

## summary for network NET3

timeperiod chosen: from 2026-06-09-00:00:00 until 2026-06-09-23:59:58

average update rate (durations larger than 15 seconds considered as observation gap): 1.1 seconds

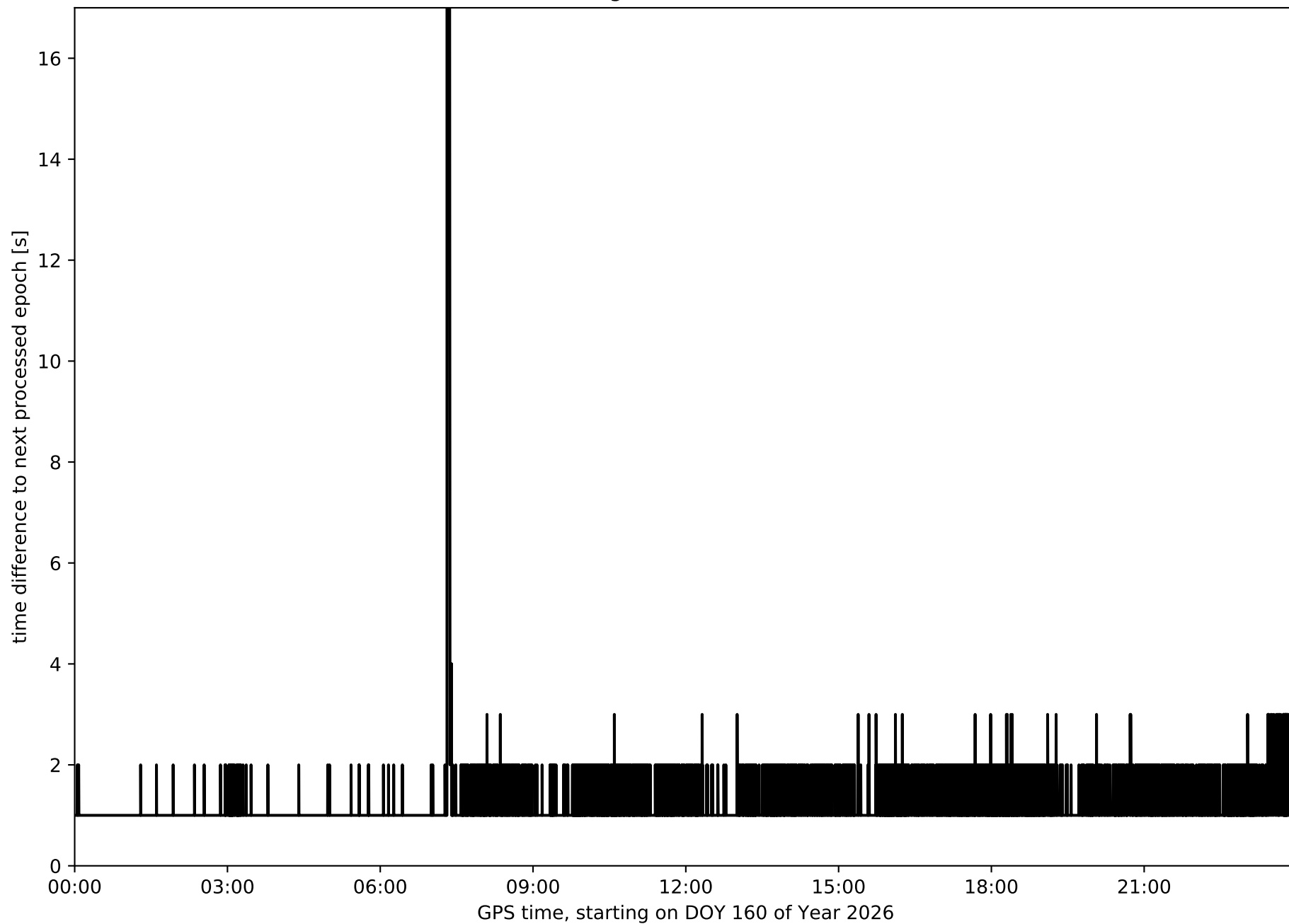
average fixing percentage with threshold set to 0.3: 94.8 percent

stations available: 12 of 12

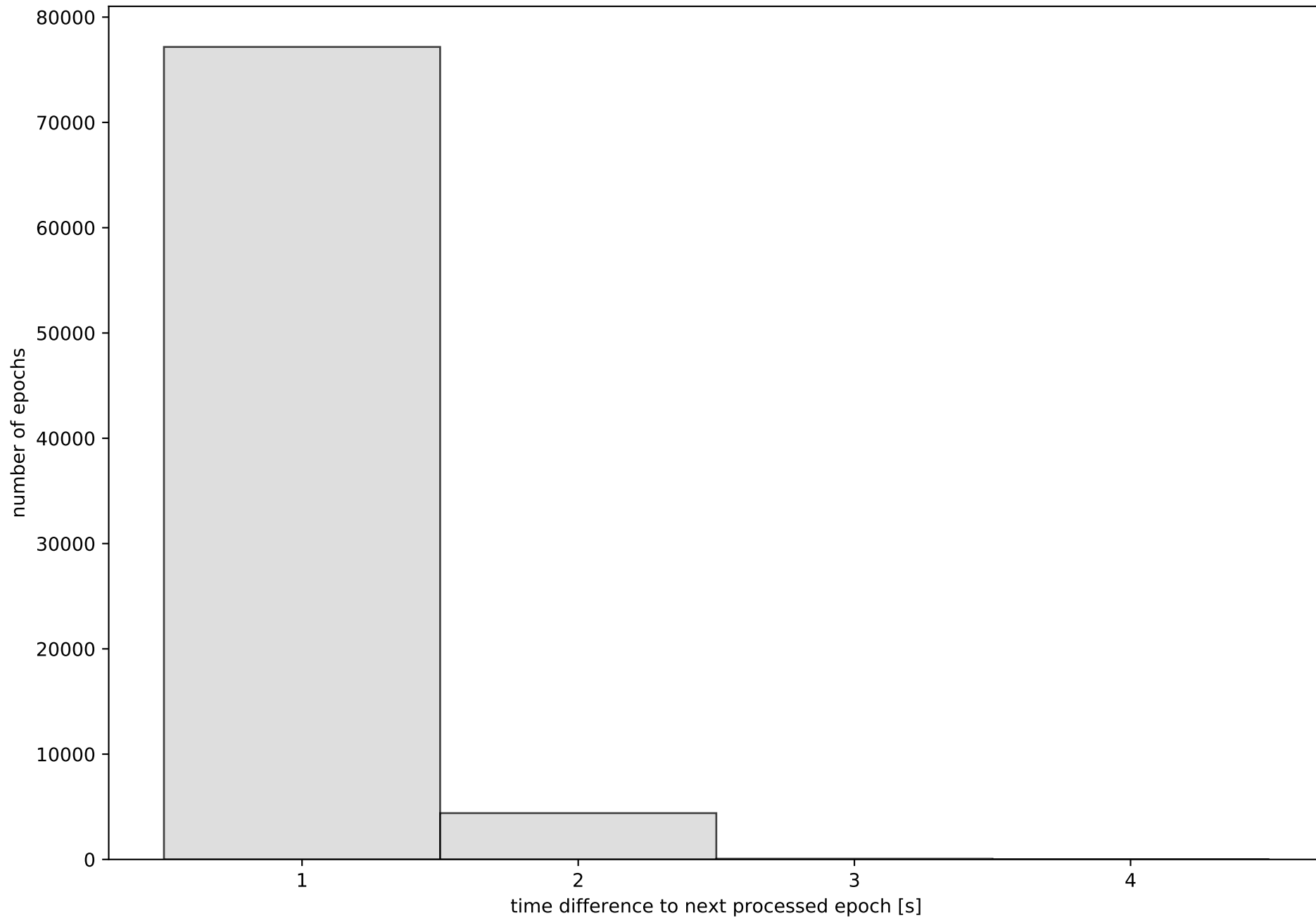
station information:

station ALBA:	antenna: LEIAR25.R3	LEIT	receiver: LEICA GR50	height: 754.656
station ALMO:	antenna: LEIAR25.R4	LEIT	receiver: LEICA GR25	height: 743.42
station CLTR:	antenna: LEIAR20	LEIM	receiver: LEICA GR10	height: 785.649
station COBA:	antenna: LEIAR20	LEIM	receiver: LEICA GR50	height: 202.143
station CUEN:	antenna: LEIAR20	LEIM	receiver: LEICA GR50	height: 998.118
station JUMA:	antenna: LEIAR20	LEIM	receiver: LEICA GR30	height: 610.249
station MOTA:	antenna: LEIAR25.R4	LEIT	receiver: LEICA GR50	height: 779.82
station MRAT:	antenna: LEIAR20	LEIM	receiver: LEICA GR30	height: 1227.58
station SONS:	antenna: LEIAR20	LEIM	receiver: LEICA GR50	height: 811.983
station UTI1:	antenna: TRM159900.00	SCIS	receiver: LEICA GR50	height: 798.706
station VIAR:	antenna: GPPNULLANTENNA	NONE	receiver: LEICA GR50	height: 746.559
station VILH:	antenna: TRM159900.00	SCIS	receiver: TRIMBLE NETR9	height: 1022.771

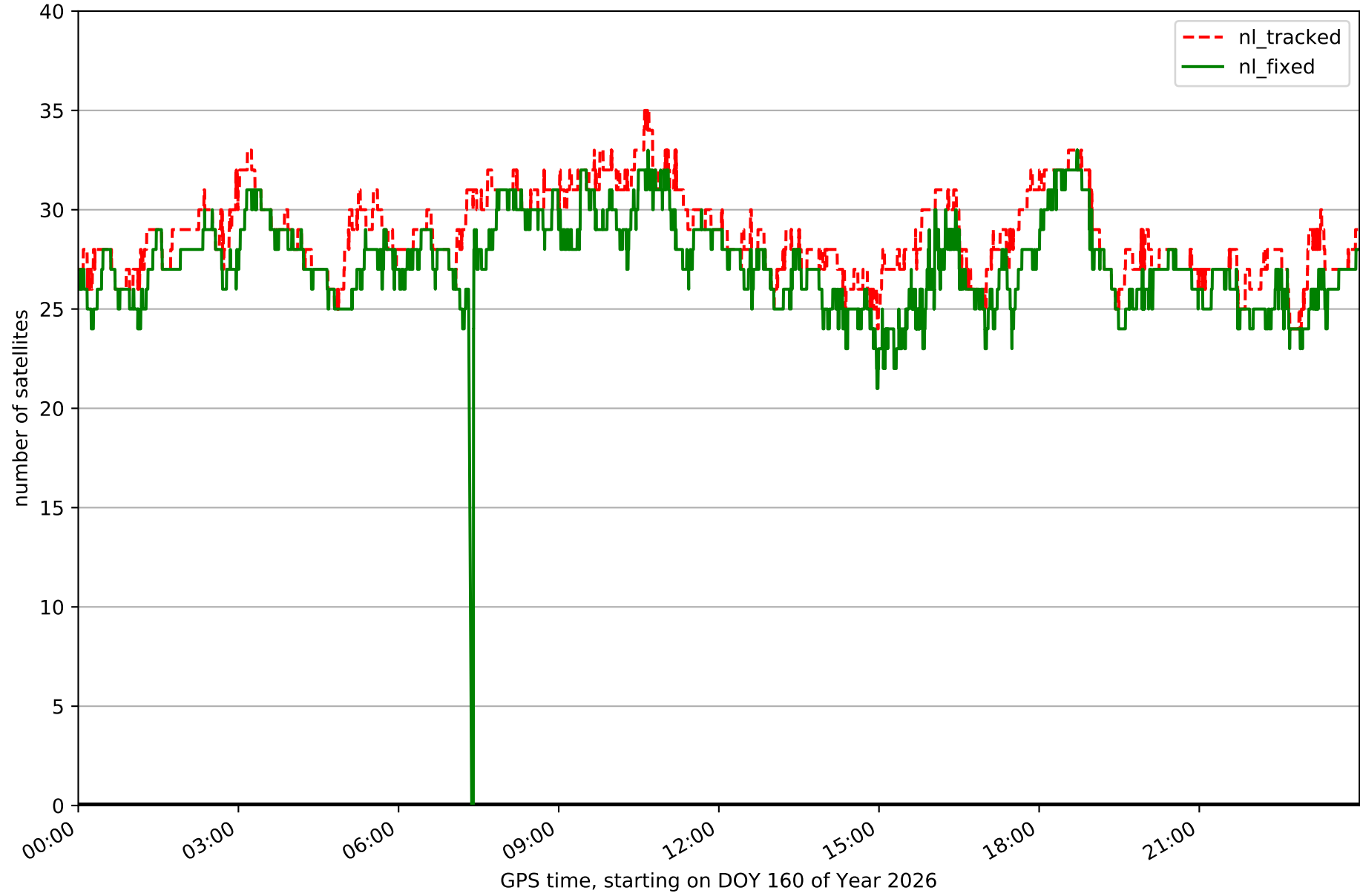
Processing rate in network NET3



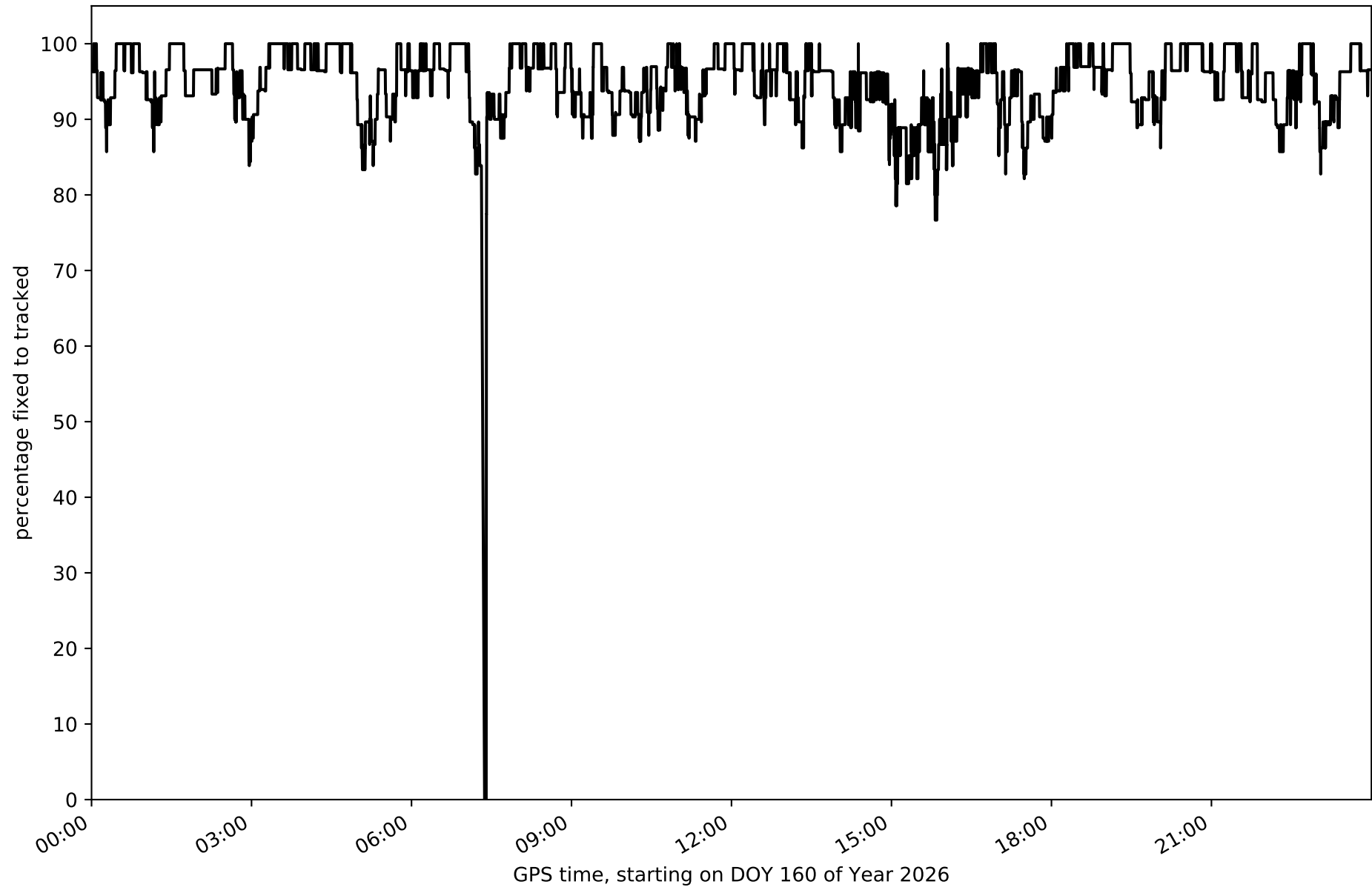
Histogram of the processing rate in network NET3 (durations larger 15 seconds neglected)



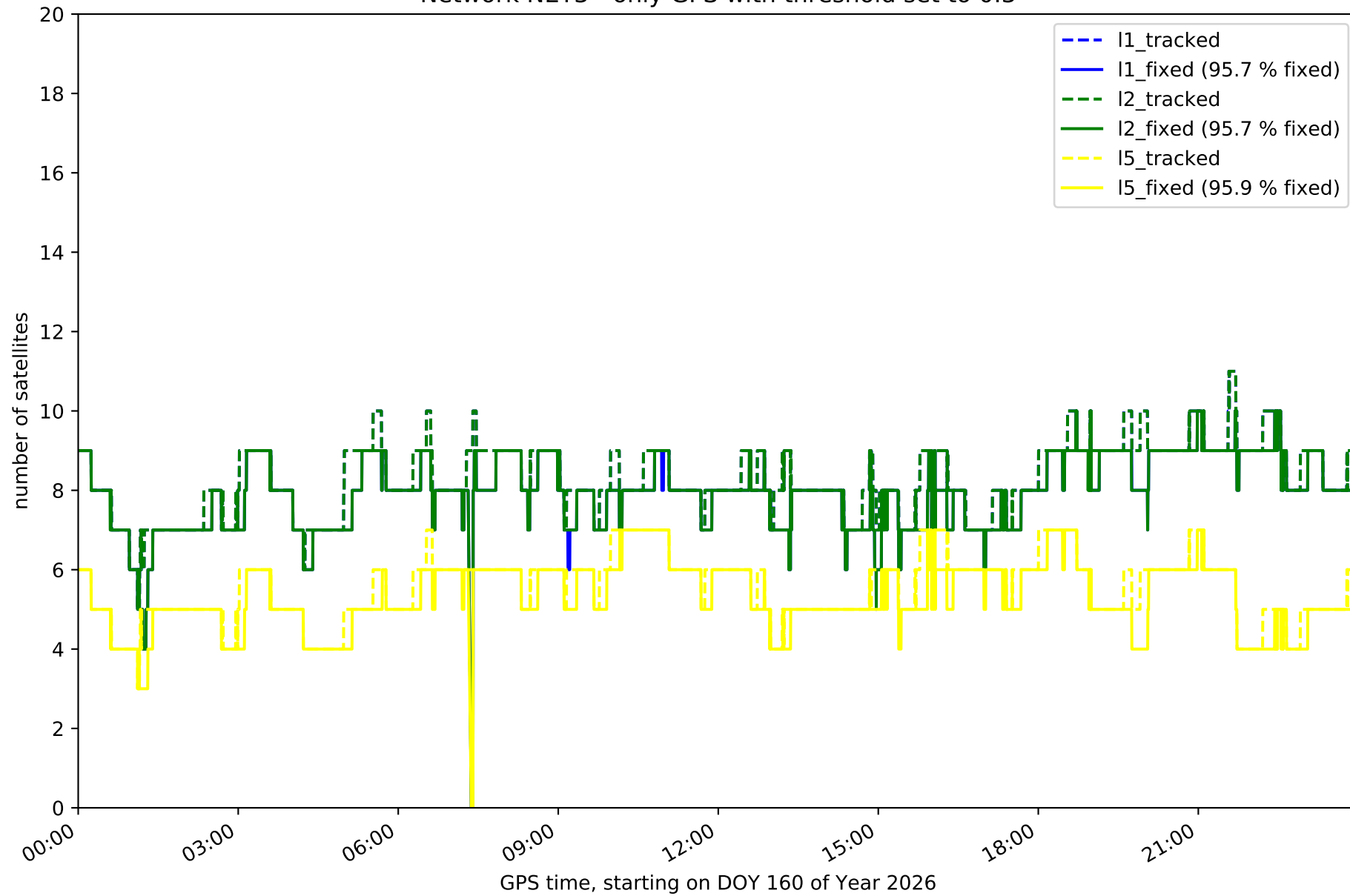
Network NET3 with threshold set to 0.3



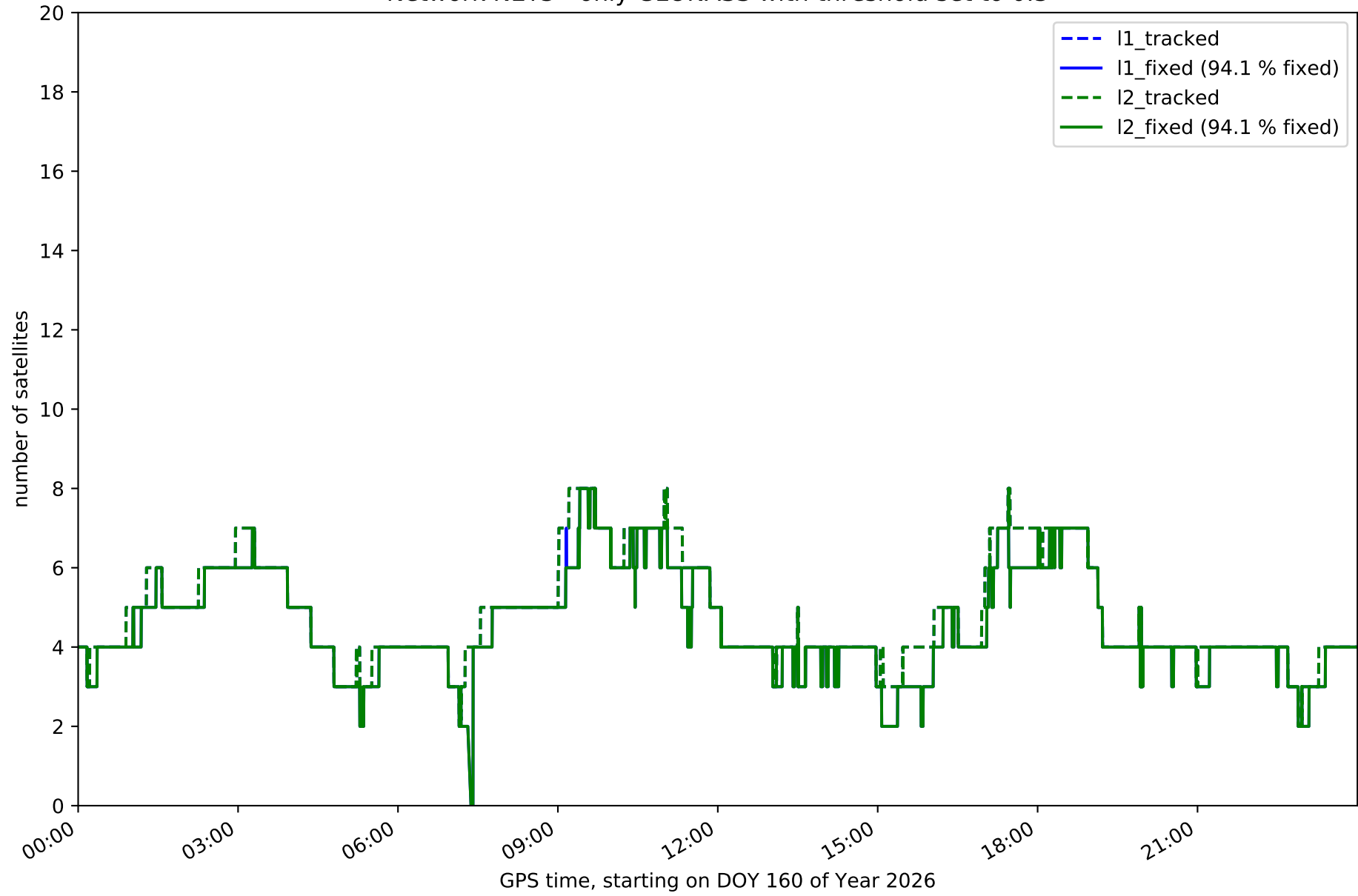
Fixing percentage of satellites in network NET3 with threshold set to 0.3



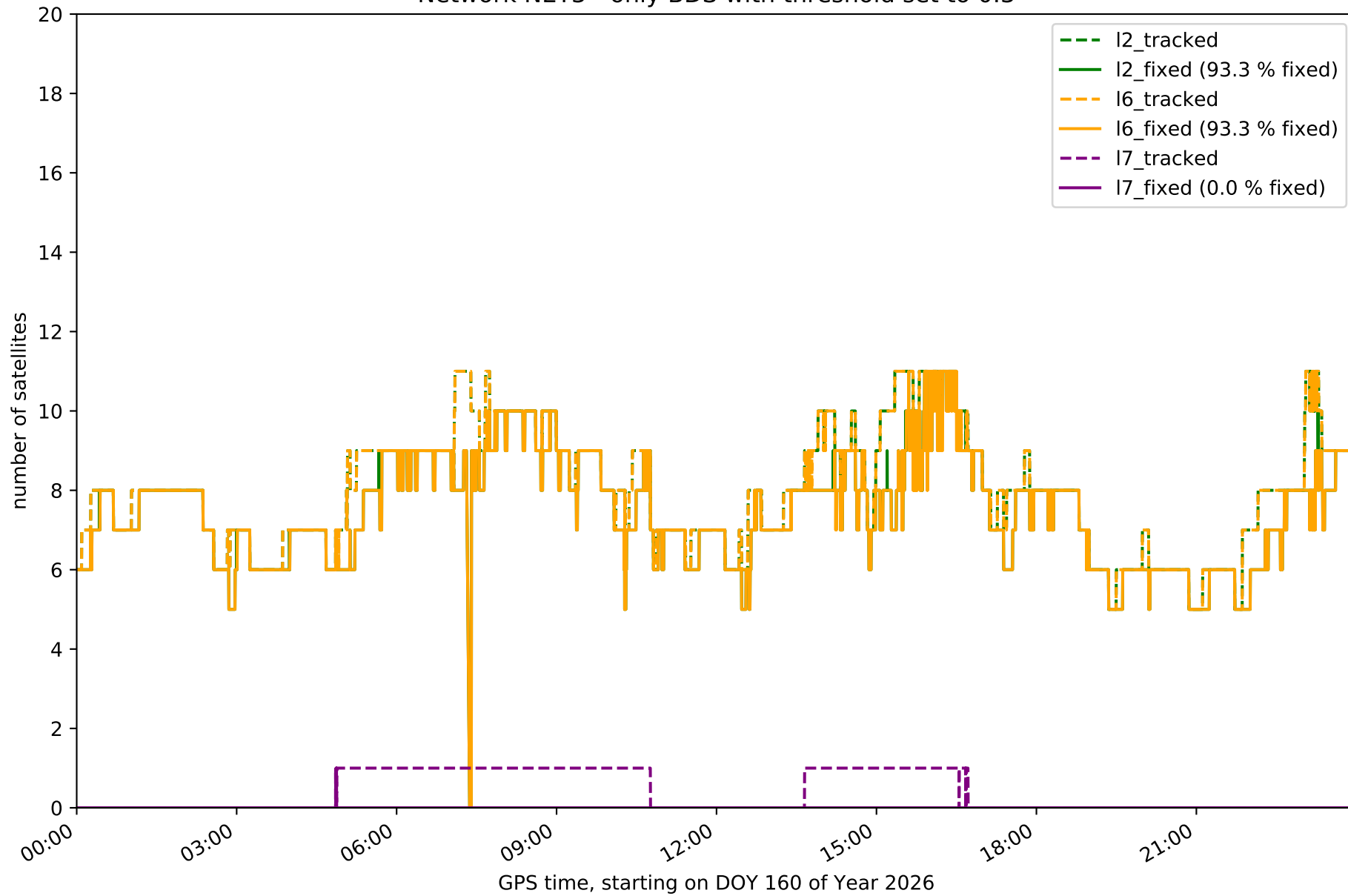
Network NET3 - only GPS with threshold set to 0.3



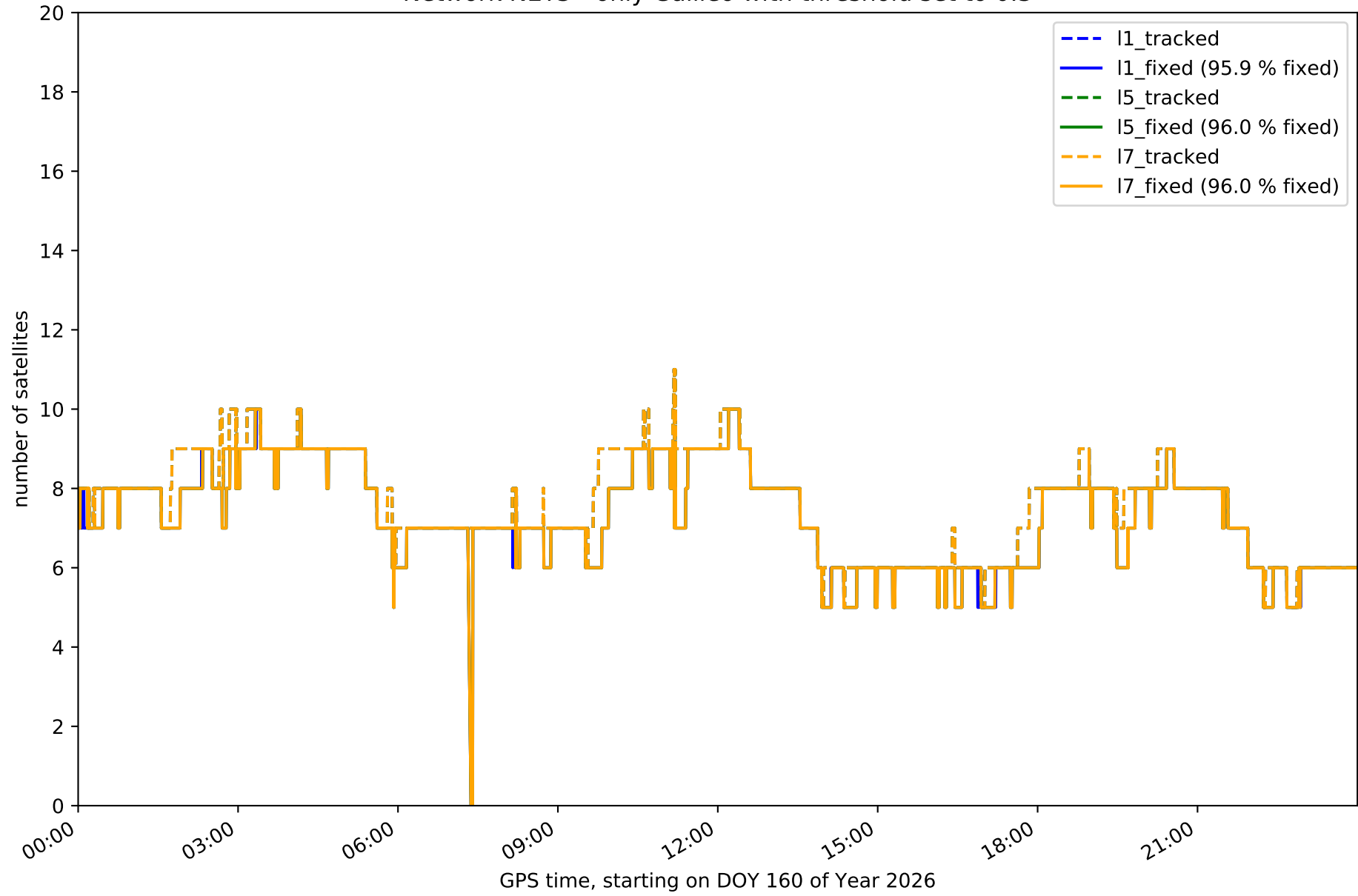
Network NET3 - only GLONASS with threshold set to 0.3



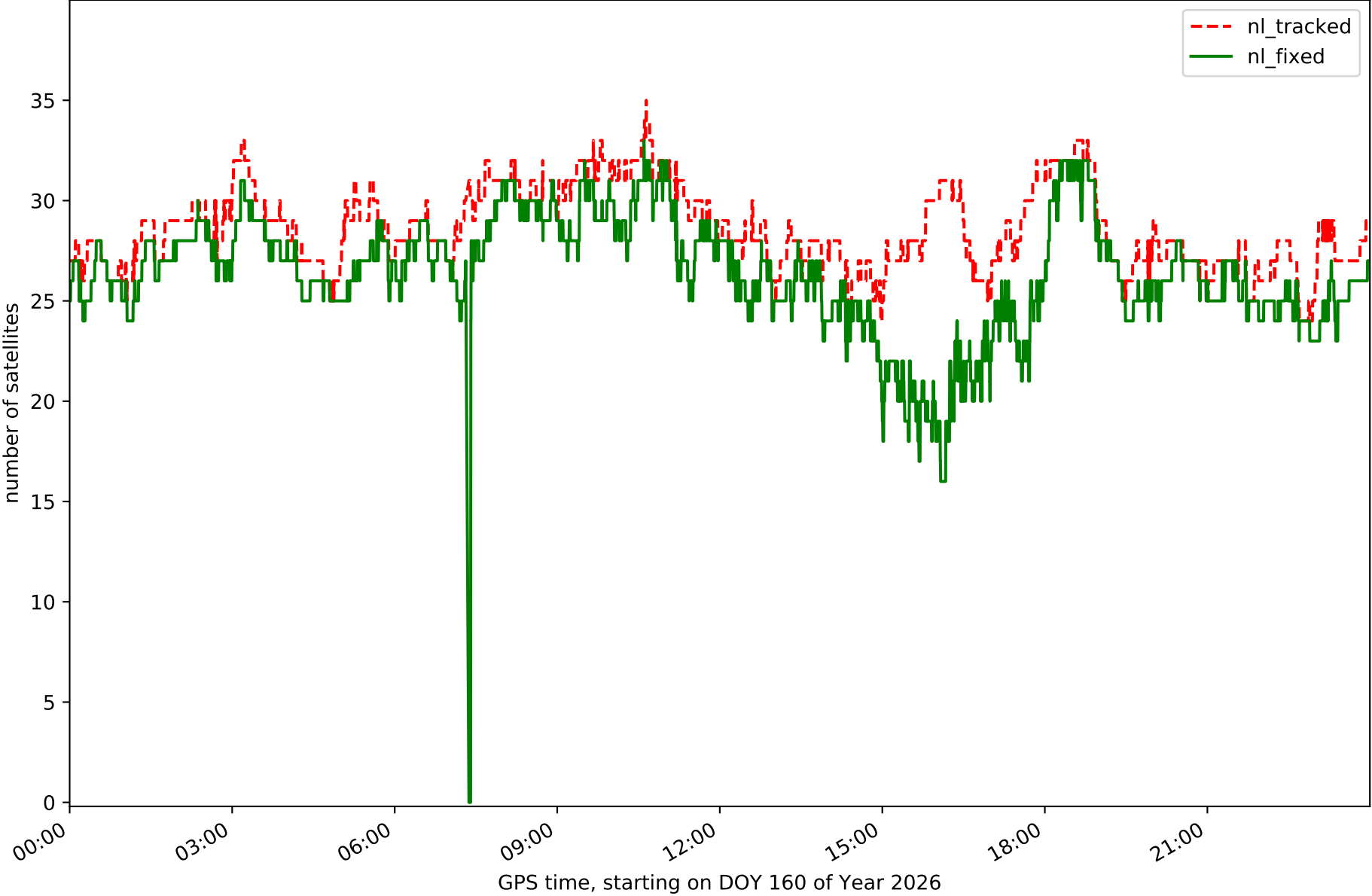
Network NET3 - only BDS with threshold set to 0.3



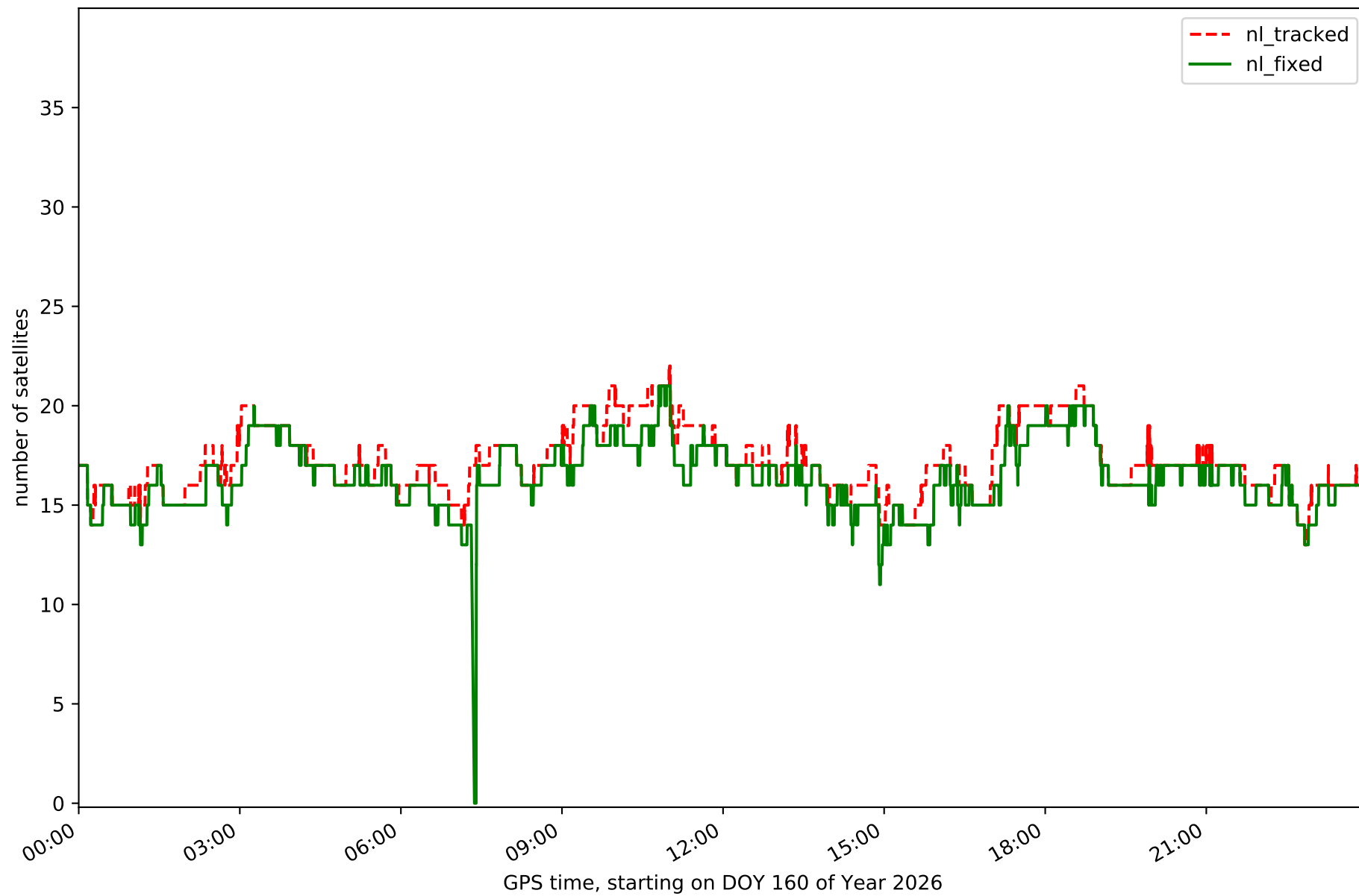
Network NET3 - only Galileo with threshold set to 0.3



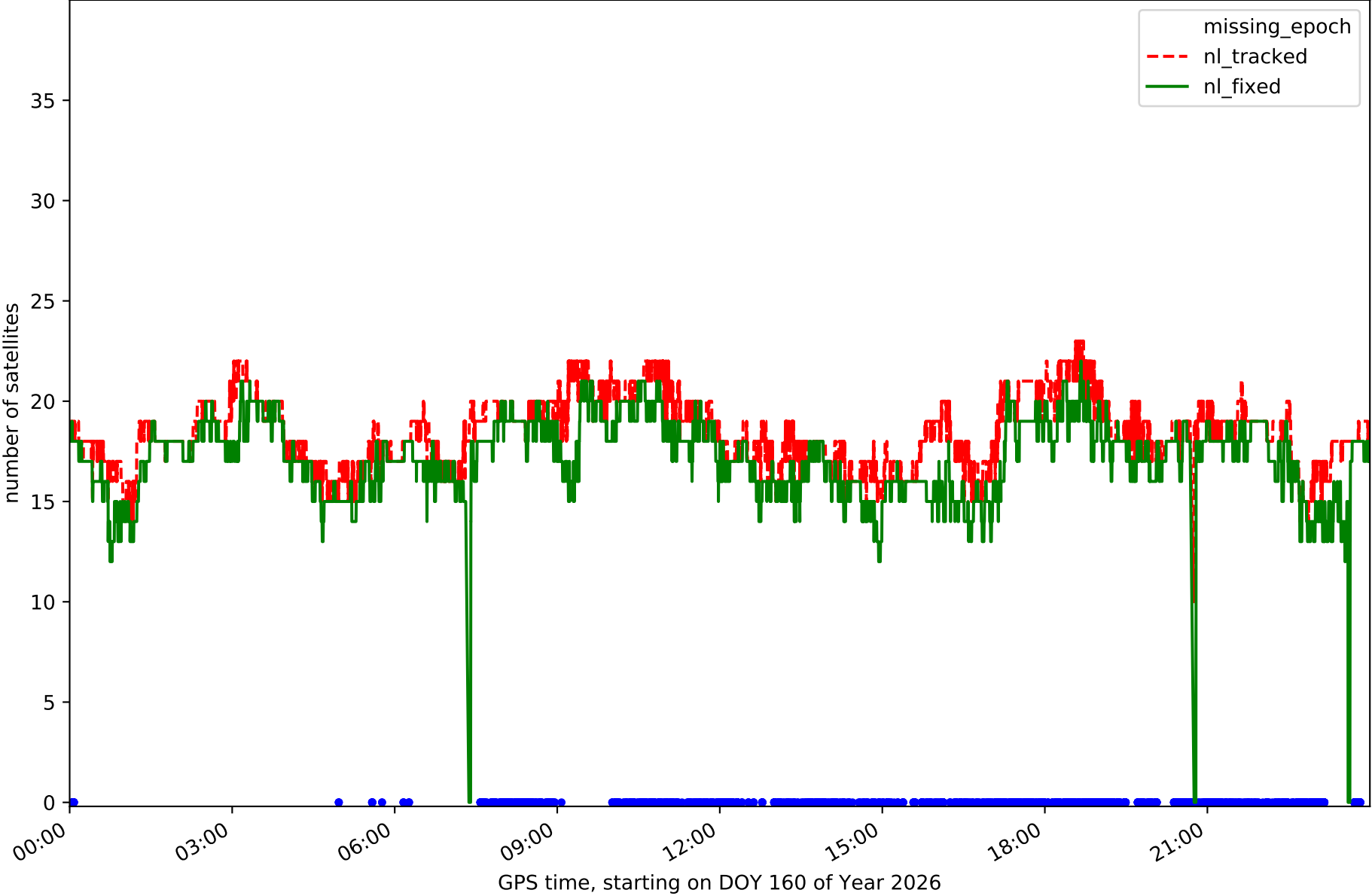
Station ALBA in network NET3



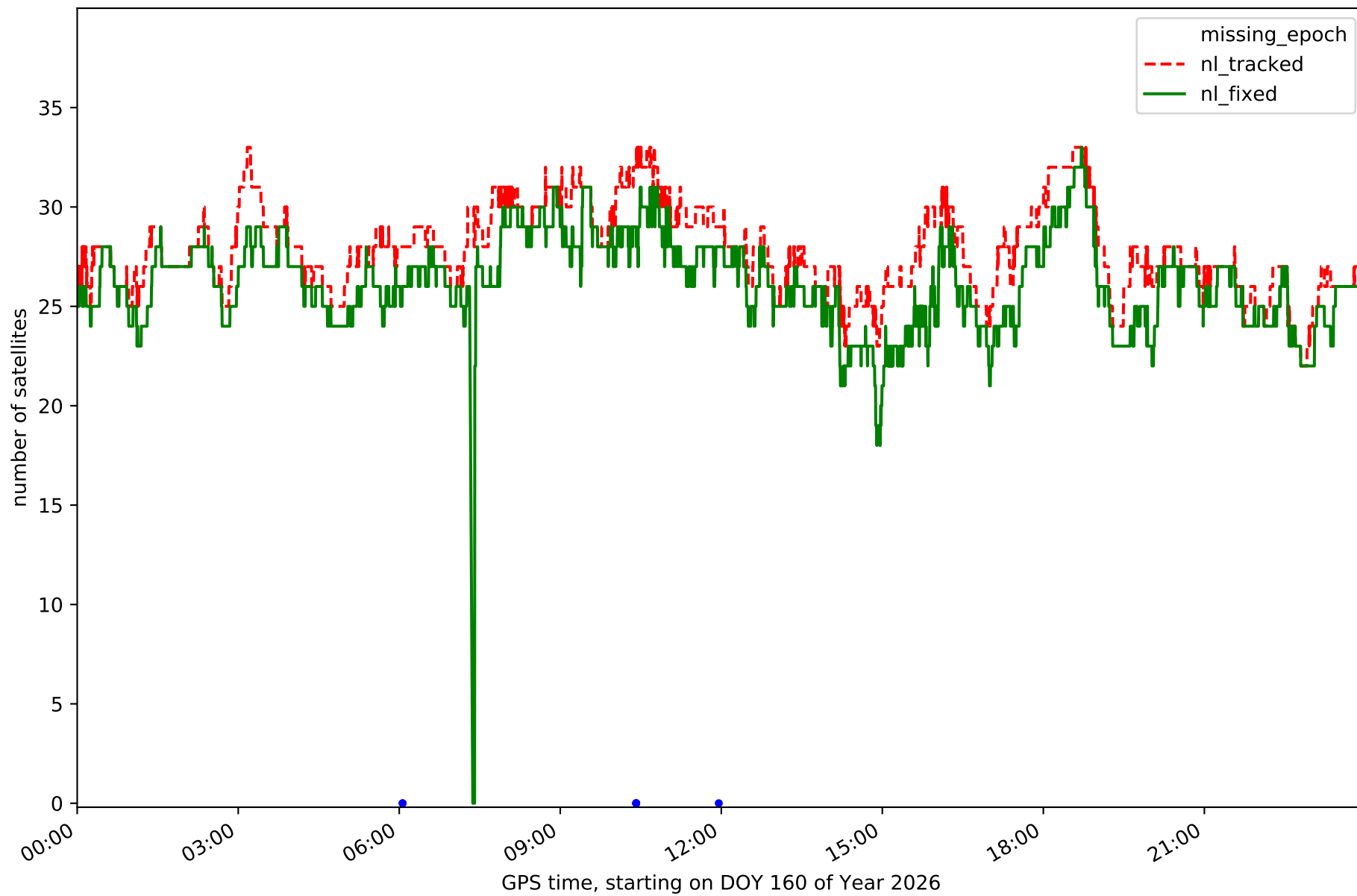
Station ALMO in network NET3



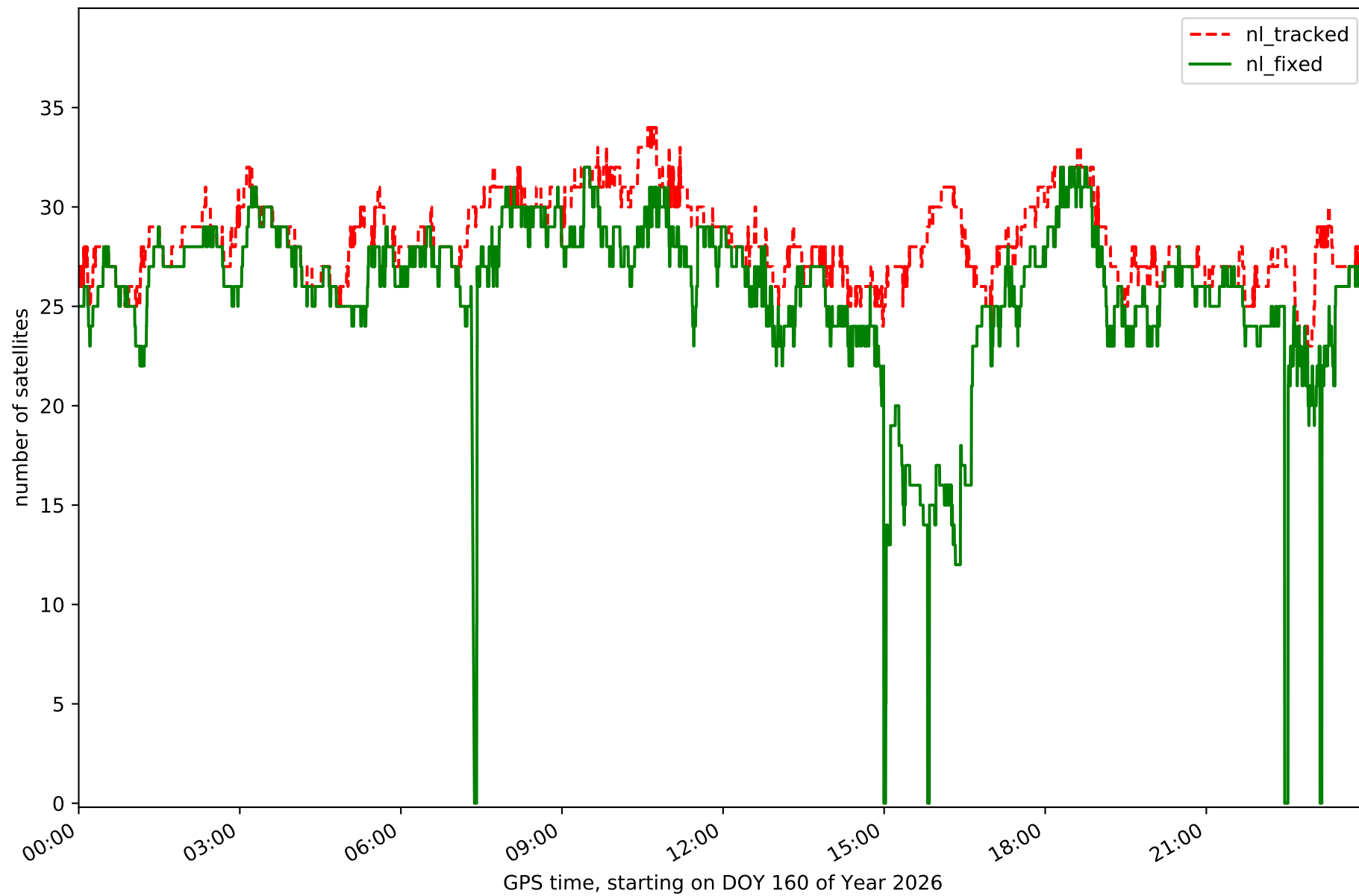
Station CLTR in network NET3



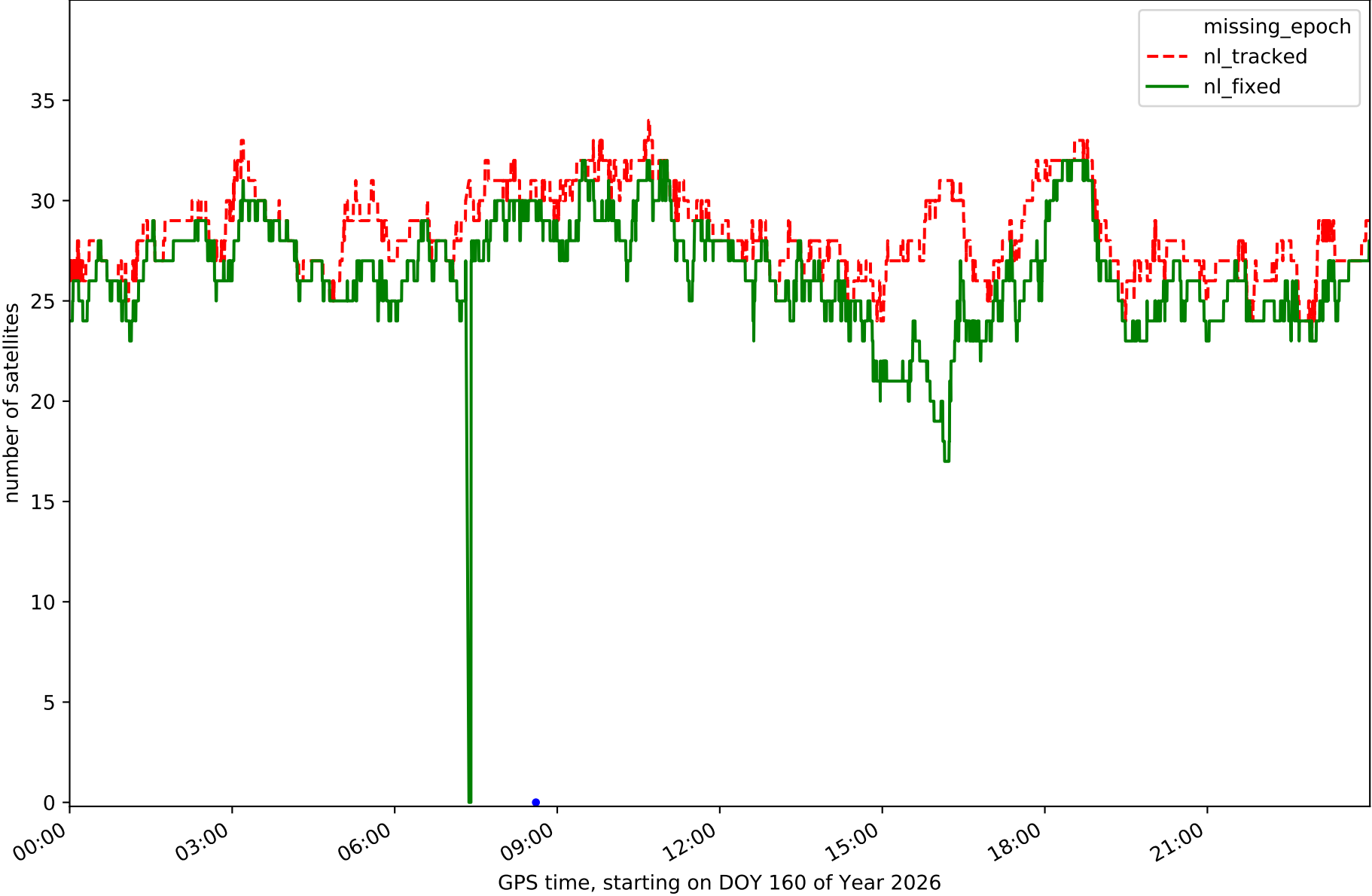
Station COBA in network NET3



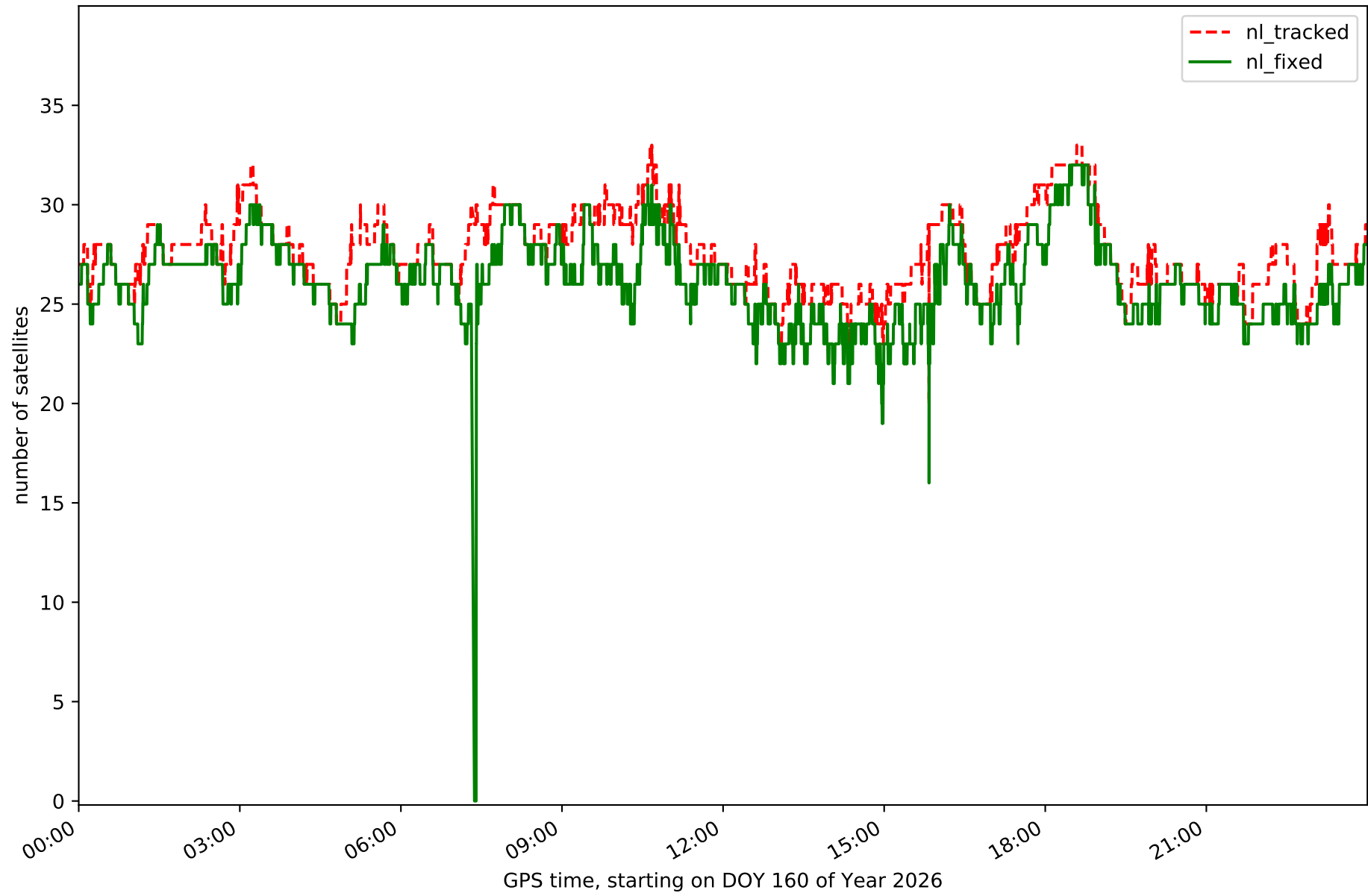
Station CUEN in network NET3



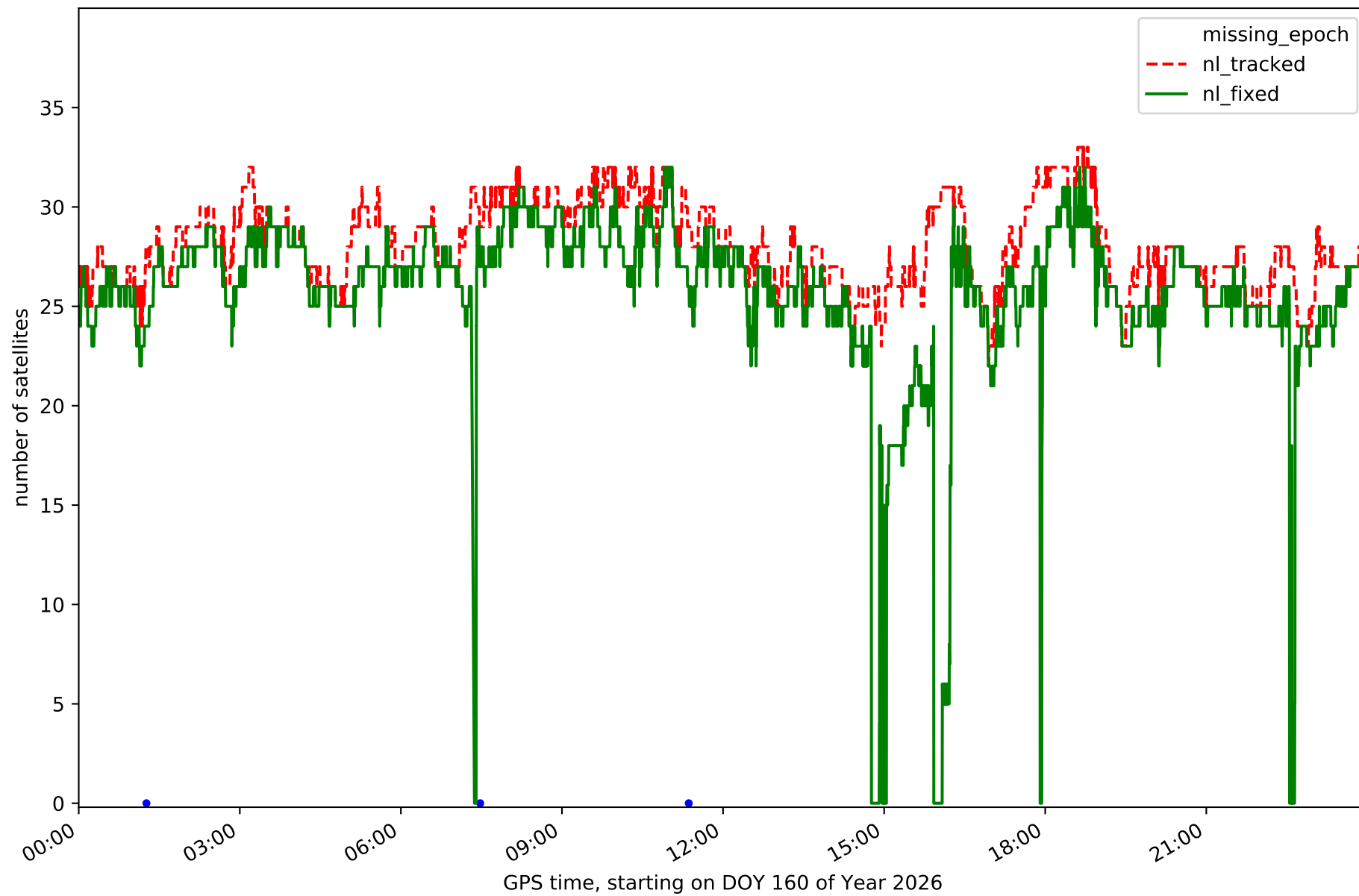
Station JUMA in network NET3



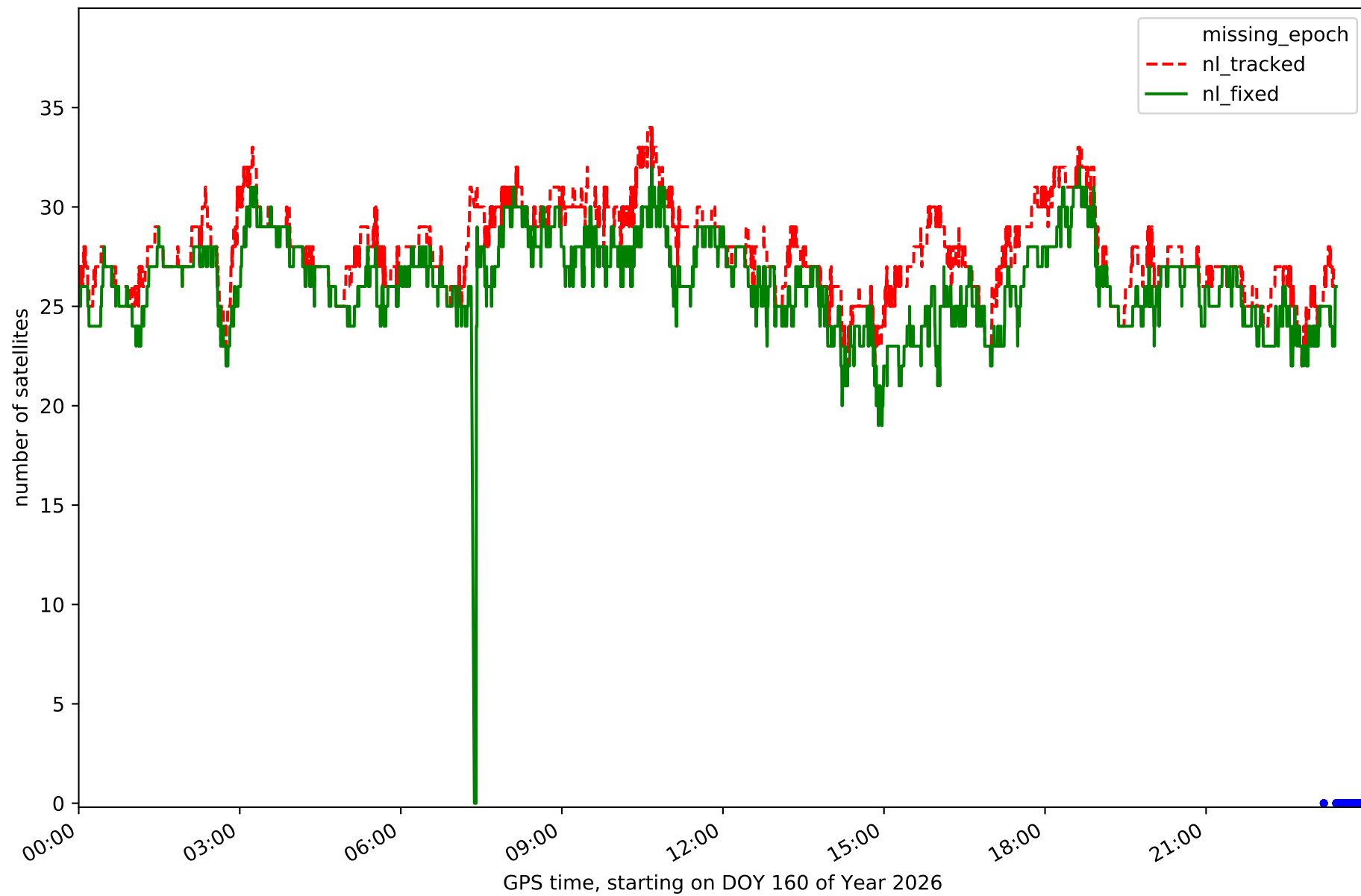
Station MOTA in network NET3



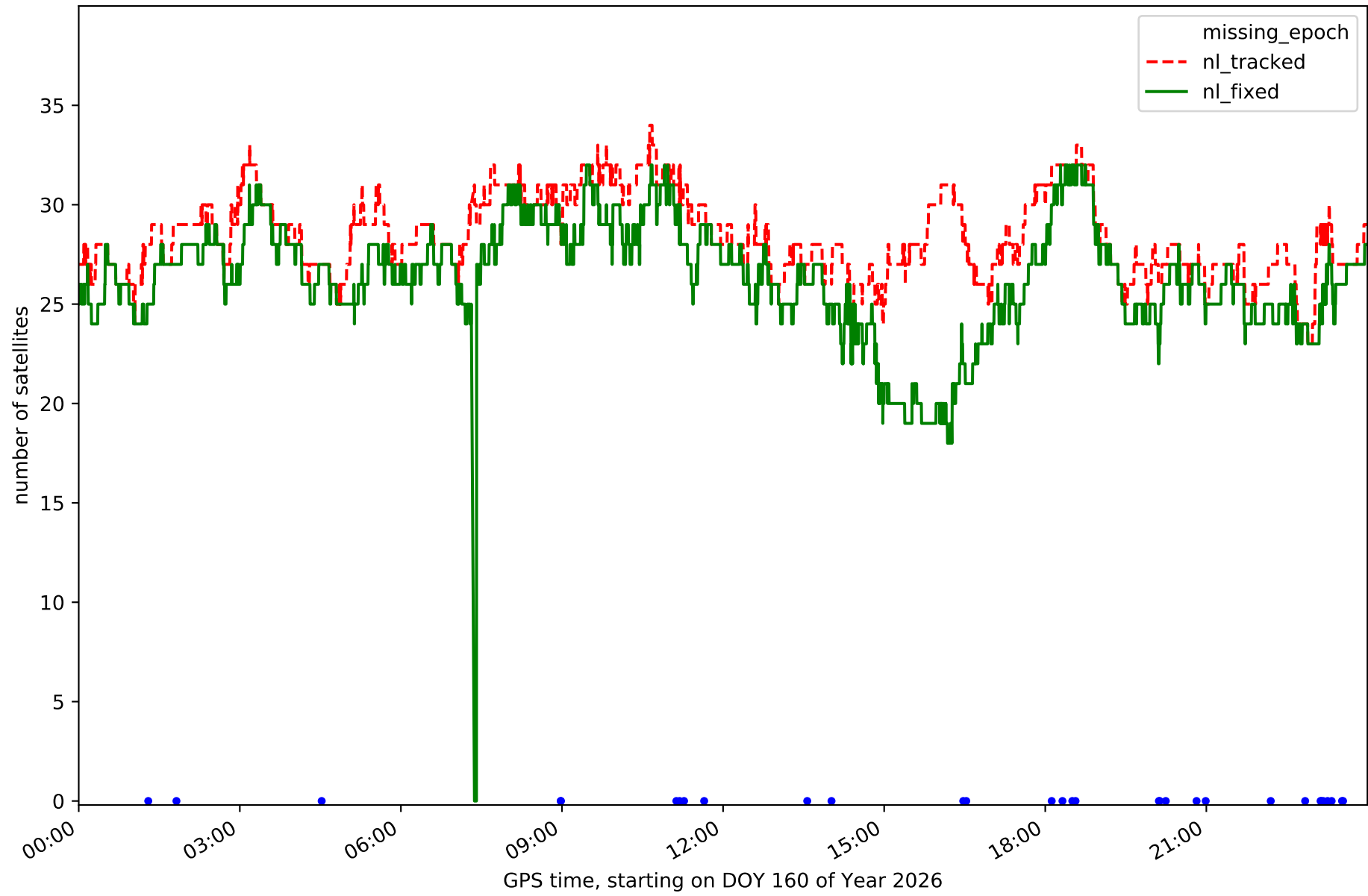
Station MRAT in network NET3



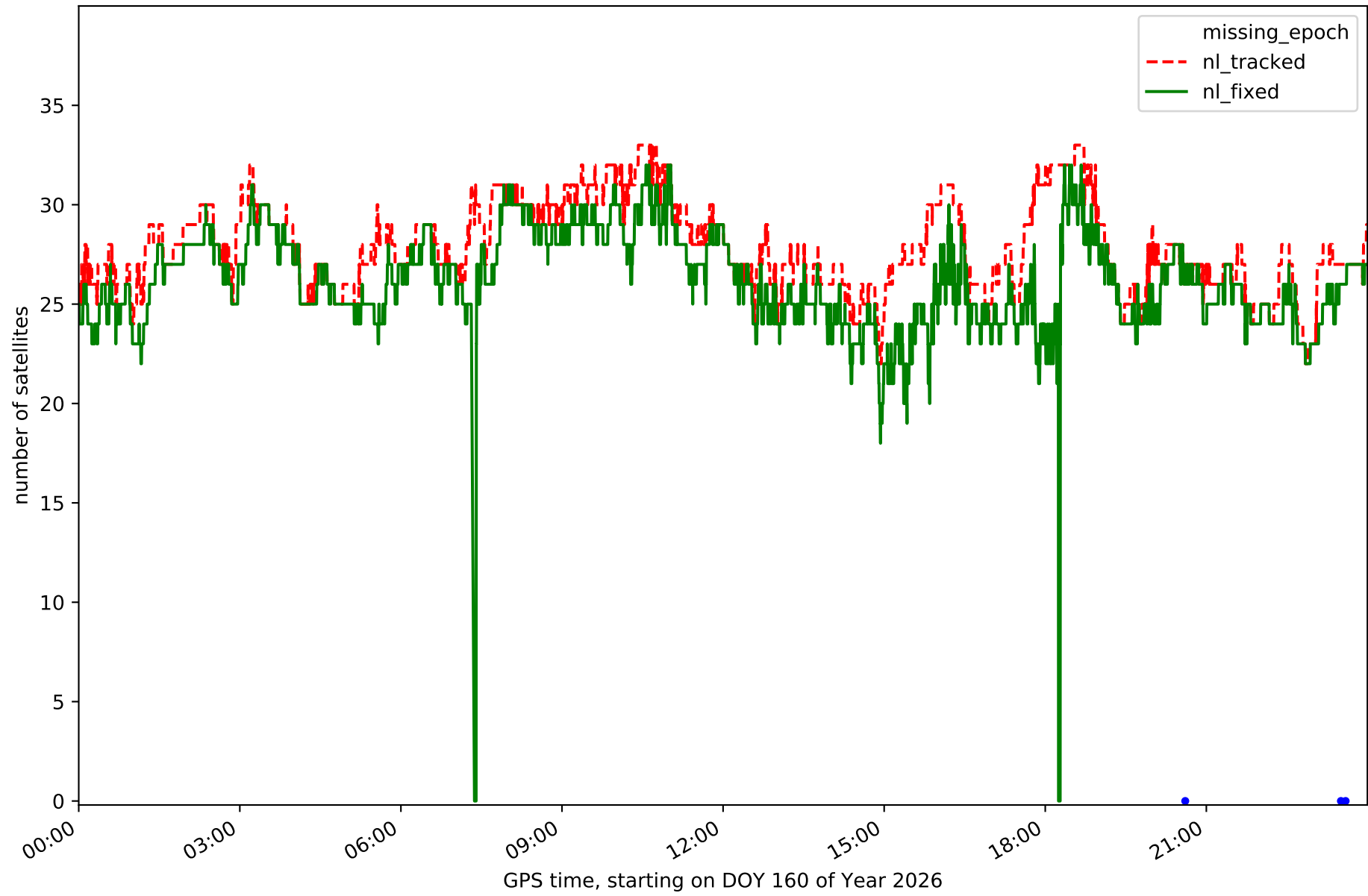
Station SONS in network NET3



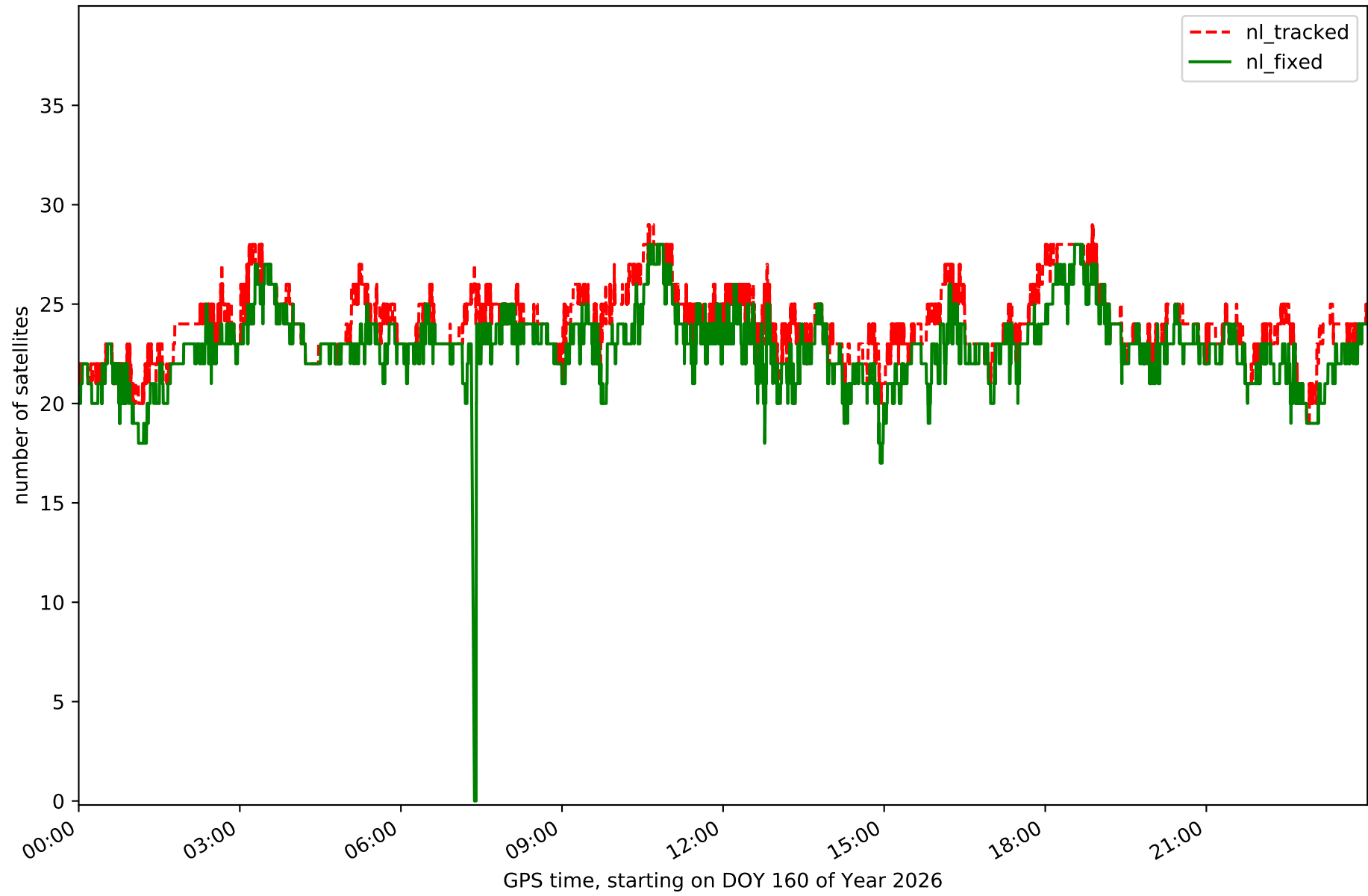
Station UTI1 in network NET3



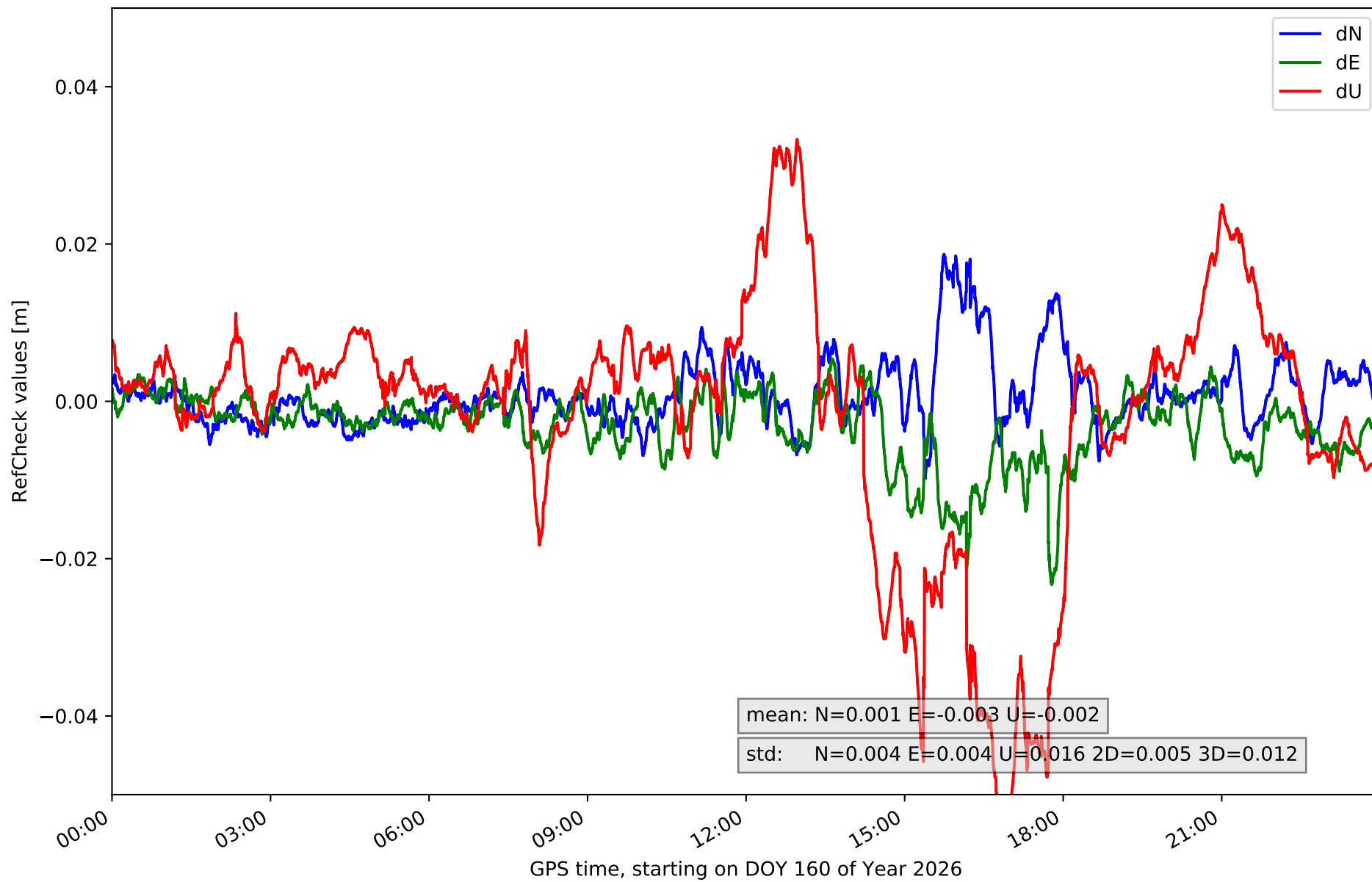
Station VIAR in network NET3



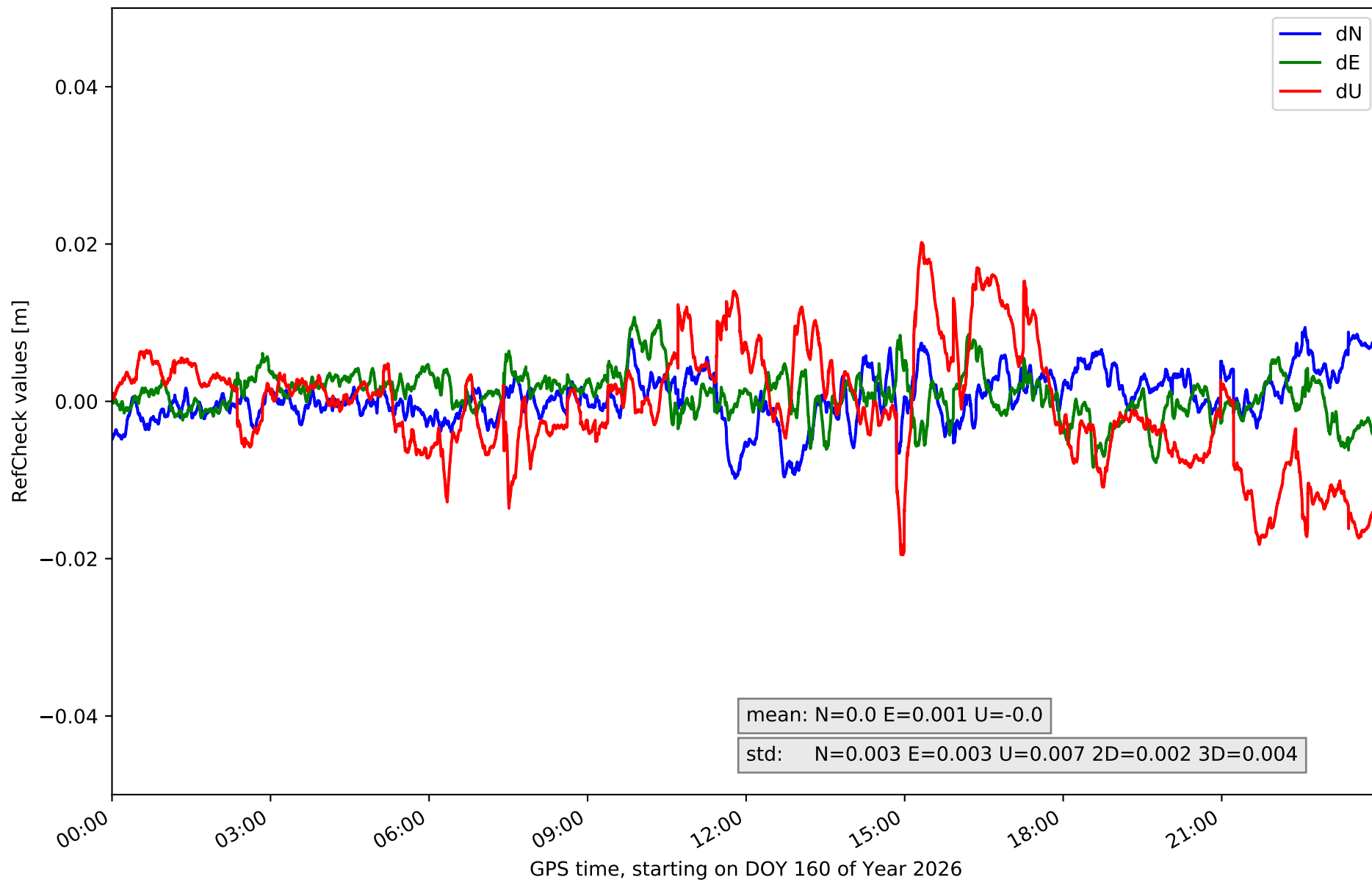
Station VILH in network NET3



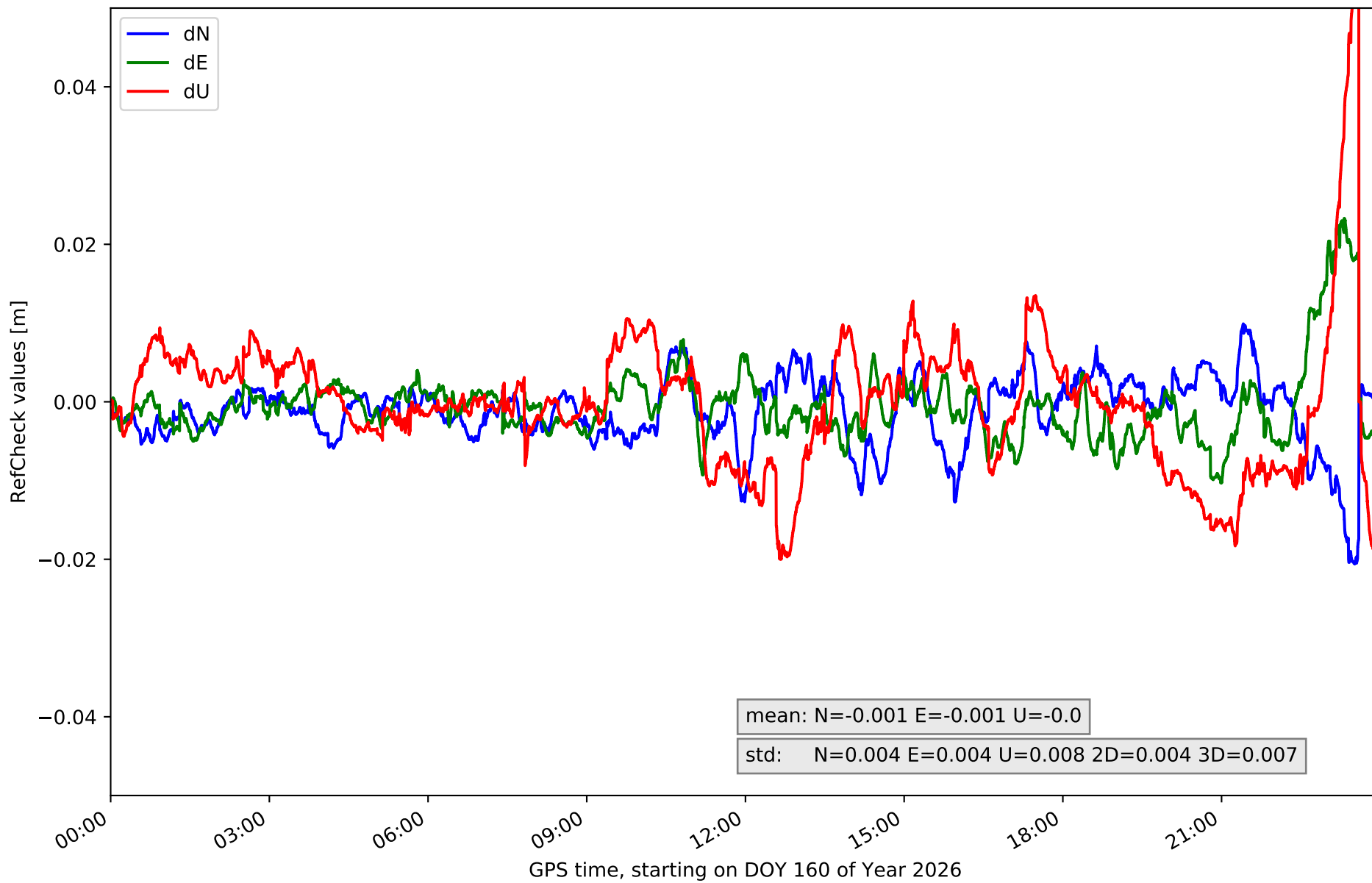
### RefCheck for station ALBA in network NET3



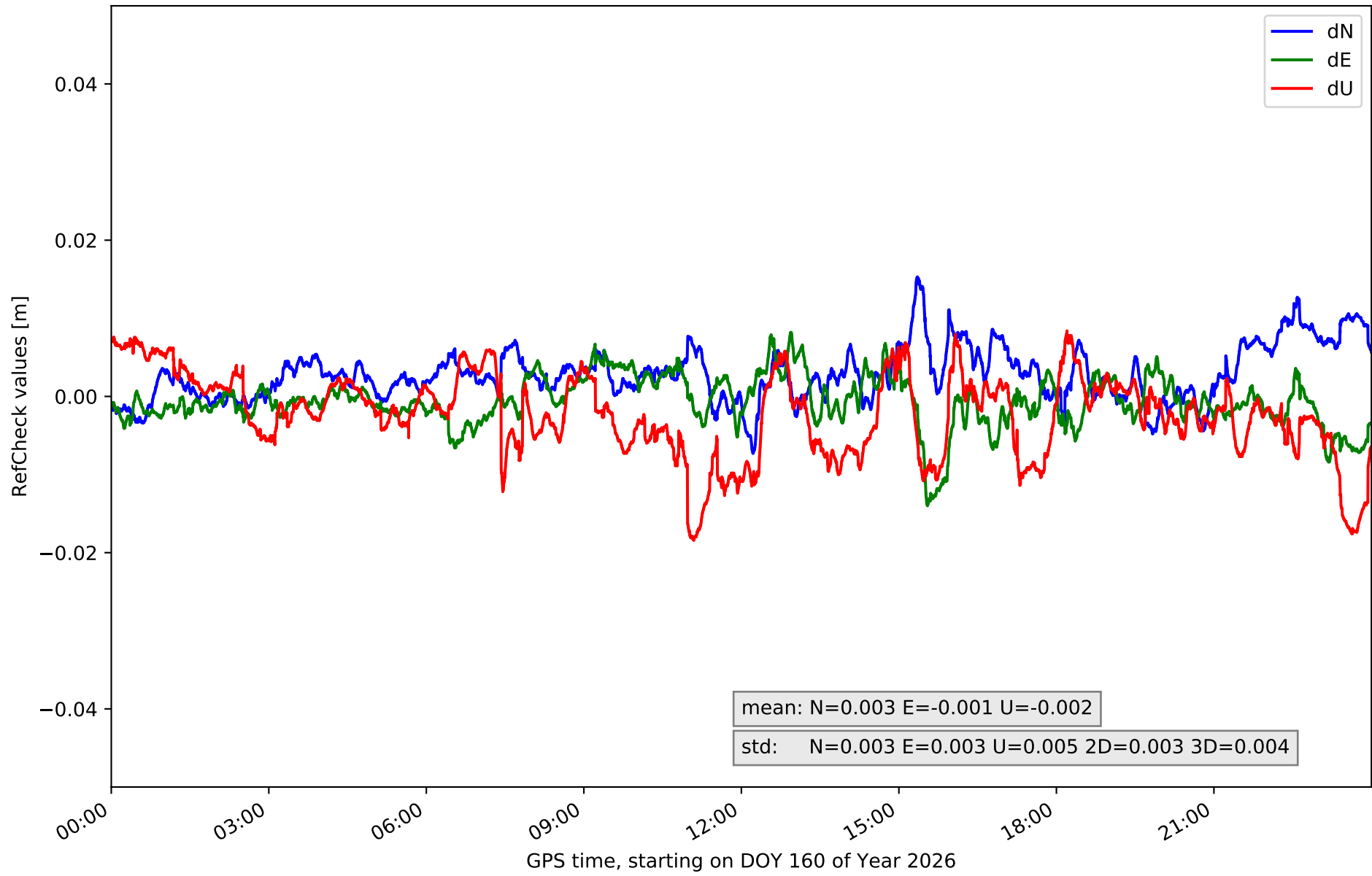
### RefCheck for station ALMO in network NET3



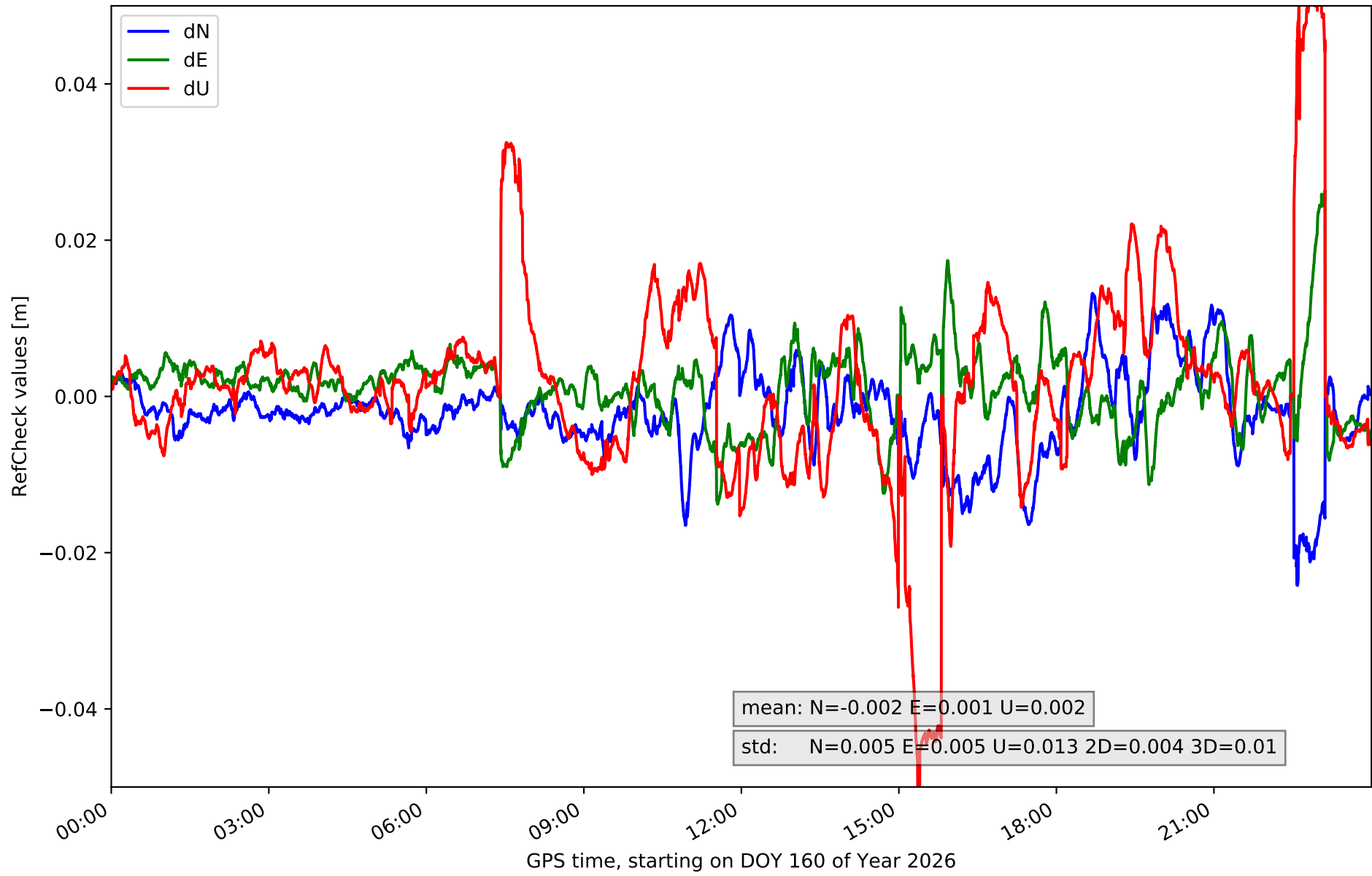
RefCheck for station CLTR in network NET3



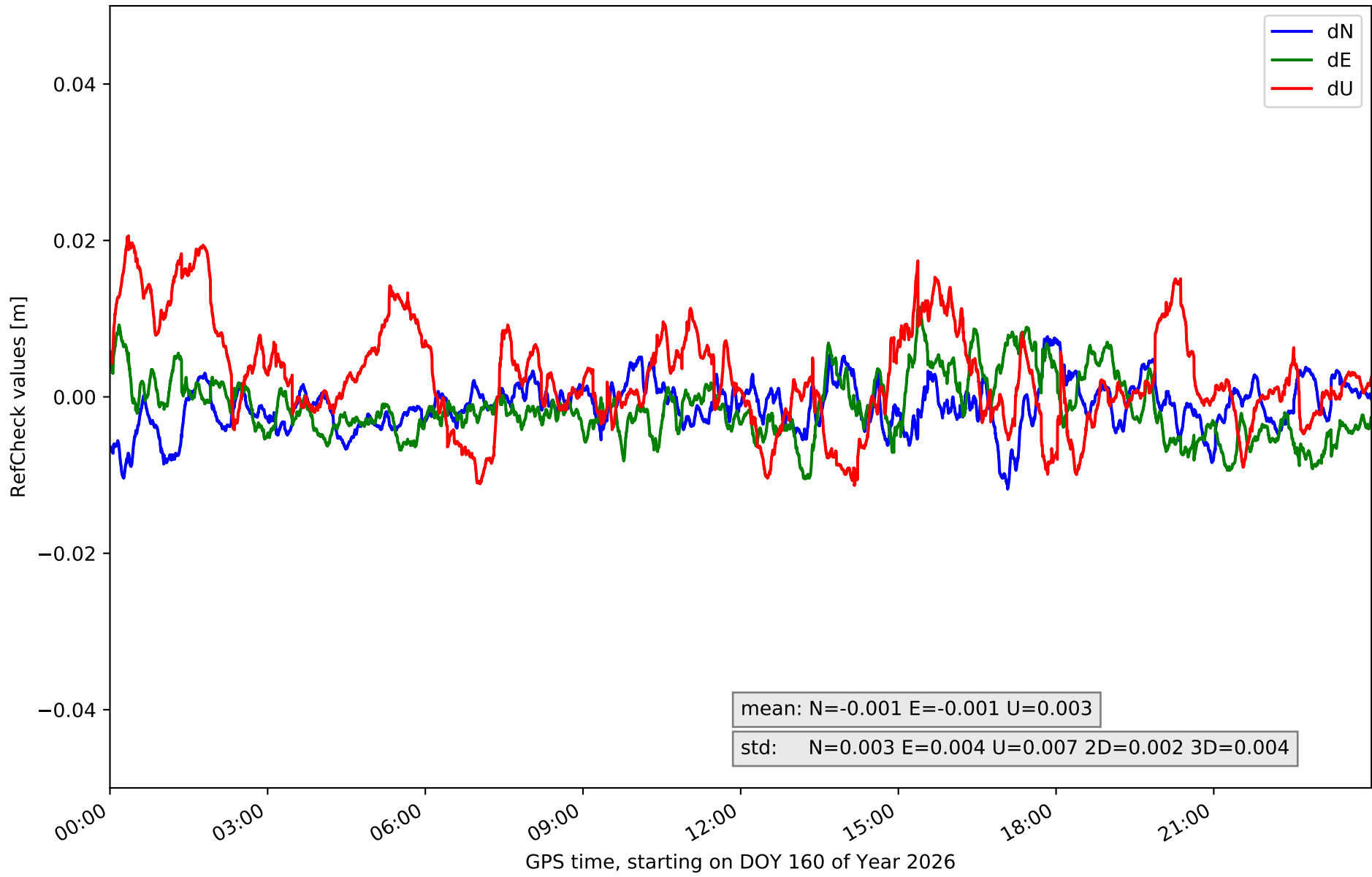
# RefCheck for station COBA in network NET3



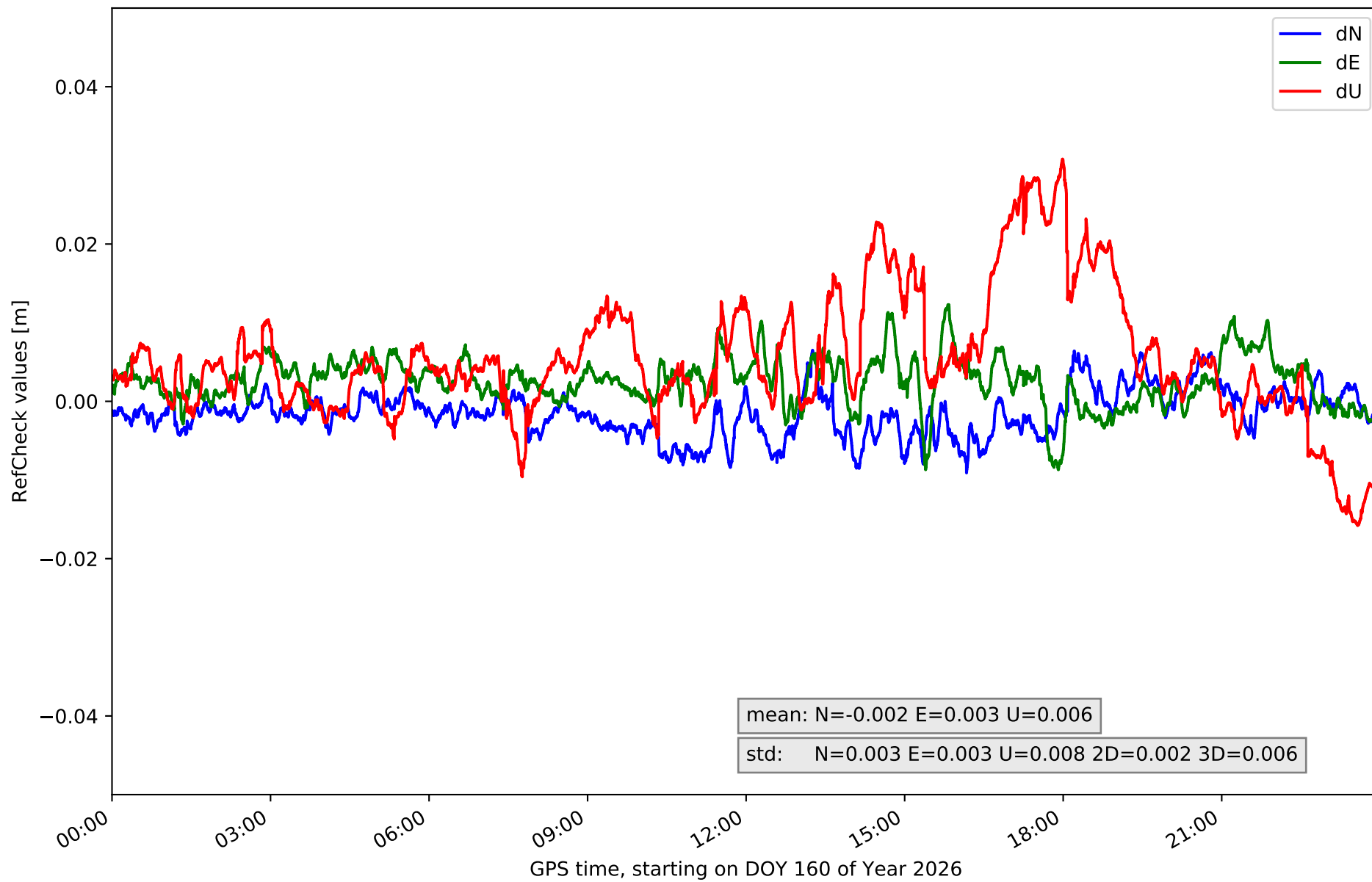
RefCheck for station CUEN in network NET3



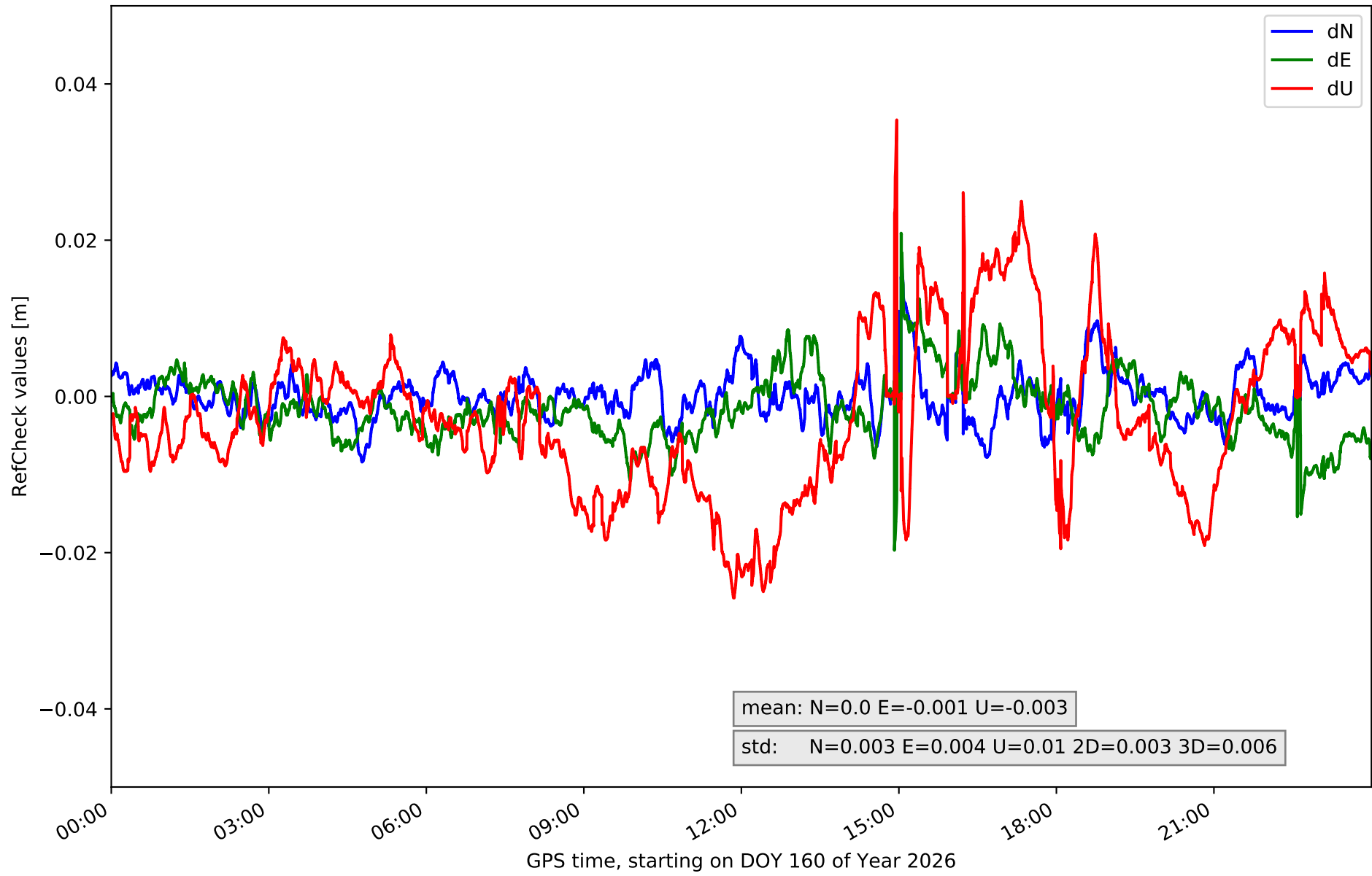
# RefCheck for station JUMA in network NET3



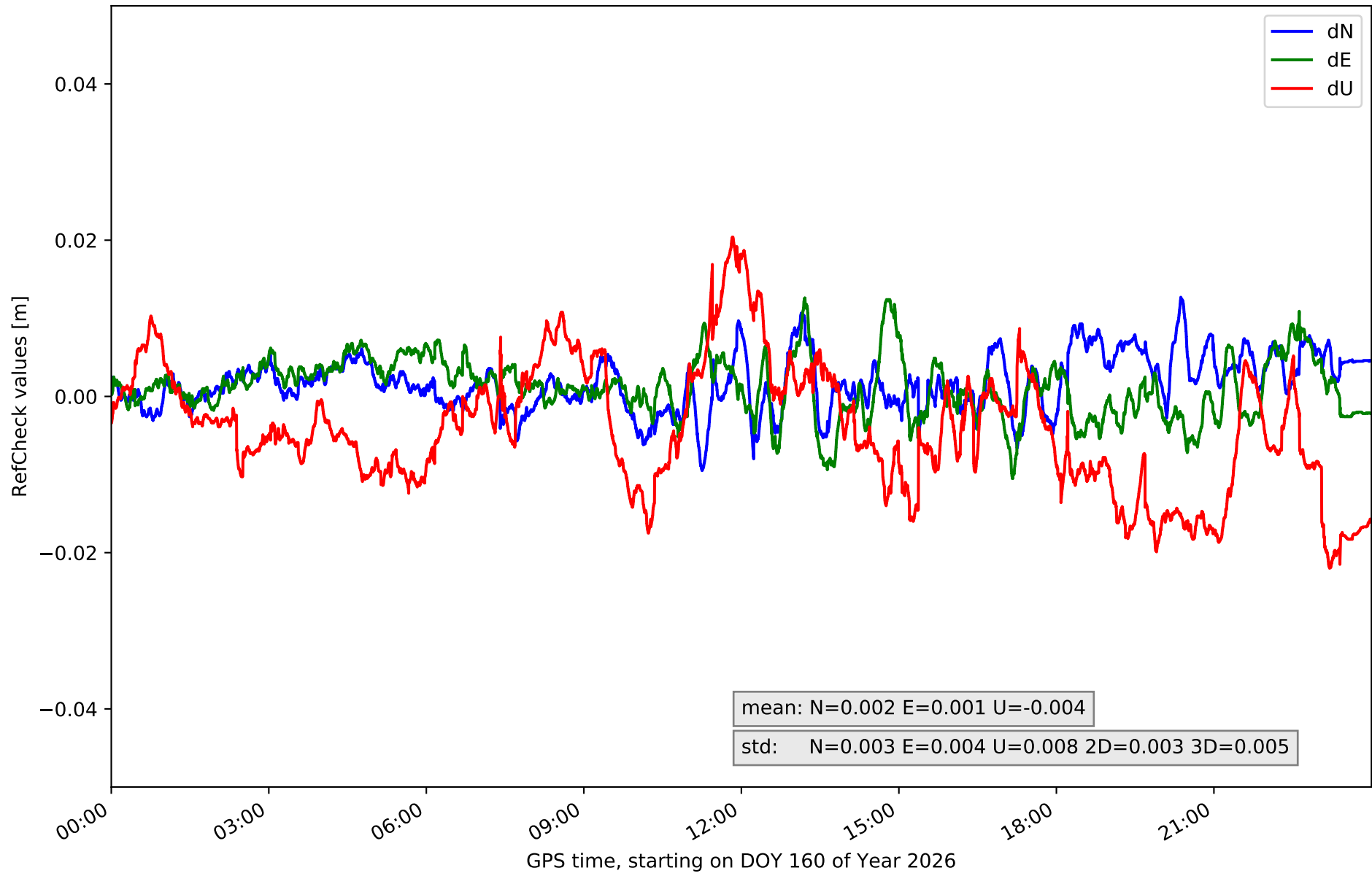
### RefCheck for station MOTA in network NET3



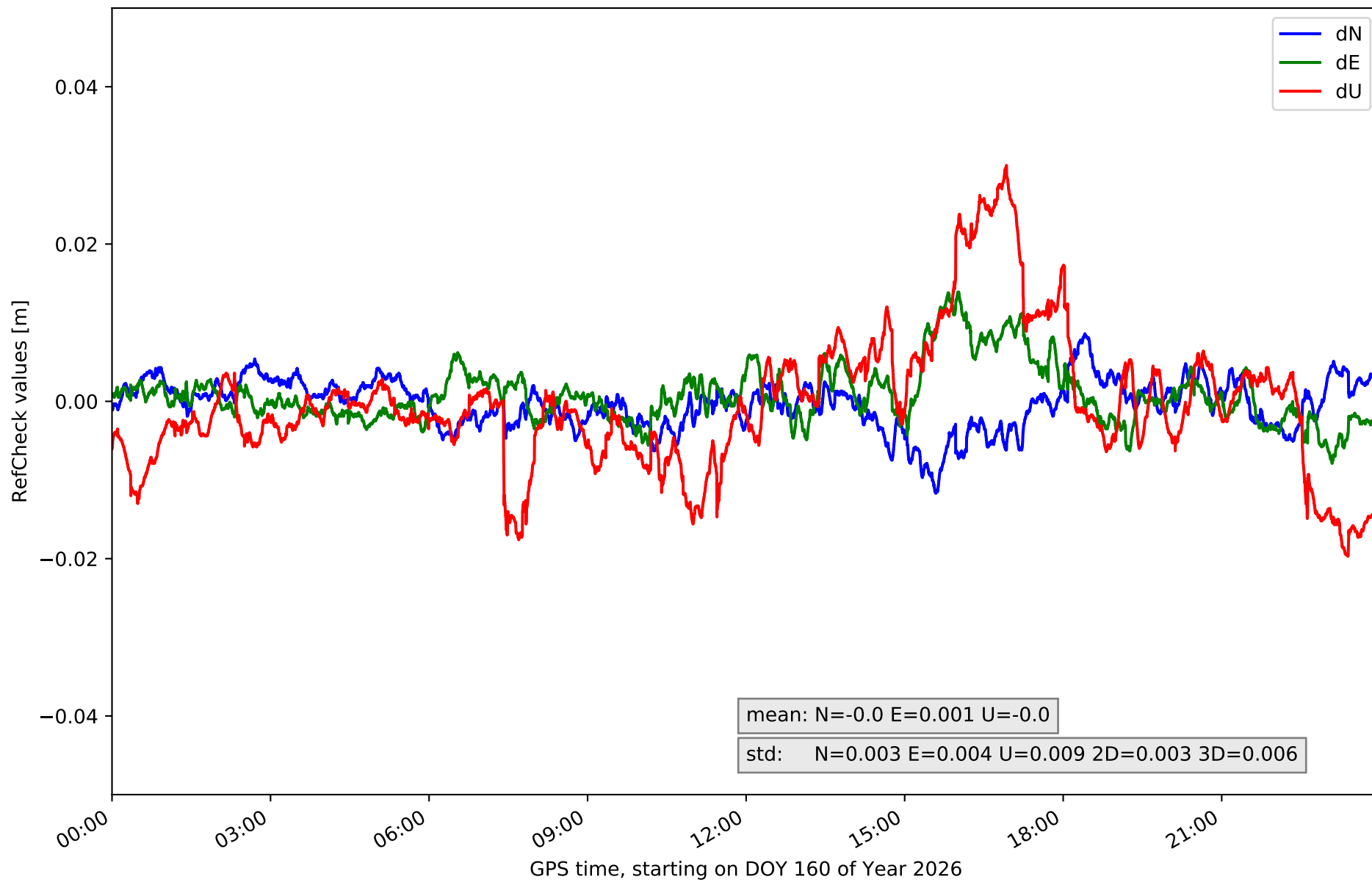
# RefCheck for station MRAT in network NET3



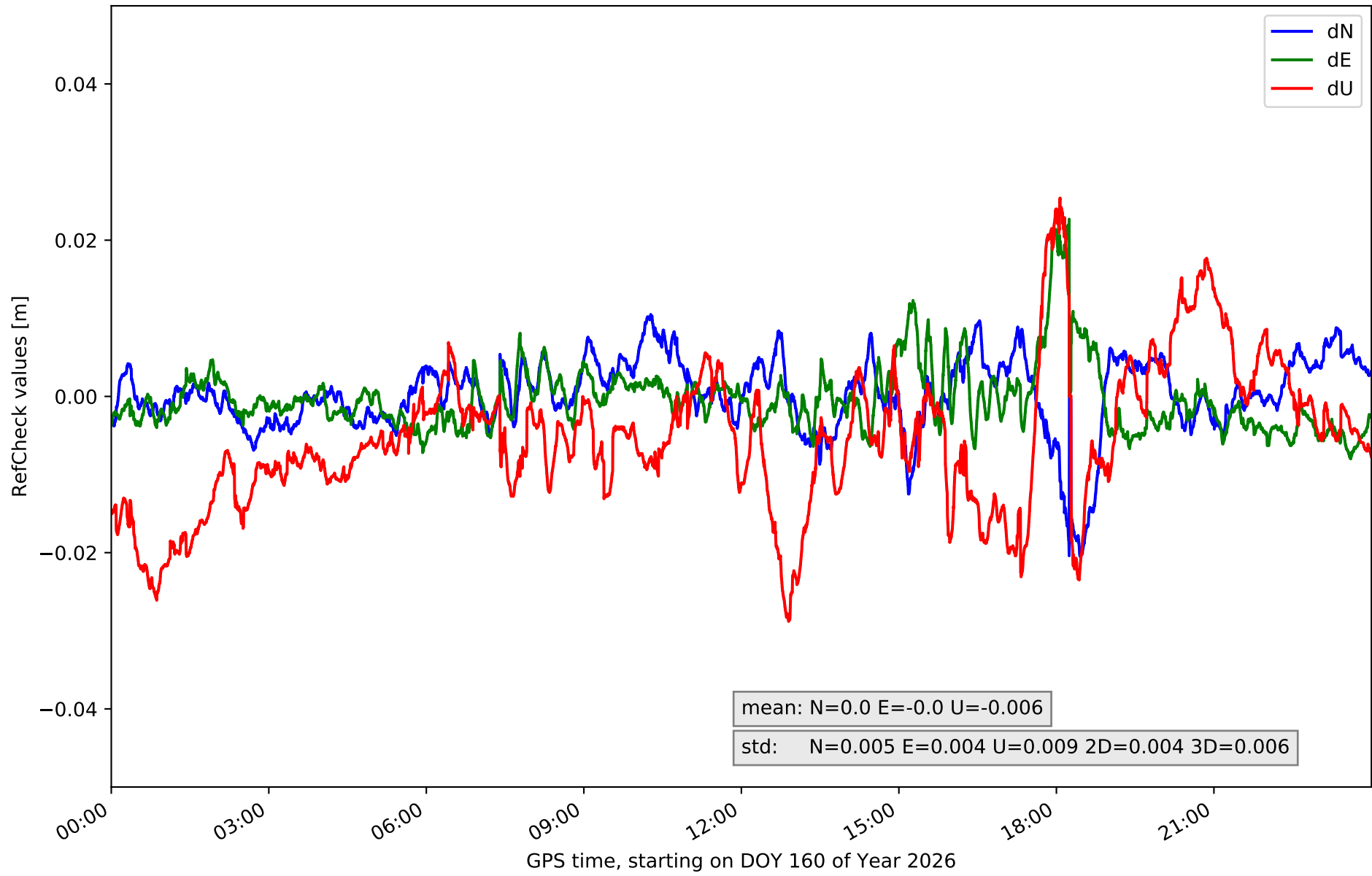
# RefCheck for station SONS in network NET3



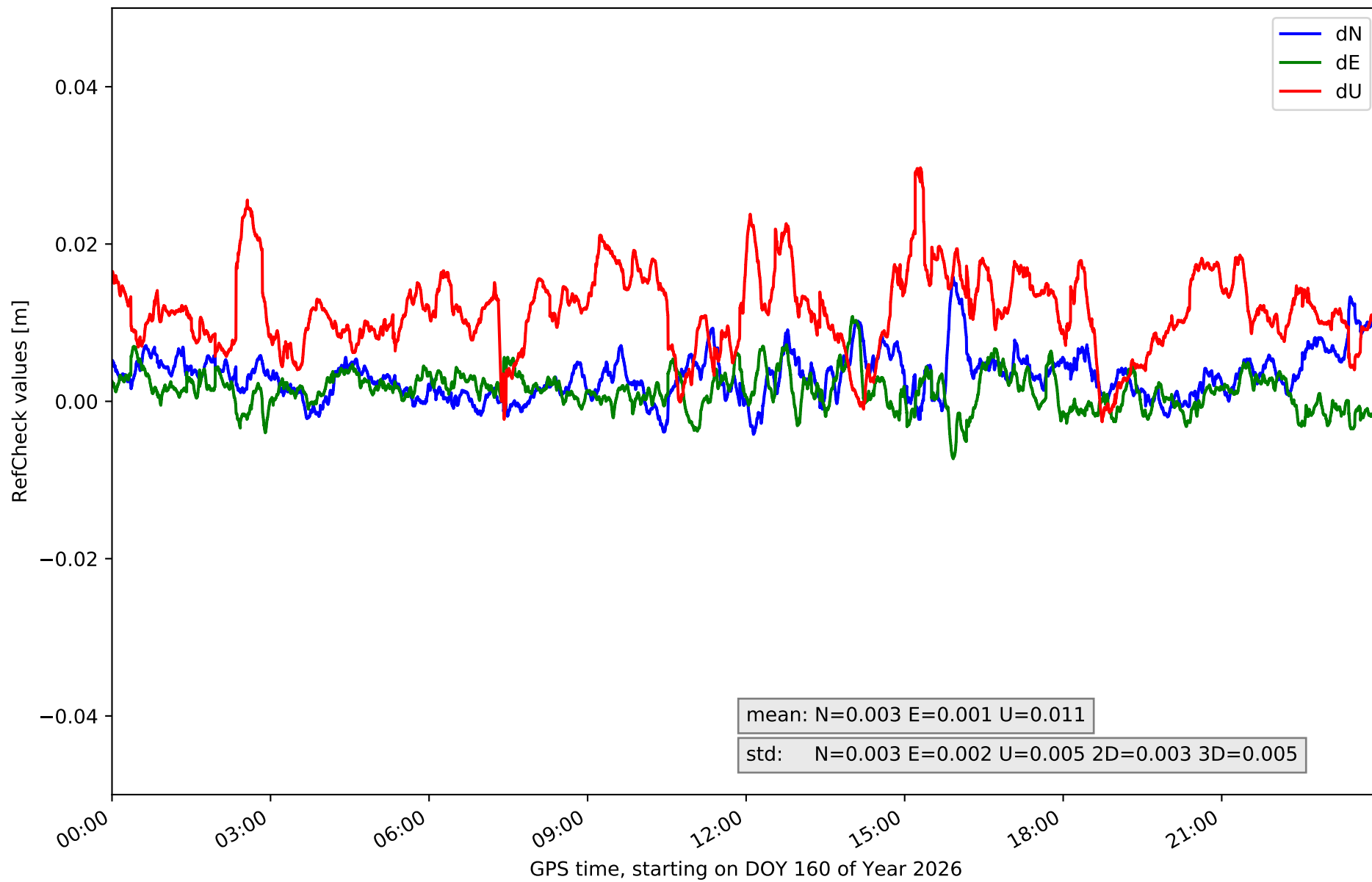
### RefCheck for station UTI1 in network NET3



# RefCheck for station VIAR in network NET3



### RefCheck for station VILH in network NET3



## RefCheck values for network NET3

Station	Nmin	Nmax	Nstd	Emin	Emax	Estd	Umin	Umax	Ustd	std2D	std3D	#2D > 0.01	% 2D > 0.01	#3D > 0.02	% 3D > 0.02
ALBA	-0.01	0.019	0.004	-0.023	0.005	0.004	-0.059	0.033	0.016	0.005	0.012	8215	10.1	17477	21.4
ALMO	-0.01	0.009	0.003	-0.008	0.011	0.003	-0.019	0.02	0.007	0.002	0.004	914	1.1	396	0.5
CLTR	-0.021	0.01	0.004	-0.01	0.023	0.004	-0.027	0.06	0.008	0.004	0.007	5144	6.3	2155	2.6
COBA	-0.007	0.015	0.003	-0.014	0.008	0.003	-0.018	0.008	0.005	0.003	0.004	4987	6.1	463	0.6
CUEN	-0.024	0.013	0.005	-0.014	0.026	0.005	-0.052	0.052	0.013	0.004	0.01	12634	15.5	8305	10.2
JUMA	-0.012	0.008	0.003	-0.011	0.011	0.004	-0.011	0.021	0.007	0.002	0.004	2898	3.5	780	1.0
MOTA	-0.009	0.006	0.003	-0.009	0.012	0.003	-0.016	0.031	0.008	0.002	0.006	1690	2.1	6474	7.9
MRAT	-0.008	0.018	0.003	-0.02	0.021	0.004	-0.026	0.035	0.01	0.003	0.006	3721	4.6	5469	6.7
SONS	-0.009	0.013	0.003	-0.011	0.013	0.004	-0.022	0.02	0.008	0.003	0.005	3891	4.8	1539	1.9
UT11	-0.012	0.009	0.003	-0.008	0.014	0.004	-0.02	0.03	0.009	0.003	0.006	4393	5.4	4619	5.7
VIAR	-0.021	0.011	0.005	-0.008	0.023	0.004	-0.029	0.025	0.009	0.004	0.006	4390	5.4	7792	9.5
VILH	-0.004	0.016	0.003	-0.007	0.011	0.002	-0.003	0.03	0.005	0.003	0.005	2688	3.3	5219	6.4
<b>Mean</b>	<b>-0.012</b>	<b>0.012</b>	<b>0.003</b>	<b>-0.012</b>	<b>0.015</b>	<b>0.004</b>	<b>-0.025</b>	<b>0.03</b>	<b>0.009</b>	<b>0.003</b>	<b>0.006</b>	<b>4630.4</b>	<b>5.7</b>	<b>5057.3</b>	<b>6.2</b>
<b>Min/Max</b>	<b>-0.024</b>	<b>0.019</b>	<b>0.005</b>	<b>-0.023</b>	<b>0.026</b>	<b>0.005</b>	<b>-0.059</b>	<b>0.06</b>	<b>0.016</b>	<b>0.005</b>	<b>0.012</b>	<b>12634</b>	<b>15.5</b>	<b>17477</b>	<b>21.4</b>

fixing statistic for network NET3

fixing percentage of	all GNSS	G	R	E	C
using threshold 0.3	94.8	95.7	94.1	95.9	93.2
considering satellites with dual-frequency fixed	92.9	93.7	91.8	94.1	91.2
considering all signals separately	92.9	93.8	91.8	94.5	89.4