

summary for network NT14

timeperiod chosen: from 2026-06-02-00:00:00 until 2026-06-02-23:59:59

average update rate (durations larger than 15 seconds considered as observation gap): 1.3 seconds

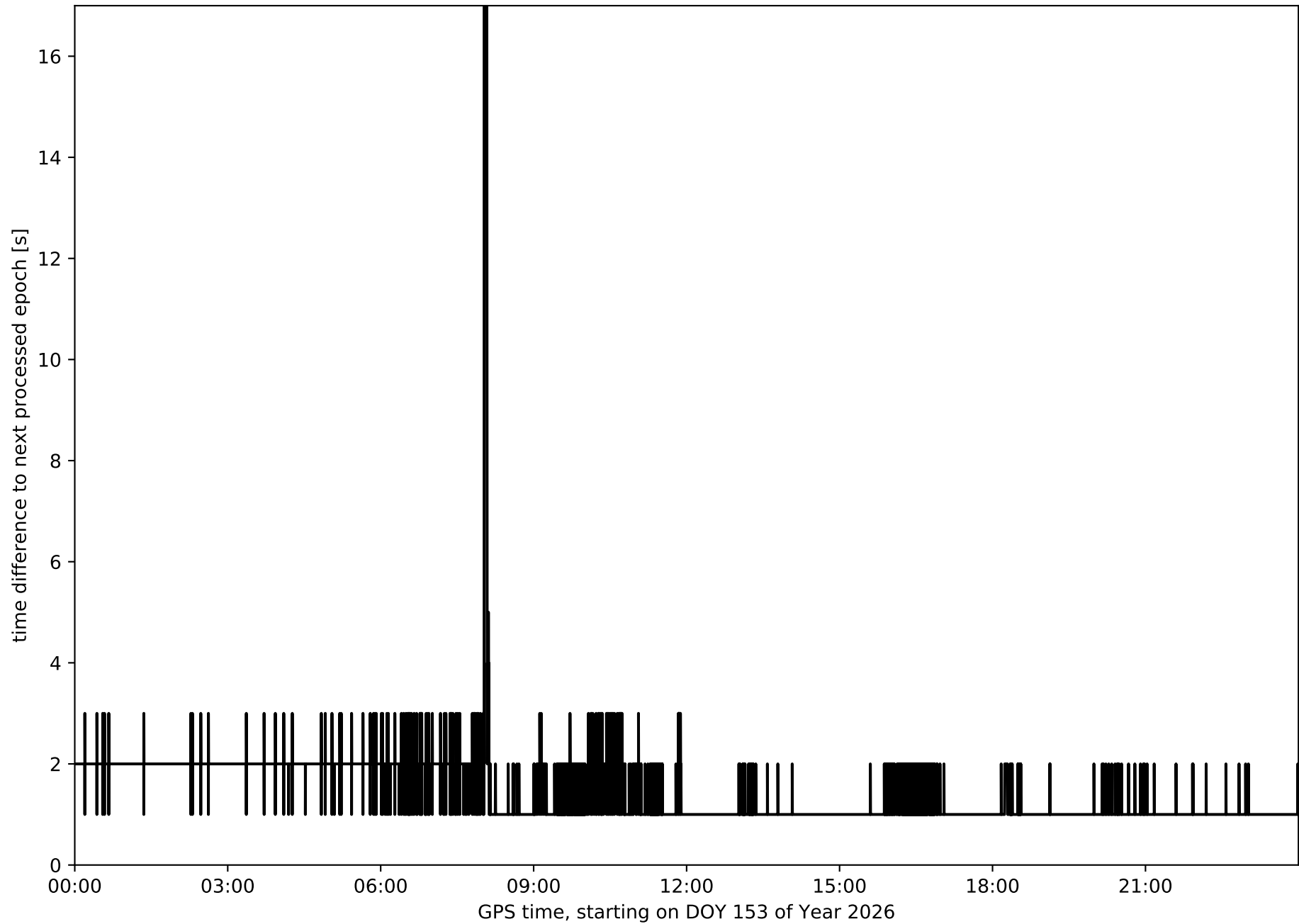
average fixing percentage with threshold set to 0.3: 93.4 percent

stations available: 12 of 13

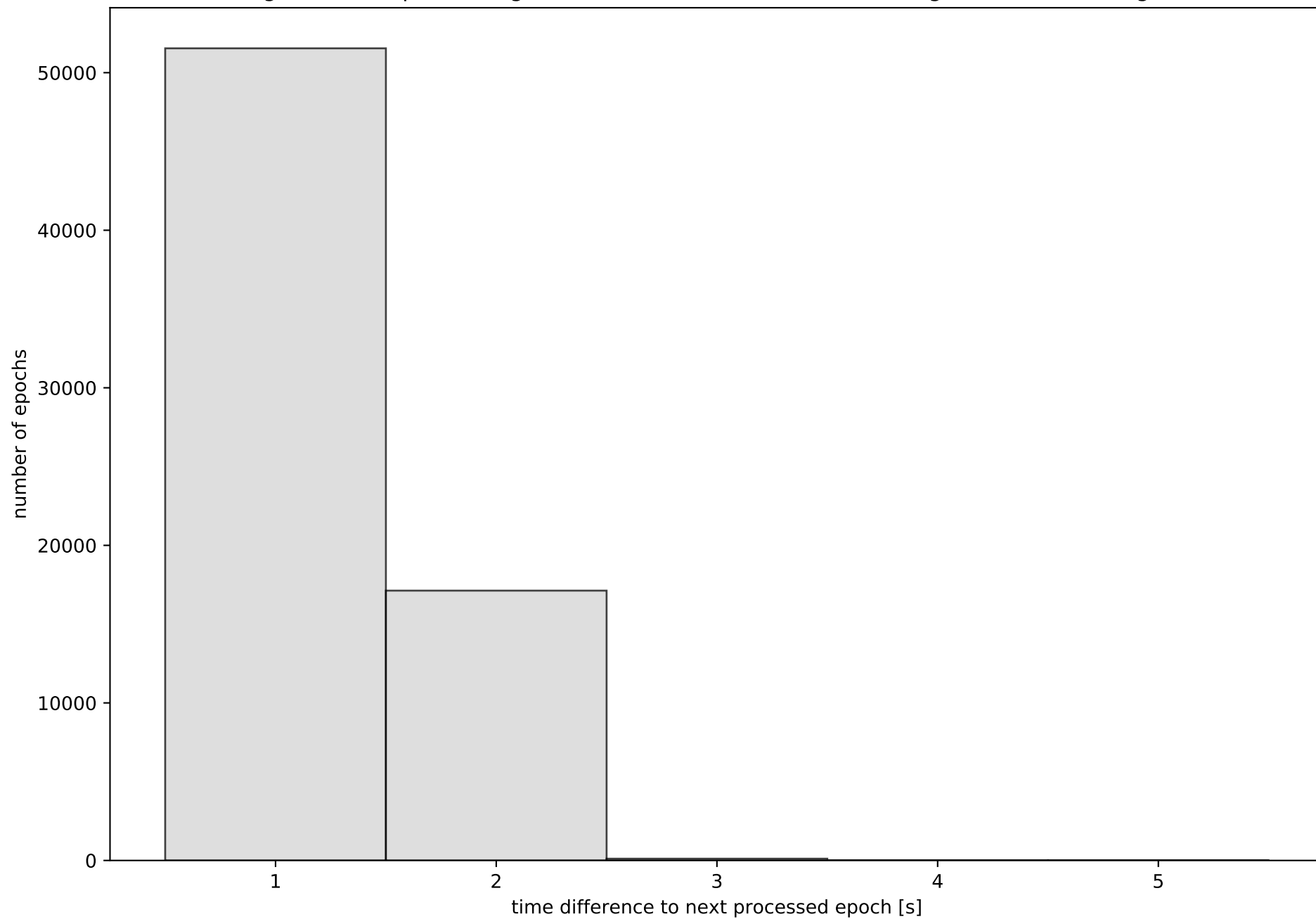
station information:

station ABAN:	antenna: LEIAR25	LEIT	receiver: LEICA GR30	height: 207.761
station AIO2:	antenna: GPPNULLANTENNA	NONE	receiver: LEICA GR50	height: 662.857
station ALAC:	antenna: LEIAR25.R3	LEIT	receiver: LEICA GR50	height: 63.359
station ALCO:	antenna: GPPNULLANTENNA	NONE	receiver: LEICA GR30	height: 640.126
station BORR:	antenna: GPPNULLANTENNA	NONE	receiver: LEICA GR30	height: 73.01
station DENI:	antenna: GPPNULLANTENNA	NONE	receiver: LEICA GR10	height: 69.734
station IEJA:	antenna: GPPNULLANTENNA	NONE	receiver: LEICA GR50	height: 1358.246
station PENI:	antenna: LEIAR25.R4	LEIT	receiver: LEICA GR25	height: 108.648
station SARR:	antenna: GPPNULLANTENNA	NONE	receiver: LEICA GR50	height: 1041.628
station TOR0:	antenna: GPPNULLANTENNA	NONE	receiver: LEICA GR30	height: 64.686
station UTIE:	antenna: GPPNULLANTENNA	NONE	receiver: LEICA GR30	height: 799.744
station VALE:	antenna: LEIAR25.R3	LEIT	receiver: LEICA GR50	height: 80.593
station VJOI:	antenna: GPPNULLANTENNA	NONE	receiver: LEICA GR30	height: 117.162

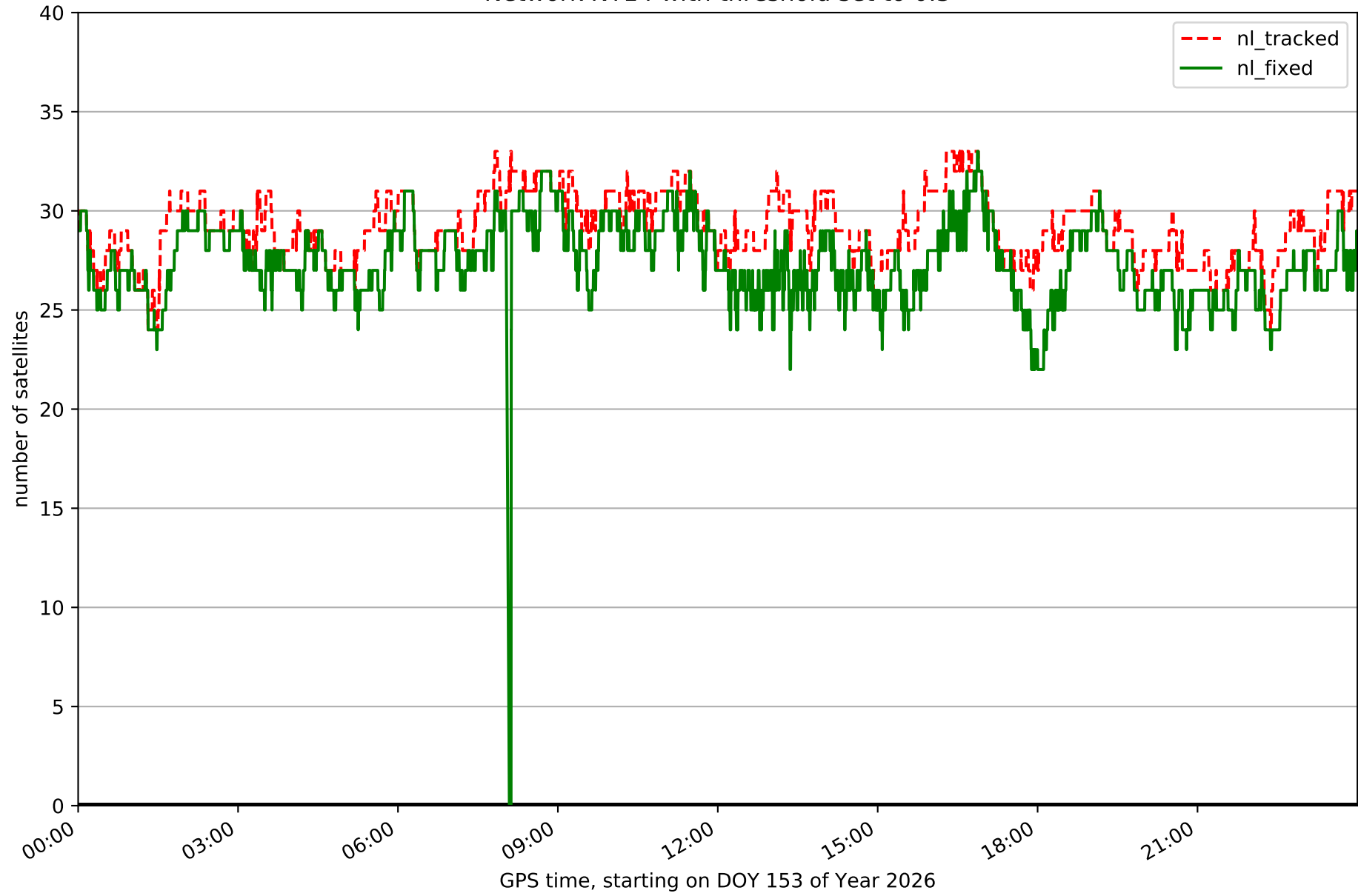
Processing rate in network NT14



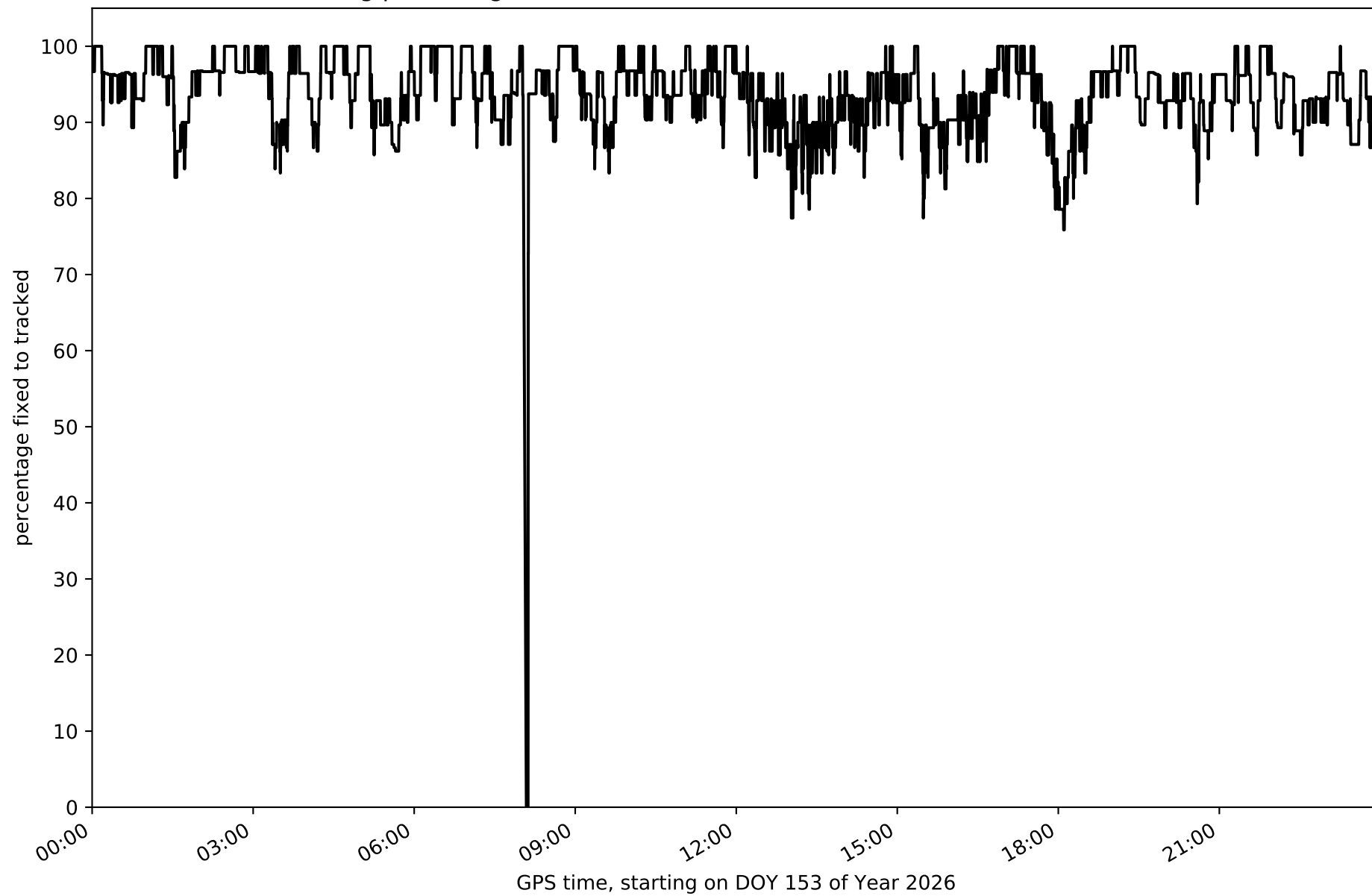
Histogram of the processing rate in network NT14 (durations larger 15 seconds neglected)



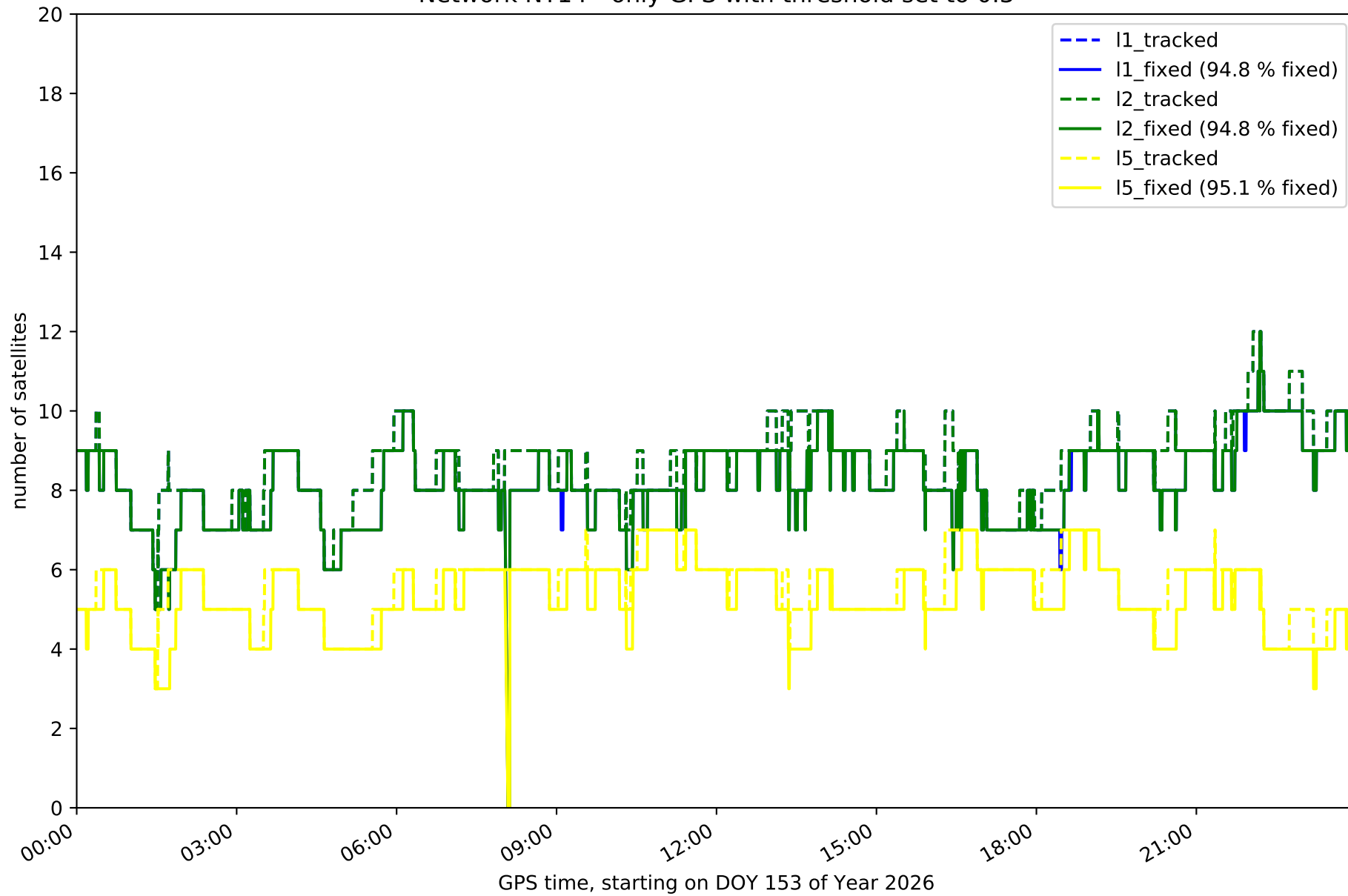
Network NT14 with threshold set to 0.3



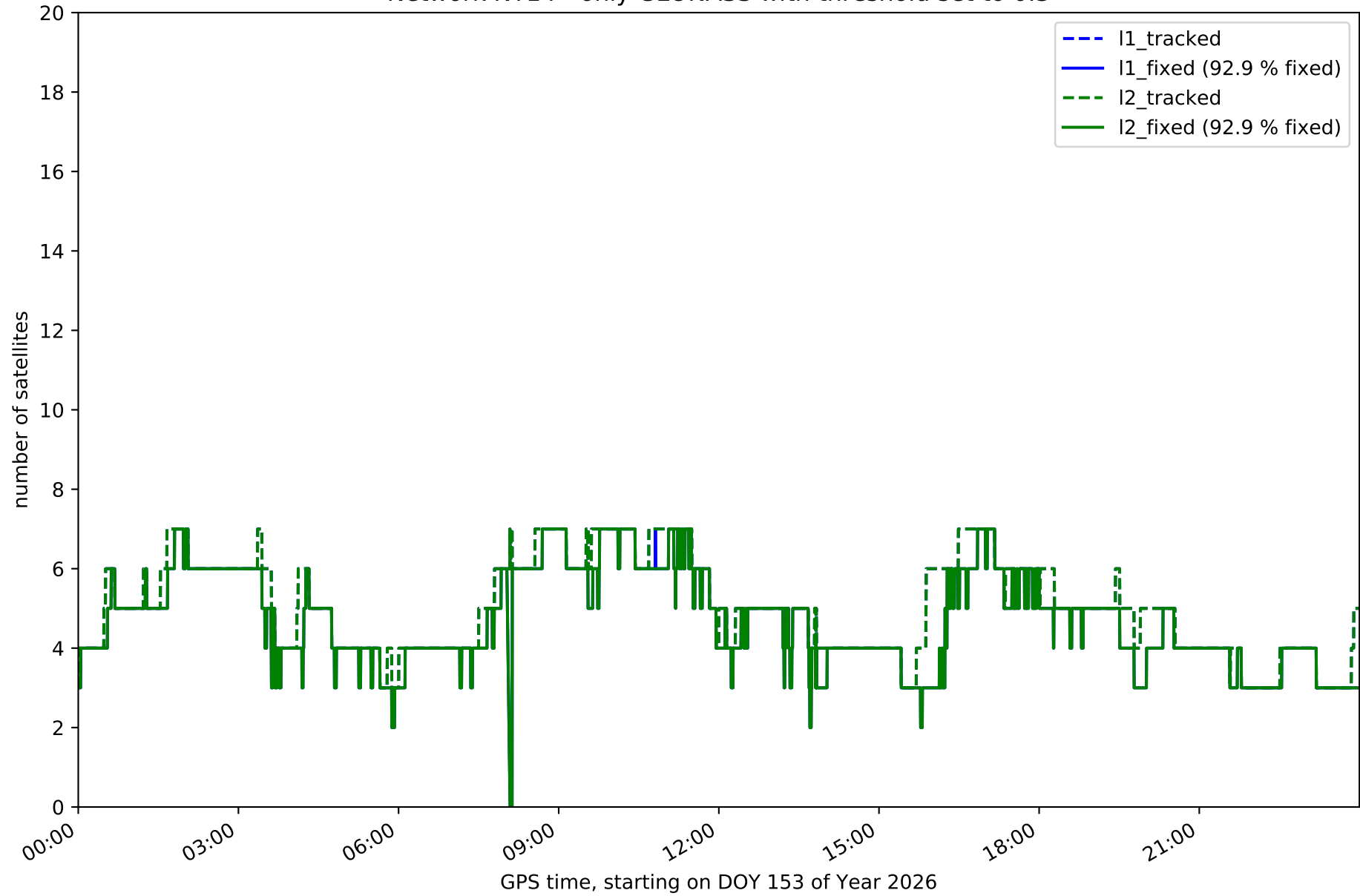
Fixing percentage of satellites in network NT14 with threshold set to 0.3



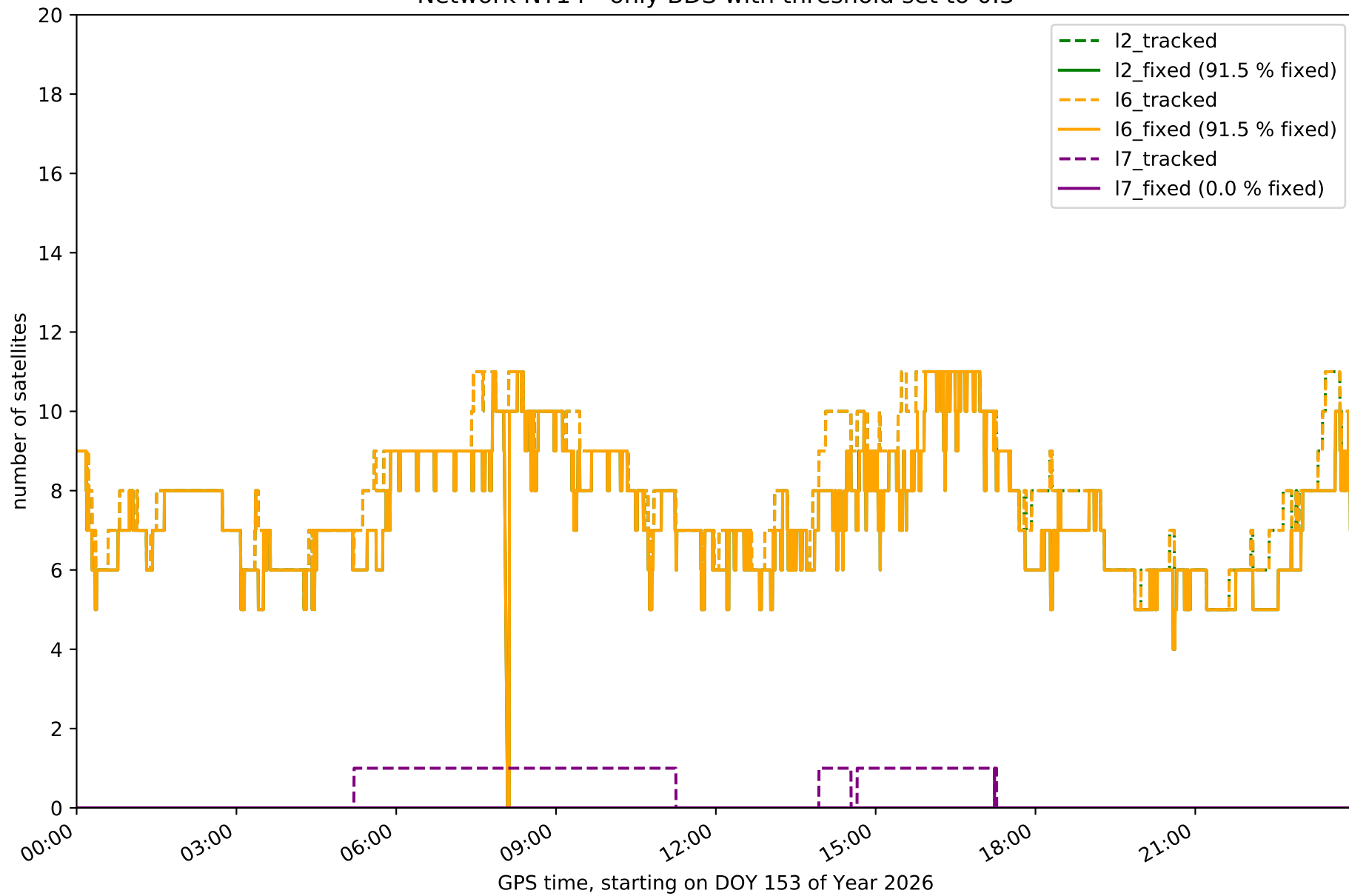
Network NT14 - only GPS with threshold set to 0.3



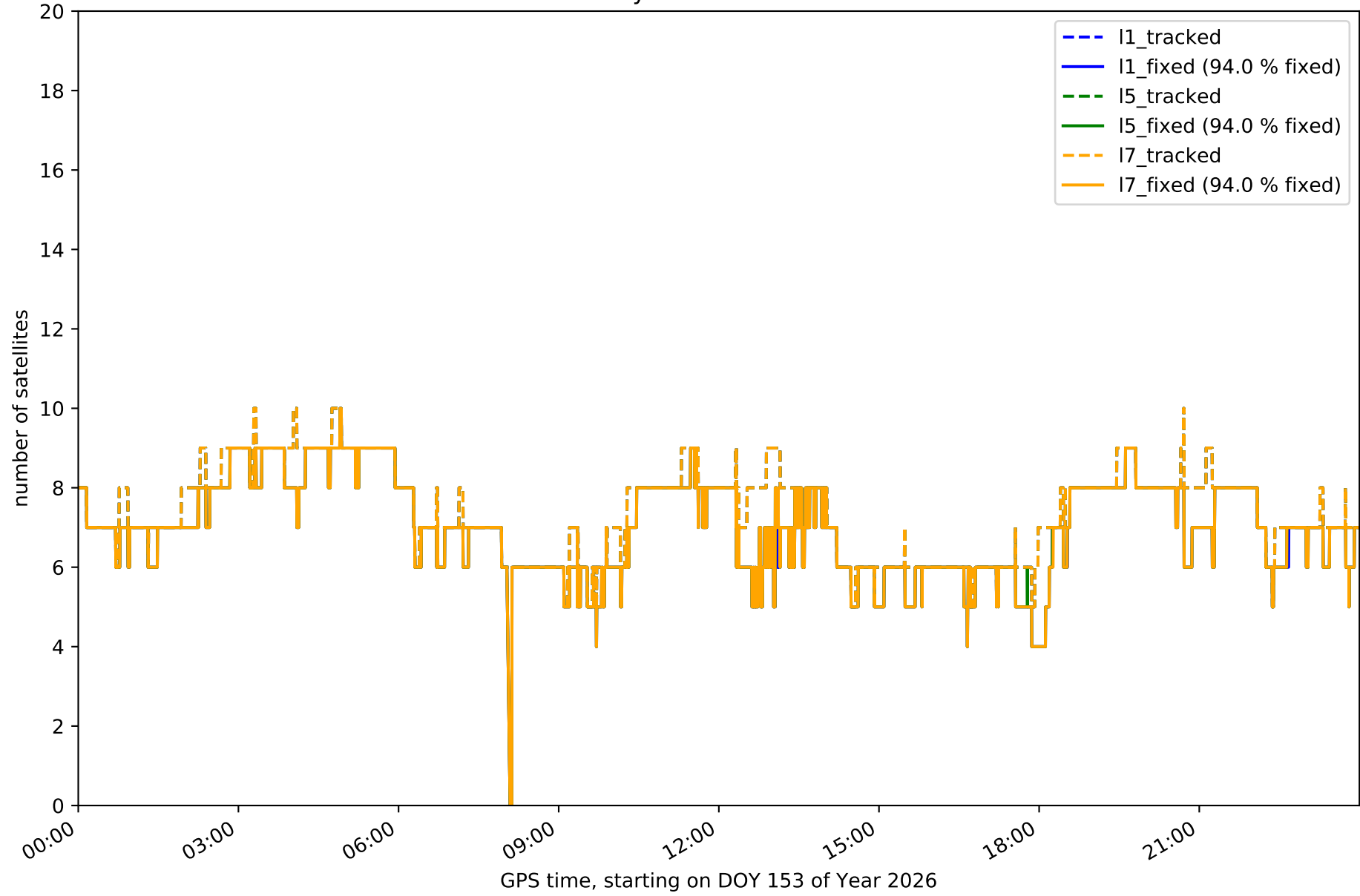
Network NT14 - only GLONASS with threshold set to 0.3



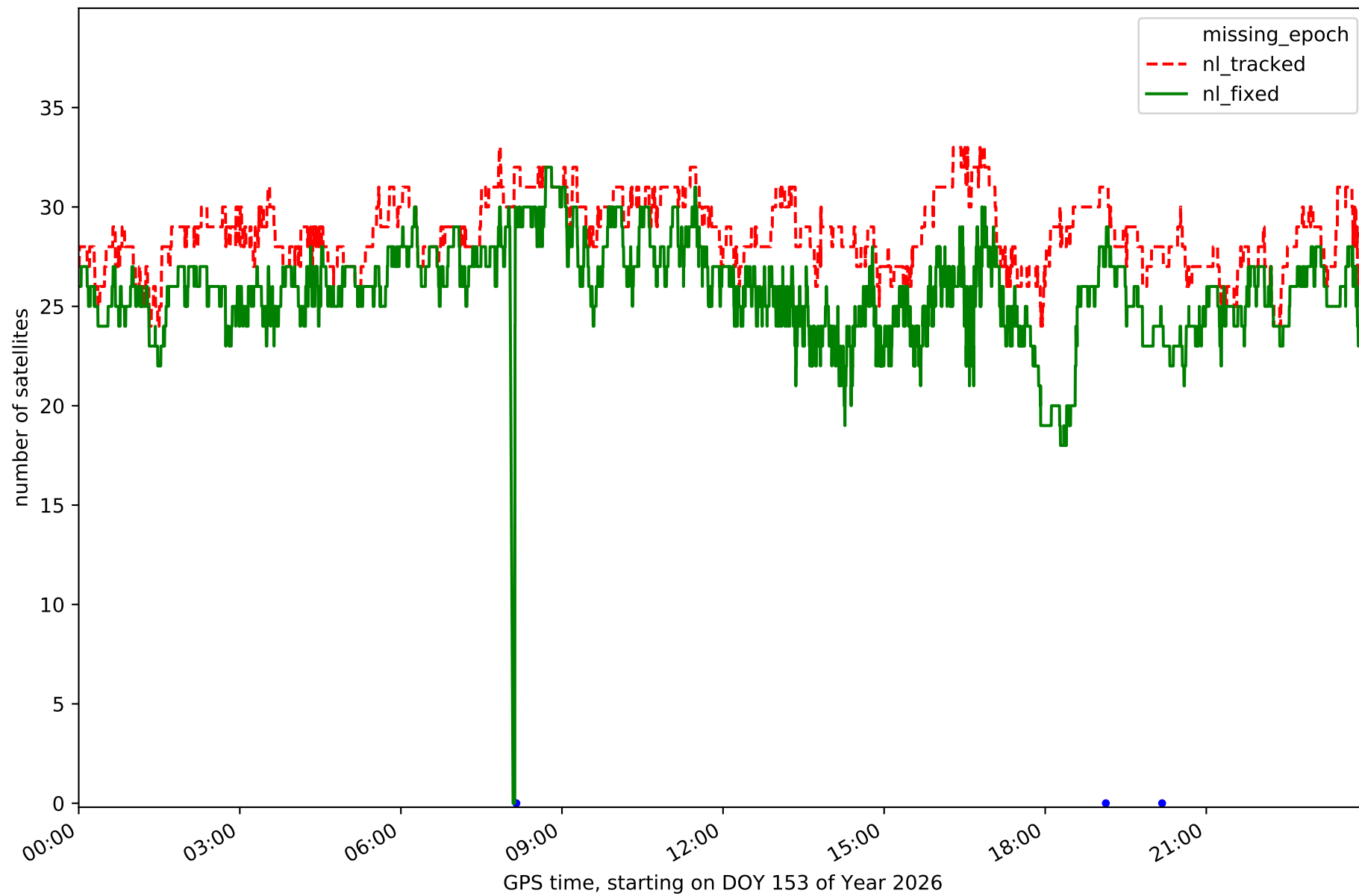
Network NT14 - only BDS with threshold set to 0.3



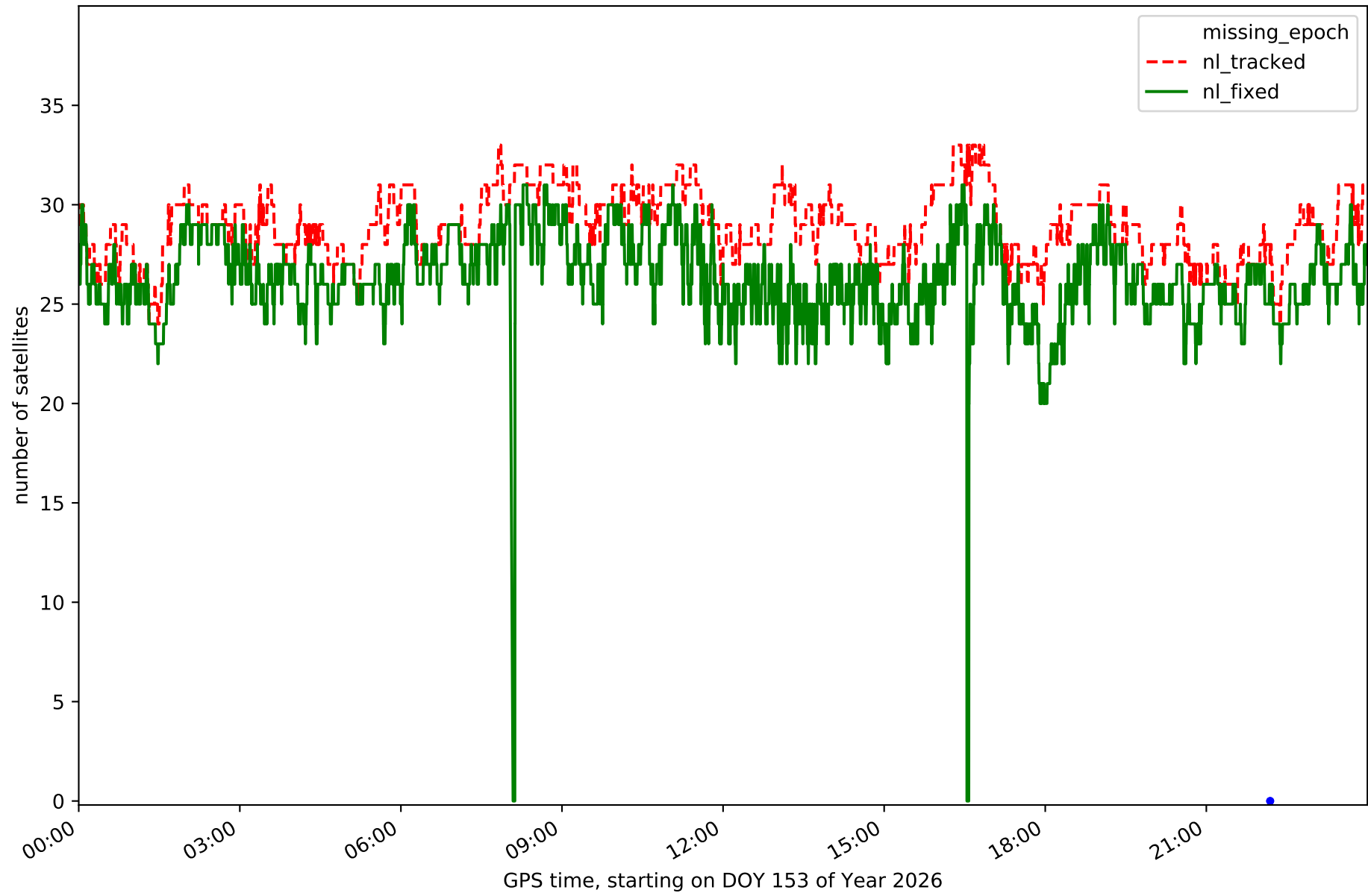
Network NT14 - only Galileo with threshold set to 0.3



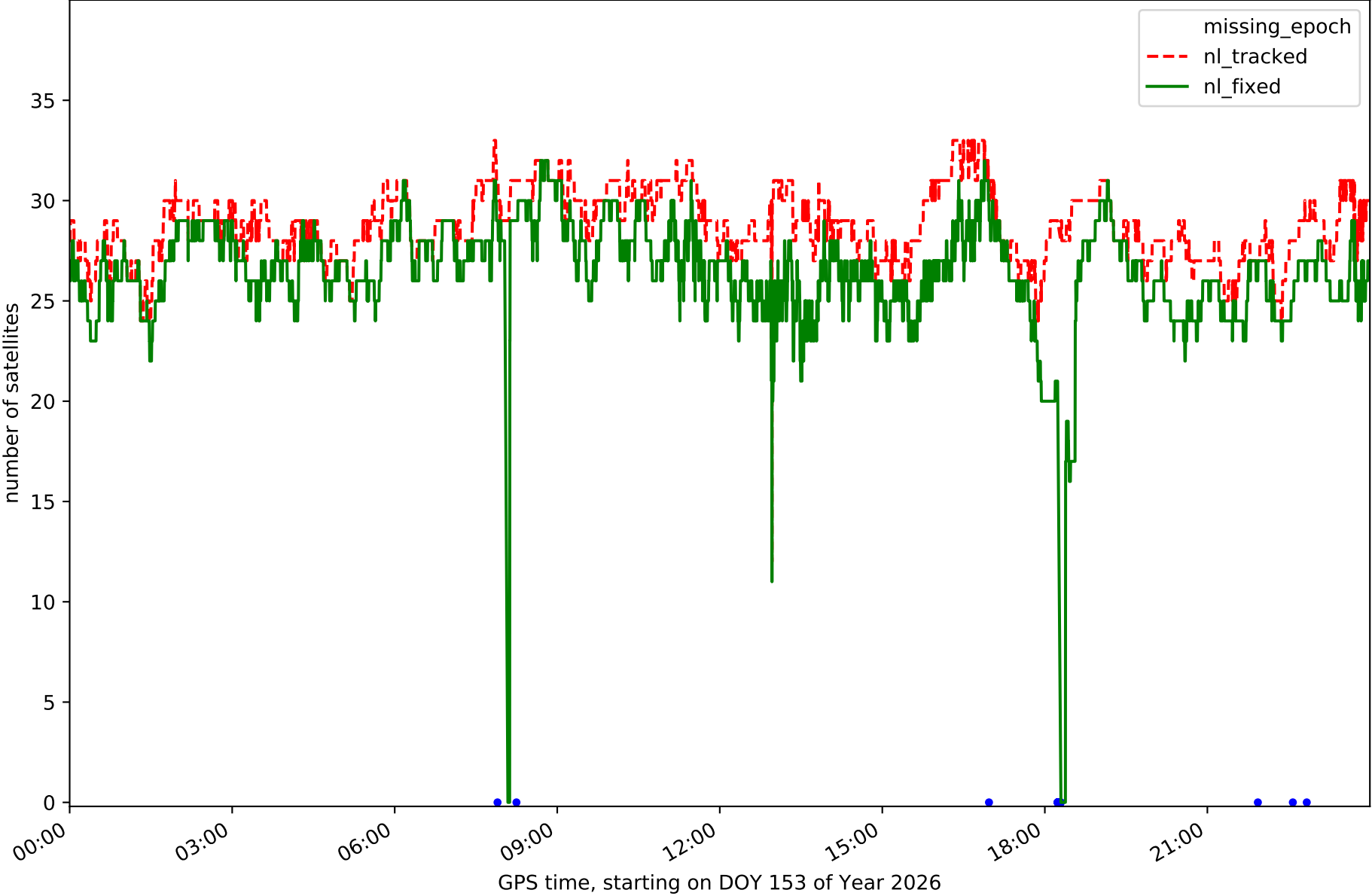
Station ABAN in network NT14



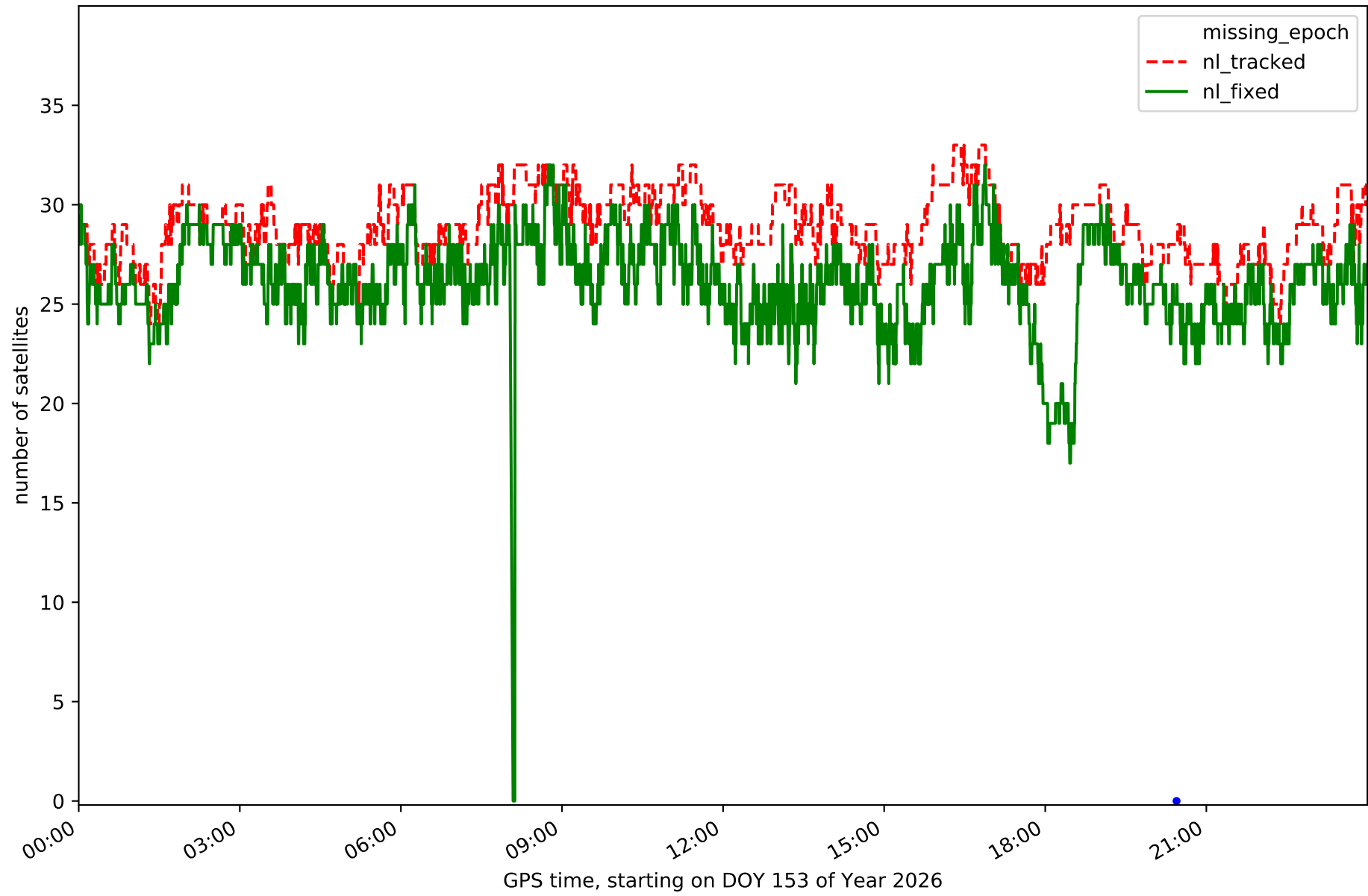
Station AIO2 in network NT14



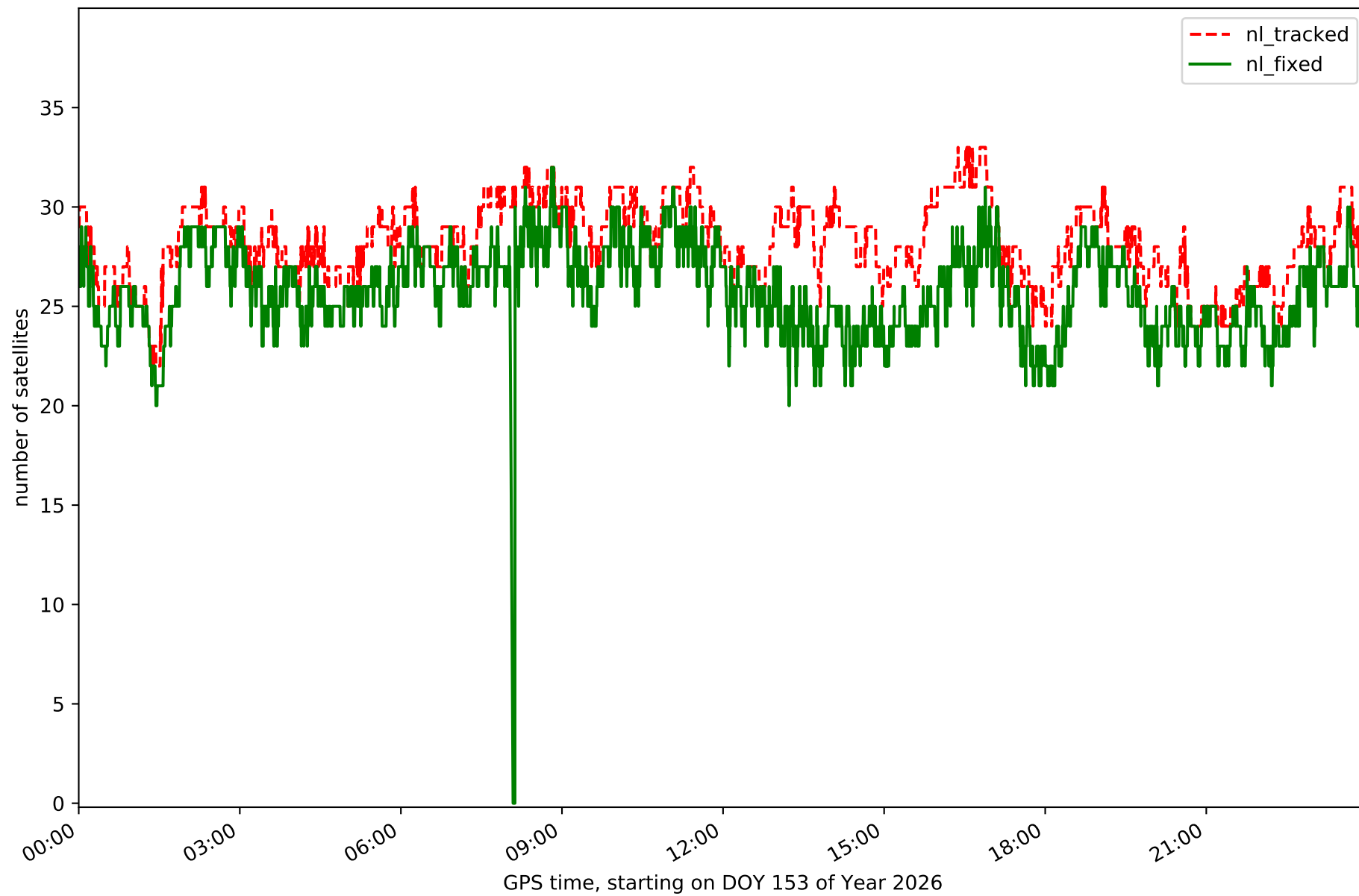
Station ALAC in network NT14



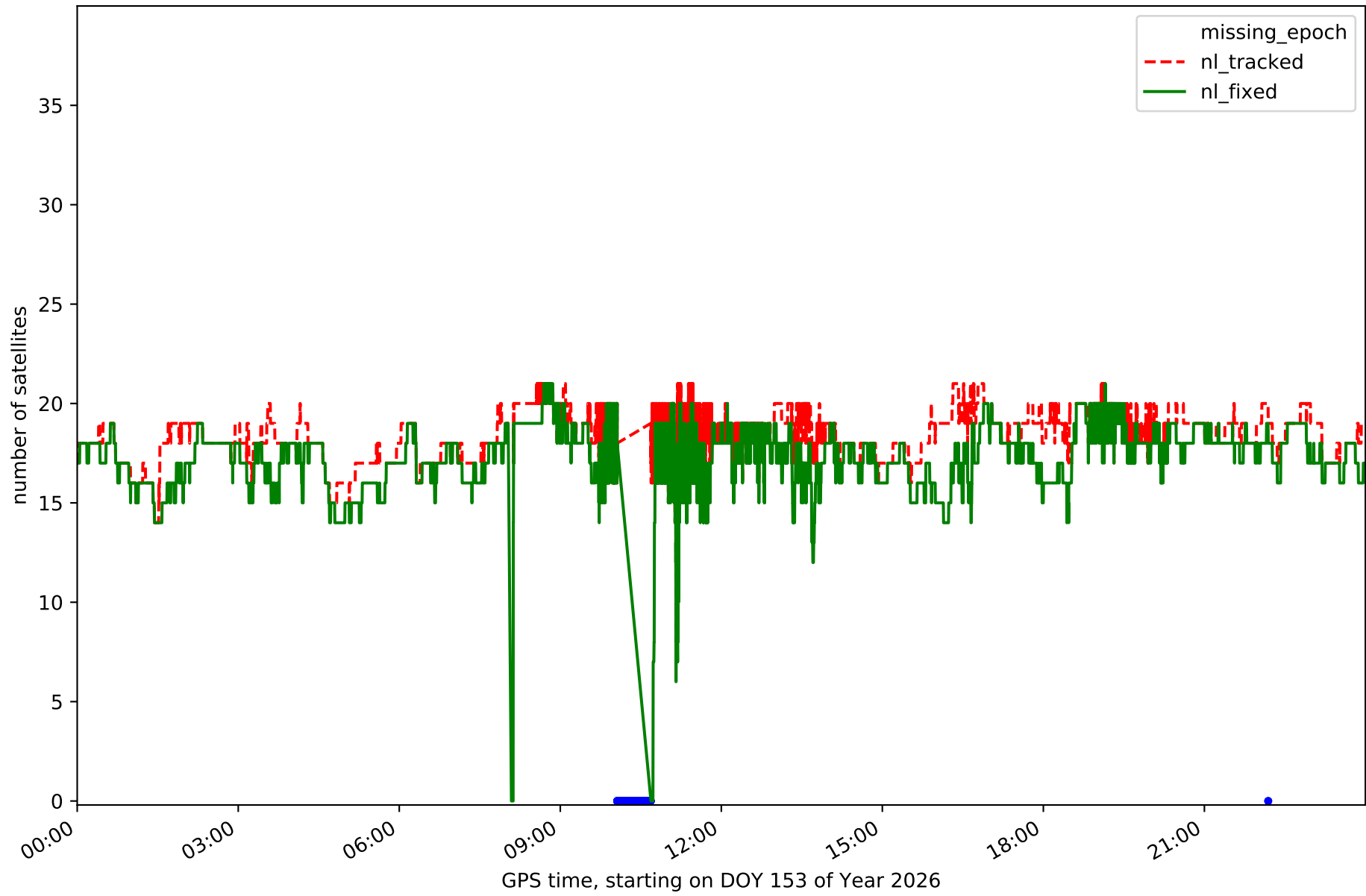
Station ALCO in network NT14



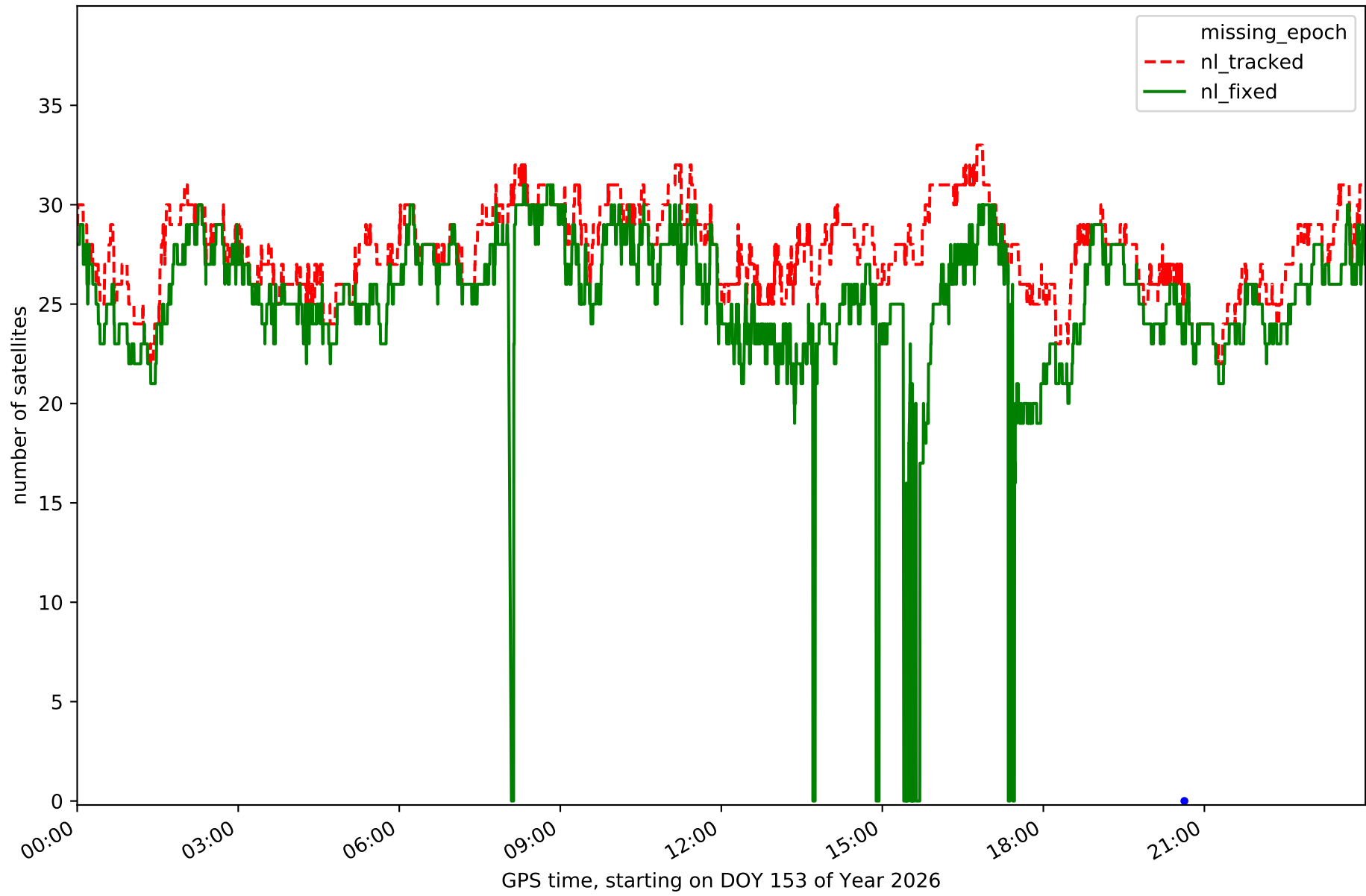
Station BORR in network NT14



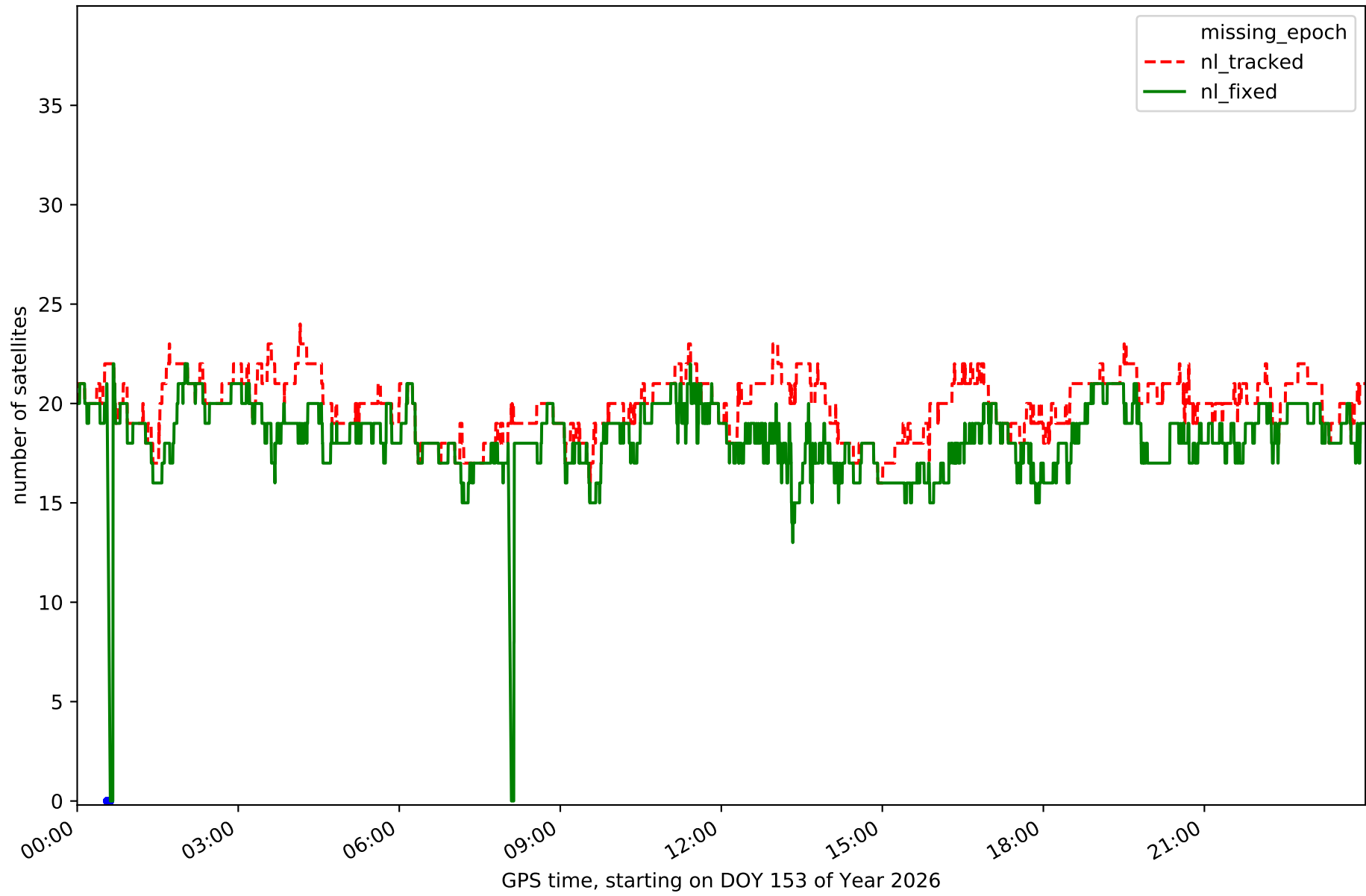
Station DENI in network NT14



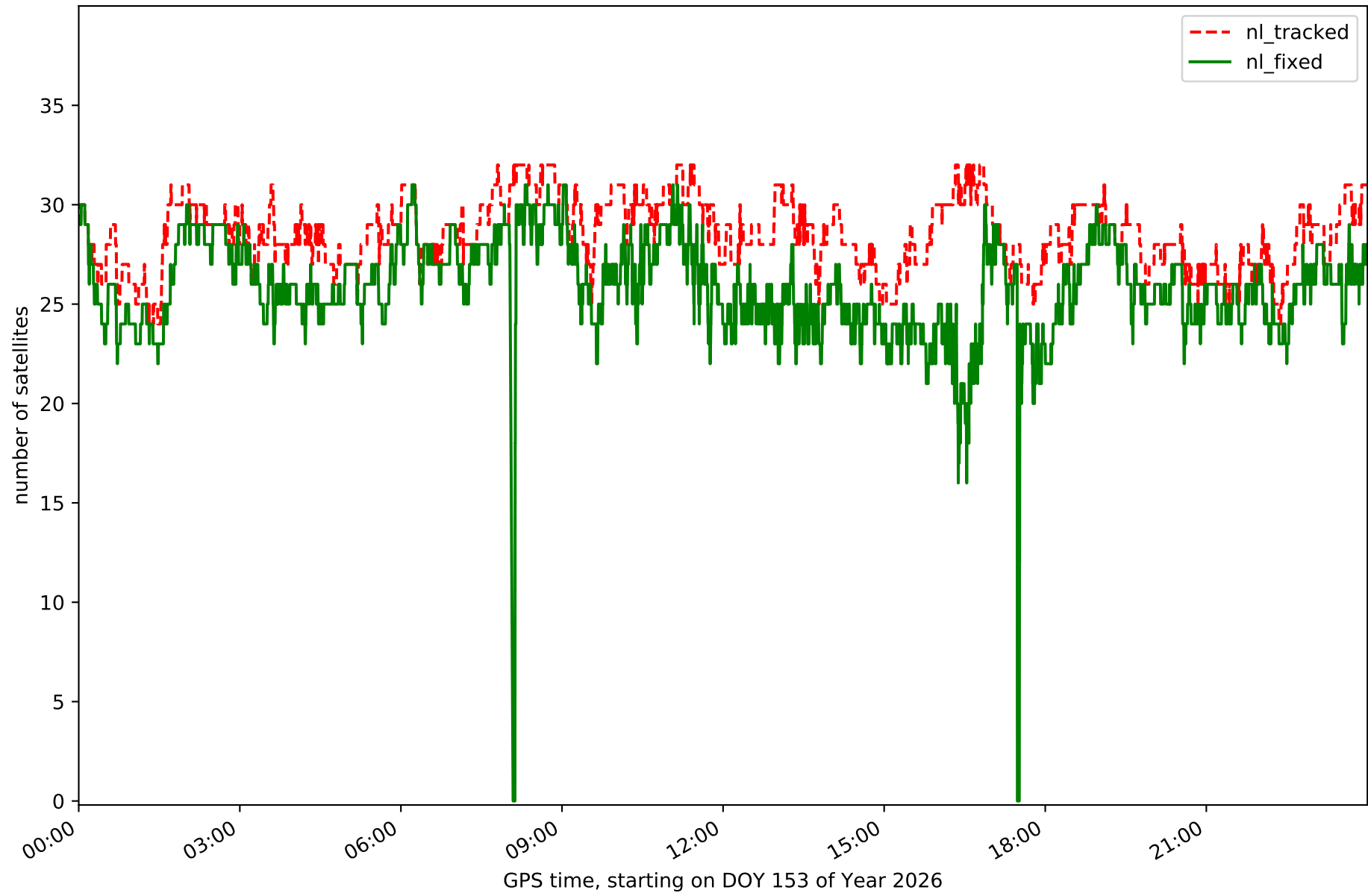
Station IEJA in network NT14



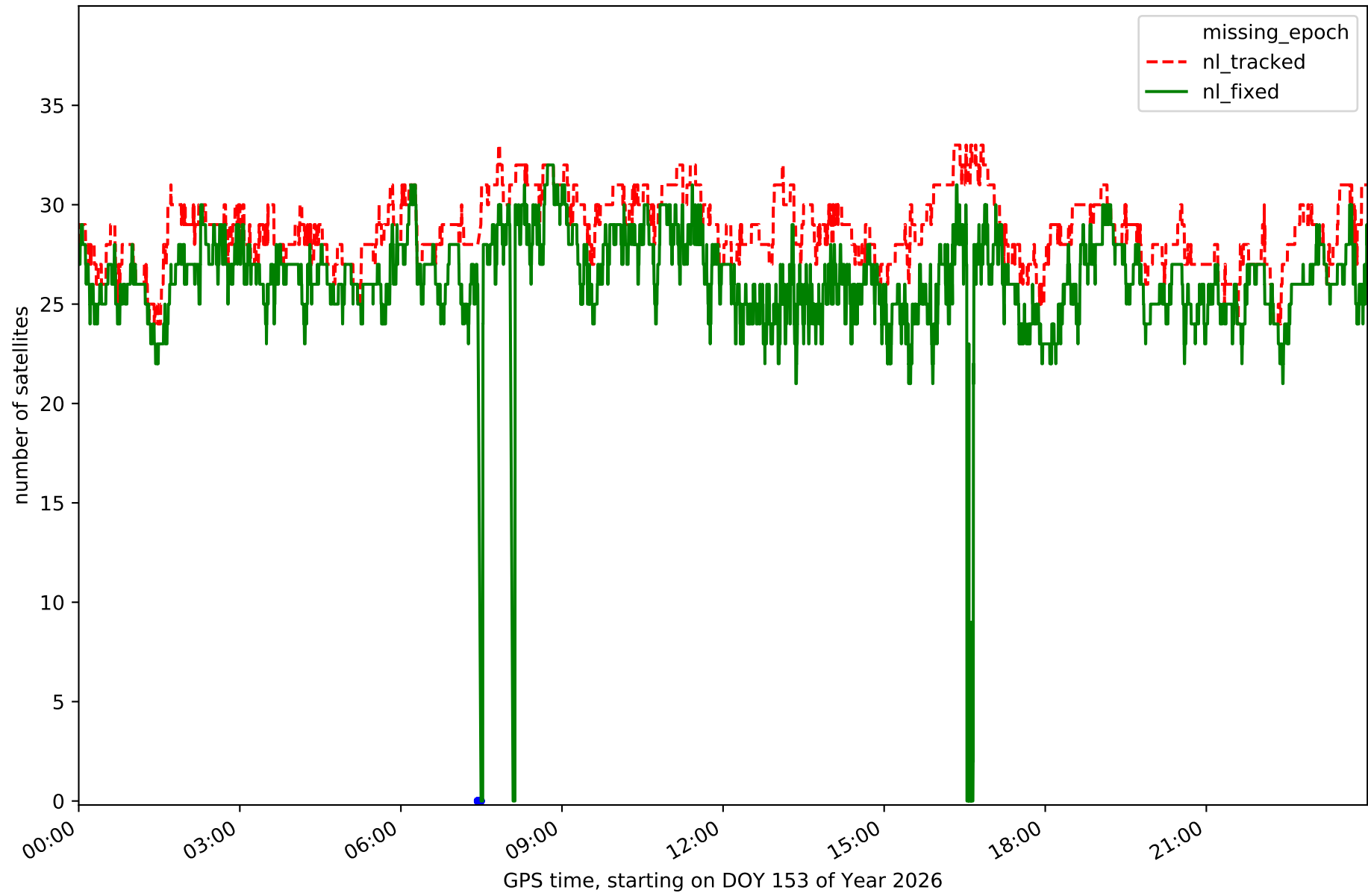
Station PENI in network NT14



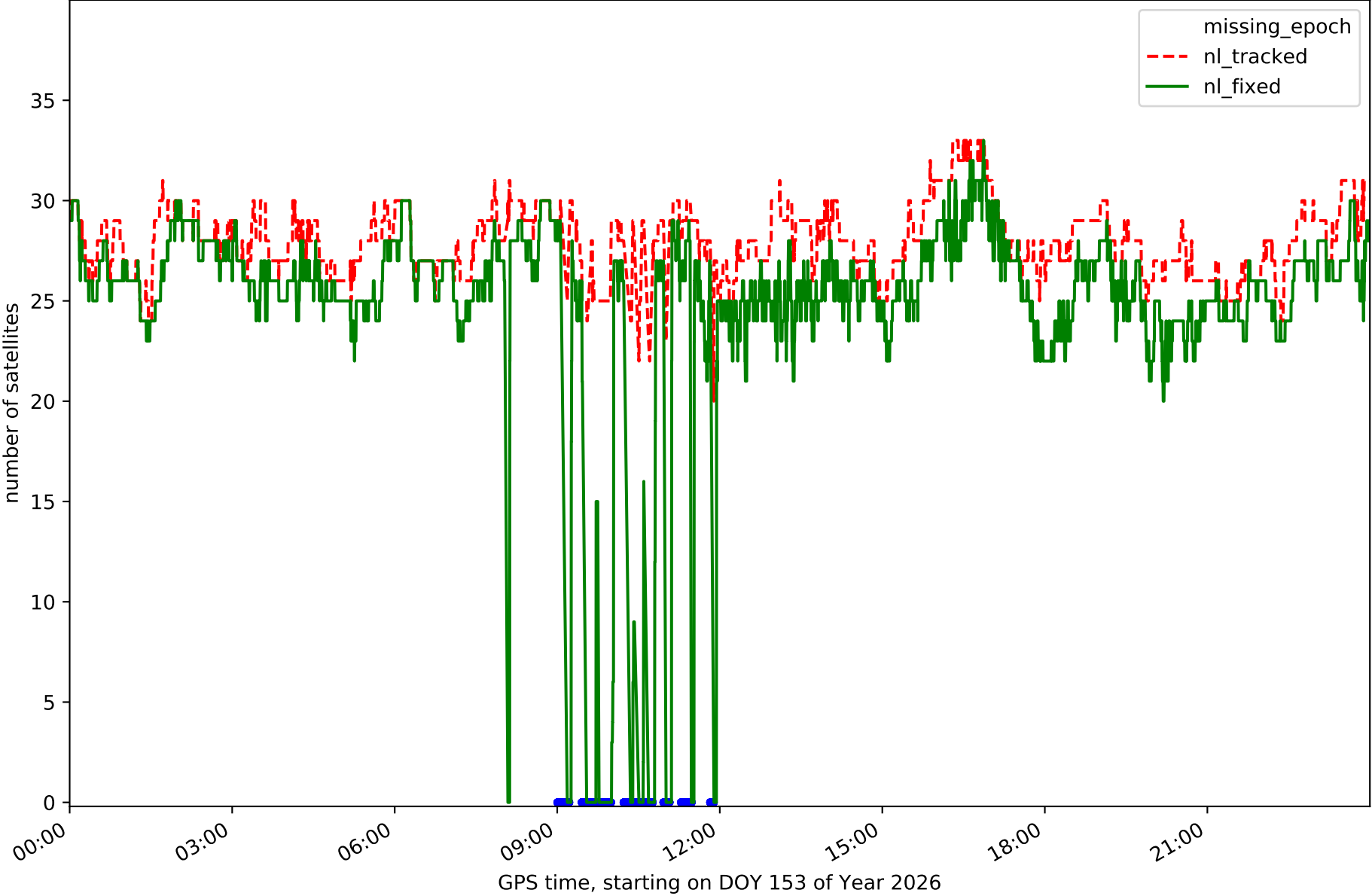
Station SARR in network NT14



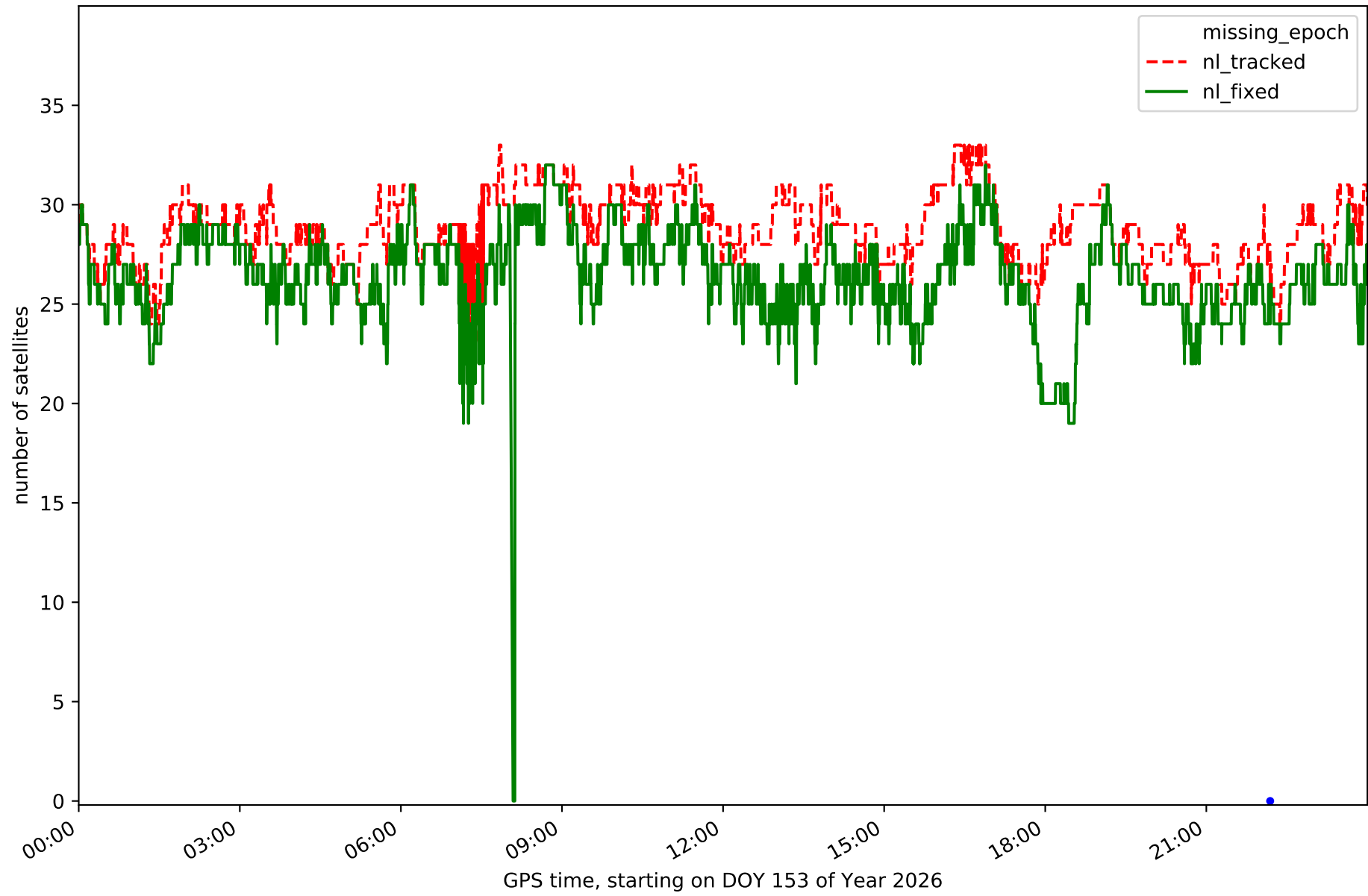
Station UTIE in network NT14



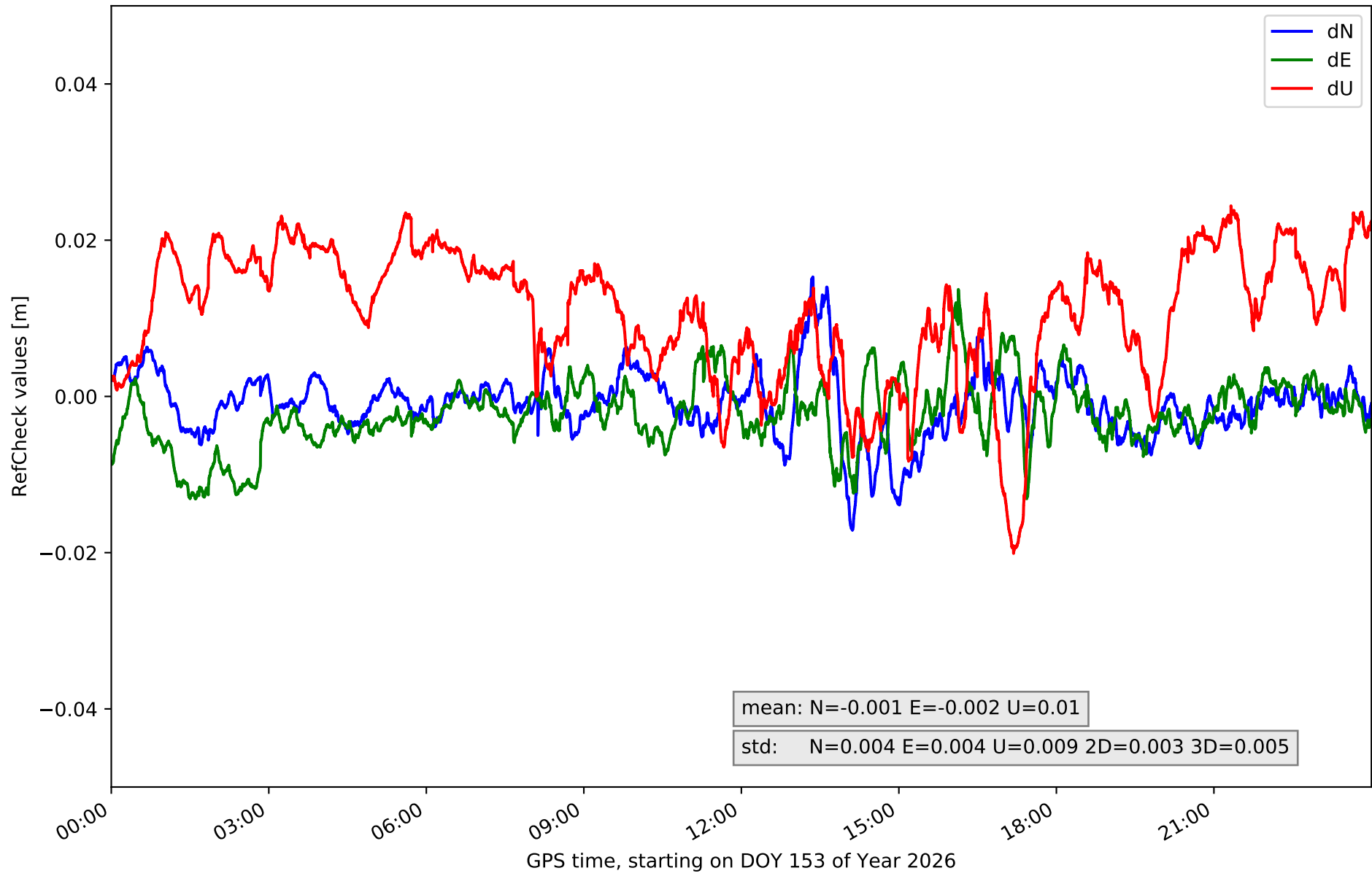
Station VALE in network NT14



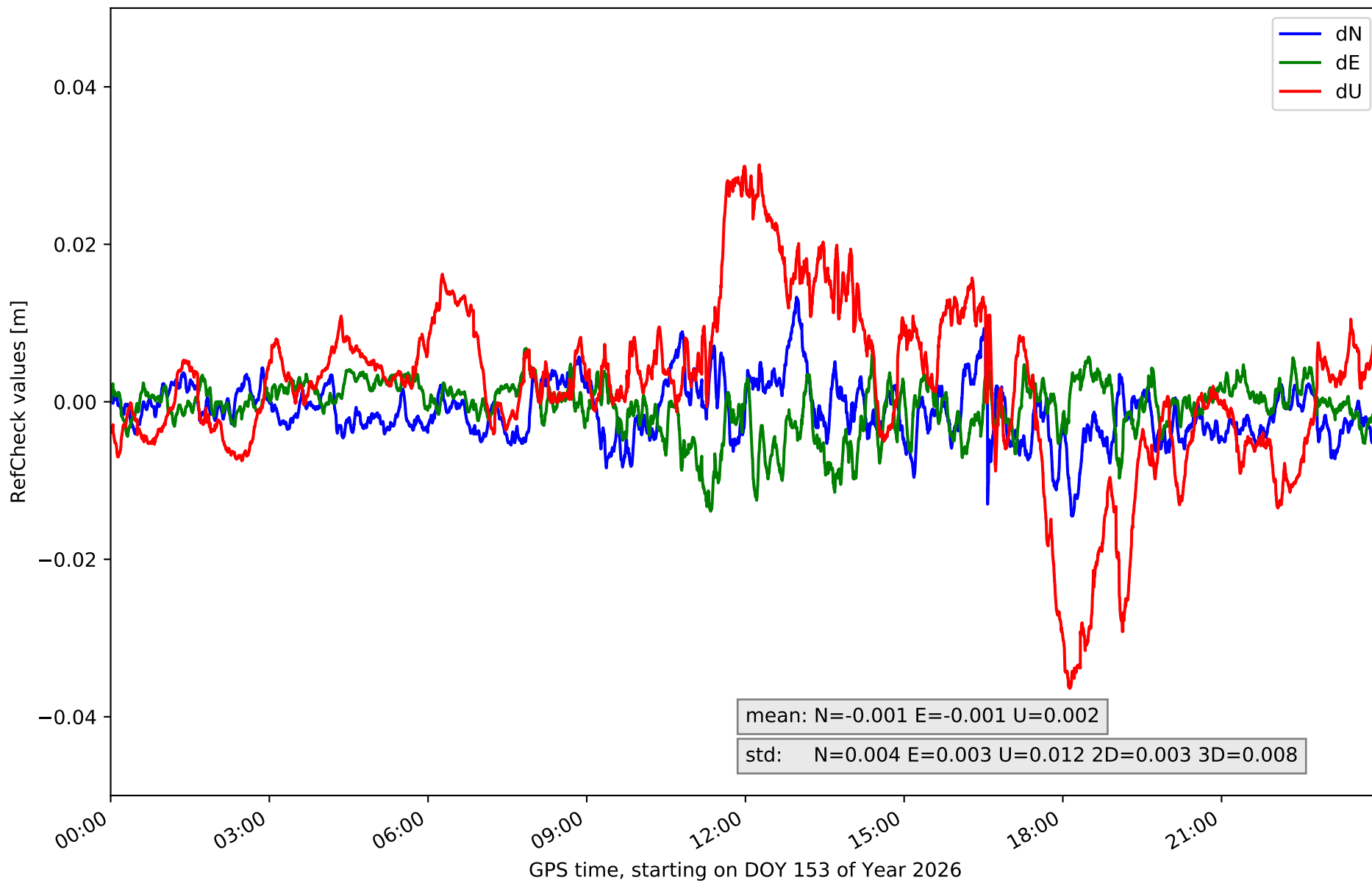
Station VJOI in network NT14



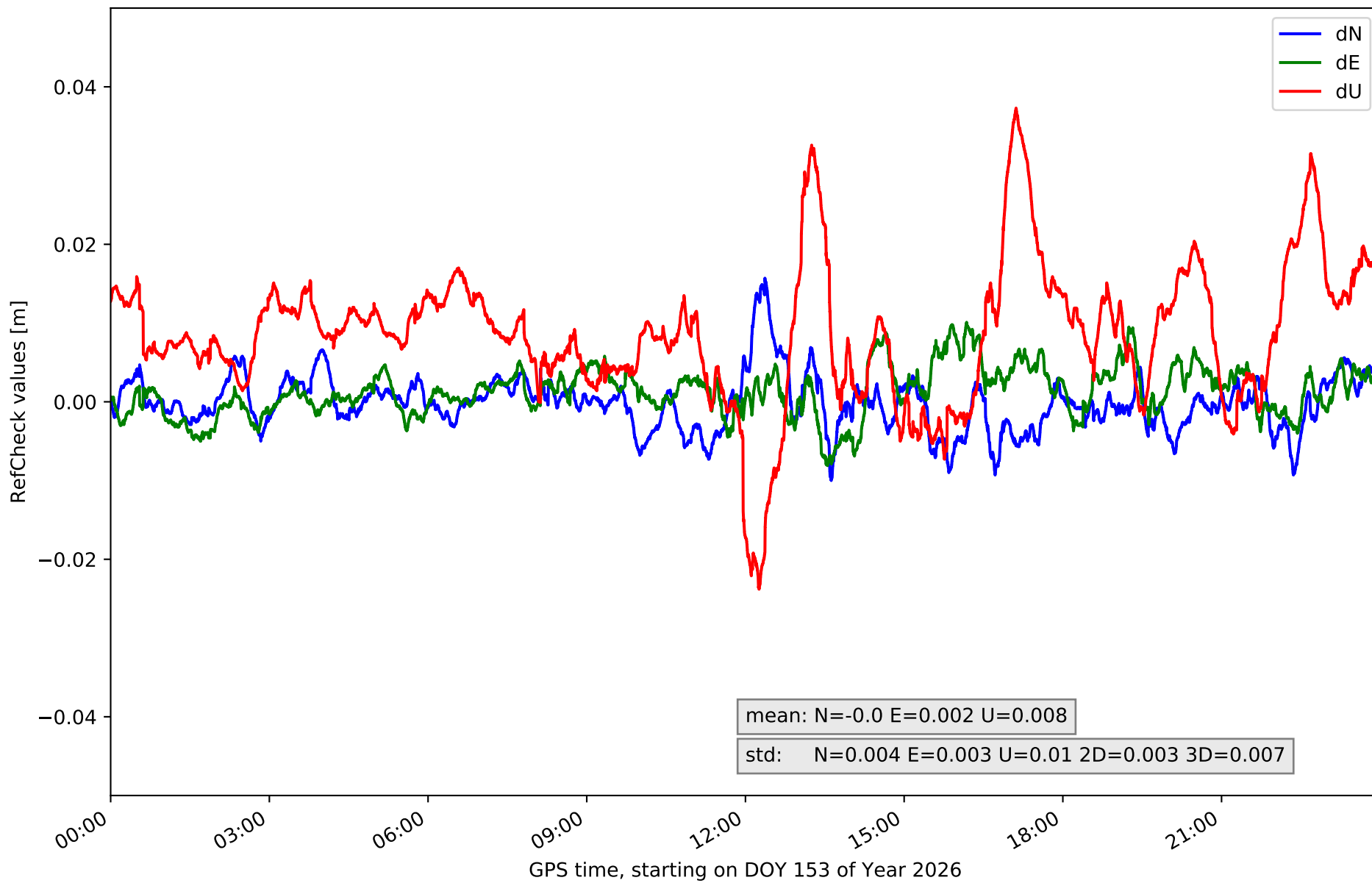
RefCheck for station ABAN in network NT14



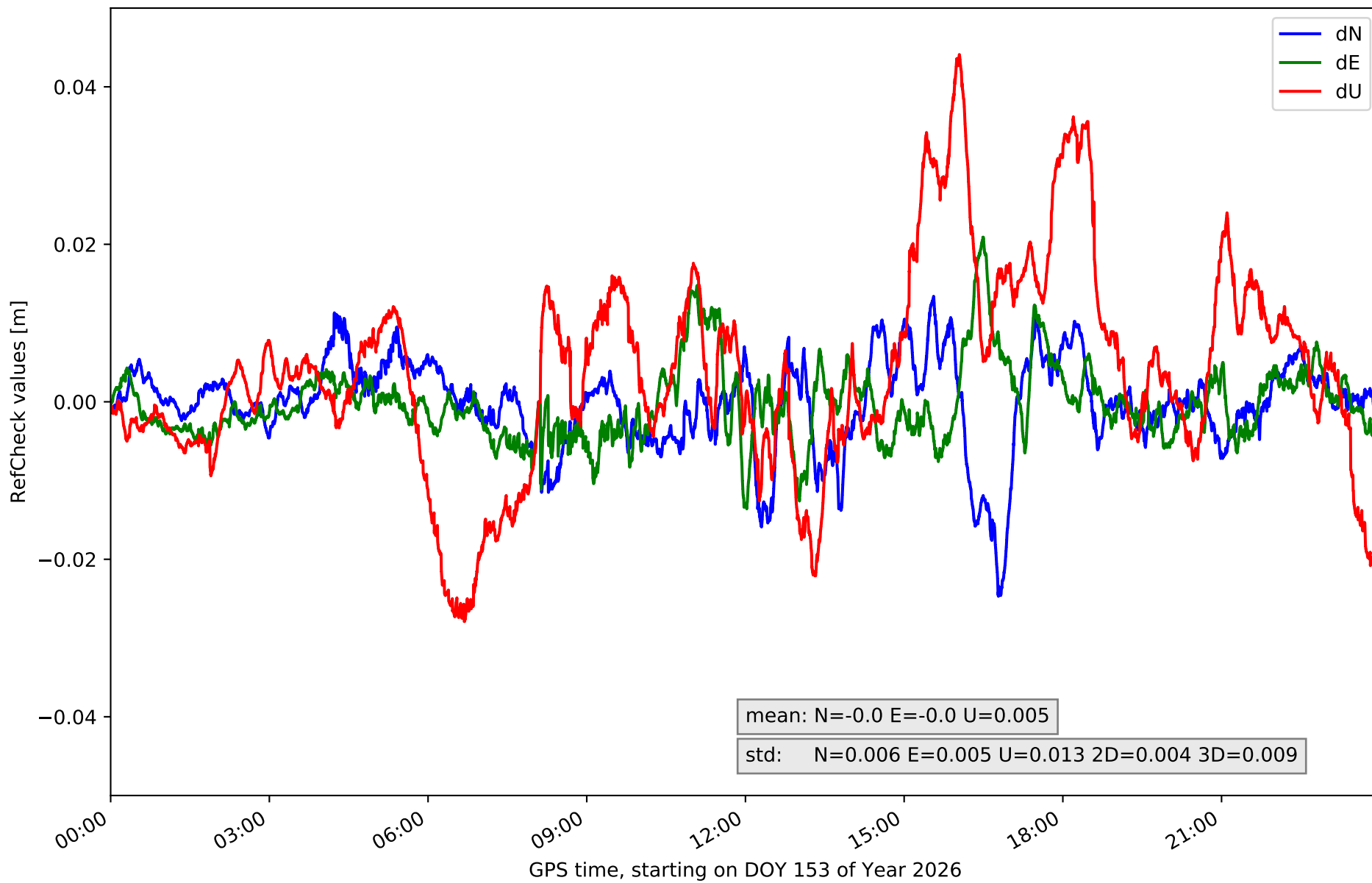
RefCheck for station AIO2 in network NT14



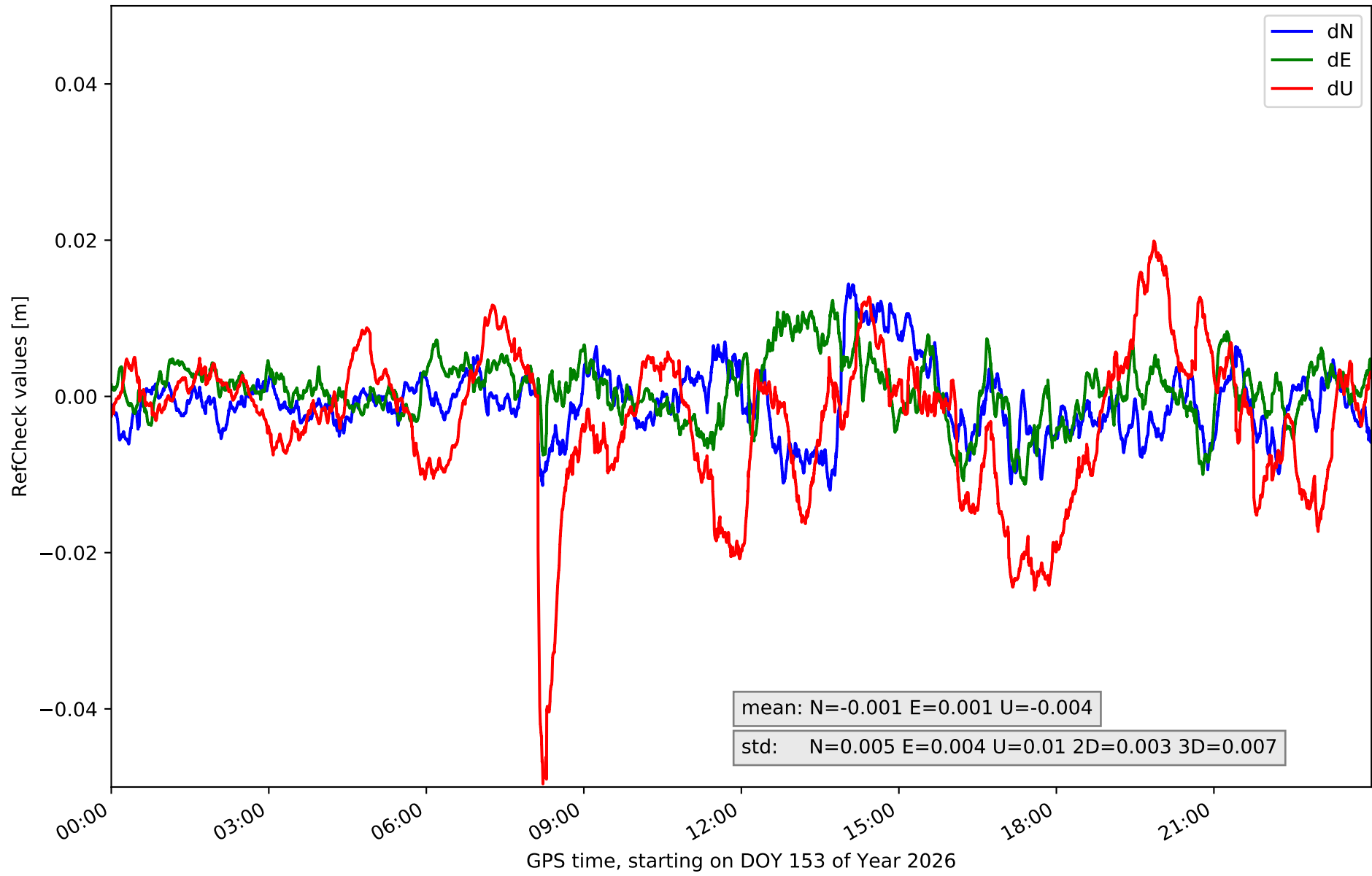
RefCheck for station ALAC in network NT14



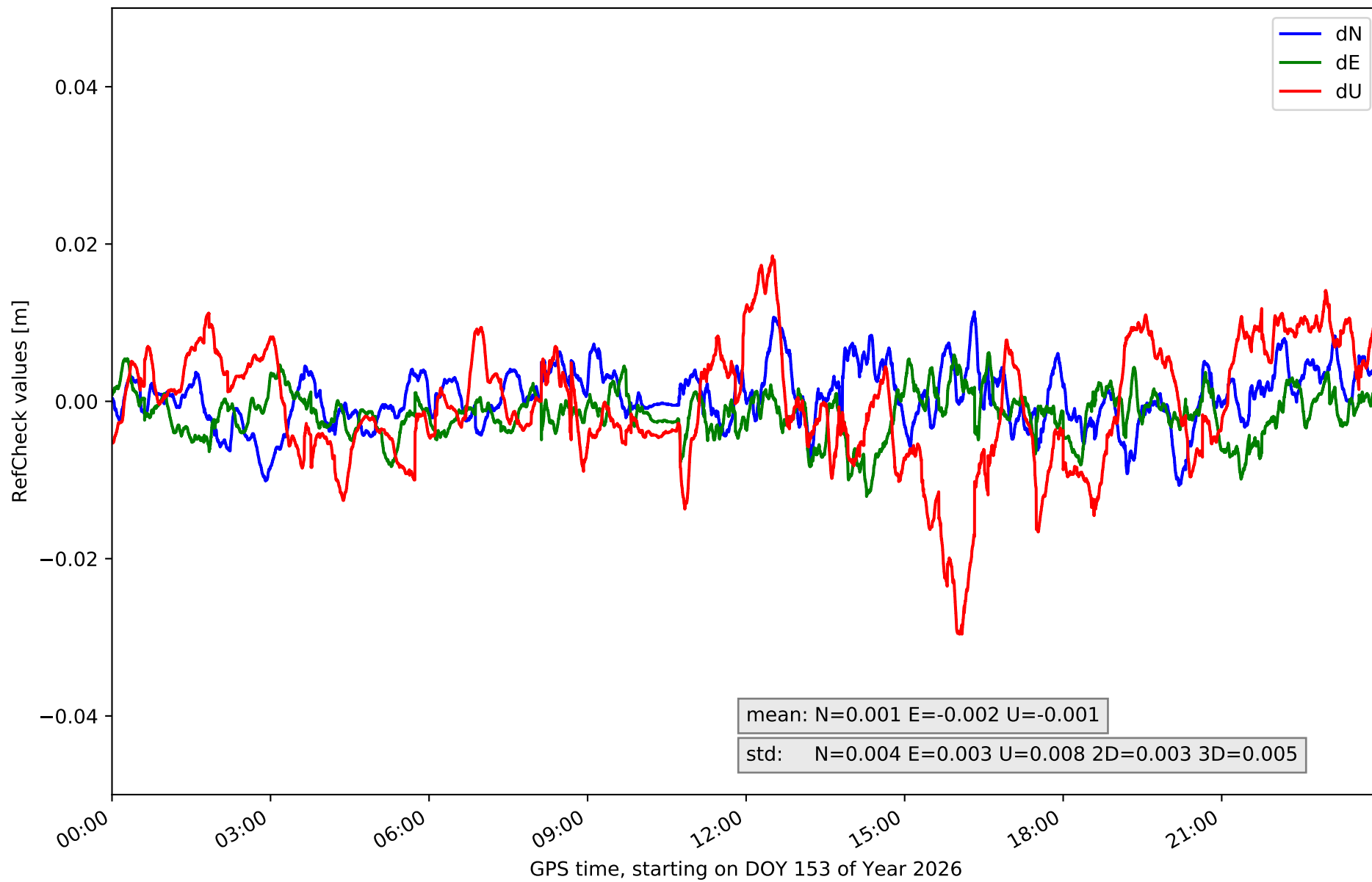
RefCheck for station ALCO in network NT14



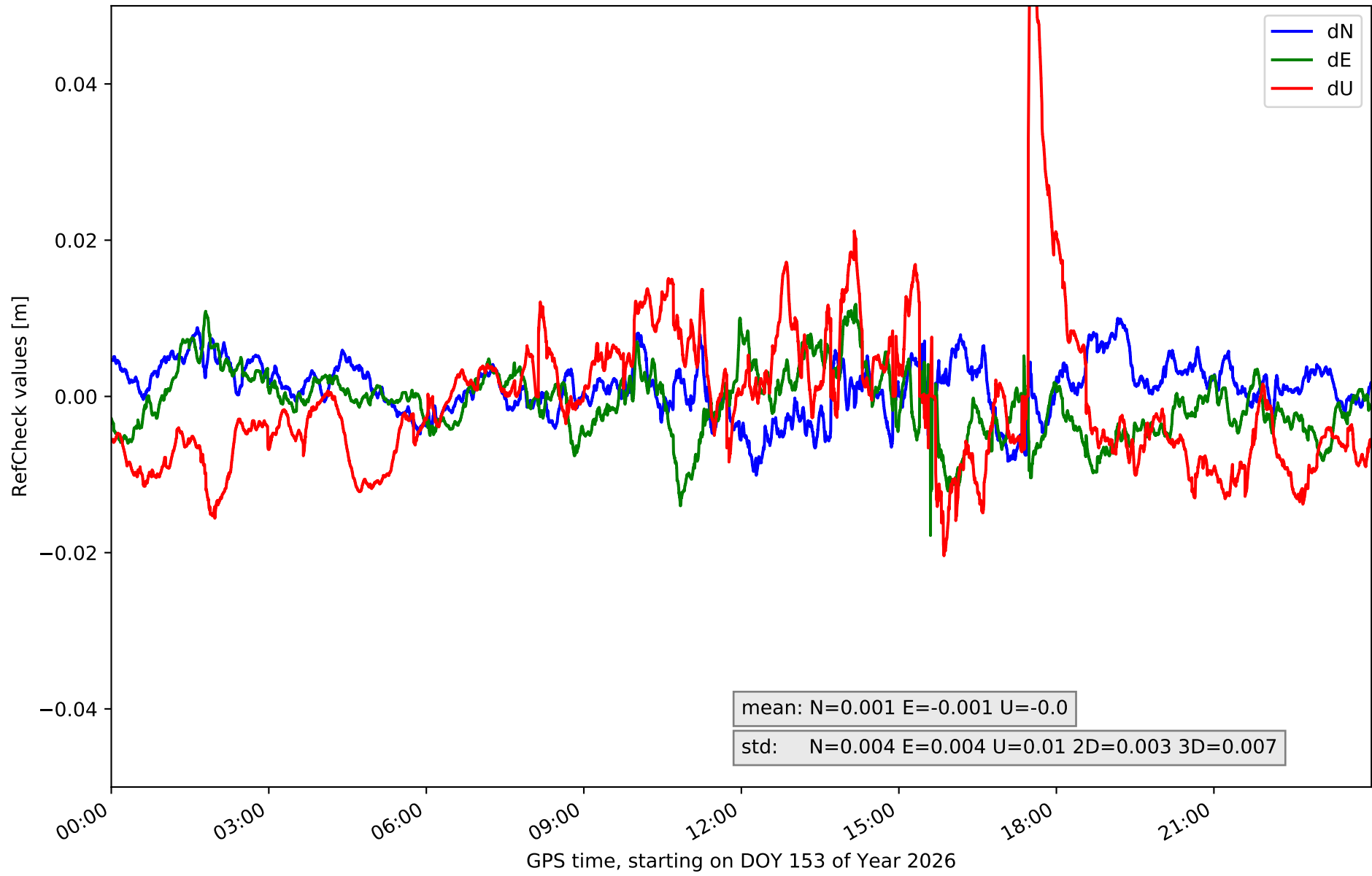
RefCheck for station BORR in network NT14



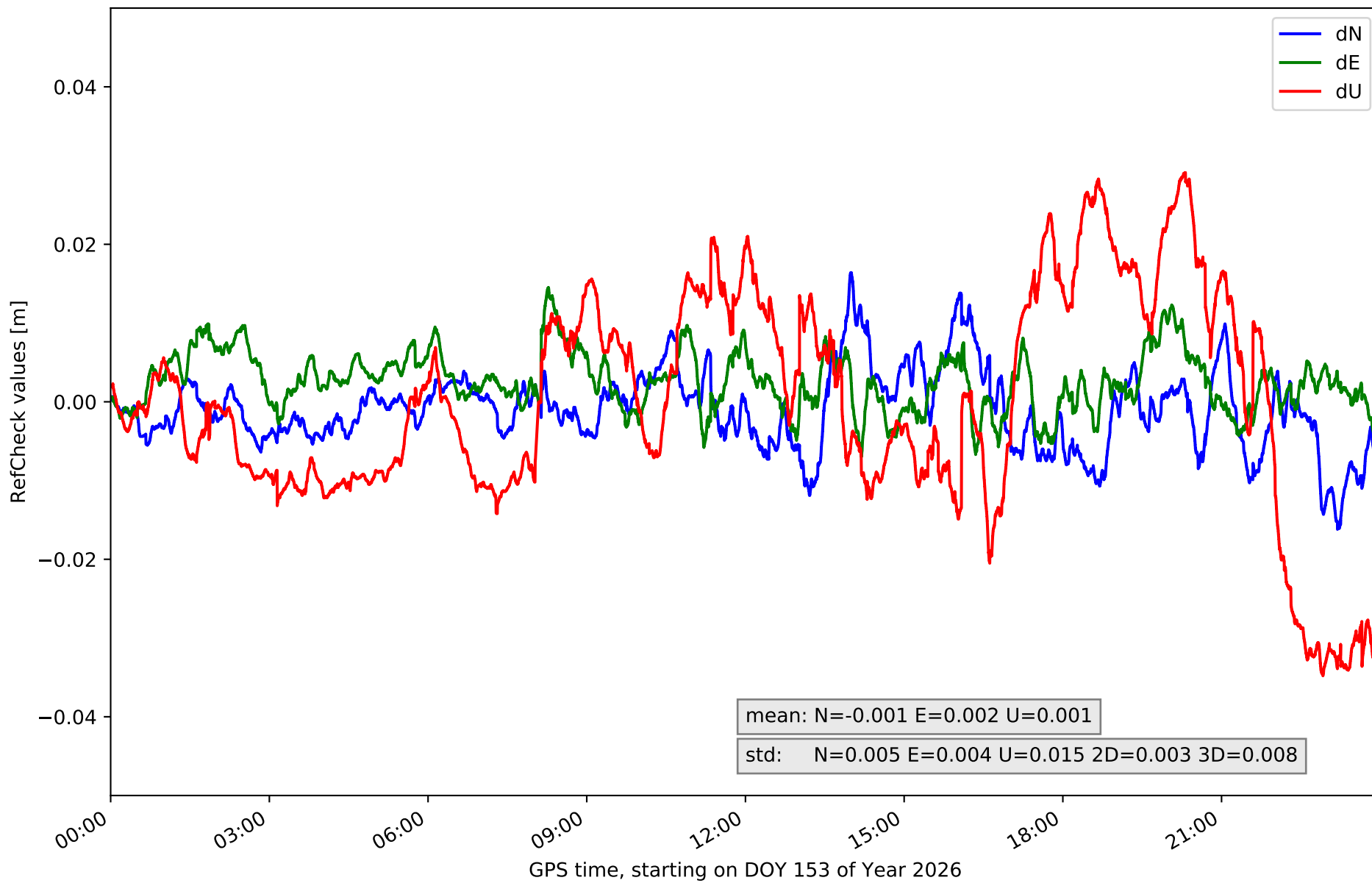
RefCheck for station DENI in network NT14



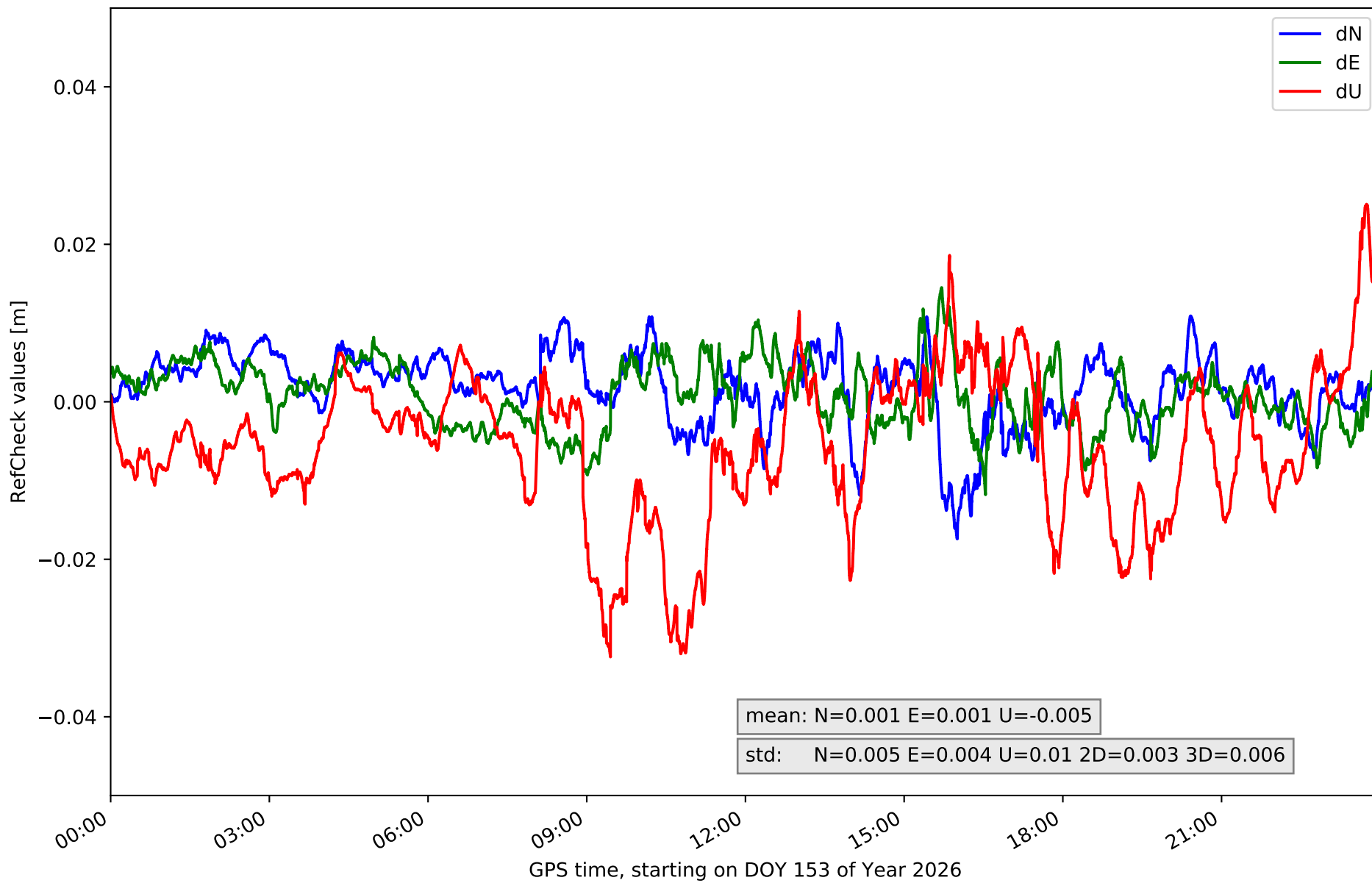
RefCheck for station IEJA in network NT14



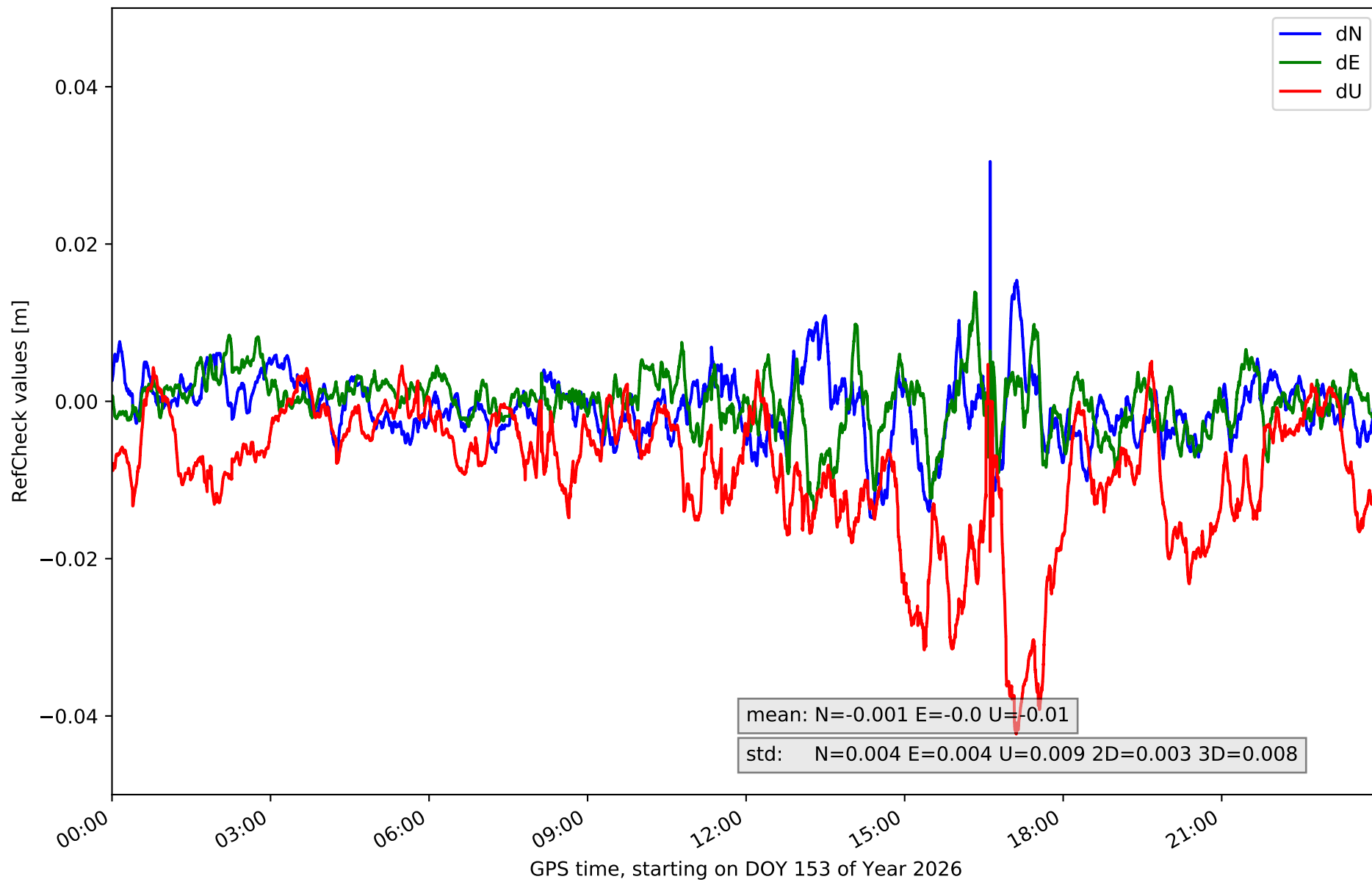
RefCheck for station PENI in network NT14



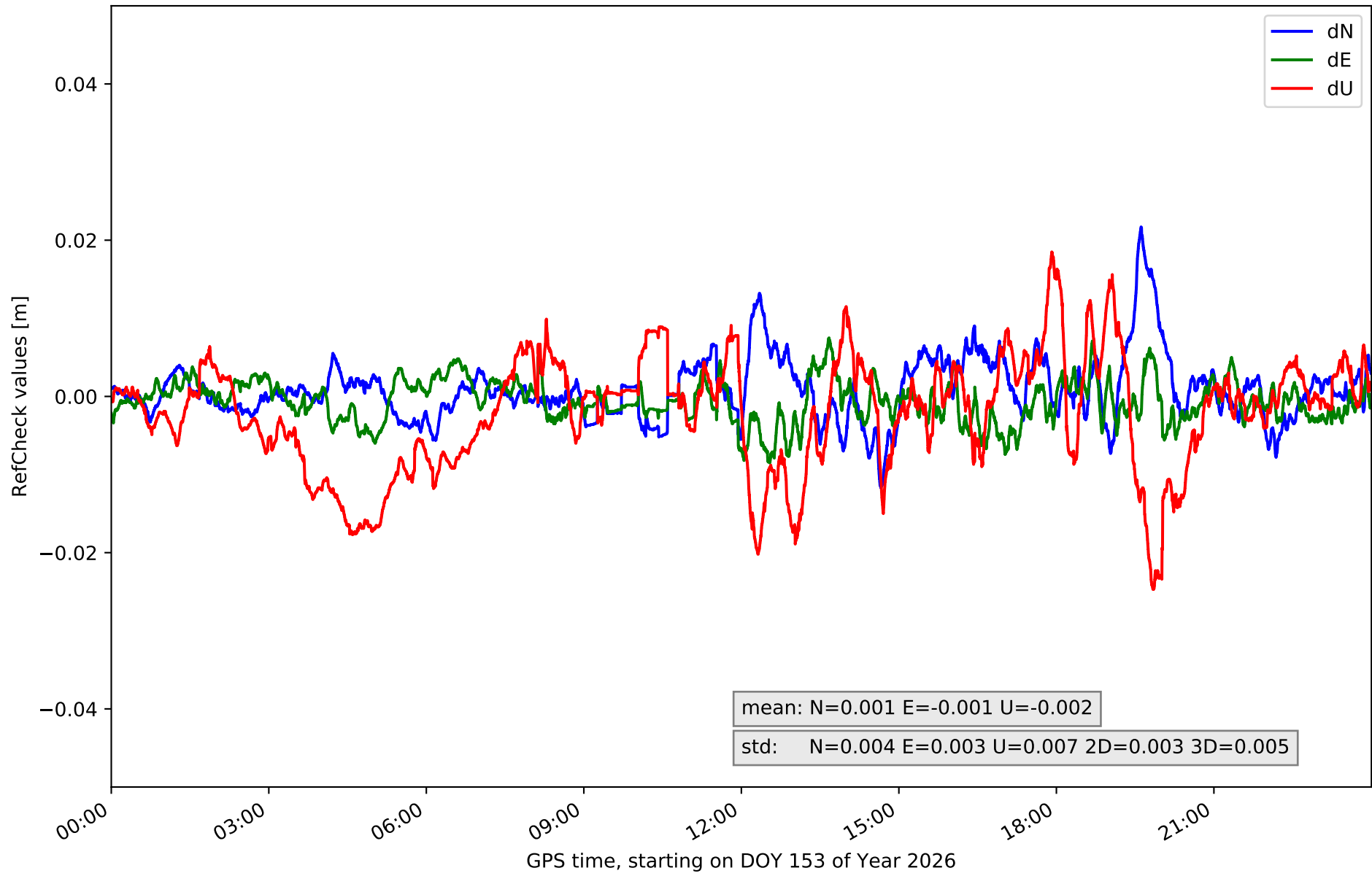
RefCheck for station SARR in network NT14



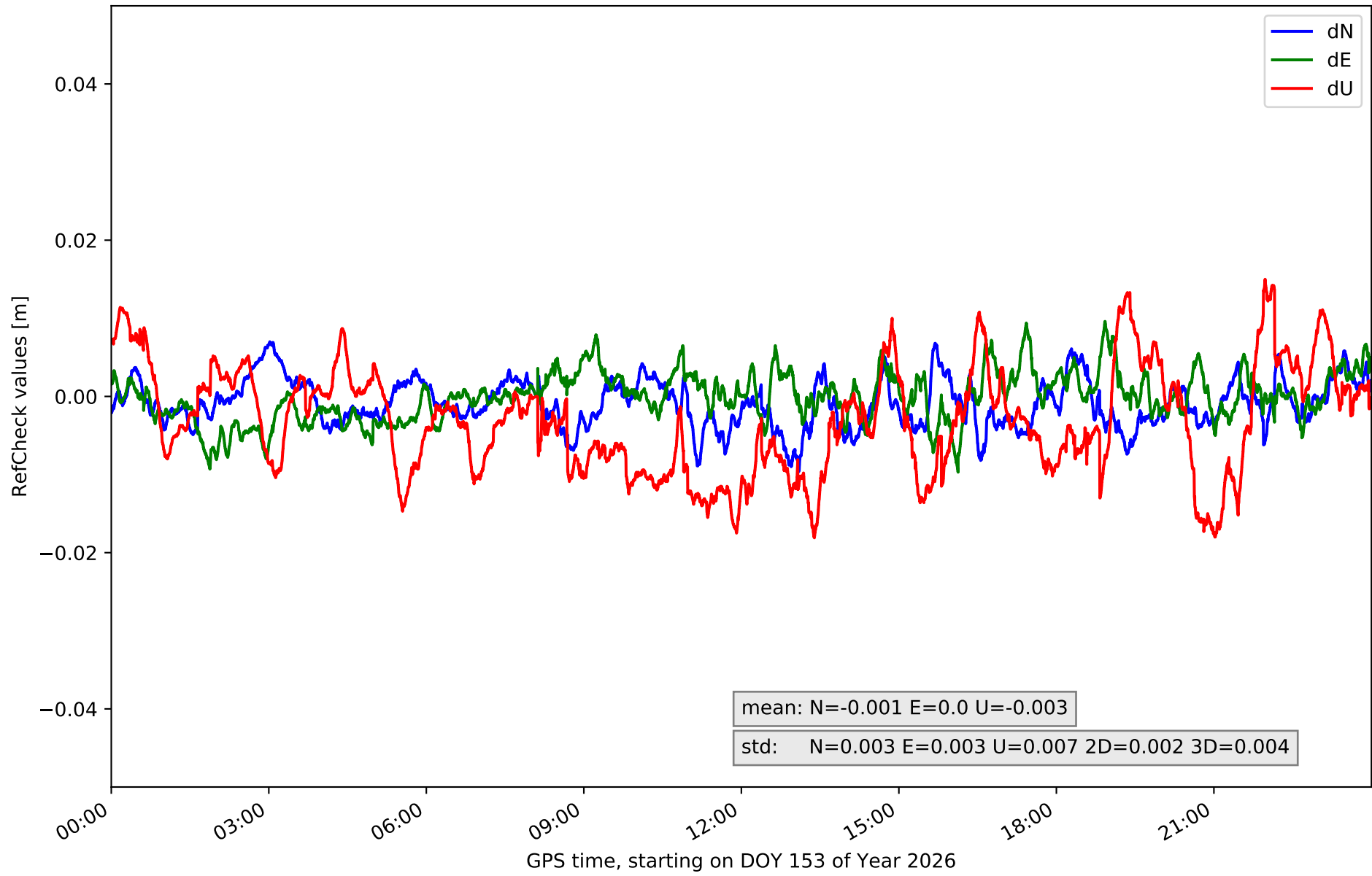
RefCheck for station UTIE in network NT14



RefCheck for station VALE in network NT14



RefCheck for station VJOI in network NT14



RefCheck values for network NT14

Station	Nmin	Nmax	Nstd	Emin	Emax	Estd	Umin	Umax	Ustd	std2D	std3D	#2D > 0.01	% 2D > 0.01	#3D > 0.02	% 3D > 0.02
ABAN	-0.017	0.015	0.004	-0.013	0.014	0.004	-0.02	0.024	0.009	0.003	0.005	8487	12.3	10643	15.5
AIO2	-0.015	0.013	0.004	-0.014	0.007	0.003	-0.036	0.03	0.012	0.003	0.008	3515	5.1	8733	12.7
ALAC	-0.01	0.016	0.004	-0.008	0.01	0.003	-0.024	0.037	0.01	0.003	0.007	2288	3.3	8552	12.4
ALCO	-0.025	0.013	0.006	-0.014	0.021	0.005	-0.028	0.044	0.013	0.004	0.009	12012	17.5	13545	19.7
BORR	-0.012	0.014	0.005	-0.011	0.012	0.004	-0.05	0.02	0.01	0.003	0.007	10243	14.9	5856	8.5
DENI	-0.011	0.011	0.004	-0.012	0.006	0.003	-0.03	0.018	0.008	0.003	0.005	2114	3.1	2297	3.3
IEJA	-0.01	0.01	0.004	-0.018	0.012	0.004	-0.02	0.06	0.01	0.003	0.007	5579	8.1	2757	4.0
PENI	-0.016	0.016	0.005	-0.007	0.015	0.004	-0.035	0.029	0.015	0.003	0.008	8698	12.6	13446	19.5
SARR	-0.017	0.011	0.005	-0.012	0.015	0.004	-0.032	0.025	0.01	0.003	0.006	5978	8.7	7530	10.9
UTIE	-0.015	0.03	0.004	-0.014	0.014	0.004	-0.042	0.005	0.009	0.003	0.008	5779	8.4	10458	15.2
VALE	-0.012	0.022	0.004	-0.009	0.007	0.003	-0.025	0.018	0.007	0.003	0.005	3360	4.9	2371	3.4
VJOI	-0.01	0.007	0.003	-0.01	0.01	0.003	-0.018	0.015	0.007	0.002	0.004	162	0.2	0	0.0
Mean	-0.014	0.015	0.004	-0.012	0.012	0.004	-0.03	0.027	0.01	0.003	0.007	5684.6	8.3	7182.3	10.4
Min/Max	-0.025	0.03	0.006	-0.018	0.021	0.005	-0.05	0.06	0.015	0.004	0.009	12012	17.5	13545	19.7

fixing statistic for network NT14

fixing percentage of	all GNSS	G	R	E	C
using threshold 0.3	93.4	94.8	92.9	94.0	91.5
considering satellites with dual-frequency fixed	90.3	91.6	90.1	91.7	87.5
considering all signals separately	90.3	91.8	90.1	91.8	85.6