

summary for network N31T

timeperiod chosen: from 2026-05-25-00:00:00 until 2026-05-25-23:59:59

average update rate (durations larger than 15 seconds considered as observation gap): 1.1 seconds

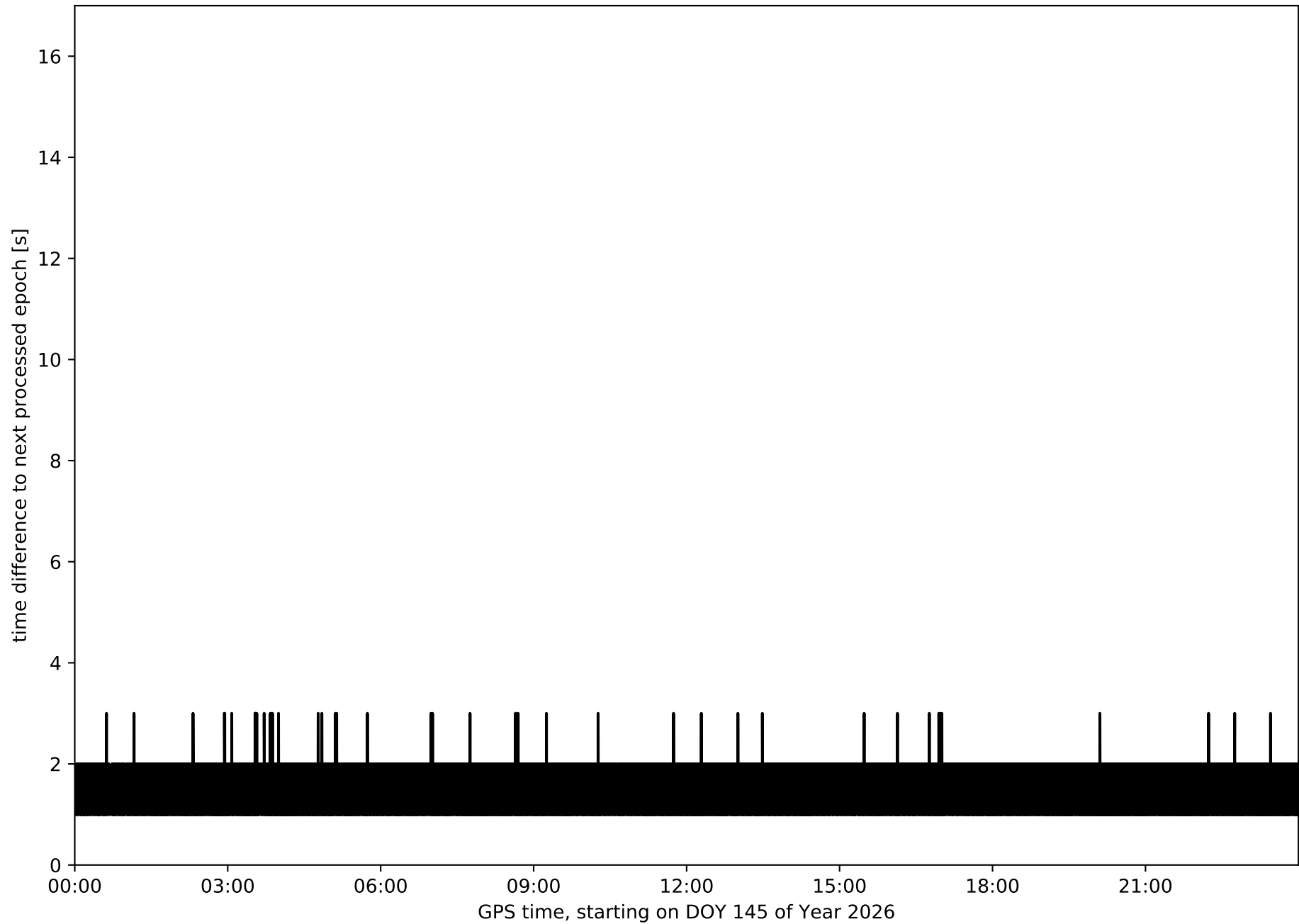
average fixing percentage with threshold set to 0.3: 92.6 percent

stations available: 7 of 7

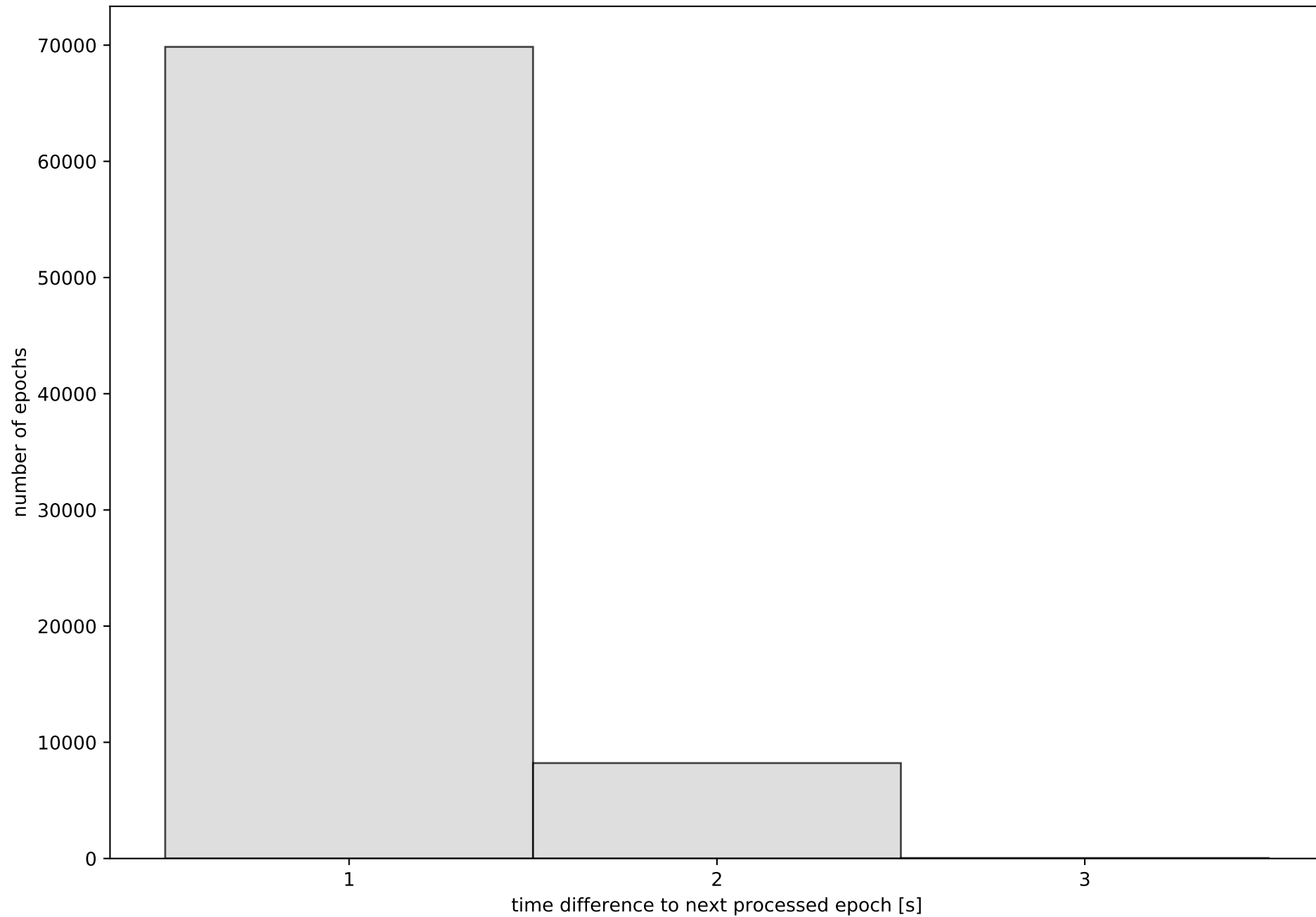
station information:

| | | | | |
|---------------|-----------------------|------|-------------------------|-----------------|
| station FUER: | antenna: LEIAR20 | LEIM | receiver: LEICA GR50 | height: 76.887 |
| station LALA: | antenna: TRM59900.00 | SCIS | receiver: TRIMBLE NETR9 | height: 62.306 |
| station LZ01: | antenna: TRM159900.00 | SCIS | receiver: TRIMBLE NETR9 | height: 52.693 |
| station LZ02: | antenna: LEIAR20 | NONE | receiver: LEICA GR25 | height: 58.039 |
| station LZ03: | antenna: LEIAR20 | NONE | receiver: LEICA GR50 | height: 314.762 |
| station MASP: | antenna: TRM159900.00 | SCIS | receiver: TRIMBLE NETR9 | height: 198.846 |
| station ULP2: | antenna: TRM59900.00 | SCIS | receiver: TRIMBLE ALLOY | height: 375.129 |

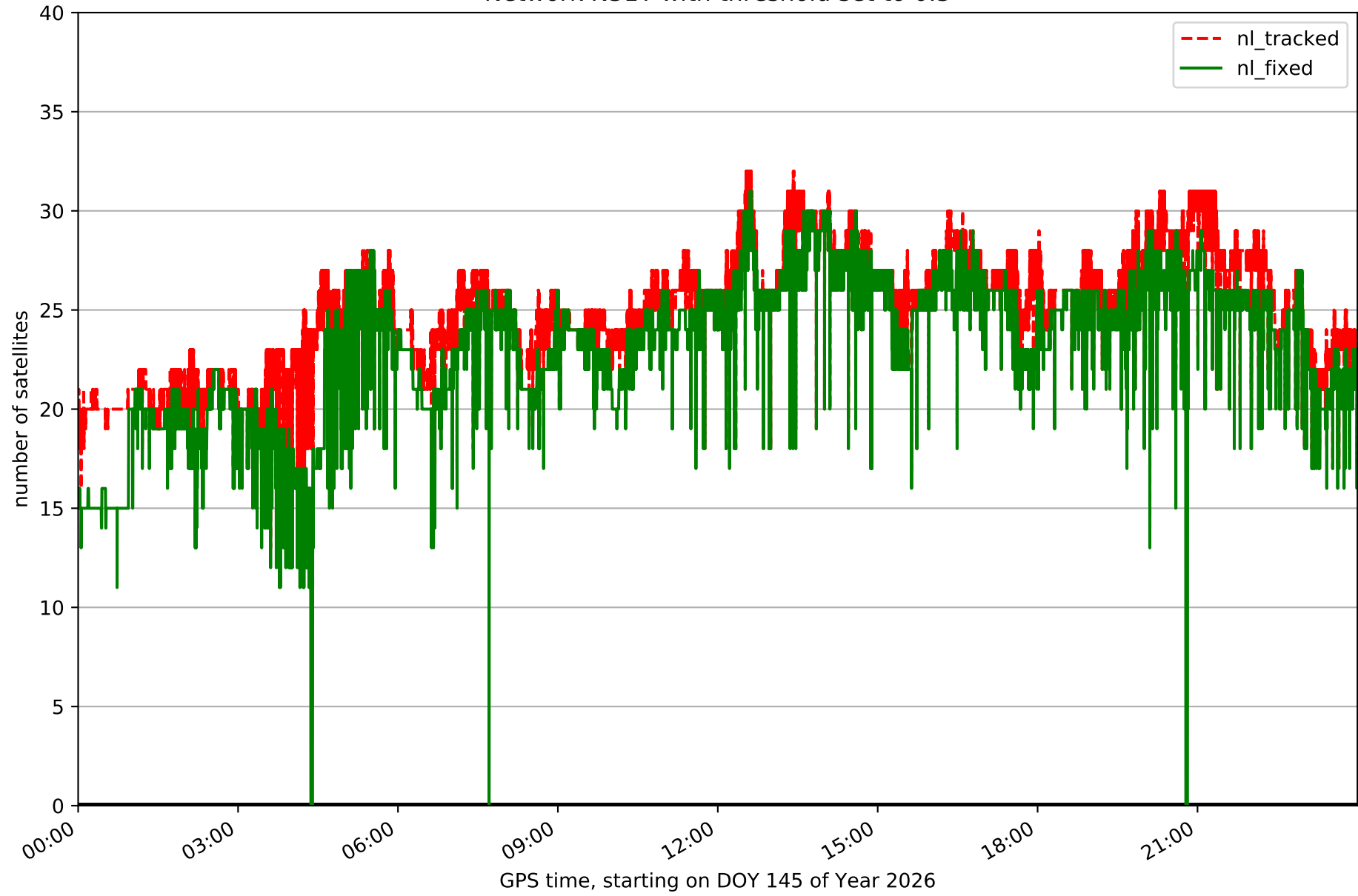
Processing rate in network N31T



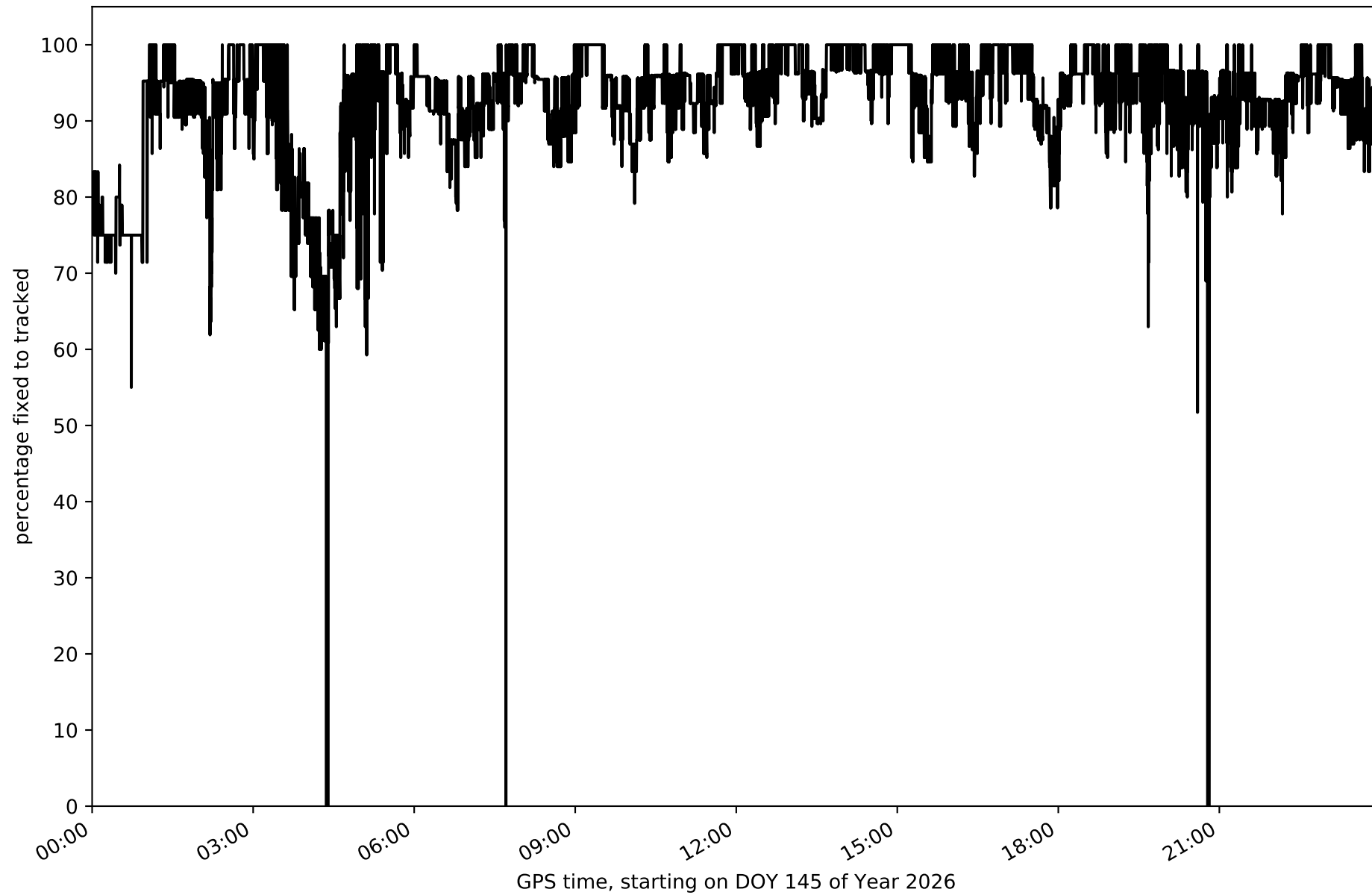
Histogram of the processing rate in network N31T (durations larger 15 seconds neglected)



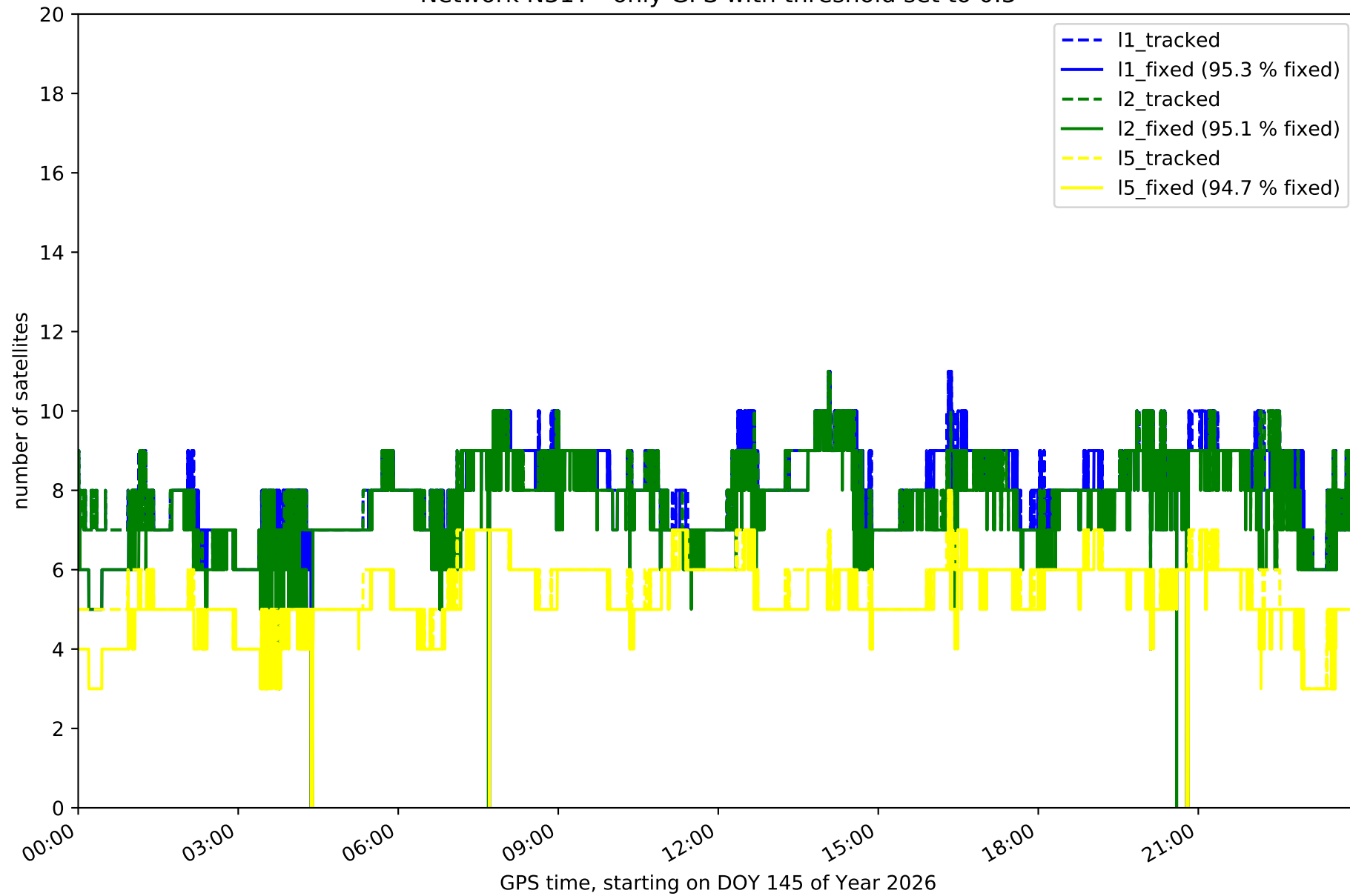
Network N31T with threshold set to 0.3



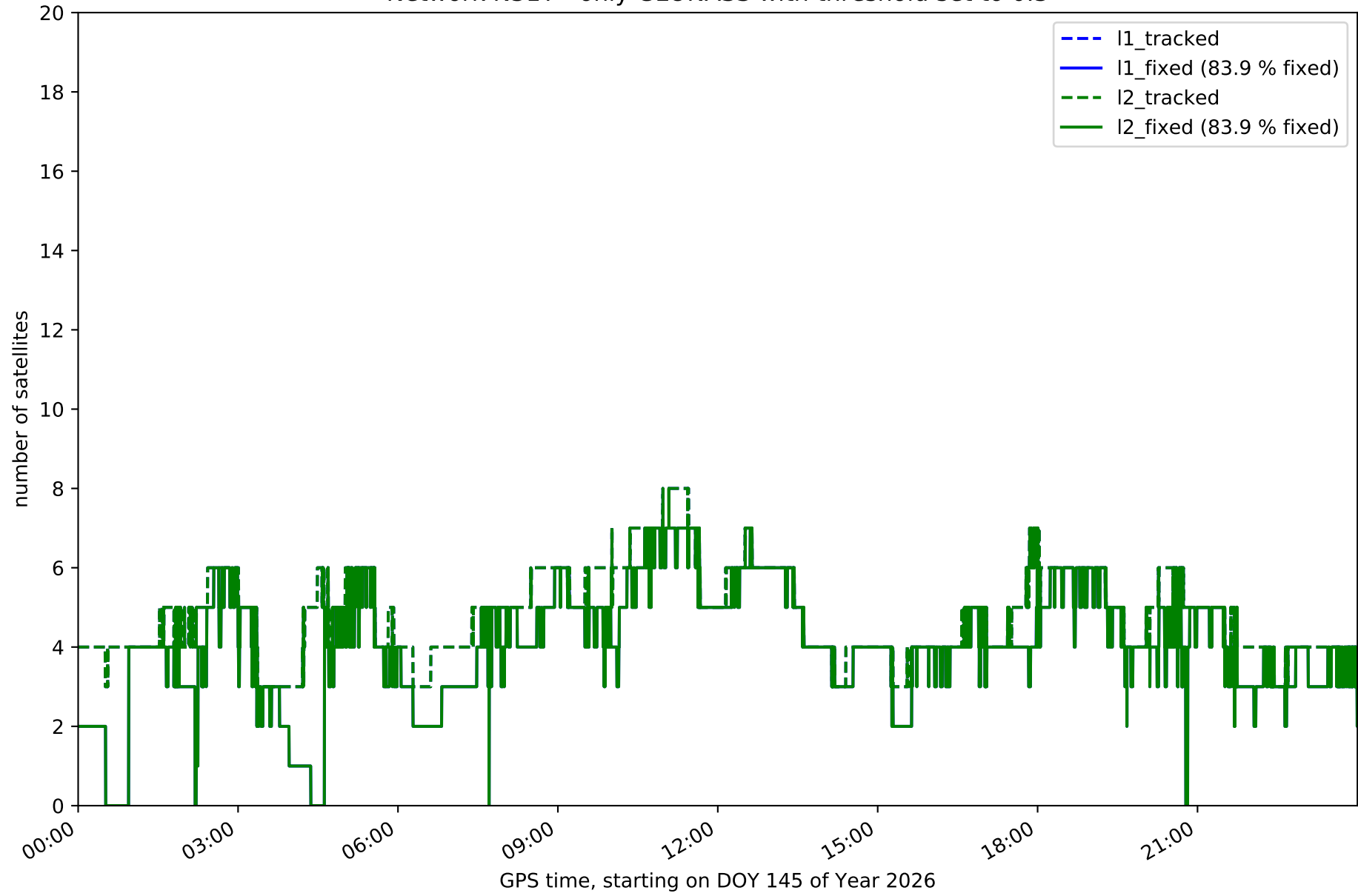
Fixing percentage of satellites in network N31T with threshold set to 0.3



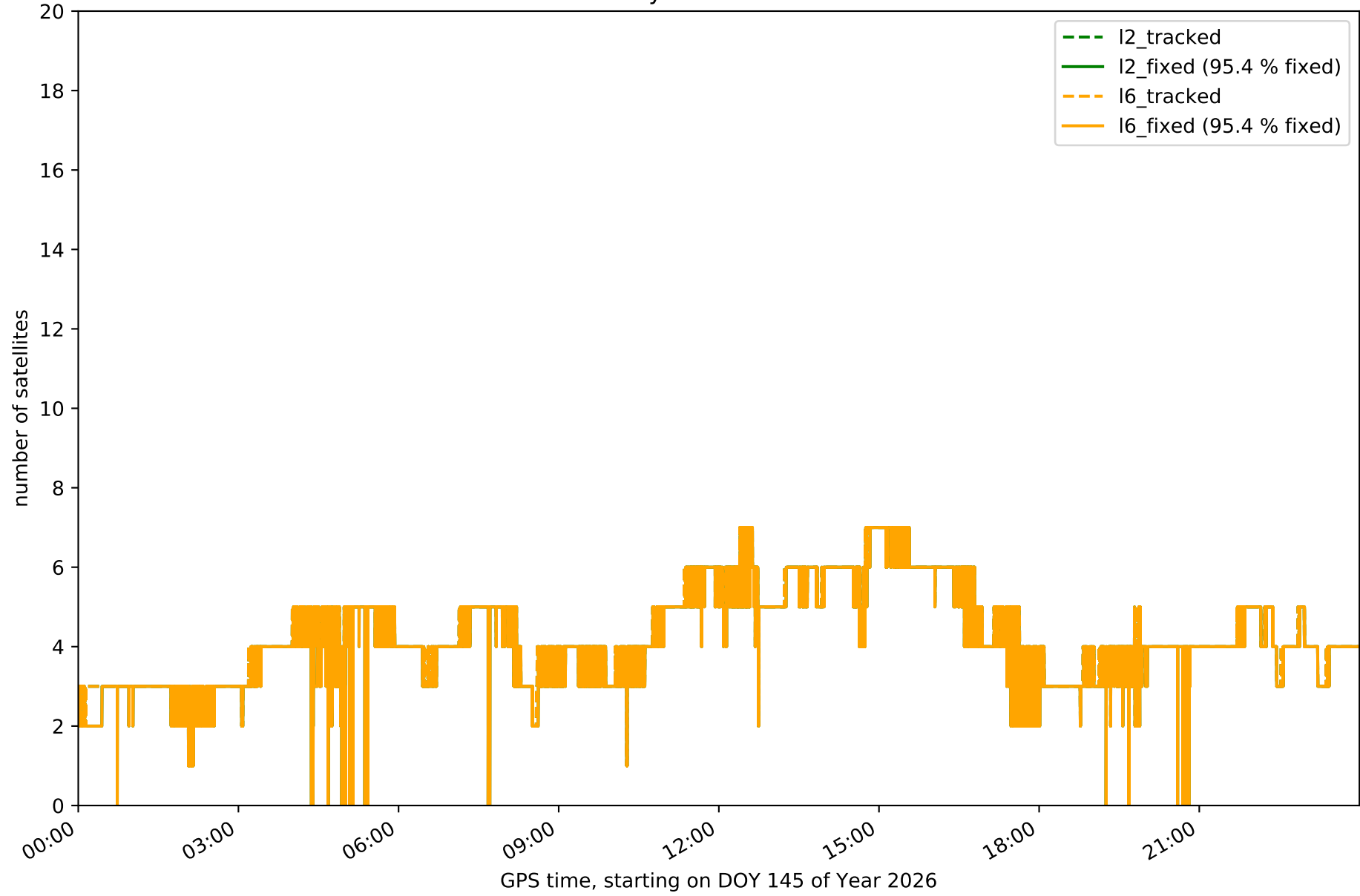
Network N31T - only GPS with threshold set to 0.3



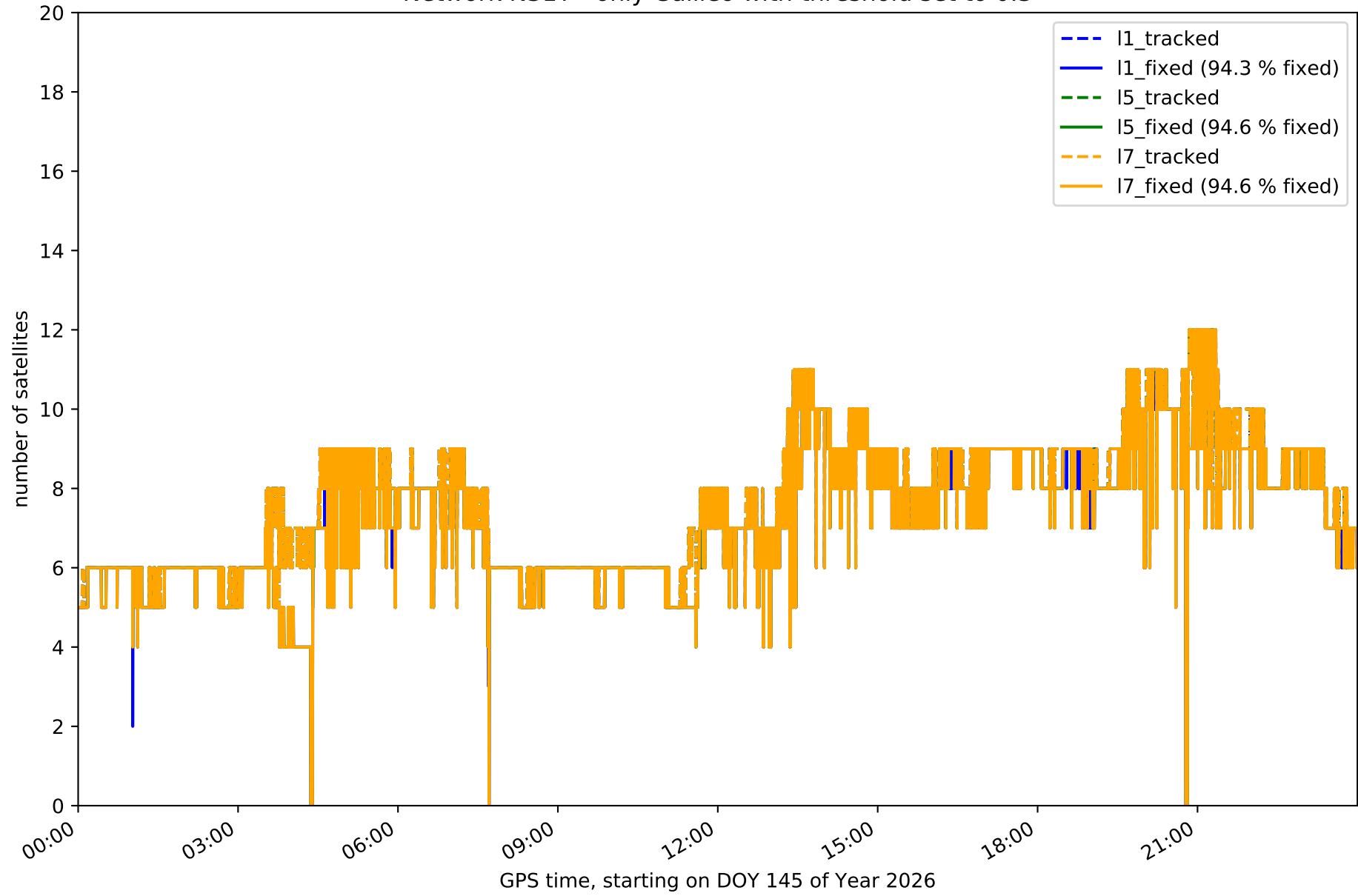
Network N31T - only GLONASS with threshold set to 0.3



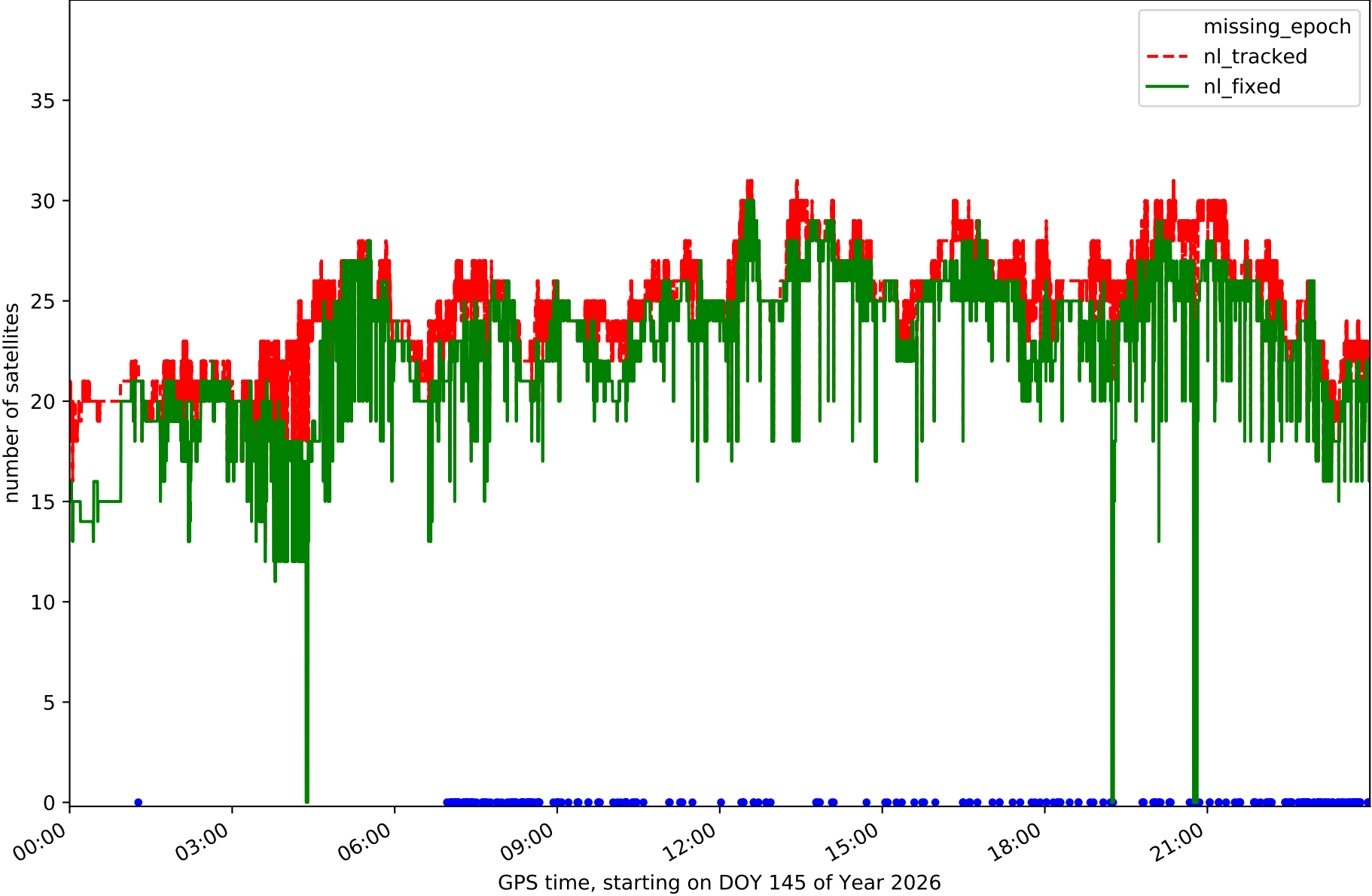
Network N31T - only BDS with threshold set to 0.3



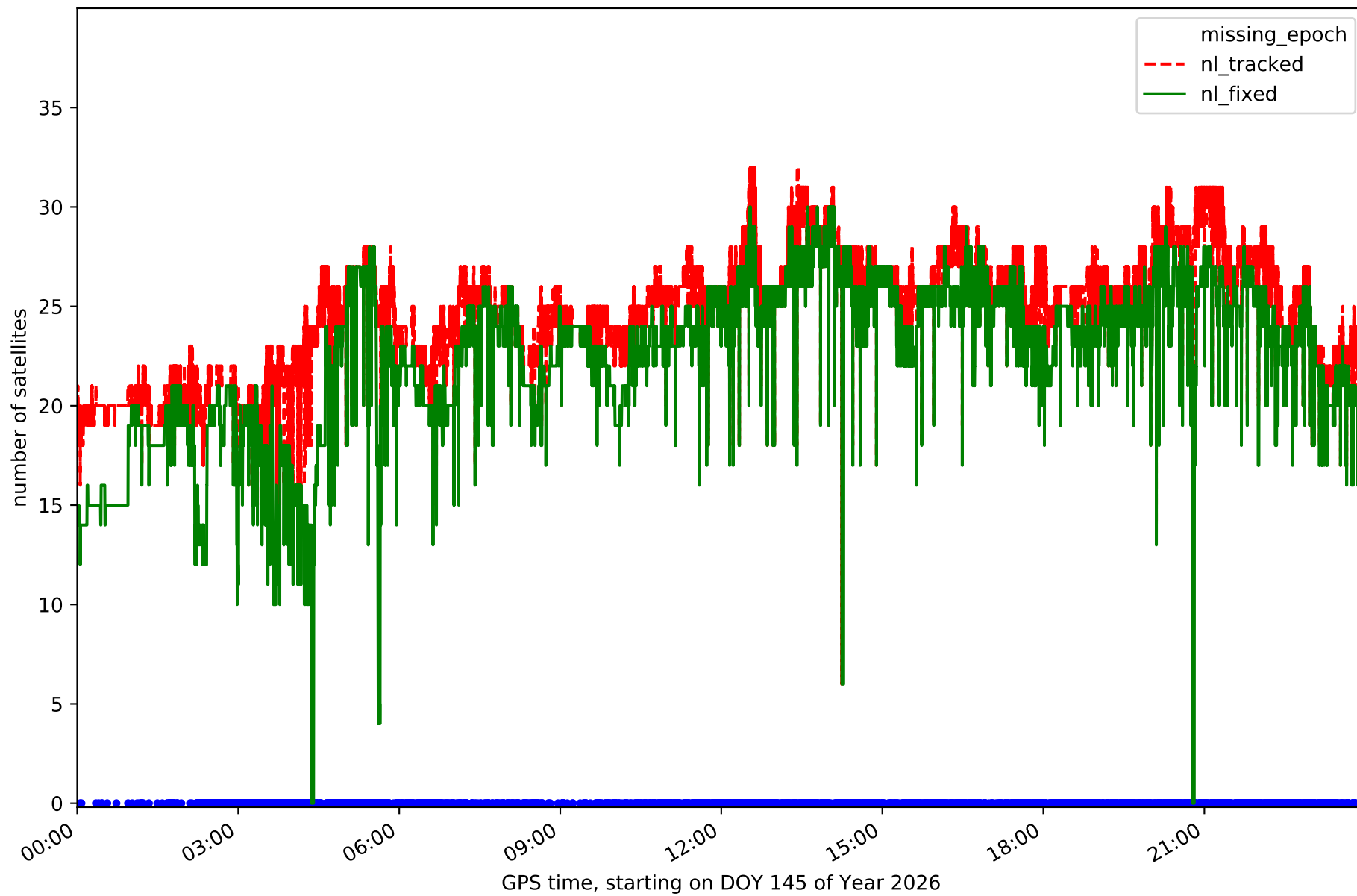
Network N31T - only Galileo with threshold set to 0.3



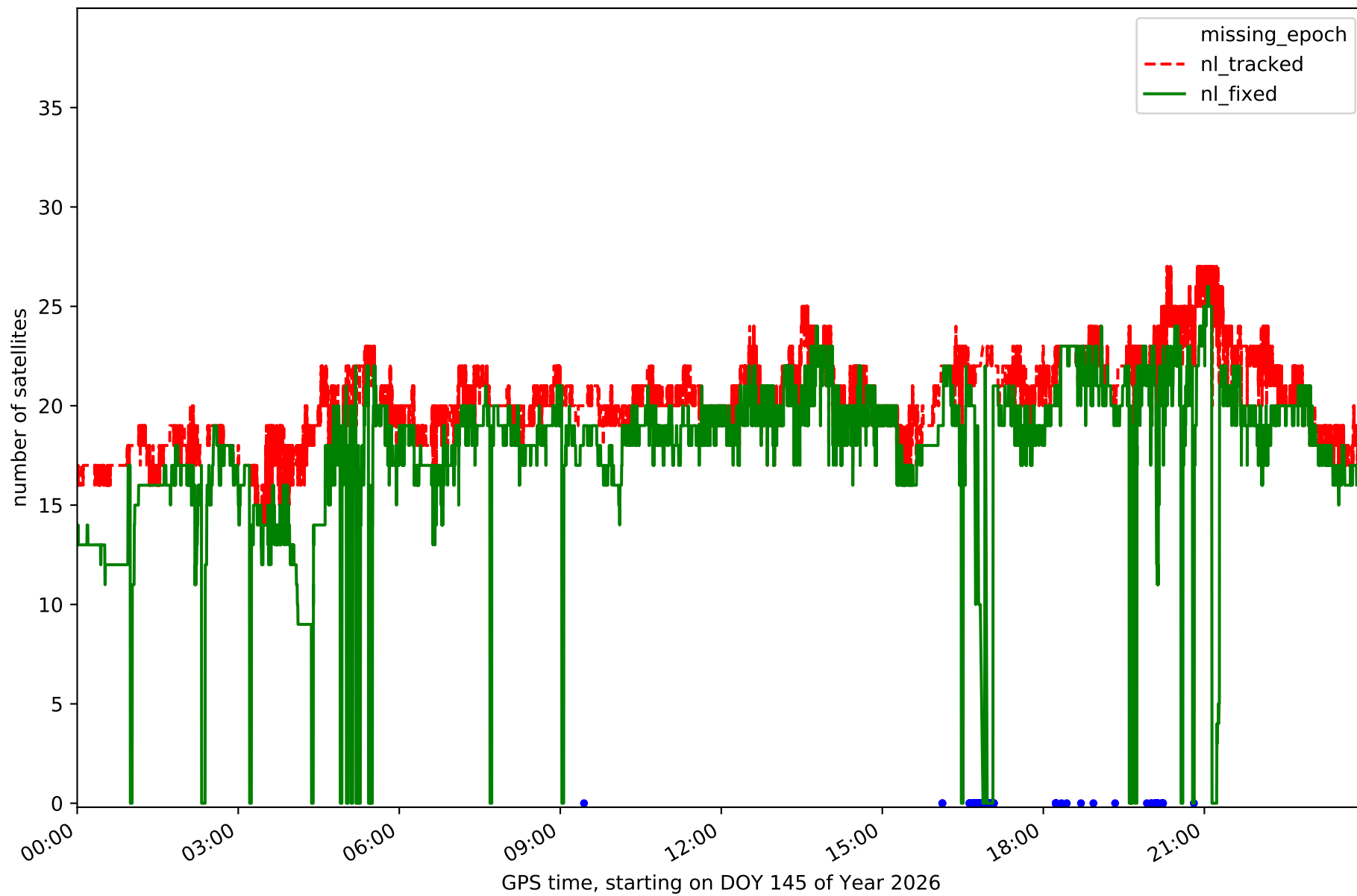
Station FUER in network N31T



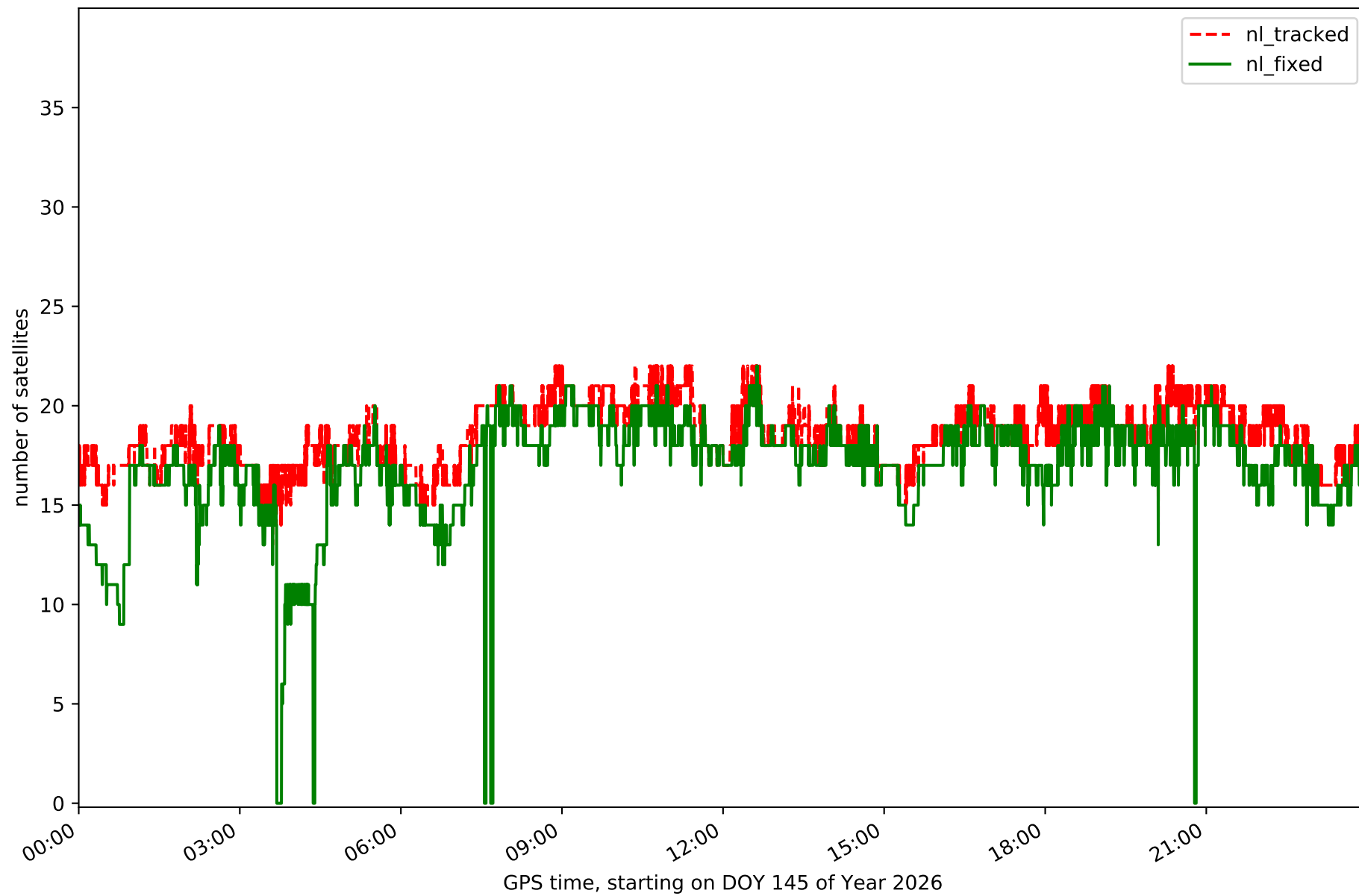
Station LALA in network N31T



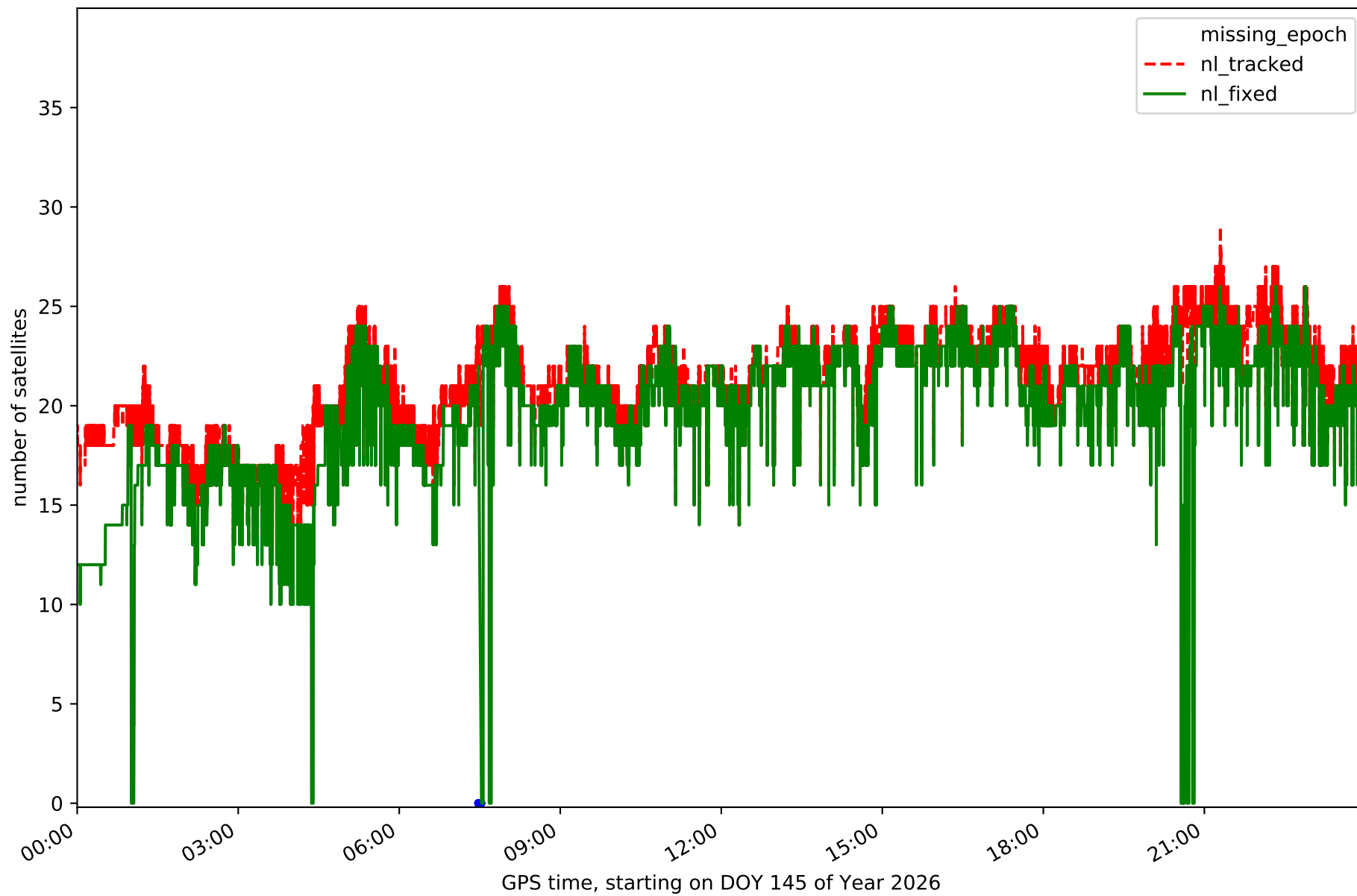
Station LZ01 in network N31T



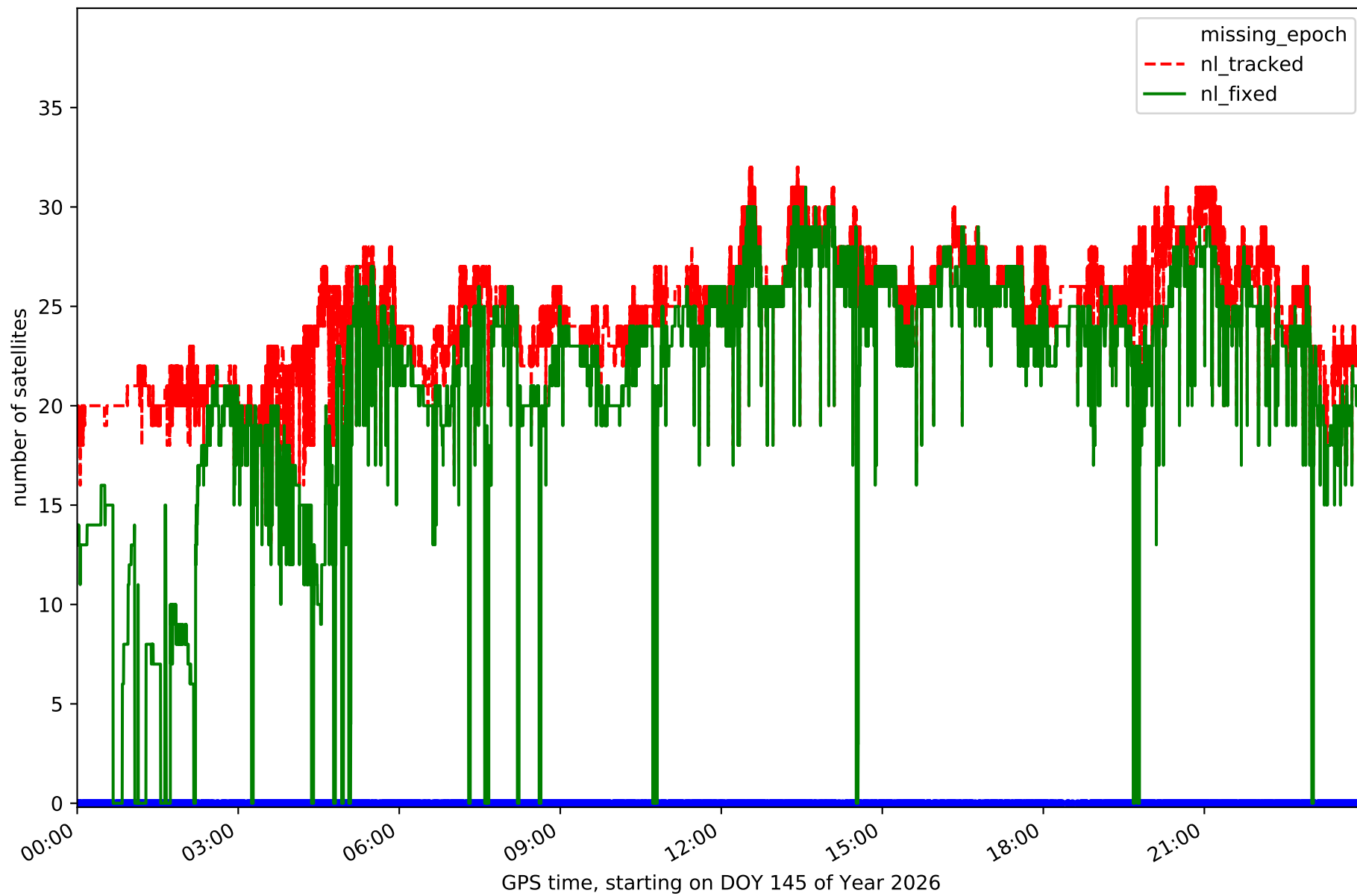
Station LZ02 in network N31T



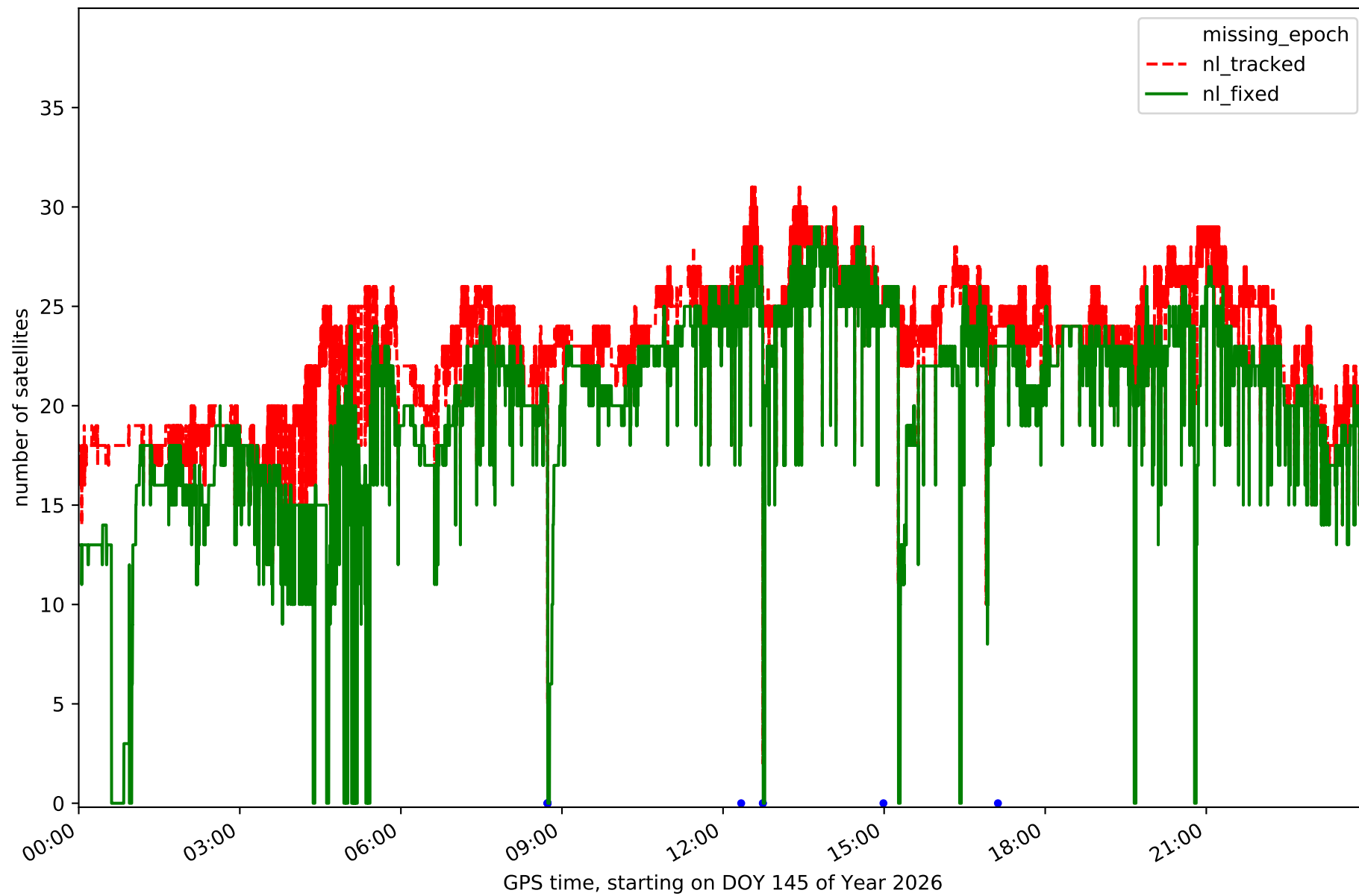
Station LZ03 in network N31T



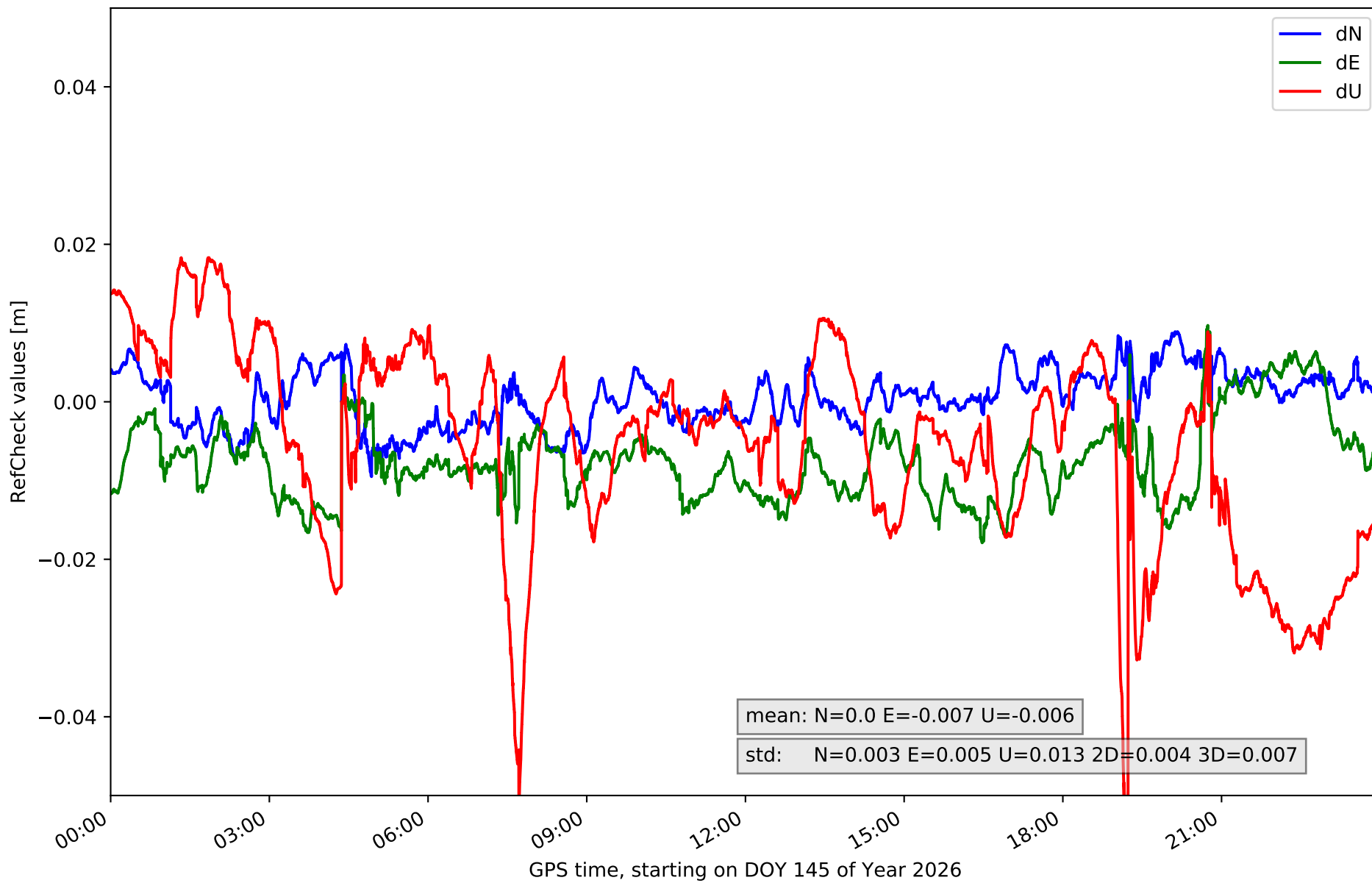
Station MASP in network N31T



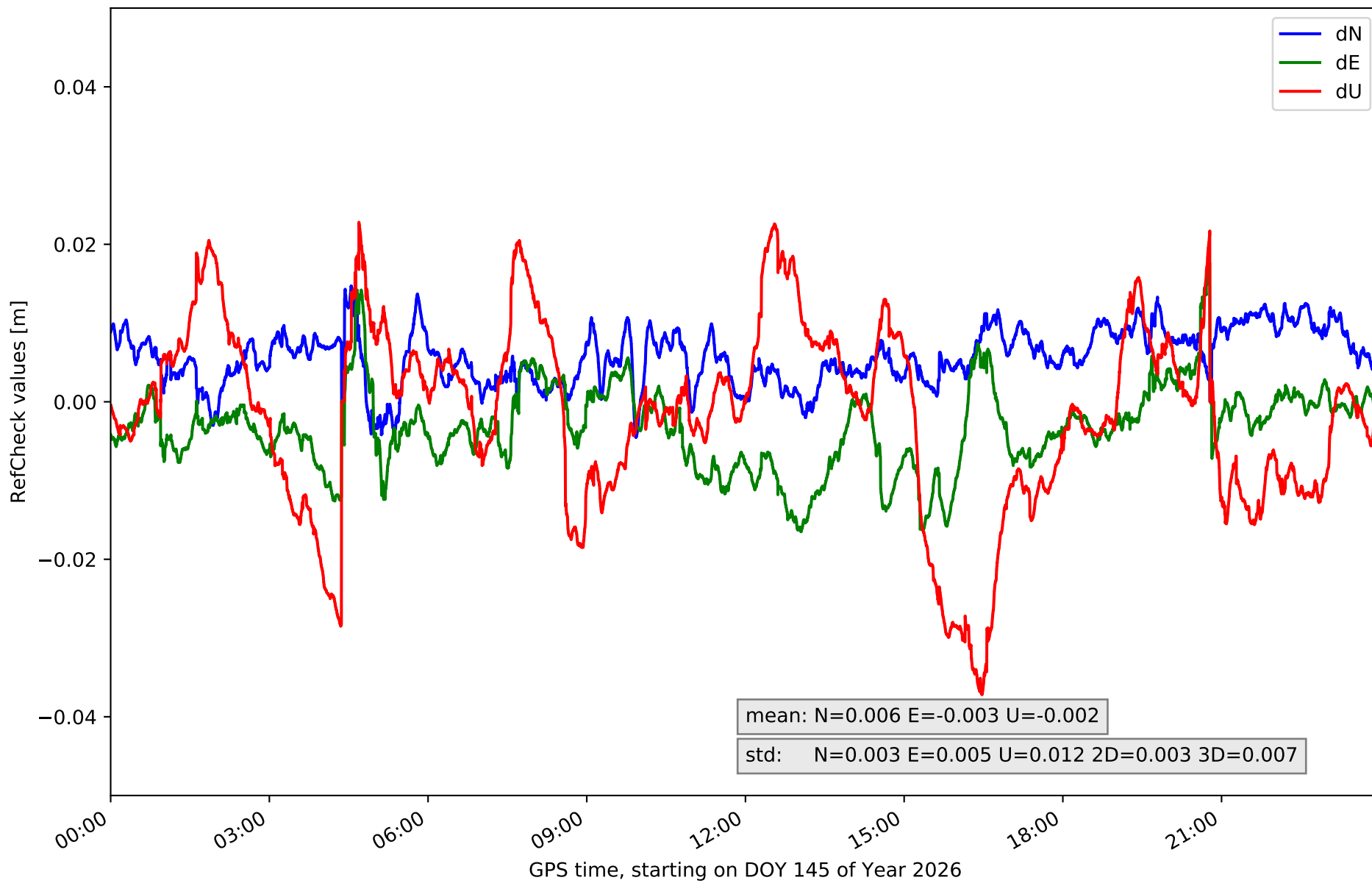
Station ULP2 in network N31T



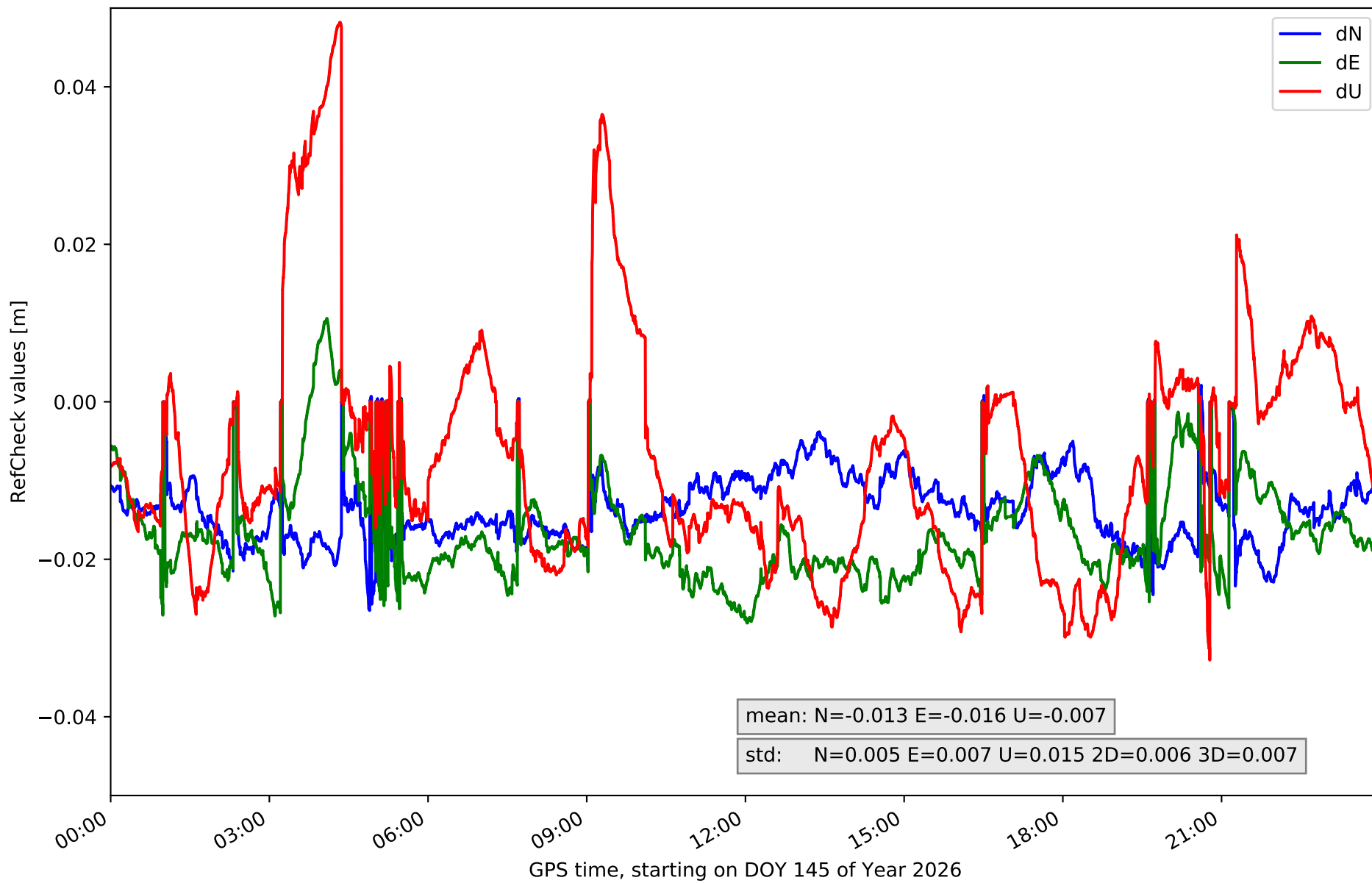
RefCheck for station FUER in network N31T



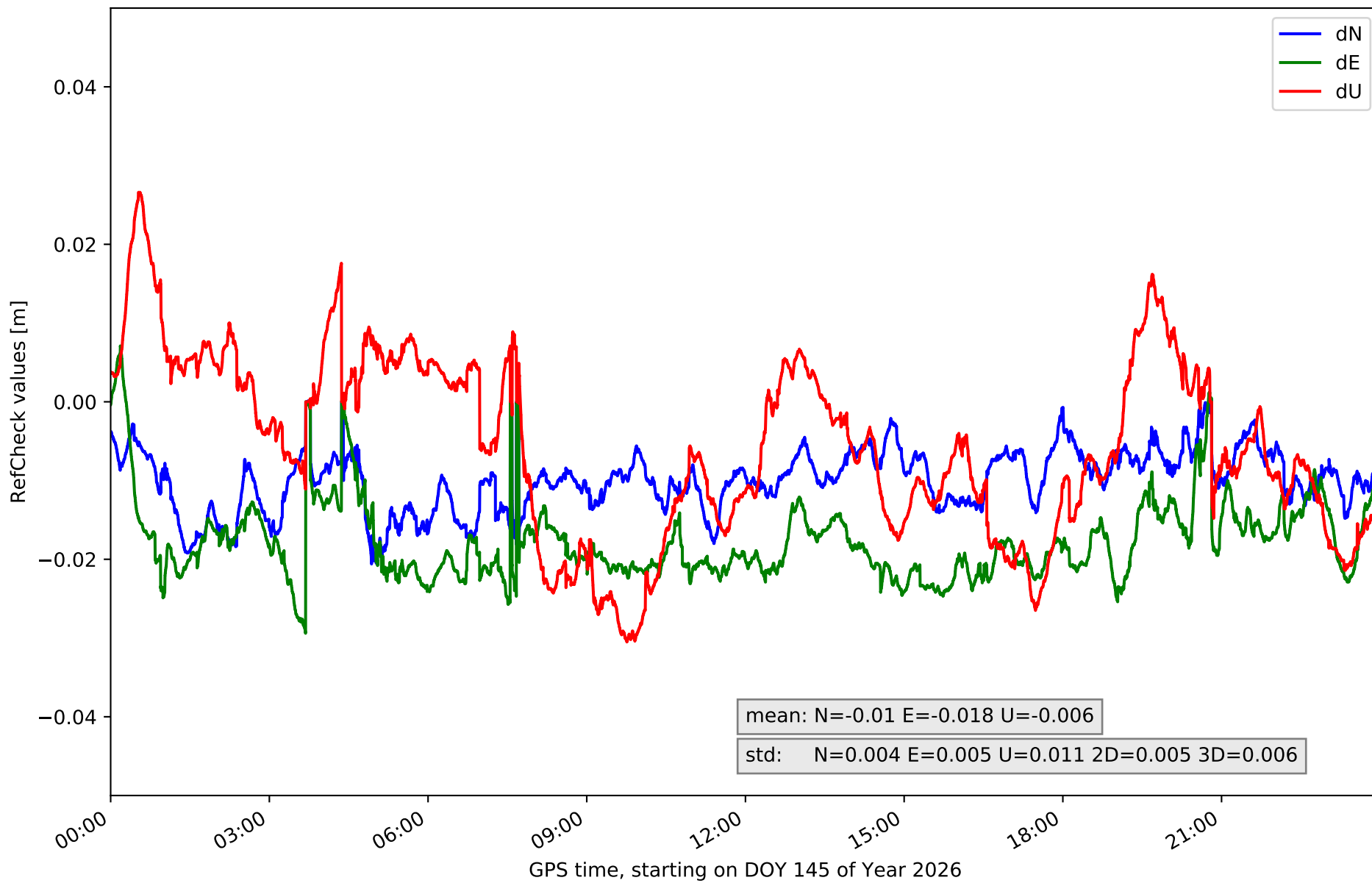
RefCheck for station LALA in network N31T



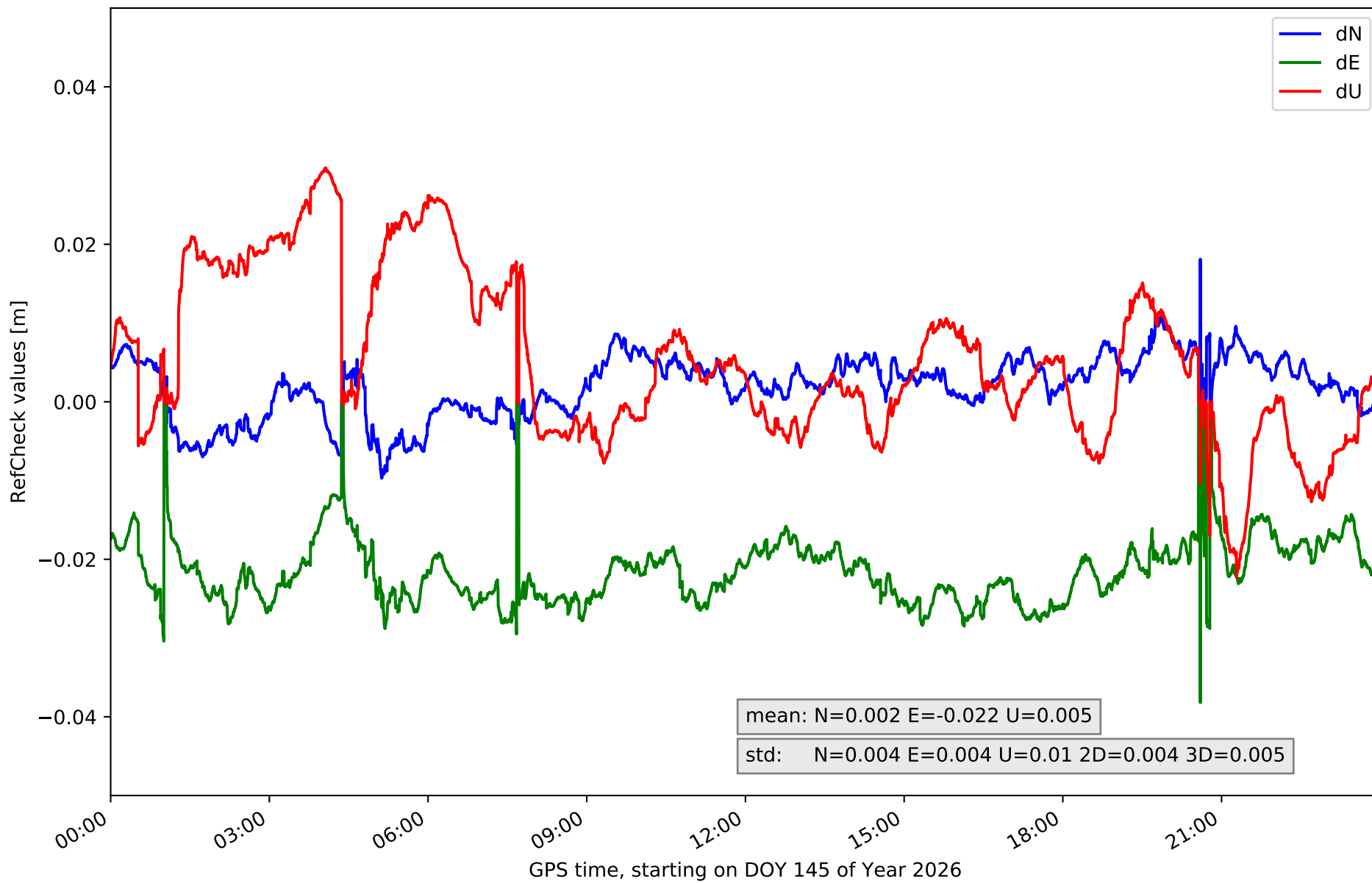
RefCheck for station LZ01 in network N31T



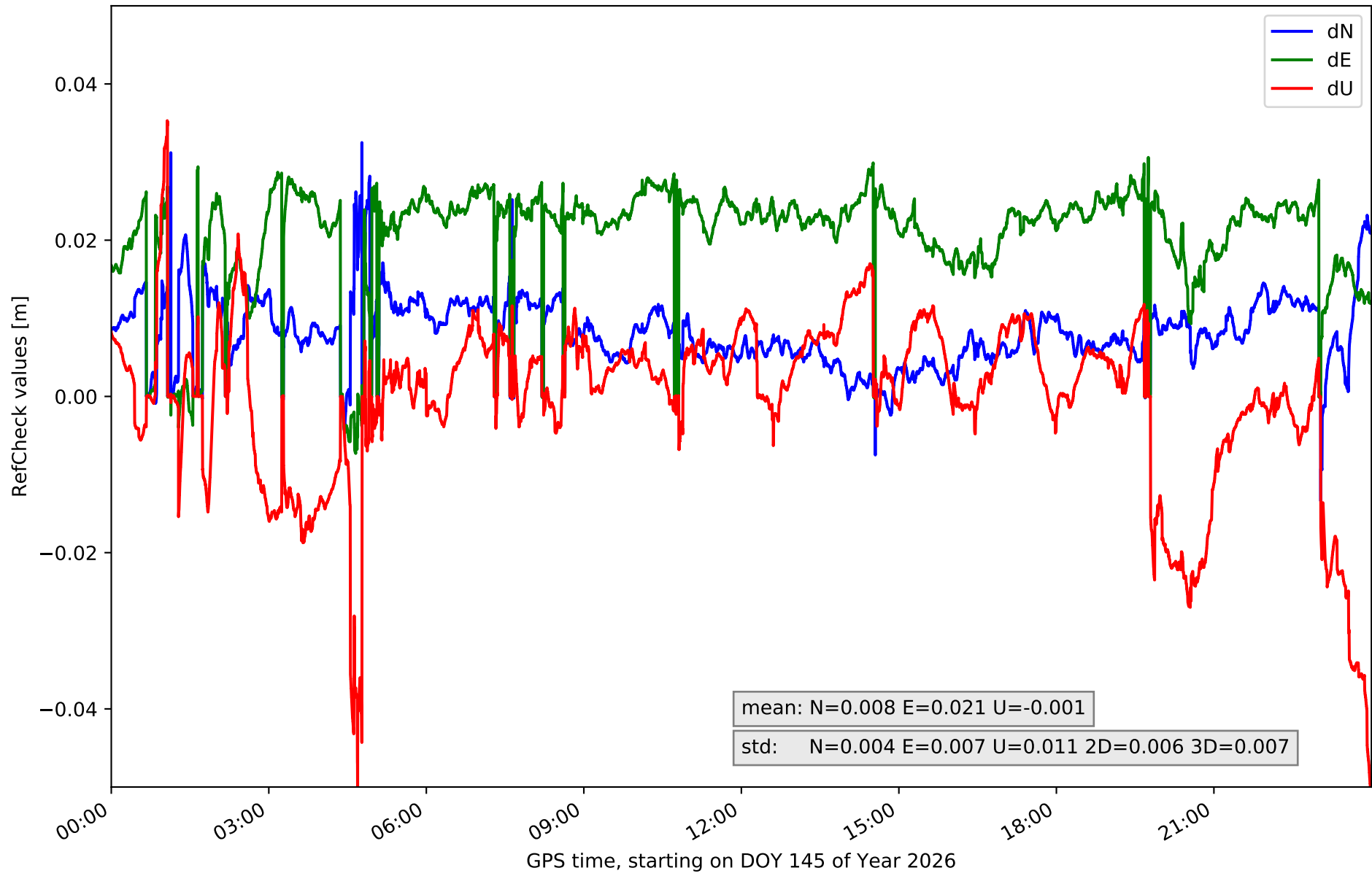
RefCheck for station LZ02 in network N31T



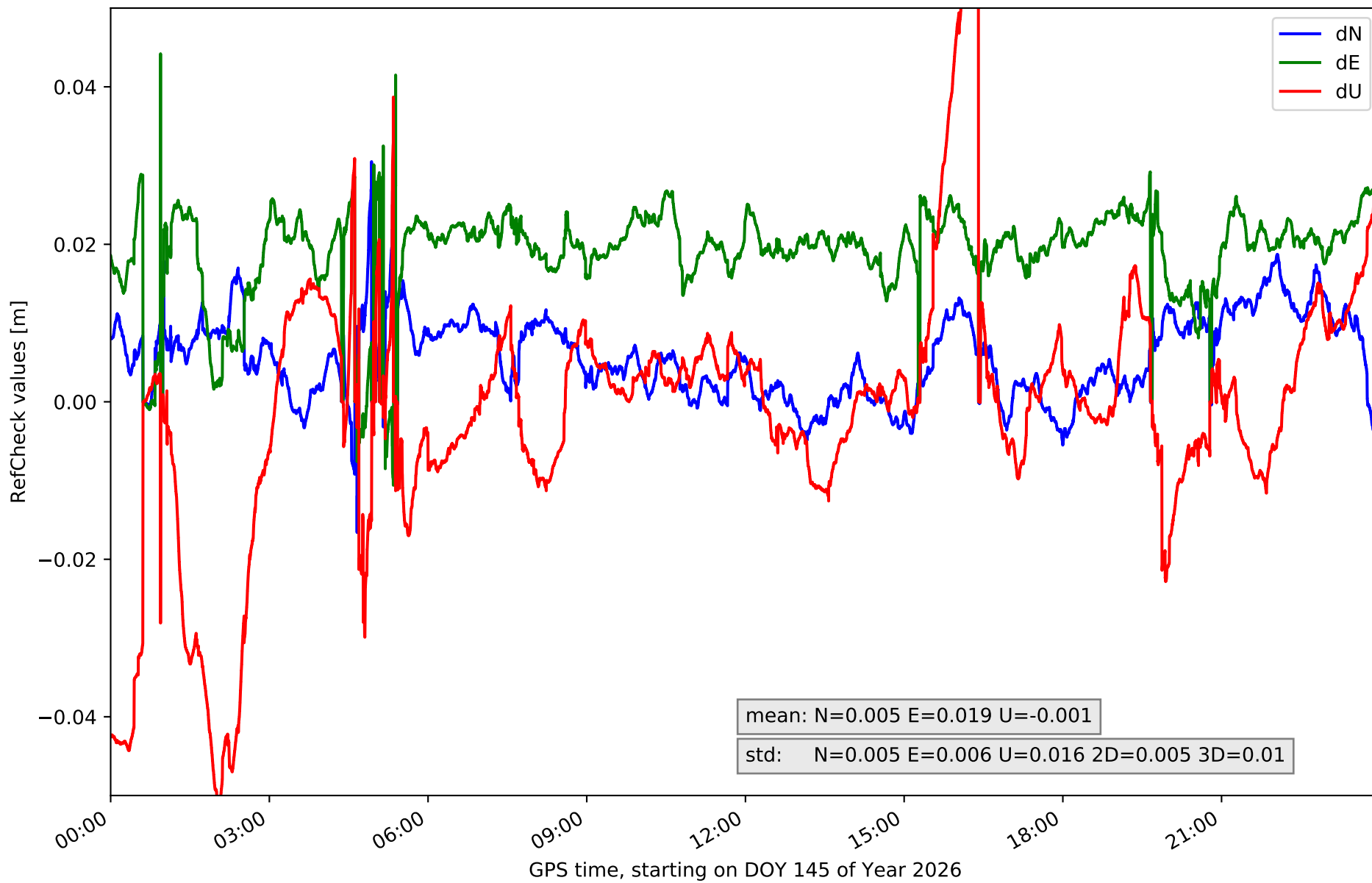
RefCheck for station LZ03 in network N31T



RefCheck for station MASP in network N31T



RefCheck for station ULP2 in network N31T



RefCheck values for network N31T

| Station | Nmin | Nmax | Nstd | Emin | Emax | Estd | Umin | Umax | Ustd | std2D | std3D | #2D > 0.01 | % 2D > 0.01 | #3D > 0.02 | % 3D > 0.02 |
|----------------|--------|-------|-------|--------|-------|-------|--------|-------|-------|-------|-------|------------|-------------|------------|-------------|
| FUER | -0.009 | 0.009 | 0.003 | -0.018 | 0.01 | 0.005 | -0.06 | 0.018 | 0.013 | 0.004 | 0.007 | 29069 | 37.2 | 14916 | 19.1 |
| LALA | -0.004 | 0.015 | 0.003 | -0.017 | 0.018 | 0.005 | -0.037 | 0.023 | 0.012 | 0.003 | 0.007 | 25000 | 32.0 | 10133 | 13.0 |
| LZ01 | -0.026 | 0.002 | 0.005 | -0.028 | 0.011 | 0.007 | -0.033 | 0.048 | 0.015 | 0.006 | 0.007 | 75545 | 96.7 | 68954 | 88.3 |
| LZ02 | -0.021 | 0.0 | 0.004 | -0.029 | 0.007 | 0.005 | -0.03 | 0.027 | 0.011 | 0.005 | 0.006 | 74461 | 95.3 | 59099 | 75.7 |
| LZ03 | -0.01 | 0.018 | 0.004 | -0.038 | 0.001 | 0.004 | -0.022 | 0.03 | 0.01 | 0.004 | 0.005 | 77202 | 98.8 | 64145 | 82.1 |
| MASP | -0.013 | 0.033 | 0.004 | -0.007 | 0.031 | 0.007 | -0.053 | 0.035 | 0.011 | 0.006 | 0.007 | 73845 | 94.5 | 68702 | 88.0 |
| ULP2 | -0.017 | 0.03 | 0.005 | -0.011 | 0.044 | 0.006 | -0.051 | 0.06 | 0.016 | 0.005 | 0.01 | 74679 | 95.6 | 60418 | 77.4 |
| Mean | -0.014 | 0.015 | 0.004 | -0.021 | 0.017 | 0.006 | -0.041 | 0.034 | 0.013 | 0.005 | 0.007 | 61400.1 | 78.6 | 49481.0 | 63.4 |
| Min/Max | -0.026 | 0.033 | 0.005 | -0.038 | 0.044 | 0.007 | -0.06 | 0.06 | 0.016 | 0.006 | 0.01 | 77202 | 98.8 | 68954 | 88.3 |

fixing statistic for network N31T

| fixing percentage of | all GNSS | G | R | E | C |
|--|----------|------|------|------|------|
| using threshold 0.3 | 92.6 | 95.3 | 83.9 | 94.3 | 95.4 |
| considering satellites with dual-frequency fixed | 89.3 | 91.2 | 79.2 | 91.9 | 93.6 |
| considering all signals separately | 90.0 | 91.4 | 79.2 | 92.3 | 93.6 |