

## summary for network N31T

timeperiod chosen: from 2026-05-16-00:00:00 until 2026-05-16-23:59:59

average update rate (durations larger than 15 seconds considered as observation gap): 1.0 seconds

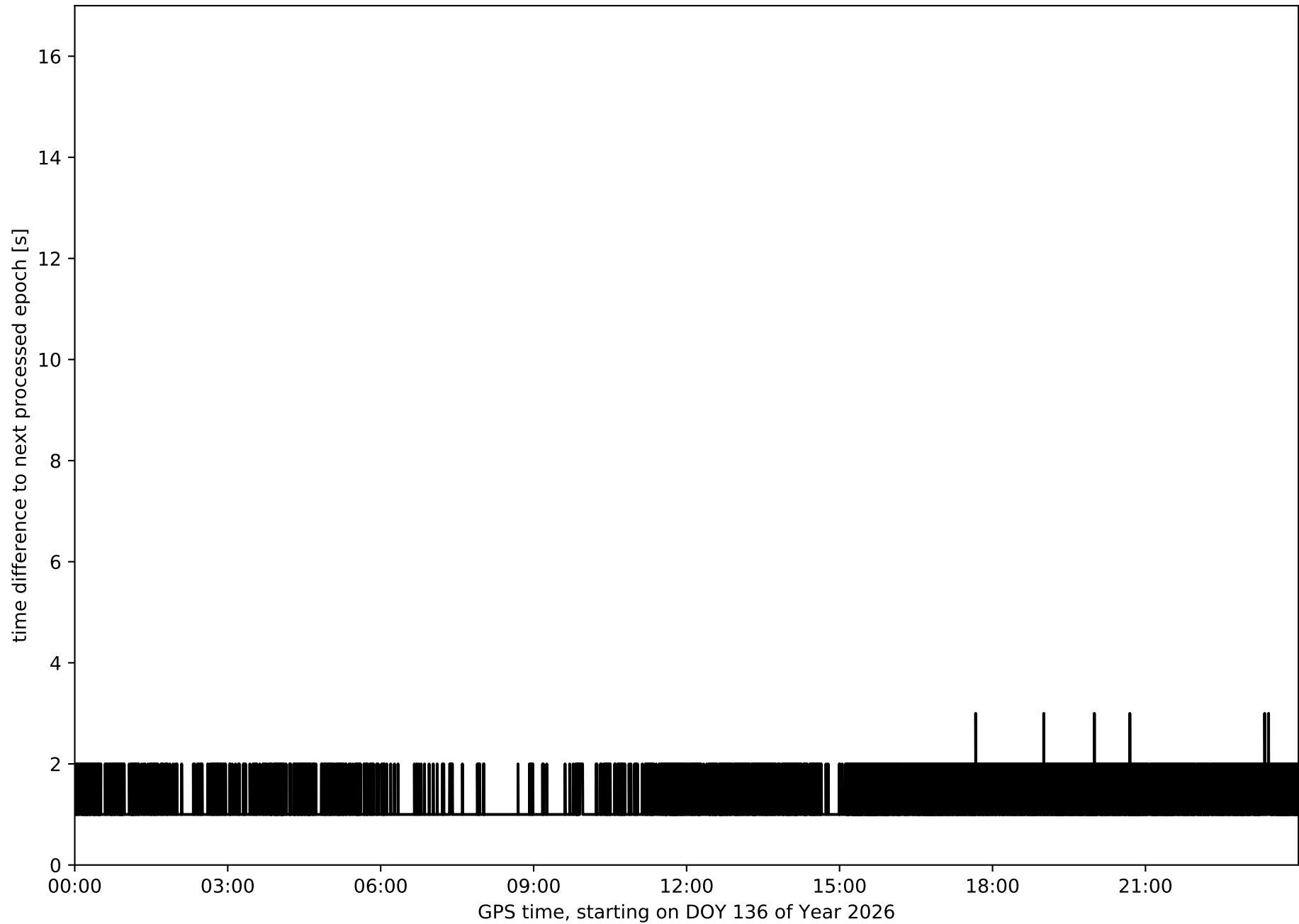
average fixing percentage with threshold set to 0.3: 88.3 percent

stations available: 7 of 7

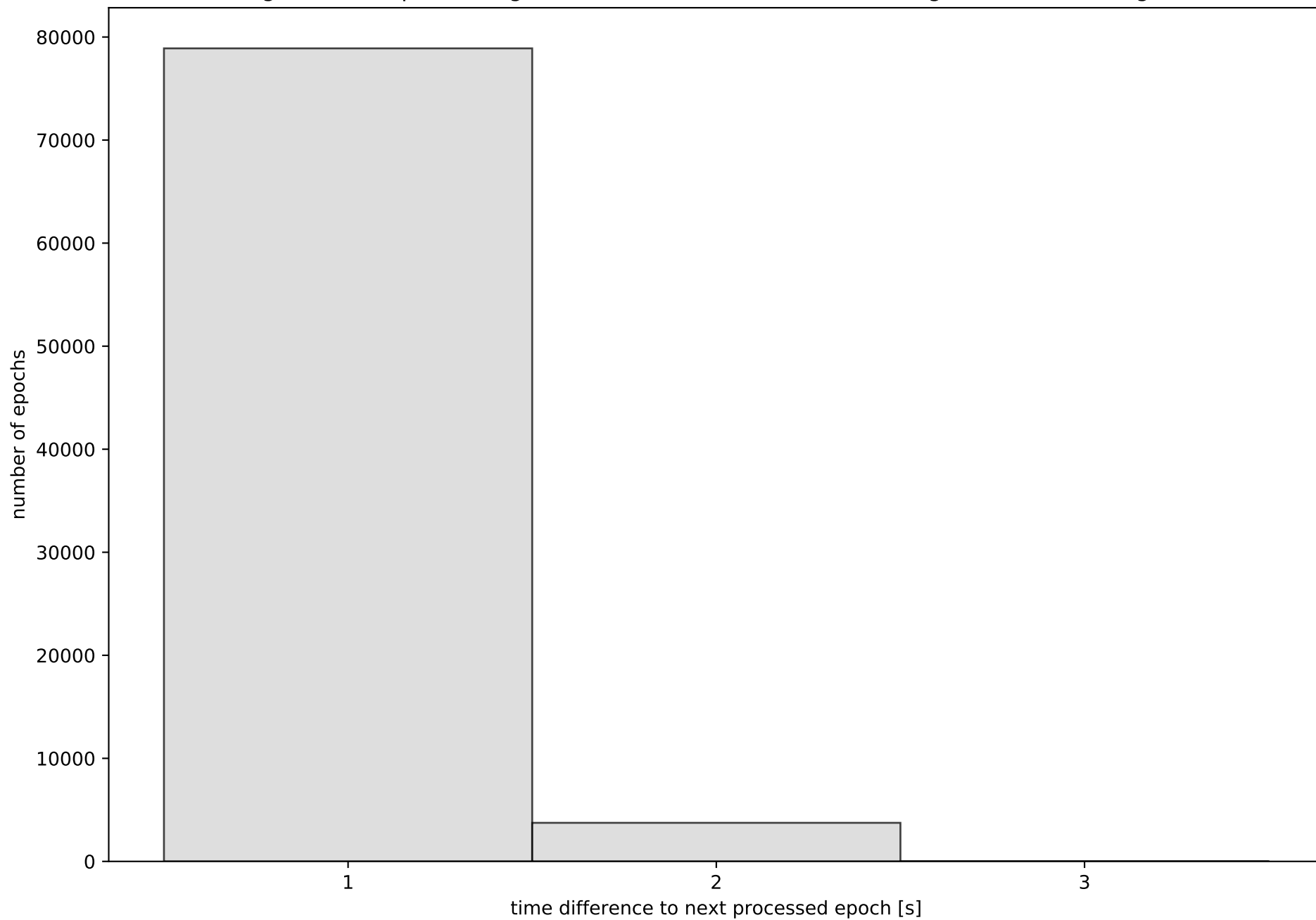
station information:

station FUER:	antenna: LEIAR20	LEIM	receiver: LEICA GR50	height: 76.887
station LALA:	antenna: TRM59900.00	SCIS	receiver: TRIMBLE NETR9	height: 62.306
station LZ01:	antenna: TRM159900.00	NONE	receiver: TRIMBLE NETR9	height: 52.693
station LZ02:	antenna: LEIAR20	NONE	receiver: LEICA GR25	height: 58.039
station LZ03:	antenna: LEIAR20	NONE	receiver: LEICA GR50	height: 314.762
station MASP:	antenna: TRM159900.00	SCIS	receiver: TRIMBLE NETR9	height: 198.846
station ULP2:	antenna: TRM59900.00	SCIS	receiver: TRIMBLE ALLOY	height: 375.129

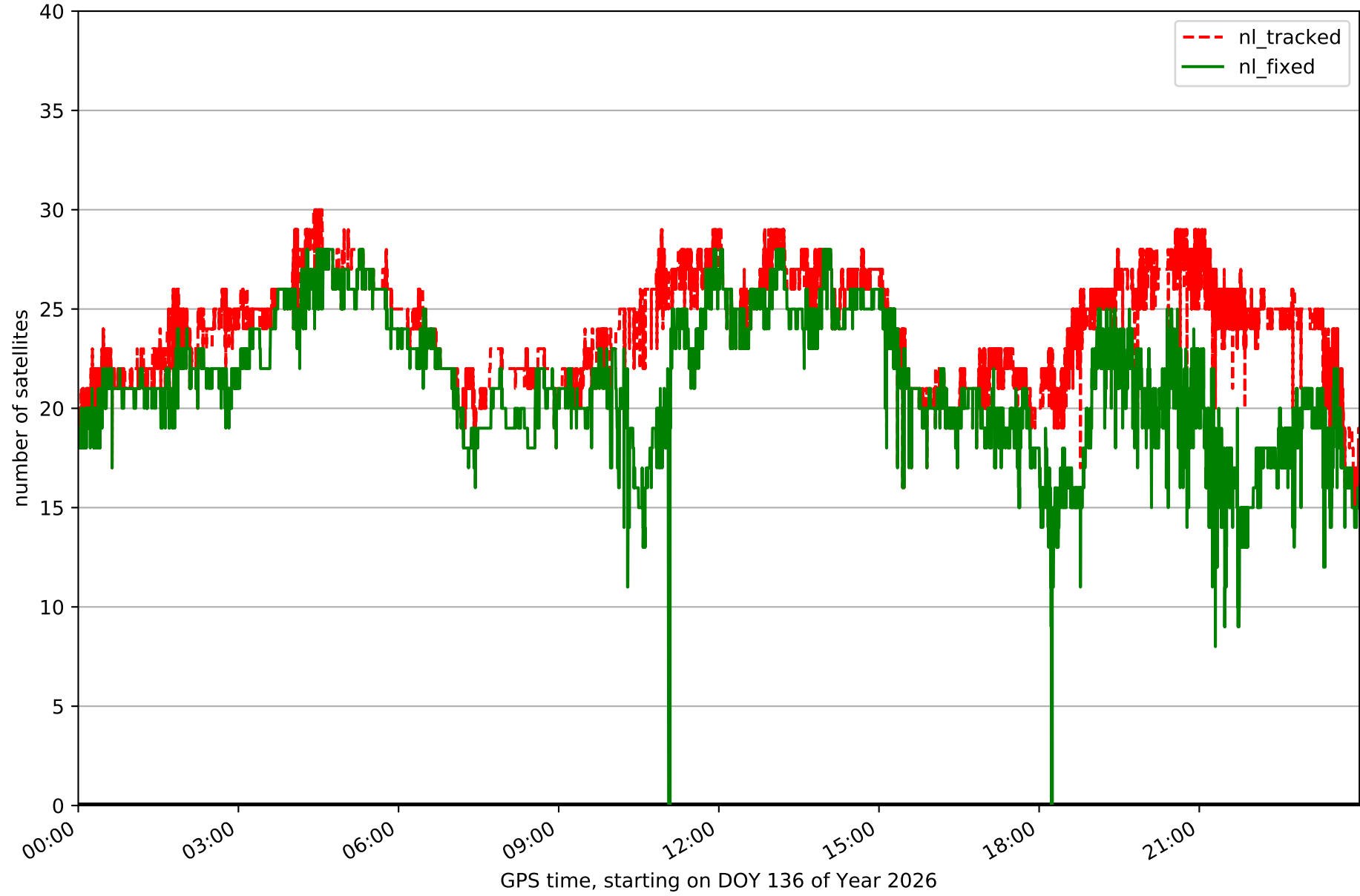
# Processing rate in network N31T



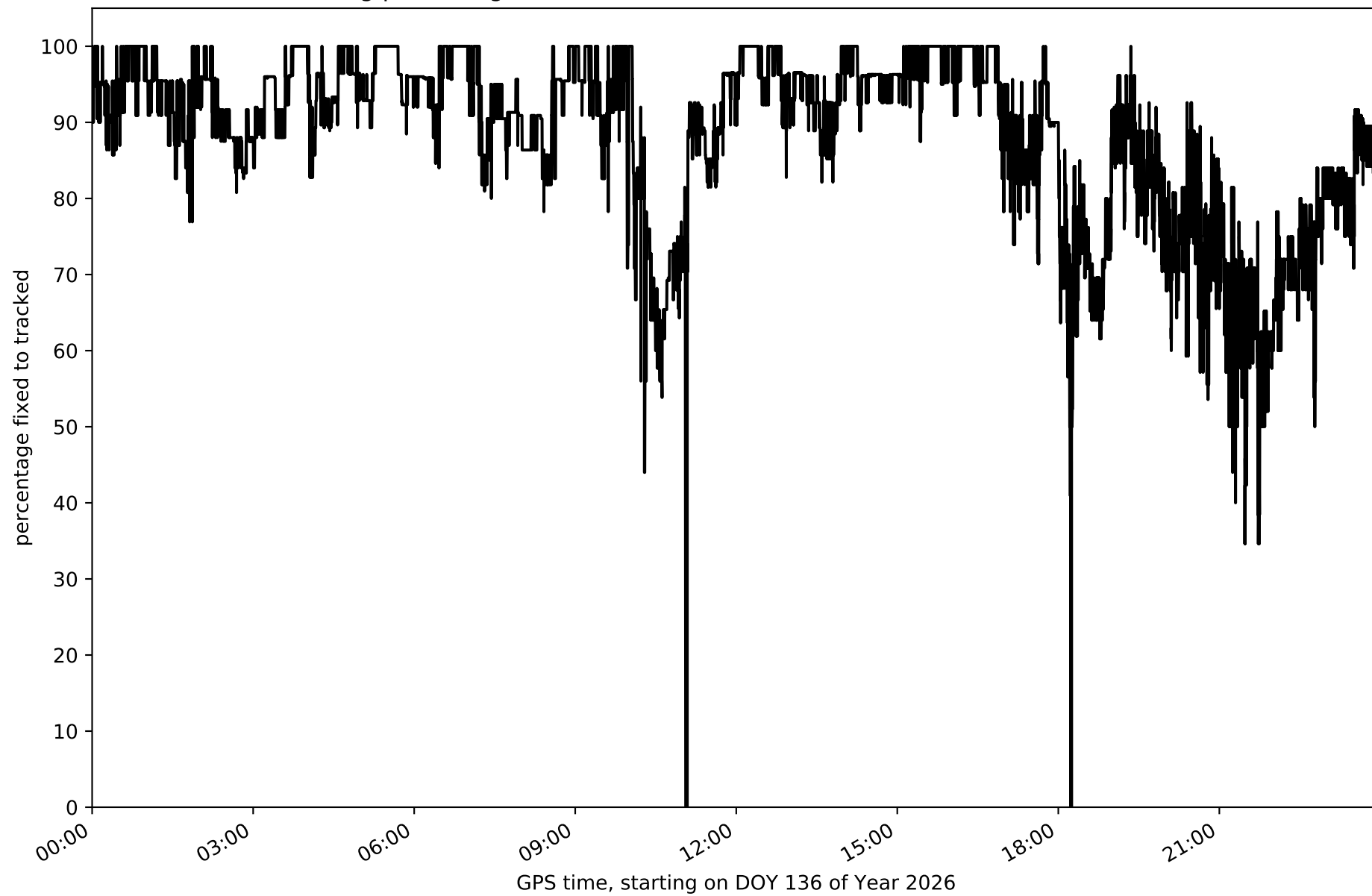
Histogram of the processing rate in network N31T (durations larger 15 seconds neglected)



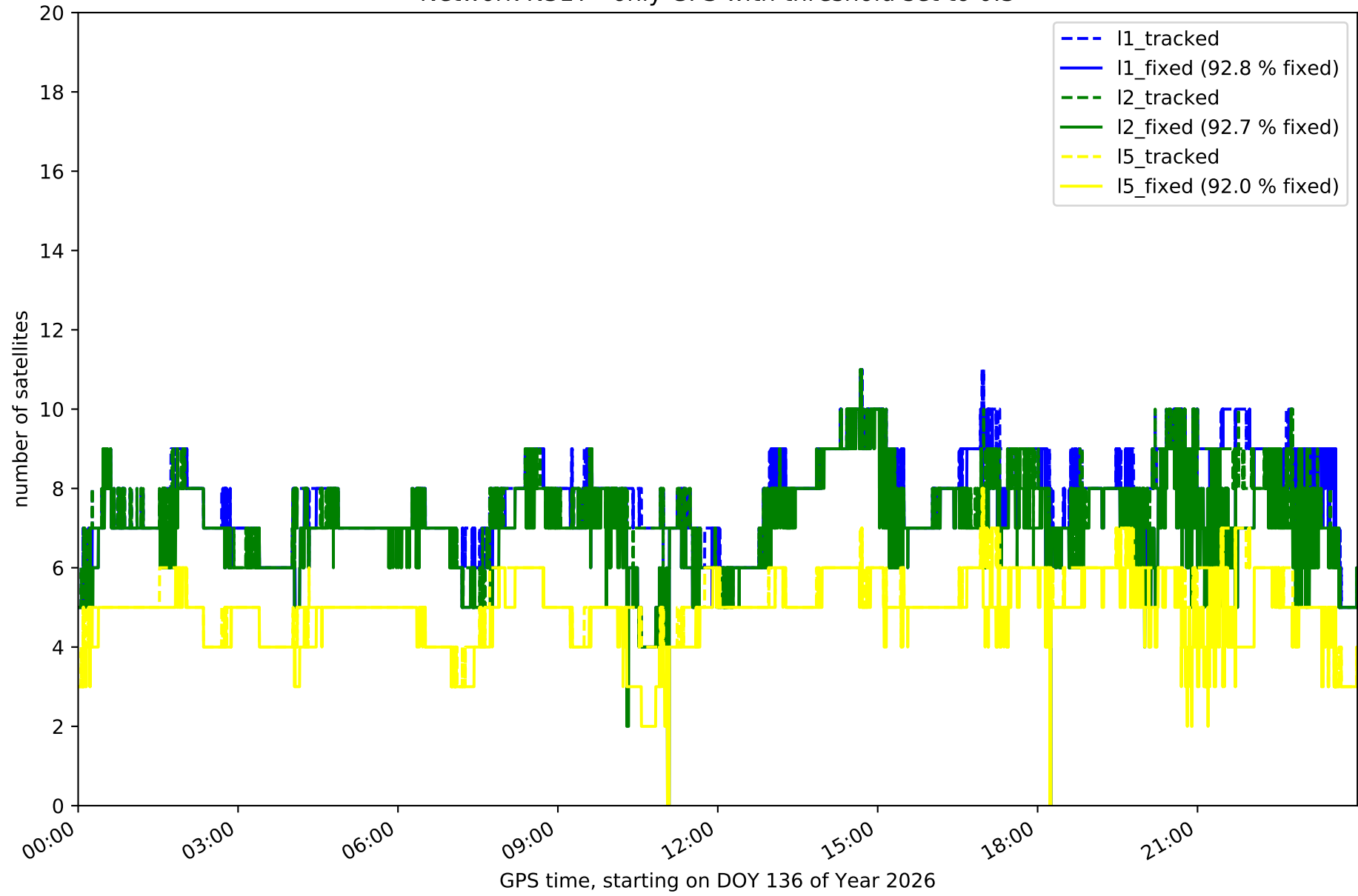
Network N31T with threshold set to 0.3



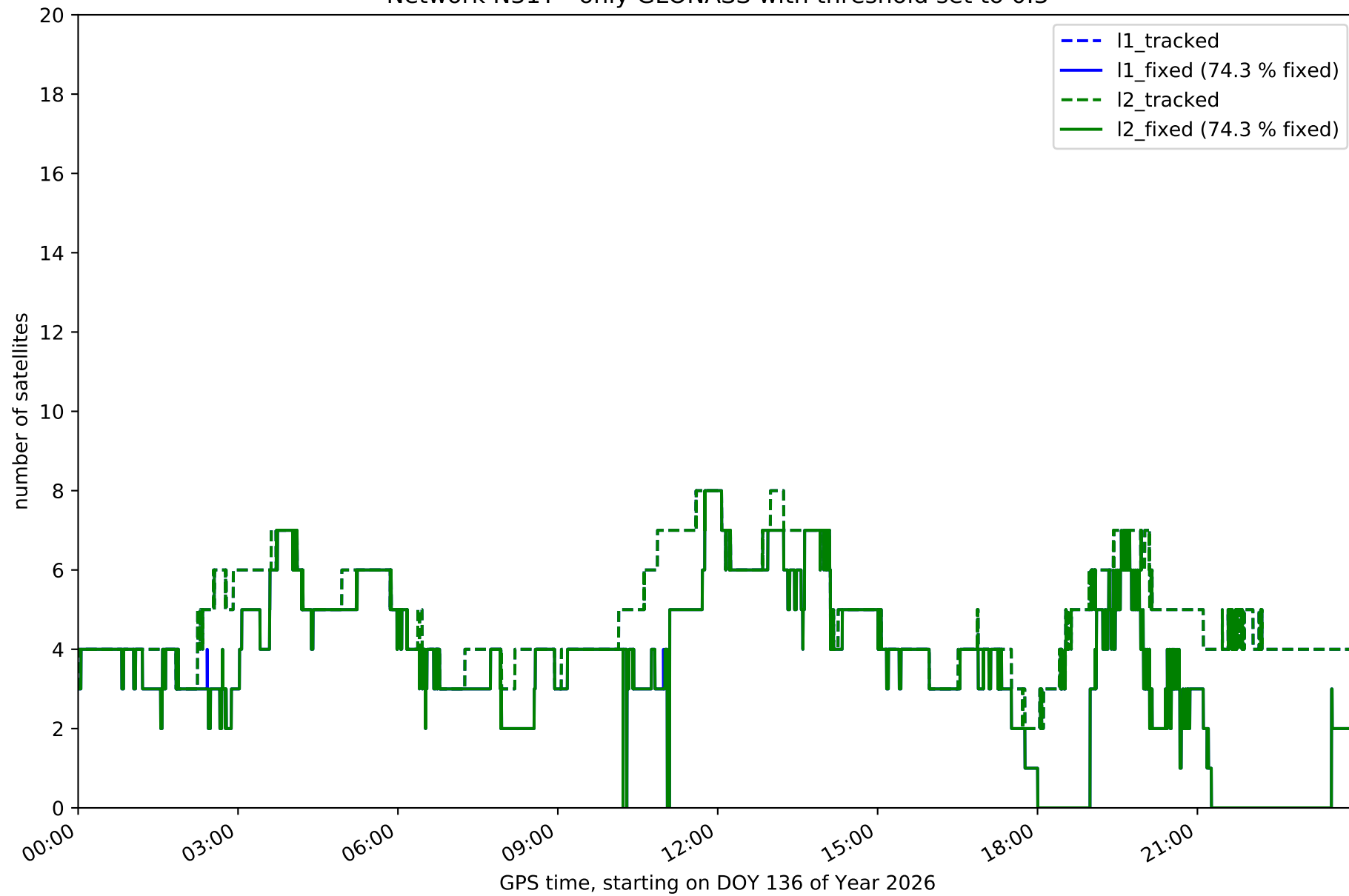
Fixing percentage of satellites in network N31T with threshold set to 0.3



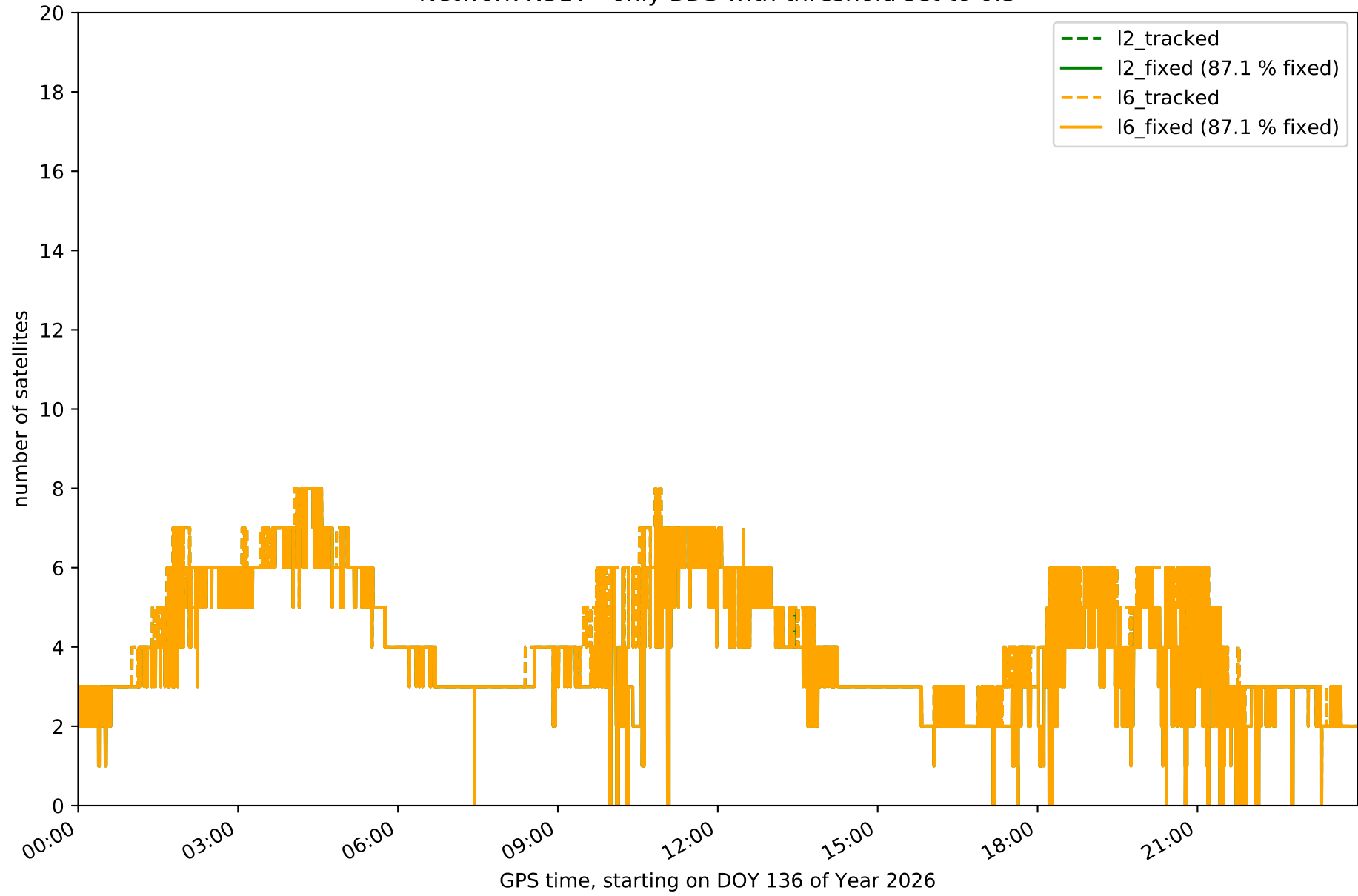
Network N31T - only GPS with threshold set to 0.3



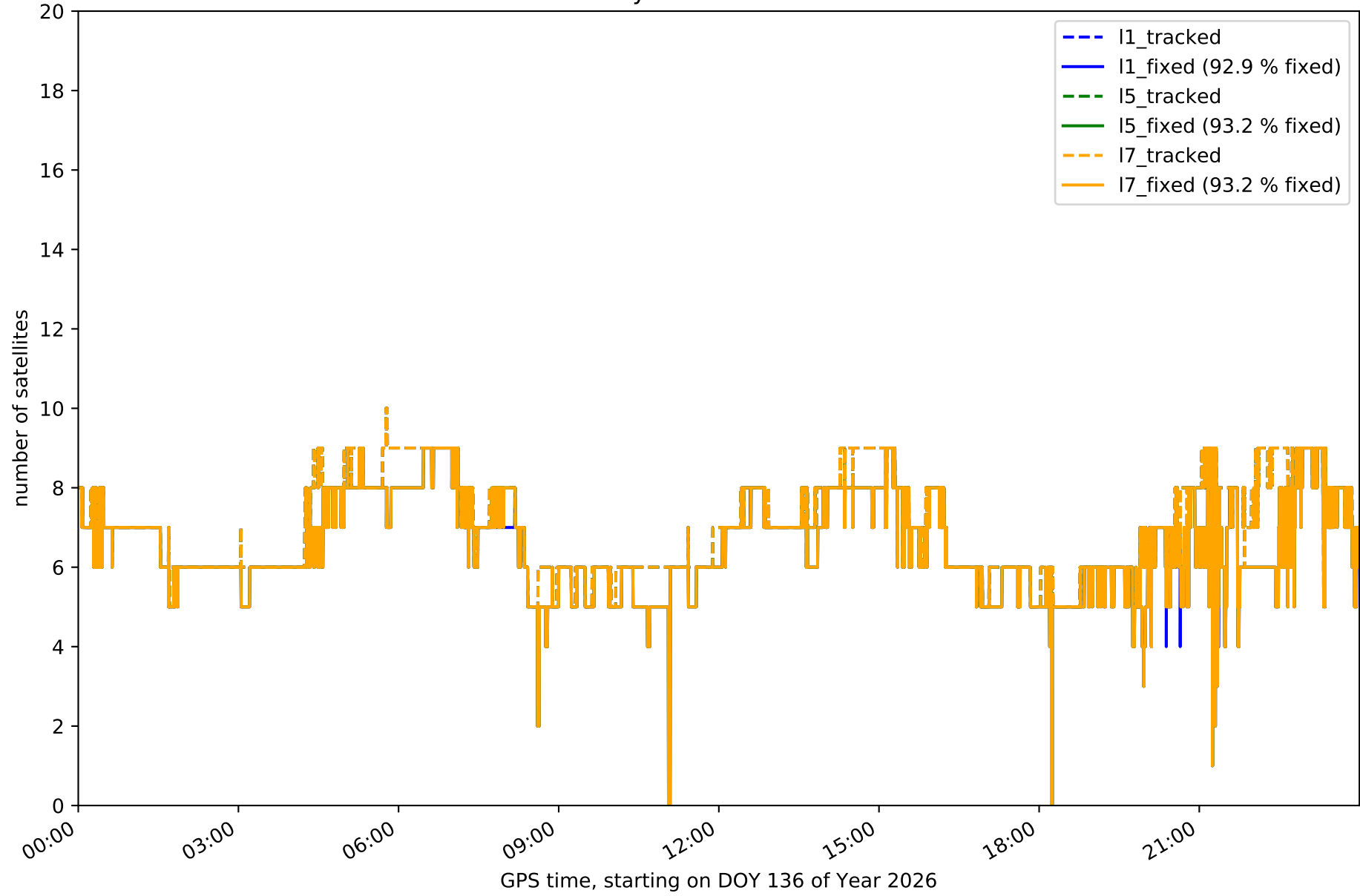
Network N31T - only GLONASS with threshold set to 0.3



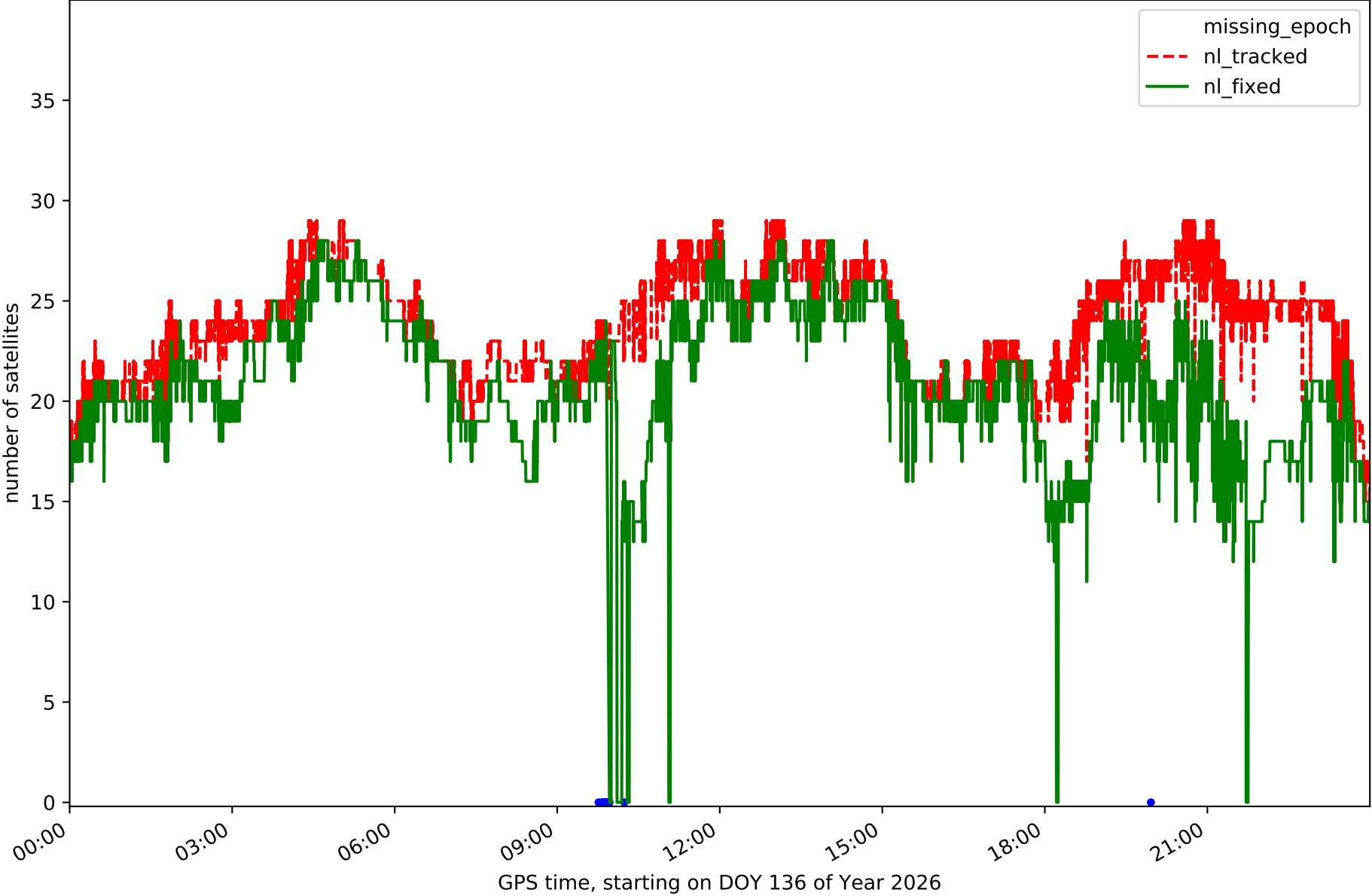
Network N31T - only BDS with threshold set to 0.3



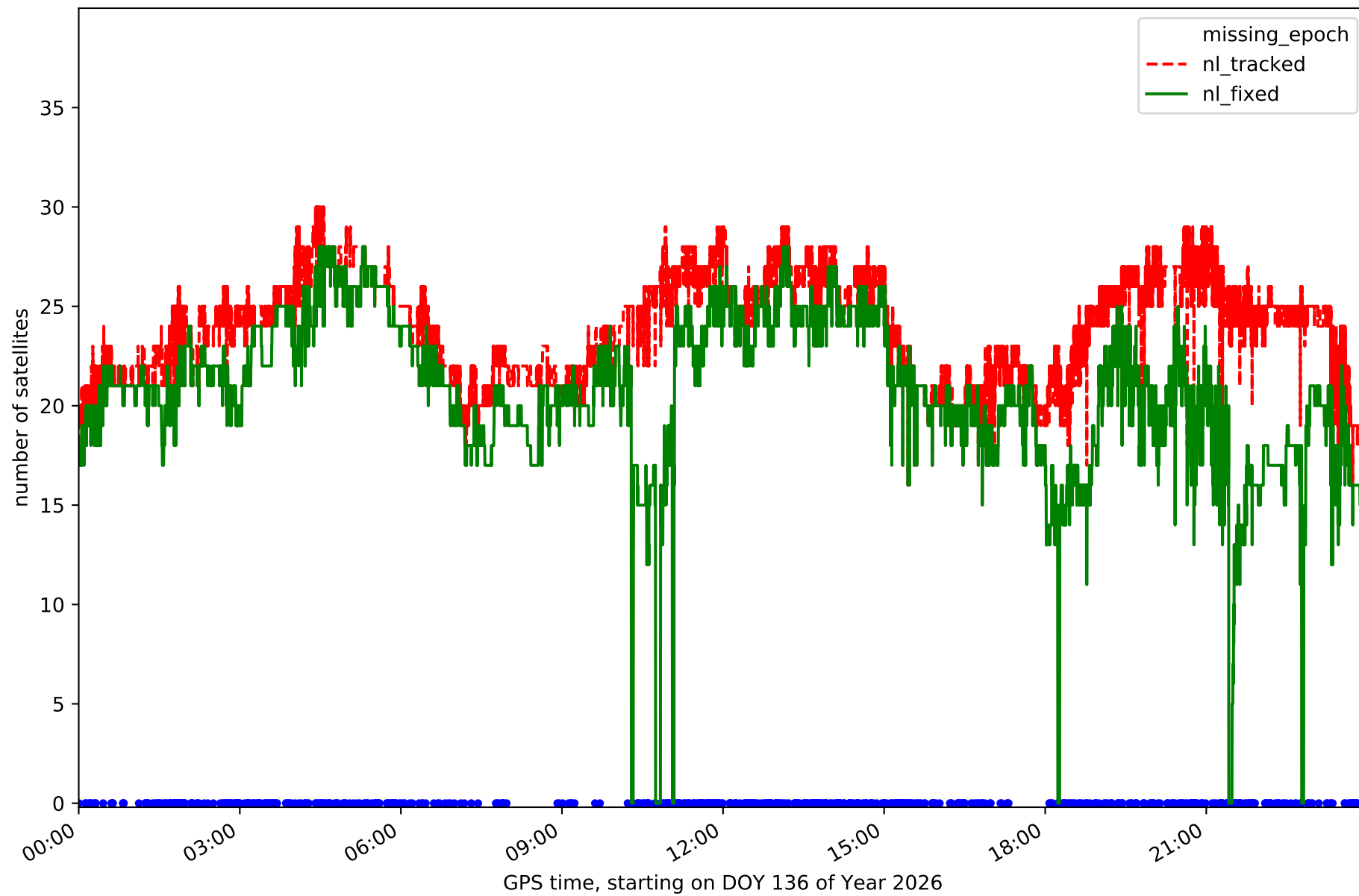
Network N31T - only Galileo with threshold set to 0.3



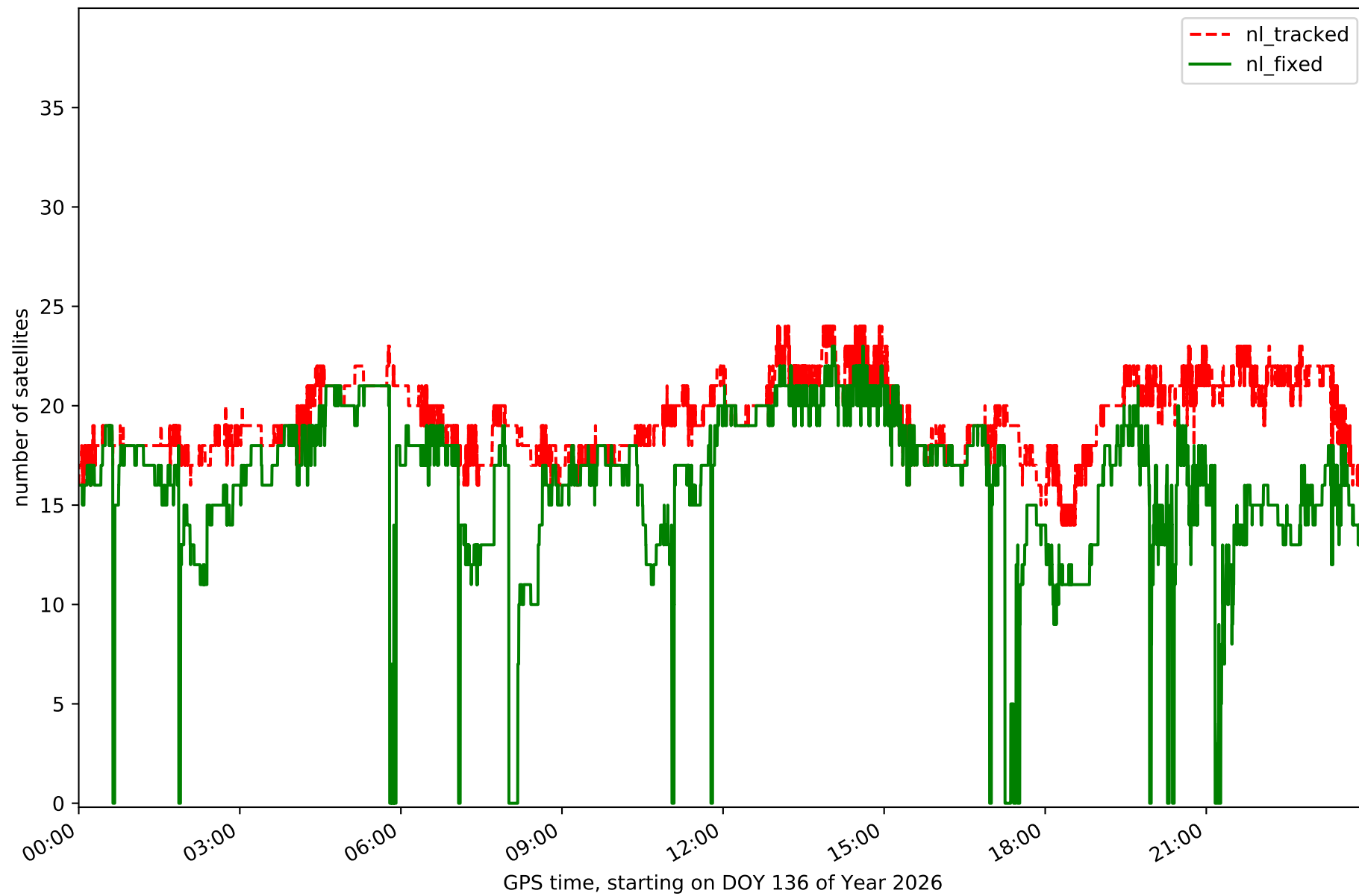
Station FUER in network N31T



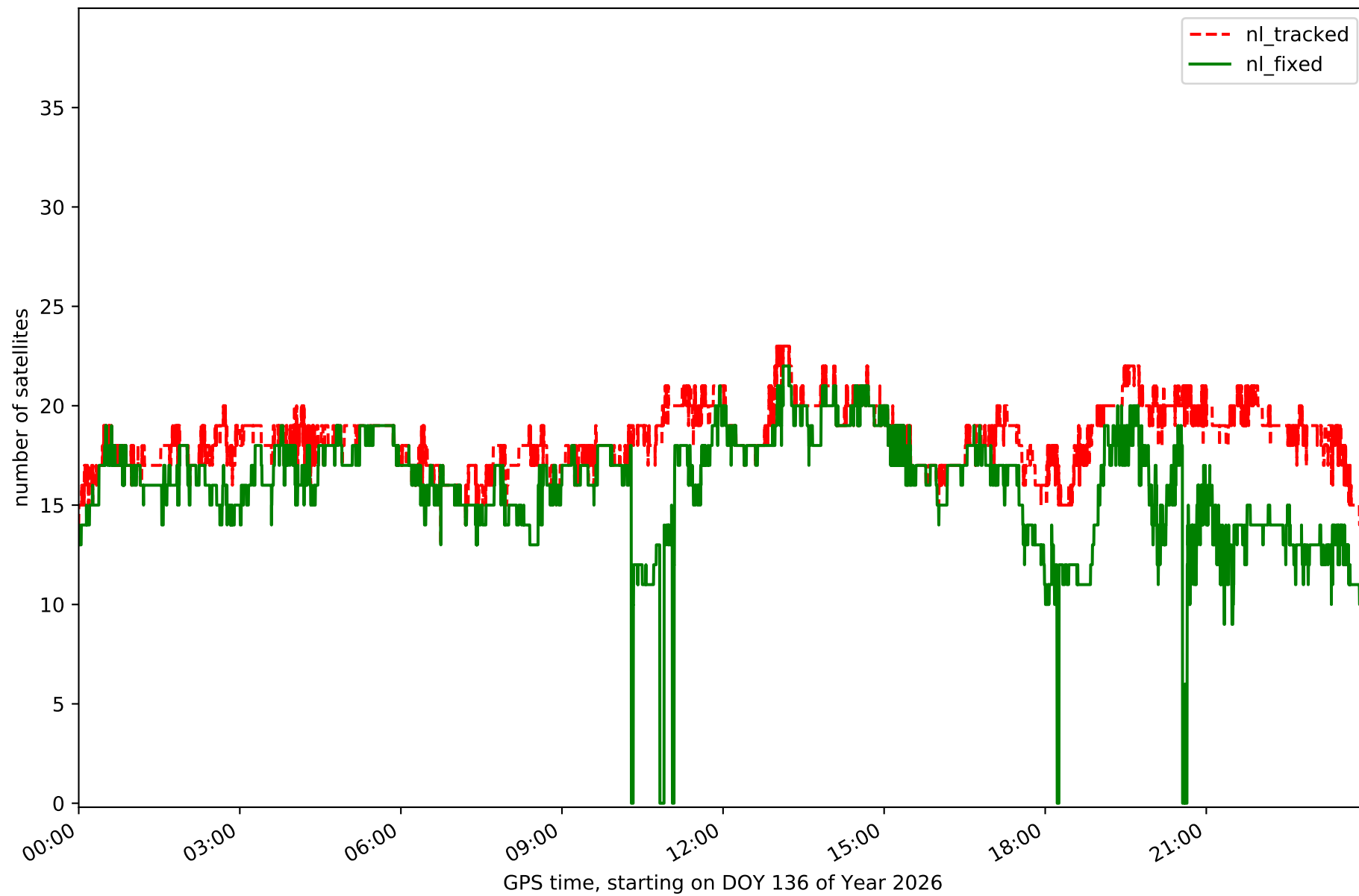
Station LALA in network N31T



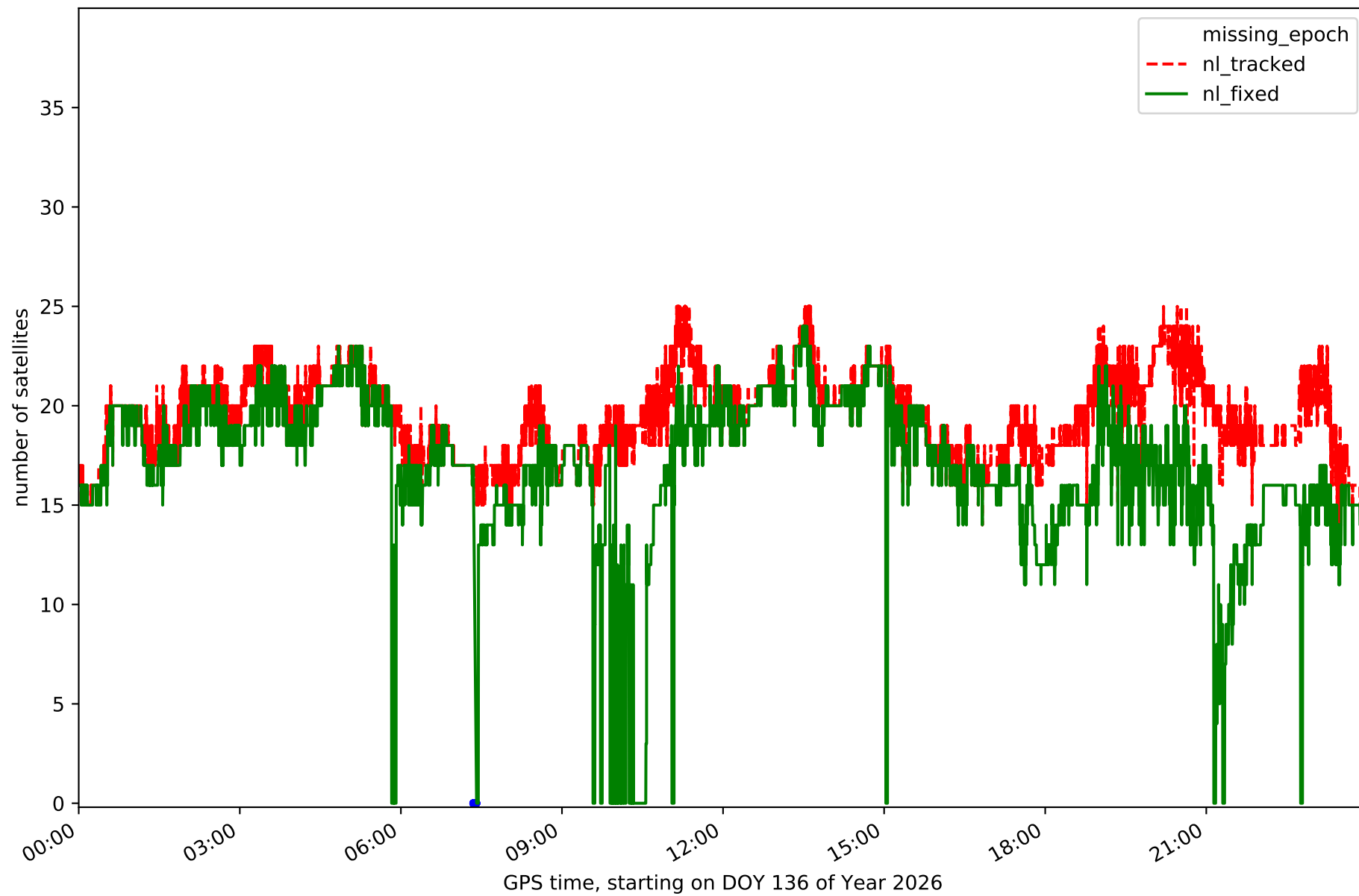
Station LZ01 in network N31T



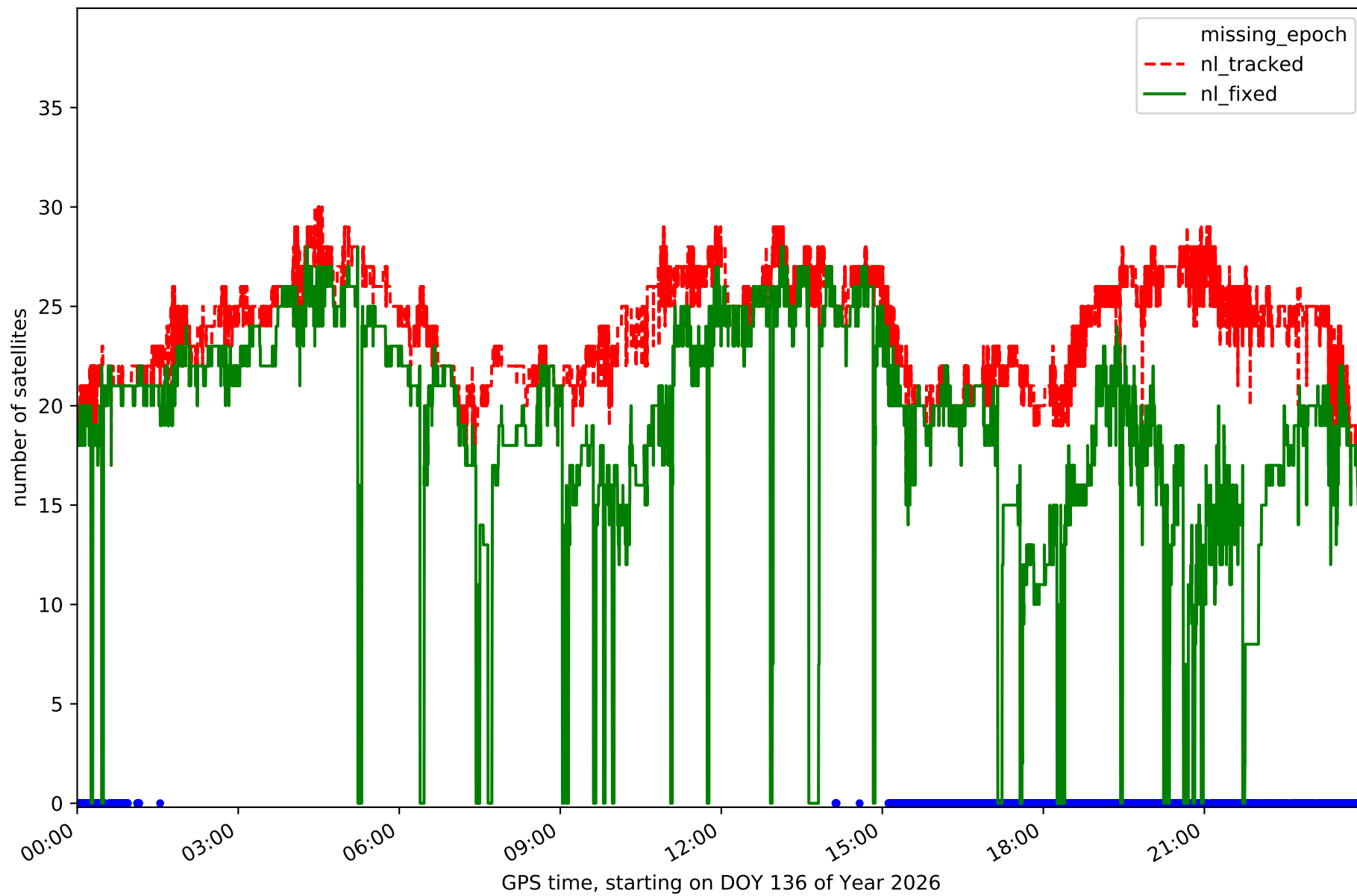
Station LZ02 in network N31T



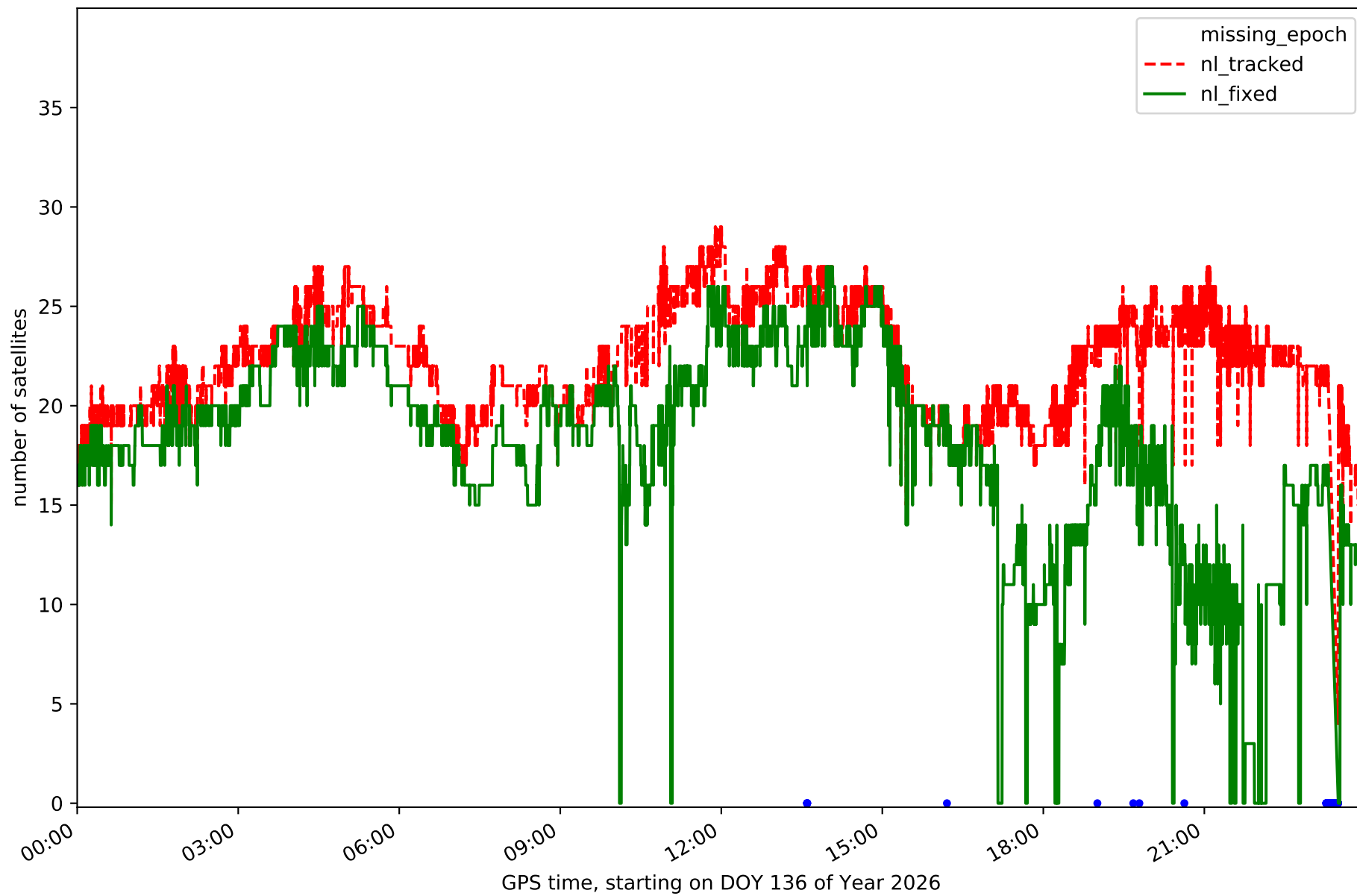
Station LZ03 in network N31T



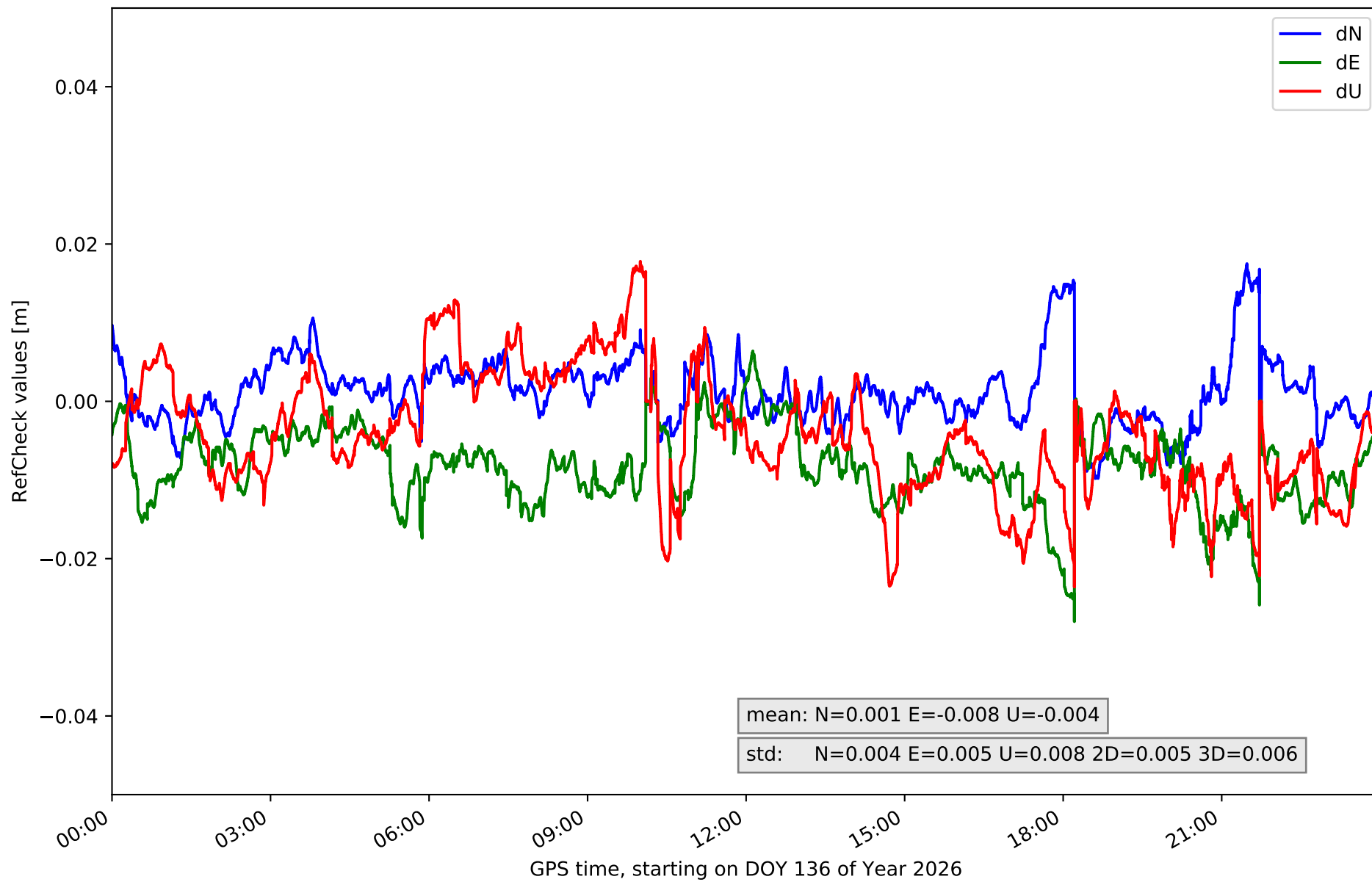
Station MASP in network N31T



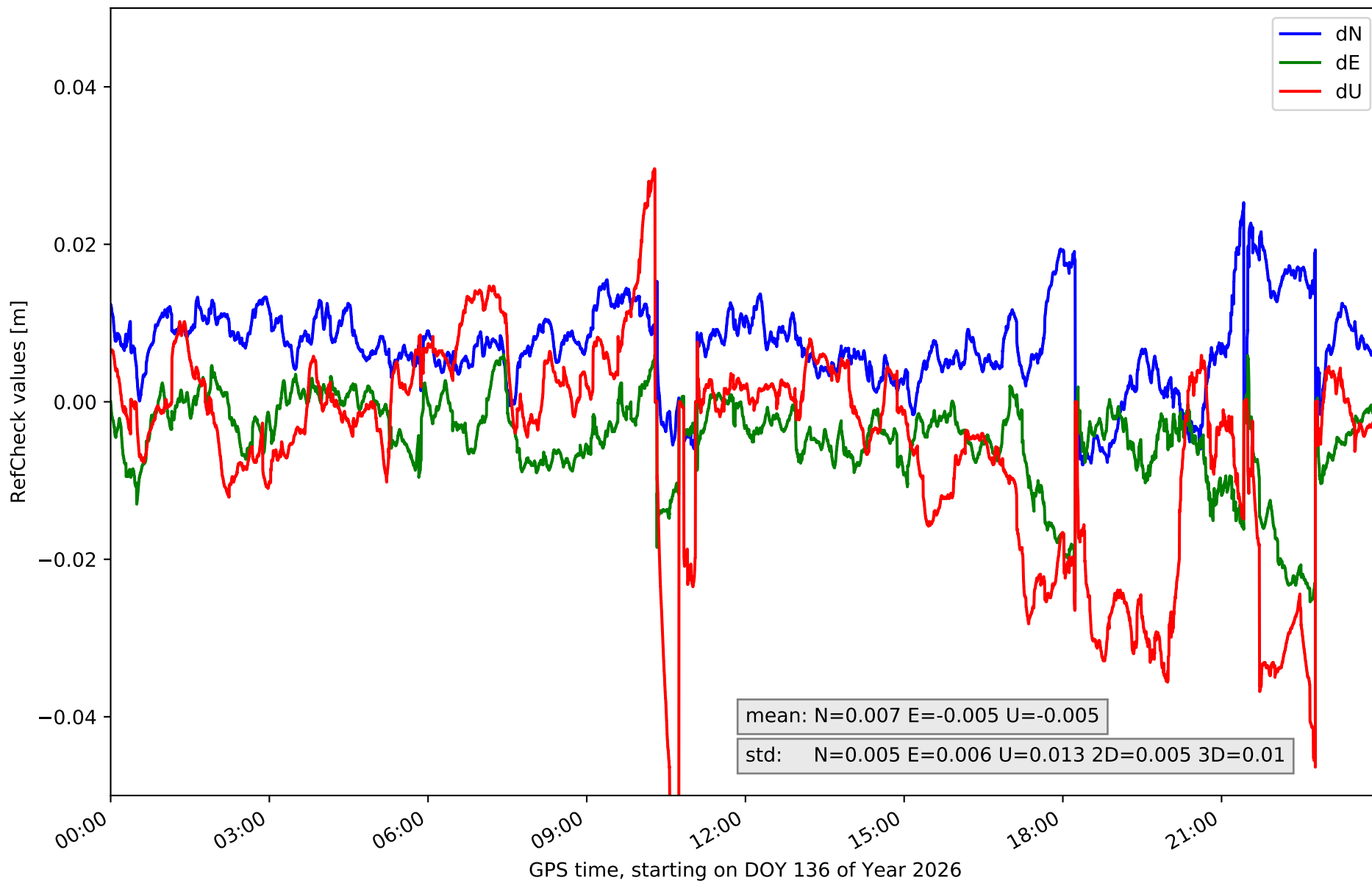
Station ULP2 in network N31T



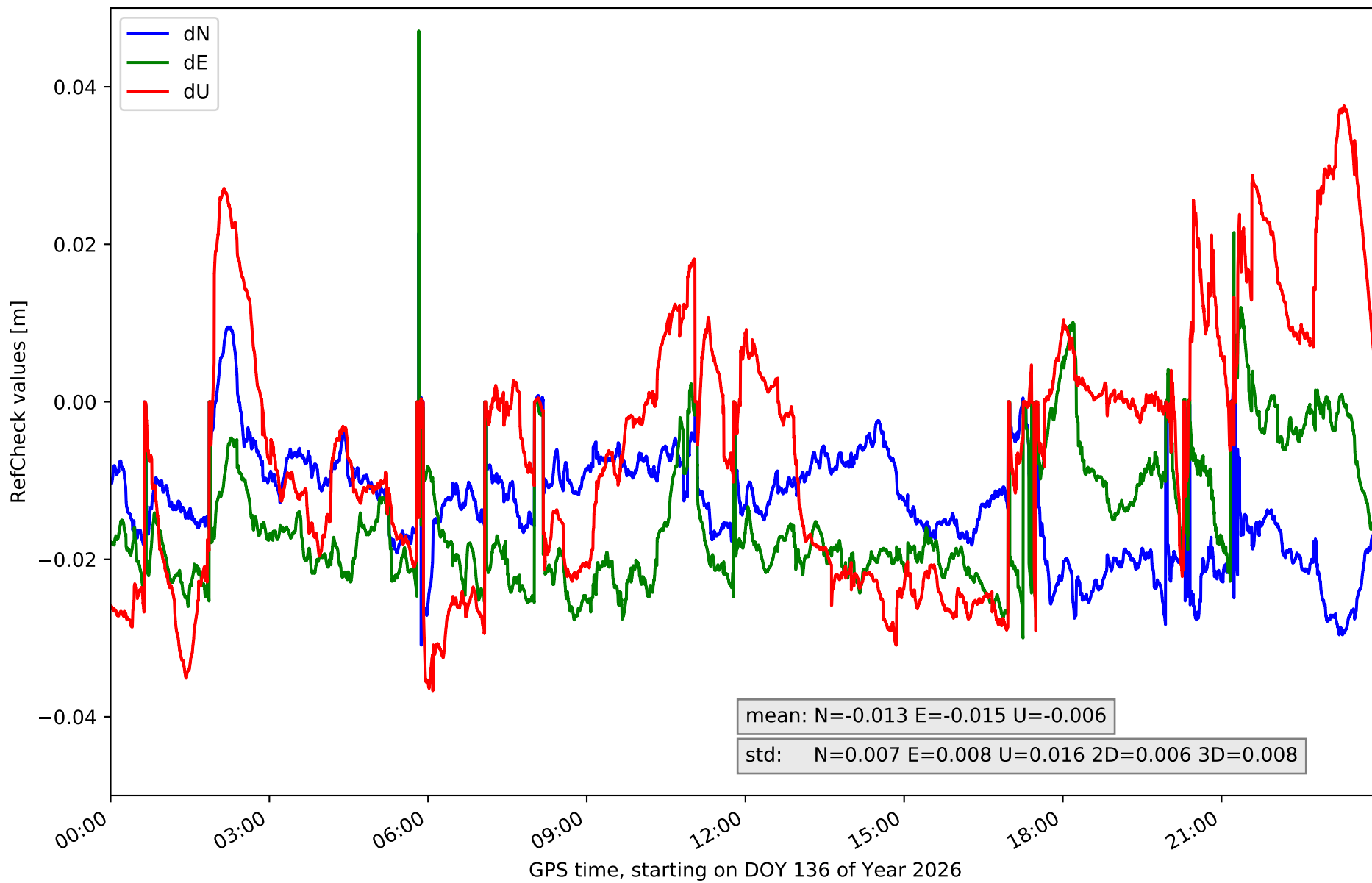
# RefCheck for station FUER in network N31T



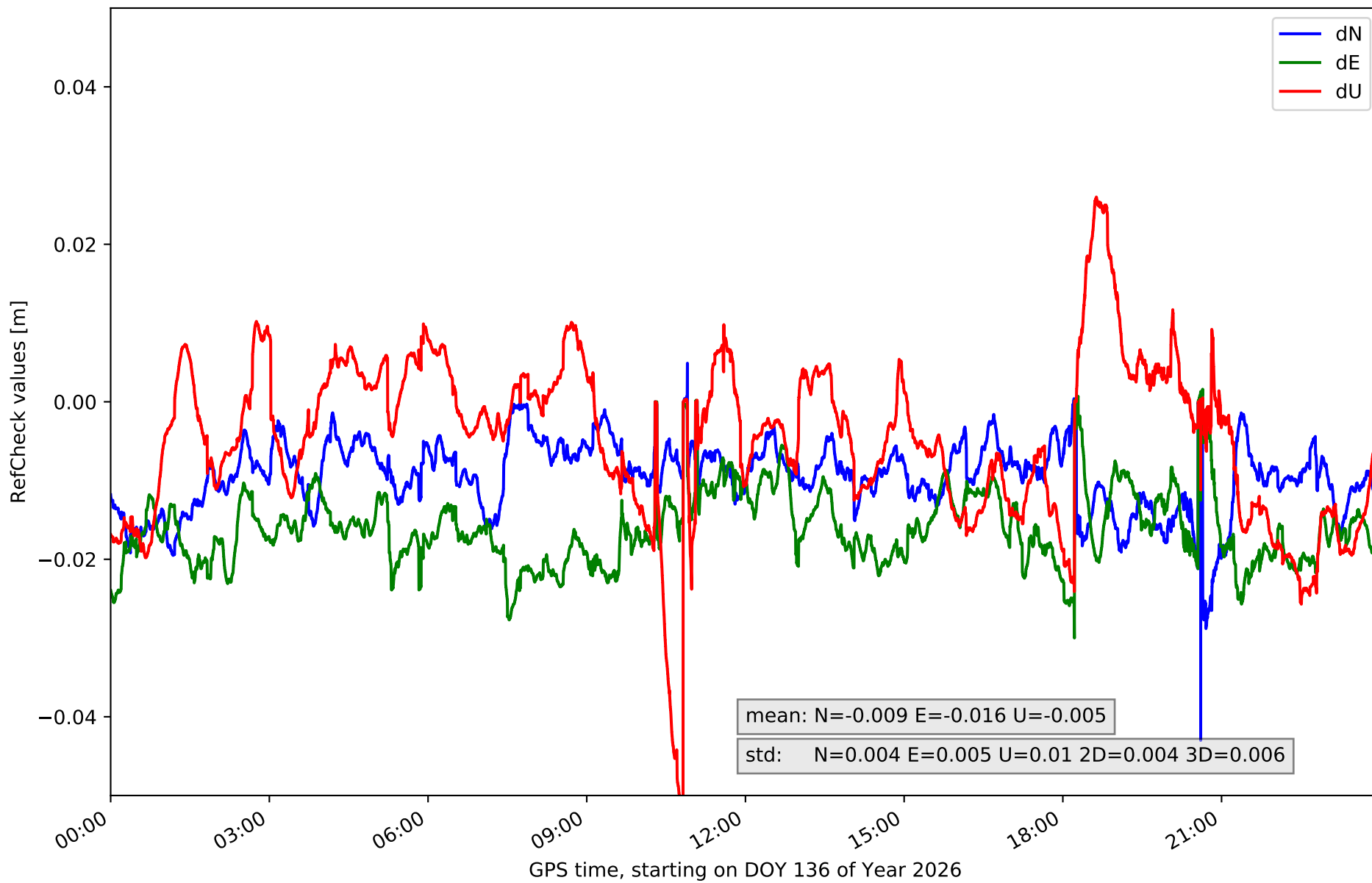
# RefCheck for station LALA in network N31T



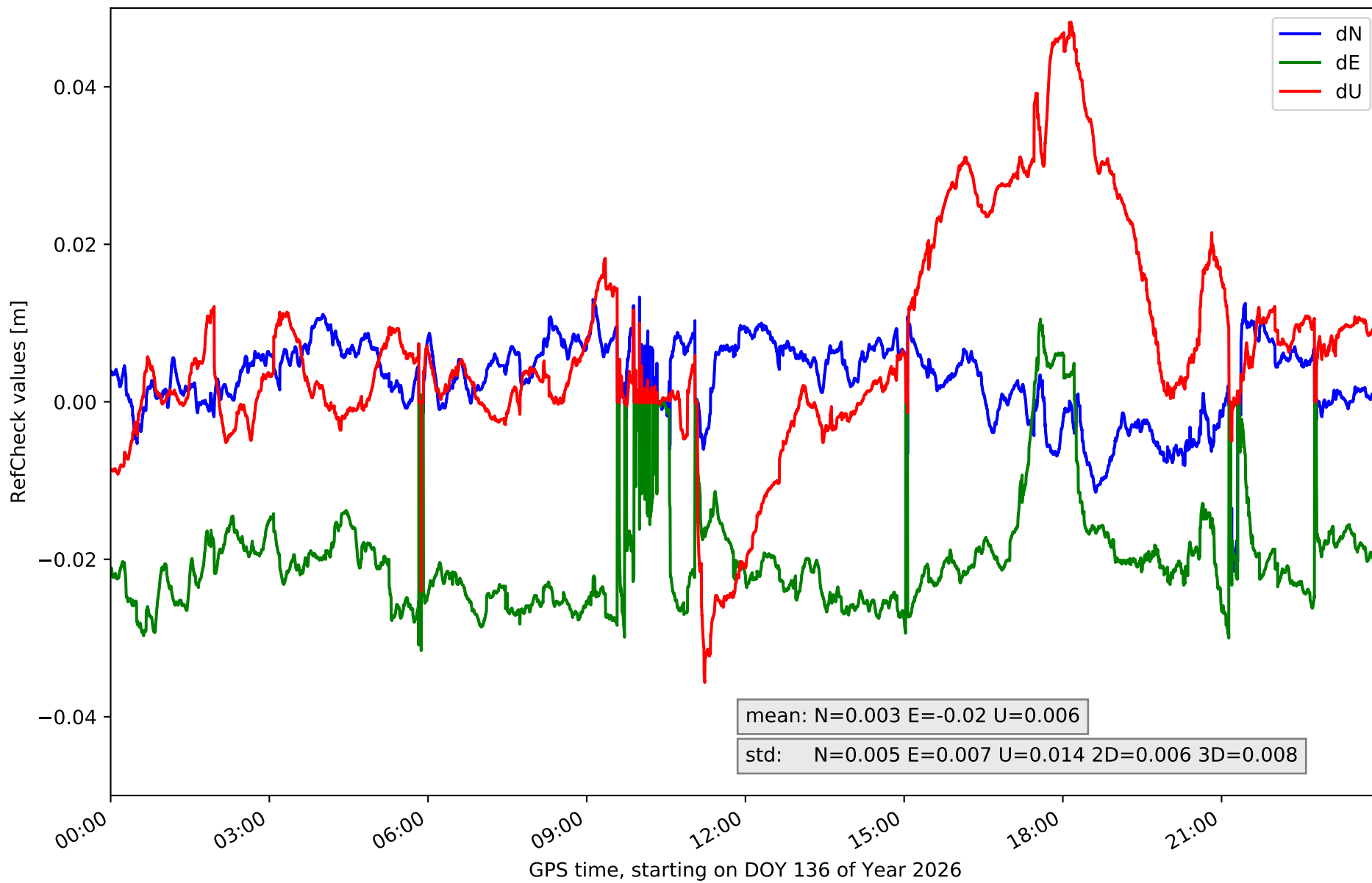
RefCheck for station LZ01 in network N31T



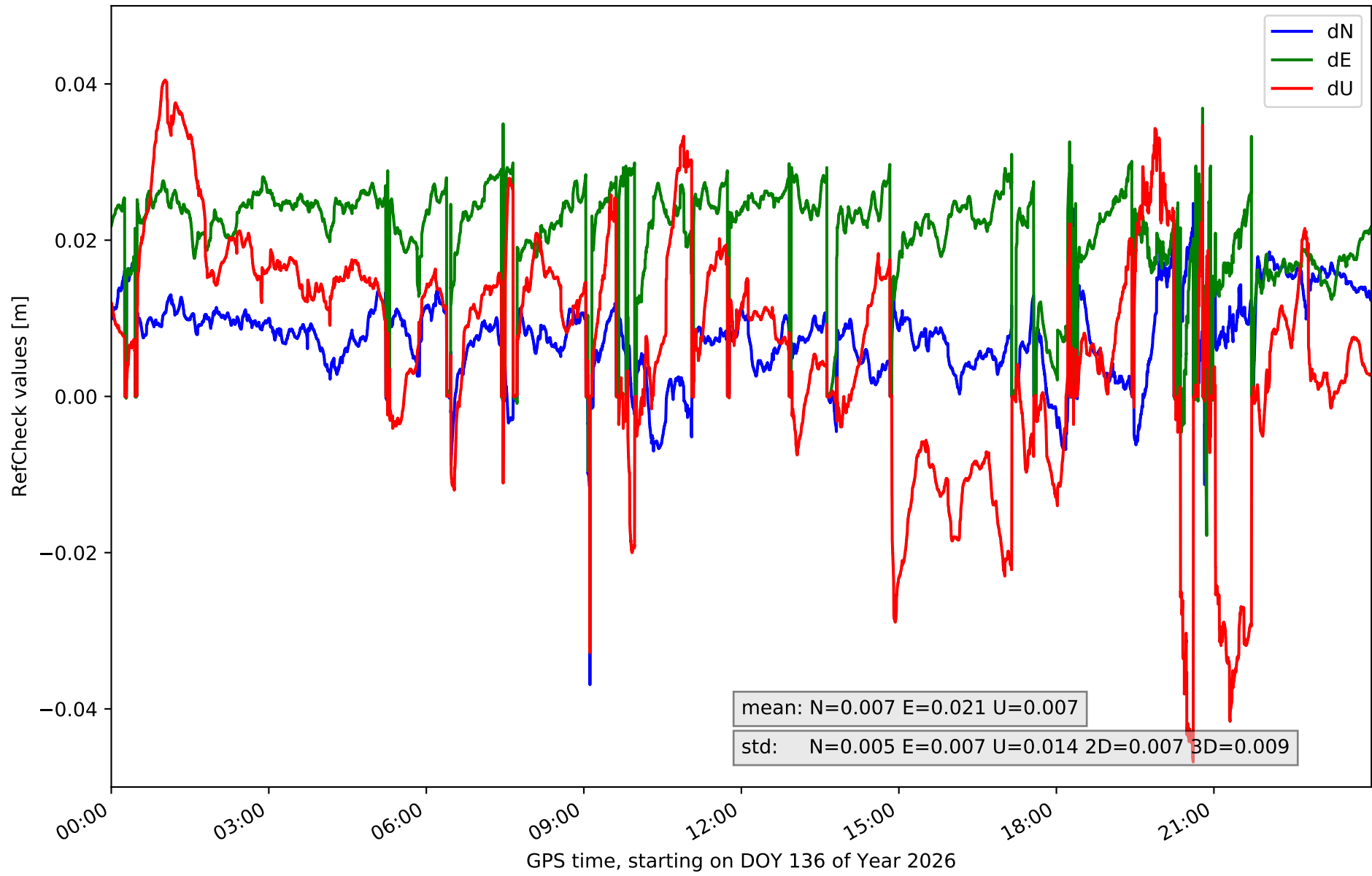
# RefCheck for station LZ02 in network N31T



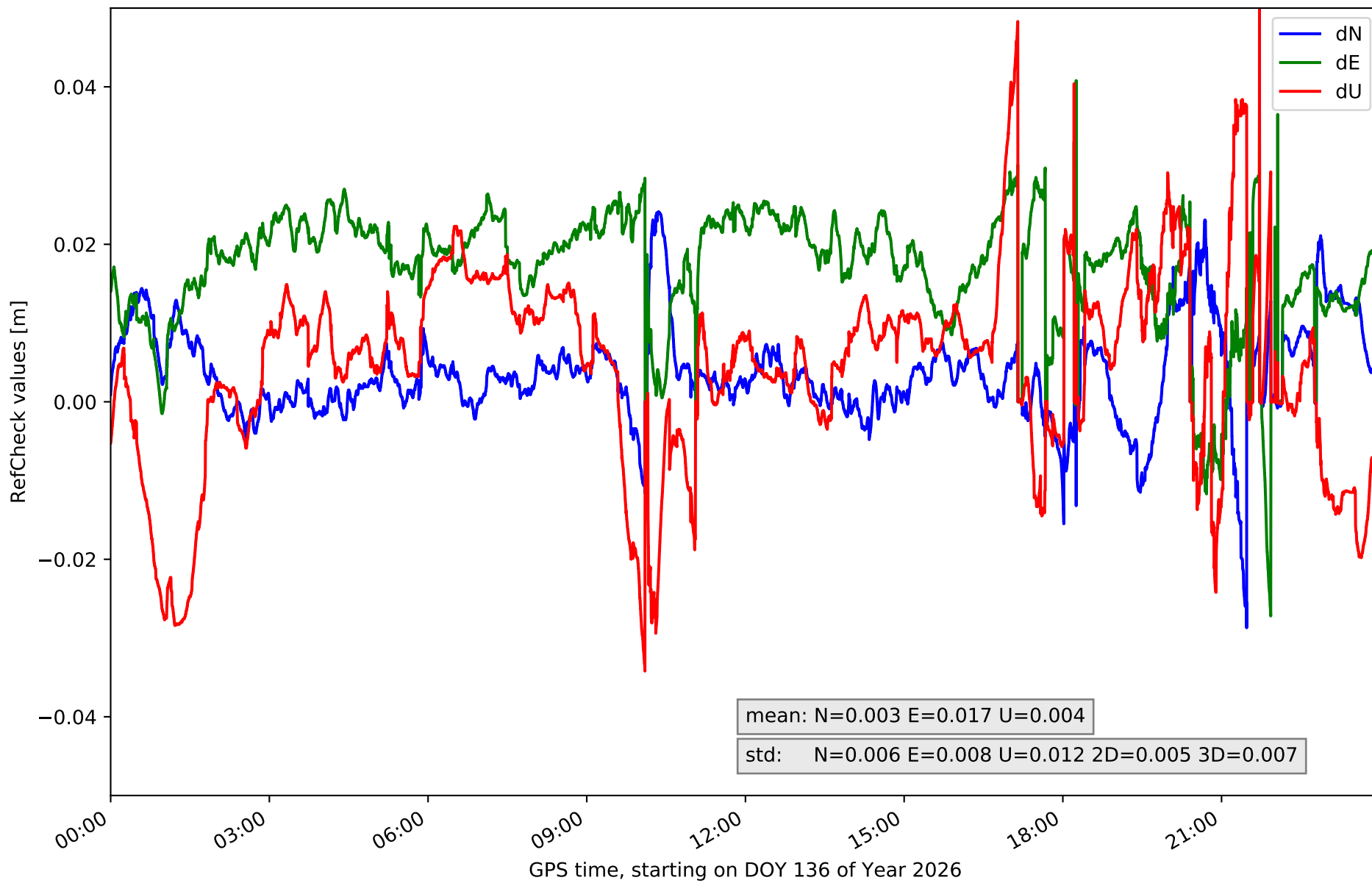
# RefCheck for station LZ03 in network N31T



# RefCheck for station MASP in network N31T



RefCheck for station ULP2 in network N31T



## RefCheck values for network N31T

Station	Nmin	Nmax	Nstd	Emin	Emax	Estd	Umin	Umax	Ustd	std2D	std3D	#2D > 0.01	% 2D > 0.01	#3D > 0.02	% 3D > 0.02
FUER	-0.01	0.018	0.004	-0.028	0.006	0.005	-0.024	0.018	0.008	0.005	0.006	31502	38.1	7564	9.2
LALA	-0.008	<b>0.025</b>	0.005	-0.025	0.006	0.006	<b>-0.06</b>	0.03	0.013	0.005	<b>0.01</b>	32956	39.9	17564	21.3
LZ01	-0.031	0.021	<b>0.007</b>	-0.03	<b>0.047</b>	<b>0.008</b>	-0.037	0.038	<b>0.016</b>	0.006	0.008	77800	94.1	72576	87.8
LZ02	<b>-0.043</b>	0.005	0.004	-0.03	0.002	0.005	<b>-0.06</b>	0.026	0.01	0.004	0.006	<b>81067</b>	<b>98.1</b>	55073	66.6
LZ03	-0.021	0.013	0.005	<b>-0.032</b>	0.011	0.007	-0.036	0.048	0.014	0.006	0.008	75913	91.9	70091	84.8
MASP	-0.037	<b>0.025</b>	0.005	-0.026	0.037	0.007	-0.047	0.041	0.014	<b>0.007</b>	0.009	75968	91.9	<b>73484</b>	<b>88.9</b>
ULP2	-0.029	0.024	0.006	-0.027	0.041	<b>0.008</b>	-0.034	<b>0.05</b>	0.012	0.005	0.007	77577	93.9	57951	70.1
<b>Mean</b>	<b>-0.026</b>	<b>0.019</b>	<b>0.005</b>	<b>-0.028</b>	<b>0.021</b>	<b>0.007</b>	<b>-0.043</b>	<b>0.036</b>	<b>0.012</b>	<b>0.005</b>	<b>0.008</b>	<b>64683.3</b>	<b>78.3</b>	<b>50614.7</b>	<b>61.2</b>
<b>Min/Max</b>	<b>-0.043</b>	<b>0.025</b>	<b>0.007</b>	<b>-0.032</b>	<b>0.047</b>	<b>0.008</b>	<b>-0.06</b>	<b>0.05</b>	<b>0.016</b>	<b>0.007</b>	<b>0.01</b>	<b>81067</b>	<b>98.1</b>	<b>73484</b>	<b>88.9</b>

fixing statistic for network N31T

fixing percentage of	all GNSS	G	R	E	C
using threshold 0.3	88.3	92.8	74.3	92.9	87.1
considering satellites with dual-frequency fixed	83.6	87.5	69.7	88.7	84.6
considering all signals separately	84.8	87.6	69.7	89.2	84.7