

summary for network N31T

timeperiod chosen: from 2026-05-10-00:00:00 until 2026-05-10-23:59:59

average update rate (durations larger than 15 seconds considered as observation gap): 1.1 seconds

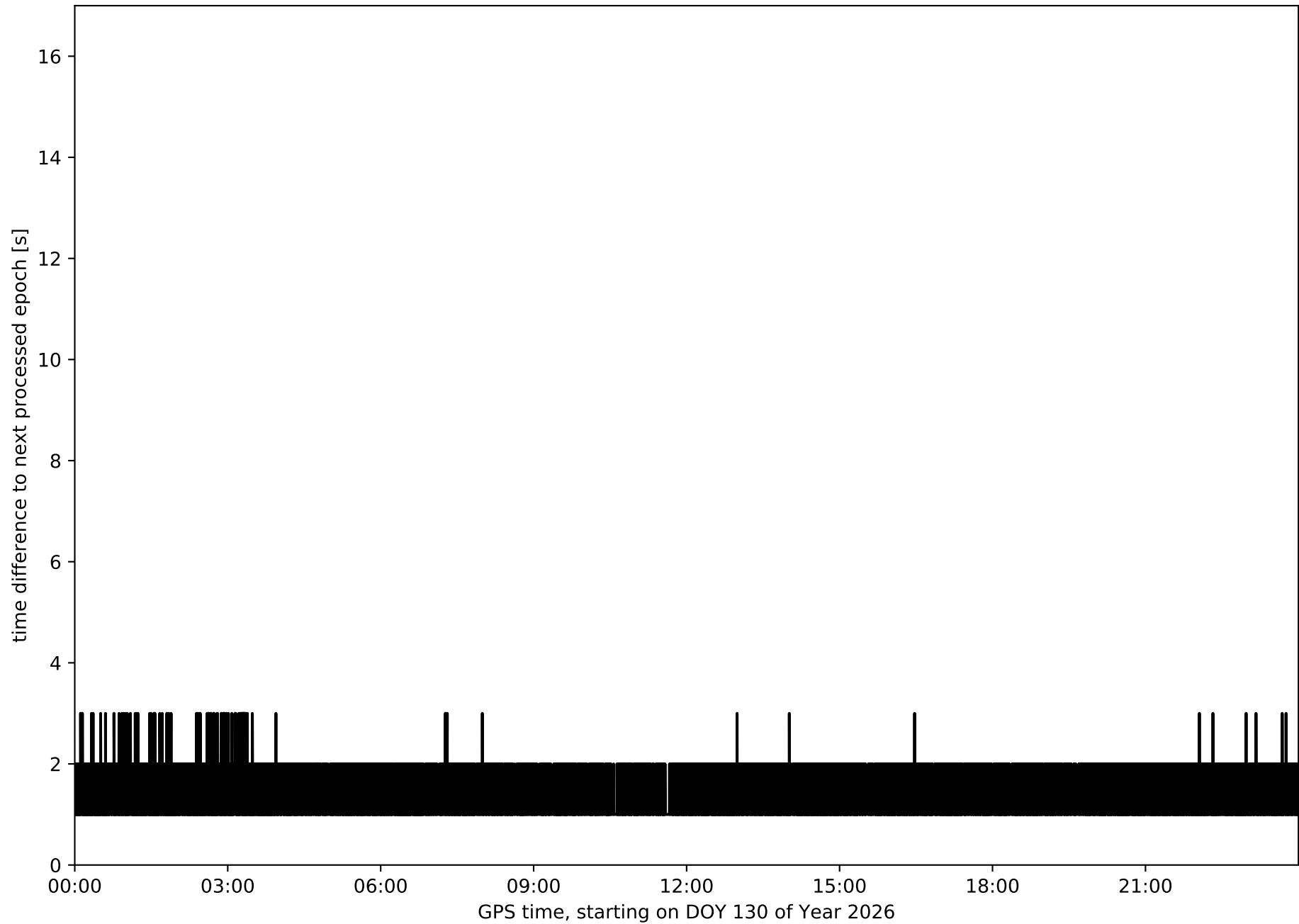
average fixing percentage with threshold set to 0.3: 81.0 percent

stations available: 7 of 7

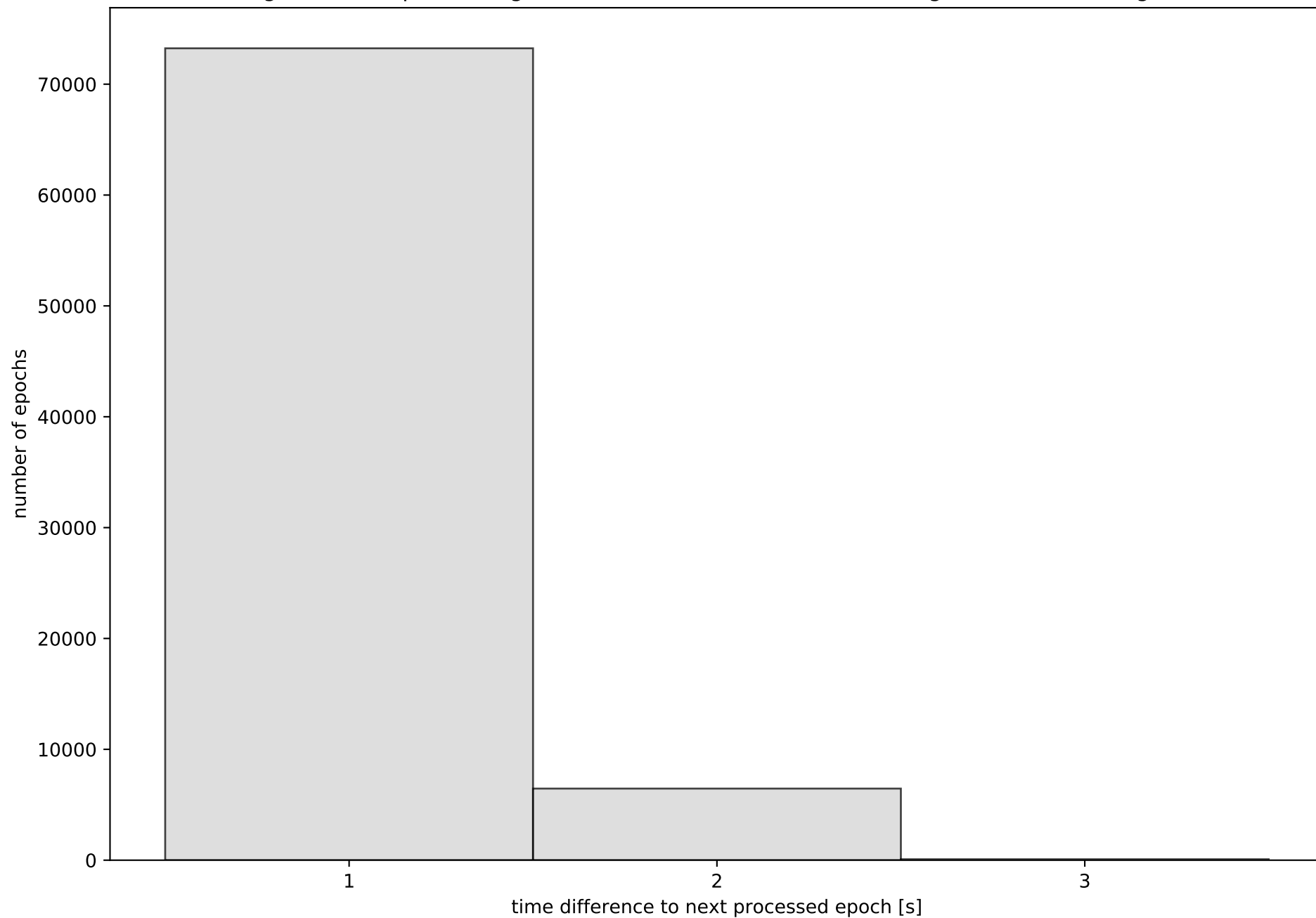
station information:

station FUER:	antenna: LEIAR20	LEIM	receiver: LEICA GR50	height: 76.887
station LALA:	antenna: TRM59900.00	SCIS	receiver: TRIMBLE NETR9	height: 62.306
station LZ01:	antenna: TRM159900.00	NONE	receiver: TRIMBLE NETR9	height: 52.693
station LZ02:	antenna: LEIAR20	NONE	receiver: LEICA GR25	height: 58.039
station LZ03:	antenna: LEIAR20	NONE	receiver: LEICA GR50	height: 314.762
station MASP:	antenna: TRM59900.00	SCIS	receiver: TRIMBLE NETR9	height: 198.846
station ULP2:	antenna: TRM59900.00	SCIS	receiver: TRIMBLE ALLOY	height: 375.129

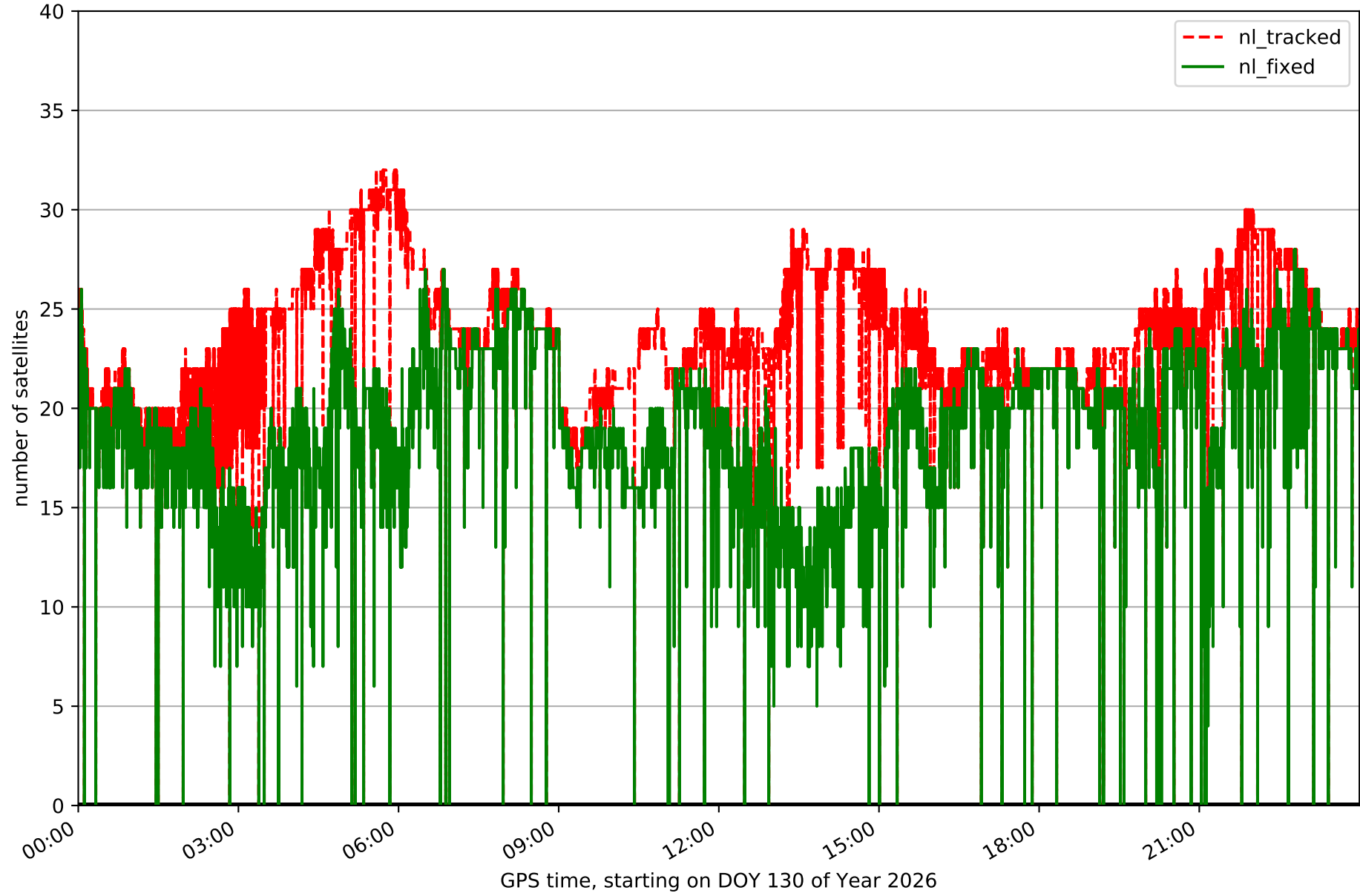
Processing rate in network N31T



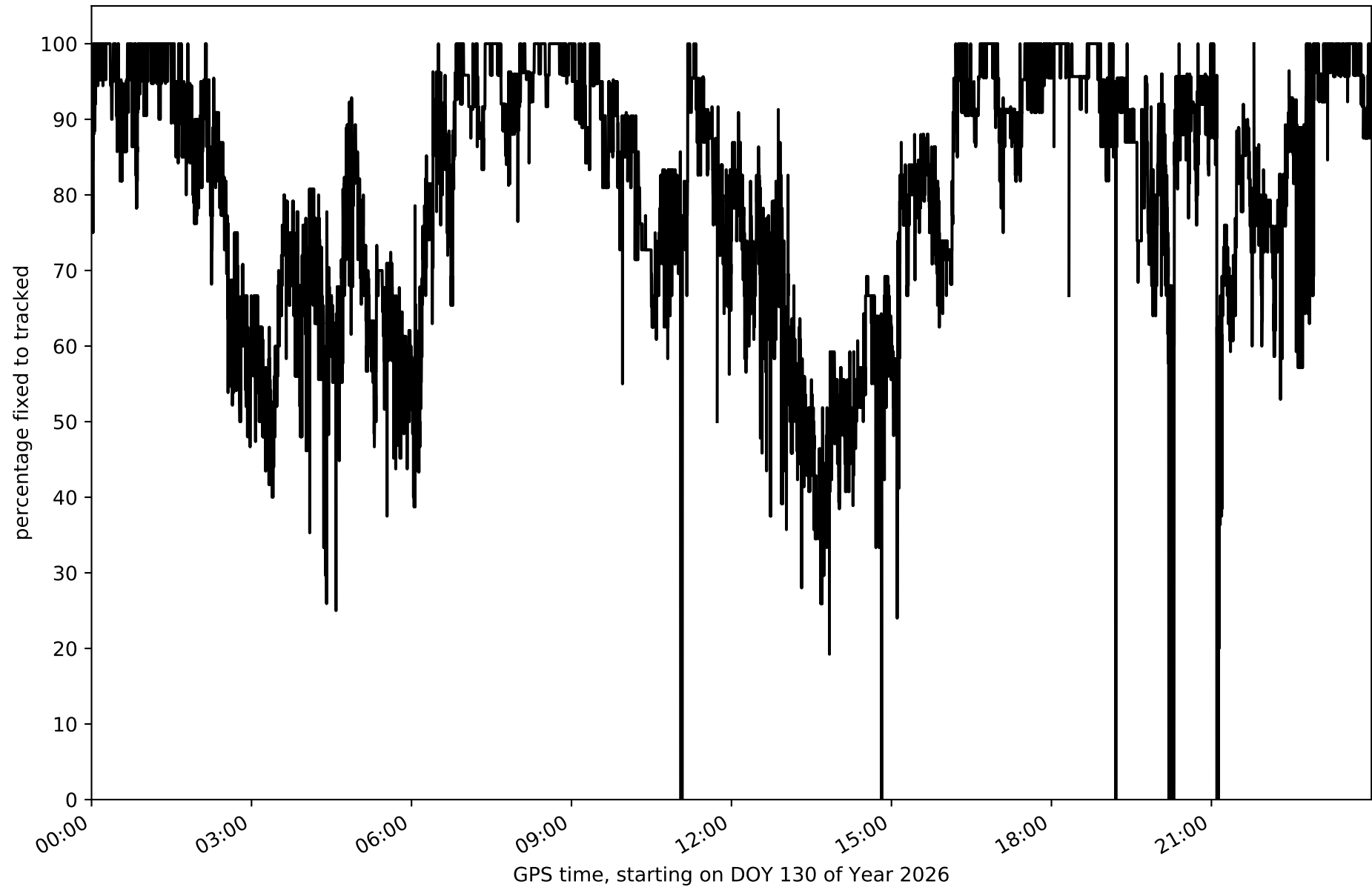
Histogram of the processing rate in network N31T (durations larger 15 seconds neglected)



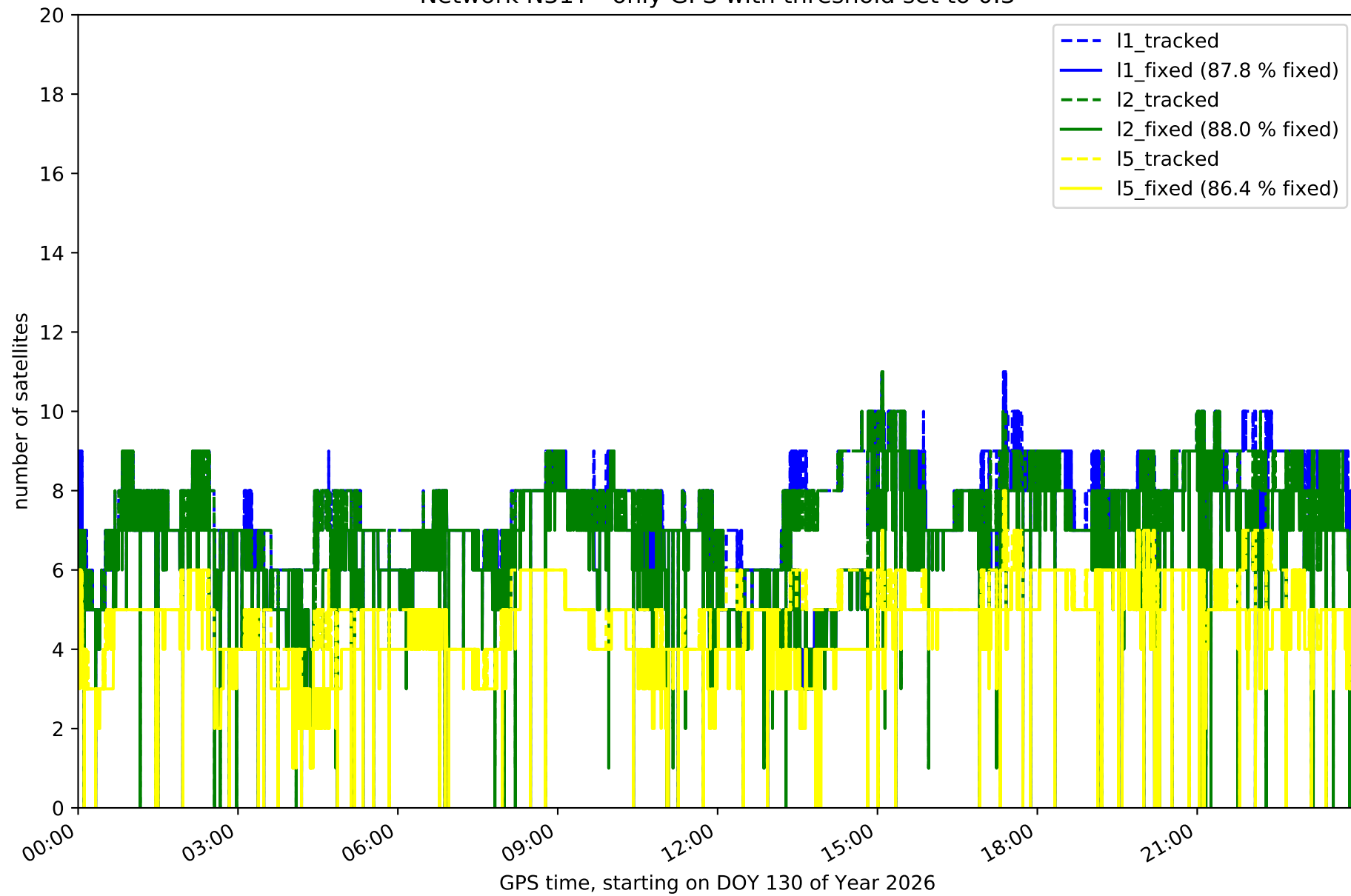
Network N31T with threshold set to 0.3



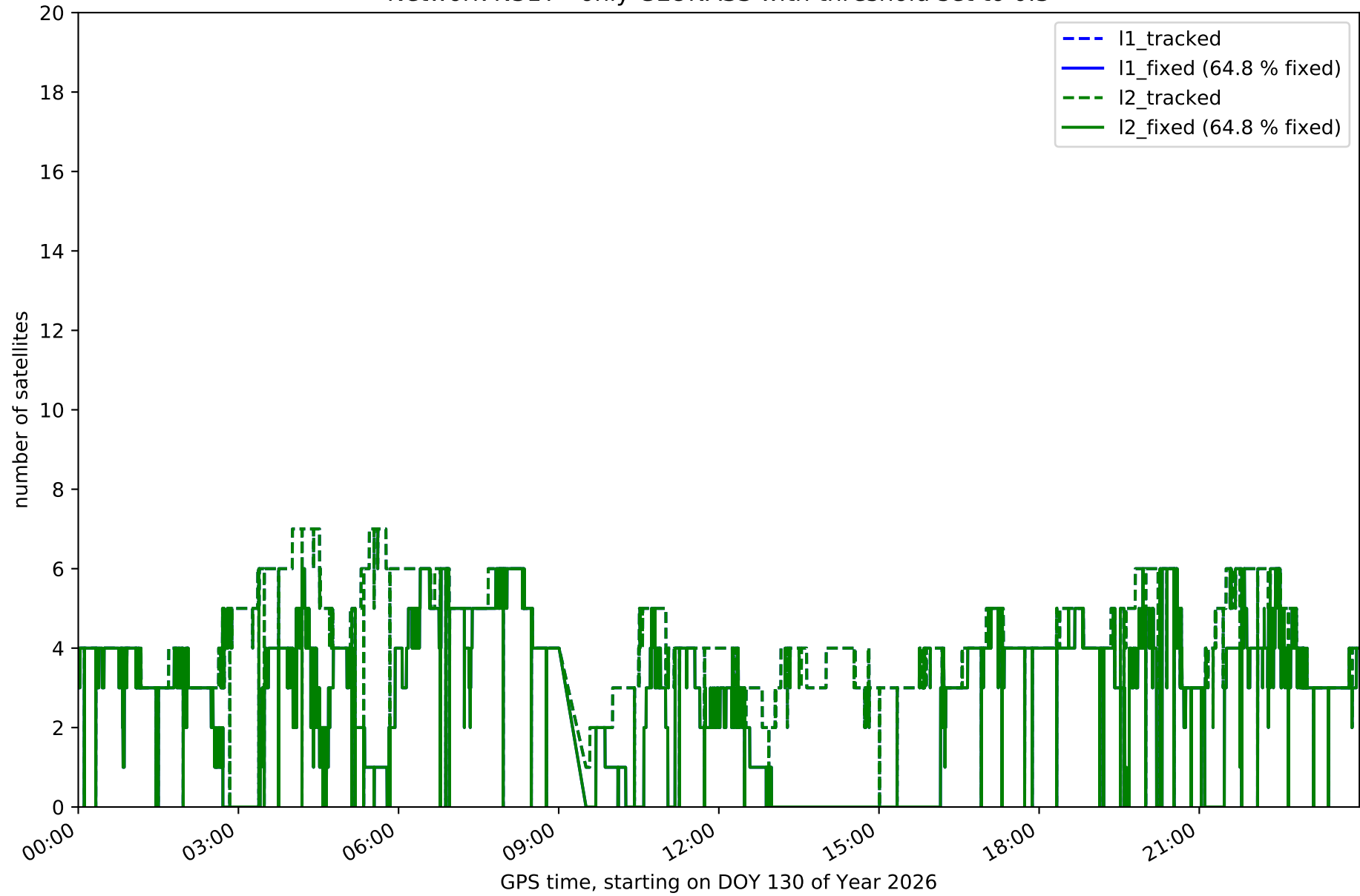
Fixing percentage of satellites in network N31T with threshold set to 0.3



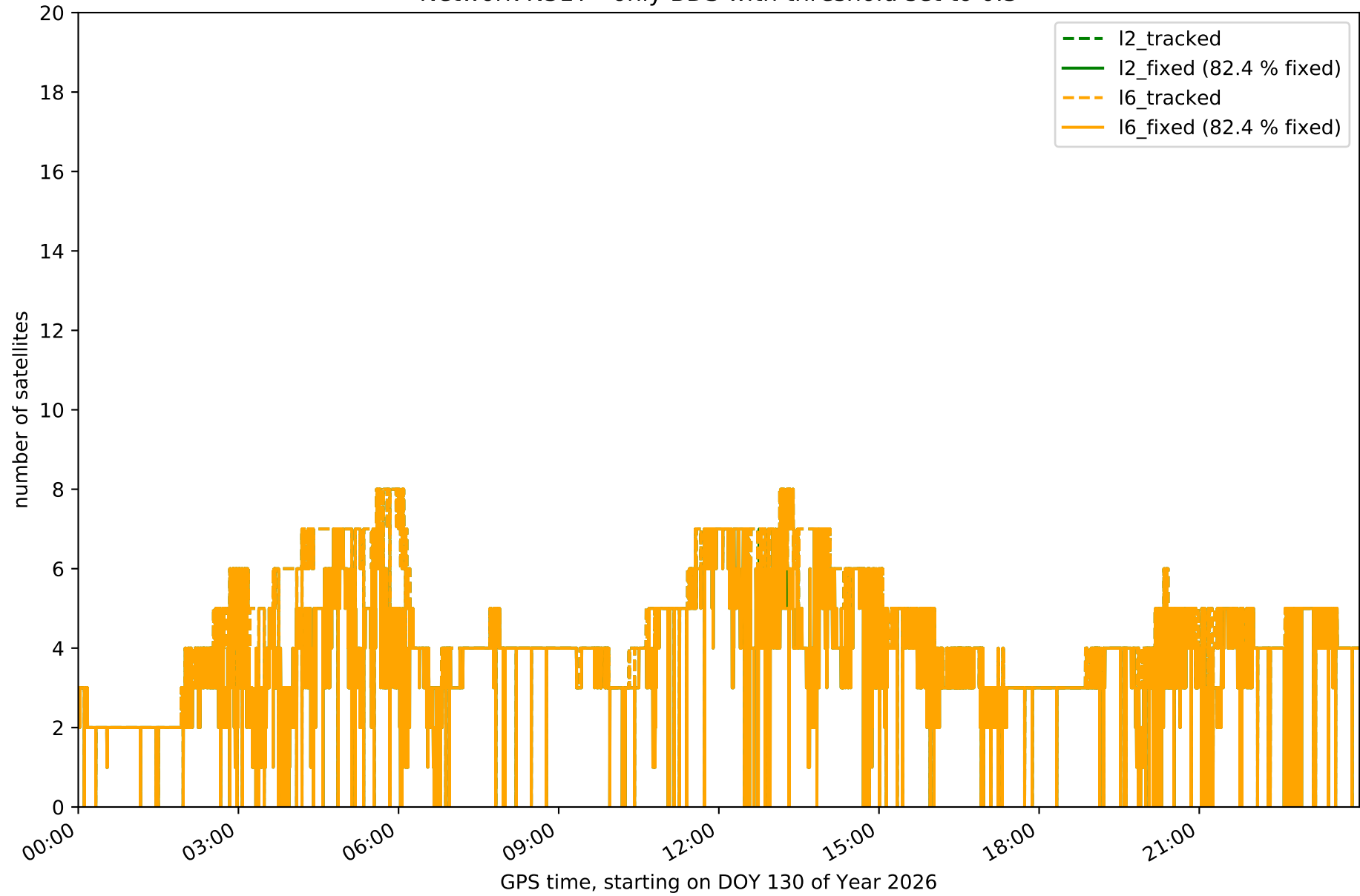
Network N31T - only GPS with threshold set to 0.3



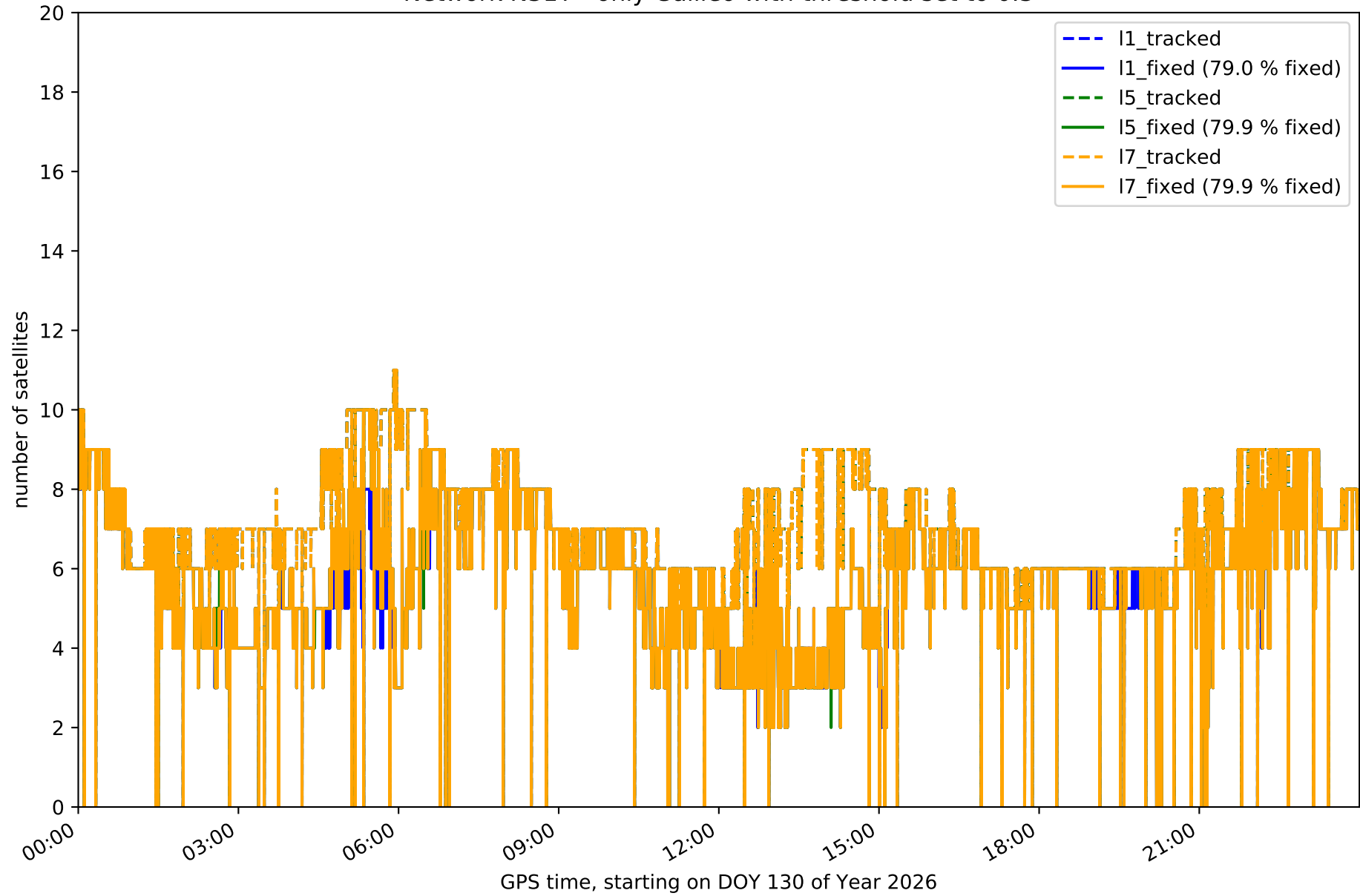
Network N31T - only GLONASS with threshold set to 0.3



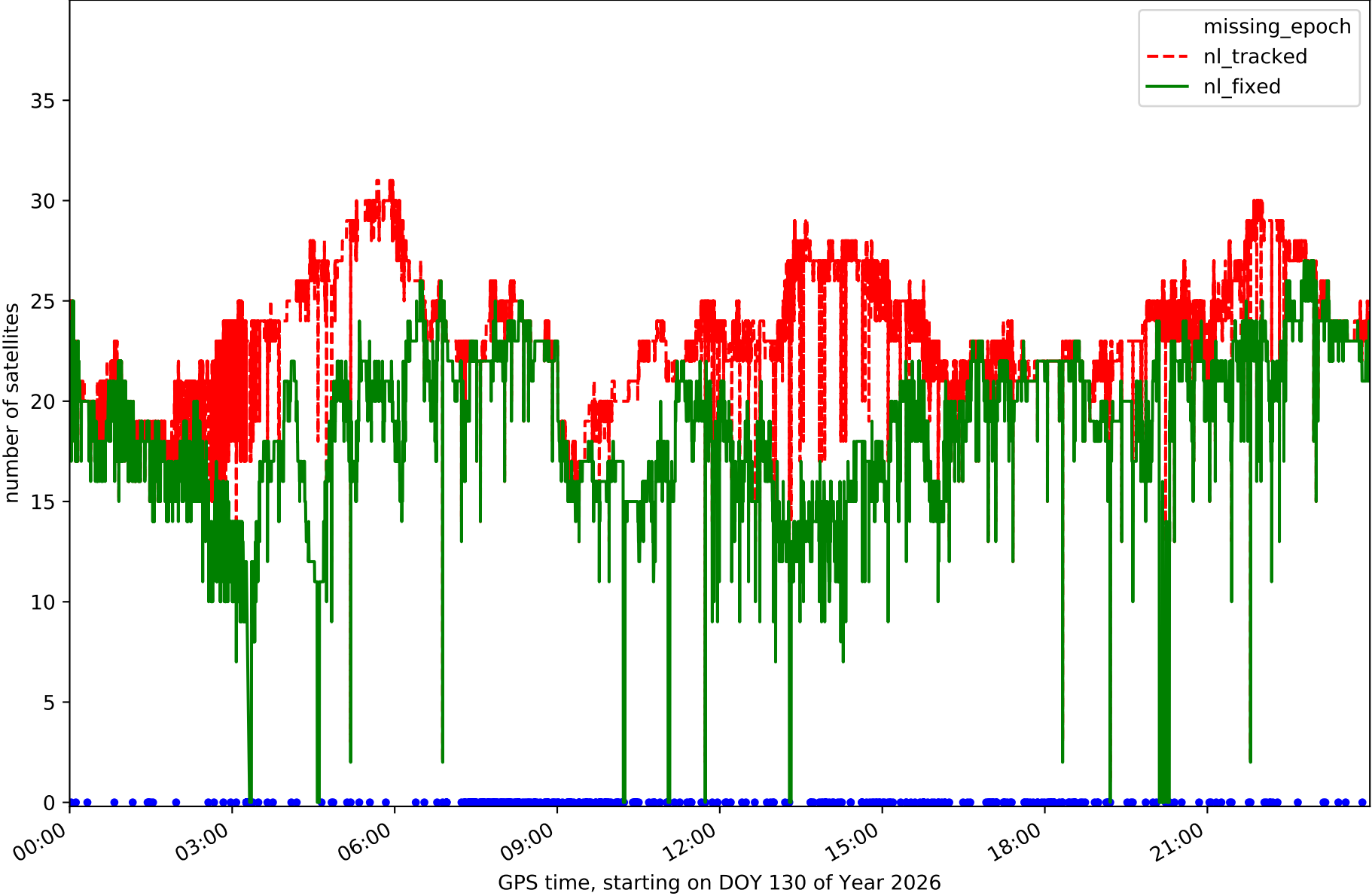
Network N31T - only BDS with threshold set to 0.3



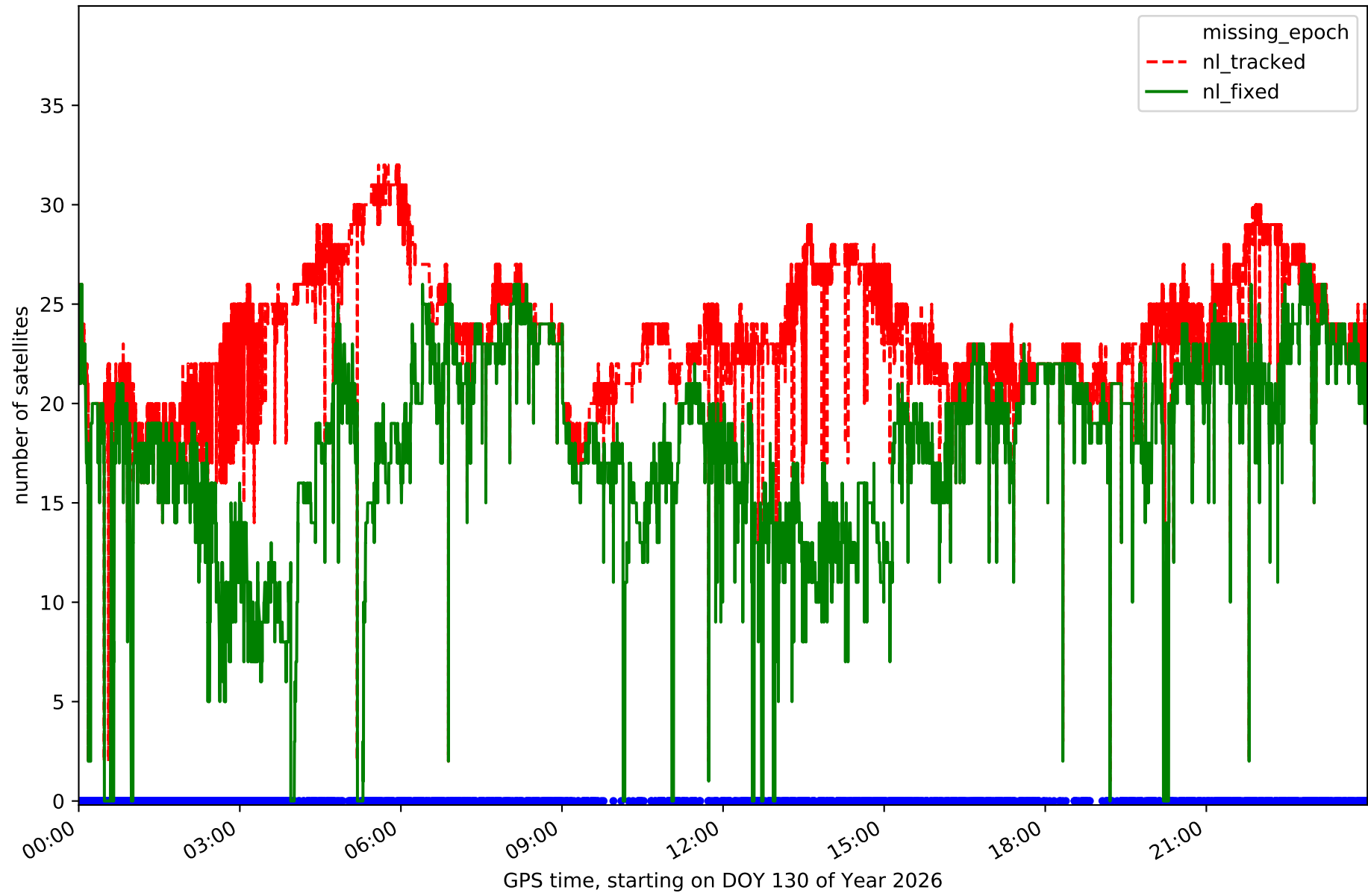
Network N31T - only Galileo with threshold set to 0.3



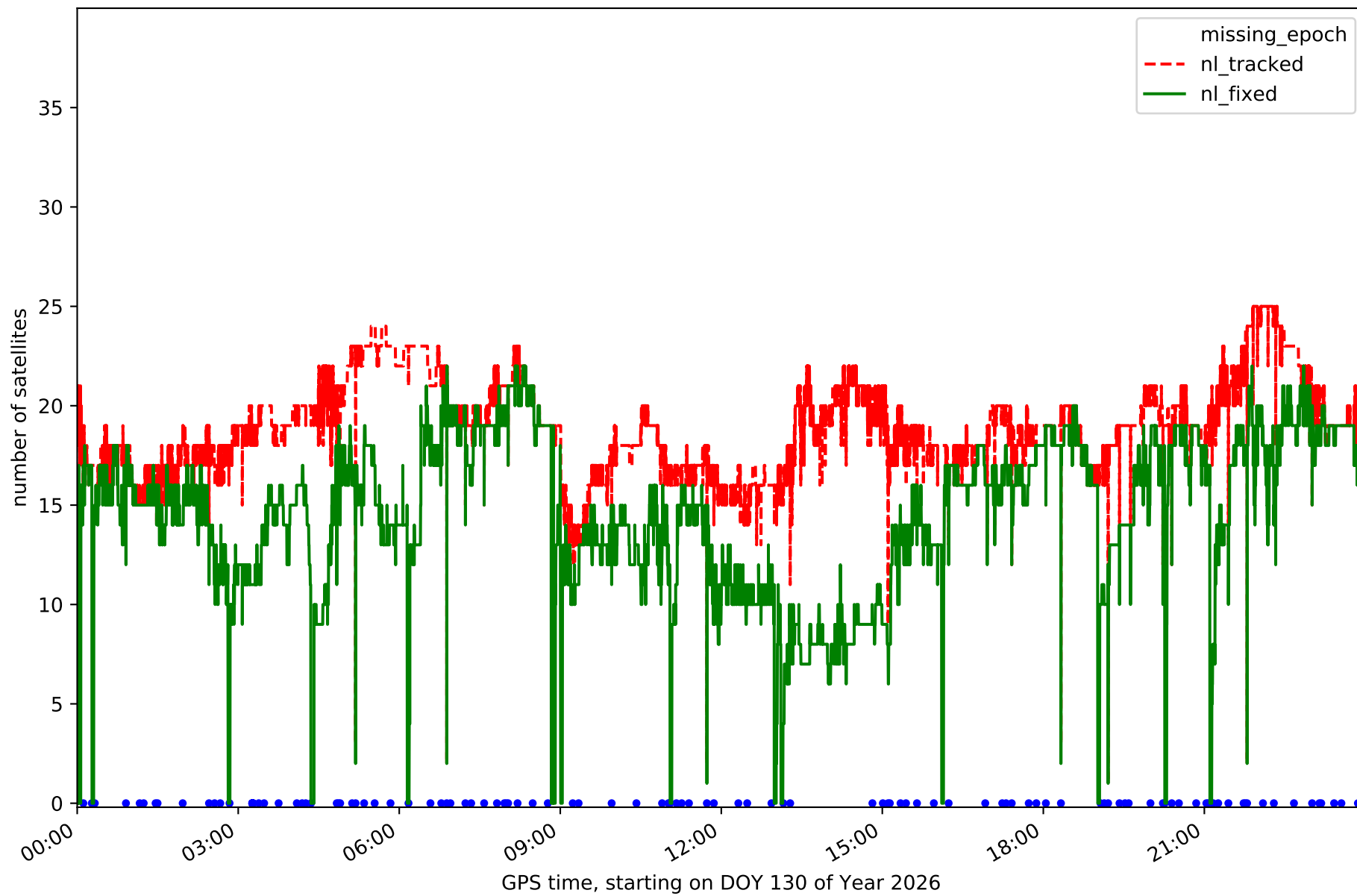
Station FUER in network N31T



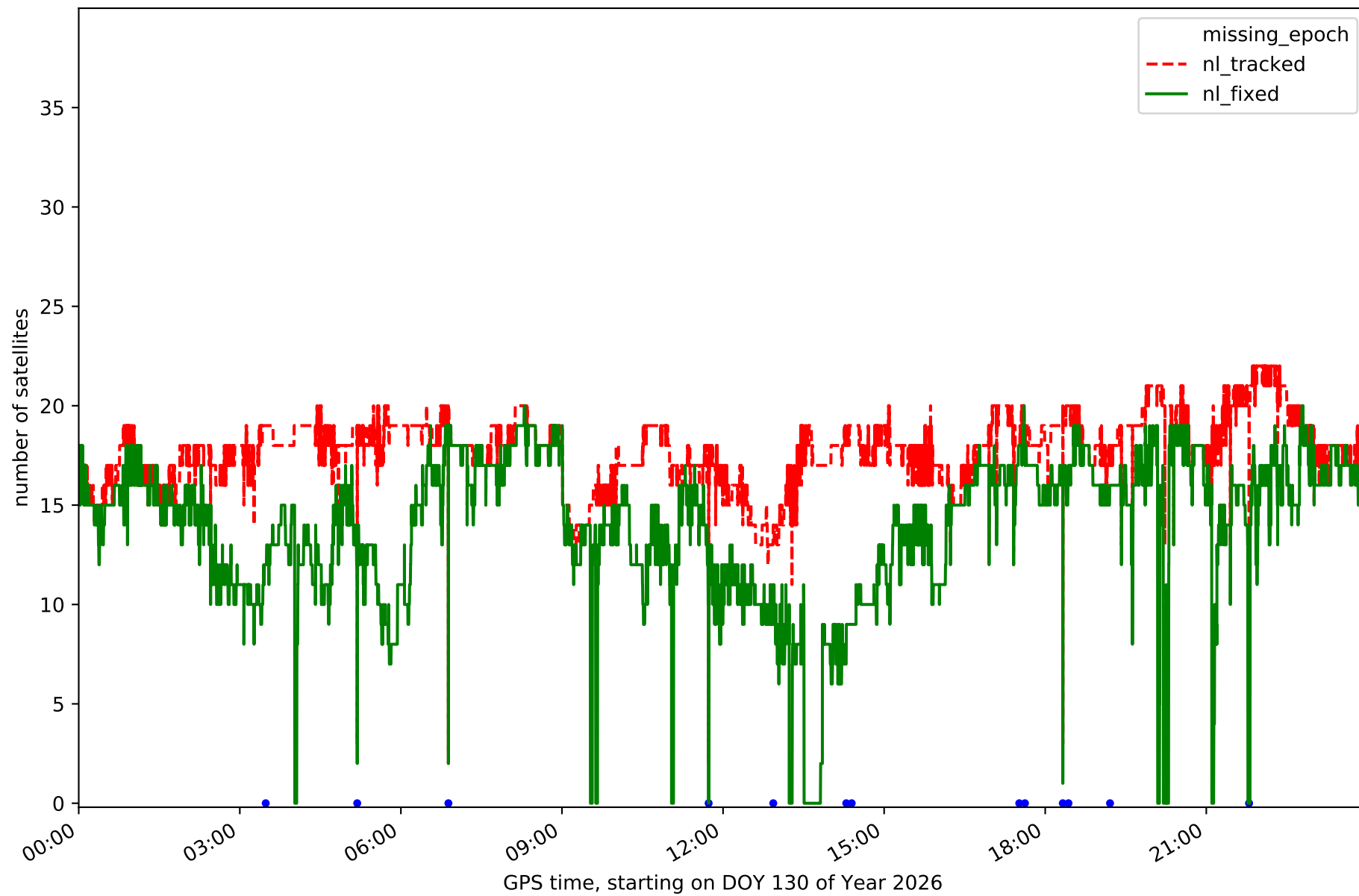
Station LALA in network N31T



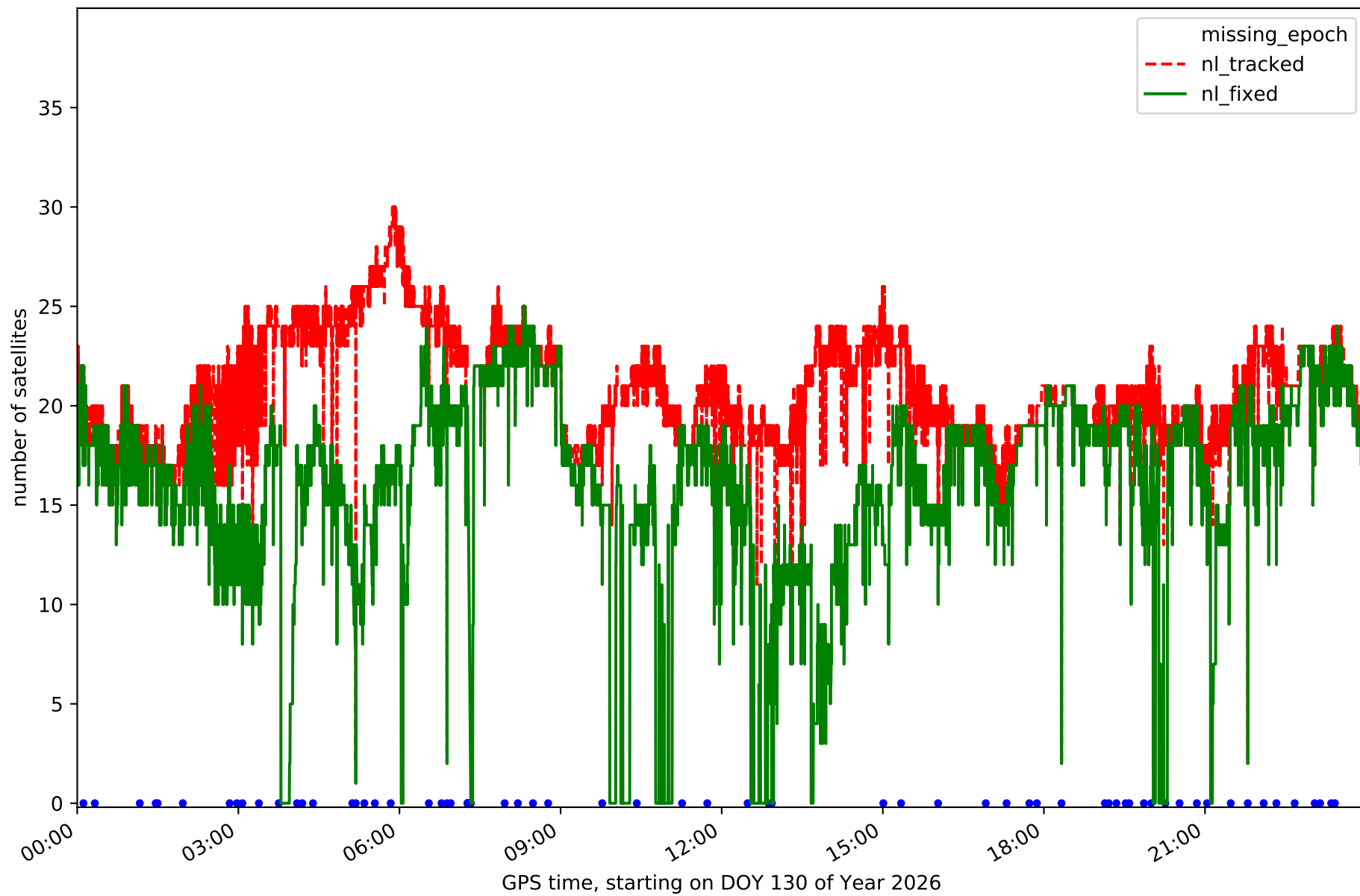
Station LZ01 in network N31T



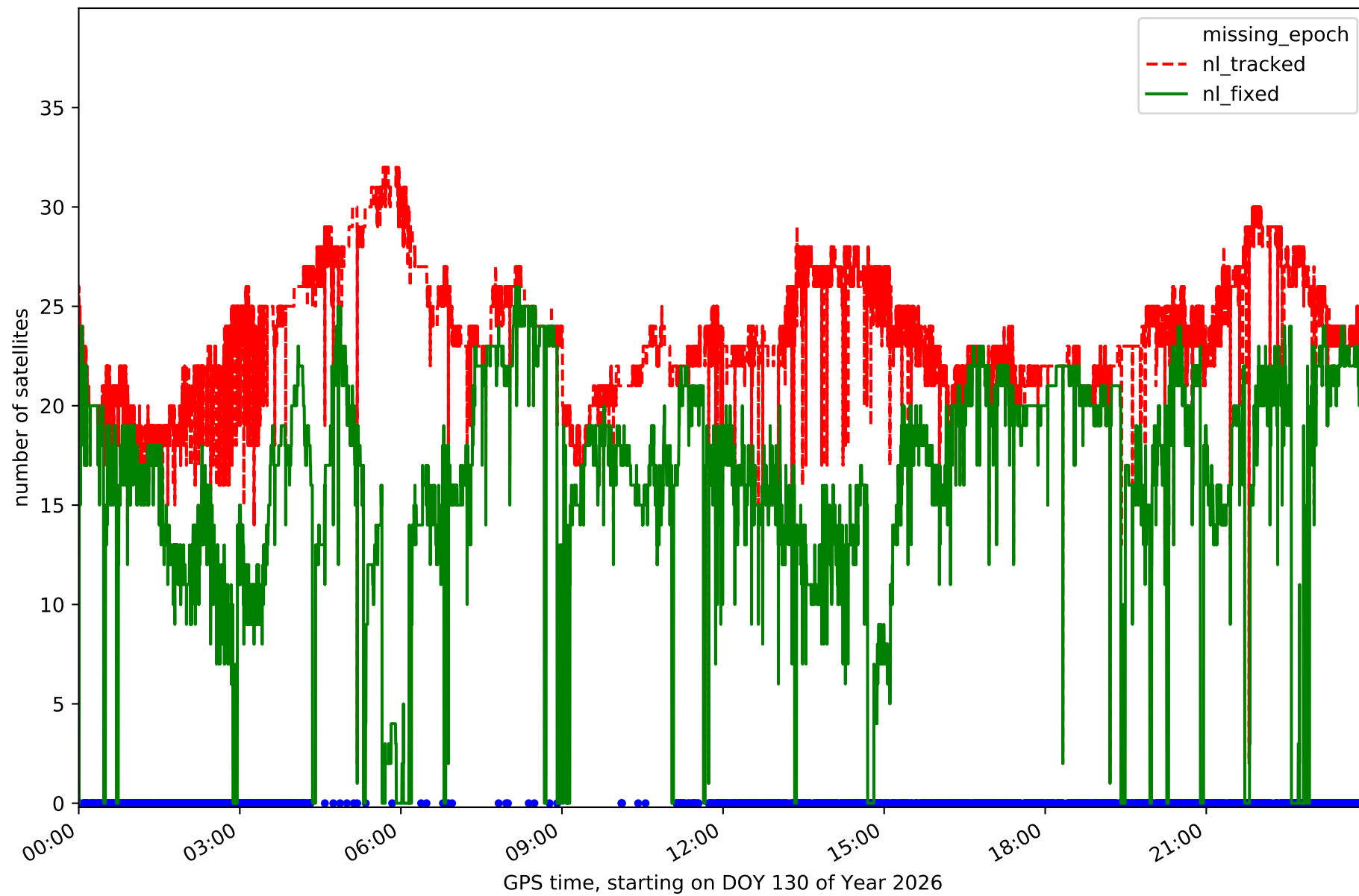
Station LZ02 in network N31T



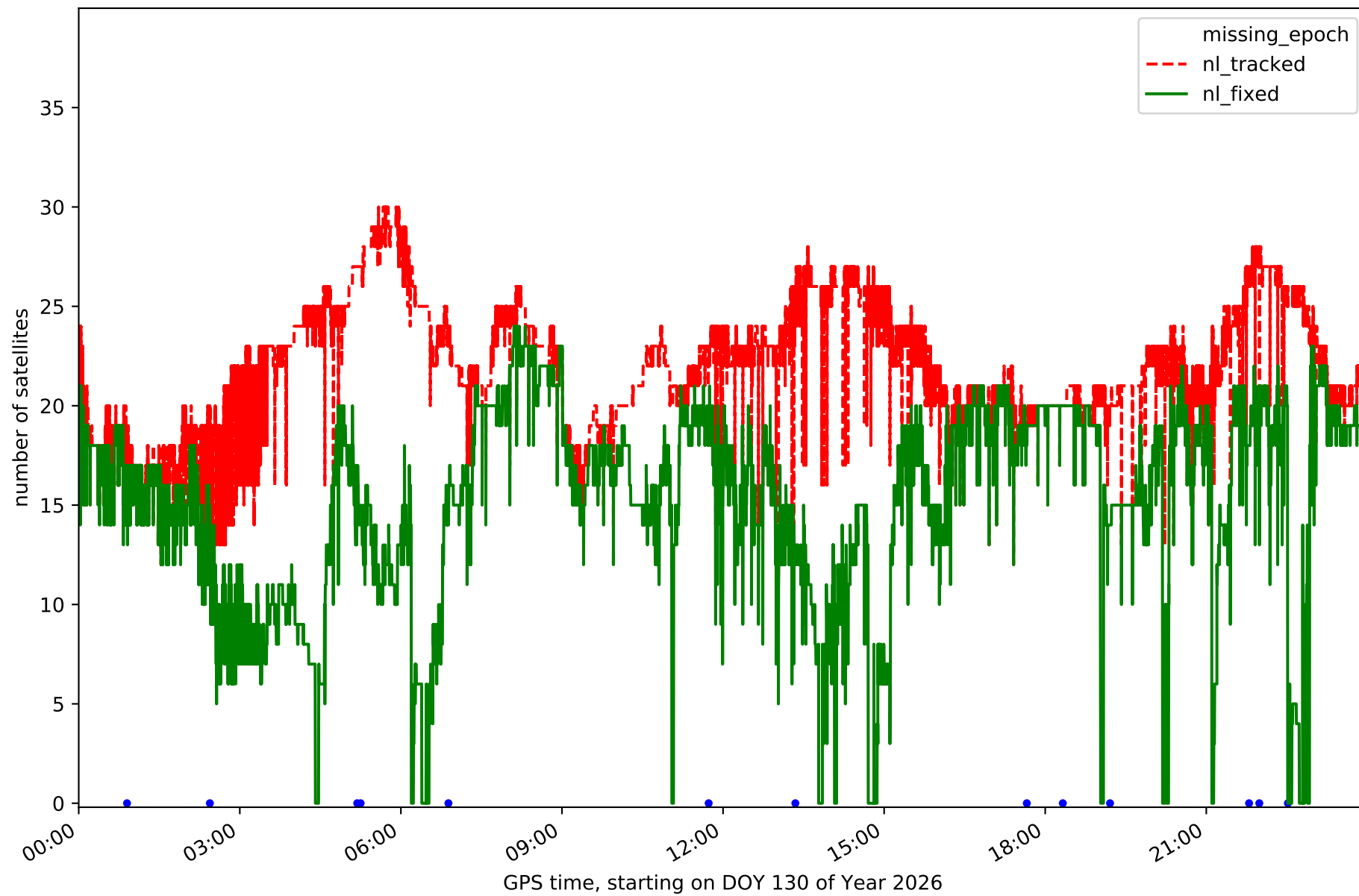
Station LZ03 in network N31T



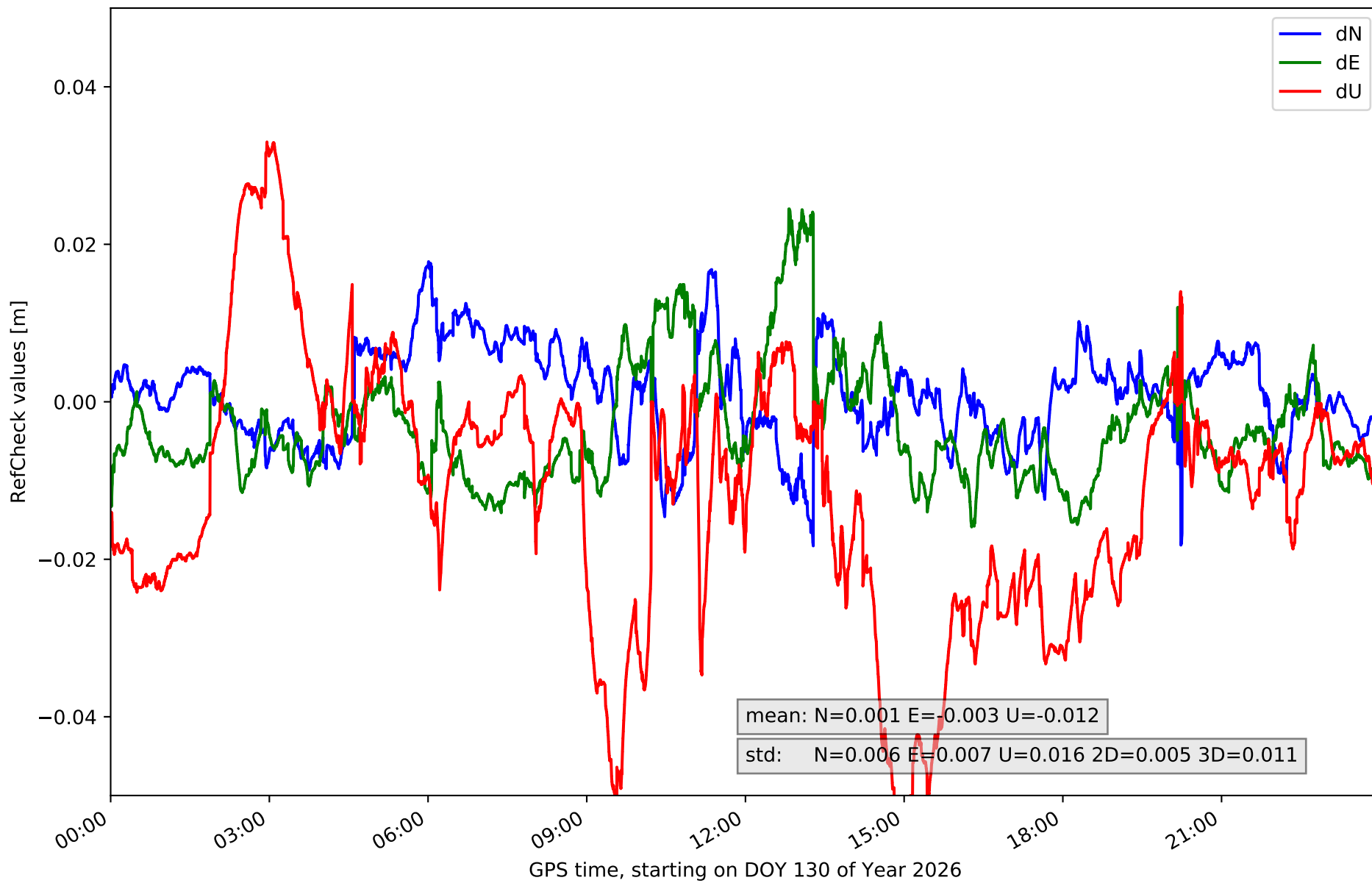
Station MASP in network N31T



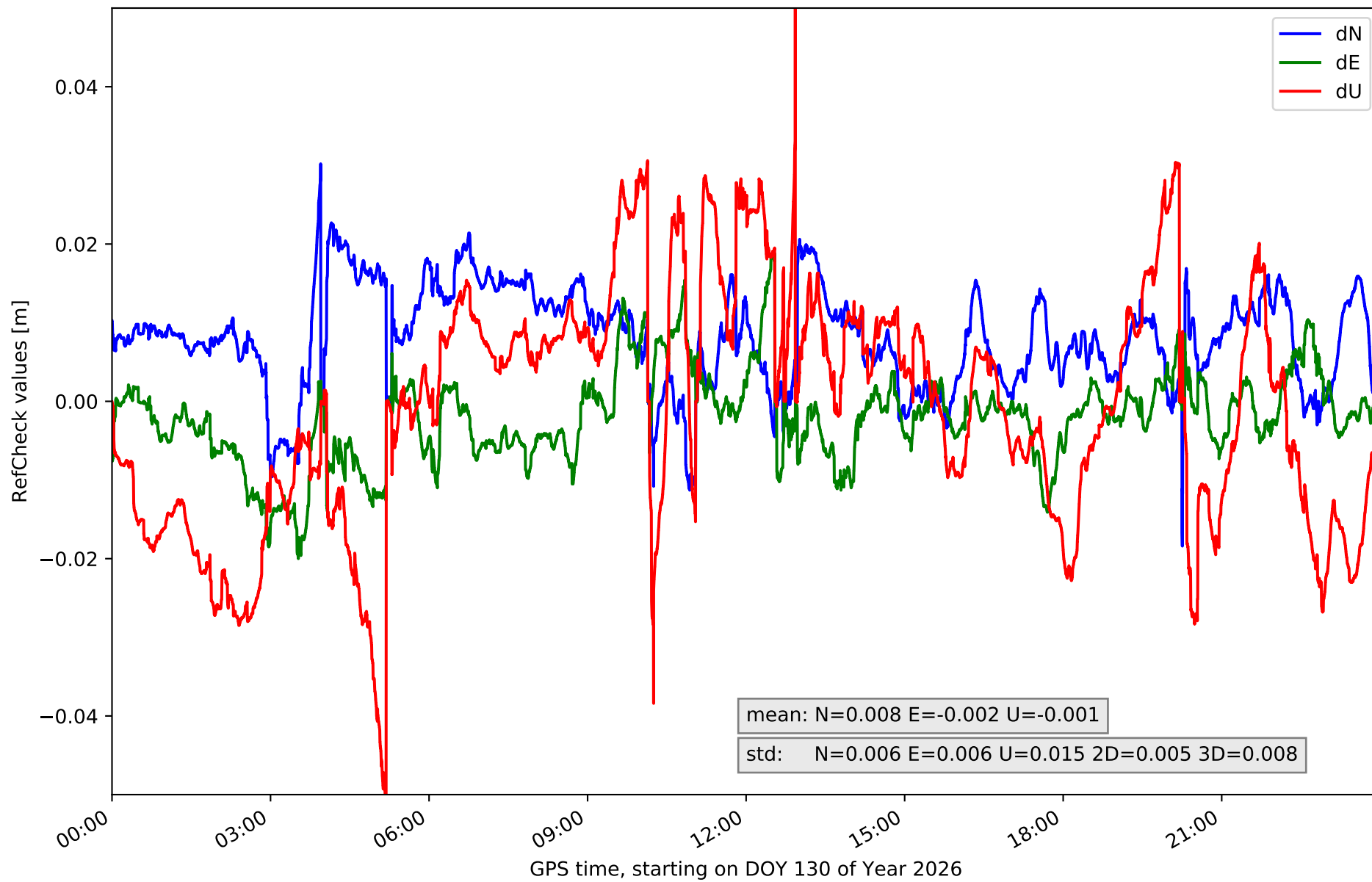
Station ULP2 in network N31T



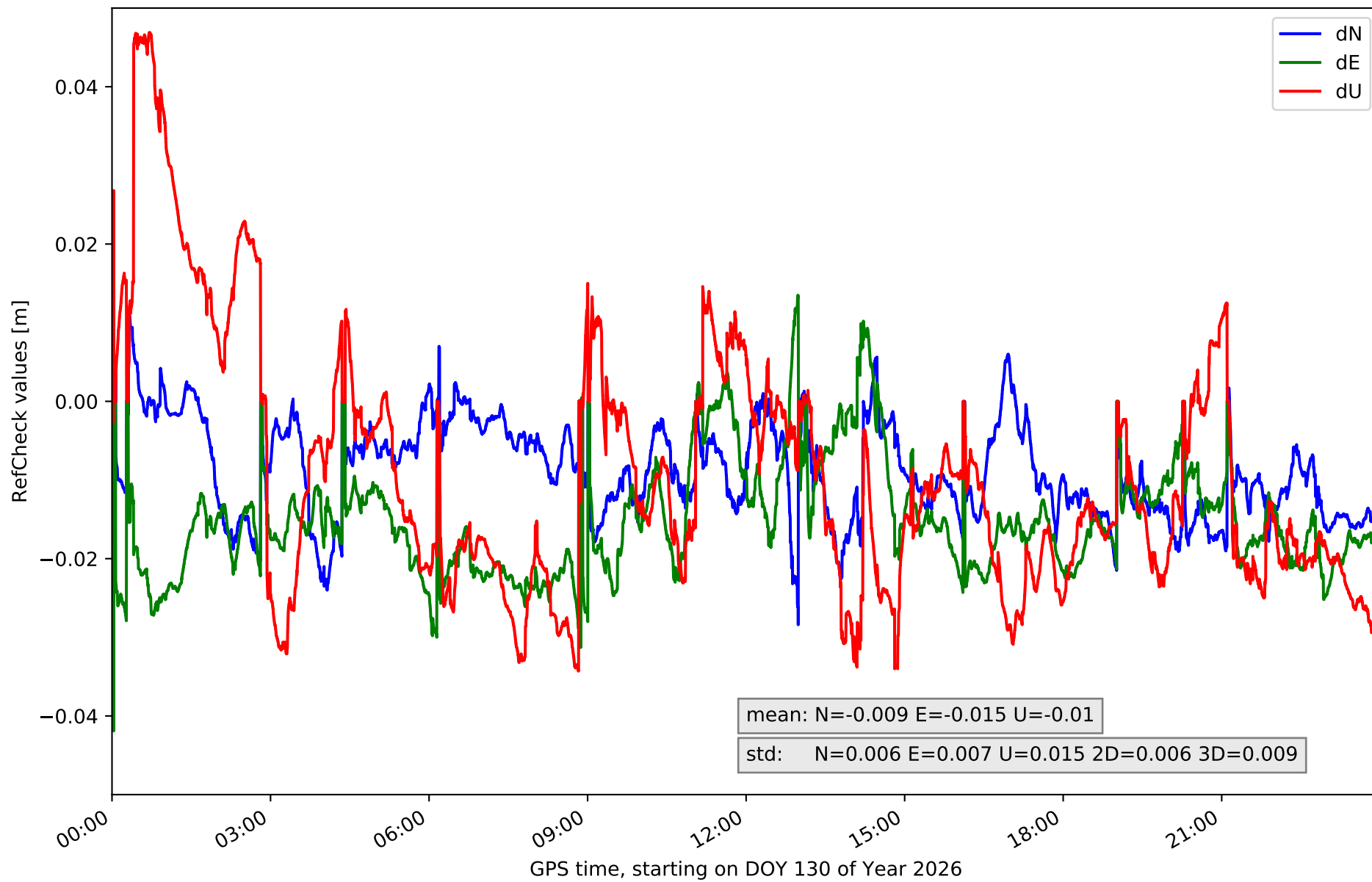
RefCheck for station FUER in network N31T



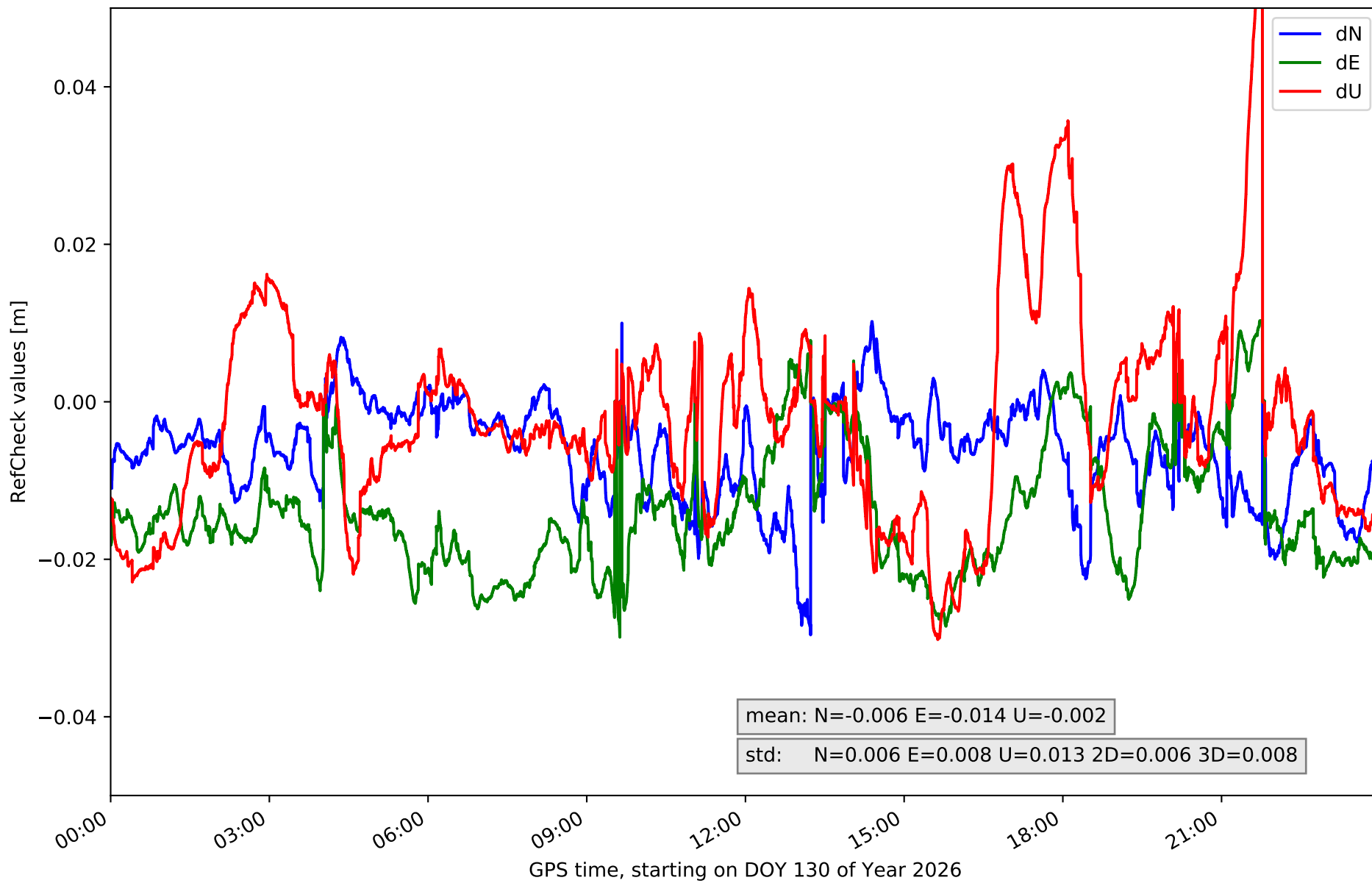
RefCheck for station LALA in network N31T



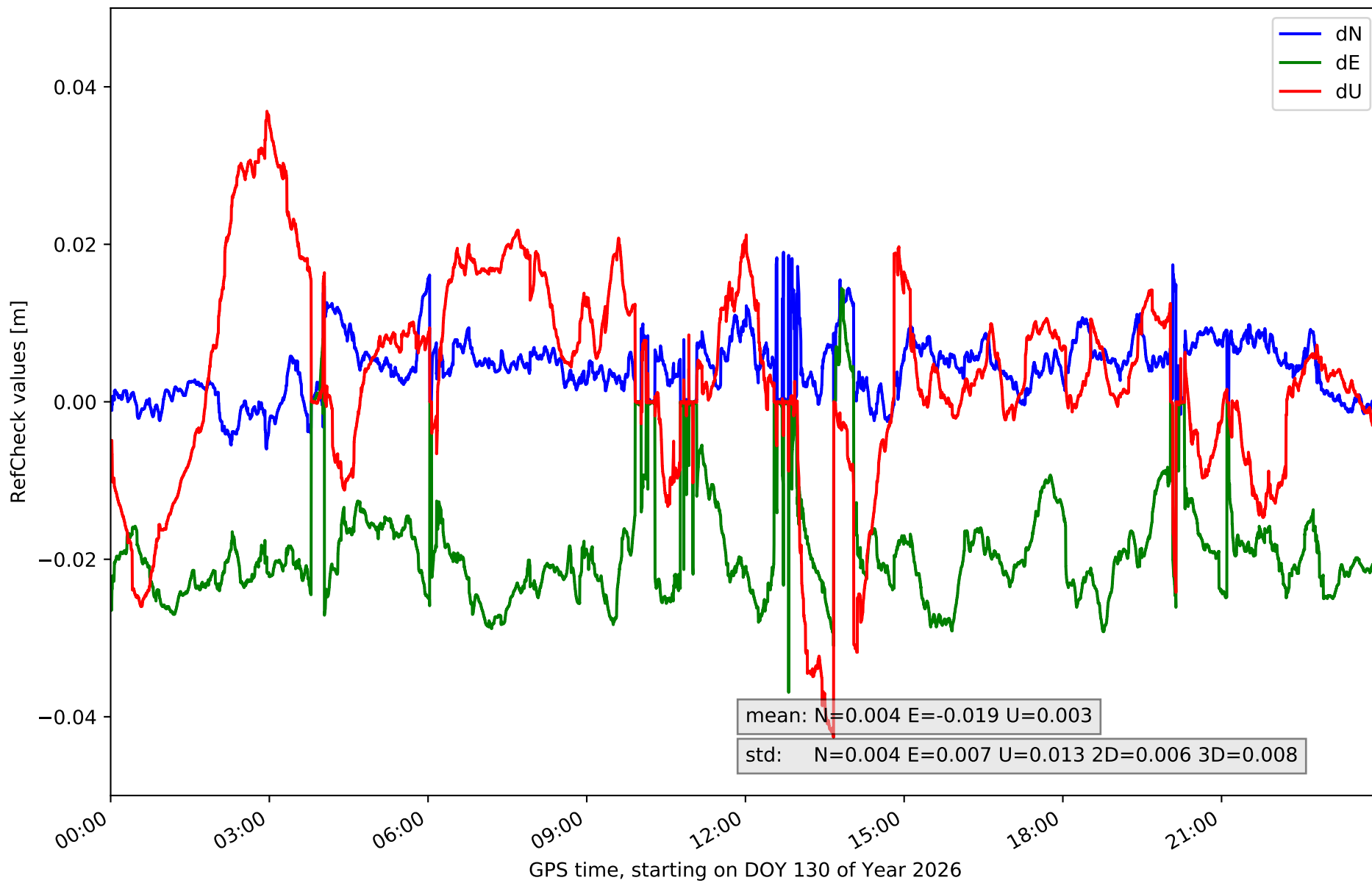
RefCheck for station LZ01 in network N31T



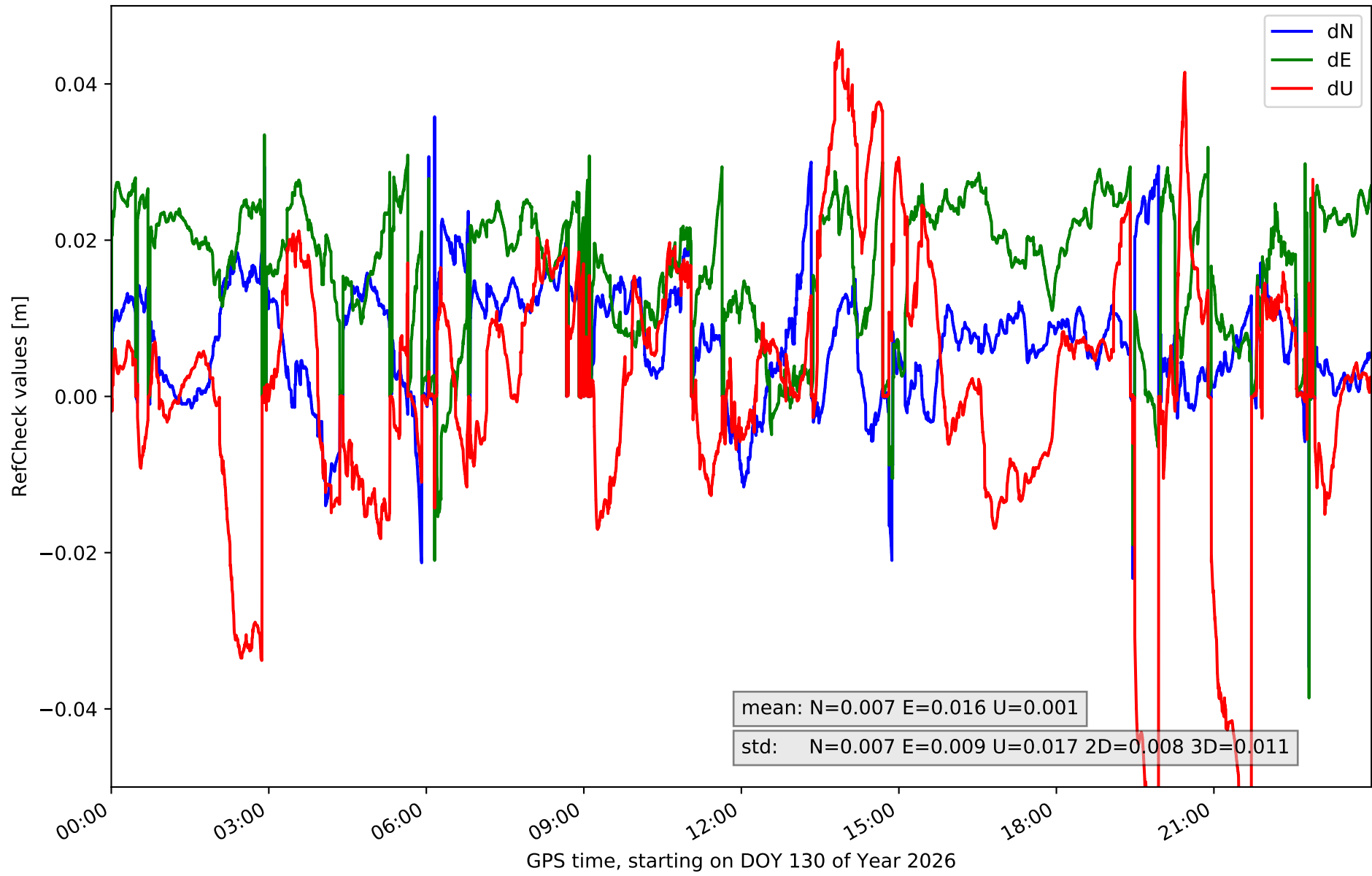
RefCheck for station LZ02 in network N31T



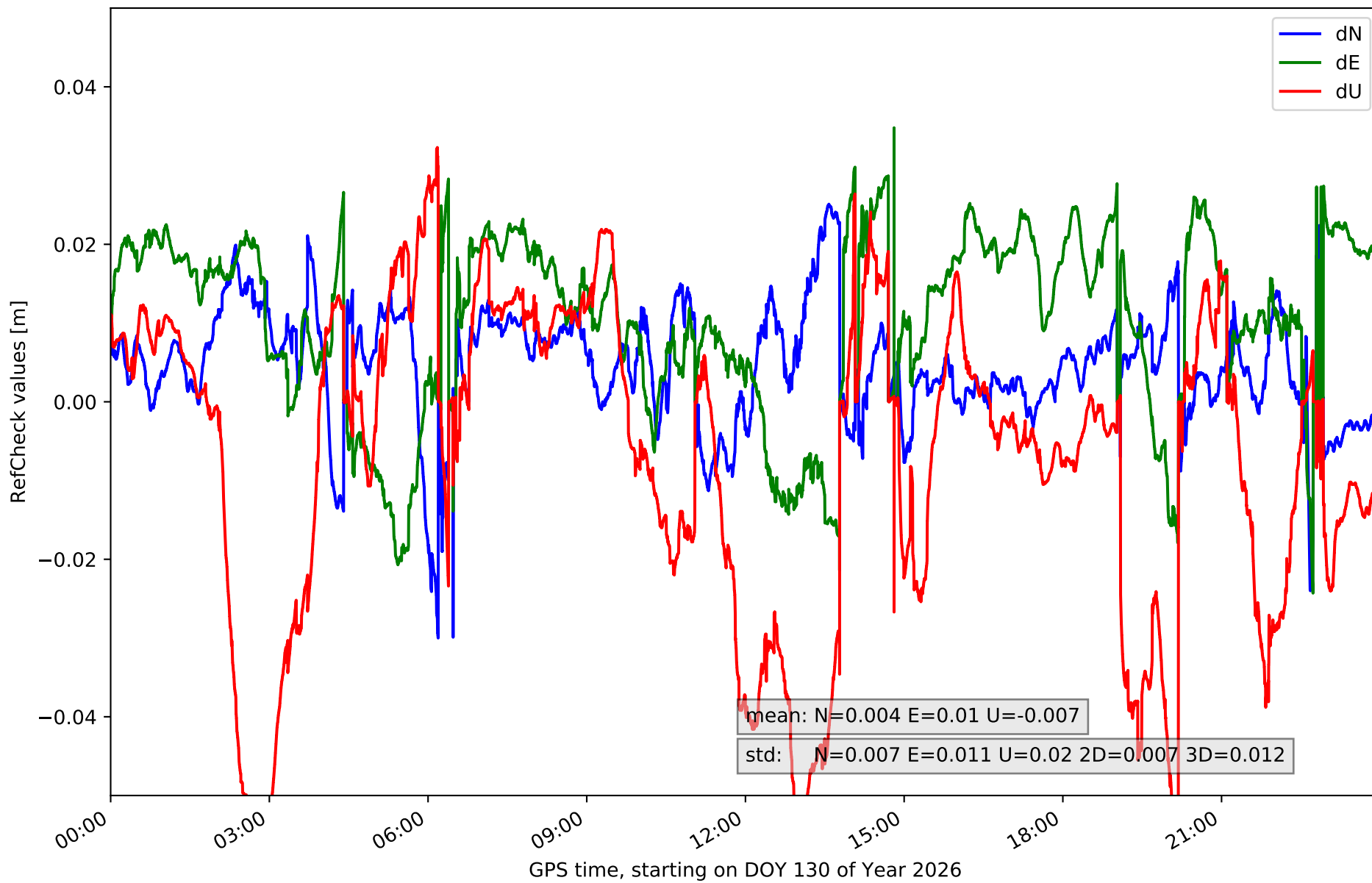
RefCheck for station LZ03 in network N31T



RefCheck for station MASP in network N31T



RefCheck for station ULP2 in network N31T



RefCheck values for network N31T

Station	Nmin	Nmax	Nstd	Emin	Emax	Estd	Umin	Umax	Ustd	std2D	std3D	#2D > 0.01	% 2D > 0.01	#3D > 0.02	% 3D > 0.02
FUER	-0.018	0.018	0.006	-0.016	0.025	0.007	-0.058	0.033	0.016	0.005	0.011	26886	33.7	32715	41.0
LALA	-0.018	0.03	0.006	-0.02	0.019	0.006	-0.054	0.05	0.015	0.005	0.008	41874	52.4	26489	33.2
LZ01	-0.028	0.011	0.006	-0.042	0.013	0.007	-0.034	0.047	0.015	0.006	0.009	72624	91.0	60934	76.3
LZ02	-0.03	0.01	0.006	-0.03	0.01	0.008	-0.03	0.06	0.013	0.006	0.008	69848	87.5	45434	56.9
LZ03	-0.006	0.019	0.004	-0.037	0.014	0.007	-0.043	0.037	0.013	0.006	0.008	74649	93.5	58677	73.5
MASP	-0.035	0.036	0.007	-0.039	0.034	0.009	-0.06	0.045	0.017	0.008	0.011	68140	85.3	59708	74.8
ULP2	-0.03	0.025	0.007	-0.024	0.035	0.011	-0.06	0.032	0.02	0.007	0.012	63175	79.1	52096	65.2
Mean	-0.024	0.021	0.006	-0.03	0.021	0.008	-0.048	0.043	0.016	0.006	0.01	59599.4	74.6	48007.6	60.1
Min/Max	-0.035	0.036	0.007	-0.042	0.035	0.011	-0.06	0.06	0.02	0.008	0.012	74649	93.5	60934	76.3

fixing statistic for network N31T

fixing percentage of	all GNSS	G	R	E	C
using threshold 0.3	81.0	87.8	64.8	79.0	82.4
considering satellites with dual-frequency fixed	74.1	81.3	58.6	74.3	77.4
considering all signals separately	75.0	81.3	58.6	74.9	77.4