

summary for network NET5

timeperiod chosen: from 2026-04-23-00:00:00 until 2026-04-23-23:59:58

average update rate (durations larger than 15 seconds considered as observation gap): 2.0 seconds

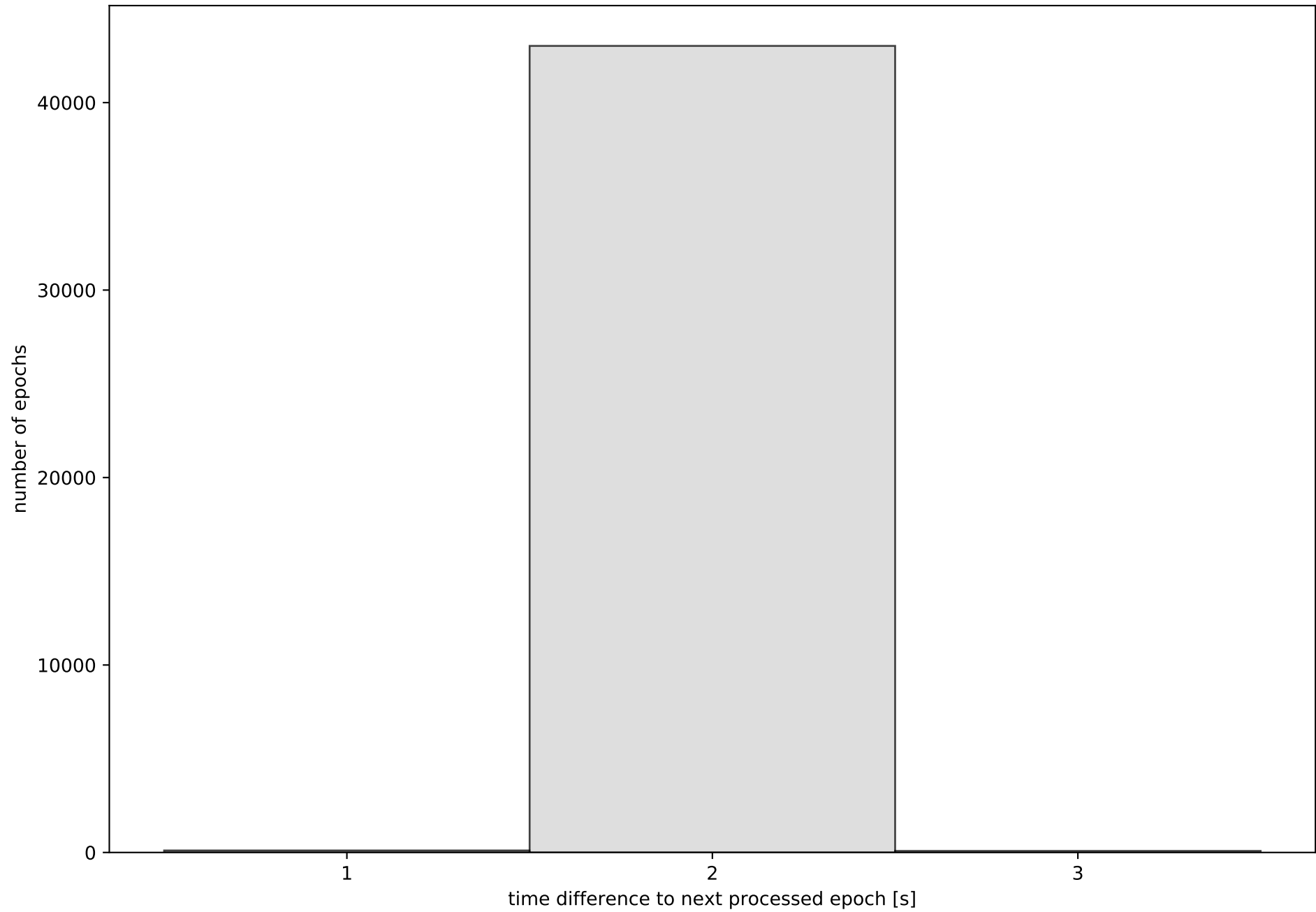
average fixing percentage with threshold set to 0.3: 93.7 percent

stations available: 13 of 14

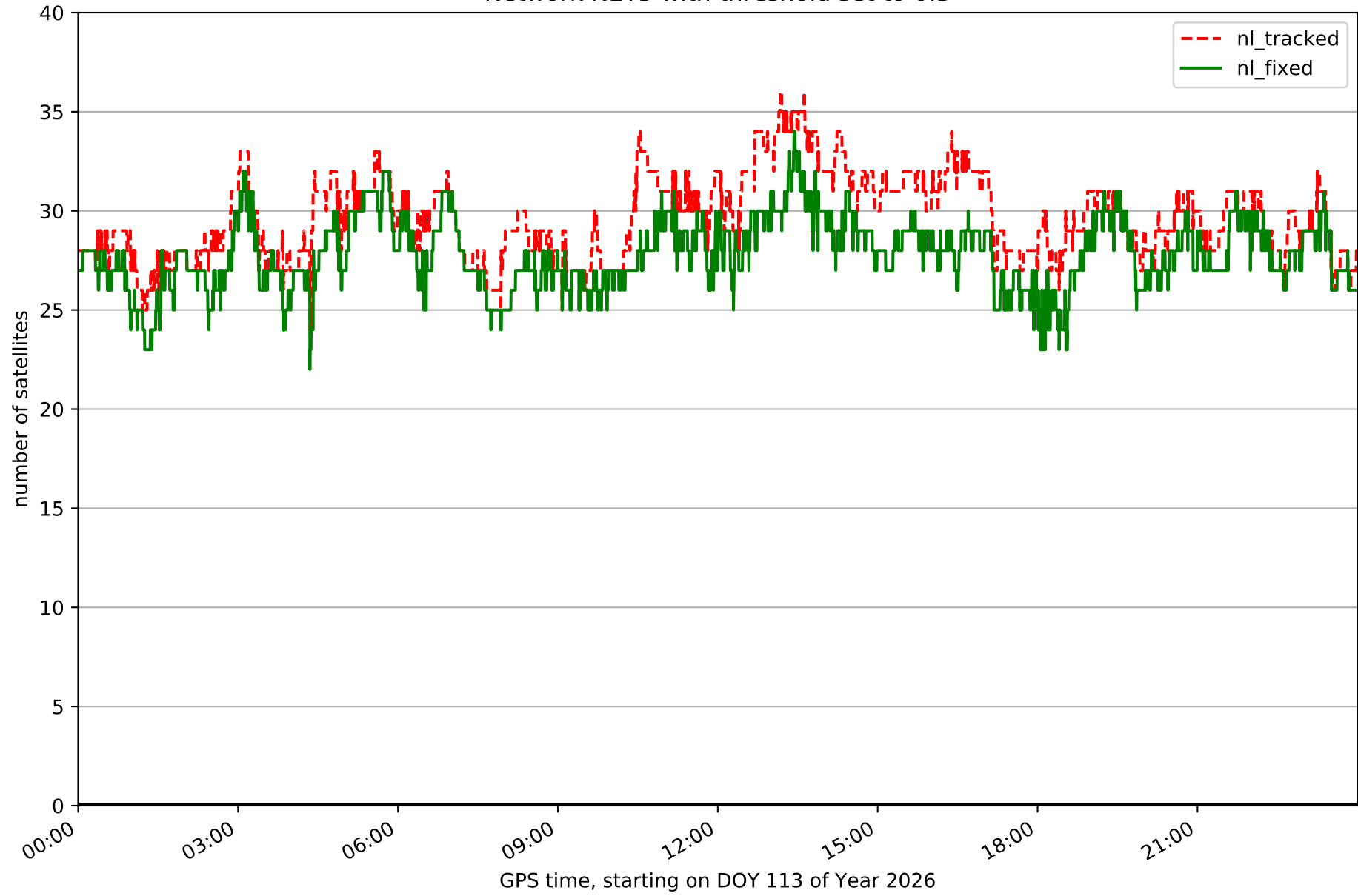
station information:

station ARDU:	antenna: LEIAR20 LEIM	receiver: LEICA GR50	height: 844.466
station BUOS:	antenna: TRM59900.00 SCIS	receiver: TRIMBLE NETR9	height: 963.896
station BURG:	antenna: GPPNULLANTENNA NONE	receiver: LEICA GR50	height: 939.518
station CALH:	antenna: GPPNULLANTENNA NONE	receiver: LEICA GR50	height: 411.39
station CAS0:	antenna: GPPNULLANTENNA NONE	receiver: LEICA GR30	height: 564.198
station CERV:	antenna: GPPNULLANTENNA NONE	receiver: LEICA GR50	height: 723.317
station ELCI:	antenna: GPPNULLANTENNA NONE	receiver: LEICA GR30	height: 525.694
station LOSA:	antenna: GPPNULLANTENNA NONE	receiver: LEICA GR50	height: 510.244
station QINT:	antenna: TRM59900.00 SCIS	receiver: TRIMBLE NETR9	height: 1191.829
station RIO1:	antenna: LEIAR25.R4 LEIT	receiver: LEICA GR50	height: 450.426
station SANR:	antenna: GPPNULLANTENNA NONE	receiver: LEICA GR50	height: 361.499
station SORI:	antenna: GPPNULLANTENNA NONE	receiver: LEICA GR50	height: 1135.68
station SROM:	antenna: GPPNULLANTENNA NONE	receiver: LEICA GR50	height: 1150.486
station VTRO:	antenna: GPPNULLANTENNA NONE	receiver: LEICA GR50	height: 1626.177

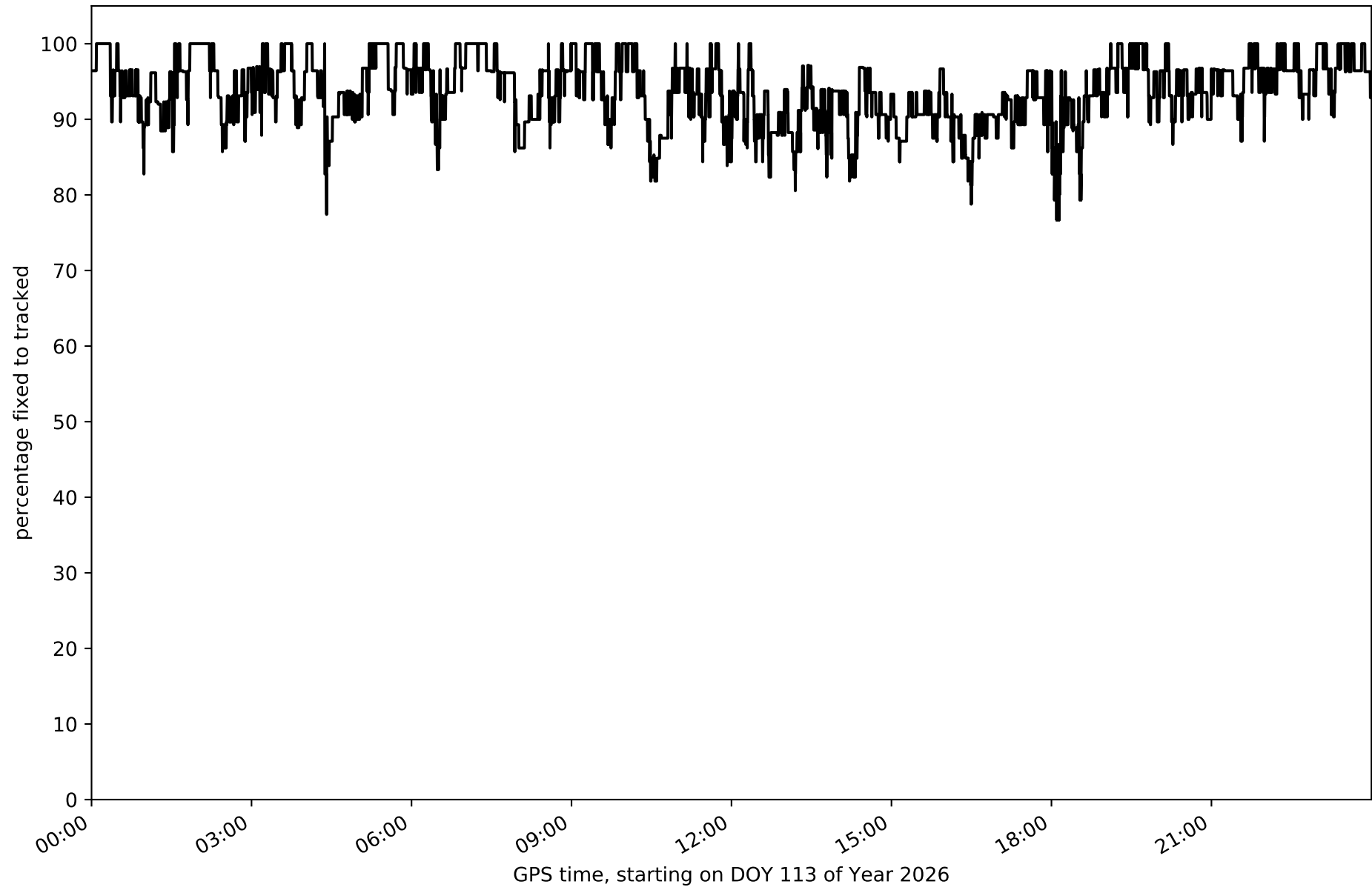
Histogram of the processing rate in network NET5 (durations larger 15 seconds neglected)



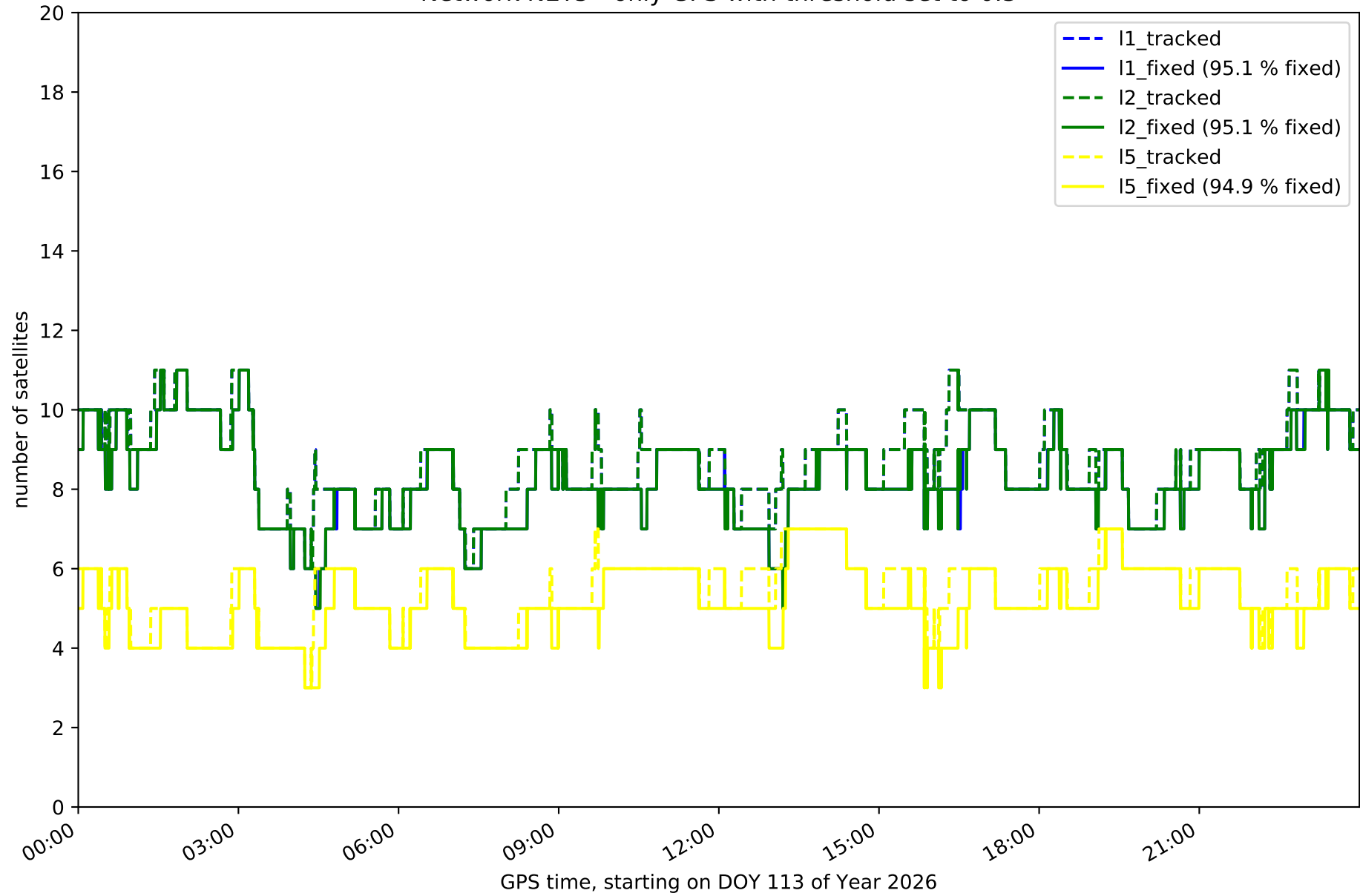
Network NET5 with threshold set to 0.3



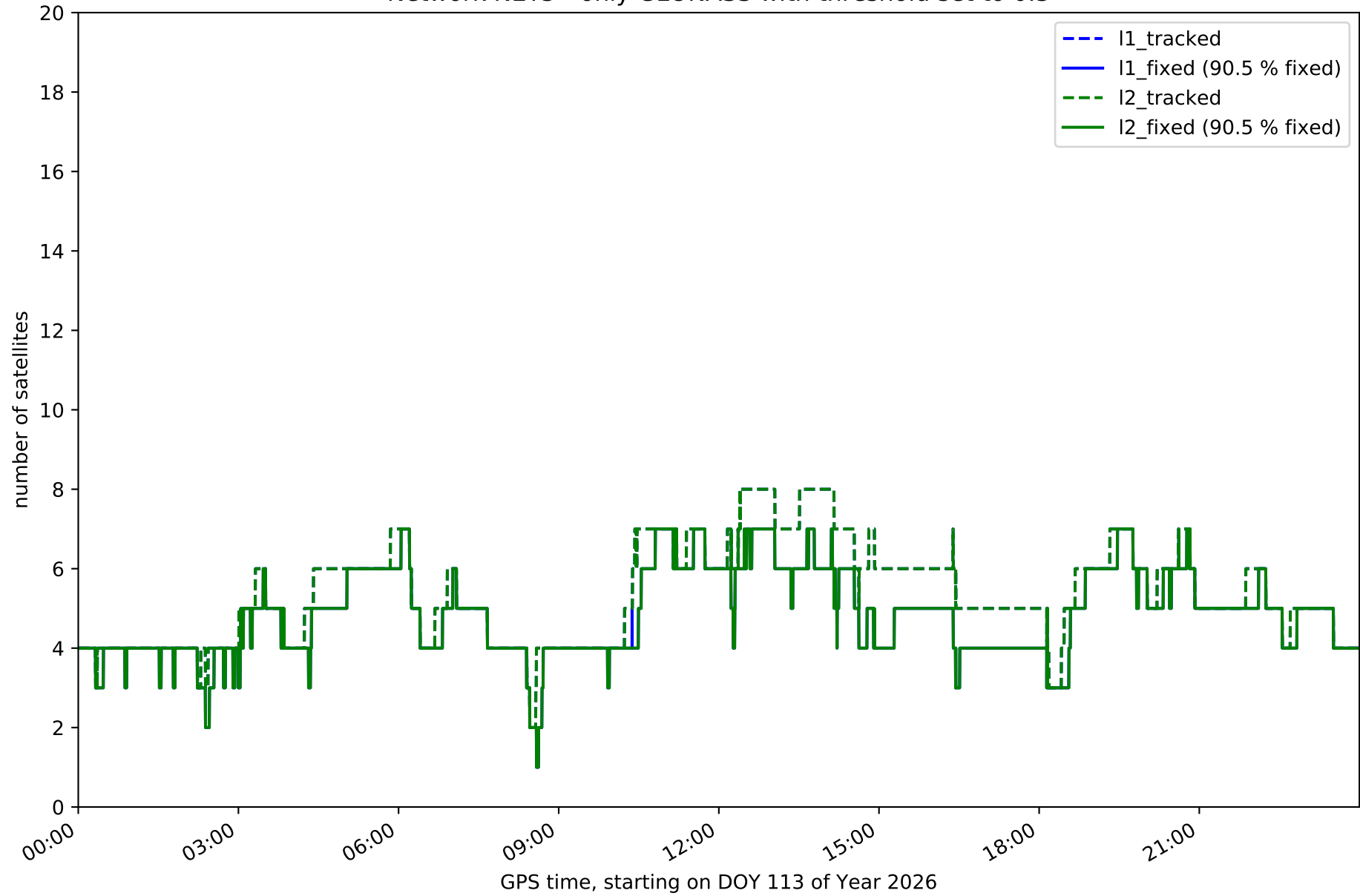
Fixing percentage of satellites in network NET5 with threshold set to 0.3



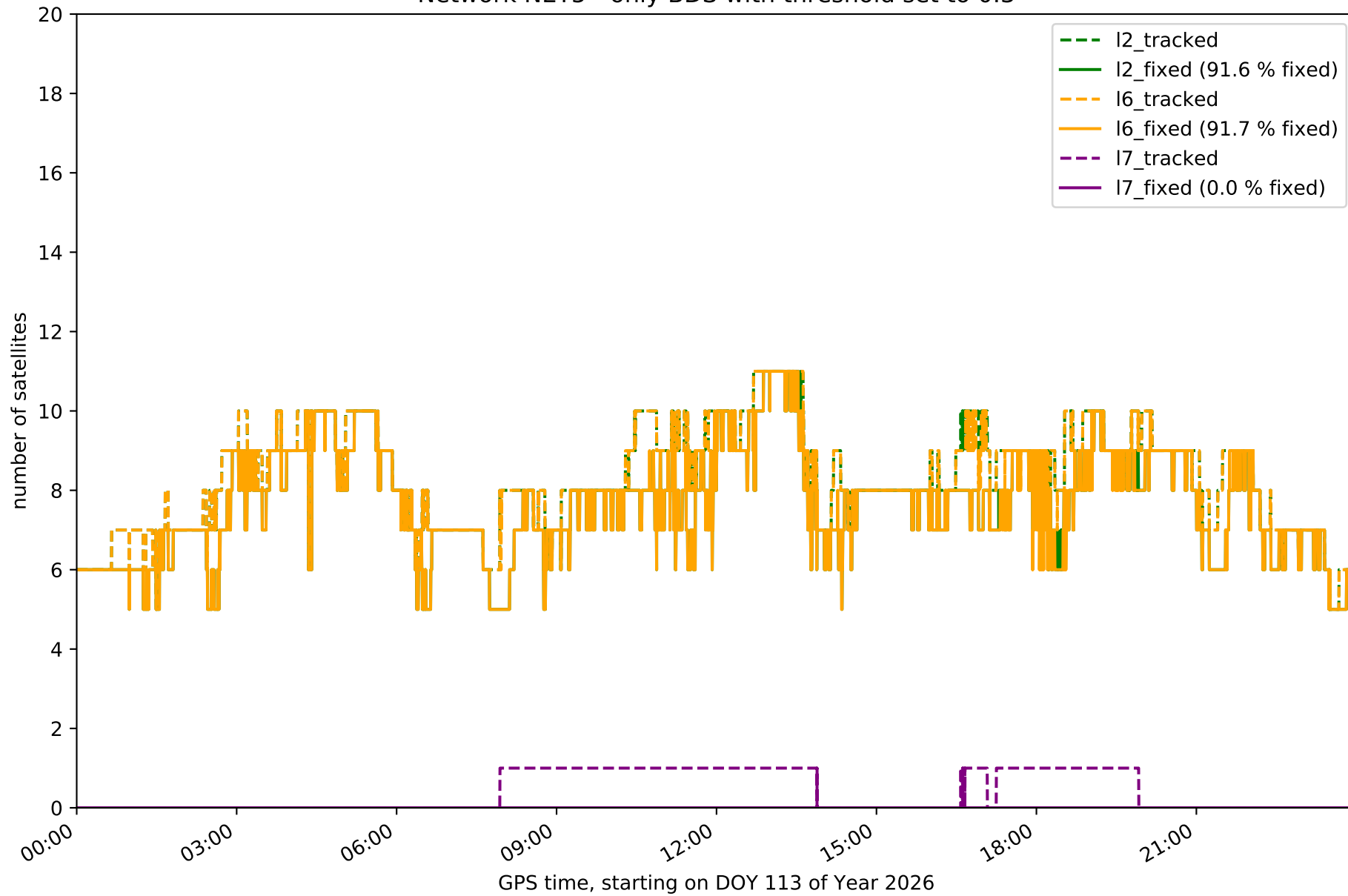
Network NET5 - only GPS with threshold set to 0.3



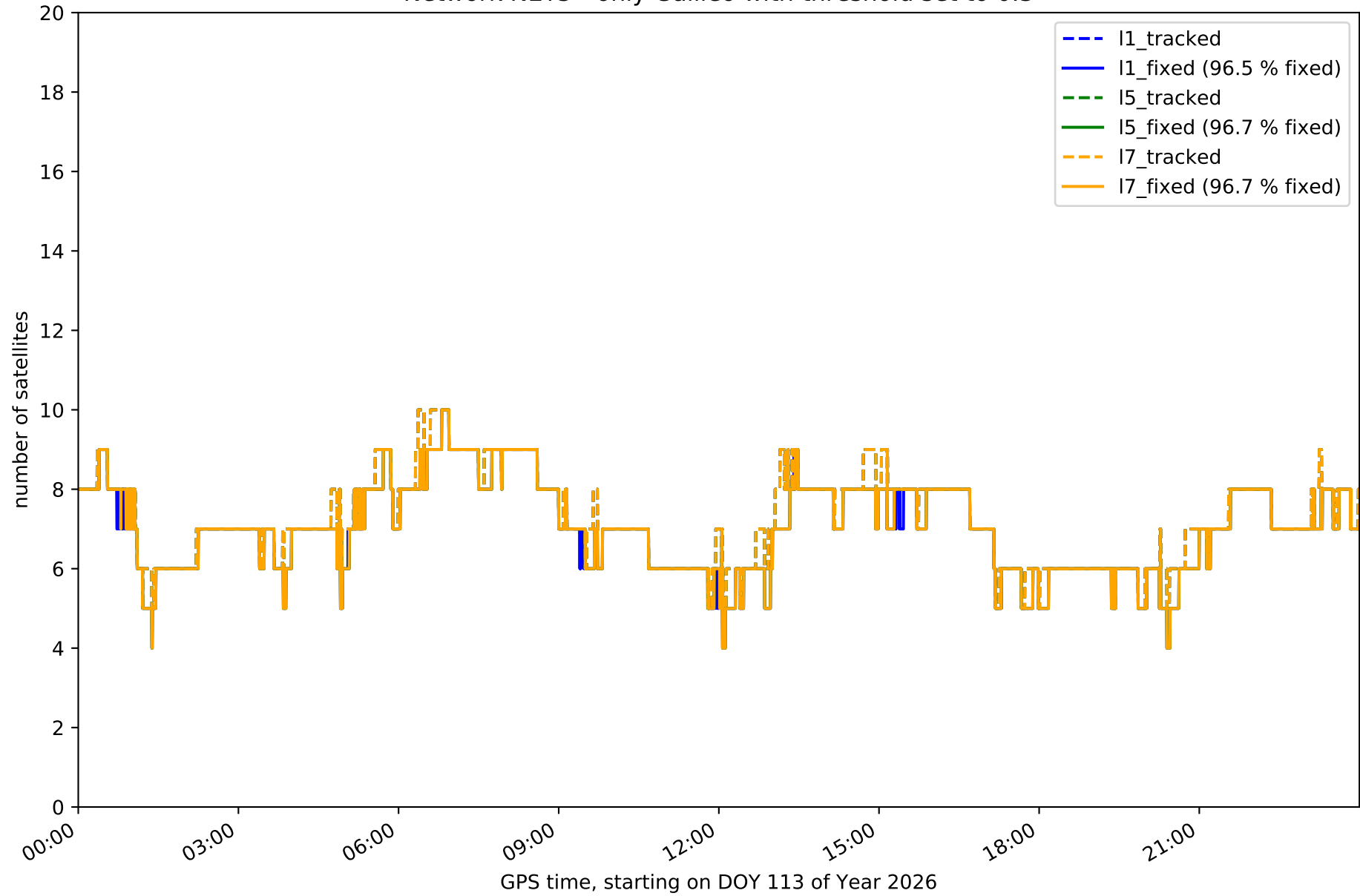
Network NET5 - only GLONASS with threshold set to 0.3



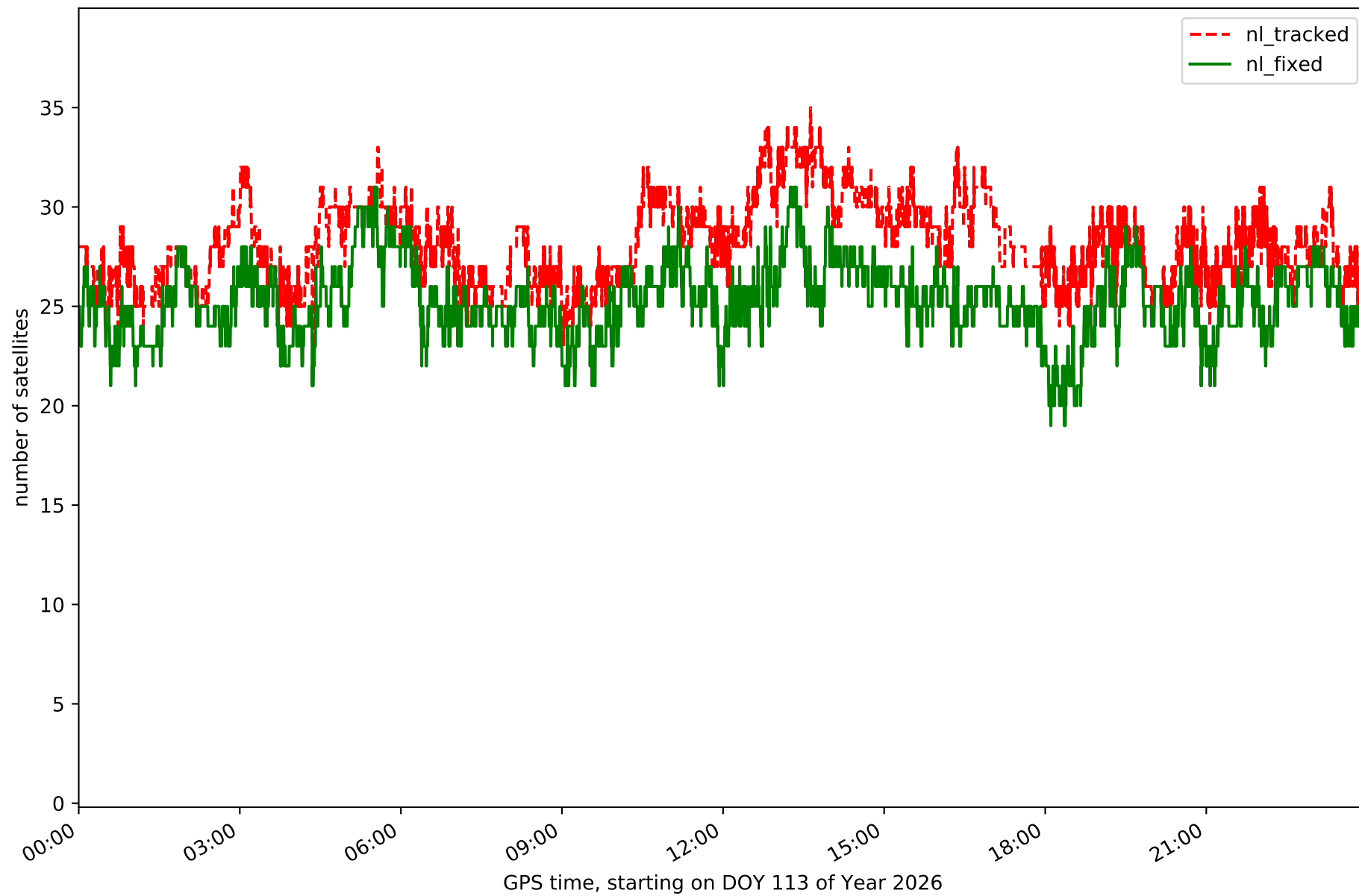
Network NET5 - only BDS with threshold set to 0.3



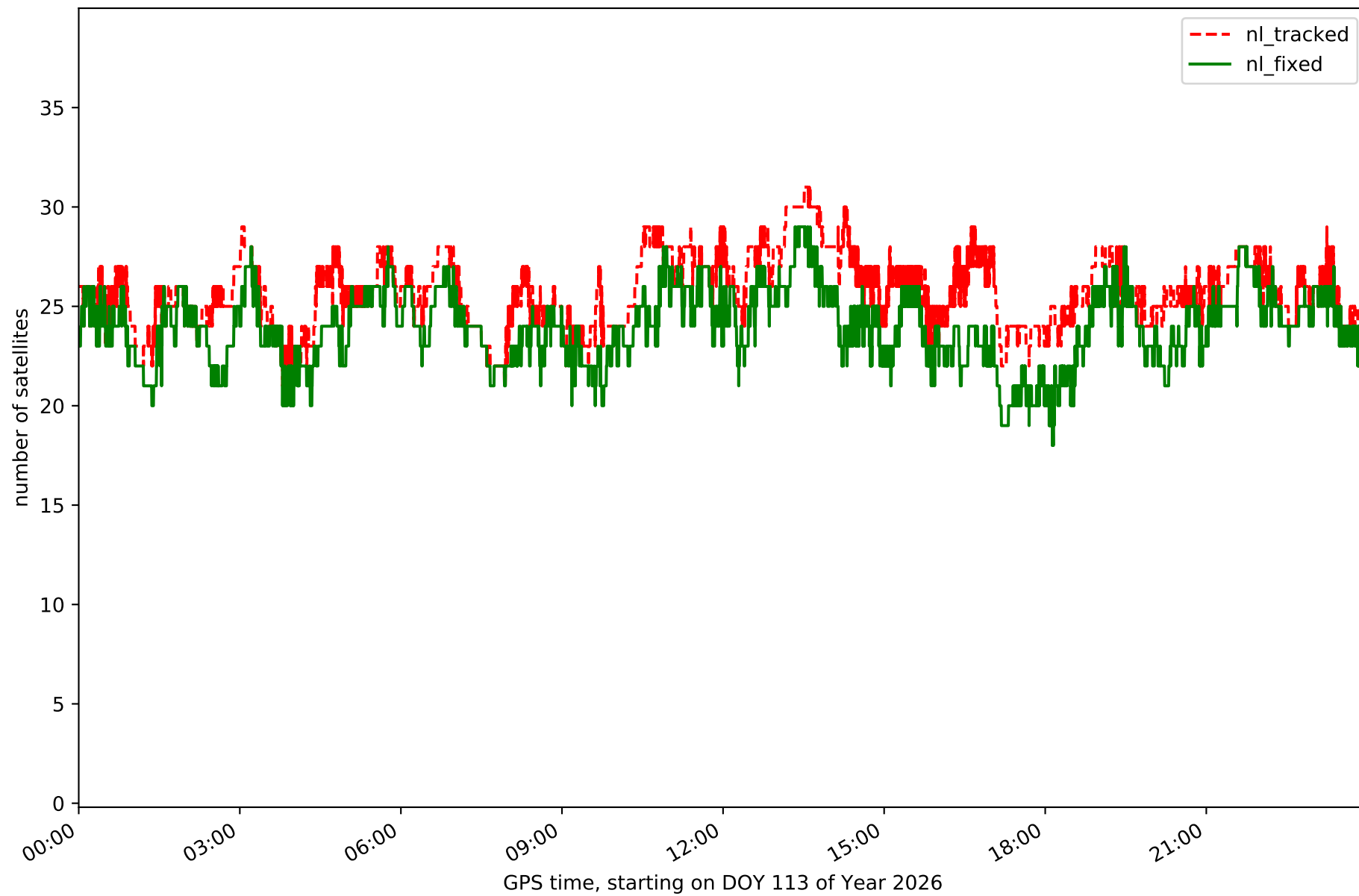
Network NET5 - only Galileo with threshold set to 0.3



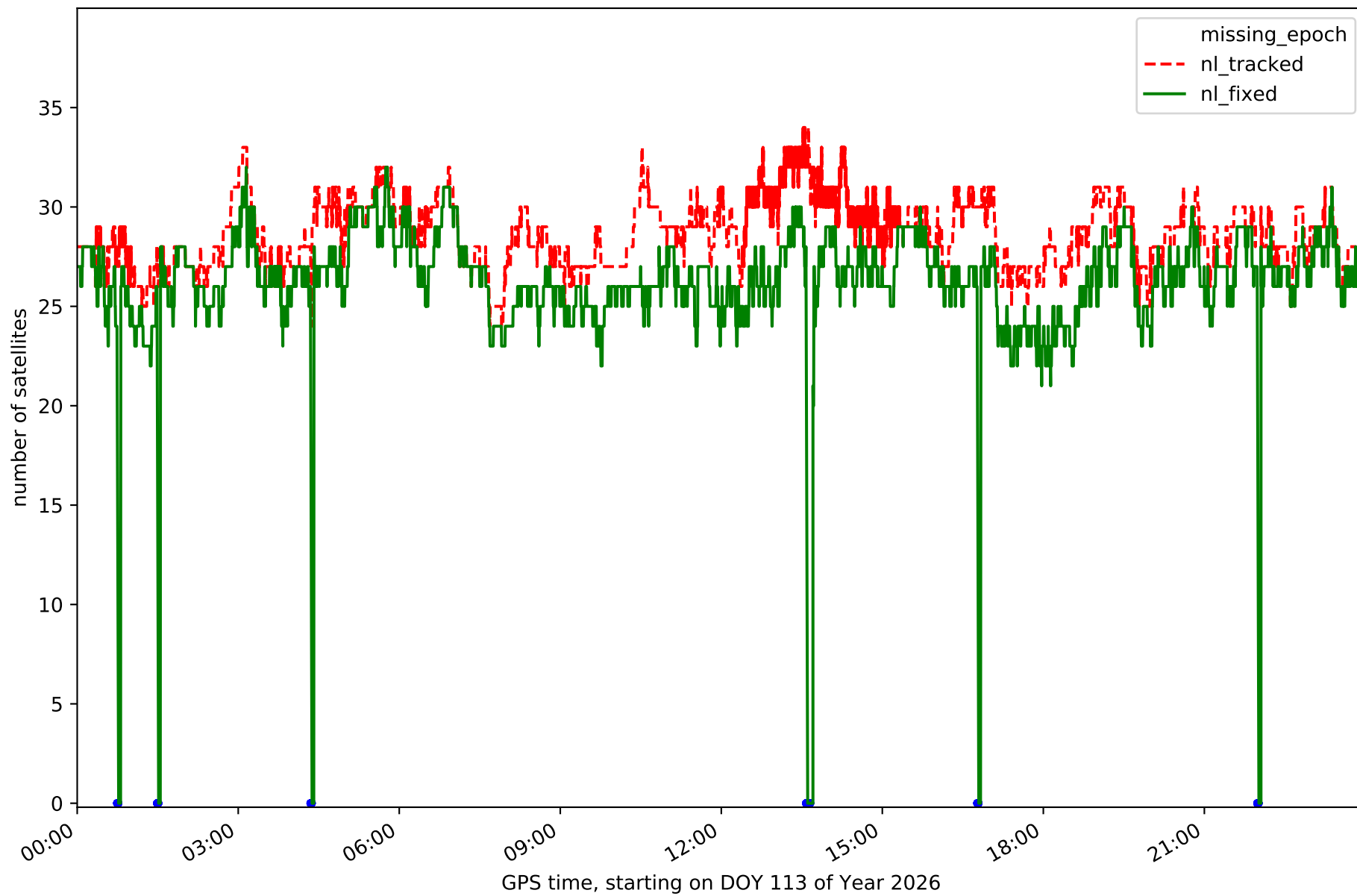
Station ARDU in network NET5



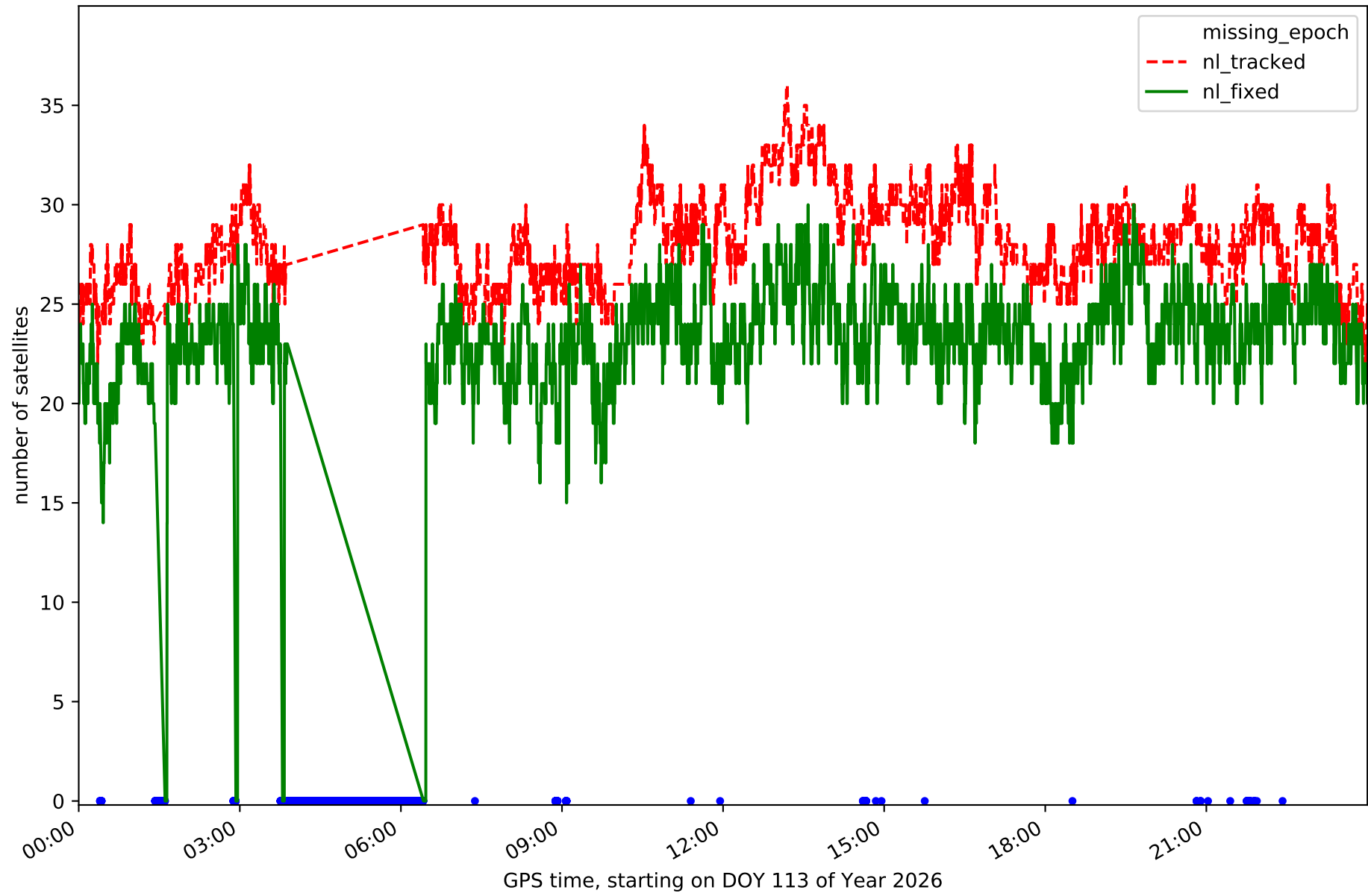
Station BUOS in network NET5



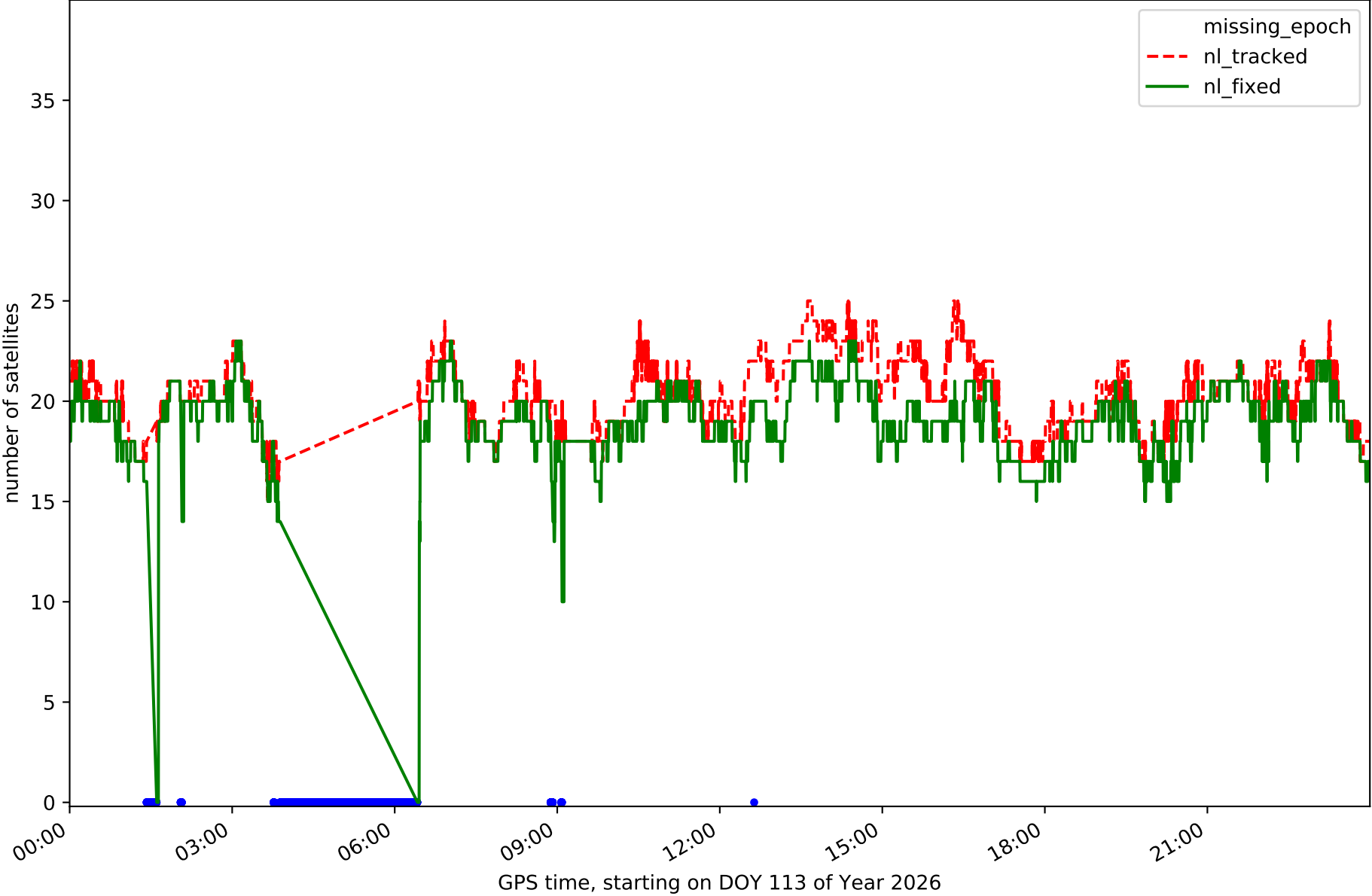
Station BURG in network NET5



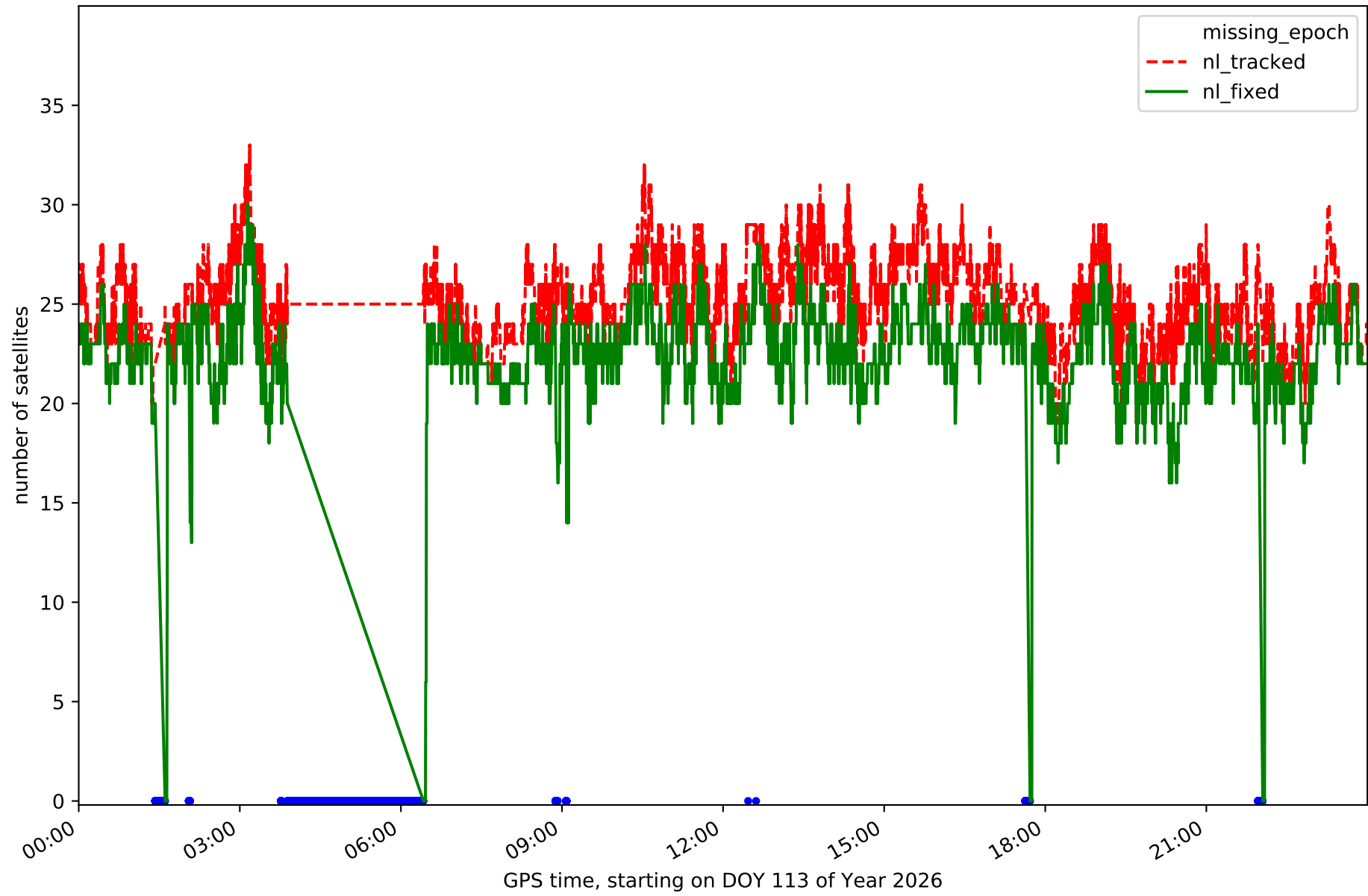
Station CALH in network NET5



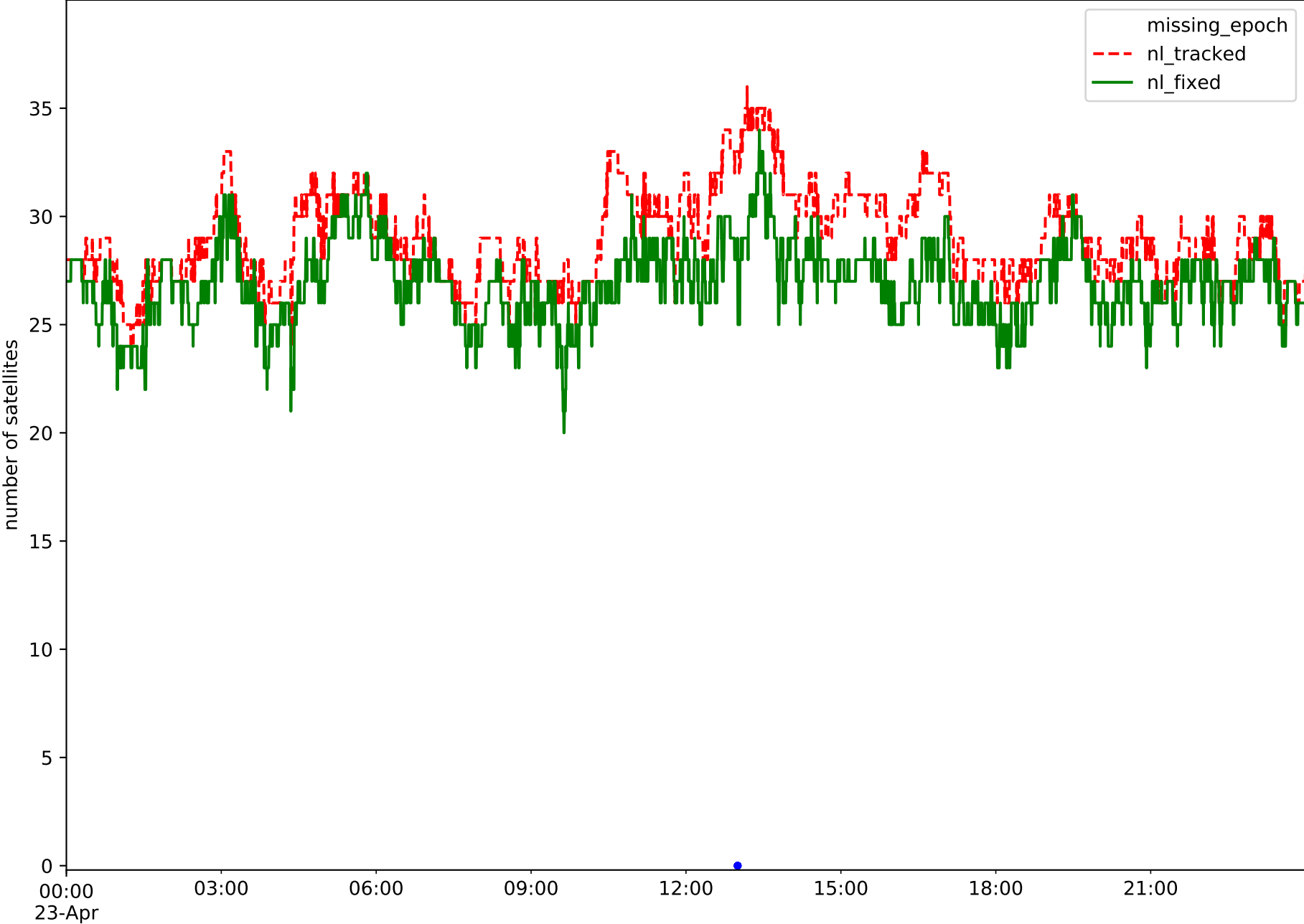
Station CAS0 in network NET5



Station CERV in network NET5

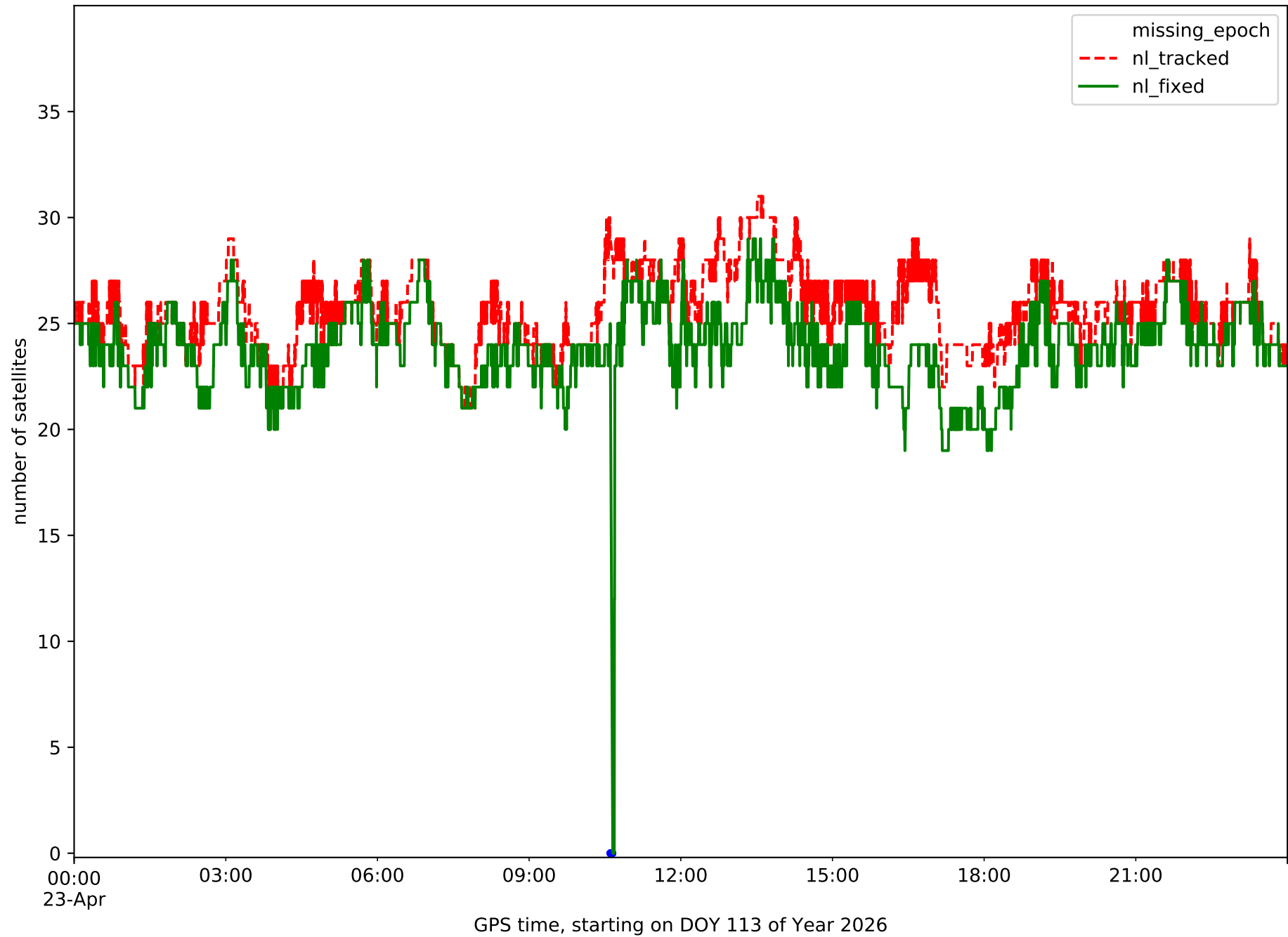


Station LOSA in network NET5

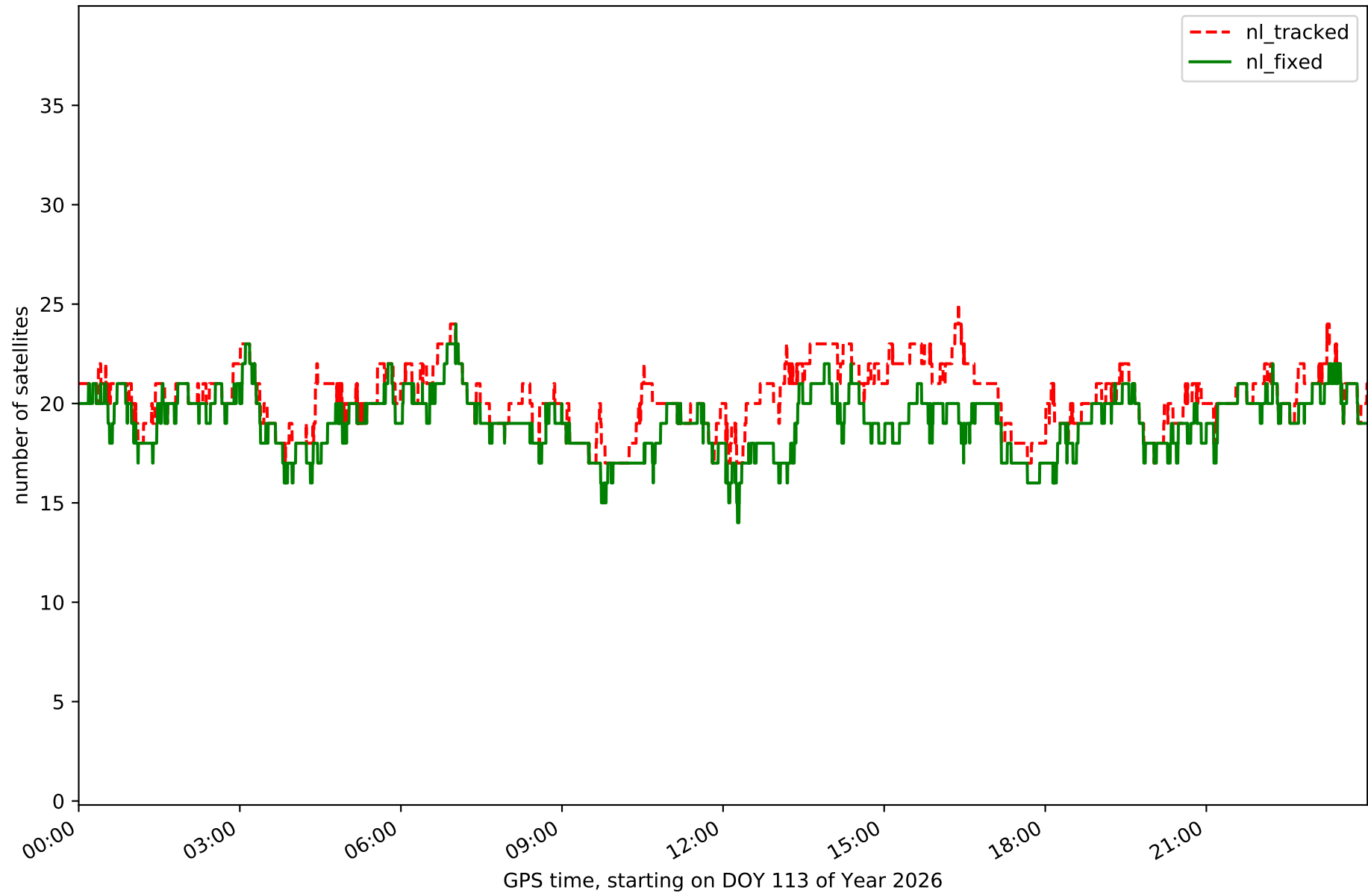


GPS time, starting on DOY 113 of Year 2026

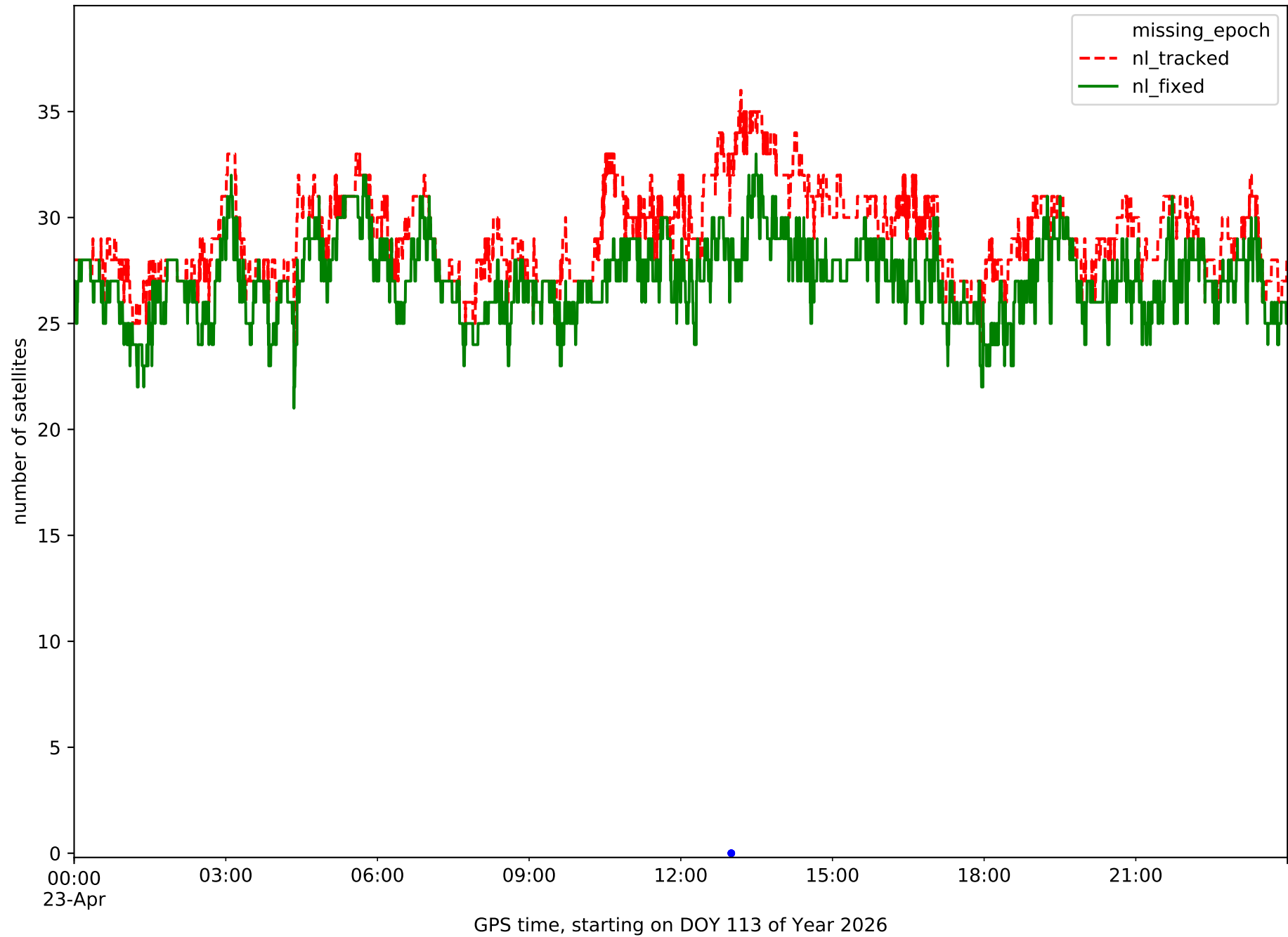
Station QINT in network NET5



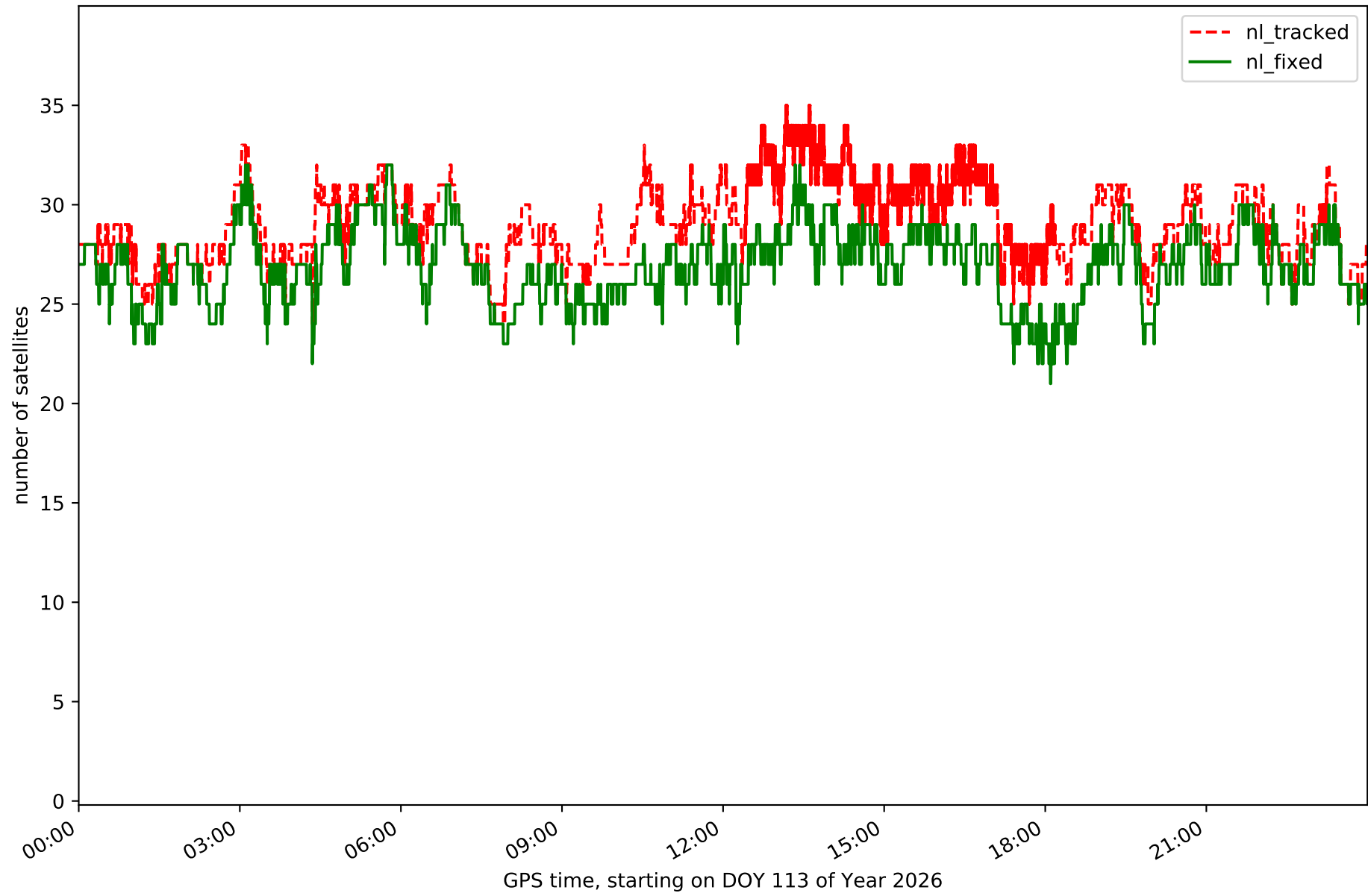
Station RIO1 in network NET5



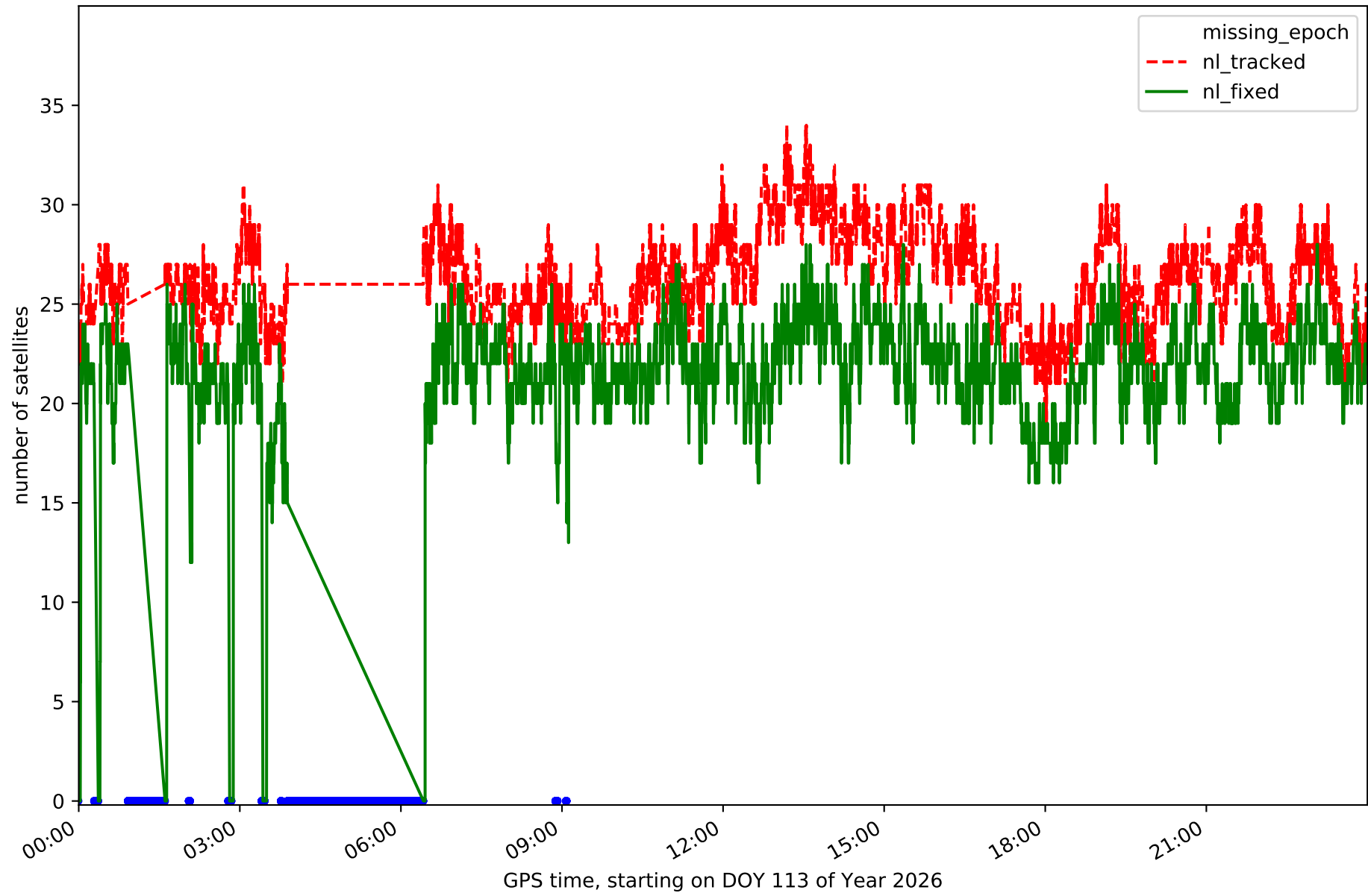
Station SANR in network NET5



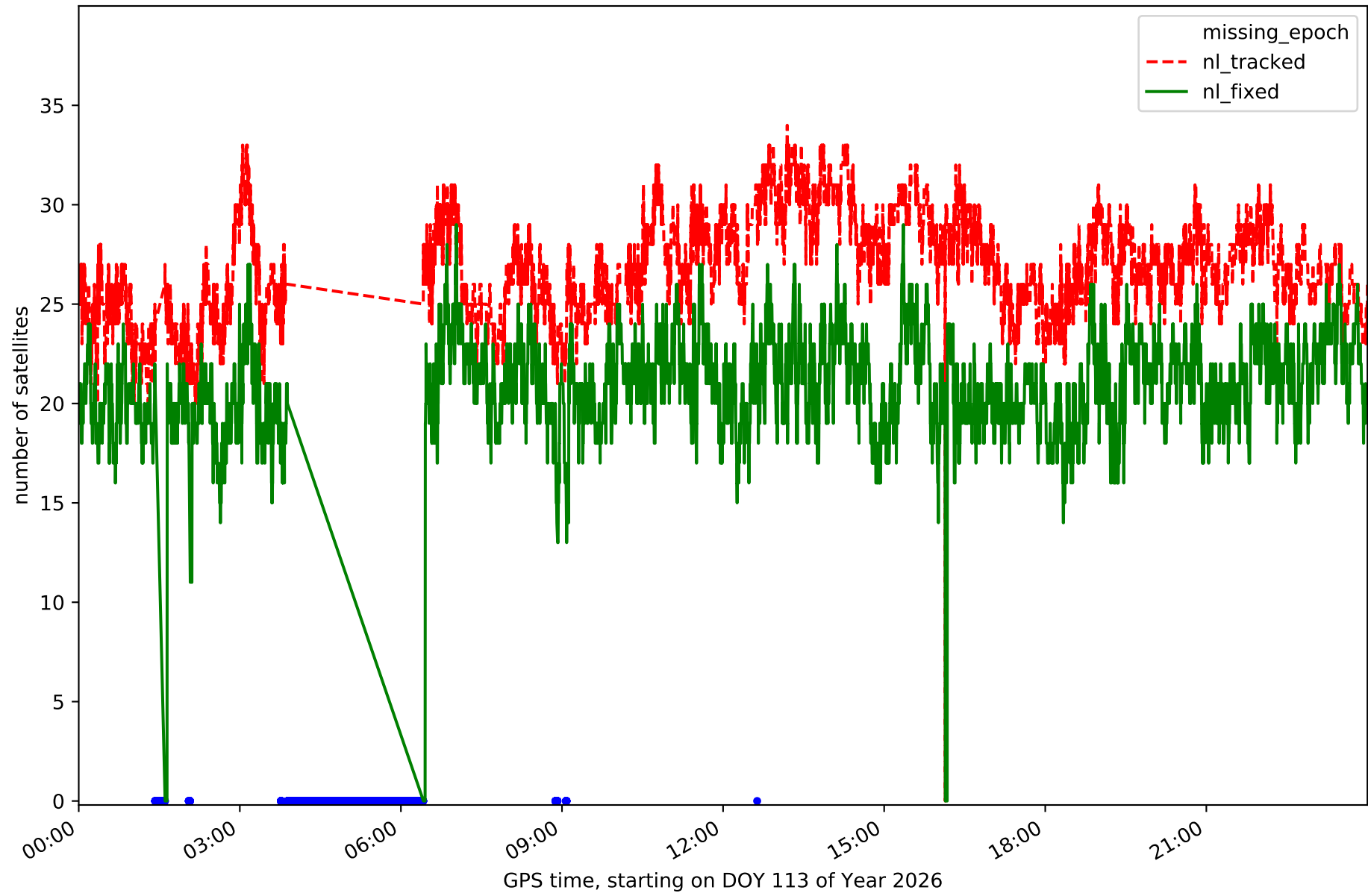
Station SORI in network NET5



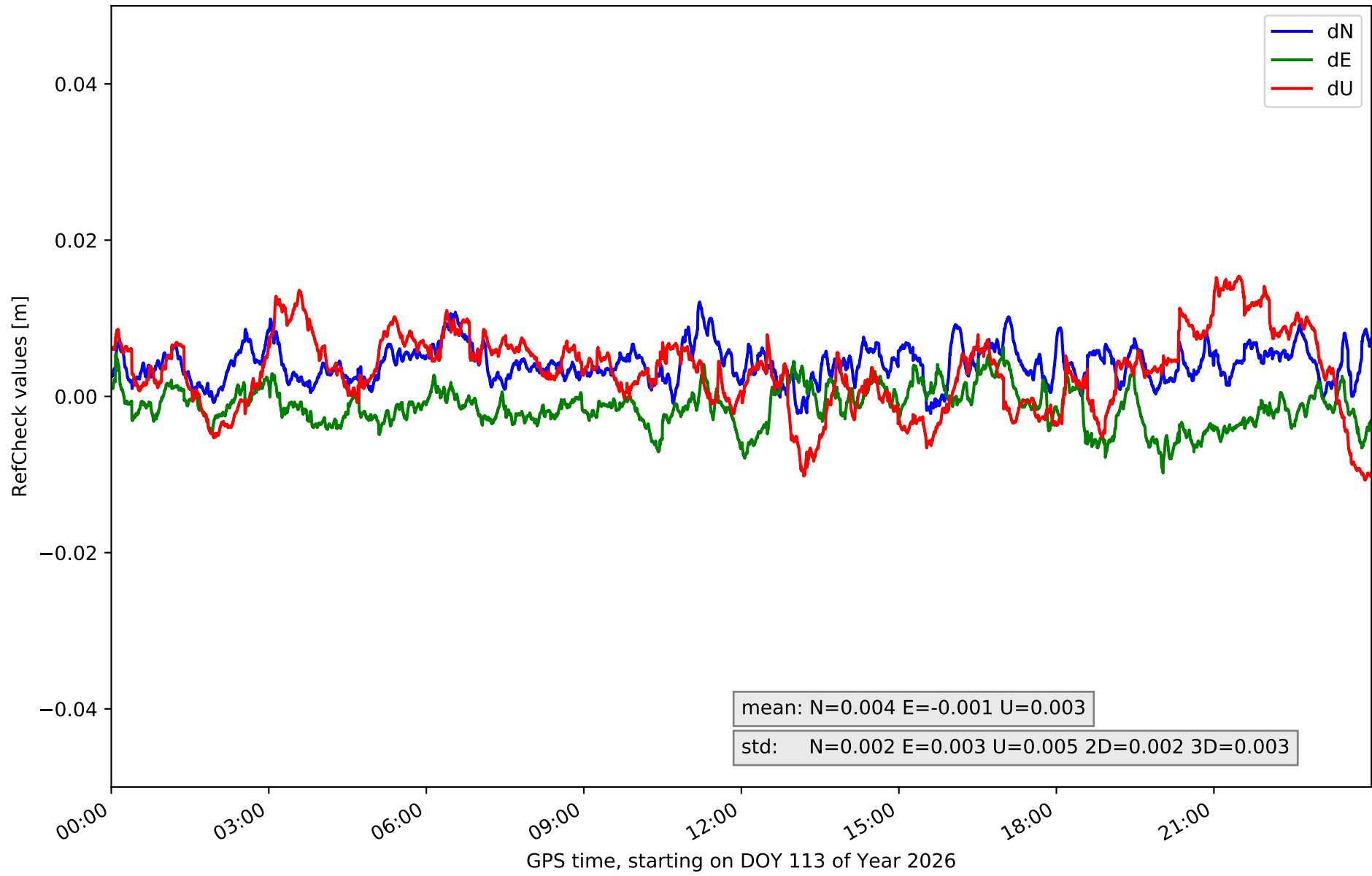
Station SROM in network NET5



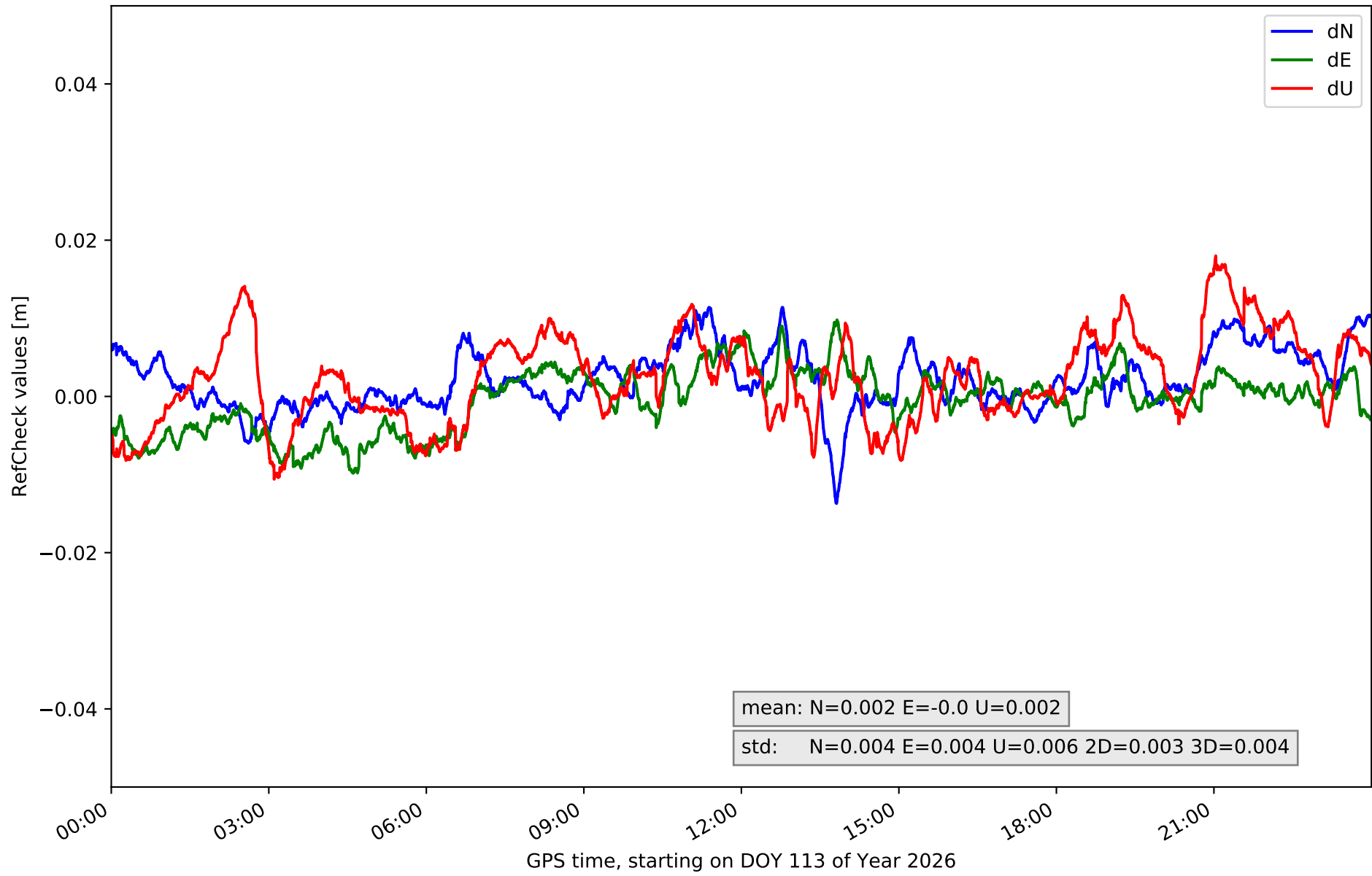
Station VTRO in network NET5



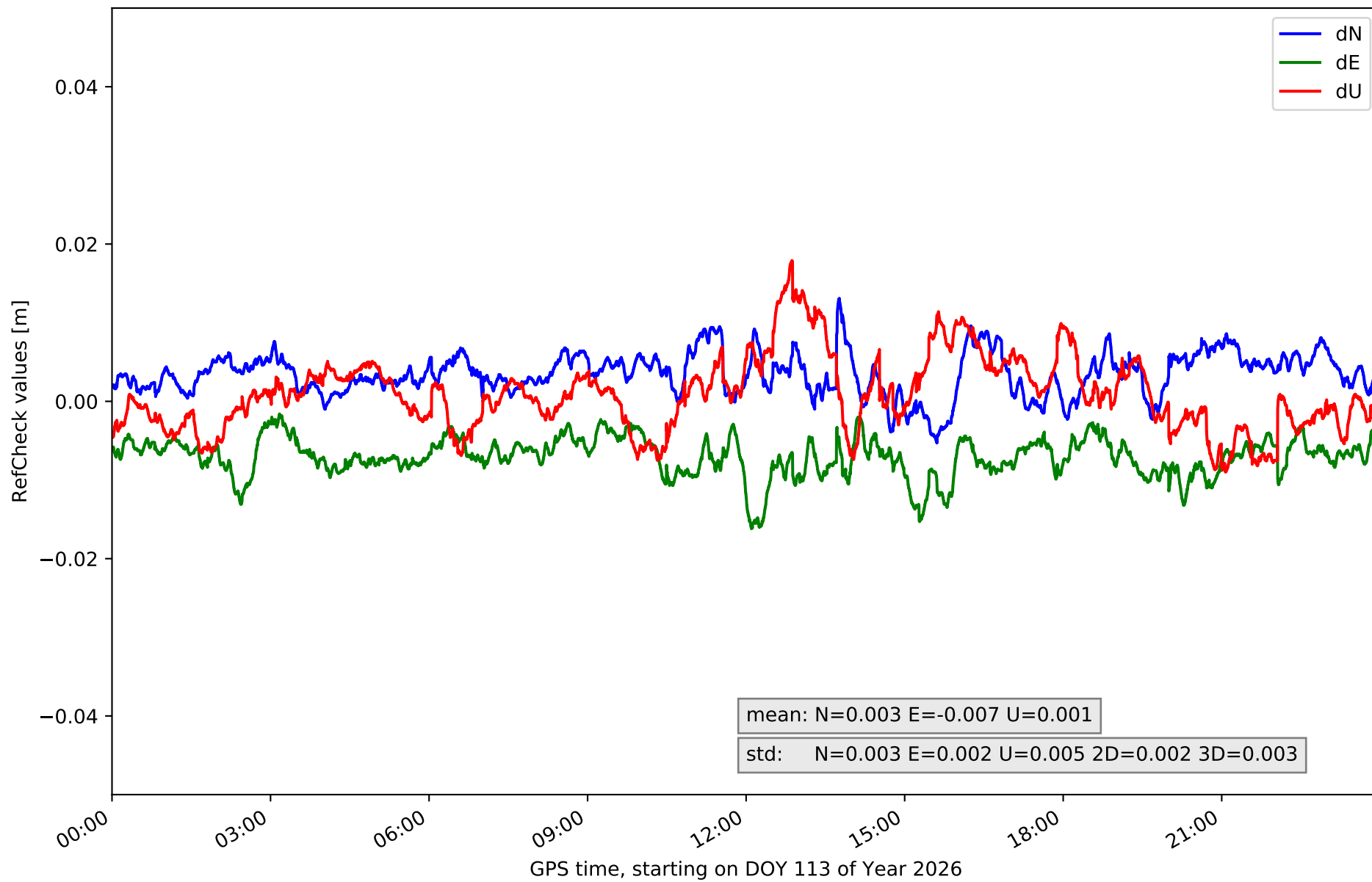
RefCheck for station ARDU in network NET5



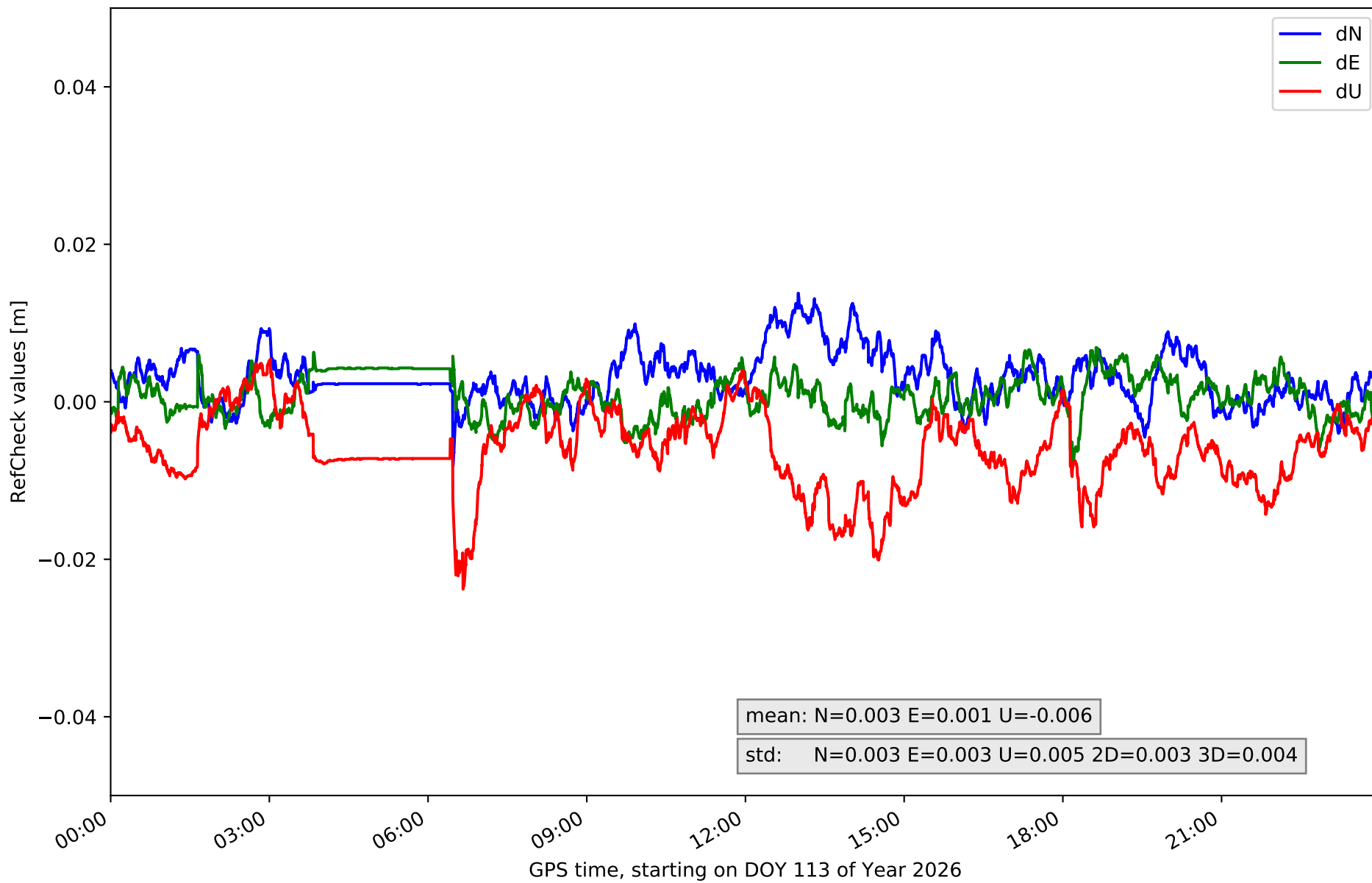
RefCheck for station BUOS in network NET5



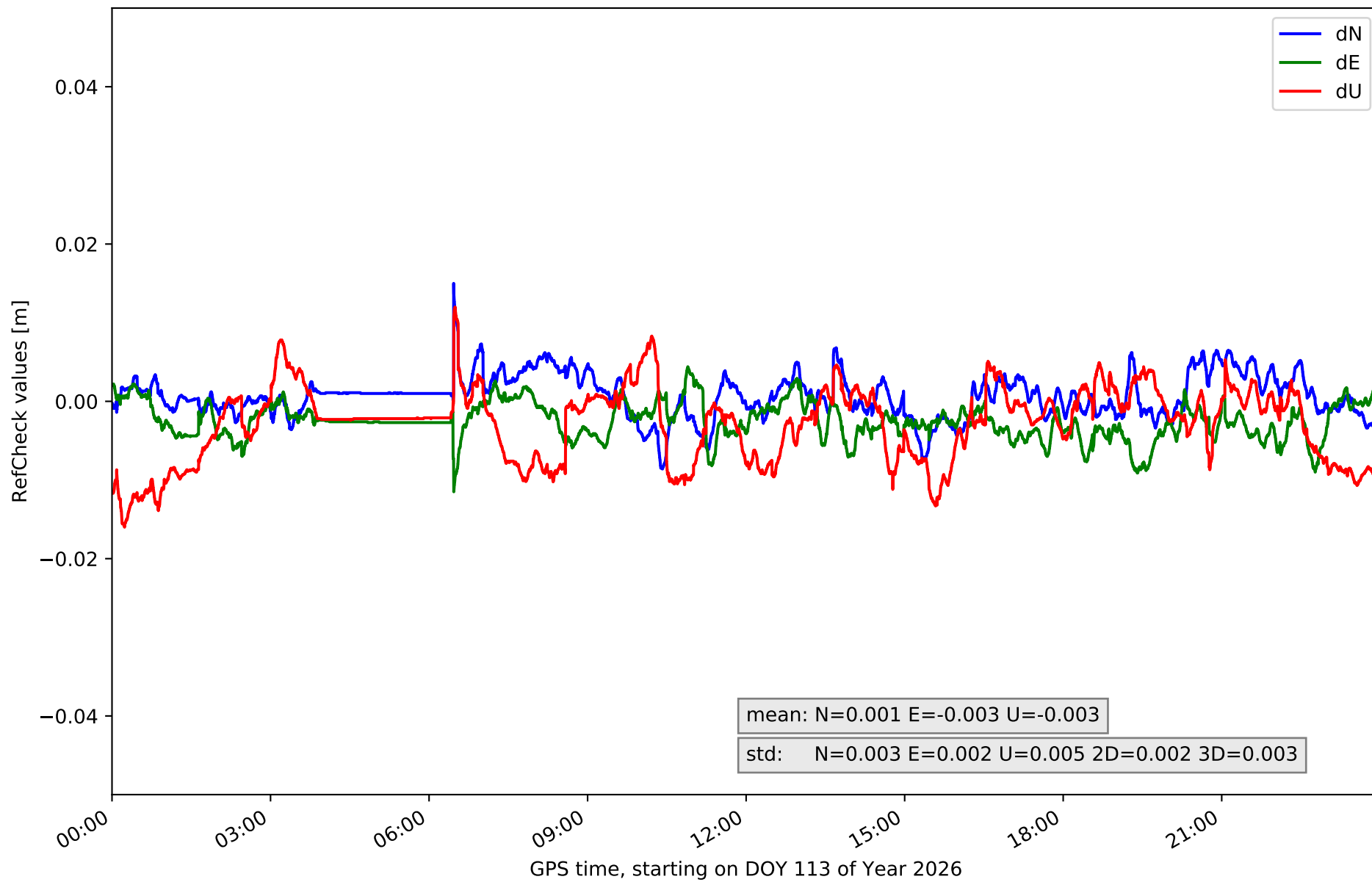
RefCheck for station BURG in network NET5



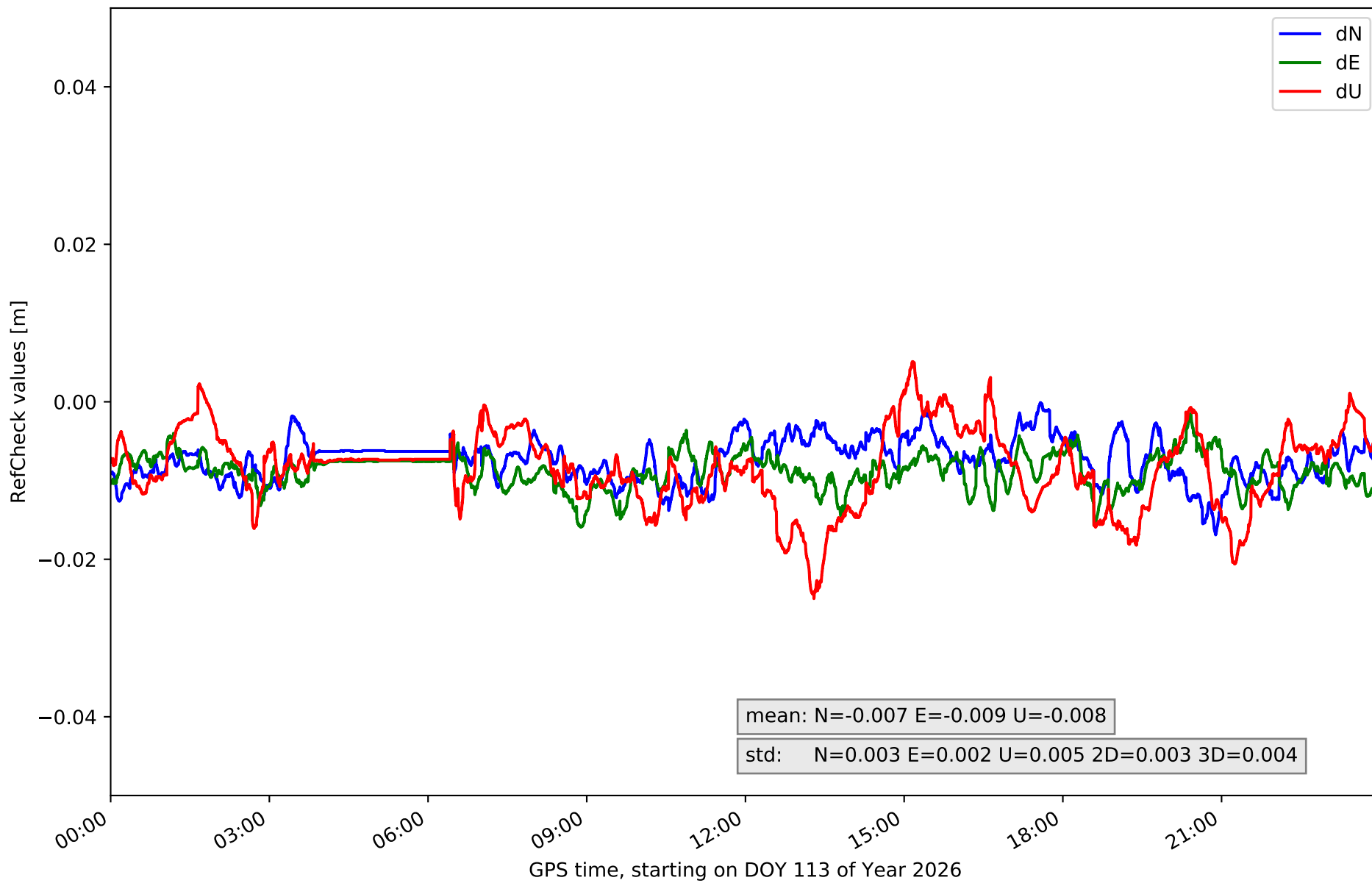
RefCheck for station CALH in network NET5



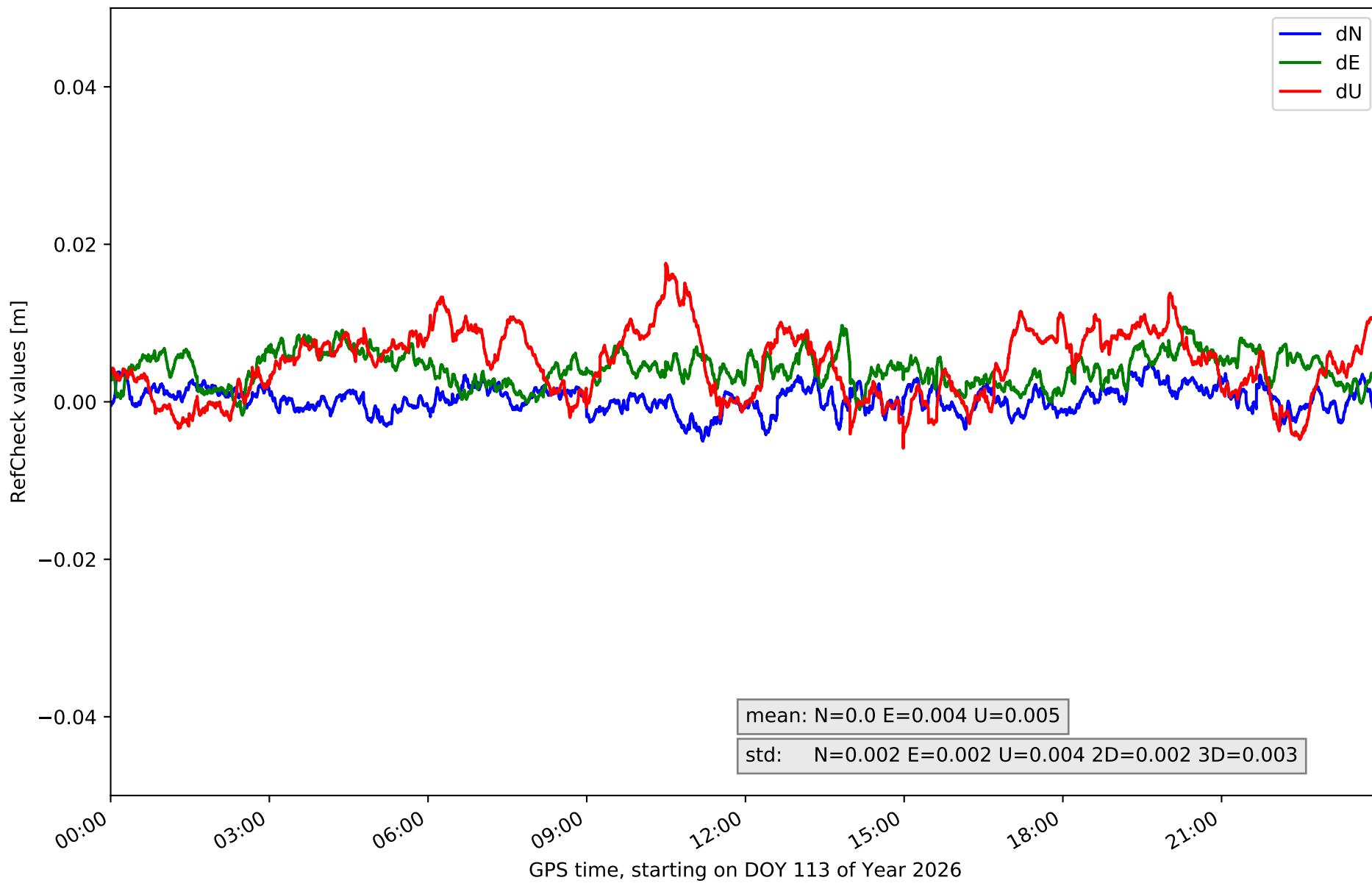
RefCheck for station CAS0 in network NET5



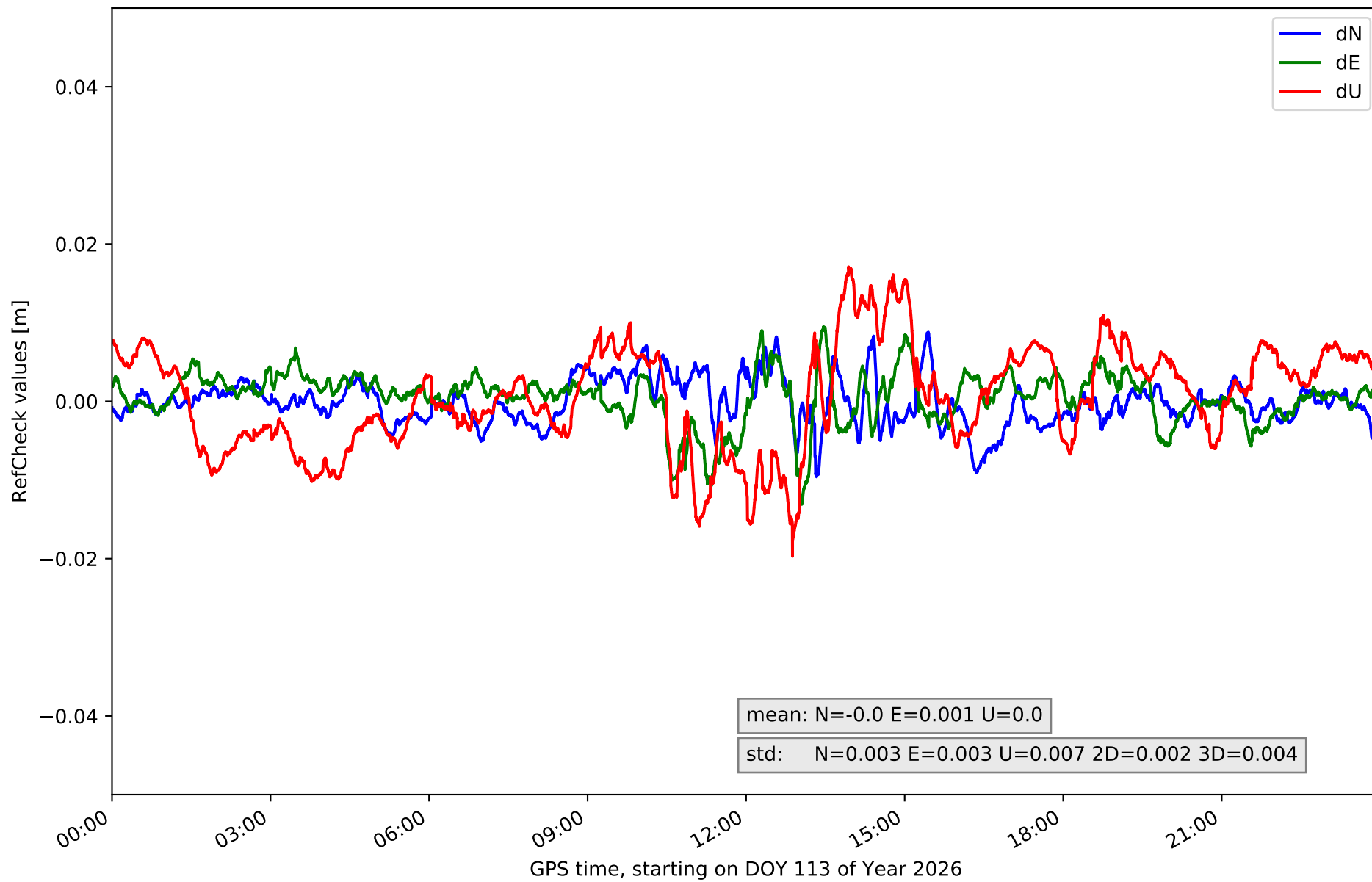
RefCheck for station CERV in network NET5



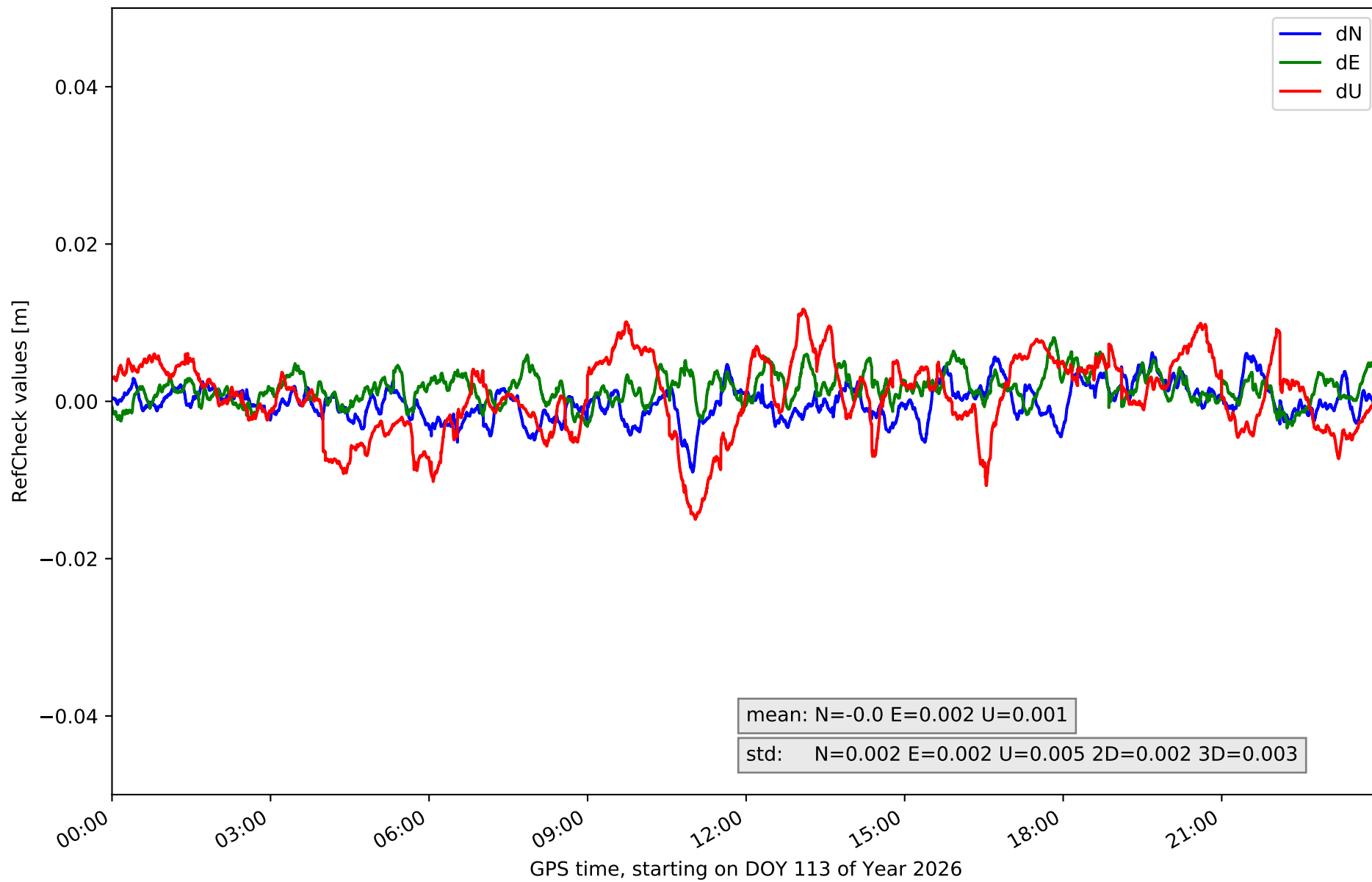
RefCheck for station LOSA in network NET5



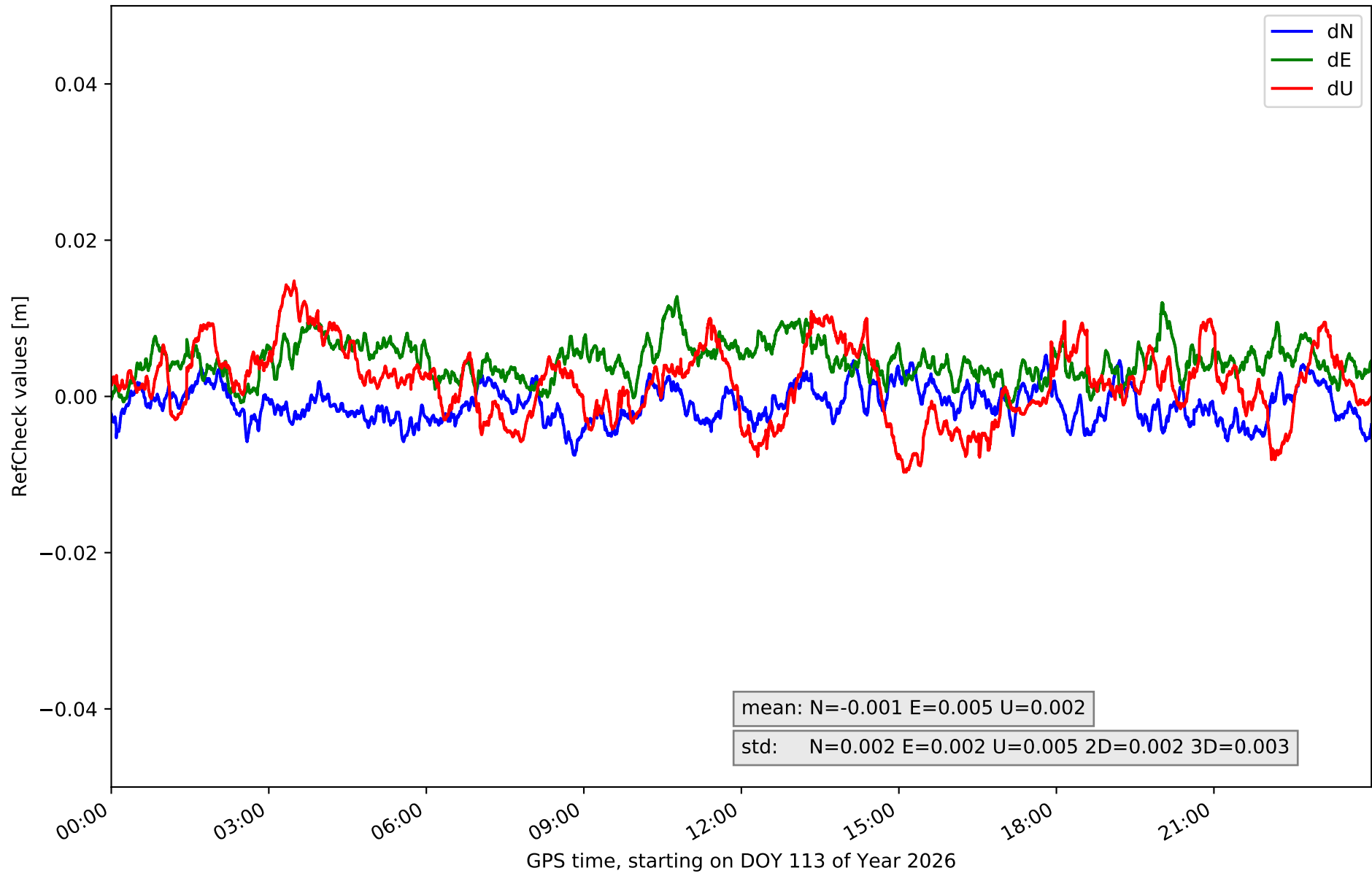
RefCheck for station QINT in network NET5



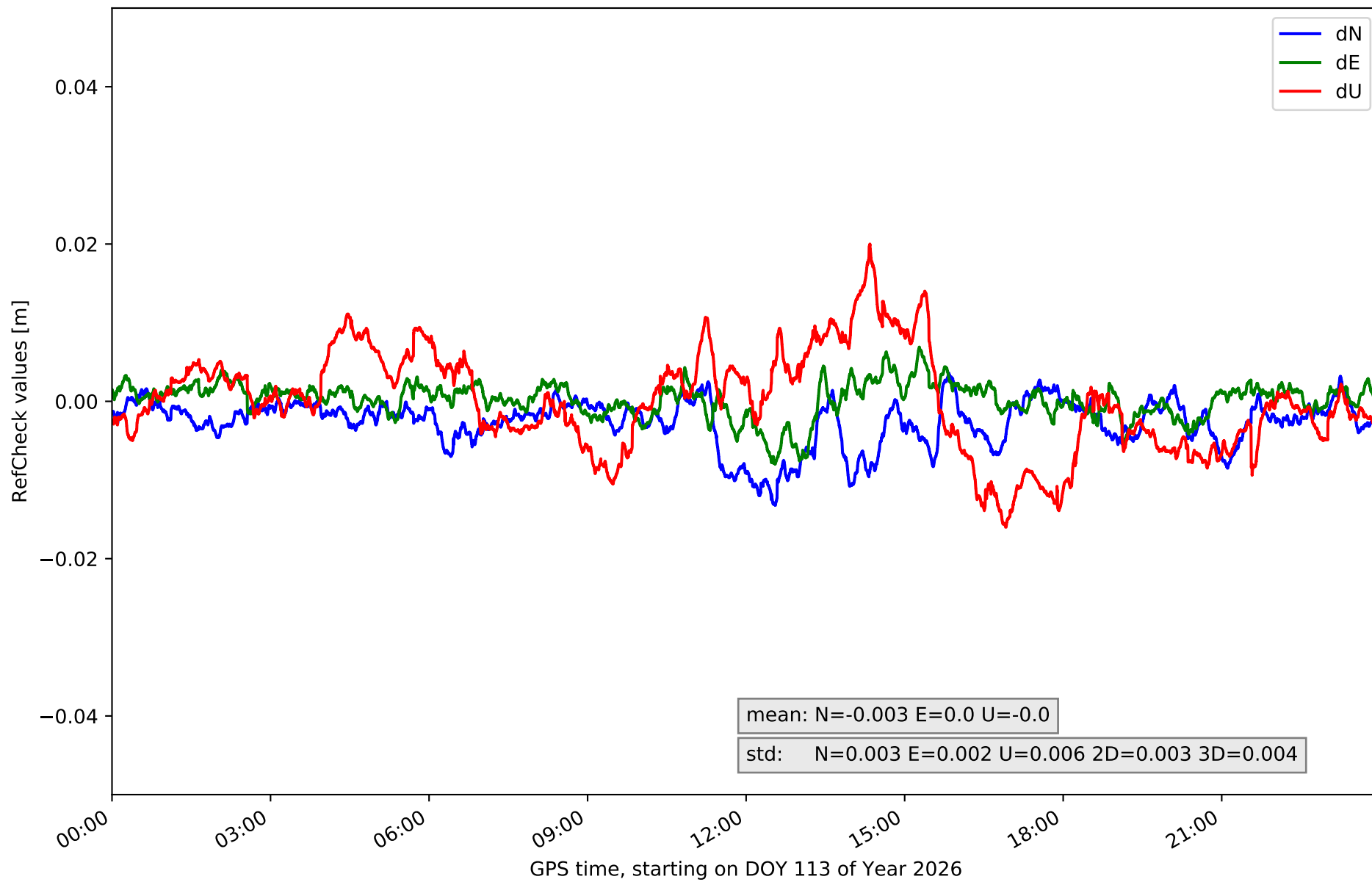
RefCheck for station RIO1 in network NET5



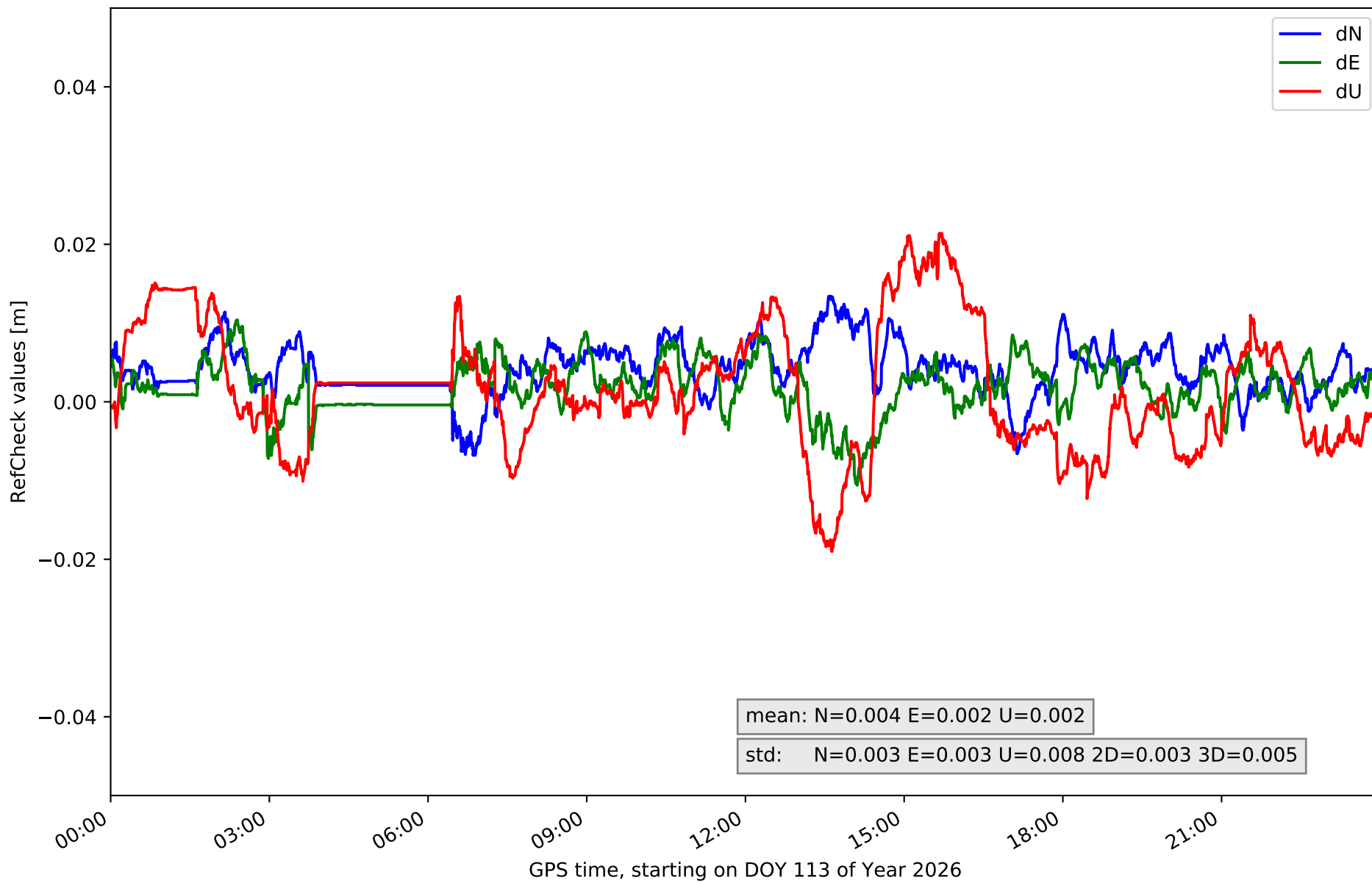
RefCheck for station SANR in network NET5



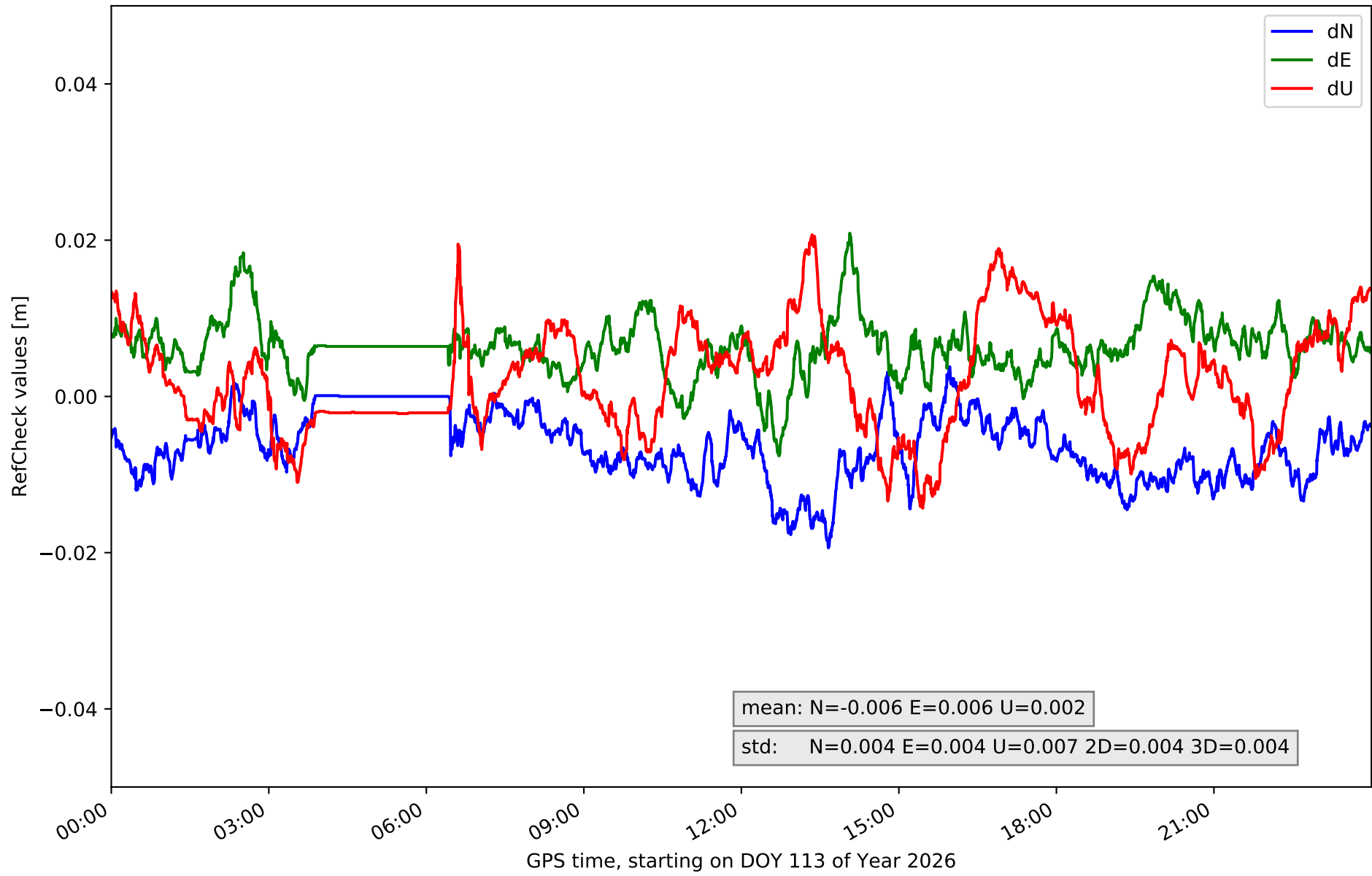
RefCheck for station SORI in network NET5



RefCheck for station SR0M in network NET5



RefCheck for station VTRO in network NET5



RefCheck values for network NET5

Station	Nmin	Nmax	Nstd	Emin	Emax	Estd	Umin	Umax	Ustd	std2D	std3D	#2D > 0.01	% 2D > 0.01	#3D > 0.02	% 3D > 0.02
ARDU	-0.002	0.012	0.002	-0.01	0.006	0.003	-0.011	0.015	0.005	0.002	0.003	766	1.8	0	0.0
BUOS	-0.014	0.011	0.004	-0.01	0.01	0.004	-0.011	0.018	0.006	0.003	0.004	1780	4.1	0	0.0
BURG	-0.005	0.013	0.003	-0.016	-0.002	0.002	-0.009	0.018	0.005	0.002	0.003	9527	22.0	0	0.0
CALH	-0.008	0.014	0.003	-0.008	0.007	0.003	-0.024	0.005	0.005	0.003	0.004	1910	4.4	771	1.8
CASO	-0.009	0.015	0.003	-0.011	0.004	0.002	-0.016	0.012	0.005	0.002	0.003	156	0.4	30	0.1
CERV	-0.017	-0.0	0.003	-0.016	-0.002	0.002	-0.025	0.005	0.005	0.003	0.004	30865	71.4	5447	12.6
LOSA	-0.005	0.005	0.002	-0.002	0.01	0.002	-0.006	0.018	0.004	0.002	0.003	0	0.0	0	0.0
QINT	-0.01	0.009	0.003	-0.013	0.009	0.003	-0.02	0.017	0.007	0.002	0.004	776	1.8	0	0.0
RIO1	-0.009	0.006	0.002	-0.003	0.008	0.002	-0.015	0.012	0.005	0.002	0.003	0	0.0	0	0.0
SANR	-0.007	0.005	0.002	-0.002	0.013	0.002	-0.01	0.015	0.005	0.002	0.003	847	2.0	0	0.0
SORI	-0.013	0.004	0.003	-0.008	0.007	0.002	-0.016	0.02	0.006	0.003	0.004	1975	4.6	116	0.3
SROM	-0.007	0.013	0.003	-0.011	0.01	0.003	-0.019	0.021	0.008	0.003	0.005	4151	9.6	1233	2.9
VTRO	-0.019	0.004	0.004	-0.008	0.021	0.004	-0.014	0.021	0.007	0.004	0.004	19098	44.2	1444	3.3
Mean	-0.01	0.009	0.003	-0.009	0.008	0.003	-0.015	0.015	0.006	0.003	0.004	5527.0	12.8	695.5	1.6
Min/Max	-0.019	0.015	0.004	-0.016	0.021	0.004	-0.025	0.021	0.008	0.004	0.005	30865	71.4	5447	12.6

fixing statistic for network NET5

fixing percentage of	all GNSS	G	R	E	C
using threshold 0.3	93.7	95.1	90.5	96.5	91.5
considering satellites with dual-frequency fixed	89.2	89.7	87.5	92.8	85.9
considering all signals separately	89.4	89.6	87.5	93.0	84.6