

summary for network NT32

timeperiod chosen: from 2026-04-03-00:00:00 until 2026-04-03-23:59:59

average update rate (durations larger than 15 seconds considered as observation gap): 1.7 seconds

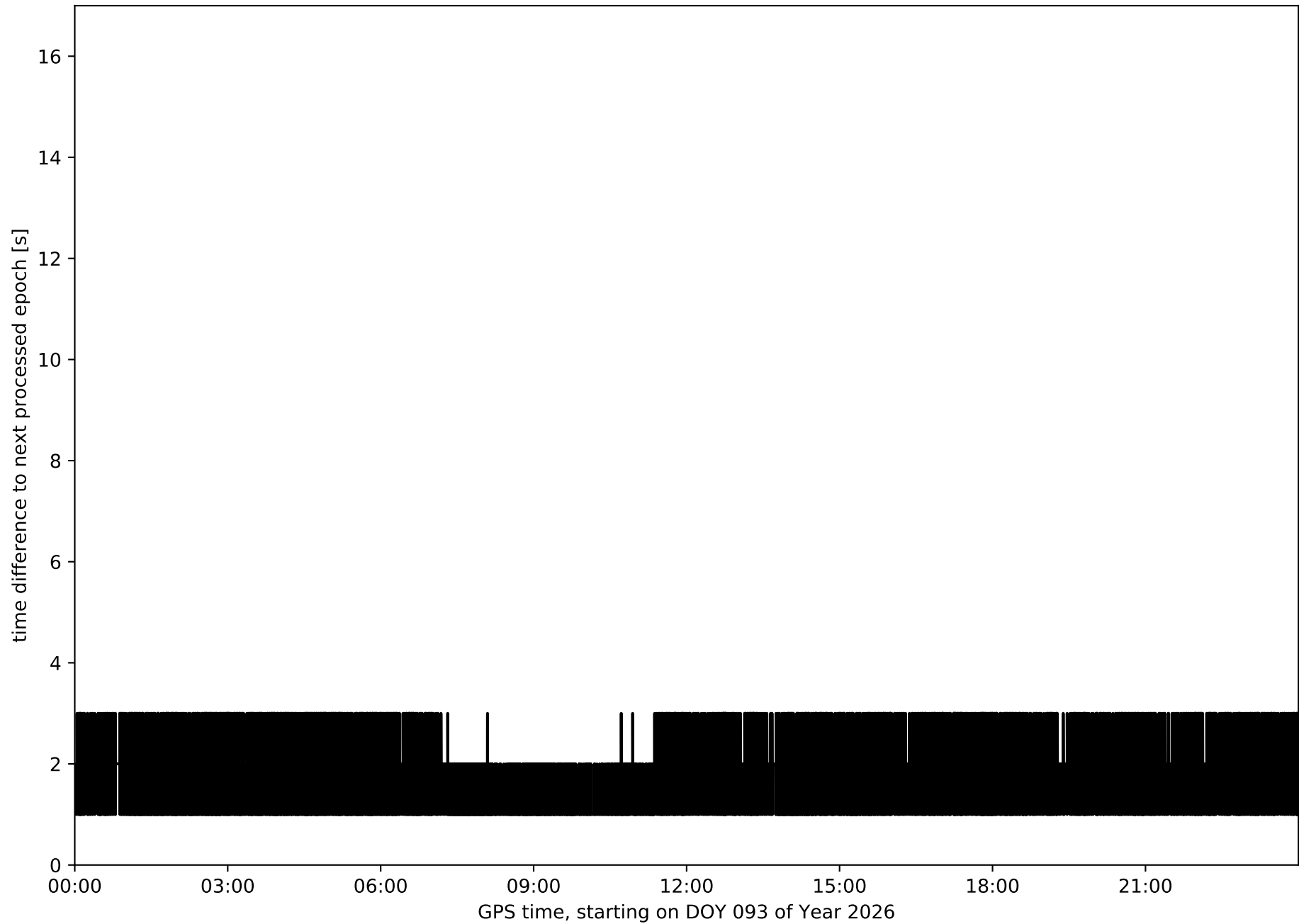
average fixing percentage with threshold set to 0.3: 91.6 percent

stations available: 13 of 14

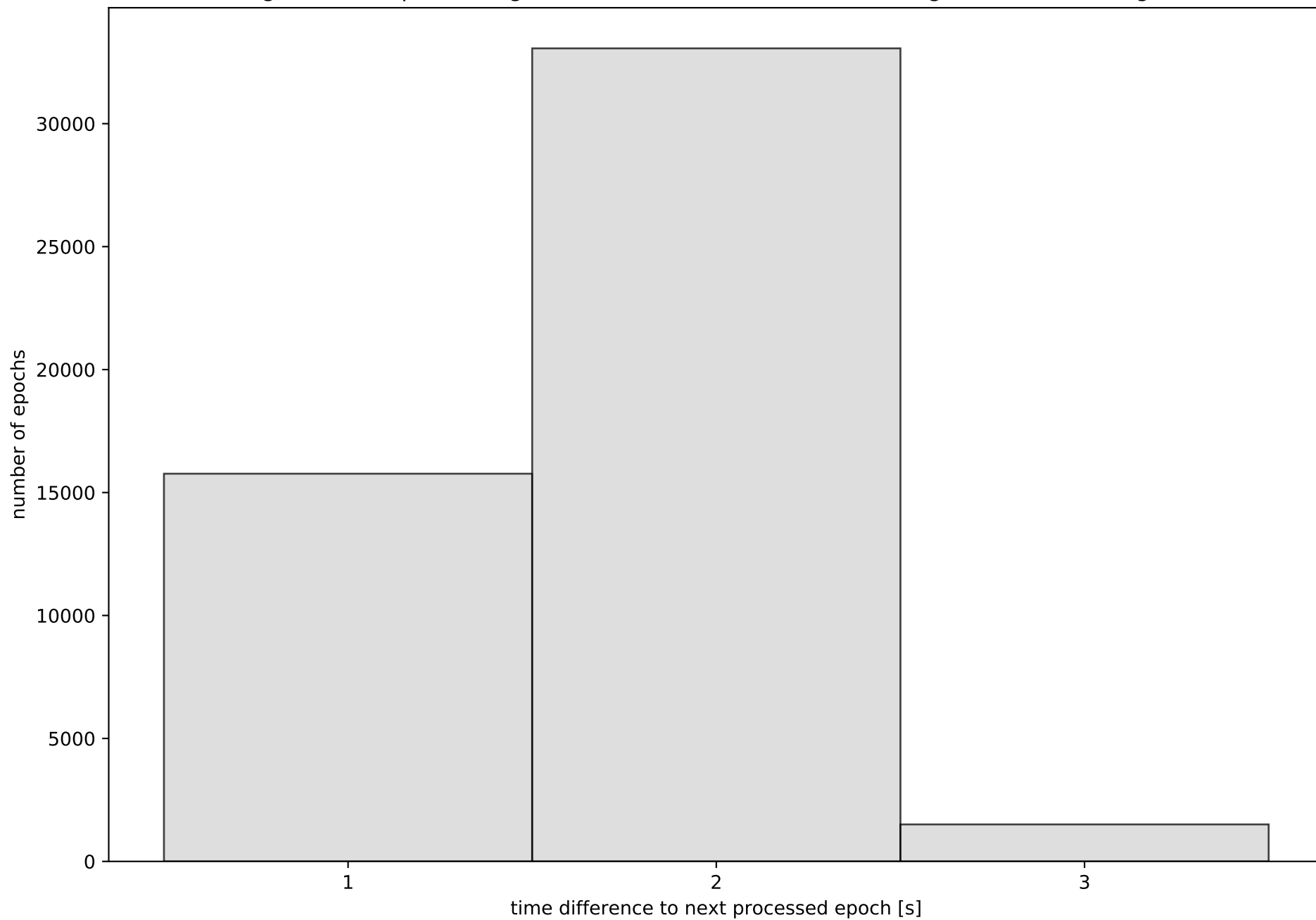
station information:

station EH01:	antenna: LEIAR20	LEIM	receiver: LEICA GR25	height: 801.016
station EH02:	antenna: TRM59900.00	SCIS	receiver: LEICA GR50	height: 85.364
station GOM1:	antenna: LEIAR20	LEIM	receiver: LEICA GR50	height: 48.789
station IZAN:	antenna: LEIAT504GG	LEIS	receiver: LEICA GR50	height: 2417.44
station LP01:	antenna: TRM57971.00	NONE	receiver: TRIMBLE ALLOY	height: 675.249
station LP03:	antenna: TRM59900.00	NONE	receiver: TRIMBLE NETR9	height: 919.563
station LPAL:	antenna: LEIAR20	LEIM	receiver: LEICA GR50	height: 2199.31
station LRES:	antenna: LEIAR20	NONE	receiver: LEICA GR50	height: 51.241
station TN01:	antenna: LEIAR20	LEIM	receiver: LEICA GR50	height: 51.859
station TN02:	antenna: TRM159900.00	SCIS	receiver: TRIMBLE ALLOY	height: 54.509
station TN03:	antenna: TRM159900.00	SCIS	receiver: TRIMBLE ALLOY	height: 58.588
station TN06:	antenna: LEIAR20	NONE	receiver: LEICA GR50	height: 1053.548
station TN09:	antenna: LEIAR20	NONE	receiver: LEICA GR50	height: 1582.15

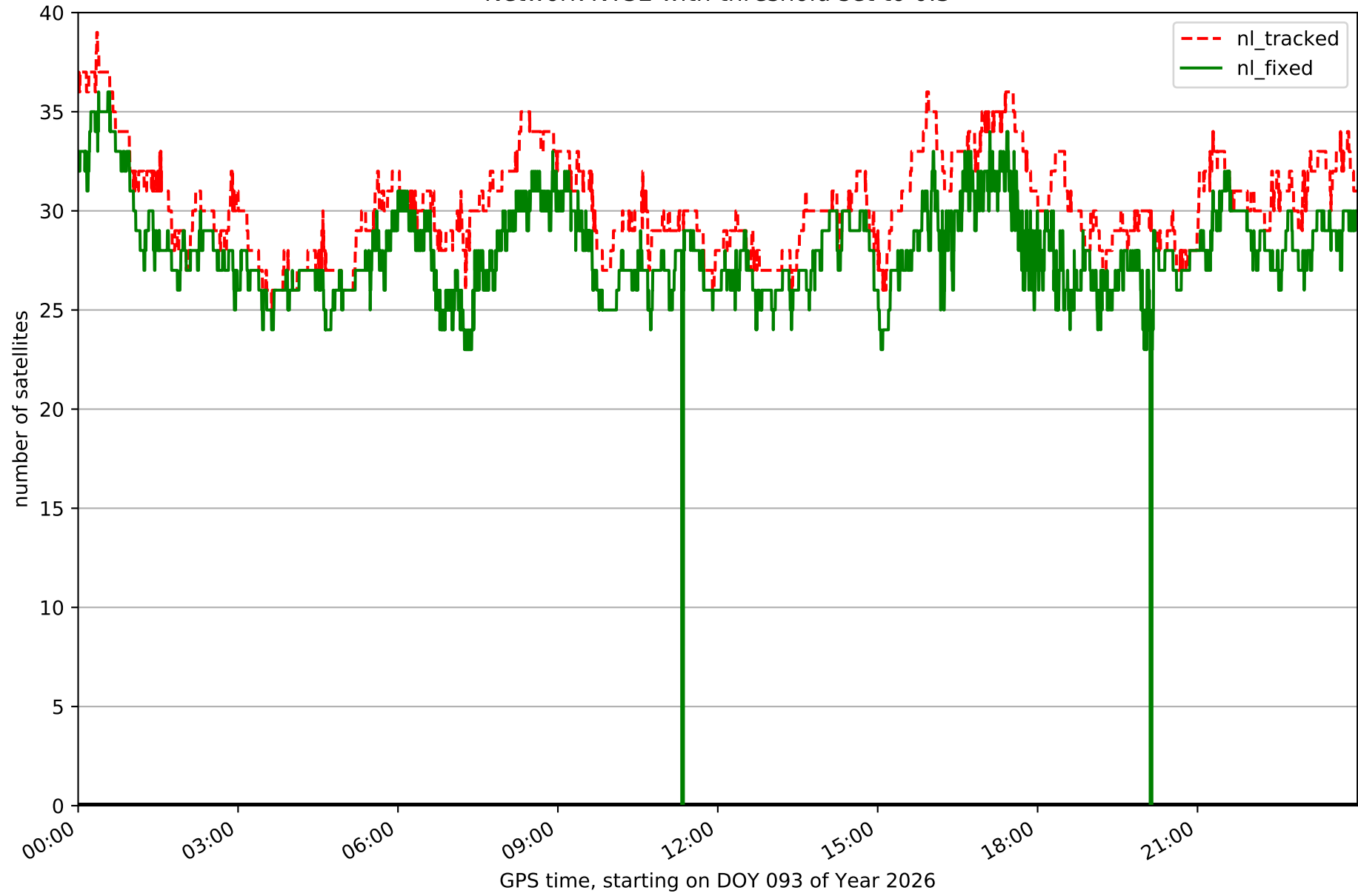
Processing rate in network NT32



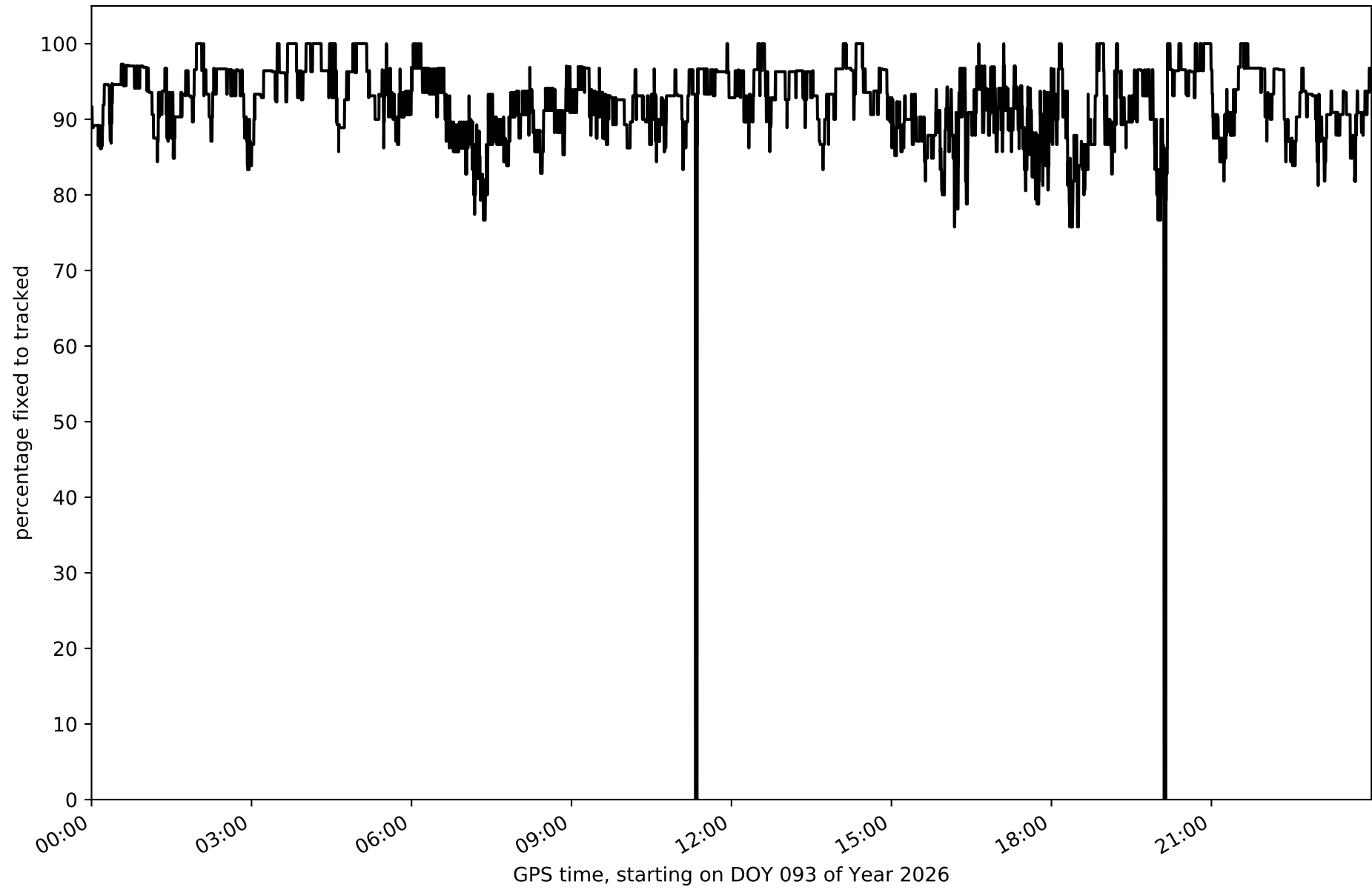
Histogram of the processing rate in network NT32 (durations larger 15 seconds neglected)



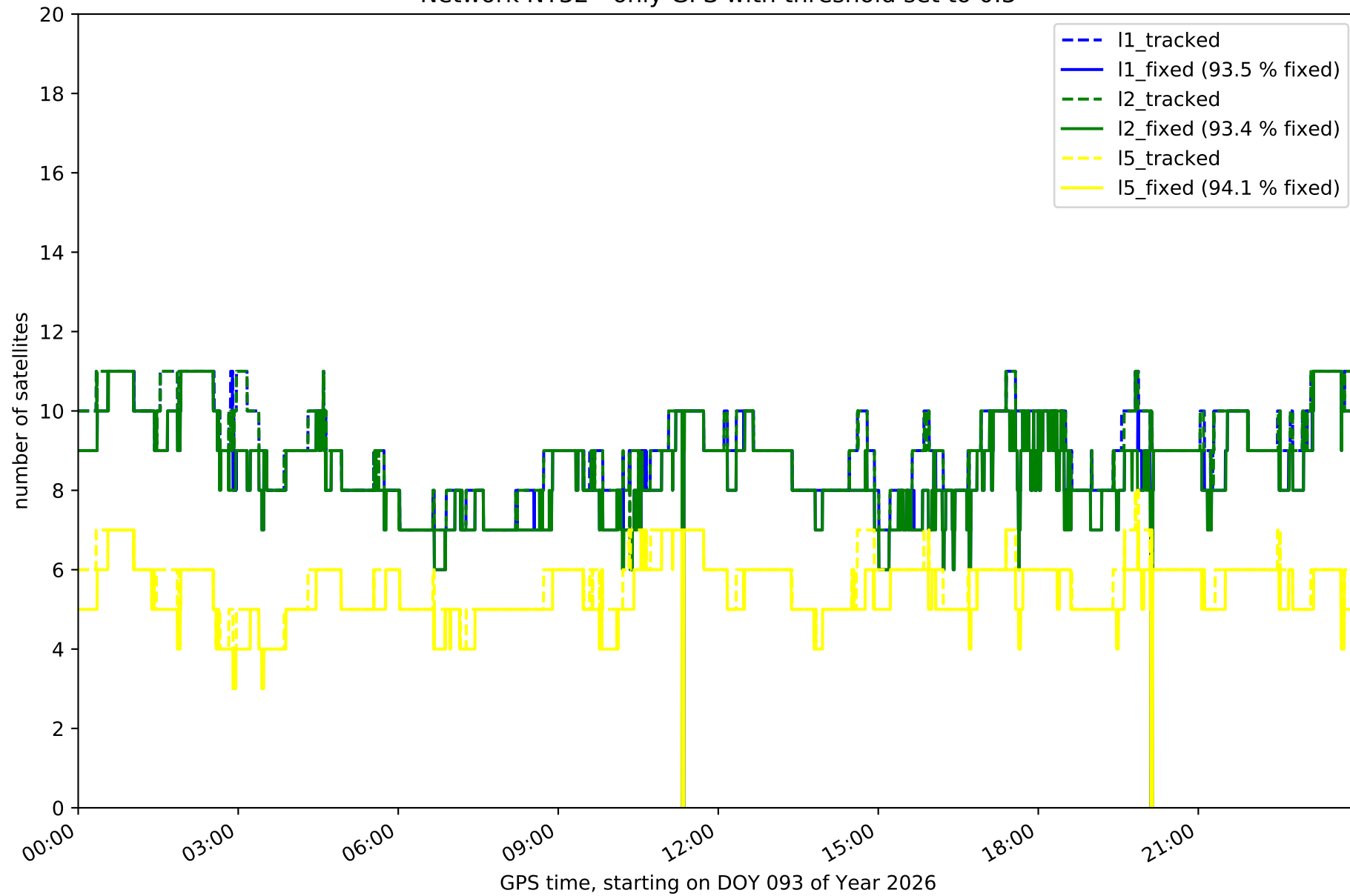
Network NT32 with threshold set to 0.3



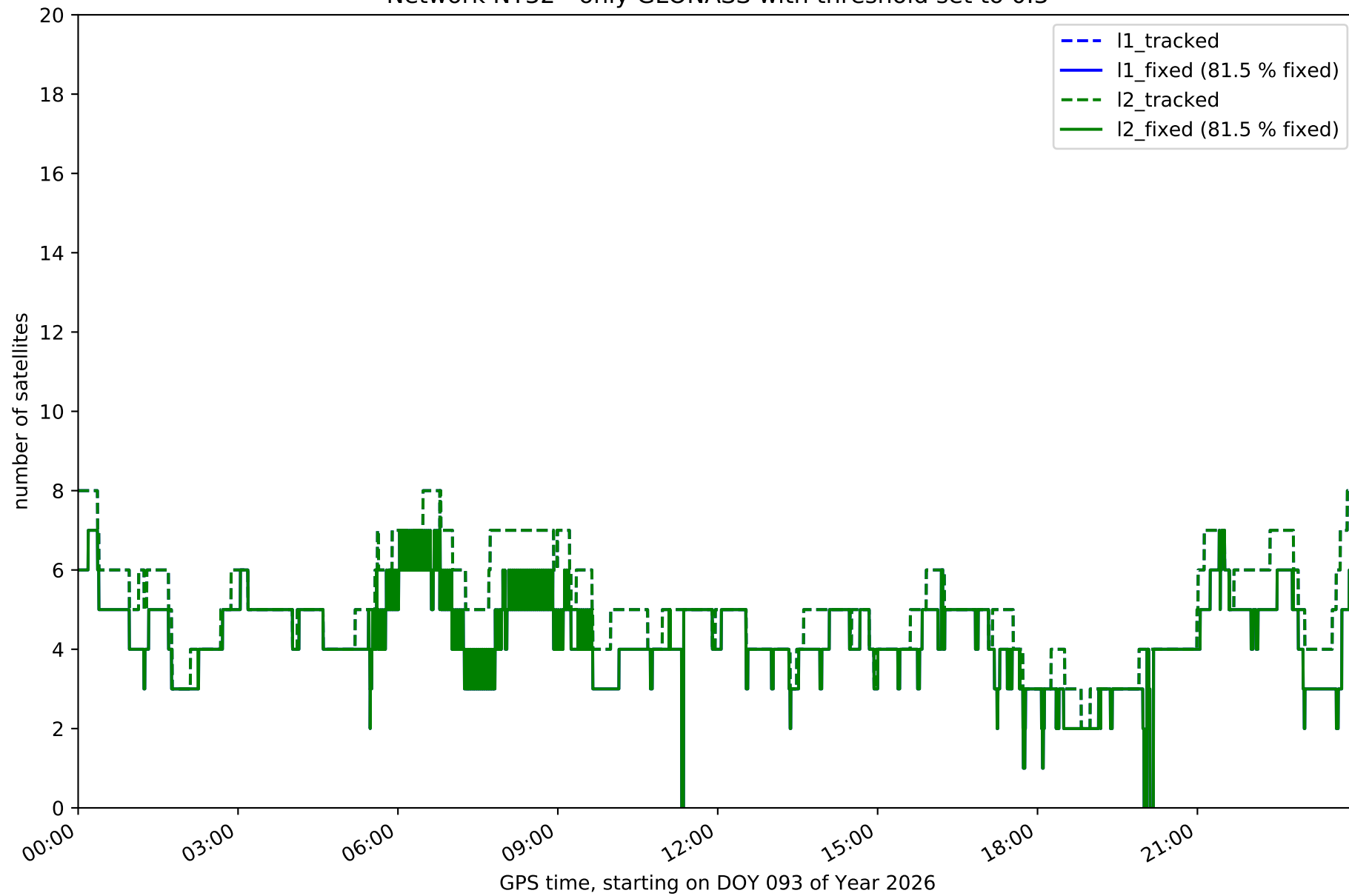
Fixing percentage of satellites in network NT32 with threshold set to 0.3



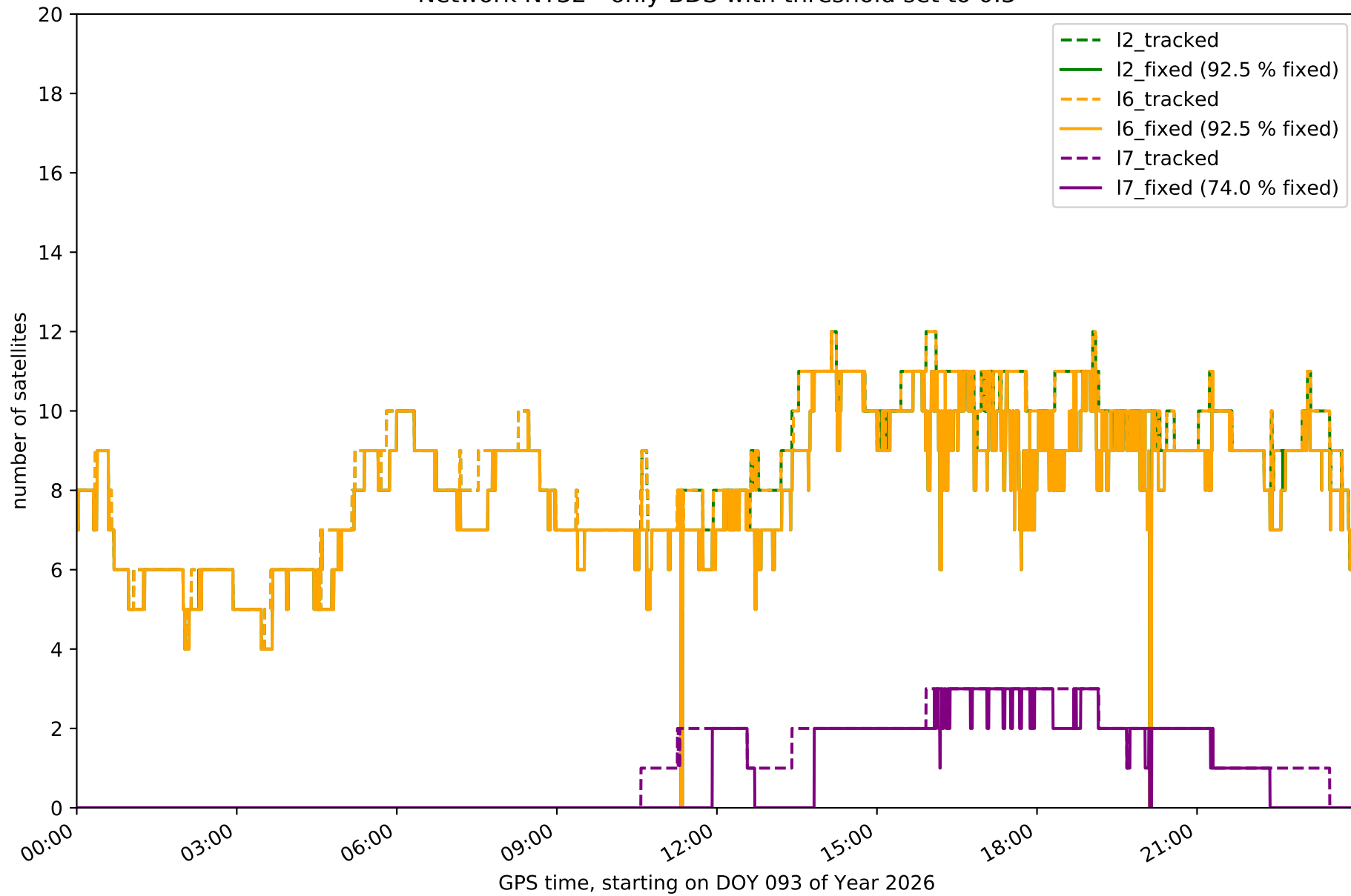
Network NT32 - only GPS with threshold set to 0.3



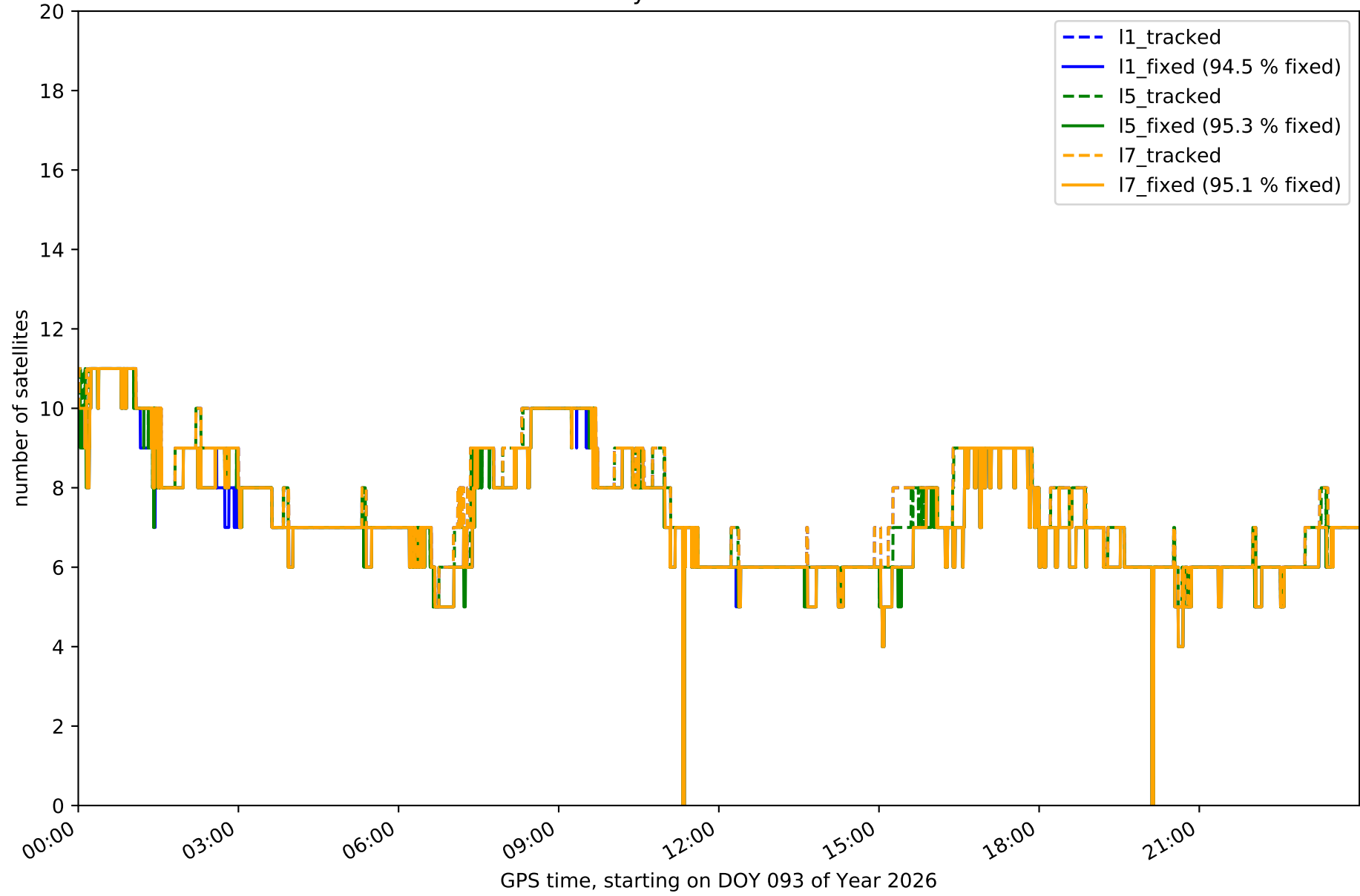
Network NT32 - only GLONASS with threshold set to 0.3



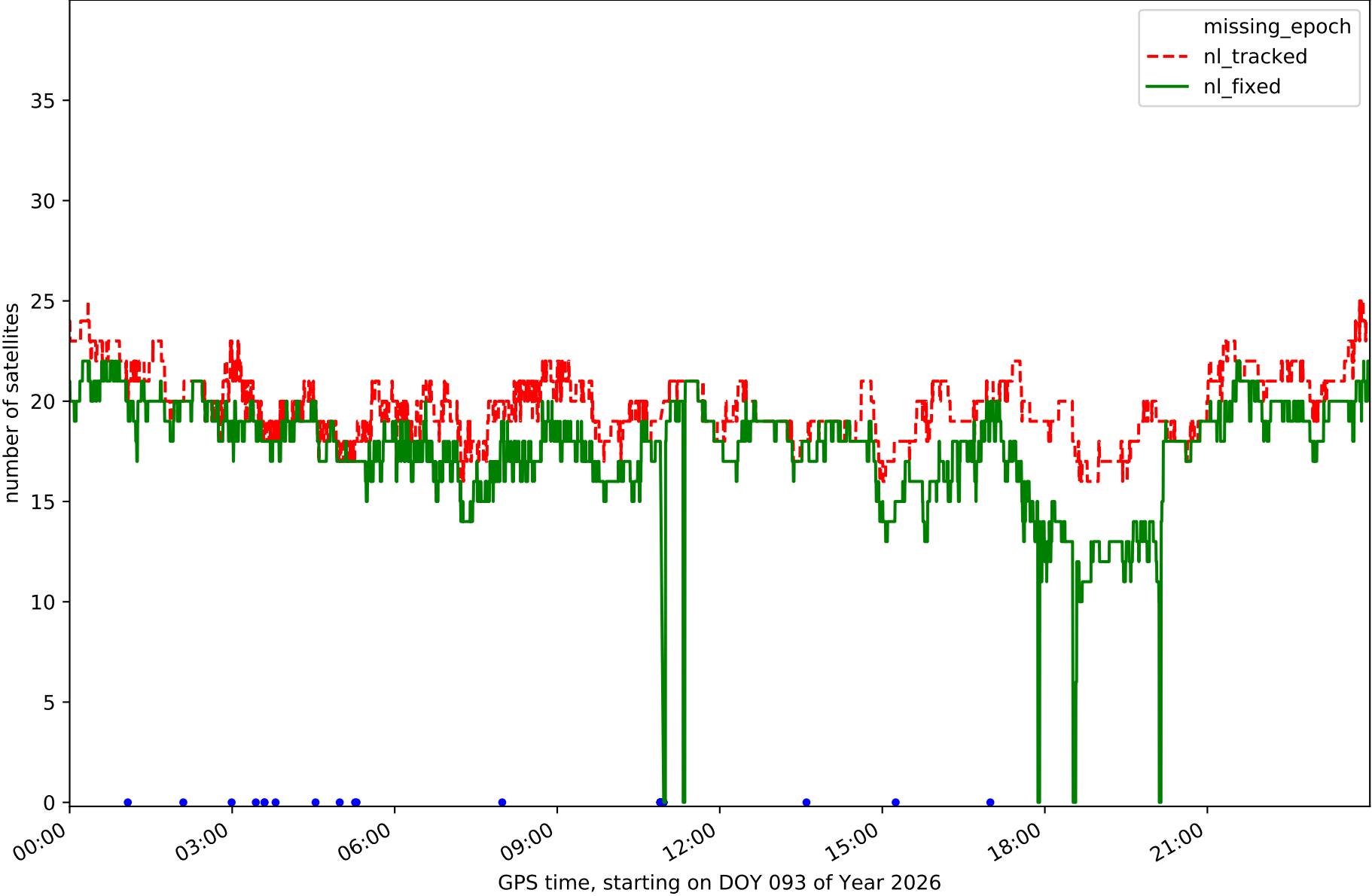
Network NT32 - only BDS with threshold set to 0.3



Network NT32 - only Galileo with threshold set to 0.3



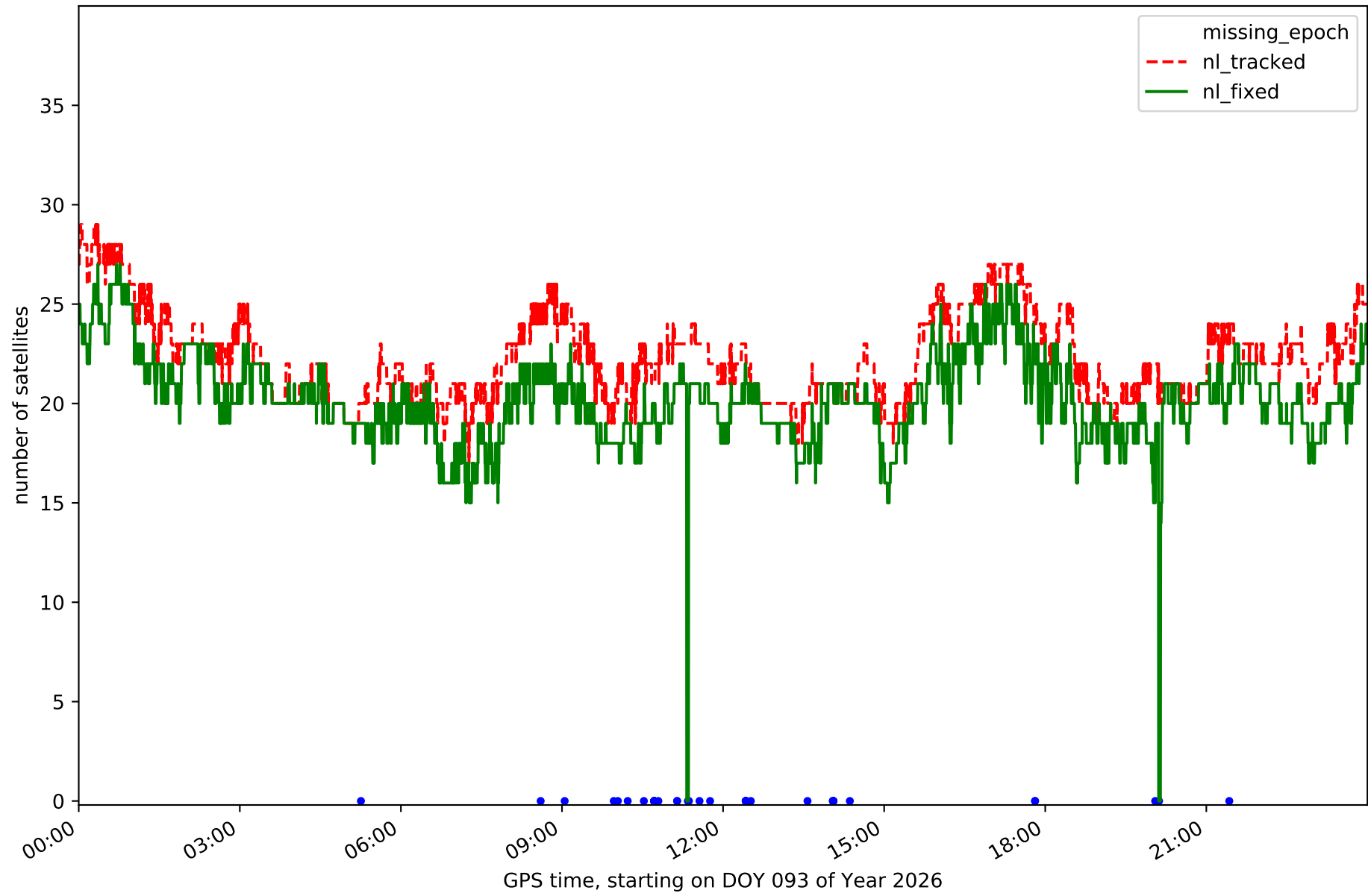
Station EH01 in network NT32



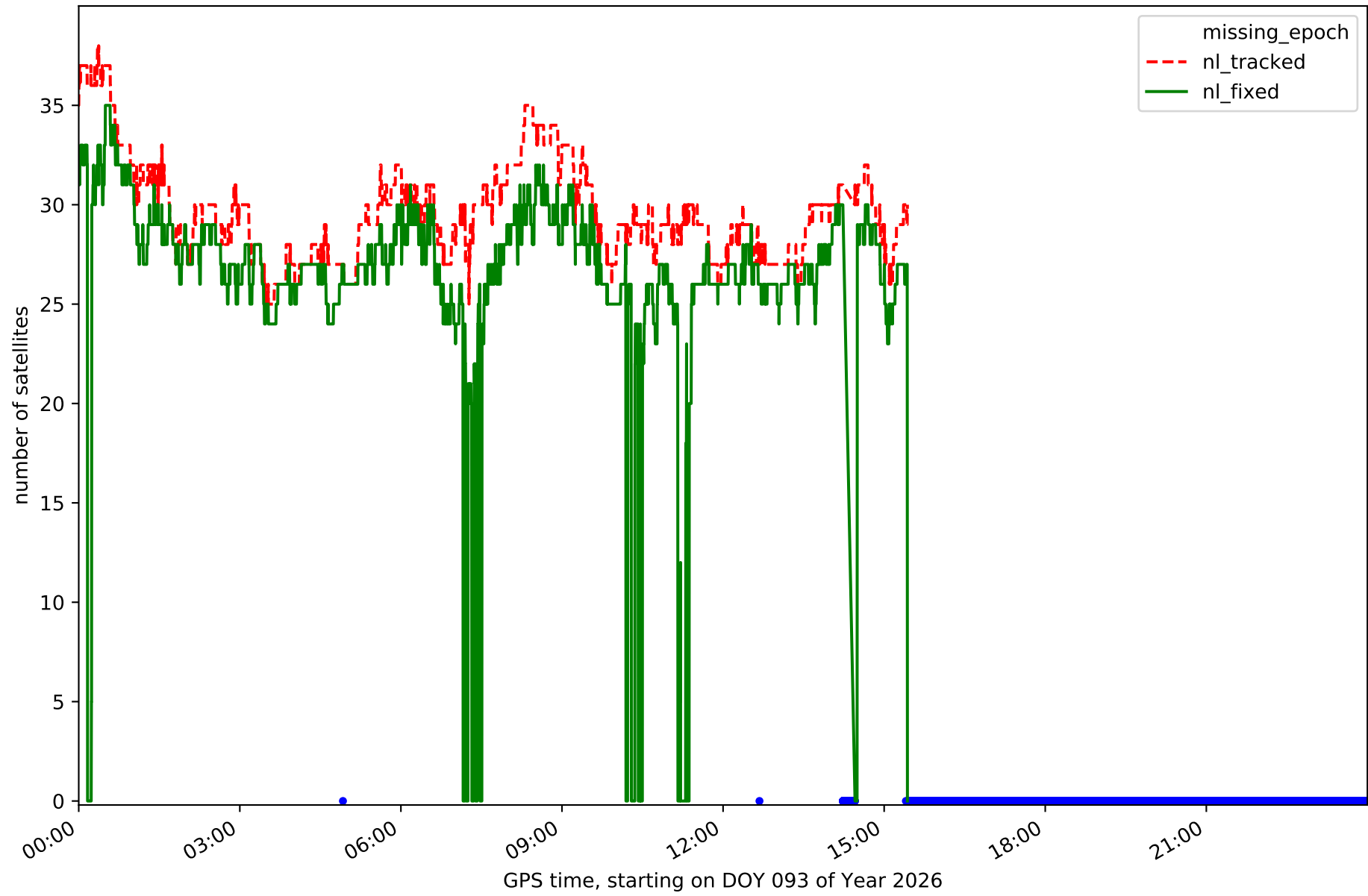
Station EH02 in network NT32



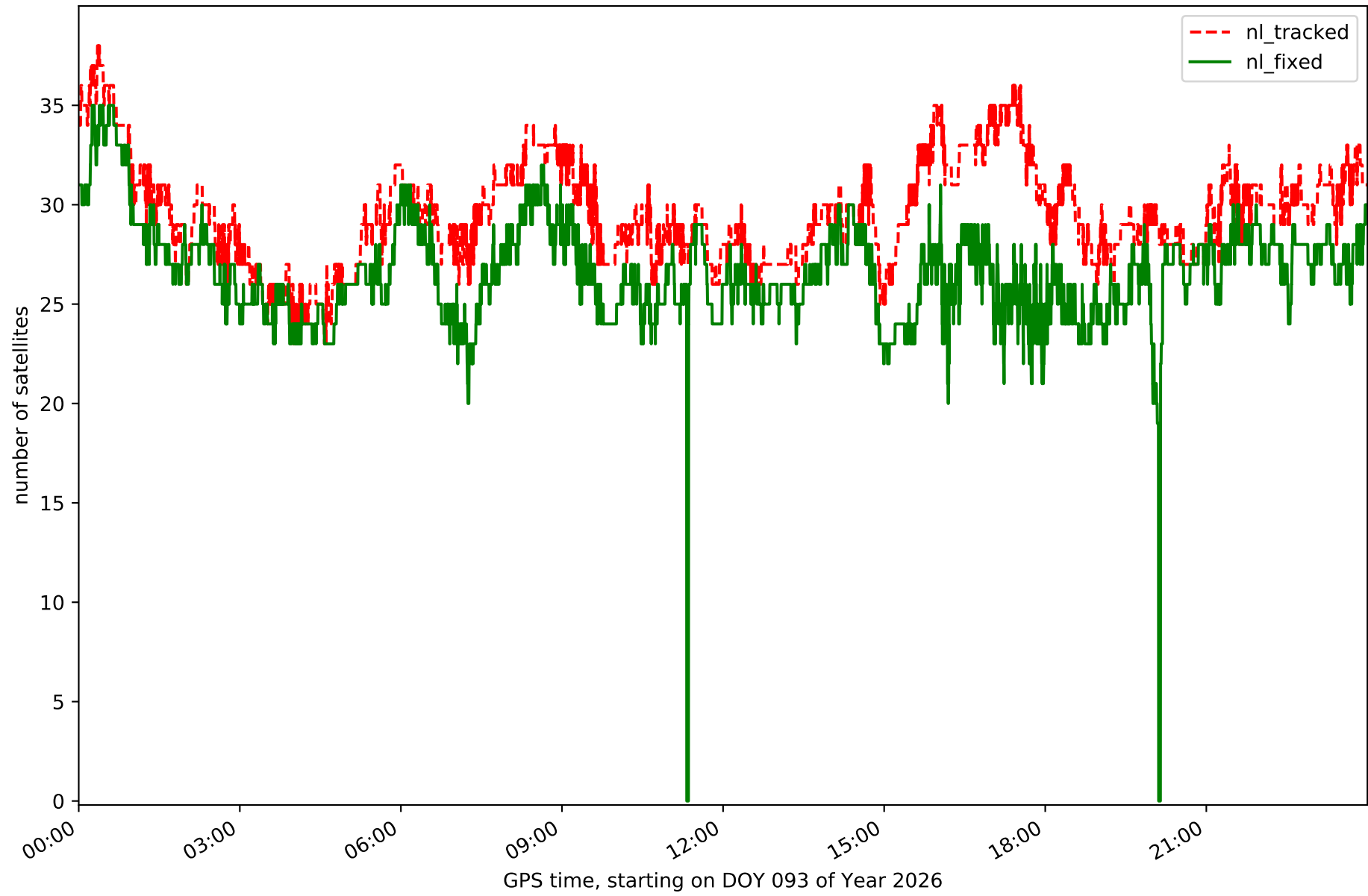
Station GOM1 in network NT32



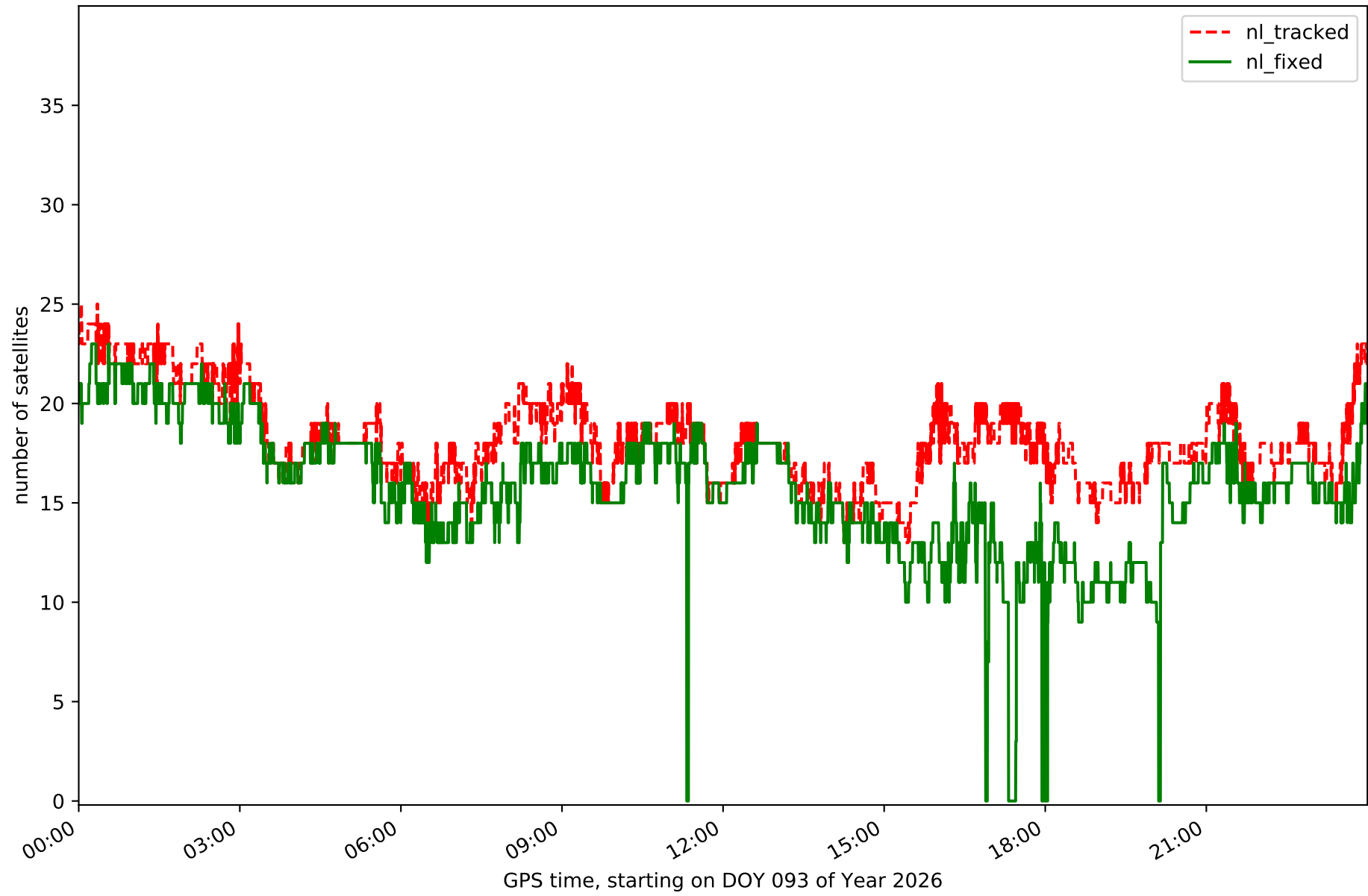
Station IZAN in network NT32



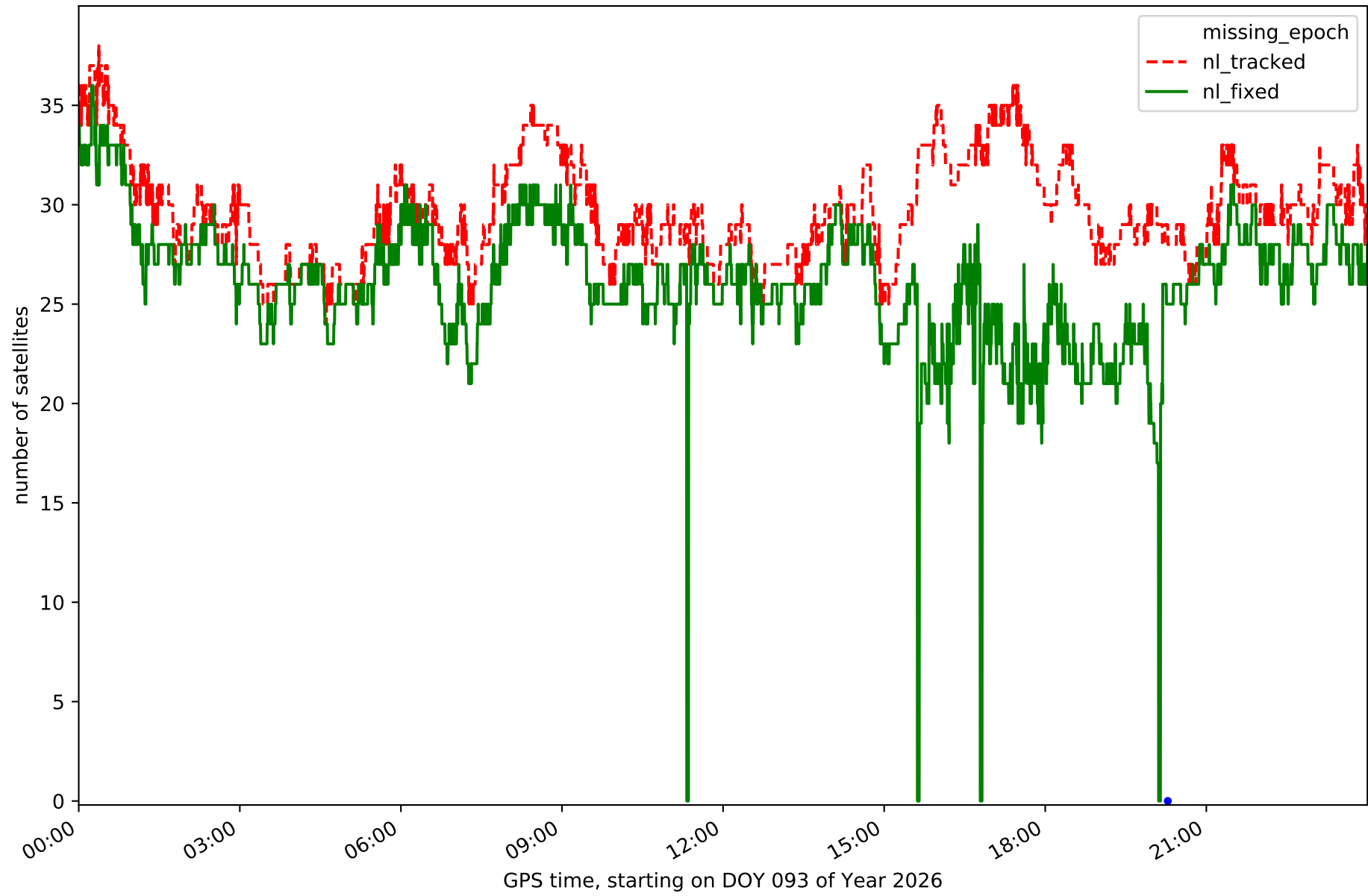
Station LP01 in network NT32



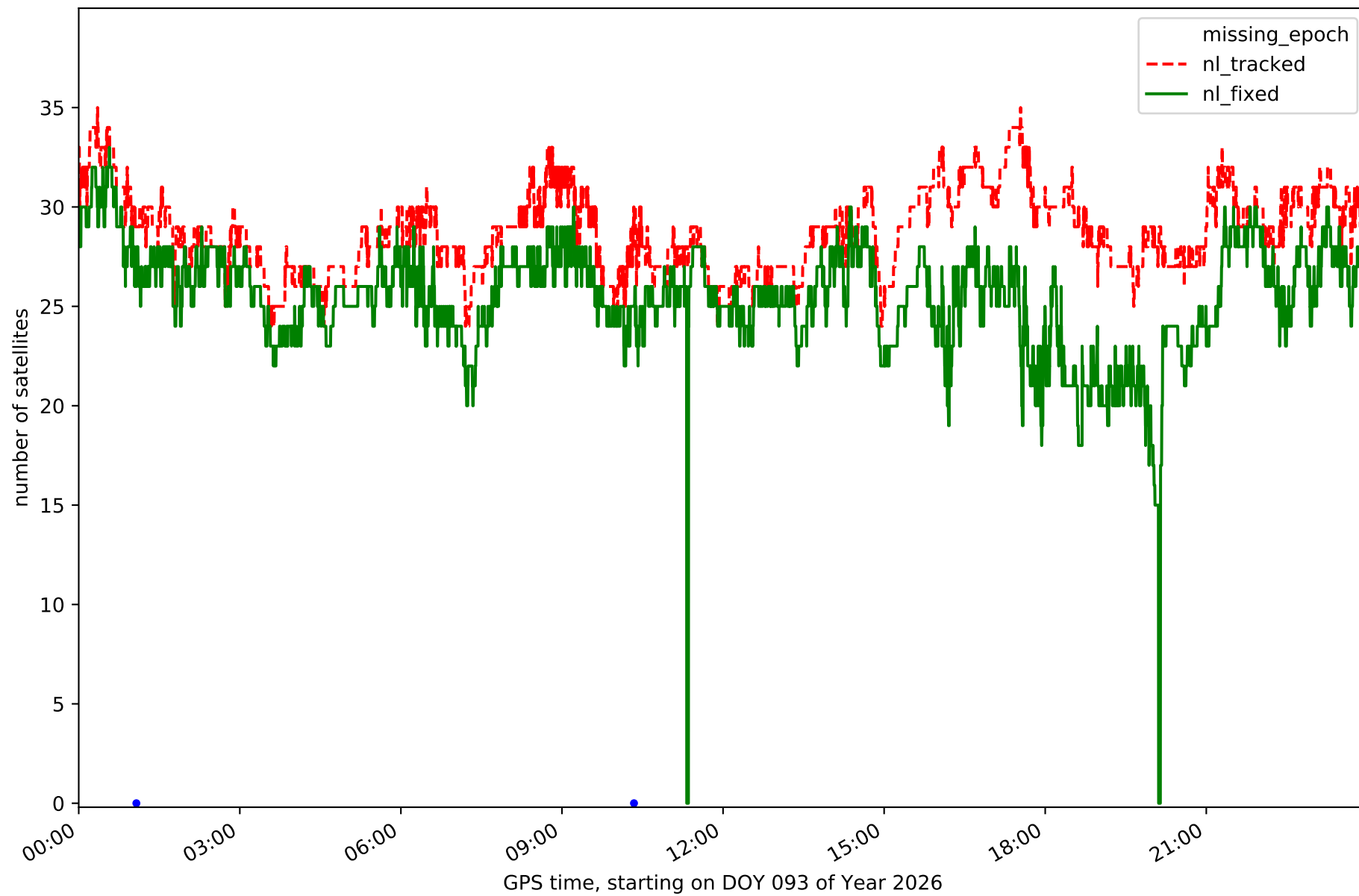
Station LP03 in network NT32



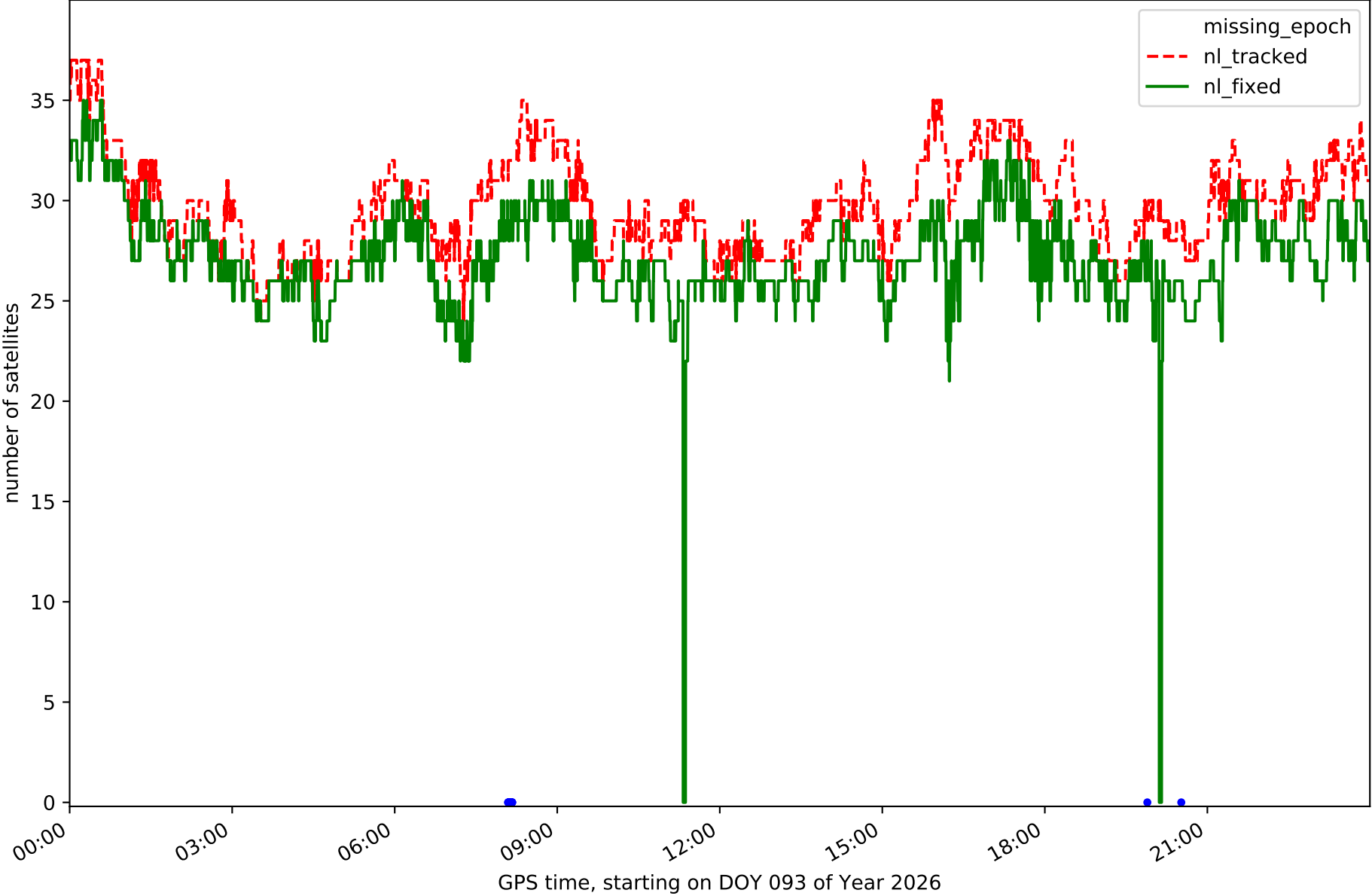
Station LPAL in network NT32



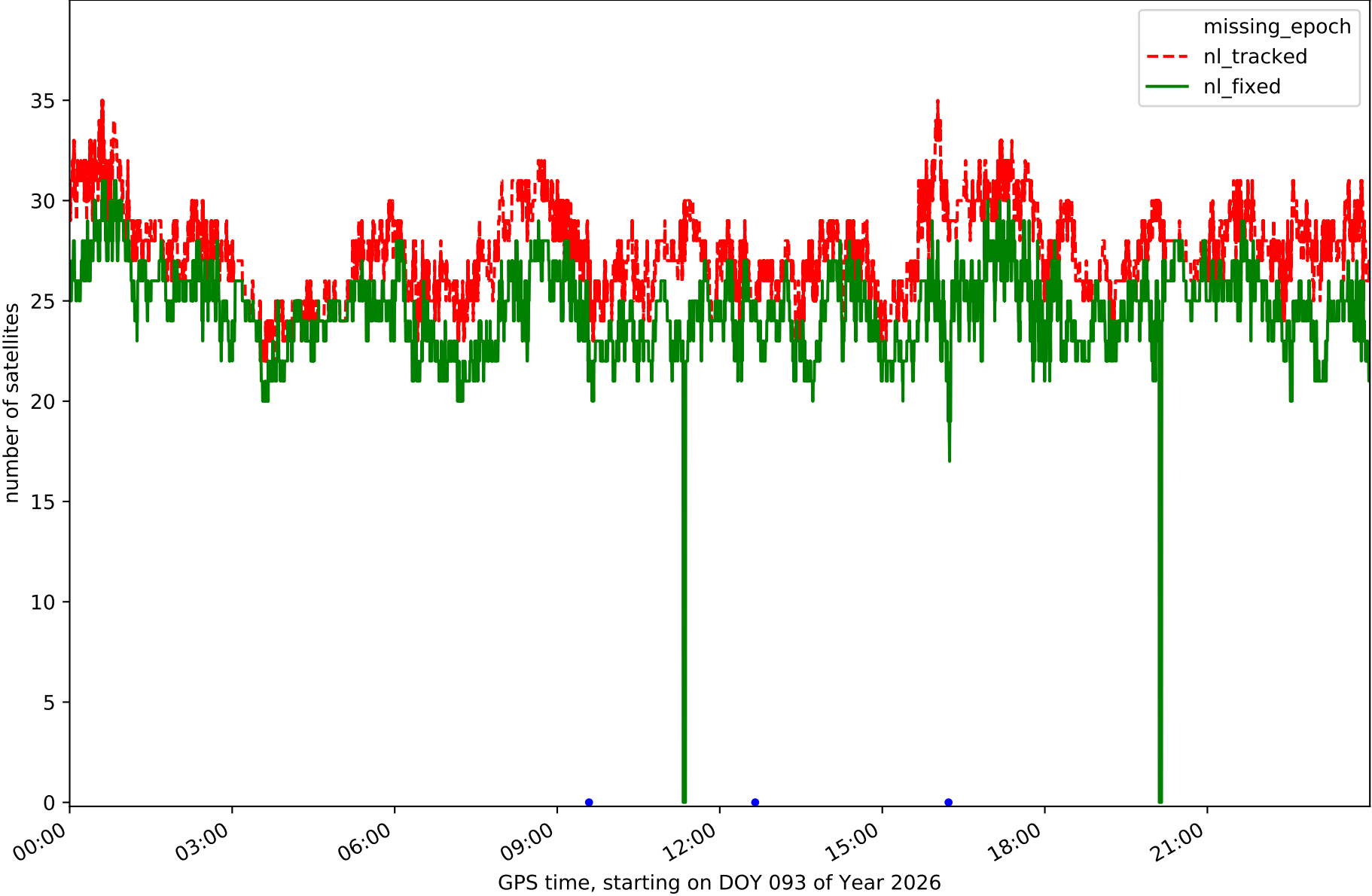
Station LRES in network NT32



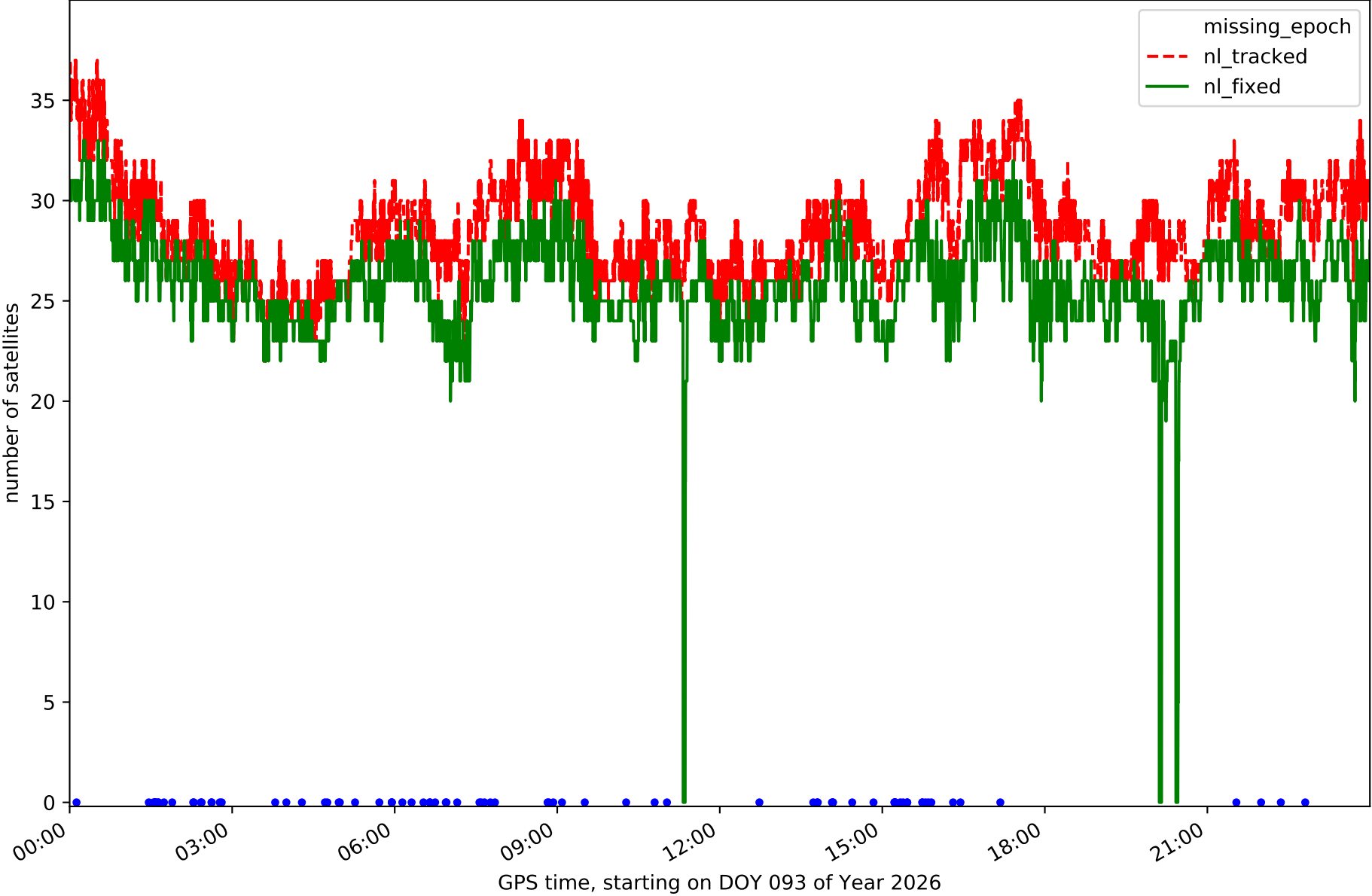
Station TN01 in network NT32



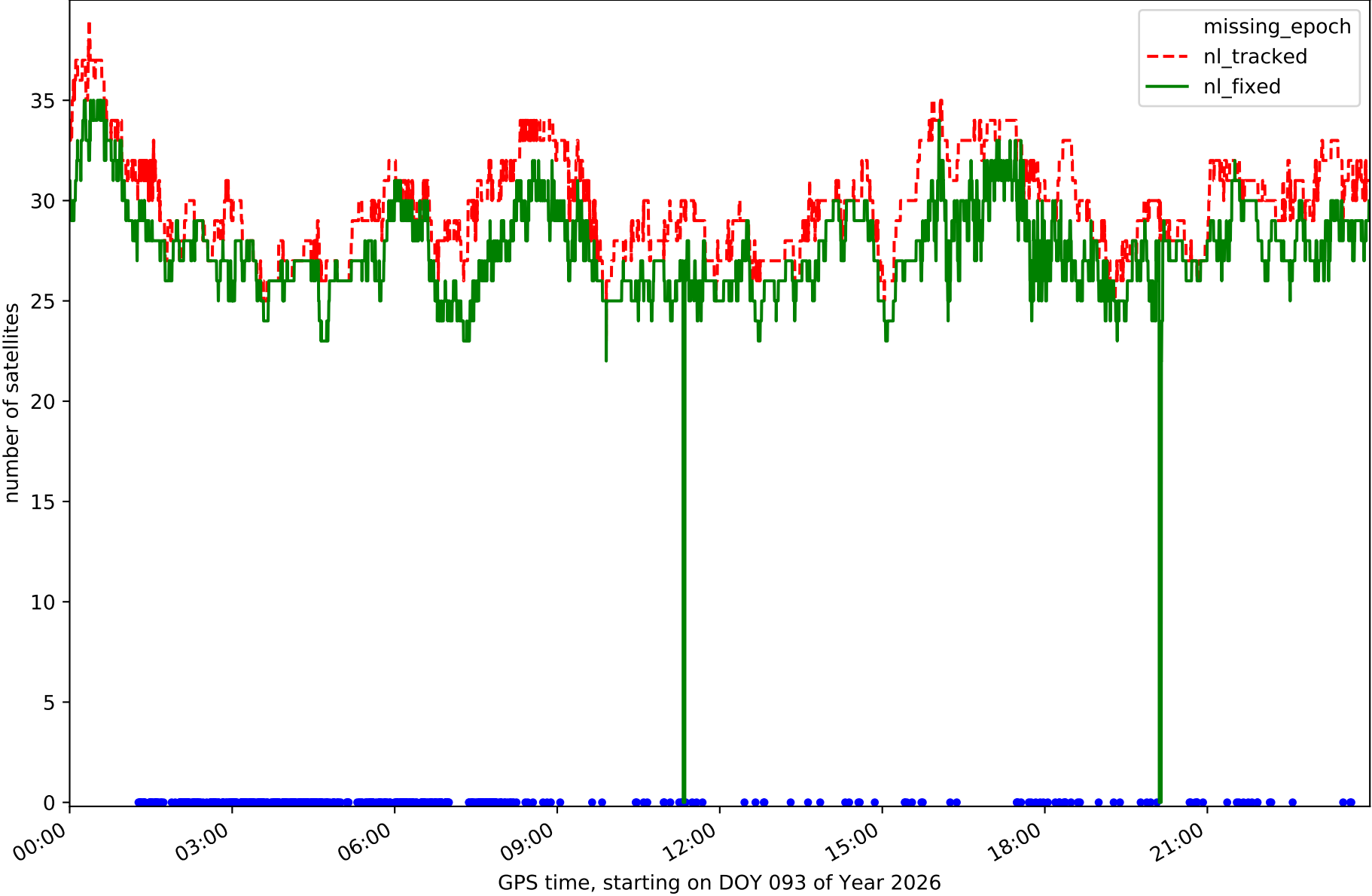
Station TN02 in network NT32



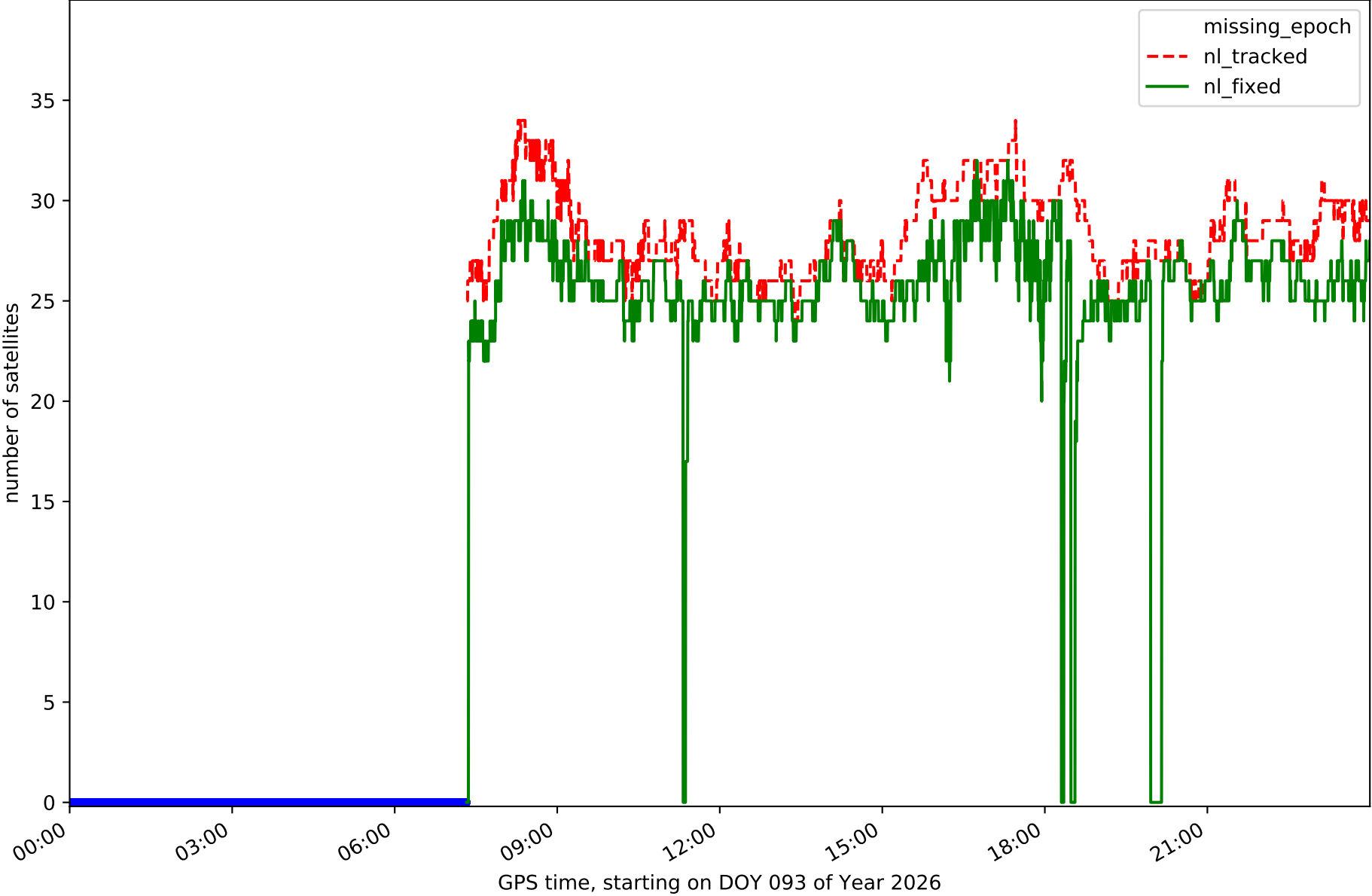
Station TN03 in network NT32



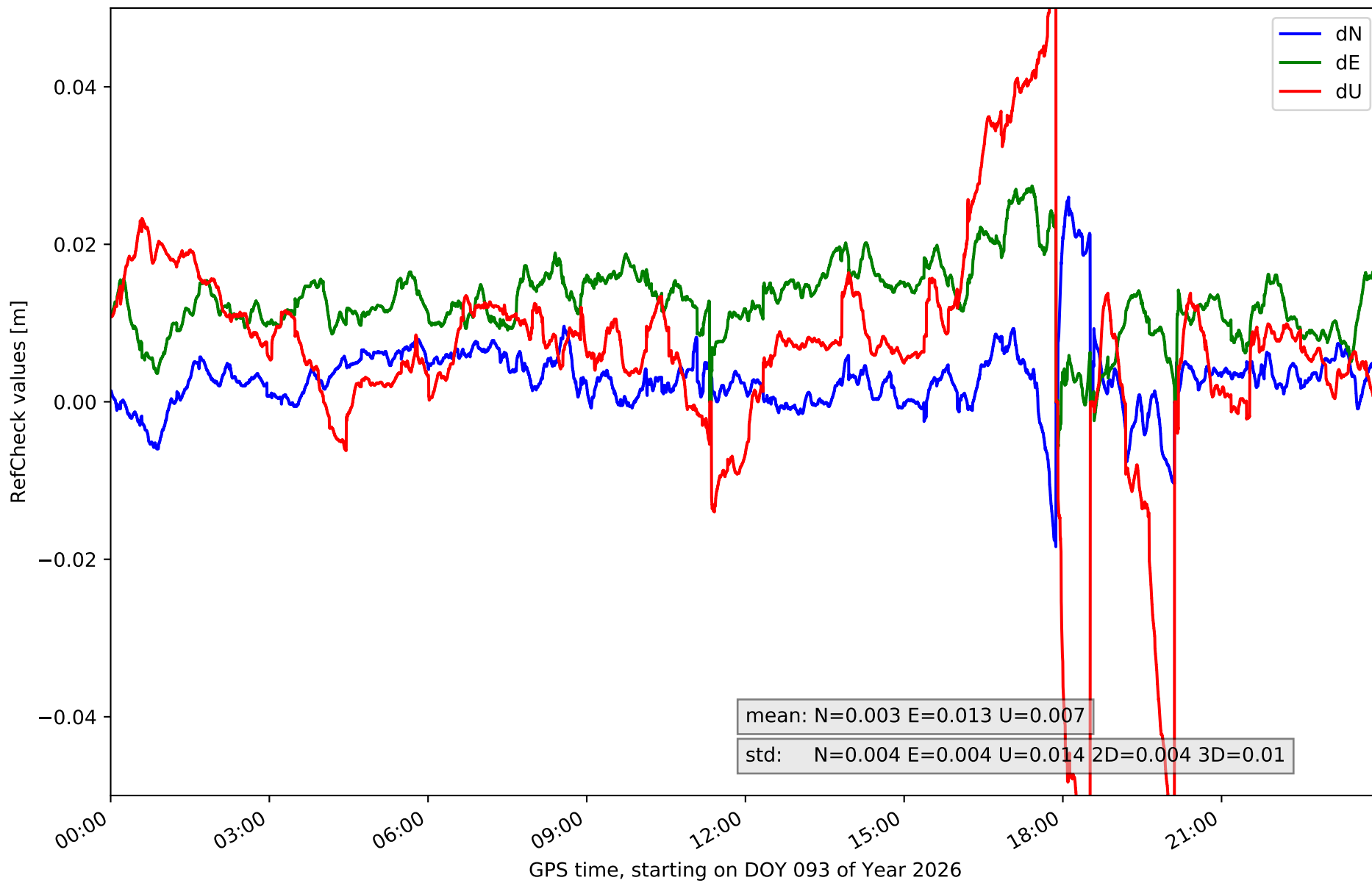
Station TN06 in network NT32



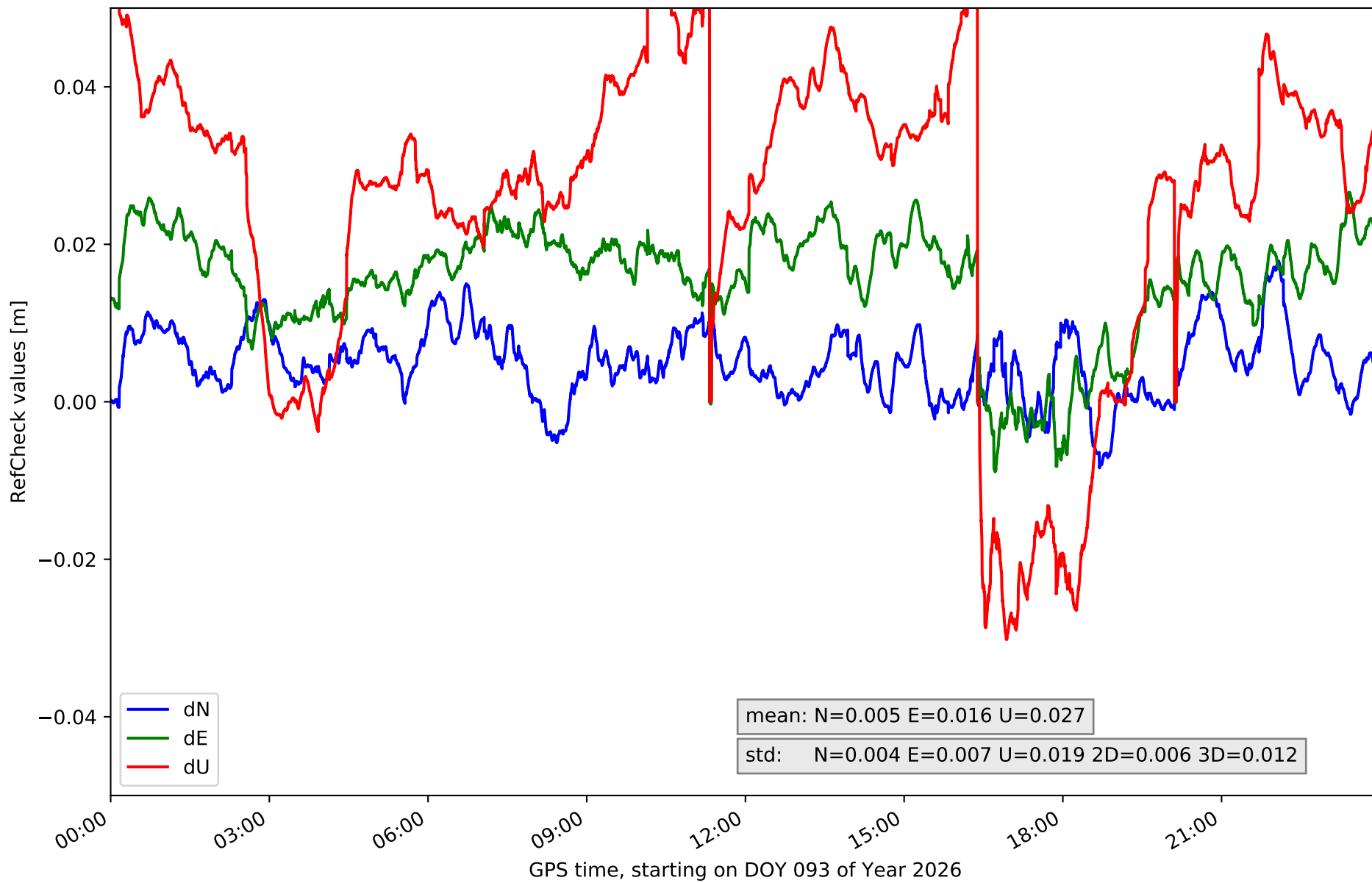
Station TN09 in network NT32



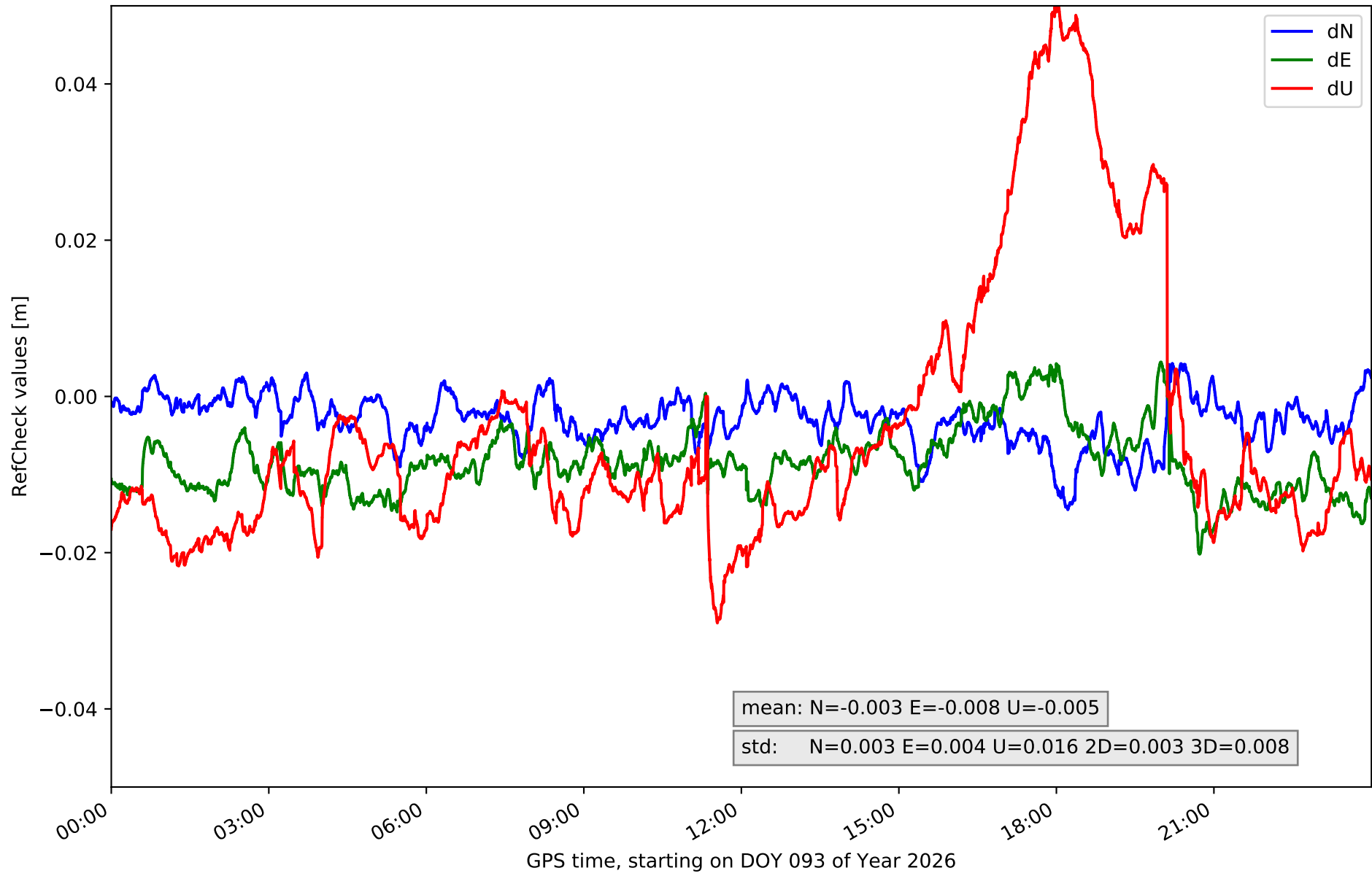
RefCheck for station EH01 in network NT32



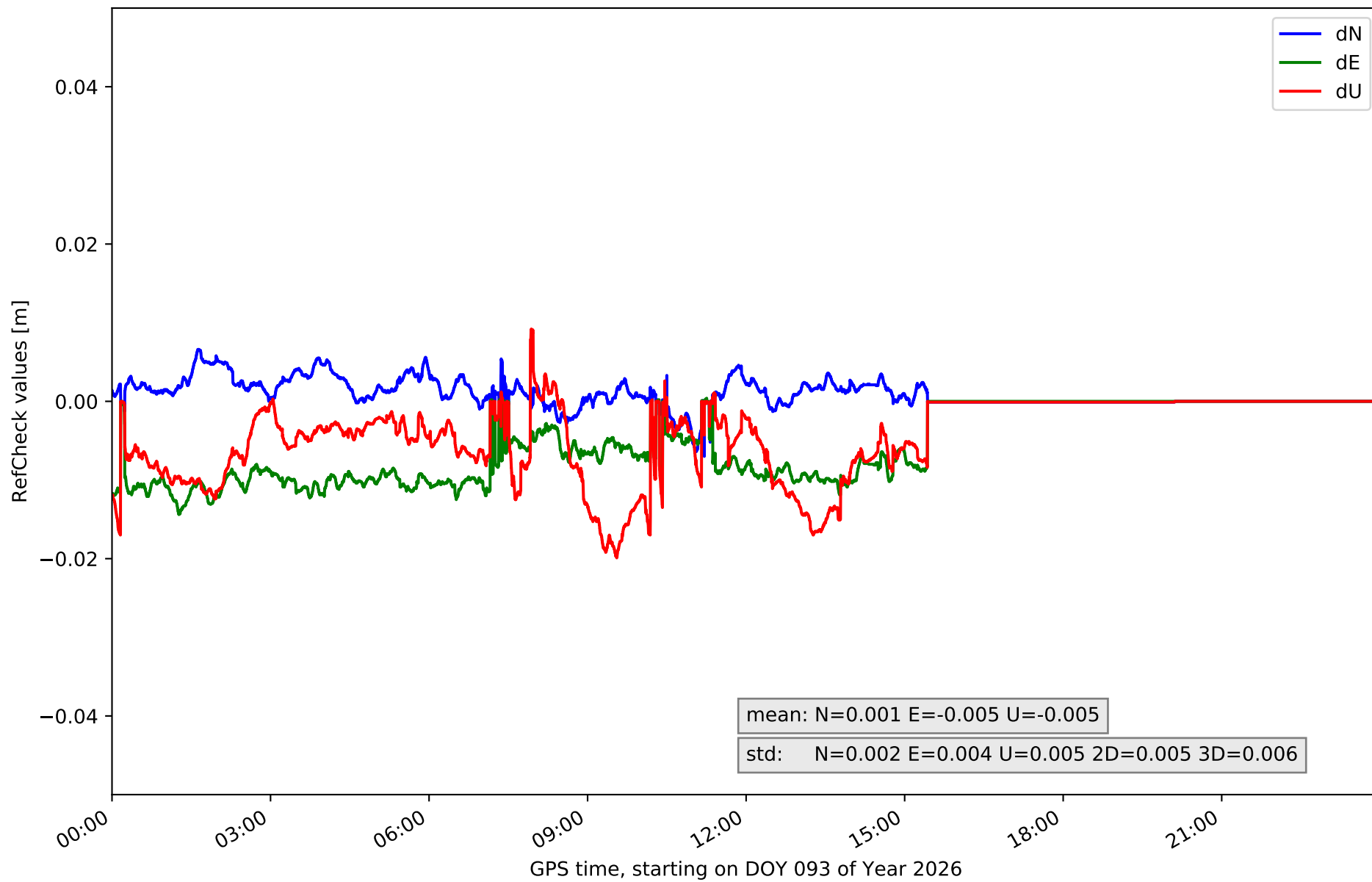
RefCheck for station EH02 in network NT32



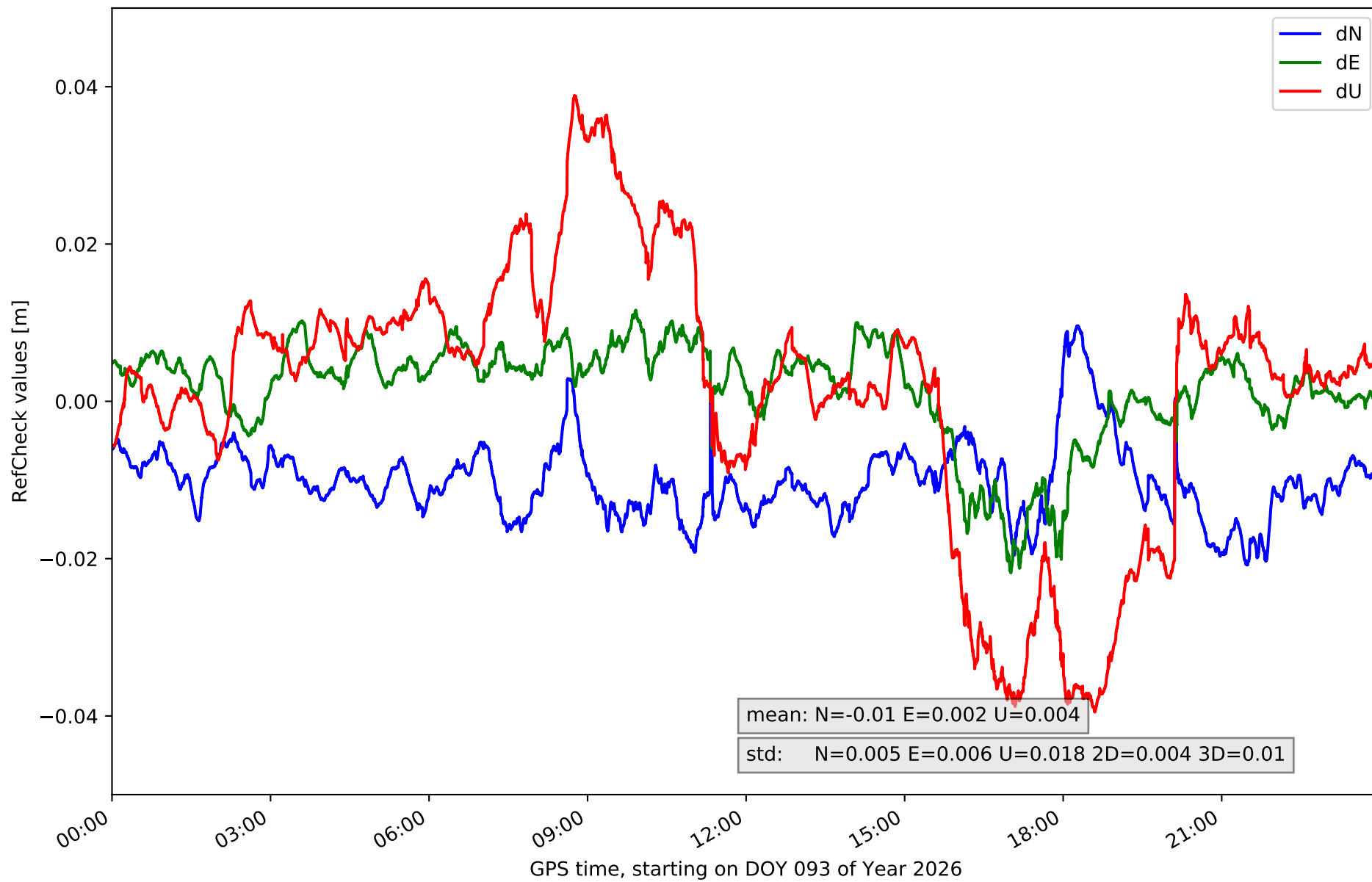
RefCheck for station GOM1 in network NT32



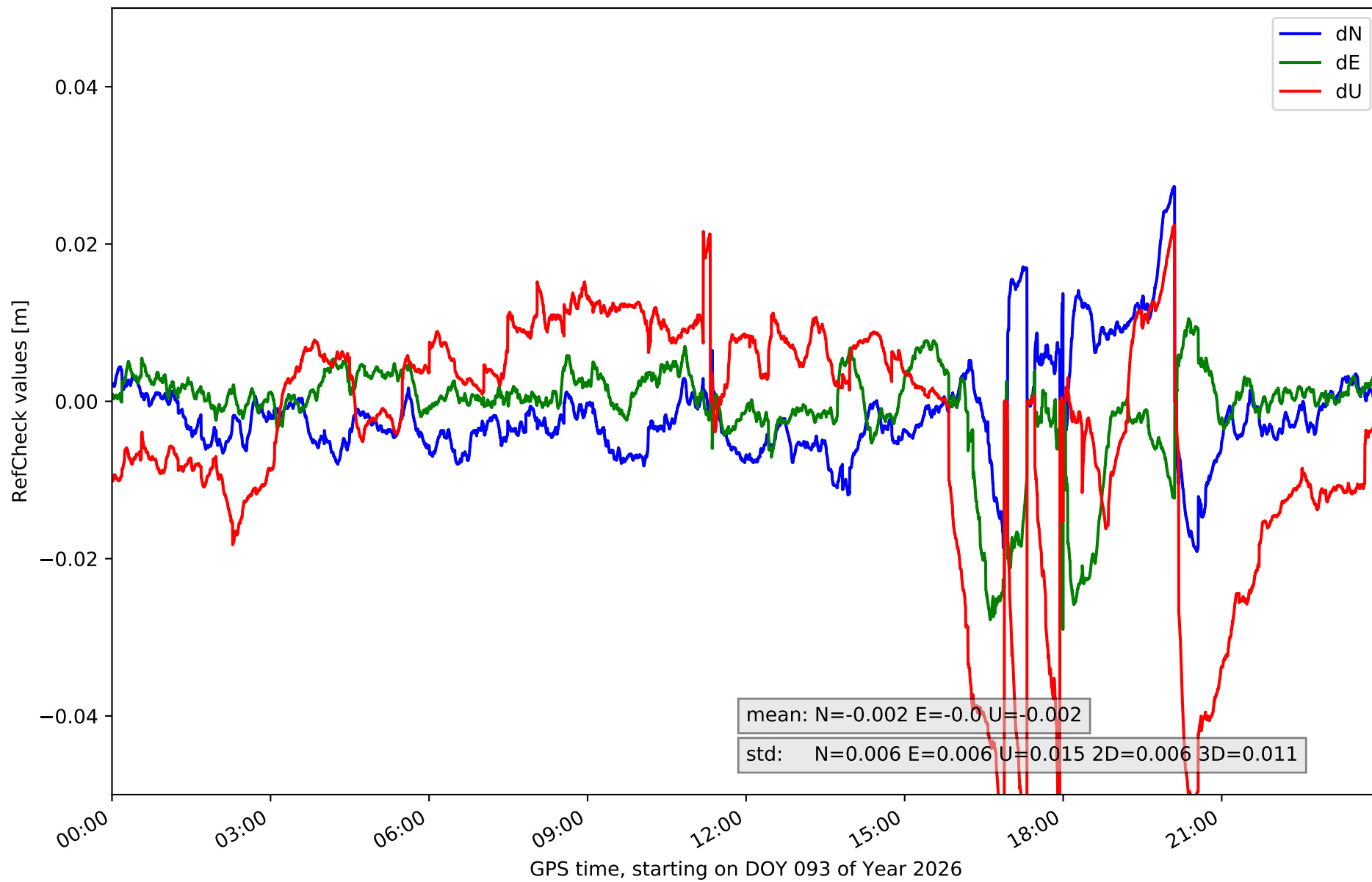
RefCheck for station IZAN in network NT32



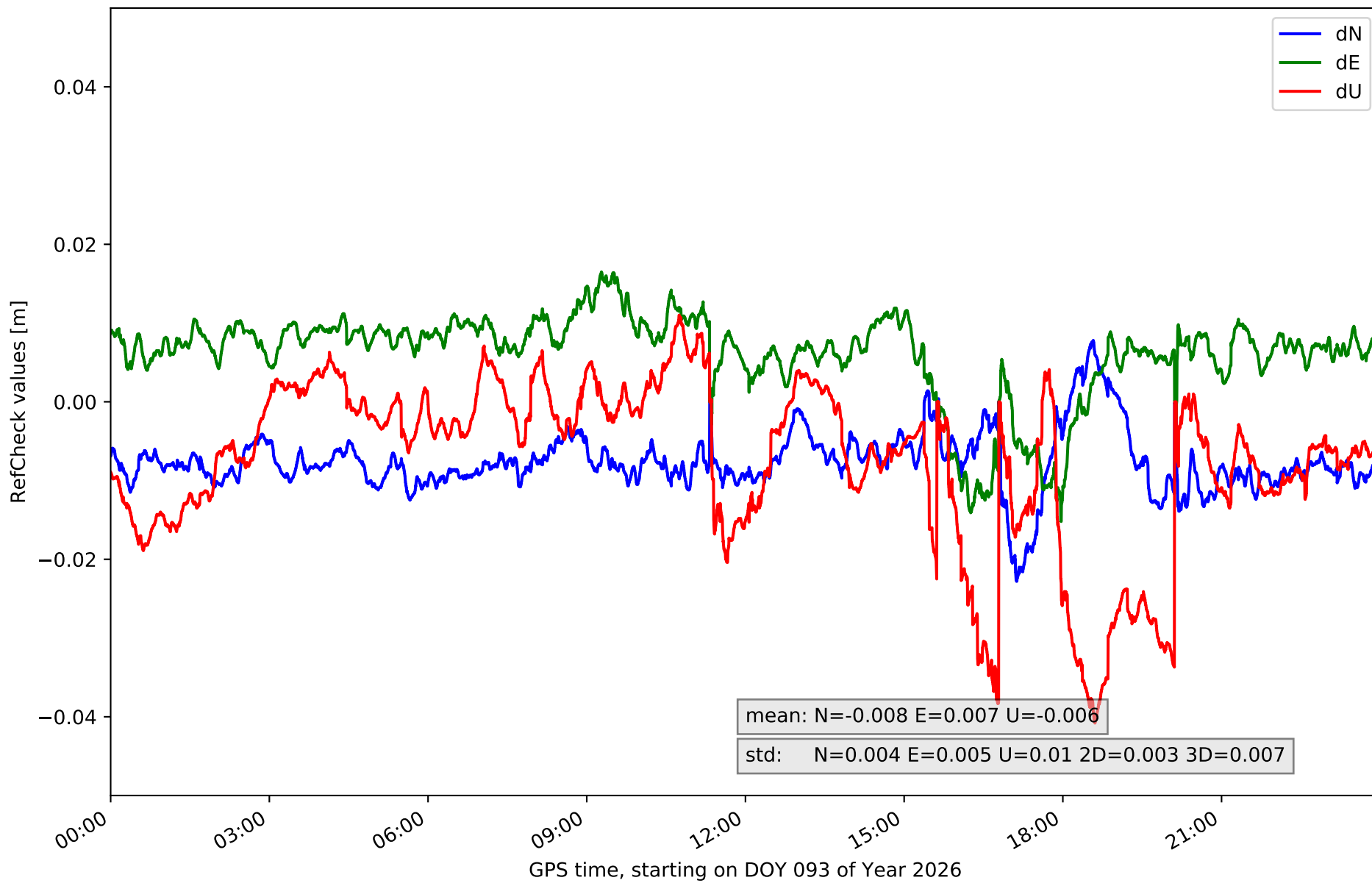
RefCheck for station LP01 in network NT32



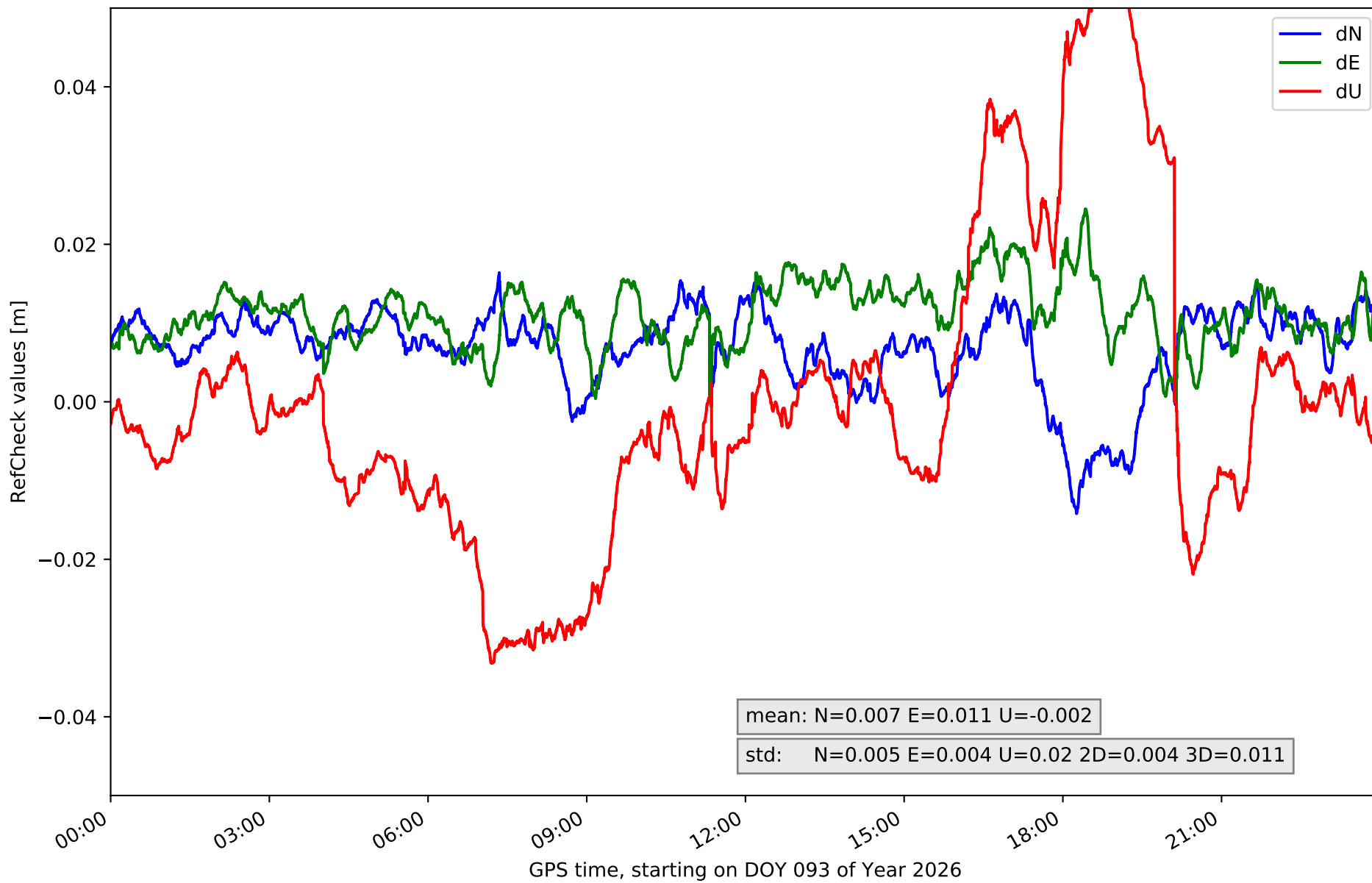
RefCheck for station LP03 in network NT32



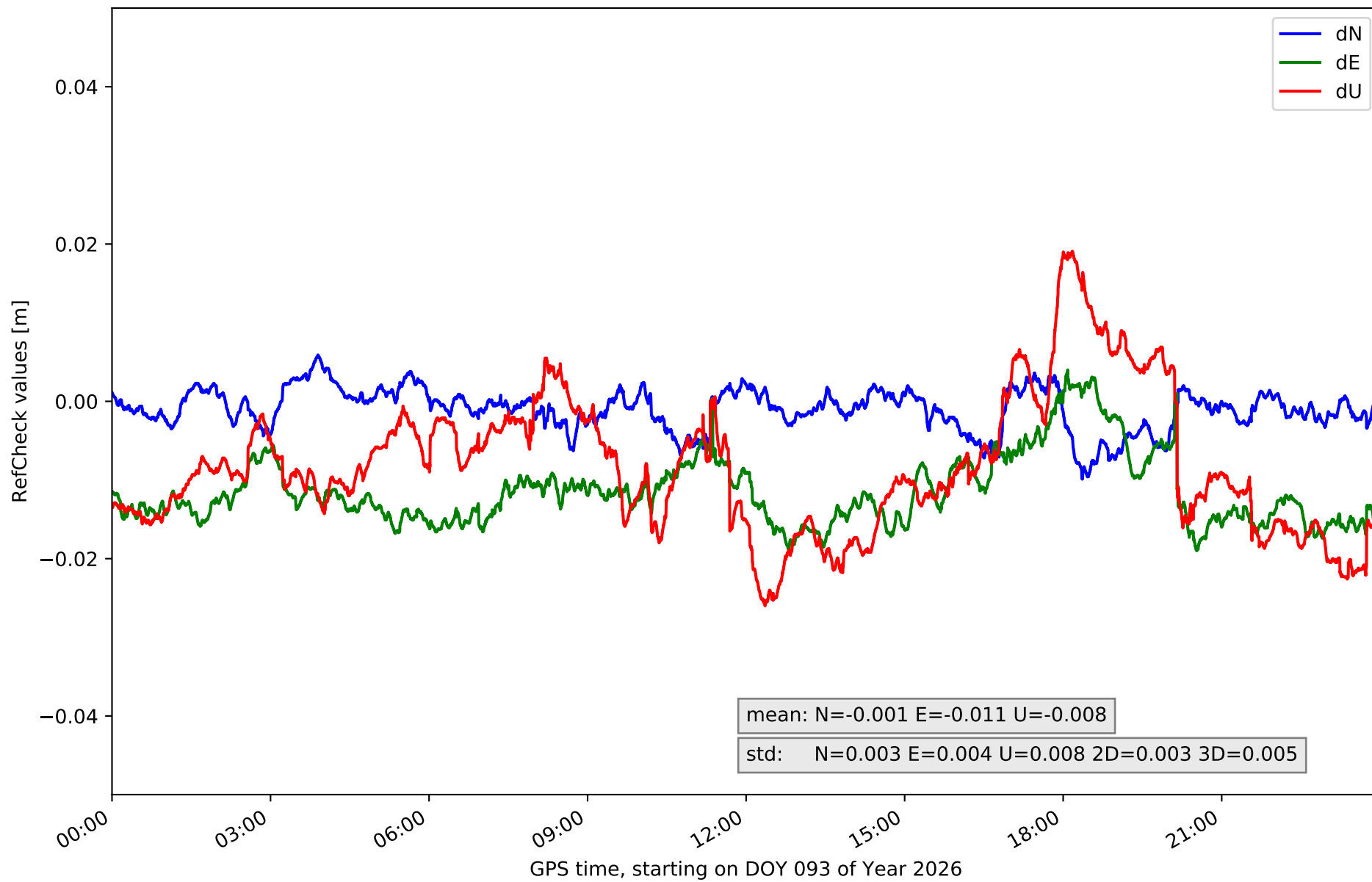
RefCheck for station LPAL in network NT32



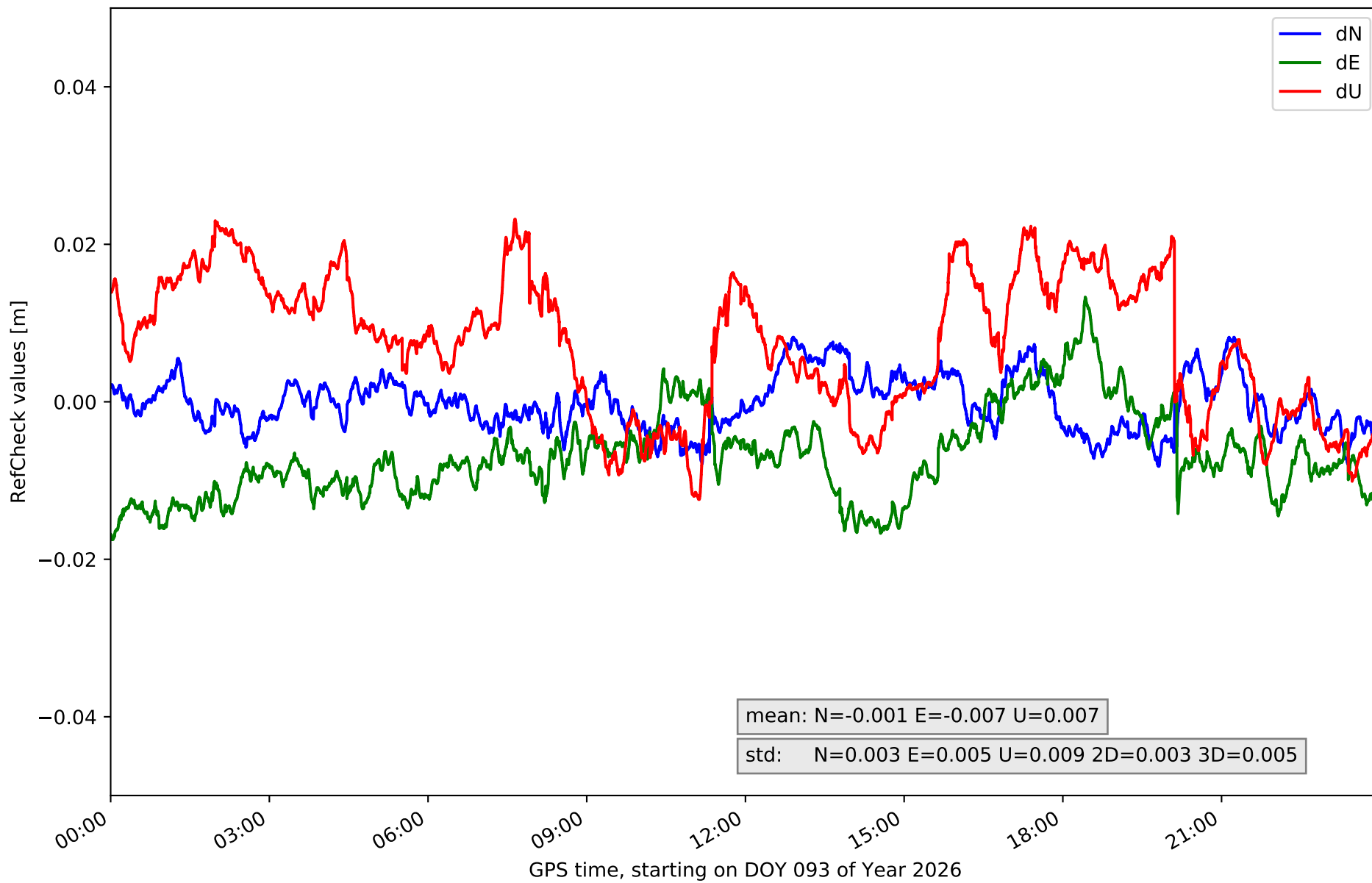
RefCheck for station LRES in network NT32



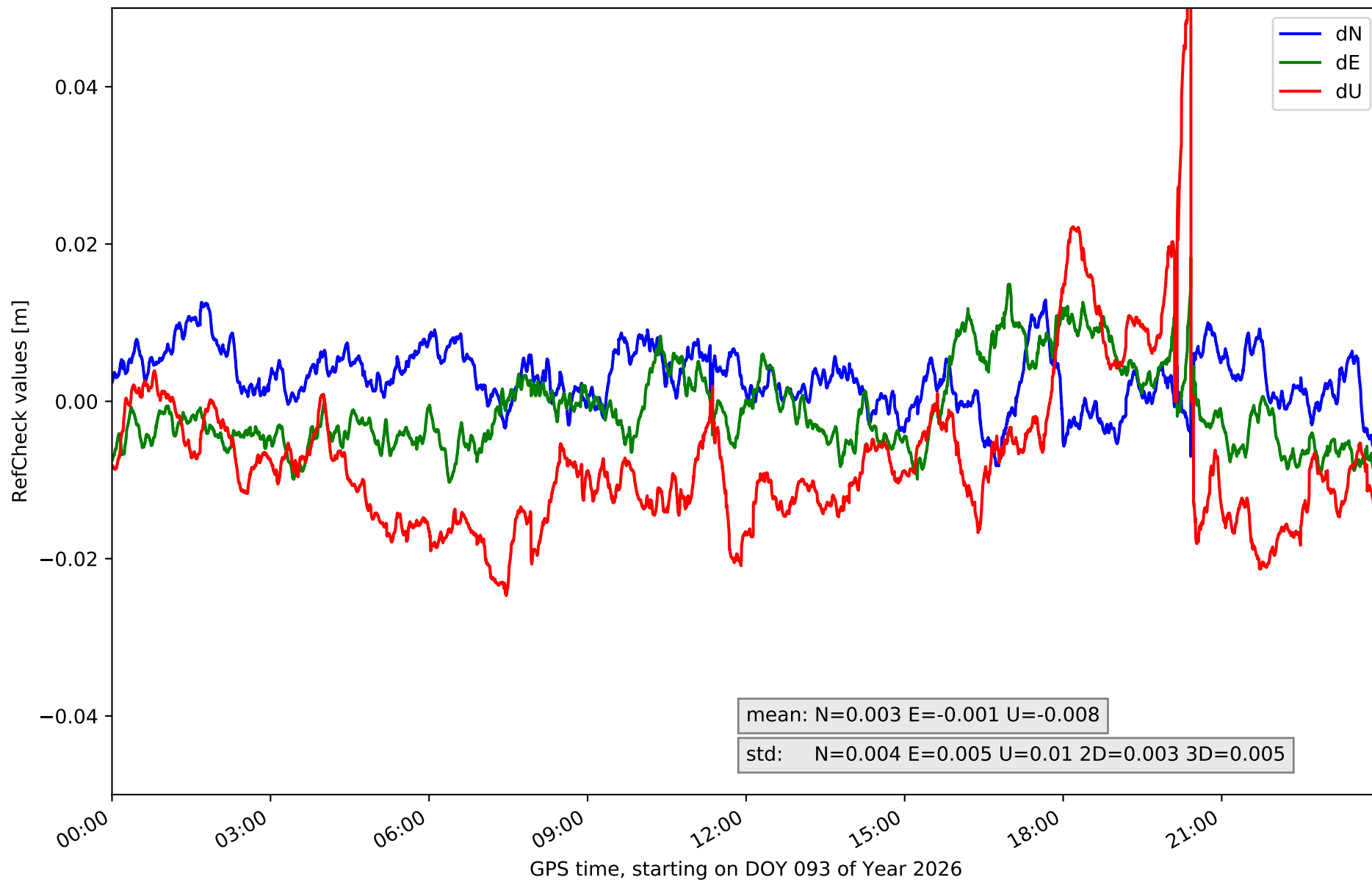
RefCheck for station TN01 in network NT32



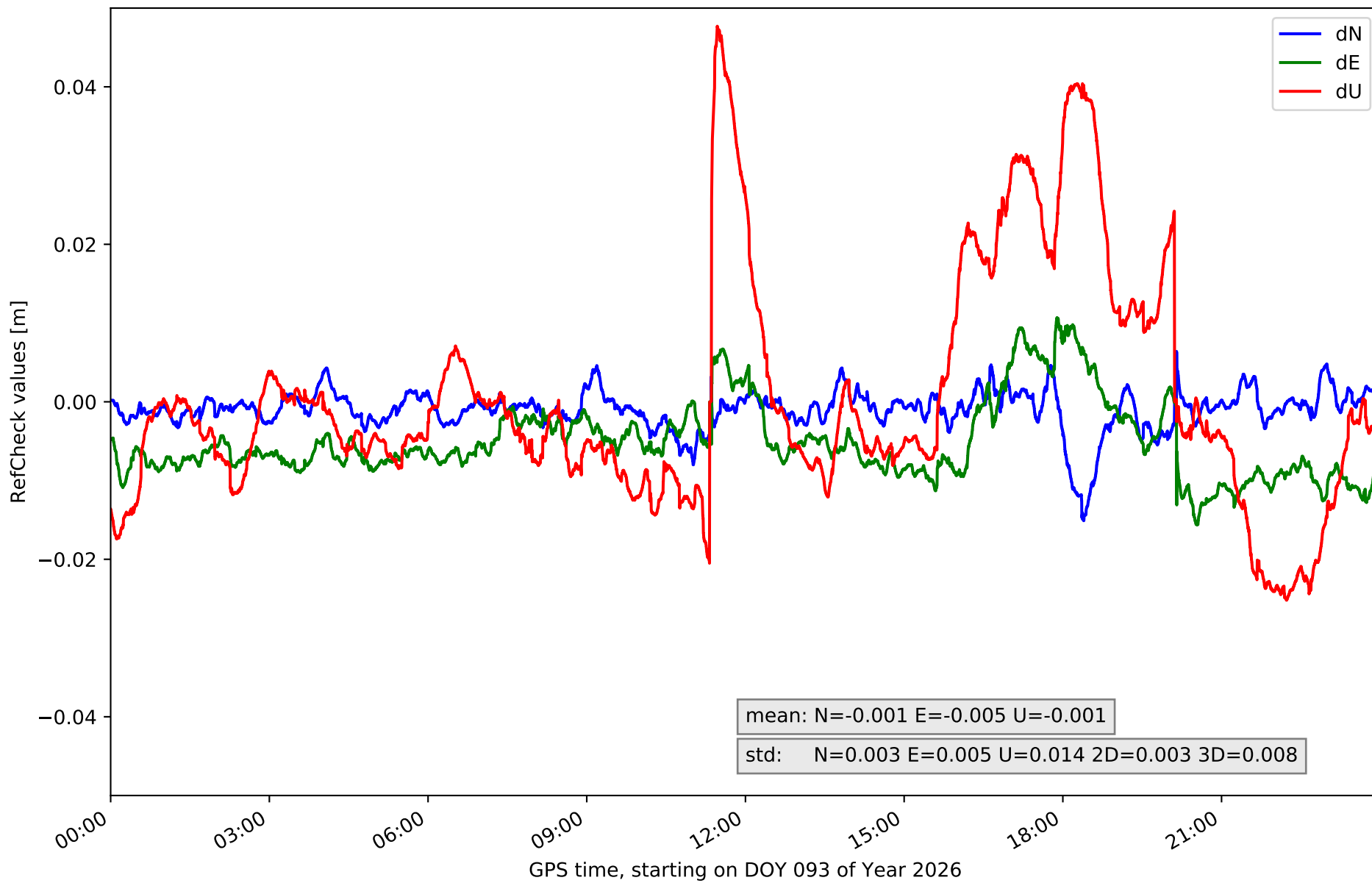
RefCheck for station TN02 in network NT32



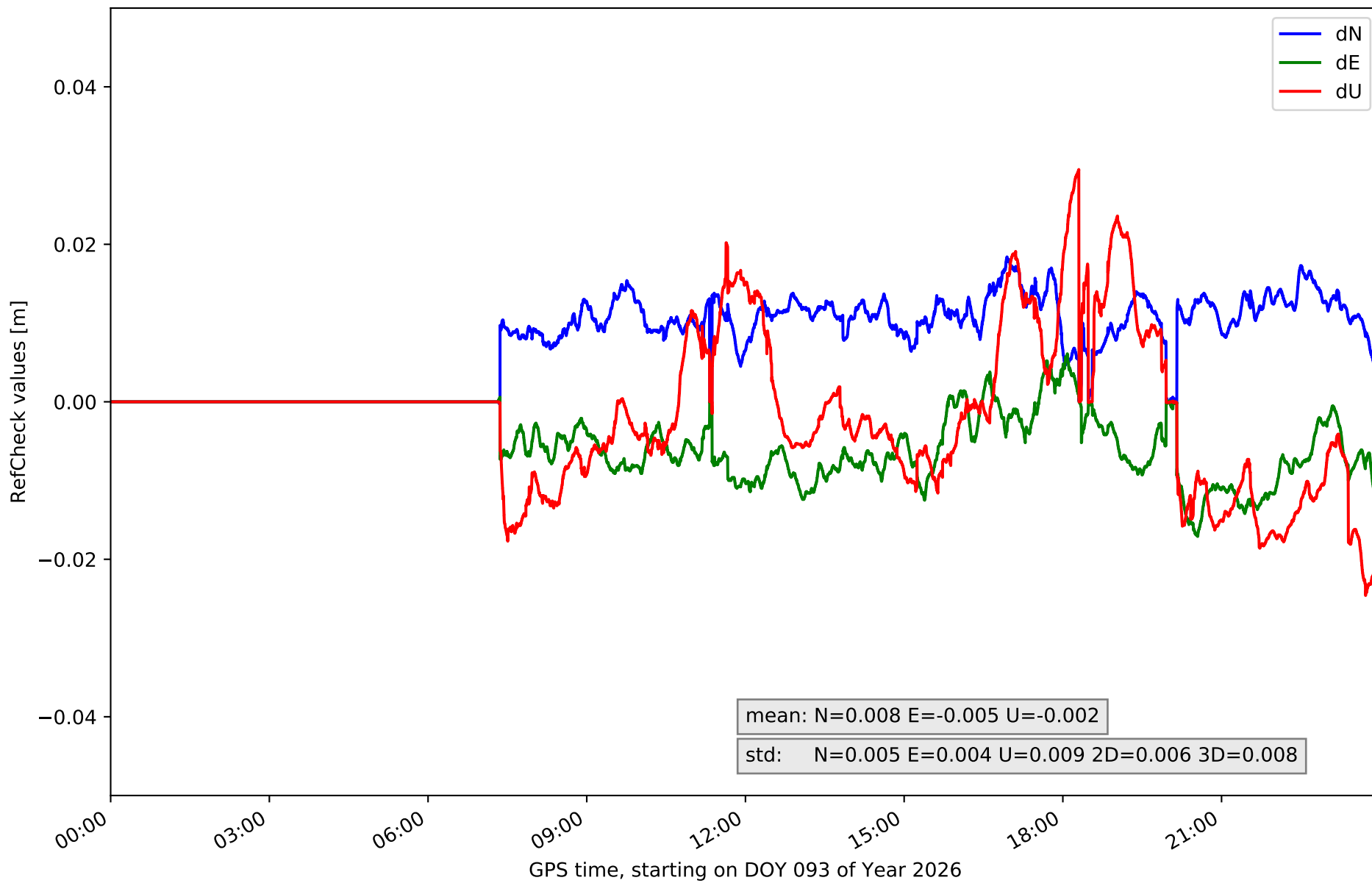
RefCheck for station TN03 in network NT32



RefCheck for station TN06 in network NT32



RefCheck for station TN09 in network NT32



RefCheck values for network NT32

Station	Nmin	Nmax	Nstd	Emin	Emax	Estd	Umin	Umax	Ustd	std2D	std3D	#2D > 0.01	% 2D > 0.01	#3D > 0.02	% 3D > 0.02
EH01	-0.018	0.026	0.004	-0.006	0.027	0.004	-0.06	0.057	0.014	0.004	0.01	42934	85.3	10644	21.1
EH02	-0.008	0.018	0.004	-0.009	0.027	0.007	-0.03	0.061	0.019	0.006	0.012	45495	90.4	43865	87.1
GOM1	-0.015	0.004	0.003	-0.02	0.004	0.004	-0.029	0.05	0.016	0.003	0.008	21435	42.6	12763	25.4
IZAN	-0.007	0.007	0.002	-0.014	0.0	0.004	-0.02	0.009	0.005	0.005	0.006	11948	23.7	250	0.5
LP01	-0.021	0.01	0.005	-0.022	0.012	0.006	-0.04	0.039	0.018	0.004	0.01	36291	72.1	20626	41.0
LP03	-0.019	0.027	0.006	-0.029	0.011	0.006	-0.06	0.022	0.015	0.006	0.011	6462	12.8	7490	14.9
LPAL	-0.023	0.008	0.004	-0.015	0.017	0.005	-0.041	0.011	0.01	0.003	0.007	37584	74.7	7047	14.0
LRES	-0.014	0.016	0.005	0.0	0.025	0.004	-0.033	0.059	0.02	0.004	0.011	44948	89.3	17555	34.9
TN01	-0.01	0.006	0.003	-0.019	0.004	0.004	-0.026	0.019	0.008	0.003	0.005	38250	76.0	11239	22.3
TN02	-0.008	0.008	0.003	-0.018	0.013	0.005	-0.012	0.023	0.009	0.003	0.005	14701	29.2	7609	15.1
TN03	-0.008	0.013	0.004	-0.01	0.018	0.005	-0.025	0.072	0.01	0.003	0.005	4769	9.5	4053	8.1
TN06	-0.015	0.006	0.003	-0.016	0.011	0.005	-0.025	0.048	0.014	0.003	0.008	6059	12.0	8543	17.0
TN09	-0.0	0.018	0.005	-0.017	0.006	0.004	-0.025	0.029	0.009	0.006	0.008	30595	60.8	8258	16.4
Mean	-0.013	0.013	0.004	-0.015	0.013	0.005	-0.033	0.038	0.013	0.004	0.008	26267.0	52.2	12303.2	24.4
Min/Max	-0.023	0.027	0.006	-0.029	0.027	0.007	-0.06	0.072	0.02	0.006	0.012	45495	90.4	43865	87.1

fixing statistic for network NT32

fixing percentage of	all GNSS	G	R	E	C
using threshold 0.3	91.6	93.5	81.5	94.5	92.5
considering satellites with dual-frequency fixed	88.7	91.4	76.6	92.0	90.6
considering all signals separately	89.3	91.7	76.6	92.6	89.5