

## summary for network N32T

timeperiod chosen: from 2026-03-29-00:00:00 until 2026-03-29-23:59:59

average update rate (durations larger than 15 seconds considered as observation gap): 1.2 seconds

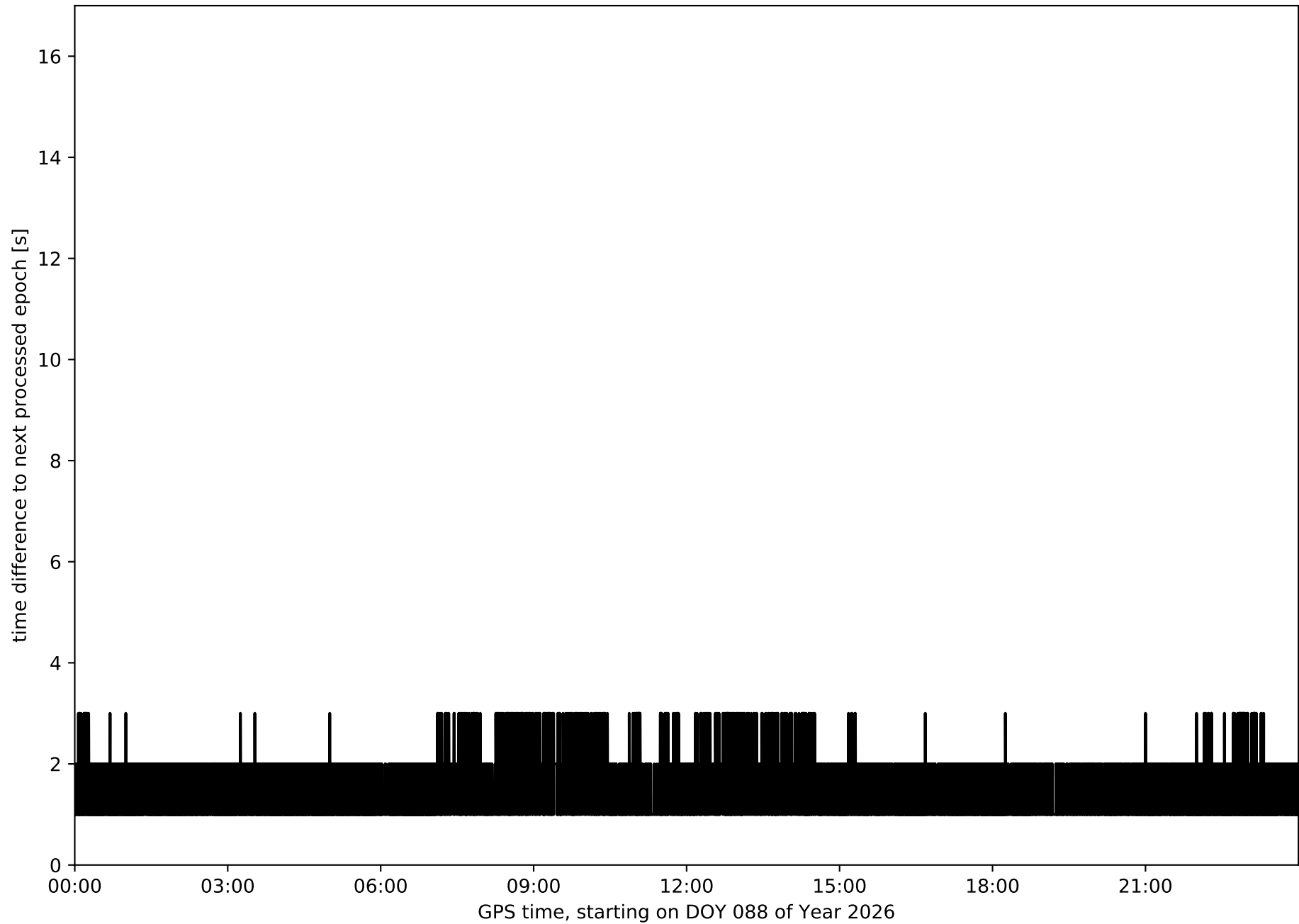
average fixing percentage with threshold set to 0.3: 91.0 percent

stations available: 13 of 14

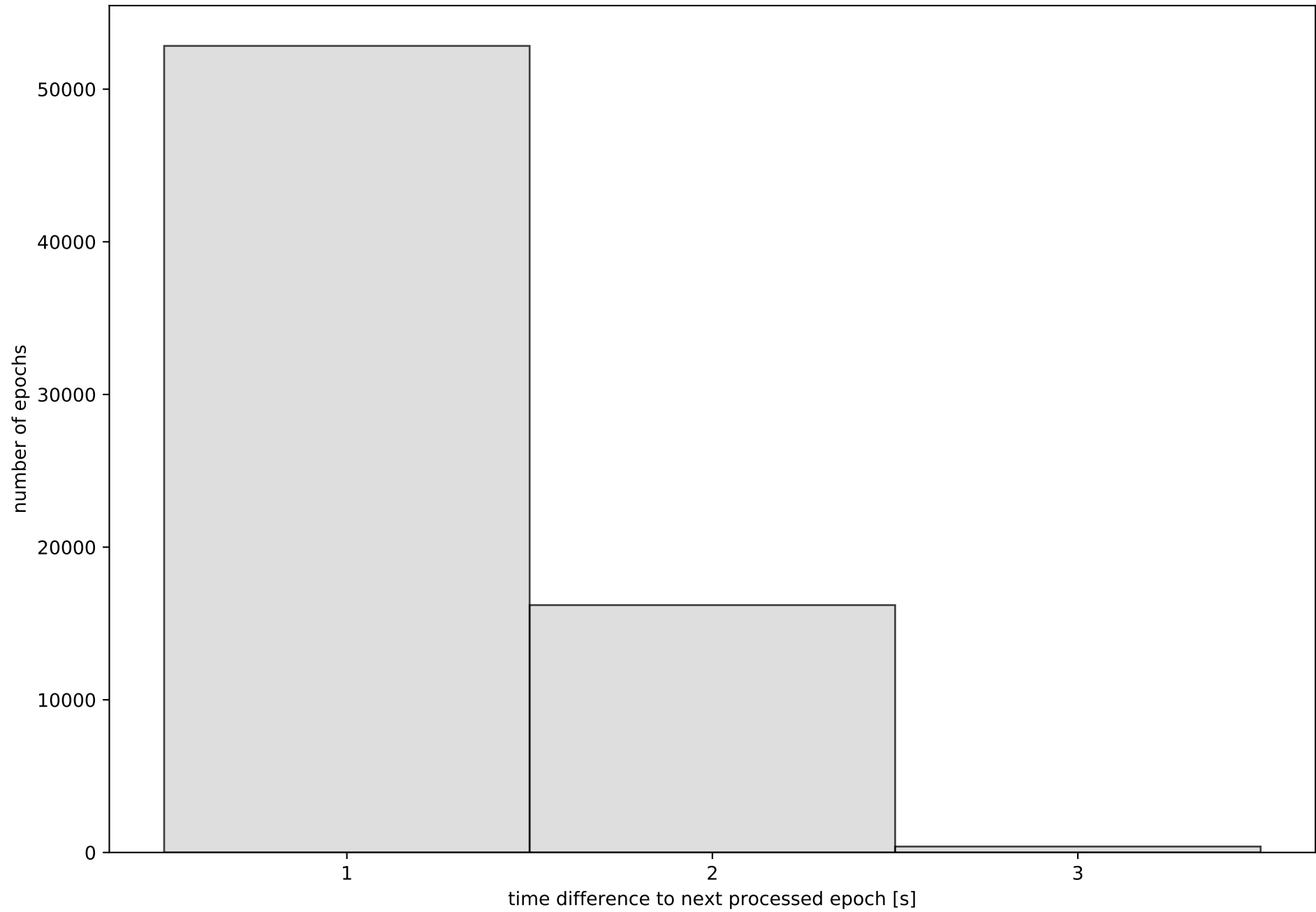
station information:

station EH01:	antenna: LEIAR20	LEIM	receiver: LEICA GR25	height: 801.016
station EH02:	antenna: TRM59900.00	SCIS	receiver: LEICA GR50	height: 85.364
station GOM1:	antenna: LEIAR20	LEIM	receiver: LEICA GR50	height: 48.789
station IZAN:	antenna: LEIAT504GG	LEIS	receiver: LEICA GR50	height: 2417.44
station LP01:	antenna: TRM57971.00	NONE	receiver: TRIMBLE ALLOY	height: 675.249
station LP03:	antenna: TRM59900.00	NONE	receiver: TRIMBLE NETR9	height: 919.563
station LPAL:	antenna: LEIAR20	LEIM	receiver: LEICA GR50	height: 2199.31
station LRES:	antenna: LEIAR20	NONE	receiver: LEICA GR25	height: 51.241
station TN01:	antenna: LEIAR20	LEIM	receiver: LEICA GR50	height: 51.859
station TN02:	antenna: TRM159900.00	SCIS	receiver: TRIMBLE ALLOY	height: 54.509
station TN03:	antenna: TRM159900.00	SCIS	receiver: TRIMBLE ALLOY	height: 58.588
station TN06:	antenna: LEIAR20	NONE	receiver: LEICA GR50	height: 1053.548
station TN09:	antenna: LEIAR20	NONE	receiver: LEICA GR50	height: 1582.15

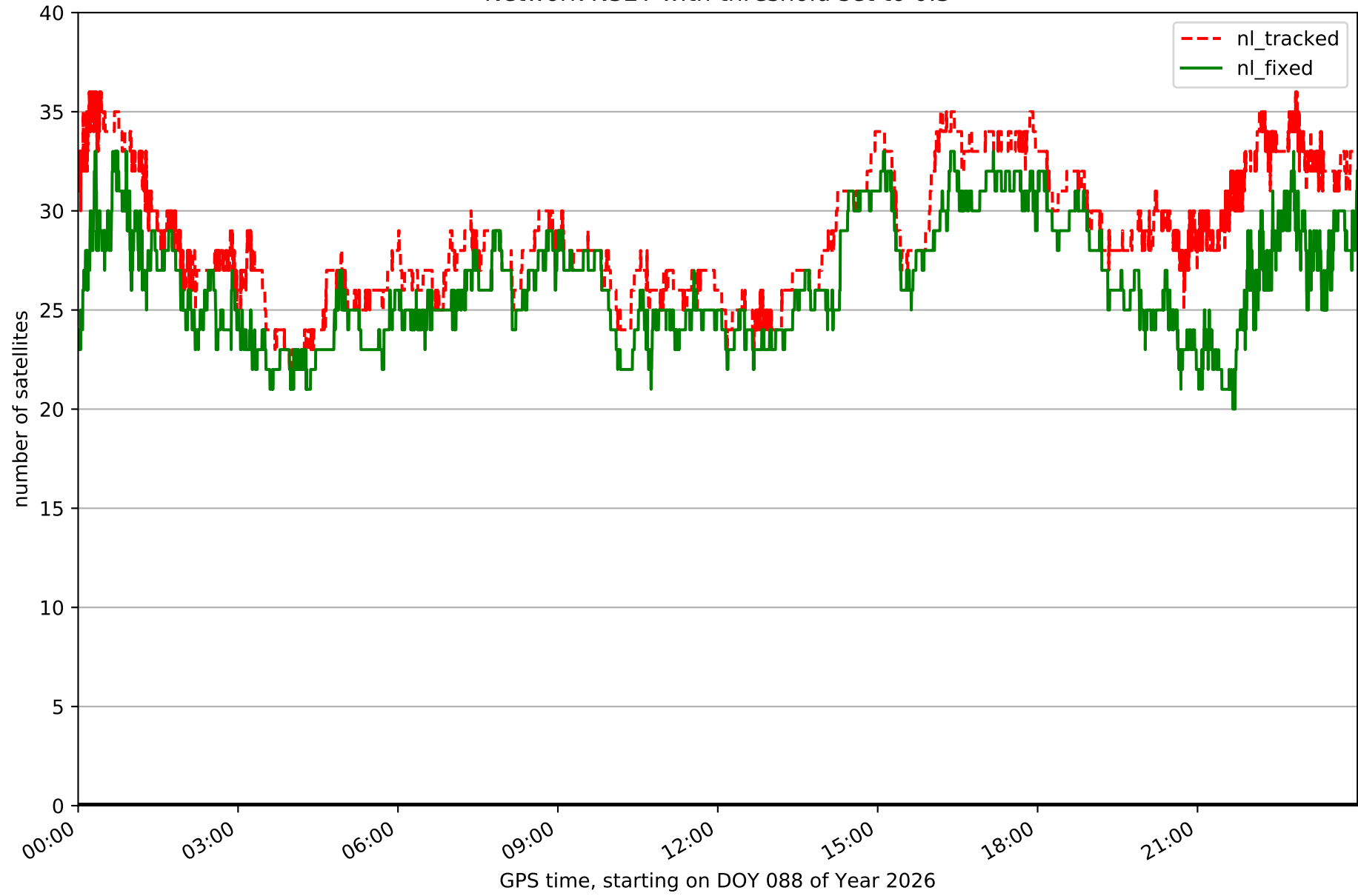
Processing rate in network N32T



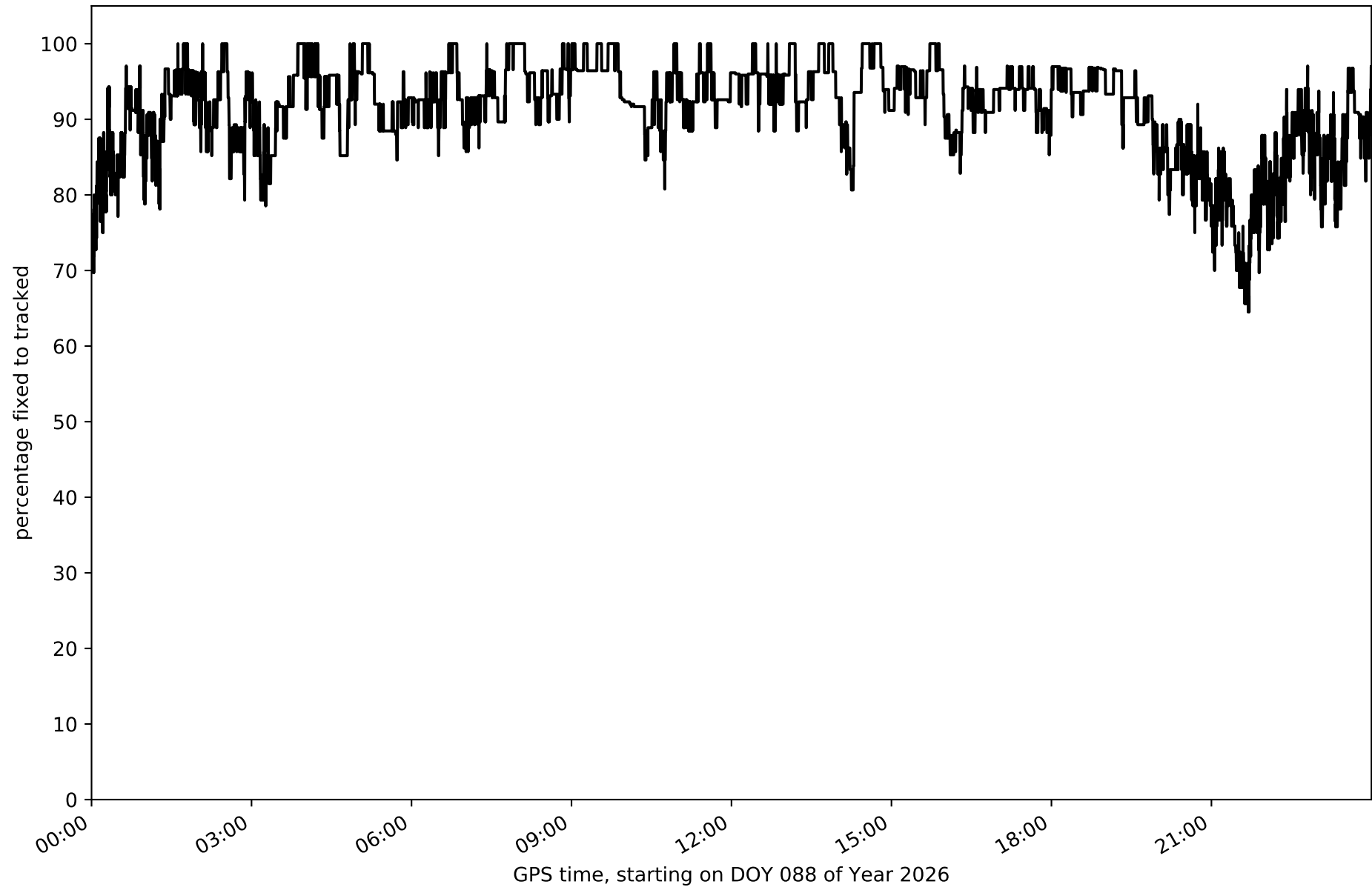
Histogram of the processing rate in network N32T (durations larger 15 seconds neglected)



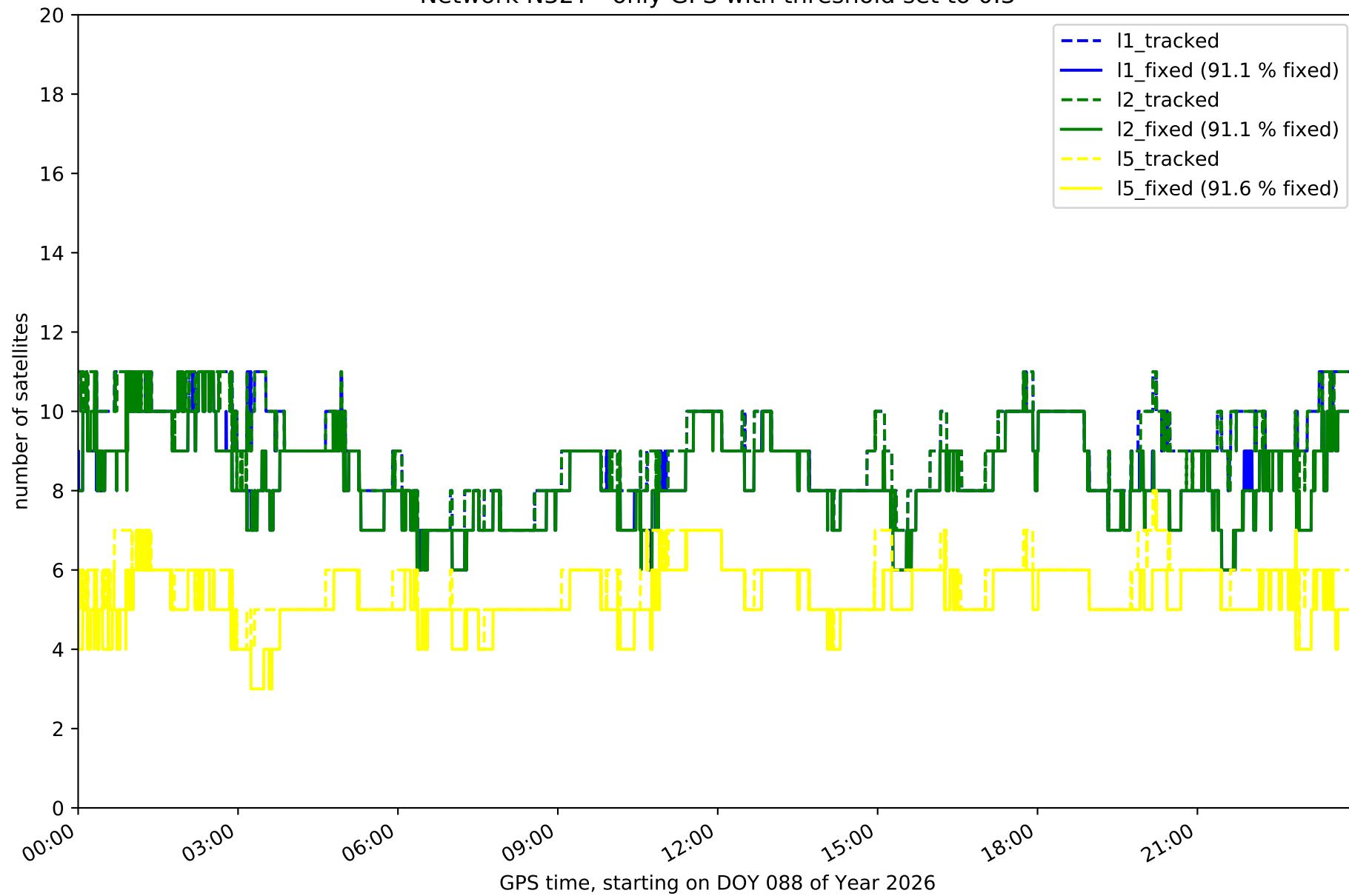
Network N32T with threshold set to 0.3



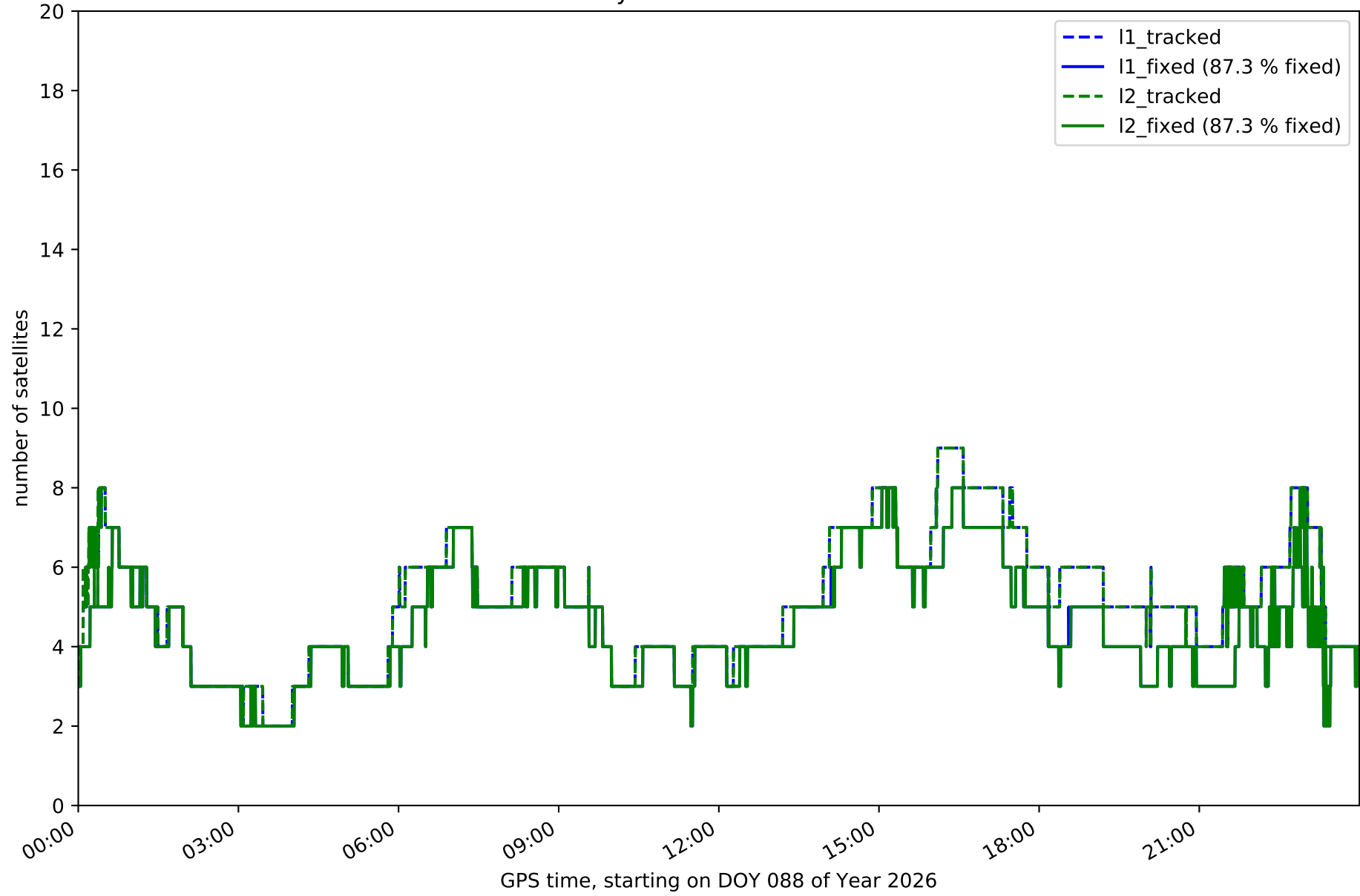
Fixing percentage of satellites in network N32T with threshold set to 0.3



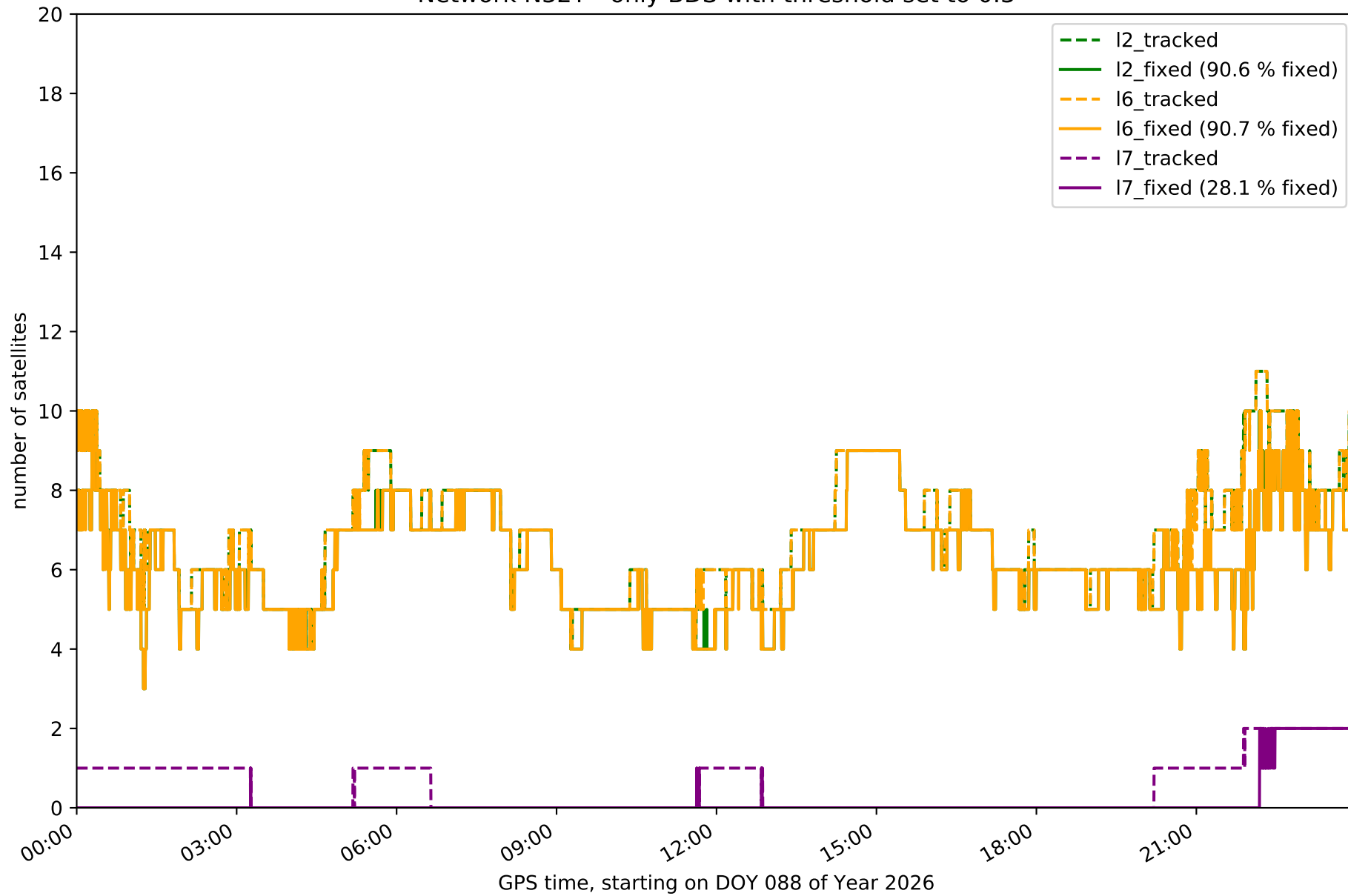
Network N32T - only GPS with threshold set to 0.3



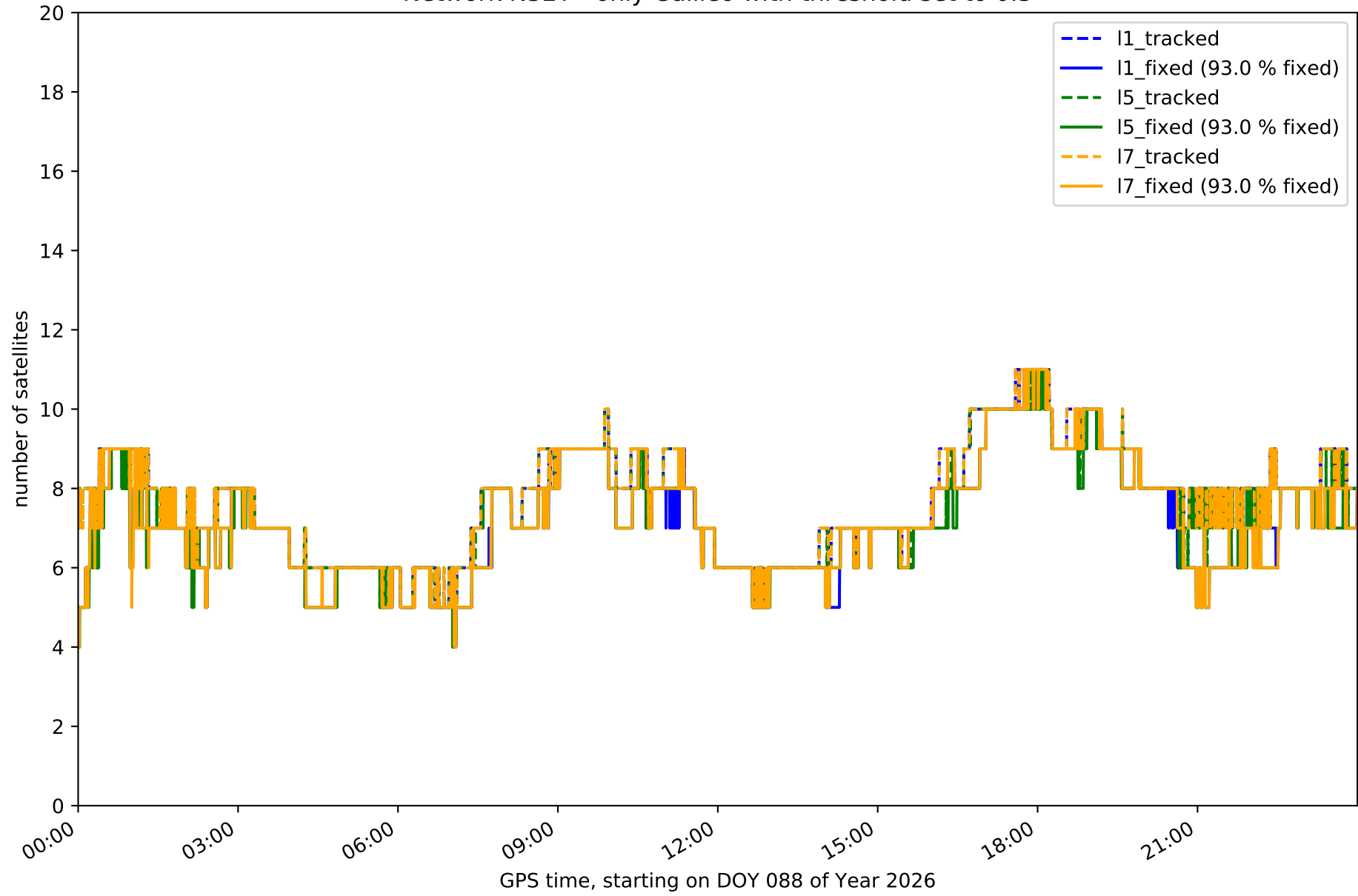
Network N32T - only GLONASS with threshold set to 0.3



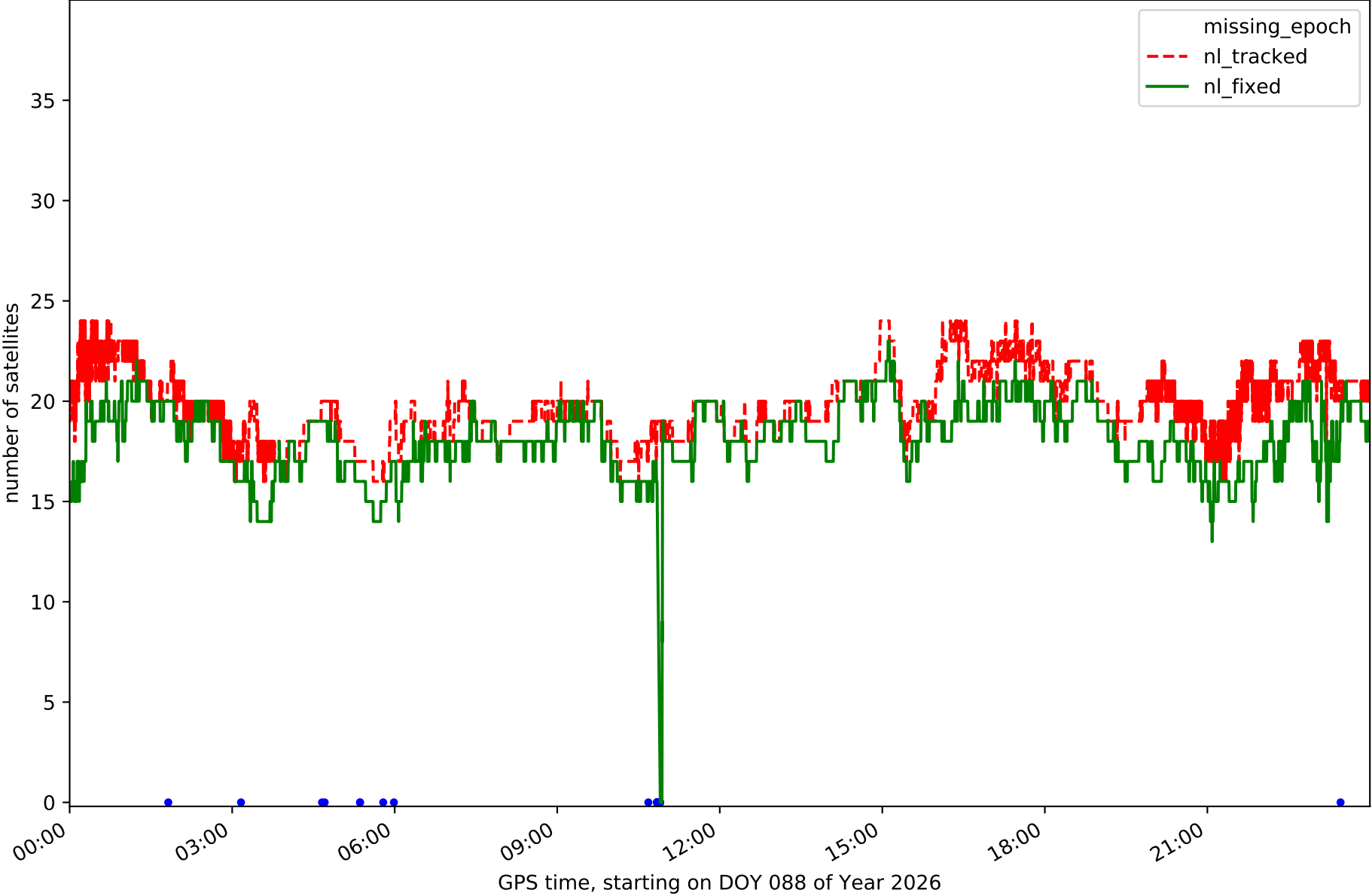
Network N32T - only BDS with threshold set to 0.3



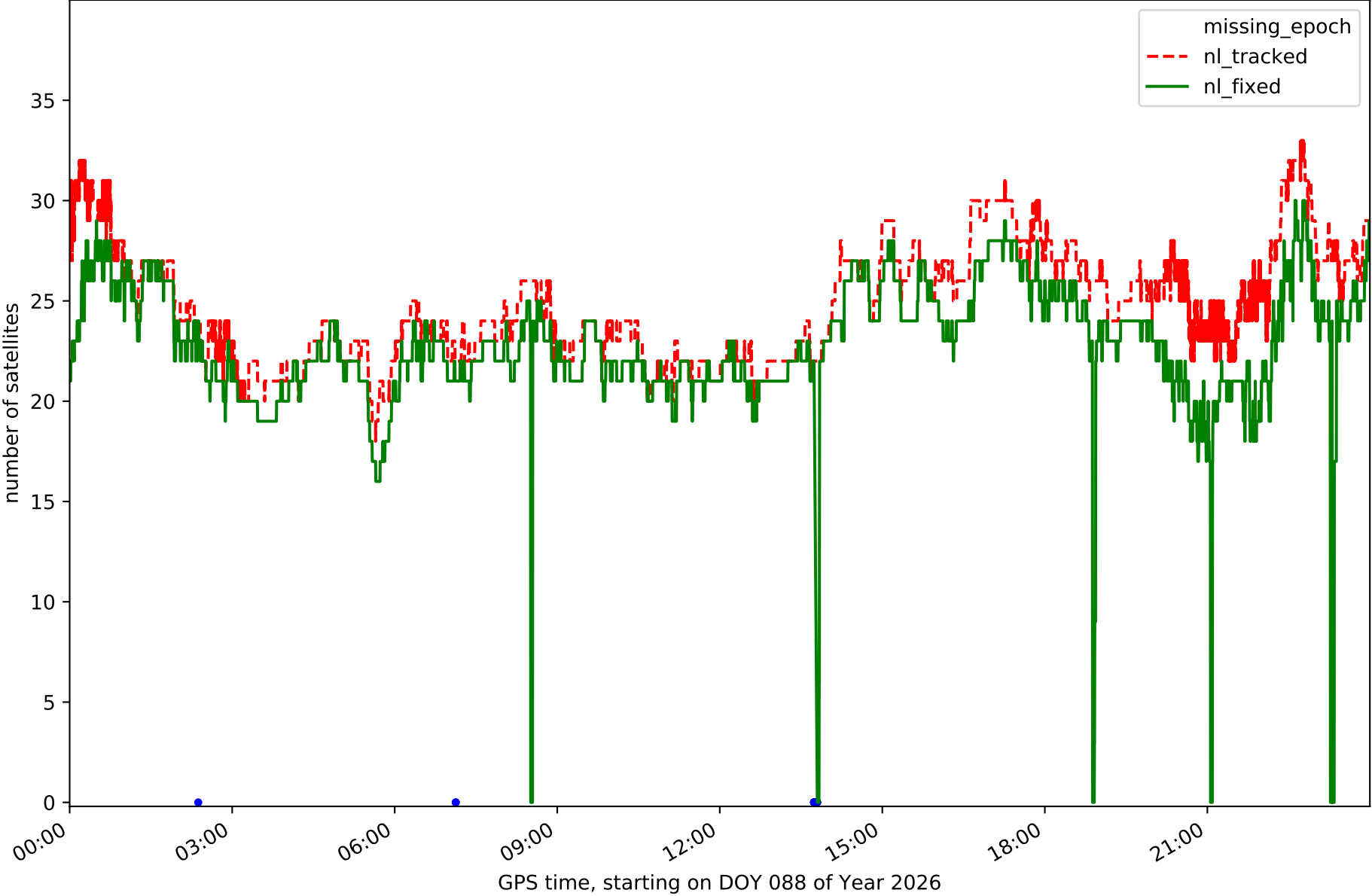
Network N32T - only Galileo with threshold set to 0.3



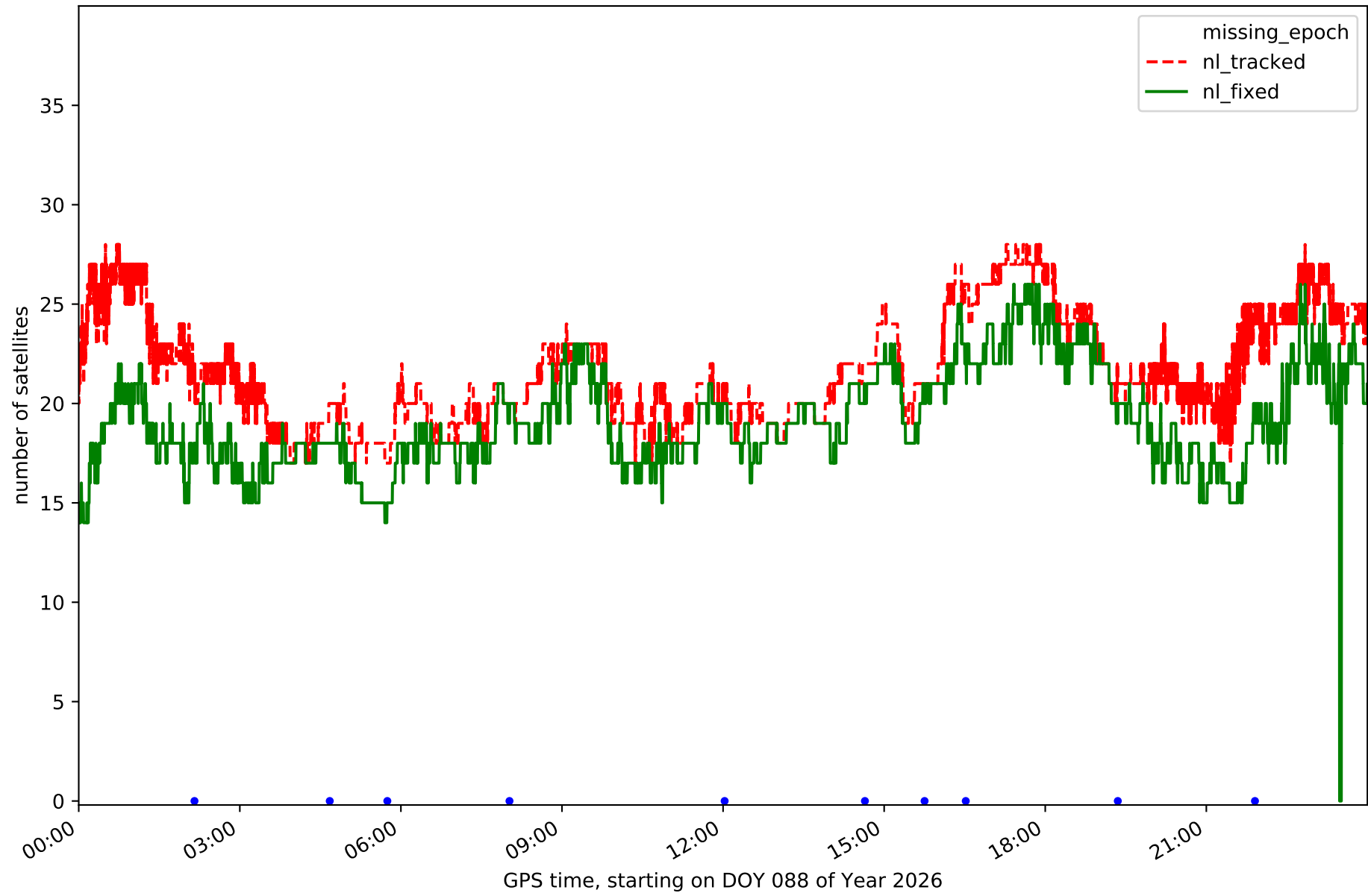
Station EH01 in network N32T



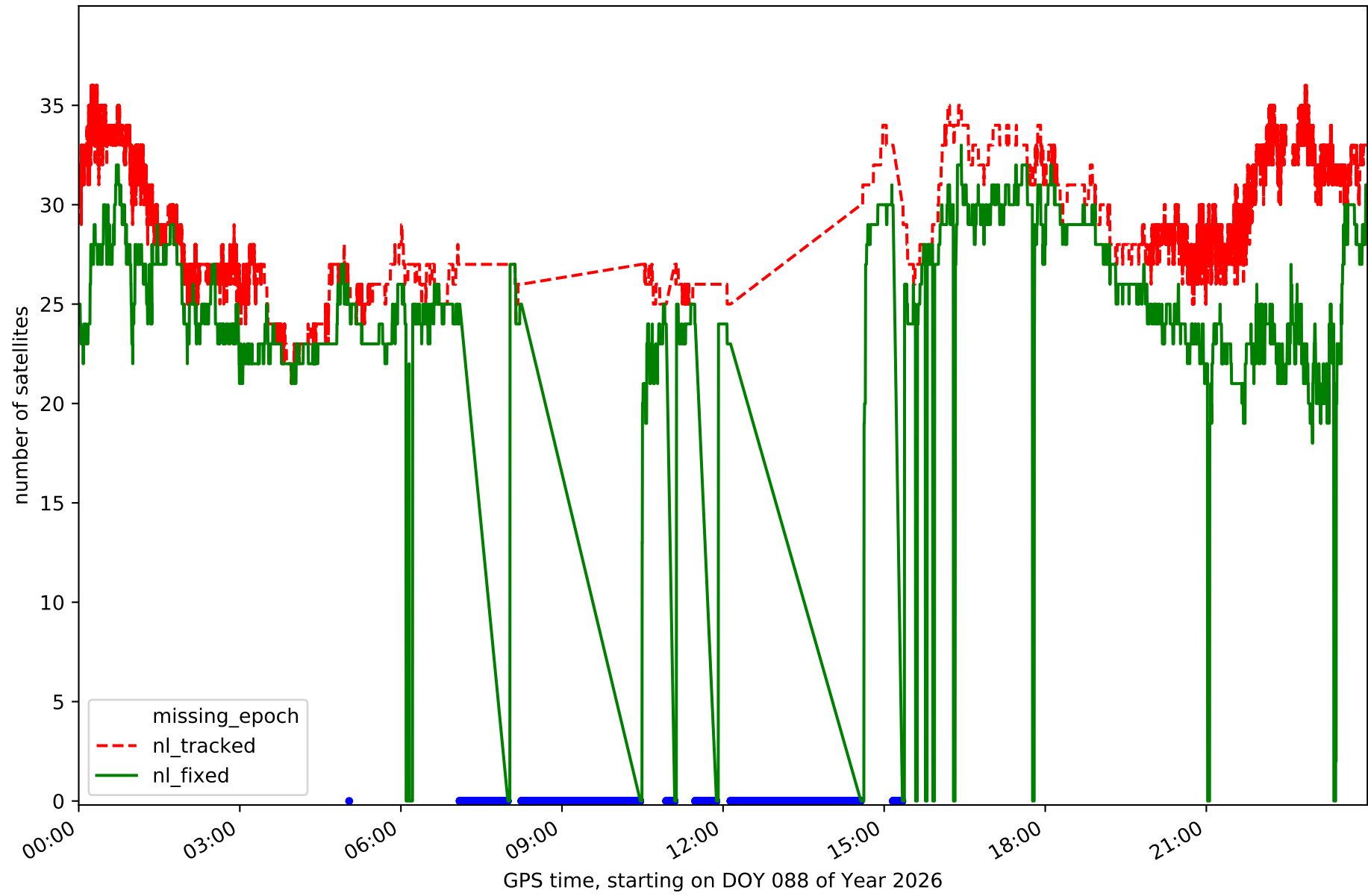
Station EH02 in network N32T



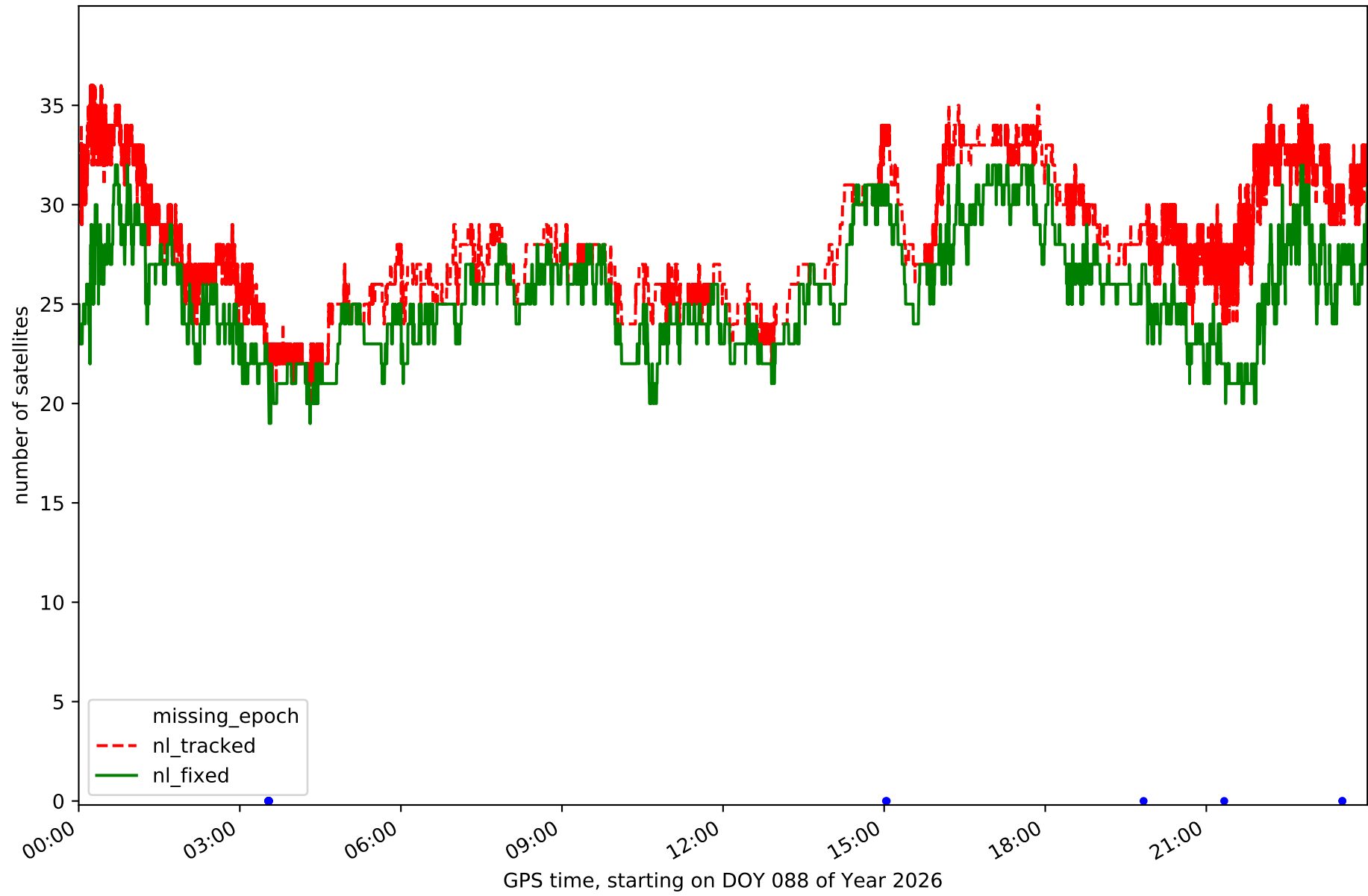
Station GOM1 in network N32T



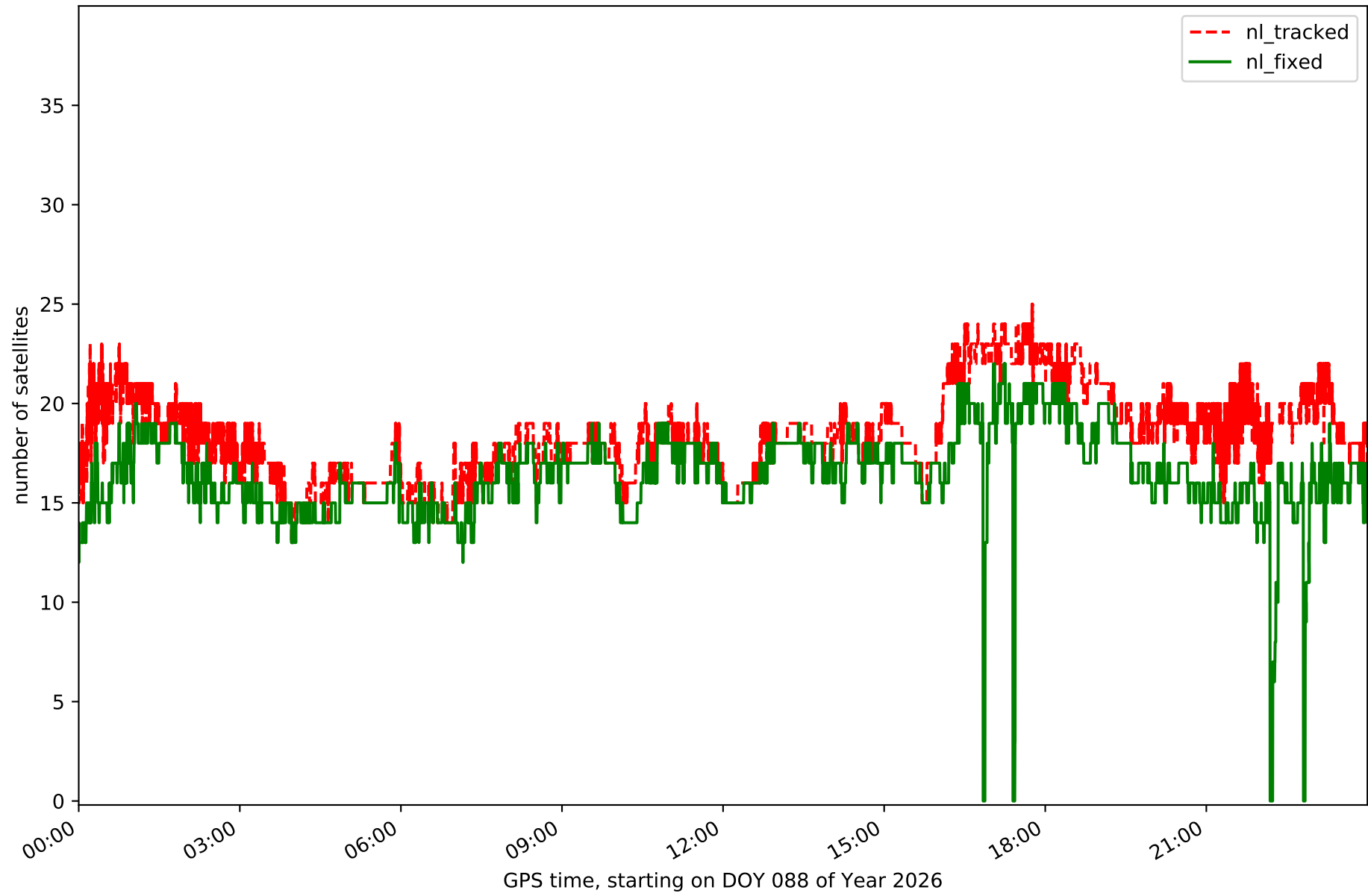
Station IZAN in network N32T



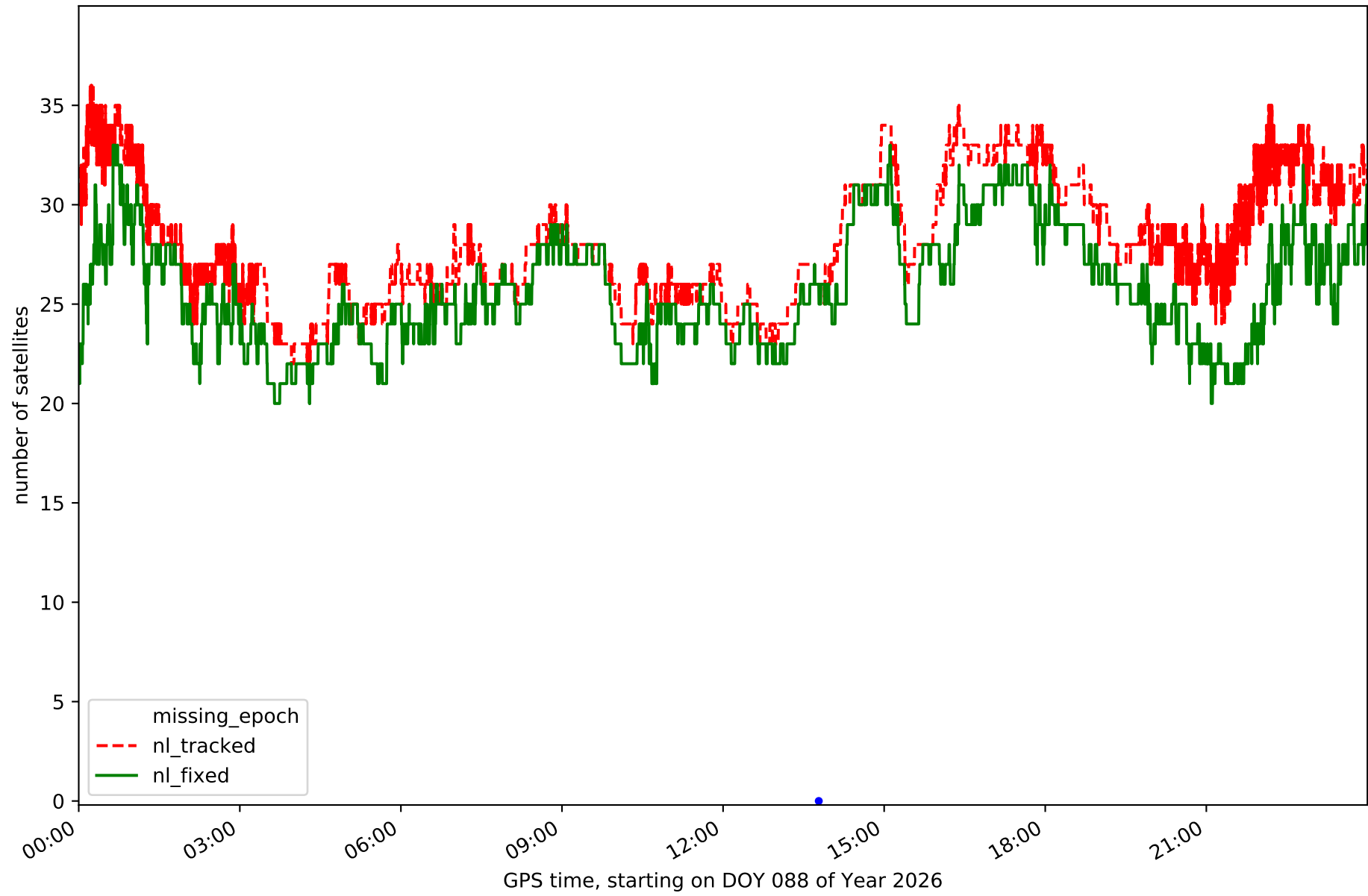
Station LP01 in network N32T



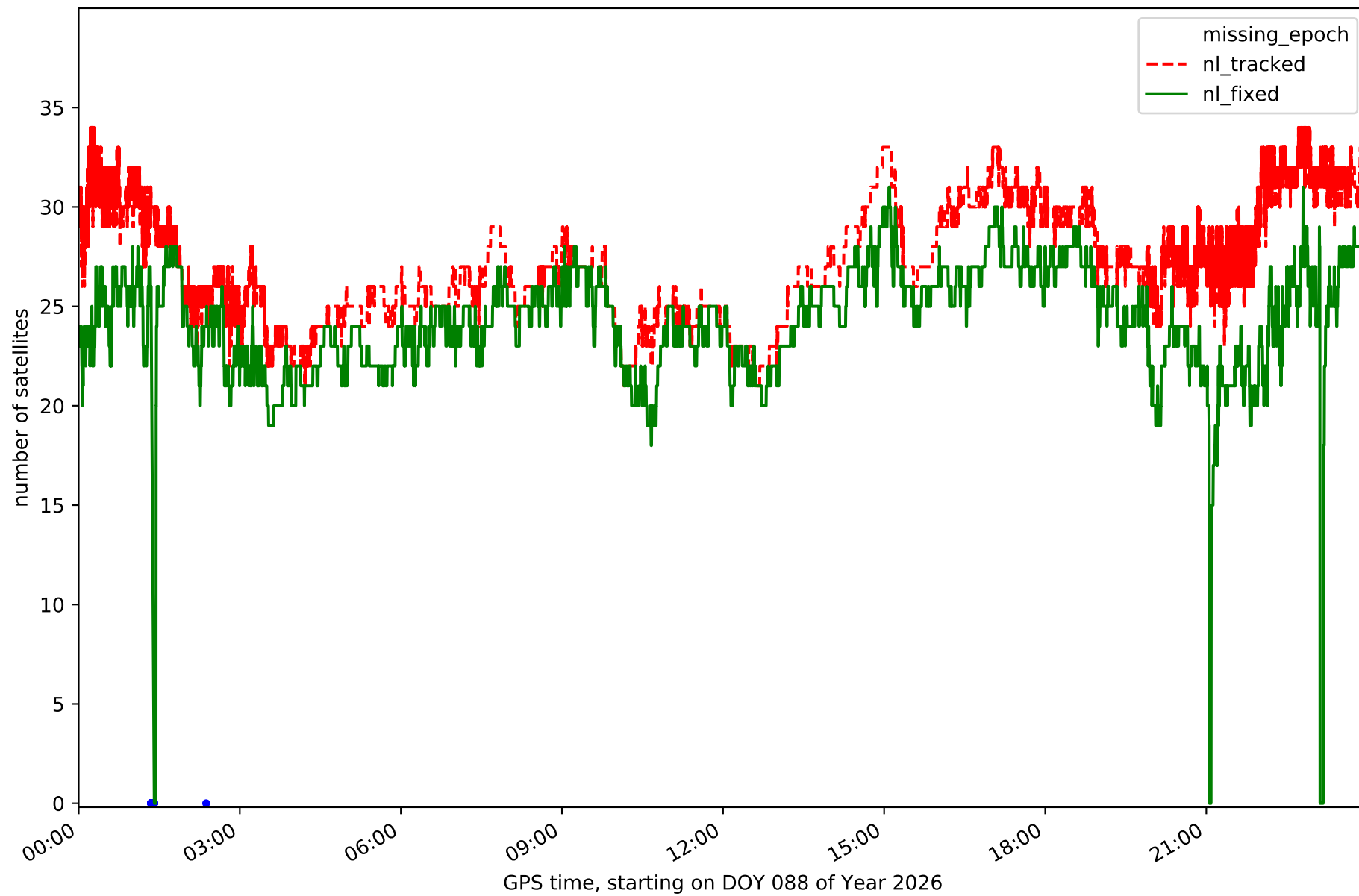
Station LP03 in network N32T



Station LPAL in network N32T



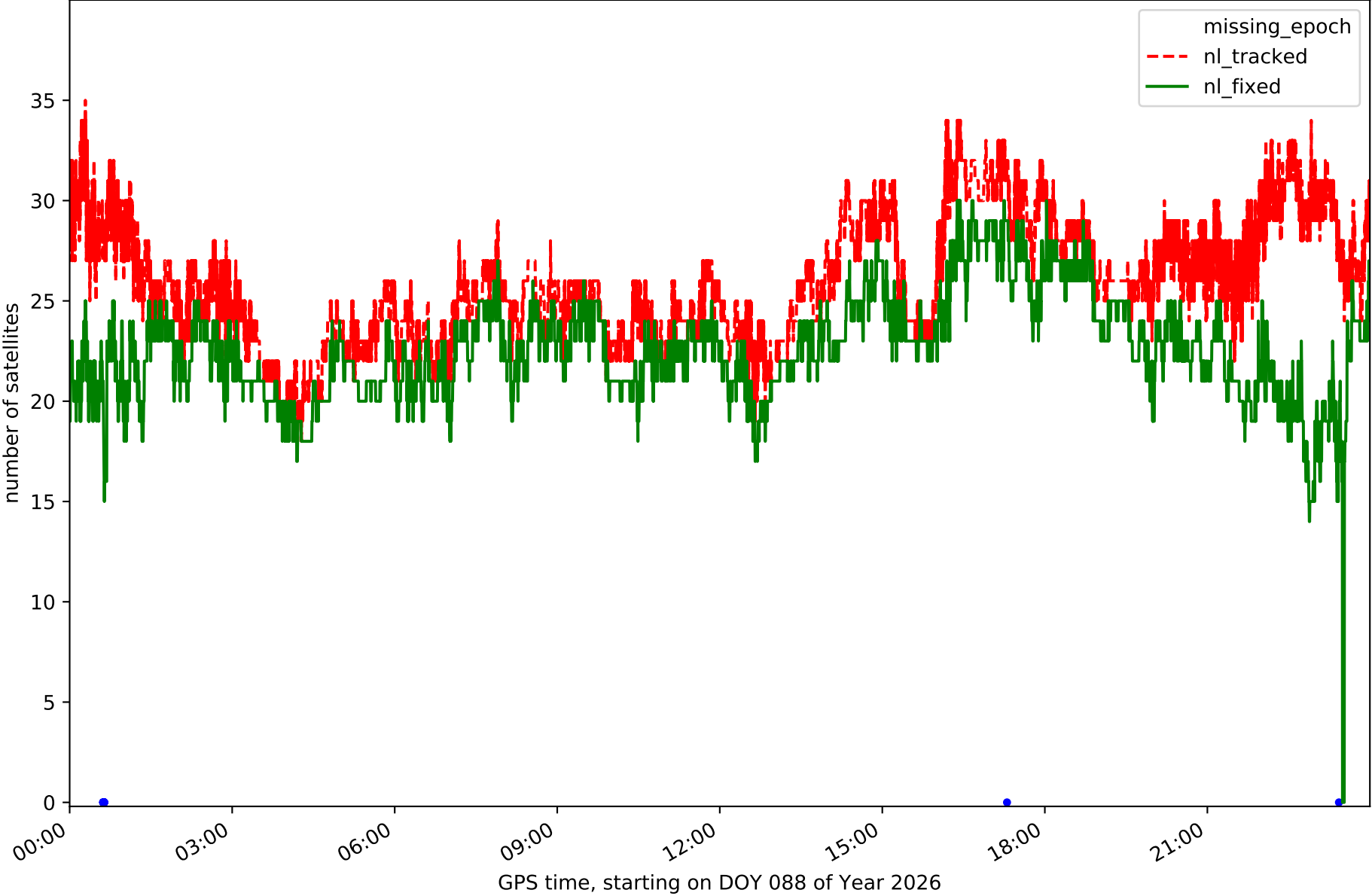
Station LRES in network N32T



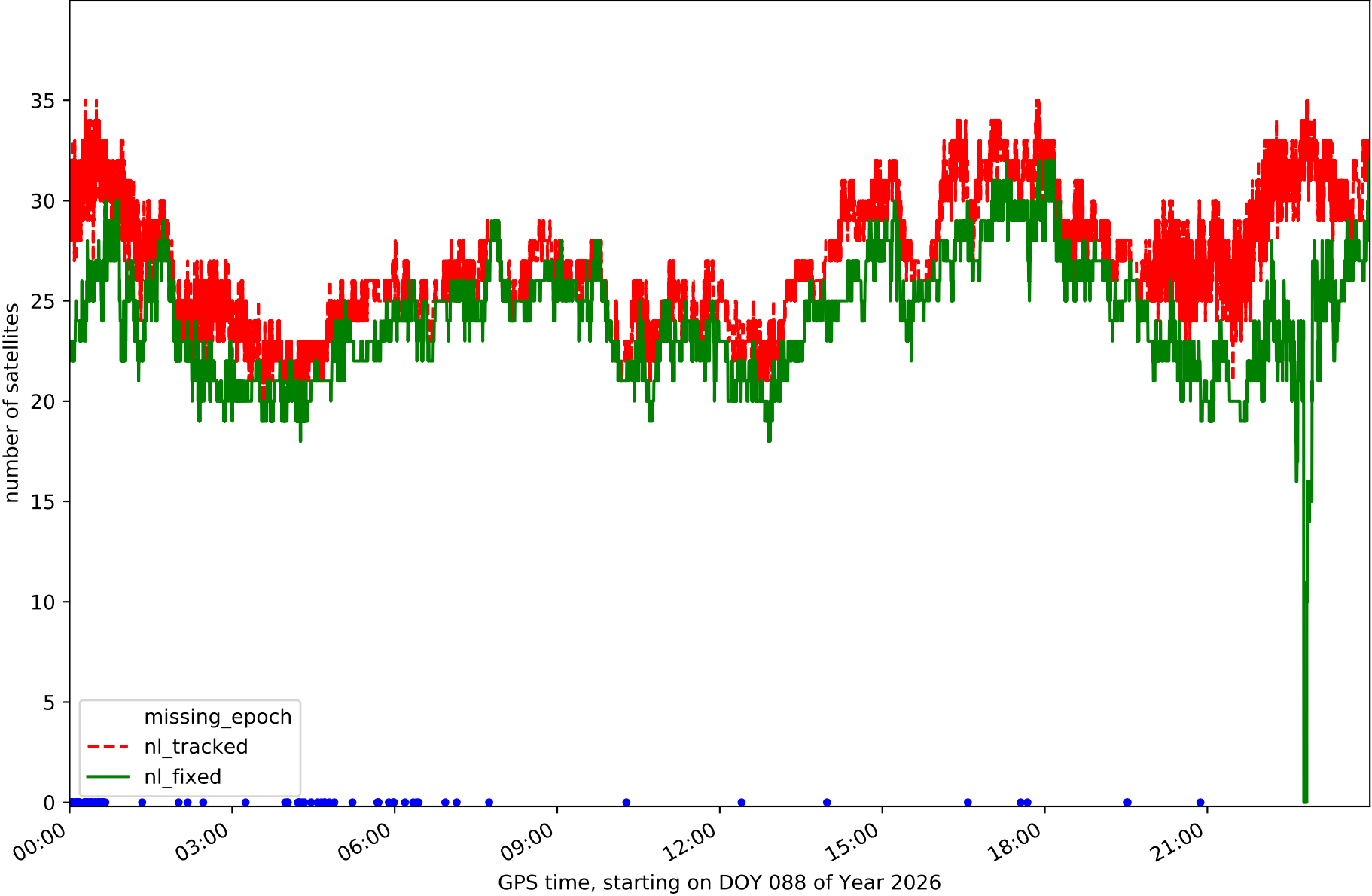
Station TN01 in network N32T



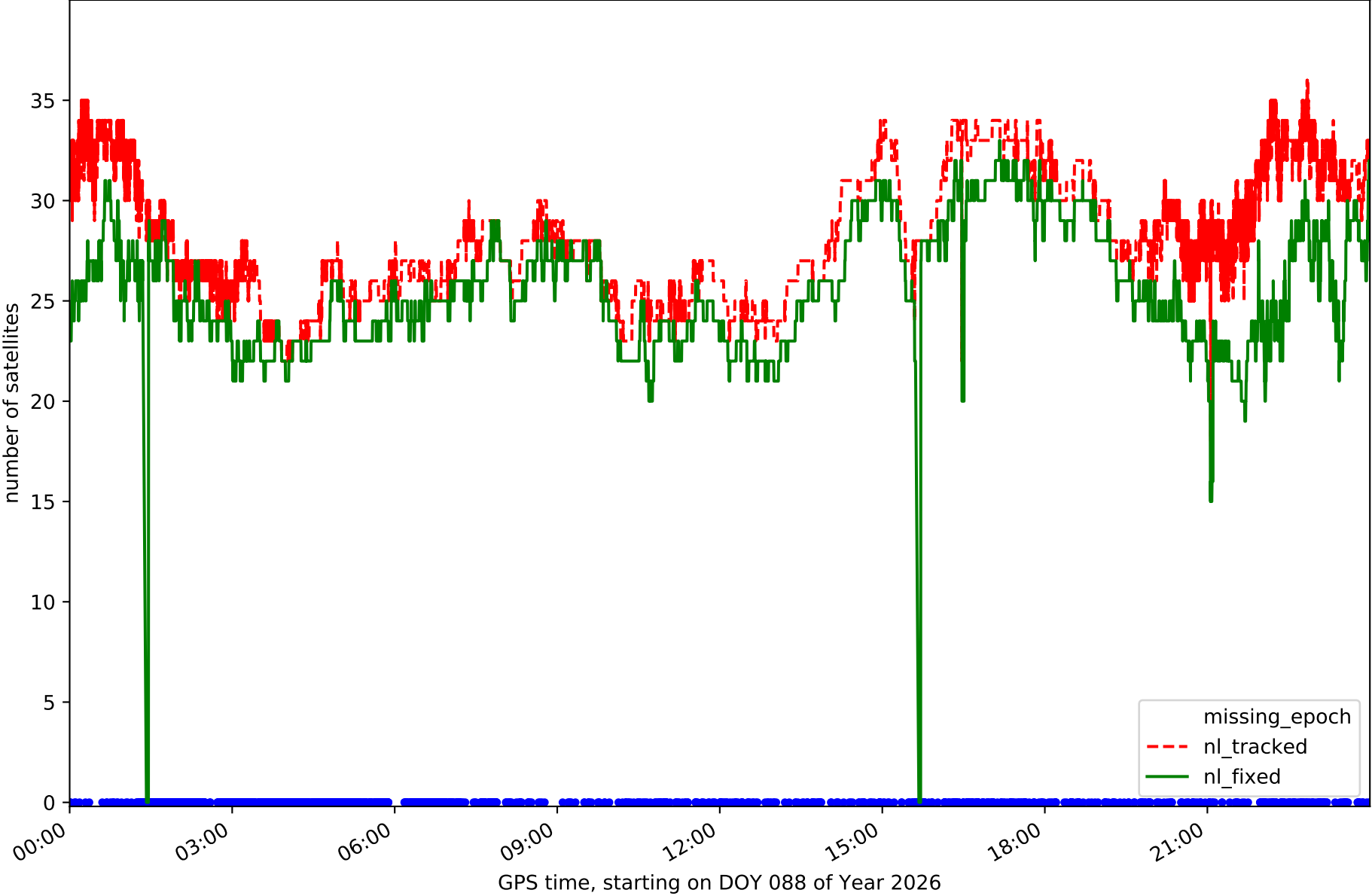
Station TN02 in network N32T



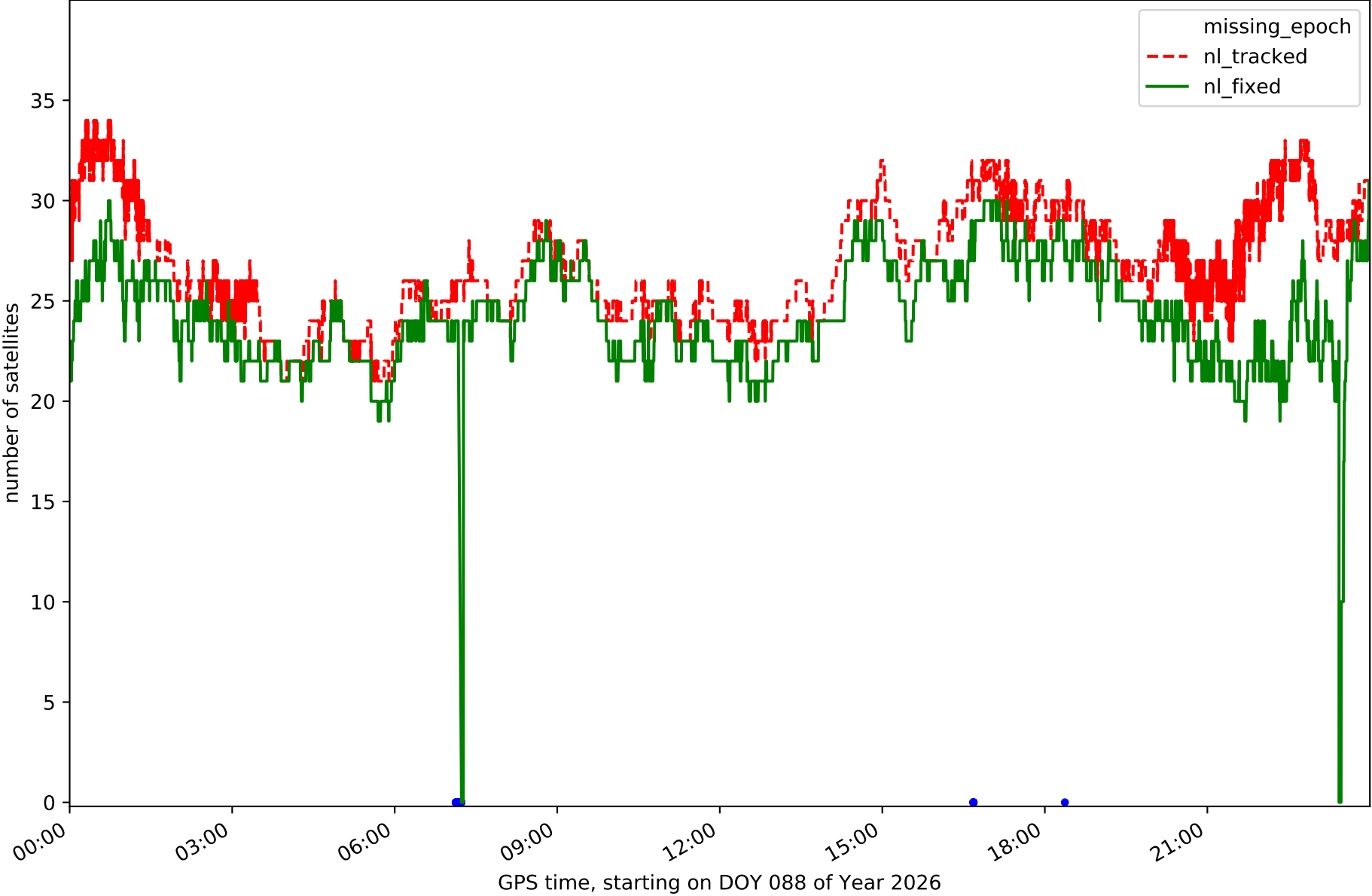
Station TN03 in network N32T



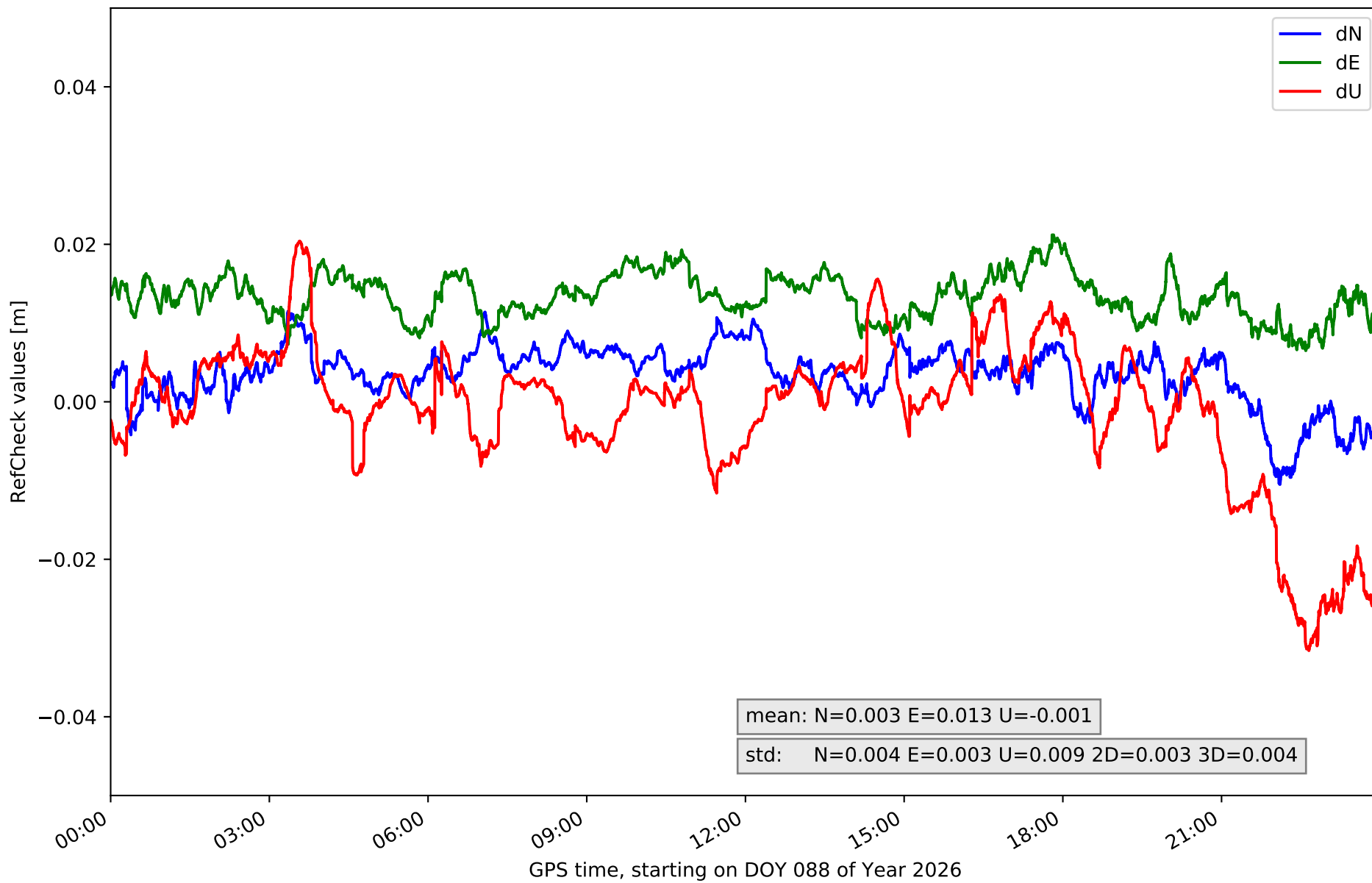
Station TN06 in network N32T



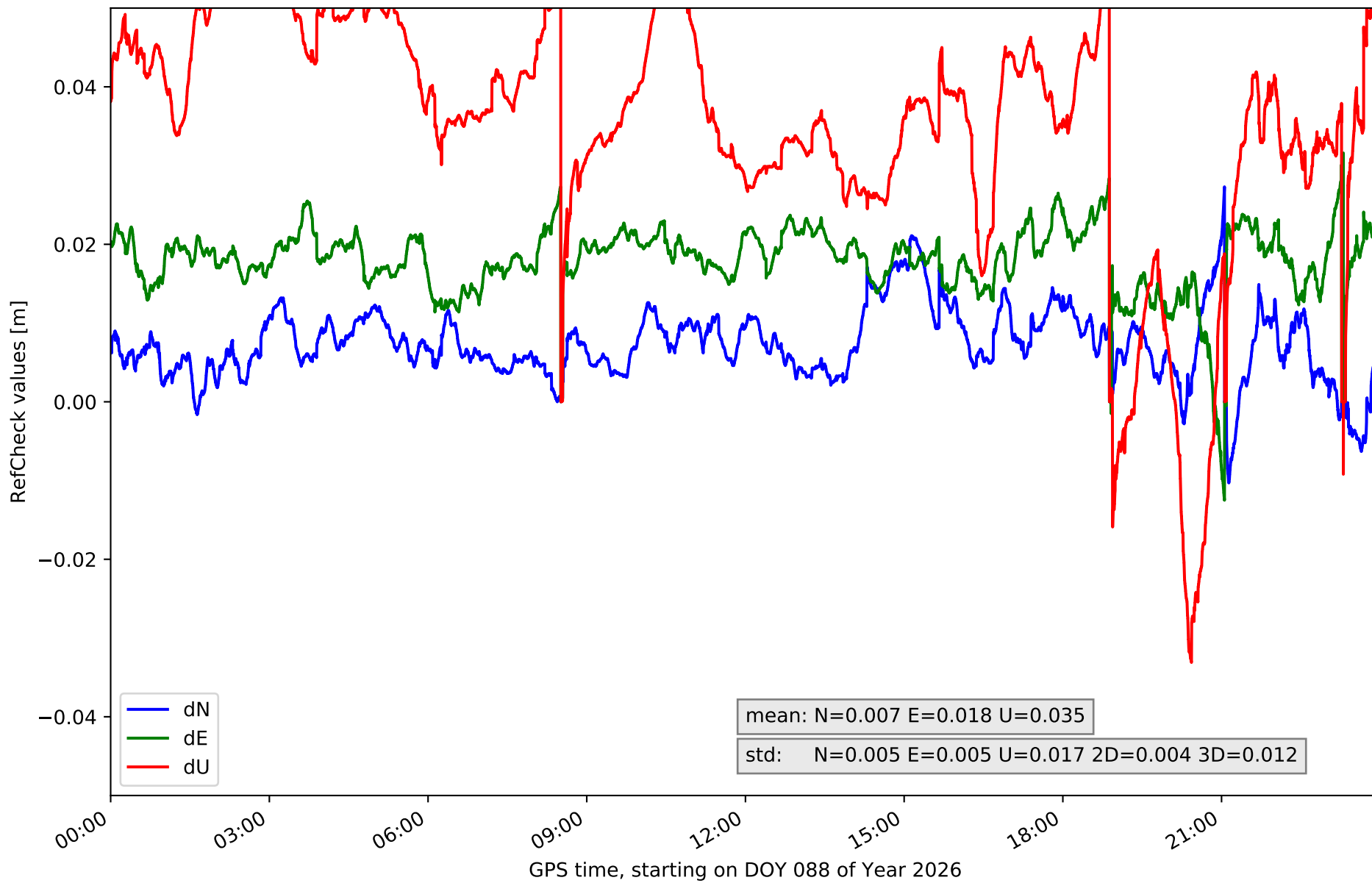
Station TN09 in network N32T



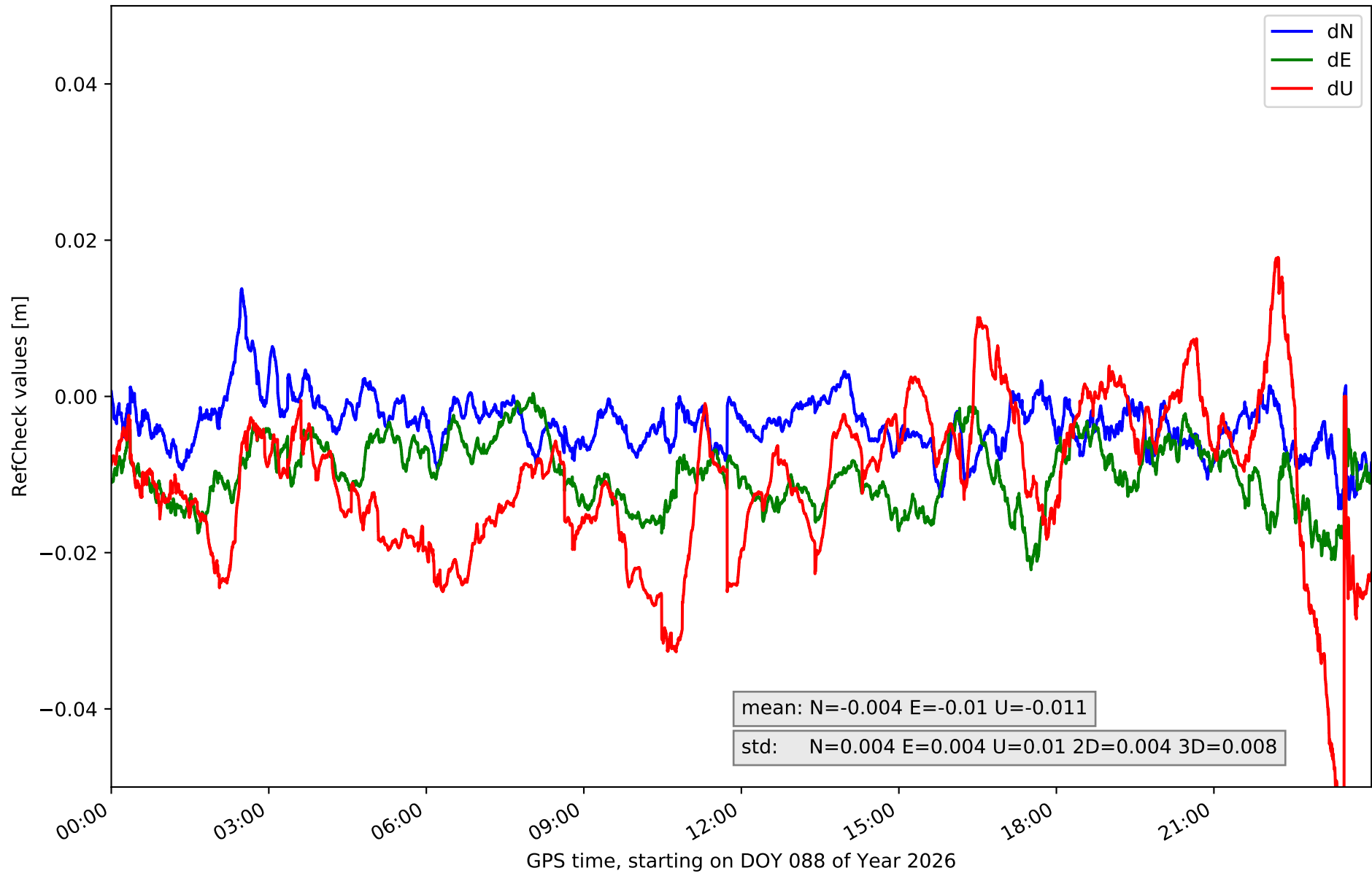
# RefCheck for station EH01 in network N32T



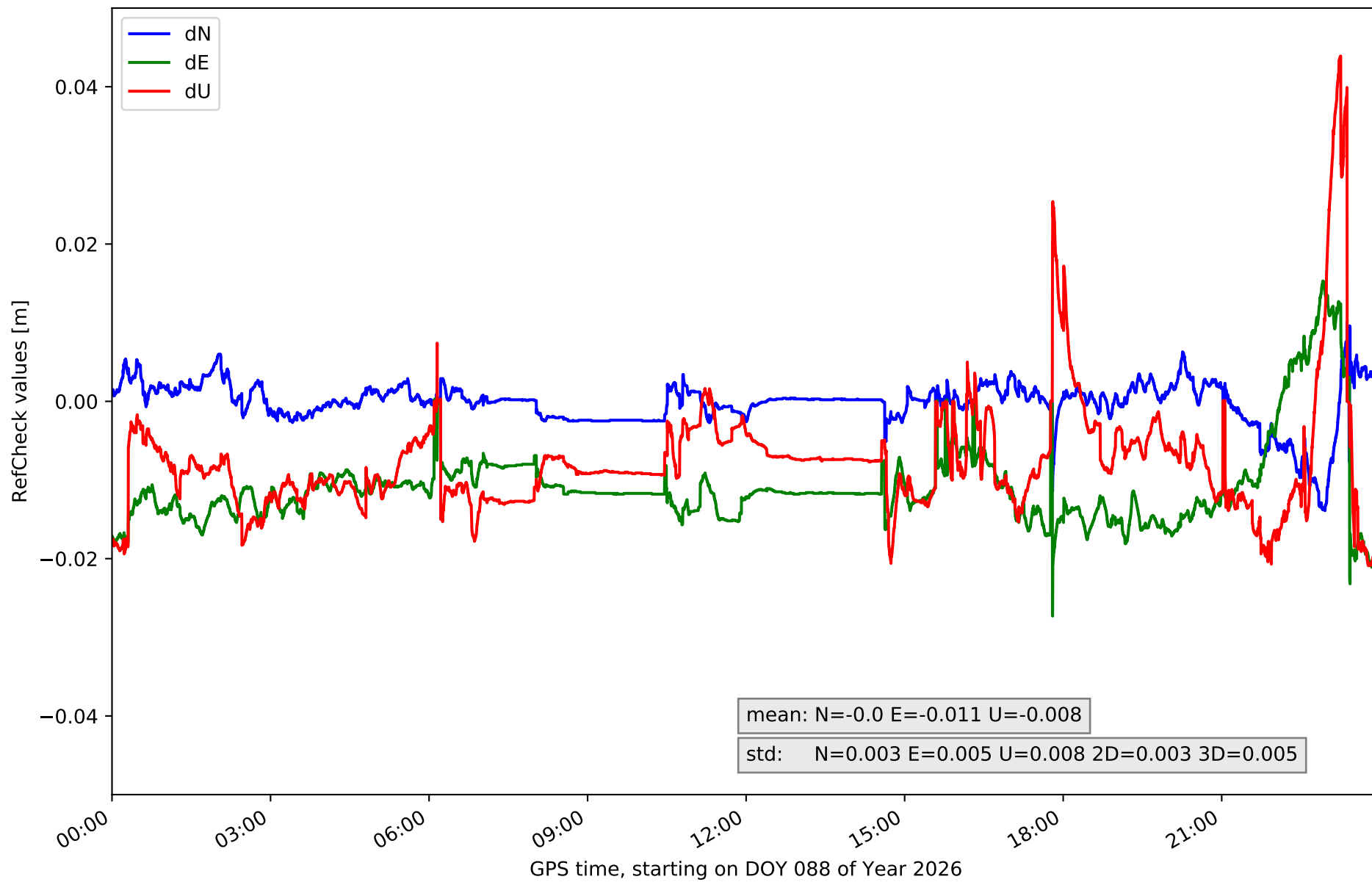
RefCheck for station EH02 in network N32T



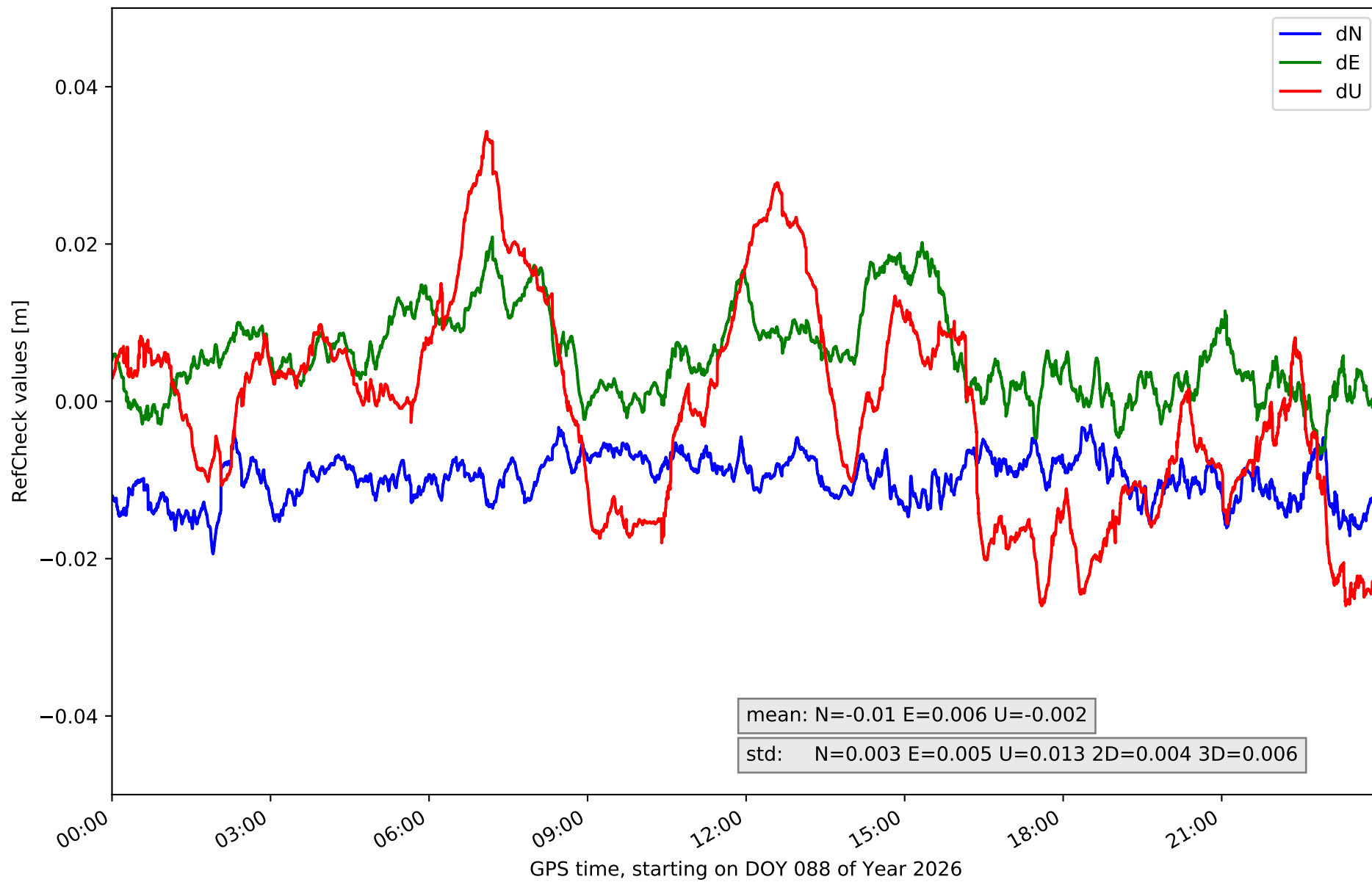
# RefCheck for station GOM1 in network N32T



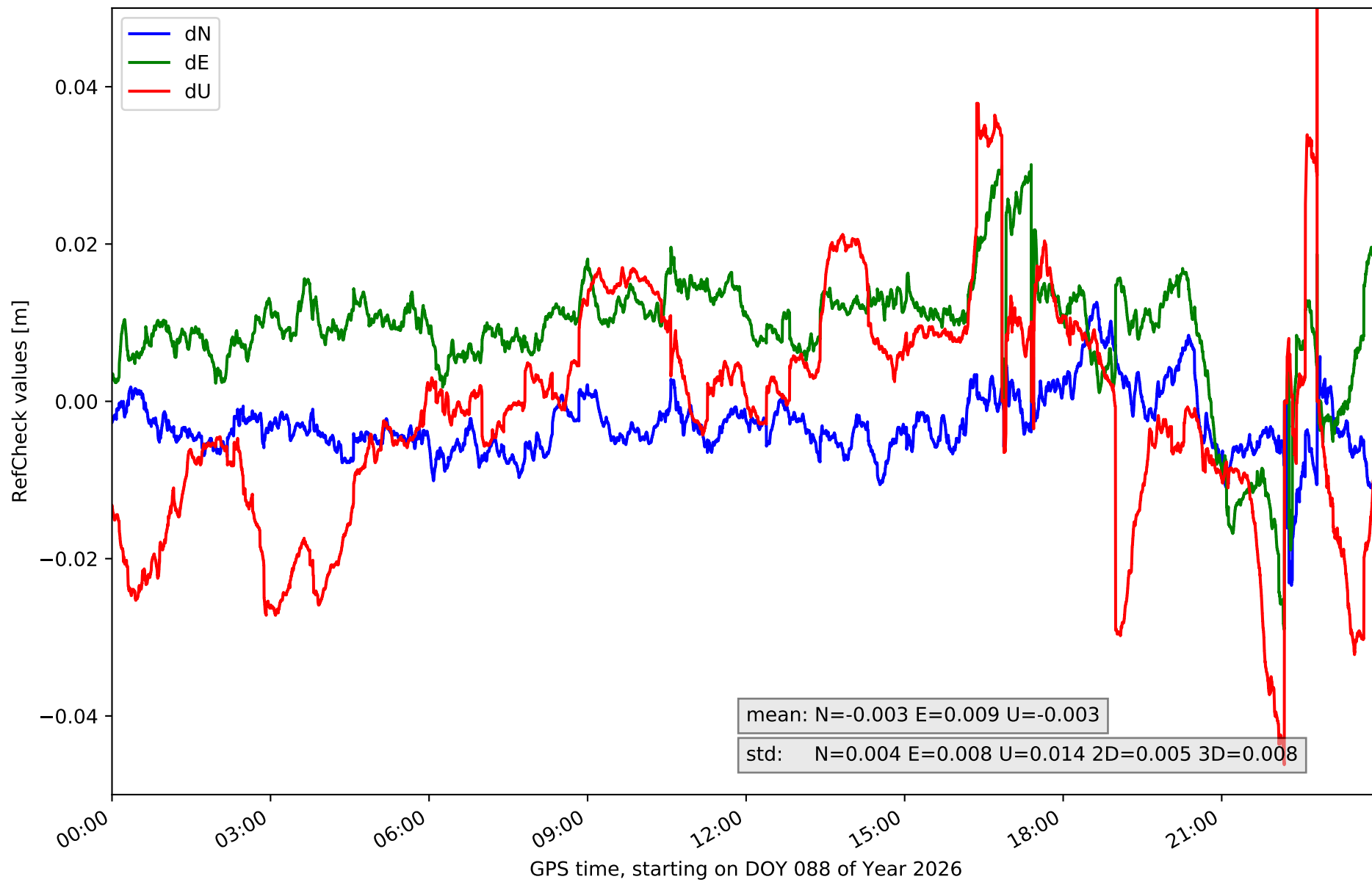
# RefCheck for station IZAN in network N32T



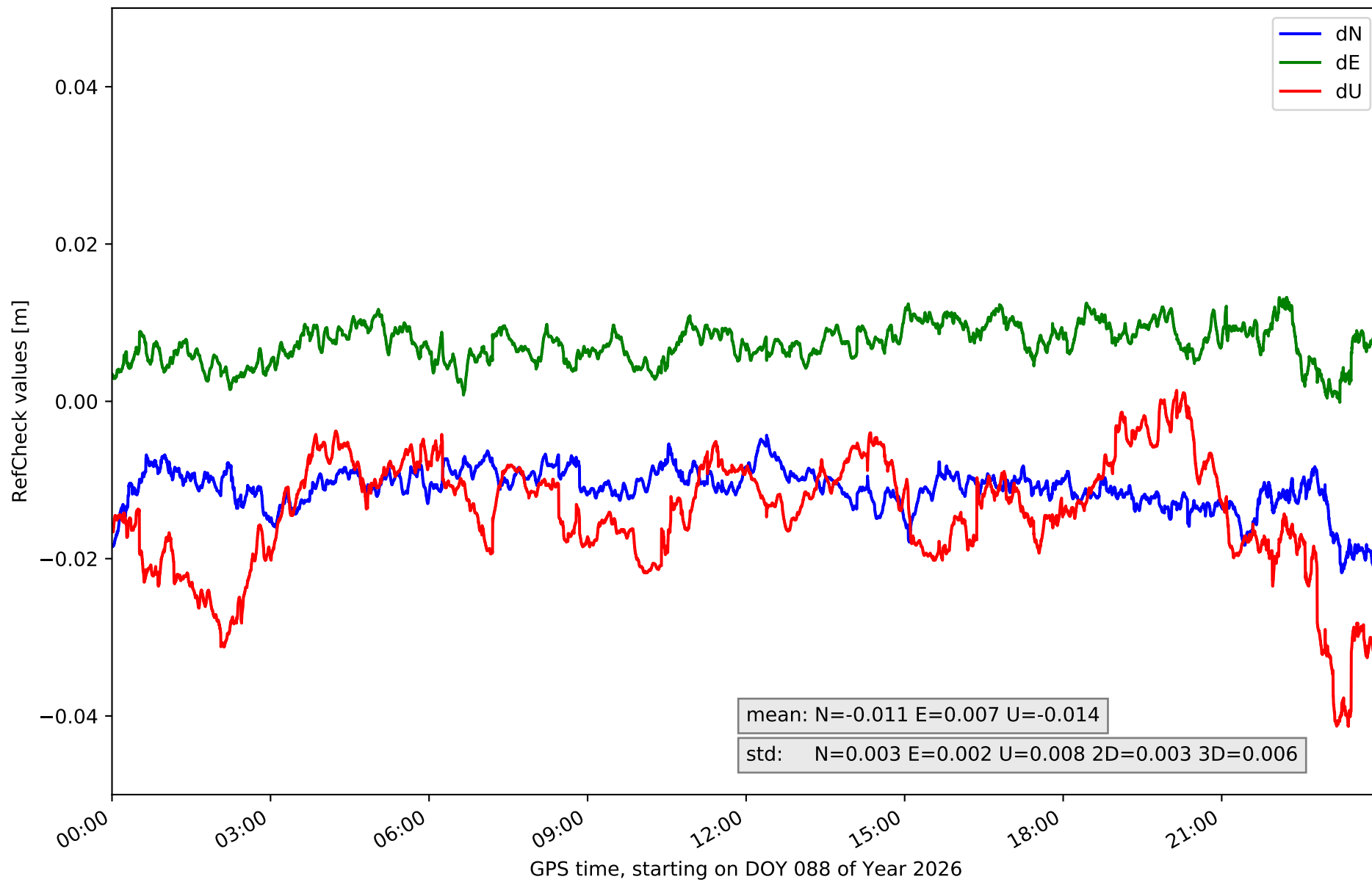
RefCheck for station LP01 in network N32T



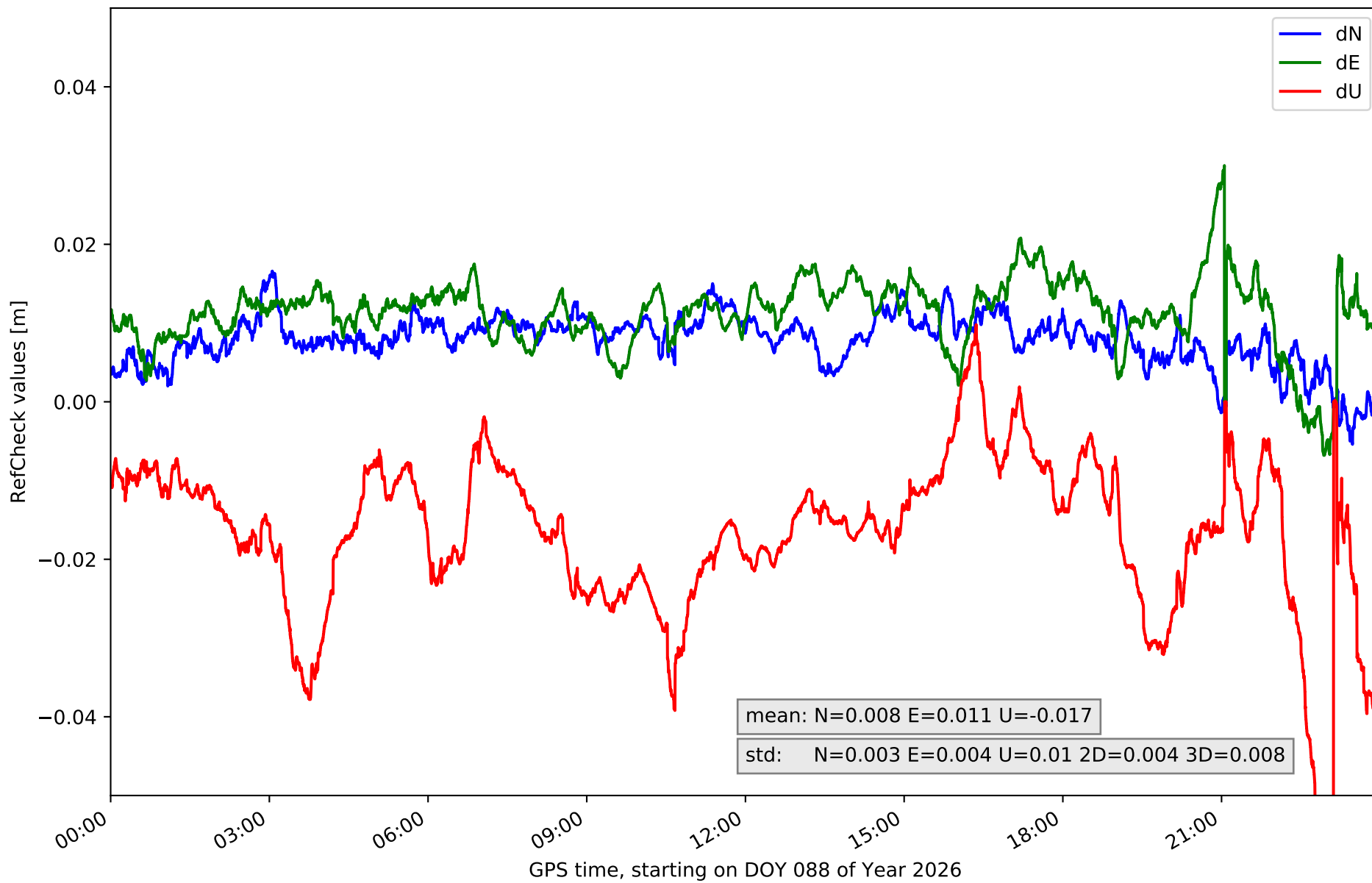
RefCheck for station LP03 in network N32T



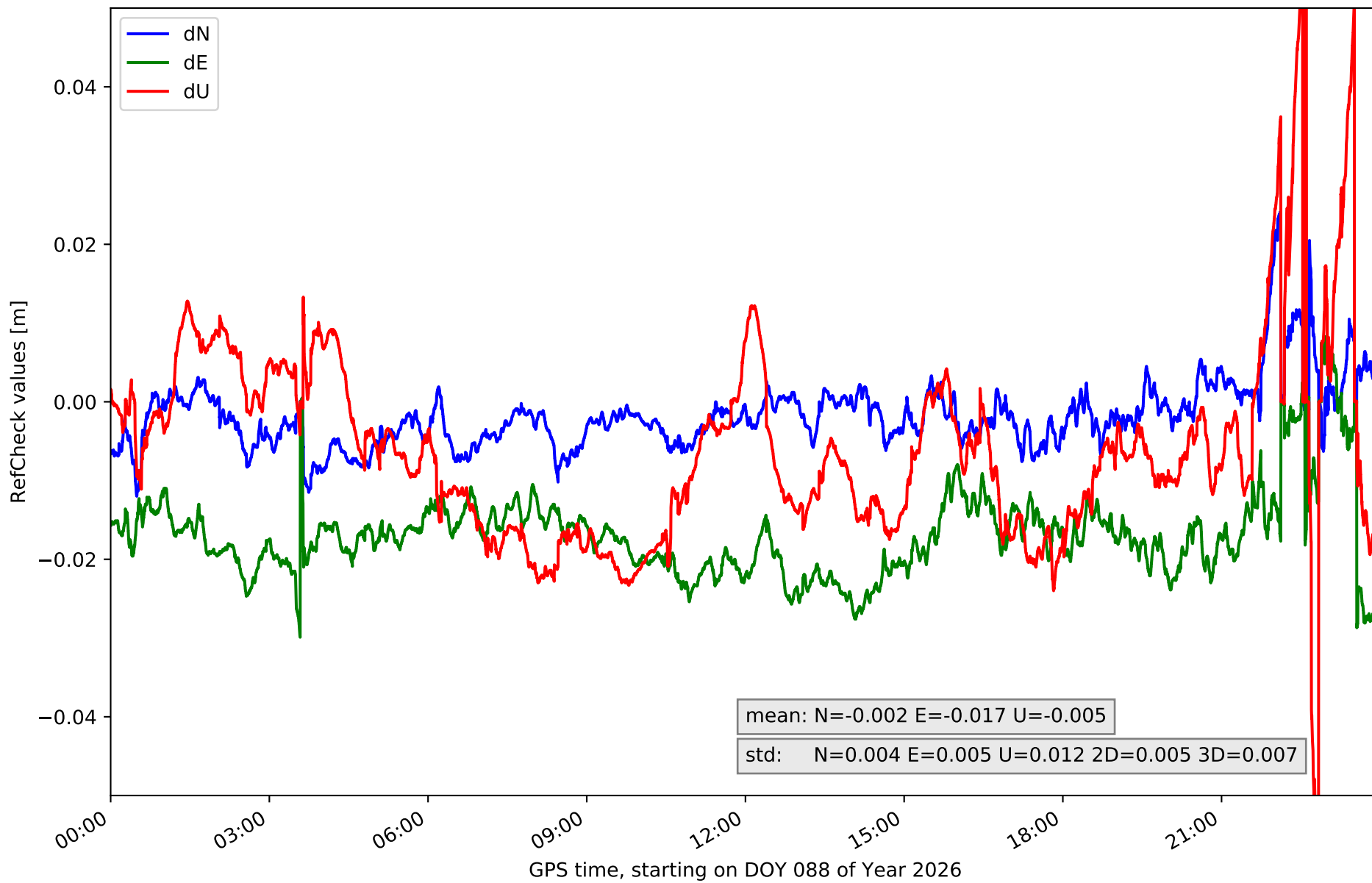
# RefCheck for station LPAL in network N32T



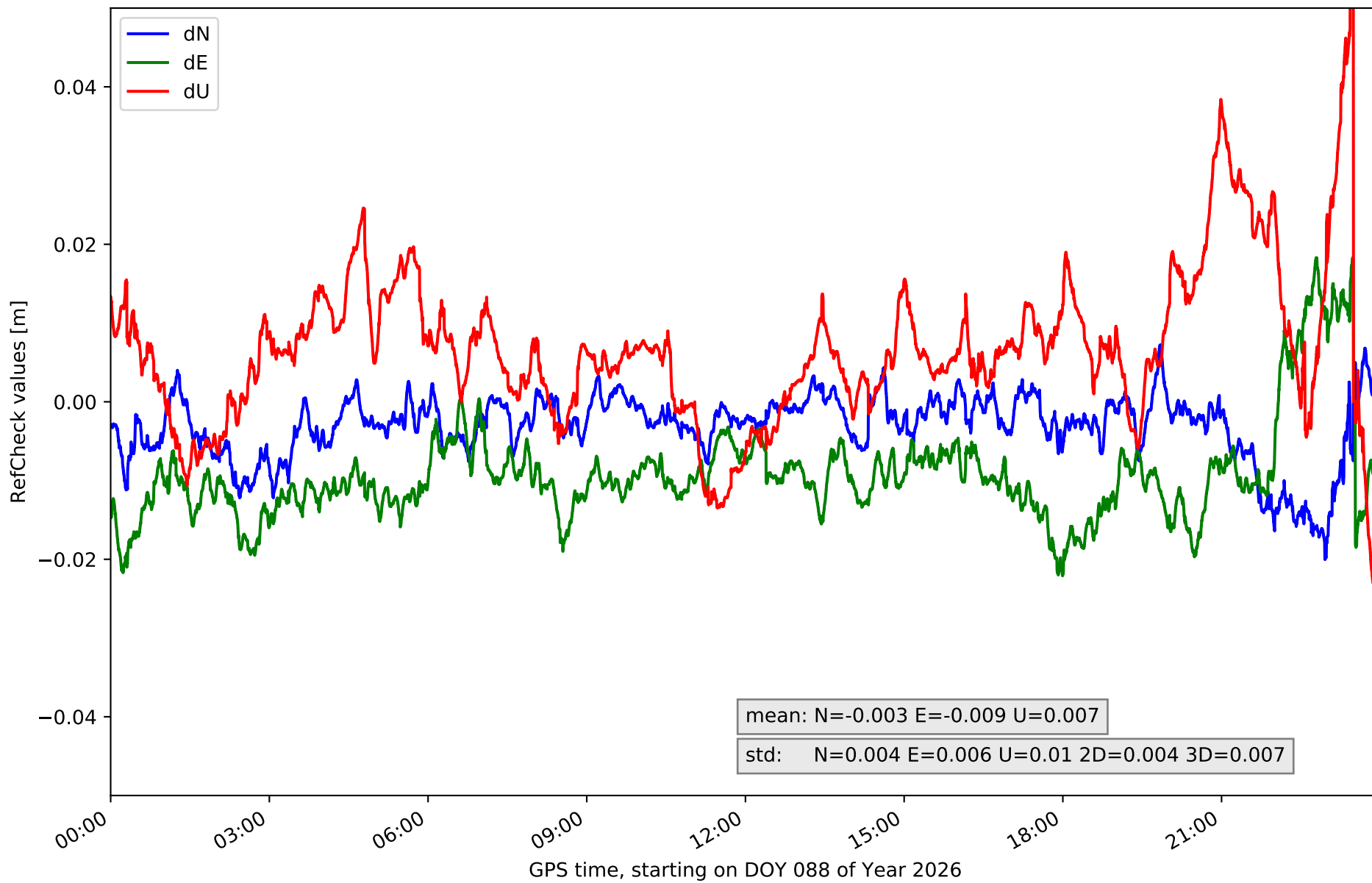
RefCheck for station LRES in network N32T



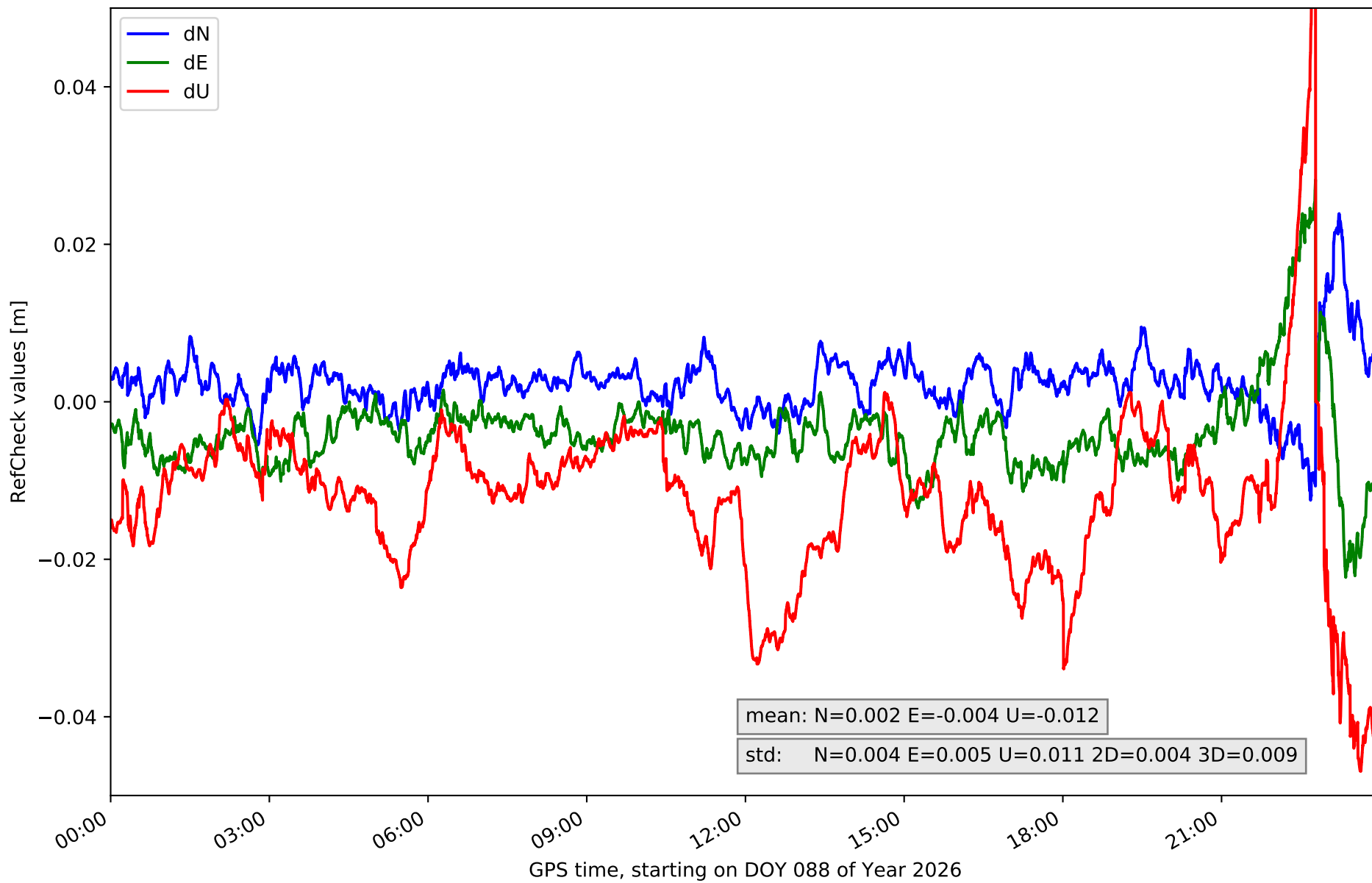
RefCheck for station TN01 in network N32T



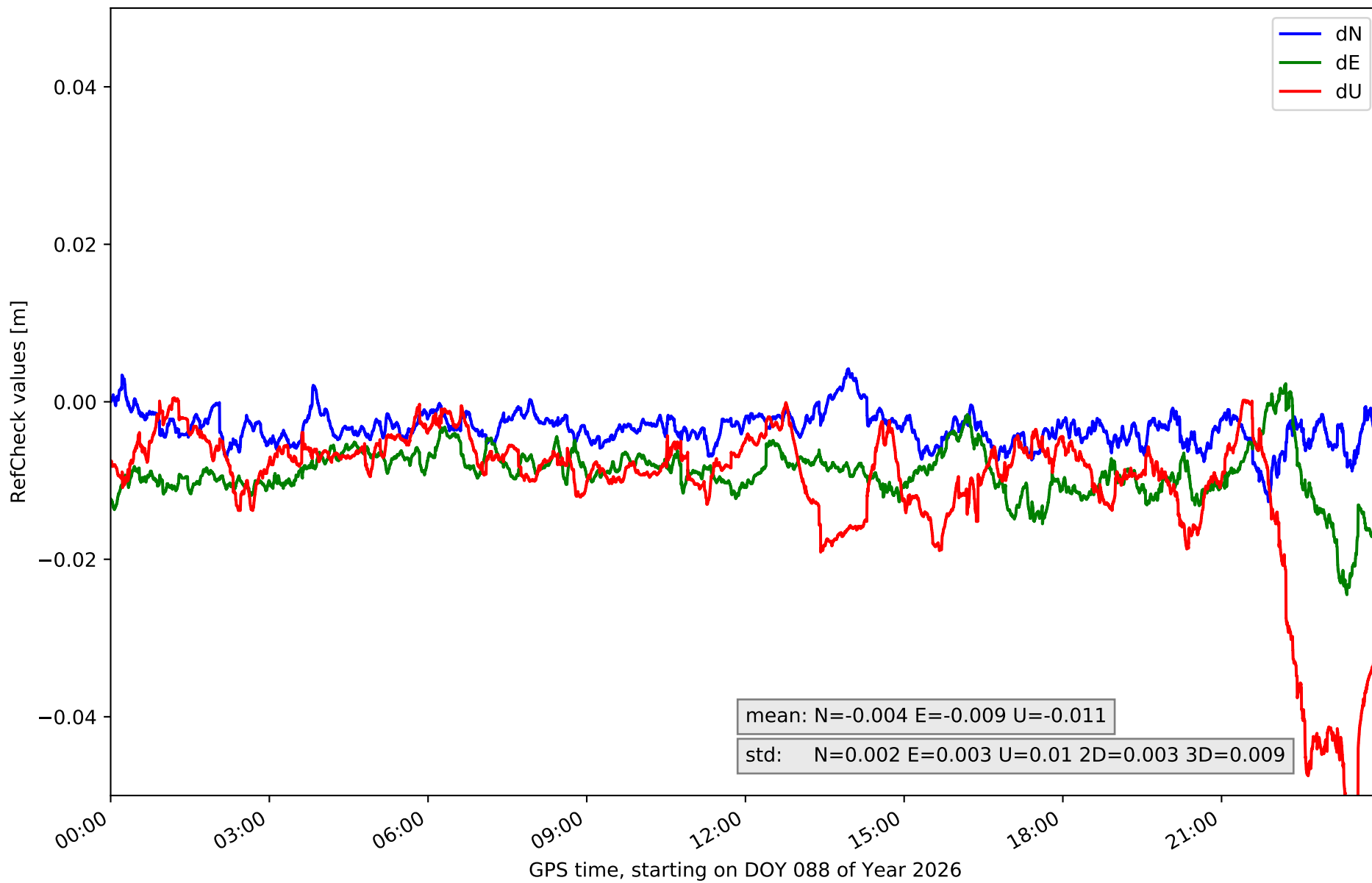
RefCheck for station TN02 in network N32T



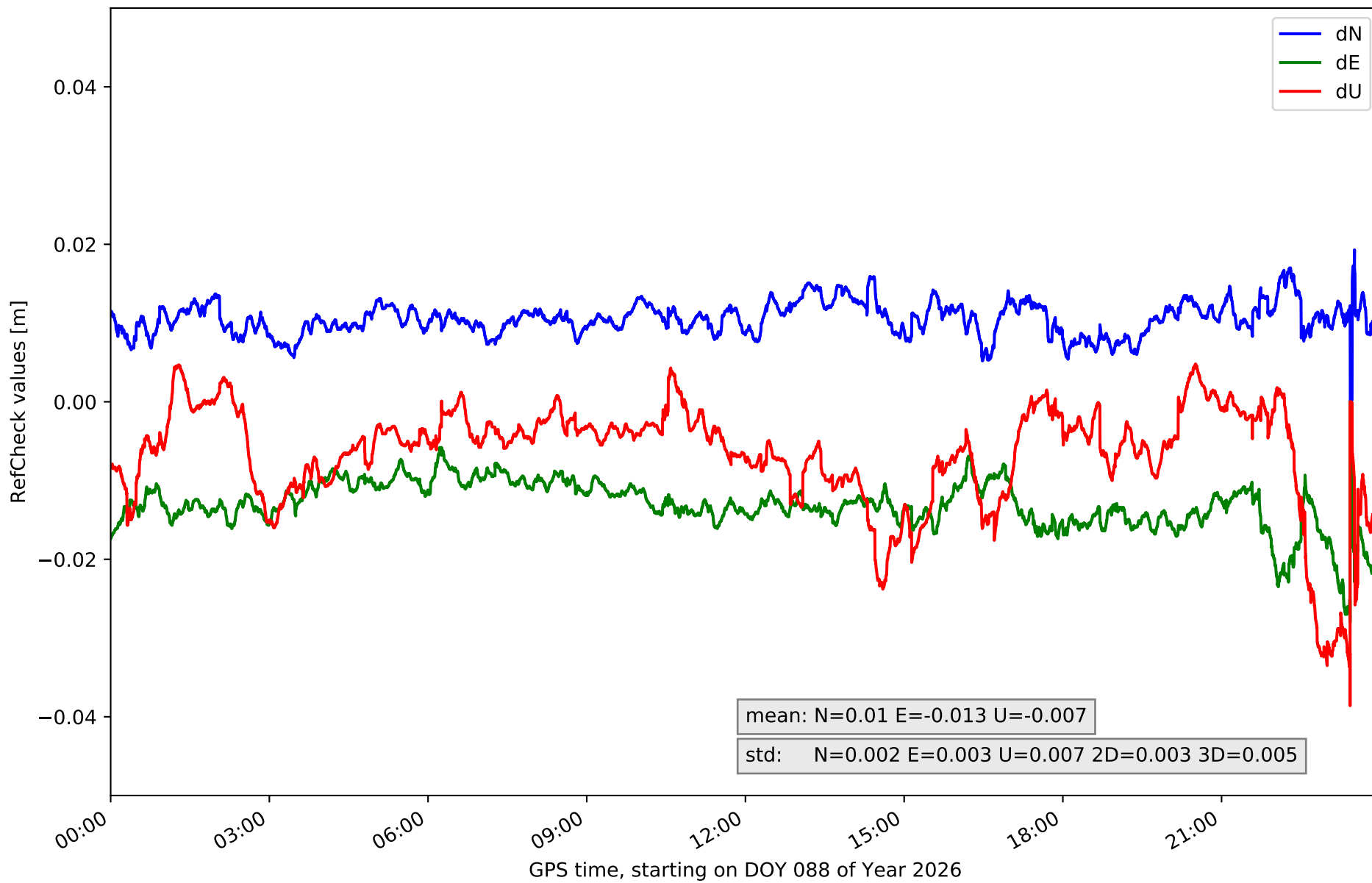
# RefCheck for station TN03 in network N32T



# RefCheck for station TN06 in network N32T



RefCheck for station TN09 in network N32T



## RefCheck values for network N32T

Station	Nmin	Nmax	Nstd	Emin	Emax	Estd	Umin	Umax	Ustd	std2D	std3D	#2D > 0.01	% 2D > 0.01	#3D > 0.02	% 3D > 0.02
EH01	-0.011	0.011	0.004	0.006	0.021	0.003	-0.032	0.02	0.009	0.003	0.004	64696	93.2	10781	15.5
EH02	-0.01	<b>0.027</b>	<b>0.005</b>	-0.013	<b>0.032</b>	0.005	-0.033	0.06	<b>0.017</b>	0.004	<b>0.012</b>	68898	99.2	<b>64794</b>	<b>93.3</b>
GOM1	-0.014	0.014	0.004	-0.022	0.0	0.004	<b>-0.06</b>	0.018	0.01	0.004	0.008	40428	58.2	19753	28.5
IZAN	-0.014	0.01	0.003	-0.027	0.015	0.005	-0.021	0.044	0.008	0.003	0.005	54060	77.9	7207	10.4
LP01	-0.019	-0.003	0.003	-0.007	0.021	0.005	-0.026	0.034	0.013	0.004	0.006	49738	71.6	18707	26.9
LP03	<b>-0.023</b>	0.013	0.004	-0.029	0.03	<b>0.008</b>	-0.046	<b>0.067</b>	0.014	<b>0.005</b>	0.008	47989	69.1	21995	31.7
LPAL	-0.022	-0.004	0.003	-0.0	0.013	0.002	-0.041	0.001	0.008	0.003	0.006	63727	91.8	29927	43.1
LRES	-0.005	0.017	0.003	-0.007	0.03	0.004	<b>-0.06</b>	0.01	0.01	0.004	0.008	61509	88.6	44888	64.7
TN01	-0.012	0.024	0.004	<b>-0.03</b>	0.008	0.005	<b>-0.06</b>	0.064	0.012	<b>0.005</b>	0.007	65856	94.9	40606	58.5
TN02	-0.02	0.007	0.004	-0.022	0.018	0.006	-0.023	0.06	0.01	0.004	0.007	45473	65.5	16777	24.2
TN03	-0.013	0.024	0.004	-0.022	0.028	0.005	-0.047	0.058	0.011	0.004	0.009	8473	12.2	14555	21.0
TN06	-0.013	0.004	0.002	-0.025	0.002	0.003	-0.057	0.001	0.01	0.003	0.009	35006	50.4	7171	10.3
TN09	0.0	0.019	0.002	-0.028	-0.0	0.003	-0.039	0.005	0.007	0.003	0.005	<b>69313</b>	<b>99.8</b>	18649	26.9
<b>Mean</b>	<b>-0.014</b>	<b>0.013</b>	<b>0.003</b>	<b>-0.017</b>	<b>0.017</b>	<b>0.004</b>	<b>-0.042</b>	<b>0.034</b>	<b>0.011</b>	<b>0.004</b>	<b>0.007</b>	<b>51935.8</b>	<b>74.8</b>	<b>24293.1</b>	<b>35.0</b>
<b>Min/Max</b>	<b>-0.023</b>	<b>0.027</b>	<b>0.005</b>	<b>-0.03</b>	<b>0.032</b>	<b>0.008</b>	<b>-0.06</b>	<b>0.067</b>	<b>0.017</b>	<b>0.005</b>	<b>0.012</b>	<b>69313</b>	<b>99.8</b>	<b>64794</b>	<b>93.3</b>

fixing statistic for network N32T

fixing percentage of	all GNSS	G	R	E	C
using threshold 0.3	91.0	91.0	87.3	93.0	90.6
considering satellites with dual-frequency fixed	88.5	89.7	84.2	90.5	87.7
considering all signals separately	88.8	90.0	84.2	91.1	85.6