

summary for network NT32

timeperiod chosen: from 2026-03-27-00:00:00 until 2026-03-27-23:59:59

average update rate (durations larger than 15 seconds considered as observation gap): 1.2 seconds

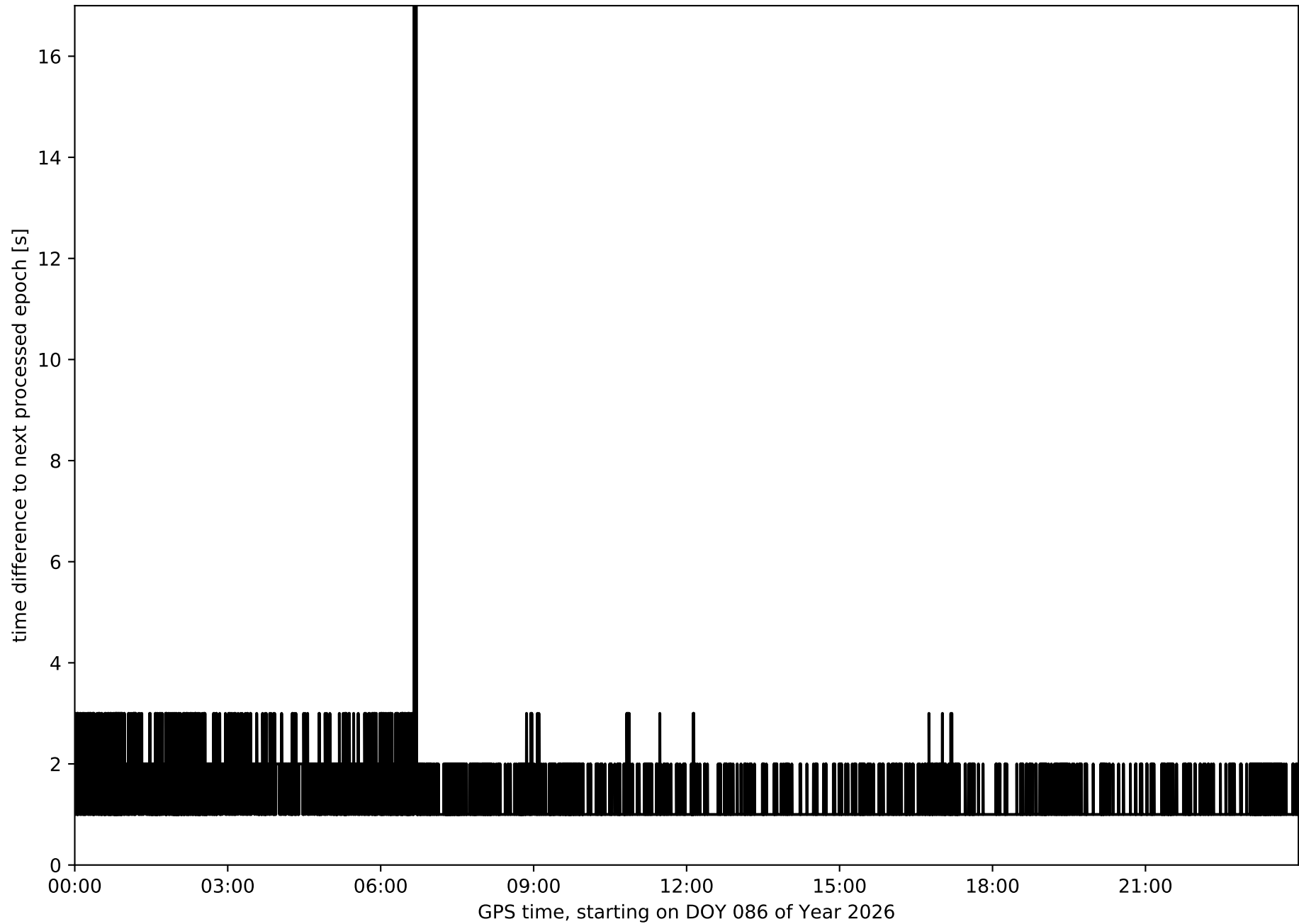
average fixing percentage with threshold set to 0.3: 88.7 percent

stations available: 12 of 15

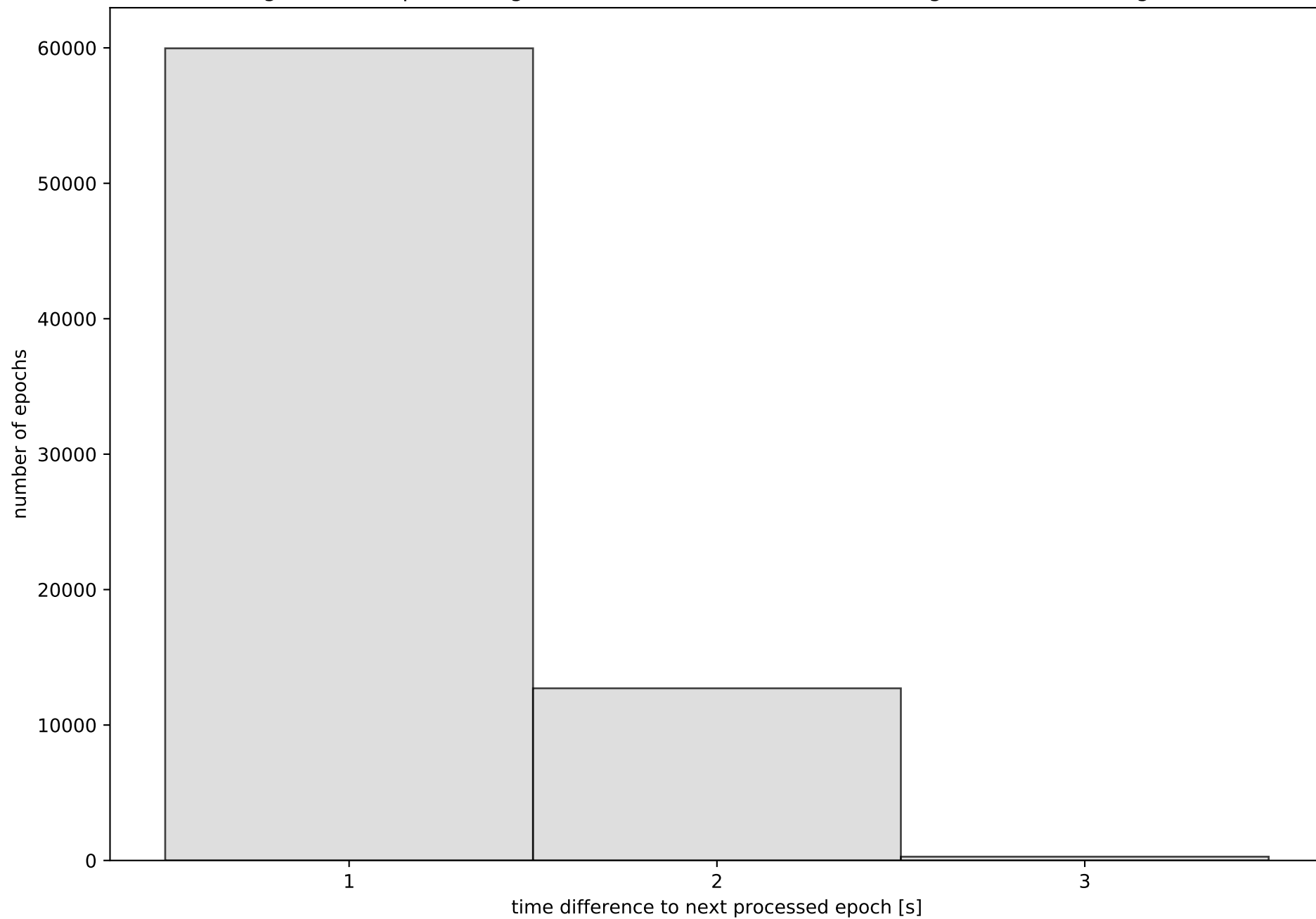
station information:

station EH01:	antenna: LEIAR20	LEIM	receiver: LEICA GR25	height: 801.016
station EH02:	antenna: TRM59900.00	SCIS	receiver: LEICA GR50	height: 85.364
station GOM1:	antenna: LEIAR20	LEIM	receiver: LEICA GR50	height: 48.789
station GOME:	antenna: LEIAR20	LEIM	receiver: LEICA GR50	height: 114.977
station IZAN:	antenna: LEIAT504GG	LEIS	receiver: LEICA GR50	height: 2417.44
station LP01:	antenna: TRM57971.00	NONE	receiver: TRIMBLE ALLOY	height: 675.249
station LP03:	antenna: TRM59900.00	NONE	receiver: TRIMBLE NETR9	height: 919.563
station LPAL:	antenna: LEIAR20	LEIM	receiver: LEICA GR50	height: 2199.31
station LRES:	antenna: LEIAR20	NONE	receiver: LEICA GR50	height: 51.241
station TN01:	antenna: LEIAR20	LEIM	receiver: LEICA GR50	height: 51.859
station TN02:	antenna: TRM159900.00	SCIS	receiver: TRIMBLE ALLOY	height: 54.509
station TN03:	antenna: TRM159900.00	SCIS	receiver: TRIMBLE ALLOY	height: 58.588
station TN06:	antenna: LEIAR20	NONE	receiver: LEICA GR50	height: 1053.548
station TN09:	antenna: LEIAR20	NONE	receiver: LEICA GR50	height: 1582.15
station TE11:	antenna: LEIAR10	NONE	receiver: LEICA GR25	height: 2092.021

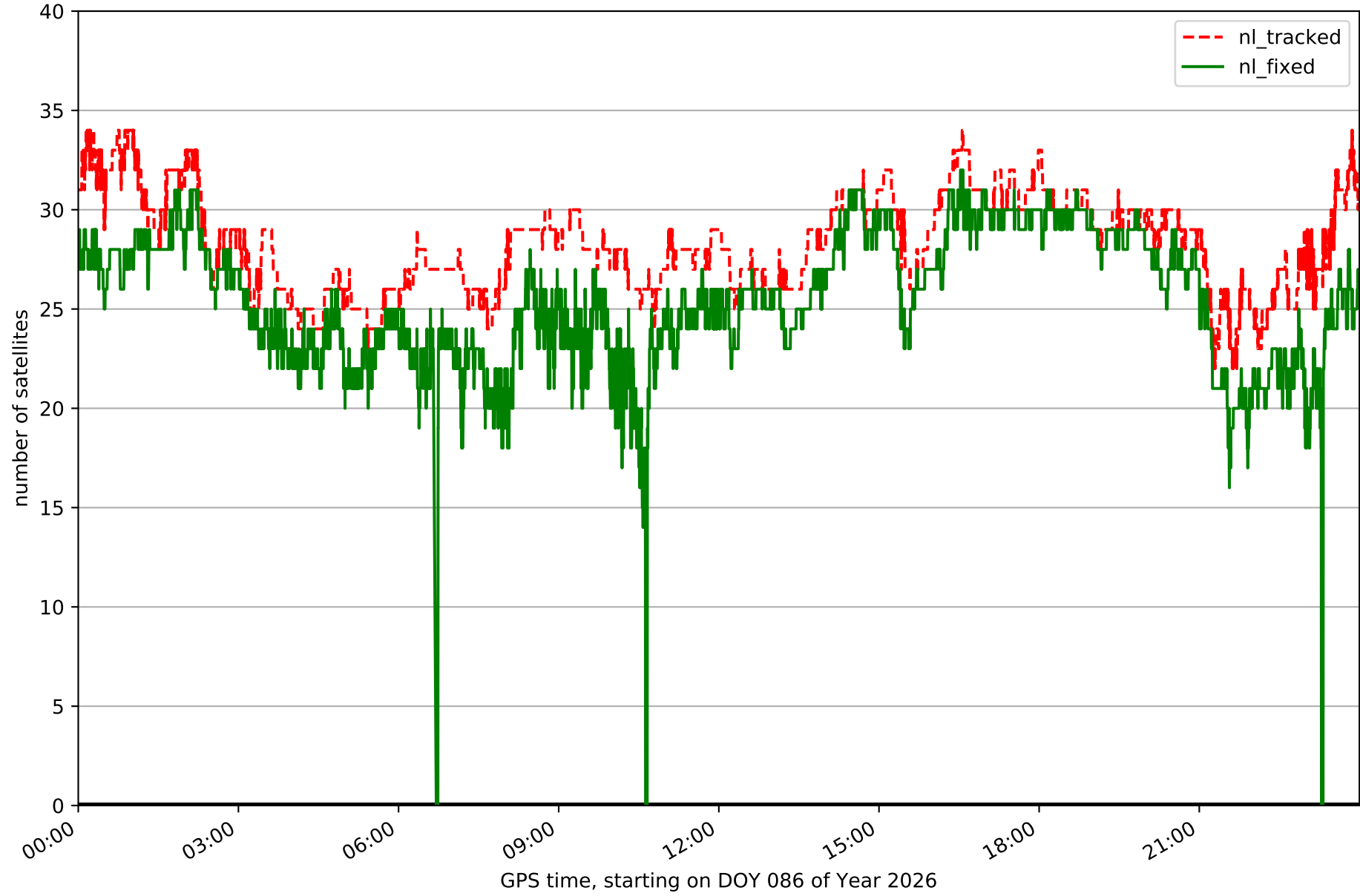
Processing rate in network NT32



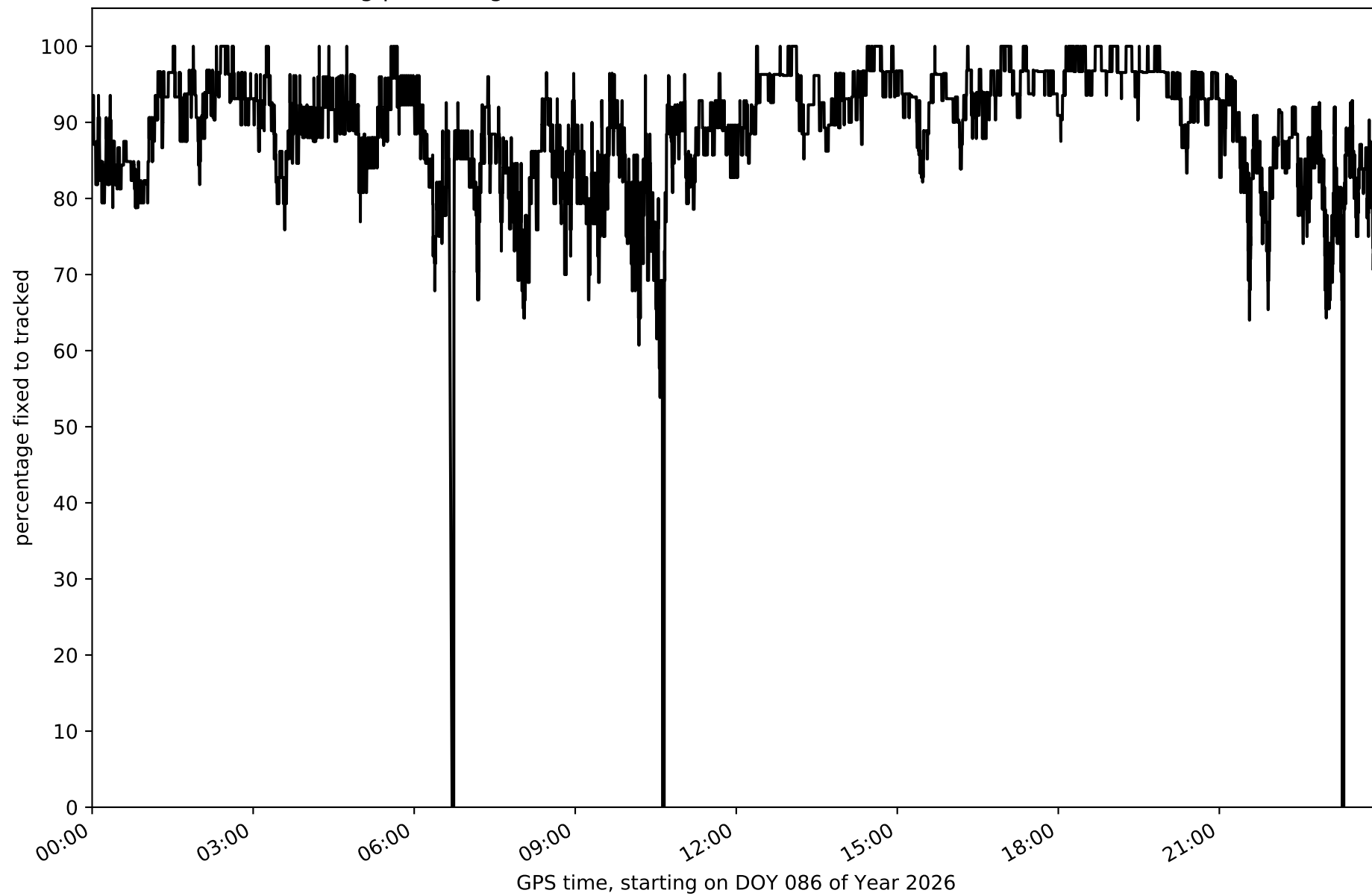
Histogram of the processing rate in network NT32 (durations larger 15 seconds neglected)



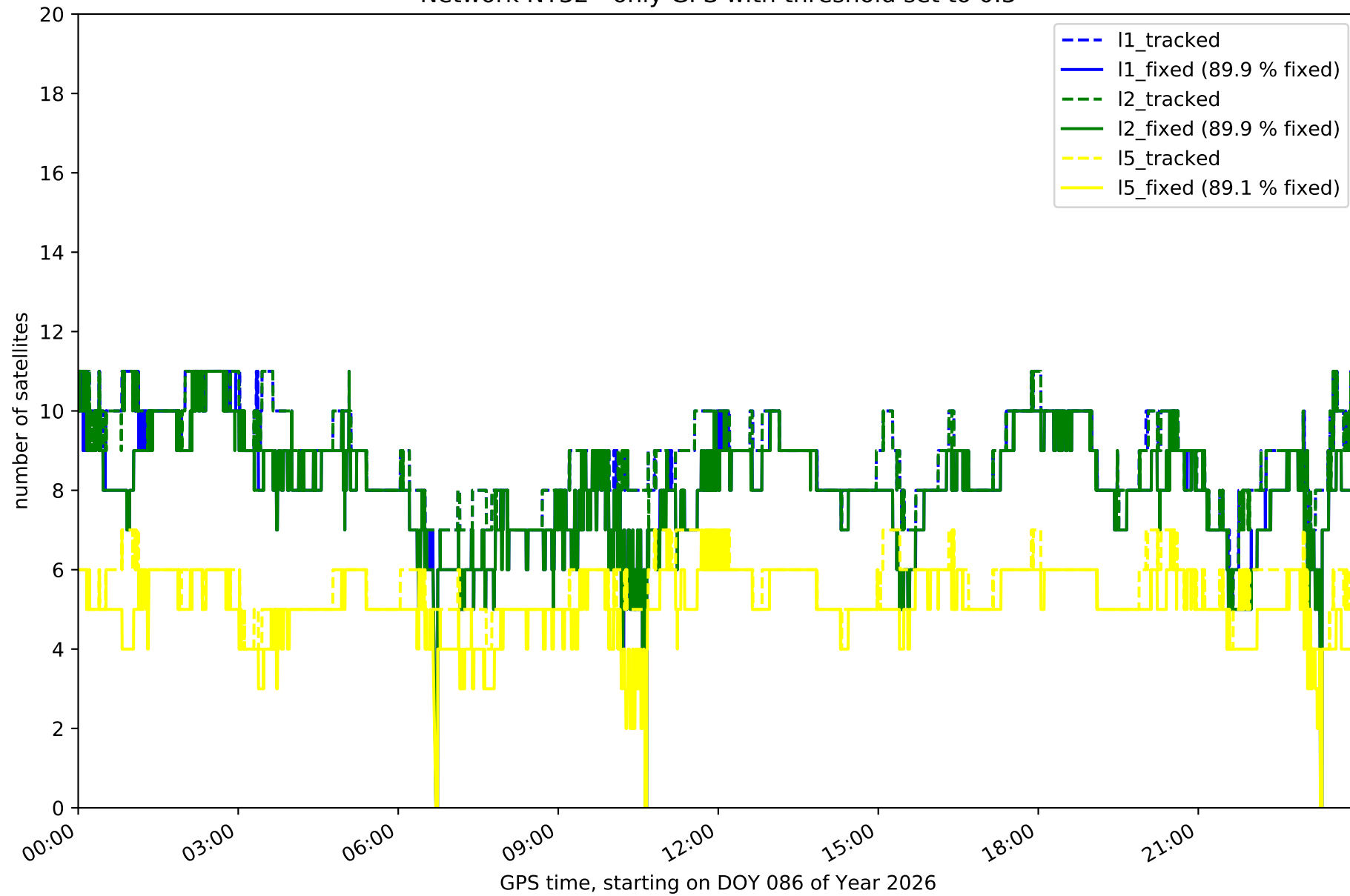
Network NT32 with threshold set to 0.3



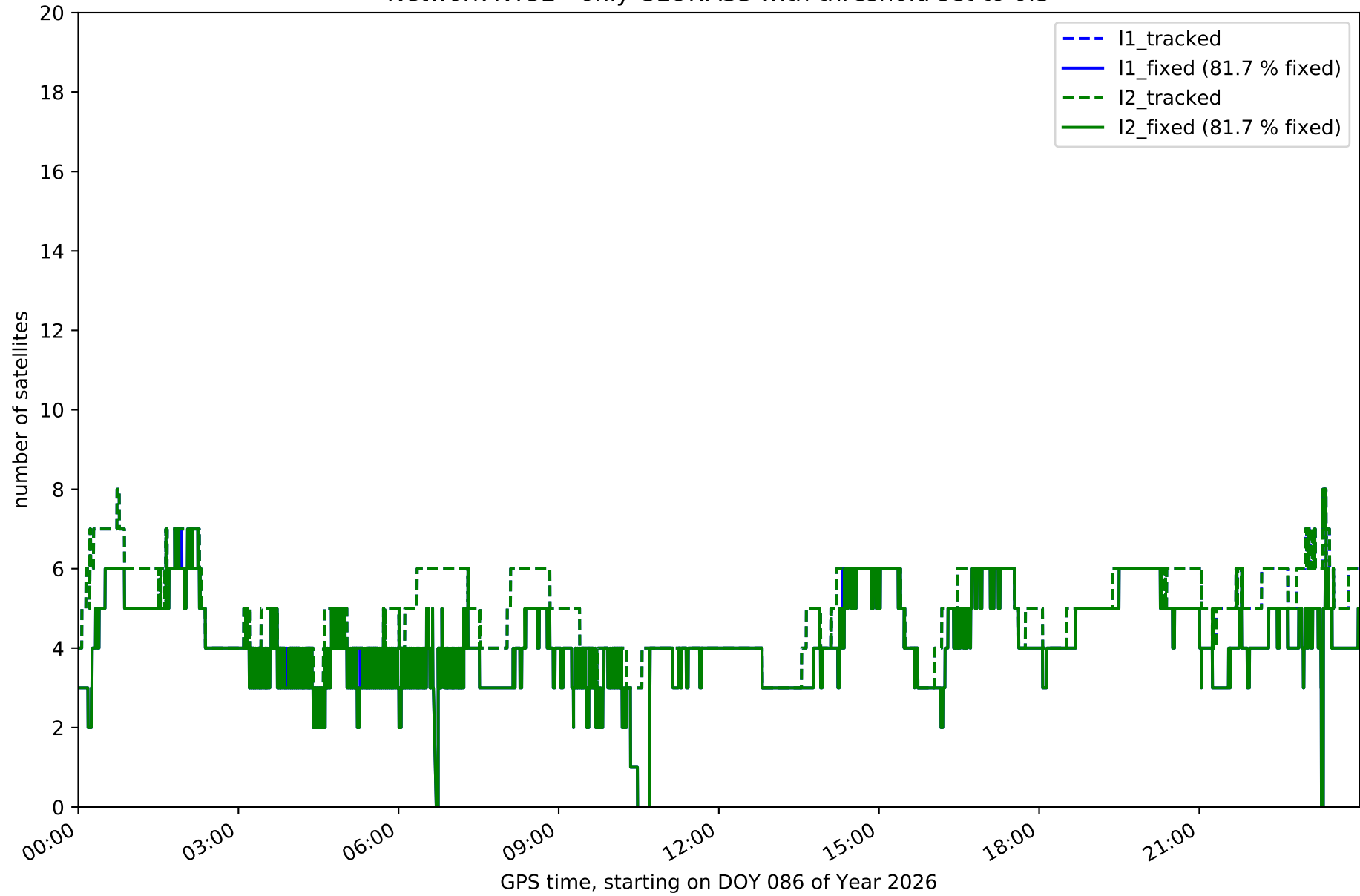
Fixing percentage of satellites in network NT32 with threshold set to 0.3



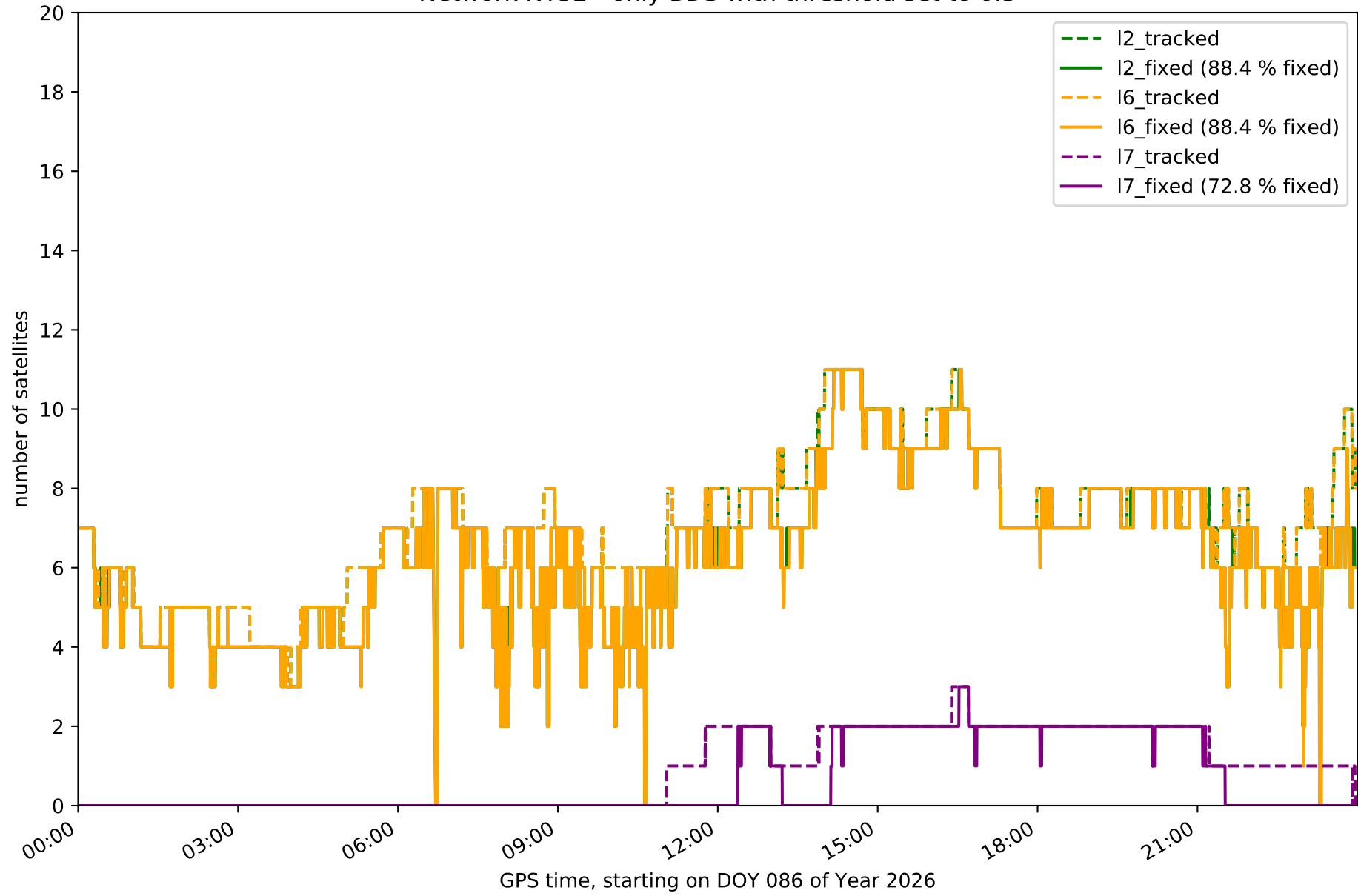
Network NT32 - only GPS with threshold set to 0.3



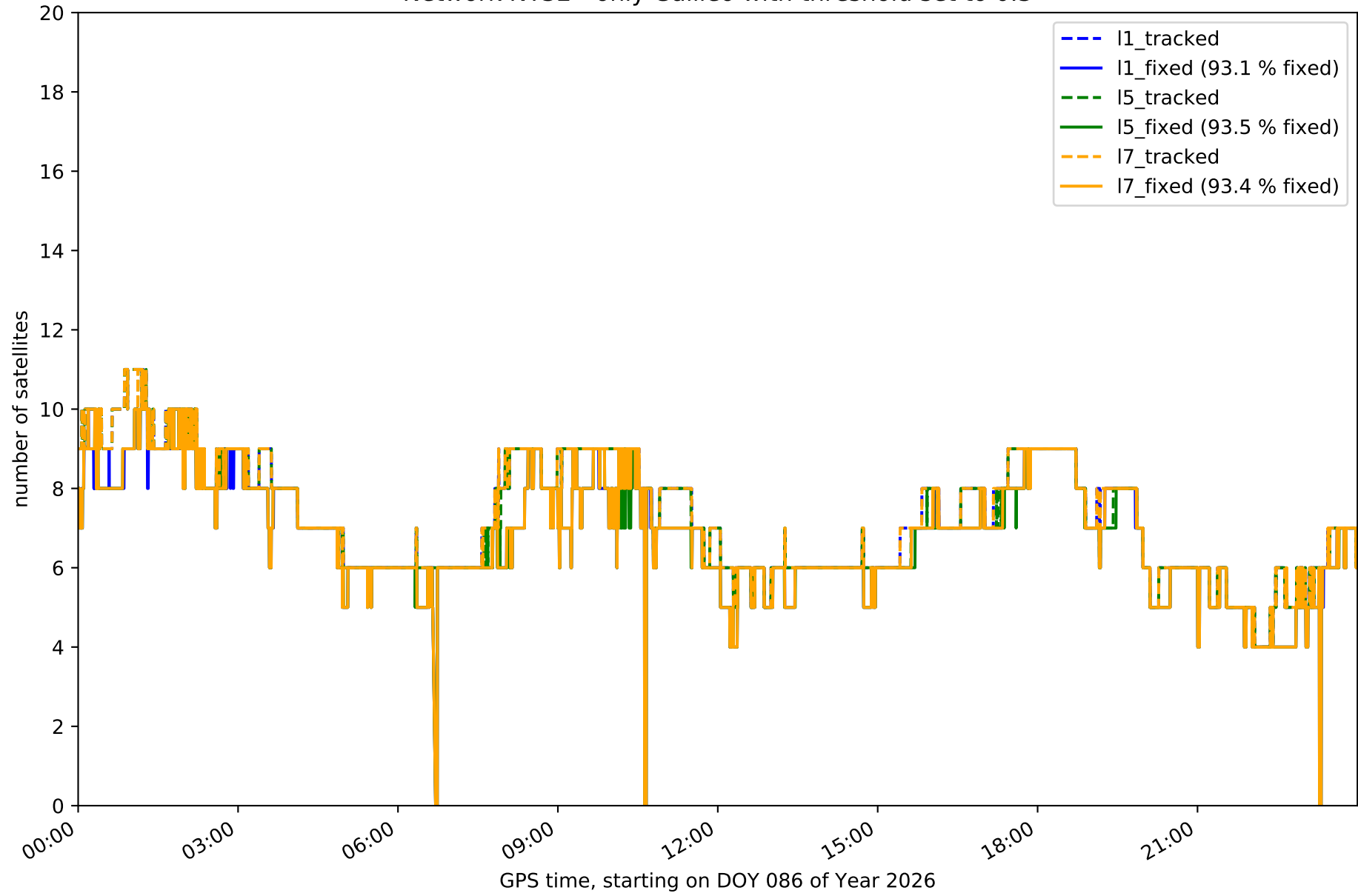
Network NT32 - only GLONASS with threshold set to 0.3



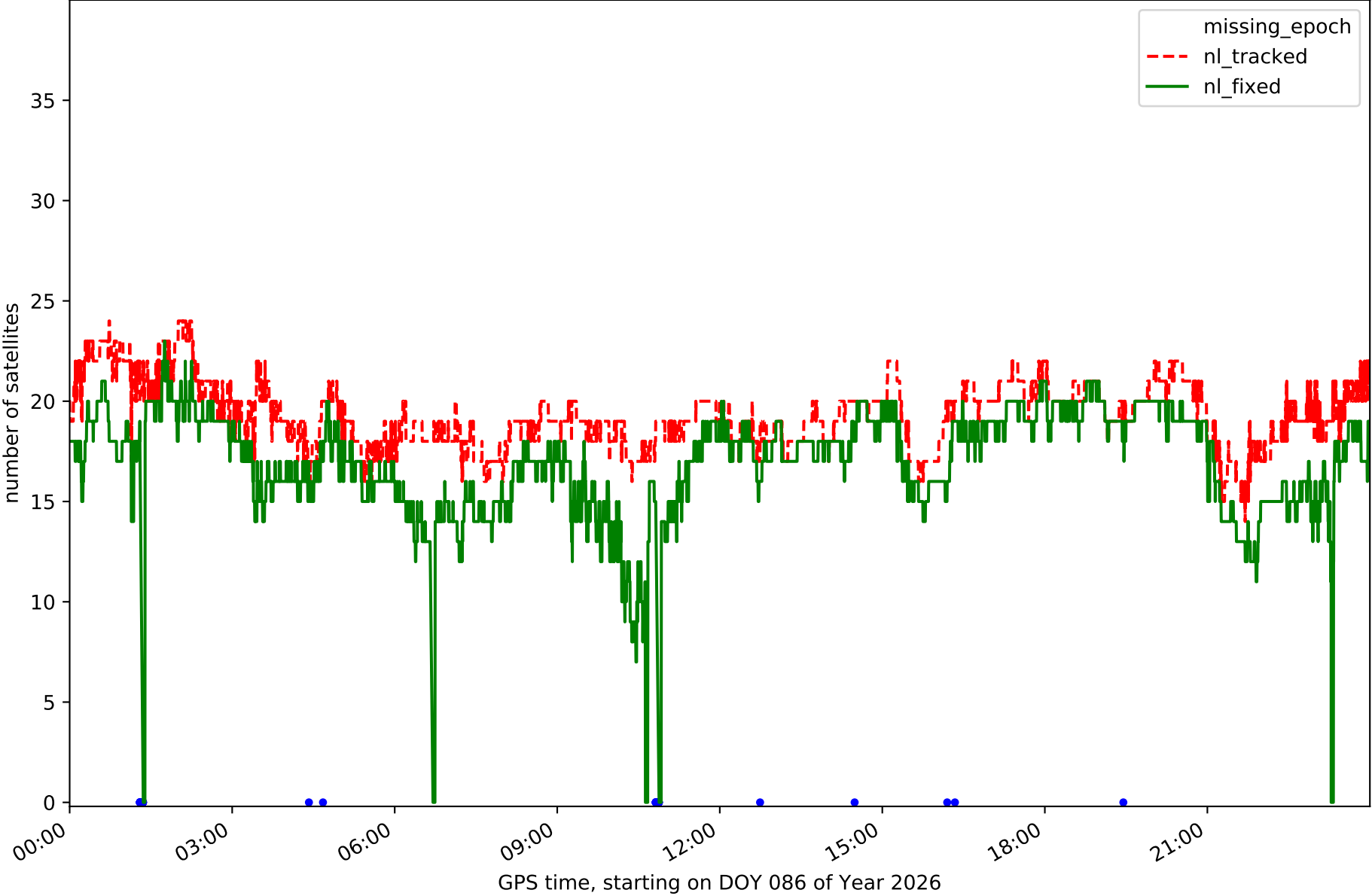
Network NT32 - only BDS with threshold set to 0.3



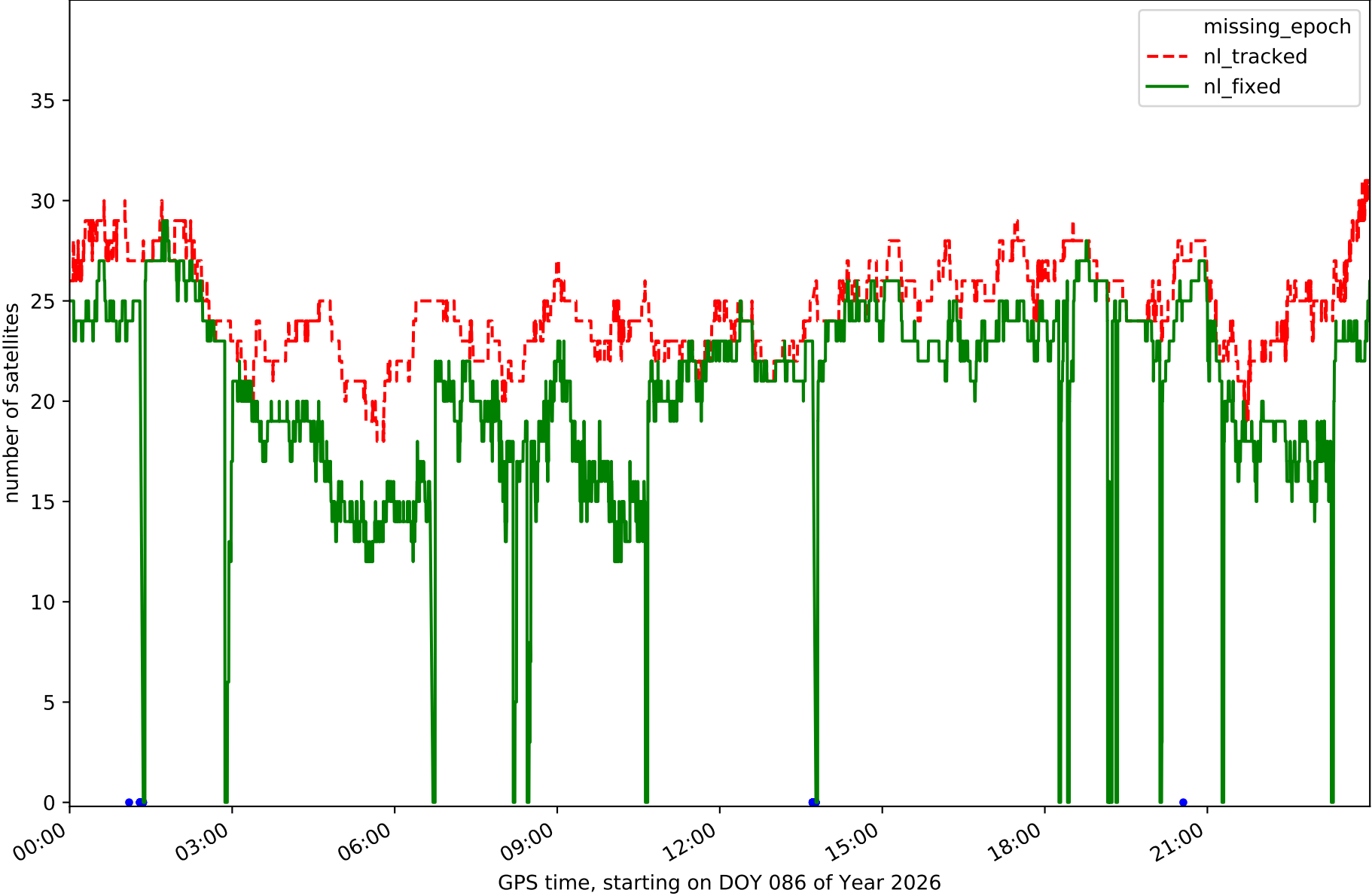
Network NT32 - only Galileo with threshold set to 0.3



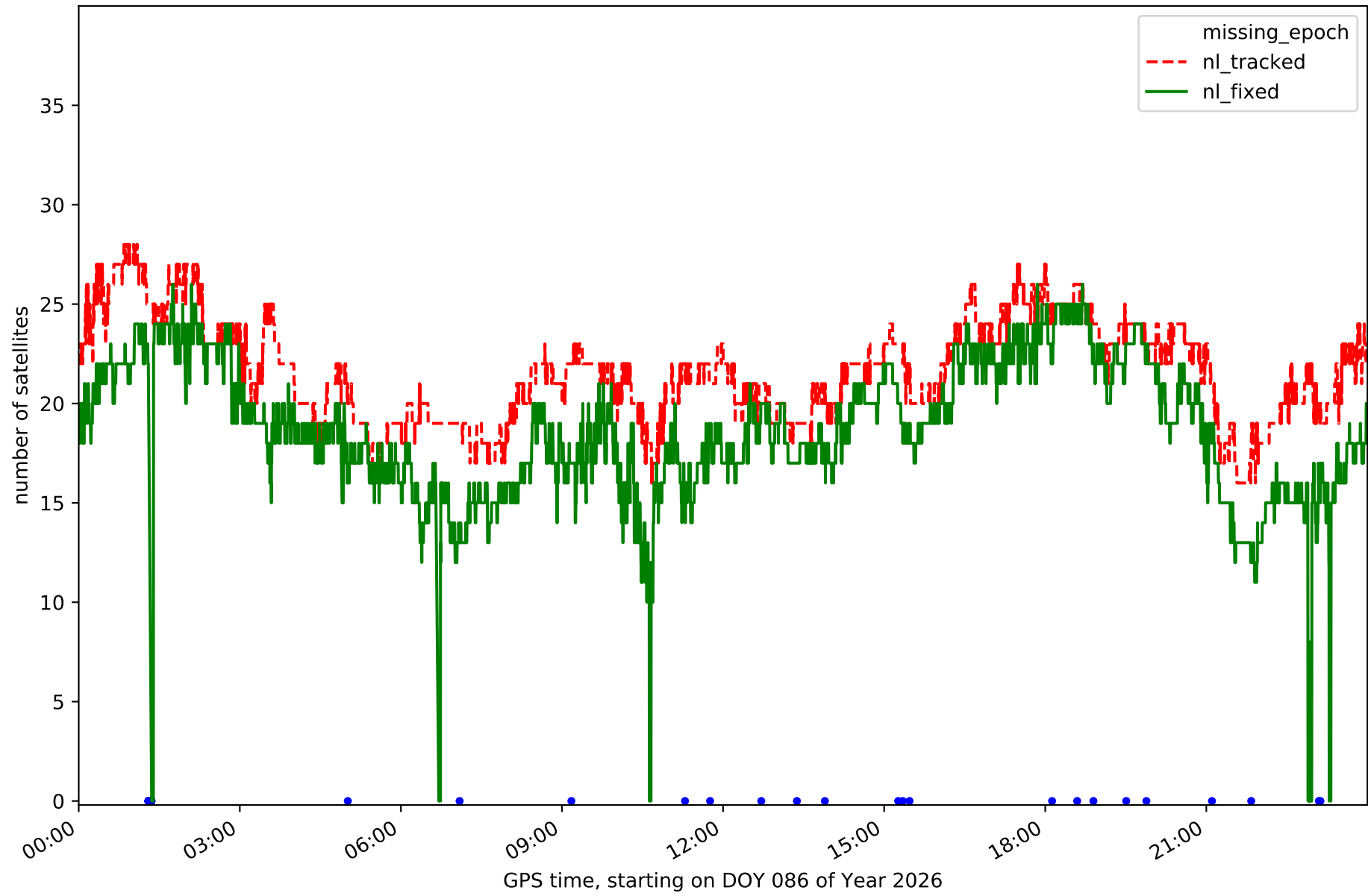
Station EH01 in network NT32



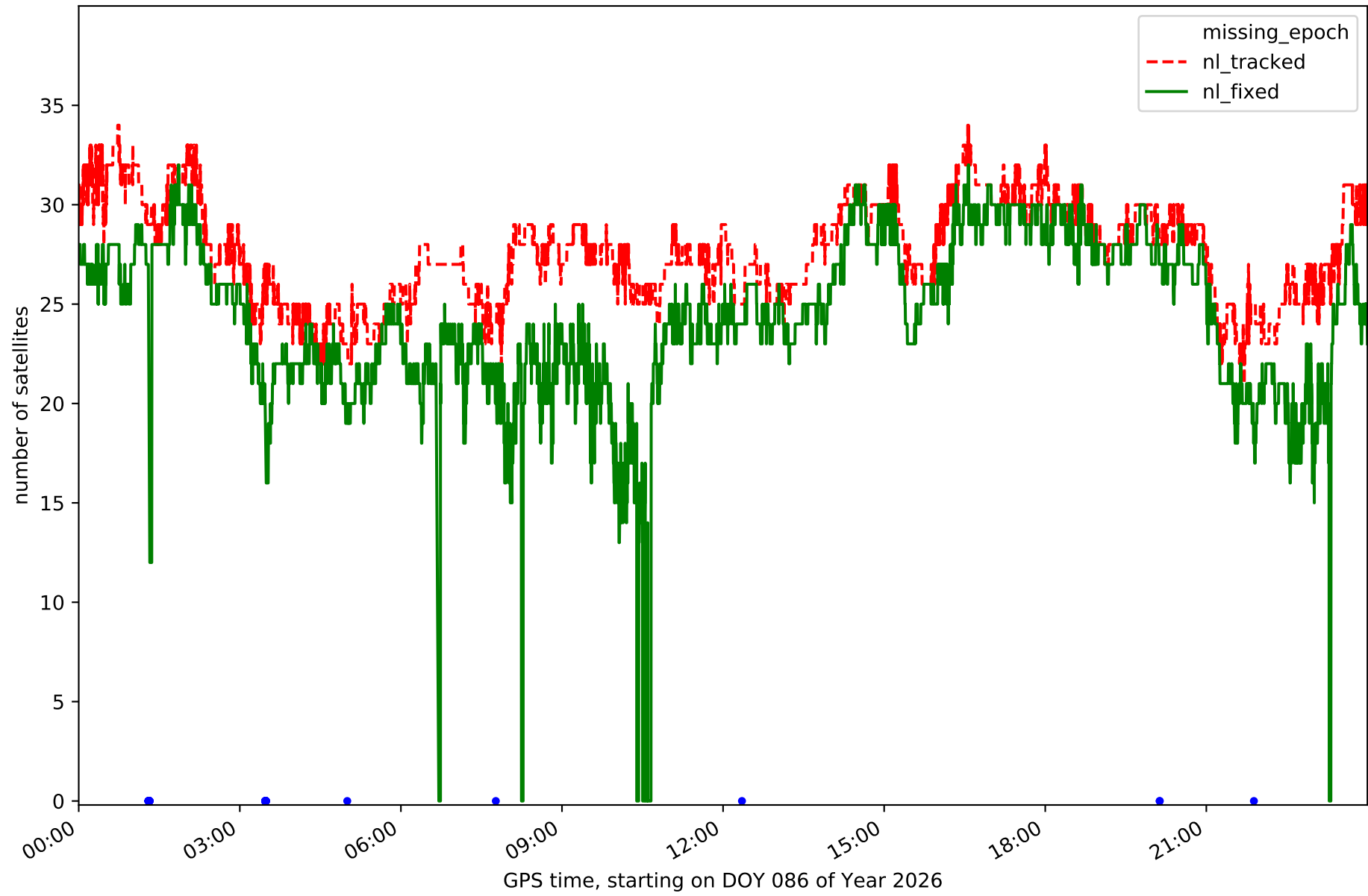
Station EH02 in network NT32



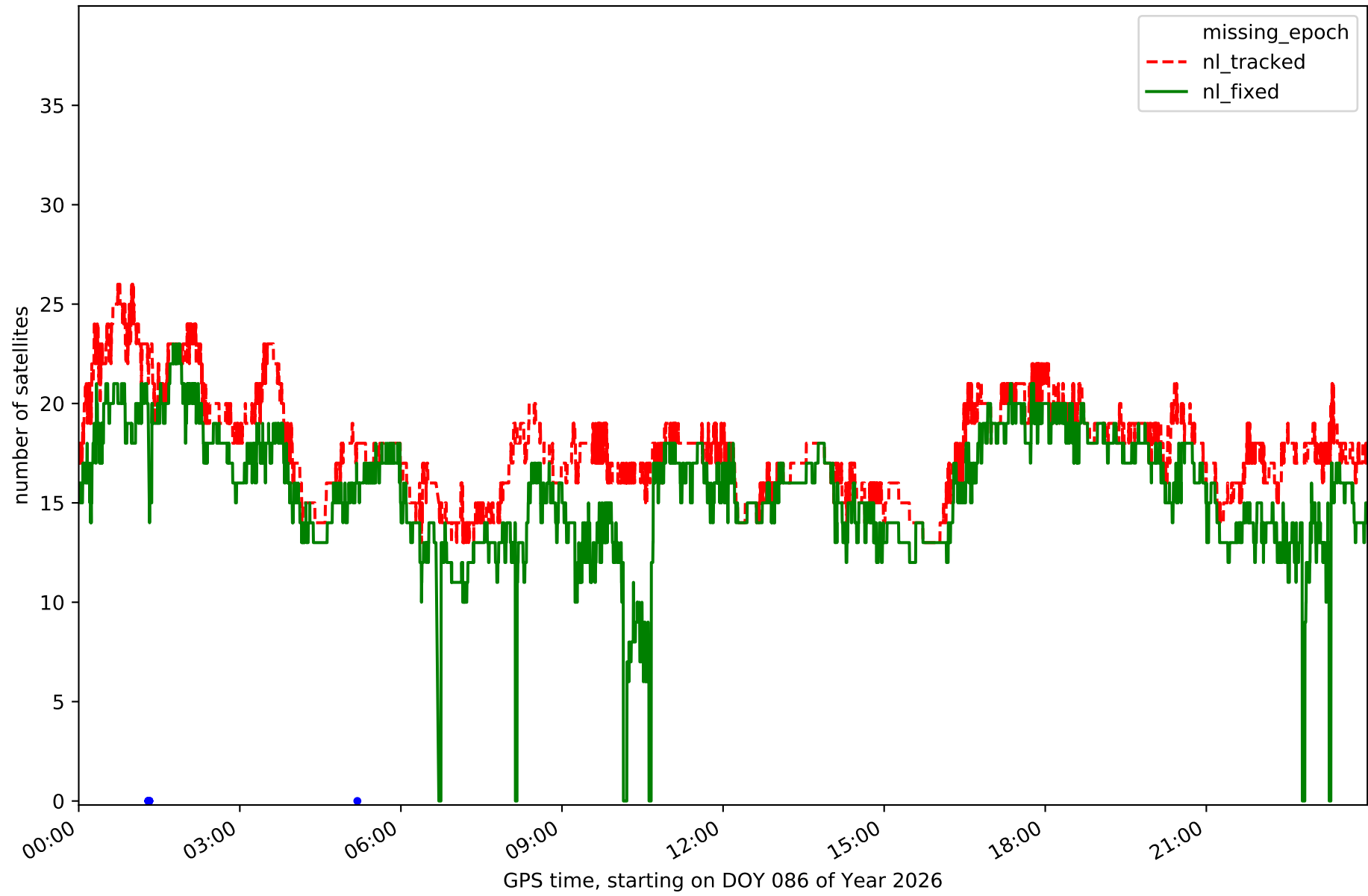
Station GOM1 in network NT32



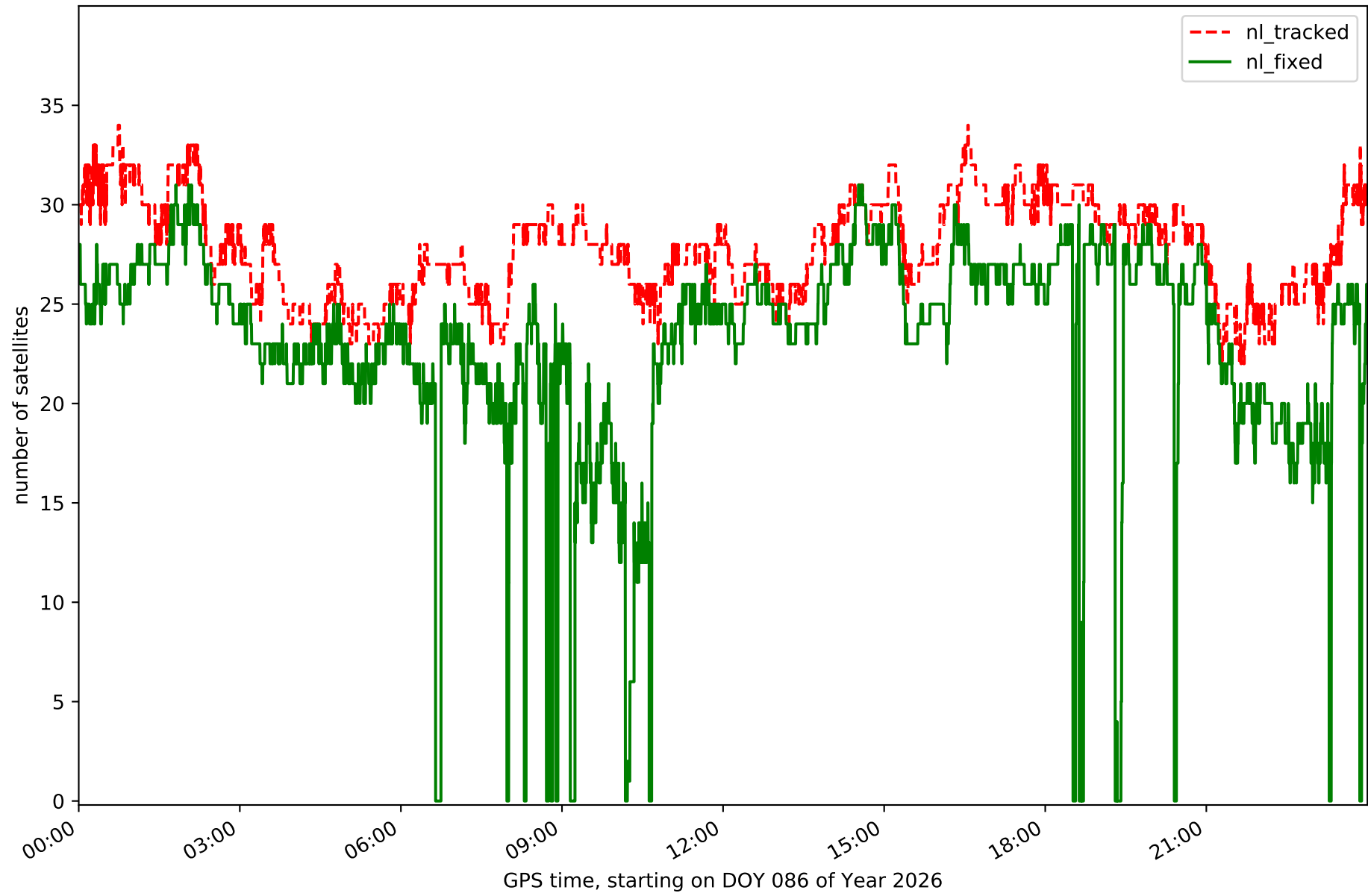
Station LP01 in network NT32



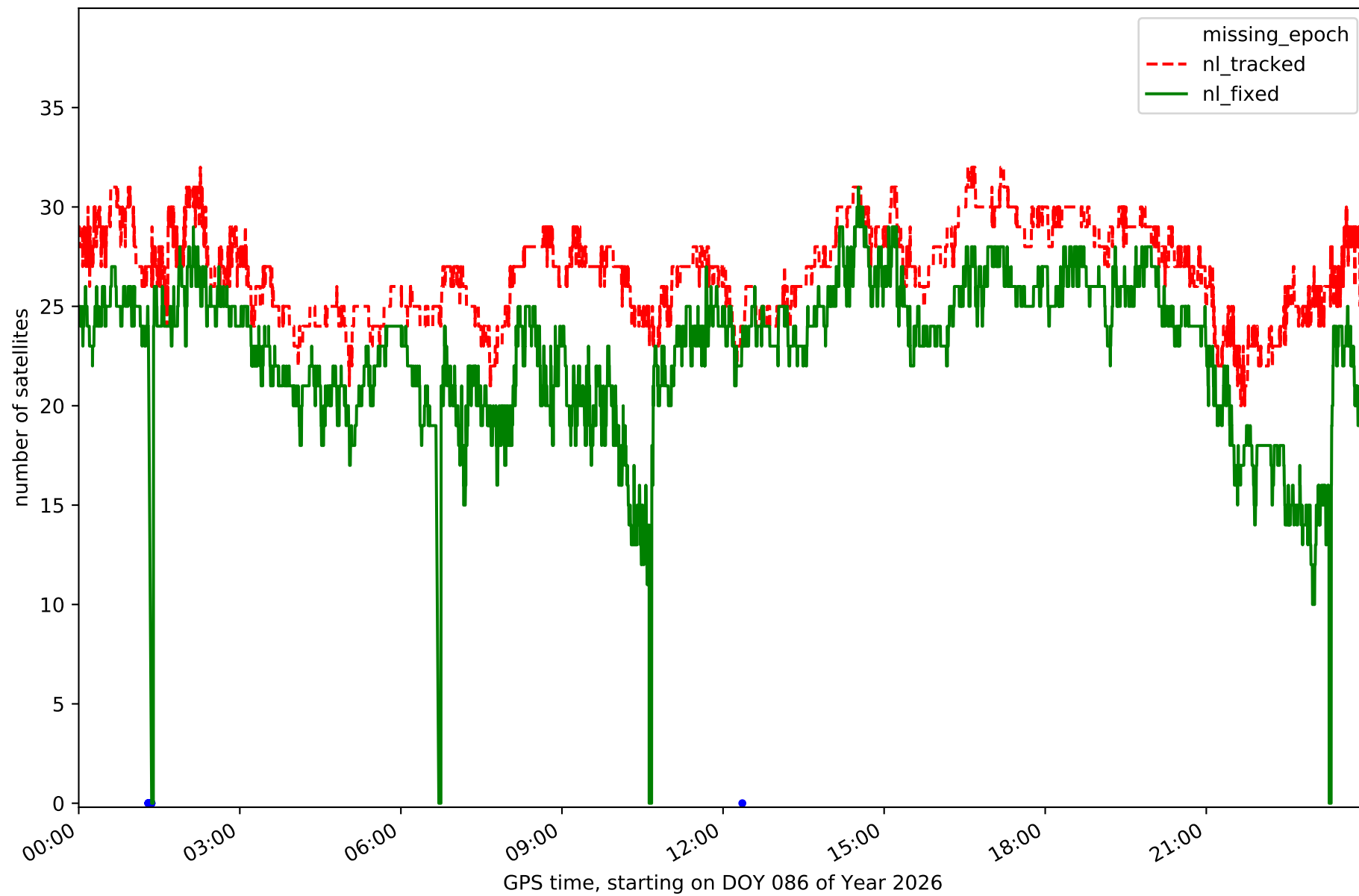
Station LP03 in network NT32



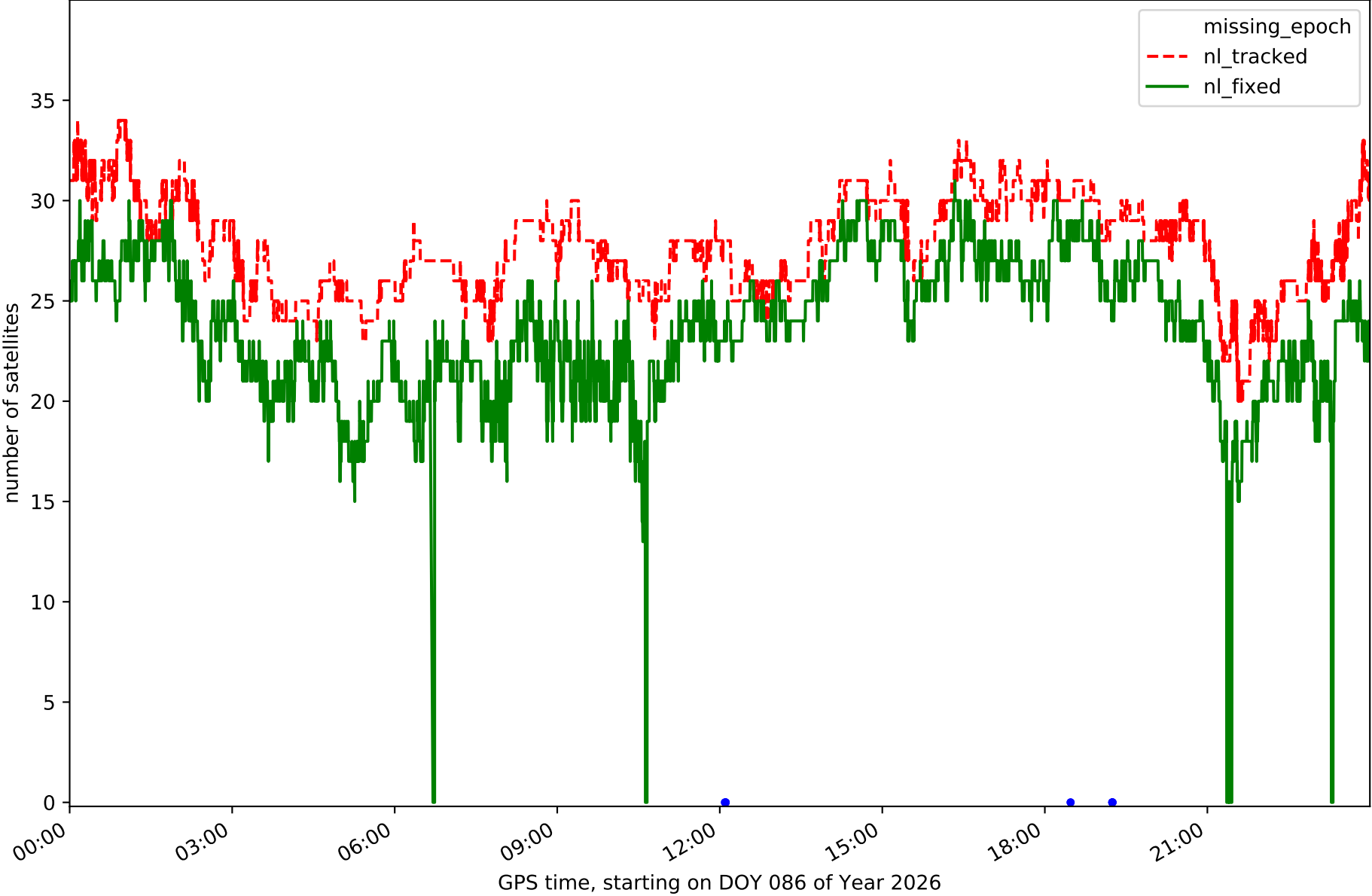
Station LPAL in network NT32



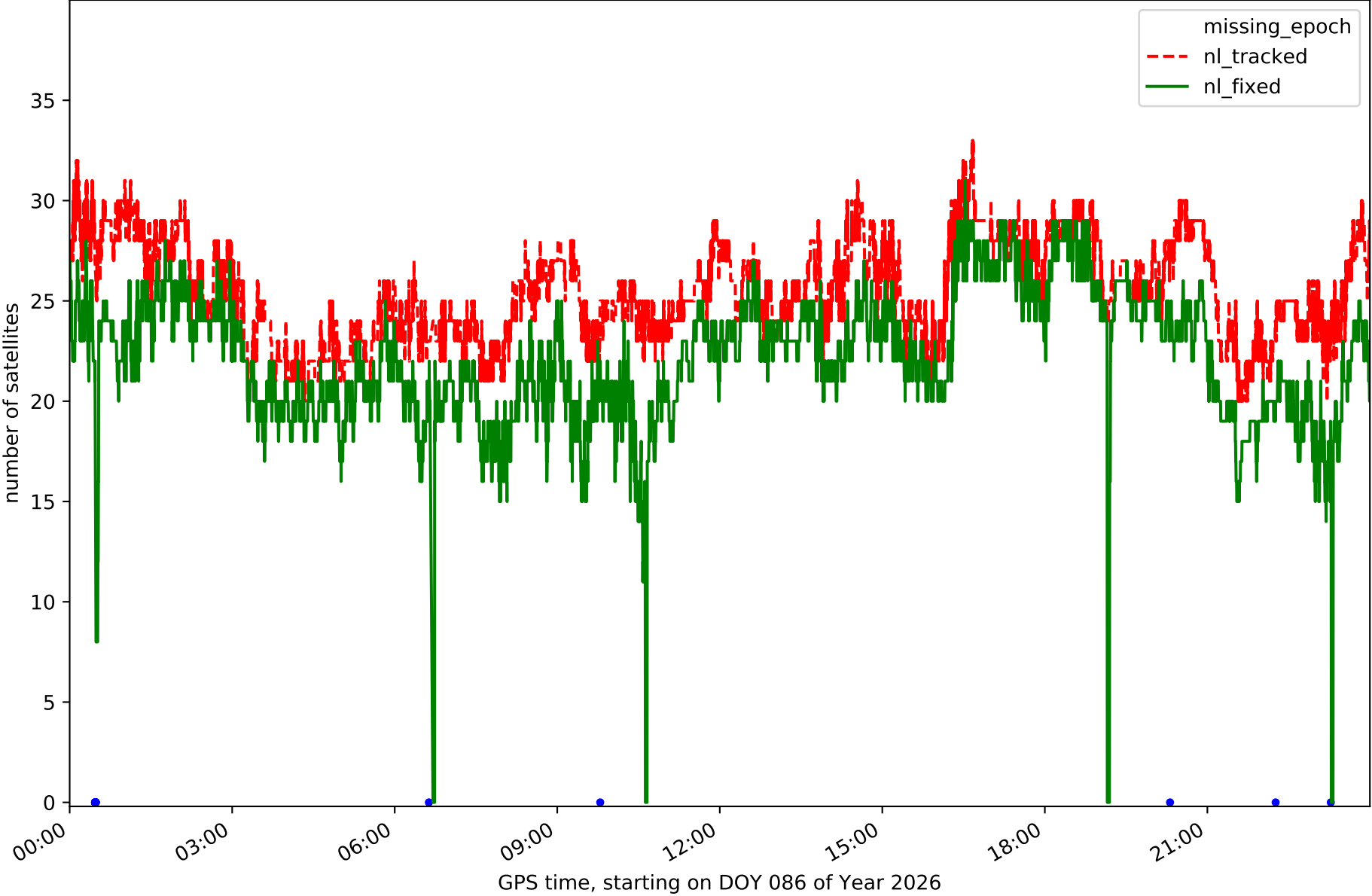
Station LRES in network NT32



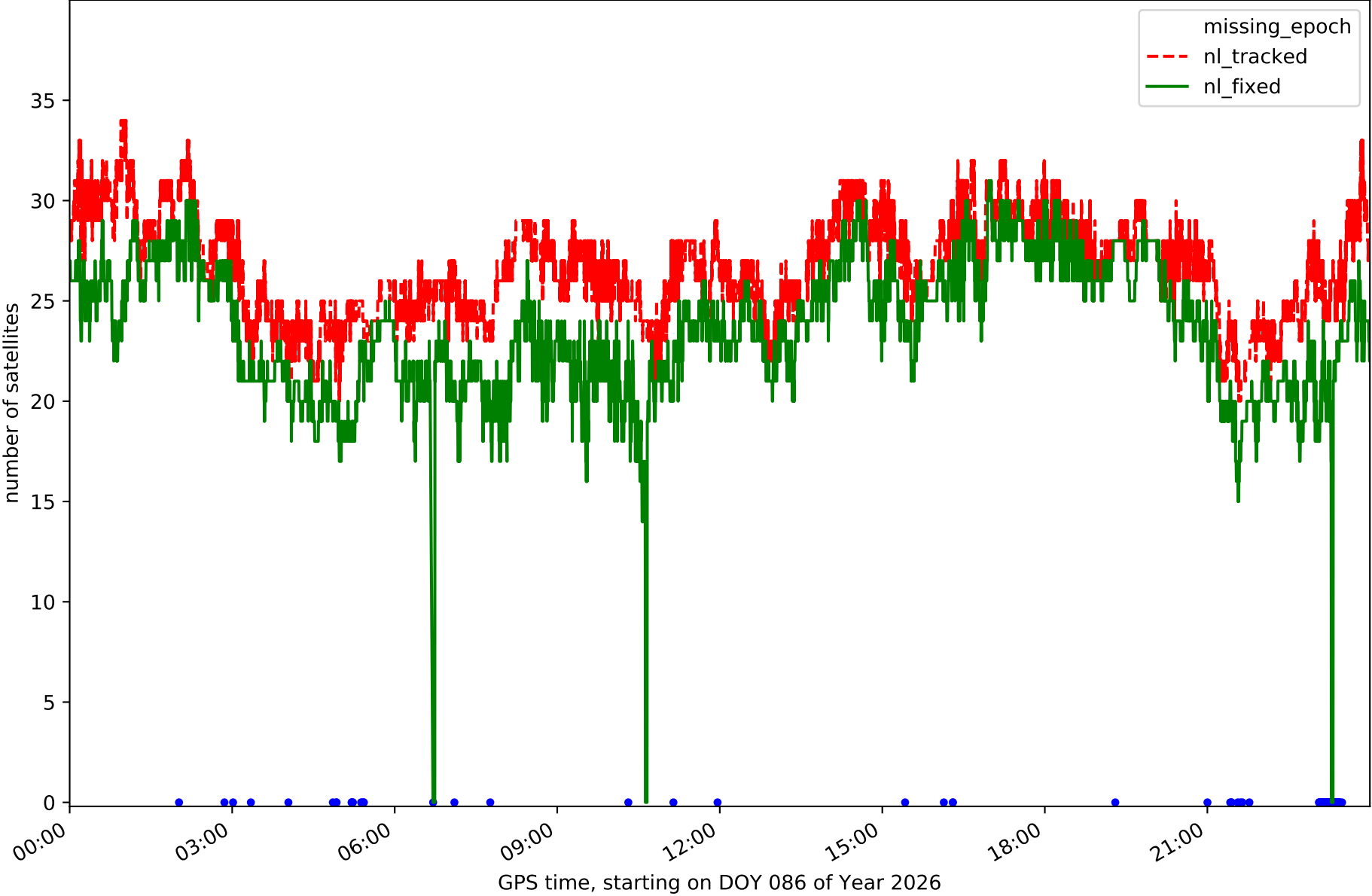
Station TN01 in network NT32



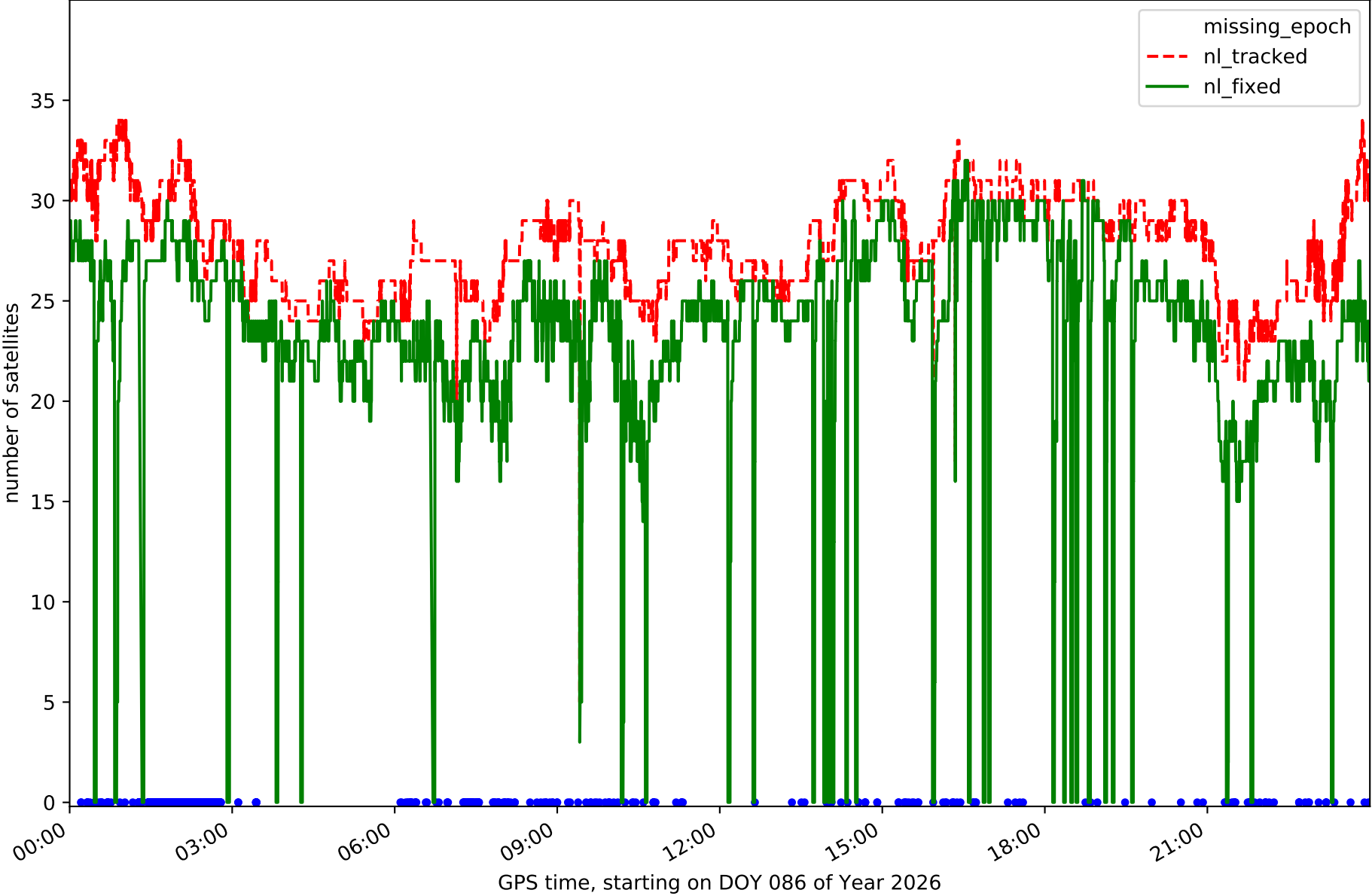
Station TN02 in network NT32



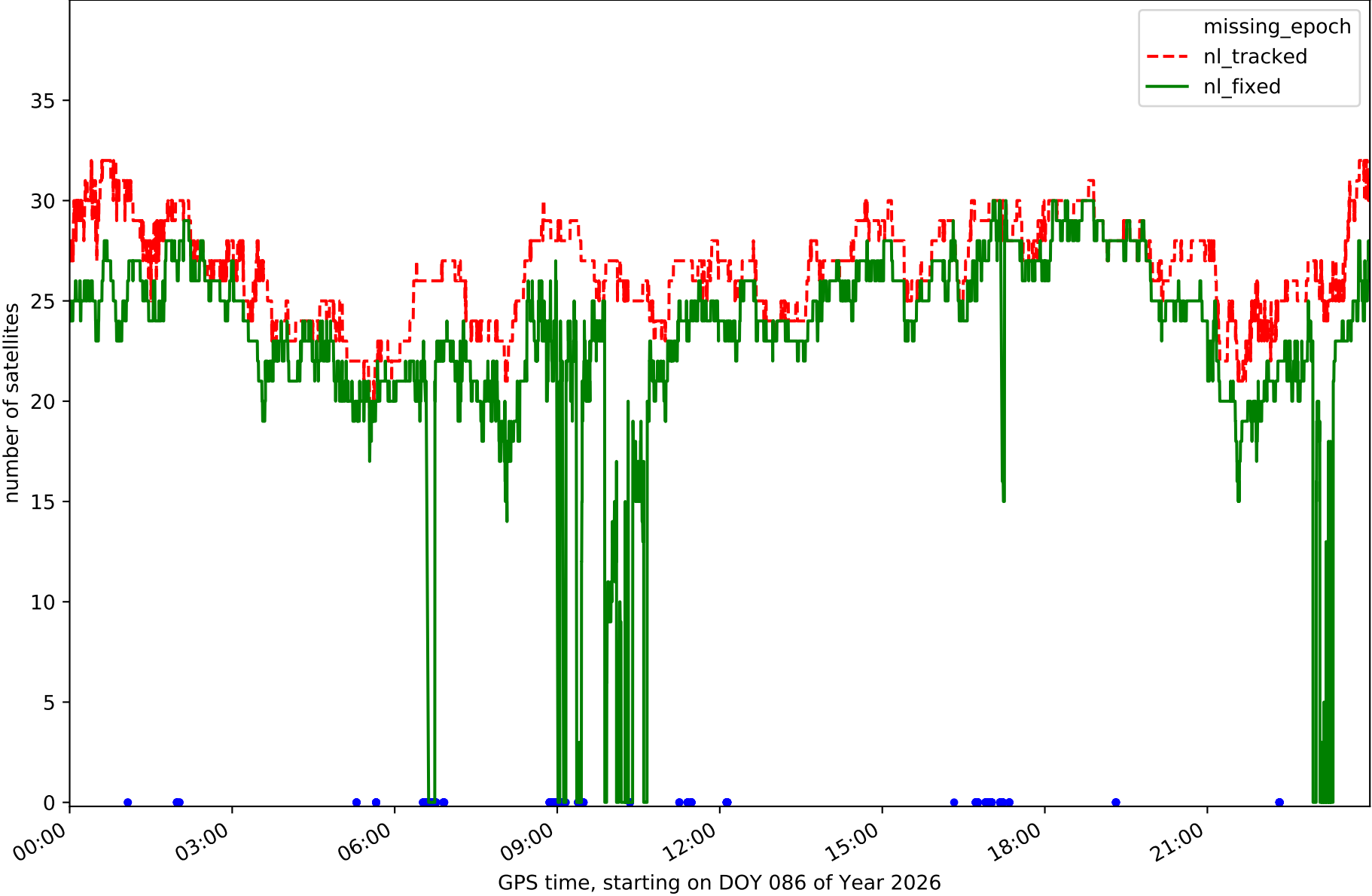
Station TN03 in network NT32



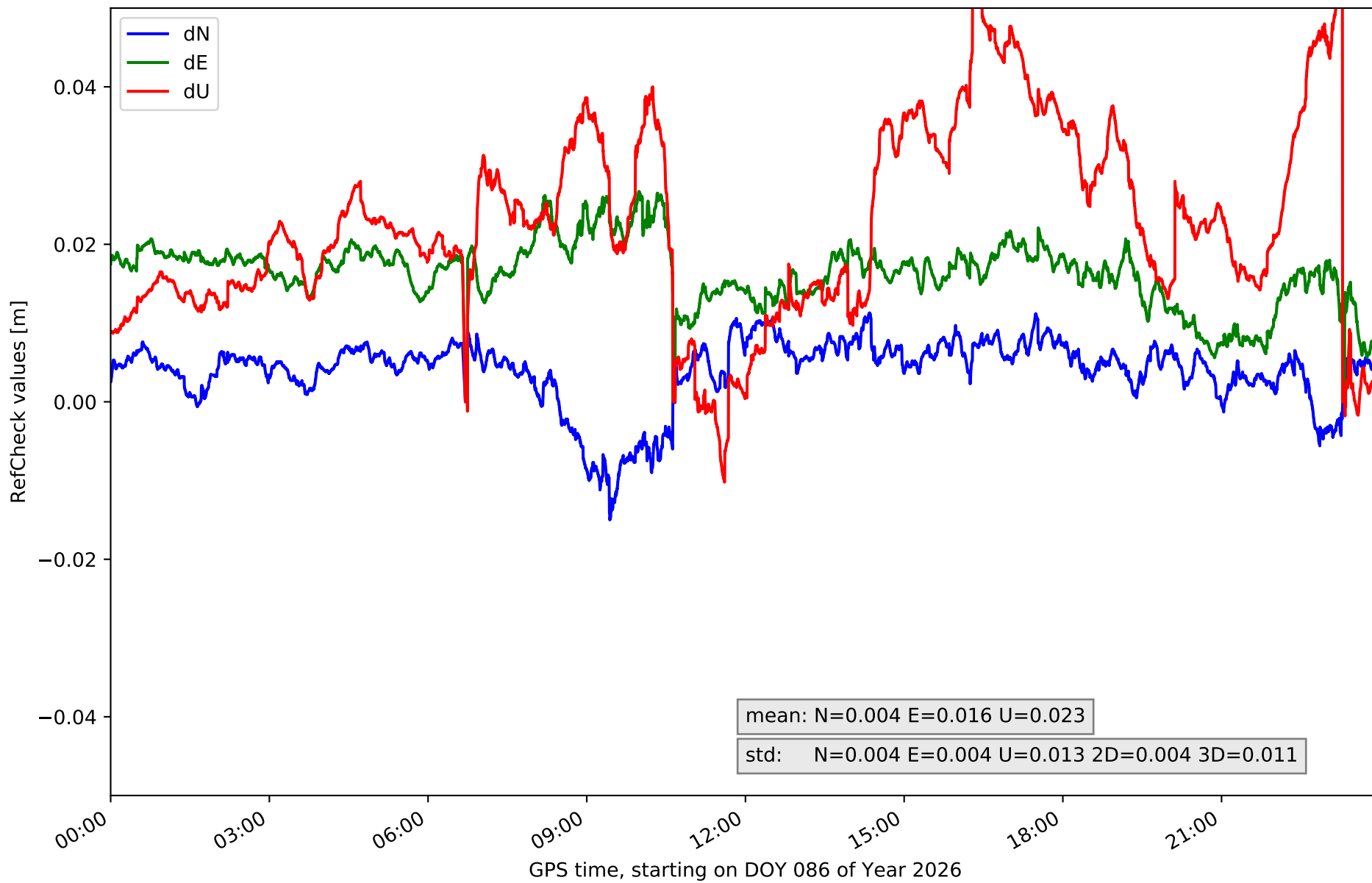
Station TN06 in network NT32



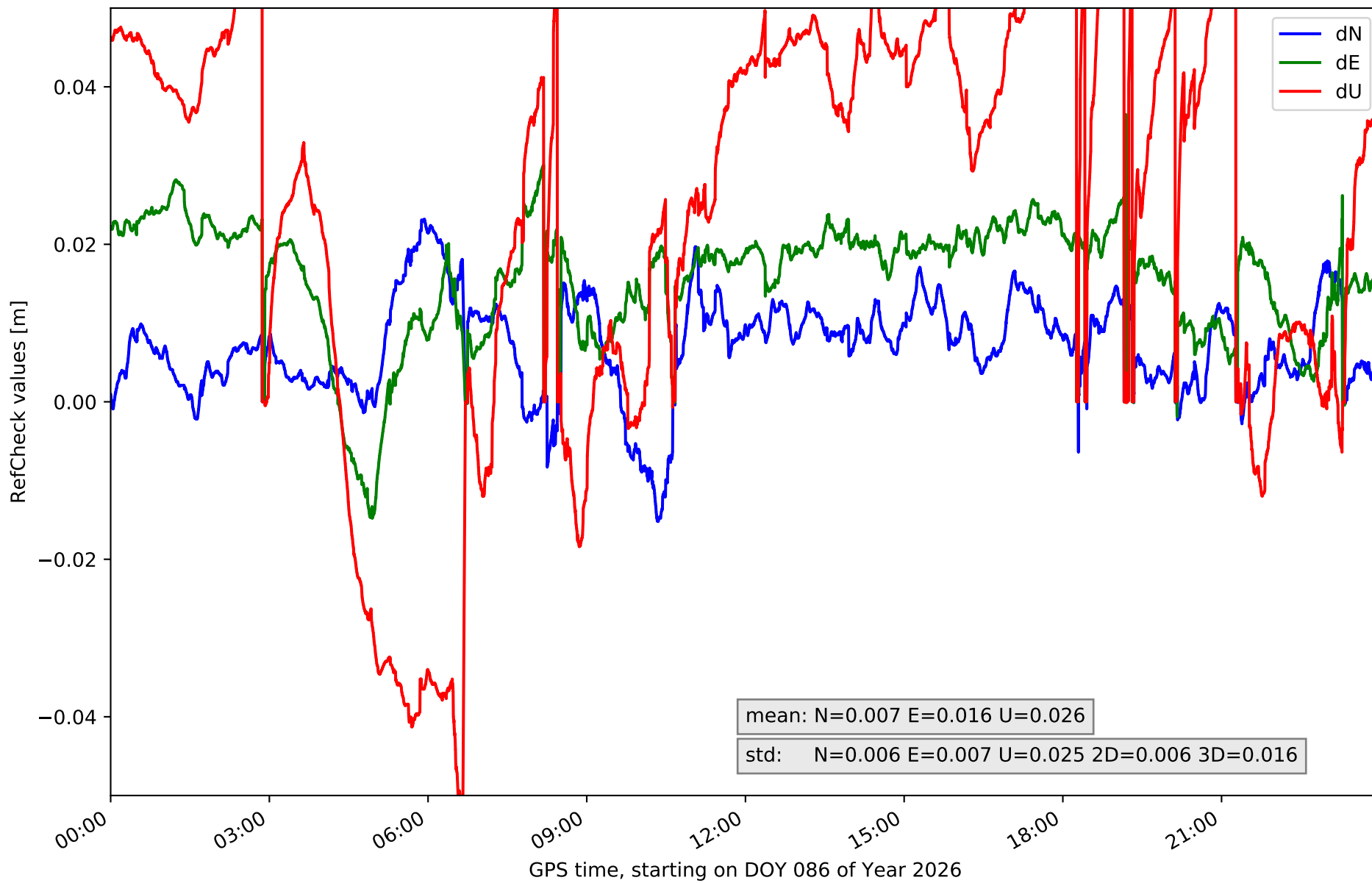
Station TN09 in network NT32



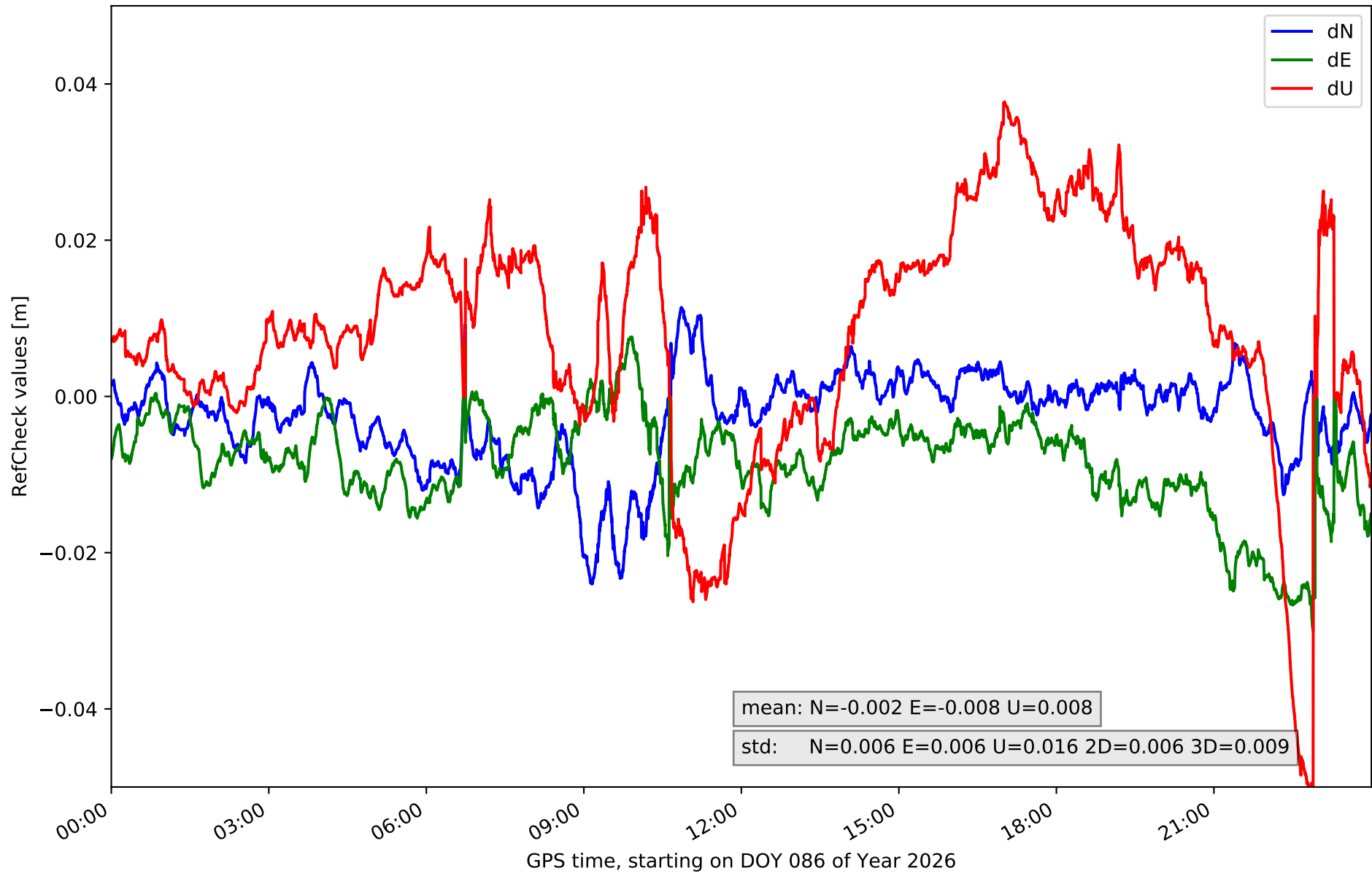
RefCheck for station EH01 in network NT32



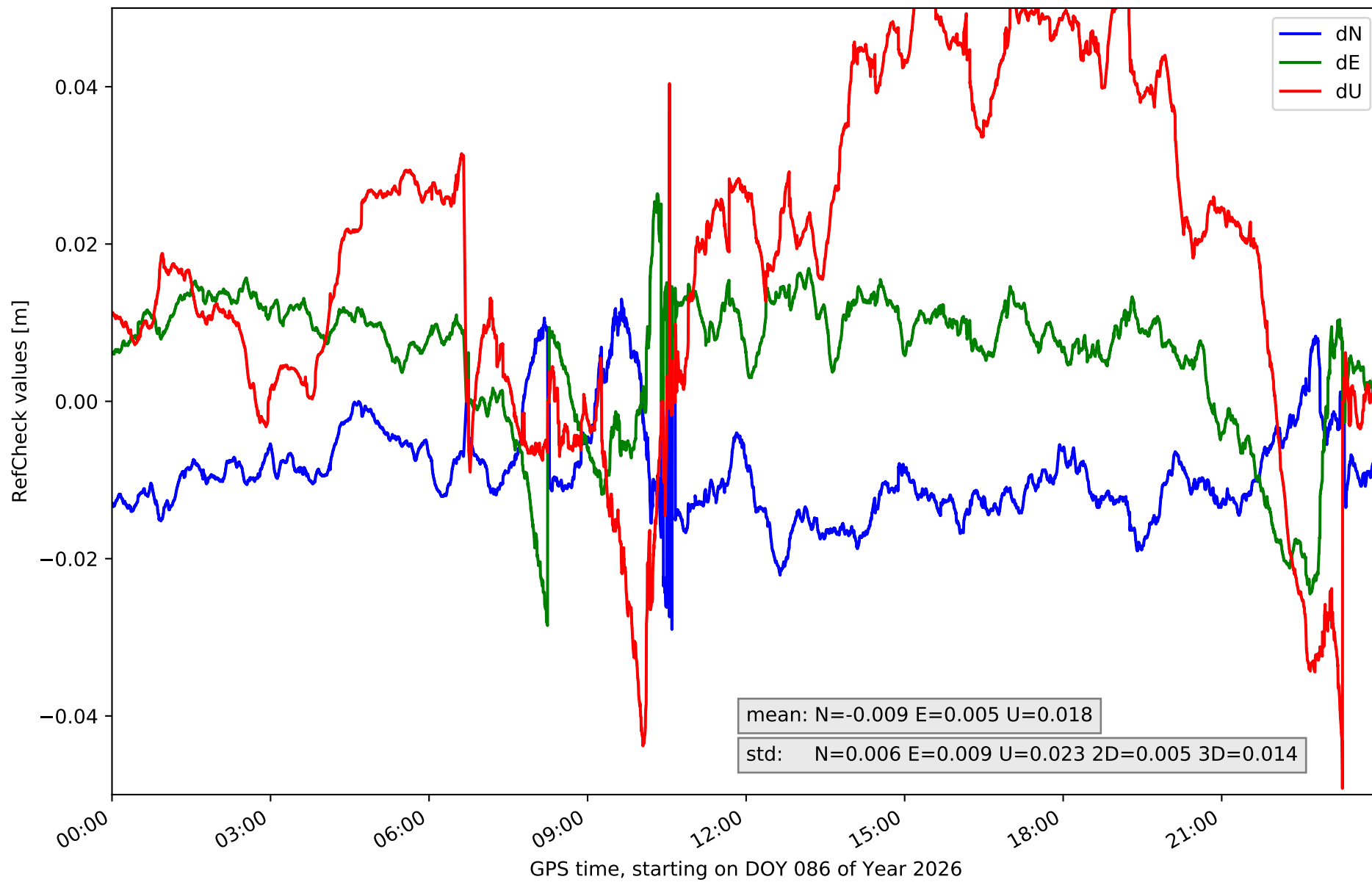
RefCheck for station EH02 in network NT32



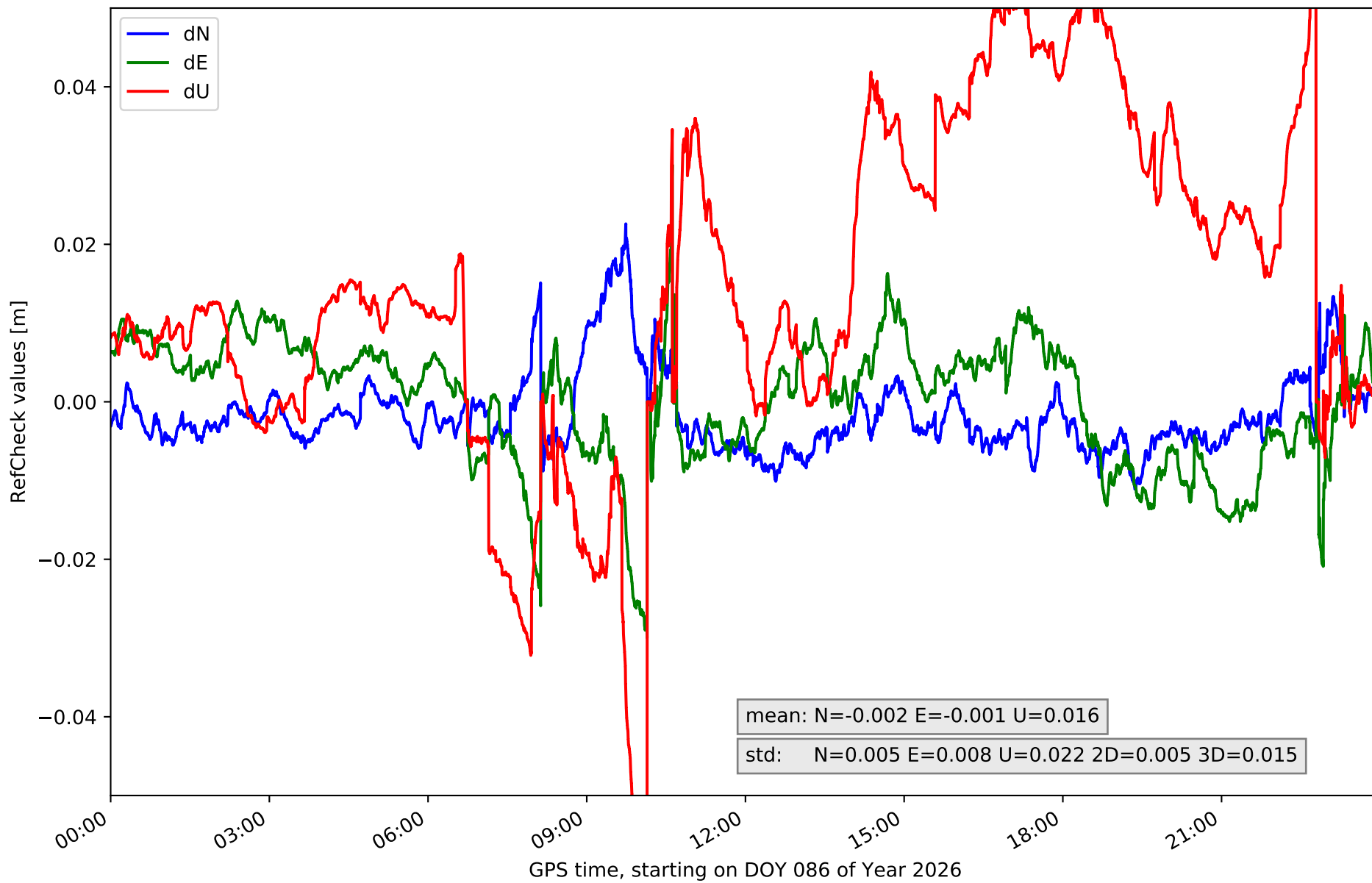
RefCheck for station GOM1 in network NT32



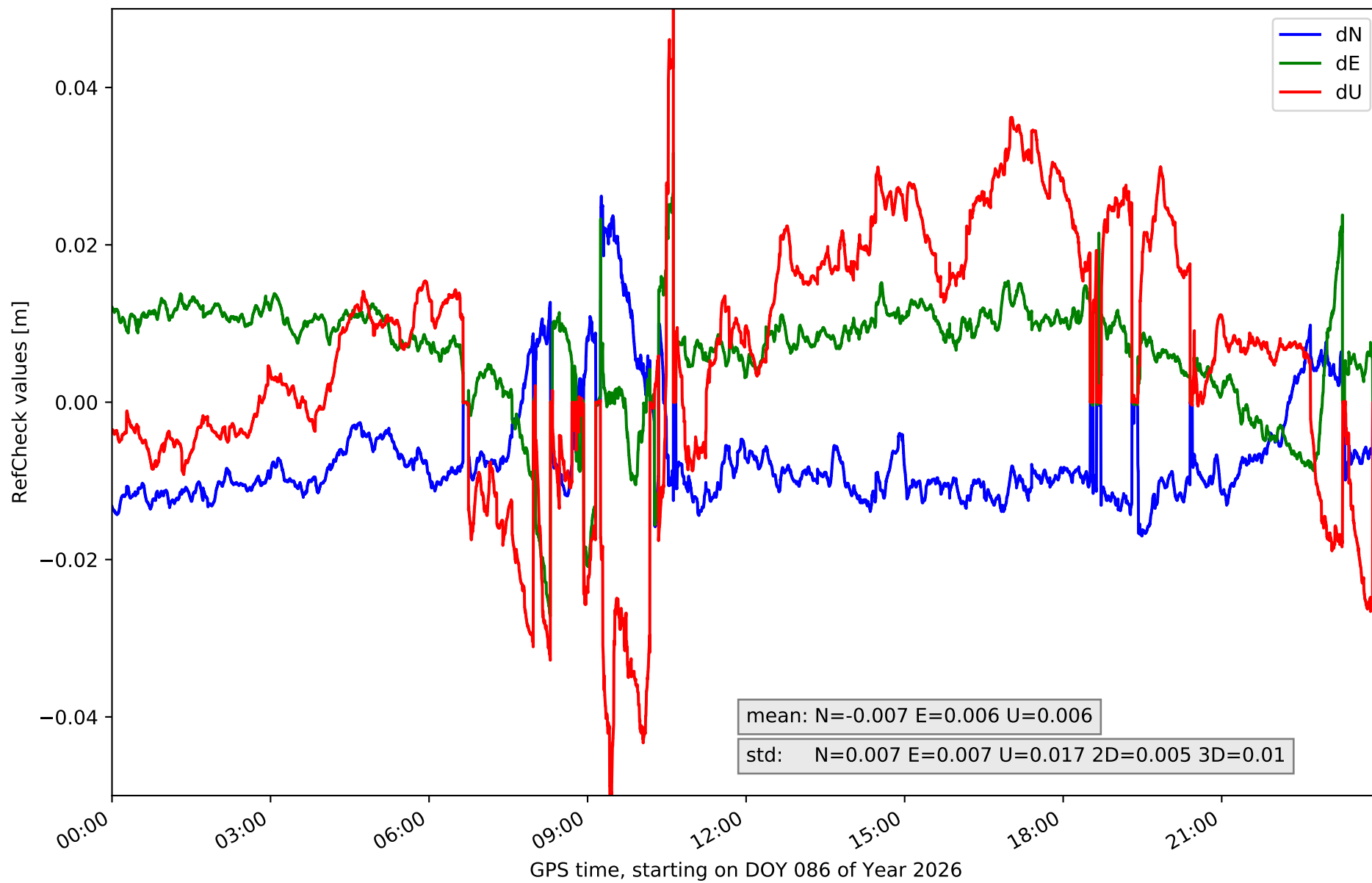
RefCheck for station LP01 in network NT32



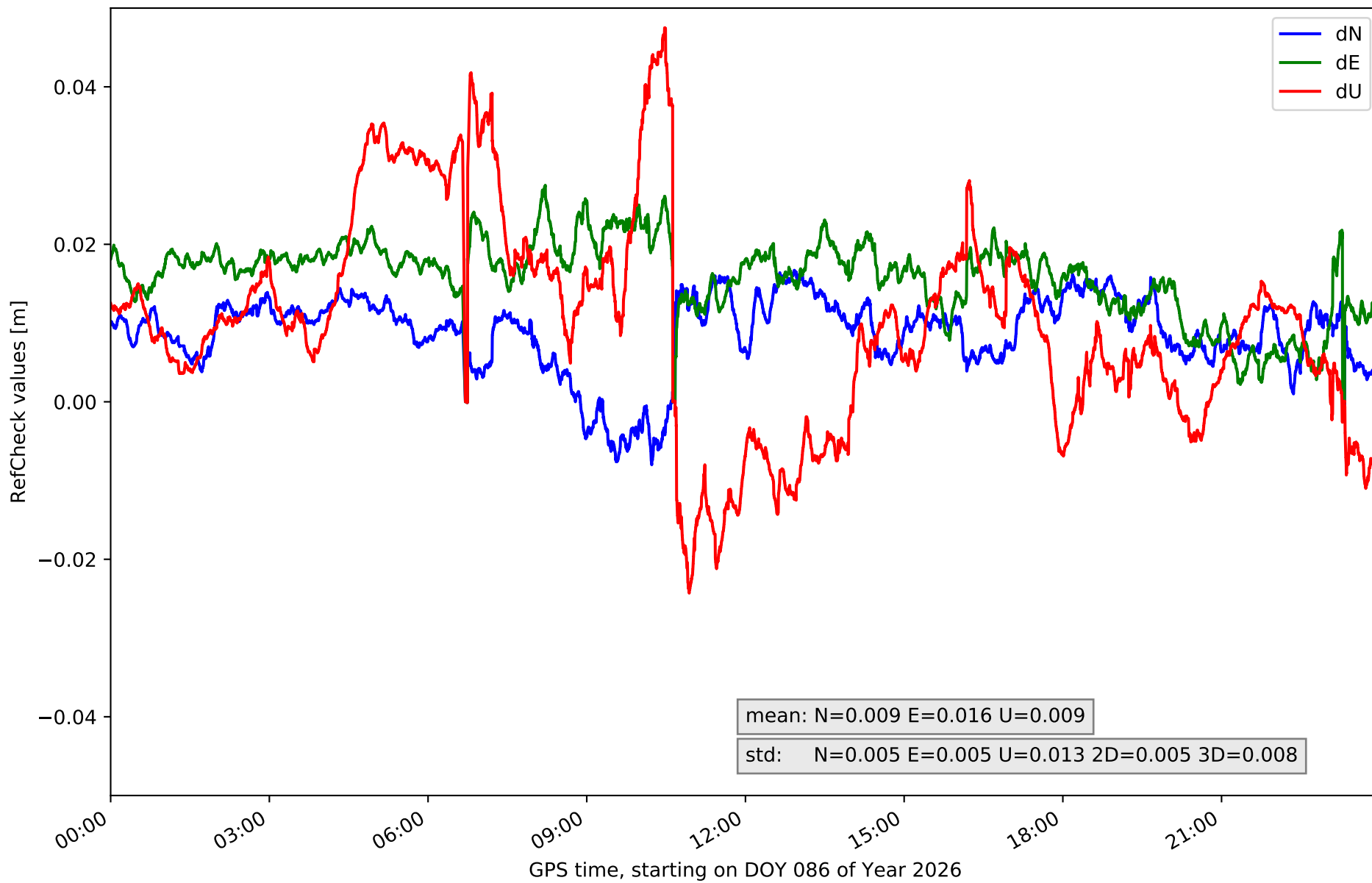
RefCheck for station LP03 in network NT32



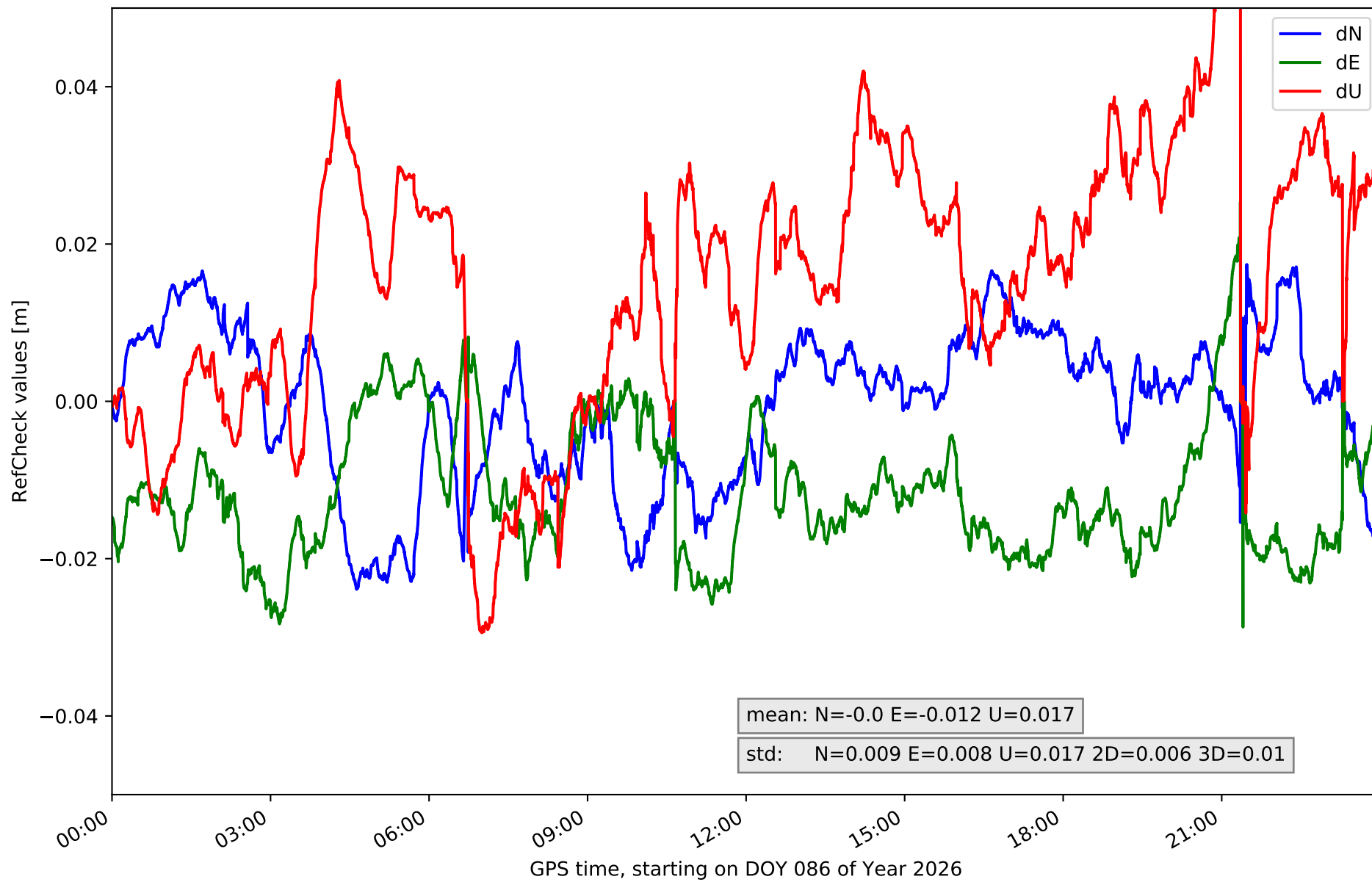
RefCheck for station LPAL in network NT32



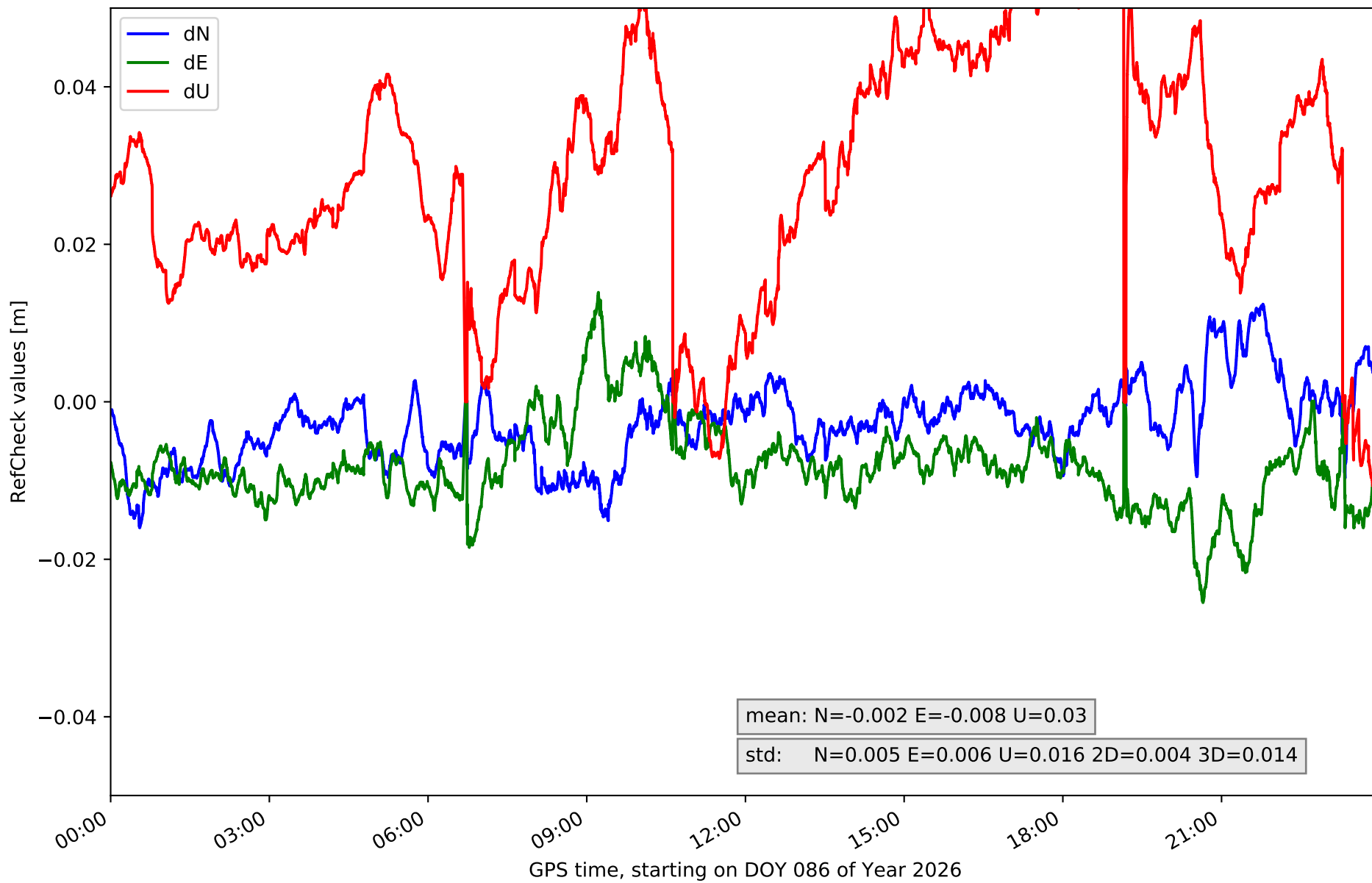
RefCheck for station LRES in network NT32



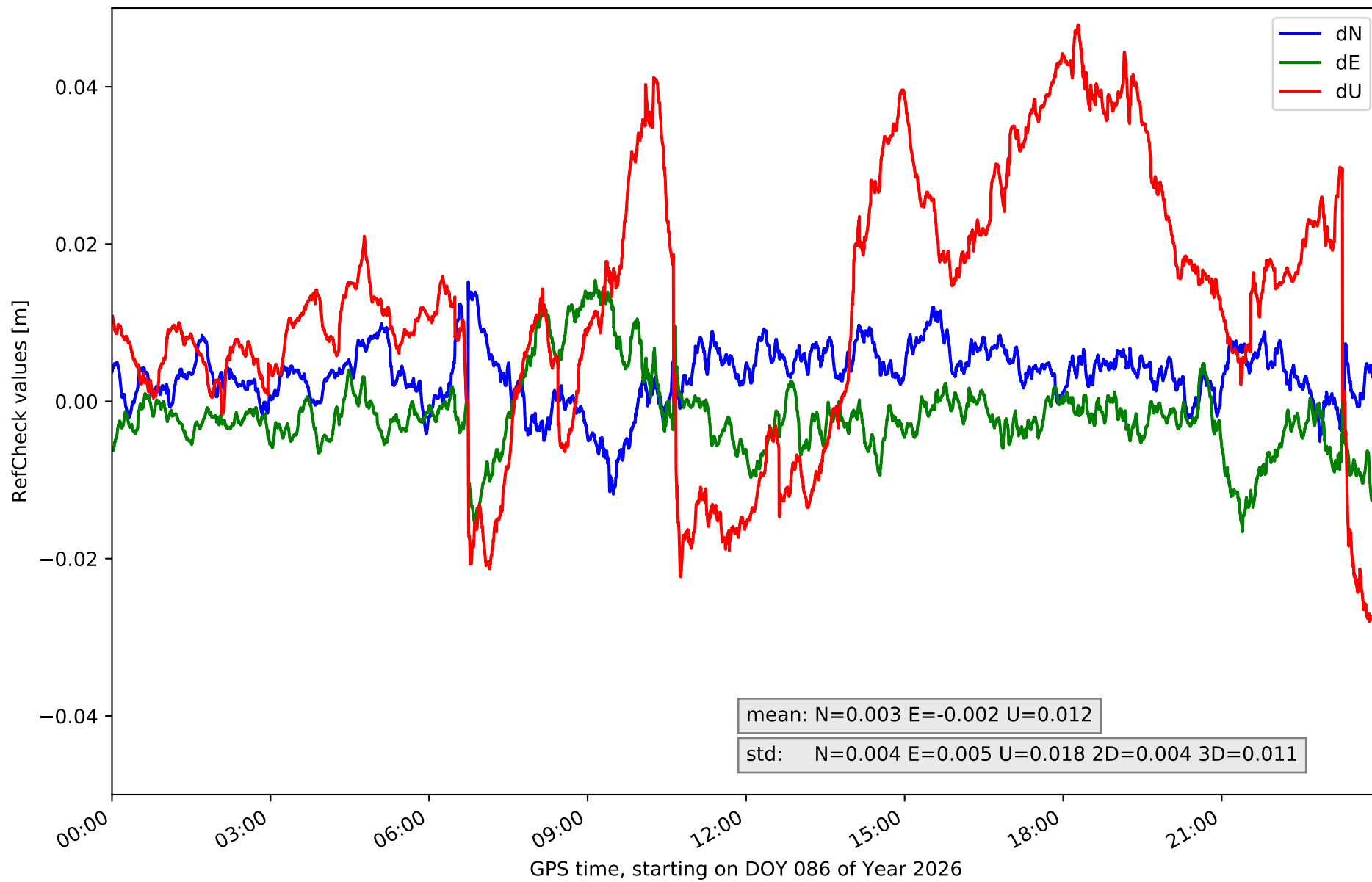
RefCheck for station TN01 in network NT32



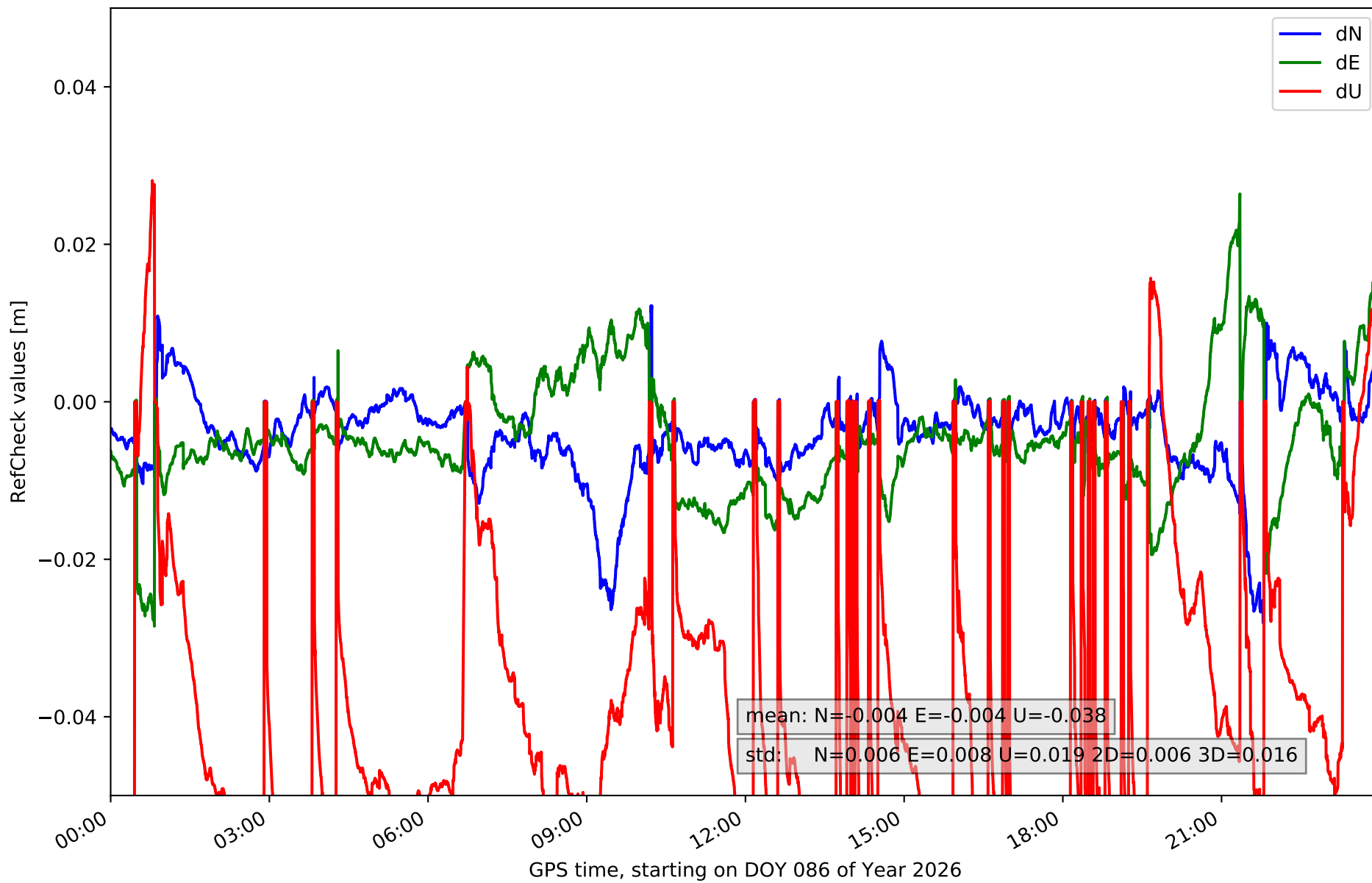
RefCheck for station TN02 in network NT32



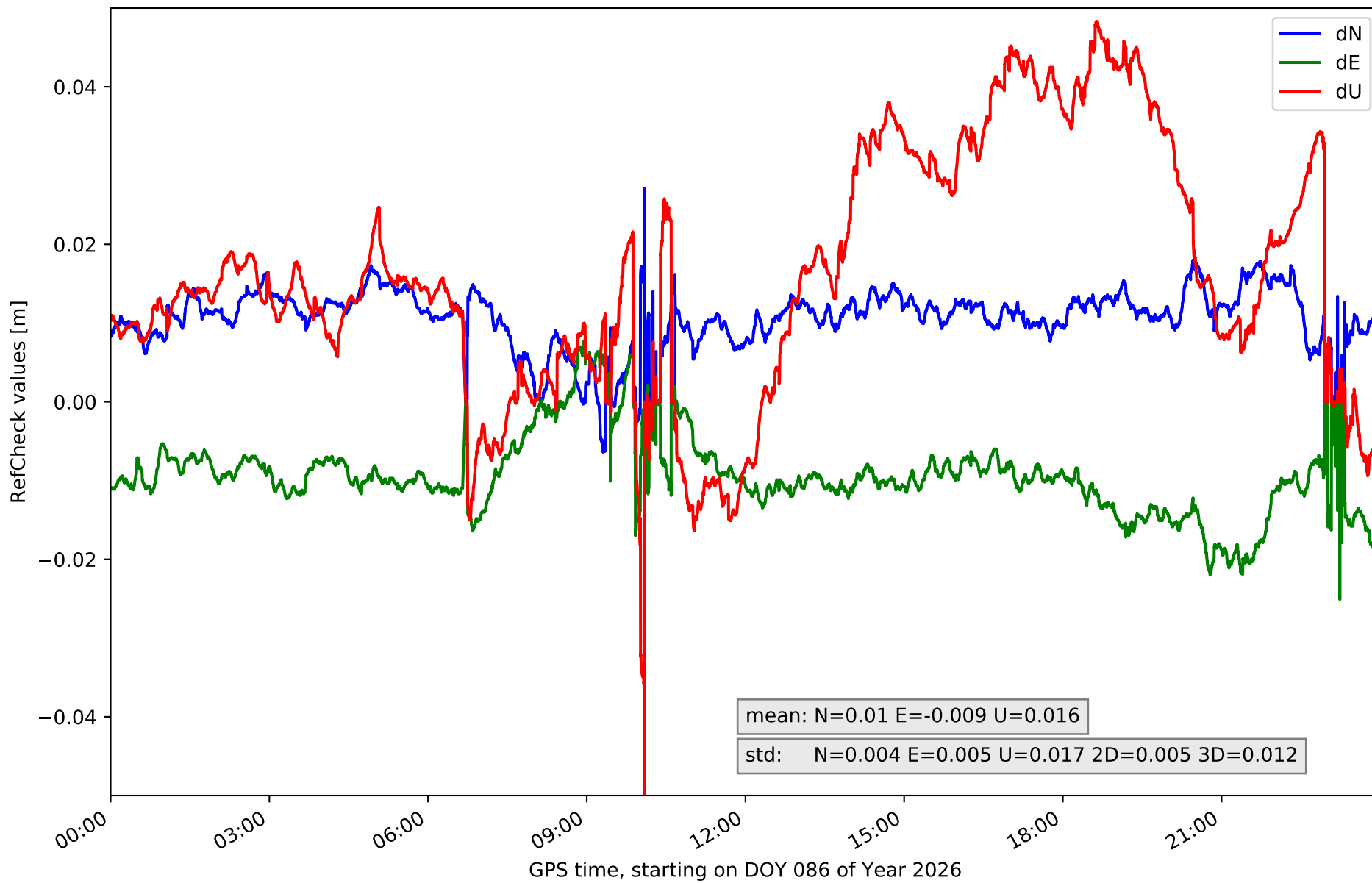
RefCheck for station TN03 in network NT32



RefCheck for station TN06 in network NT32



RefCheck for station TN09 in network NT32



RefCheck values for network NT32

Station	Nmin	Nmax	Nstd	Emin	Emax	Estd	Umin	Umax	Ustd	std2D	std3D	#2D > 0.01	% 2D > 0.01	#3D > 0.02	% 3D > 0.02
EH01	-0.015	0.011	0.004	0.0	0.027	0.004	-0.01	0.054	0.013	0.004	0.011	66215	90.8	59400	81.4
EH02	-0.015	0.023	0.006	-0.015	0.036	0.007	-0.057	0.062	0.025	0.006	0.016	65373	89.6	58395	80.0
GOM1	-0.024	0.011	0.006	-0.03	0.008	0.006	-0.051	0.038	0.016	0.006	0.009	38243	52.4	36973	50.7
LP01	-0.029	0.013	0.006	-0.029	0.037	0.009	-0.049	0.054	0.023	0.005	0.014	59009	80.9	53210	72.9
LP03	-0.011	0.023	0.005	-0.03	0.03	0.008	-0.057	0.06	0.022	0.005	0.015	20496	28.1	40694	55.8
LPAL	-0.017	0.026	0.007	-0.027	0.032	0.007	-0.051	0.055	0.017	0.005	0.01	52783	72.3	33388	45.8
LRES	-0.008	0.017	0.005	-0.0	0.028	0.005	-0.024	0.048	0.013	0.005	0.008	68016	93.2	50885	69.7
TN01	-0.024	0.017	0.009	-0.029	0.025	0.008	-0.029	0.069	0.017	0.006	0.01	60162	82.5	61152	83.8
TN02	-0.016	0.012	0.005	-0.025	0.014	0.006	-0.011	0.06	0.016	0.004	0.014	35077	48.1	58051	79.6
TN03	-0.012	0.015	0.004	-0.017	0.015	0.005	-0.029	0.048	0.018	0.004	0.011	12676	17.4	30928	42.4
TN06	-0.028	0.012	0.006	-0.029	0.026	0.008	-0.061	0.028	0.019	0.006	0.016	27401	37.6	64029	87.8
TN09	-0.006	0.027	0.004	-0.025	0.008	0.005	-0.096	0.048	0.017	0.005	0.012	61106	83.8	46154	63.3
Mean	-0.017	0.017	0.006	-0.021	0.024	0.007	-0.044	0.052	0.018	0.005	0.012	47213.1	64.7	49438.2	67.8
Min/Max	-0.029	0.027	0.009	-0.03	0.037	0.009	-0.096	0.069	0.025	0.006	0.016	68016	93.2	64029	87.8

fixing statistic for network NT32

fixing percentage of	all GNSS	G	R	E	C
using threshold 0.3	88.7	89.9	81.7	93.1	88.4
considering satellites with dual-frequency fixed	84.9	86.7	77.0	87.7	85.5
considering all signals separately	85.4	86.8	77.0	88.3	84.6