

summary for network N32T

timeperiod chosen: from 2026-03-27-00:00:00 until 2026-03-27-23:59:58

average update rate (durations larger than 15 seconds considered as observation gap): 1.0 seconds

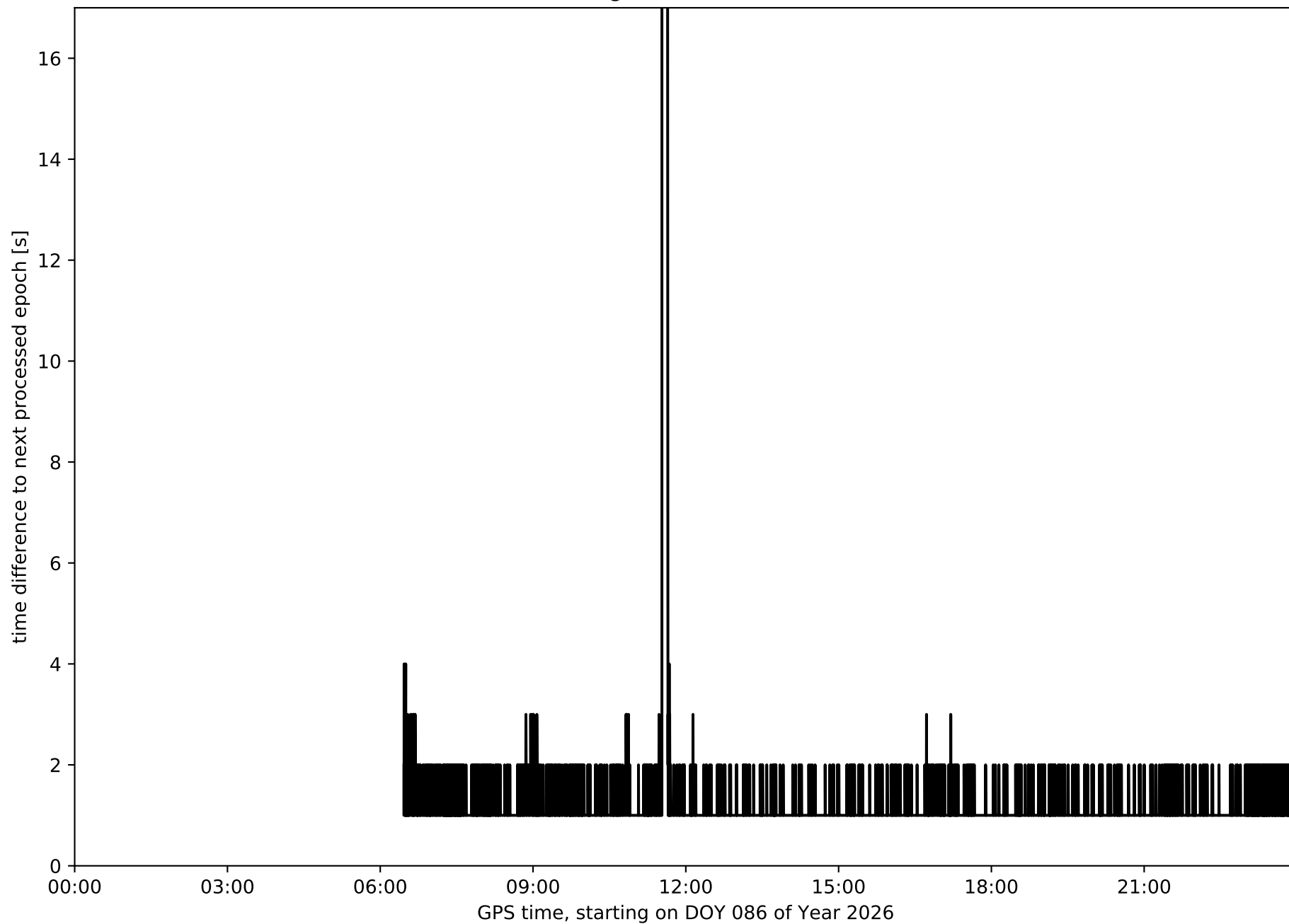
average fixing percentage with threshold set to 0.3: 87.9 percent

stations available: 12 of 14

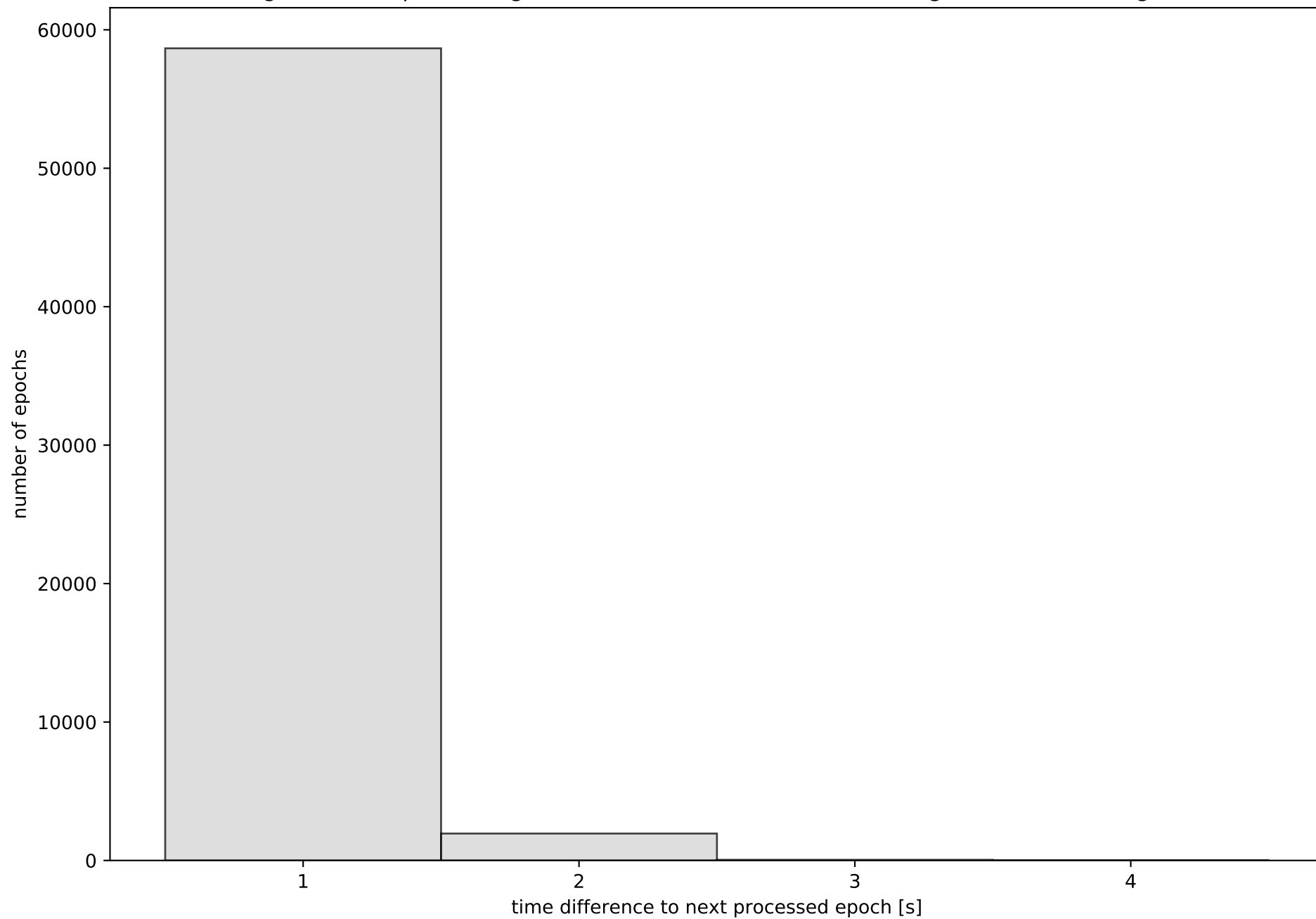
station information:

station EH01:	antenna: LEIAR20	LEIM	receiver: LEICA GR25	height: 801.016
station EH02:	antenna: TRM59900.00	SCIS	receiver: LEICA GR50	height: 85.364
station GOM1:	antenna: LEIAR20	LEIM	receiver: LEICA GR50	height: 48.789
station LP01:	antenna: TRM57971.00	NONE	receiver: TRIMBLE ALLOY	height: 675.249
station LP03:	antenna: TRM59900.00	NONE	receiver: TRIMBLE NETR9	height: 919.563
station LPAL:	antenna: LEIAR20	LEIM	receiver: LEICA GR50	height: 2199.31
station LRES:	antenna: LEIAR20	NONE	receiver: LEICA GR25	height: 51.241
station TN01:	antenna: LEIAR20	LEIM	receiver: LEICA GR50	height: 51.859
station TN02:	antenna: TRM159900.00	SCIS	receiver: TRIMBLE ALLOY	height: 54.509
station TN03:	antenna: TRM159900.00	SCIS	receiver: TRIMBLE ALLOY	height: 58.588
station TN06:	antenna: LEIAR20	NONE	receiver: LEICA GR50	height: 1053.548
station TN09:	antenna: LEIAR20	NONE	receiver: LEICA GR50	height: 1582.15

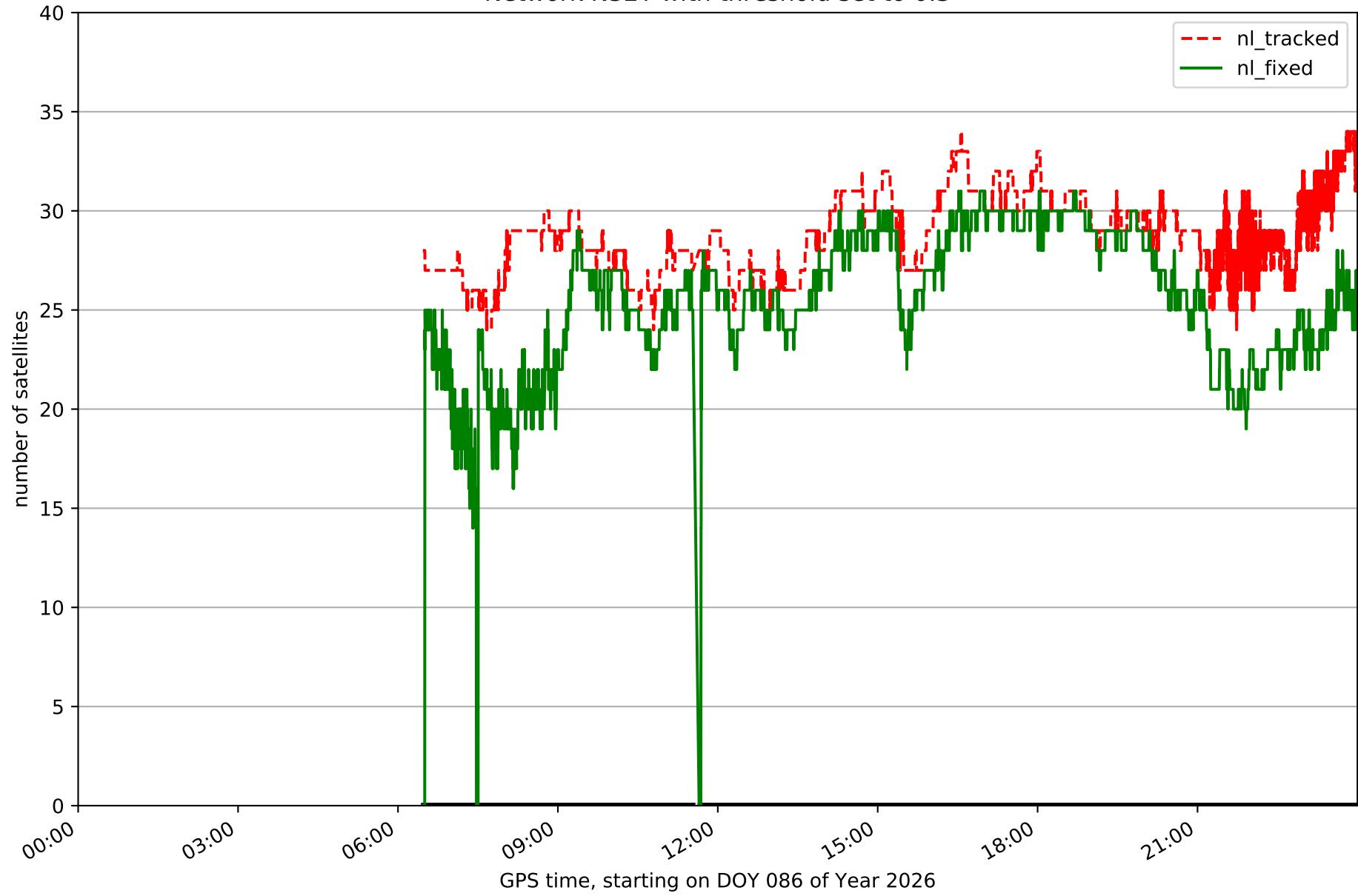
Processing rate in network N32T



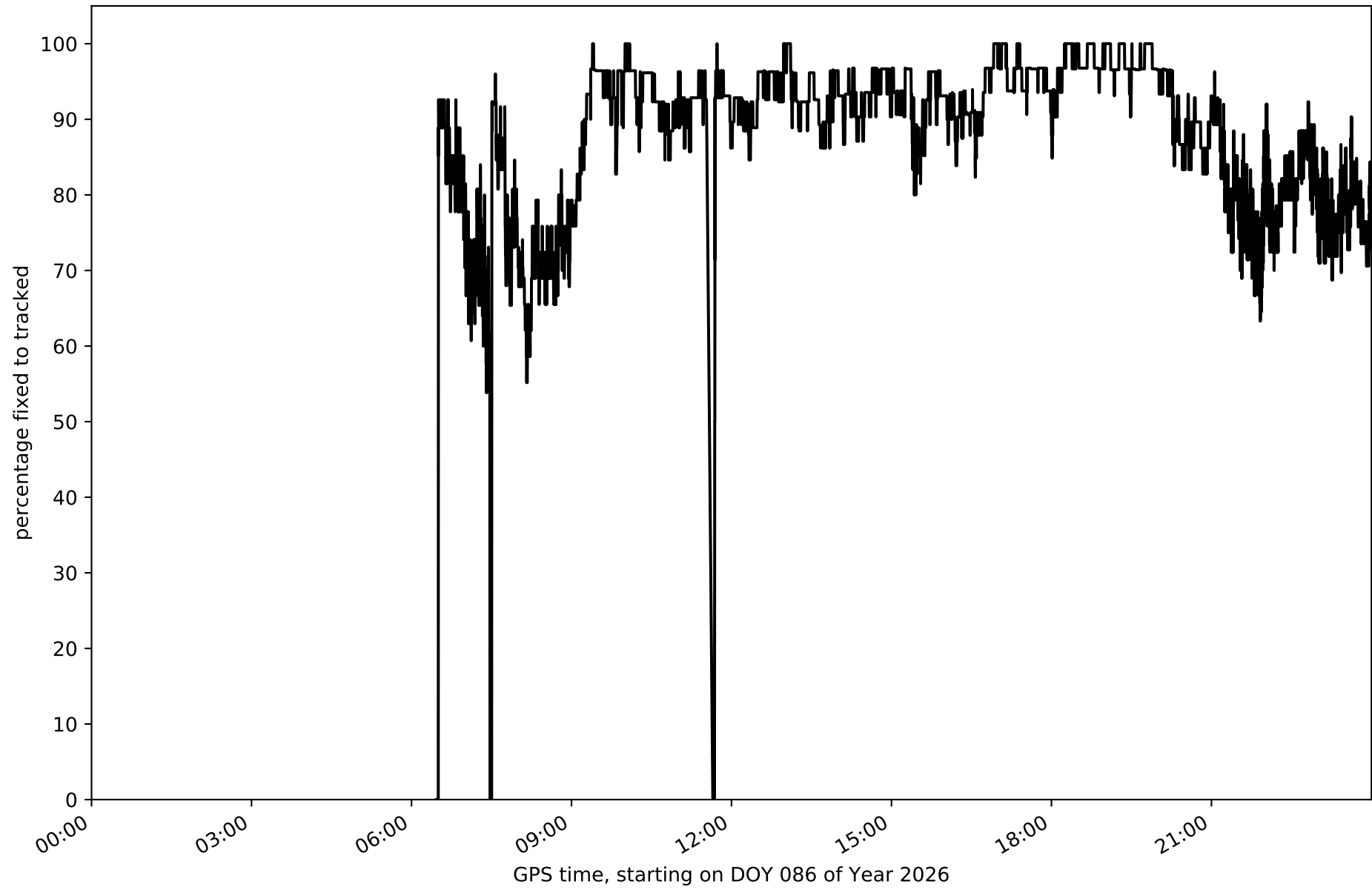
Histogram of the processing rate in network N32T (durations larger 15 seconds neglected)



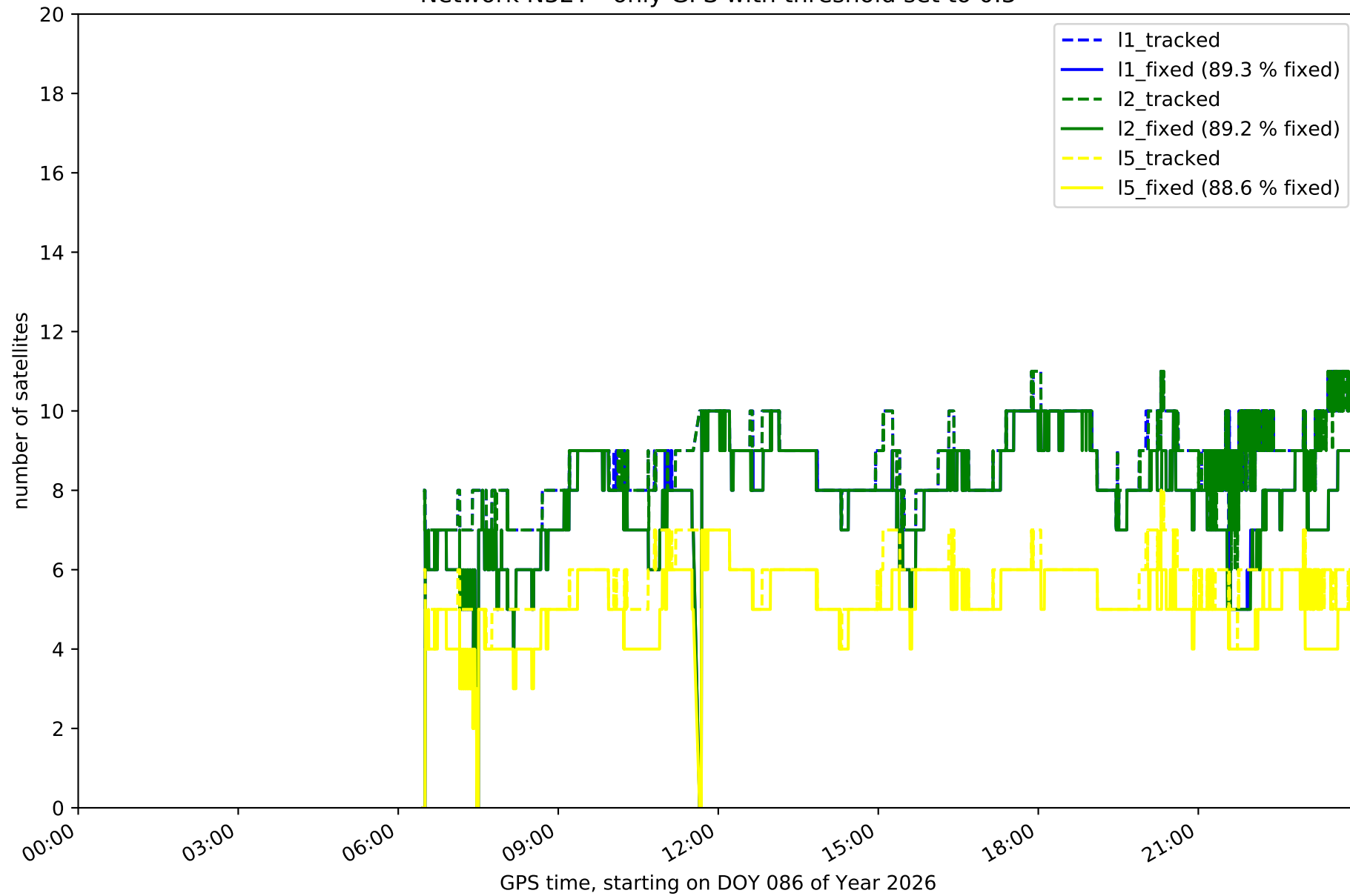
Network N32T with threshold set to 0.3



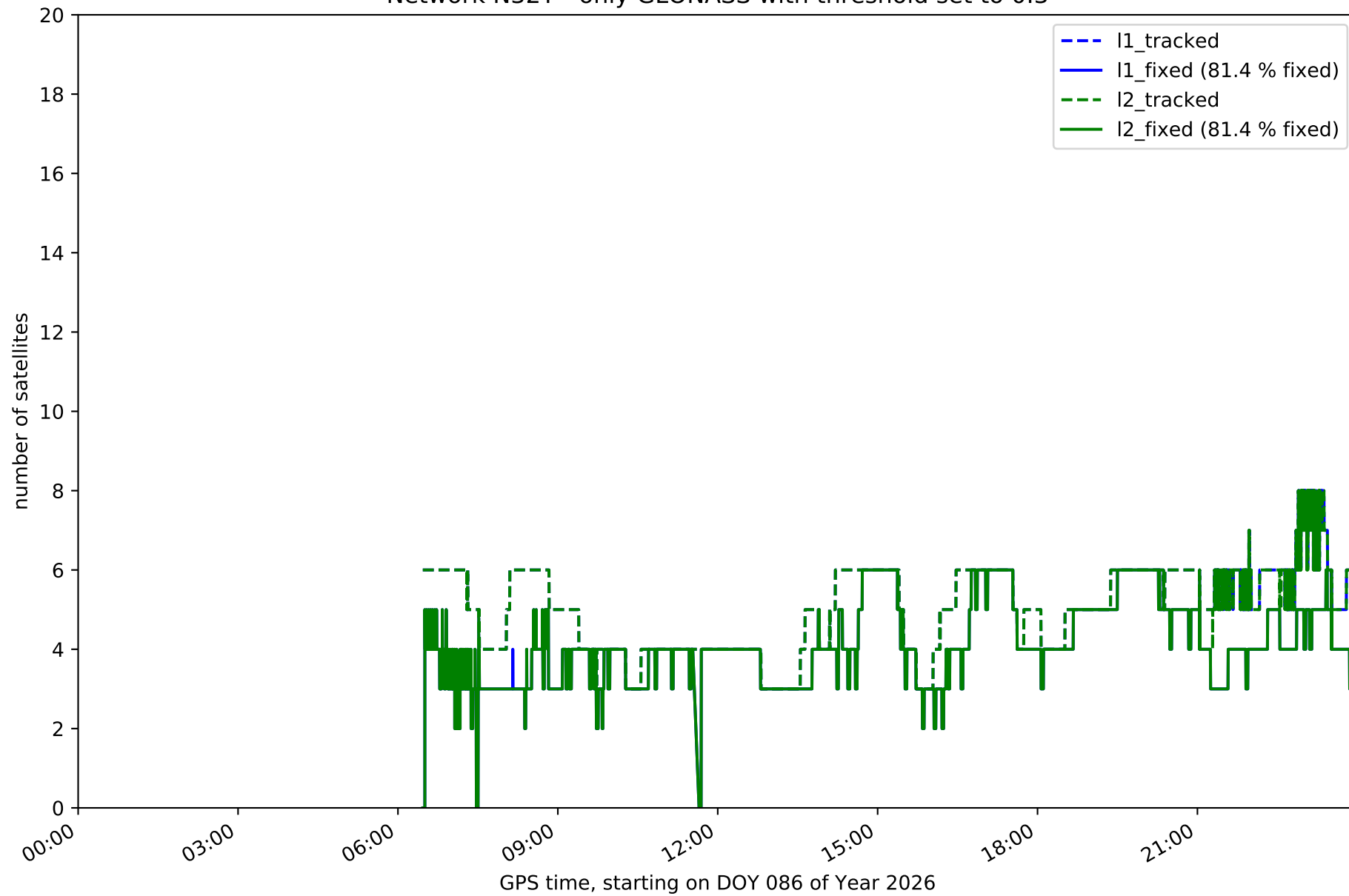
Fixing percentage of satellites in network N32T with threshold set to 0.3



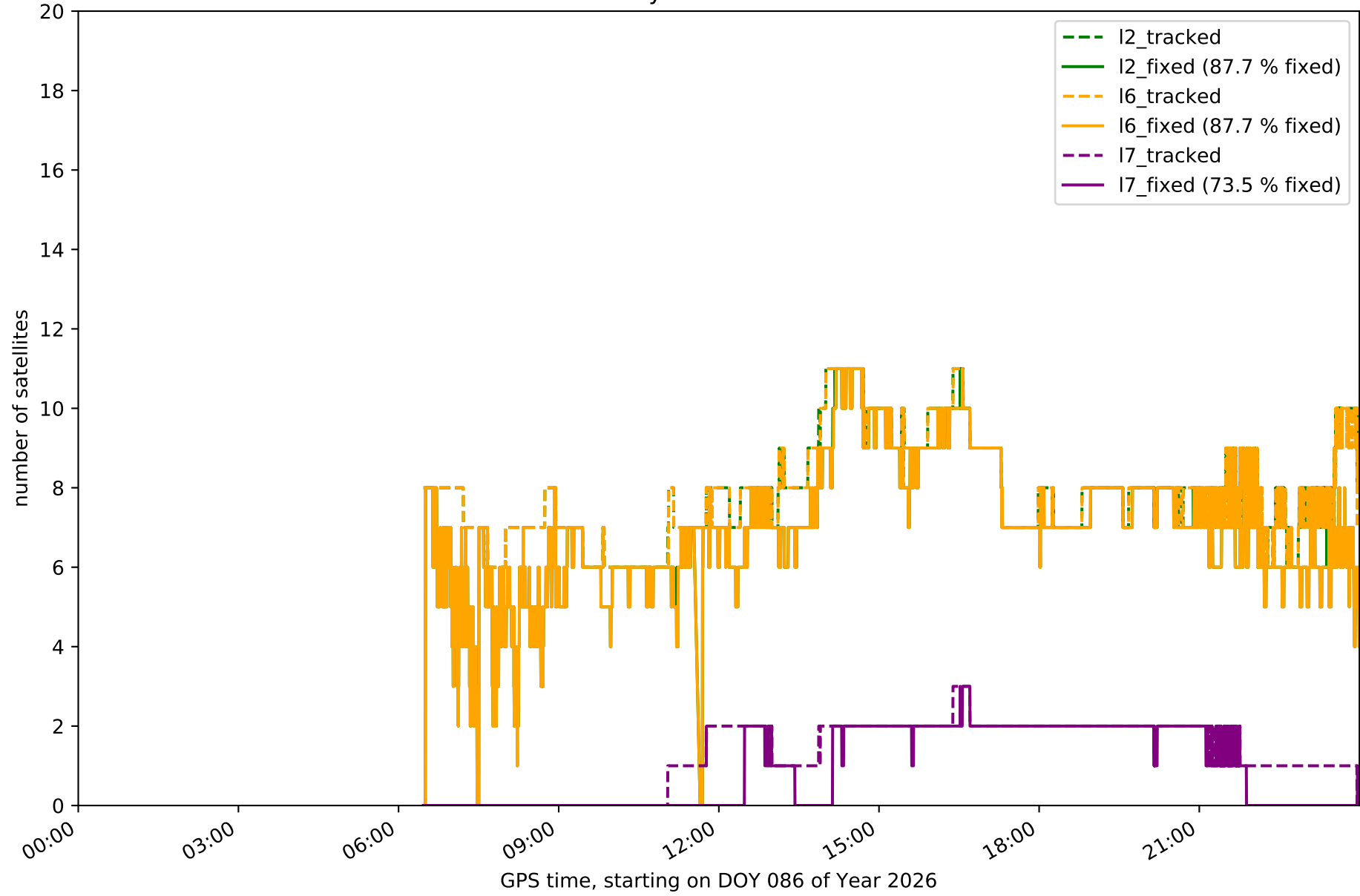
Network N32T - only GPS with threshold set to 0.3



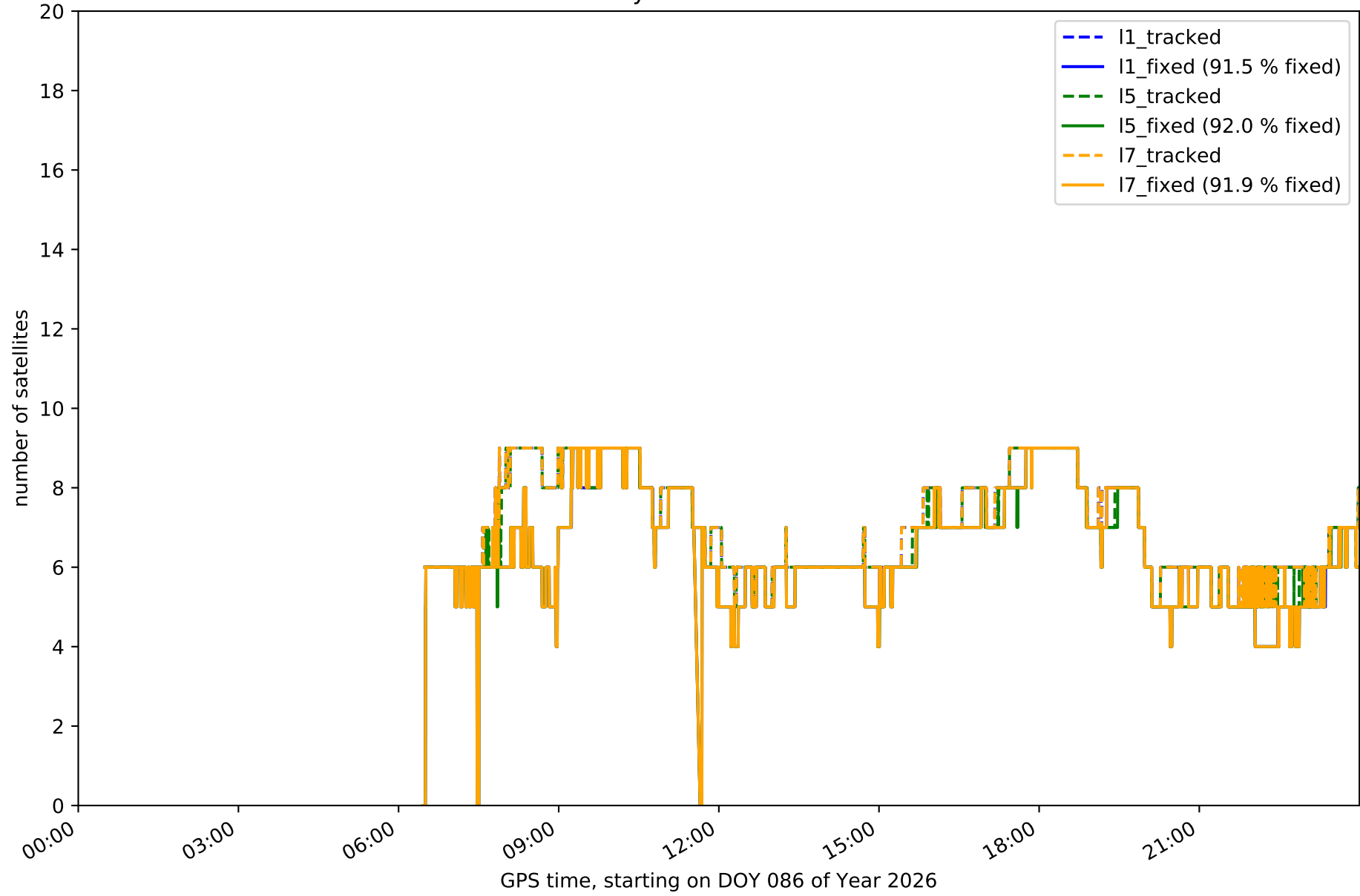
Network N32T - only GLONASS with threshold set to 0.3



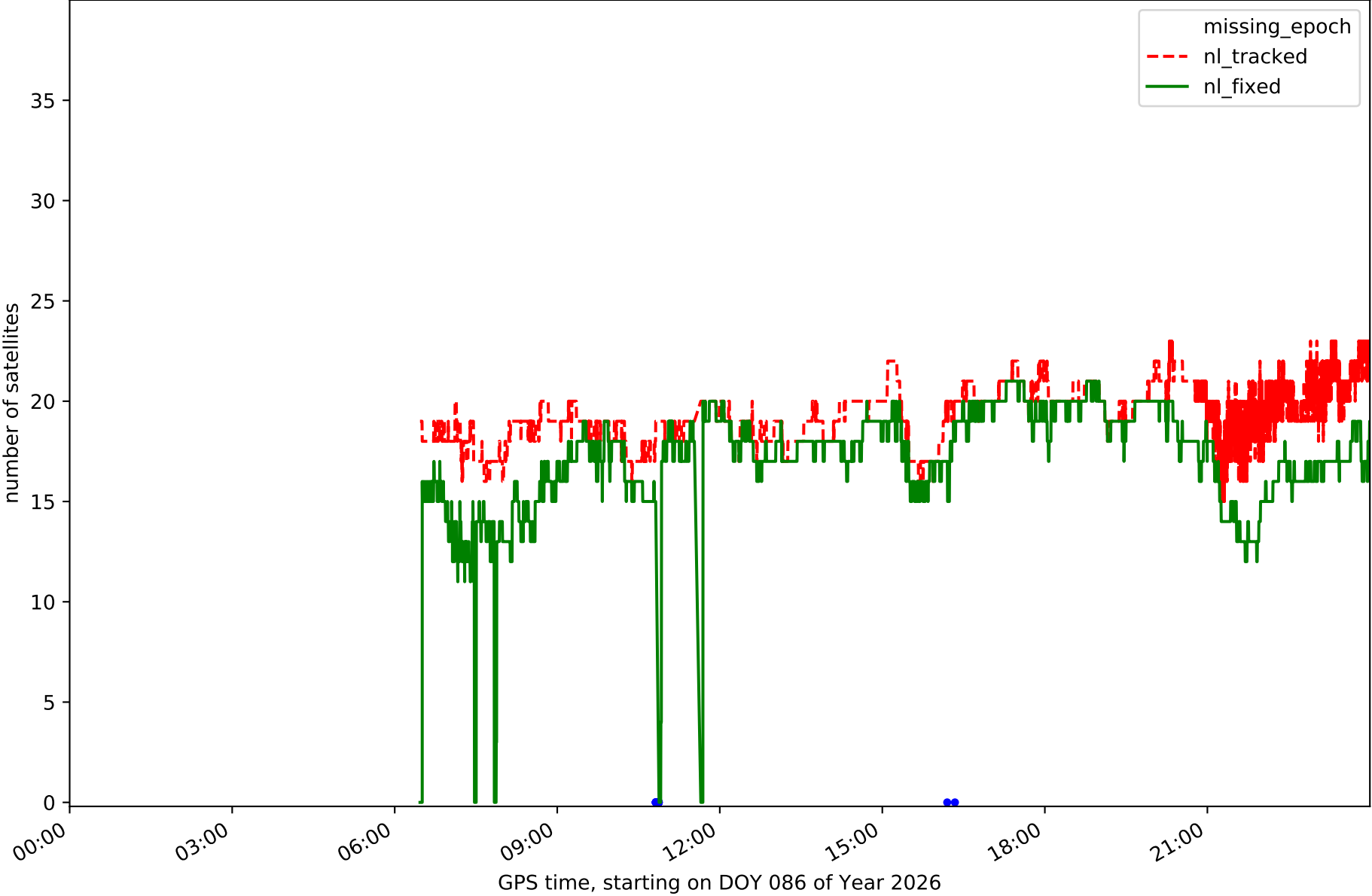
Network N32T - only BDS with threshold set to 0.3



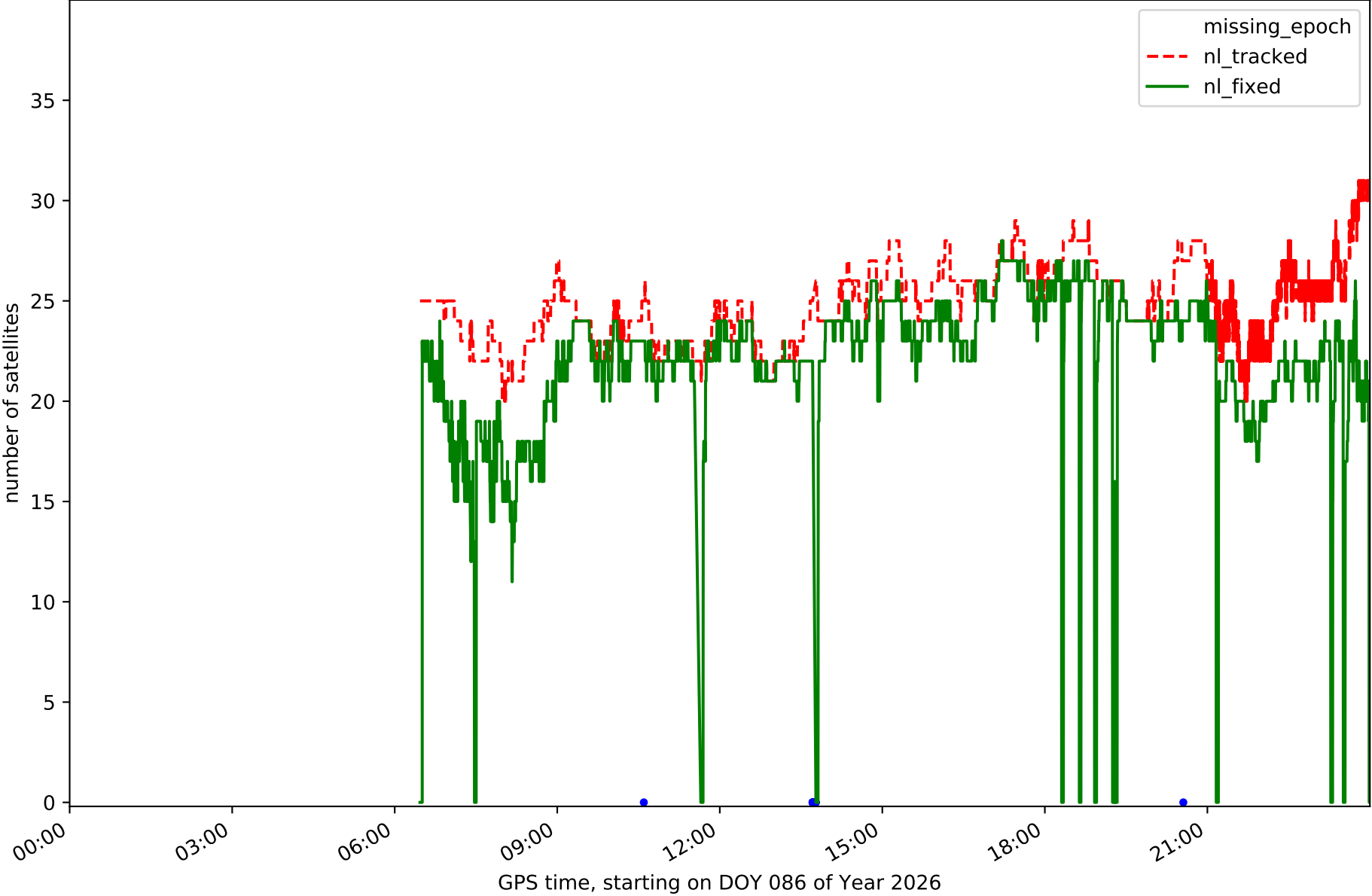
Network N32T - only Galileo with threshold set to 0.3



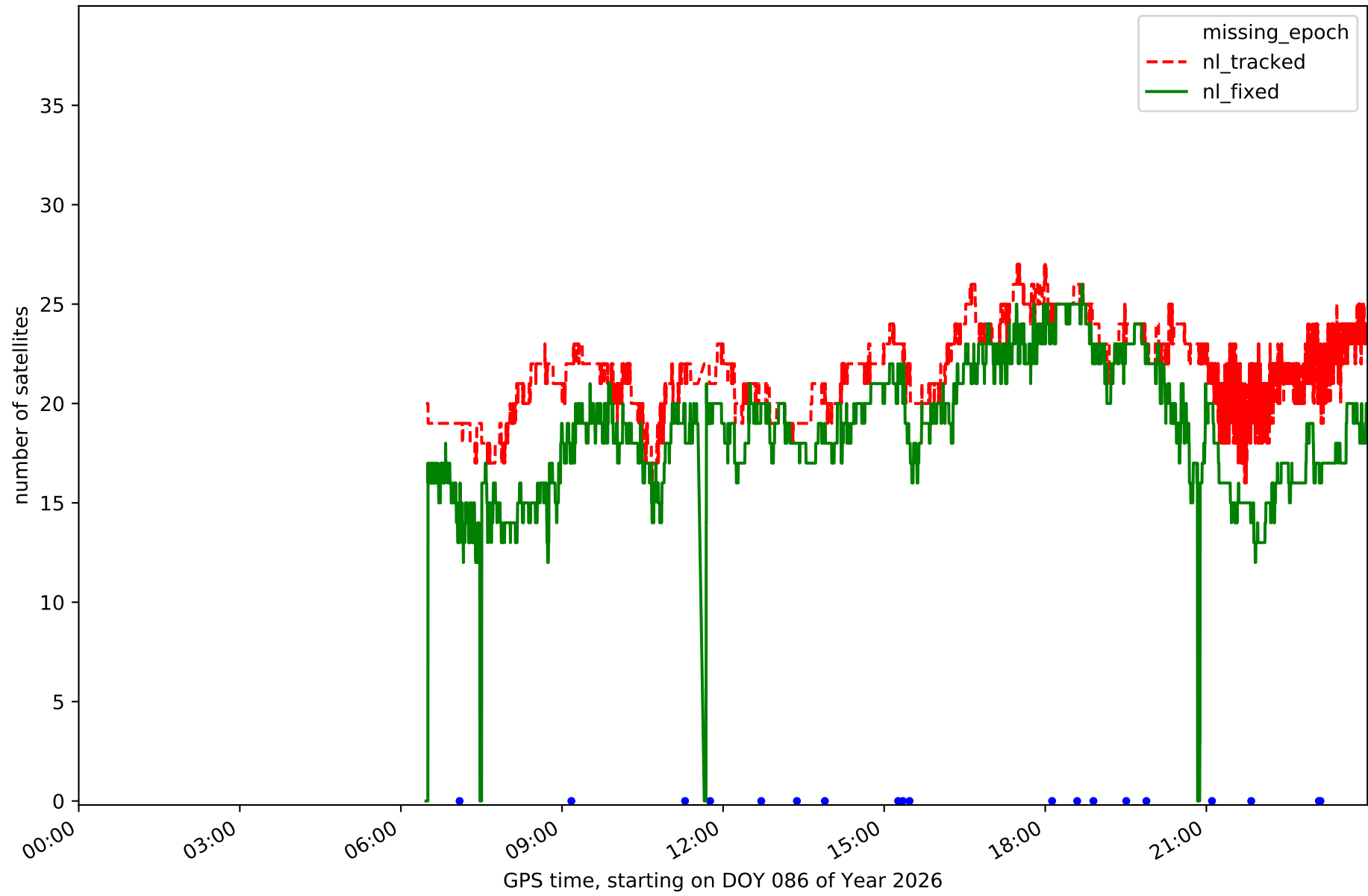
Station EH01 in network N32T



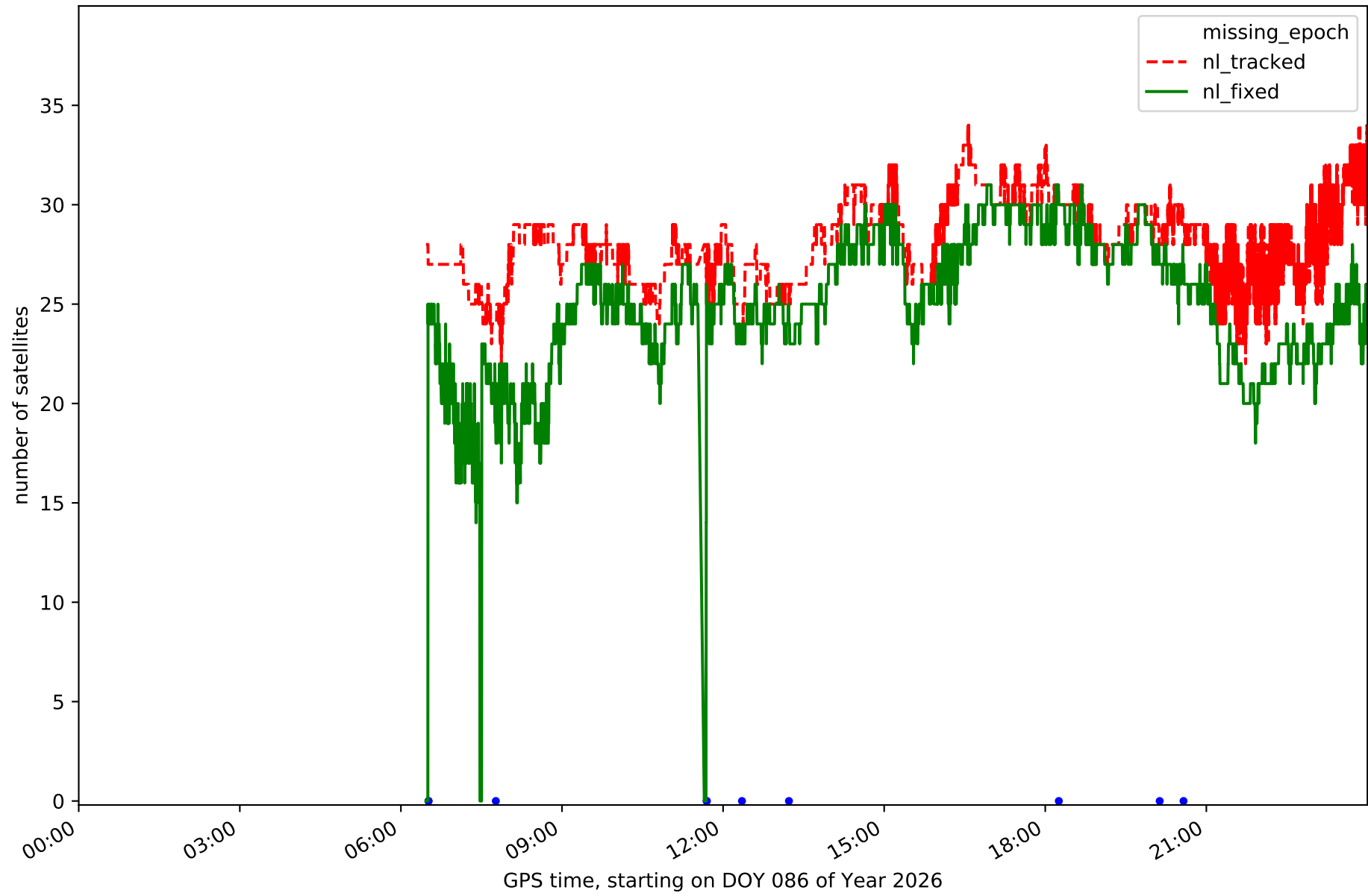
Station EH02 in network N32T



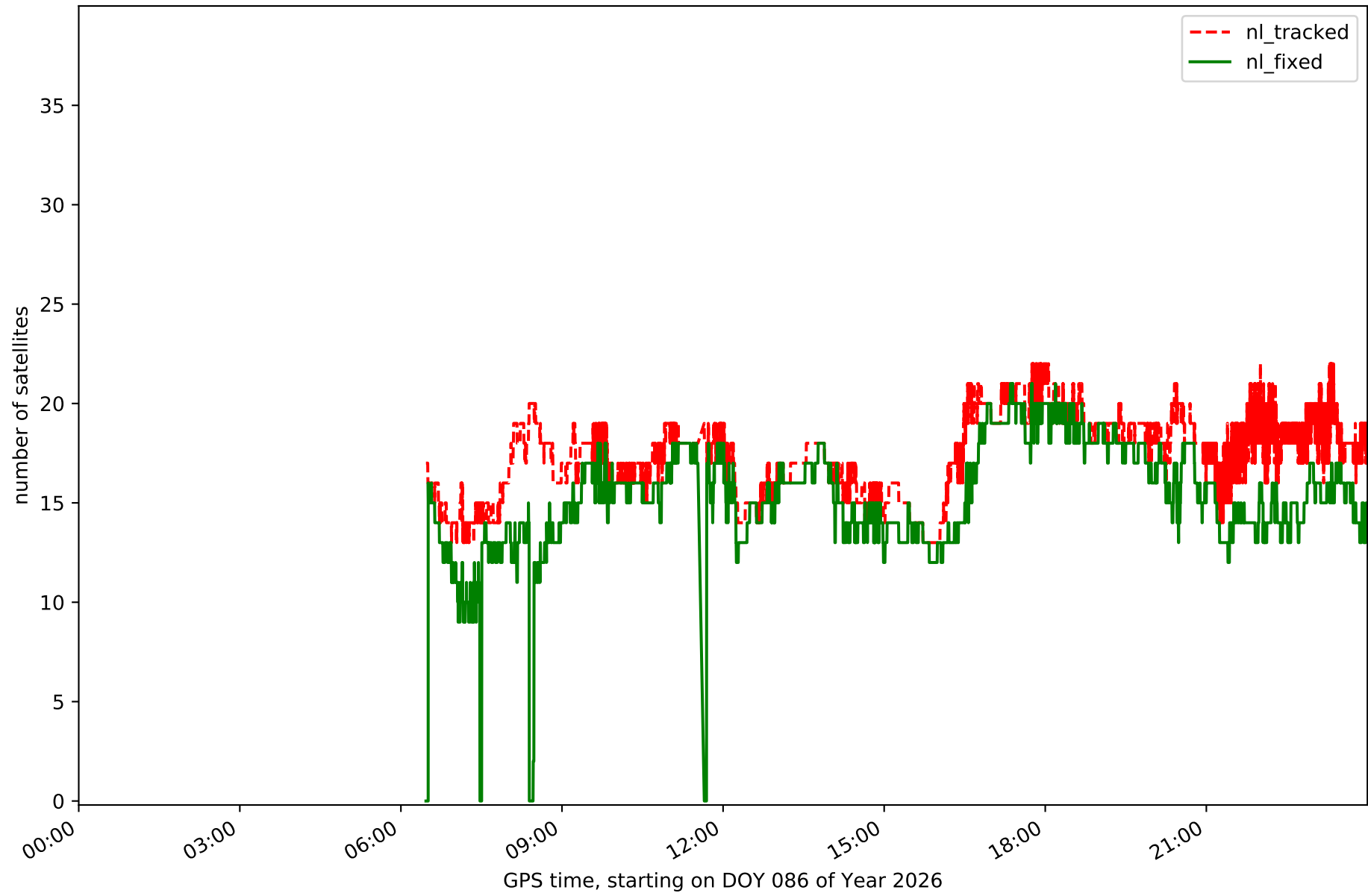
Station GOM1 in network N32T



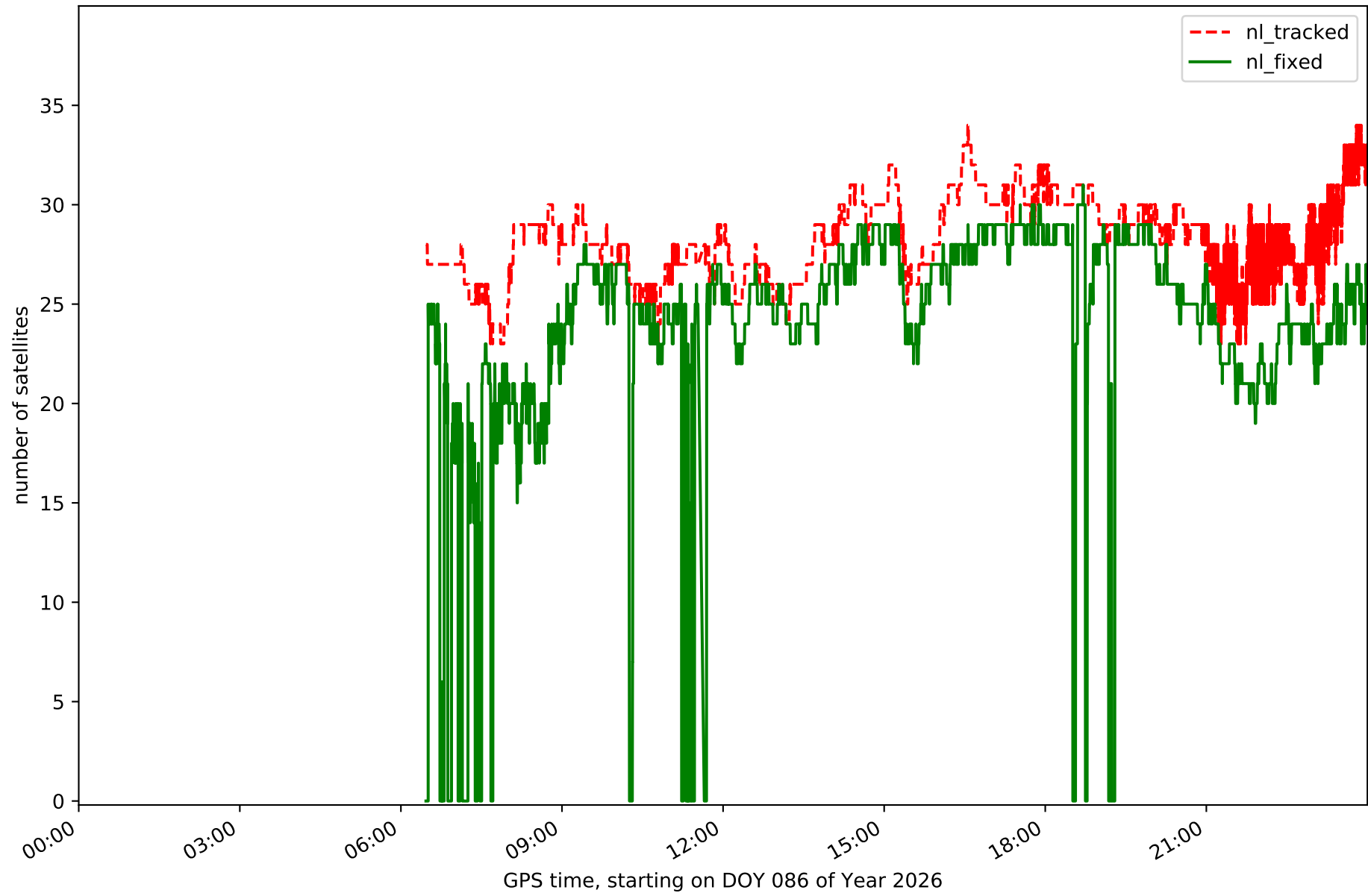
Station LP01 in network N32T



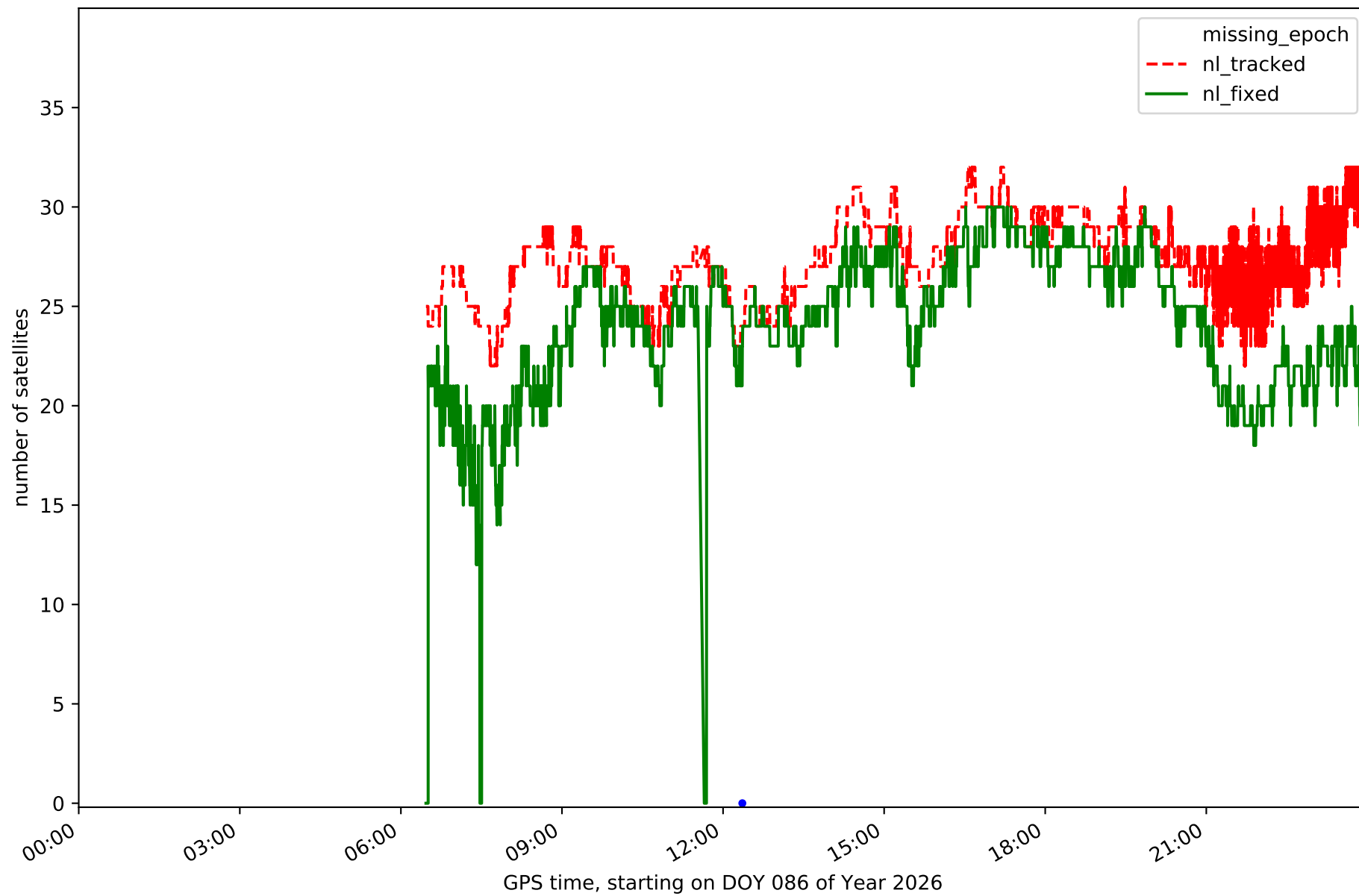
Station LP03 in network N32T



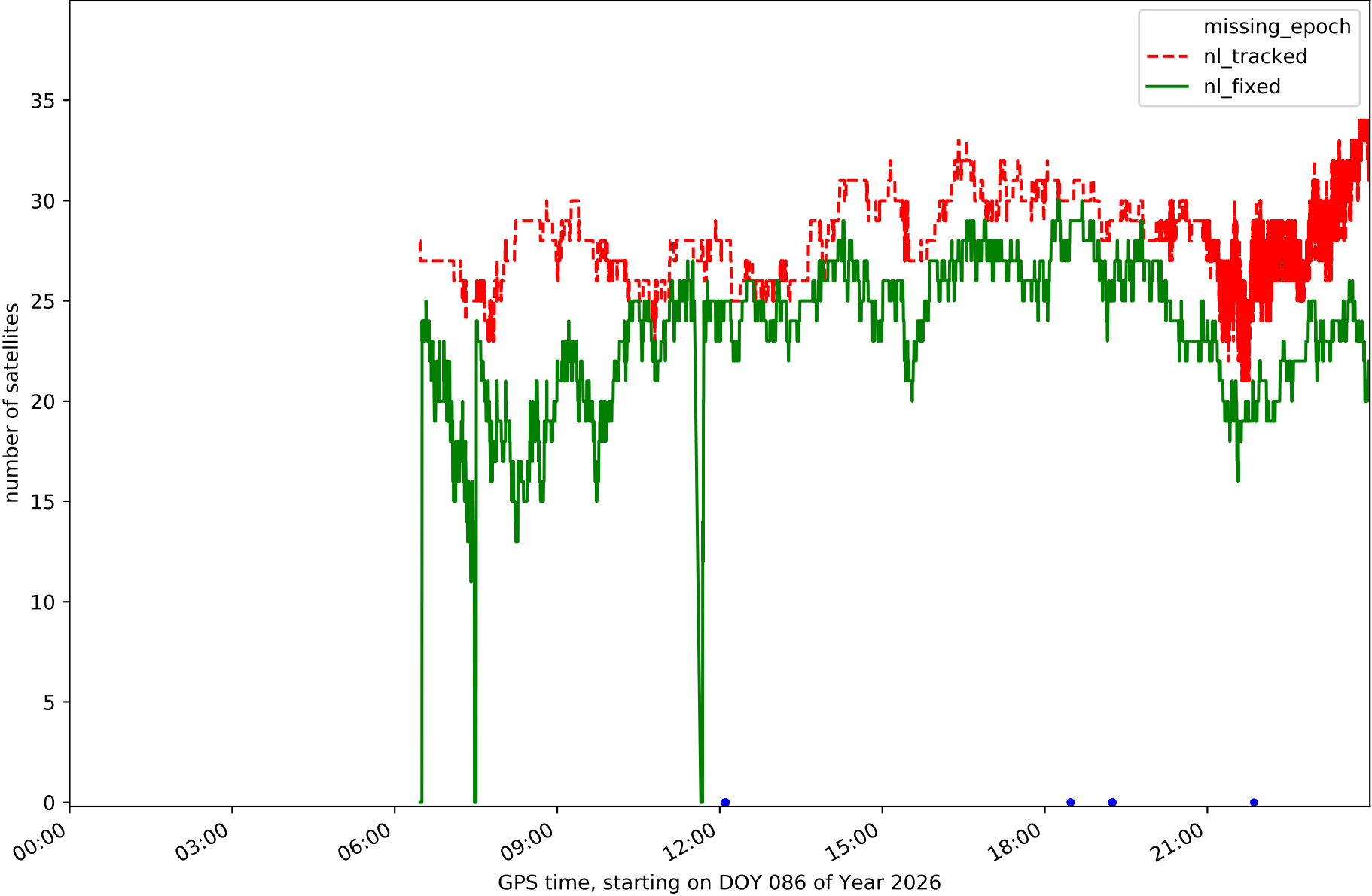
Station LPAL in network N32T



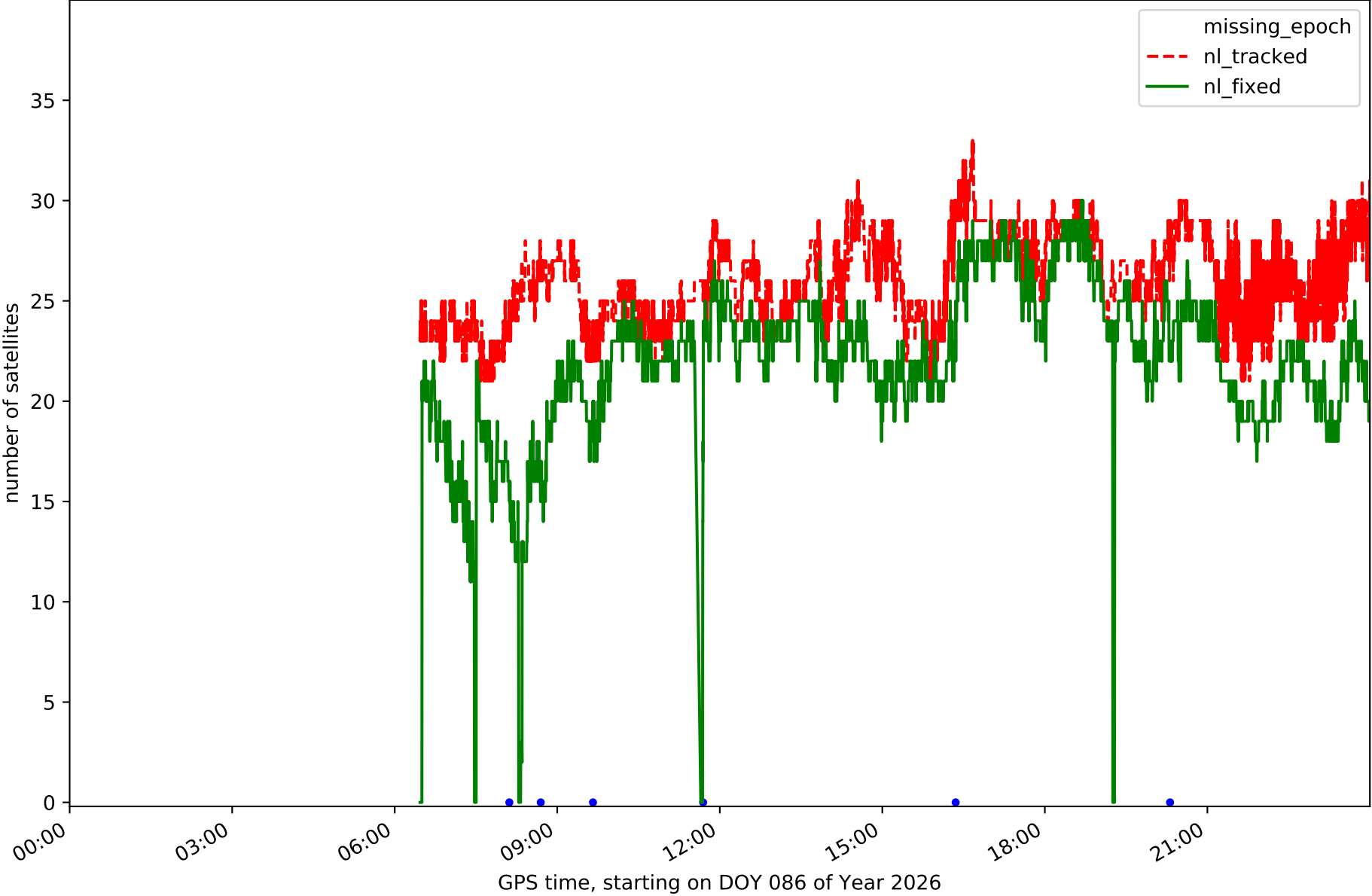
Station LRES in network N32T



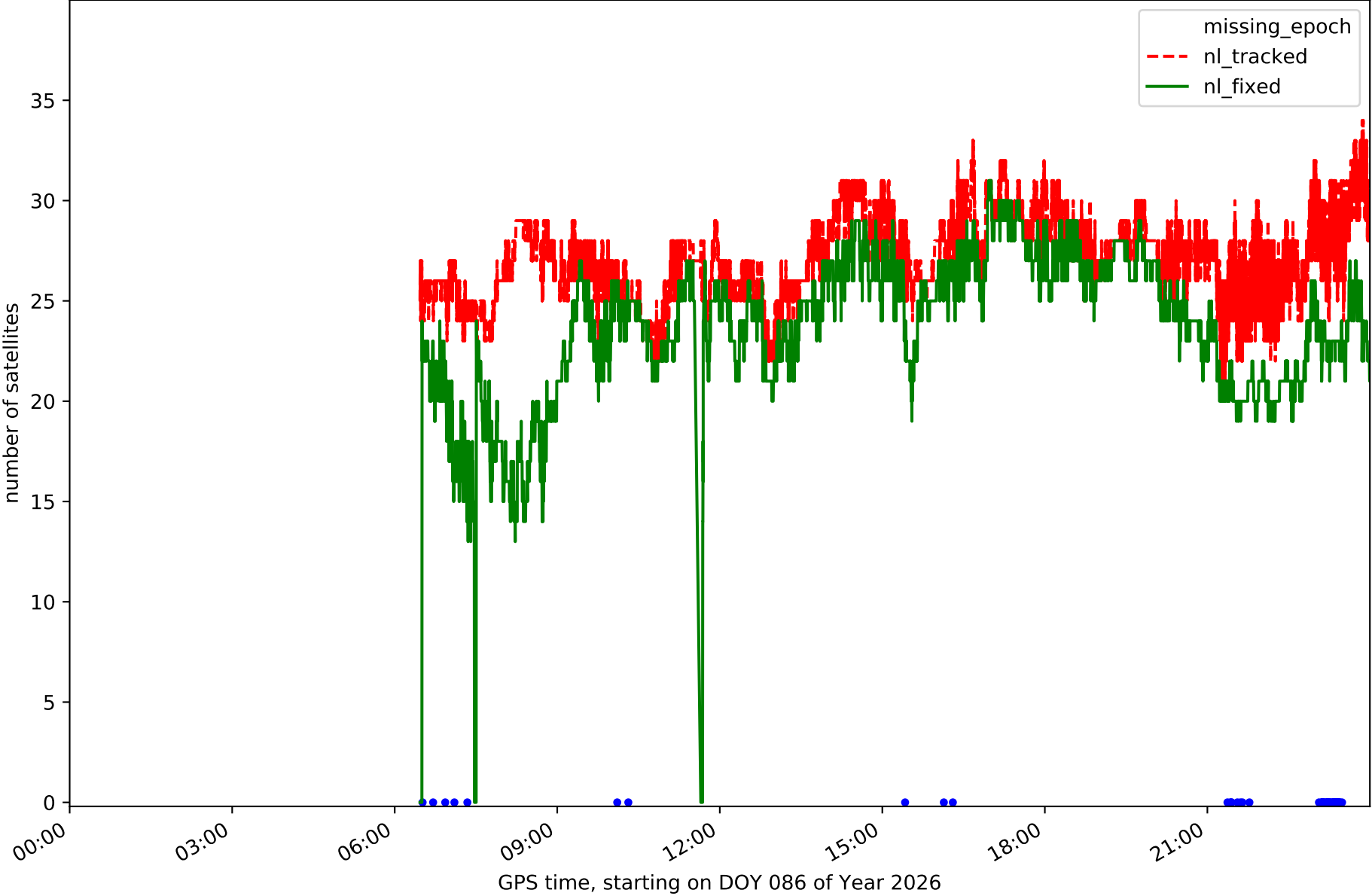
Station TN01 in network N32T



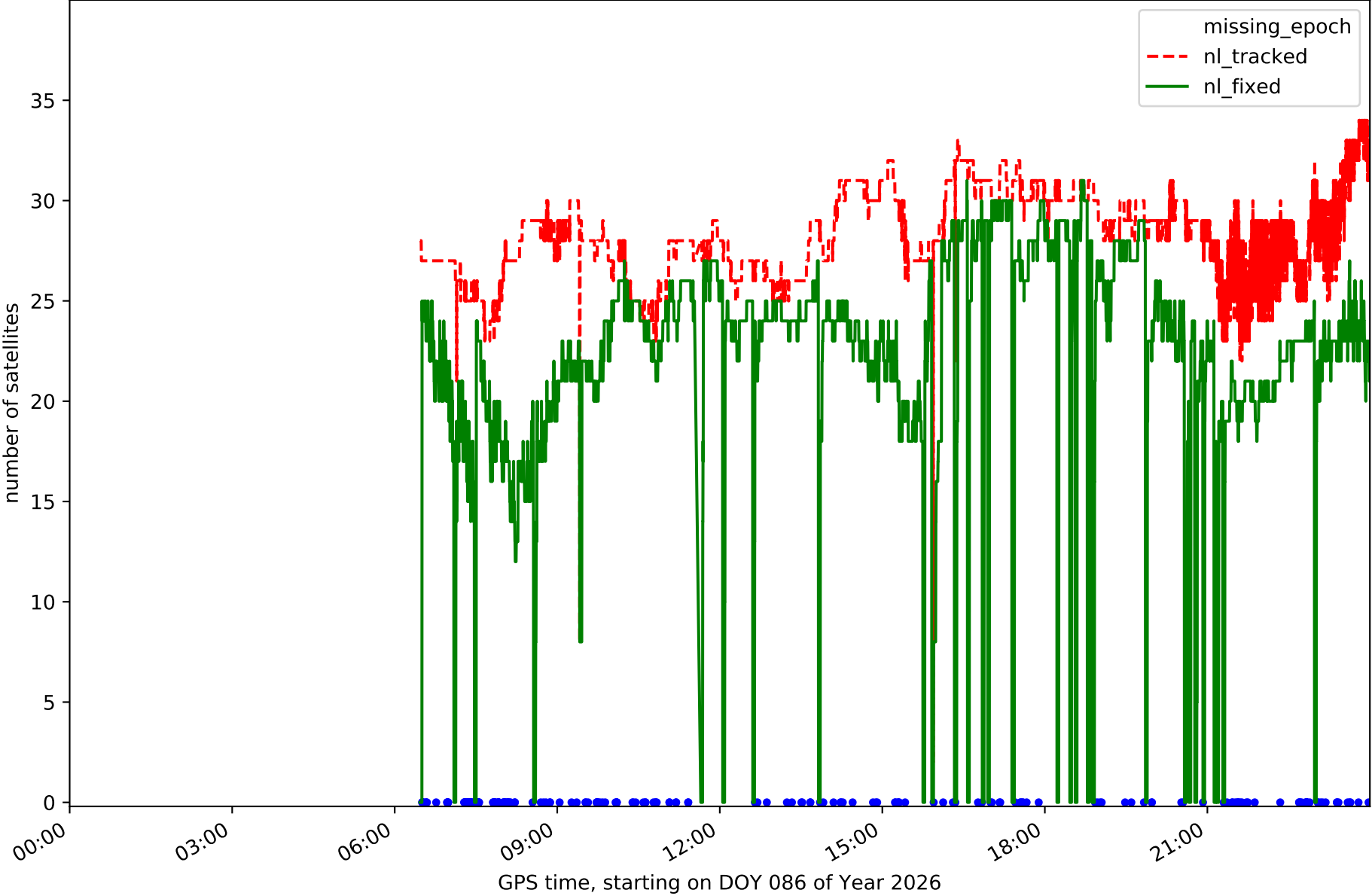
Station TN02 in network N32T



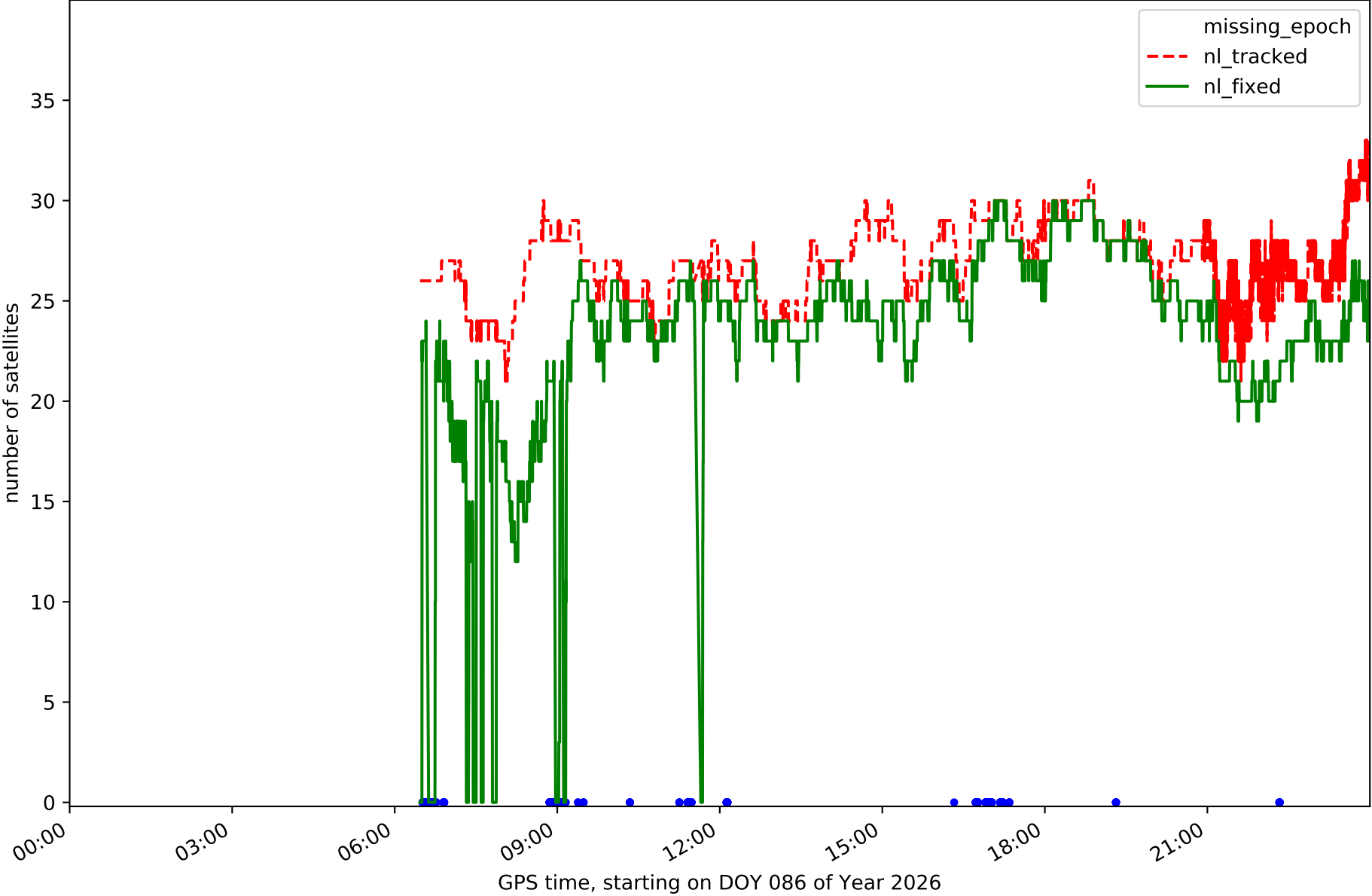
Station TN03 in network N32T



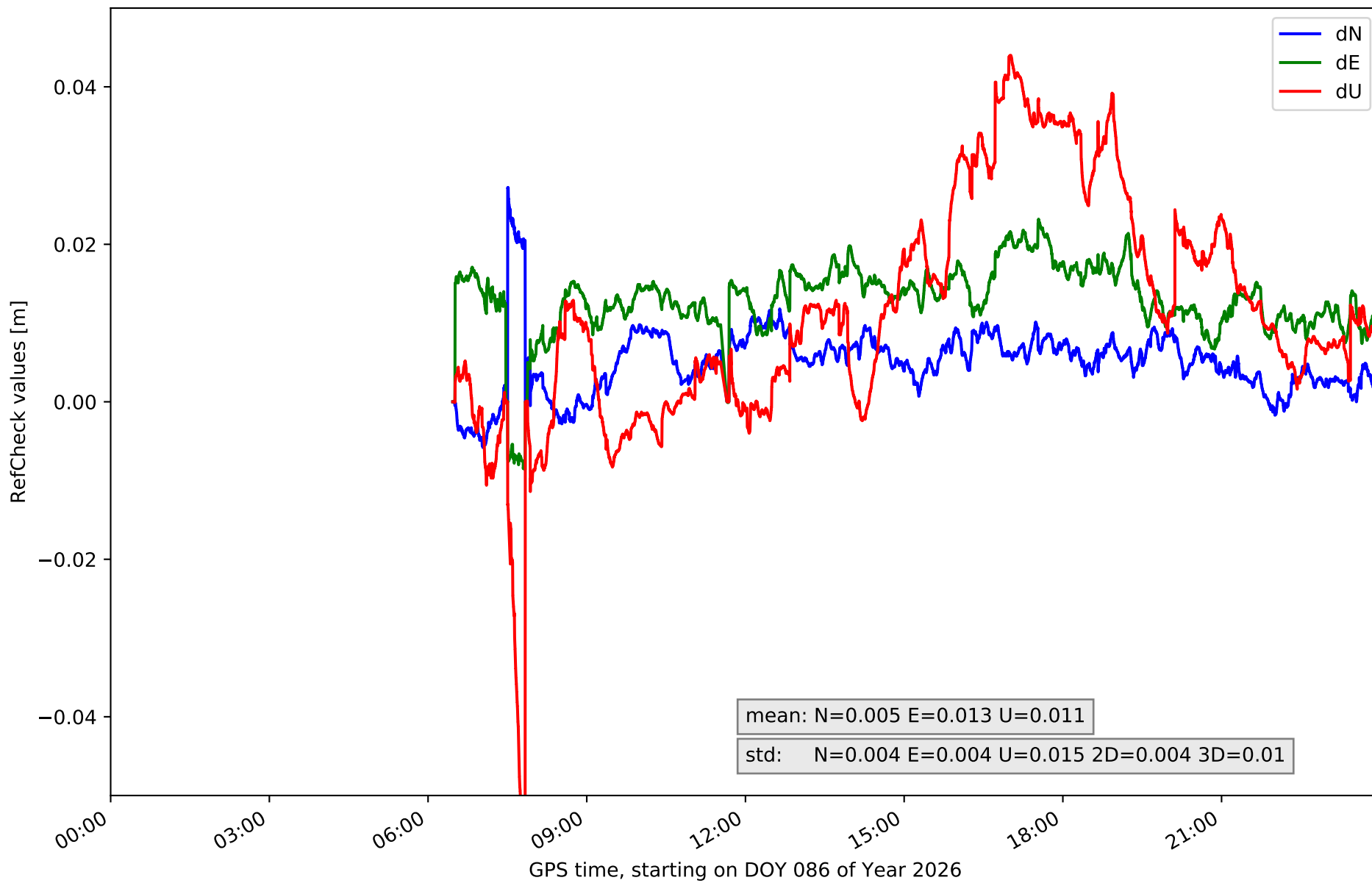
Station TN06 in network N32T



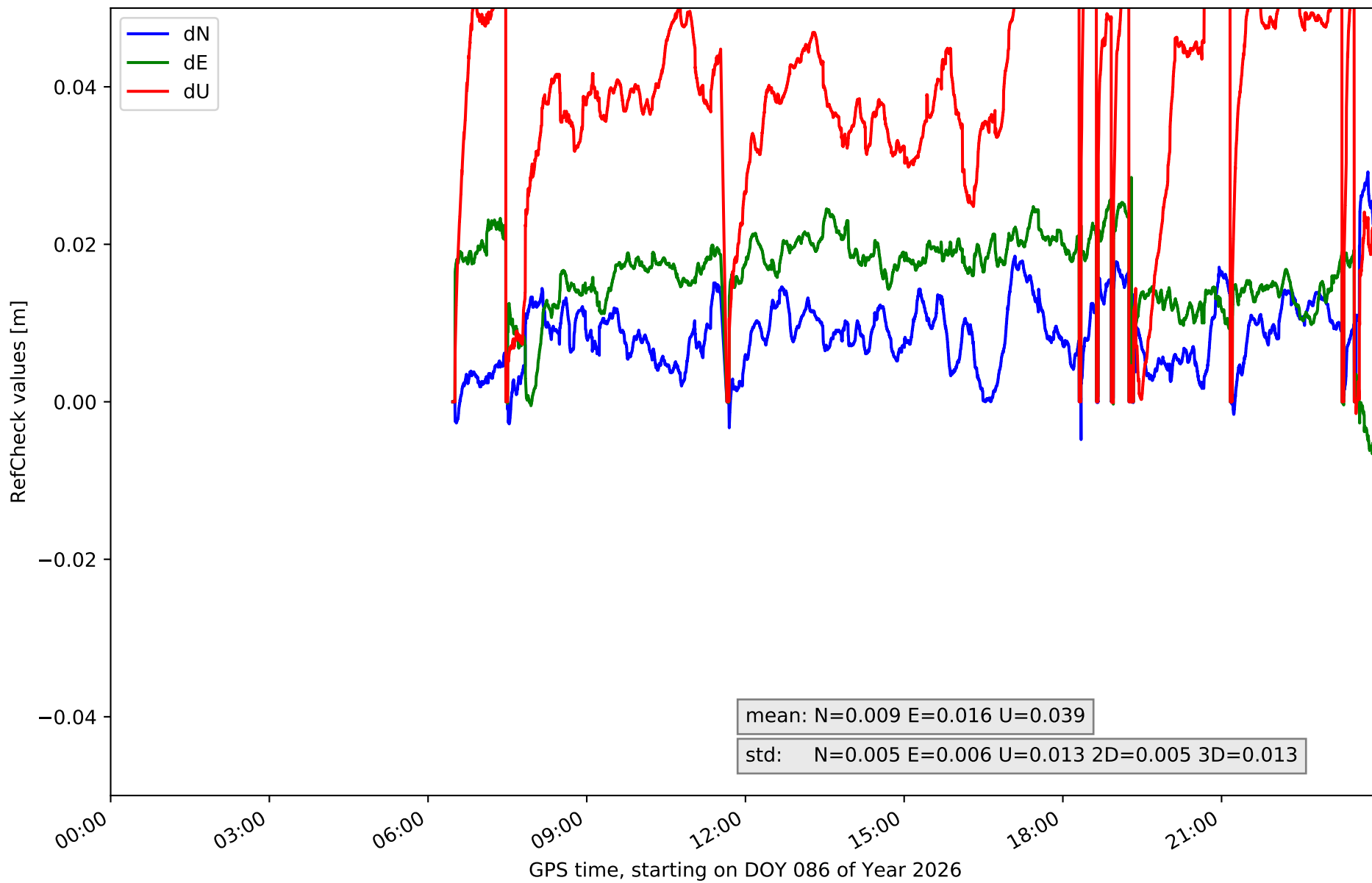
Station TN09 in network N32T



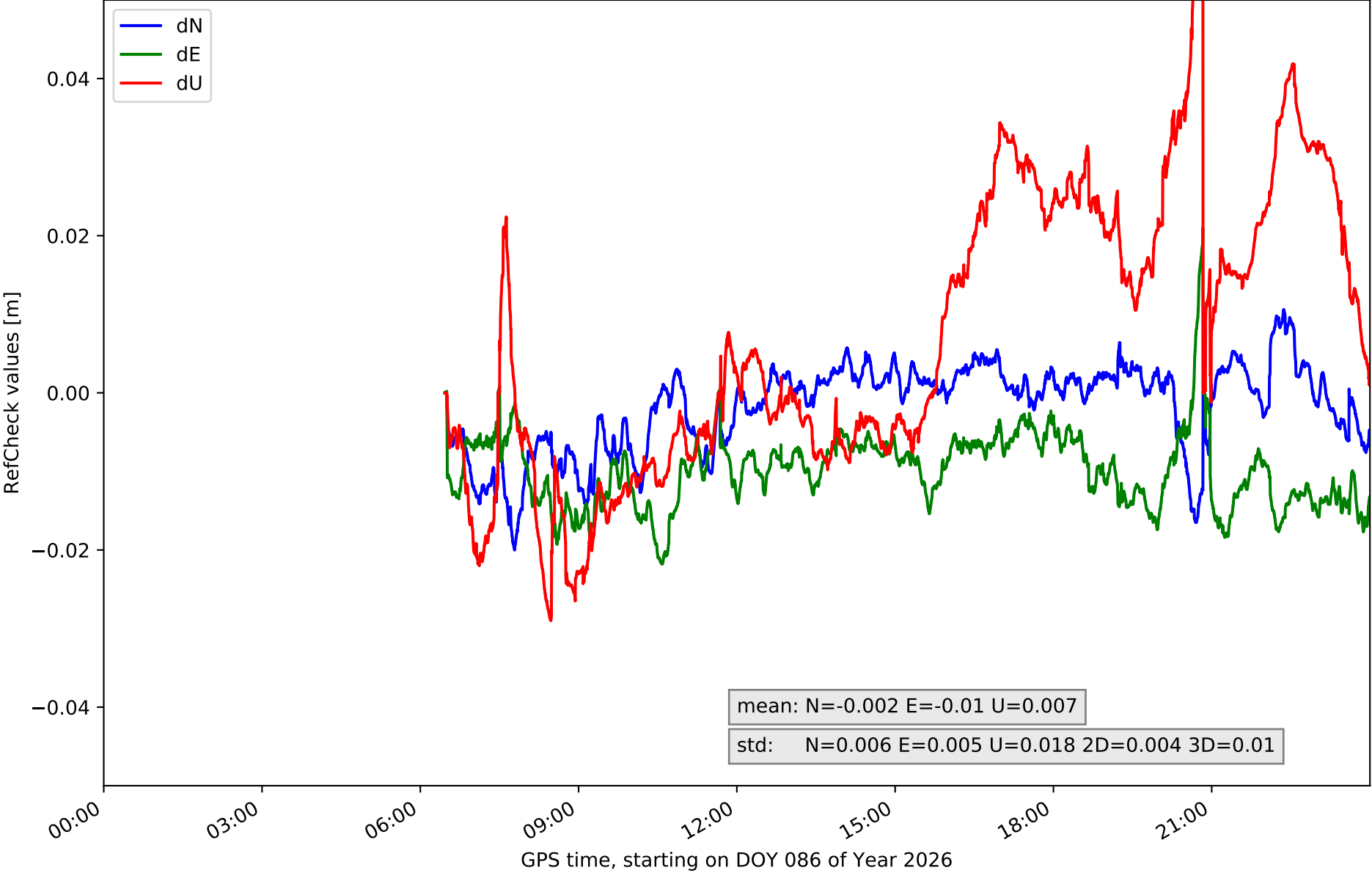
RefCheck for station EH01 in network N32T



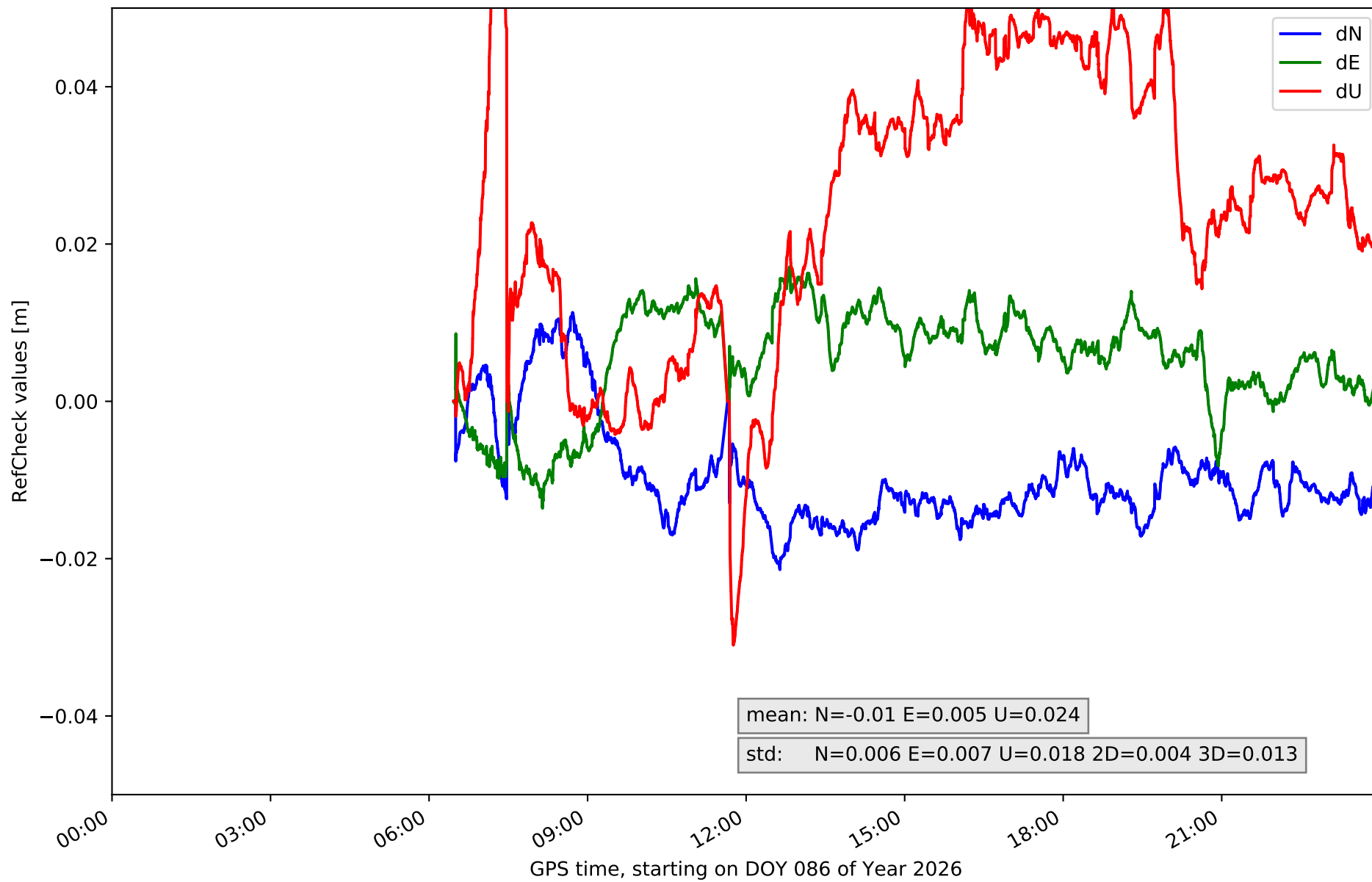
RefCheck for station EH02 in network N32T



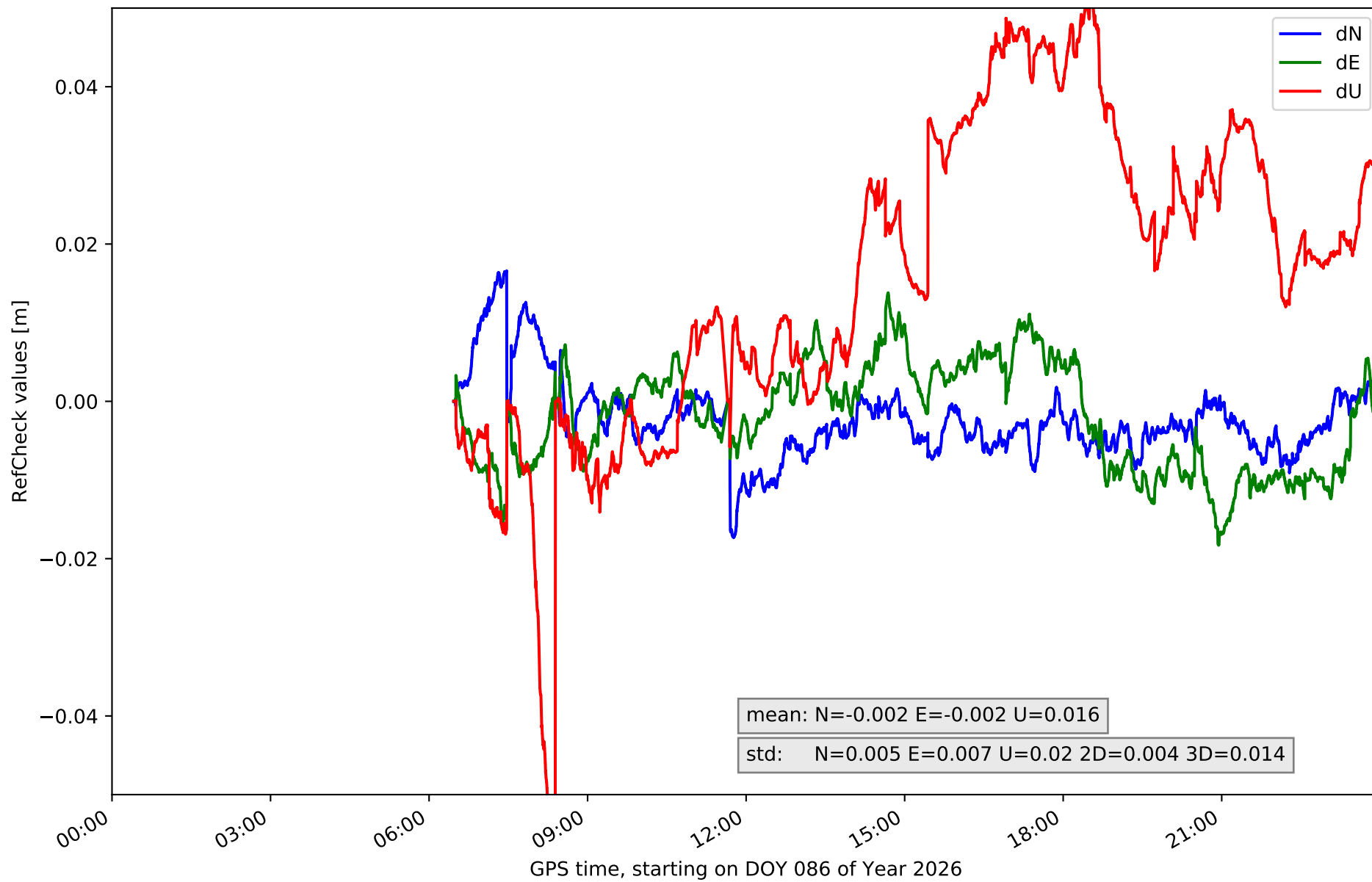
RefCheck for station GOM1 in network N32T



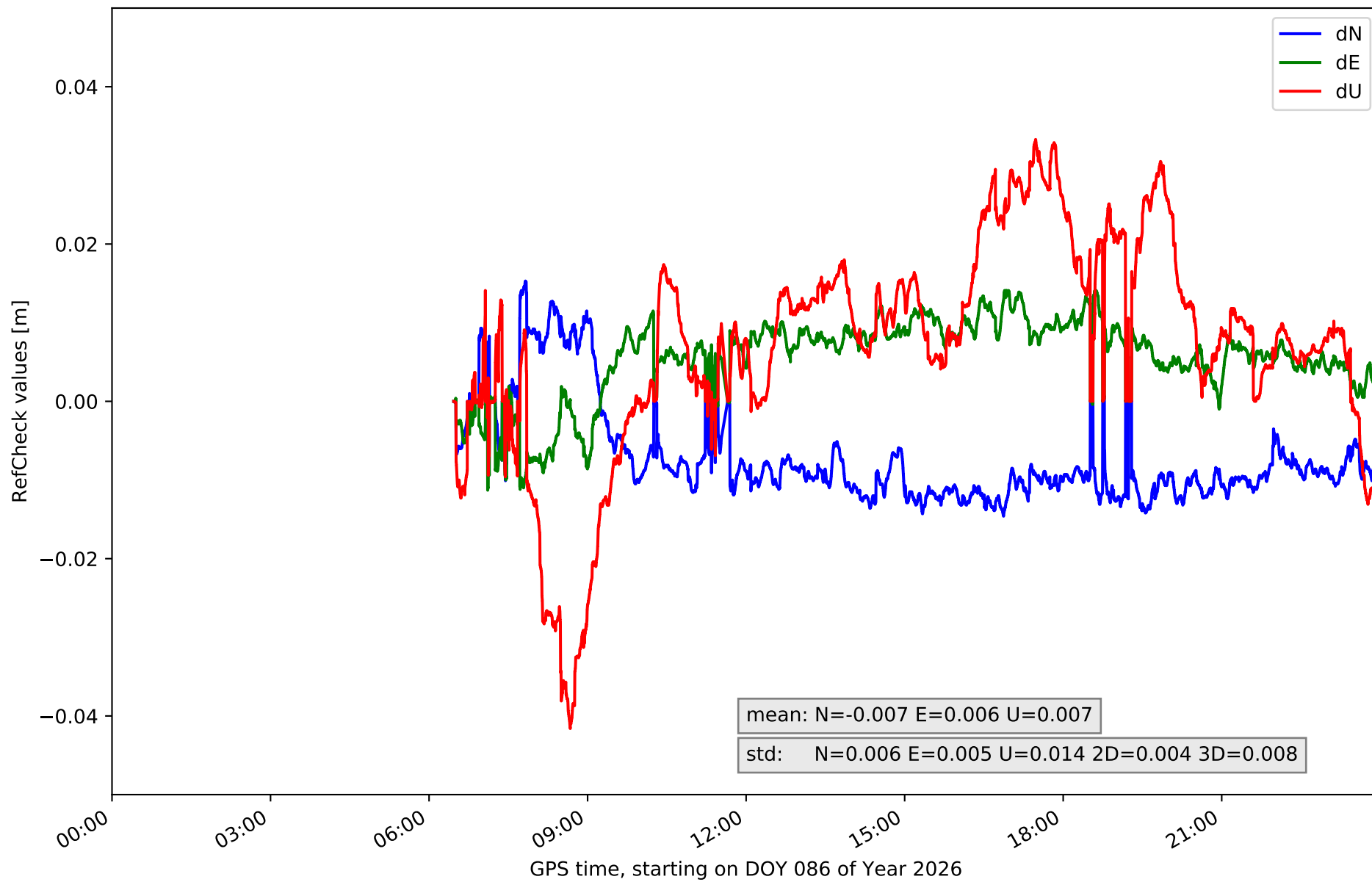
RefCheck for station LP01 in network N32T



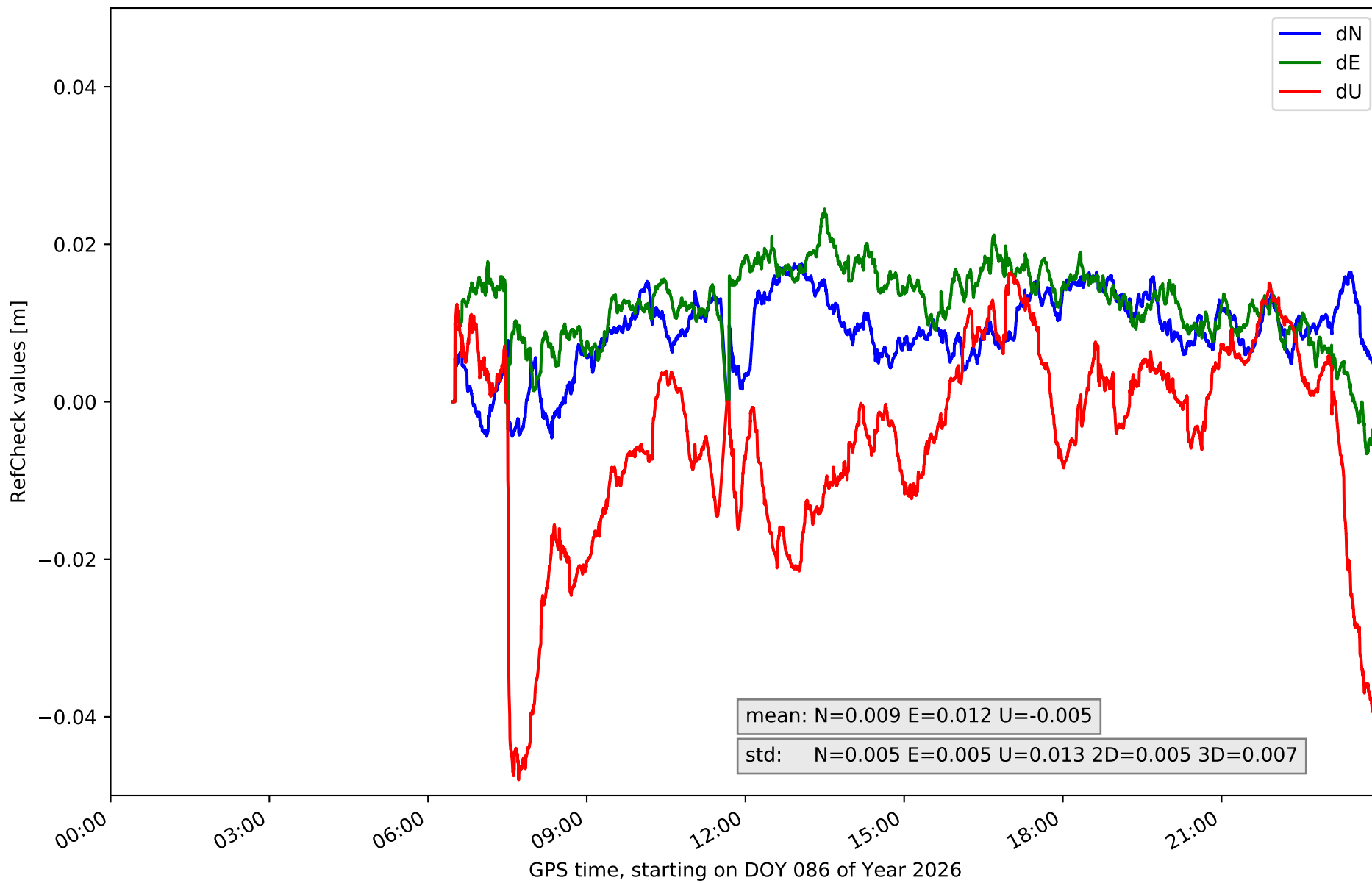
RefCheck for station LP03 in network N32T



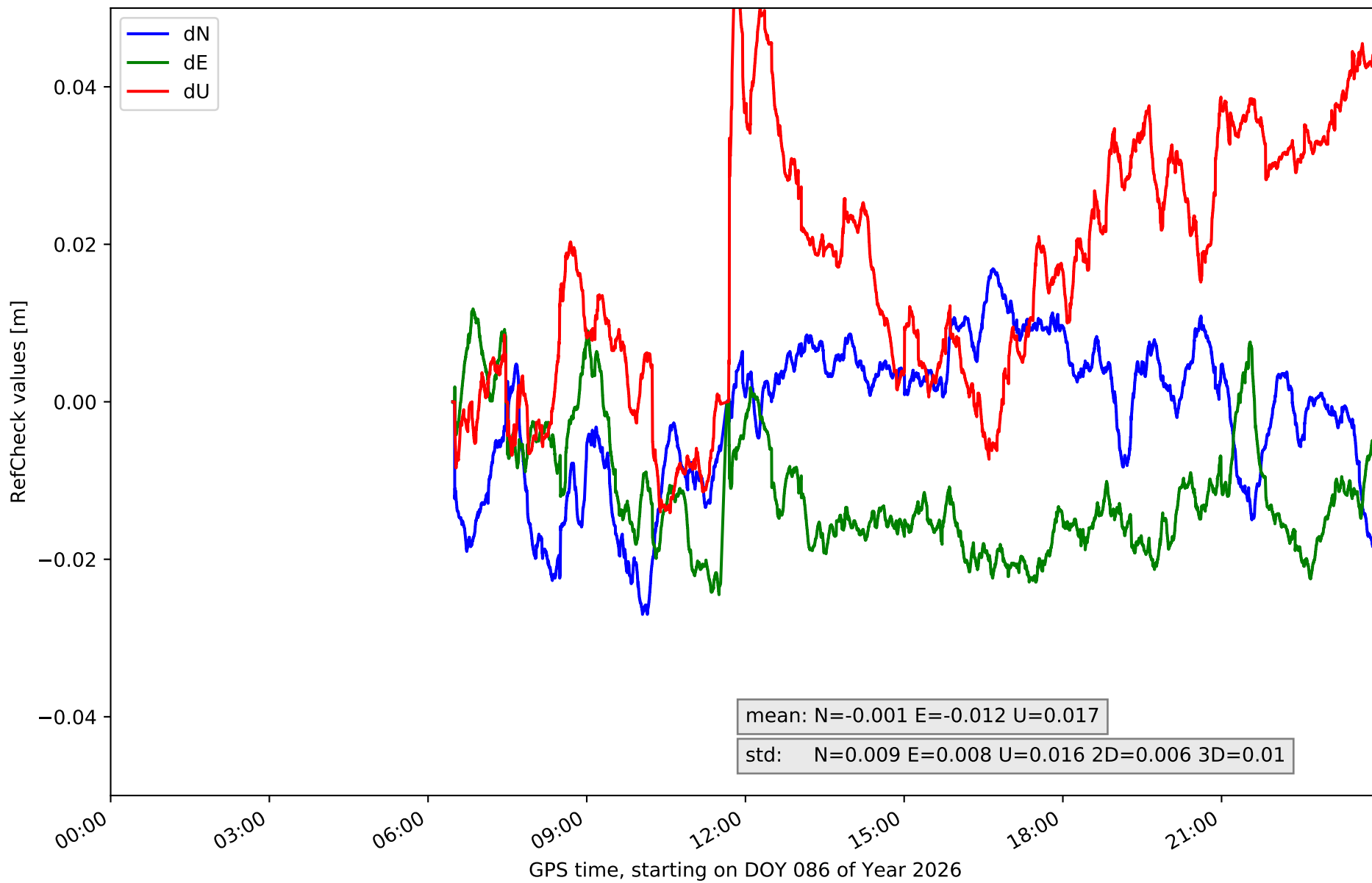
RefCheck for station LPAL in network N32T



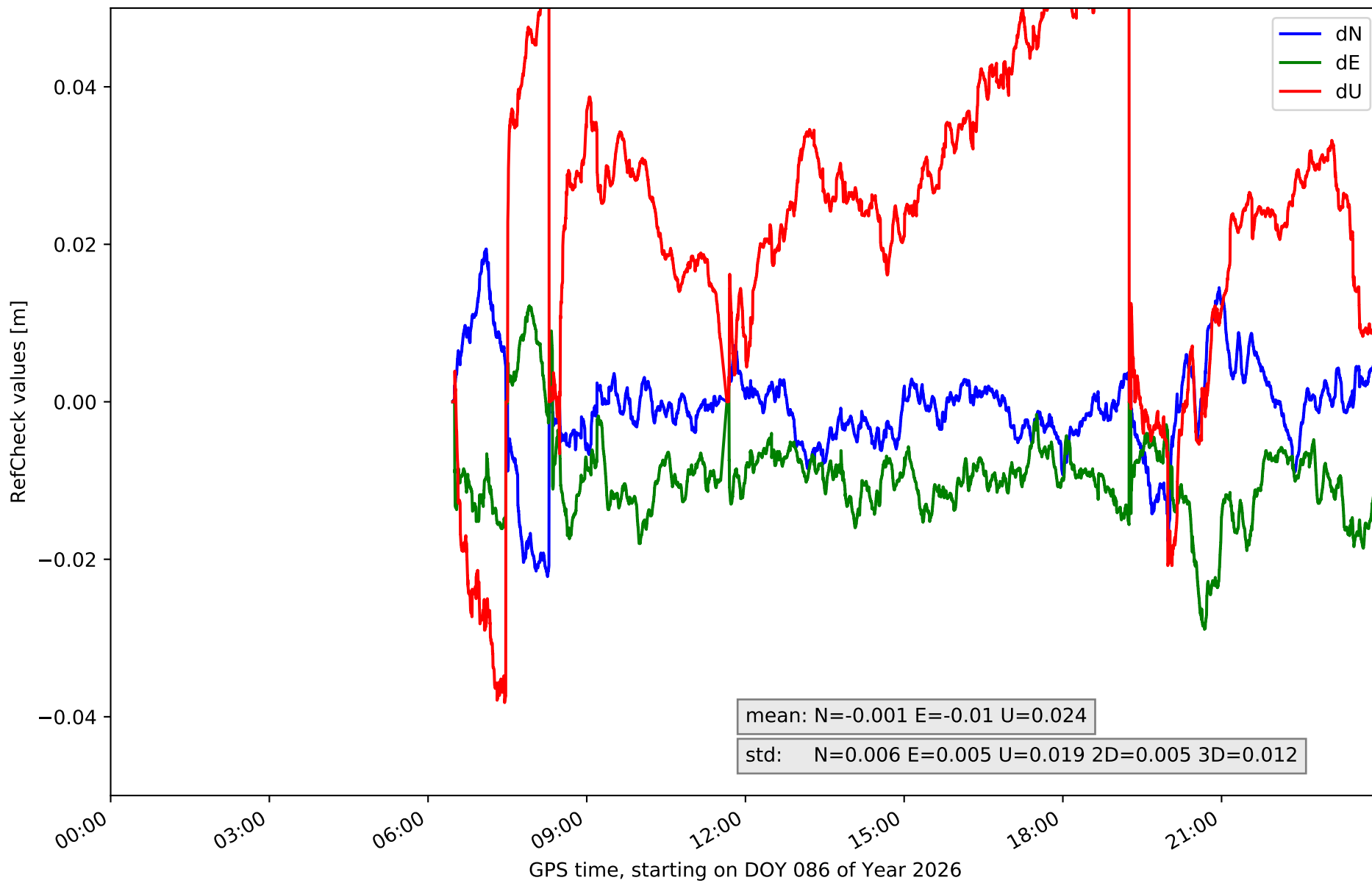
RefCheck for station LRES in network N32T



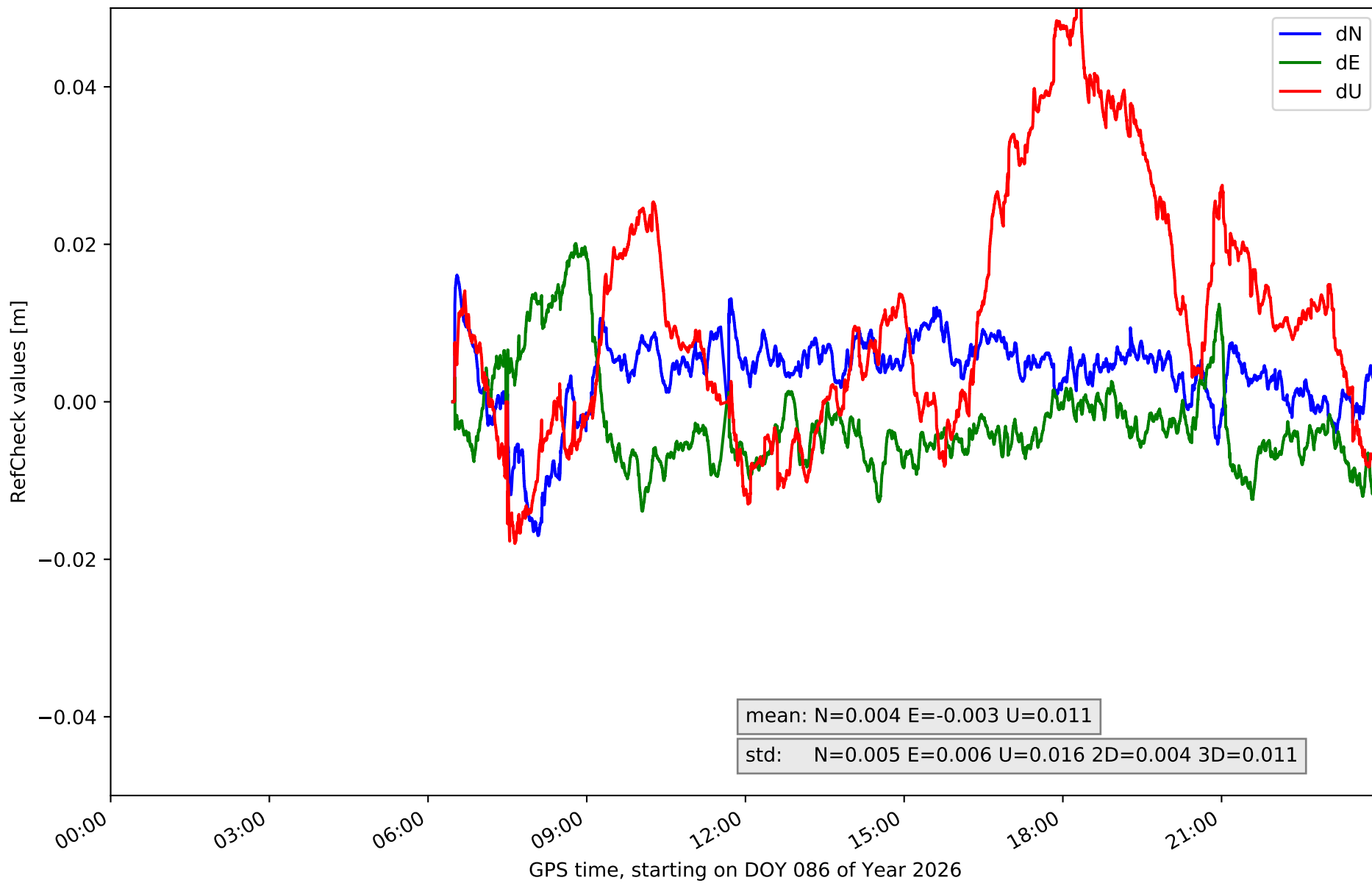
RefCheck for station TN01 in network N32T



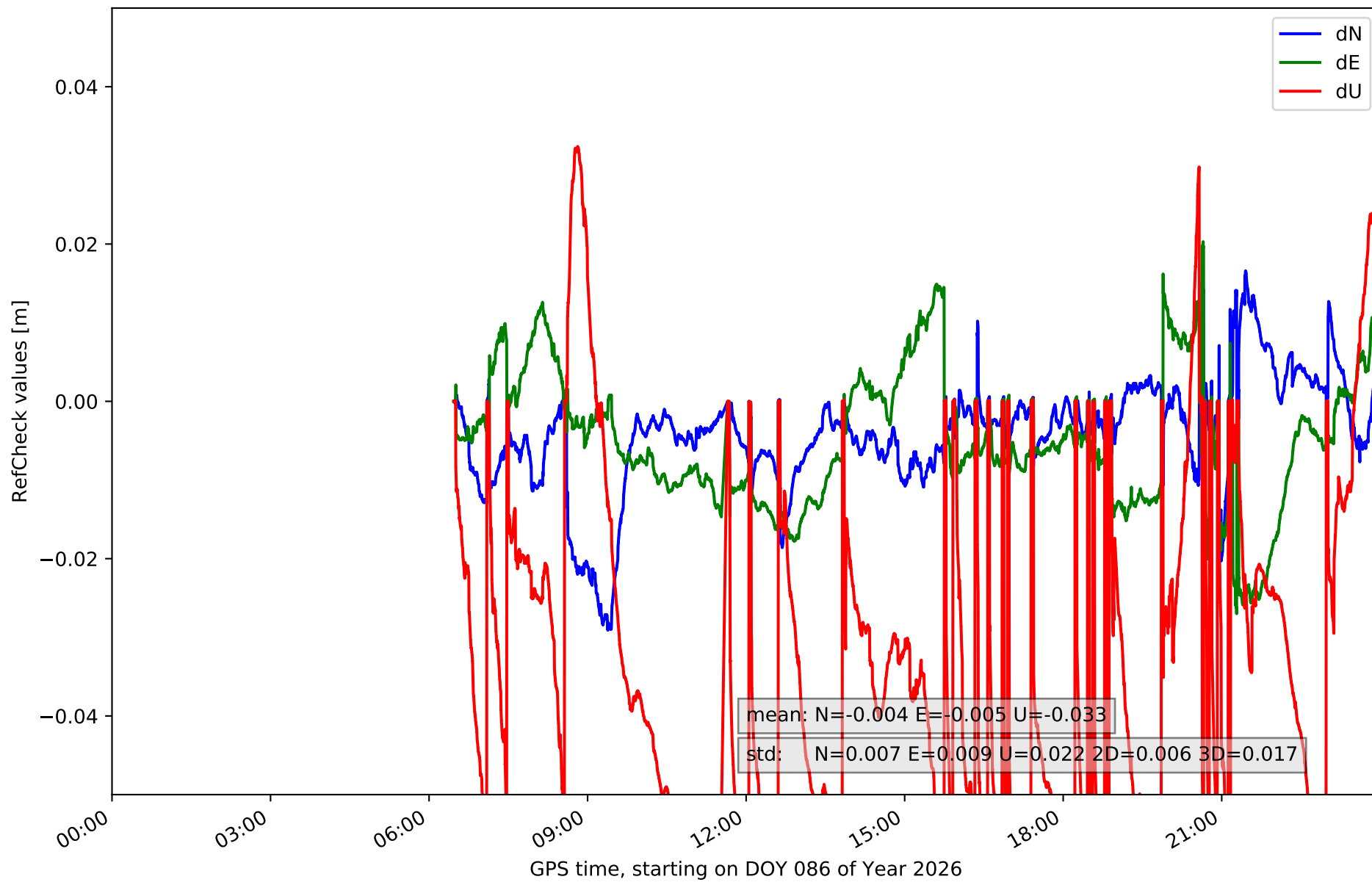
RefCheck for station TN02 in network N32T



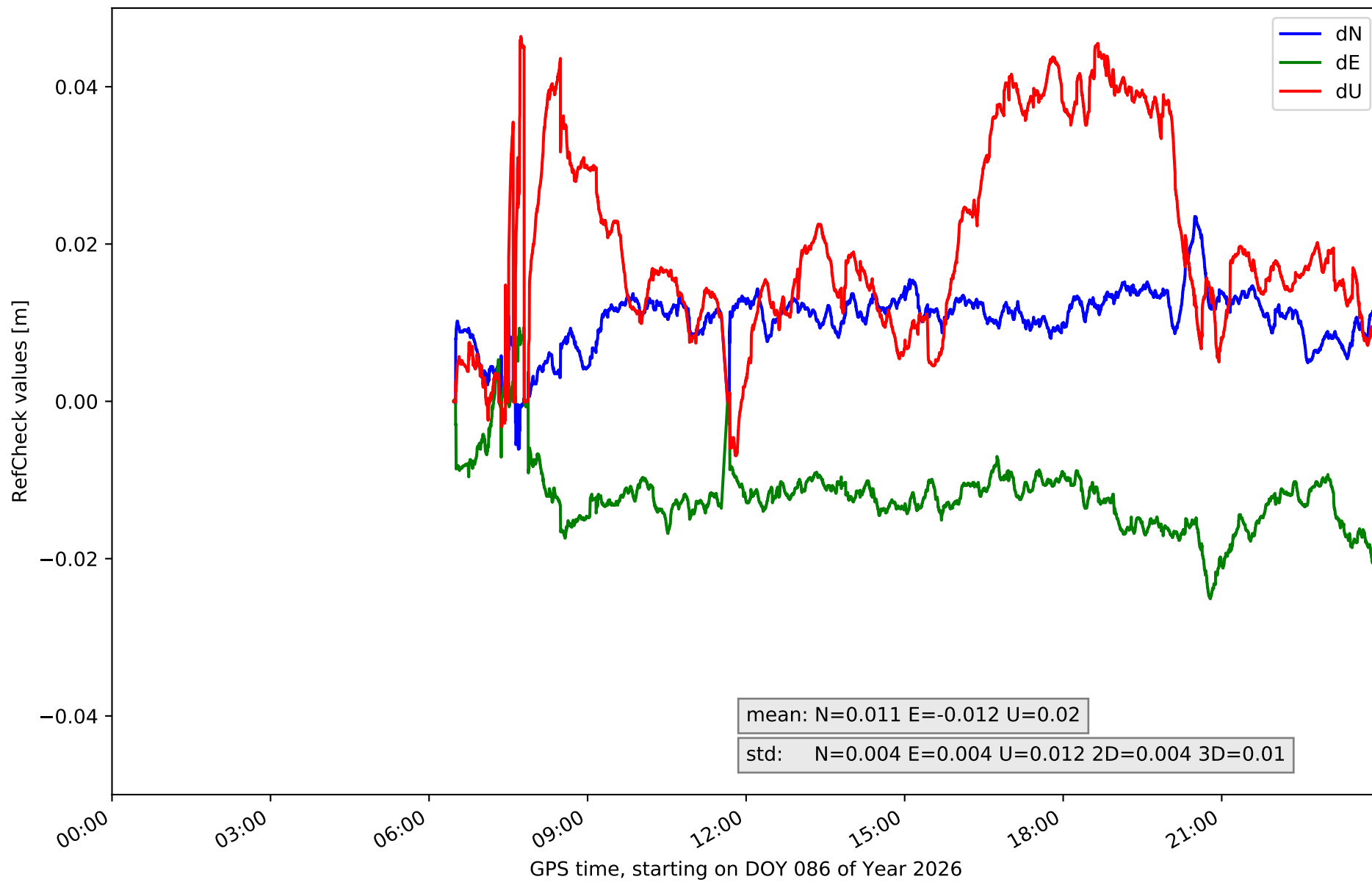
RefCheck for station TN03 in network N32T



RefCheck for station TN06 in network N32T



RefCheck for station TN09 in network N32T



RefCheck values for network N32T

Station	Nmin	Nmax	Nstd	Emin	Emax	Estd	Umin	Umax	Ustd	std2D	std3D	#2D > 0.01	% 2D > 0.01	#3D > 0.02	% 3D > 0.02
EH01	-0.006	0.027	0.004	-0.009	0.023	0.004	-0.06	0.044	0.015	0.004	0.01	54031	89.1	24754	40.8
EH02	-0.005	0.029	0.005	-0.01	0.029	0.006	-0.002	0.061	0.013	0.005	0.013	58308	96.1	56329	92.9
GOM1	-0.02	0.011	0.006	-0.022	0.021	0.005	-0.029	0.06	0.018	0.004	0.01	35289	58.2	30713	50.6
LP01	-0.021	0.011	0.006	-0.014	0.017	0.007	-0.031	0.055	0.018	0.004	0.013	48801	80.5	45780	75.5
LP03	-0.017	0.017	0.005	-0.018	0.014	0.007	-0.06	0.052	0.02	0.004	0.014	20108	33.1	34578	57.0
LPAL	-0.015	0.015	0.006	-0.011	0.014	0.005	-0.042	0.033	0.014	0.004	0.008	43986	72.5	19007	31.3
LRES	-0.005	0.018	0.005	-0.007	0.025	0.005	-0.048	0.016	0.013	0.005	0.007	53568	88.3	26314	43.4
TN01	-0.027	0.017	0.009	-0.025	0.012	0.008	-0.014	0.055	0.016	0.006	0.01	52897	87.2	46597	76.8
TN02	-0.022	0.019	0.006	-0.029	0.012	0.005	-0.038	0.06	0.019	0.005	0.012	37298	61.5	49178	81.1
TN03	-0.017	0.016	0.005	-0.014	0.02	0.006	-0.018	0.051	0.016	0.004	0.011	16402	27.0	18942	31.2
TN06	-0.029	0.017	0.007	-0.027	0.02	0.009	-0.062	0.032	0.022	0.006	0.017	29581	48.8	52124	85.9
TN09	-0.006	0.024	0.004	-0.025	0.009	0.004	-0.007	0.046	0.012	0.004	0.01	56256	92.7	49936	82.3
Mean	-0.016	0.018	0.006	-0.018	0.018	0.006	-0.034	0.047	0.016	0.005	0.011	42210.4	69.6	37854.3	62.4
Min/Max	-0.029	0.029	0.009	-0.029	0.029	0.009	-0.062	0.061	0.022	0.006	0.017	58308	96.1	56329	92.9

fixing statistic for network N32T

fixing percentage of	all GNSS	G	R	E	C
using threshold 0.3	87.9	89.3	81.4	91.5	87.7
considering satellites with dual-frequency fixed	85.3	87.2	78.2	88.4	84.8
considering all signals separately	85.6	87.3	78.2	88.6	83.8