

## summary for network NET8

timeperiod chosen: from 2026-03-11-00:00:00 until 2026-03-11-23:59:59

average update rate (durations larger than 15 seconds considered as observation gap): 1.3 seconds

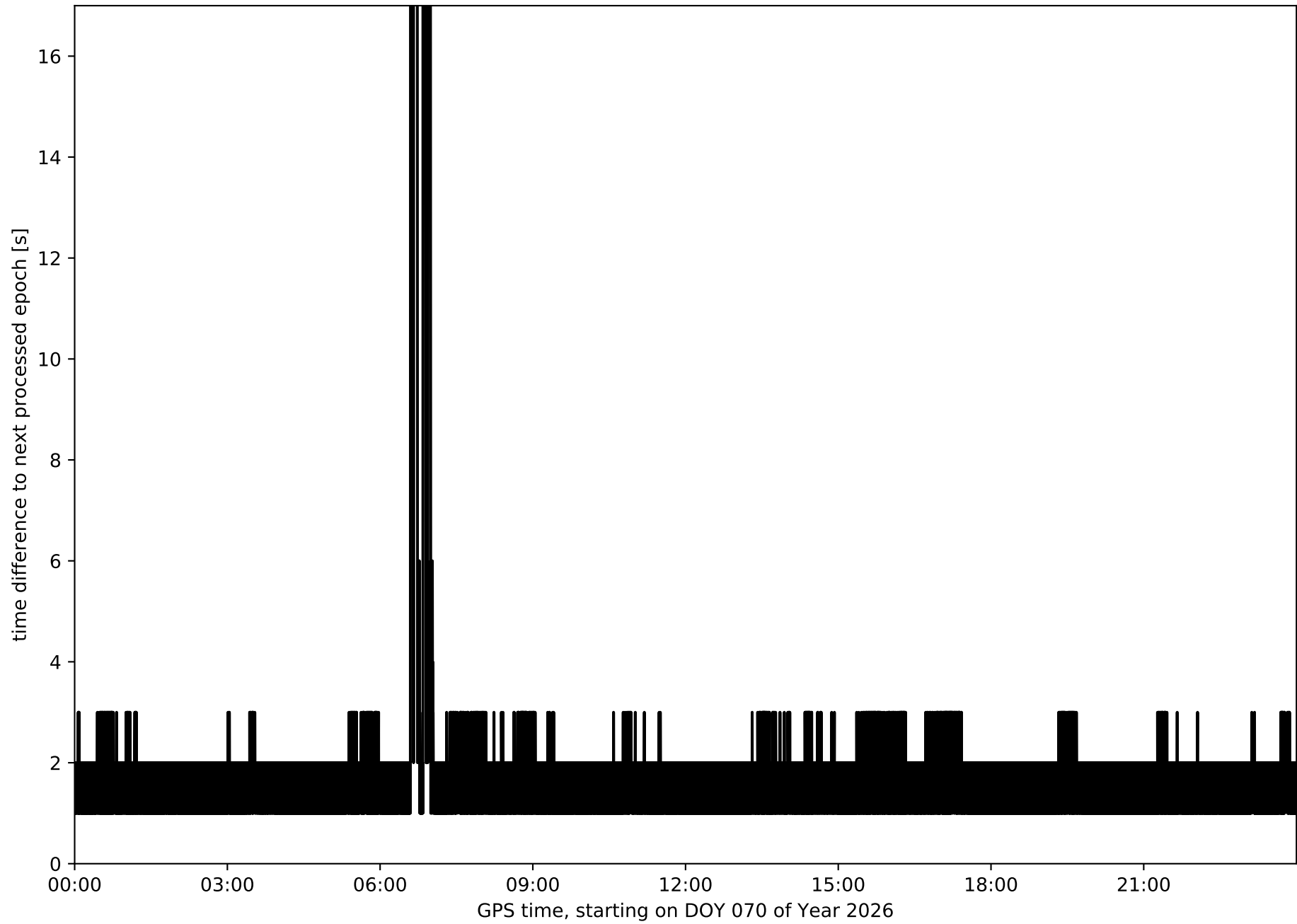
average fixing percentage with threshold set to 0.3: 93.5 percent

stations available: 16 of 16

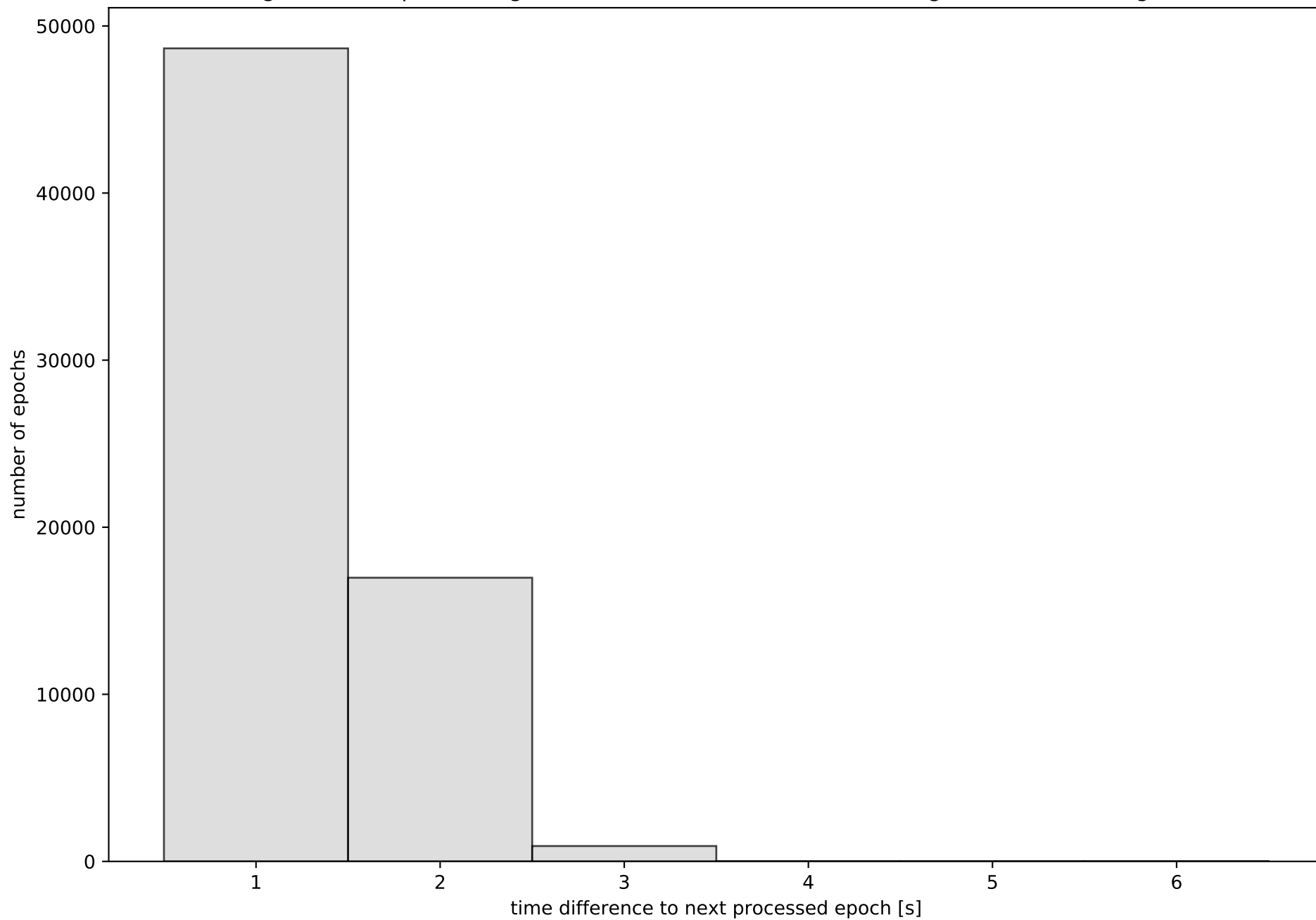
station information:

station ALDA:	antenna: GPPNULLANTENNA NONE	receiver: LEICA GR30	height: 881.799
station ALSA:	antenna: GPPNULLANTENNA NONE	receiver: LEICA GR50	height: 584.184
station AMUR:	antenna: GPPNULLANTENNA NONE	receiver: LEICA GR30	height: 299.246
station ELGE:	antenna: GPPNULLANTENNA NONE	receiver: LEICA GR30	height: 535.723
station ESTE:	antenna: GPPNULLANTENNA NONE	receiver: LEICA GR50	height: 523.468
station HOND:	antenna: LEIAR20 LEIM	receiver: LEICA GR50	height: 166.321
station ISPS:	antenna: LEIAR20 LEIM	receiver: LEICA GR50	height: 265.498
station KAST:	antenna: GPPNULLANTENNA NONE	receiver: LEICA GR30	height: 321.676
station LEIT:	antenna: GPPNULLANTENNA NONE	receiver: LEICA GR50	height: 530.056
station MIBR:	antenna: LEIAR25 LEIT	receiver: TRIMBLE NETR9	height: 526.687
station ORON:	antenna: GPPNULLANTENNA NONE	receiver: LEICA GR50	height: 204.825
station PASA:	antenna: GPPNULLANTENNA NONE	receiver: LEICA GR30	height: 67.372
station SOPU:	antenna: GPPNULLANTENNA NONE	receiver: LEICA GR30	height: 168.983
station TAFA:	antenna: GPPNULLANTENNA NONE	receiver: LEICA GR50	height: 473.837
station UPNA:	antenna: GPPNULLANTENNA NONE	receiver: LEICA GR50	height: 500.91
station VITO:	antenna: GPPNULLANTENNA NONE	receiver: LEICA GR30	height: 600.461

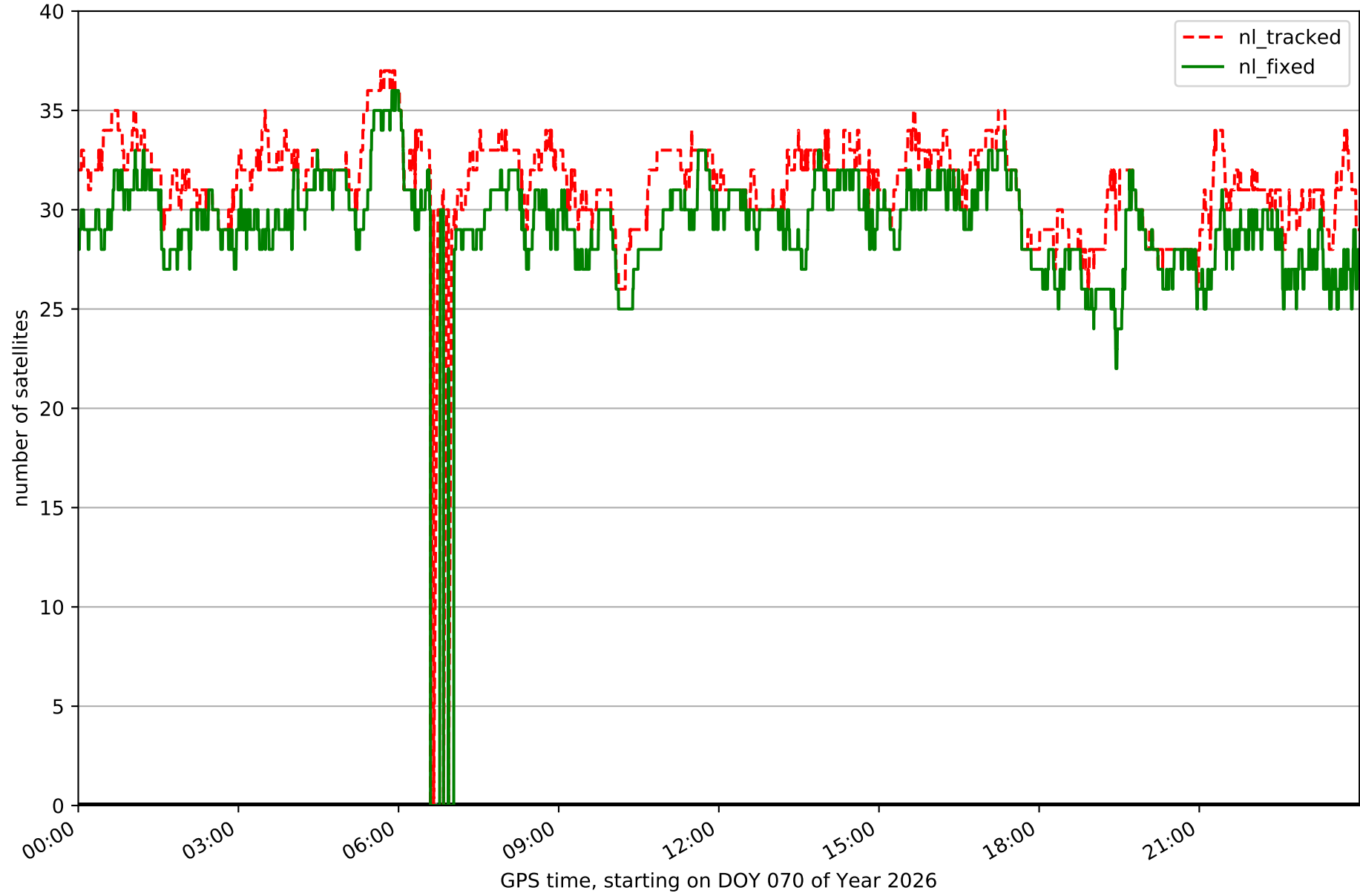
Processing rate in network NET8



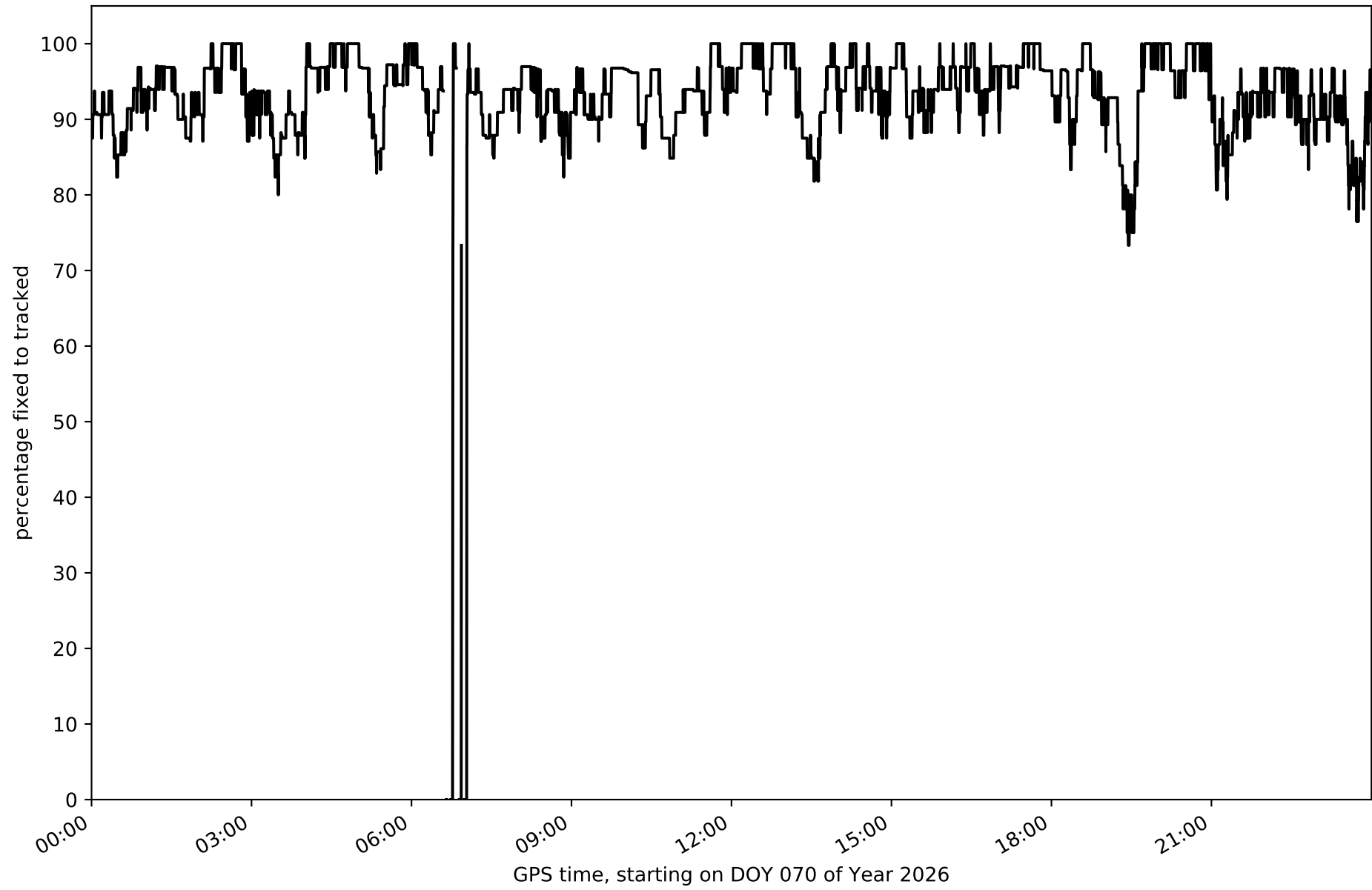
Histogram of the processing rate in network NET8 (durations larger 15 seconds neglected)



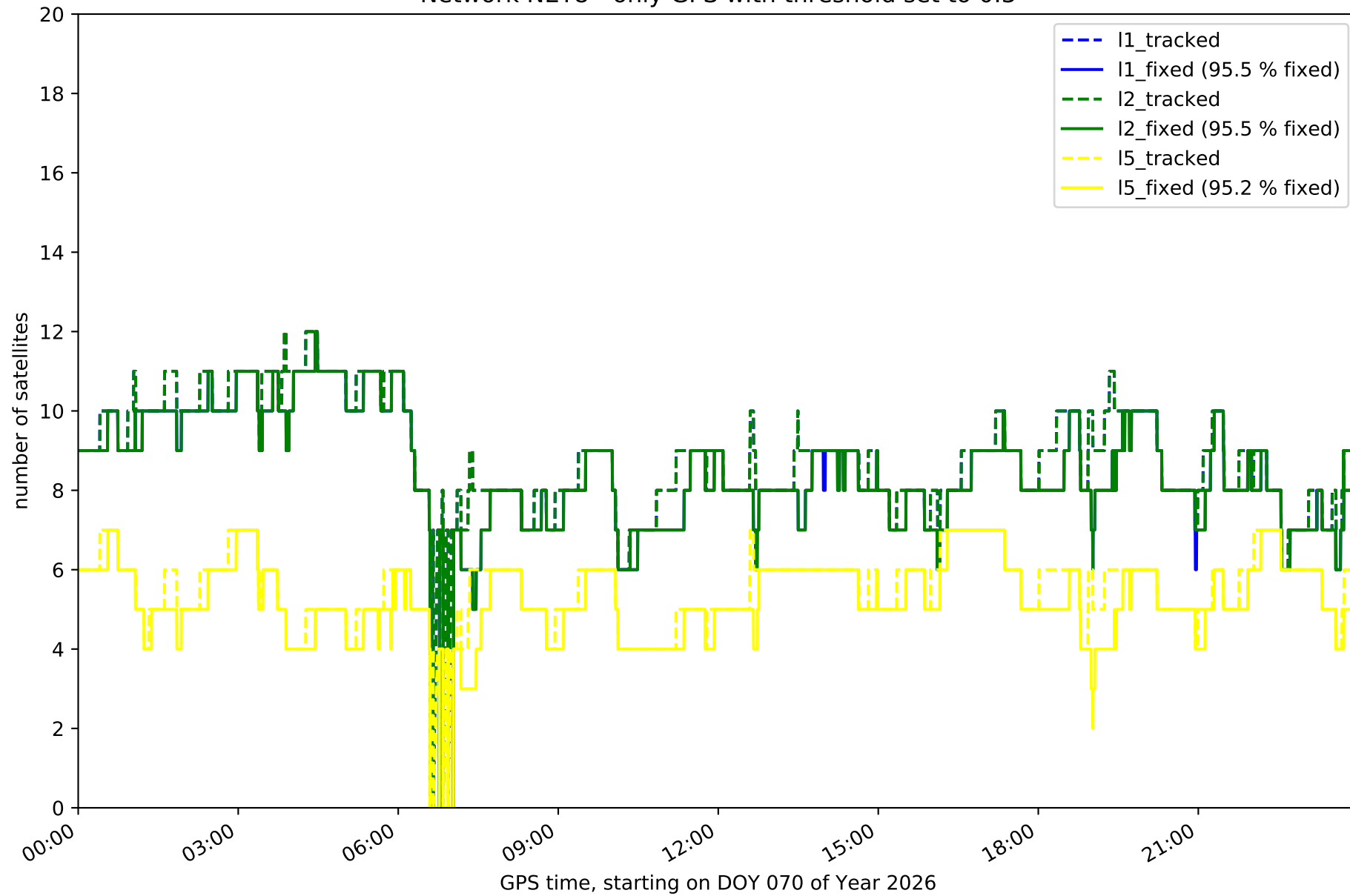
Network NET8 with threshold set to 0.3



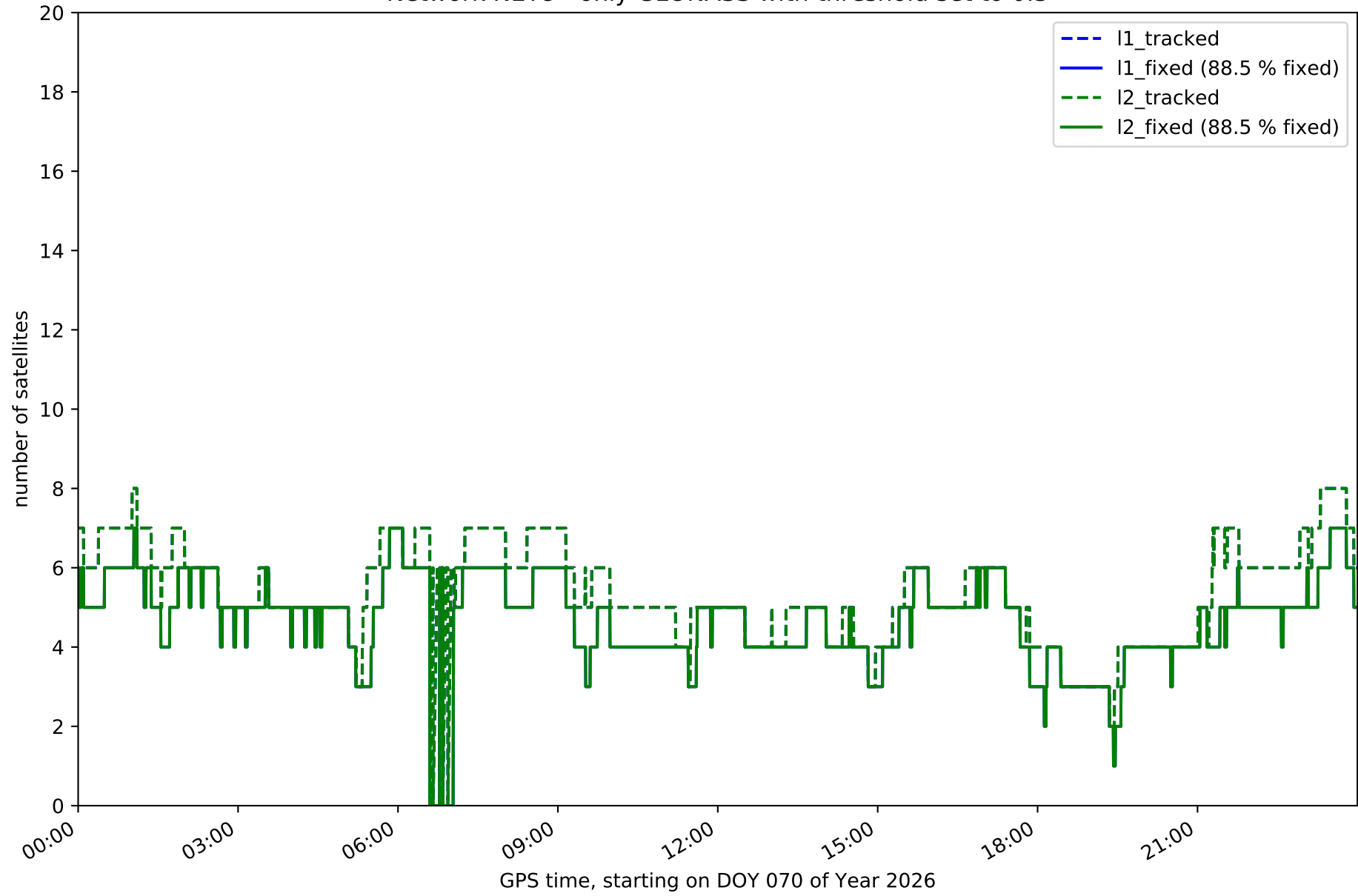
Fixing percentage of satellites in network NET8 with threshold set to 0.3



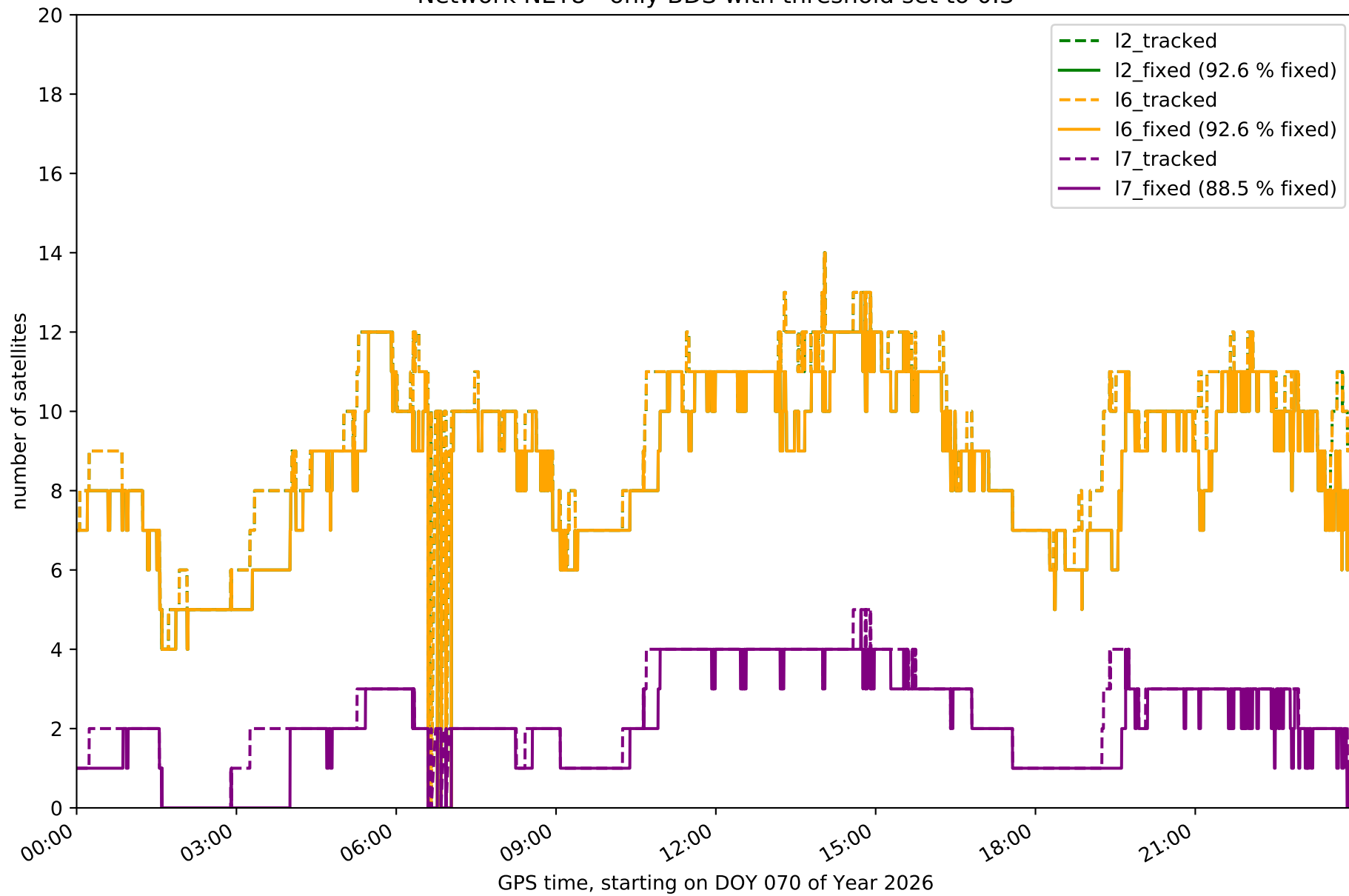
Network NET8 - only GPS with threshold set to 0.3



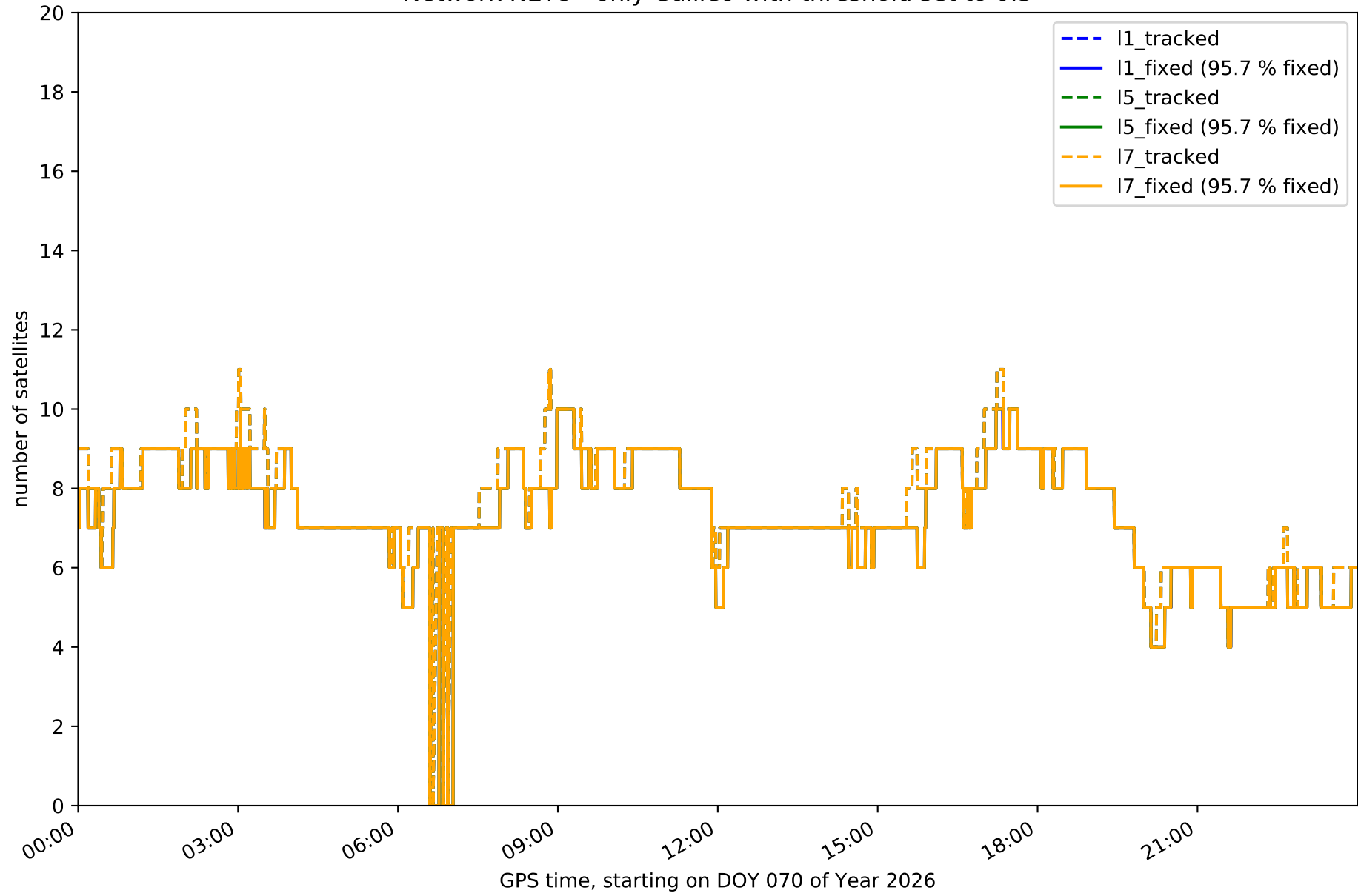
Network NET8 - only GLONASS with threshold set to 0.3



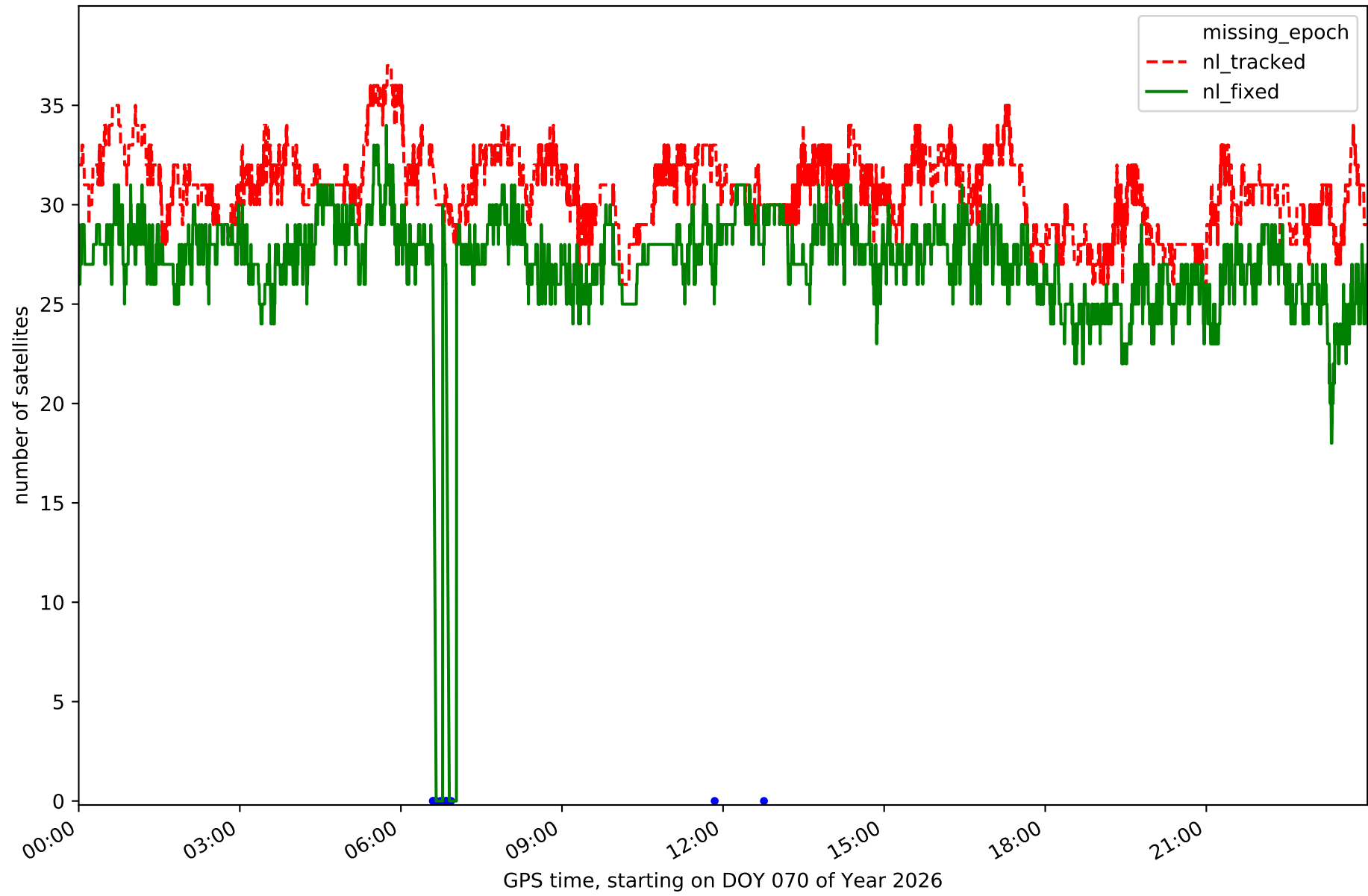
Network NET8 - only BDS with threshold set to 0.3



Network NET8 - only Galileo with threshold set to 0.3



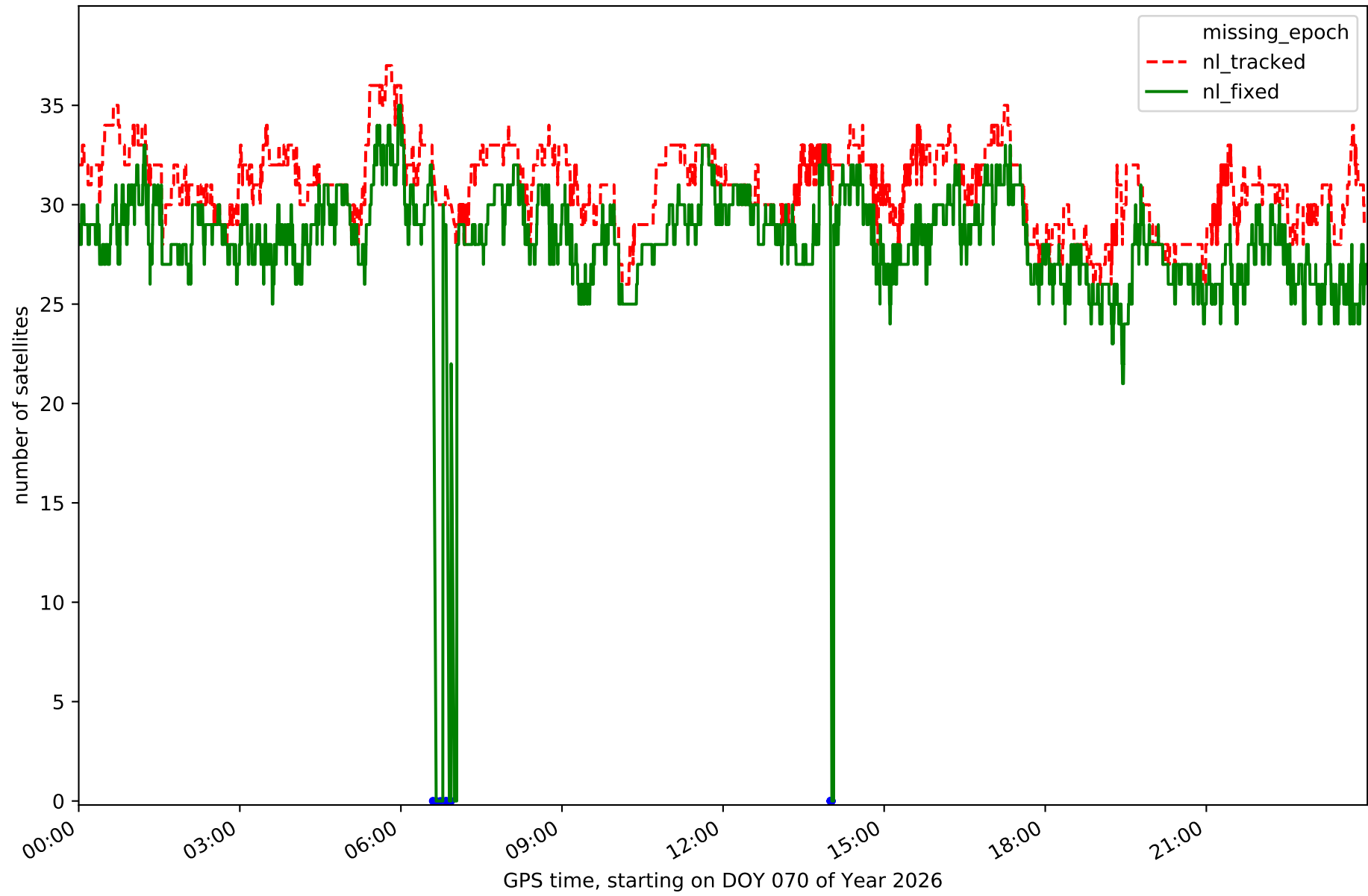
Station ALDA in network NET8



Station ALSA in network NET8



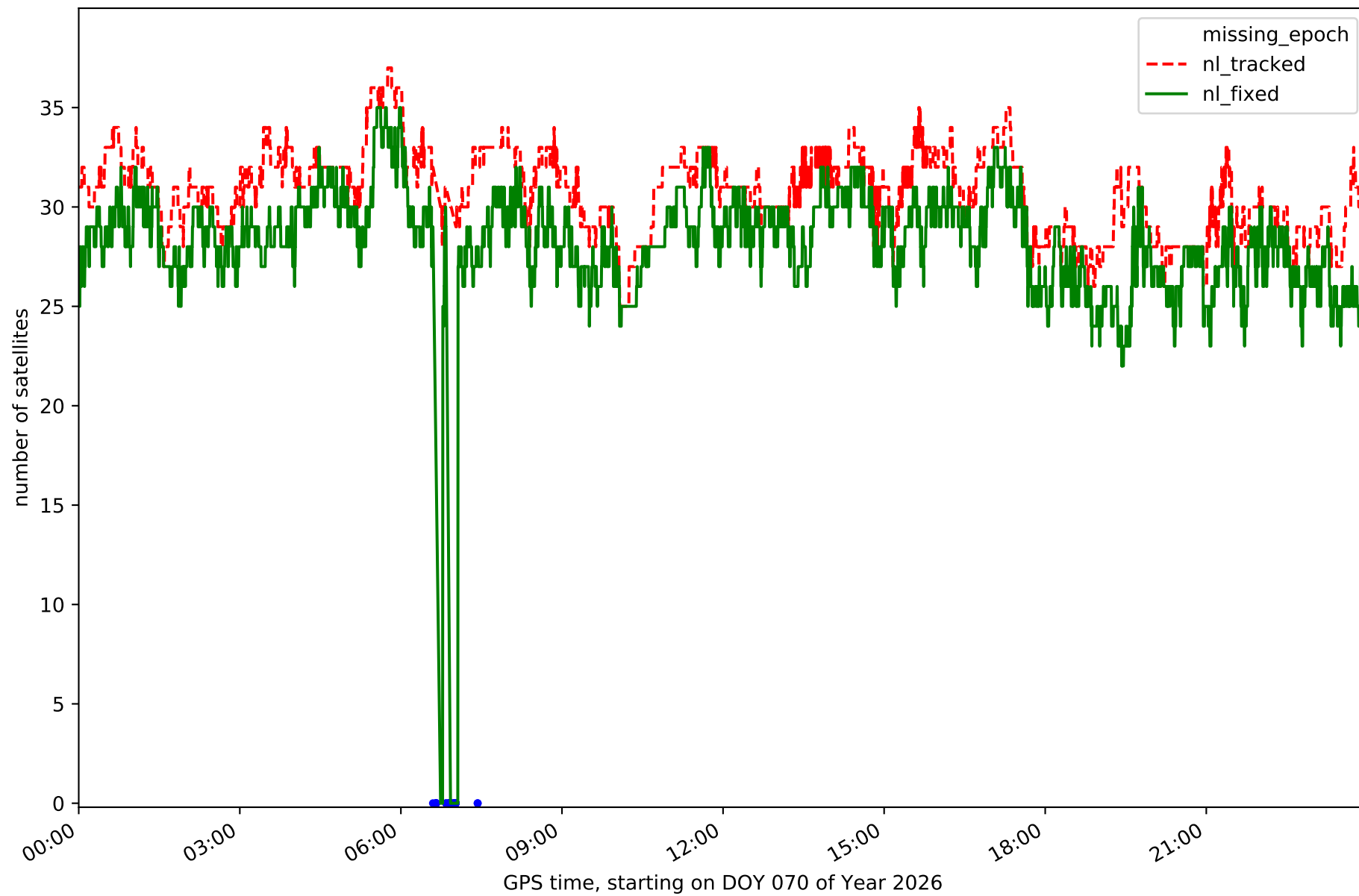
Station AMUR in network NET8



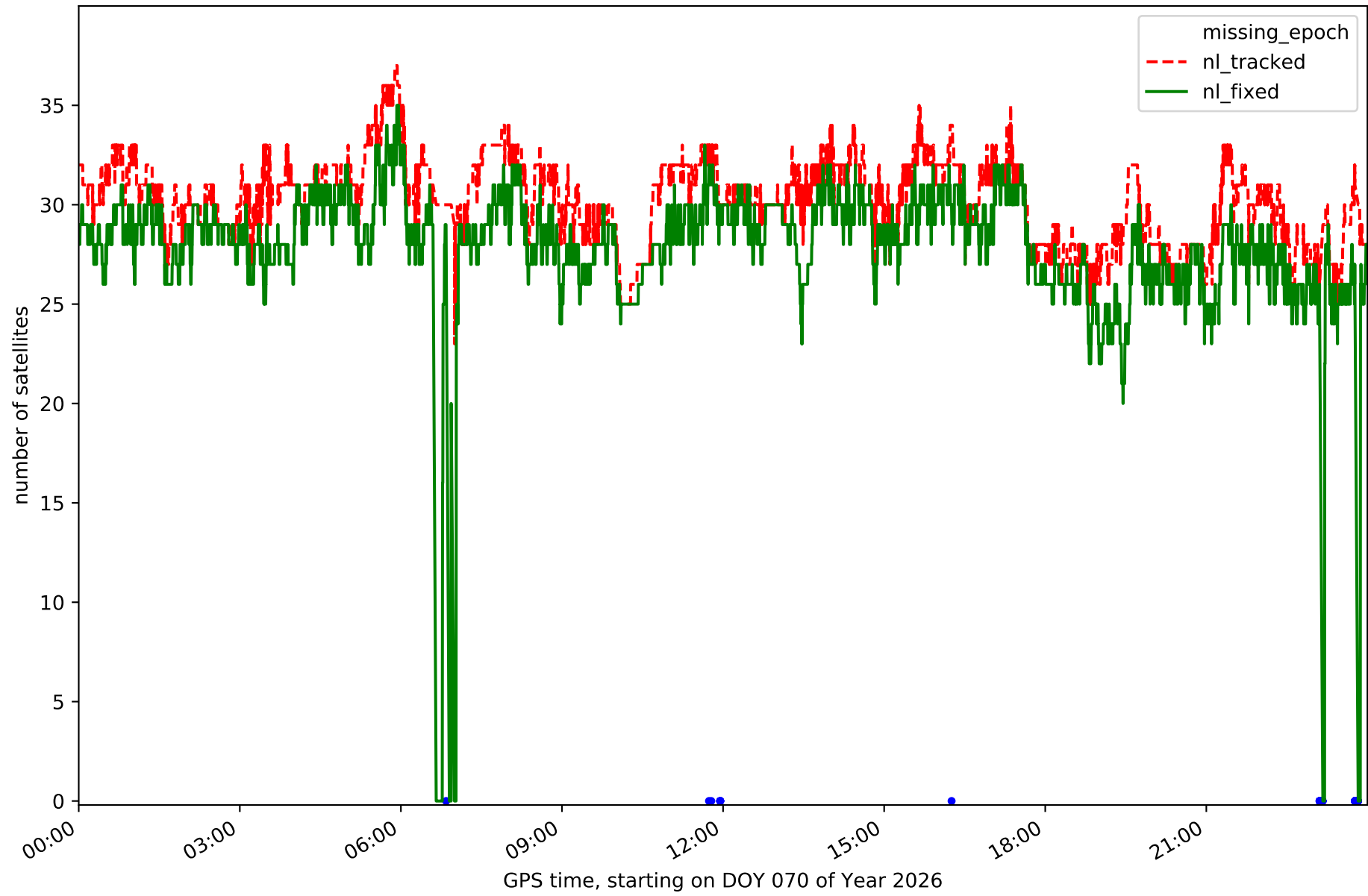
Station ELGE in network NET8



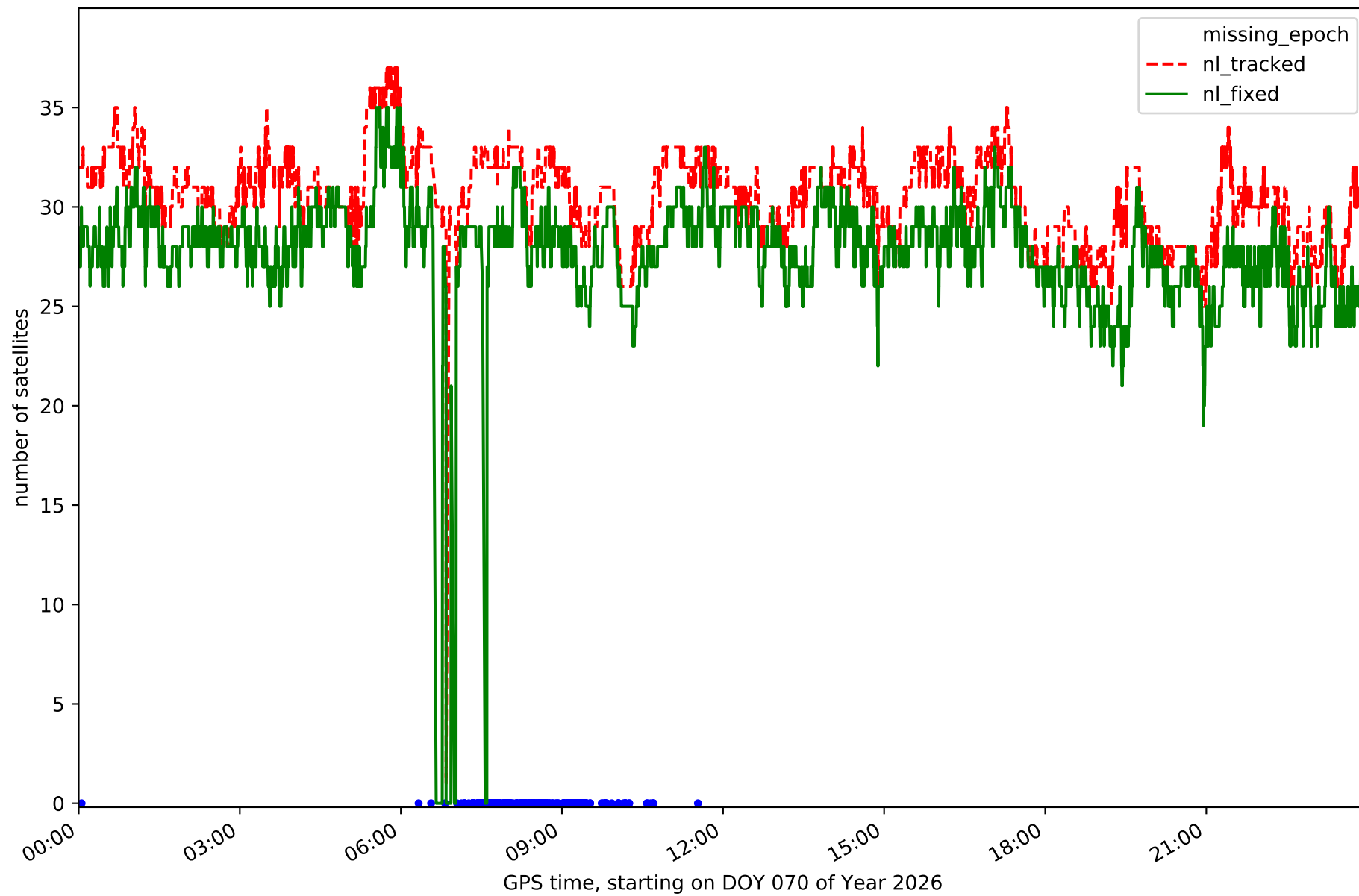
Station ESTE in network NET8



Station HOND in network NET8



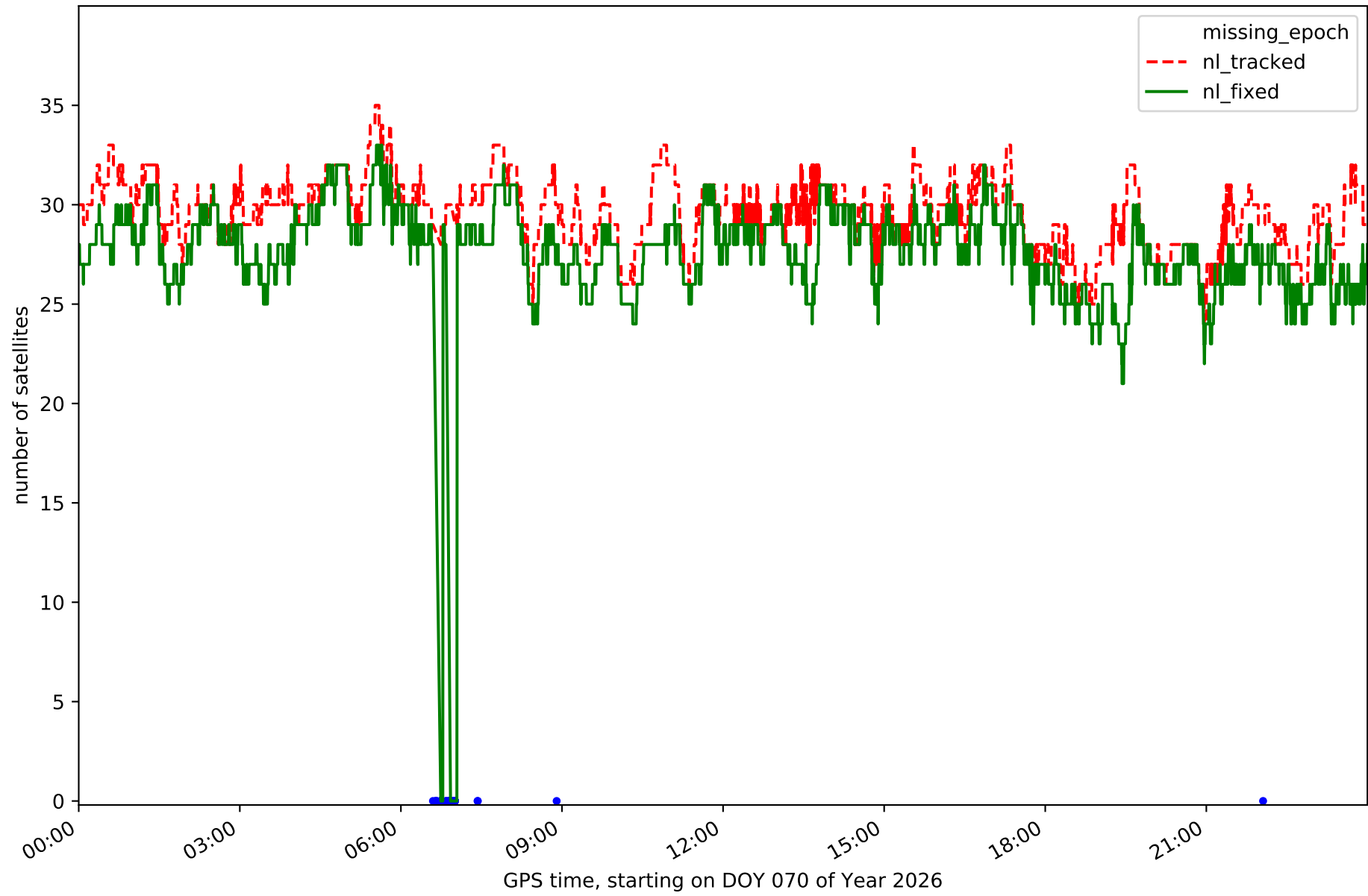
Station ISPS in network NET8



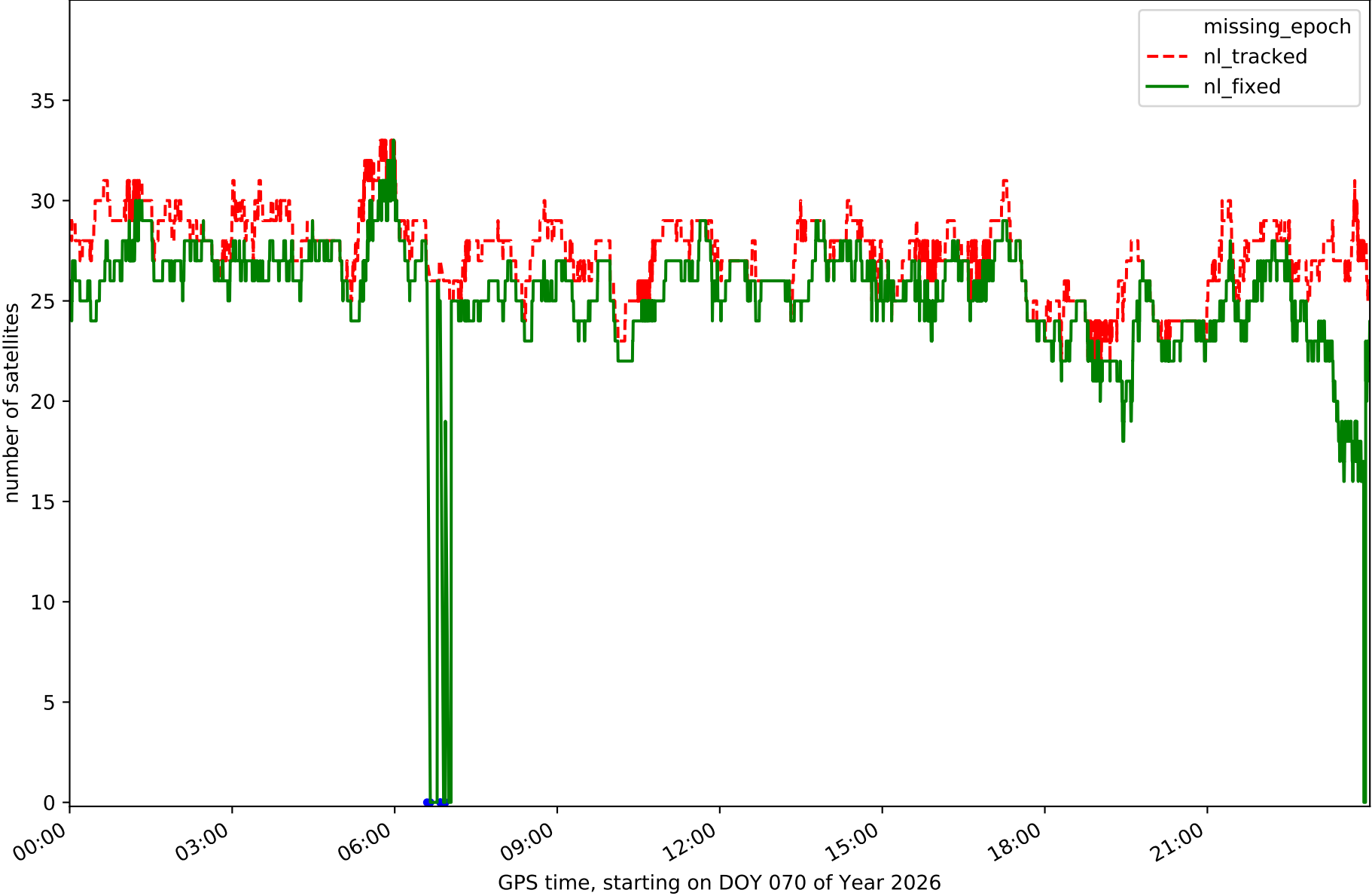
Station KAST in network NET8



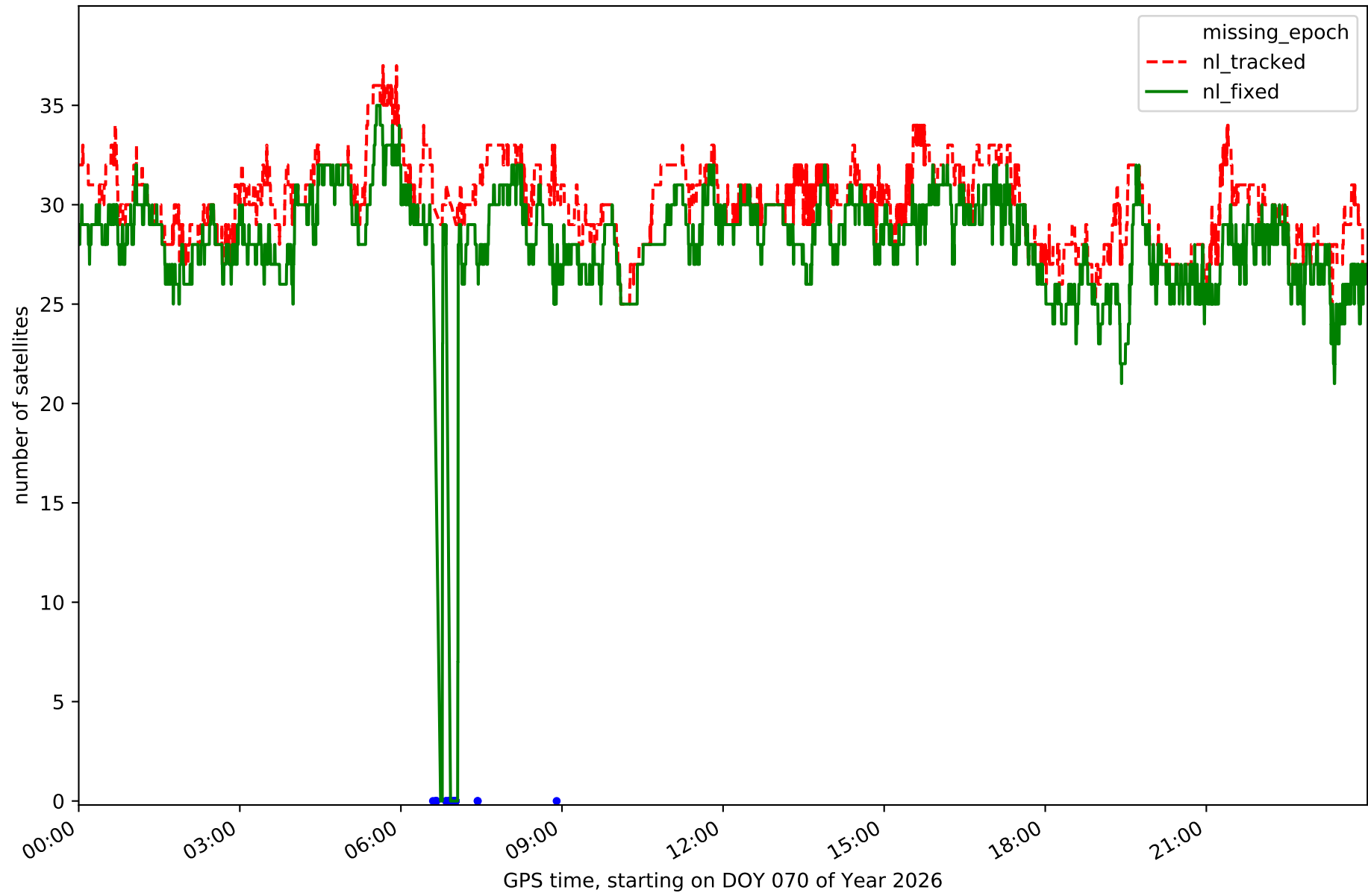
Station LEIT in network NET8



Station MIBR in network NET8



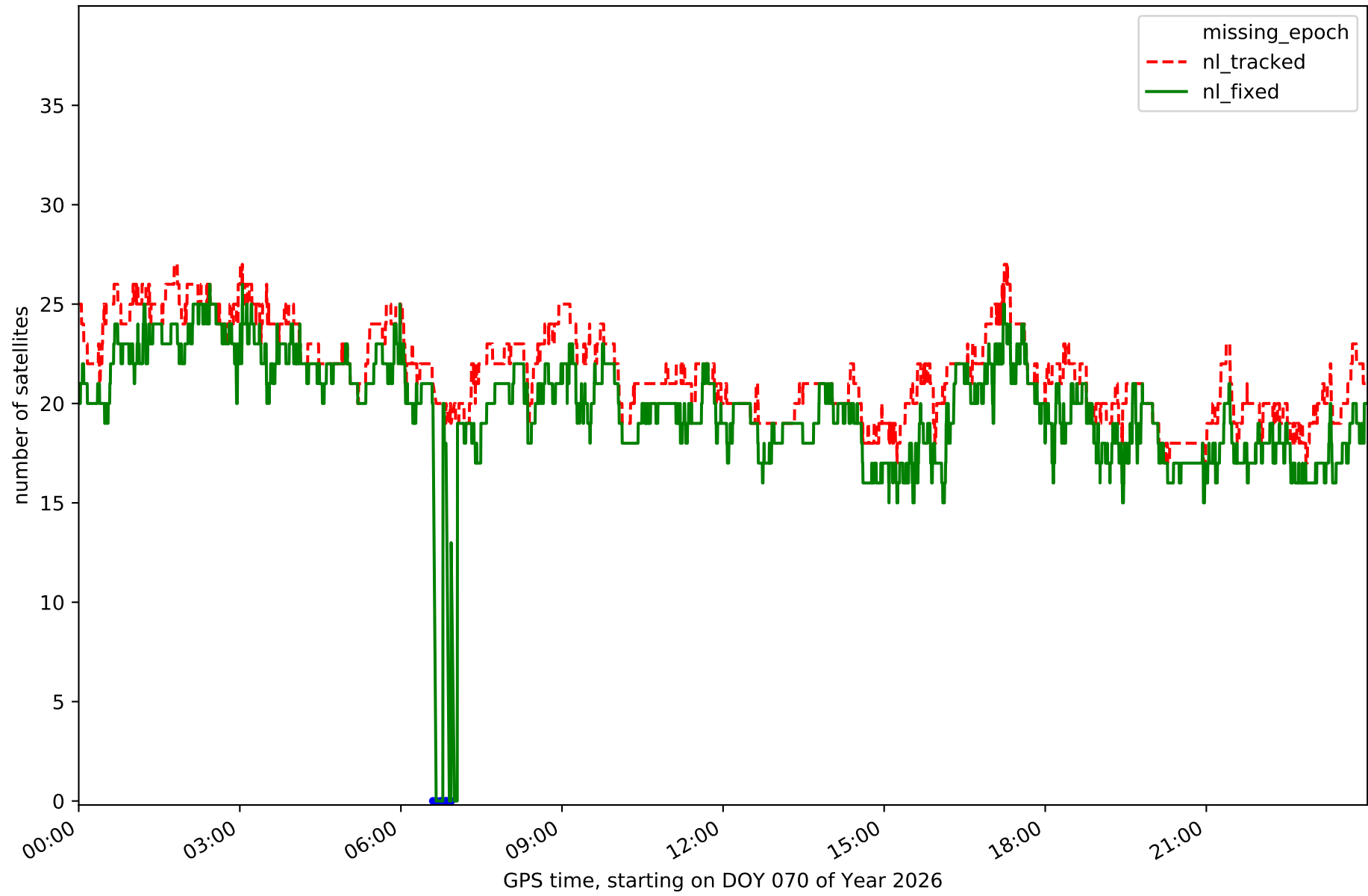
Station ORON in network NET8



Station PASA in network NET8



Station SOPU in network NET8



Station TAFE in network NET8



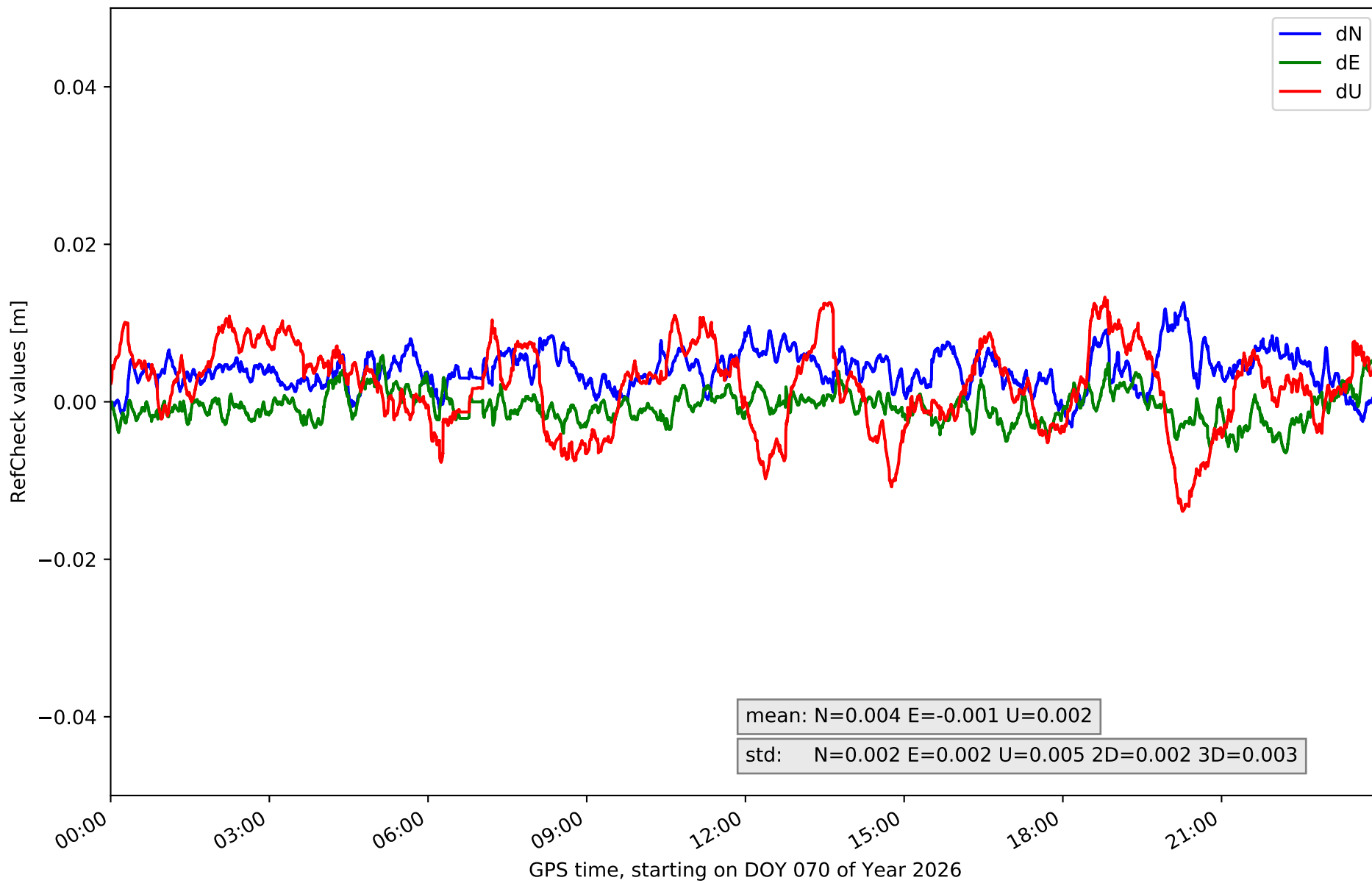
Station UPNA in network NET8



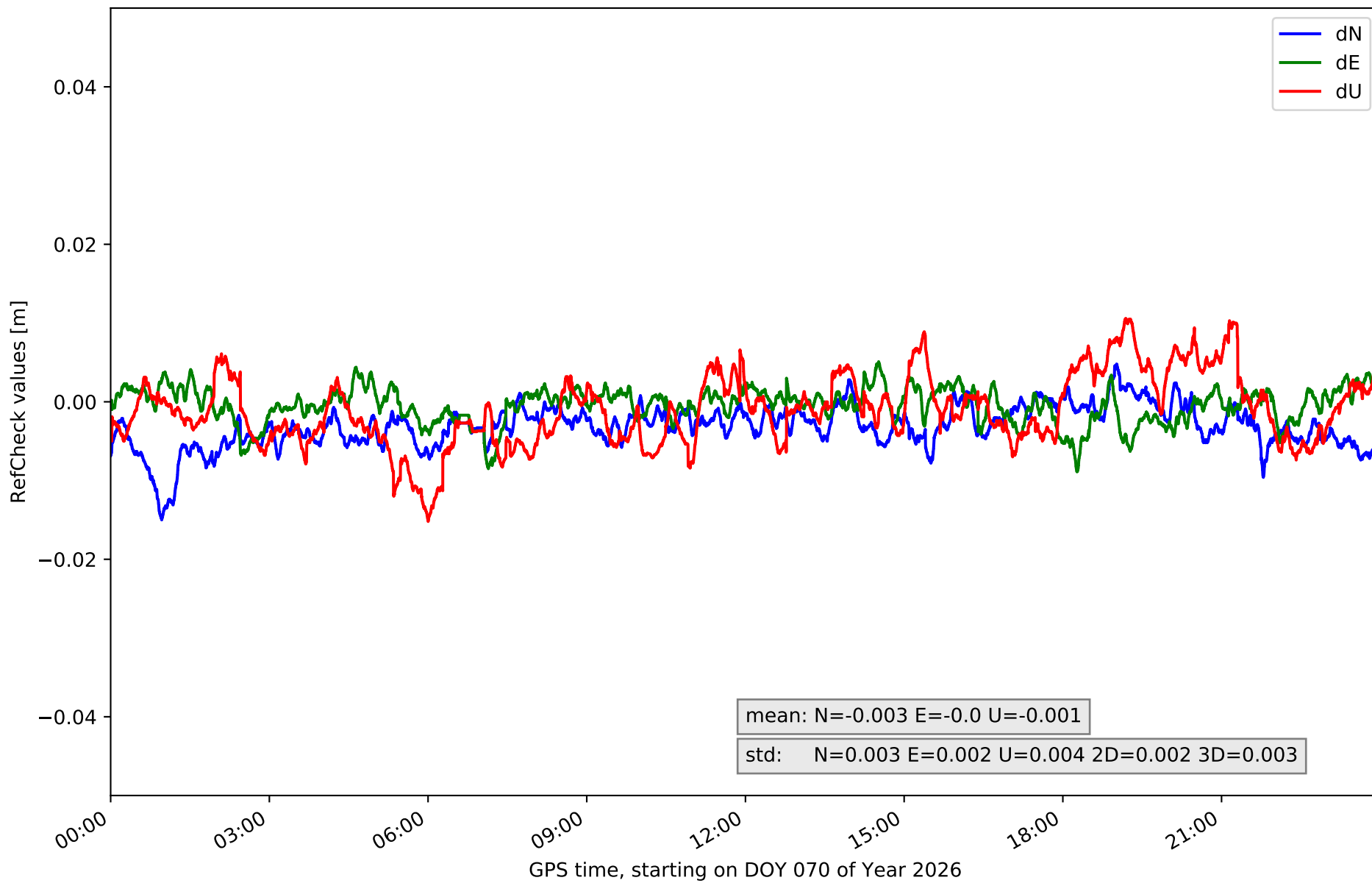
Station VITO in network NET8



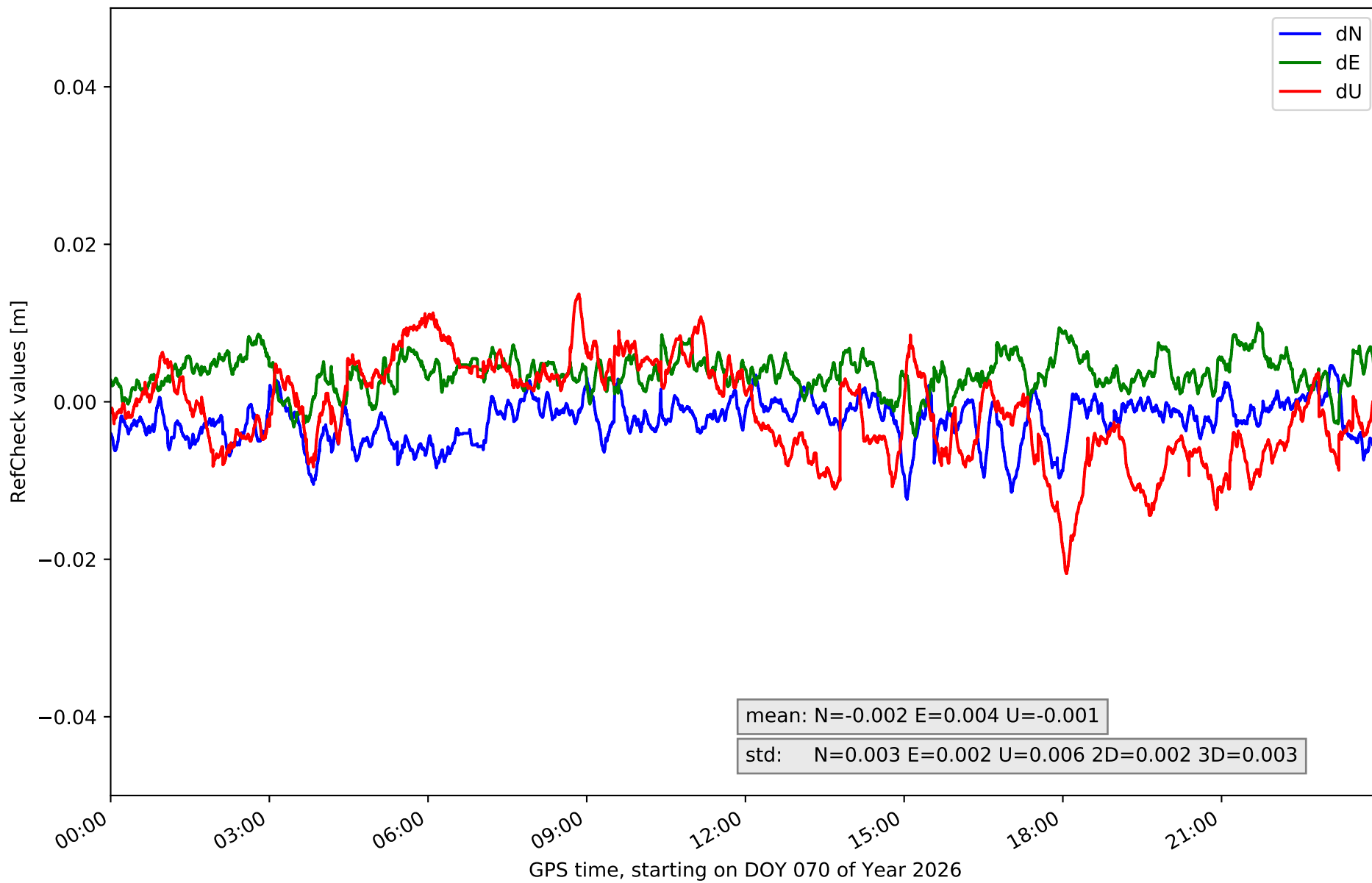
### RefCheck for station ALDA in network NET8



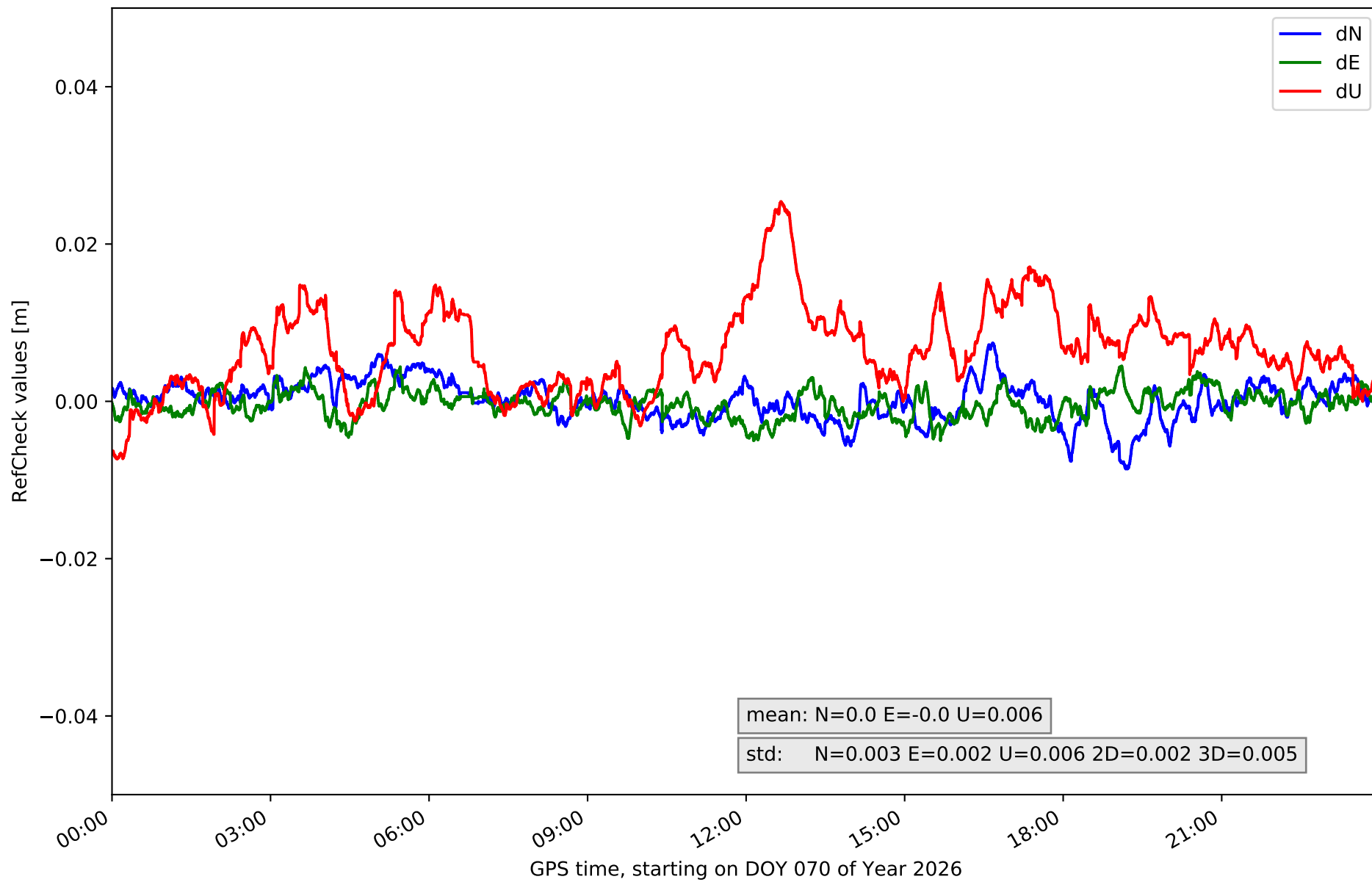
# RefCheck for station ALSA in network NET8



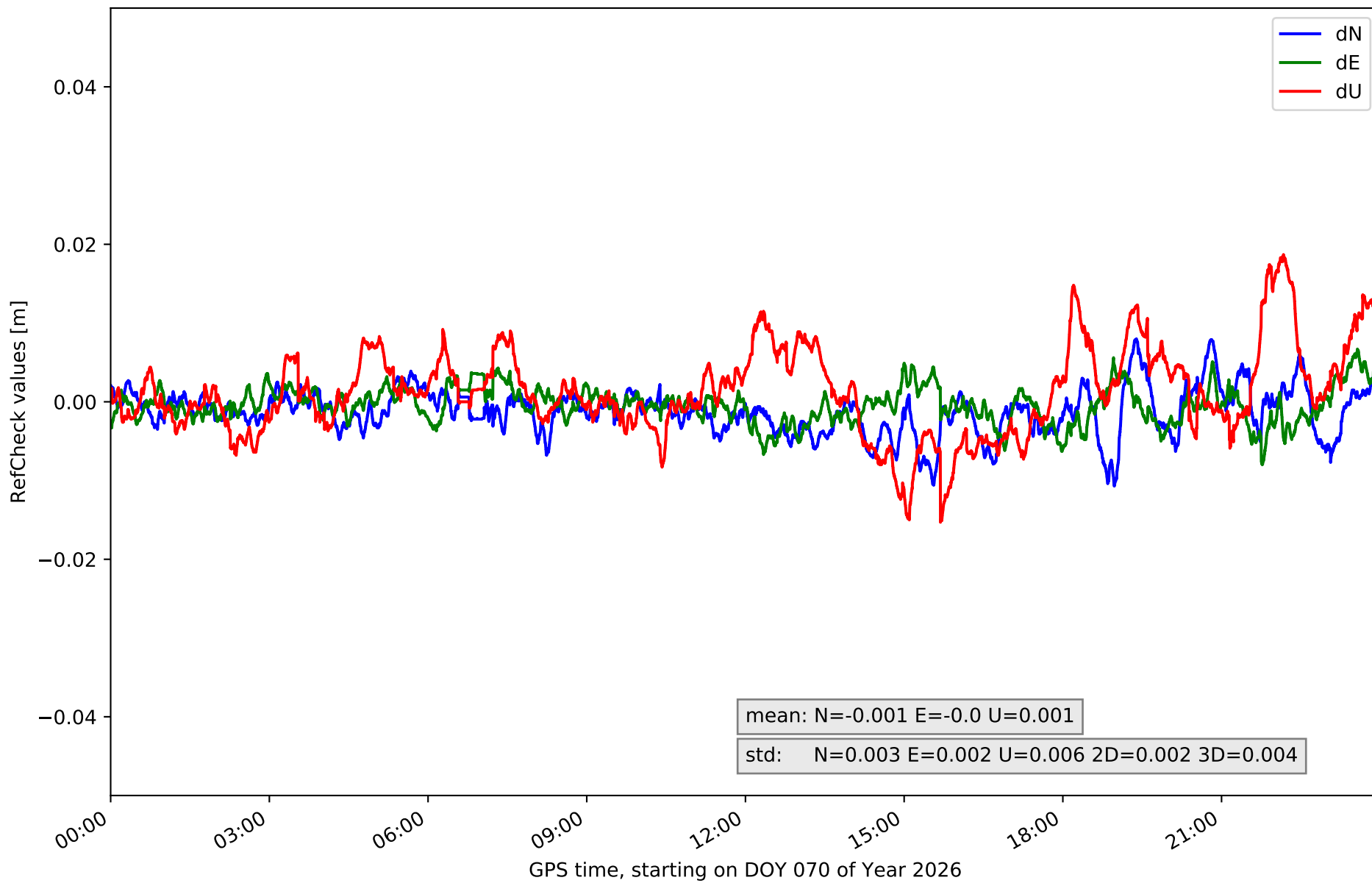
### RefCheck for station AMUR in network NET8



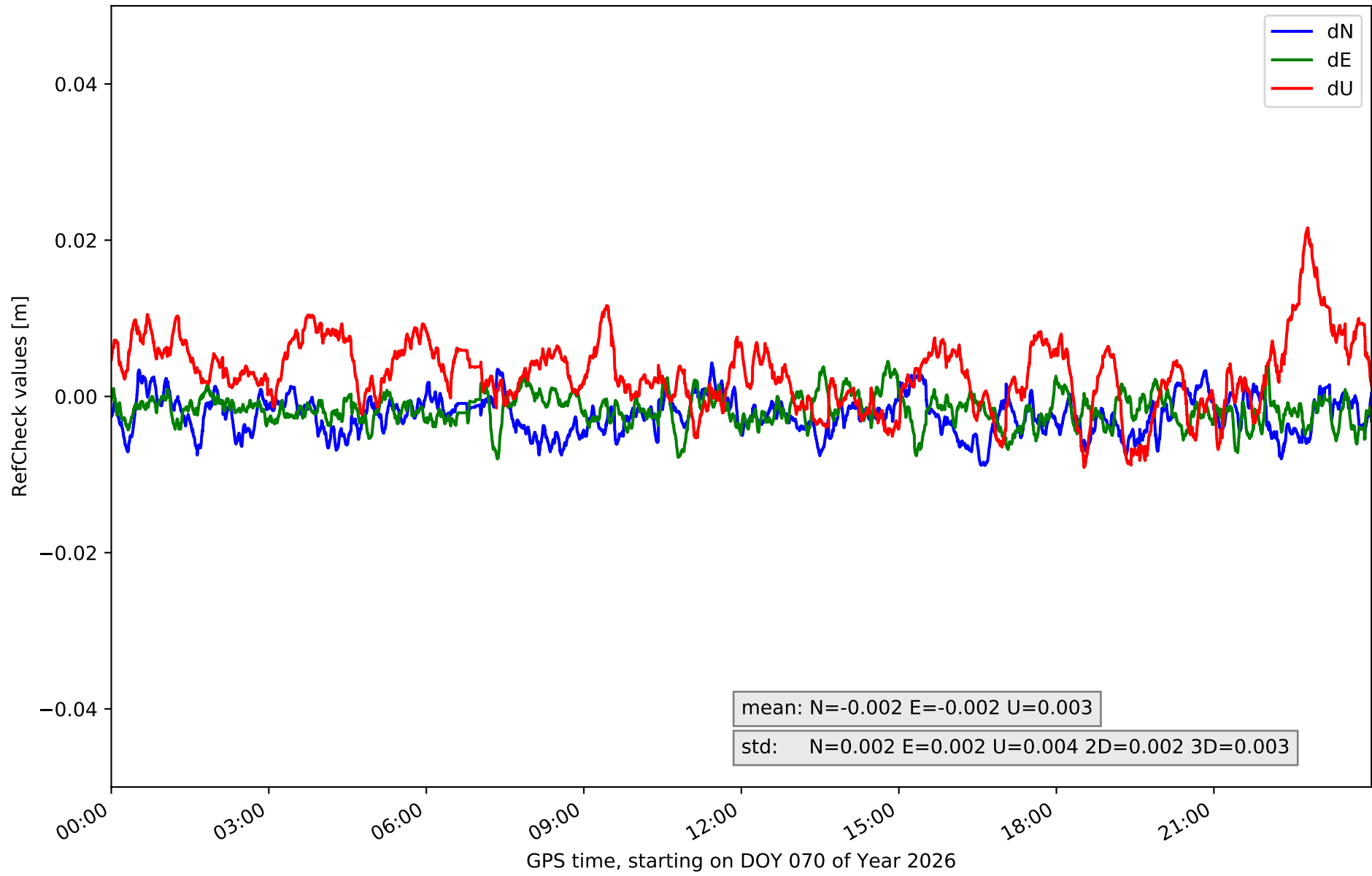
# RefCheck for station ELGE in network NET8



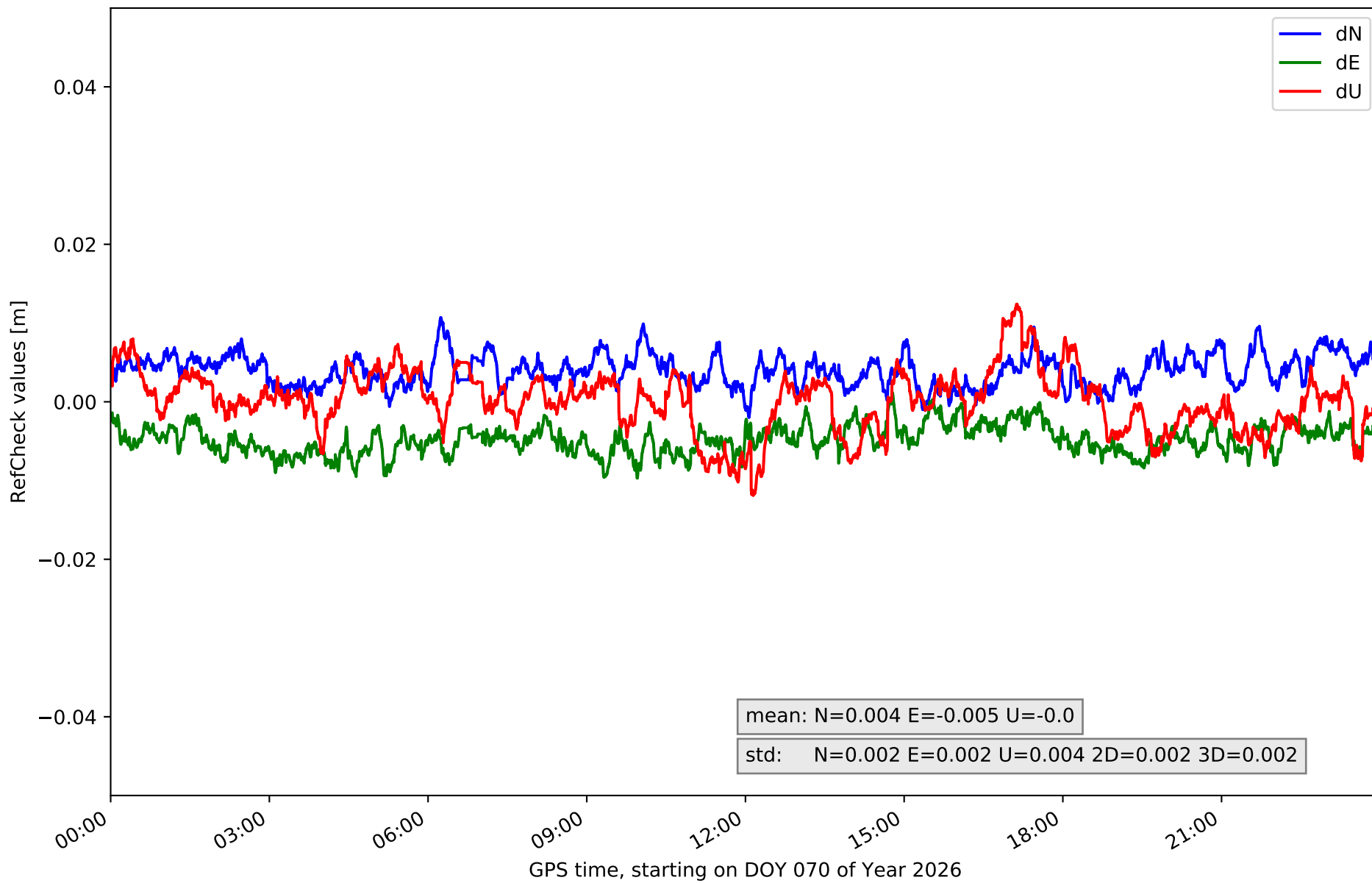
# RefCheck for station ESTE in network NET8



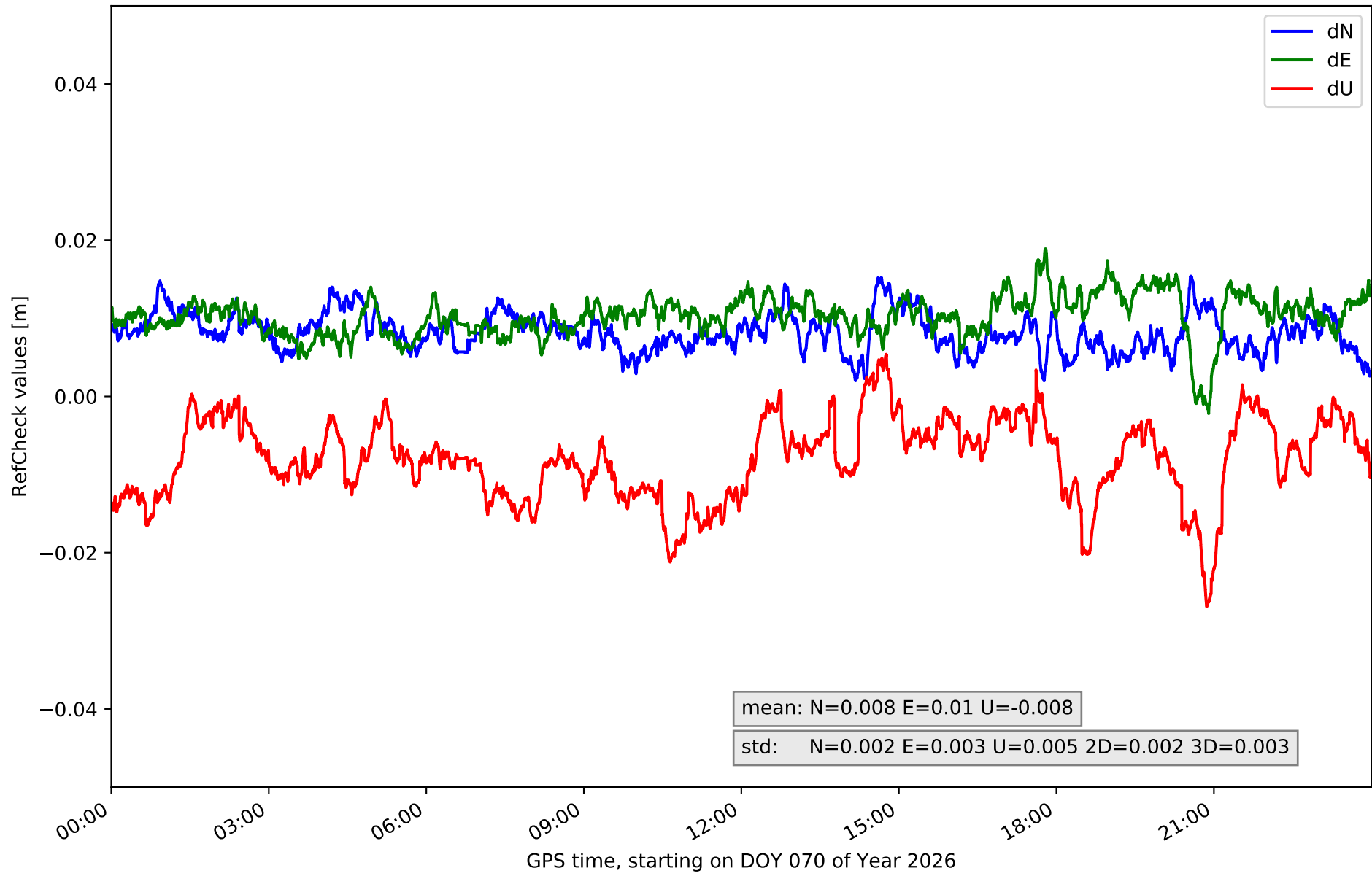
# RefCheck for station HOND in network NET8



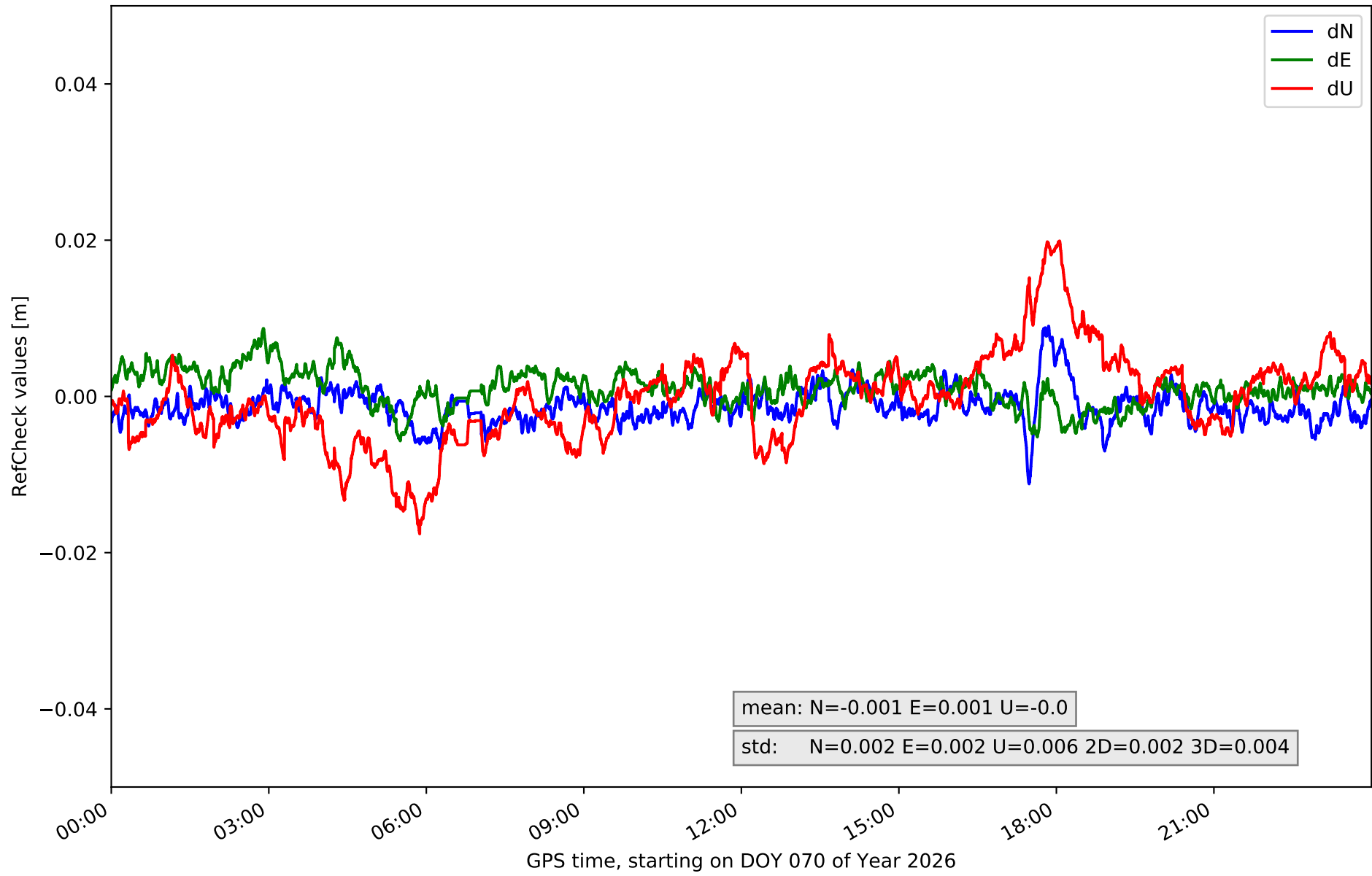
# RefCheck for station ISPS in network NET8



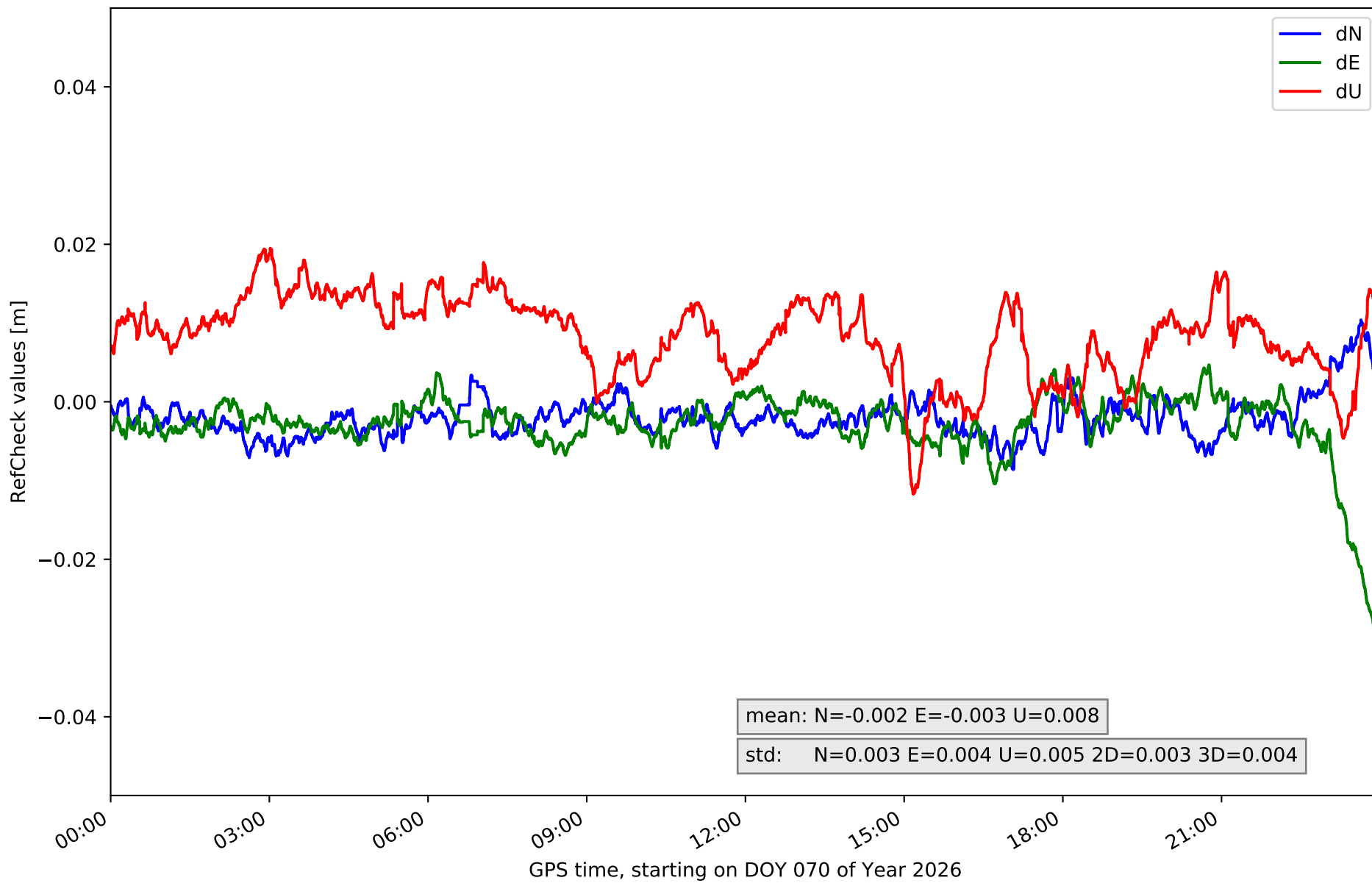
# RefCheck for station KAST in network NET8



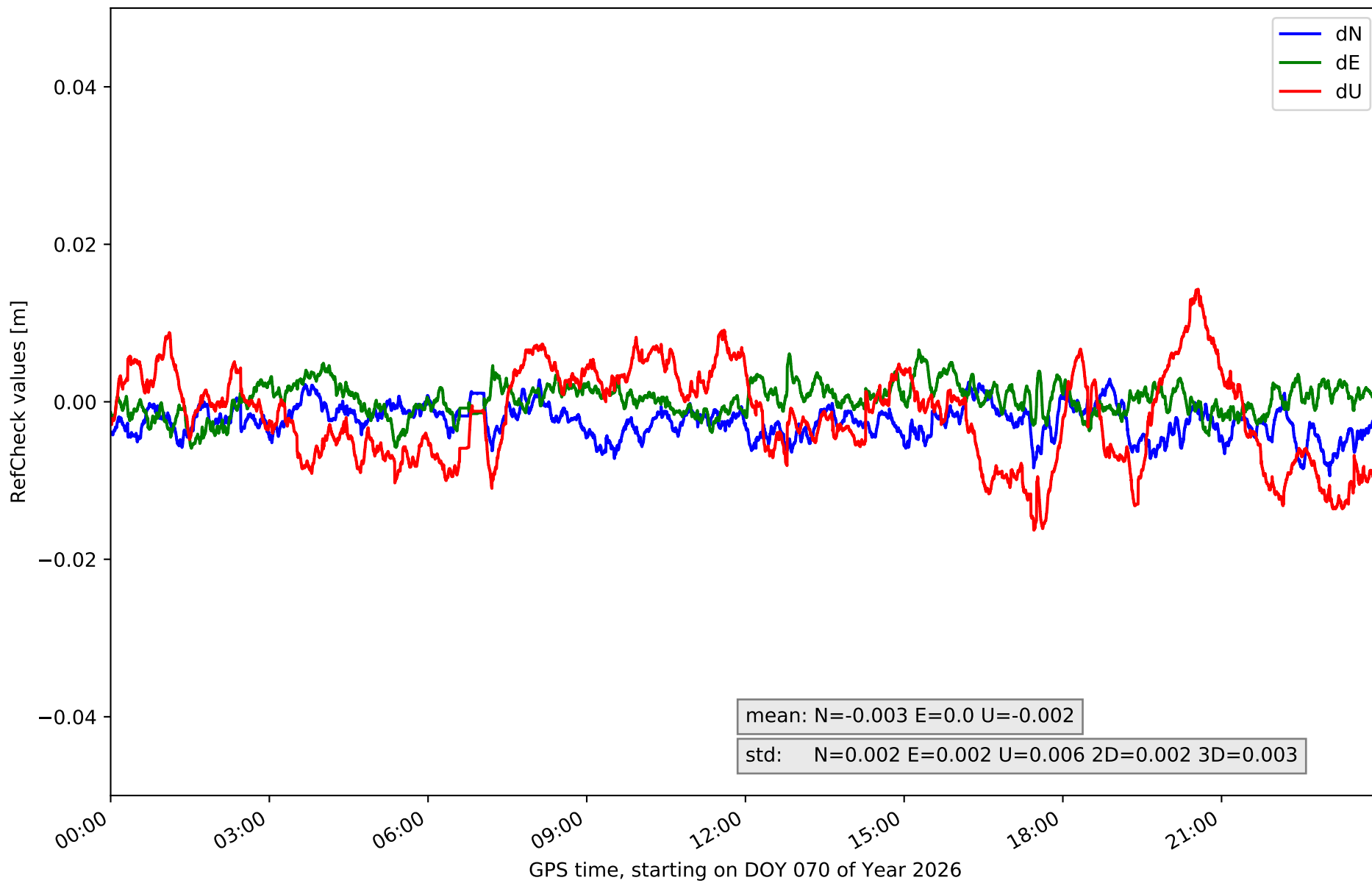
# RefCheck for station LEIT in network NET8



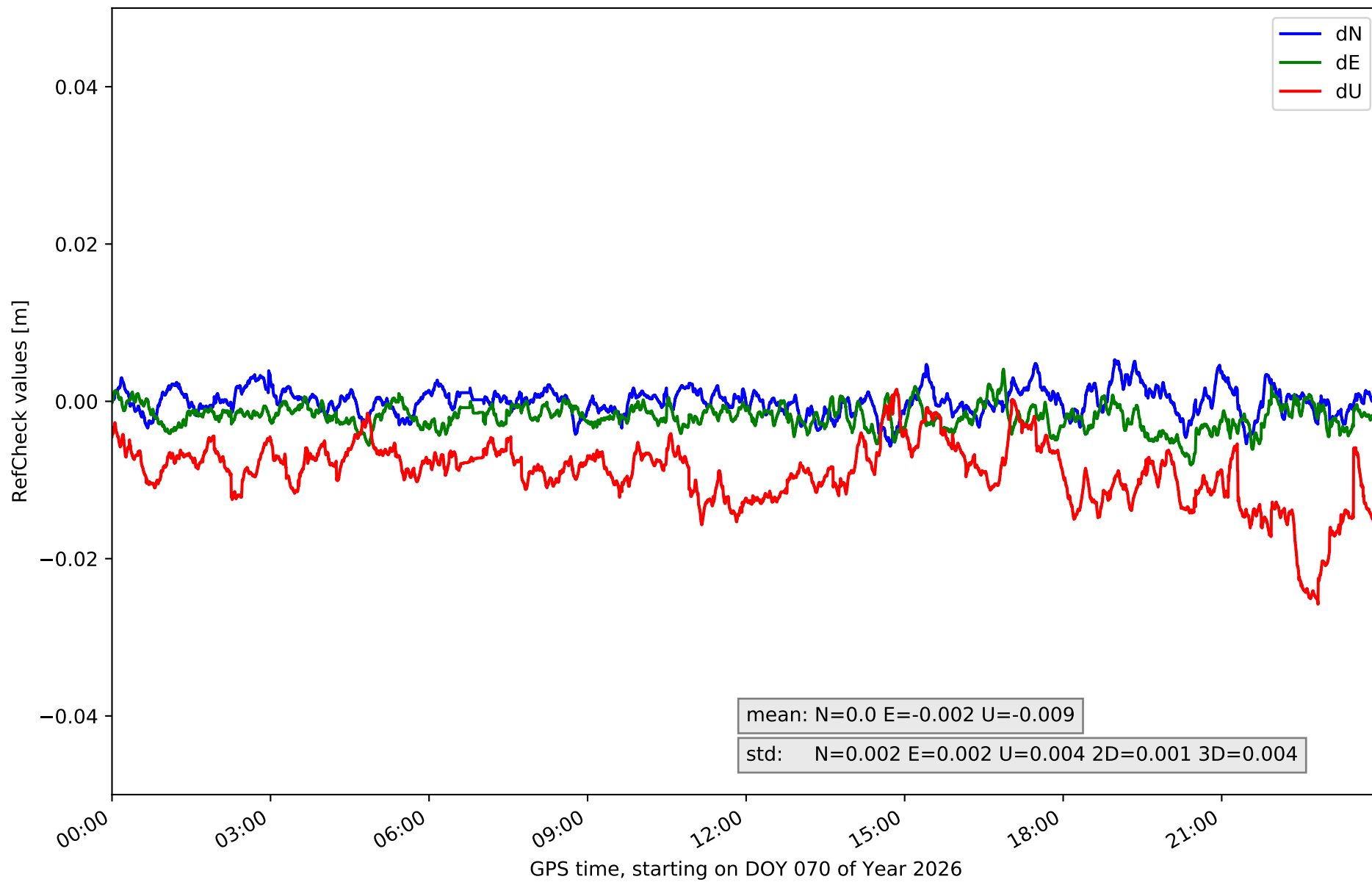
# RefCheck for station MIBR in network NET8



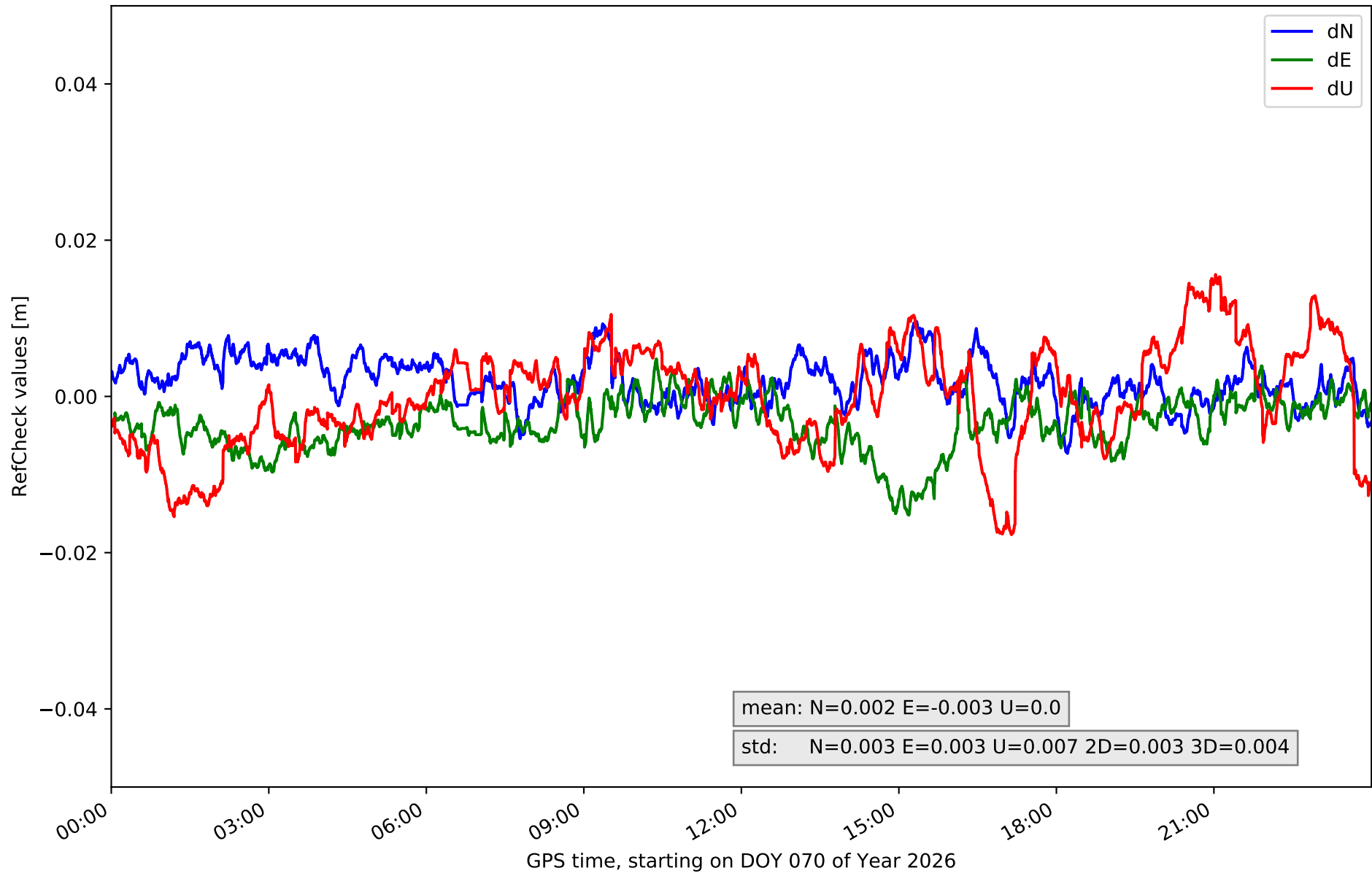
### RefCheck for station ORON in network NET8



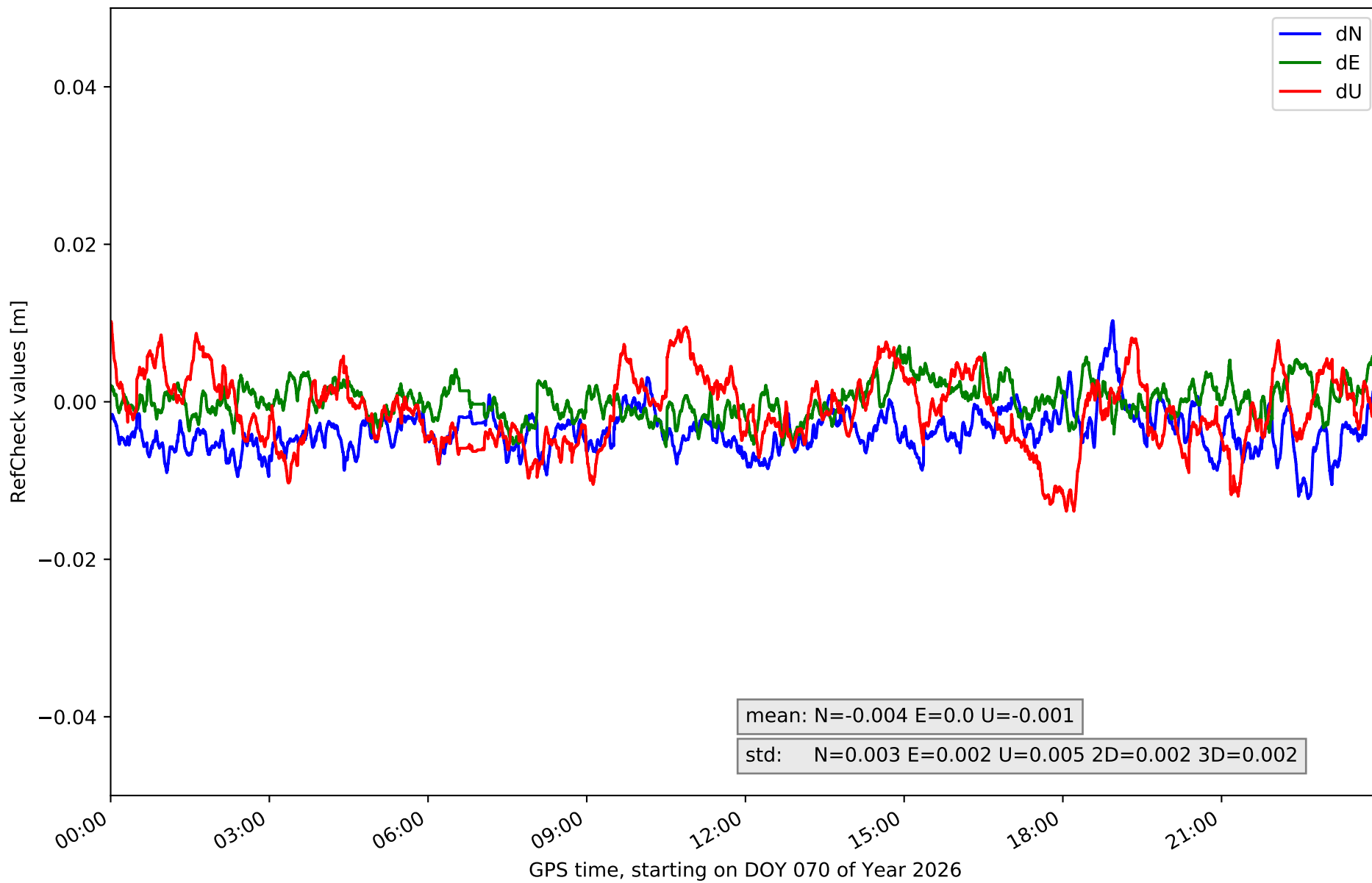
# RefCheck for station PASA in network NET8



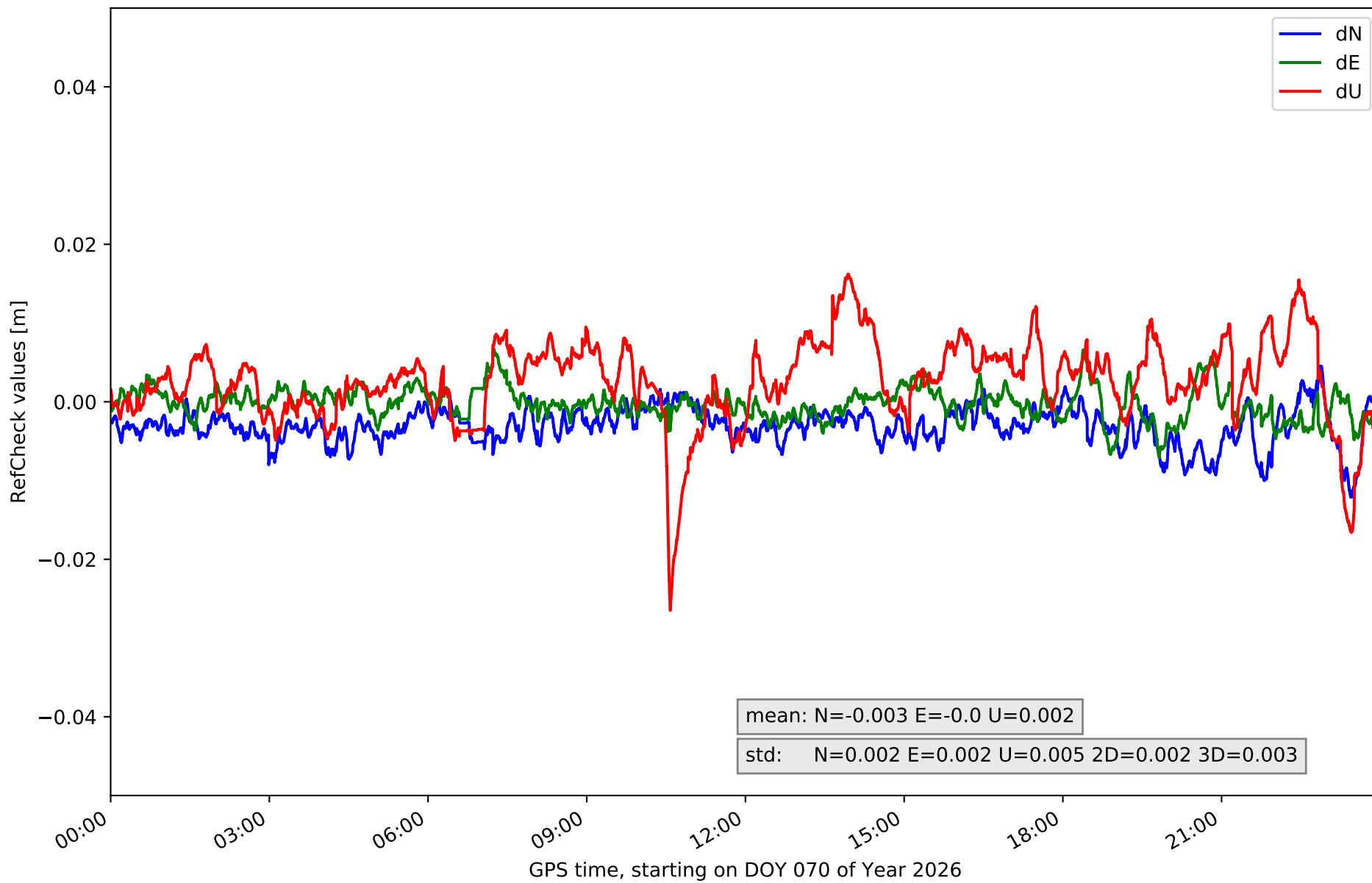
# RefCheck for station SOPU in network NET8



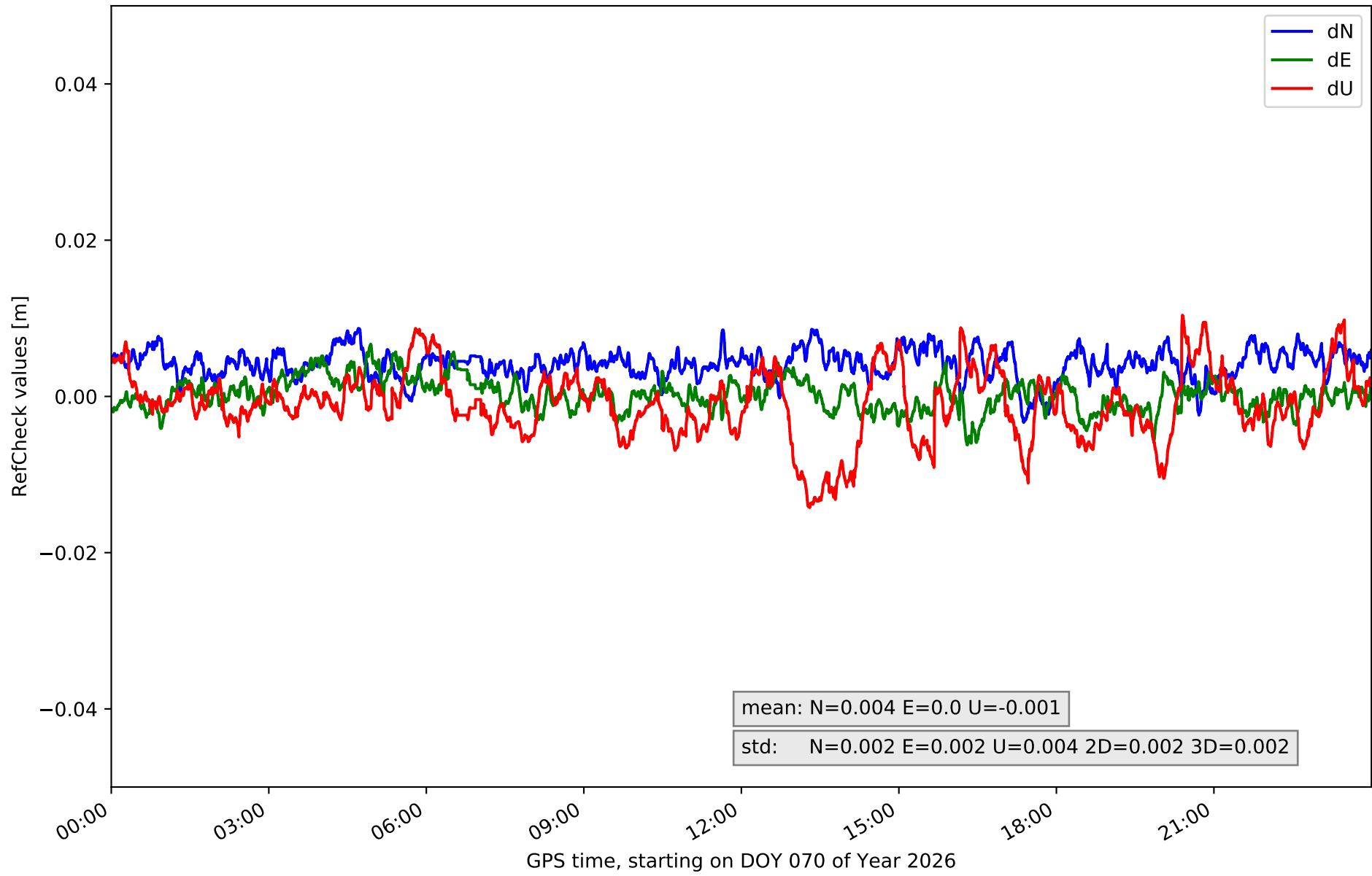
# RefCheck for station TAFE in network NET8



### RefCheck for station UPNA in network NET8



# RefCheck for station VITO in network NET8



## RefCheck values for network NET8

Station	Nmin	Nmax	Nstd	Emin	Emax	Estd	Umin	Umax	Ustd	std2D	std3D	#2D > 0.01	% 2D > 0.01	#3D > 0.02	% 3D > 0.02
ALDA	-0.003	0.013	0.002	-0.006	0.006	0.002	-0.014	0.013	0.005	0.002	0.003	1157	1.7	0	0.0
ALSA	-0.015	0.005	0.003	-0.009	0.005	0.002	-0.015	0.011	0.004	0.002	0.003	1293	1.9	0	0.0
AMUR	-0.012	0.005	0.003	-0.004	0.01	0.002	-0.022	0.014	0.006	0.002	0.003	1568	2.3	678	1.0
ELGE	-0.009	0.007	0.003	-0.005	0.004	0.002	-0.007	0.025	0.006	0.002	0.005	0	0.0	1804	2.7
ESTE	-0.011	0.008	0.003	-0.008	0.007	0.002	-0.015	0.019	0.006	0.002	0.004	443	0.7	0	0.0
HOND	-0.009	0.004	0.002	-0.008	0.004	0.002	-0.009	0.022	0.004	0.002	0.003	0	0.0	466	0.7
ISPS	-0.002	0.011	0.002	-0.01	0.001	0.002	-0.012	0.012	0.004	0.002	0.002	1823	2.7	0	0.0
KAST	0.002	0.015	0.002	-0.002	0.019	0.003	-0.027	0.005	0.005	0.002	0.003	63693	95.0	7566	11.3
LEIT	-0.011	0.009	0.002	-0.006	0.009	0.002	-0.018	0.02	0.006	0.002	0.004	152	0.2	570	0.9
MIBR	-0.009	0.01	0.003	-0.03	0.005	0.004	-0.012	0.019	0.005	0.003	0.004	2931	4.4	1058	1.6
ORON	-0.009	0.003	0.002	-0.006	0.007	0.002	-0.016	0.014	0.006	0.002	0.003	0	0.0	0	0.0
PASA	-0.006	0.005	0.002	-0.008	0.004	0.002	-0.026	0.002	0.004	0.001	0.004	0	0.0	1943	2.9
SOPU	-0.007	0.01	0.003	-0.015	0.005	0.003	-0.018	0.016	0.007	0.003	0.004	3936	5.9	0	0.0
TAFA	-0.012	0.01	0.003	-0.006	0.007	0.002	-0.014	0.01	0.005	0.002	0.002	1114	1.7	0	0.0
UPNA	-0.012	0.004	0.002	-0.007	0.007	0.002	-0.026	0.016	0.005	0.002	0.003	863	1.3	459	0.7
VITO	-0.003	0.009	0.002	-0.006	0.007	0.002	-0.014	0.01	0.004	0.002	0.002	0	0.0	0	0.0
<b>Mean</b>	<b>-0.008</b>	<b>0.008</b>	<b>0.002</b>	<b>-0.008</b>	<b>0.007</b>	<b>0.002</b>	<b>-0.017</b>	<b>0.014</b>	<b>0.005</b>	<b>0.002</b>	<b>0.003</b>	<b>4935.8</b>	<b>7.4</b>	<b>909.0</b>	<b>1.4</b>
<b>Min/Max</b>	<b>-0.015</b>	<b>0.015</b>	<b>0.003</b>	<b>-0.03</b>	<b>0.019</b>	<b>0.004</b>	<b>-0.027</b>	<b>0.025</b>	<b>0.007</b>	<b>0.003</b>	<b>0.005</b>	<b>63693</b>	<b>95.0</b>	<b>7566</b>	<b>11.3</b>

## fixing statistic for network NET8

fixing percentage of	all GNSS	G	R	E	C
using threshold 0.3	93.5	95.5	88.5	95.7	92.6
considering satellites with dual-frequency fixed	92.4	94.4	88.9	94.1	90.8
considering all signals separately	92.5	94.3	88.9	94.2	90.2