

## summary for network NET5

timeperiod chosen: from 2024-11-30-00:00:00 until 2024-11-30-23:59:59

average update rate (durations larger than 15 seconds considered as observation gap): 1.0 seconds

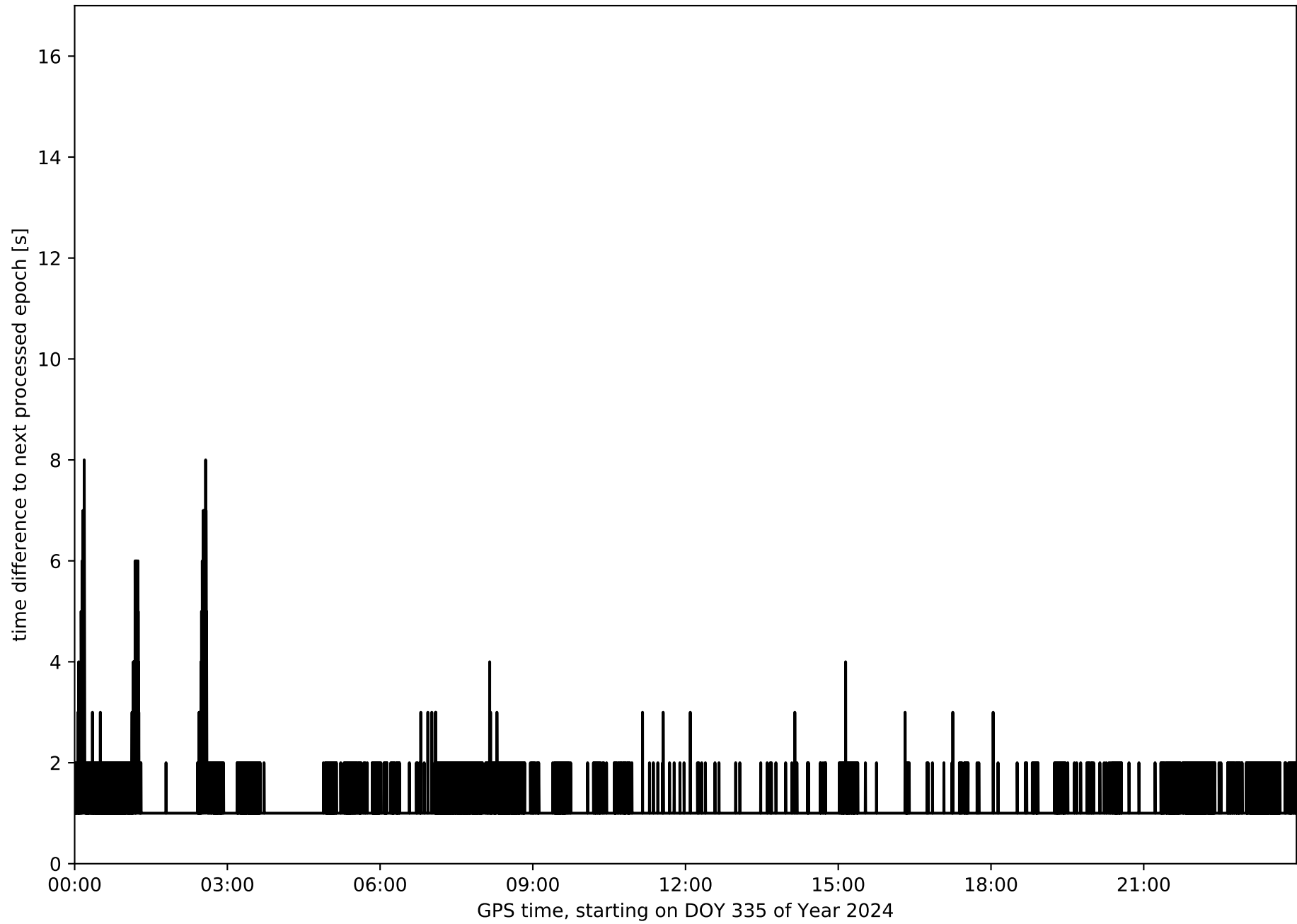
average fixing percentage with threshold set to 0.3: 92.8 percent

stations available: 11 of 11

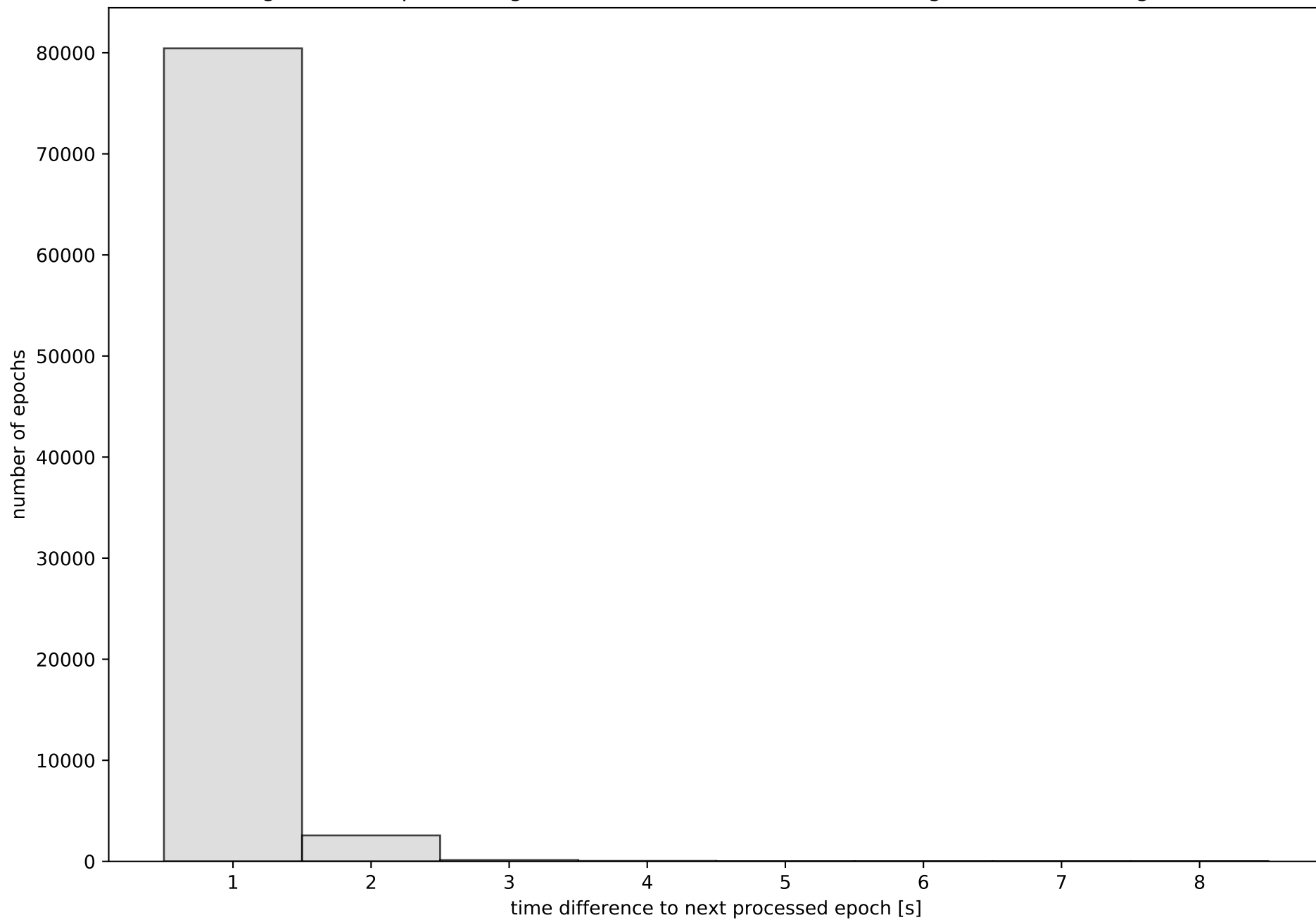
station information:

station ALMZ:	antenna: LEIAR20	LEIM	receiver: LEICA GR50	height: 1019.452
station ARDU:	antenna: LEIAR20	LEIM	receiver: LEICA GR50	height: 844.466
station BUOS:	antenna: TRM59900.00	SCIS	receiver: TRIMBLE NETR9	height: 963.896
station CALH:	antenna: GPPNULLANTENNA	NONE	receiver: LEICA GR50	height: 411.39
station CAS0:	antenna: GPPNULLANTENNA	NONE	receiver: LEICA GR30	height: 564.198
station CERV:	antenna: GPPNULLANTENNA	NONE	receiver: LEICA GR50	height: 723.317
station LERM:	antenna: TRM59900.00	SCIS	receiver: TRIMBLE NETR9	height: 926.169
station QINT:	antenna: TRM59900.00	SCIS	receiver: TRIMBLE NETR9	height: 1191.829
station SORI:	antenna: GPPNULLANTENNA	NONE	receiver: LEICA GR50	height: 1135.68
station SROM:	antenna: GPPNULLANTENNA	NONE	receiver: LEICA GR50	height: 1150.486
station VTRO:	antenna: GPPNULLANTENNA	NONE	receiver: LEICA GR50	height: 1626.177

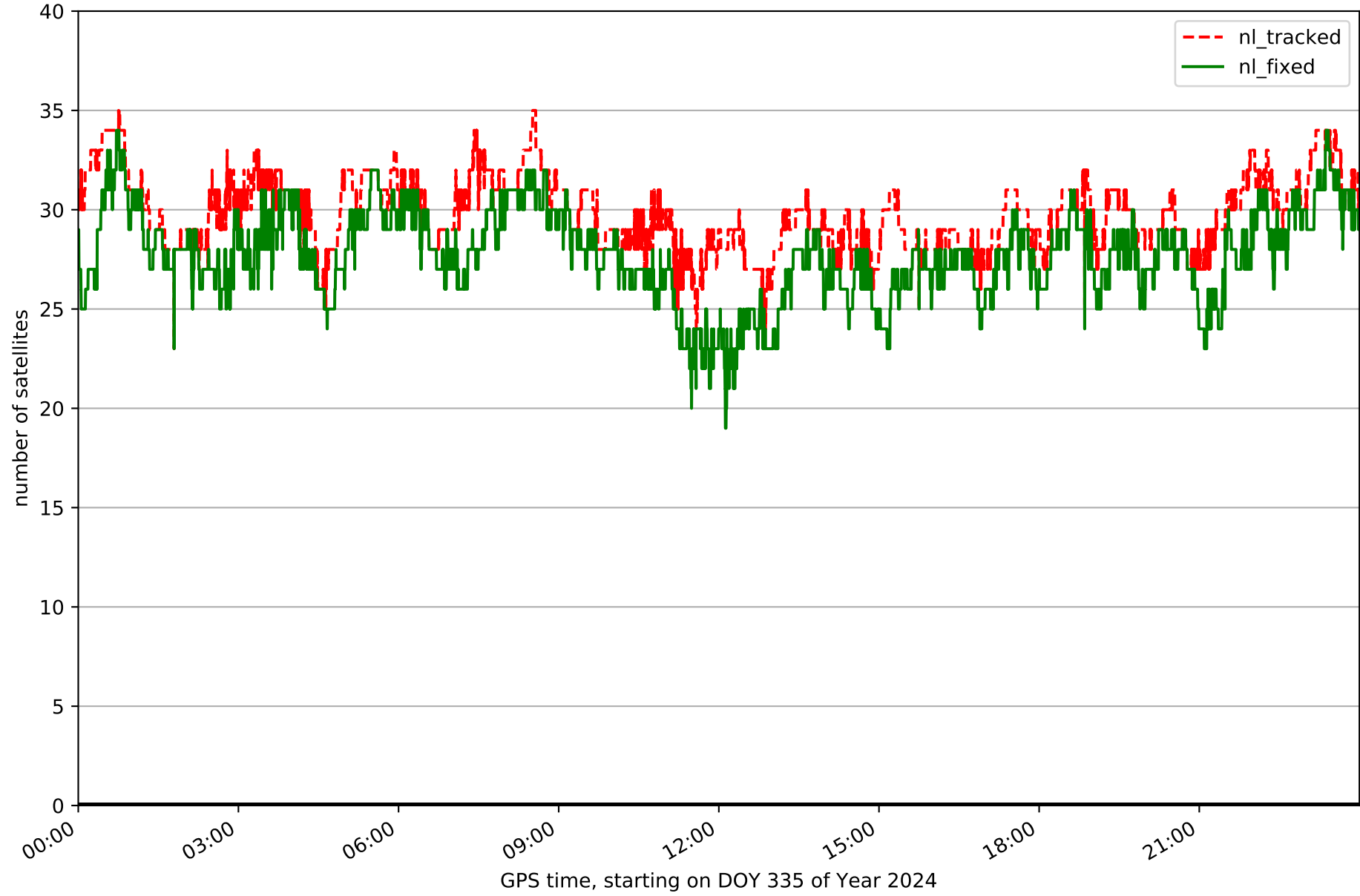
# Processing rate in network NET5



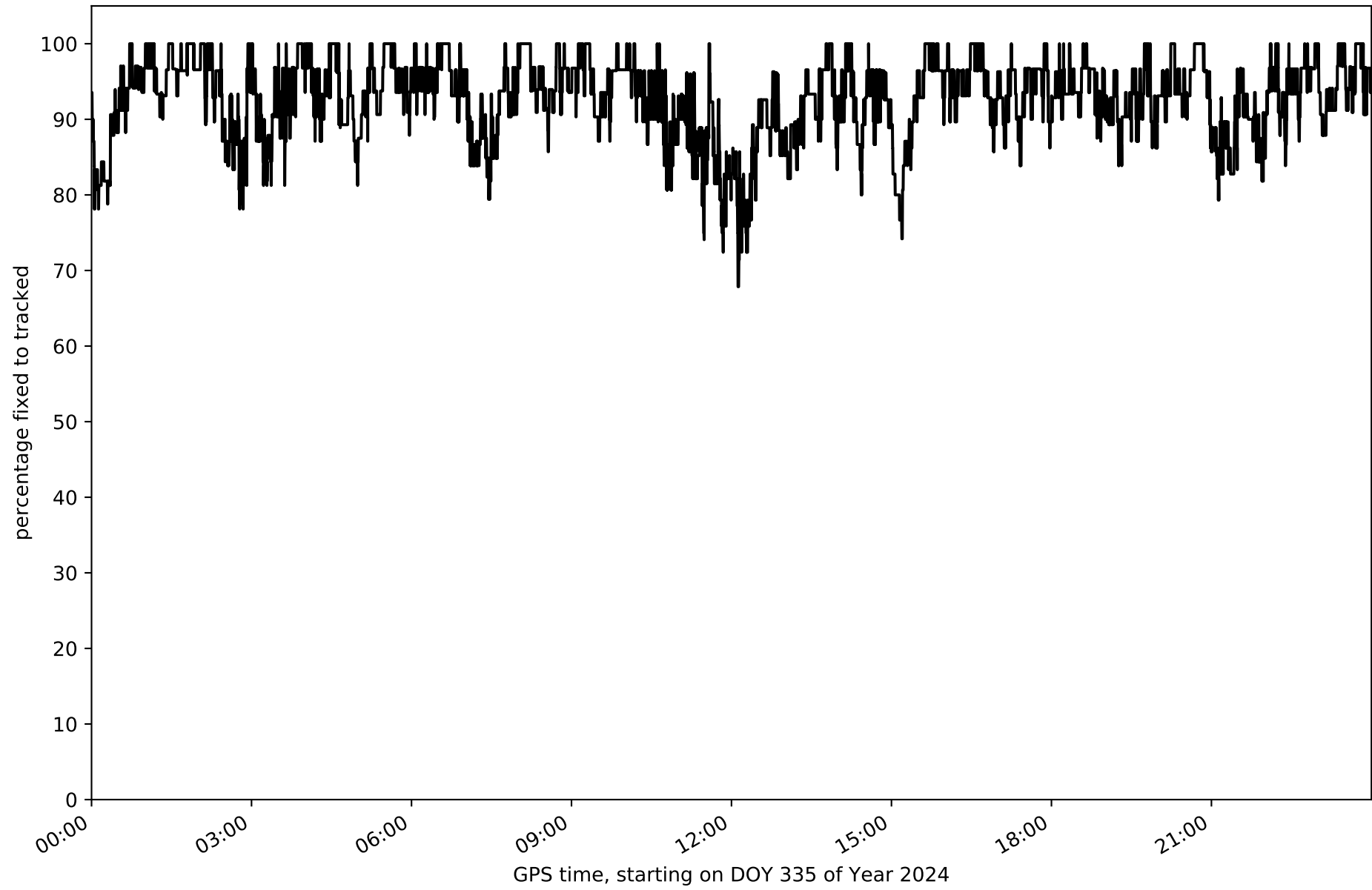
Histogram of the processing rate in network NET5 (durations larger 15 seconds neglected)



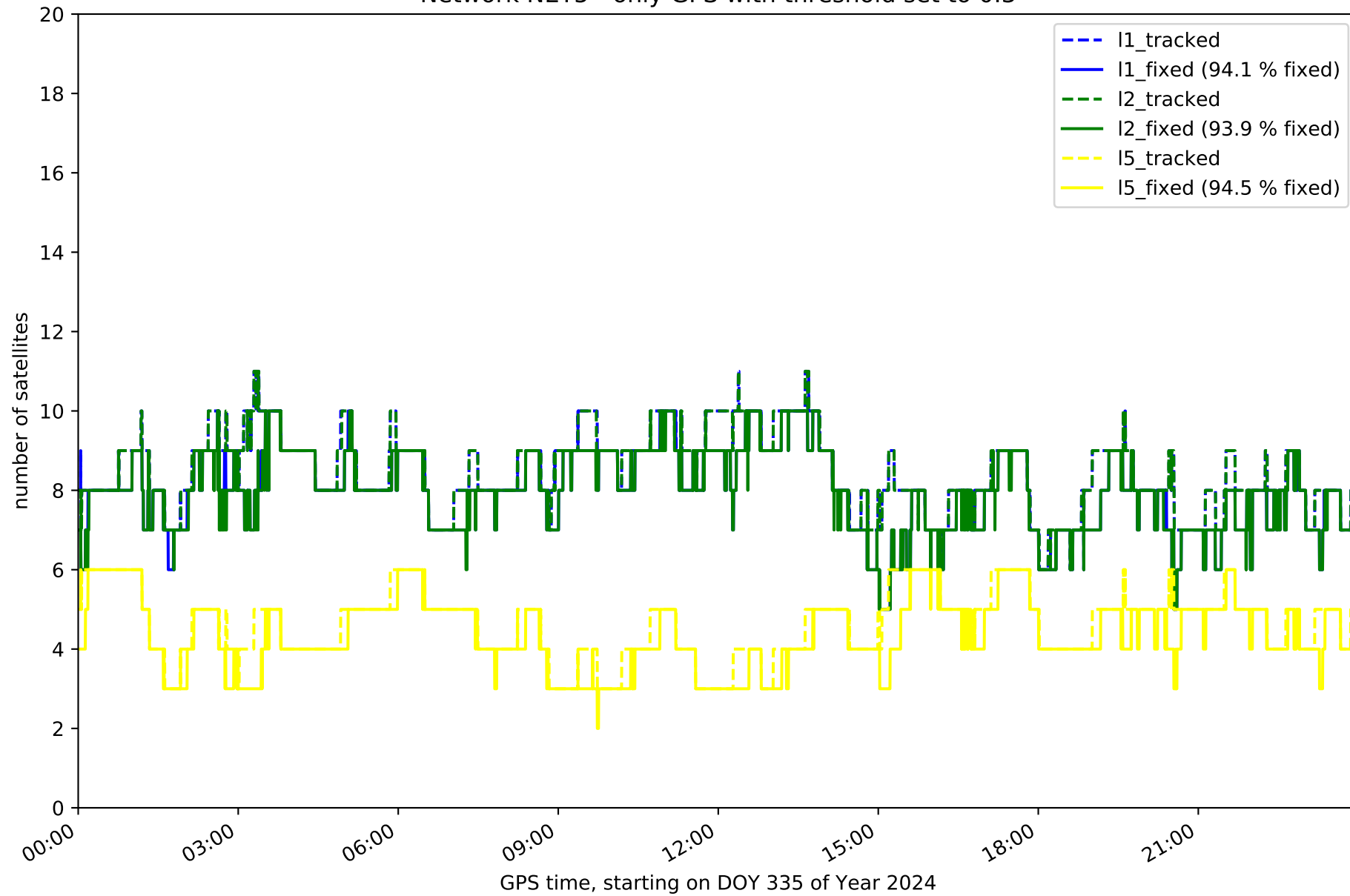
Network NET5 with threshold set to 0.3



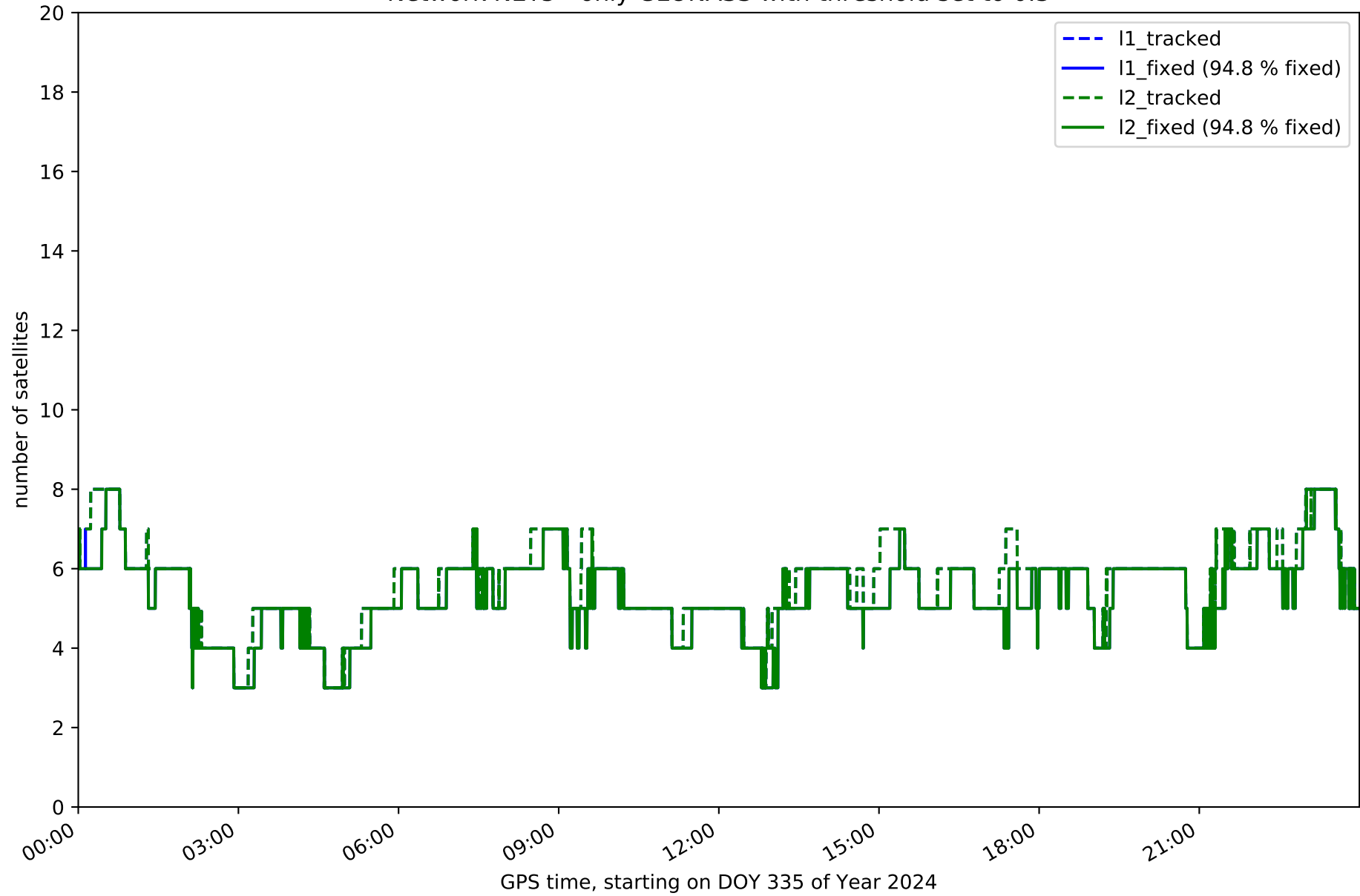
Fixing percentage of satellites in network NET5 with threshold set to 0.3



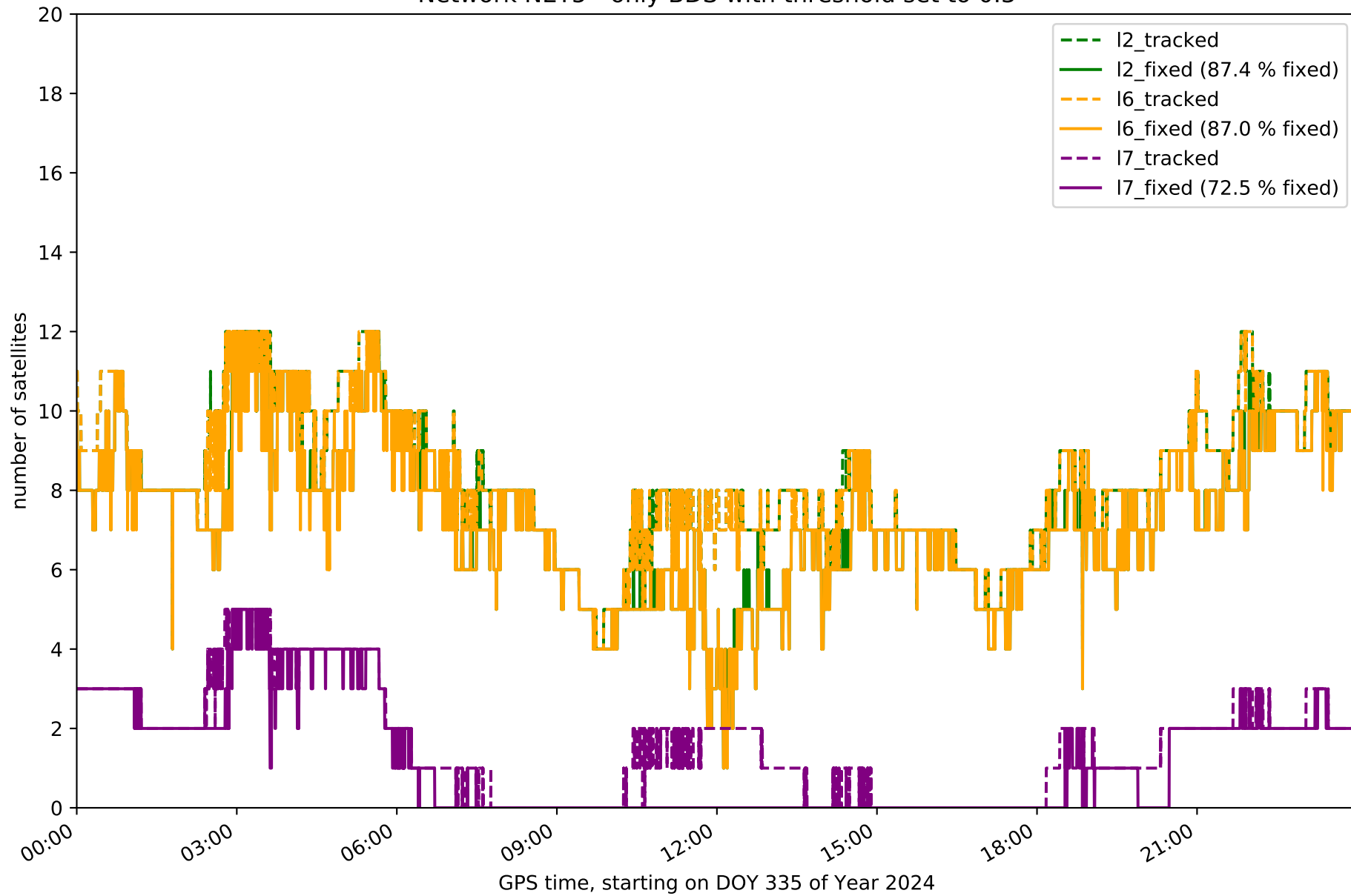
Network NET5 - only GPS with threshold set to 0.3



Network NET5 - only GLONASS with threshold set to 0.3

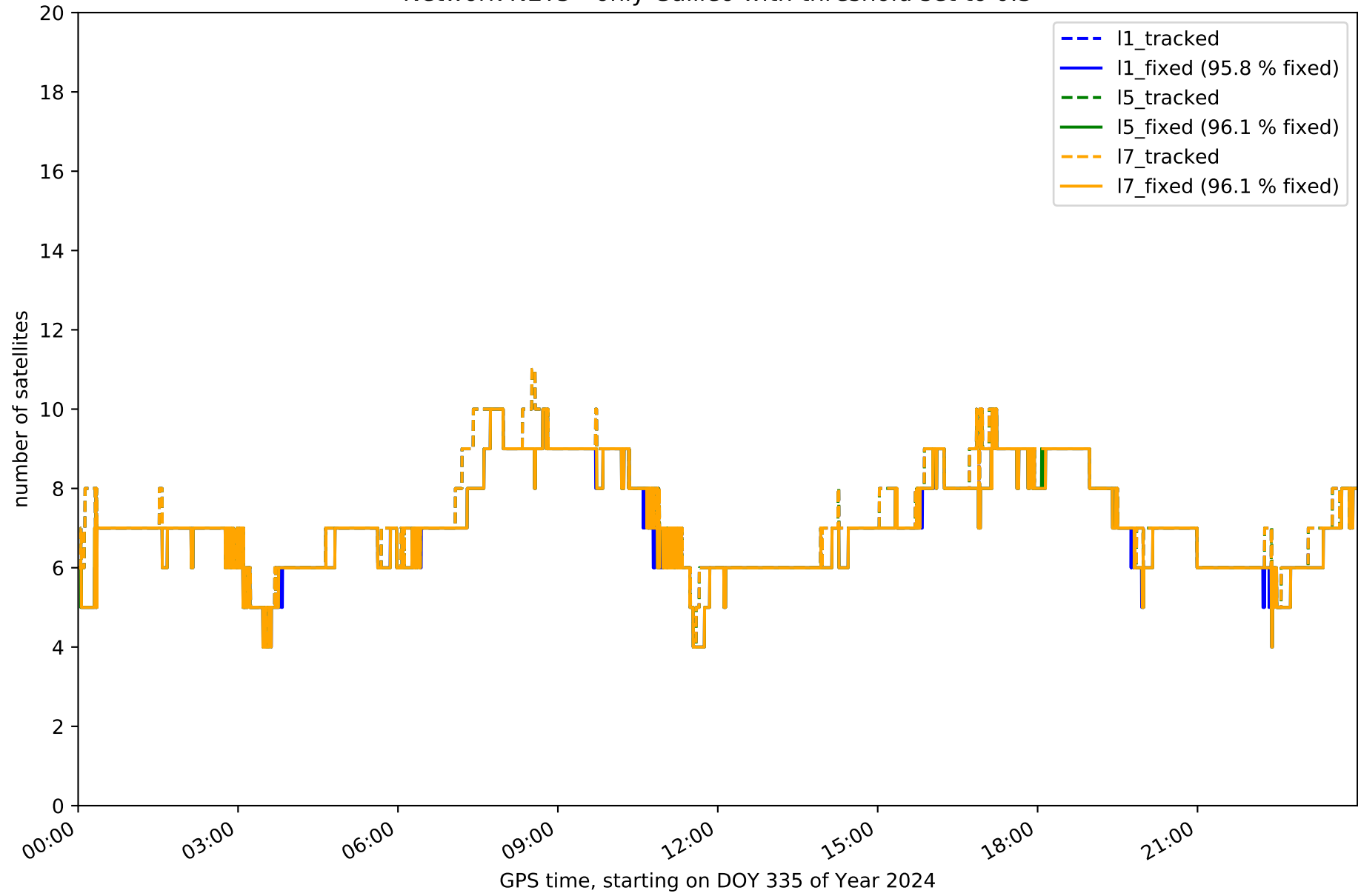


Network NET5 - only BDS with threshold set to 0.3

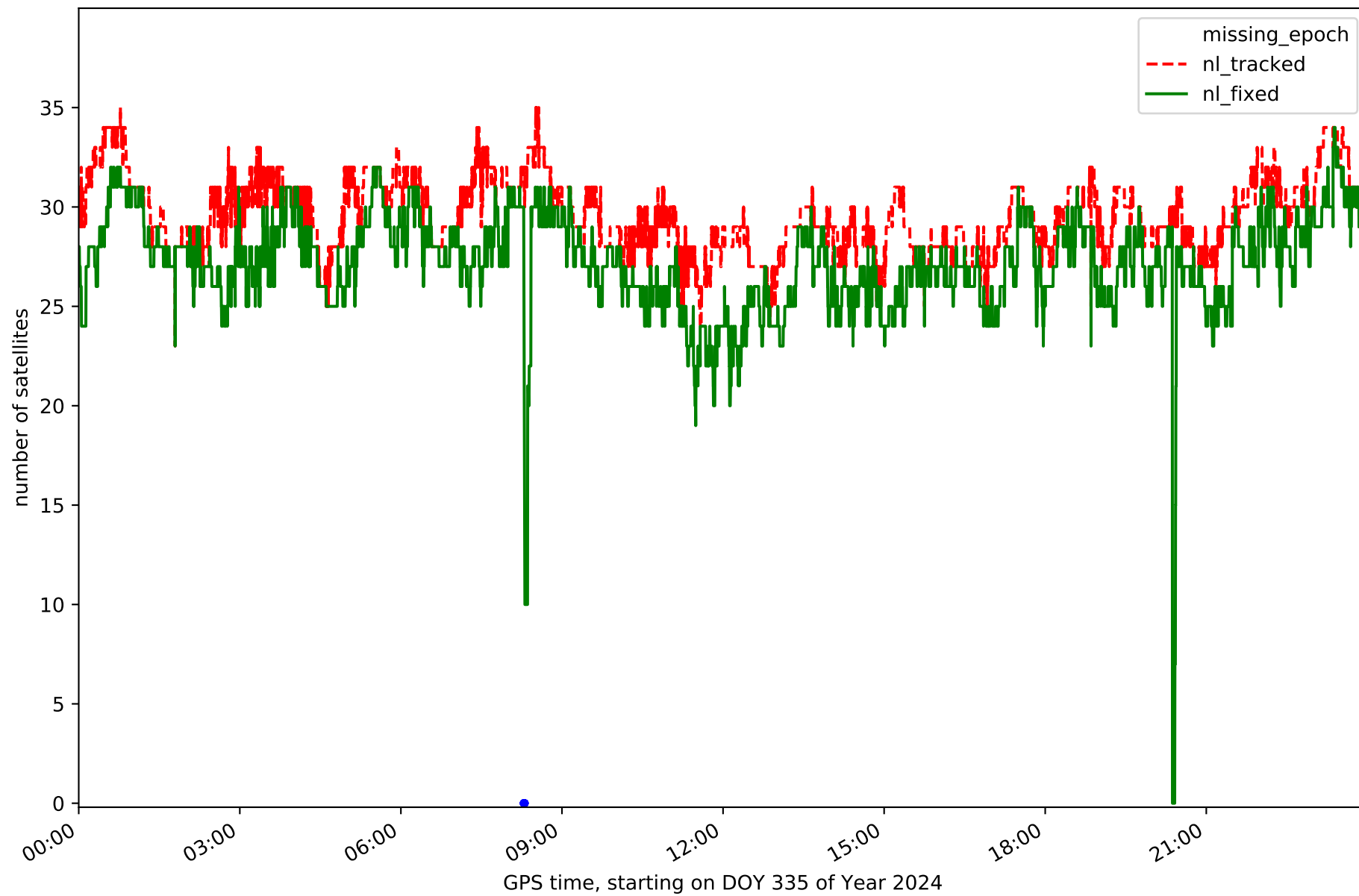




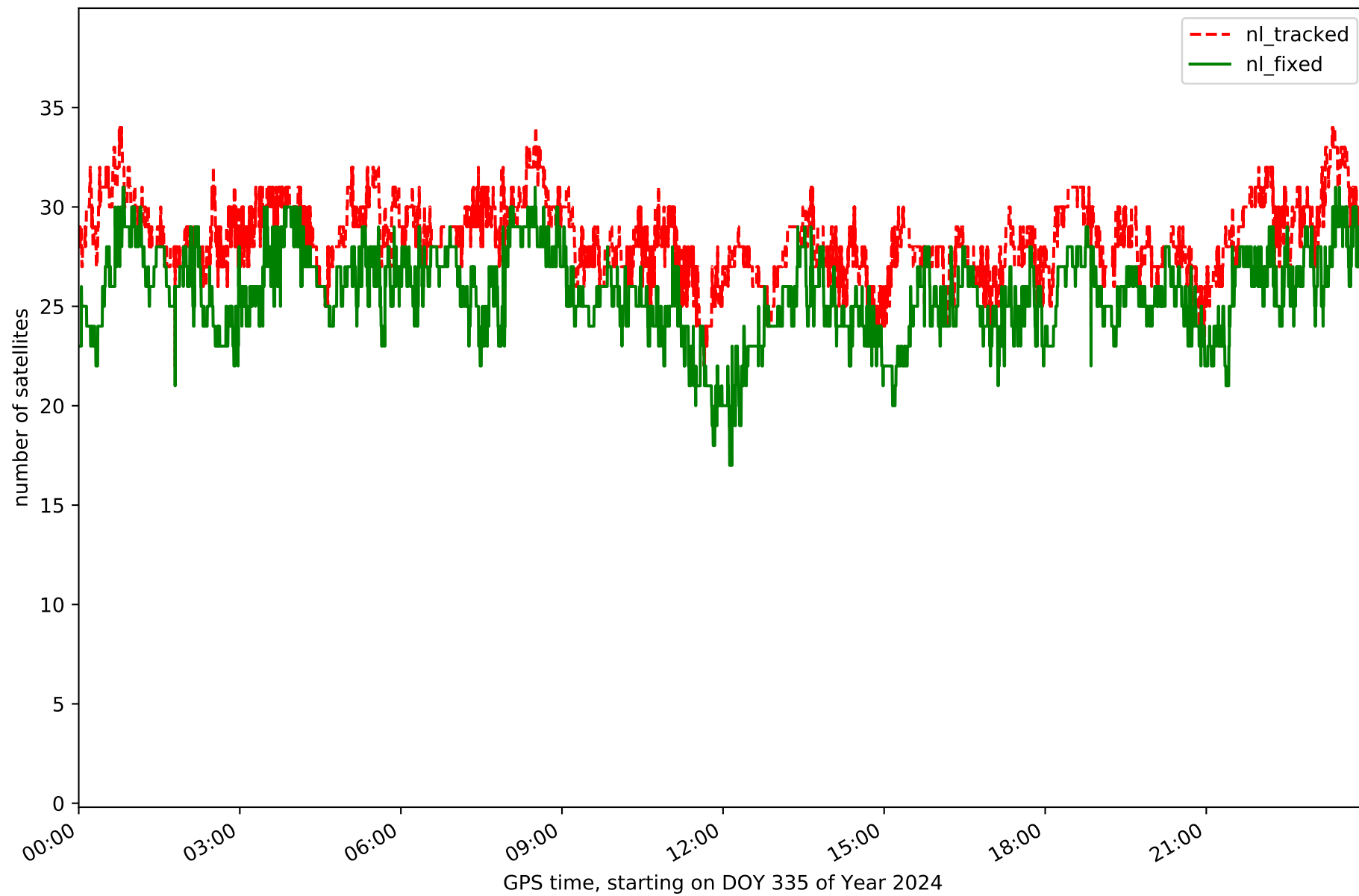
Network NET5 - only Galileo with threshold set to 0.3



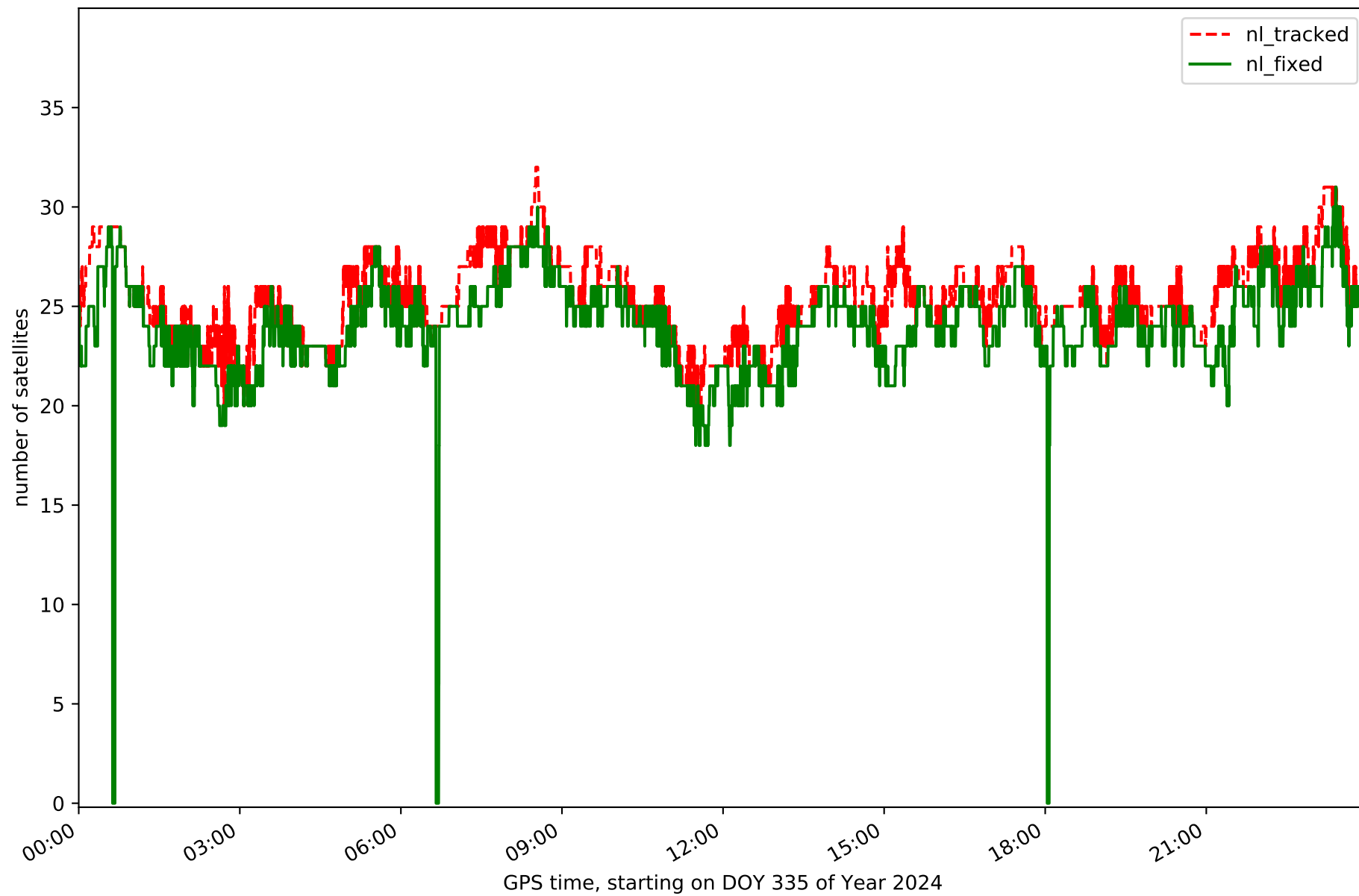
Station ALMZ in network NET5



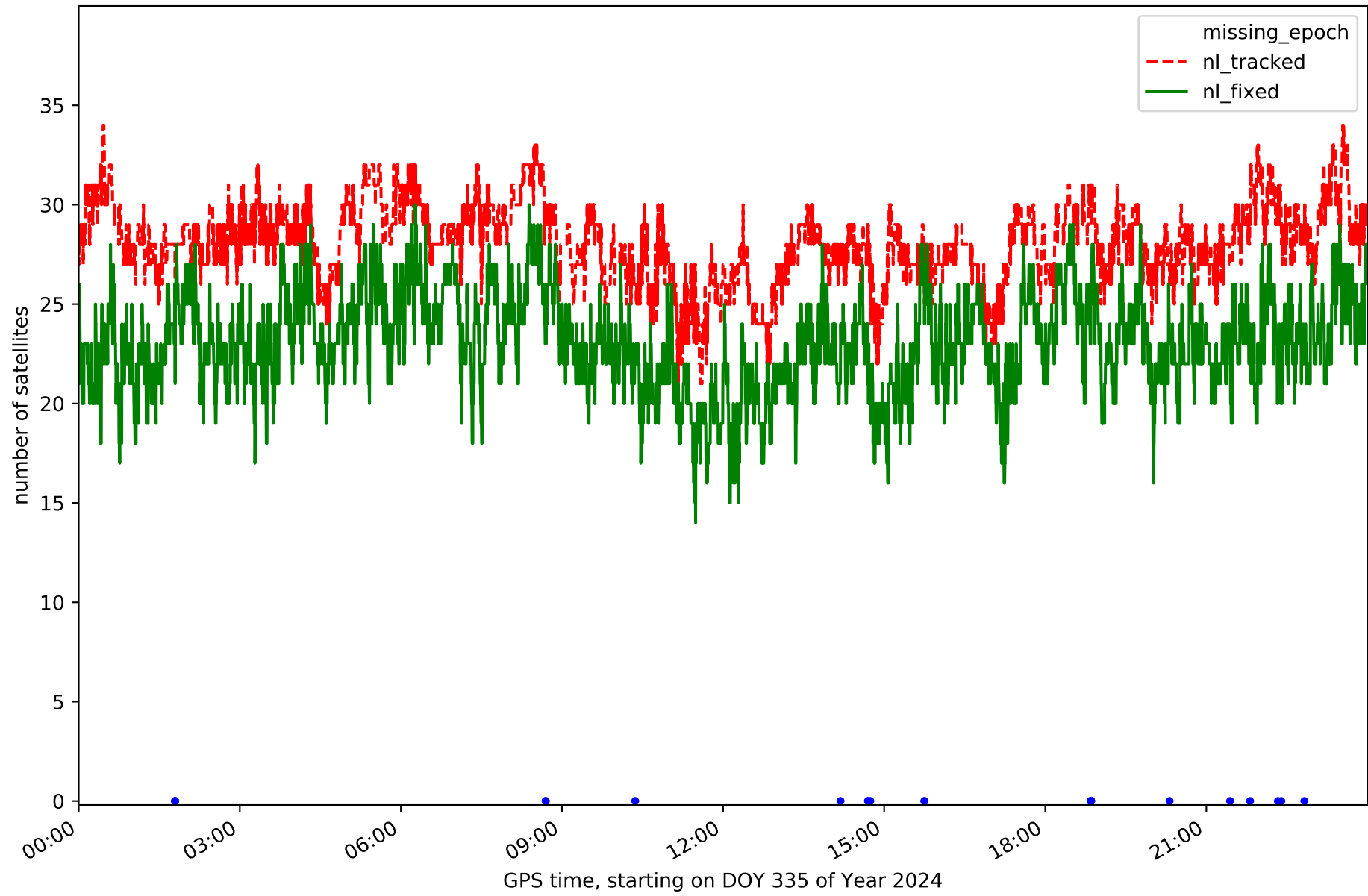
Station ARDU in network NET5



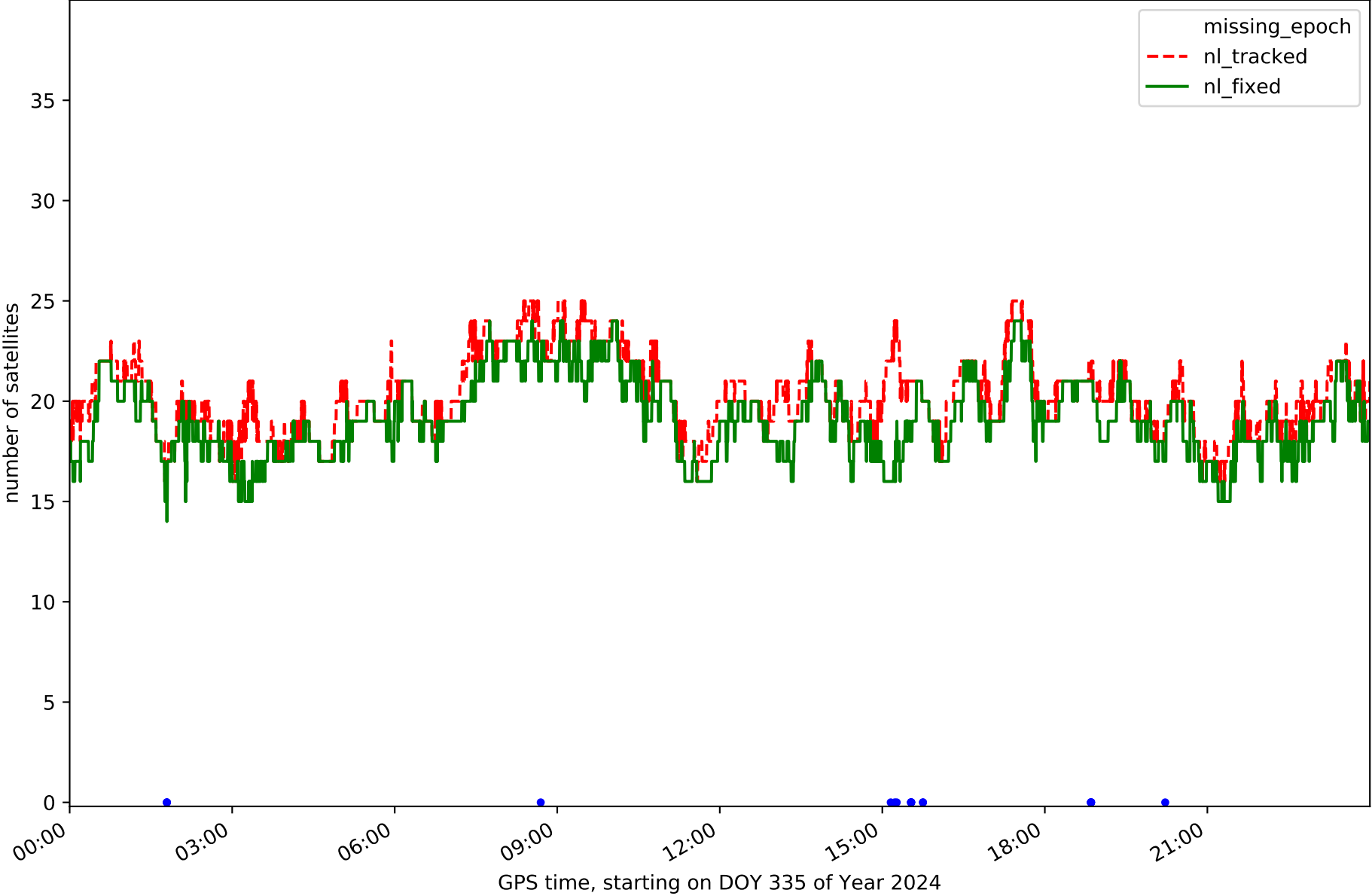
Station BUOS in network NET5



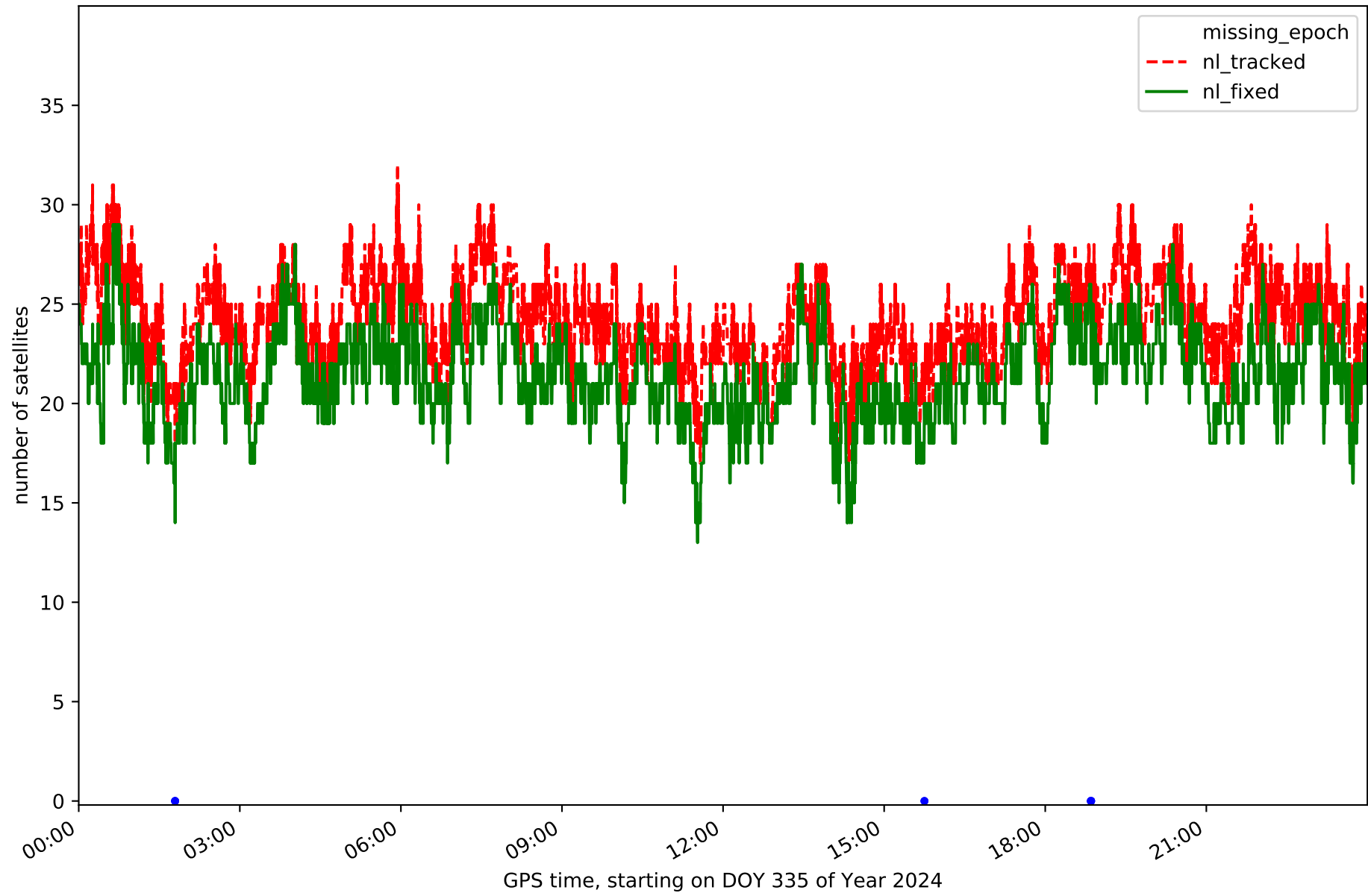
Station CALH in network NET5



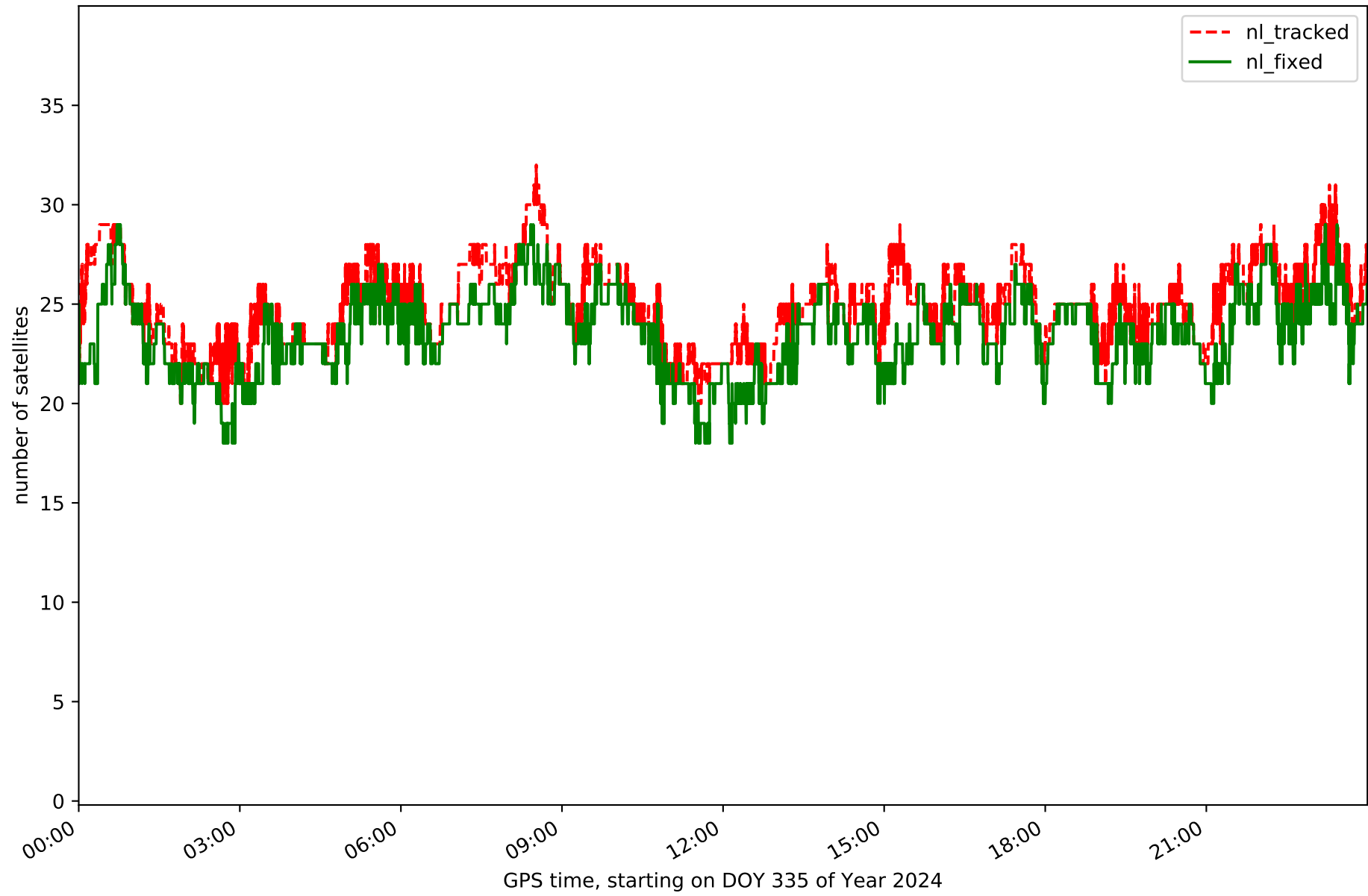
Station CAS0 in network NET5



Station CERV in network NET5

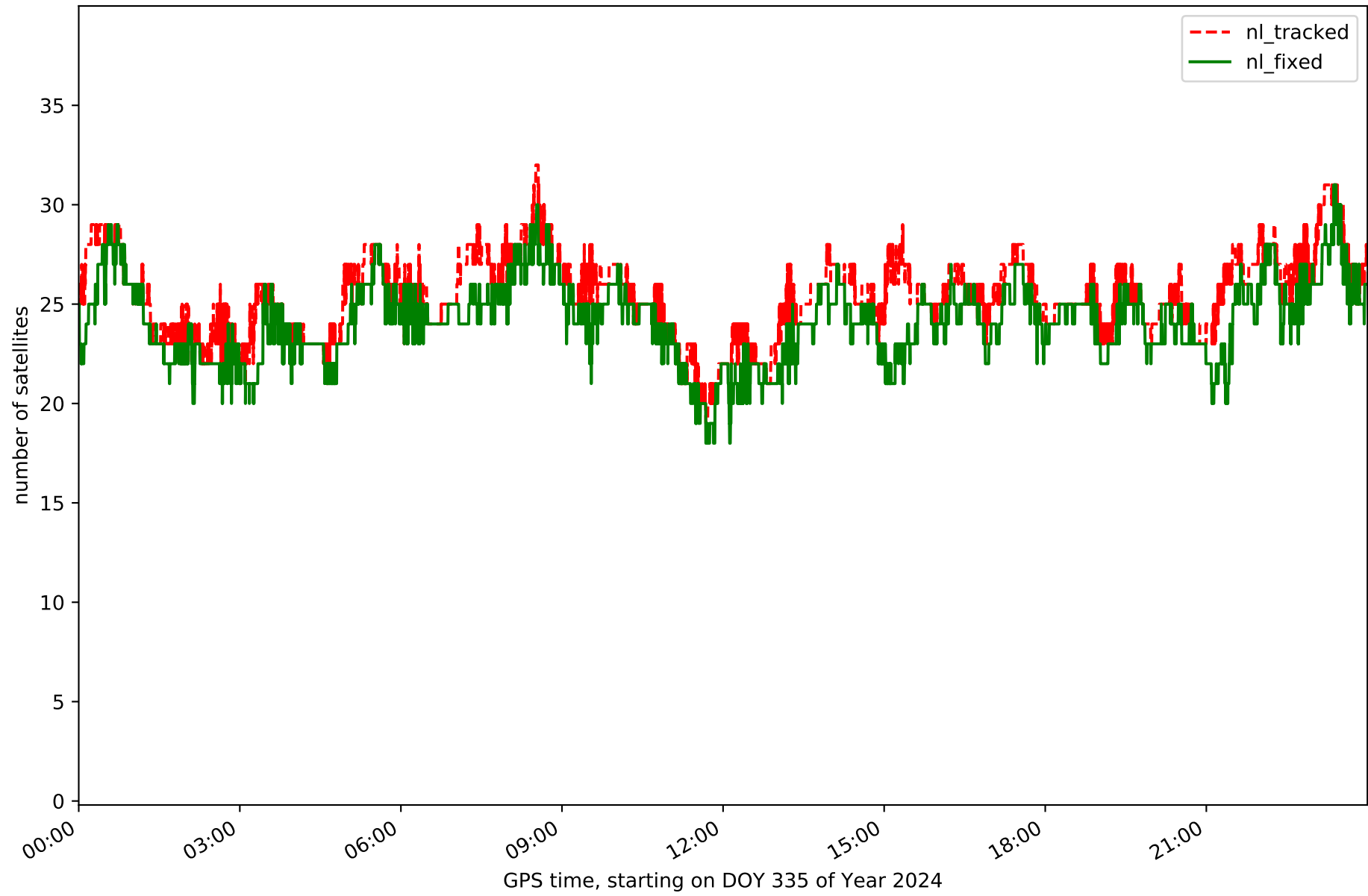


Station LERM in network NET5

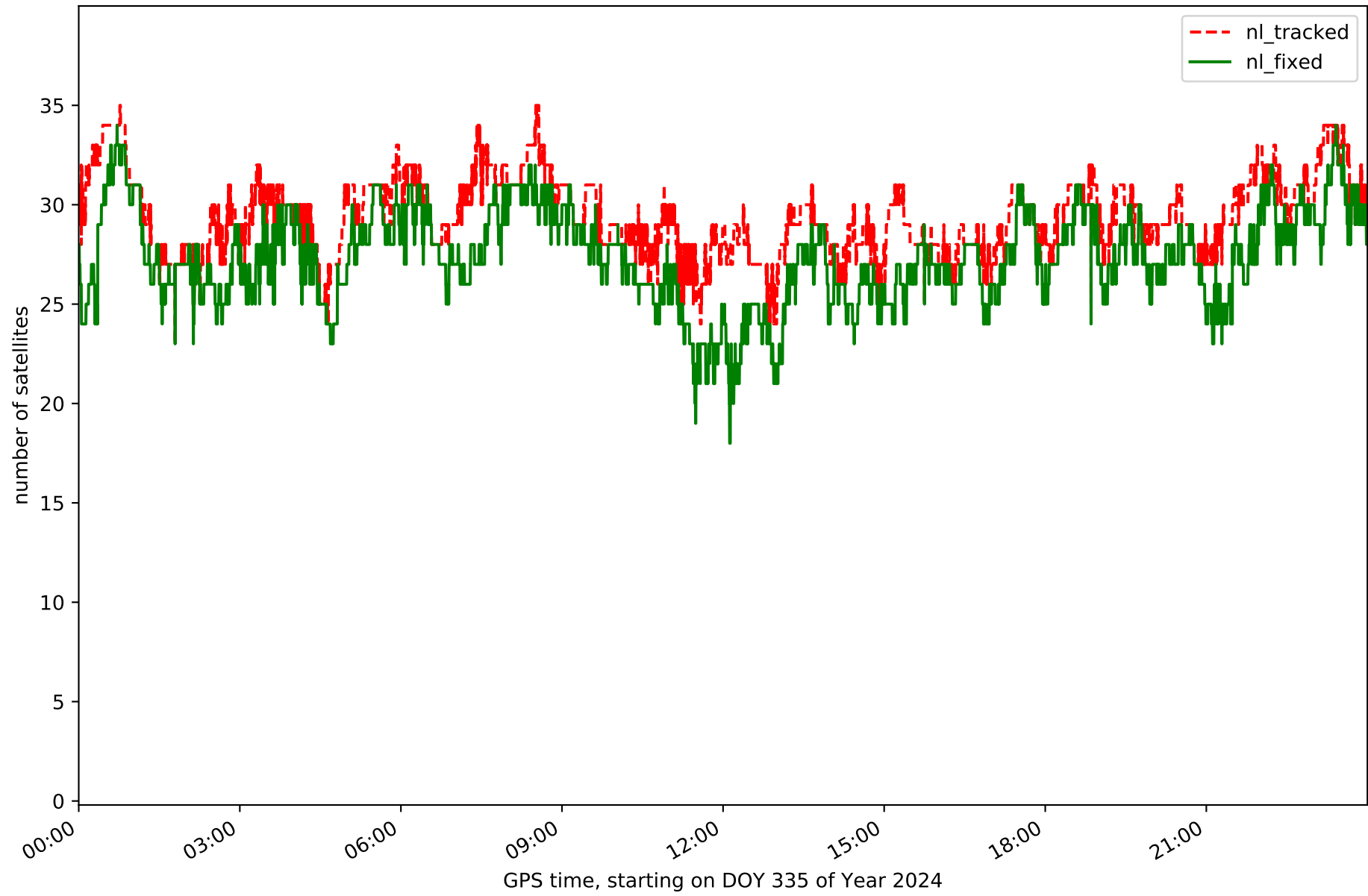




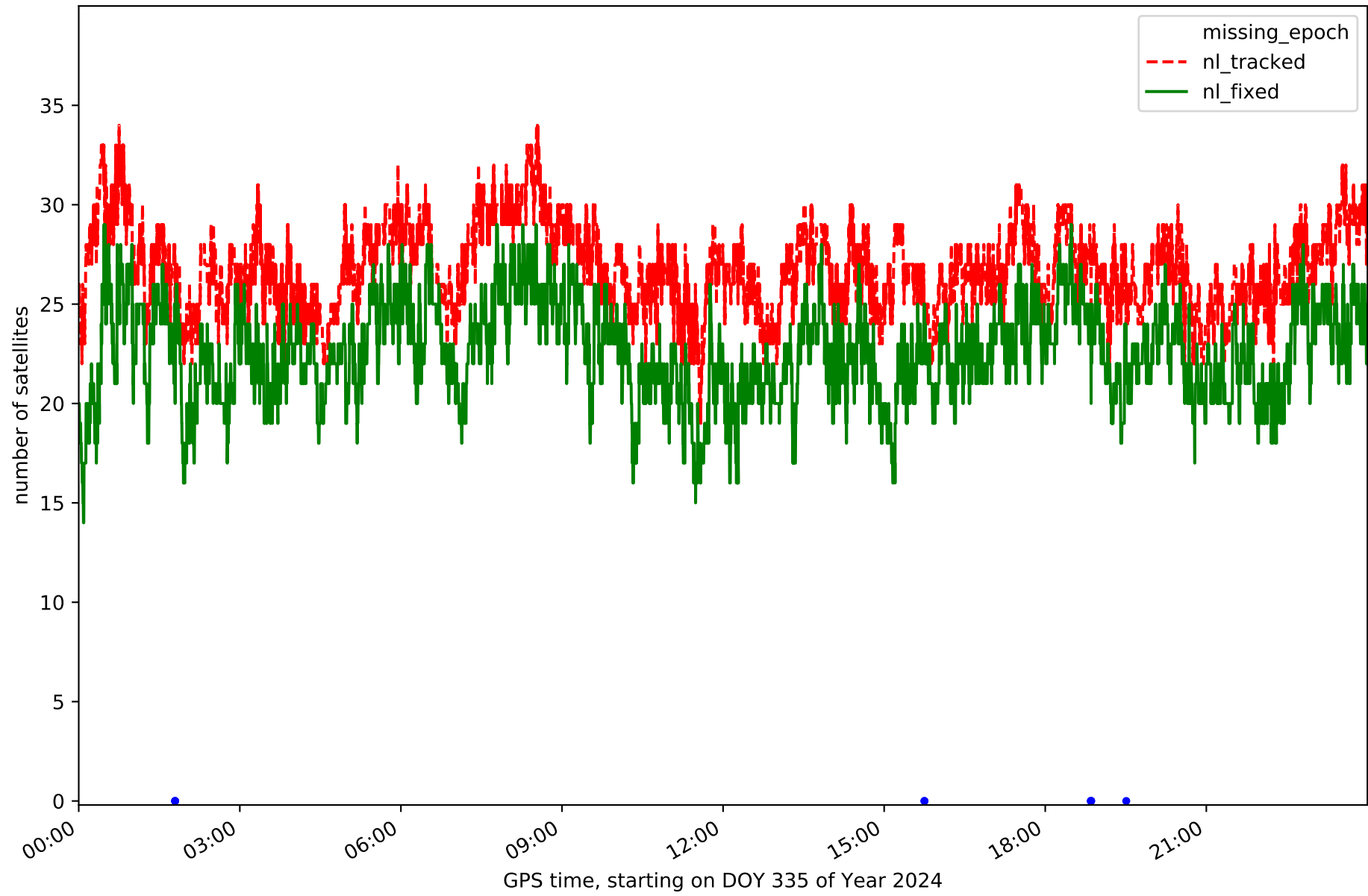
Station QINT in network NET5



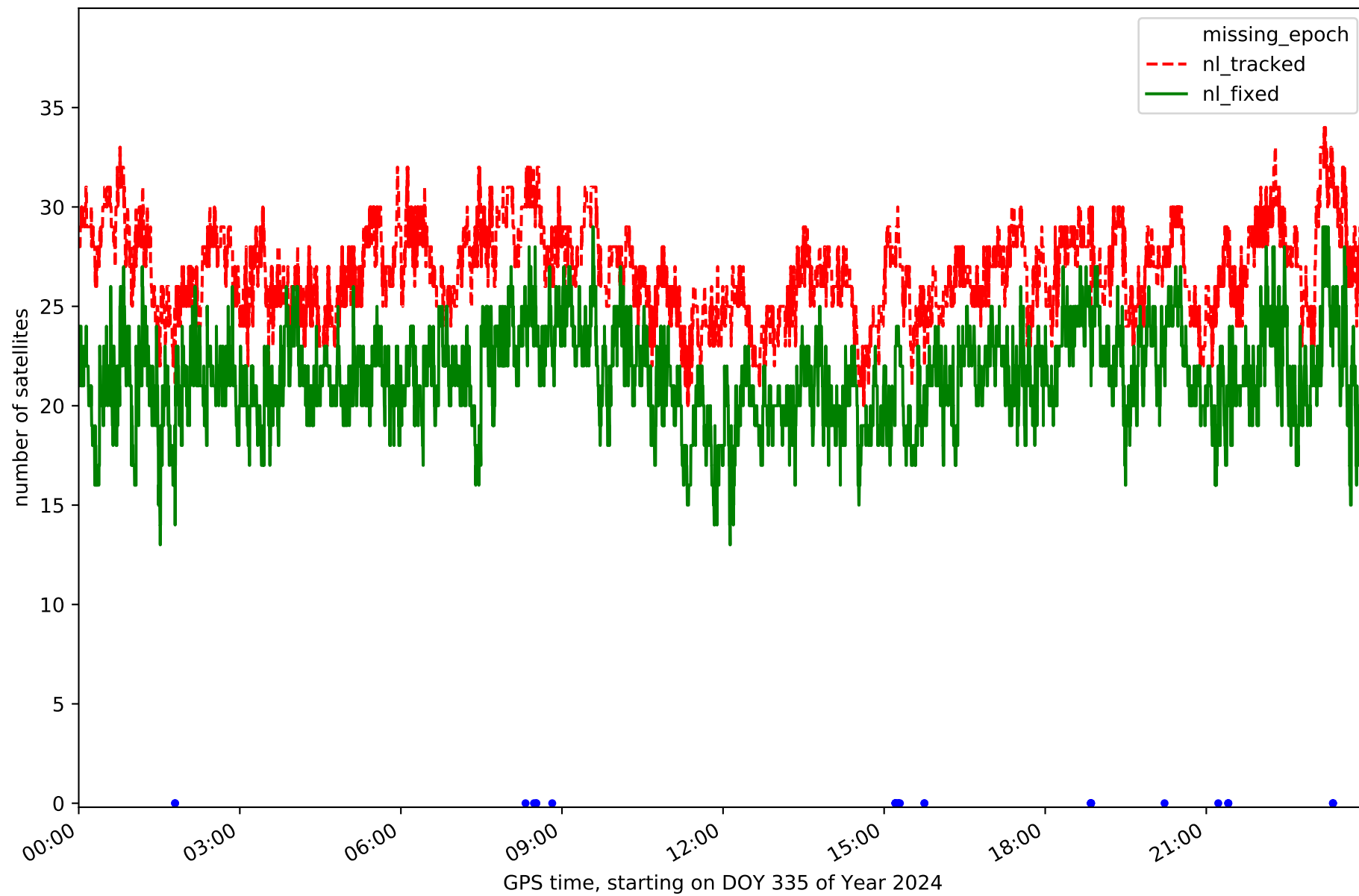
Station SORI in network NET5



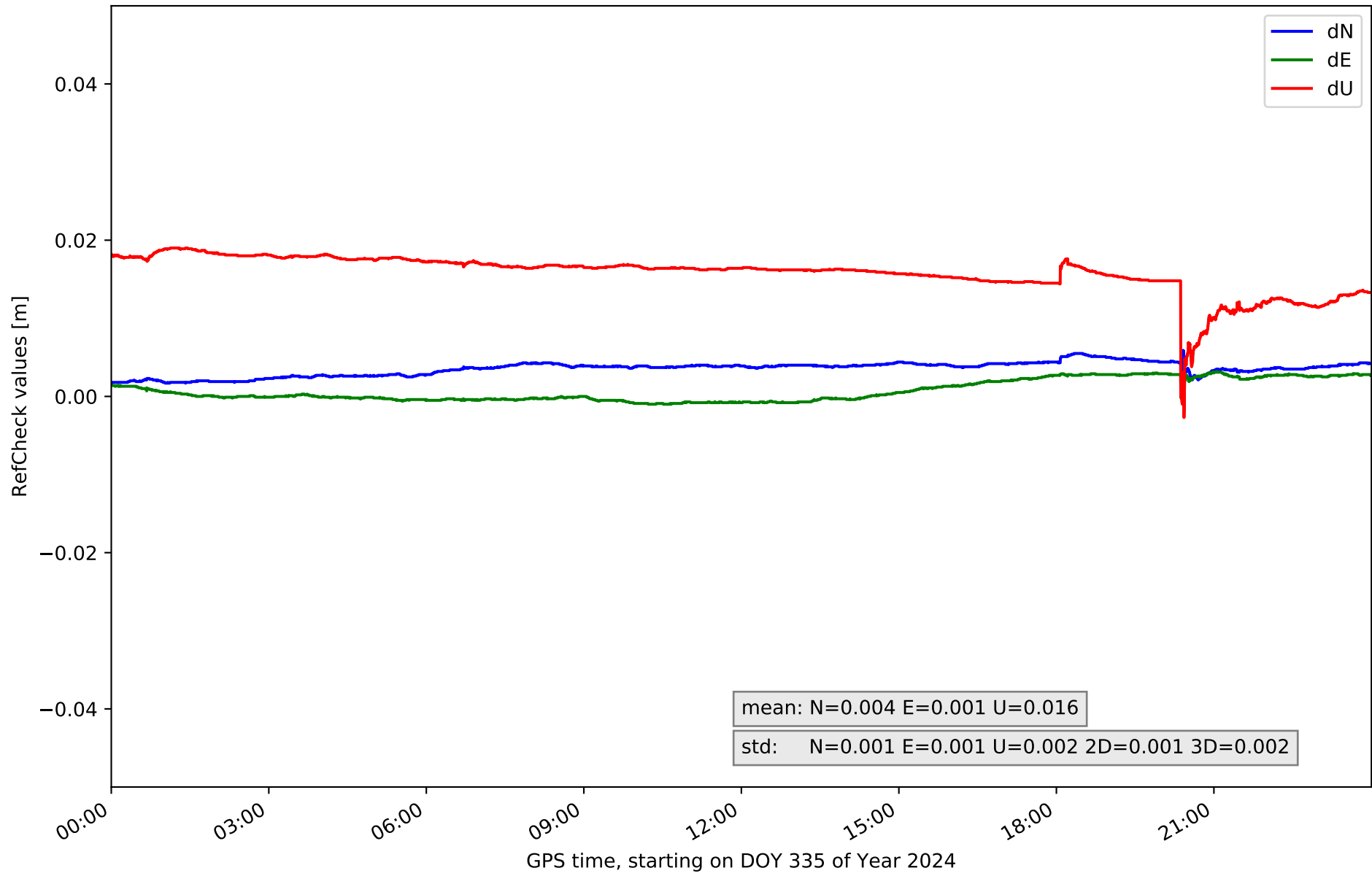
Station SROM in network NET5



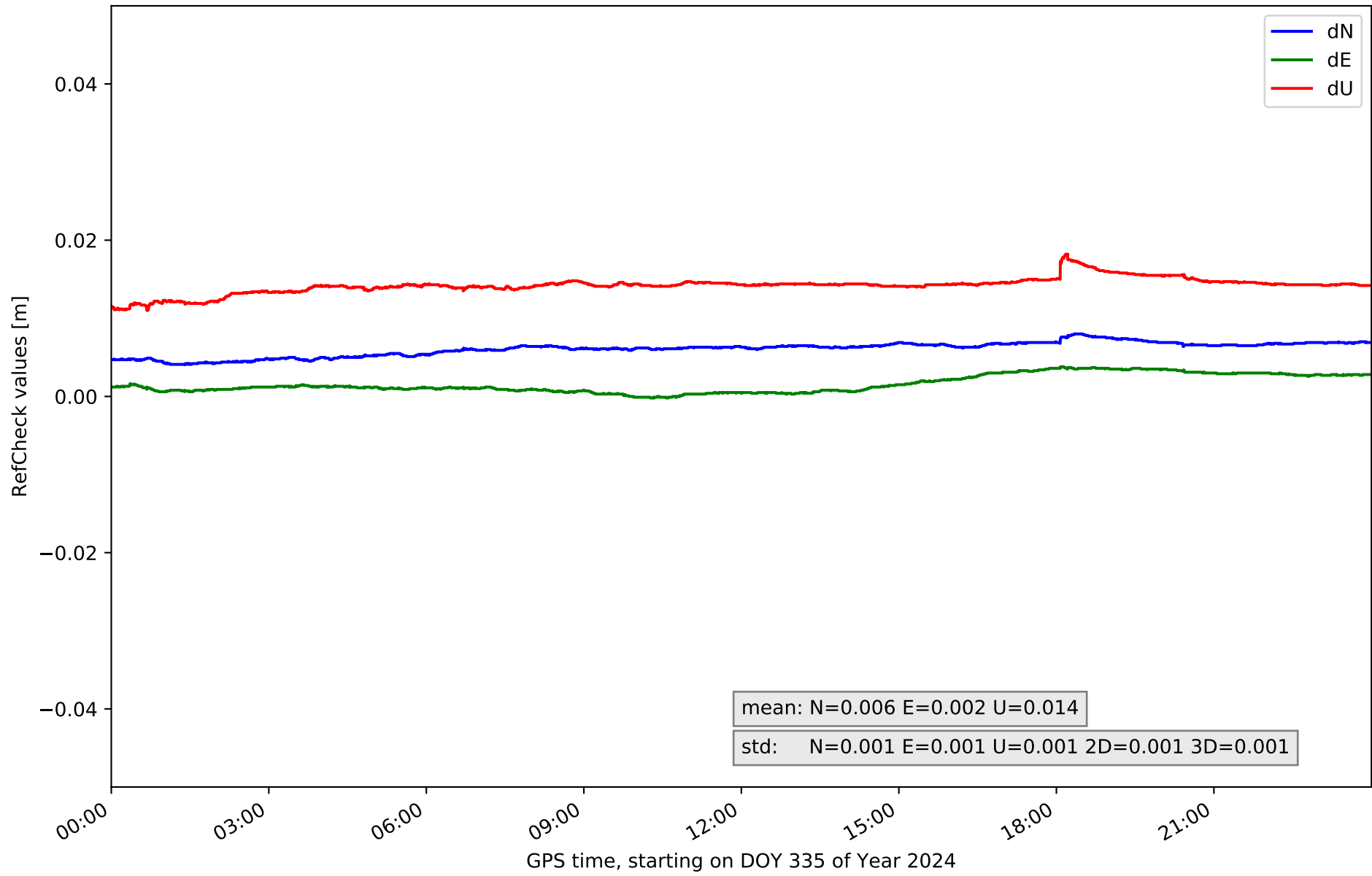
Station VTRO in network NET5



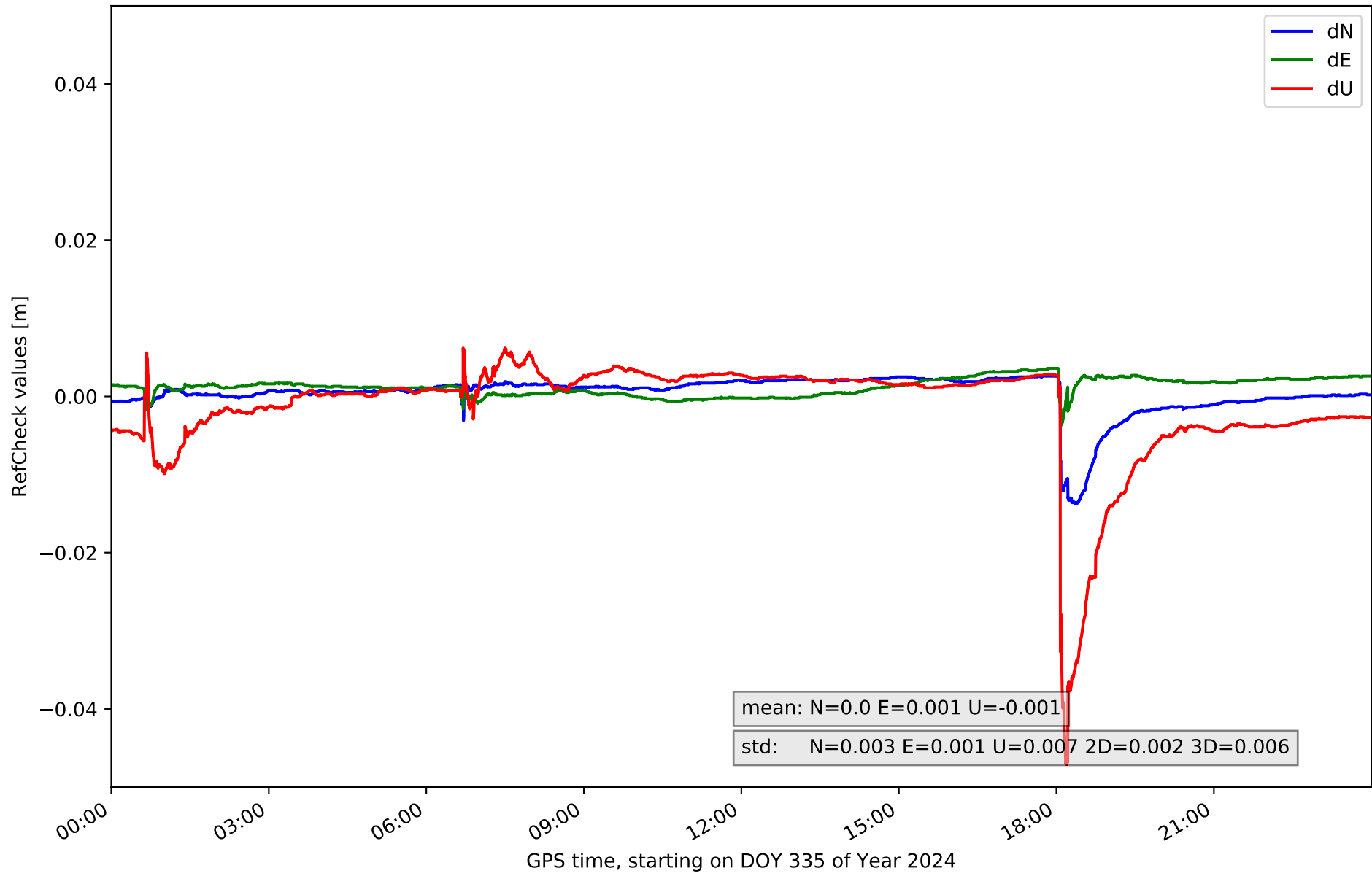
### RefCheck for station ALMZ in network NET5



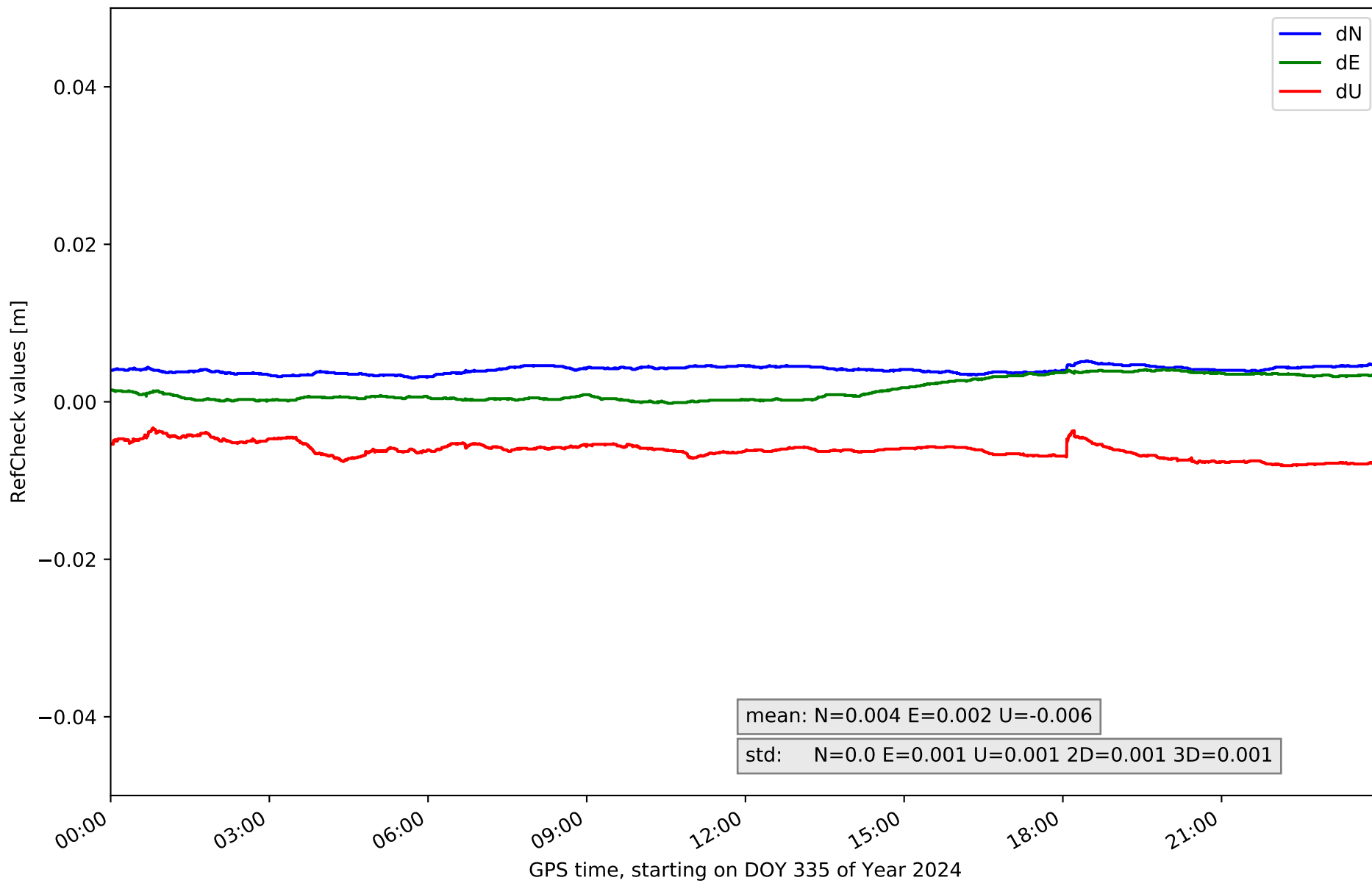
# RefCheck for station ARDU in network NET5



# RefCheck for station BUOS in network NET5

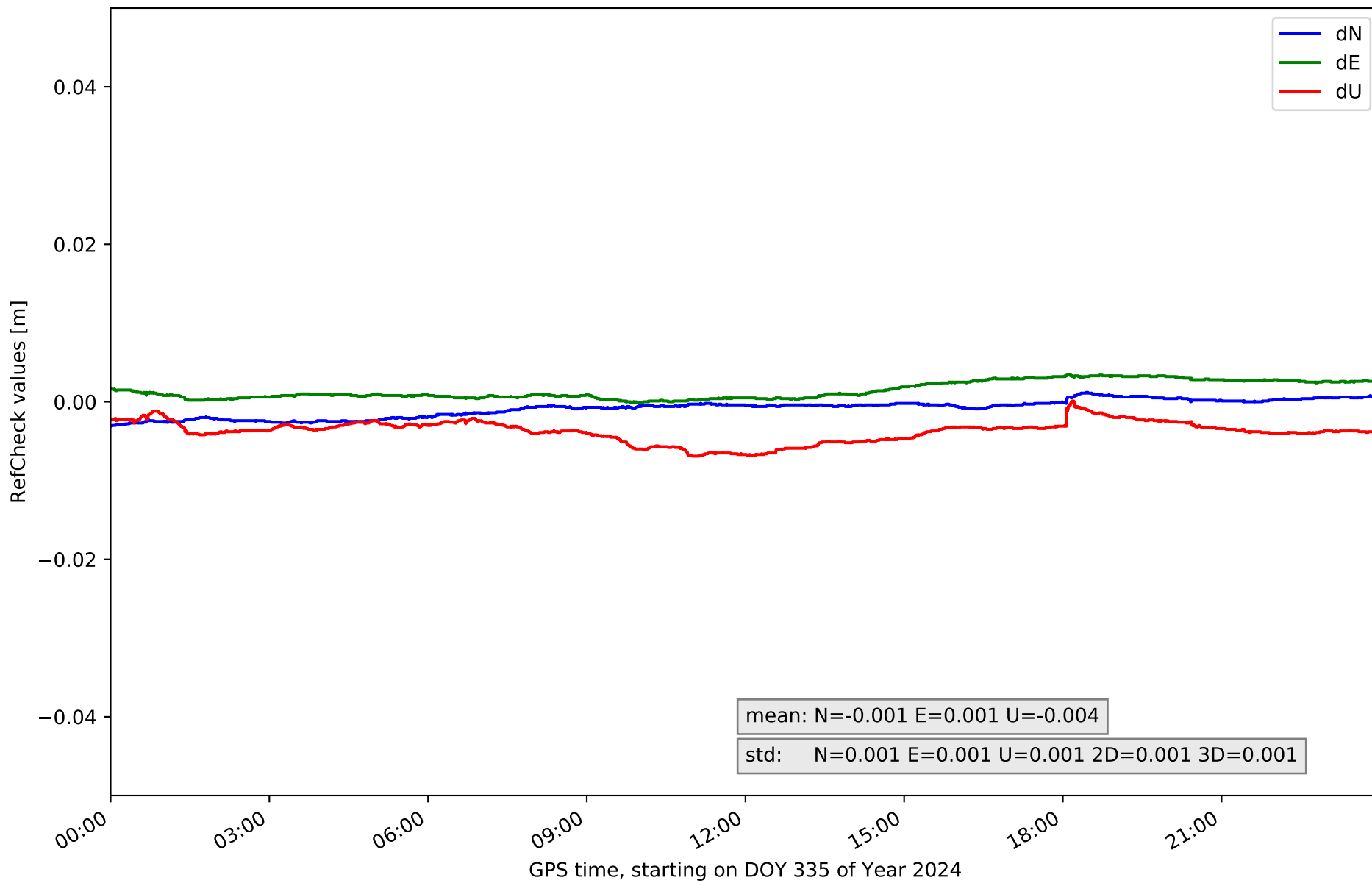


### RefCheck for station CALH in network NET5

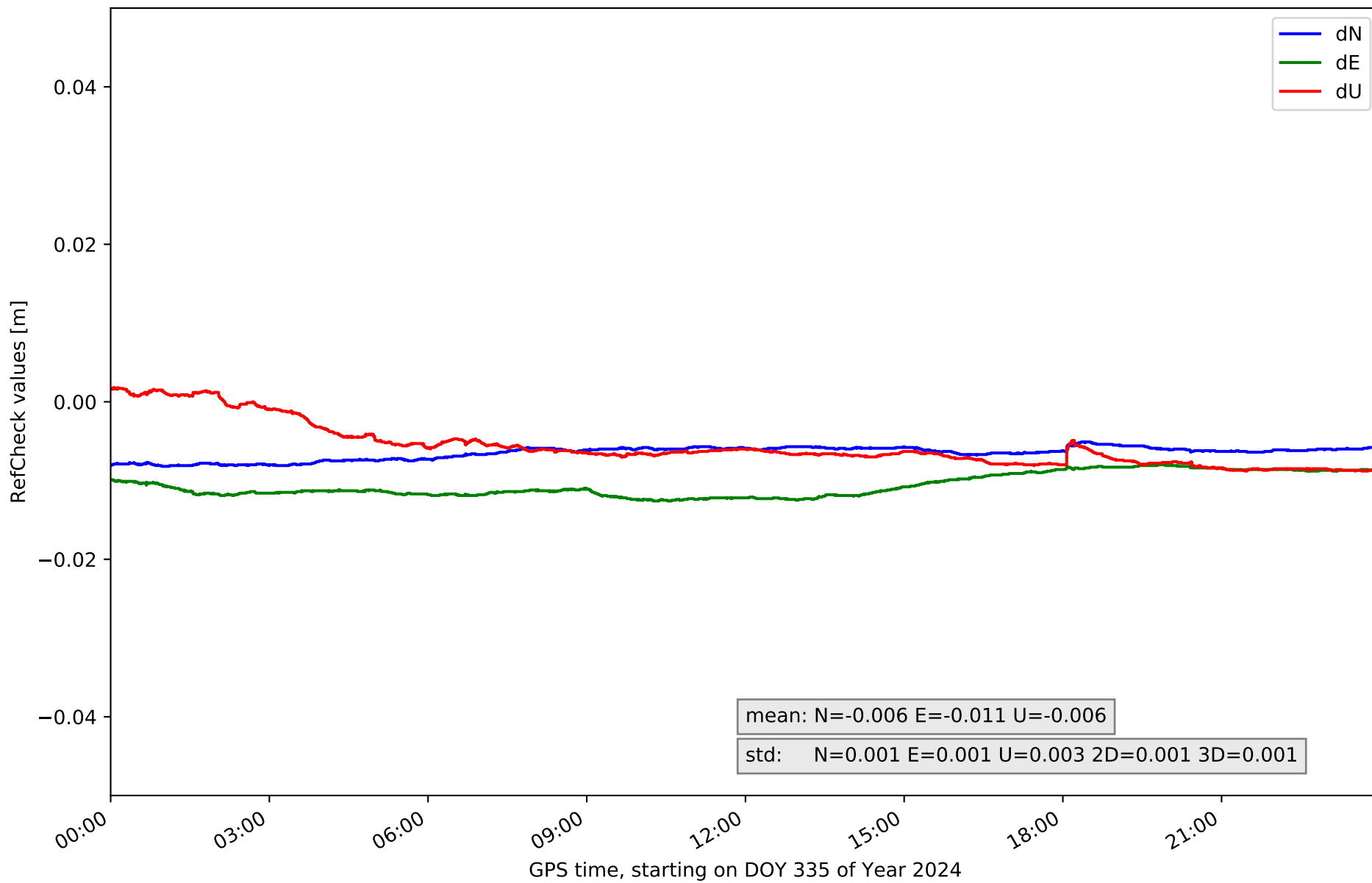




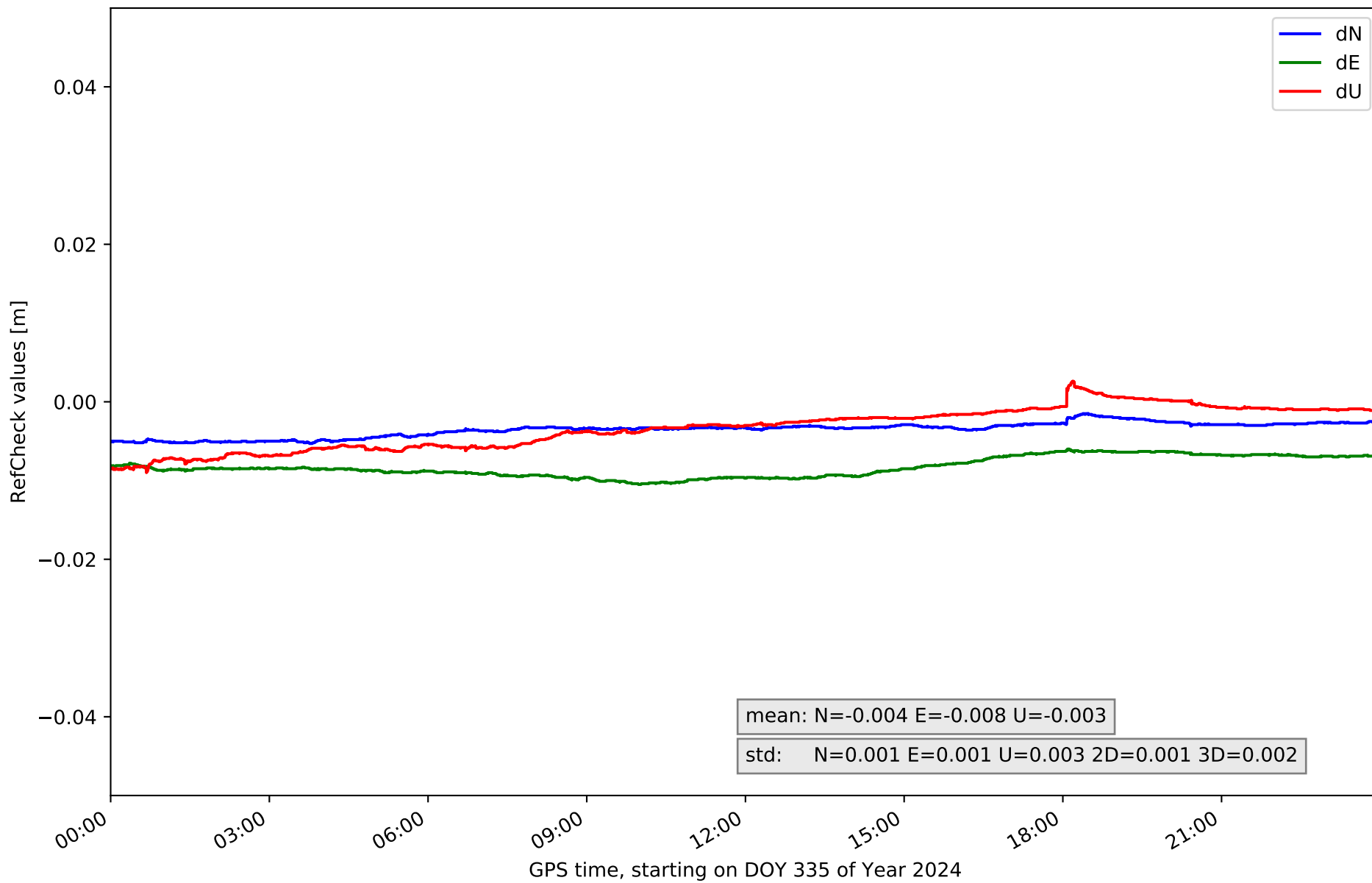
### RefCheck for station CAS0 in network NET5



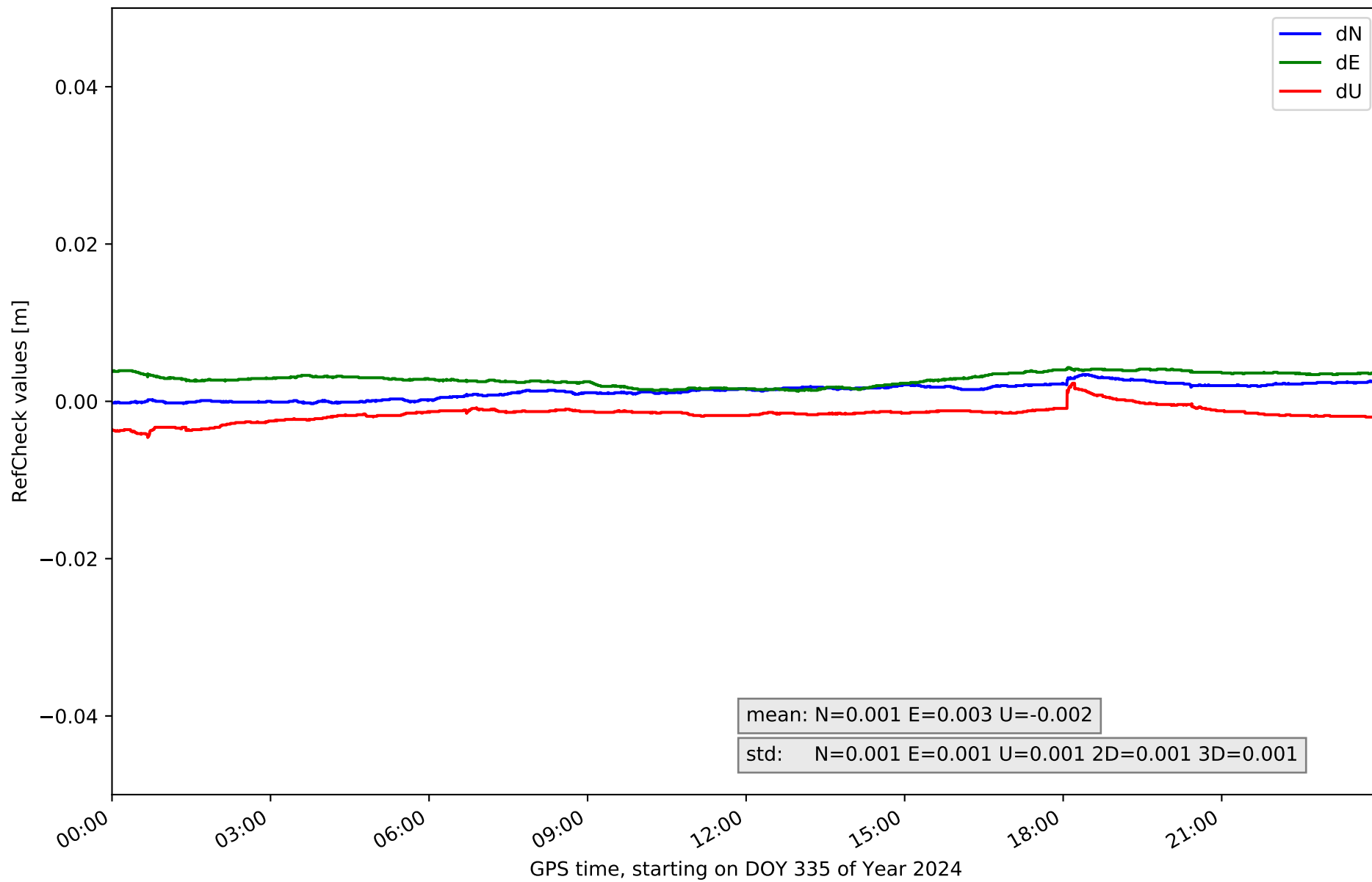
### RefCheck for station CERV in network NET5



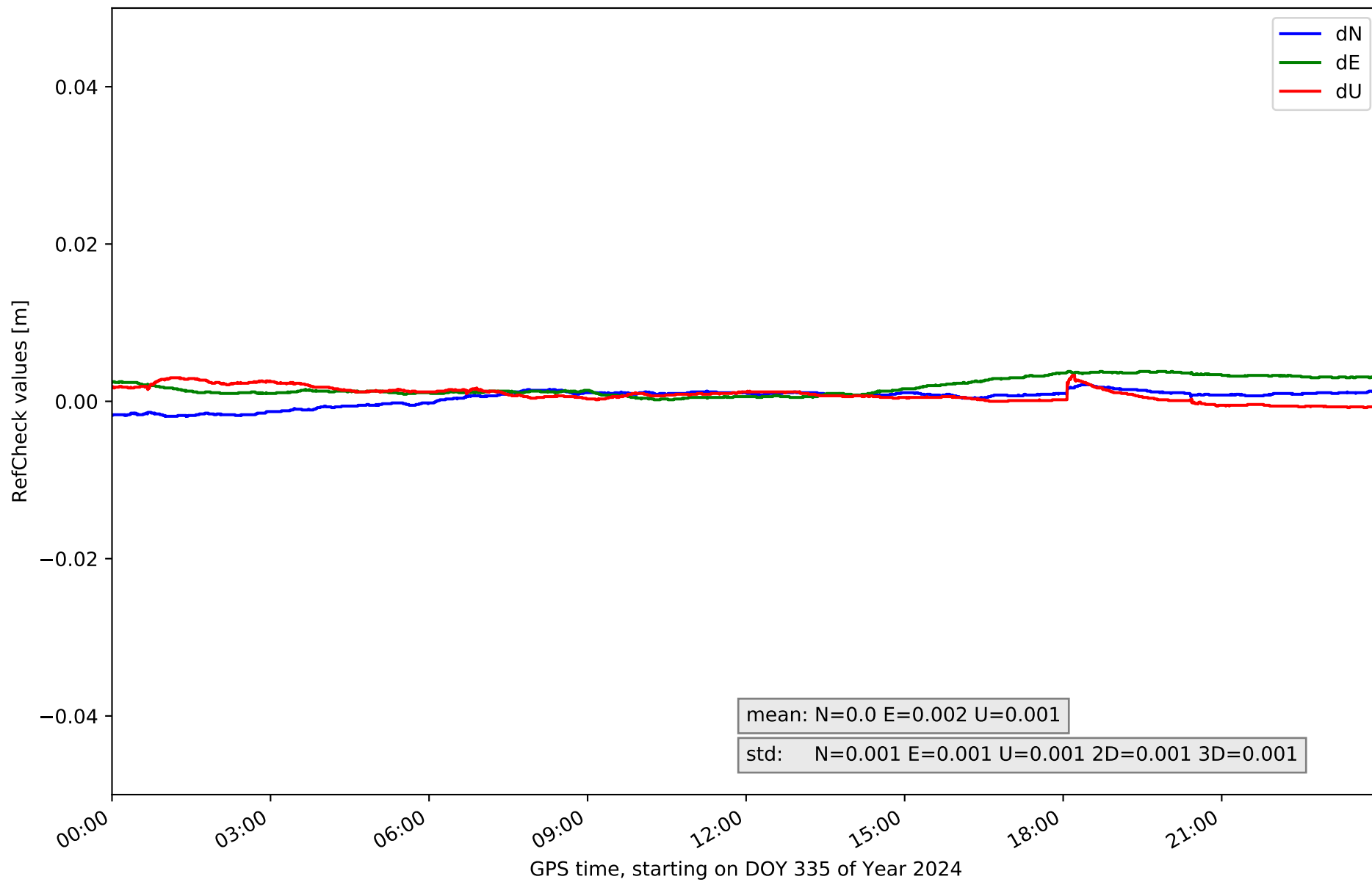
### RefCheck for station LERM in network NET5



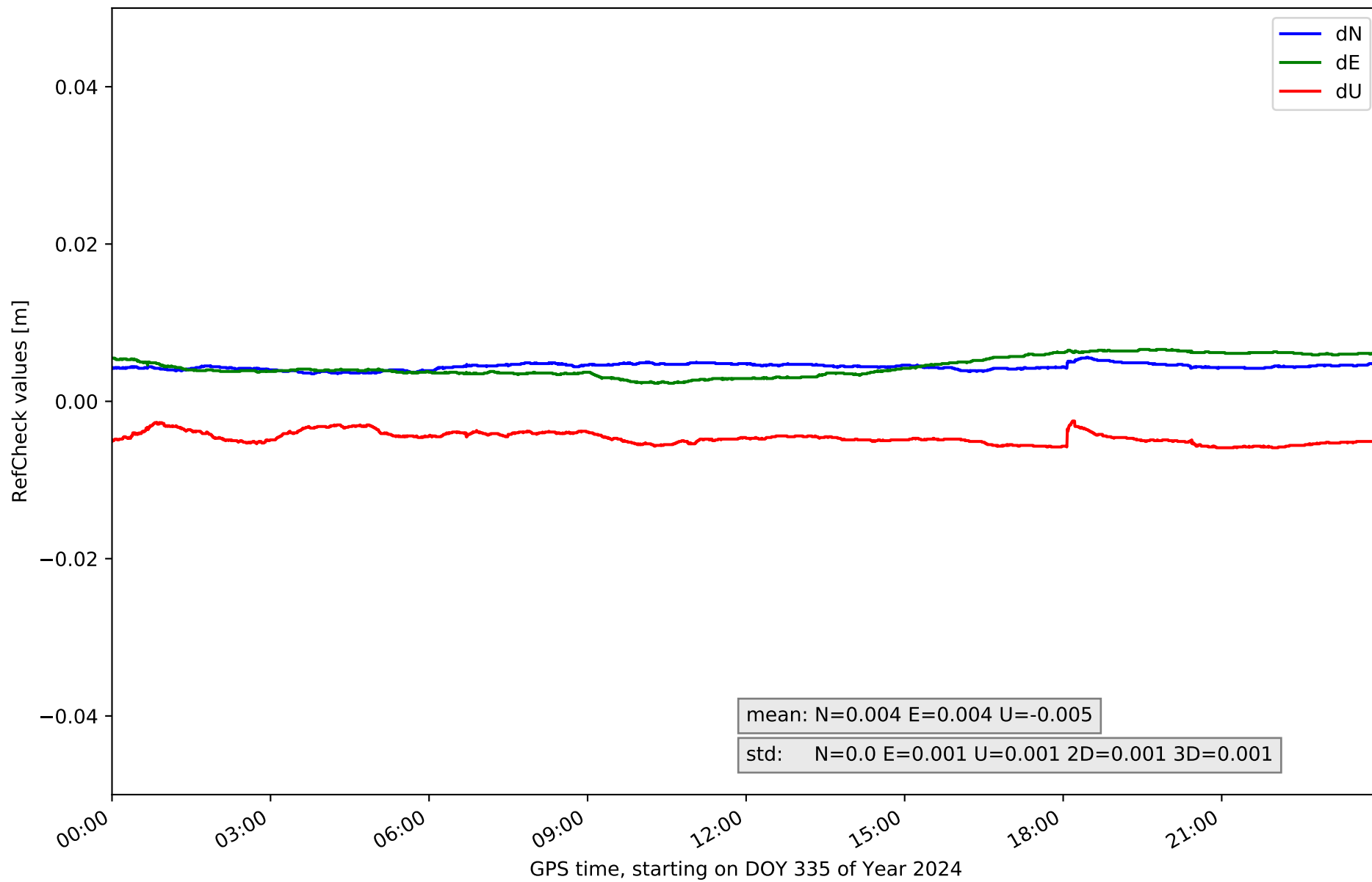
### RefCheck for station QINT in network NET5



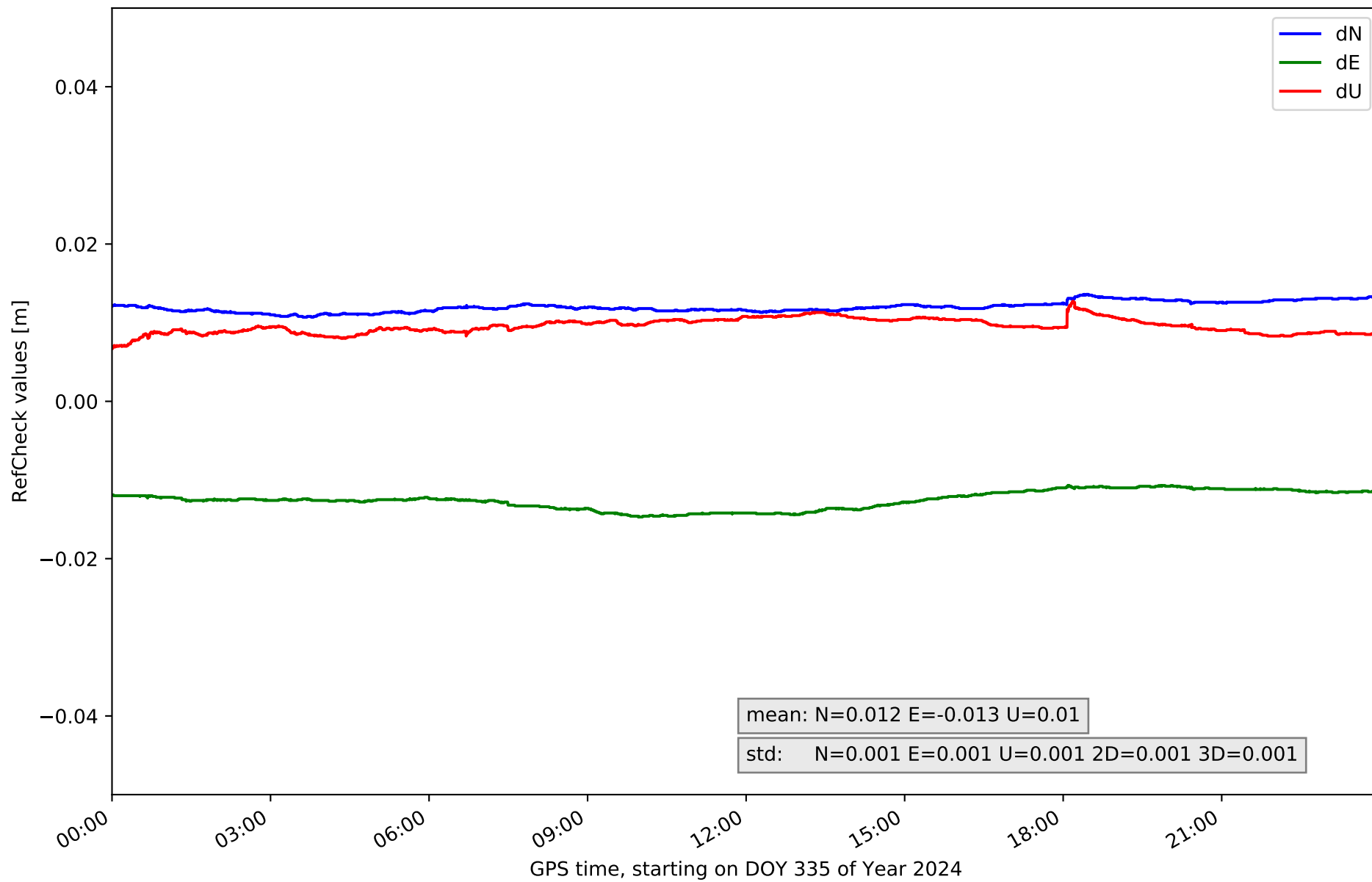
# RefCheck for station SORI in network NET5



### RefCheck for station SR0M in network NET5



### RefCheck for station VTRO in network NET5



## RefCheck values for network NET5

Station	Nmin	Nmax	Nstd	Emin	Emax	Estd	Umin	Umax	Ustd	std2D	std3D	#2D > 0.01	% 2D > 0.01	#3D > 0.02	% 3D > 0.02
ALMZ	0.0	0.006	0.001	-0.001	0.003	0.001	-0.003	0.019	0.002	0.001	0.002	0	0.0	0	0.0
ARDU	0.004	0.008	0.001	-0.0	0.004	0.001	0.011	0.018	0.001	0.001	0.001	0	0.0	138	0.2
BUOS	-0.014	0.003	0.003	-0.004	0.004	0.001	-0.047	0.006	0.007	0.002	0.006	1942	2.3	2628	3.2
CALH	0.003	0.005	0.0	-0.0	0.004	0.001	-0.008	-0.003	0.001	0.001	0.001	0	0.0	0	0.0
CASO	-0.003	0.001	0.001	-0.0	0.004	0.001	-0.007	0.0	0.001	0.001	0.001	0	0.0	0	0.0
CERV	-0.008	-0.005	0.001	-0.013	-0.008	0.001	-0.009	0.002	0.003	0.001	0.001	78328	94.1	0	0.0
LERM	-0.005	-0.002	0.001	-0.011	-0.006	0.001	-0.009	0.003	0.003	0.001	0.002	23111	27.8	0	0.0
QINT	-0.0	0.003	0.001	0.001	0.004	0.001	-0.005	0.002	0.001	0.001	0.001	0	0.0	0	0.0
SORI	-0.002	0.002	0.001	0.0	0.004	0.001	-0.001	0.003	0.001	0.001	0.001	0	0.0	0	0.0
SROM	0.004	0.006	0.0	0.002	0.007	0.001	-0.006	-0.003	0.001	0.001	0.001	0	0.0	0	0.0
VTRO	0.011	0.014	0.001	-0.015	-0.011	0.001	0.007	0.013	0.001	0.001	0.001	83225	100.0	33485	40.2
<b>Mean</b>	-0.001	0.004	0.001	-0.004	0.001	0.001	-0.007	0.005	0.002	0.001	0.002	16964.2	20.4	3295.5	4.0
<b>Min/Max</b>	-0.014	0.014	0.003	-0.015	0.007	0.001	-0.047	0.019	0.007	0.002	0.006	83225	100.0	33485	40.2



fixing statistic for network NET5

fixing percentage of	all GNSS	G	R	E	C
using threshold 0.3	92.8	94.1	94.8	95.8	87.4
considering satellites with dual-frequency fixed	89.3	89.7	91.3	91.8	84.2
considering all signals separately	89.3	89.6	91.3	92.0	83.2