

## summary for network NET3

timeperiod chosen: from 2024-10-11-00:00:00 until 2024-10-11-23:59:59

average update rate (durations larger than 15 seconds considered as observation gap): 1.2 seconds

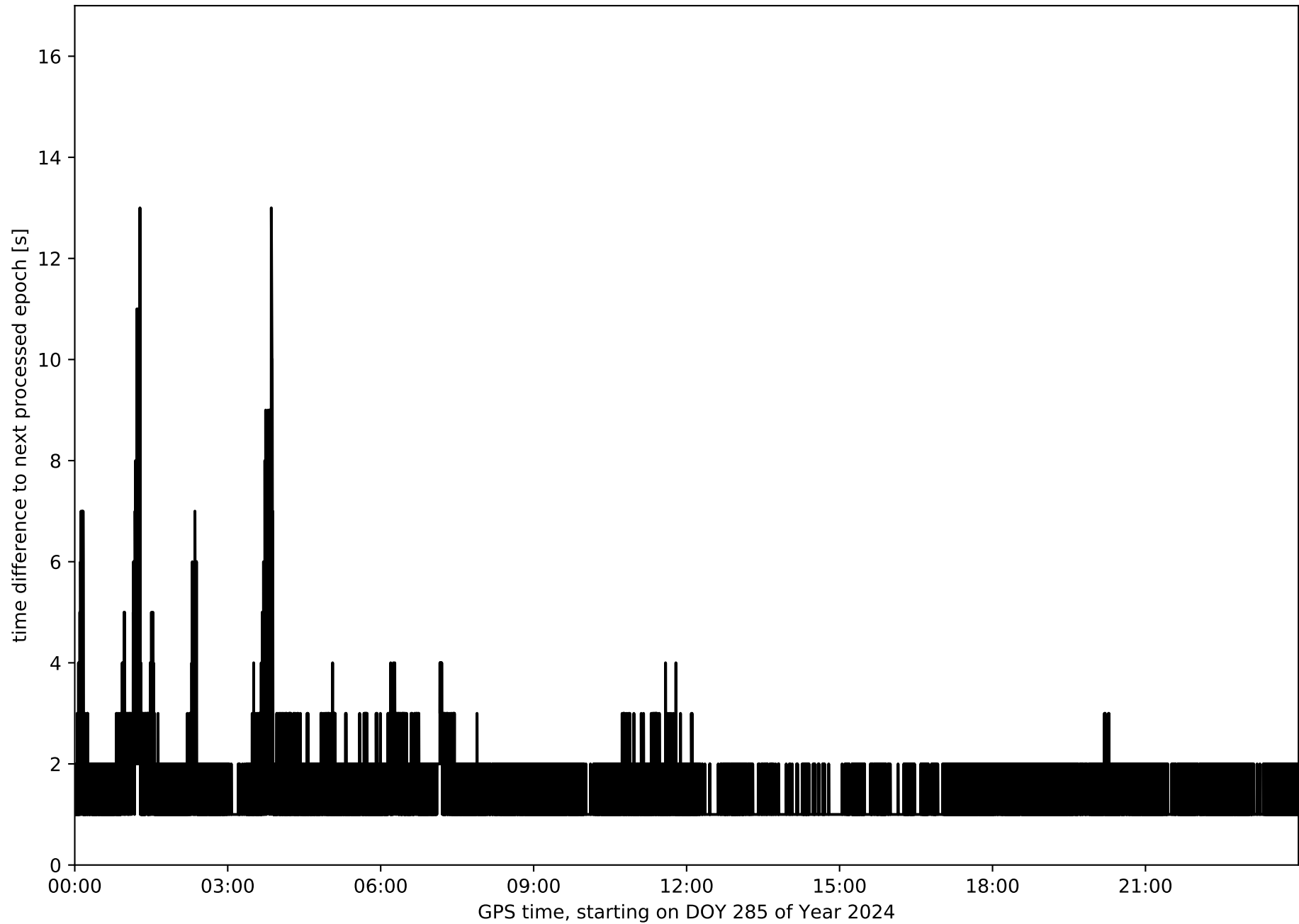
average fixing percentage with threshold set to 0.3: 92.6 percent

stations available: 11 of 11

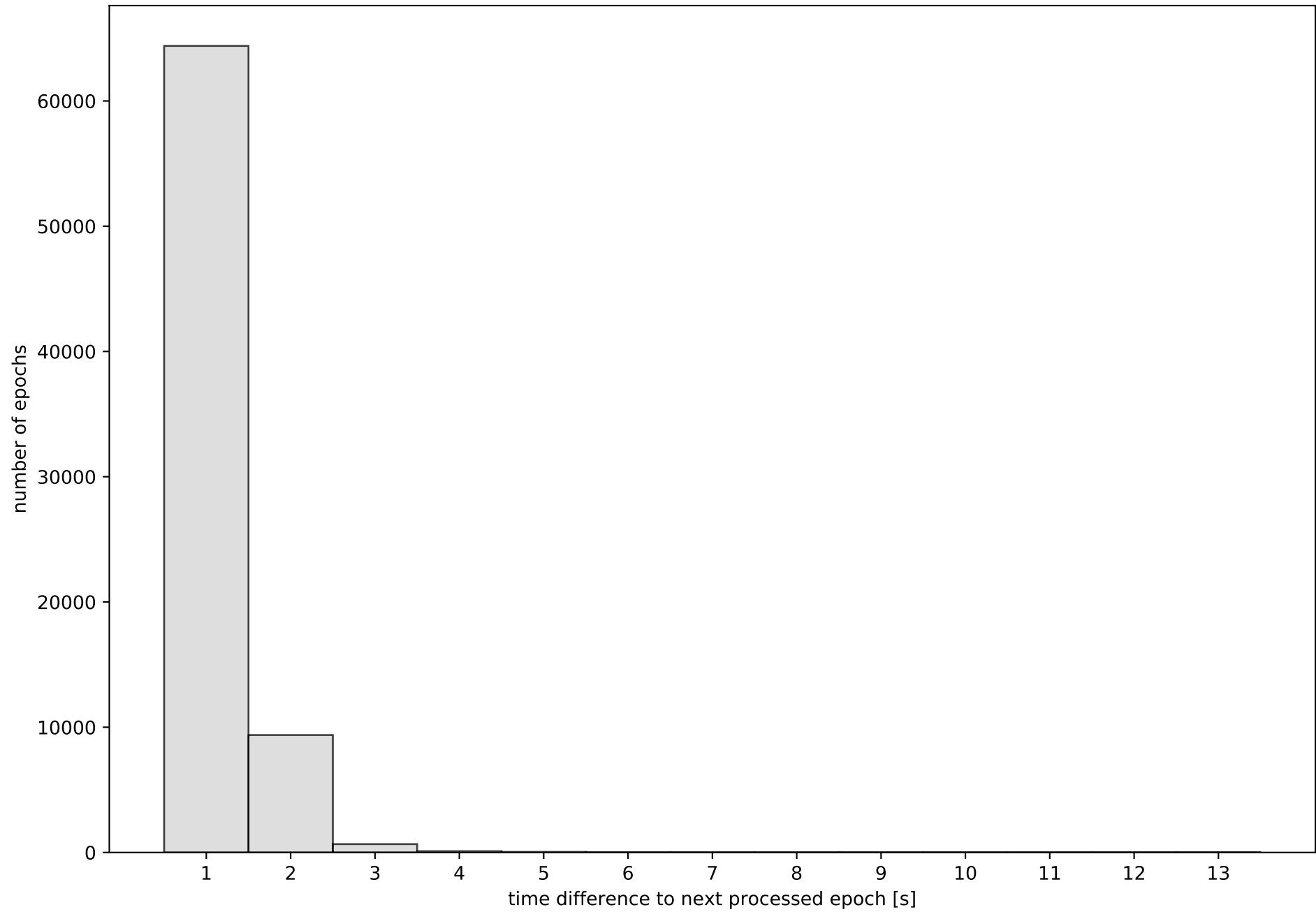
station information:

|               |                         |      |                         |                  |
|---------------|-------------------------|------|-------------------------|------------------|
| station ALBA: | antenna: LEIAR25.R3     | LEIT | receiver: LEICA GR50    | height: 754.692  |
| station ALMO: | antenna: LEIAR25.R4     | LEIT | receiver: LEICA GR25    | height: 743.419  |
| station CLTR: | antenna: LEIAR20        | LEIM | receiver: LEICA GR10    | height: 785.65   |
| station COBA: | antenna: LEIAR20        | LEIM | receiver: LEICA GR50    | height: 202.146  |
| station CUEN: | antenna: LEIAR20        | LEIM | receiver: LEICA GR50    | height: 998.123  |
| station MOTA: | antenna: LEIAR25.R4     | LEIT | receiver: LEICA GR50    | height: 779.827  |
| station MRAT: | antenna: LEIAR20        | LEIM | receiver: LEICA GR30    | height: 1227.566 |
| station SONS: | antenna: LEIAR20        | LEIM | receiver: LEICA GR50    | height: 811.988  |
| station UTI1: | antenna: TRM159900.00   | SCIS | receiver: TRIMBLE NETR9 | height: 798.701  |
| station VIAR: | antenna: GPPNULLANTENNA | NONE | receiver: LEICA GR50    | height: 746.56   |
| station VILH: | antenna: TRM159900.00   | SCIS | receiver: TRIMBLE NETR9 | height: 1022.778 |

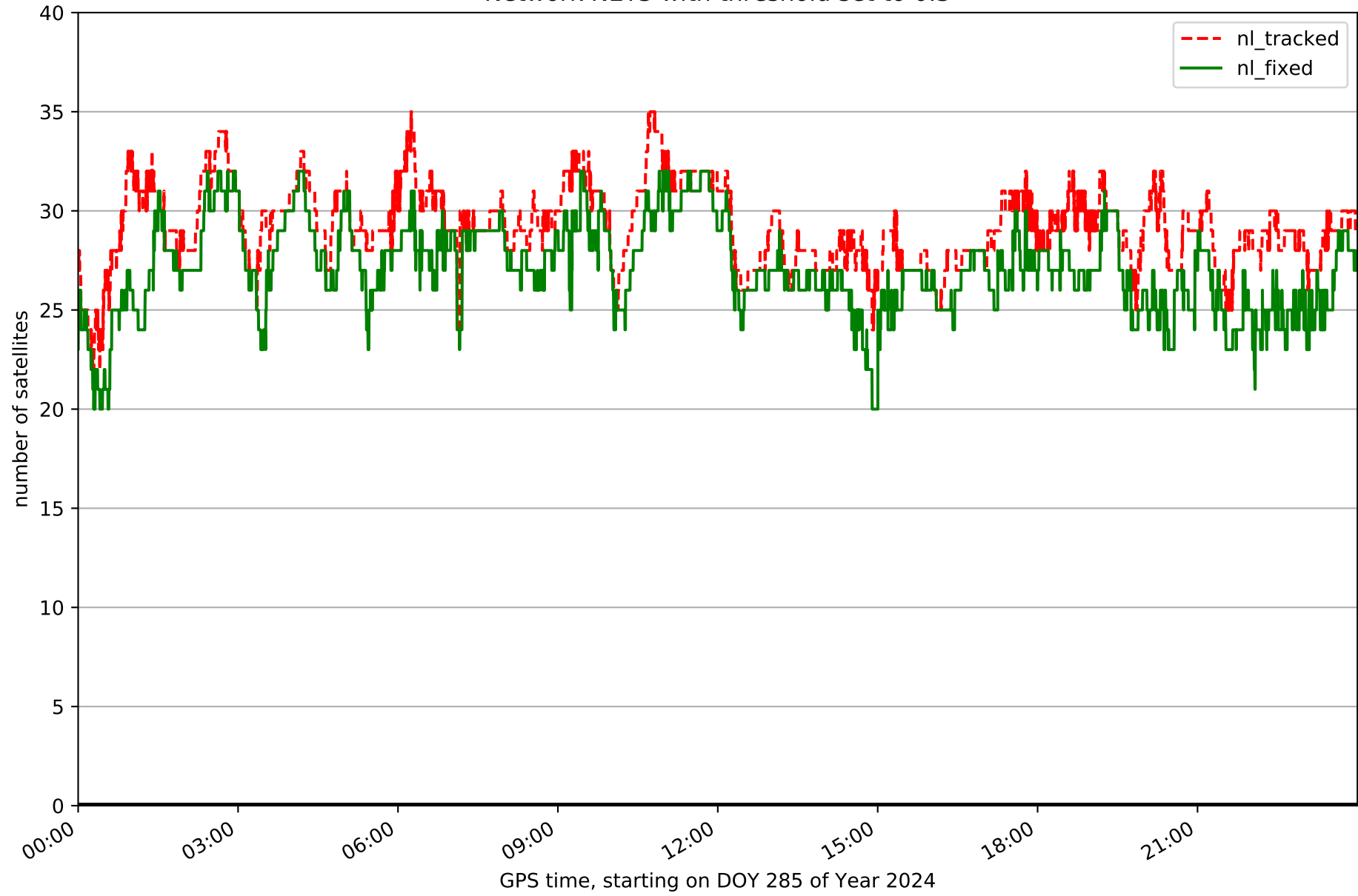
Processing rate in network NET3



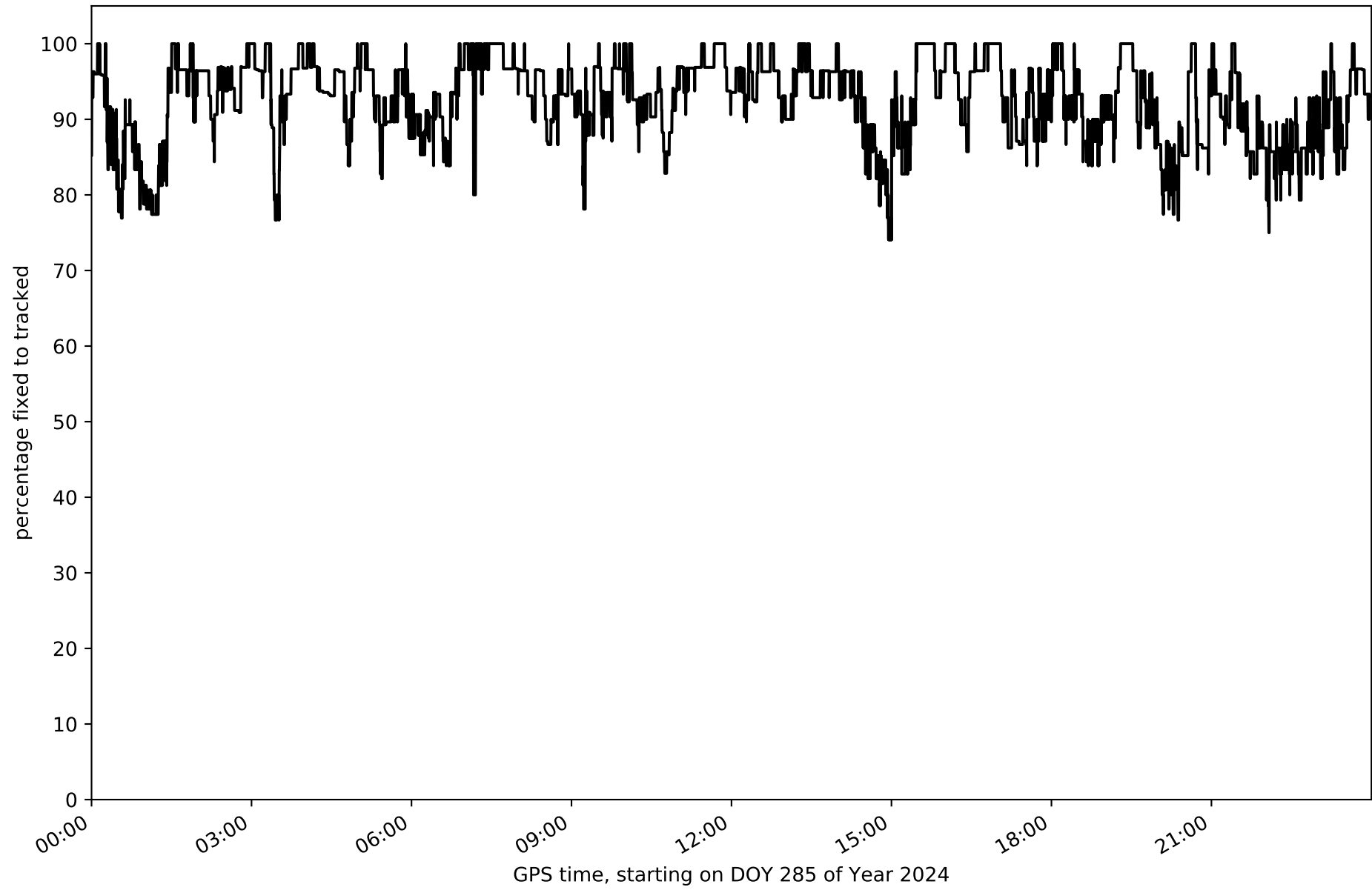
Histogram of the processing rate in network NET3 (durations larger 15 seconds neglected)



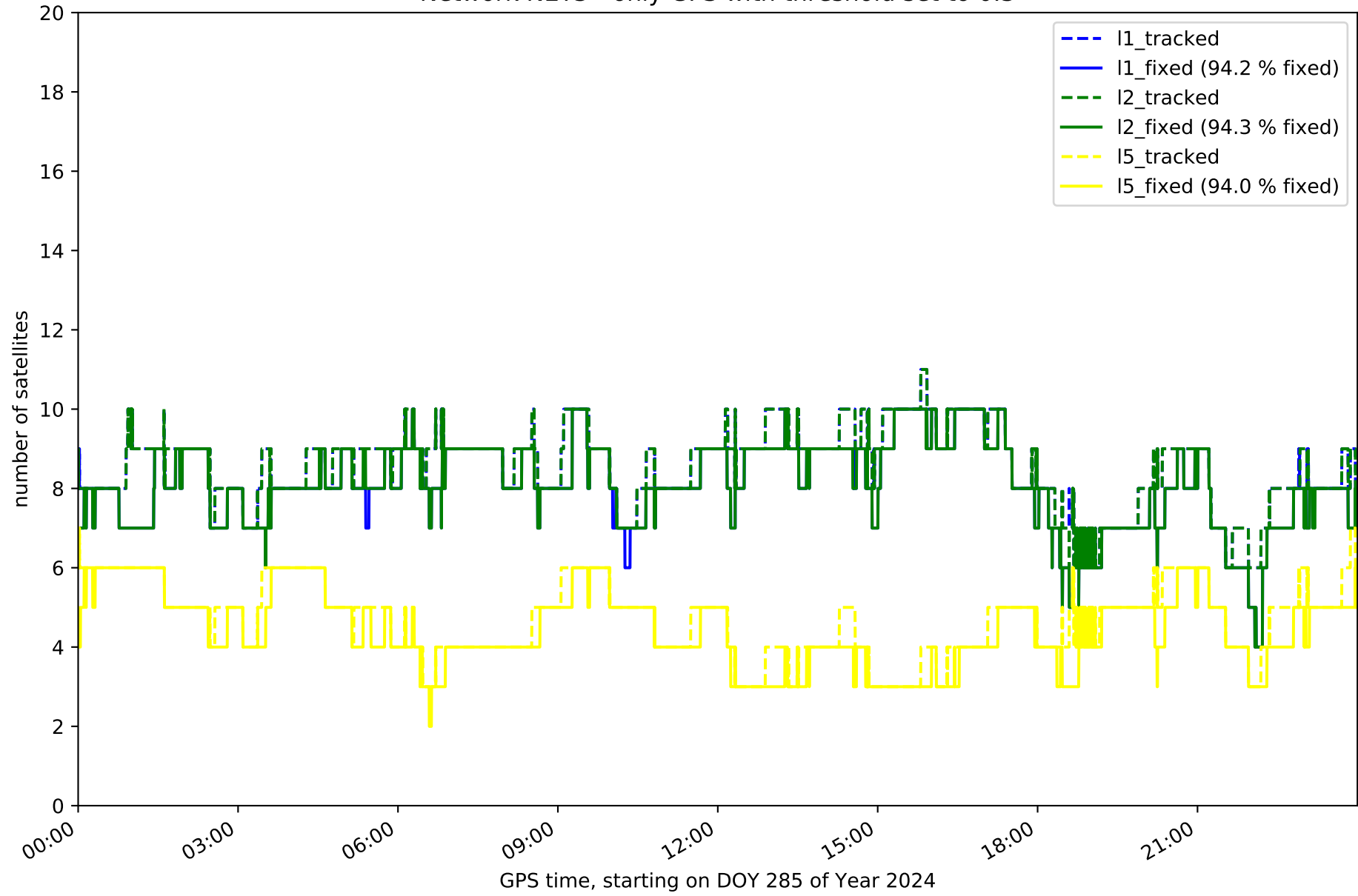
Network NET3 with threshold set to 0.3



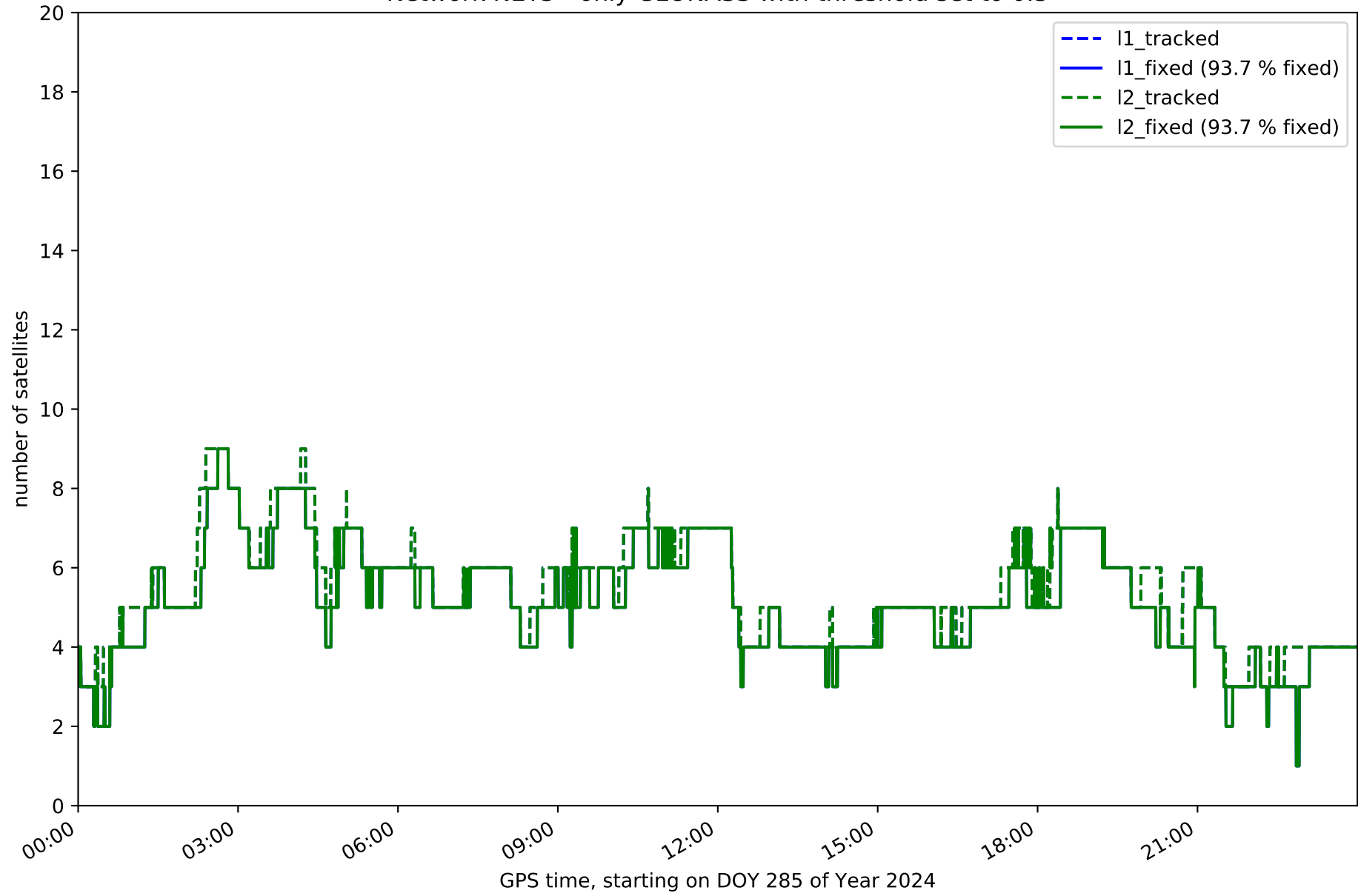
Fixing percentage of satellites in network NET3 with threshold set to 0.3



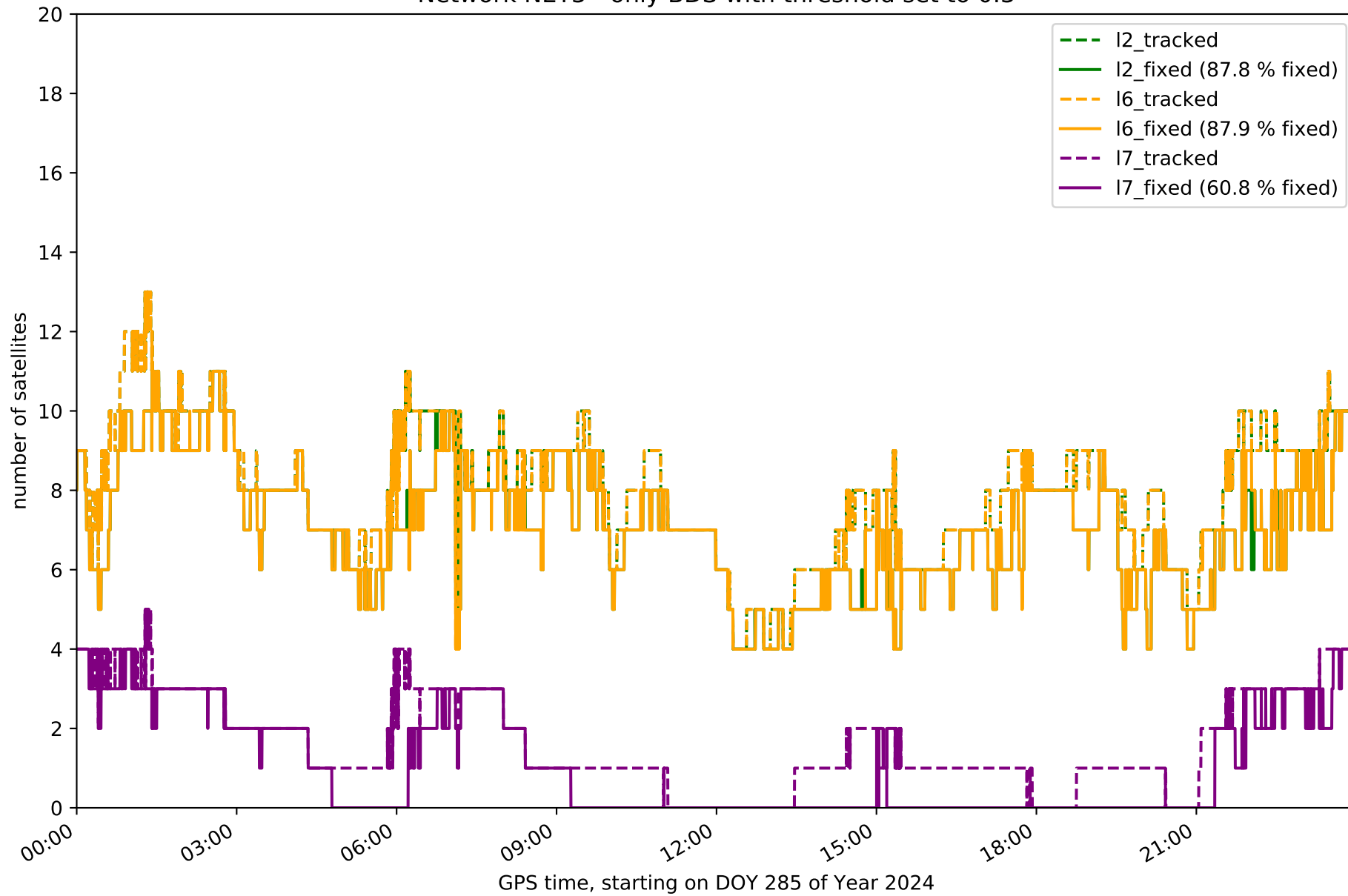
Network NET3 - only GPS with threshold set to 0.3



Network NET3 - only GLONASS with threshold set to 0.3

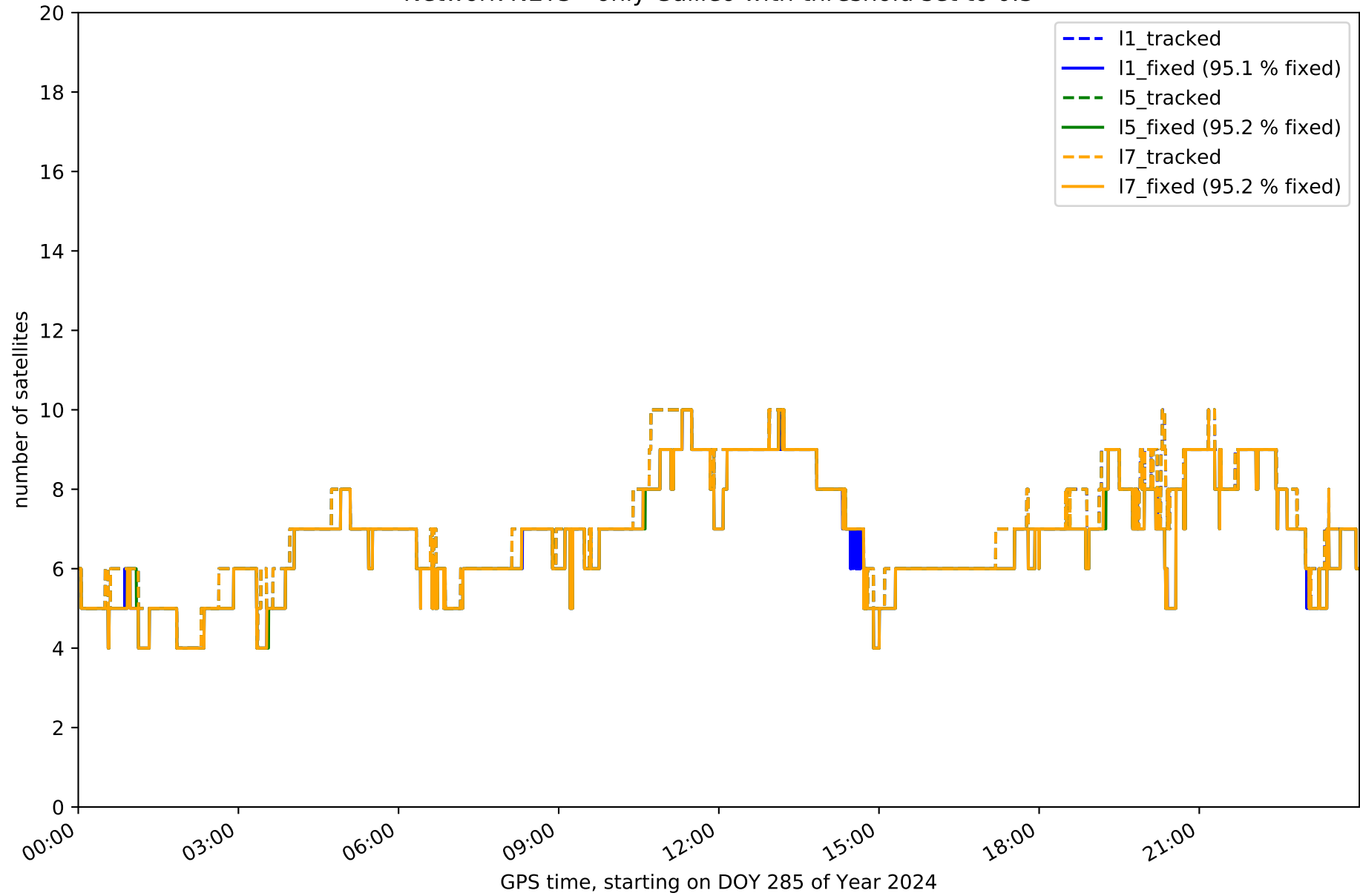


Network NET3 - only BDS with threshold set to 0.3

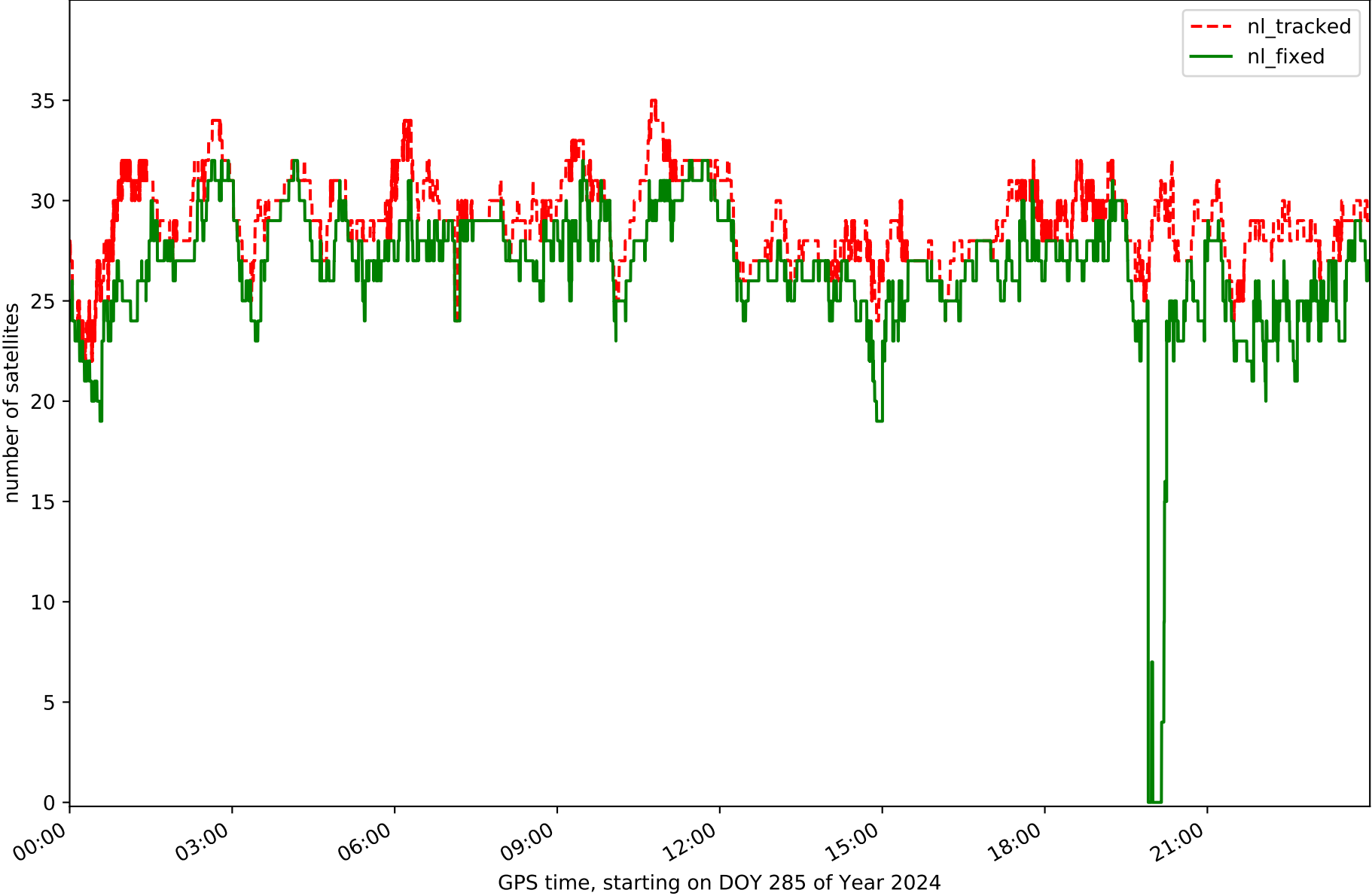




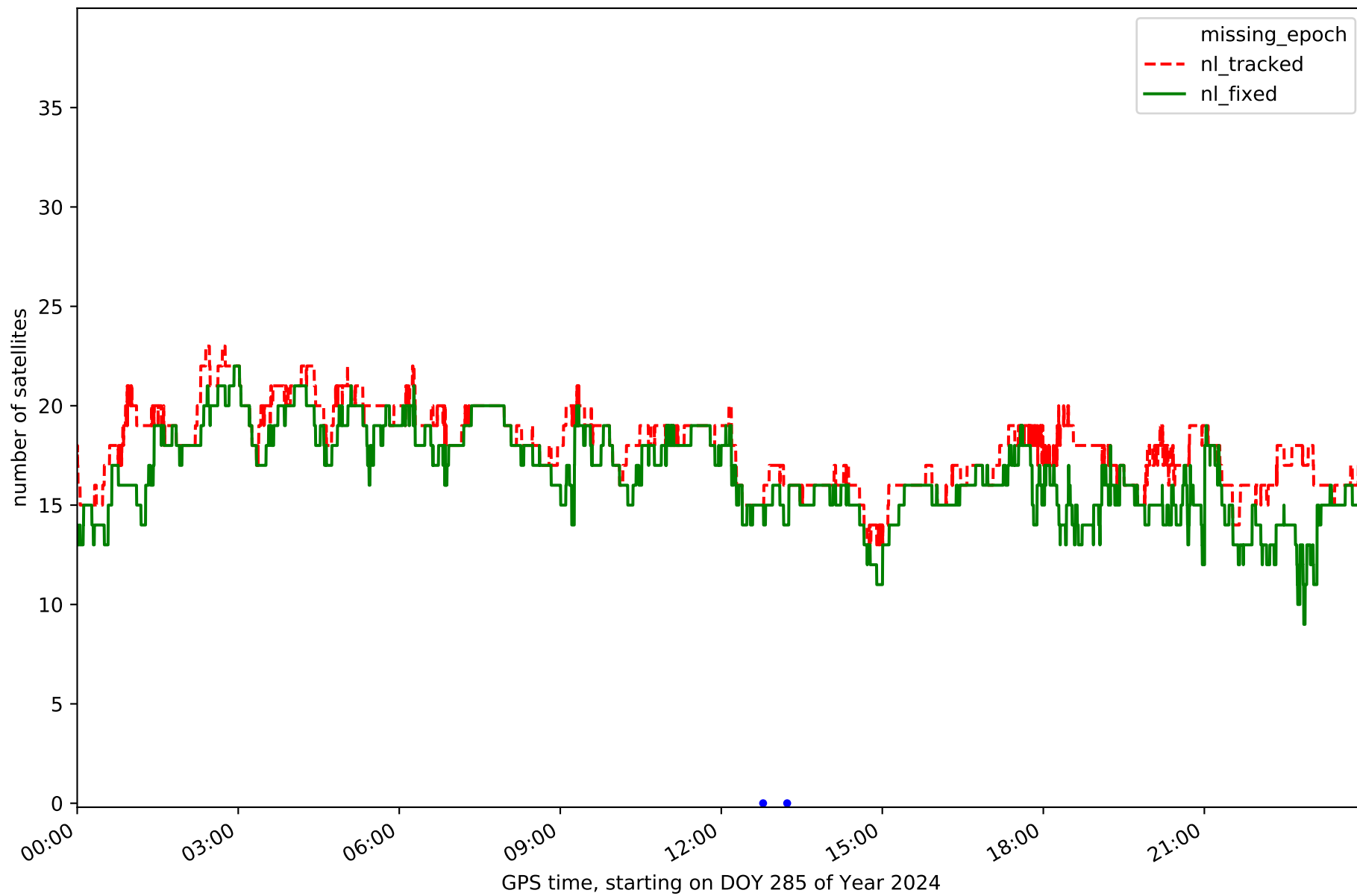
Network NET3 - only Galileo with threshold set to 0.3



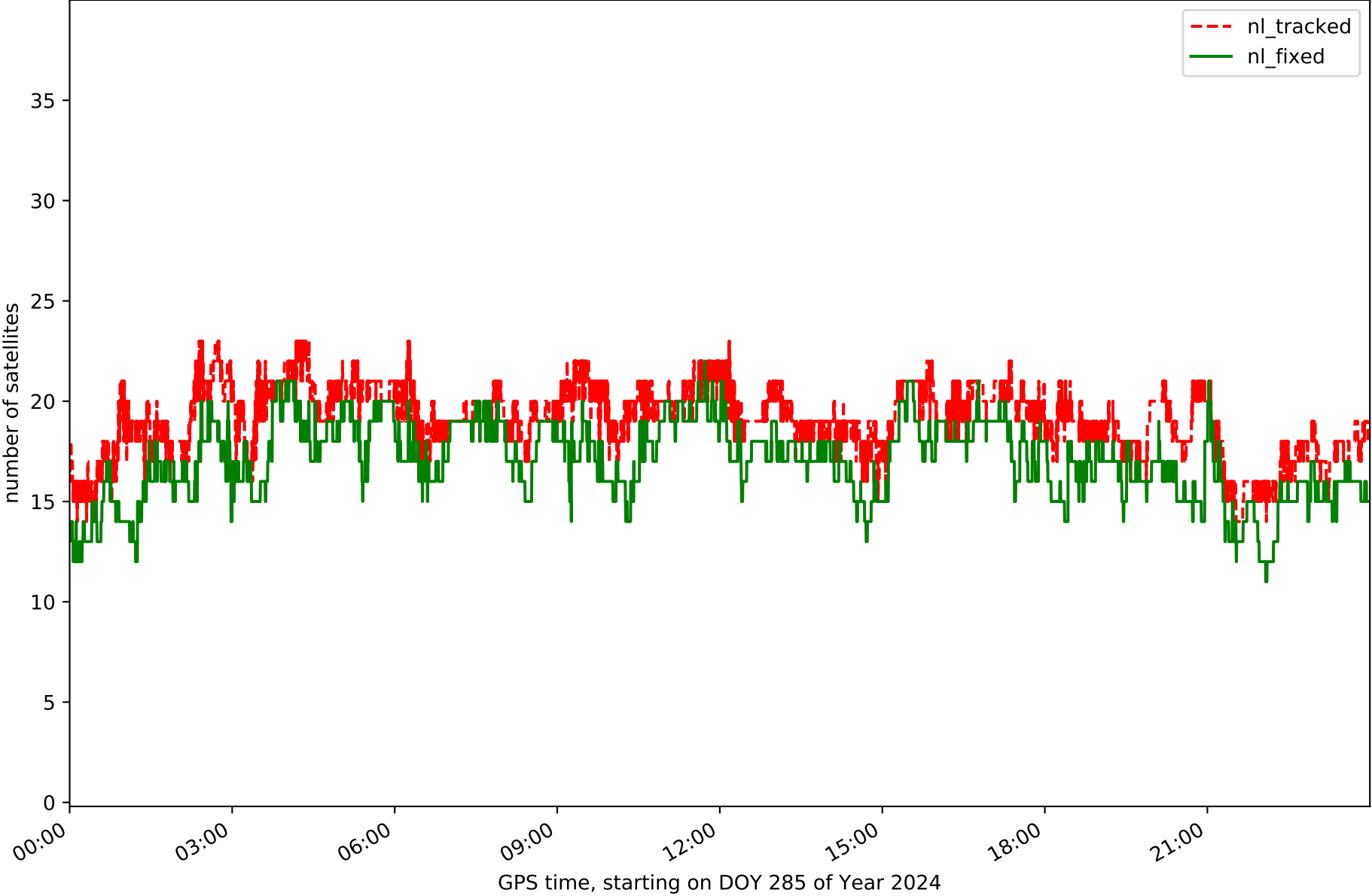
Station ALBA in network NET3



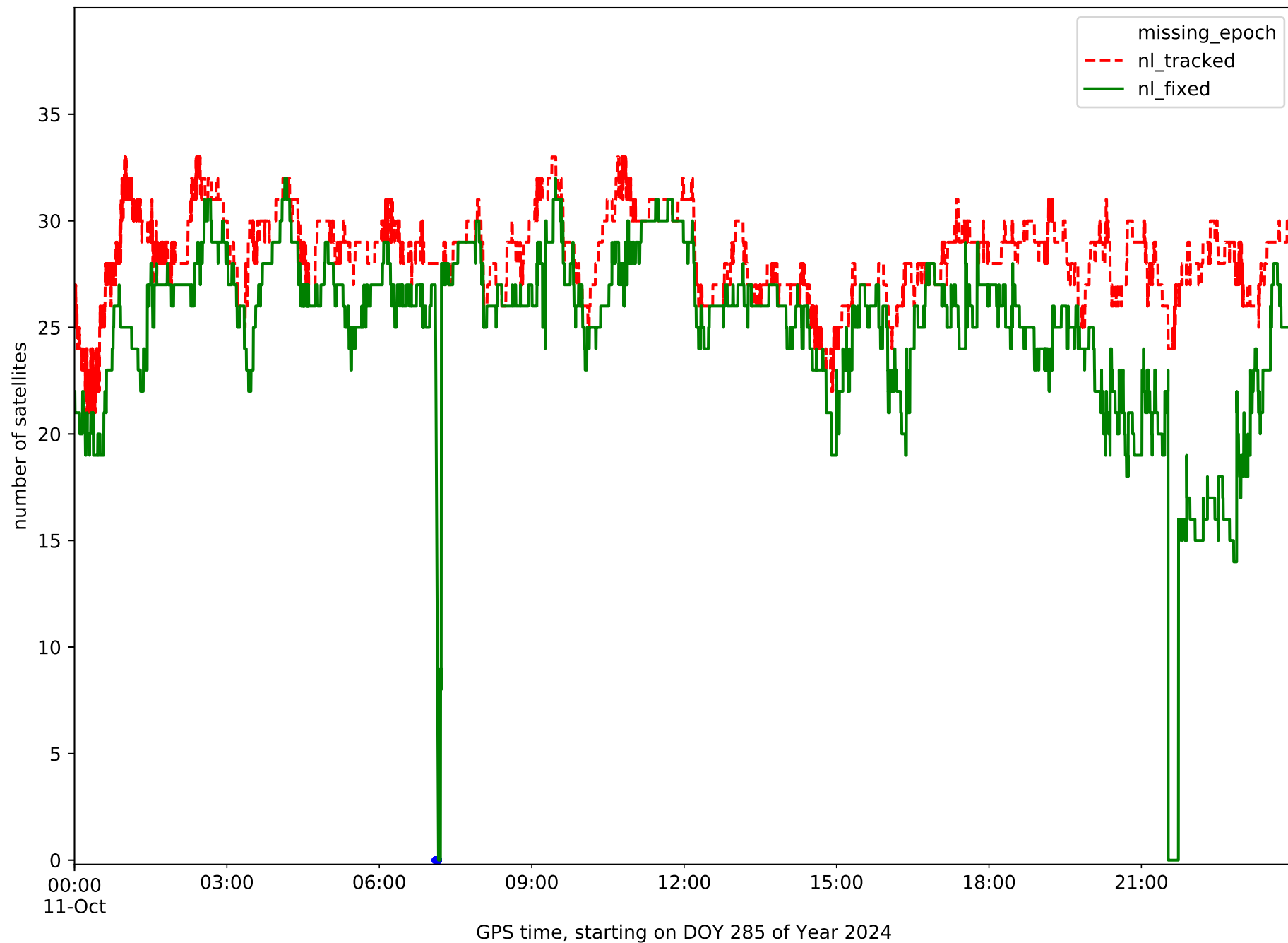
Station ALMO in network NET3



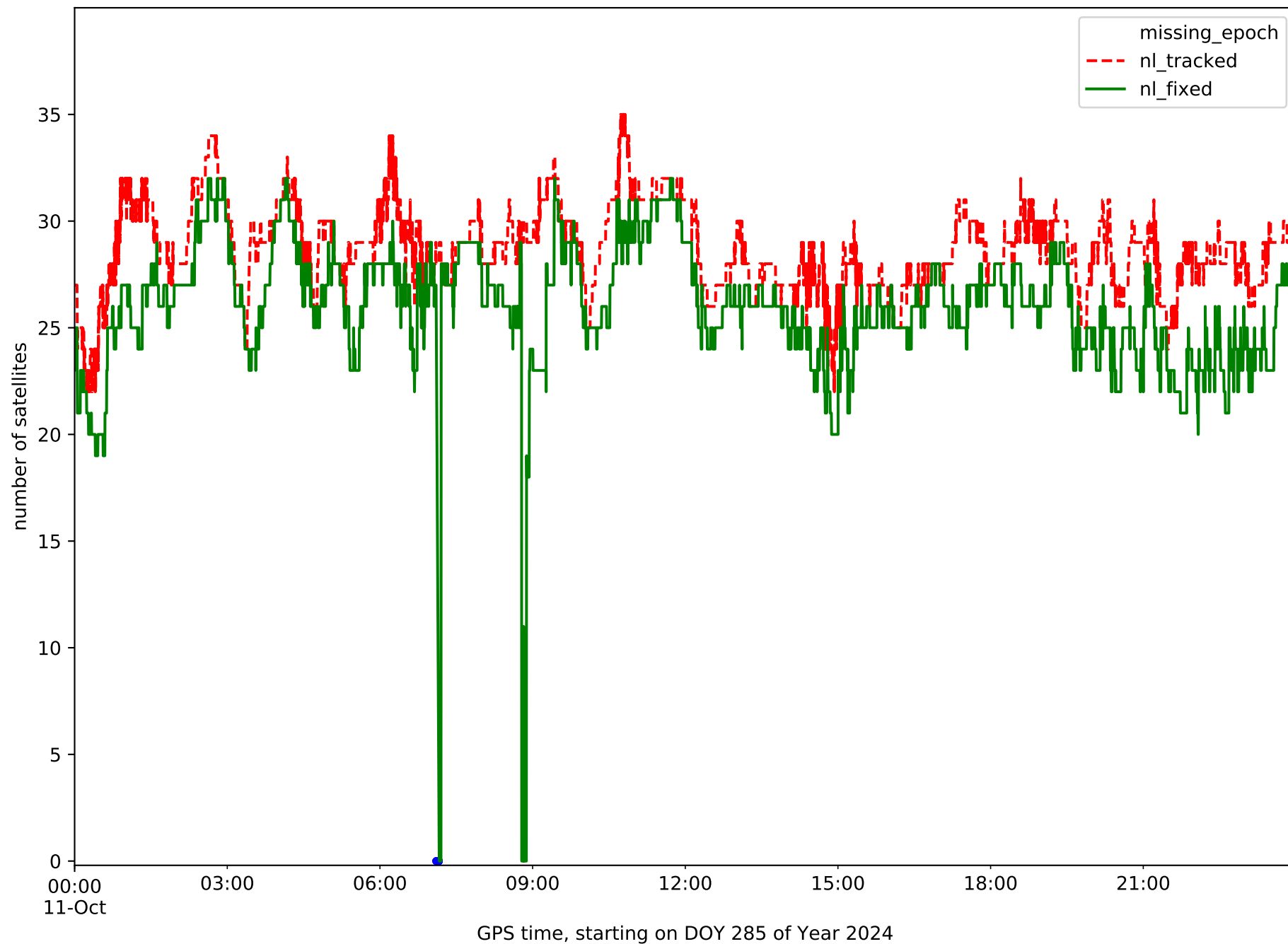
Station CLTR in network NET3



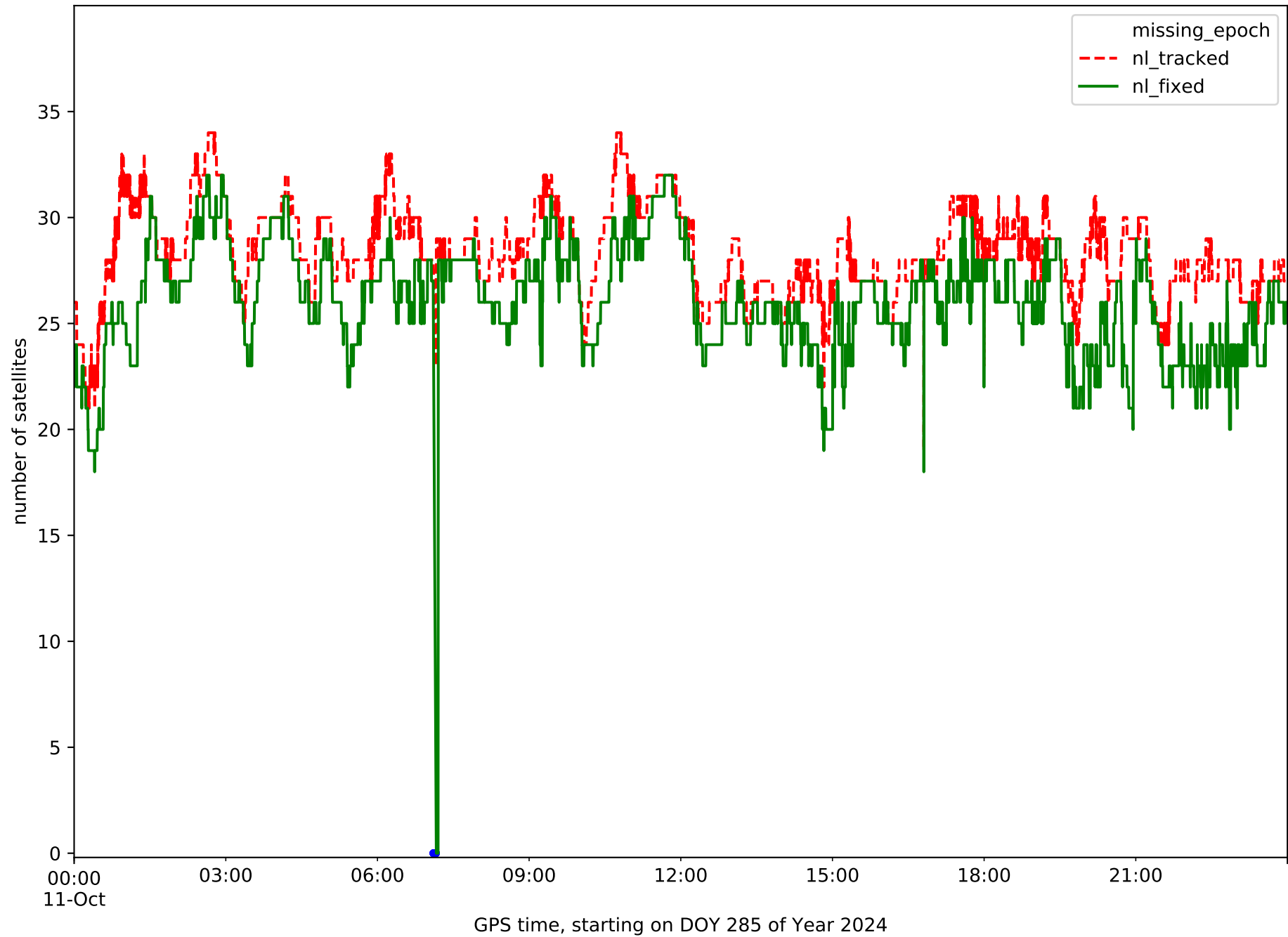
Station COBA in network NET3



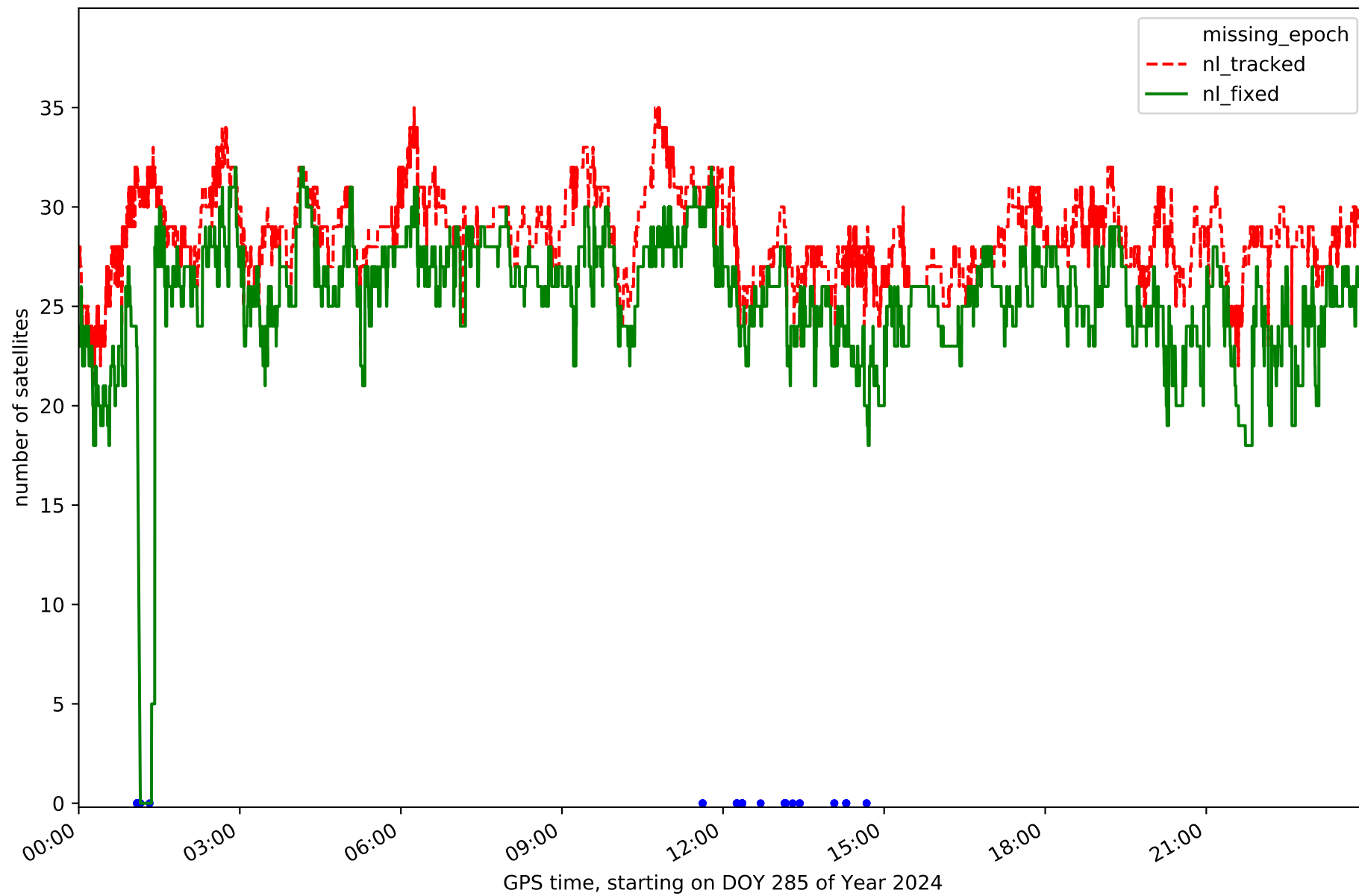
Station CUEN in network NET3



Station MOTA in network NET3

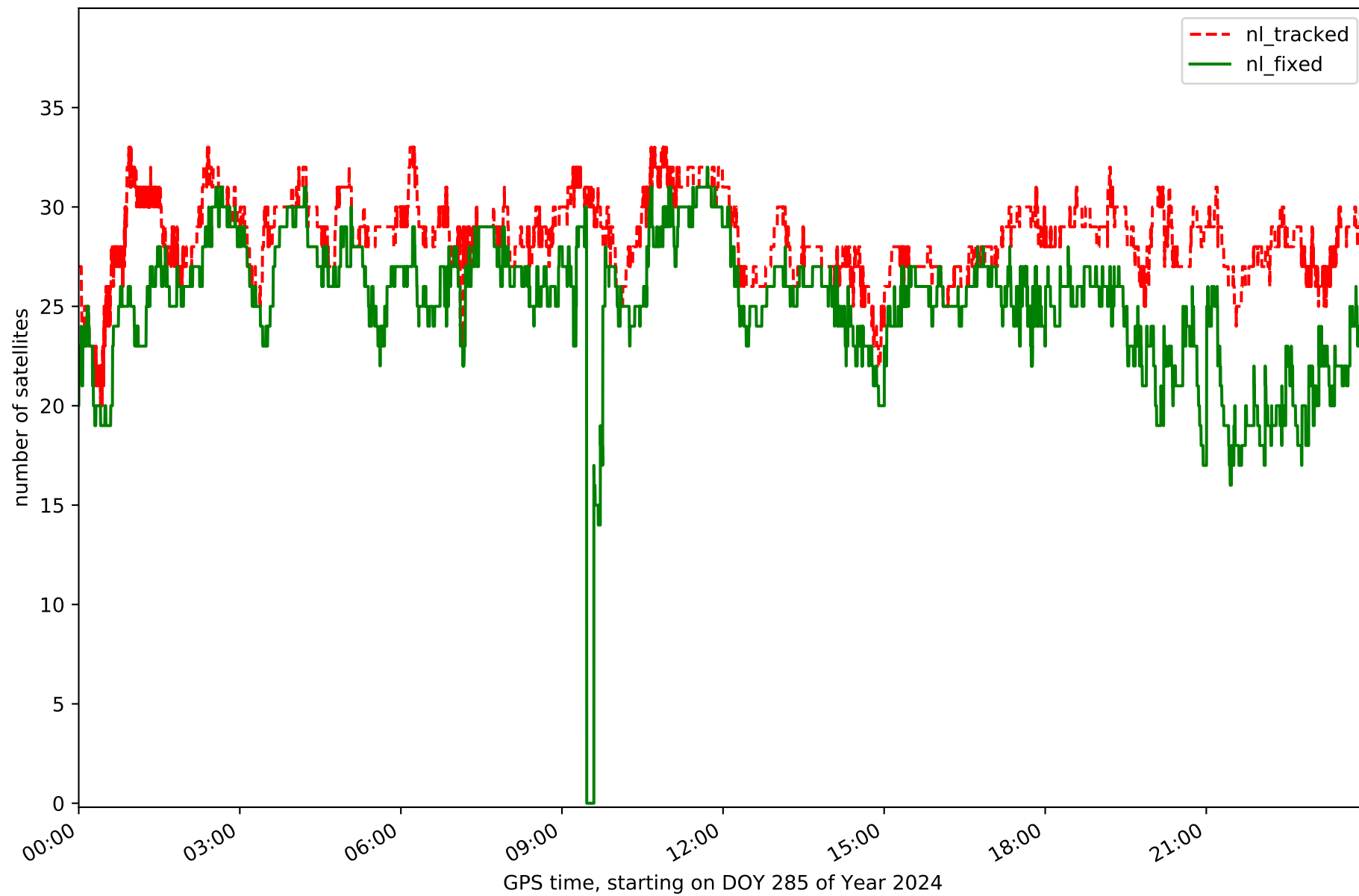


Station MRAT in network NET3

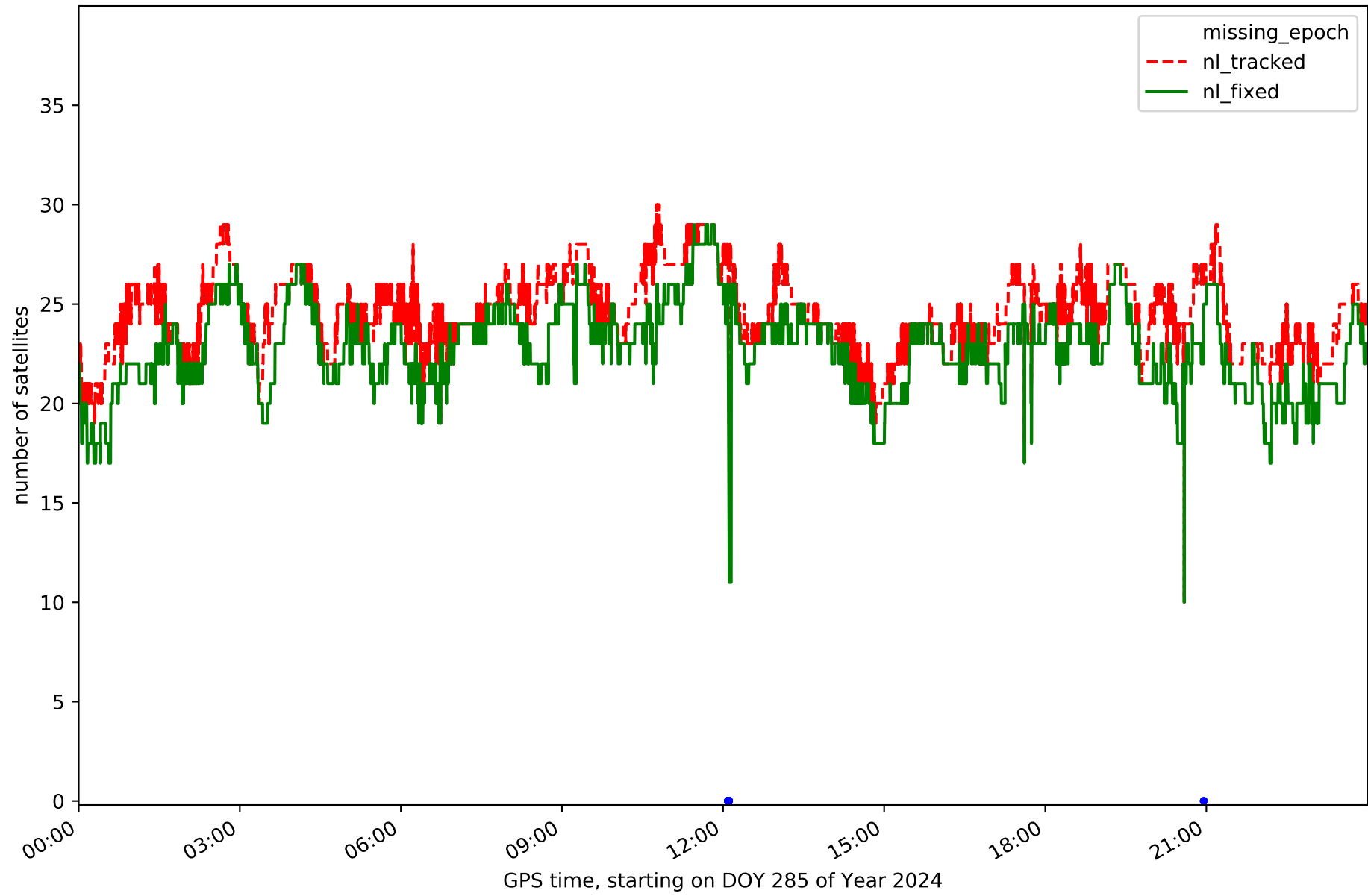




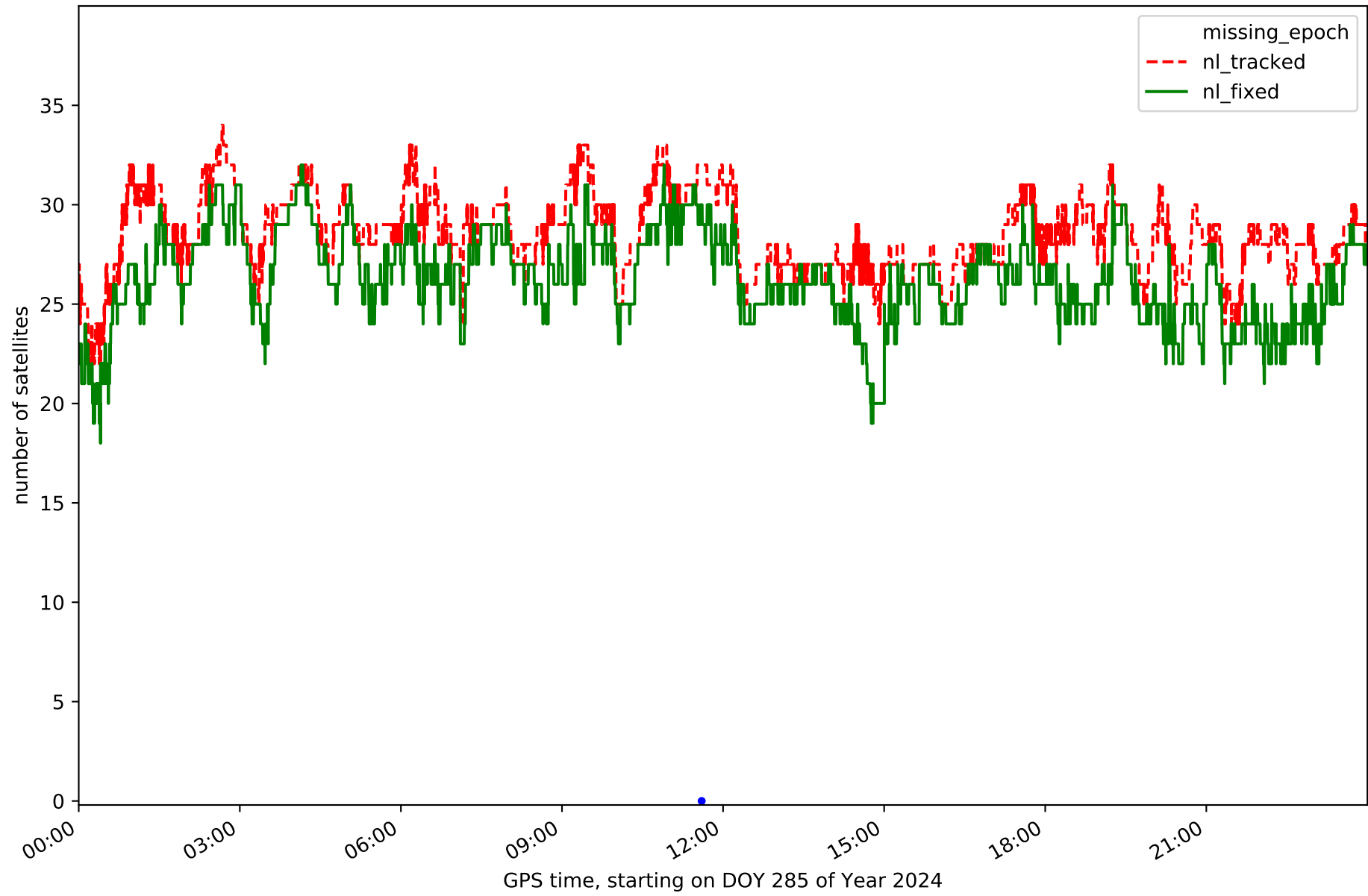
Station SONS in network NET3



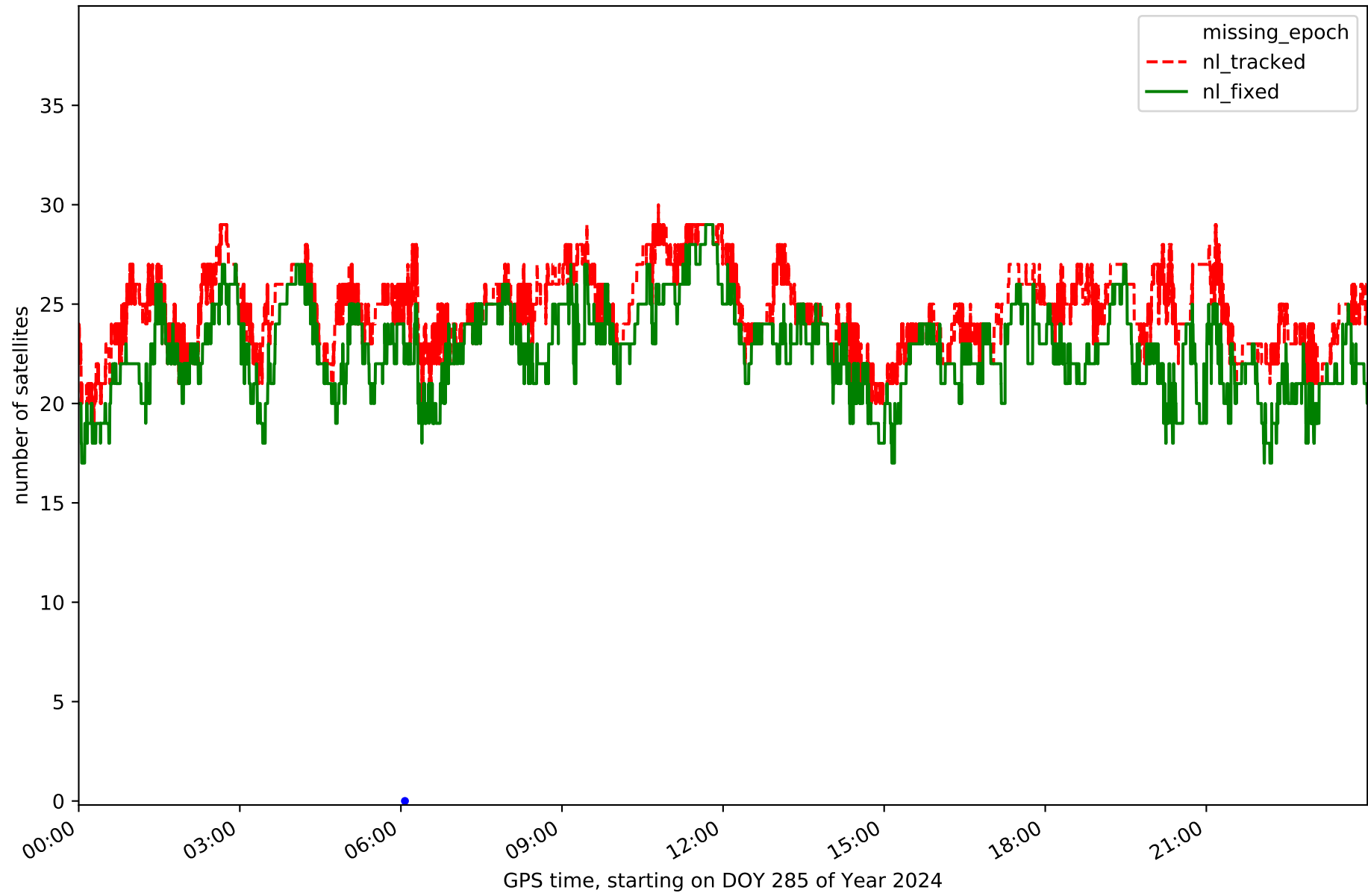
Station UTI1 in network NET3



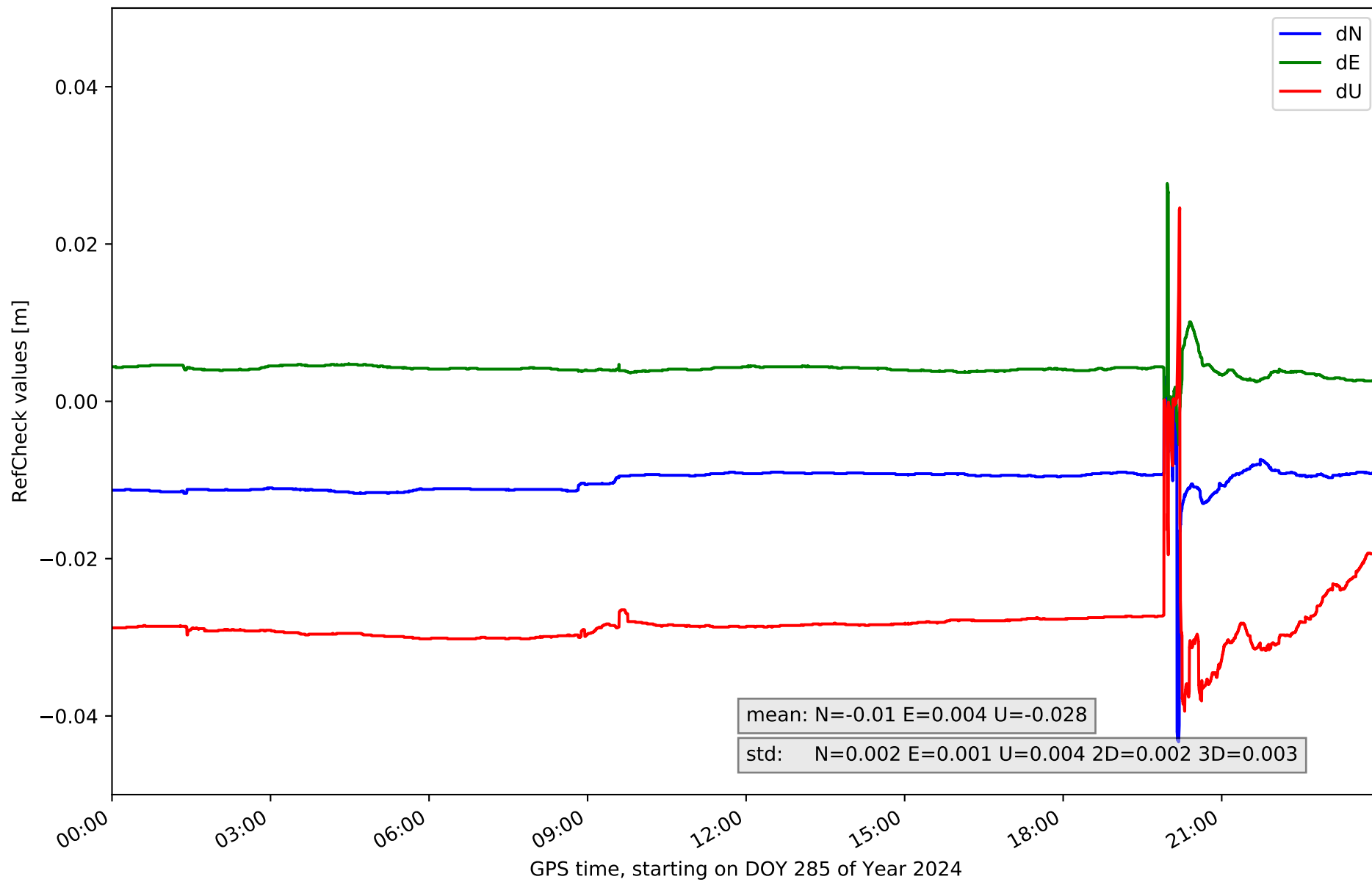
Station VIAR in network NET3



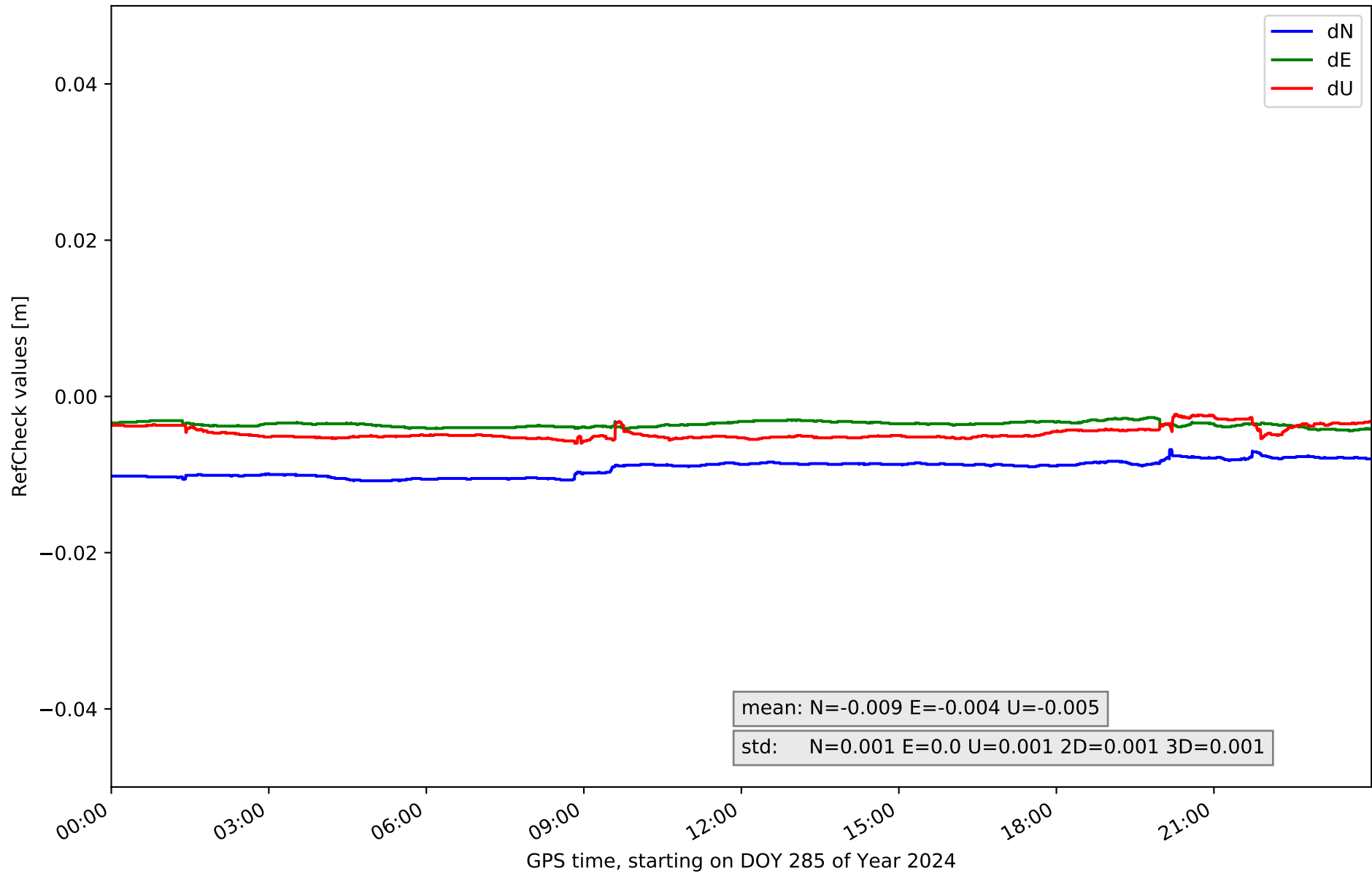
Station VILH in network NET3



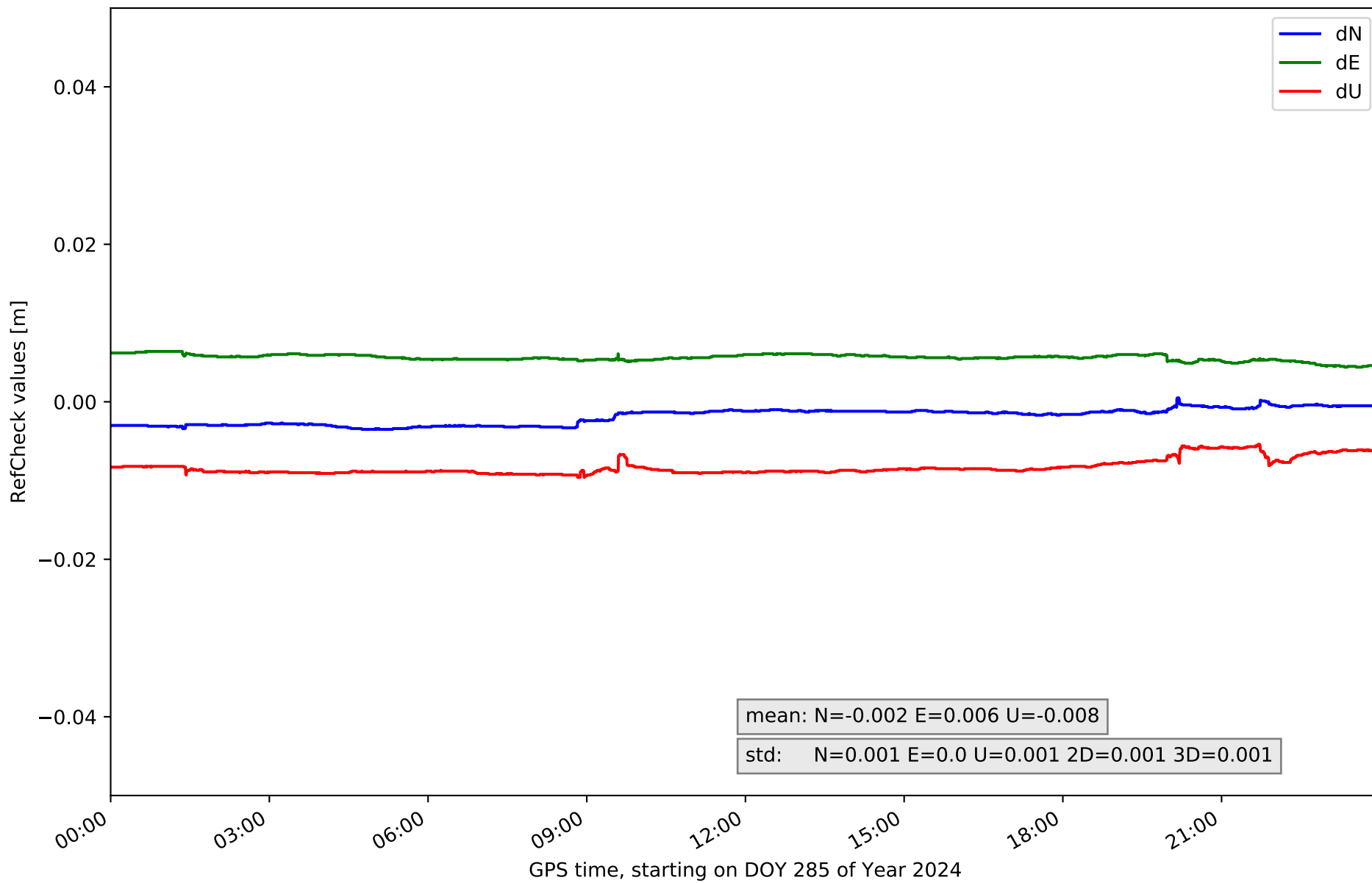
# RefCheck for station ALBA in network NET3



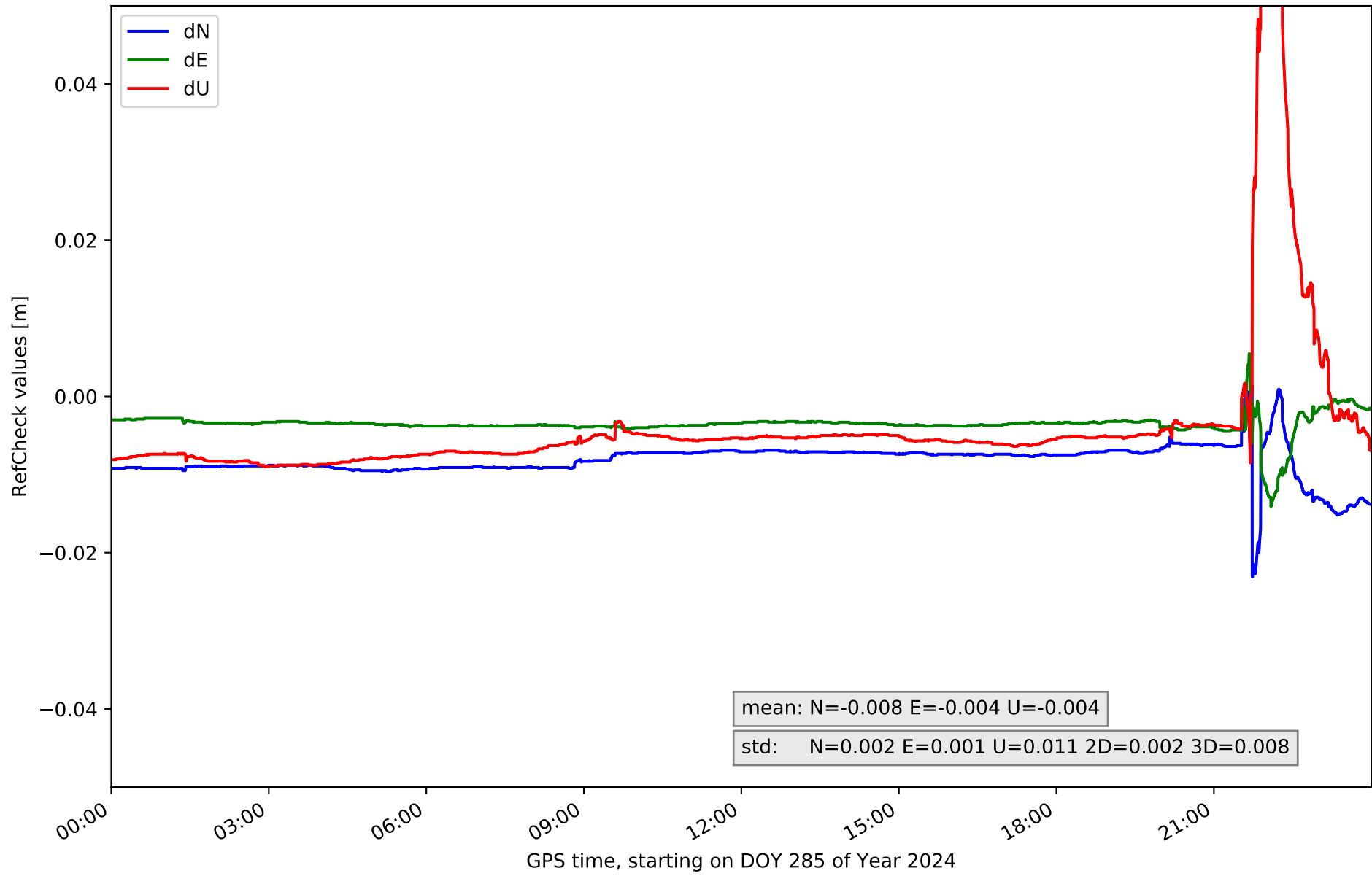
# RefCheck for station ALMO in network NET3



### RefCheck for station CLTR in network NET3

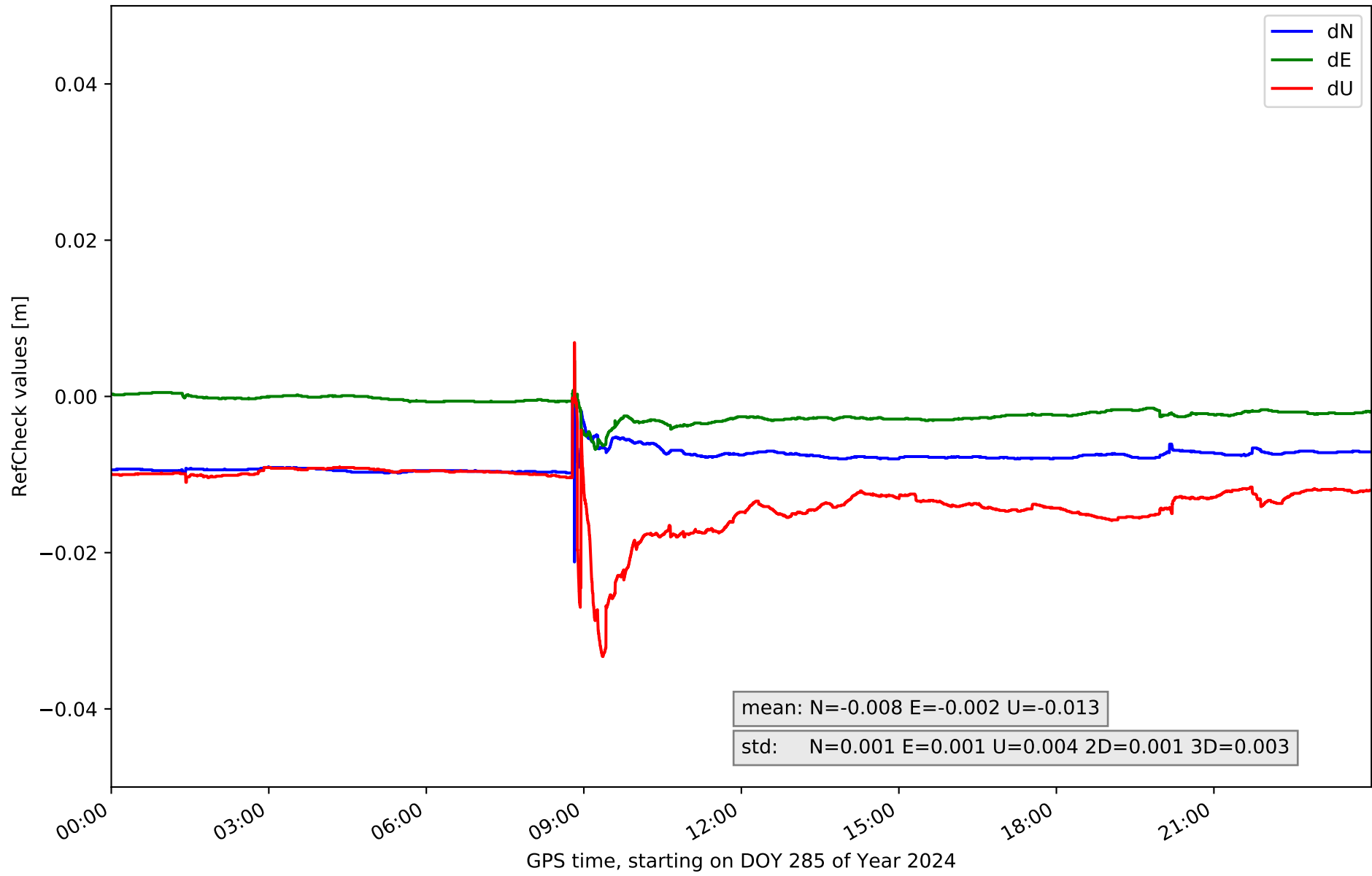


# RefCheck for station COBA in network NET3

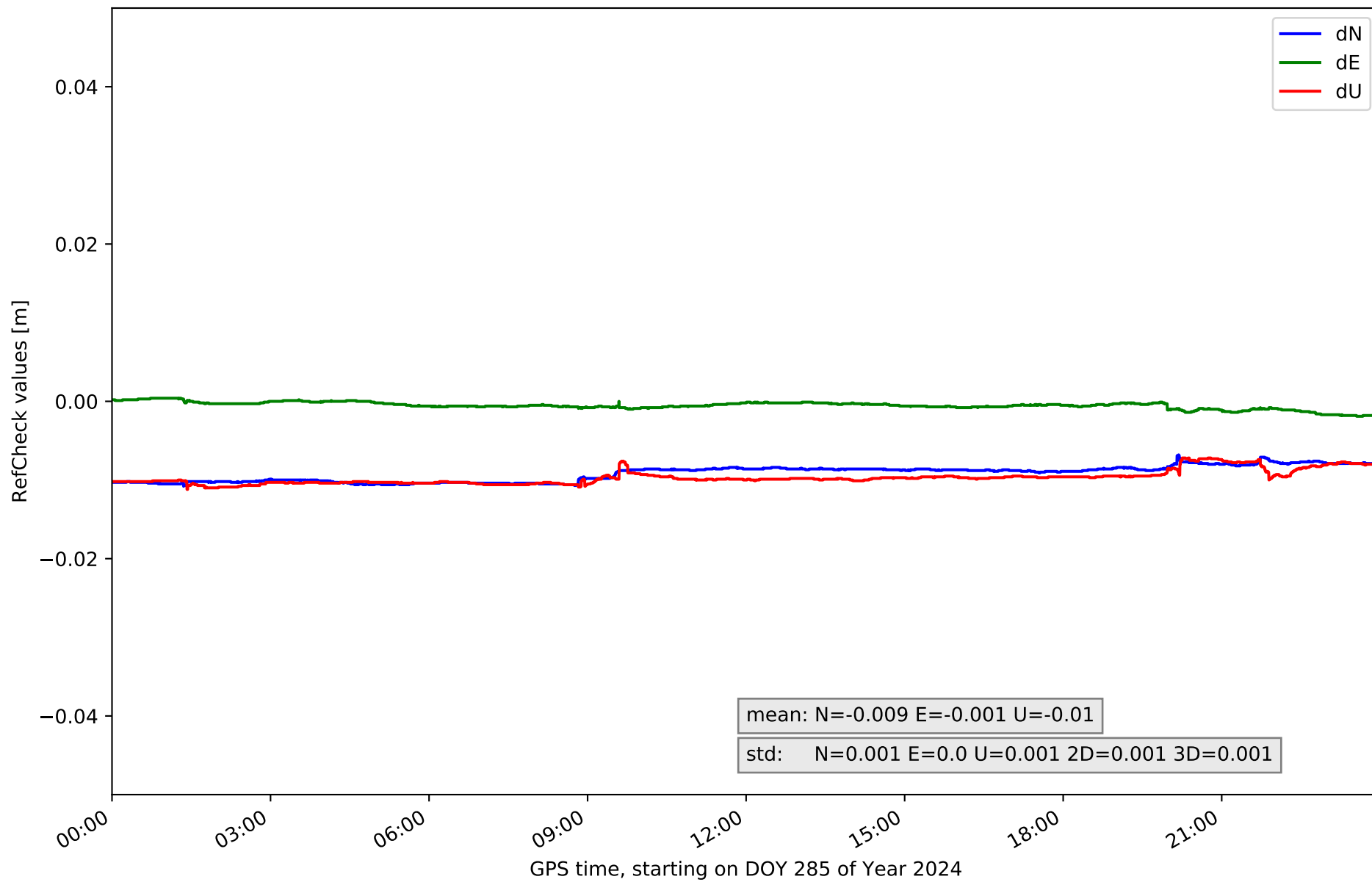




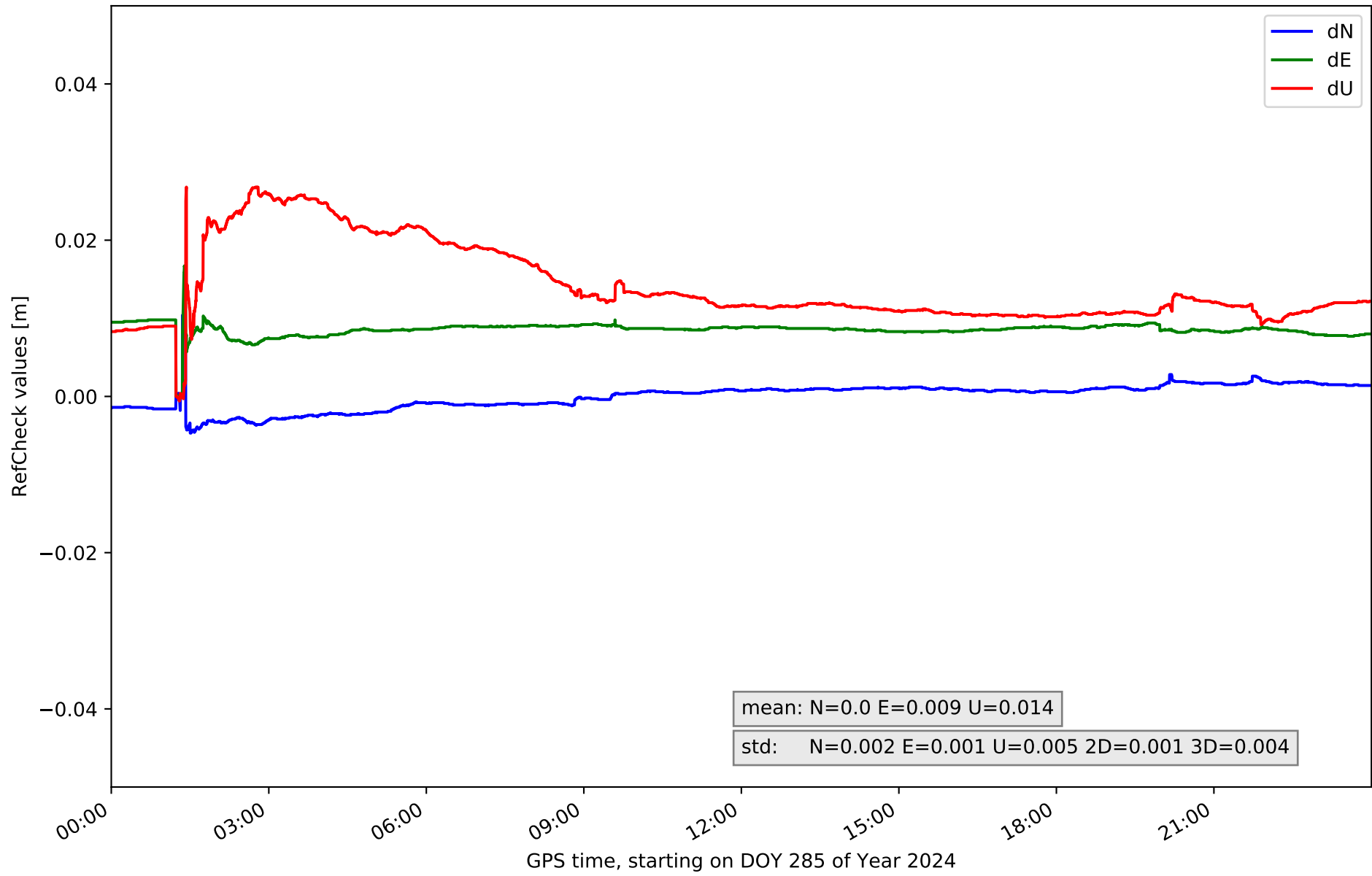
### RefCheck for station CUEN in network NET3



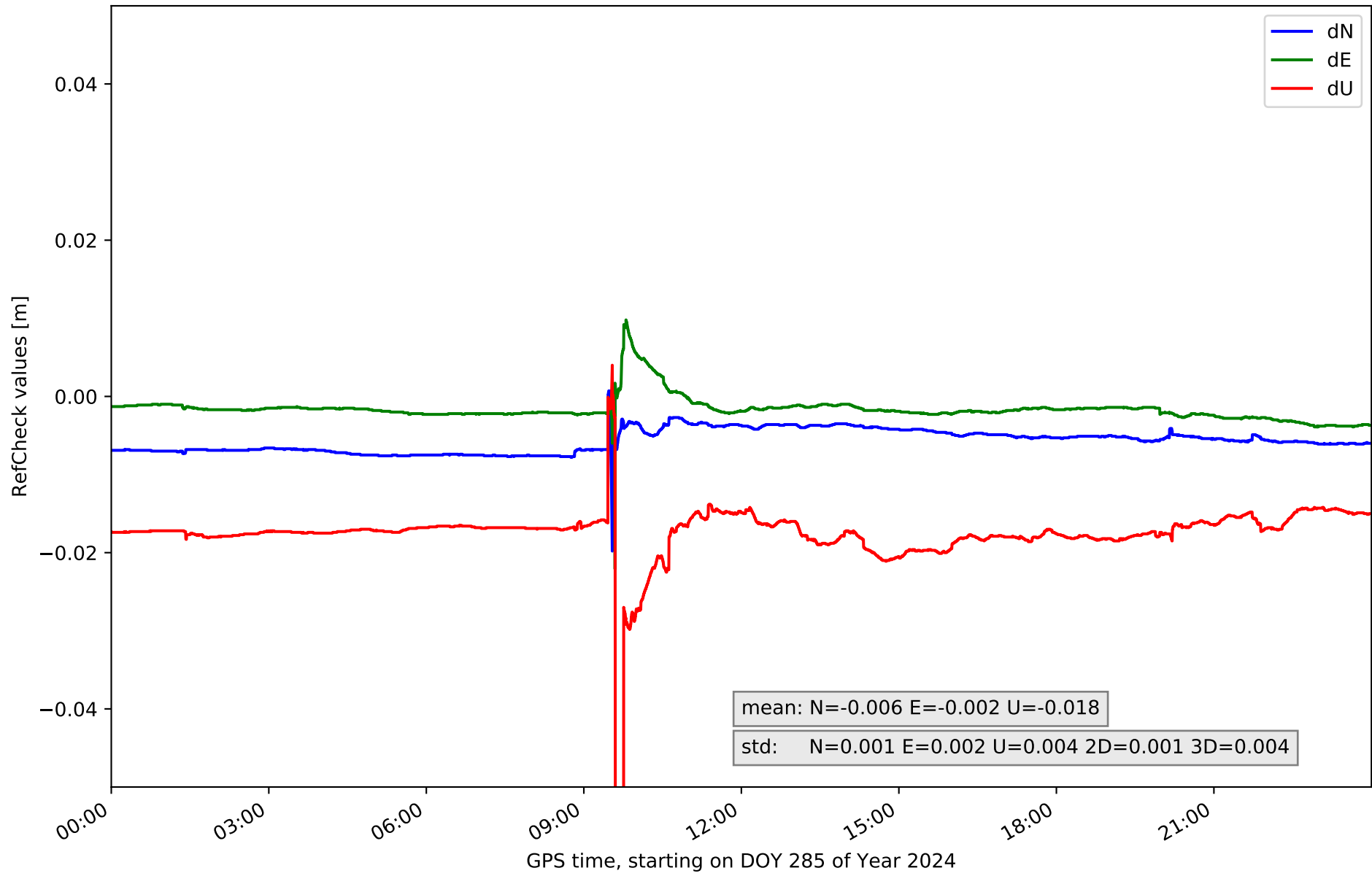
### RefCheck for station MOTA in network NET3



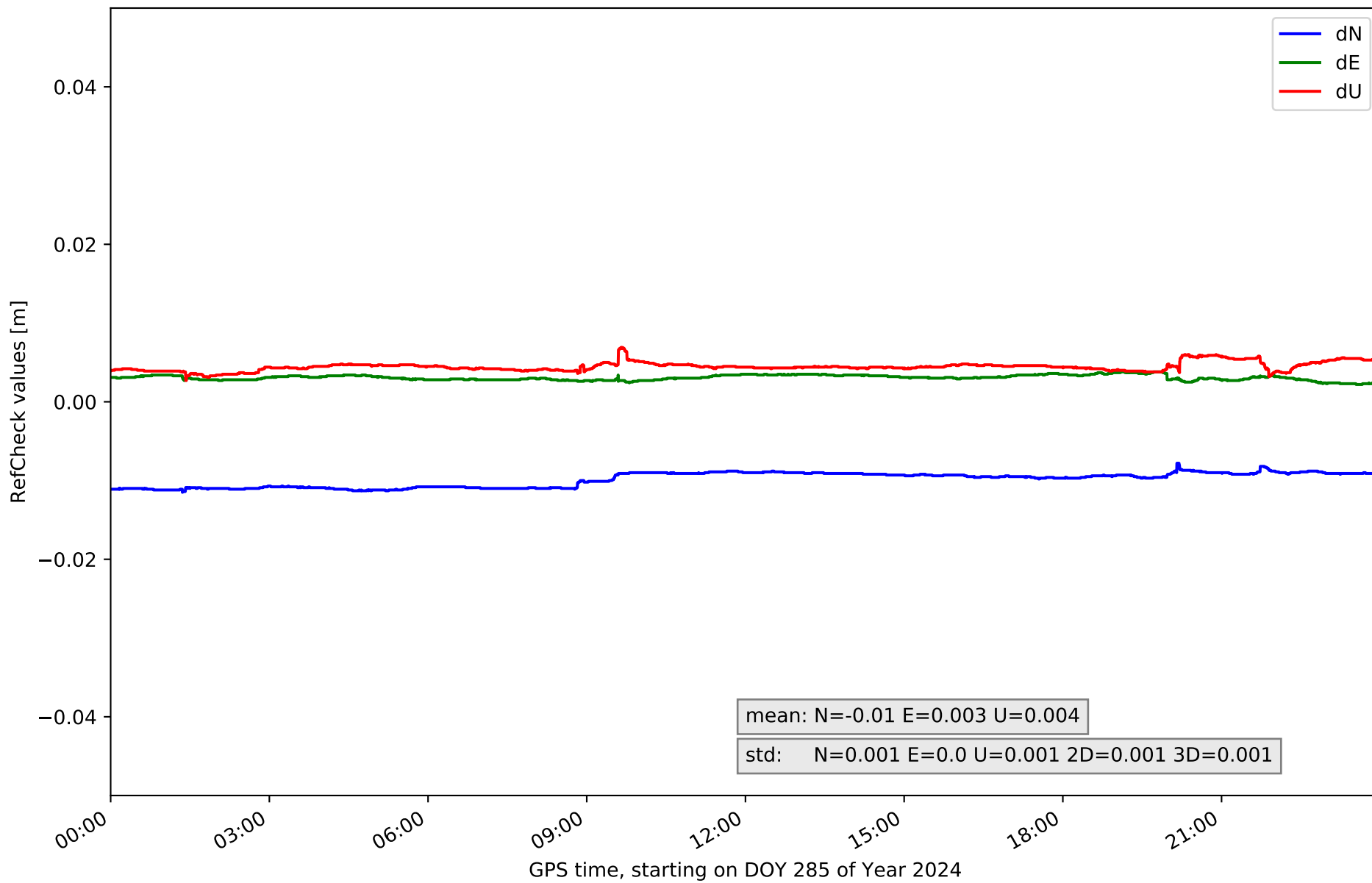
# RefCheck for station MRAT in network NET3



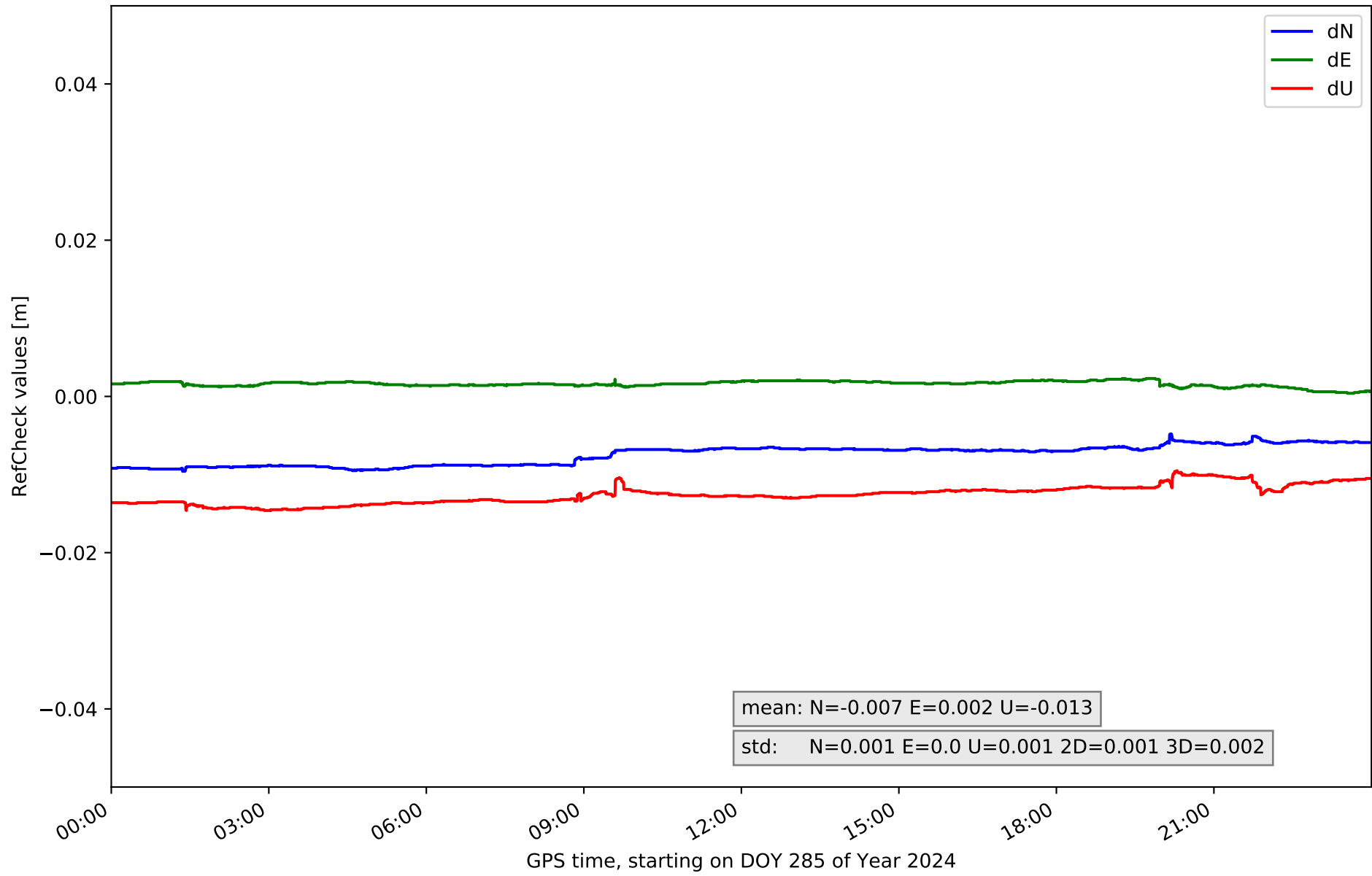
# RefCheck for station SONS in network NET3



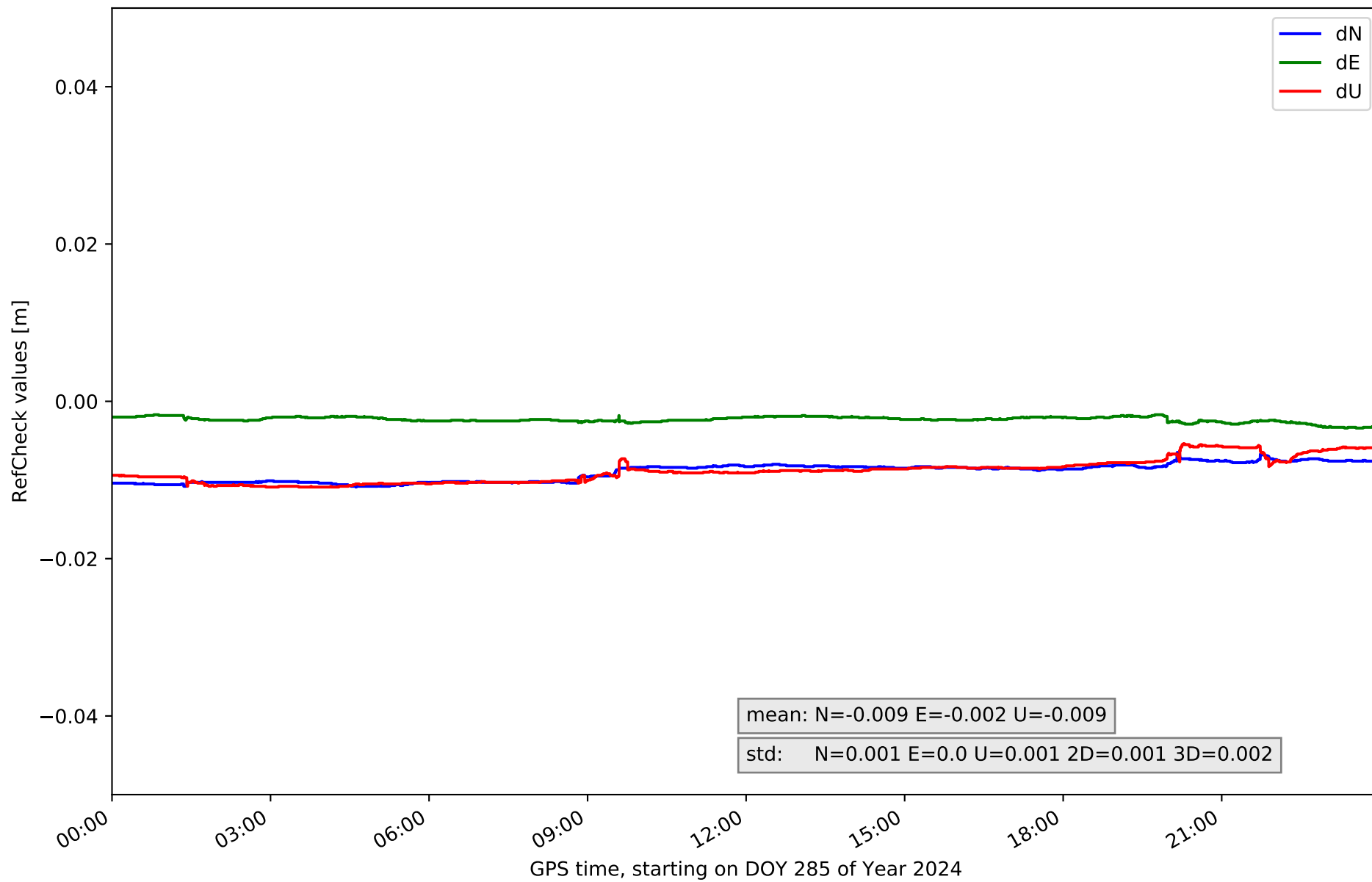
### RefCheck for station UTI1 in network NET3



# RefCheck for station VIAR in network NET3



### RefCheck for station VILH in network NET3



## RefCheck values for network NET3

| Station        | Nmin   | Nmax   | Nstd  | Emin   | Emax   | Estd  | Umin   | Umax   | Ustd  | std2D | std3D | #2D > 0.01 | % 2D > 0.01 | #3D > 0.02 | % 3D > 0.02 |
|----------------|--------|--------|-------|--------|--------|-------|--------|--------|-------|-------|-------|------------|-------------|------------|-------------|
| ALBA           | -0.043 | 0.003  | 0.002 | -0.005 | 0.028  | 0.001 | -0.039 | 0.025  | 0.004 | 0.002 | 0.003 | 62865      | 84.2        | 73950      | 99.0        |
| ALMO           | -0.011 | -0.007 | 0.001 | -0.004 | -0.003 | 0.0   | -0.006 | -0.002 | 0.001 | 0.001 | 0.001 | 26365      | 35.3        | 0          | 0.0         |
| CLTR           | -0.004 | 0.001  | 0.001 | 0.004  | 0.006  | 0.0   | -0.01  | -0.005 | 0.001 | 0.001 | 0.001 | 0          | 0.0         | 0          | 0.0         |
| COBA           | -0.023 | 0.002  | 0.002 | -0.014 | 0.005  | 0.001 | -0.009 | 0.075  | 0.011 | 0.002 | 0.008 | 10744      | 14.4        | 3095       | 4.1         |
| CUEN           | -0.021 | -0.0   | 0.001 | -0.007 | 0.005  | 0.001 | -0.033 | 0.007  | 0.004 | 0.001 | 0.003 | 1          | 0.0         | 3118       | 4.2         |
| MOTA           | -0.011 | -0.007 | 0.001 | -0.002 | 0.0    | 0.0   | -0.011 | -0.007 | 0.001 | 0.001 | 0.001 | 22960      | 30.8        | 0          | 0.0         |
| MRAT           | -0.005 | 0.01   | 0.002 | -0.0   | 0.017  | 0.001 | -0.001 | 0.027  | 0.005 | 0.001 | 0.004 | 421        | 0.6         | 16098      | 21.6        |
| SONS           | -0.02  | 0.001  | 0.001 | -0.022 | 0.01   | 0.002 | -0.064 | 0.004  | 0.004 | 0.001 | 0.004 | 148        | 0.2         | 9234       | 12.4        |
| UT11           | -0.011 | -0.008 | 0.001 | 0.002  | 0.004  | 0.0   | 0.003  | 0.007  | 0.001 | 0.001 | 0.001 | 37247      | 49.9        | 0          | 0.0         |
| VIAR           | -0.01  | -0.005 | 0.001 | 0.0    | 0.002  | 0.0   | -0.015 | -0.009 | 0.001 | 0.001 | 0.002 | 0          | 0.0         | 0          | 0.0         |
| VILH           | -0.011 | -0.006 | 0.001 | -0.003 | -0.002 | 0.0   | -0.011 | -0.005 | 0.001 | 0.001 | 0.002 | 24131      | 32.3        | 0          | 0.0         |
| <b>Mean</b>    | -0.015 | -0.001 | 0.001 | -0.005 | 0.007  | 0.001 | -0.018 | 0.011  | 0.003 | 0.001 | 0.003 | 16807.5    | 22.5        | 9590.5     | 12.8        |
| <b>Min/Max</b> | -0.043 | 0.01   | 0.002 | -0.022 | 0.028  | 0.002 | -0.064 | 0.075  | 0.011 | 0.002 | 0.008 | 62865      | 84.2        | 73950      | 99.0        |



fixing statistic for network NET3

| fixing percentage of                             | all GNSS | G    | R    | E    | C    |
|--|----------|------|------|------|------|
| using threshold 0.3                              | 92.6     | 94.2 | 93.7 | 95.1 | 87.8 |
| considering satellites with dual-frequency fixed | 90.2     | 91.5 | 90.0 | 93.0 | 85.3 |
| considering all signals separately               | 90.1     | 91.6 | 90.0 | 93.2 | 83.0 |