

summary for network NT10

timeperiod chosen: from 2024-07-01-00:00:00 until 2024-07-01-23:59:59

average update rate (durations larger than 15 seconds considered as observation gap): 1.1 seconds

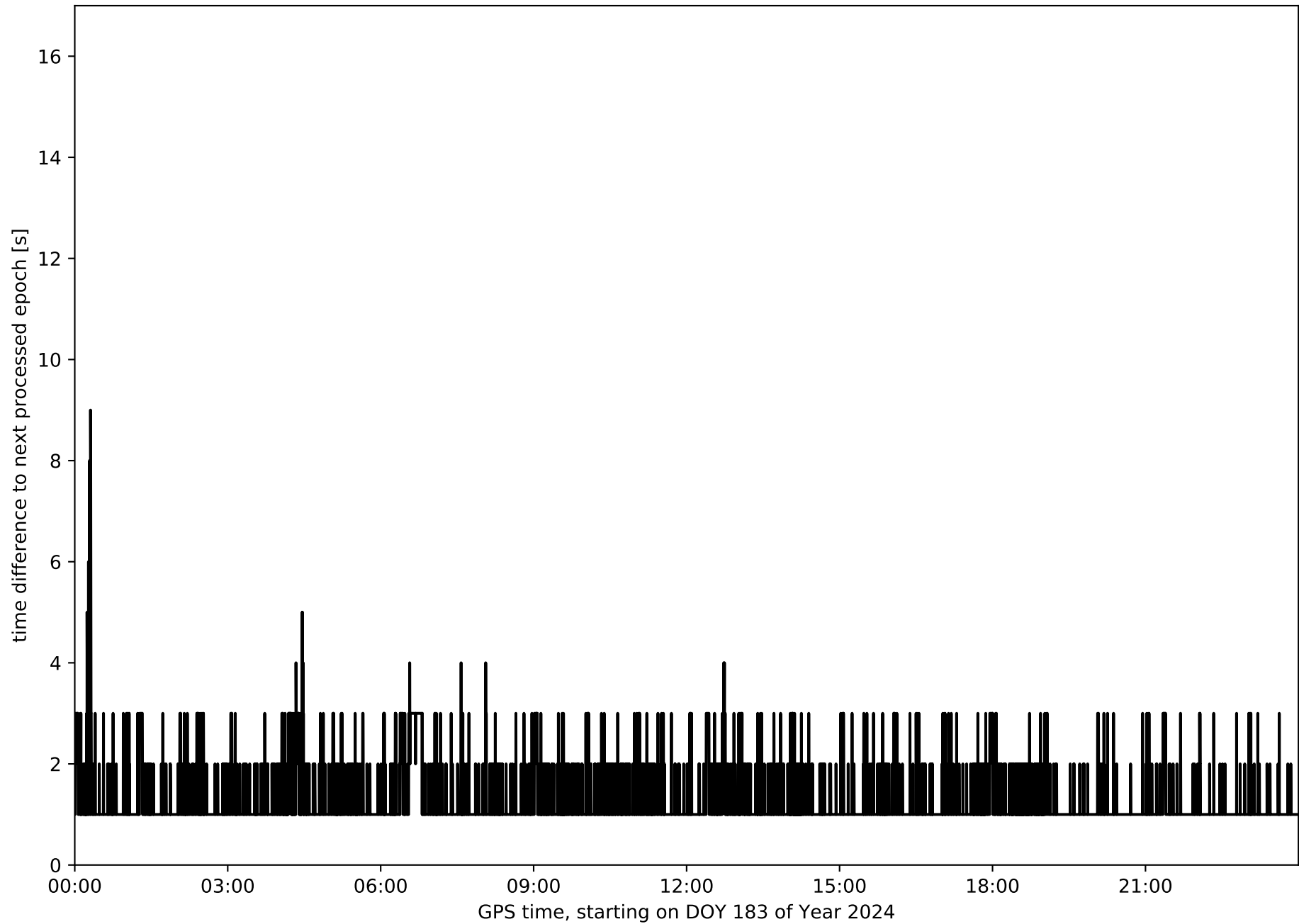
average fixing percentage with threshold set to 0.3: 89.5 percent

stations available: 11 of 14

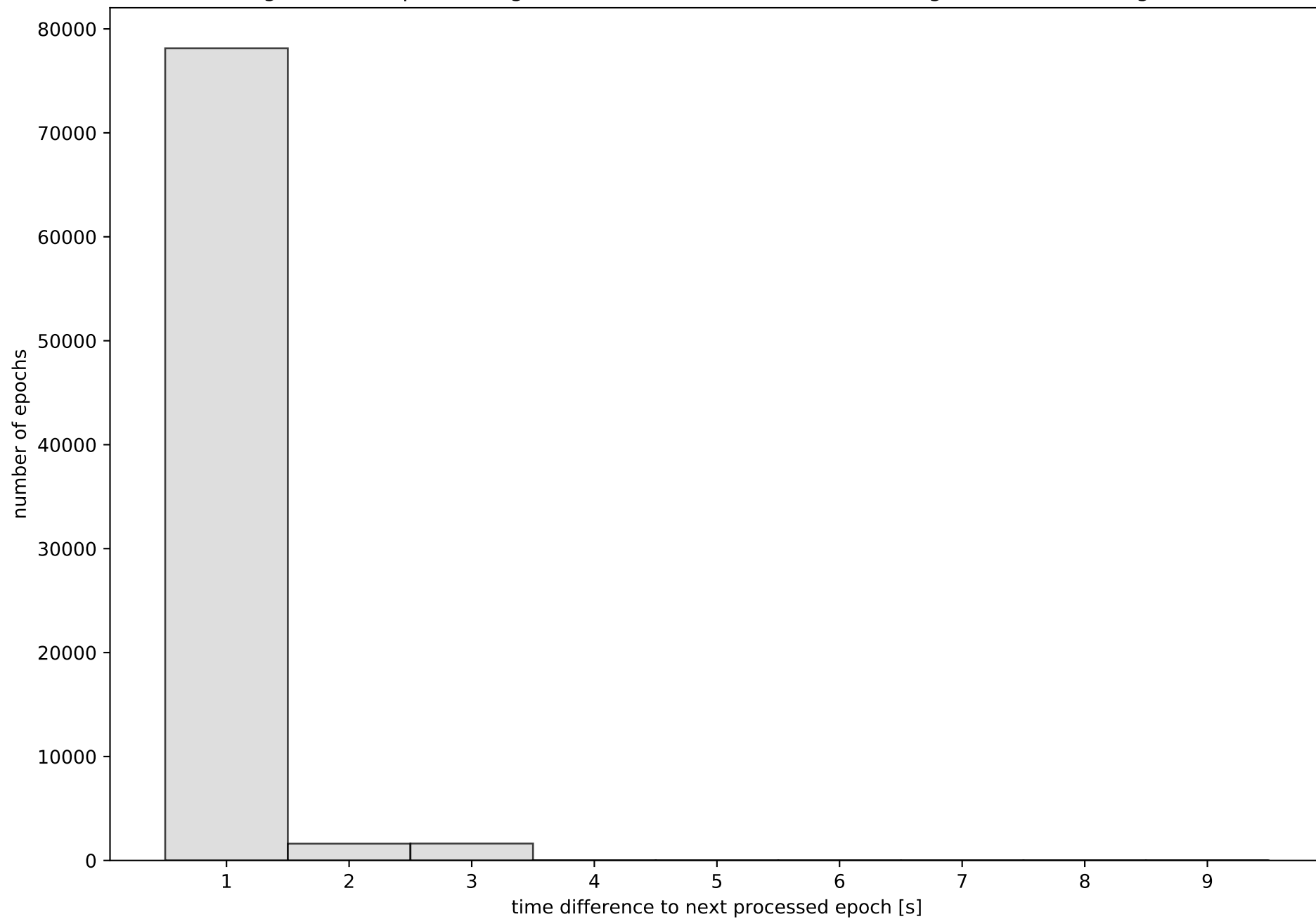
station information:

station ALC1:	antenna: TRM57971.00 TZGD	receiver: TRIMBLE NETR9	height: 397.675
station BCL1:	antenna: LEIAR20 LEIM	receiver: LEICA GR25	height: 56.129
station BCLN:	antenna: LEIAR25.R4 LEIT	receiver: LEICA GR10	height: 84.875
station BERG:	antenna: GPPNULLANTENNA NONE	receiver: LEICA GR30	height: 892.808
station GIRO:	antenna: LEIAR25.R4 LEIT	receiver: LEICA GR10	height: 112.767
station GRAU:	antenna: GPPNULLANTENNA NONE	receiver: TPS NET-G3	height: 509.777
station MEQU:	antenna: GPPNULLANTENNA NONE	receiver: LEICA GR50	height: 138.594
station PUIG:	antenna: TRM59900.00 SCIS	receiver: TRIMBLE NETR9	height: 1162.395
station TARR:	antenna: LEIAR20 LEIM	receiver: LEICA GR25	height: 491.514
station TRRG:	antenna: LEIAR20 LEIM	receiver: LEICA GR50	height: 55.163
station VRO2:	antenna: GPPNULLANTENNA NONE	receiver: LEICA GR50	height: 541.427

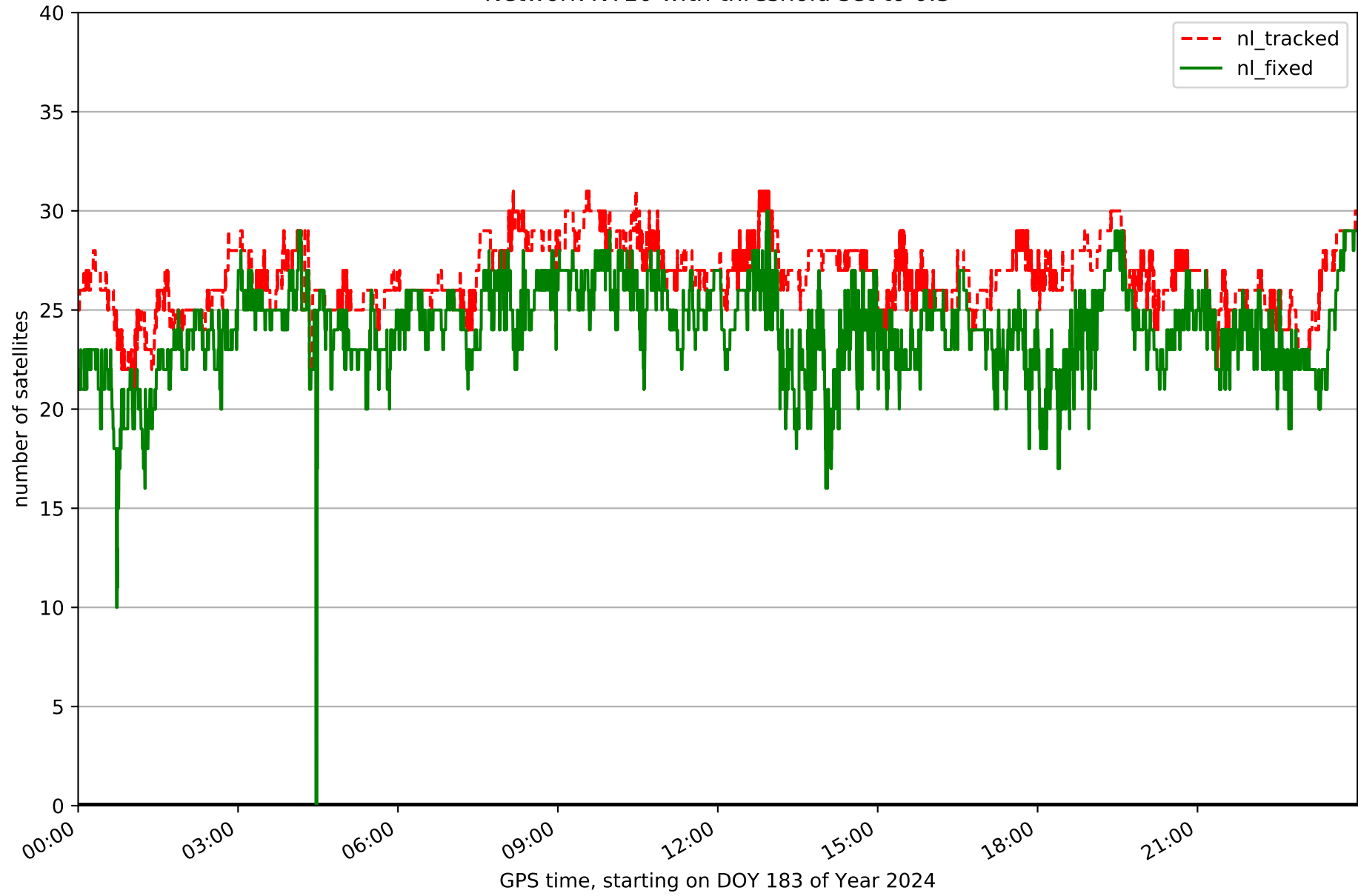
Processing rate in network NT10



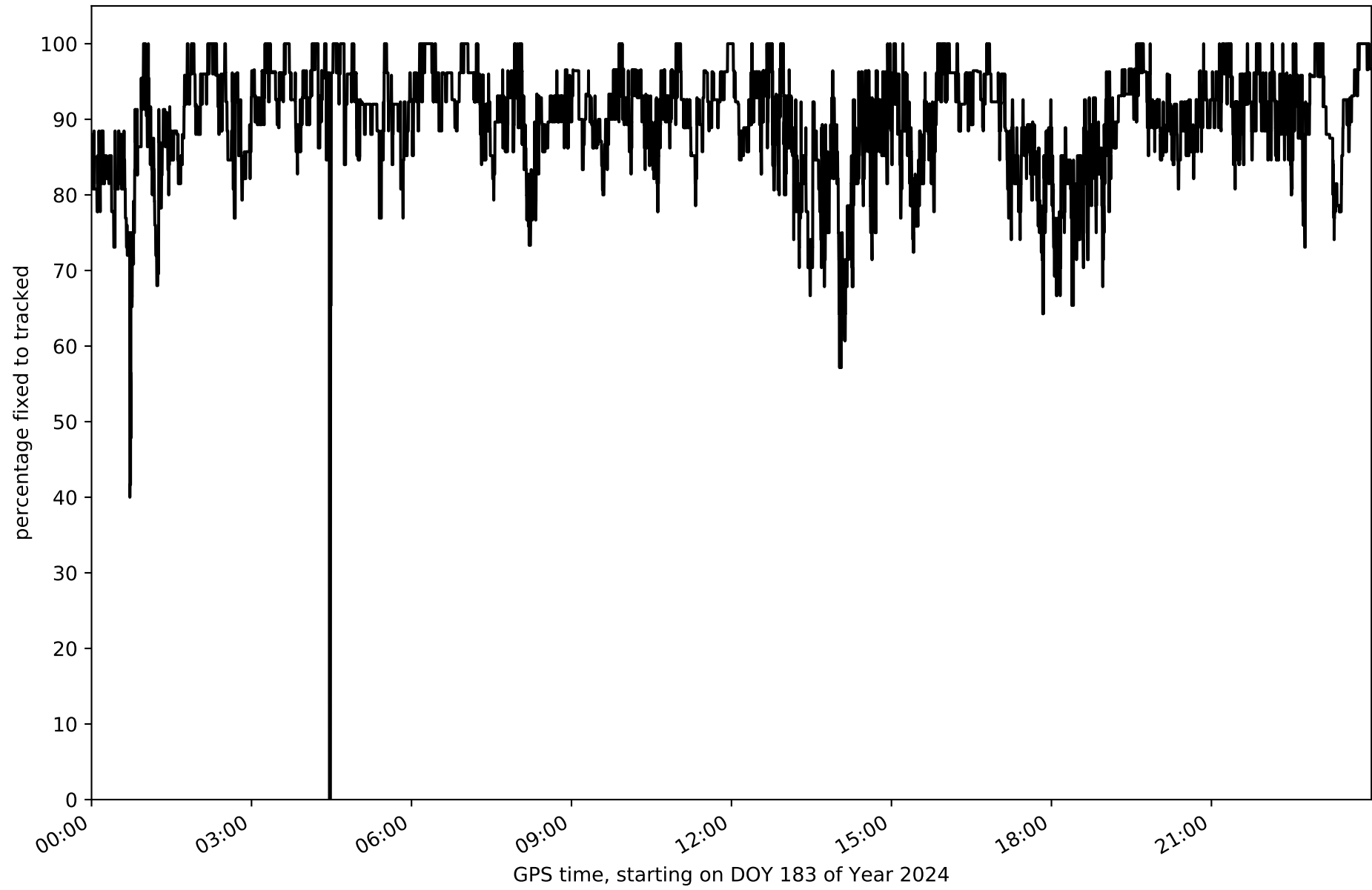
Histogram of the processing rate in network NT10 (durations larger 15 seconds neglected)



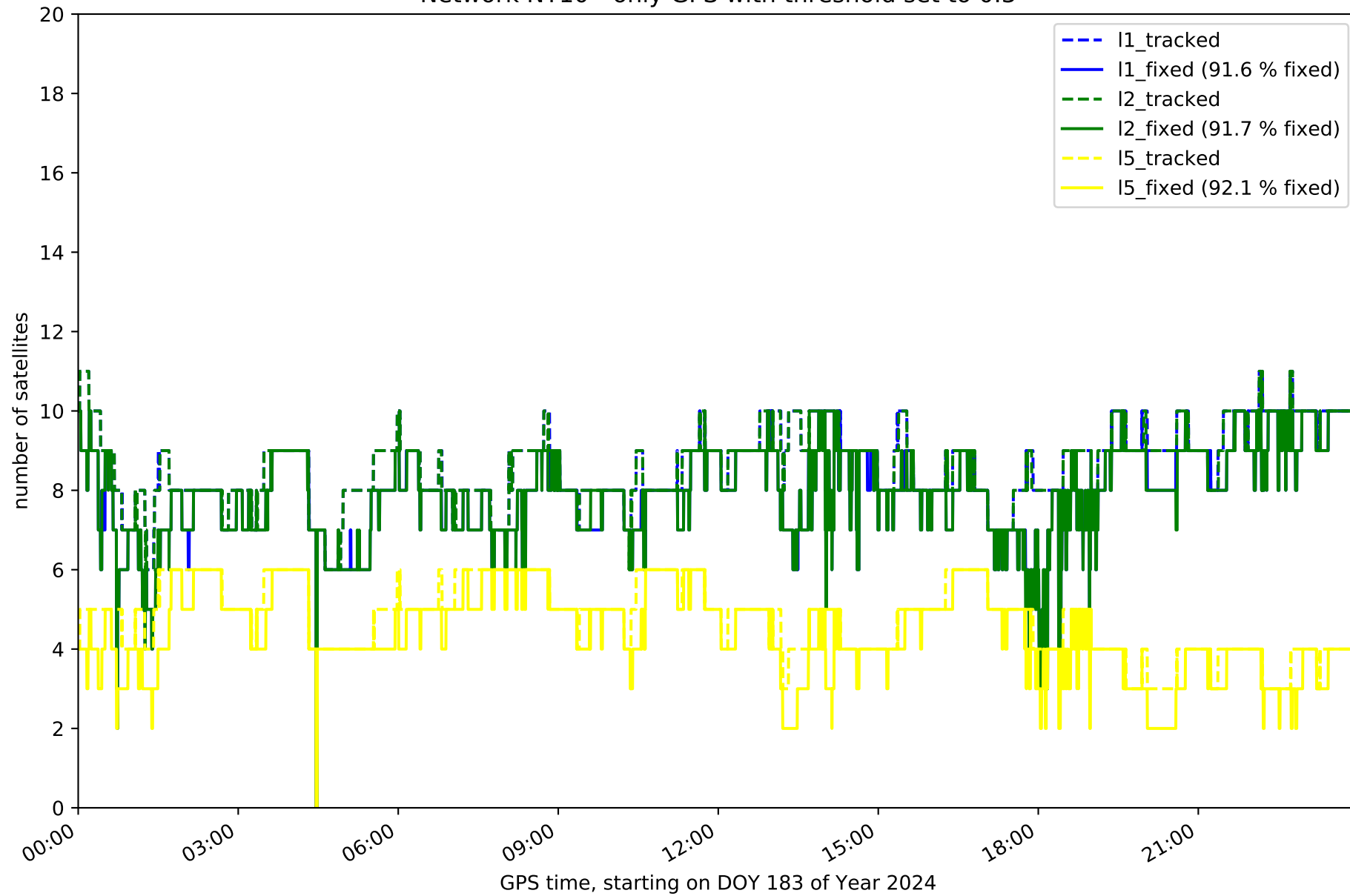
Network NT10 with threshold set to 0.3



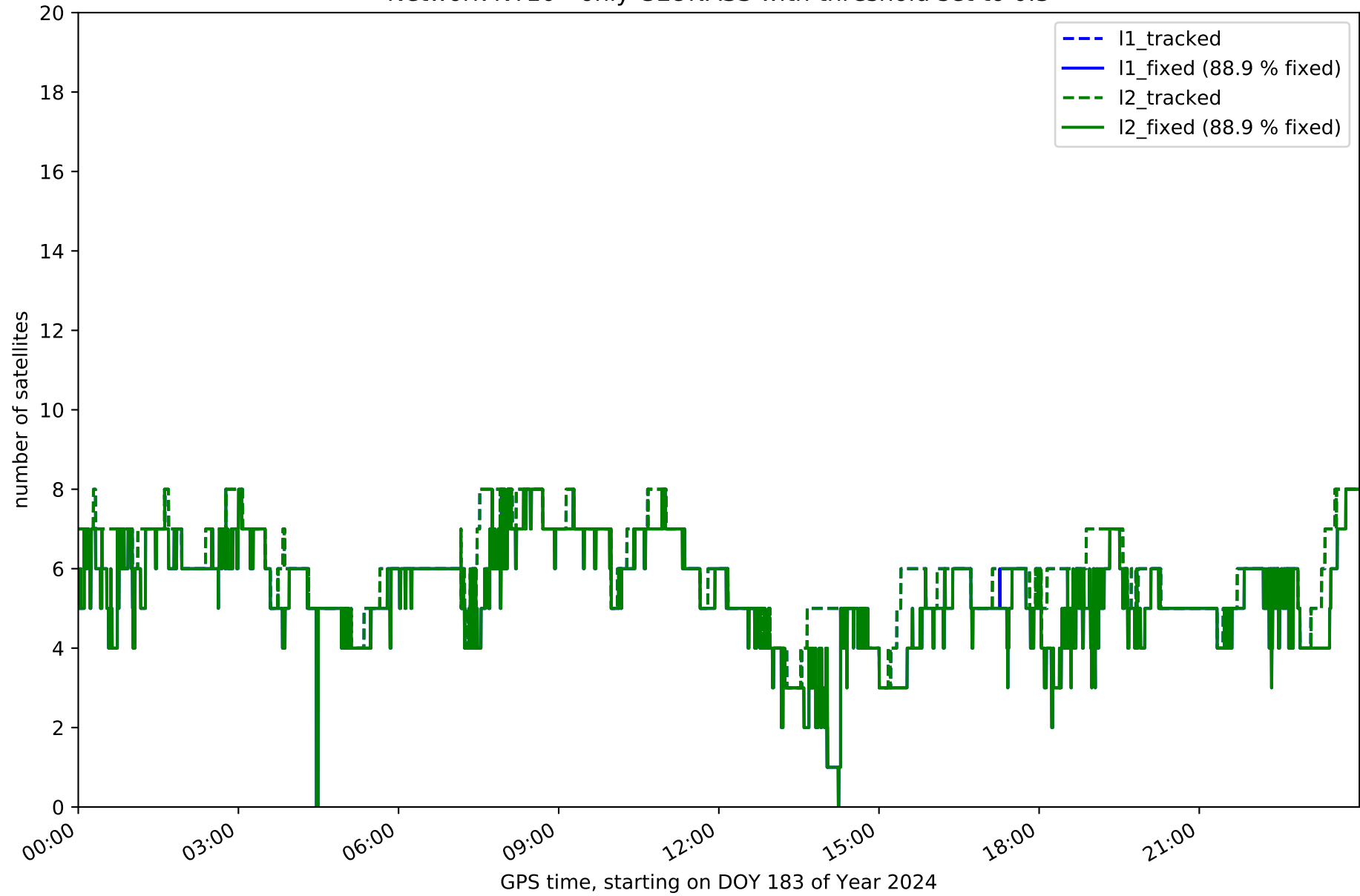
Fixing percentage of satellites in network NT10 with threshold set to 0.3



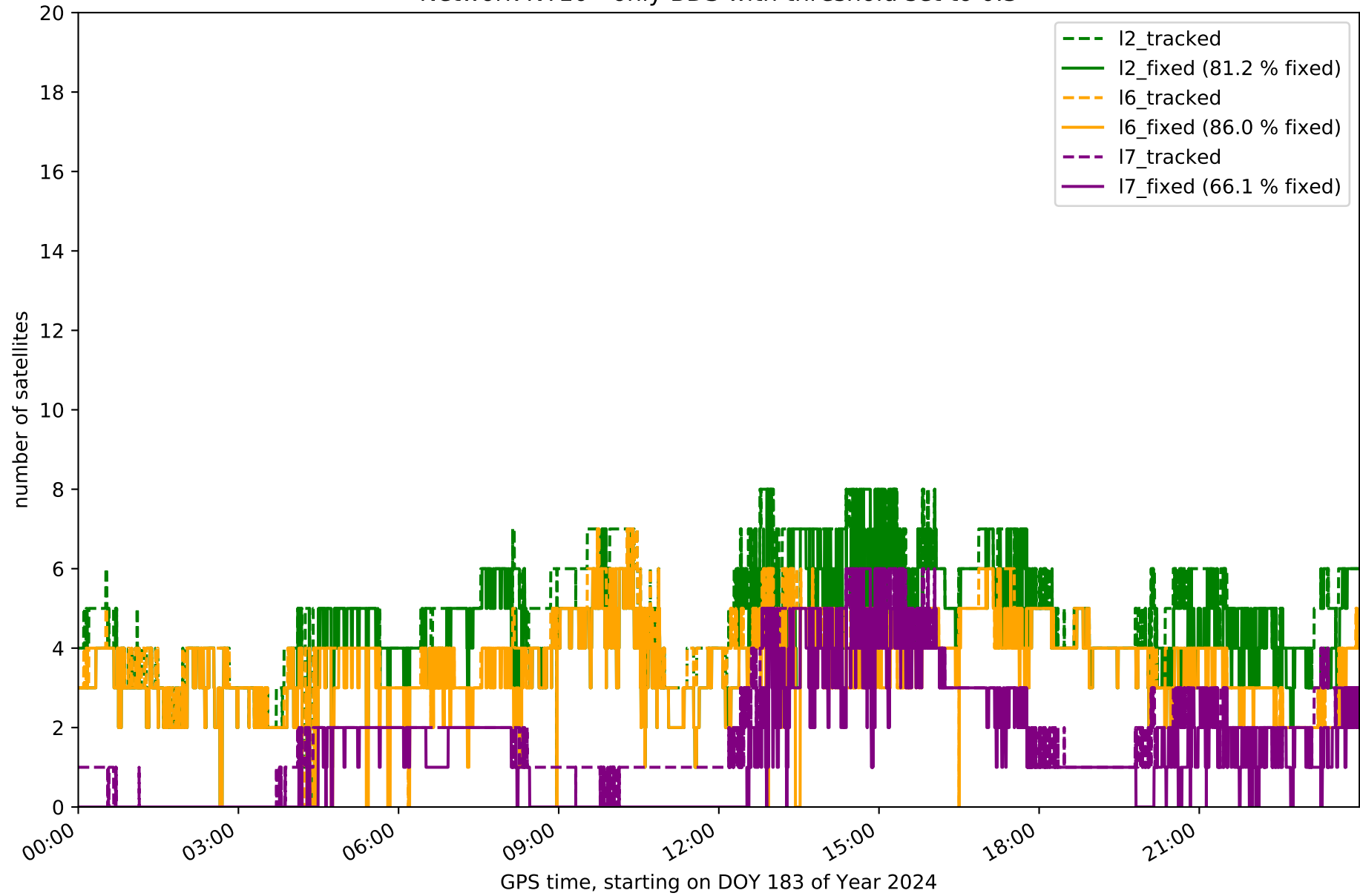
Network NT10 - only GPS with threshold set to 0.3



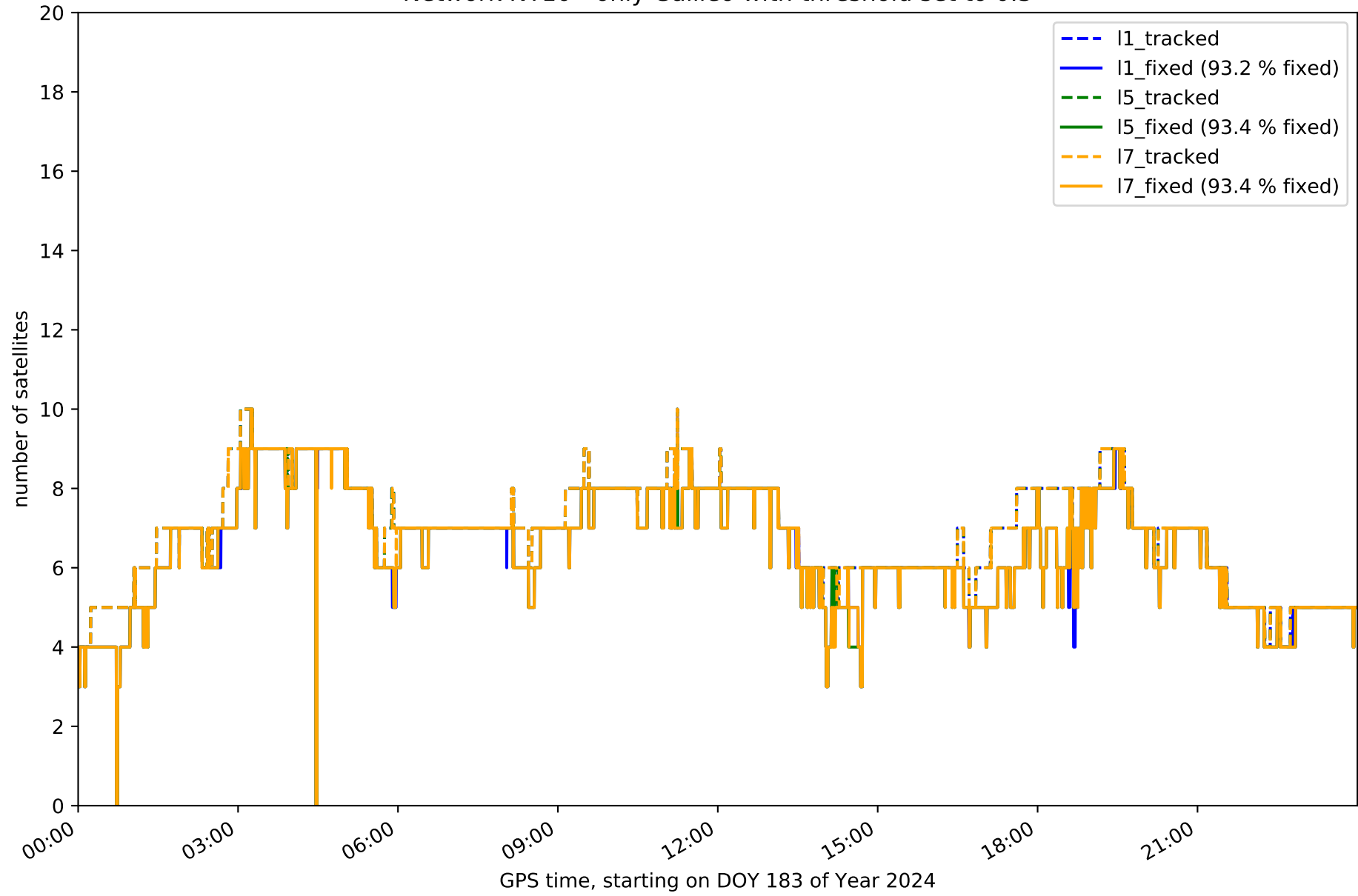
Network NT10 - only GLONASS with threshold set to 0.3



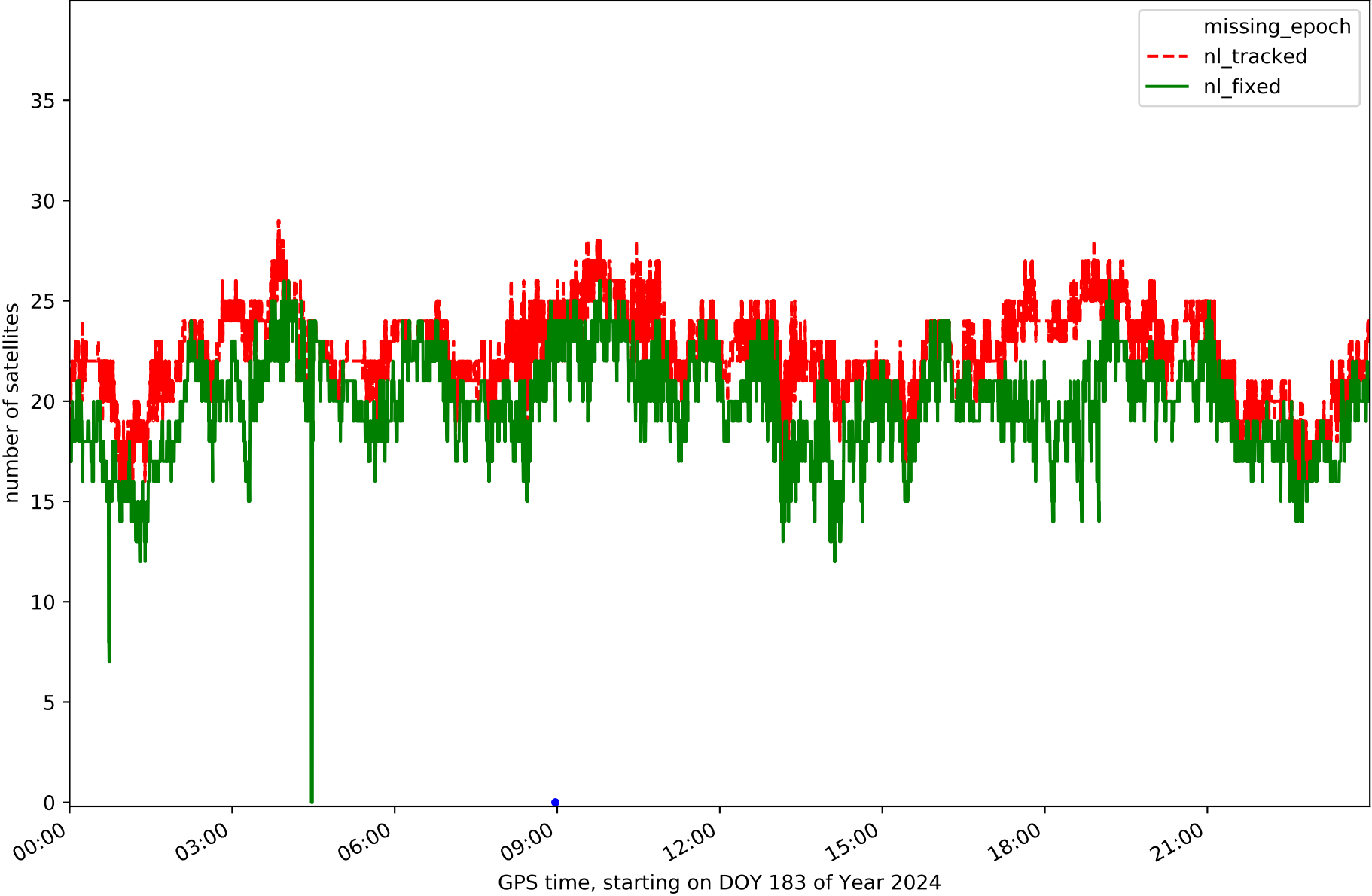
Network NT10 - only BDS with threshold set to 0.3



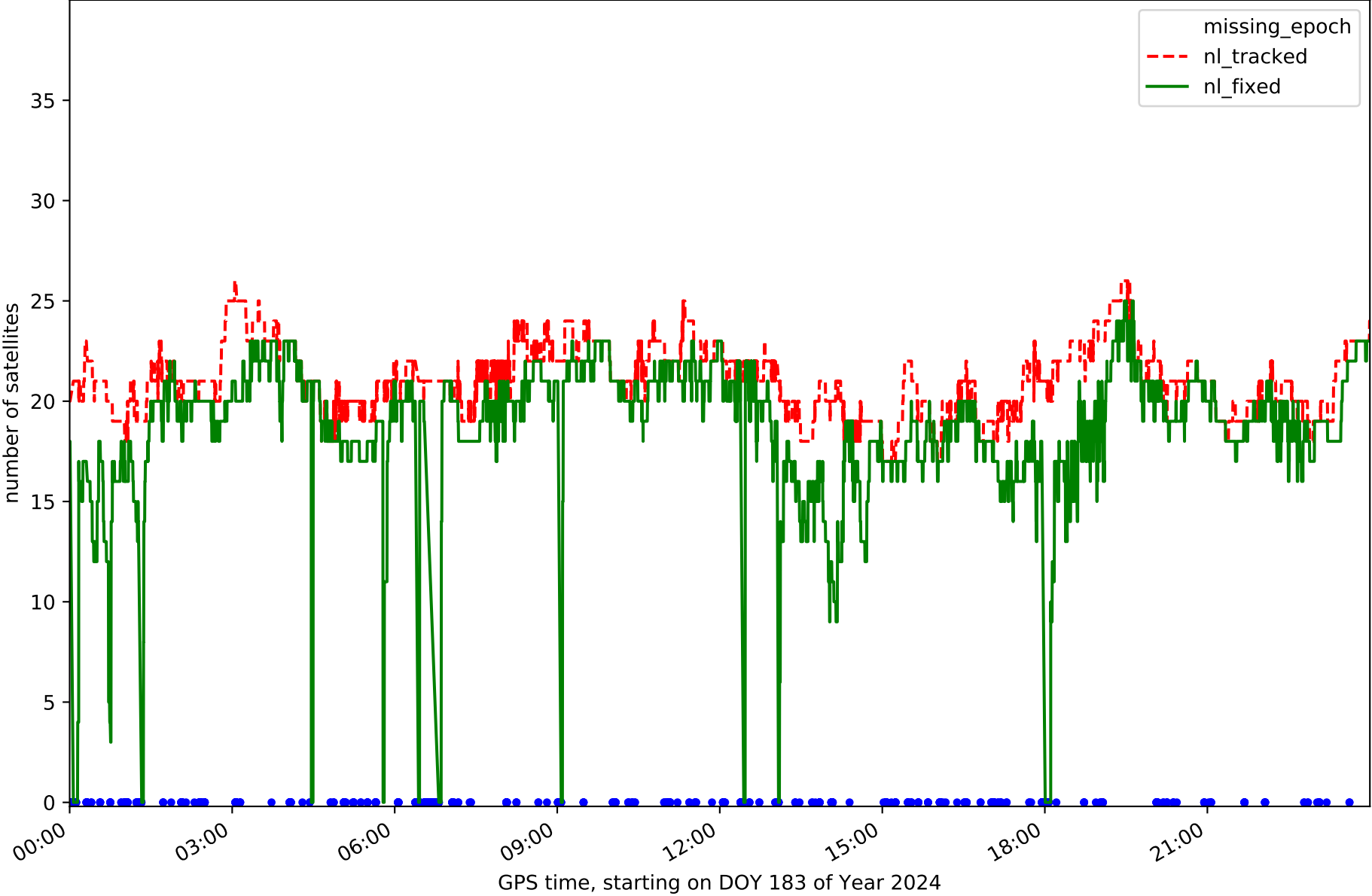
Network NT10 - only Galileo with threshold set to 0.3



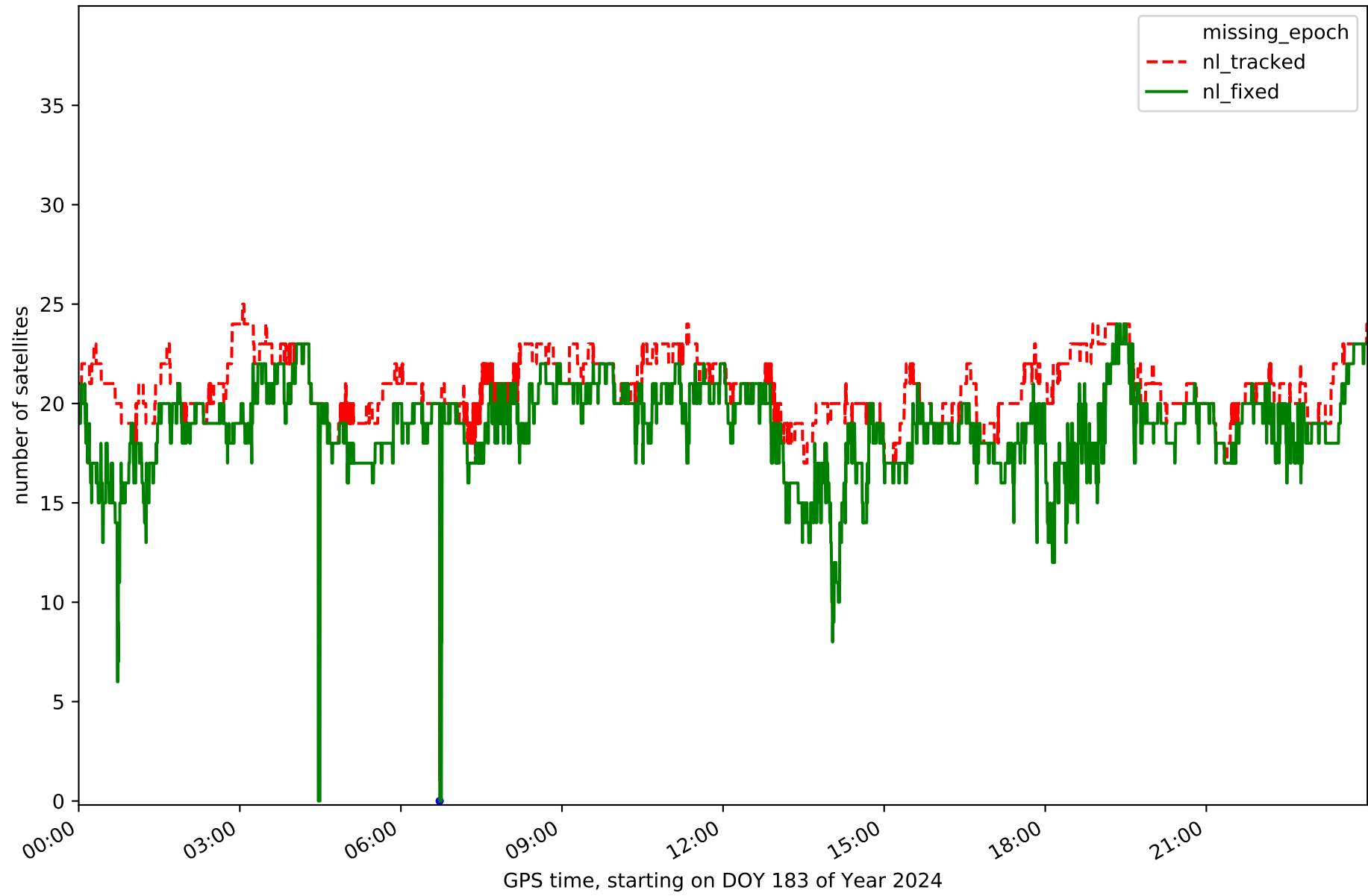
Station ALC1 in network NT10



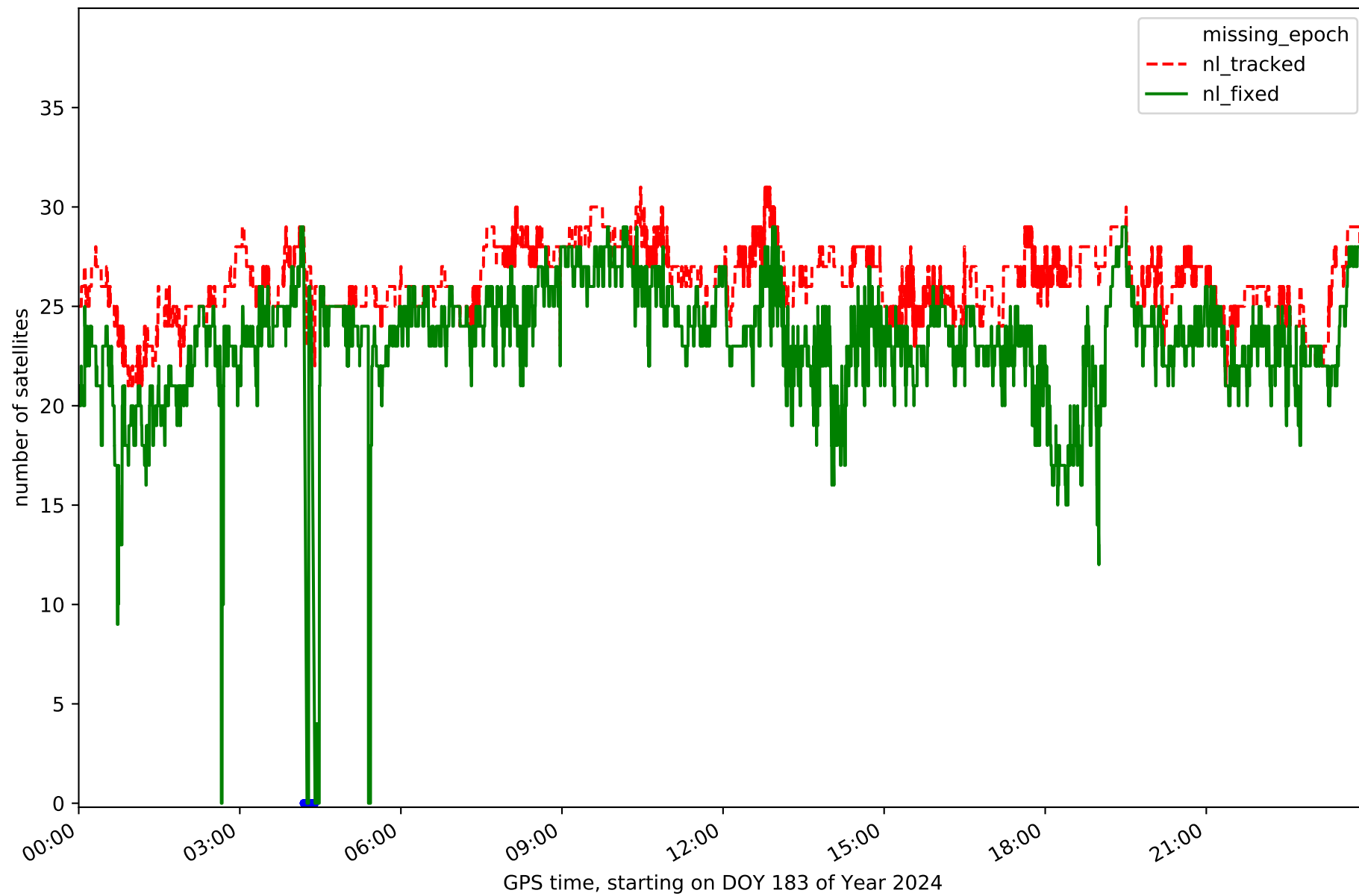
Station BCL1 in network NT10



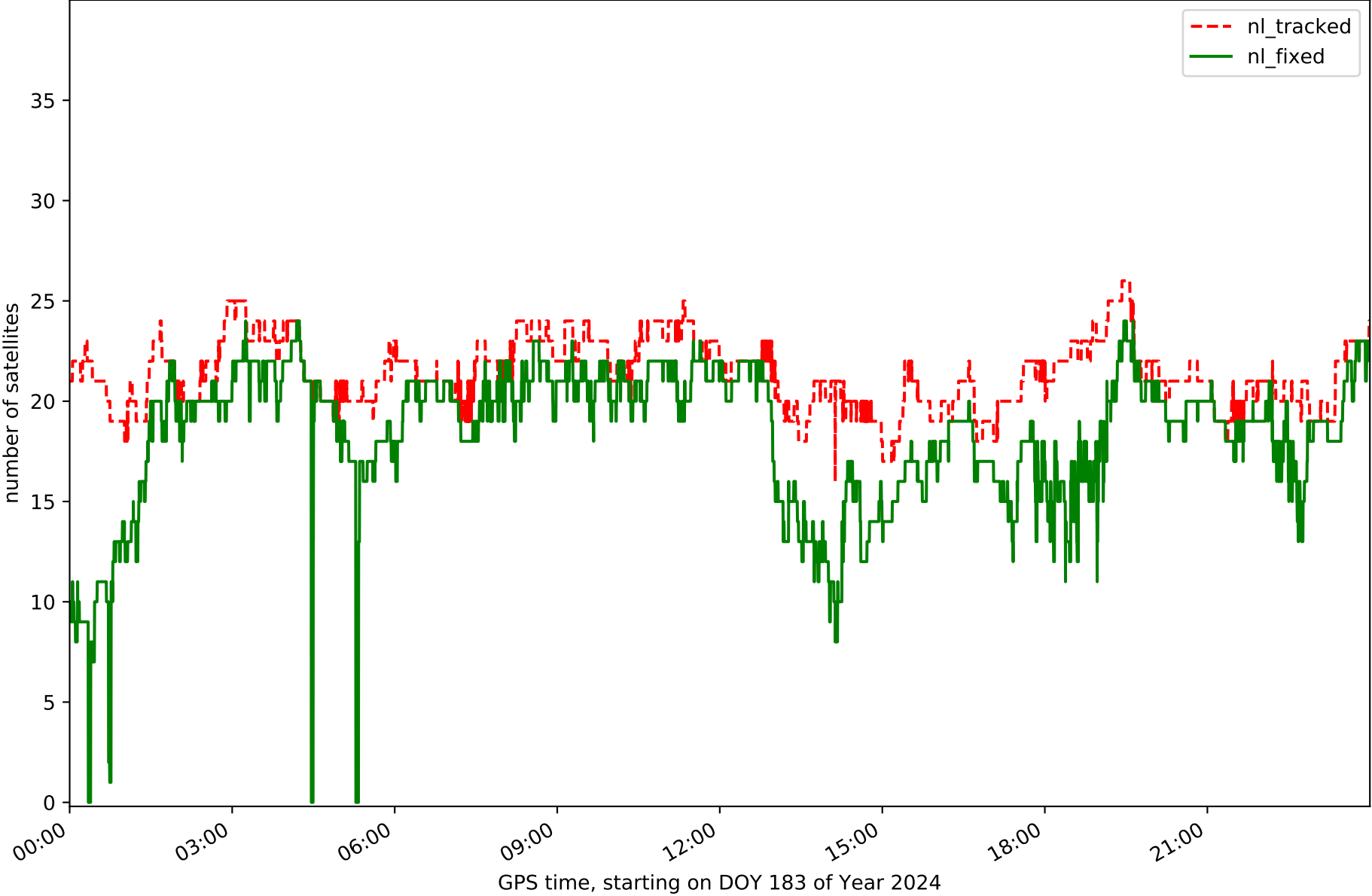
Station BCLN in network NT10



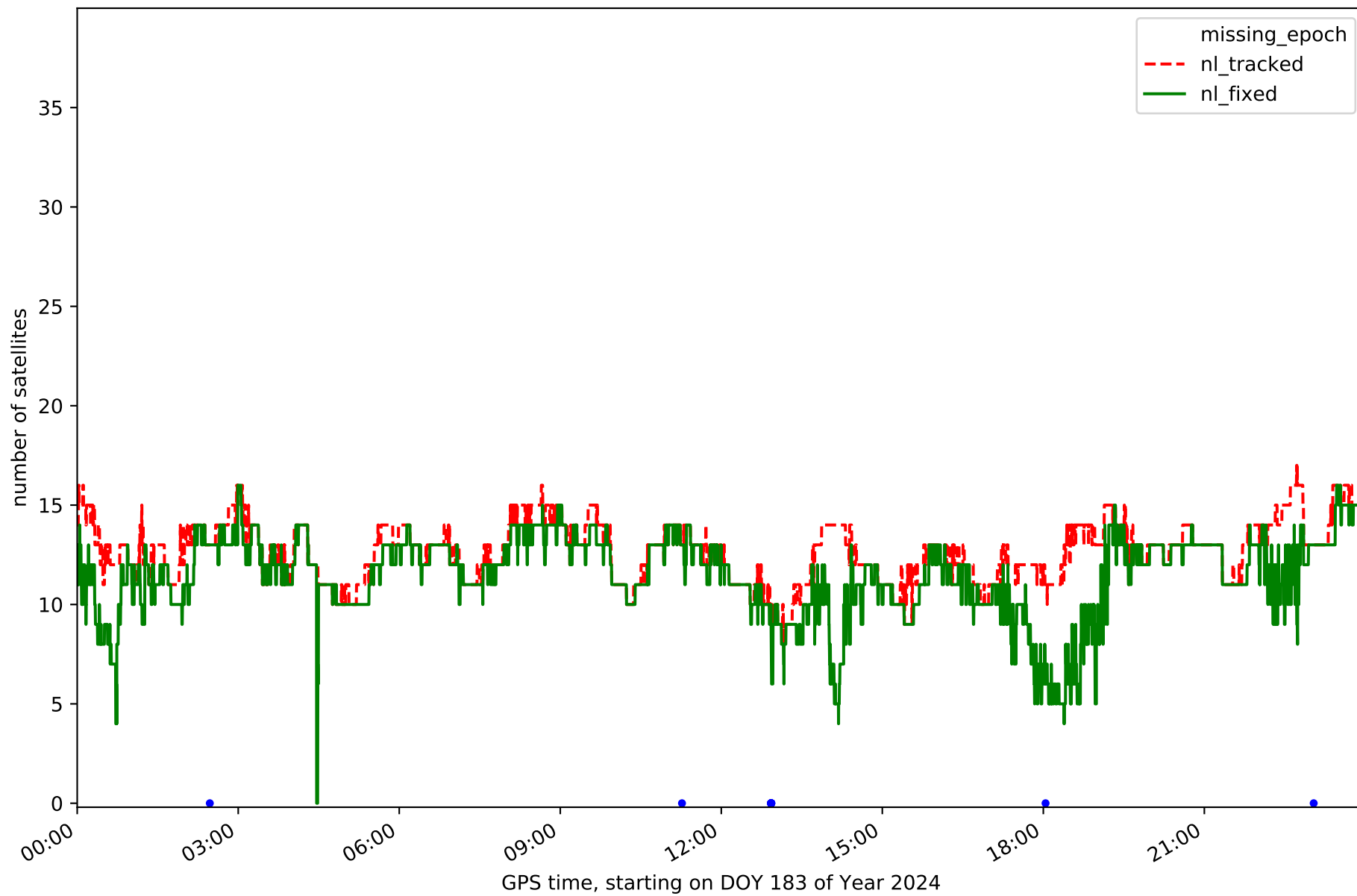
Station BERG in network NT10



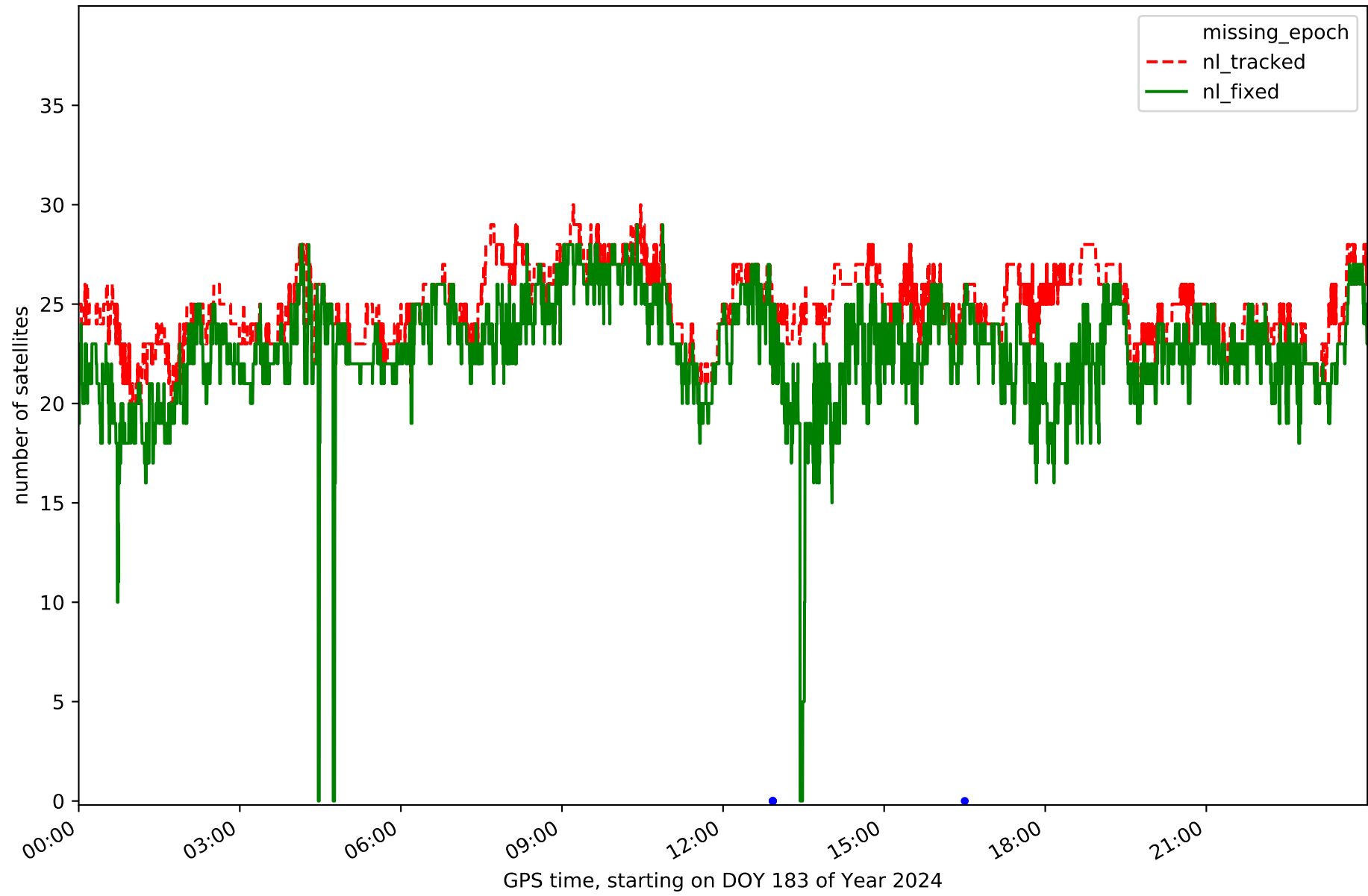
Station GIRO in network NT10



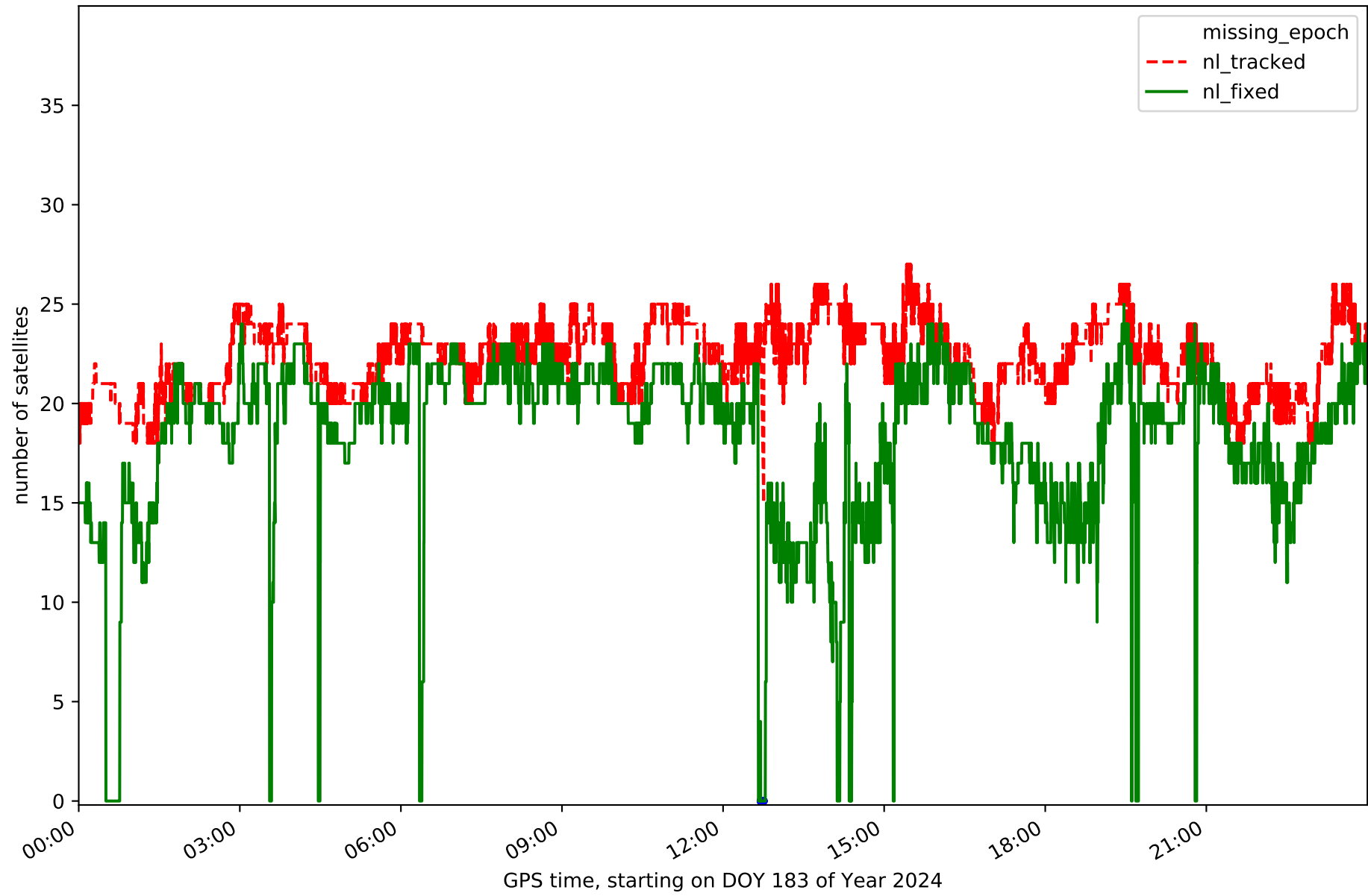
Station GRAU in network NT10



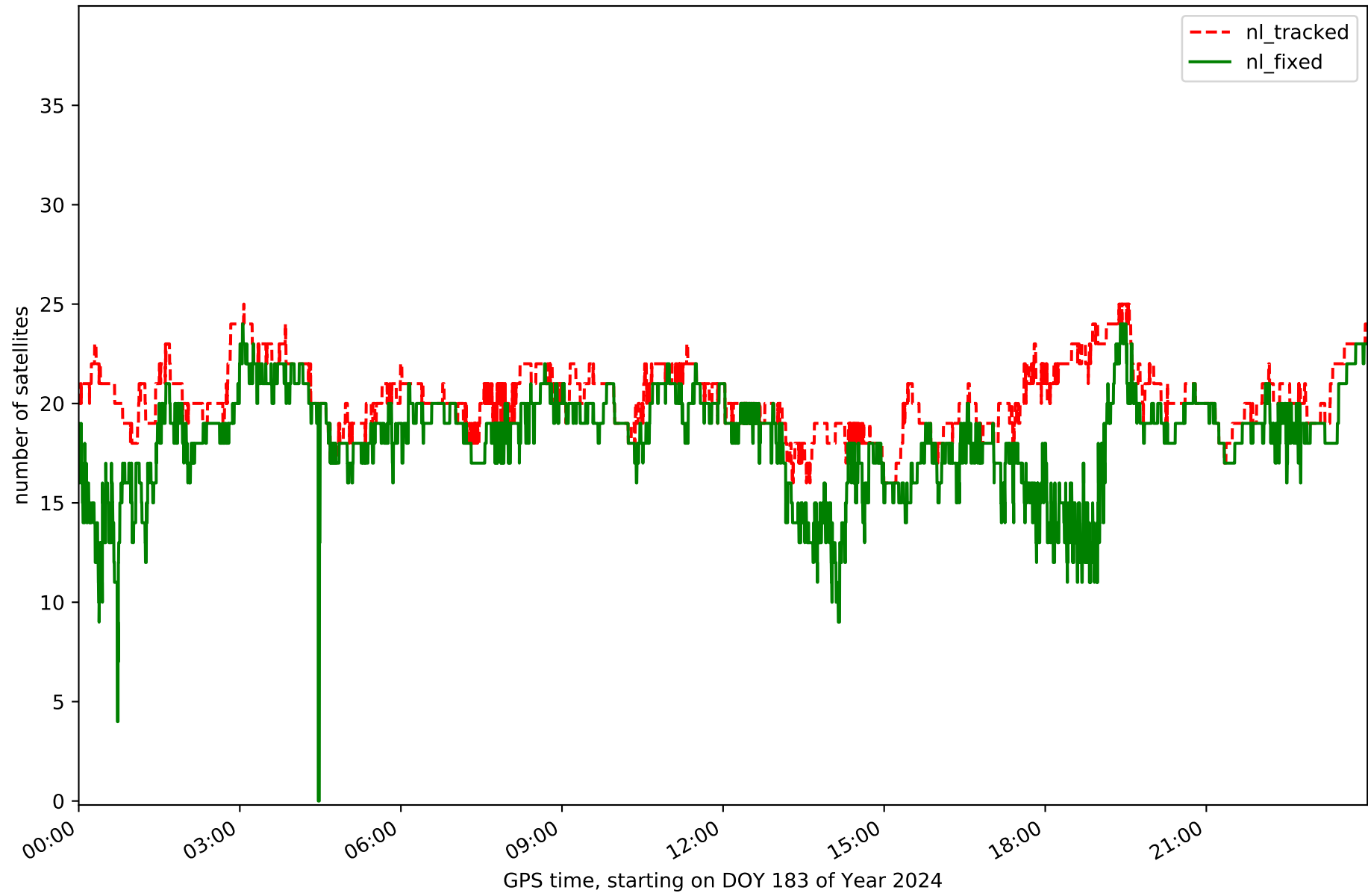
Station MEQU in network NT10



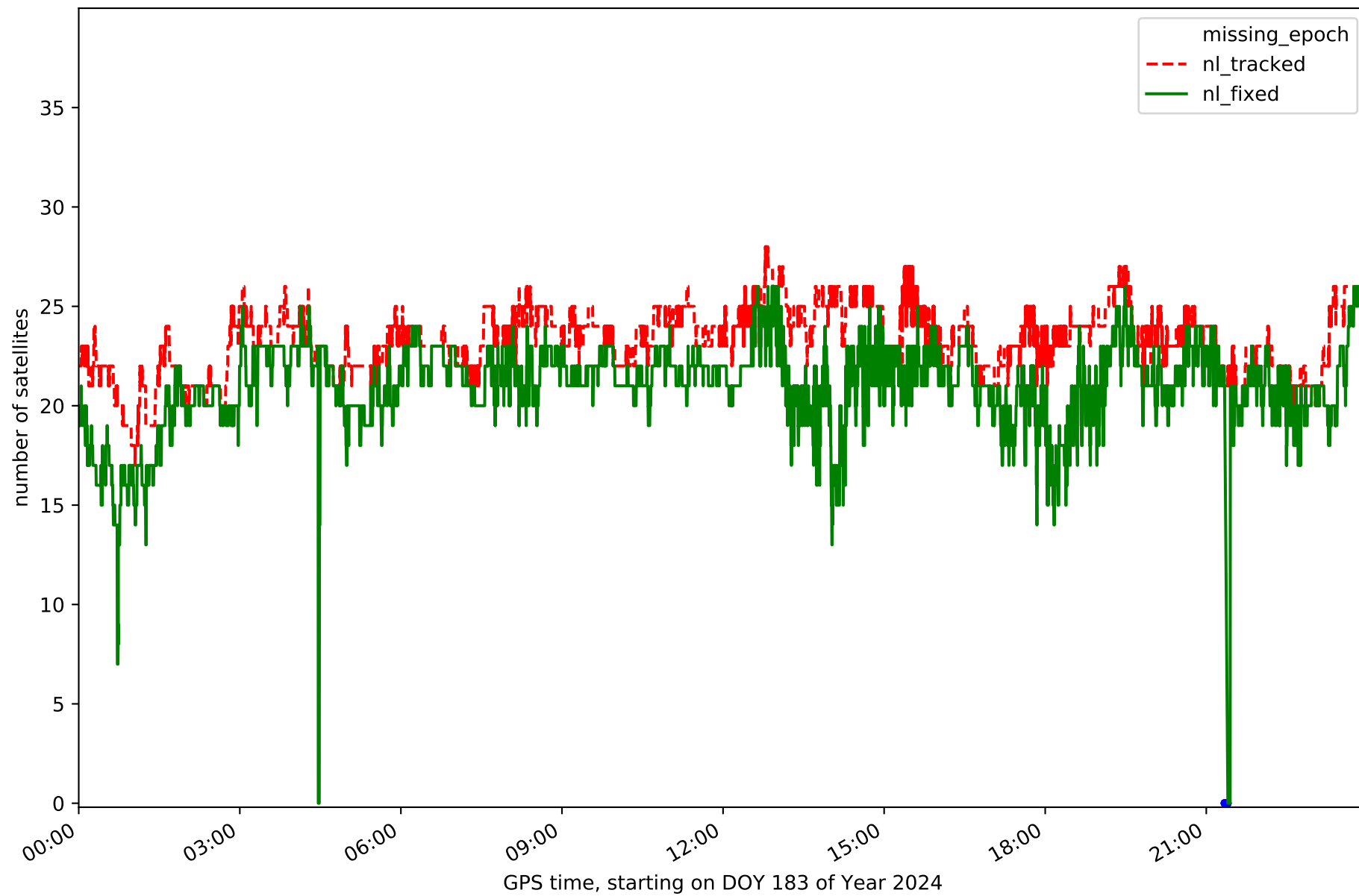
Station PUIG in network NT10



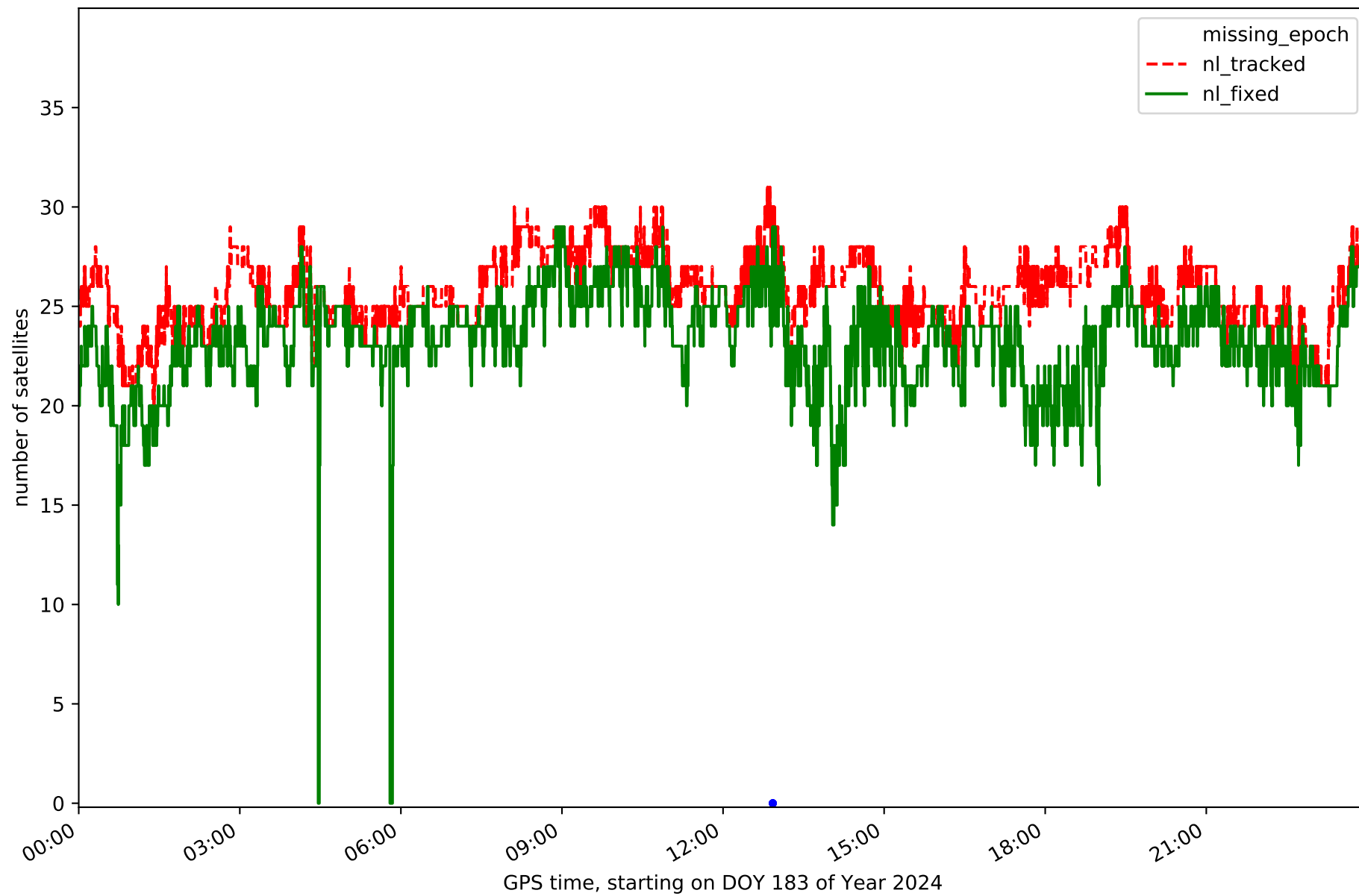
Station TARR in network NT10



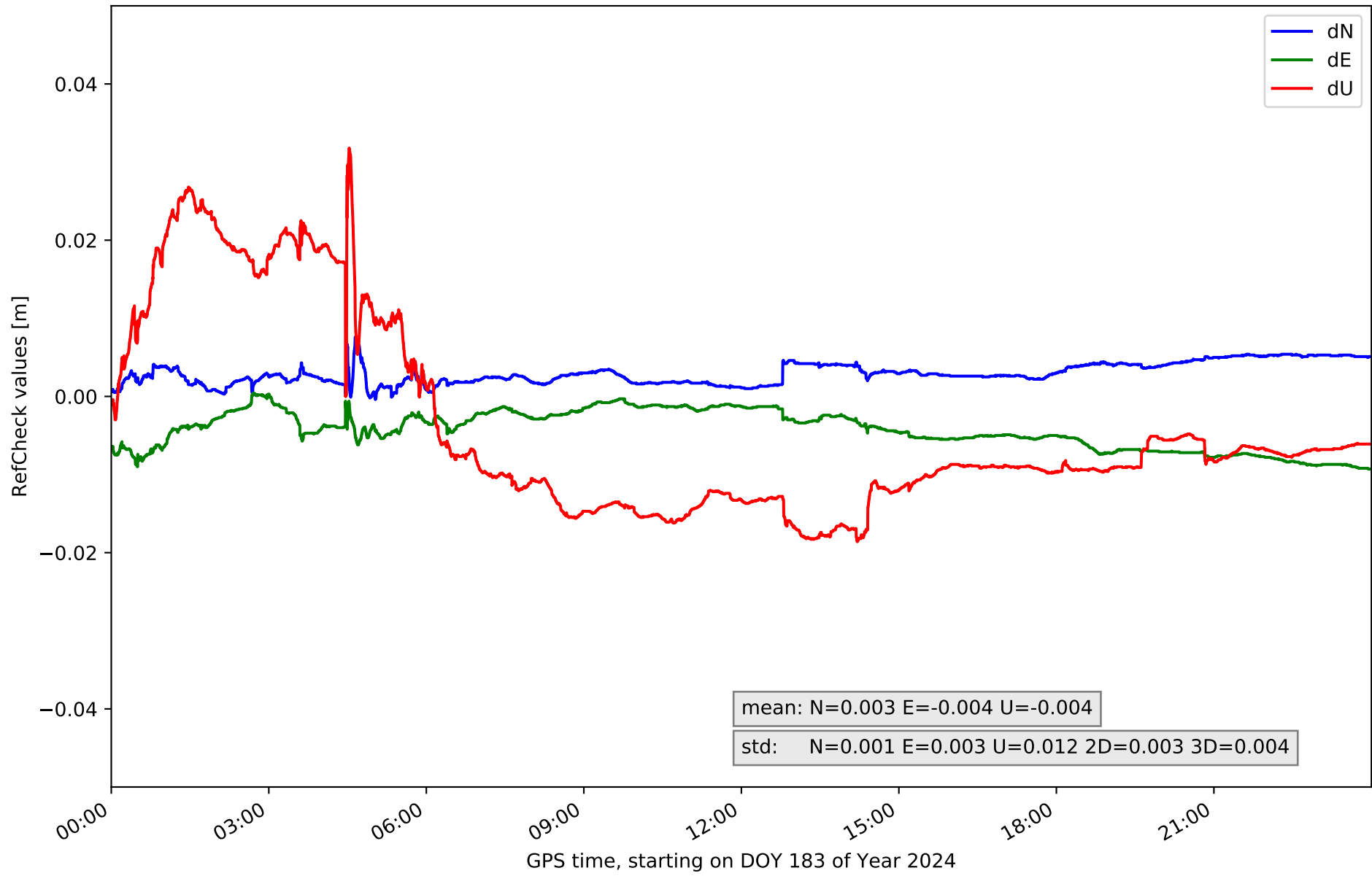
Station TRRG in network NT10



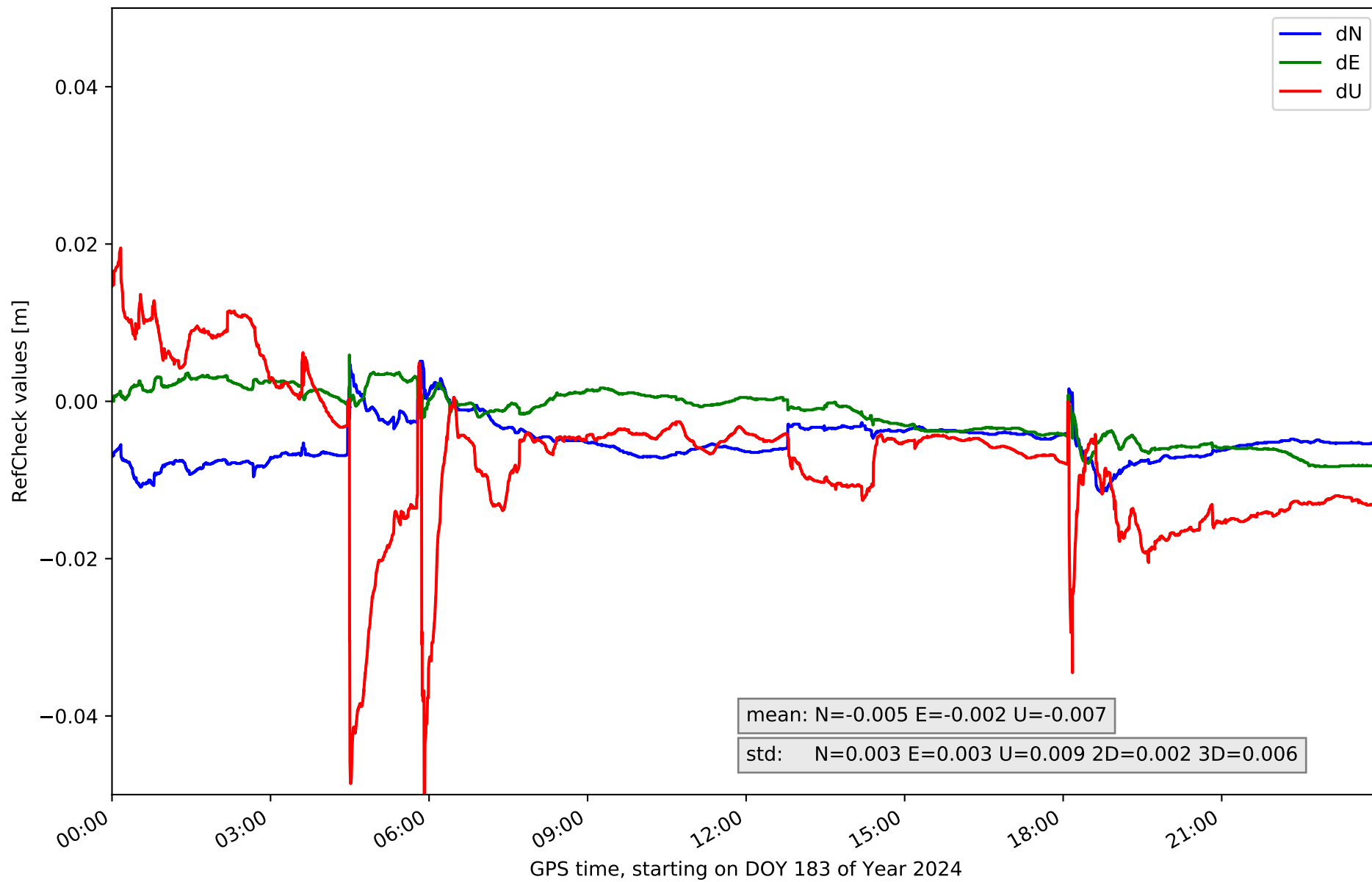
Station VRO2 in network NT10



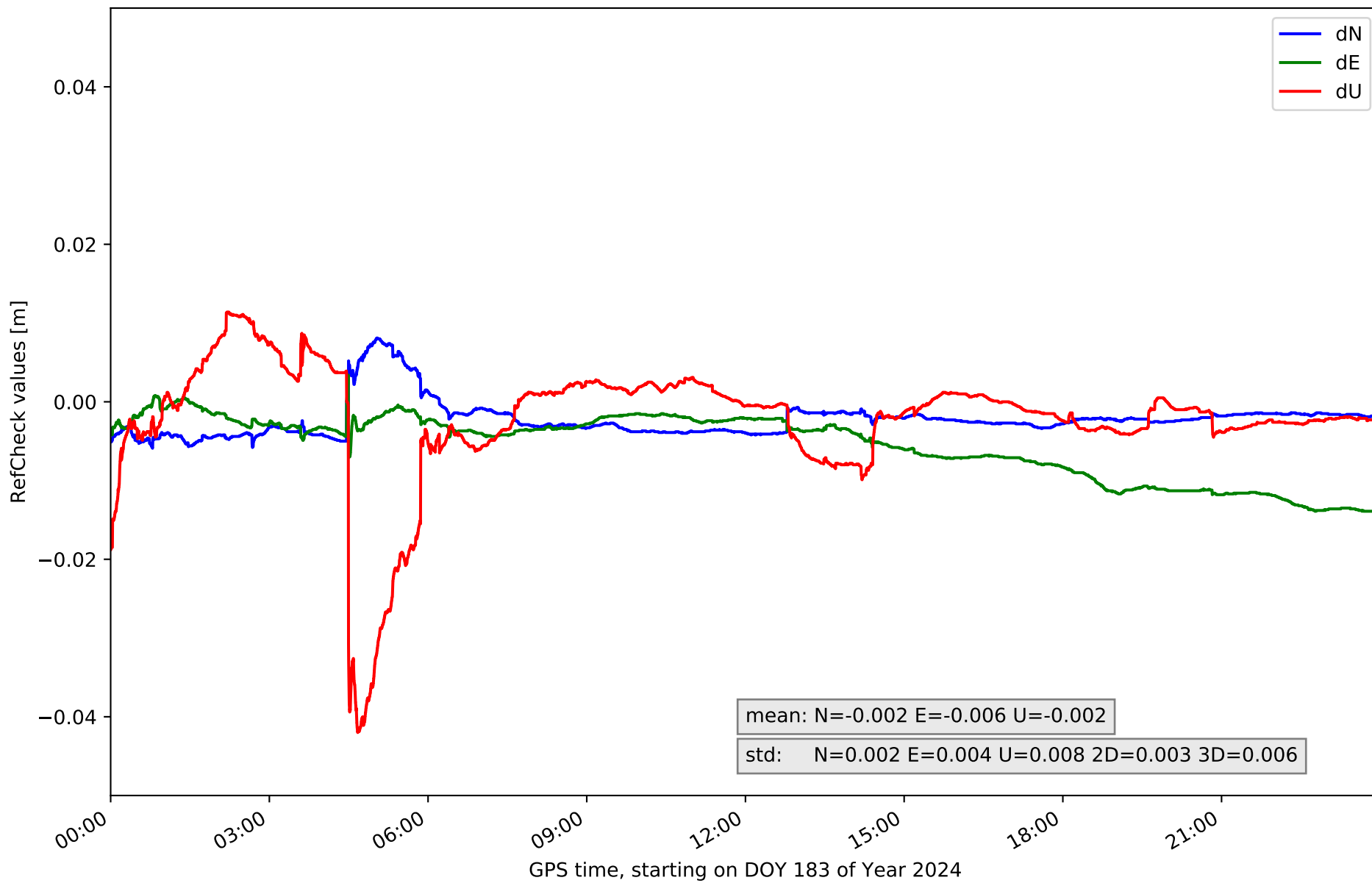
RefCheck for station ALC1 in network NT10



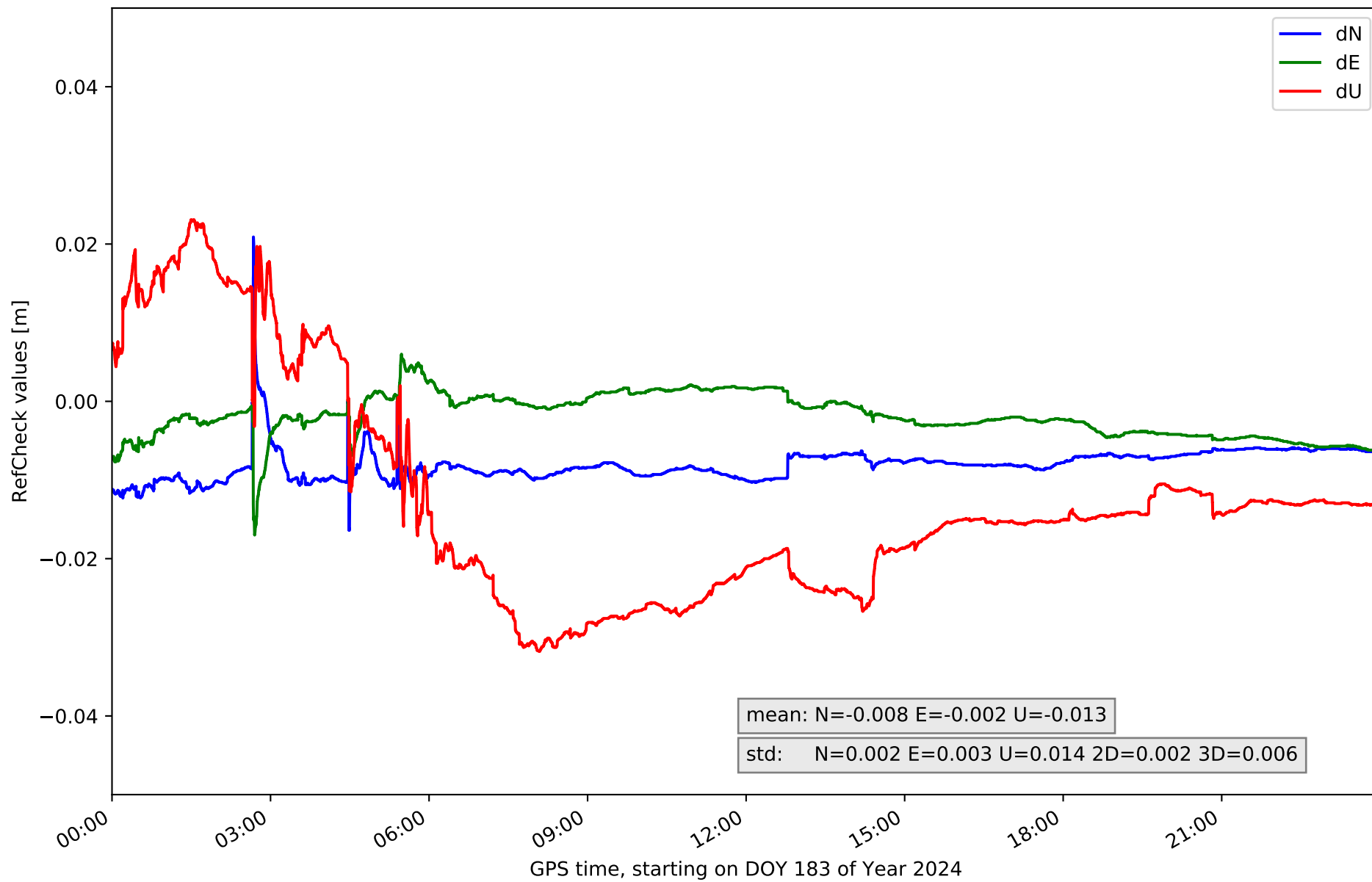
RefCheck for station BCL1 in network NT10



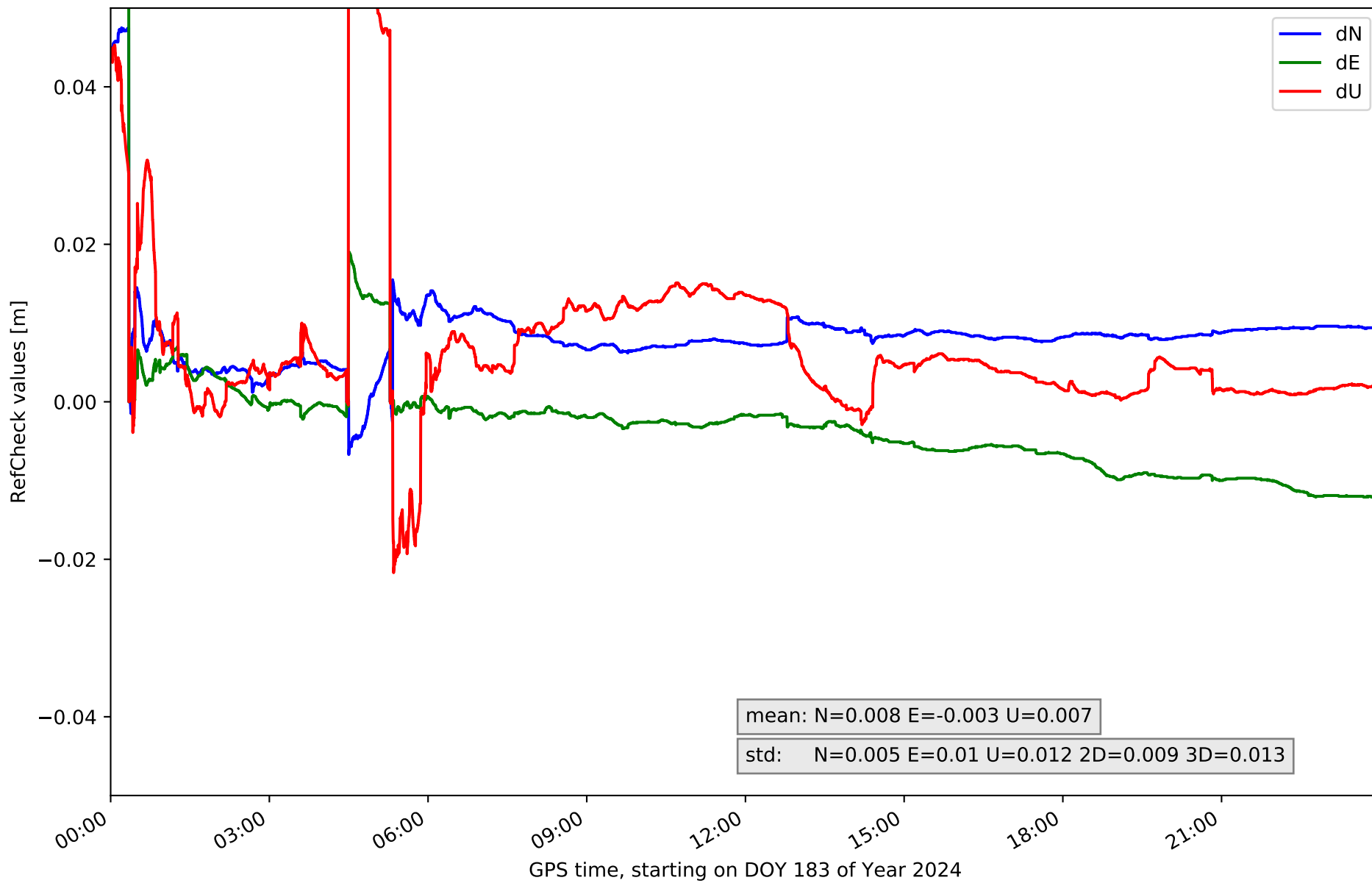
RefCheck for station BCLN in network NT10



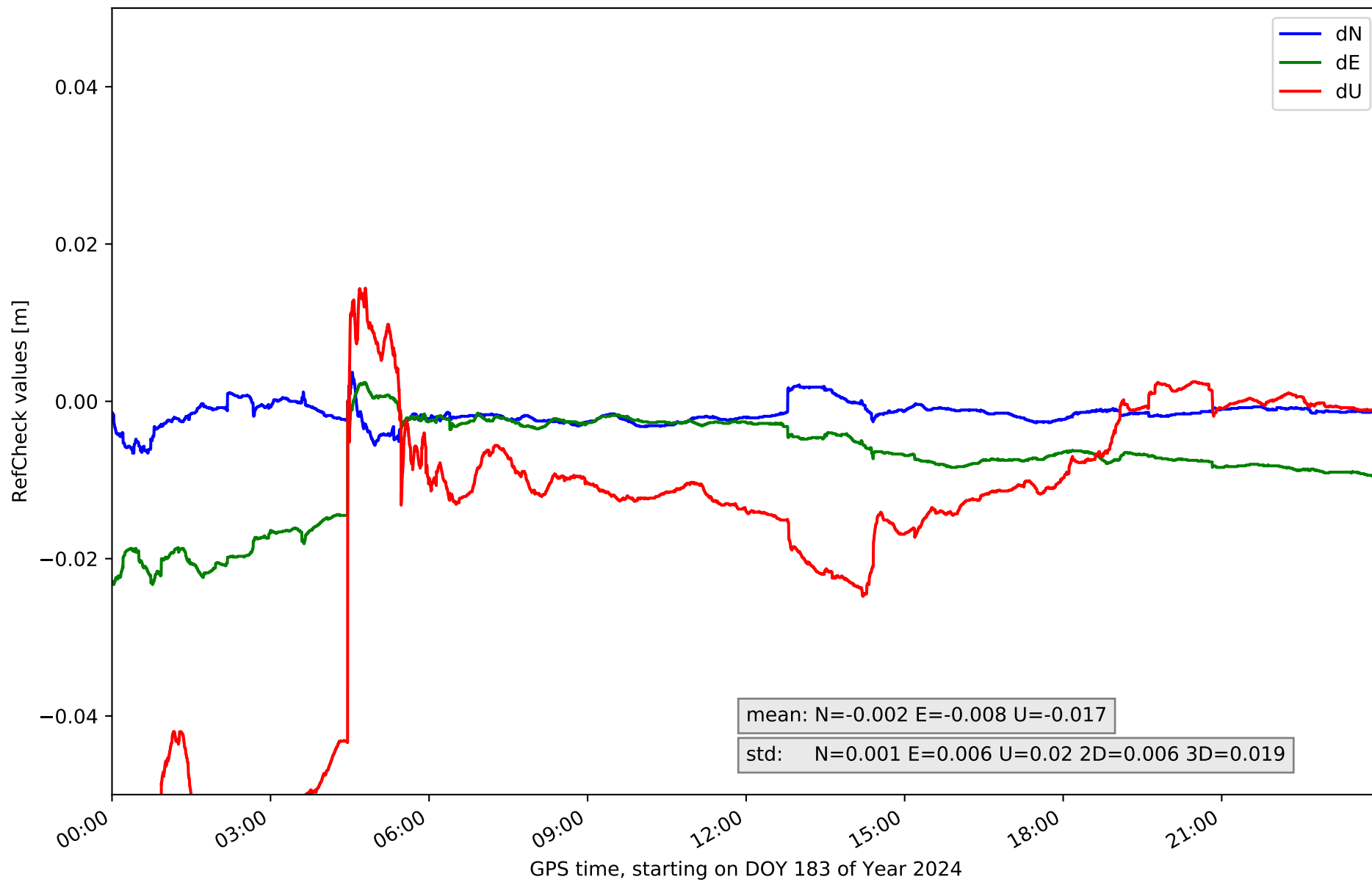
RefCheck for station BERG in network NT10



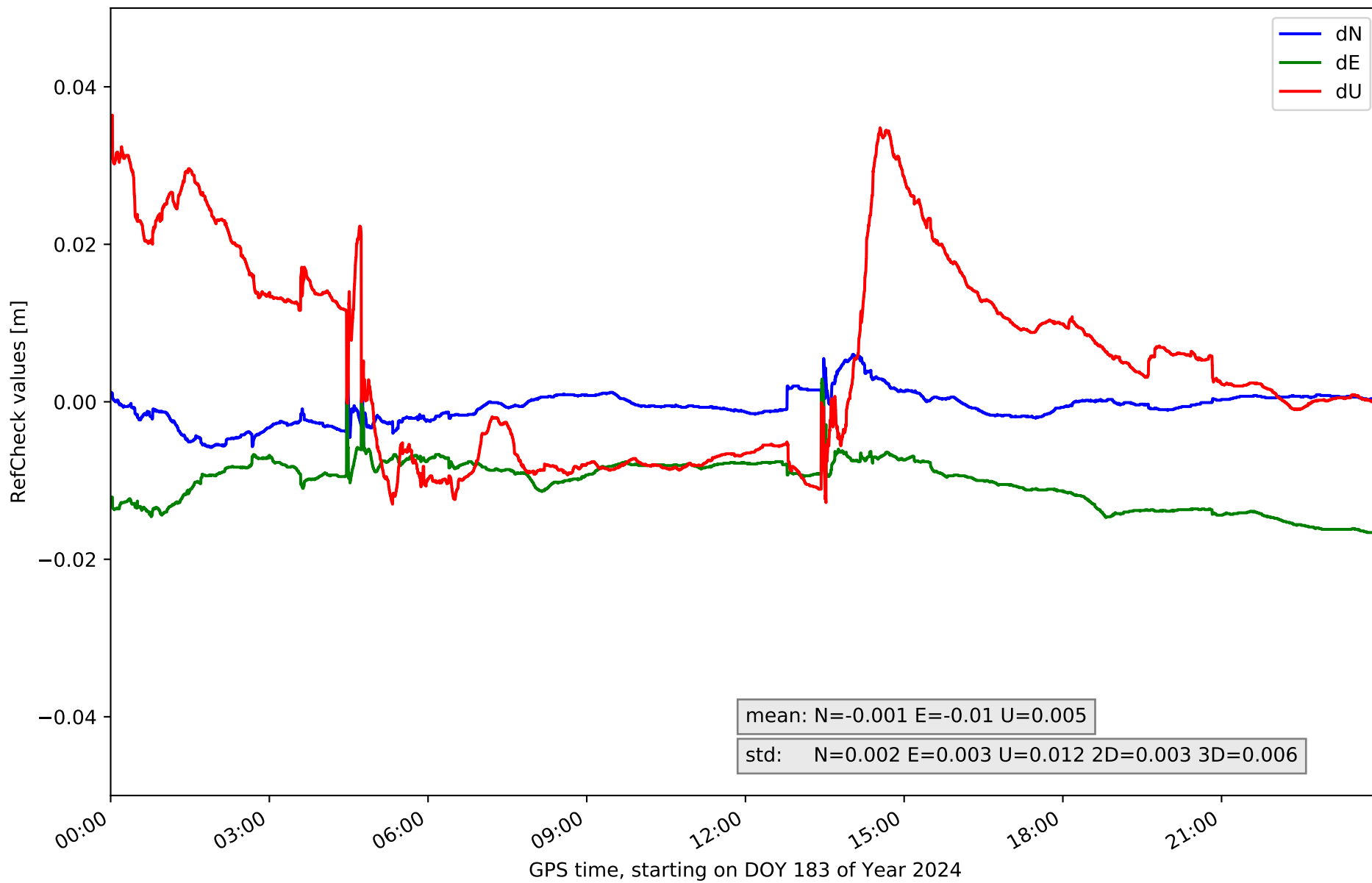
RefCheck for station GIRO in network NT10



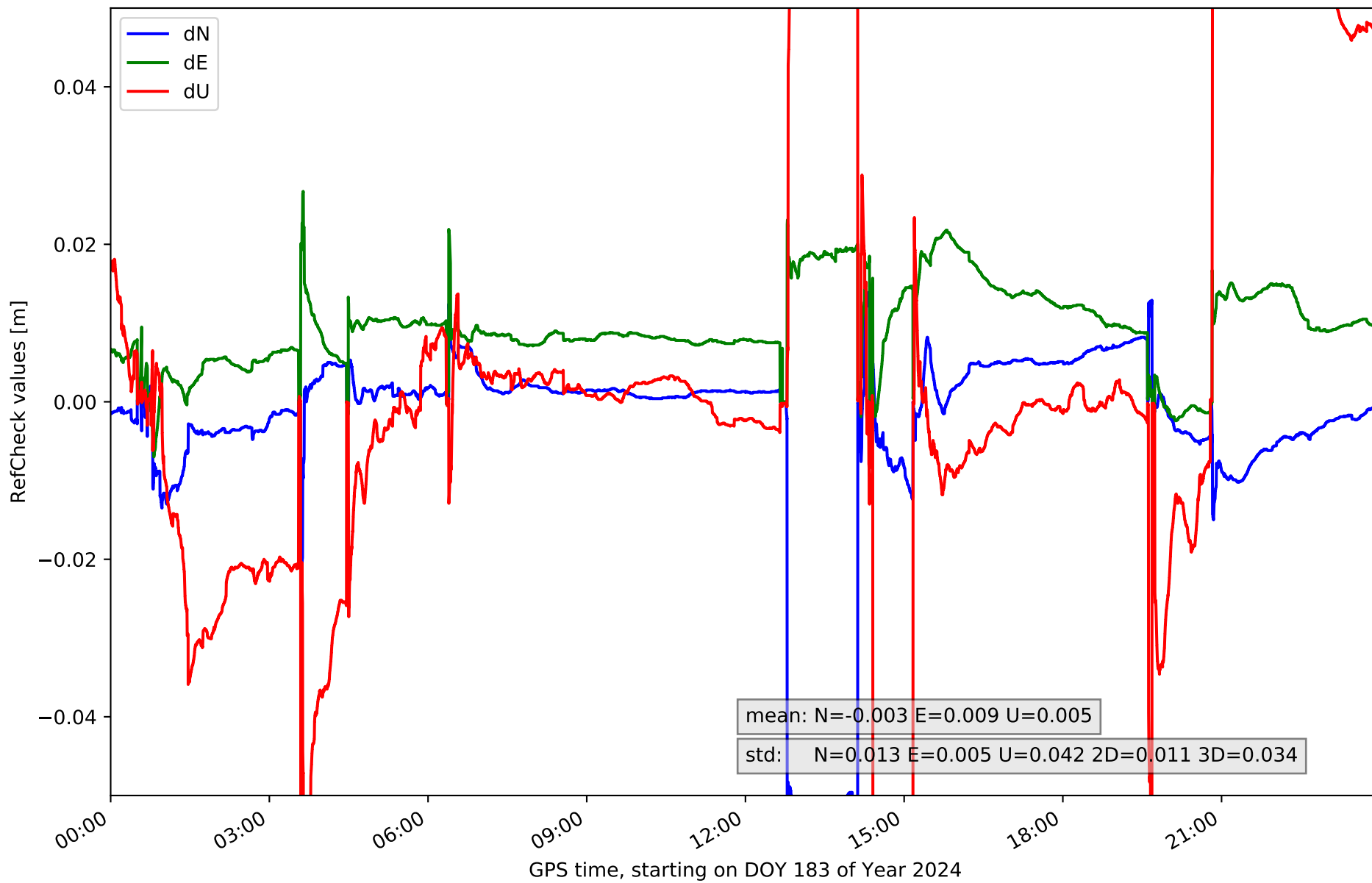
RefCheck for station GRAU in network NT10



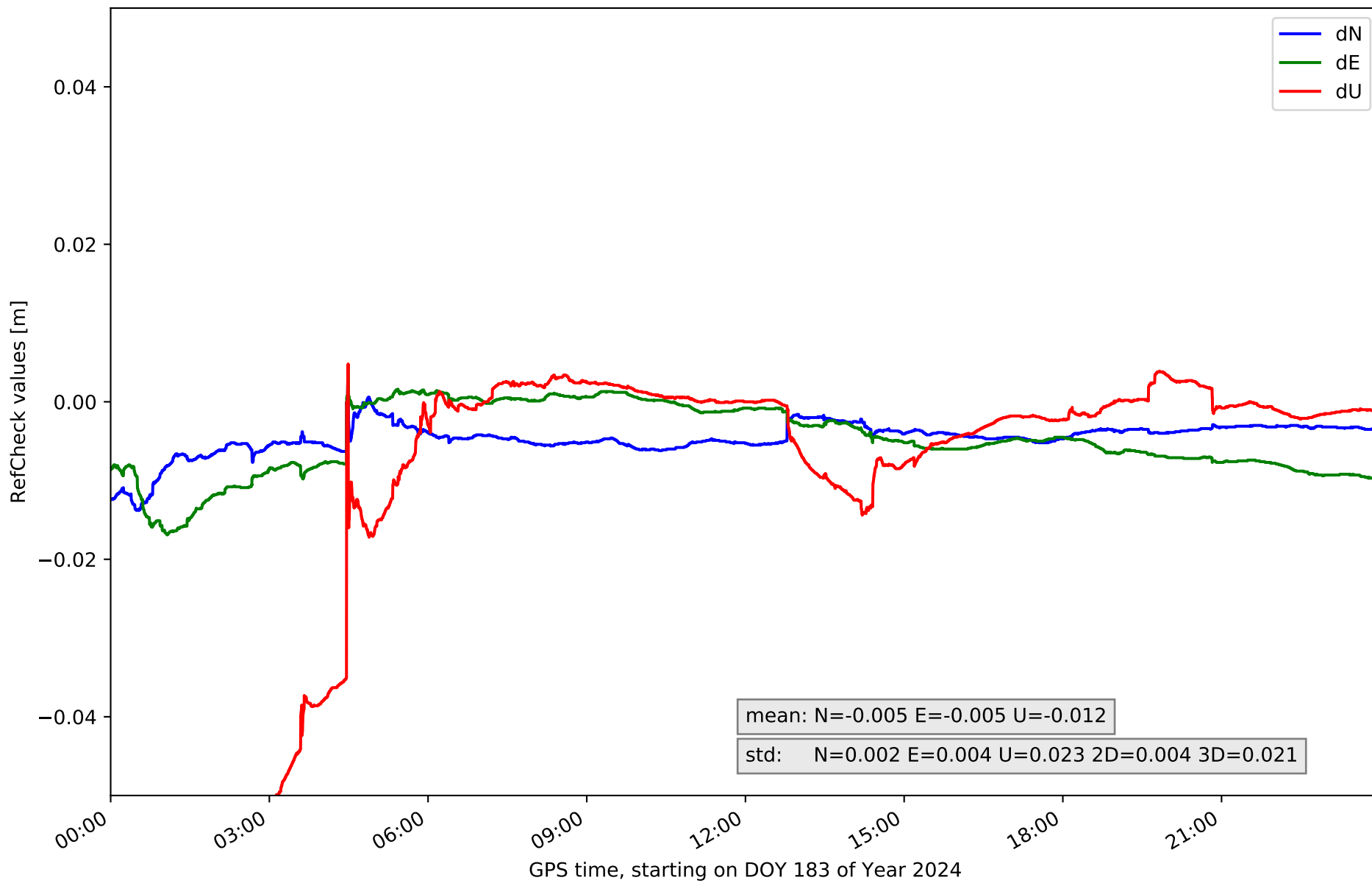
RefCheck for station MEQU in network NT10



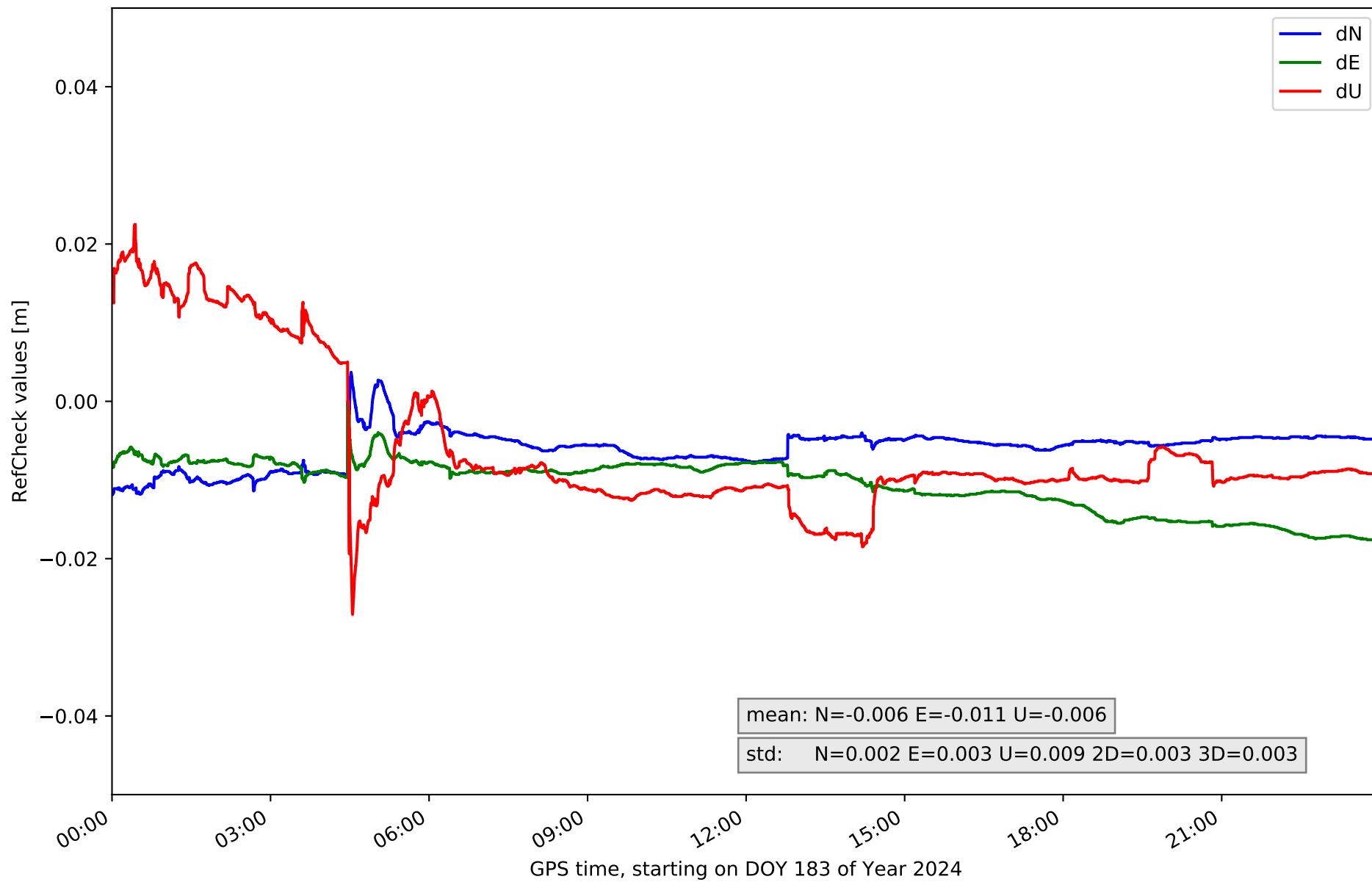
RefCheck for station PUIG in network NT10



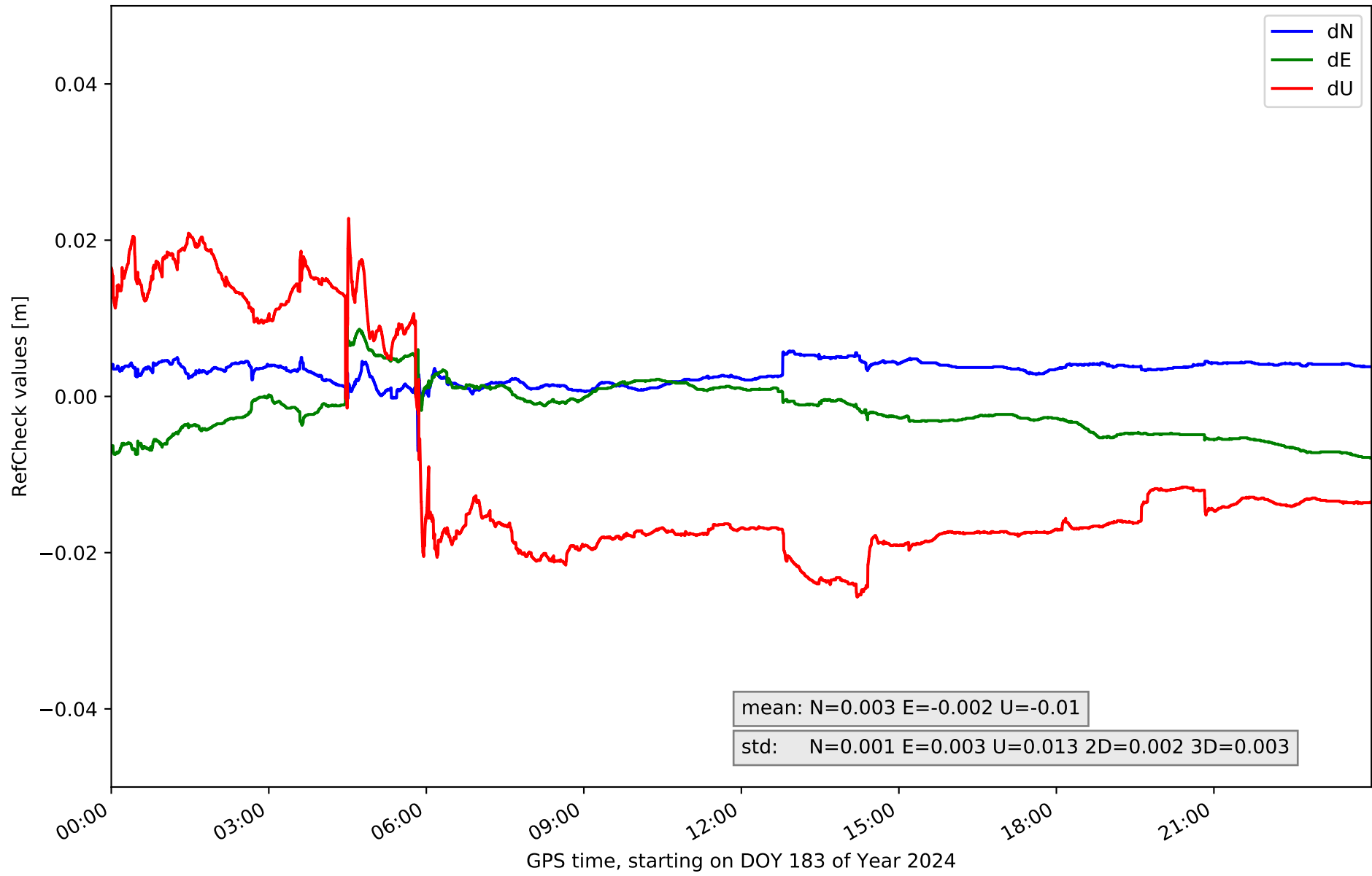
RefCheck for station TARR in network NT10



RefCheck for station TRRG in network NT10



RefCheck for station VRO2 in network NT10



RefCheck values for network NT10

Station	Nmin	Nmax	Nstd	Emin	Emax	Estd	Umin	Umax	Ustd	std2D	std3D	#2D > 0.01	% 2D > 0.01	#3D > 0.02	% 3D > 0.02
ALC1	-0.0	0.008	0.001	-0.009	0.0	0.003	-0.019	0.032	0.012	0.003	0.004	4620	5.7	6759	8.3
BCL1	-0.012	0.005	0.003	-0.008	0.006	0.003	-0.051	0.019	0.009	0.002	0.006	4017	4.9	5252	6.5
BCLN	-0.006	0.008	0.002	-0.014	0.003	0.004	-0.042	0.011	0.008	0.003	0.006	19056	23.4	3901	4.8
BERG	-0.016	0.021	0.002	-0.017	0.006	0.003	-0.032	0.023	0.014	0.002	0.006	14463	17.8	33890	41.6
GIRO	-0.007	0.048	0.005	-0.012	0.08	0.01	-0.022	0.079	0.012	0.009	0.013	42544	52.3	5873	7.2
GRAU	-0.007	0.004	0.001	-0.023	0.002	0.006	-0.074	0.014	0.02	0.006	0.019	14663	18.0	19339	23.8
MEQU	-0.006	0.006	0.002	-0.017	0.003	0.003	-0.013	0.036	0.012	0.003	0.006	37968	46.6	14541	17.9
PUIG	-0.056	0.014	0.013	-0.007	0.027	0.005	-0.139	0.13	0.042	0.011	0.034	37862	46.5	33492	41.1
TARR	-0.014	0.002	0.002	-0.017	0.004	0.004	-0.081	0.005	0.023	0.004	0.021	12240	15.0	14663	18.0
TRRG	-0.012	0.004	0.002	-0.018	-0.0	0.003	-0.027	0.022	0.009	0.003	0.003	73197	89.9	8778	10.8
VRO2	-0.007	0.006	0.001	-0.008	0.009	0.003	-0.026	0.023	0.013	0.002	0.003	0	0.0	10558	13.0
Mean	-0.013	0.011	0.003	-0.014	0.013	0.004	-0.048	0.036	0.016	0.004	0.011	23693.6	29.1	14276.9	17.5
Min/Max	-0.056	0.048	0.013	-0.023	0.08	0.01	-0.139	0.13	0.042	0.011	0.034	73197	89.9	33890	41.6

fixing statistic for network NT10

fixing percentage of	all GNSS	G	R	E	C
using threshold 0.3	89.5	91.6	88.9	93.2	81.2
considering satellites with dual-frequency fixed	88.0	88.6	86.2	90.2	83.9
considering all signals separately	88.2	88.7	86.2	90.5	82.1