

summary for network NET5

timeperiod chosen: from 2024-10-22-00:00:00 until 2024-10-22-23:59:59

average update rate (durations larger than 15 seconds considered as observation gap): 1.1 seconds

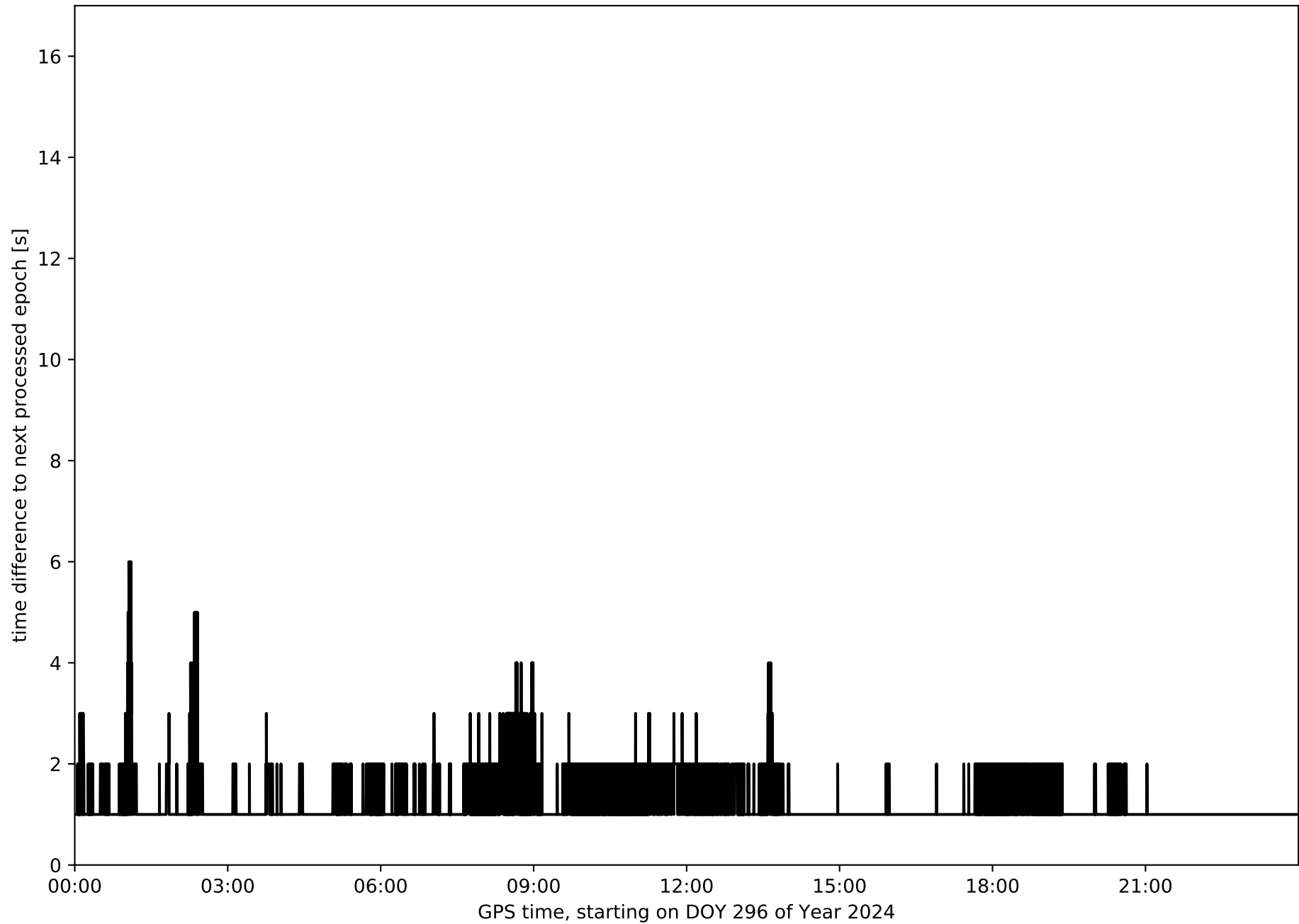
average fixing percentage with threshold set to 0.3: 88.9 percent

stations available: 11 of 11

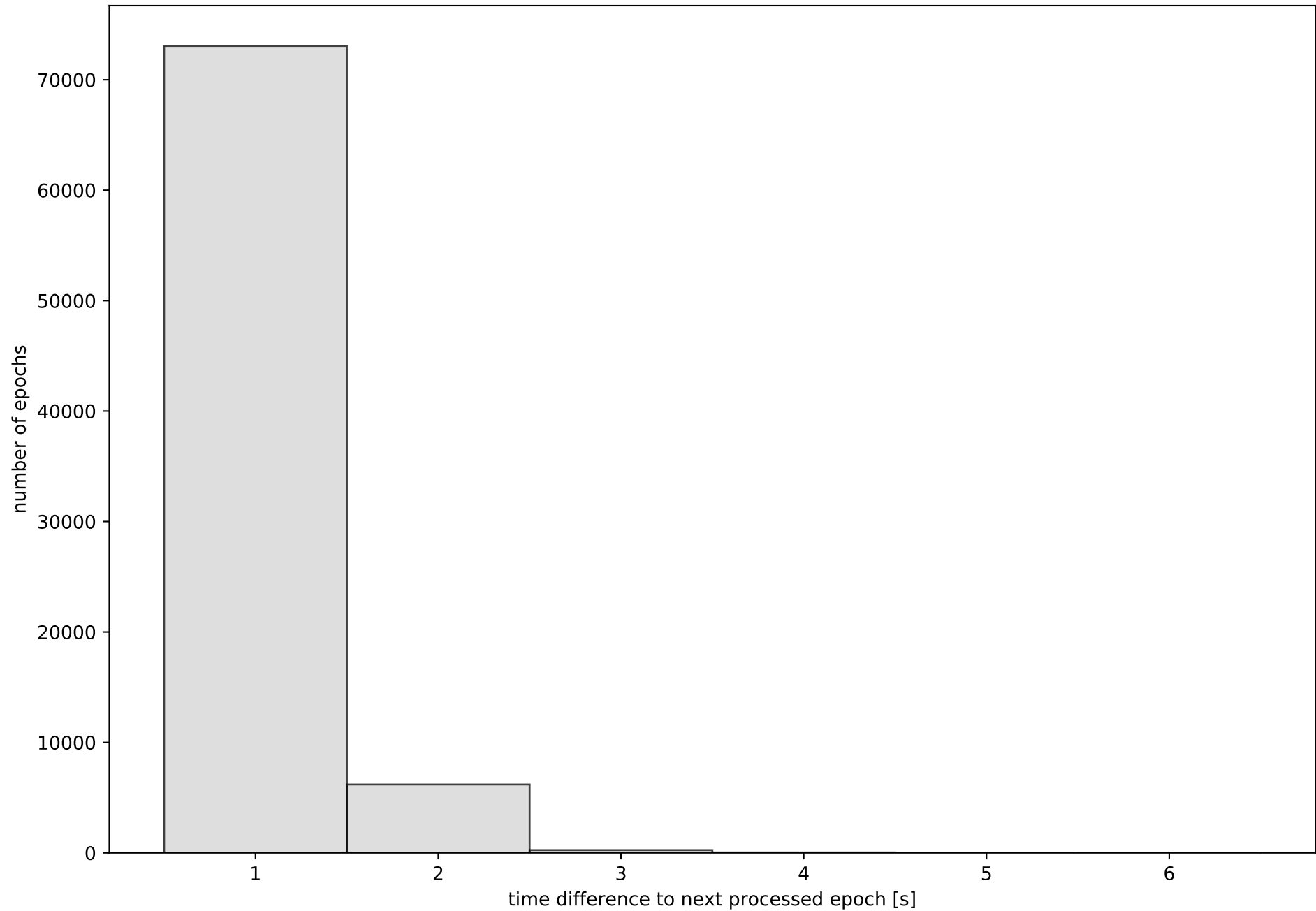
station information:

| | | | | |
|---------------|-------------------------|------|-------------------------|------------------|
| station ALMZ: | antenna: LEIAR20 | LEIM | receiver: LEICA GR50 | height: 1019.452 |
| station ARDU: | antenna: LEIAR20 | LEIM | receiver: LEICA GR50 | height: 844.466 |
| station BUOS: | antenna: TRM59900.00 | SCIS | receiver: TRIMBLE NETR9 | height: 963.896 |
| station CALH: | antenna: GPPNULLANTENNA | NONE | receiver: LEICA GR50 | height: 411.39 |
| station CAS0: | antenna: GPPNULLANTENNA | NONE | receiver: LEICA GR30 | height: 564.198 |
| station CERV: | antenna: GPPNULLANTENNA | NONE | receiver: LEICA GR50 | height: 723.317 |
| station LERM: | antenna: TRM59900.00 | SCIS | receiver: TRIMBLE NETR9 | height: 926.169 |
| station QINT: | antenna: TRM59900.00 | SCIS | receiver: TRIMBLE NETR9 | height: 1191.829 |
| station SORI: | antenna: GPPNULLANTENNA | NONE | receiver: LEICA GR50 | height: 1135.68 |
| station SROM: | antenna: GPPNULLANTENNA | NONE | receiver: LEICA GR50 | height: 1150.486 |
| station VTRO: | antenna: GPPNULLANTENNA | NONE | receiver: LEICA GR50 | height: 1626.177 |

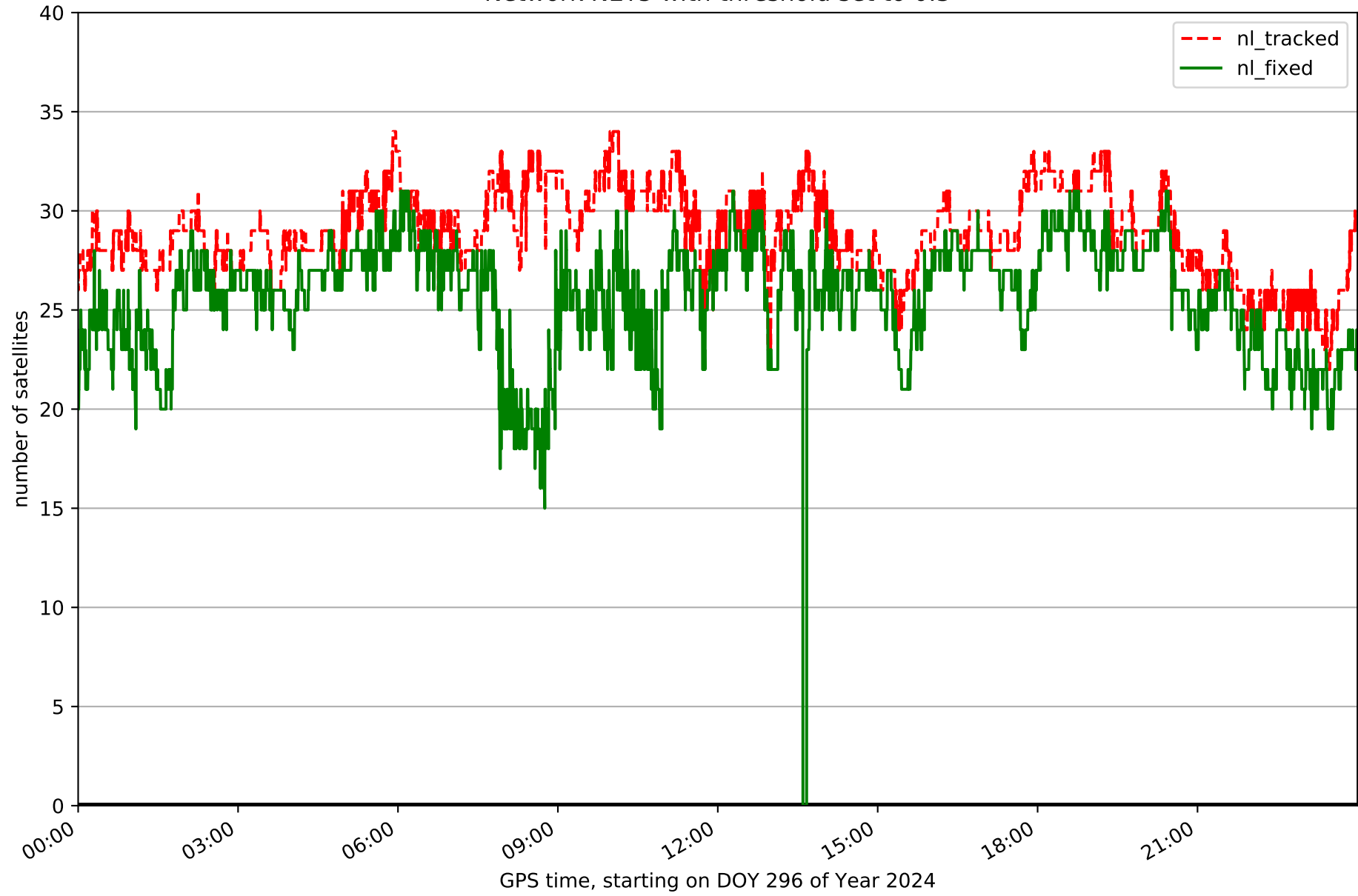
Processing rate in network NET5



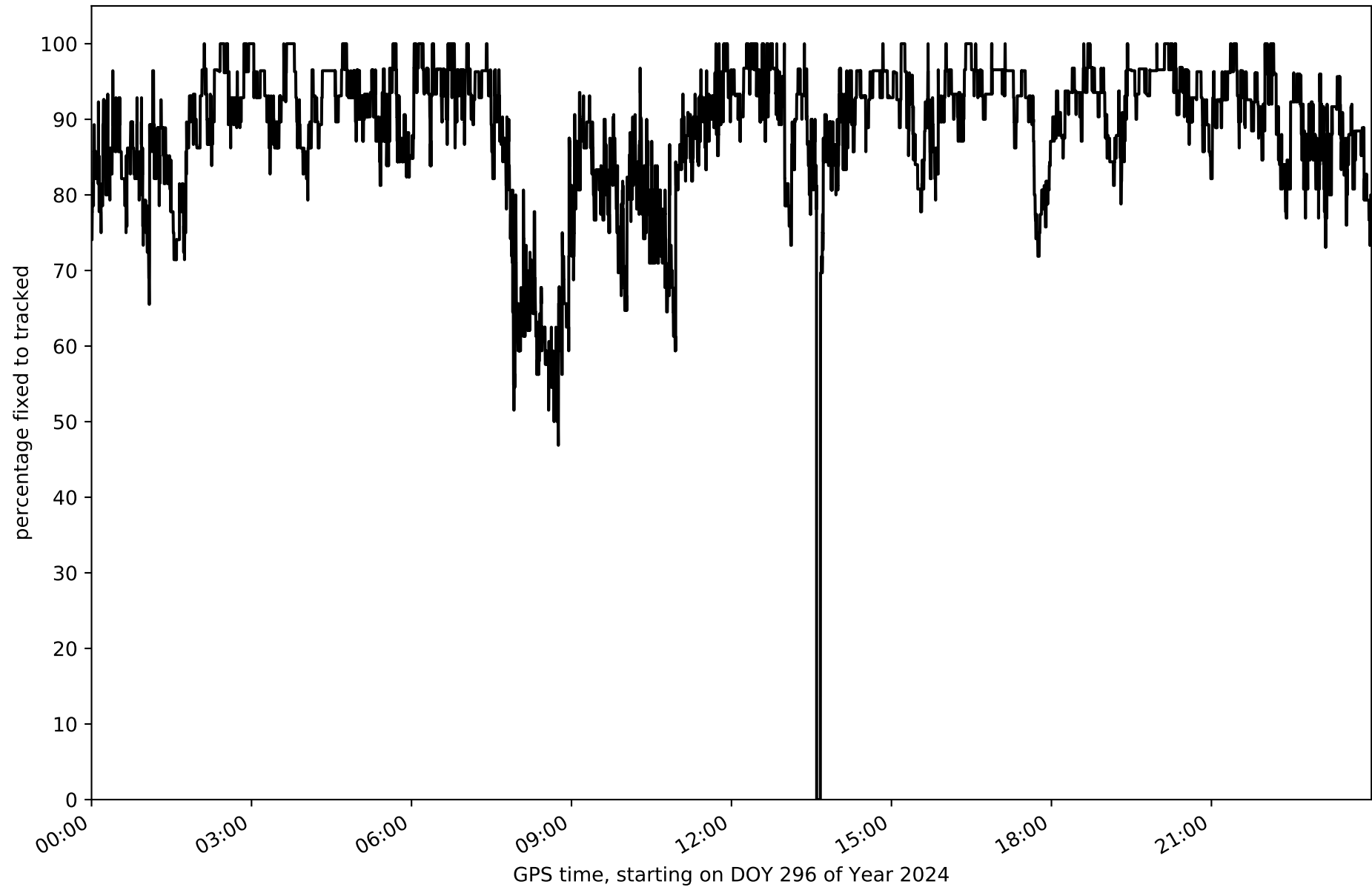
Histogram of the processing rate in network NET5 (durations larger 15 seconds neglected)



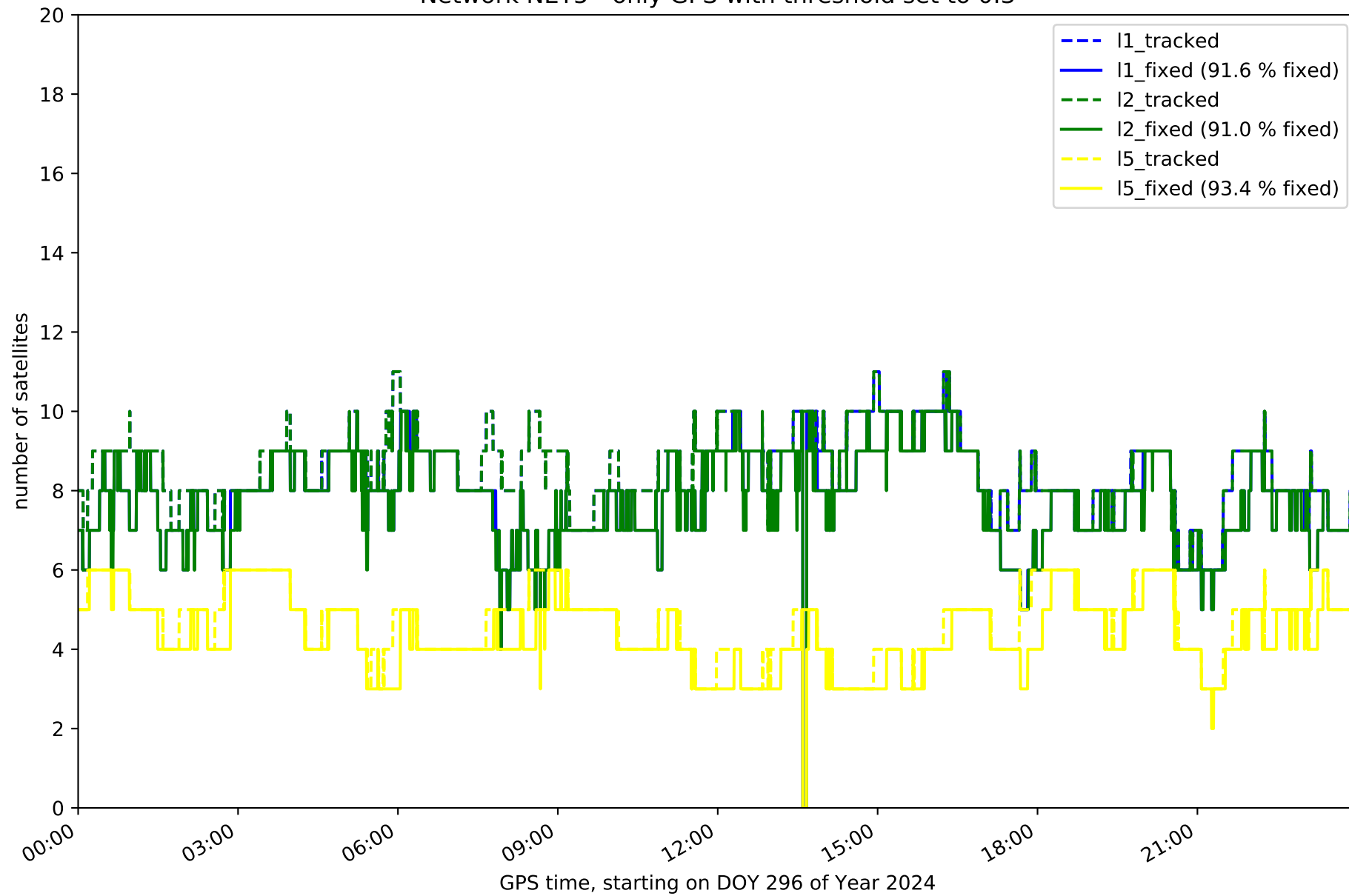
Network NET5 with threshold set to 0.3



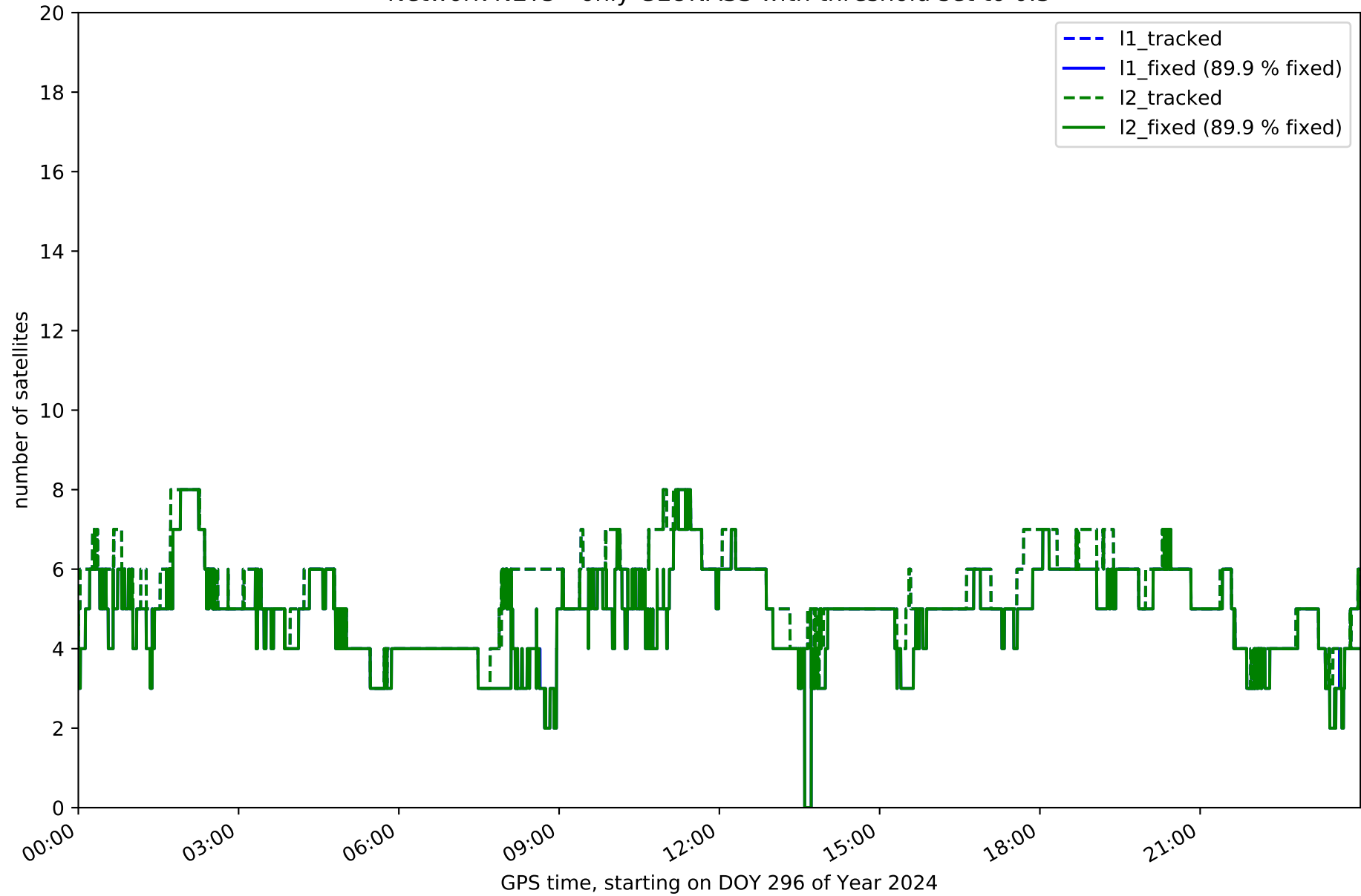
Fixing percentage of satellites in network NET5 with threshold set to 0.3



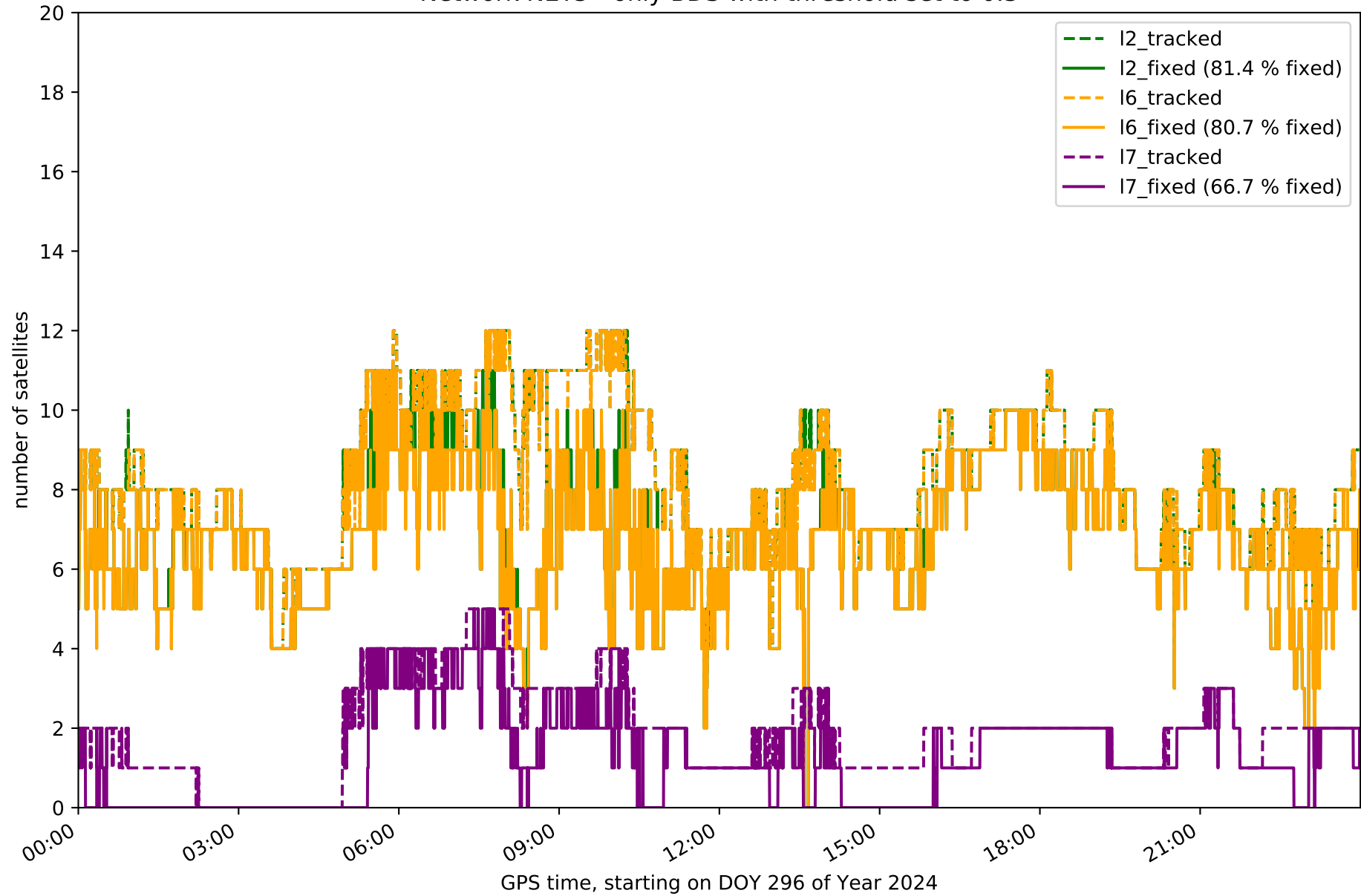
Network NET5 - only GPS with threshold set to 0.3



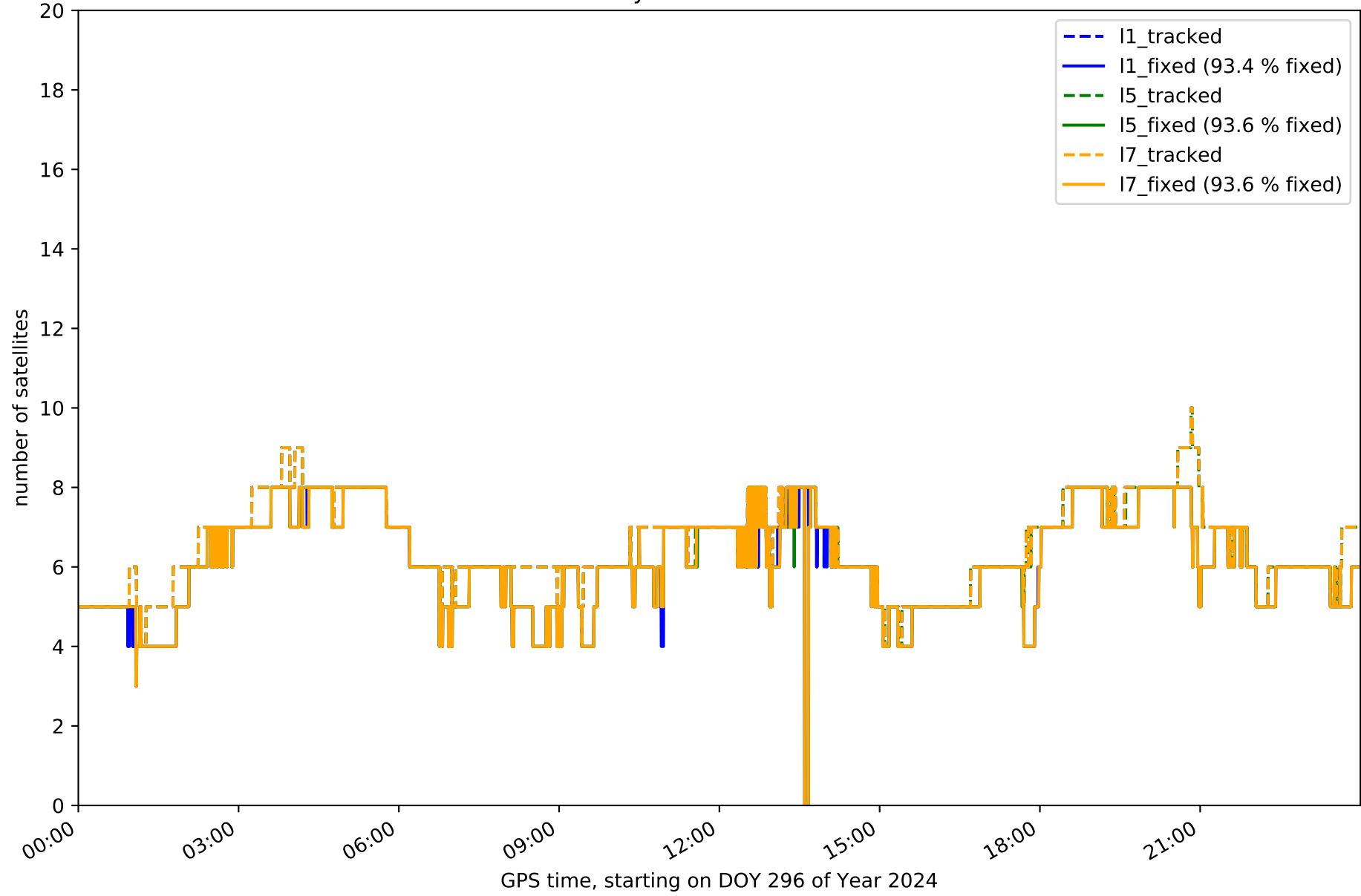
Network NET5 - only GLONASS with threshold set to 0.3



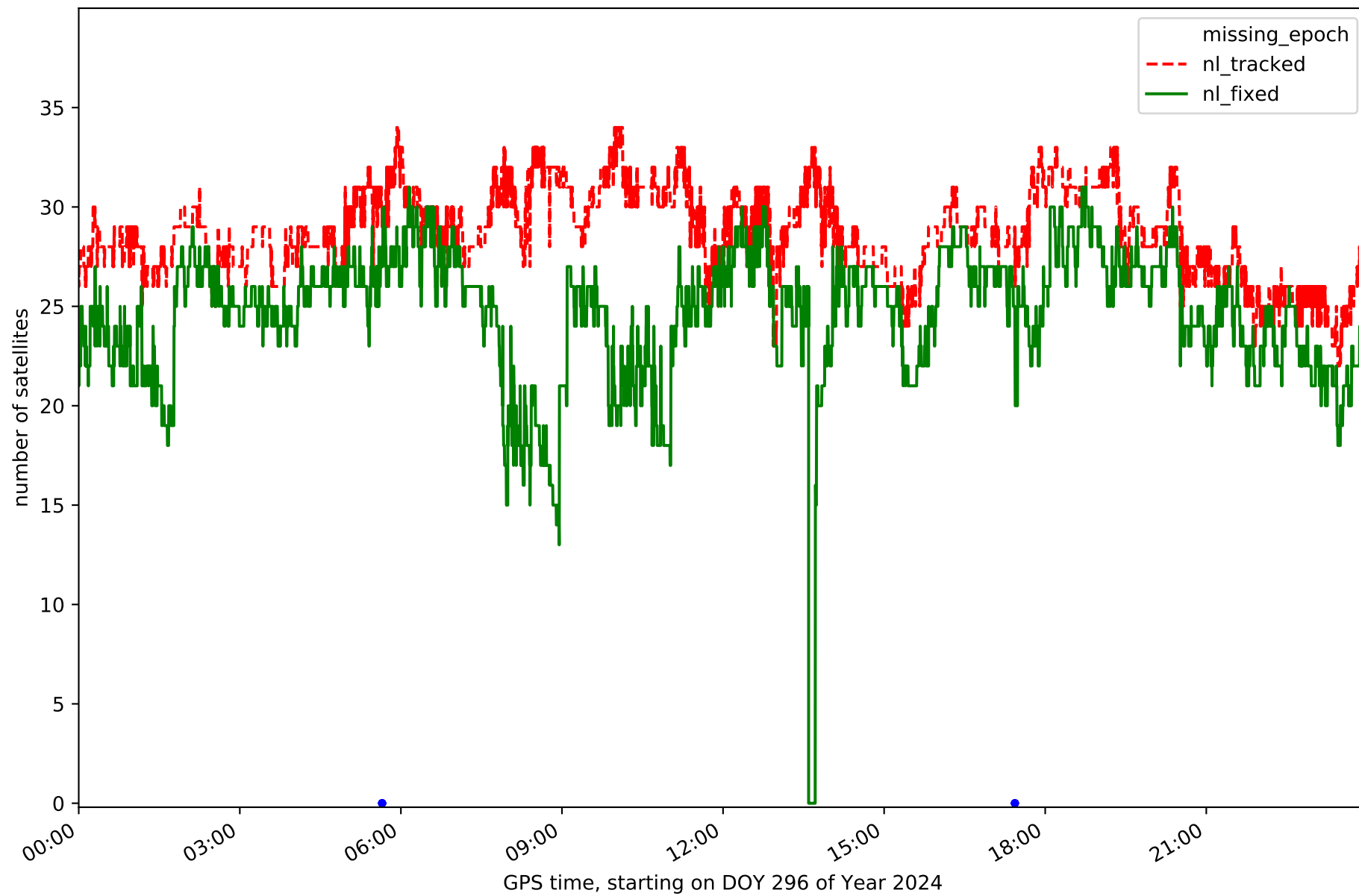
Network NET5 - only BDS with threshold set to 0.3



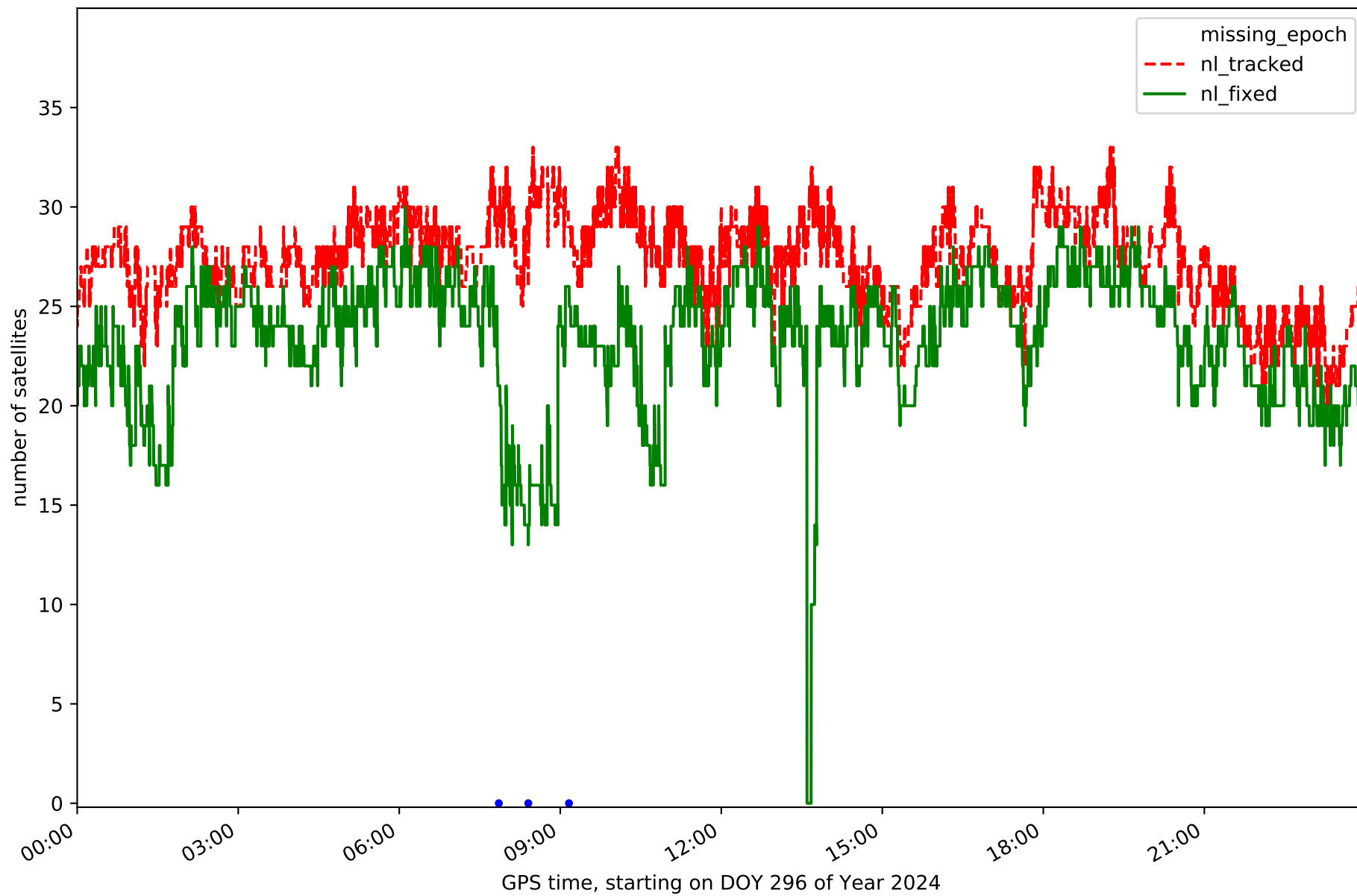
Network NET5 - only Galileo with threshold set to 0.3



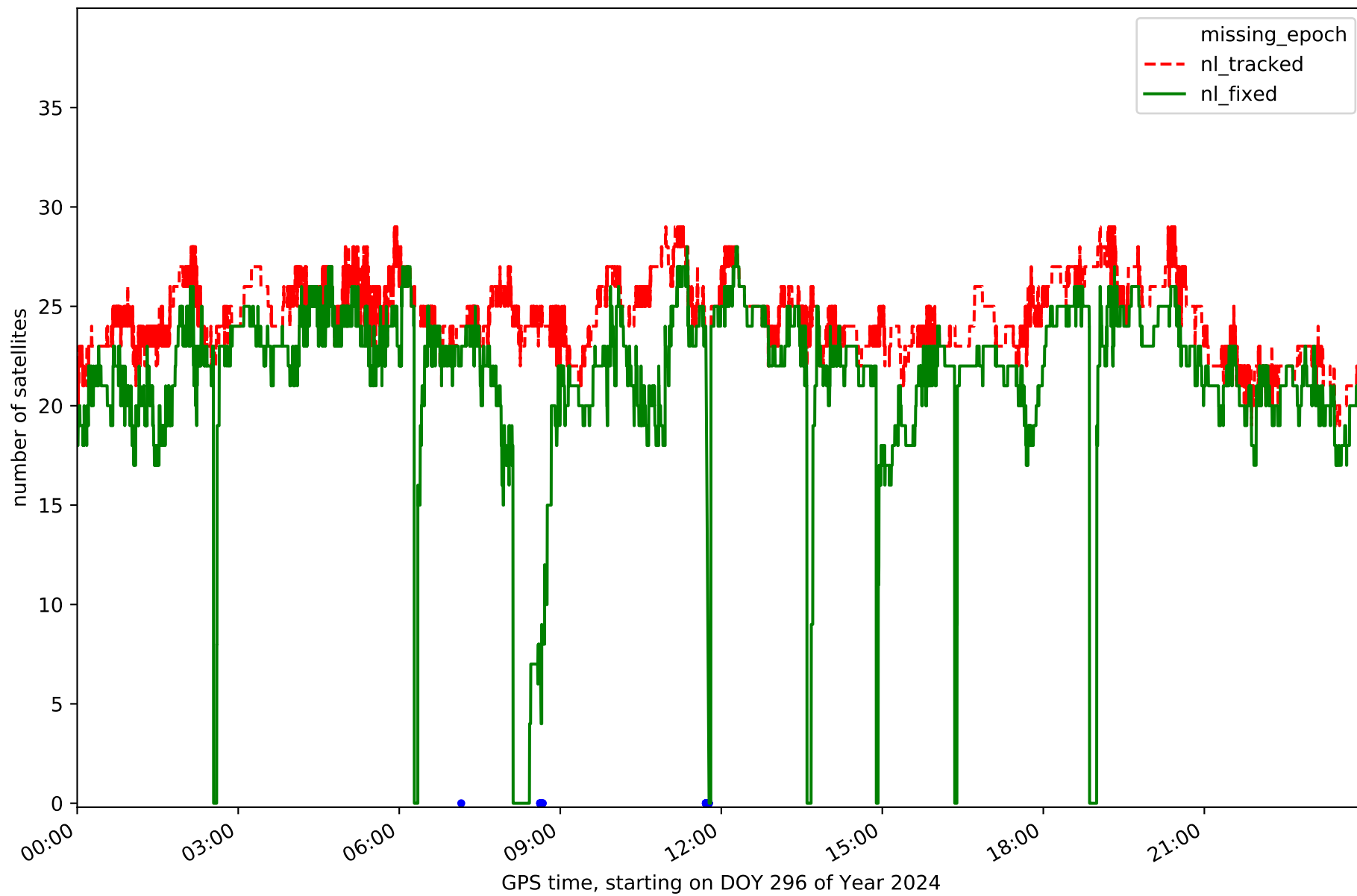
Station ALMZ in network NET5



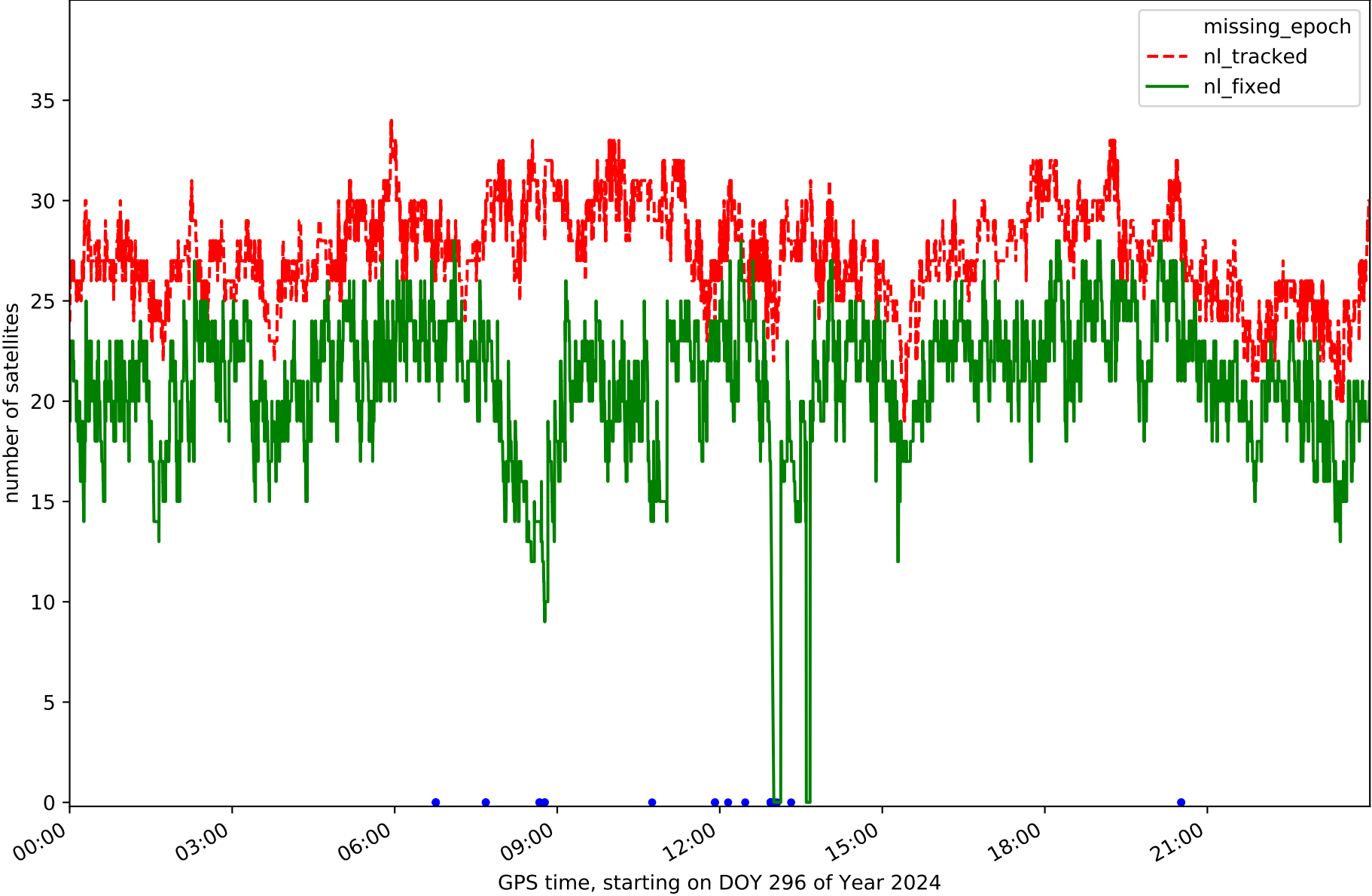
Station ARDU in network NET5



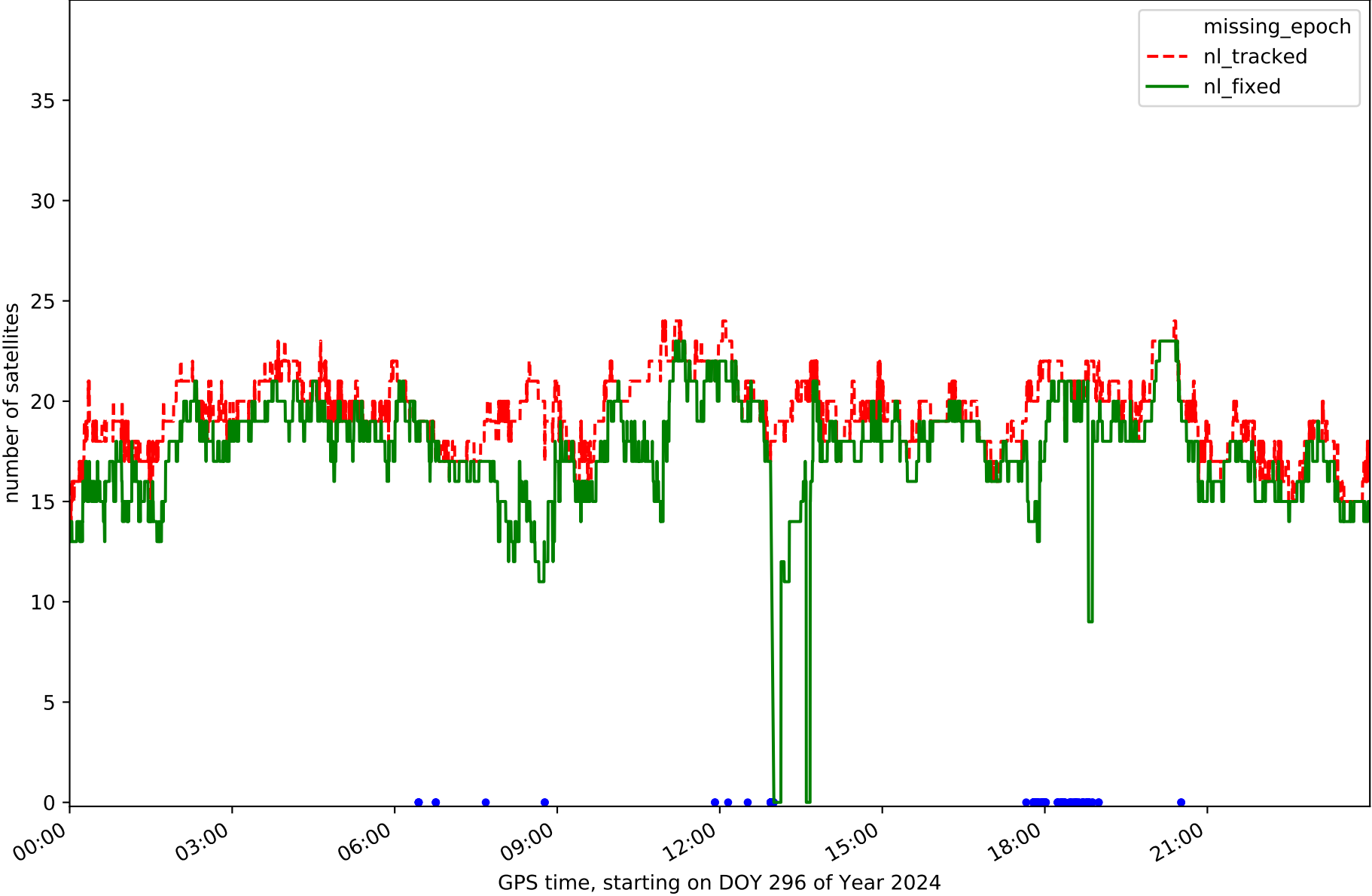
Station BUOS in network NET5



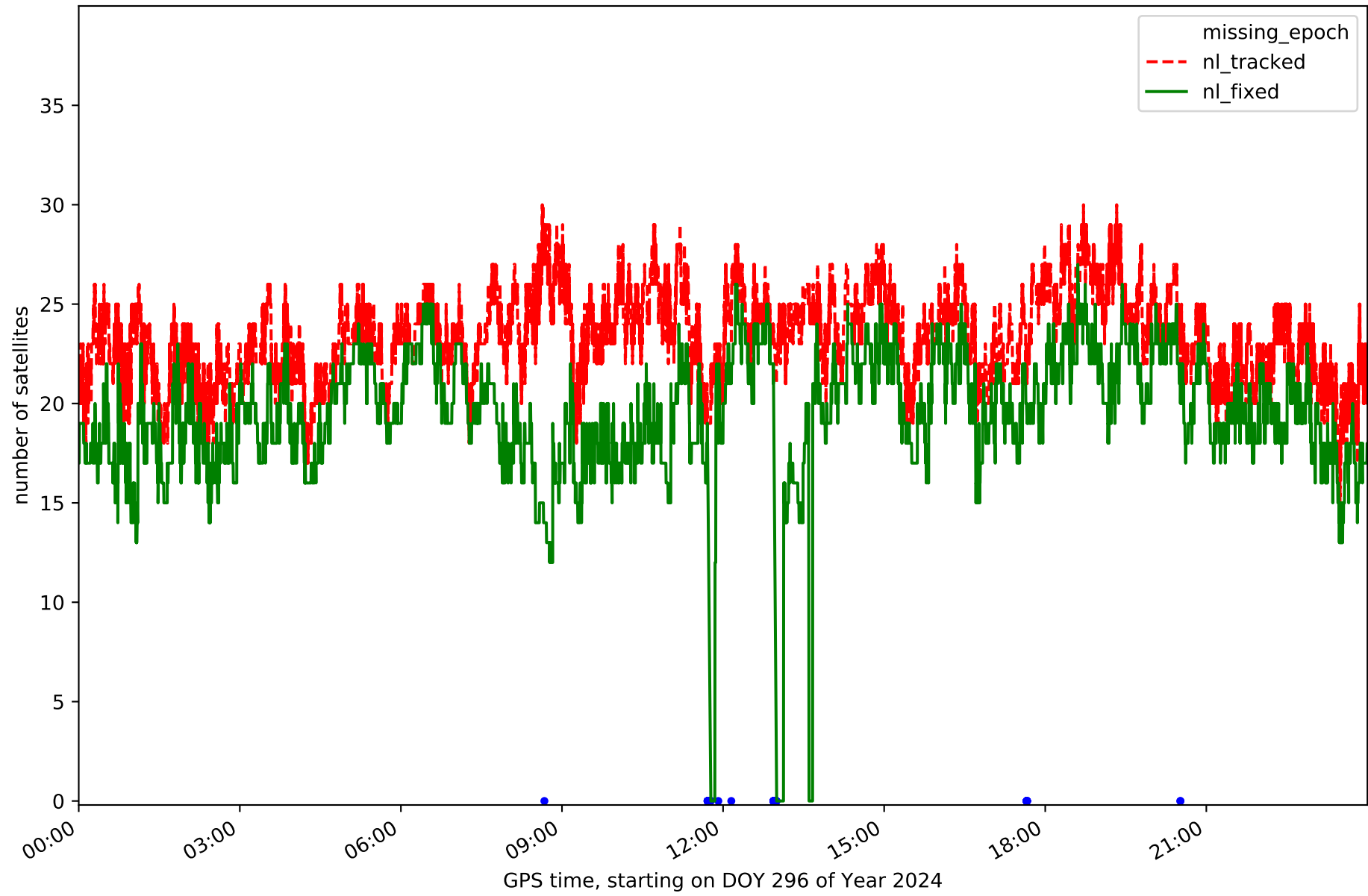
Station CALH in network NET5



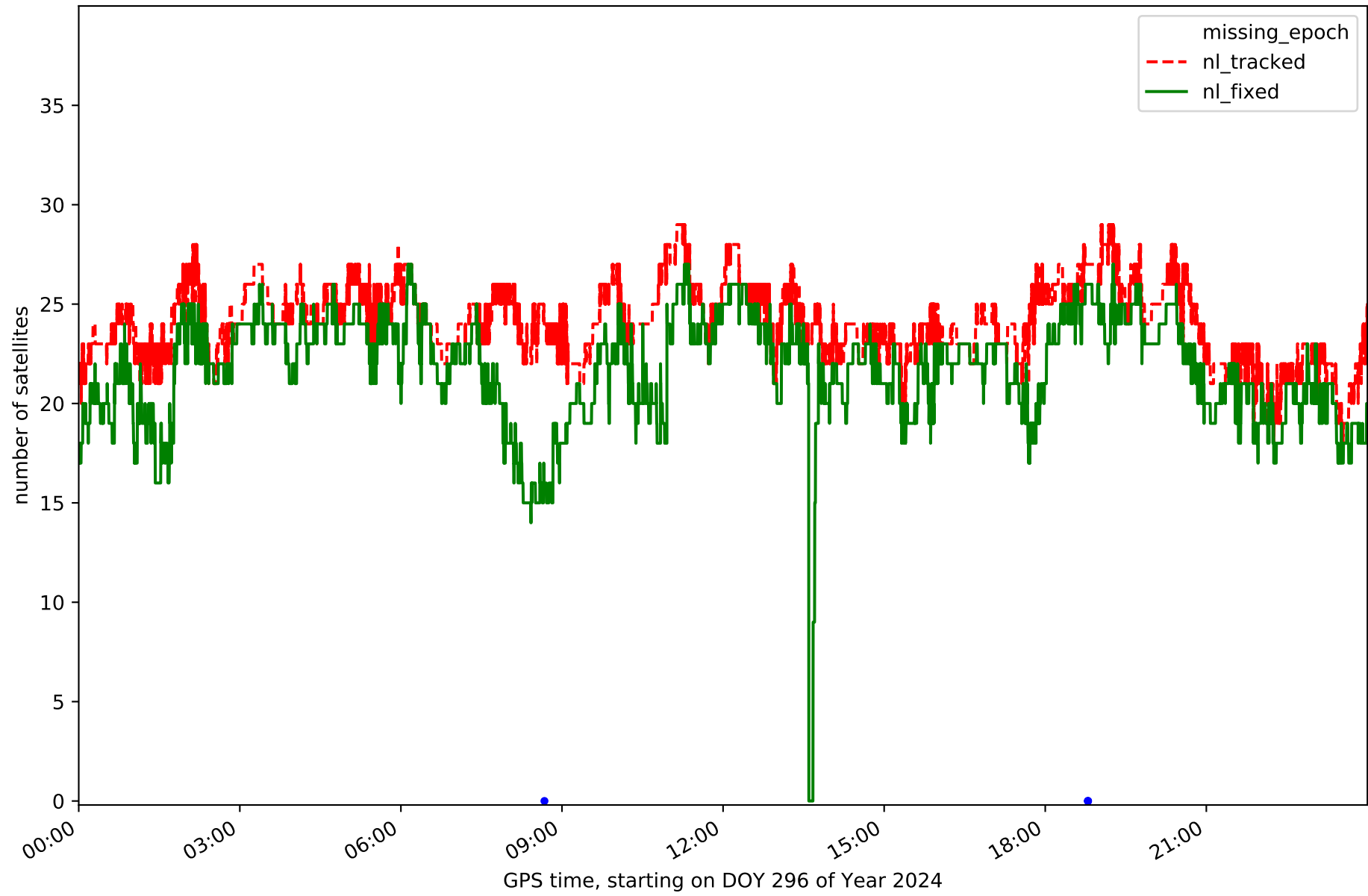
Station CAS0 in network NET5



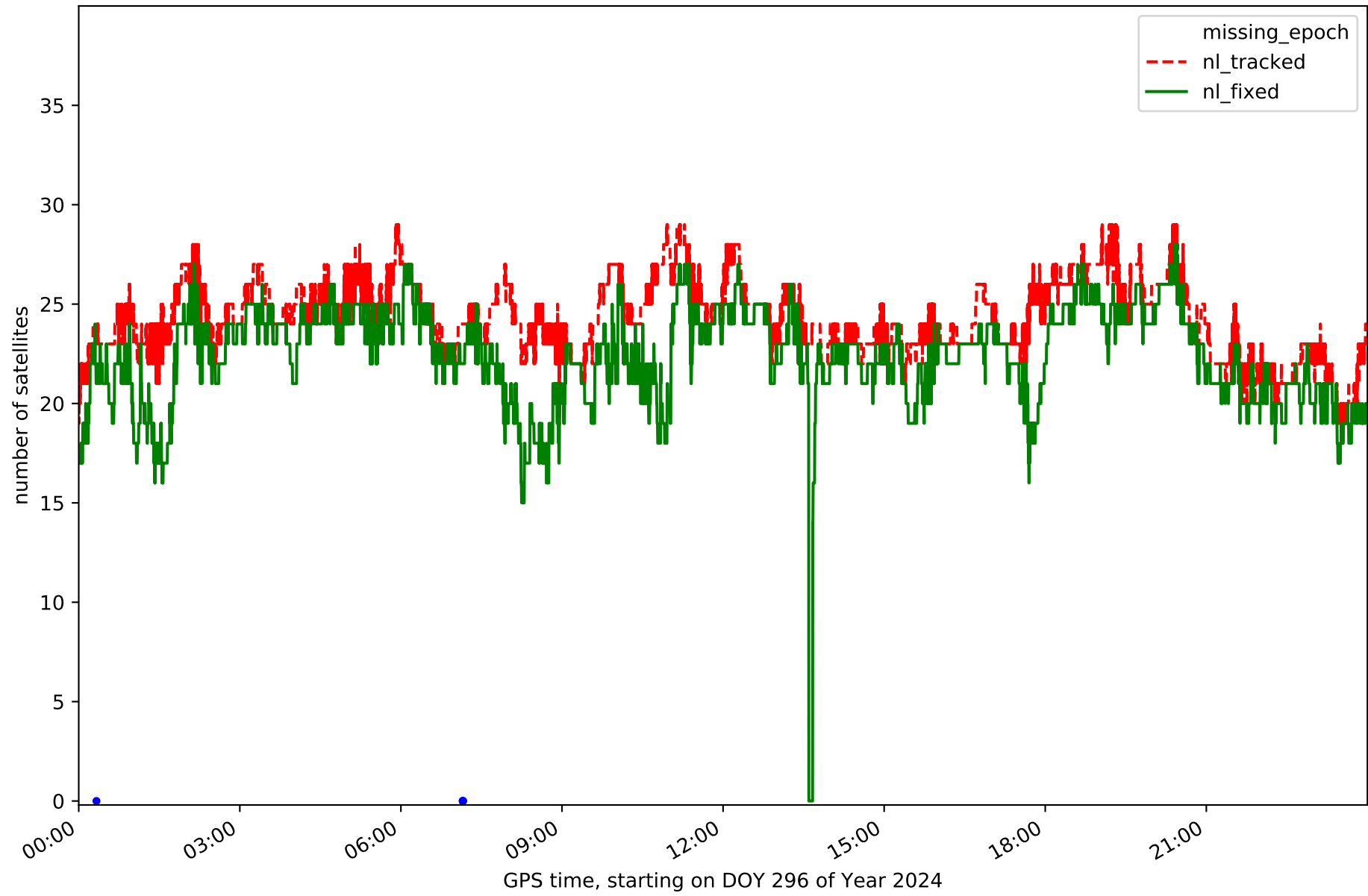
Station CERV in network NET5



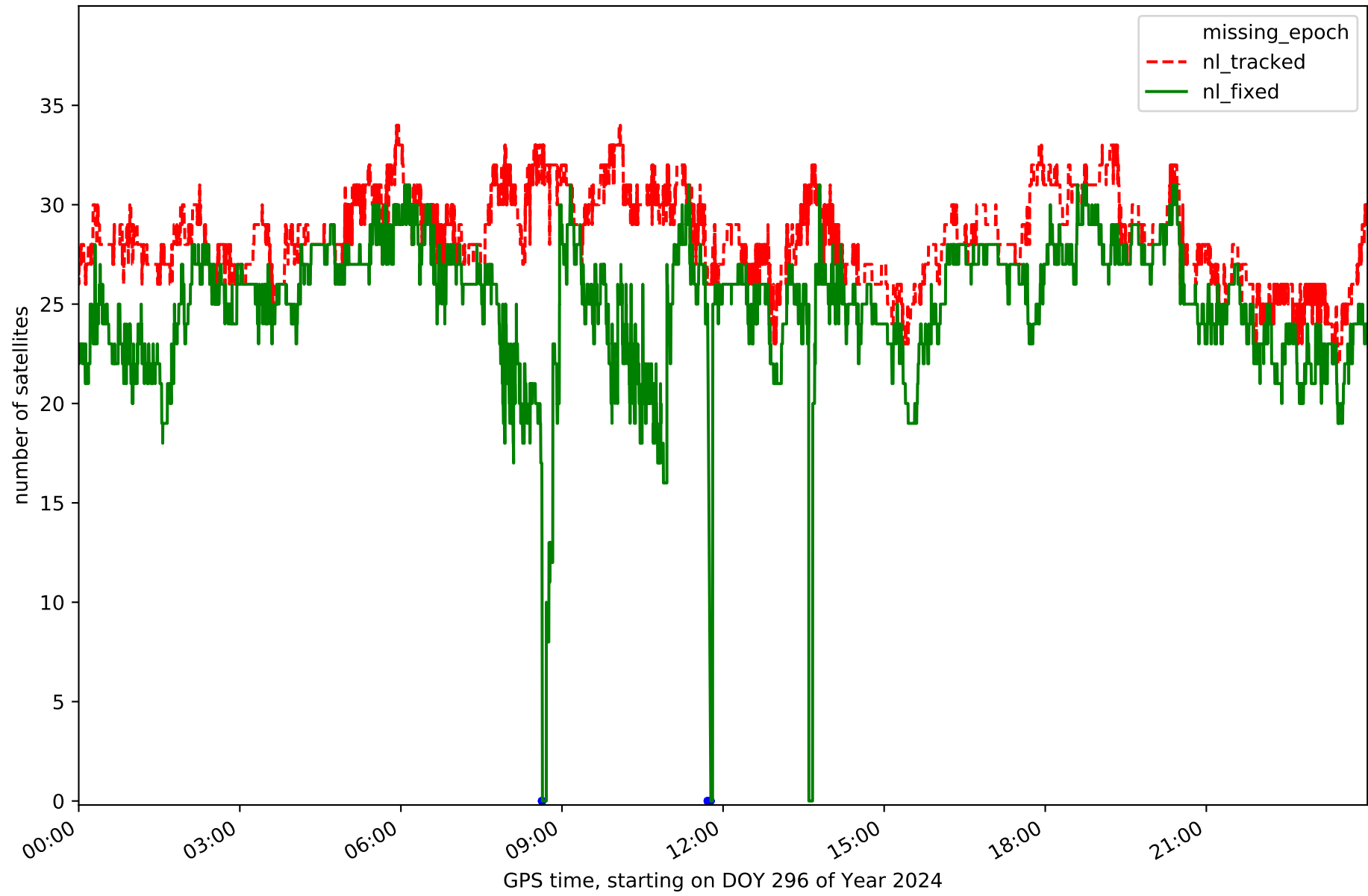
Station LERM in network NET5



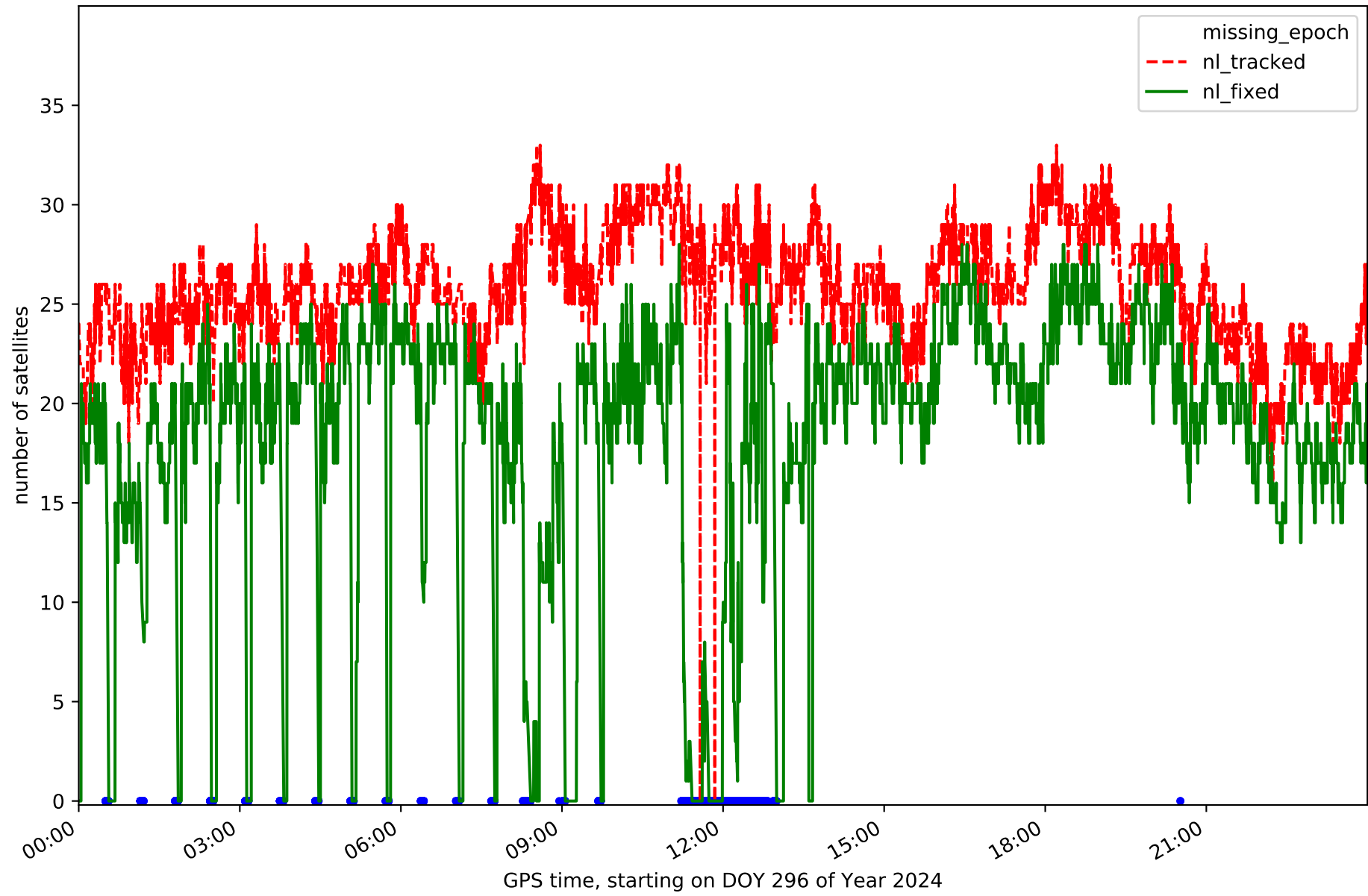
Station QINT in network NET5



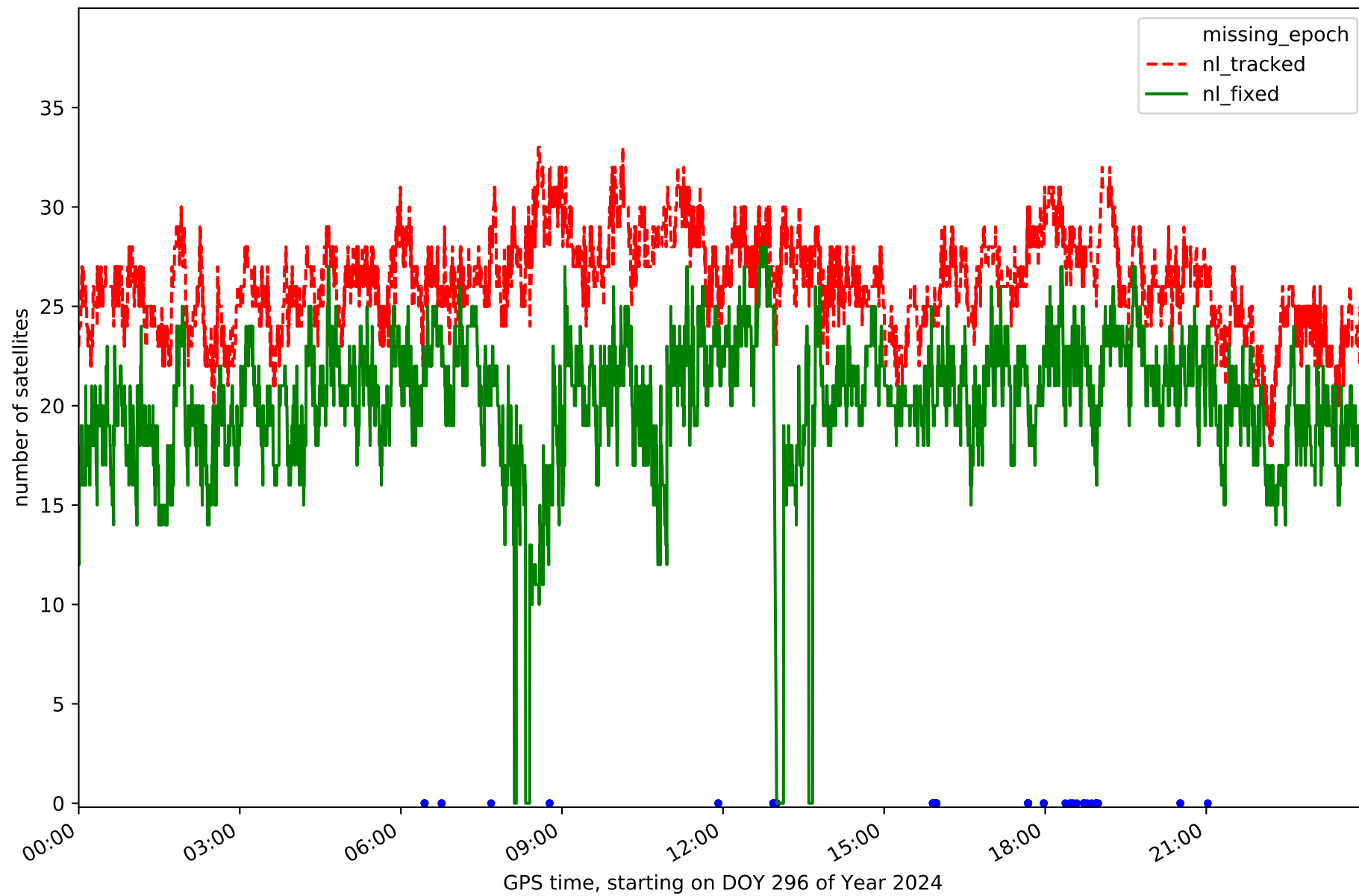
Station SORI in network NET5



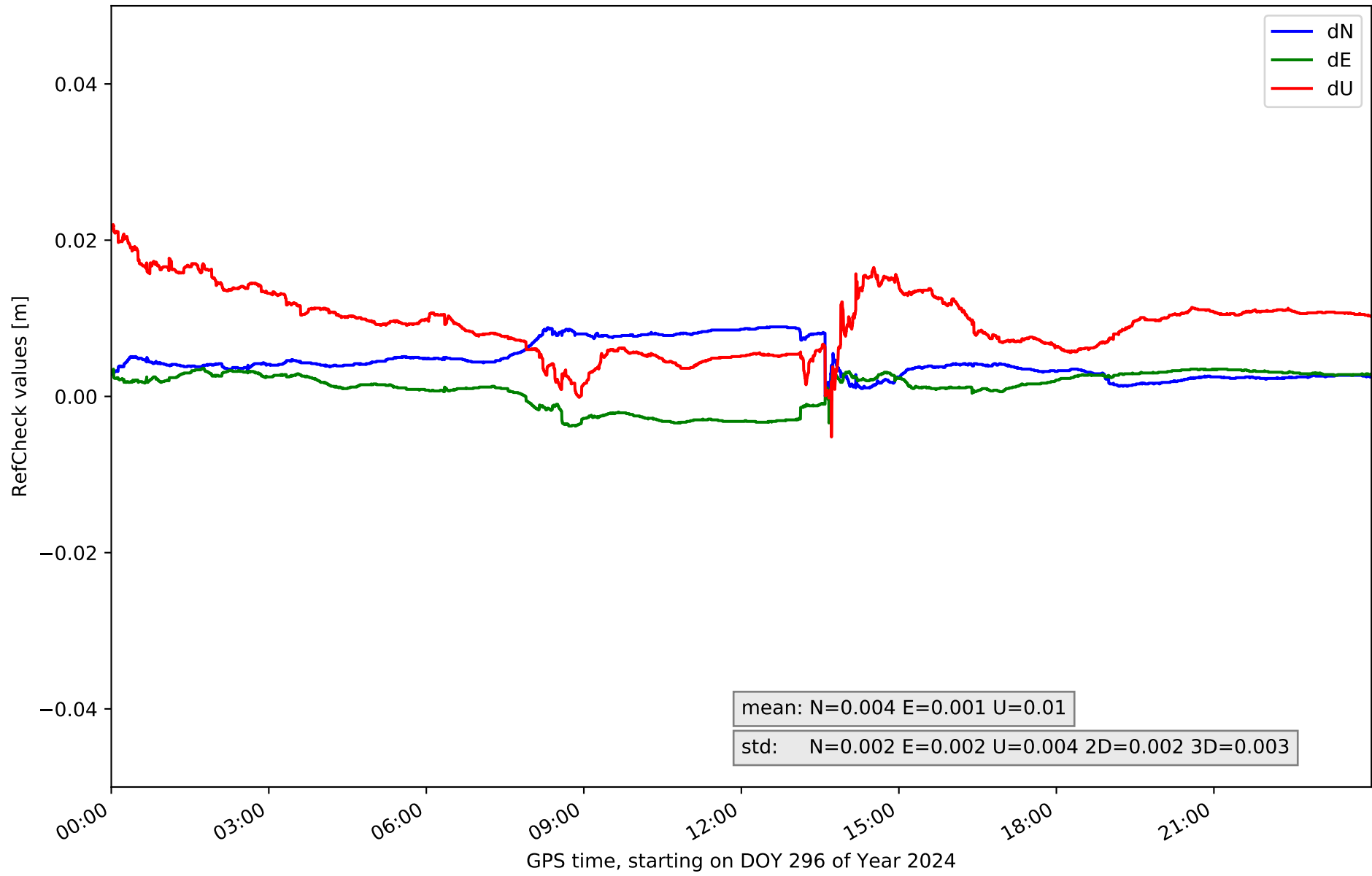
Station SROM in network NET5



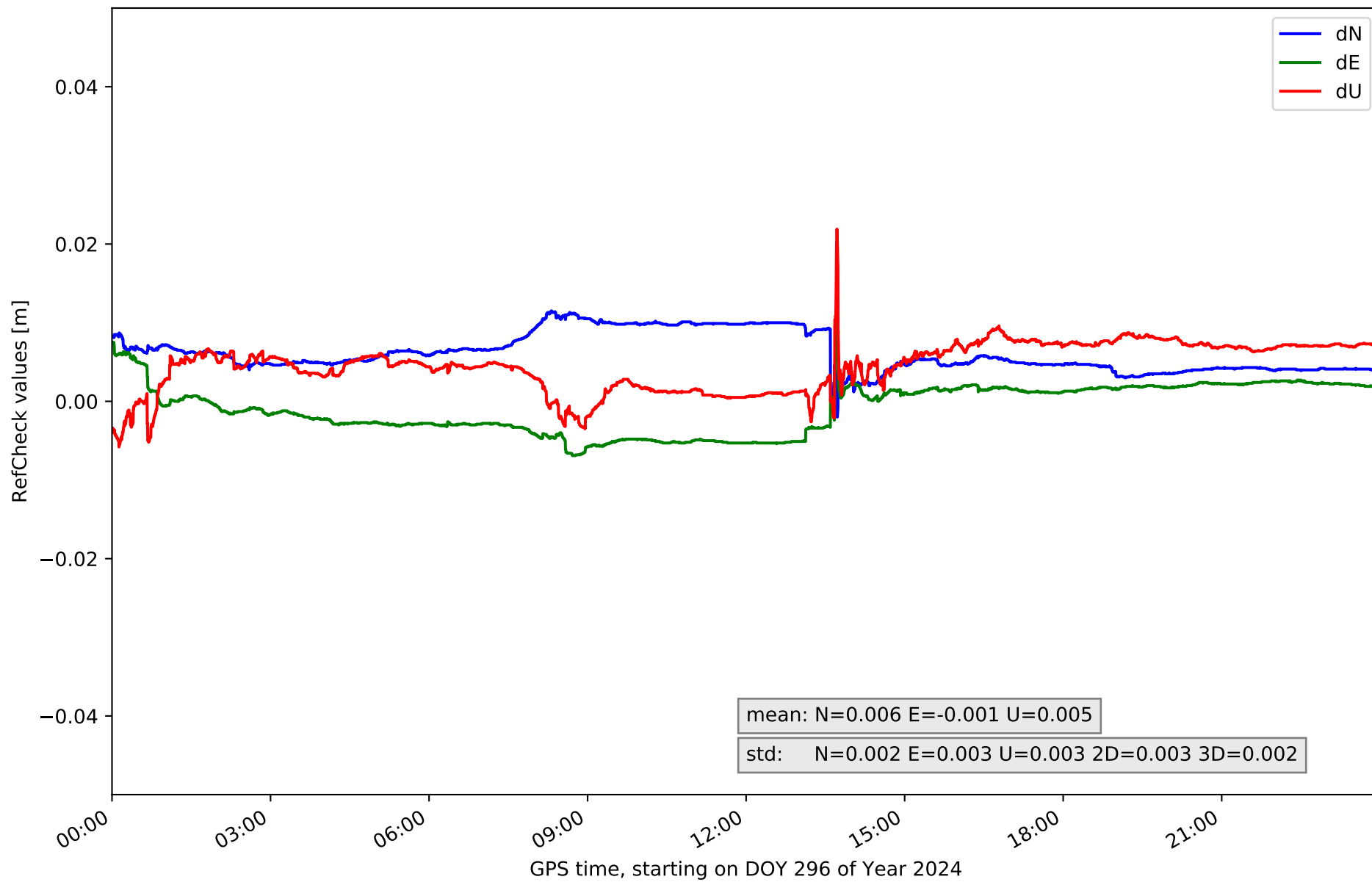
Station VTRO in network NET5



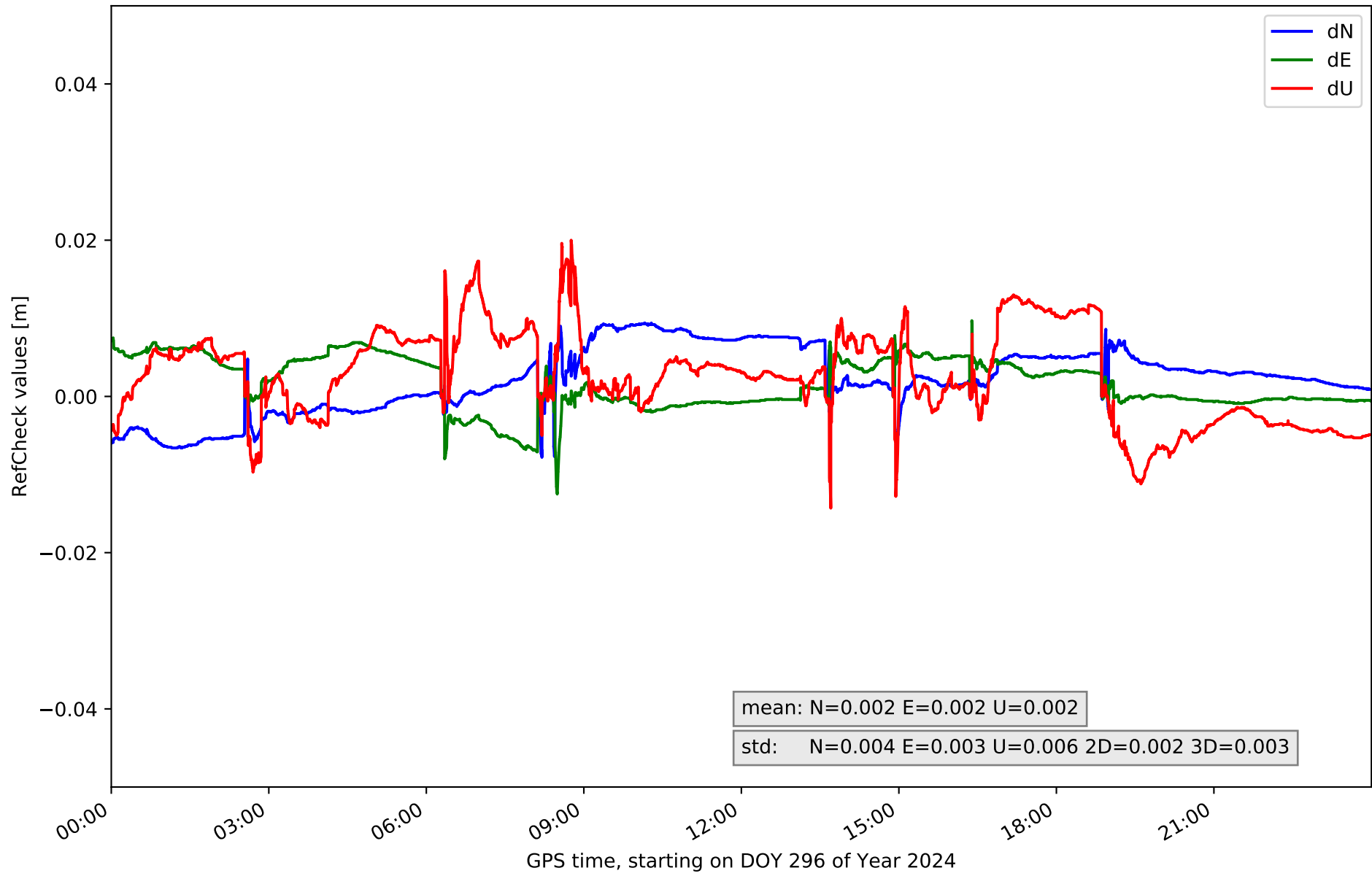
RefCheck for station ALMZ in network NET5



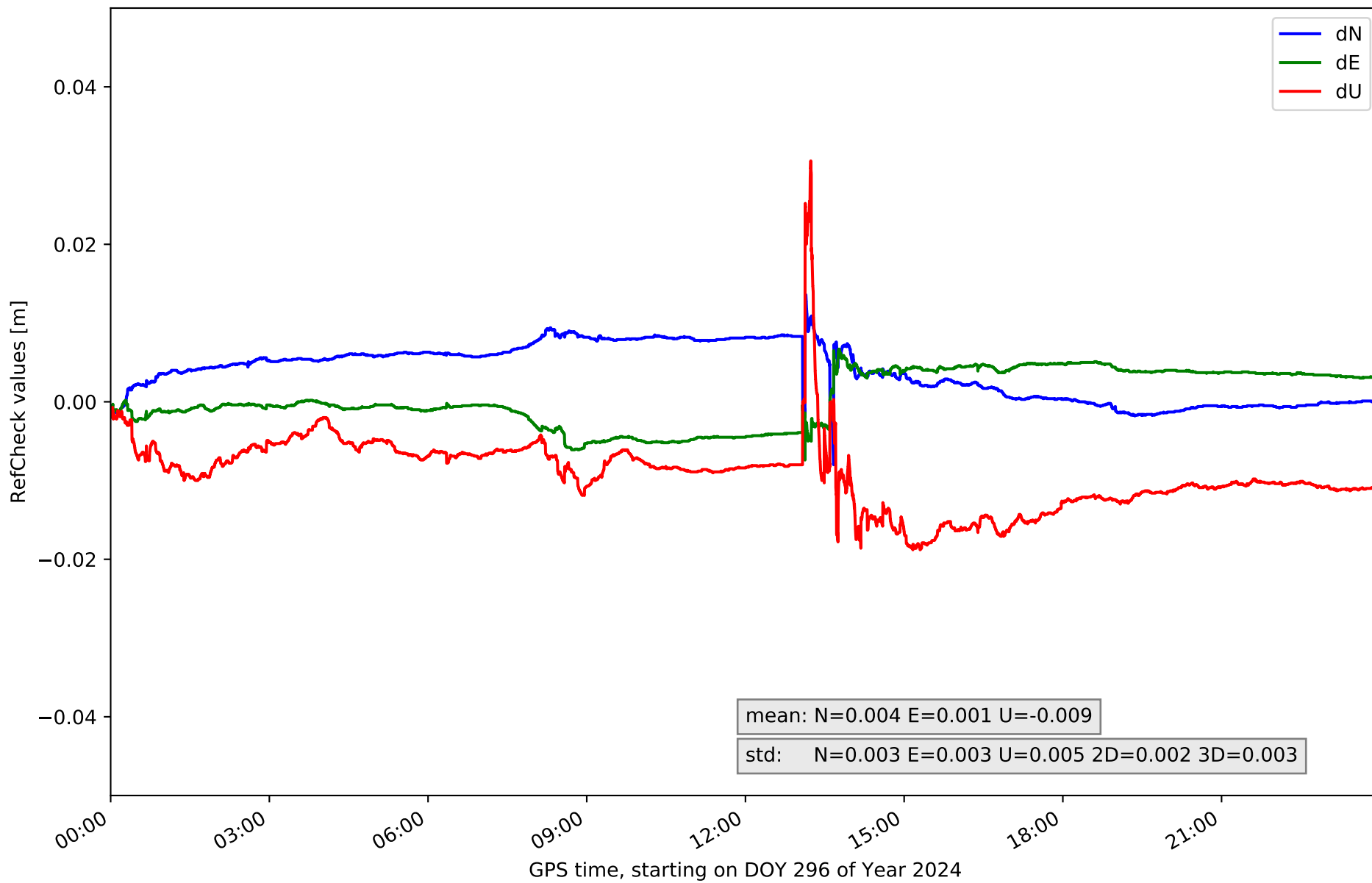
RefCheck for station ARDU in network NET5



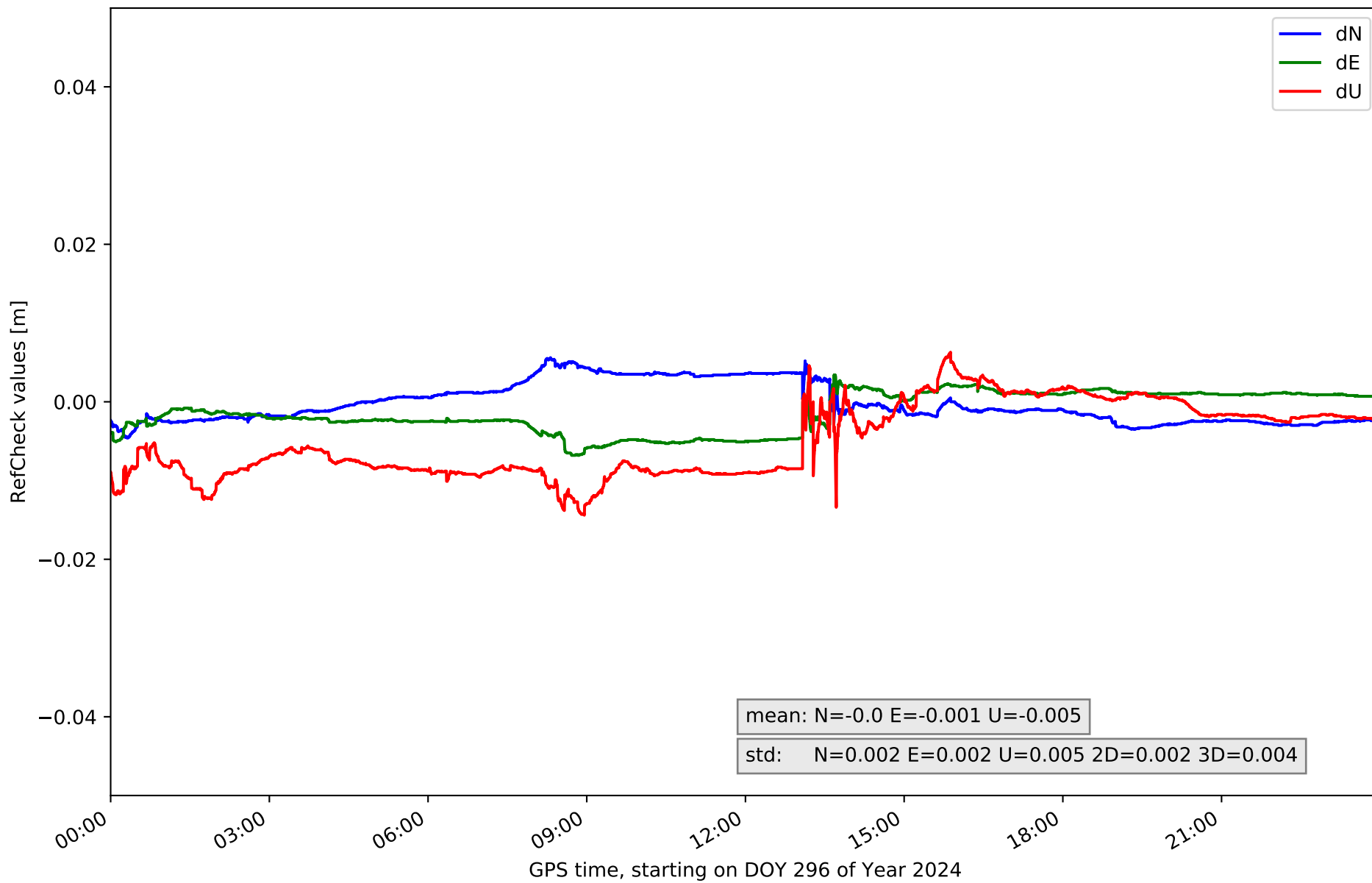
RefCheck for station BUOS in network NET5



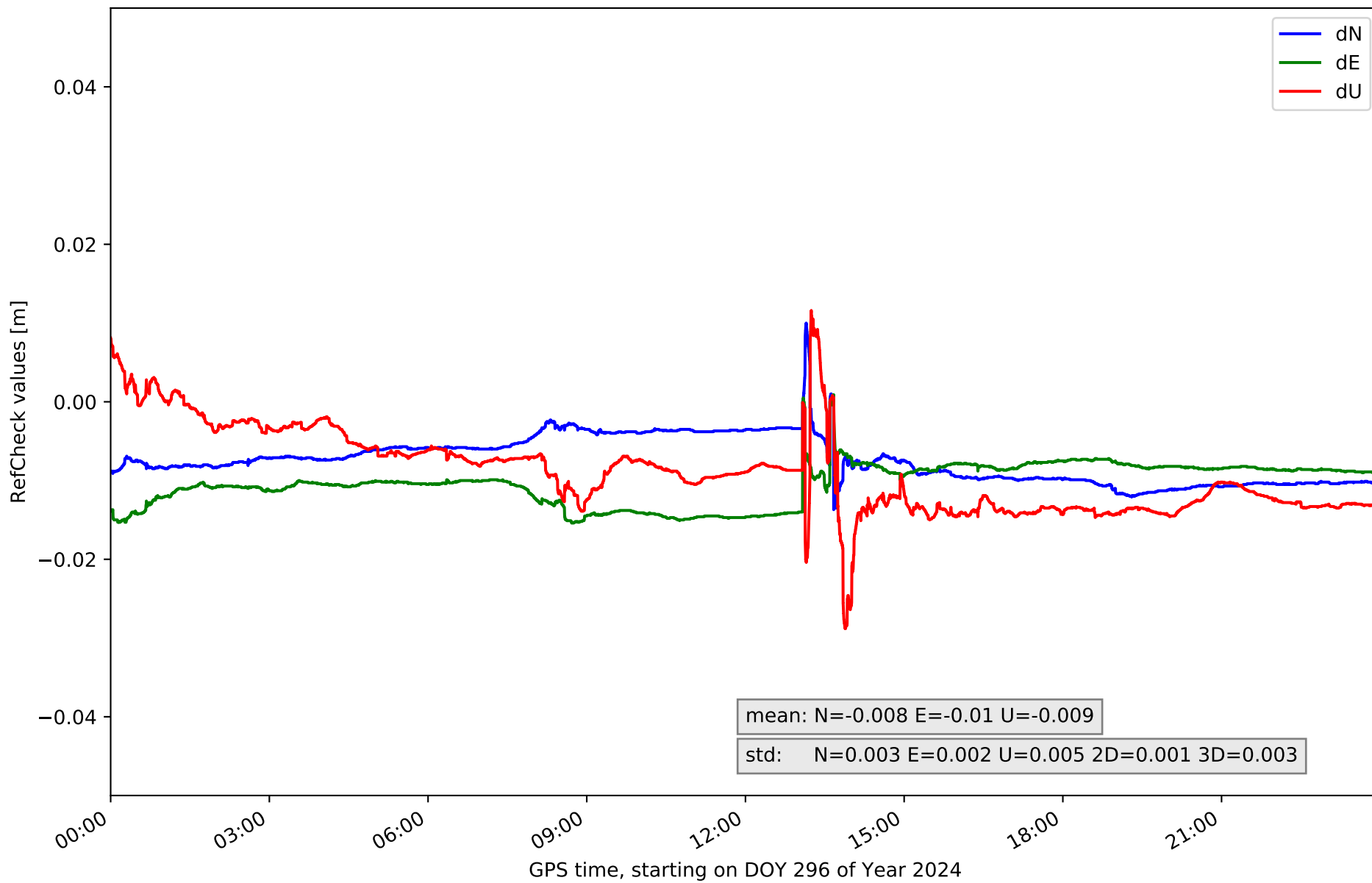
RefCheck for station CALH in network NET5



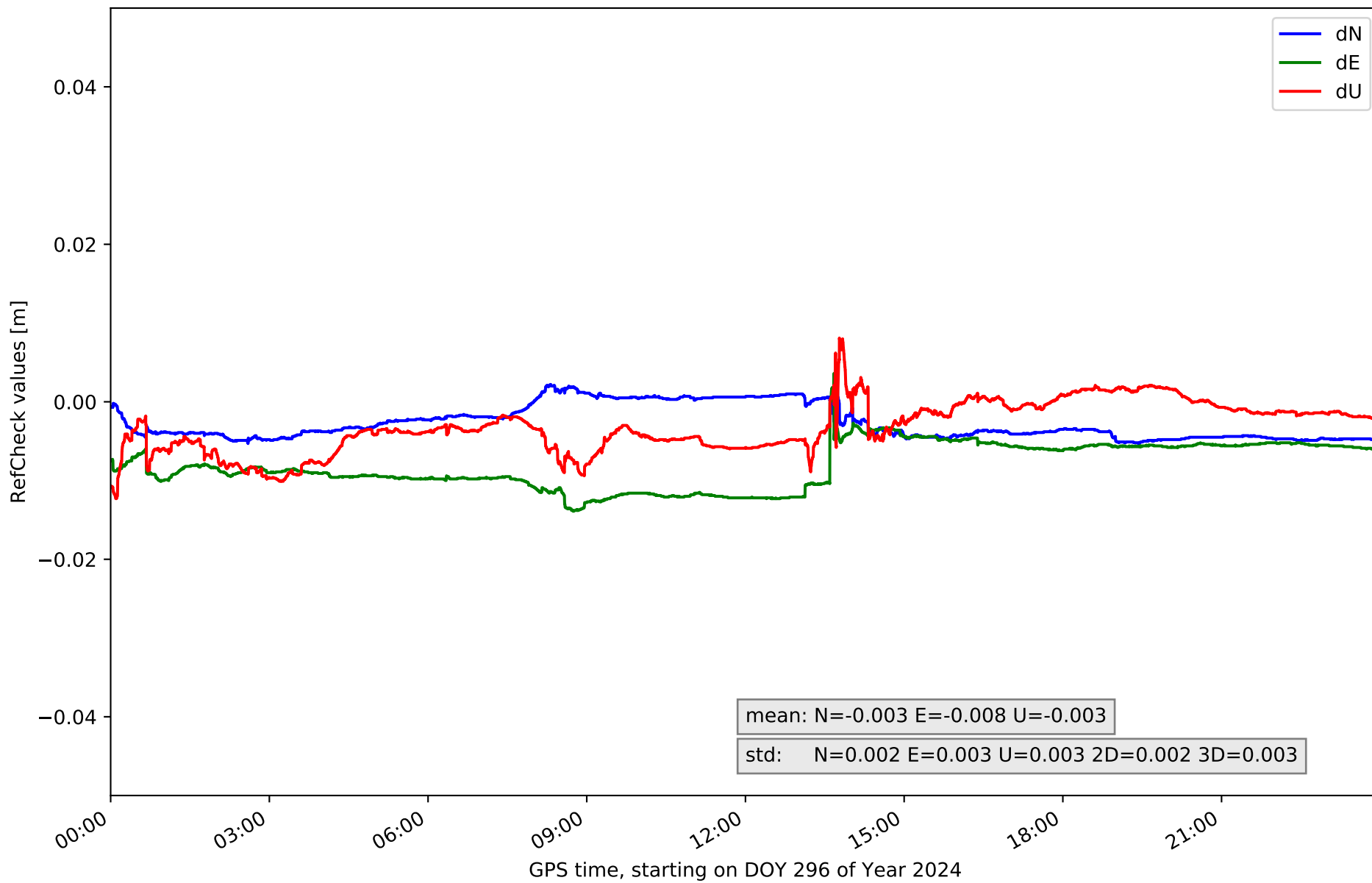
RefCheck for station CAS0 in network NET5



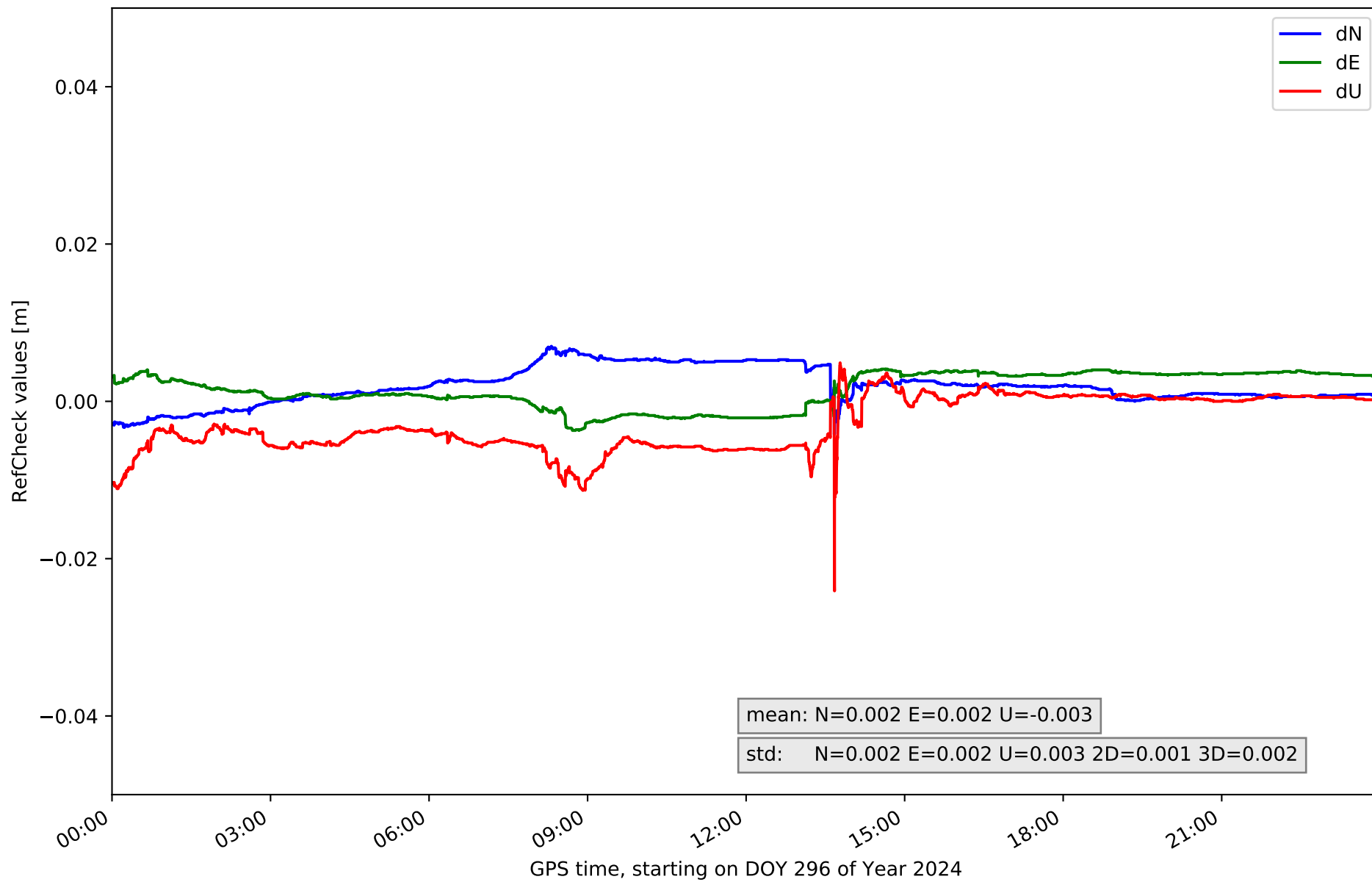
RefCheck for station CERV in network NET5



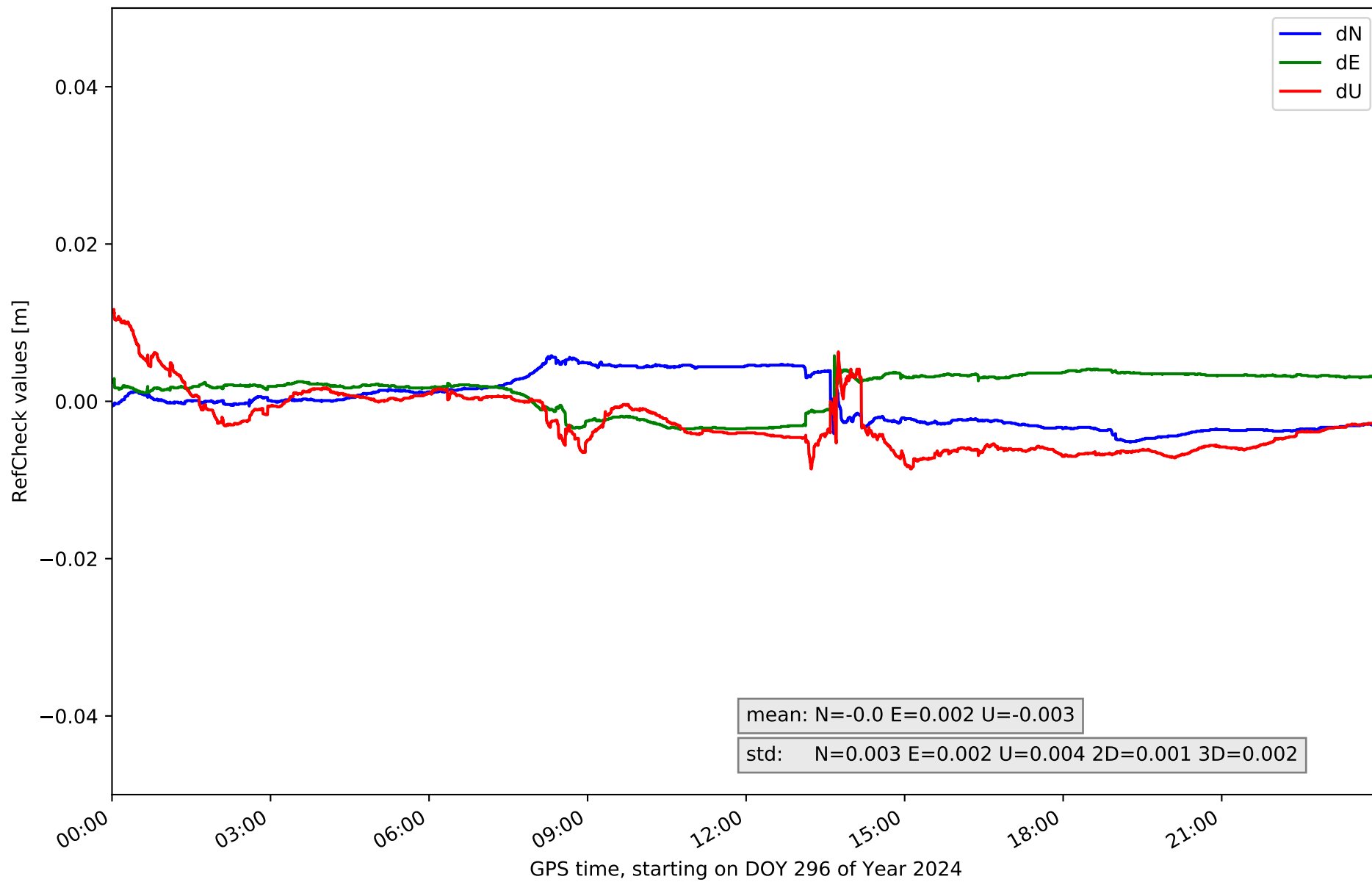
RefCheck for station LERM in network NET5



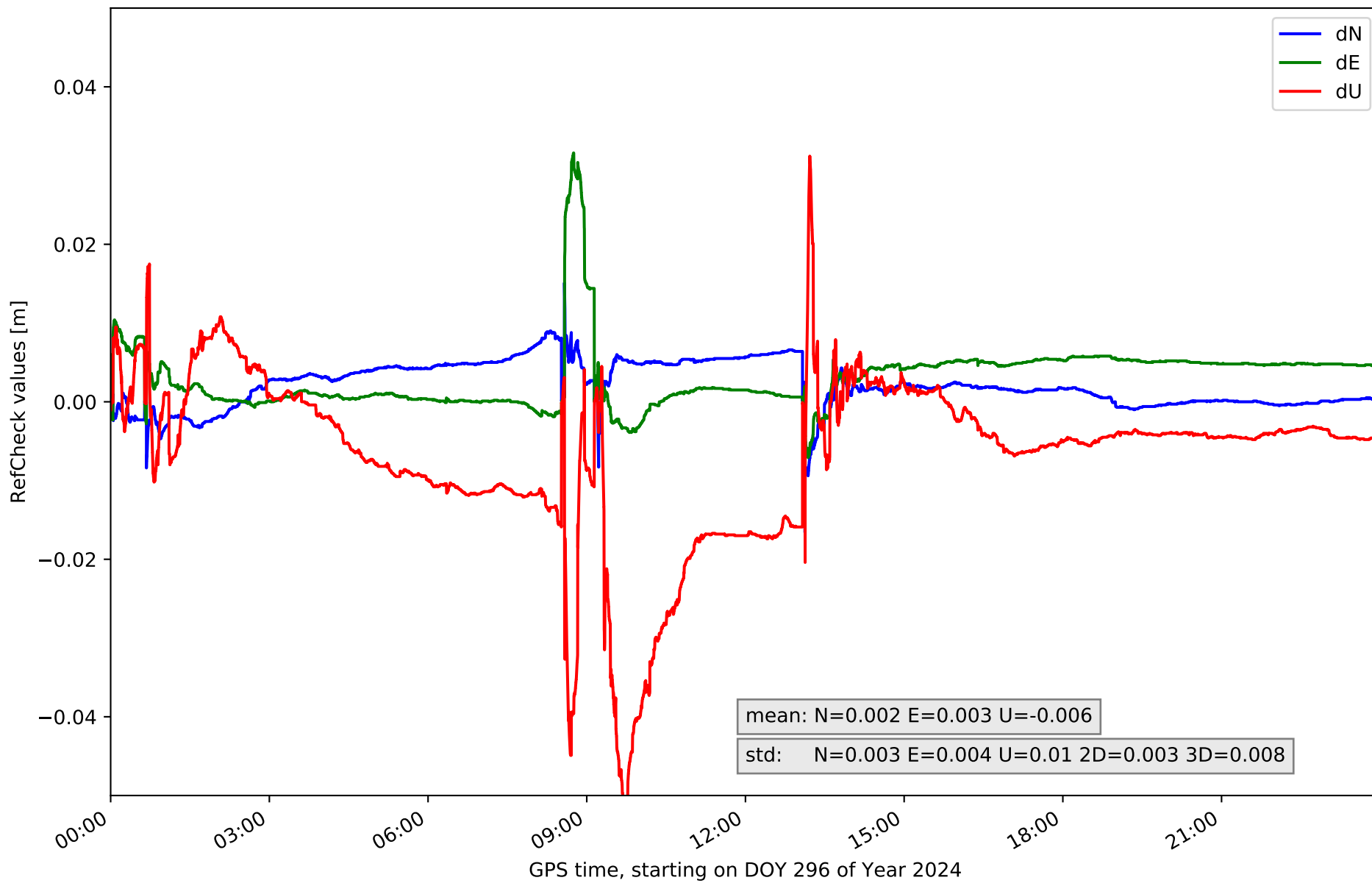
RefCheck for station QINT in network NET5



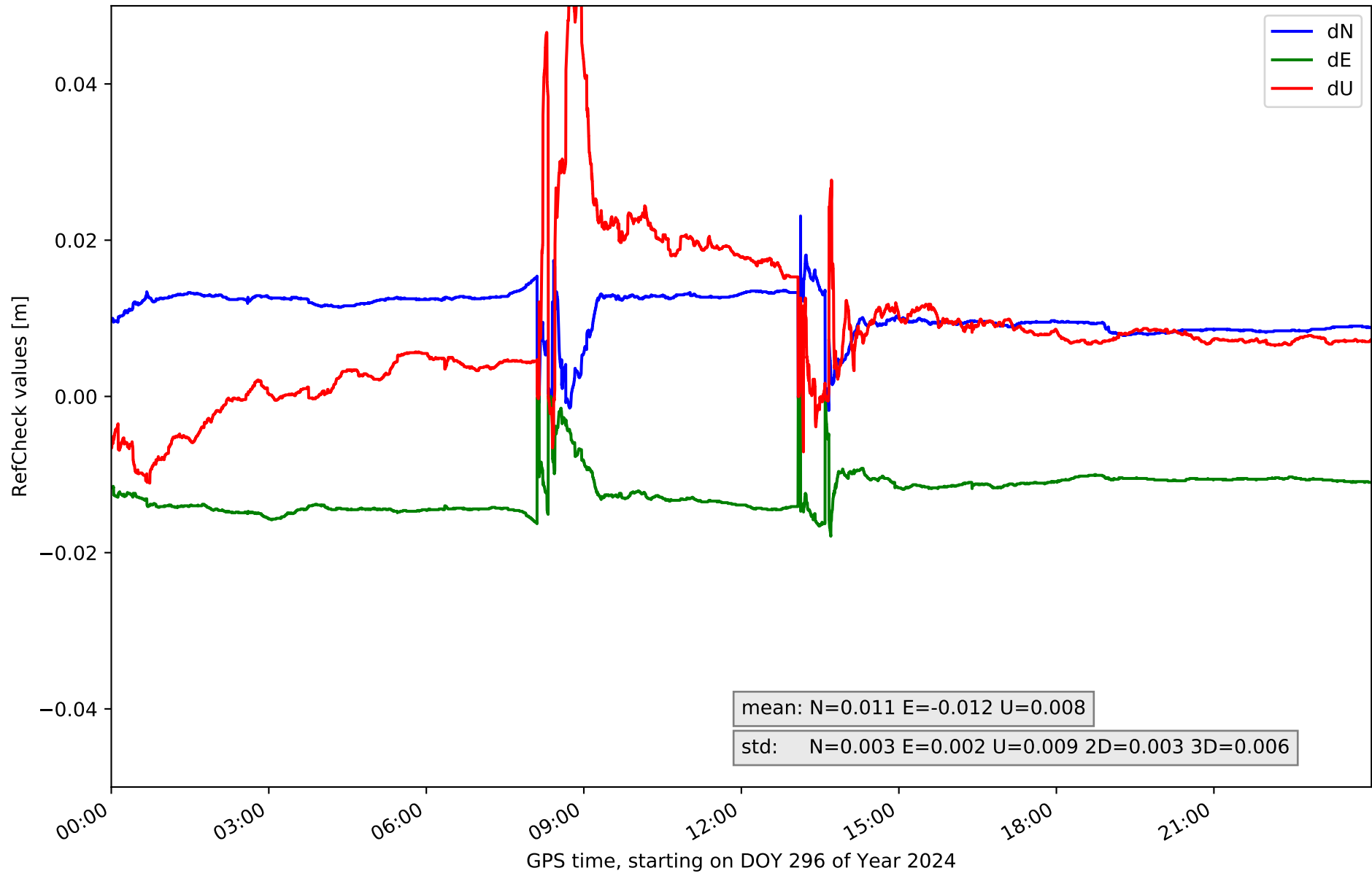
RefCheck for station SORI in network NET5



RefCheck for station SR0M in network NET5



RefCheck for station VTRO in network NET5



RefCheck values for network NET5

| Station | Nmin | Nmax | Nstd | Emin | Emax | Estd | Umin | Umax | Ustd | std2D | std3D | #2D > 0.01 | % 2D > 0.01 | #3D > 0.02 | % 3D > 0.02 |
|----------------|---------------|--------------|--------------|---------------|--------------|--------------|---------------|--------------|--------------|--------------|--------------|----------------|-------------|---------------|-------------|
| ALMZ | -0.002 | 0.009 | 0.002 | -0.004 | 0.004 | 0.002 | -0.005 | 0.022 | 0.004 | 0.002 | 0.003 | 0 | 0.0 | 1172 | 1.5 |
| ARDU | -0.002 | 0.011 | 0.002 | -0.007 | 0.014 | 0.003 | -0.006 | 0.022 | 0.003 | 0.003 | 0.002 | 15399 | 19.4 | 103 | 0.1 |
| BUOS | -0.008 | 0.009 | 0.004 | -0.013 | 0.01 | 0.003 | -0.014 | 0.02 | 0.006 | 0.002 | 0.003 | 116 | 0.1 | 29 | 0.0 |
| CALH | -0.008 | 0.014 | 0.003 | -0.007 | 0.007 | 0.003 | -0.019 | 0.031 | 0.005 | 0.002 | 0.003 | 1350 | 1.7 | 494 | 0.6 |
| CASO | -0.005 | 0.006 | 0.002 | -0.007 | 0.003 | 0.002 | -0.014 | 0.006 | 0.005 | 0.002 | 0.004 | 0 | 0.0 | 0 | 0.0 |
| CERV | -0.014 | 0.01 | 0.003 | -0.015 | 0.001 | 0.002 | -0.029 | 0.012 | 0.005 | 0.001 | 0.003 | 78644 | 98.9 | 2297 | 2.9 |
| LERM | -0.005 | 0.003 | 0.002 | -0.014 | 0.004 | 0.003 | -0.012 | 0.008 | 0.003 | 0.002 | 0.003 | 24112 | 30.3 | 0 | 0.0 |
| QINT | -0.004 | 0.007 | 0.002 | -0.004 | 0.004 | 0.002 | -0.024 | 0.005 | 0.003 | 0.001 | 0.002 | 0 | 0.0 | 11 | 0.0 |
| SORI | -0.005 | 0.006 | 0.003 | -0.004 | 0.006 | 0.002 | -0.009 | 0.012 | 0.004 | 0.001 | 0.002 | 0 | 0.0 | 0 | 0.0 |
| SROM | -0.017 | 0.015 | 0.003 | -0.007 | 0.032 | 0.004 | -0.051 | 0.031 | 0.01 | 0.003 | 0.008 | 1683 | 2.1 | 6564 | 8.3 |
| VTRO | -0.002 | 0.023 | 0.003 | -0.018 | 0.003 | 0.002 | -0.011 | 0.054 | 0.009 | 0.003 | 0.006 | 78033 | 98.1 | 21504 | 27.0 |
| Mean | -0.007 | 0.01 | 0.003 | -0.009 | 0.008 | 0.003 | -0.018 | 0.02 | 0.005 | 0.002 | 0.004 | 18121.5 | 22.8 | 2924.9 | 3.7 |
| Min/Max | -0.017 | 0.023 | 0.004 | -0.018 | 0.032 | 0.004 | -0.051 | 0.054 | 0.01 | 0.003 | 0.008 | 78644 | 98.9 | 21504 | 27.0 |

fixing statistic for network NET5

| fixing percentage of | all GNSS | G | R | E | C |
|--|----------|------|------|------|------|
| using threshold 0.3 | 88.9 | 91.5 | 89.9 | 93.4 | 81.4 |
| considering satellites with dual-frequency fixed | 84.2 | 86.4 | 84.1 | 87.1 | 78.3 |
| considering all signals separately | 84.3 | 86.6 | 84.1 | 87.4 | 76.5 |