

summary for network NT10

timeperiod chosen: from 2024-10-17-00:00:00 until 2024-10-17-23:59:59

average update rate (durations larger than 15 seconds considered as observation gap): 1.1 seconds

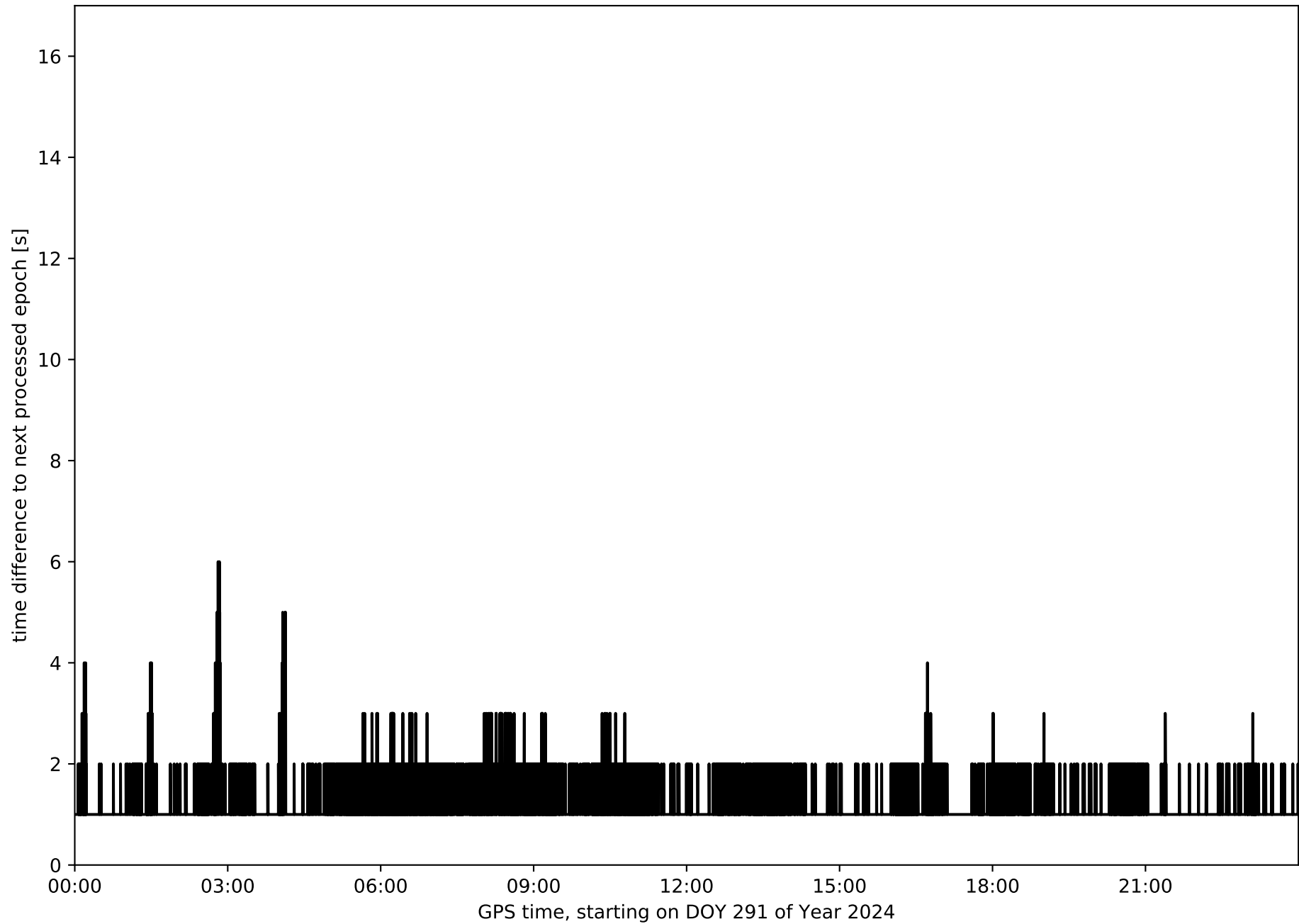
average fixing percentage with threshold set to 0.3: 87.3 percent

stations available: 13 of 13

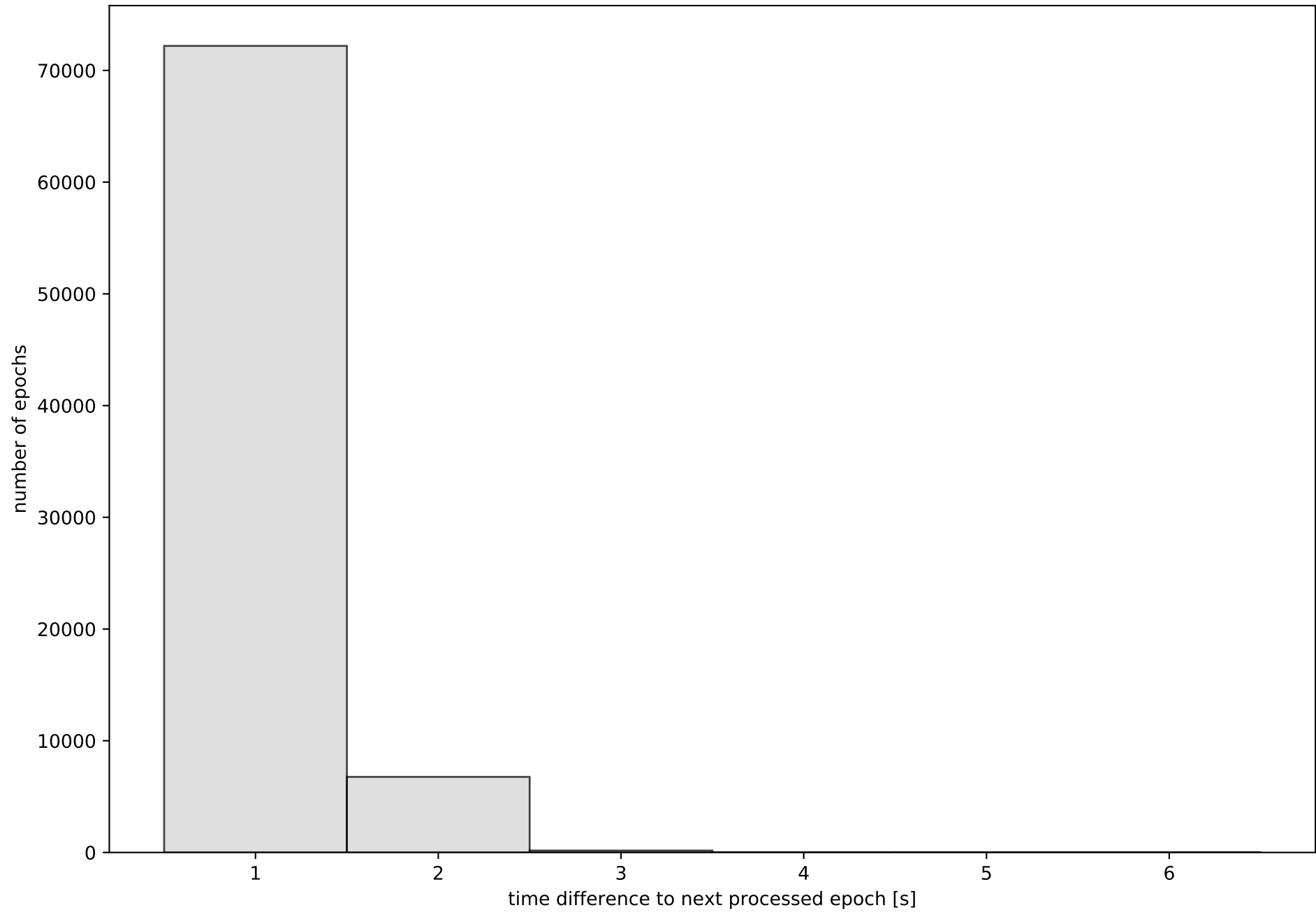
station information:

station BCL1:	antenna: LEIAR20	LEIM	receiver: LEICA GR25	height: 56.129
station BCLN:	antenna: LEIAR25.R4	LEIT	receiver: LEICA GR10	height: 84.875
station BELL:	antenna: LEIAR25.R4	NONE	receiver: LEICA GR50	height: 853.488
station CREU:	antenna: LEIAR25.R4	NONE	receiver: LEICA GR50	height: 133.464
station EBRE:	antenna: LEIAR25.R4	NONE	receiver: LEICA GR50	height: 107.868
station ESCO:	antenna: LEIAR25.R4	NONE	receiver: LEICA GR50	height: 2508.504
station GIRO:	antenna: LEIAR25.R4	LEIT	receiver: LEICA GR10	height: 112.767
station GRAU:	antenna: GPPNULLANTENNA	NONE	receiver: TPS NET-G3	height: 509.777
station MEQU:	antenna: GPPNULLANTENNA	NONE	receiver: LEICA GR50	height: 138.594
station PUIG:	antenna: TRM59900.00	SCIS	receiver: TRIMBLE NETR9	height: 1162.395
station TARR:	antenna: LEIAR20	LEIM	receiver: LEICA GR25	height: 491.514
station TRRG:	antenna: LEIAR20	LEIM	receiver: LEICA GR50	height: 55.163
station VRO2:	antenna: GPPNULLANTENNA	NONE	receiver: LEICA GR50	height: 541.427

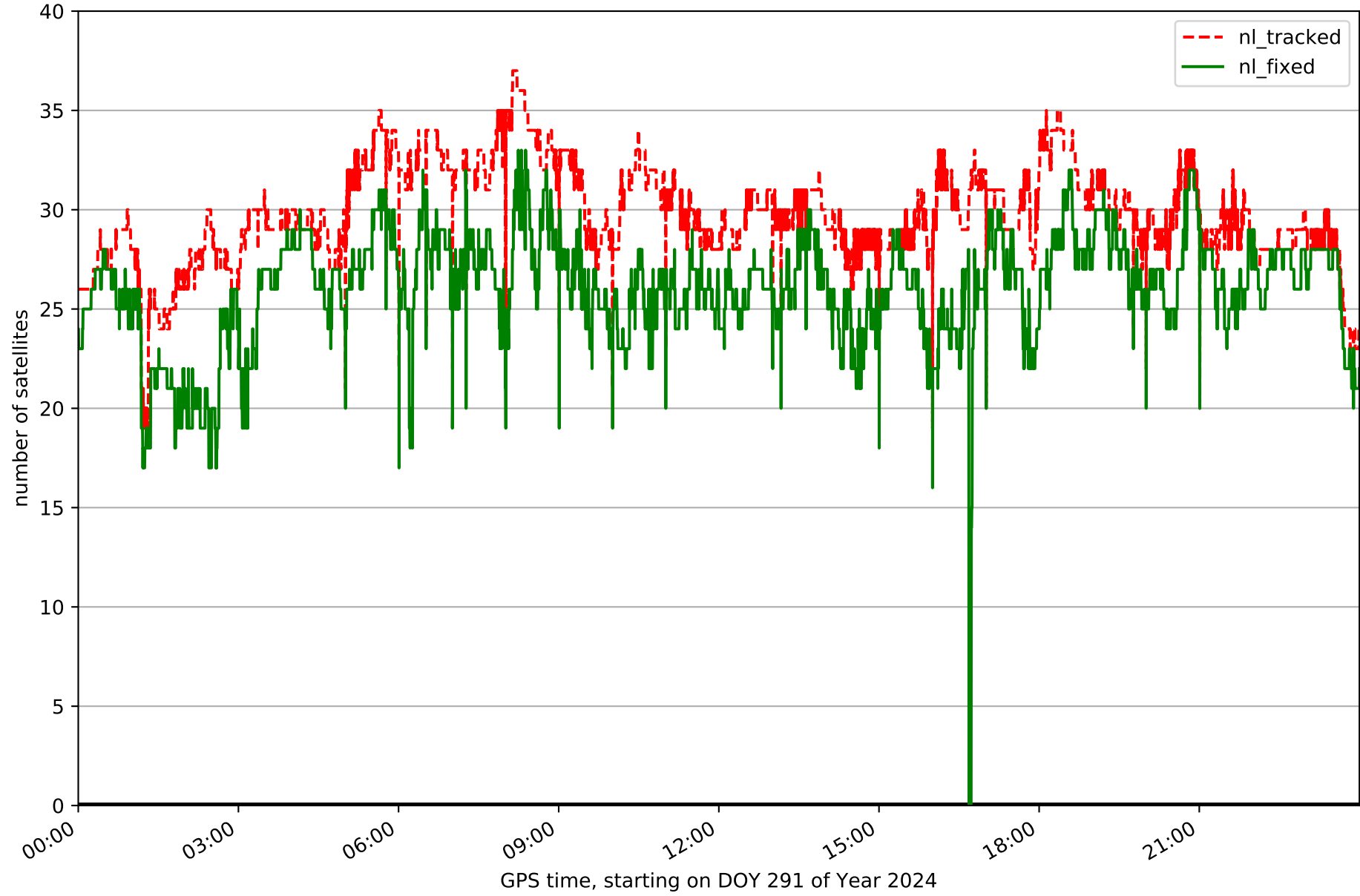
Processing rate in network NT10



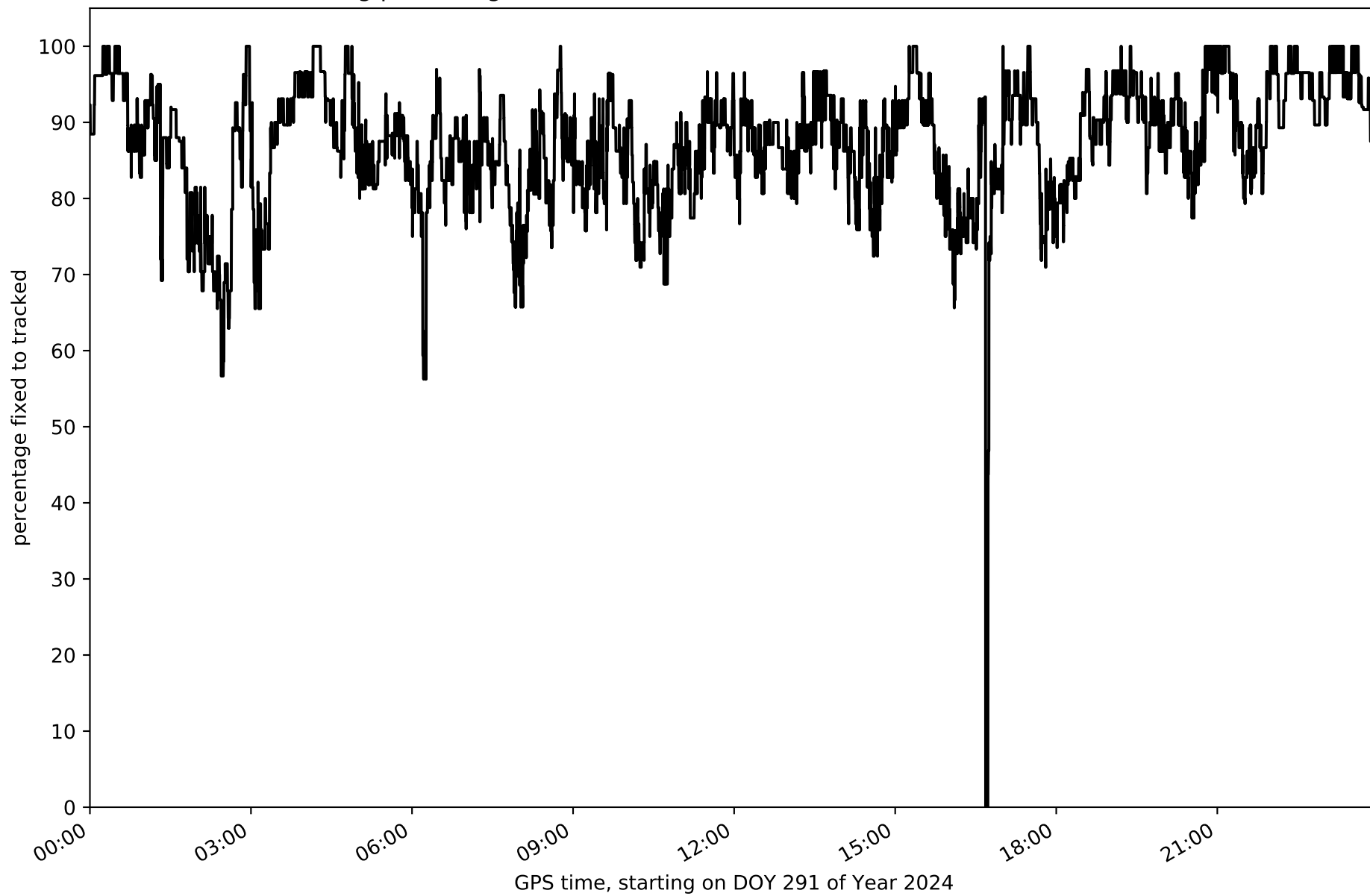
Histogram of the processing rate in network NT10 (durations larger 15 seconds neglected)



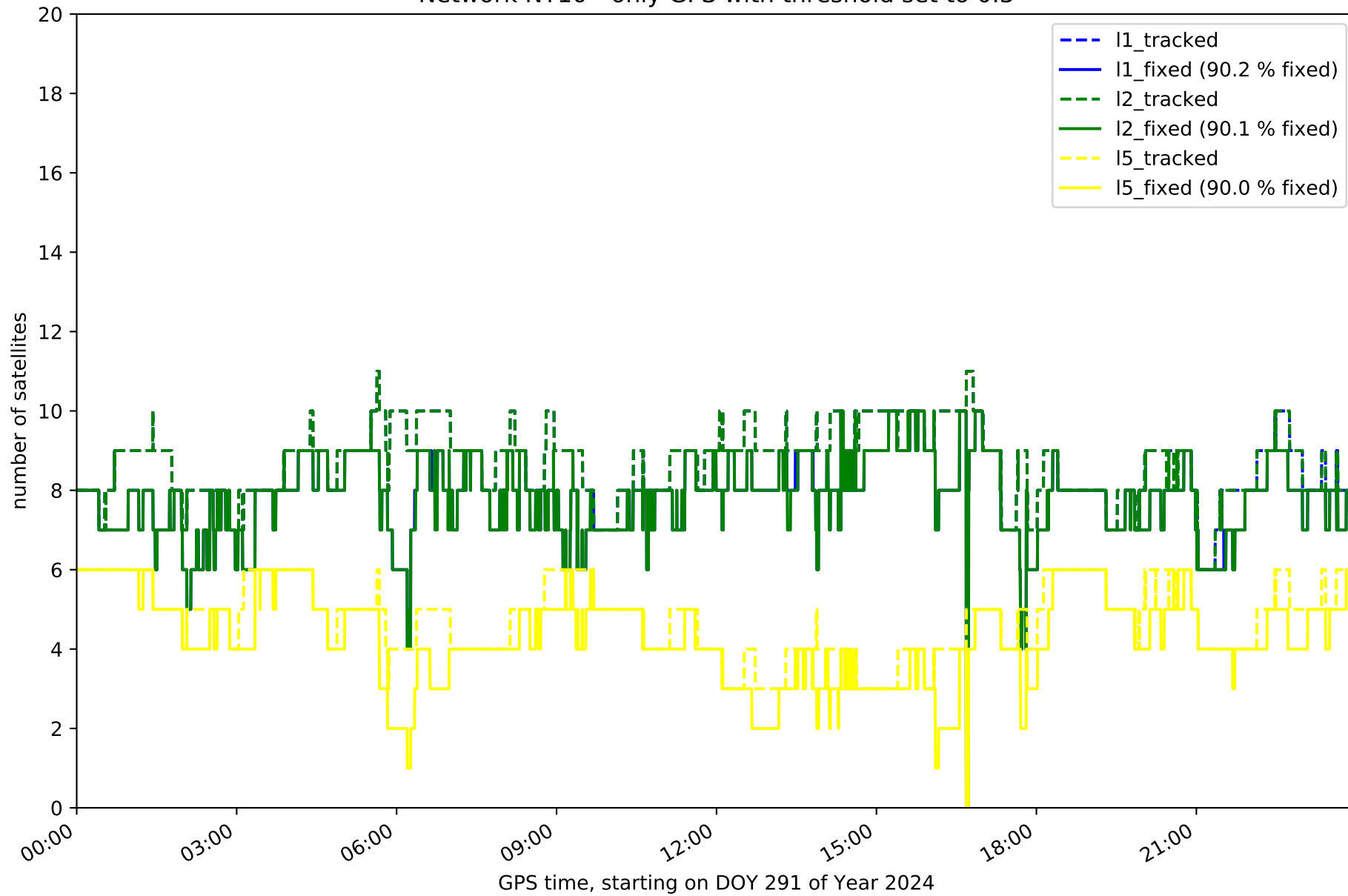
Network NT10 with threshold set to 0.3



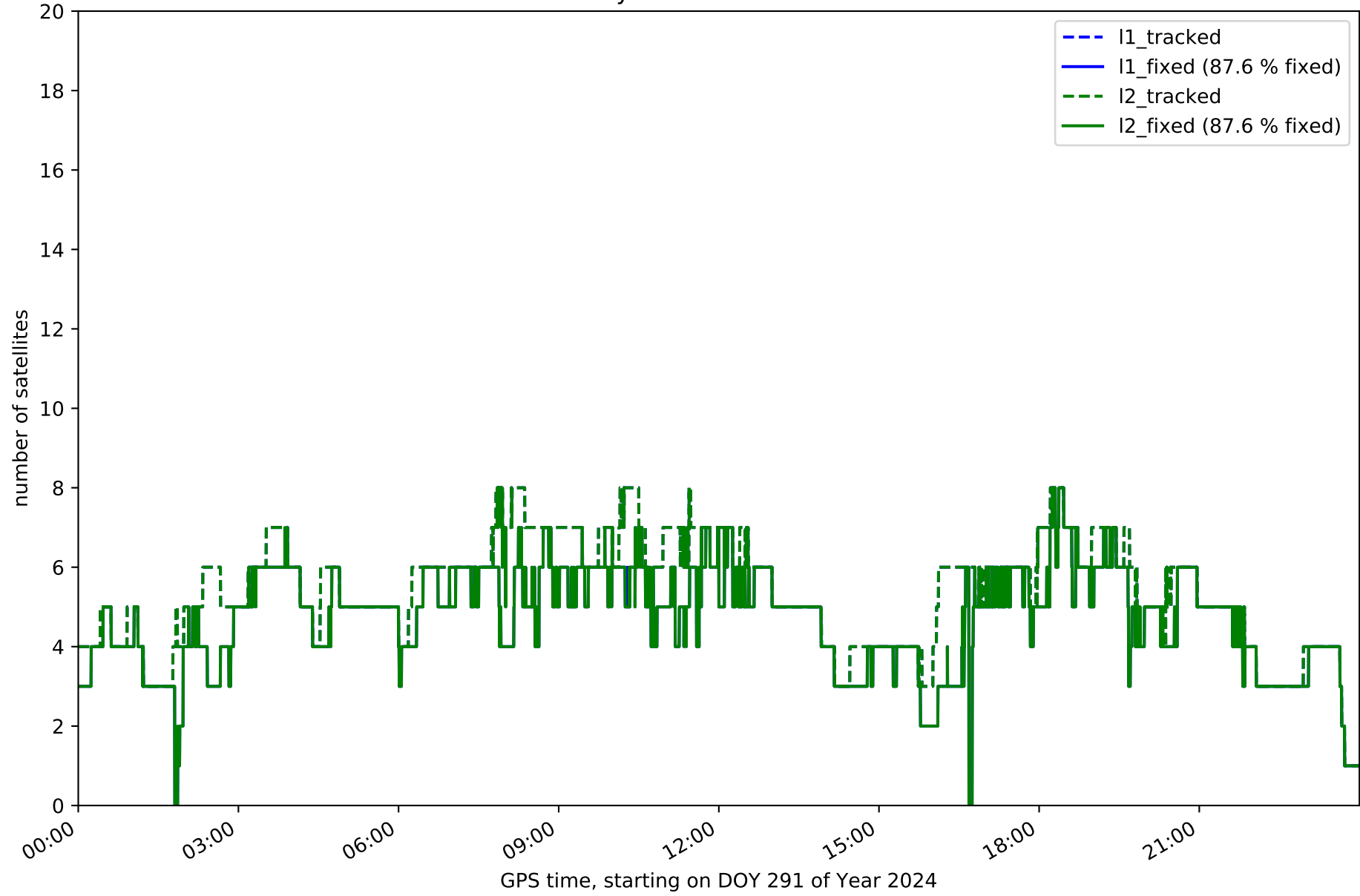
Fixing percentage of satellites in network NT10 with threshold set to 0.3



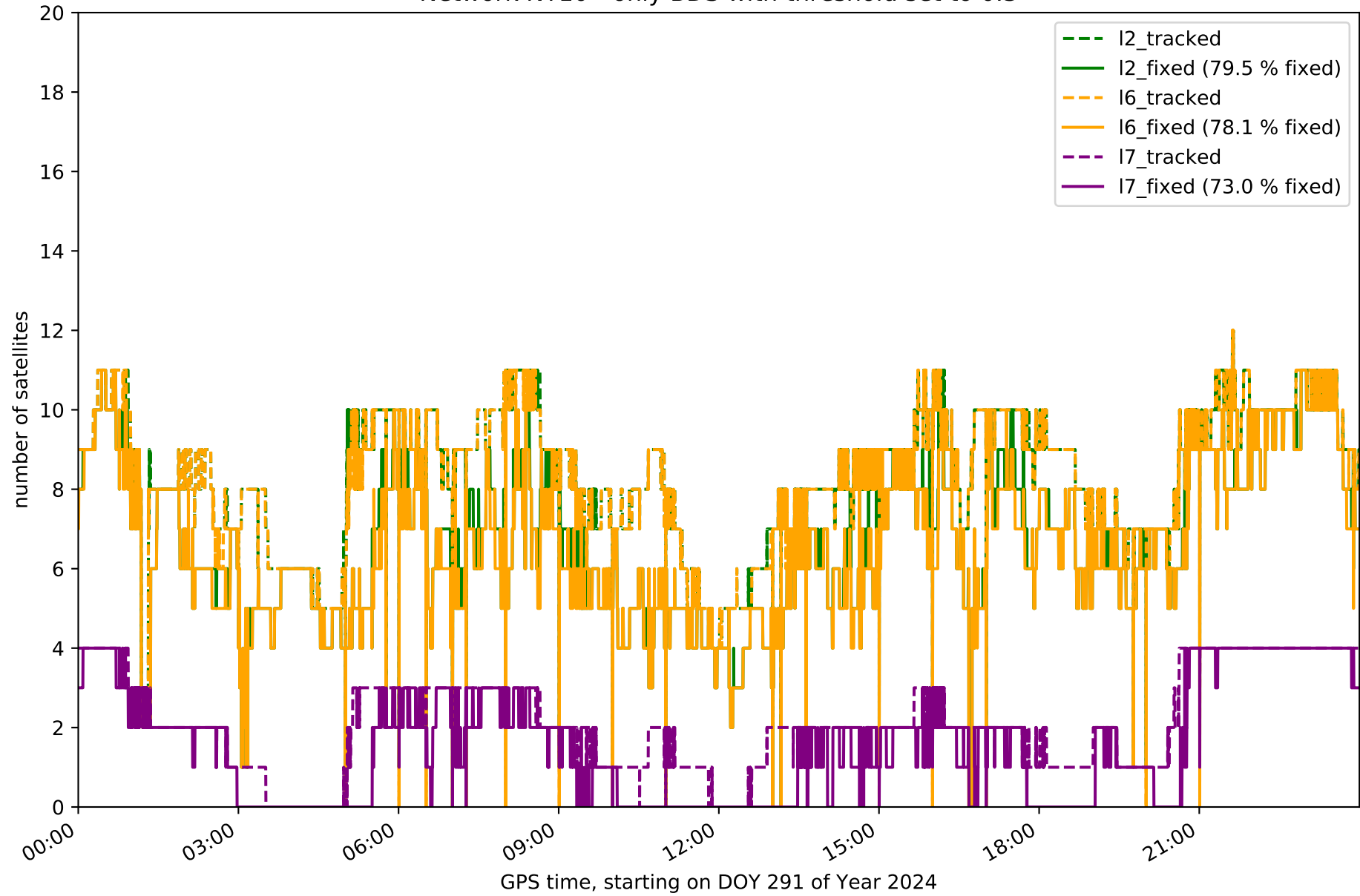
Network NT10 - only GPS with threshold set to 0.3



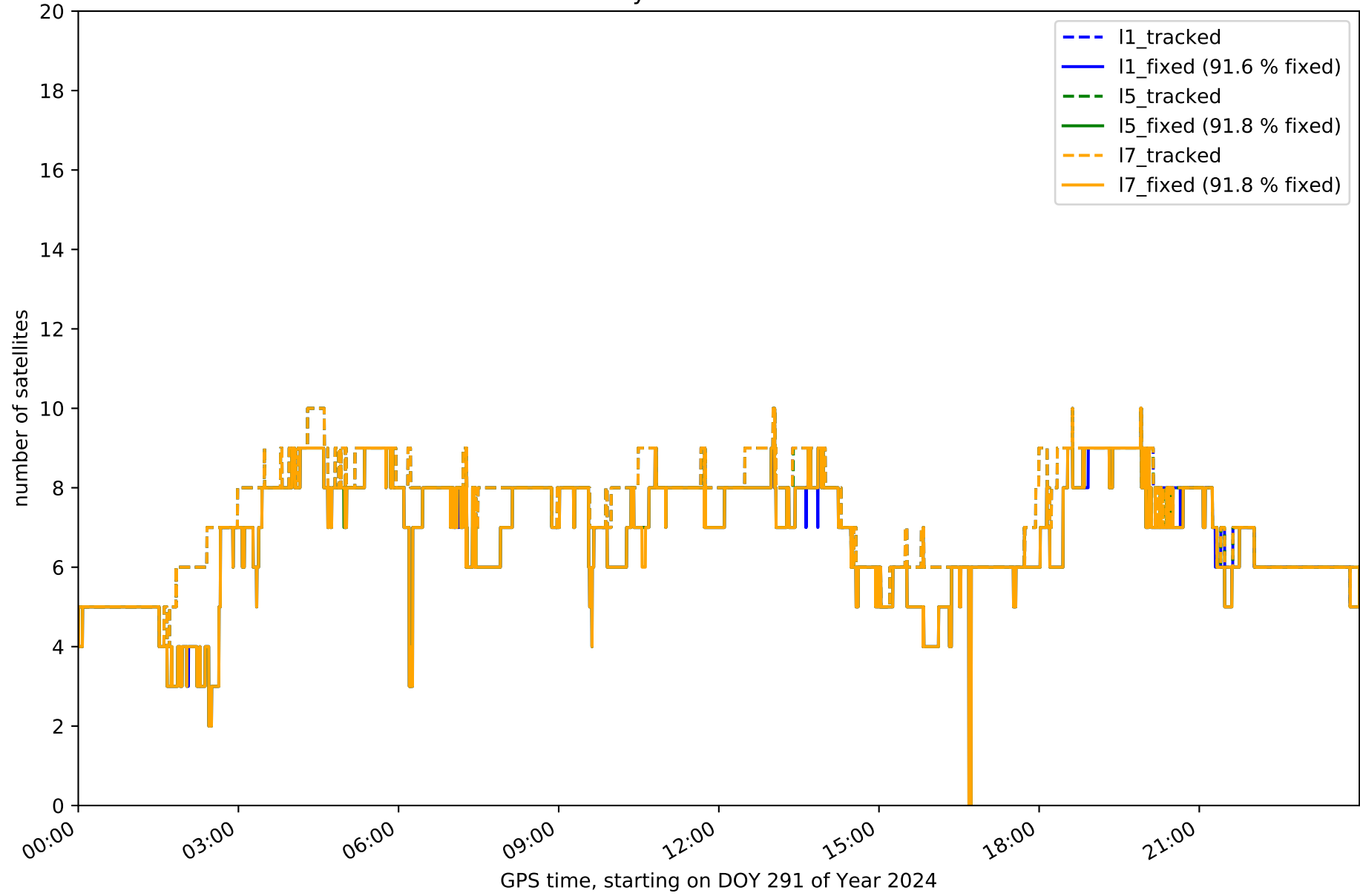
Network NT10 - only GLONASS with threshold set to 0.3



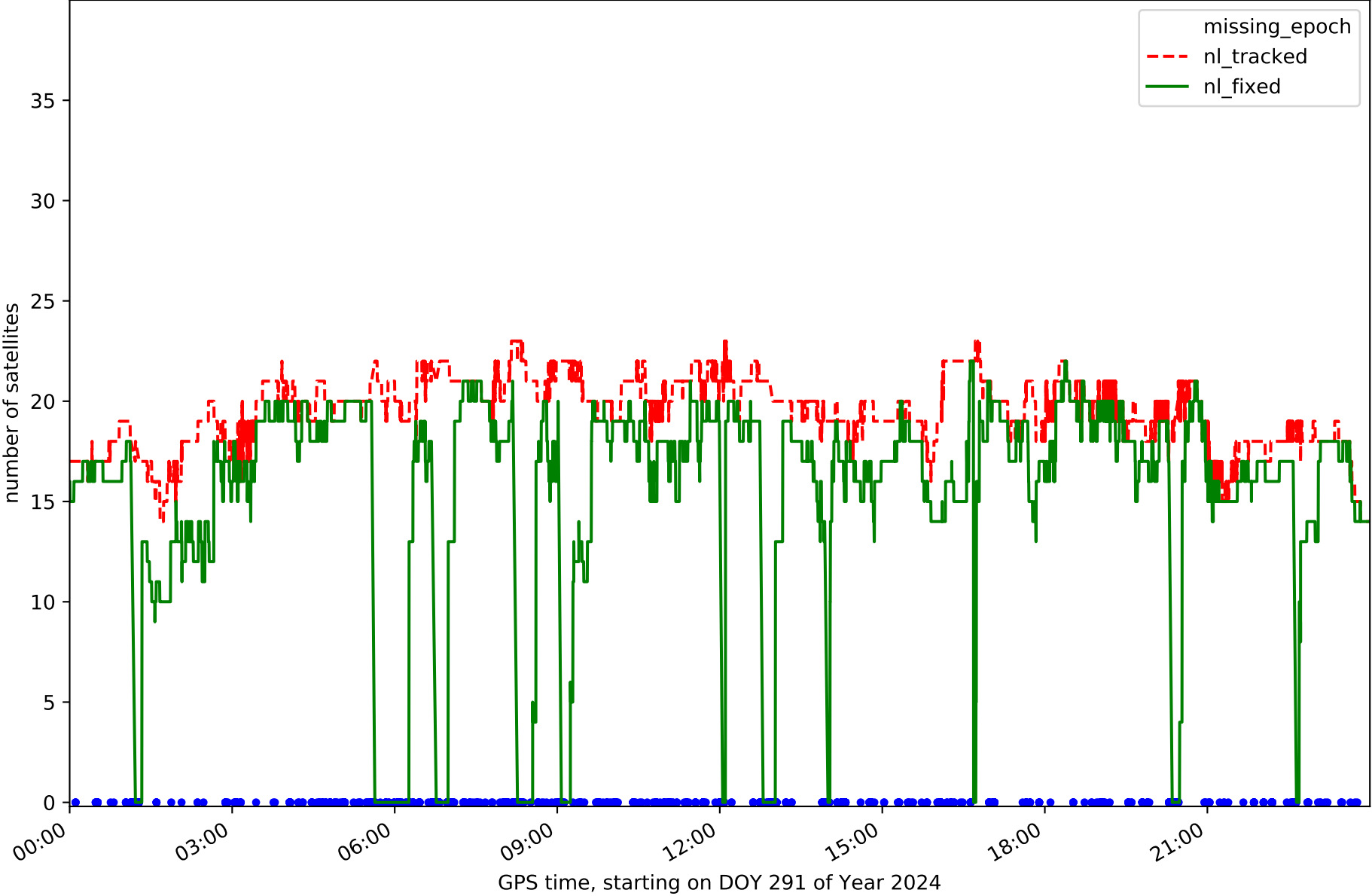
Network NT10 - only BDS with threshold set to 0.3



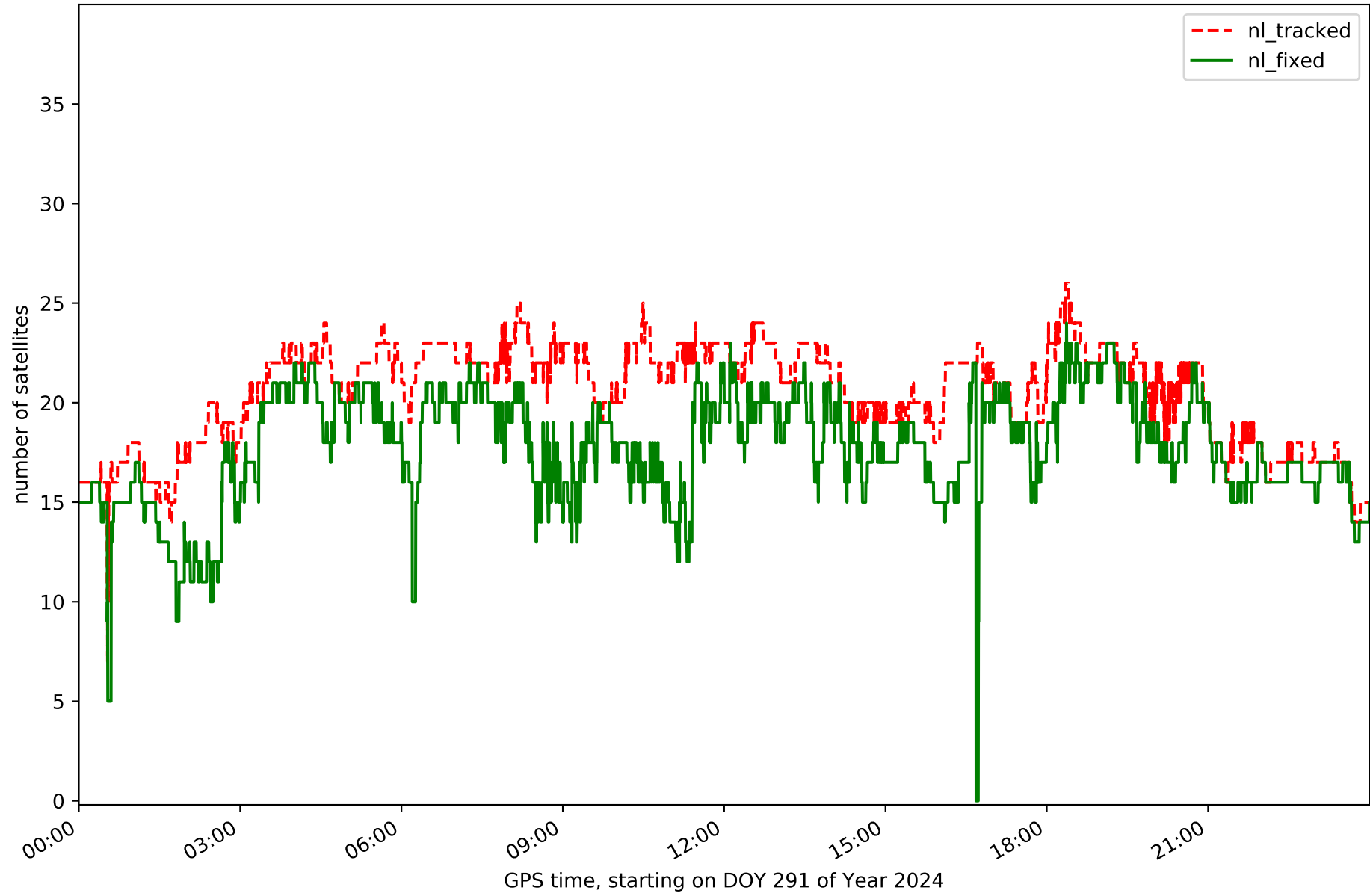
Network NT10 - only Galileo with threshold set to 0.3



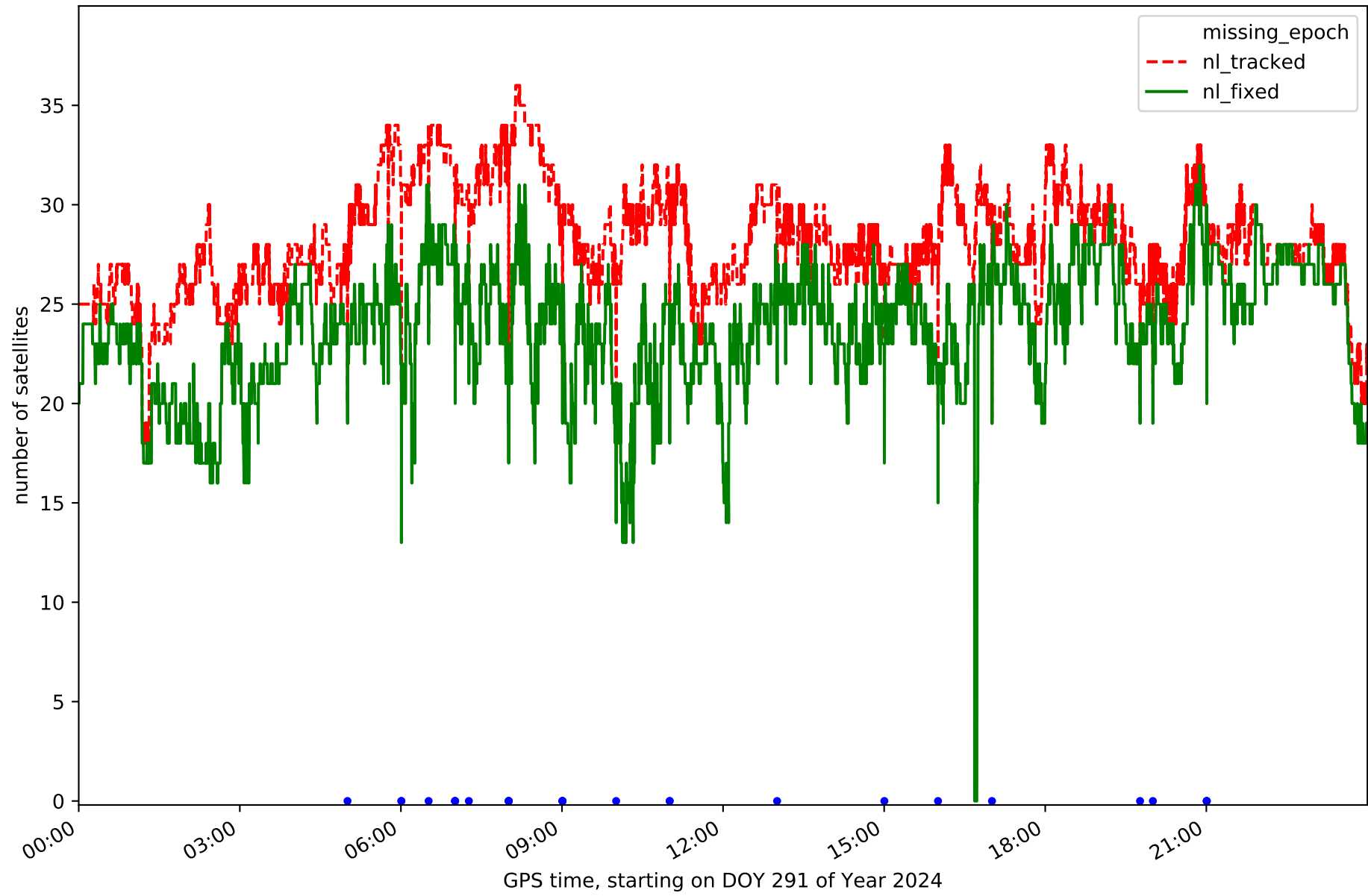
Station BCL1 in network NT10



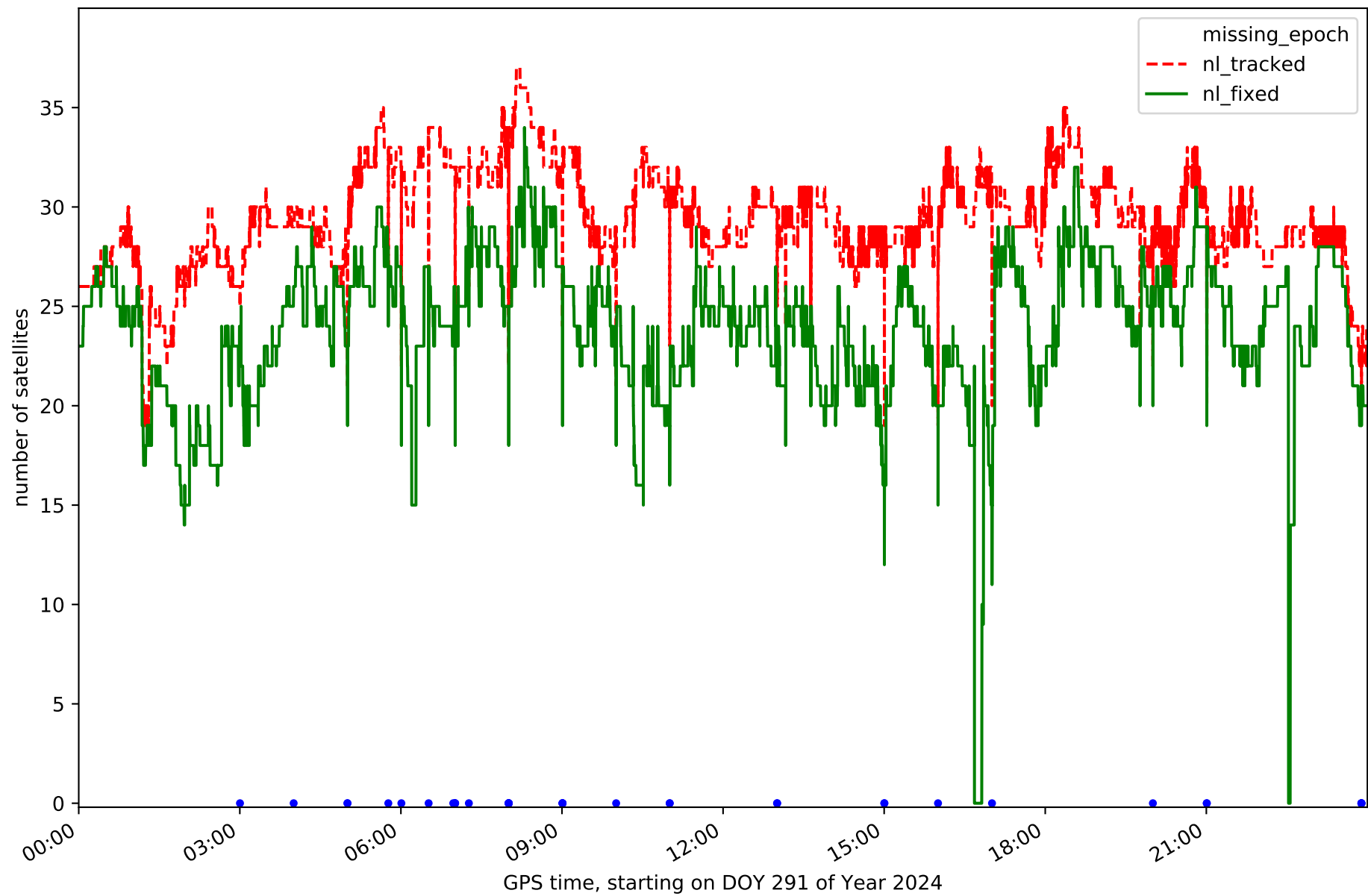
Station BCLN in network NT10



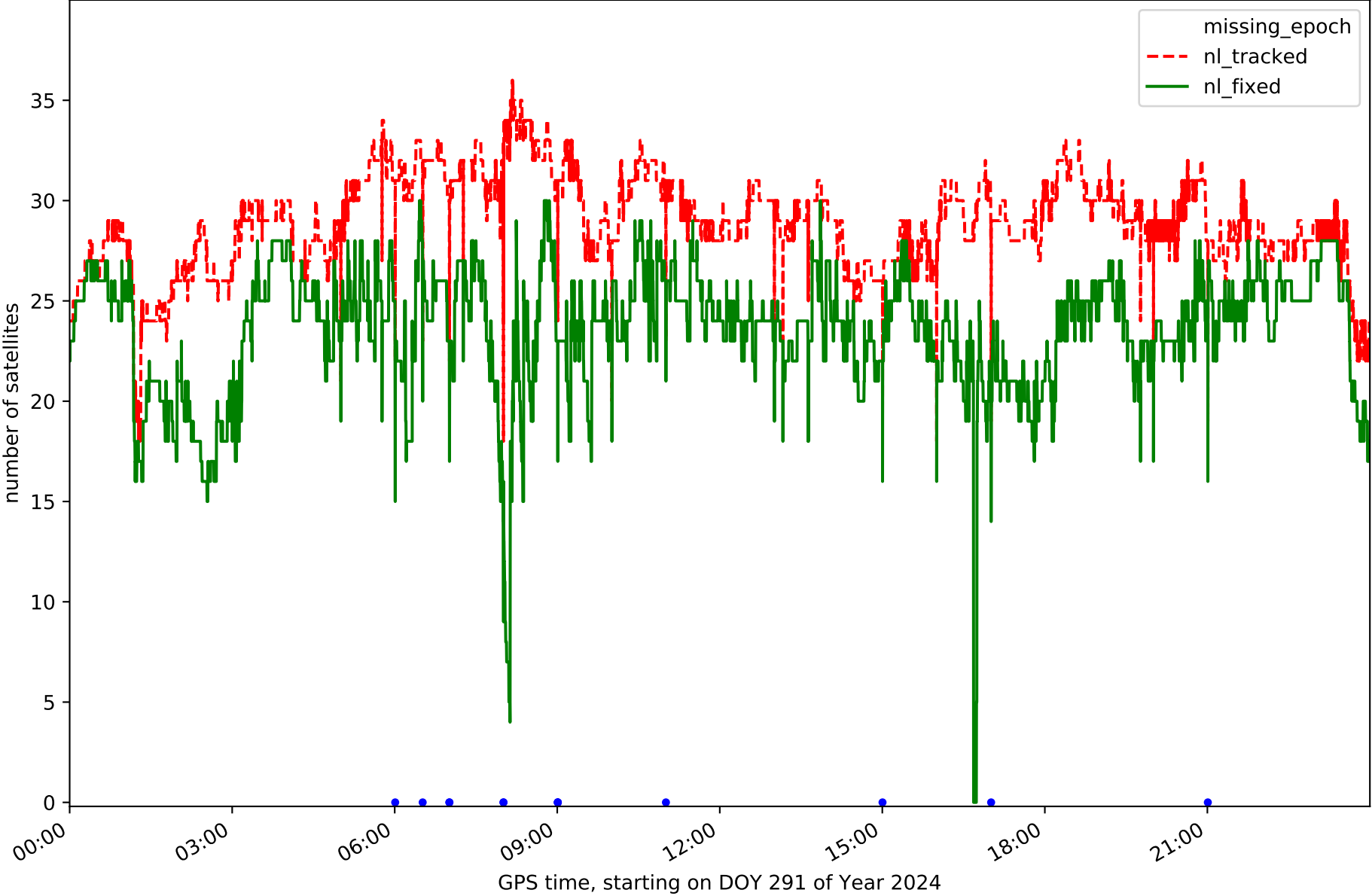
Station BELL in network NT10



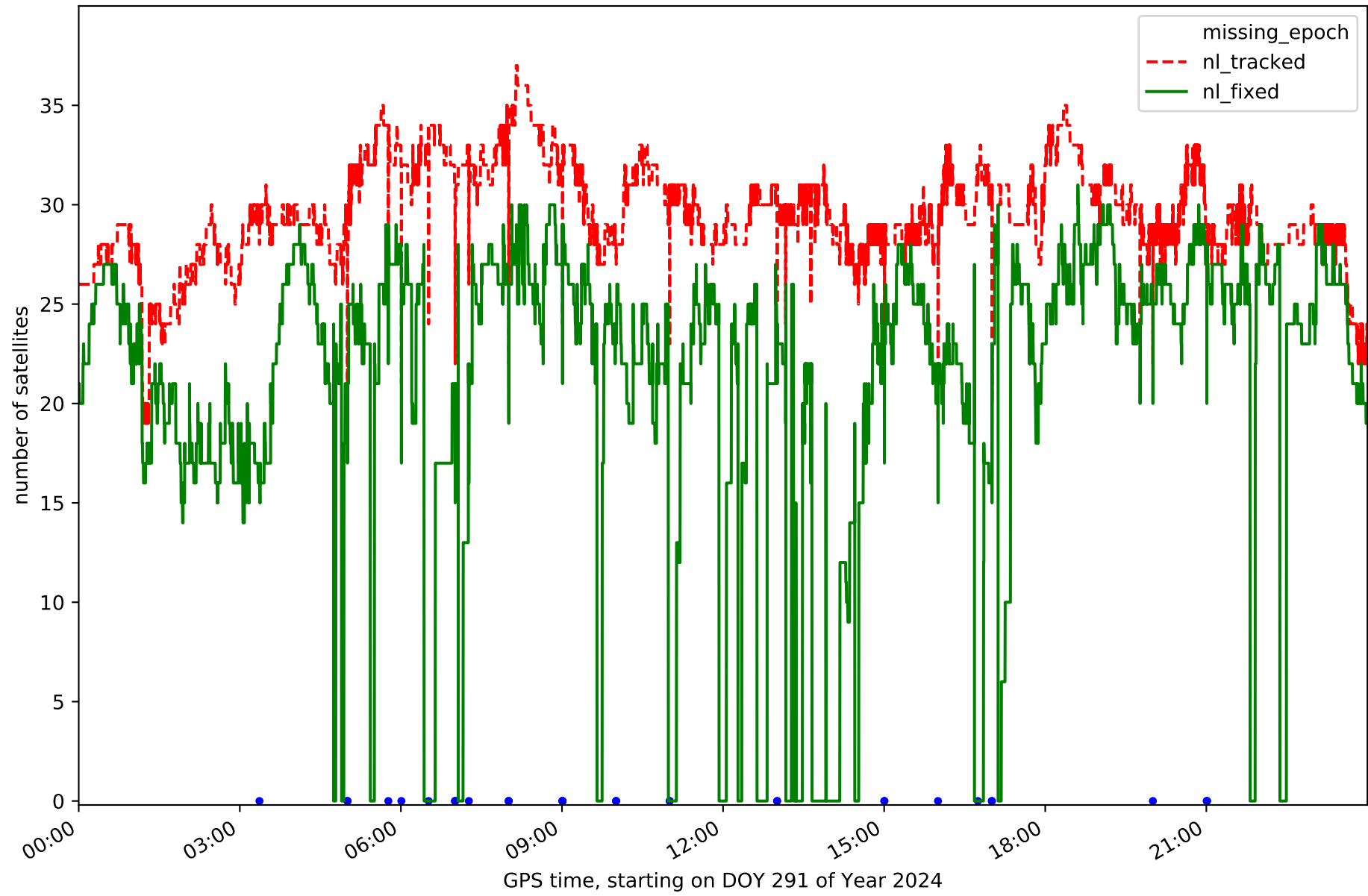
Station CREU in network NT10



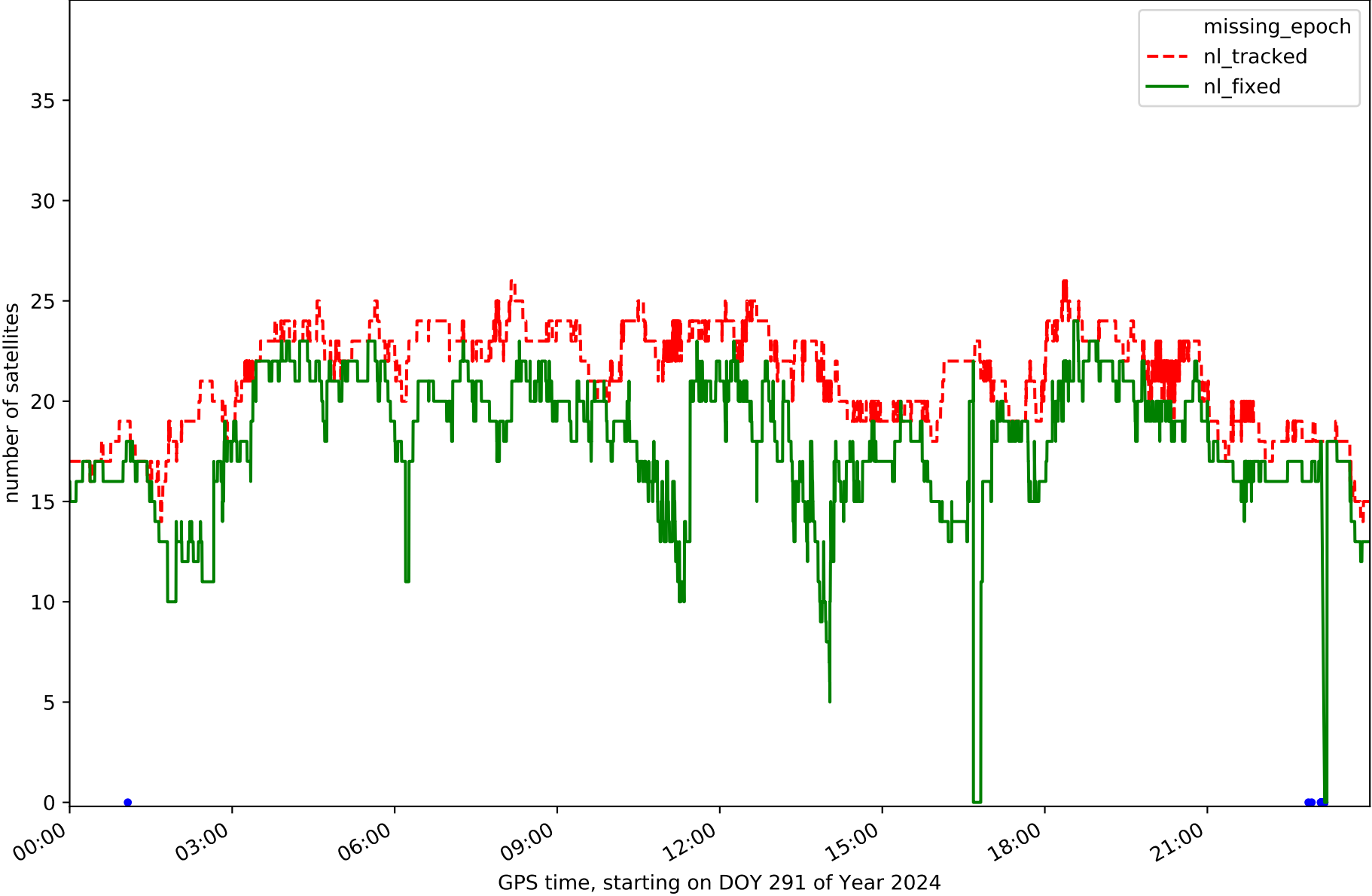
Station EBRE in network NT10



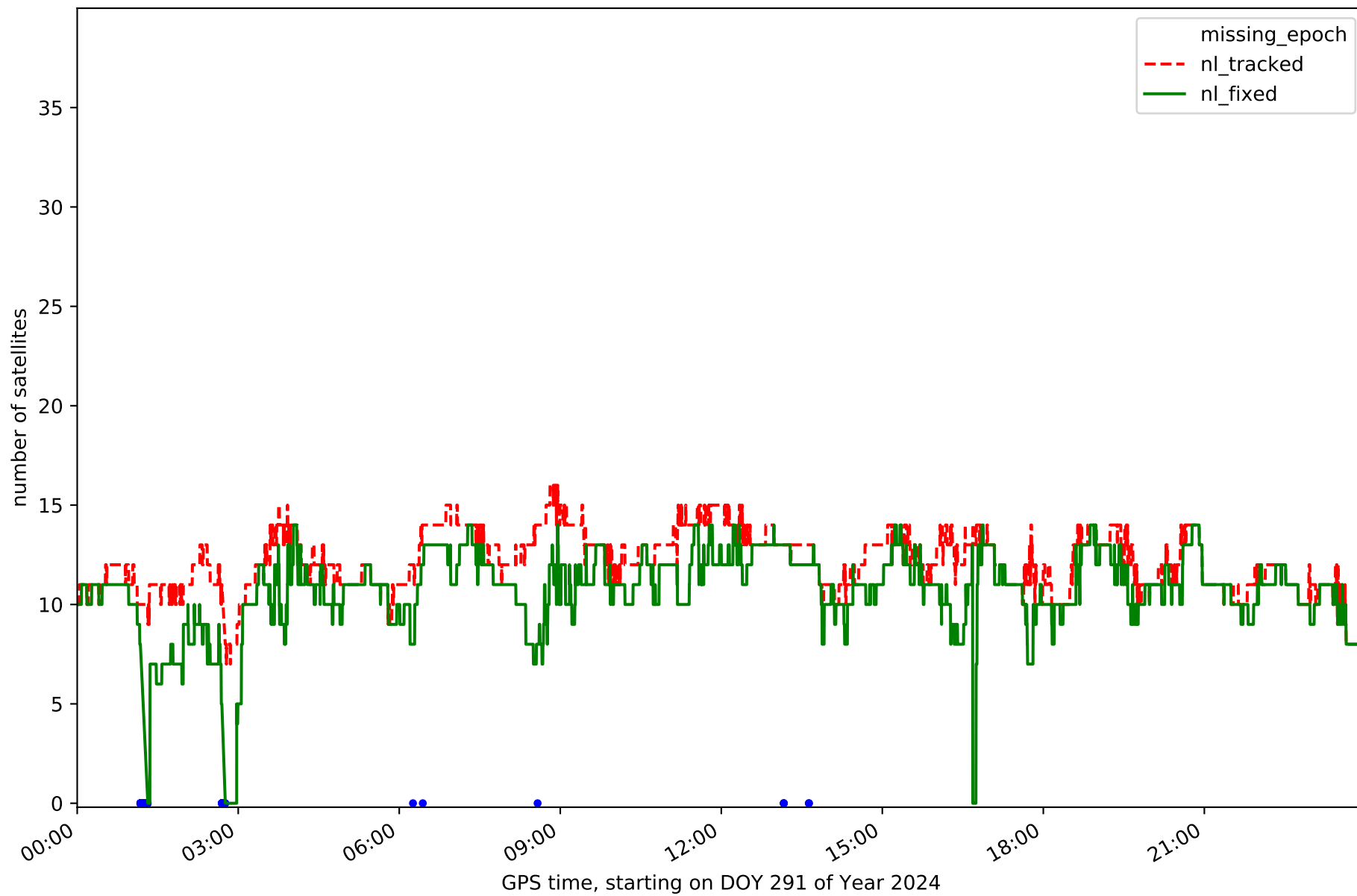
Station ESCO in network NT10



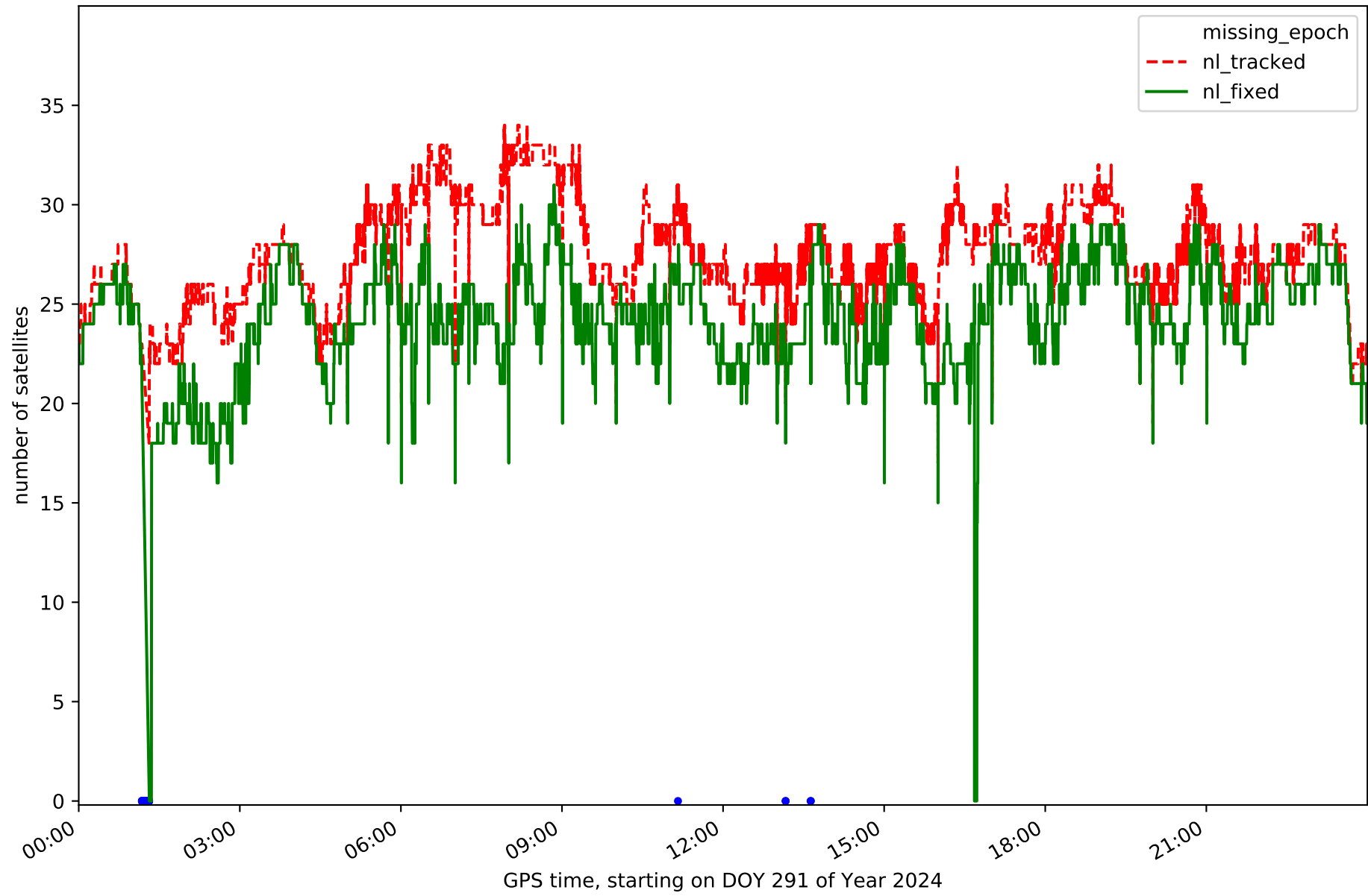
Station GIRO in network NT10



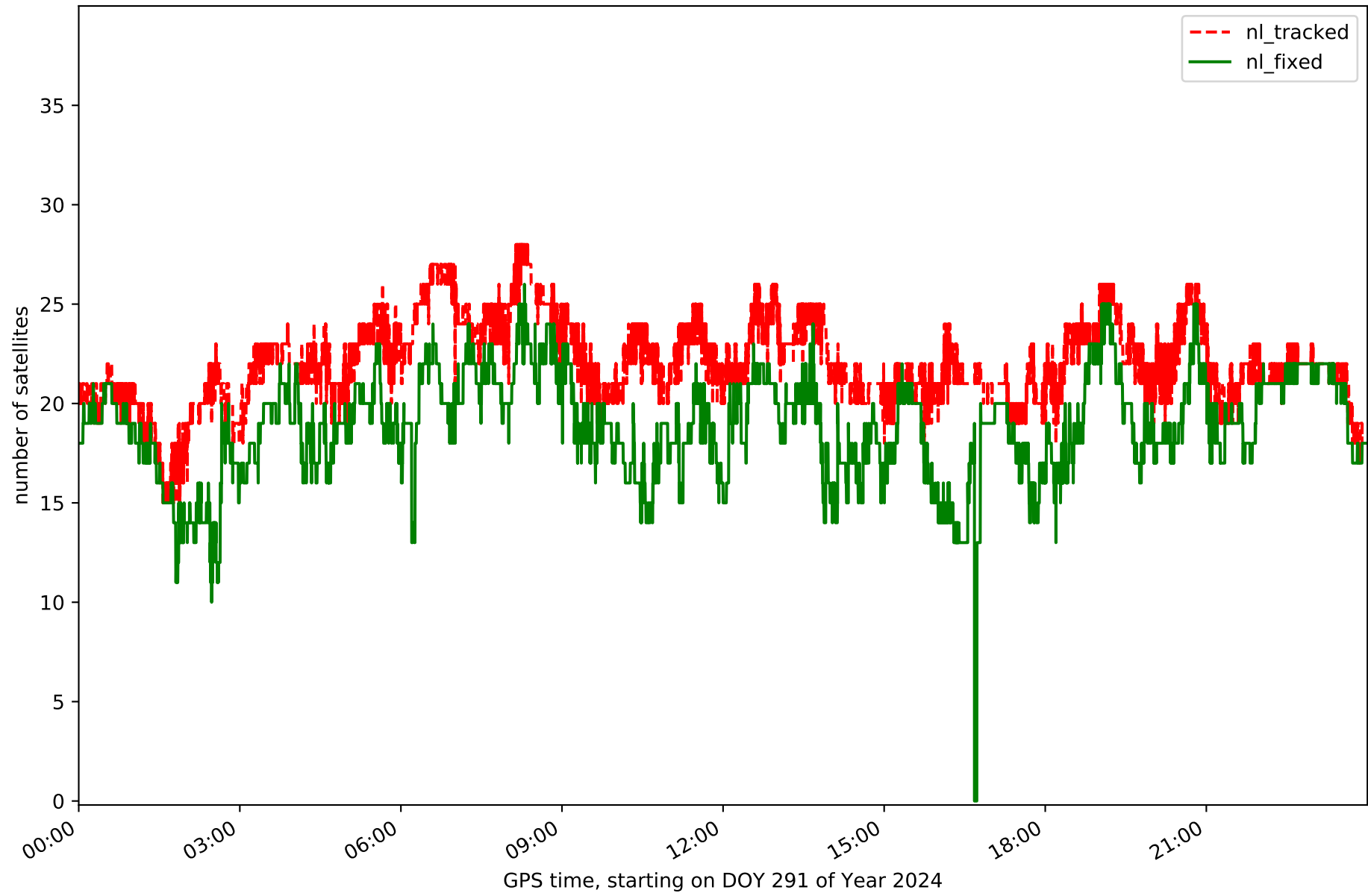
Station GRAU in network NT10



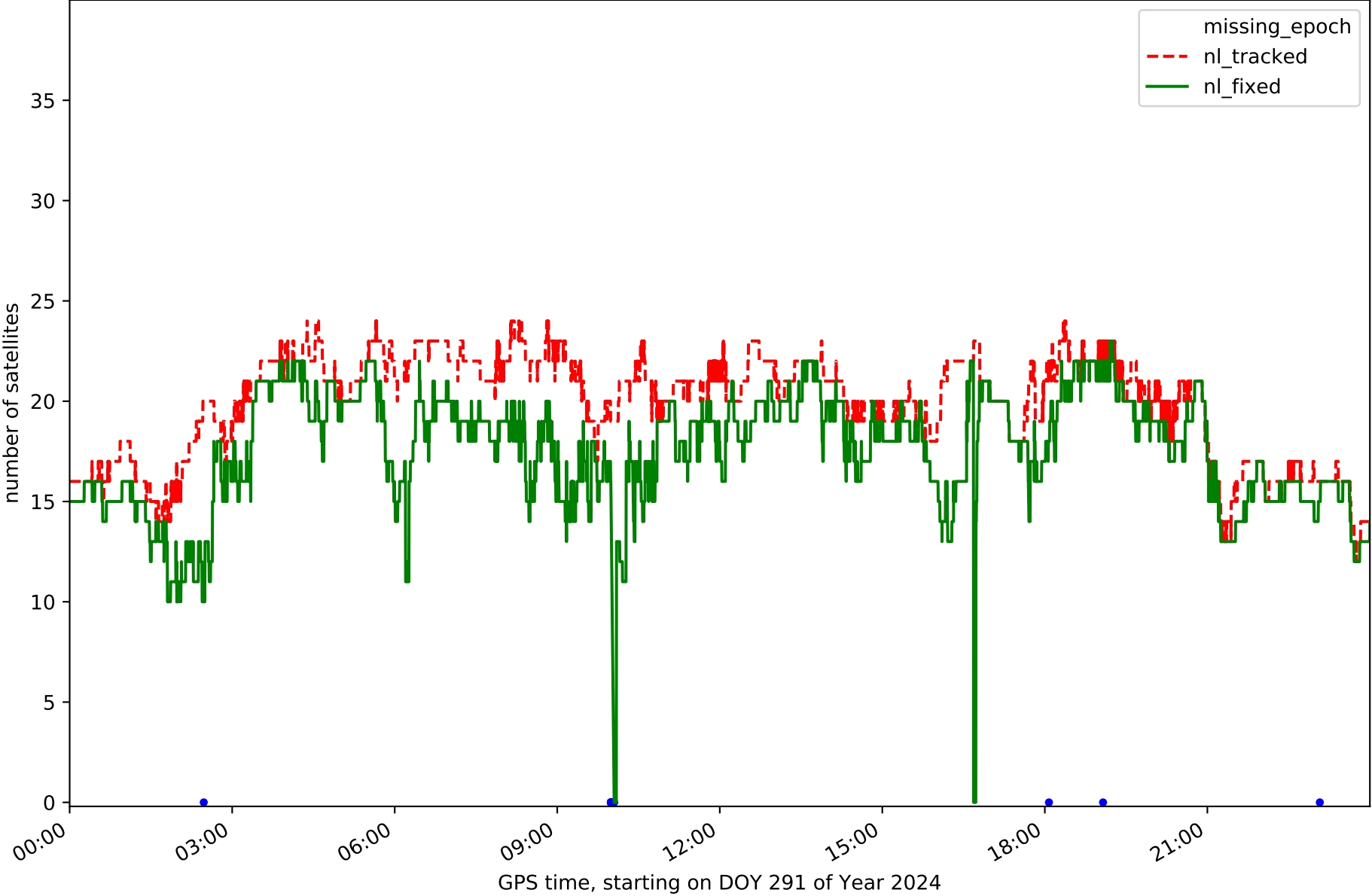
Station MEQU in network NT10



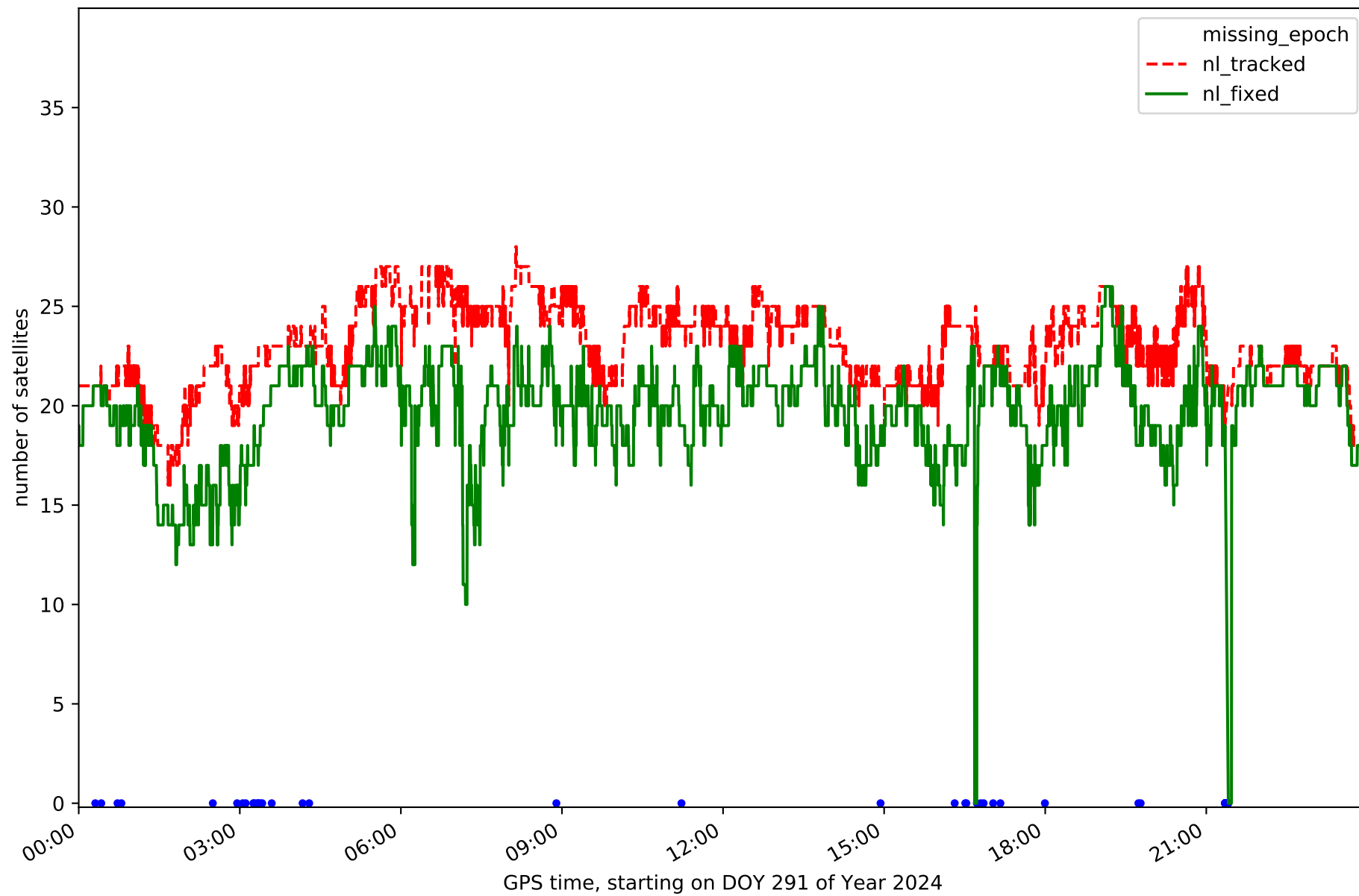
Station PUIG in network NT10



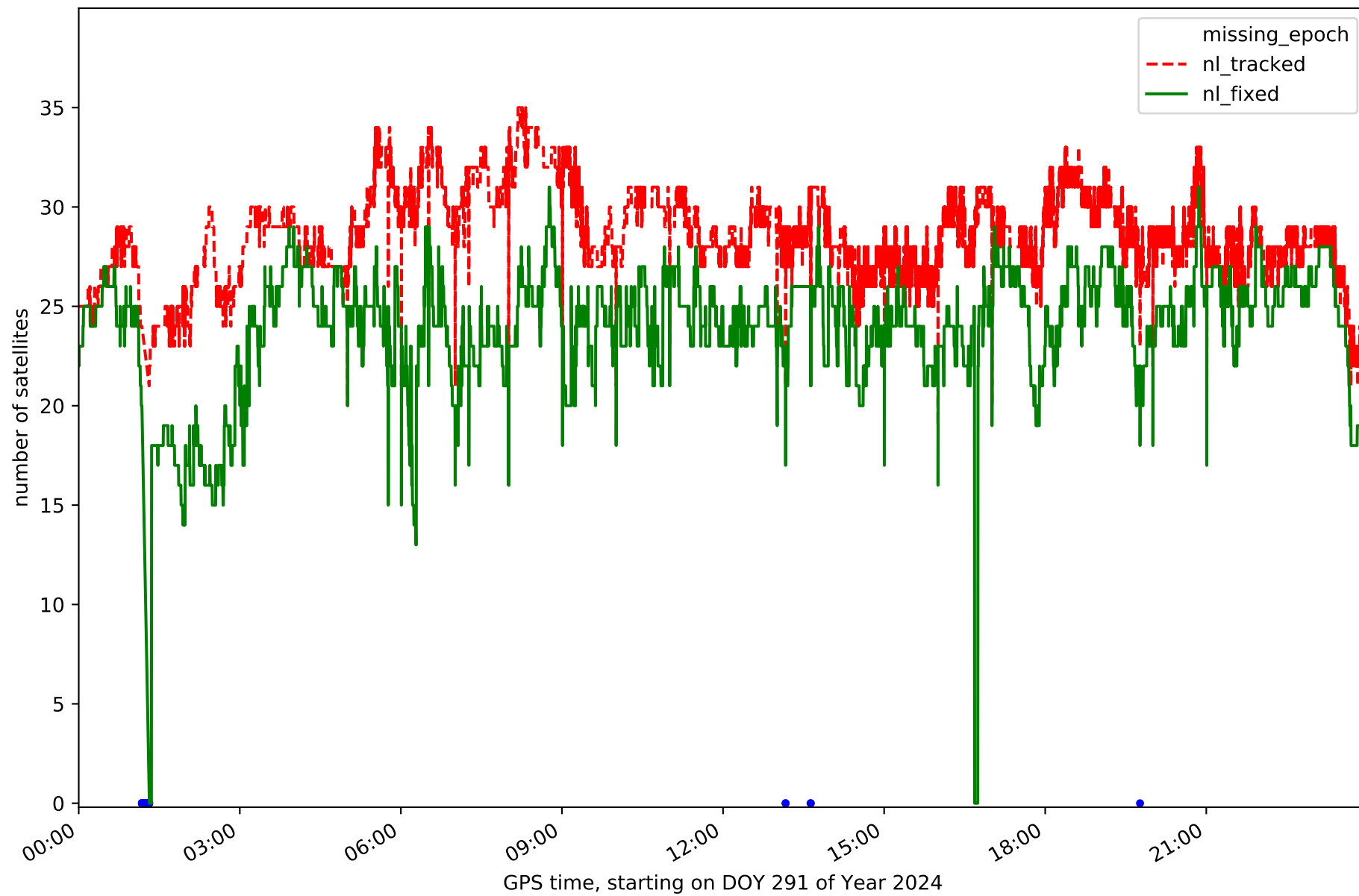
Station TARR in network NT10



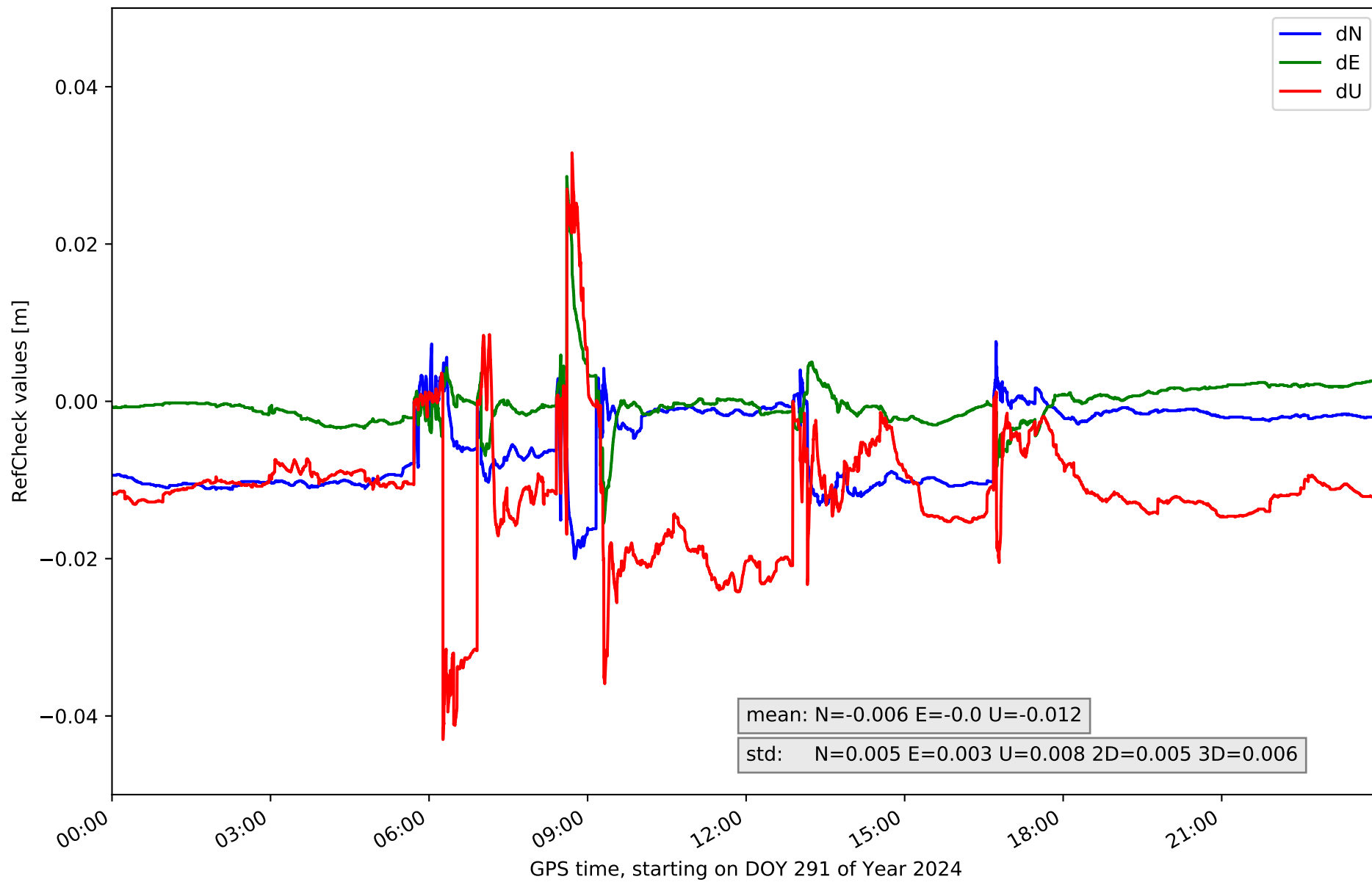
Station TRRG in network NT10



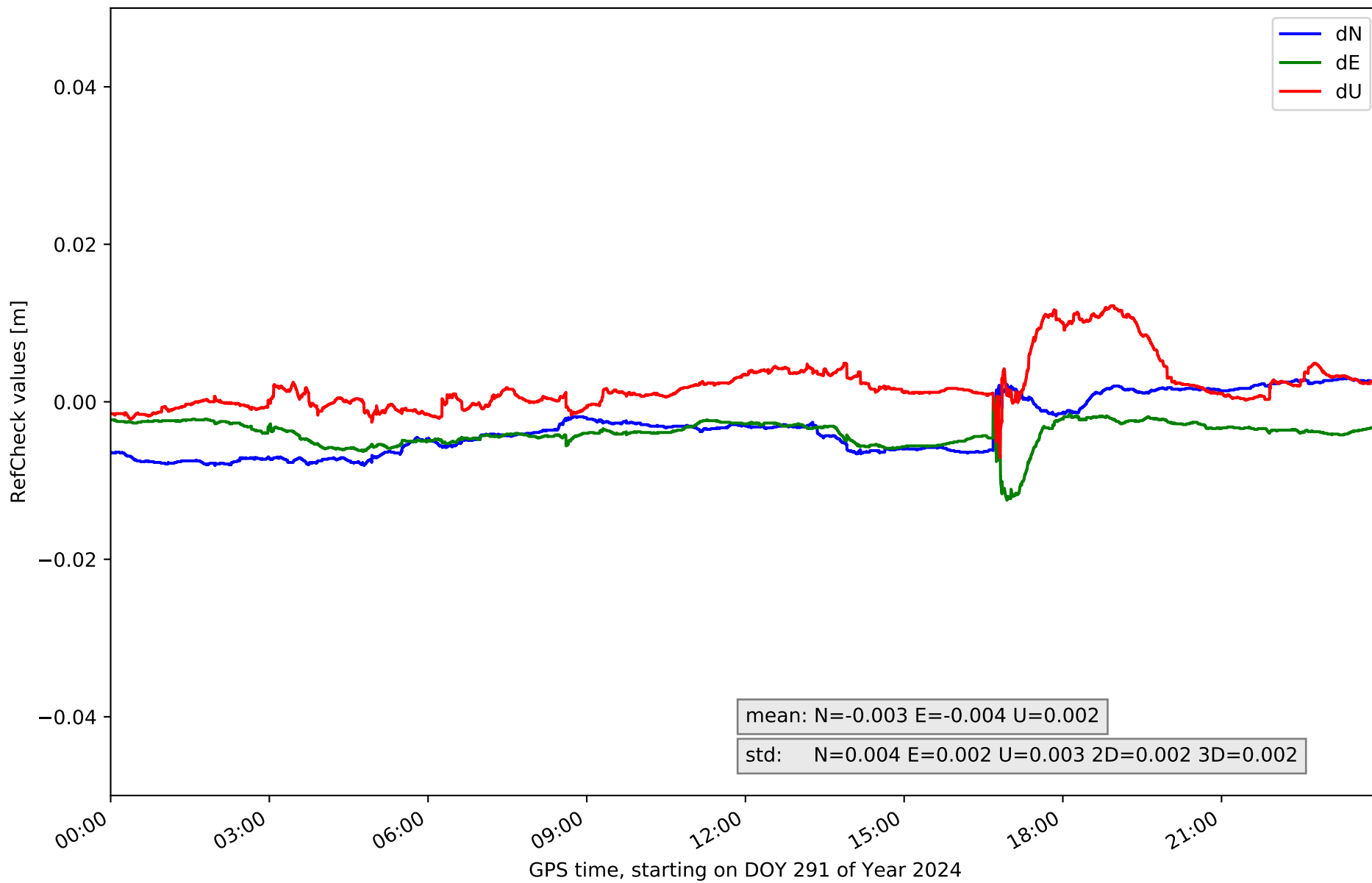
Station VRO2 in network NT10



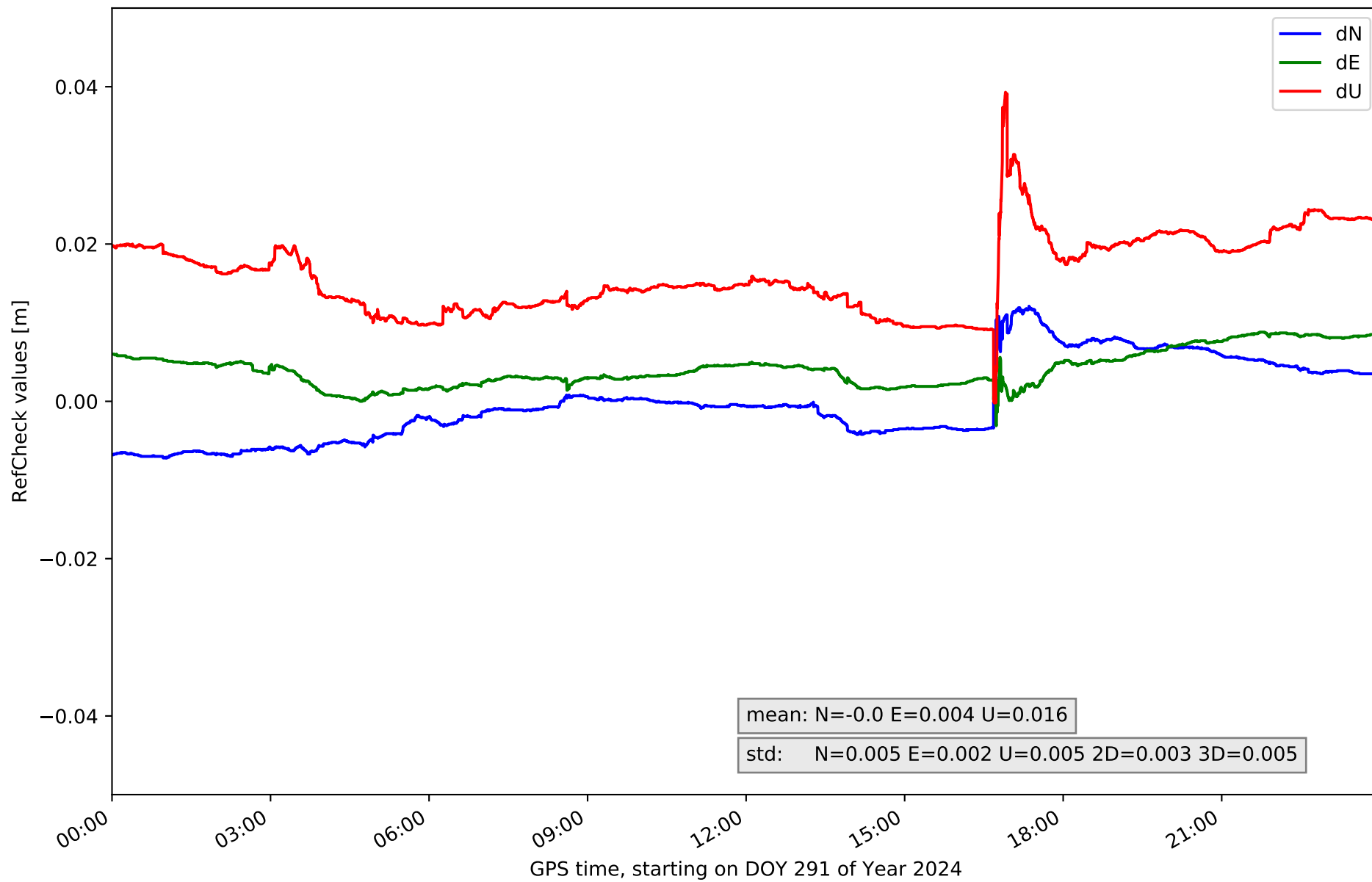
RefCheck for station BCL1 in network NT10



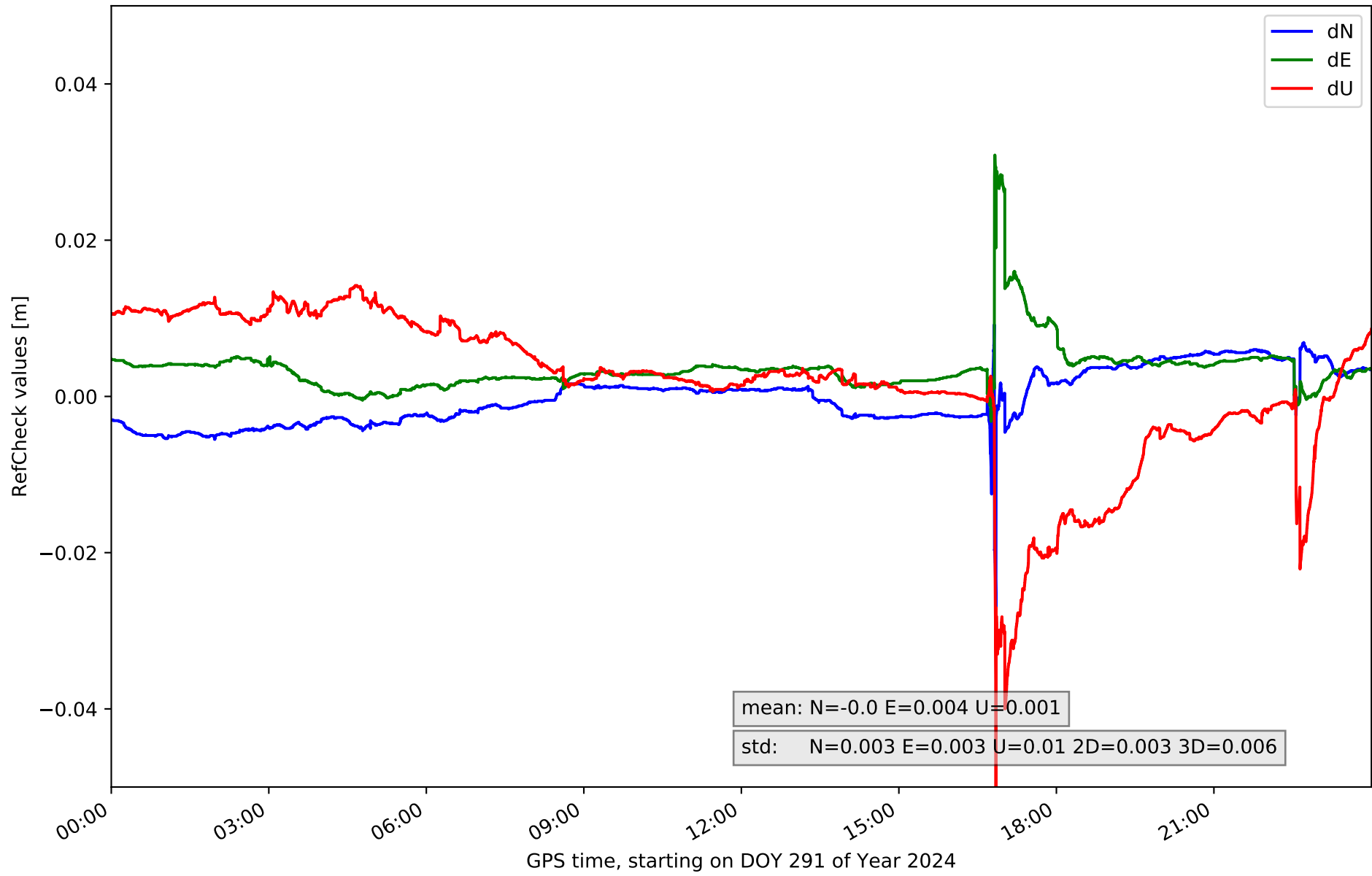
RefCheck for station BCLN in network NT10



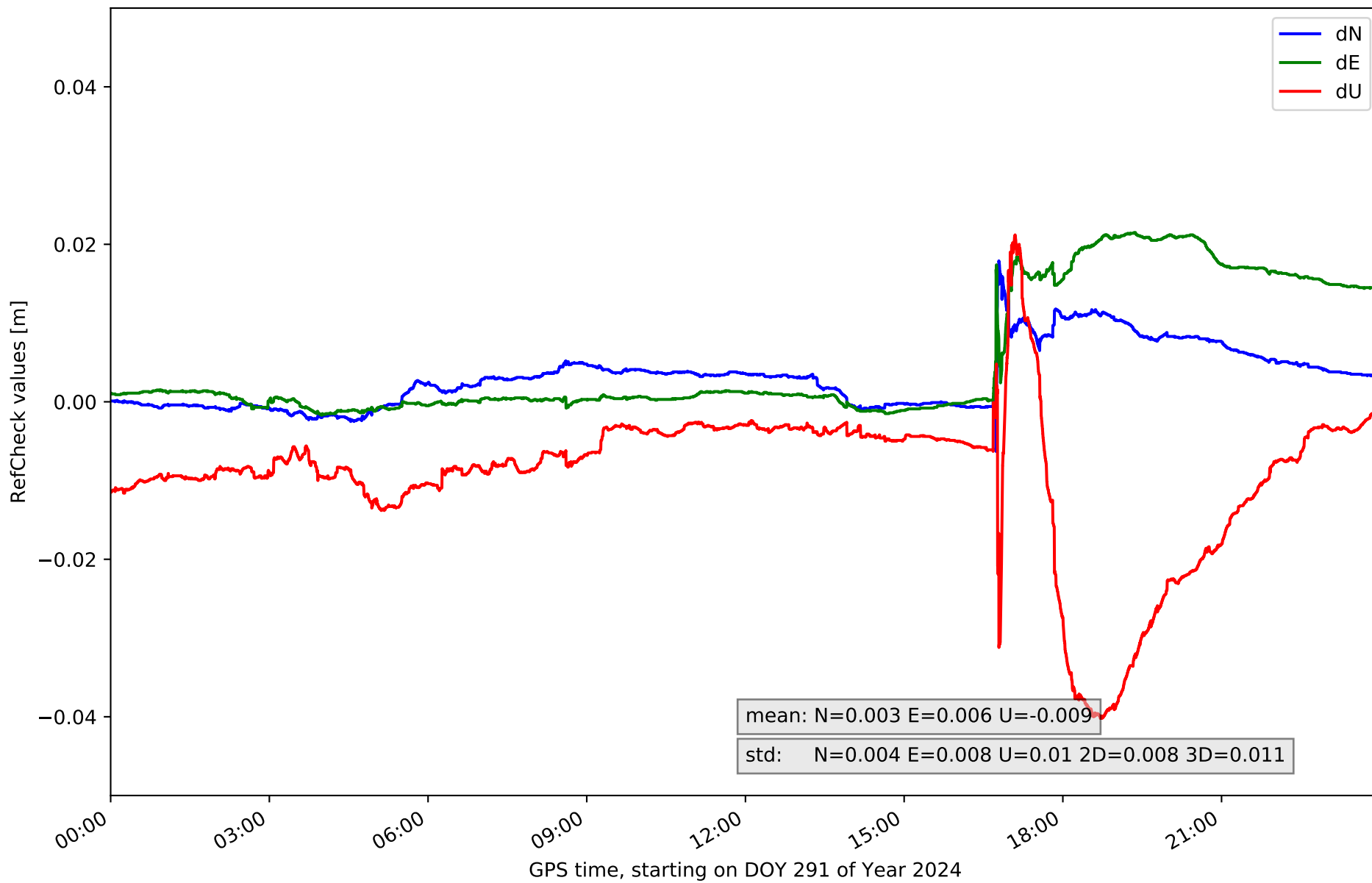
RefCheck for station BELL in network NT10



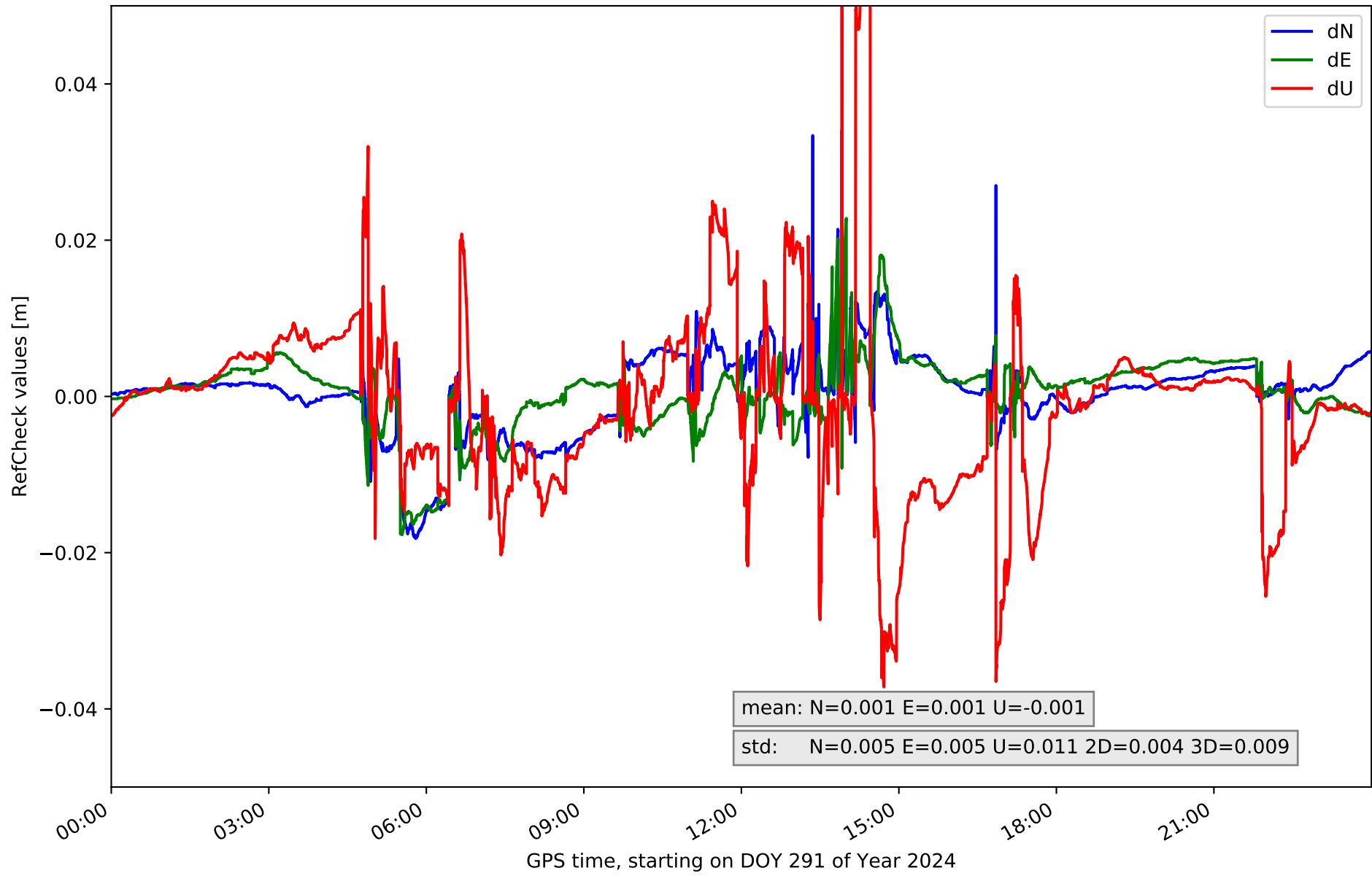
RefCheck for station CREU in network NT10



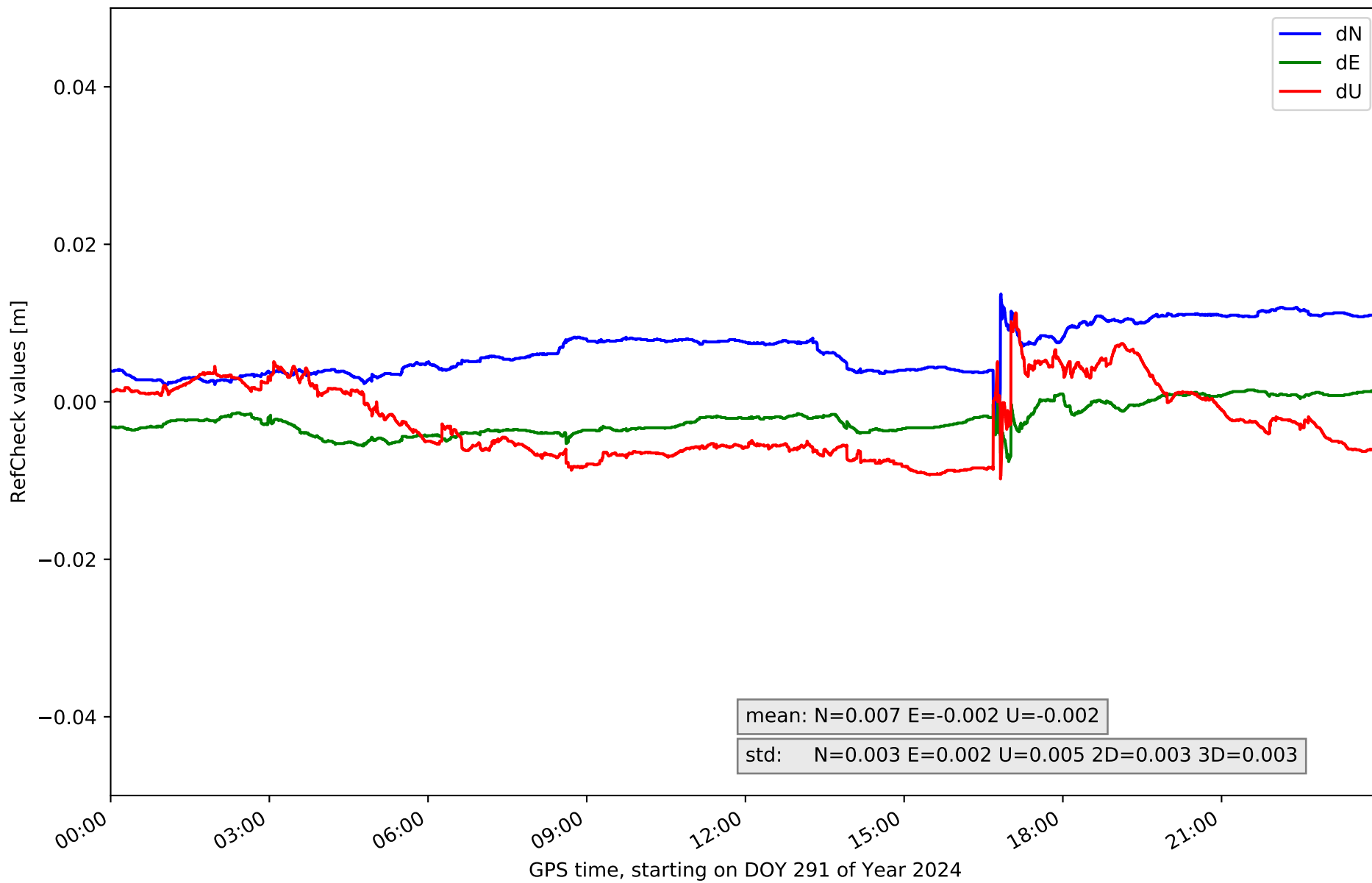
RefCheck for station EBRE in network NT10



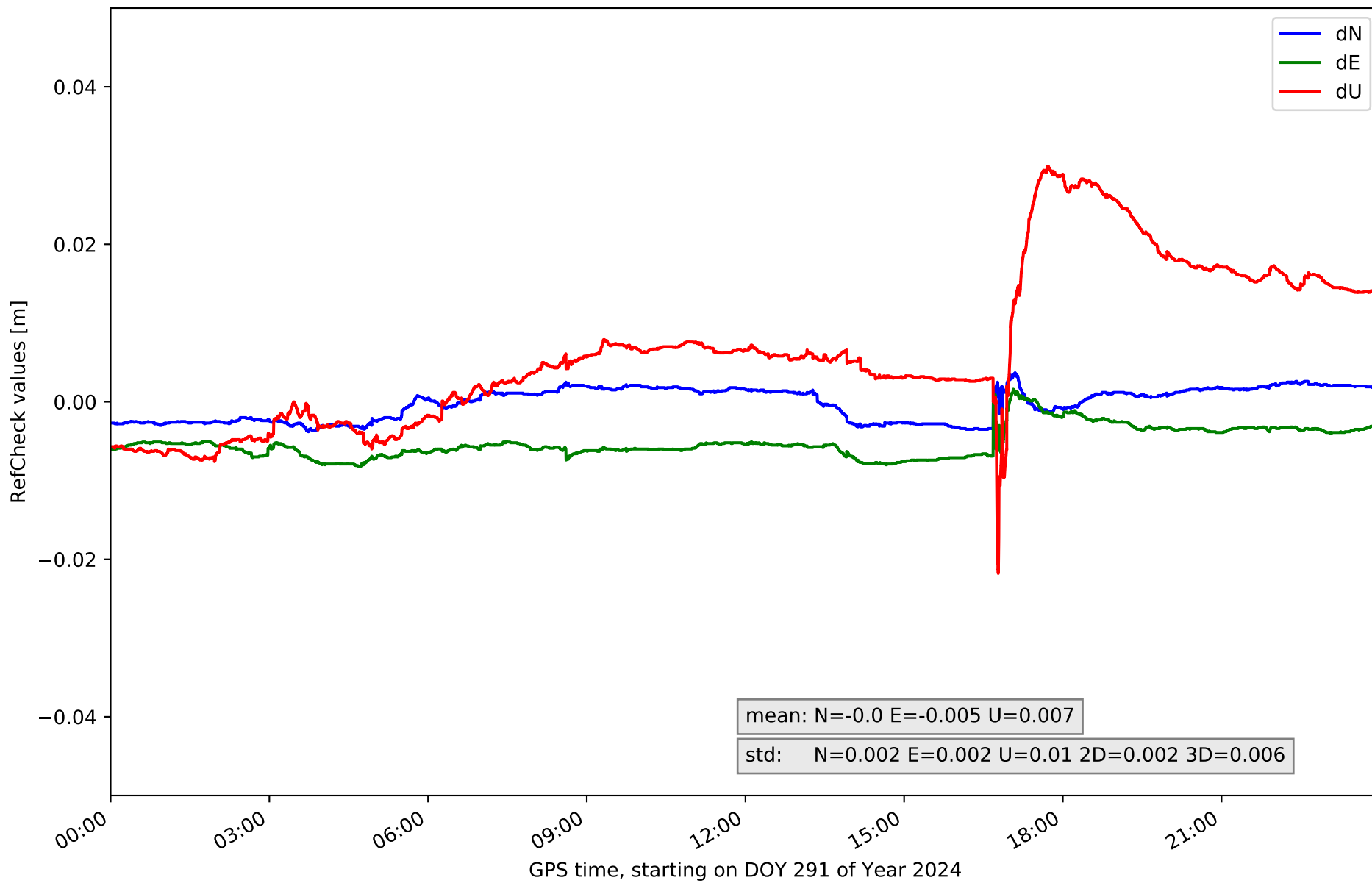
RefCheck for station ESCO in network NT10



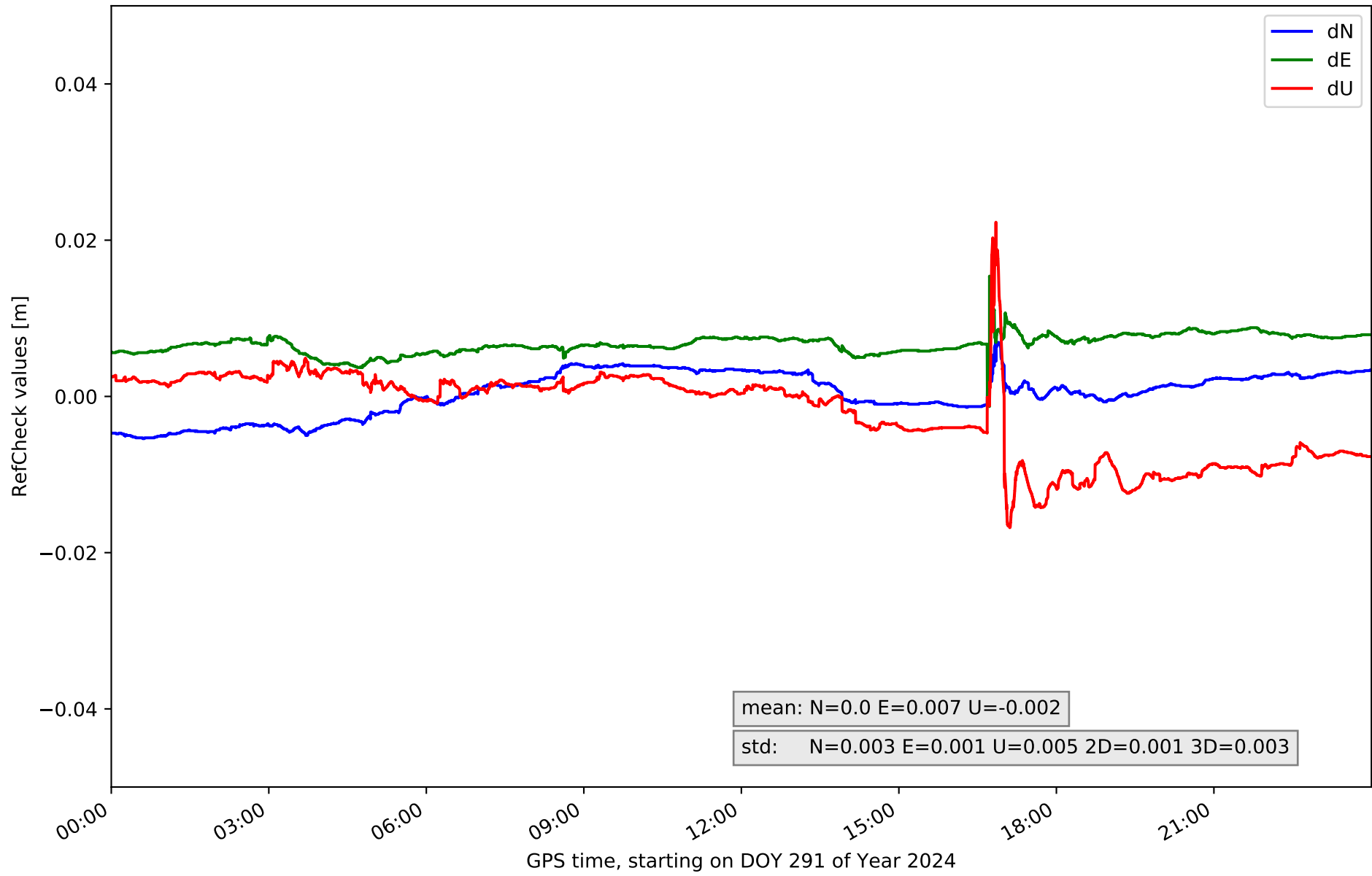
RefCheck for station GIRO in network NT10



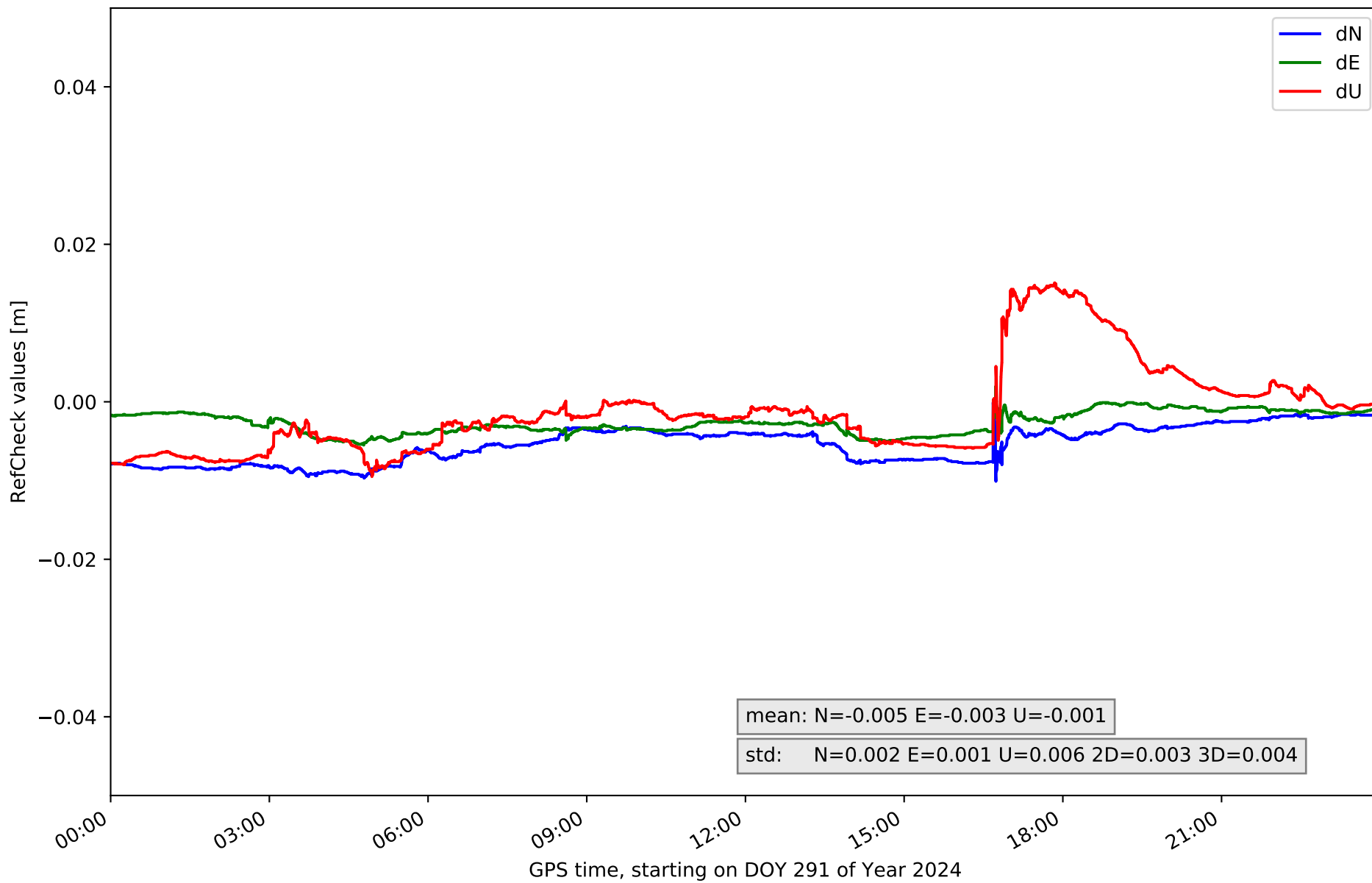
RefCheck for station MEQU in network NT10



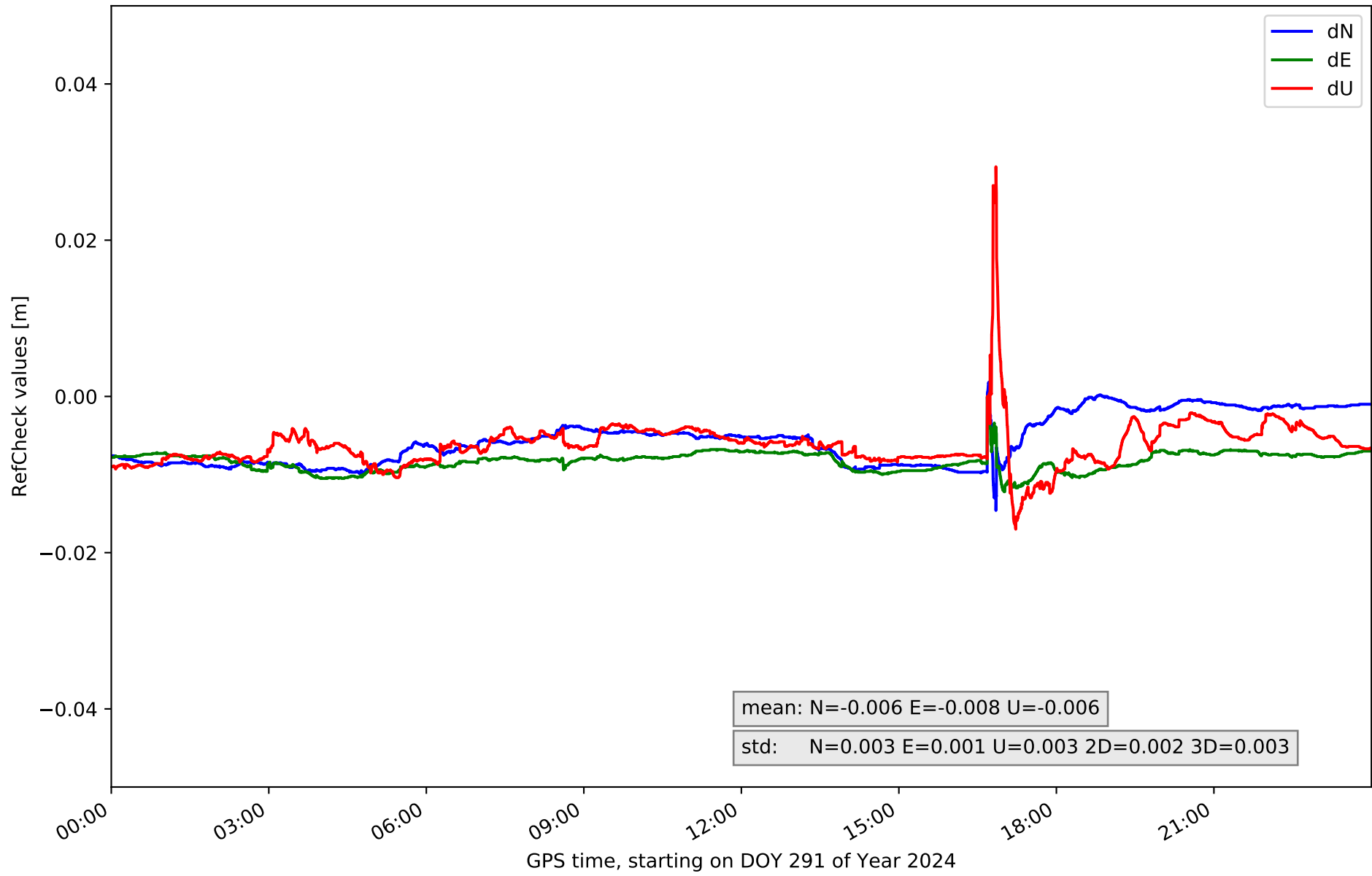
RefCheck for station PUIG in network NT10



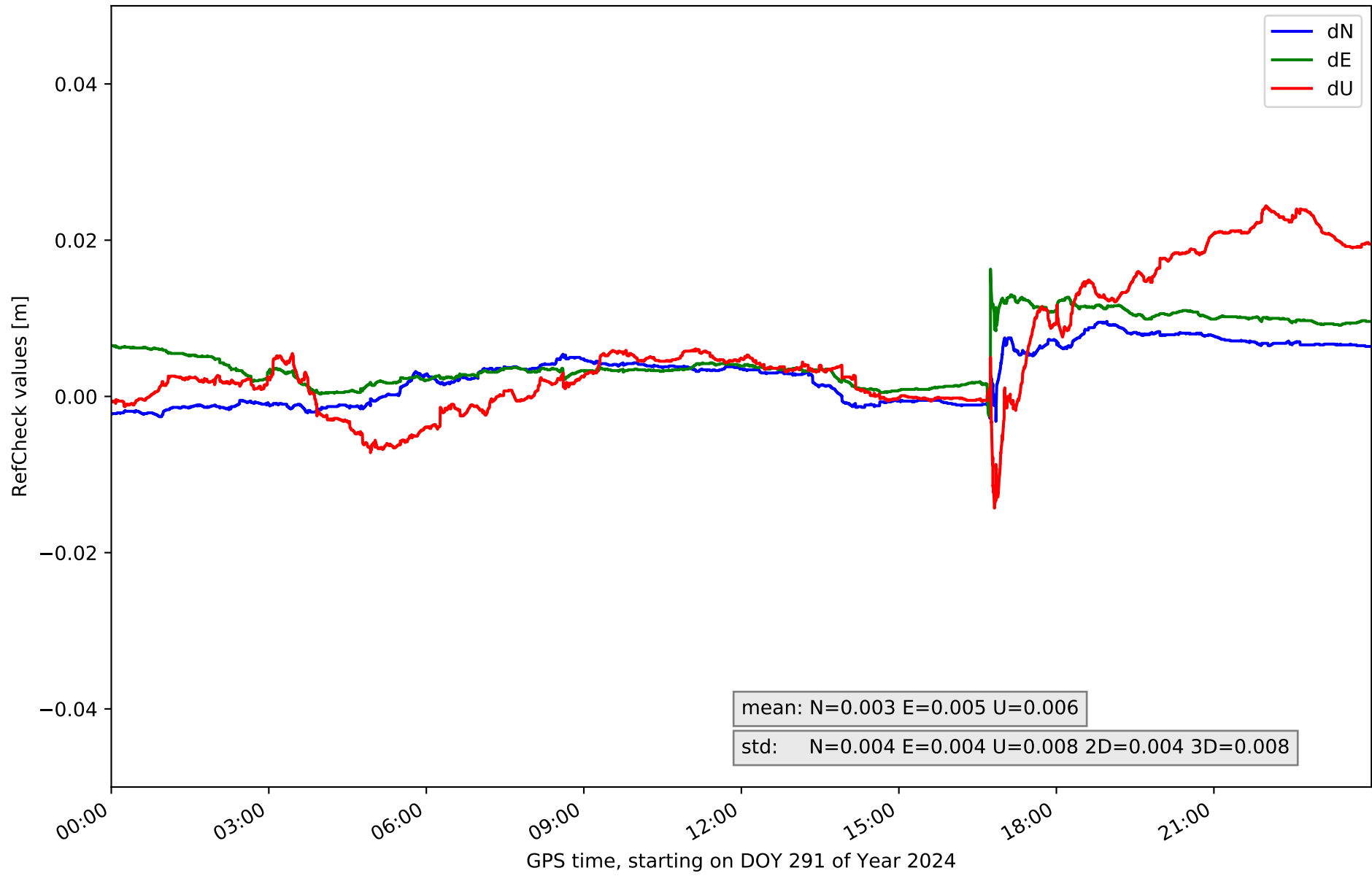
RefCheck for station TARR in network NT10



RefCheck for station TRRG in network NT10



RefCheck for station VRO2 in network NT10



RefCheck values for network NT10

Station	Nmin	Nmax	Nstd	Emin	Emax	Estd	Umin	Umax	Ustd	std2D	std3D	#2D > 0.01	% 2D > 0.01	#3D > 0.02	% 3D > 0.02
BCL1	-0.02	0.008	0.005	-0.015	0.029	0.003	-0.043	0.032	0.008	0.005	0.006	28991	36.6	10792	13.6
BCLN	-0.008	0.003	0.004	-0.013	0.0	0.002	-0.007	0.012	0.003	0.002	0.002	1784	2.3	0	0.0
BELL	-0.007	0.012	0.005	-0.003	0.009	0.002	-0.0	0.039	0.005	0.003	0.005	5551	7.0	30192	38.1
CREU	-0.027	0.009	0.003	-0.003	0.031	0.003	-0.061	0.014	0.01	0.003	0.006	2943	3.7	4371	5.5
EBRE	-0.006	0.018	0.004	-0.002	0.021	0.008	-0.04	0.021	0.01	0.008	0.011	24999	31.6	16058	20.3
ESCO	-0.018	0.034	0.005	-0.018	0.023	0.005	-0.037	0.075	0.011	0.004	0.009	6004	7.6	10452	13.2
GIRO	-0.003	0.014	0.003	-0.008	0.002	0.002	-0.01	0.011	0.005	0.003	0.003	20165	25.5	0	0.0
GRAU	-0.015	0.005	0.003	-0.026	0.008	0.003	-0.052	0.025	0.01	0.003	0.006	8819	11.1	3241	4.1
MEQU	-0.004	0.004	0.002	-0.008	0.002	0.002	-0.022	0.03	0.01	0.002	0.006	0	0.0	8642	10.9
PUIG	-0.005	0.007	0.003	-0.001	0.015	0.001	-0.017	0.022	0.005	0.001	0.003	601	0.8	253	0.3
TARR	-0.01	-0.0	0.002	-0.005	0.002	0.001	-0.009	0.015	0.006	0.003	0.004	4326	5.5	0	0.0
TRRG	-0.015	0.002	0.003	-0.012	-0.0	0.001	-0.017	0.029	0.003	0.002	0.003	37555	47.4	594	0.8
VRO2	-0.003	0.01	0.004	-0.003	0.016	0.004	-0.014	0.024	0.008	0.004	0.008	24806	31.3	15868	20.0
Mean	-0.011	0.01	0.004	-0.009	0.012	0.003	-0.025	0.027	0.007	0.003	0.006	12811.1	16.2	7727.9	9.8
Min/Max	-0.027	0.034	0.005	-0.026	0.031	0.008	-0.061	0.075	0.011	0.008	0.011	37555	47.4	30192	38.1

fixing statistic for network NT10

fixing percentage of	all GNSS	G	R	E	C
using threshold 0.3	87.3	90.2	87.6	91.6	79.5
considering satellites with dual-frequency fixed	83.1	84.9	81.0	85.8	78.1
considering all signals separately	83.4	84.9	81.0	86.1	77.1