

summary for network NT11

timeperiod chosen: from 2024-09-19-00:00:00 until 2024-09-19-23:59:59

average update rate (durations larger than 15 seconds considered as observation gap): 1.1 seconds

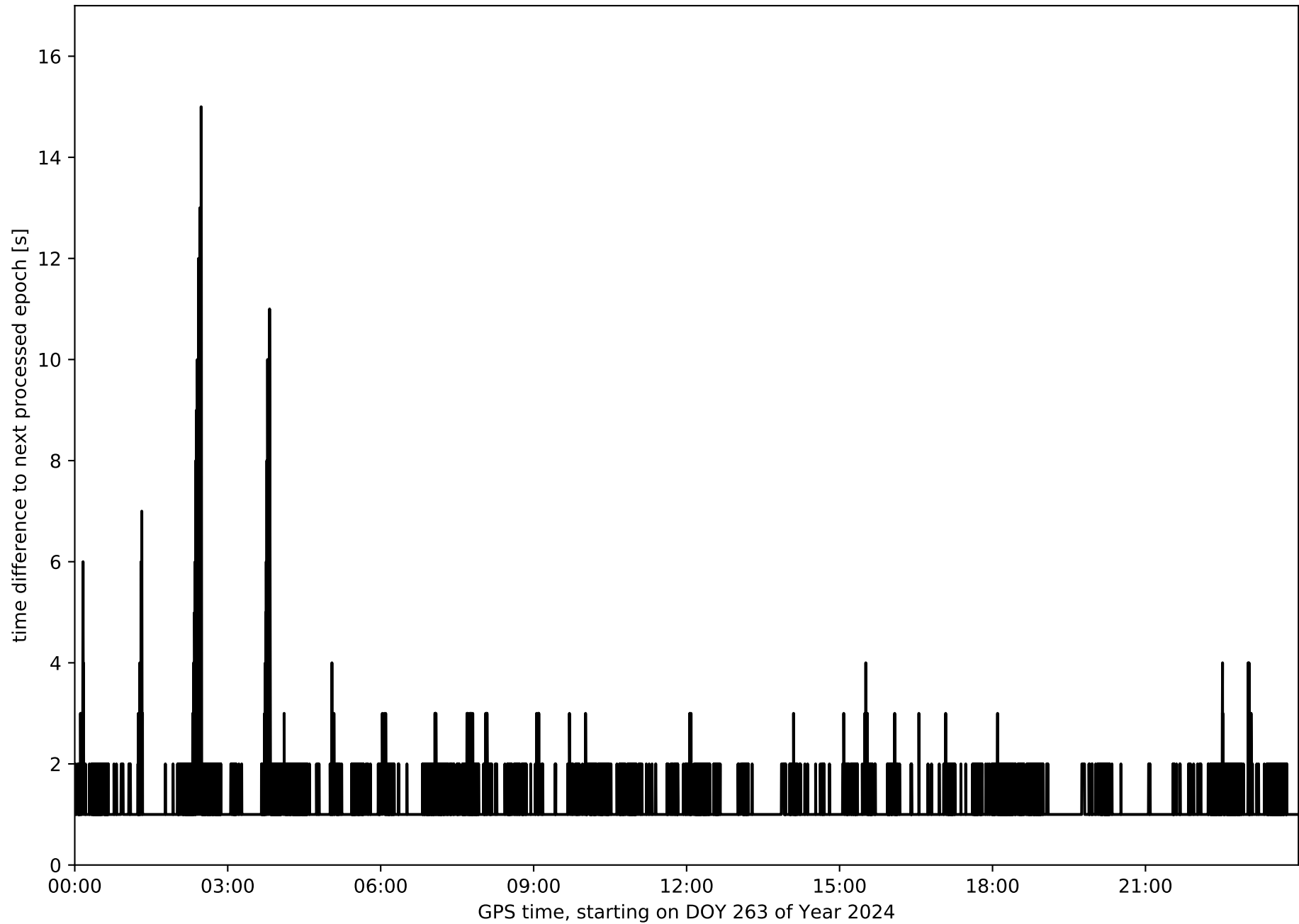
average fixing percentage with threshold set to 0.3: 92.0 percent

stations available: 10 of 10

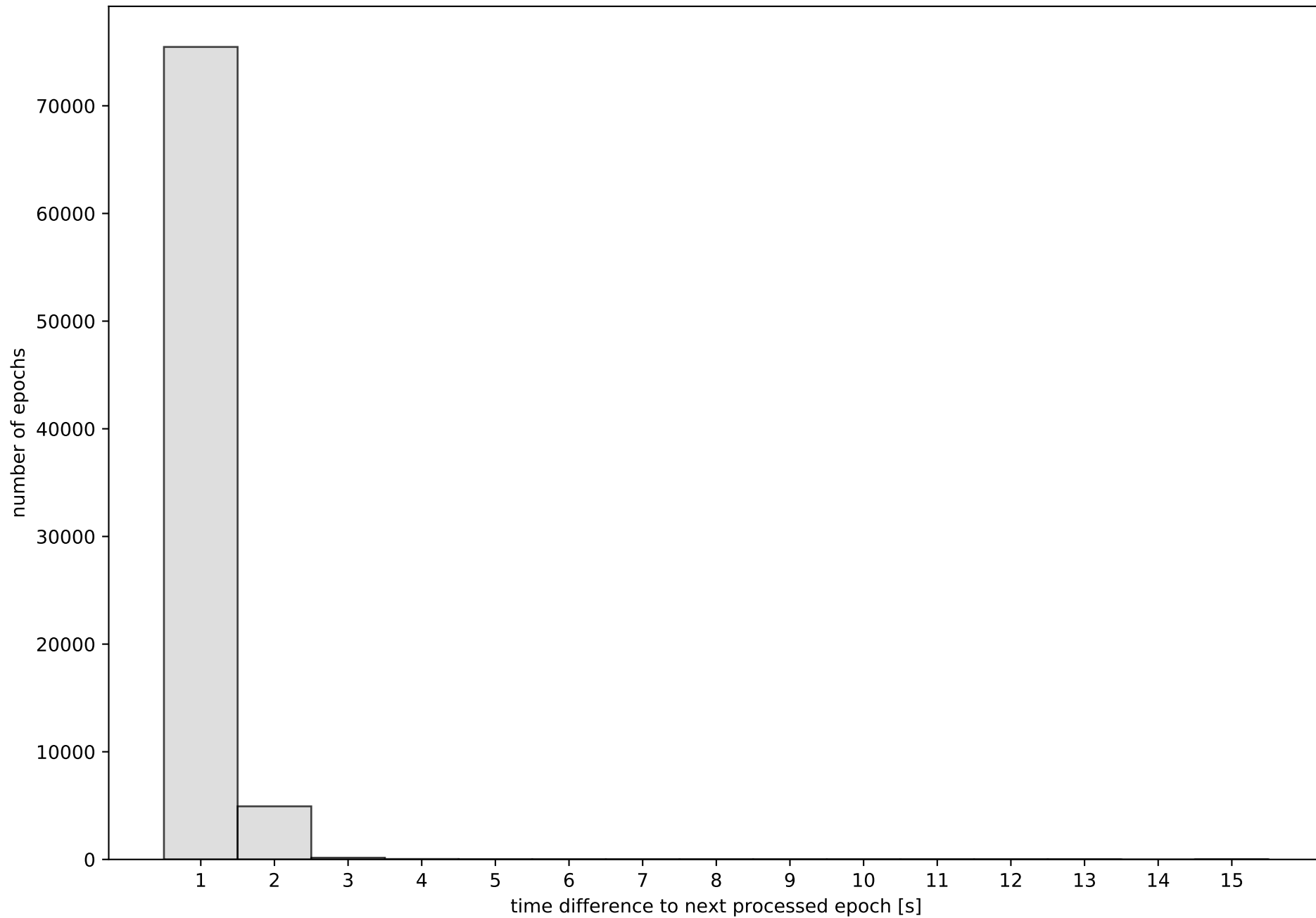
station information:

station ALOR:	antenna: LEIAR25	LEIT	receiver: LEICA GR30	height: 189.527
station CBON:	antenna: LEIAR25	LEIT	receiver: LEICA GR30	height: 57.337
station EIVI:	antenna: LEIAR25	LEIT	receiver: LEICA GR30	height: 132.136
station FORM:	antenna: LEIAR25	LEIT	receiver: LEICA GR30	height: 99.597
station IBIZ:	antenna: TPSCR3_GGD	CONE	receiver: LEICA GR25	height: 59.957
station MALL:	antenna: LEIAR20	LEIM	receiver: LEICA GR50	height: 62.11
station MENC:	antenna: LEIAR25	LEIT	receiver: LEICA GR30	height: 66.64
station SINE:	antenna: LEIAR25	LEIT	receiver: LEICA GR30	height: 188.036
station SJO1:	antenna: LEIAR25	LEIT	receiver: LEICA GR30	height: 59.879
station TRAU:	antenna: LEIAR25	LEIT	receiver: LEICA GR30	height: 606.096

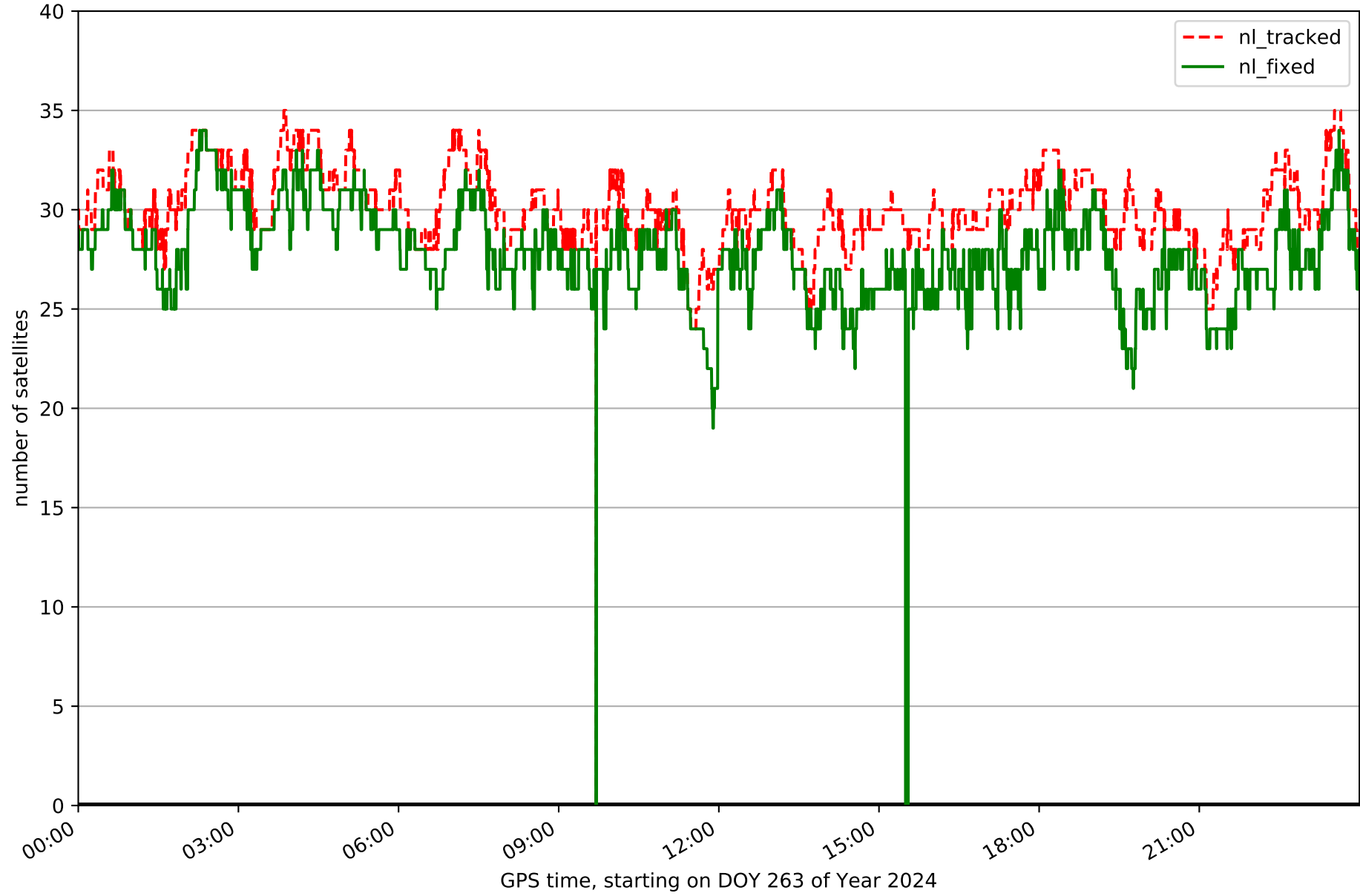
Processing rate in network NT11



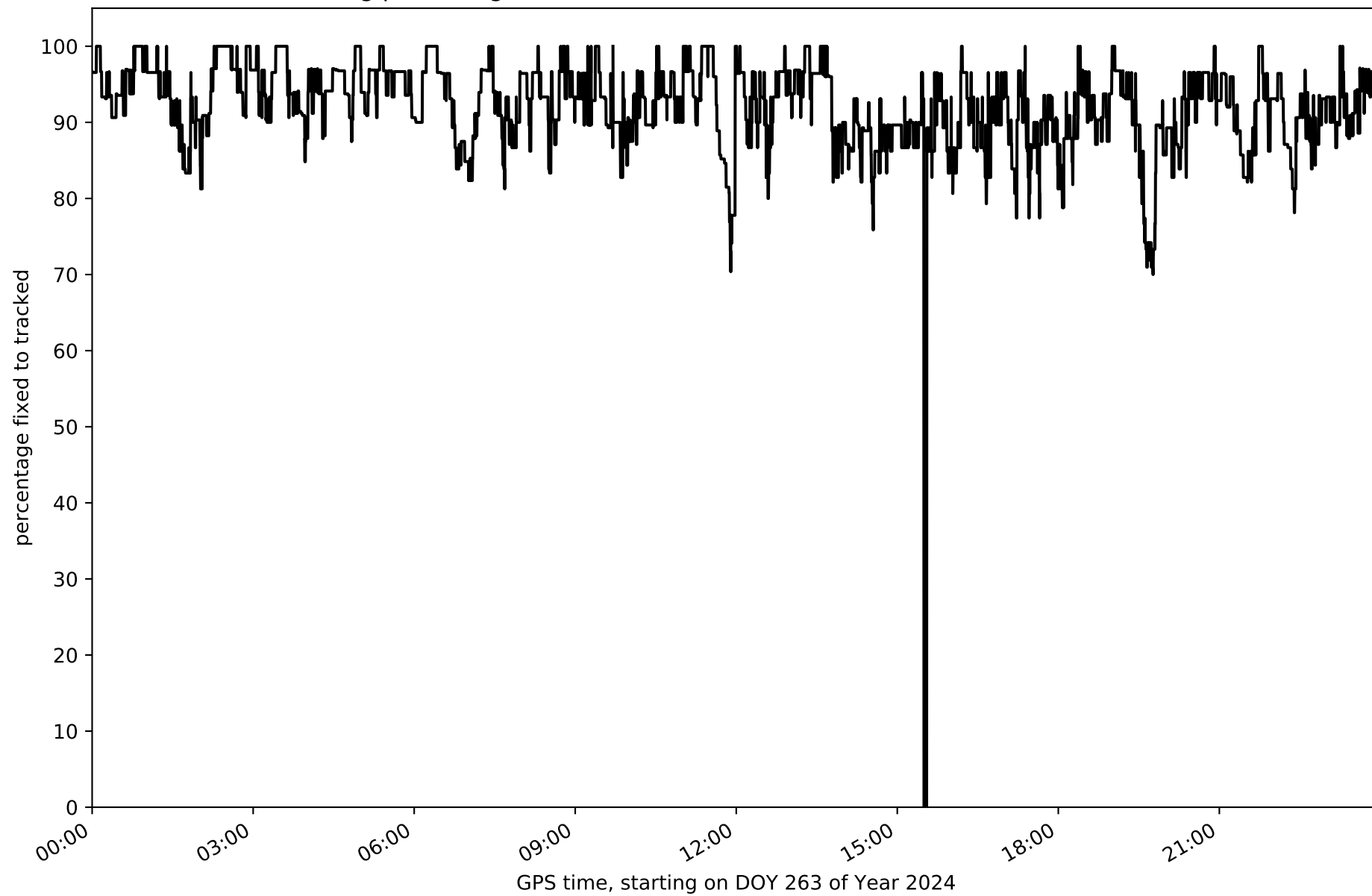
Histogram of the processing rate in network NT11 (durations larger 15 seconds neglected)



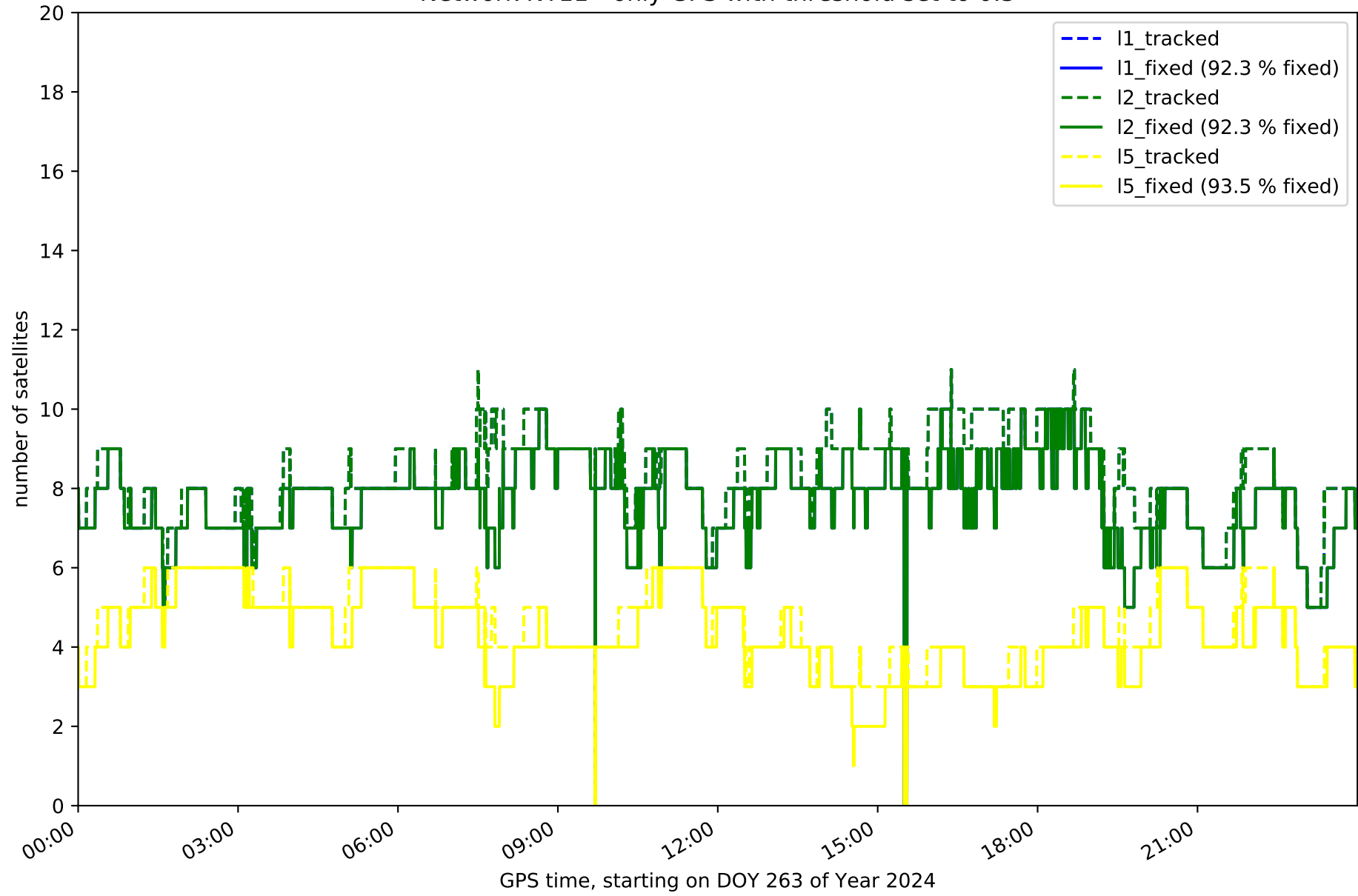
Network NT11 with threshold set to 0.3



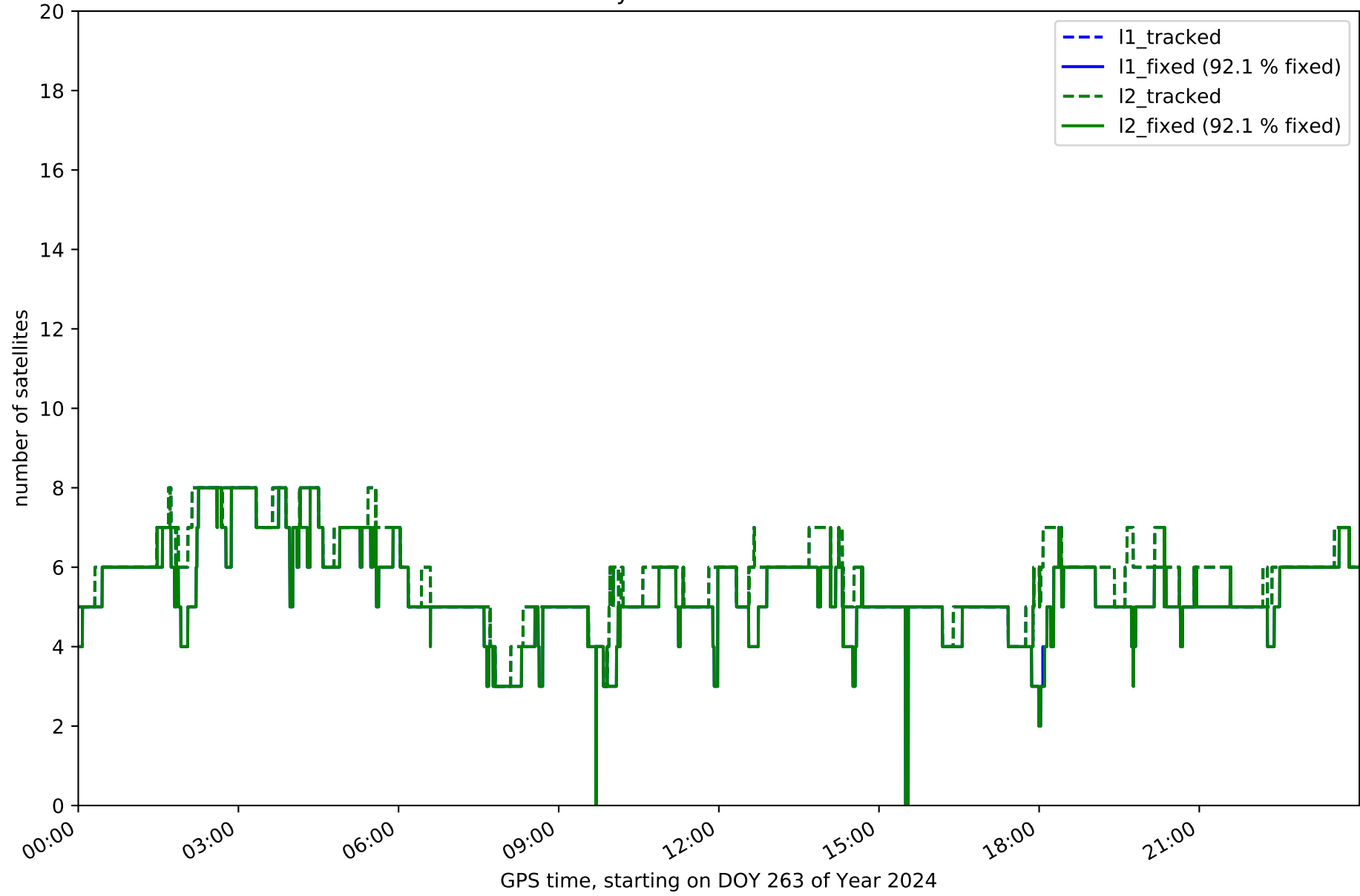
Fixing percentage of satellites in network NT11 with threshold set to 0.3



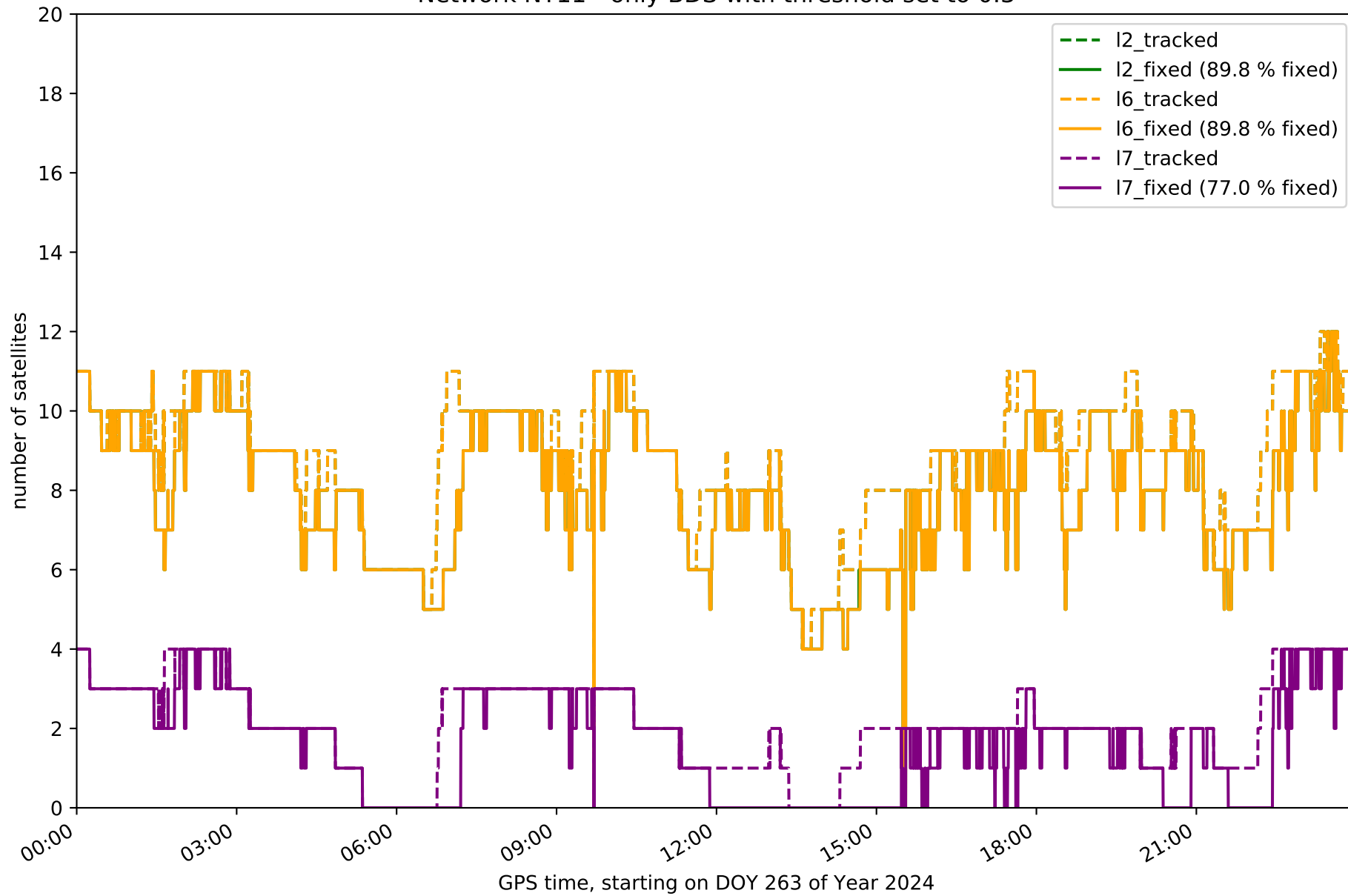
Network NT11 - only GPS with threshold set to 0.3



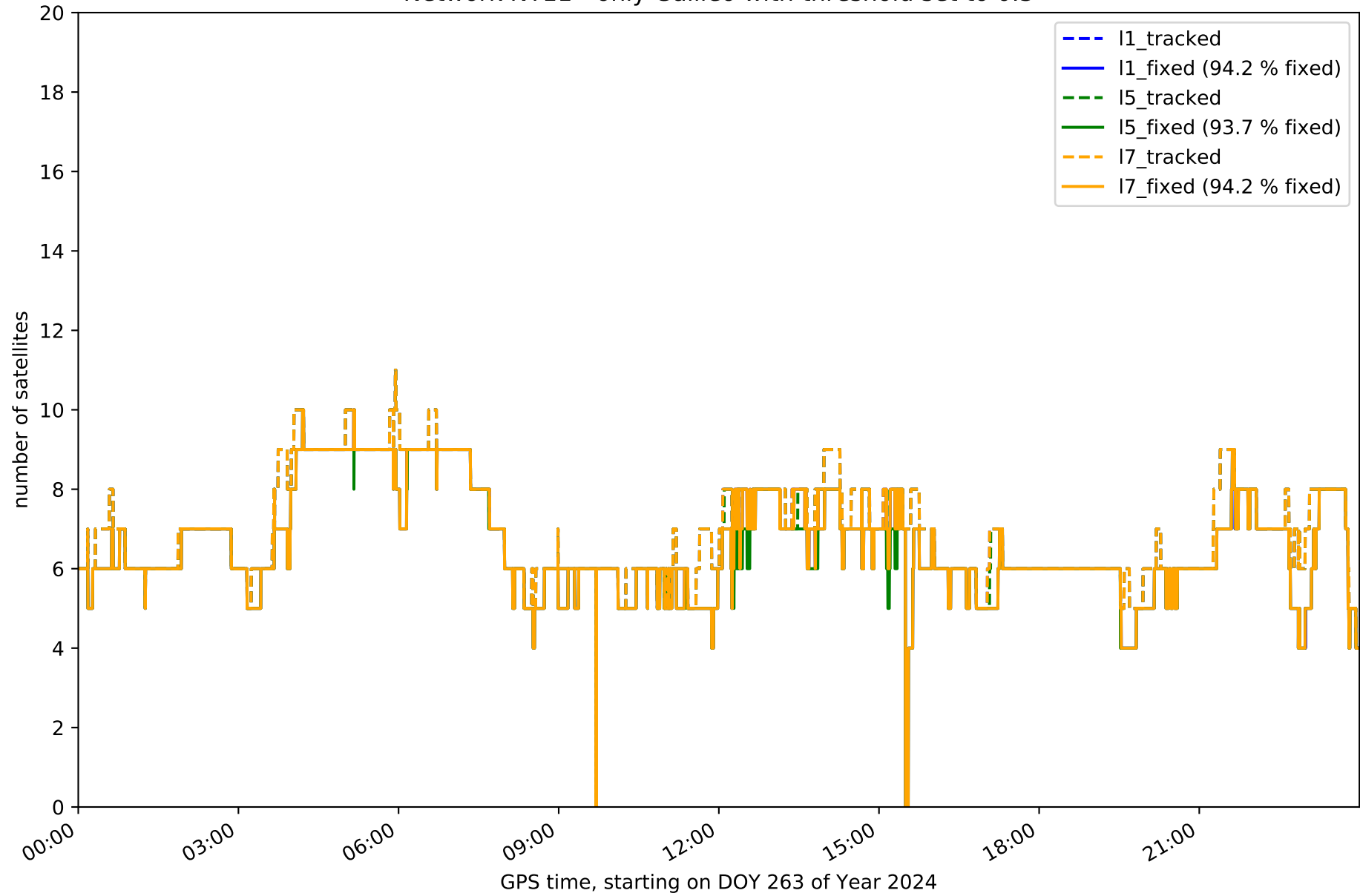
Network NT11 - only GLONASS with threshold set to 0.3



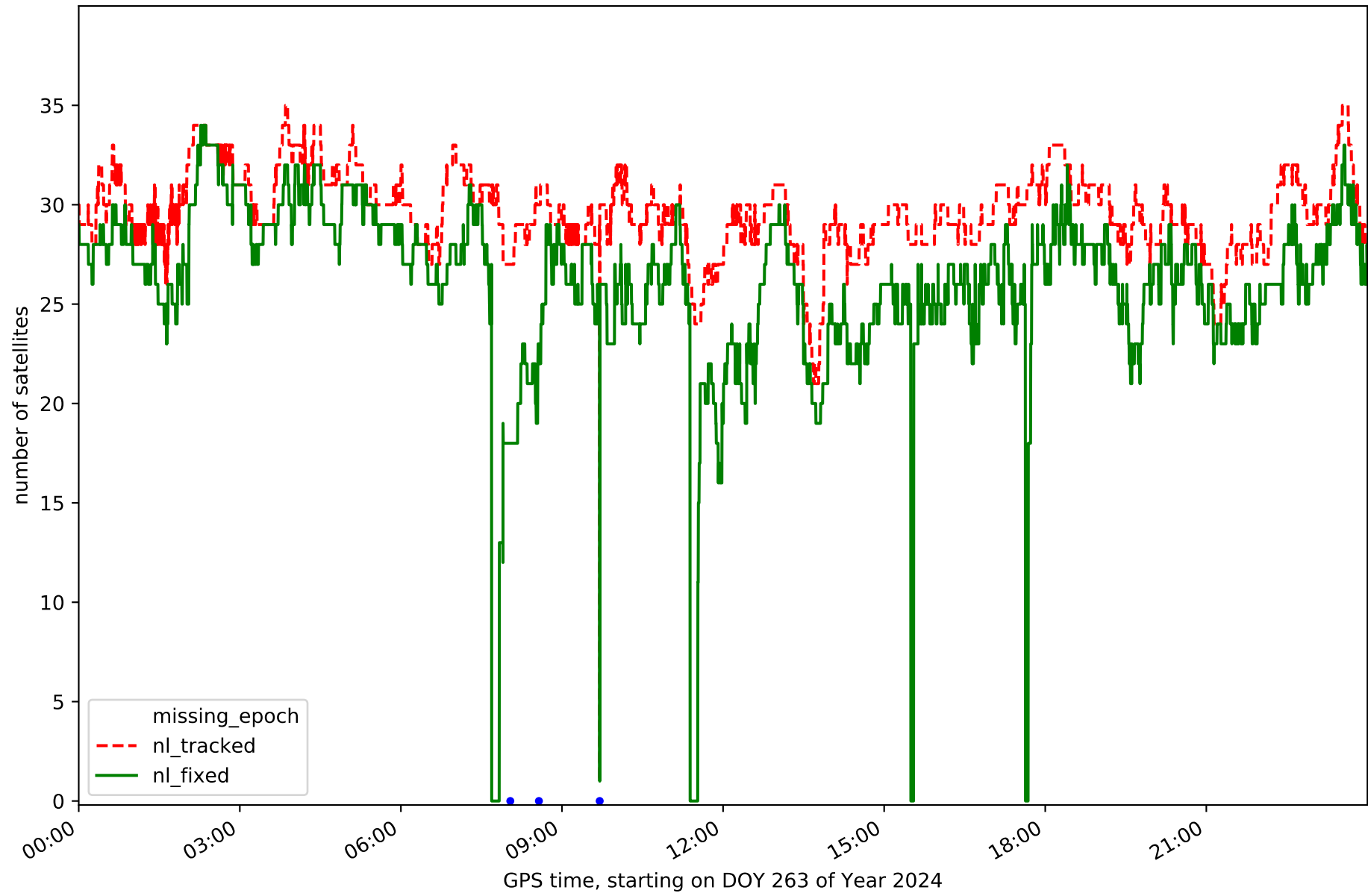
Network NT11 - only BDS with threshold set to 0.3



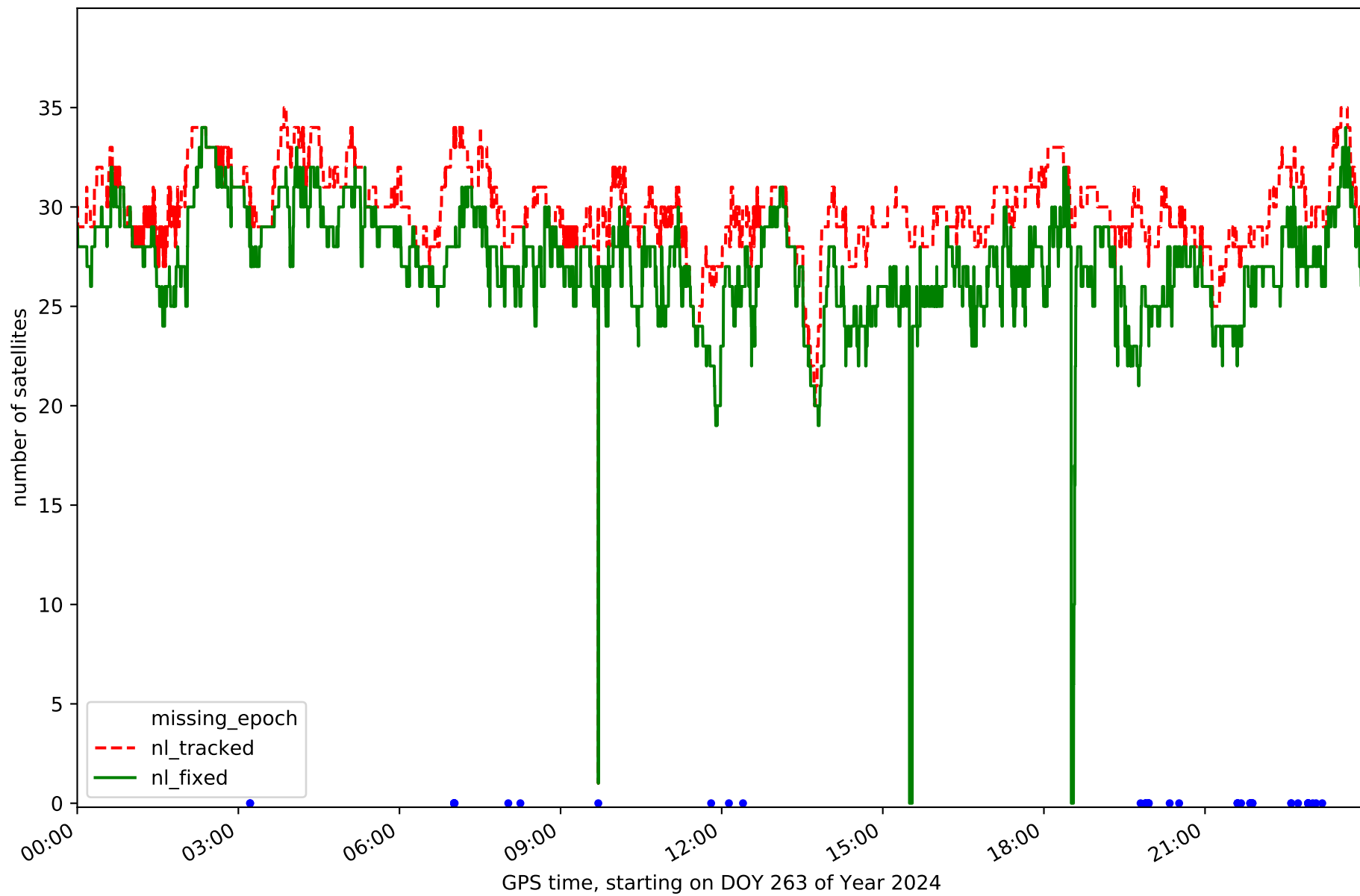
Network NT11 - only Galileo with threshold set to 0.3



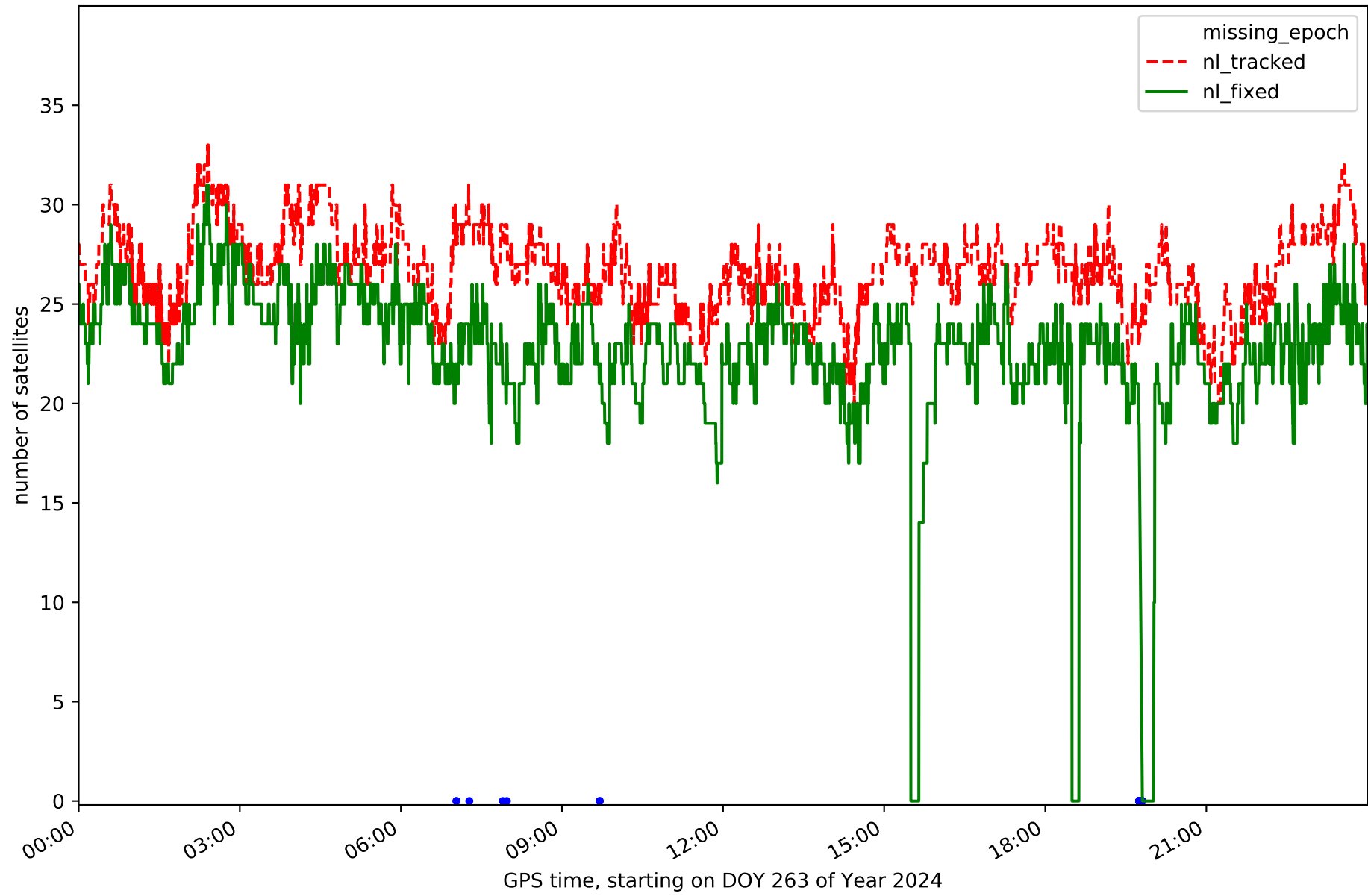
Station ALOR in network NT11



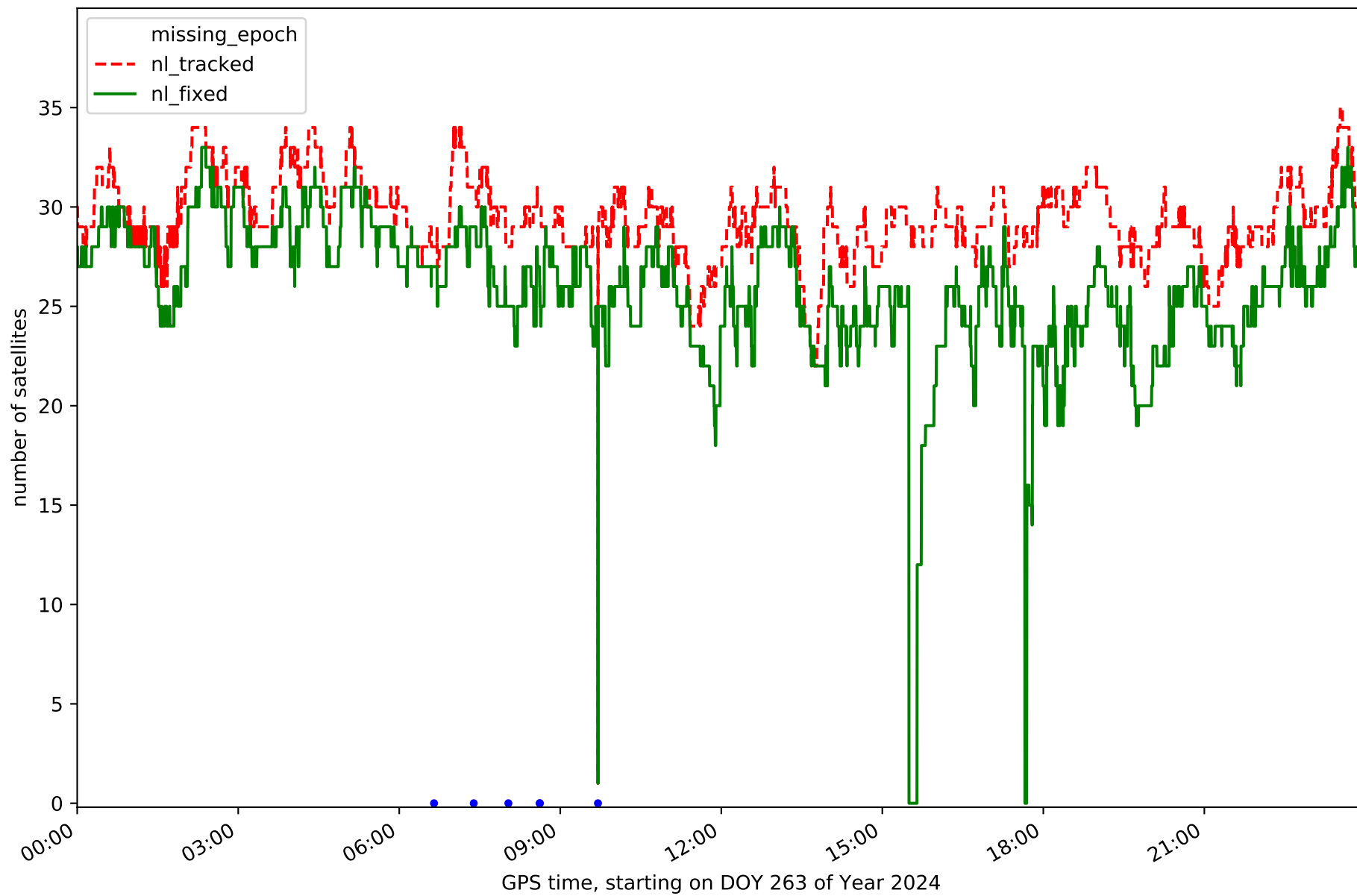
Station CBON in network NT11



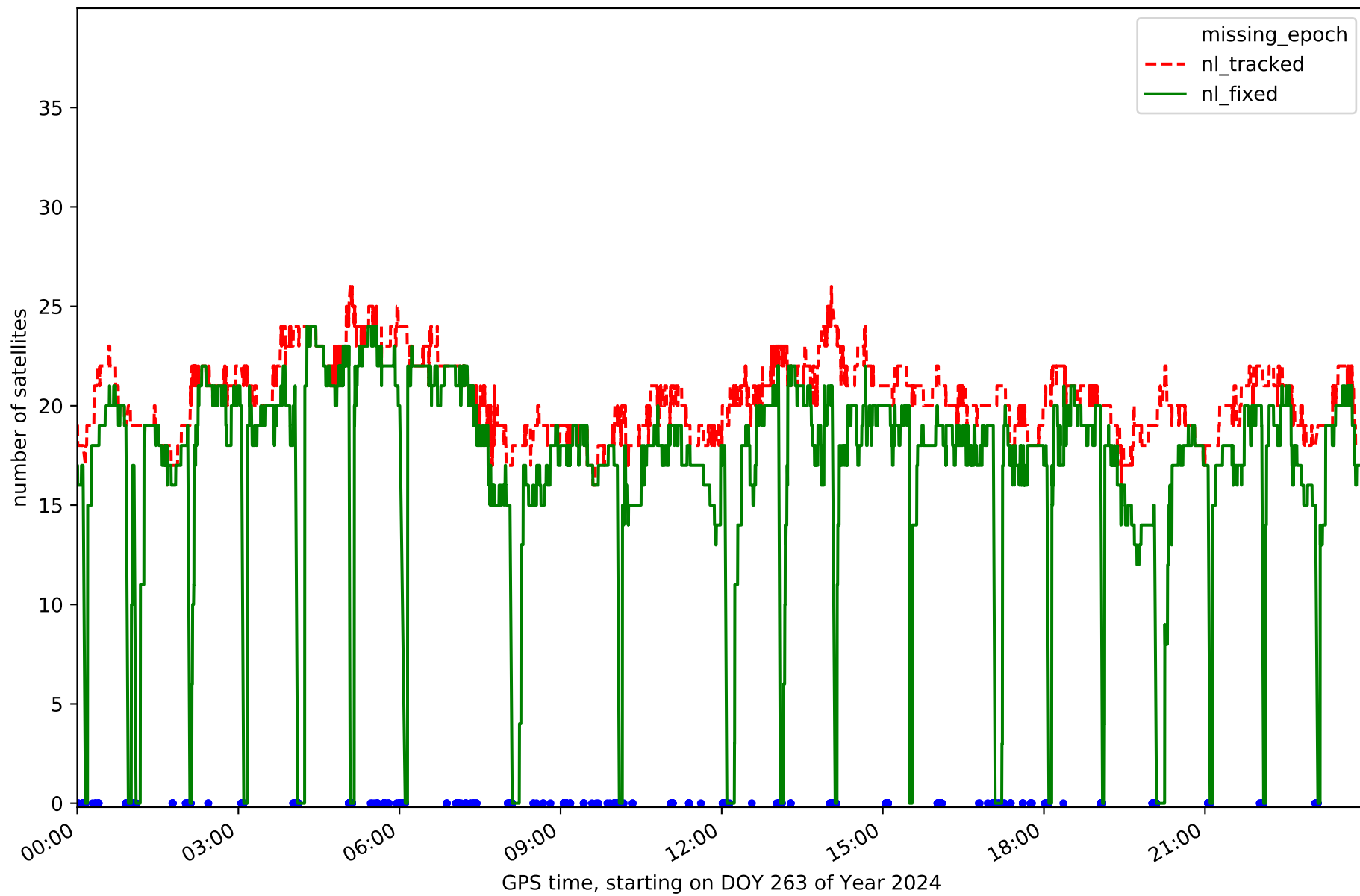
Station EIVI in network NT11



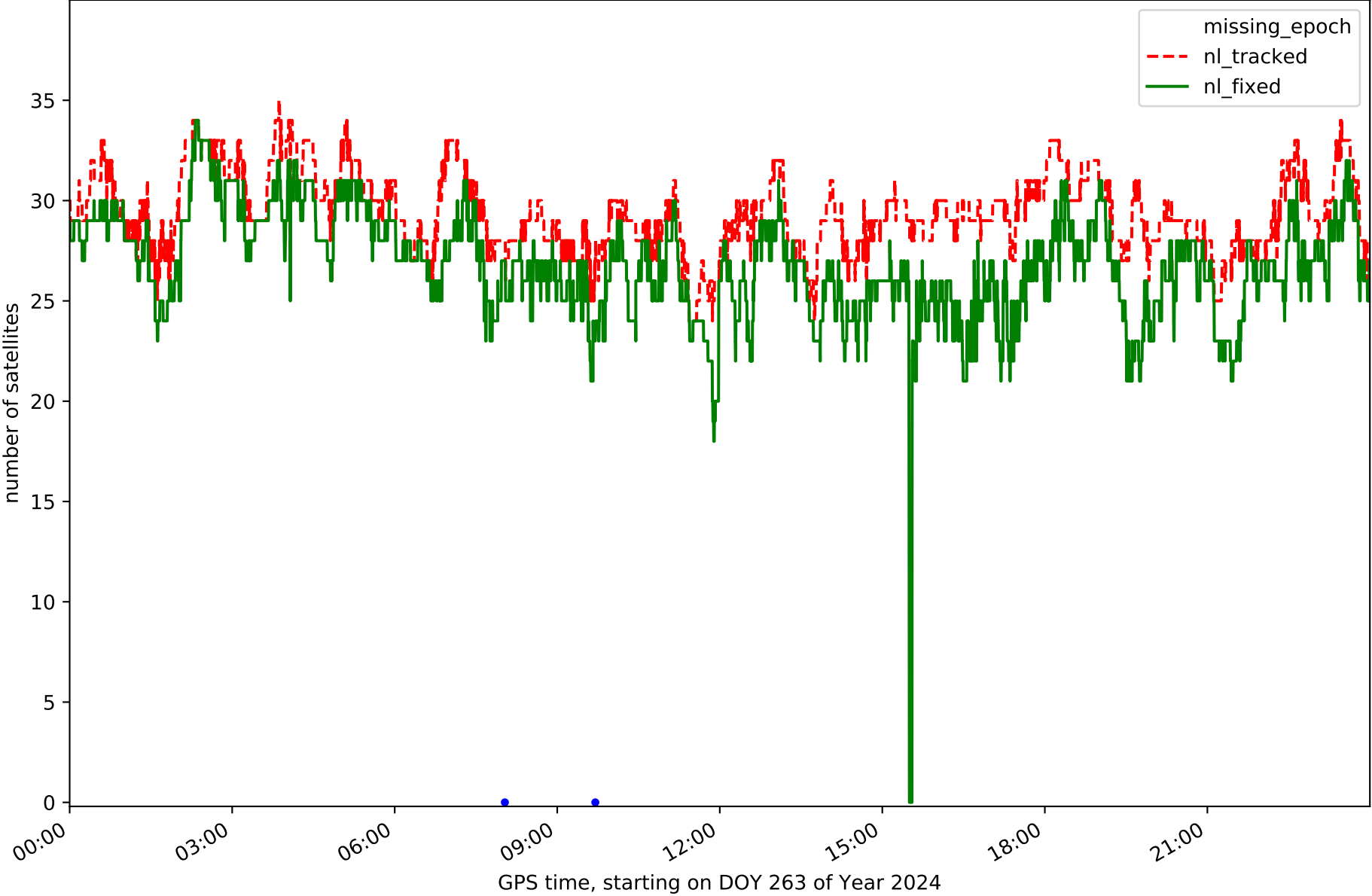
Station FORM in network NT11



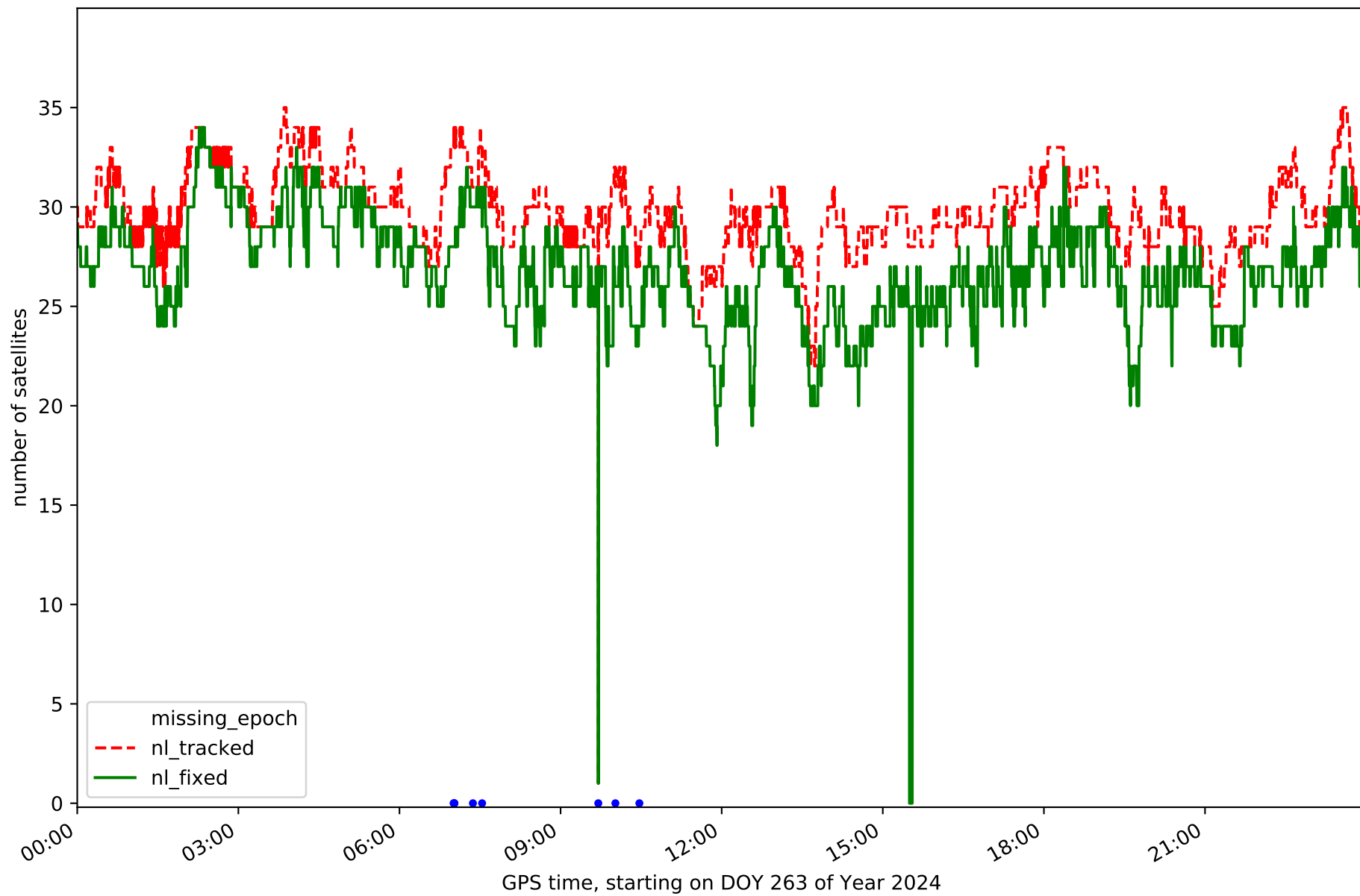
Station IBIZ in network NT11



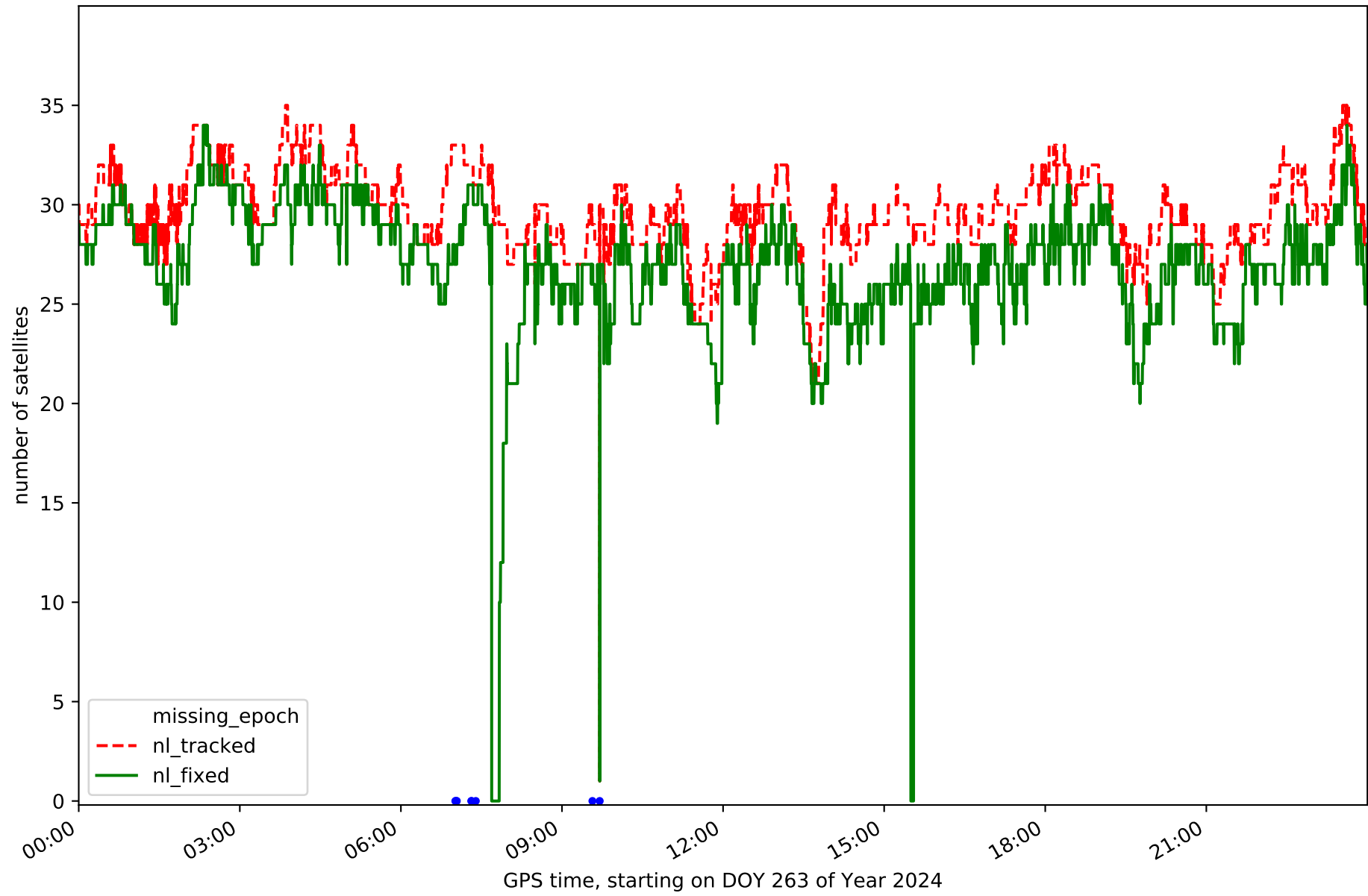
Station MALL in network NT11



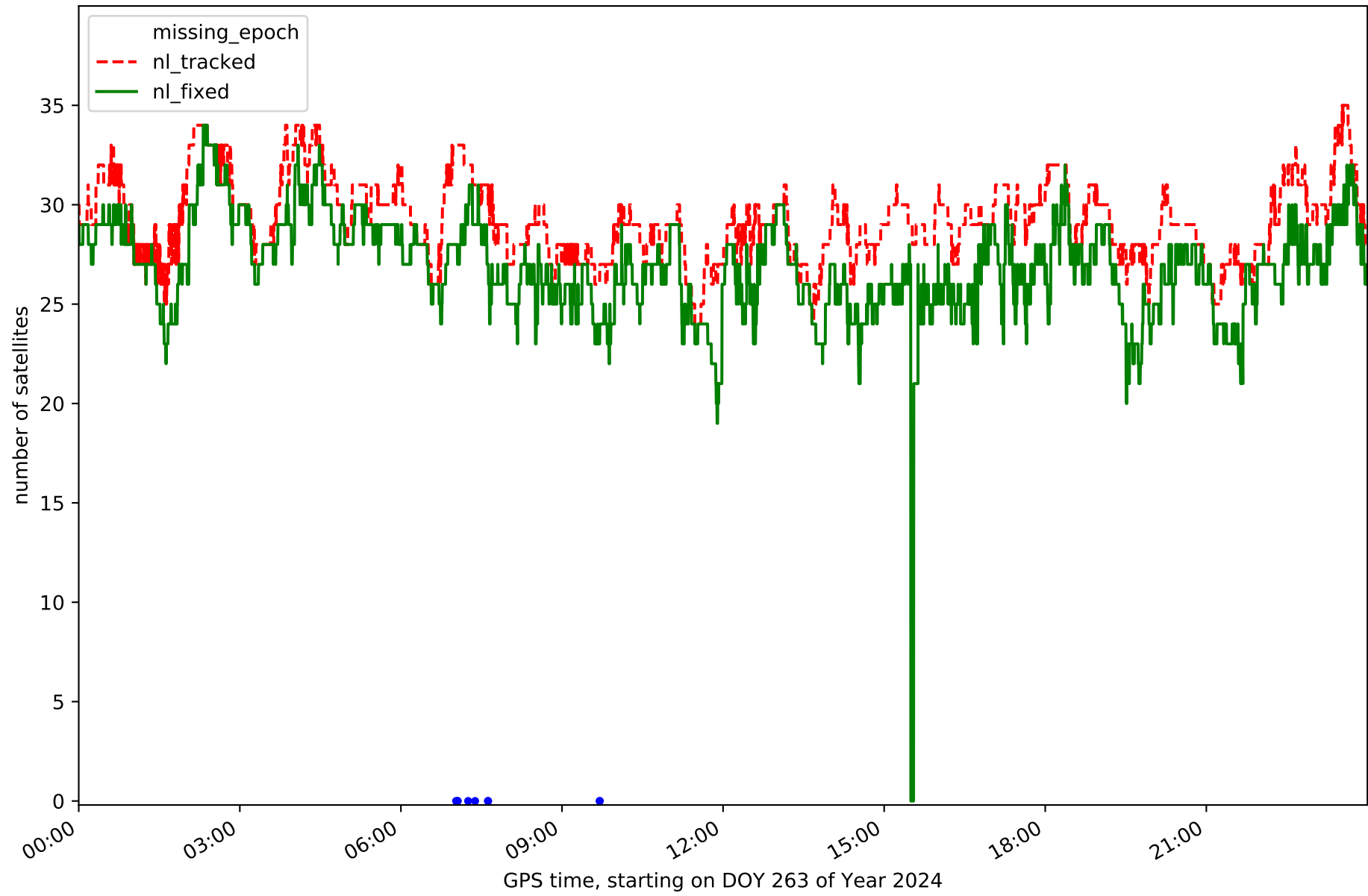
Station MENC in network NT11



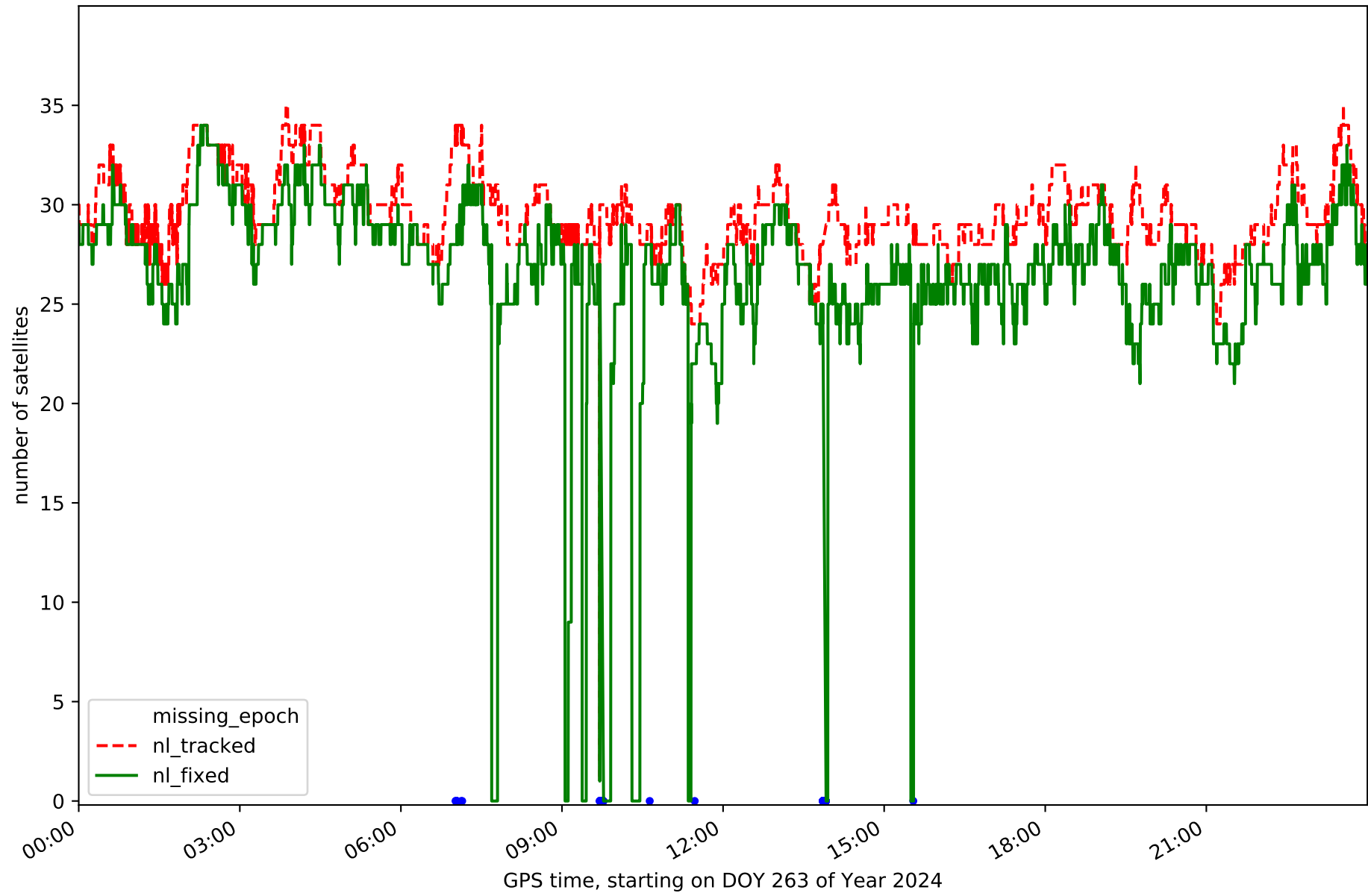
Station SINE in network NT11



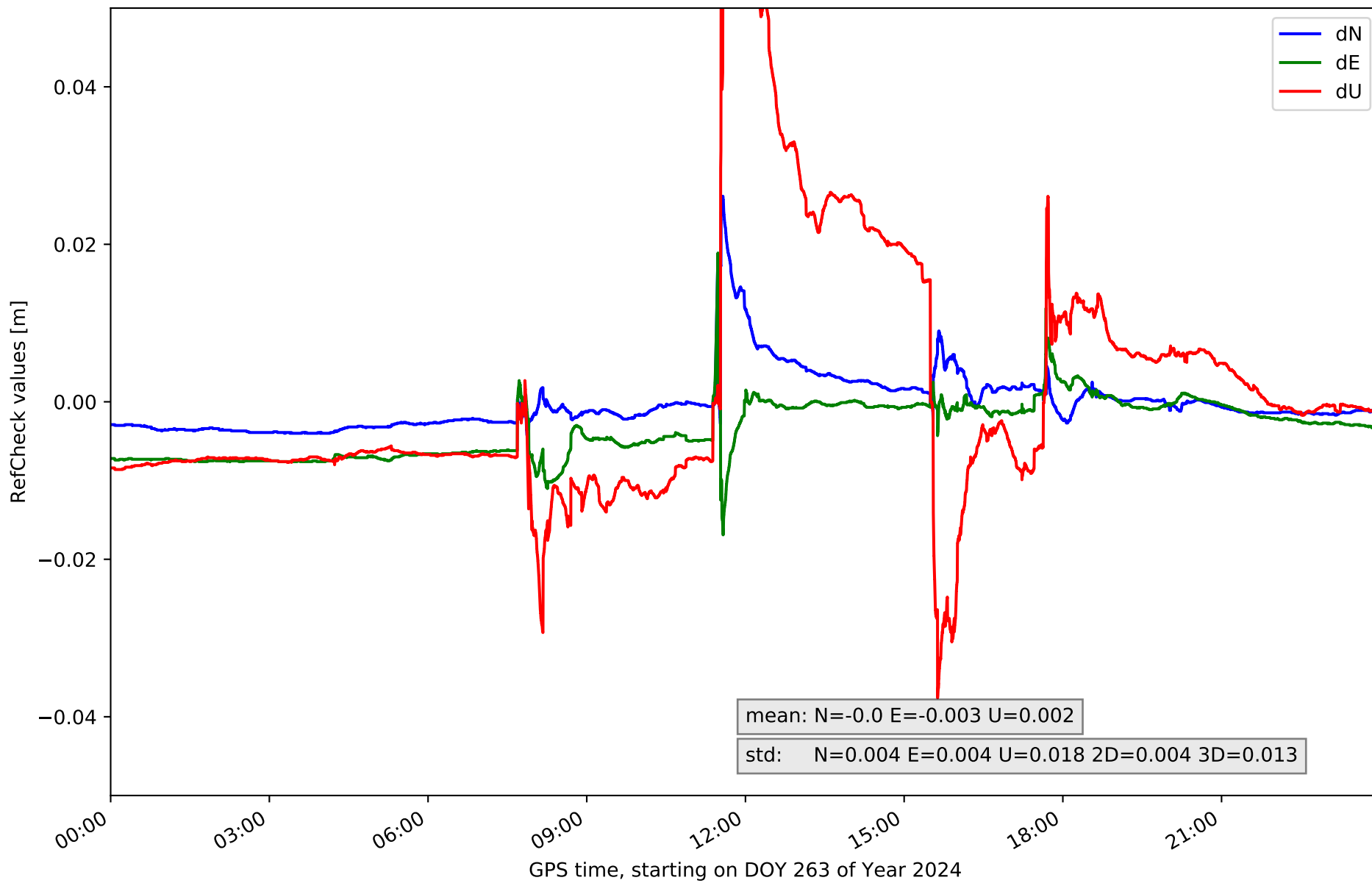
Station SJO1 in network NT11



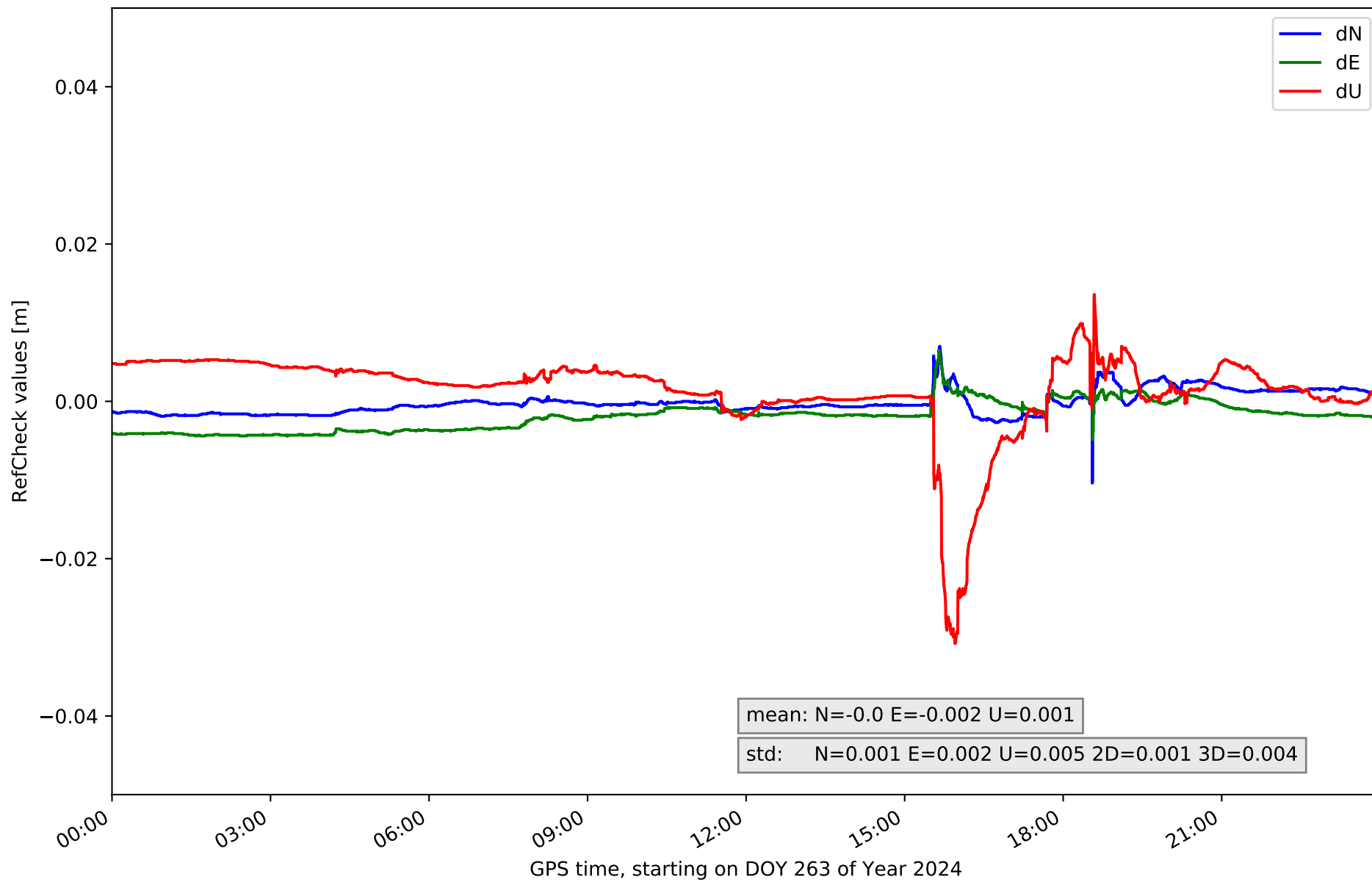
Station TRAU in network NT11



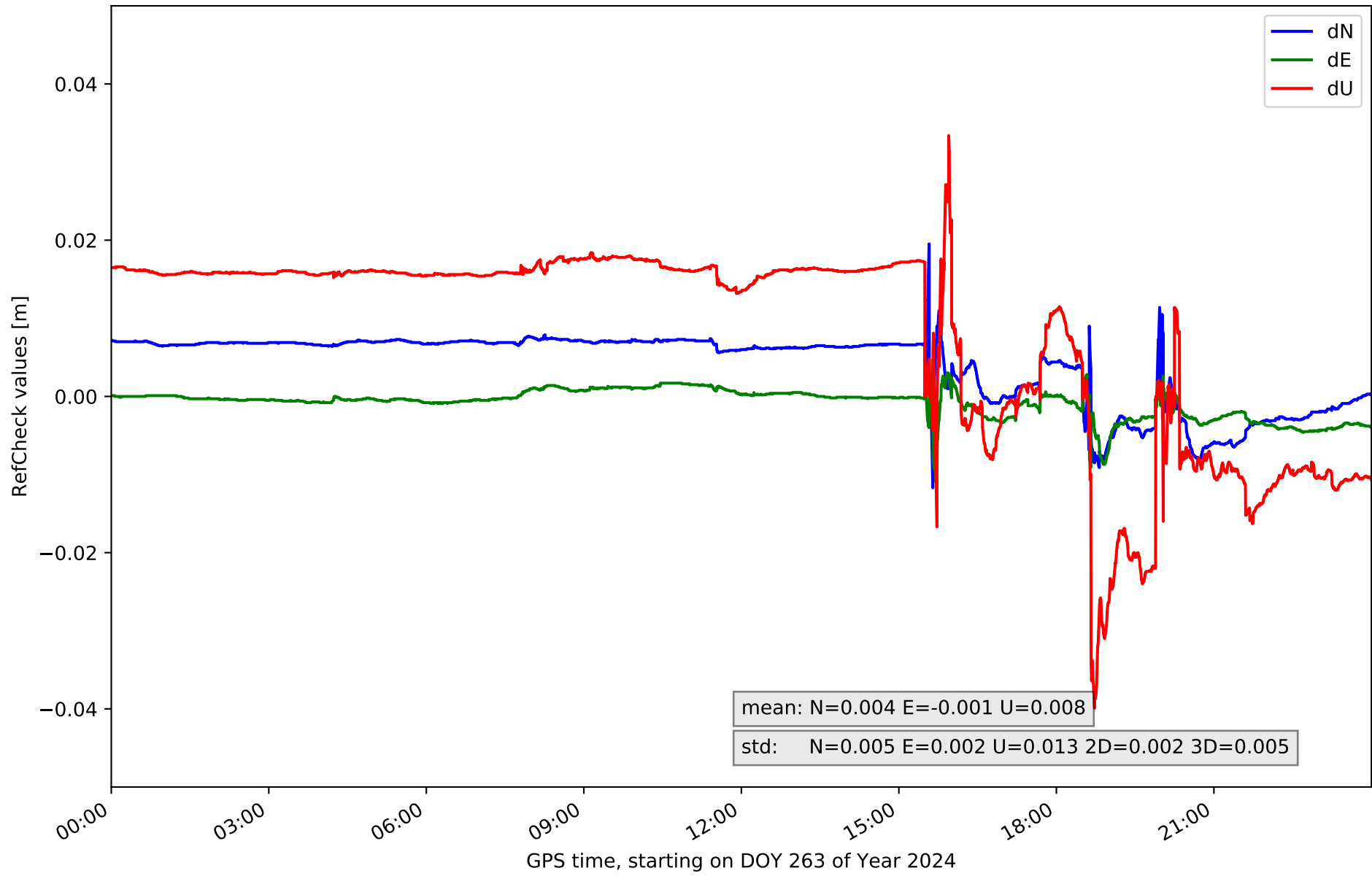
RefCheck for station ALOR in network NT11



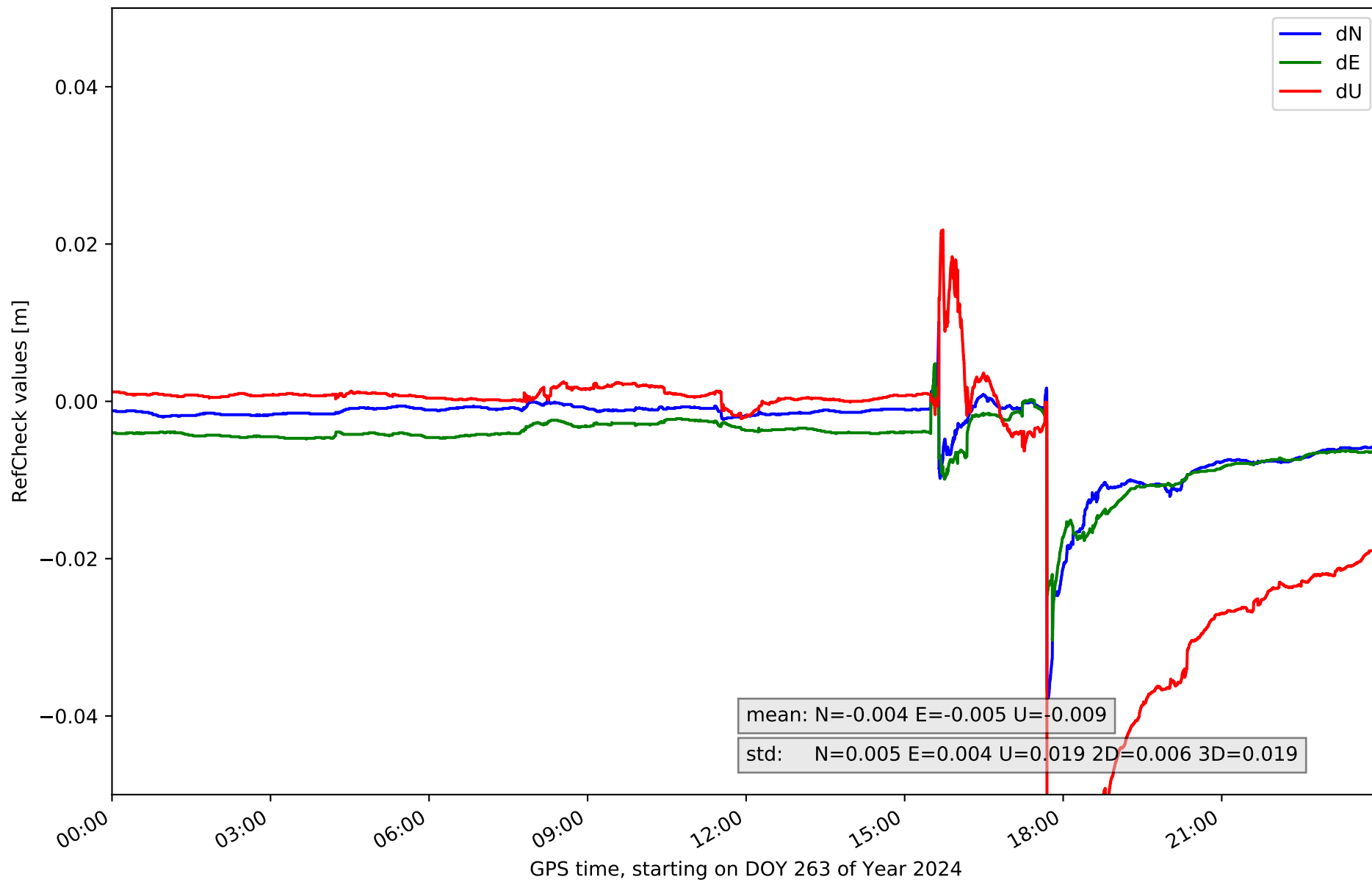
RefCheck for station CBON in network NT11



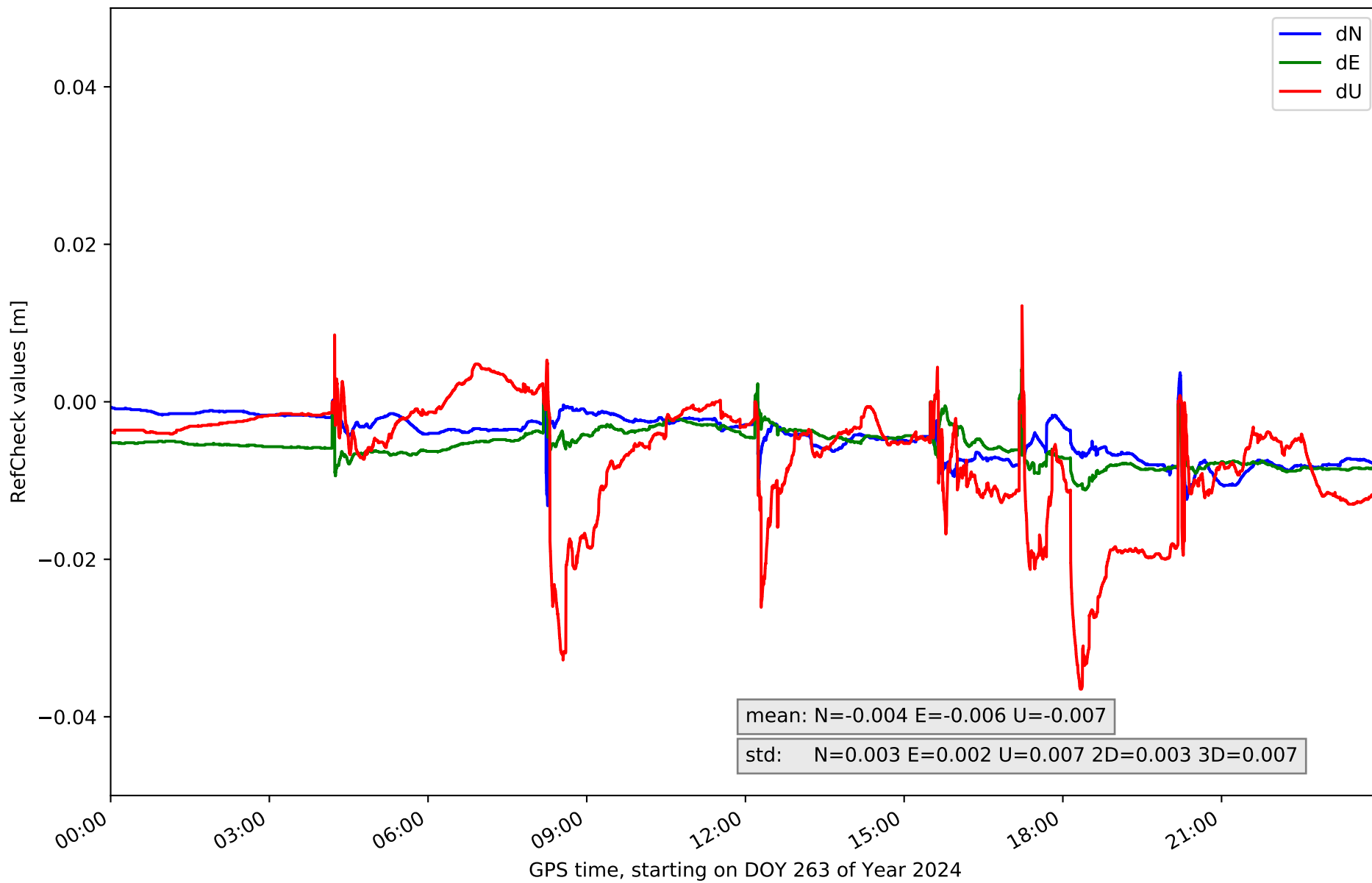
RefCheck for station EIVI in network NT11



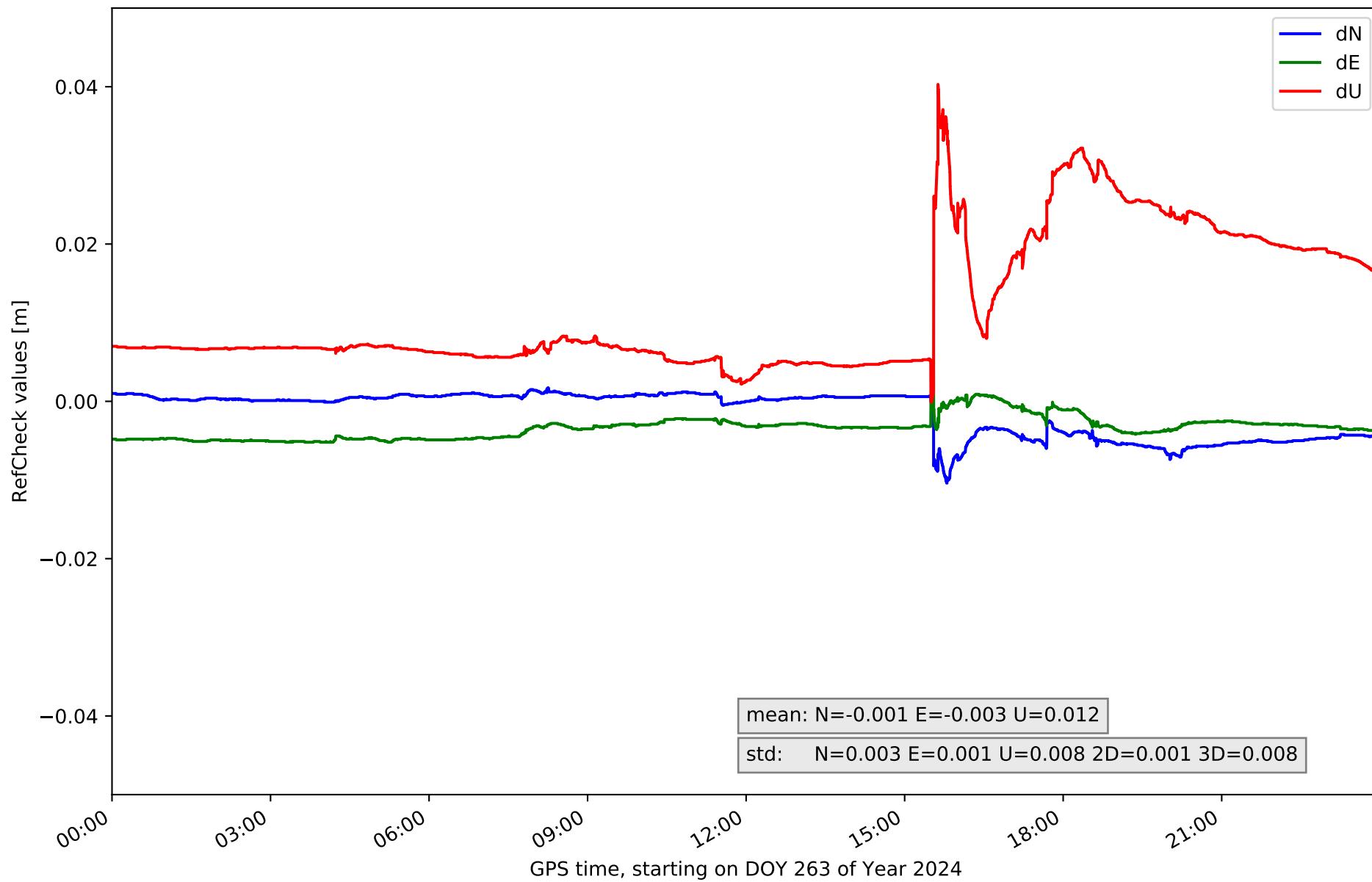
RefCheck for station FORM in network NT11



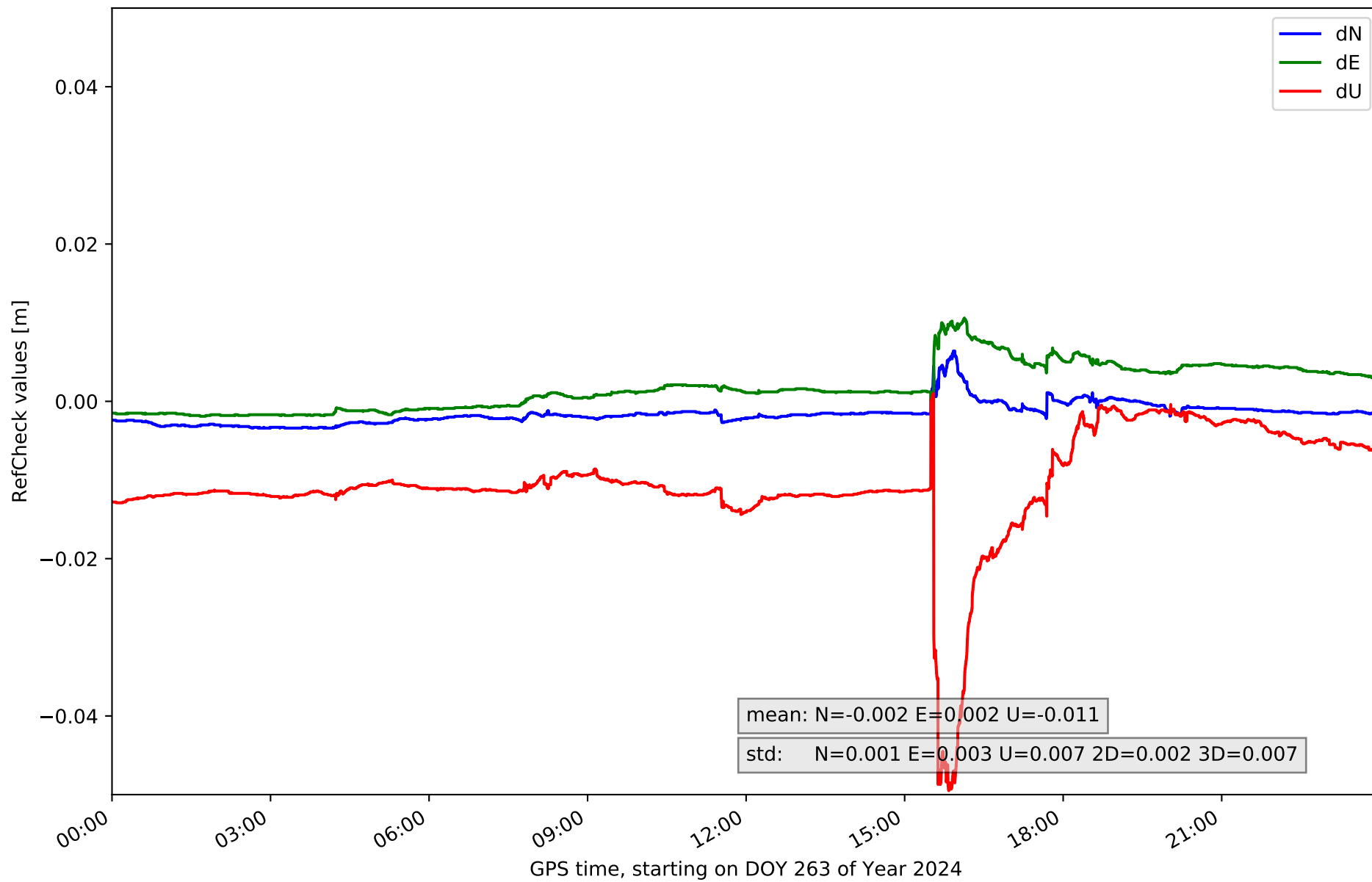
RefCheck for station IBIZ in network NT11



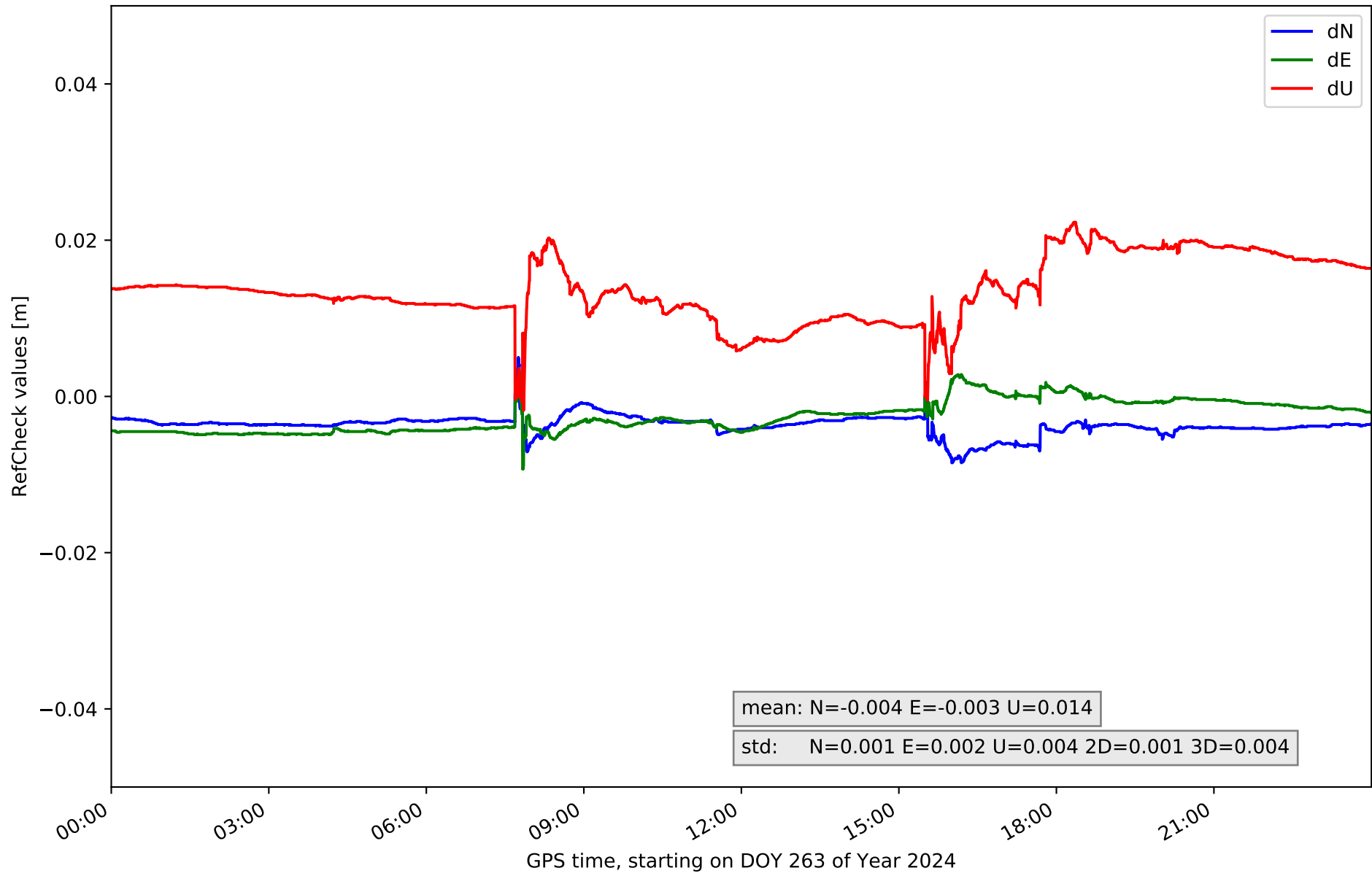
RefCheck for station MALL in network NT11



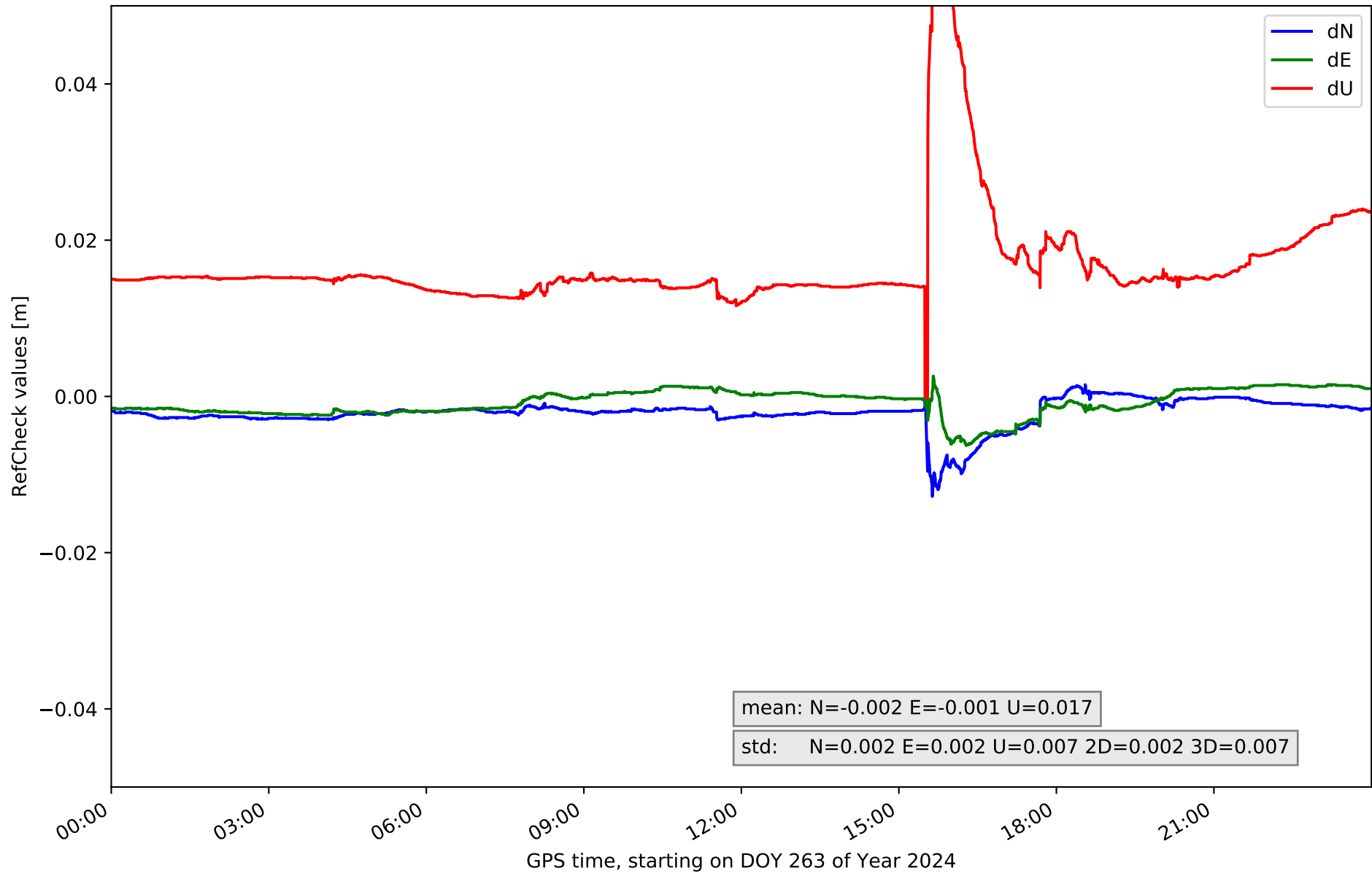
RefCheck for station MENC in network NT11



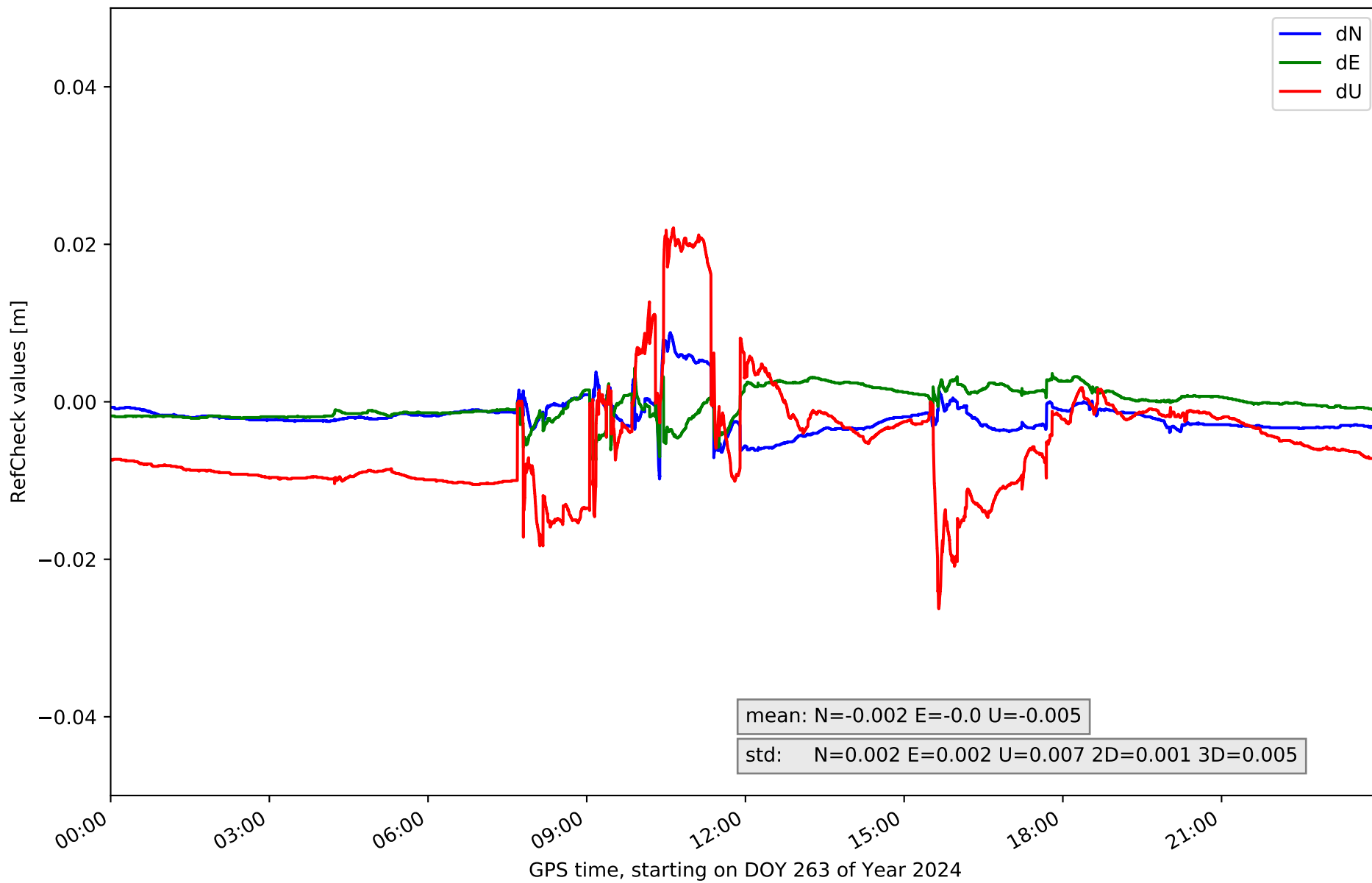
RefCheck for station SINE in network NT11



RefCheck for station SJO1 in network NT11



RefCheck for station TRAU in network NT11



RefCheck values for network NT11

Station	Nmin	Nmax	Nstd	Emin	Emax	Estd	Umin	Umax	Ustd	std2D	std3D	#2D > 0.01	% 2D > 0.01	#3D > 0.02	% 3D > 0.02
ALOR	-0.004	0.026	0.004	-0.017	0.019	0.004	-0.038	0.084	0.018	0.004	0.013	2642	3.3	13946	17.3
CBON	-0.01	0.007	0.001	-0.005	0.006	0.002	-0.031	0.014	0.005	0.001	0.004	21	0.0	1657	2.1
EIVI	-0.012	0.019	0.005	-0.011	0.005	0.002	-0.04	0.033	0.013	0.002	0.005	1152	1.4	4037	5.0
FORM	-0.038	0.01	0.005	-0.03	0.005	0.004	-0.095	0.022	0.019	0.006	0.019	17405	21.6	21757	27.0
IBIZ	-0.013	0.004	0.003	-0.011	0.004	0.002	-0.036	0.012	0.007	0.003	0.007	20722	25.7	10156	12.6
MALL	-0.01	0.002	0.003	-0.005	0.004	0.001	-0.0	0.04	0.008	0.001	0.008	150	0.2	21716	26.9
MENC	-0.003	0.006	0.001	-0.002	0.011	0.003	-0.05	0.001	0.007	0.002	0.007	1505	1.9	4293	5.3
SINE	-0.009	0.005	0.001	-0.009	0.003	0.002	-0.002	0.022	0.004	0.001	0.004	31	0.0	6496	8.1
SJO1	-0.013	0.002	0.002	-0.006	0.003	0.002	-0.0	0.064	0.007	0.002	0.007	2048	2.5	10727	13.3
TRAU	-0.01	0.009	0.002	-0.007	0.004	0.002	-0.026	0.022	0.007	0.001	0.005	71	0.1	3180	3.9
Mean	-0.012	0.009	0.003	-0.01	0.006	0.002	-0.032	0.031	0.01	0.002	0.008	4574.7	5.7	9796.5	12.2
Min/Max	-0.038	0.026	0.005	-0.03	0.019	0.004	-0.095	0.084	0.019	0.006	0.019	20722	25.7	21757	27.0

fixing statistic for network NT11

fixing percentage of	all GNSS	G	R	E	C
using threshold 0.3	92.0	92.3	92.1	94.2	89.8
considering satellites with dual-frequency fixed	88.8	89.3	89.1	90.9	86.1
considering all signals separately	88.7	89.6	89.1	90.8	84.7