

summary for network NT15

timeperiod chosen: from 2024-08-24-00:00:00 until 2024-08-24-23:59:58

average update rate (durations larger than 15 seconds considered as observation gap): 3.0 seconds

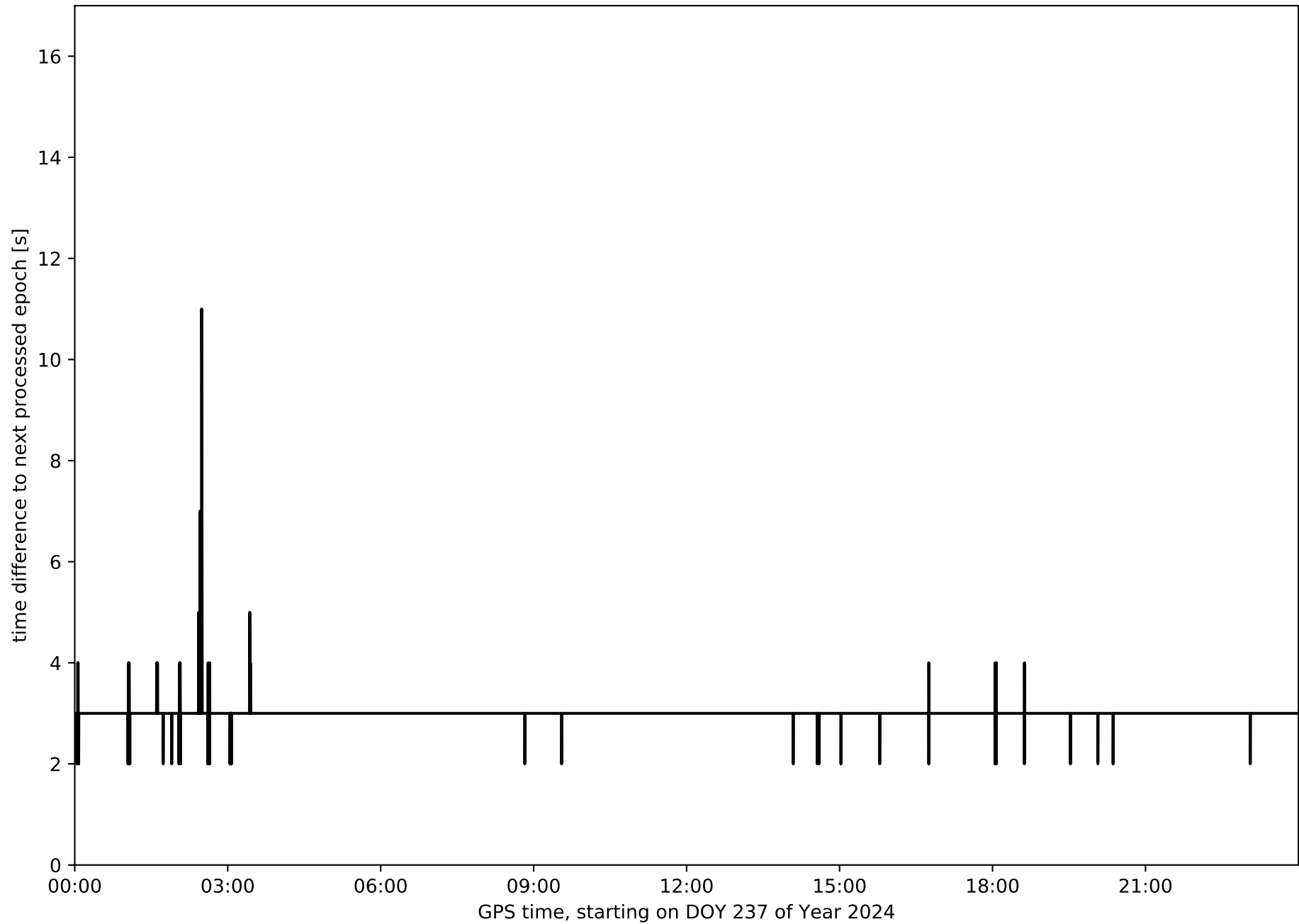
average fixing percentage with threshold set to 0.3: 91.4 percent

stations available: 9 of 11

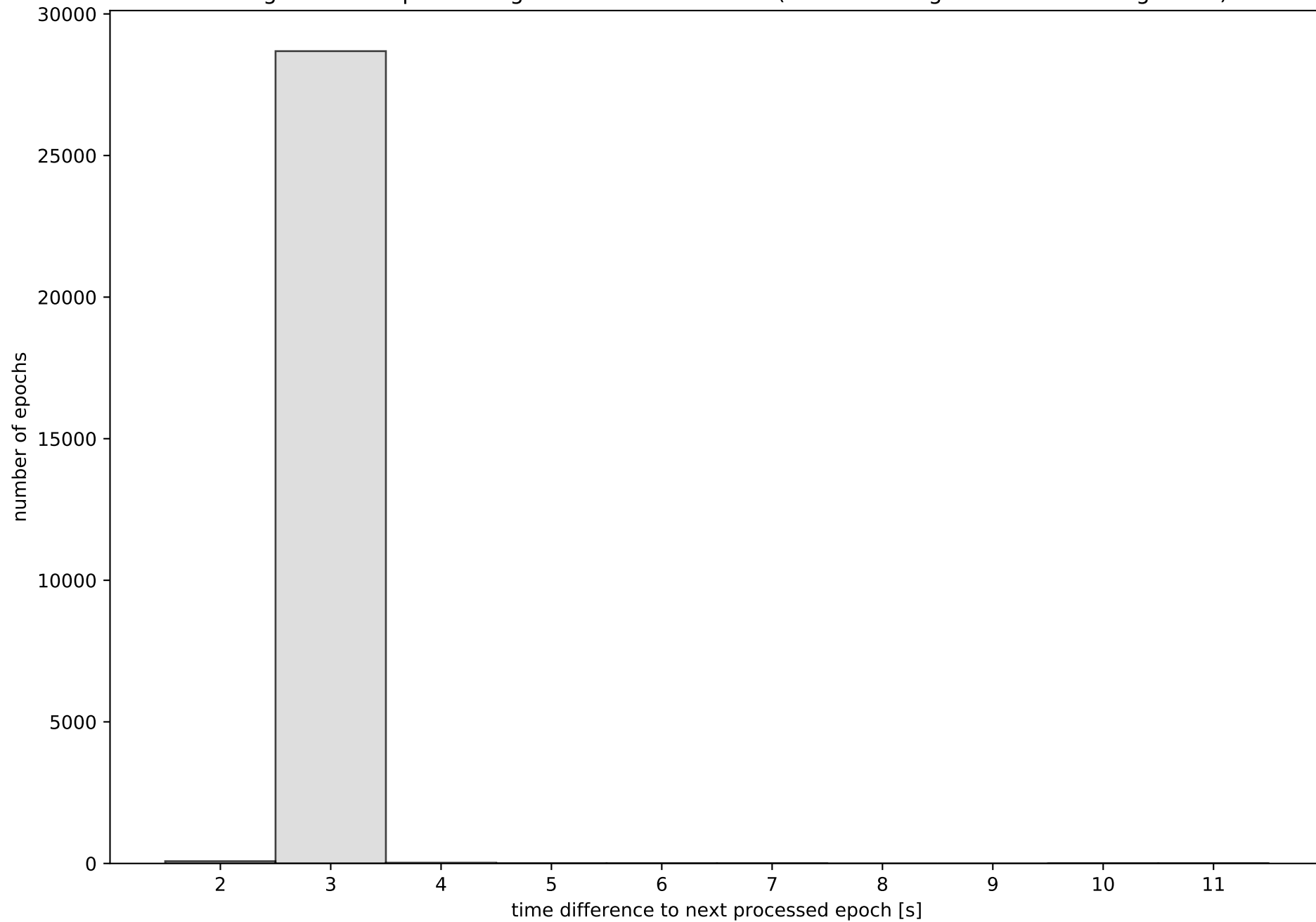
station information:

station ACIN:	antenna: GPPNULLANTENNA NONE	receiver: LEICA GR50	height: 1178.47
station AJAL:	antenna: GPPNULLANTENNA NONE	receiver: LEICA GR50	height: 884.142
station ALC1:	antenna: TRM57971.00 TZGD	receiver: TRIMBLE NETR9	height: 397.675
station ALIA:	antenna: GPPNULLANTENNA NONE	receiver: LEICA GR50	height: 1169.276
station BERG:	antenna: GPPNULLANTENNA NONE	receiver: LEICA GR30	height: 892.808
station CUEN:	antenna: LEIAR20 LEIM	receiver: LEICA GR50	height: 998.123
station MOLI:	antenna: LEIAR20 LEIM	receiver: LEICA GR25	height: 1119.45
station MUNI:	antenna: GPPNULLANTENNA NONE	receiver: TPS NET-G3	height: 854.946
station QNTO:	antenna: GPPNULLANTENNA NONE	receiver: LEICA GR50	height: 216.666
station UT11:	antenna: TRM159900.00 SCIS	receiver: TRIMBLE NETR9	height: 798.701

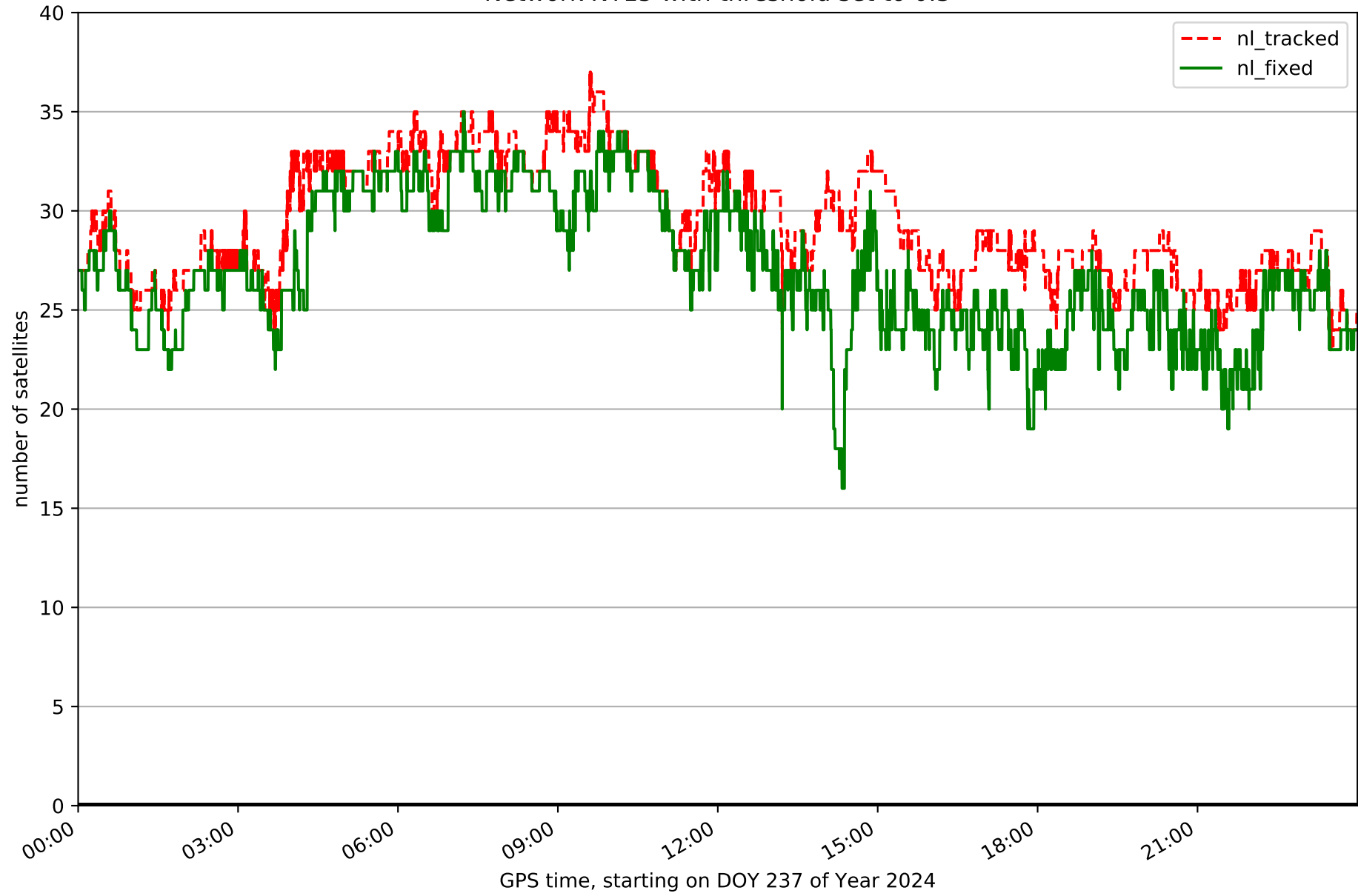
Processing rate in network NT15



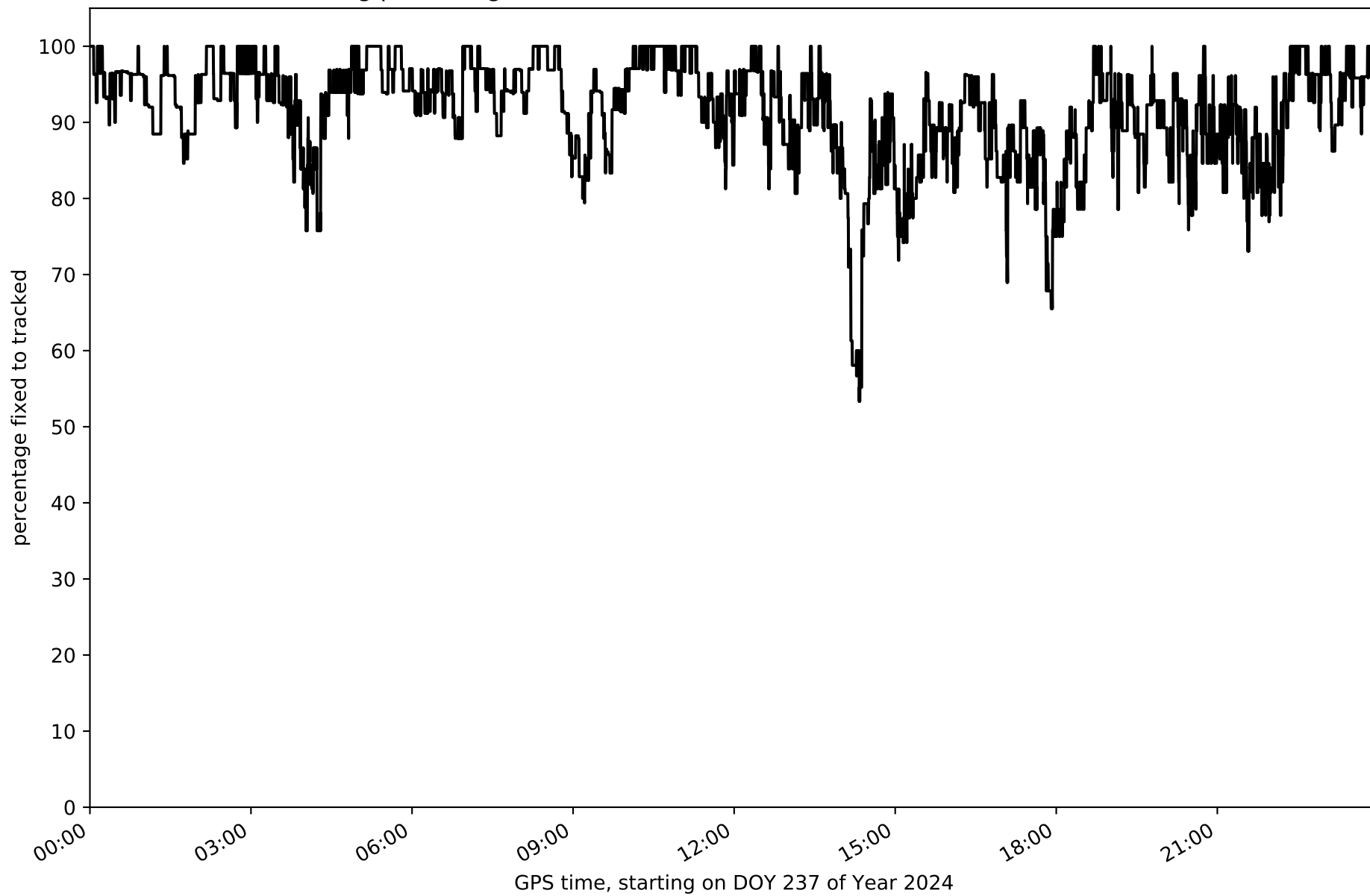
Histogram of the processing rate in network NT15 (durations larger 15 seconds neglected)



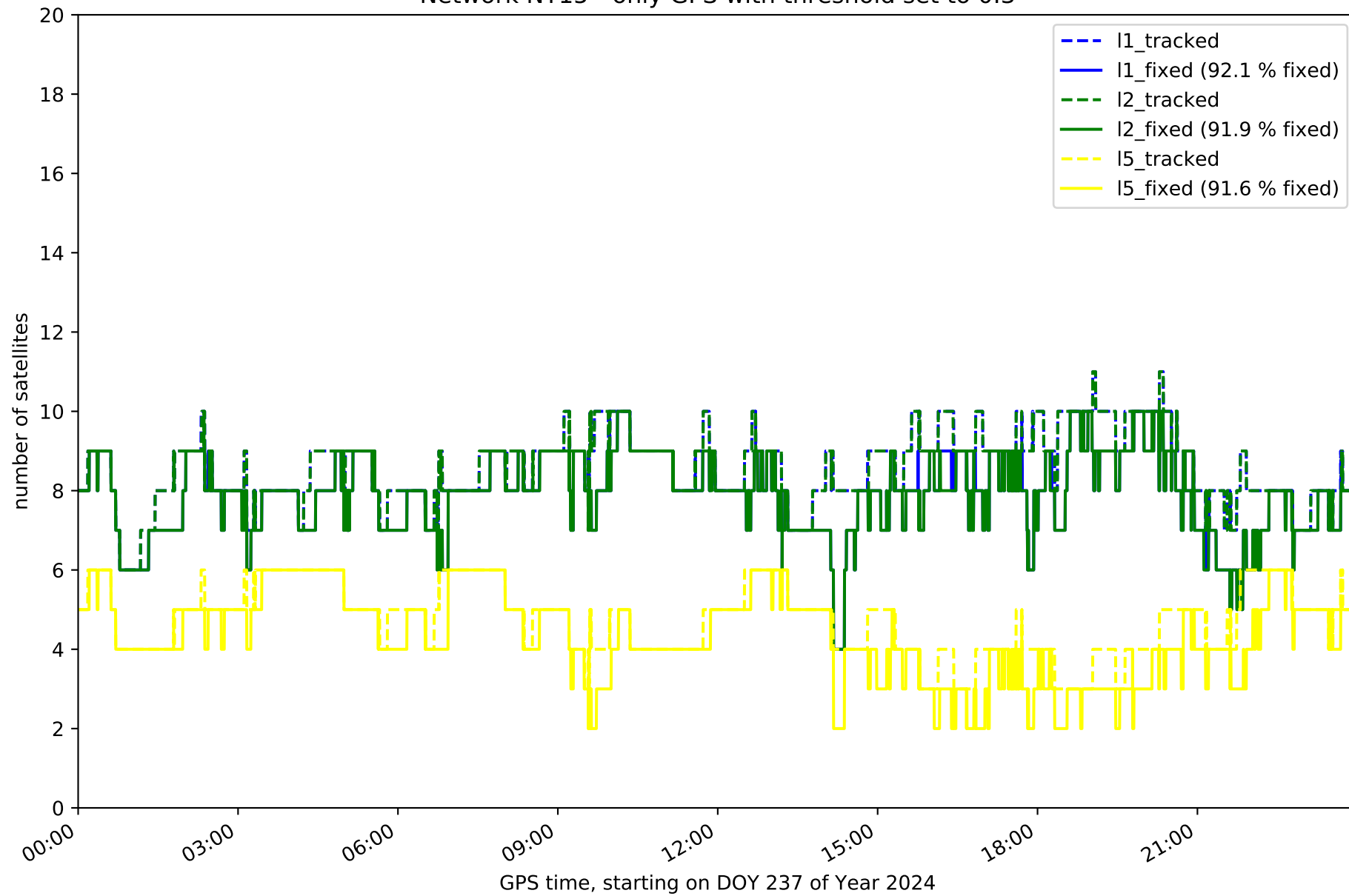
Network NT15 with threshold set to 0.3



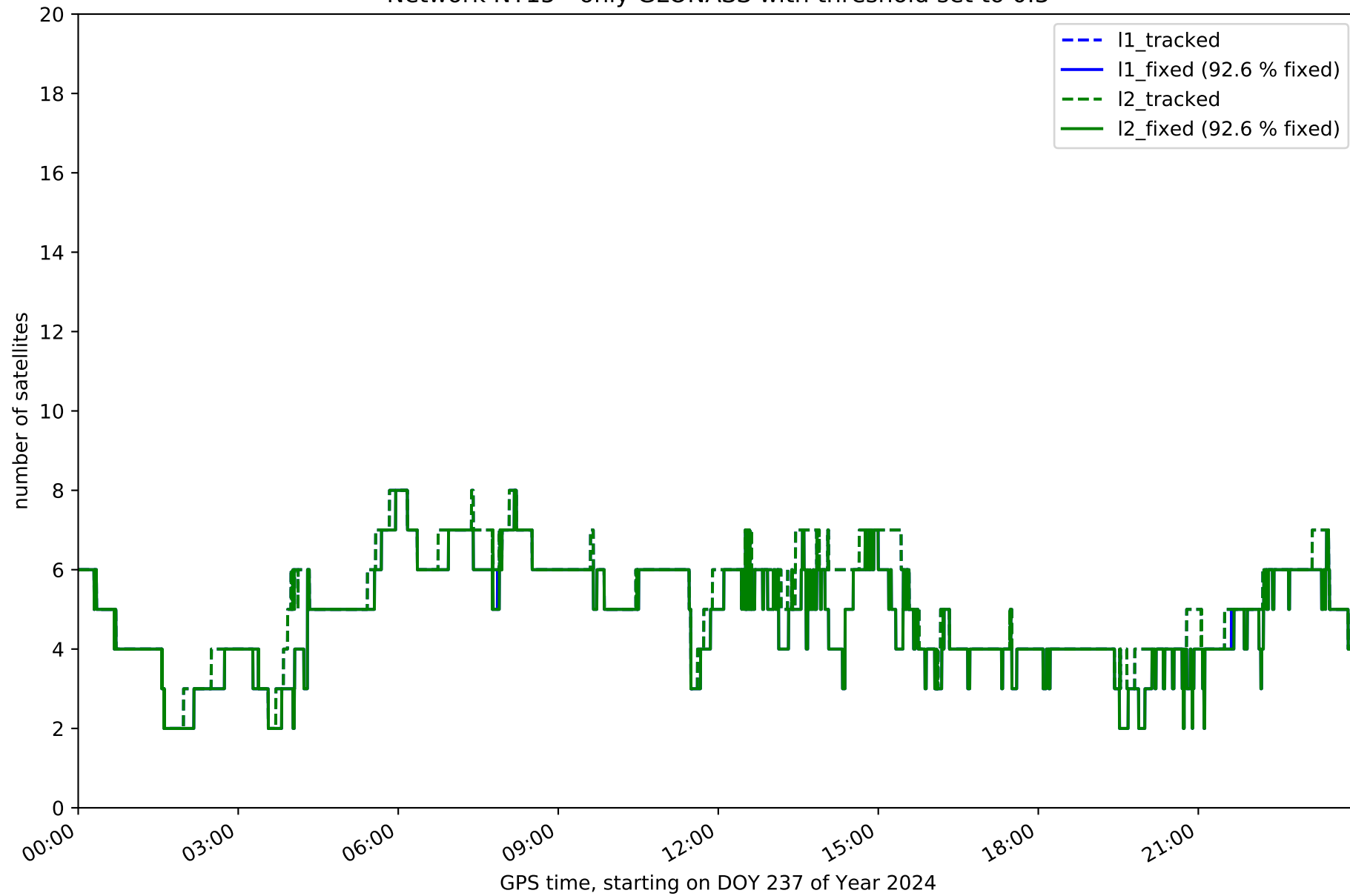
Fixing percentage of satellites in network NT15 with threshold set to 0.3



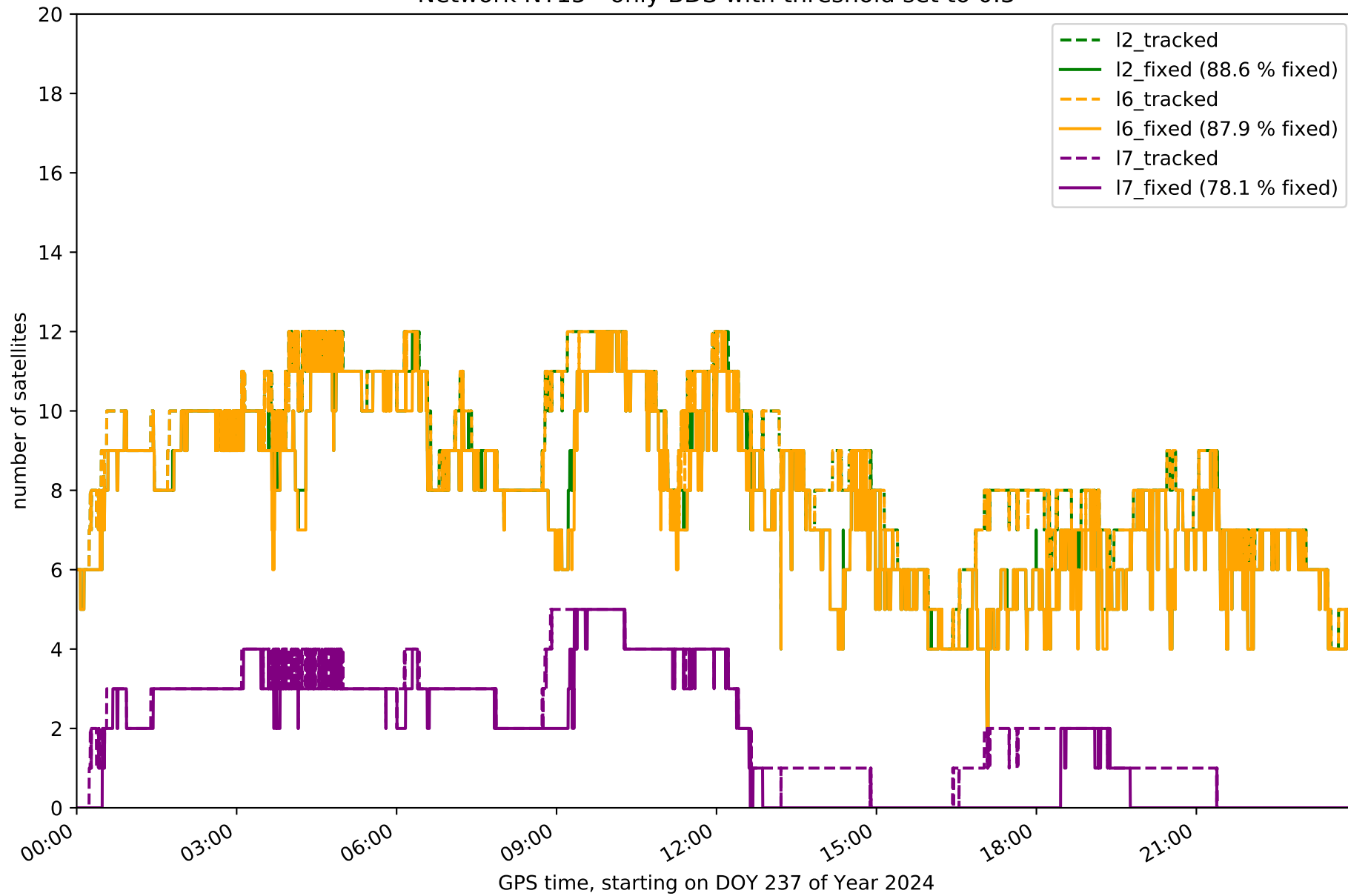
Network NT15 - only GPS with threshold set to 0.3



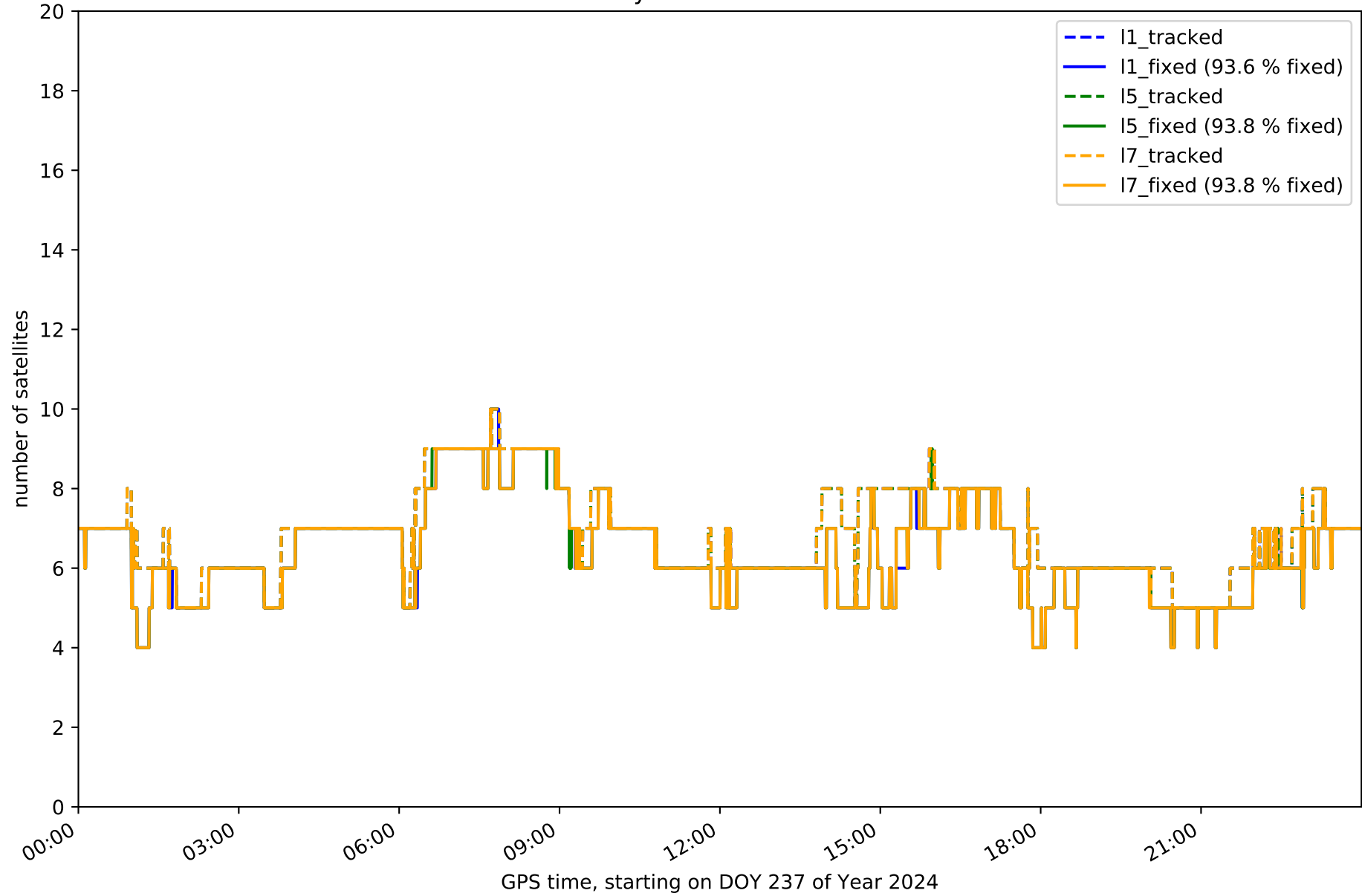
Network NT15 - only GLONASS with threshold set to 0.3



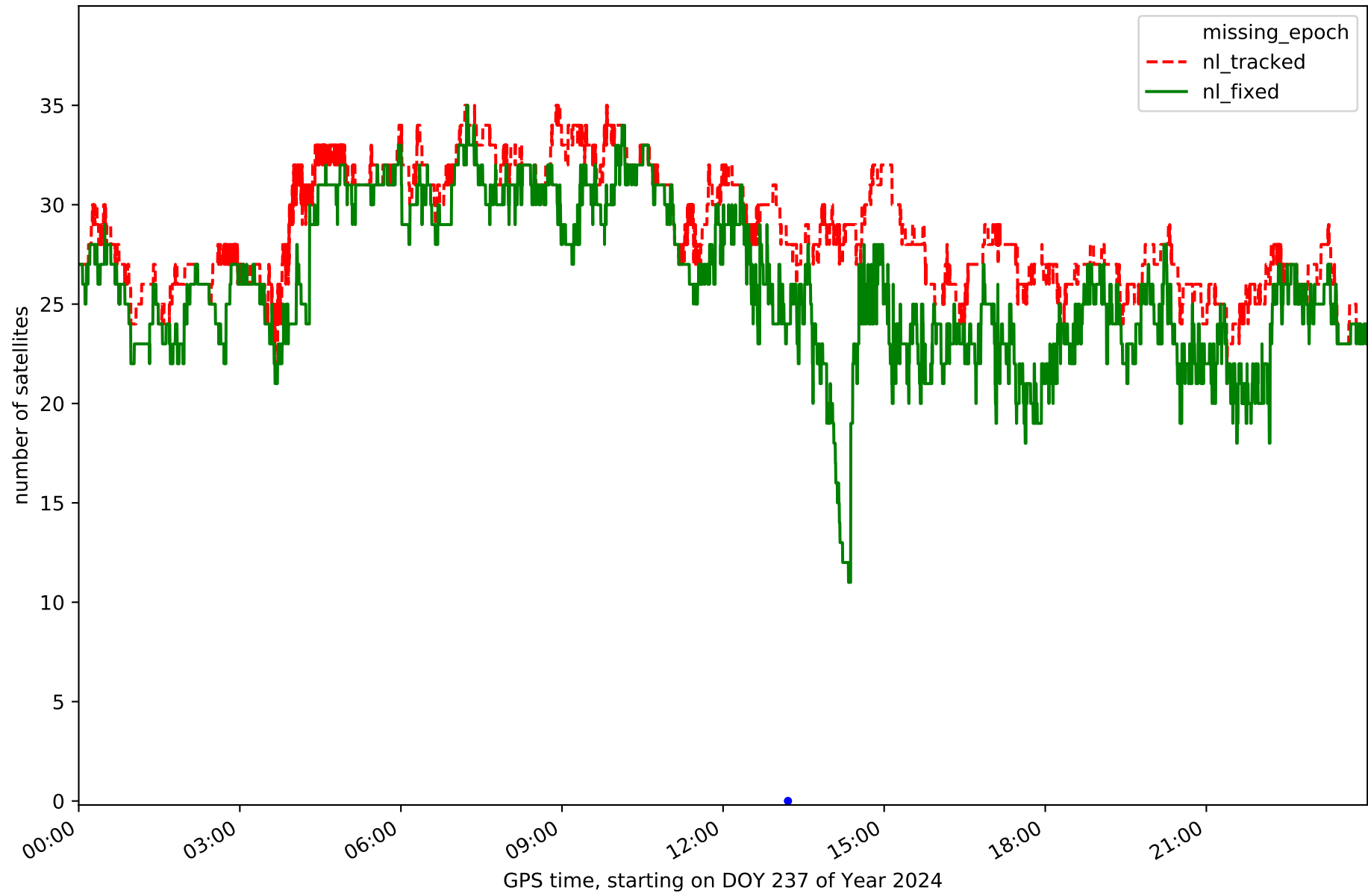
Network NT15 - only BDS with threshold set to 0.3



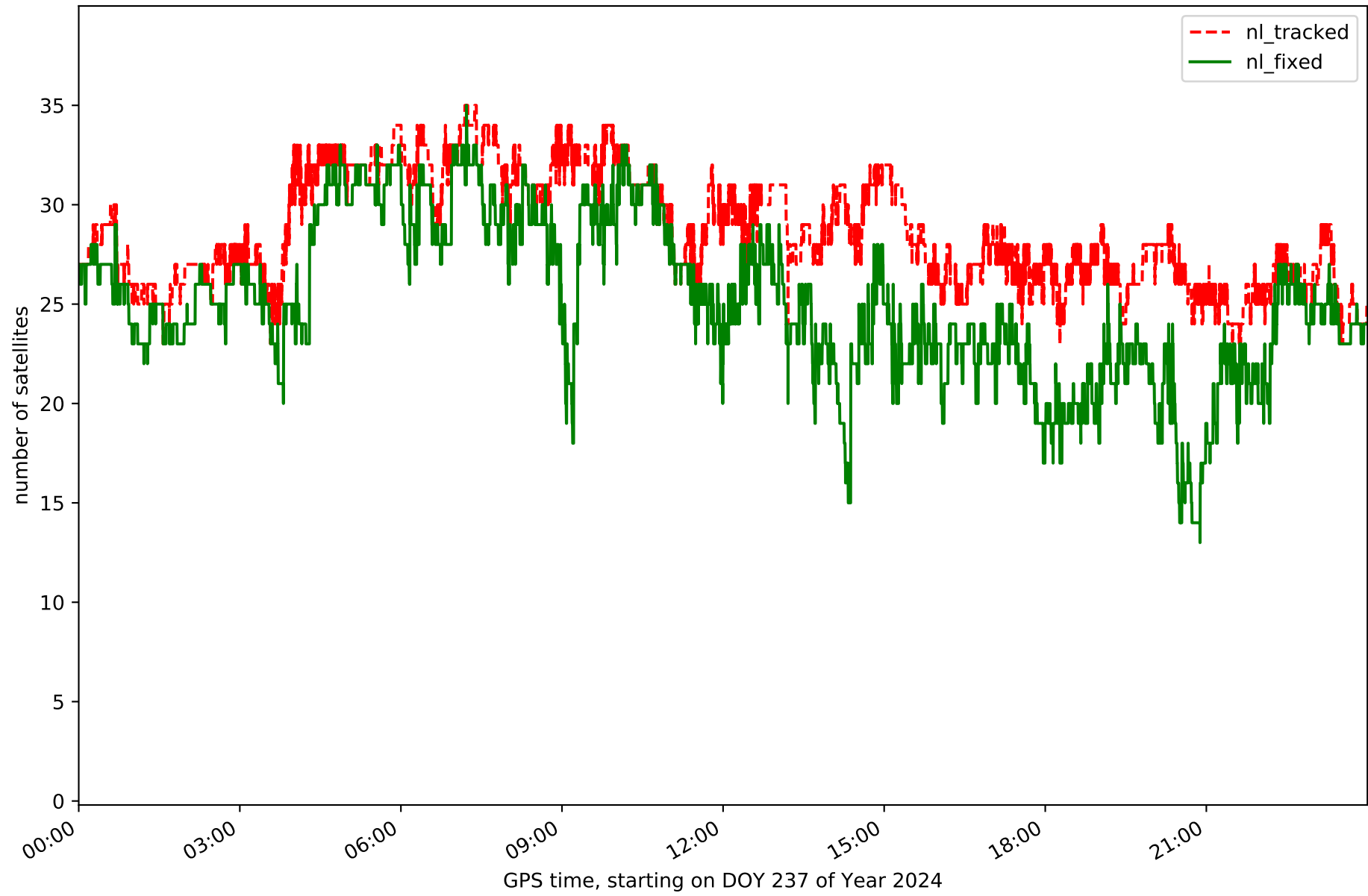
Network NT15 - only Galileo with threshold set to 0.3



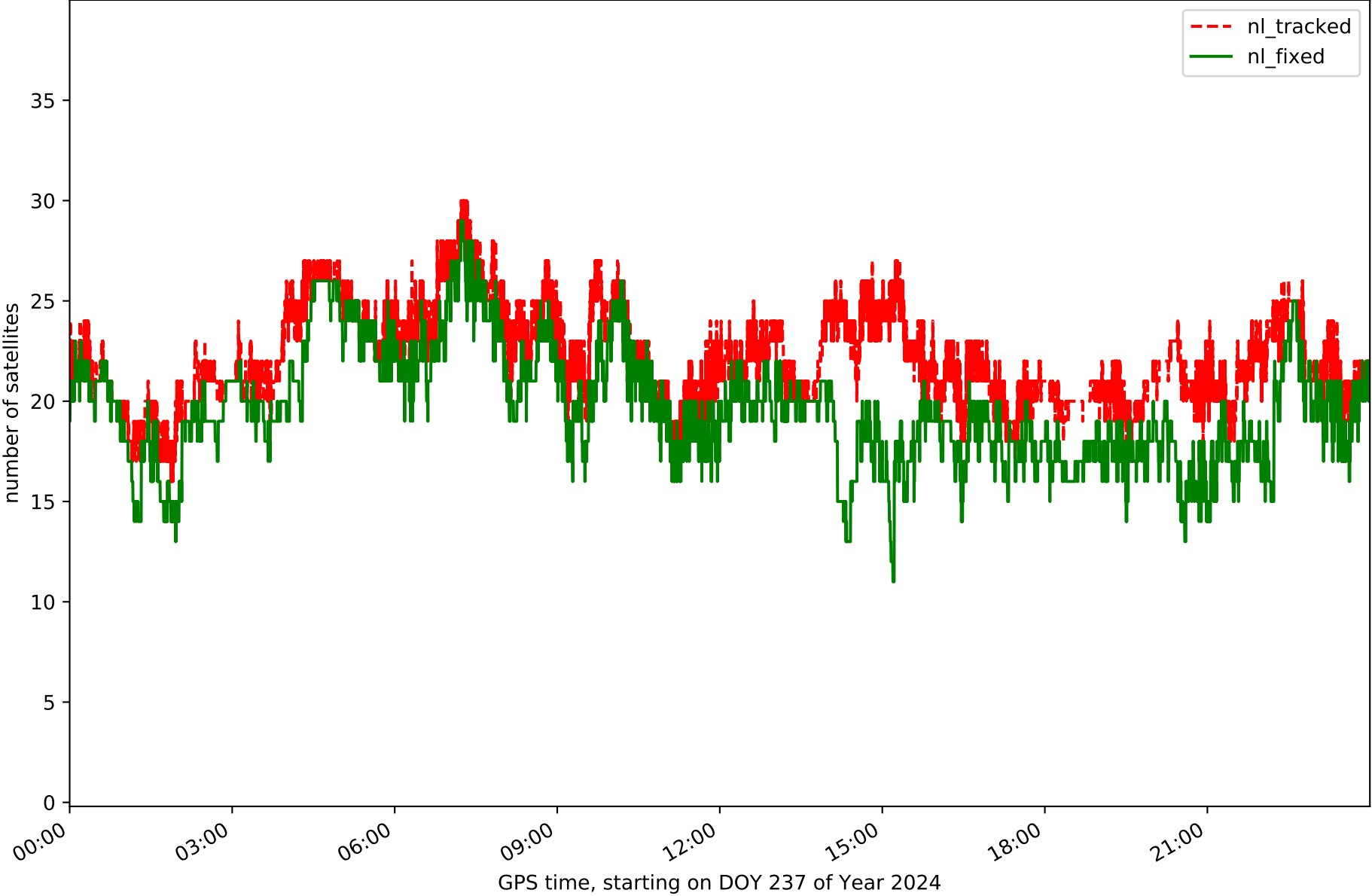
Station ACIN in network NT15



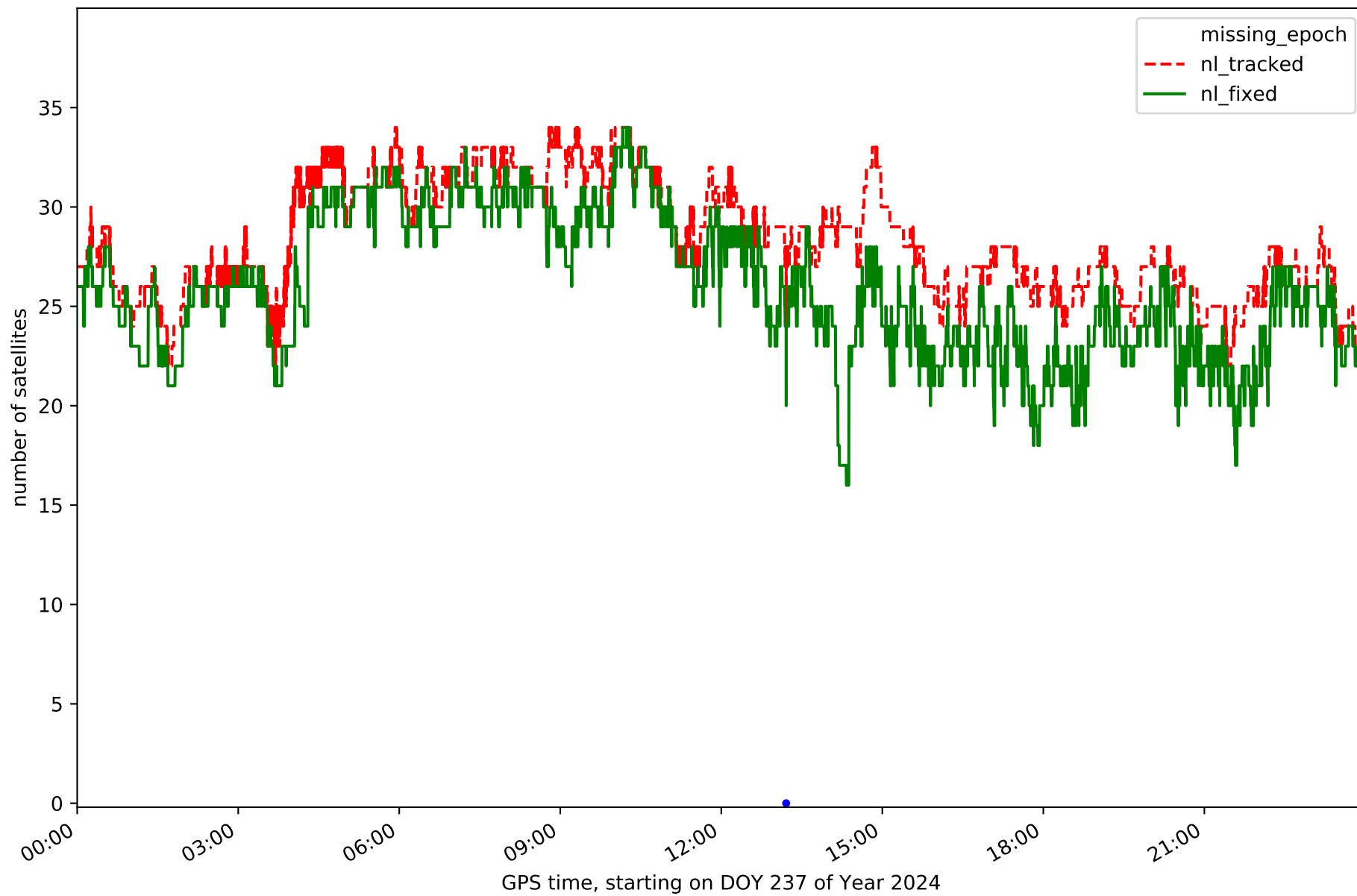
Station AJAL in network NT15



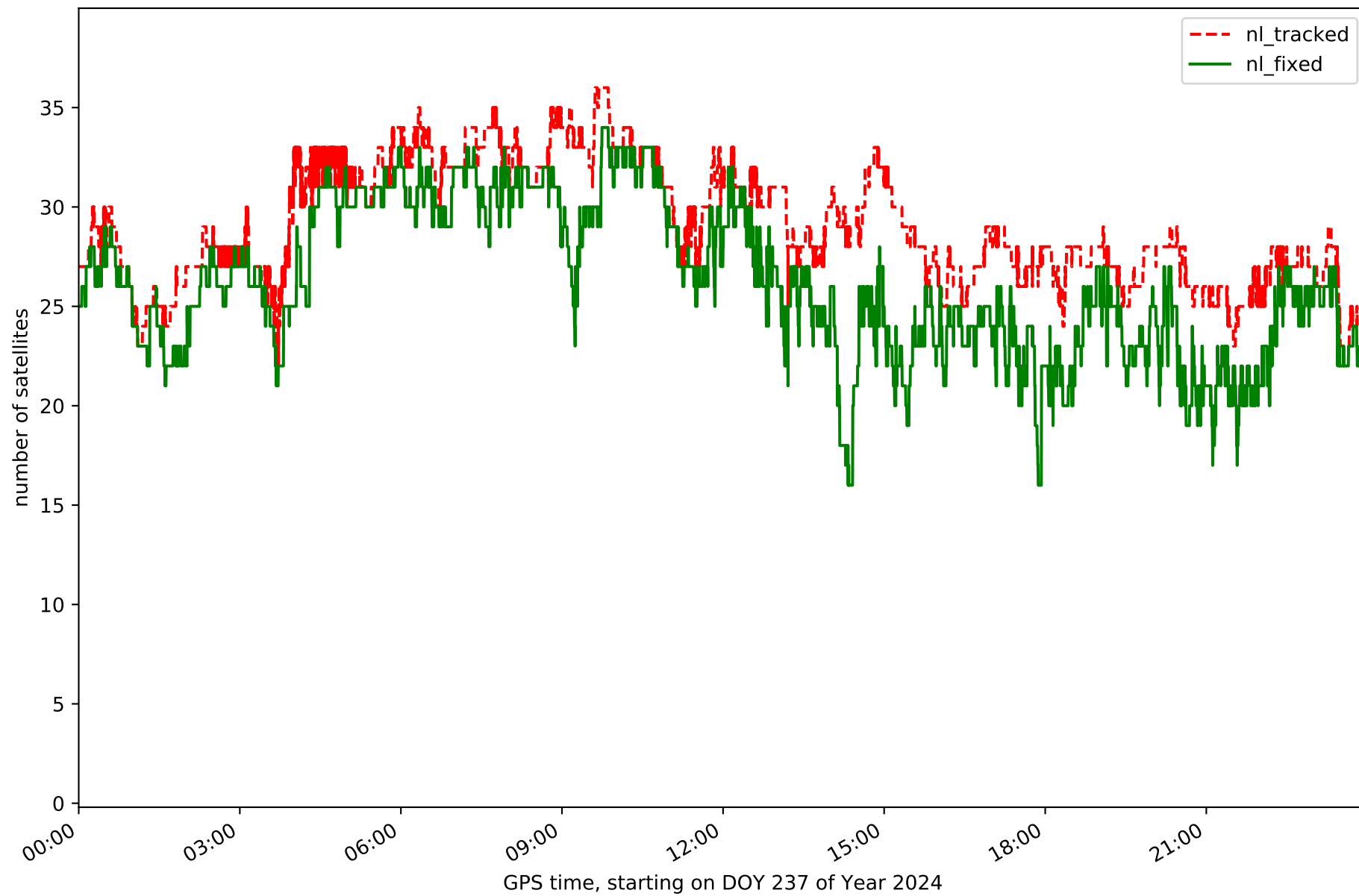
Station ALC1 in network NT15



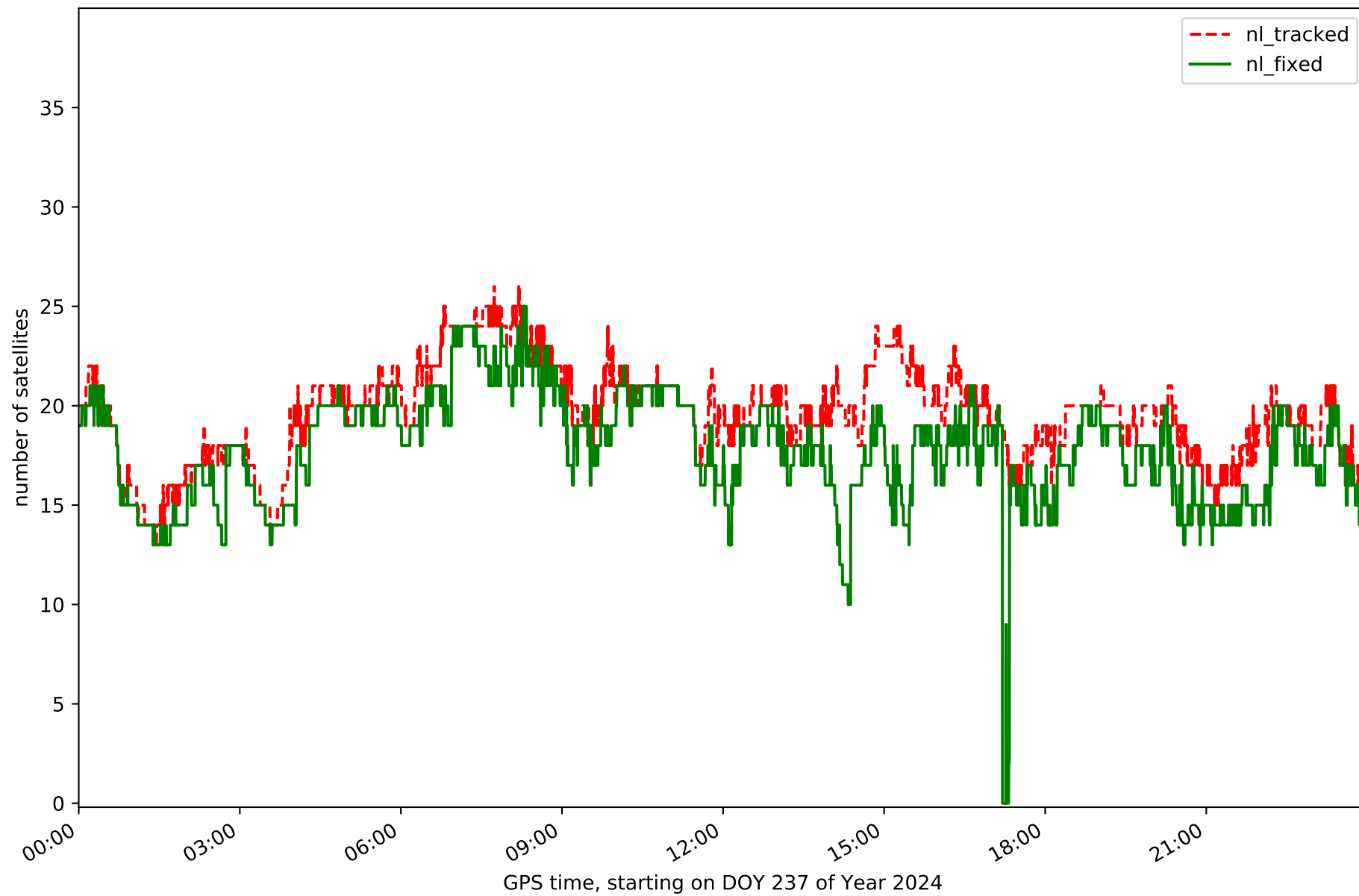
Station ALIA in network NT15



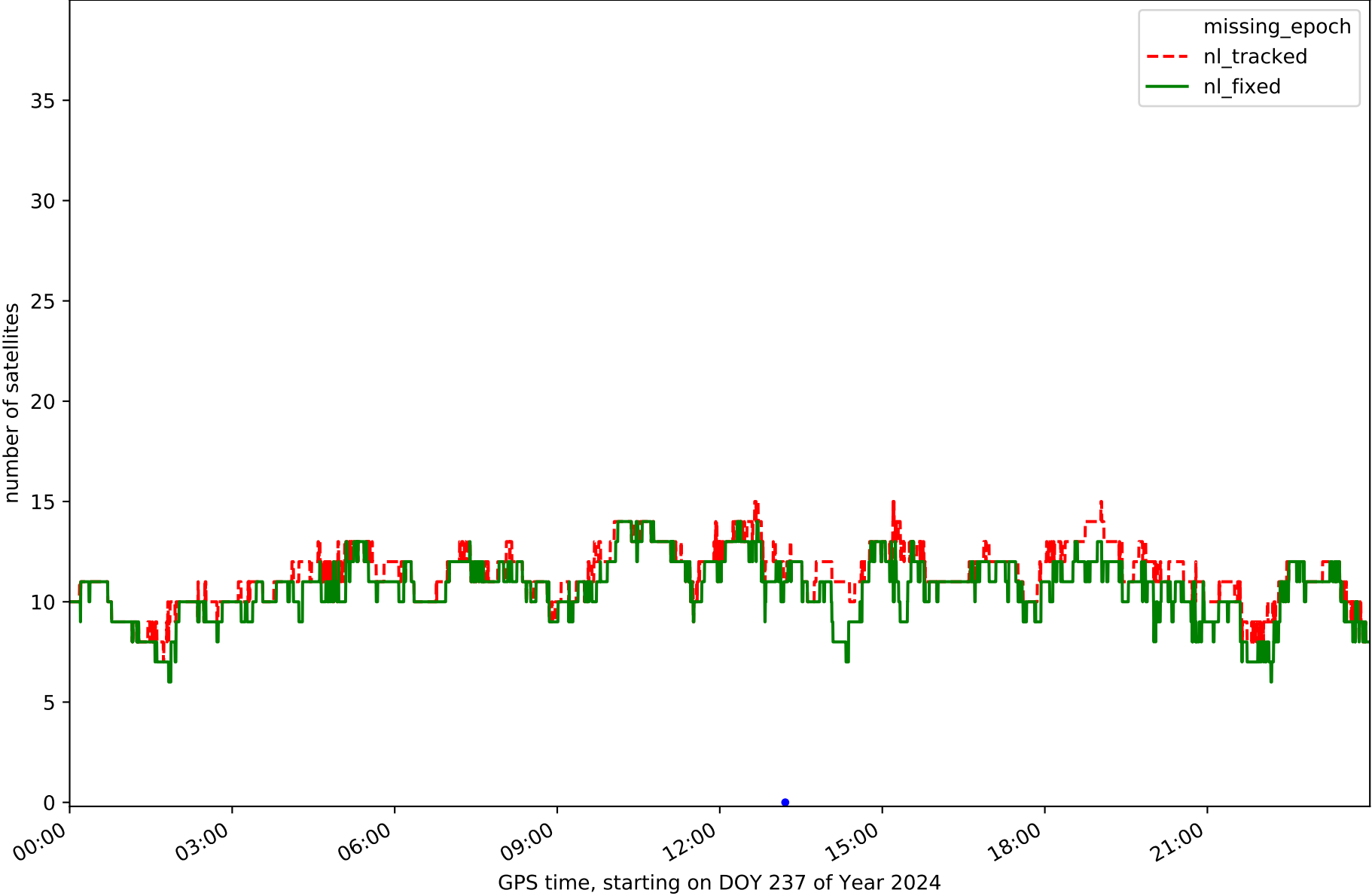
Station BERG in network NT15



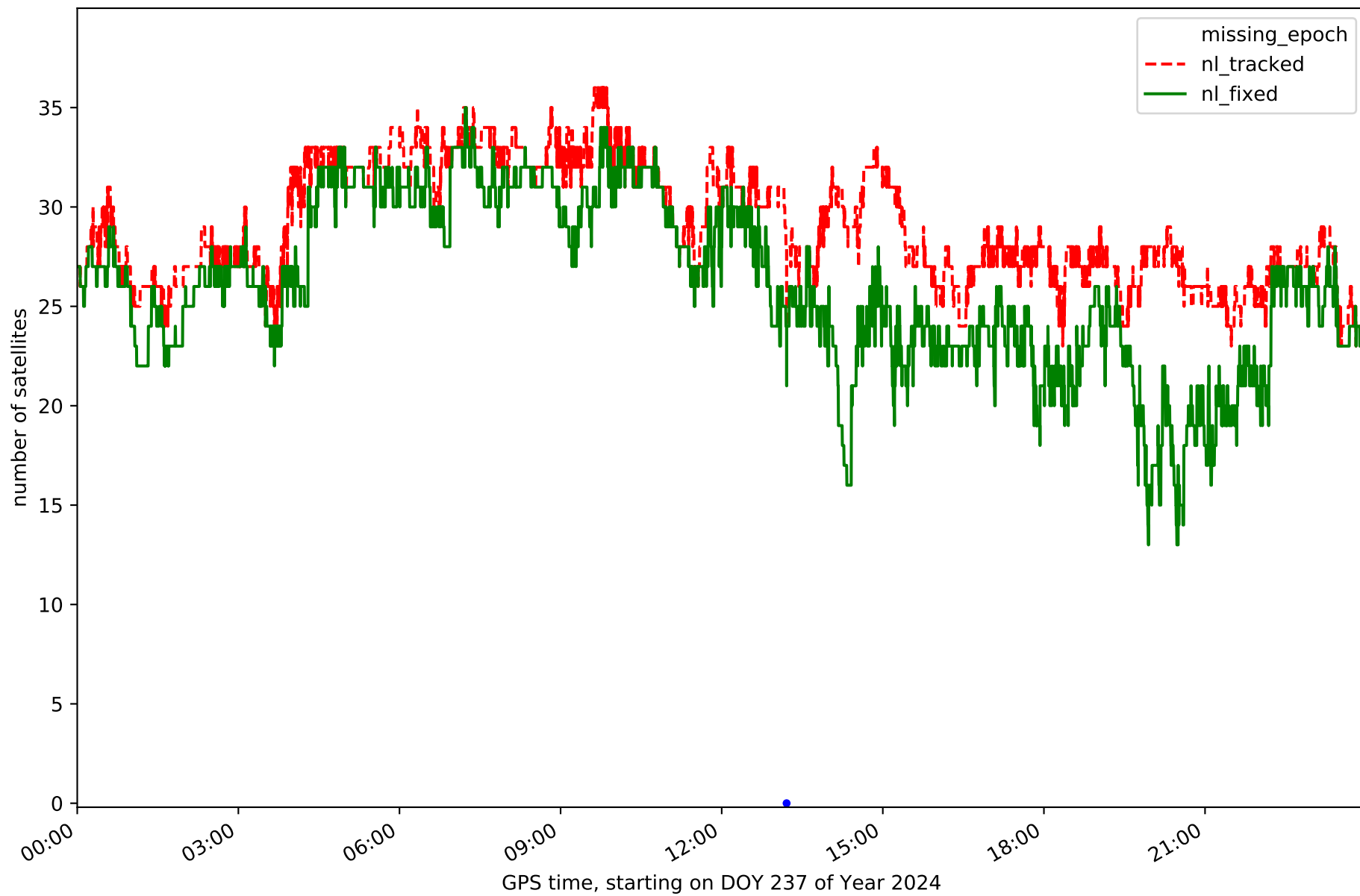
Station MOLI in network NT15



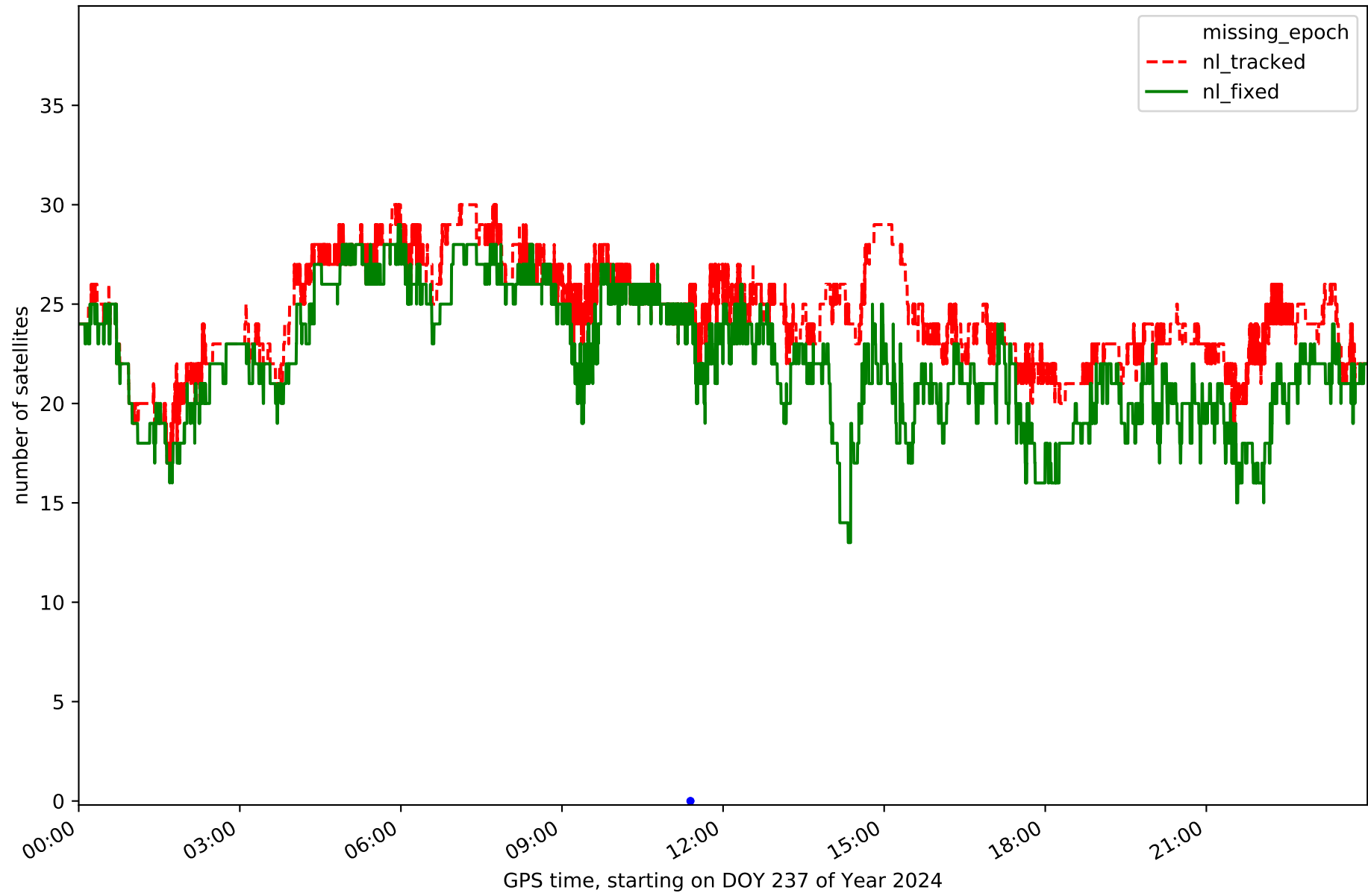
Station MUNI in network NT15



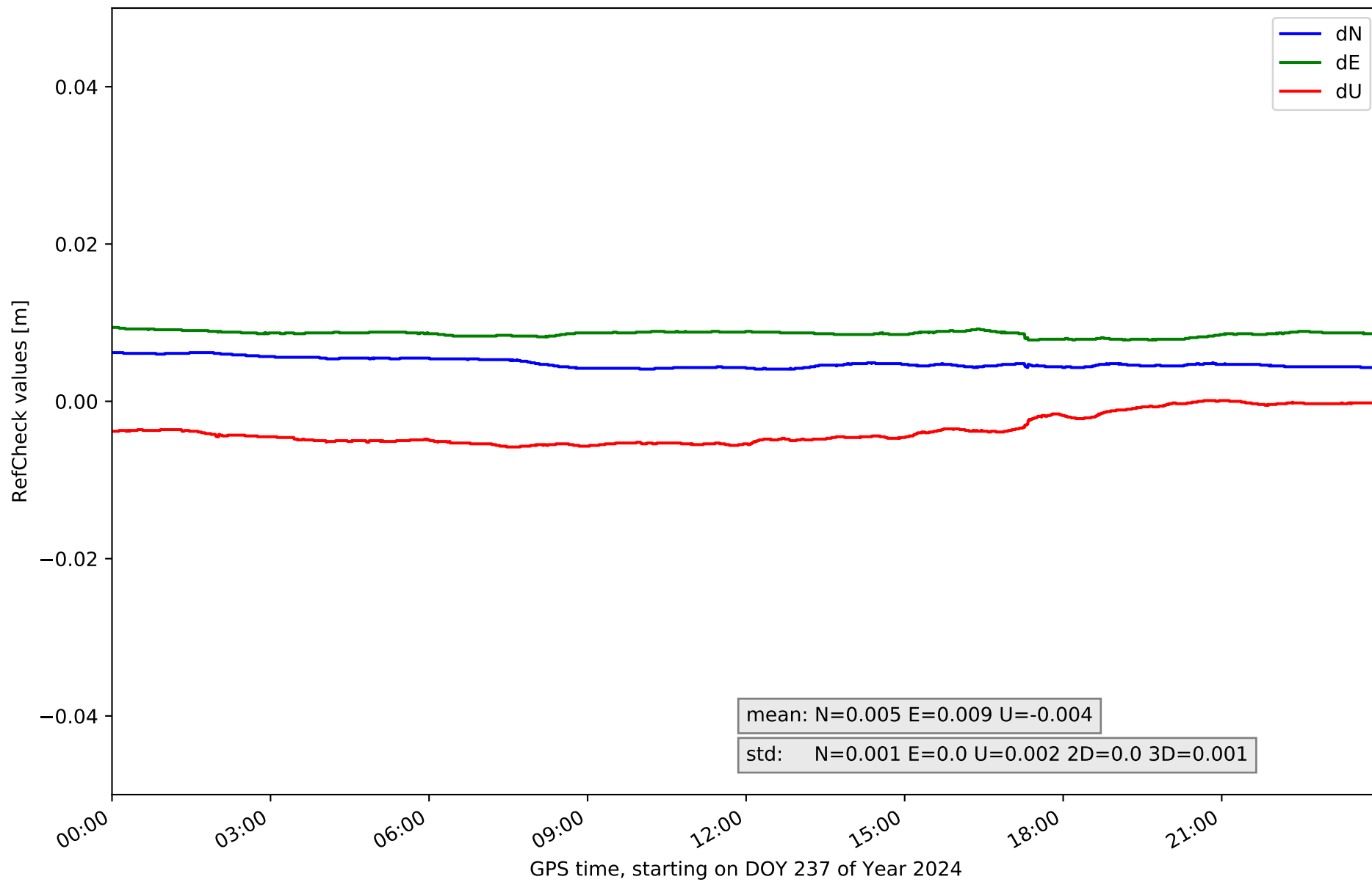
Station QNTO in network NT15



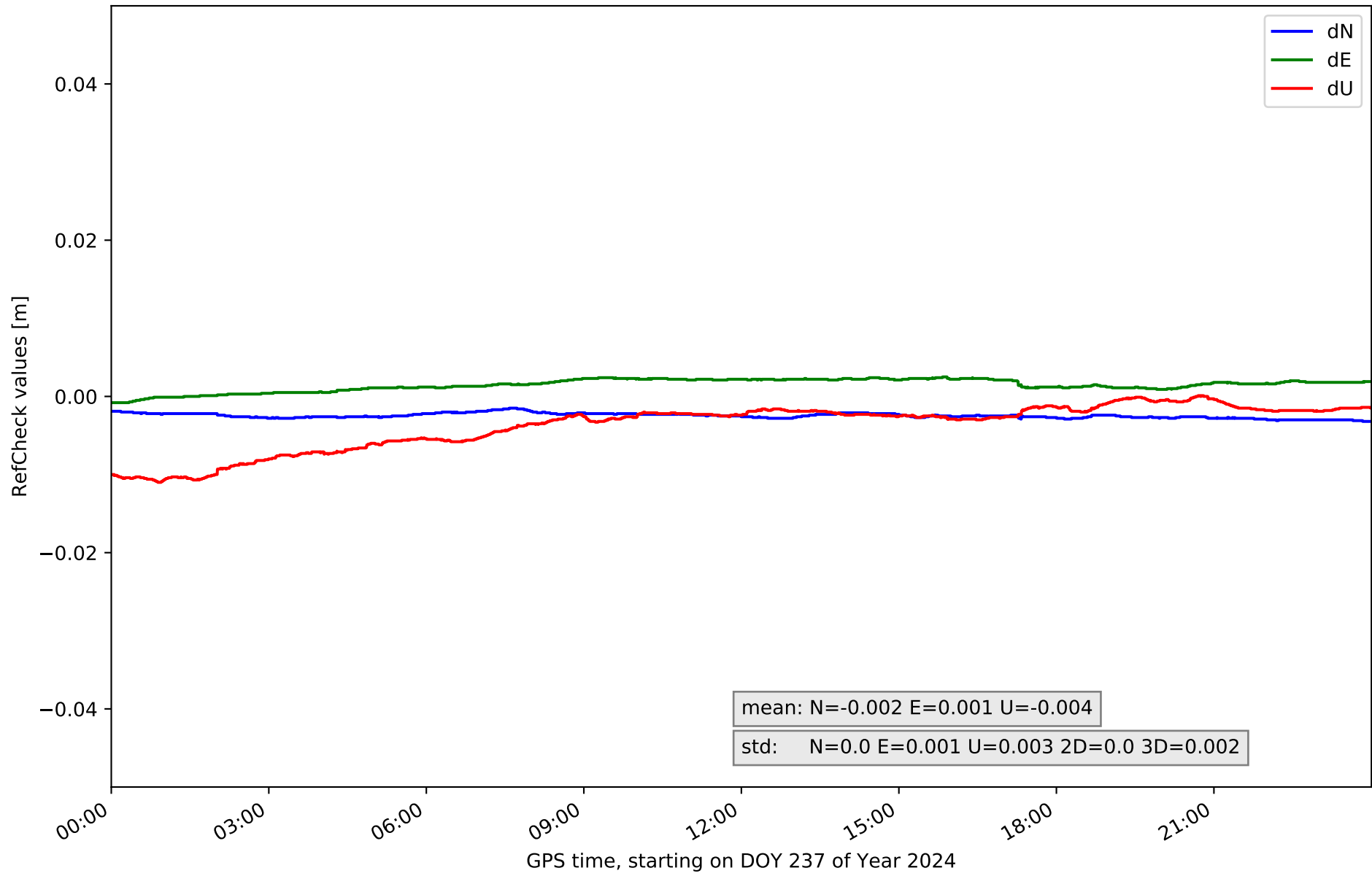
Station UTI1 in network NT15



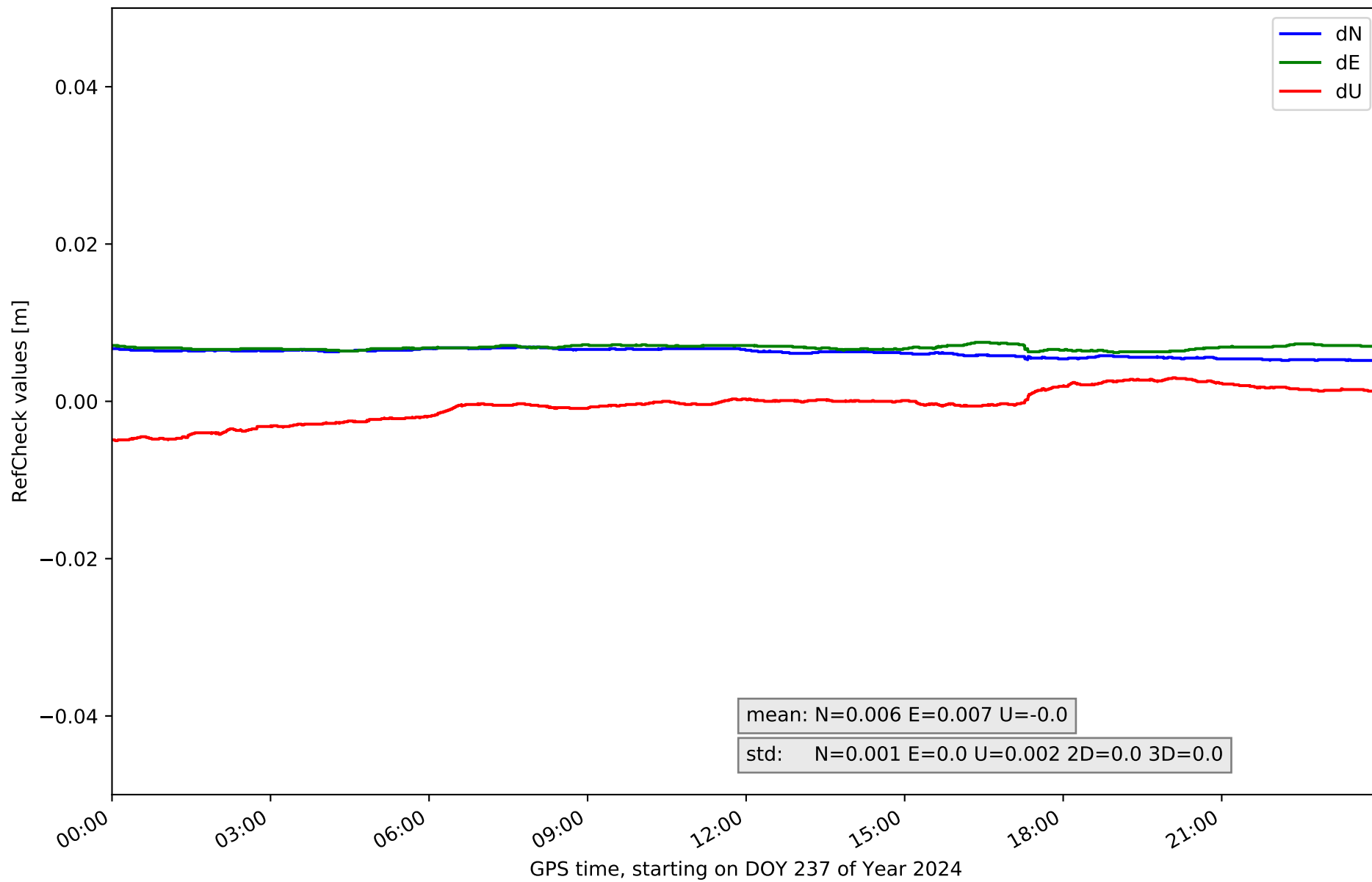
RefCheck for station ACIN in network NT15



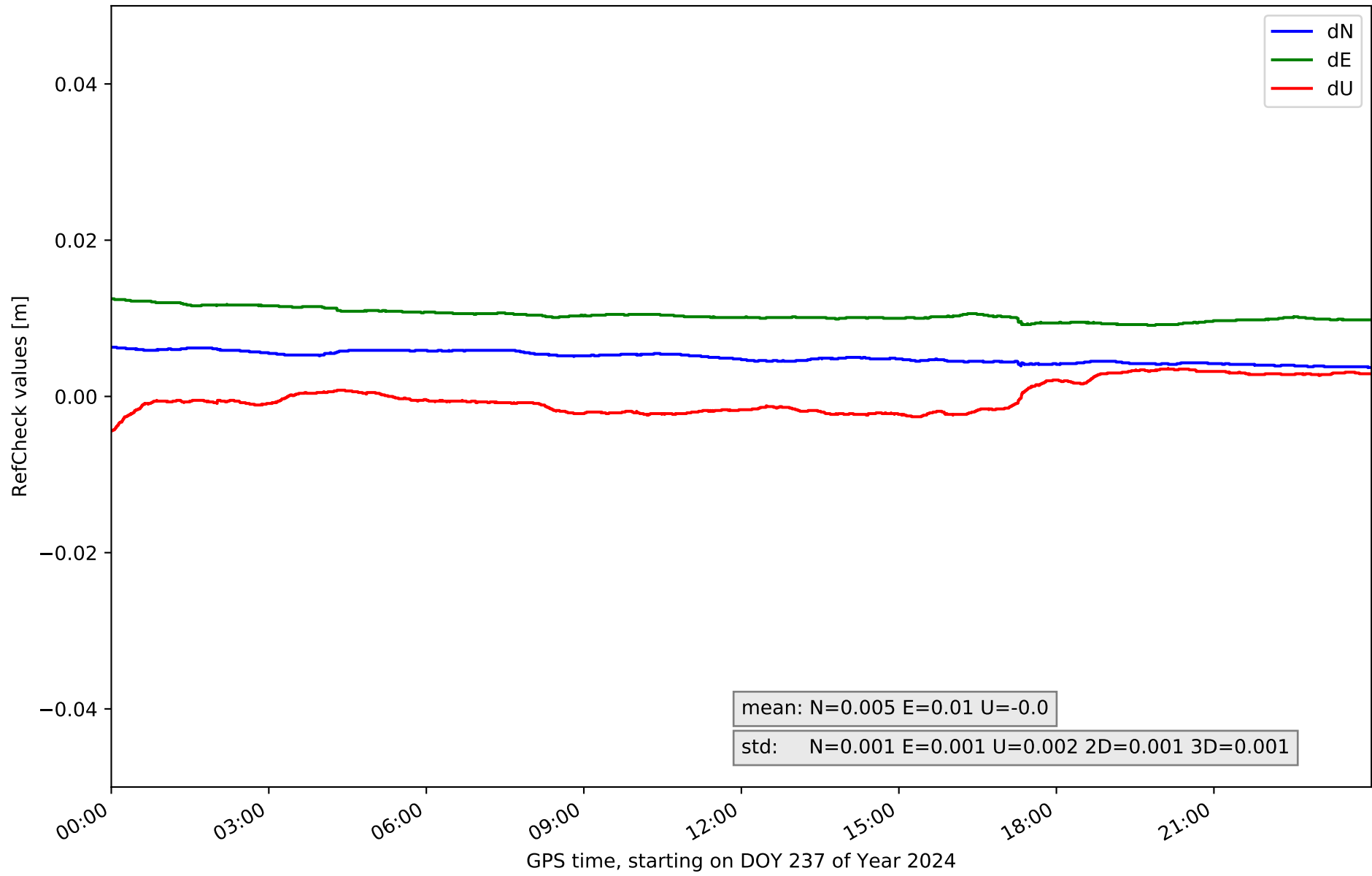
RefCheck for station AJAL in network NT15



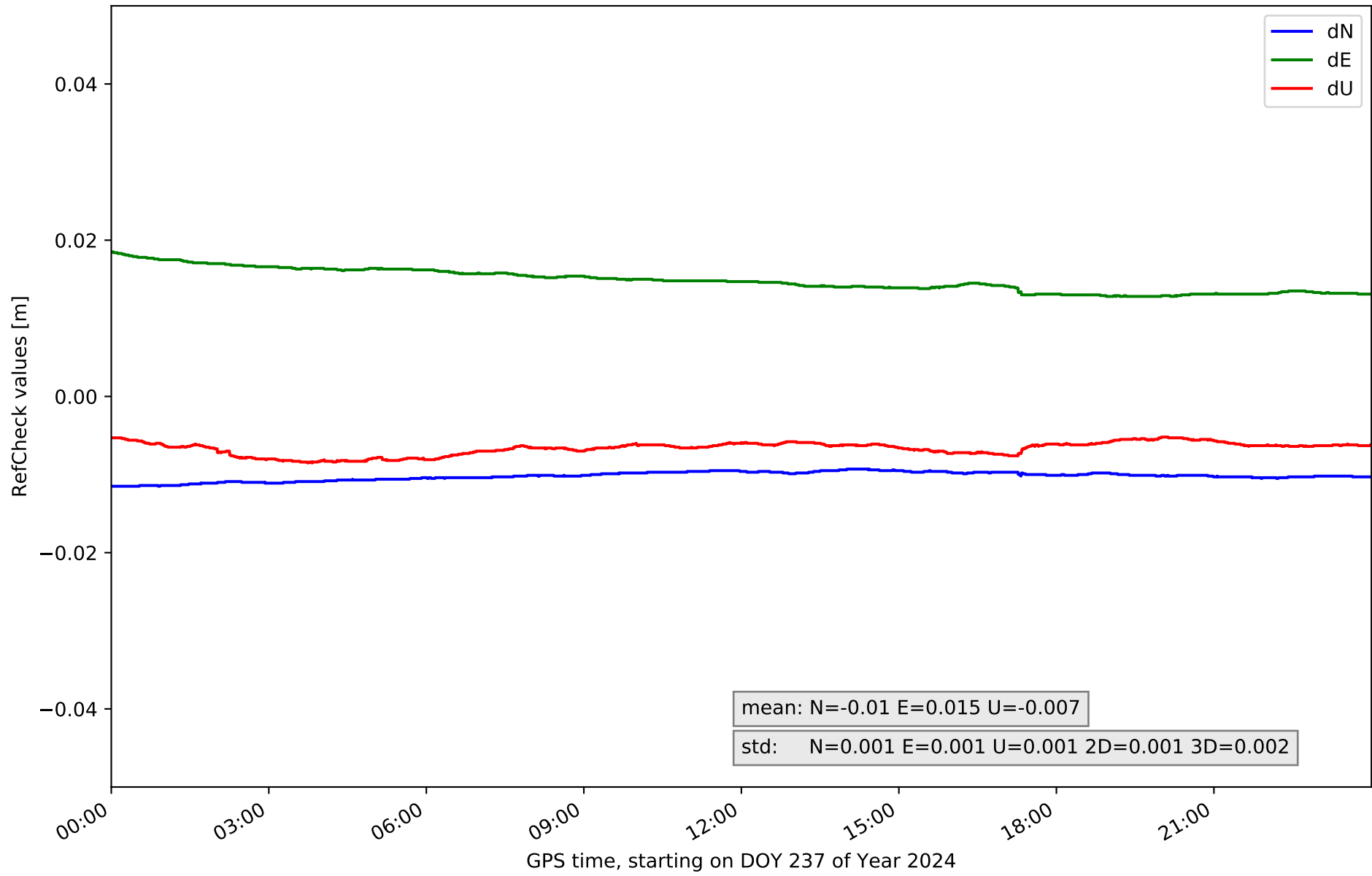
RefCheck for station ALC1 in network NT15



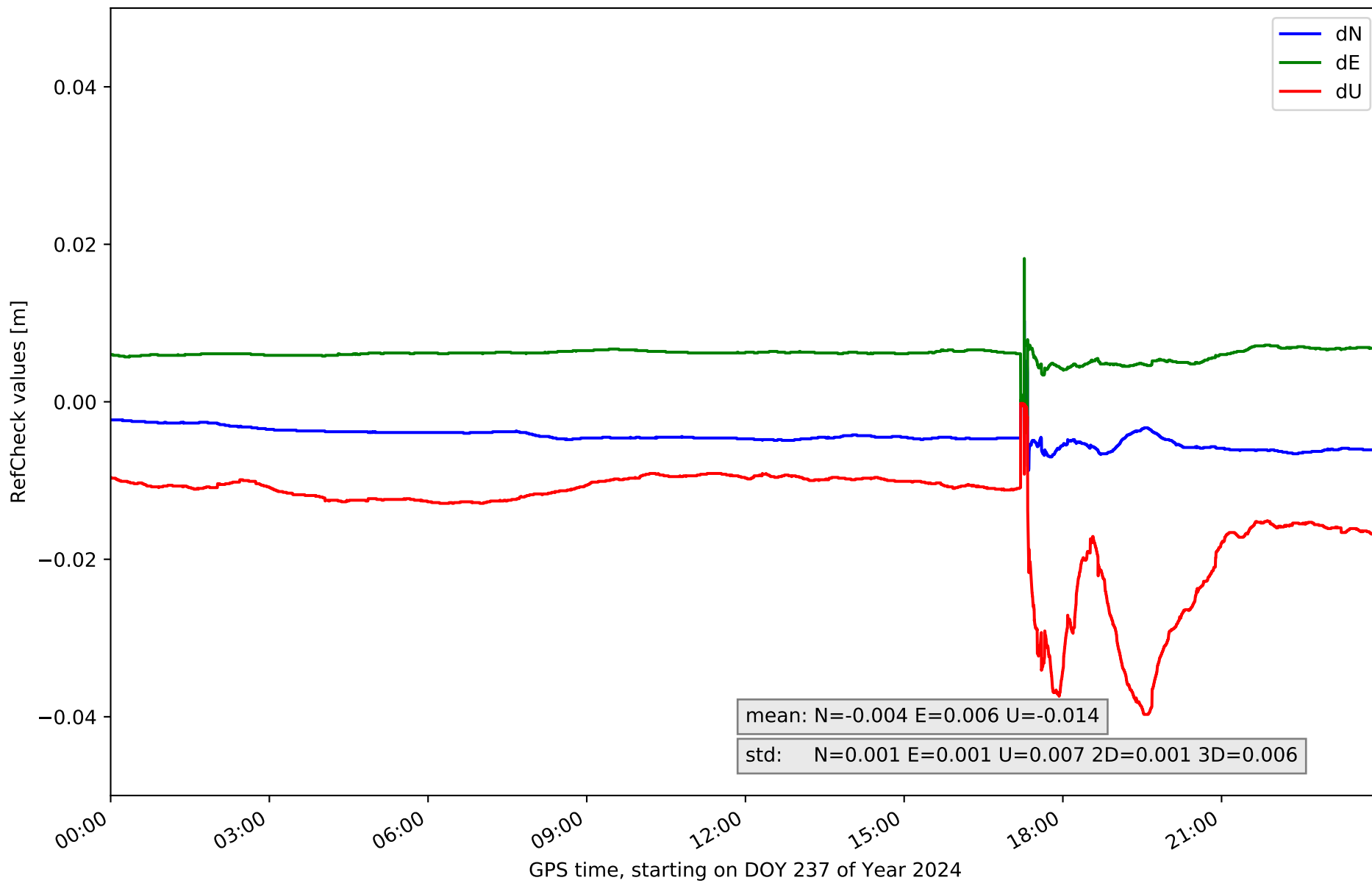
RefCheck for station ALIA in network NT15



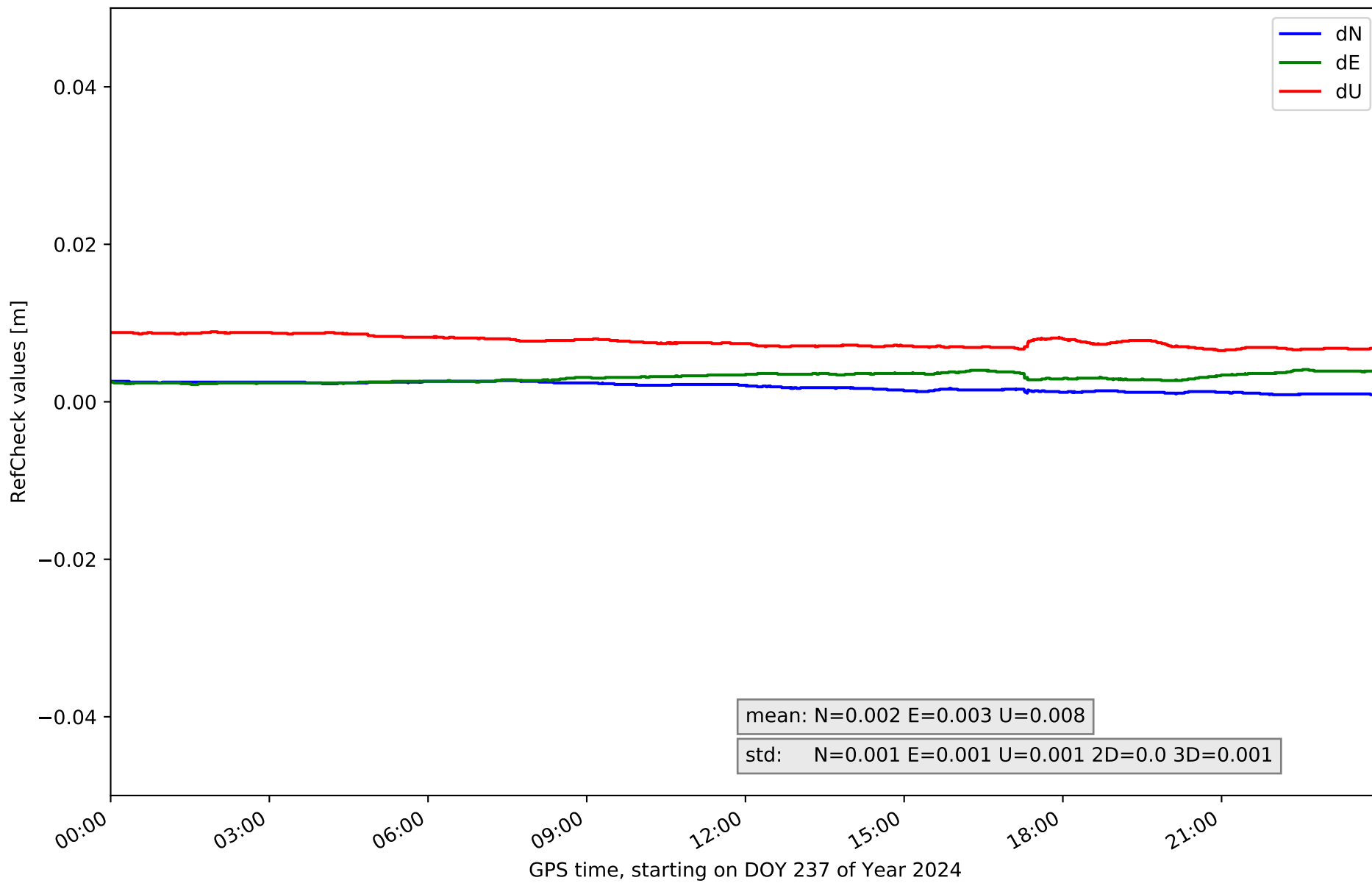
RefCheck for station BERG in network NT15



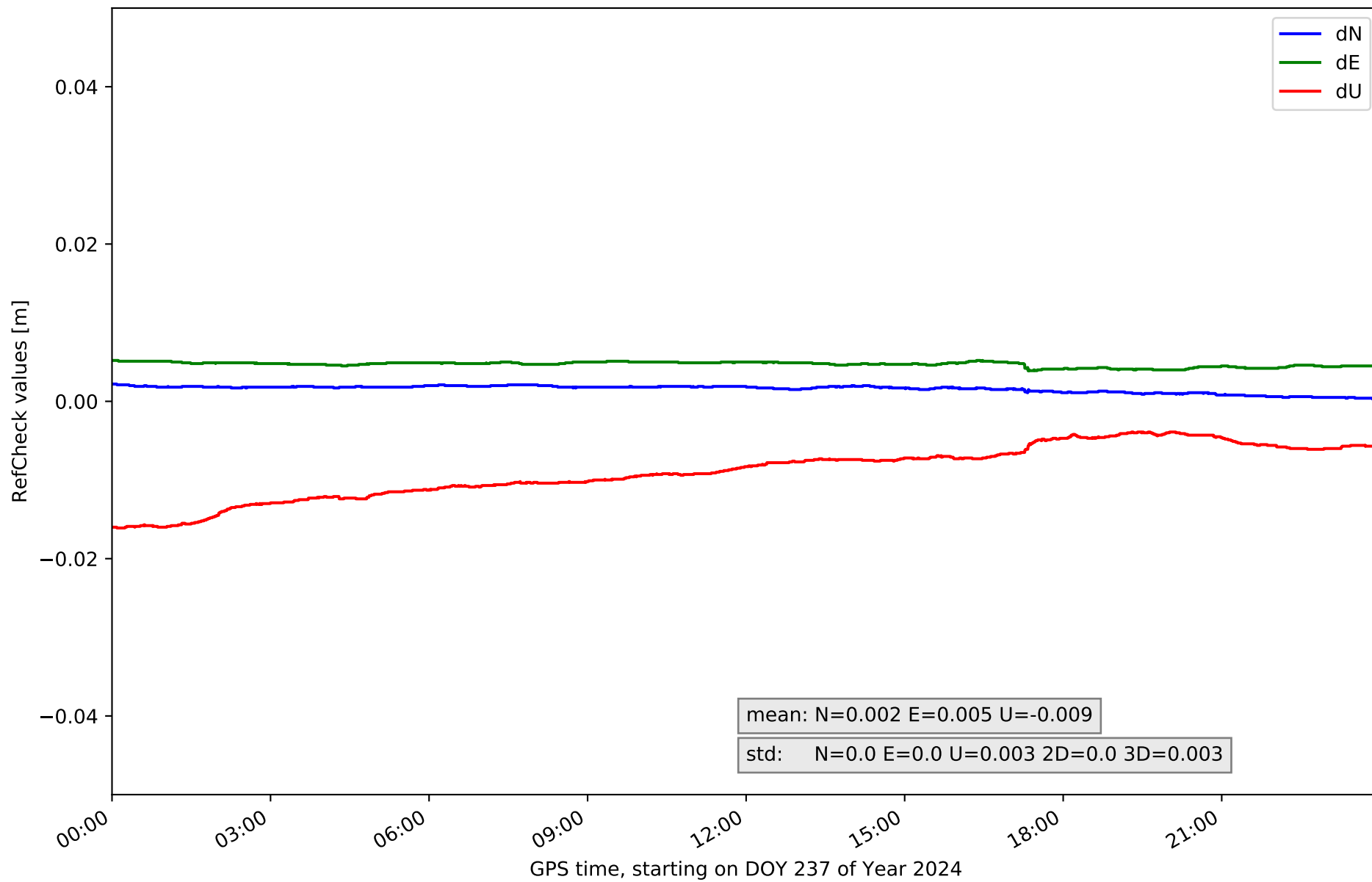
RefCheck for station MOLI in network NT15



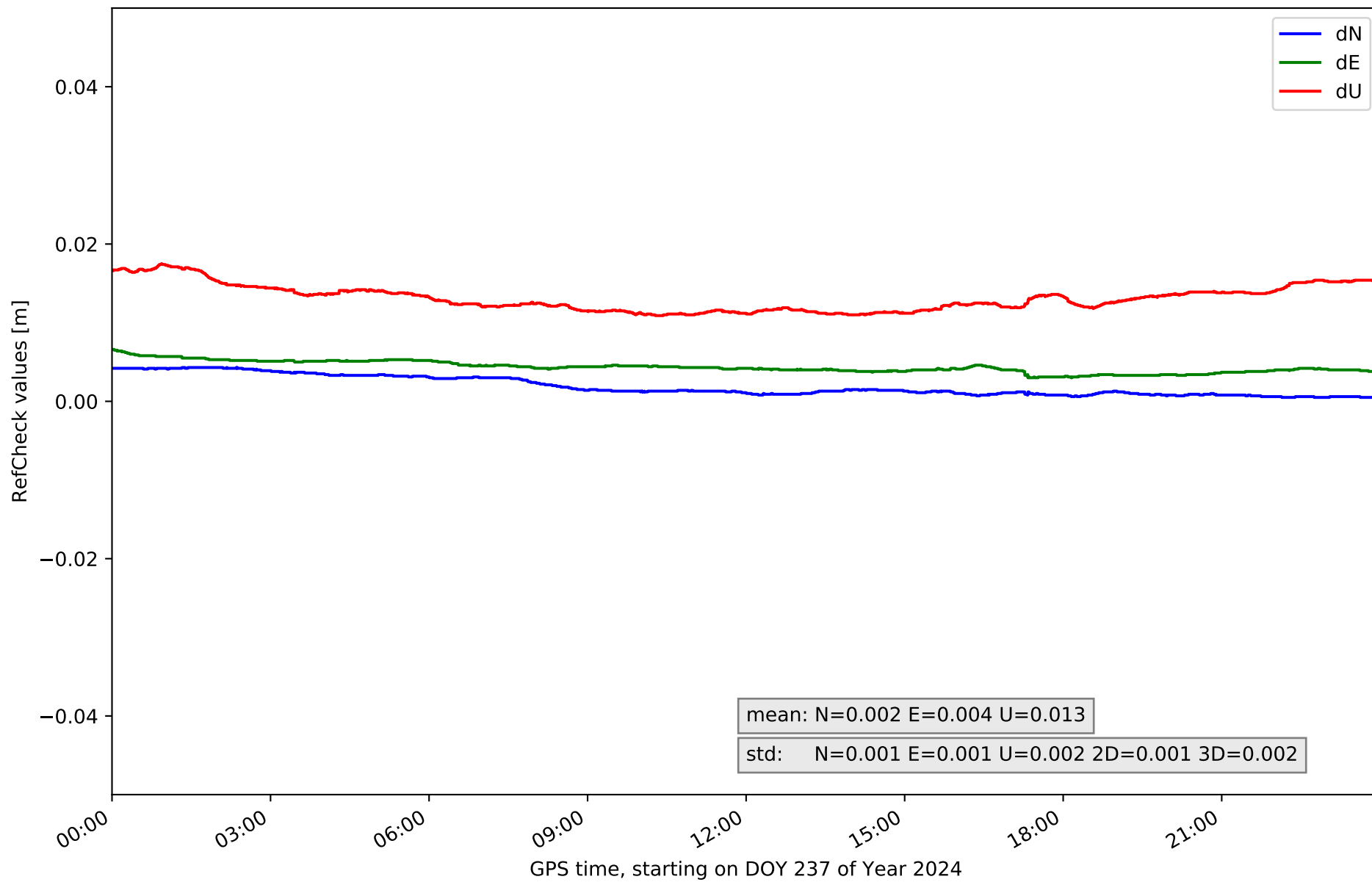
RefCheck for station MUNI in network NT15



RefCheck for station QNTO in network NT15



RefCheck for station UTI1 in network NT15



RefCheck values for network NT15

Station	Nmin	Nmax	Nstd	Emin	Emax	Estd	Umin	Umax	Ustd	std2D	std3D	#2D > 0.01	% 2D > 0.01	#3D > 0.02	% 3D > 0.02
ACIN	0.004	0.006	0.001	0.008	0.009	0.0	-0.006	0.0	0.002	0.0	0.001	8570	29.8	0	0.0
AJAL	-0.003	-0.002	0.0	-0.001	0.003	0.001	-0.011	0.0	0.003	0.0	0.002	0	0.0	0	0.0
ALC1	0.005	0.007	0.001	0.006	0.007	0.0	-0.005	0.003	0.002	0.0	0.0	0	0.0	0	0.0
ALIA	0.004	0.006	0.001	0.009	0.013	0.001	-0.004	0.004	0.002	0.001	0.001	28804	100.0	0	0.0
BERG	-0.011	-0.009	0.001	0.013	0.018	0.001	-0.009	-0.005	0.001	0.001	0.002	28804	100.0	9049	31.4
MOLI	-0.009	0.01	0.001	-0.004	0.018	0.001	-0.04	-0.0	0.007	0.001	0.006	33	0.1	4258	14.8
MUNI	0.001	0.003	0.001	0.002	0.004	0.001	0.006	0.009	0.001	0.0	0.001	0	0.0	0	0.0
QNT0	0.0	0.002	0.0	0.004	0.005	0.0	-0.016	-0.004	0.003	0.0	0.003	0	0.0	0	0.0
UT11	0.001	0.004	0.001	0.003	0.007	0.001	0.011	0.018	0.002	0.001	0.002	0	0.0	0	0.0
Mean	-0.001	0.003	0.001	0.004	0.009	0.001	-0.008	0.003	0.003	0.0	0.002	7356.8	25.5	1478.6	5.1
Min/Max	-0.011	0.01	0.001	-0.004	0.018	0.001	-0.04	0.018	0.007	0.001	0.006	28804	100.0	9049	31.4

fixing statistic for network NT15

fixing percentage of	all GNSS	G	R	E	C
using threshold 0.3	91.4	92.1	92.6	93.6	88.5
considering satellites with dual-frequency fixed	89.8	90.2	90.4	91.6	86.8
considering all signals separately	89.9	90.1	90.4	91.9	86.4