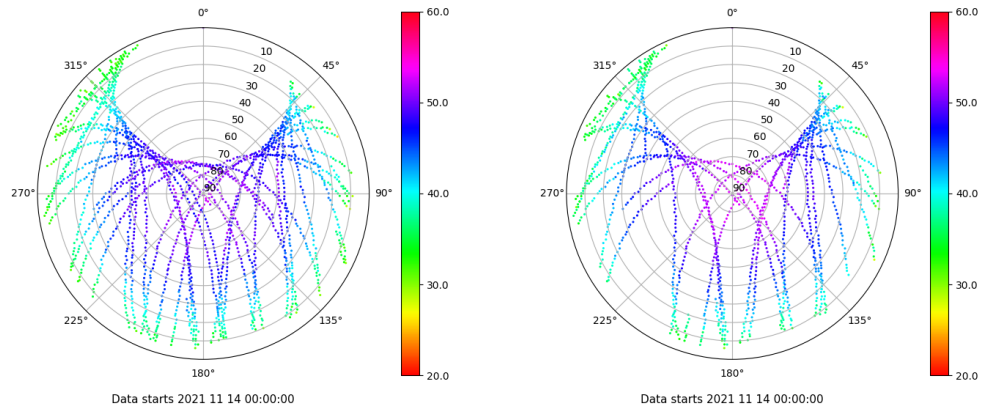


# Control de calidad GNSS GPS diario

Estacion: VEG1  
 Fecha: 2021 11 14  
 Dia del año: 318

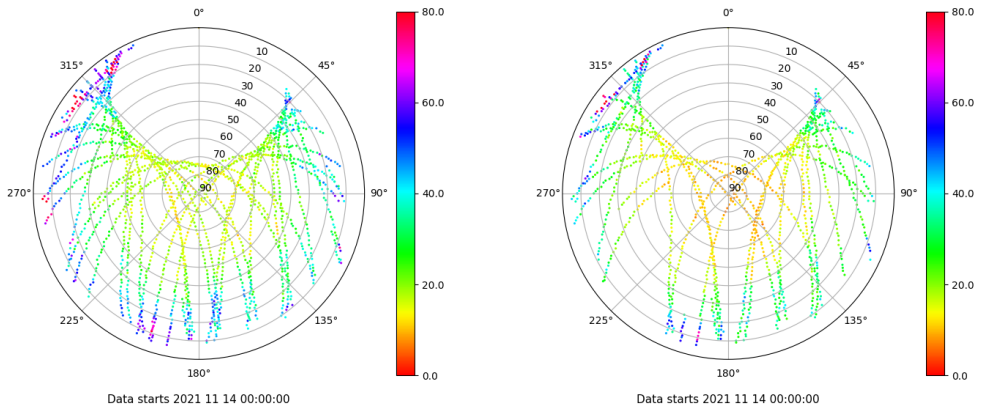
## Señal-Ruido GPS L1 y L2

Skyplot for station VEG1. Signal to Noise S1C Data file VEG100ESP\_R\_2021318.xtr Skyplot for station VEG1. Signal to Noise S2X Data file VEG100ESP\_R\_2021318.xtr



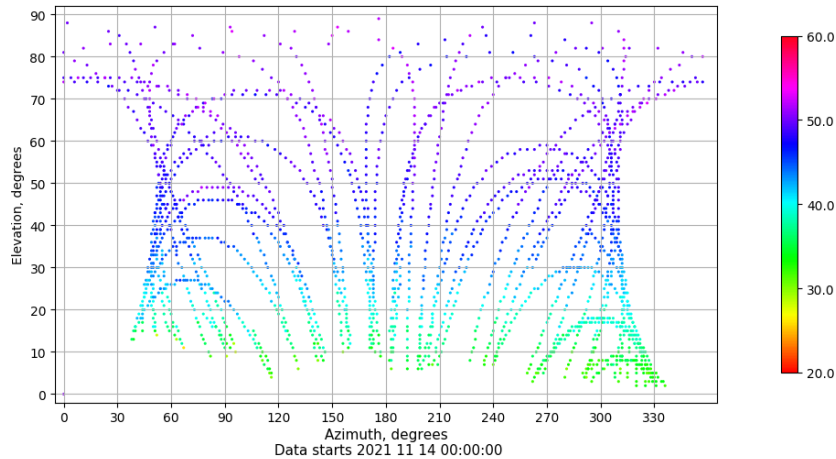
## Multipath GPS L1 y L2

Skyplot for station VEG1. Parameter M1C Data file VEG100ESP\_R\_2021318.xtr Skyplot for station VEG1. Parameter M2X Data file VEG100ESP\_R\_2021318.xtr



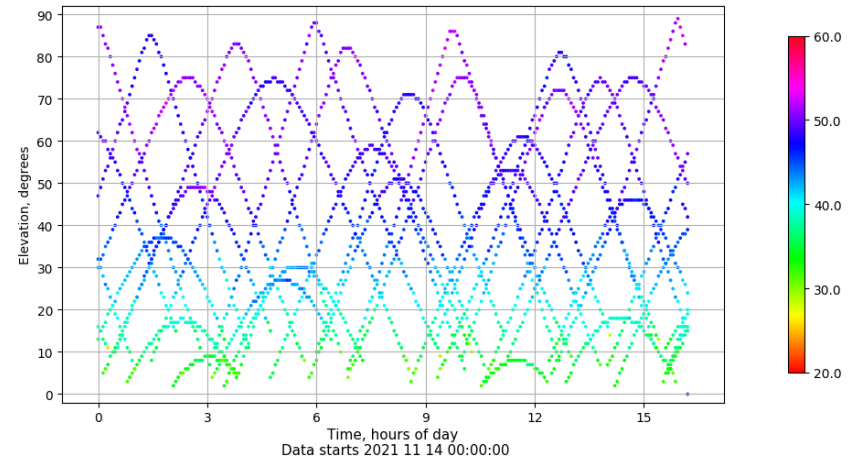
## Azimuth-Elevacion

Azimuth-elevation plot for station VEG1. Signal to Noise S1C Data file VEG100ESP\_R\_2021318.xtr



## Tiempo-Elevacion

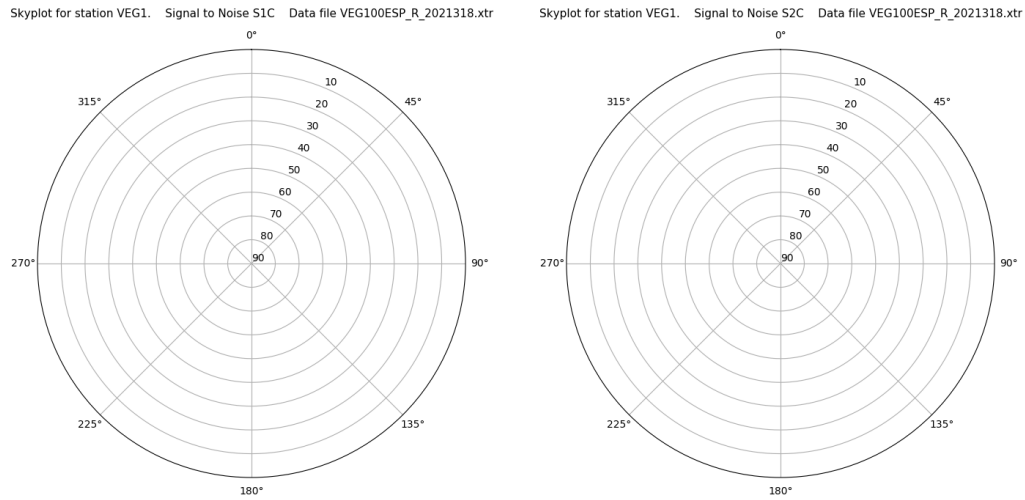
Time-elevation plot for station VEG1. Signal to Noise S1C Data file VEG100ESP\_R\_2021318.xtr



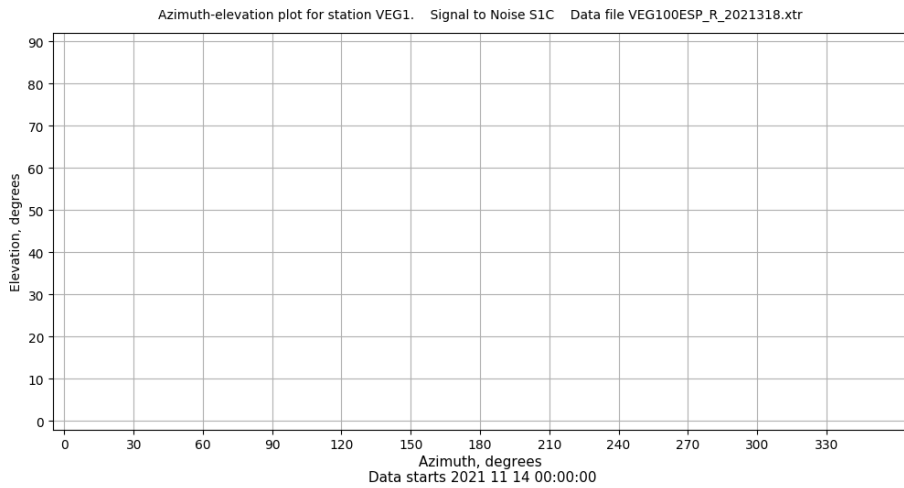
# Control de calidad GNSS GLO diario

Estacion: VEG1  
 Fecha: 2021 11 14  
 Dia del año: 318

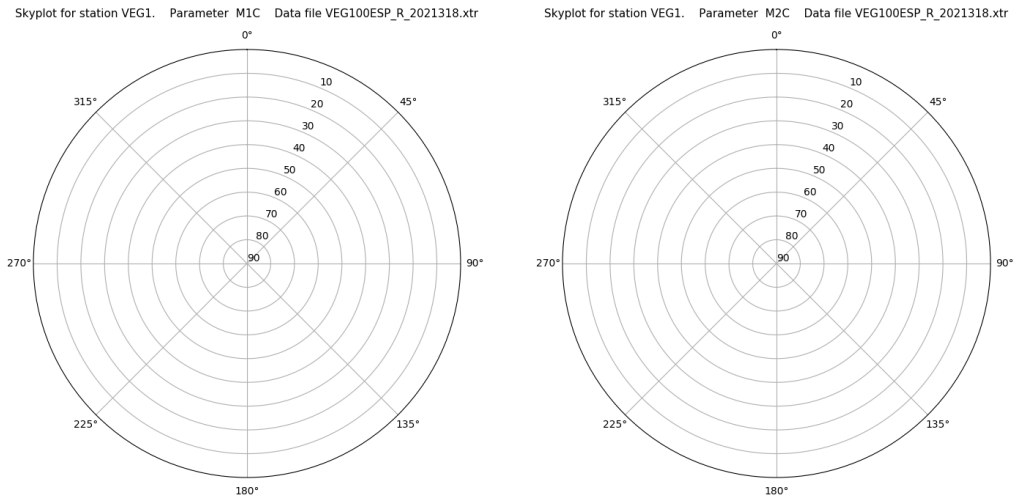
## Señal-Ruido GLO L1 y L2



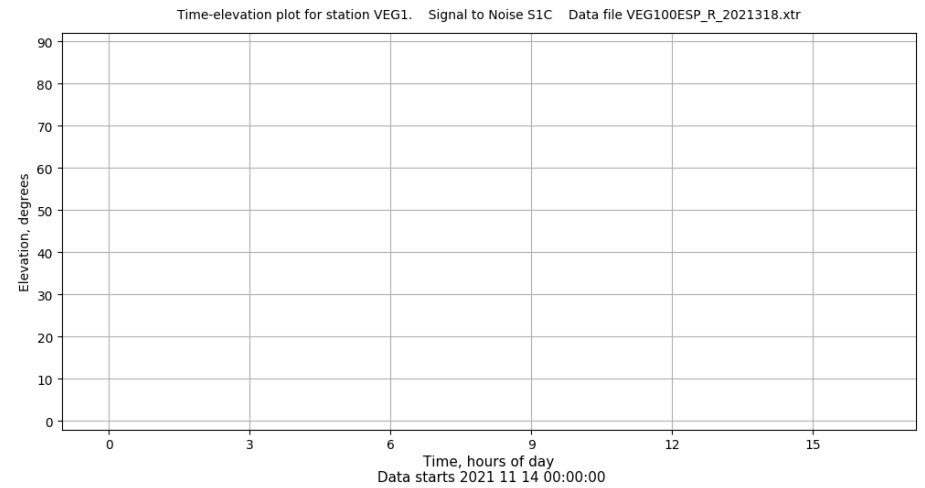
## Azimut-Elevacion



## Multipath GLO L1 y L2



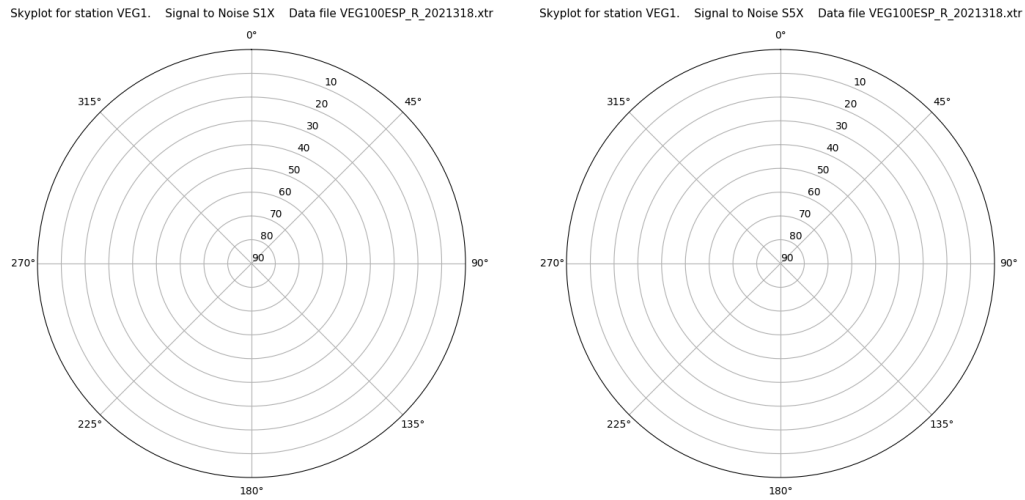
## Tiempo-Elevacion



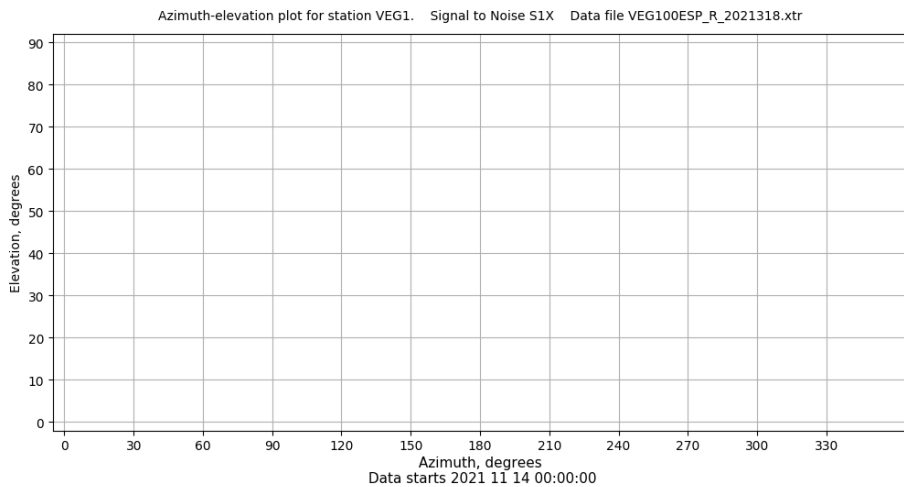
# Control de calidad GNSS GAL diario

Estacion: VEG1  
 Fecha: 2021 11 14  
 Dia del año: 318

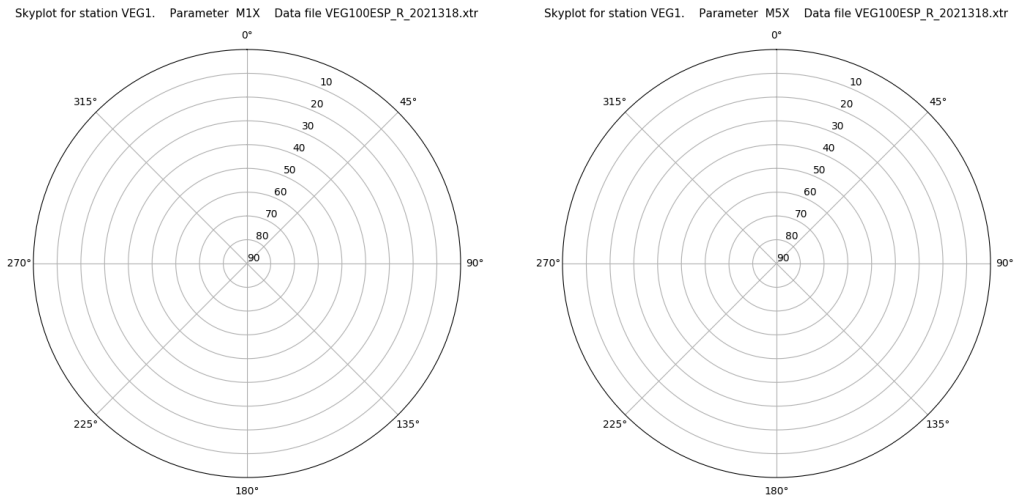
## Señal-Ruido GAL E1 y E5



## Azimut-Elevacion



## Multipath GAL E1 y E5



## Tiempo-Elevacion

