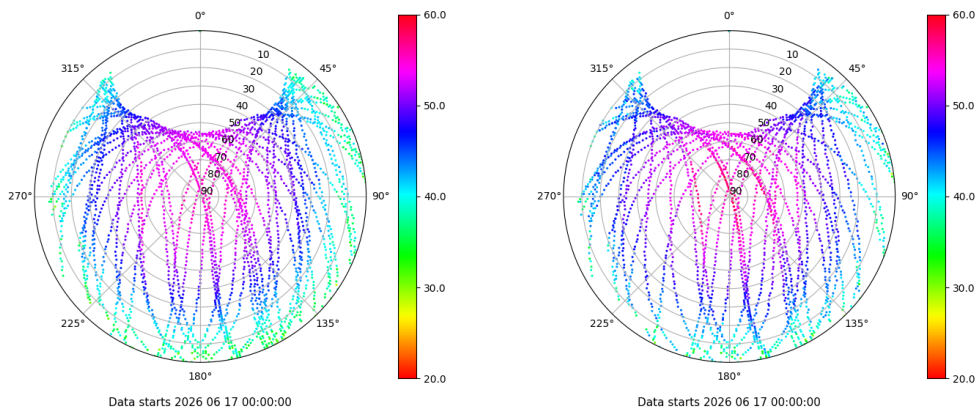


# Control de calidad GNSS GPS diario

Estacion: TN01  
 Fecha: 2026 06 17  
 Dia del año: 168

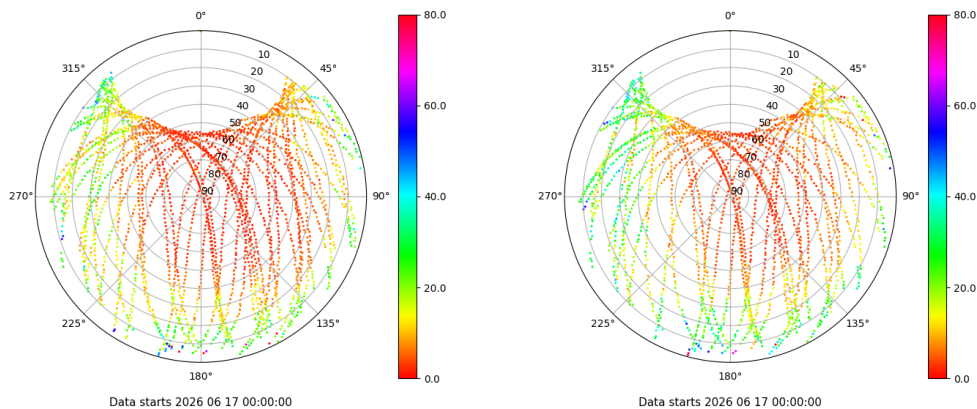
## Señal-Ruido GPS L1 y L2

Skyplot for station TN01. Signal to Noise S1C Data file TN0100ESP\_R\_2026168.xtr Skyplot for station TN01. Signal to Noise S2S Data file TN0100ESP\_R\_2026168.xtr



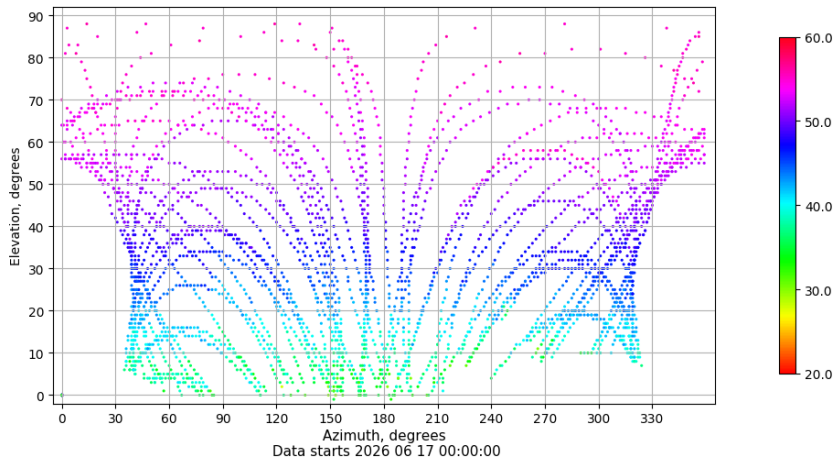
## Multipath GPS L1 y L2

Skyplot for station TN01. Parameter M1C Data file TN0100ESP\_R\_2026168.xtr Skyplot for station TN01. Parameter M2S Data file TN0100ESP\_R\_2026168.xtr



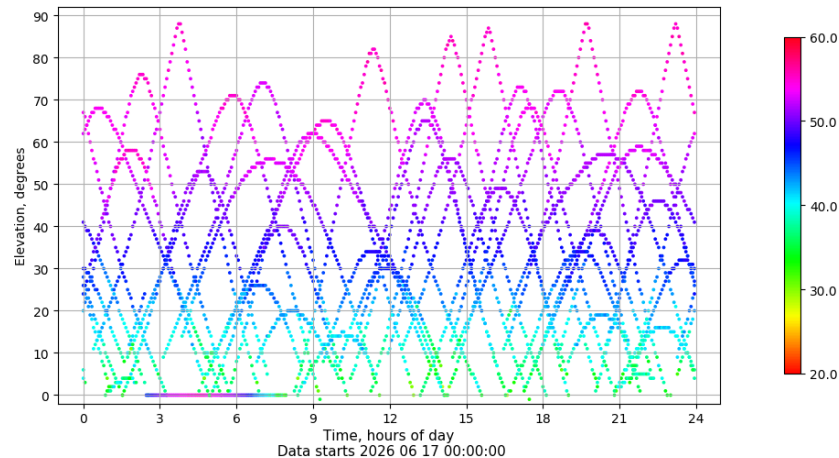
## Azimuth-Elevacion

Azimuth-elevation plot for station TN01. Signal to Noise S1C Data file TN0100ESP\_R\_2026168.xtr



## Tiempo-Elevacion

Time-elevation plot for station TN01. Signal to Noise S1C Data file TN0100ESP\_R\_2026168.xtr

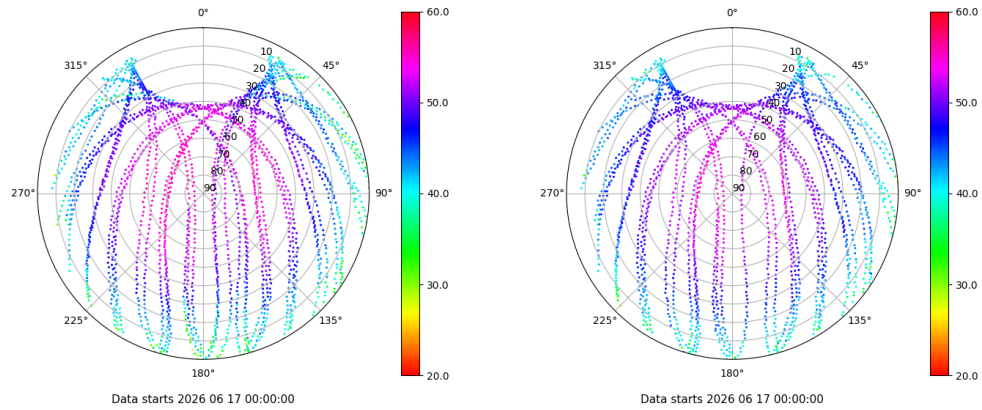


# Control de calidad GNSS GLO diario

Estacion: TN01  
 Fecha: 2026 06 17  
 Dia del año: 168

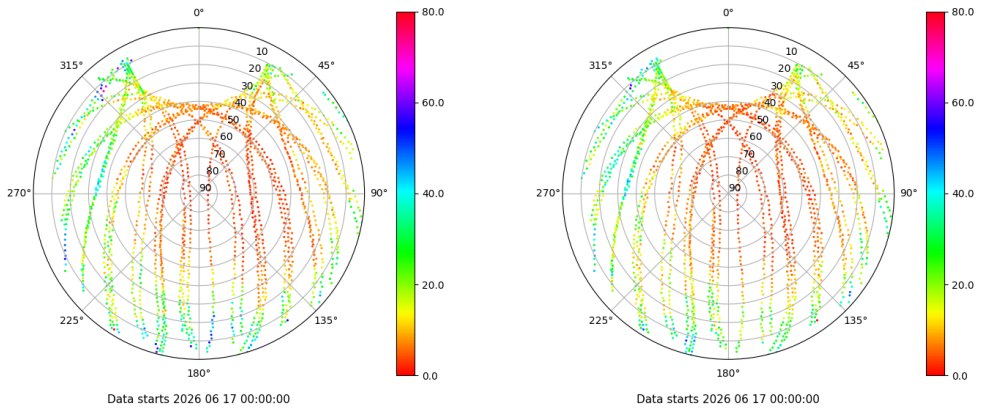
## Señal-Ruido GLO L1 y L2

Skyplot for station TN01. Signal to Noise S1C Data file TN0100ESP\_R\_2026168.xtr Skyplot for station TN01. Signal to Noise S2C Data file TN0100ESP\_R\_2026168.xtr



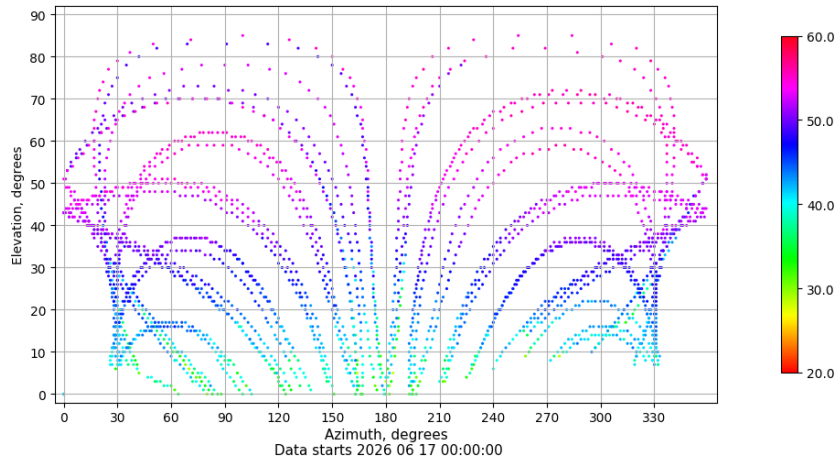
## Multipath GLO L1 y L2

Skyplot for station TN01. Parameter M1C Data file TN0100ESP\_R\_2026168.xtr Skyplot for station TN01. Parameter M2C Data file TN0100ESP\_R\_2026168.xtr



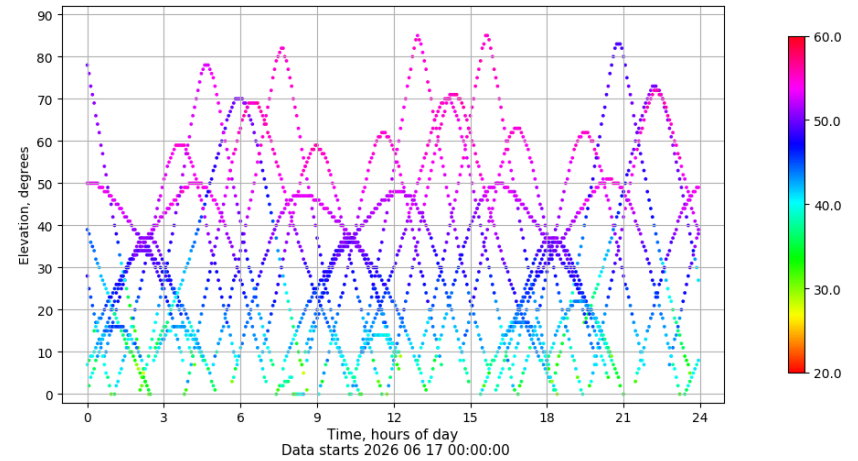
## Azimuth-Elevacion

Azimuth-elevation plot for station TN01. Signal to Noise S1C Data file TN0100ESP\_R\_2026168.xtr



## Tiempo-Elevacion

Time-elevation plot for station TN01. Signal to Noise S1C Data file TN0100ESP\_R\_2026168.xtr

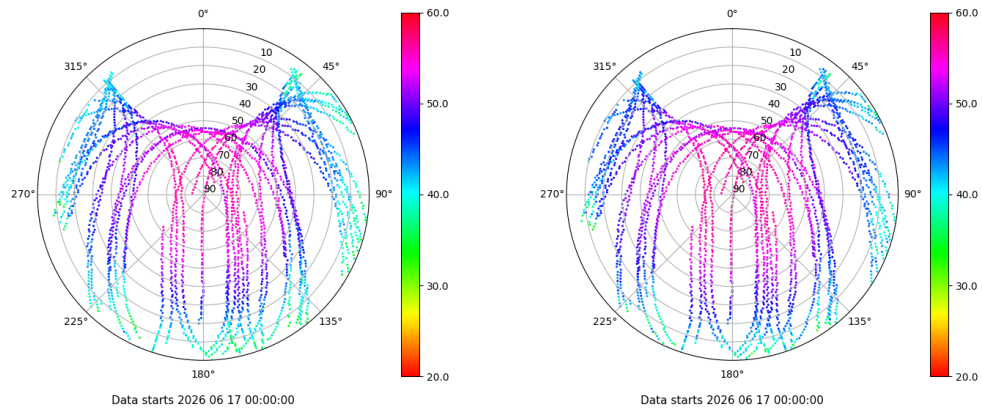


# Control de calidad GNSS GAL diario

Estacion: TN01  
 Fecha: 2026 06 17  
 Dia del año: 168

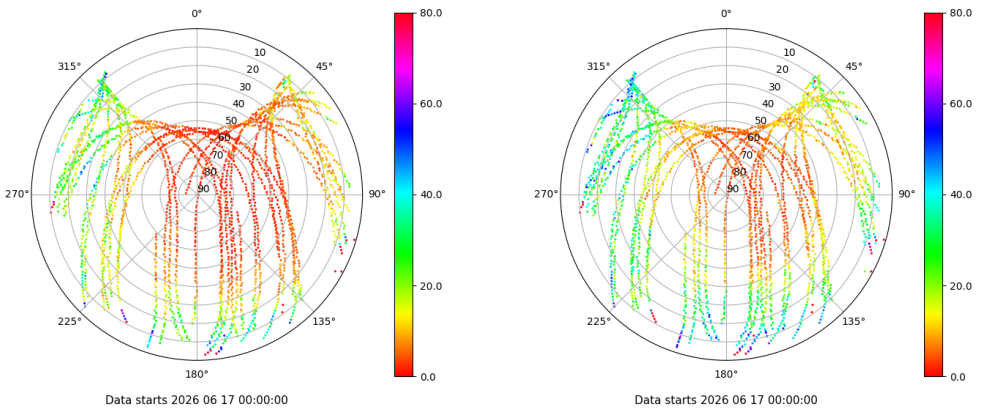
## Señal-Ruido GAL E1 y E5

Skyplot for station TN01. Signal to Noise S1C Data file TN0100ESP\_R\_2026168.xtr Skyplot for station TN01. Signal to Noise S5Q Data file TN0100ESP\_R\_2026168.xtr



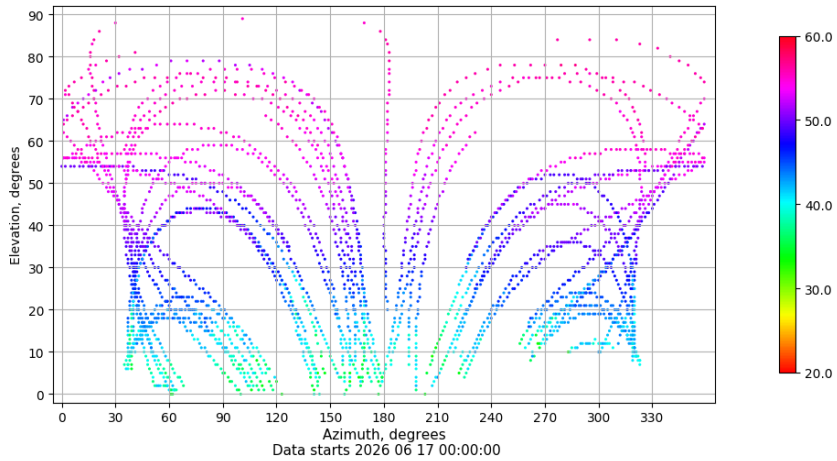
## Multipath GAL E1 y E5

Skyplot for station TN01. Parameter M1C Data file TN0100ESP\_R\_2026168.xtr Skyplot for station TN01. Parameter M5Q Data file TN0100ESP\_R\_2026168.xtr



## Azimuth-Elevacion

Azimuth-elevation plot for station TN01. Signal to Noise S1C Data file TN0100ESP\_R\_2026168.xtr



## Tiempo-Elevacion

Time-elevation plot for station TN01. Signal to Noise S1C Data file TN0100ESP\_R\_2026168.xtr

