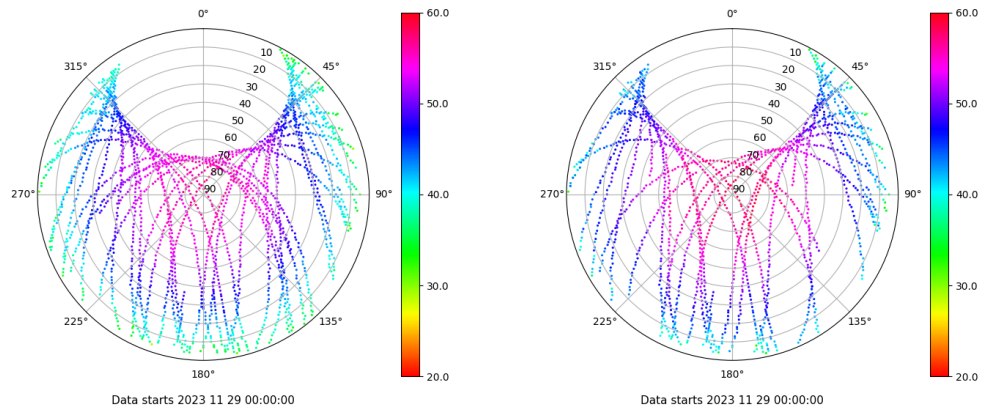


Control de calidad GNSS GPS diario

Estacion: TERU
 Fecha: 2023 11 29
 Dia del año: 333

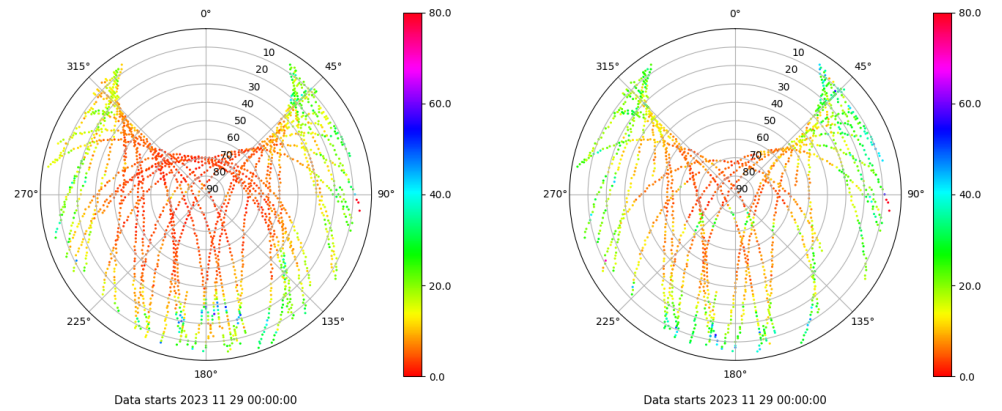
Señal-Ruido GPS L1 y L2

Skyplot for station TERU. Signal to Noise S1C Data file TERU00ESP_R_2023333.xtr Skyplot for station TERU. Signal to Noise S2S Data file TERU00ESP_R_2023333.xtr



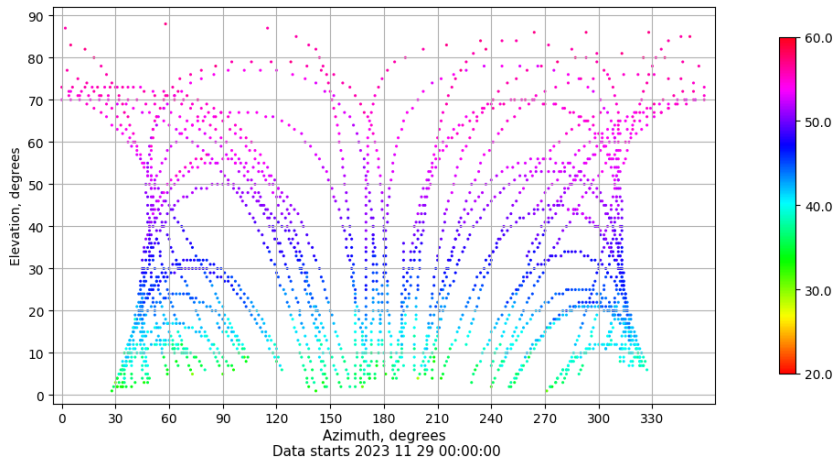
Multipath GPS L1 y L2

Skyplot for station TERU. Parameter M1C Data file TERU00ESP_R_2023333.xtr Skyplot for station TERU. Parameter M2S Data file TERU00ESP_R_2023333.xtr



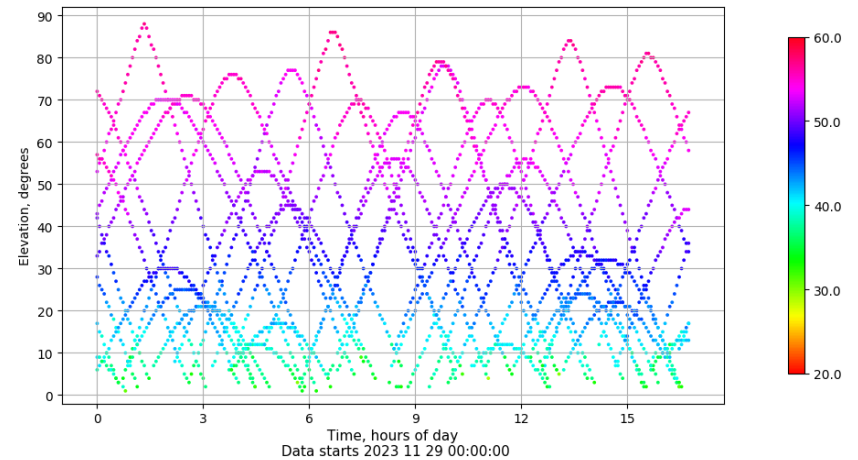
Azimuth-Elevacion

Azimuth-elevation plot for station TERU. Signal to Noise S1C Data file TERU00ESP_R_2023333.xtr



Tiempo-Elevacion

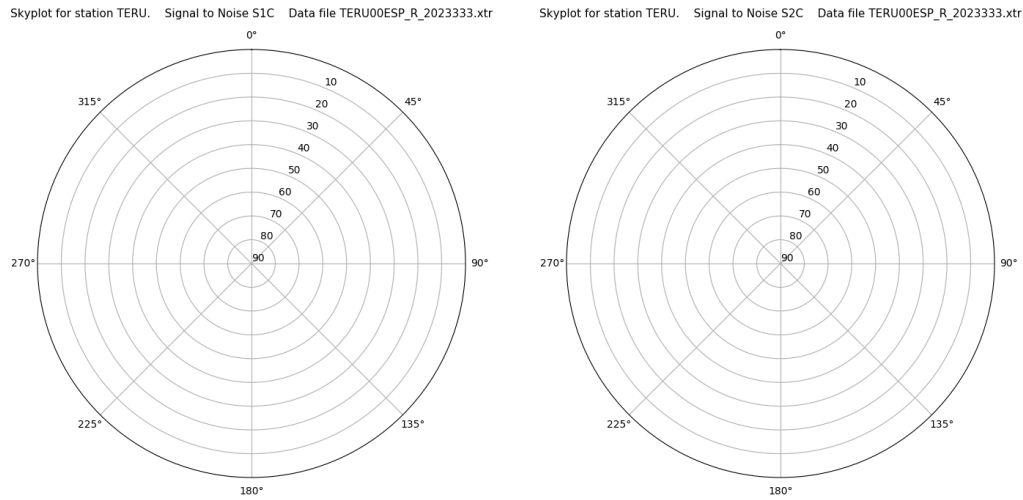
Time-elevation plot for station TERU. Signal to Noise S1C Data file TERU00ESP_R_2023333.xtr



Control de calidad GNSS GLO diario

Estacion: TERU
 Fecha: 2023 11 29
 Dia del año: 333

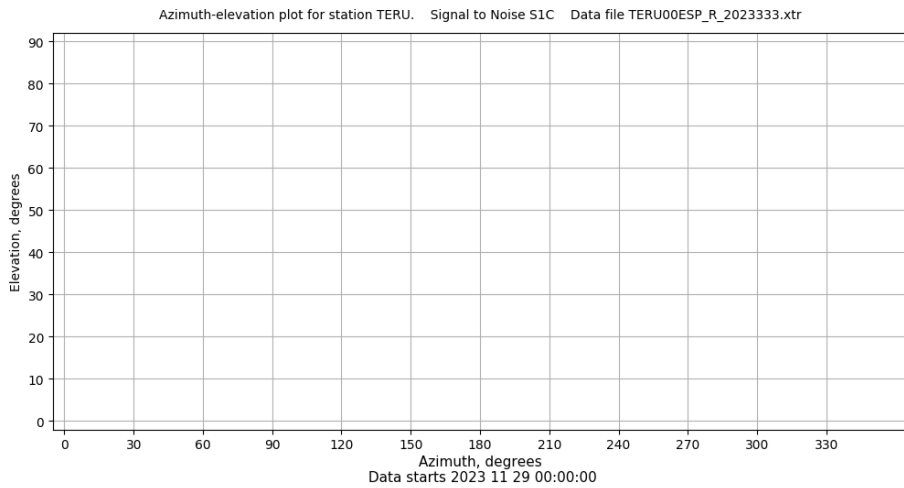
Señal-Ruido GLO L1 y L2



Data starts 2023 11 29 00:00:00

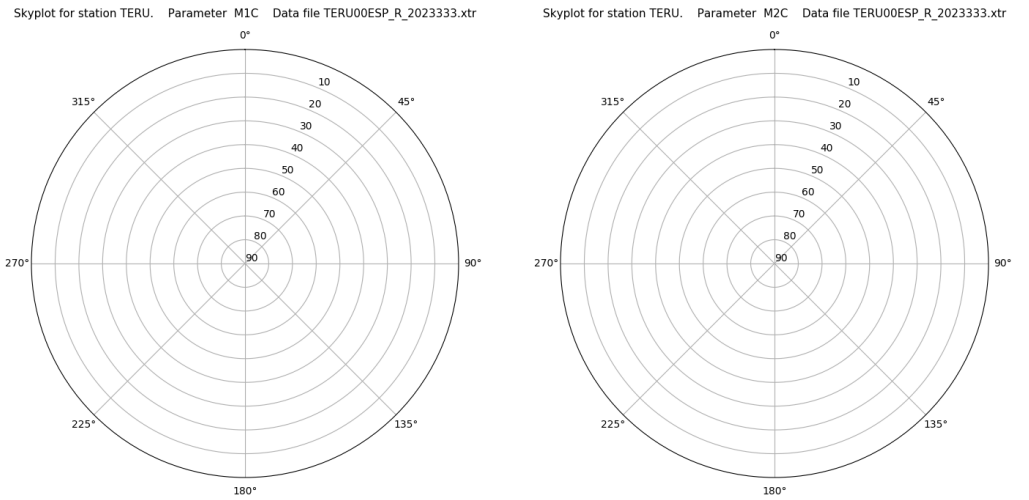
Data starts 2023 11 29 00:00:00

Azimut-Elevacion



Data starts 2023 11 29 00:00:00

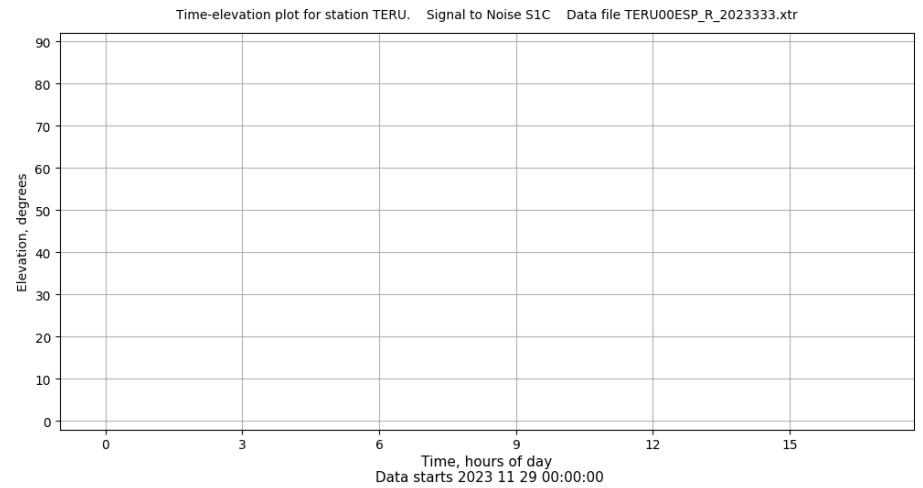
Multipath GLO L1 y L2



Data starts 2023 11 29 00:00:00

Data starts 2023 11 29 00:00:00

Tiempo-Elevacion

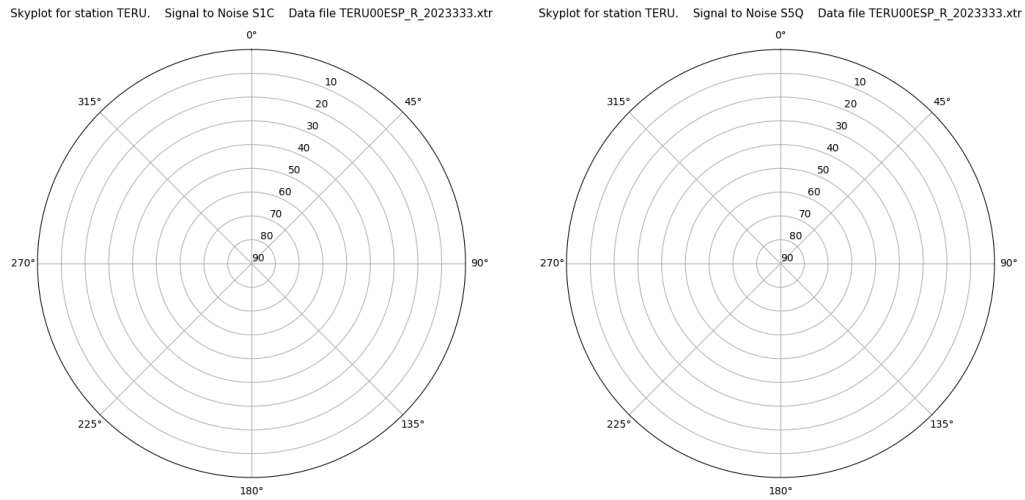


Data starts 2023 11 29 00:00:00

Control de calidad GNSS GAL diario

Estacion: TERU
 Fecha: 2023 11 29
 Dia del año: 333

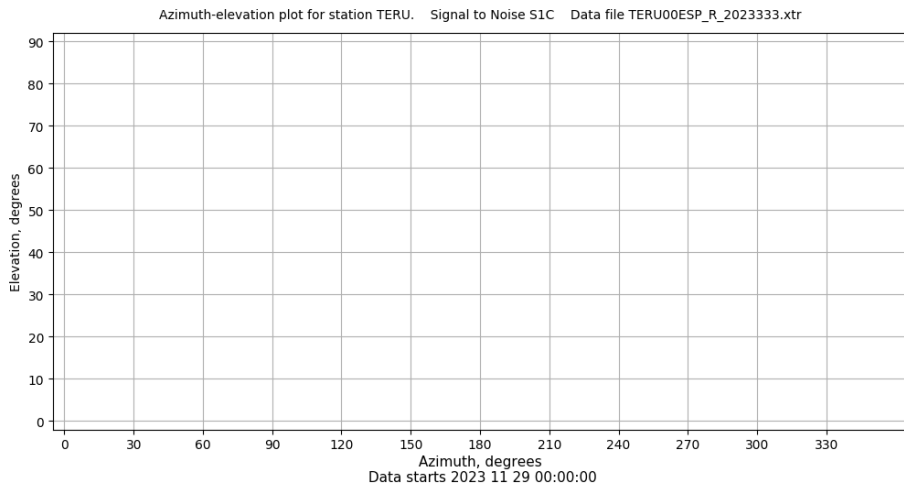
Señal-Ruido GAL E1 y E5



Data starts 2023 11 29 00:00:00

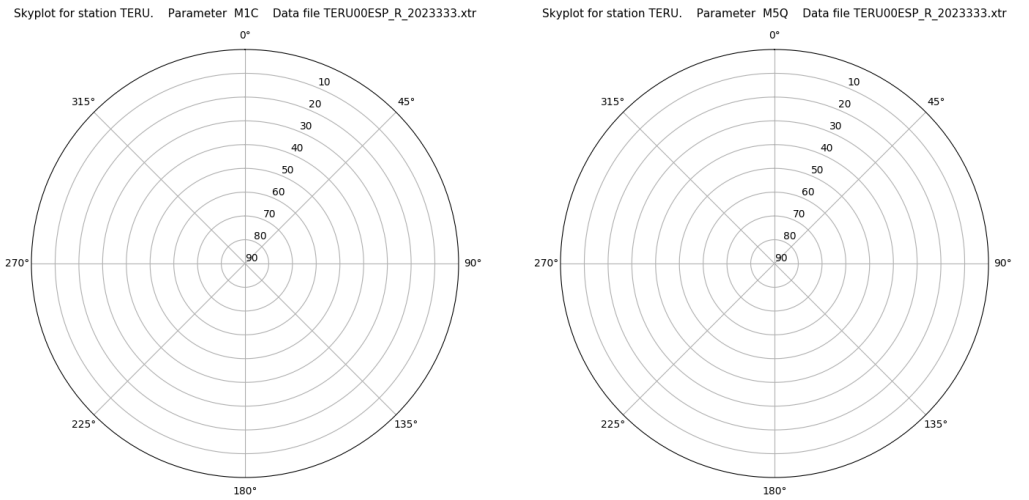
Data starts 2023 11 29 00:00:00

Azimut-Elevacion



Data starts 2023 11 29 00:00:00

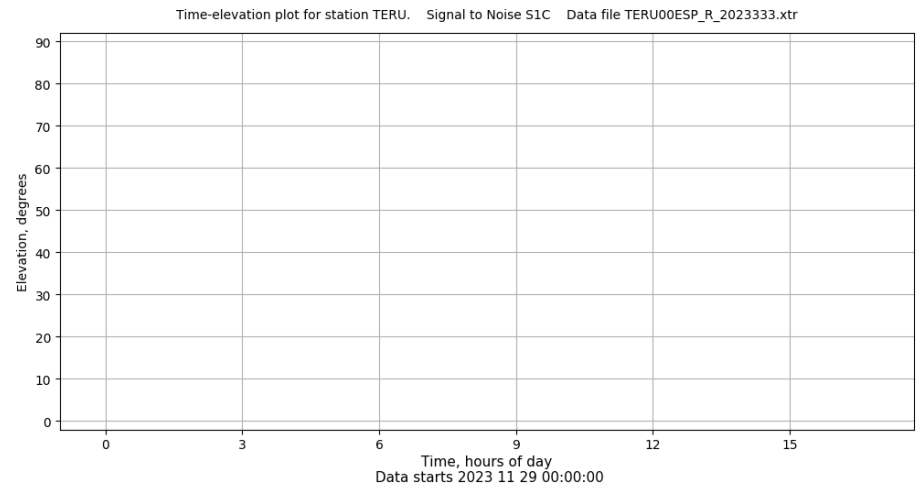
Multipath GAL E1 y E5



Data starts 2023 11 29 00:00:00

Data starts 2023 11 29 00:00:00

Tiempo-Elevacion



Data starts 2023 11 29 00:00:00