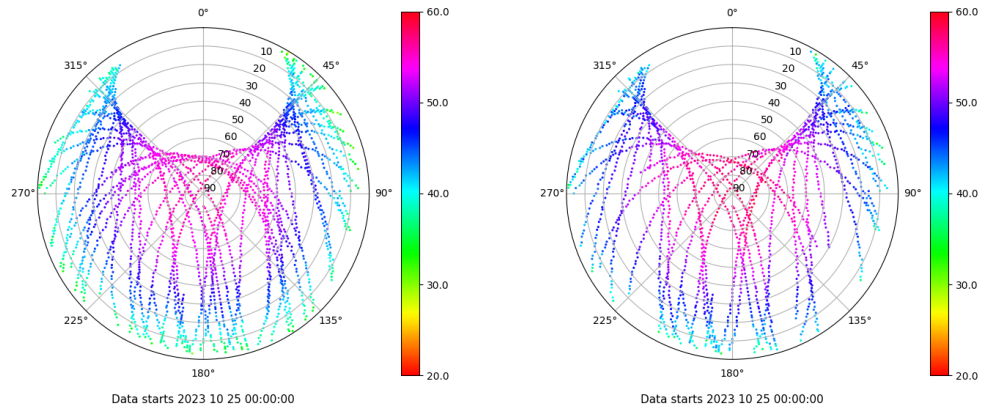


# Control de calidad GNSS GPS diario

Estacion: TERU  
 Fecha: 2023 10 25  
 Dia del año: 298

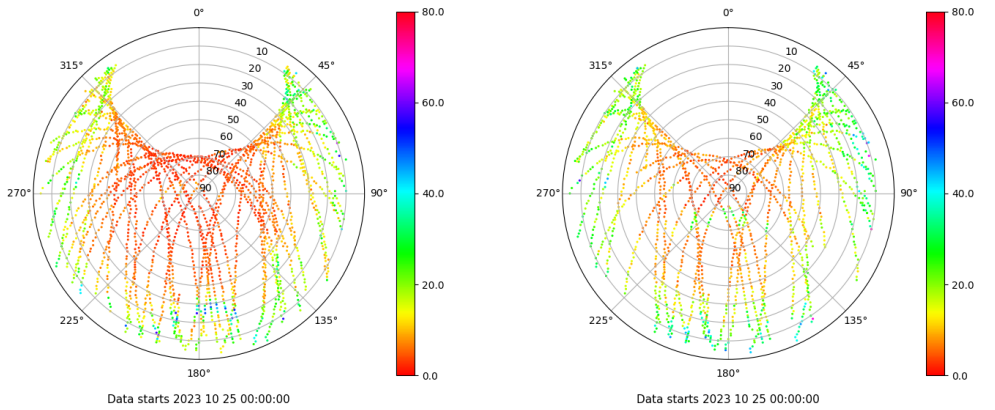
## Señal-Ruido GPS L1 y L2

Skyplot for station TERU. Signal to Noise S1C Data file TERU00ESP\_R\_2023298.xtr Skyplot for station TERU. Signal to Noise S2S Data file TERU00ESP\_R\_2023298.xtr



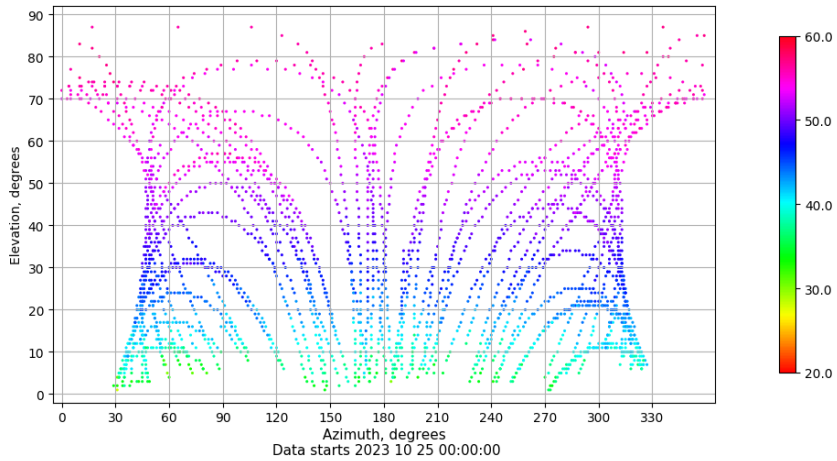
## Multipath GPS L1 y L2

Skyplot for station TERU. Parameter M1C Data file TERU00ESP\_R\_2023298.xtr Skyplot for station TERU. Parameter M2S Data file TERU00ESP\_R\_2023298.xtr



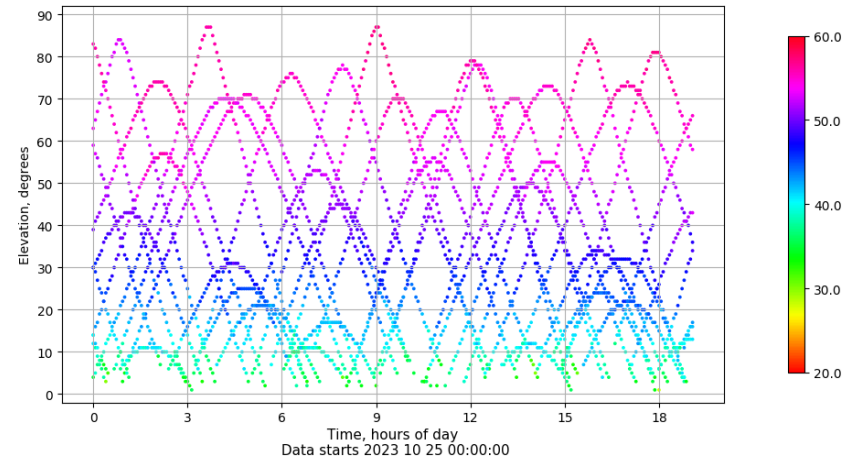
## Azimuth-Elevacion

Azimuth-elevation plot for station TERU. Signal to Noise S1C Data file TERU00ESP\_R\_2023298.xtr



## Tiempo-Elevacion

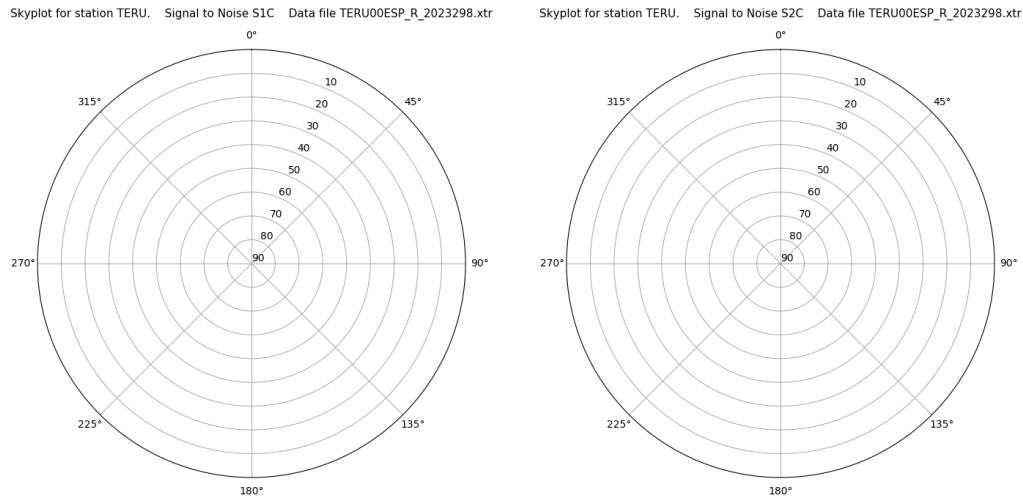
Time-elevation plot for station TERU. Signal to Noise S1C Data file TERU00ESP\_R\_2023298.xtr



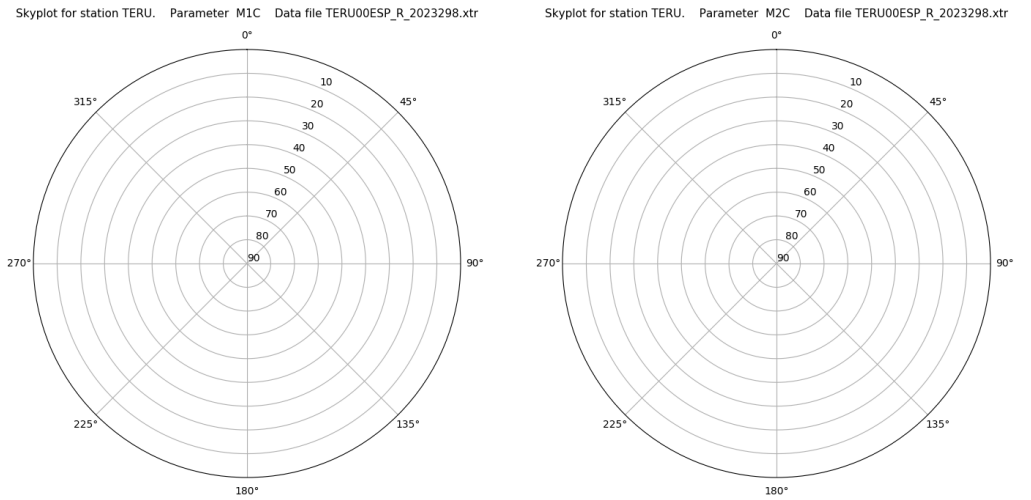
# Control de calidad GNSS GLO diario

Estacion: TERU  
 Fecha: 2023 10 25  
 Dia del año: 298

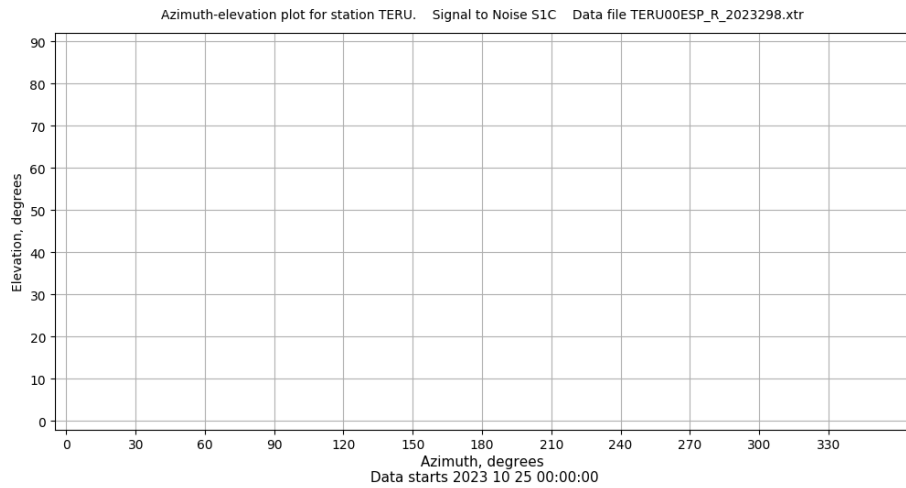
## Señal-Ruido GLO L1 y L2



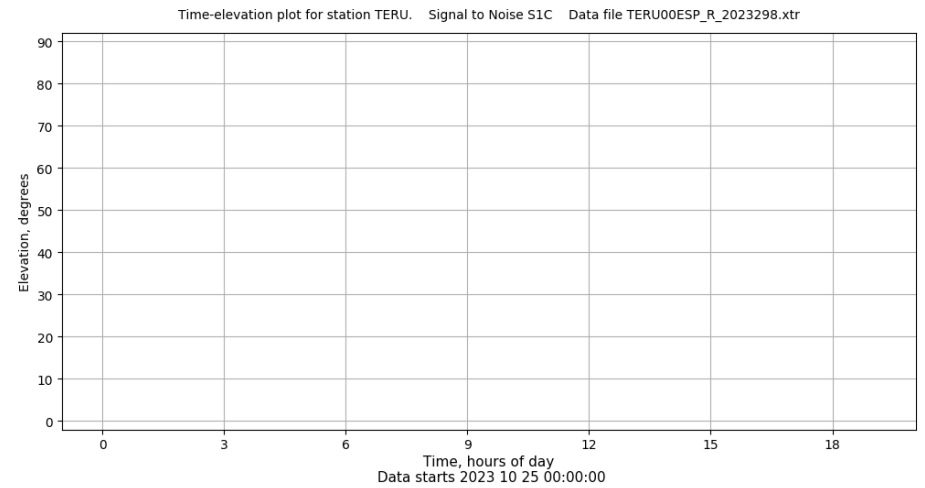
## Multipath GLO L1 y L2



## Azimut-Elevacion



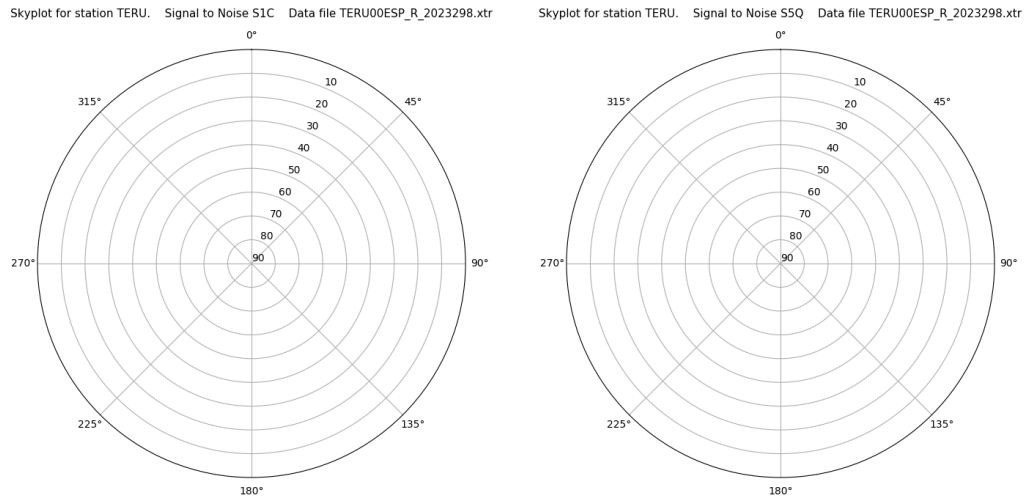
## Tiempo-Elevacion



# Control de calidad GNSS GAL diario

Estacion: TERU  
 Fecha: 2023 10 25  
 Dia del año: 298

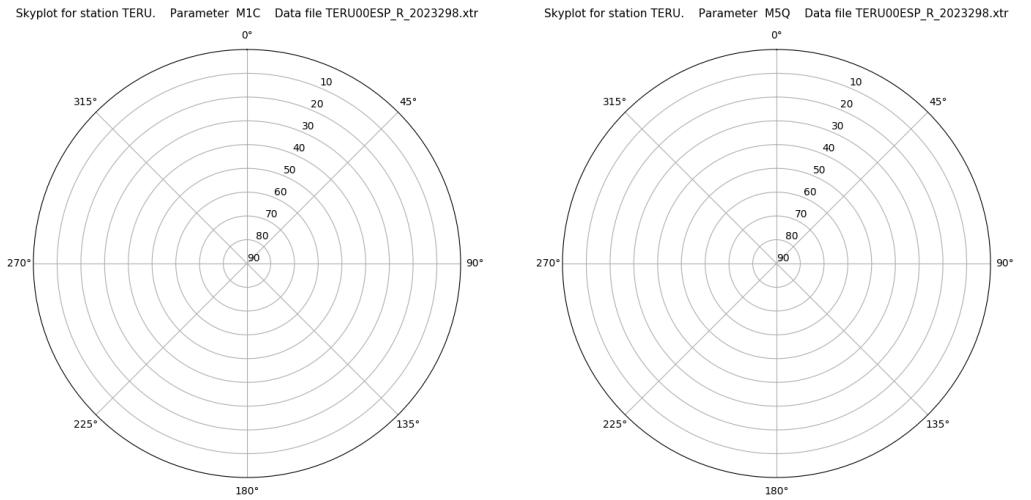
## Señal-Ruido GAL E1 y E5



Data starts 2023 10 25 00:00:00

Data starts 2023 10 25 00:00:00

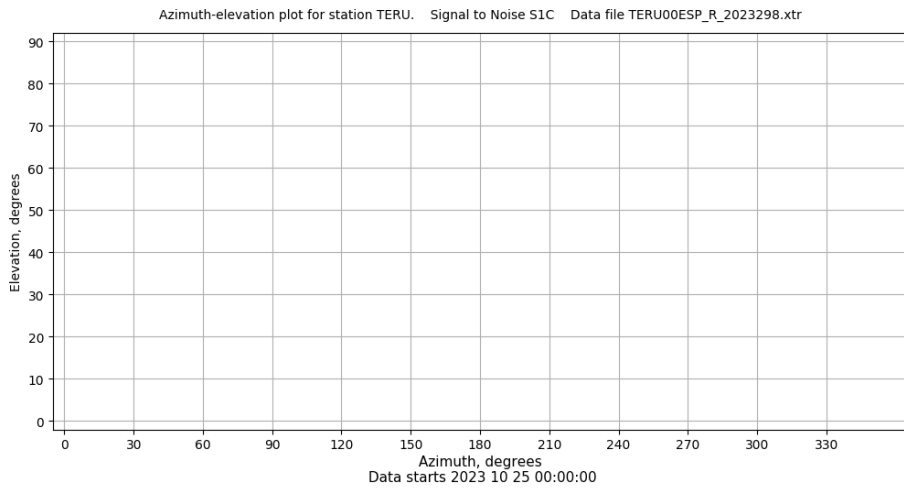
## Multipath GAL E1 y E5



Data starts 2023 10 25 00:00:00

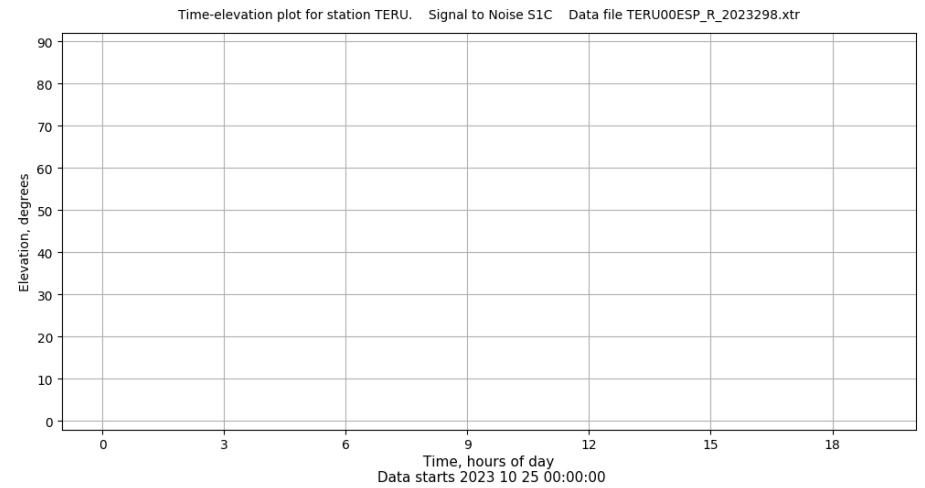
Data starts 2023 10 25 00:00:00

## Azimut-Elevacion



Data starts 2023 10 25 00:00:00

## Tiempo-Elevacion



Data starts 2023 10 25 00:00:00