

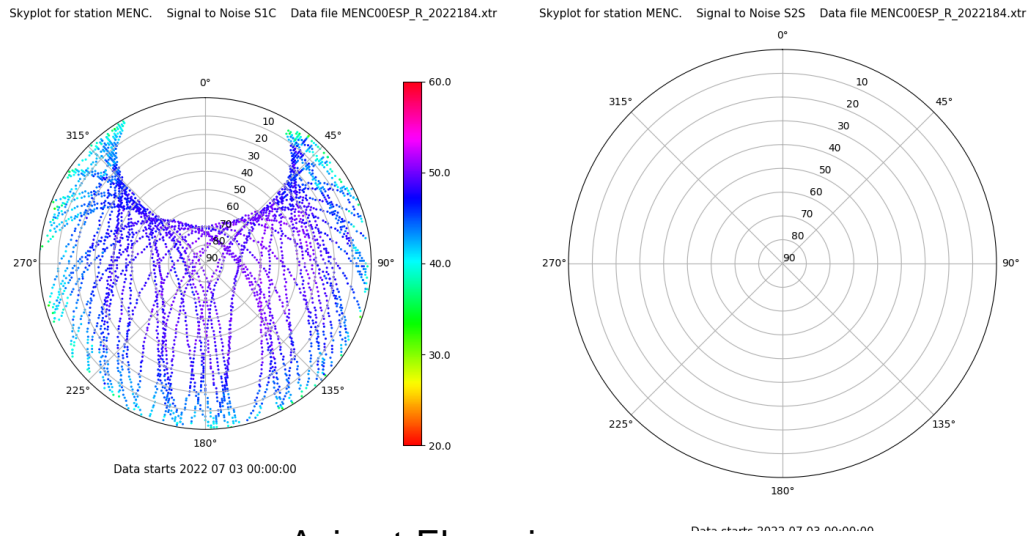
Control de calidad GNSS GPS diario

Estacion: MENC

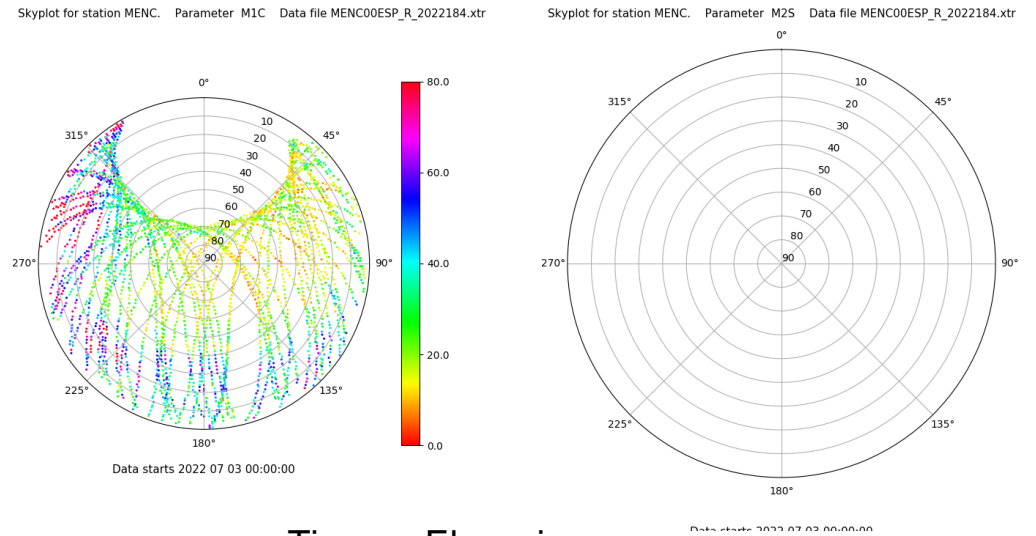
Fecha: 2022 07 03

Dia del año: 184

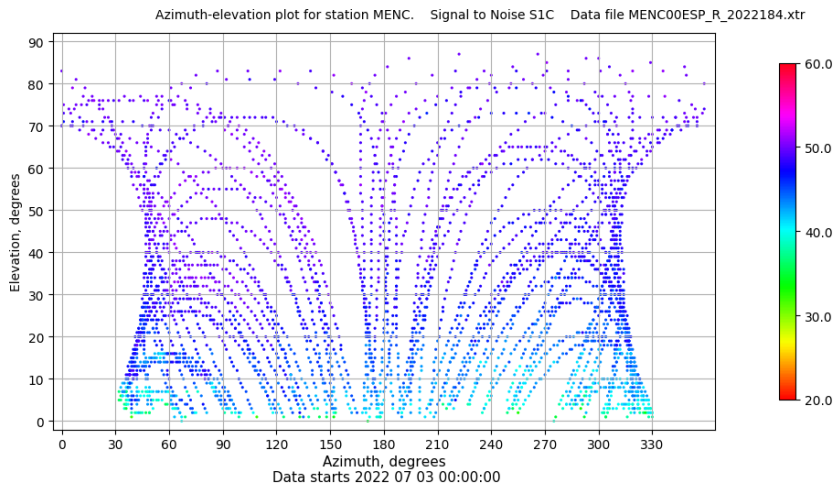
Señal-Ruido GPS L1 y L2



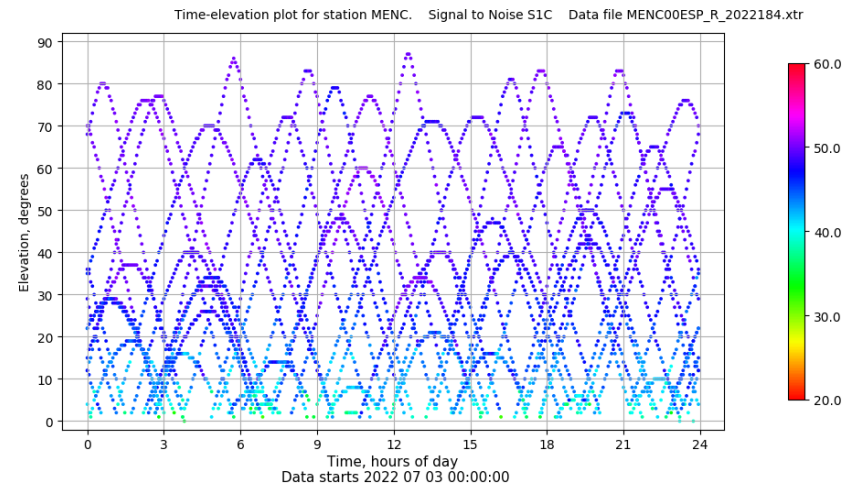
Multipath GPS L1 y L2



Azimut-Elevacion



Tiempo-Elevacion

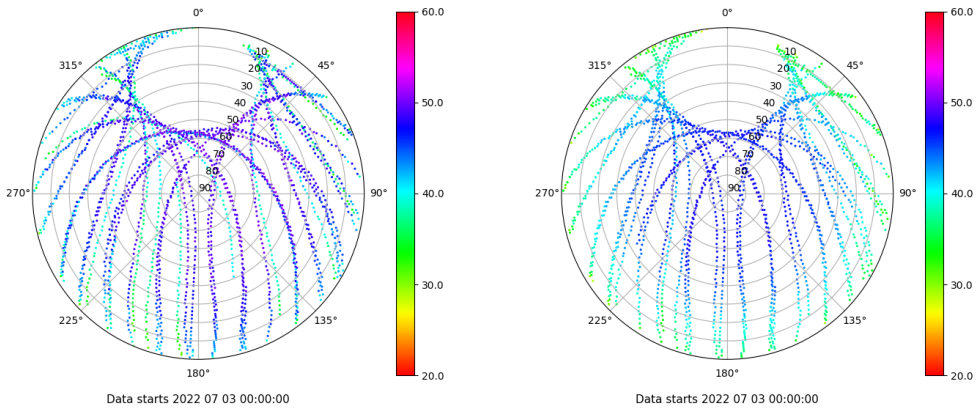


Control de calidad GNSS GLO diario

Estacion: MENC
 Fecha: 2022 07 03
 Dia del año: 184

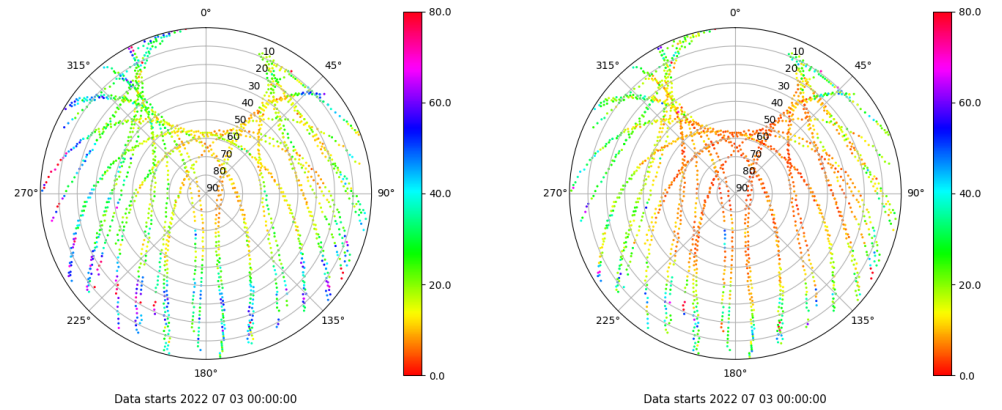
Señal-Ruido GLO L1 y L2

Skyplot for station MENC. Signal to Noise S1C Data file MENC00ESP_R_2022184.xtr Skyplot for station MENC. Signal to Noise S2P Data file MENC00ESP_R_2022184.xtr



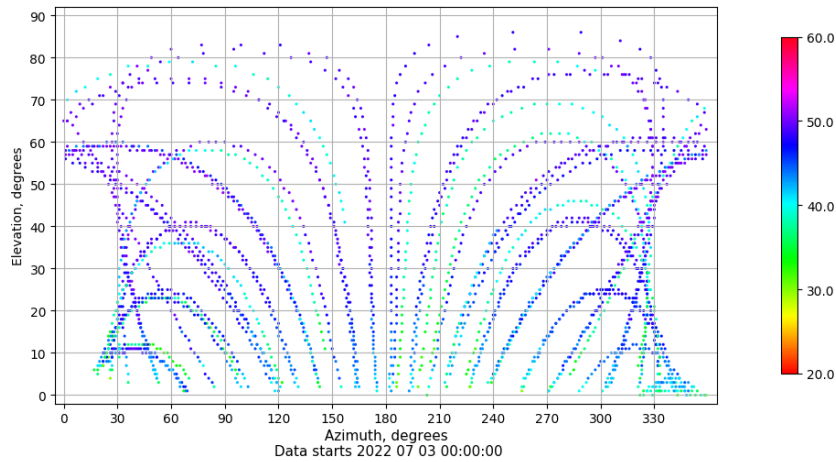
Multipath GLO L1 y L2

Skyplot for station MENC. Parameter M1C Data file MENC00ESP_R_2022184.xtr Skyplot for station MENC. Parameter M2P Data file MENC00ESP_R_2022184.xtr



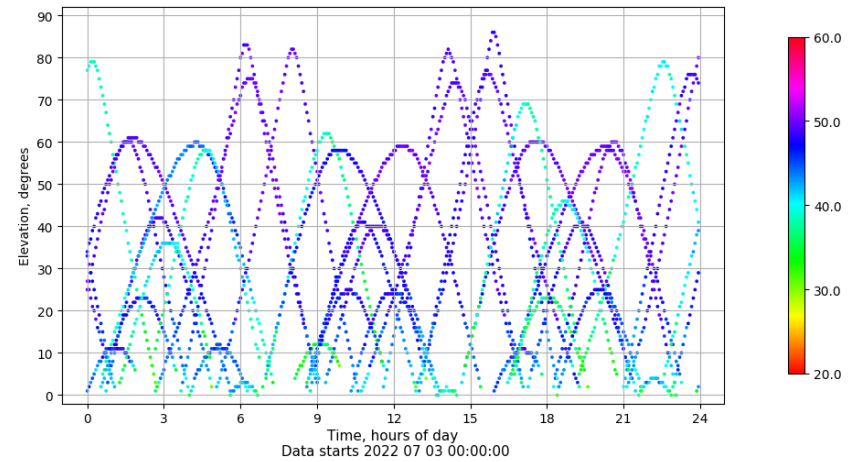
Azimuth-Elevacion

Azimuth-elevation plot for station MENC. Signal to Noise S1C Data file MENC00ESP_R_2022184.xtr



Tiempo-Elevacion

Time-elevation plot for station MENC. Signal to Noise S1C Data file MENC00ESP_R_2022184.xtr

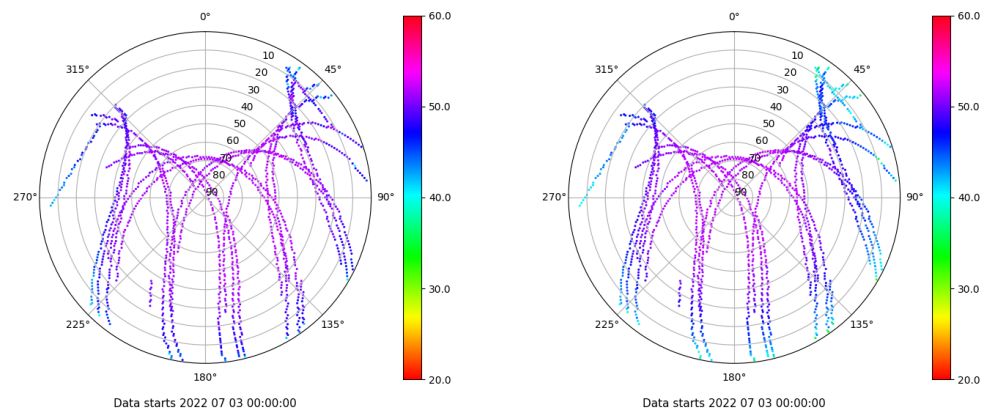


Control de calidad GNSS GAL diario

Estacion: MENC
 Fecha: 2022 07 03
 Dia del año: 184

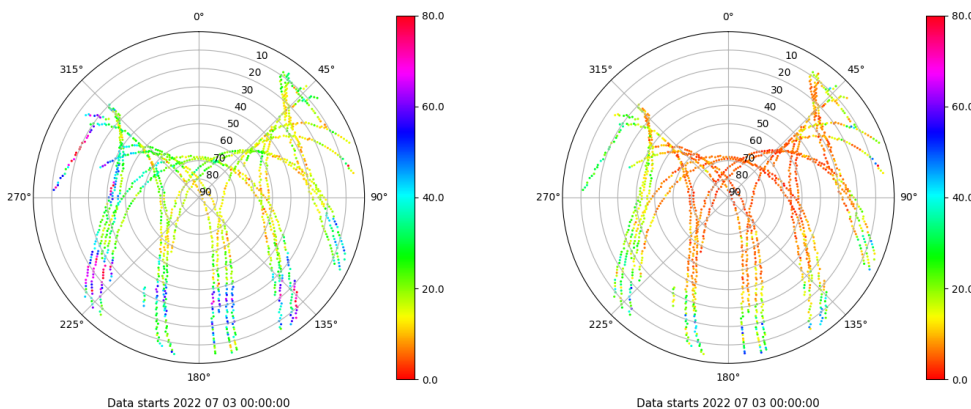
Señal-Ruido GAL E1 y E5

Skyplot for station MENC. Signal to Noise S1C Data file MENC00ESP_R_2022184.xtr Skyplot for station MENC. Signal to Noise S5Q Data file MENC00ESP_R_2022184.xtr



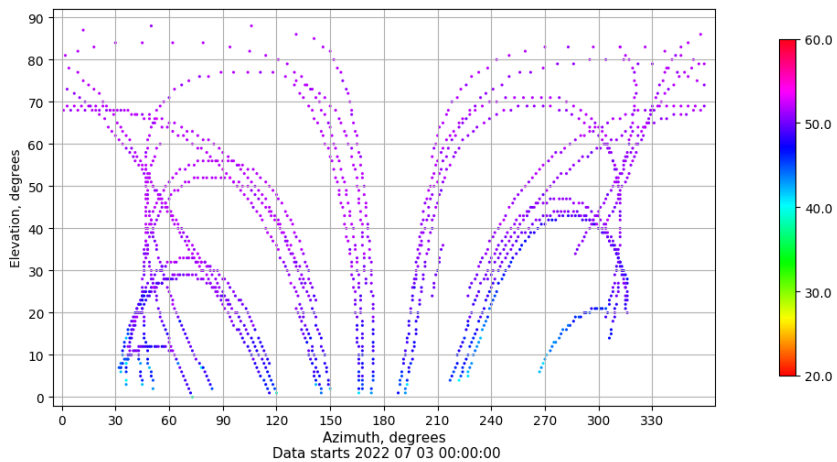
Multipath GAL E1 y E5

Skyplot for station MENC. Parameter M1C Data file MENC00ESP_R_2022184.xtr Skyplot for station MENC. Parameter M5Q Data file MENC00ESP_R_2022184.xtr



Azimut-Elevacion

Azimuth-elevation plot for station MENC. Signal to Noise S1C Data file MENC00ESP_R_2022184.xtr



Tiempo-Elevacion

Time-elevation plot for station MENC. Signal to Noise S1C Data file MENC00ESP_R_2022184.xtr

