

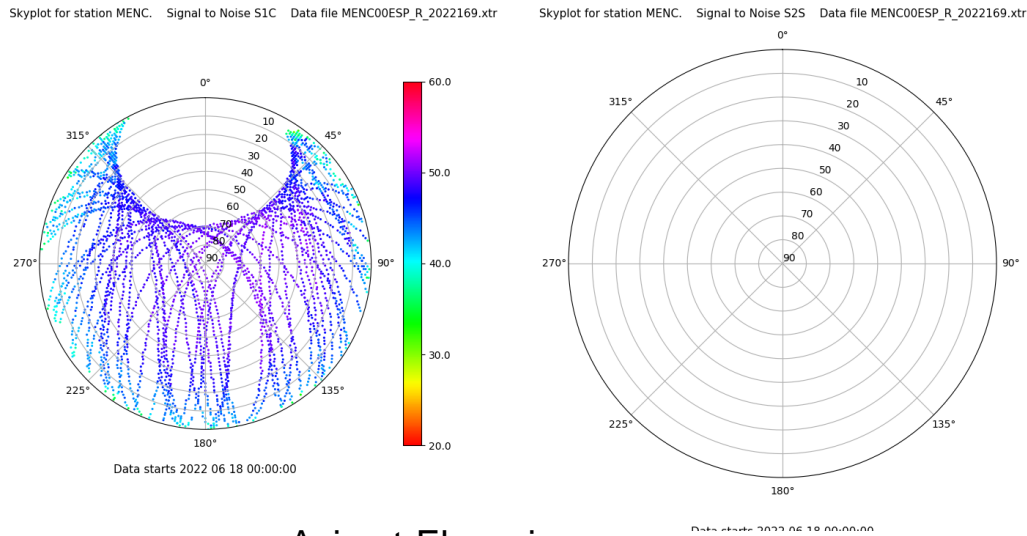
# Control de calidad GNSS GPS diario

Estacion: MENC

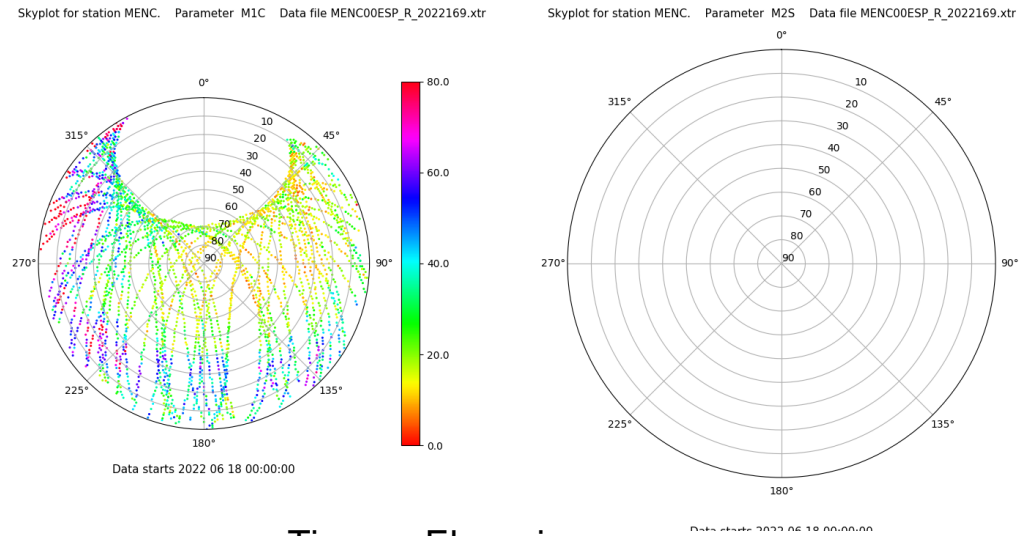
Fecha: 2022 06 18

Dia del año: 169

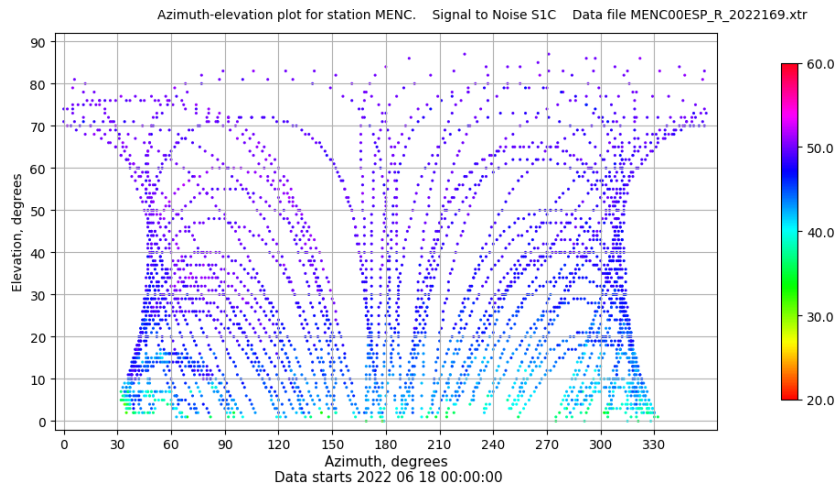
## Señal-Ruido GPS L1 y L2



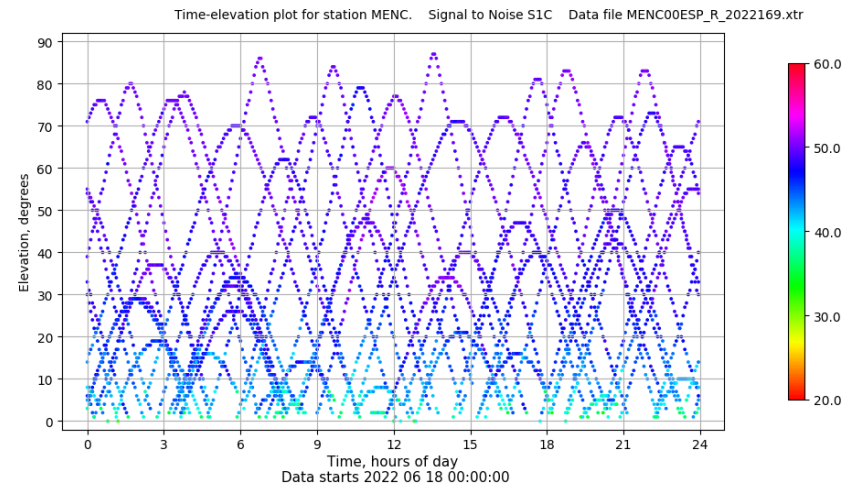
## Multipath GPS L1 y L2



## Azimut-Elevacion



## Tiempo-Elevacion

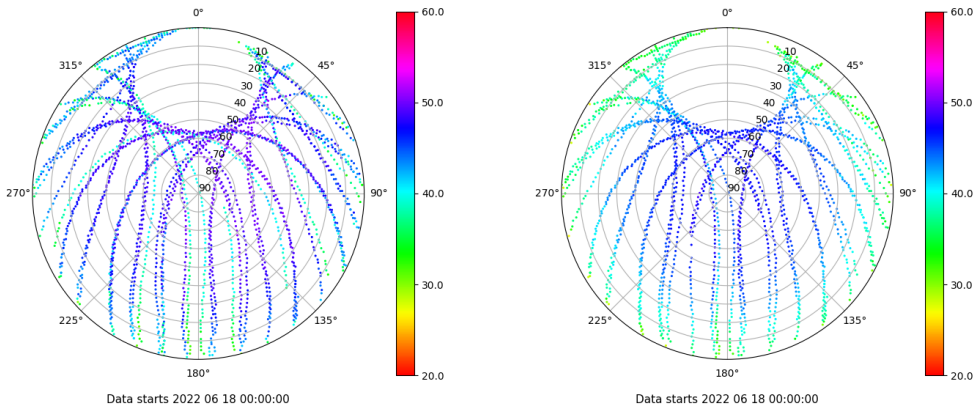


# Control de calidad GNSS GLO diario

Estacion: MENC  
 Fecha: 2022 06 18  
 Dia del año: 169

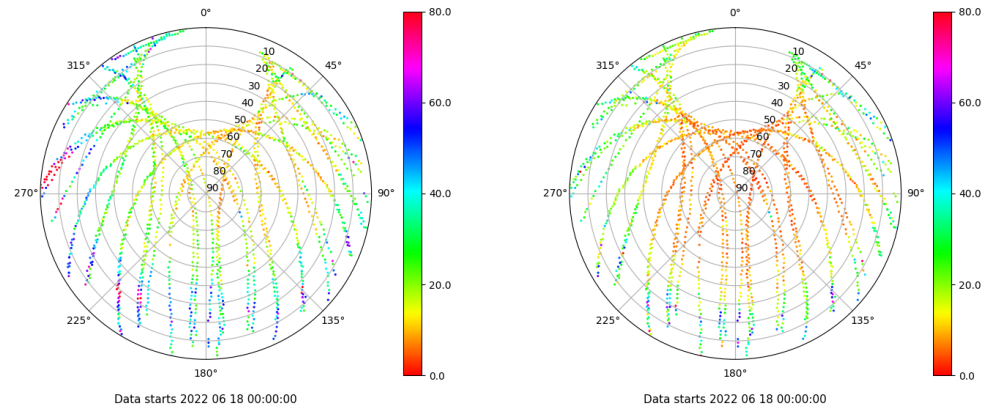
## Señal-Ruido GLO L1 y L2

Skyplot for station MENC. Signal to Noise S1C Data file MENC00ESP\_R\_2022169.xtr Skyplot for station MENC. Signal to Noise S2P Data file MENC00ESP\_R\_2022169.xtr



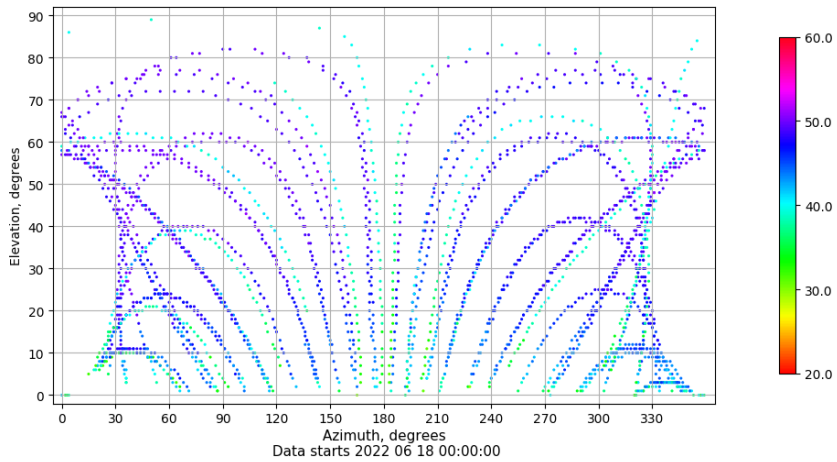
## Multipath GLO L1 y L2

Skyplot for station MENC. Parameter M1C Data file MENC00ESP\_R\_2022169.xtr Skyplot for station MENC. Parameter M2P Data file MENC00ESP\_R\_2022169.xtr



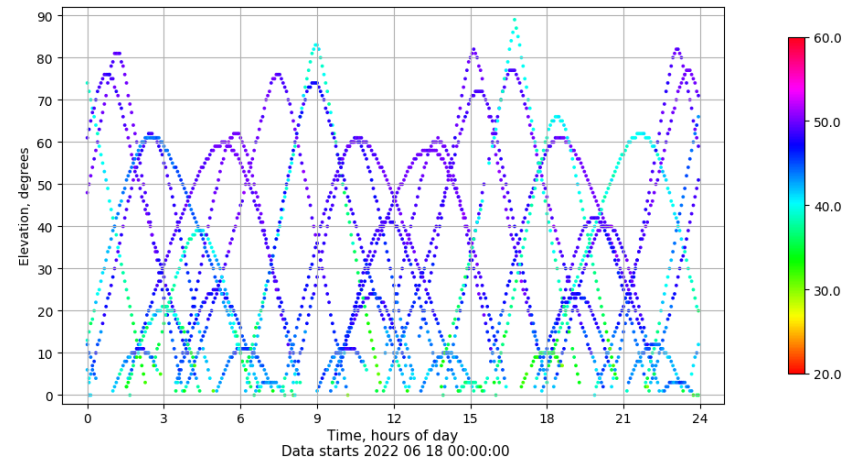
## Azimuth-Elevacion

Azimuth-elevation plot for station MENC. Signal to Noise S1C Data file MENC00ESP\_R\_2022169.xtr



## Tiempo-Elevacion

Time-elevation plot for station MENC. Signal to Noise S1C Data file MENC00ESP\_R\_2022169.xtr



# Control de calidad GNSS GAL diario

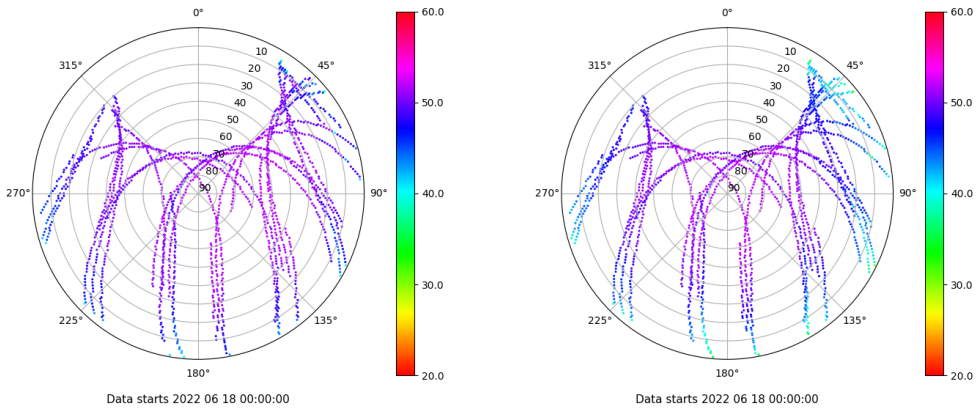
Estacion: MENC

Fecha: 2022 06 18

Dia del año: 169

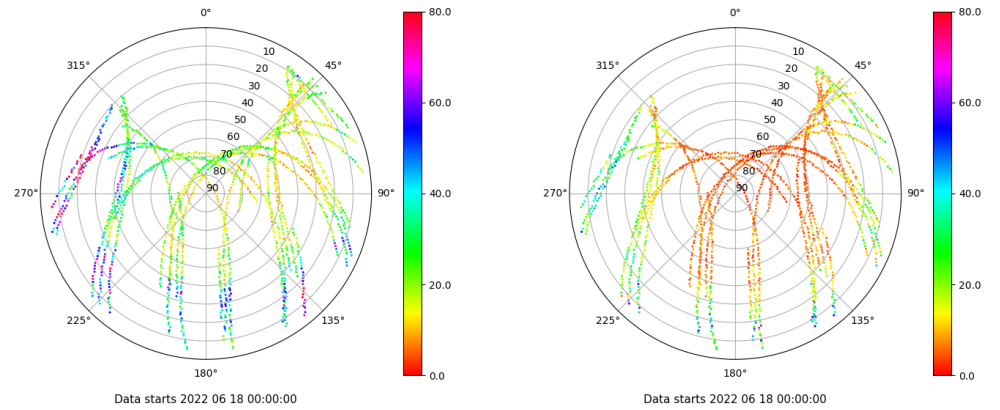
## Señal-Ruido GAL E1 y E5

Skyplot for station MENC. Signal to Noise S1C Data file MENC00ESP\_R\_2022169.xtr Skyplot for station MENC. Signal to Noise S5Q Data file MENC00ESP\_R\_2022169.xtr



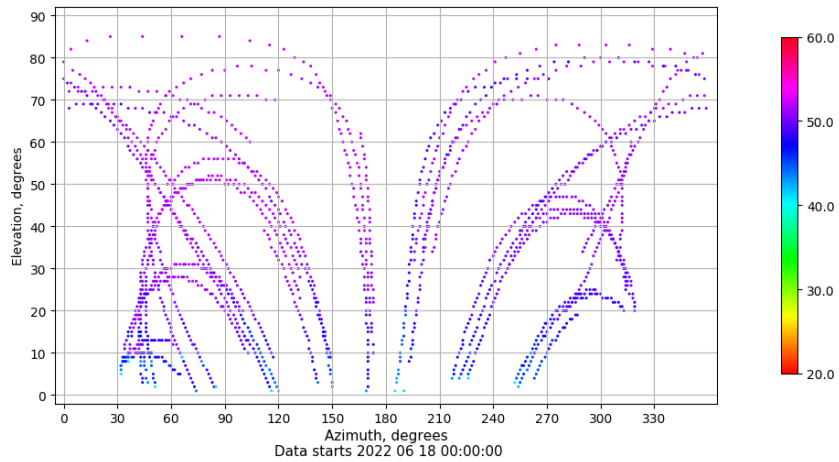
## Multipath GAL E1 y E5

Skyplot for station MENC. Parameter M1C Data file MENC00ESP\_R\_2022169.xtr Skyplot for station MENC. Parameter M5Q Data file MENC00ESP\_R\_2022169.xtr



## Azimut-Elevacion

Azimuth-elevation plot for station MENC. Signal to Noise S1C Data file MENC00ESP\_R\_2022169.xtr



## Tiempo-Elevacion

Time-elevation plot for station MENC. Signal to Noise S1C Data file MENC00ESP\_R\_2022169.xtr

