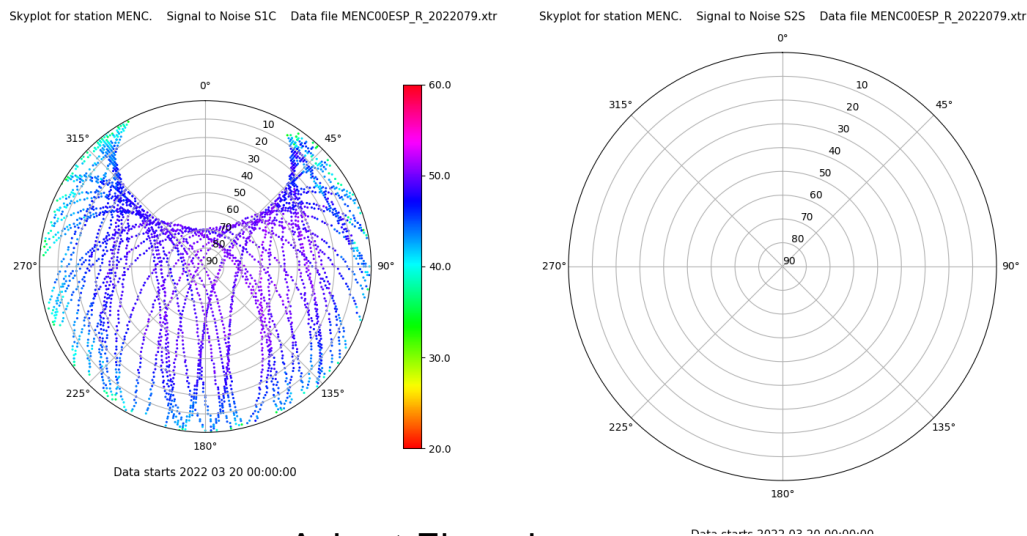


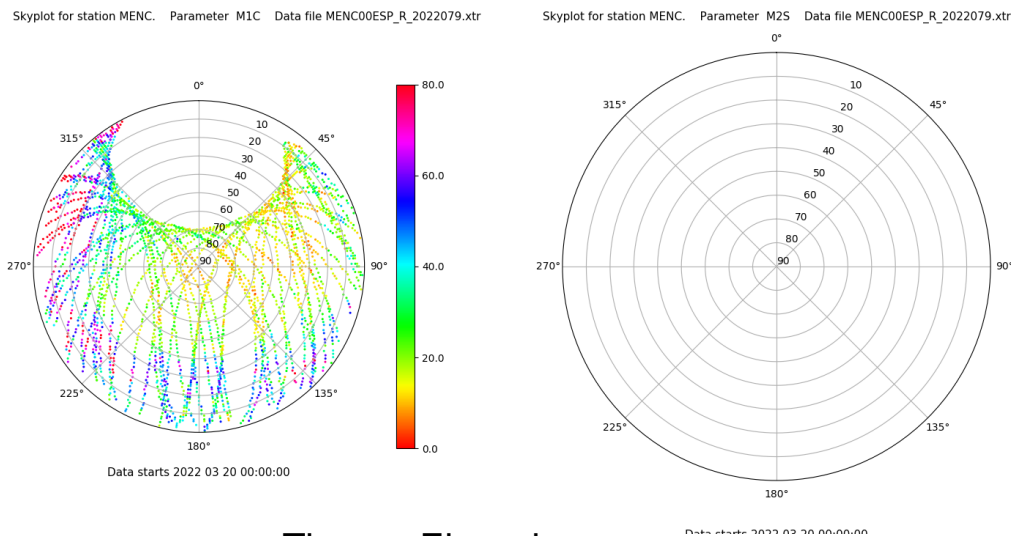
Control de calidad GNSS GPS diario

Estacion: MENC
 Fecha: 2022 03 20
 Dia del año: 079

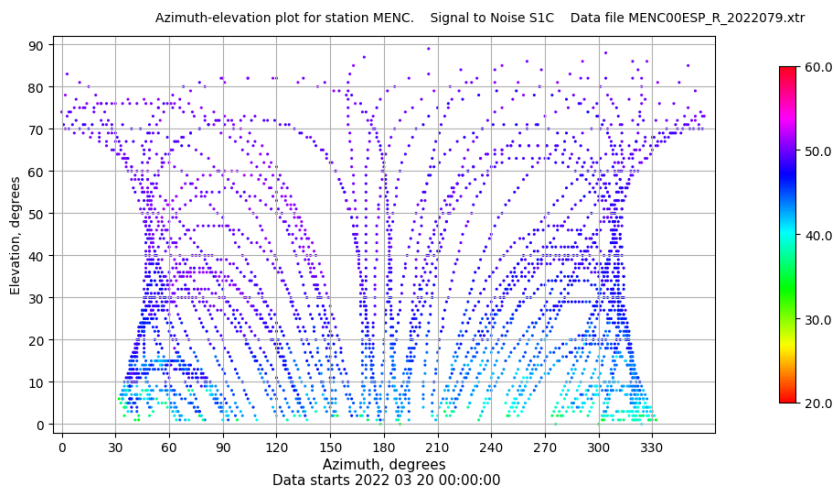
Señal-Ruido GPS L1 y L2



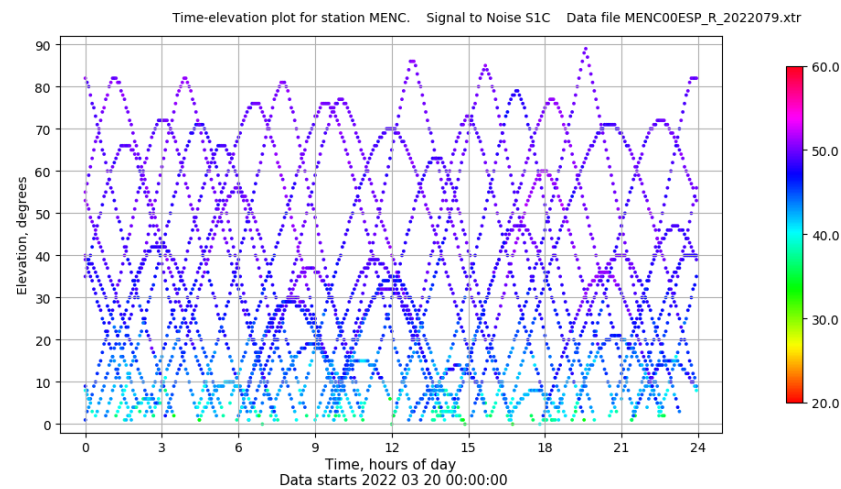
Multipath GPS L1 y L2



Azimut-Elevacion



Tiempo-Elevacion

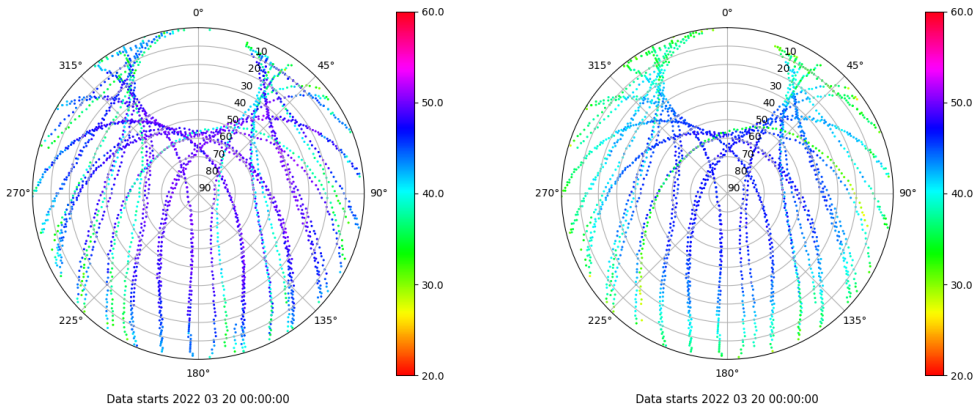


Control de calidad GNSS GLO diario

Estacion: MENC
 Fecha: 2022 03 20
 Dia del año: 079

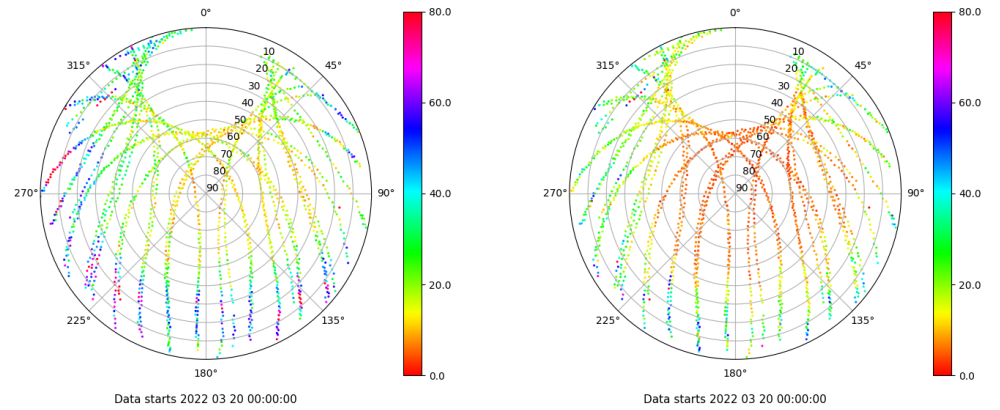
Señal-Ruido GLO L1 y L2

Skyplot for station MENC. Signal to Noise S1C Data file MENC00ESP_R_2022079.xtr Skyplot for station MENC. Signal to Noise S2P Data file MENC00ESP_R_2022079.xtr



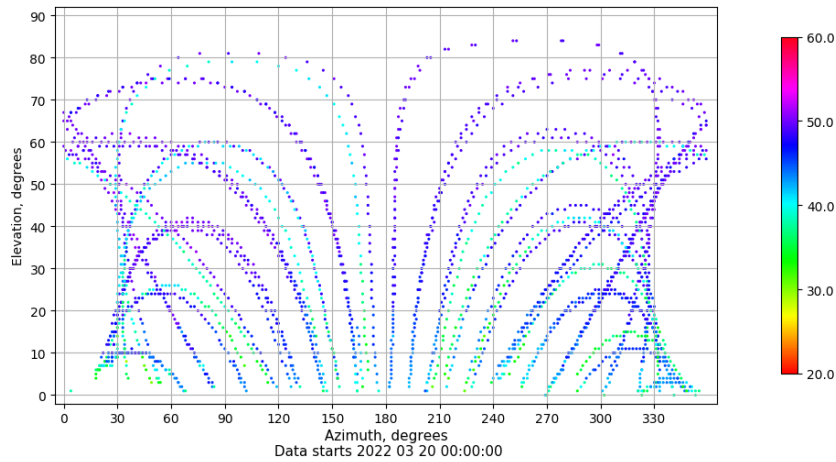
Multipath GLO L1 y L2

Skyplot for station MENC. Parameter M1C Data file MENC00ESP_R_2022079.xtr Skyplot for station MENC. Parameter M2P Data file MENC00ESP_R_2022079.xtr



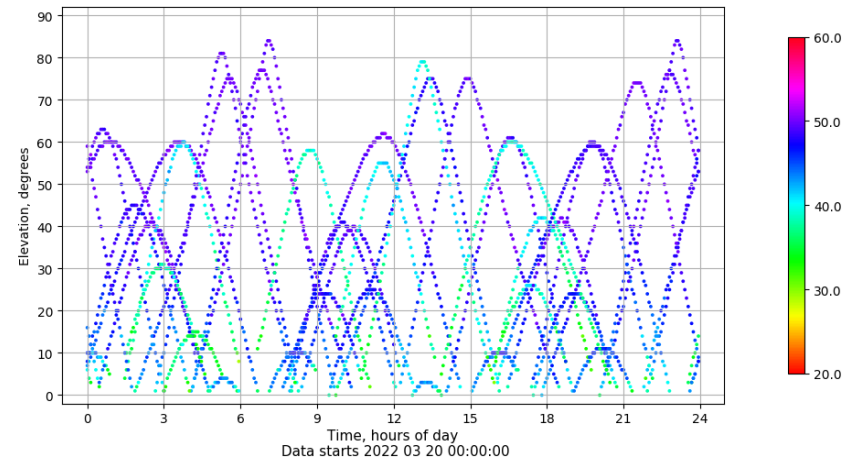
Azimut-Elevacion

Azimuth-elevation plot for station MENC. Signal to Noise S1C Data file MENC00ESP_R_2022079.xtr



Tiempo-Elevacion

Time-elevation plot for station MENC. Signal to Noise S1C Data file MENC00ESP_R_2022079.xtr



Control de calidad GNSS GAL diario

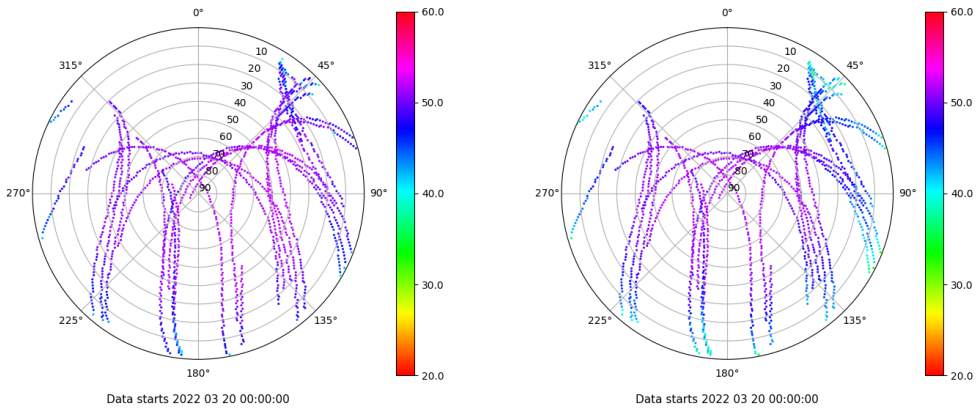
Estacion: MENC

Fecha: 2022 03 20

Dia del año: 079

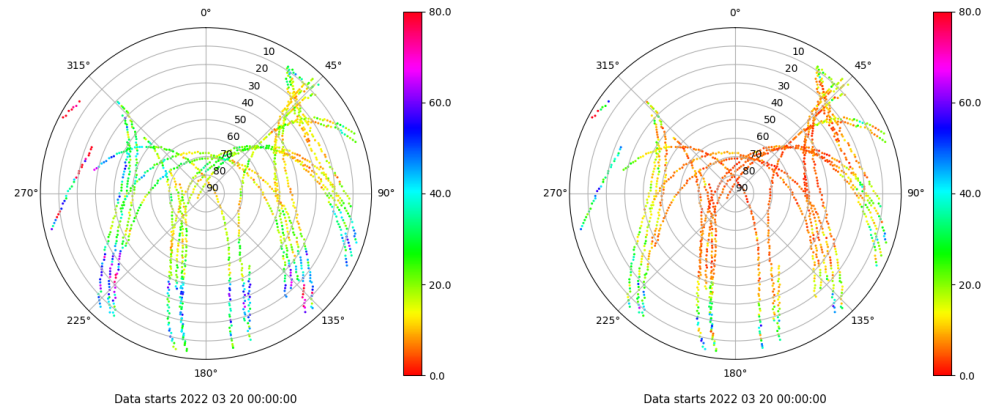
Señal-Ruido GAL E1 y E5

Skyplot for station MENC. Signal to Noise S1C Data file MENC00ESP_R_2022079.xtr Skyplot for station MENC. Signal to Noise S5Q Data file MENC00ESP_R_2022079.xtr



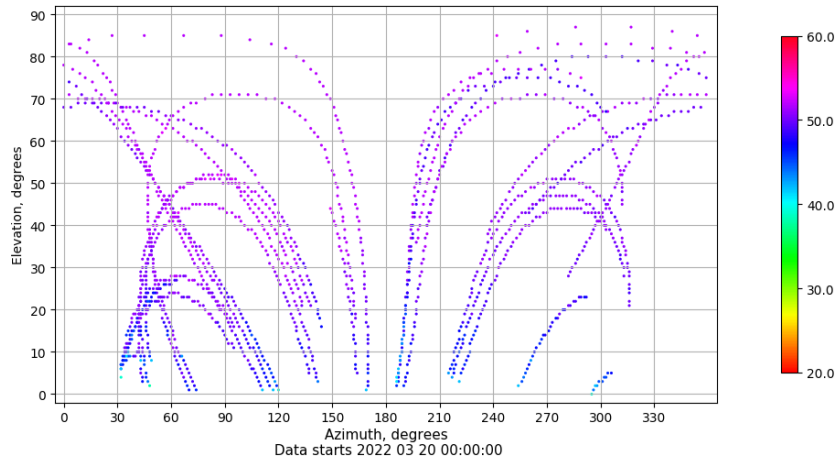
Multipath GAL E1 y E5

Skyplot for station MENC. Parameter M1C Data file MENC00ESP_R_2022079.xtr Skyplot for station MENC. Parameter M5Q Data file MENC00ESP_R_2022079.xtr



Azimut-Elevacion

Azimuth-elevation plot for station MENC. Signal to Noise S1C Data file MENC00ESP_R_2022079.xtr



Tiempo-Elevacion

Time-elevation plot for station MENC. Signal to Noise S1C Data file MENC00ESP_R_2022079.xtr

