

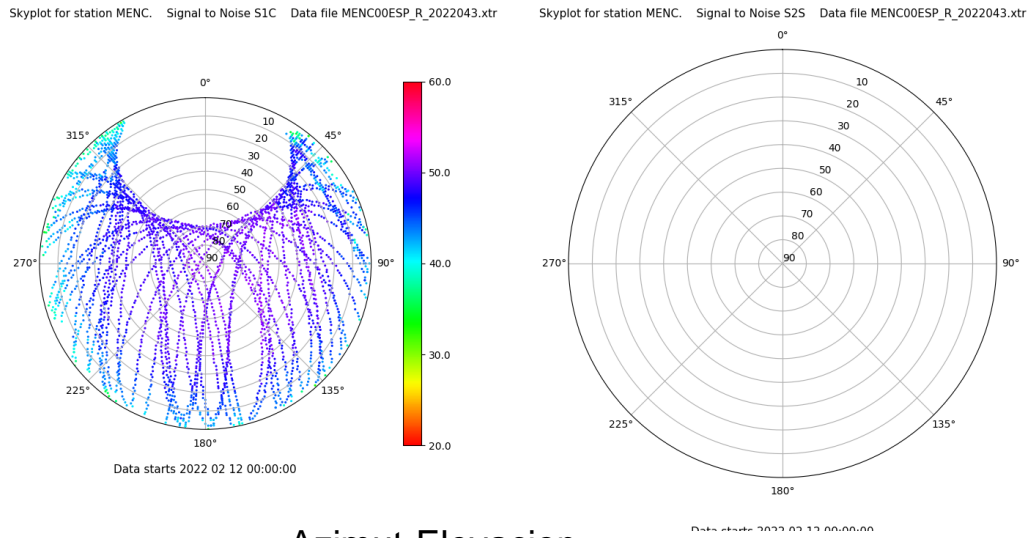
Control de calidad GNSS GPS diario

Estacion: MENC

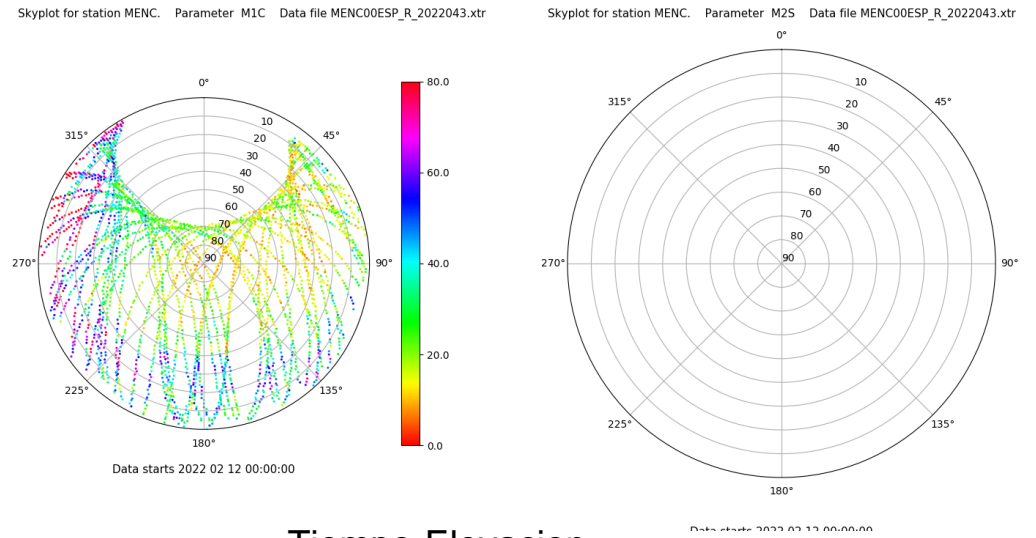
Fecha: 2022 02 12

Dia del año: 043

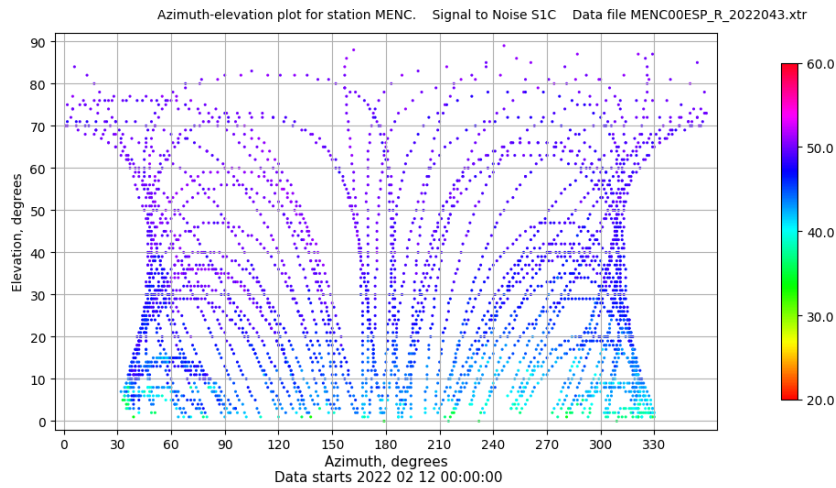
Señal-Ruido GPS L1 y L2



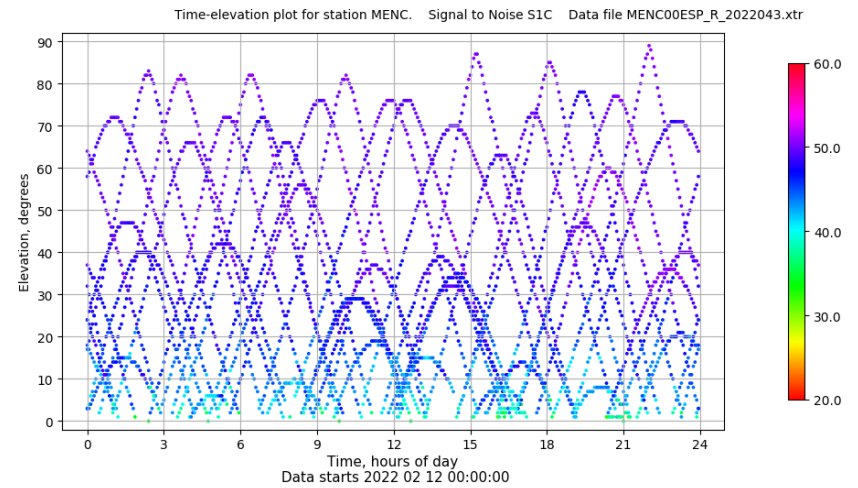
Multipath GPS L1 y L2



Azimut-Elevacion



Tiempo-Elevacion



Control de calidad GNSS GLO diario

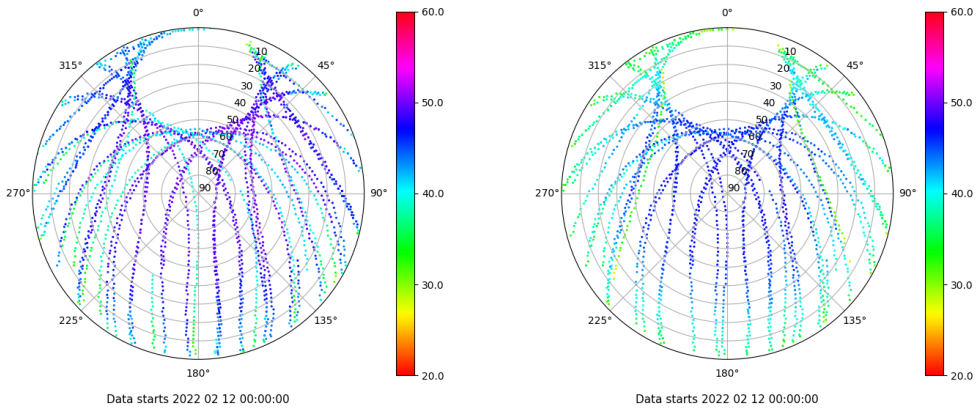
Estacion: MENC

Fecha: 2022 02 12

Dia del año: 043

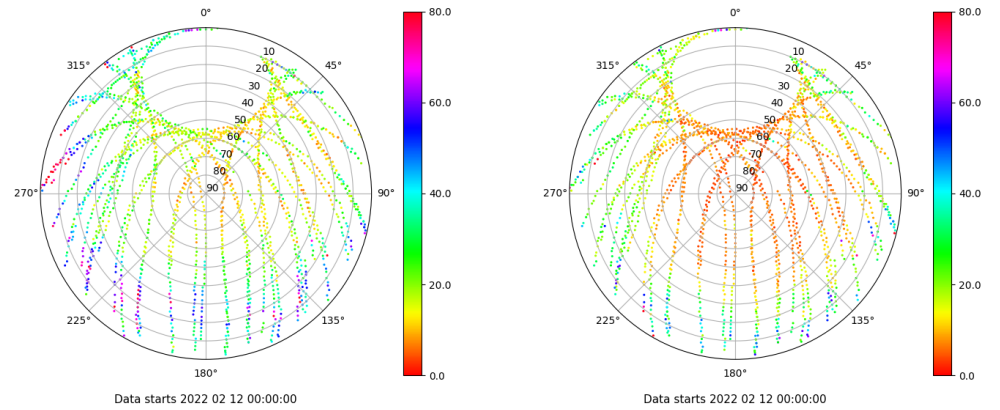
Señal-Ruido GLO L1 y L2

Skyplot for station MENC. Signal to Noise S1C Data file MENC00ESP_R_2022043.xtr Skyplot for station MENC. Signal to Noise S2P Data file MENC00ESP_R_2022043.xtr



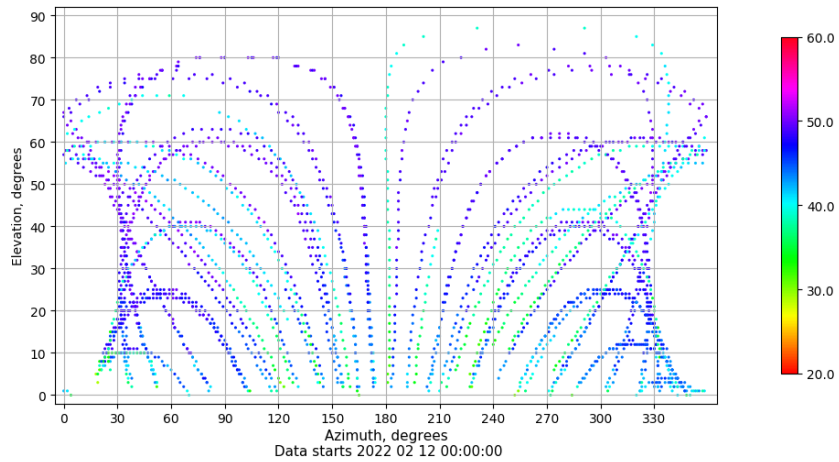
Multipath GLO L1 y L2

Skyplot for station MENC. Parameter M1C Data file MENC00ESP_R_2022043.xtr Skyplot for station MENC. Parameter M2P Data file MENC00ESP_R_2022043.xtr



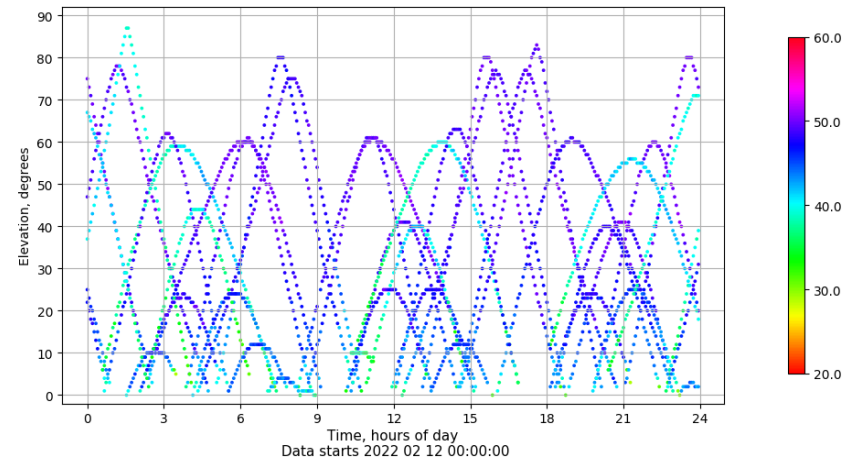
Azimut-Elevacion

Azimuth-elevation plot for station MENC. Signal to Noise S1C Data file MENC00ESP_R_2022043.xtr



Tiempo-Elevacion

Time-elevation plot for station MENC. Signal to Noise S1C Data file MENC00ESP_R_2022043.xtr



Control de calidad GNSS GAL diario

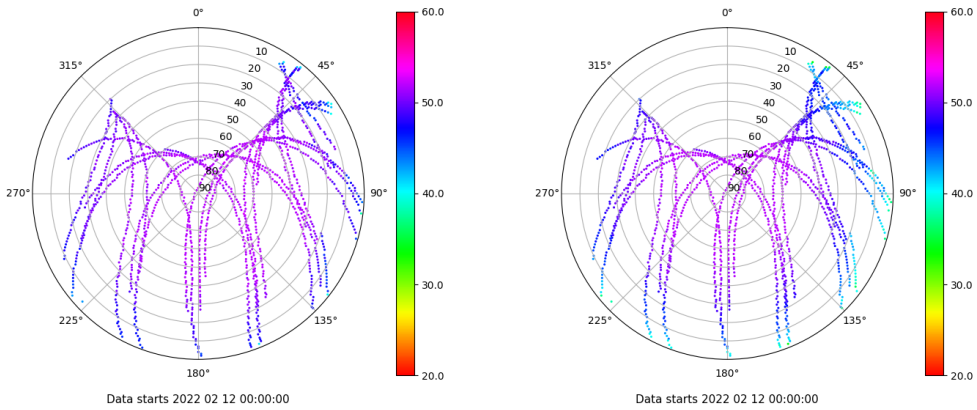
Estacion: MENC

Fecha: 2022 02 12

Dia del año: 043

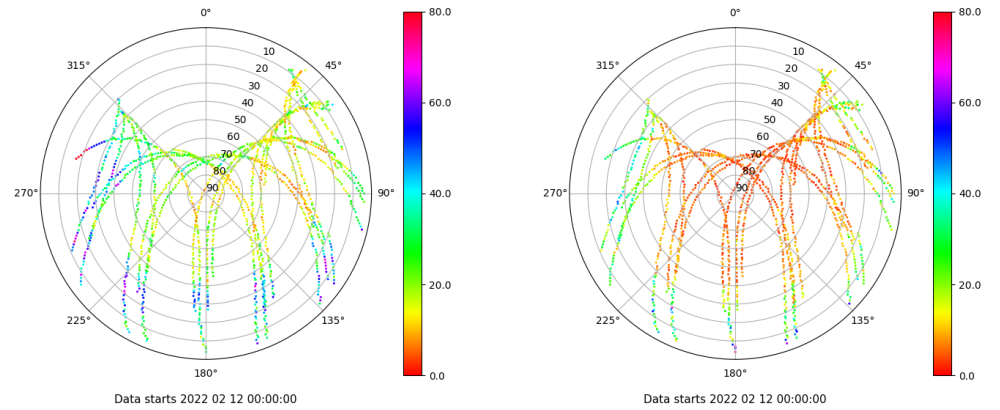
Señal-Ruido GAL E1 y E5

Skyplot for station MENC. Signal to Noise S1C Data file MENC00ESP_R_2022043.xtr Skyplot for station MENC. Signal to Noise S5Q Data file MENC00ESP_R_2022043.xtr



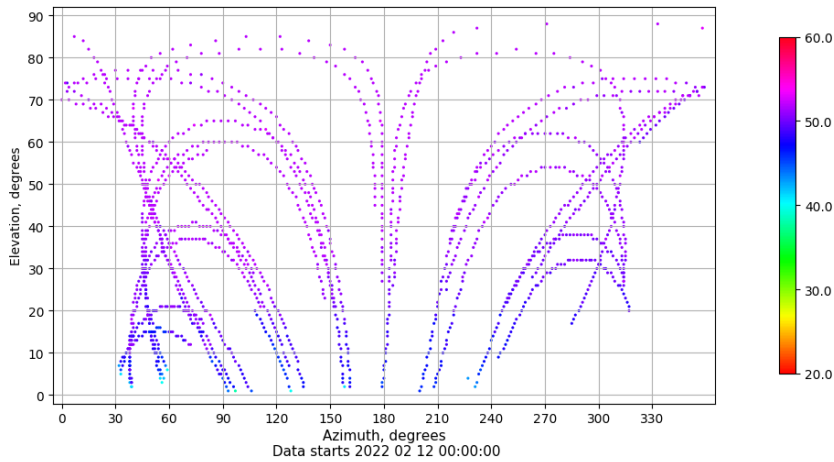
Multipath GAL E1 y E5

Skyplot for station MENC. Parameter M1C Data file MENC00ESP_R_2022043.xtr Skyplot for station MENC. Parameter M5Q Data file MENC00ESP_R_2022043.xtr



Azimuth-Elevacion

Azimuth-elevation plot for station MENC. Signal to Noise S1C Data file MENC00ESP_R_2022043.xtr



Tiempo-Elevacion

Time-elevation plot for station MENC. Signal to Noise S1C Data file MENC00ESP_R_2022043.xtr

