

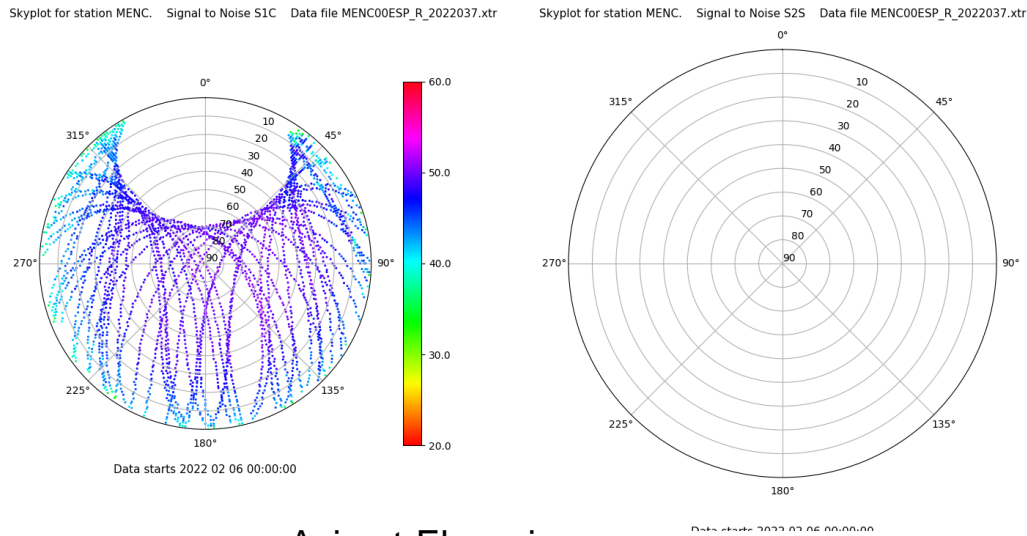
Control de calidad GNSS GPS diario

Estacion: MENC

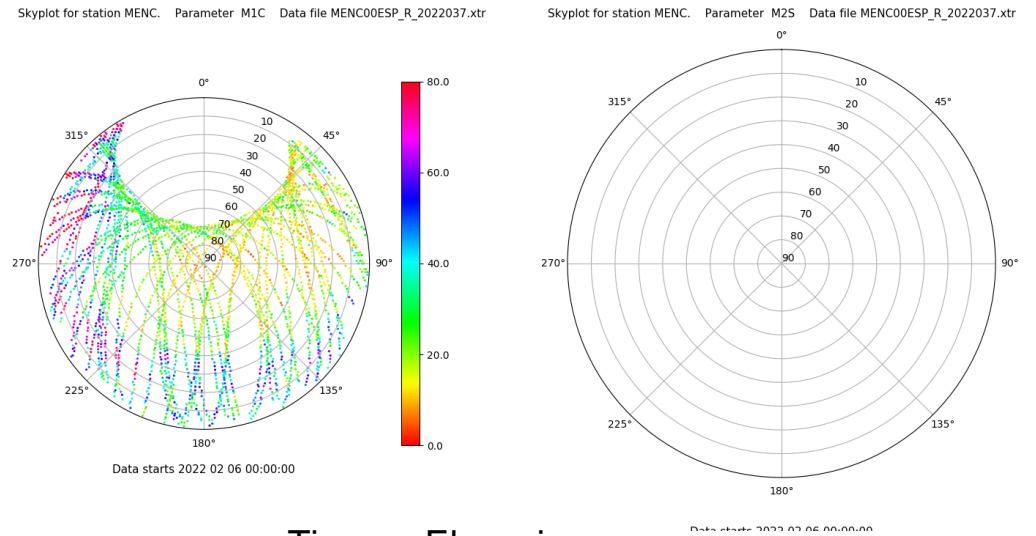
Fecha: 2022 02 06

Dia del año: 037

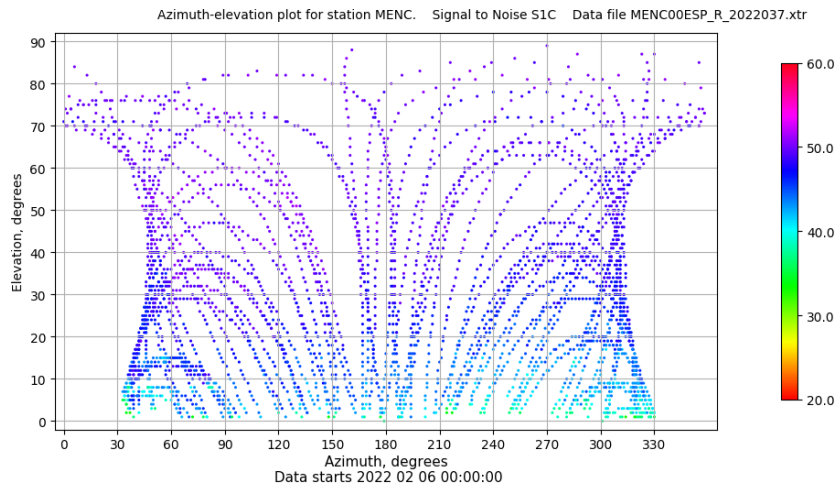
Señal-Ruido GPS L1 y L2



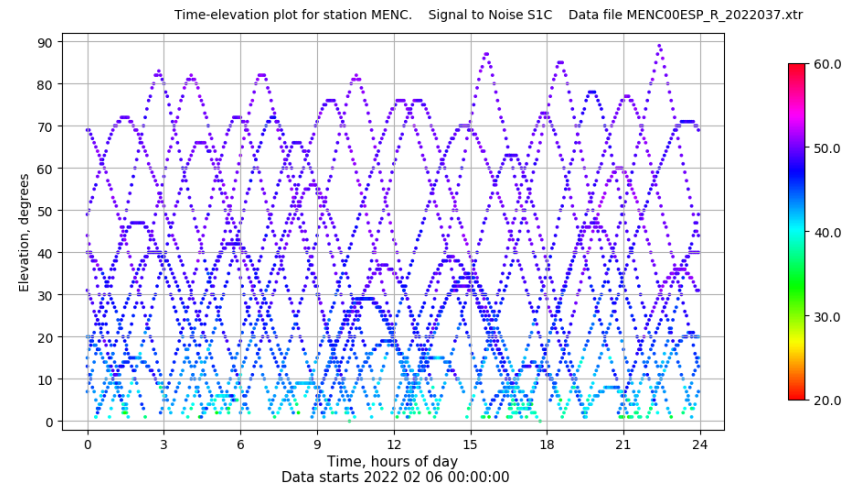
Multipath GPS L1 y L2



Azimut-Elevacion



Tiempo-Elevacion



Control de calidad GNSS GLO diario

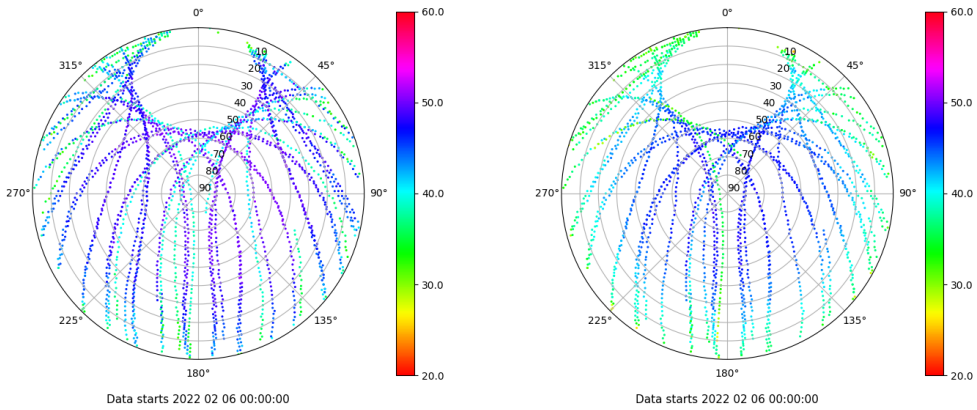
Estacion: MENC

Fecha: 2022 02 06

Dia del año: 037

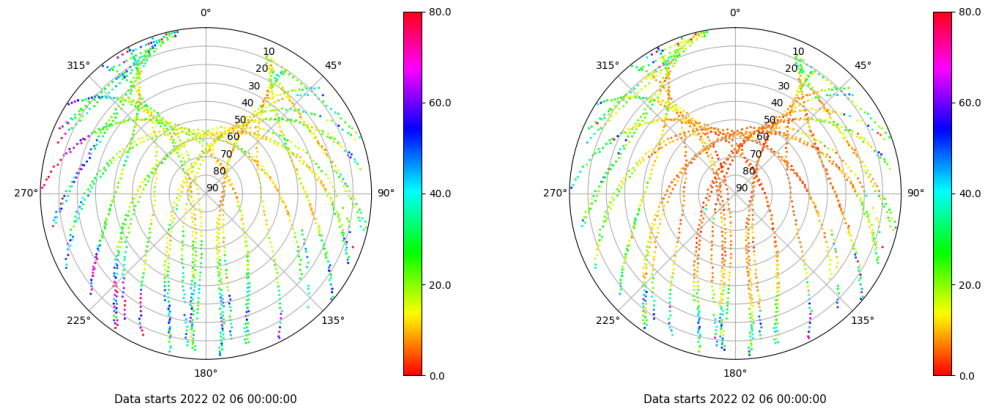
Señal-Ruido GLO L1 y L2

Skyplot for station MENC. Signal to Noise S1C Data file MENC00ESP_R_2022037.xtr Skyplot for station MENC. Signal to Noise S2P Data file MENC00ESP_R_2022037.xtr



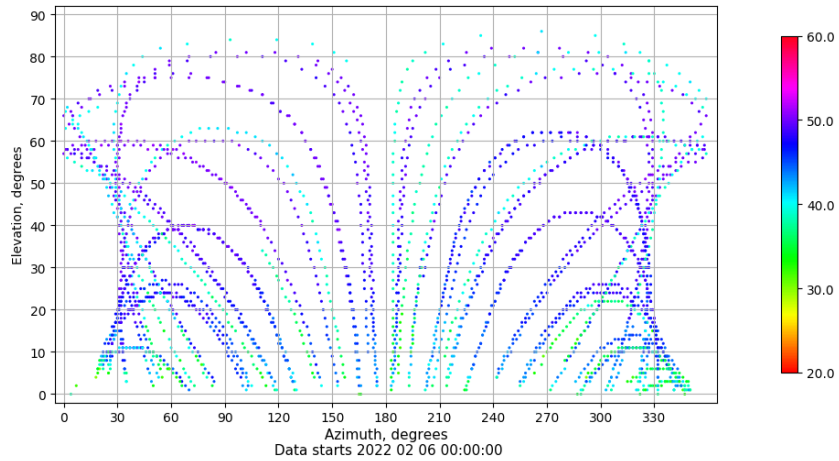
Multipath GLO L1 y L2

Skyplot for station MENC. Parameter M1C Data file MENC00ESP_R_2022037.xtr Skyplot for station MENC. Parameter M2P Data file MENC00ESP_R_2022037.xtr



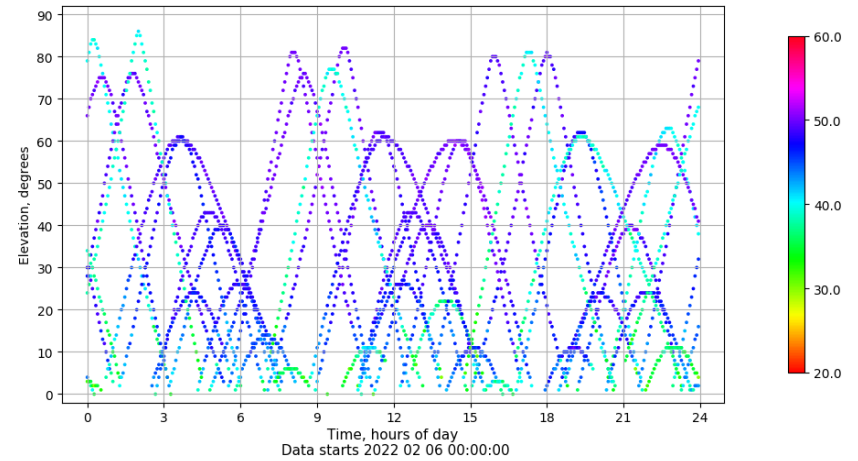
Azimuth-Elevacion

Azimuth-elevation plot for station MENC. Signal to Noise S1C Data file MENC00ESP_R_2022037.xtr



Tiempo-Elevacion

Time-elevation plot for station MENC. Signal to Noise S1C Data file MENC00ESP_R_2022037.xtr



Control de calidad GNSS GAL diario

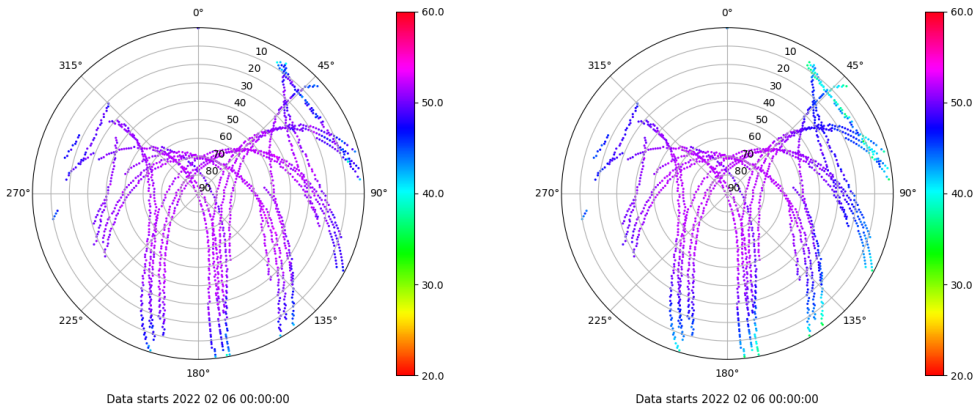
Estacion: MENC

Fecha: 2022 02 06

Dia del año: 037

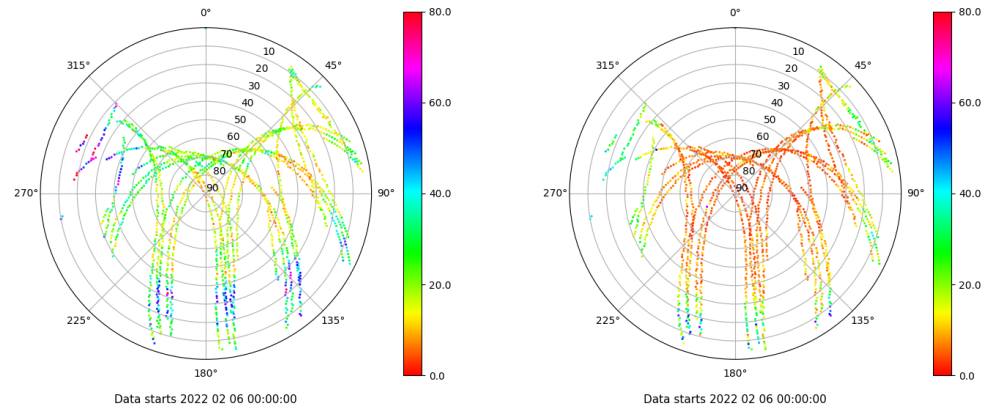
Señal-Ruido GAL E1 y E5

Skyplot for station MENC. Signal to Noise S1C Data file MENC00ESP_R_2022037.xtr Skyplot for station MENC. Signal to Noise S5Q Data file MENC00ESP_R_2022037.xtr



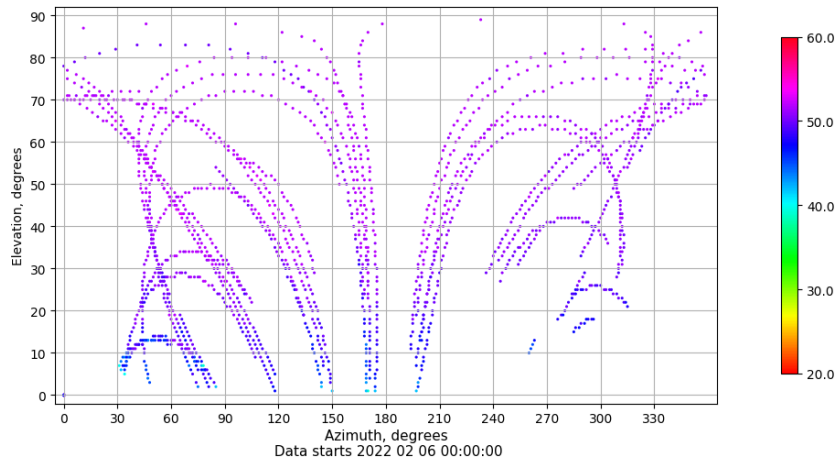
Multipath GAL E1 y E5

Skyplot for station MENC. Parameter M1C Data file MENC00ESP_R_2022037.xtr Skyplot for station MENC. Parameter M5Q Data file MENC00ESP_R_2022037.xtr



Azimuth-Elevacion

Azimuth-elevation plot for station MENC. Signal to Noise S1C Data file MENC00ESP_R_2022037.xtr



Tiempo-Elevacion

Time-elevation plot for station MENC. Signal to Noise S1C Data file MENC00ESP_R_2022037.xtr

