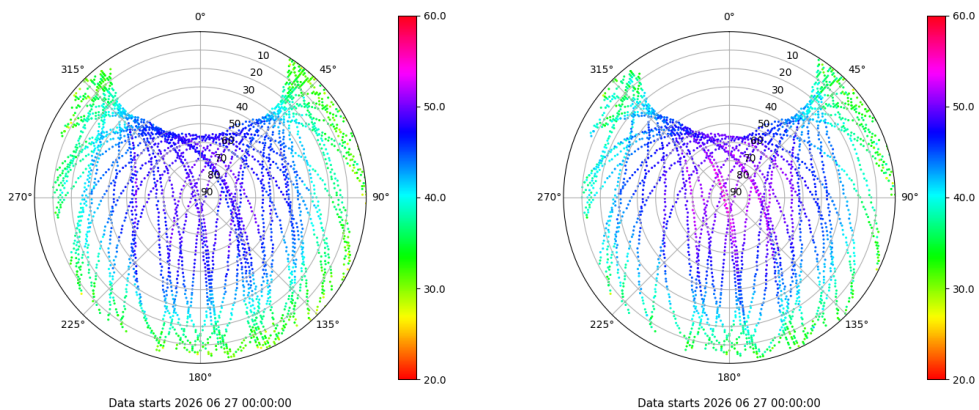


# Control de calidad GNSS GPS diario

Estacion: LZ01  
 Fecha: 2026 06 27  
 Día del año: 178

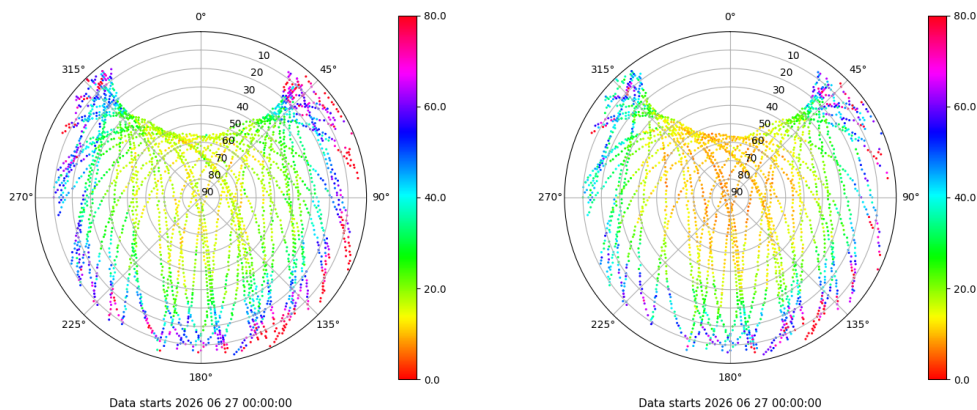
## Señal-Ruido GPS L1 y L2

Skyplot for station LZ01. Signal to Noise S1C Data file LZ0100ESP\_R\_2026178.xtr Skyplot for station LZ01. Signal to Noise S2X Data file LZ0100ESP\_R\_2026178.xtr



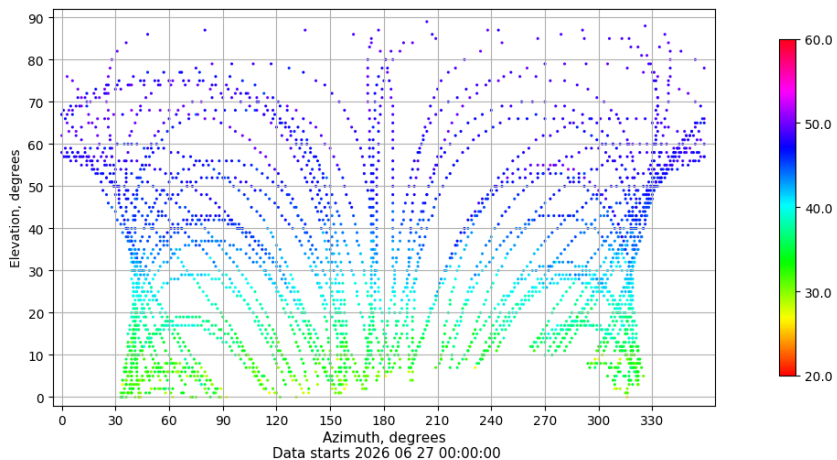
## Multipath GPS L1 y L2

Skyplot for station LZ01. Parameter M1C Data file LZ0100ESP\_R\_2026178.xtr Skyplot for station LZ01. Parameter M2X Data file LZ0100ESP\_R\_2026178.xtr



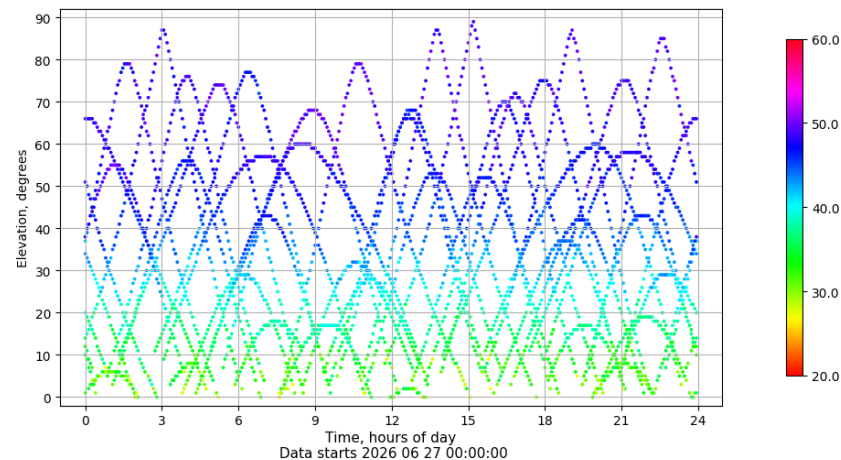
## Azimuth-Elevacion

Azimuth-elevation plot for station LZ01. Signal to Noise S1C Data file LZ0100ESP\_R\_2026178.xtr



## Tiempo-Elevacion

Time-elevation plot for station LZ01. Signal to Noise S1C Data file LZ0100ESP\_R\_2026178.xtr

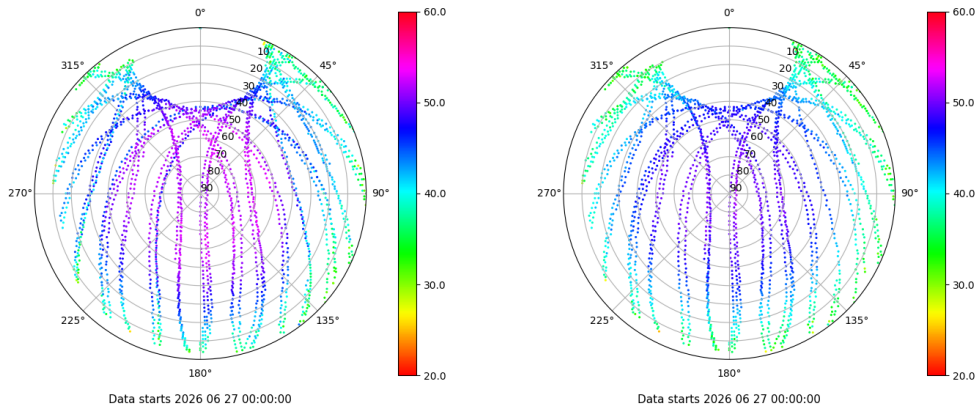


# Control de calidad GNSS GLO diario

Estacion: LZ01  
 Fecha: 2026 06 27  
 Dia del año: 178

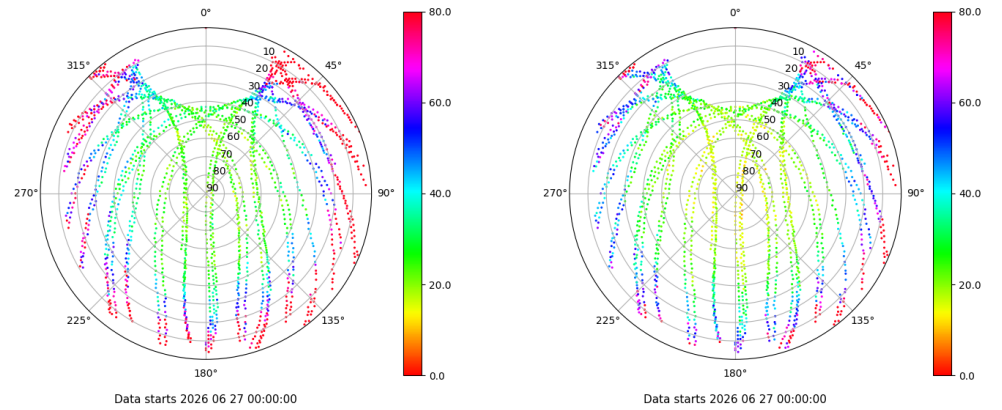
## Señal-Ruido GLO L1 y L2

Skyplot for station LZ01. Signal to Noise S1C Data file LZ0100ESP\_R\_2026178.xtr Skyplot for station LZ01. Signal to Noise S2C Data file LZ0100ESP\_R\_2026178.xtr



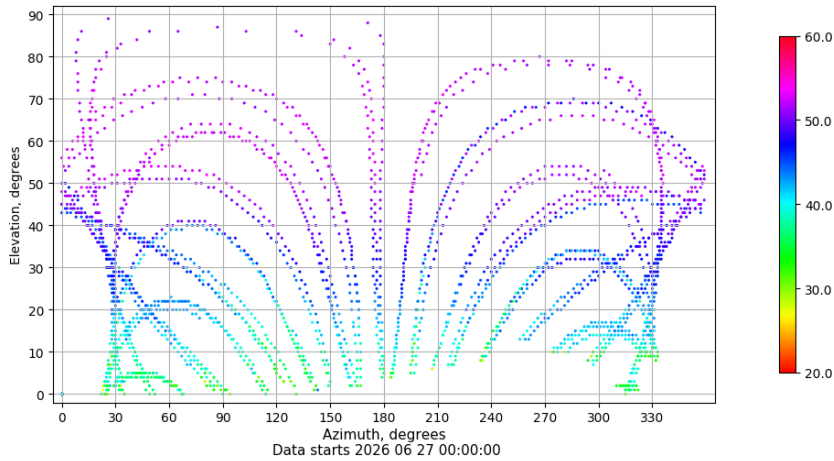
## Multipath GLO L1 y L2

Skyplot for station LZ01. Parameter M1C Data file LZ0100ESP\_R\_2026178.xtr Skyplot for station LZ01. Parameter M2C Data file LZ0100ESP\_R\_2026178.xtr



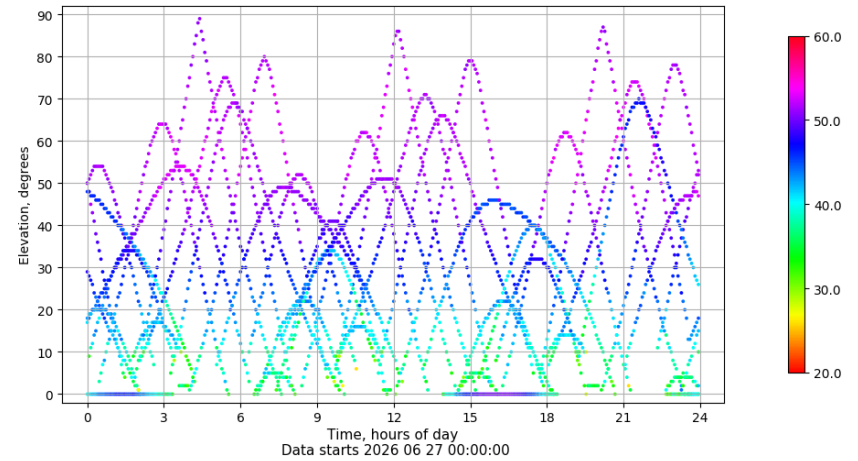
## Azimuth-Elevacion

Azimuth-elevation plot for station LZ01. Signal to Noise S1C Data file LZ0100ESP\_R\_2026178.xtr



## Tiempo-Elevacion

Time-elevation plot for station LZ01. Signal to Noise S1C Data file LZ0100ESP\_R\_2026178.xtr

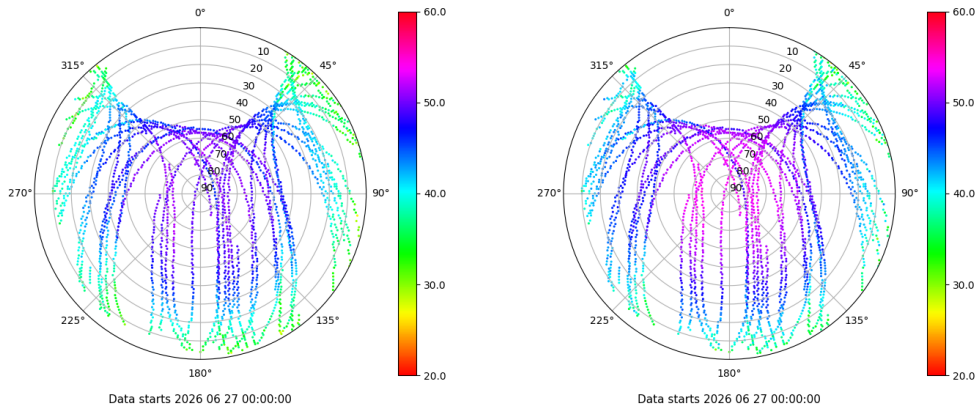


# Control de calidad GNSS GAL diario

Estacion: LZ01  
 Fecha: 2026 06 27  
 Dia del año: 178

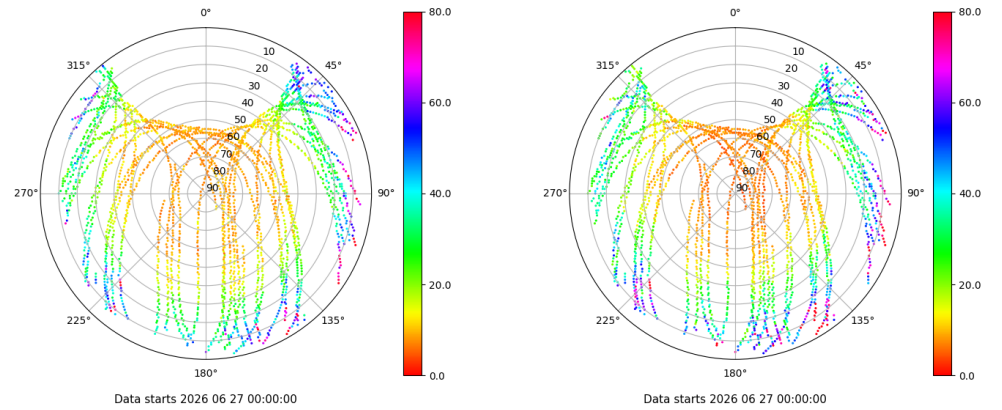
## Señal-Ruido GAL E1 y E5

Skyplot for station LZ01. Signal to Noise S1X Data file LZ0100ESP\_R\_2026178.xtr Skyplot for station LZ01. Signal to Noise S5X Data file LZ0100ESP\_R\_2026178.xtr



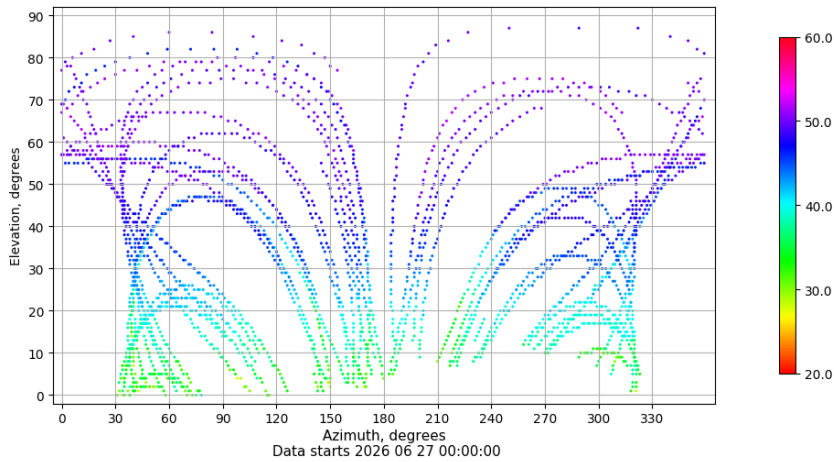
## Multipath GAL E1 y E5

Skyplot for station LZ01. Parameter M1X Data file LZ0100ESP\_R\_2026178.xtr Skyplot for station LZ01. Parameter M5X Data file LZ0100ESP\_R\_2026178.xtr



## Azimuth-Elevacion

Azimuth-elevation plot for station LZ01. Signal to Noise S1X Data file LZ0100ESP\_R\_2026178.xtr



## Tiempo-Elevacion

Time-elevation plot for station LZ01. Signal to Noise S1X Data file LZ0100ESP\_R\_2026178.xtr

