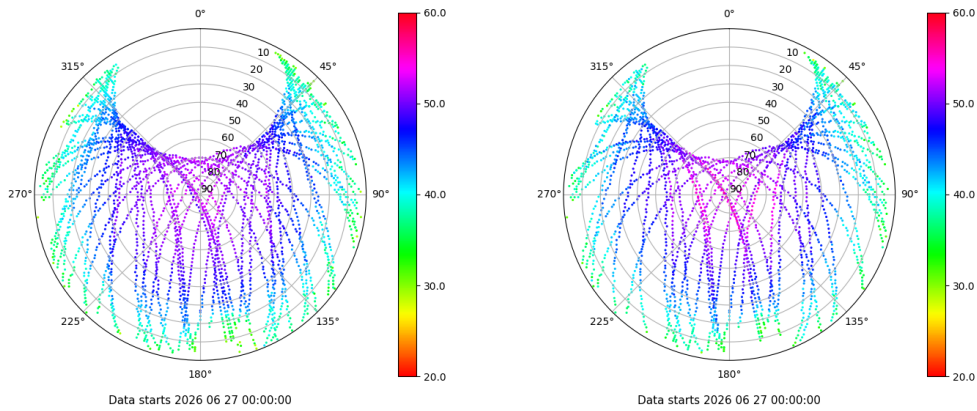


Control de calidad GNSS GPS diario

Estacion: IGNE
 Fecha: 2026 06 27
 Dia del año: 178

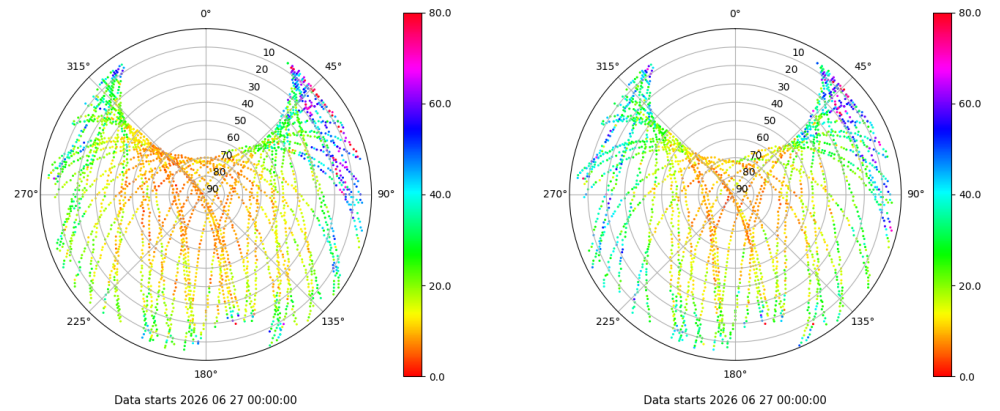
Señal-Ruido GPS L1 y L2

Skyplot for station IGNE. Signal to Noise S1C Data file IGNE00ESP_R_2026178.xtr Skyplot for station IGNE. Signal to Noise S2S Data file IGNE00ESP_R_2026178.xtr



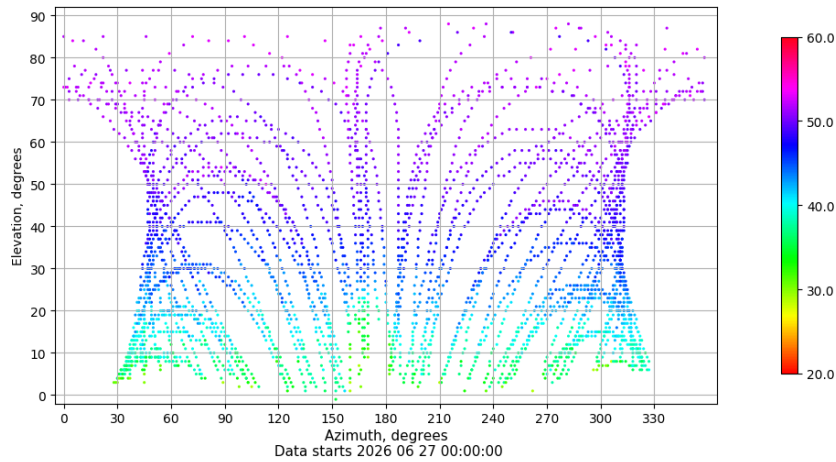
Multipath GPS L1 y L2

Skyplot for station IGNE. Parameter M1C Data file IGNE00ESP_R_2026178.xtr Skyplot for station IGNE. Parameter M2S Data file IGNE00ESP_R_2026178.xtr



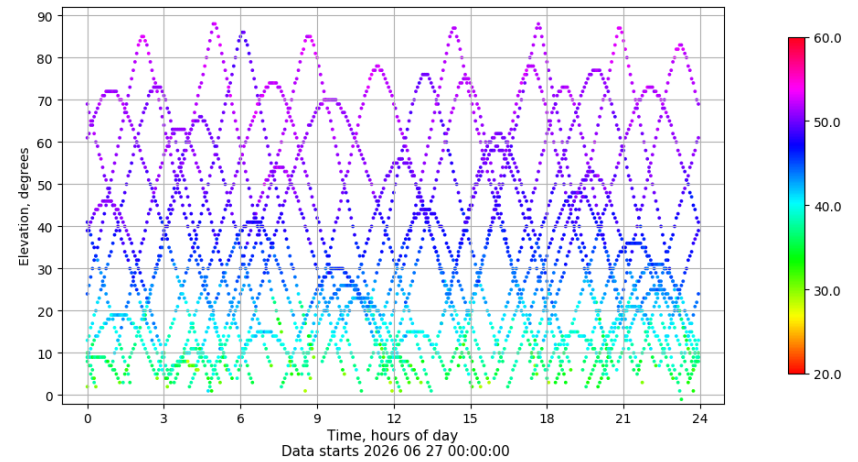
Azimuth-Elevacion

Azimuth-elevation plot for station IGNE. Signal to Noise S1C Data file IGNE00ESP_R_2026178.xtr



Tiempo-Elevacion

Time-elevation plot for station IGNE. Signal to Noise S1C Data file IGNE00ESP_R_2026178.xtr

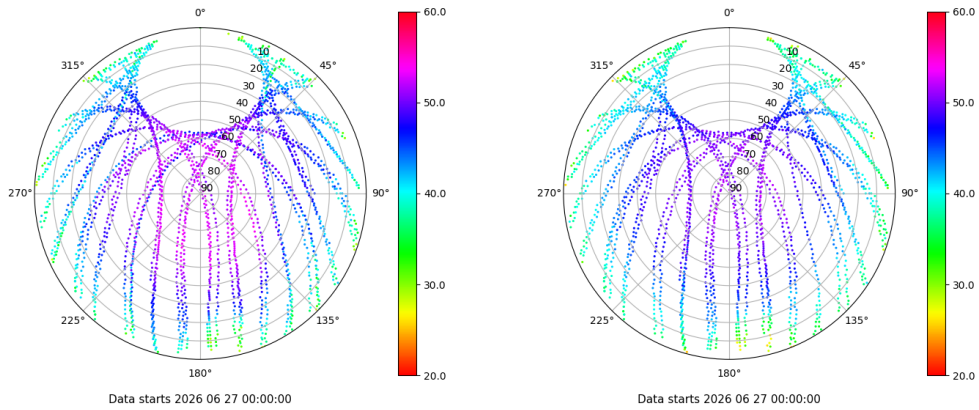


Control de calidad GNSS GLO diario

Estacion: IGNE
 Fecha: 2026 06 27
 Dia del año: 178

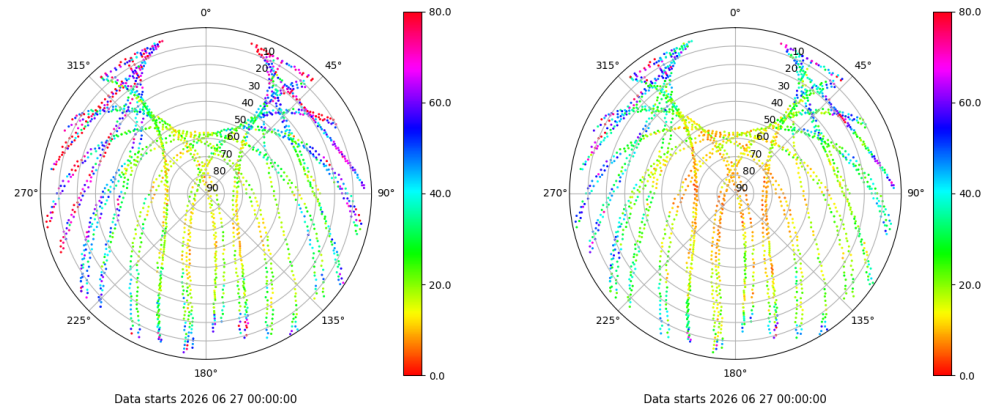
Señal-Ruido GLO L1 y L2

Skyplot for station IGNE. Signal to Noise S1C Data file IGNE00ESP_R_2026178.xtr Skyplot for station IGNE. Signal to Noise S2C Data file IGNE00ESP_R_2026178.xtr



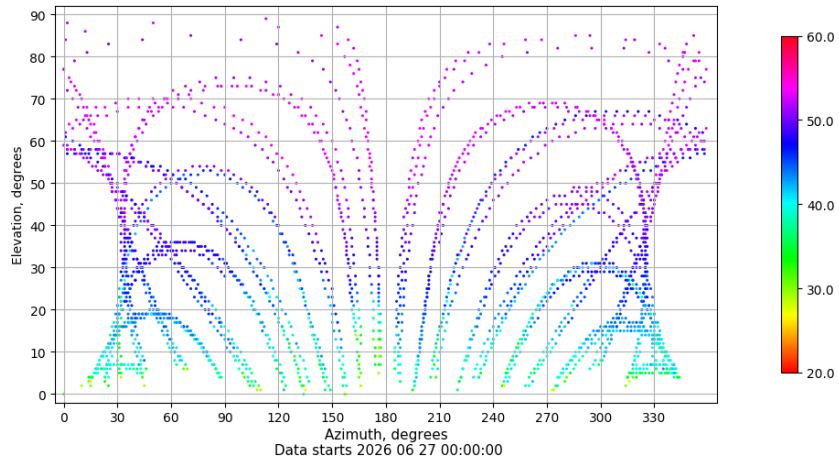
Multipath GLO L1 y L2

Skyplot for station IGNE. Parameter M1C Data file IGNE00ESP_R_2026178.xtr Skyplot for station IGNE. Parameter M2C Data file IGNE00ESP_R_2026178.xtr



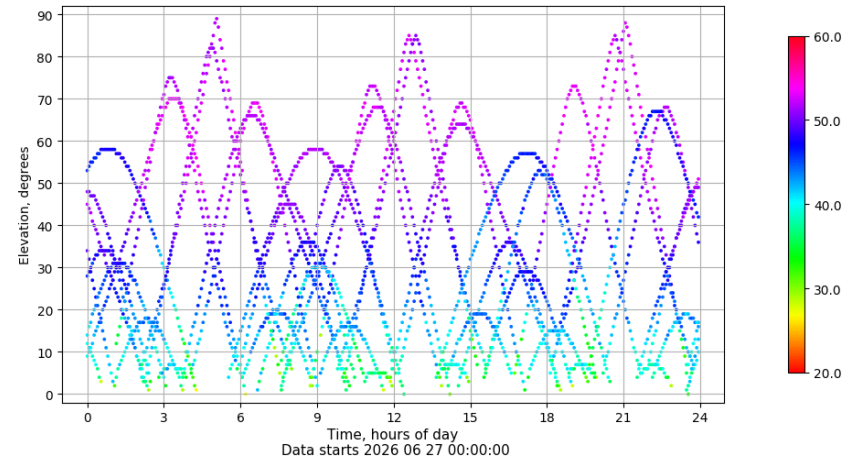
Azimut-Elevacion

Azimuth-elevation plot for station IGNE. Signal to Noise S1C Data file IGNE00ESP_R_2026178.xtr



Tiempo-Elevacion

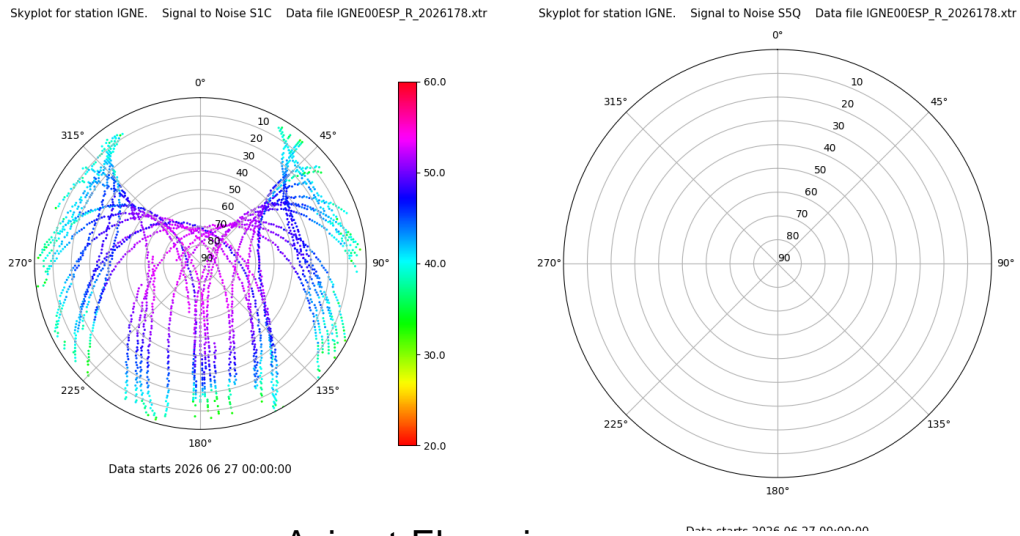
Time-elevation plot for station IGNE. Signal to Noise S1C Data file IGNE00ESP_R_2026178.xtr



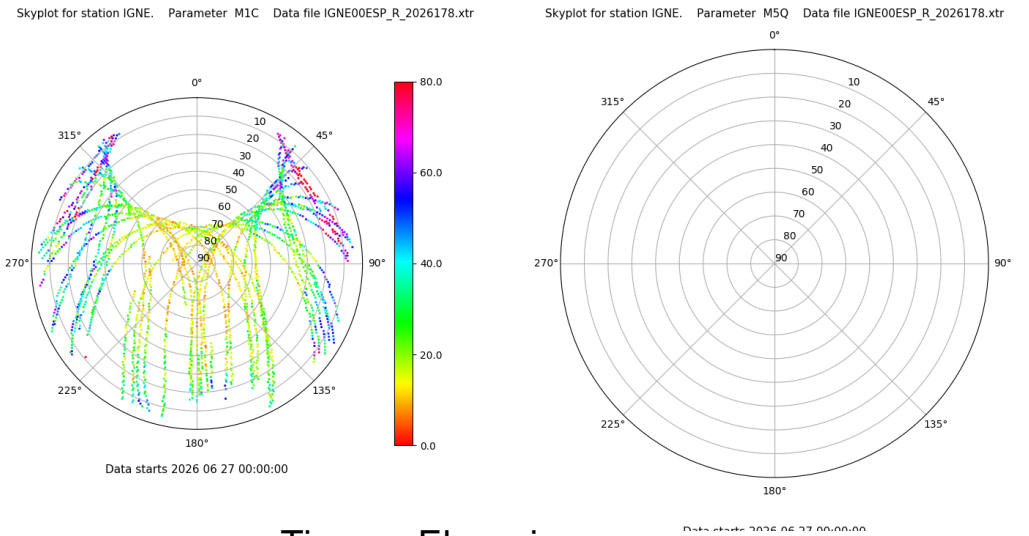
Control de calidad GNSS GAL diario

Estacion: IGNE
 Fecha: 2026 06 27
 Dia del año: 178

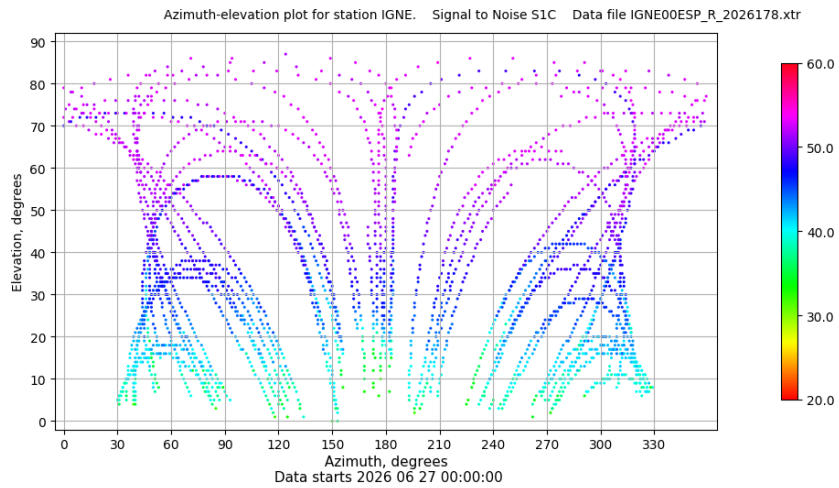
Señal-Ruido GAL E1 y E5



Multipath GAL E1 y E5



Azimuth-Elevacion



Tiempo-Elevacion

