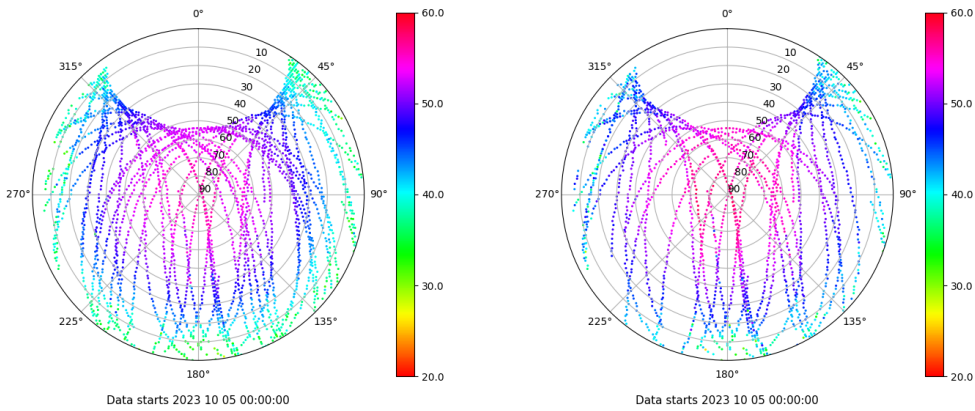


Control de calidad GNSS GPS diario

Estacion: GOME
 Fecha: 2023 10 05
 Dia del año: 278

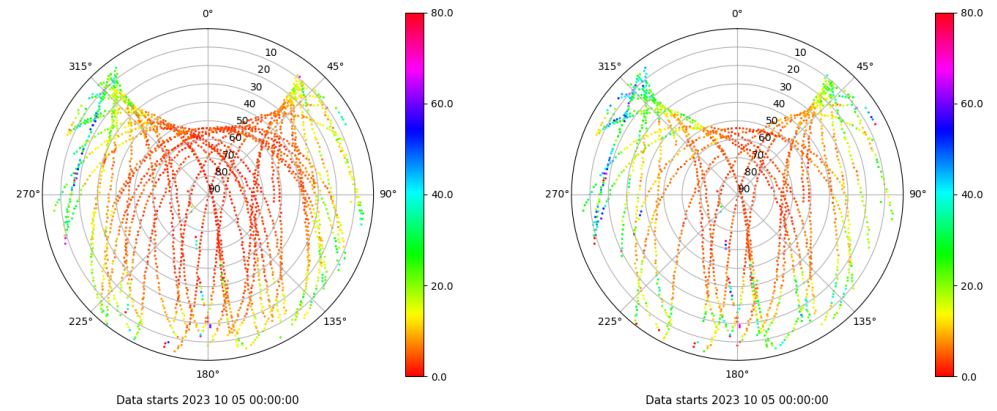
Señal-Ruido GPS L1 y L2

Skyplot for station GOME. Signal to Noise S1C Data file GOME00ESP_R_2023278.xtr Skyplot for station GOME. Signal to Noise S2S Data file GOME00ESP_R_2023278.xtr



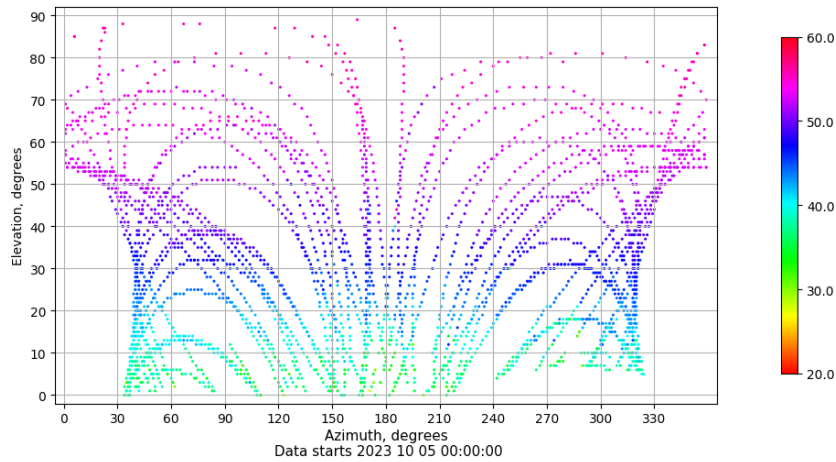
Multipath GPS L1 y L2

Skyplot for station GOME. Parameter M1C Data file GOME00ESP_R_2023278.xtr Skyplot for station GOME. Parameter M2S Data file GOME00ESP_R_2023278.xtr



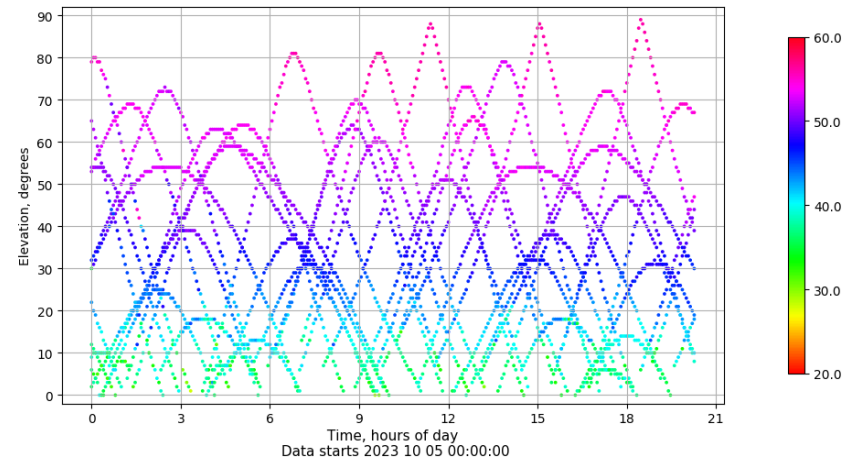
Azimuth-Elevacion

Azimuth-elevation plot for station GOME. Signal to Noise S1C Data file GOME00ESP_R_2023278.xtr



Tiempo-Elevacion

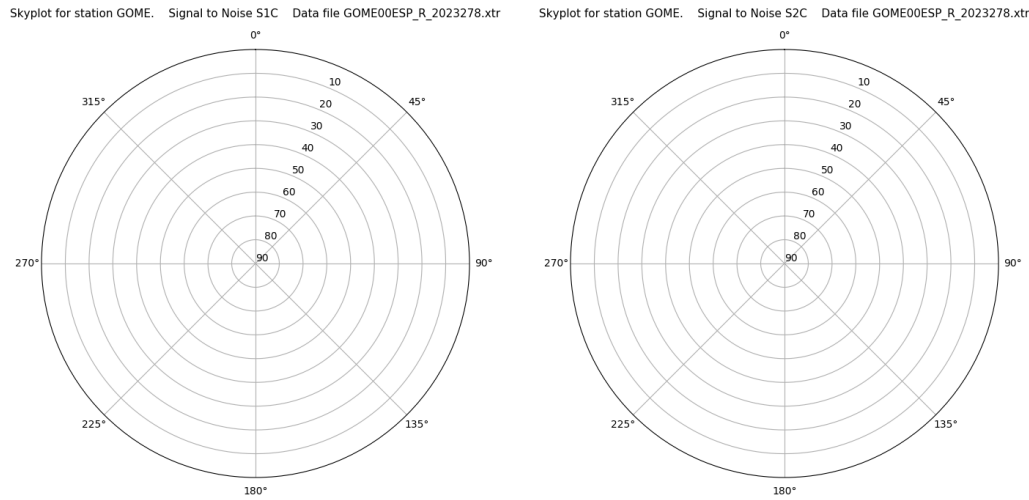
Time-elevation plot for station GOME. Signal to Noise S1C Data file GOME00ESP_R_2023278.xtr



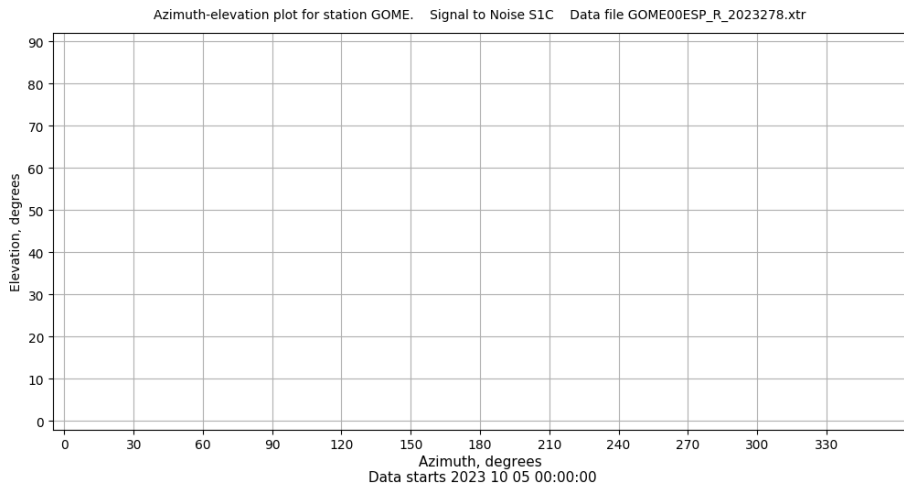
Control de calidad GNSS GLO diario

Estacion: GOME
 Fecha: 2023 10 05
 Dia del año: 278

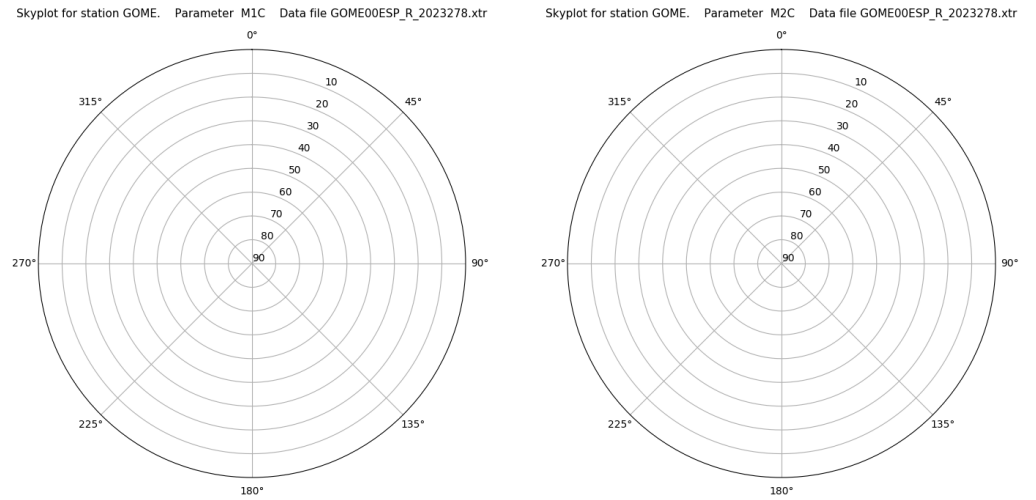
Señal-Ruido GLO L1 y L2



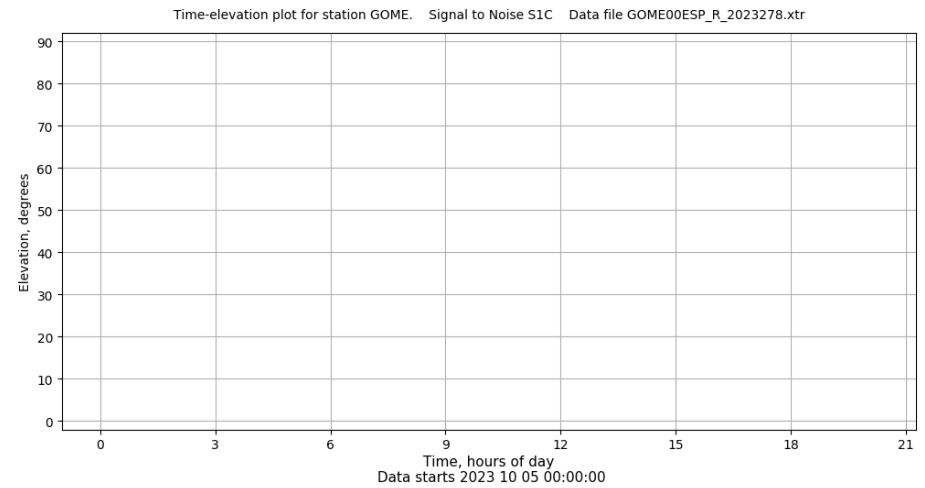
Azimut-Elevacion



Multipath GLO L1 y L2



Tiempo-Elevacion



Control de calidad GNSS GAL diario

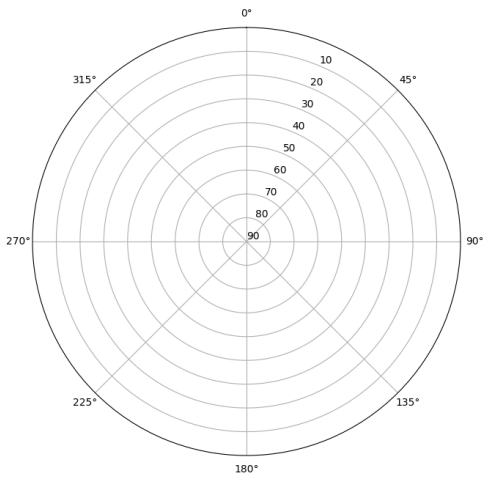
Estacion: GOME

Fecha: 2023 10 05

Dia del año: 278

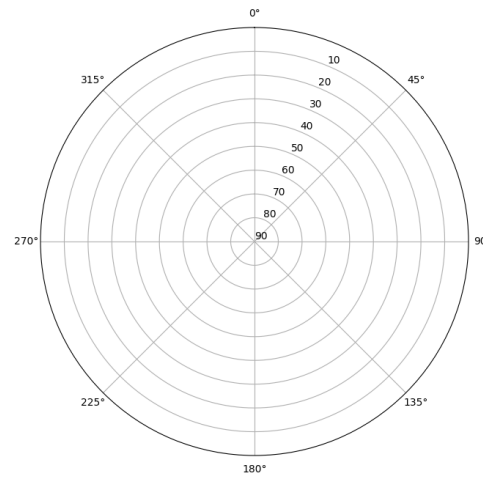
Señal-Ruido GAL E1 y E5

Skyplot for station GOME. Signal to Noise S1C Data file GOME00ESP_R_2023278.xtr



Data starts 2023 10 05 00:00:00

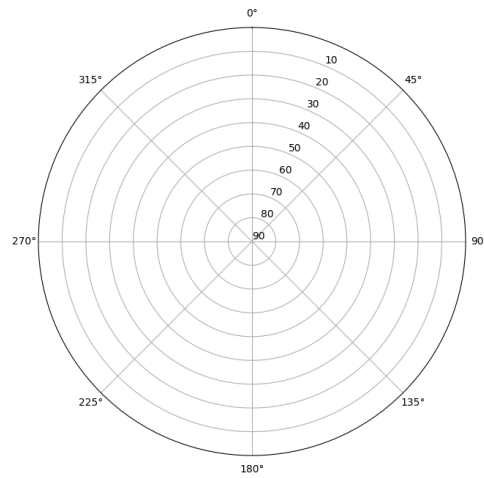
Skyplot for station GOME. Signal to Noise S5Q Data file GOME00ESP_R_2023278.xtr



Data starts 2023 10 05 00:00:00

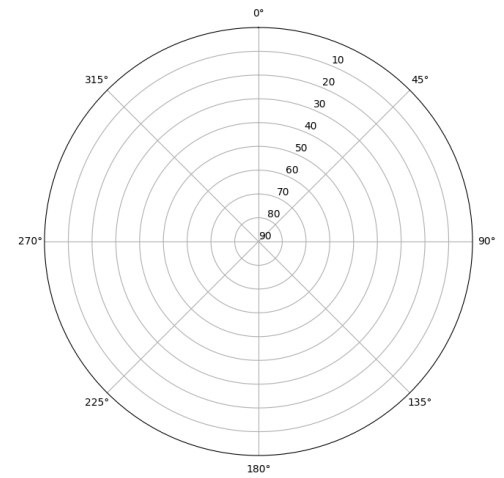
Multipath GAL E1 y E5

Skyplot for station GOME. Parameter M1C Data file GOME00ESP_R_2023278.xtr



Data starts 2023 10 05 00:00:00

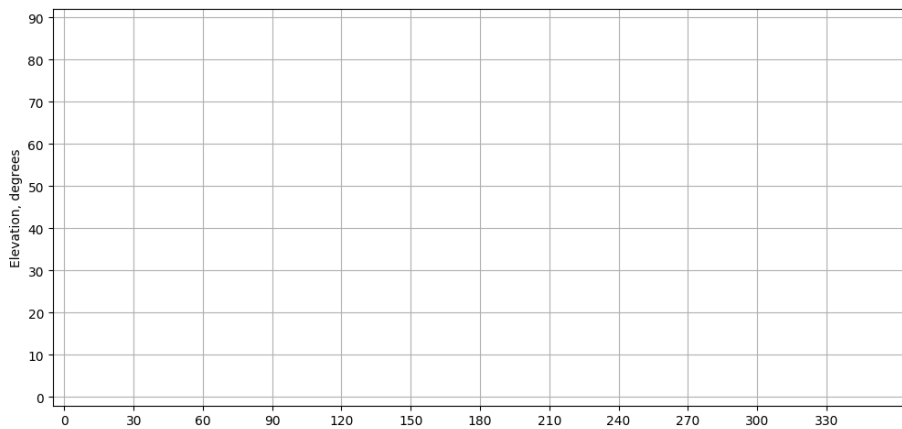
Skyplot for station GOME. Parameter M5Q Data file GOME00ESP_R_2023278.xtr



Data starts 2023 10 05 00:00:00

Azimut-Elevacion

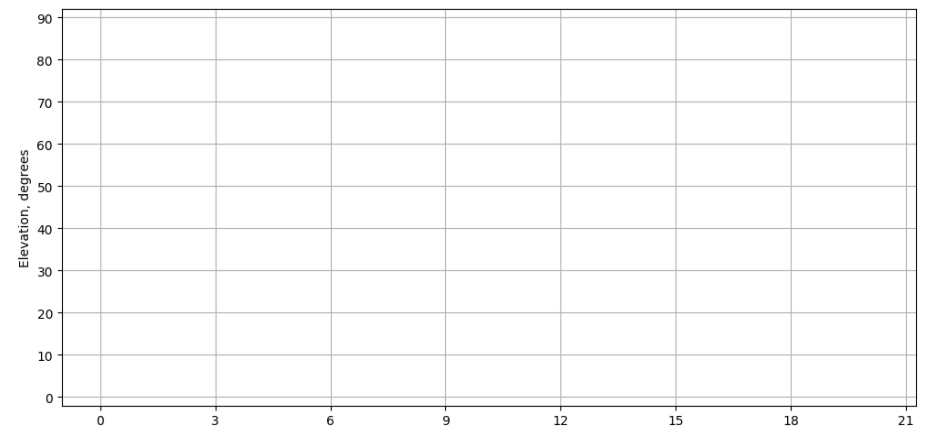
Azimuth-elevation plot for station GOME. Signal to Noise S1C Data file GOME00ESP_R_2023278.xtr



Data starts 2023 10 05 00:00:00

Tiempo-Elevacion

Time-elevation plot for station GOME. Signal to Noise S1C Data file GOME00ESP_R_2023278.xtr



Data starts 2023 10 05 00:00:00