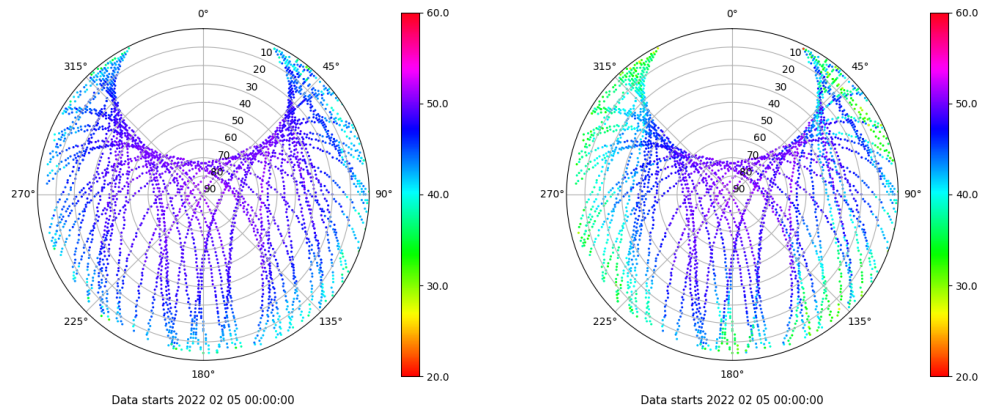


Control de calidad GNSS GPS diario

Estacion: GIRO
 Fecha: 2022 02 05
 Dia del año: 036

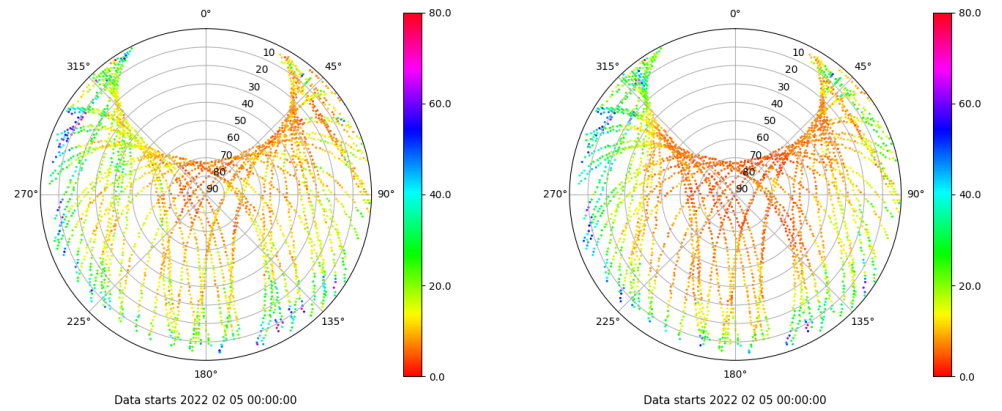
Señal-Ruido GPS L1 y L2

Skyplot for station GIRO. Signal to Noise S1C Data file GIRO00ESP_R_2022036.xtr Skyplot for station GIRO. Signal to Noise S2W Data file GIRO00ESP_R_2022036.xtr



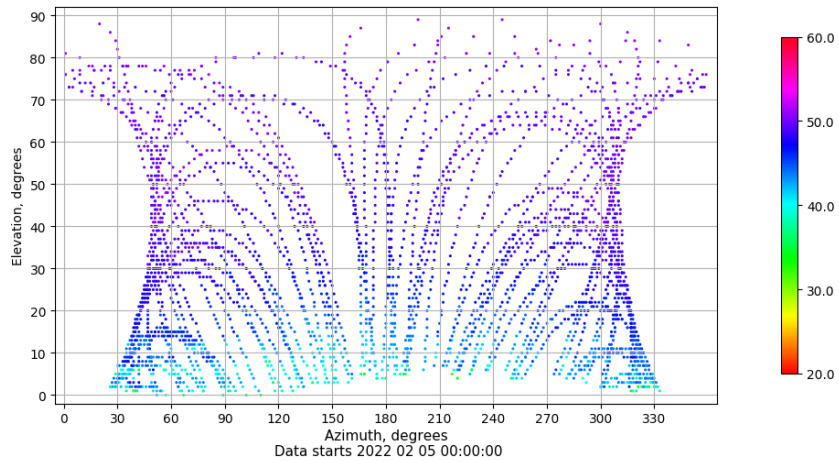
Multipath GPS L1 y L2

Skyplot for station GIRO. Parameter M1C Data file GIRO00ESP_R_2022036.xtr Skyplot for station GIRO. Parameter M2W Data file GIRO00ESP_R_2022036.xtr



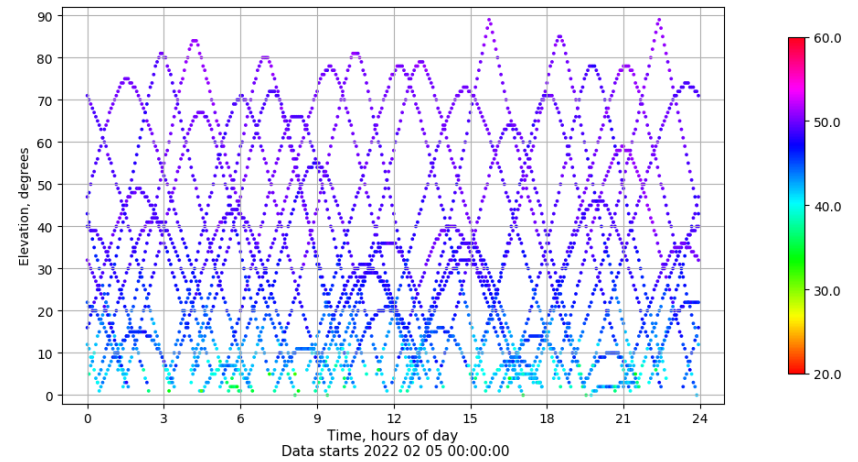
Azimuth-Elevacion

Azimuth-elevation plot for station GIRO. Signal to Noise S1C Data file GIRO00ESP_R_2022036.xtr



Tiempo-Elevacion

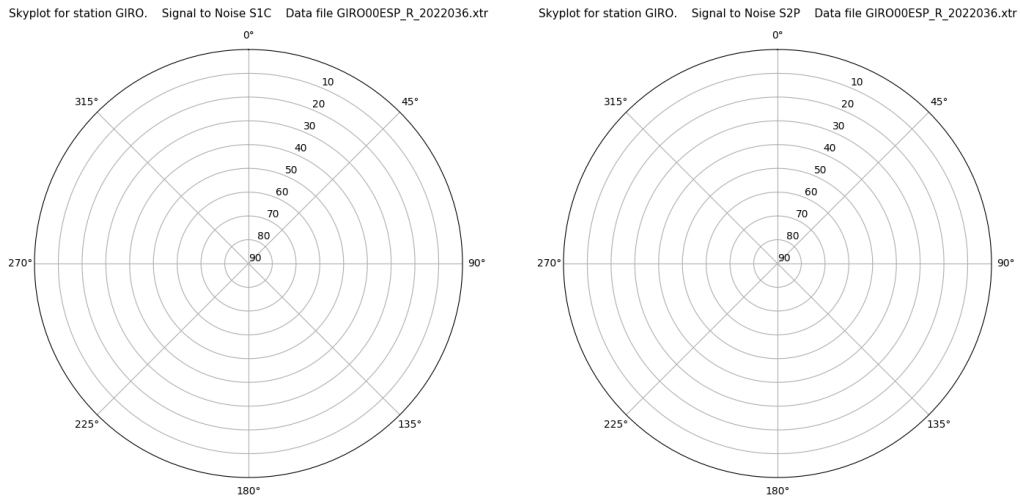
Time-elevation plot for station GIRO. Signal to Noise S1C Data file GIRO00ESP_R_2022036.xtr



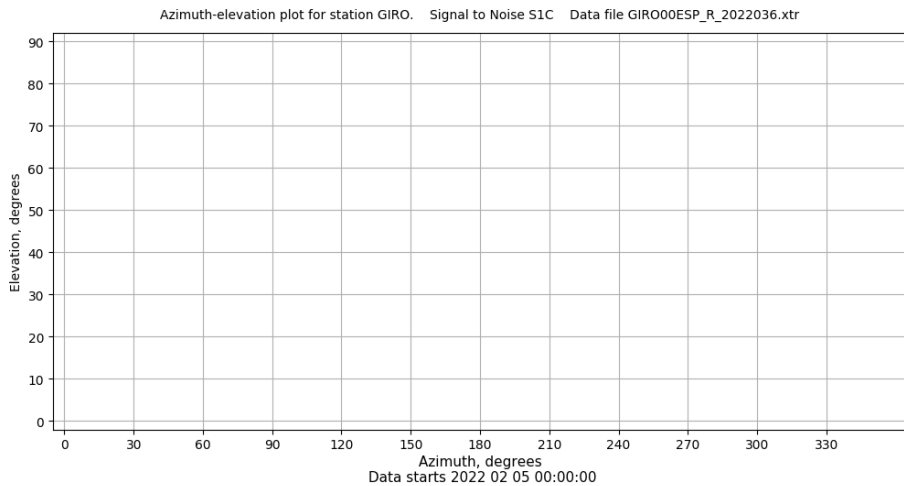
Control de calidad GNSS GLO diario

Estacion: GIRO
 Fecha: 2022 02 05
 Dia del año: 036

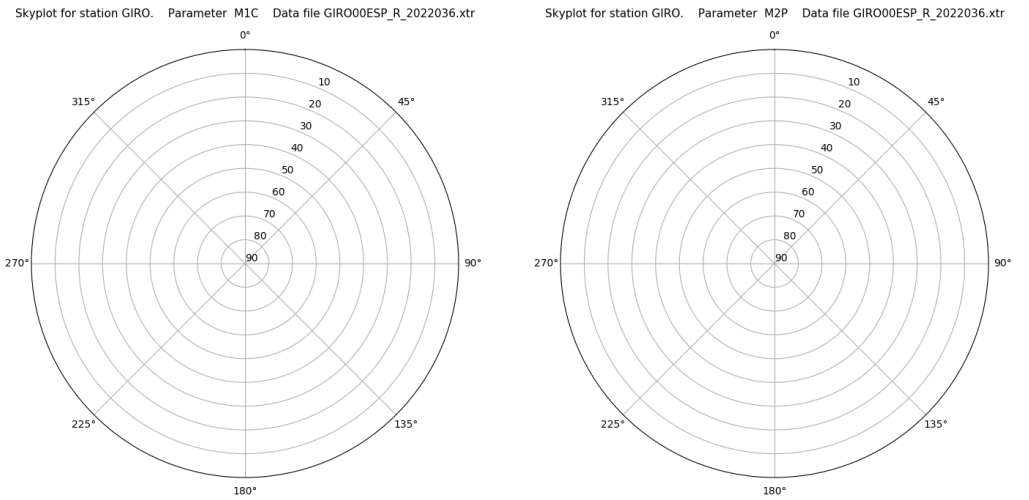
Señal-Ruido GLO L1 y L2



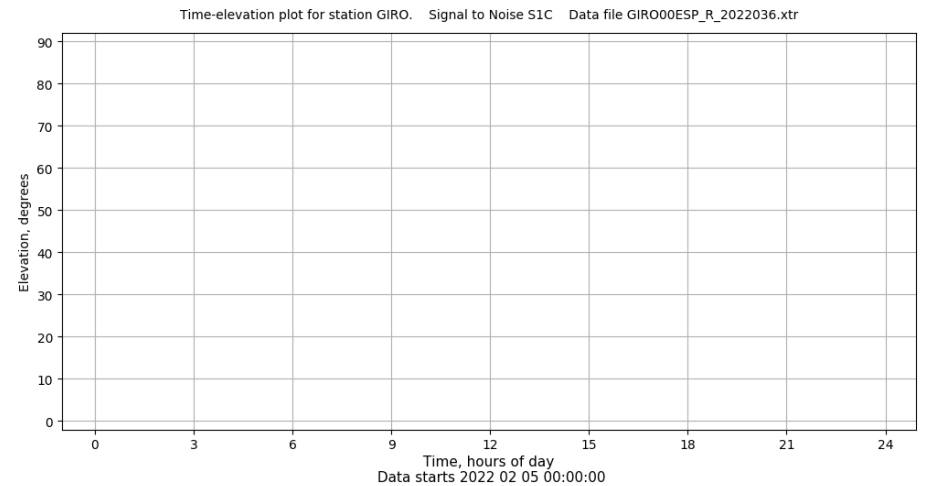
Azimut-Elevacion



Multipath GLO L1 y L2



Tiempo-Elevacion

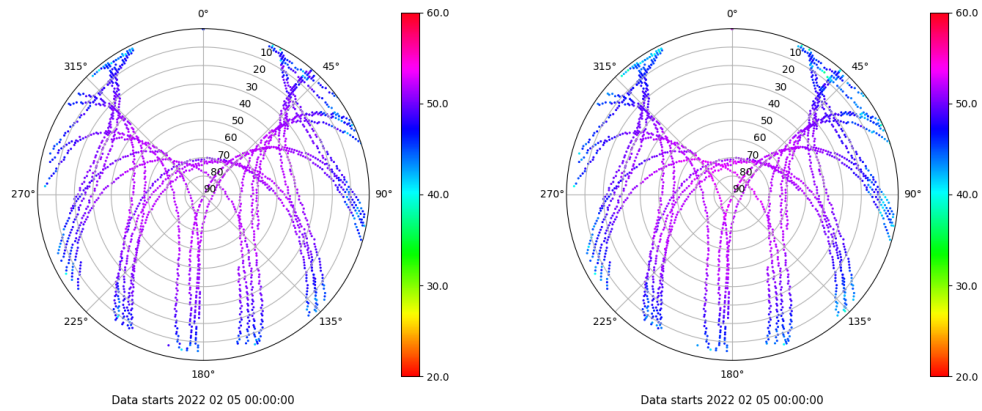


Control de calidad GNSS GAL diario

Estacion: GIRO
 Fecha: 2022 02 05
 Dia del año: 036

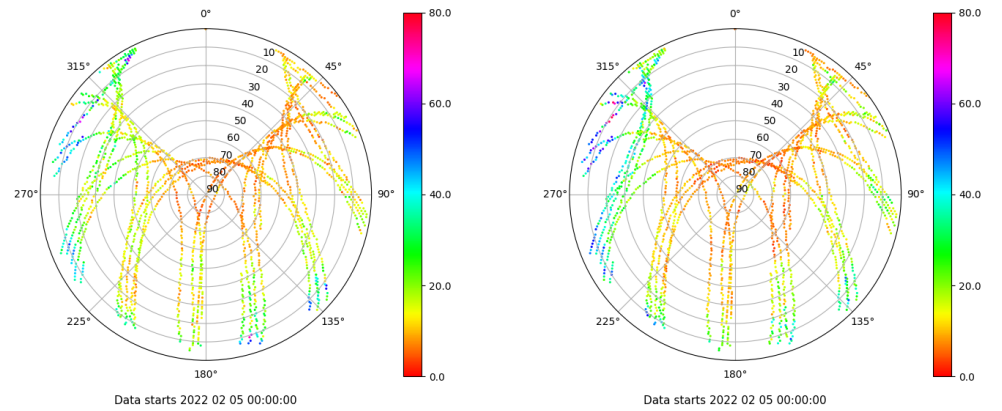
Señal-Ruido GAL E1 y E5

Skyplot for station GIRO. Signal to Noise S1C Data file GIRO00ESP_R_2022036.xtr Skyplot for station GIRO. Signal to Noise S5Q Data file GIRO00ESP_R_2022036.xtr



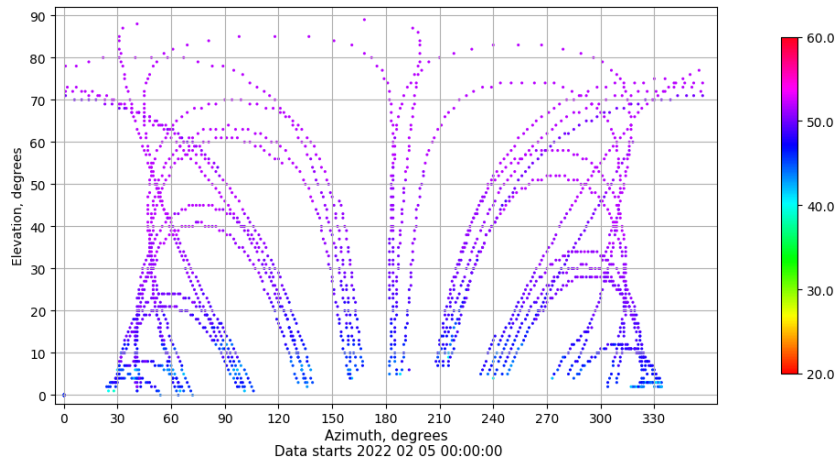
Multipath GAL E1 y E5

Skyplot for station GIRO. Parameter M1C Data file GIRO00ESP_R_2022036.xtr Skyplot for station GIRO. Parameter M5Q Data file GIRO00ESP_R_2022036.xtr



Azimut-Elevacion

Azimuth-elevation plot for station GIRO. Signal to Noise S1C Data file GIRO00ESP_R_2022036.xtr



Tiempo-Elevacion

Time-elevation plot for station GIRO. Signal to Noise S1C Data file GIRO00ESP_R_2022036.xtr

