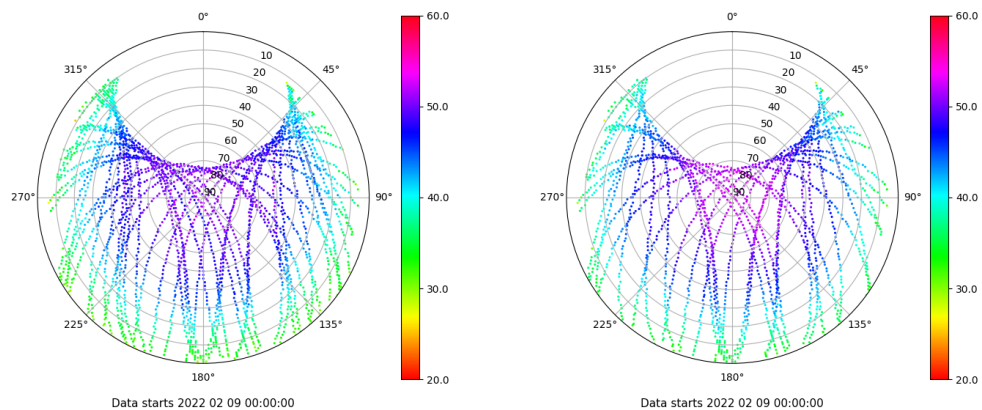


# Control de calidad GNSS GPS diario

Estacion: FUDE  
 Fecha: 2022 02 09  
 Dia del año: 040

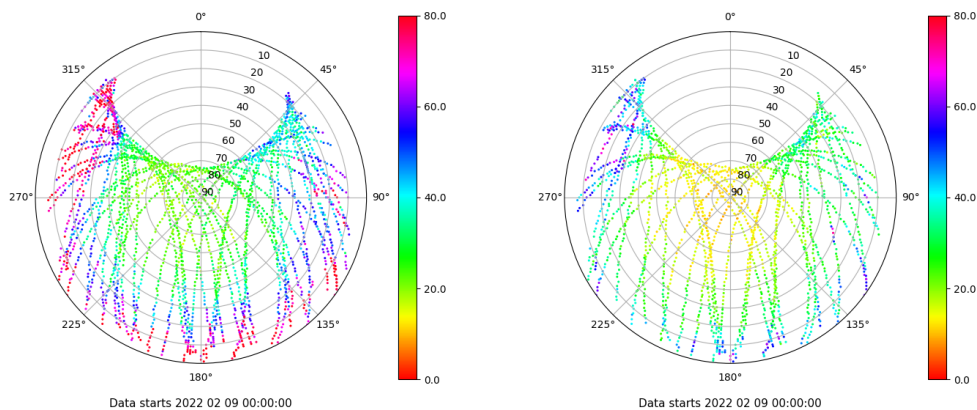
## Señal-Ruido GPS L1 y L2

Skyplot for station FUDE. Signal to Noise S1C Data file FUDE00ESP\_R\_2022040.xtr Skyplot for station FUDE. Signal to Noise S2X Data file FUDE00ESP\_R\_2022040.xtr



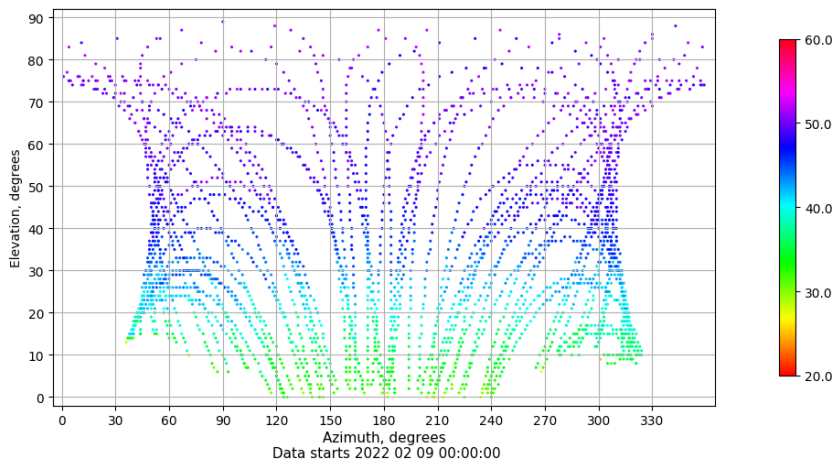
## Multipath GPS L1 y L2

Skyplot for station FUDE. Parameter M1C Data file FUDE00ESP\_R\_2022040.xtr Skyplot for station FUDE. Parameter M2X Data file FUDE00ESP\_R\_2022040.xtr



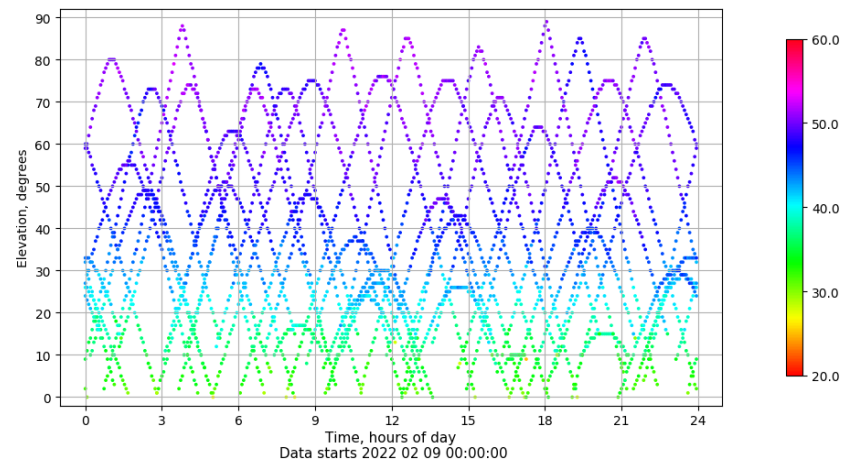
## Azimuth-Elevacion

Azimuth-elevation plot for station FUDE. Signal to Noise S1C Data file FUDE00ESP\_R\_2022040.xtr



## Tiempo-Elevacion

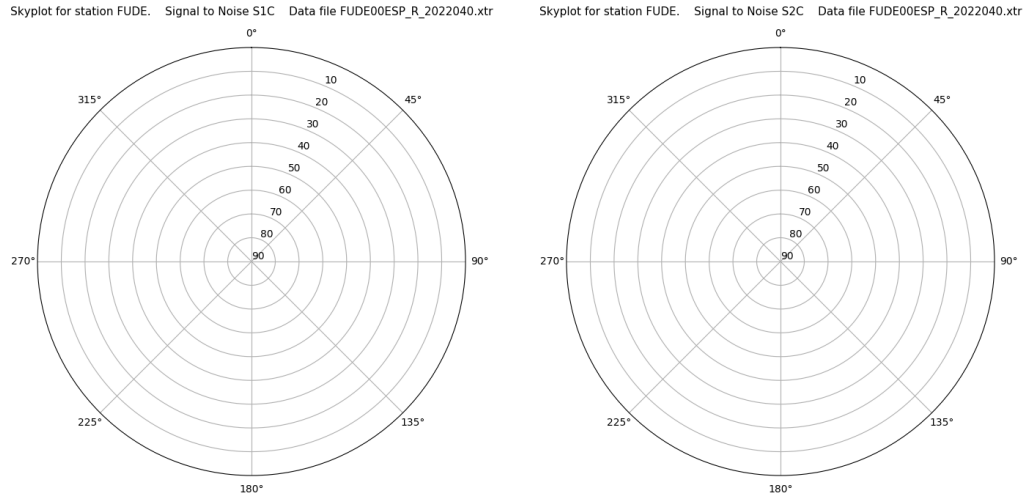
Time-elevation plot for station FUDE. Signal to Noise S1C Data file FUDE00ESP\_R\_2022040.xtr



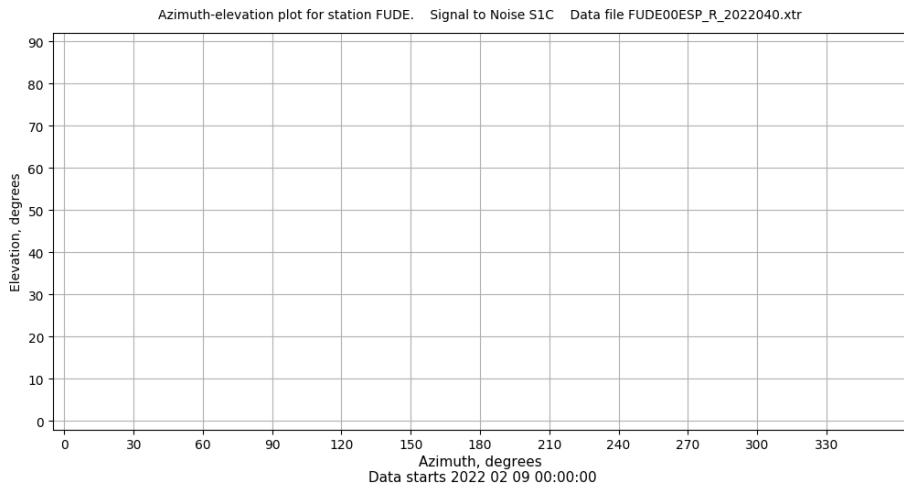
# Control de calidad GNSS GLO diario

Estacion: FUDE  
 Fecha: 2022 02 09  
 Dia del año: 040

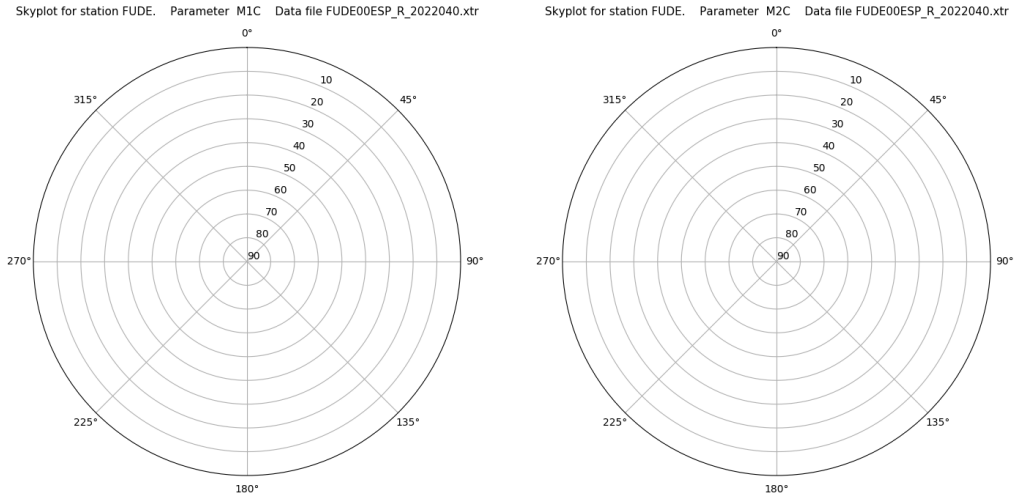
## Señal-Ruido GLO L1 y L2



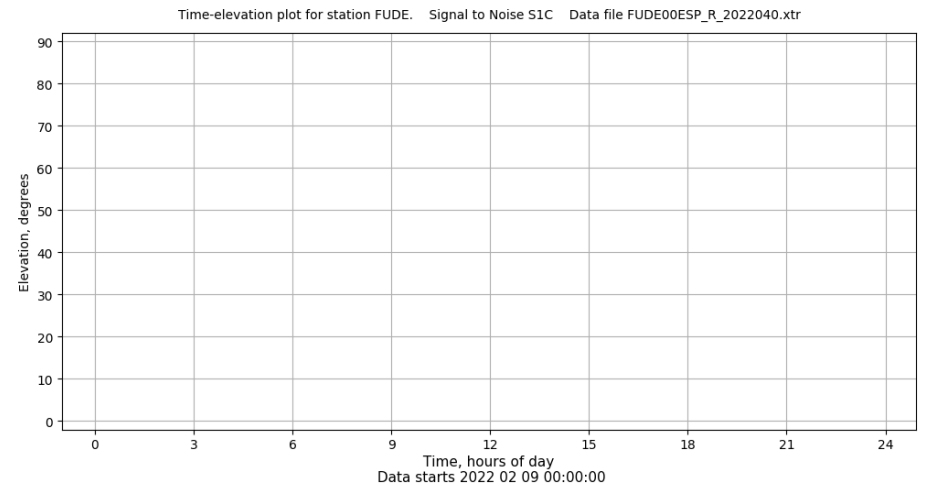
## Azimut-Elevacion



## Multipath GLO L1 y L2



## Tiempo-Elevacion

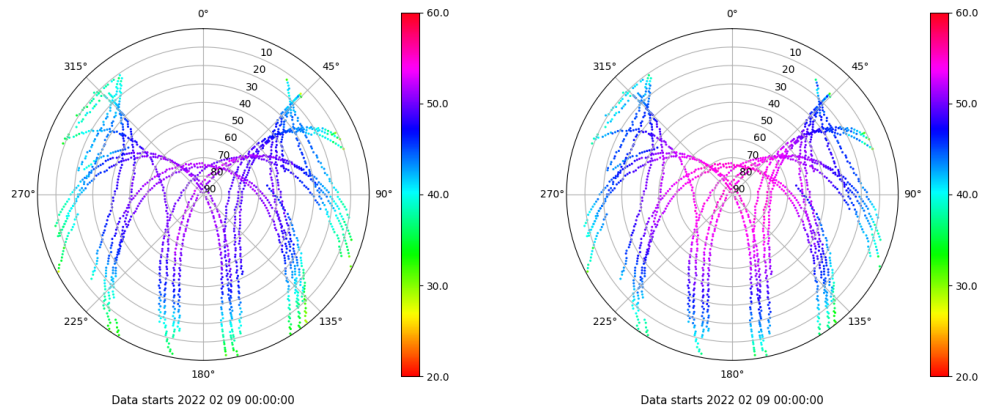


# Control de calidad GNSS GAL diario

Estacion: FUDE  
 Fecha: 2022 02 09  
 Dia del año: 040

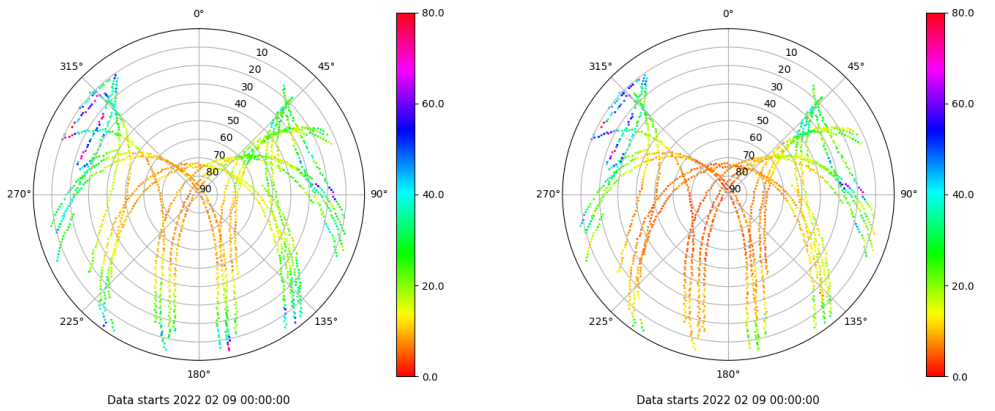
## Señal-Ruido GAL E1 y E5

Skyplot for station FUDE. Signal to Noise S1X Data file FUDE00ESP\_R\_2022040.xtr Skyplot for station FUDE. Signal to Noise S5X Data file FUDE00ESP\_R\_2022040.xtr



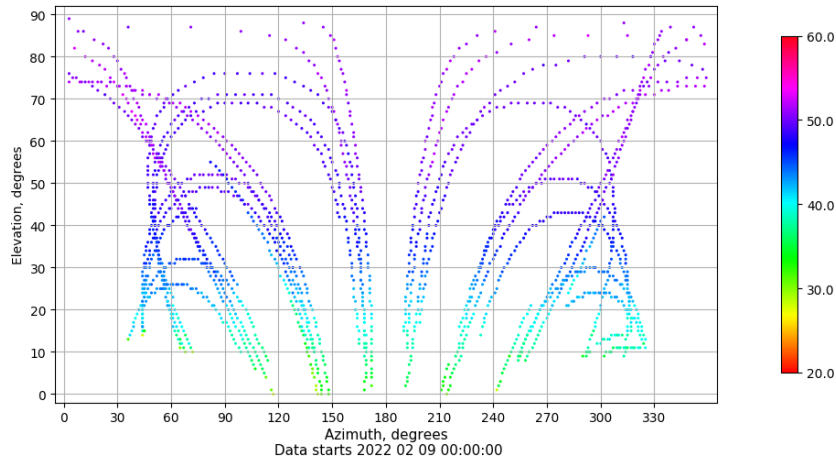
## Multipath GAL E1 y E5

Skyplot for station FUDE. Parameter M1X Data file FUDE00ESP\_R\_2022040.xtr Skyplot for station FUDE. Parameter M5X Data file FUDE00ESP\_R\_2022040.xtr



## Azimuth-Elevacion

Azimuth-elevation plot for station FUDE. Signal to Noise S1X Data file FUDE00ESP\_R\_2022040.xtr



## Tiempo-Elevacion

Time-elevation plot for station FUDE. Signal to Noise S1X Data file FUDE00ESP\_R\_2022040.xtr

