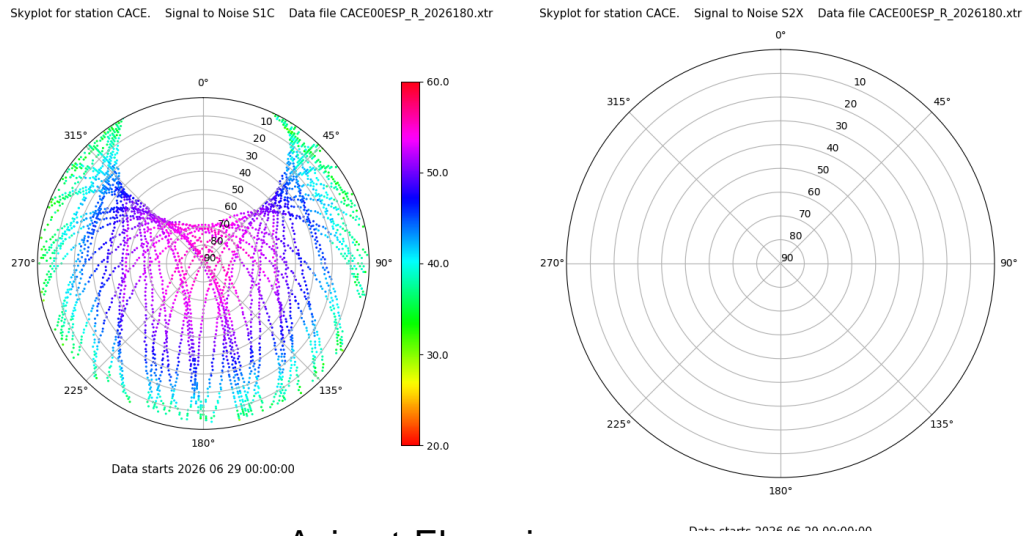


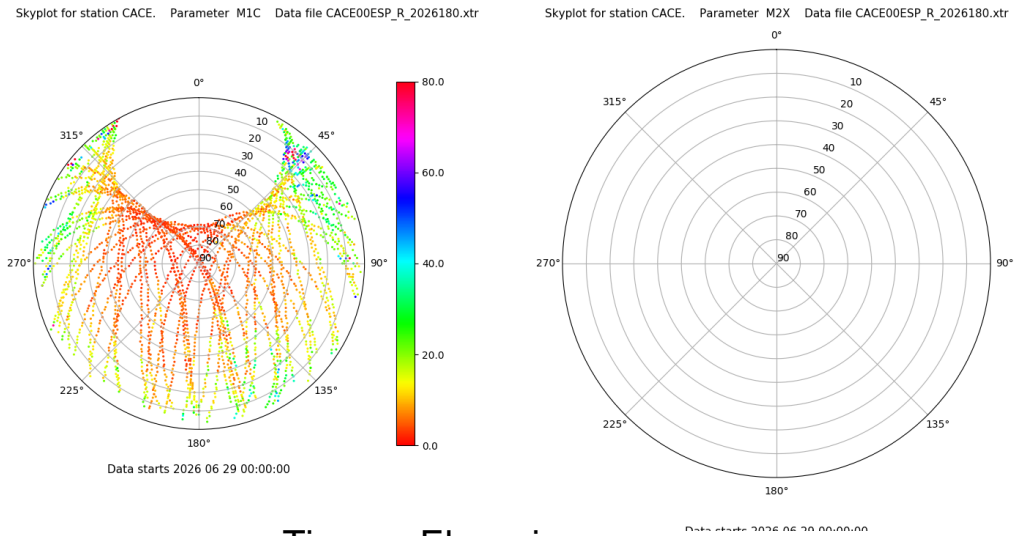
# Control de calidad GNSS GPS diario

Estacion: CACE  
 Fecha: 2026 06 29  
 Dia del año: 180

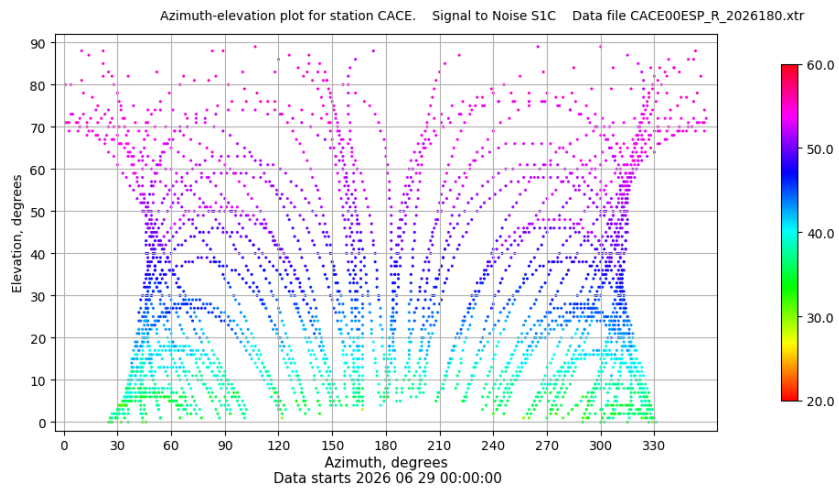
## Señal-Ruido GPS L1 y L2



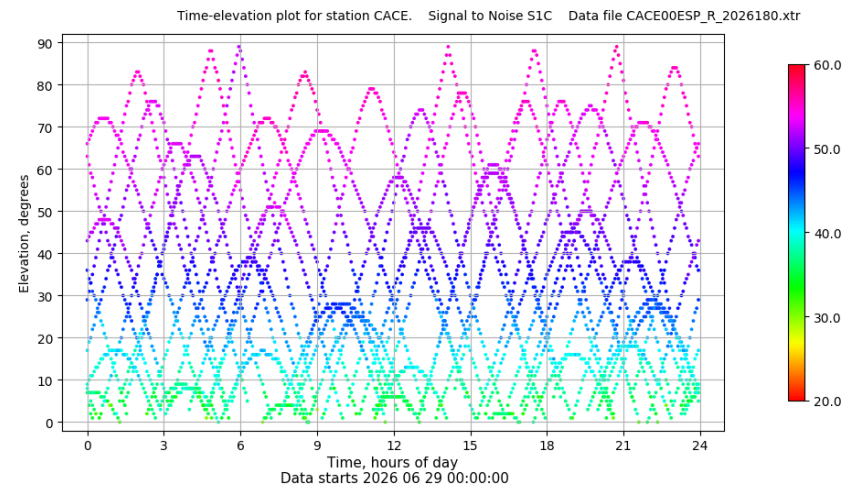
## Multipath GPS L1 y L2



## Azimut-Elevacion



## Tiempo-Elevacion

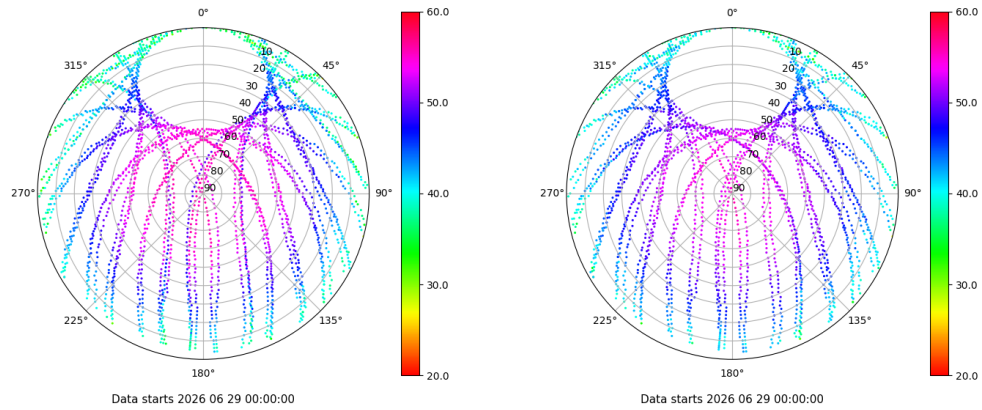


# Control de calidad GNSS GLO diario

Estacion: CACE  
 Fecha: 2026 06 29  
 Dia del año: 180

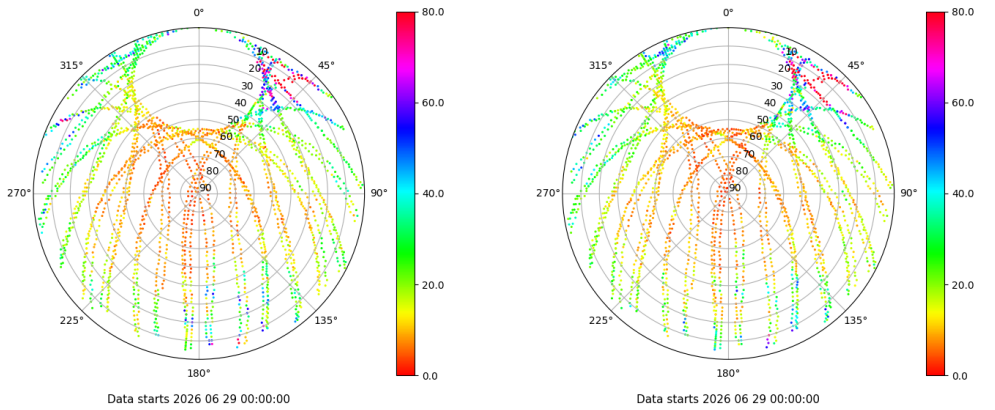
## Señal-Ruido GLO L1 y L2

Skyplot for station CACE. Signal to Noise S1C Data file CACE00ESP\_R\_2026180.xtr Skyplot for station CACE. Signal to Noise S2C Data file CACE00ESP\_R\_2026180.xtr



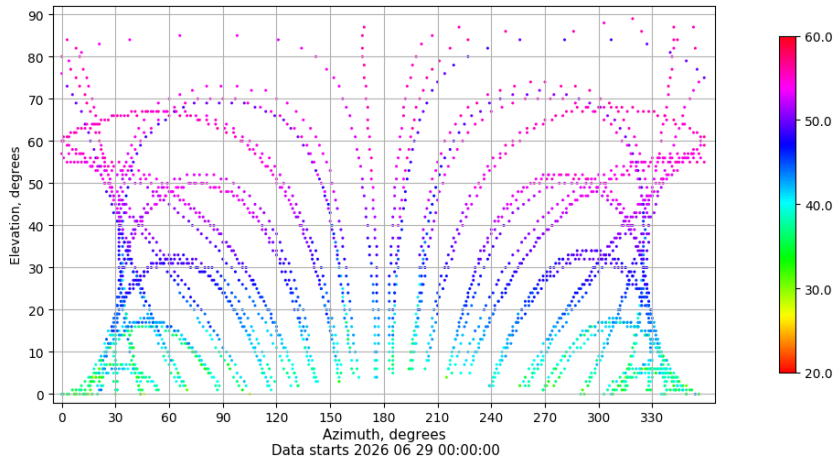
## Multipath GLO L1 y L2

Skyplot for station CACE. Parameter M1C Data file CACE00ESP\_R\_2026180.xtr Skyplot for station CACE. Parameter M2C Data file CACE00ESP\_R\_2026180.xtr



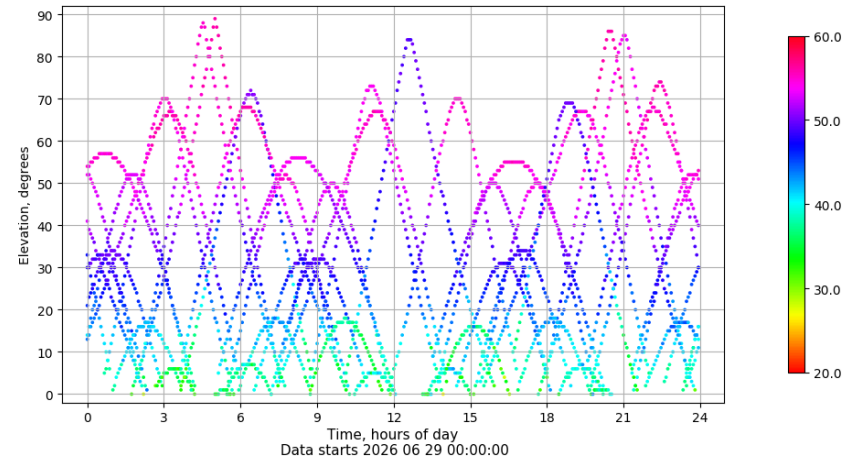
## Azimuth-Elevacion

Azimuth-elevation plot for station CACE. Signal to Noise S1C Data file CACE00ESP\_R\_2026180.xtr



## Tiempo-Elevacion

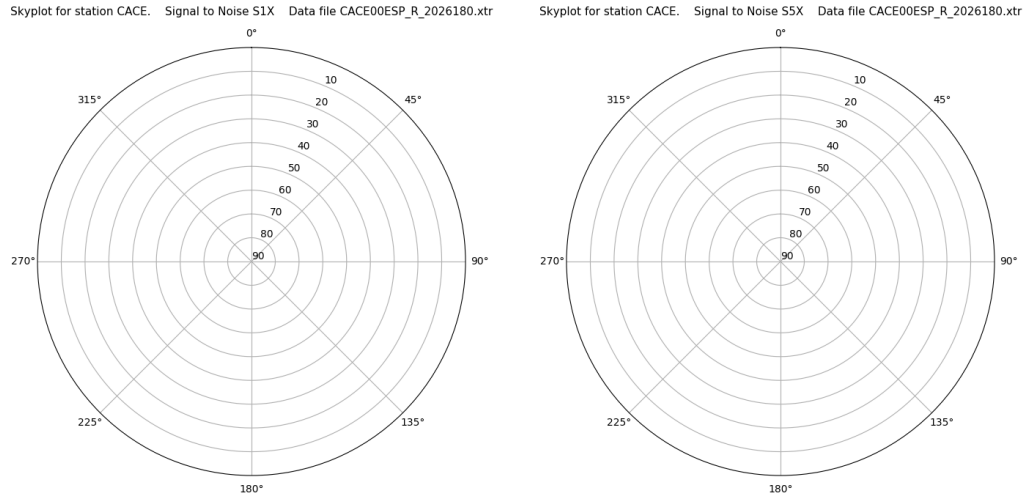
Time-elevation plot for station CACE. Signal to Noise S1C Data file CACE00ESP\_R\_2026180.xtr



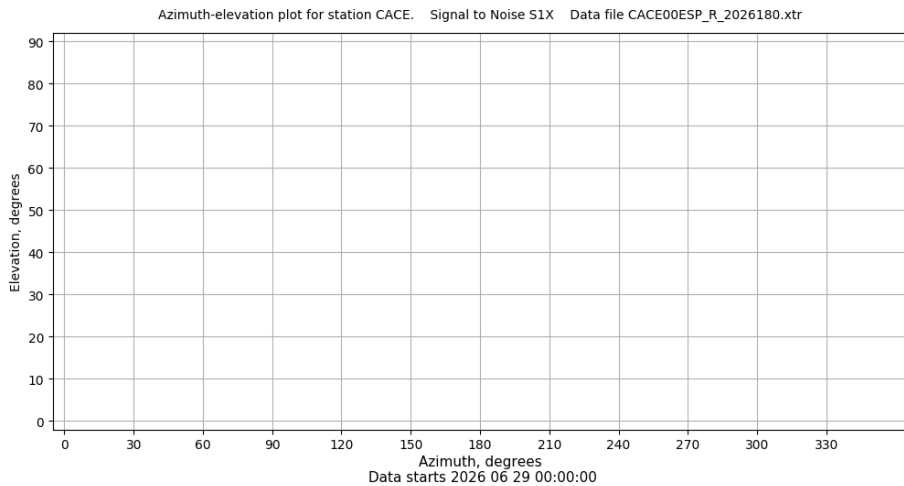
# Control de calidad GNSS GAL diario

Estacion: CACE  
 Fecha: 2026 06 29  
 Dia del año: 180

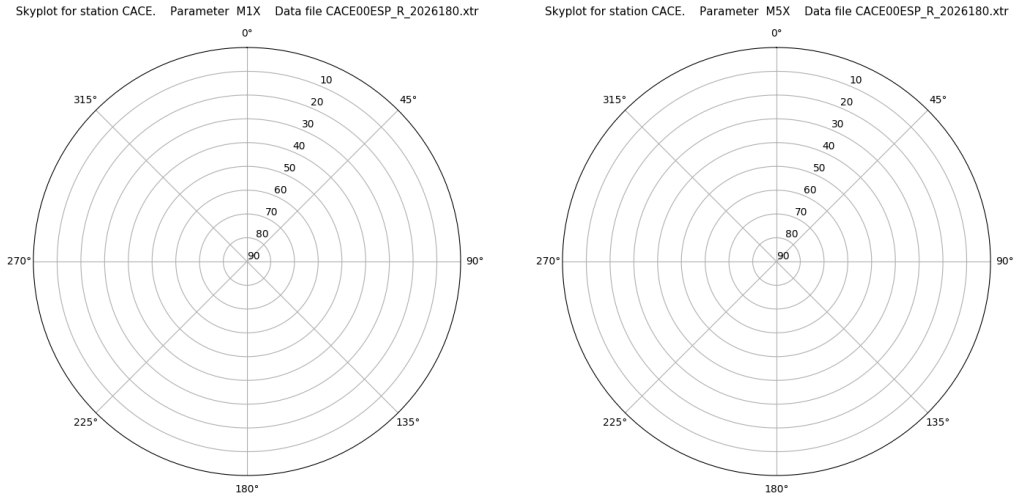
## Señal-Ruido GAL E1 y E5



## Azimut-Elevacion



## Multipath GAL E1 y E5



## Tiempo-Elevacion

