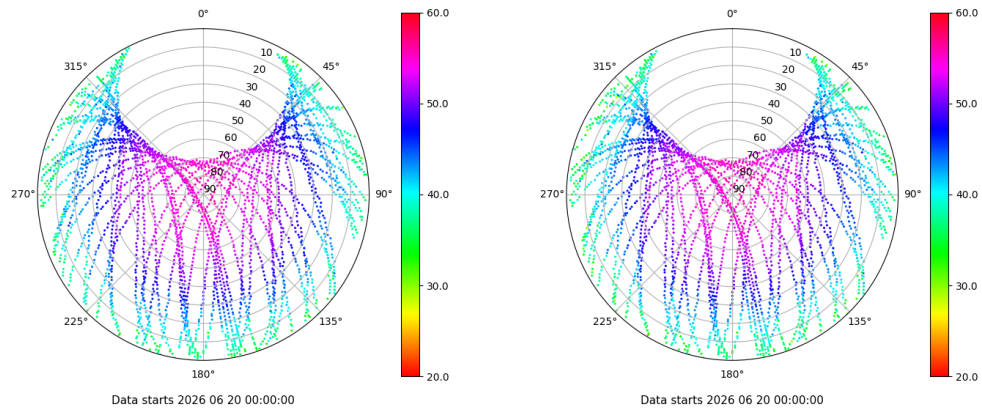


# Control de calidad GNSS GPS diario

Estacion: ALMZ  
 Fecha: 2026 06 20  
 Dia del año: 171

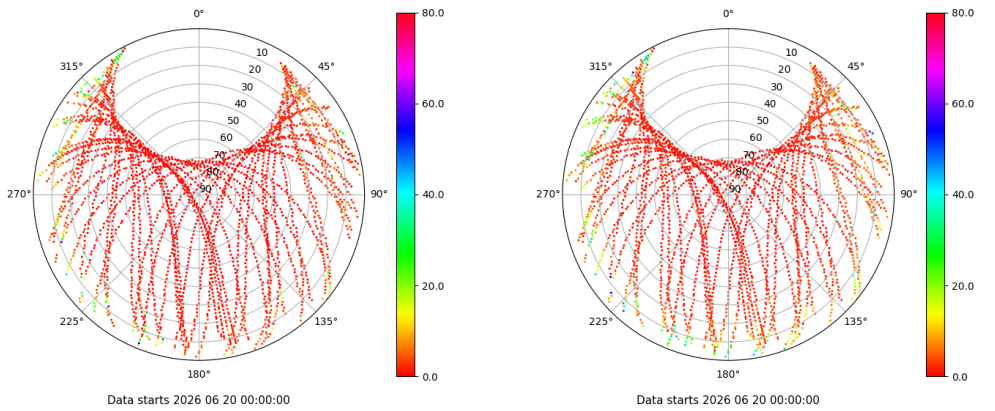
## Señal-Ruido GPS L1 y L2

Skyplot for station ALMZ. Signal to Noise S1C Data file ALMZ00ESP\_R\_2026171.xtr Skyplot for station ALMZ. Signal to Noise S2W Data file ALMZ00ESP\_R\_2026171.xtr



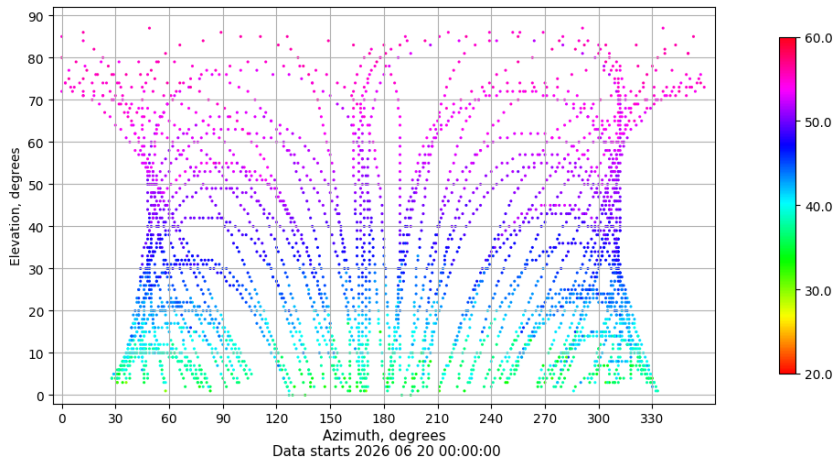
## Multipath GPS L1 y L2

Skyplot for station ALMZ. Parameter M1C Data file ALMZ00ESP\_R\_2026171.xtr Skyplot for station ALMZ. Parameter M2W Data file ALMZ00ESP\_R\_2026171.xtr



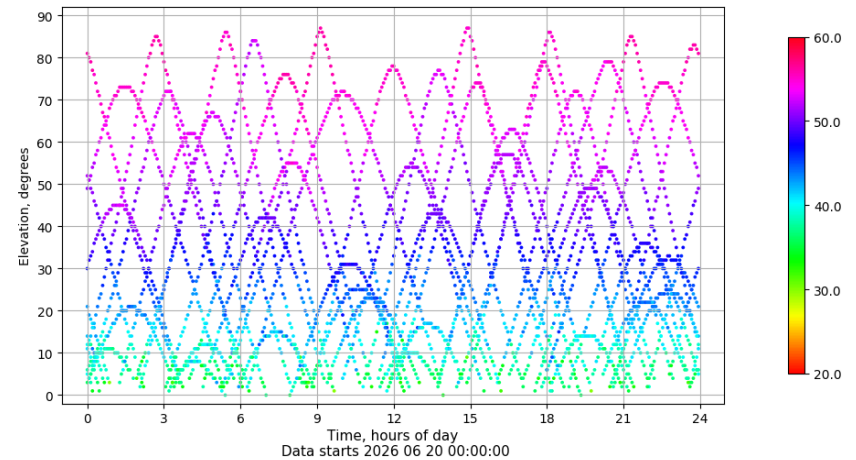
## Azimuth-Elevacion

Azimuth-elevation plot for station ALMZ. Signal to Noise S1C Data file ALMZ00ESP\_R\_2026171.xtr



## Tiempo-Elevacion

Time-elevation plot for station ALMZ. Signal to Noise S1C Data file ALMZ00ESP\_R\_2026171.xtr

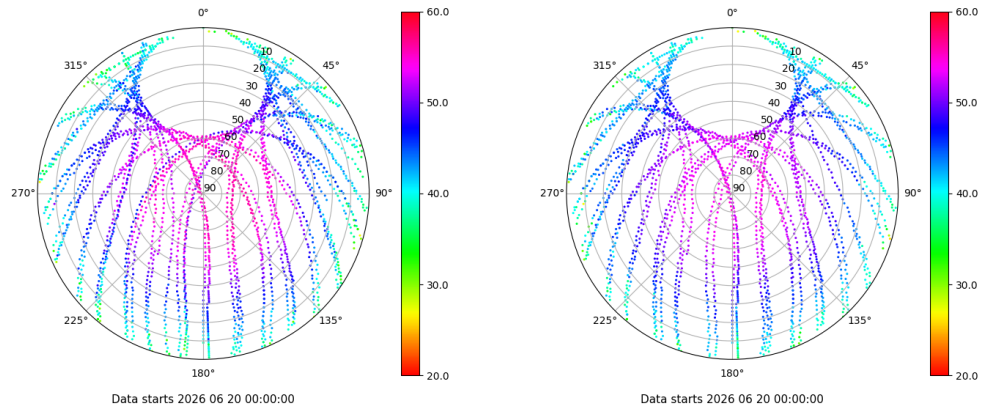


# Control de calidad GNSS GLO diario

Estacion: ALMZ  
 Fecha: 2026 06 20  
 Dia del año: 171

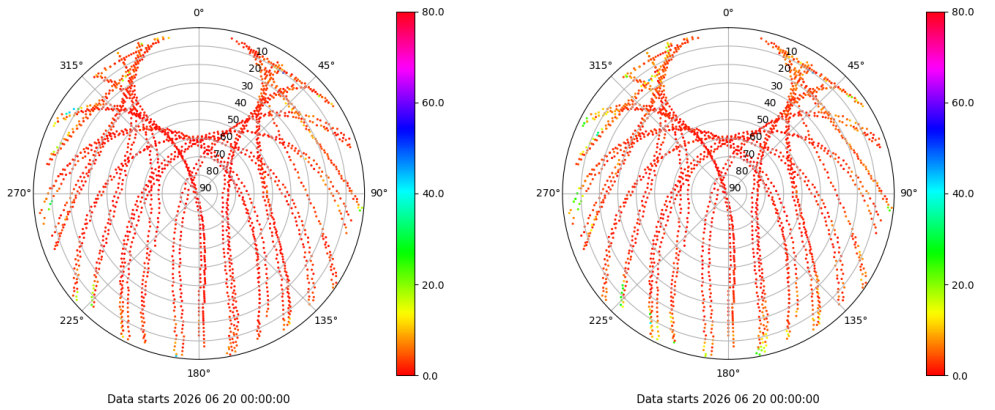
## Señal-Ruido GLO L1 y L2

Skyplot for station ALMZ. Signal to Noise S1C Data file ALMZ00ESP\_R\_2026171.xtr Skyplot for station ALMZ. Signal to Noise S2P Data file ALMZ00ESP\_R\_2026171.xtr



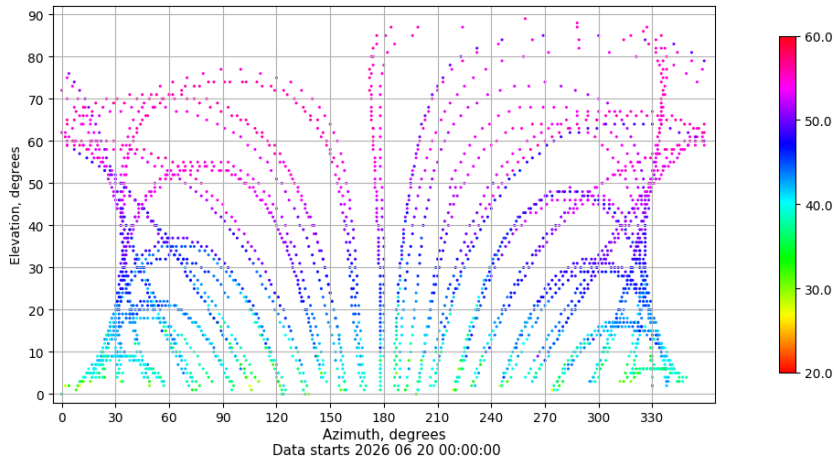
## Multipath GLO L1 y L2

Skyplot for station ALMZ. Parameter M1C Data file ALMZ00ESP\_R\_2026171.xtr Skyplot for station ALMZ. Parameter M2P Data file ALMZ00ESP\_R\_2026171.xtr



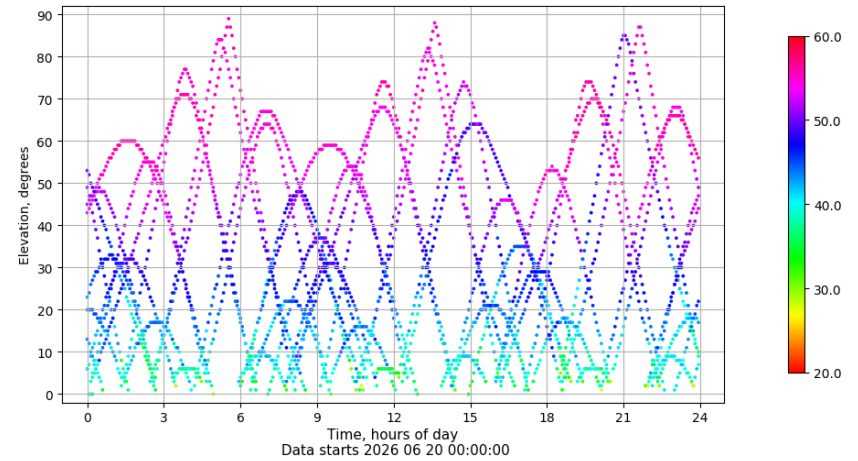
## Azimuth-Elevacion

Azimuth-elevation plot for station ALMZ. Signal to Noise S1C Data file ALMZ00ESP\_R\_2026171.xtr



## Tiempo-Elevacion

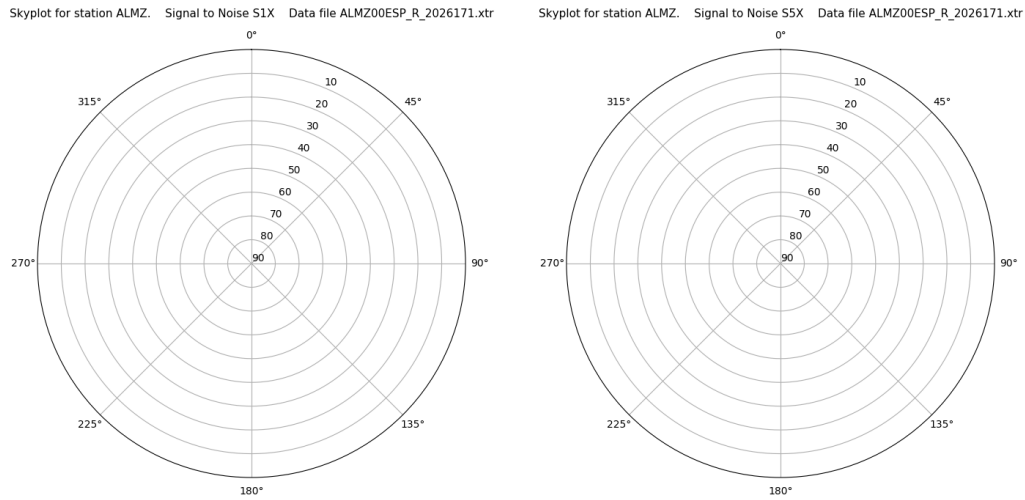
Time-elevation plot for station ALMZ. Signal to Noise S1C Data file ALMZ00ESP\_R\_2026171.xtr



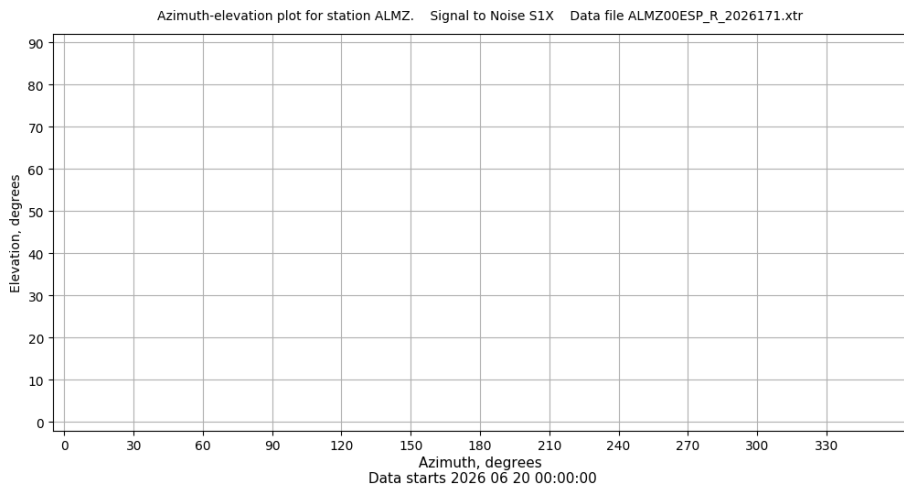
# Control de calidad GNSS GAL diario

Estacion: ALMZ  
 Fecha: 2026 06 20  
 Dia del año: 171

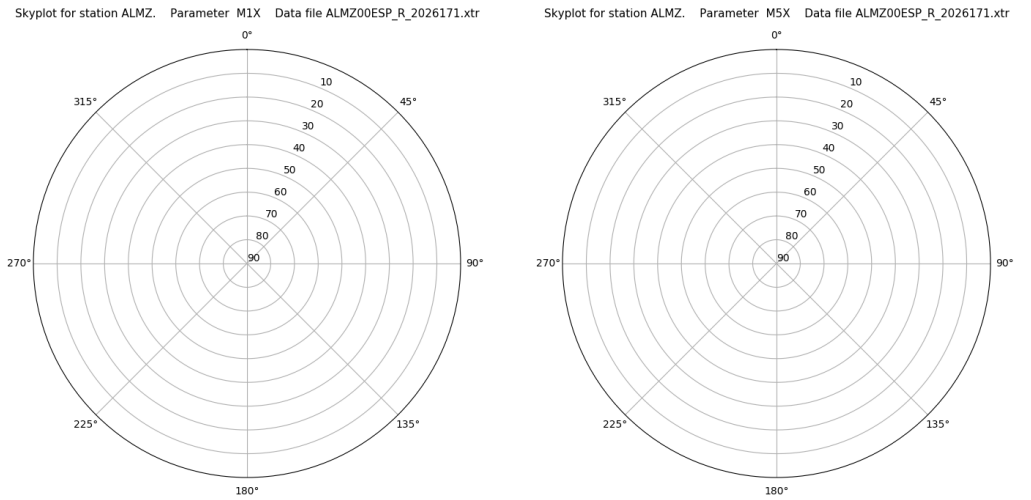
## Señal-Ruido GAL E1 y E5



## Azimut-Elevacion



## Multipath GAL E1 y E5



## Tiempo-Elevacion

