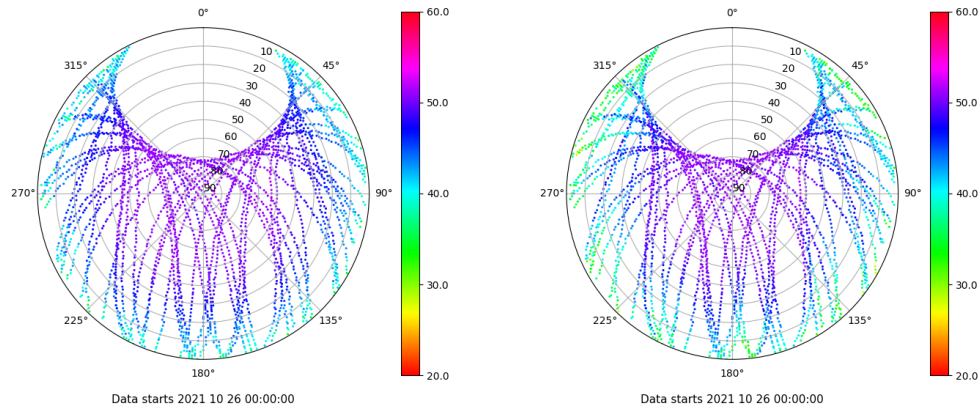


Control de calidad GNSS GPS diario

Estacion: ALMZ
 Fecha: 2021 10 26
 Dia del año: 299

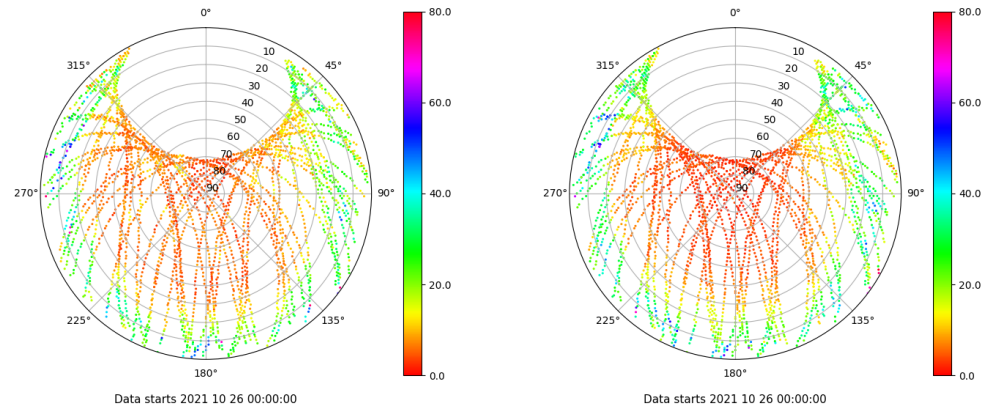
Señal-Ruido GPS L1 y L2

Skyplot for station ALMZ. Signal to Noise S1C Data file ALMZ00ESP_R_2021299.xtr Skyplot for station ALMZ. Signal to Noise S2W Data file ALMZ00ESP_R_2021299.xtr



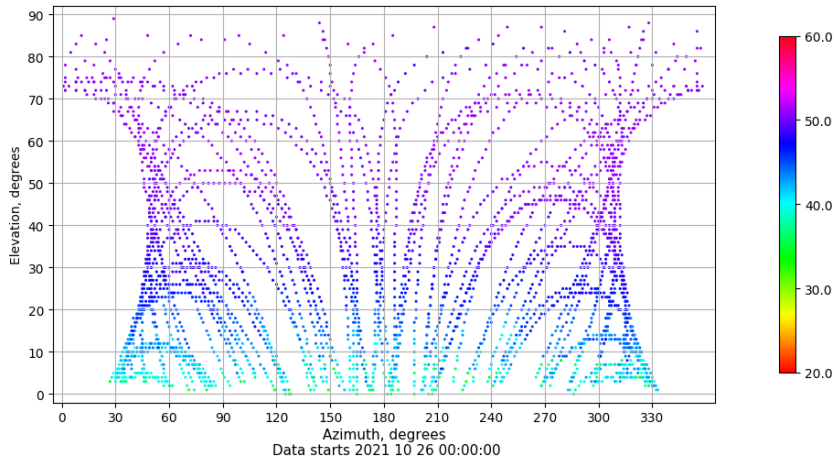
Multipath GPS L1 y L2

Skyplot for station ALMZ. Parameter M1C Data file ALMZ00ESP_R_2021299.xtr Skyplot for station ALMZ. Parameter M2W Data file ALMZ00ESP_R_2021299.xtr



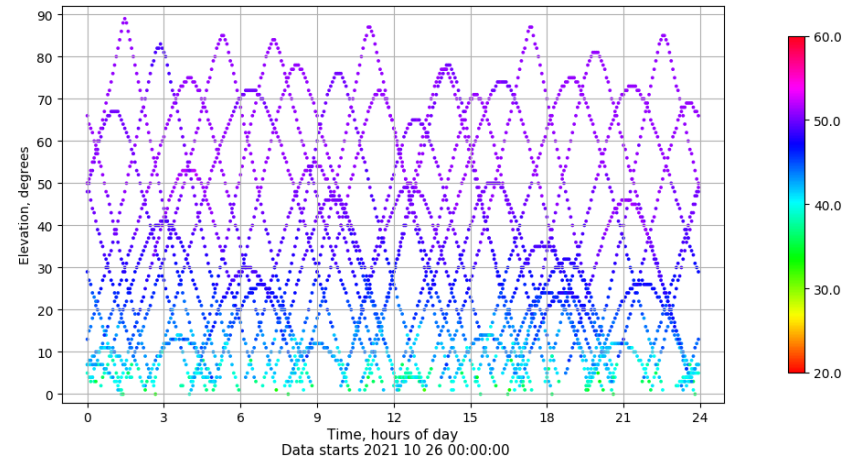
Azimuth-Elevacion

Azimuth-elevation plot for station ALMZ. Signal to Noise S1C Data file ALMZ00ESP_R_2021299.xtr



Tiempo-Elevacion

Time-elevation plot for station ALMZ. Signal to Noise S1C Data file ALMZ00ESP_R_2021299.xtr

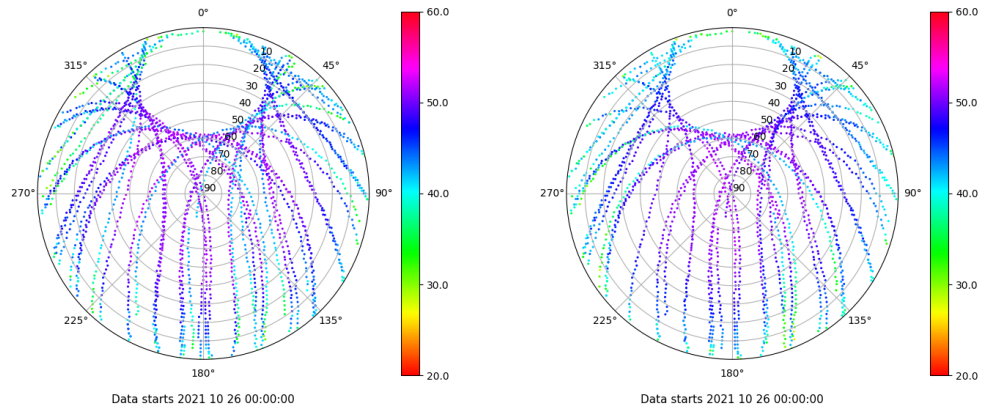


Control de calidad GNSS GLO diario

Estacion: ALMZ
 Fecha: 2021 10 26
 Día del año: 299

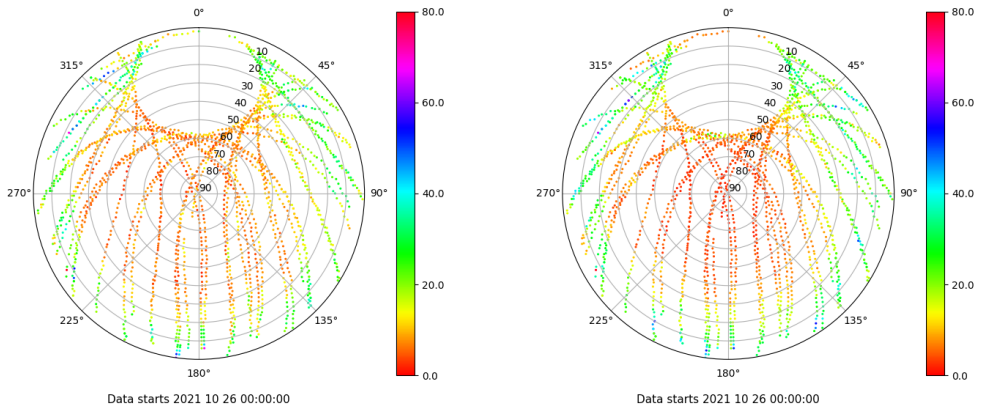
Señal-Ruido GLO L1 y L2

Skyplot for station ALMZ. Signal to Noise S1C Data file ALMZ00ESP_R_2021299.xtr Skyplot for station ALMZ. Signal to Noise S2P Data file ALMZ00ESP_R_2021299.xtr



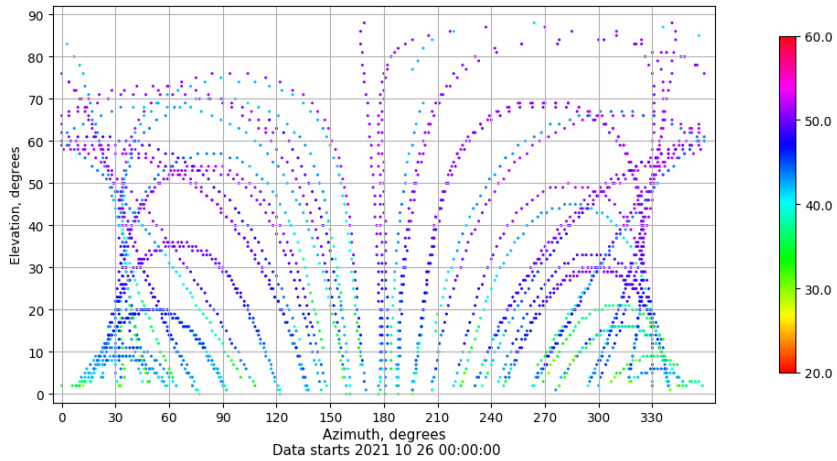
Multipath GLO L1 y L2

Skyplot for station ALMZ. Parameter M1C Data file ALMZ00ESP_R_2021299.xtr Skyplot for station ALMZ. Parameter M2P Data file ALMZ00ESP_R_2021299.xtr



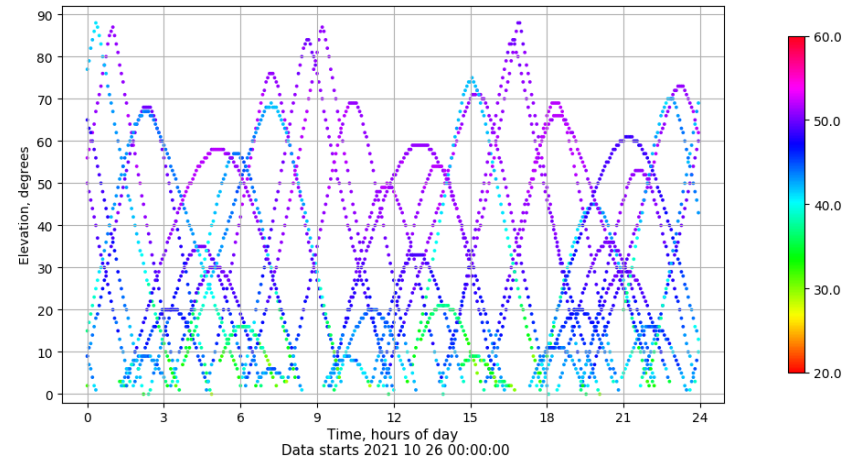
Azimuth-Elevacion

Azimuth-elevation plot for station ALMZ. Signal to Noise S1C Data file ALMZ00ESP_R_2021299.xtr



Tiempo-Elevacion

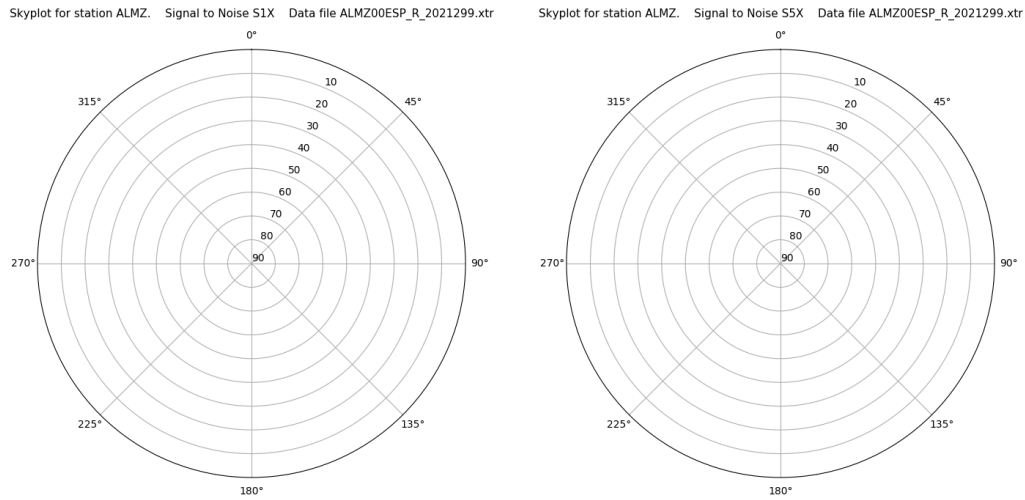
Time-elevation plot for station ALMZ. Signal to Noise S1C Data file ALMZ00ESP_R_2021299.xtr



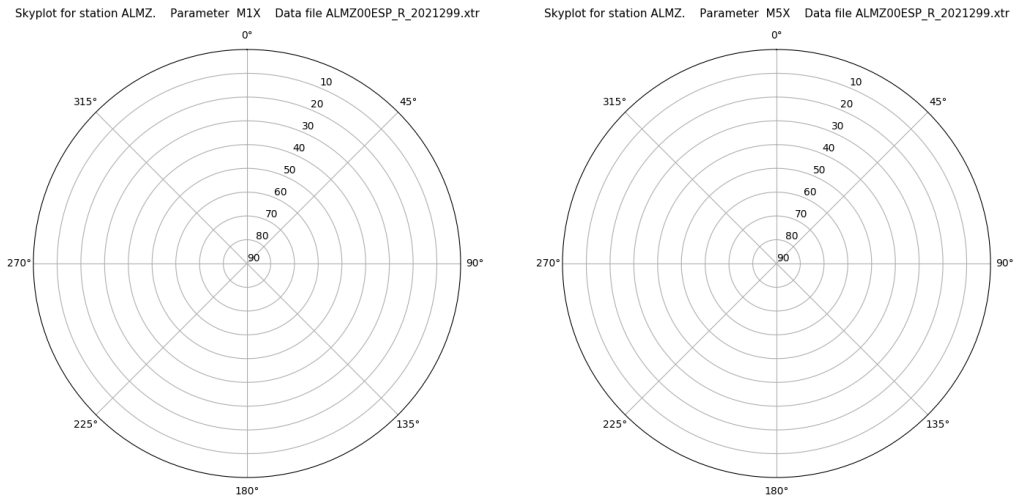
Control de calidad GNSS GAL diario

Estacion: ALMZ
 Fecha: 2021 10 26
 Dia del año: 299

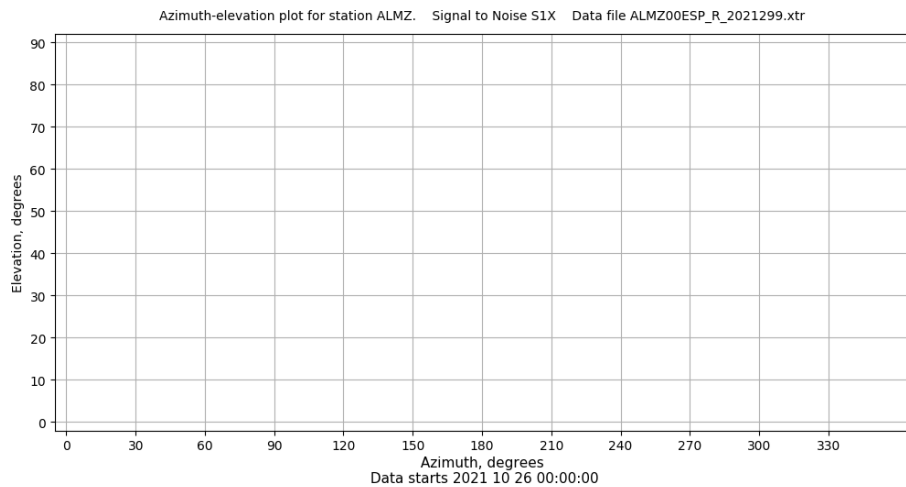
Señal-Ruido GAL E1 y E5



Multipath GAL E1 y E5



Azimut-Elevacion



Tiempo-Elevacion

