

summary for network NT11

timeperiod chosen: from 2026-06-28-00:00:00 until 2026-06-28-23:59:59

average update rate (durations larger than 15 seconds considered as observation gap): 1.0 seconds

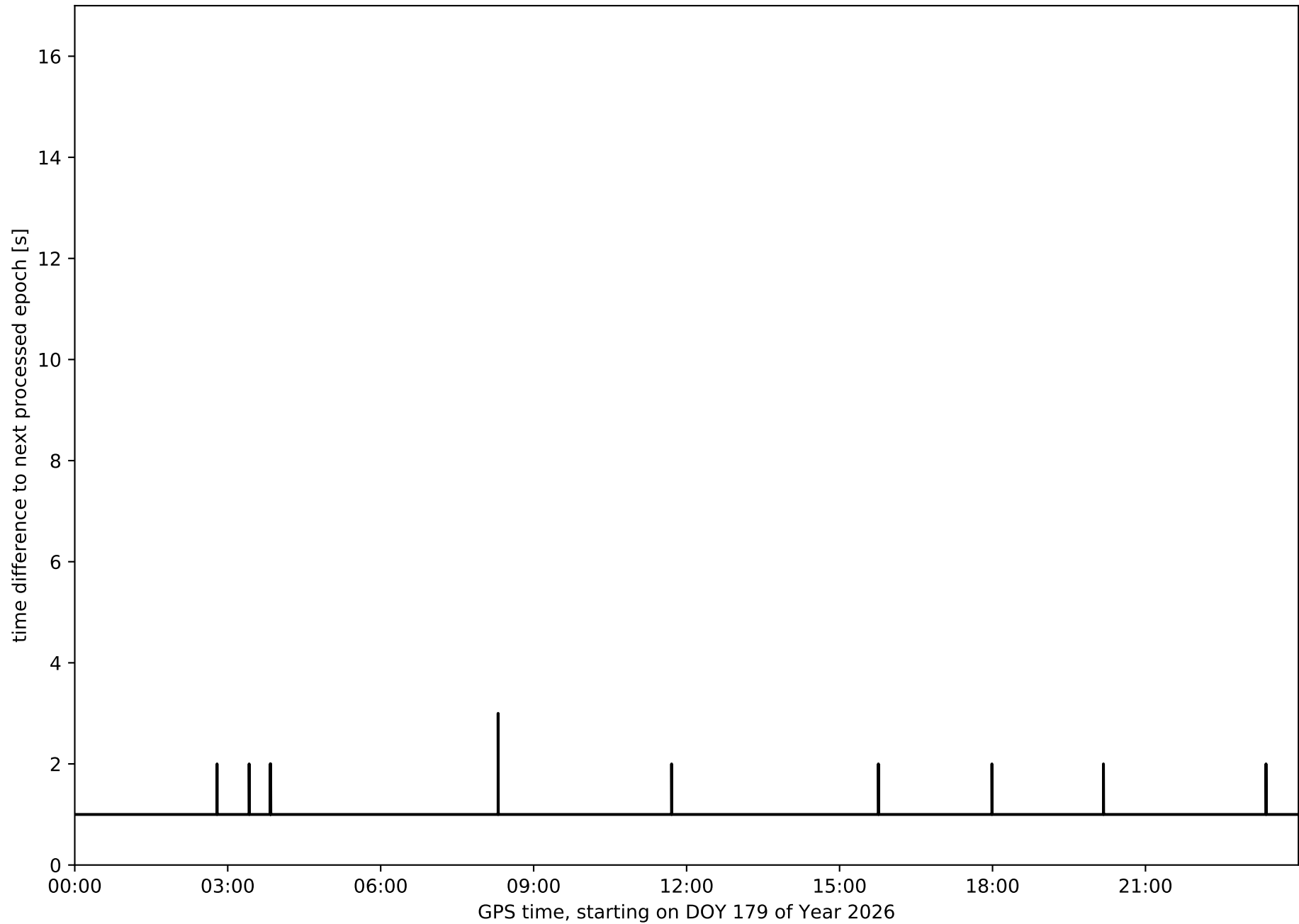
average fixing percentage with threshold set to 0.3: 95.7 percent

stations available: 9 of 9

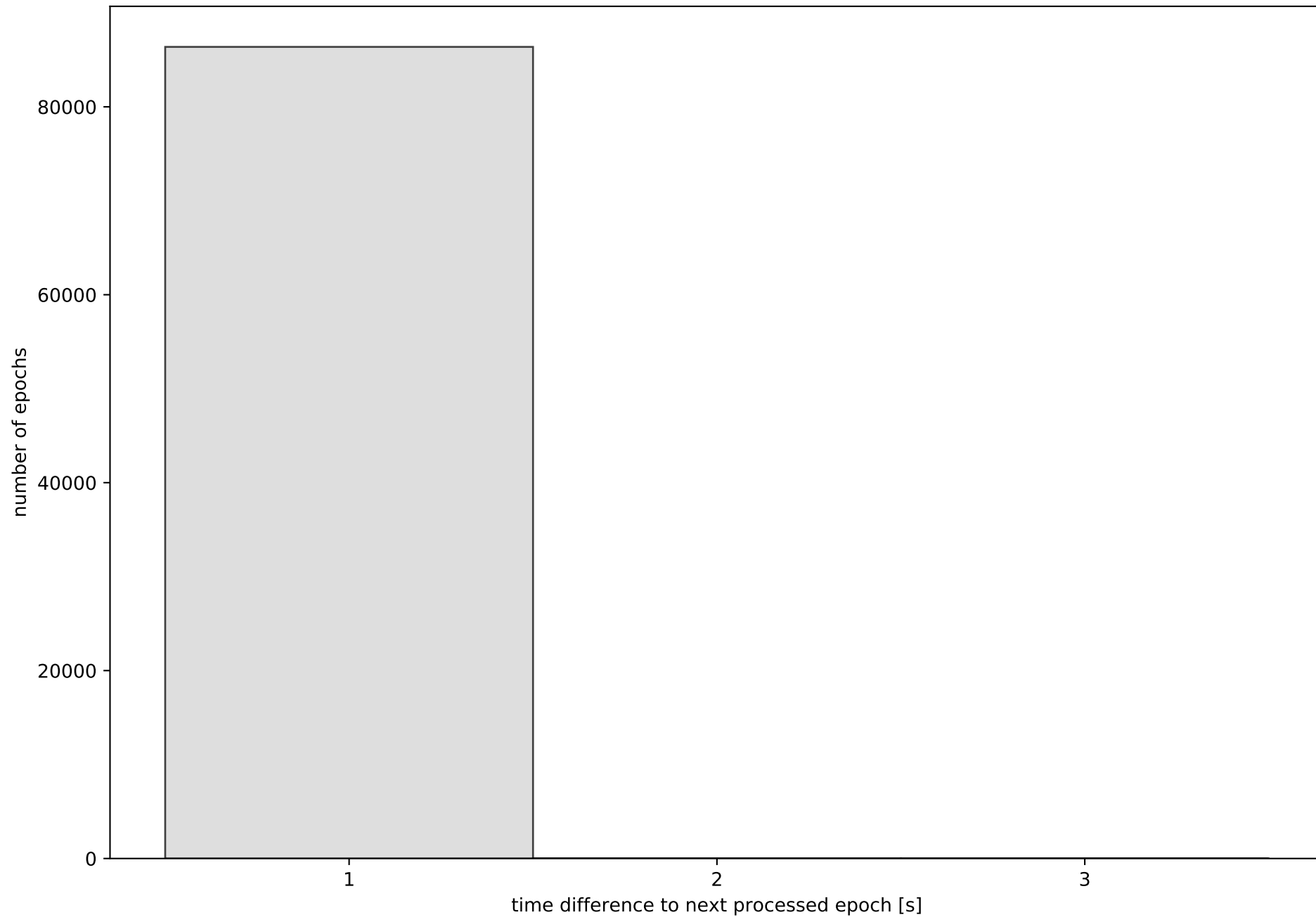
station information:

| | | | | |
|---------------|---------------------|------|----------------------|-----------------|
| station ALOR: | antenna: LEIAR25 | LEIT | receiver: LEICA GR30 | height: 189.508 |
| station CBON: | antenna: LEIAR25 | LEIT | receiver: LEICA GR30 | height: 57.319 |
| station EIVI: | antenna: LEIAR25 | LEIT | receiver: LEICA GR30 | height: 132.126 |
| station FORM: | antenna: LEIAR25 | LEIT | receiver: LEICA GR30 | height: 99.577 |
| station IBIZ: | antenna: TPSCR3_GGD | CONE | receiver: LEICA GR25 | height: 59.944 |
| station MALL: | antenna: LEIAR20 | LEIM | receiver: LEICA GR50 | height: 62.117 |
| station SINE: | antenna: LEIAR25 | LEIT | receiver: LEICA GR30 | height: 188.038 |
| station SJO1: | antenna: LEIAR25 | LEIT | receiver: LEICA GR30 | height: 59.876 |
| station TRAU: | antenna: LEIAR25 | LEIT | receiver: LEICA GR30 | height: 606.077 |

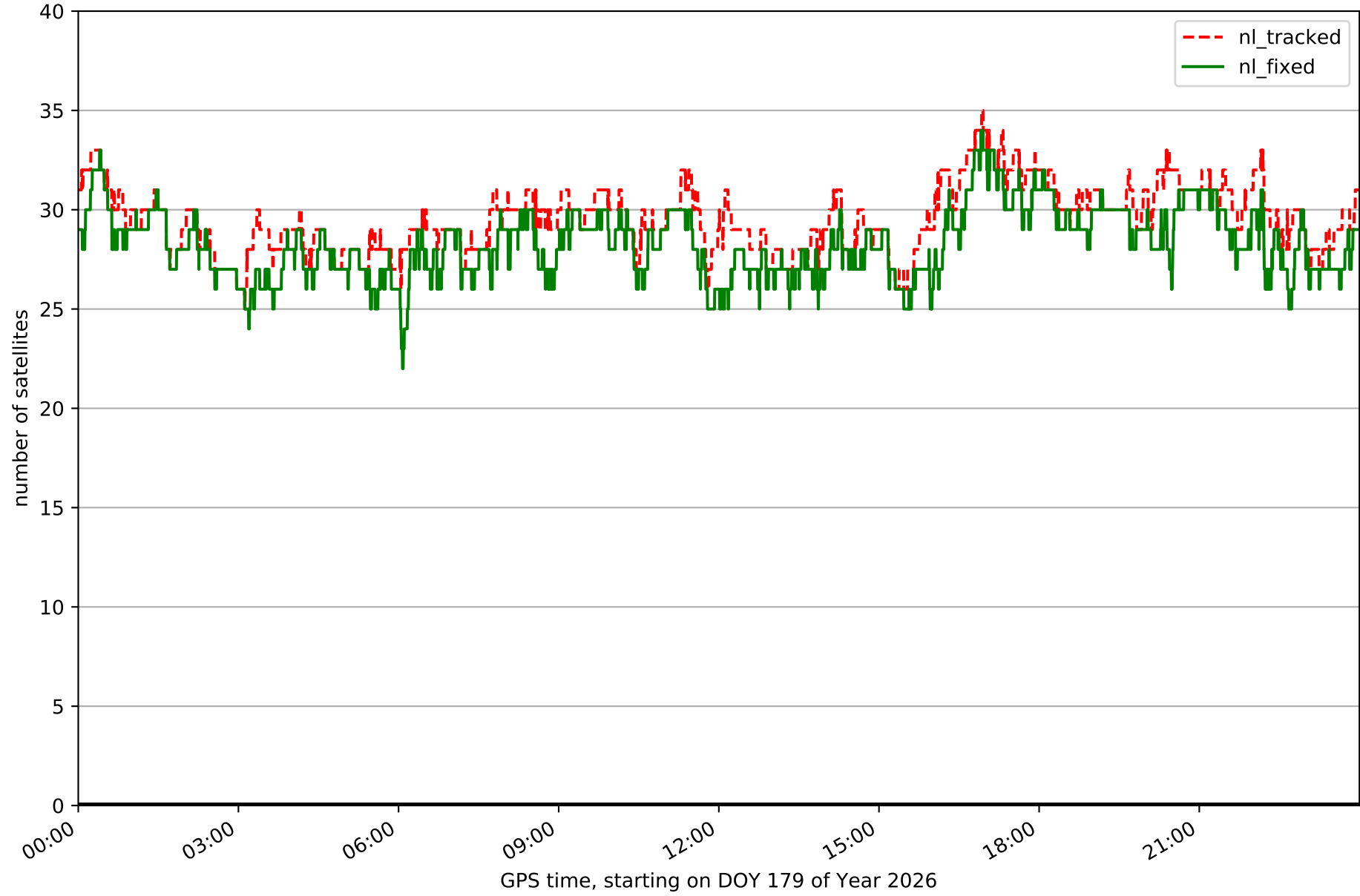
Processing rate in network NT11



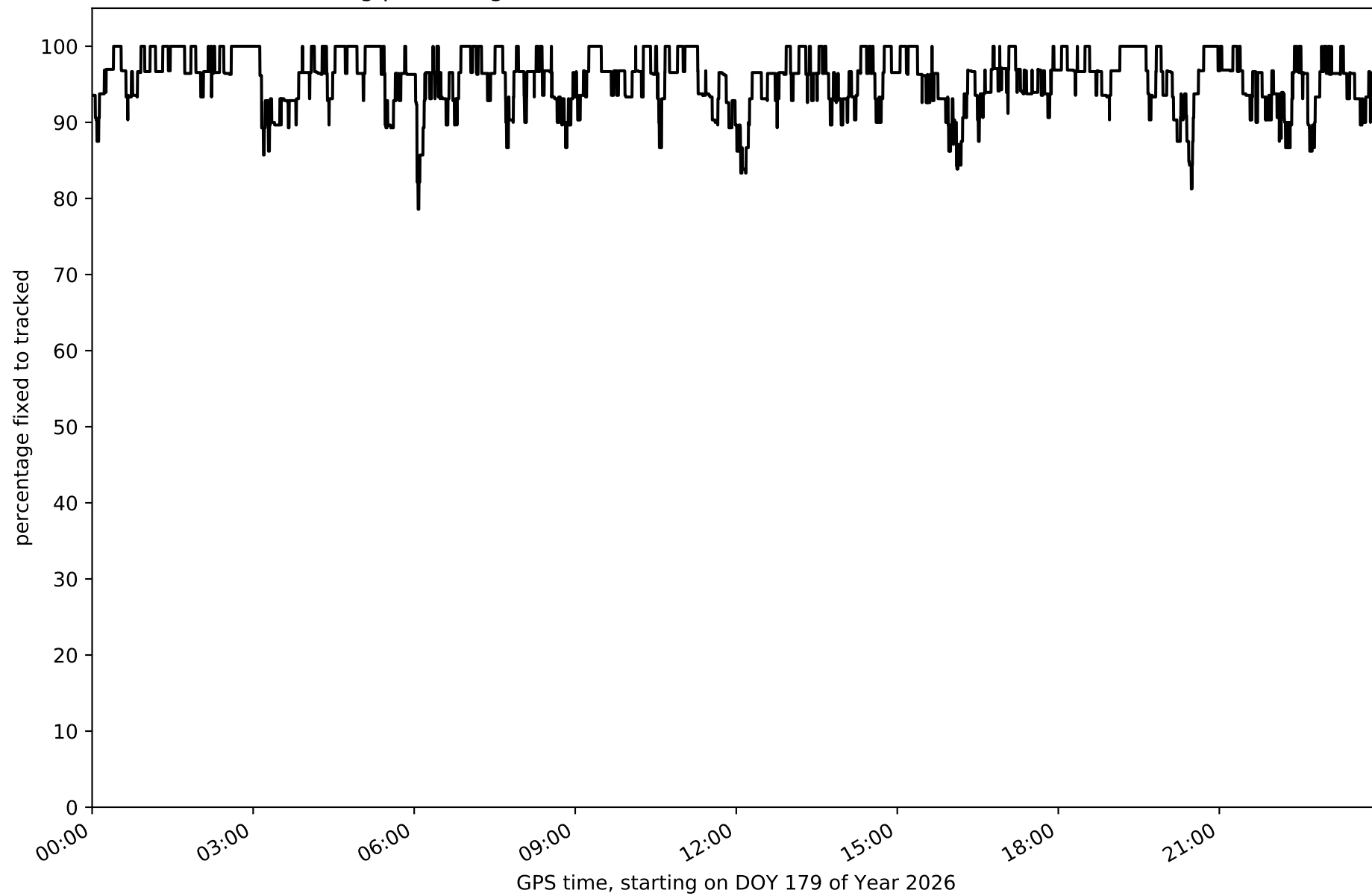
Histogram of the processing rate in network NT11 (durations larger 15 seconds neglected)



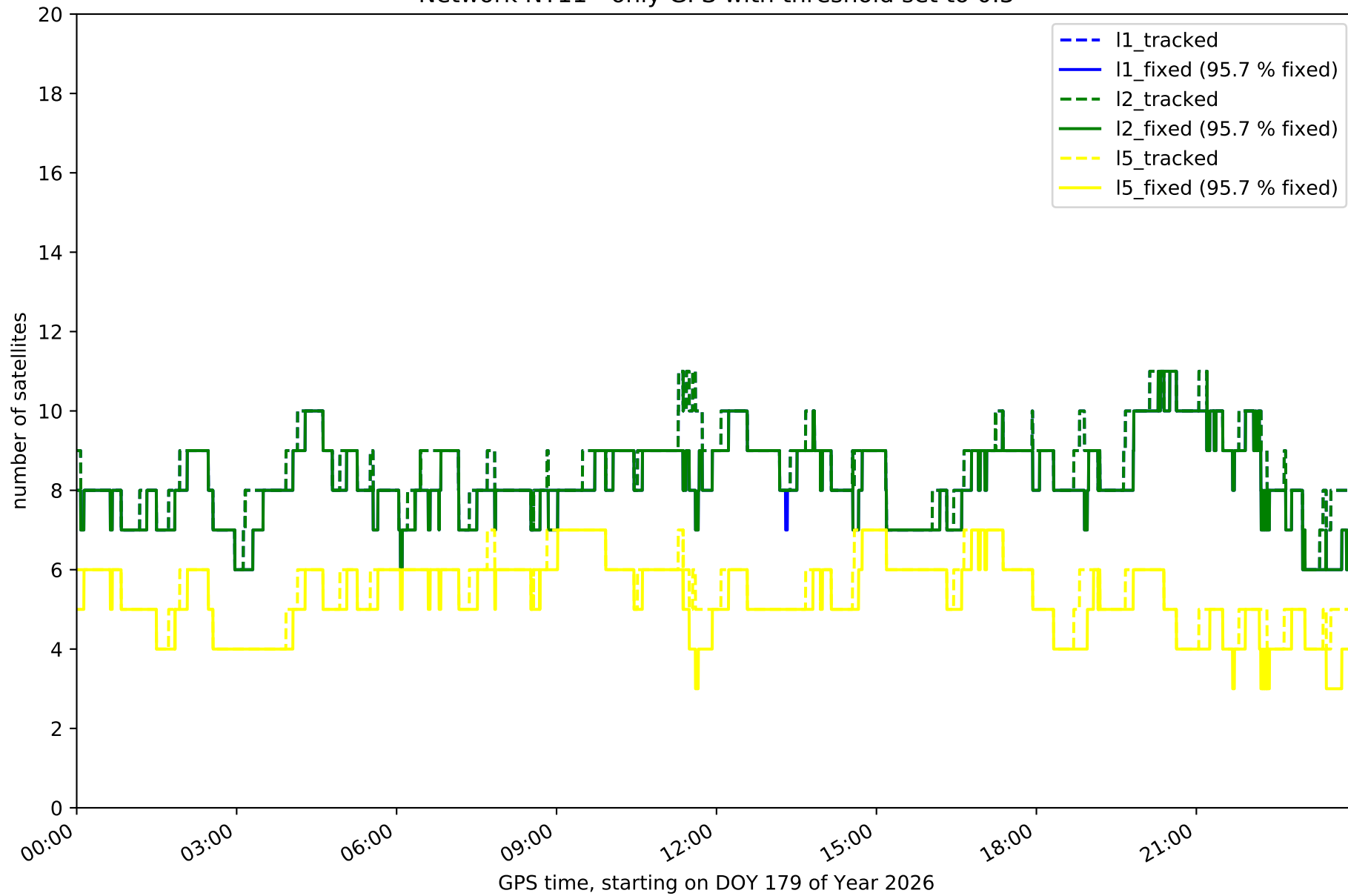
Network NT11 with threshold set to 0.3



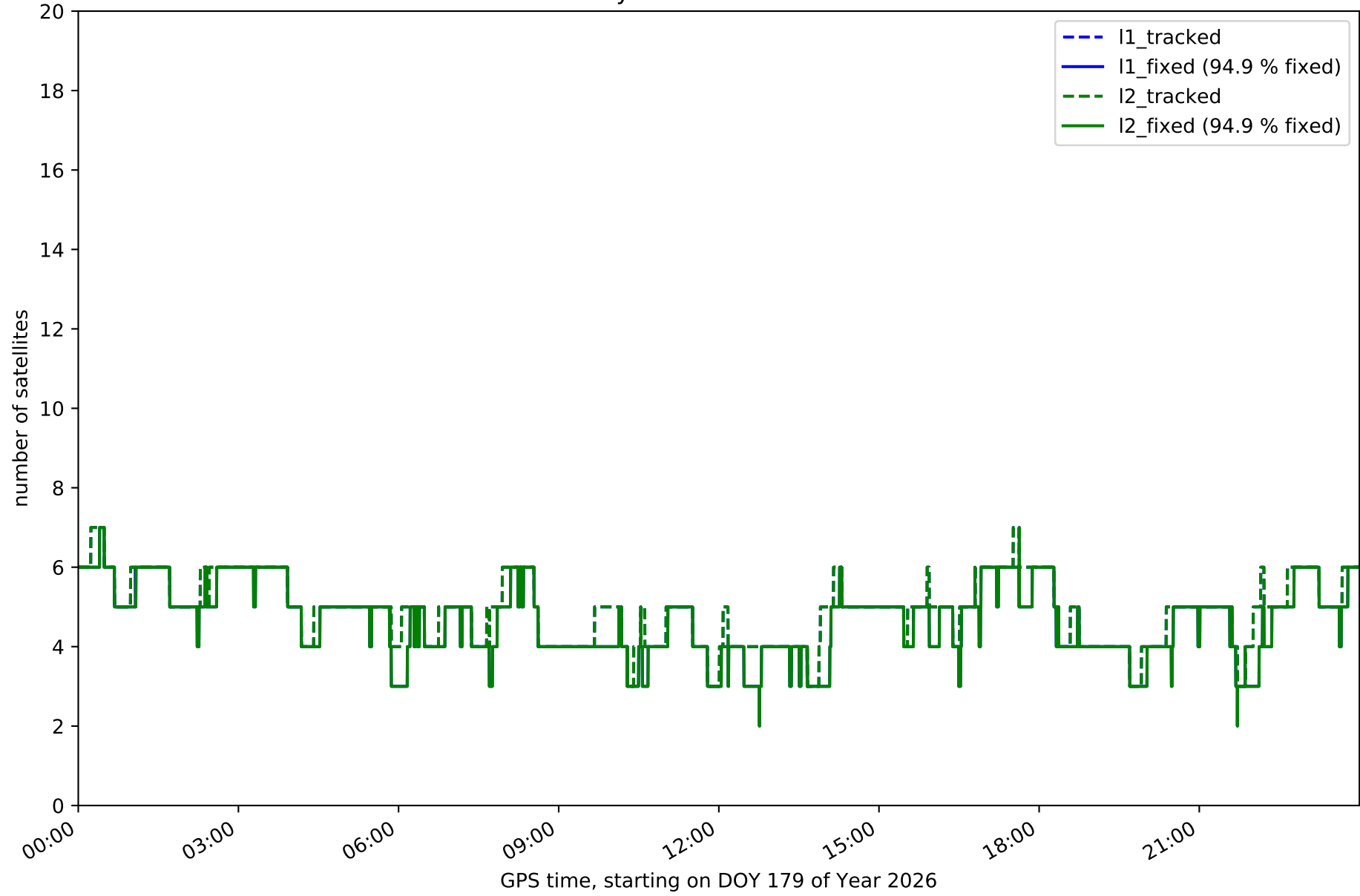
Fixing percentage of satellites in network NT11 with threshold set to 0.3



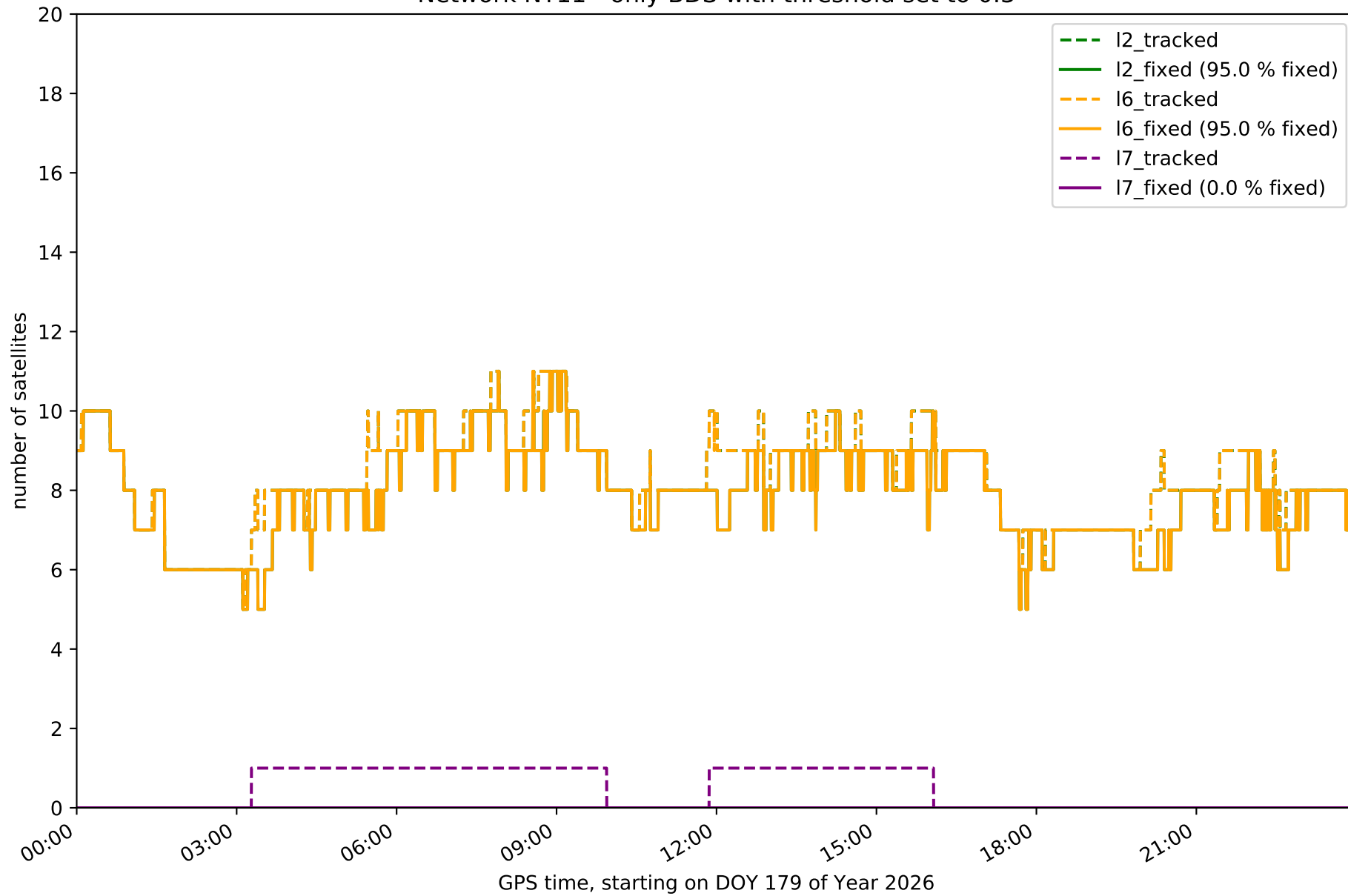
Network NT11 - only GPS with threshold set to 0.3



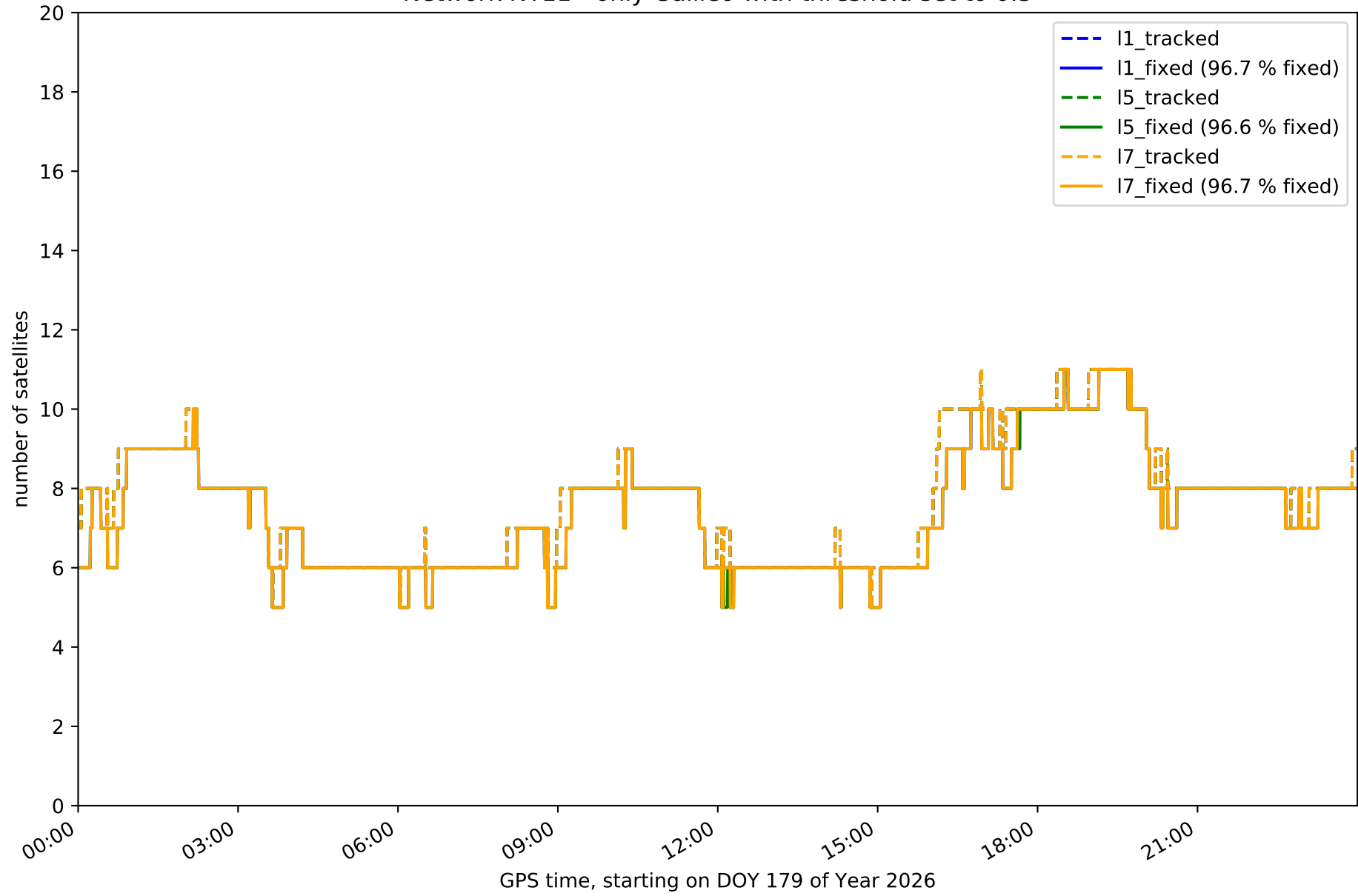
Network NT11 - only GLONASS with threshold set to 0.3



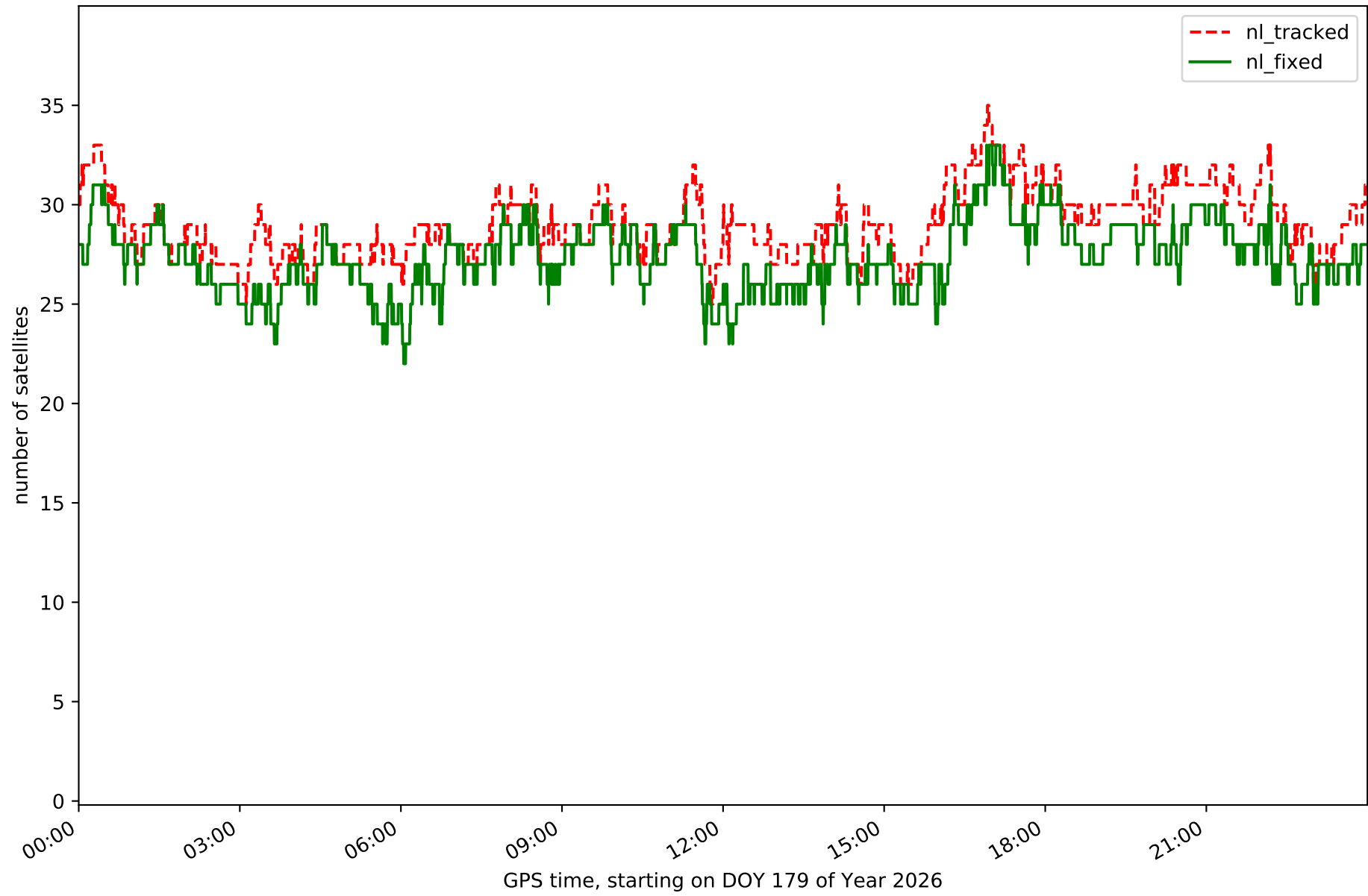
Network NT11 - only BDS with threshold set to 0.3



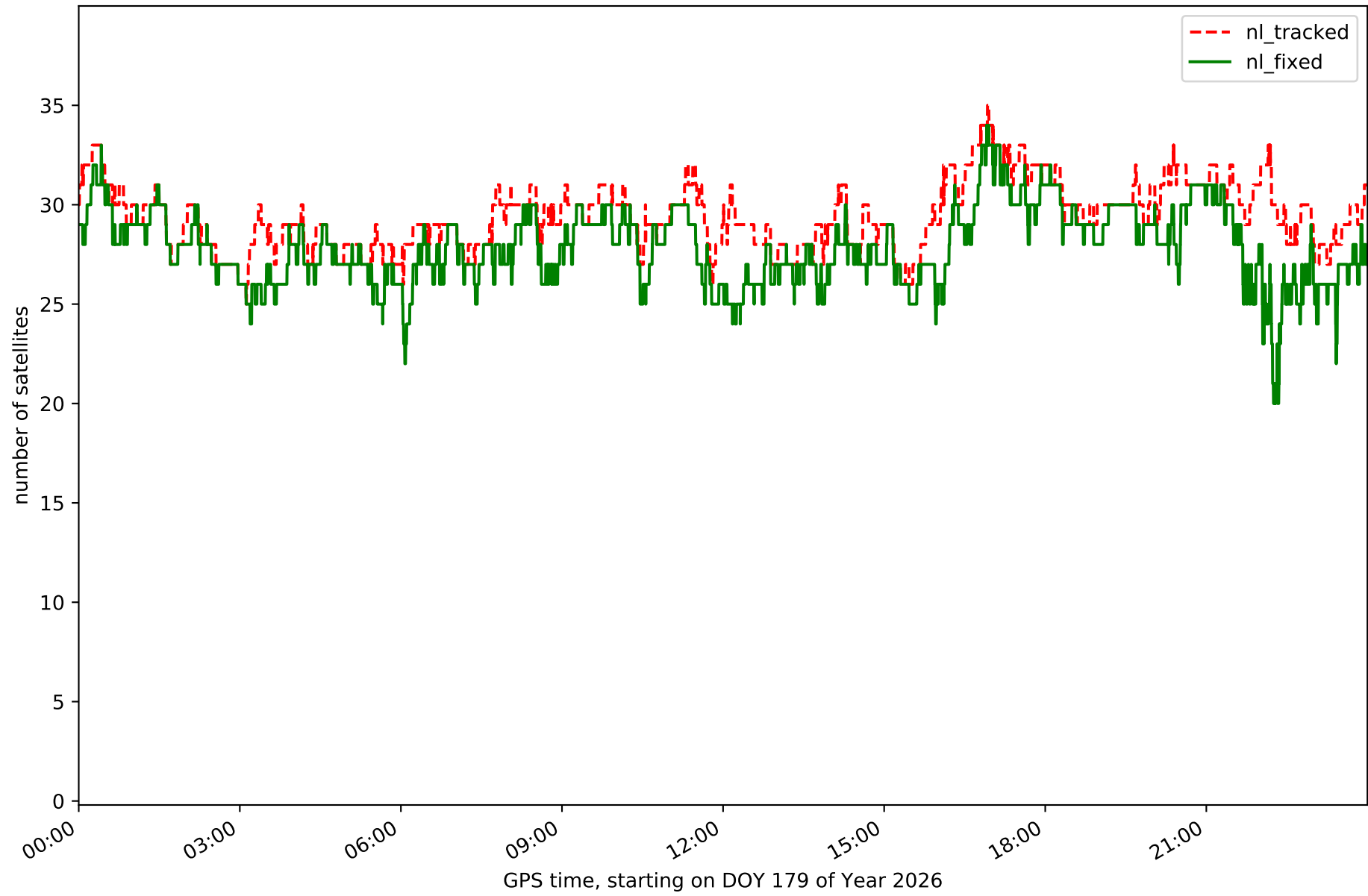
Network NT11 - only Galileo with threshold set to 0.3



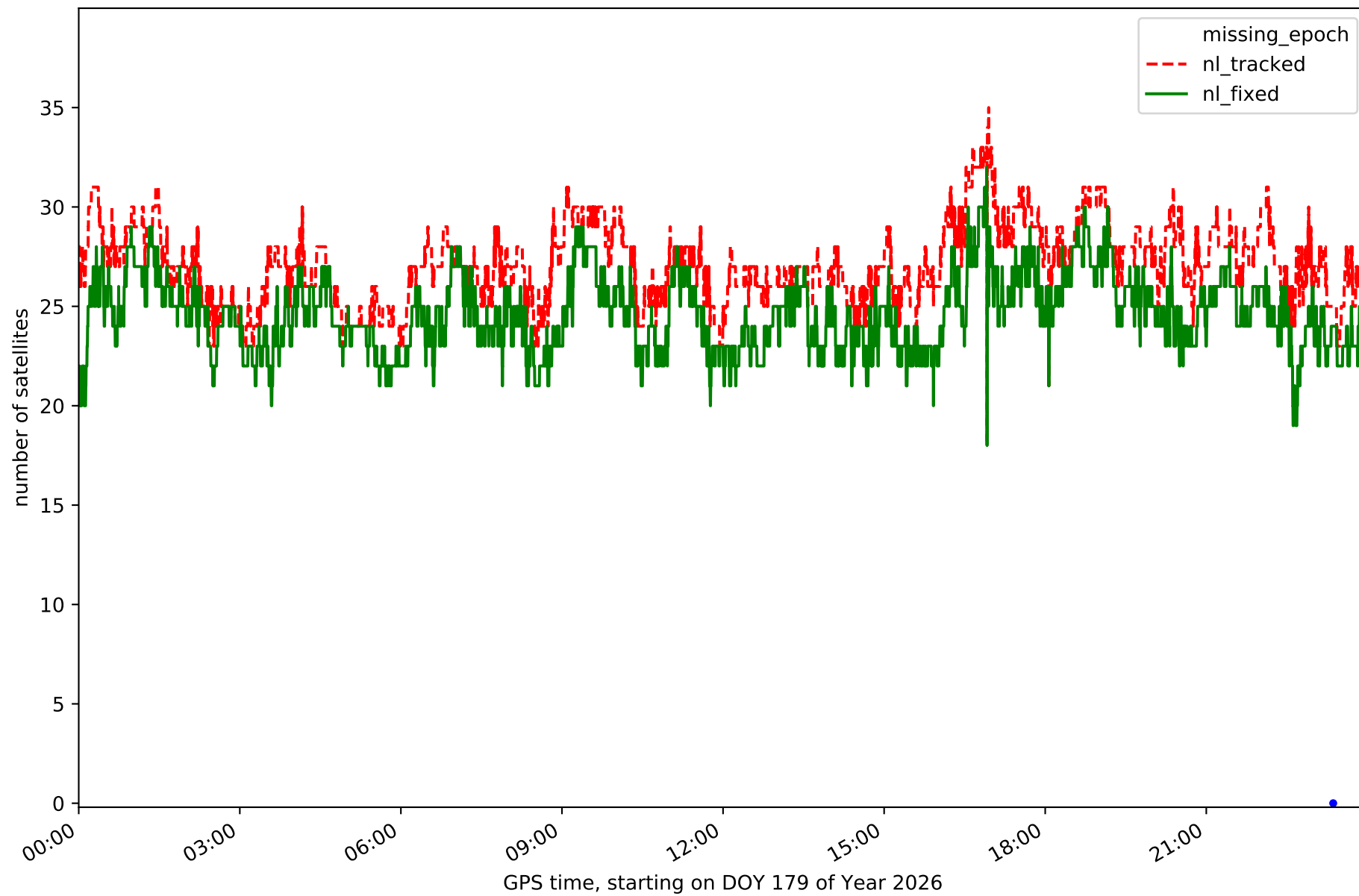
Station ALOR in network NT11



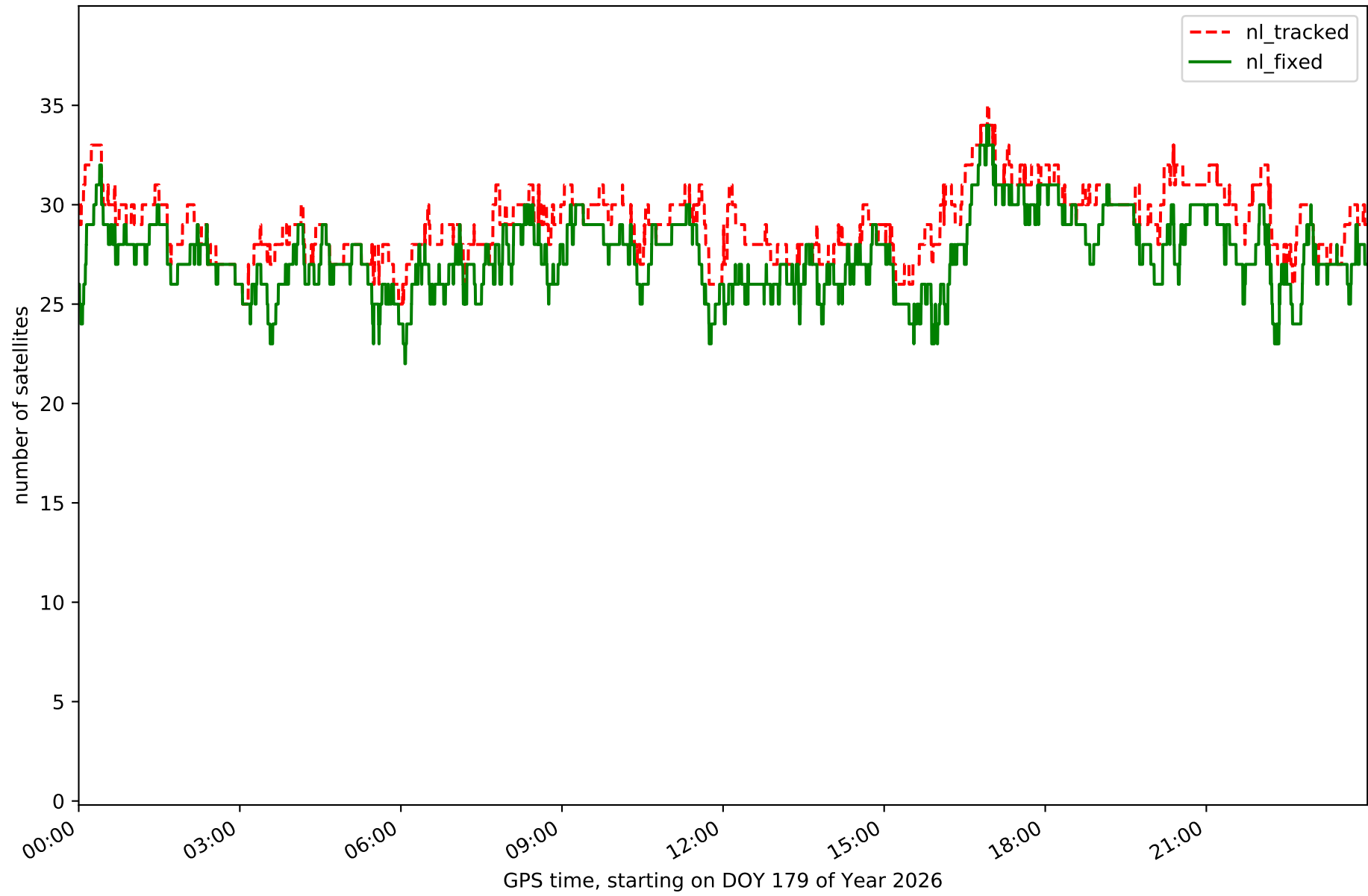
Station CBON in network NT11



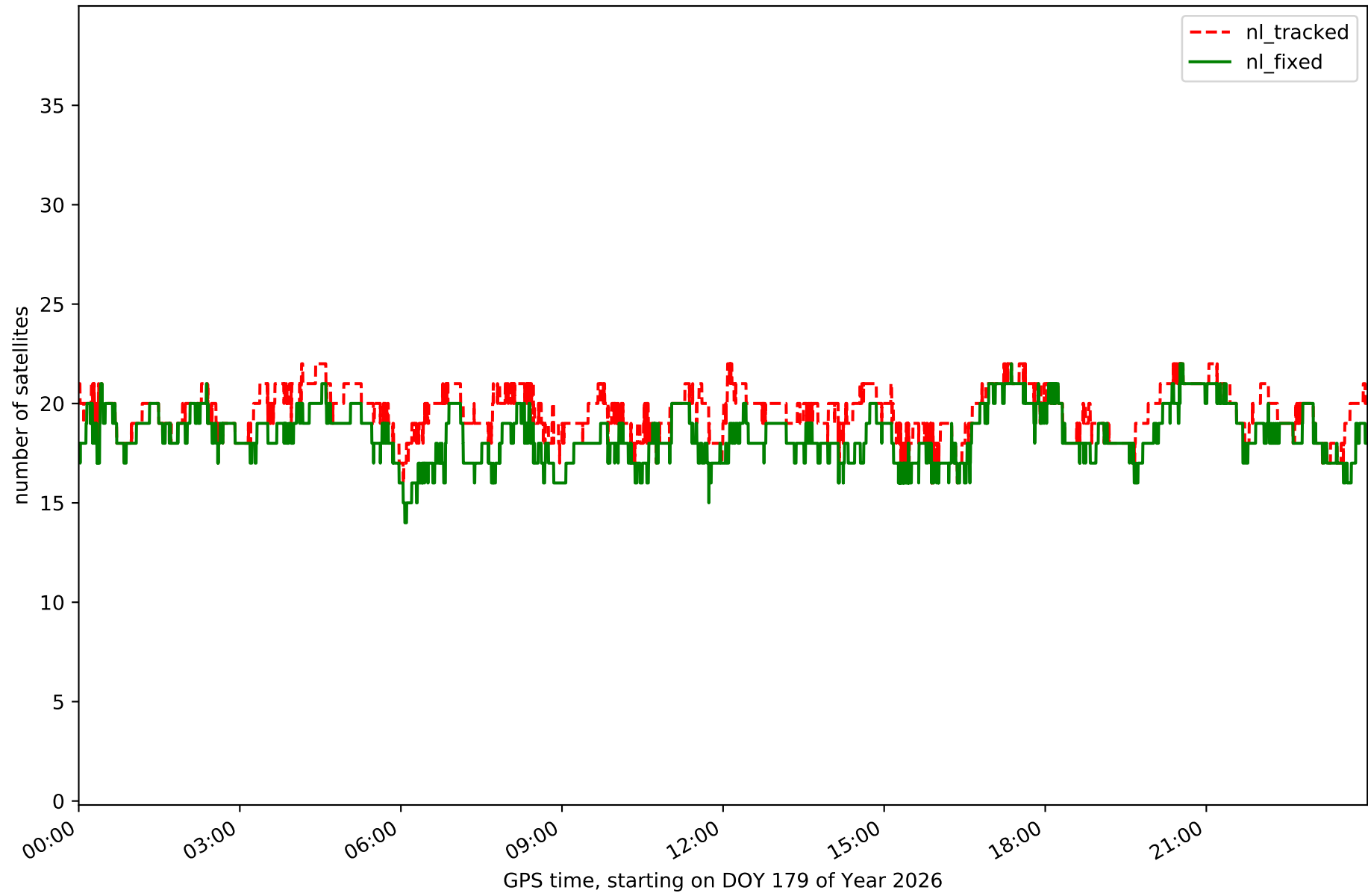
Station EIVI in network NT11



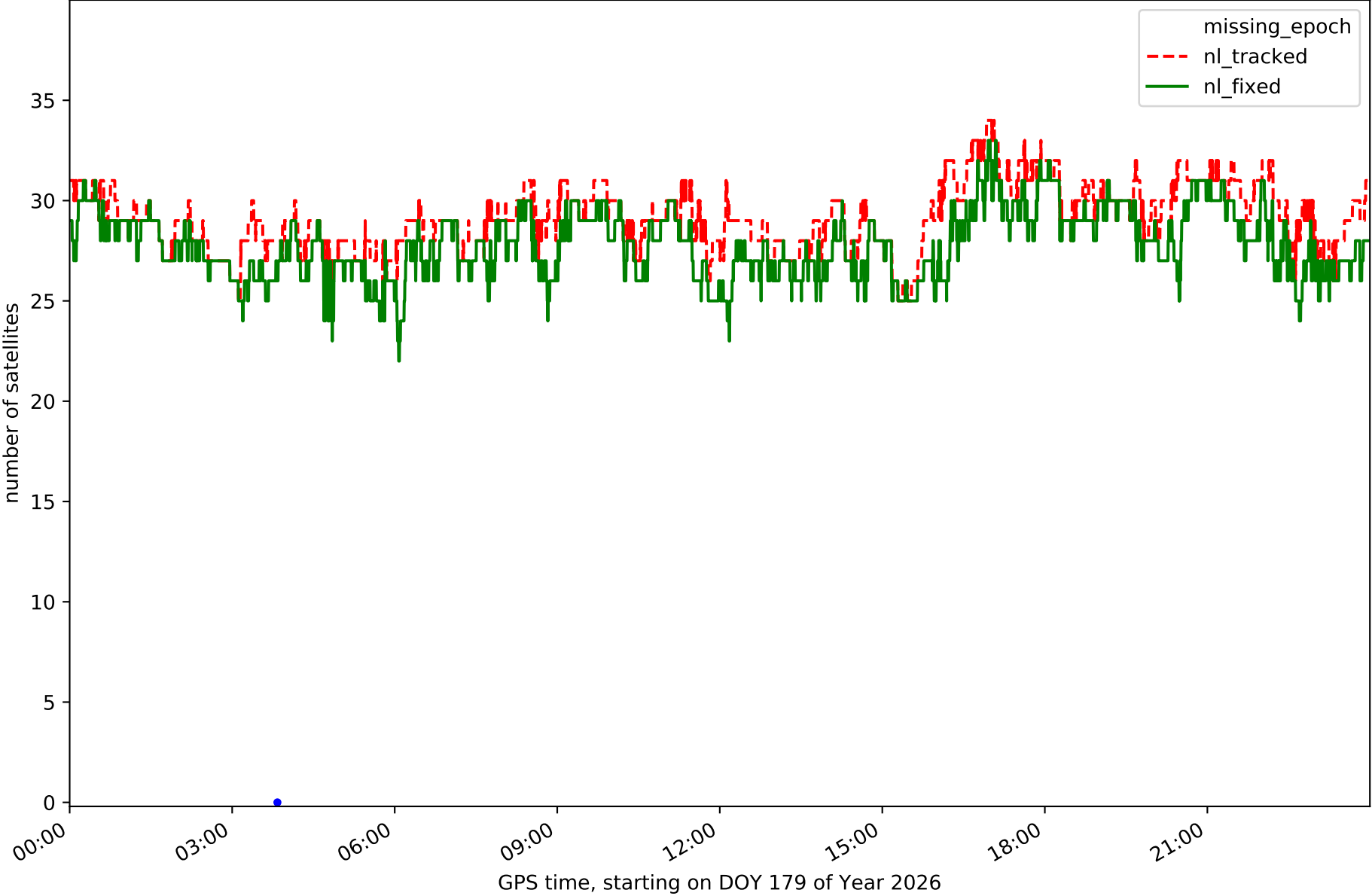
Station FORM in network NT11



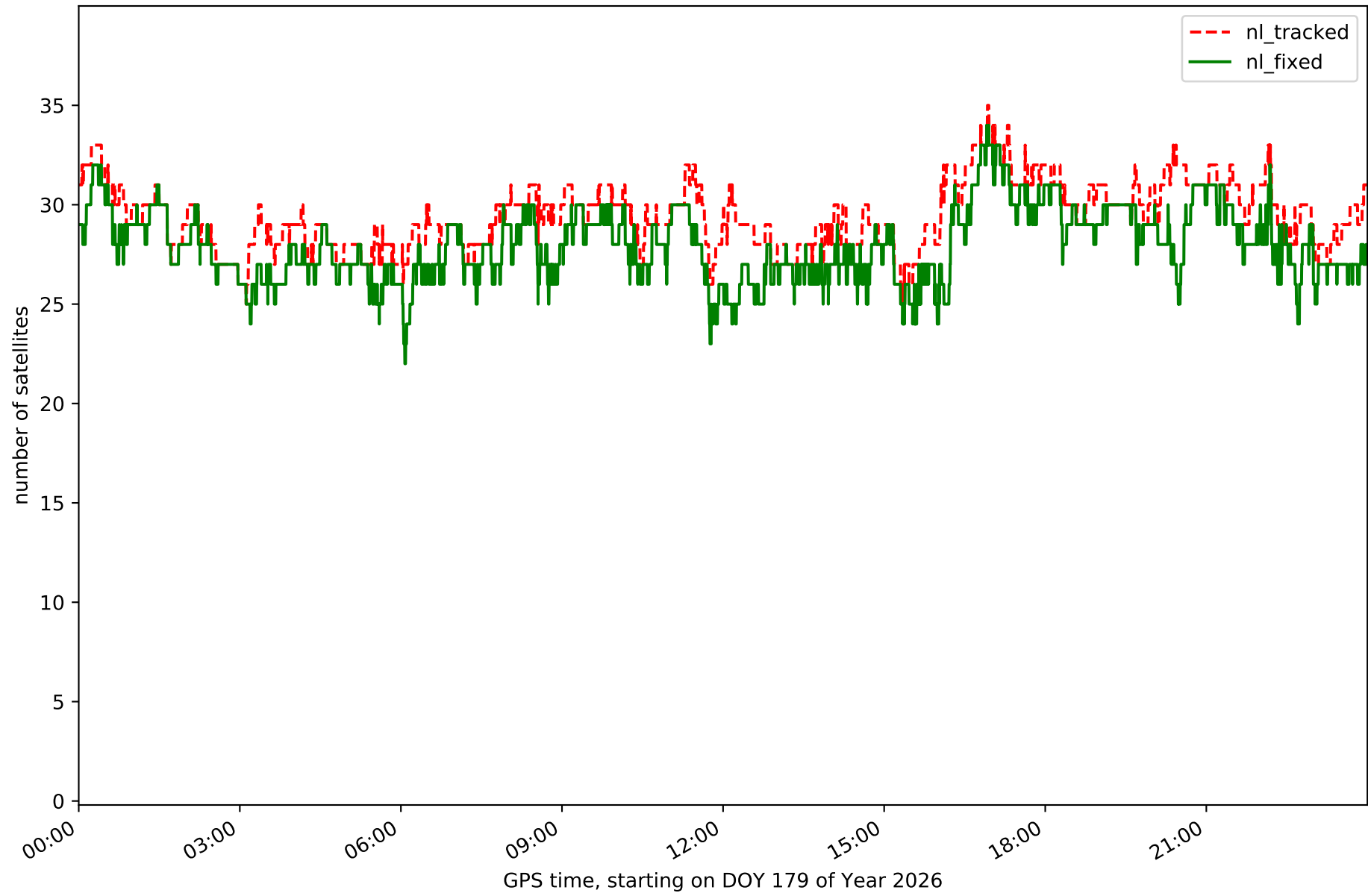
Station IBIZ in network NT11



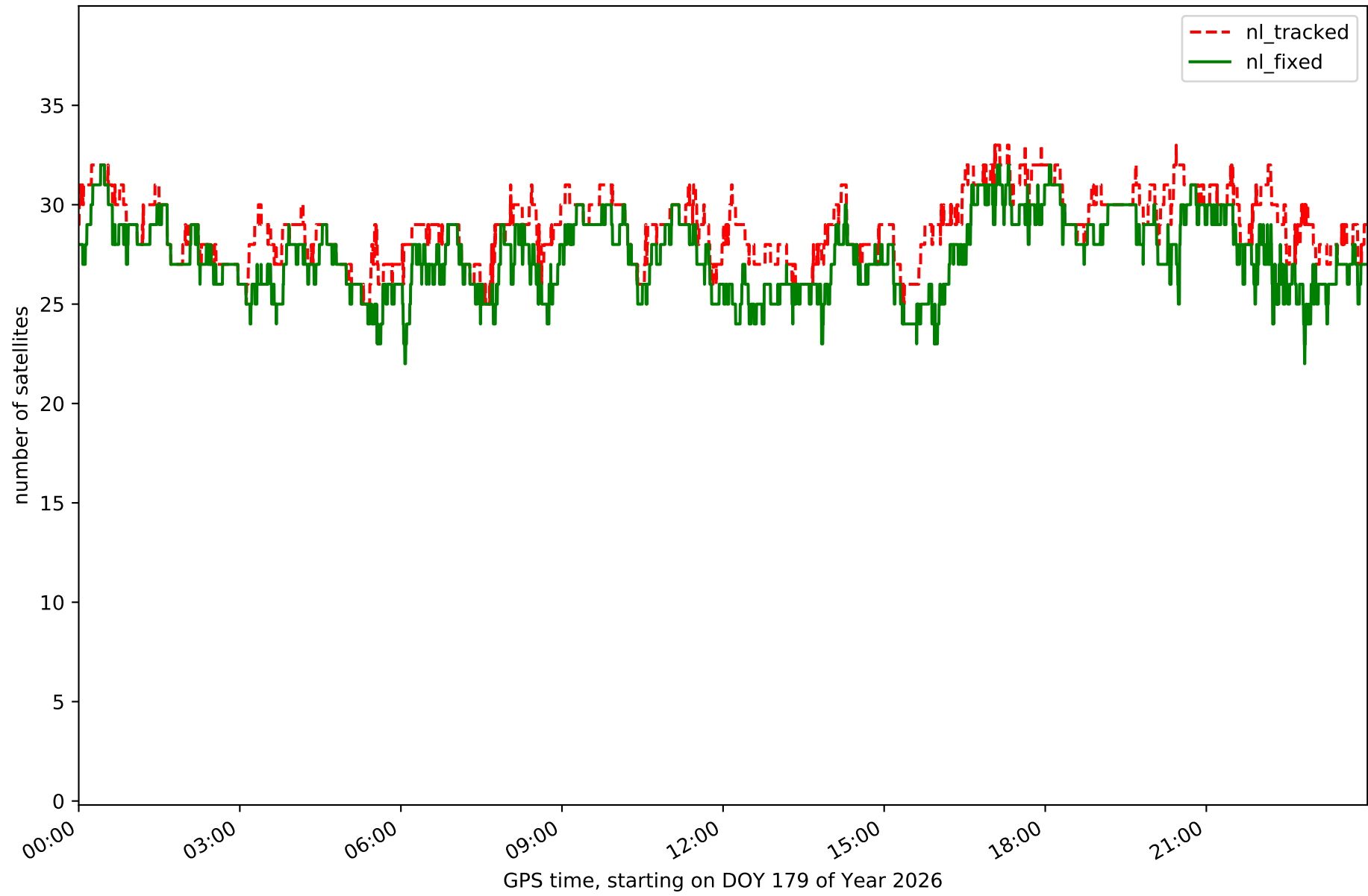
Station MALL in network NT11



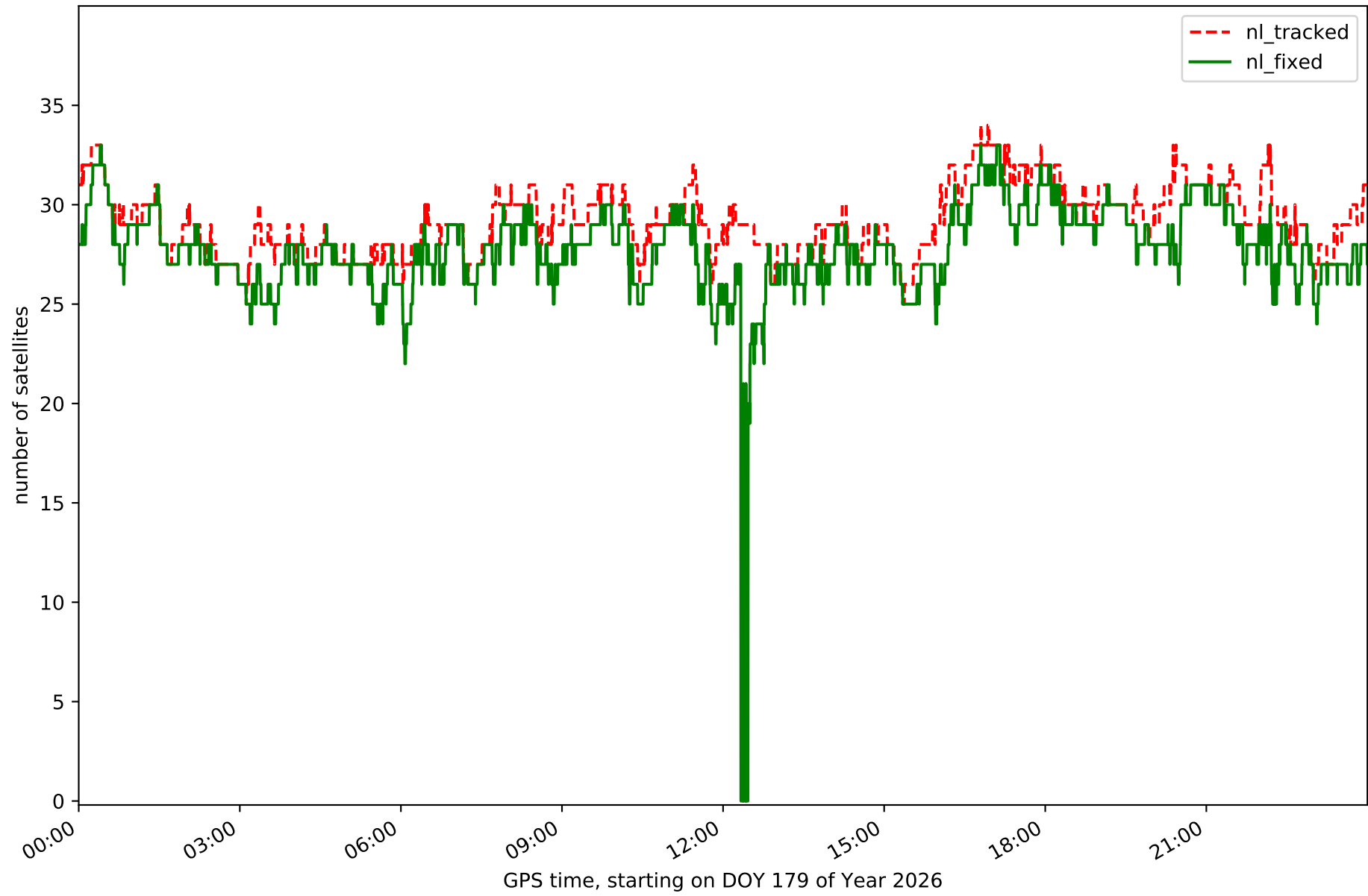
Station SINE in network NT11



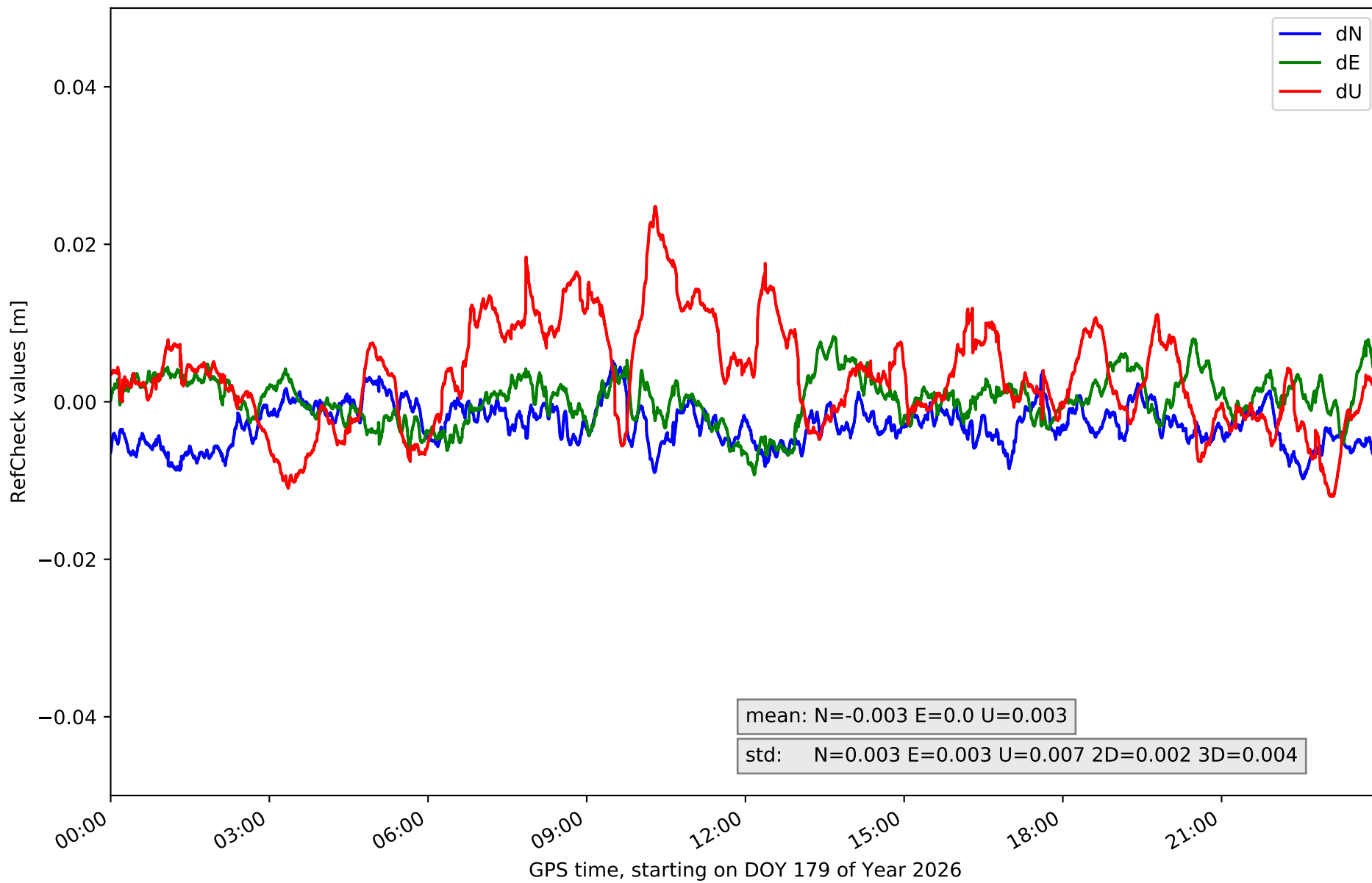
Station SJO1 in network NT11



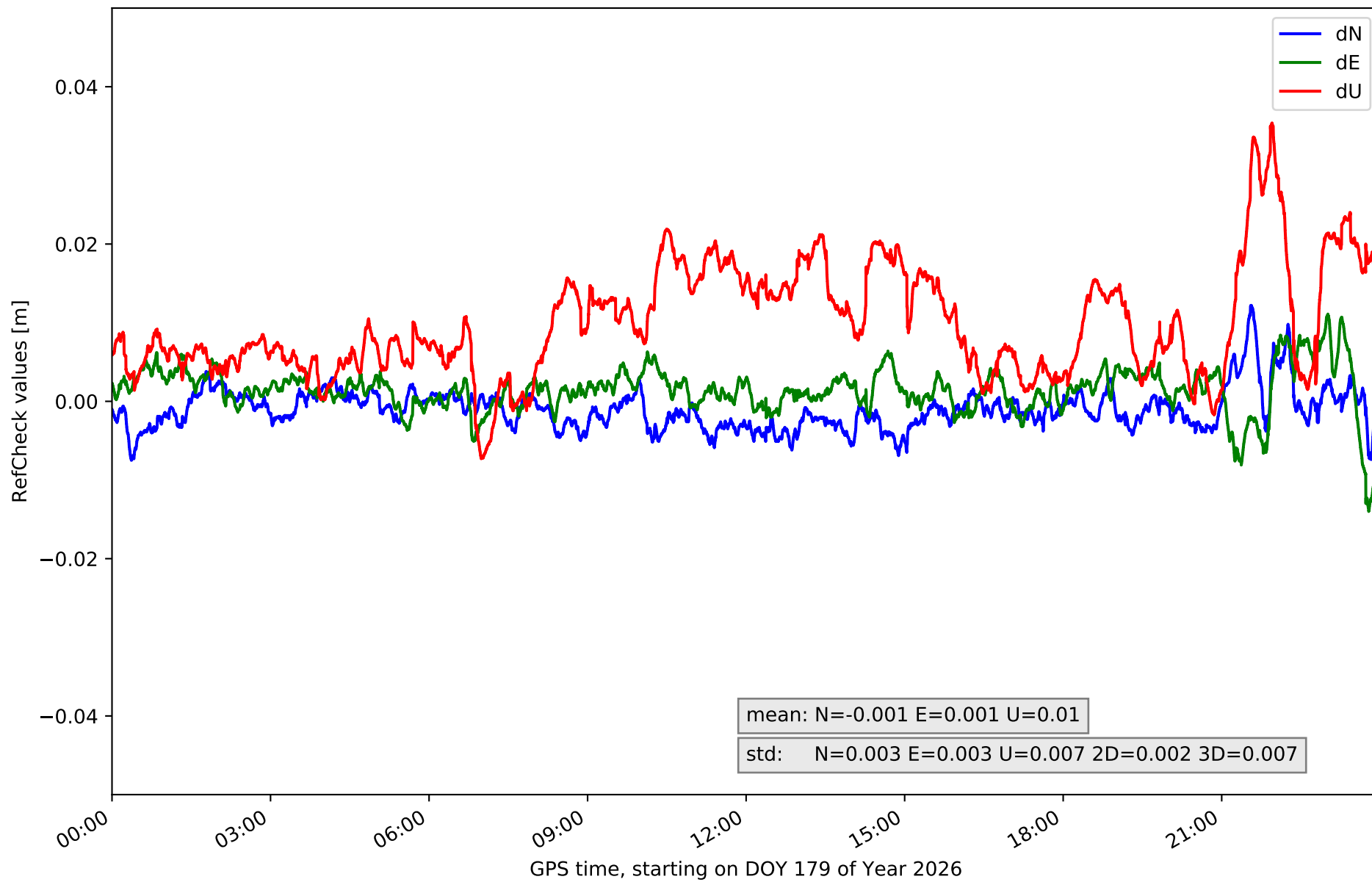
Station TRAU in network NT11



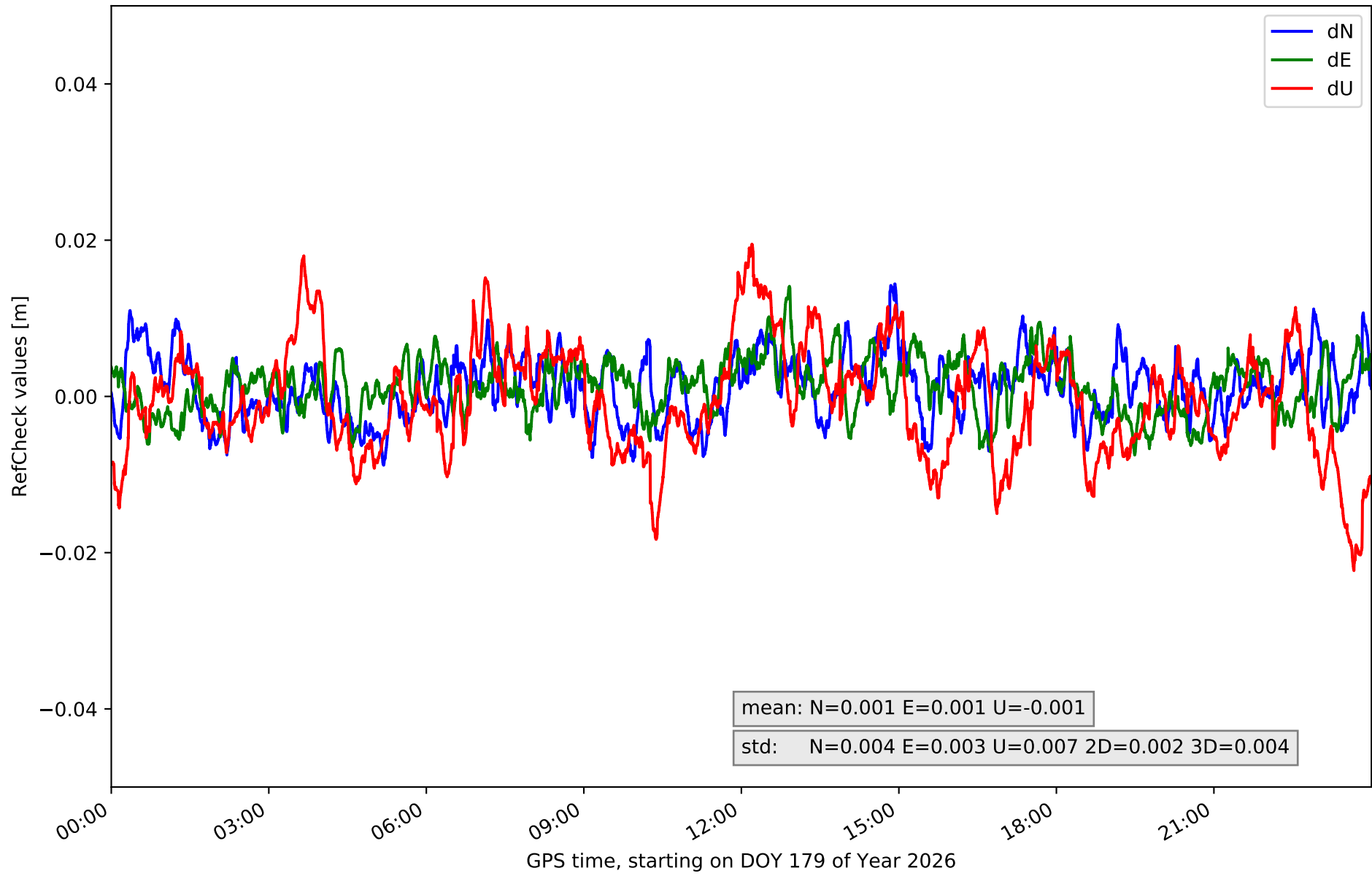
RefCheck for station ALOR in network NT11



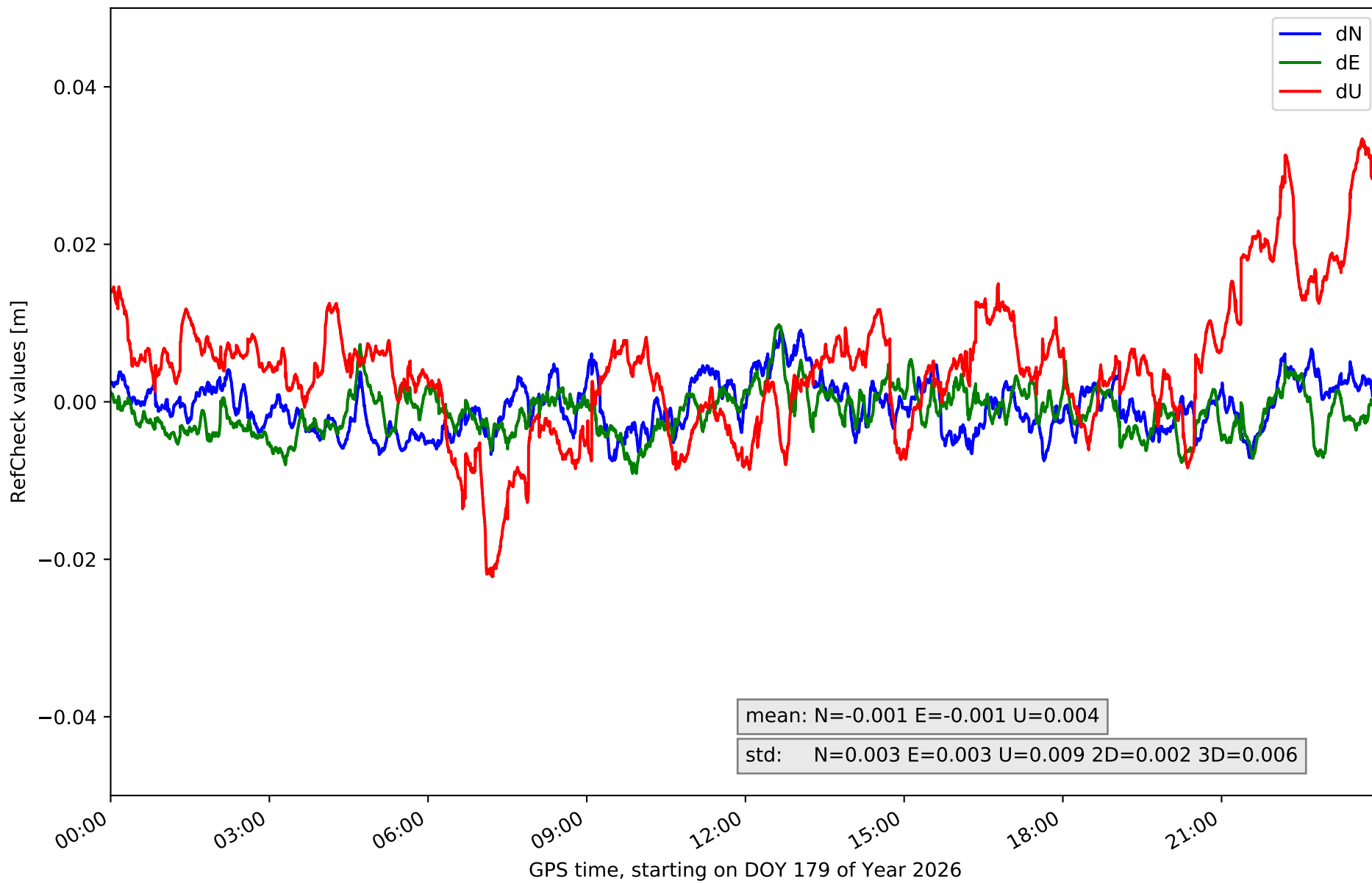
RefCheck for station CBON in network NT11



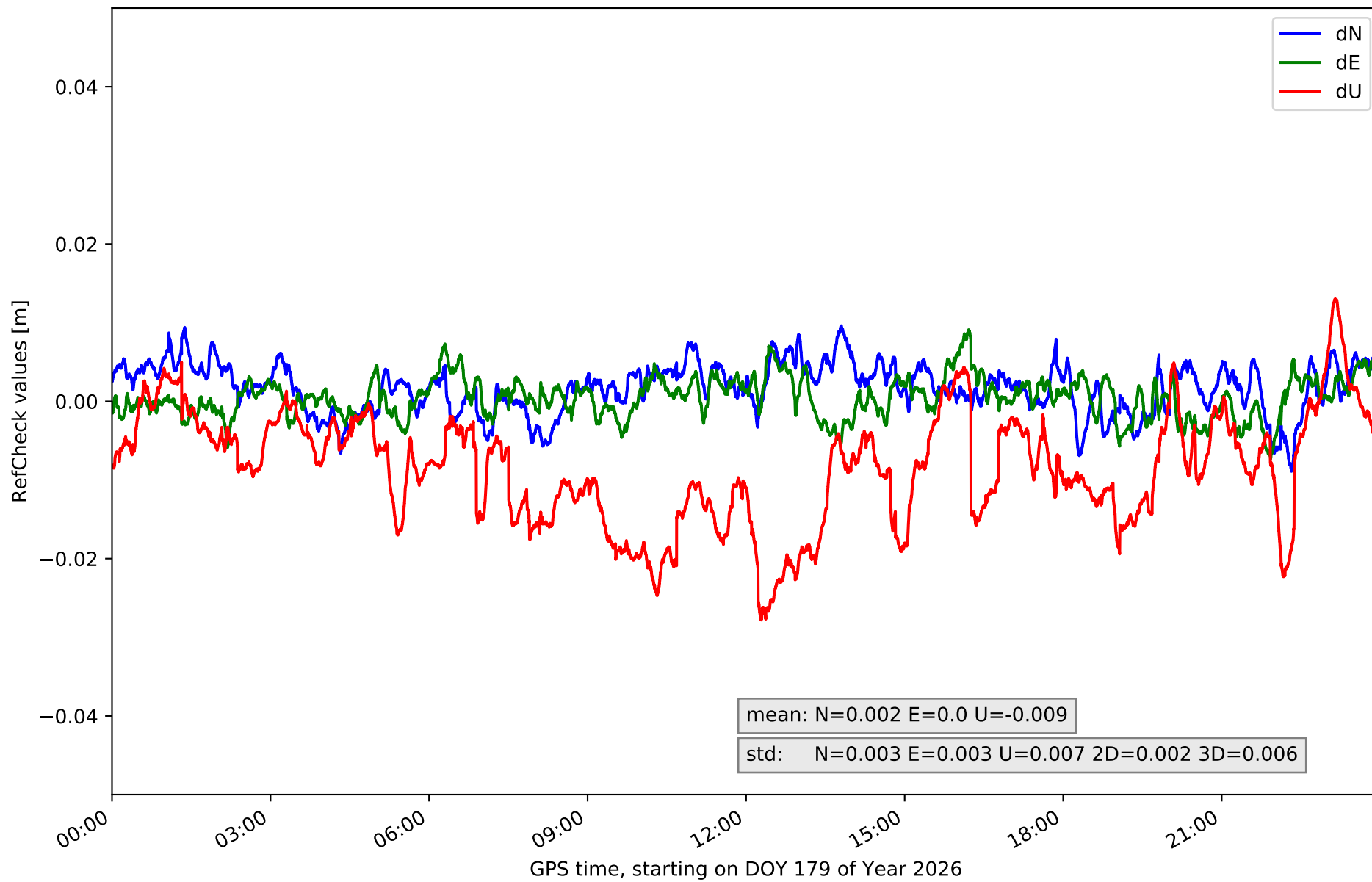
RefCheck for station EIVI in network NT11



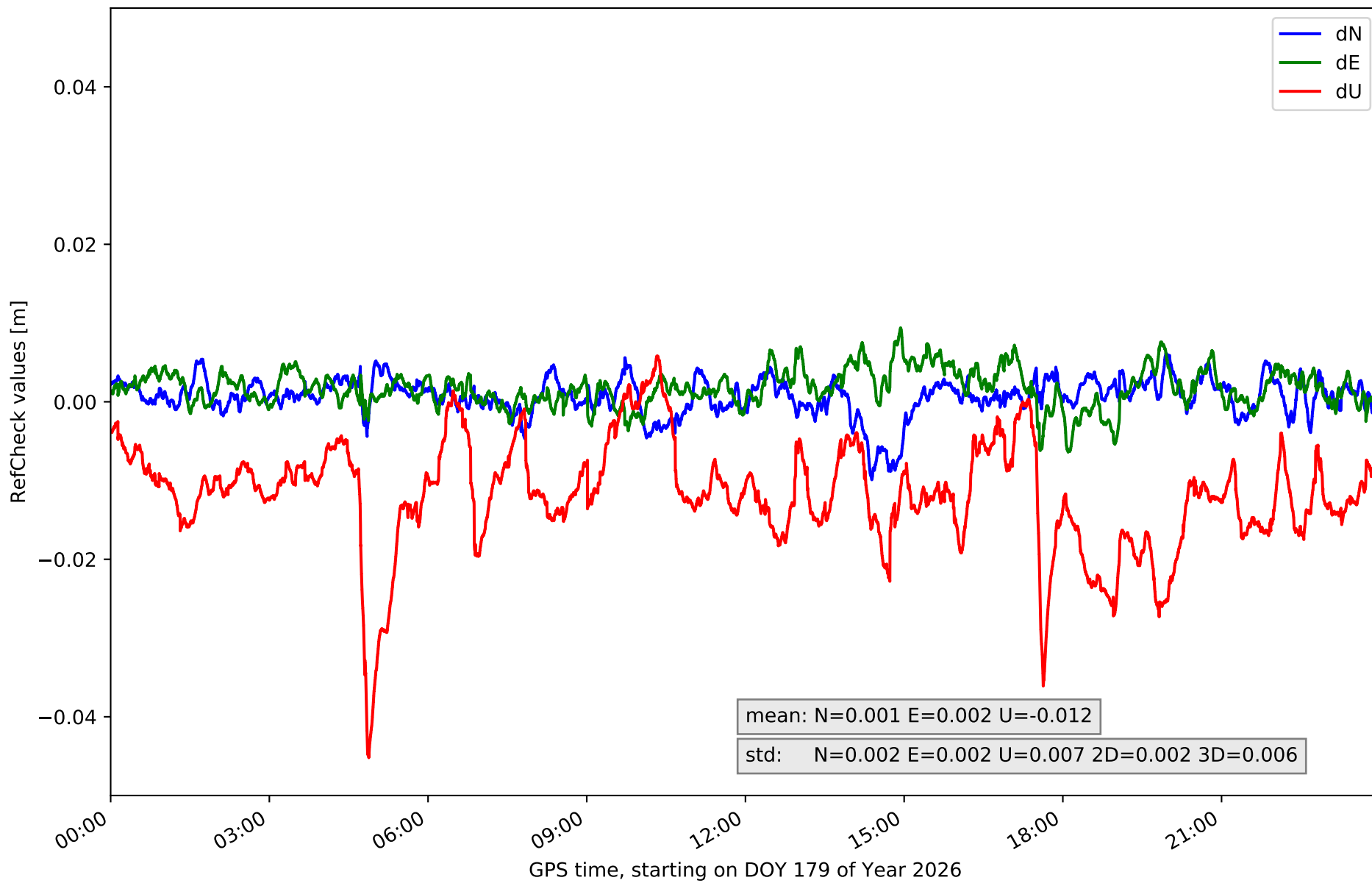
RefCheck for station FORM in network NT11



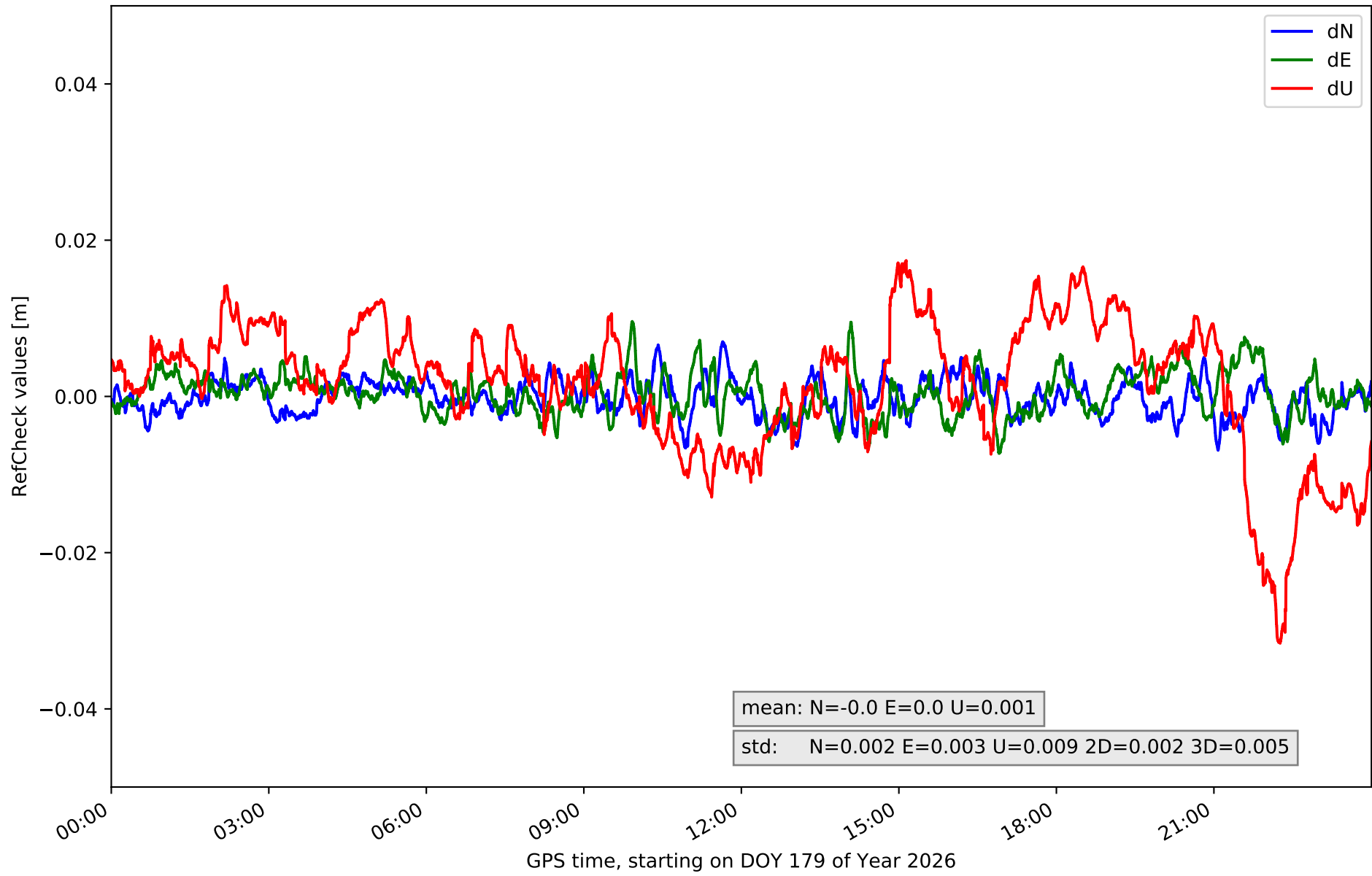
RefCheck for station IBIZ in network NT11



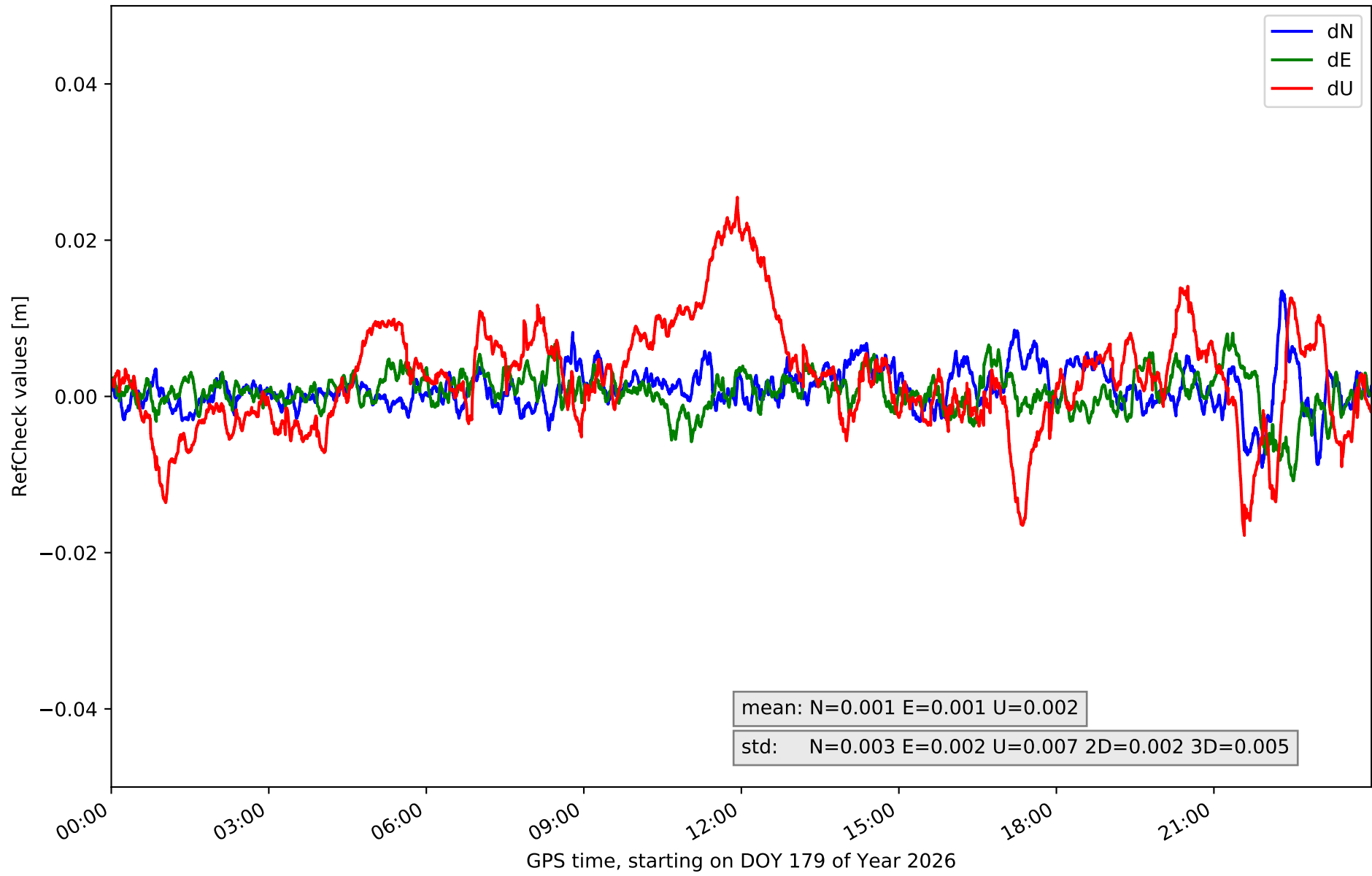
RefCheck for station MALL in network NT11



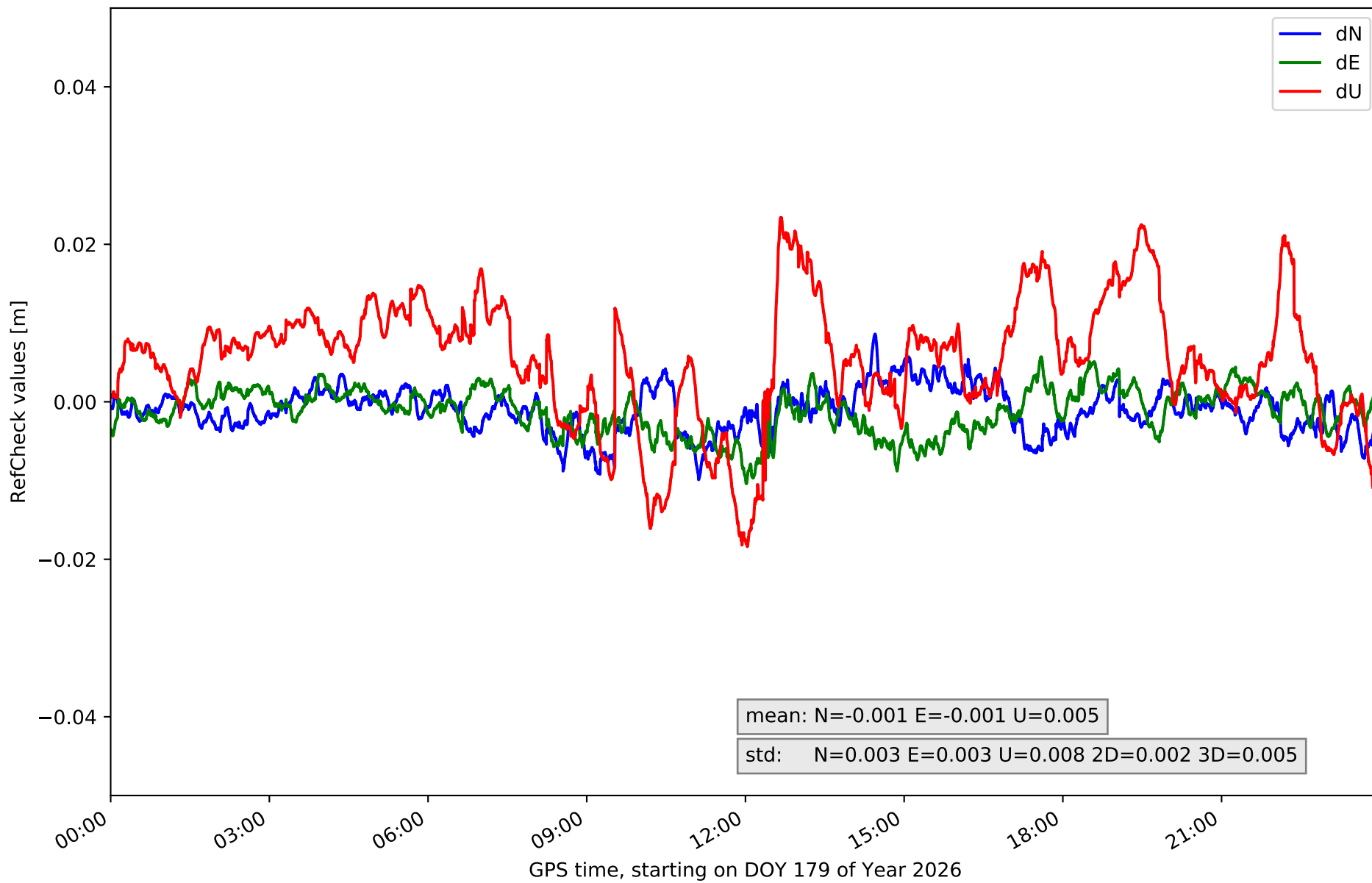
RefCheck for station SINE in network NT11



RefCheck for station SJO1 in network NT11



RefCheck for station TRAU in network NT11



RefCheck values for network NT11

| Station | Nmin | Nmax | Nstd | Emin | Emax | Estd | Umin | Umax | Ustd | std2D | std3D | #2D > 0.01 | % 2D > 0.01 | #3D > 0.02 | % 3D > 0.02 |
|----------------|--------|-------|-------|--------|-------|-------|--------|-------|-------|-------|-------|------------|-------------|------------|-------------|
| ALOR | -0.01 | 0.005 | 0.003 | -0.009 | 0.008 | 0.003 | -0.012 | 0.025 | 0.007 | 0.002 | 0.004 | 340 | 0.4 | 1257 | 1.5 |
| CBON | -0.007 | 0.012 | 0.003 | -0.014 | 0.011 | 0.003 | -0.007 | 0.035 | 0.007 | 0.002 | 0.007 | 2220 | 2.6 | 9071 | 10.5 |
| EIVI | -0.009 | 0.014 | 0.004 | -0.007 | 0.014 | 0.003 | -0.022 | 0.019 | 0.007 | 0.002 | 0.004 | 2588 | 3.0 | 852 | 1.0 |
| FORM | -0.007 | 0.009 | 0.003 | -0.009 | 0.01 | 0.003 | -0.022 | 0.033 | 0.009 | 0.002 | 0.006 | 724 | 0.8 | 5786 | 6.7 |
| IBIZ | -0.009 | 0.01 | 0.003 | -0.007 | 0.009 | 0.003 | -0.028 | 0.013 | 0.007 | 0.002 | 0.006 | 149 | 0.2 | 6477 | 7.5 |
| MALL | -0.01 | 0.006 | 0.002 | -0.006 | 0.009 | 0.002 | -0.045 | 0.006 | 0.007 | 0.002 | 0.006 | 771 | 0.9 | 8575 | 9.9 |
| SINE | -0.007 | 0.007 | 0.002 | -0.007 | 0.01 | 0.003 | -0.032 | 0.017 | 0.009 | 0.002 | 0.005 | 3 | 0.0 | 2529 | 2.9 |
| SJO1 | -0.009 | 0.013 | 0.003 | -0.011 | 0.008 | 0.002 | -0.018 | 0.025 | 0.007 | 0.002 | 0.005 | 1194 | 1.4 | 2375 | 2.7 |
| TRAU | -0.01 | 0.009 | 0.003 | -0.01 | 0.006 | 0.003 | -0.018 | 0.023 | 0.008 | 0.002 | 0.005 | 588 | 0.7 | 2638 | 3.1 |
| Mean | -0.009 | 0.009 | 0.003 | -0.009 | 0.009 | 0.003 | -0.023 | 0.022 | 0.008 | 0.002 | 0.005 | 953.0 | 1.1 | 4395.6 | 5.1 |
| Min/Max | -0.01 | 0.014 | 0.004 | -0.014 | 0.014 | 0.003 | -0.045 | 0.035 | 0.009 | 0.002 | 0.007 | 2588 | 3.0 | 9071 | 10.5 |

fixing statistic for network NT11

| fixing percentage of | all GNSS | G | R | E | C |
|--|----------|------|------|------|------|
| using threshold 0.3 | 95.7 | 95.7 | 94.9 | 96.7 | 95.0 |
| considering satellites with dual-frequency fixed | 94.0 | 94.3 | 93.0 | 95.8 | 92.6 |
| considering all signals separately | 93.8 | 94.4 | 93.0 | 96.0 | 90.2 |