

## summary for network NT11

timeperiod chosen: from 2026-06-24-00:00:00 until 2026-06-24-23:59:59

average update rate (durations larger than 15 seconds considered as observation gap): 1.0 seconds

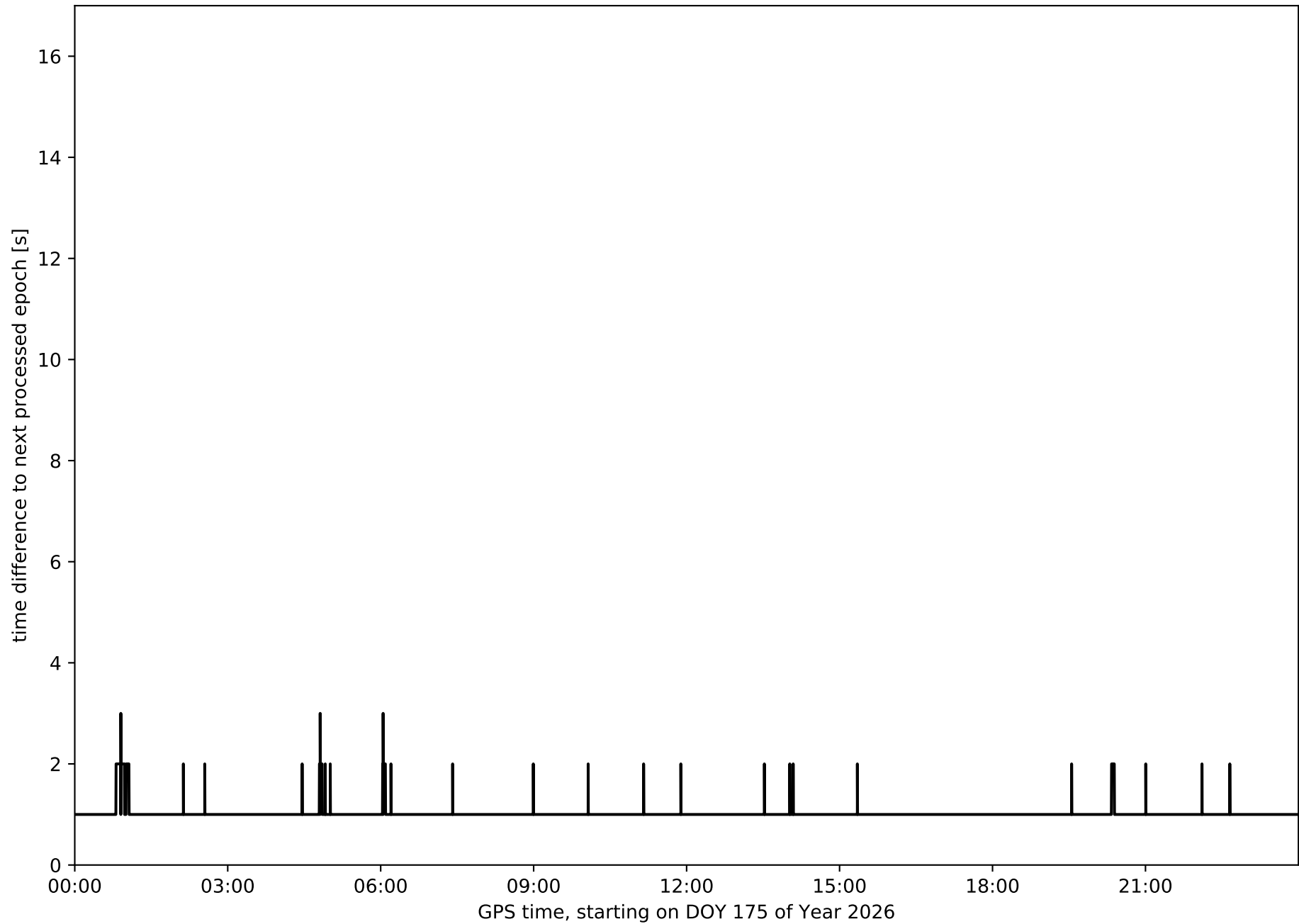
average fixing percentage with threshold set to 0.3: 95.5 percent

stations available: 9 of 9

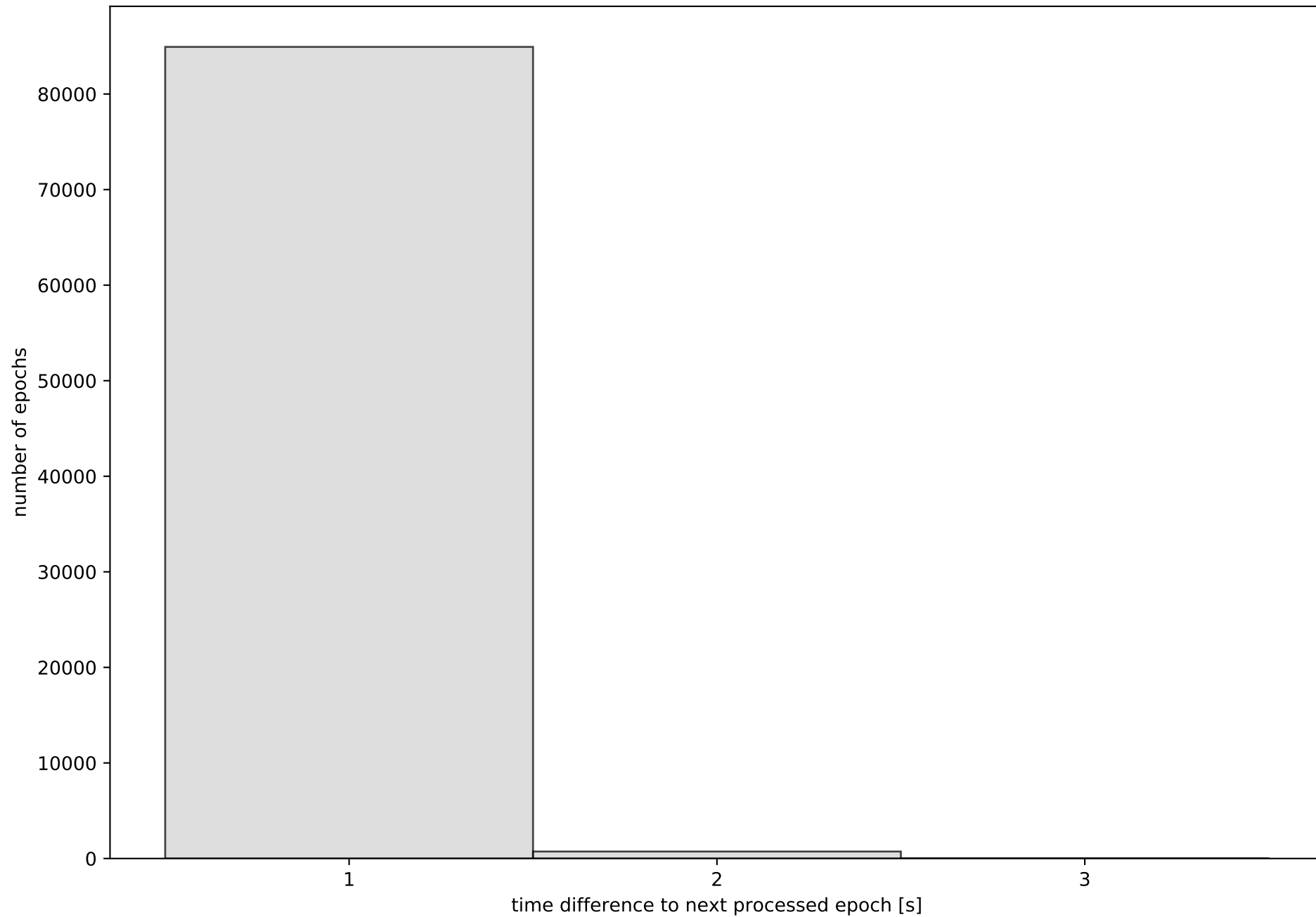
station information:

station ALOR:	antenna: LEIAR25	LEIT	receiver: LEICA GR30	height: 189.508
station CBON:	antenna: LEIAR25	LEIT	receiver: LEICA GR30	height: 57.319
station EIVI:	antenna: LEIAR25	LEIT	receiver: LEICA GR30	height: 132.126
station FORM:	antenna: LEIAR25	LEIT	receiver: LEICA GR30	height: 99.577
station IBIZ:	antenna: TPSCR3_GGD	CONE	receiver: LEICA GR25	height: 59.944
station MALL:	antenna: LEIAR20	LEIM	receiver: LEICA GR50	height: 62.117
station SINE:	antenna: LEIAR25	LEIT	receiver: LEICA GR30	height: 188.038
station SJO1:	antenna: LEIAR25	LEIT	receiver: LEICA GR30	height: 59.876
station TRAU:	antenna: LEIAR25	LEIT	receiver: LEICA GR30	height: 606.077

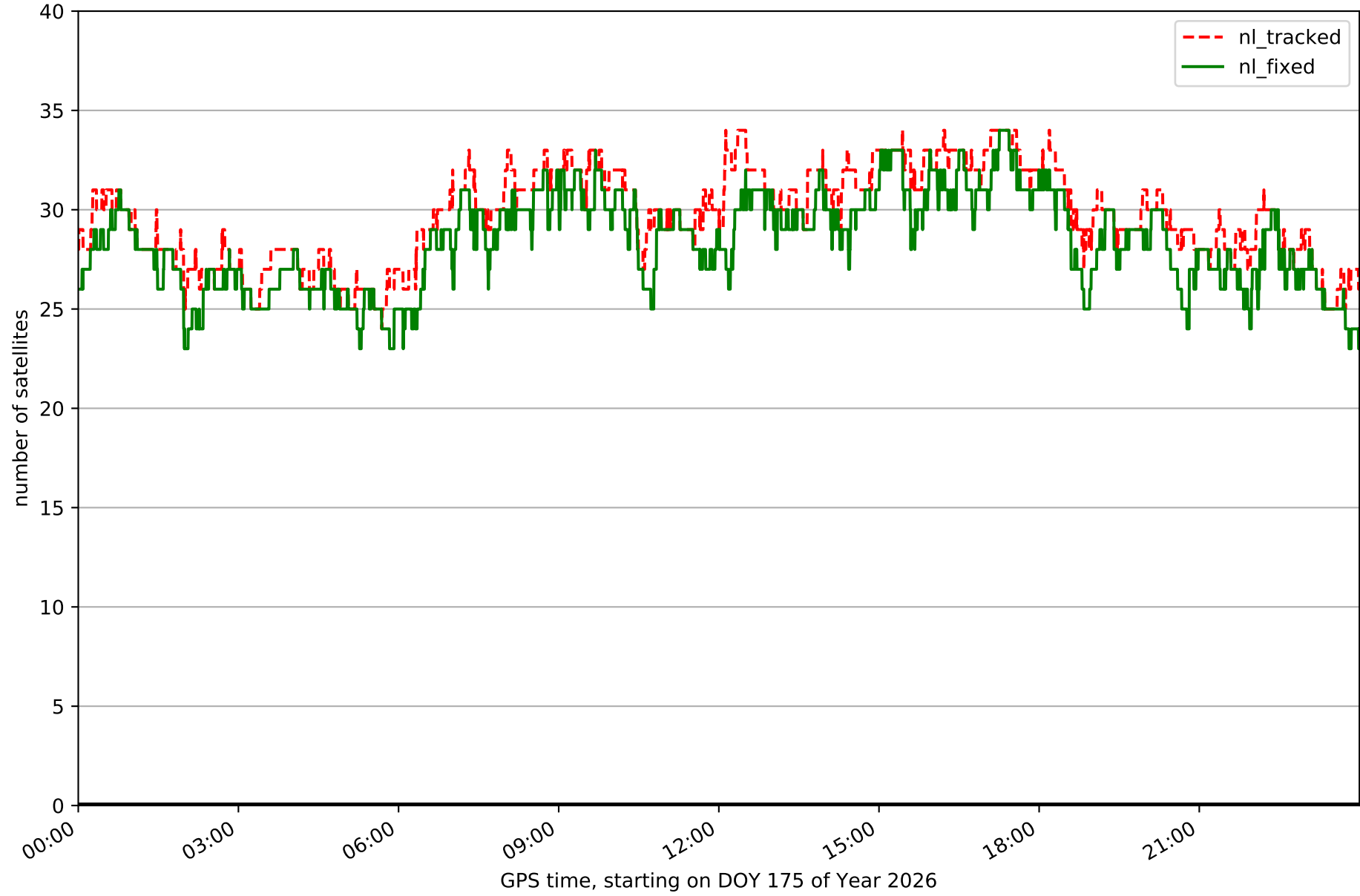
Processing rate in network NT11



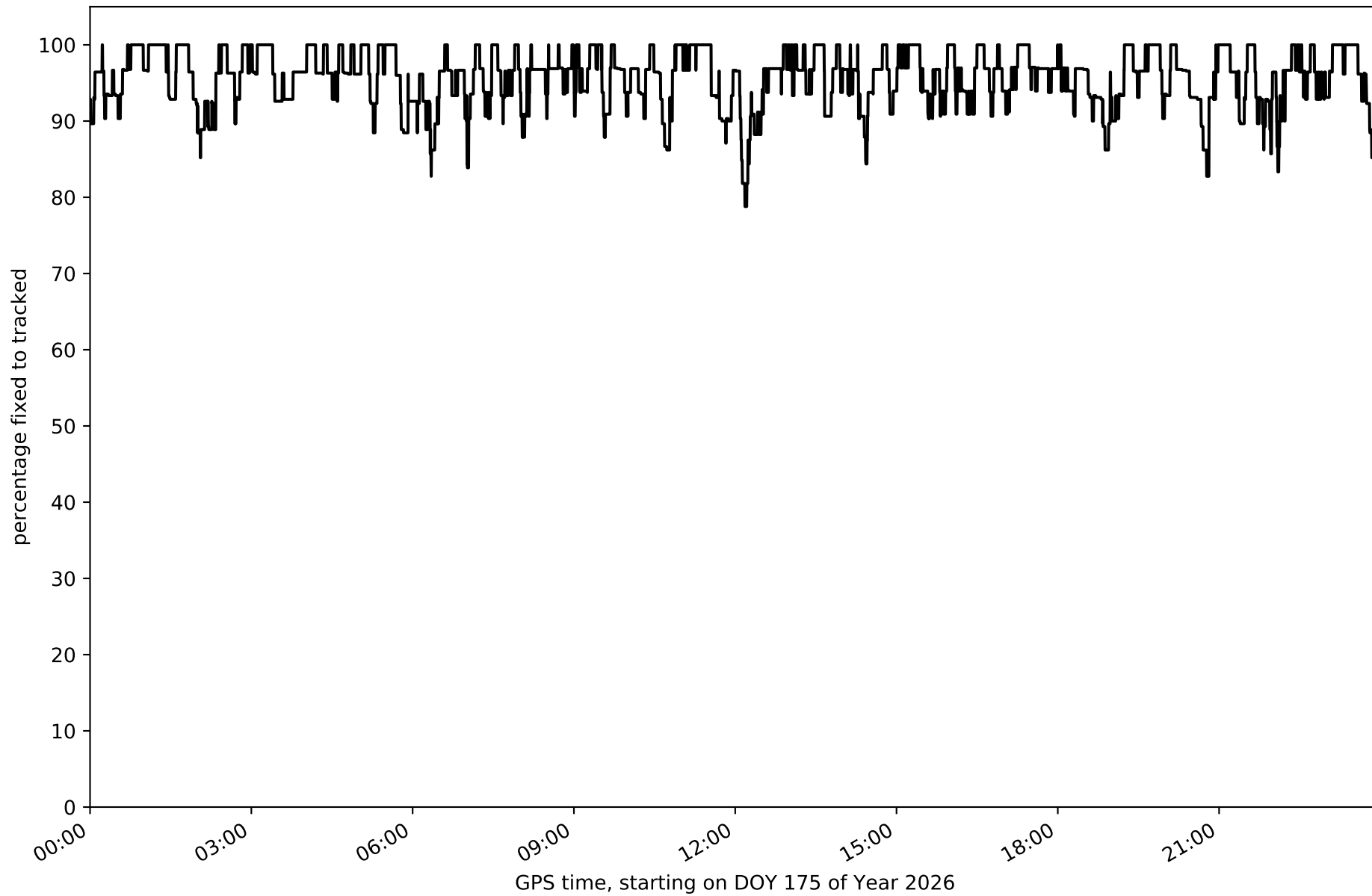
Histogram of the processing rate in network NT11 (durations larger 15 seconds neglected)



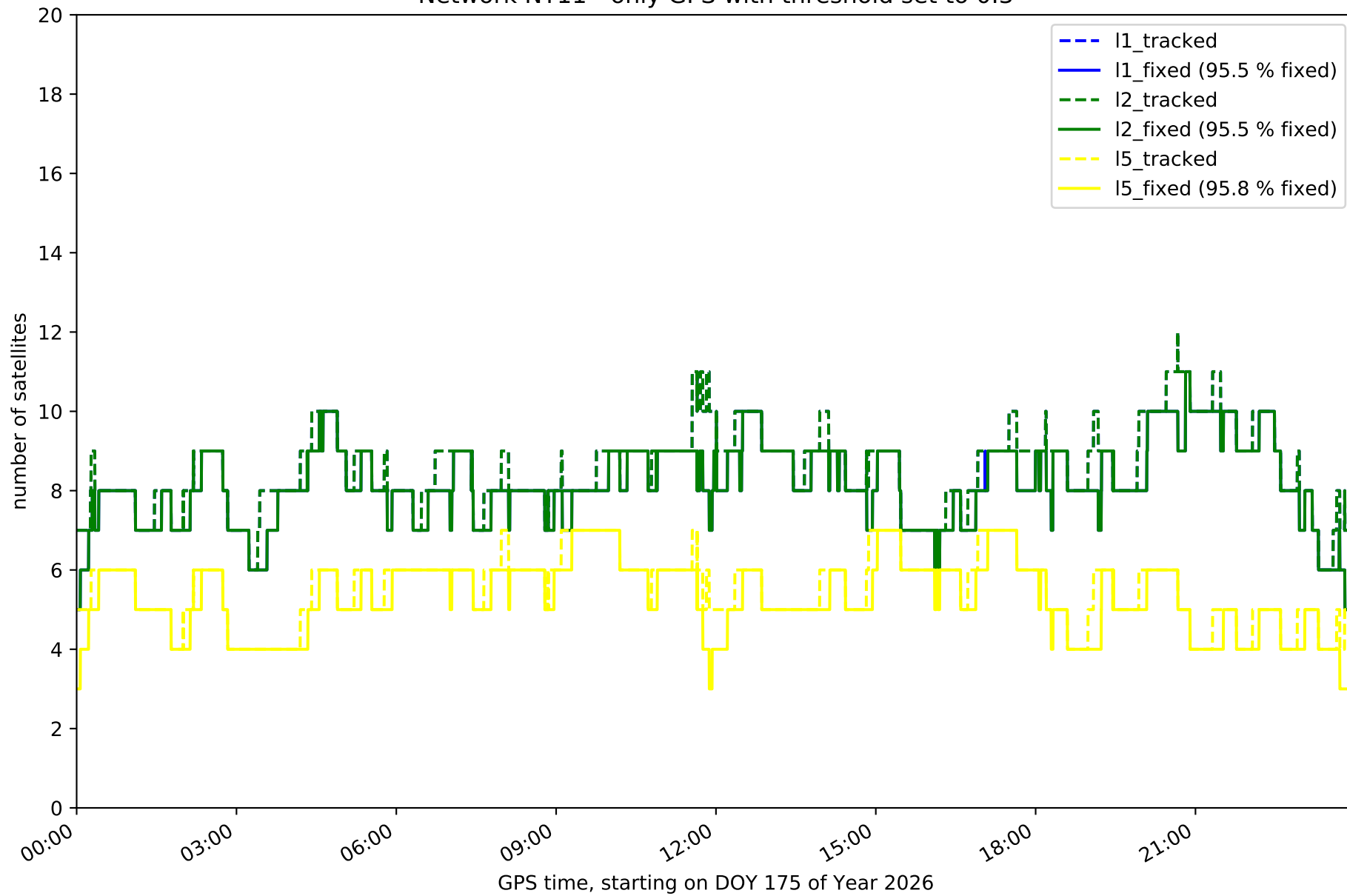
Network NT11 with threshold set to 0.3



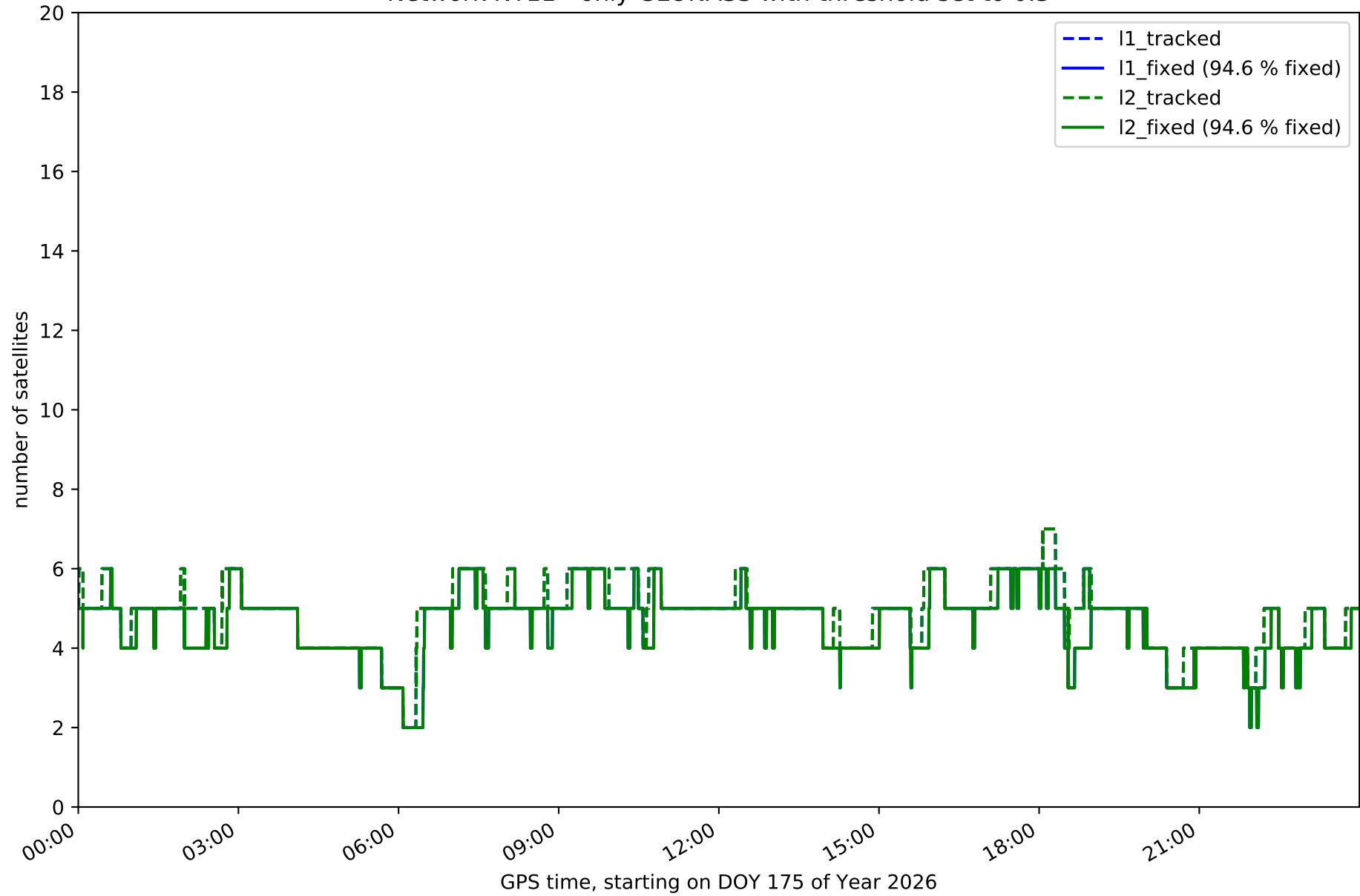
Fixing percentage of satellites in network NT11 with threshold set to 0.3



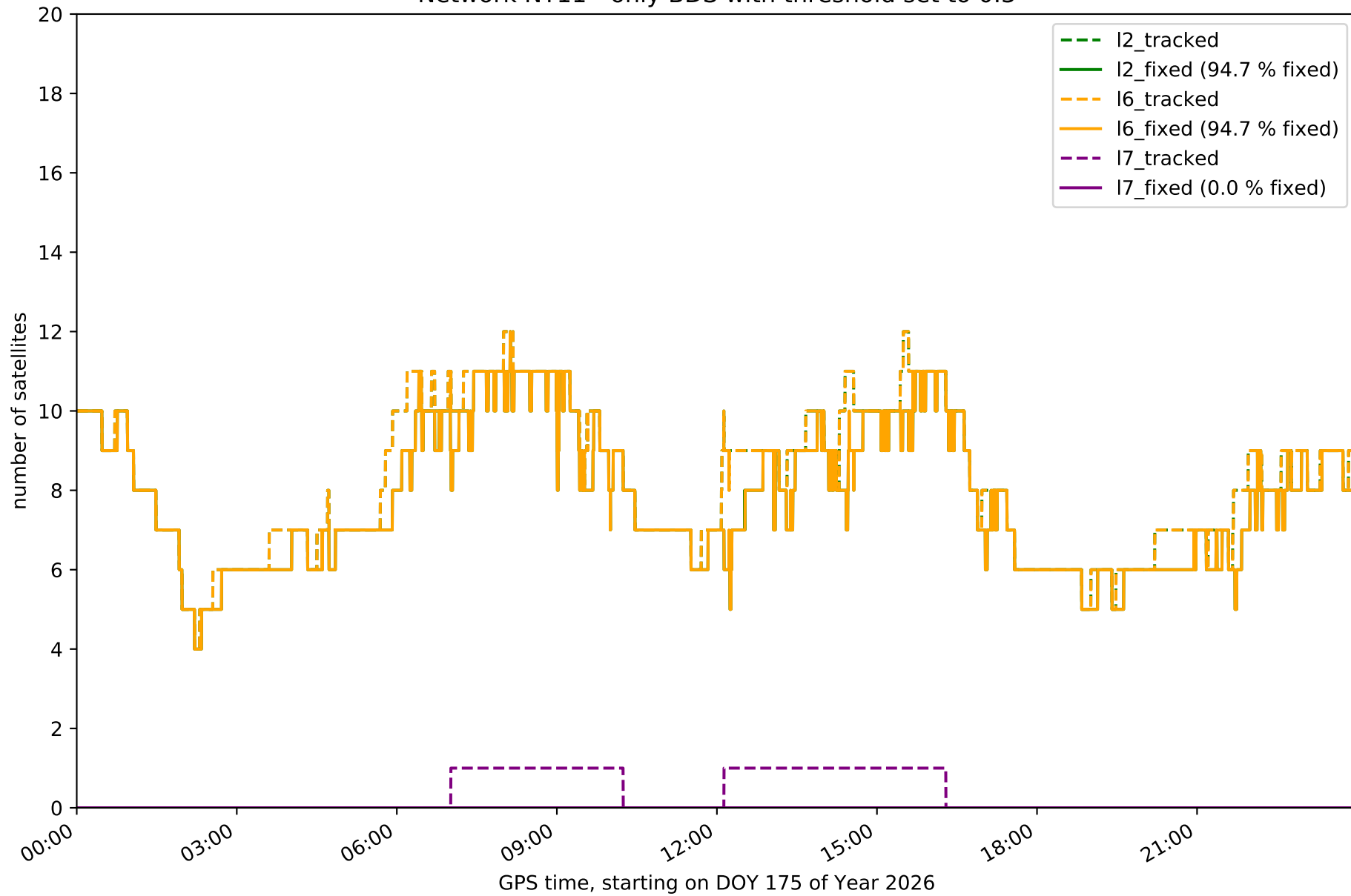
Network NT11 - only GPS with threshold set to 0.3



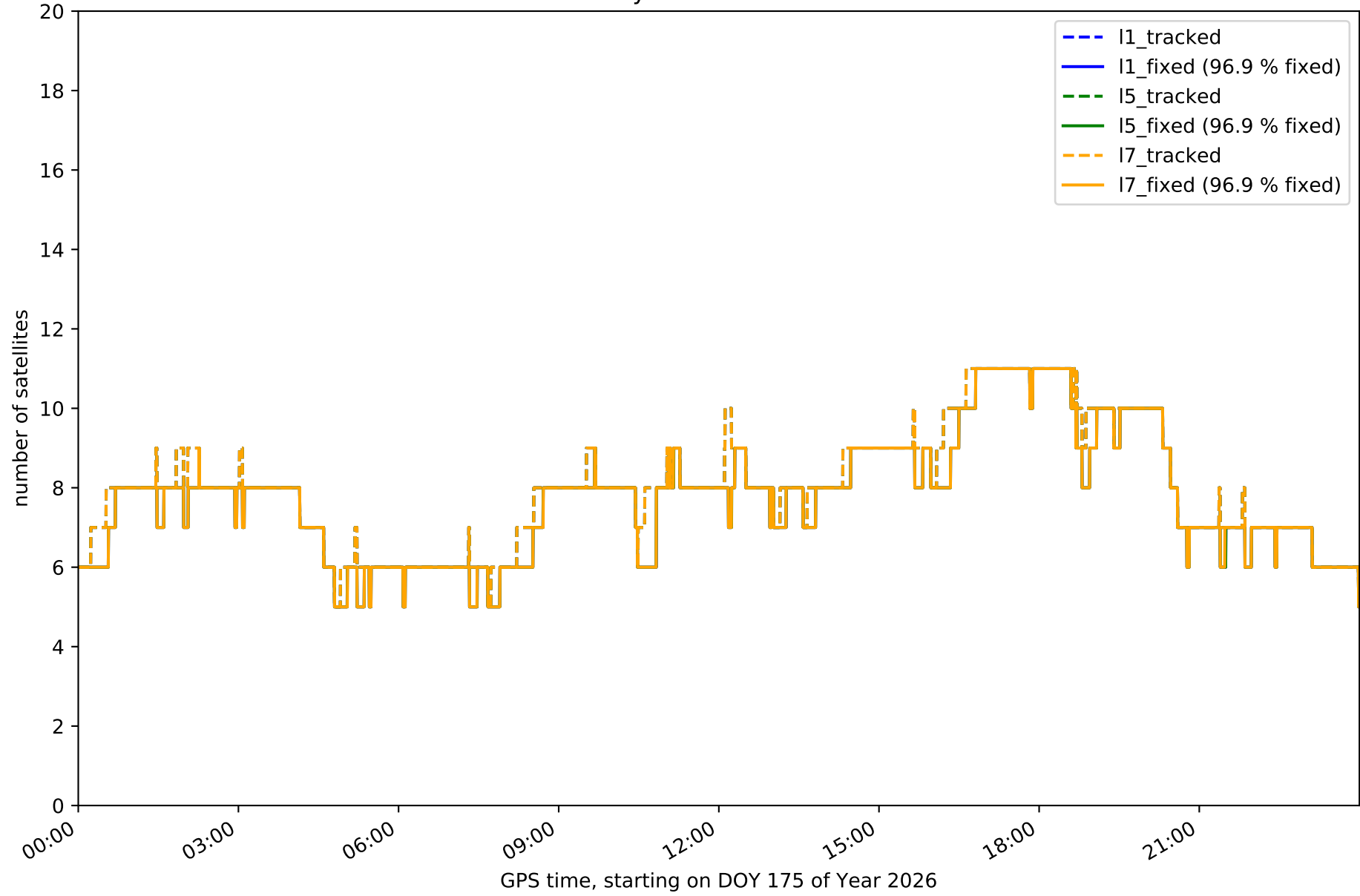
Network NT11 - only GLONASS with threshold set to 0.3



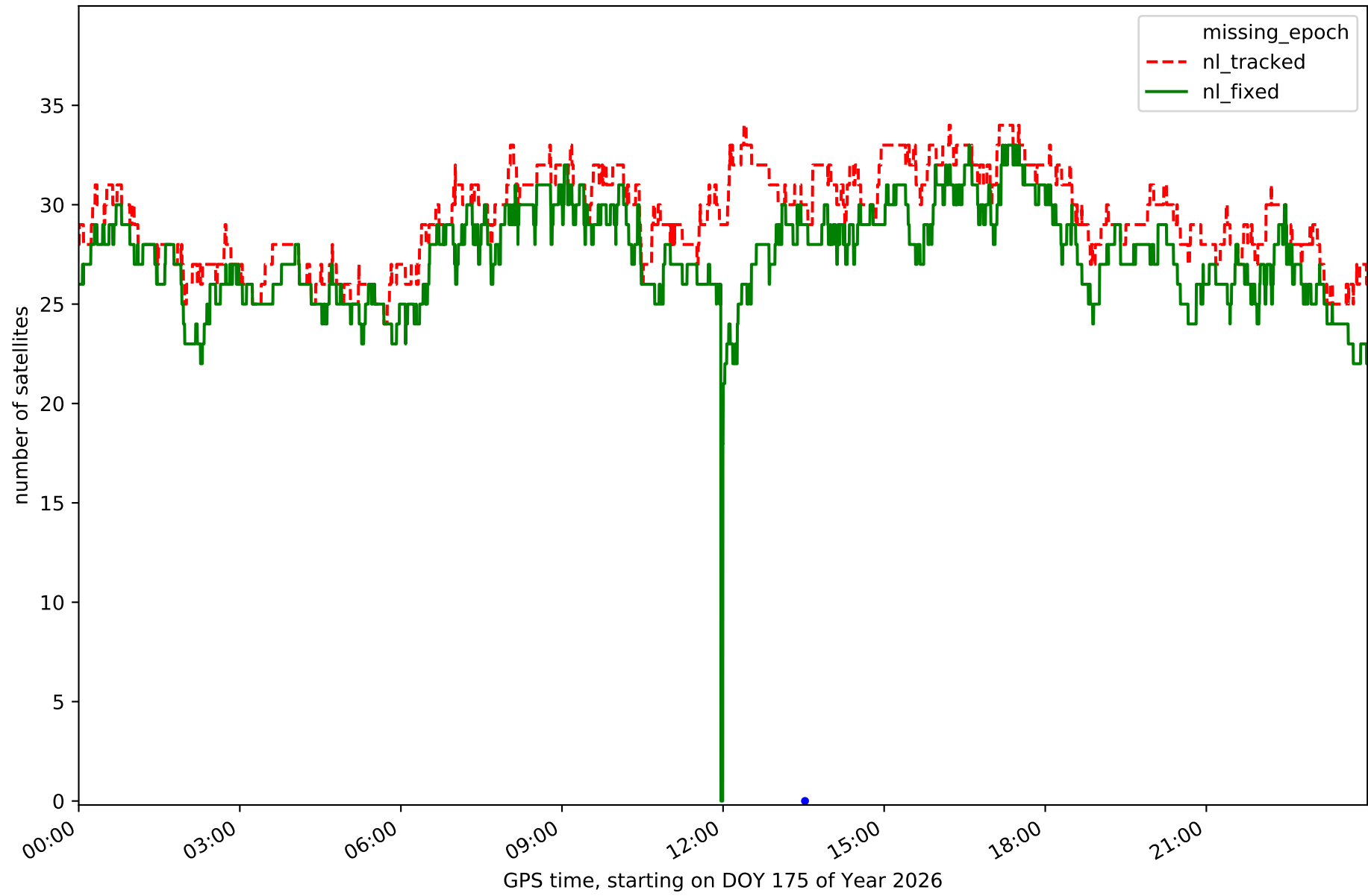
Network NT11 - only BDS with threshold set to 0.3



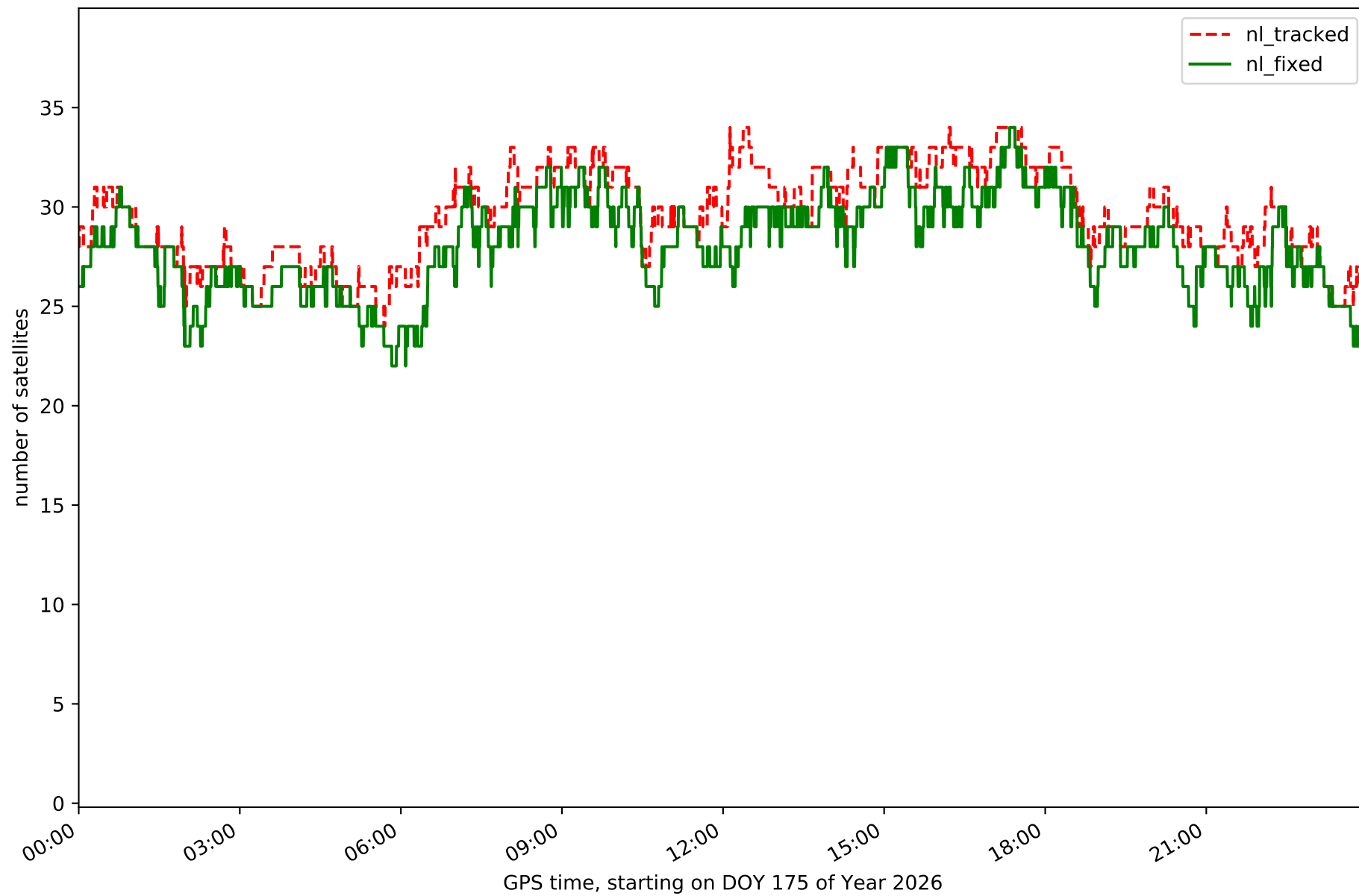
Network NT11 - only Galileo with threshold set to 0.3



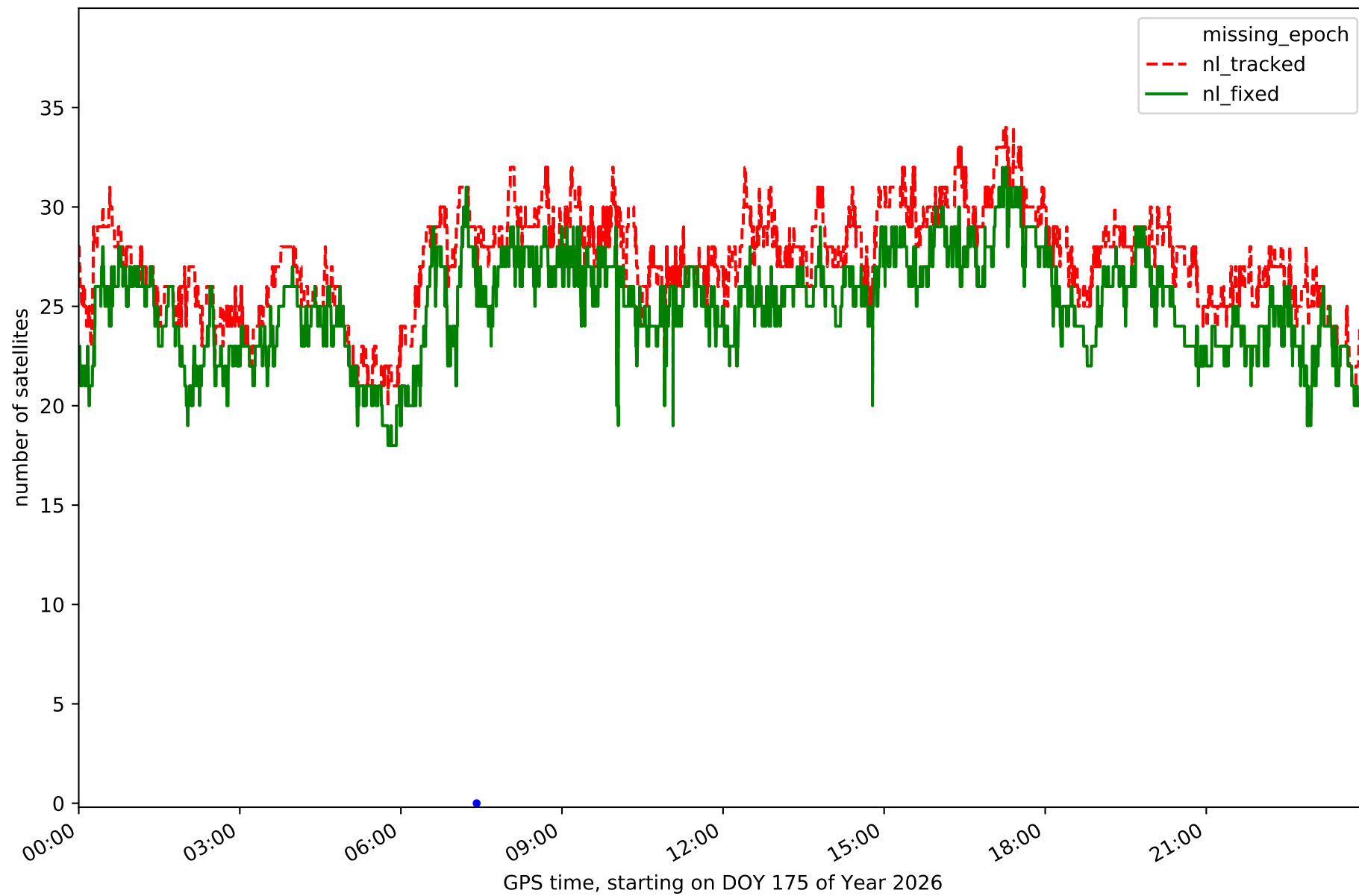
Station ALOR in network NT11



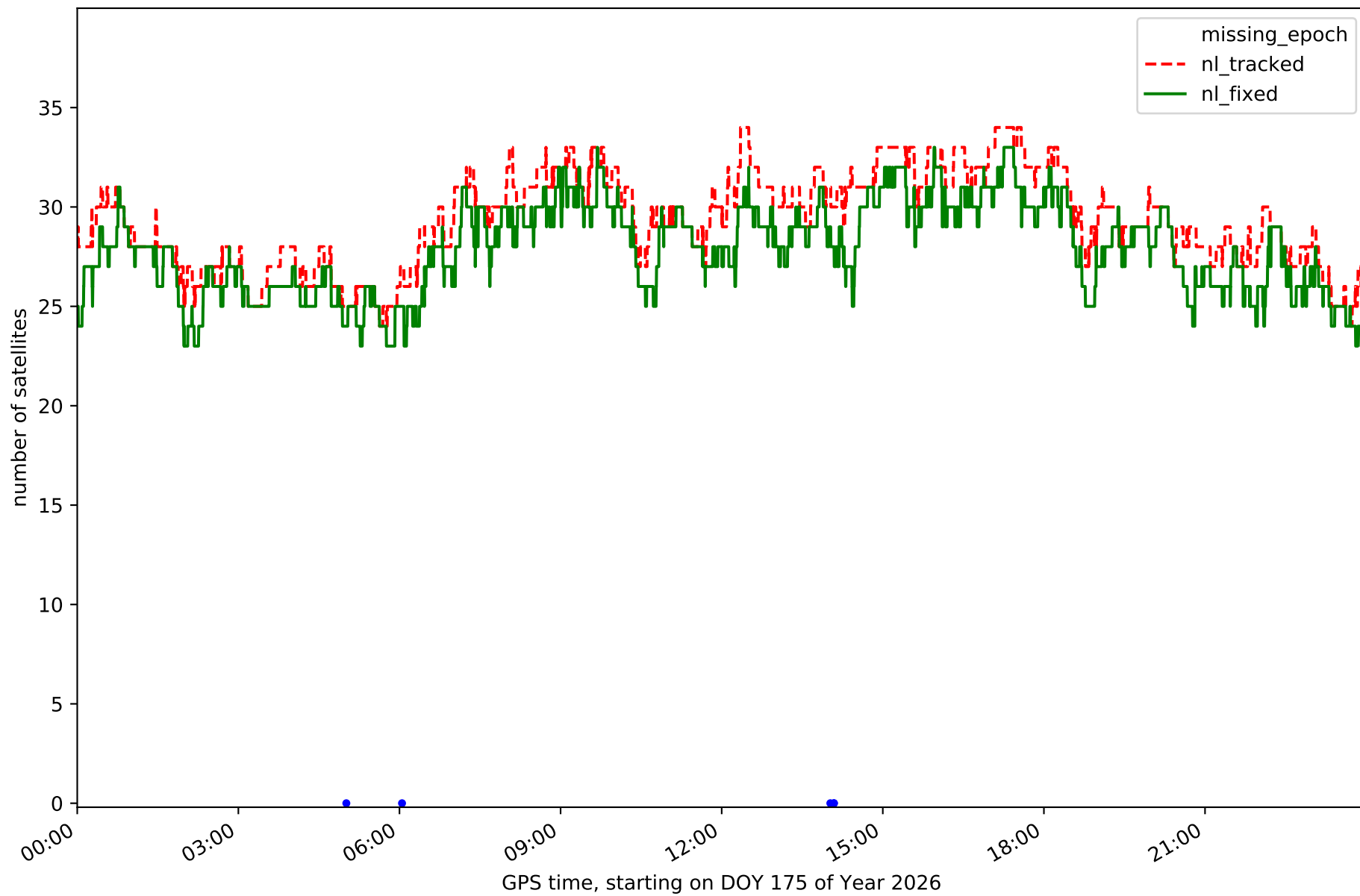
Station CBON in network NT11



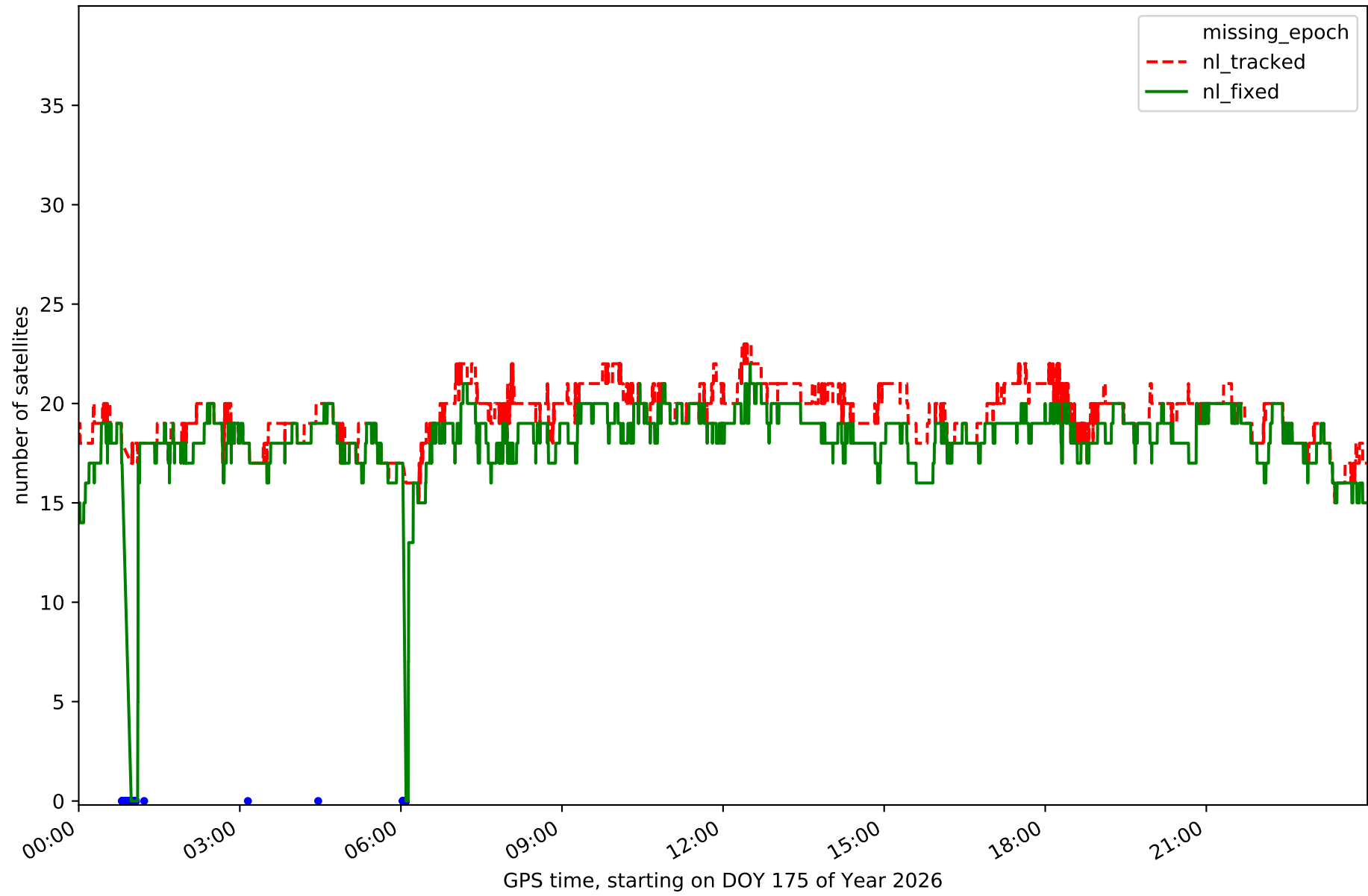
Station EIVI in network NT11



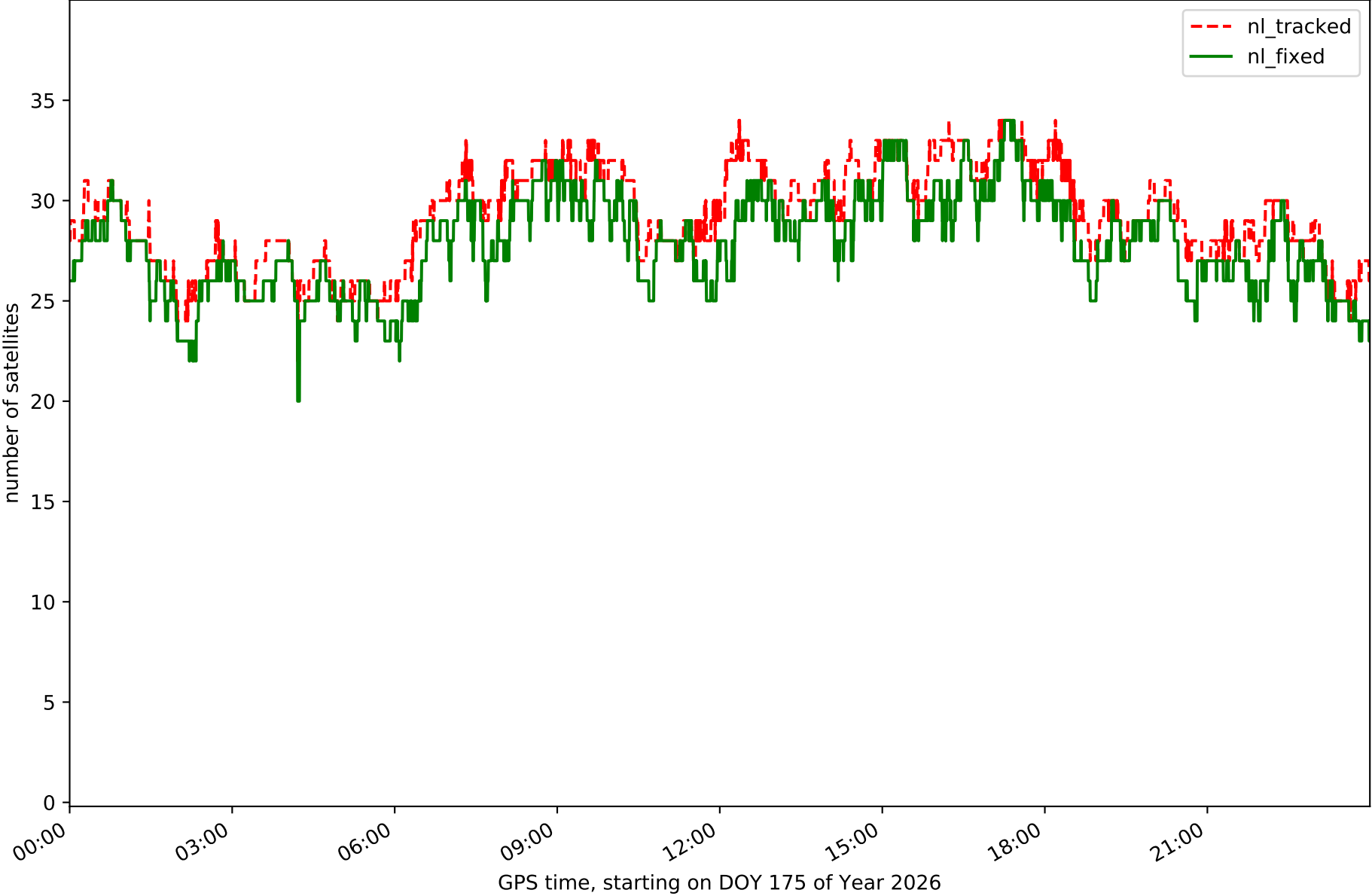
Station FORM in network NT11



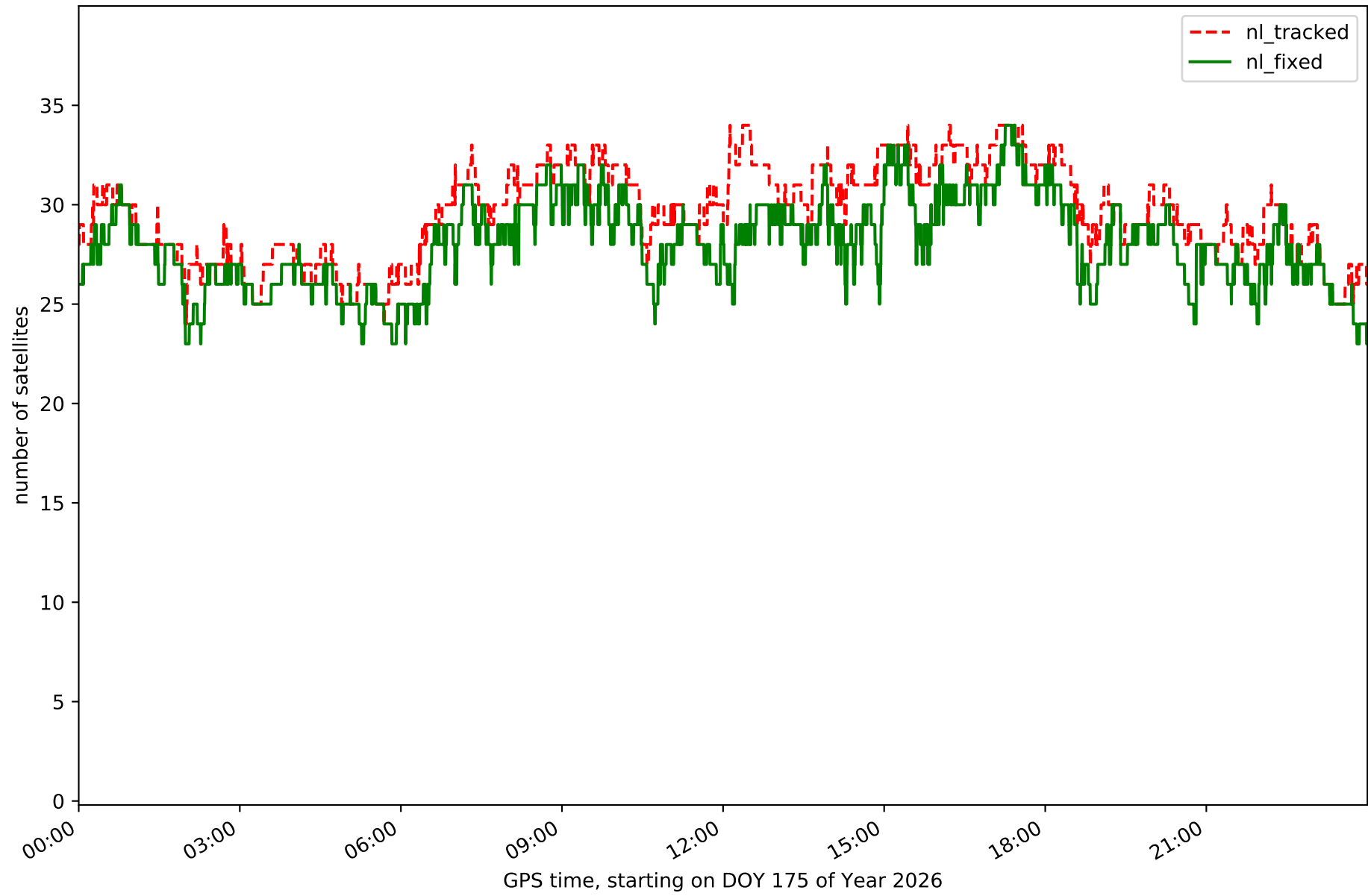
Station IBIZ in network NT11



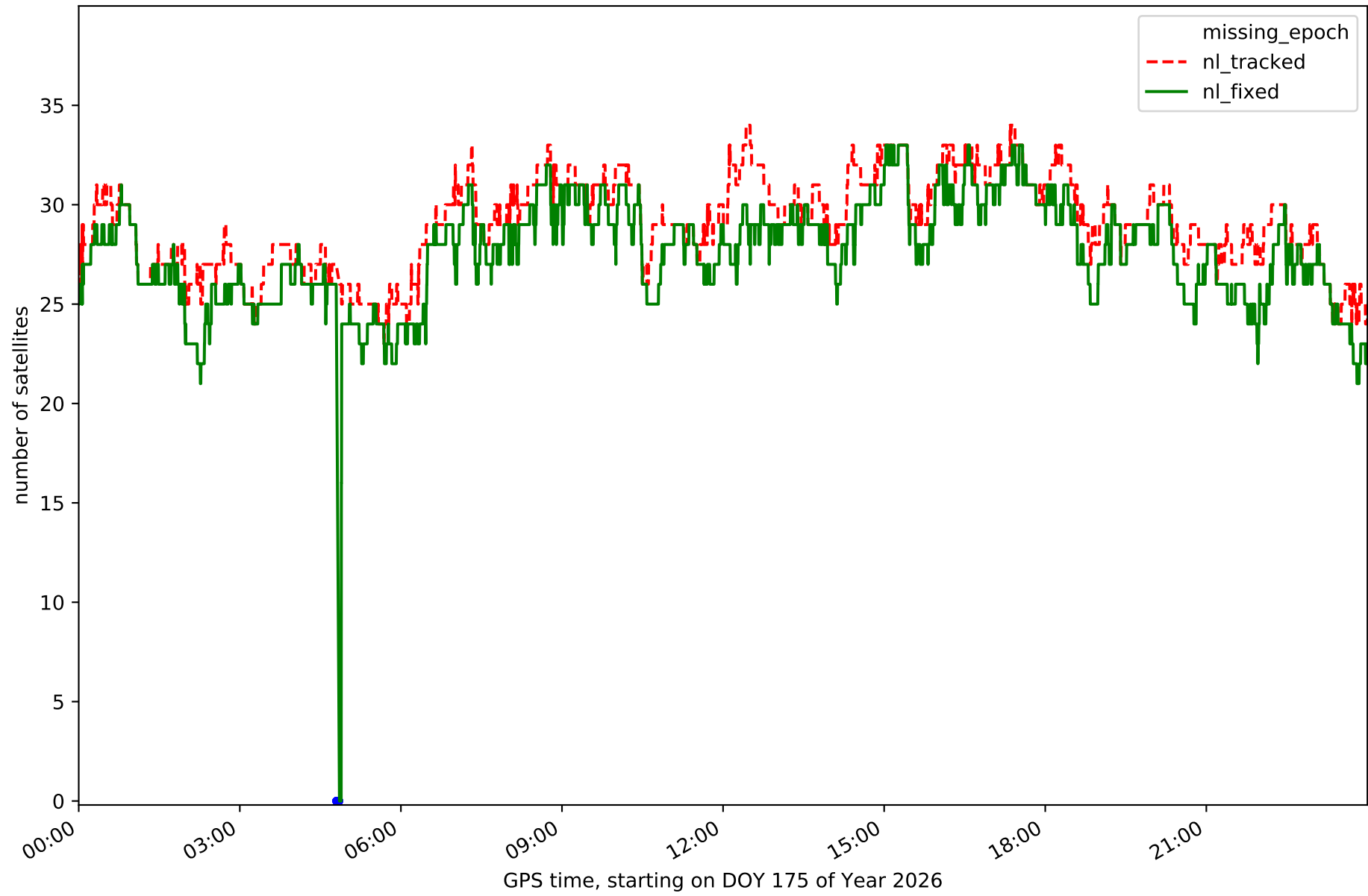
Station MALL in network NT11



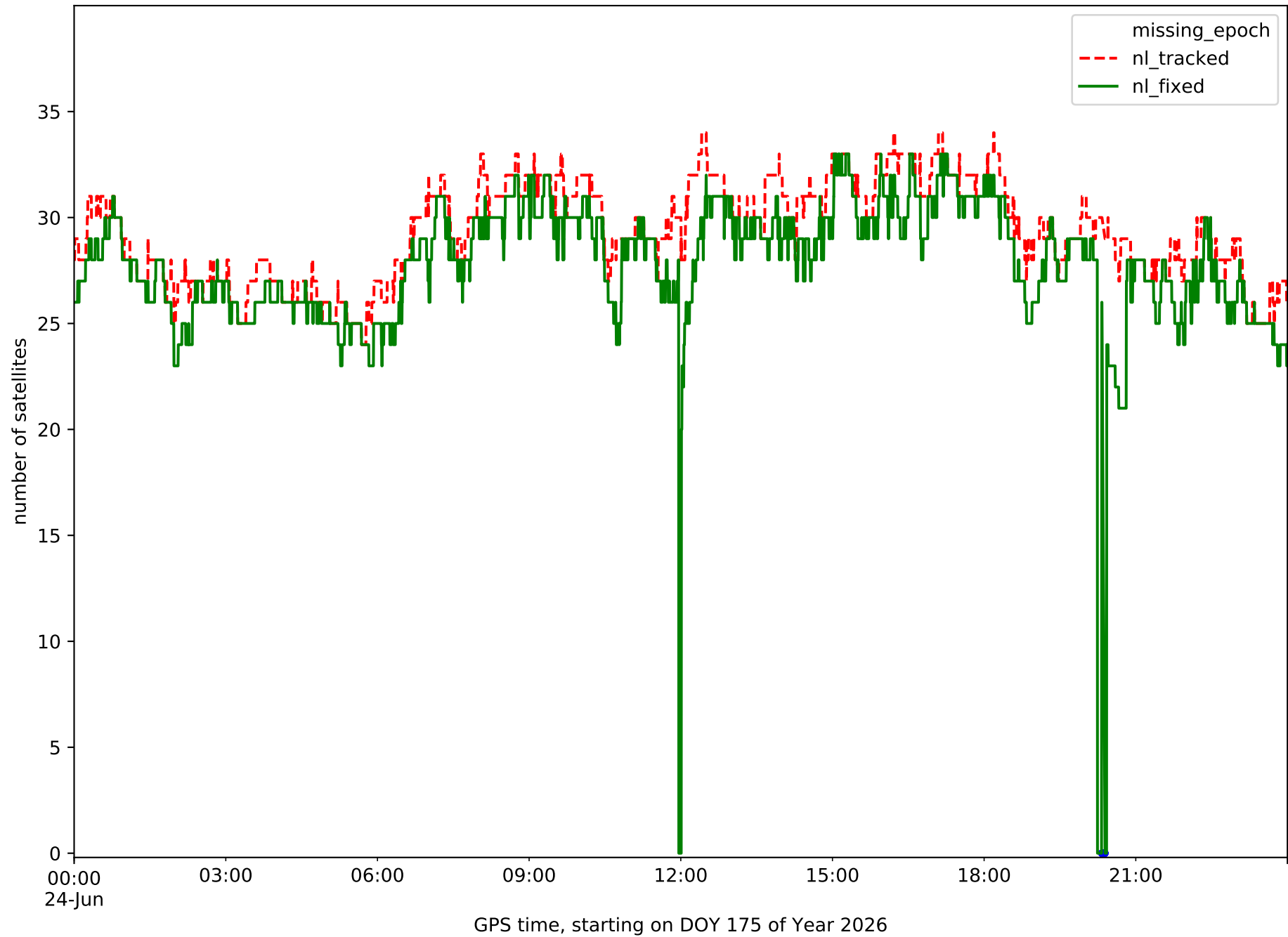
Station SINE in network NT11



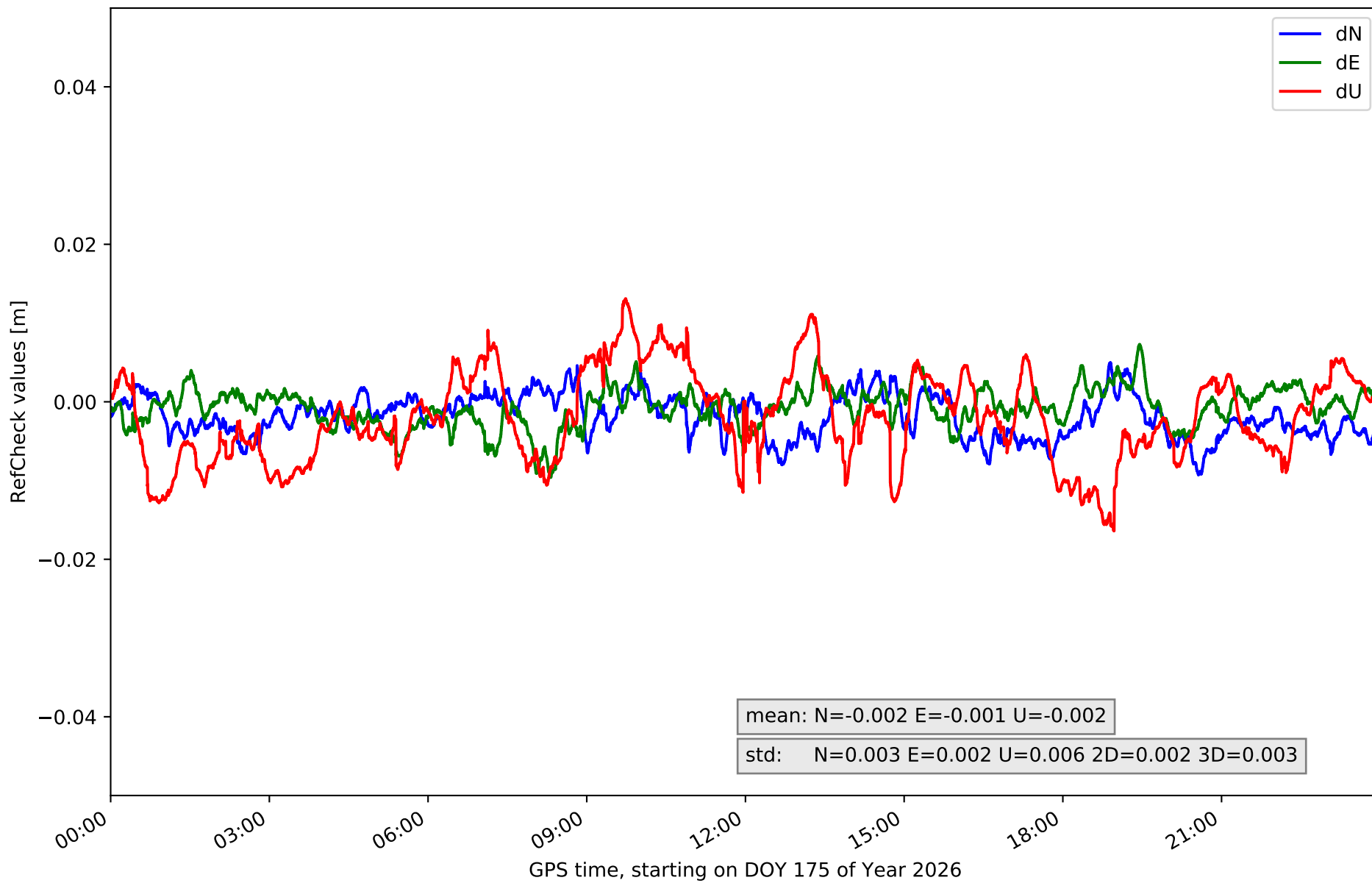
Station SJO1 in network NT11



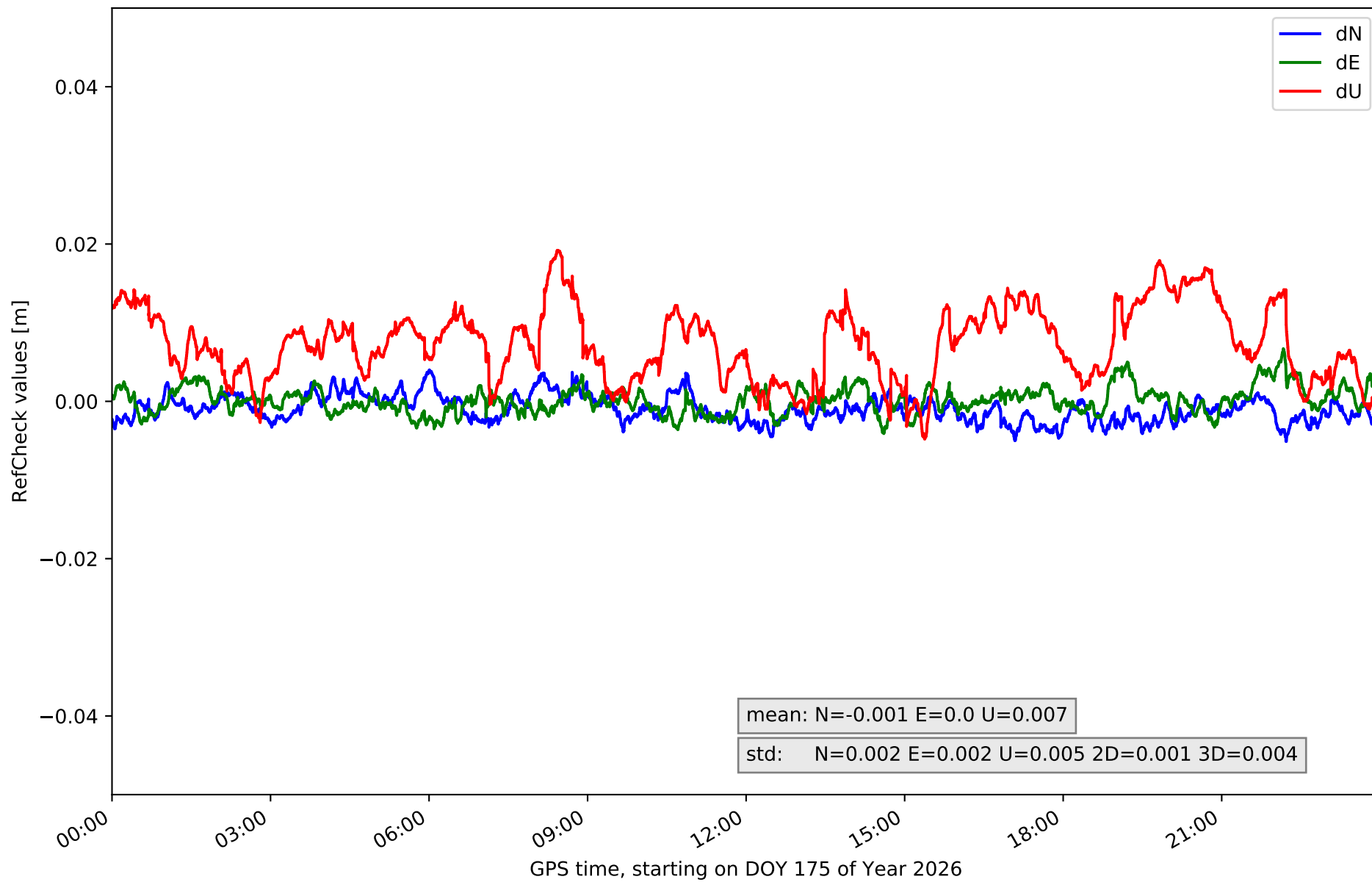
Station TRAU in network NT11



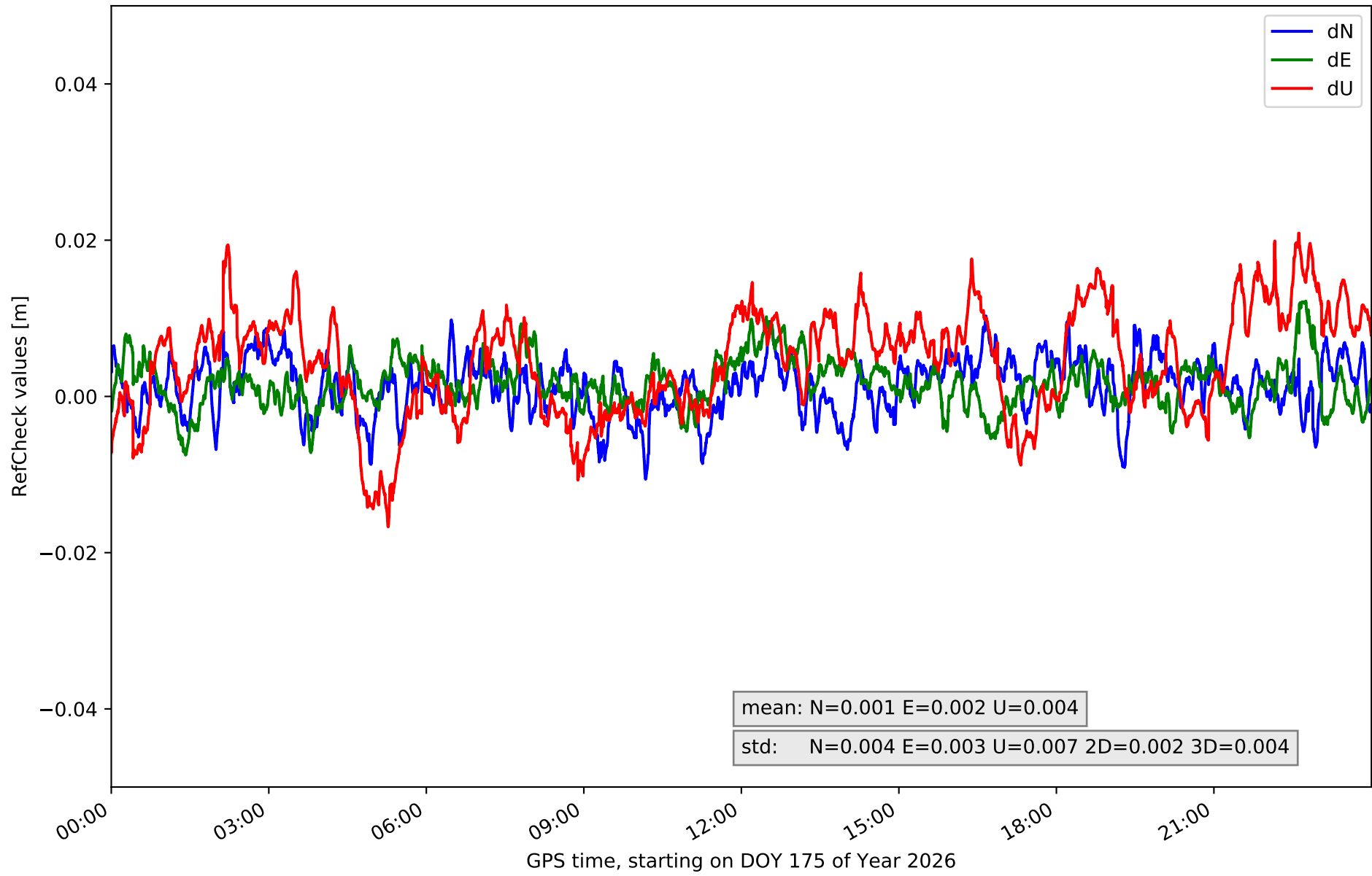
# RefCheck for station ALOR in network NT11



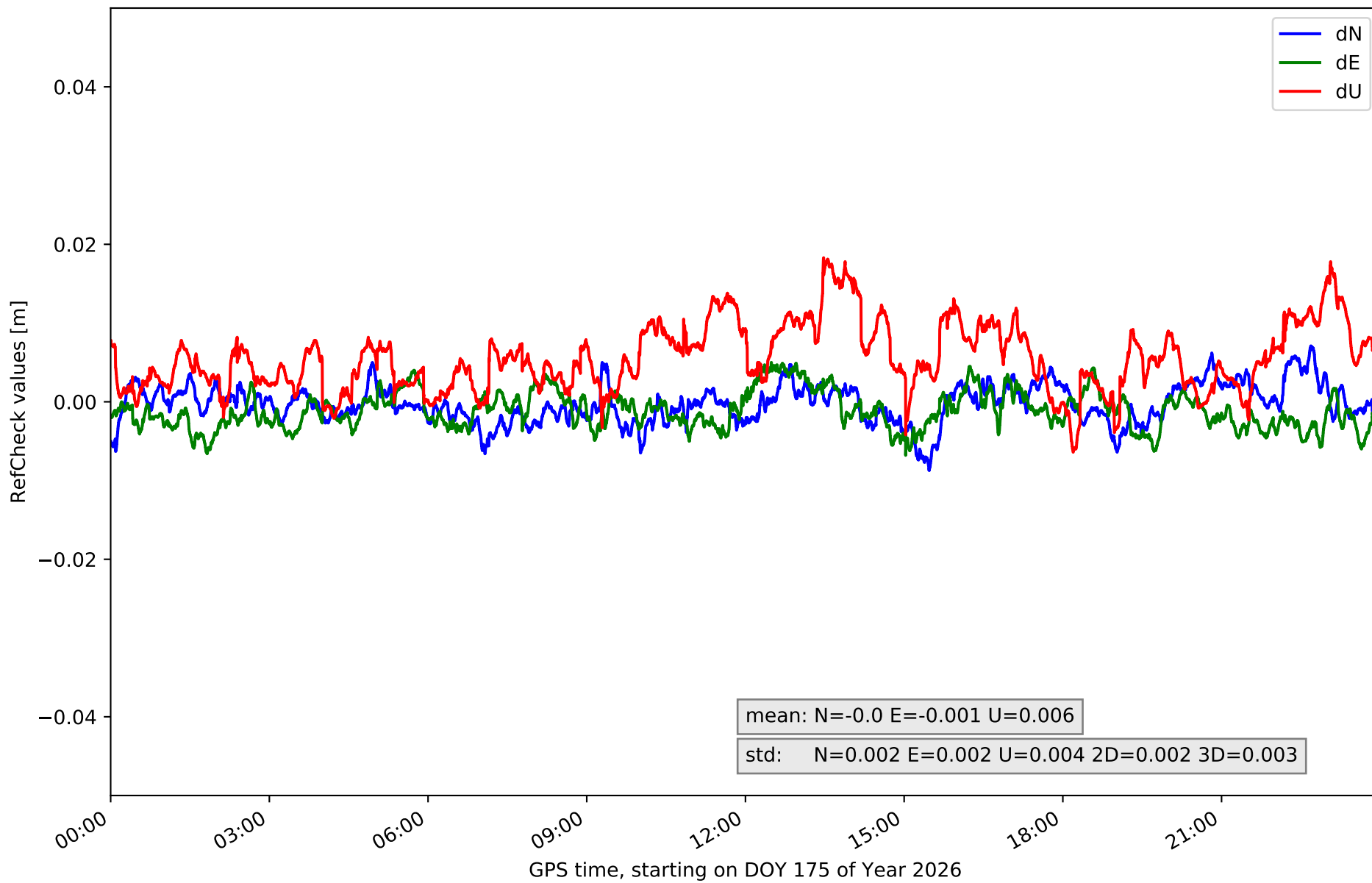
### RefCheck for station CBON in network NT11



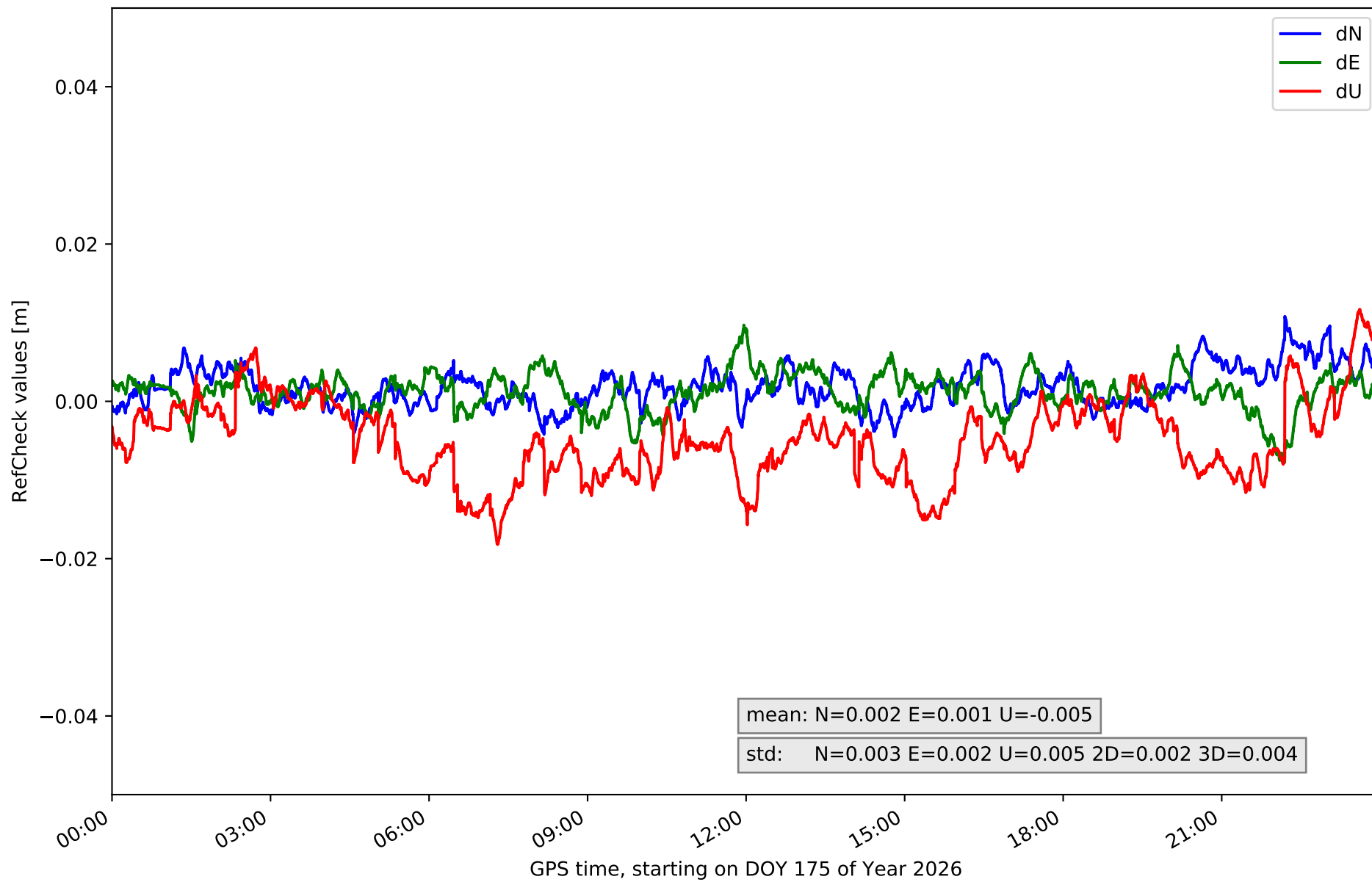
# RefCheck for station EIVI in network NT11



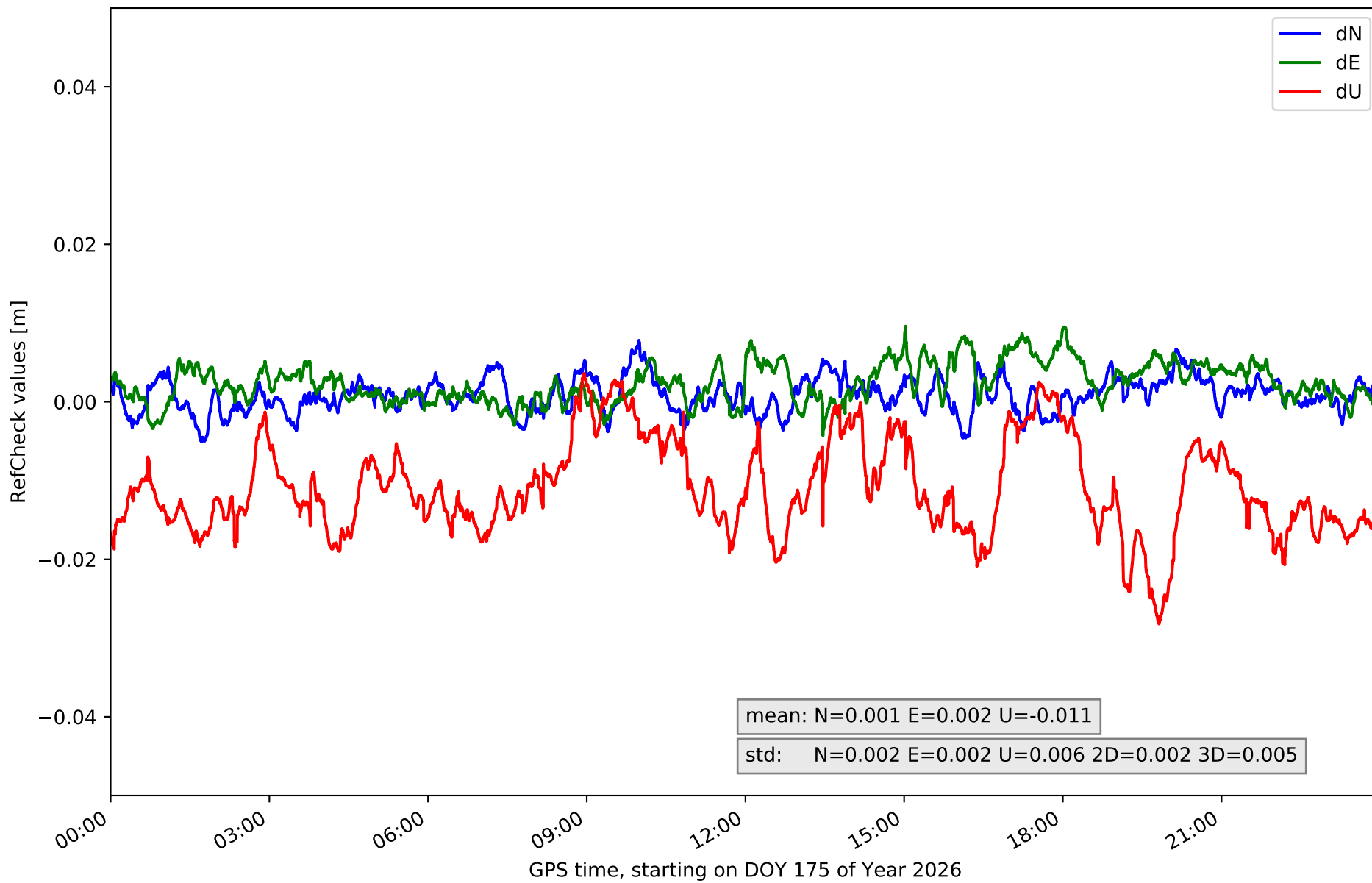
### RefCheck for station FORM in network NT11



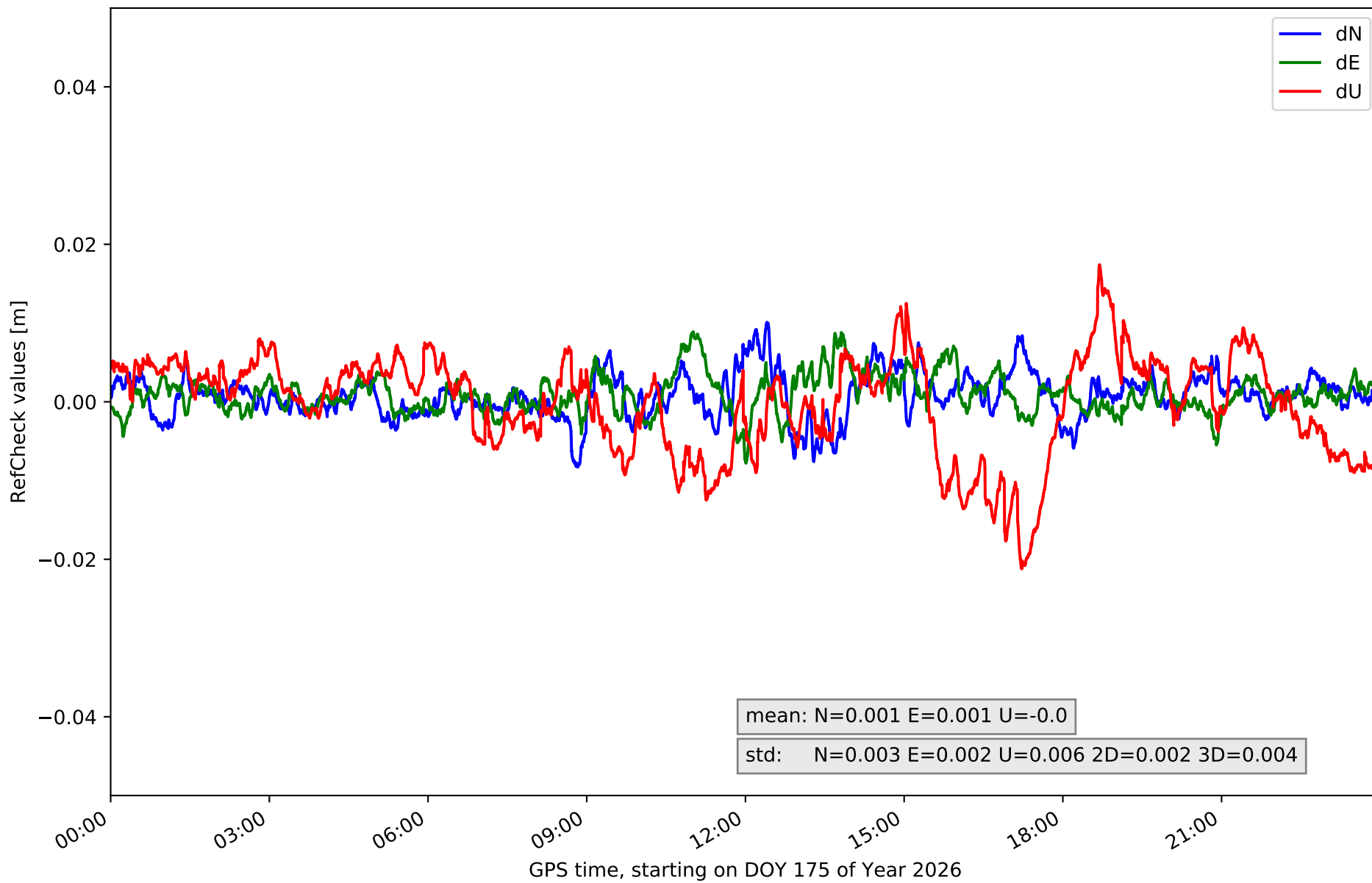
# RefCheck for station IBIZ in network NT11



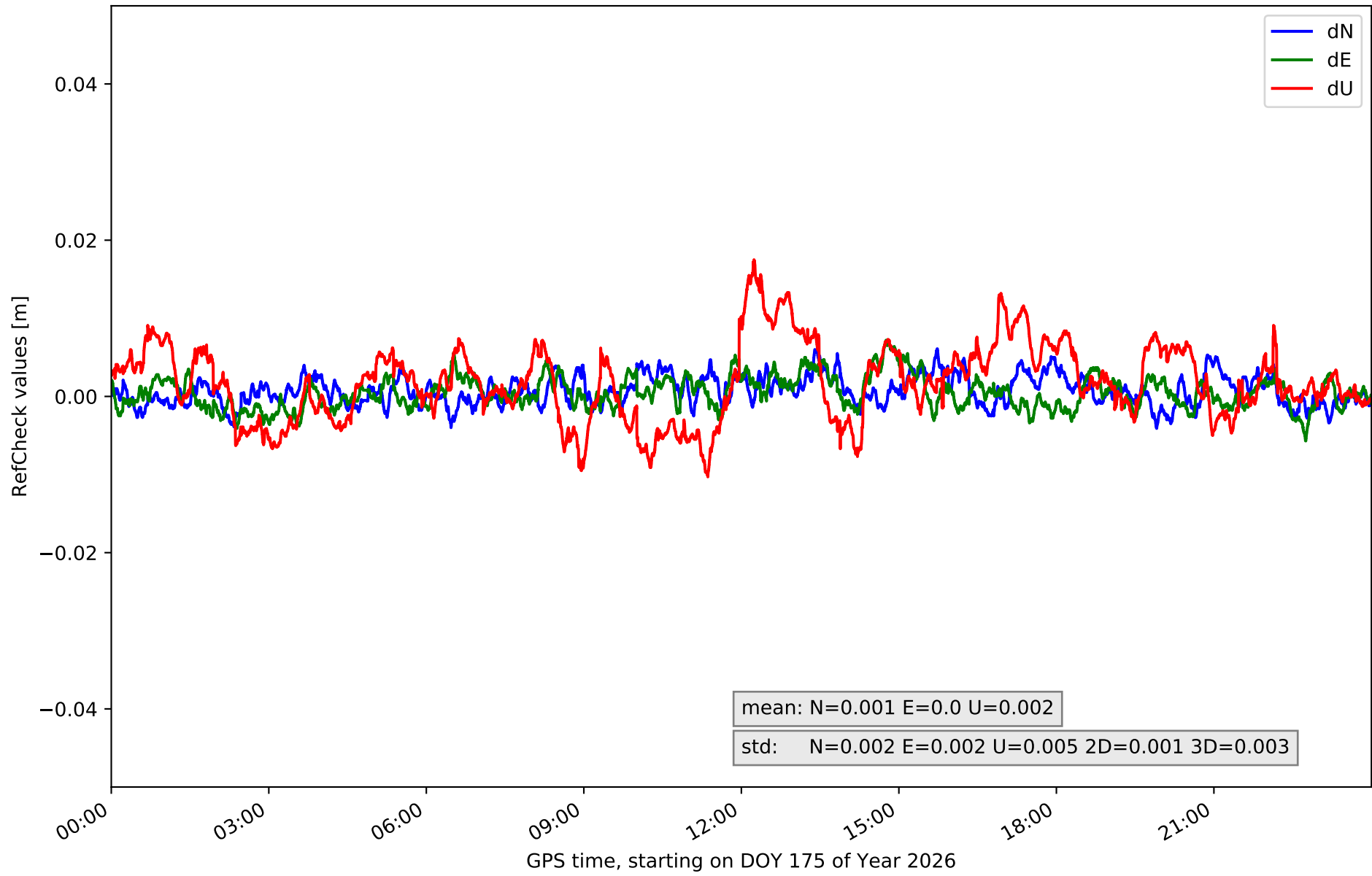
# RefCheck for station MALL in network NT11



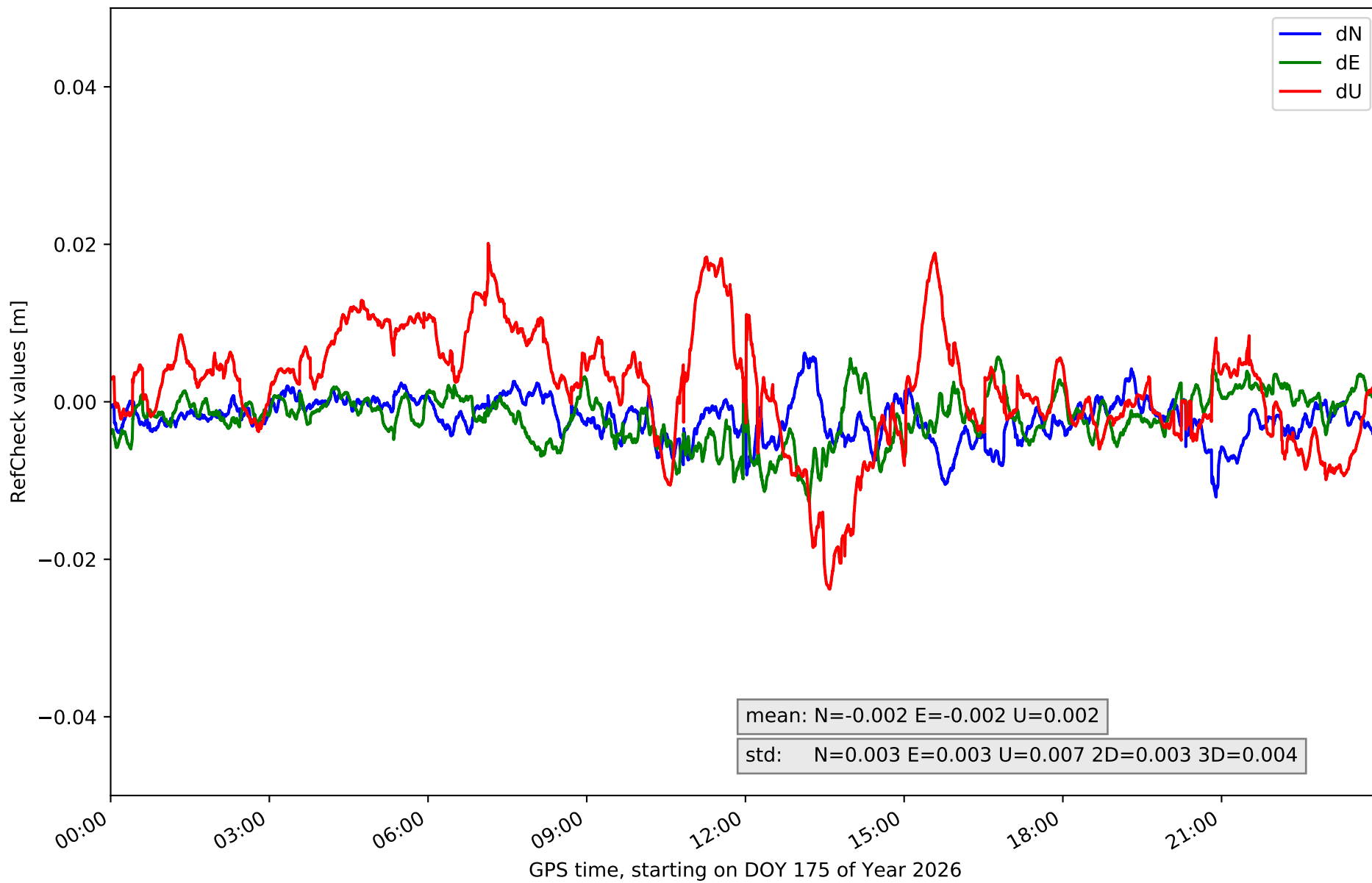
# RefCheck for station SINE in network NT11



# RefCheck for station SJO1 in network NT11



# RefCheck for station TRAU in network NT11



## RefCheck values for network NT11

Station	Nmin	Nmax	Nstd	Emin	Emax	Estd	Umin	Umax	Ustd	std2D	std3D	#2D > 0.01	% 2D > 0.01	#3D > 0.02	% 3D > 0.02
ALOR	-0.009	0.005	0.003	-0.01	0.007	0.002	-0.016	0.013	0.006	0.002	0.003	0	0.0	0	0.0
CBON	-0.005	0.004	0.002	-0.004	0.007	0.002	-0.005	0.019	0.005	0.001	0.004	0	0.0	0	0.0
EIVI	-0.011	0.01	<b>0.004</b>	-0.007	<b>0.012</b>	<b>0.003</b>	-0.017	<b>0.021</b>	<b>0.007</b>	0.002	0.004	1691	2.0	956	1.1
FORM	-0.009	0.007	0.002	-0.007	0.005	0.002	-0.006	0.018	0.004	0.002	0.003	0	0.0	0	0.0
IBIZ	-0.004	<b>0.011</b>	0.003	-0.008	0.01	0.002	-0.018	0.012	0.005	0.002	0.004	612	0.7	0	0.0
MALL	-0.005	0.008	0.002	-0.004	0.01	0.002	<b>-0.028</b>	0.004	0.006	0.002	<b>0.005</b>	0	0.0	<b>3596</b>	<b>4.2</b>
SINE	-0.008	0.01	0.003	-0.008	0.009	0.002	-0.021	0.017	0.006	0.002	0.004	357	0.4	664	0.8
SJO1	-0.004	0.006	0.002	-0.006	0.007	0.002	-0.01	0.018	0.005	0.001	0.003	0	0.0	0	0.0
TRAU	<b>-0.012</b>	0.006	0.003	<b>-0.013</b>	0.006	<b>0.003</b>	-0.024	0.02	<b>0.007</b>	<b>0.003</b>	0.004	<b>3280</b>	<b>3.8</b>	1184	1.4
<b>Mean</b>	<b>-0.007</b>	<b>0.007</b>	<b>0.003</b>	<b>-0.007</b>	<b>0.008</b>	<b>0.002</b>	<b>-0.016</b>	<b>0.016</b>	<b>0.006</b>	<b>0.002</b>	<b>0.004</b>	<b>660.0</b>	<b>0.8</b>	<b>711.1</b>	<b>0.8</b>
<b>Min/Max</b>	<b>-0.012</b>	<b>0.011</b>	<b>0.004</b>	<b>-0.013</b>	<b>0.012</b>	<b>0.003</b>	<b>-0.028</b>	<b>0.021</b>	<b>0.007</b>	<b>0.003</b>	<b>0.005</b>	<b>3280</b>	<b>3.8</b>	<b>3596</b>	<b>4.2</b>

fixing statistic for network NT11

fixing percentage of	all GNSS	G	R	E	C
using threshold 0.3	95.5	95.5	94.6	96.9	94.7
considering satellites with dual-frequency fixed	94.1	94.3	93.0	95.8	92.7
considering all signals separately	94.1	94.5	93.0	96.1	91.0