

summary for network NT15

timeperiod chosen: from 2025-03-04-00:00:00 until 2025-03-04-23:59:59

average update rate (durations larger than 15 seconds considered as observation gap): 1.0 seconds

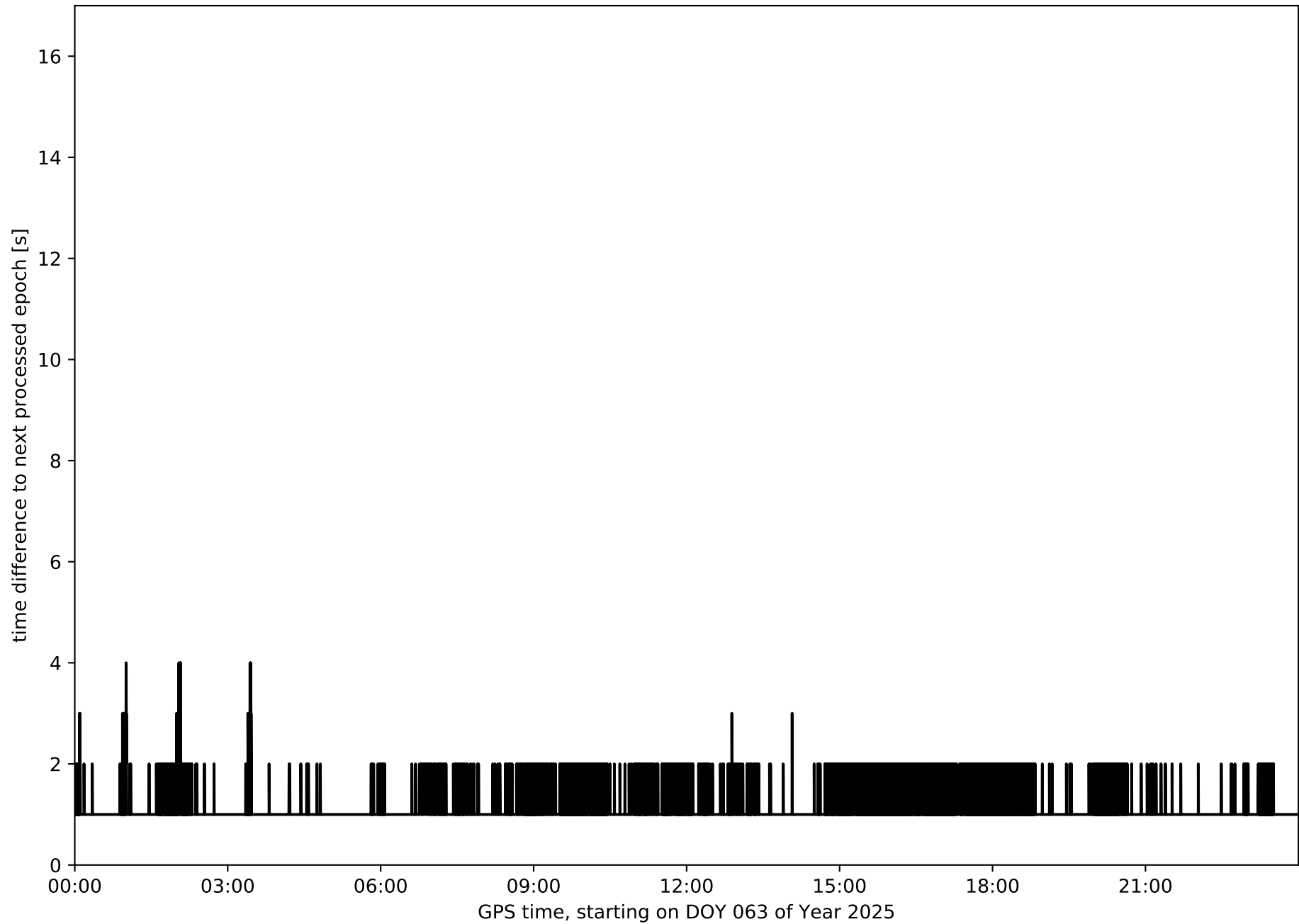
average fixing percentage with threshold set to 0.3: 92.0 percent

stations available: 13 of 13

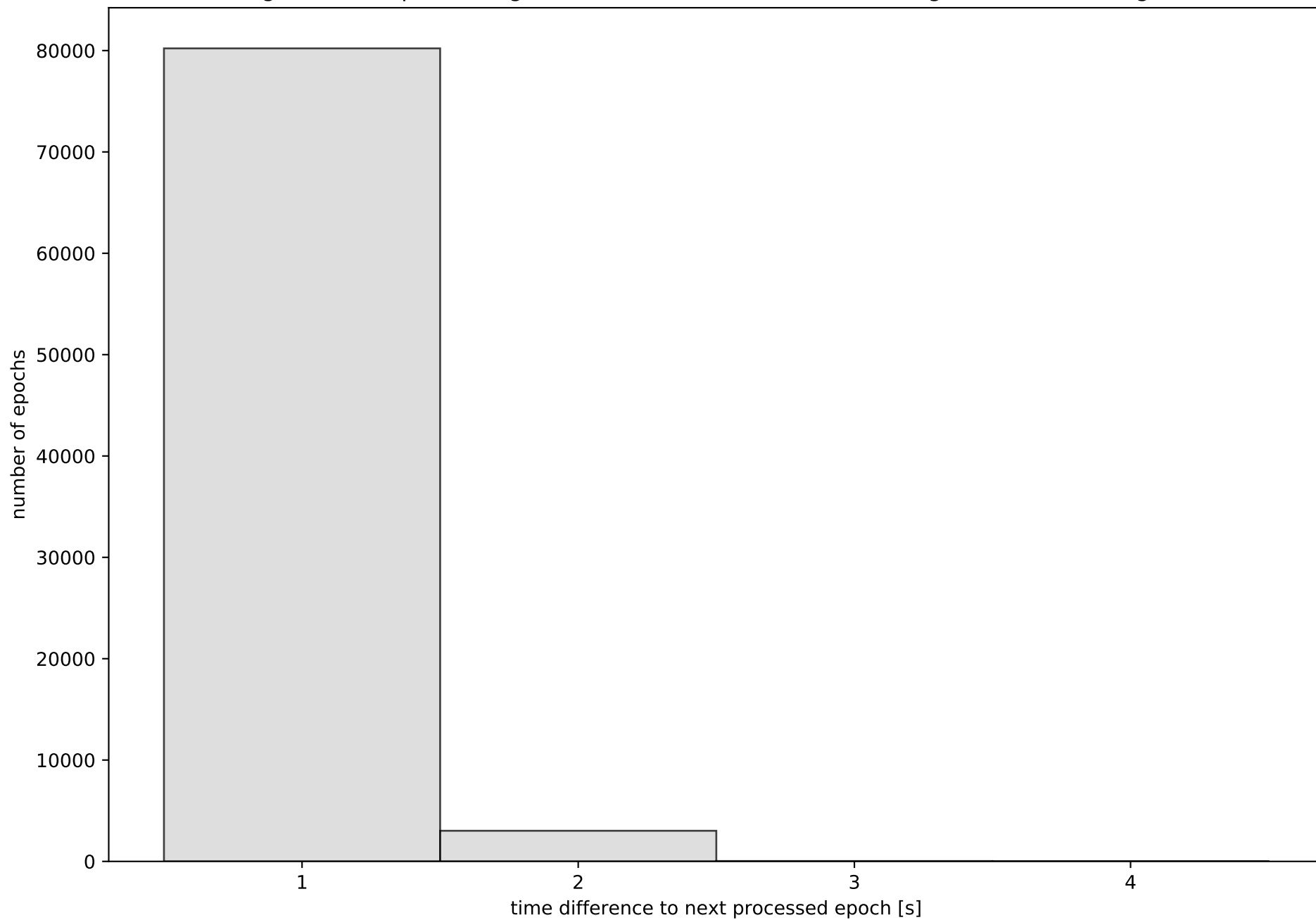
station information:

station ACIN:	antenna: GPPNULLANTENNA NONE	receiver: LEICA GR50	height: 1178.47
station AGRD:	antenna: GPPNULLANTENNA NONE	receiver: LEICA GR50	height: 1010.813
station ALC1:	antenna: TRM57971.00 TZGD	receiver: TRIMBLE NETR9	height: 397.68
station ALIA:	antenna: GPPNULLANTENNA NONE	receiver: LEICA GR50	height: 1169.276
station ARAS:	antenna: GPPNULLANTENNA NONE	receiver: LEICA GR50	height: 1325.848
station BERG:	antenna: GPPNULLANTENNA NONE	receiver: LEICA GR30	height: 892.808
station CATY:	antenna: GPPNULLANTENNA NONE	receiver: TPS NET-G3	height: 597.734
station CRNA:	antenna: GPPNULLANTENNA NONE	receiver: TPS NET-G3A	height: 649.433
station MOLI:	antenna: LEIAR20 LEIM	receiver: LEICA GR25	height: 1119.45
station MUNI:	antenna: GPPNULLANTENNA NONE	receiver: TPS NET-G3	height: 854.946
station QNTO:	antenna: GPPNULLANTENNA NONE	receiver: LEICA GR50	height: 216.666
station TERU:	antenna: LEIAR20 LEIM	receiver: LEICA GR50	height: 956.227
station YEBE:	antenna: LEIAR20 LEIM	receiver: LEICA GR50	height: 972.816

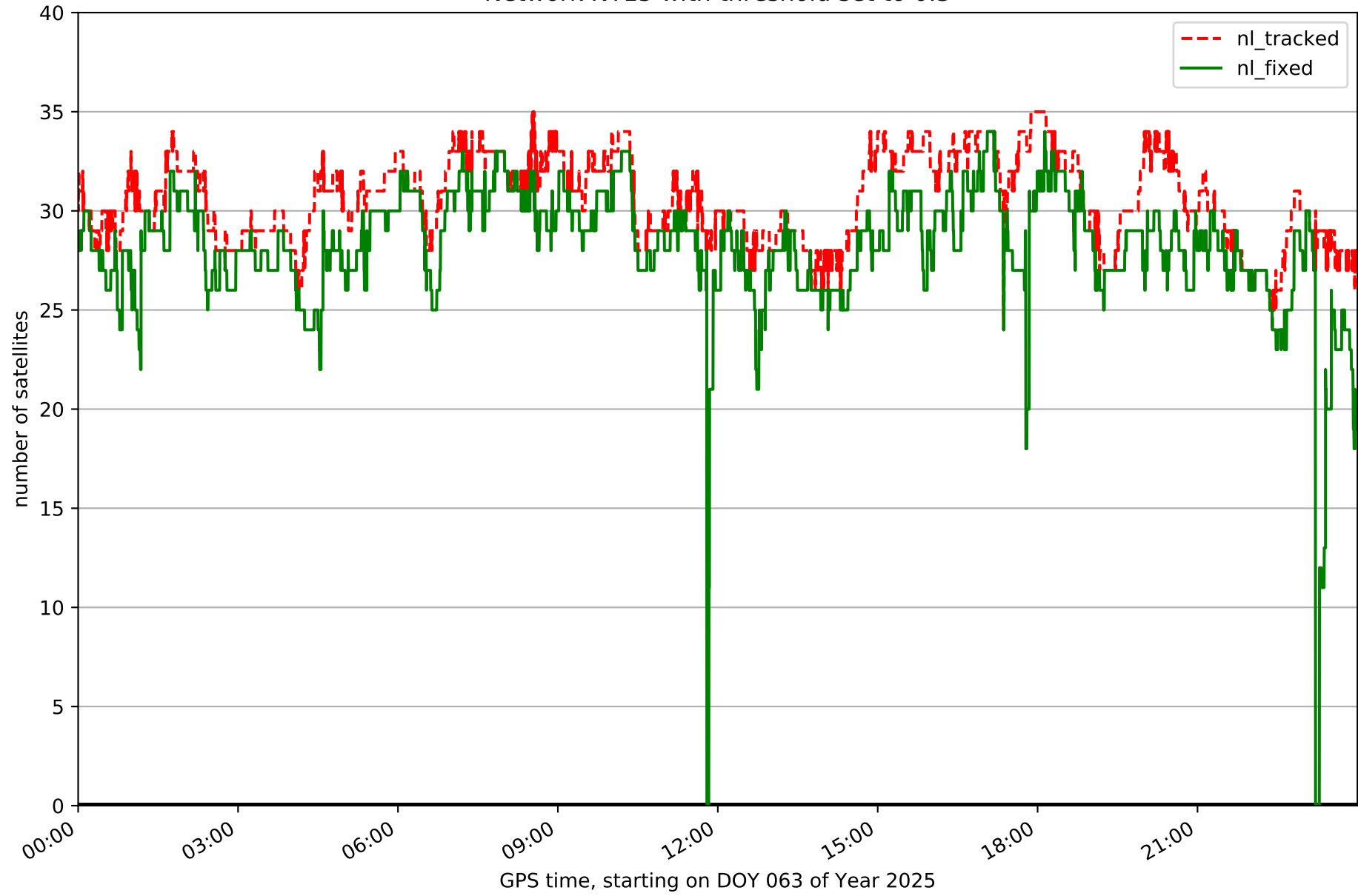
Processing rate in network NT15



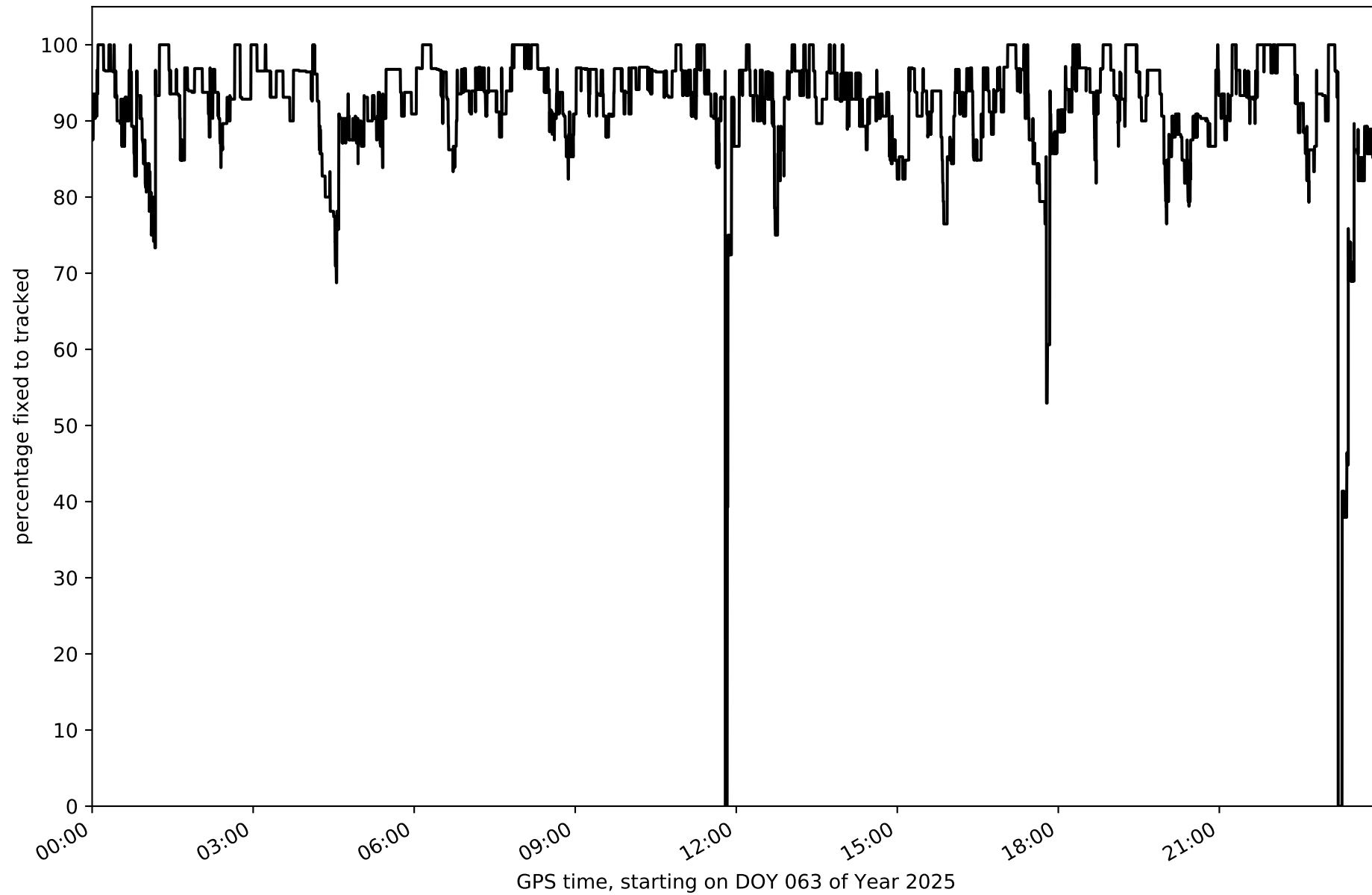
Histogram of the processing rate in network NT15 (durations larger 15 seconds neglected)



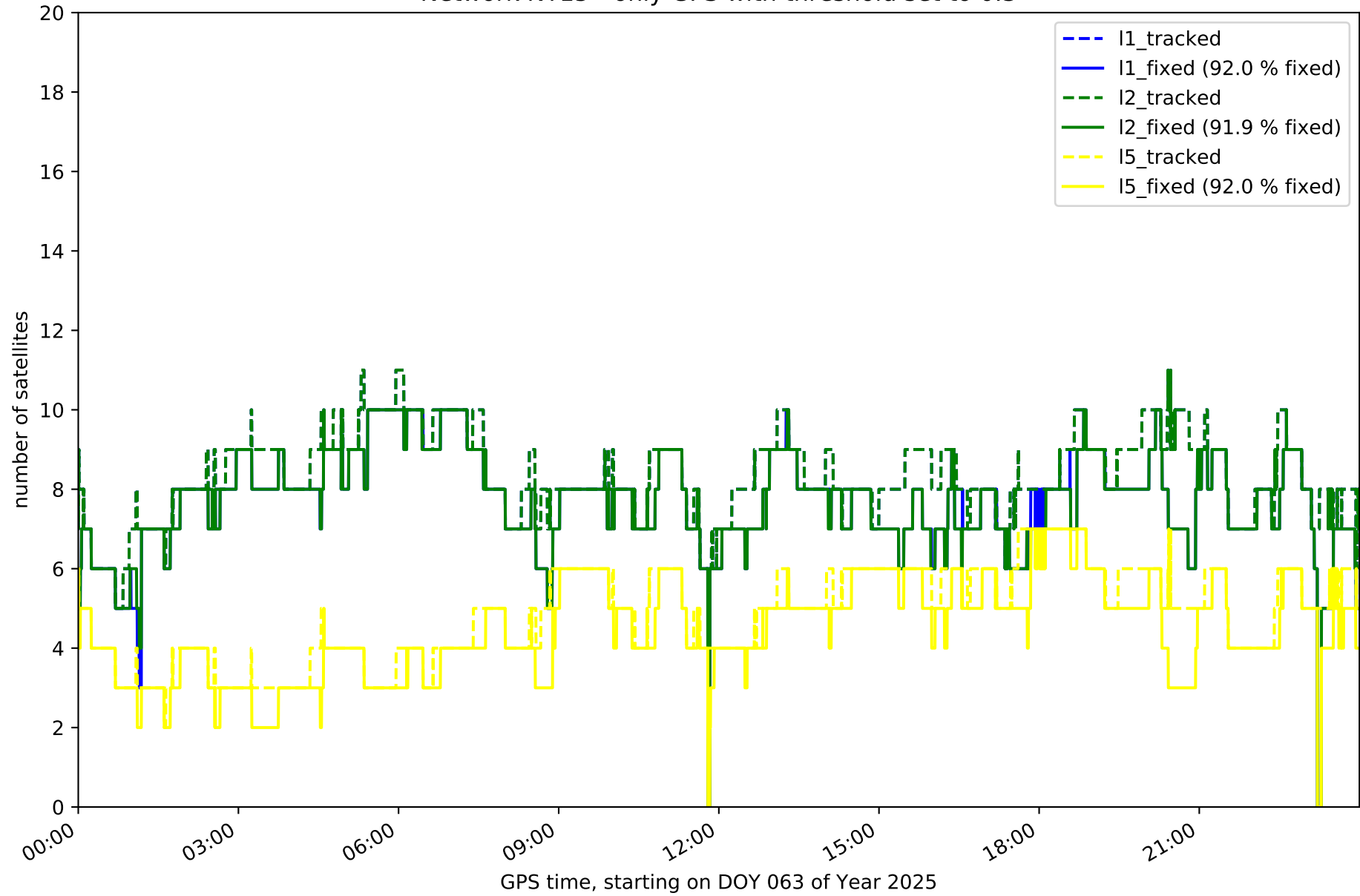
Network NT15 with threshold set to 0.3



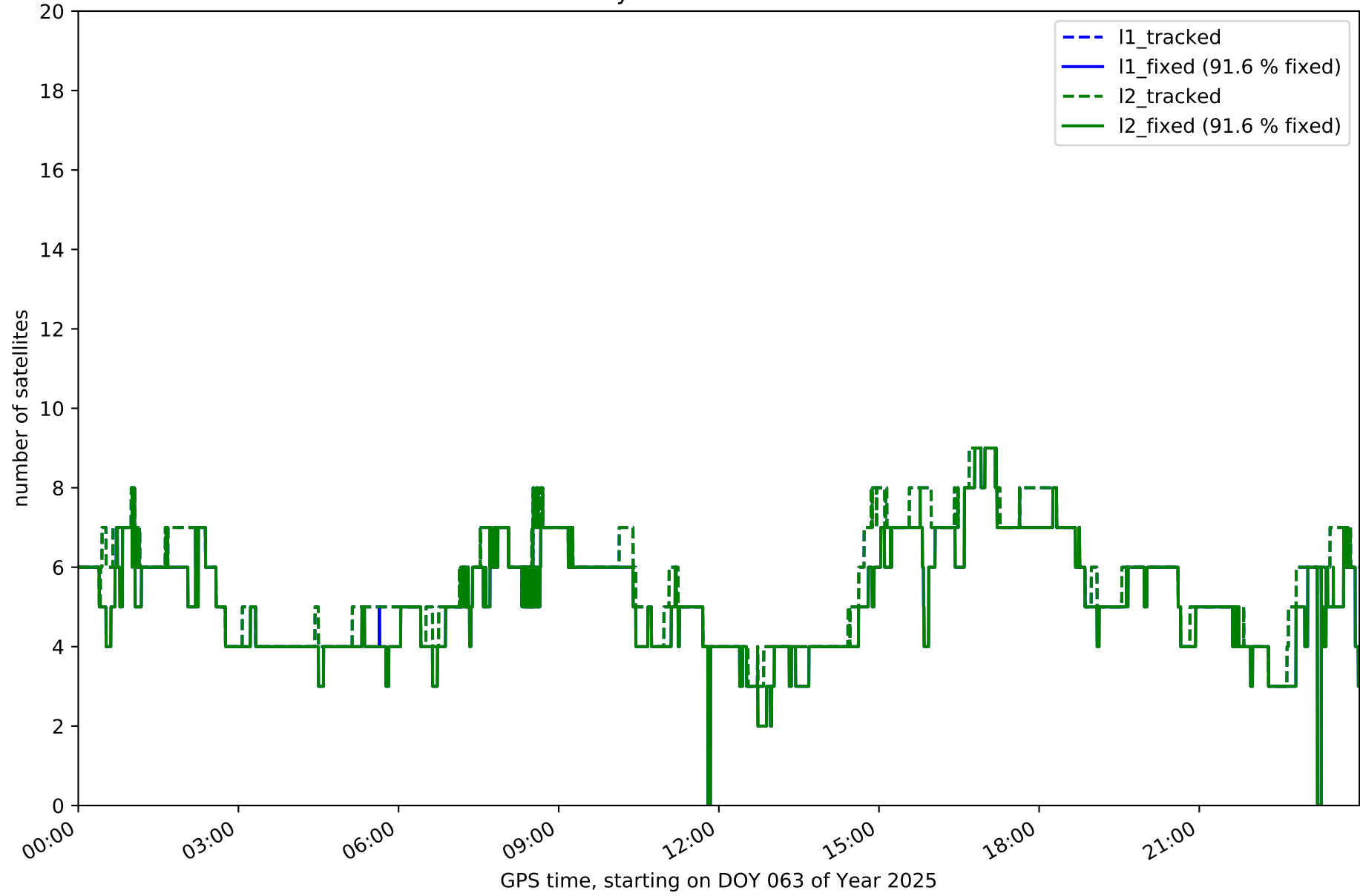
Fixing percentage of satellites in network NT15 with threshold set to 0.3



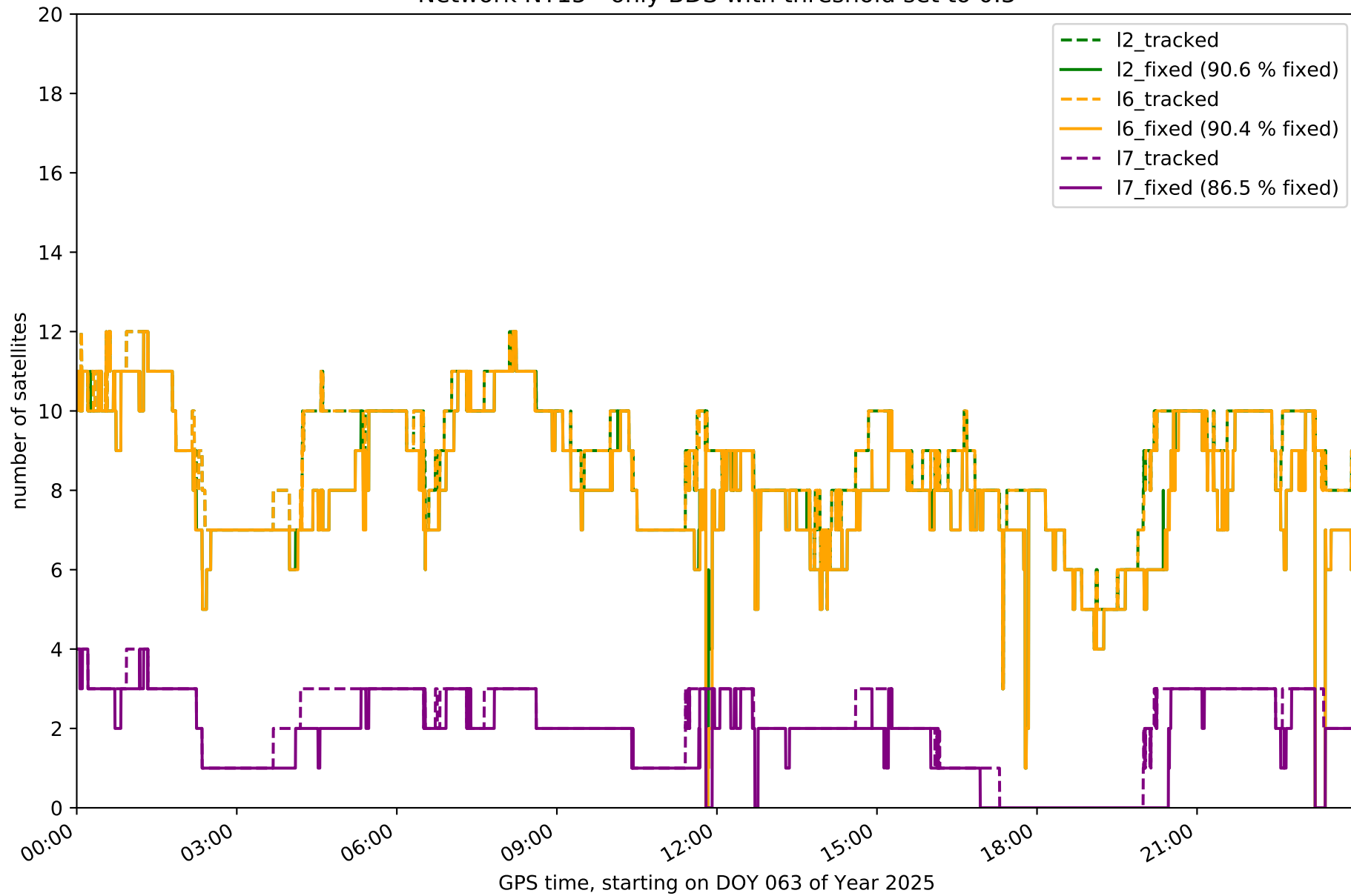
Network NT15 - only GPS with threshold set to 0.3



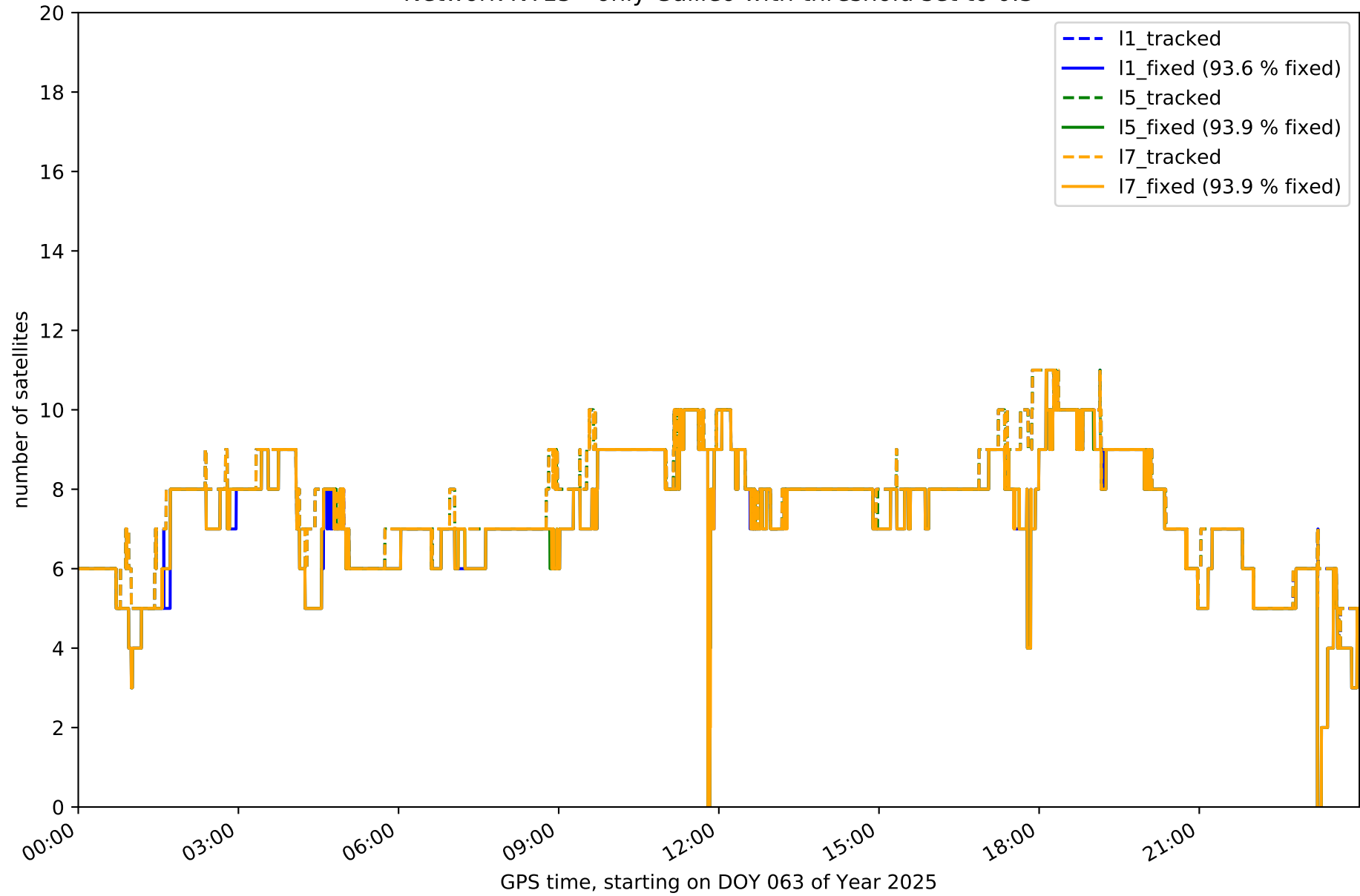
Network NT15 - only GLONASS with threshold set to 0.3



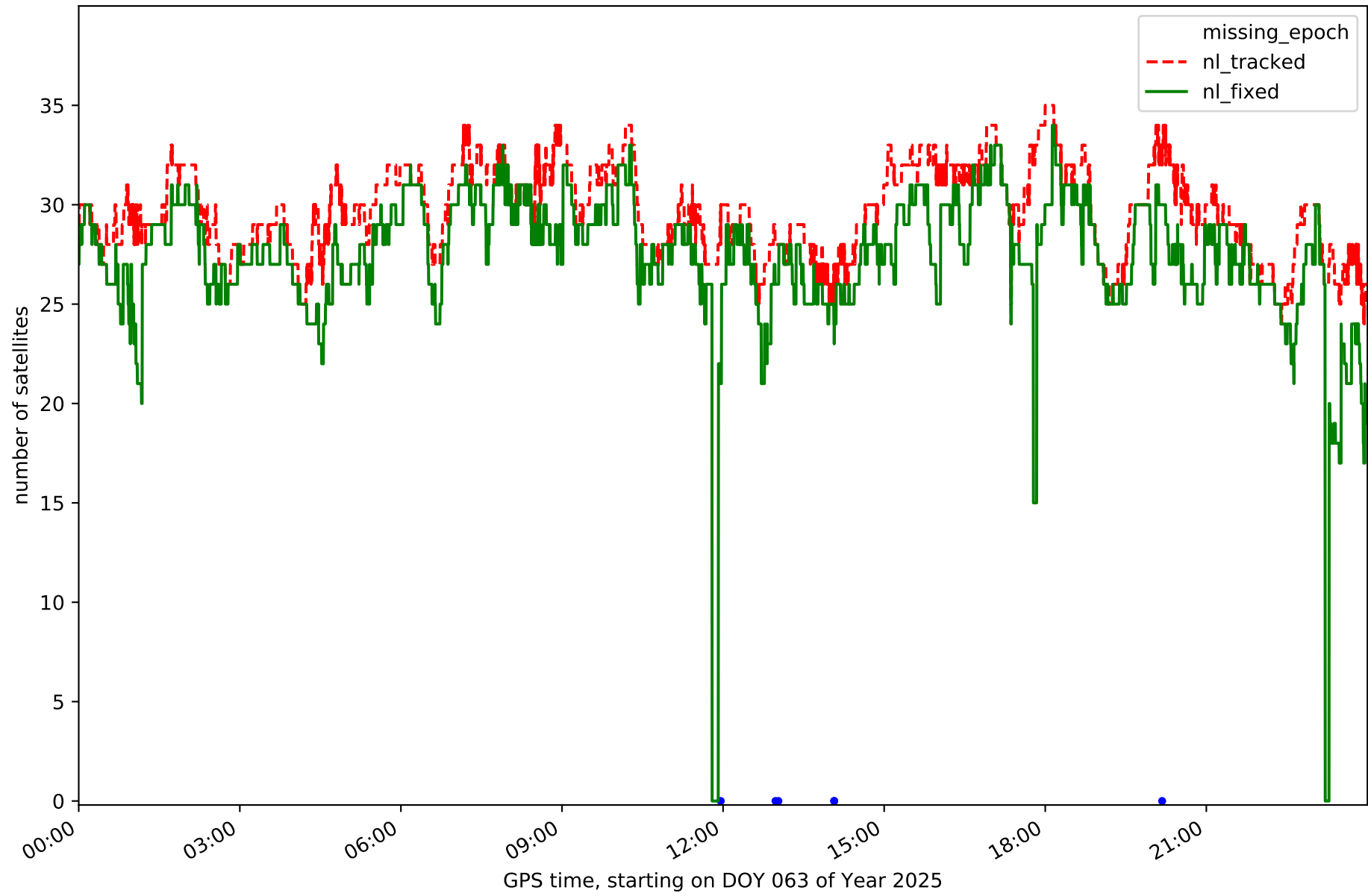
Network NT15 - only BDS with threshold set to 0.3



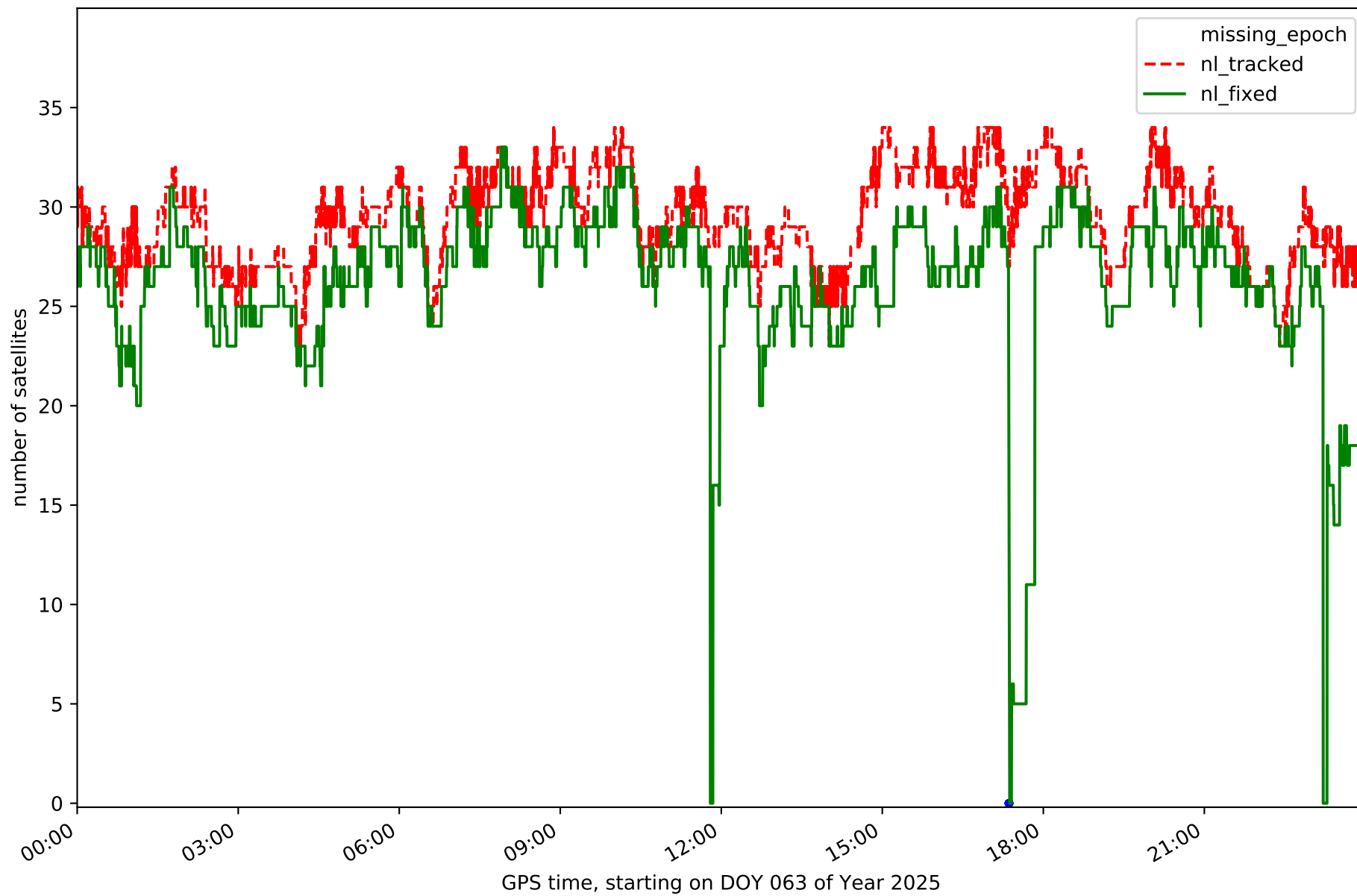
Network NT15 - only Galileo with threshold set to 0.3



Station ACIN in network NT15



Station AGRD in network NT15

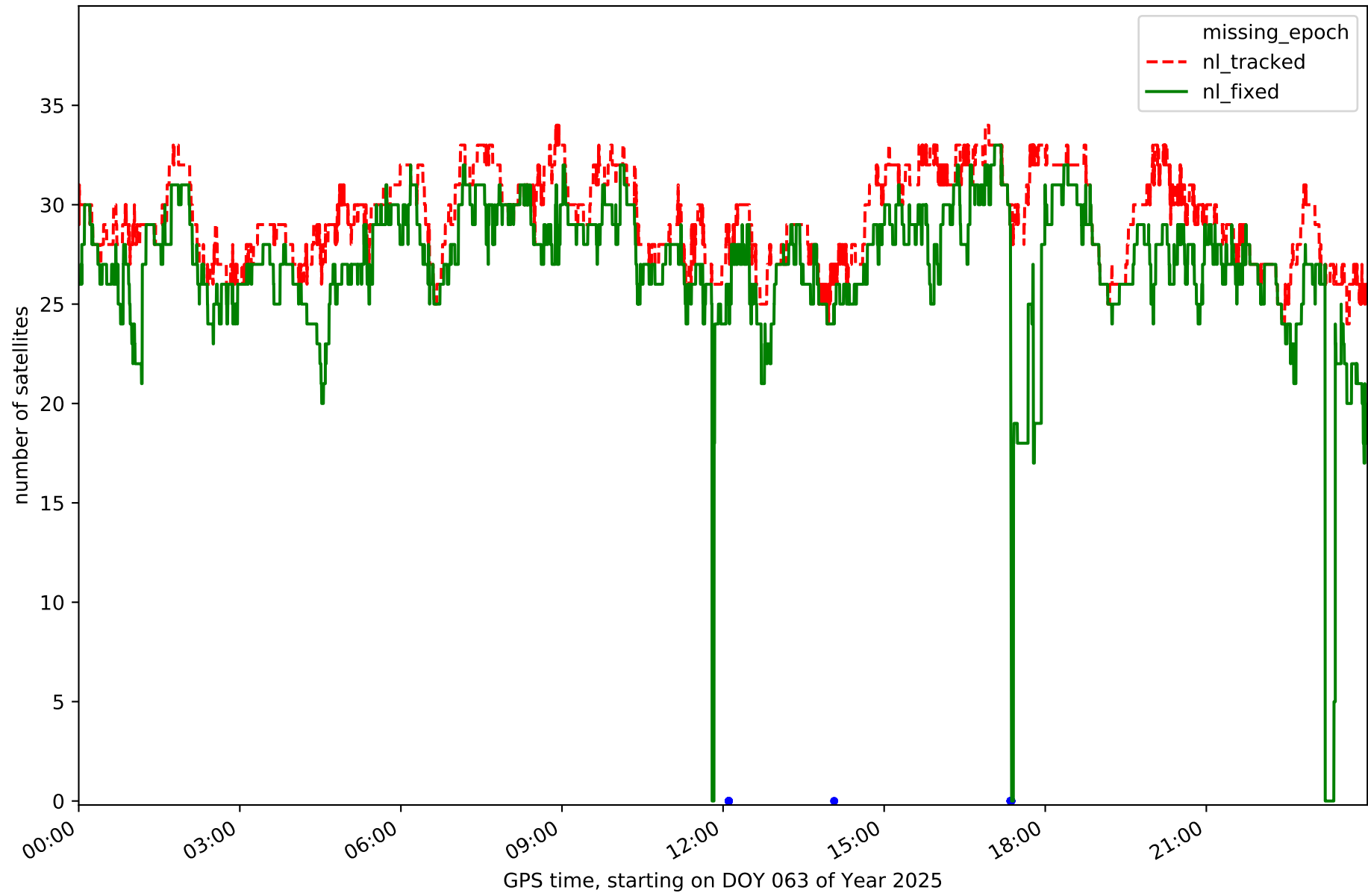


Station ALC1 in network NT15

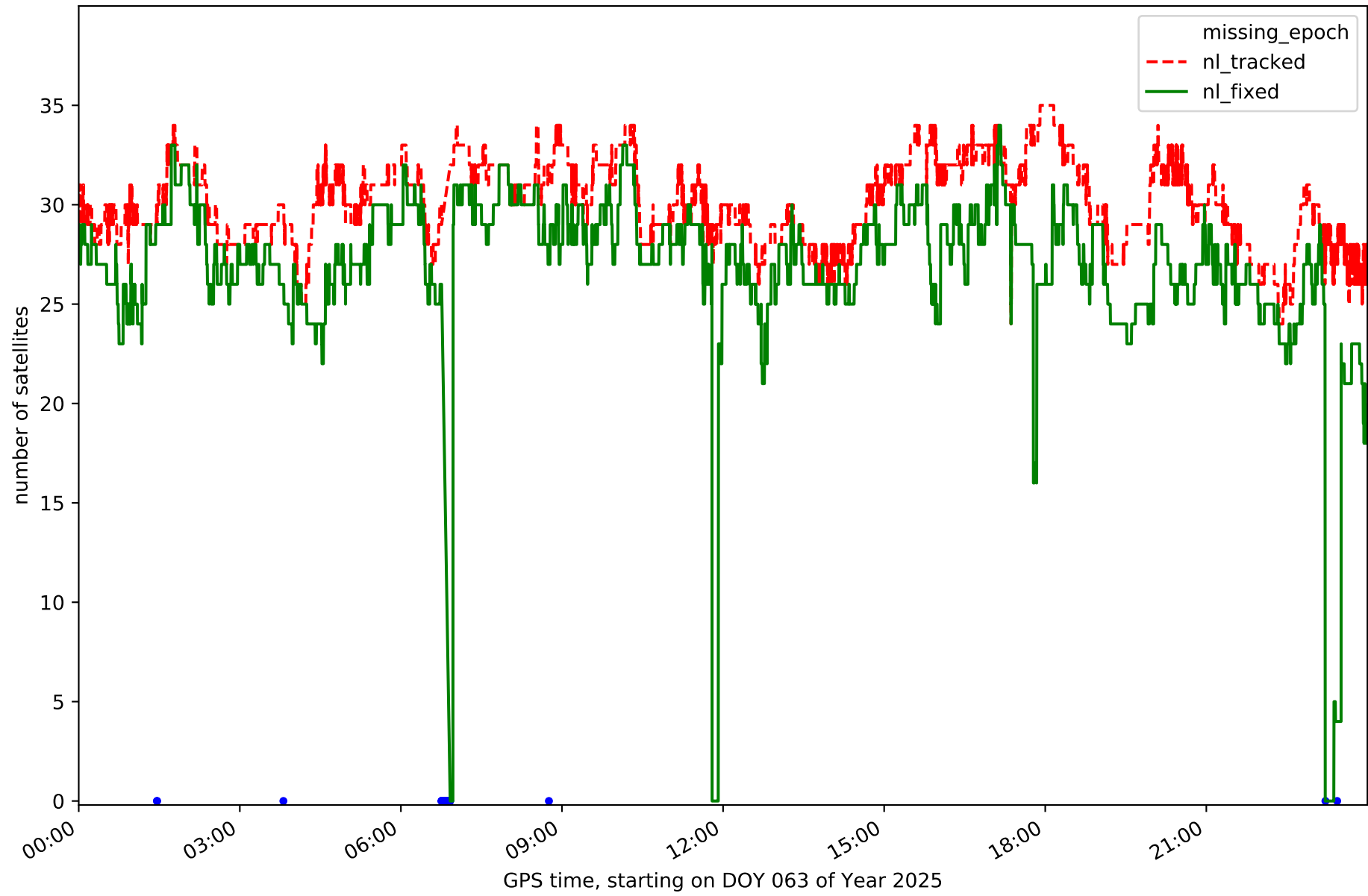


GPS time, starting on DOY 063 of Year 2025

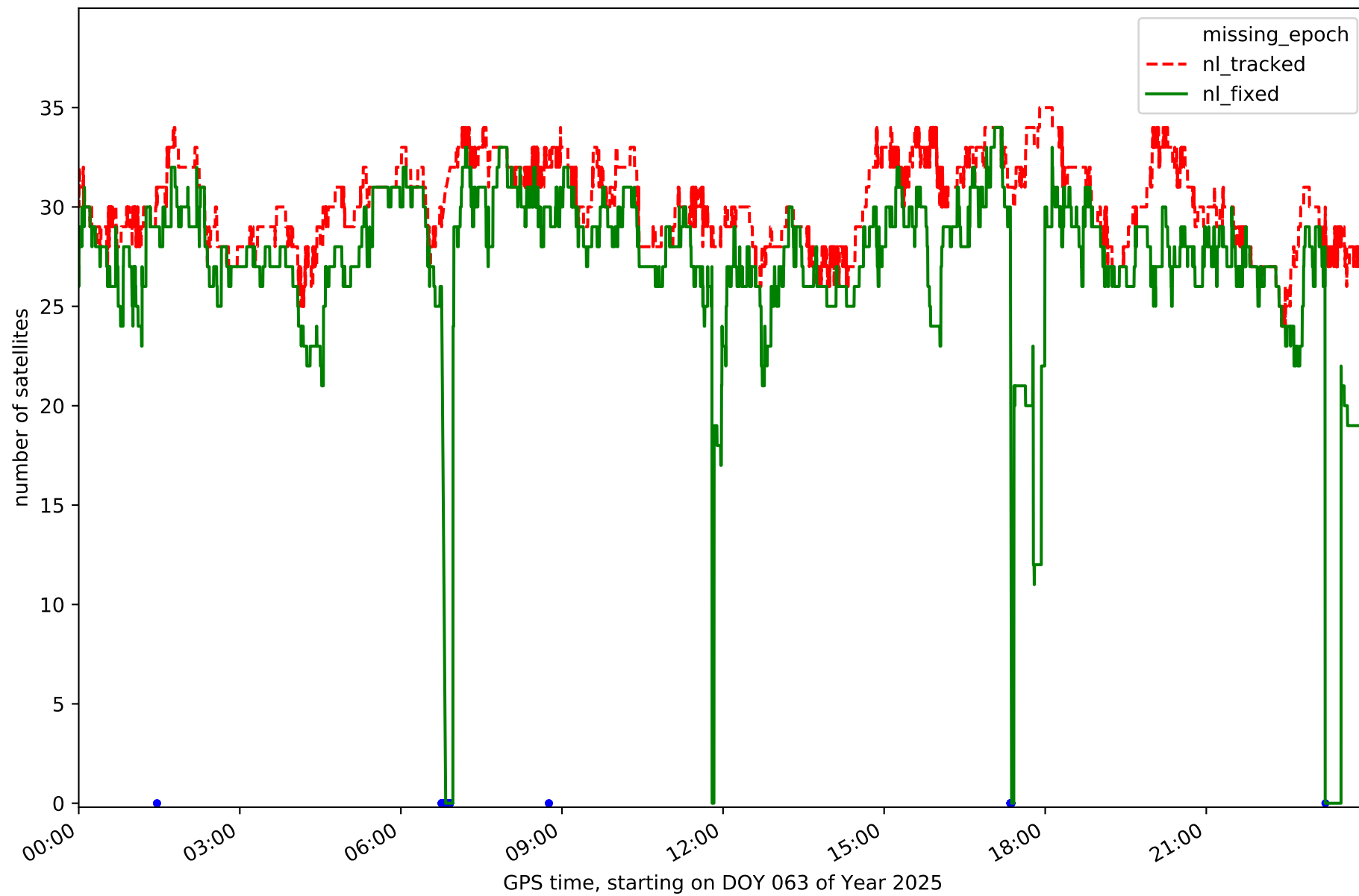
Station ALIA in network NT15



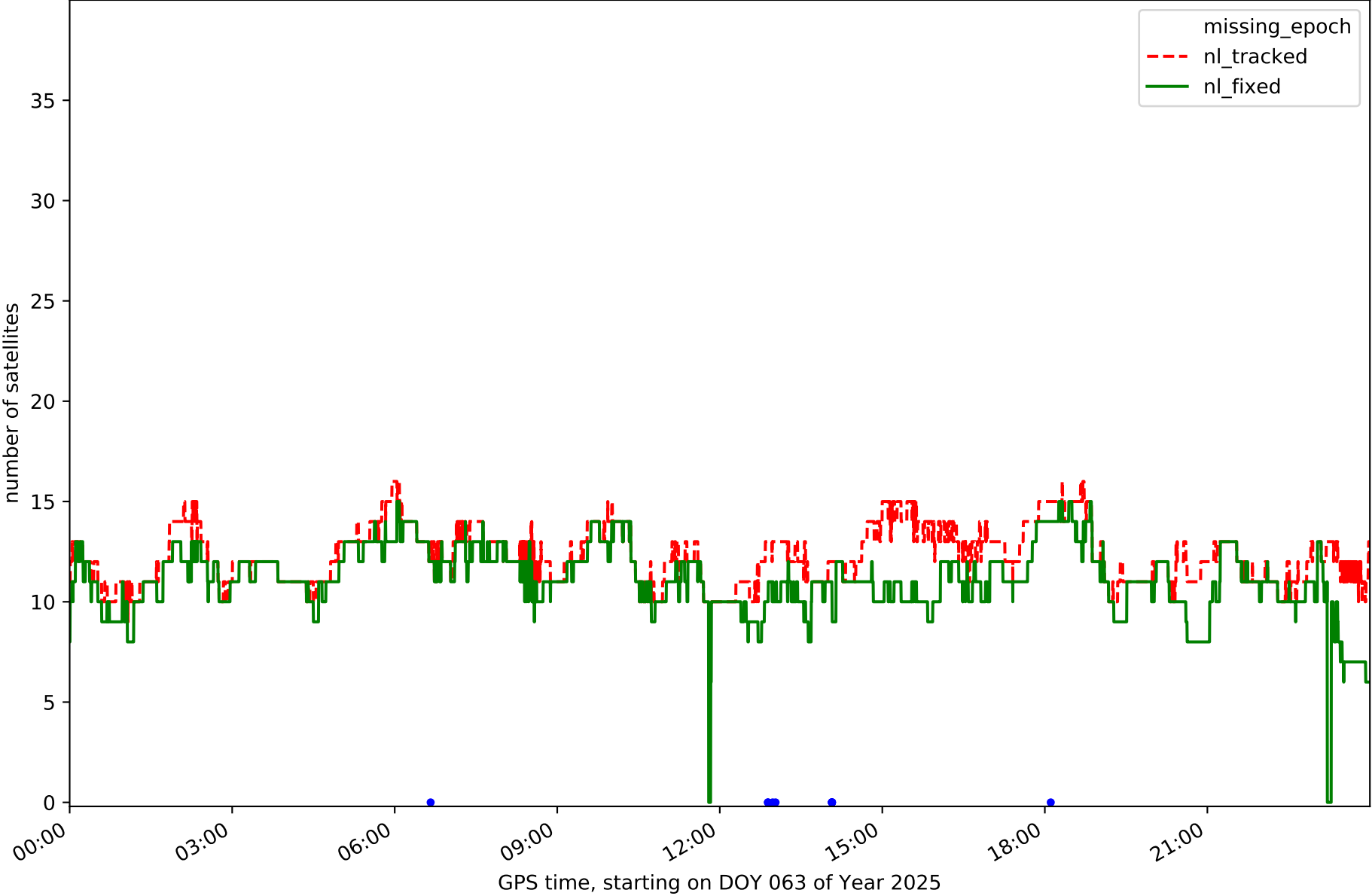
Station ARAS in network NT15



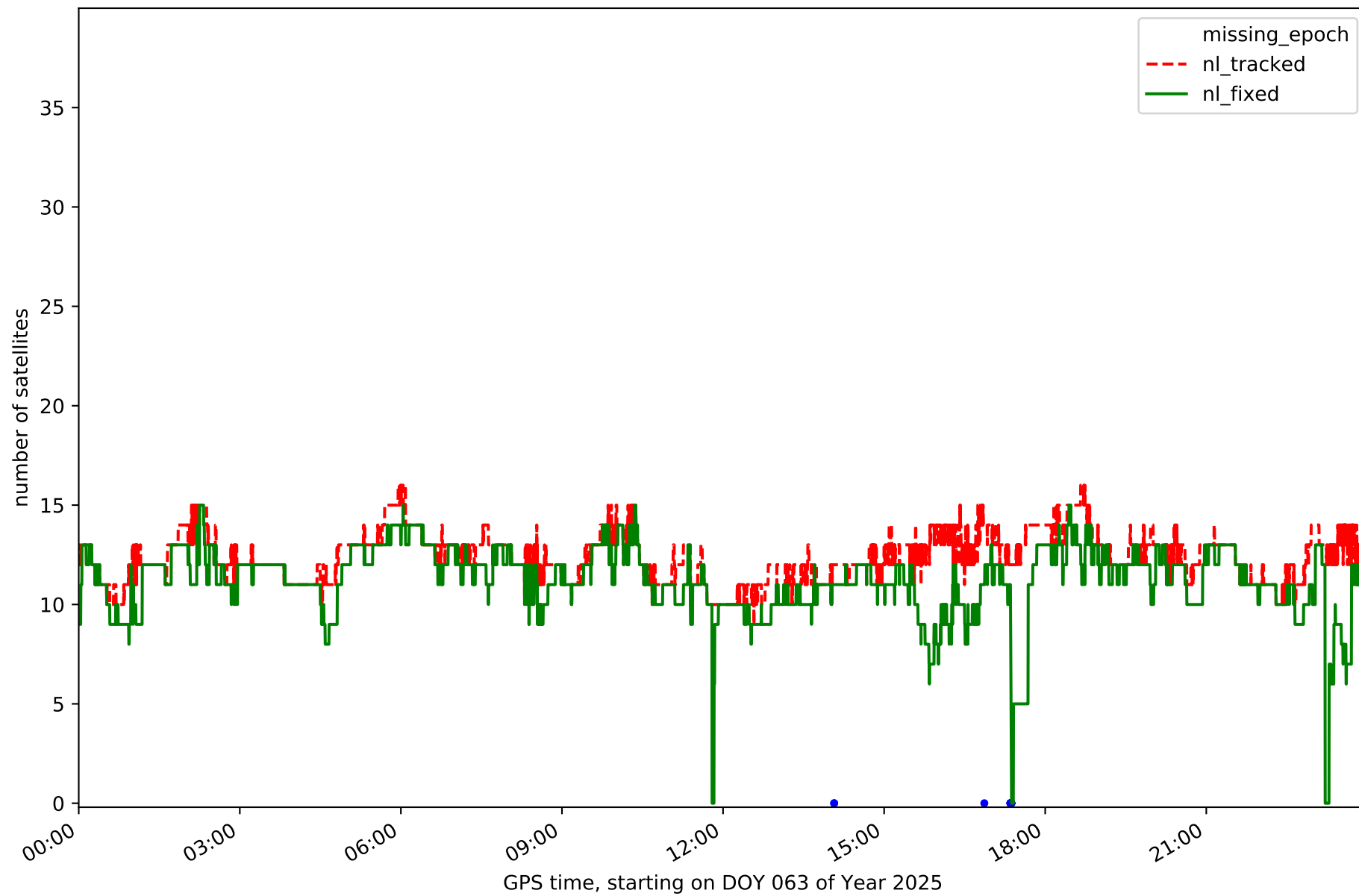
Station BERG in network NT15



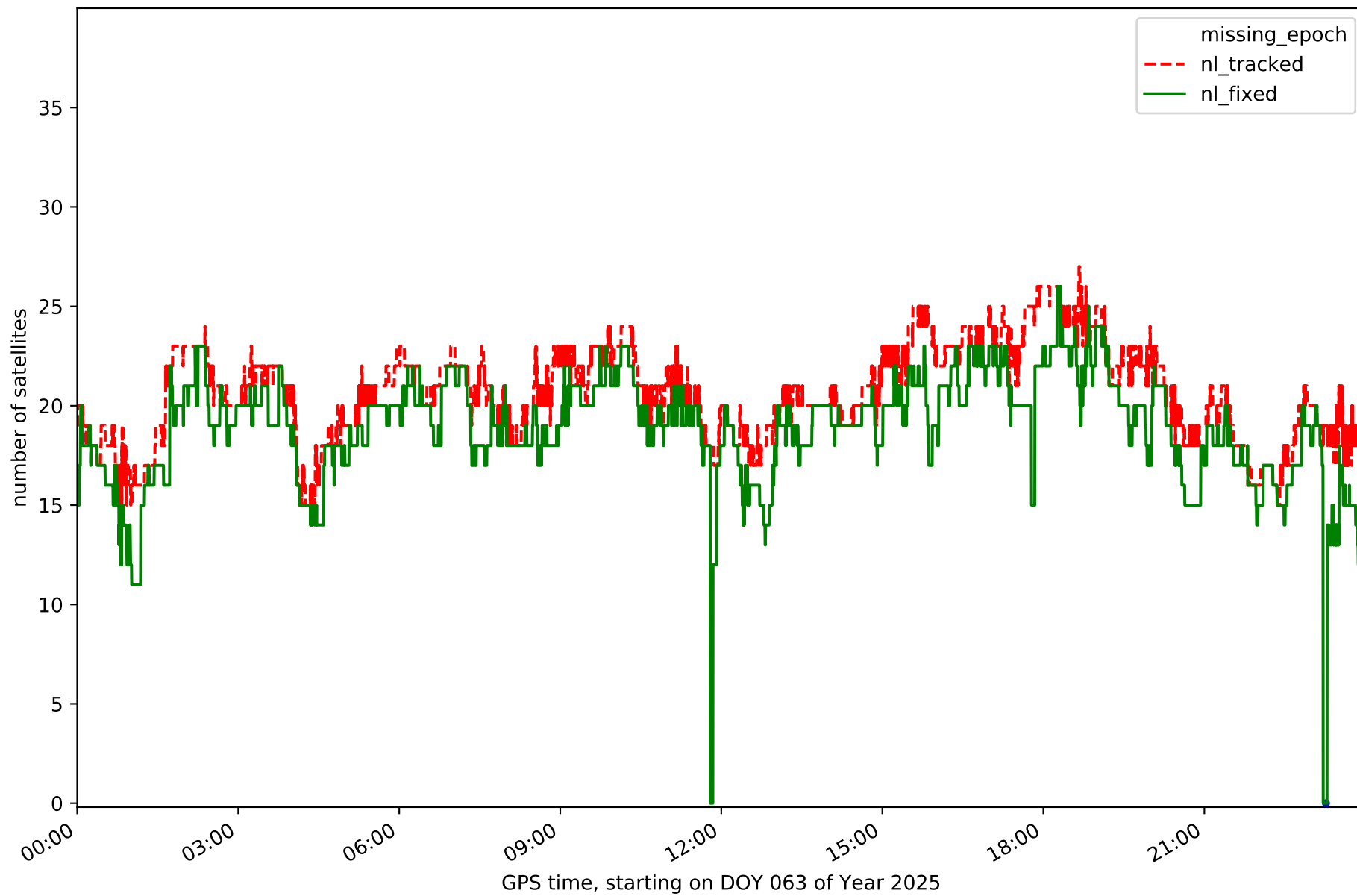
Station CATY in network NT15



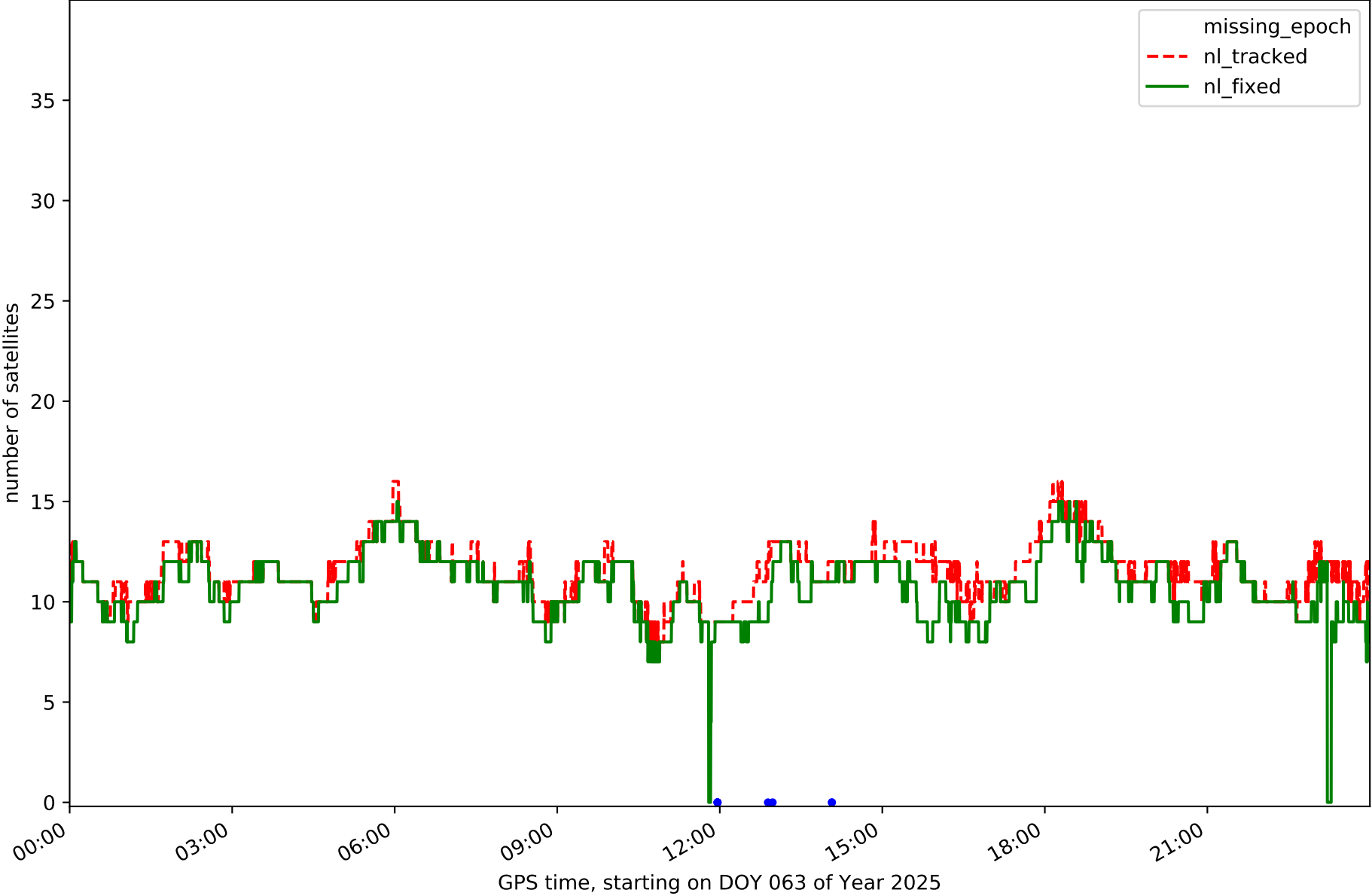
Station CRNA in network NT15



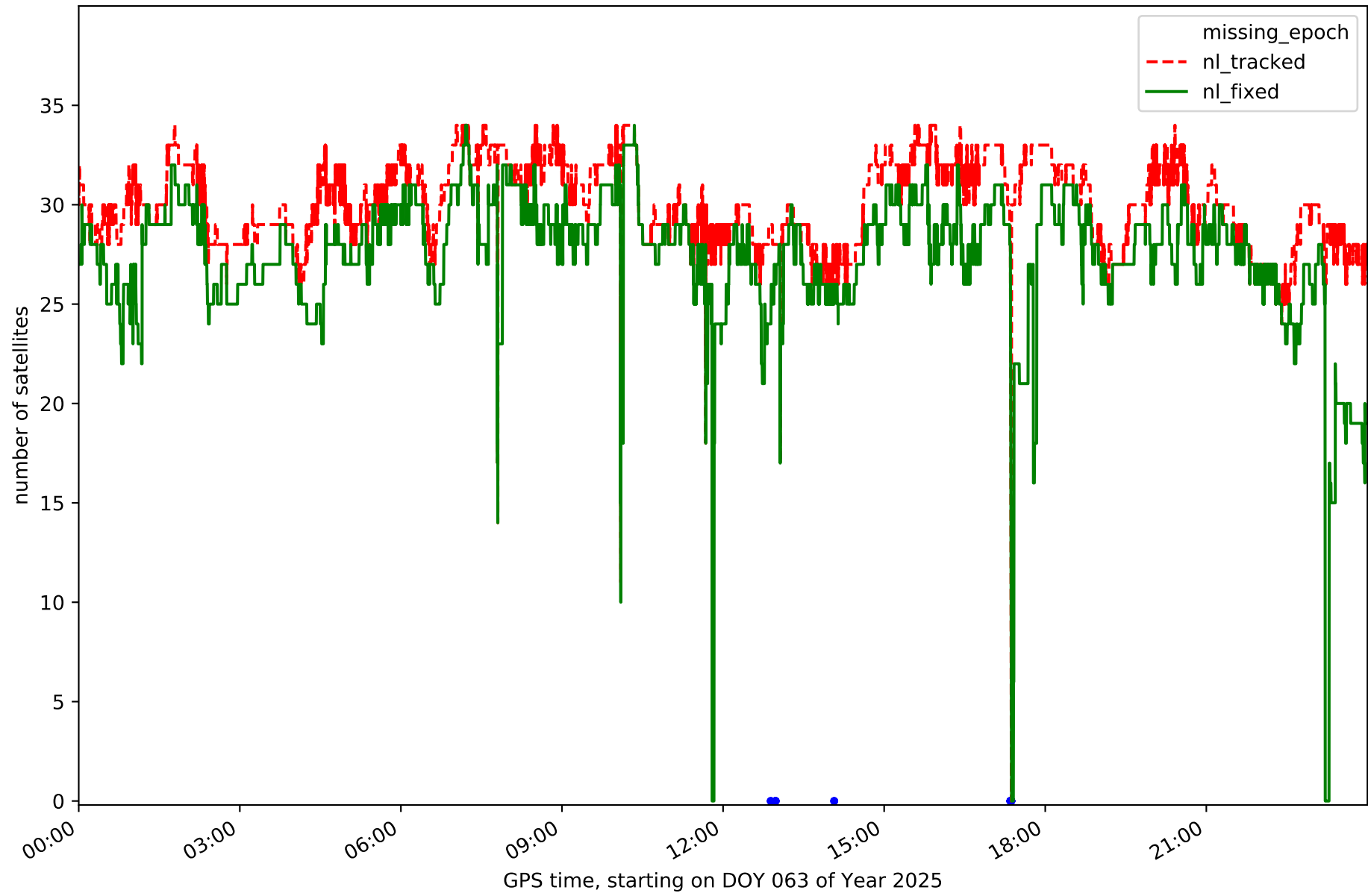
Station MOLI in network NT15



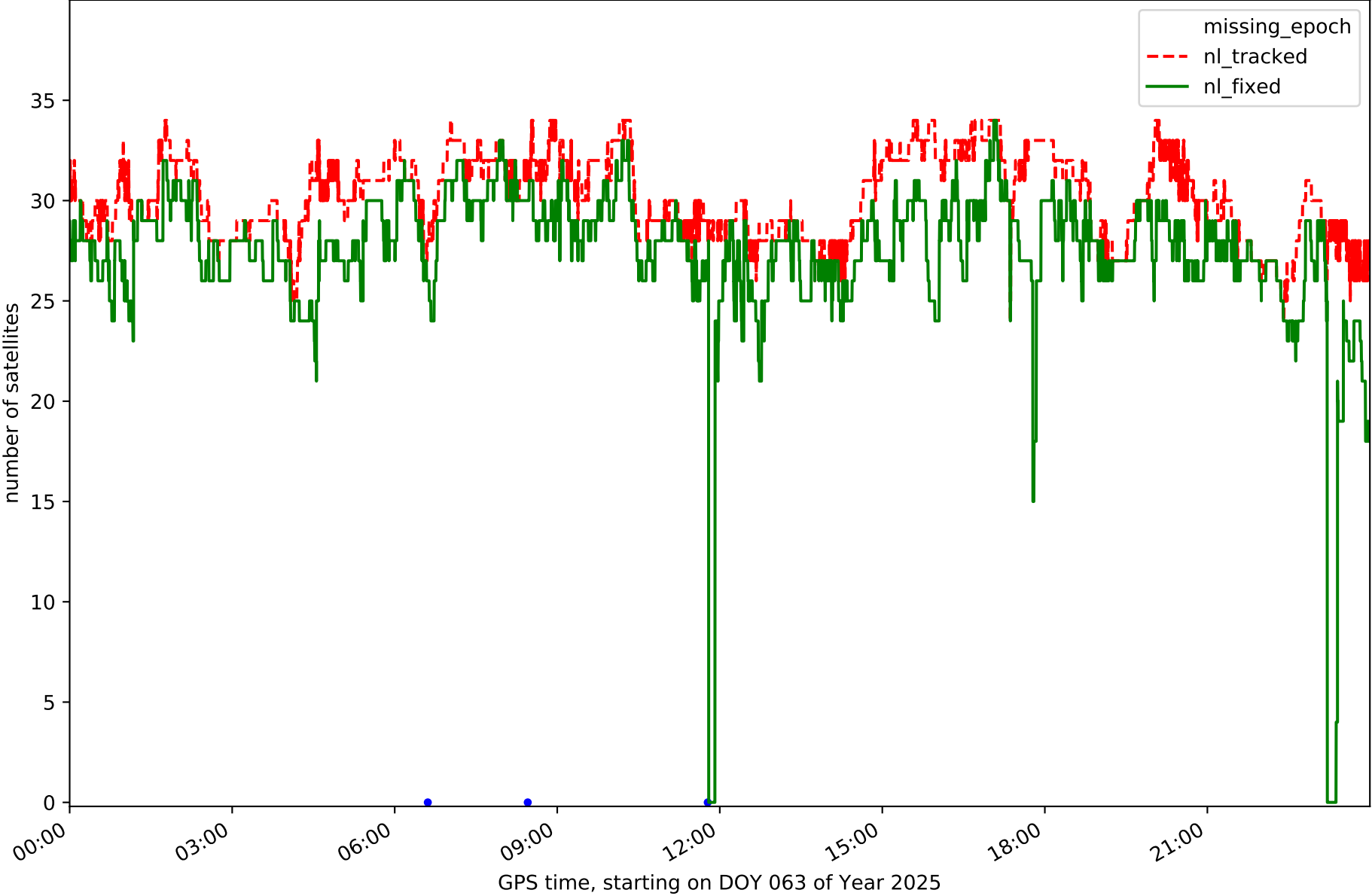
Station MUNI in network NT15



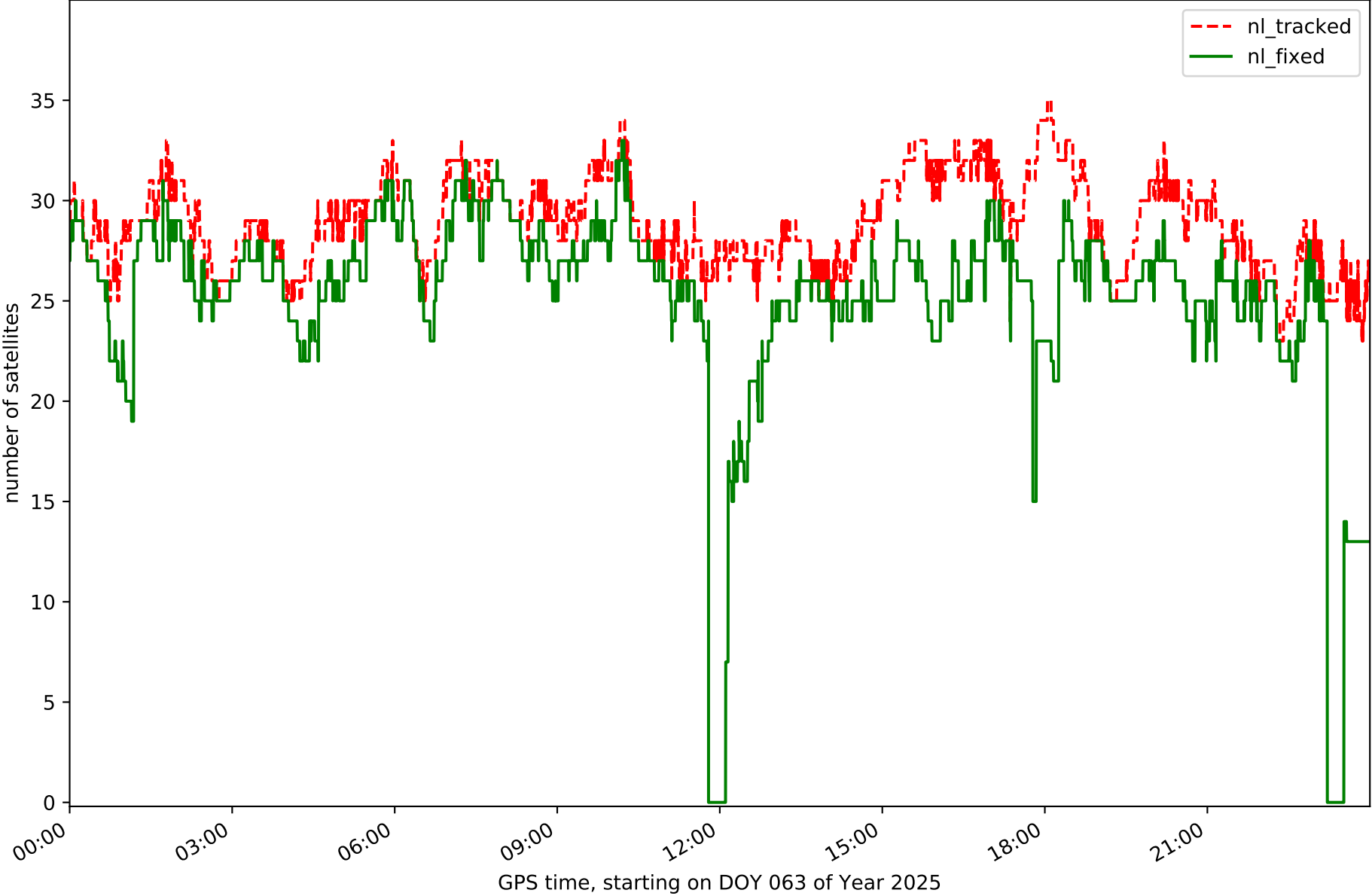
Station QNT0 in network NT15



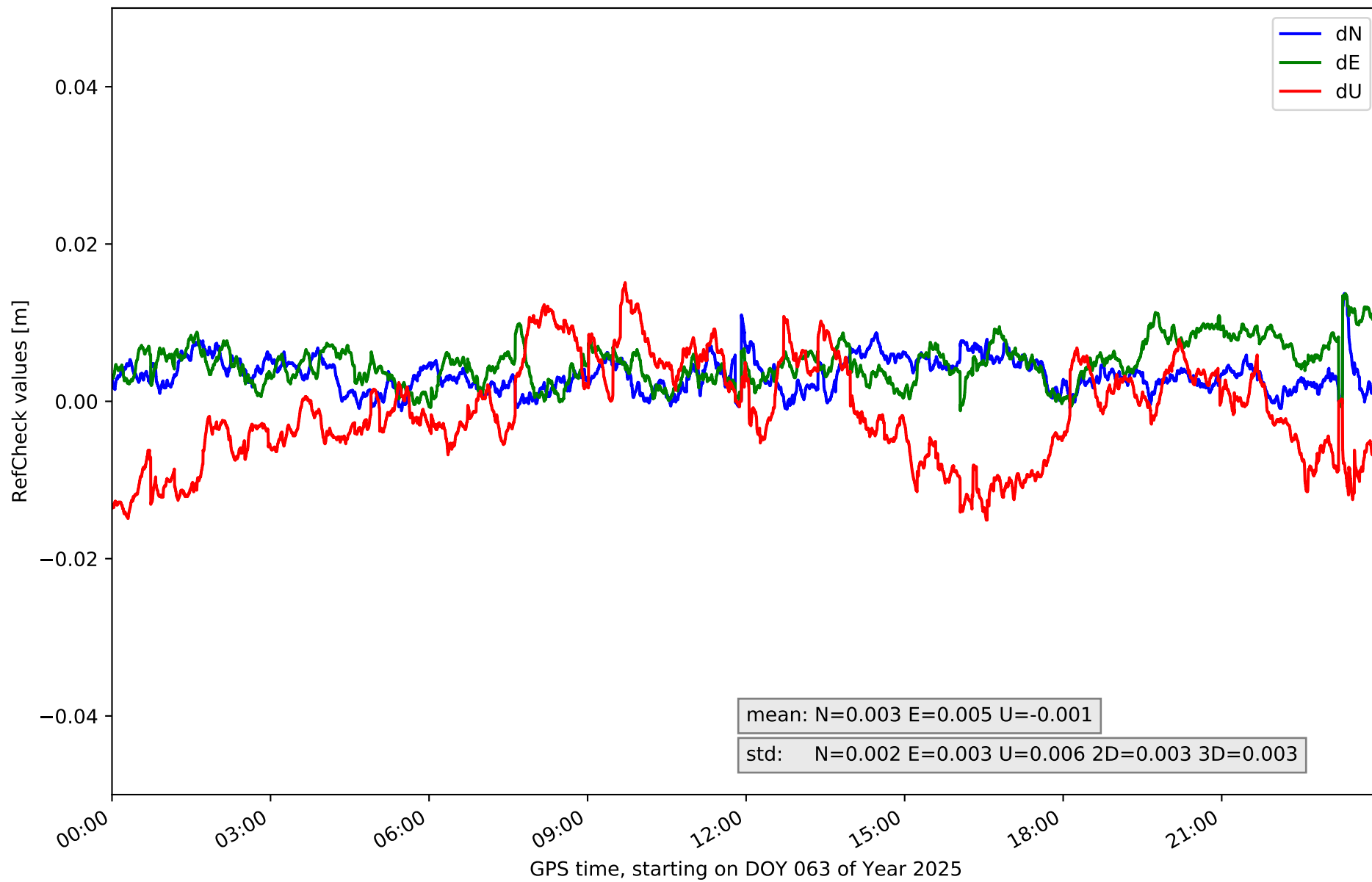
Station TERU in network NT15



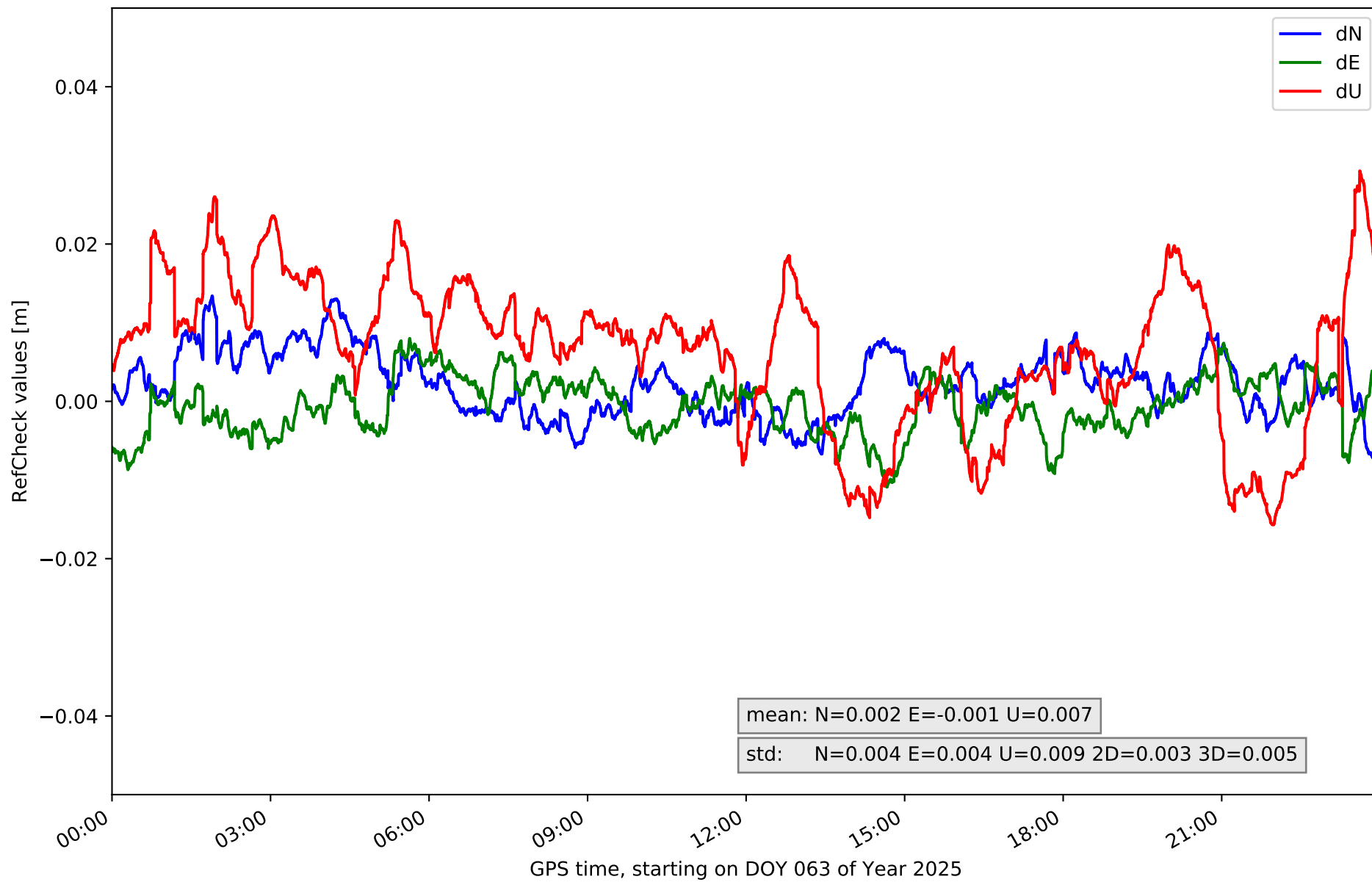
Station YEBE in network NT15



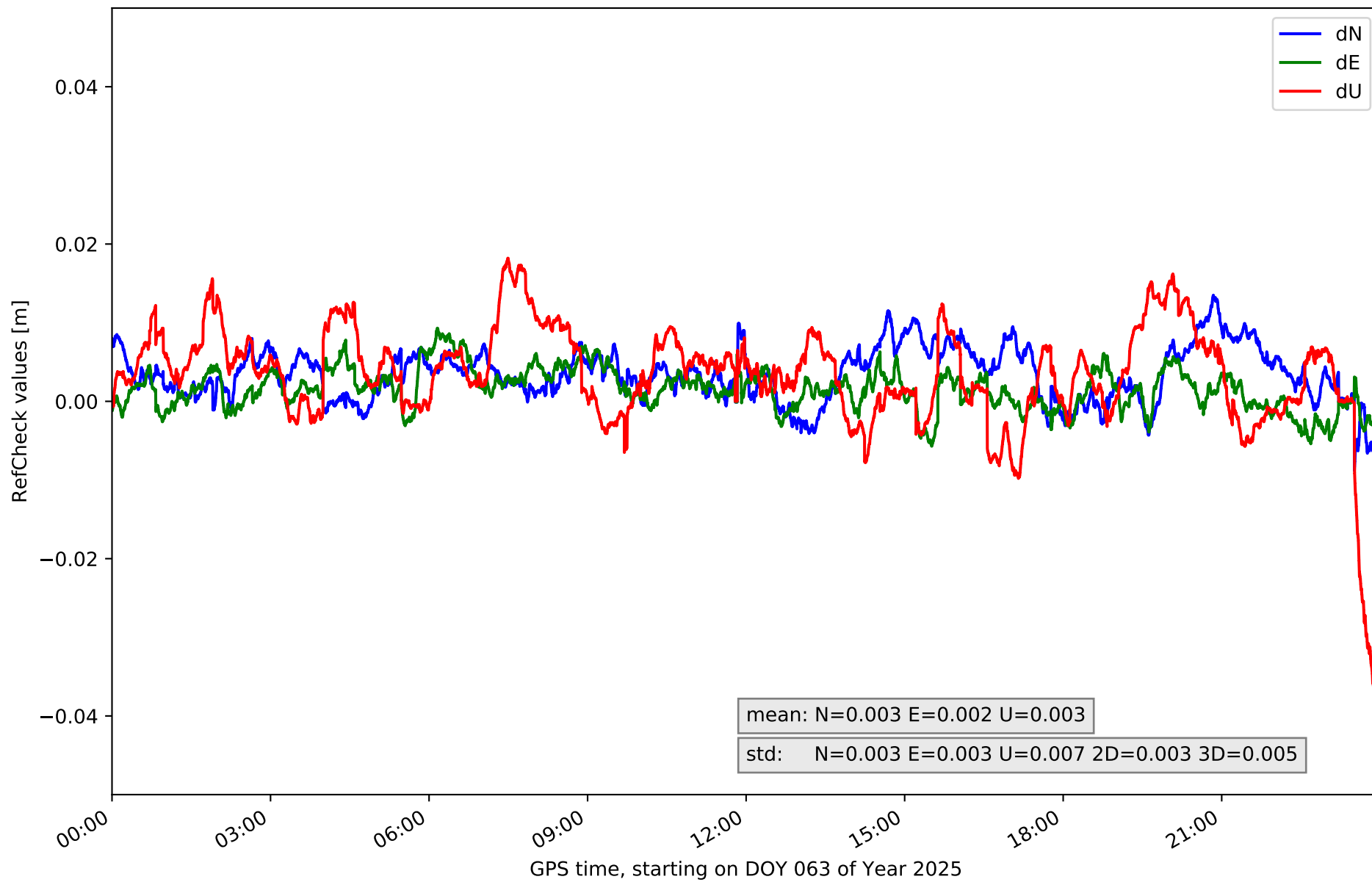
RefCheck for station ACIN in network NT15



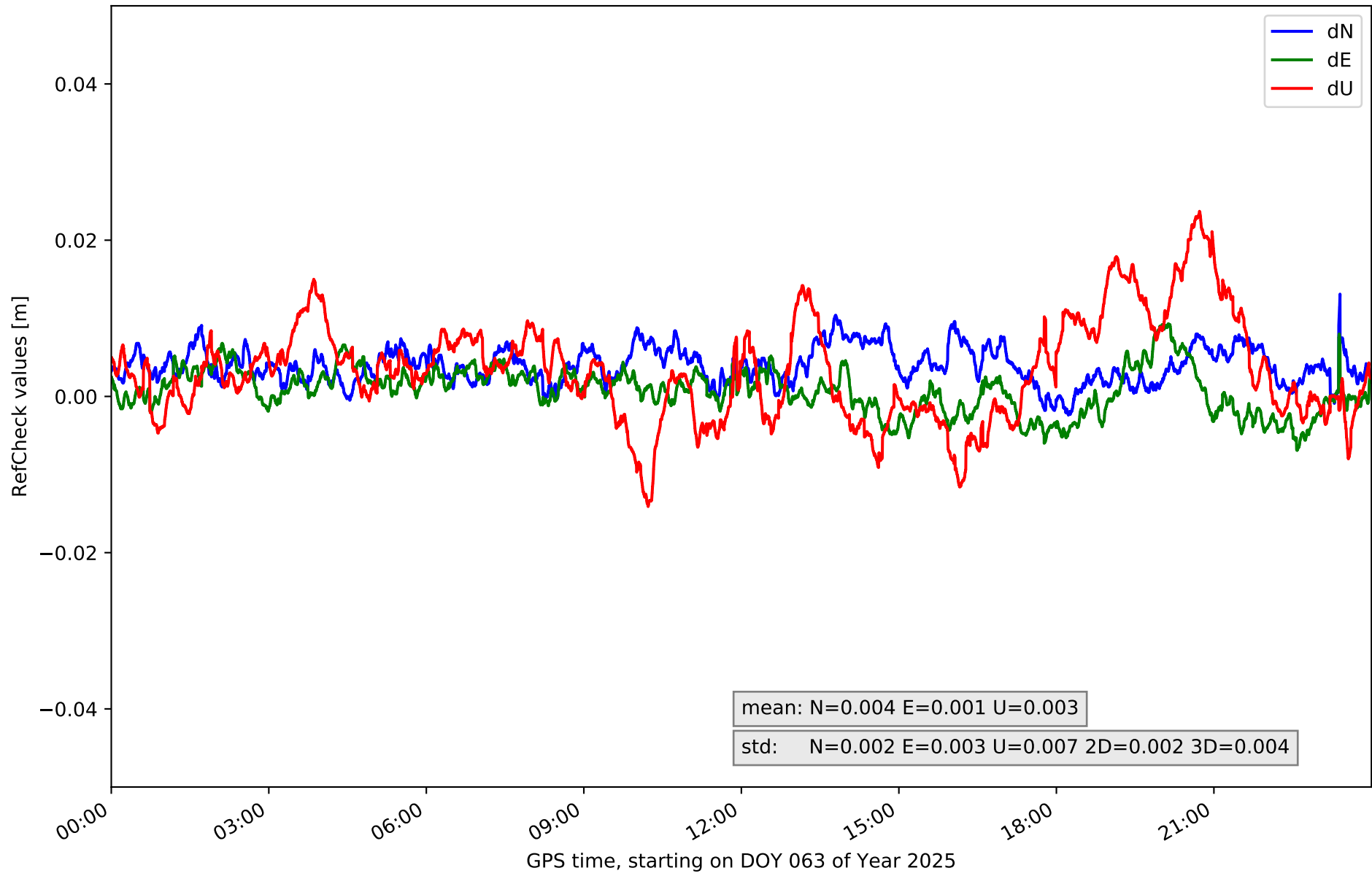
RefCheck for station AGRD in network NT15



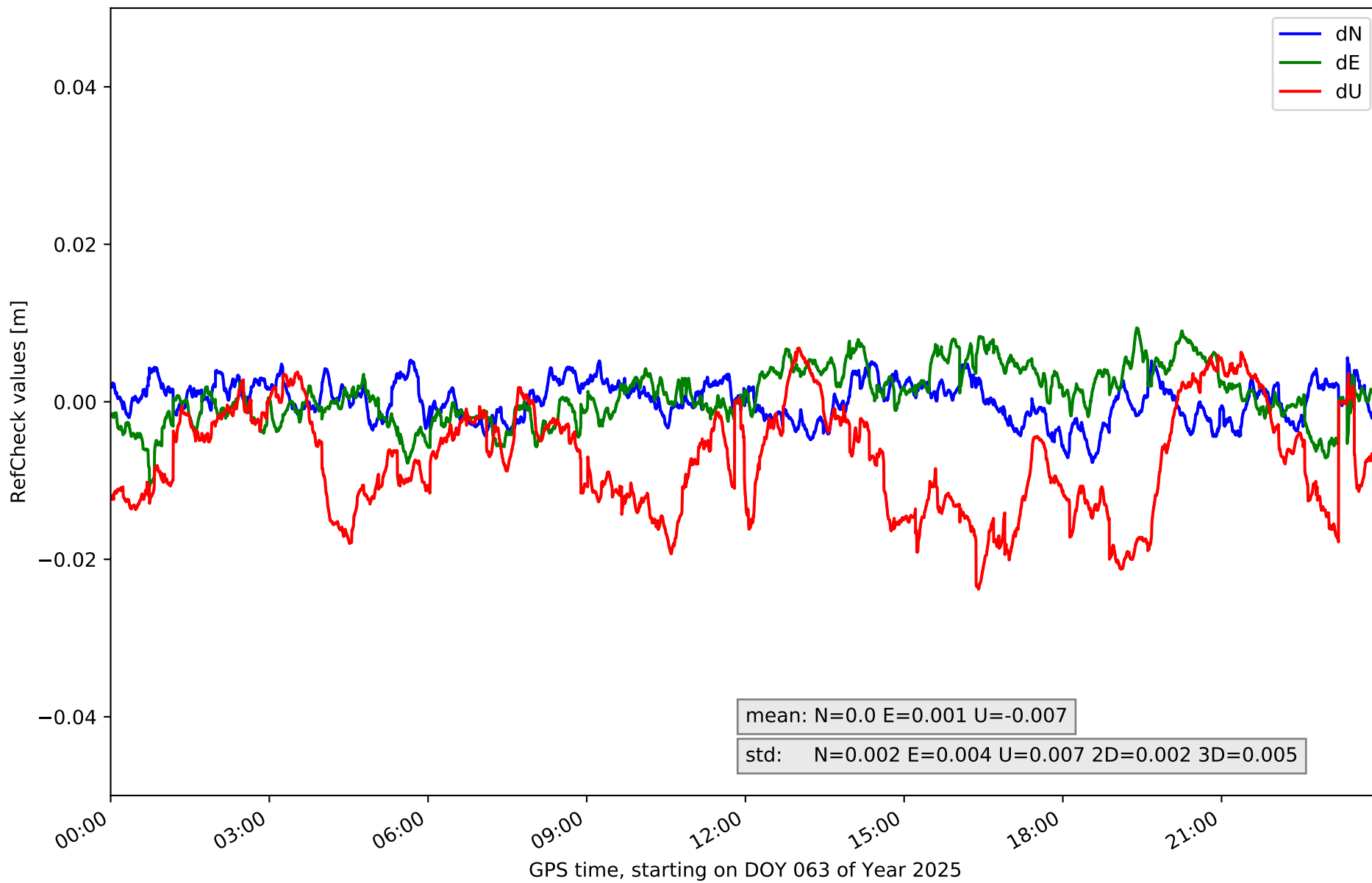
RefCheck for station ALC1 in network NT15



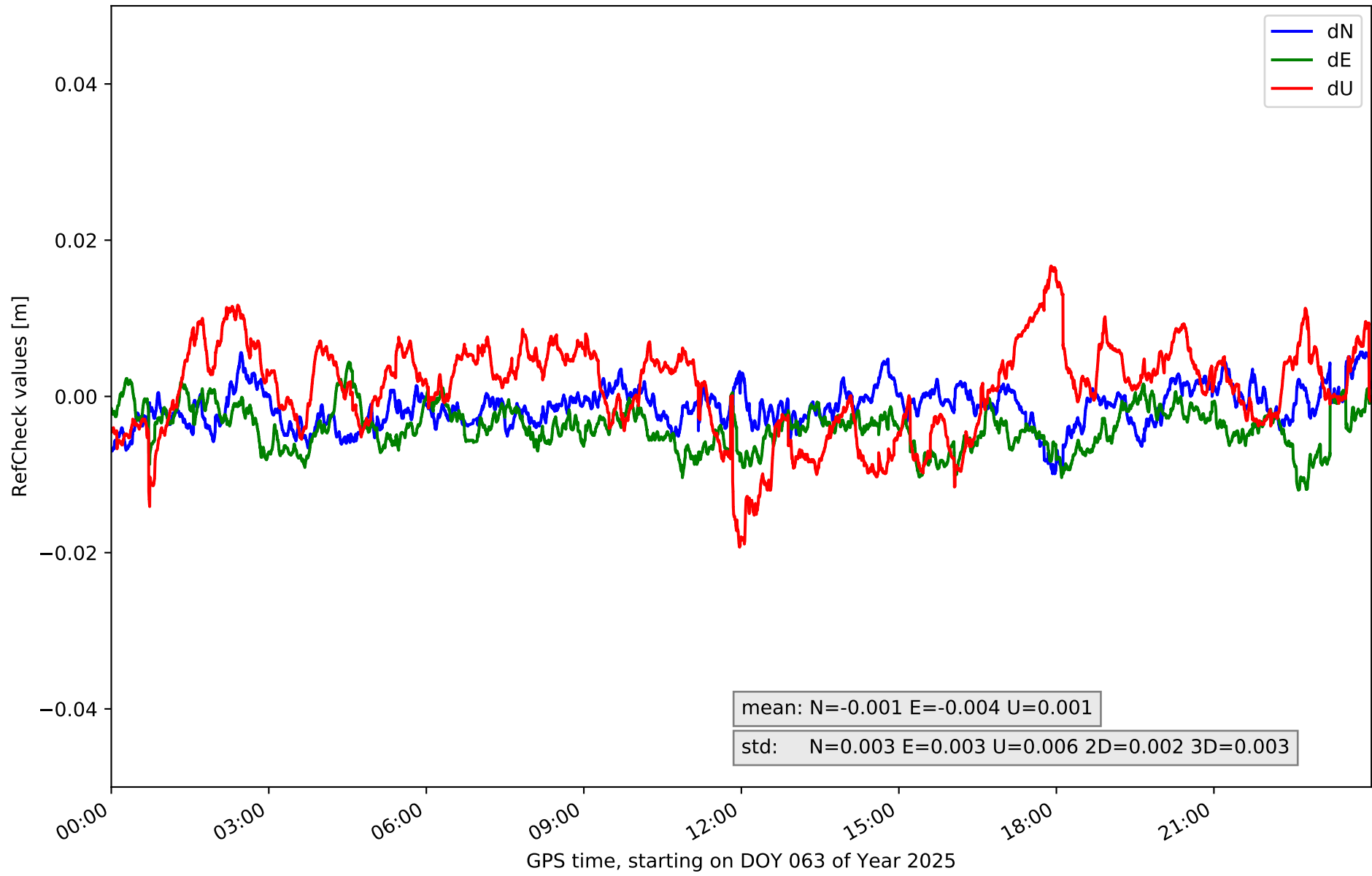
RefCheck for station ALIA in network NT15



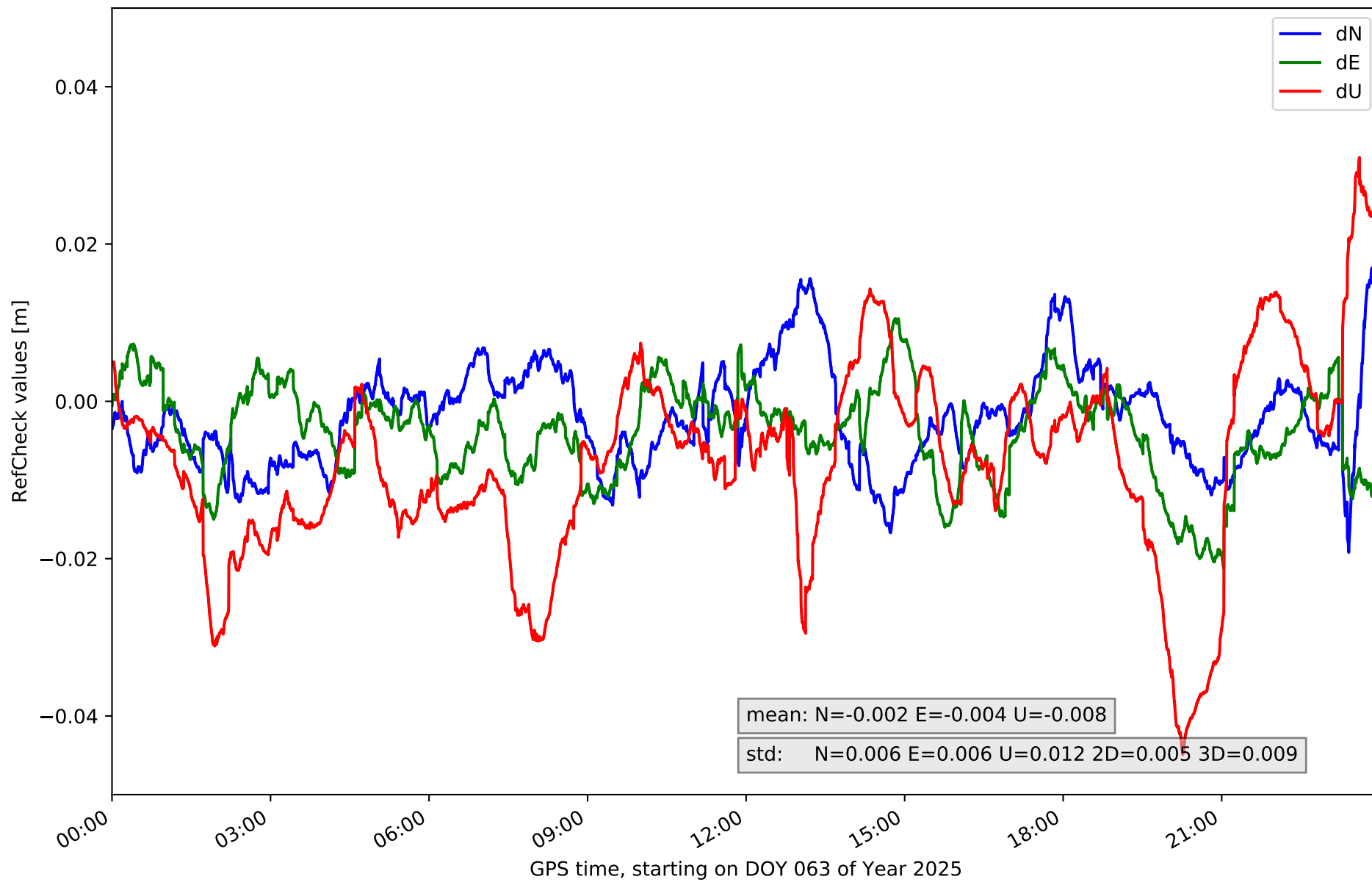
RefCheck for station ARAS in network NT15



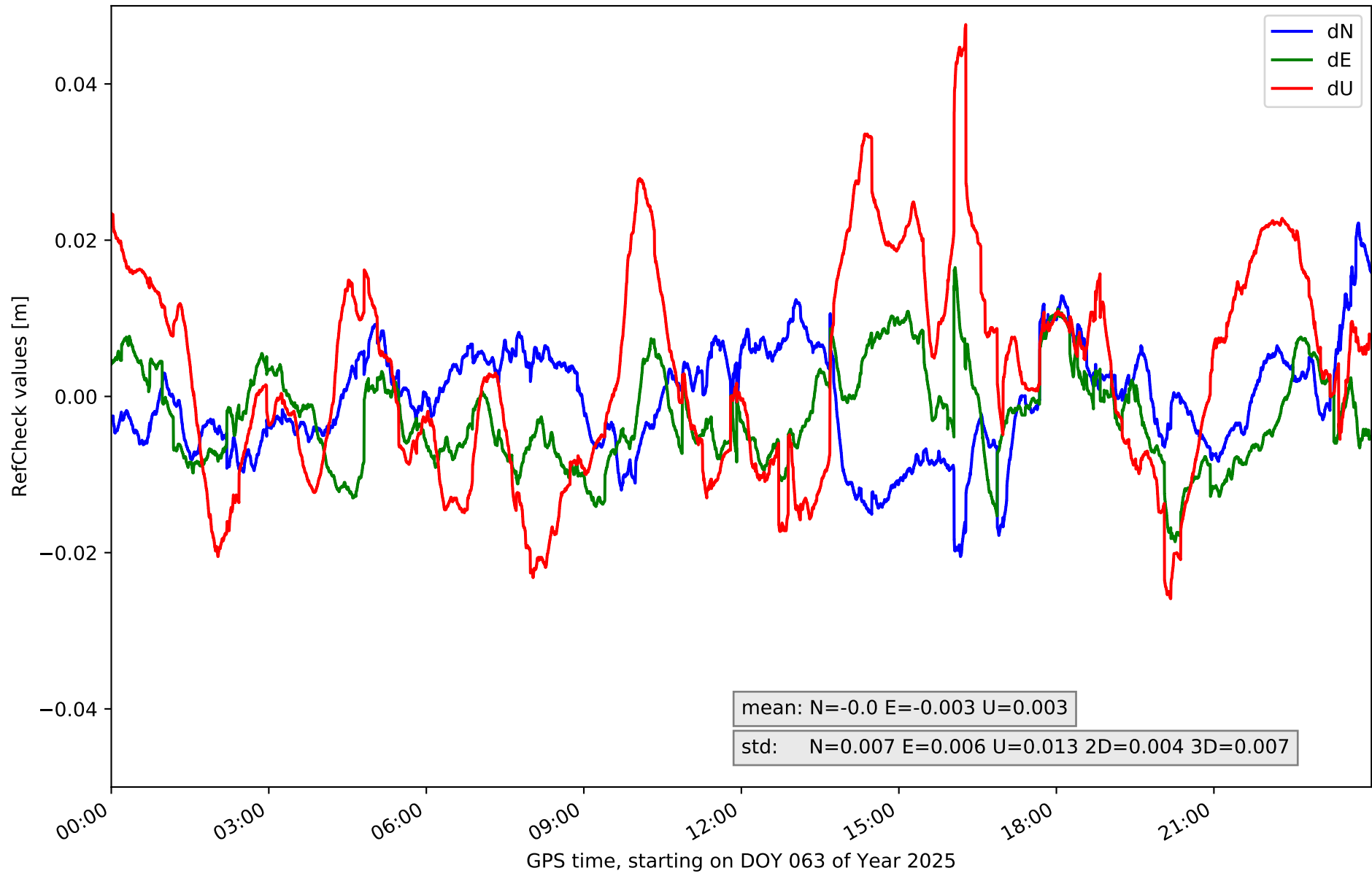
RefCheck for station BERG in network NT15



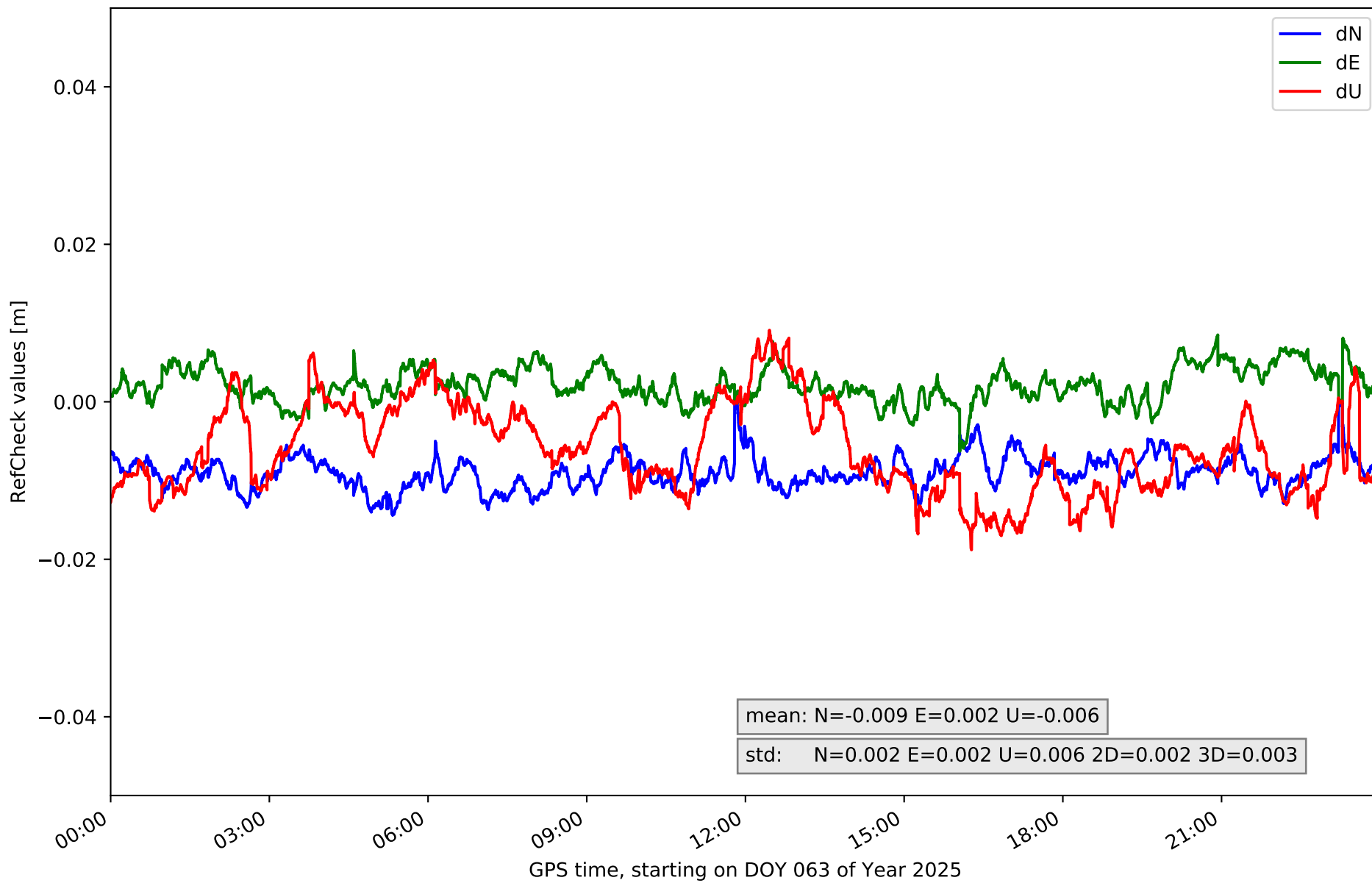
RefCheck for station CATY in network NT15



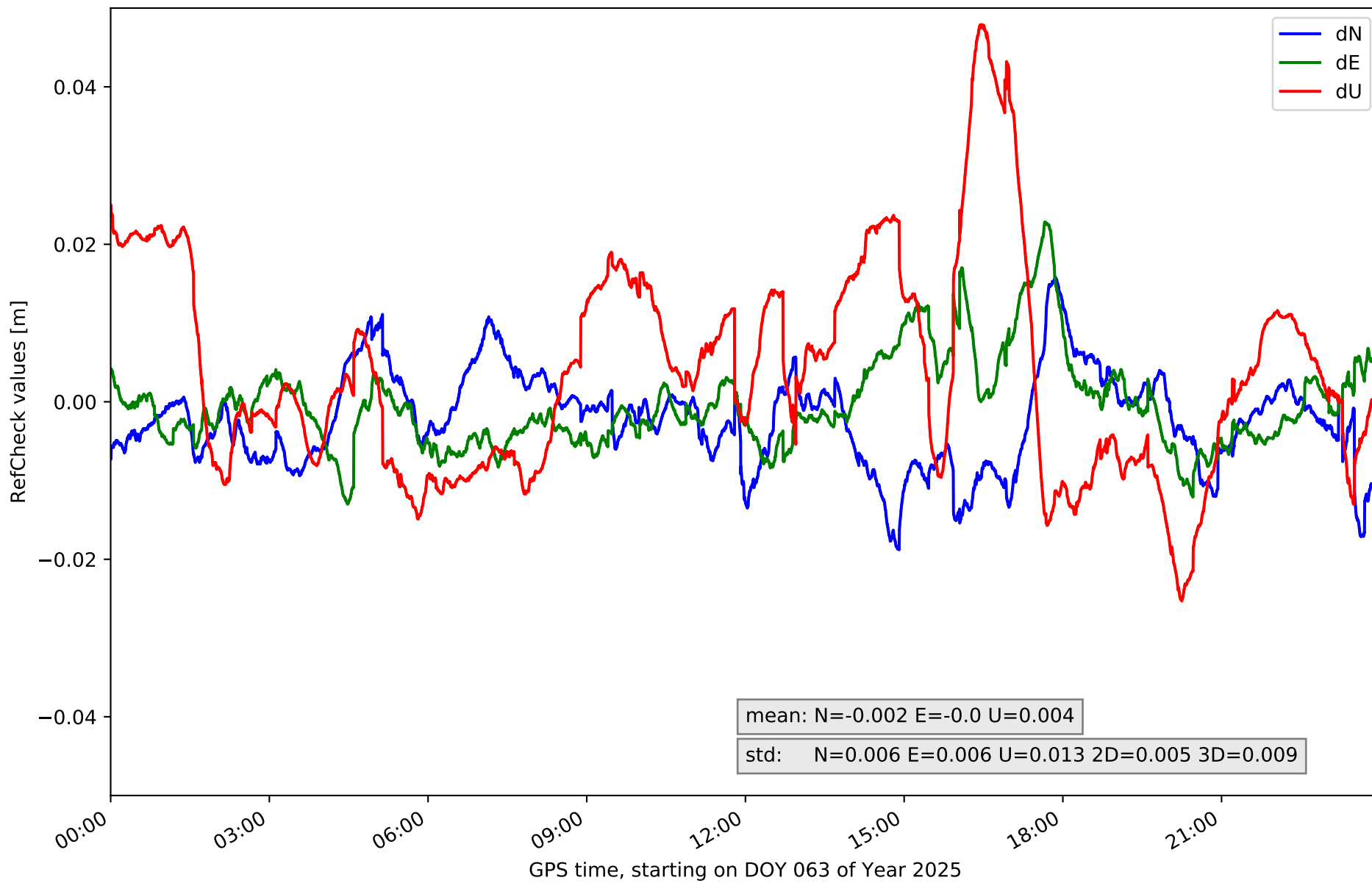
RefCheck for station CRNA in network NT15



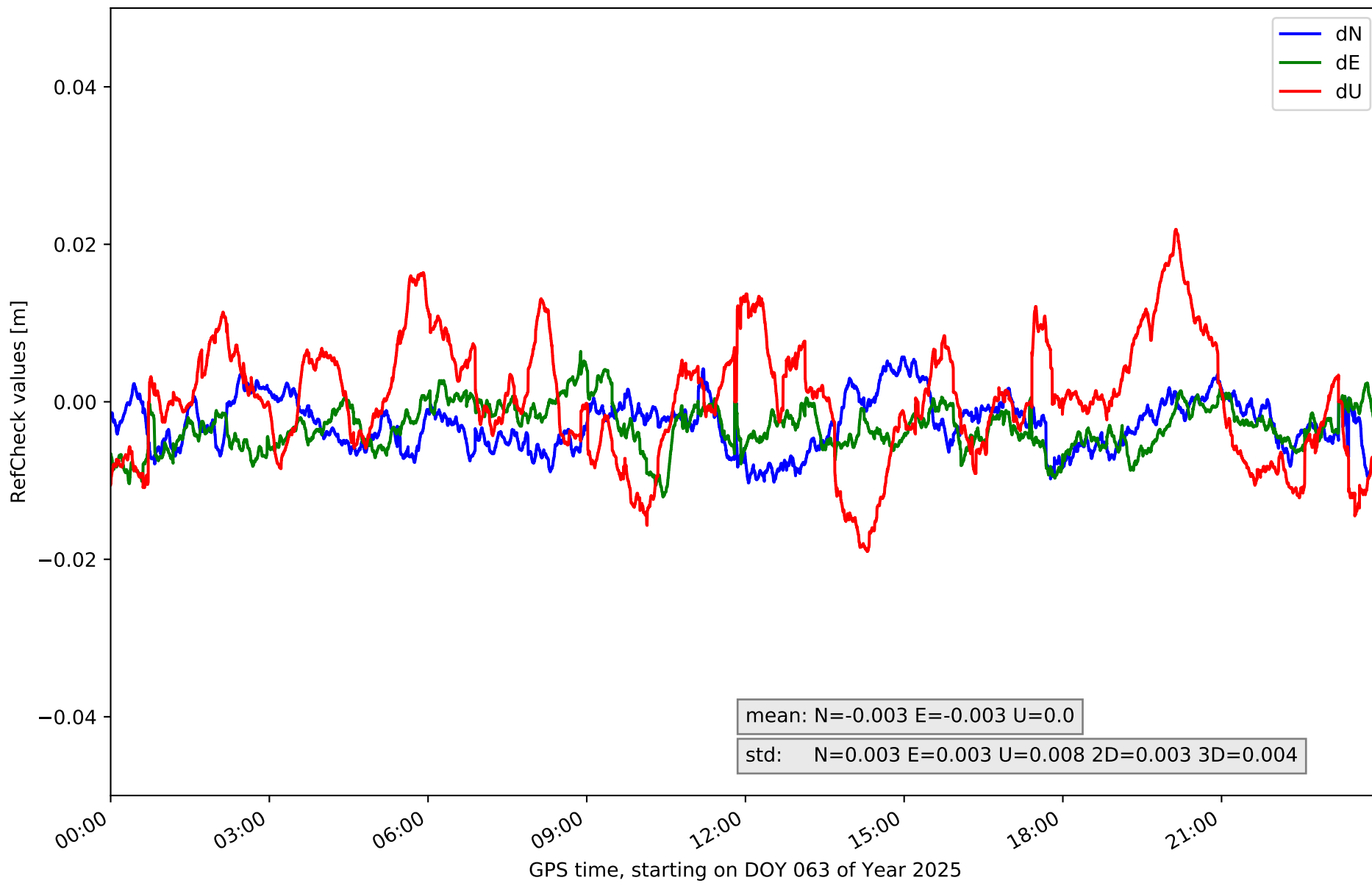
RefCheck for station MOLI in network NT15



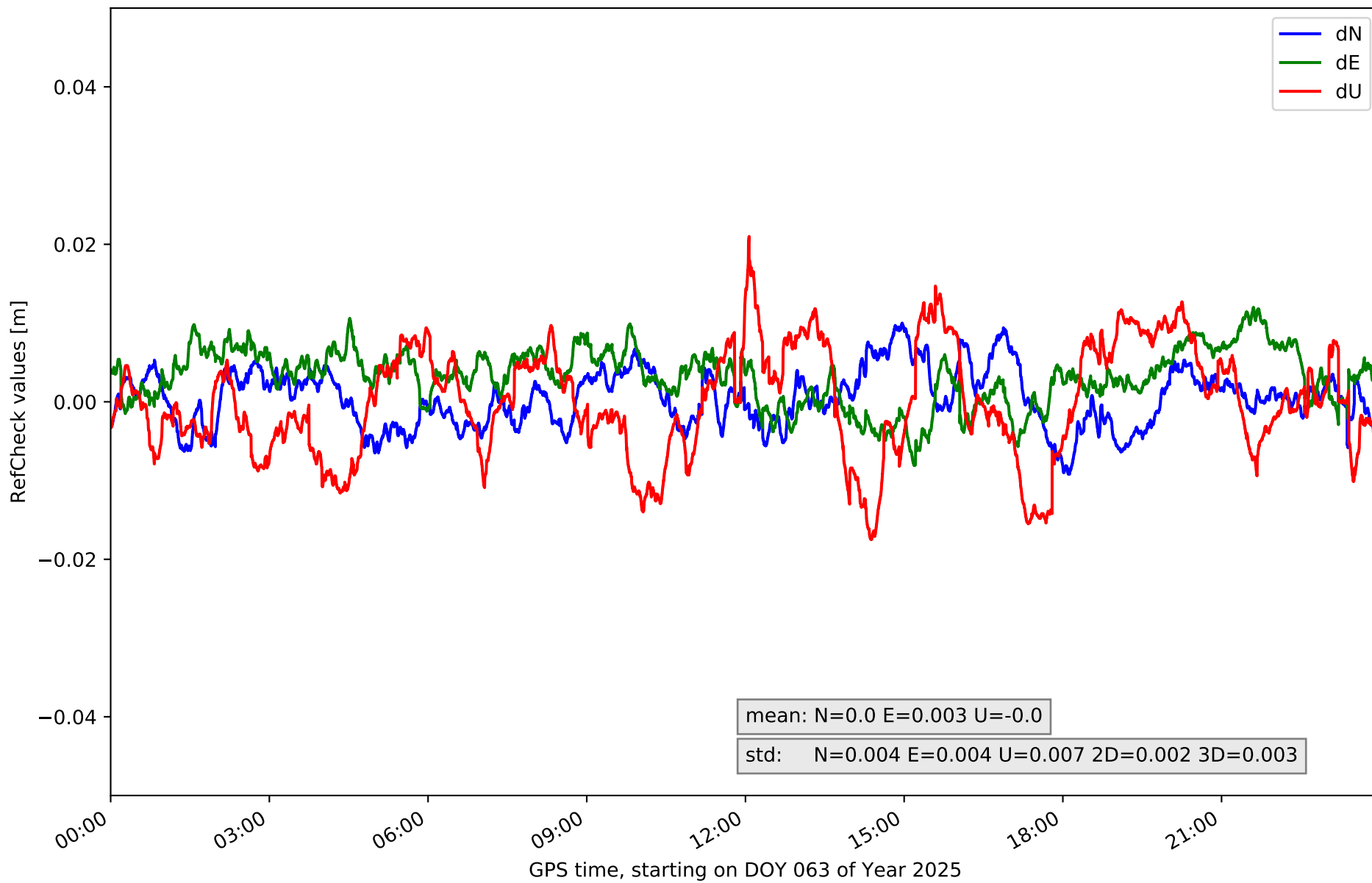
RefCheck for station MUNI in network NT15



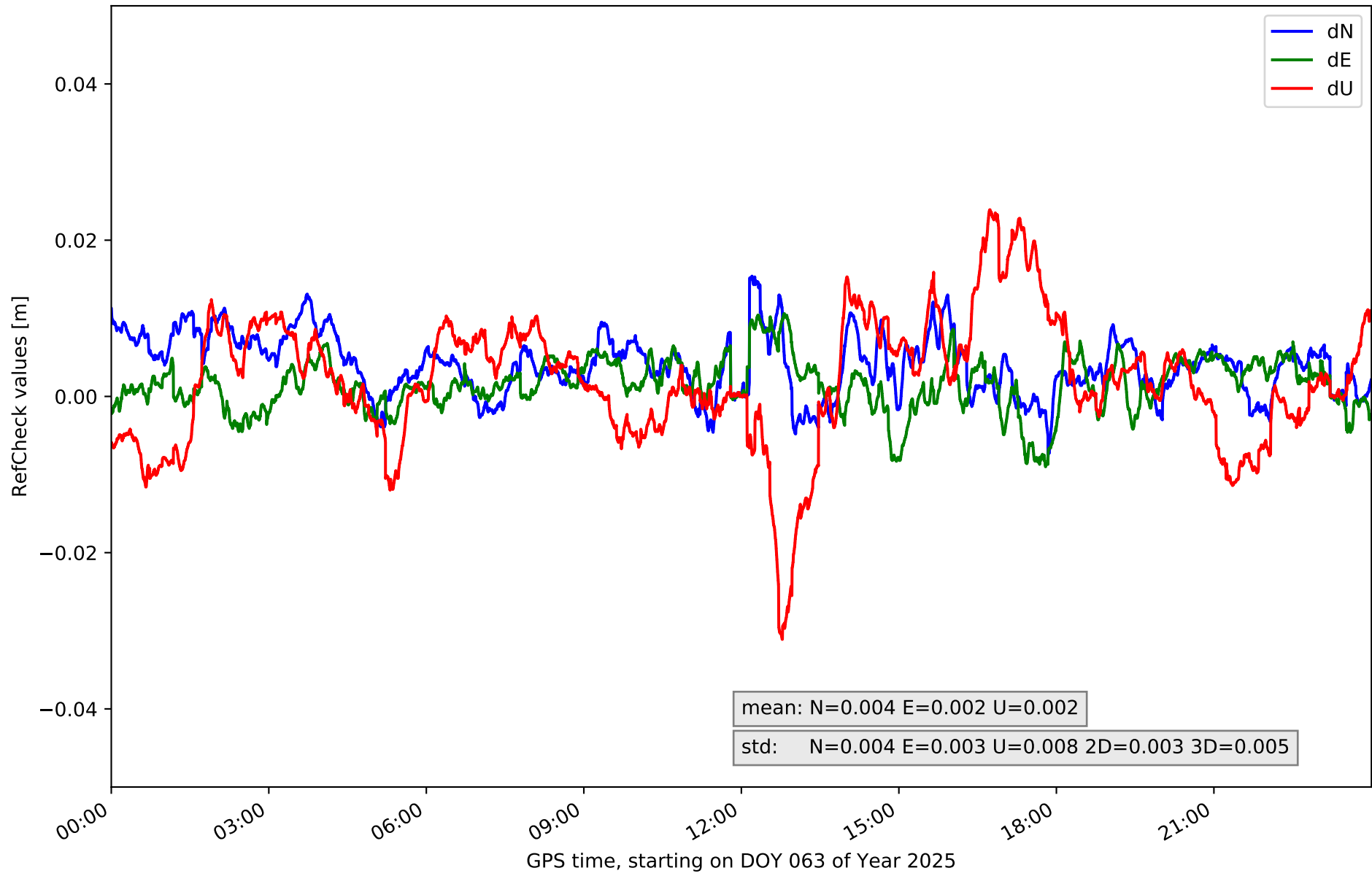
RefCheck for station QNTO in network NT15



RefCheck for station TERU in network NT15



RefCheck for station YEBE in network NT15



RefCheck values for network NT15

Station	Nmin	Nmax	Nstd	Emin	Emax	Estd	Umin	Umax	Ustd	std2D	std3D	#2D > 0.01	% 2D > 0.01	#3D > 0.02	% 3D > 0.02
ACIN	-0.001	0.014	0.002	-0.001	0.014	0.003	-0.015	0.015	0.006	0.003	0.003	5402	6.5	234	0.3
AGRD	-0.008	0.013	0.004	-0.011	0.008	0.004	-0.016	0.029	0.009	0.003	0.005	4637	5.6	6357	7.6
ALC1	-0.009	0.013	0.003	-0.006	0.009	0.003	-0.039	0.018	0.007	0.003	0.005	2723	3.3	1469	1.8
ALIA	-0.002	0.013	0.002	-0.007	0.009	0.003	-0.014	0.024	0.007	0.002	0.004	385	0.5	1620	1.9
ARAS	-0.008	0.006	0.002	-0.011	0.009	0.004	-0.024	0.007	0.007	0.002	0.005	341	0.4	2180	2.6
BERG	-0.01	0.006	0.003	-0.012	0.004	0.003	-0.019	0.017	0.006	0.002	0.003	2943	3.5	523	0.6
CATY	-0.019	0.017	0.006	-0.021	0.011	0.006	-0.045	0.031	0.012	0.005	0.009	26903	32.3	15932	19.1
CRNA	-0.021	0.022	0.007	-0.019	0.017	0.006	-0.026	0.048	0.013	0.004	0.007	26512	31.8	17306	20.8
MOLI	-0.014	-0.0	0.002	-0.006	0.009	0.002	-0.019	0.009	0.006	0.002	0.003	33203	39.9	96	0.1
MUNI	-0.019	0.016	0.006	-0.013	0.023	0.006	-0.025	0.048	0.013	0.005	0.009	18291	22.0	15452	18.6
QNT0	-0.01	0.006	0.003	-0.012	0.006	0.003	-0.019	0.022	0.008	0.003	0.004	3361	4.0	322	0.4
TERU	-0.009	0.01	0.004	-0.008	0.012	0.004	-0.018	0.021	0.007	0.002	0.003	2386	2.9	51	0.1
YEBE	-0.008	0.015	0.004	-0.009	0.011	0.003	-0.031	0.024	0.008	0.003	0.005	8115	9.7	3480	4.2
Mean	-0.011	0.012	0.004	-0.01	0.011	0.004	-0.024	0.024	0.008	0.003	0.005	10400.2	12.5	5001.7	6.0
Min/Max	-0.021	0.022	0.007	-0.021	0.023	0.006	-0.045	0.048	0.013	0.005	0.009	33203	39.9	17306	20.8

fixing statistic for network NT15

fixing percentage of	all GNSS	G	R	E	C
using threshold 0.3	92.0	92.0	91.6	93.6	90.6
considering satellites with dual-frequency fixed	89.9	90.3	88.5	91.5	88.9
considering all signals separately	90.0	90.2	88.5	91.8	88.6