

summary for network NT14

timeperiod chosen: from 2025-02-26-00:00:00 until 2025-02-26-23:59:59

average update rate (durations larger than 15 seconds considered as observation gap): 1.1 seconds

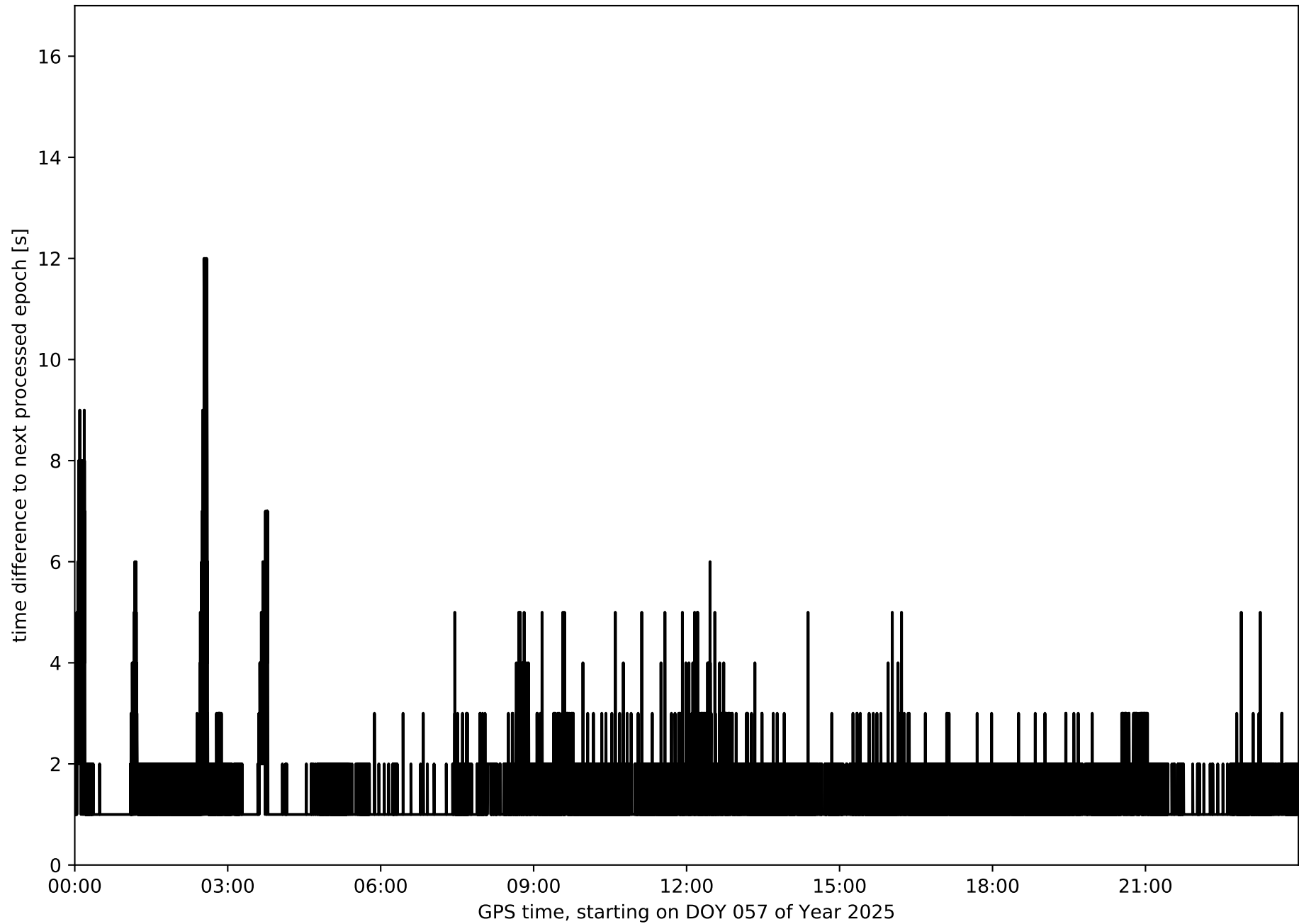
average fixing percentage with threshold set to 0.3: 92.3 percent

stations available: 13 of 13

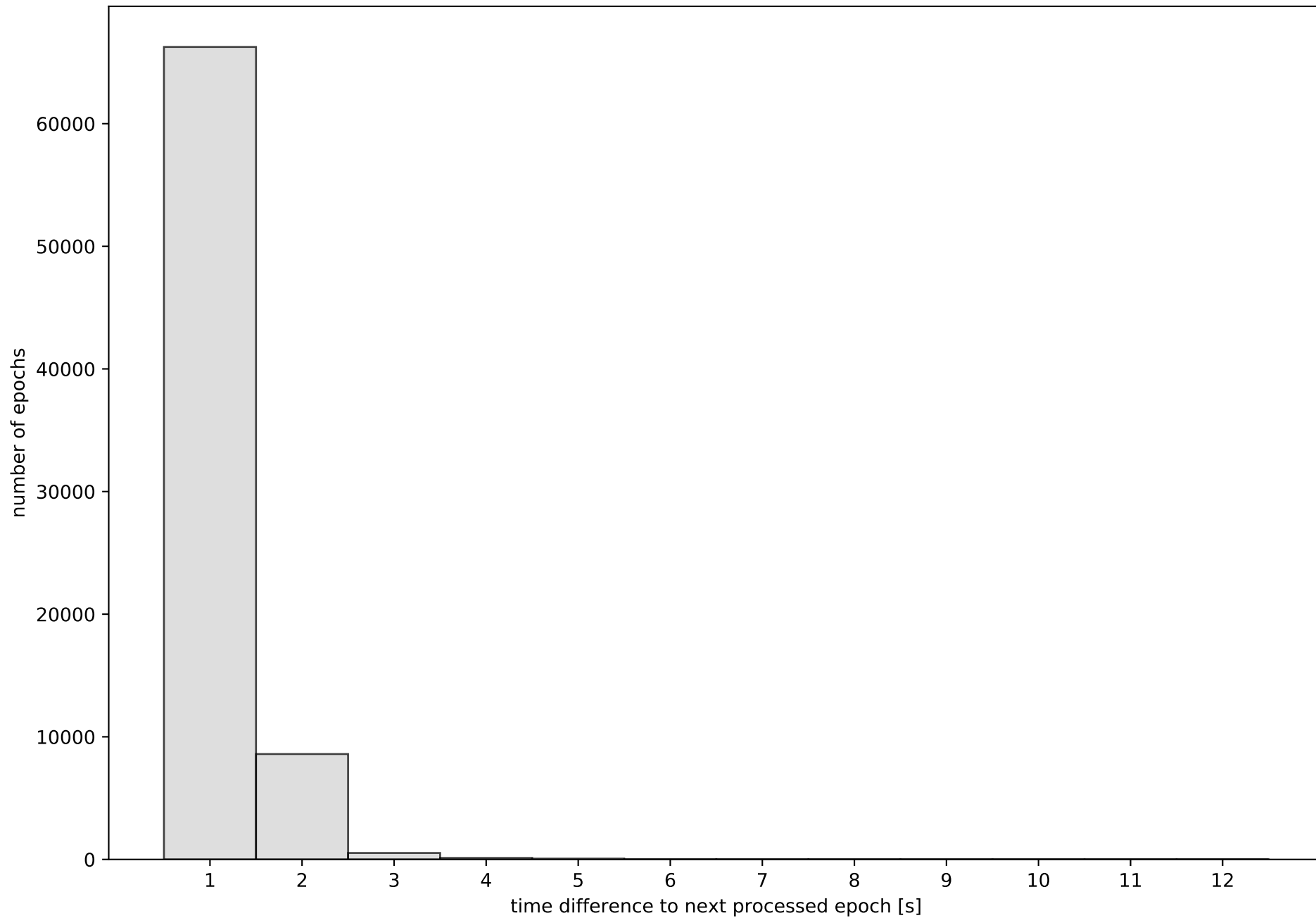
station information:

station ABAN:	antenna: LEIAR25	LEIT	receiver: LEICA GR30	height: 207.768
station AIO2:	antenna: GPPNULLANTENNA	NONE	receiver: LEICA GR50	height: 662.859
station ALAC:	antenna: LEIAR25.R3	LEIT	receiver: LEICA GR50	height: 63.367
station ALCO:	antenna: GPPNULLANTENNA	NONE	receiver: LEICA GR30	height: 640.121
station BORR:	antenna: GPPNULLANTENNA	NONE	receiver: TRIMBLE NETR9	height: 73.019
station DENI:	antenna: GPPNULLANTENNA	NONE	receiver: LEICA GR10	height: 69.735
station IEJA:	antenna: GPPNULLANTENNA	NONE	receiver: LEICA GR50	height: 1358.249
station PENI:	antenna: LEIAR25.R4	LEIT	receiver: LEICA GR25	height: 108.648
station SARR:	antenna: GPPNULLANTENNA	NONE	receiver: LEICA GR50	height: 1041.631
station TOR0:	antenna: GPPNULLANTENNA	NONE	receiver: LEICA GR30	height: 64.679
station UTIE:	antenna: GPPNULLANTENNA	NONE	receiver: LEICA GRX1200GGPRO	height: 799.741
station VALE:	antenna: LEIAR25.R3	LEIT	receiver: LEICA GR50	height: 80.598
station VJOI:	antenna: GPPNULLANTENNA	NONE	receiver: TRIMBLE NETR9	height: 117.157

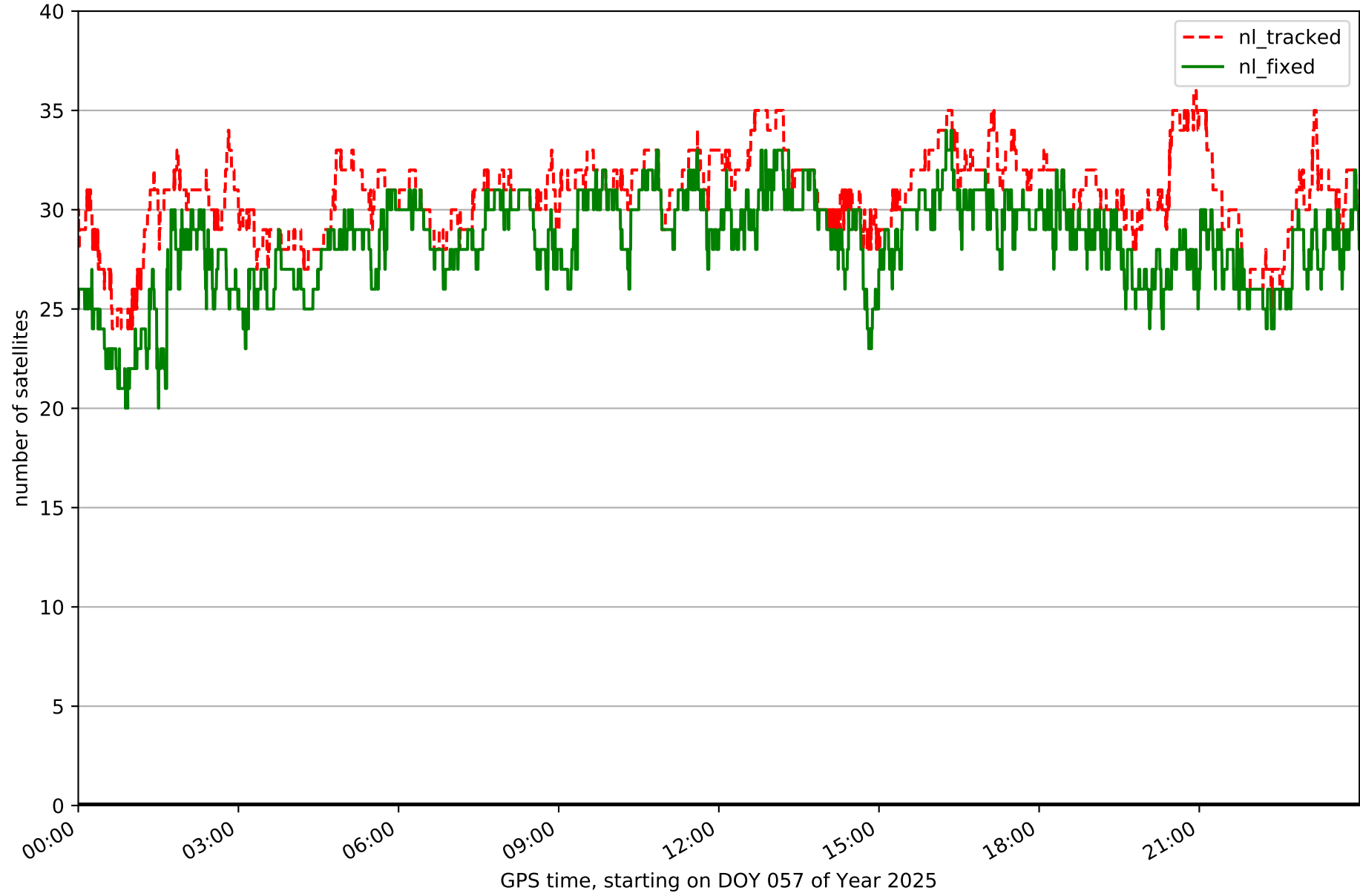
Processing rate in network NT14



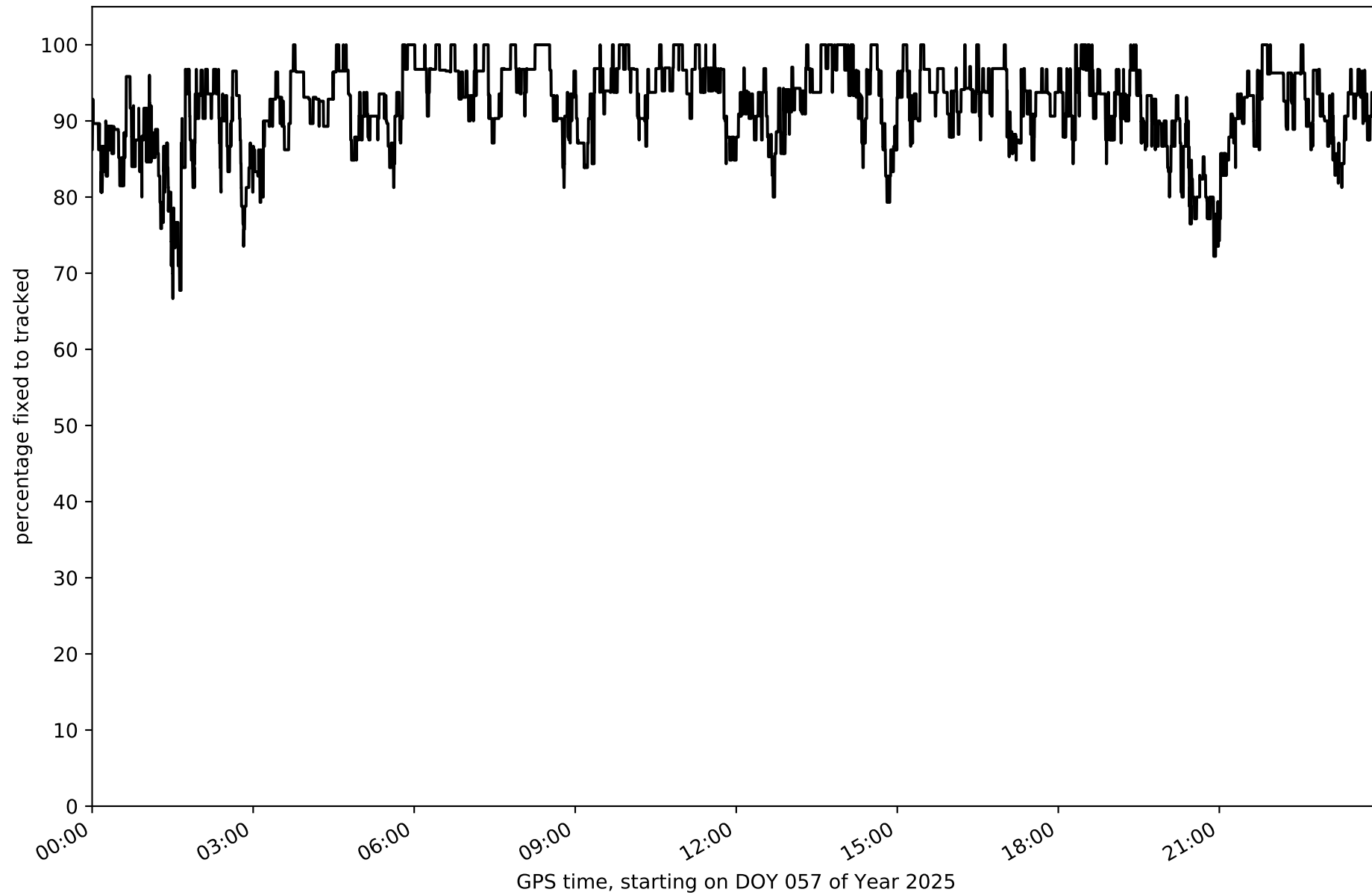
Histogram of the processing rate in network NT14 (durations larger 15 seconds neglected)



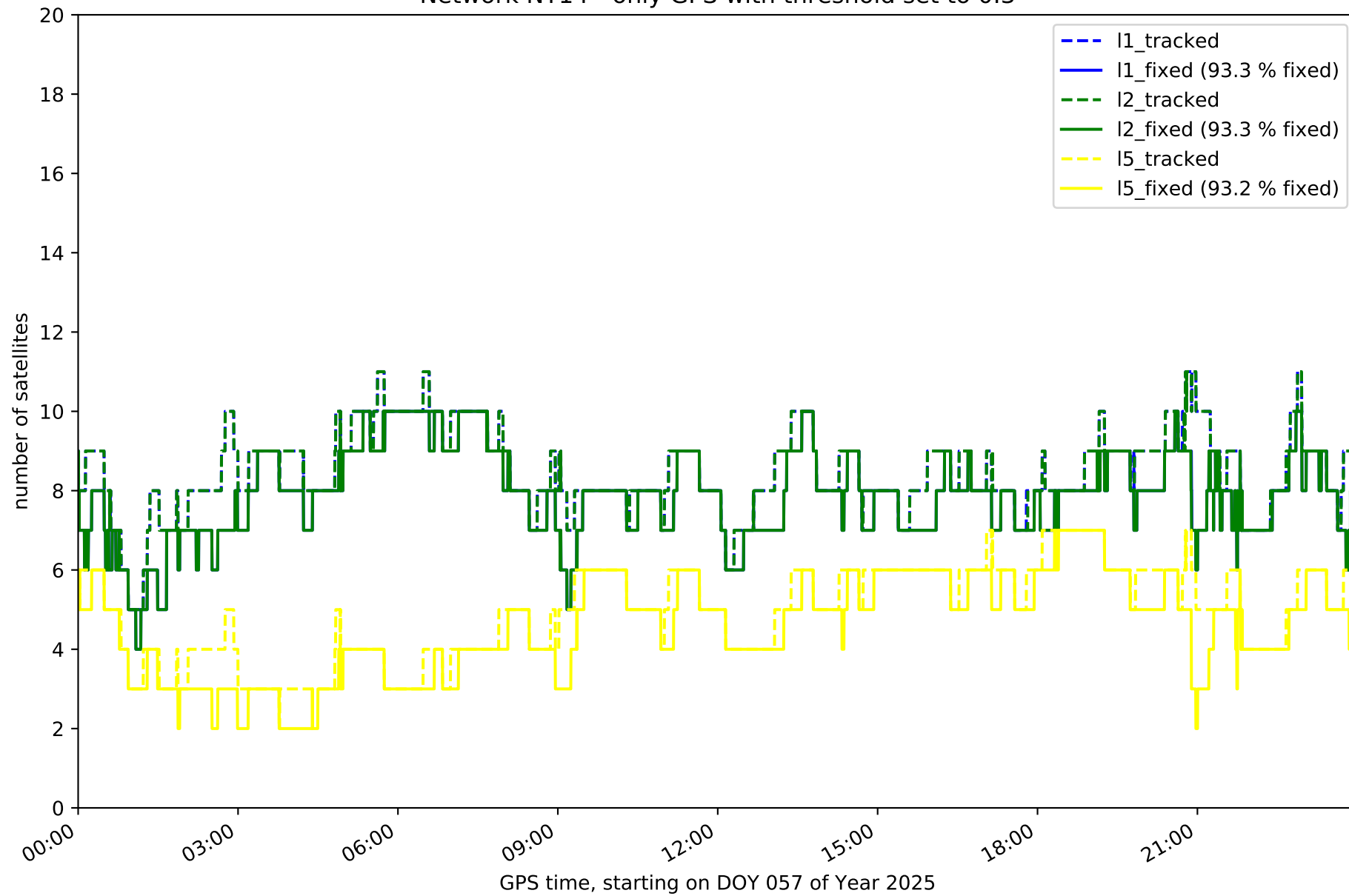
Network NT14 with threshold set to 0.3



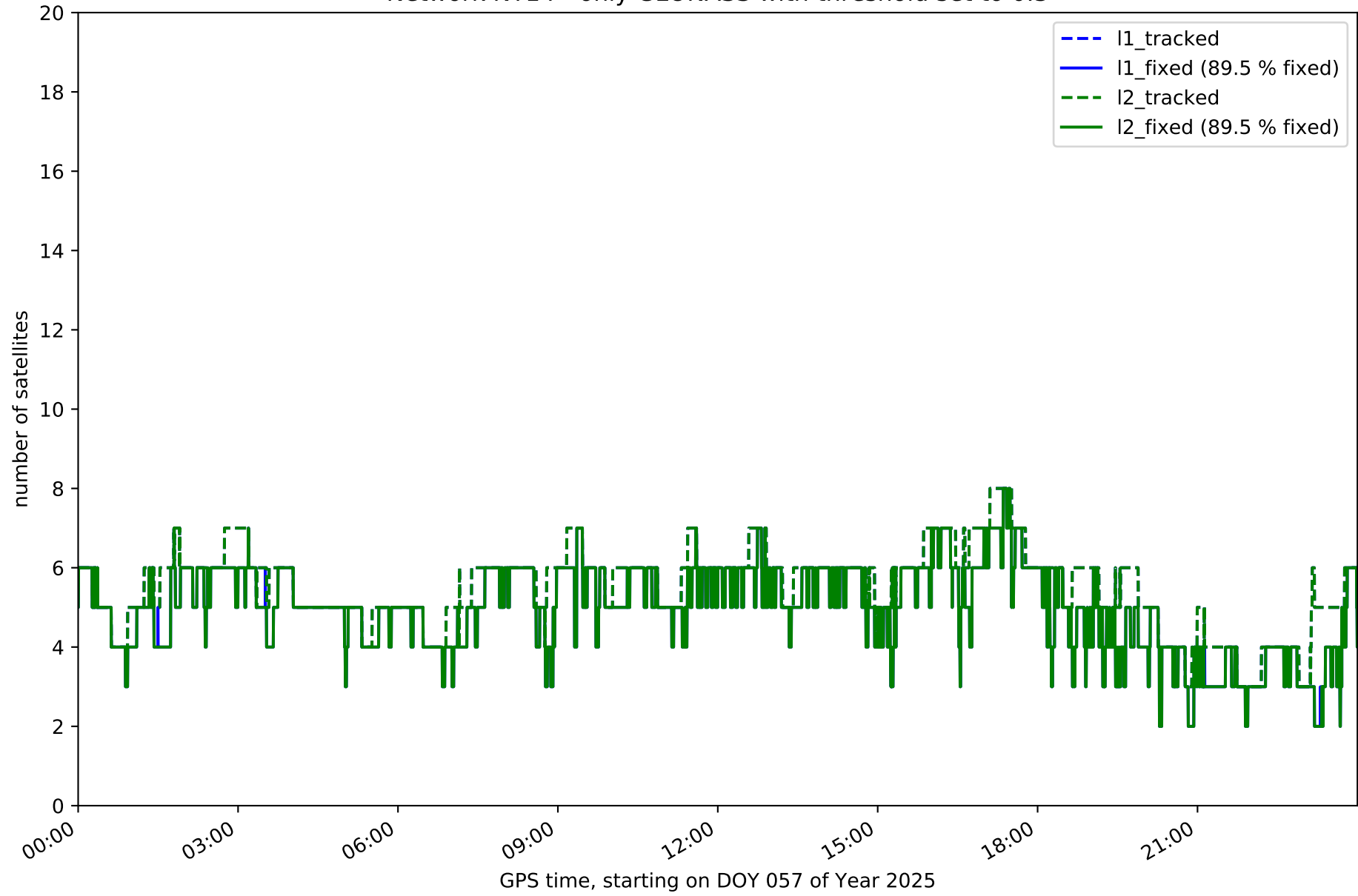
Fixing percentage of satellites in network NT14 with threshold set to 0.3



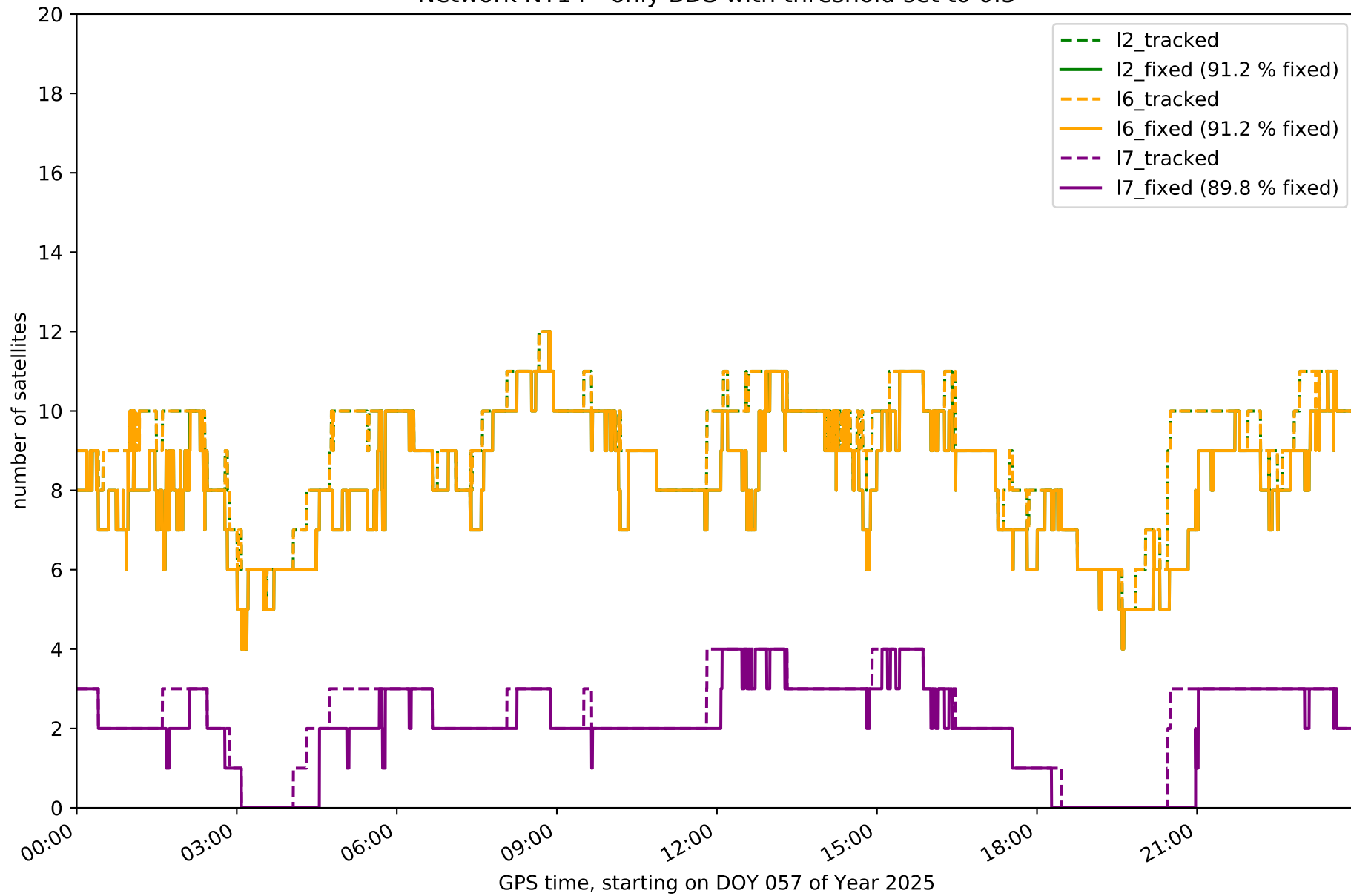
Network NT14 - only GPS with threshold set to 0.3



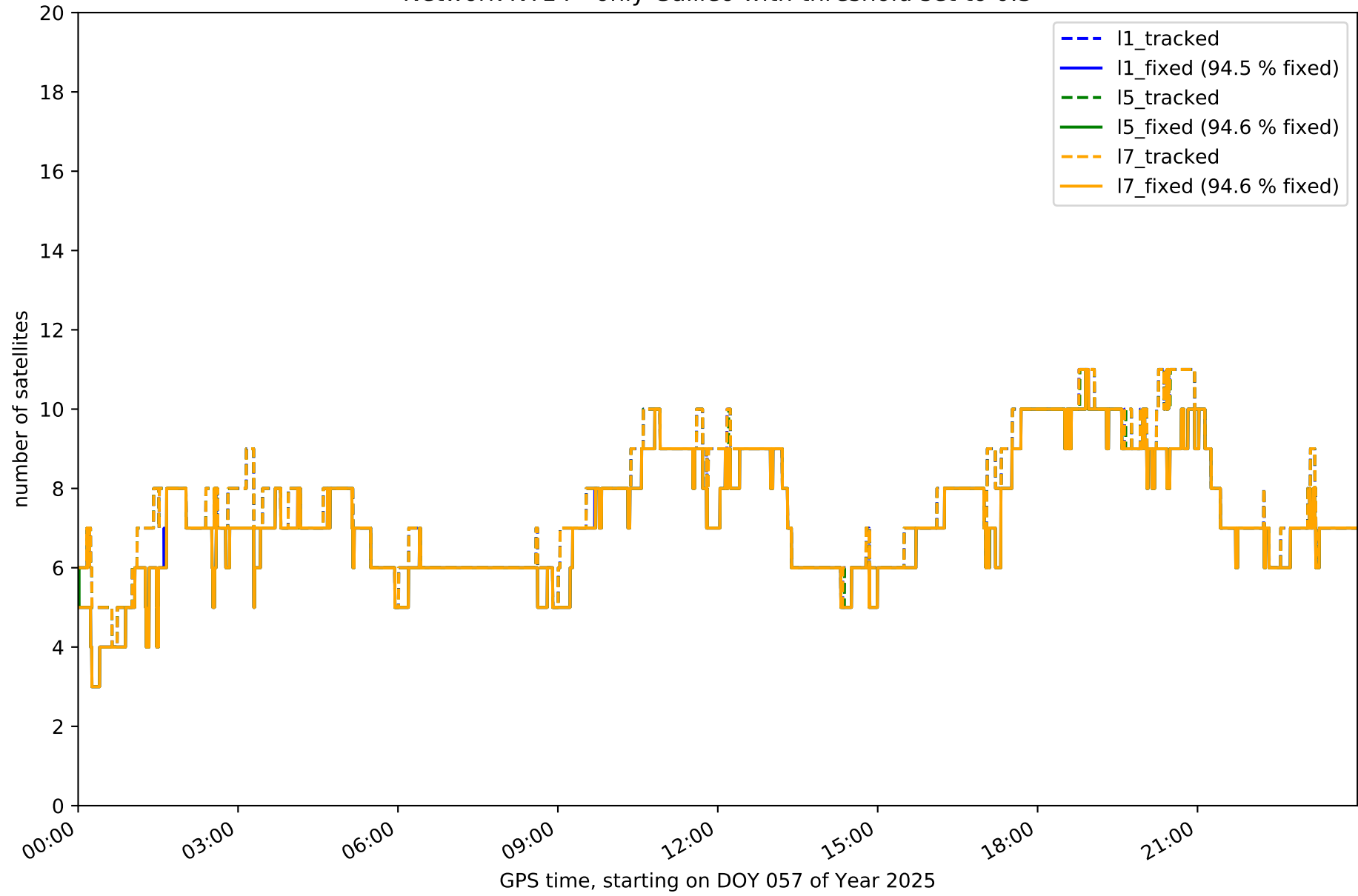
Network NT14 - only GLONASS with threshold set to 0.3



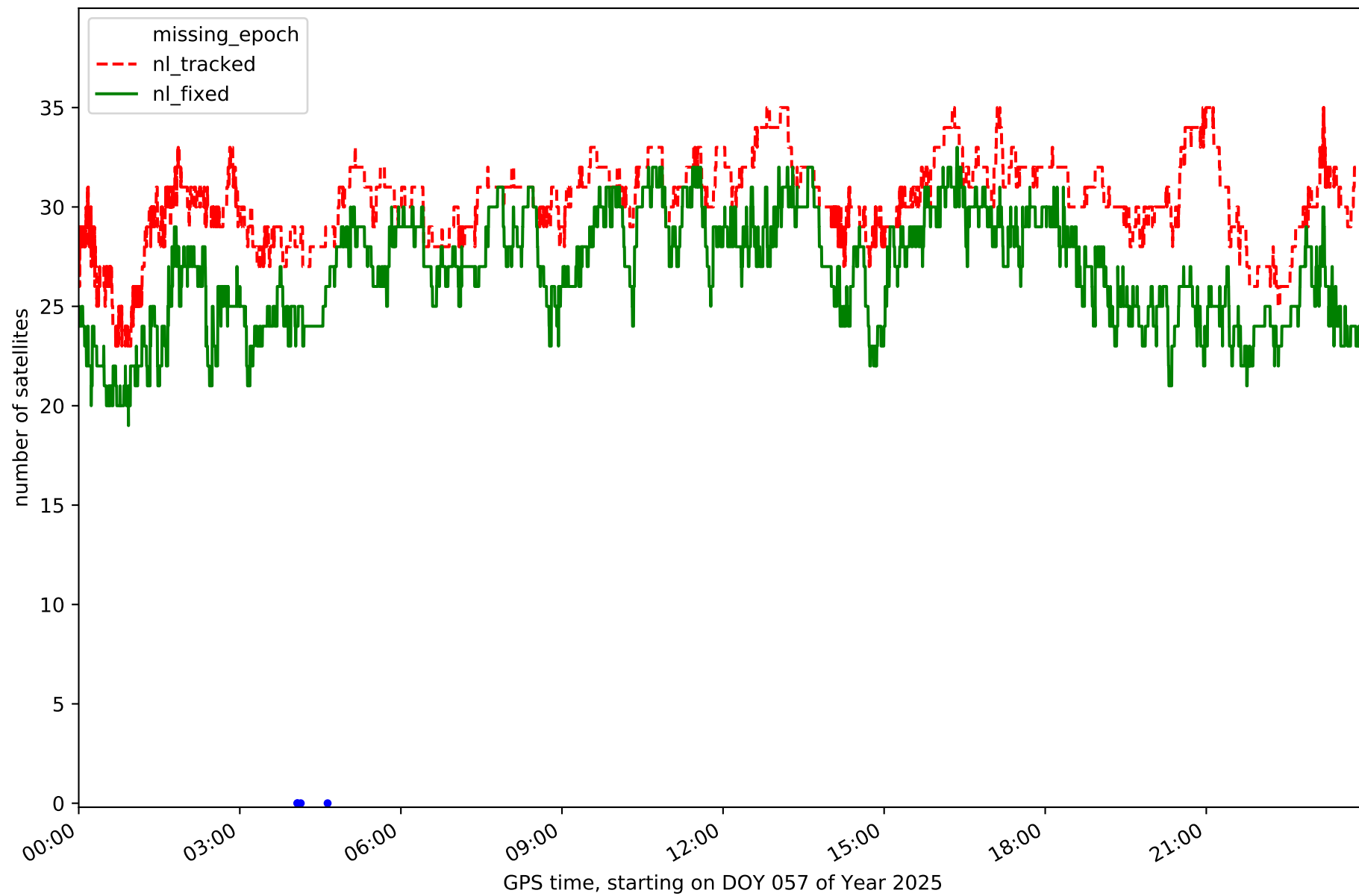
Network NT14 - only BDS with threshold set to 0.3



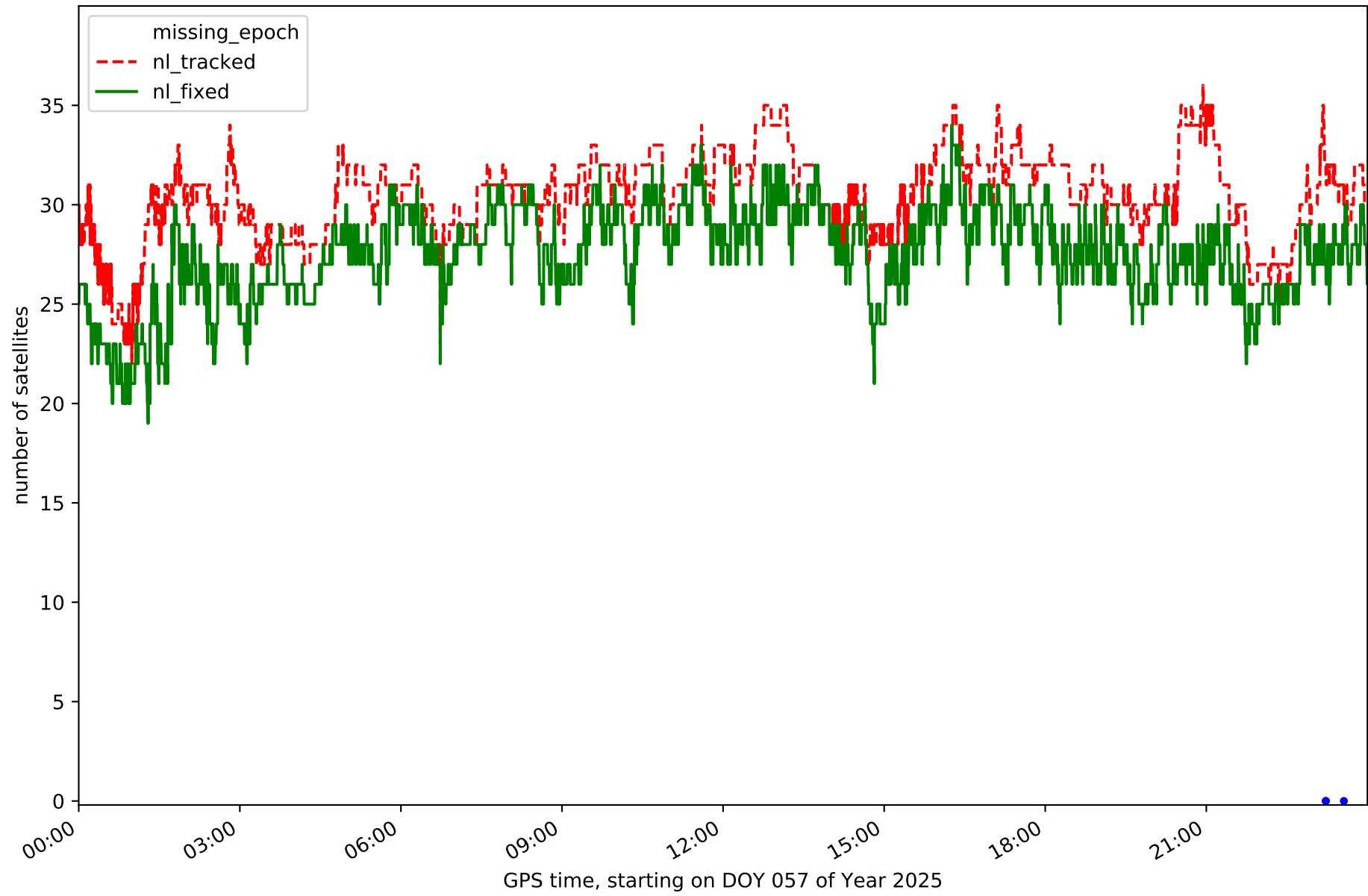
Network NT14 - only Galileo with threshold set to 0.3



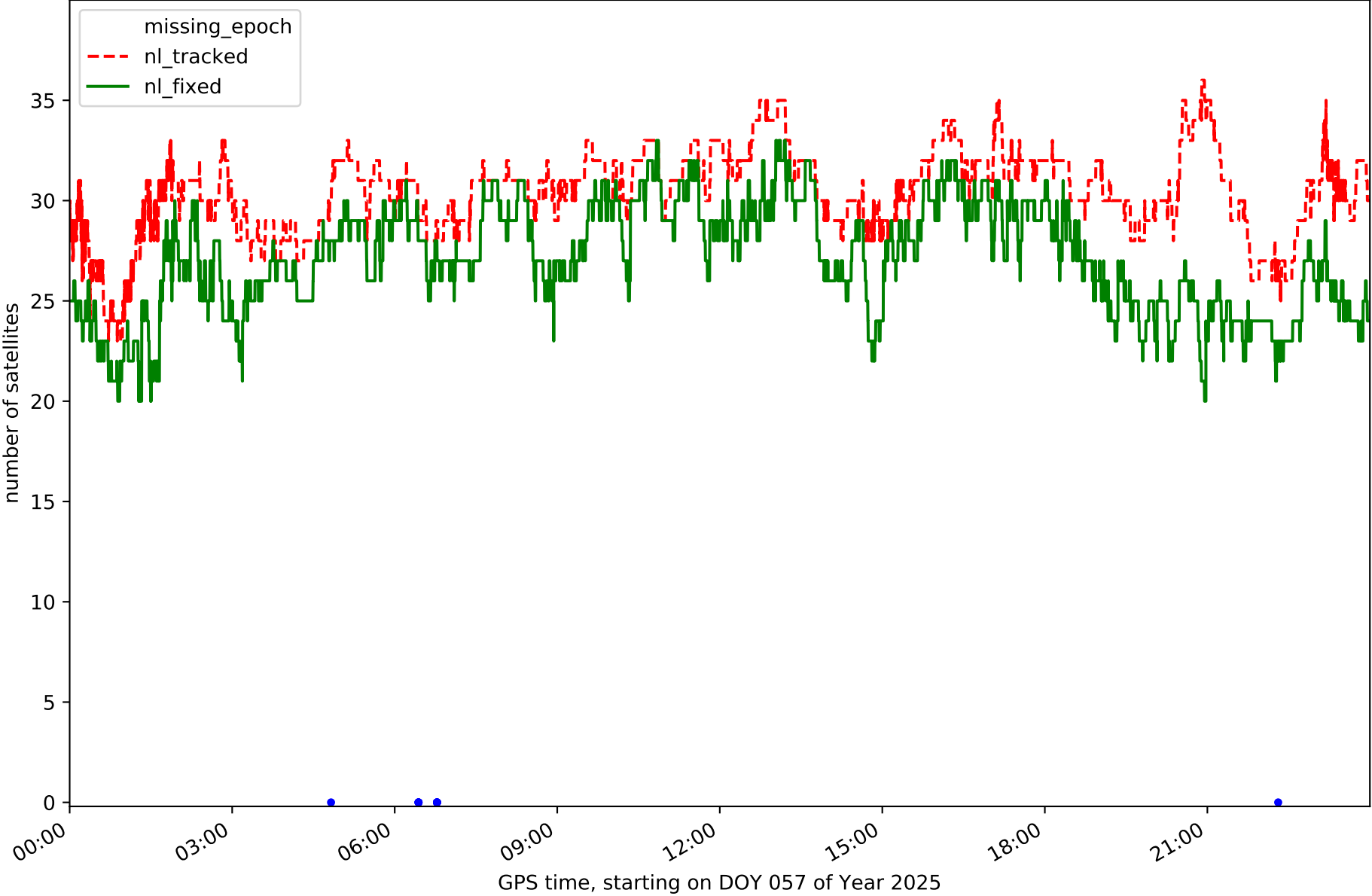
Station ABAN in network NT14



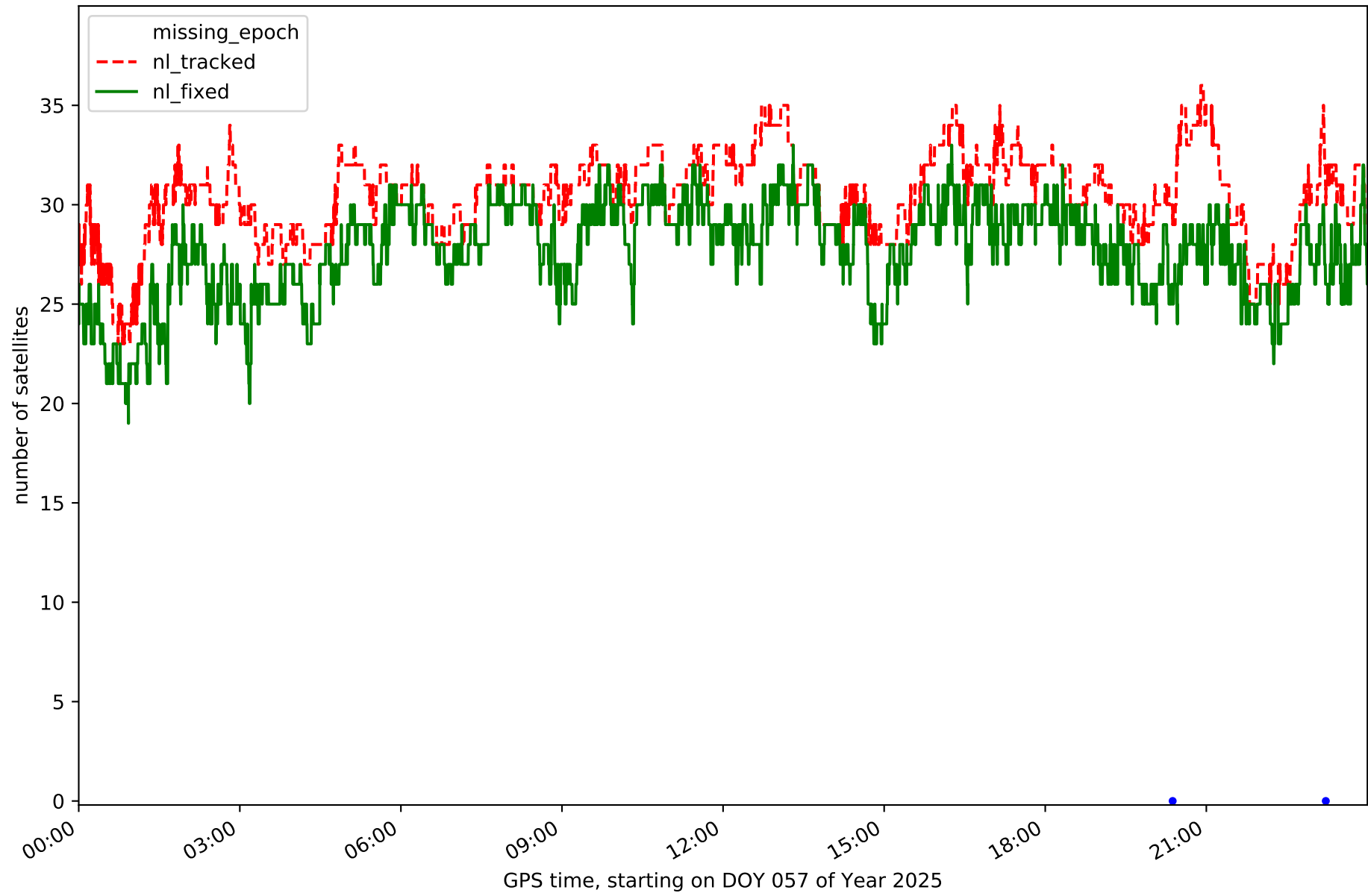
Station AIO2 in network NT14



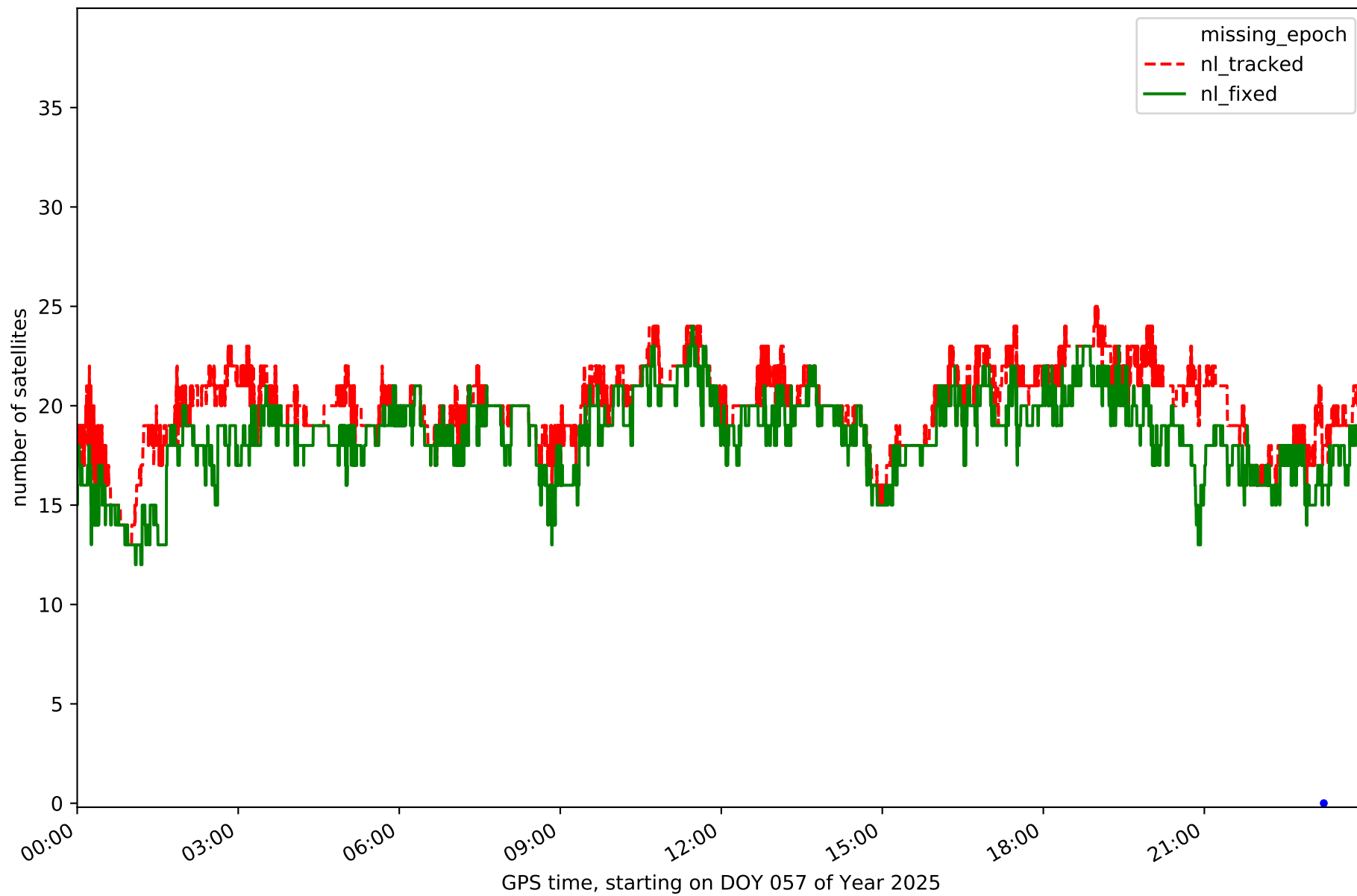
Station ALAC in network NT14



Station ALCO in network NT14



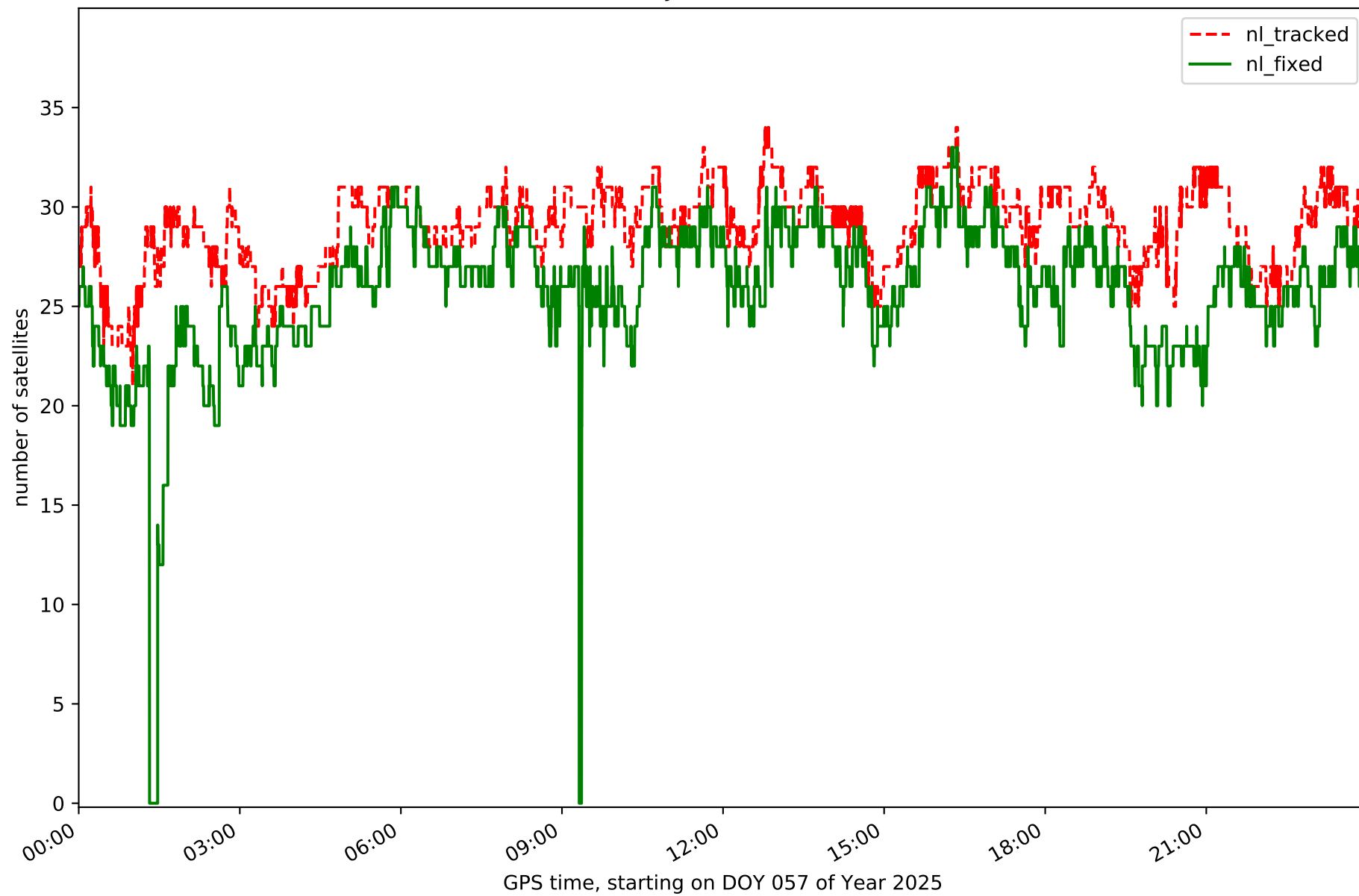
Station BORR in network NT14



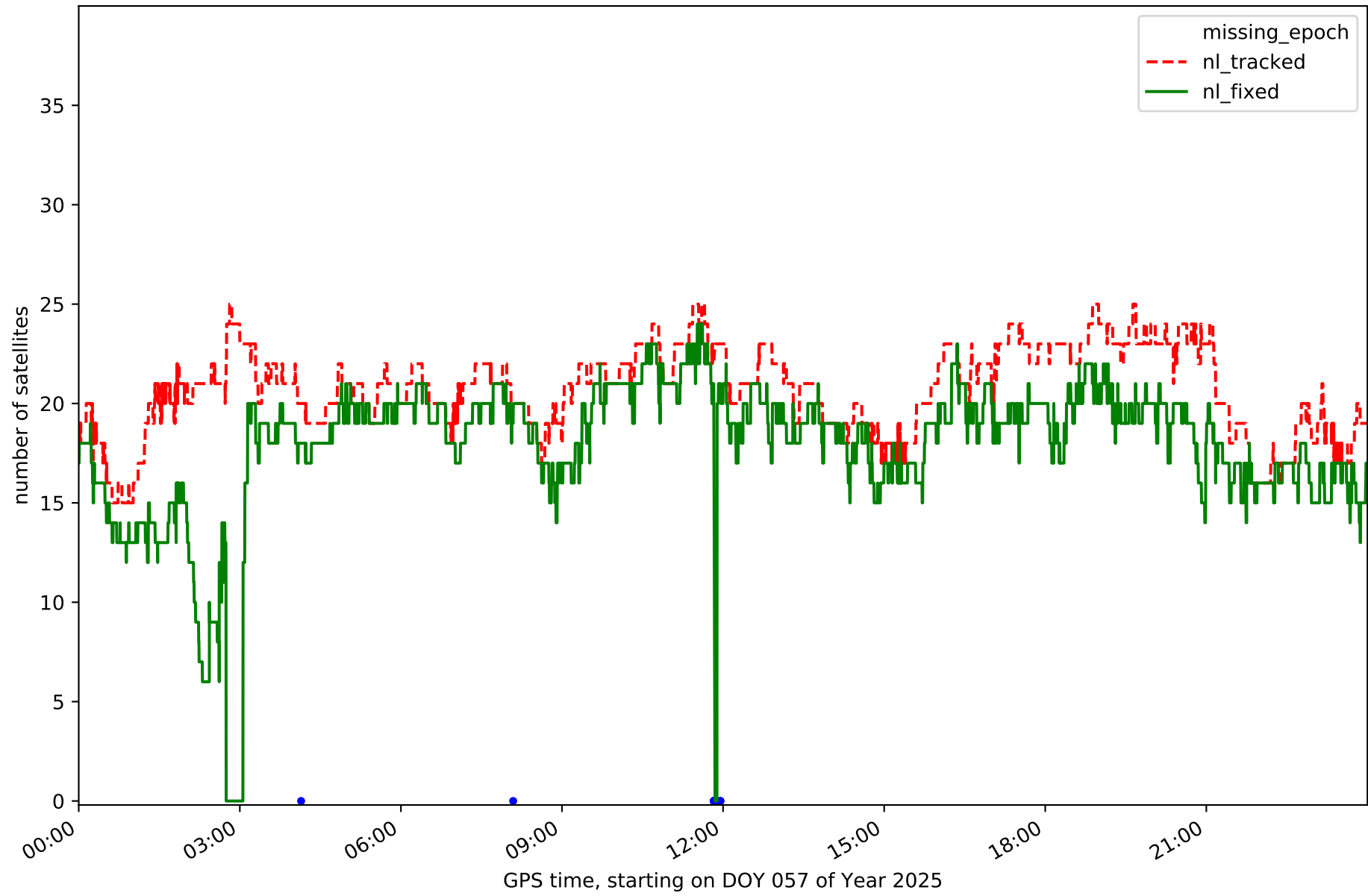
Station DENI in network NT14



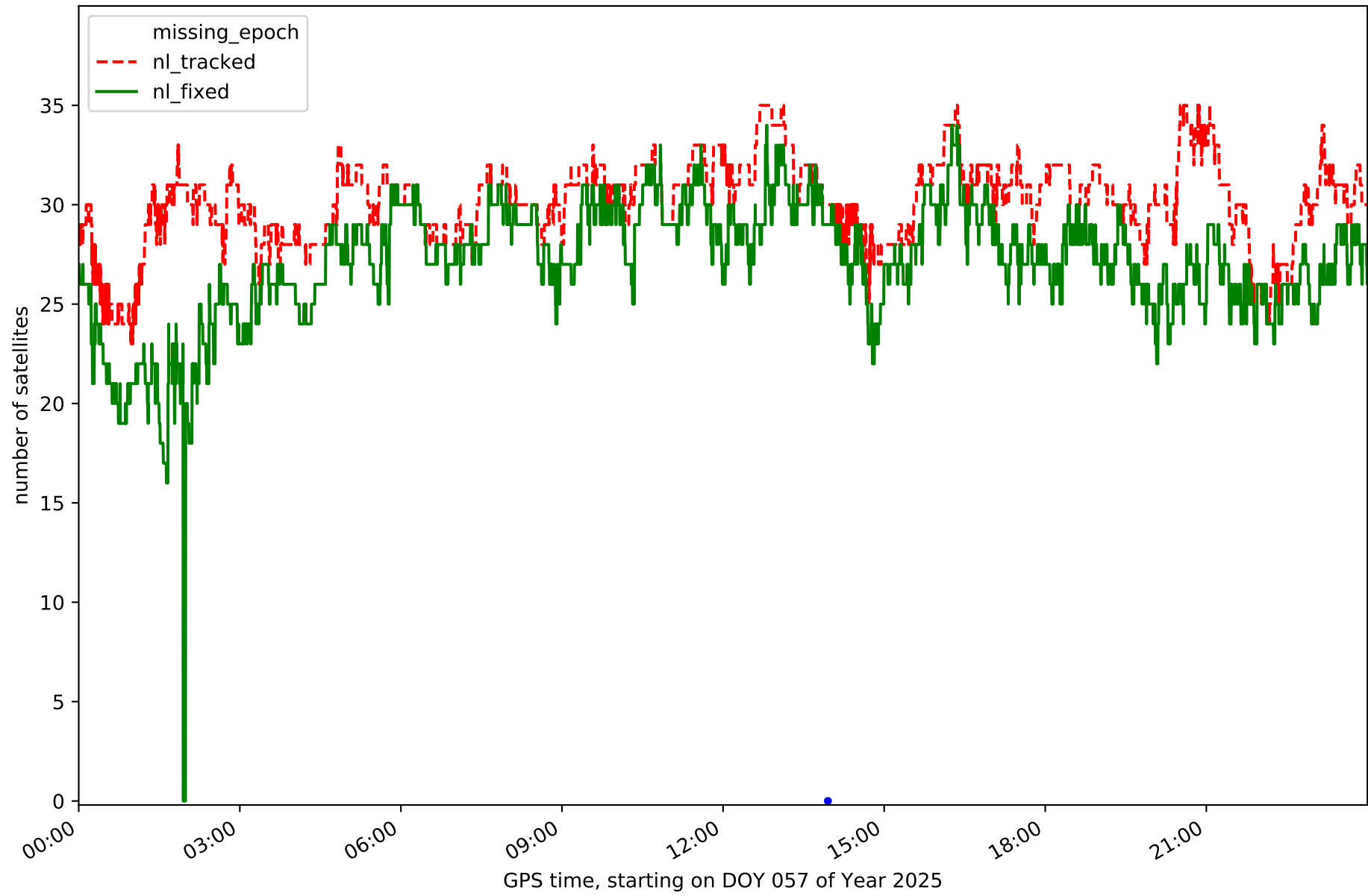
Station IEJA in network NT14



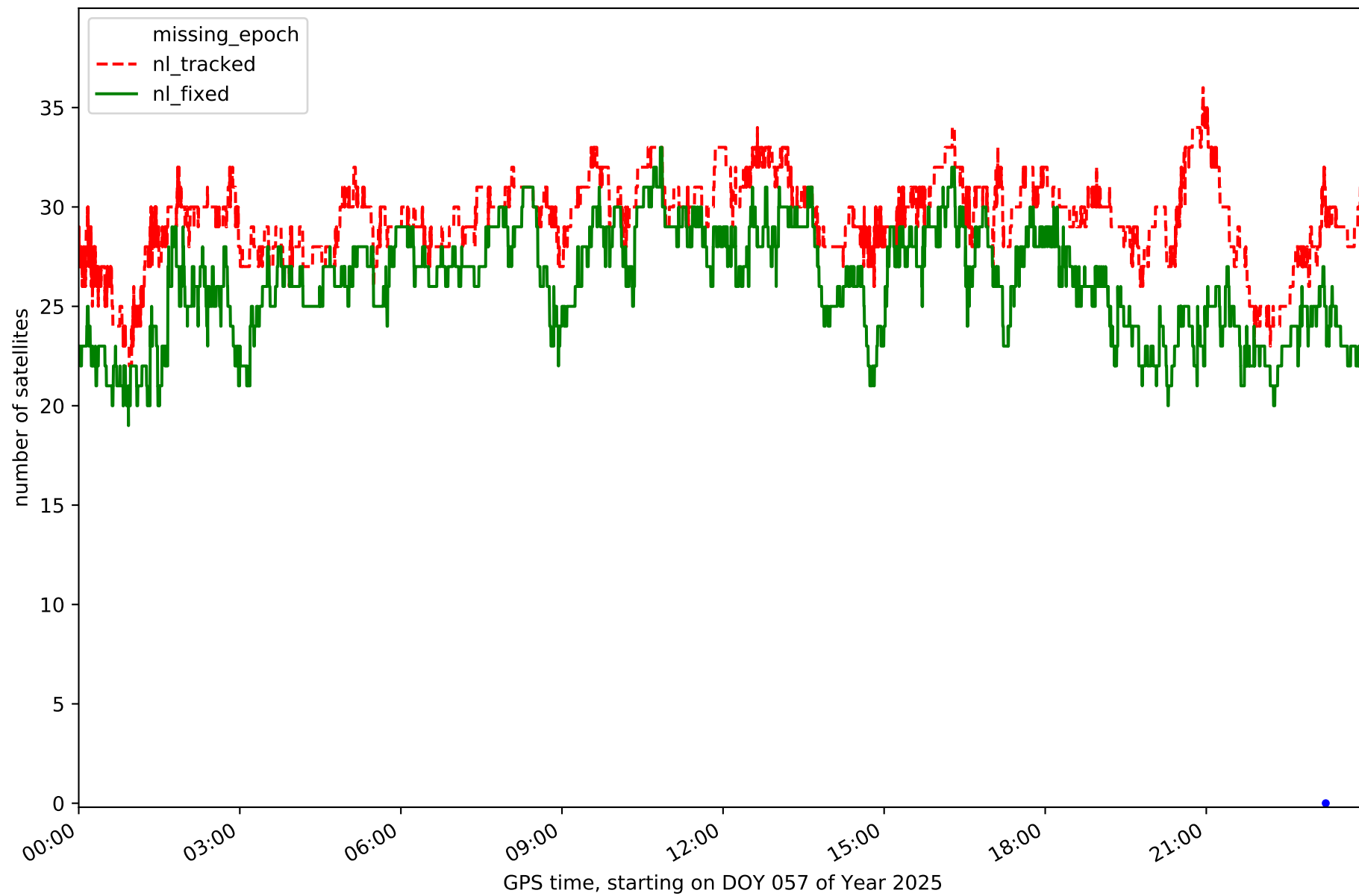
Station PENI in network NT14



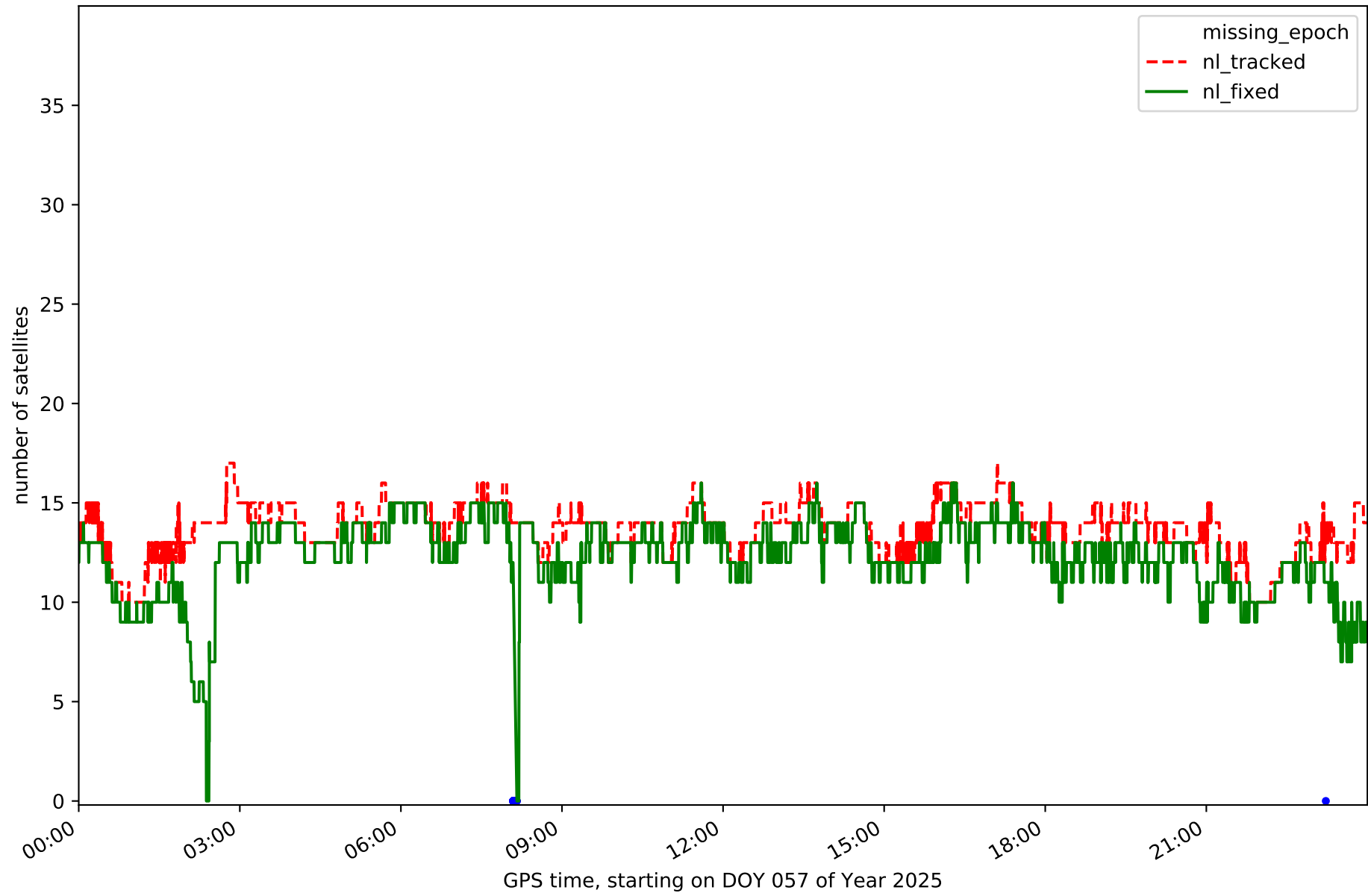
Station SARR in network NT14



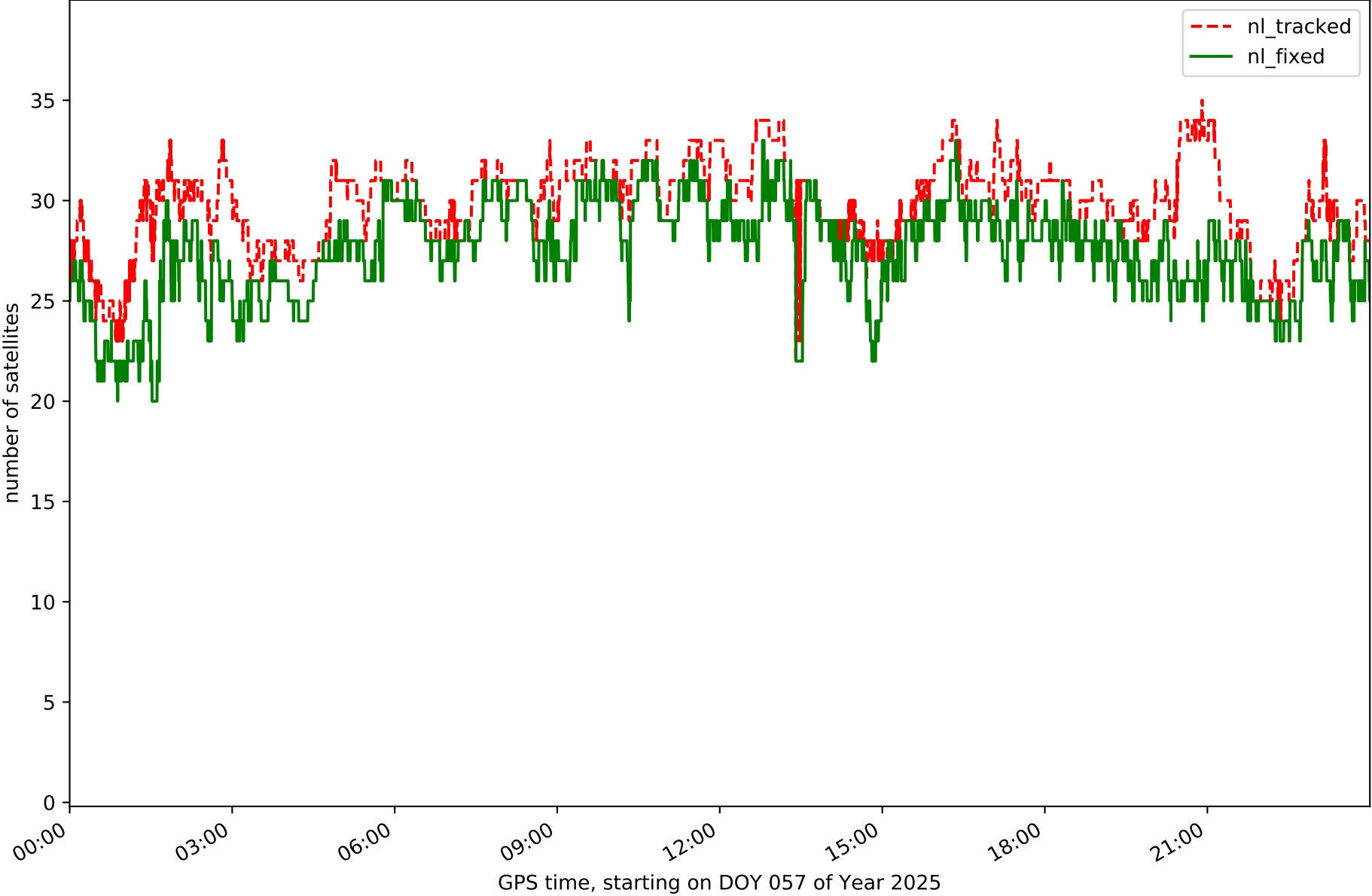
Station TOR0 in network NT14



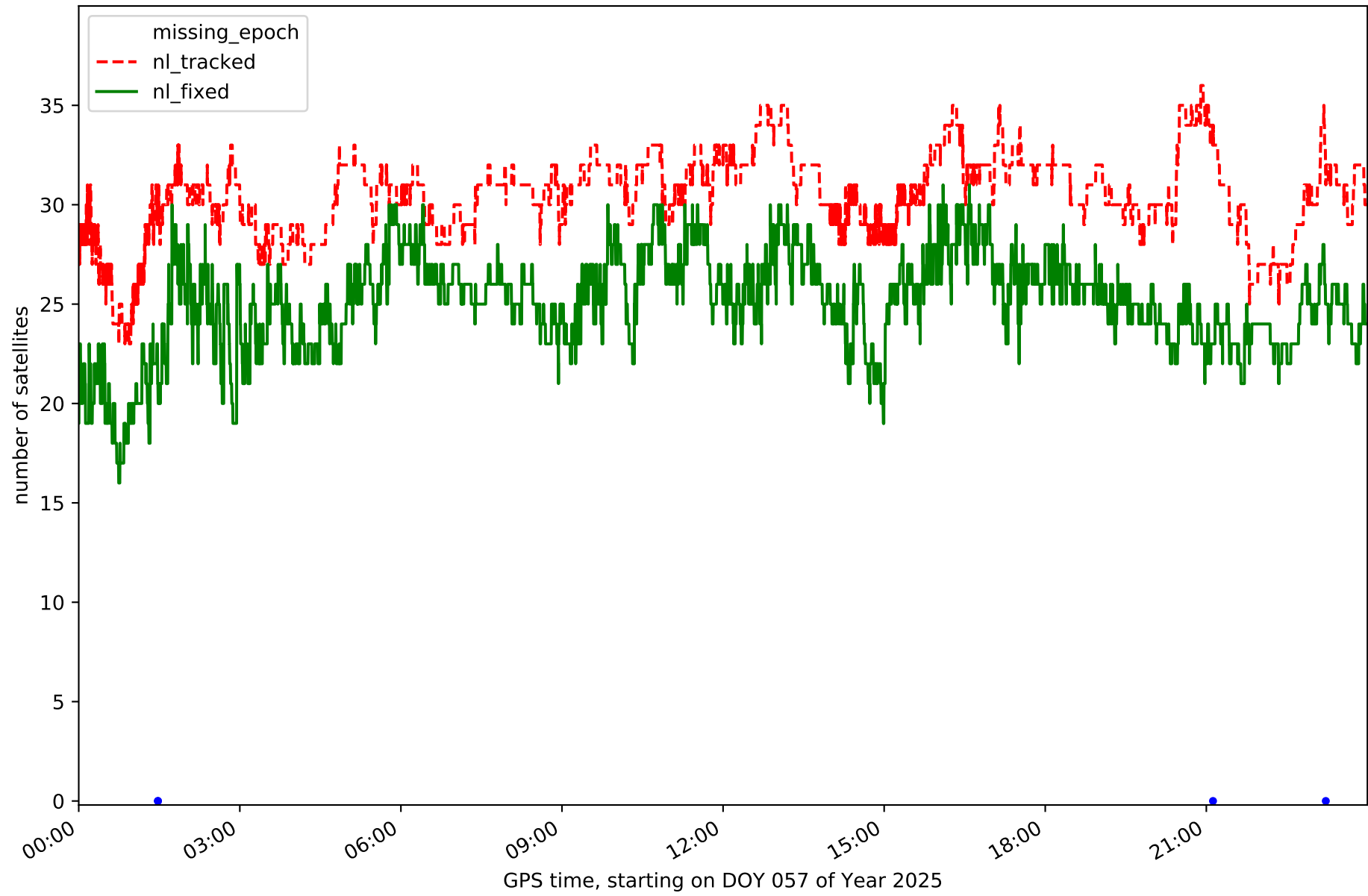
Station UTIE in network NT14



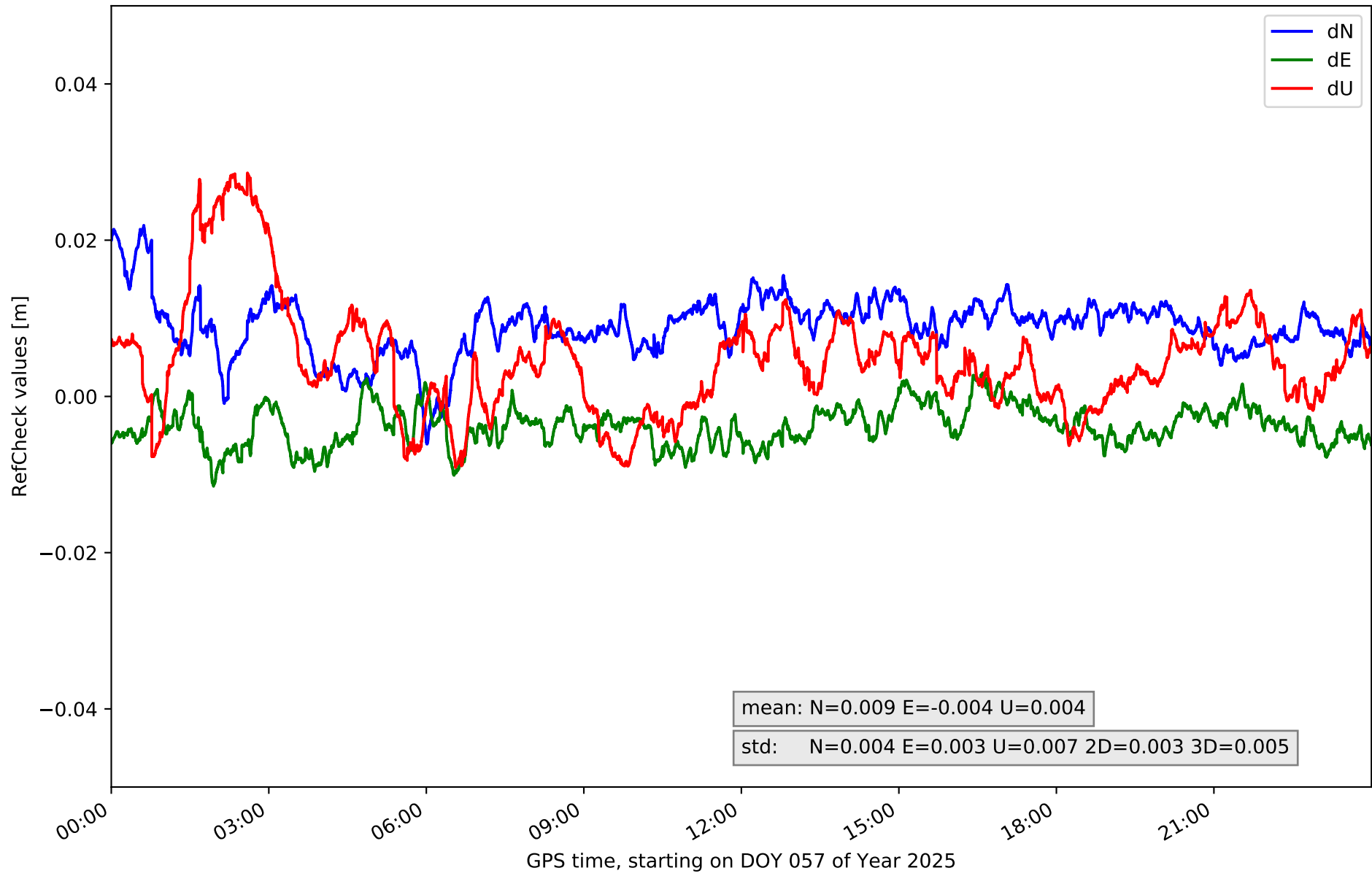
Station VALE in network NT14



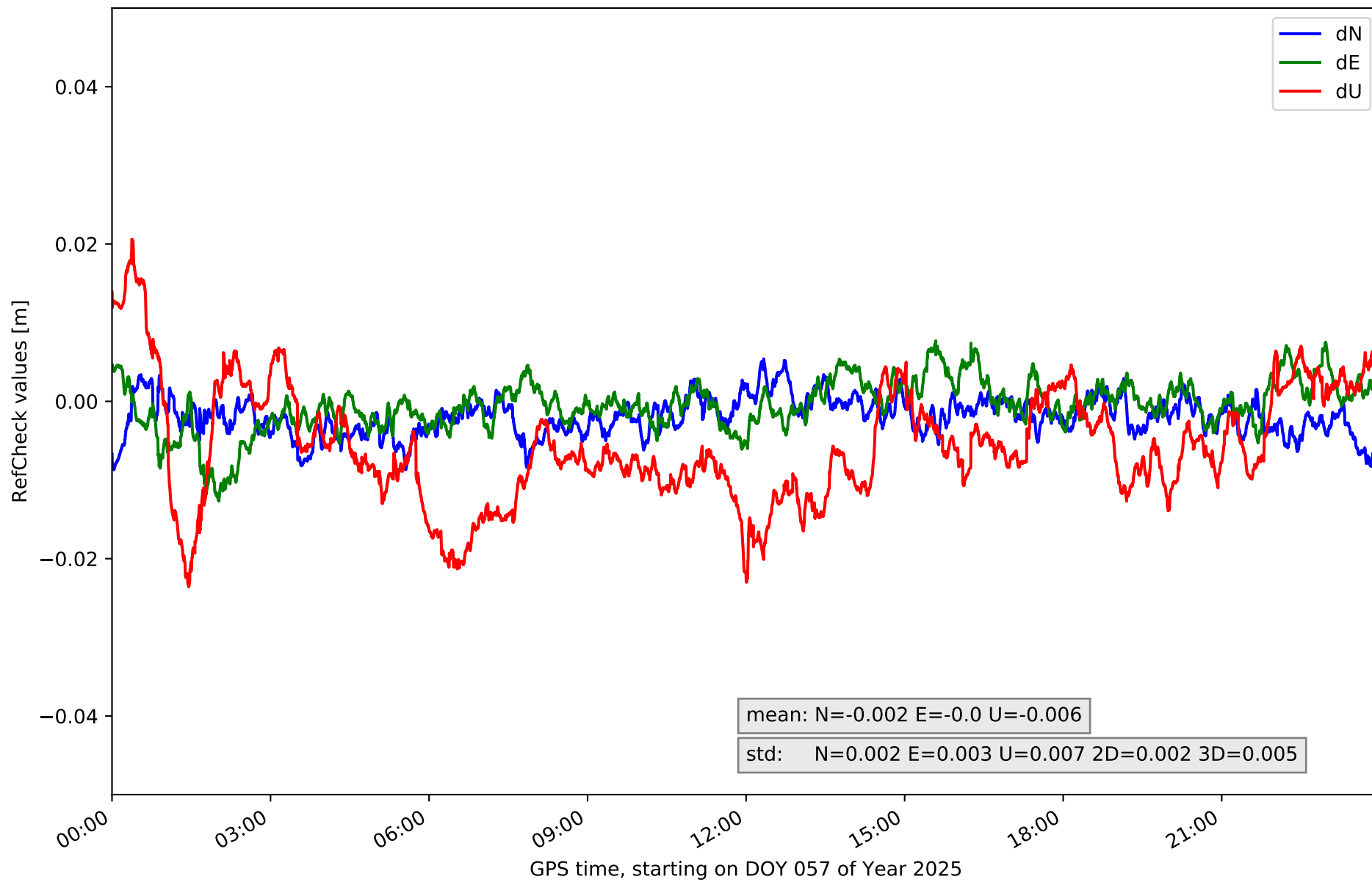
Station VJOI in network NT14



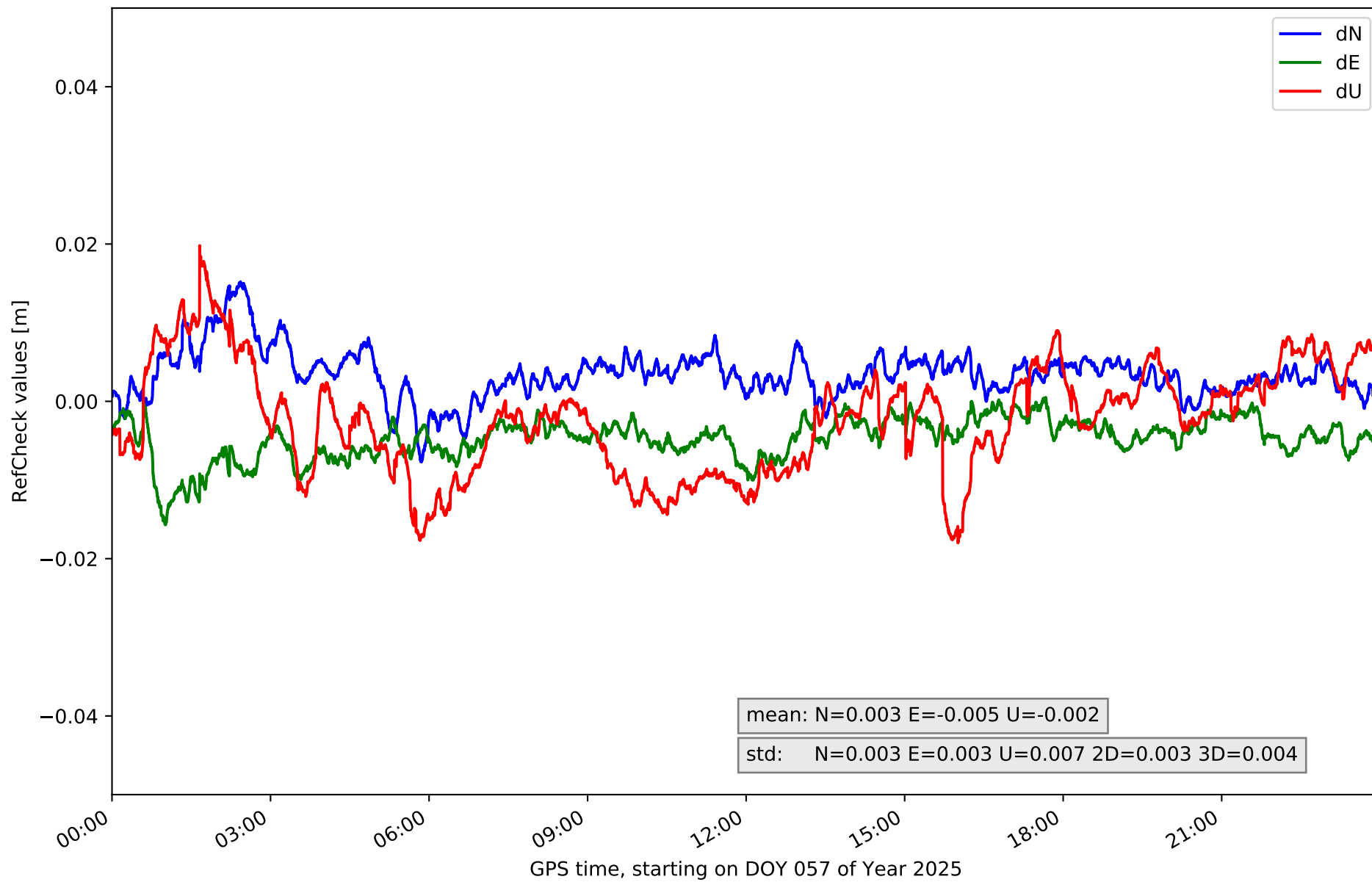
RefCheck for station ABAN in network NT14



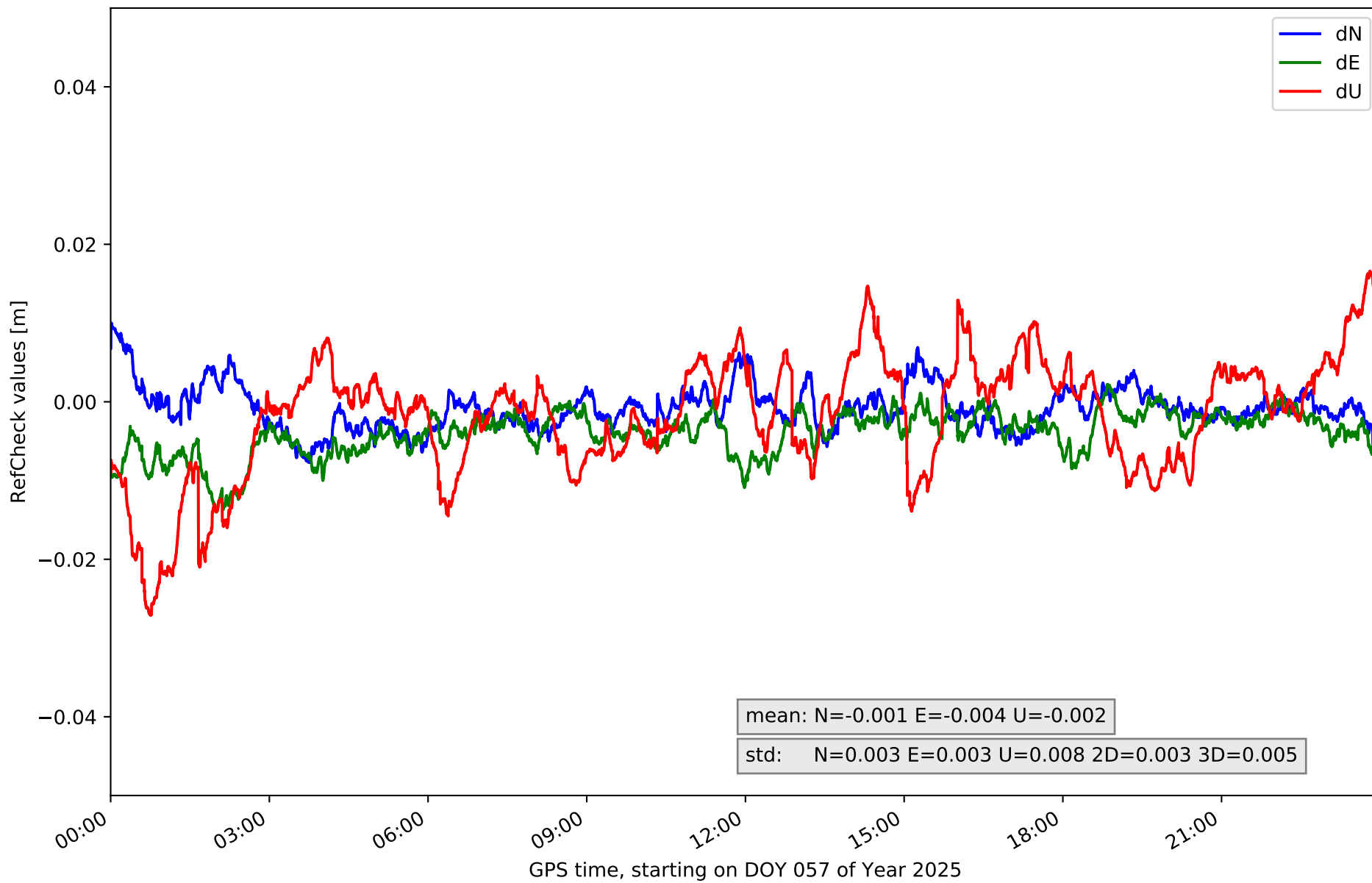
RefCheck for station AIO2 in network NT14



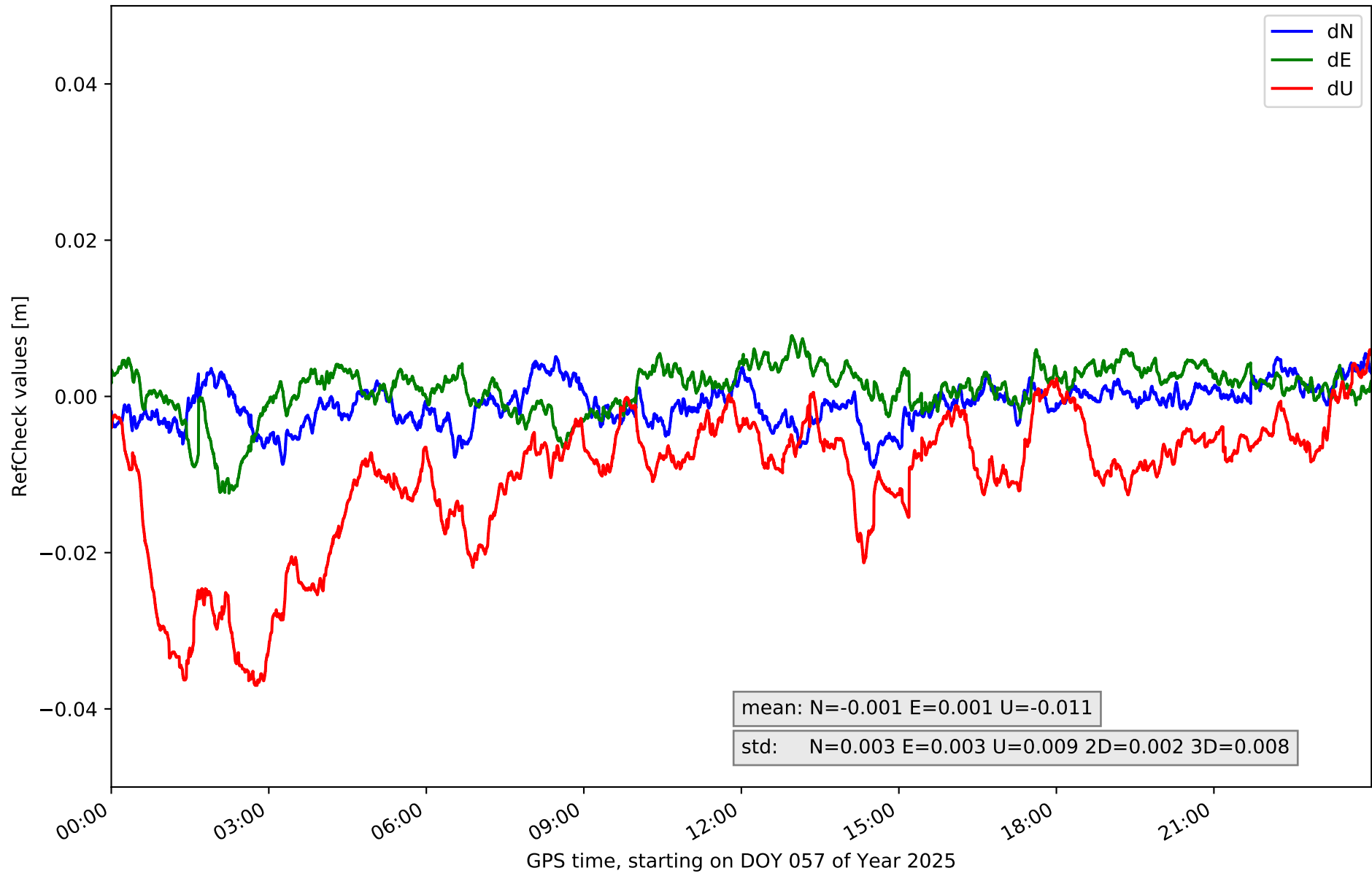
RefCheck for station ALAC in network NT14



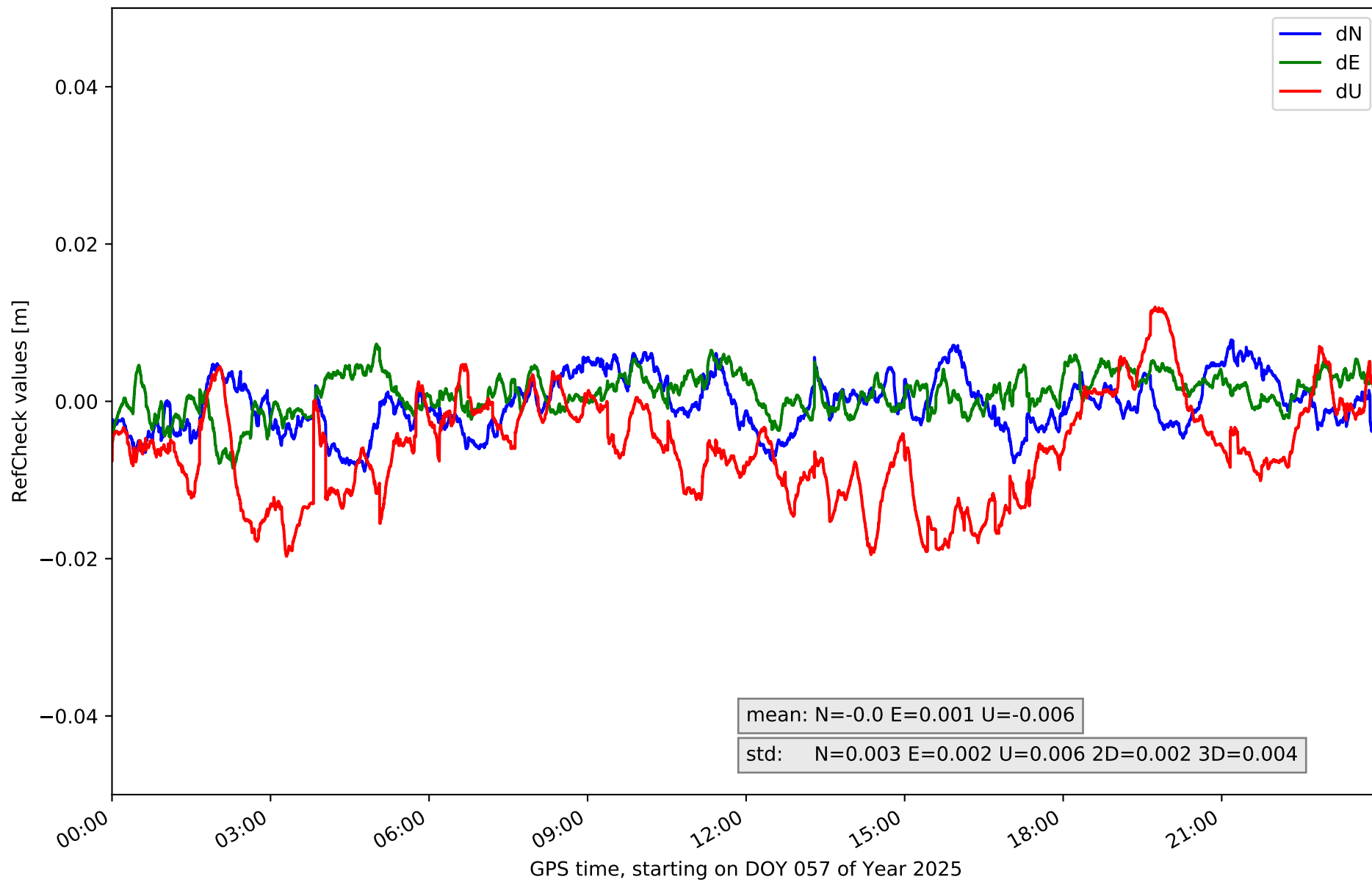
RefCheck for station ALCO in network NT14



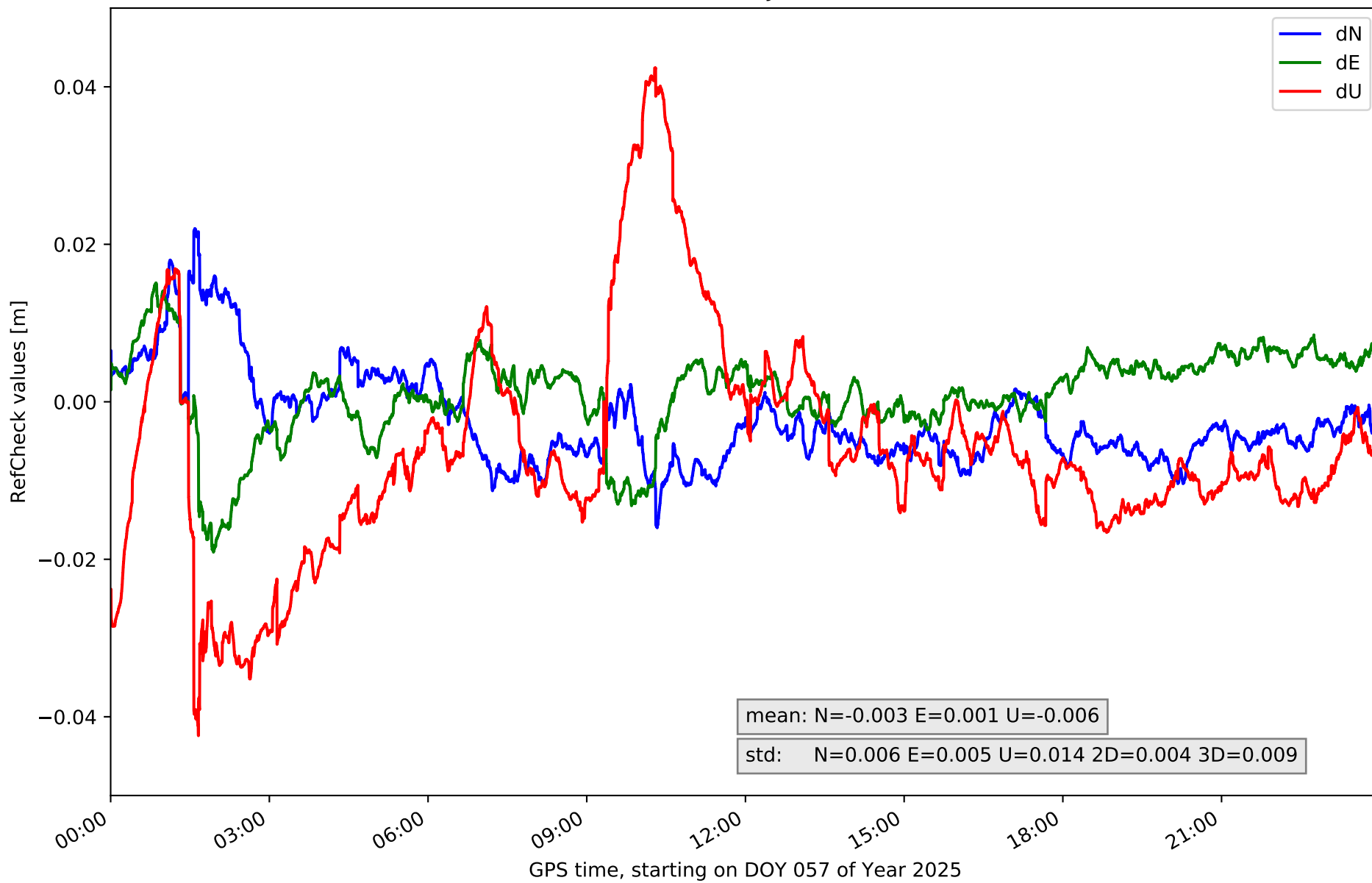
RefCheck for station BORR in network NT14



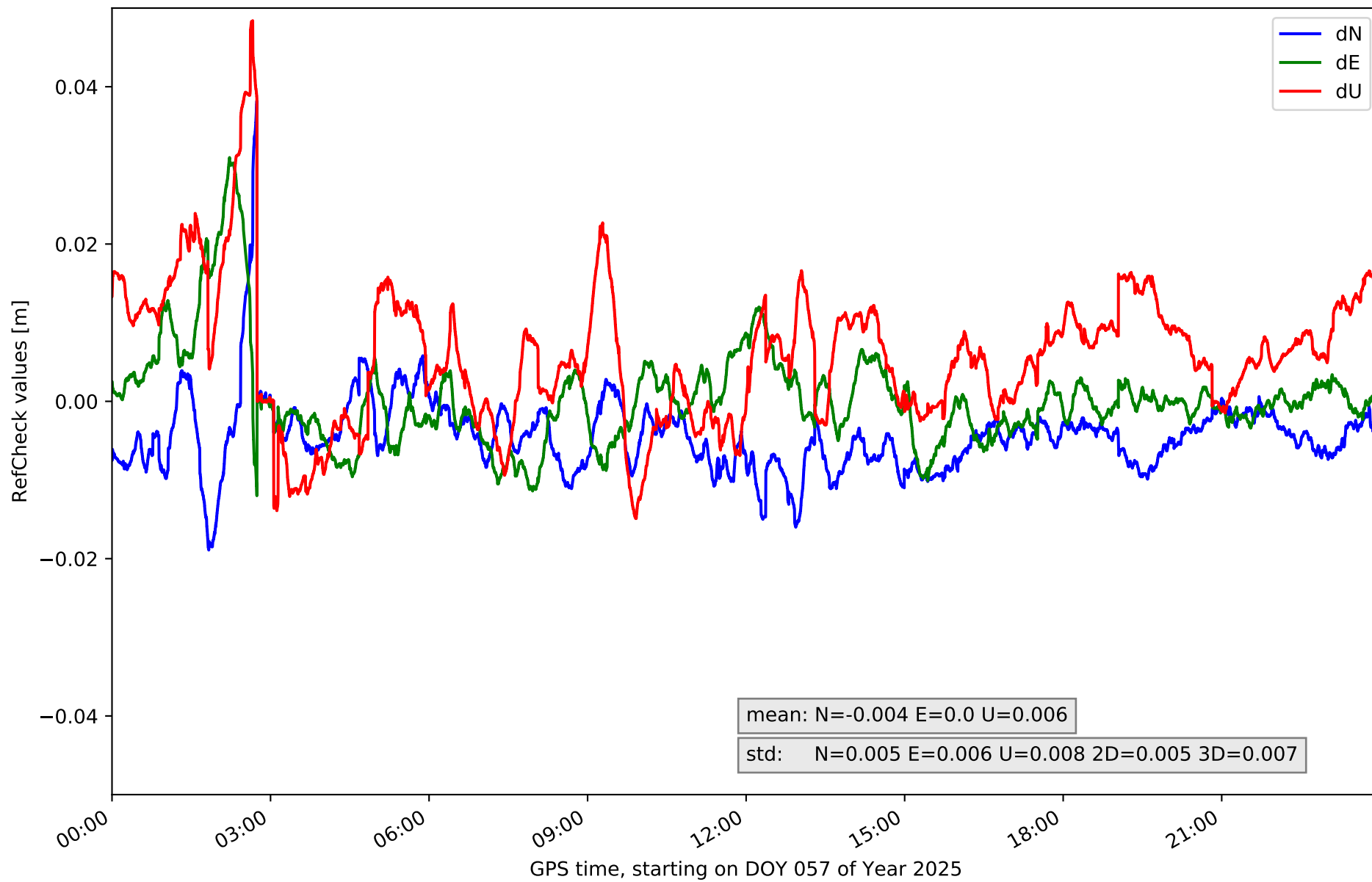
RefCheck for station DENI in network NT14



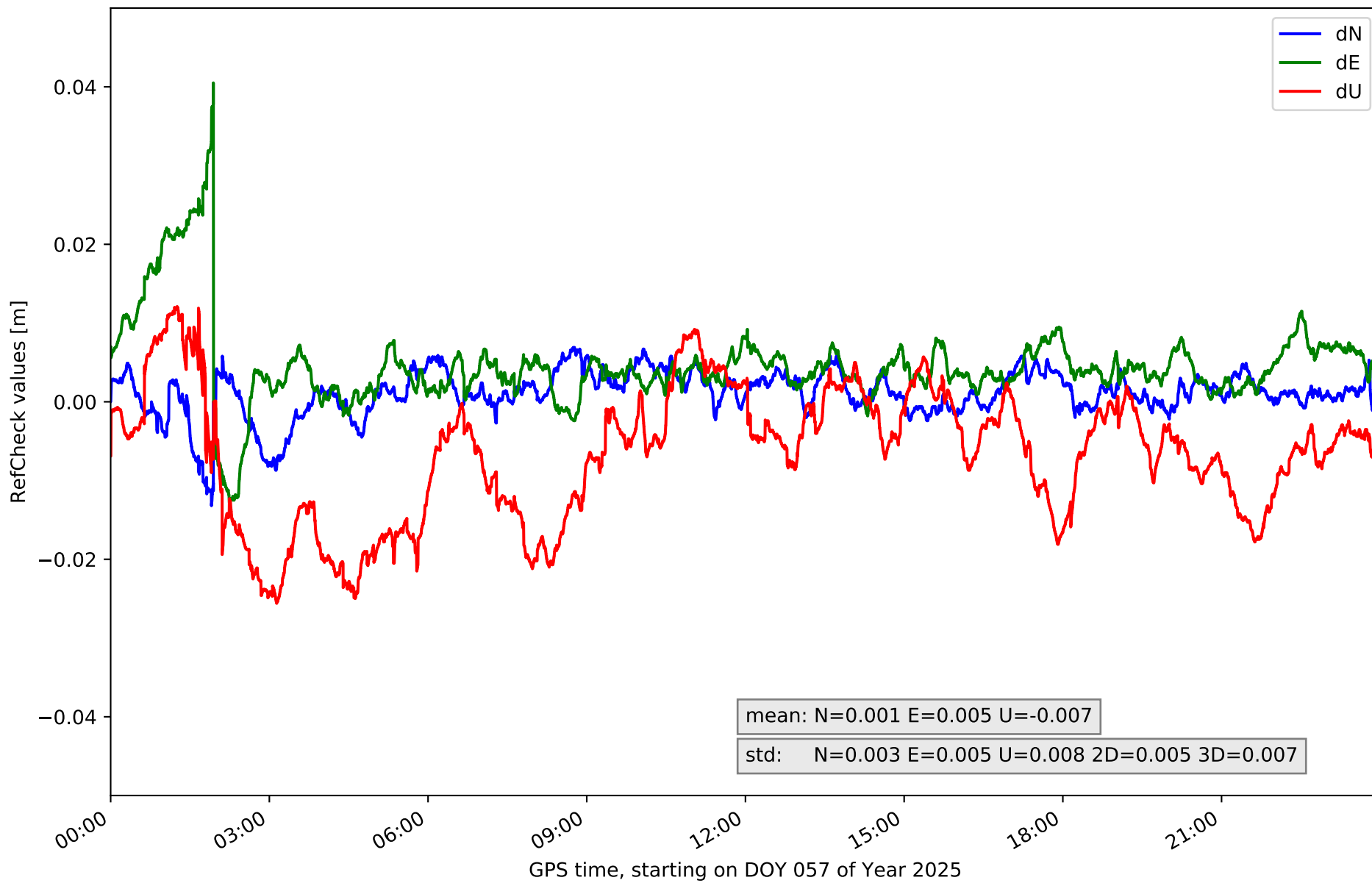
RefCheck for station IEJA in network NT14



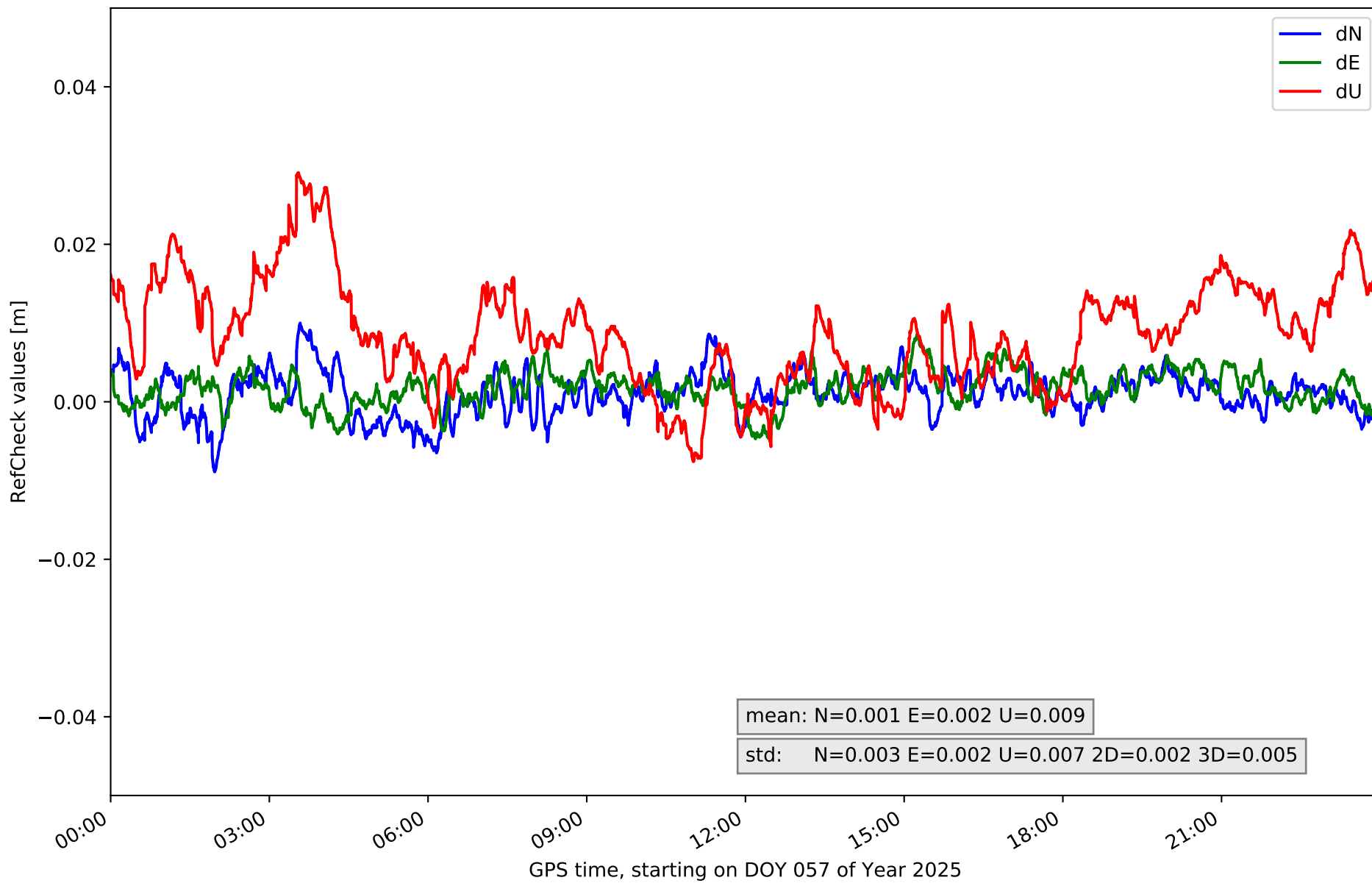
RefCheck for station PENI in network NT14



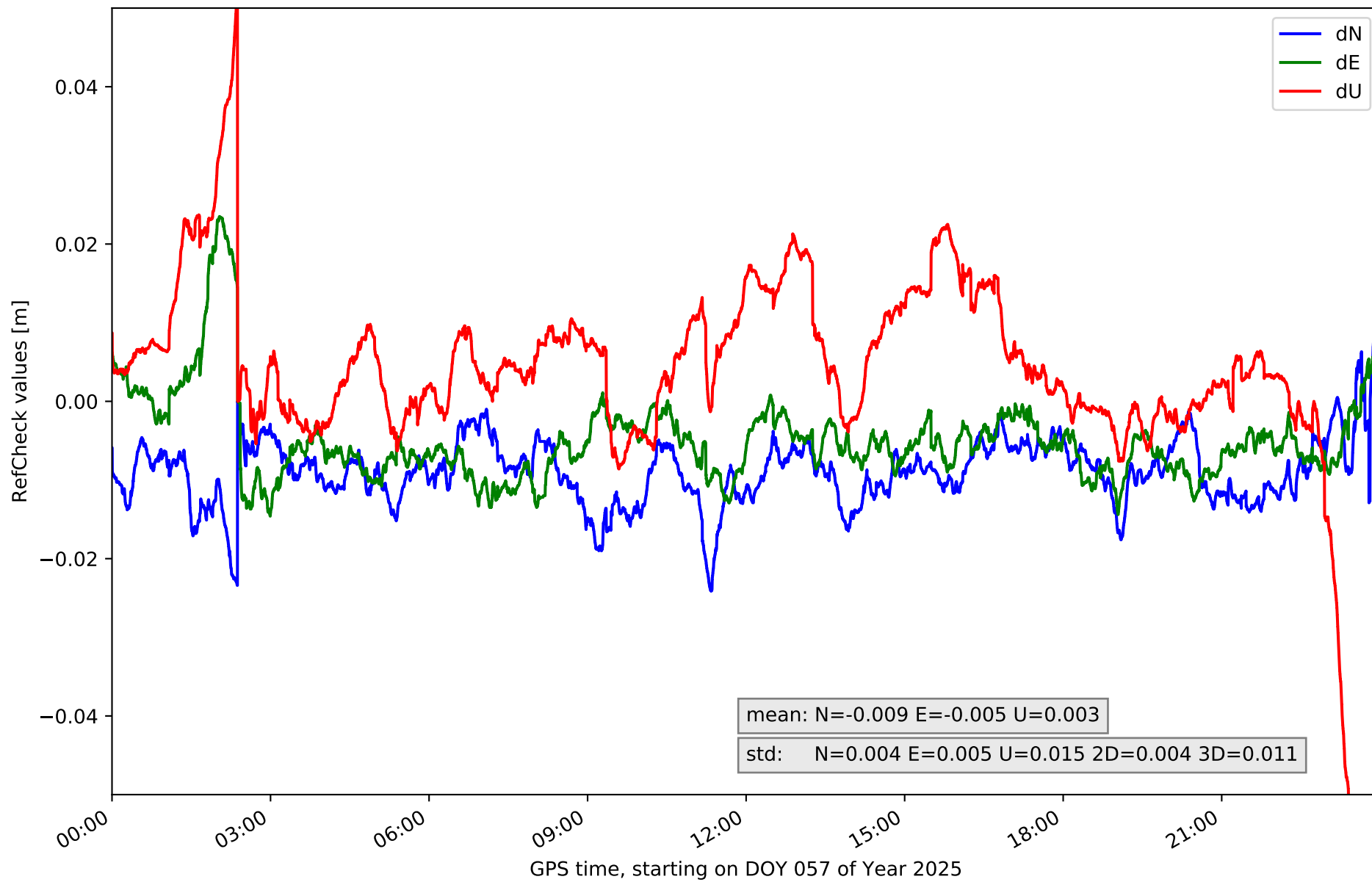
RefCheck for station SARR in network NT14



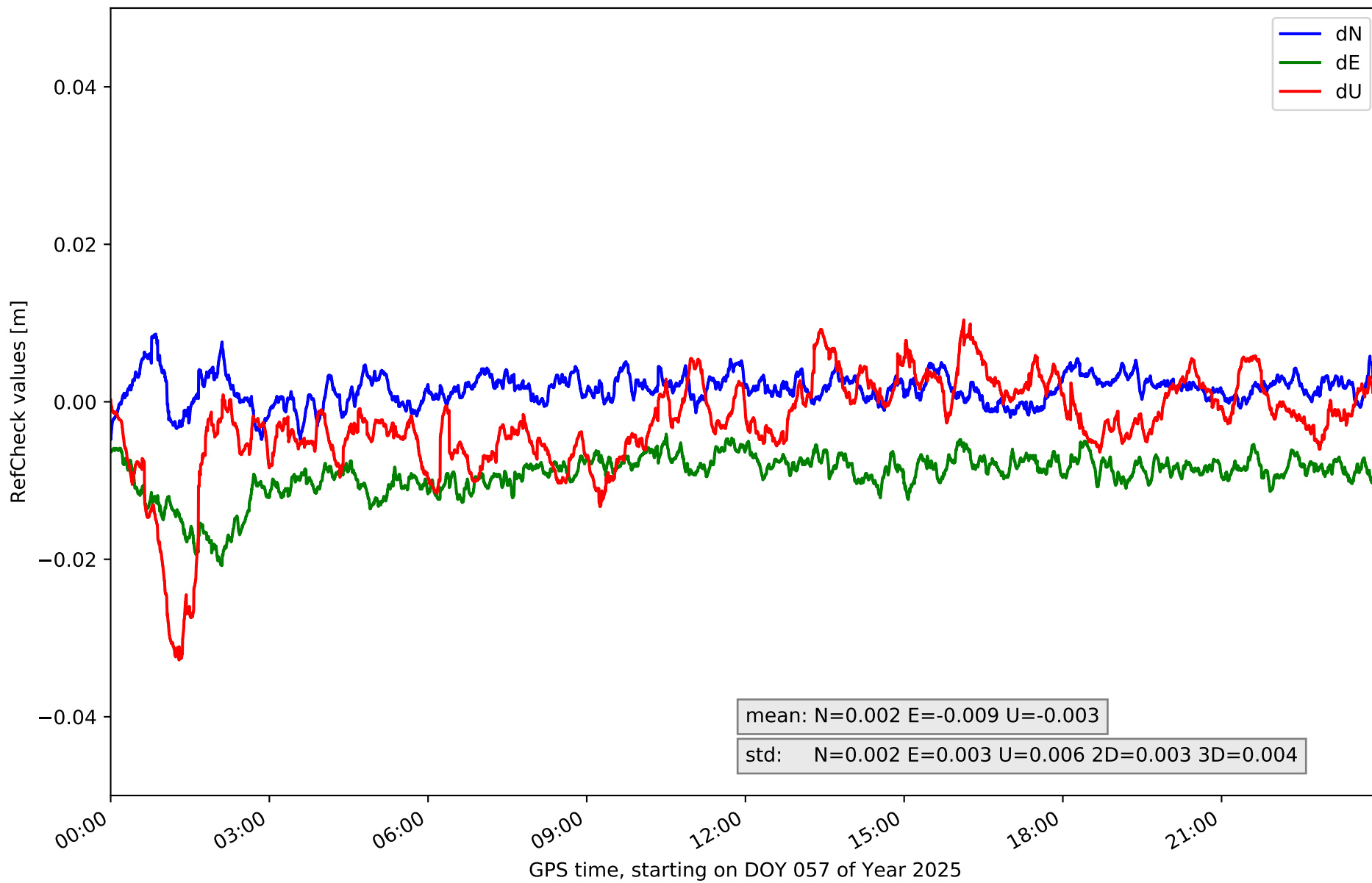
RefCheck for station TOR0 in network NT14



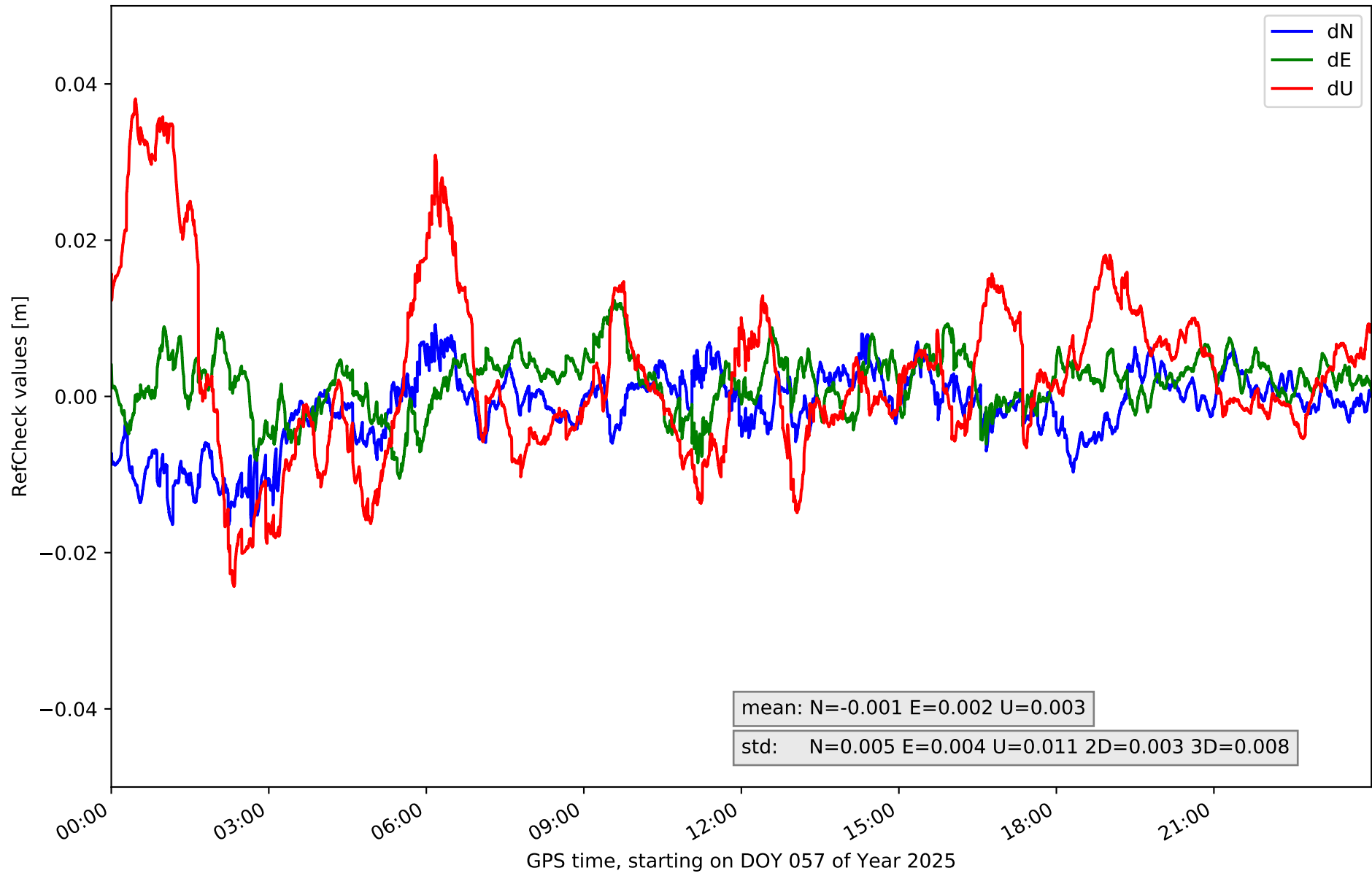
RefCheck for station UTIE in network NT14



RefCheck for station VALE in network NT14



RefCheck for station VJOI in network NT14



RefCheck values for network NT14

Station	Nmin	Nmax	Nstd	Emin	Emax	Estd	Umin	Umax	Ustd	std2D	std3D	#2D > 0.01	% 2D > 0.01	#3D > 0.02	% 3D > 0.02
ABAN	-0.006	0.022	0.004	-0.011	0.003	0.003	-0.009	0.029	0.007	0.003	0.005	40189	53.1	5630	7.4
AIO2	-0.009	0.005	0.002	-0.013	0.008	0.003	-0.024	0.021	0.007	0.002	0.005	1396	1.8	2133	2.8
ALAC	-0.008	0.015	0.003	-0.016	0.001	0.003	-0.018	0.02	0.007	0.003	0.004	7165	9.5	558	0.7
ALCO	-0.008	0.01	0.003	-0.014	0.002	0.003	-0.027	0.017	0.008	0.003	0.005	3792	5.0	3611	4.8
BORR	-0.009	0.005	0.003	-0.012	0.008	0.003	-0.037	0.006	0.009	0.002	0.008	1311	1.7	11699	15.5
DENI	-0.009	0.008	0.003	-0.009	0.007	0.002	-0.02	0.012	0.006	0.002	0.004	0	0.0	48	0.1
IEJA	-0.016	0.022	0.006	-0.019	0.015	0.005	-0.042	0.042	0.014	0.004	0.009	12500	16.5	13401	17.7
PENI	-0.019	0.038	0.005	-0.012	0.031	0.006	-0.015	0.048	0.008	0.005	0.007	11895	15.7	5959	7.9
SARR	-0.013	0.007	0.003	-0.013	0.041	0.005	-0.026	0.012	0.008	0.005	0.007	7111	9.4	10090	13.3
TORO	-0.009	0.01	0.003	-0.005	0.009	0.002	-0.008	0.029	0.007	0.002	0.005	32	0.0	4390	5.8
UTIE	-0.024	0.012	0.004	-0.015	0.024	0.005	-0.08	0.052	0.015	0.004	0.011	51176	67.7	11304	14.9
VALE	-0.005	0.009	0.002	-0.021	-0.004	0.003	-0.033	0.01	0.006	0.003	0.004	24002	31.7	3410	4.5
VJOI	-0.017	0.009	0.005	-0.011	0.012	0.004	-0.024	0.038	0.011	0.003	0.008	7738	10.2	8902	11.8
Mean	-0.012	0.013	0.004	-0.013	0.012	0.004	-0.028	0.026	0.009	0.003	0.006	12946.7	17.1	6241.2	8.2
Min/Max	-0.024	0.038	0.006	-0.021	0.041	0.006	-0.08	0.052	0.015	0.005	0.011	51176	67.7	13401	17.7

fixing statistic for network NT14

fixing percentage of	all GNSS	G	R	E	C
using threshold 0.3	92.3	93.2	89.5	94.5	91.2
considering satellites with dual-frequency fixed	89.2	91.5	81.9	92.2	89.4
considering all signals separately	89.7	91.6	81.9	92.4	89.1