

## summary for network NT31

timeperiod chosen: from 2025-02-25-00:00:00 until 2025-02-25-23:59:59

average update rate (durations larger than 15 seconds considered as observation gap): 1.0 seconds

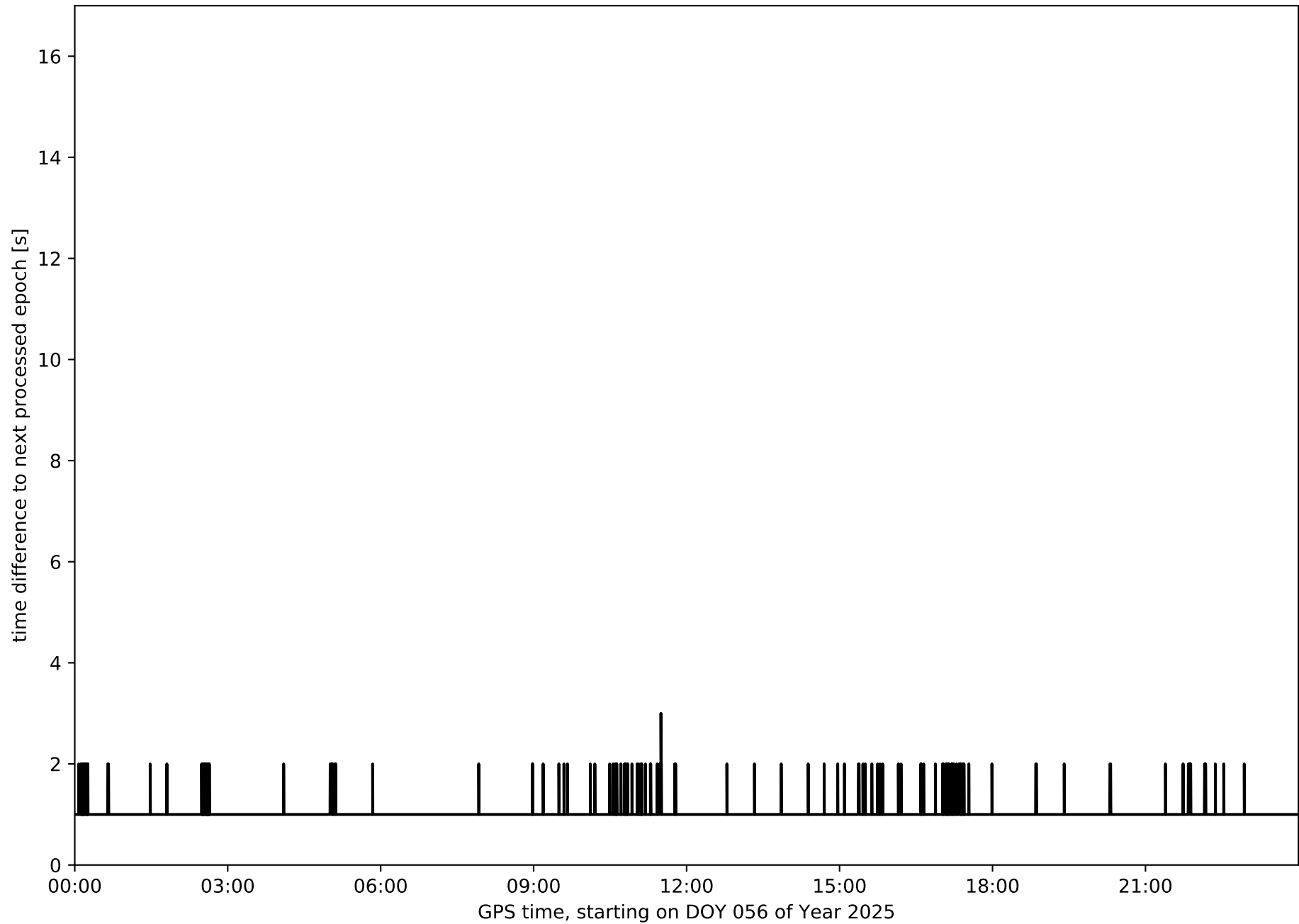
average fixing percentage with threshold set to 0.3: 75.8 percent

stations available: 7 of 7

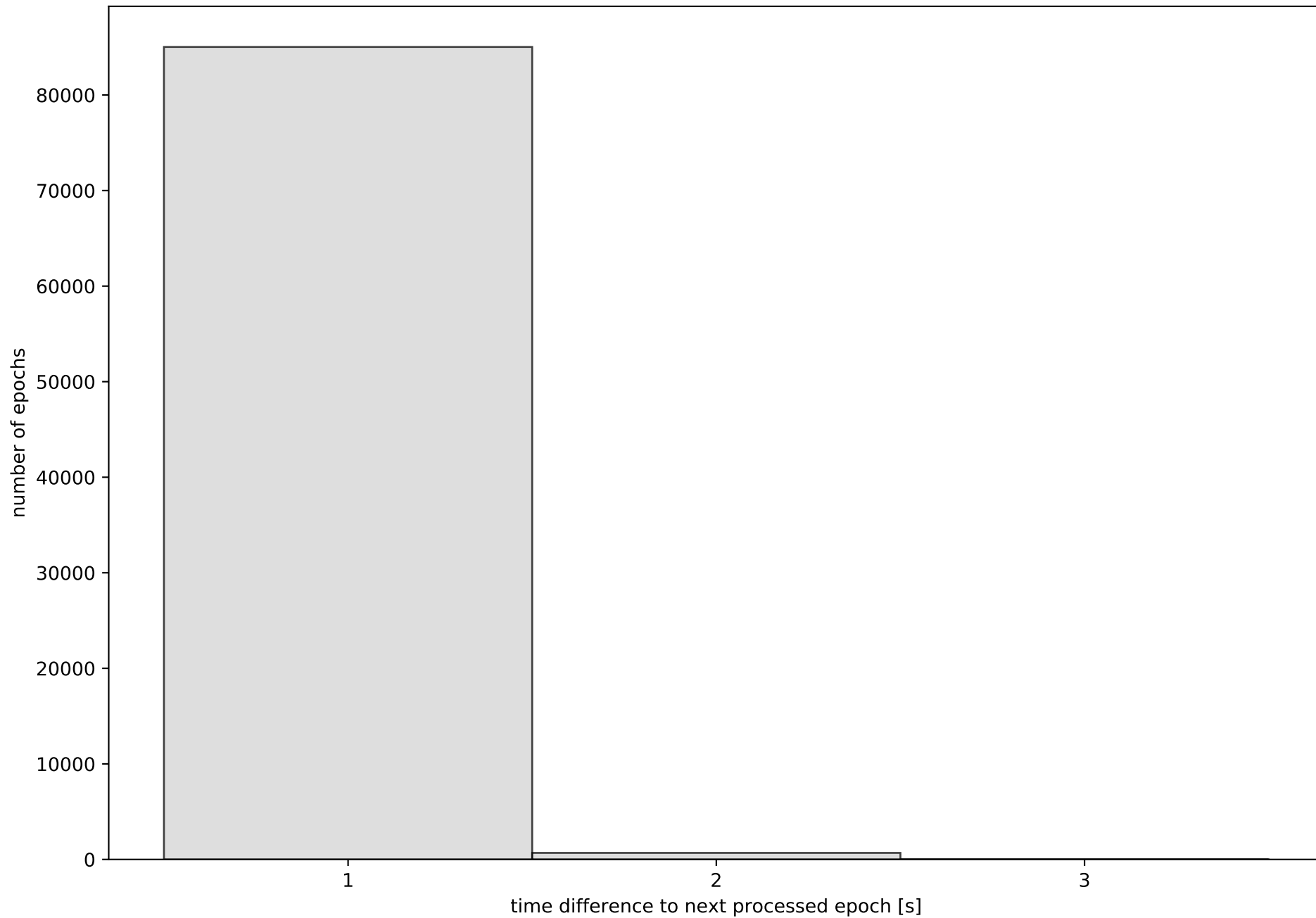
station information:

|               |                       |      |                         |                 |
|---------------|-----------------------|------|-------------------------|-----------------|
| station FUER: | antenna: LEIAR20      | LEIM | receiver: LEICA GR50    | height: 76.887  |
| station LALA: | antenna: TRM59900.00  | SCIS | receiver: TRIMBLE NETR9 | height: 62.306  |
| station LZ01: | antenna: TRM159900.00 | NONE | receiver: TRIMBLE NETR9 | height: 52.693  |
| station LZ02: | antenna: LEIAR20      | NONE | receiver: LEICA GR25    | height: 58.039  |
| station LZ03: | antenna: LEIAR20      | NONE | receiver: LEICA GR50    | height: 314.762 |
| station MASP: | antenna: TRM59900.00  | SCIS | receiver: TRIMBLE NETR9 | height: 198.846 |
| station ULP2: | antenna: TRM59900.00  | SCIS | receiver: TRIMBLE NETR9 | height: 375.129 |

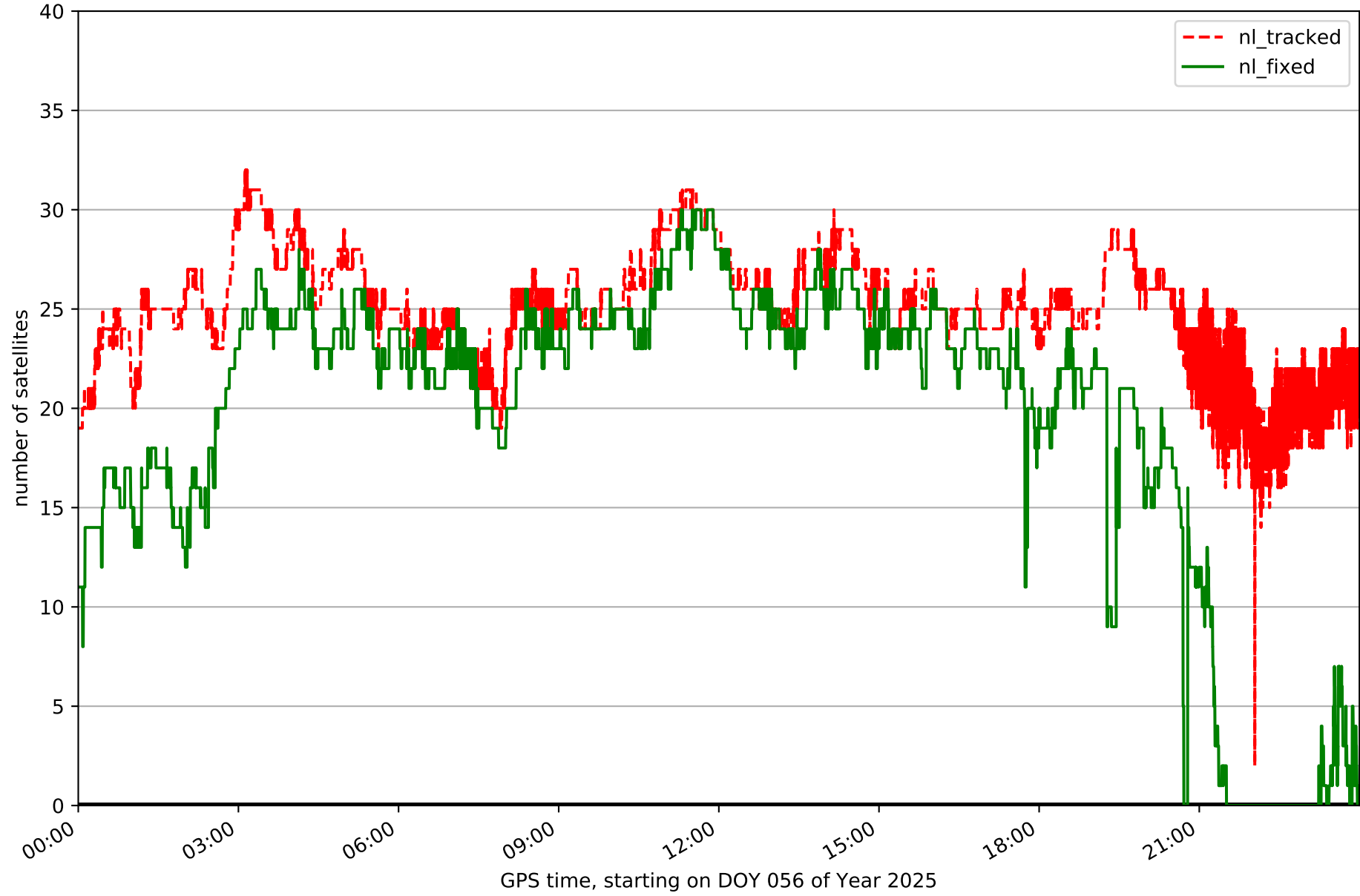
# Processing rate in network NT31



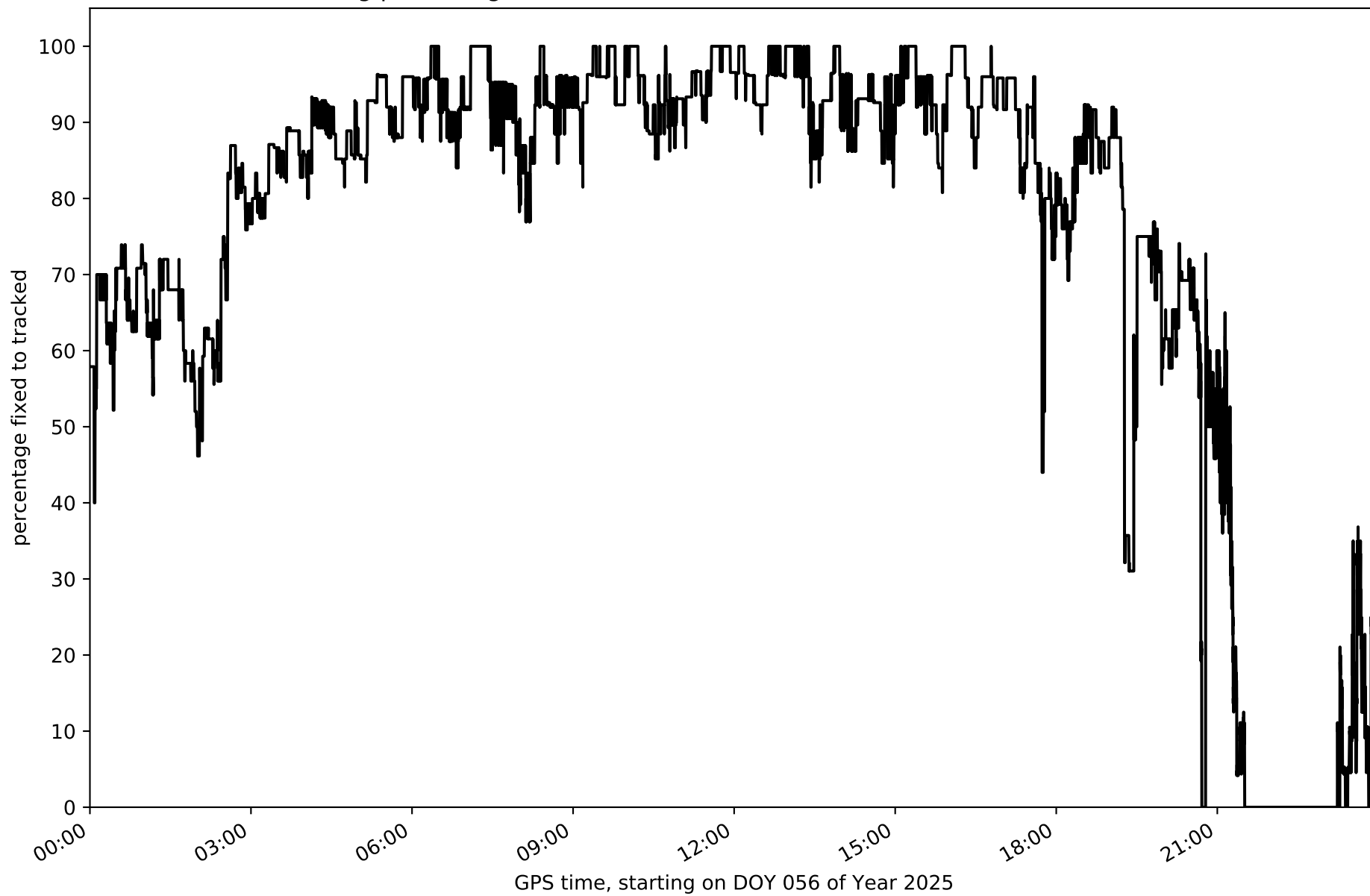
Histogram of the processing rate in network NT31 (durations larger 15 seconds neglected)



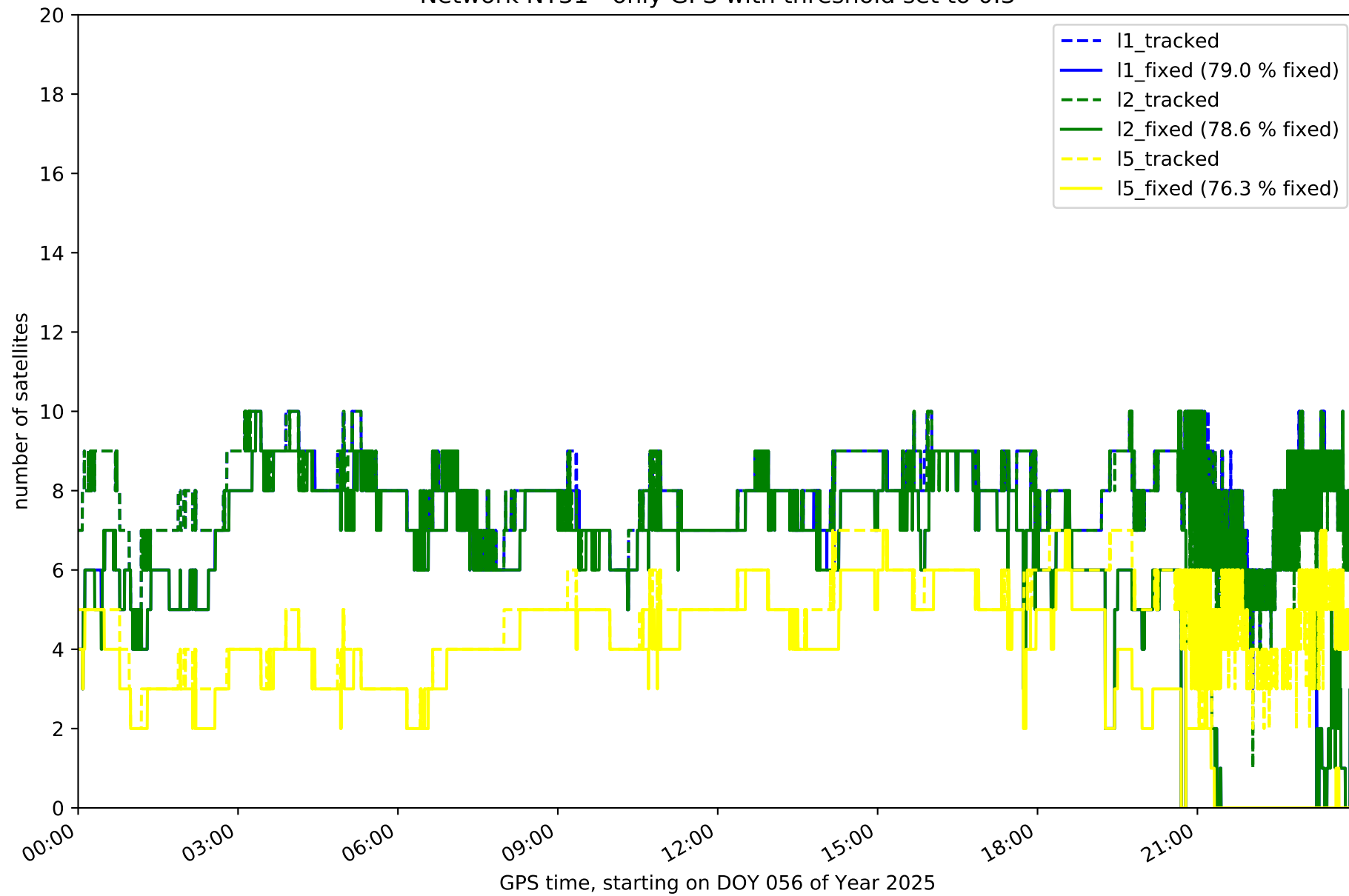
Network NT31 with threshold set to 0.3



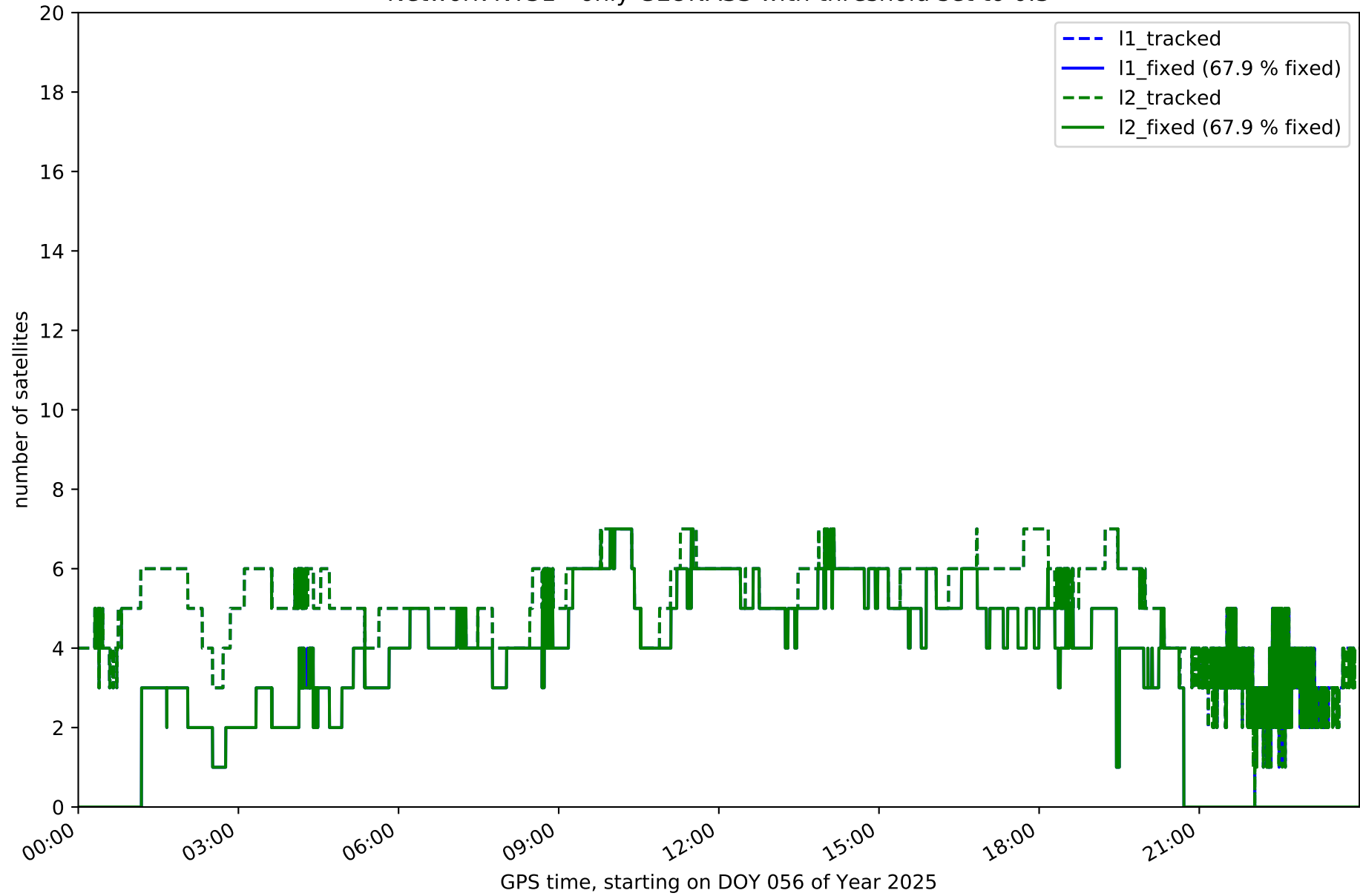
Fixing percentage of satellites in network NT31 with threshold set to 0.3



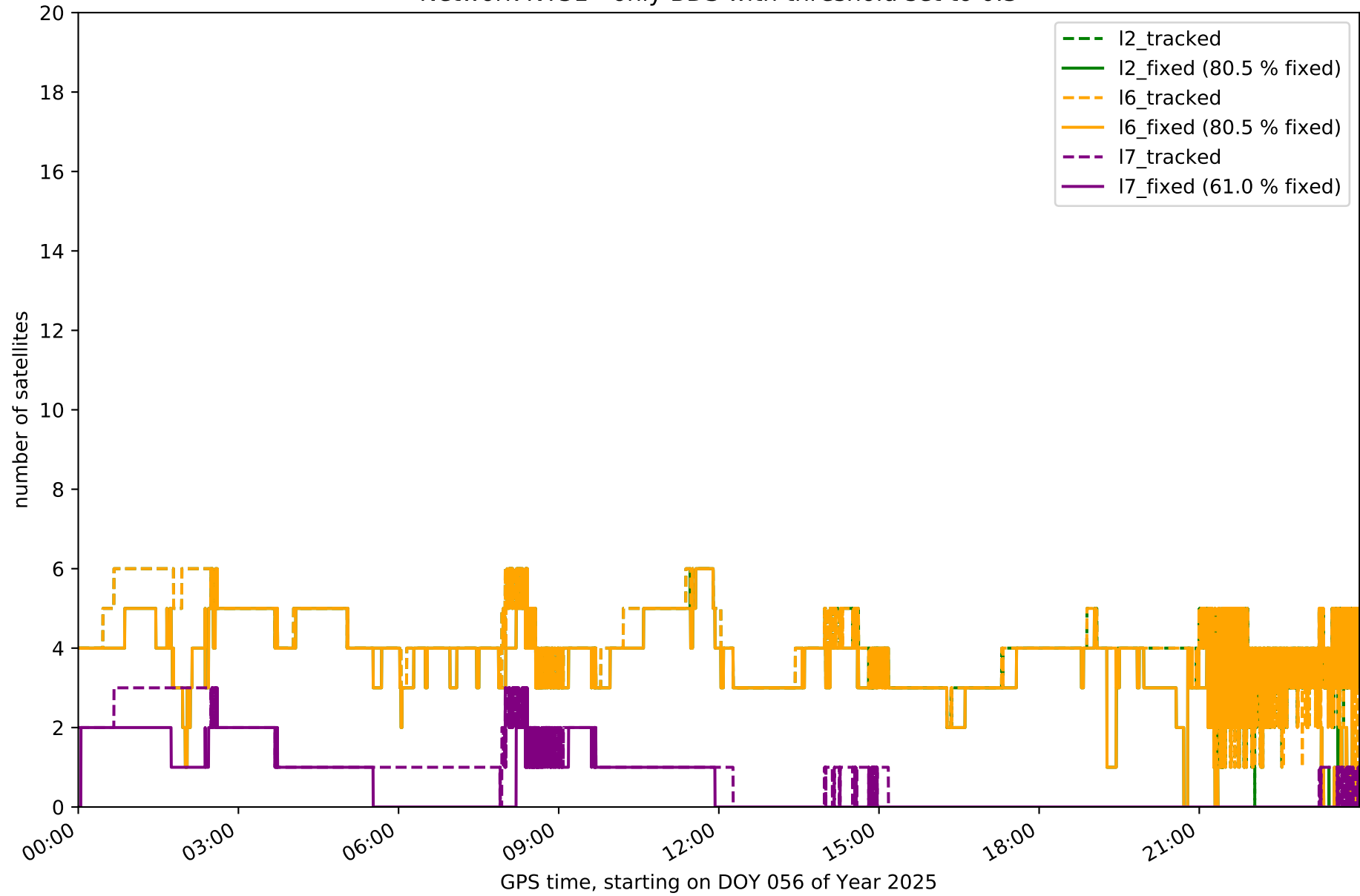
Network NT31 - only GPS with threshold set to 0.3



Network NT31 - only GLONASS with threshold set to 0.3

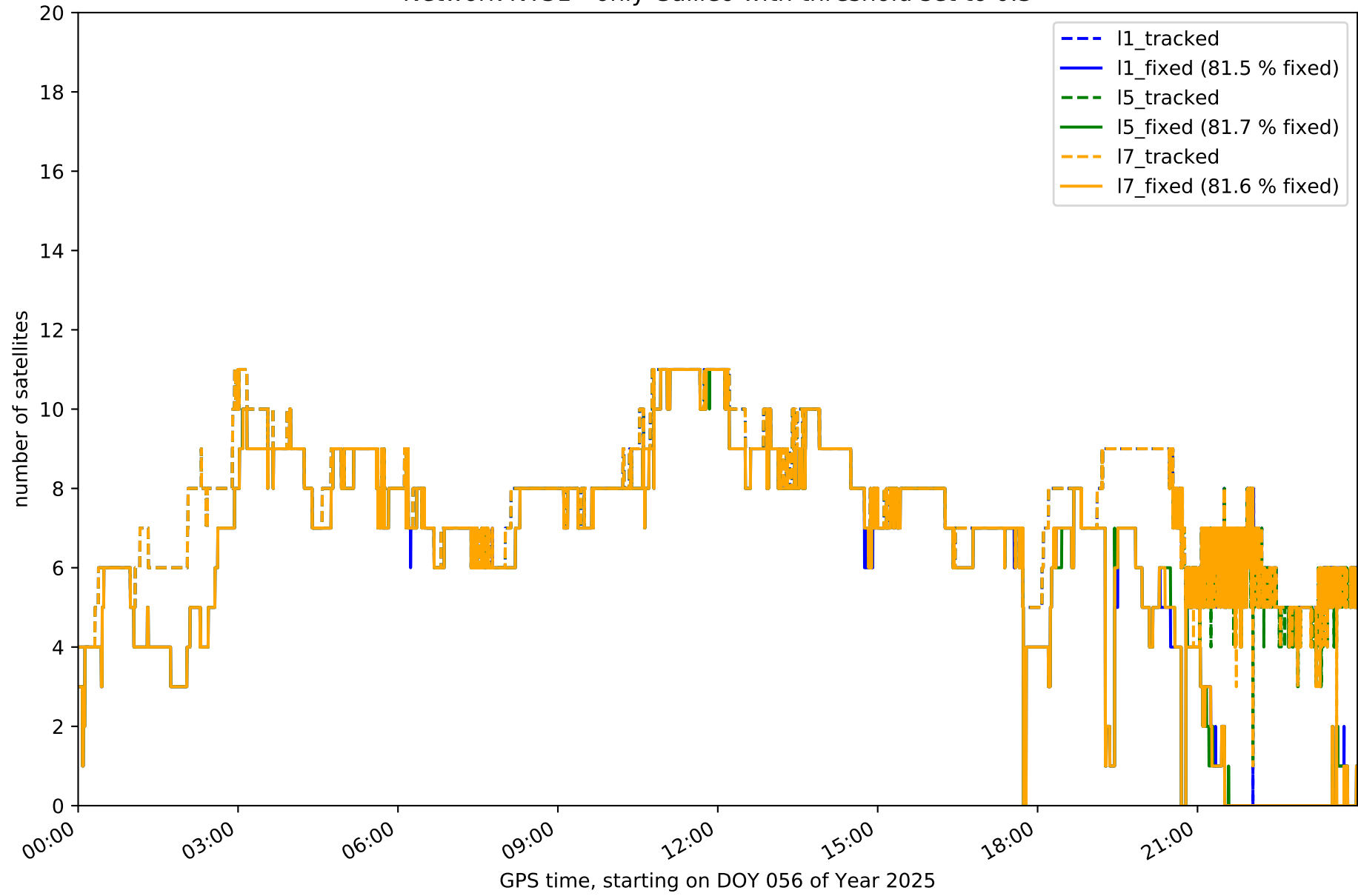


Network NT31 - only BDS with threshold set to 0.3

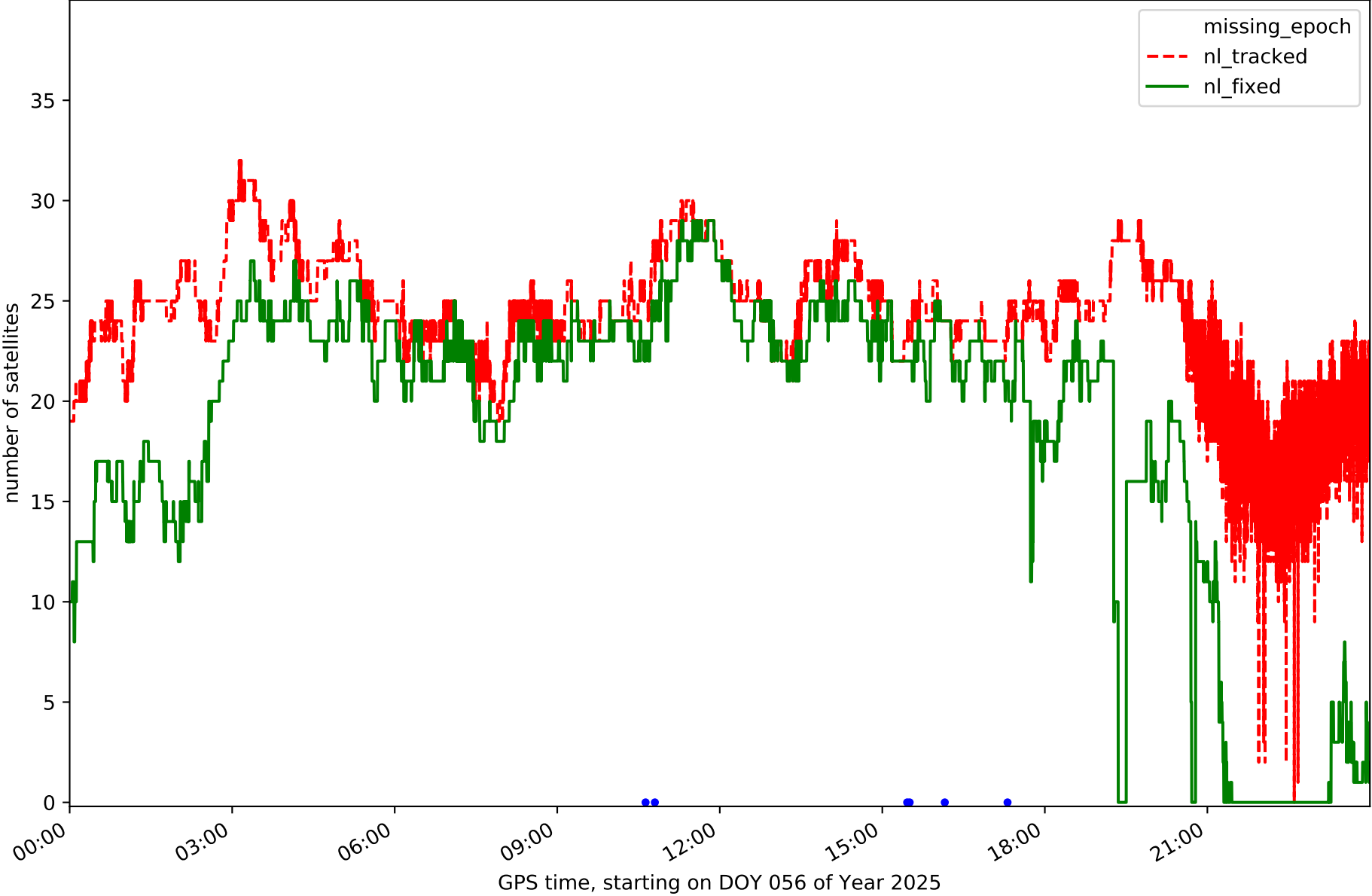




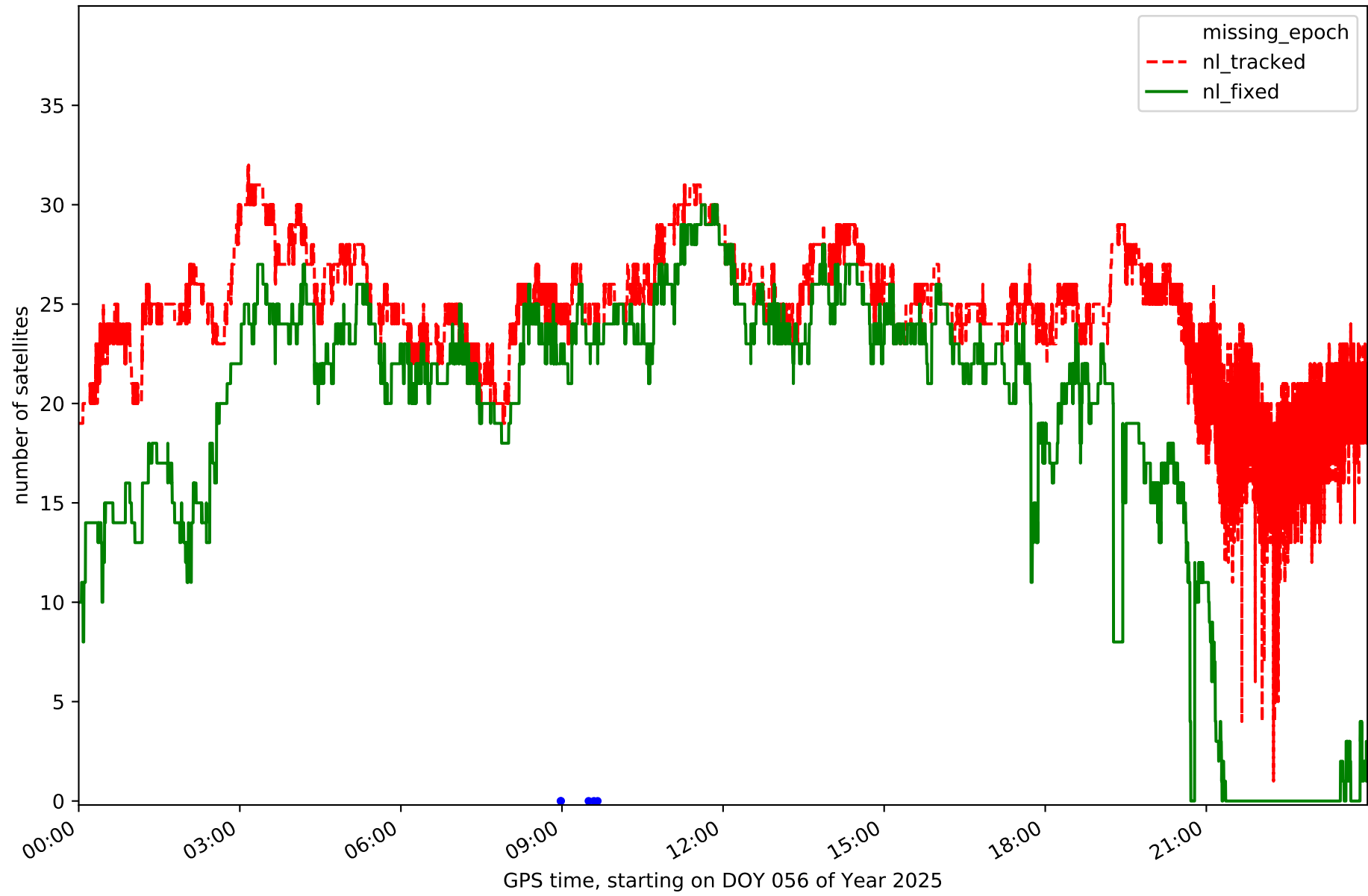
Network NT31 - only Galileo with threshold set to 0.3



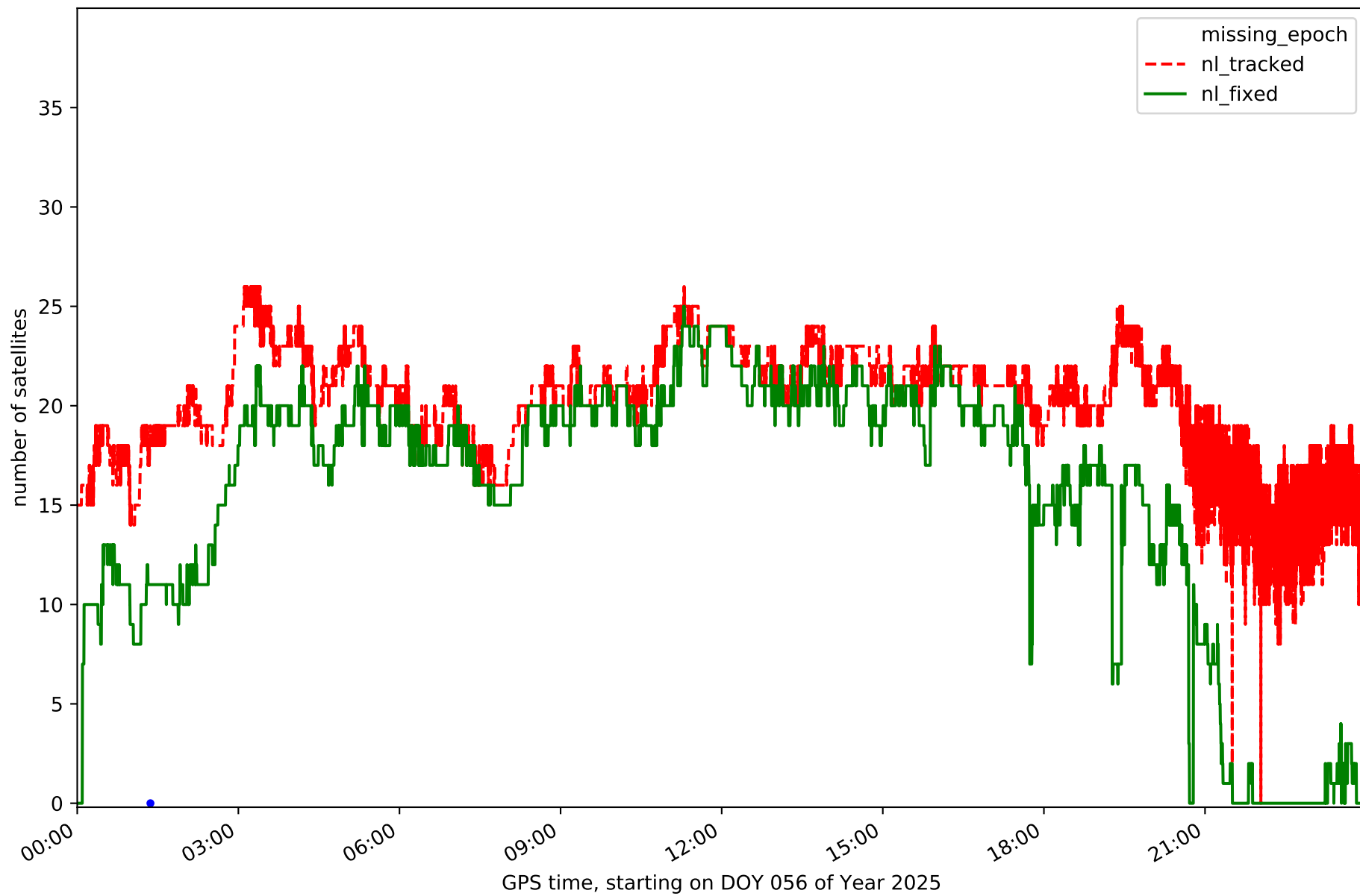
Station FUER in network NT31



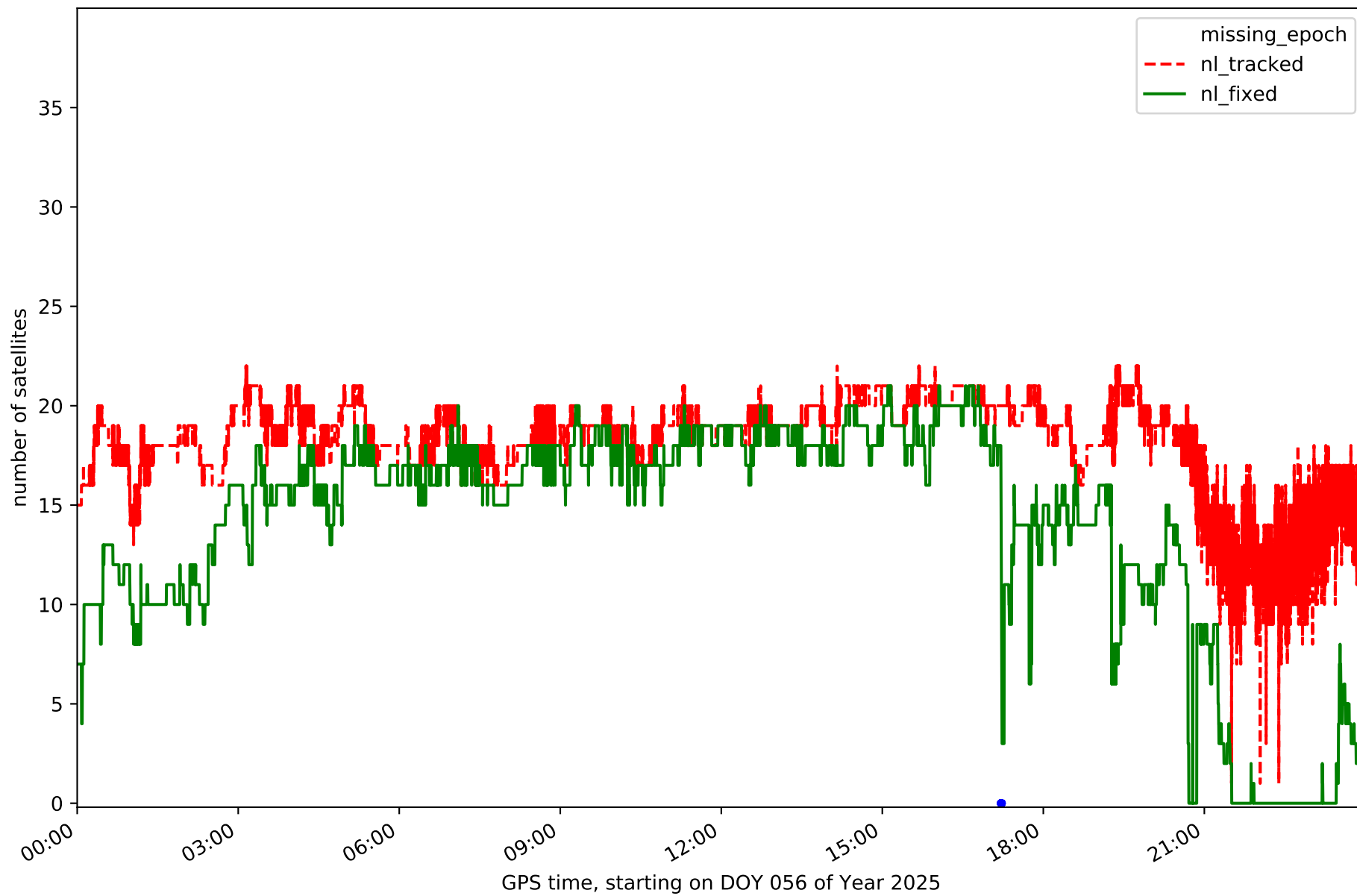
Station LALA in network NT31



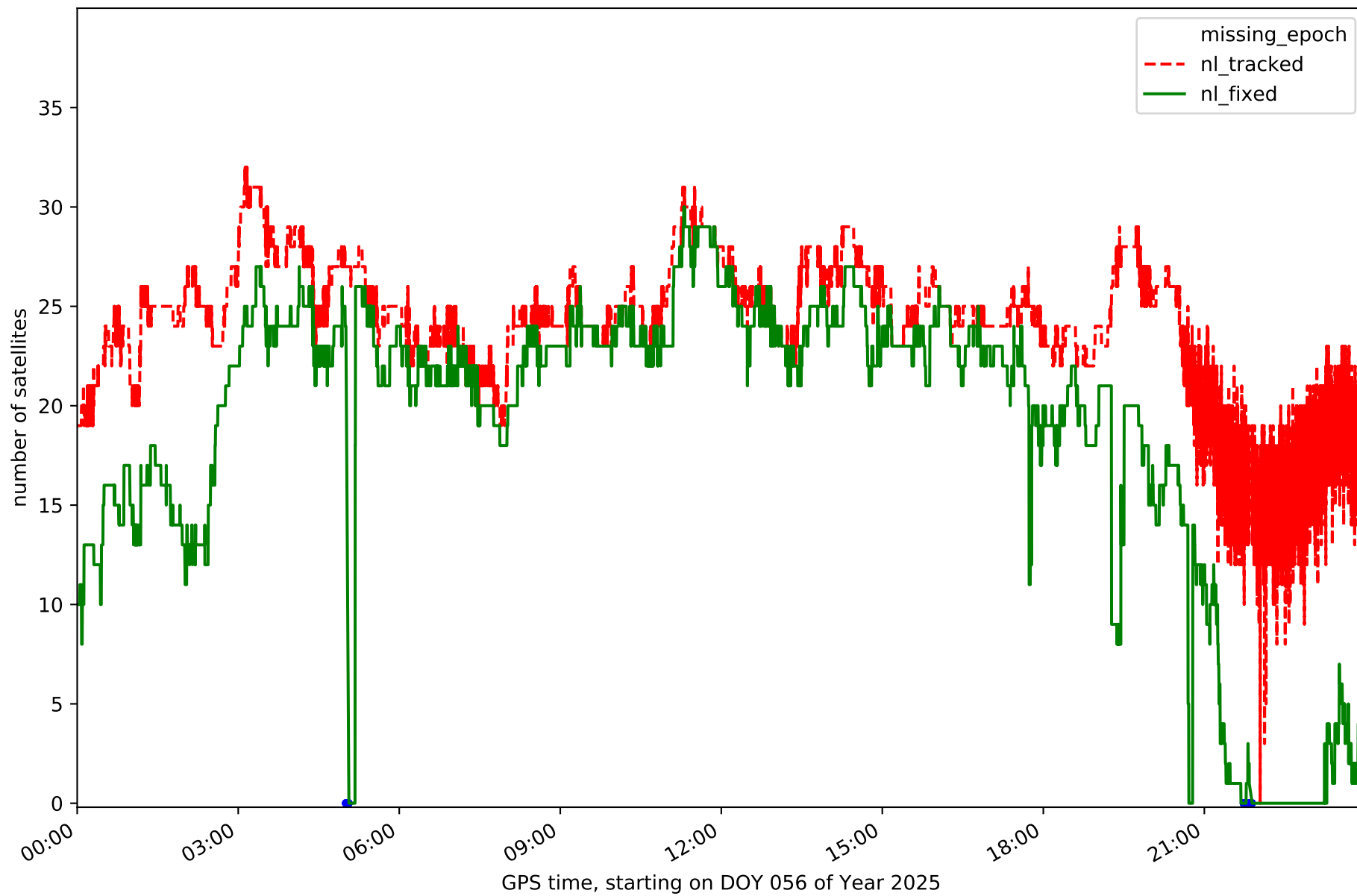
Station LZ01 in network NT31



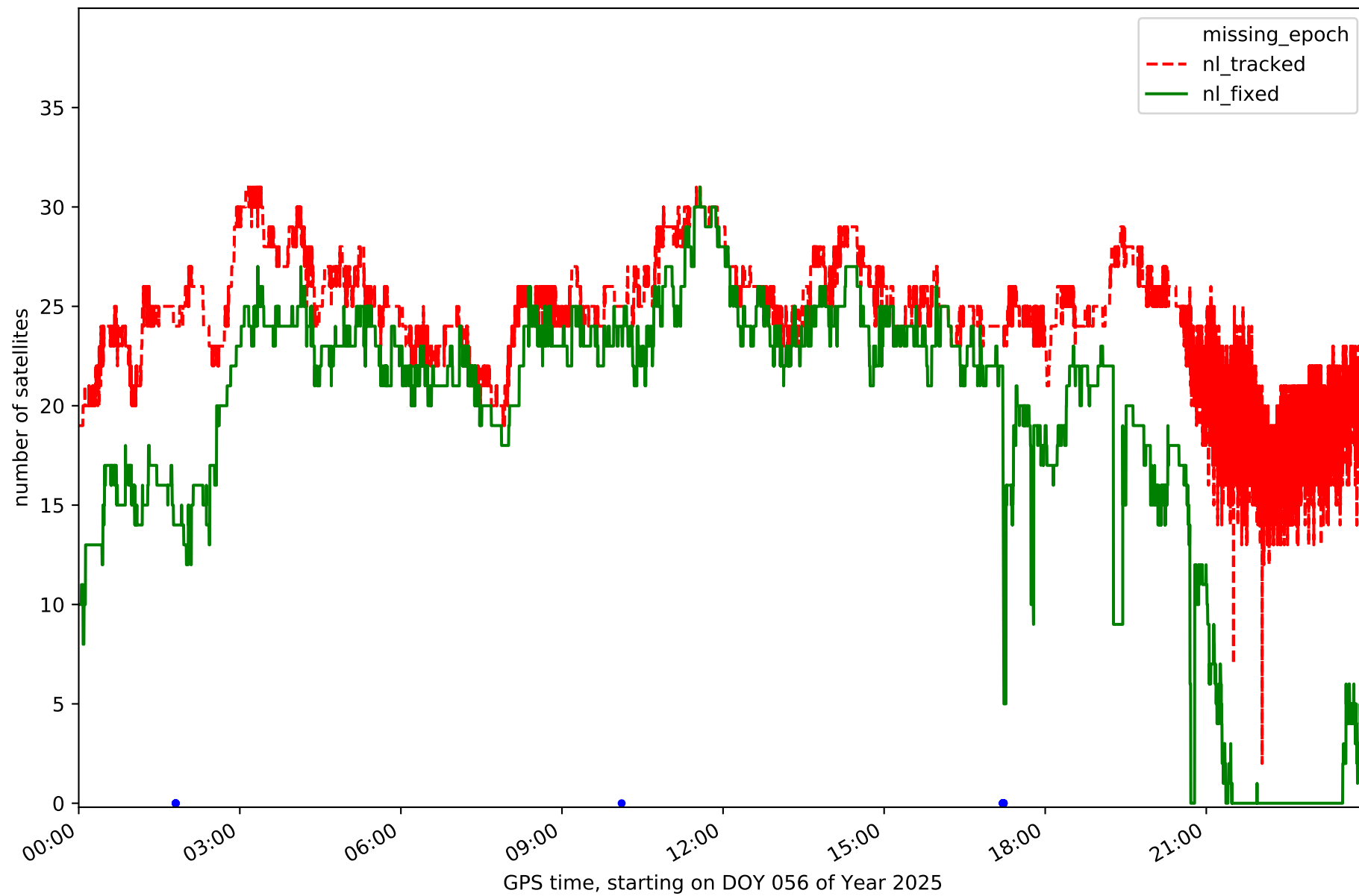
Station LZ02 in network NT31



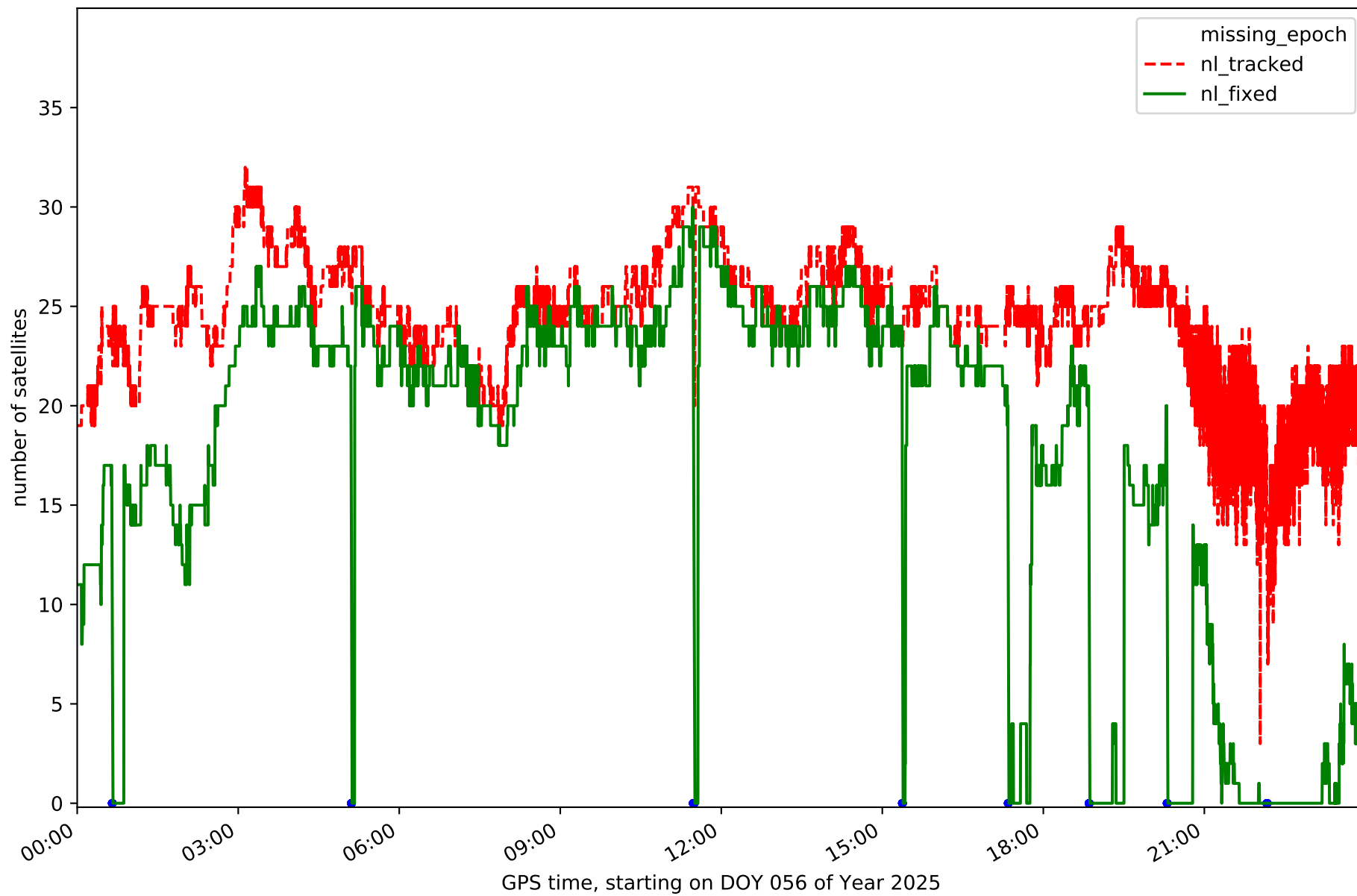
Station LZ03 in network NT31



Station MASP in network NT31

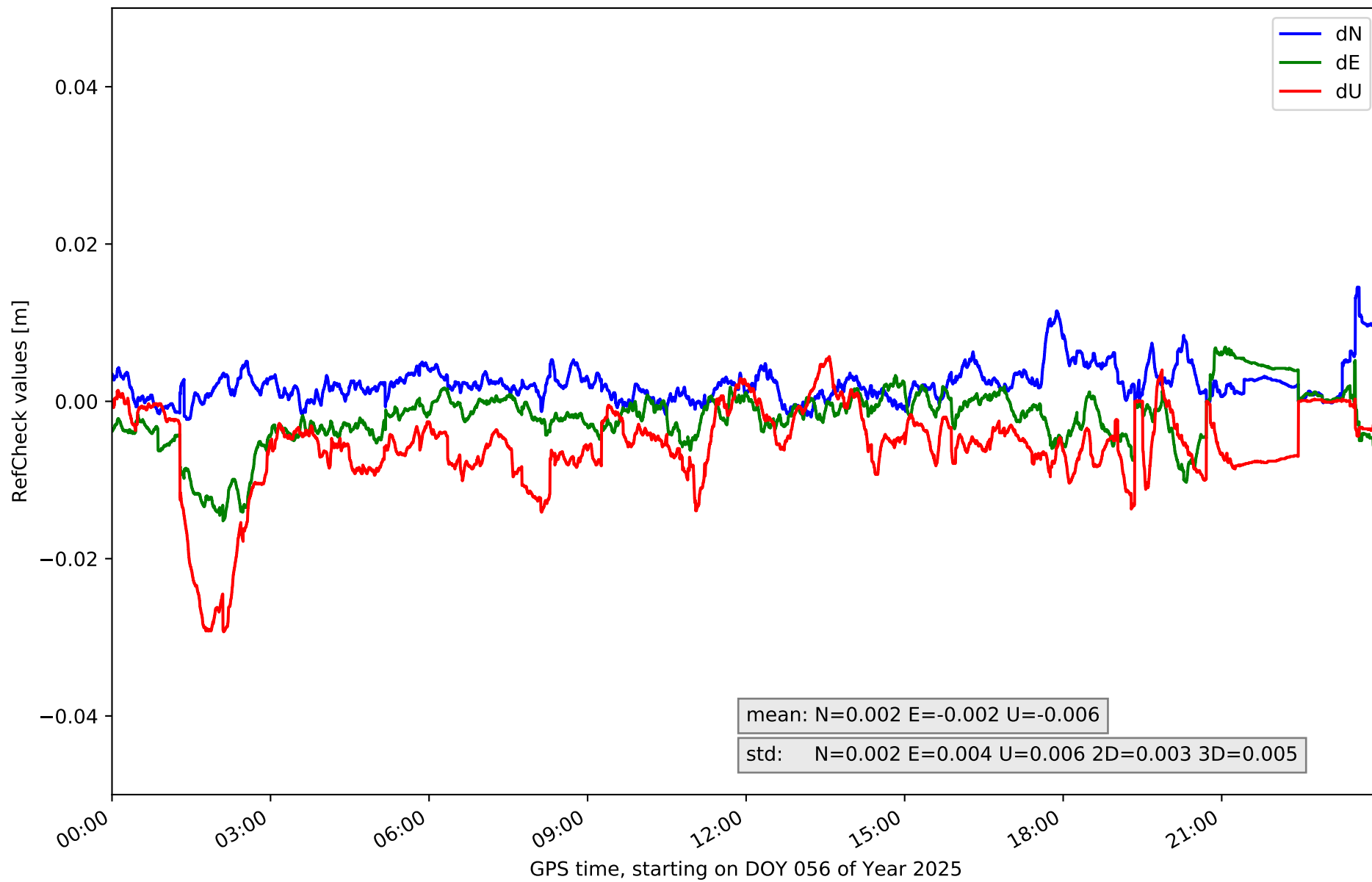


Station ULP2 in network NT31

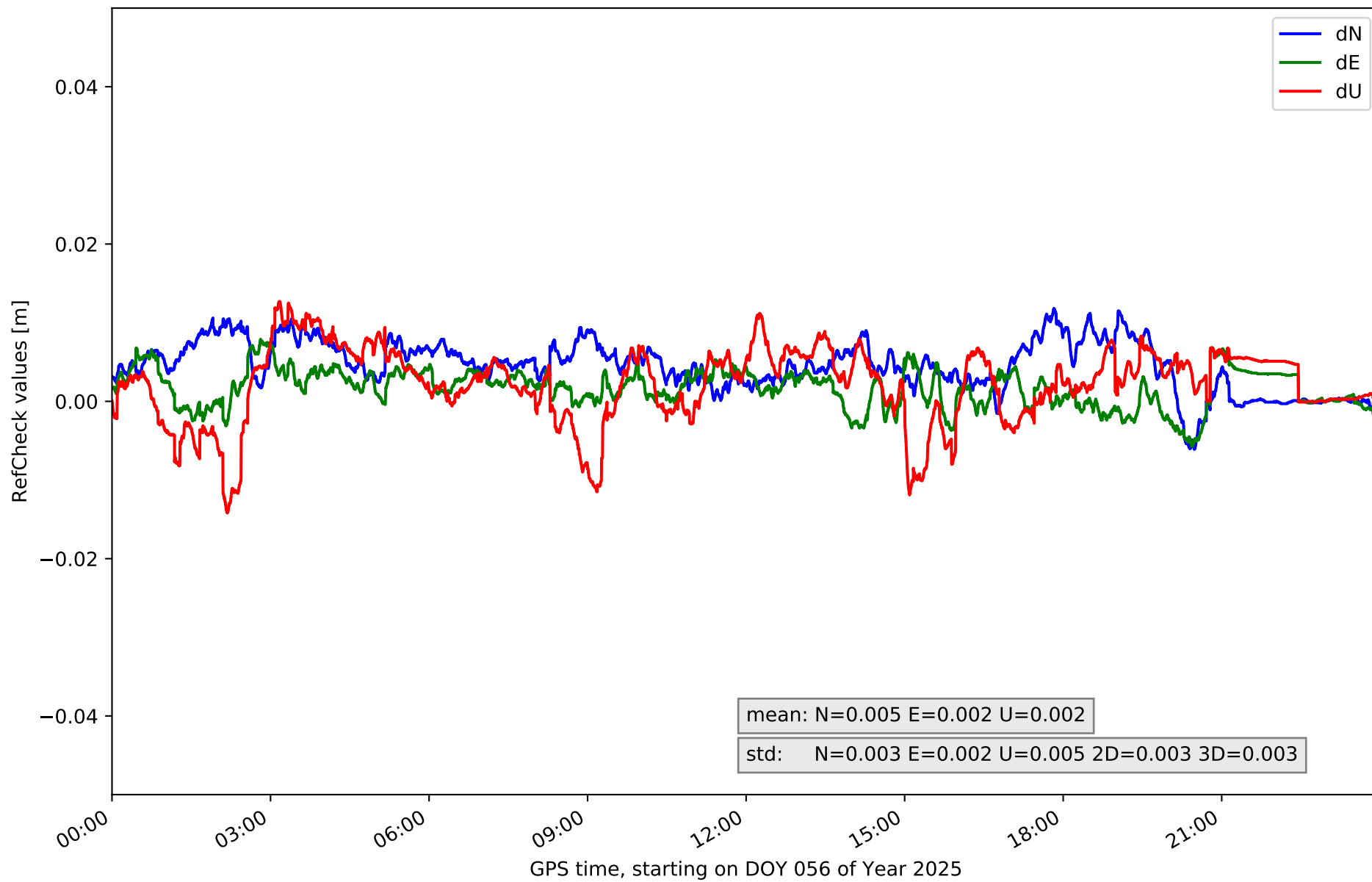




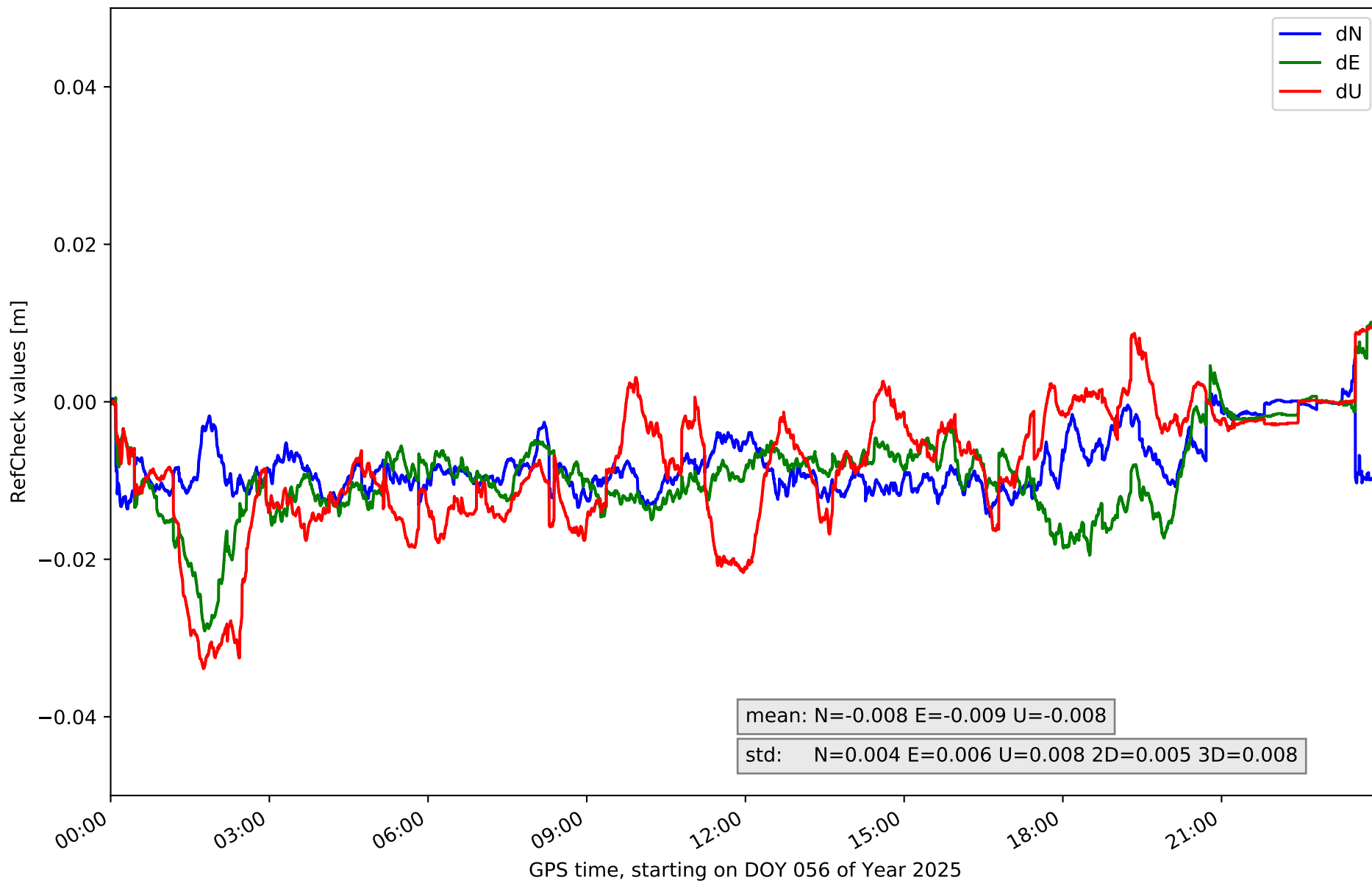
RefCheck for station FUER in network NT31



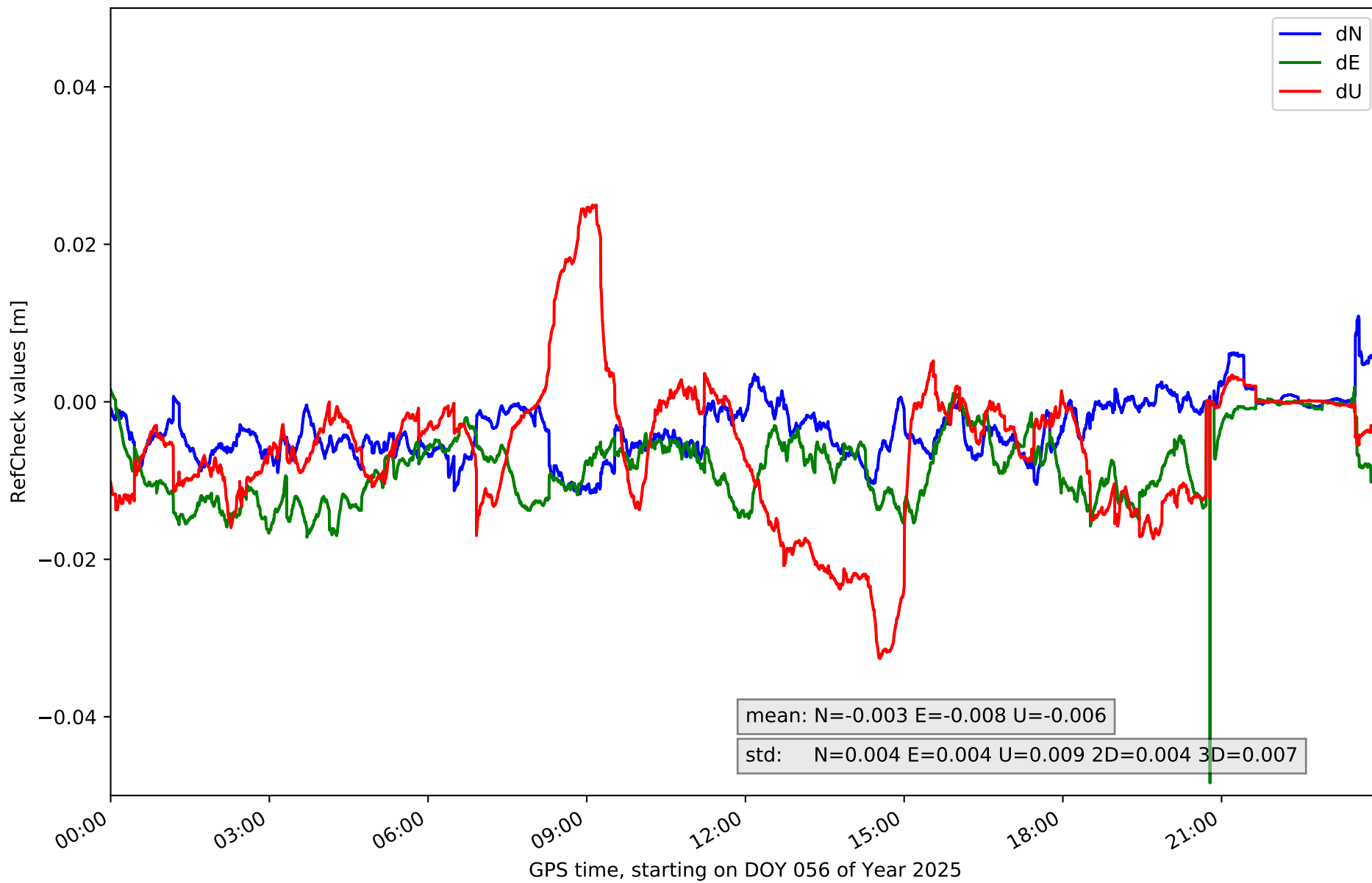
### RefCheck for station LALA in network NT31



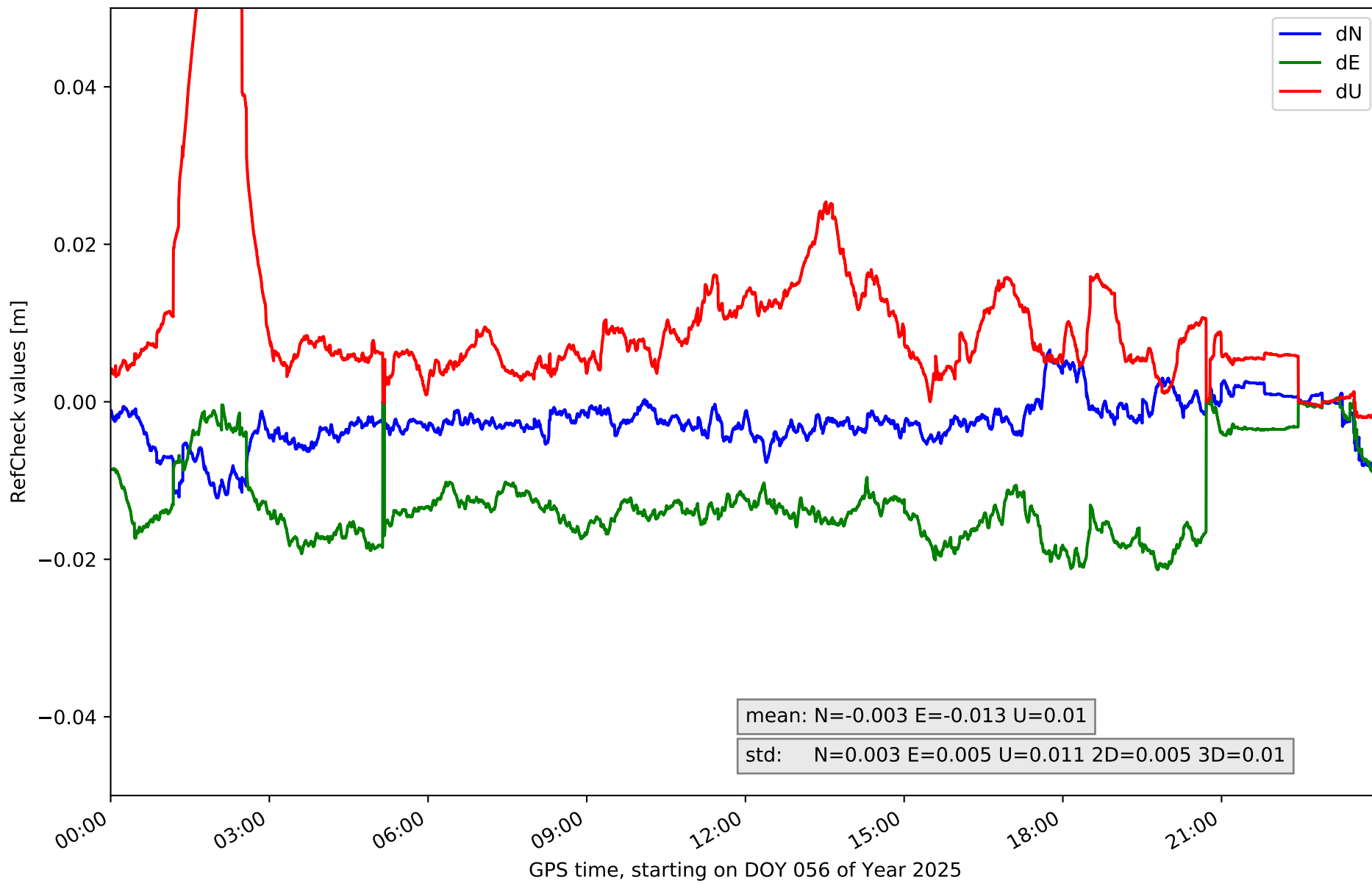
# RefCheck for station LZ01 in network NT31



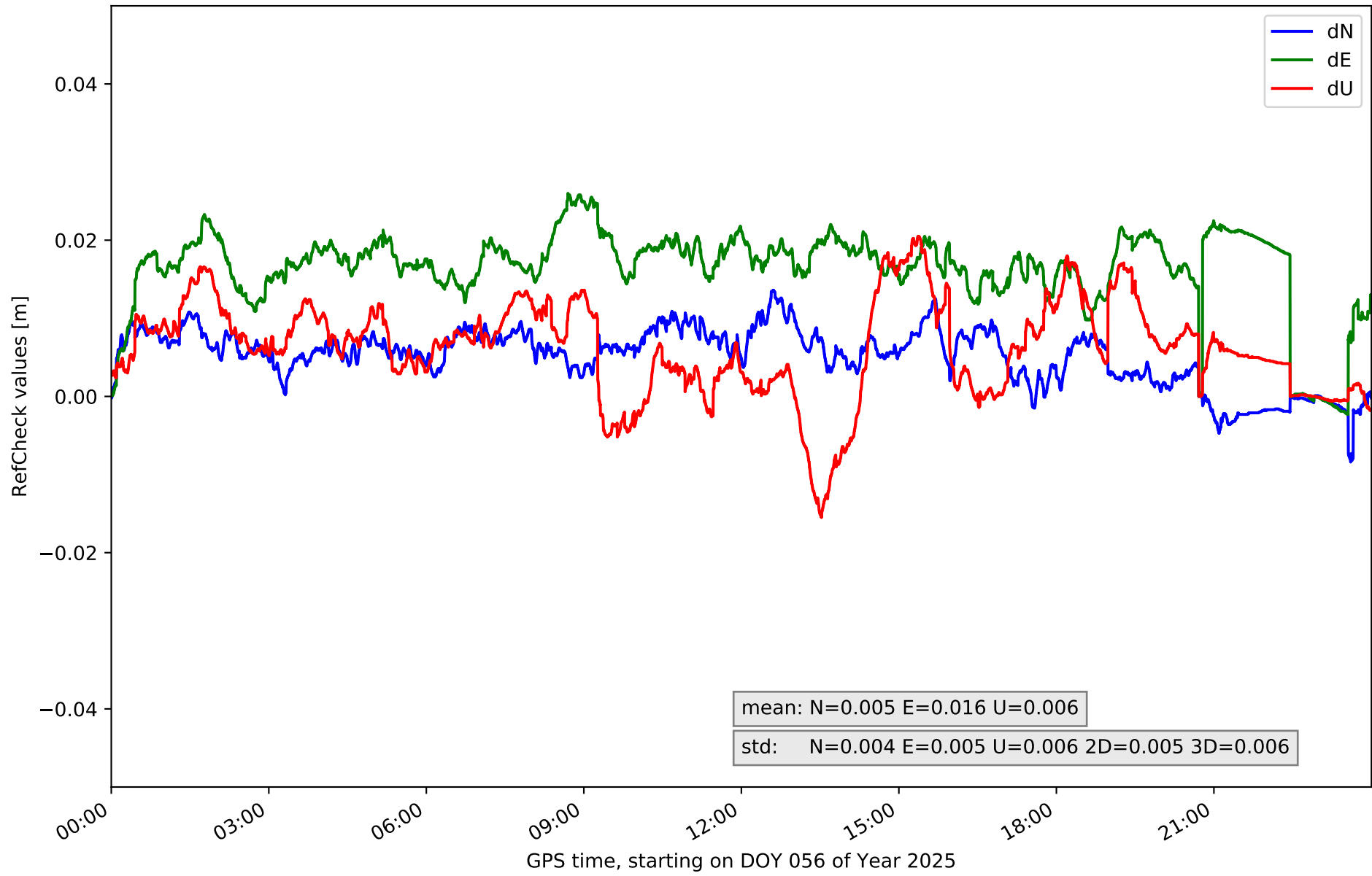
RefCheck for station LZ02 in network NT31



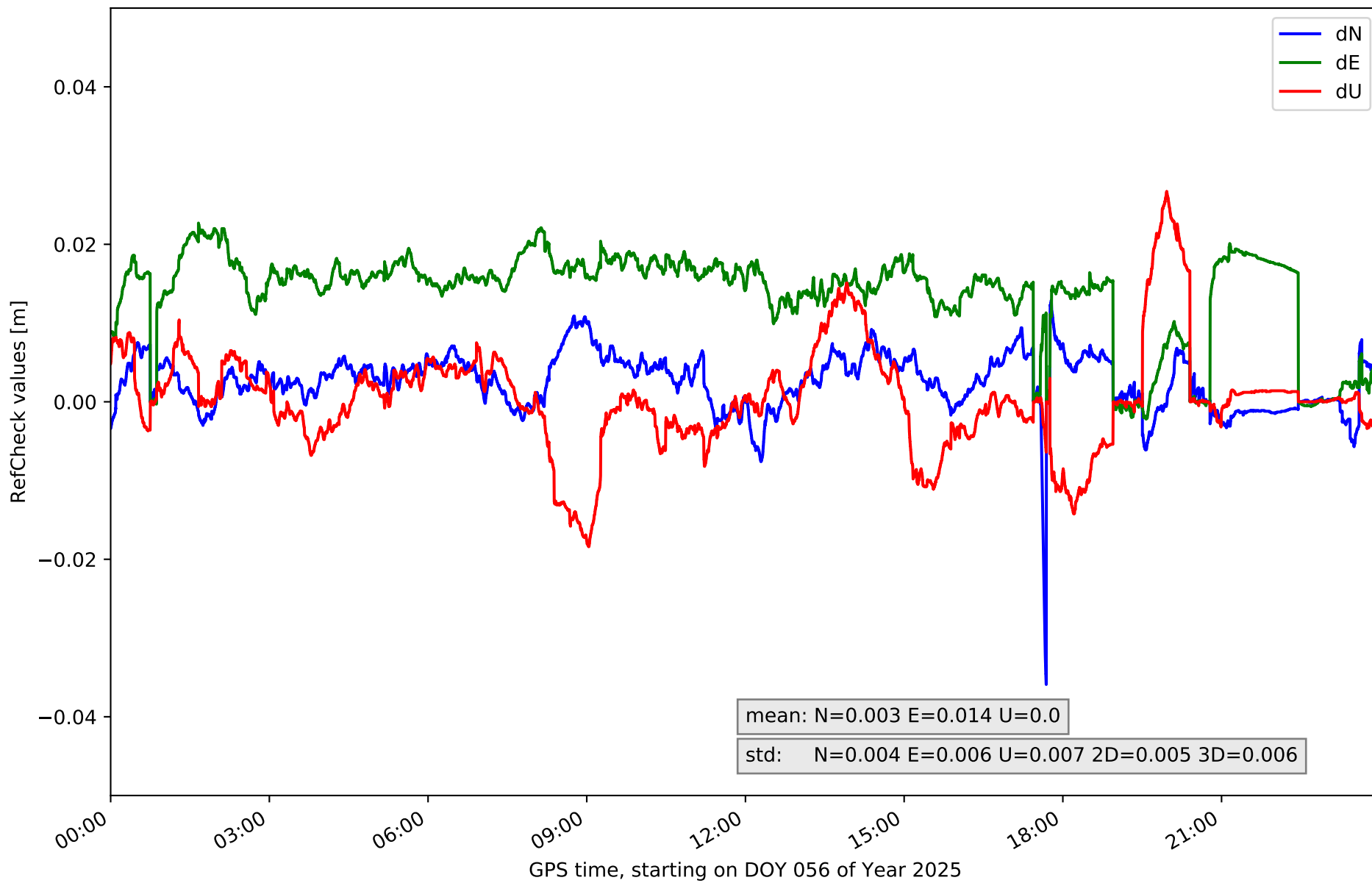
### RefCheck for station LZ03 in network NT31



# RefCheck for station MASP in network NT31



RefCheck for station ULP2 in network NT31



## RefCheck values for network NT31

| Station        | Nmin          | Nmax         | Nstd         | Emin          | Emax         | Estd         | Umin          | Umax         | Ustd         | std2D        | std3D        | #2D > 0.01     | % 2D > 0.01 | #3D > 0.02     | % 3D > 0.02 |
|----------------|---------------|--------------|--------------|---------------|--------------|--------------|---------------|--------------|--------------|--------------|--------------|----------------|-------------|----------------|-------------|
| FUER           | -0.002        | <b>0.015</b> | 0.002        | -0.015        | 0.007        | 0.004        | -0.029        | 0.006        | 0.006        | 0.003        | 0.005        | 7594           | 8.9         | 4051           | 4.7         |
| LALA           | -0.009        | 0.012        | 0.003        | -0.009        | 0.008        | 0.002        | -0.014        | 0.013        | 0.005        | 0.003        | 0.003        | 3248           | 3.8         | 0              | 0.0         |
| LZ01           | -0.015        | 0.005        | <b>0.004</b> | -0.029        | 0.01         | <b>0.006</b> | <b>-0.034</b> | 0.01         | 0.008        | <b>0.005</b> | 0.008        | 69745          | 81.4        | 21549          | 25.1        |
| LZ02           | -0.012        | 0.011        | <b>0.004</b> | <b>-0.048</b> | 0.002        | 0.004        | -0.033        | 0.025        | 0.009        | 0.004        | 0.007        | 41380          | 48.3        | 11146          | 13.0        |
| LZ03           | -0.012        | 0.007        | 0.003        | -0.021        | 0.001        | 0.005        | -0.003        | <b>0.066</b> | <b>0.011</b> | <b>0.005</b> | <b>0.01</b>  | 72377          | 84.4        | 20966          | 24.5        |
| MASP           | -0.008        | 0.014        | <b>0.004</b> | -0.002        | <b>0.026</b> | 0.005        | -0.015        | 0.021        | 0.006        | <b>0.005</b> | 0.006        | <b>80272</b>   | <b>93.6</b> | <b>46230</b>   | <b>53.9</b> |
| ULP2           | <b>-0.036</b> | 0.013        | <b>0.004</b> | -0.002        | 0.023        | <b>0.006</b> | -0.018        | 0.027        | 0.007        | <b>0.005</b> | 0.006        | 72452          | 84.5        | 12887          | 15.0        |
| <b>Mean</b>    | <b>-0.013</b> | <b>0.011</b> | <b>0.003</b> | <b>-0.018</b> | <b>0.011</b> | <b>0.005</b> | <b>-0.021</b> | <b>0.024</b> | <b>0.007</b> | <b>0.004</b> | <b>0.006</b> | <b>49581.1</b> | <b>57.8</b> | <b>16689.9</b> | <b>19.5</b> |
| <b>Min/Max</b> | <b>-0.036</b> | <b>0.015</b> | <b>0.004</b> | <b>-0.048</b> | <b>0.026</b> | <b>0.006</b> | <b>-0.034</b> | <b>0.066</b> | <b>0.011</b> | <b>0.005</b> | <b>0.01</b>  | <b>80272</b>   | <b>93.6</b> | <b>46230</b>   | <b>53.9</b> |



## fixing statistic for network NT31

| fixing percentage of                             | all GNSS | G    | R    | E    | C    |
|--|----------|------|------|------|------|
| using threshold 0.3                              | 75.8     | 79.0 | 67.9 | 81.5 | 80.5 |
| considering satellites with dual-frequency fixed | 76.1     | 77.7 | 65.9 | 80.1 | 79.9 |
| considering all signals separately               | 76.6     | 77.6 | 65.9 | 80.2 | 78.1 |