

summary for network NET5

timeperiod chosen: from 2025-02-25-00:00:00 until 2025-02-25-23:59:59

average update rate (durations larger than 15 seconds considered as observation gap): 1.2 seconds

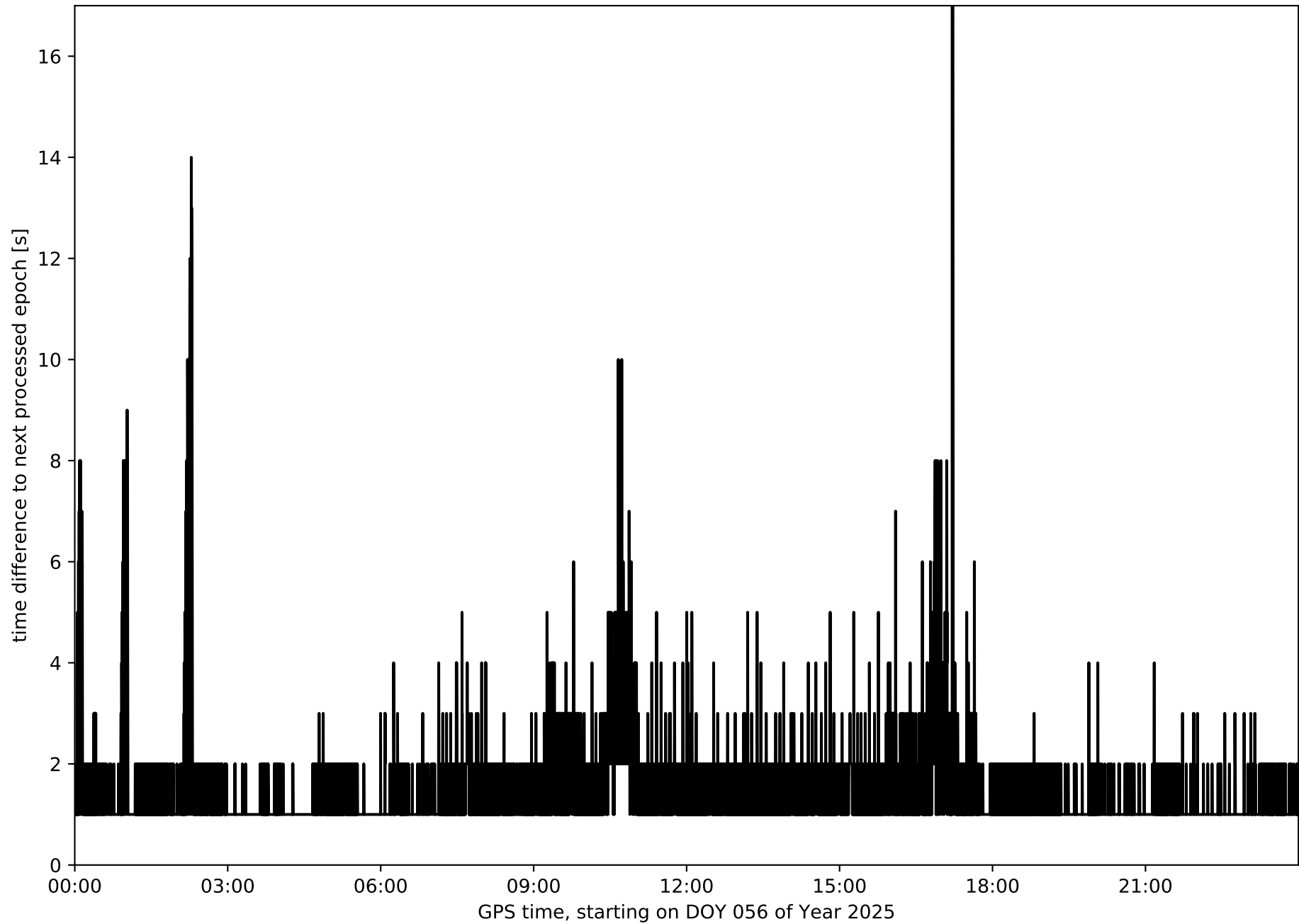
average fixing percentage with threshold set to 0.3: 89.7 percent

stations available: 11 of 11

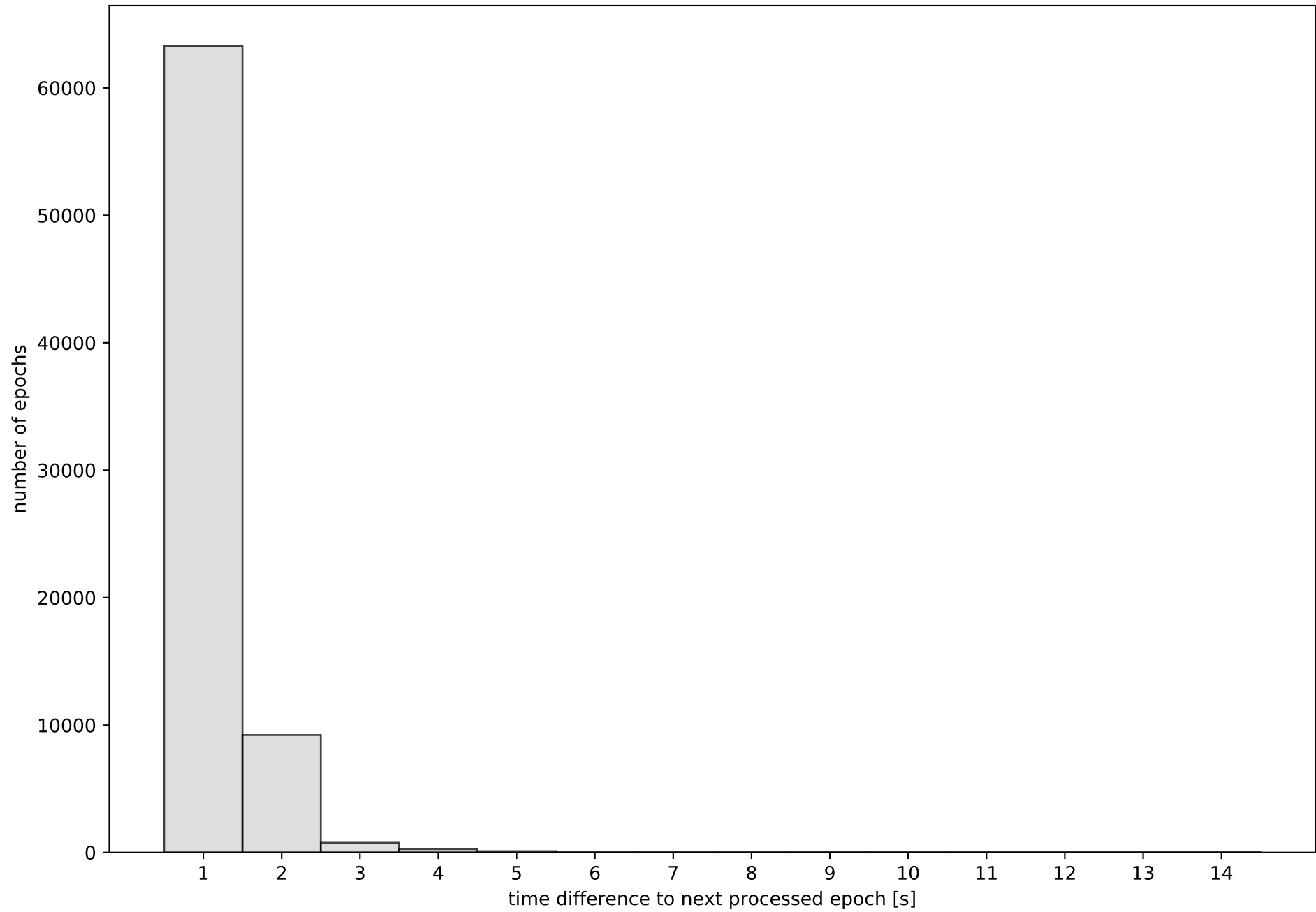
station information:

station ALMZ:	antenna: LEIAR20	LEIM	receiver: LEICA GR50	height: 1019.452
station ARDU:	antenna: LEIAR20	LEIM	receiver: LEICA GR50	height: 844.466
station BUOS:	antenna: TRM59900.00	SCIS	receiver: TRIMBLE NETR9	height: 963.896
station CALH:	antenna: GPPNULLANTENNA	NONE	receiver: LEICA GR50	height: 411.39
station CAS0:	antenna: GPPNULLANTENNA	NONE	receiver: LEICA GR30	height: 564.198
station CERV:	antenna: GPPNULLANTENNA	NONE	receiver: LEICA GR50	height: 723.317
station LERM:	antenna: TRM59900.00	SCIS	receiver: TRIMBLE NETR9	height: 926.169
station QINT:	antenna: TRM59900.00	SCIS	receiver: TRIMBLE NETR9	height: 1191.829
station SORI:	antenna: GPPNULLANTENNA	NONE	receiver: LEICA GR50	height: 1135.68
station SROM:	antenna: GPPNULLANTENNA	NONE	receiver: LEICA GR50	height: 1150.486
station VTRO:	antenna: GPPNULLANTENNA	NONE	receiver: LEICA GR50	height: 1626.177

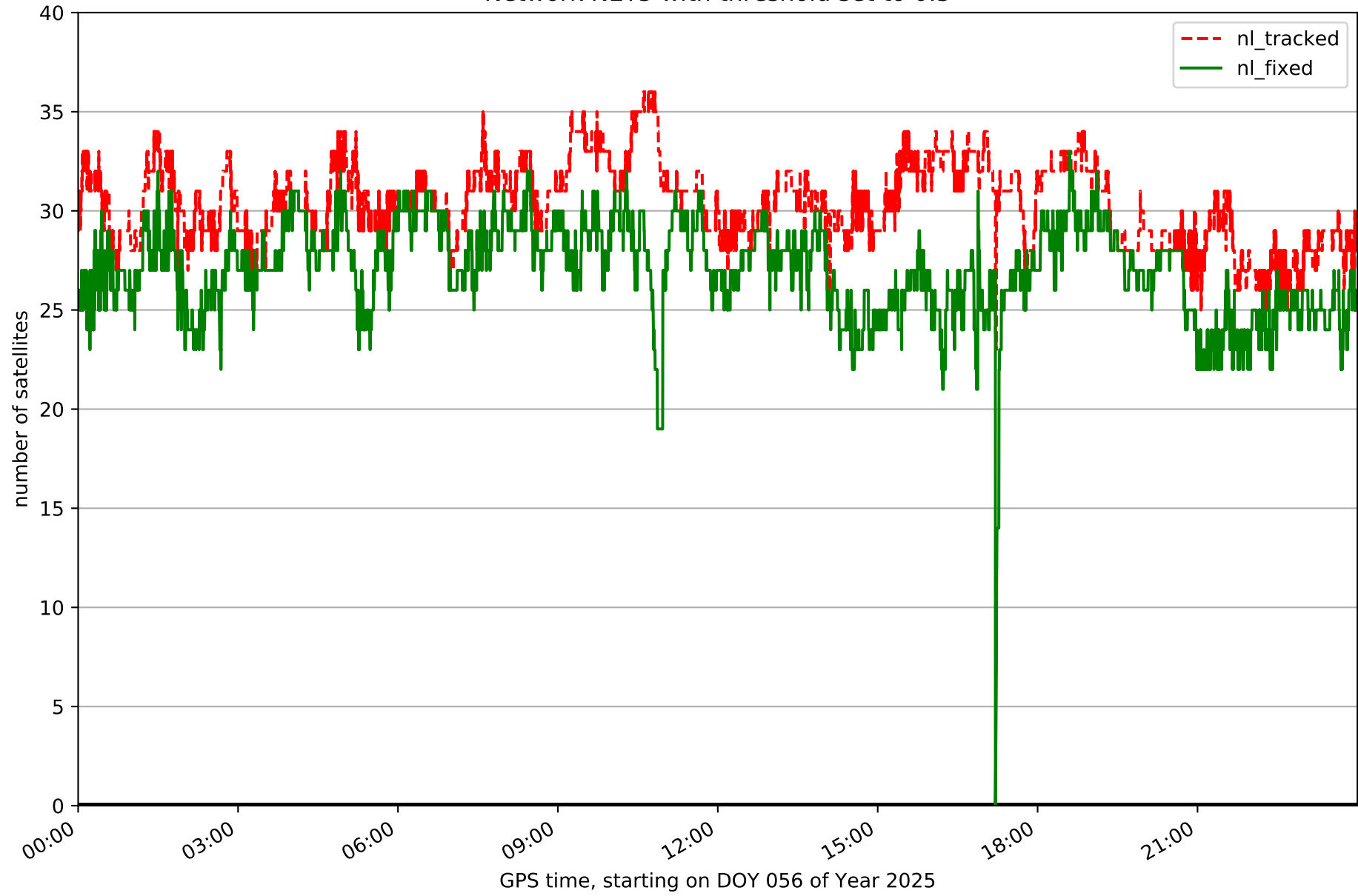
Processing rate in network NET5



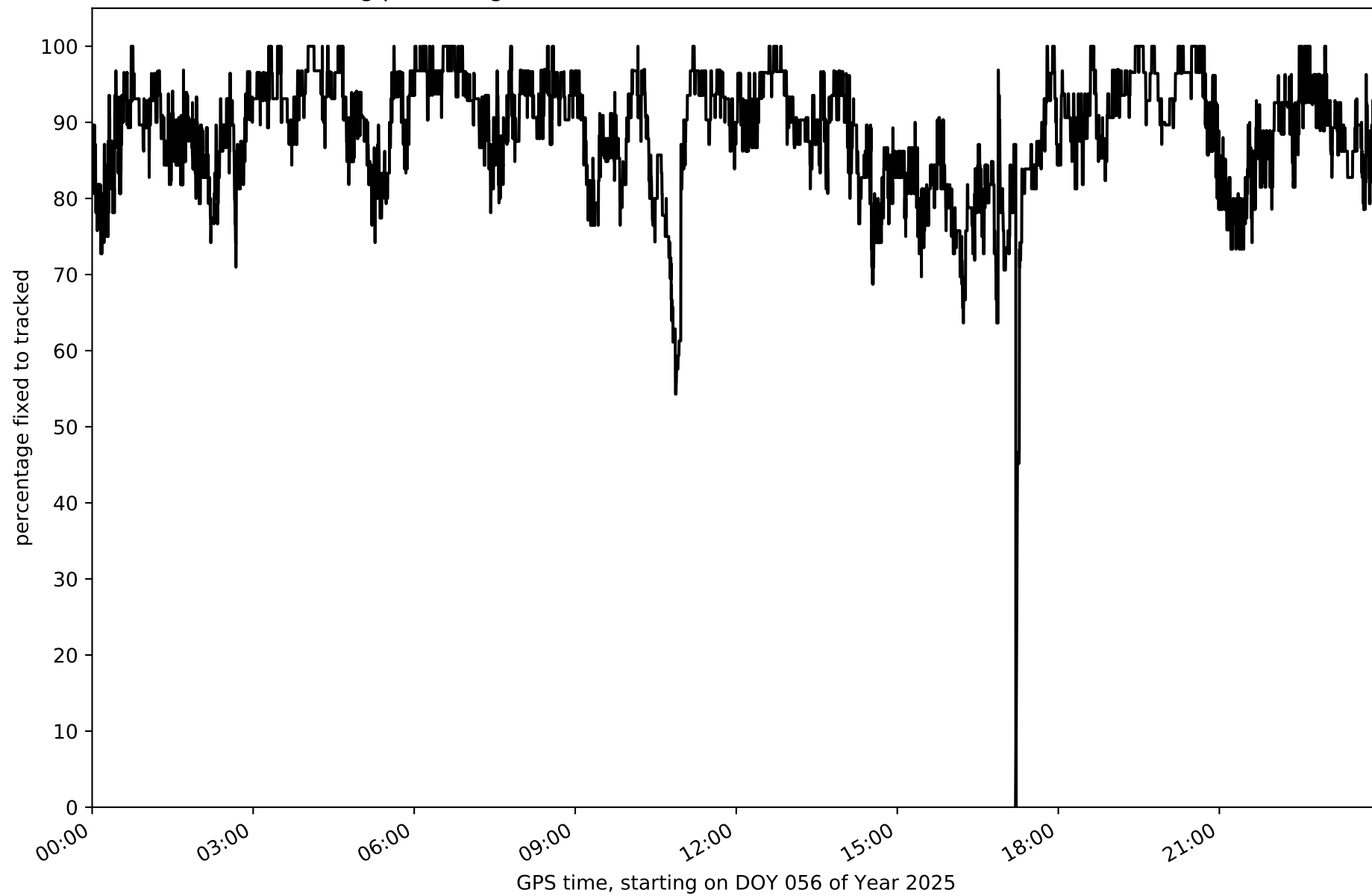
Histogram of the processing rate in network NET5 (durations larger 15 seconds neglected)



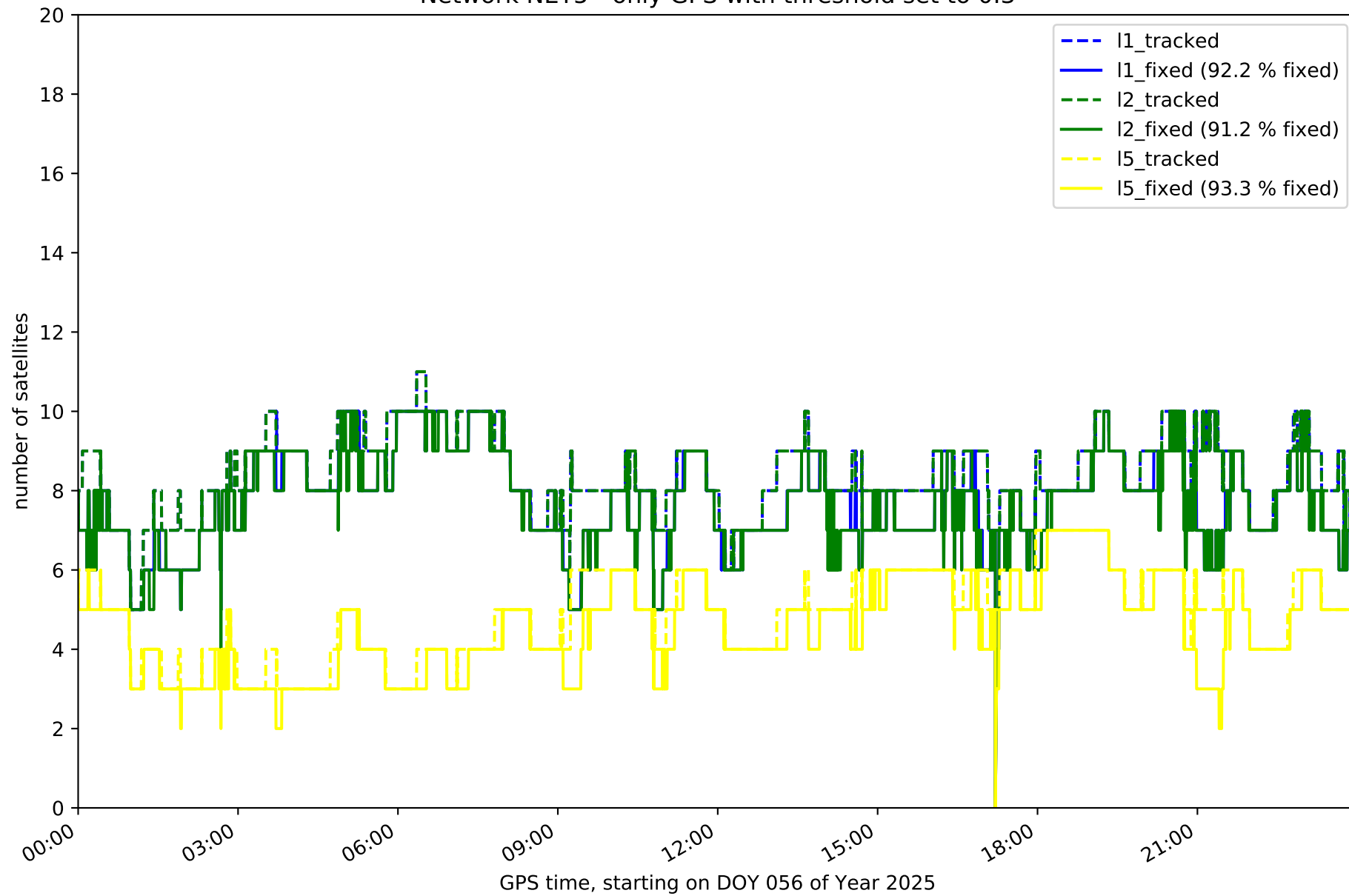
Network NET5 with threshold set to 0.3



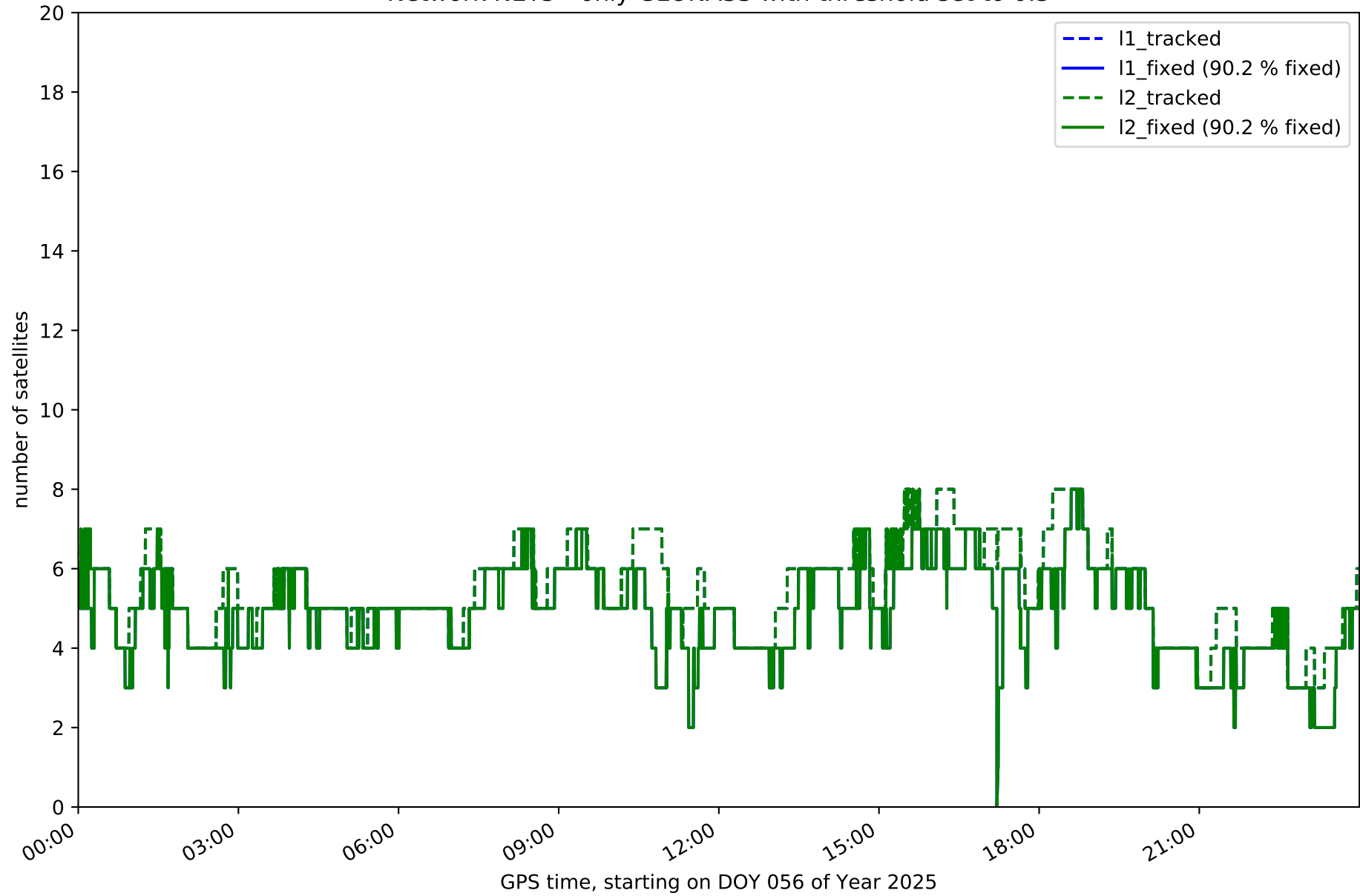
Fixing percentage of satellites in network NET5 with threshold set to 0.3



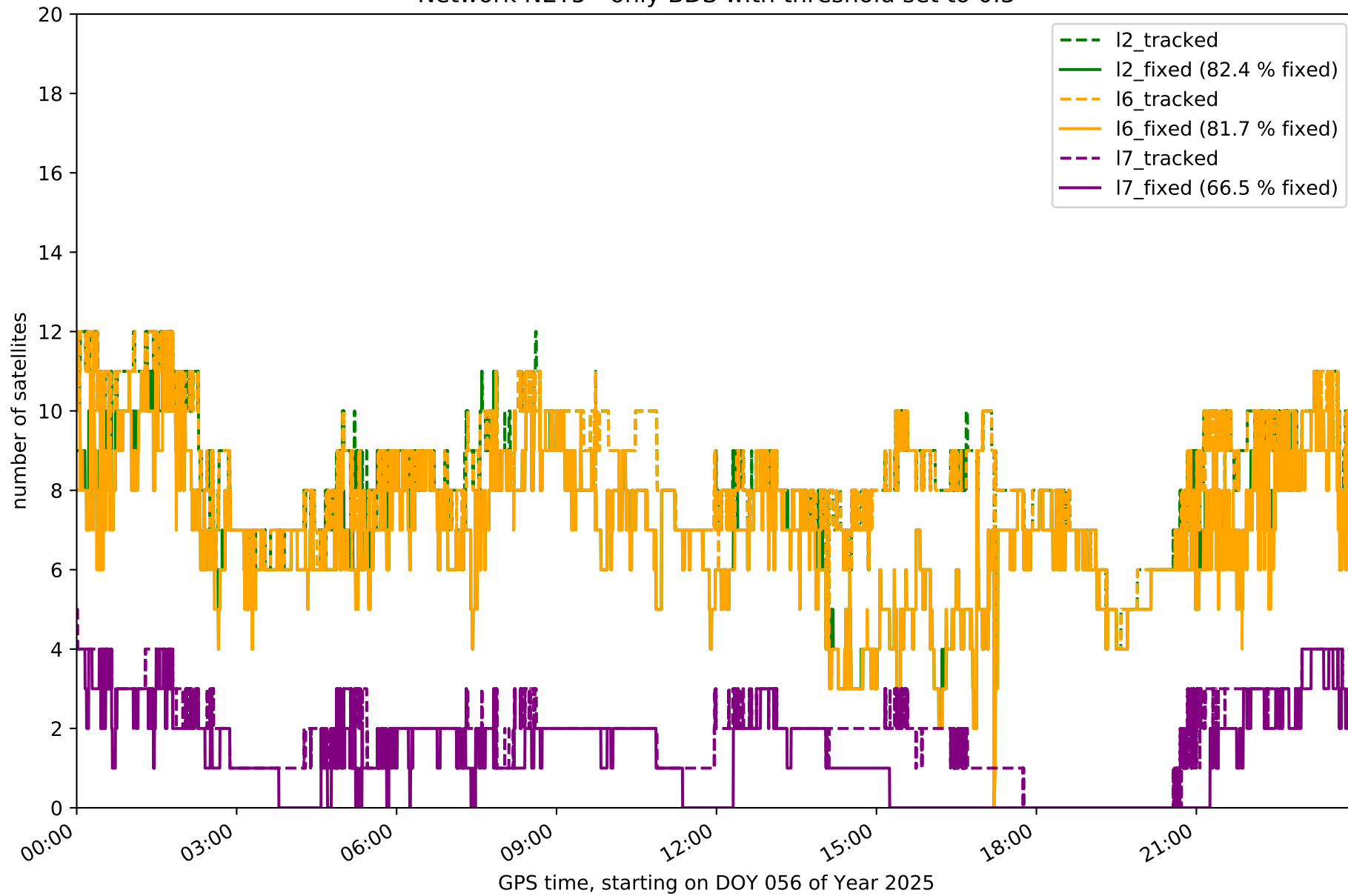
Network NET5 - only GPS with threshold set to 0.3



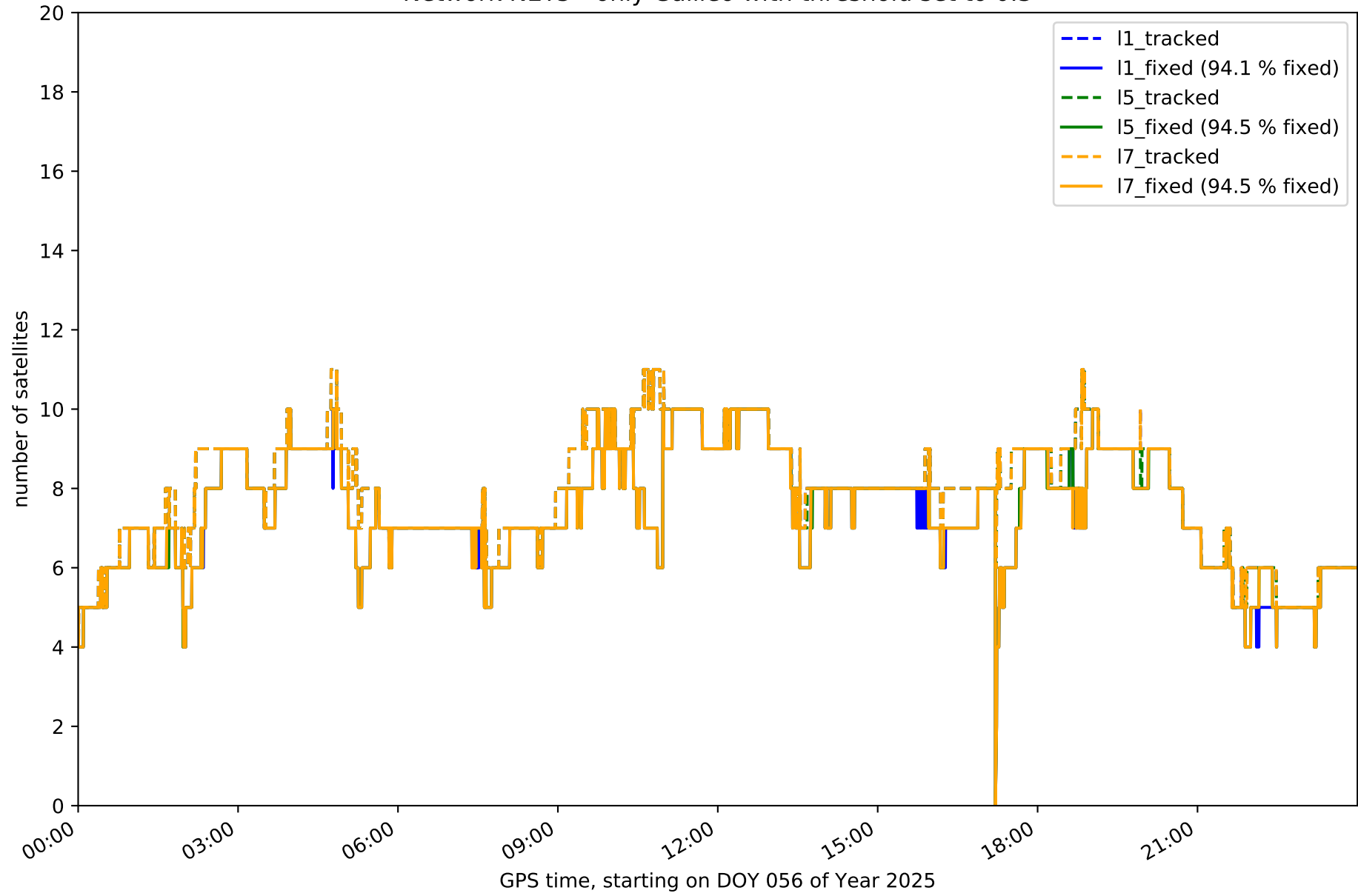
Network NET5 - only GLONASS with threshold set to 0.3



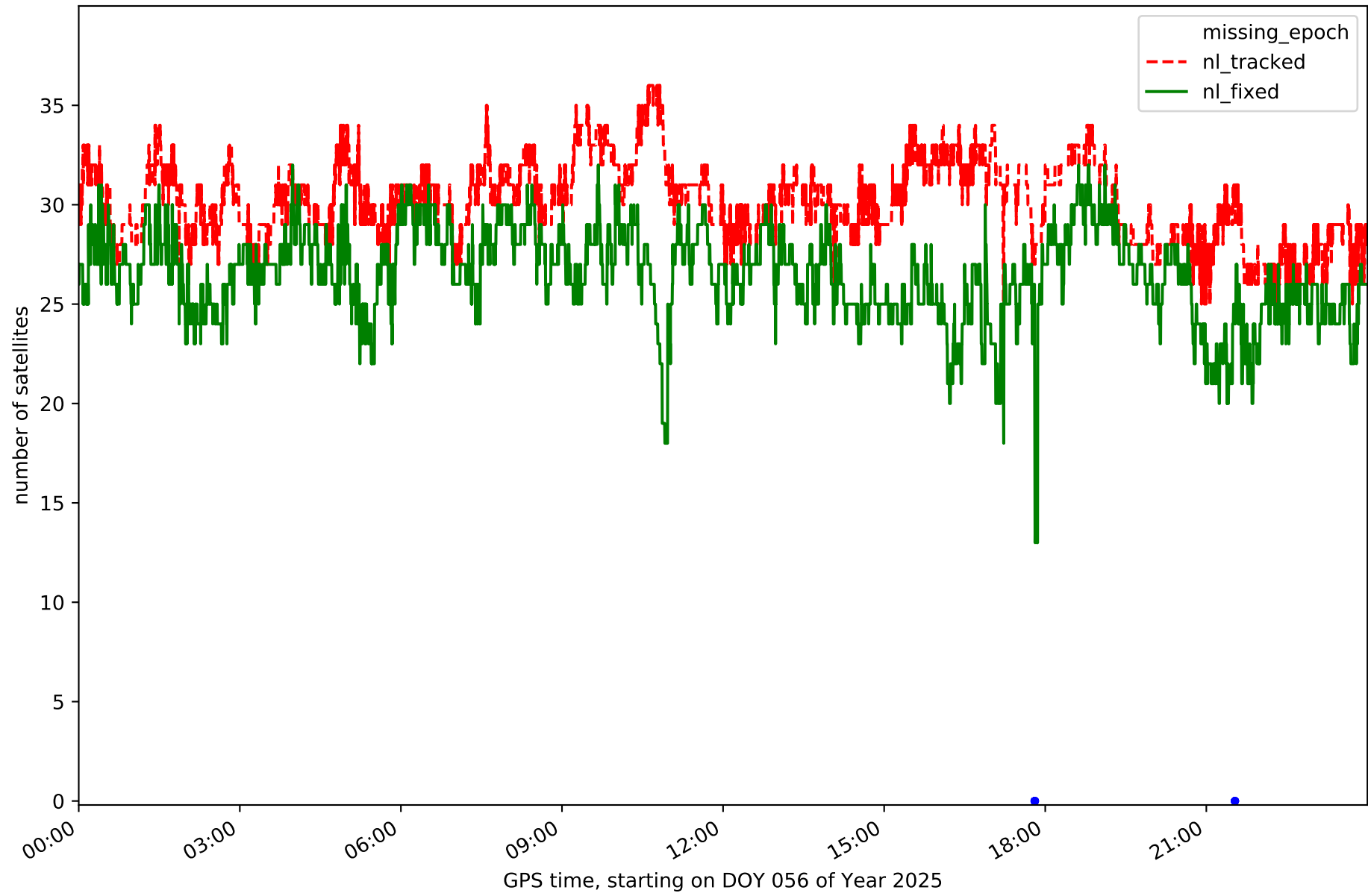
Network NET5 - only BDS with threshold set to 0.3



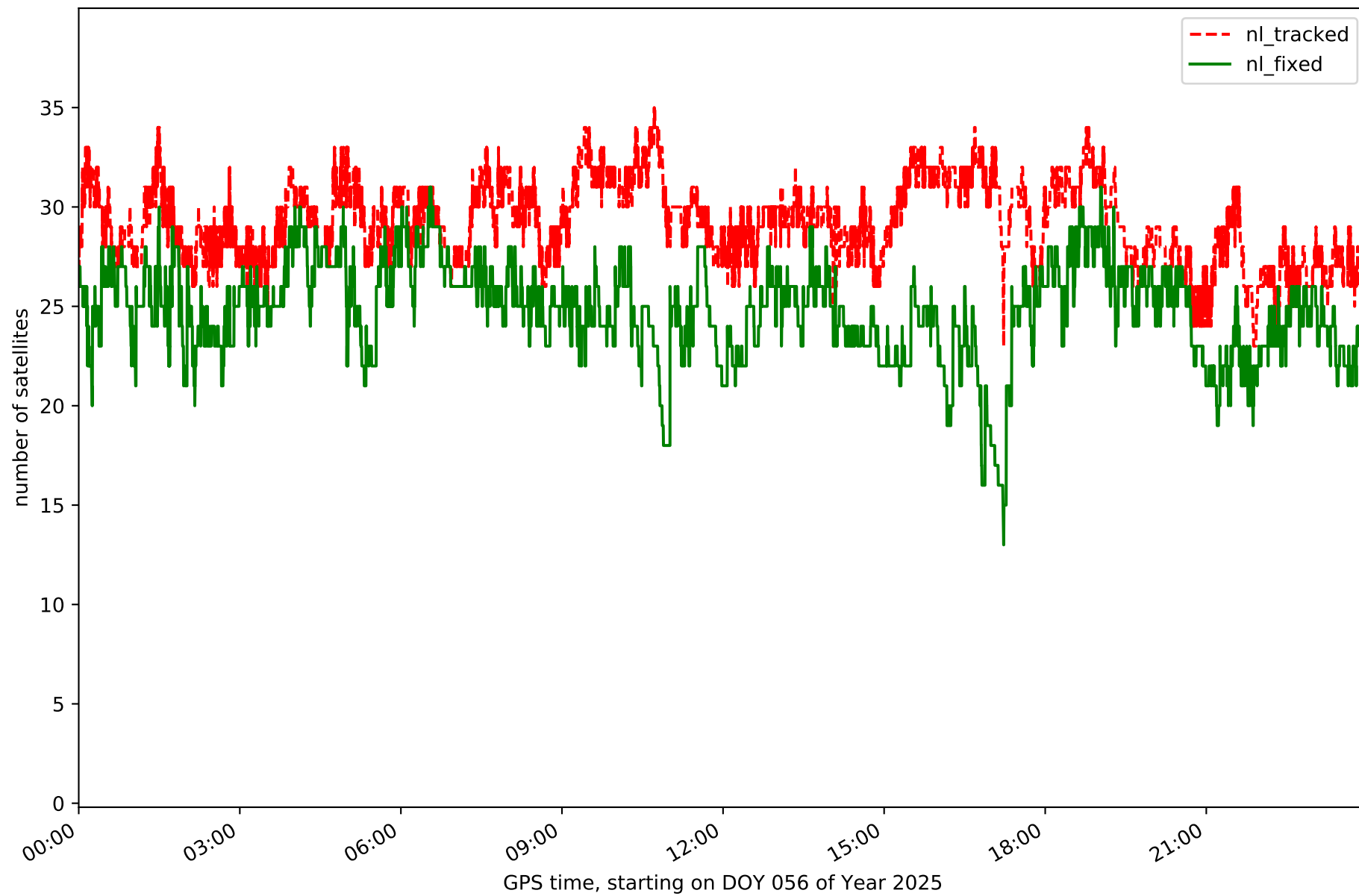
Network NET5 - only Galileo with threshold set to 0.3



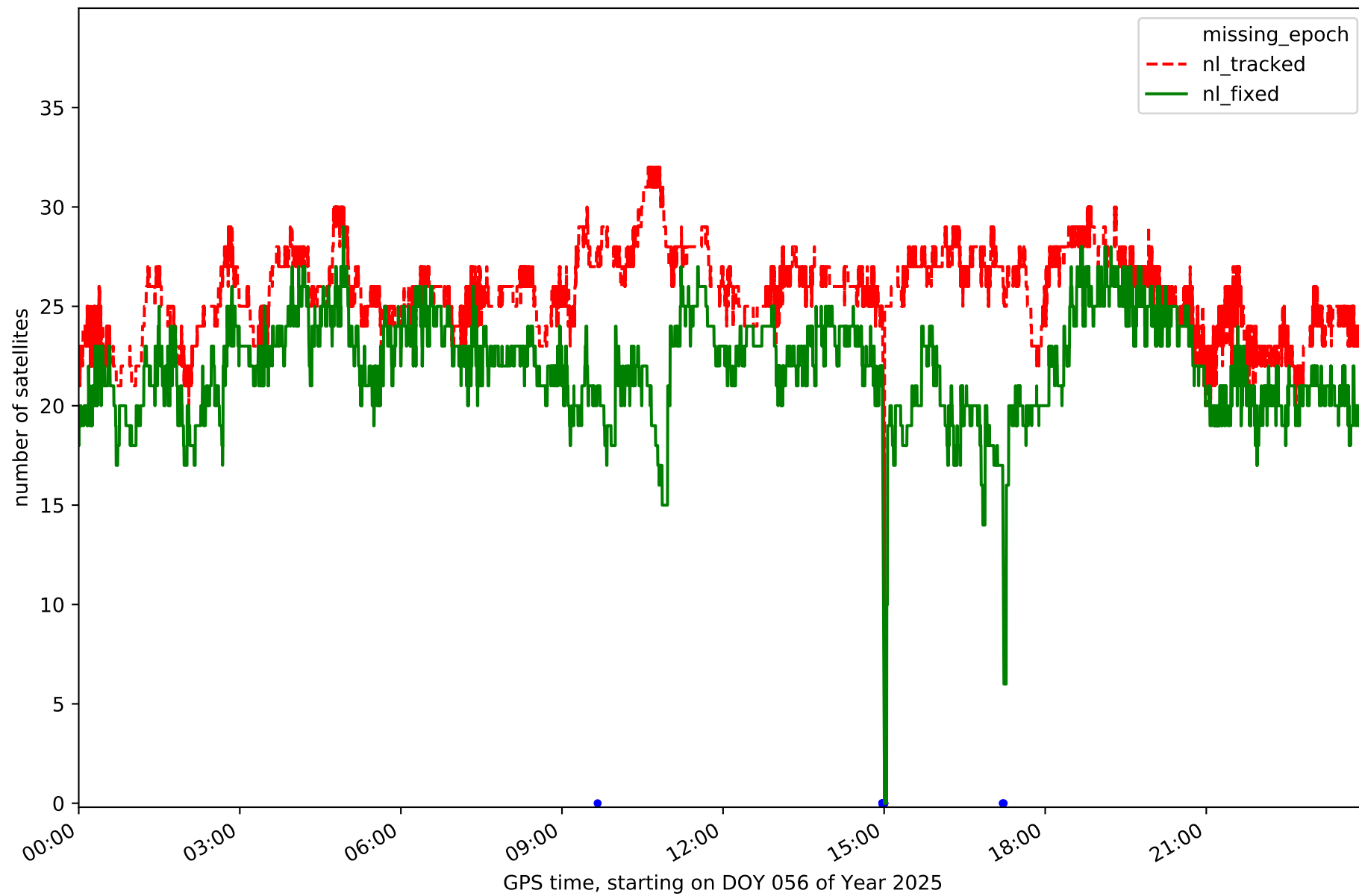
Station ALMZ in network NET5



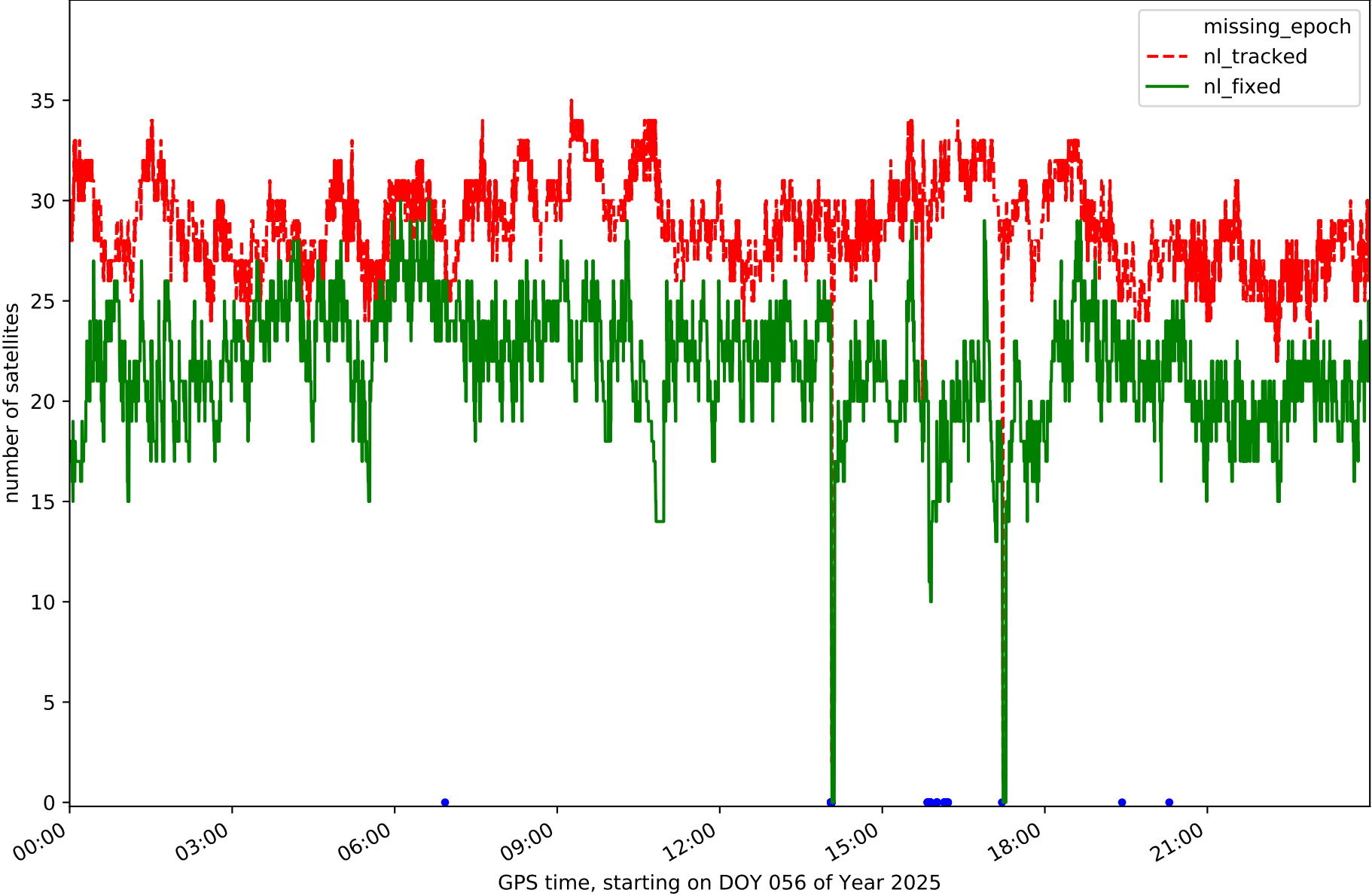
Station ARDU in network NET5



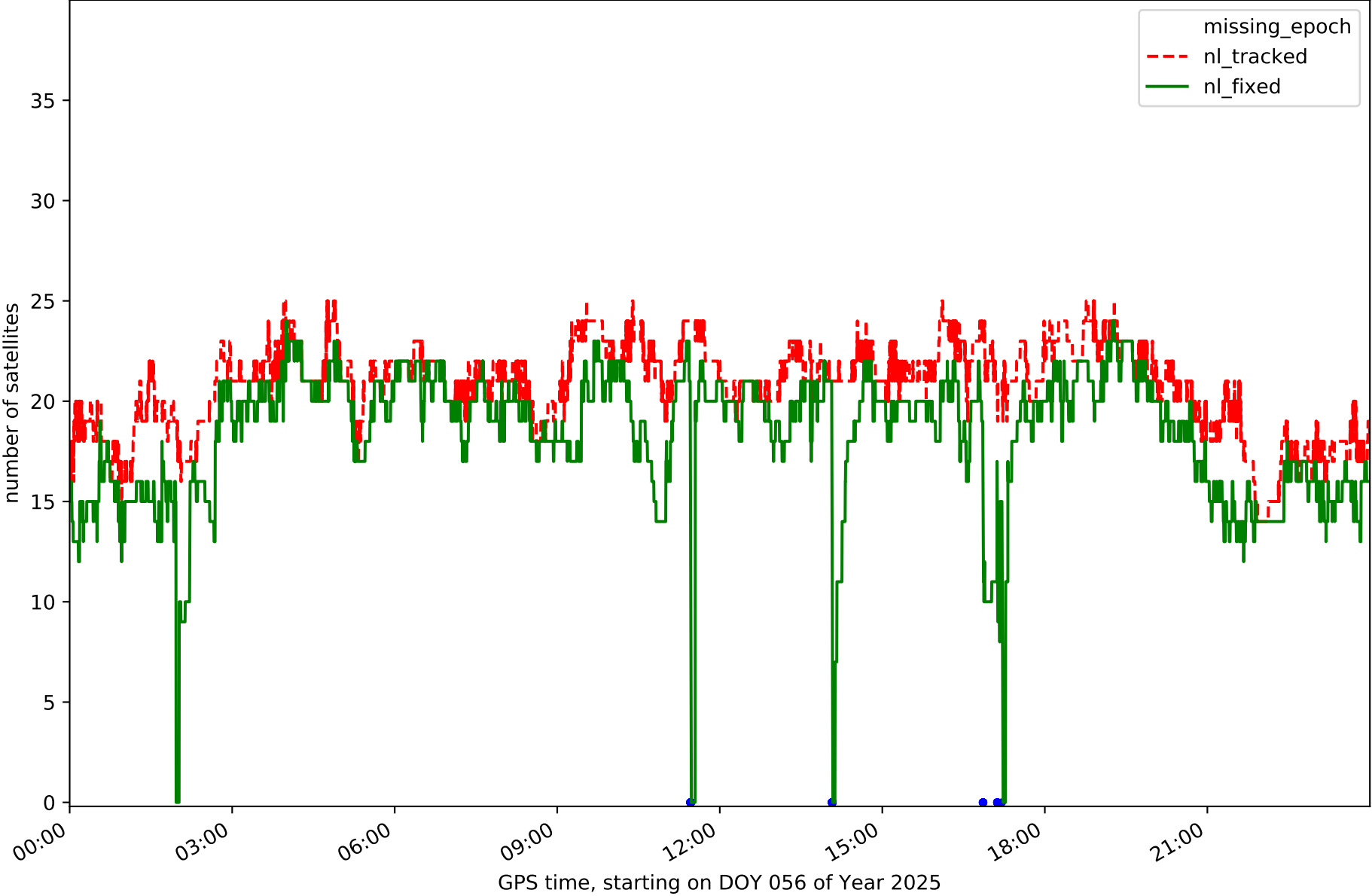
Station BUOS in network NET5



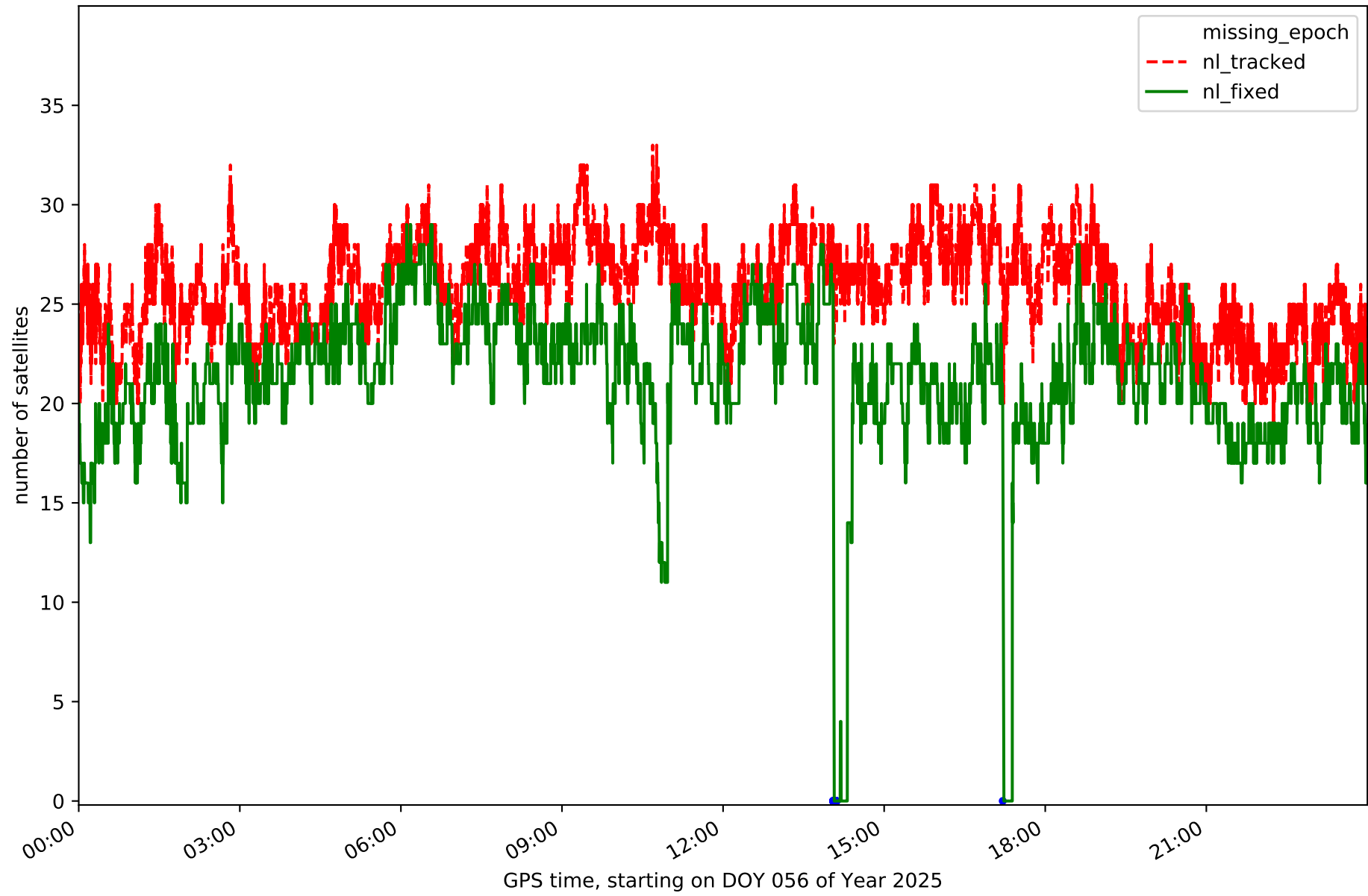
Station CALH in network NET5



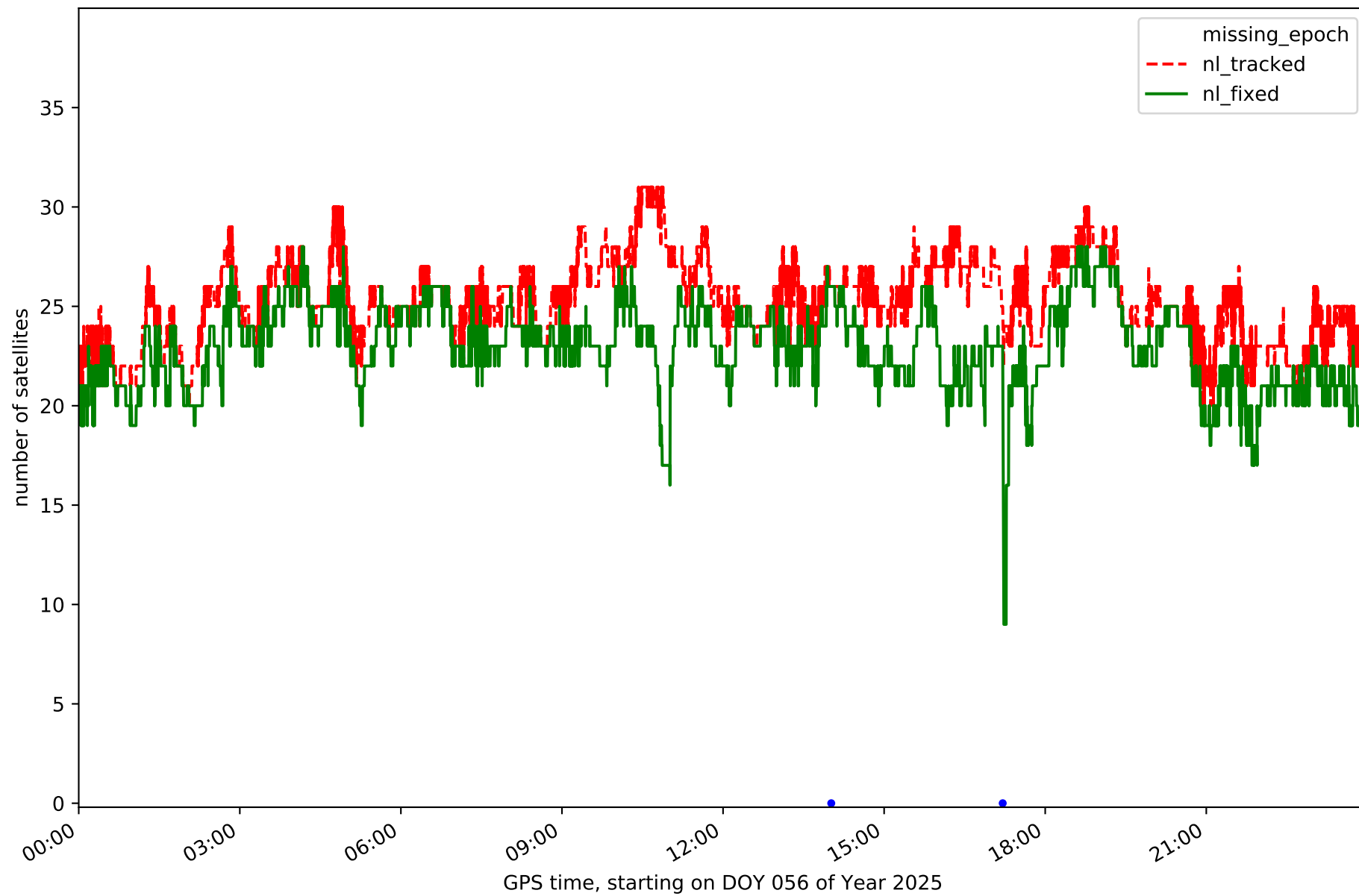
Station CAS0 in network NET5



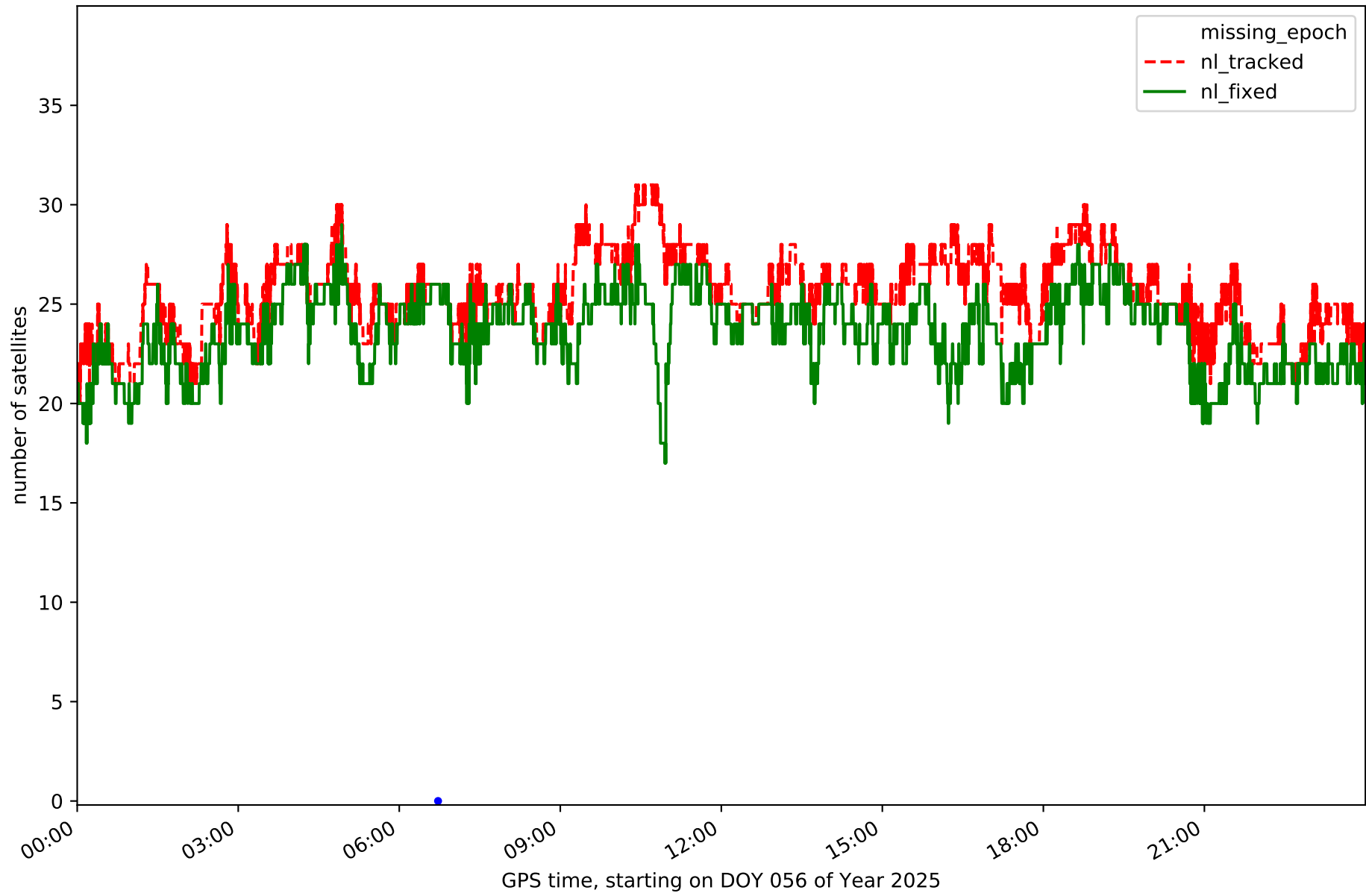
Station CERV in network NET5



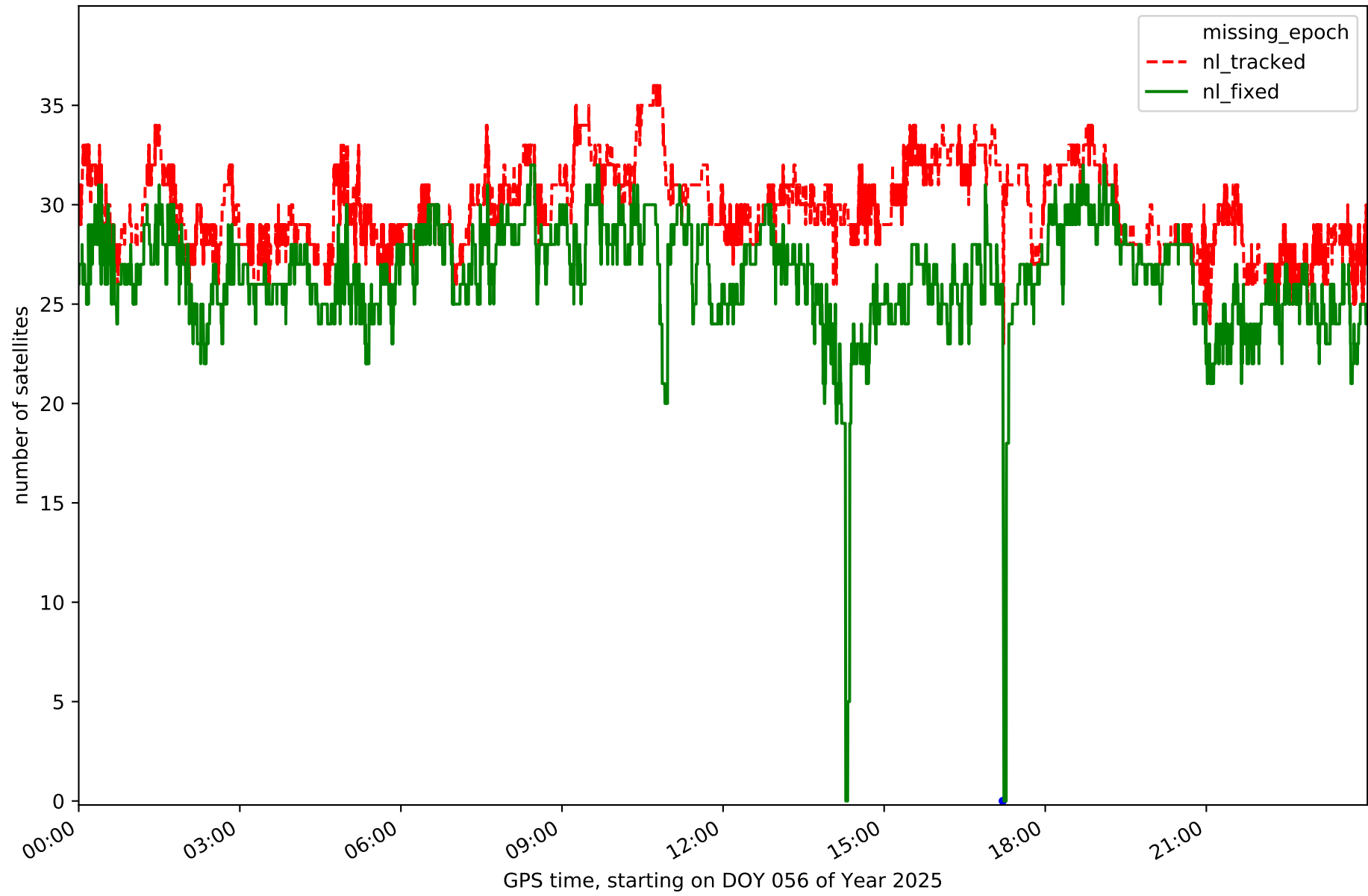
Station LERM in network NET5



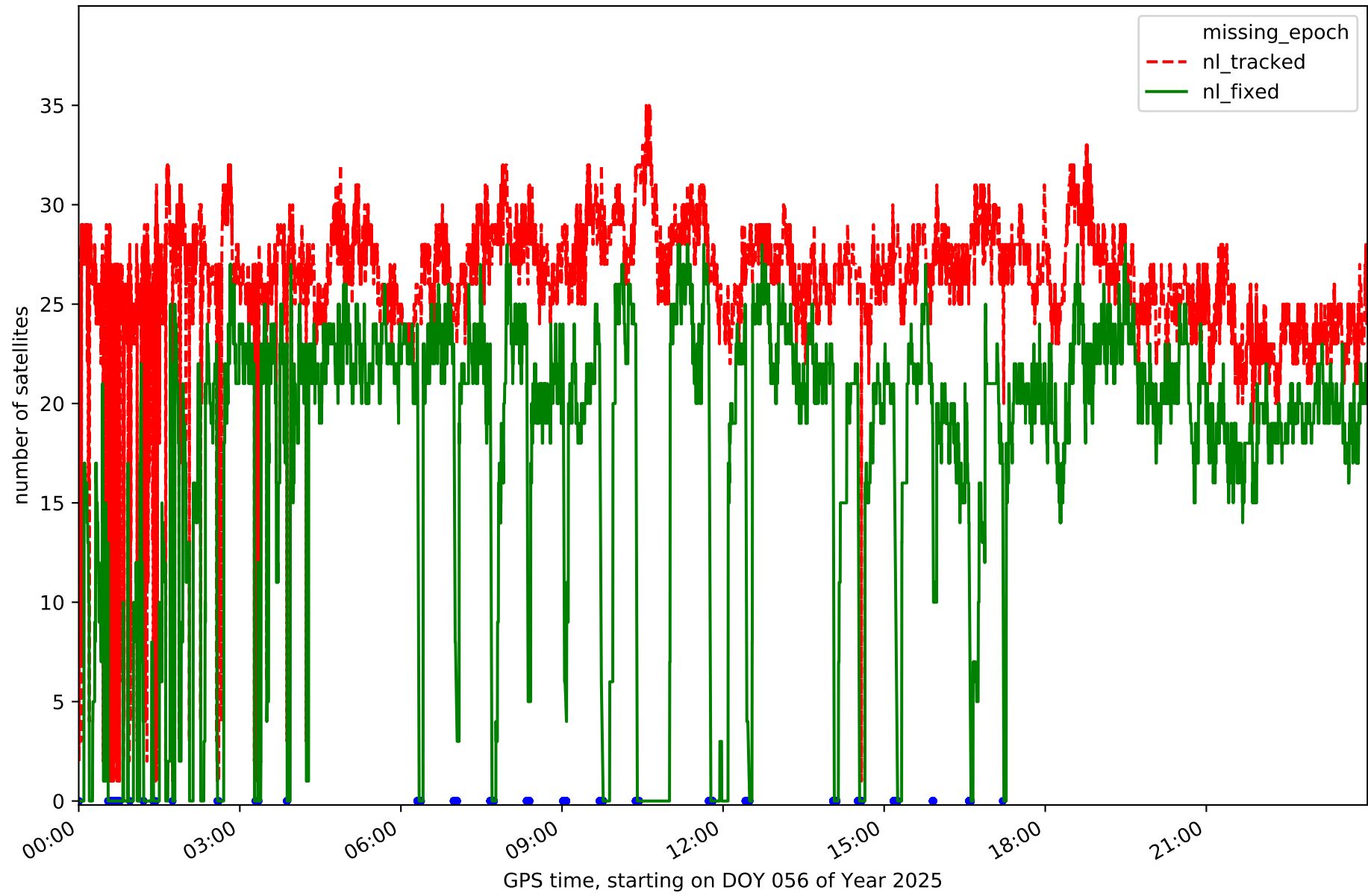
Station QINT in network NET5



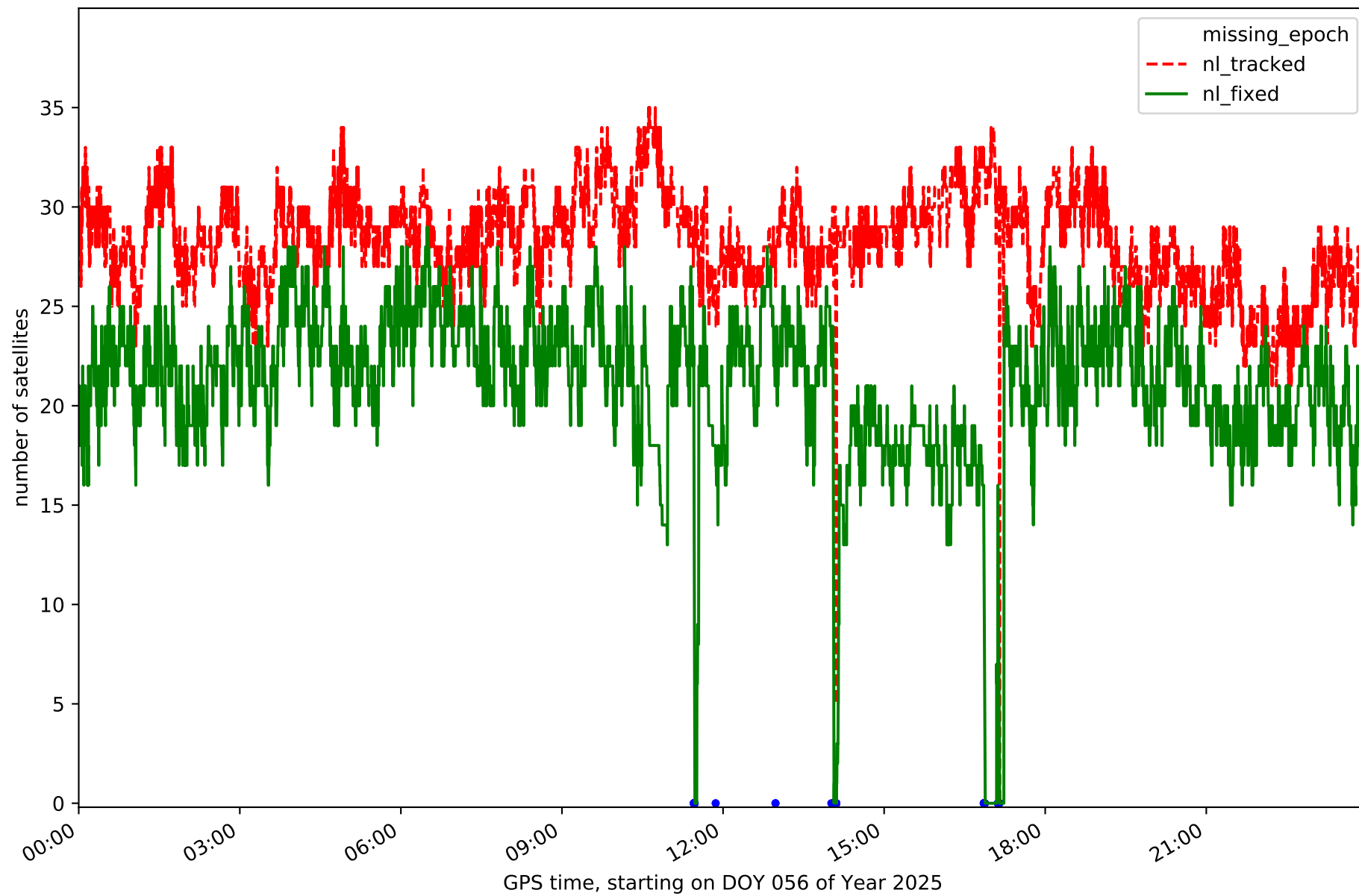
Station SORI in network NET5



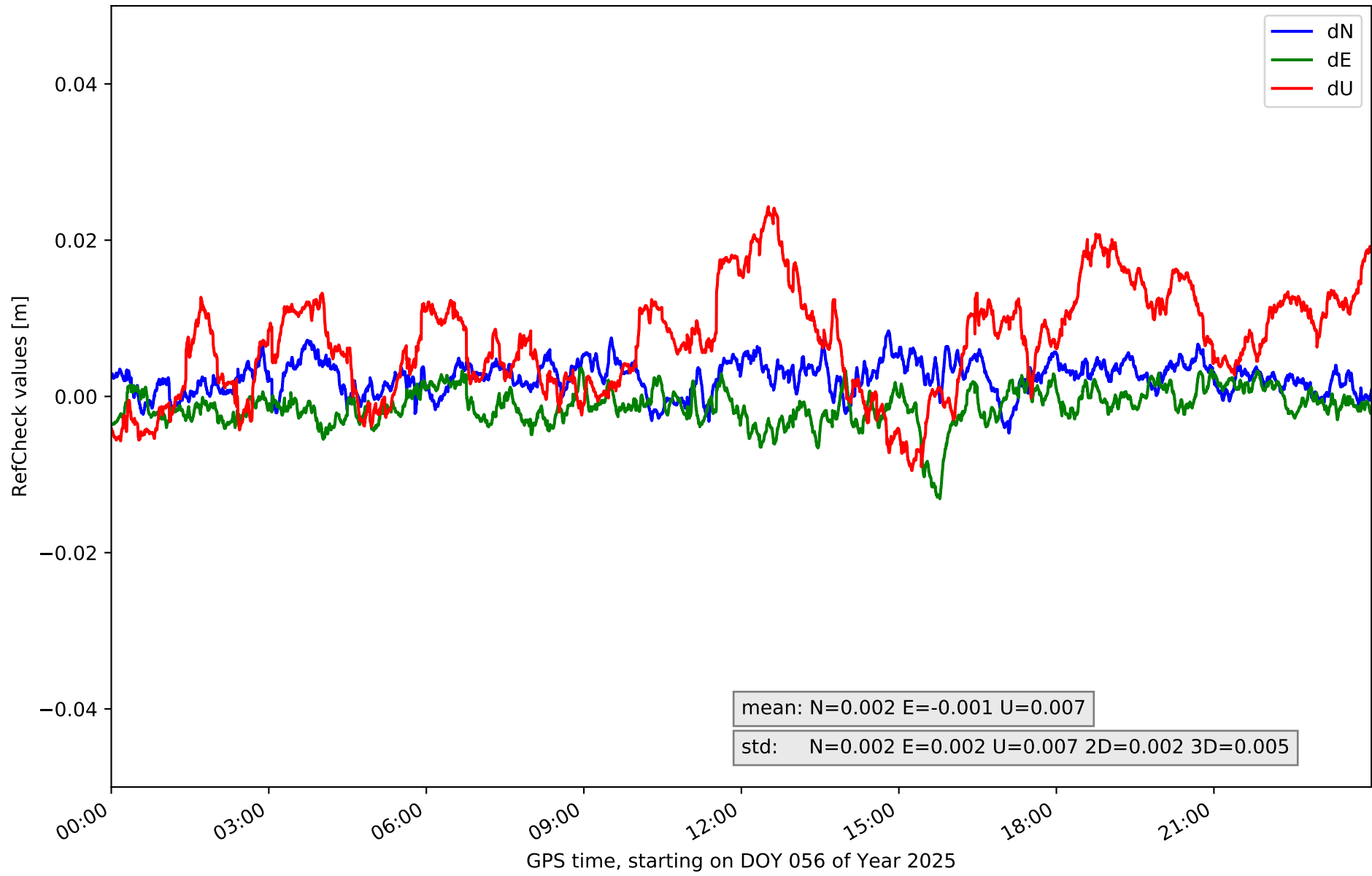
Station SROM in network NET5



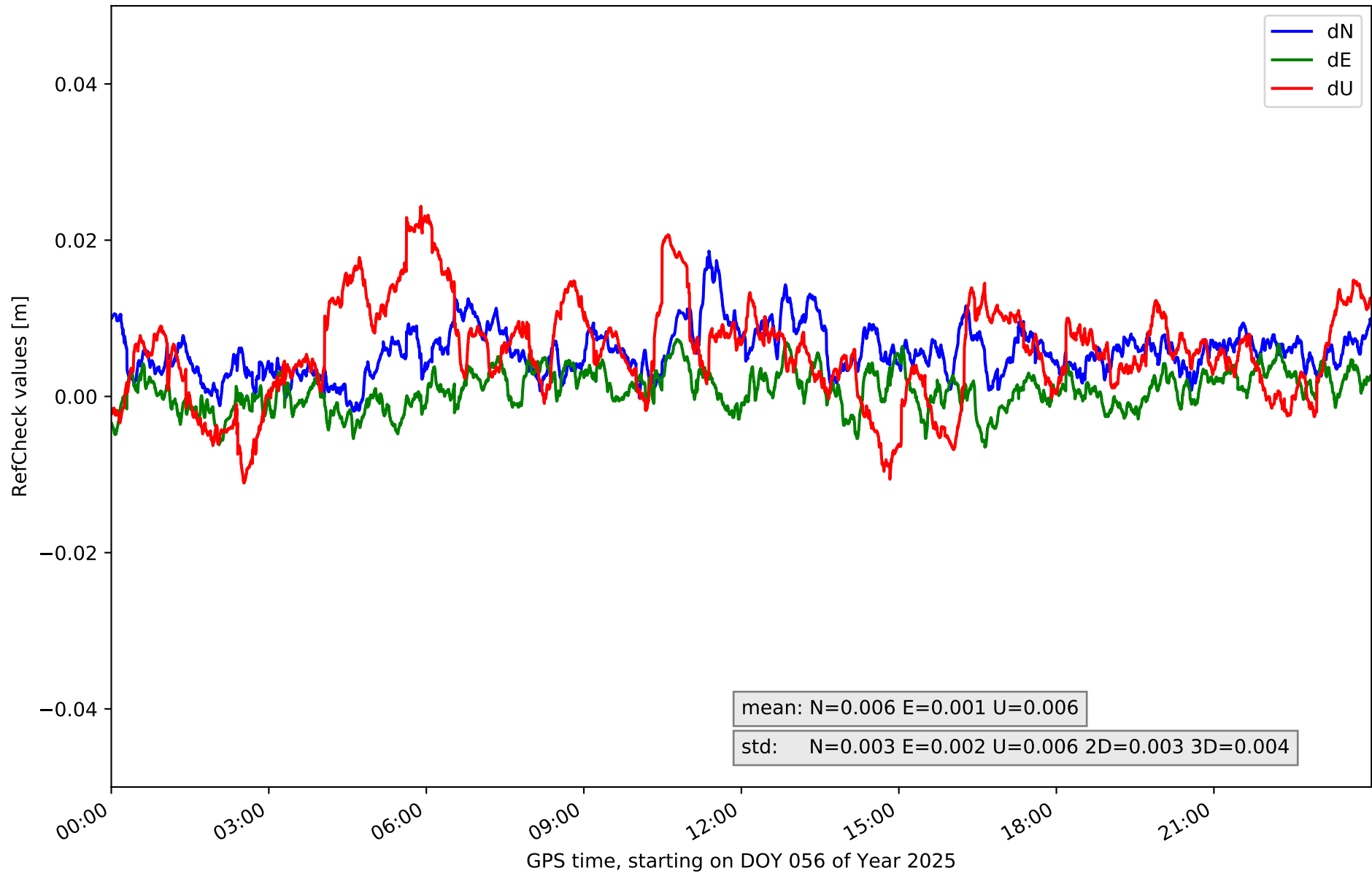
Station VTRO in network NET5



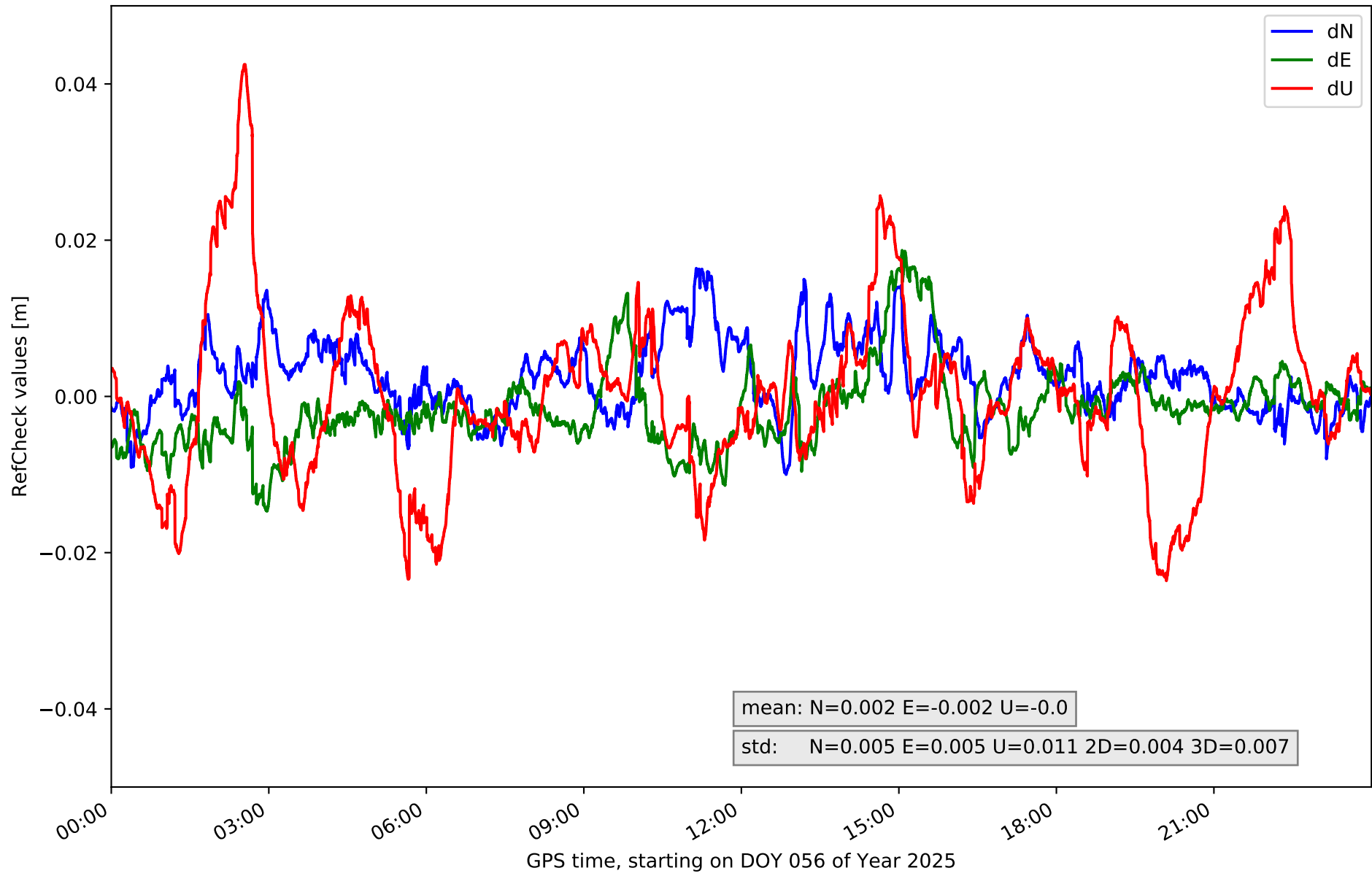
RefCheck for station ALMZ in network NET5



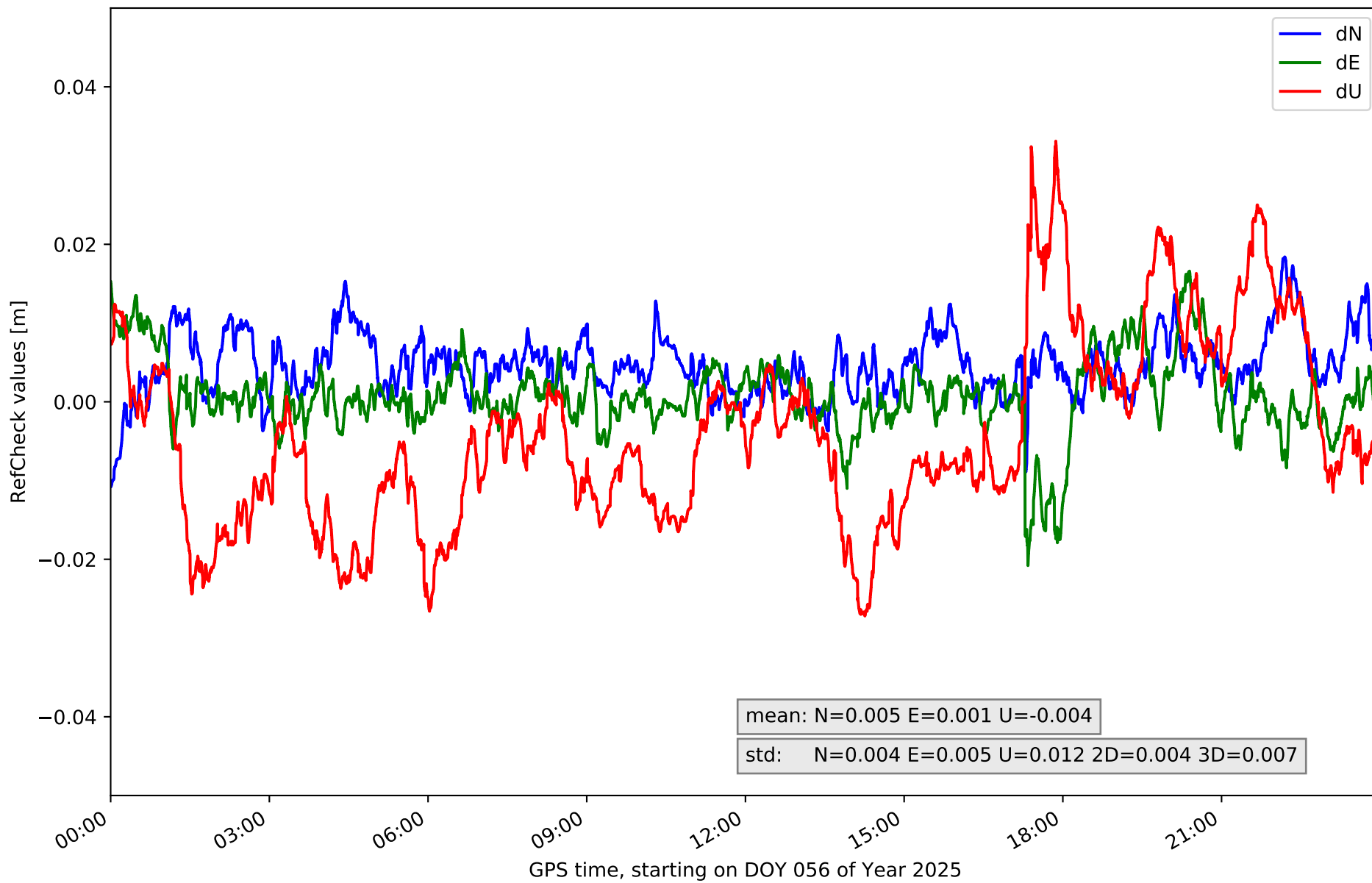
RefCheck for station ARDU in network NET5



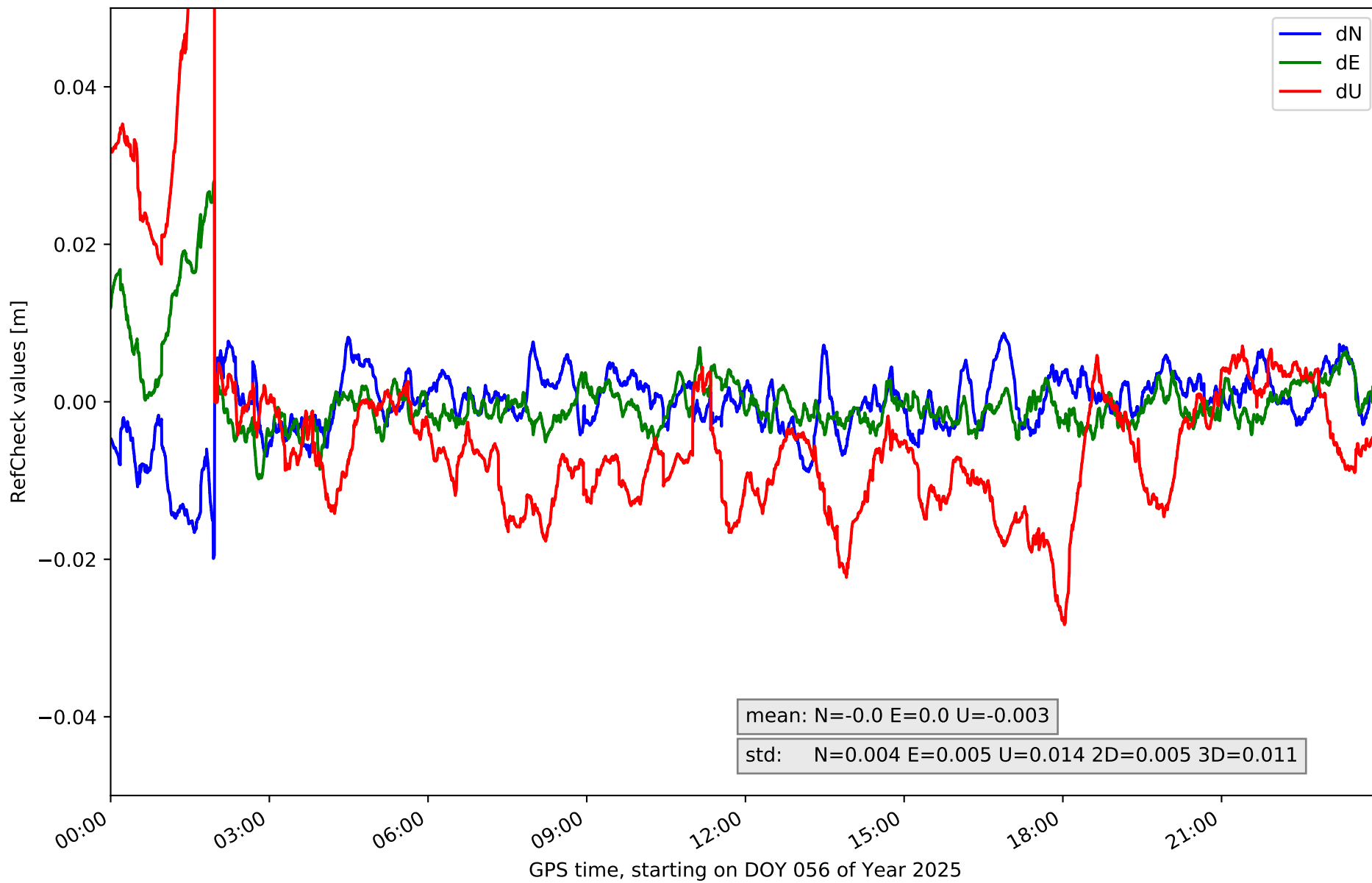
RefCheck for station BUOS in network NET5



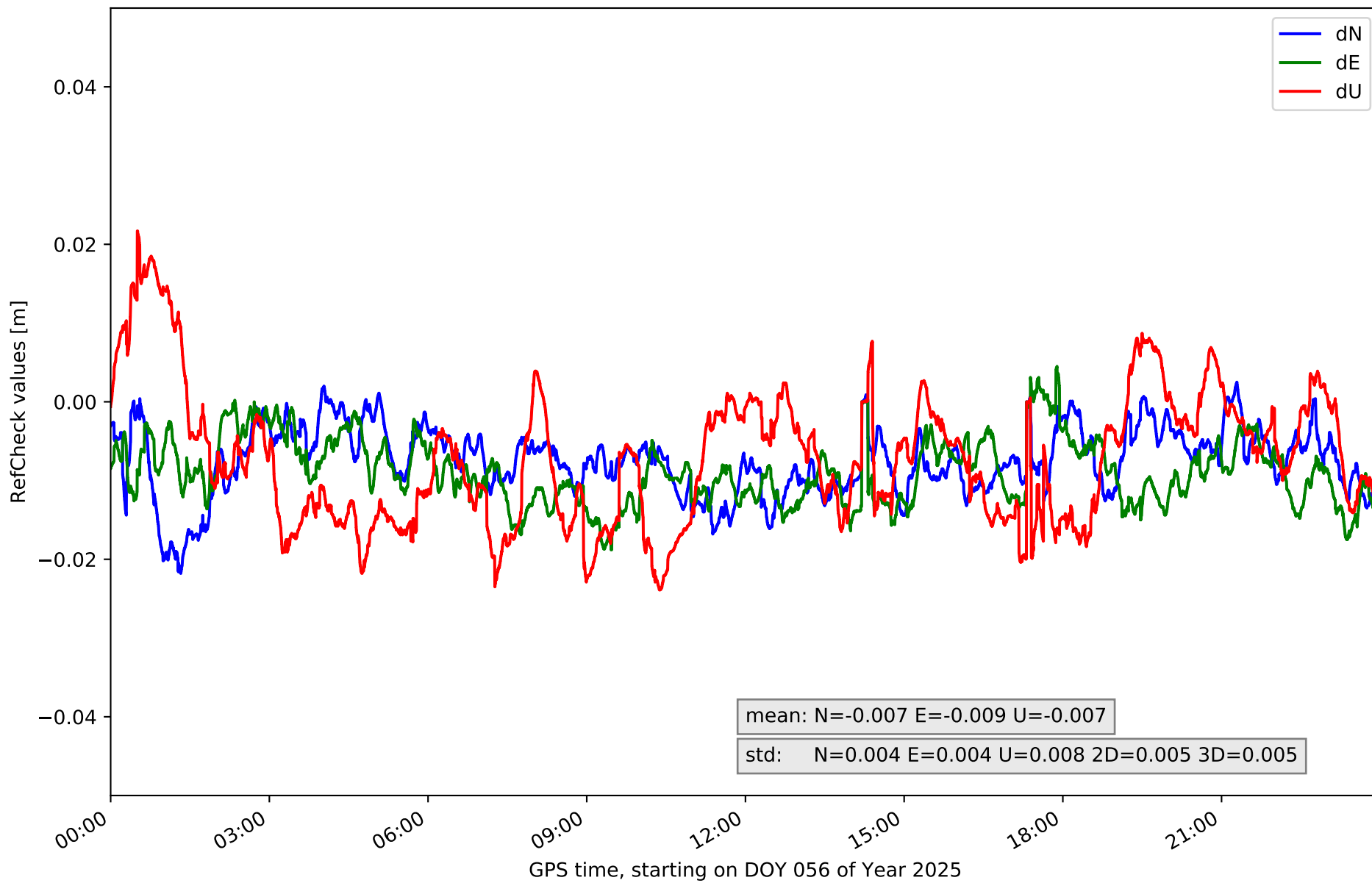
RefCheck for station CALH in network NET5



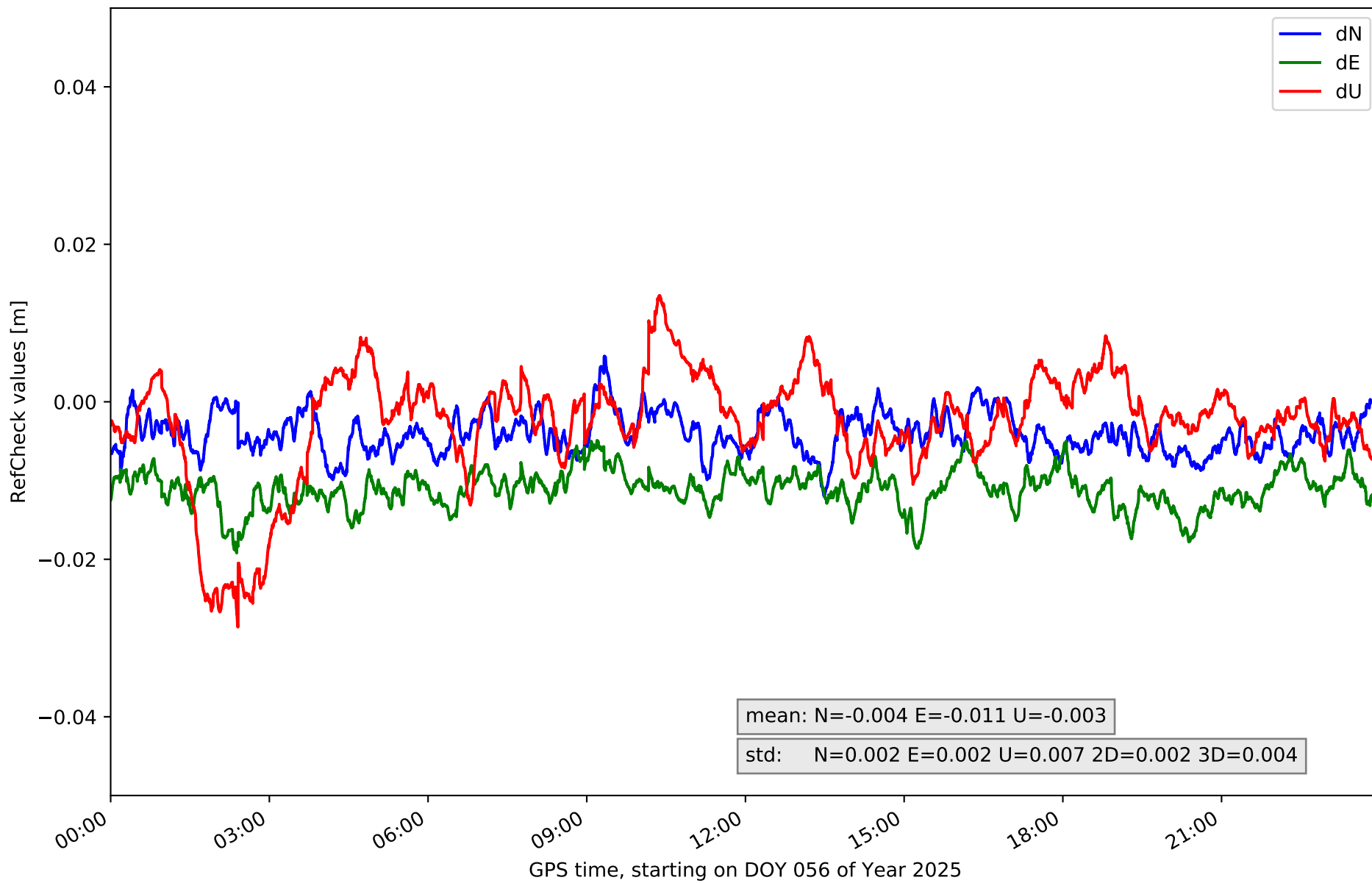
RefCheck for station CAS0 in network NET5



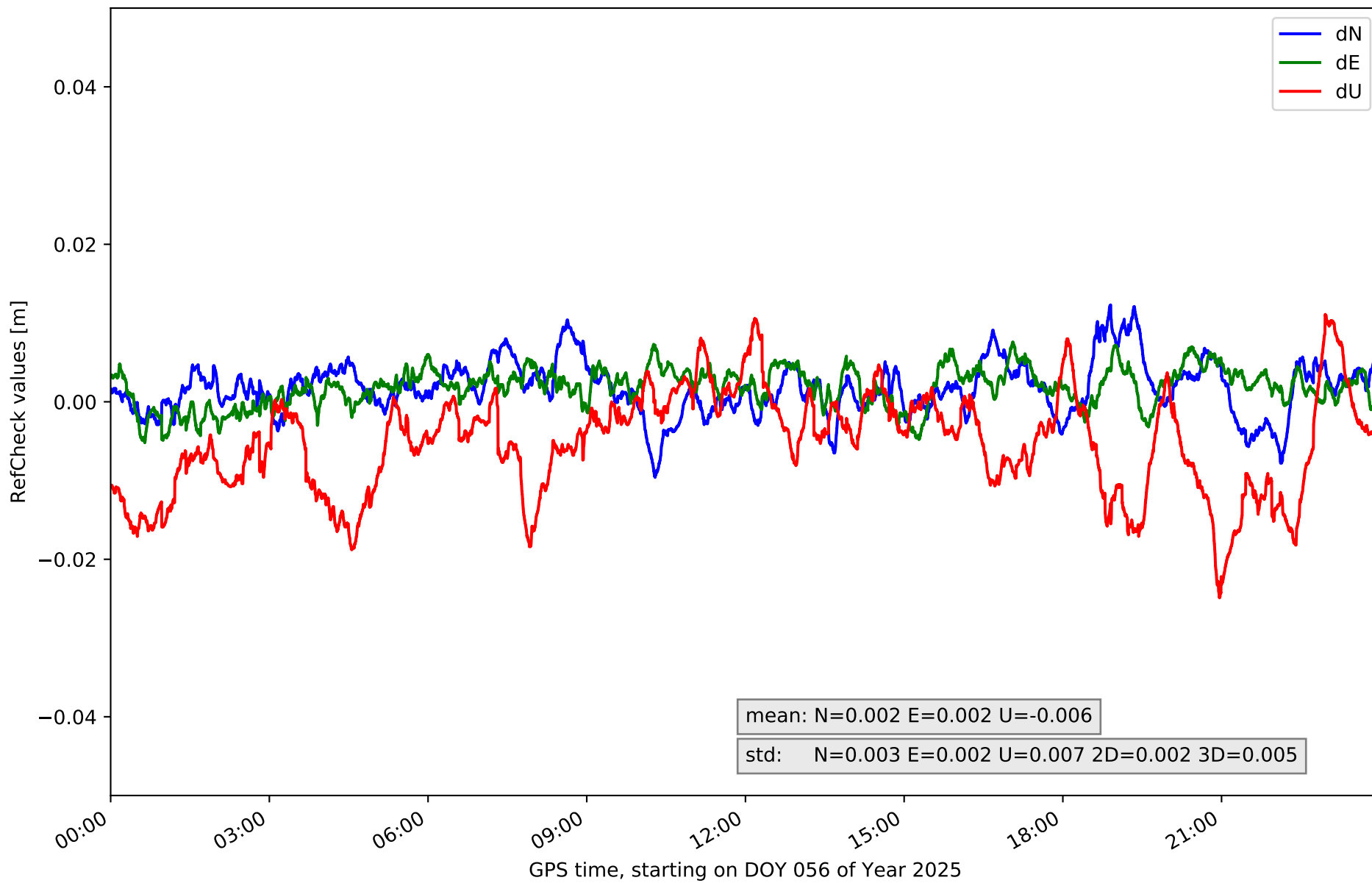
RefCheck for station CERV in network NET5



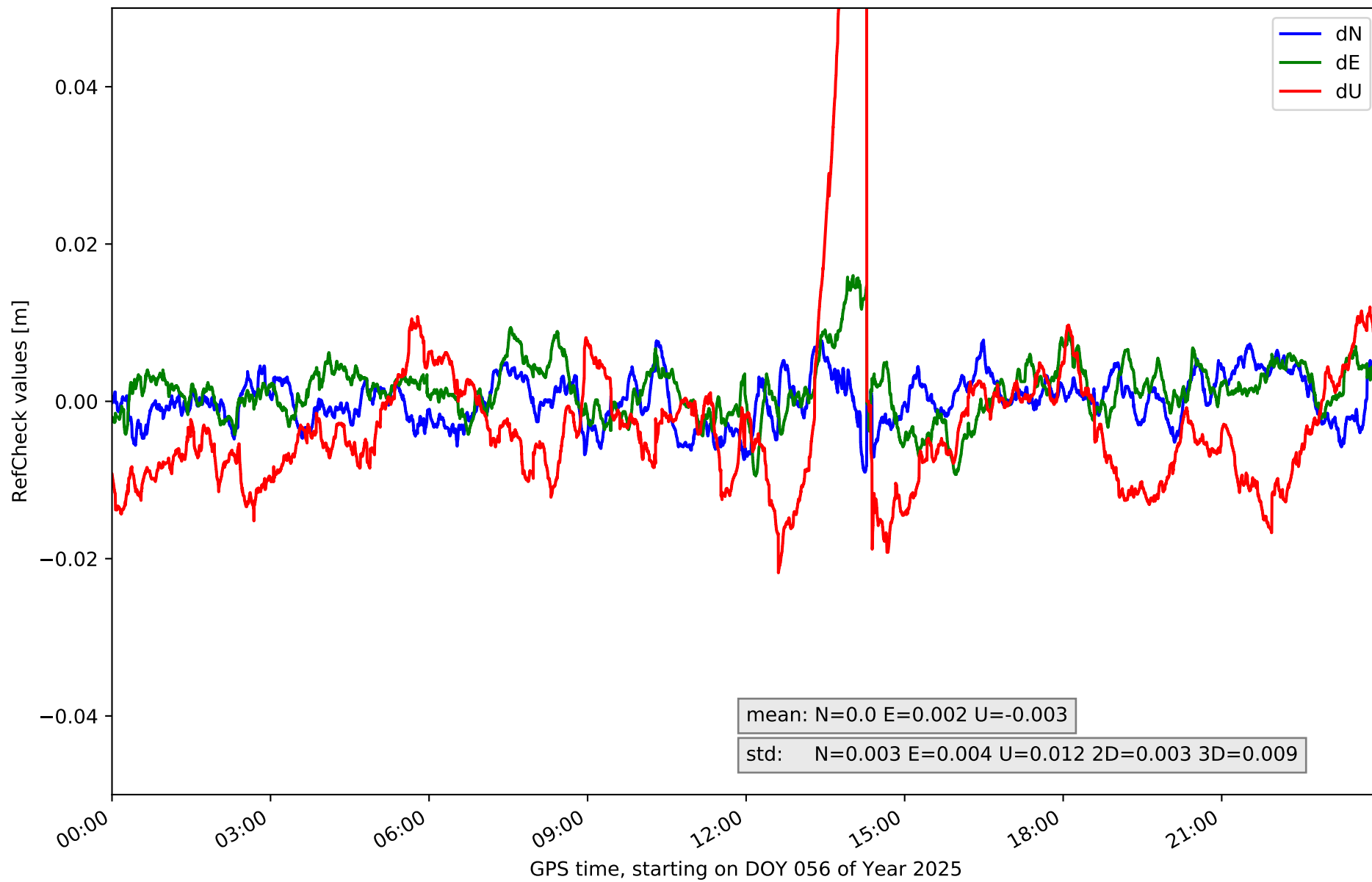
RefCheck for station LERM in network NET5



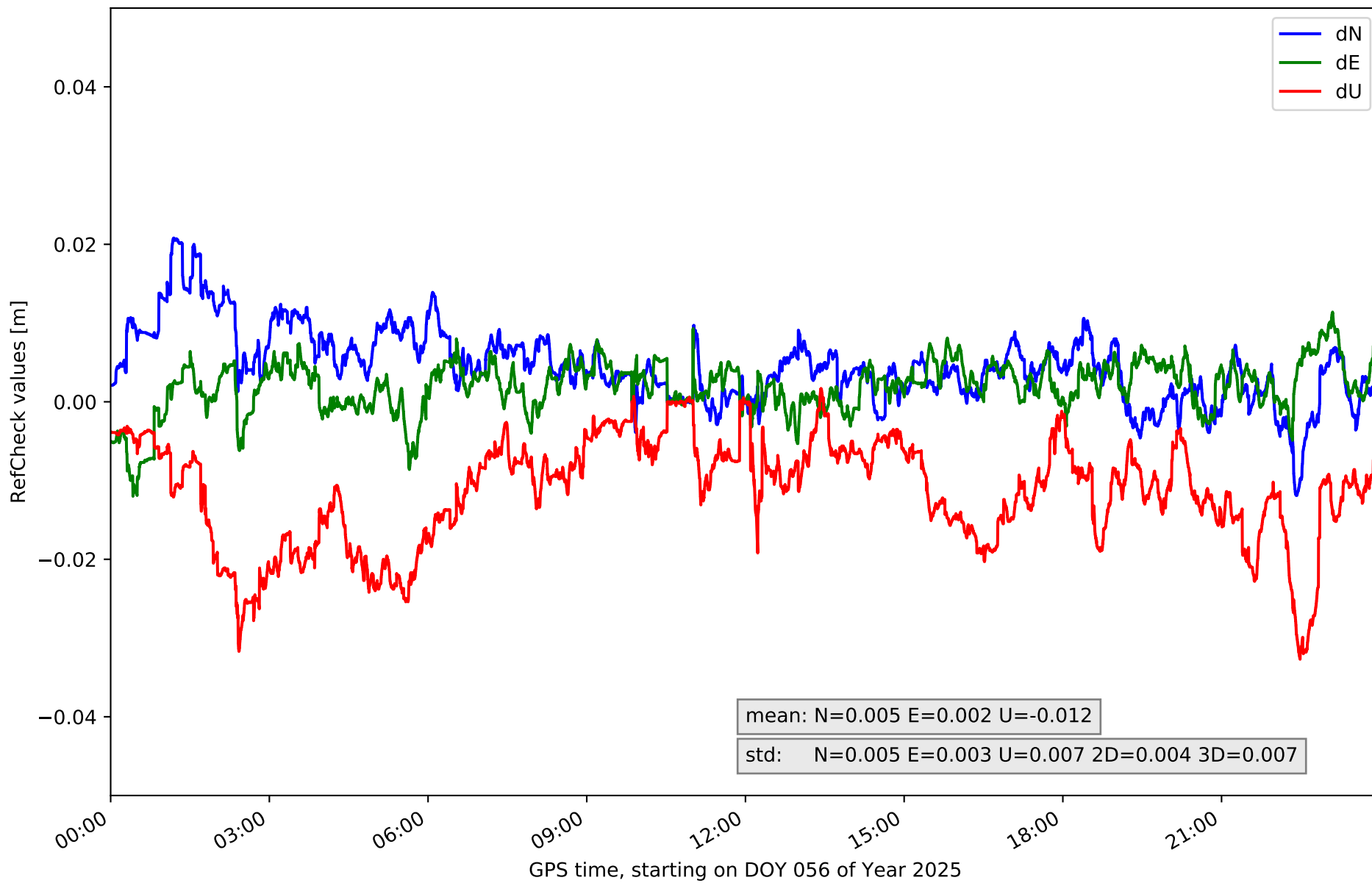
RefCheck for station QINT in network NET5



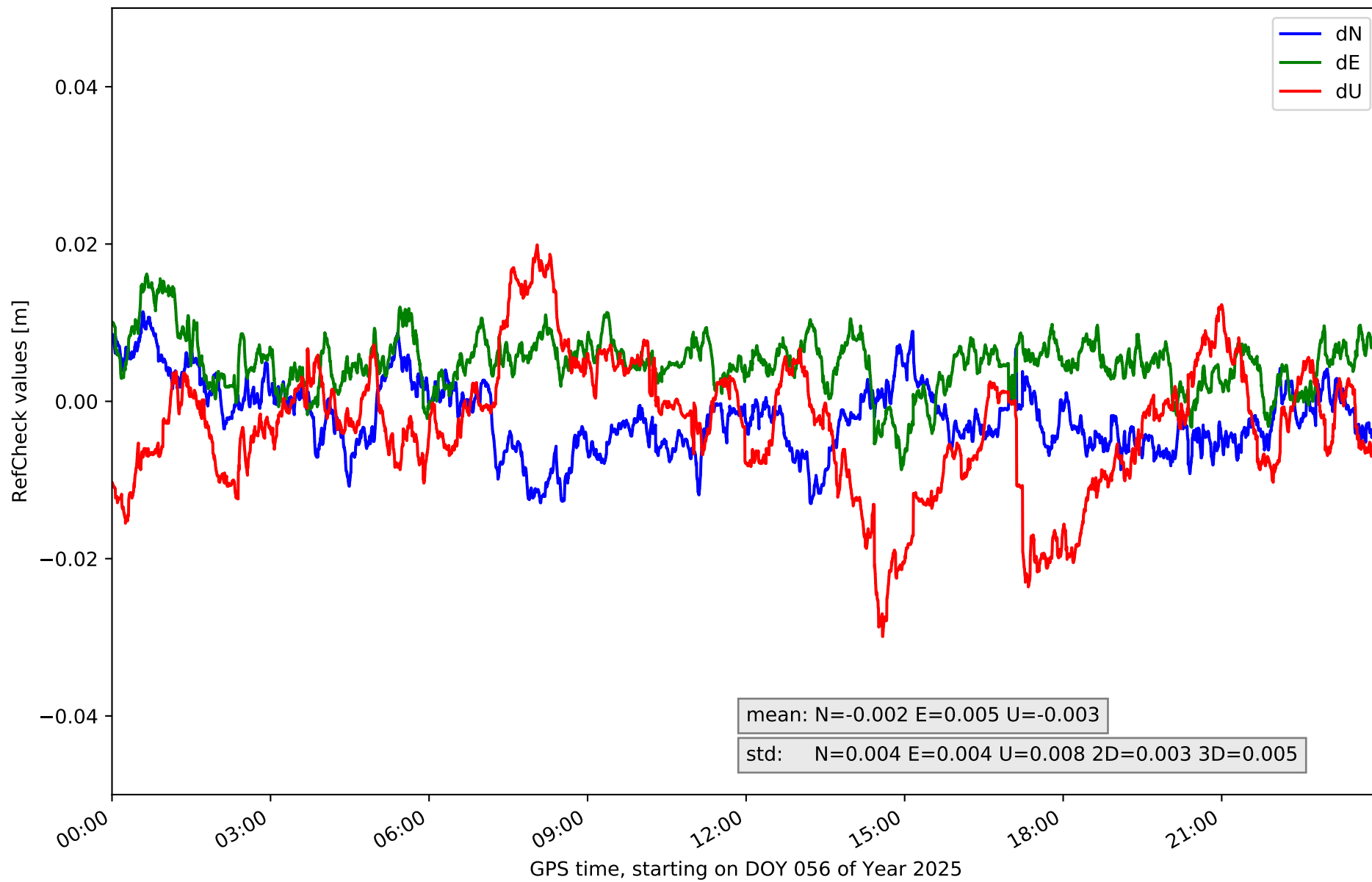
RefCheck for station SORI in network NET5



RefCheck for station SR0M in network NET5



RefCheck for station VTRO in network NET5



RefCheck values for network NET5

Station	Nmin	Nmax	Nstd	Emin	Emax	Estd	Umin	Umax	Ustd	std2D	std3D	#2D > 0.01	% 2D > 0.01	#3D > 0.02	% 3D > 0.02
ALMZ	-0.005	0.008	0.002	-0.013	0.004	0.002	-0.009	0.024	0.007	0.002	0.005	859	1.2	2182	3.0
ARDU	-0.002	0.019	0.003	-0.006	0.007	0.002	-0.011	0.024	0.006	0.003	0.004	6981	9.5	2673	3.6
BUOS	-0.01	0.016	0.005	-0.015	0.019	0.005	-0.024	0.043	0.011	0.004	0.007	11029	14.9	8470	11.5
CALH	-0.011	0.018	0.004	-0.021	0.017	0.005	-0.027	0.033	0.012	0.004	0.007	15051	20.4	13621	18.5
CASO	-0.02	0.009	0.004	-0.01	0.028	0.005	-0.028	0.076	0.014	0.005	0.011	4527	6.1	7659	10.4
CERV	-0.022	0.003	0.004	-0.019	0.004	0.004	-0.024	0.022	0.008	0.005	0.005	49748	67.4	14635	19.8
LERM	-0.012	0.006	0.002	-0.019	-0.005	0.002	-0.029	0.013	0.007	0.002	0.004	61538	83.4	5133	7.0
QINT	-0.01	0.012	0.003	-0.005	0.008	0.002	-0.025	0.011	0.007	0.002	0.005	1989	2.7	1086	1.5
SORI	-0.009	0.008	0.003	-0.009	0.016	0.004	-0.022	0.069	0.012	0.003	0.009	1867	2.5	2864	3.9
SROM	-0.012	0.021	0.005	-0.012	0.011	0.003	-0.033	0.002	0.007	0.004	0.007	12607	17.1	15739	21.3
VTRO	-0.013	0.011	0.004	-0.009	0.016	0.004	-0.03	0.02	0.008	0.003	0.005	11659	15.8	4865	6.6
Mean	-0.011	0.012	0.004	-0.013	0.011	0.003	-0.024	0.031	0.009	0.003	0.006	16168.6	21.9	7175.2	9.7
Min/Max	-0.022	0.021	0.005	-0.021	0.028	0.005	-0.033	0.076	0.014	0.005	0.011	61538	83.4	15739	21.3

fixing statistic for network NET5

fixing percentage of	all GNSS	G	R	E	C
using threshold 0.3	89.7	92.2	90.2	94.1	82.4
considering satellites with dual-frequency fixed	83.9	85.8	80.8	88.4	78.6
considering all signals separately	84.2	85.8	80.8	88.6	76.8