

summary for network NET3

timeperiod chosen: from 2025-02-08-00:00:00 until 2025-02-08-23:59:59

average update rate (durations larger than 15 seconds considered as observation gap): 1.1 seconds

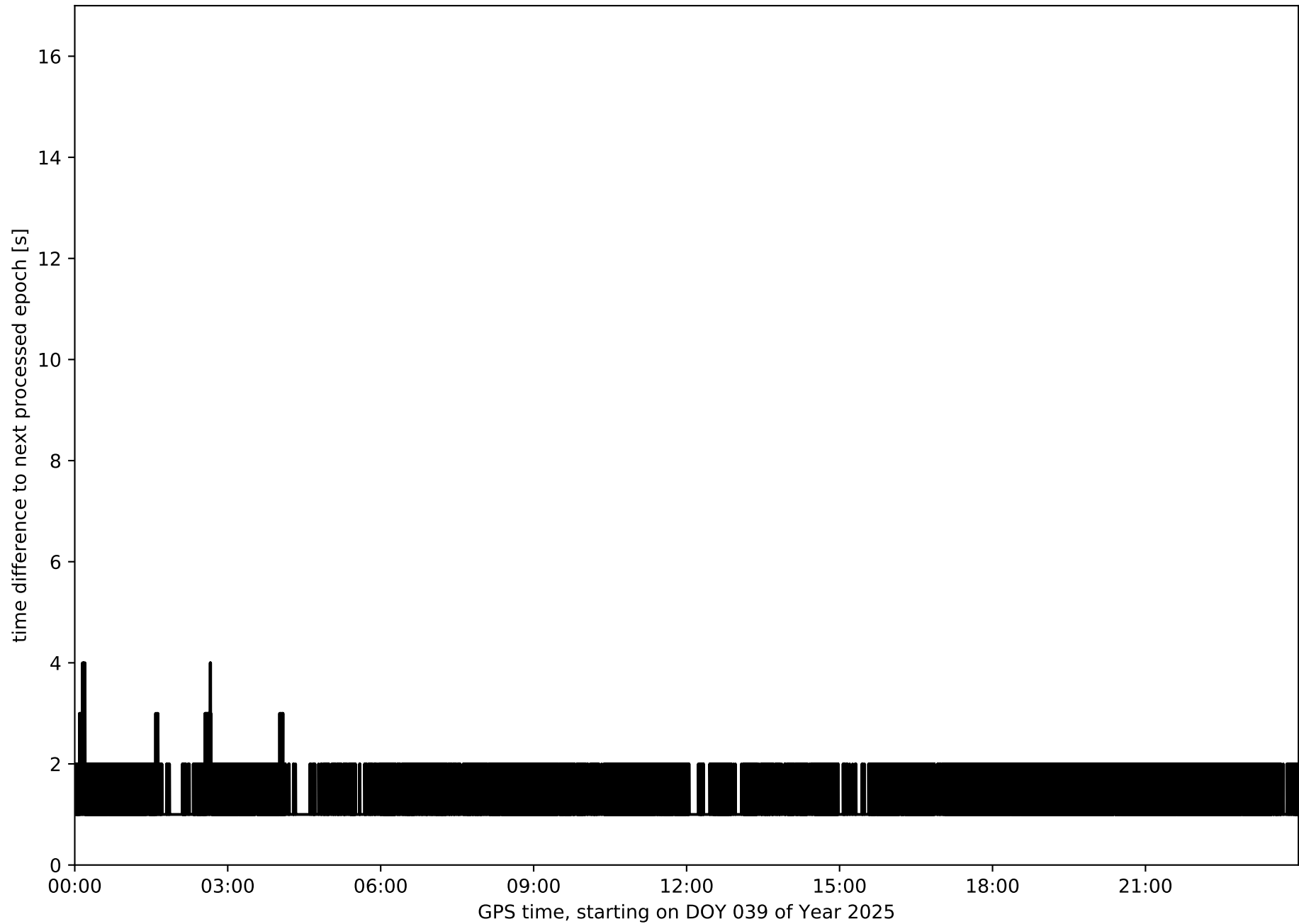
average fixing percentage with threshold set to 0.3: 93.6 percent

stations available: 11 of 12

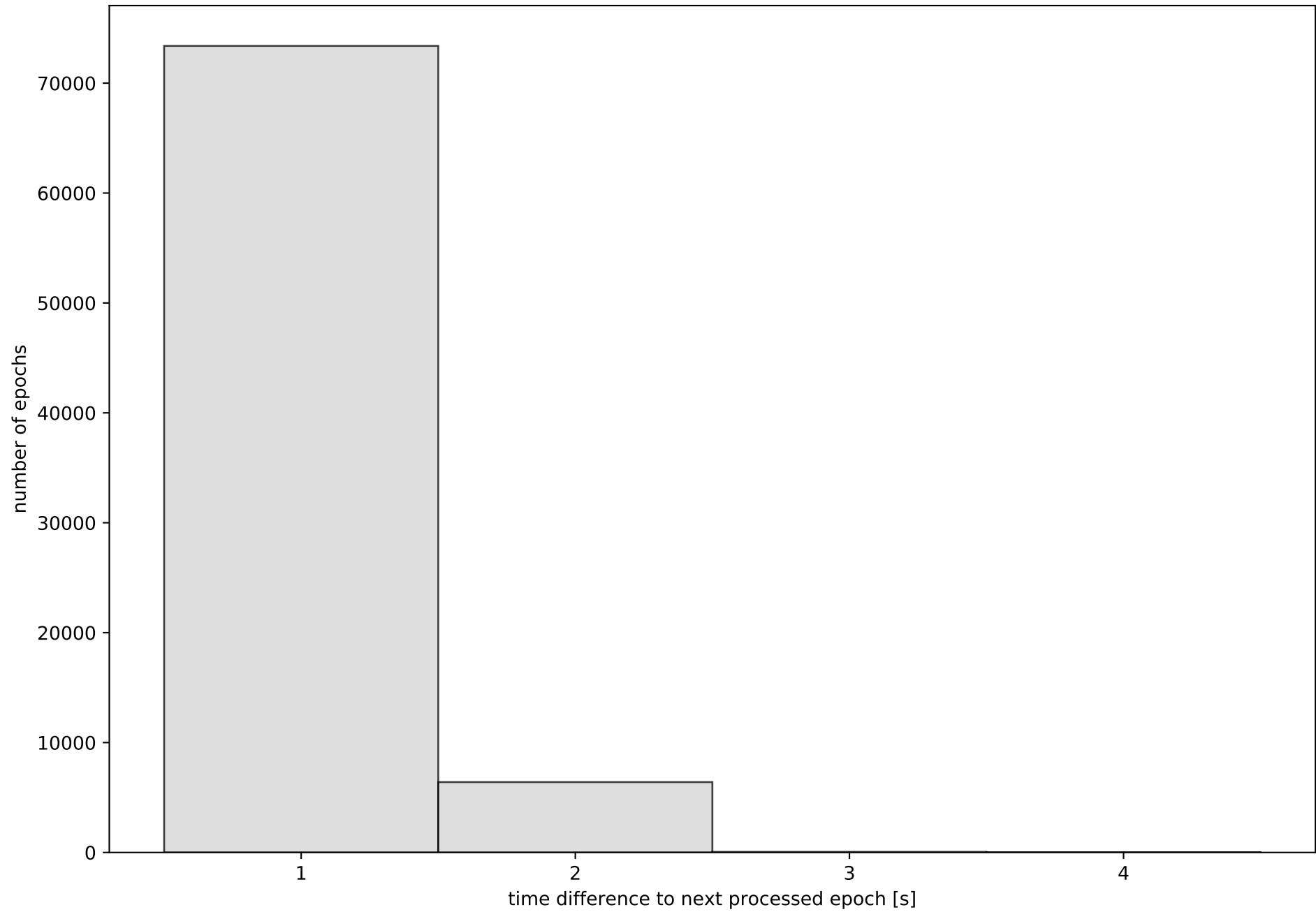
station information:

station ALBA:	antenna: LEIAR25.R3	LEIT	receiver: LEICA GR50	height: 754.692
station ALMO:	antenna: LEIAR25.R4	LEIT	receiver: LEICA GR25	height: 743.419
station COBA:	antenna: LEIAR20	LEIM	receiver: LEICA GR50	height: 202.146
station CUEN:	antenna: LEIAR20	LEIM	receiver: LEICA GR50	height: 998.123
station JUMA:	antenna: LEIAR20	LEIM	receiver: LEICA GR30	height: 610.246
station MOTA:	antenna: LEIAR25.R4	LEIT	receiver: LEICA GR50	height: 779.827
station MRAT:	antenna: LEIAR20	LEIM	receiver: LEICA GR30	height: 1227.566
station SONS:	antenna: LEIAR20	LEIM	receiver: LEICA GR50	height: 811.988
station UTI1:	antenna: TRM159900.00	SCIS	receiver: LEICA GR50	height: 798.701
station VIAR:	antenna: GPPNULLANTENNA	NONE	receiver: LEICA GR50	height: 746.56
station VILH:	antenna: TRM159900.00	SCIS	receiver: TRIMBLE NETR9	height: 1022.778

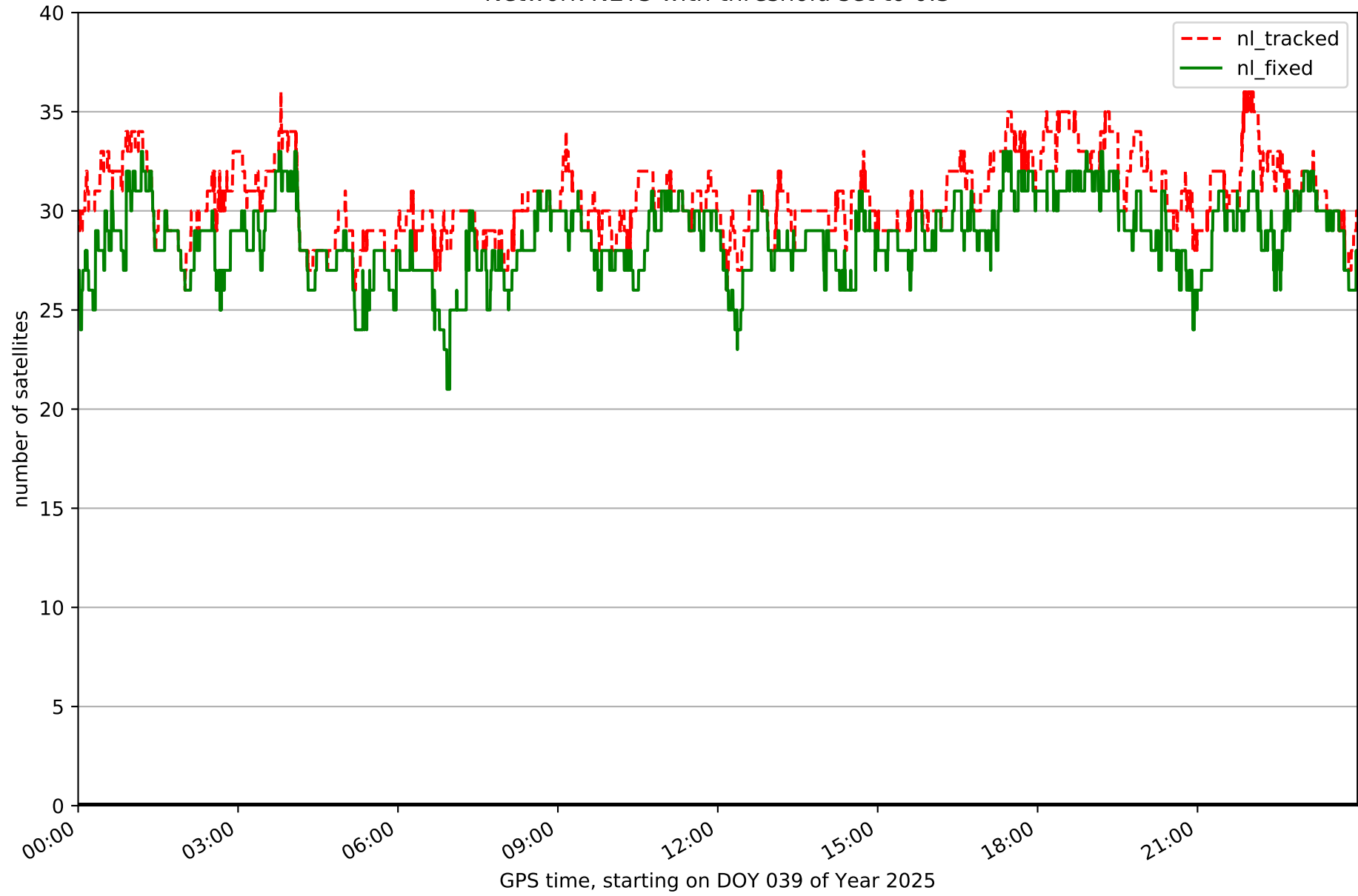
Processing rate in network NET3



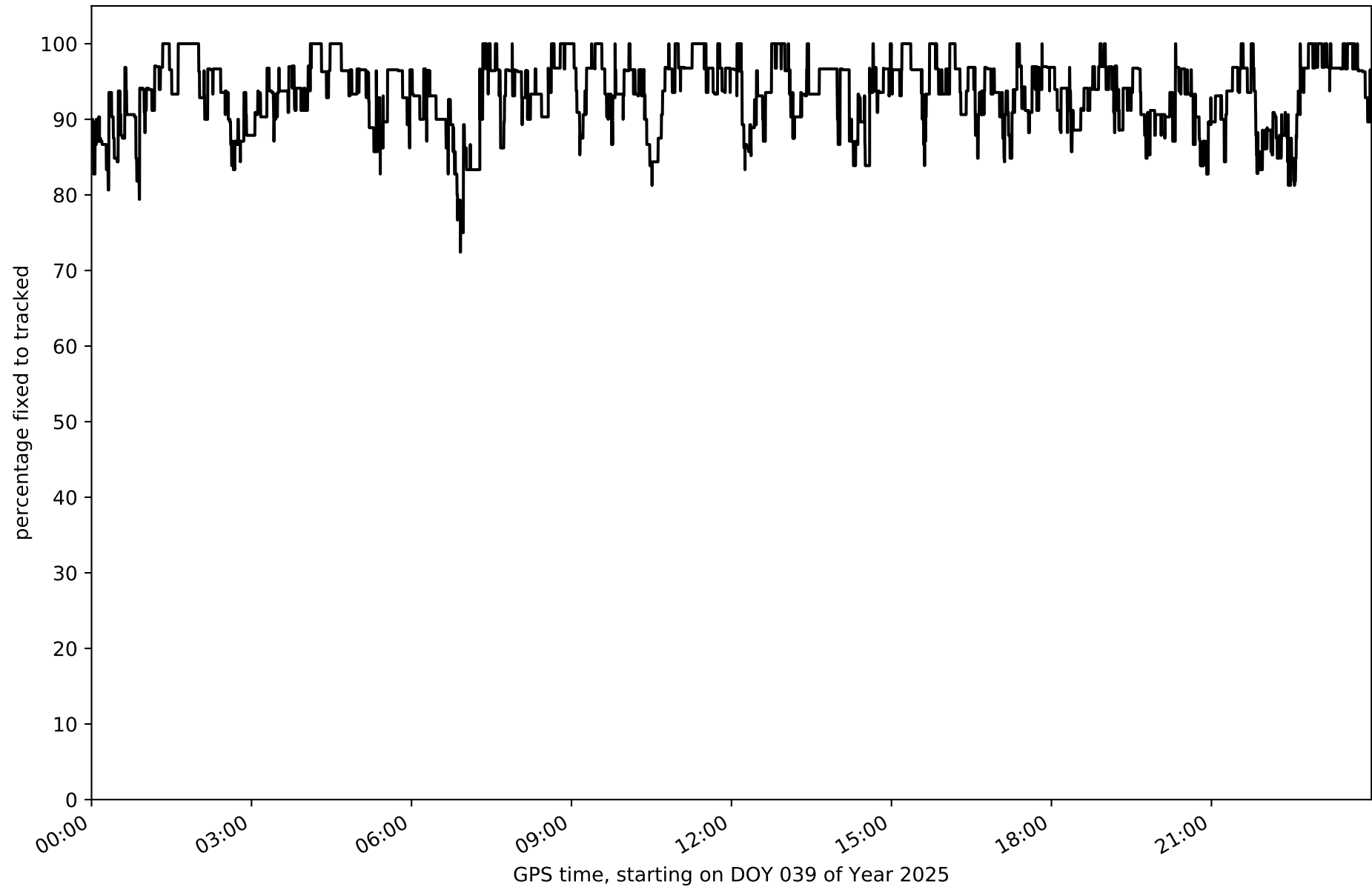
Histogram of the processing rate in network NET3 (durations larger 15 seconds neglected)



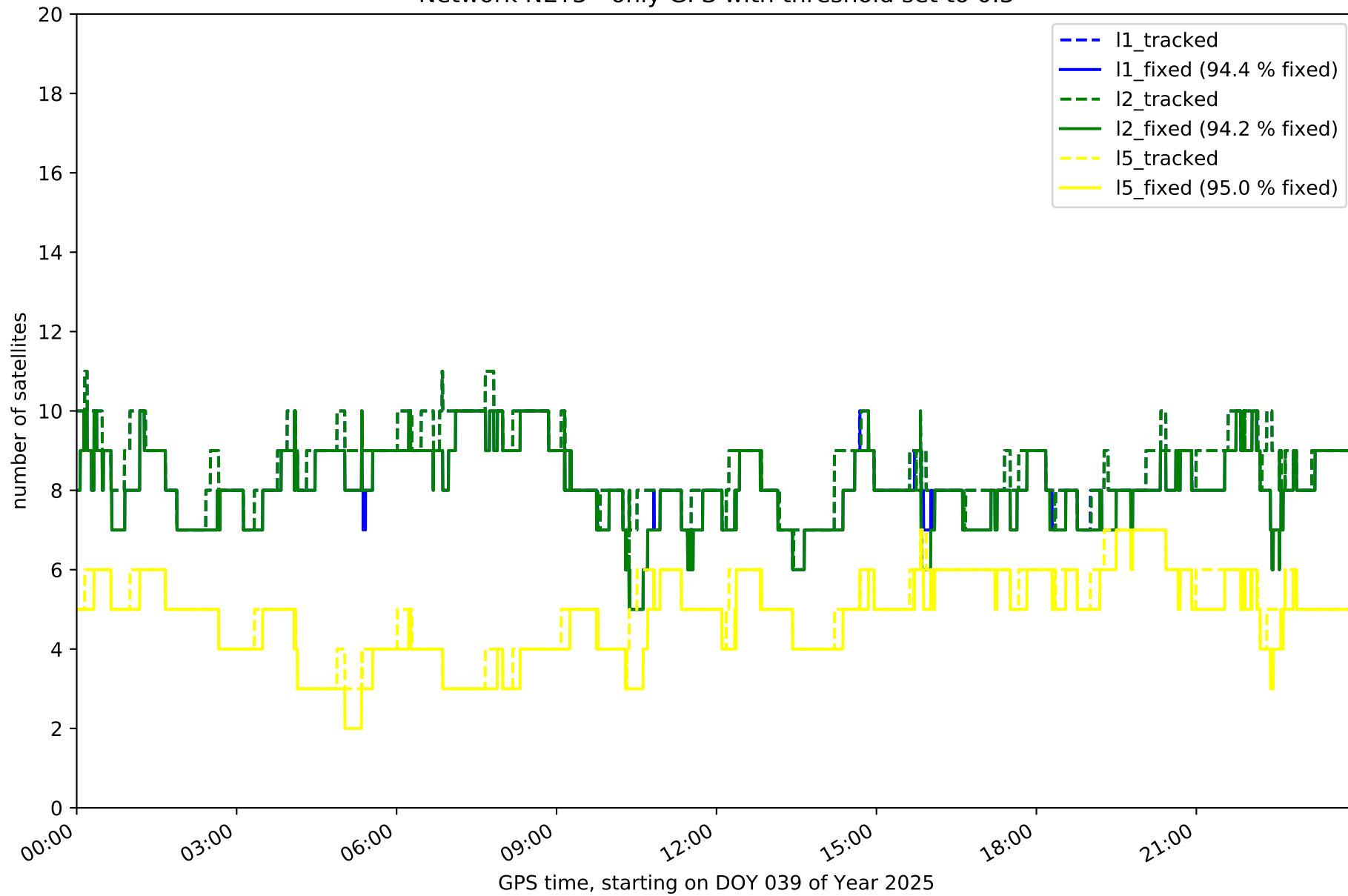
Network NET3 with threshold set to 0.3



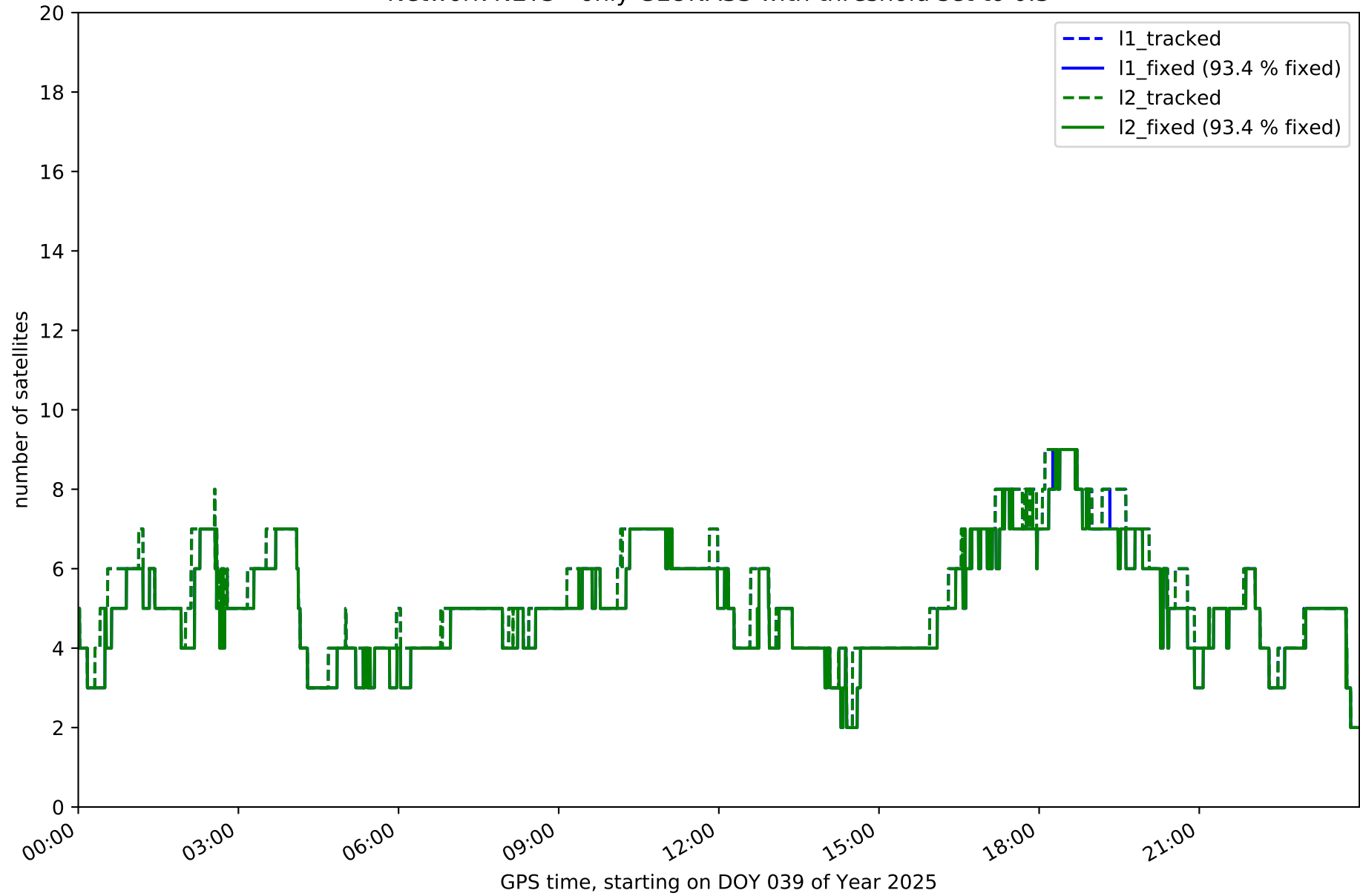
Fixing percentage of satellites in network NET3 with threshold set to 0.3



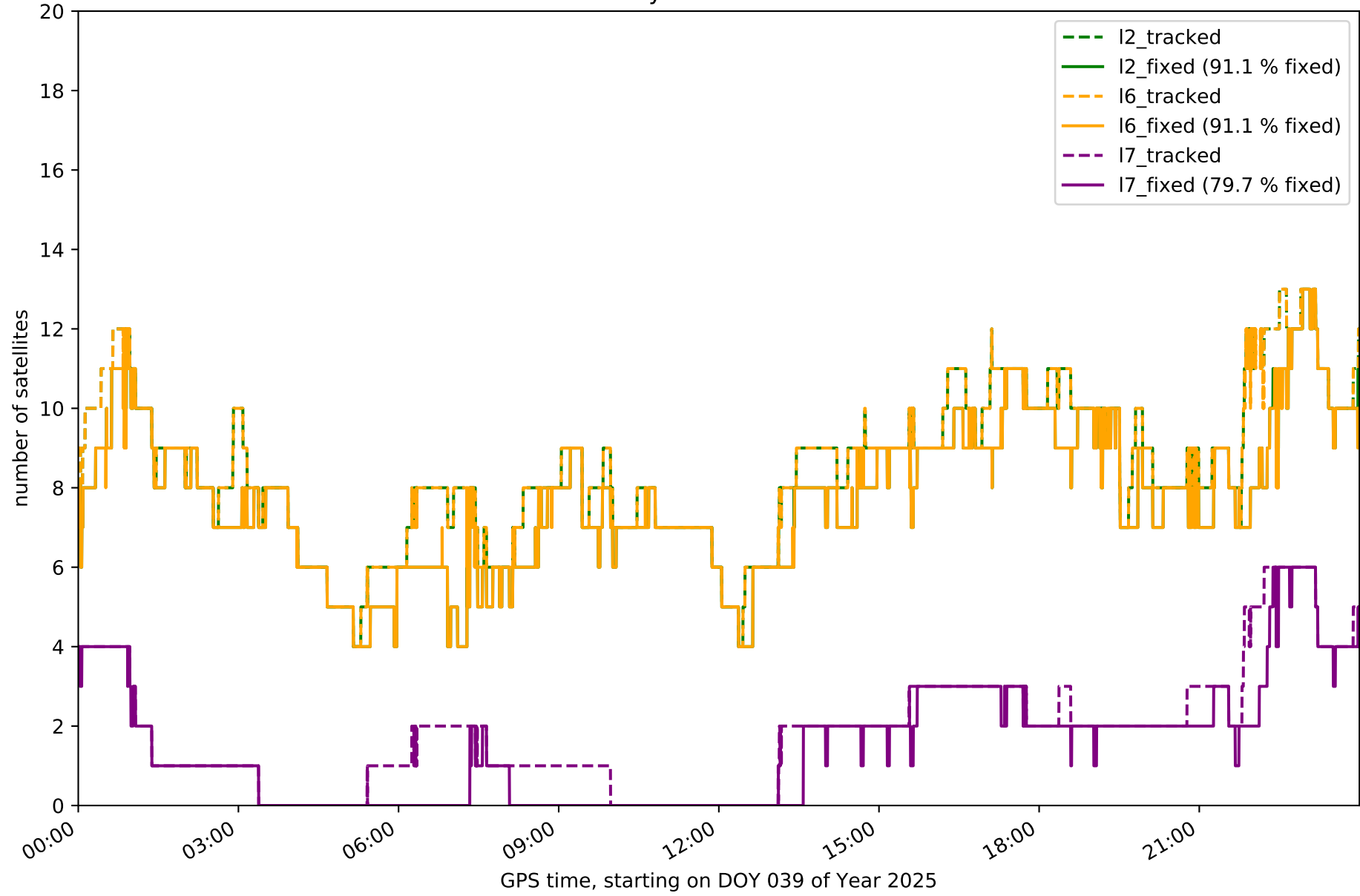
Network NET3 - only GPS with threshold set to 0.3



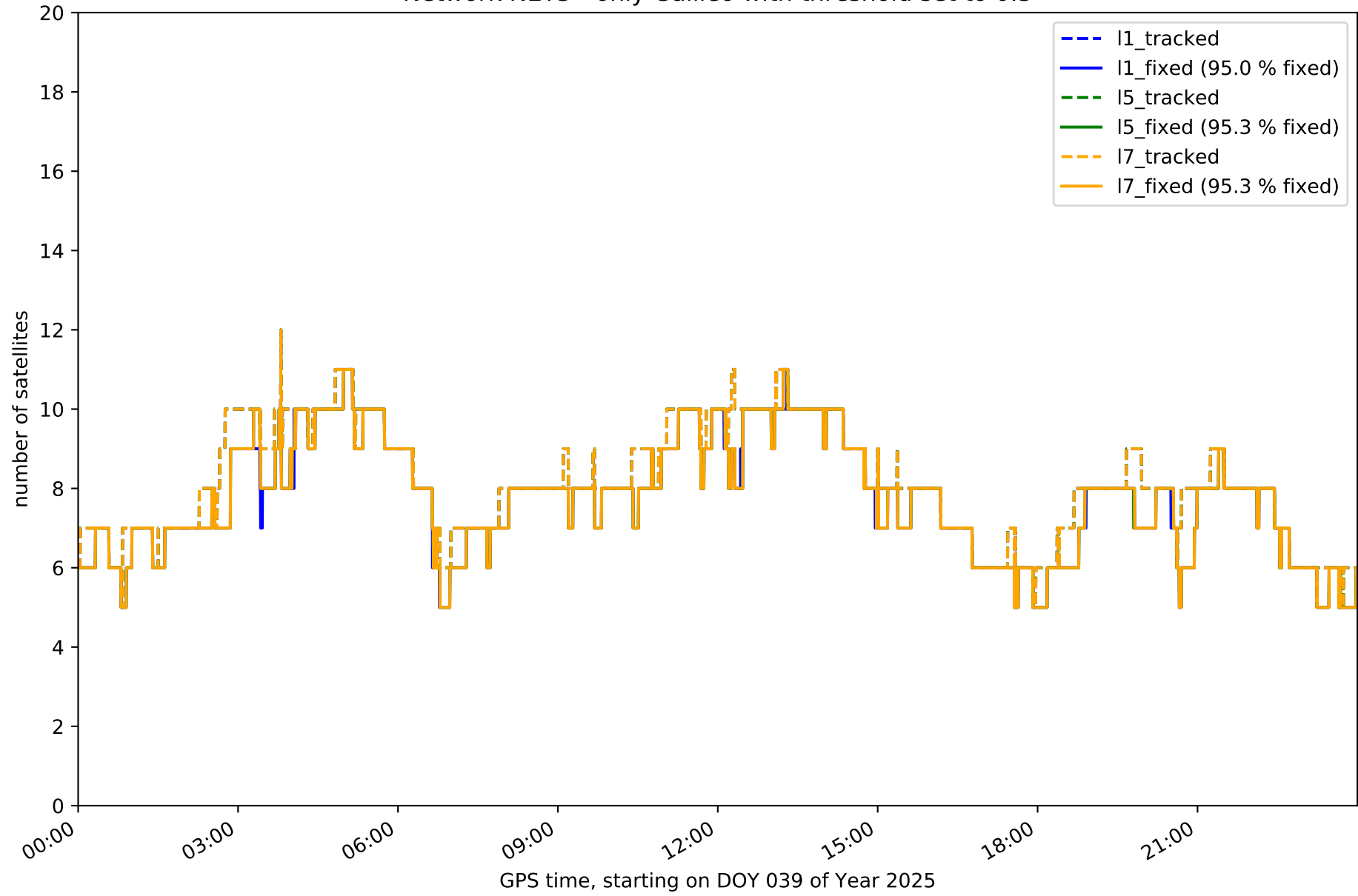
Network NET3 - only GLONASS with threshold set to 0.3



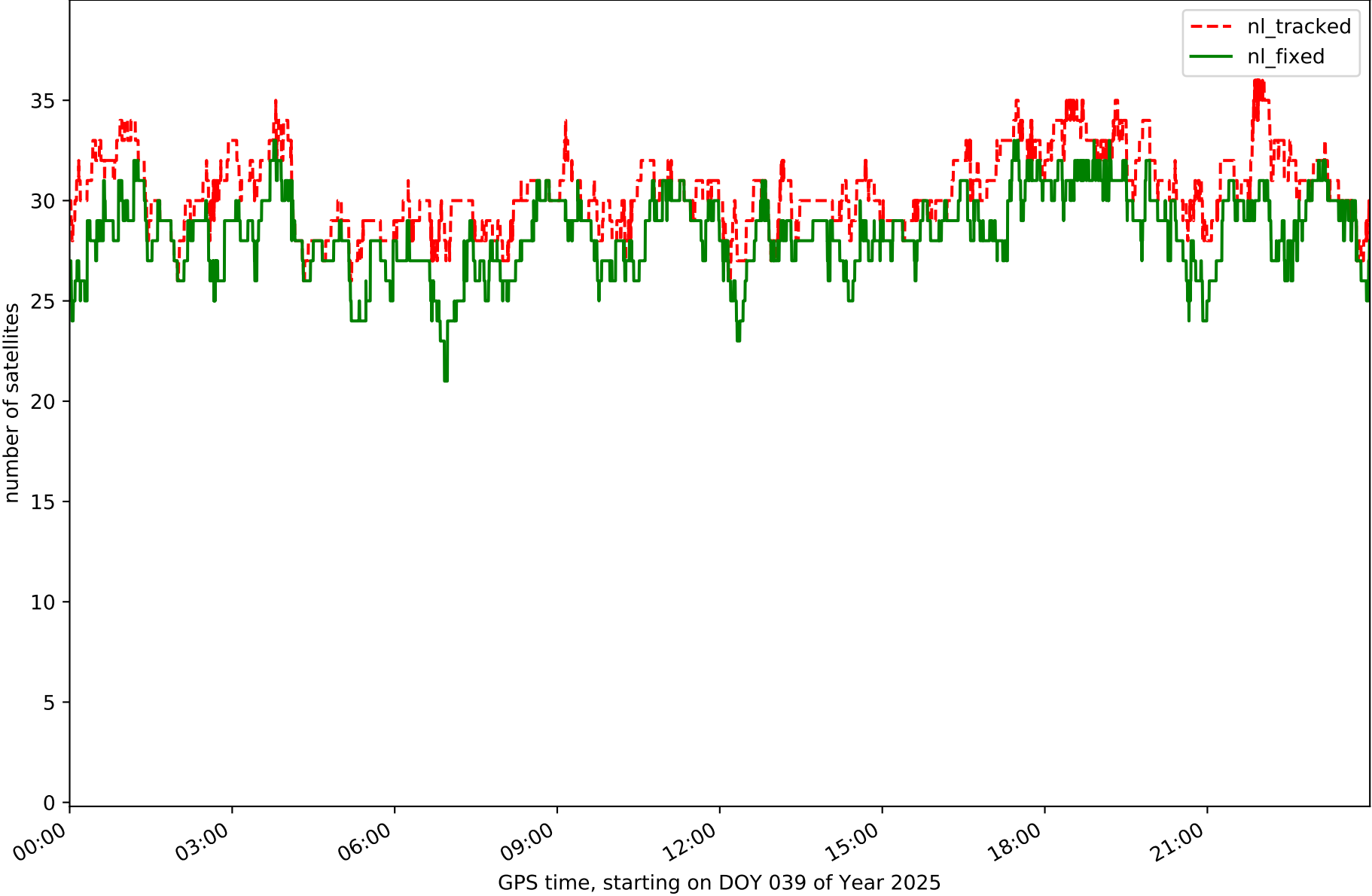
Network NET3 - only BDS with threshold set to 0.3



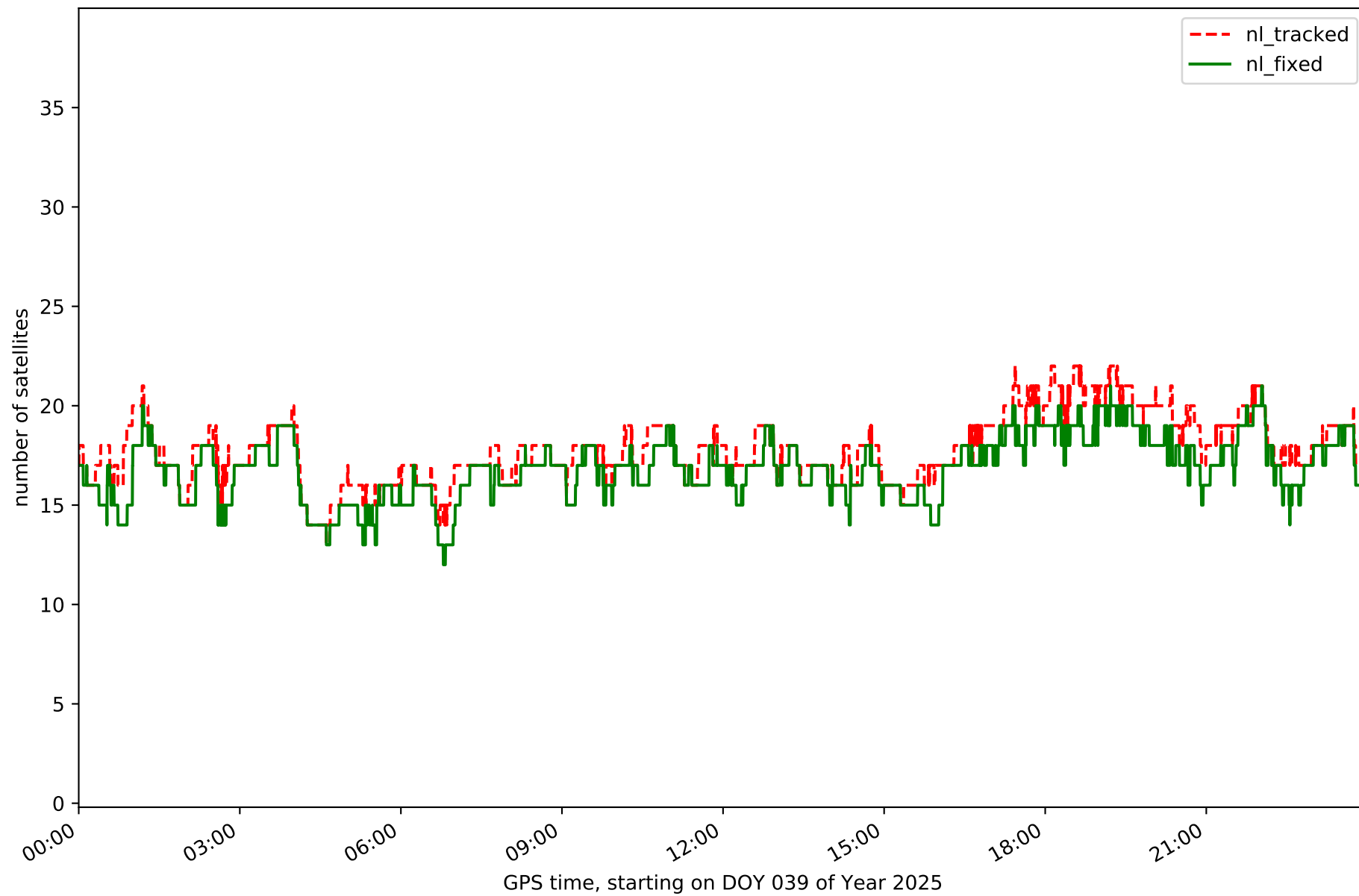
Network NET3 - only Galileo with threshold set to 0.3



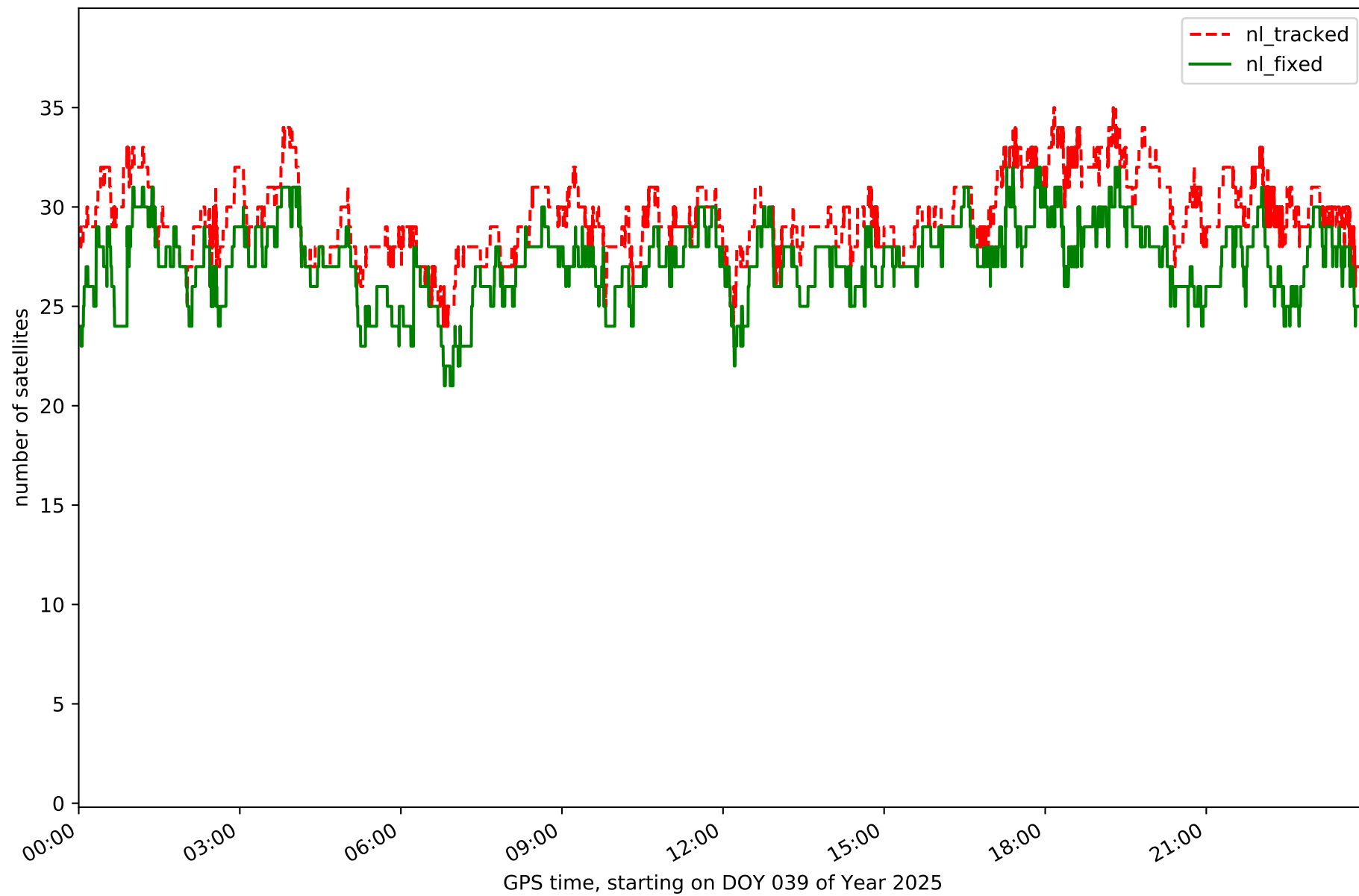
Station ALBA in network NET3



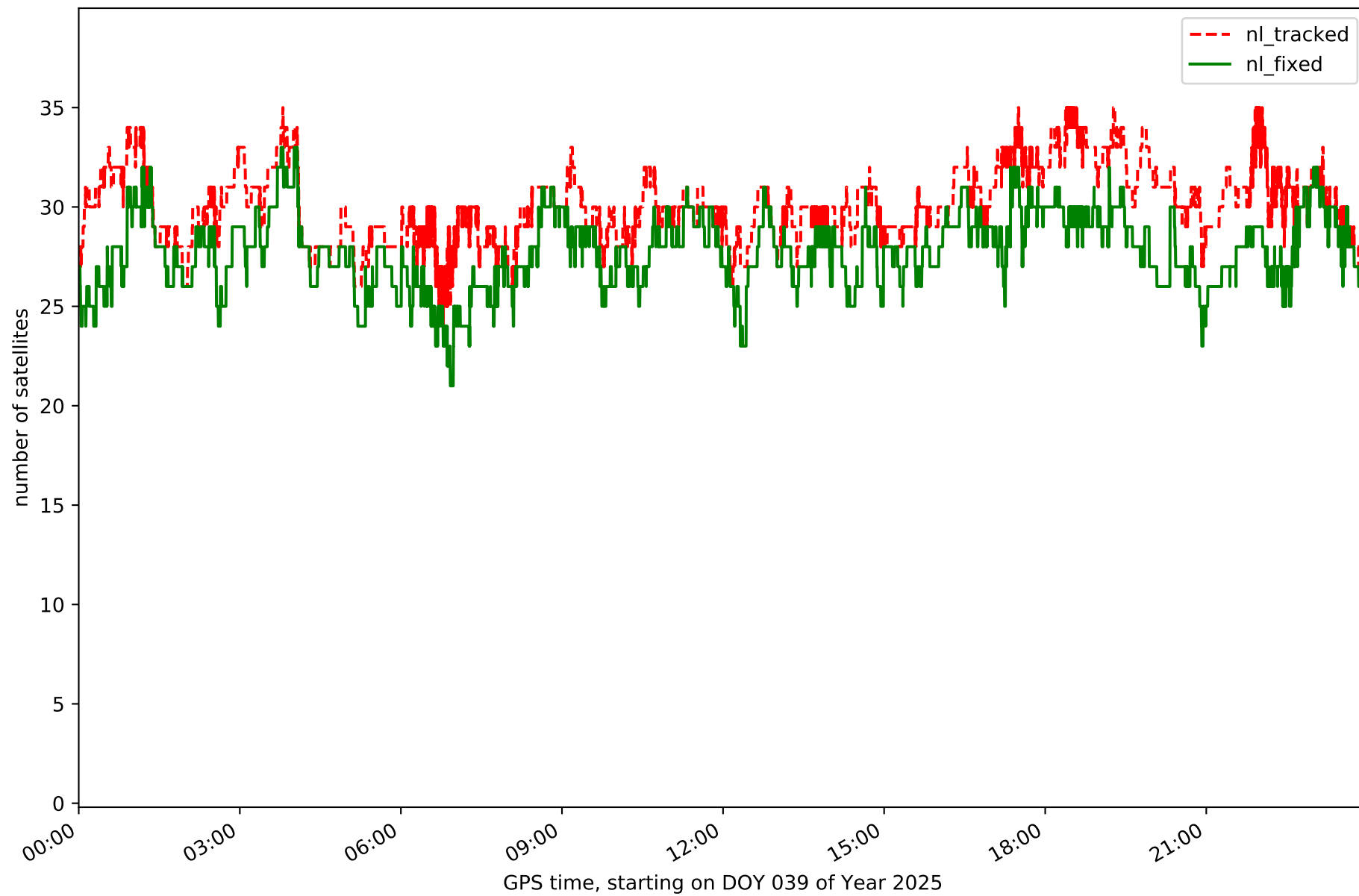
Station ALMO in network NET3



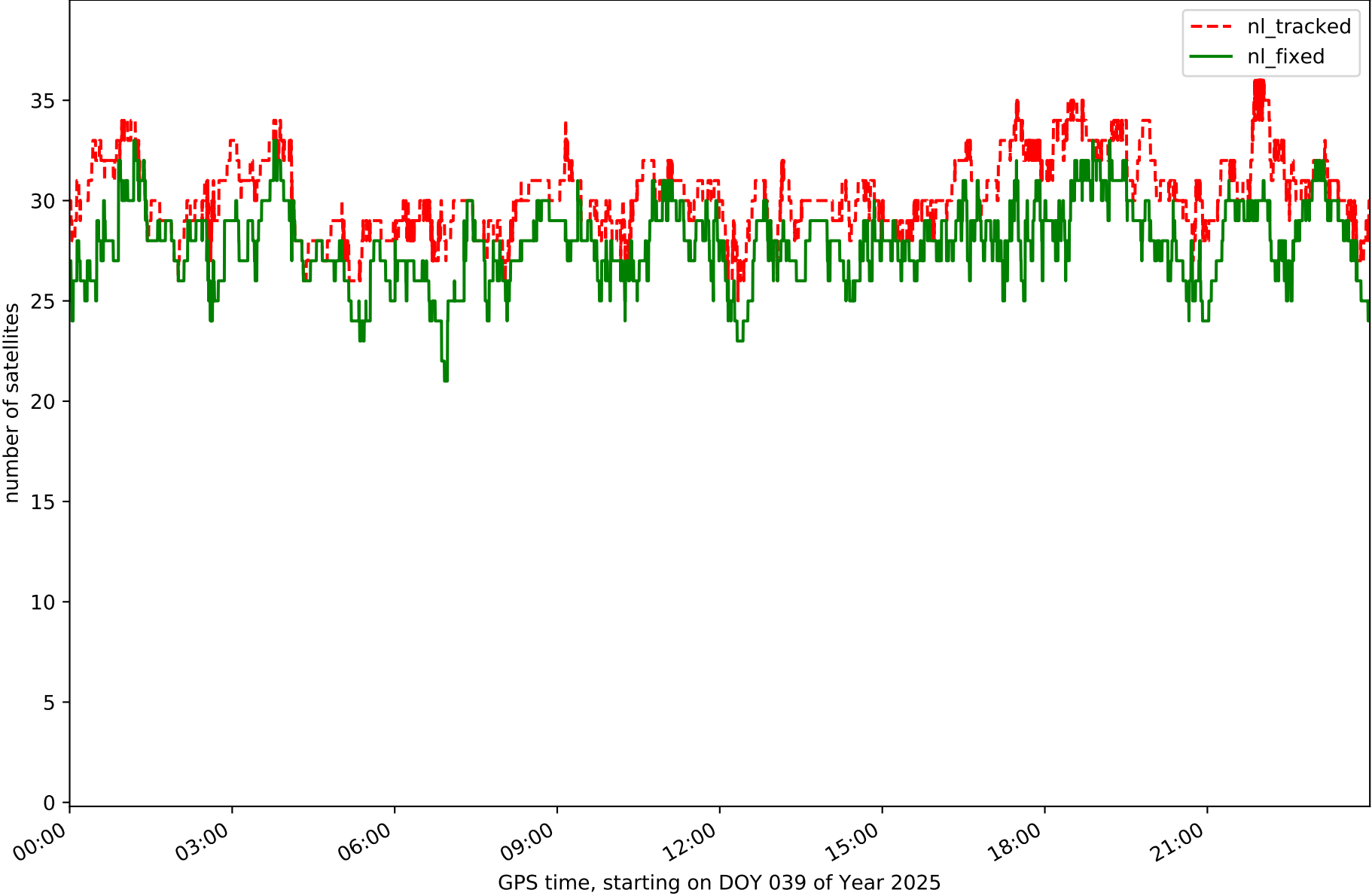
Station COBA in network NET3



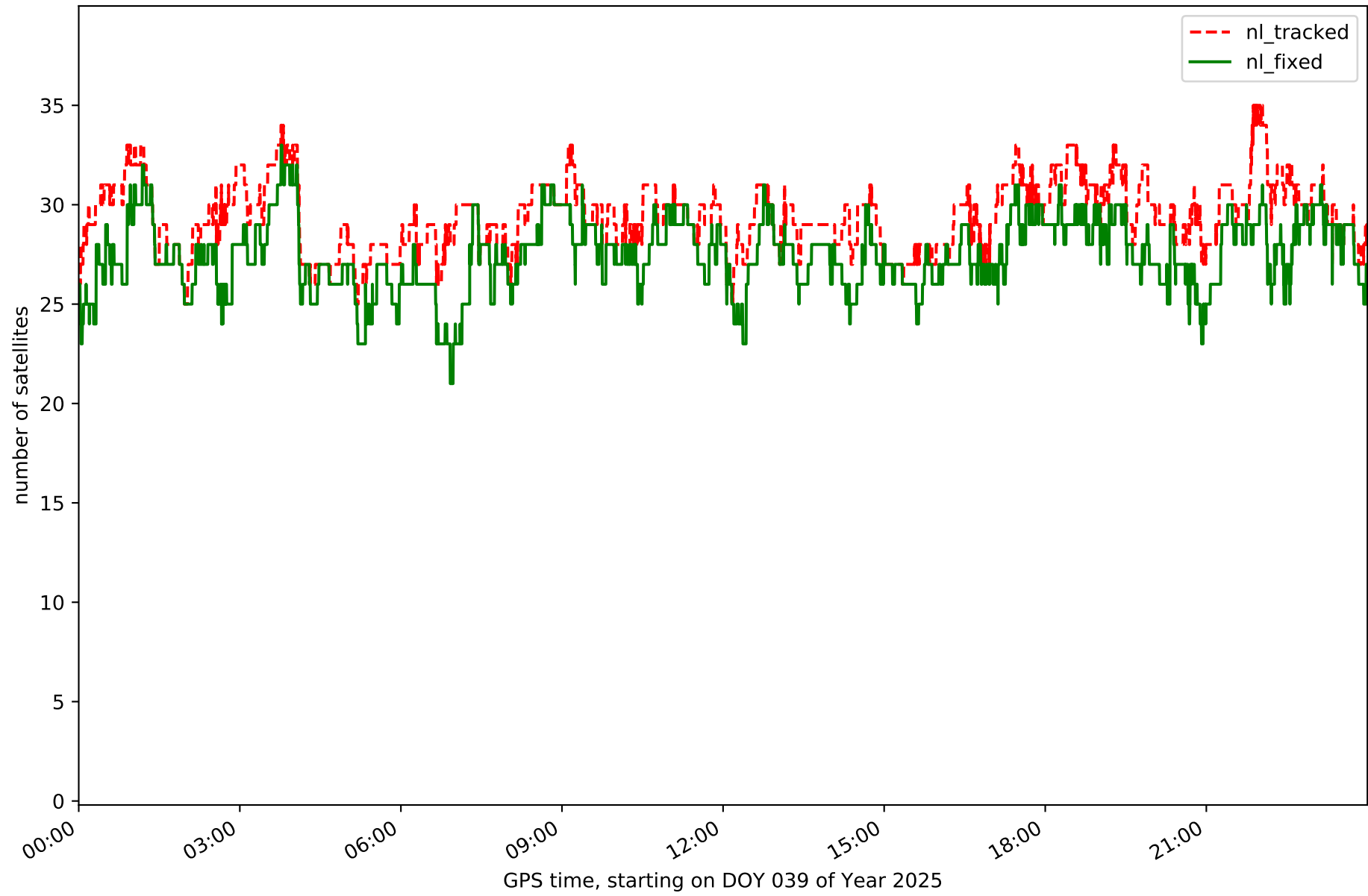
Station CUEN in network NET3



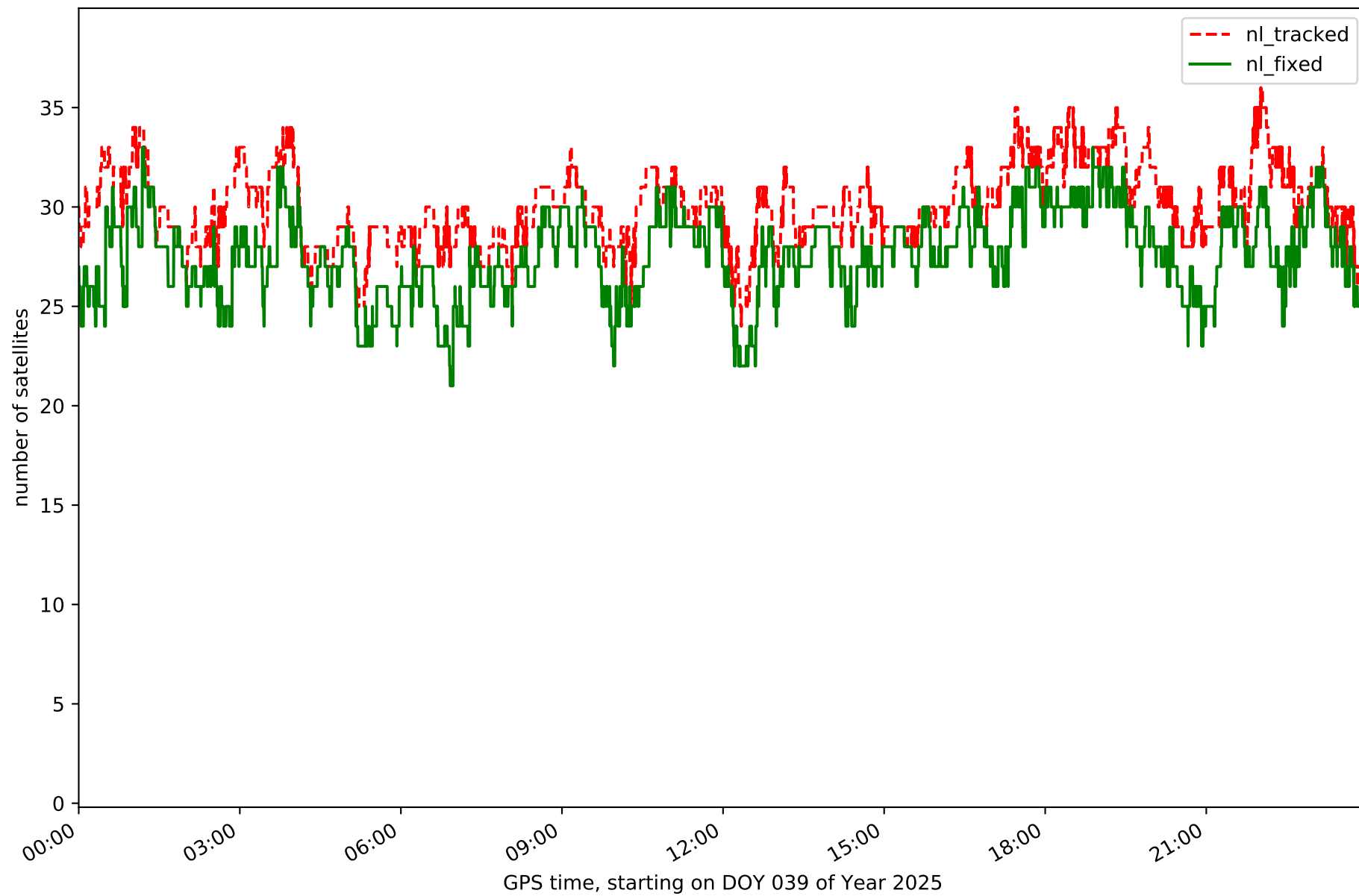
Station JUMA in network NET3



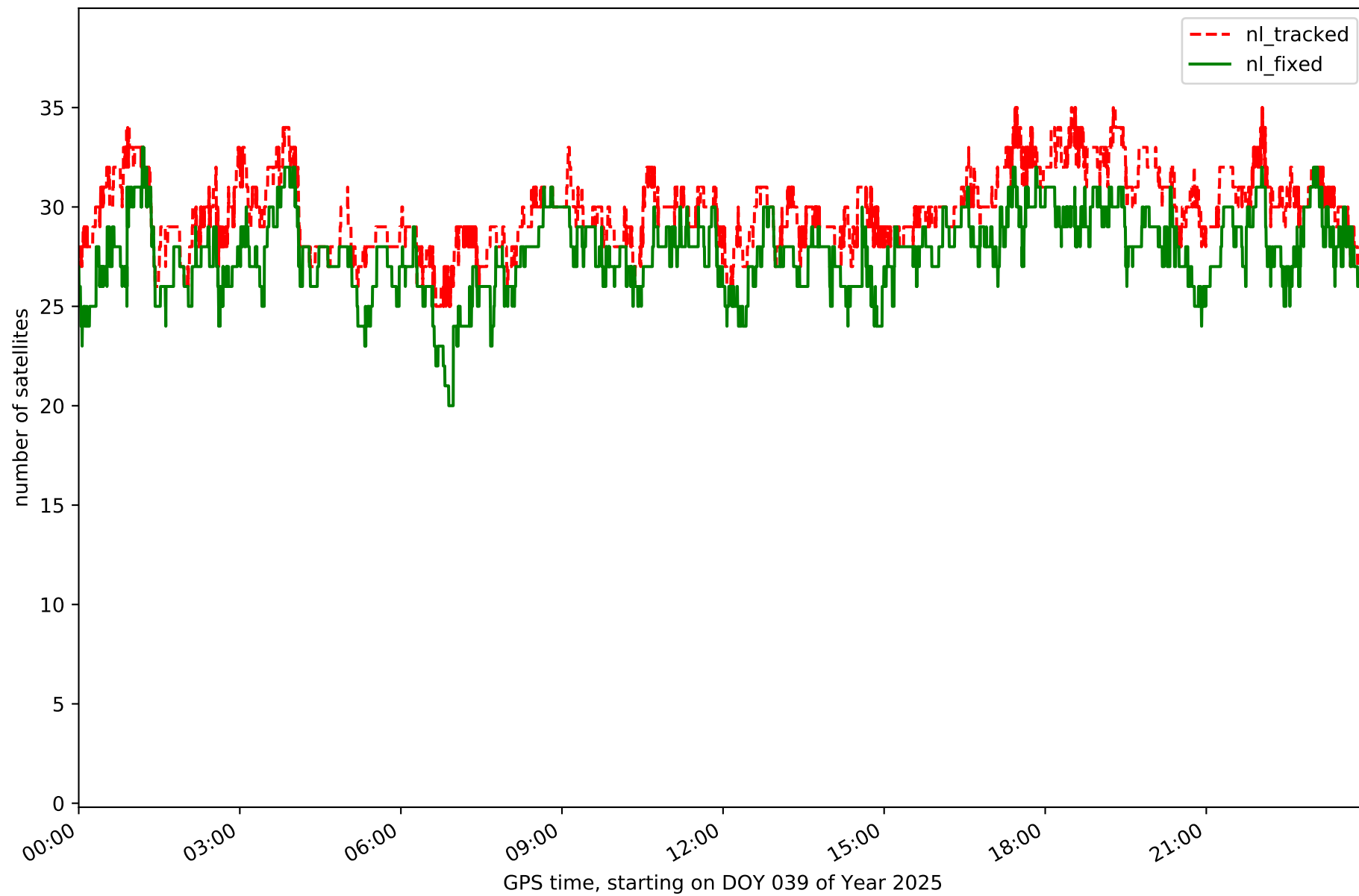
Station MOTA in network NET3



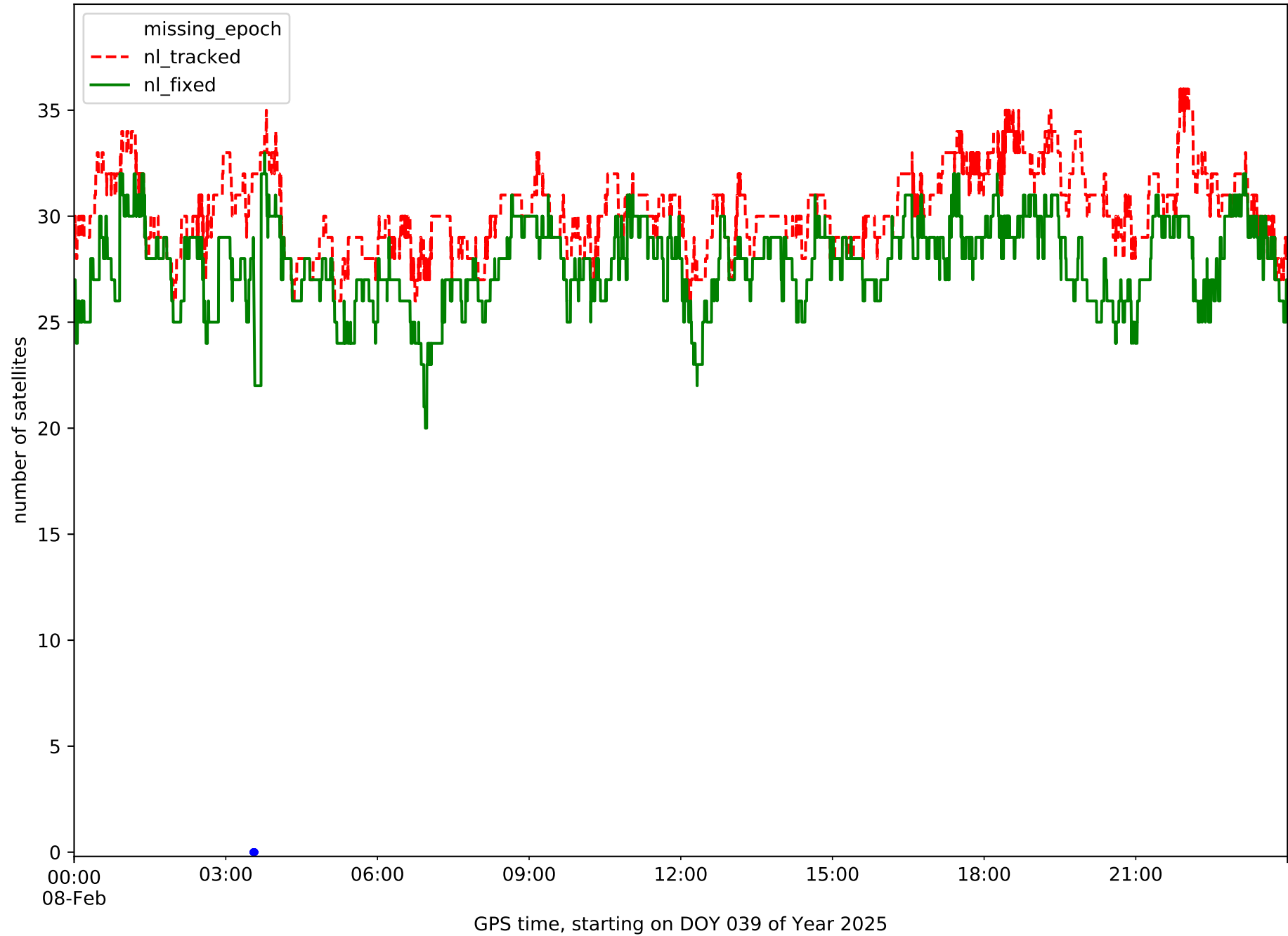
Station MRAT in network NET3



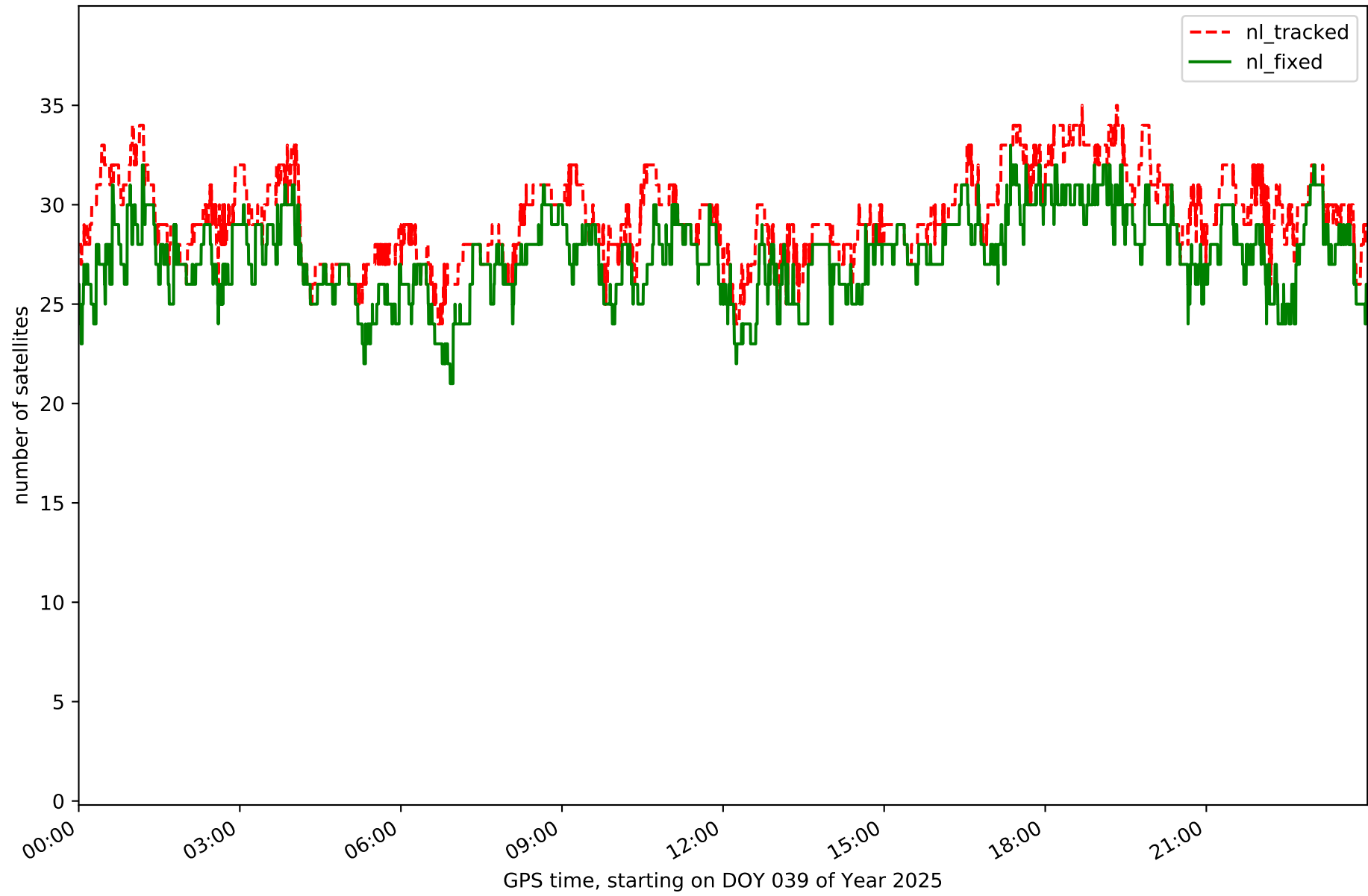
Station SONS in network NET3



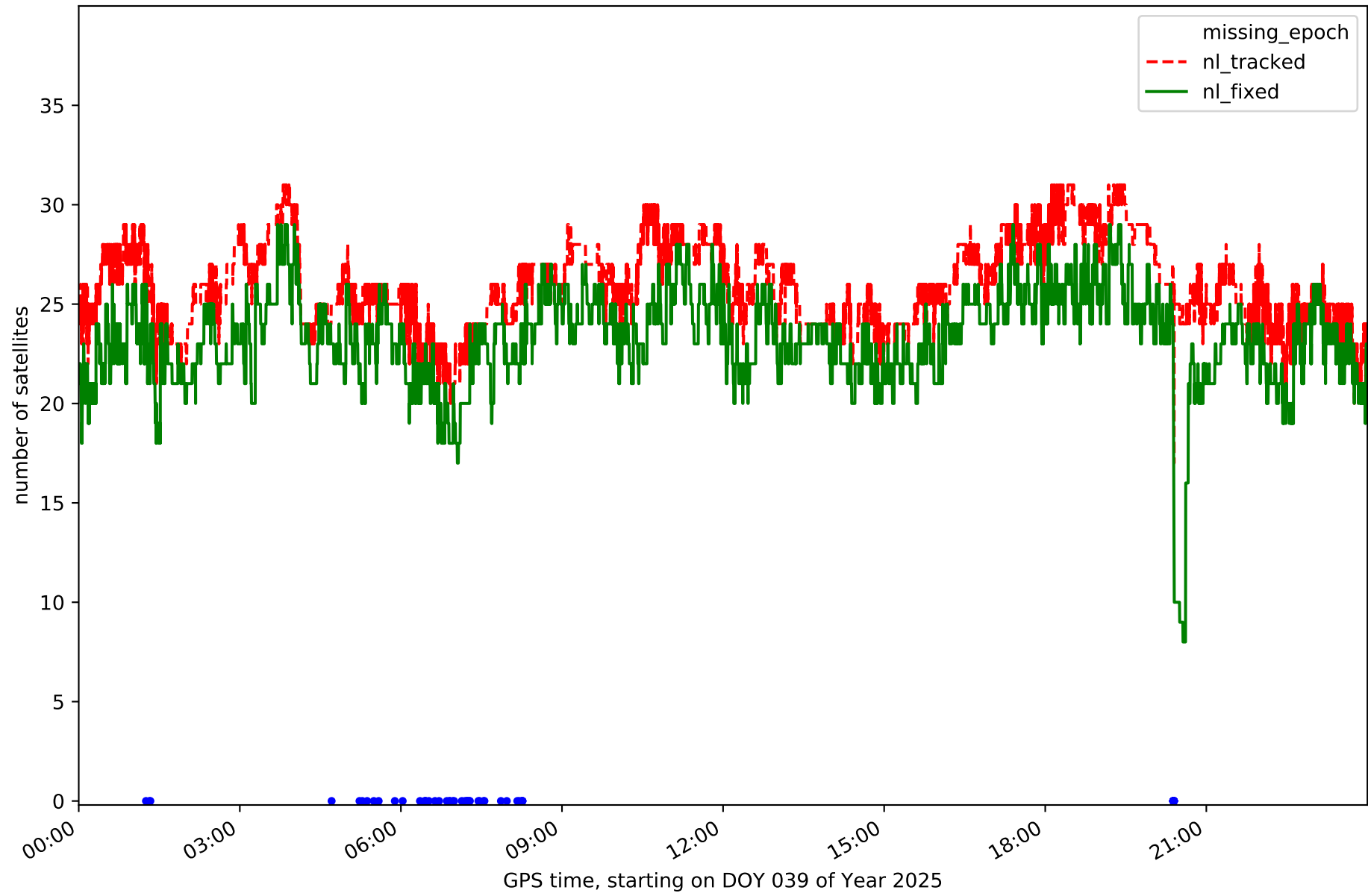
Station UTI1 in network NET3



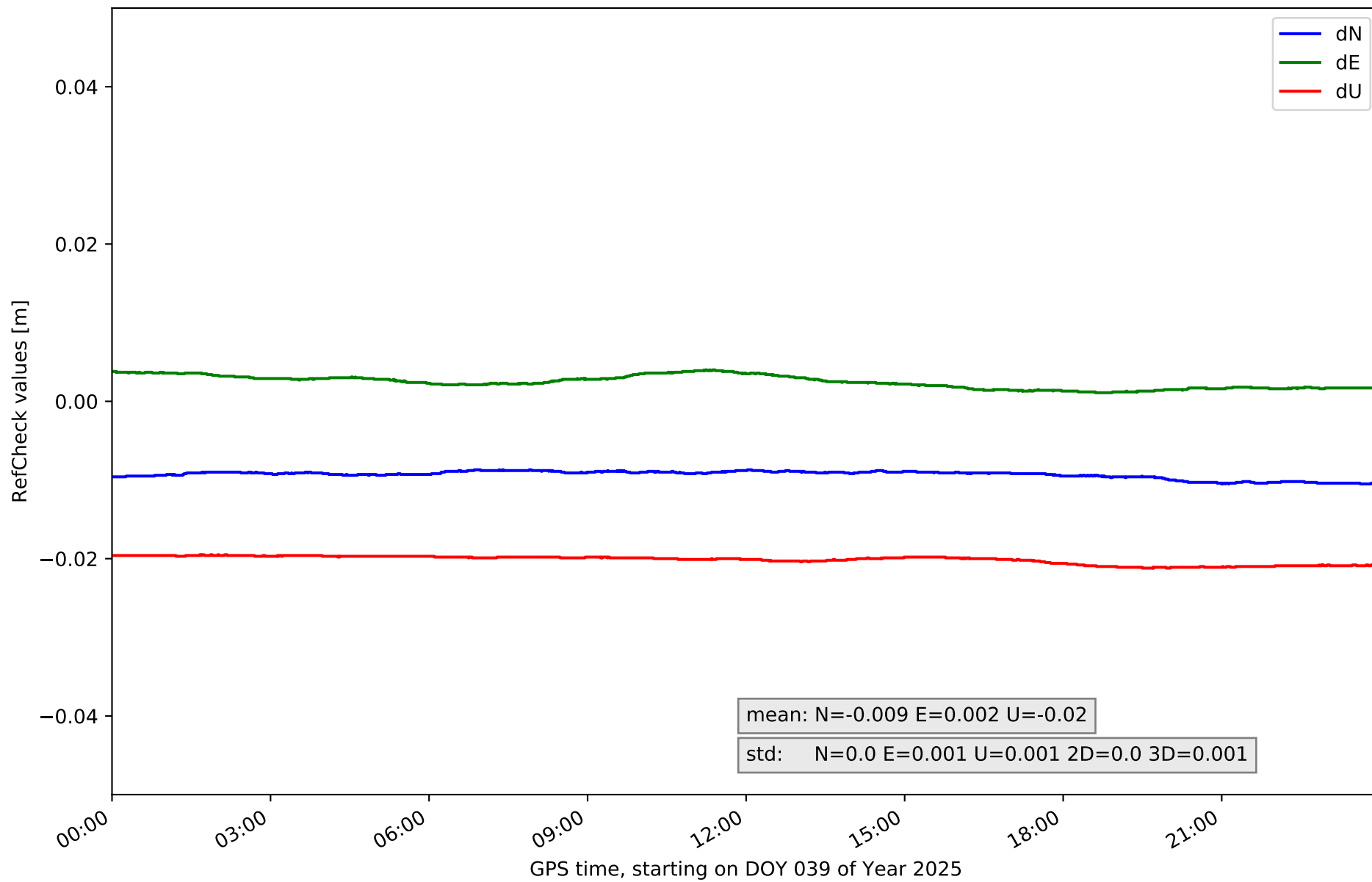
Station VIAR in network NET3



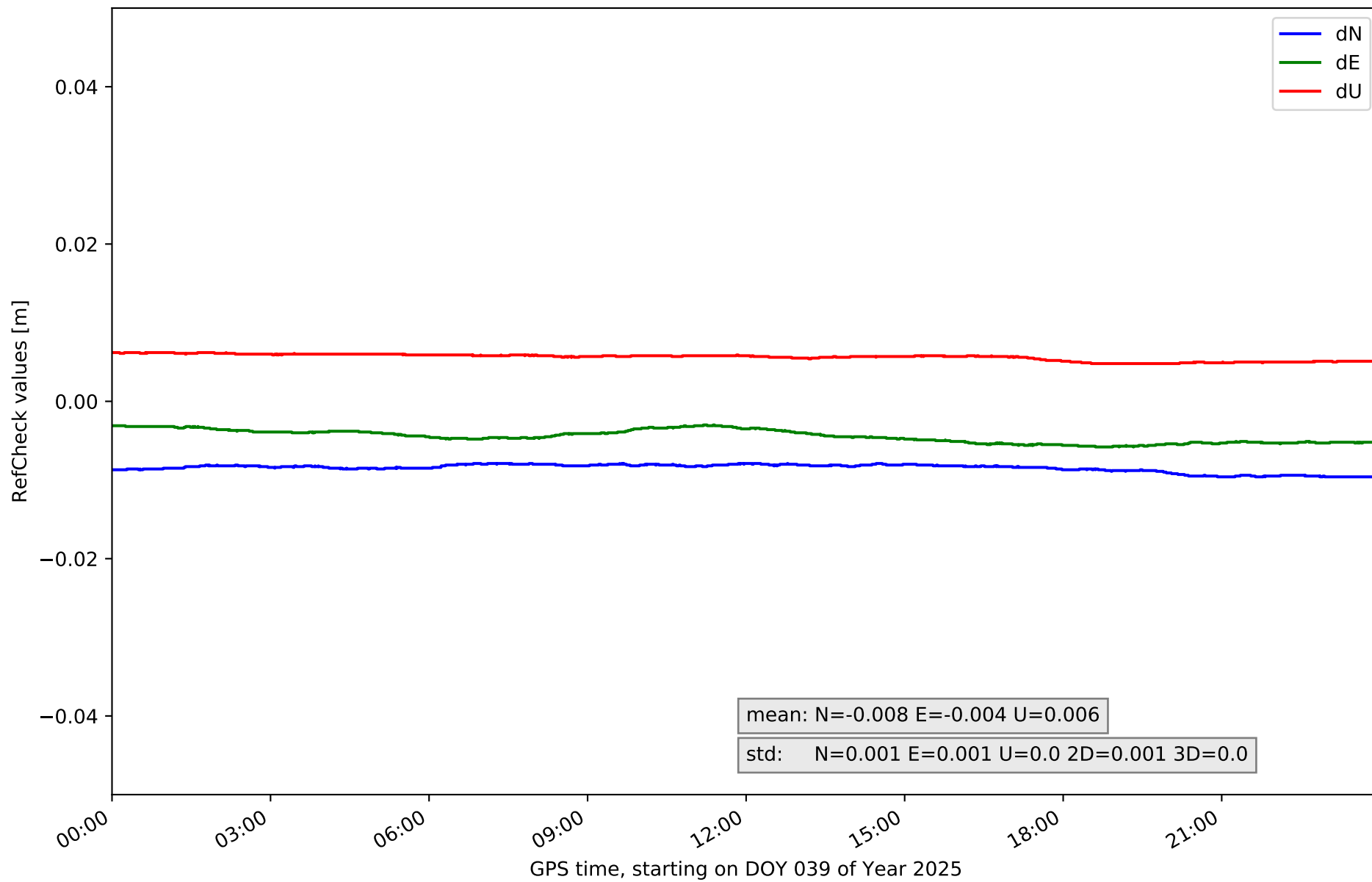
Station VILH in network NET3



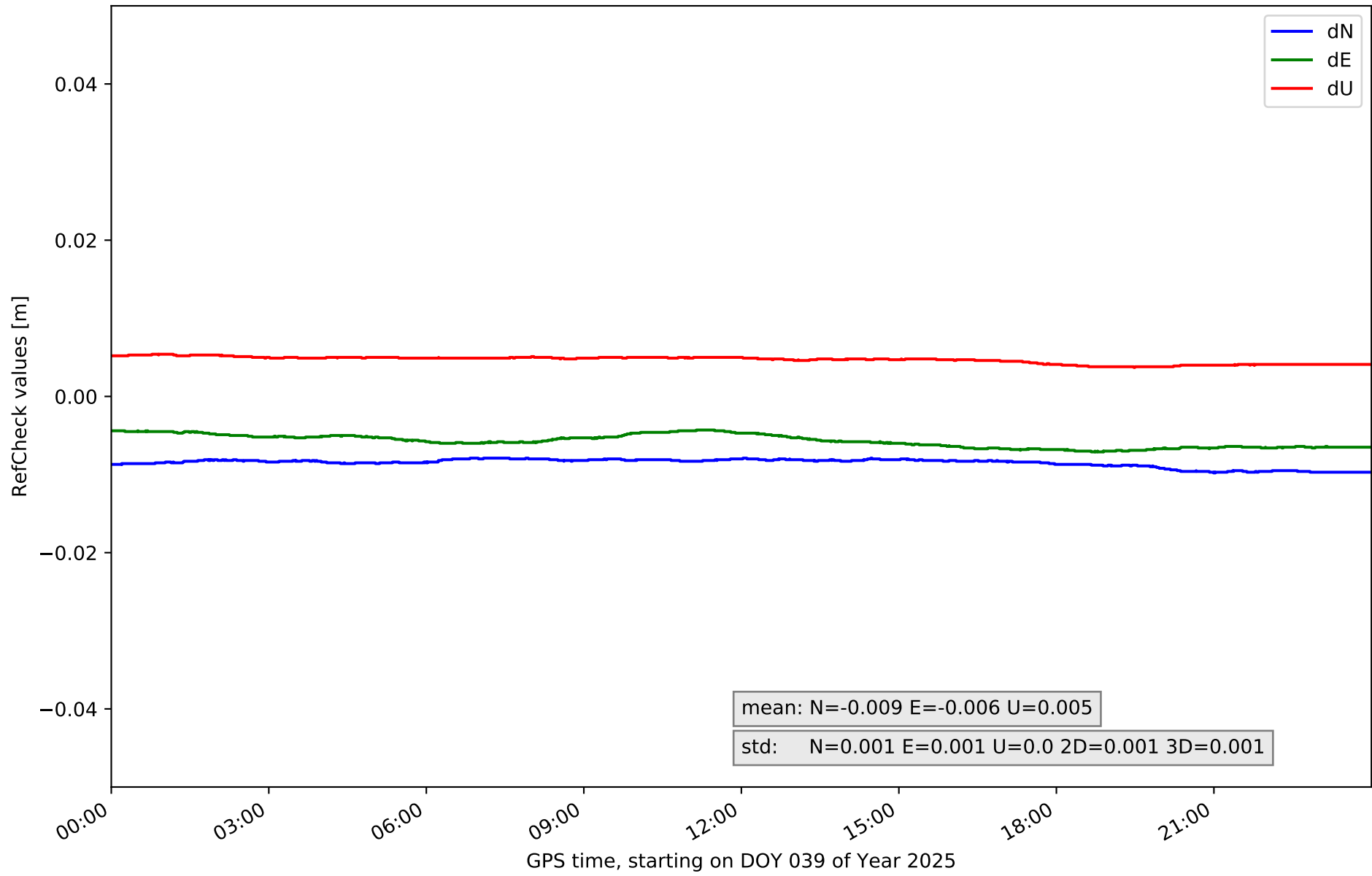
RefCheck for station ALBA in network NET3



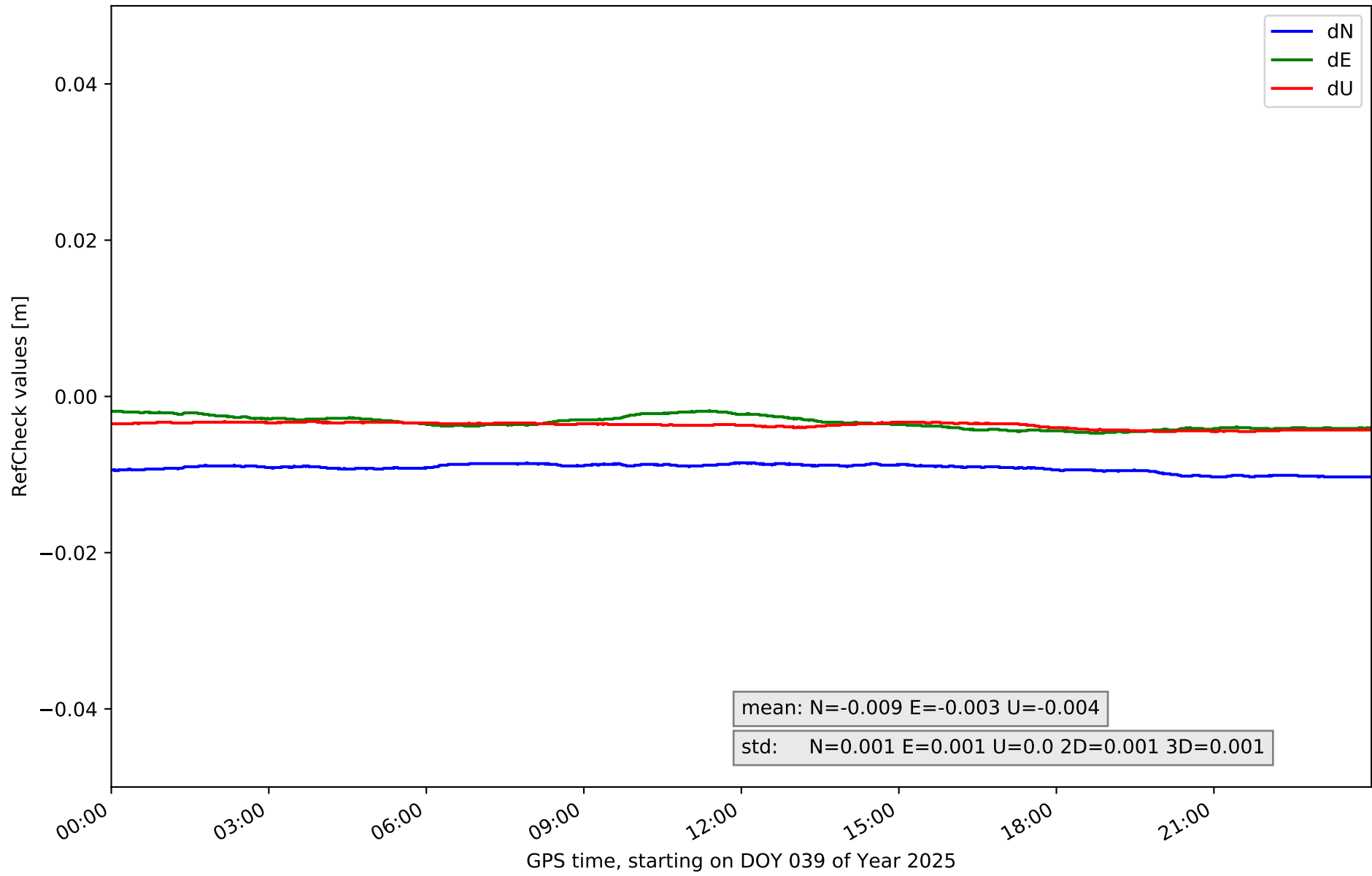
RefCheck for station ALMO in network NET3



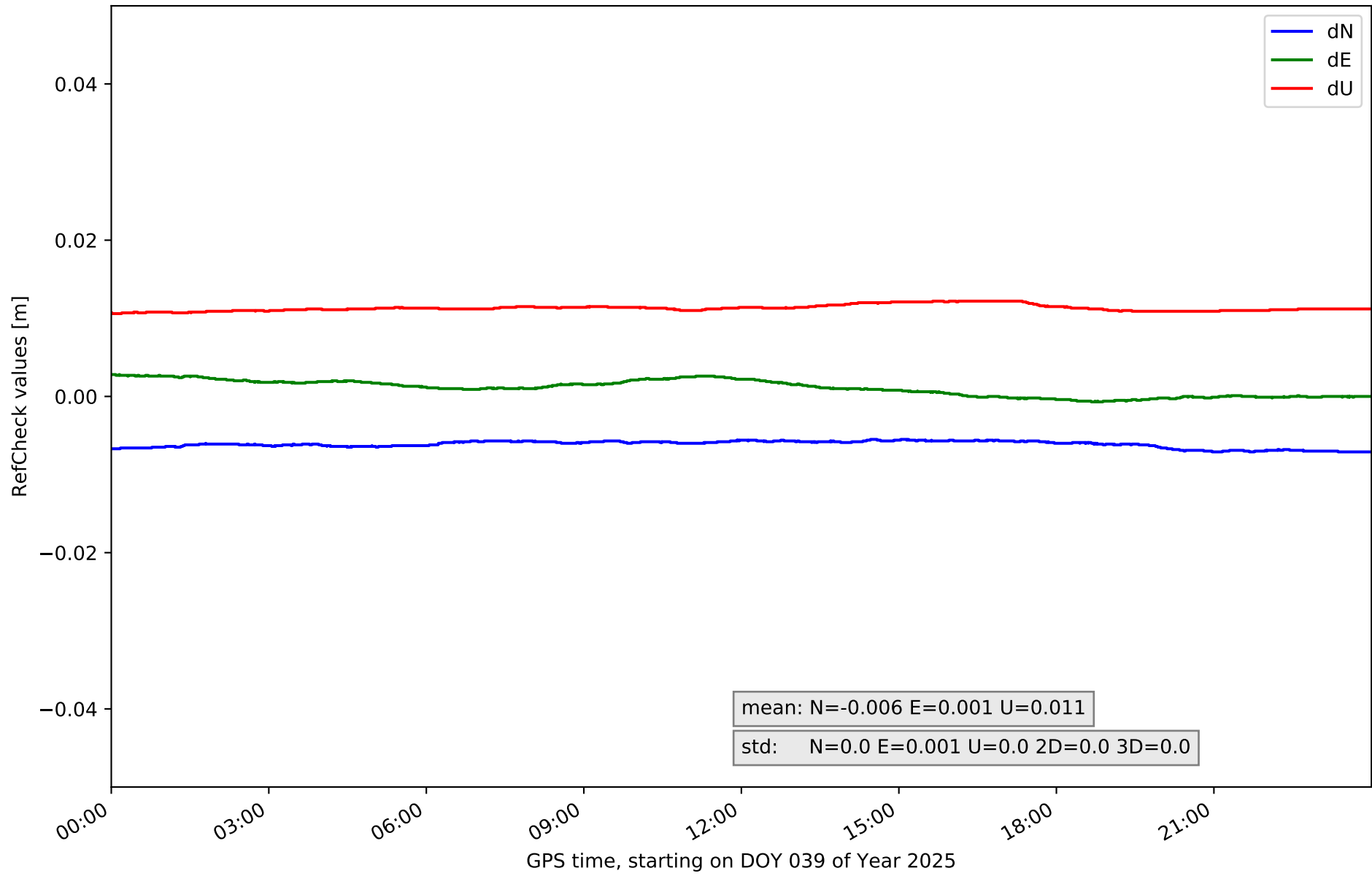
RefCheck for station COBA in network NET3



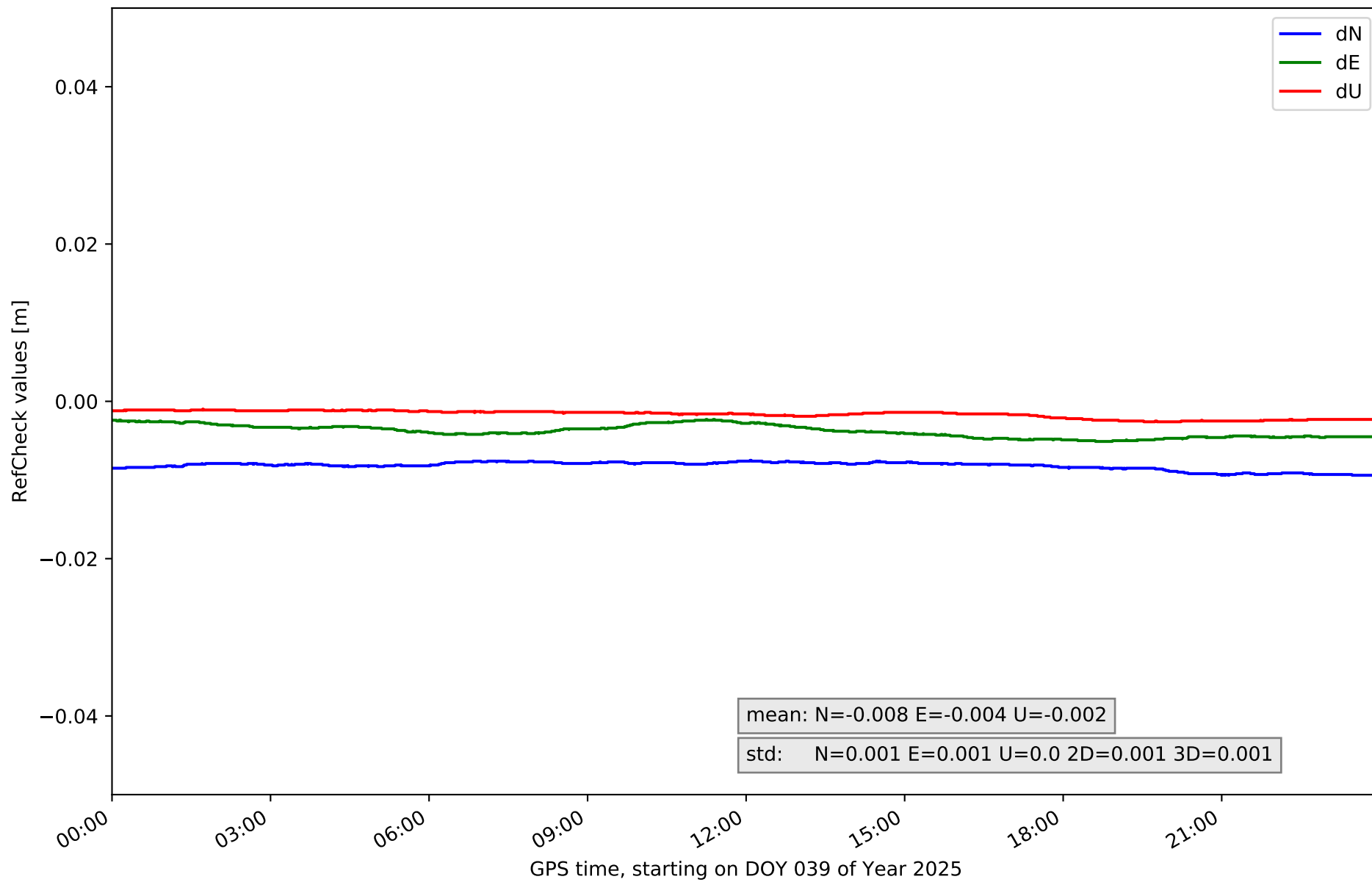
RefCheck for station CUEN in network NET3



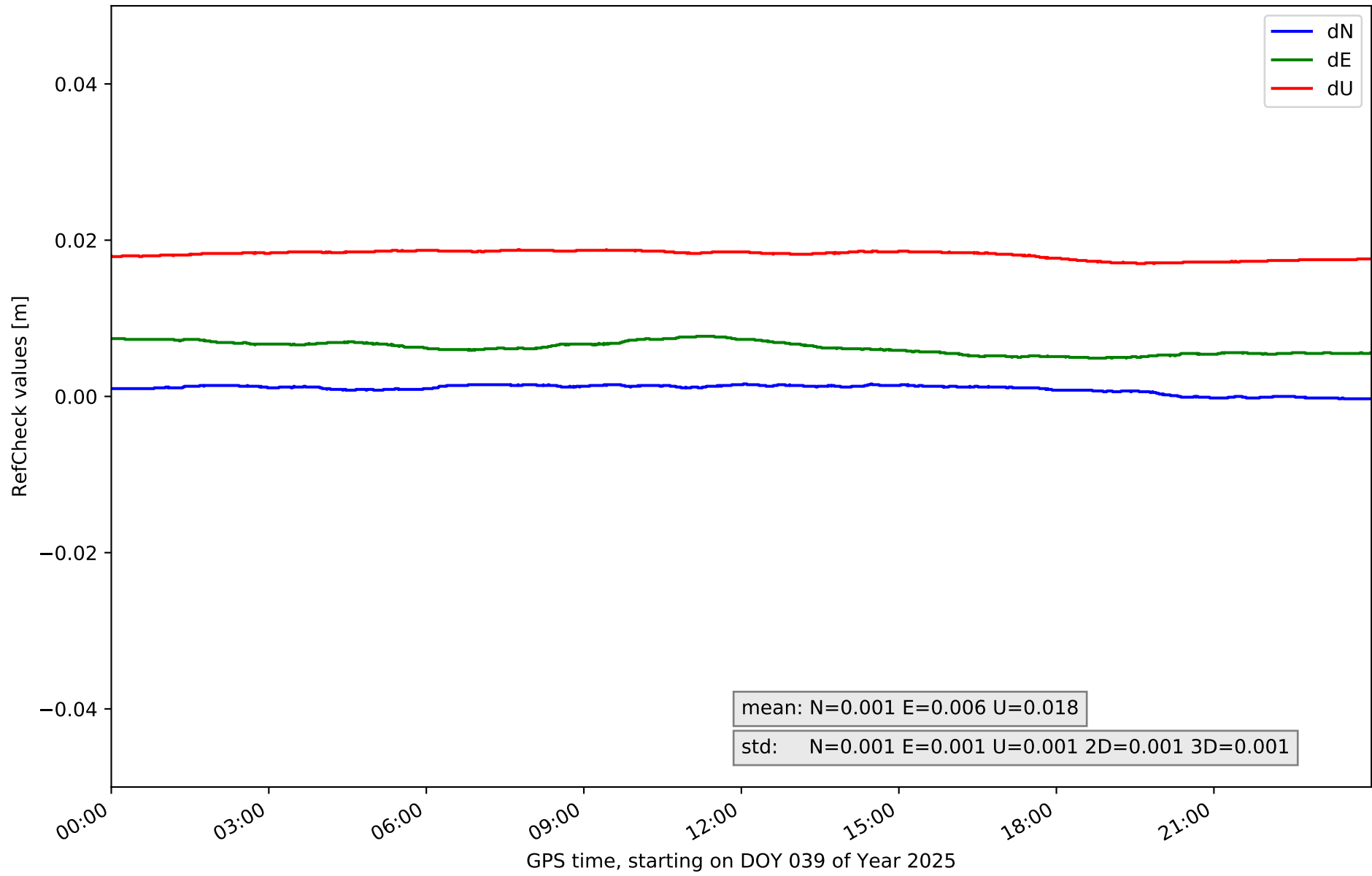
RefCheck for station JUMA in network NET3



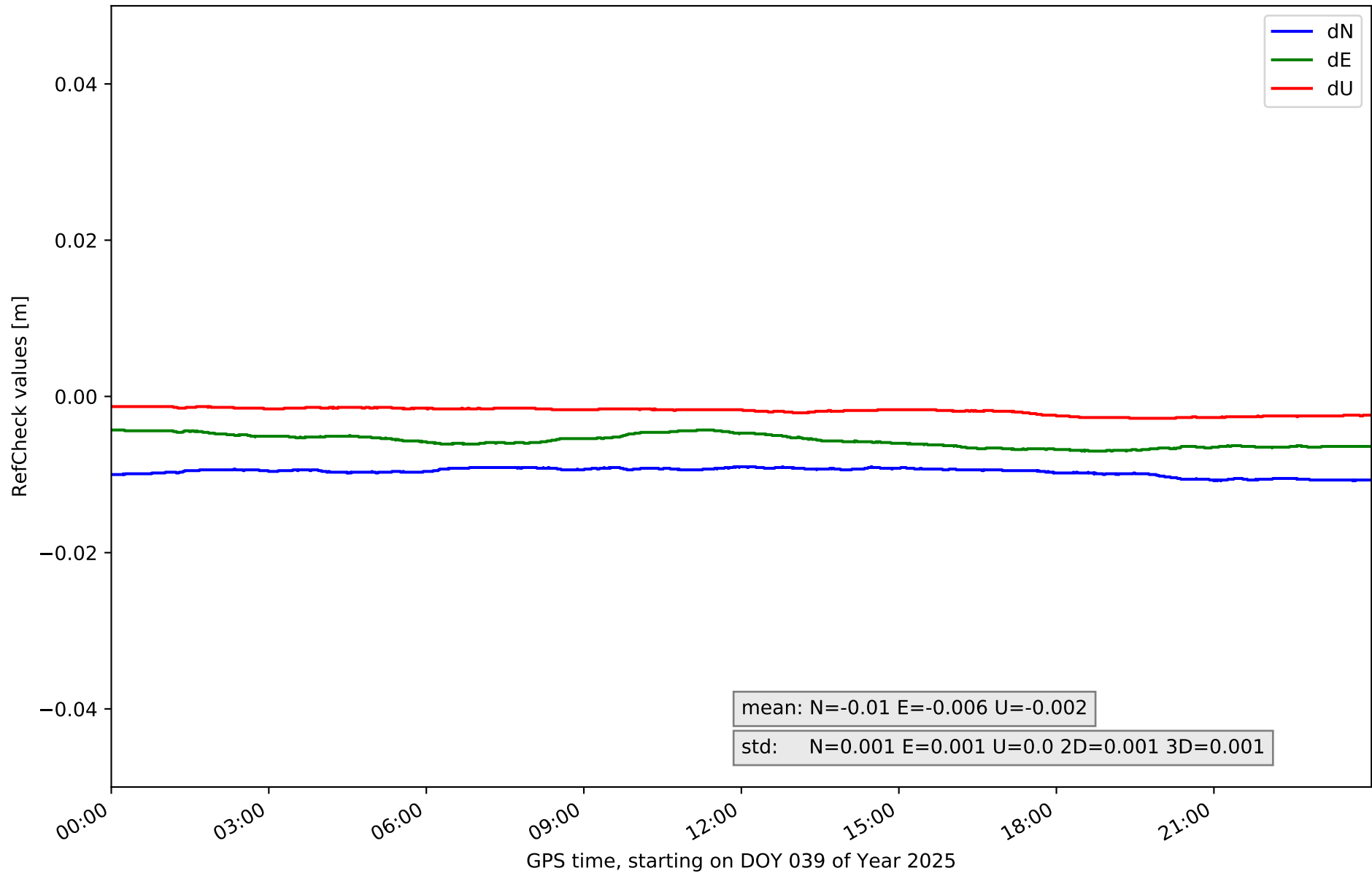
RefCheck for station MOTA in network NET3



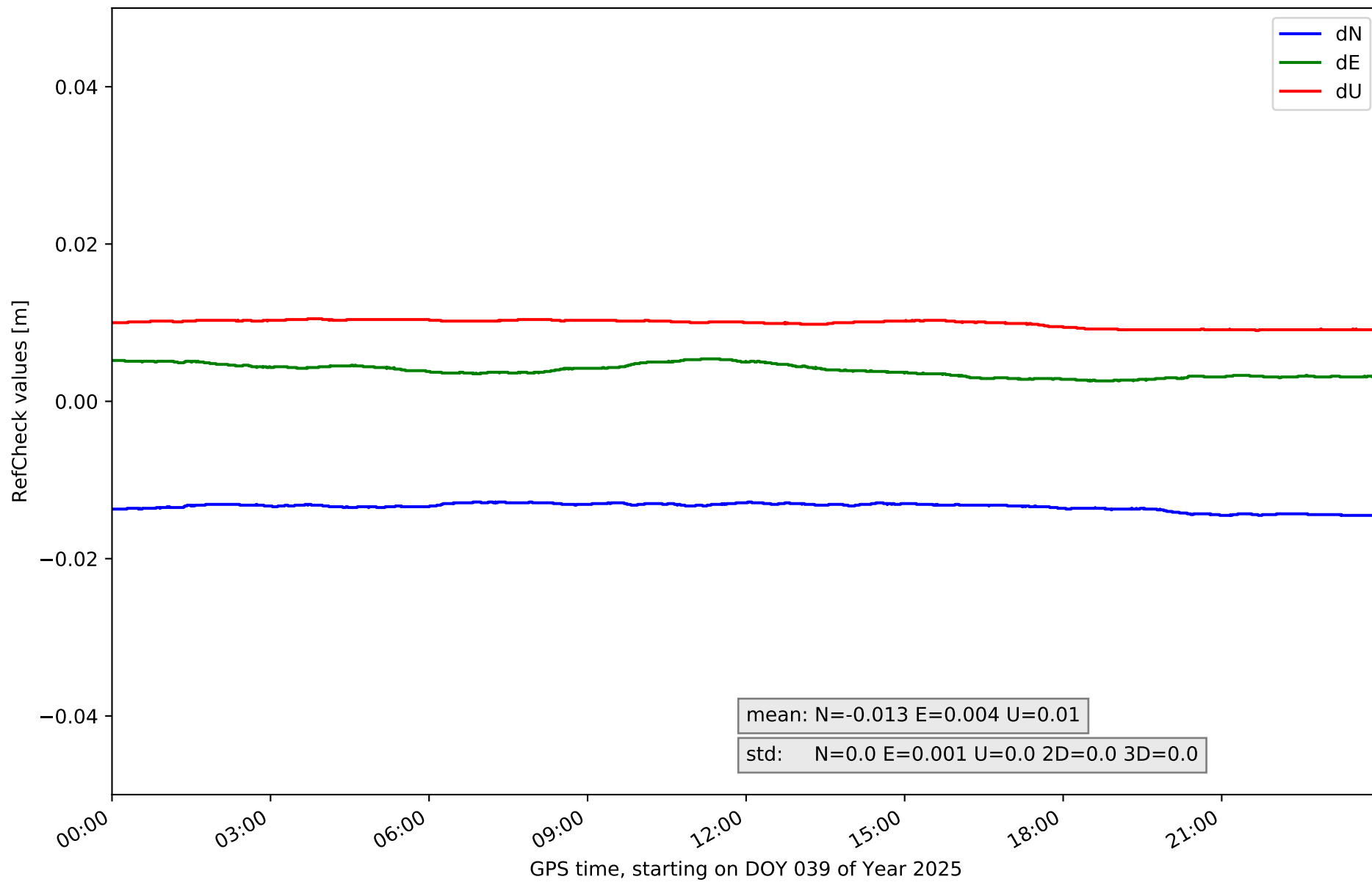
RefCheck for station MRAT in network NET3



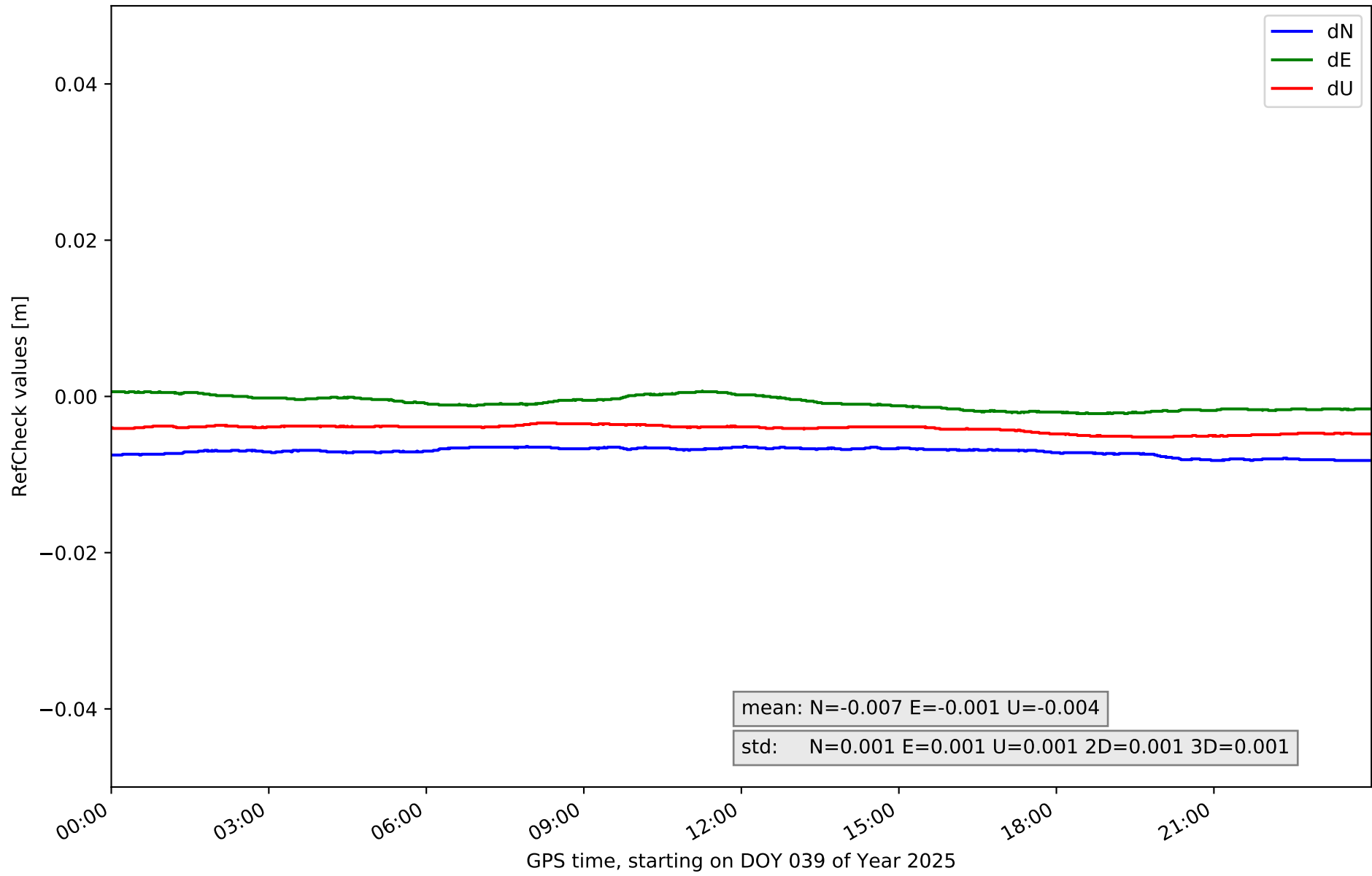
RefCheck for station SONS in network NET3



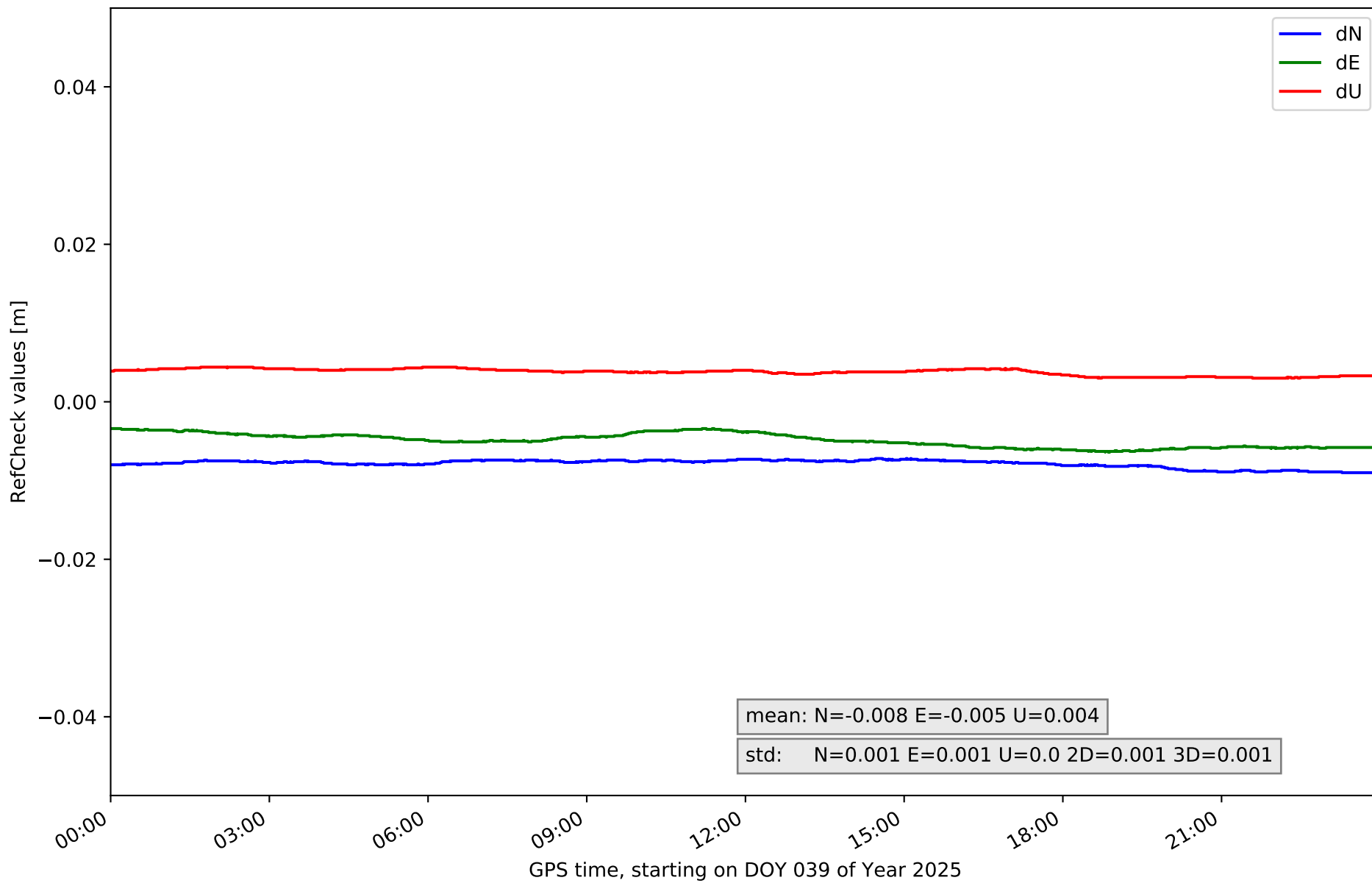
RefCheck for station UTI1 in network NET3



RefCheck for station VIAR in network NET3



RefCheck for station VILH in network NET3



RefCheck values for network NET3

Station	Nmin	Nmax	Nstd	Emin	Emax	Estd	Umin	Umax	Ustd	std2D	std3D	#2D > 0.01	% 2D > 0.01	#3D > 0.02	% 3D > 0.02
ALBA	-0.011	-0.009	0.0	0.001	0.004	0.001	-0.021	-0.019	0.001	0.0	0.001	17155	21.5	79859	100.0
ALMO	-0.01	-0.008	0.001	-0.006	-0.003	0.001	0.005	0.006	0.0	0.001	0.0	22264	27.9	0	0.0
COBA	-0.01	-0.008	0.001	-0.007	-0.004	0.001	0.004	0.005	0.0	0.001	0.001	37360	46.8	0	0.0
CUEN	-0.01	-0.009	0.001	-0.005	-0.002	0.001	-0.004	-0.003	0.0	0.001	0.001	23518	29.4	0	0.0
JUMA	-0.007	-0.005	0.0	-0.001	0.003	0.001	0.011	0.012	0.0	0.0	0.0	0	0.0	0	0.0
MOTA	-0.009	-0.007	0.001	-0.005	-0.002	0.001	-0.003	-0.001	0.0	0.001	0.001	13125	16.4	0	0.0
MRAT	-0.0	0.002	0.001	0.005	0.008	0.001	0.017	0.019	0.001	0.001	0.001	0	0.0	4014	5.0
SONS	-0.011	-0.009	0.001	-0.007	-0.004	0.001	-0.003	-0.001	0.0	0.001	0.001	79859	100.0	0	0.0
UT11	-0.015	-0.013	0.0	0.003	0.005	0.001	0.009	0.011	0.0	0.0	0.0	79859	100.0	0	0.0
VIAR	-0.008	-0.006	0.001	-0.002	0.001	0.001	-0.005	-0.003	0.001	0.001	0.001	0	0.0	0	0.0
VILH	-0.009	-0.007	0.001	-0.006	-0.003	0.001	0.003	0.004	0.0	0.001	0.001	19645	24.6	0	0.0
Mean	-0.009	-0.007	0.001	-0.003	0.0	0.001	0.001	0.003	0.0	0.001	0.001	26616.8	33.3	7624.8	9.5
Min/Max	-0.015	0.002	0.001	-0.007	0.008	0.001	-0.021	0.019	0.001	0.001	0.001	79859	100.0	79859	100.0

fixing statistic for network NET3

fixing percentage of	all GNSS	G	R	E	C
using threshold 0.3	93.6	94.4	93.4	95.0	91.1
considering satellites with dual-frequency fixed	92.2	93.1	90.7	93.9	90.3
considering all signals separately	92.3	93.3	90.7	94.3	89.4