

summary for network NT31

timeperiod chosen: from 2025-12-15-00:00:00 until 2025-12-15-23:59:59

average update rate (durations larger than 15 seconds considered as observation gap): 1.0 seconds

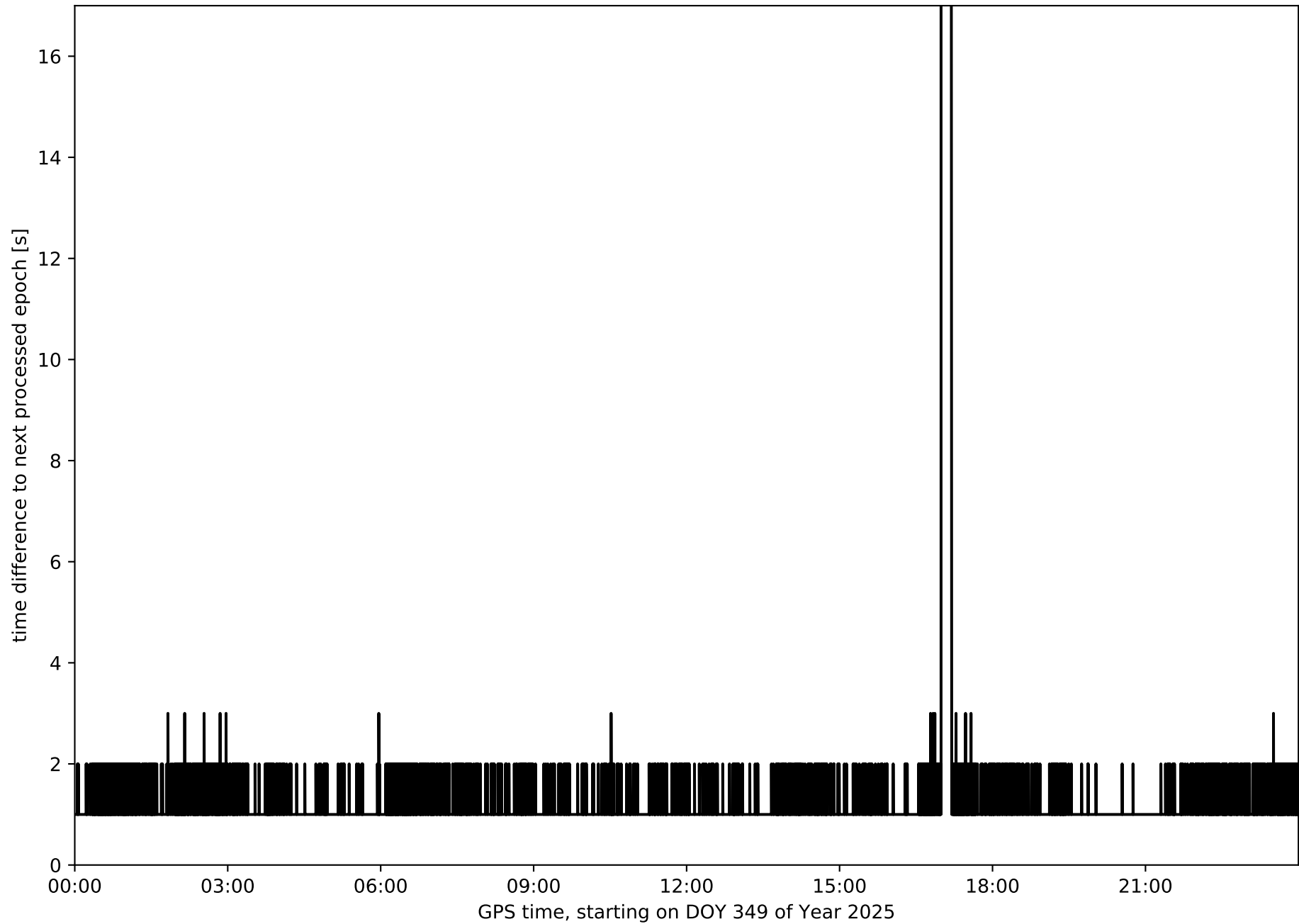
average fixing percentage with threshold set to 0.3: 85.5 percent

stations available: 7 of 7

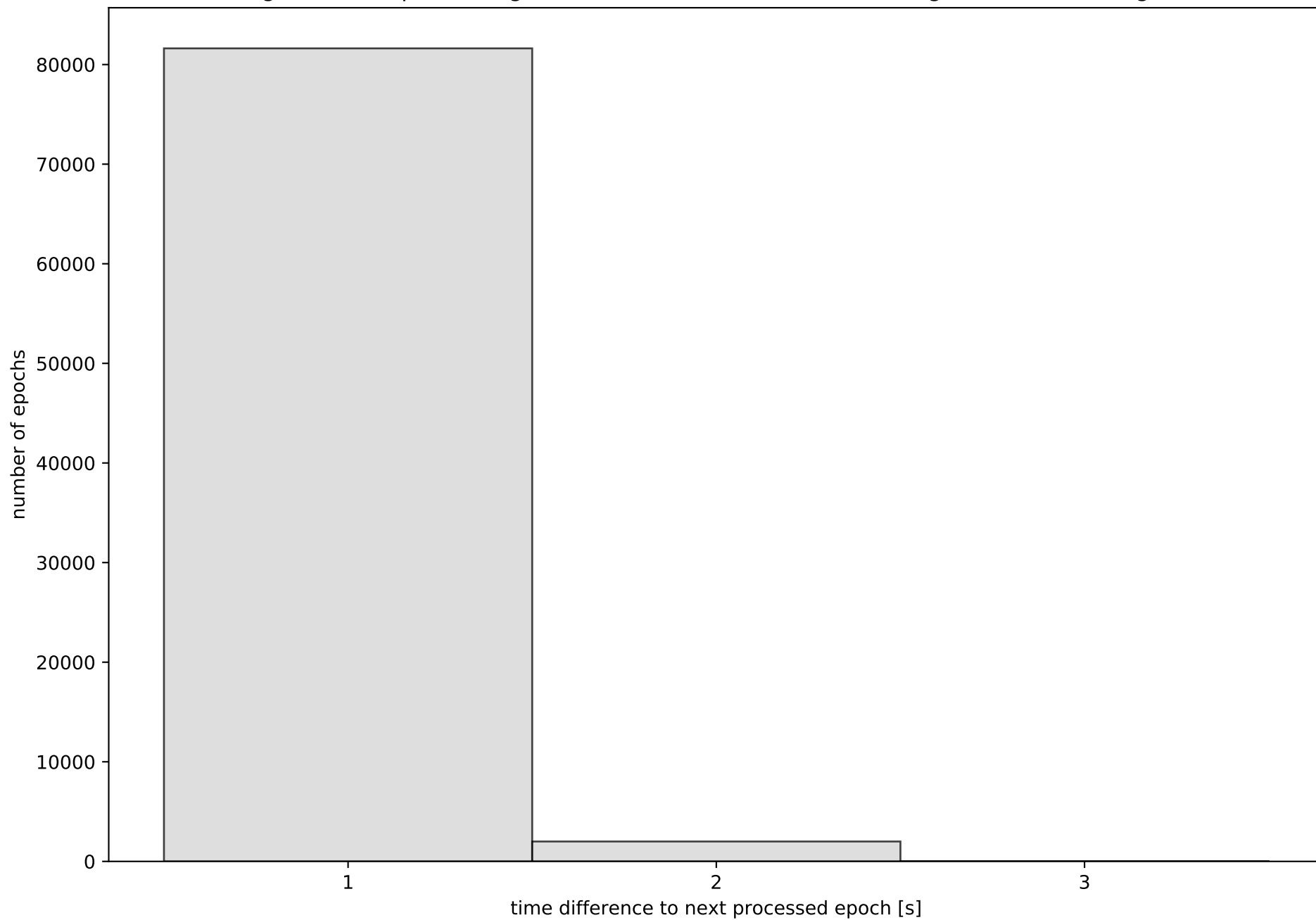
station information:

station FUER:	antenna: LEIAR20	LEIM	receiver: LEICA GR50	height: 76.887
station LALA:	antenna: TRM59900.00	SCIS	receiver: TRIMBLE NETR9	height: 62.306
station LZ01:	antenna: TRM159900.00	NONE	receiver: TRIMBLE NETR9	height: 52.693
station LZ02:	antenna: LEIAR20	NONE	receiver: LEICA GR25	height: 58.039
station LZ03:	antenna: LEIAR20	NONE	receiver: LEICA GR50	height: 314.762
station MASP:	antenna: TRM59900.00	SCIS	receiver: TRIMBLE NETR9	height: 198.846
station ULP2:	antenna: TRM59900.00	SCIS	receiver: TRIMBLE ALLOY	height: 375.129

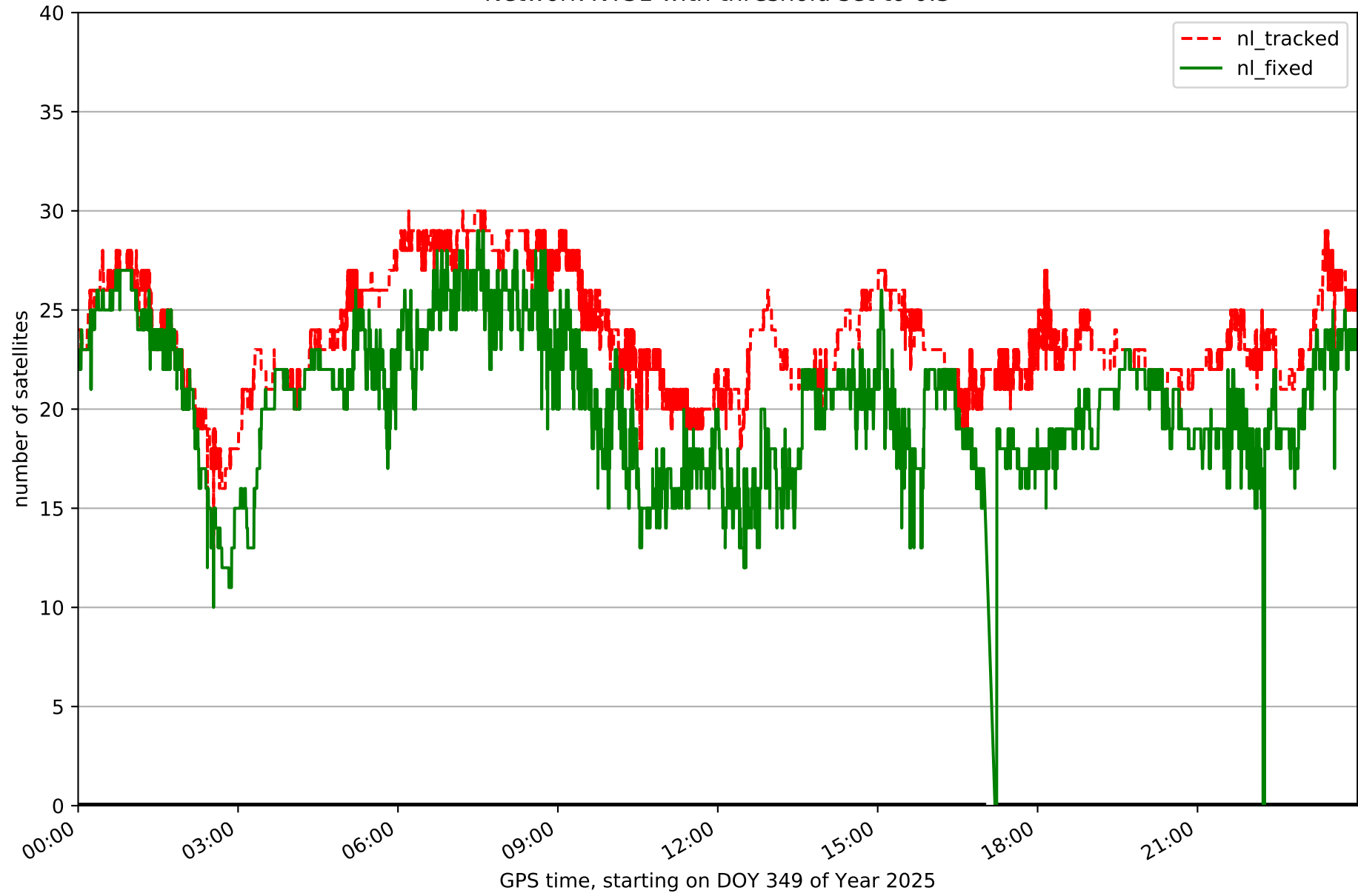
Processing rate in network NT31



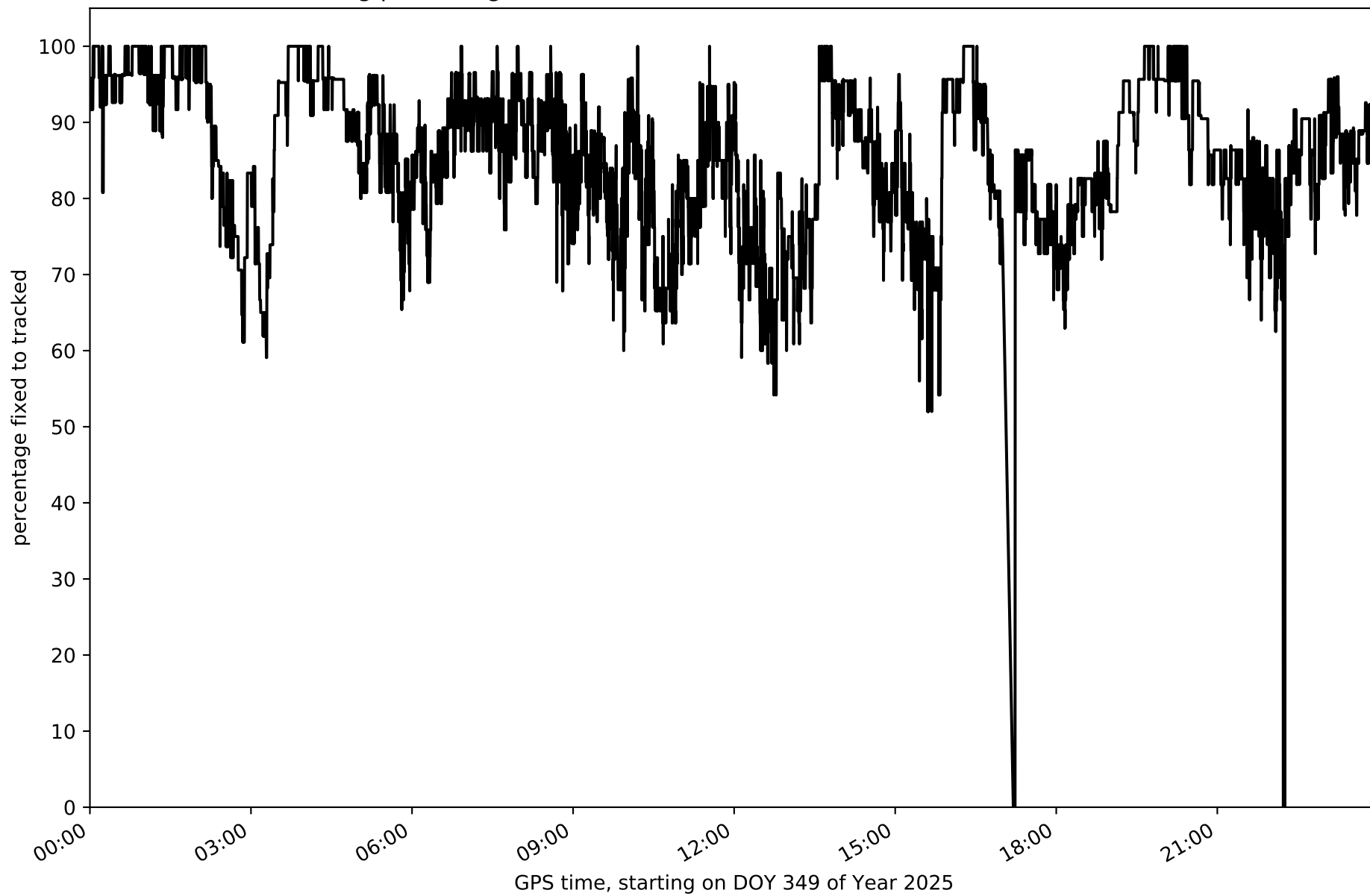
Histogram of the processing rate in network NT31 (durations larger 15 seconds neglected)



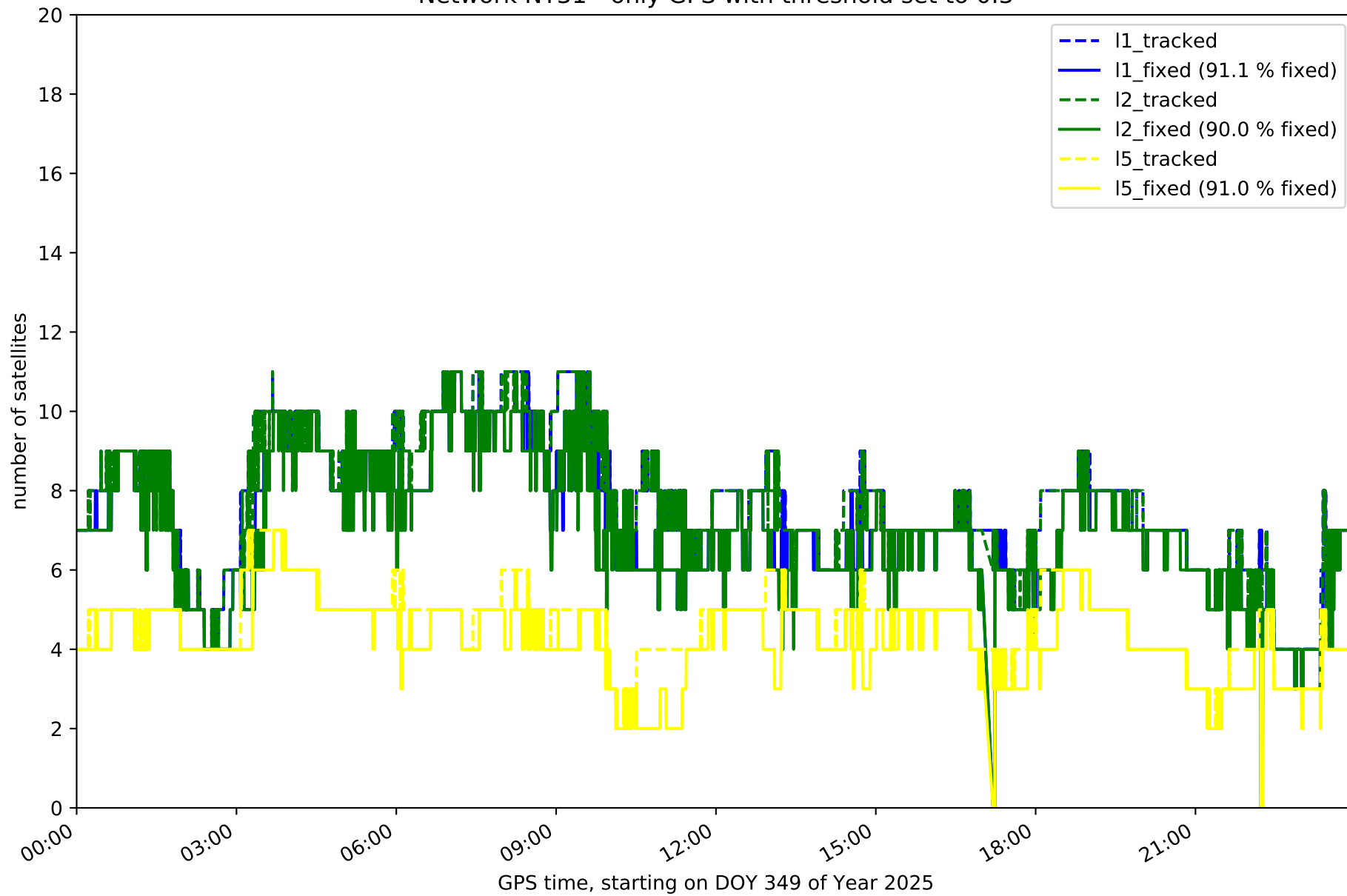
Network NT31 with threshold set to 0.3



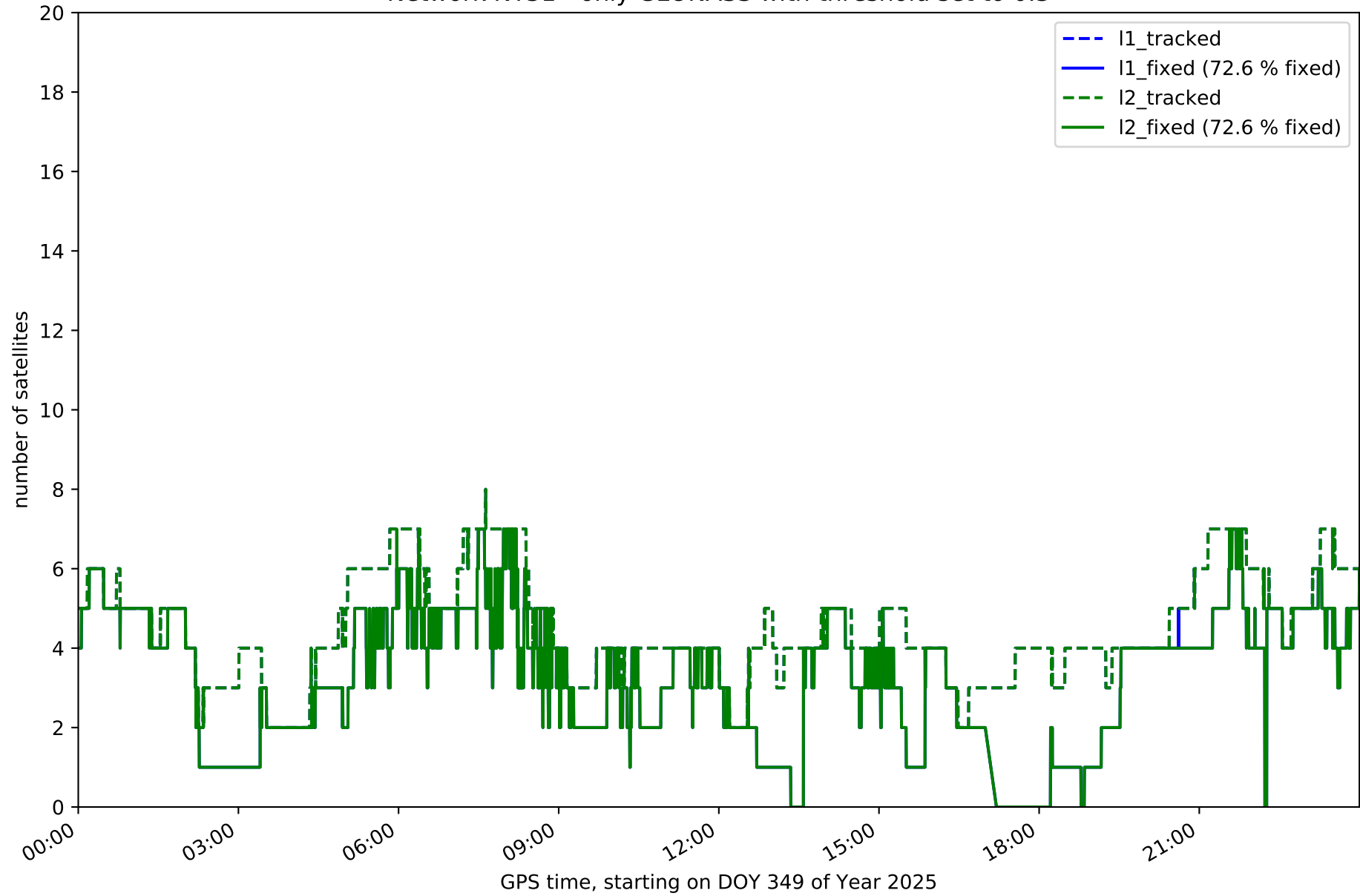
Fixing percentage of satellites in network NT31 with threshold set to 0.3



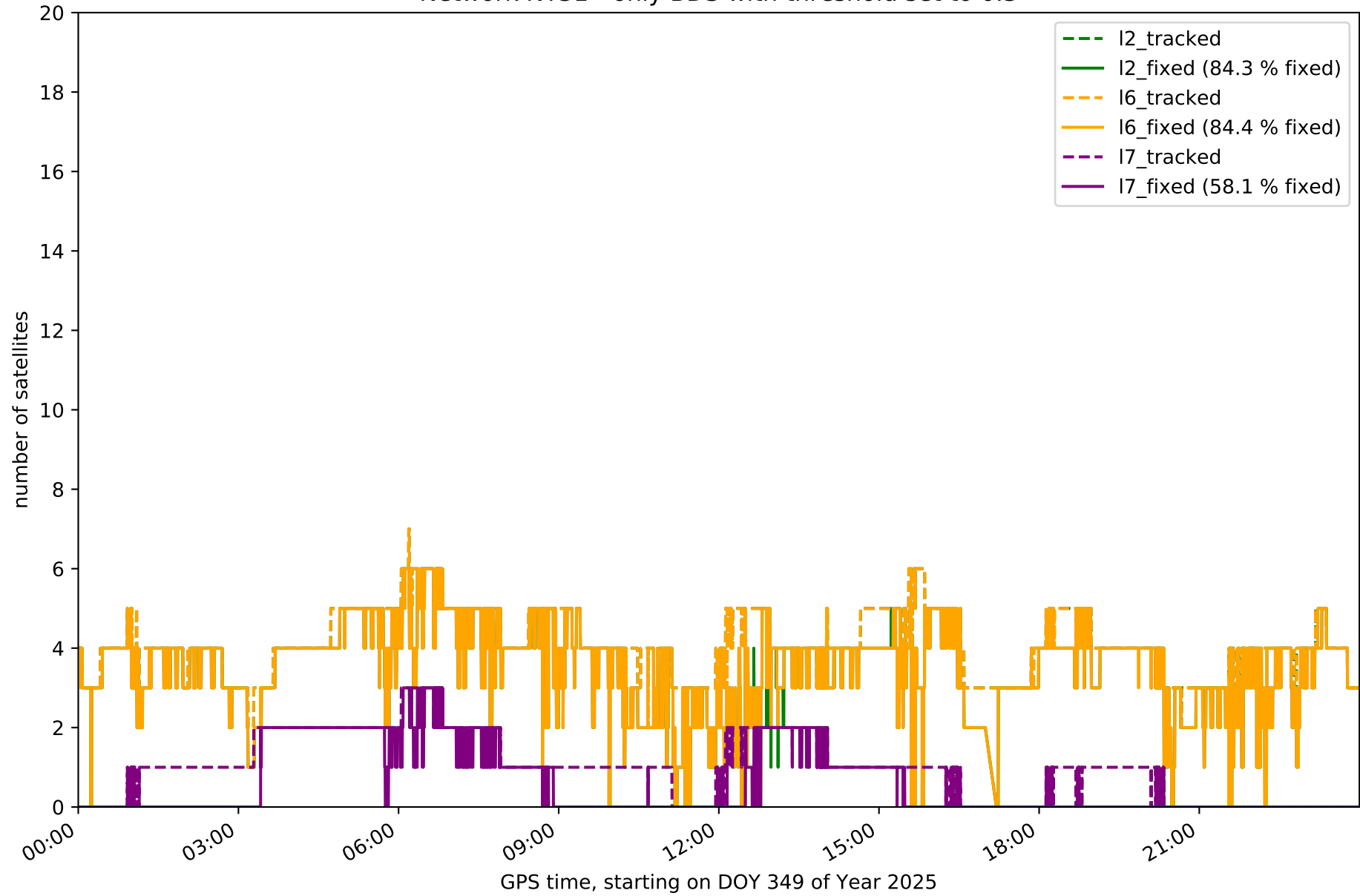
Network NT31 - only GPS with threshold set to 0.3



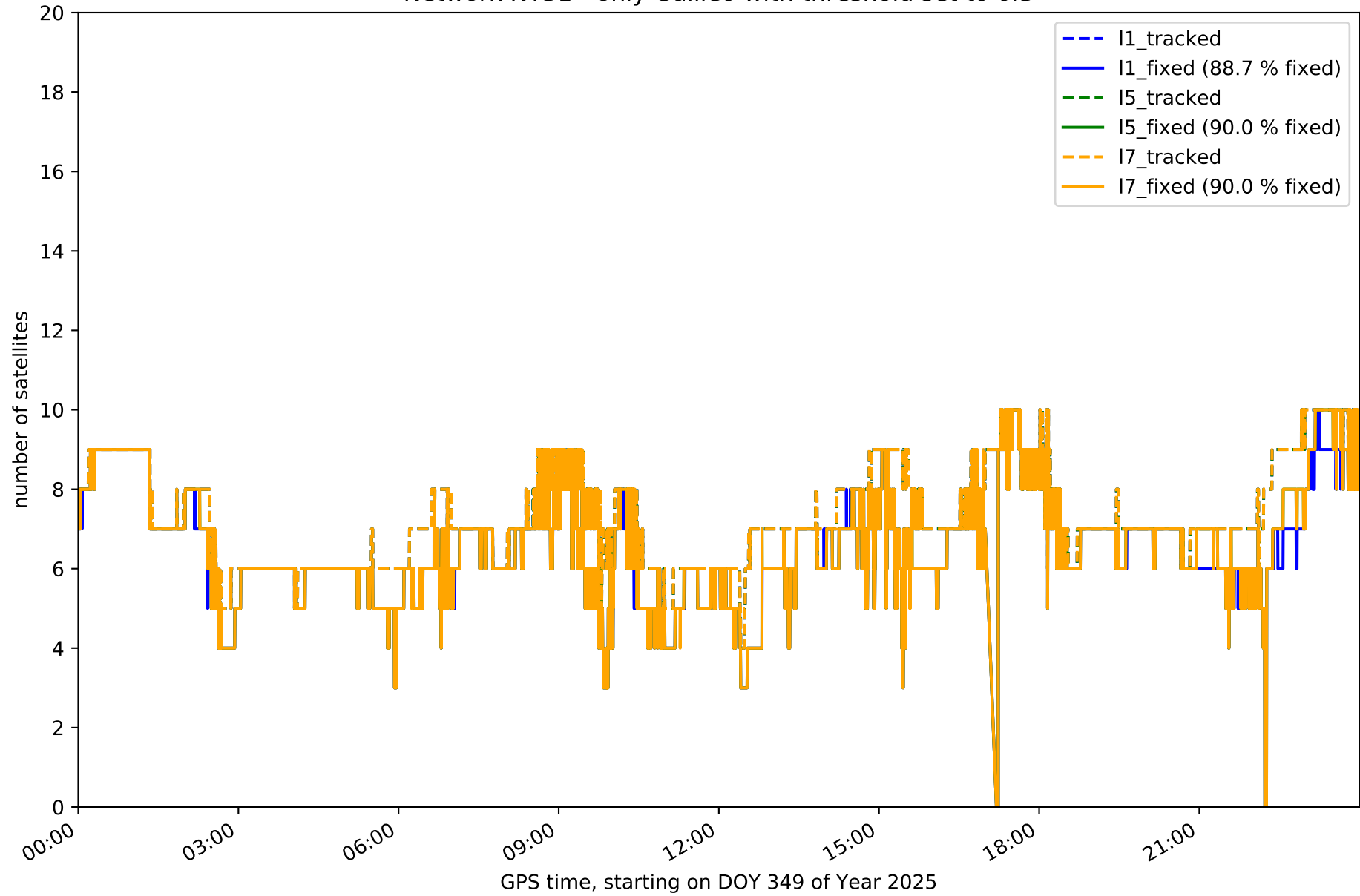
Network NT31 - only GLONASS with threshold set to 0.3



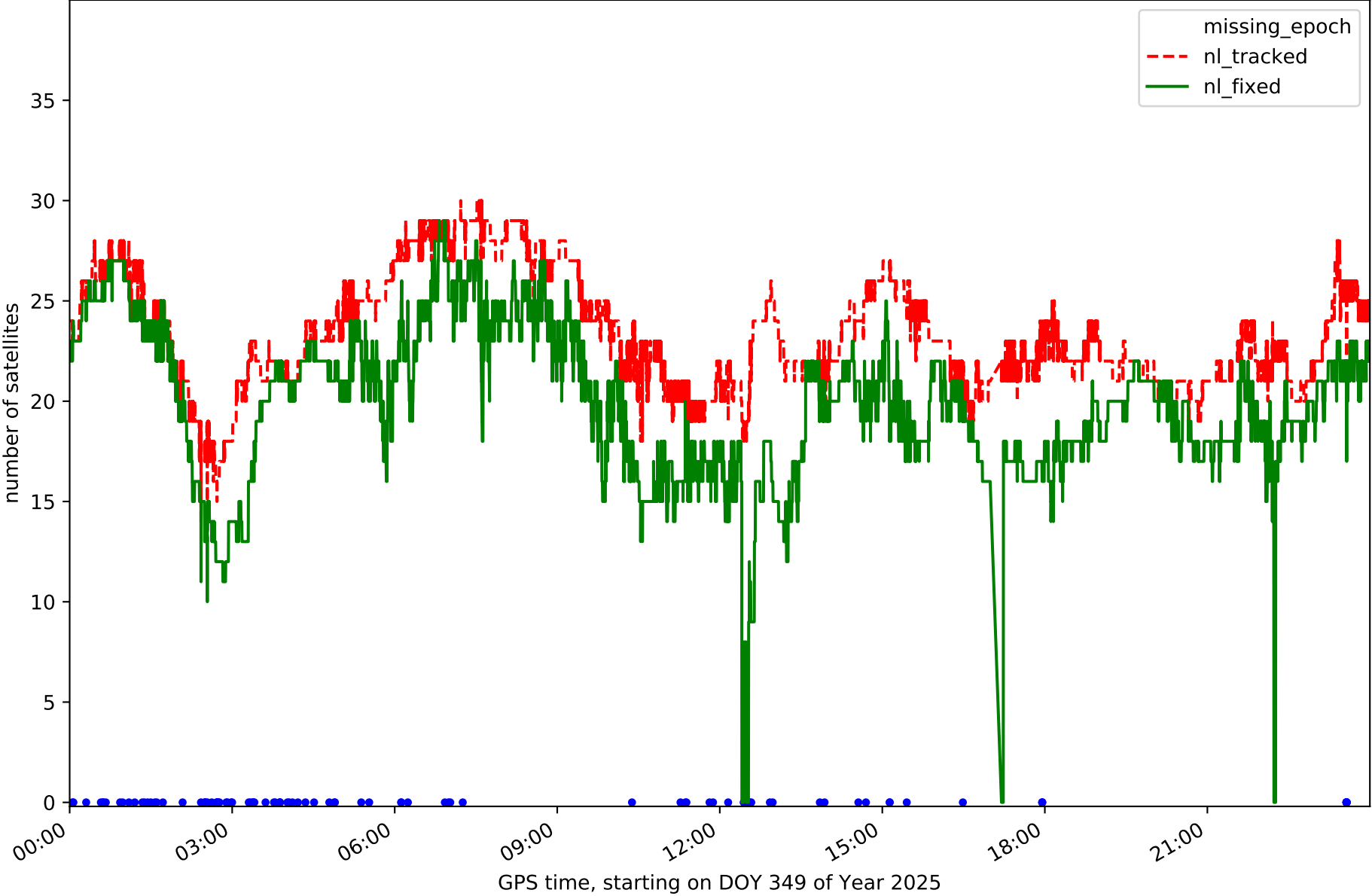
Network NT31 - only BDS with threshold set to 0.3



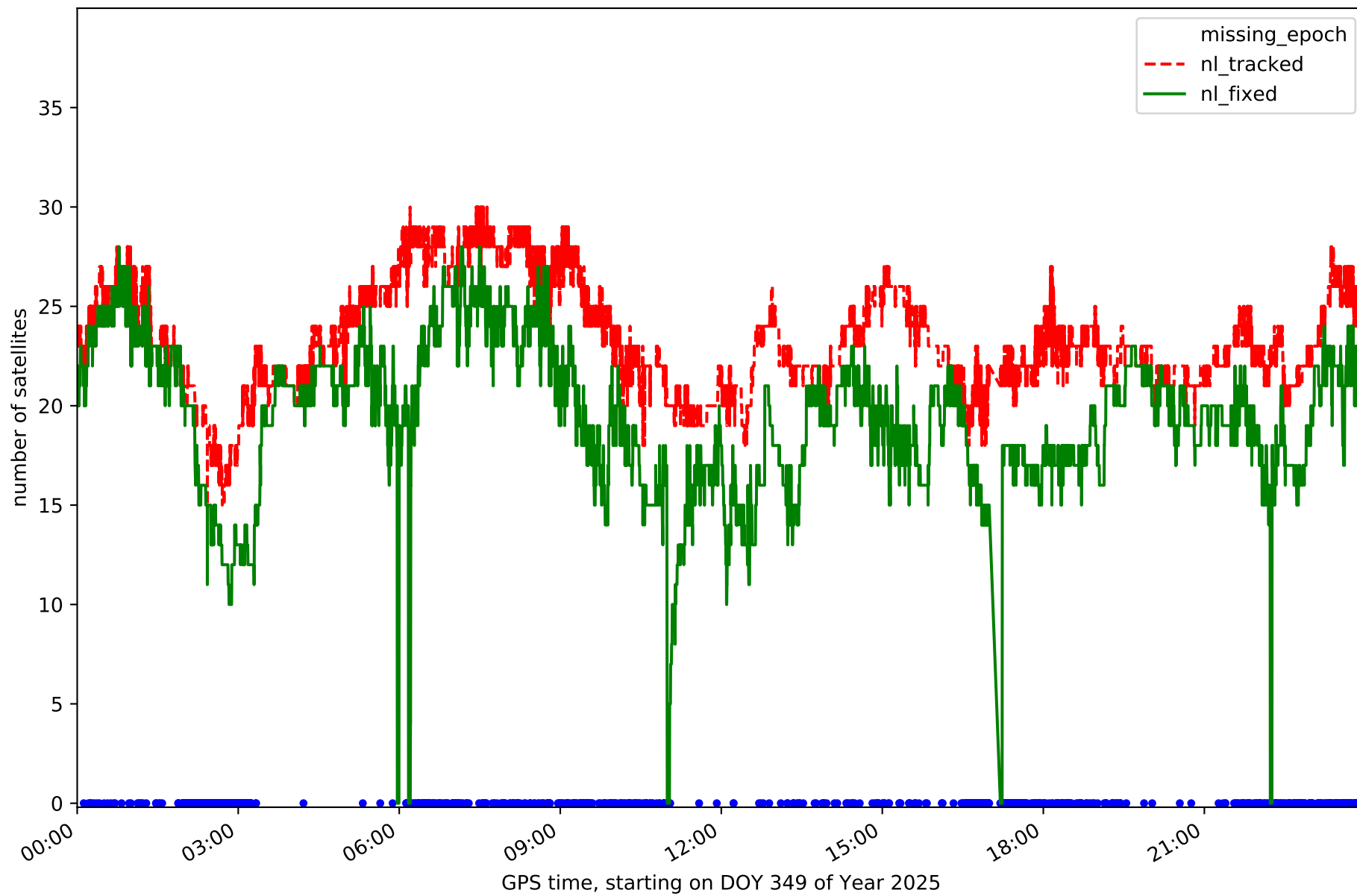
Network NT31 - only Galileo with threshold set to 0.3



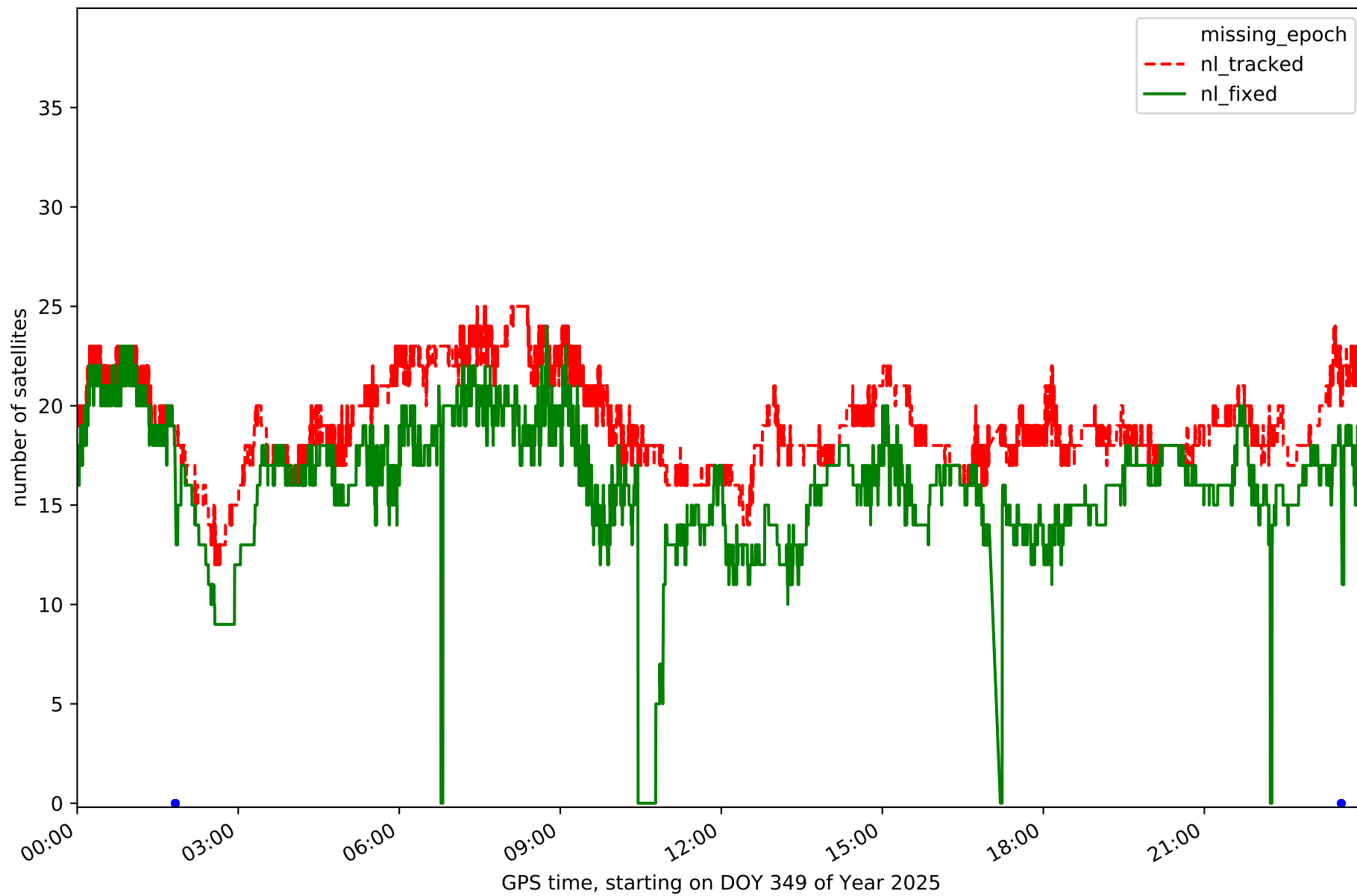
Station FUER in network NT31



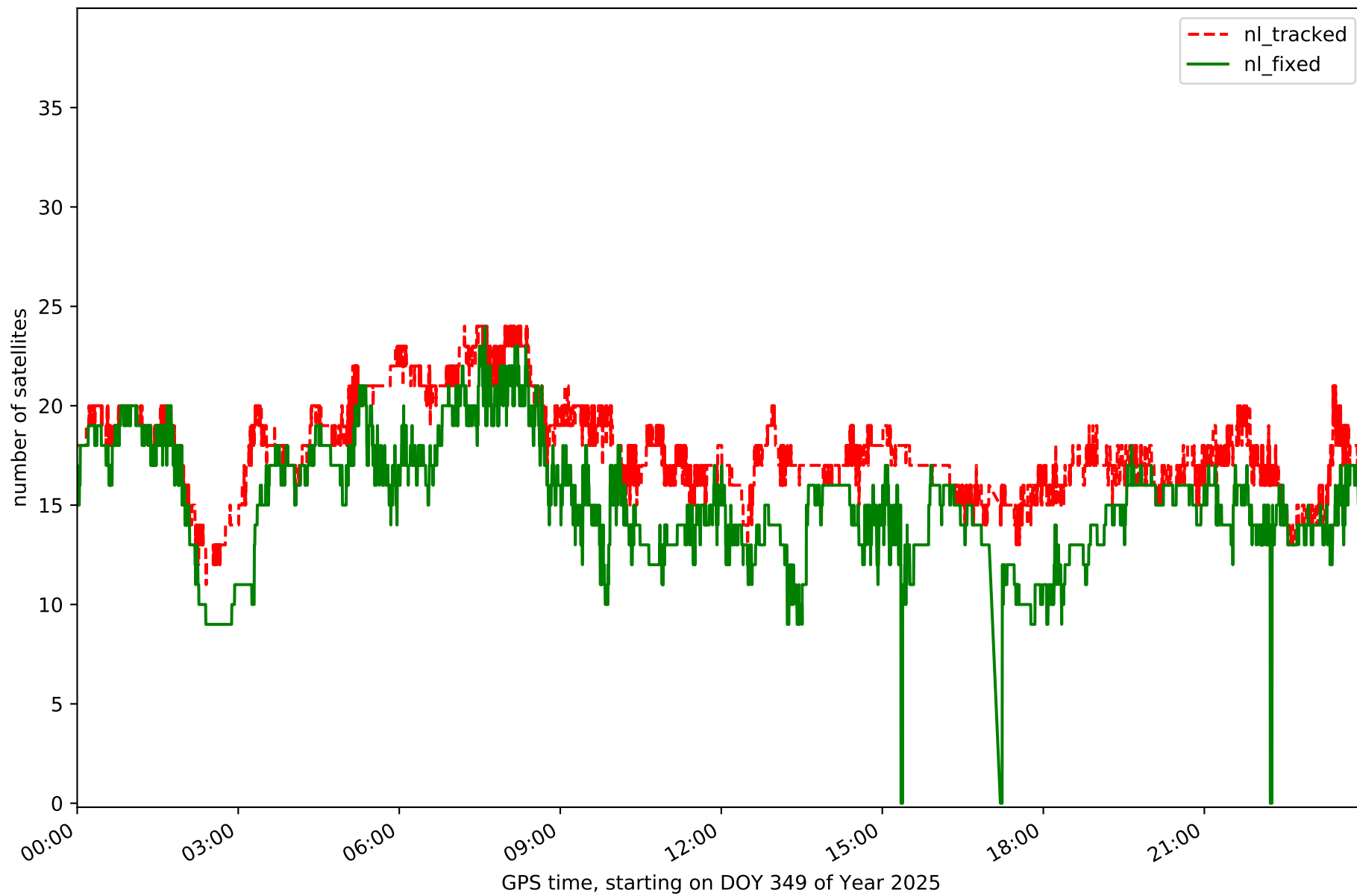
Station LALA in network NT31



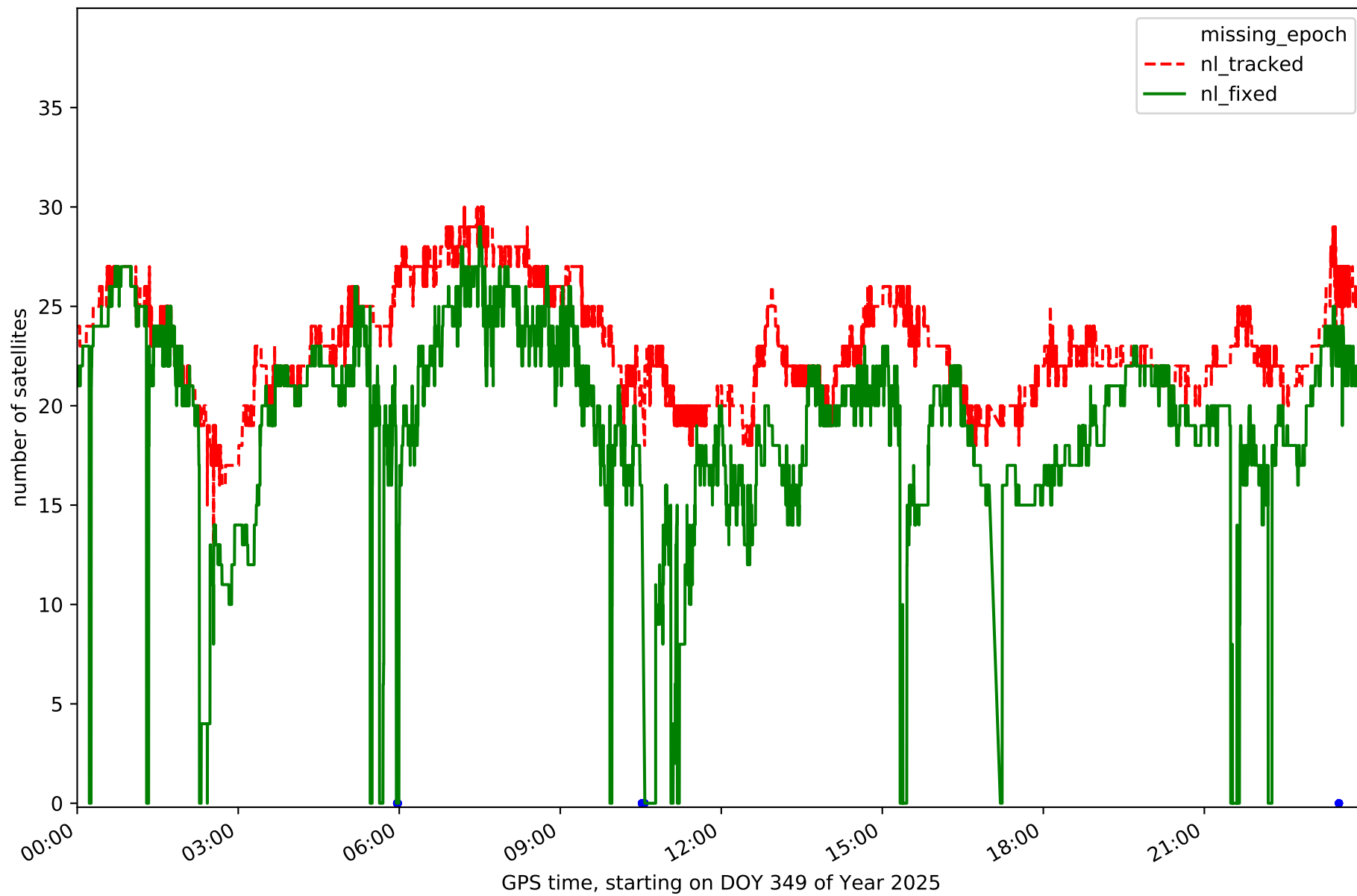
Station LZ01 in network NT31



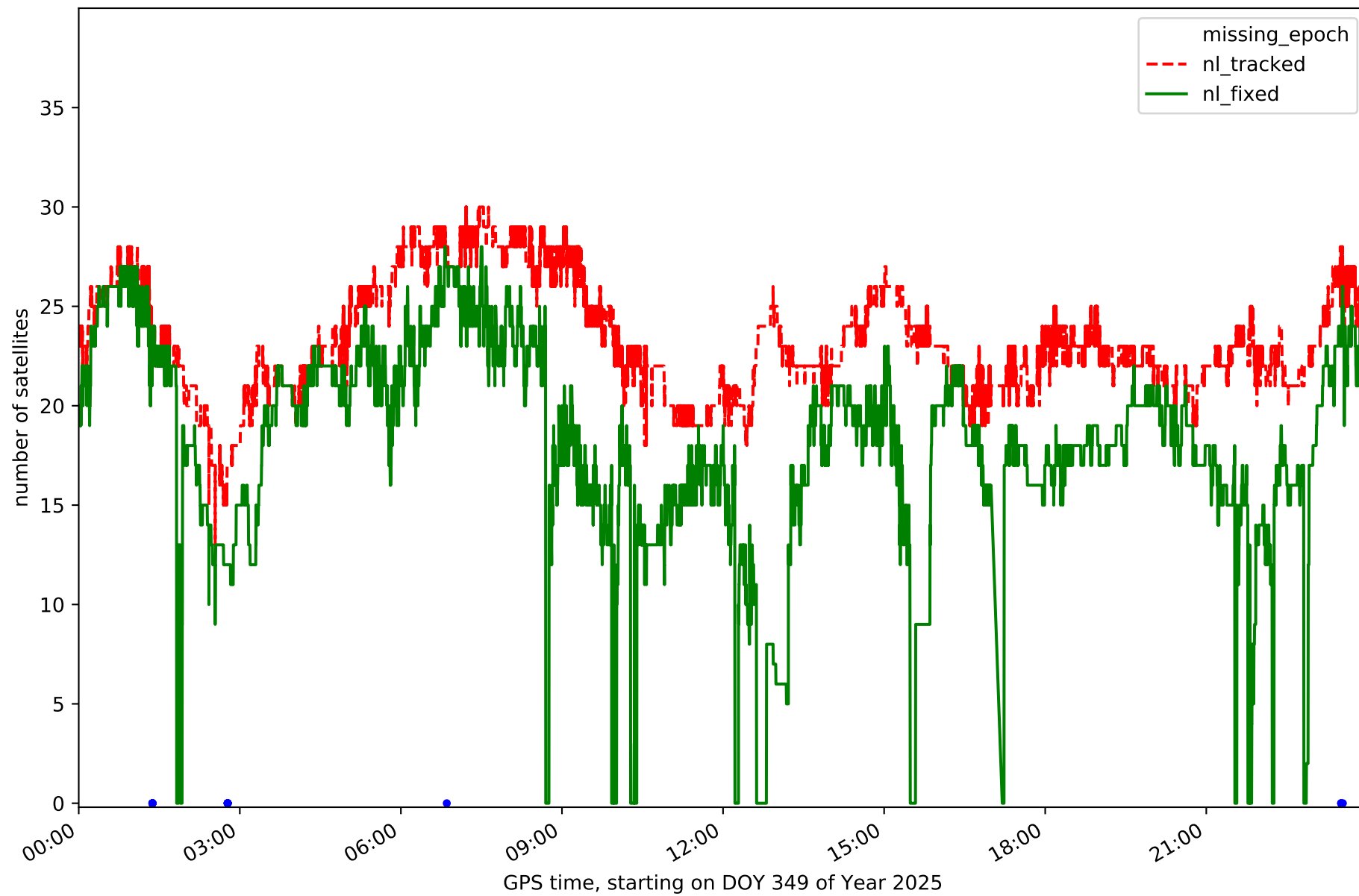
Station LZ02 in network NT31



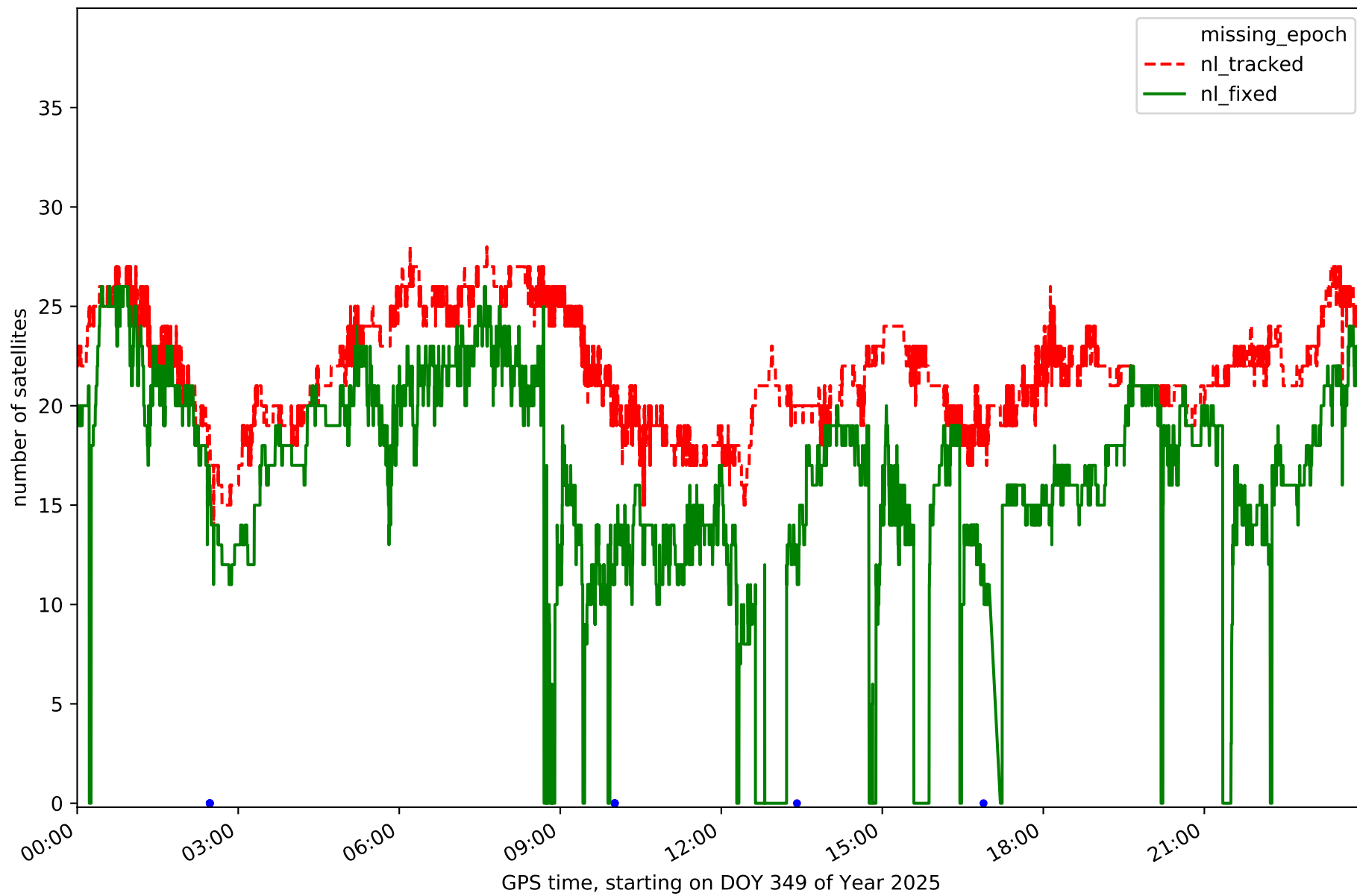
Station LZ03 in network NT31



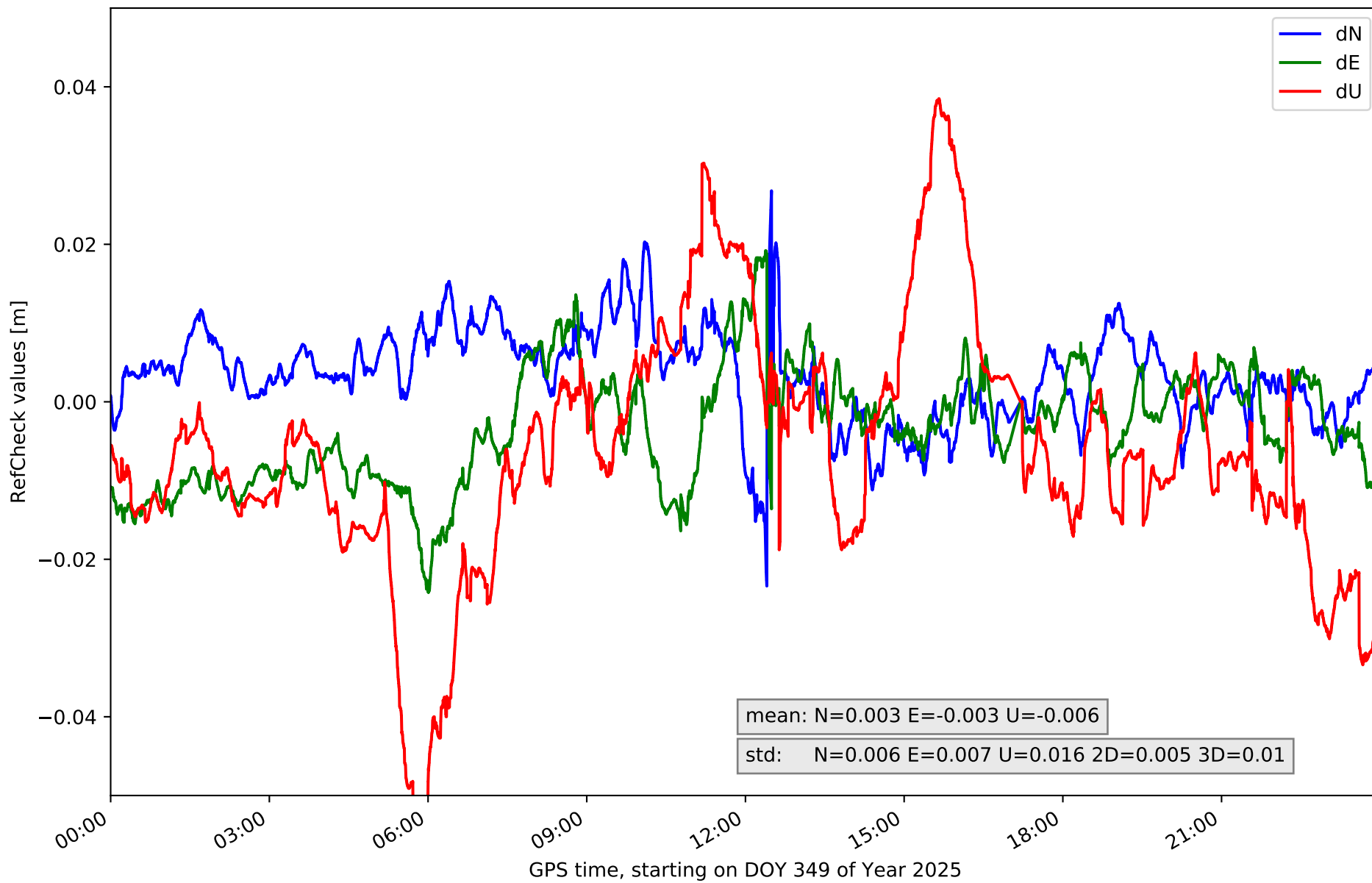
Station MASP in network NT31



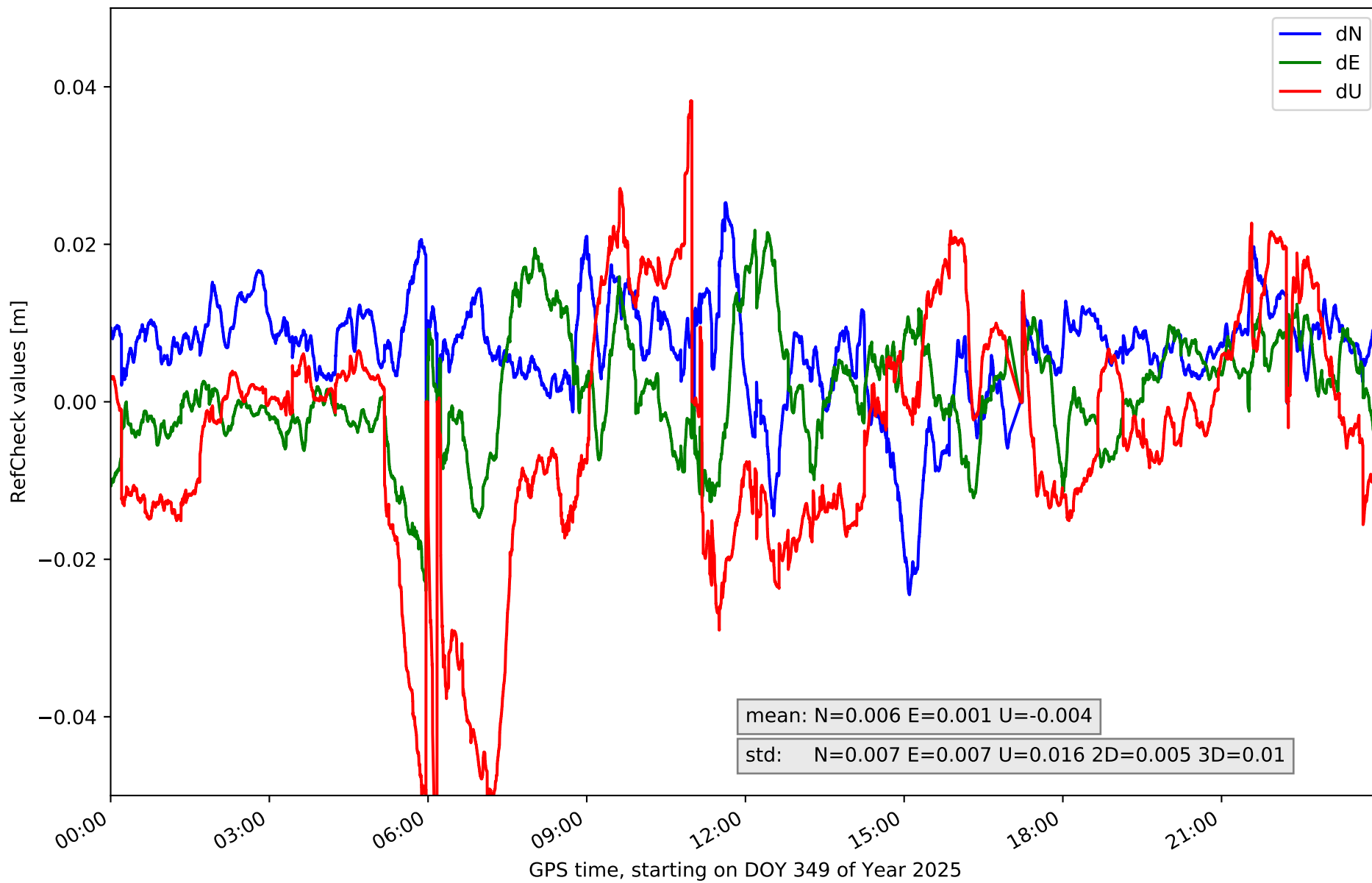
Station ULP2 in network NT31



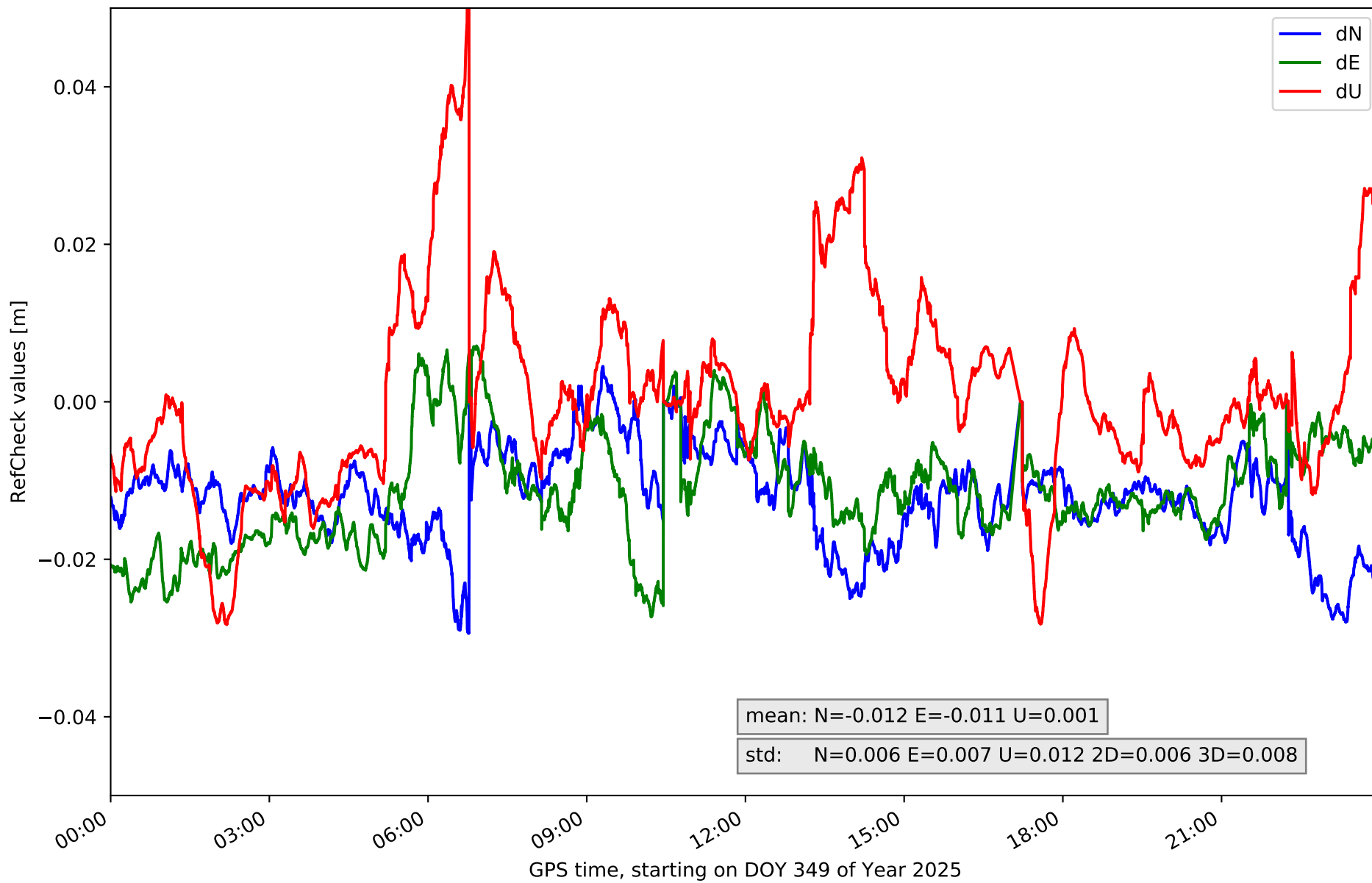
RefCheck for station FUER in network NT31



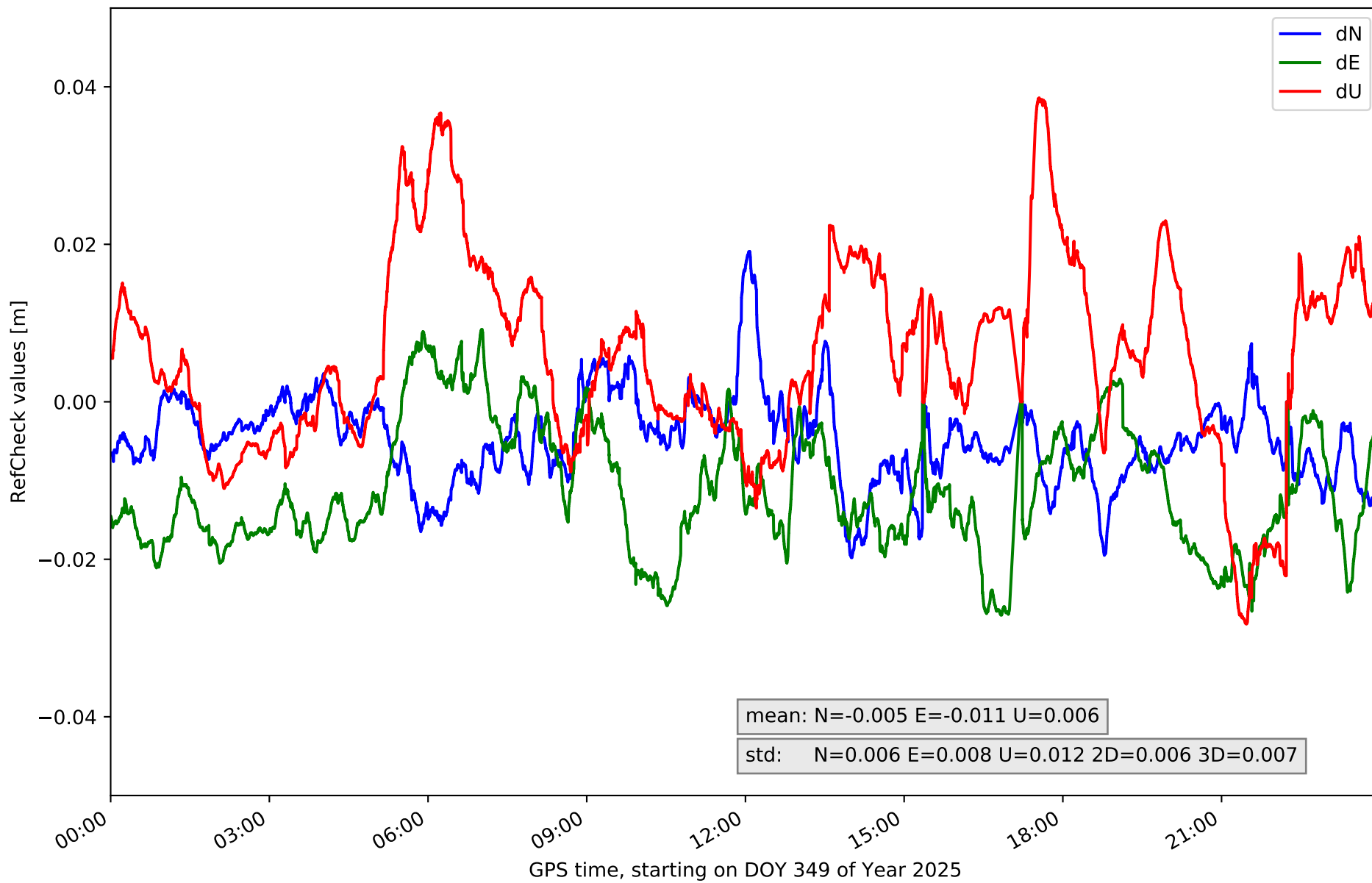
RefCheck for station LALA in network NT31



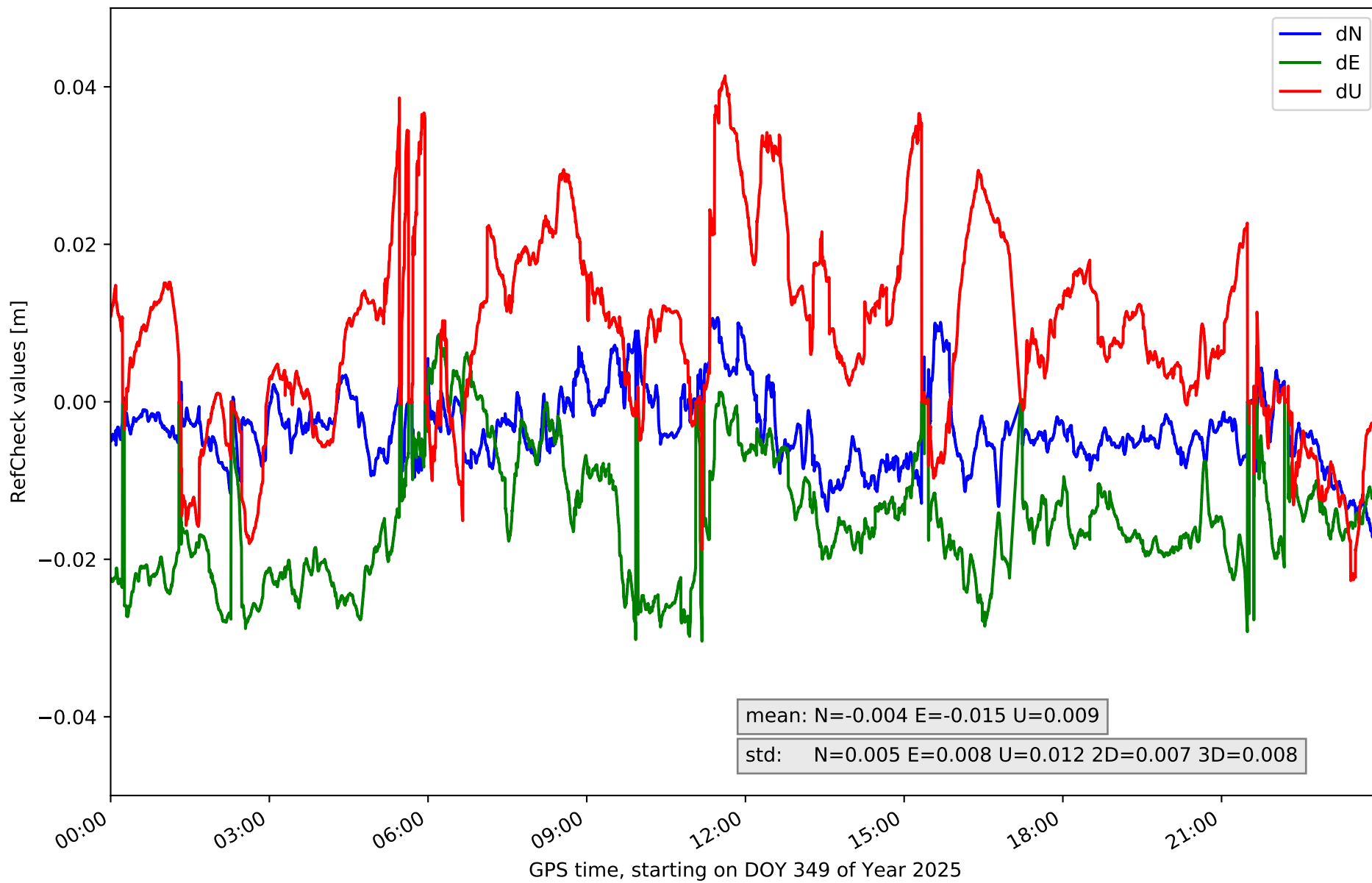
RefCheck for station LZ01 in network NT31



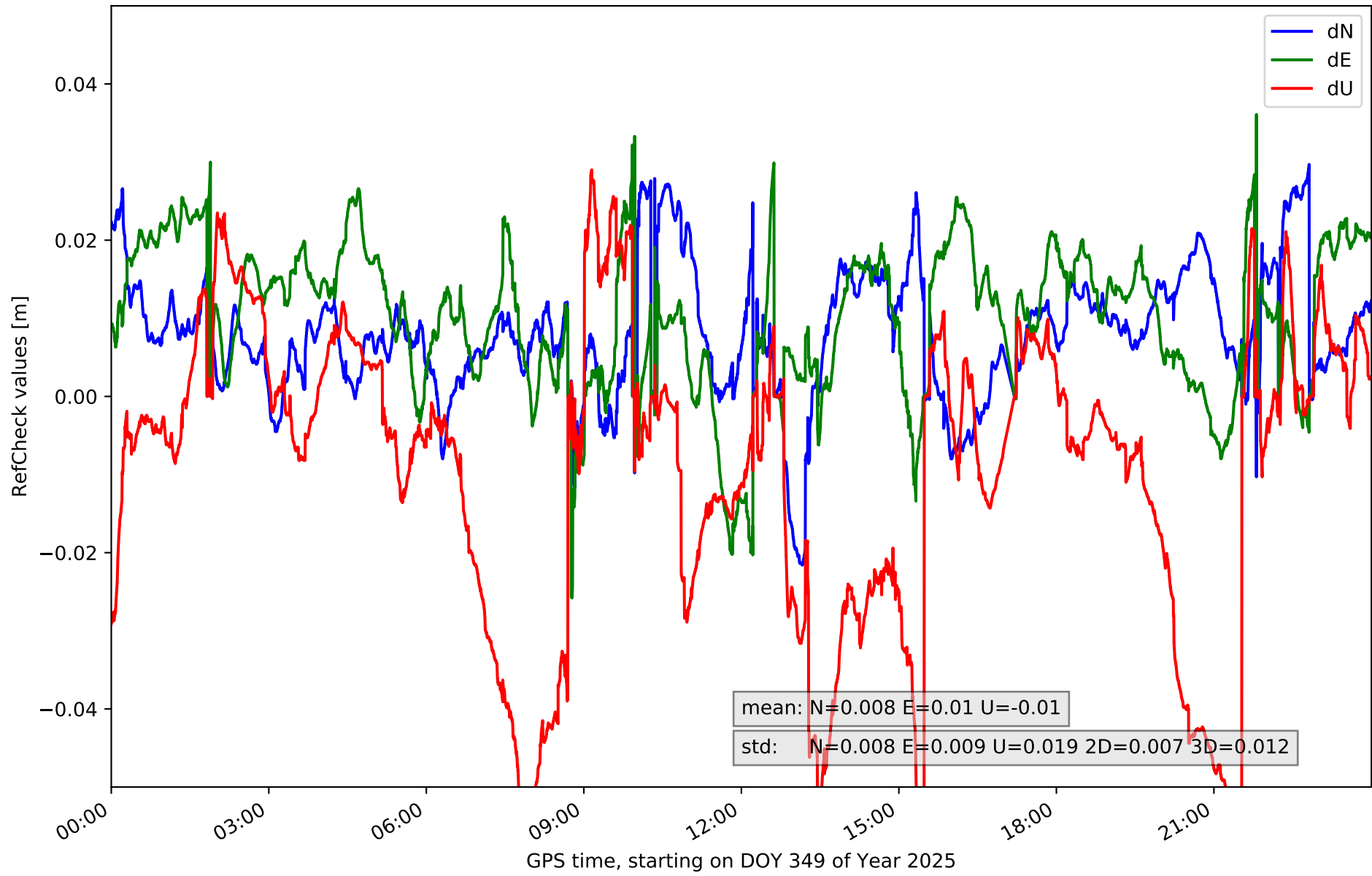
RefCheck for station LZ02 in network NT31



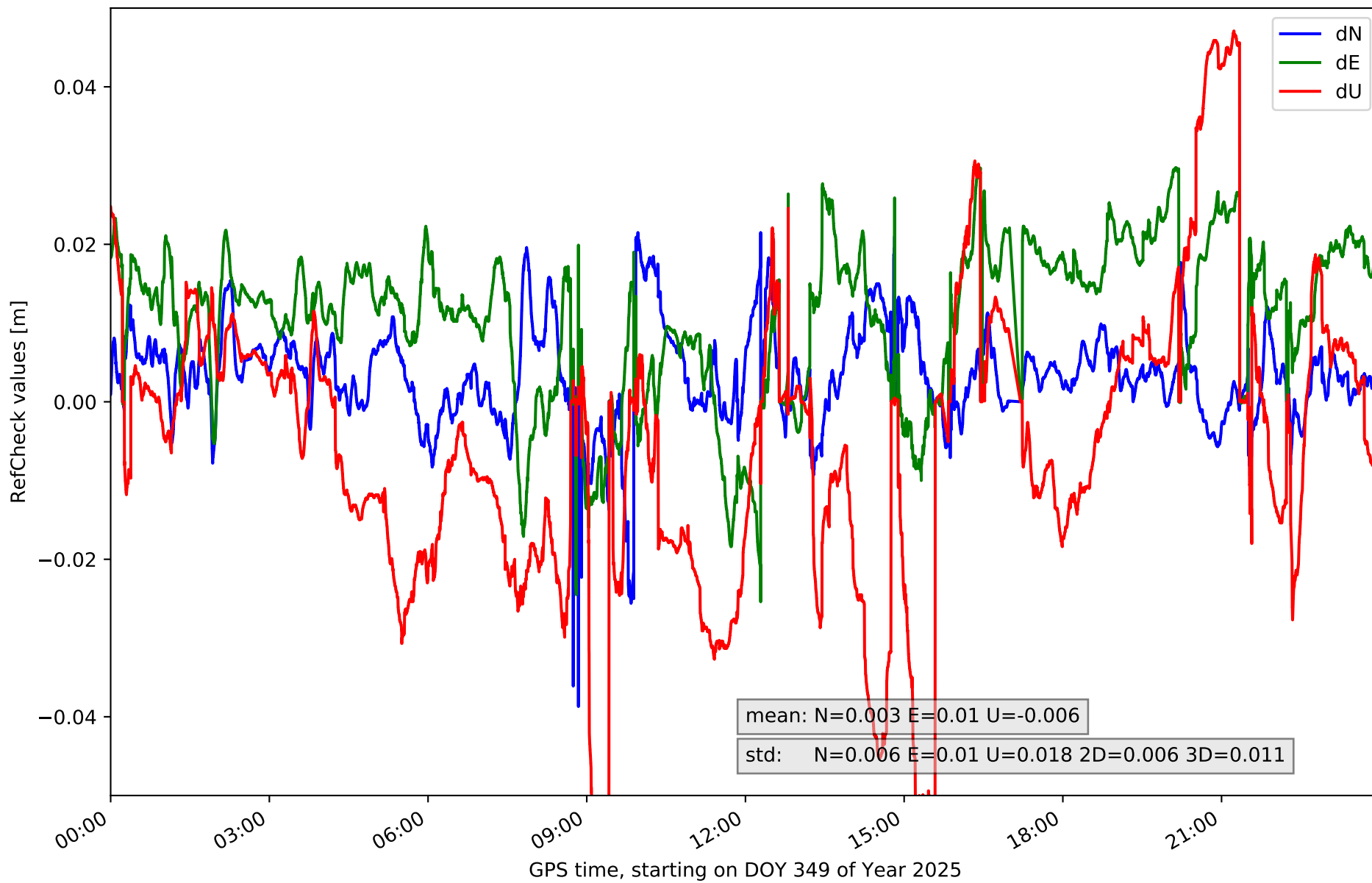
RefCheck for station LZ03 in network NT31



RefCheck for station MASP in network NT31



RefCheck for station ULP2 in network NT31



RefCheck values for network NT31

Station	Nmin	Nmax	Nstd	Emin	Emax	Estd	Umin	Umax	Ustd	std2D	std3D	#2D > 0.01	% 2D > 0.01	#3D > 0.02	% 3D > 0.02
FUER	-0.023	0.027	0.006	-0.024	0.019	0.007	-0.053	0.038	0.016	0.005	0.01	35193	42.1	23916	28.6
LALA	-0.025	0.025	0.007	-0.024	0.022	0.007	-0.061	0.038	0.016	0.005	0.01	41003	49.0	22891	27.4
LZ01	-0.029	0.006	0.006	-0.027	0.007	0.007	-0.028	0.055	0.012	0.006	0.008	72561	86.8	44440	53.1
LZ02	-0.02	0.019	0.006	-0.027	0.009	0.008	-0.028	0.039	0.012	0.006	0.007	64511	77.1	35316	42.2
LZ03	-0.017	0.011	0.005	-0.03	0.009	0.008	-0.023	0.041	0.012	0.007	0.008	64911	77.6	51723	61.8
MASP	-0.022	0.03	0.008	-0.026	0.036	0.009	-0.063	0.029	0.019	0.007	0.012	66294	79.3	53260	63.7
ULP2	-0.039	0.021	0.006	-0.025	0.03	0.01	-0.06	0.047	0.018	0.006	0.011	65265	78.0	47437	56.7
Mean	-0.025	0.02	0.006	-0.026	0.019	0.008	-0.045	0.041	0.015	0.006	0.009	58534.0	70.0	39854.7	47.6
Min/Max	-0.039	0.03	0.008	-0.03	0.036	0.01	-0.063	0.055	0.019	0.007	0.012	72561	86.8	53260	63.7

fixing statistic for network NT31

fixing percentage of	all GNSS	G	R	E	C
using threshold 0.3	85.5	91.1	72.6	88.7	84.3
considering satellites with dual-frequency fixed	80.7	85.4	66.4	84.9	80.3
considering all signals separately	81.7	86.0	66.4	85.6	77.7