

summary for network NET1

timeperiod chosen: from 2025-01-18-00:00:00 until 2025-01-18-23:59:59

average update rate (durations larger than 15 seconds considered as observation gap): 1.0 seconds

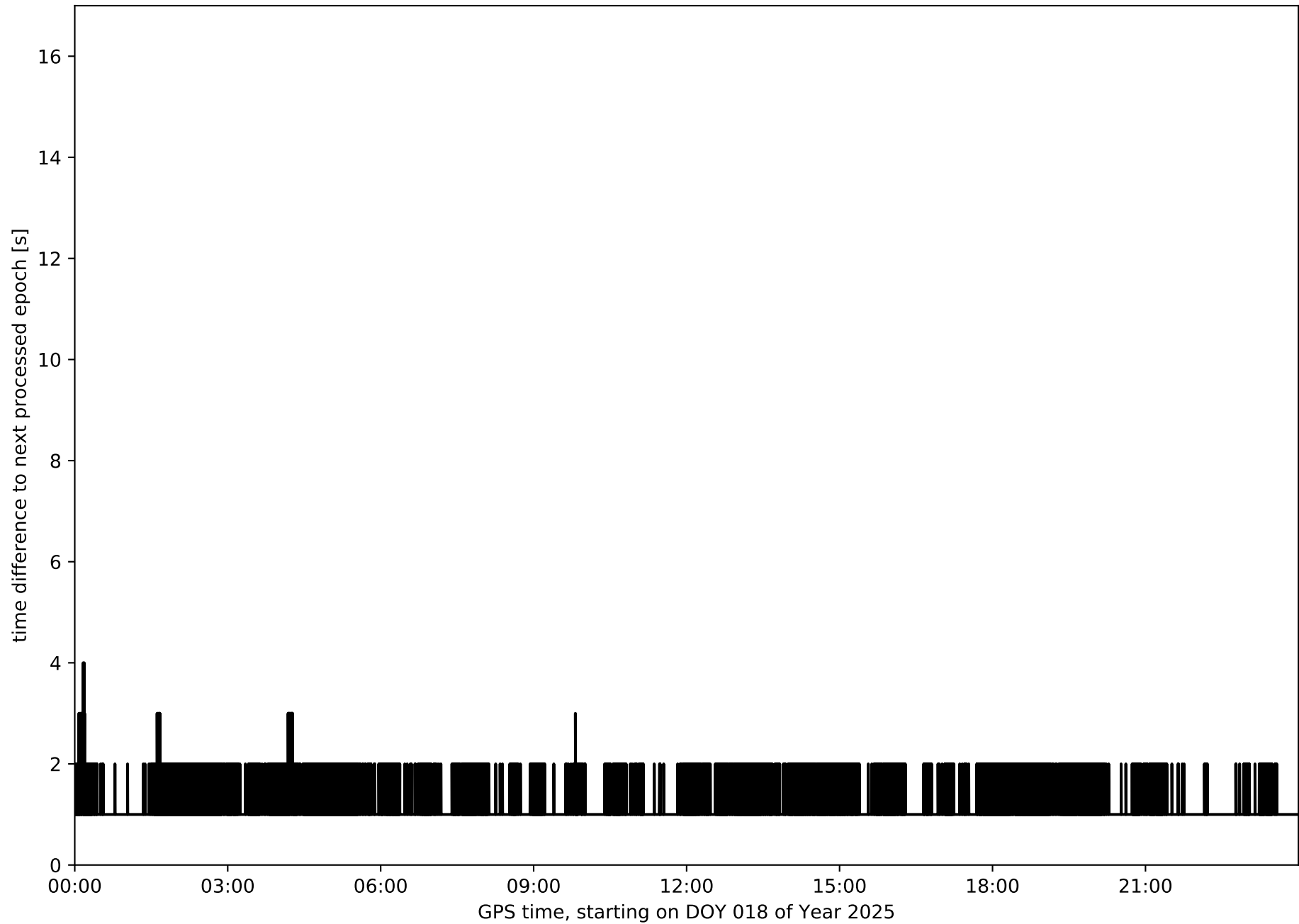
average fixing percentage with threshold set to 0.3: 93.0 percent

stations available: 13 of 13

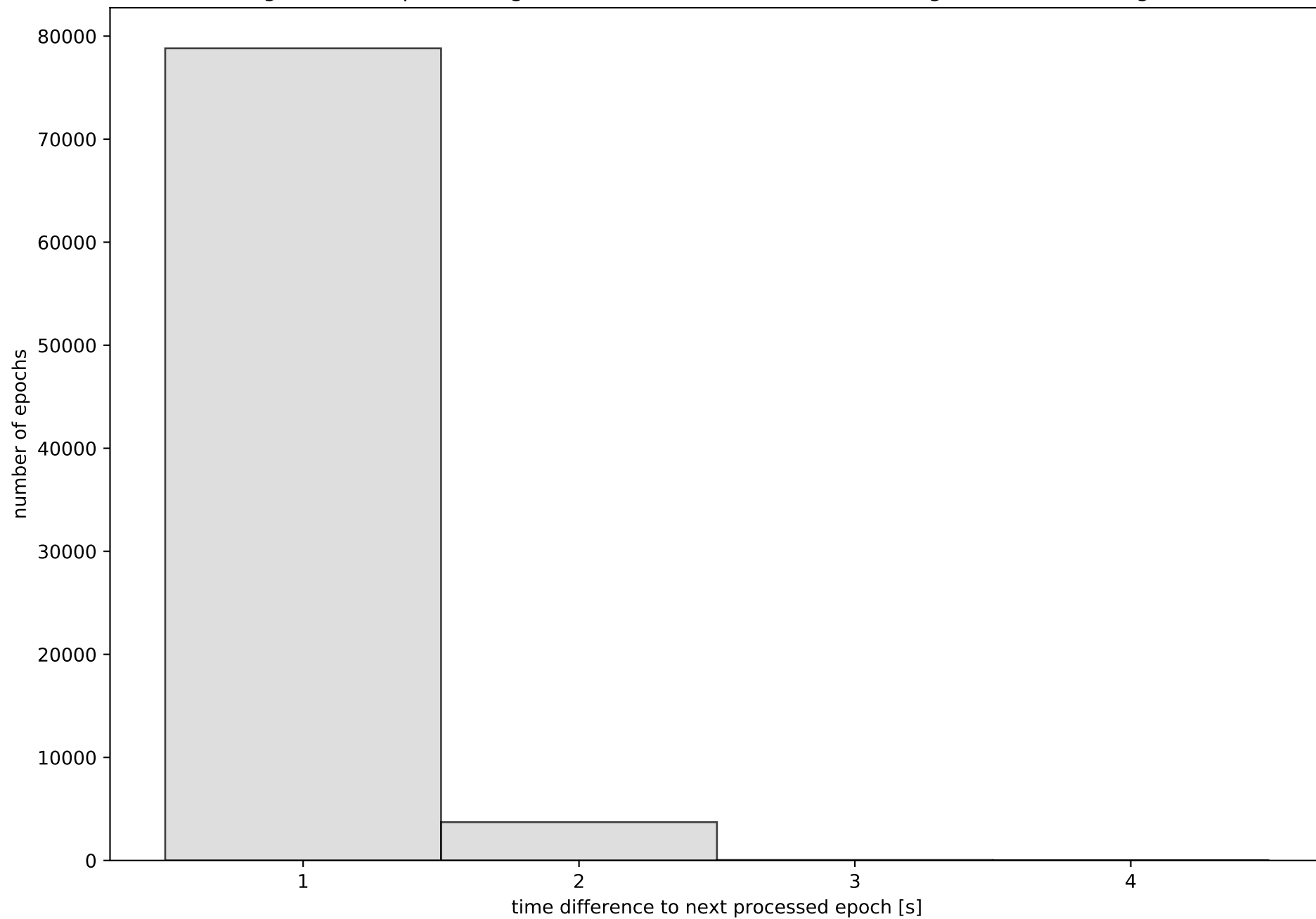
station information:

station AJAL:	antenna: GPPNULLANTENNA NONE	receiver: LEICA GR50	height: 884.142
station ARAJ:	antenna: LEIAR20 LEIM	receiver: LEICA GR50	height: 580.921
station AVI2:	antenna: TRM59900.00 SCIS	receiver: TRIMBLE NETR9	height: 1206.515
station BUIT:	antenna: TRM57971.00 TZGD	receiver: TRIMBLE NETR9	height: 1032.705
station IGNE:	antenna: LEIAT504GG LEIS	receiver: LEICA GR50	height: 766.956
station MAD1:	antenna: LEIAR20 LEIM	receiver: LEICA GR50	height: 724.483
station ORUS:	antenna: TRM57971.00 TZGD	receiver: TRIMBLE NETR9	height: 862.752
station PEN1:	antenna: GPPNULLANTENNA NONE	receiver: LEICA GR30	height: 814.558
station RIA1:	antenna: TRM59900.00 SCIS	receiver: TRIMBLE NETR9	height: 1263.778
station SGVA:	antenna: GPPNULLANTENNA NONE	receiver: LEICA GR50	height: 1076.312
station SMDV:	antenna: TPSCR.G3 TPSH	receiver: TPS NET-G5	height: 670.791
station TALV:	antenna: TPSCR.G5 TPSH	receiver: TPS NET-G5	height: 458.35
station YEB1:	antenna: LEIAR25 NONE	receiver: LEICA GR25	height: 975.396

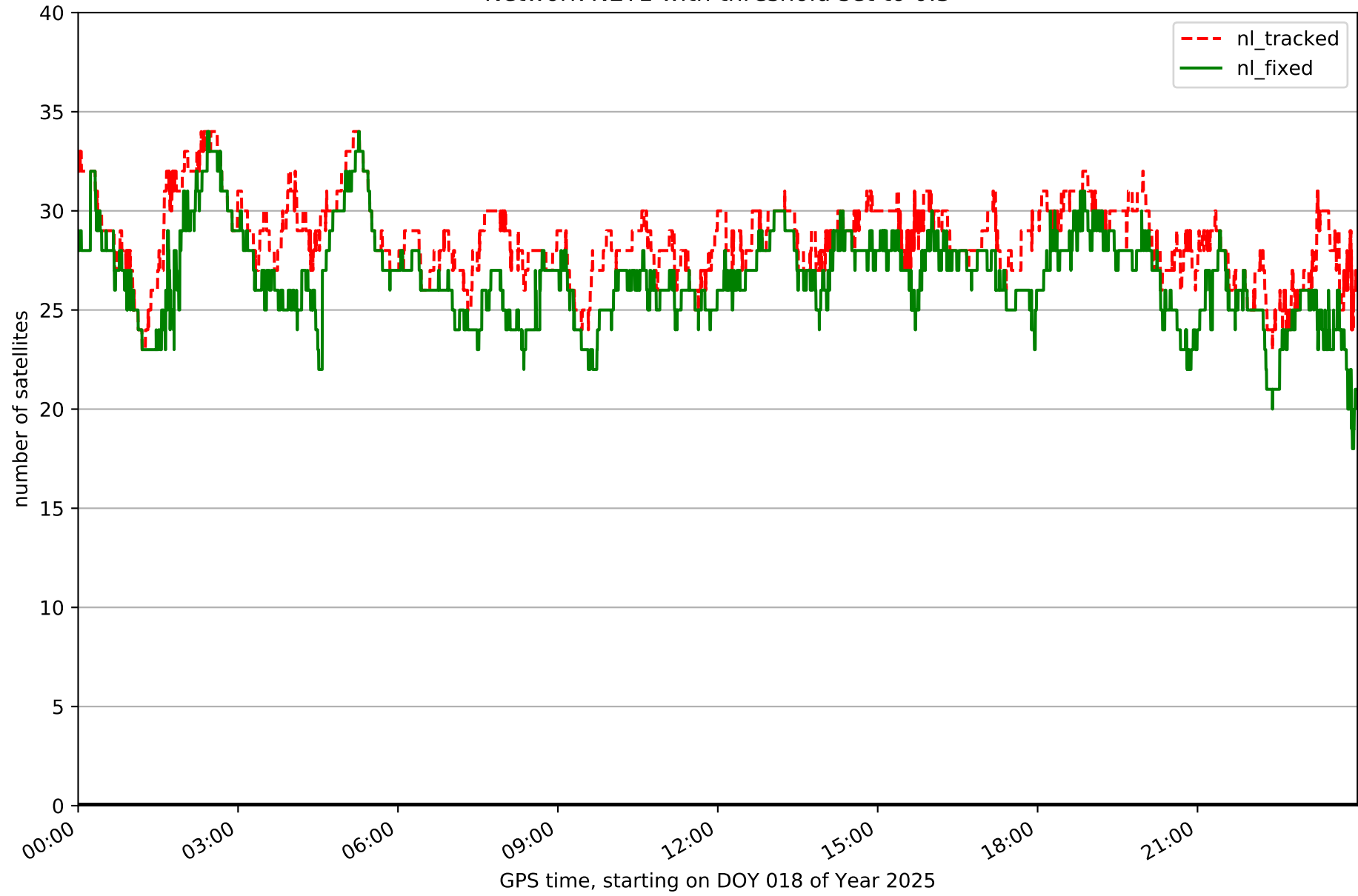
Processing rate in network NET1



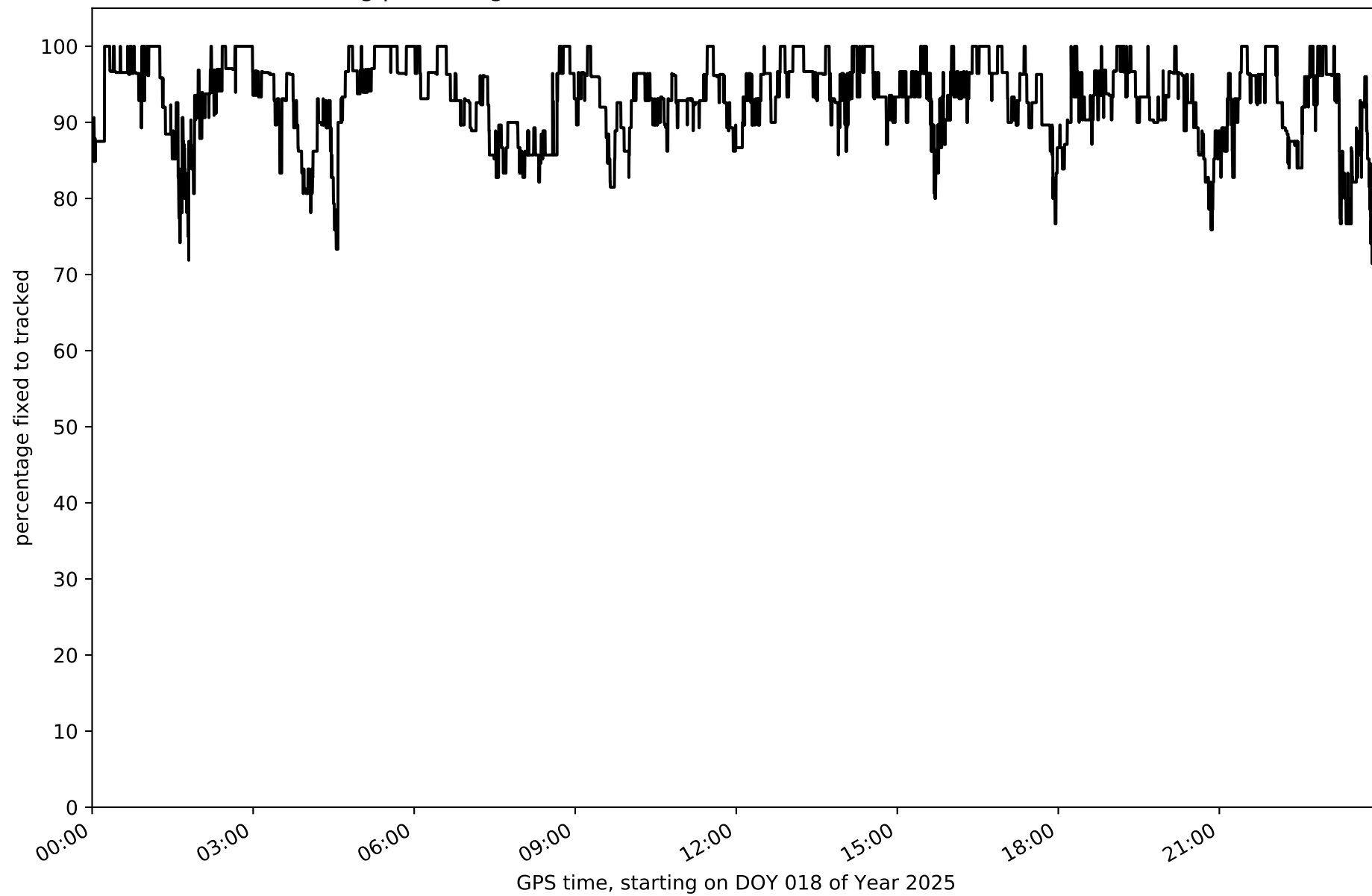
Histogram of the processing rate in network NET1 (durations larger 15 seconds neglected)



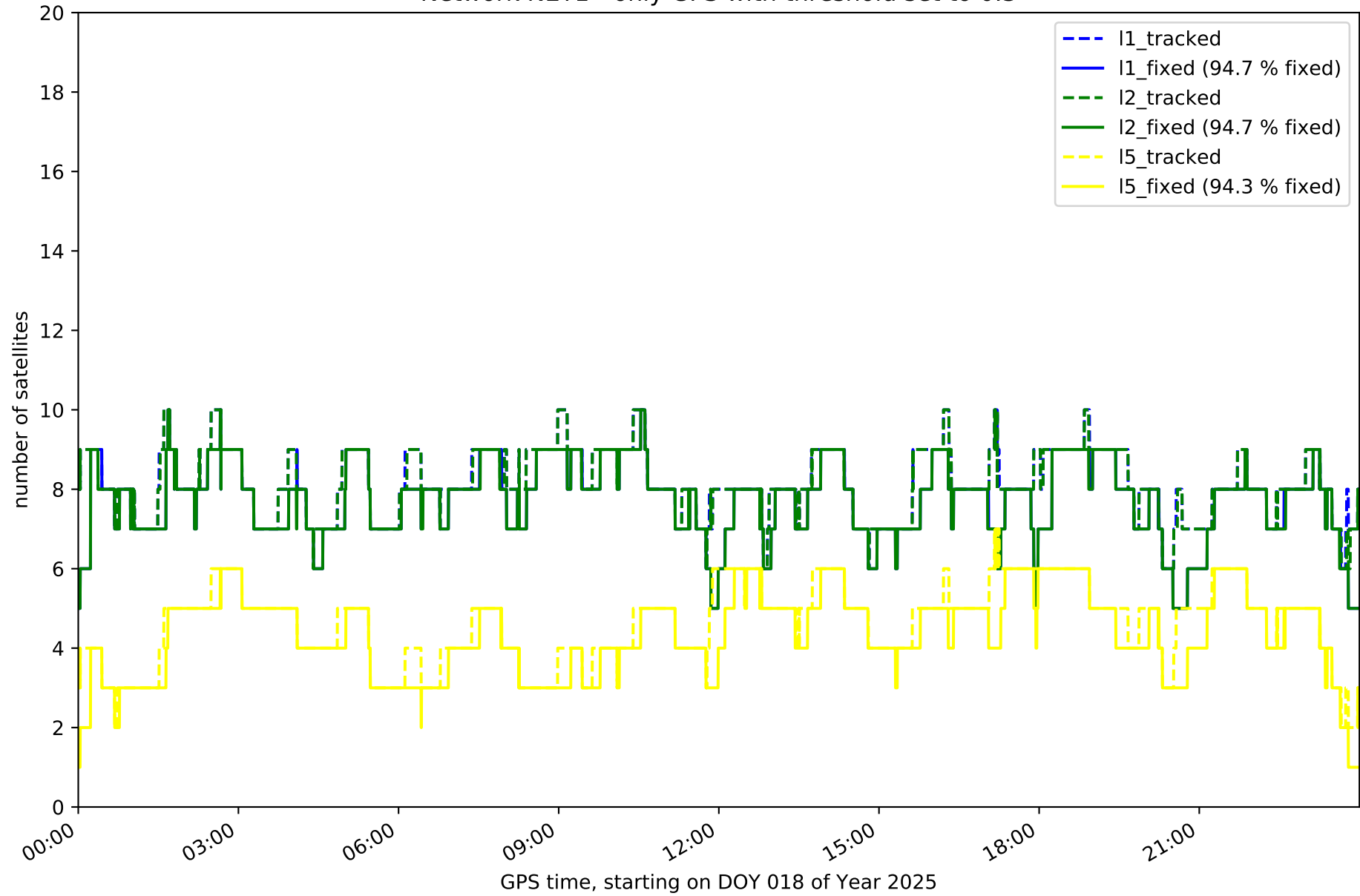
Network NET1 with threshold set to 0.3



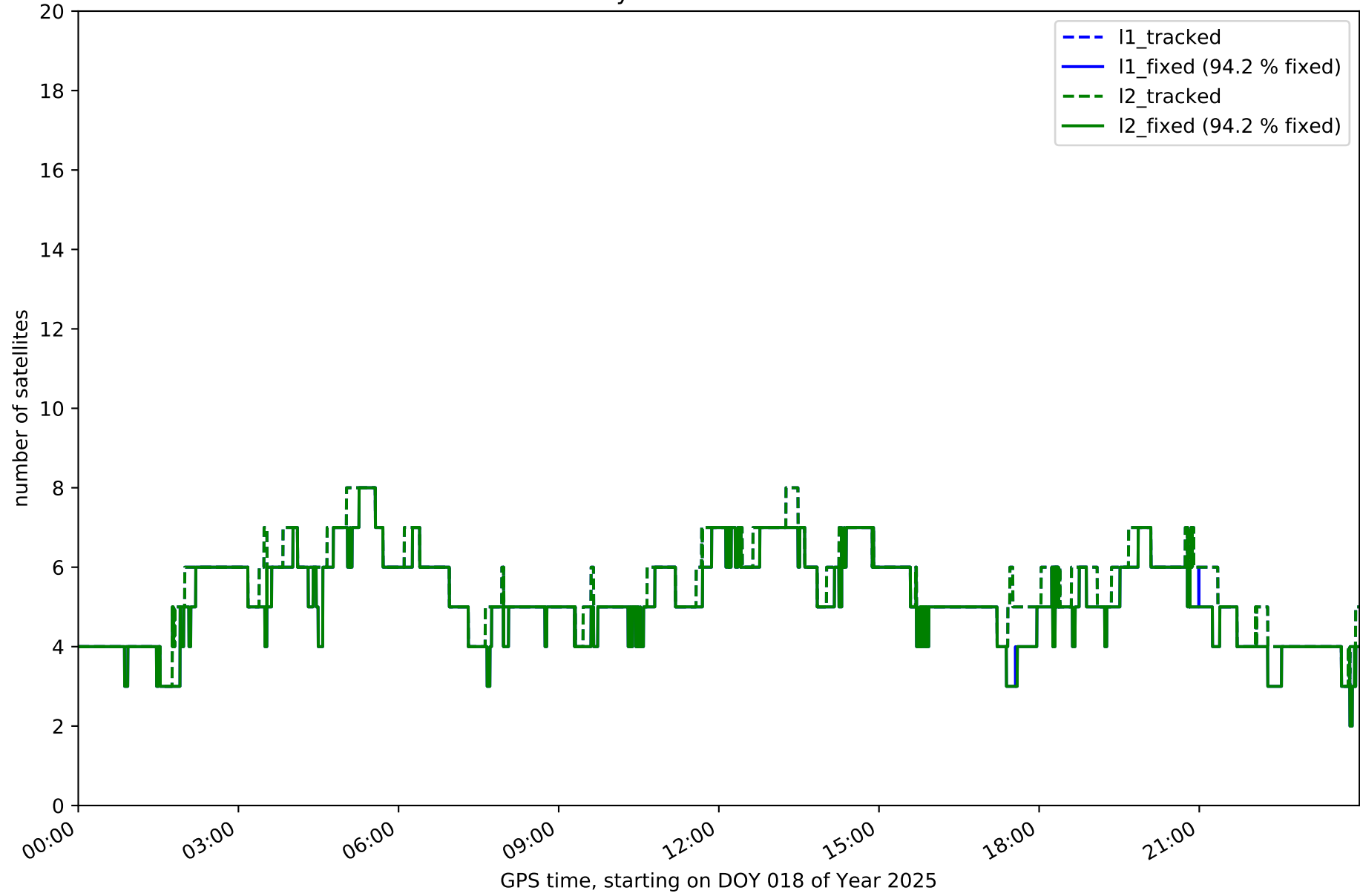
Fixing percentage of satellites in network NET1 with threshold set to 0.3



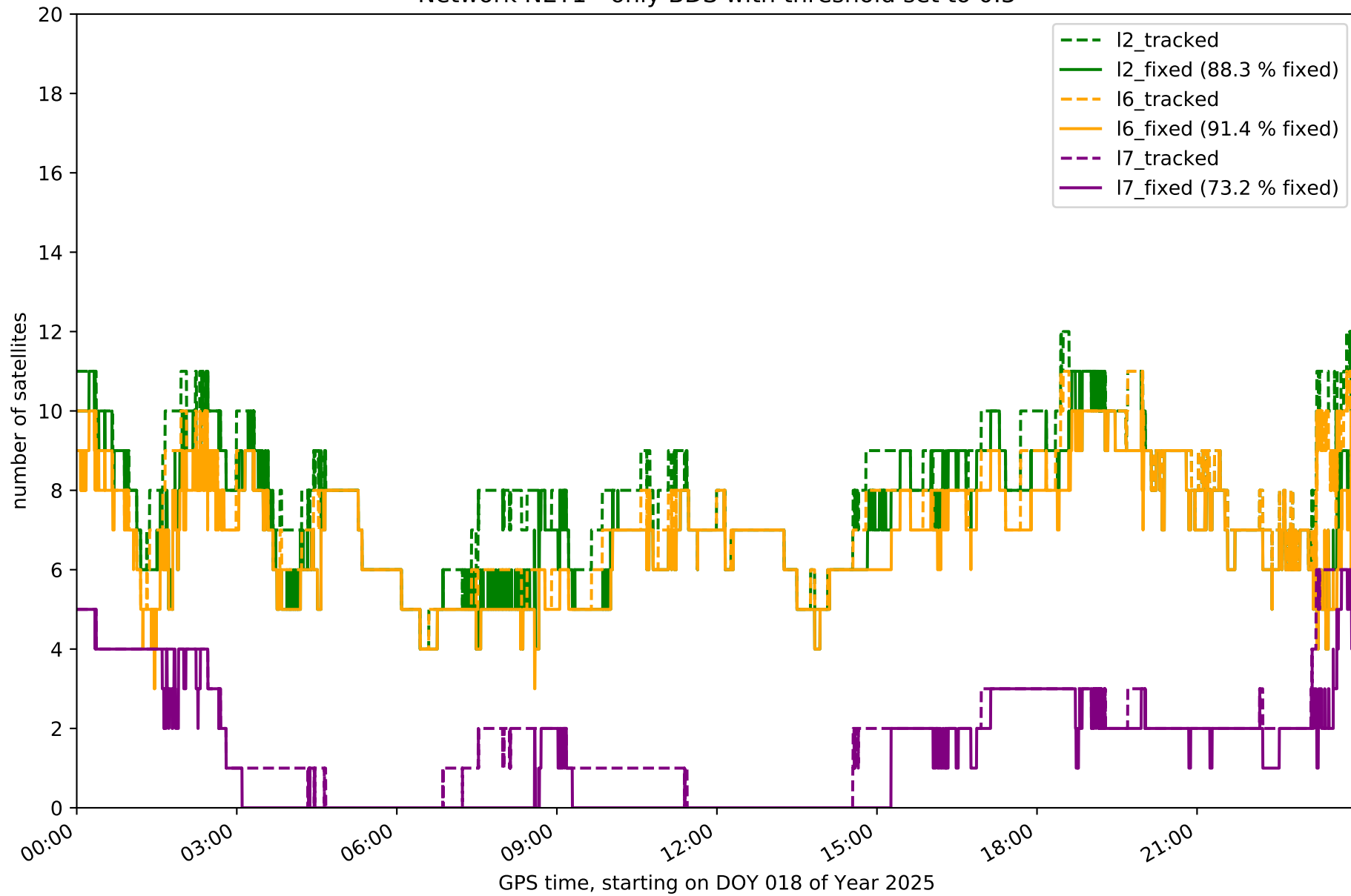
Network NET1 - only GPS with threshold set to 0.3



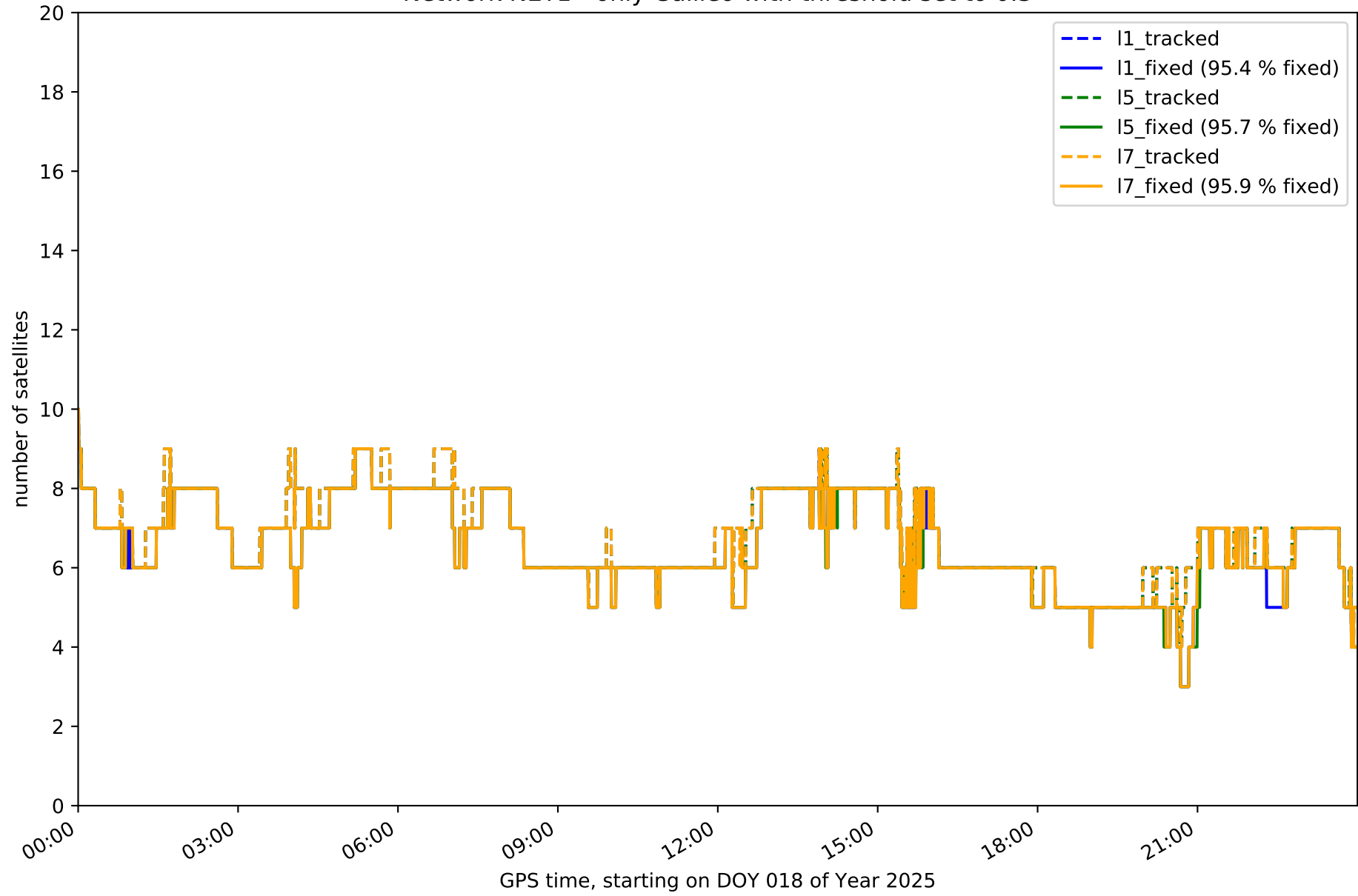
Network NET1 - only GLONASS with threshold set to 0.3



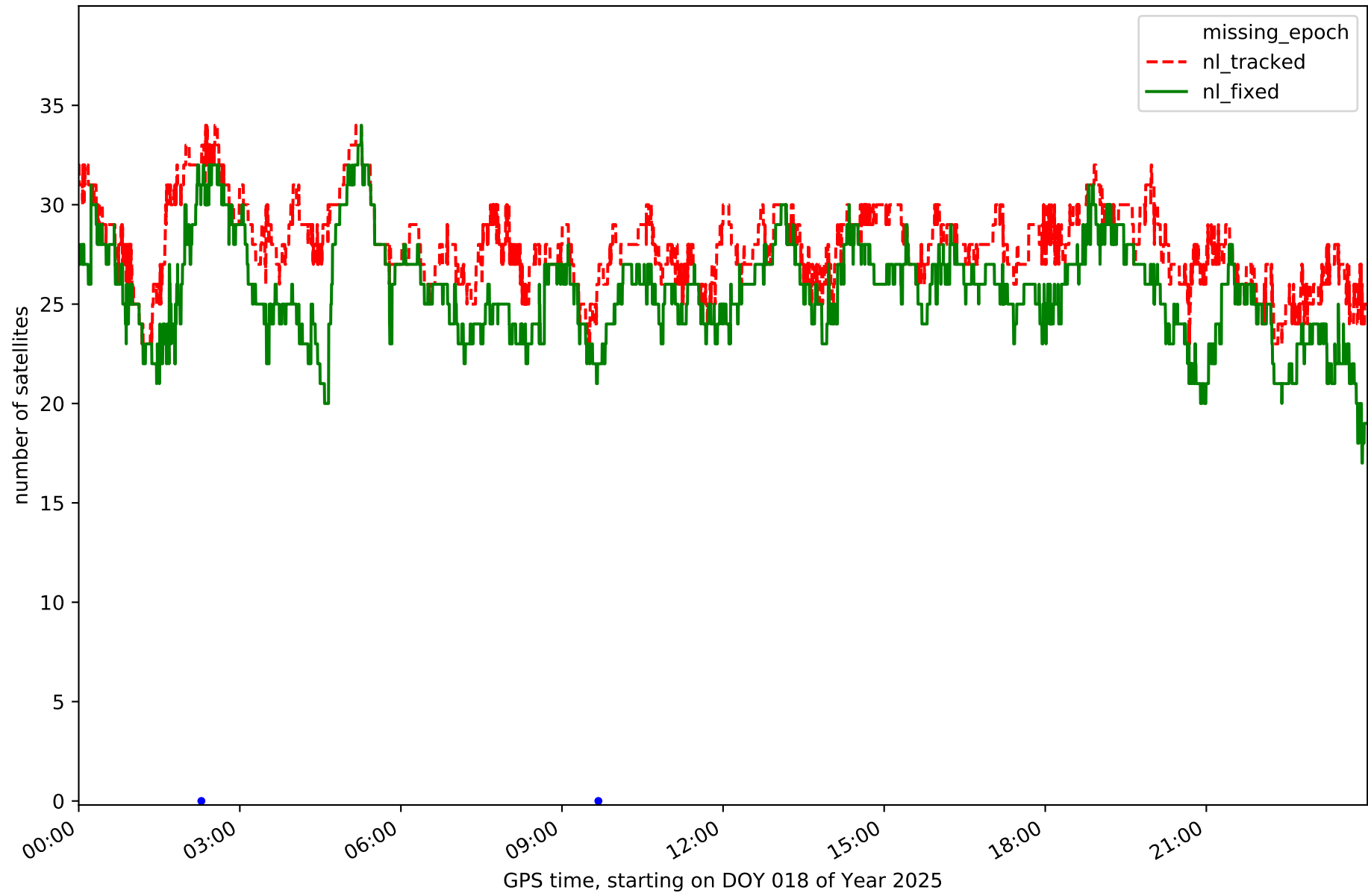
Network NET1 - only BDS with threshold set to 0.3



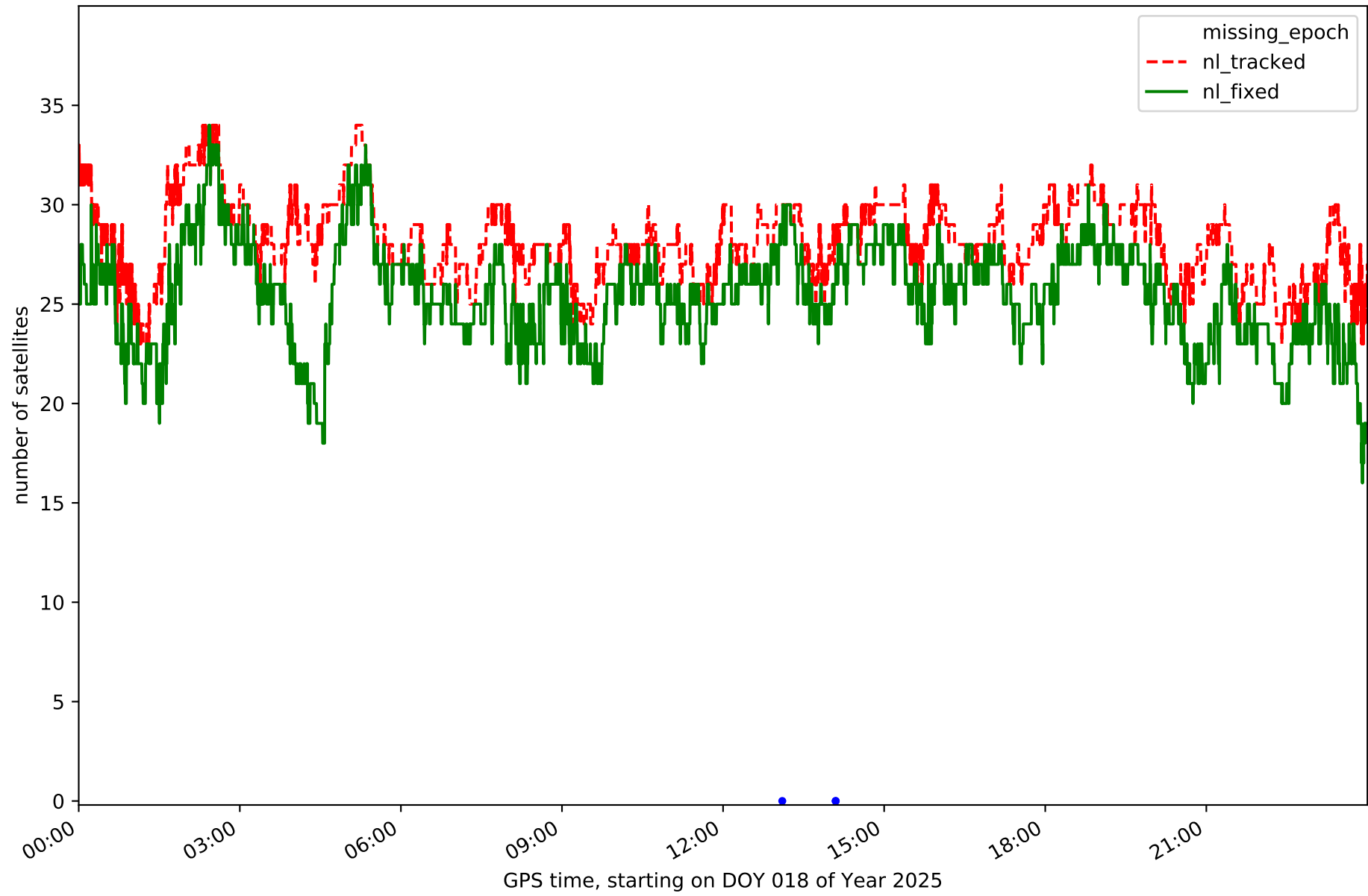
Network NET1 - only Galileo with threshold set to 0.3



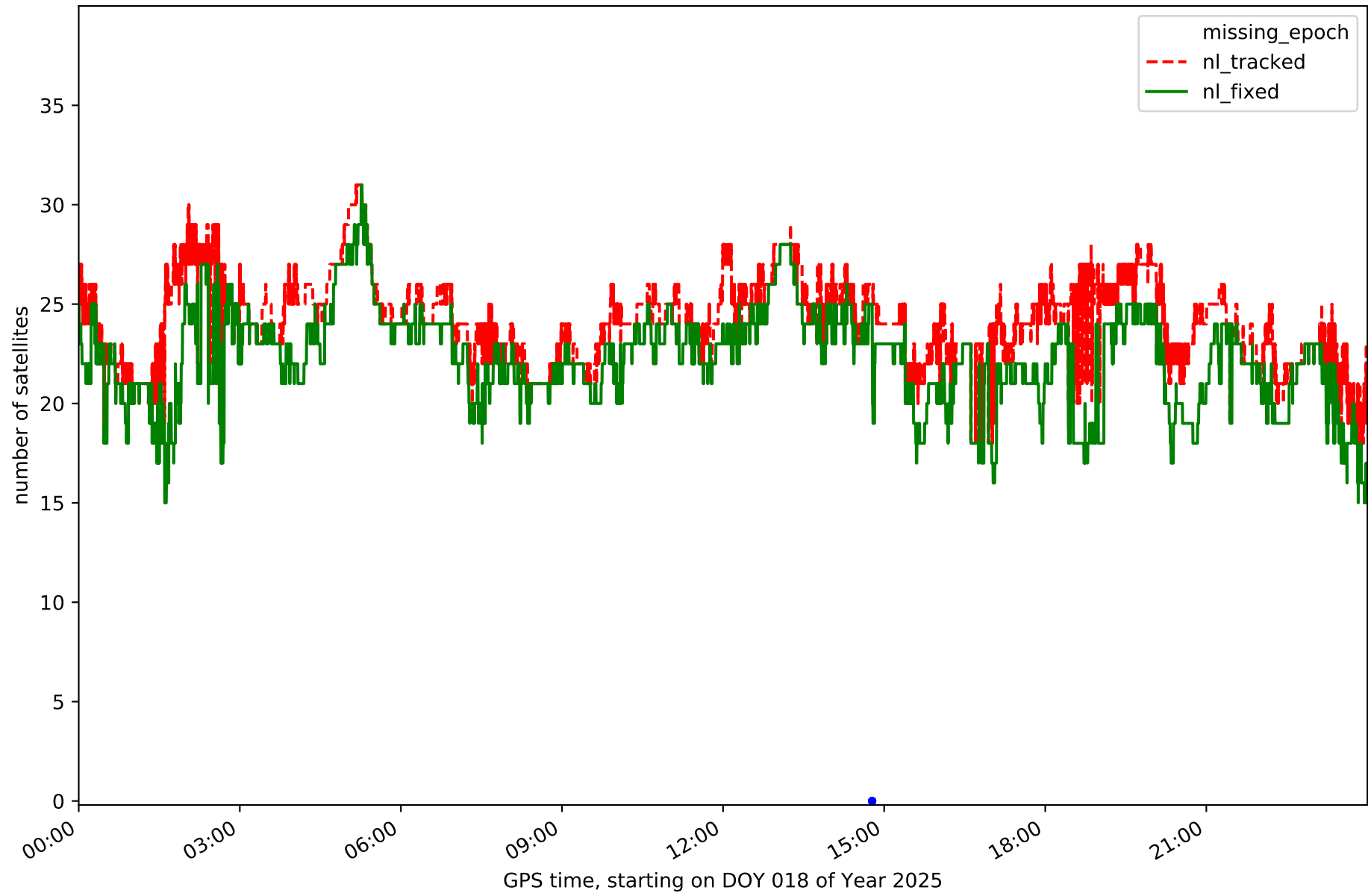
Station AJAL in network NET1



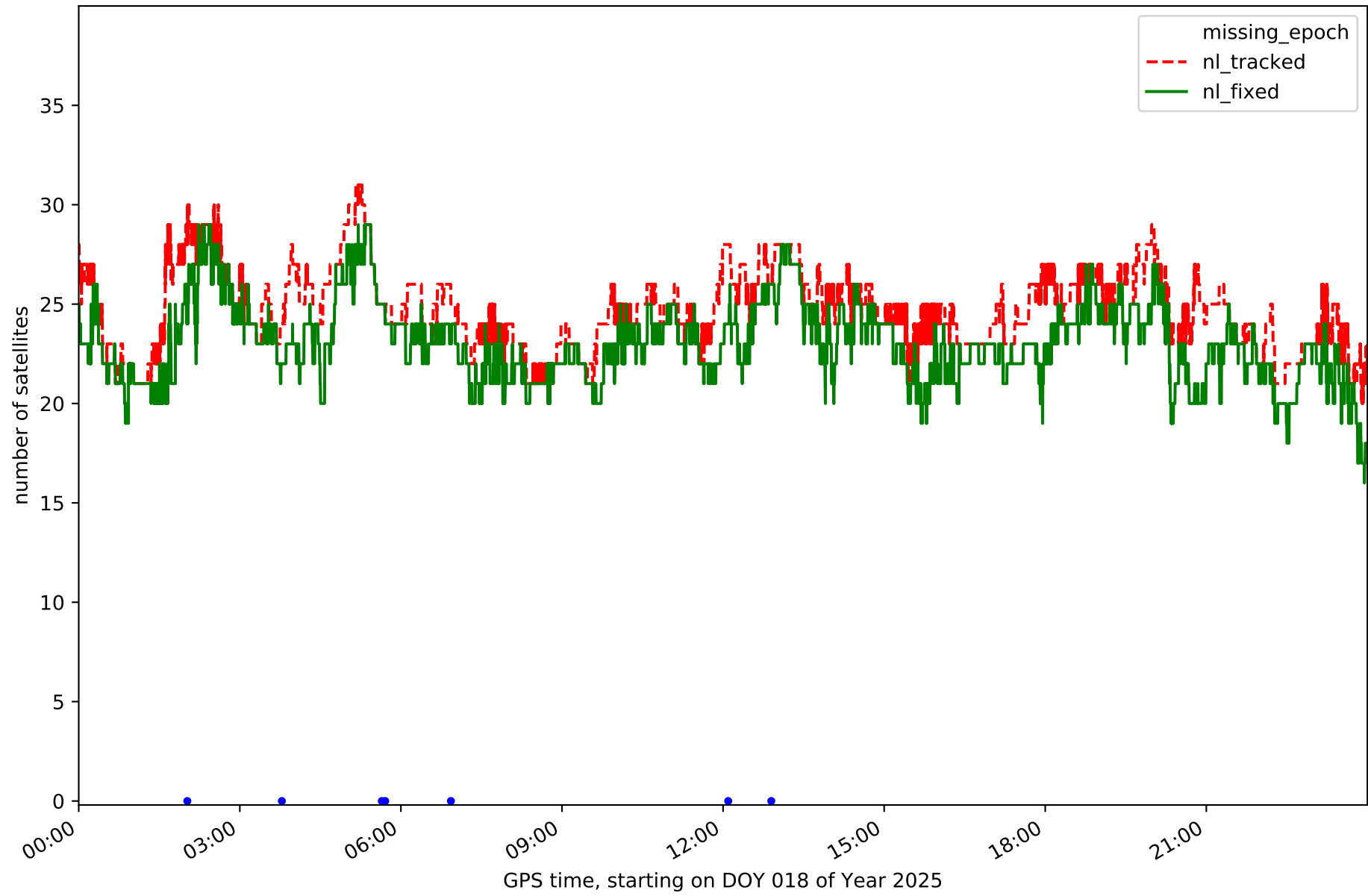
Station ARAJ in network NET1



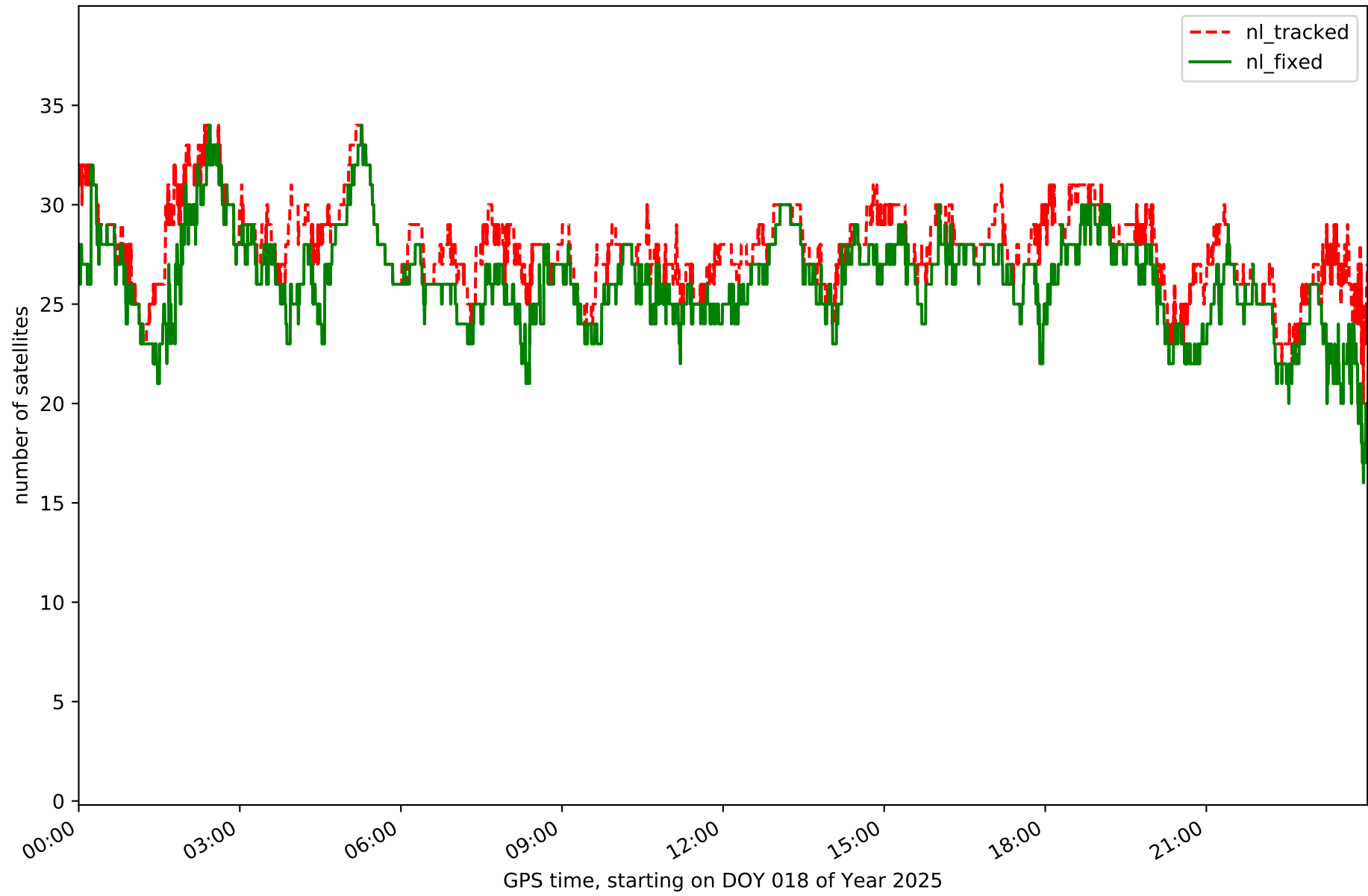
Station AVI2 in network NET1



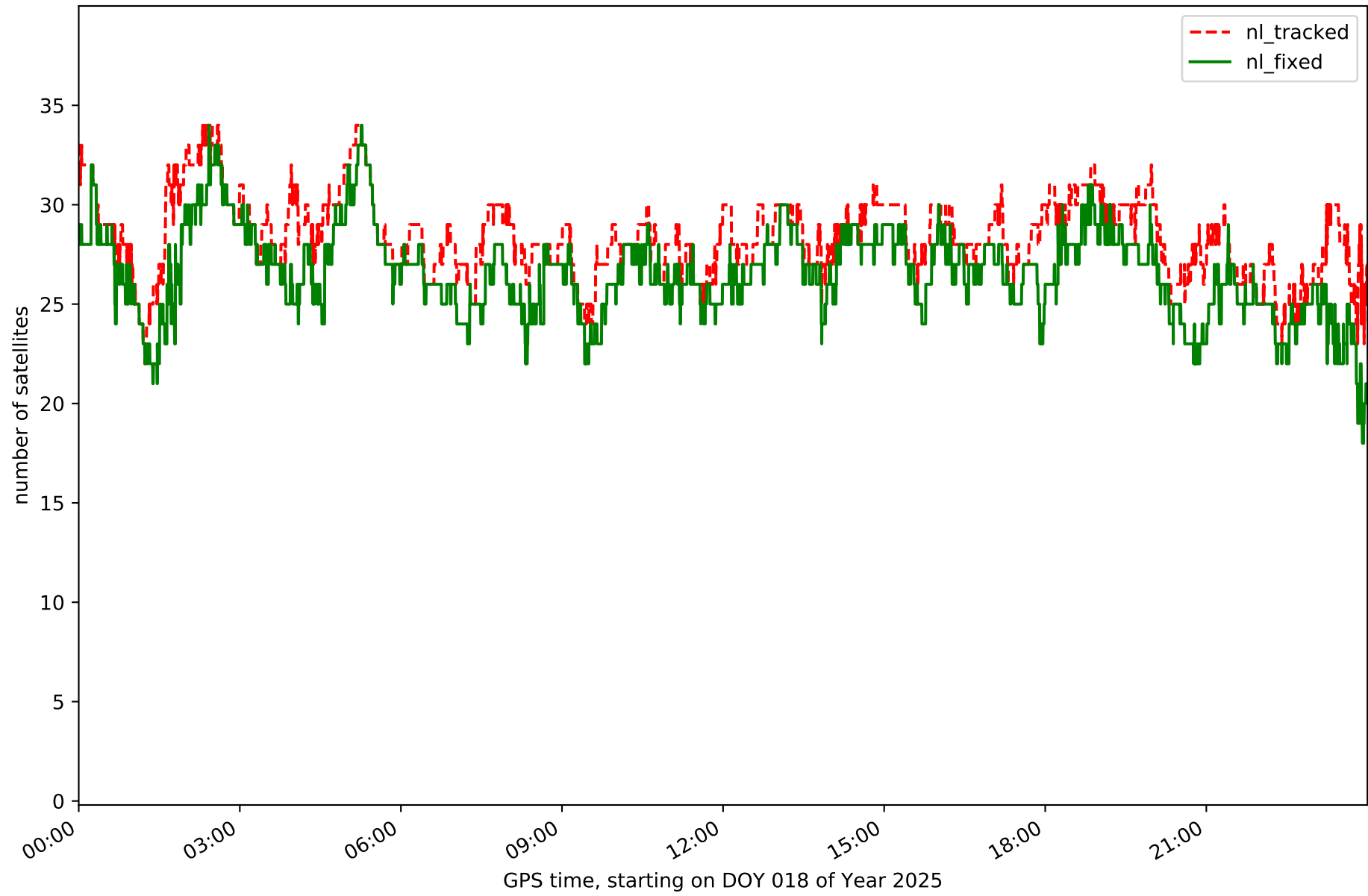
Station BUIT in network NET1



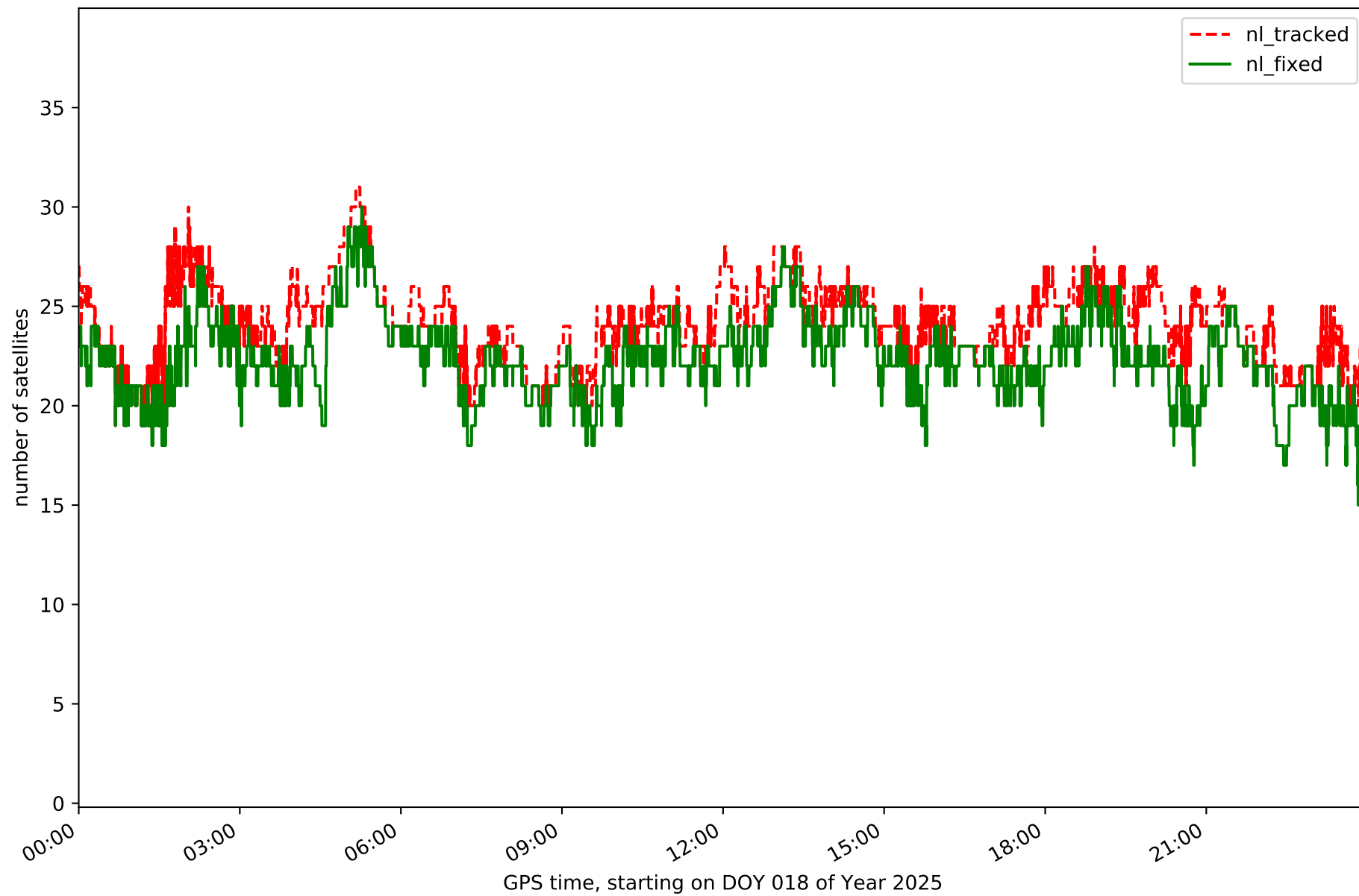
Station IGNE in network NET1



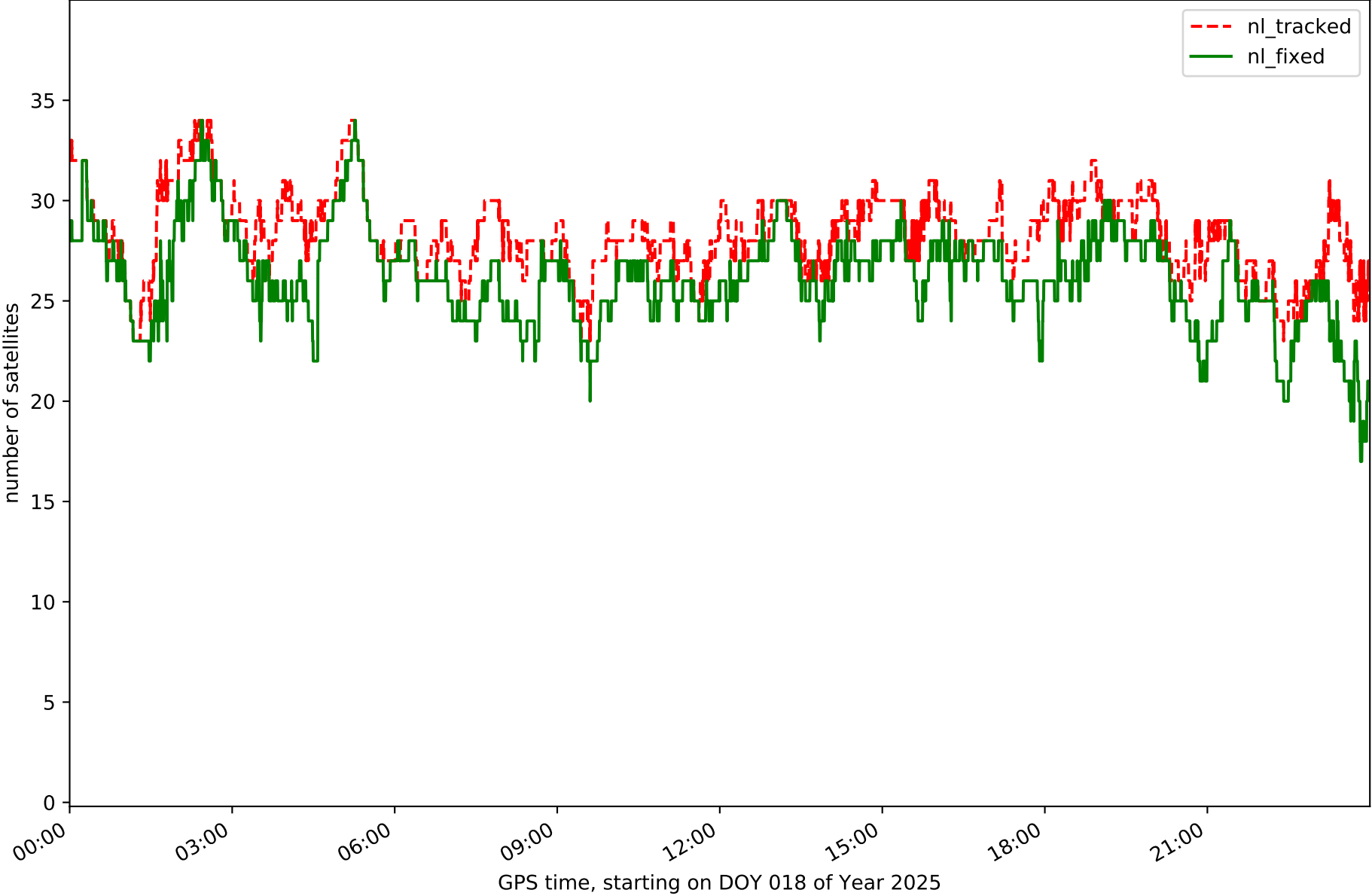
Station MAD1 in network NET1



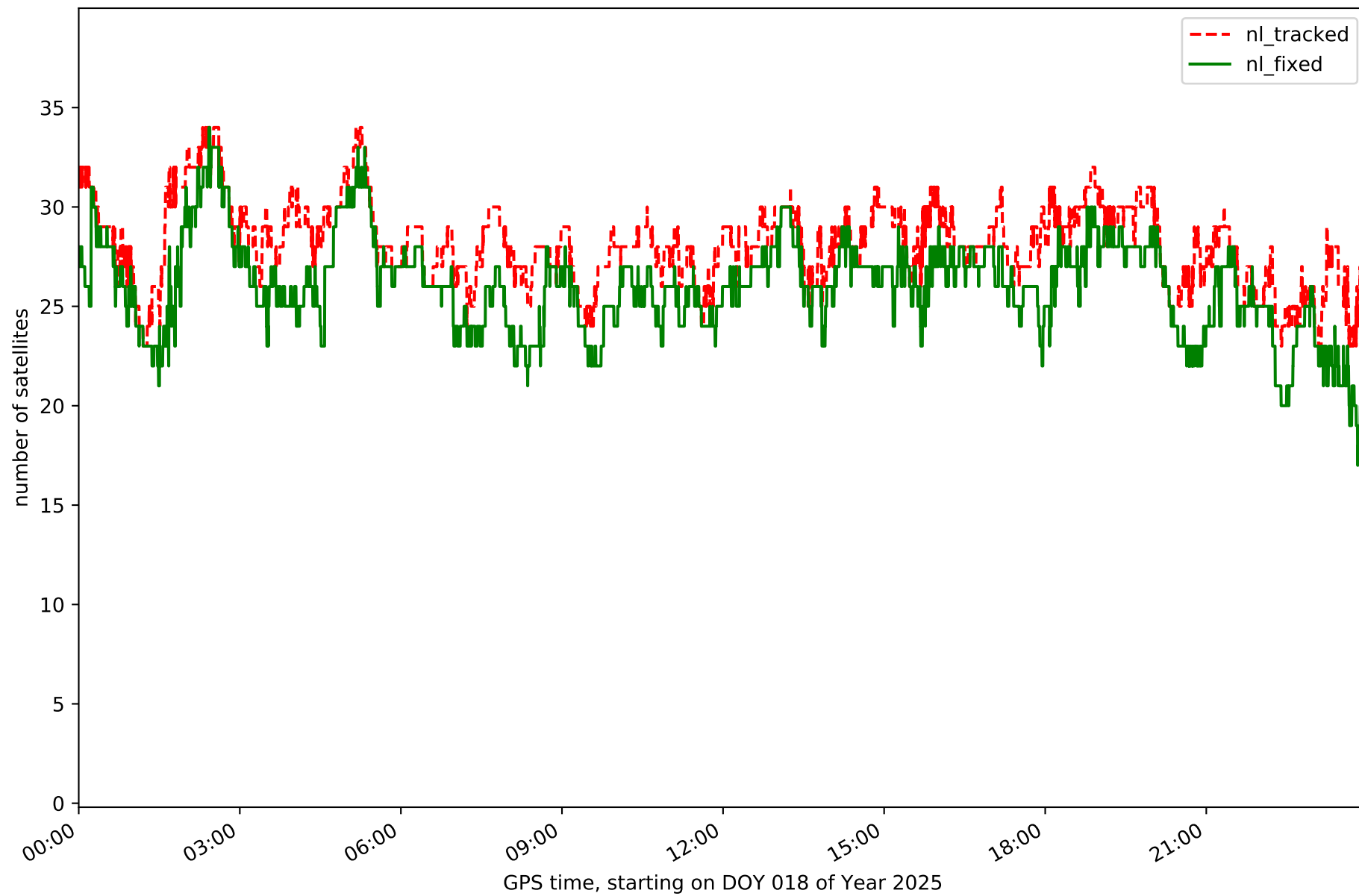
Station ORUS in network NET1



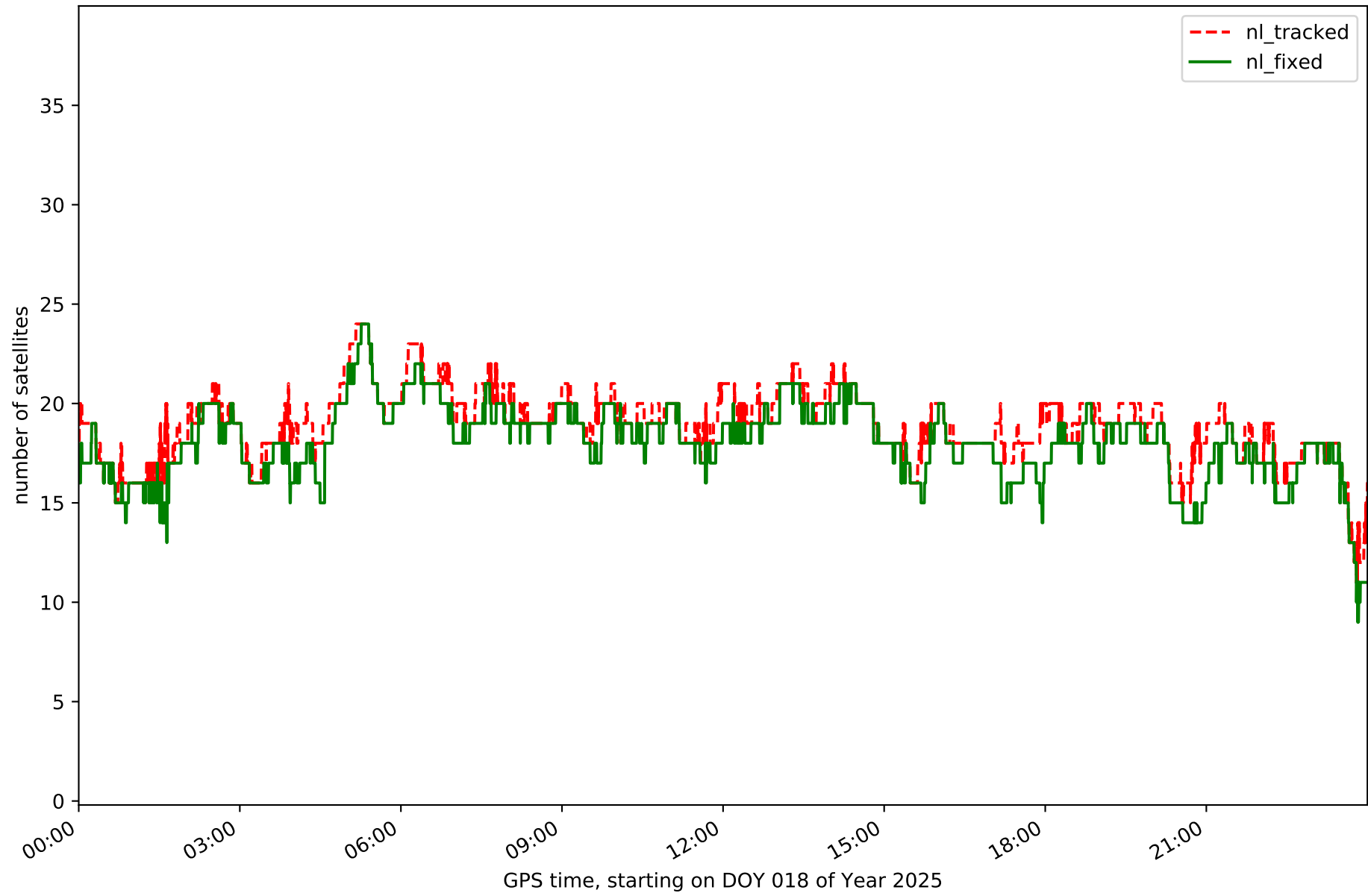
Station PEN1 in network NET1



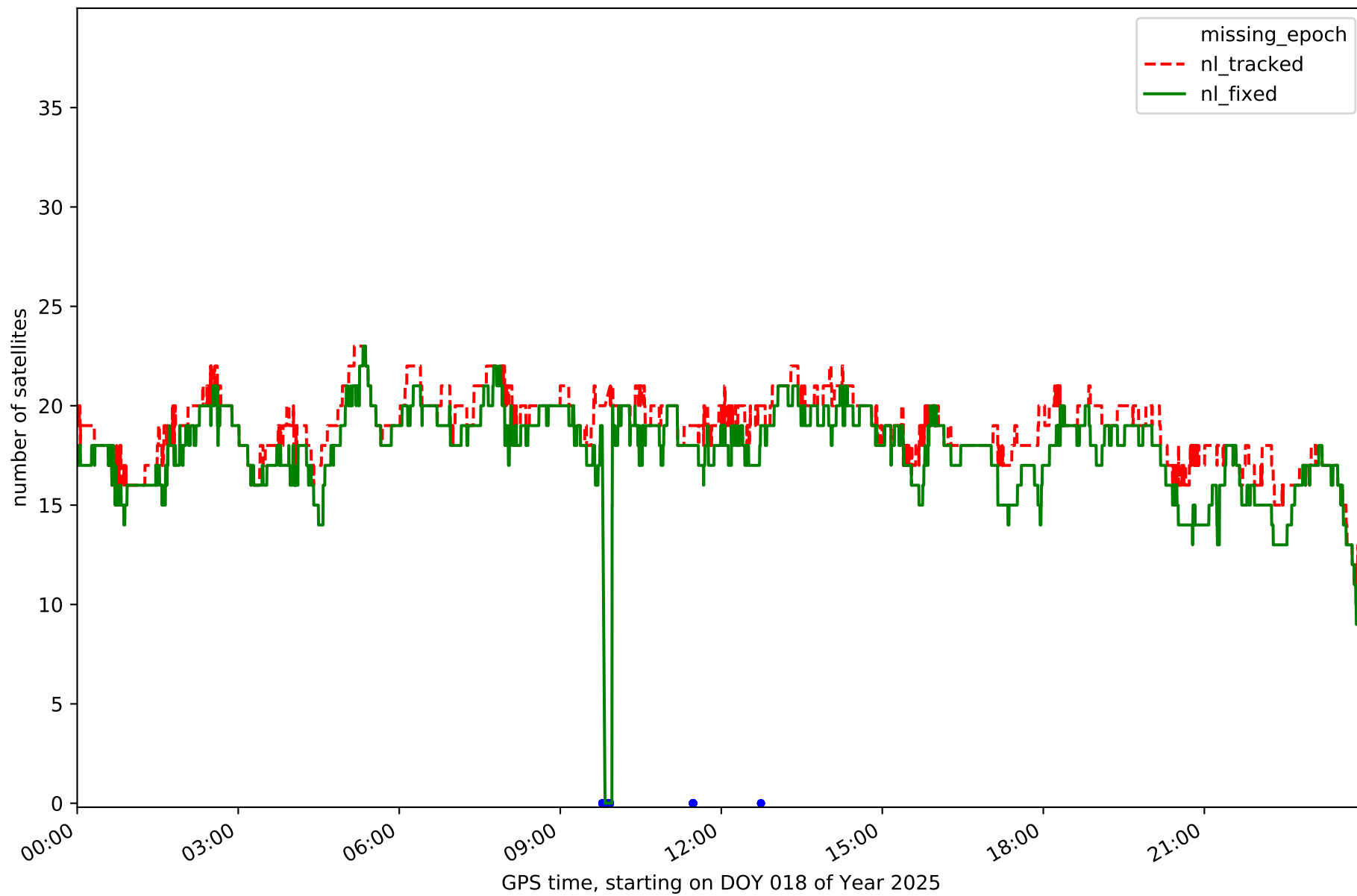
Station SGVA in network NET1



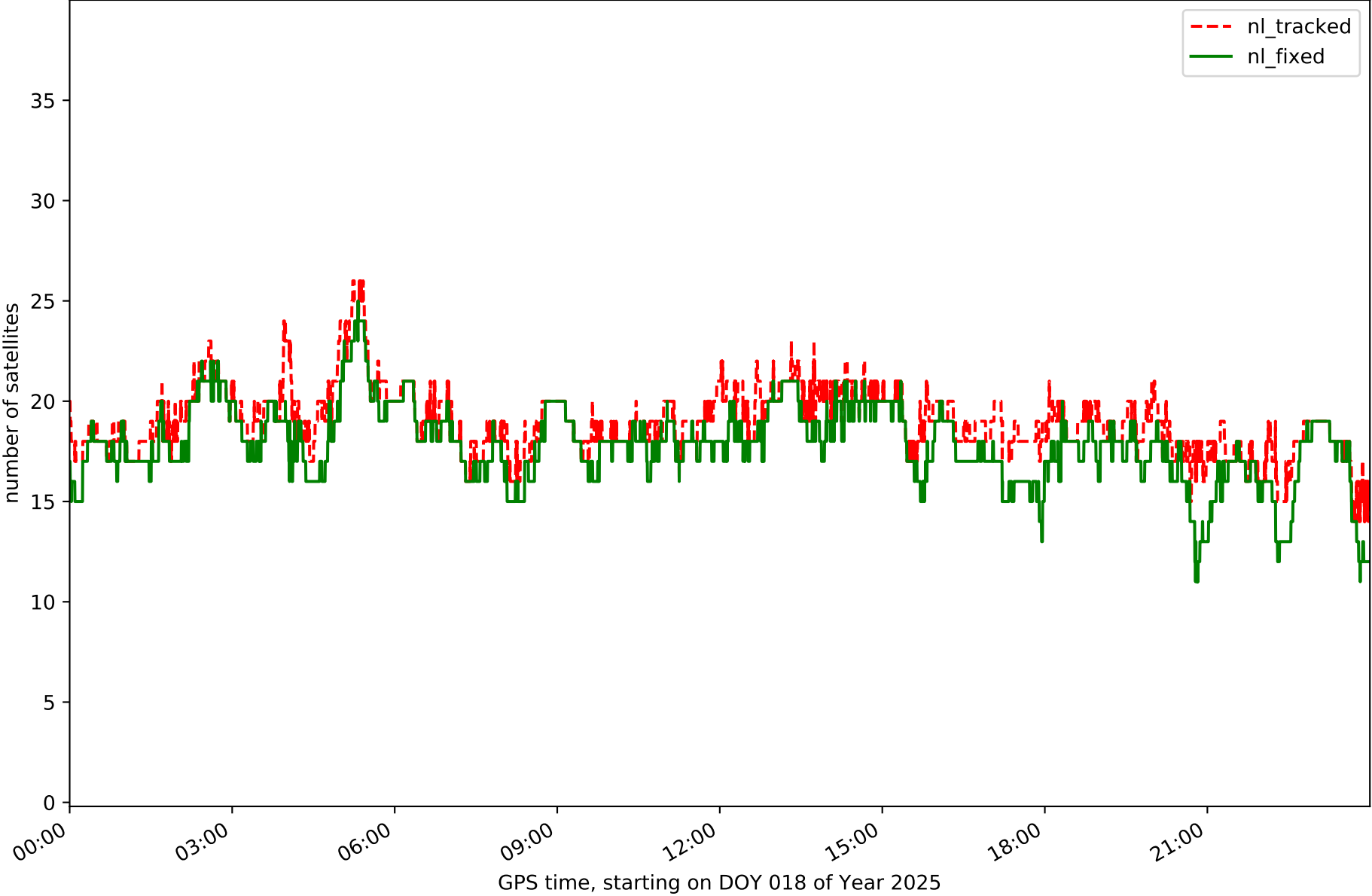
Station SMDV in network NET1



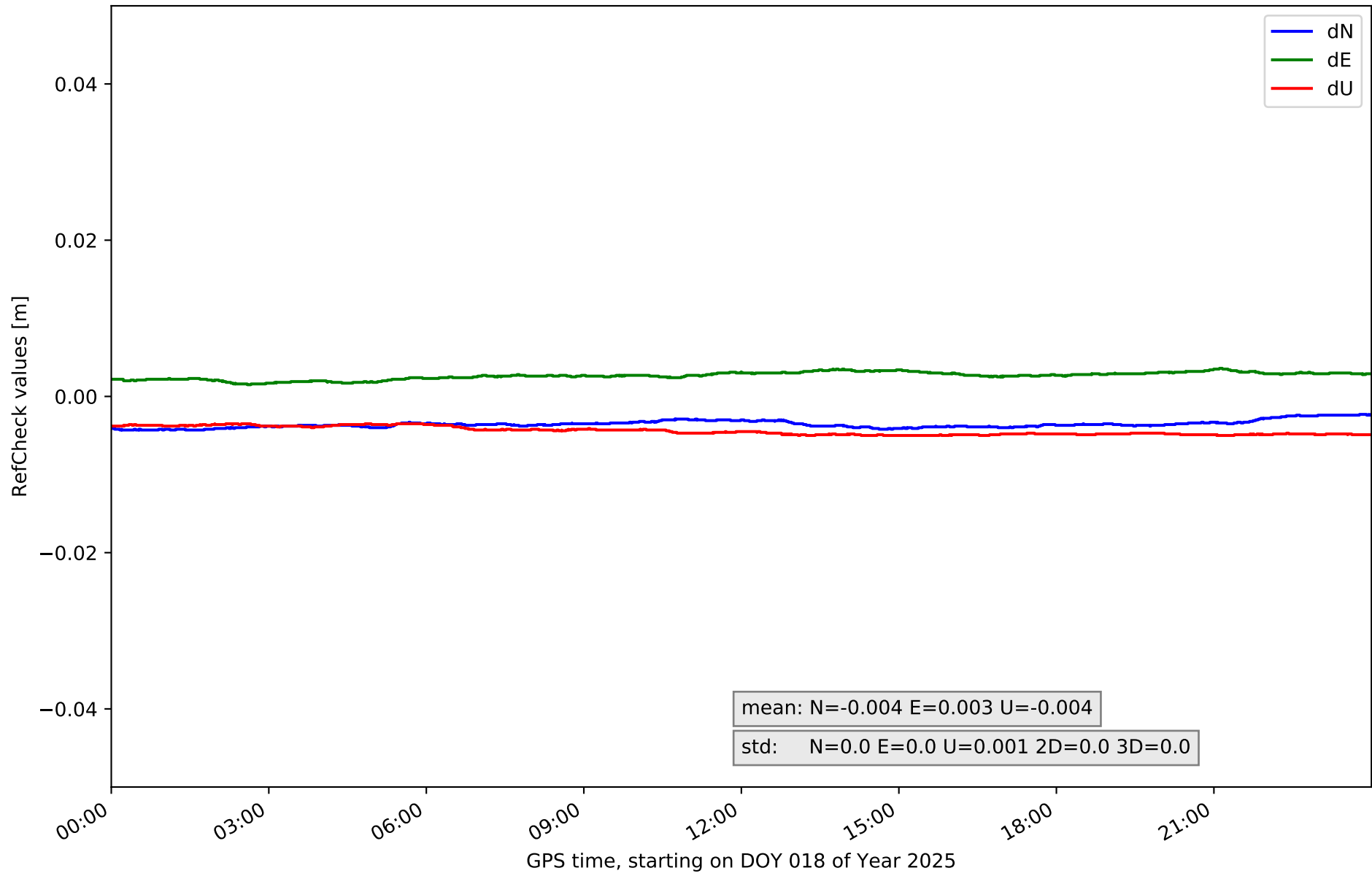
Station TALV in network NET1



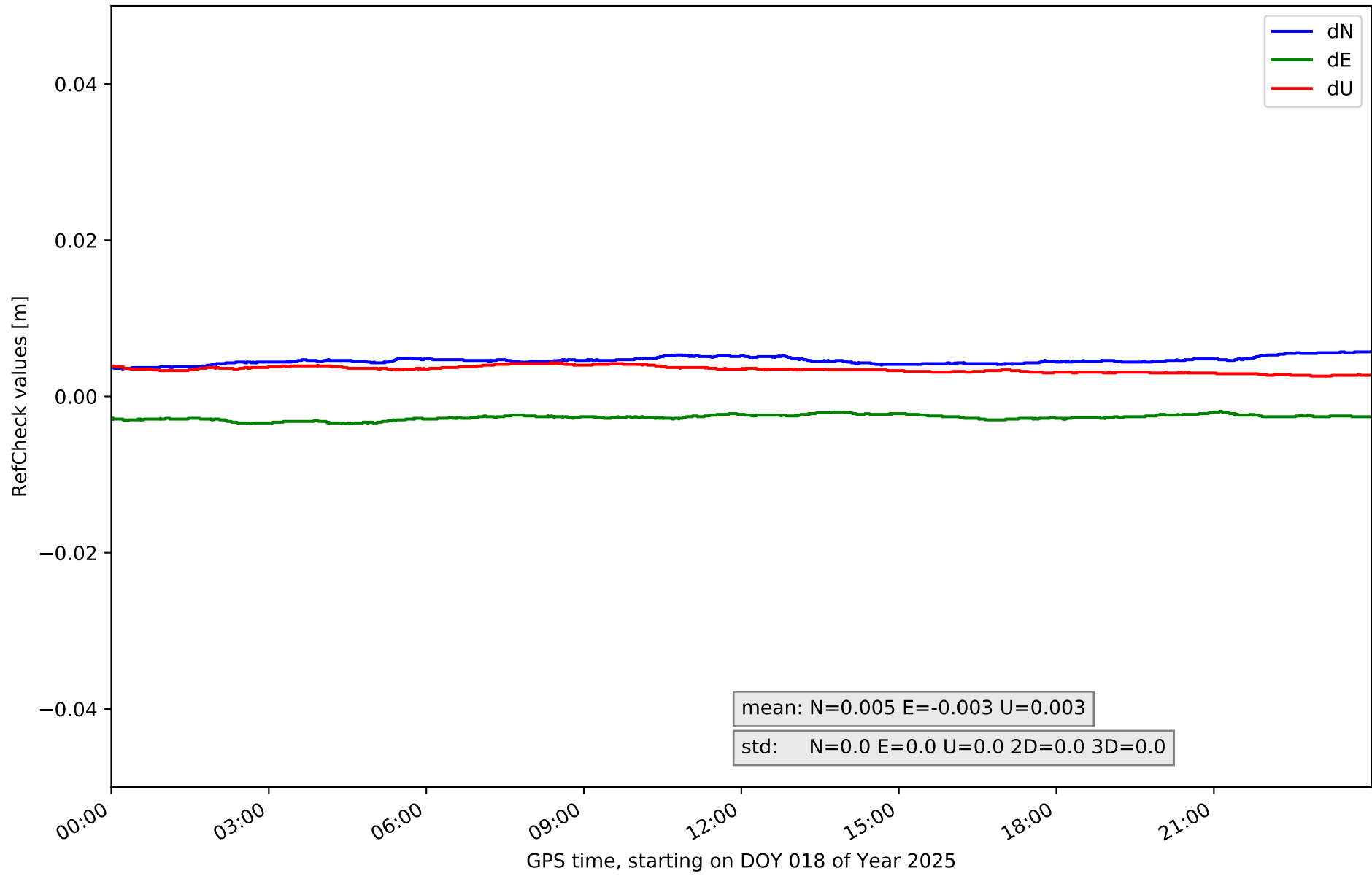
Station YEB1 in network NET1



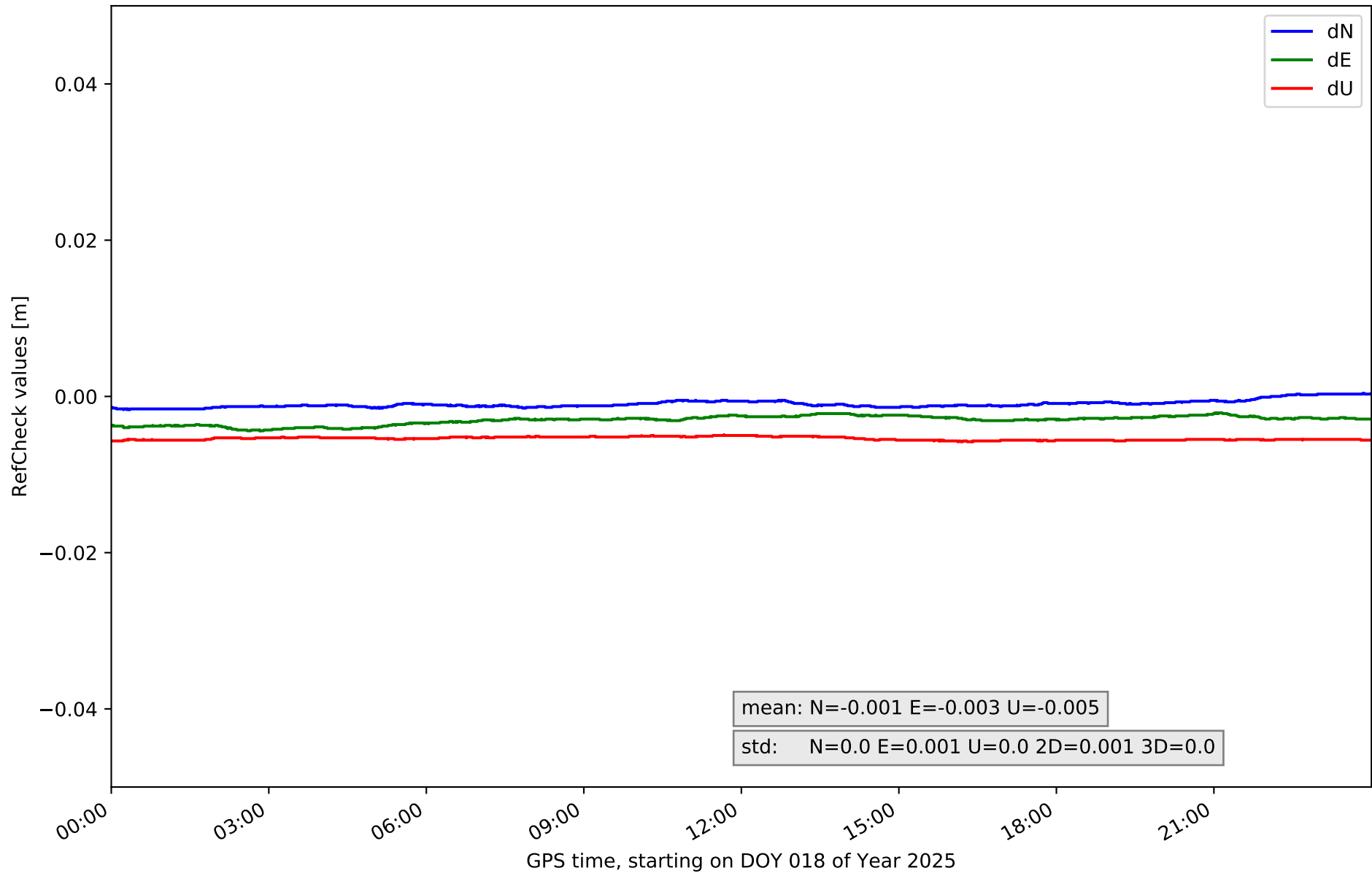
RefCheck for station AJAL in network NET1



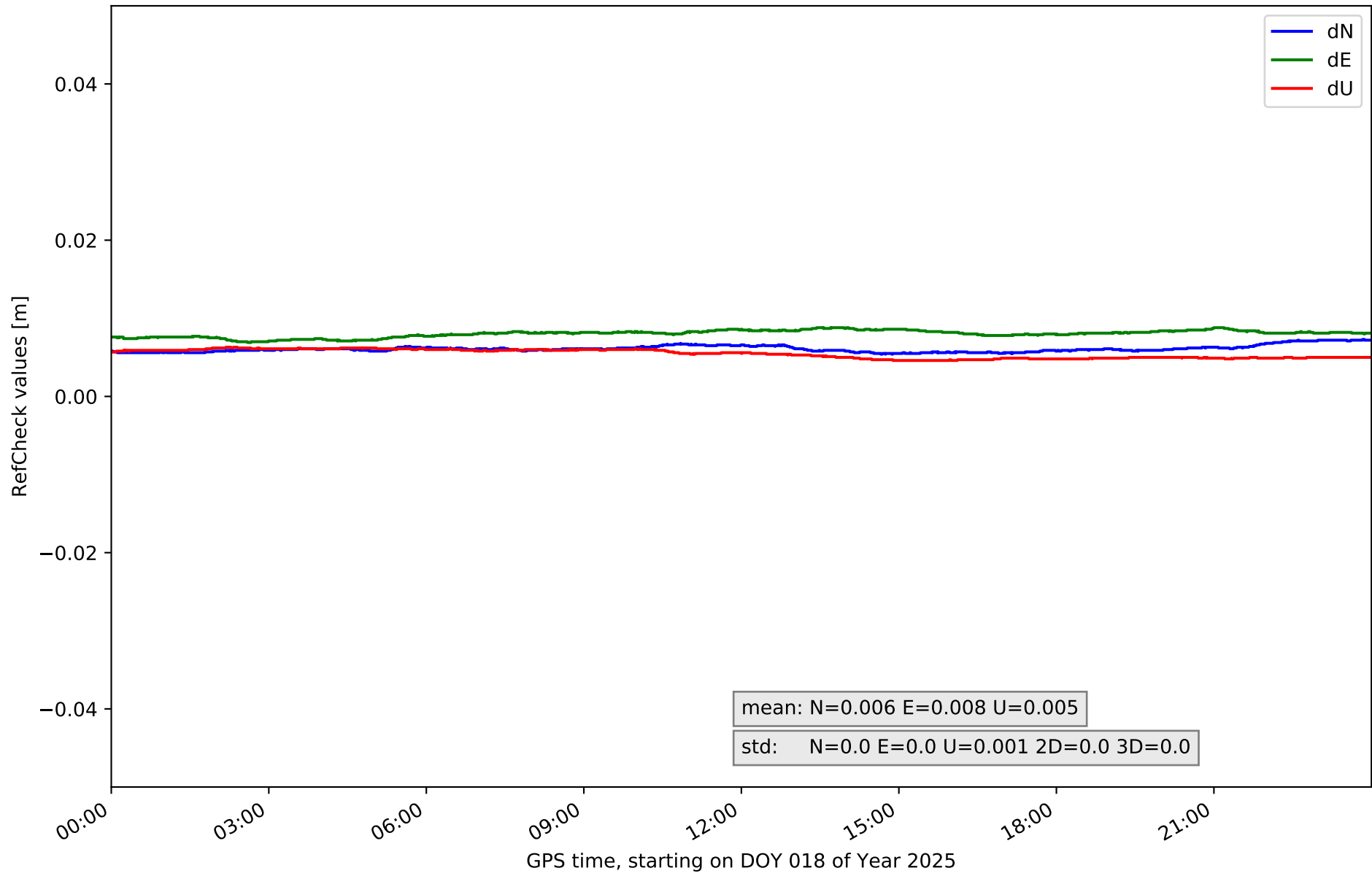
RefCheck for station ARAJ in network NET1



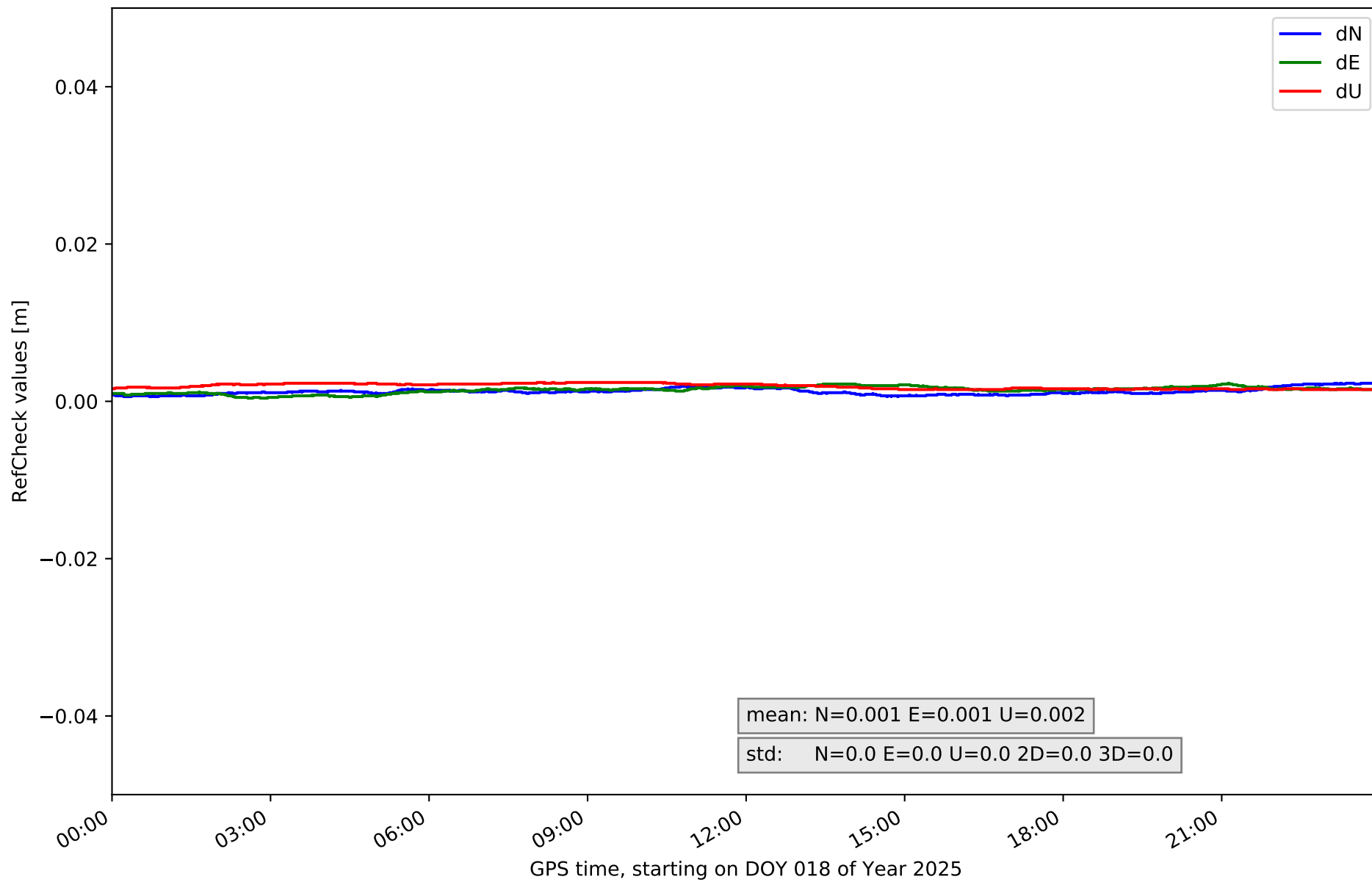
RefCheck for station AVI2 in network NET1



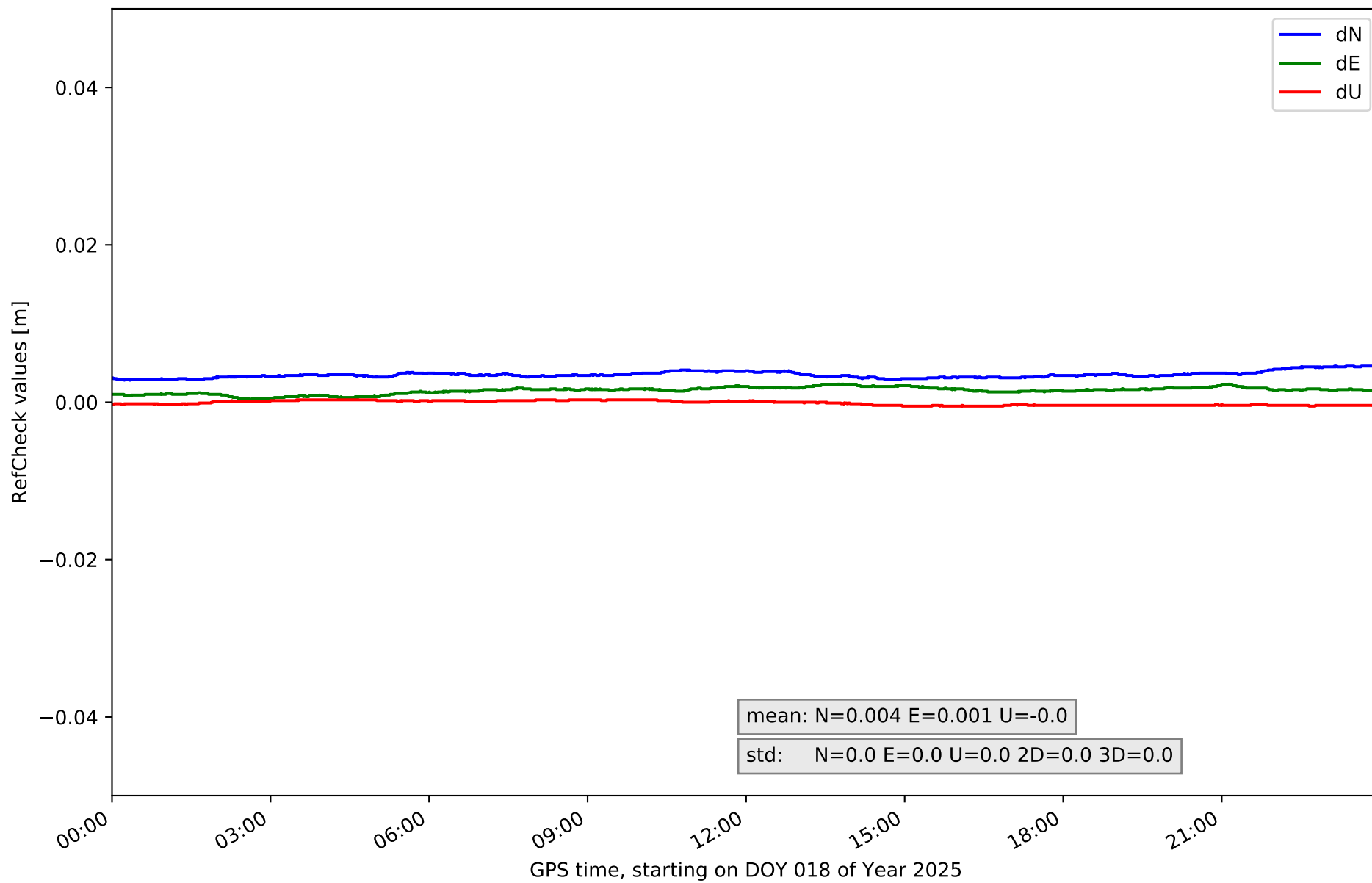
RefCheck for station BUIT in network NET1



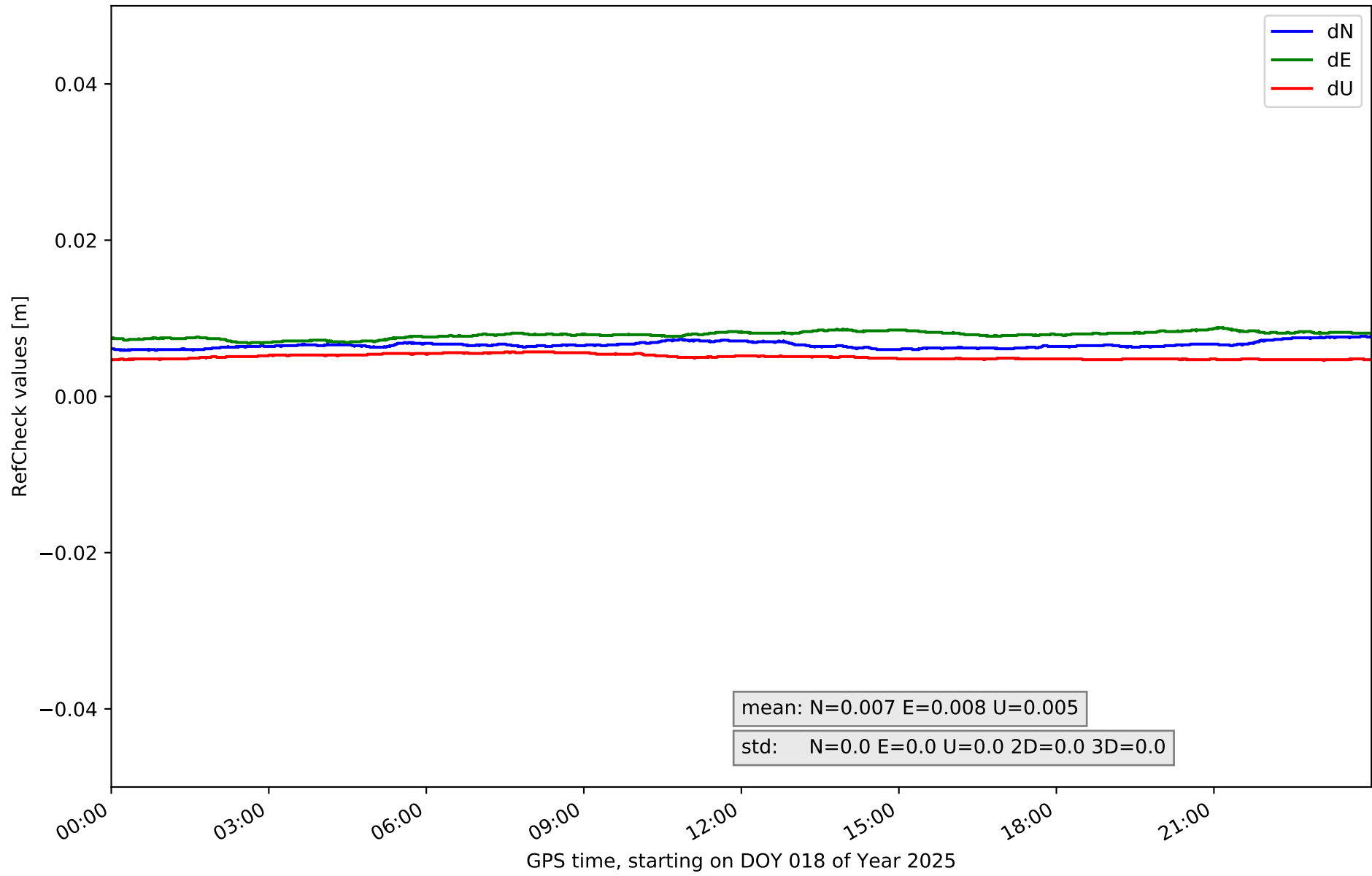
RefCheck for station IGNE in network NET1



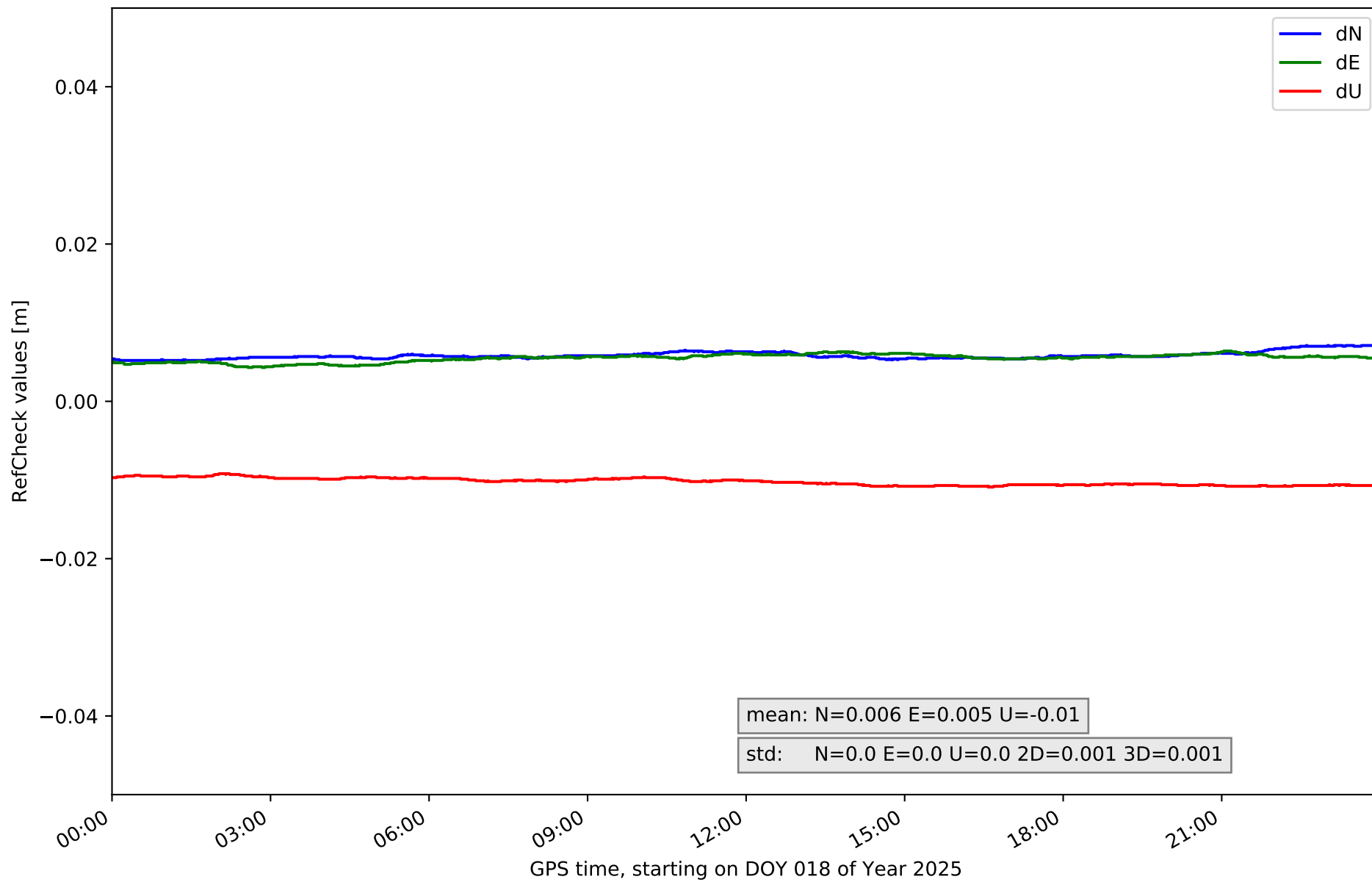
RefCheck for station MAD1 in network NET1



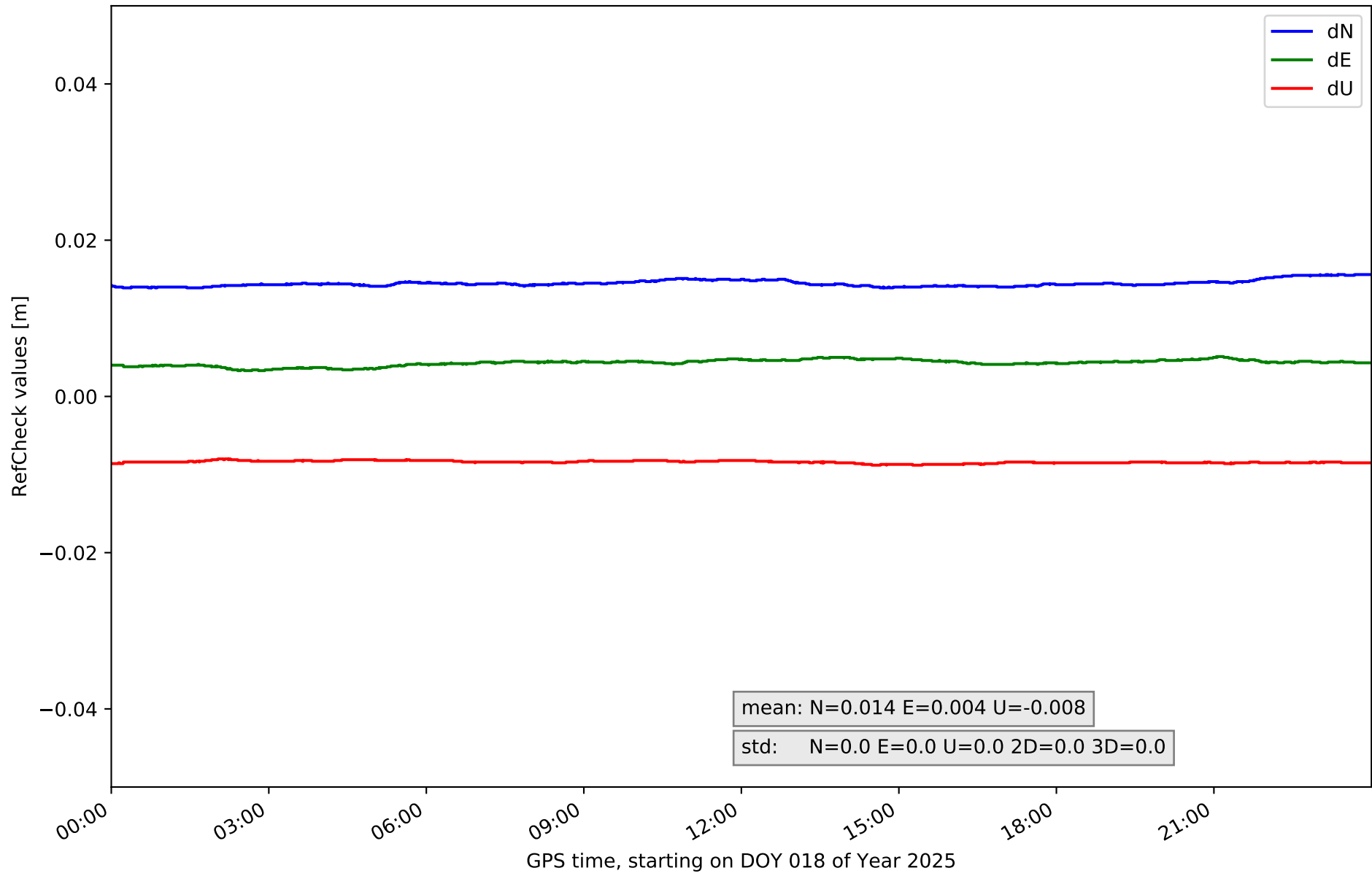
RefCheck for station ORUS in network NET1



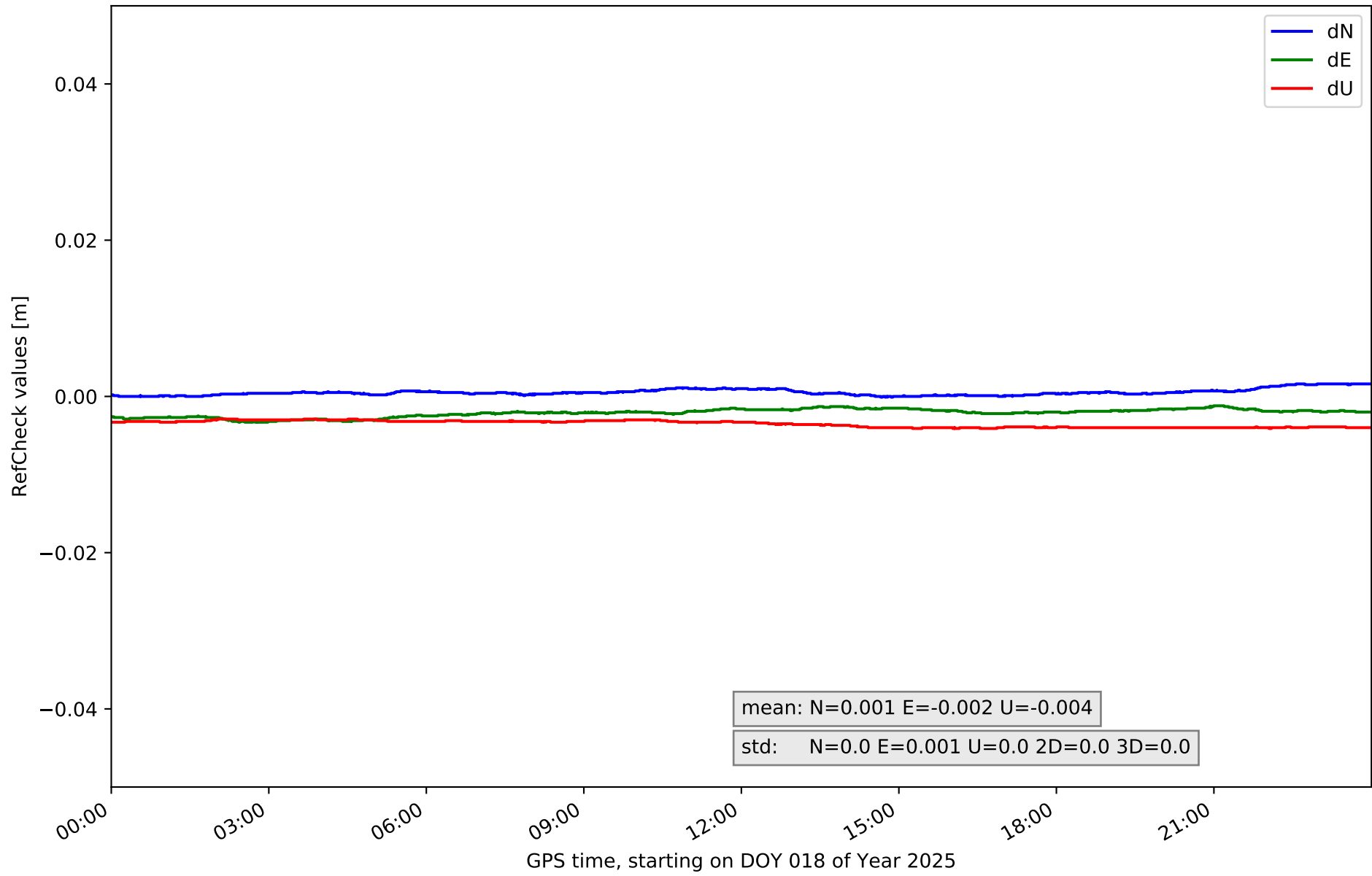
RefCheck for station PEN1 in network NET1



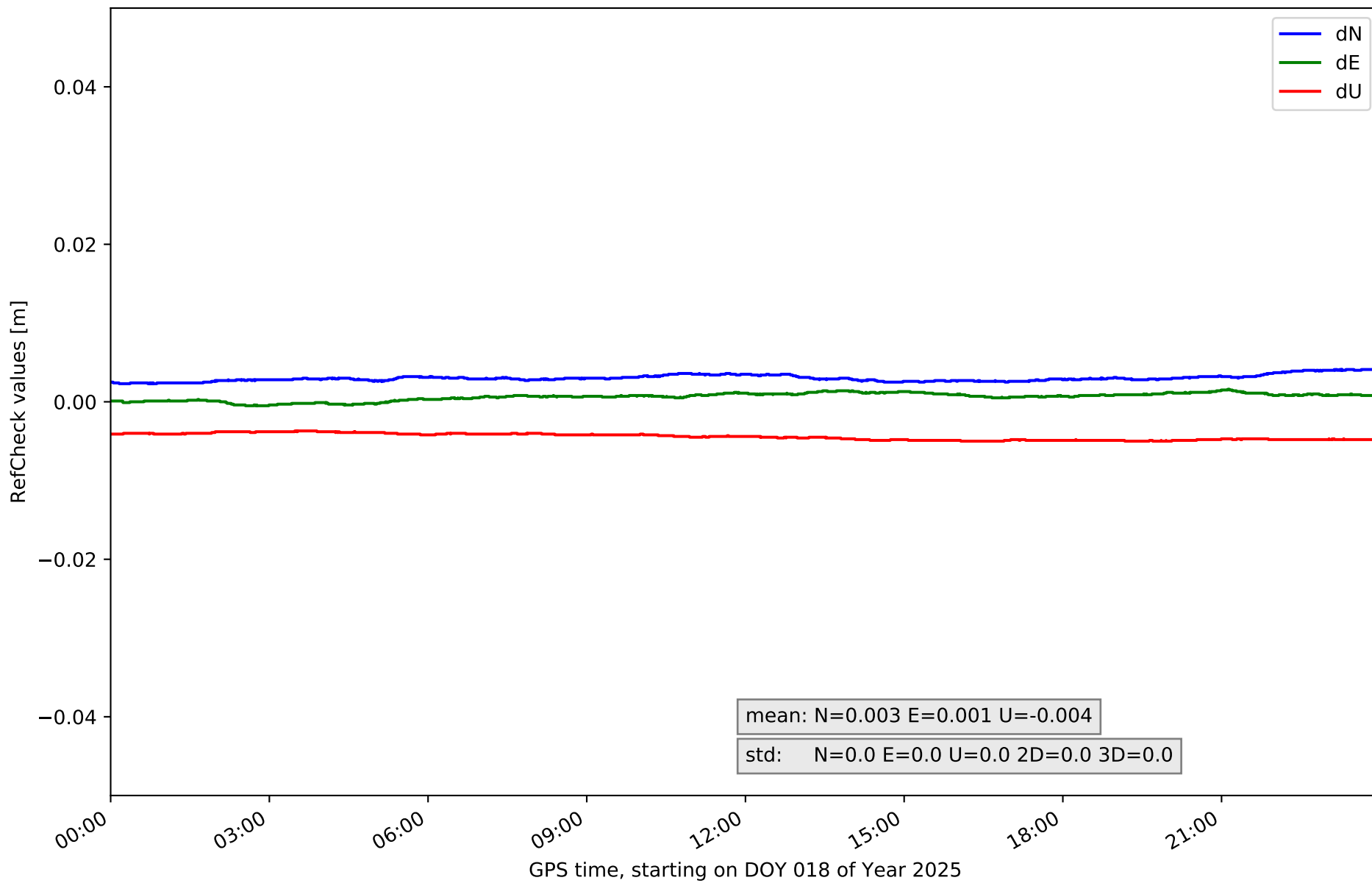
RefCheck for station RIA1 in network NET1



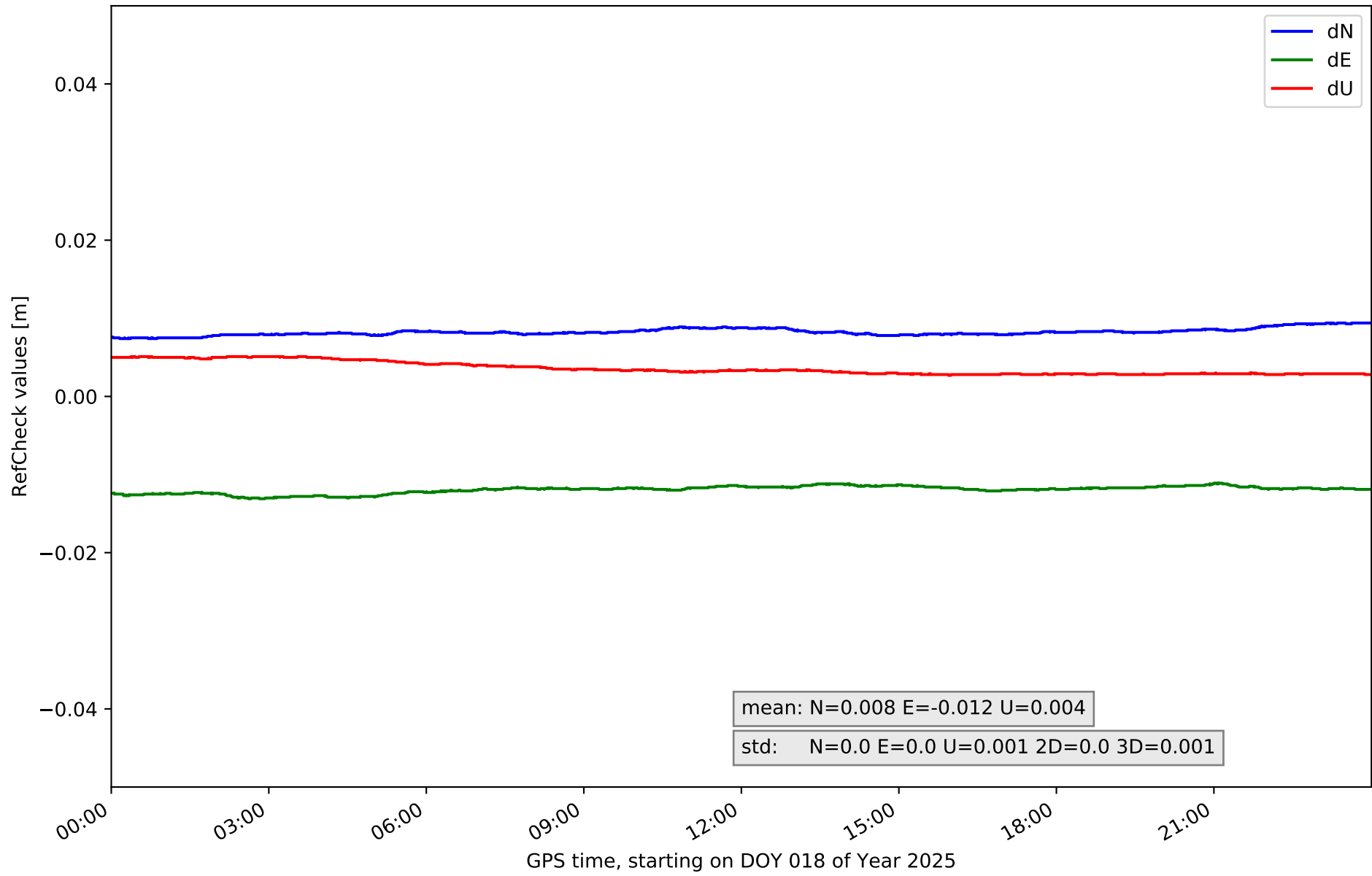
RefCheck for station SGVA in network NET1



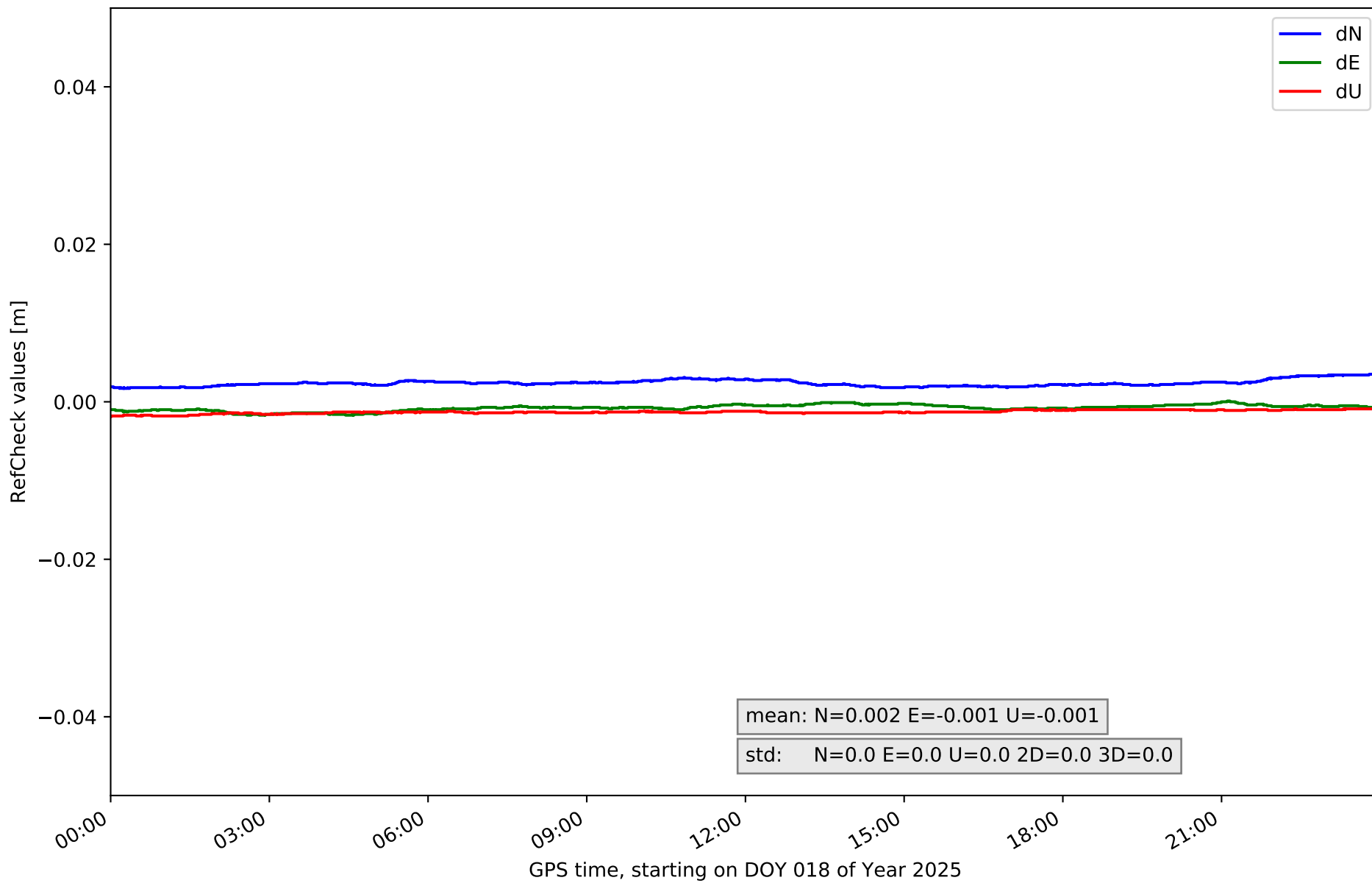
RefCheck for station SMDV in network NET1



RefCheck for station TALV in network NET1



RefCheck for station YEB1 in network NET1



RefCheck values for network NET1

Station	Nmin	Nmax	Nstd	Emin	Emax	Estd	Umin	Umax	Ustd	std2D	std3D	#2D > 0.01	% 2D > 0.01	#3D > 0.02	% 3D > 0.02
AJAL	-0.004	-0.002	0.0	0.002	0.004	0.0	-0.005	-0.004	0.001	0.0	0.0	0	0.0	0	0.0
ARAJ	0.004	0.006	0.0	-0.004	-0.002	0.0	0.003	0.004	0.0	0.0	0.0	0	0.0	0	0.0
AVI2	-0.002	0.0	0.0	-0.004	-0.002	0.001	-0.006	-0.005	0.0	0.001	0.0	0	0.0	0	0.0
BUIT	0.005	0.007	0.0	0.007	0.009	0.0	0.005	0.006	0.001	0.0	0.0	51752	62.7	0	0.0
IGNE	0.001	0.002	0.0	0.0	0.002	0.0	0.002	0.002	0.0	0.0	0.0	0	0.0	0	0.0
MAD1	0.003	0.005	0.0	0.0	0.002	0.0	-0.001	0.0	0.0	0.0	0.0	0	0.0	0	0.0
ORUS	0.006	0.008	0.0	0.007	0.009	0.0	0.005	0.006	0.0	0.0	0.0	61719	74.7	0	0.0
PEN1	0.005	0.007	0.0	0.004	0.006	0.0	-0.011	-0.009	0.0	0.001	0.001	0	0.0	0	0.0
RIA1	0.014	0.016	0.0	0.003	0.005	0.0	-0.009	-0.008	0.0	0.0	0.0	82582	100.0	0	0.0
SGVA	-0.0	0.002	0.0	-0.003	-0.001	0.001	-0.004	-0.003	0.0	0.0	0.0	0	0.0	0	0.0
SMDV	0.002	0.004	0.0	-0.001	0.002	0.0	-0.005	-0.004	0.0	0.0	0.0	0	0.0	0	0.0
TALV	0.007	0.009	0.0	-0.013	-0.011	0.0	0.003	0.005	0.001	0.0	0.001	82582	100.0	0	0.0
YEB1	0.002	0.004	0.0	-0.002	0.0	0.0	-0.002	-0.001	0.0	0.0	0.0	0	0.0	0	0.0
Mean	0.003	0.005	0.0	-0.0	0.002	0.0	-0.002	-0.001	0.0	0.0	0.0	21433.5	26.0	0.0	0.0
Min/Max	-0.004	0.016	0.0	-0.013	0.009	0.001	-0.011	0.006	0.001	0.001	0.001	82582	100.0	0	0.0

fixing statistic for network NET1

fixing percentage of	all GNSS	G	R	E	C
using threshold 0.3	93.0	94.7	94.2	95.4	88.3
considering satellites with dual-frequency fixed	92.7	93.8	93.0	94.7	88.0
considering all signals separately	92.8	93.9	93.0	94.9	87.1