

summary for network N31T

timeperiod chosen: from 2024-12-02-00:00:00 until 2024-12-02-23:59:59

average update rate (durations larger than 15 seconds considered as observation gap): 1.0 seconds

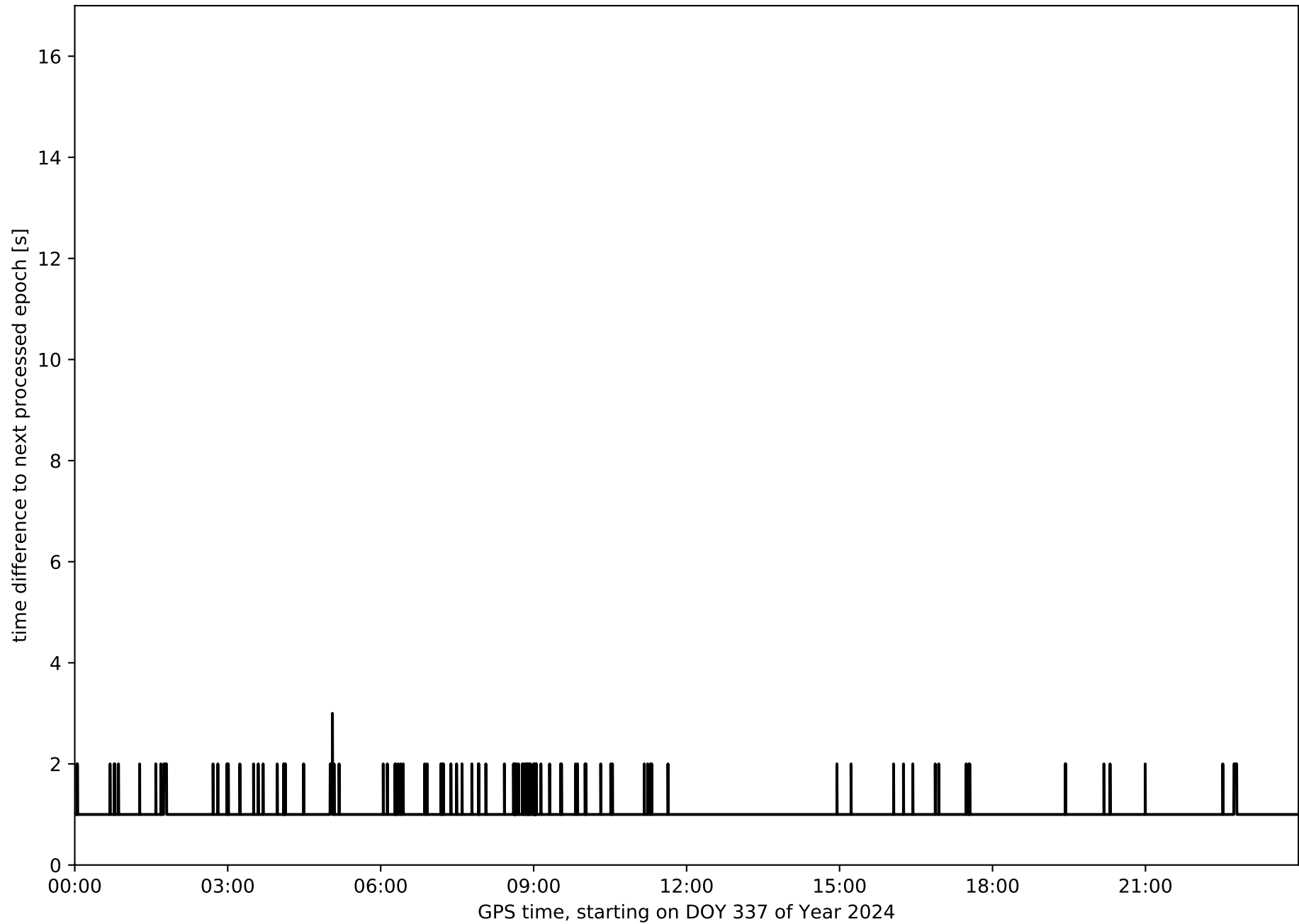
average fixing percentage with threshold set to 0.3: 82.4 percent

stations available: 7 of 7

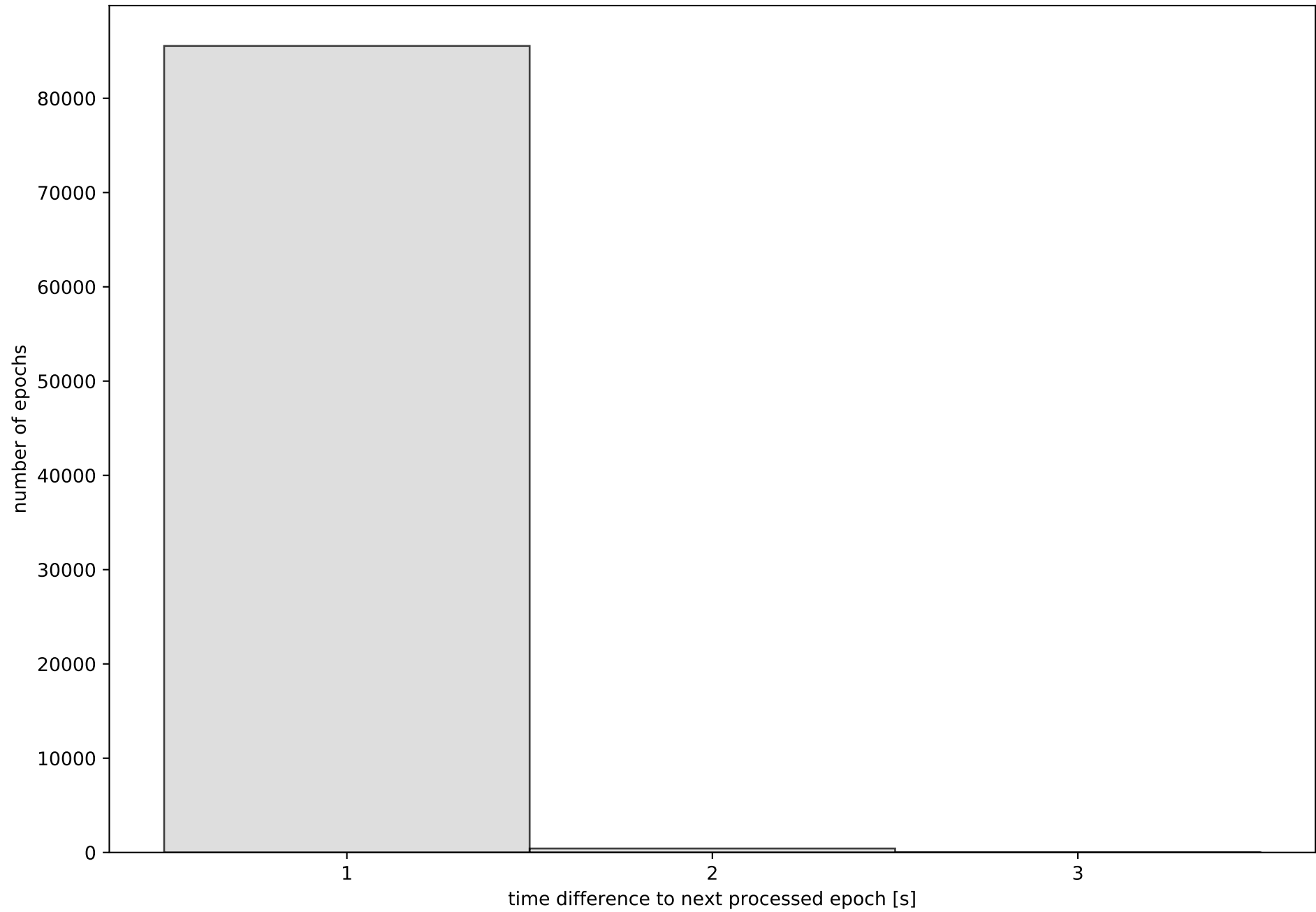
station information:

station FUER:	antenna: LEIAR20	LEIM	receiver: LEICA GR50	height: 76.887
station LALA:	antenna: TRM59900.00	SCIS	receiver: TRIMBLE NETR9	height: 62.306
station LZ01:	antenna: TRM59800.00	SCIS	receiver: TRIMBLE NETR9	height: 52.693
station LZ02:	antenna: LEIAR20	NONE	receiver: LEICA GR25	height: 58.039
station LZ03:	antenna: LEIAR20	NONE	receiver: LEICA GR50	height: 314.762
station MASP:	antenna: TRM59900.00	SCIS	receiver: TRIMBLE NETR9	height: 198.846
station ULP2:	antenna: TRM59900.00	SCIS	receiver: TRIMBLE NETR9	height: 375.129

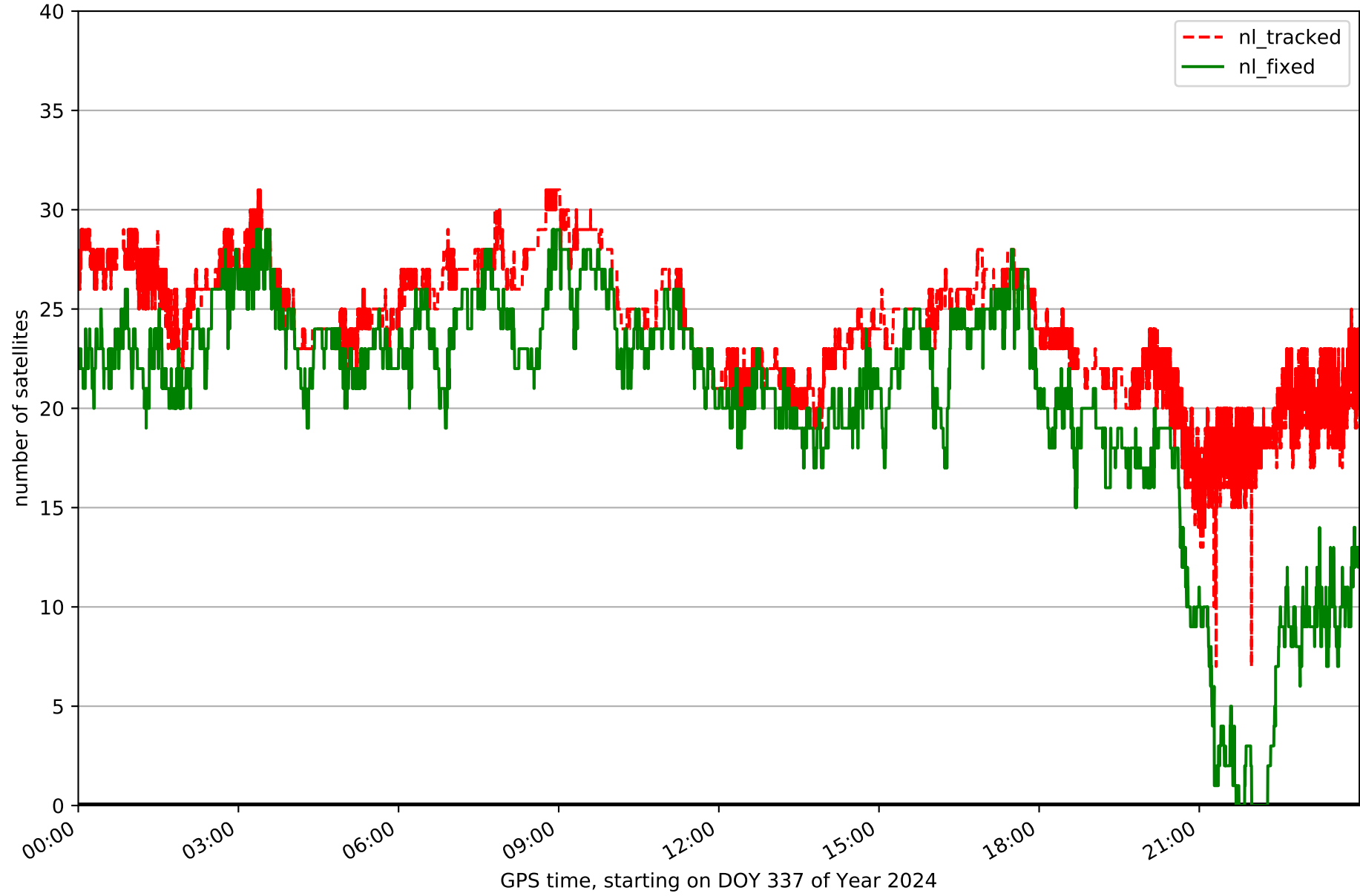
Processing rate in network N31T



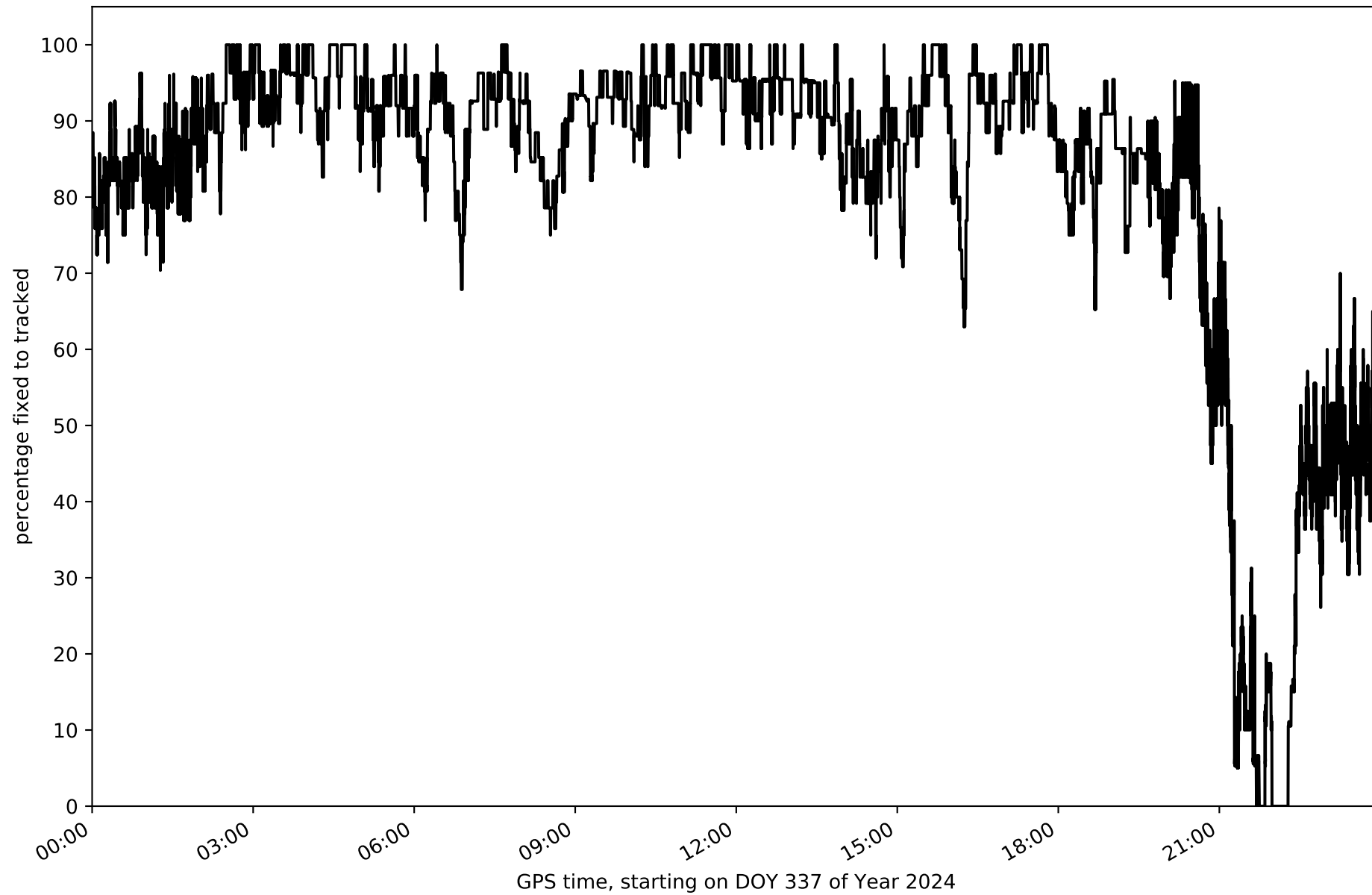
Histogram of the processing rate in network N31T (durations larger 15 seconds neglected)



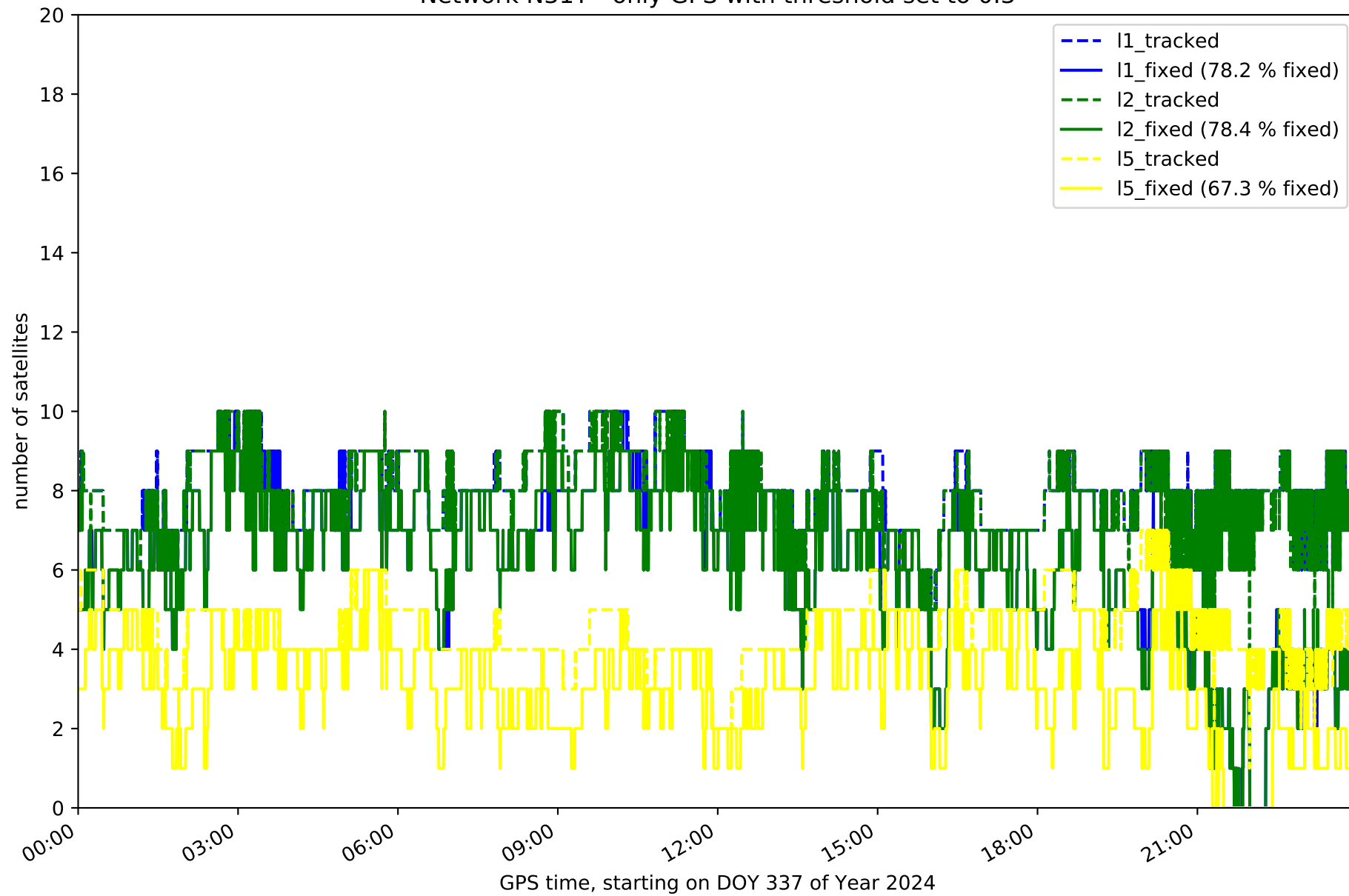
Network N31T with threshold set to 0.3



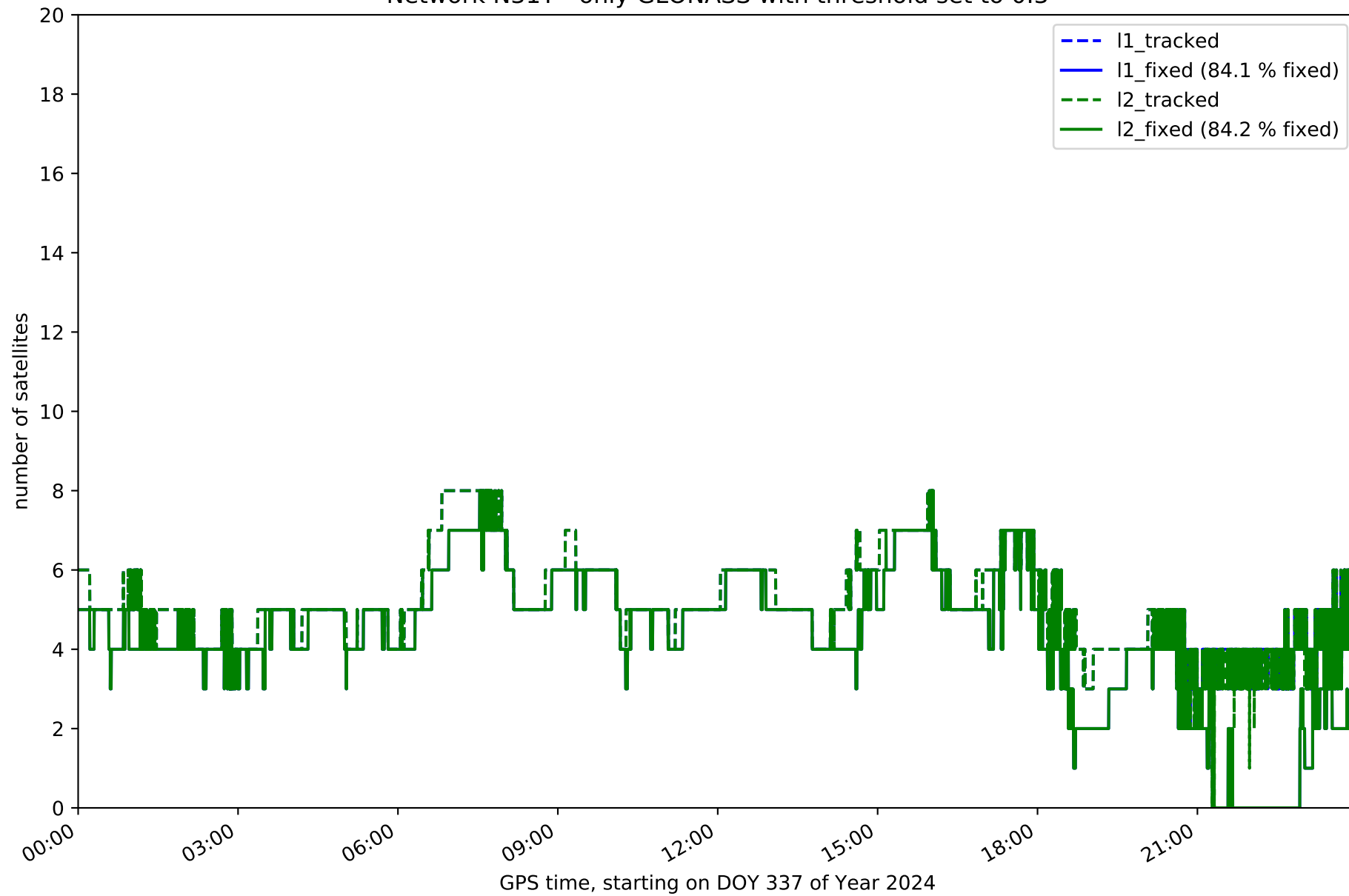
Fixing percentage of satellites in network N31T with threshold set to 0.3



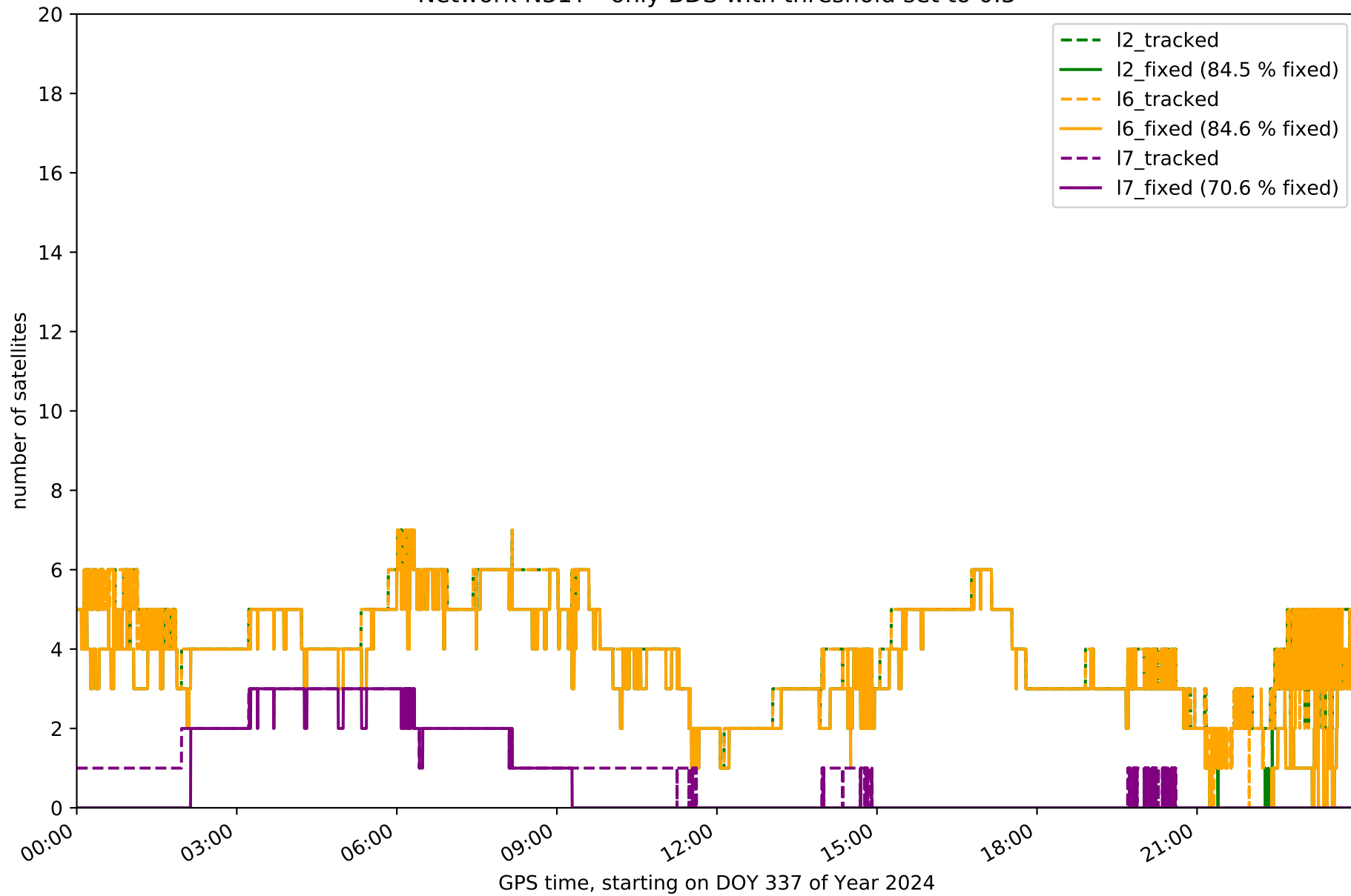
Network N31T - only GPS with threshold set to 0.3



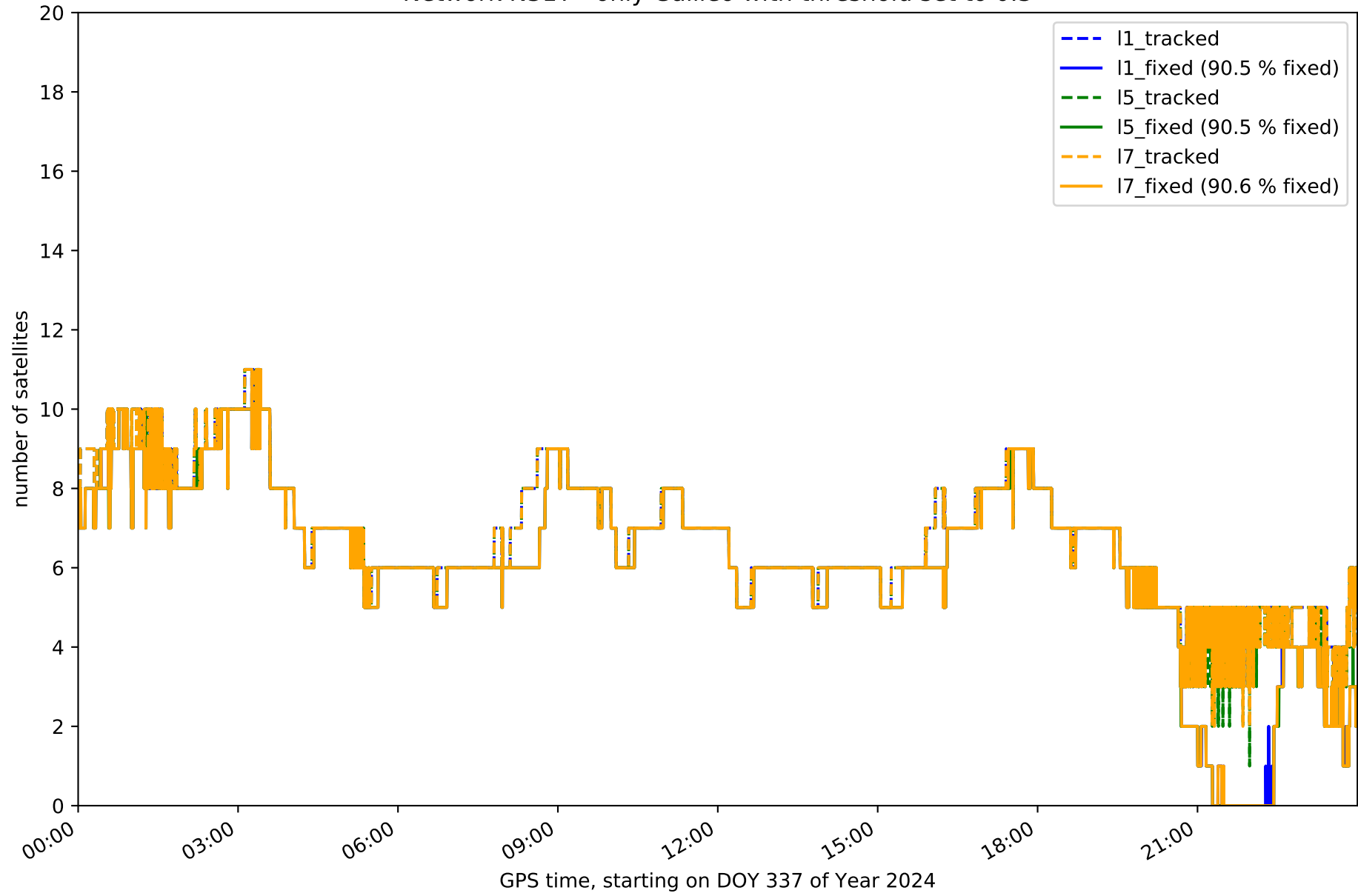
Network N31T - only GLONASS with threshold set to 0.3



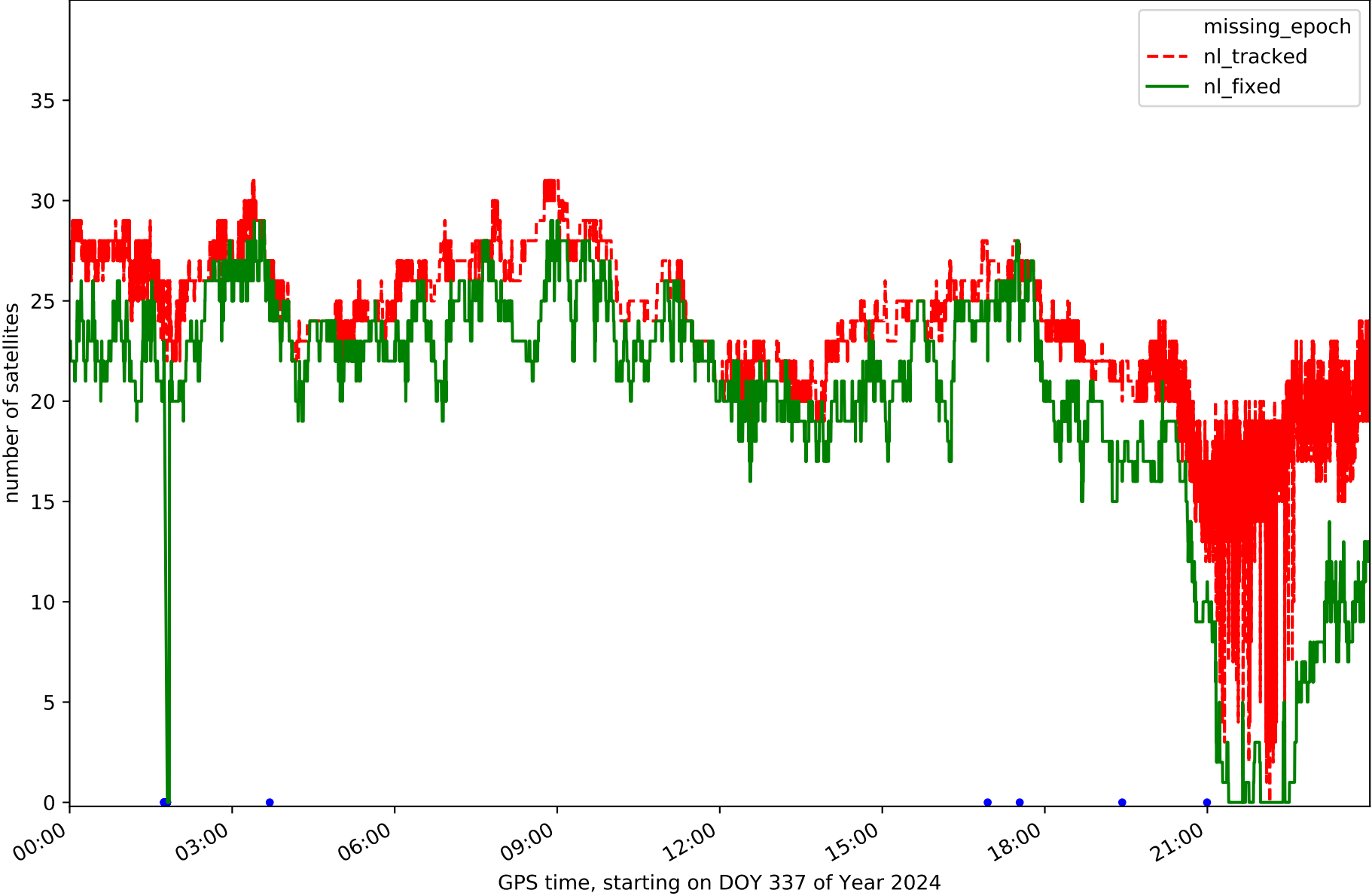
Network N31T - only BDS with threshold set to 0.3



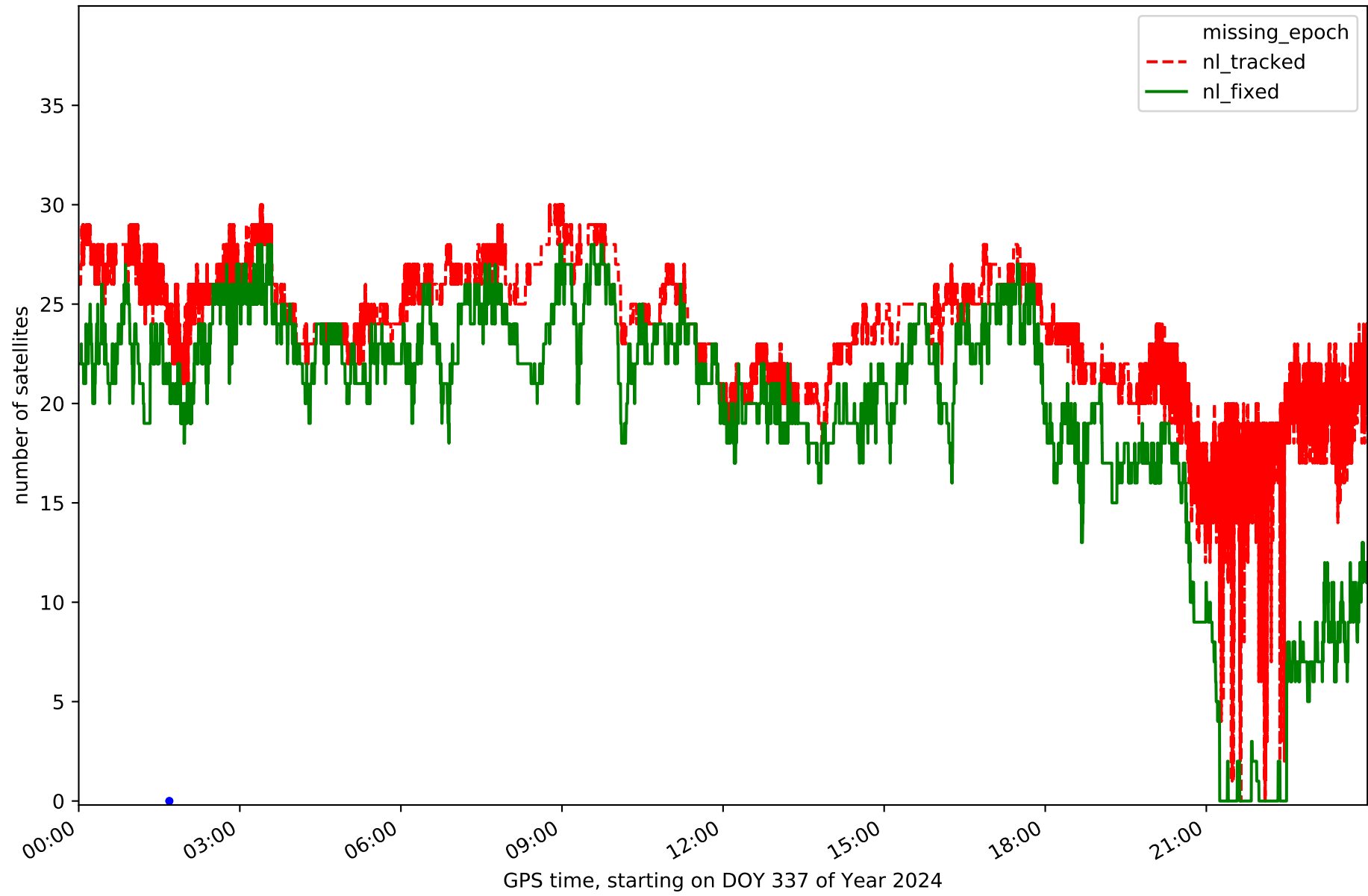
Network N31T - only Galileo with threshold set to 0.3



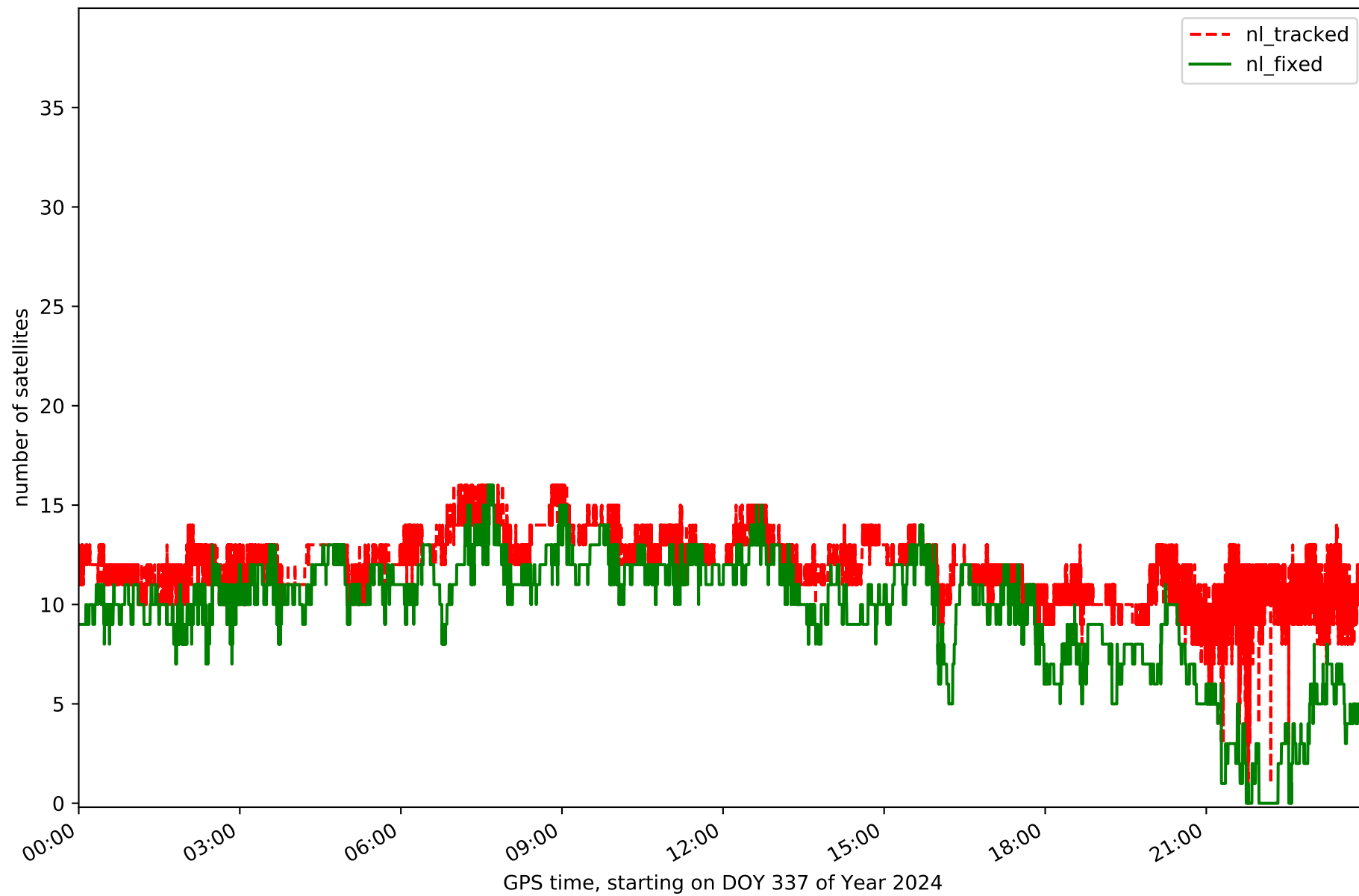
Station FUER in network N31T



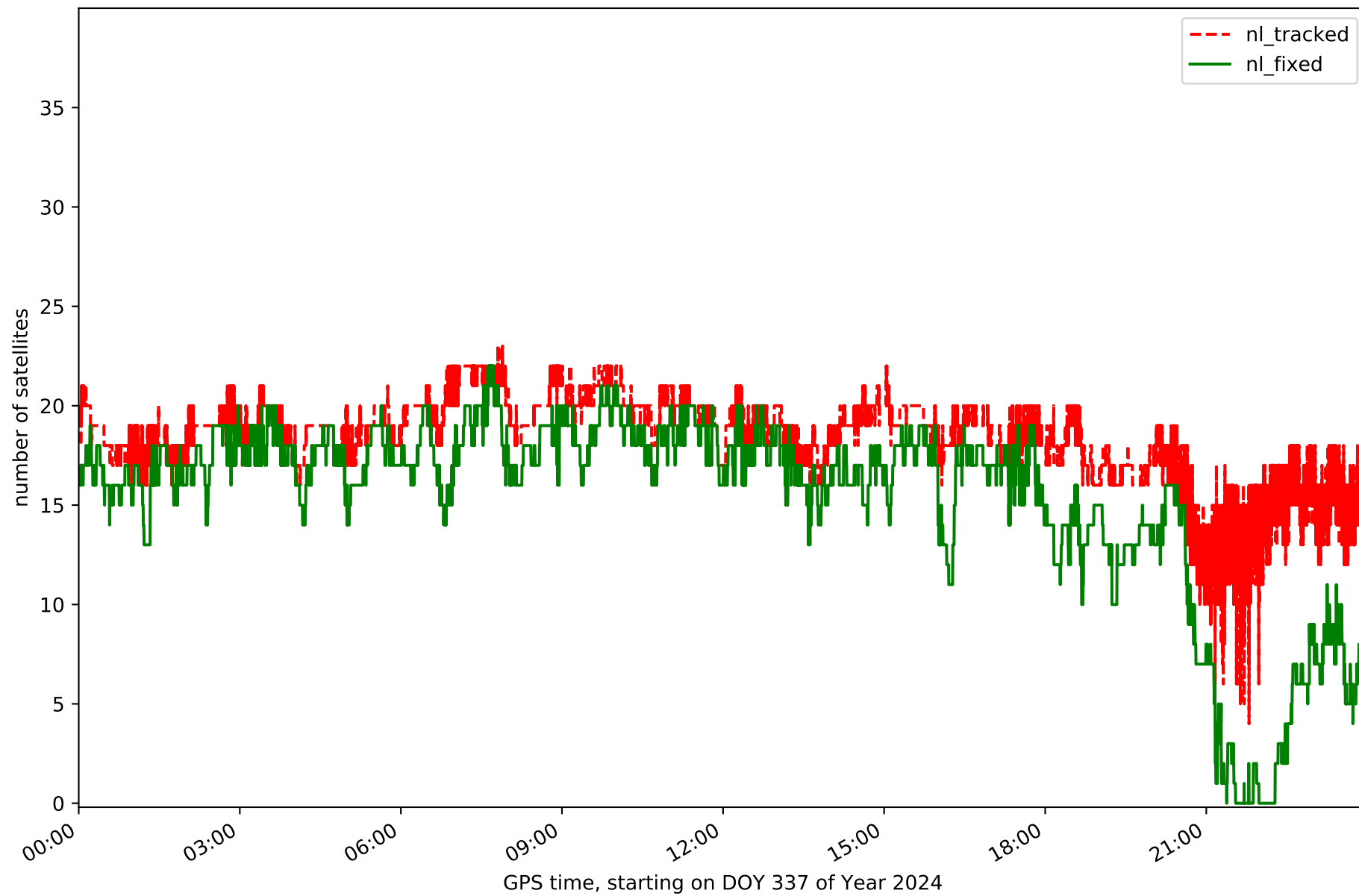
Station LALA in network N31T



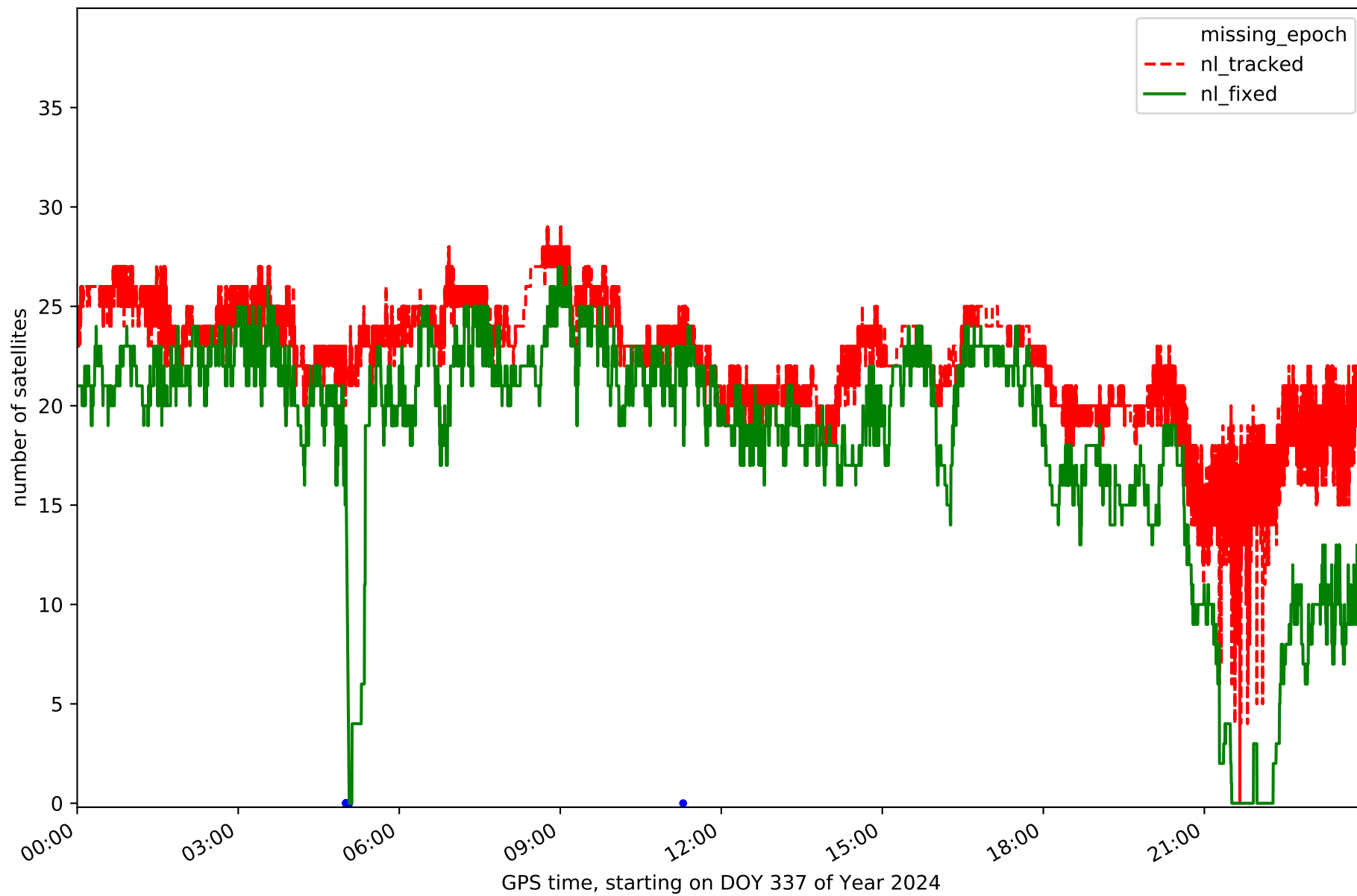
Station LZ01 in network N31T



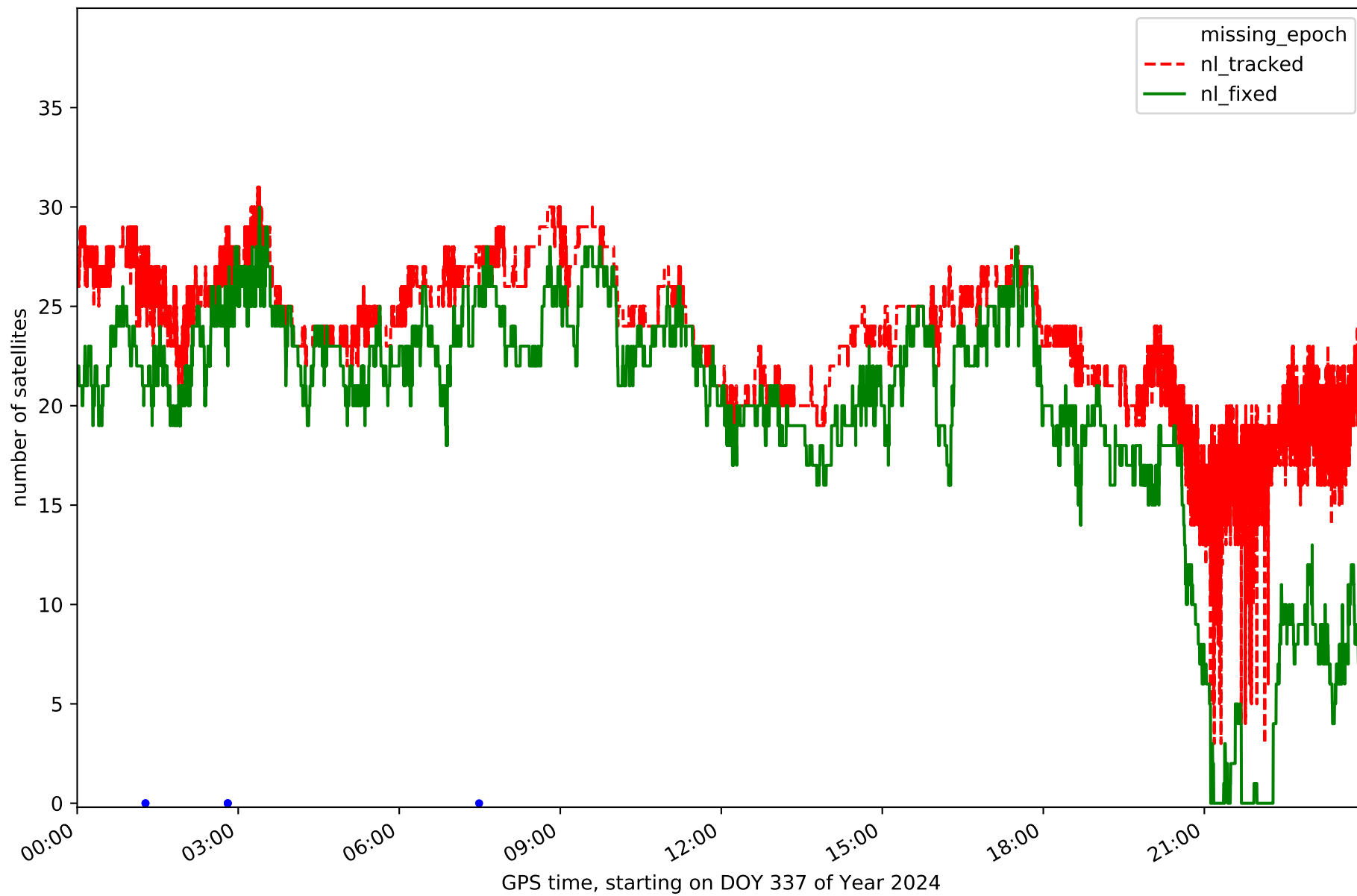
Station LZ02 in network N31T



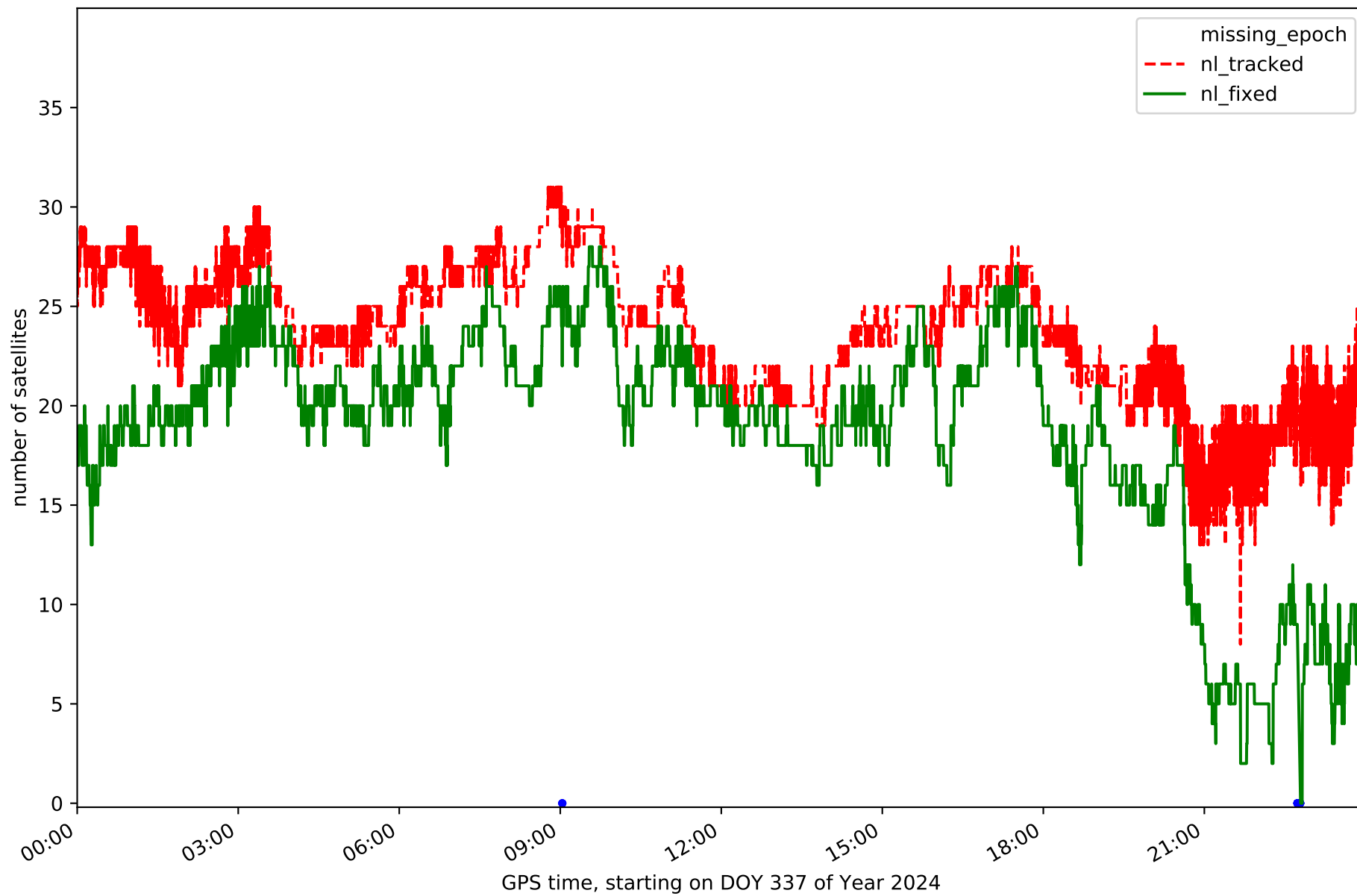
Station LZ03 in network N31T



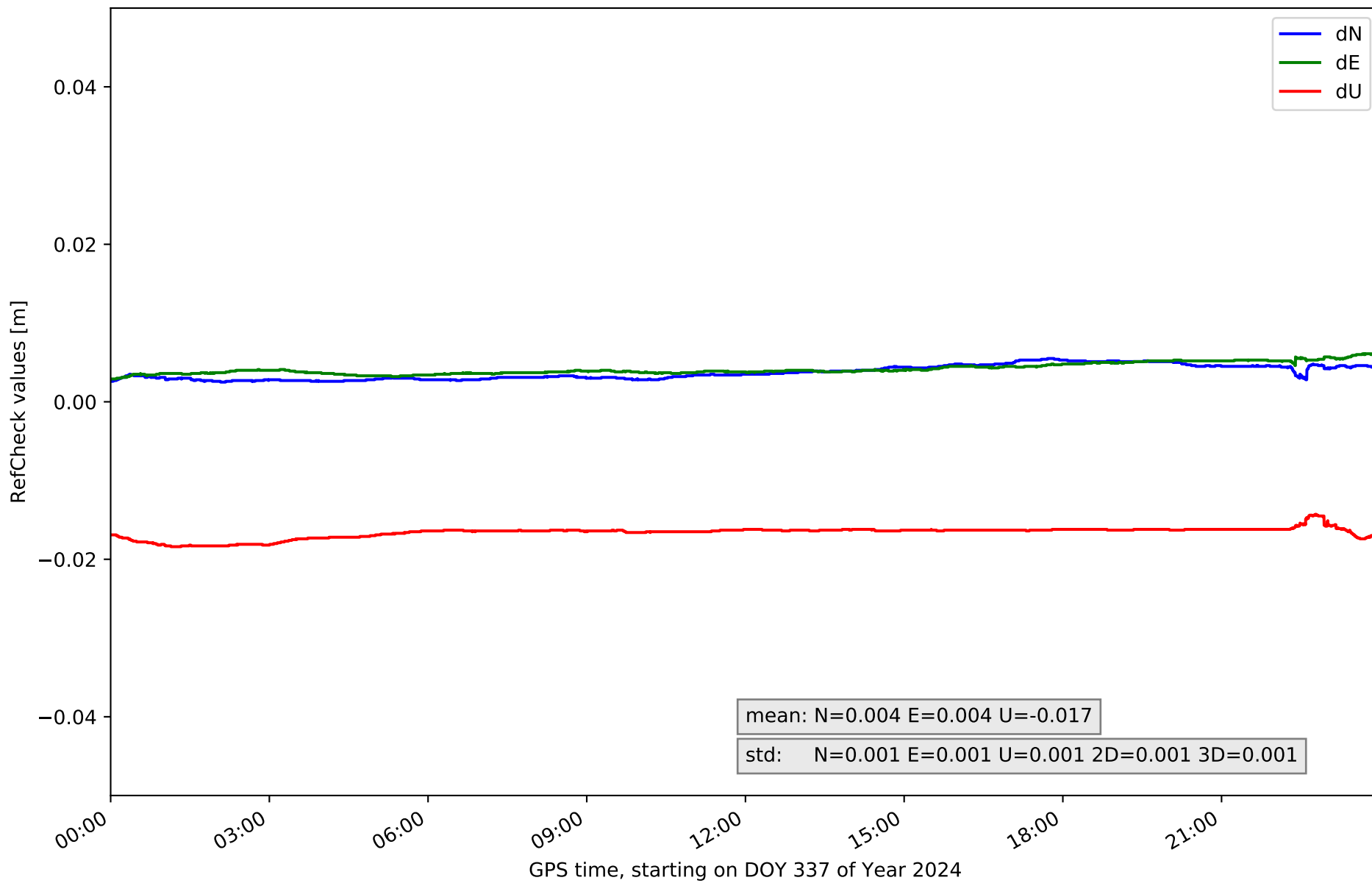
Station MASP in network N31T



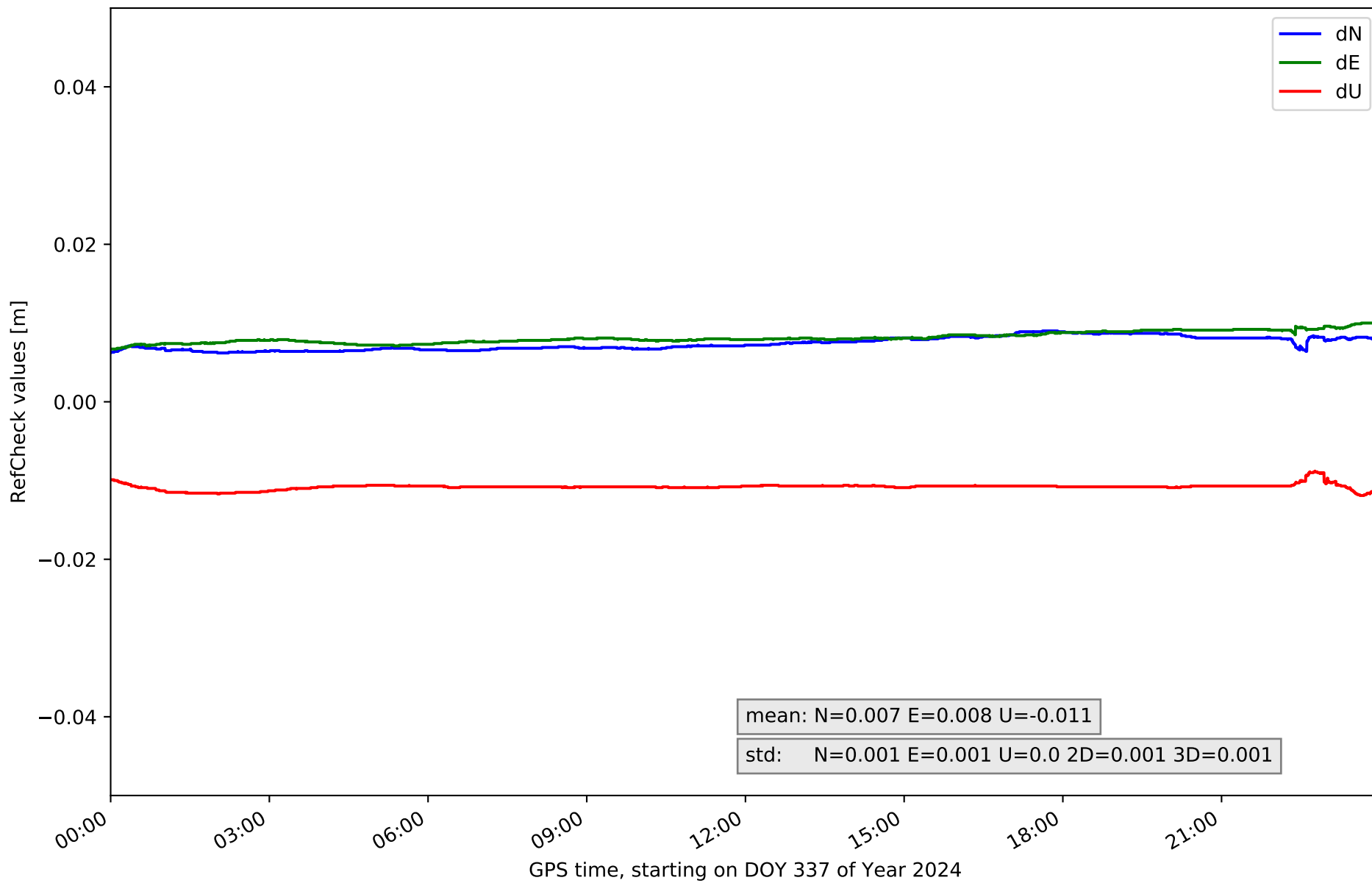
Station ULP2 in network N31T



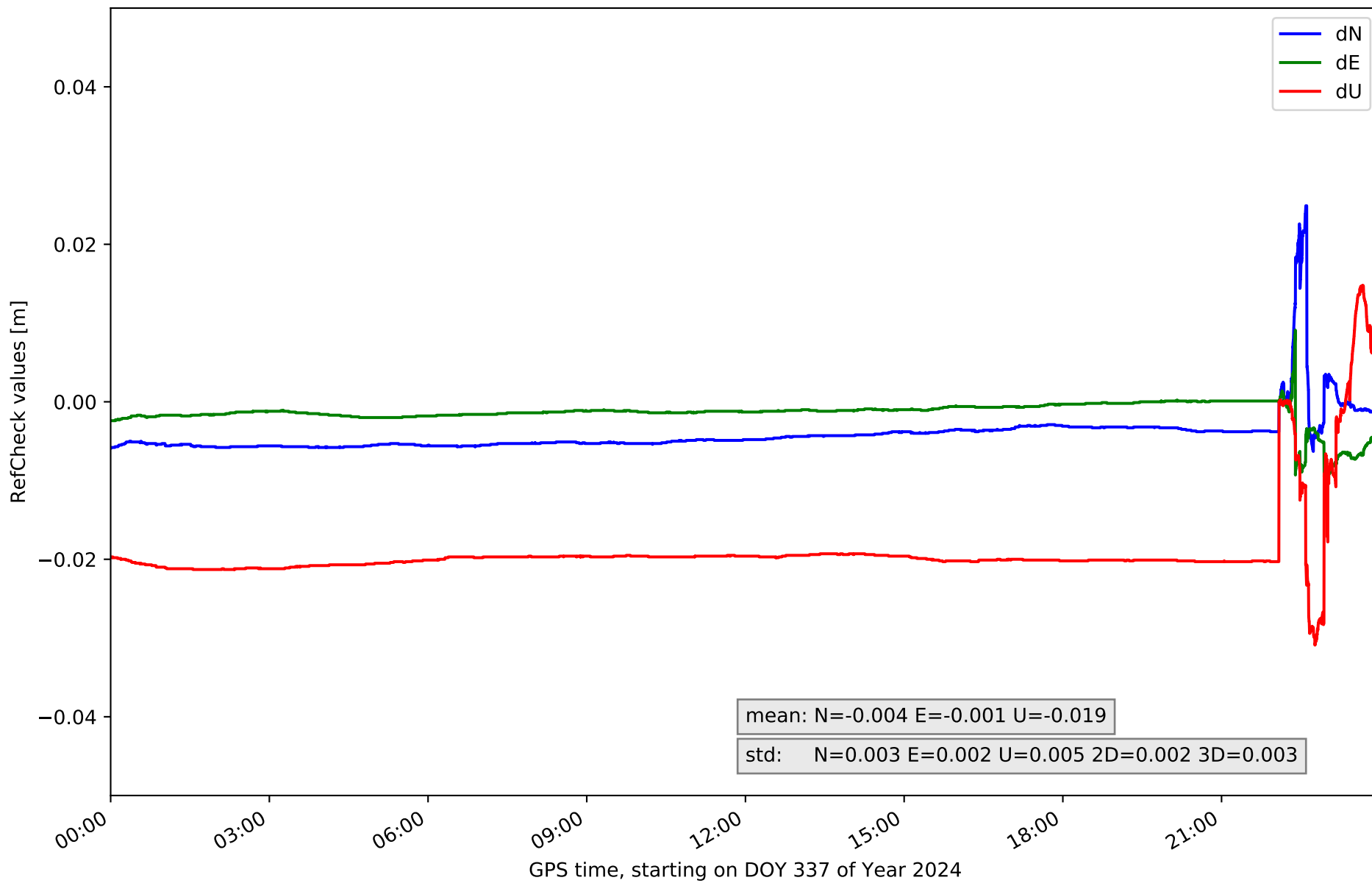
RefCheck for station FUER in network N31T



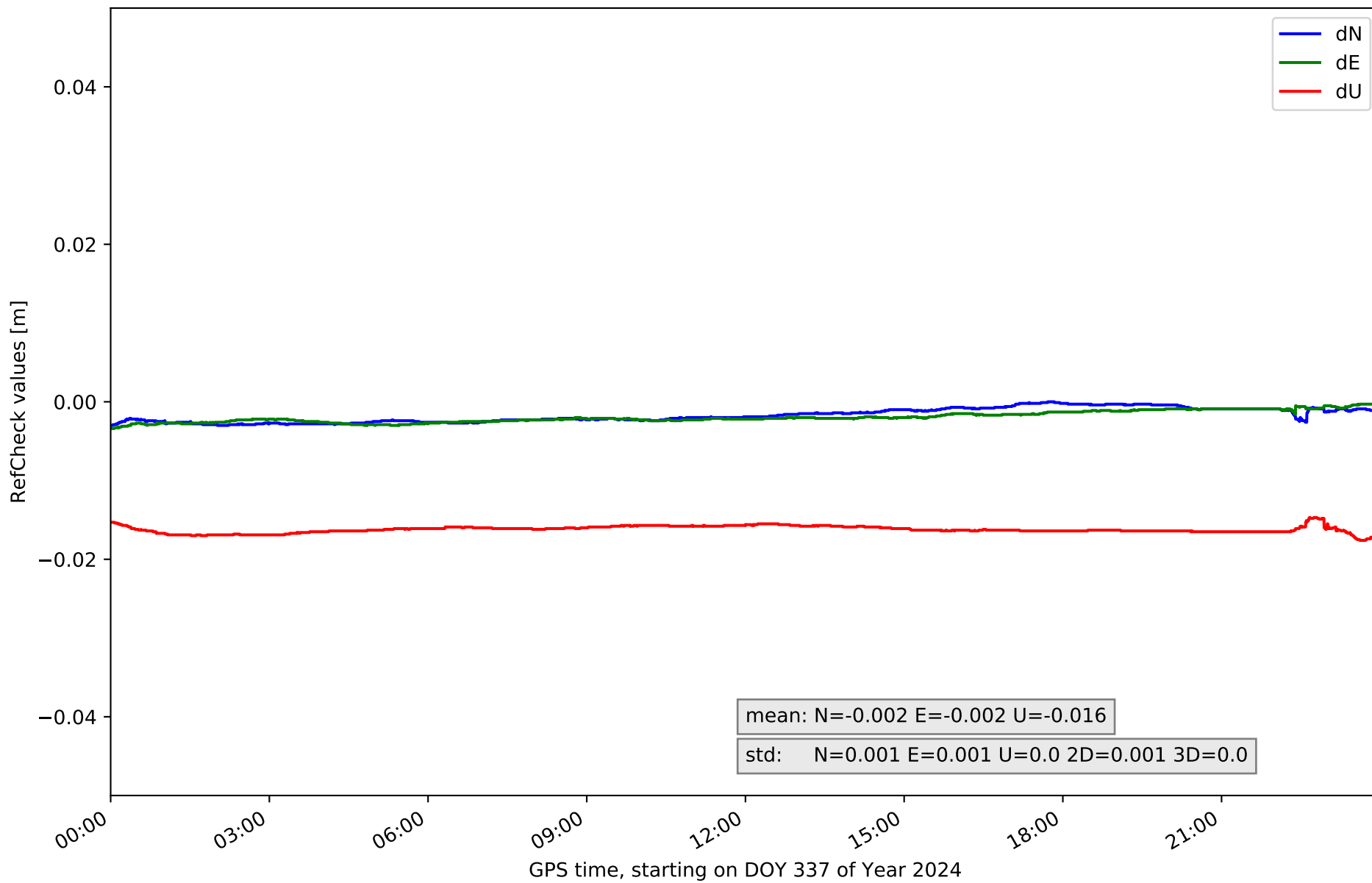
RefCheck for station LALA in network N31T



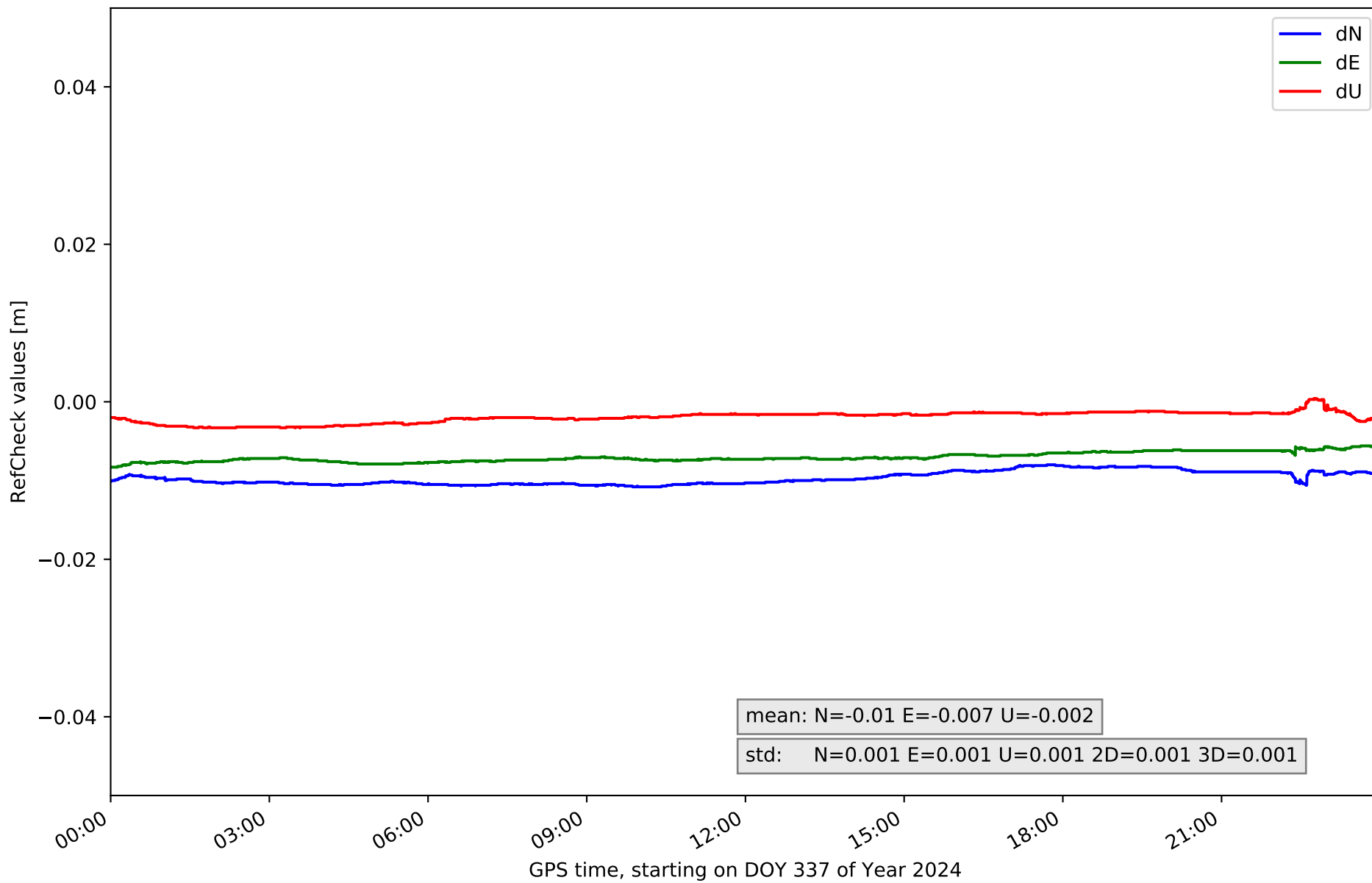
RefCheck for station LZ01 in network N31T



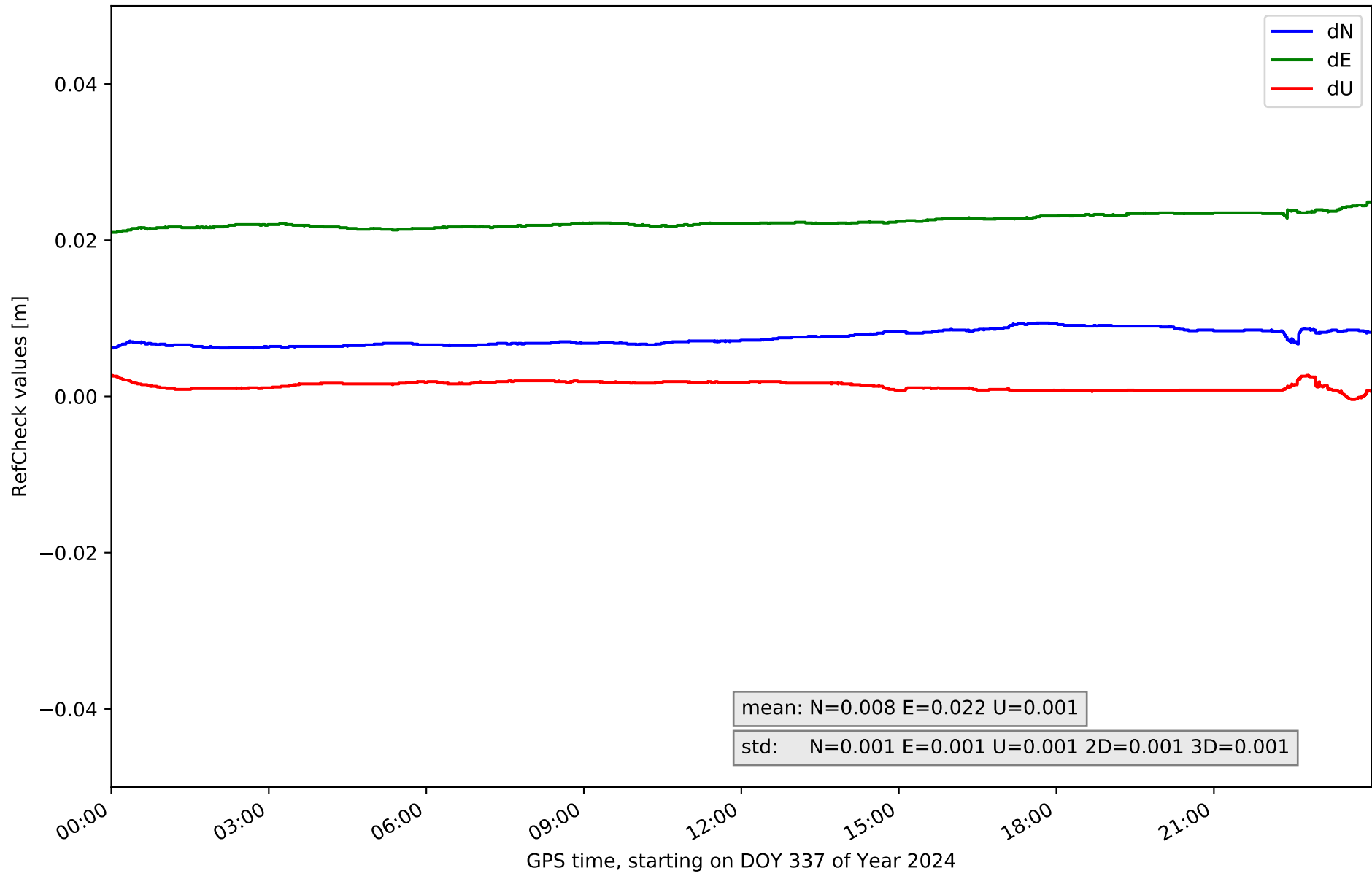
RefCheck for station LZ02 in network N31T



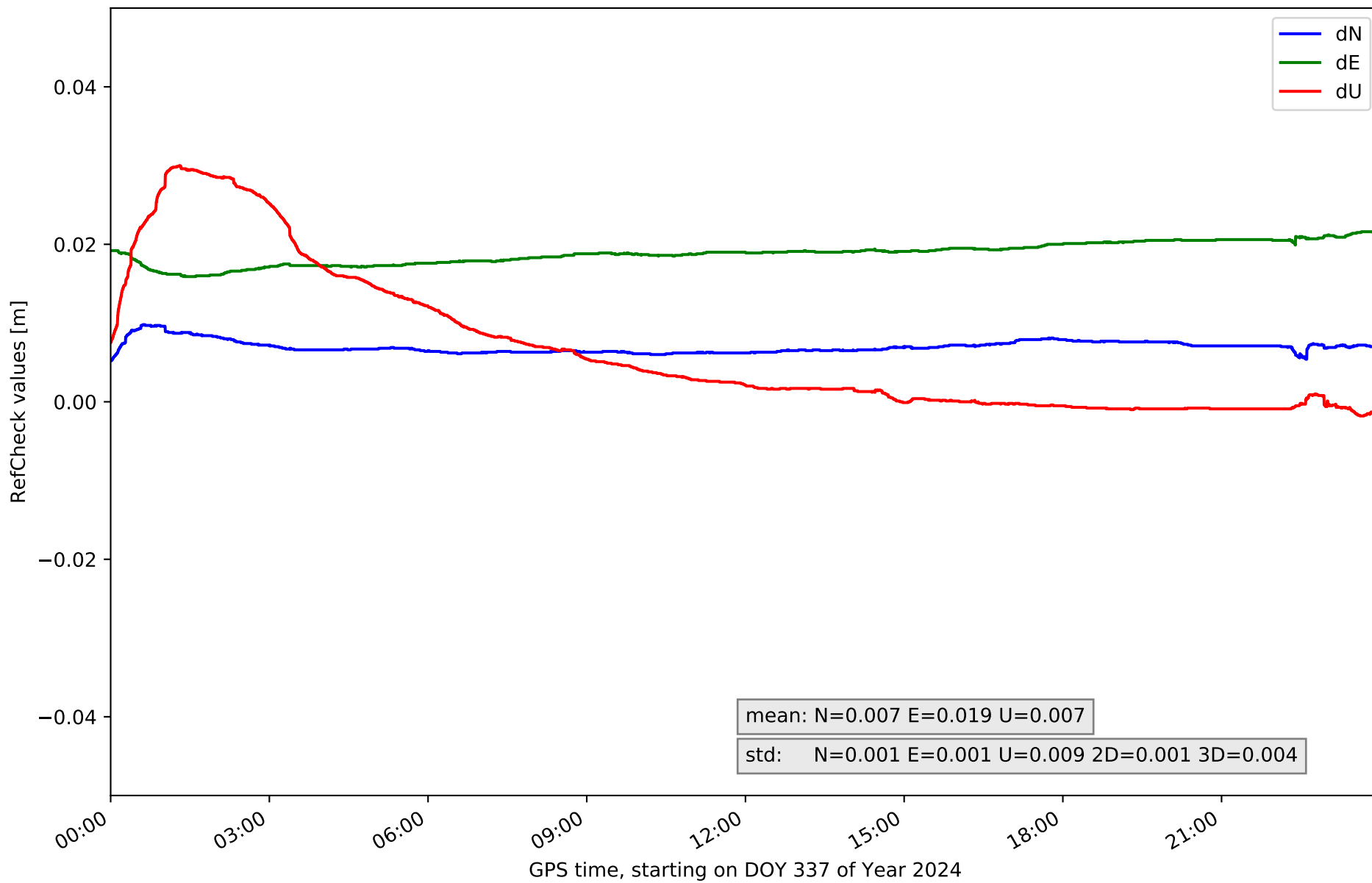
RefCheck for station LZ03 in network N31T



RefCheck for station MASP in network N31T



RefCheck for station ULP2 in network N31T



RefCheck values for network N31T

Station	Nmin	Nmax	Nstd	Emin	Emax	Estd	Umin	Umax	Ustd	std2D	std3D	#2D > 0.01	% 2D > 0.01	#3D > 0.02	% 3D > 0.02
FUER	0.003	0.005	0.001	0.003	0.006	0.001	-0.018	-0.014	0.001	0.001	0.001	0	0.0	0	0.0
LALA	0.006	0.009	0.001	0.007	0.01	0.001	-0.012	-0.009	0.0	0.001	0.001	68697	79.9	0	0.0
LZ01	-0.006	0.025	0.003	-0.01	0.009	0.002	-0.031	0.015	0.005	0.002	0.003	1077	1.3	74549	86.7
LZ02	-0.003	0.0	0.001	-0.003	0.0	0.001	-0.018	-0.015	0.0	0.001	0.0	0	0.0	0	0.0
LZ03	-0.011	-0.008	0.001	-0.008	-0.005	0.001	-0.003	0.0	0.001	0.001	0.001	85979	100.0	0	0.0
MASP	0.006	0.009	0.001	0.021	0.025	0.001	-0.0	0.003	0.001	0.001	0.001	85979	100.0	85979	100.0
ULP2	0.005	0.01	0.001	0.016	0.022	0.001	-0.002	0.03	0.009	0.001	0.004	85979	100.0	81958	95.3
Mean	0.0	0.007	0.001	0.004	0.01	0.001	-0.012	0.001	0.002	0.001	0.002	46815.9	54.5	34640.9	40.3
Min/Max	-0.011	0.025	0.003	-0.01	0.025	0.002	-0.031	0.03	0.009	0.002	0.004	85979	100.0	85979	100.0

fixing statistic for network N31T

fixing percentage of	all GNSS	G	R	E	C
using threshold 0.3	82.4	78.2	84.2	90.5	84.5
considering satellites with dual-frequency fixed	81.9	74.5	84.0	89.7	82.9
considering all signals separately	80.7	70.9	84.0	90.0	81.1