

## summary for network NET3

timeperiod chosen: from 2024-10-30-00:00:00 until 2024-10-30-23:59:59

average update rate (durations larger than 15 seconds considered as observation gap): 1.0 seconds

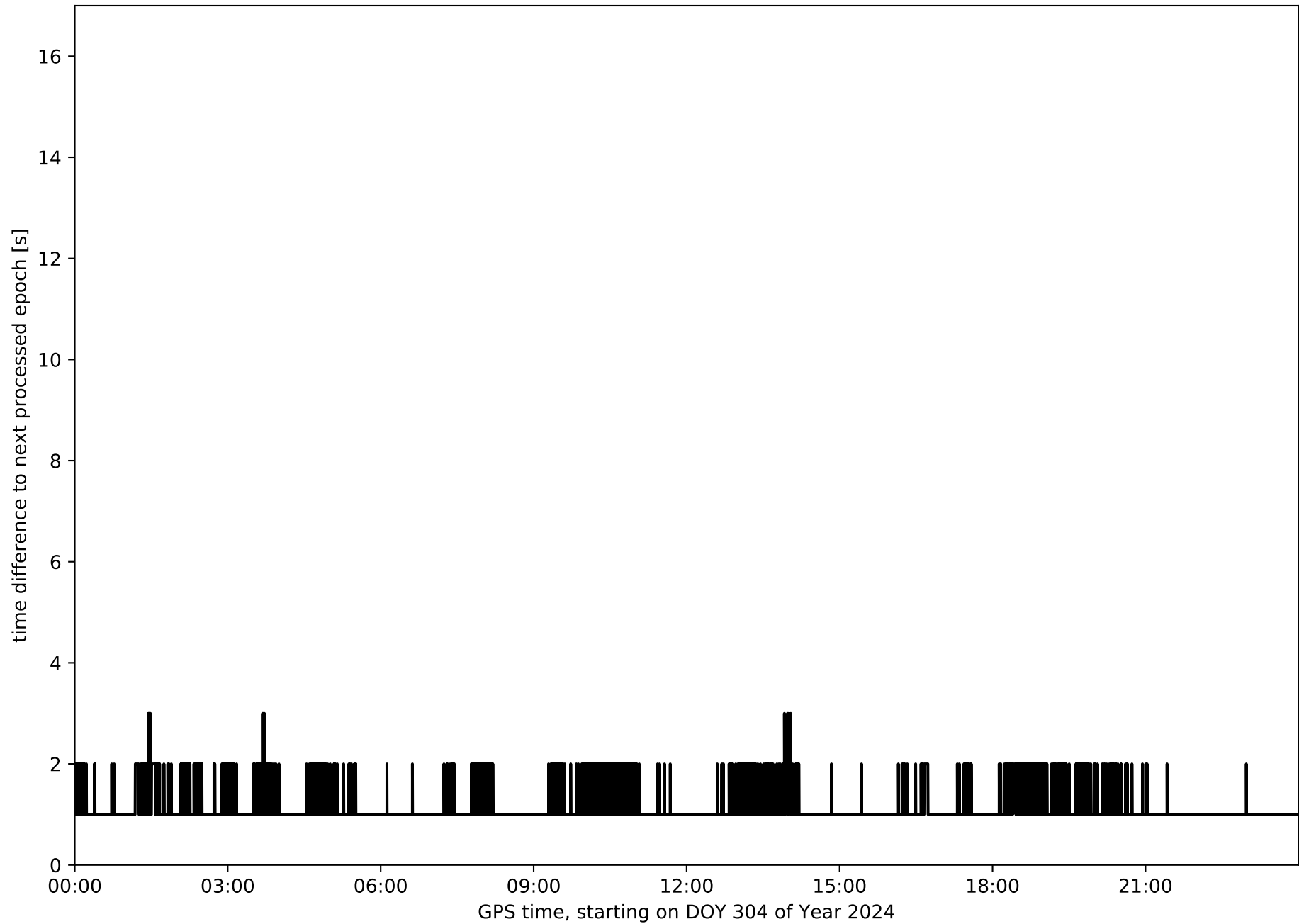
average fixing percentage with threshold set to 0.3: 89.9 percent

stations available: 10 of 11

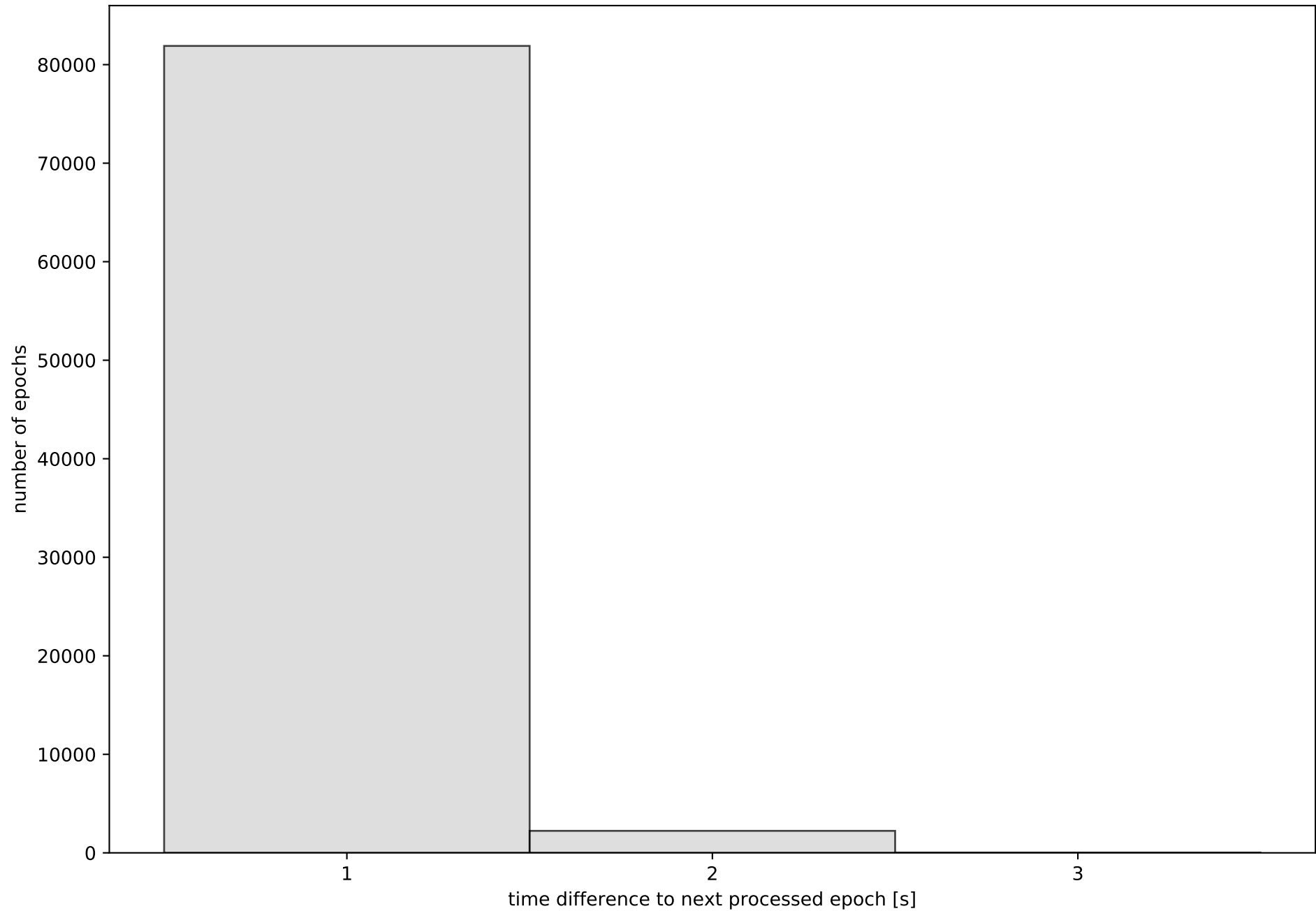
station information:

station ALBA:	antenna: LEIAR25.R3	LEIT	receiver: LEICA GR50	height: 754.692
station ALMO:	antenna: LEIAR25.R4	LEIT	receiver: LEICA GR25	height: 743.419
station CLTR:	antenna: LEIAR20	LEIM	receiver: LEICA GR10	height: 785.65
station COBA:	antenna: LEIAR20	LEIM	receiver: LEICA GR50	height: 202.146
station CUEN:	antenna: LEIAR20	LEIM	receiver: LEICA GR50	height: 998.123
station MOTA:	antenna: LEIAR25.R4	LEIT	receiver: LEICA GR50	height: 779.827
station MRAT:	antenna: LEIAR20	LEIM	receiver: LEICA GR30	height: 1227.566
station SONS:	antenna: LEIAR20	LEIM	receiver: LEICA GR50	height: 811.988
station VIAR:	antenna: GPPNULLANTENNA	NONE	receiver: LEICA GR50	height: 746.56
station VILH:	antenna: TRM159900.00	SCIS	receiver: TRIMBLE NETR9	height: 1022.778

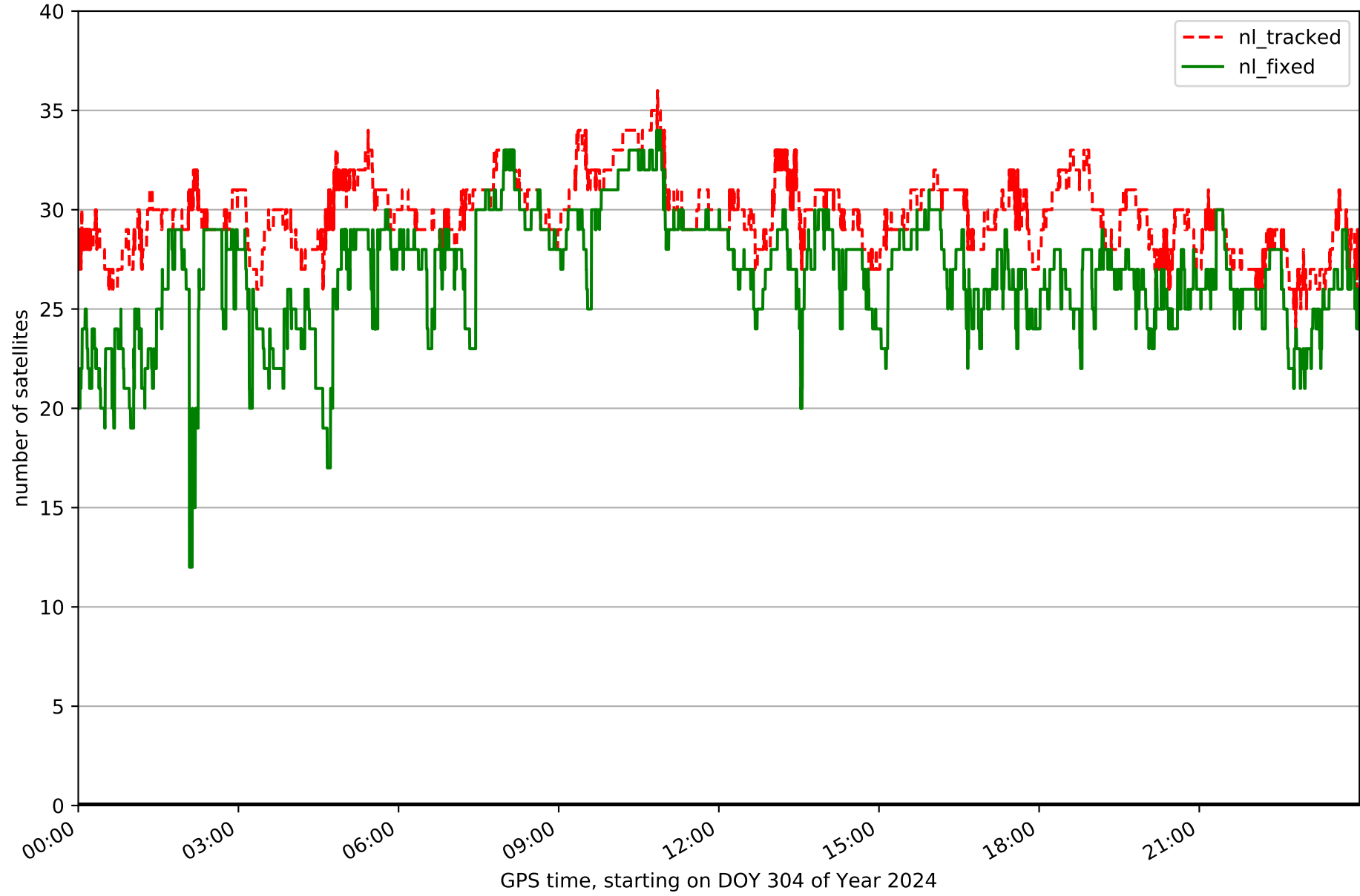
# Processing rate in network NET3



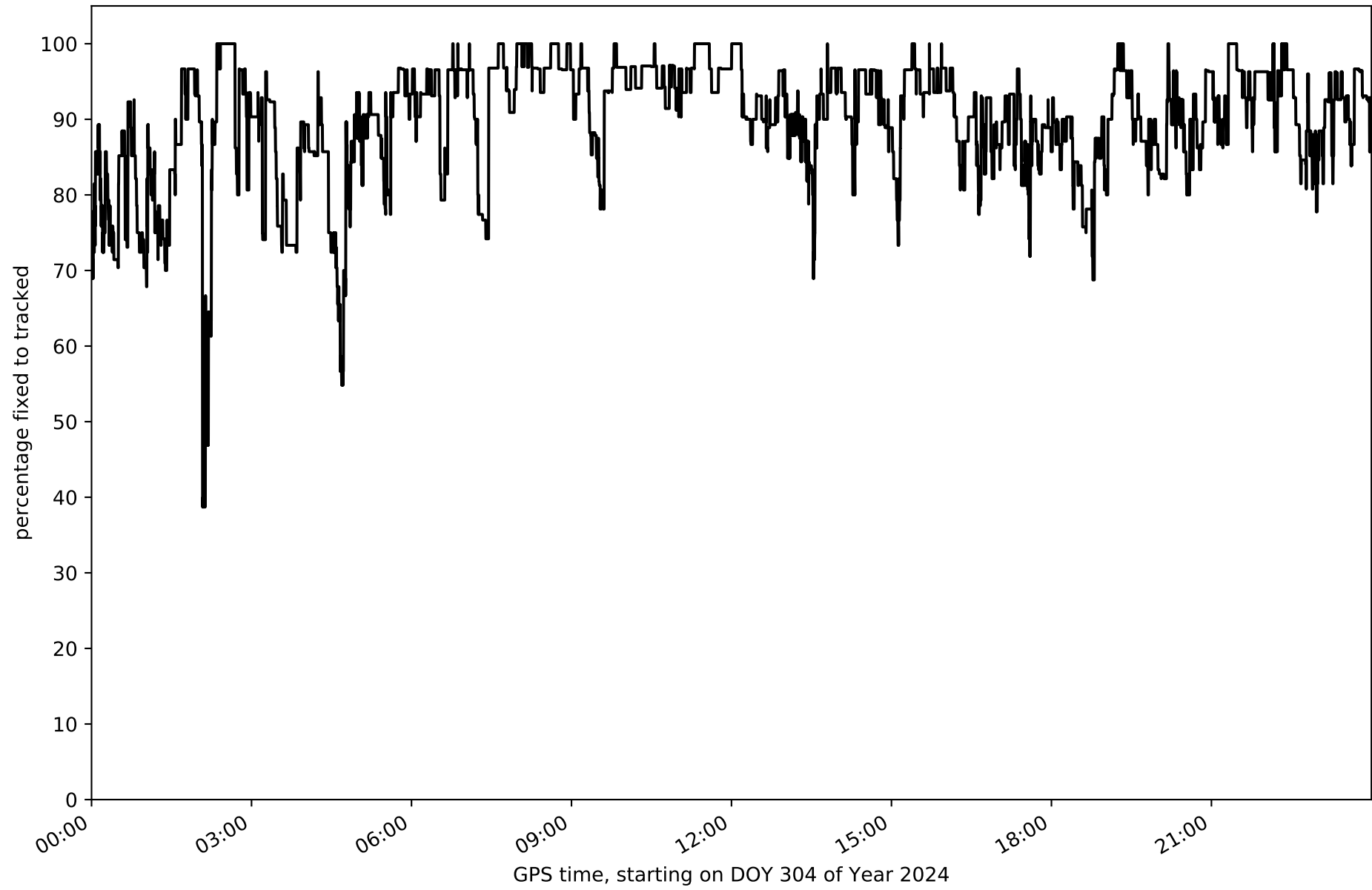
Histogram of the processing rate in network NET3 (durations larger 15 seconds neglected)



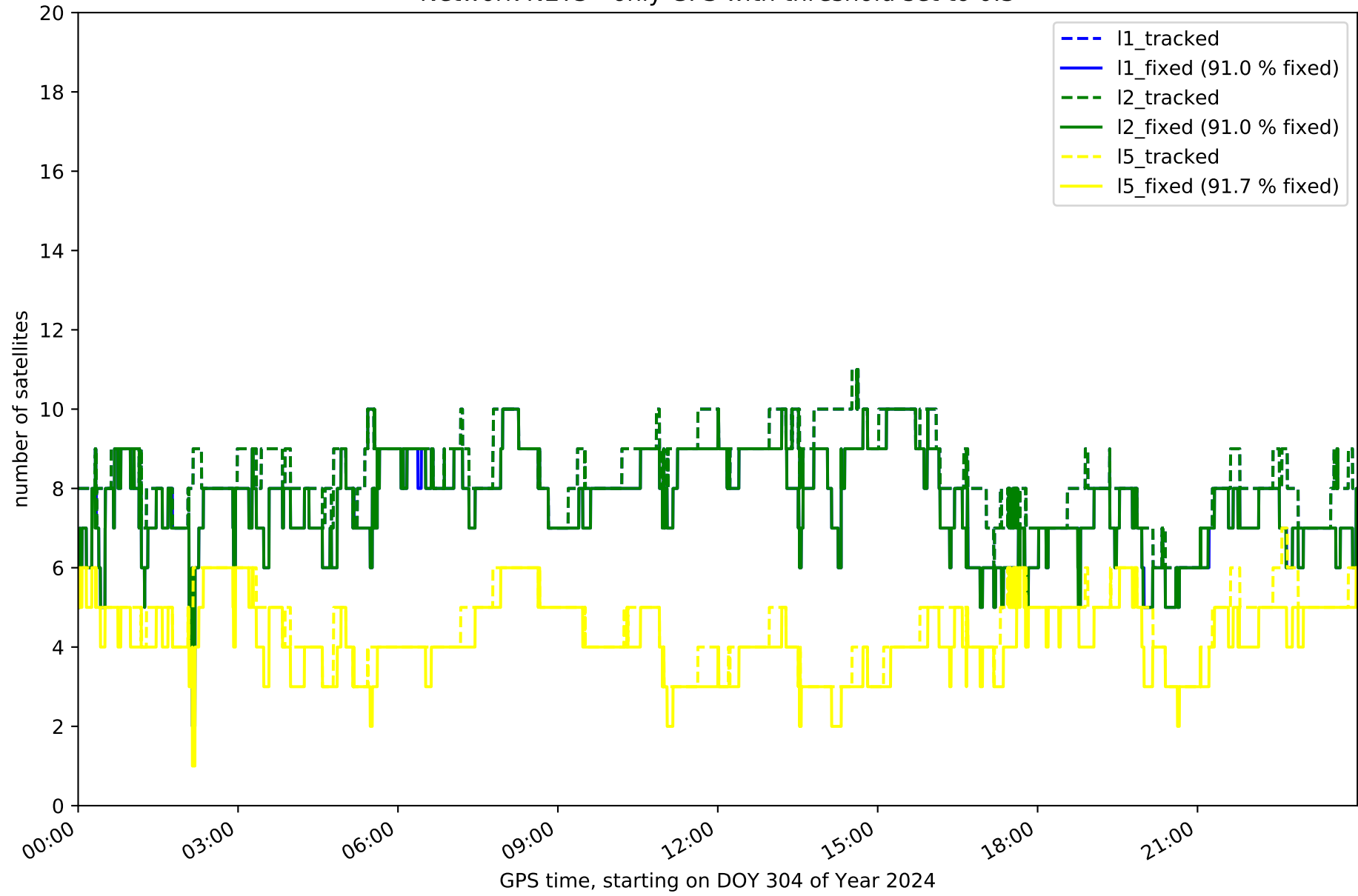
Network NET3 with threshold set to 0.3



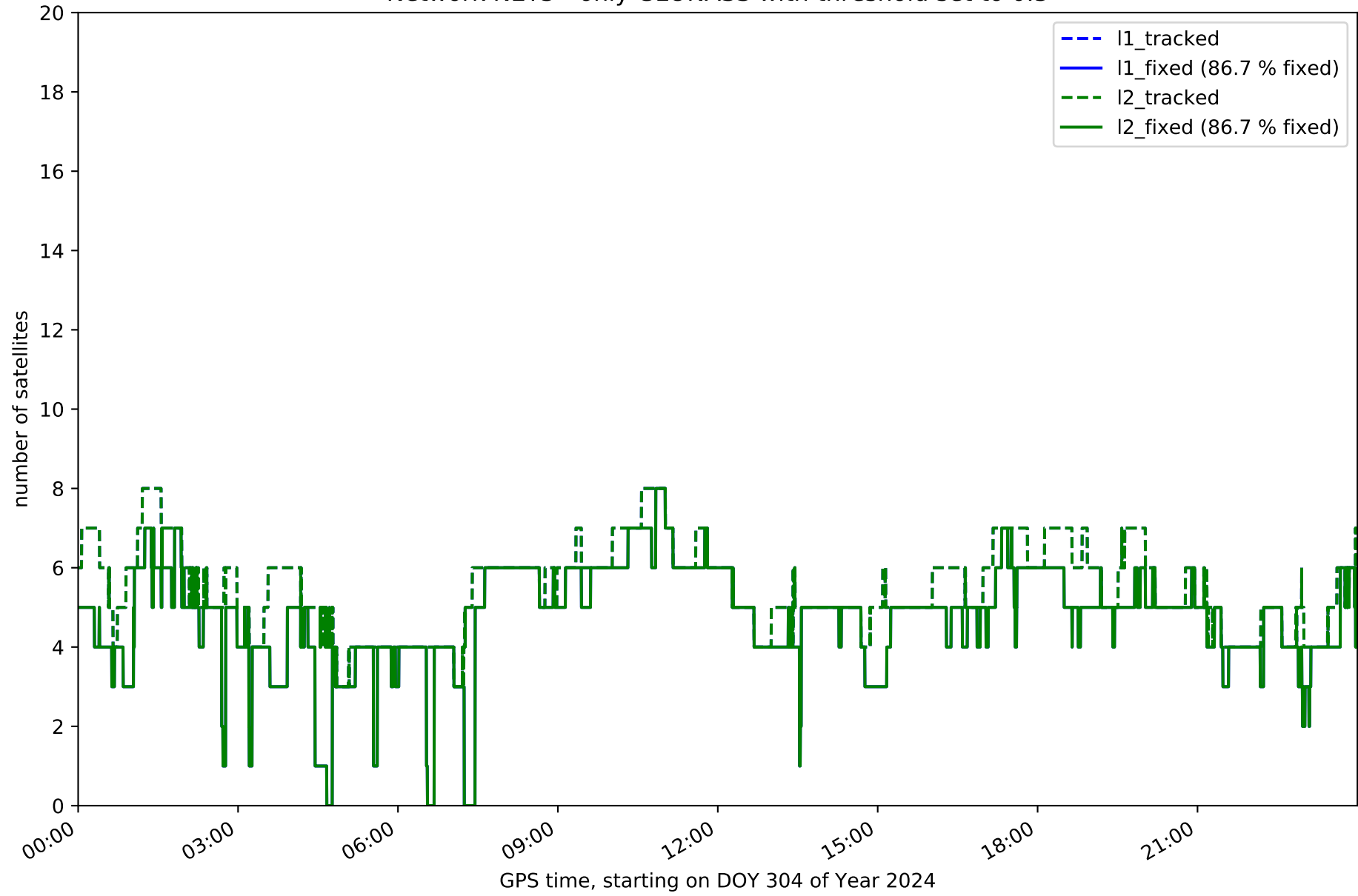
Fixing percentage of satellites in network NET3 with threshold set to 0.3



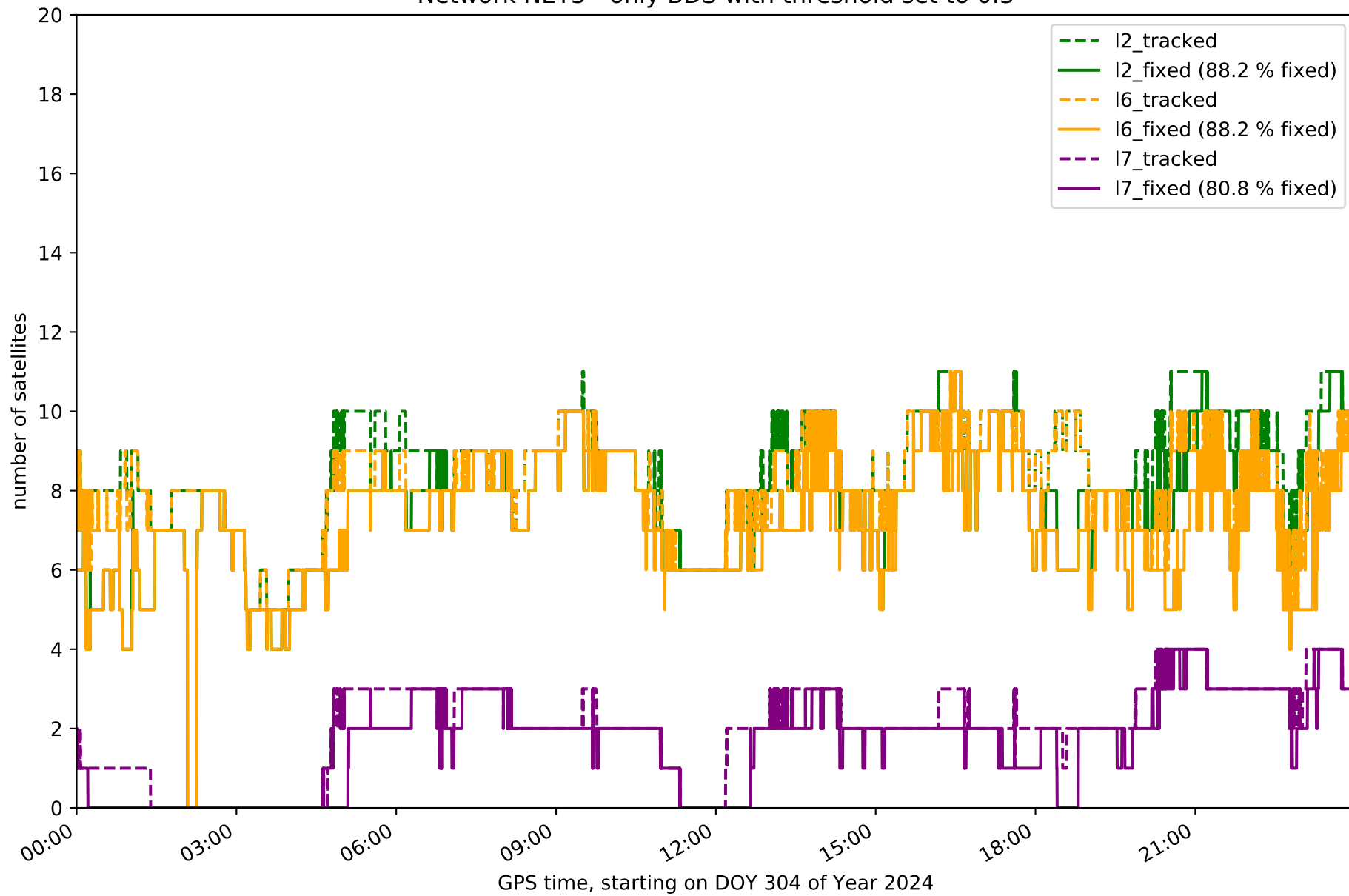
Network NET3 - only GPS with threshold set to 0.3



Network NET3 - only GLONASS with threshold set to 0.3

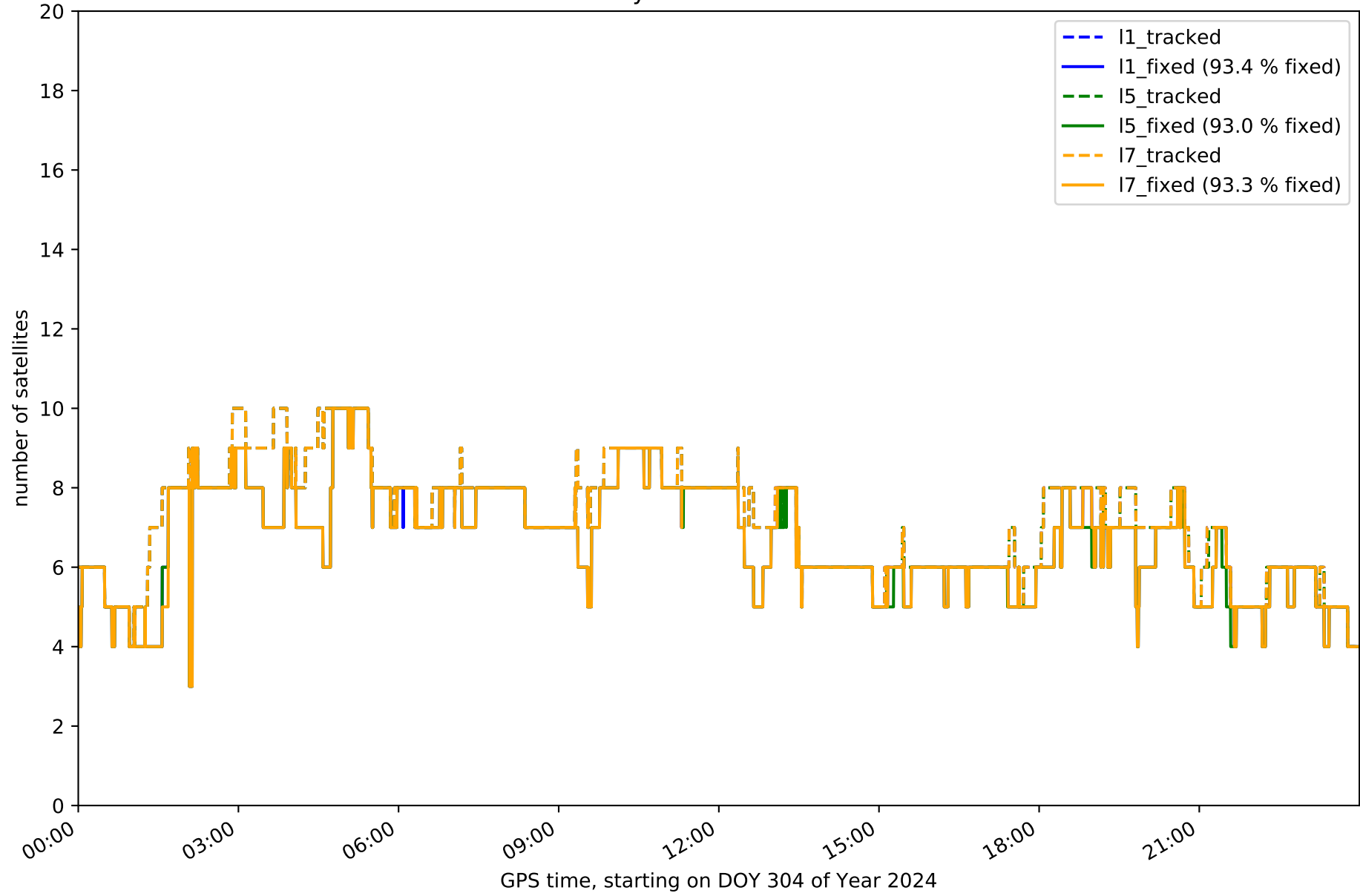


Network NET3 - only BDS with threshold set to 0.3

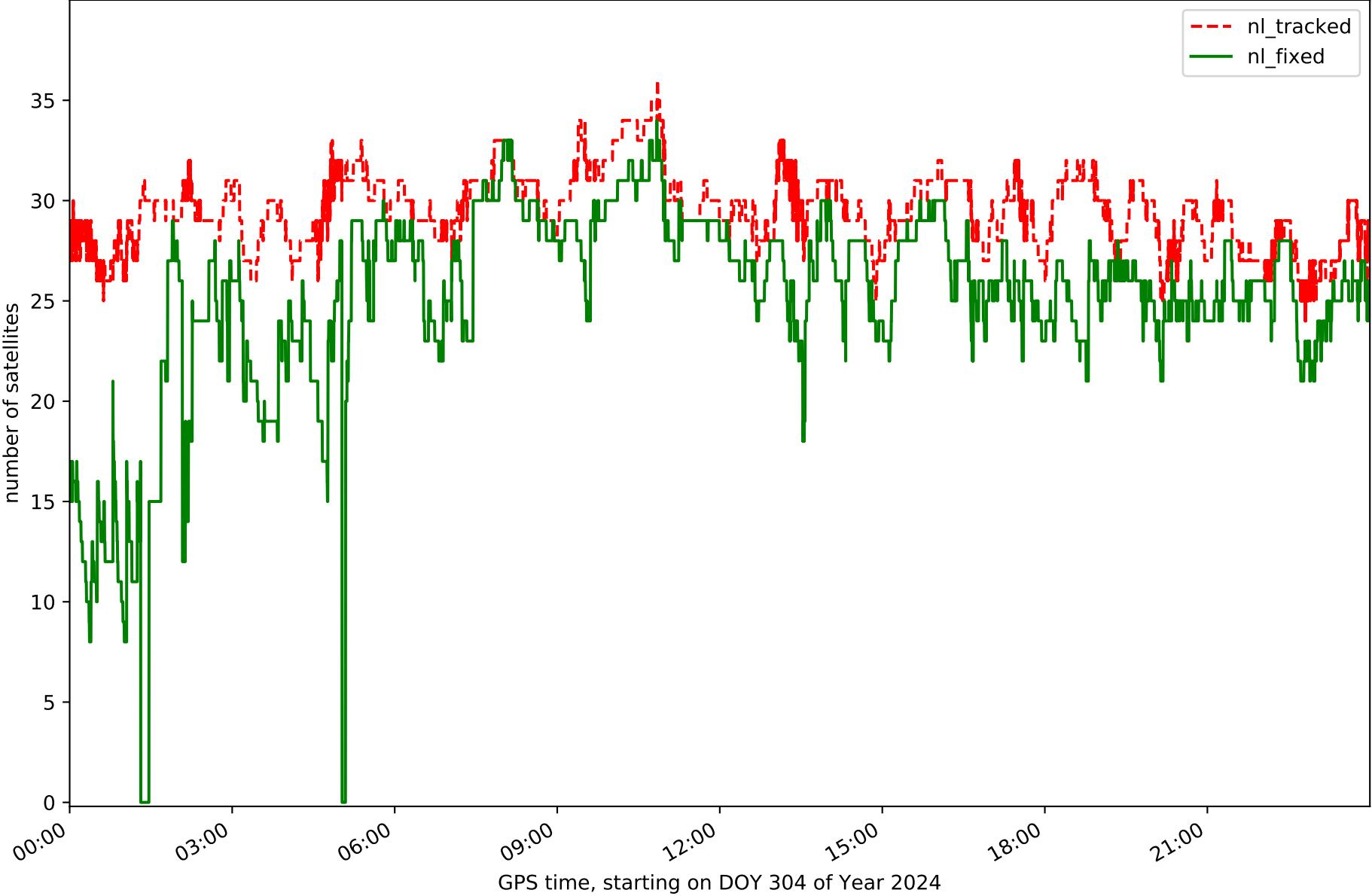




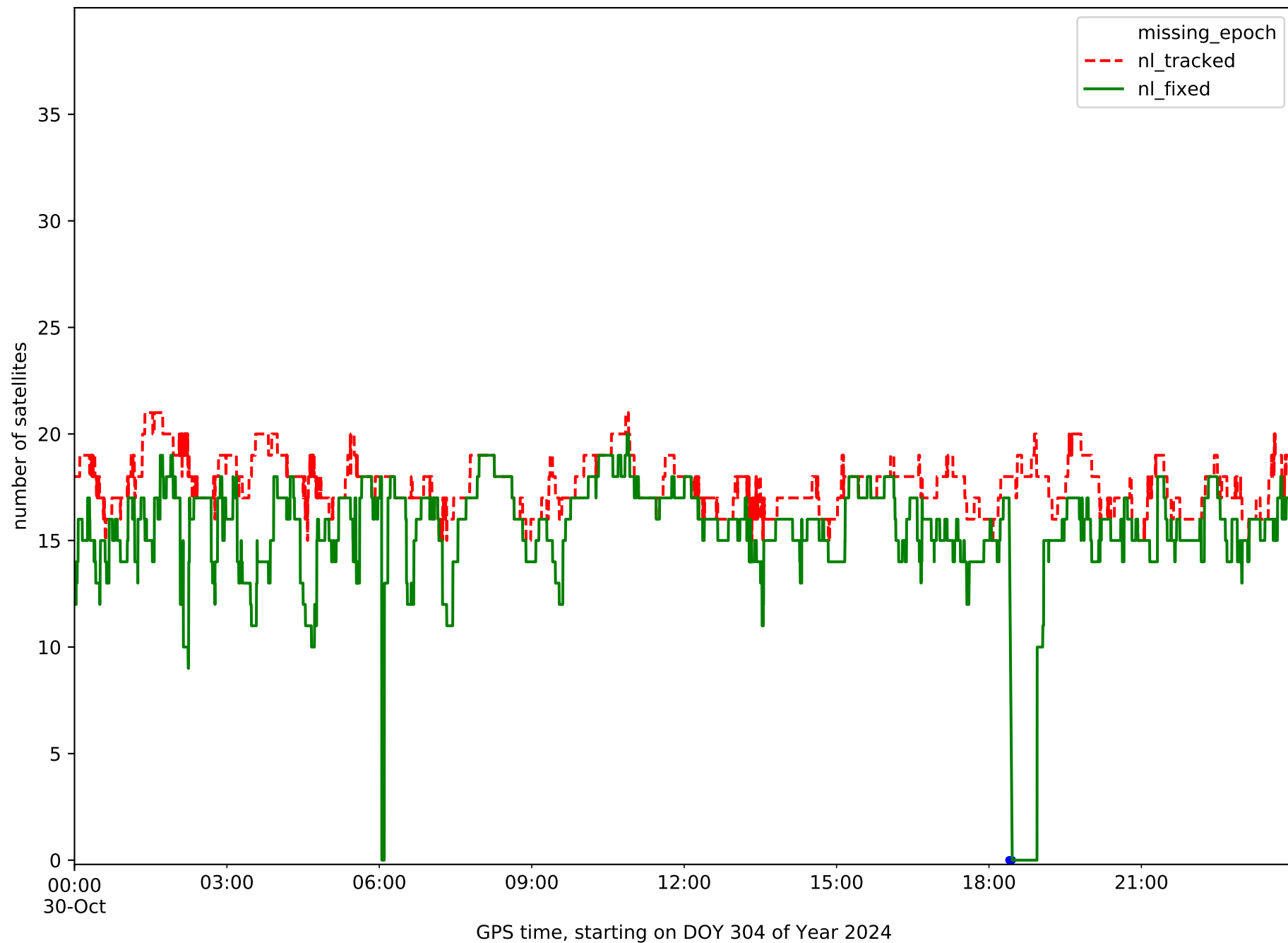
Network NET3 - only Galileo with threshold set to 0.3



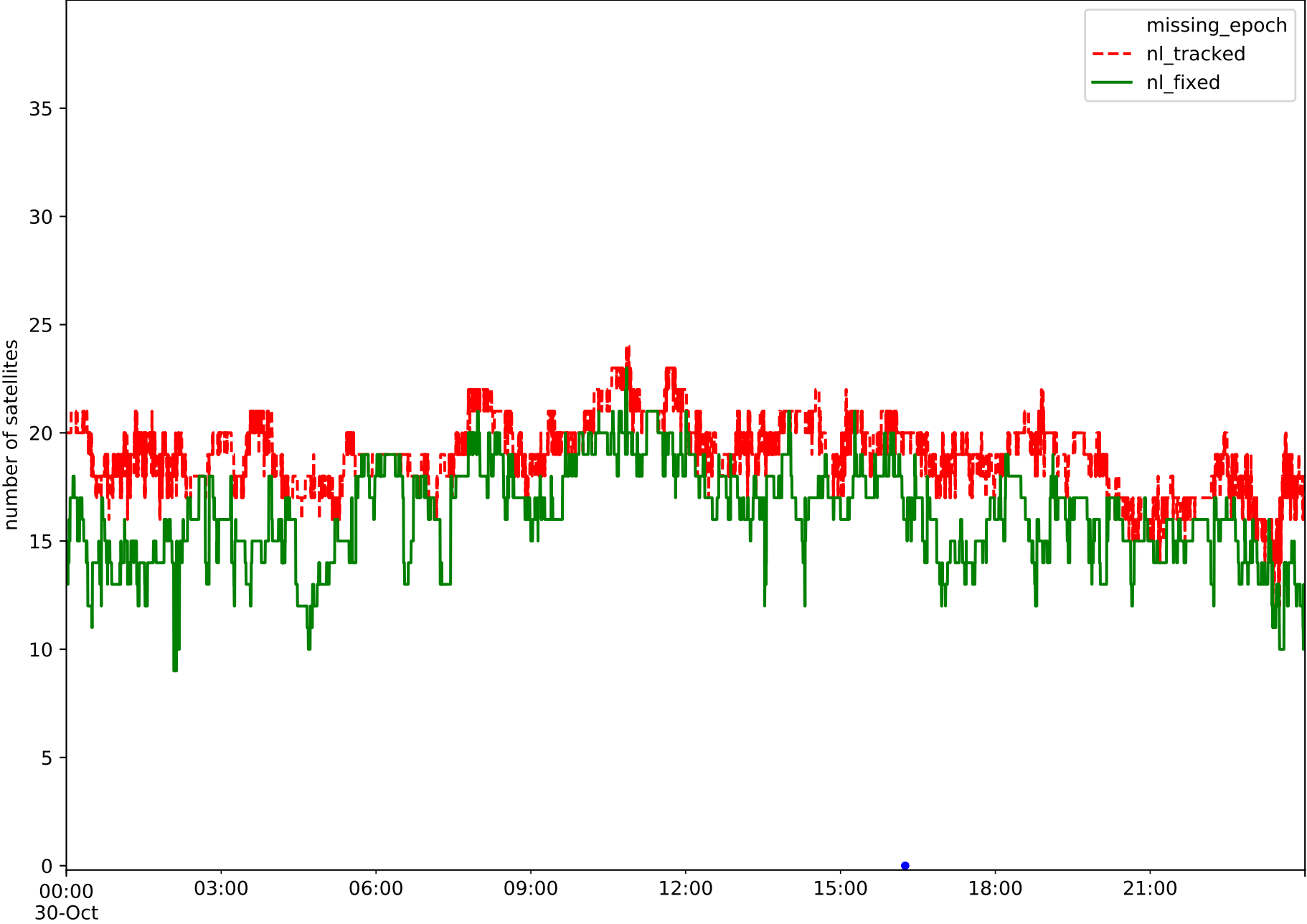
Station ALBA in network NET3



# Station ALMO in network NET3

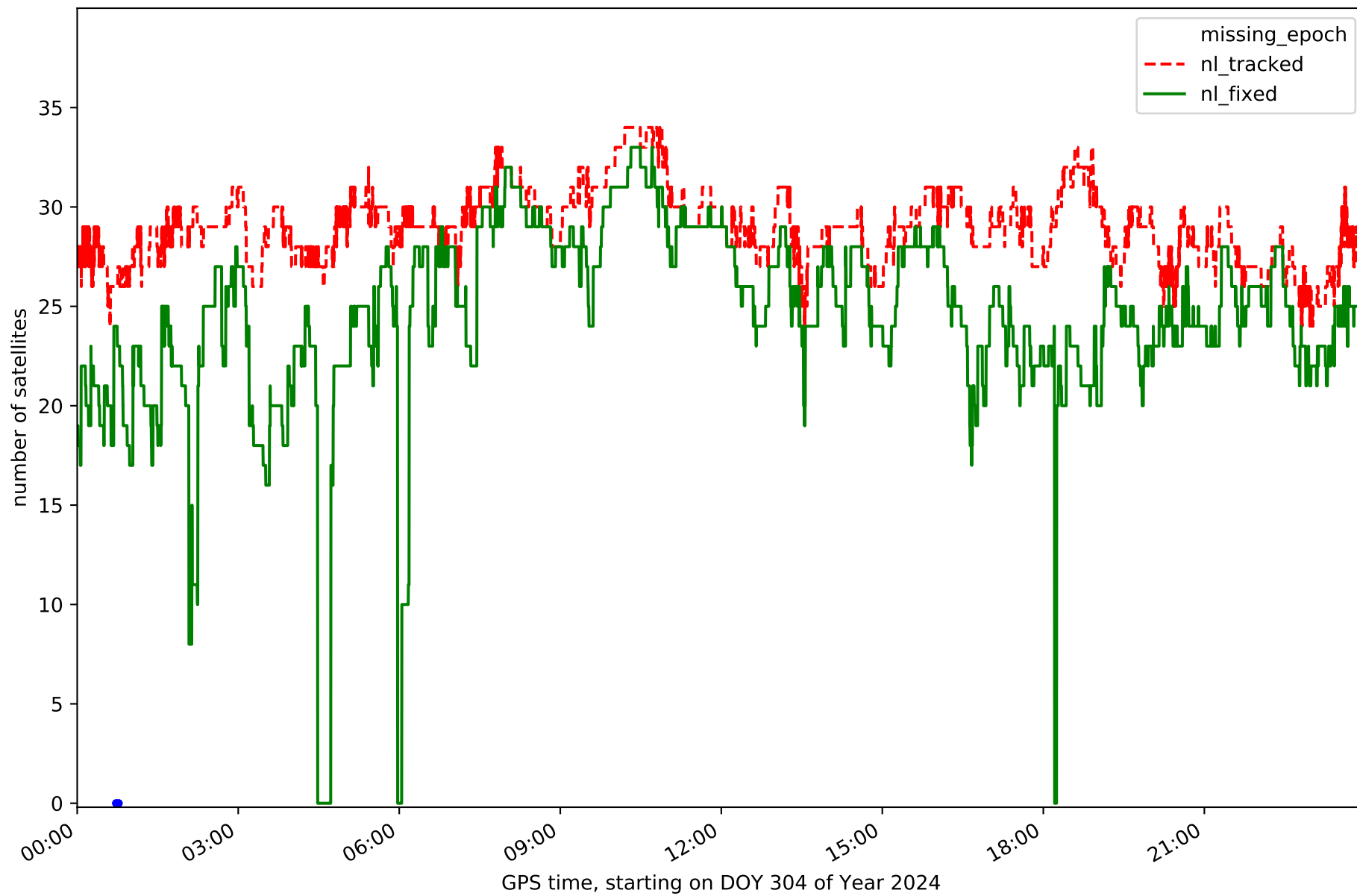


Station CLTR in network NET3

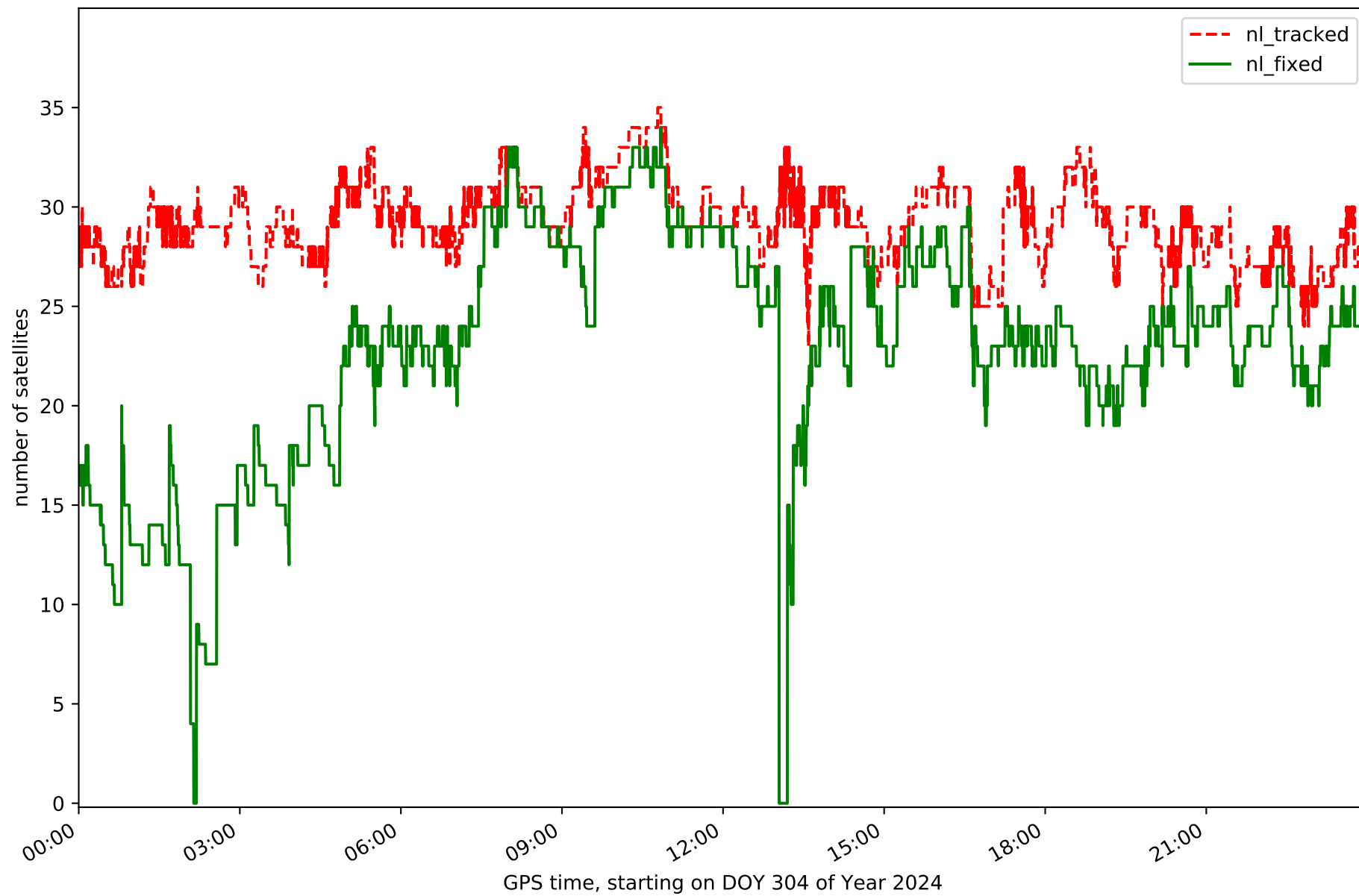


GPS time, starting on DOY 304 of Year 2024

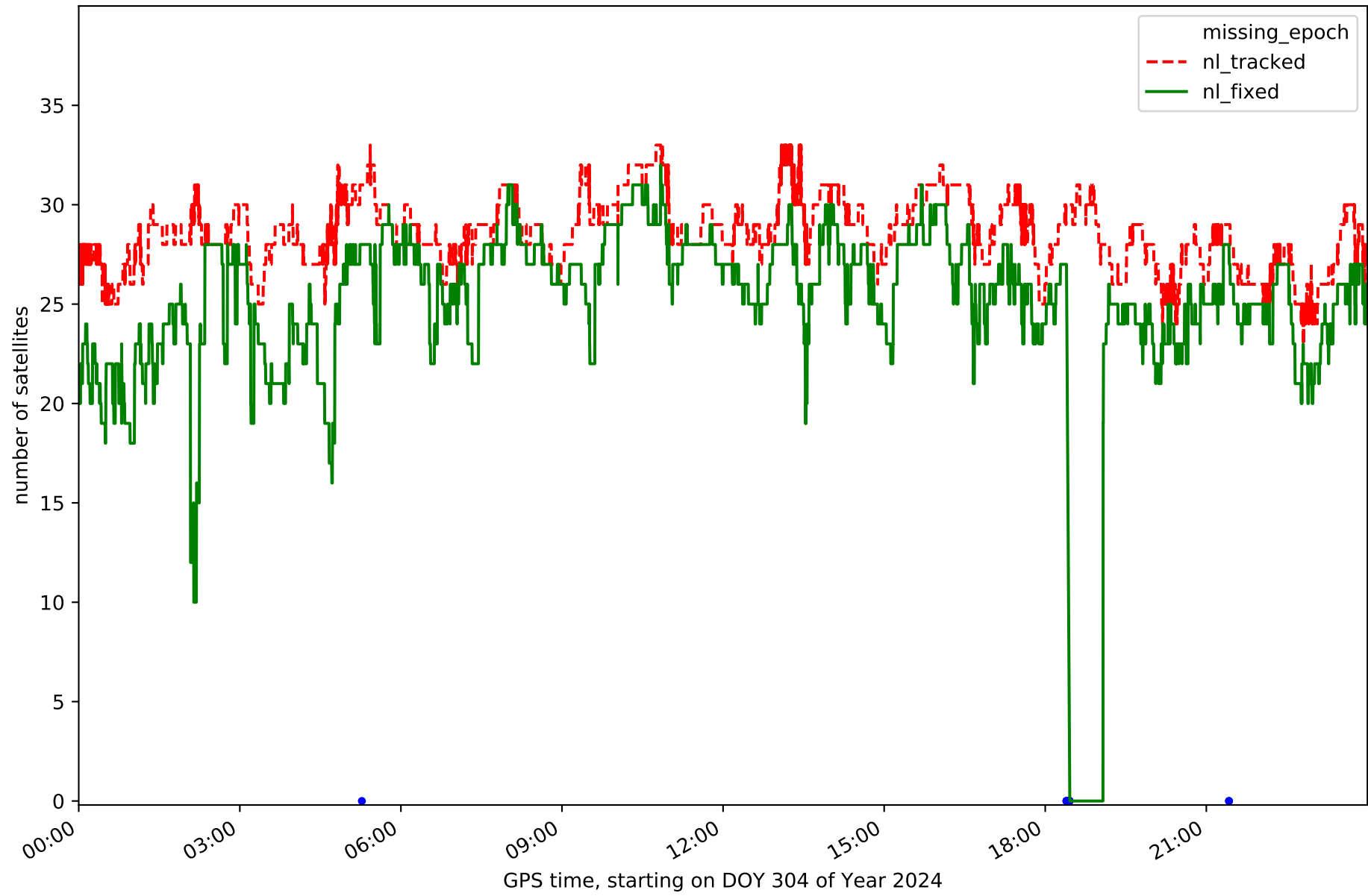
Station COBA in network NET3



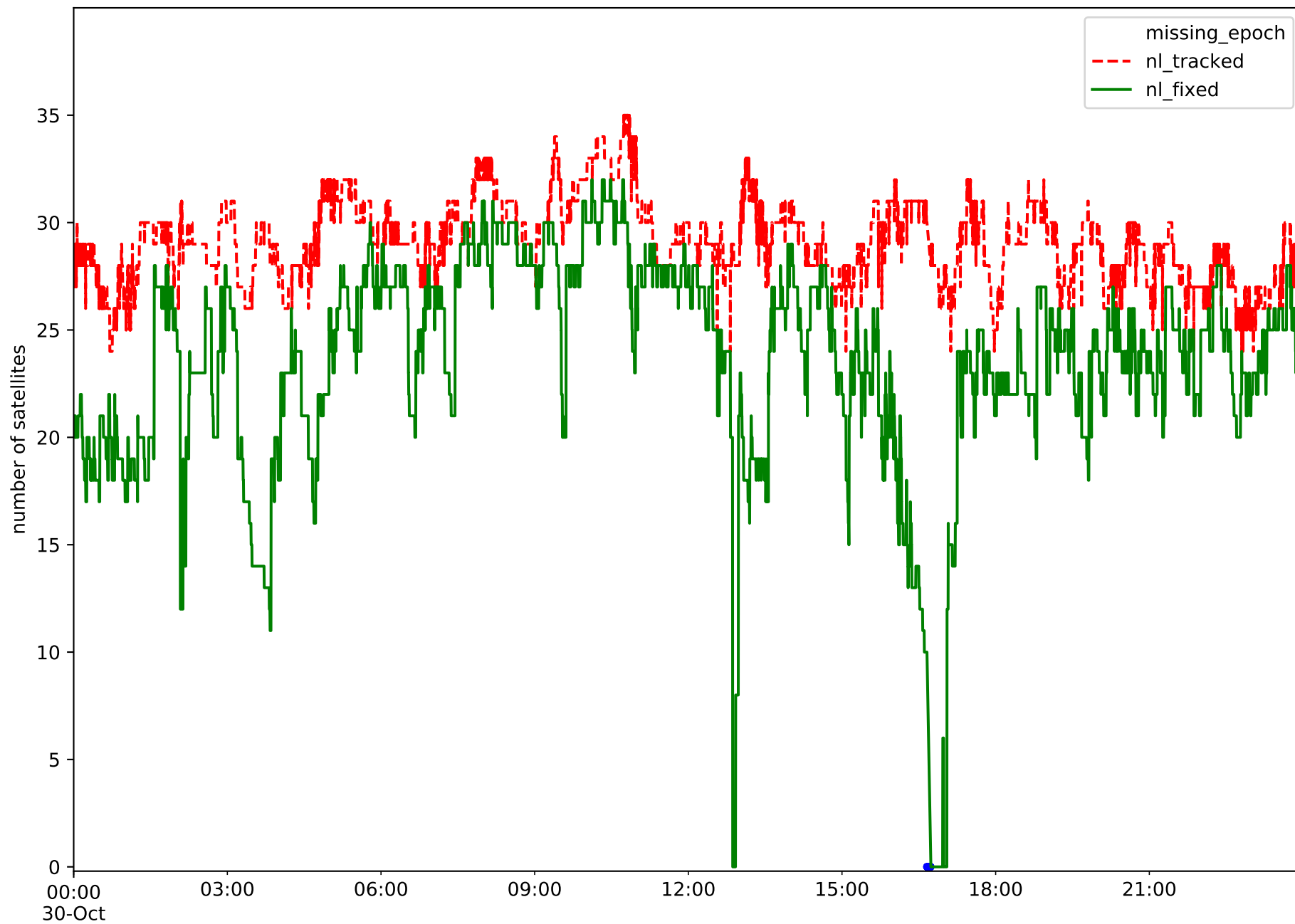
Station CUEN in network NET3



Station MOTA in network NET3



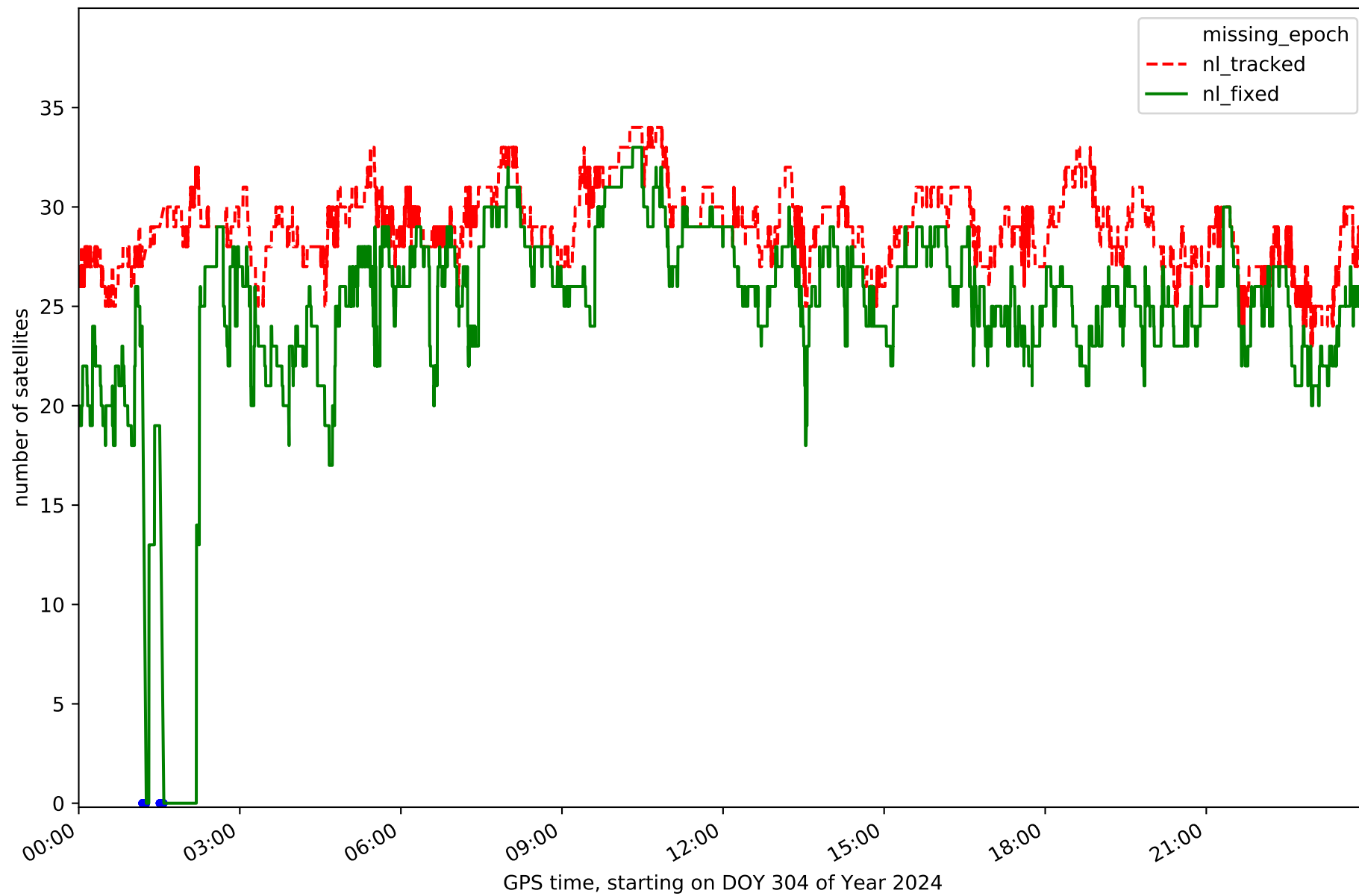
Station MRAT in network NET3



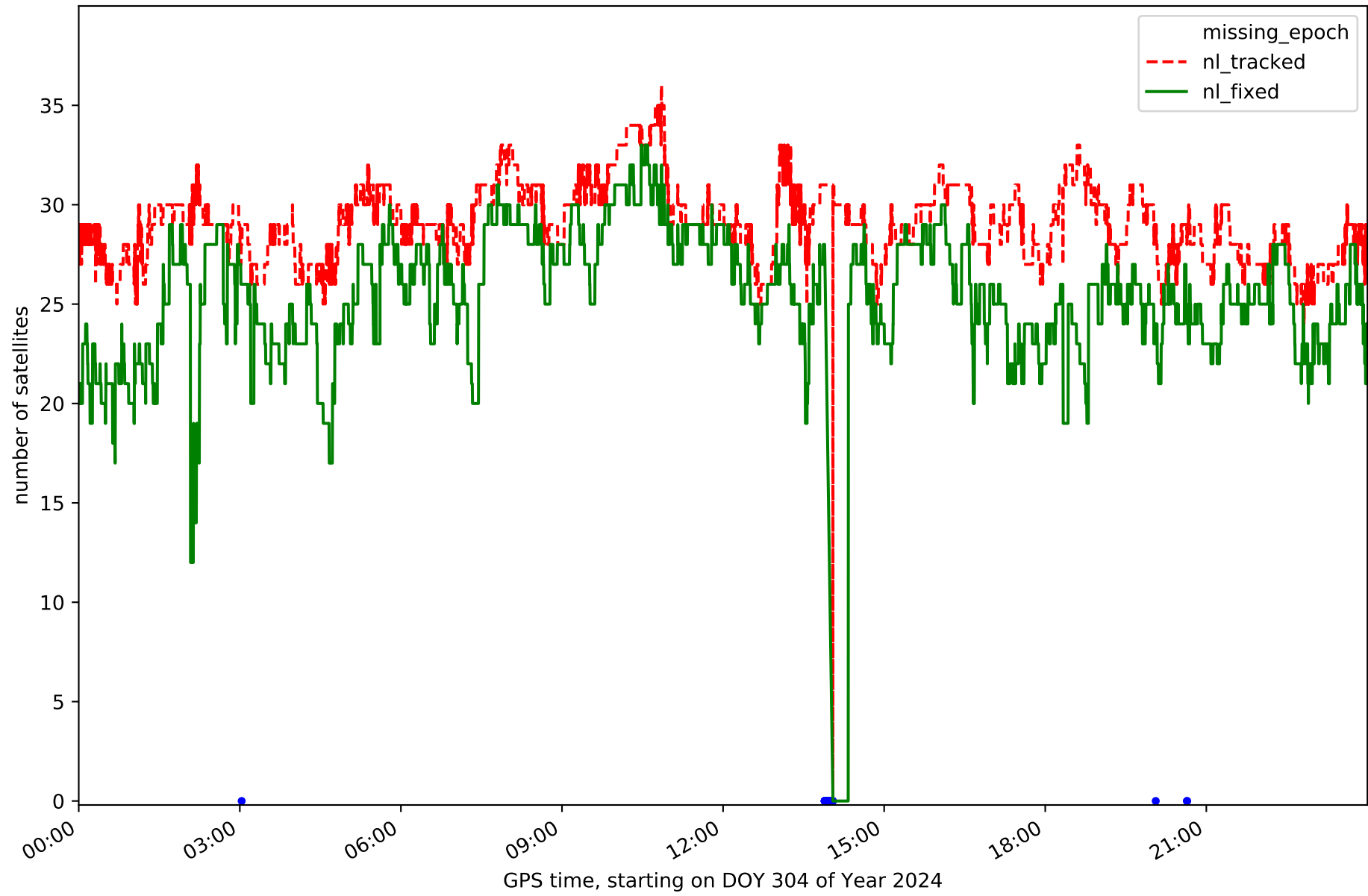
GPS time, starting on DOY 304 of Year 2024



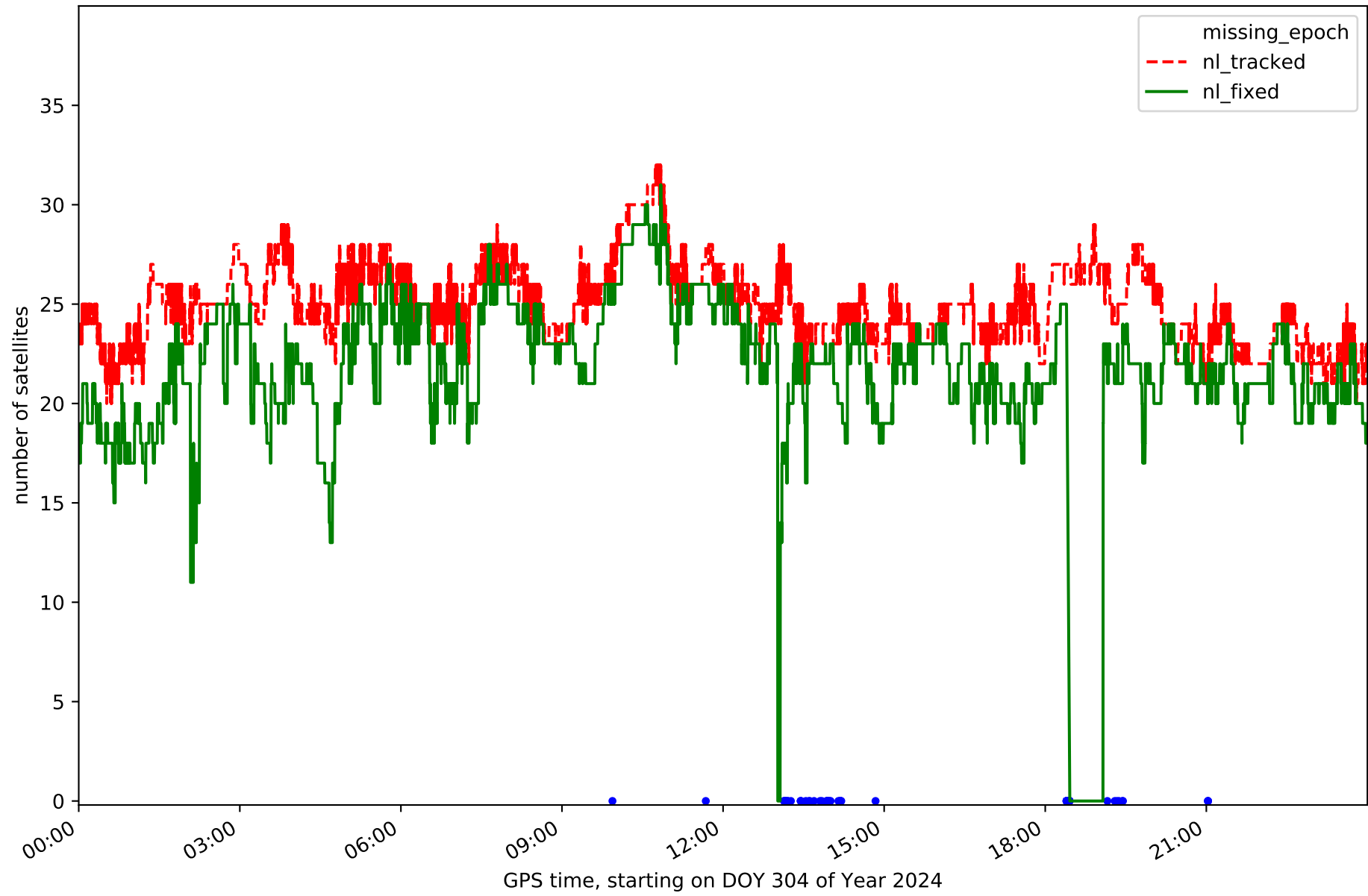
Station SONS in network NET3



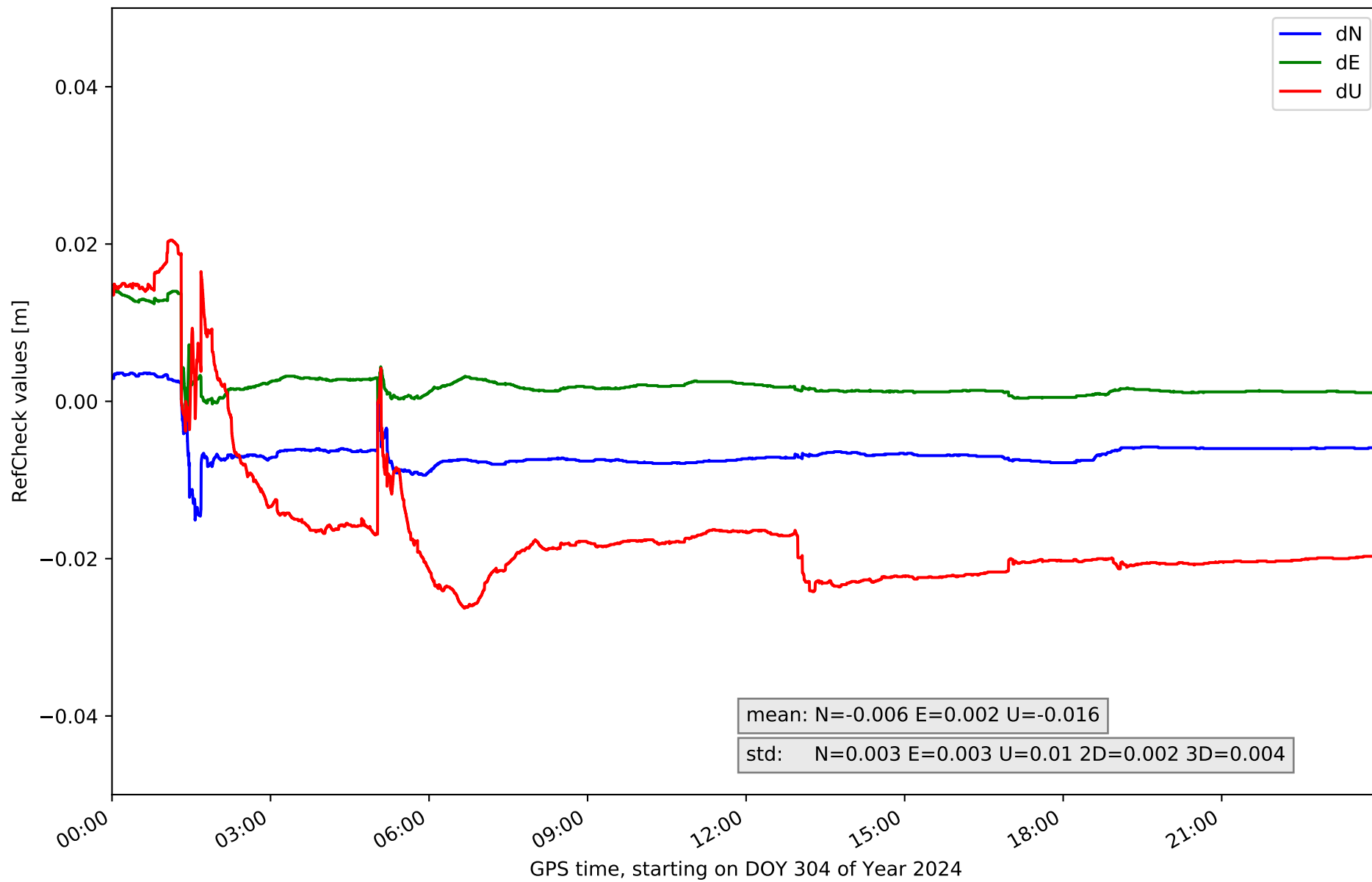
Station VIAR in network NET3



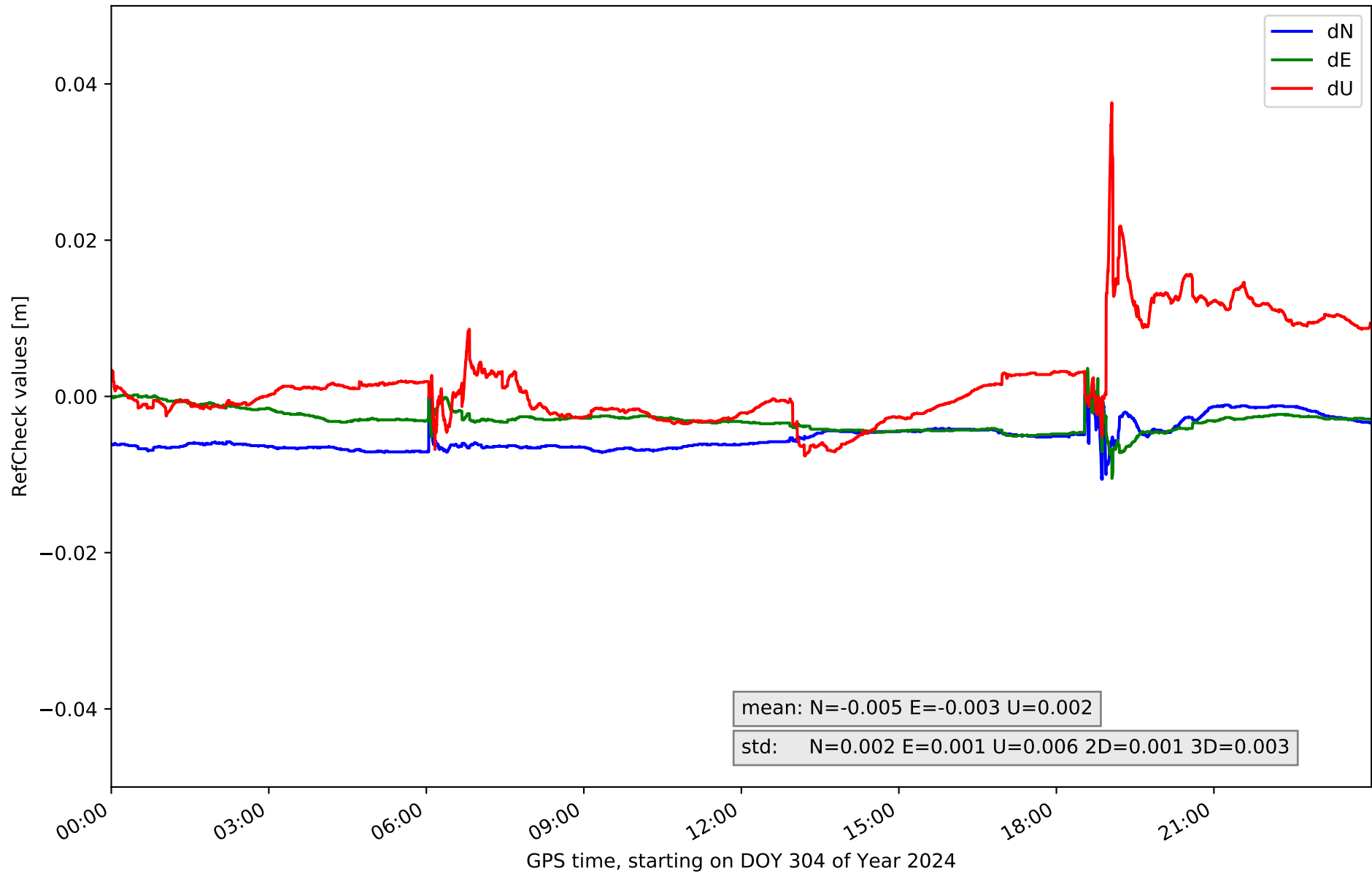
Station VILH in network NET3



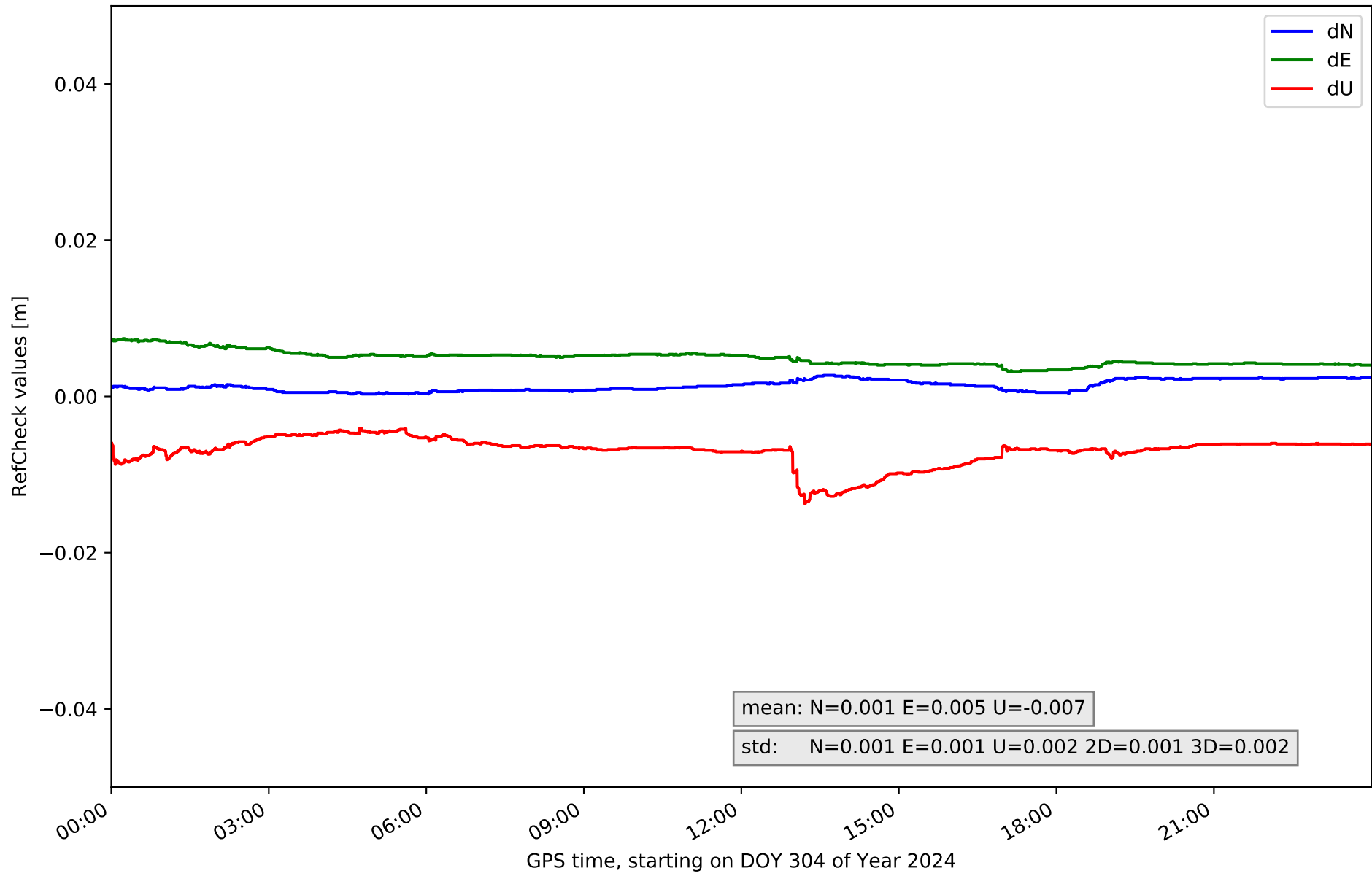
### RefCheck for station ALBA in network NET3



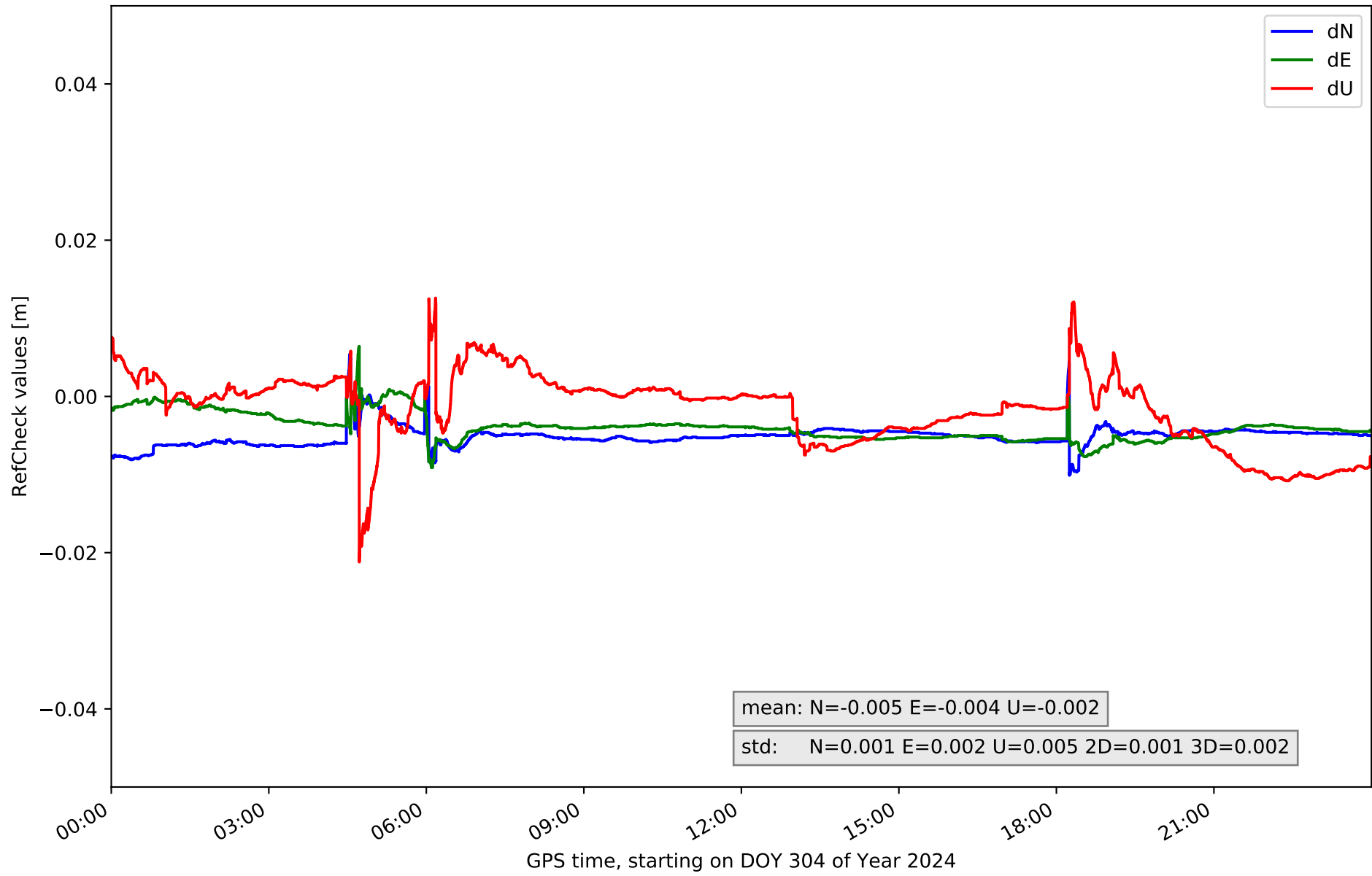
# RefCheck for station ALMO in network NET3



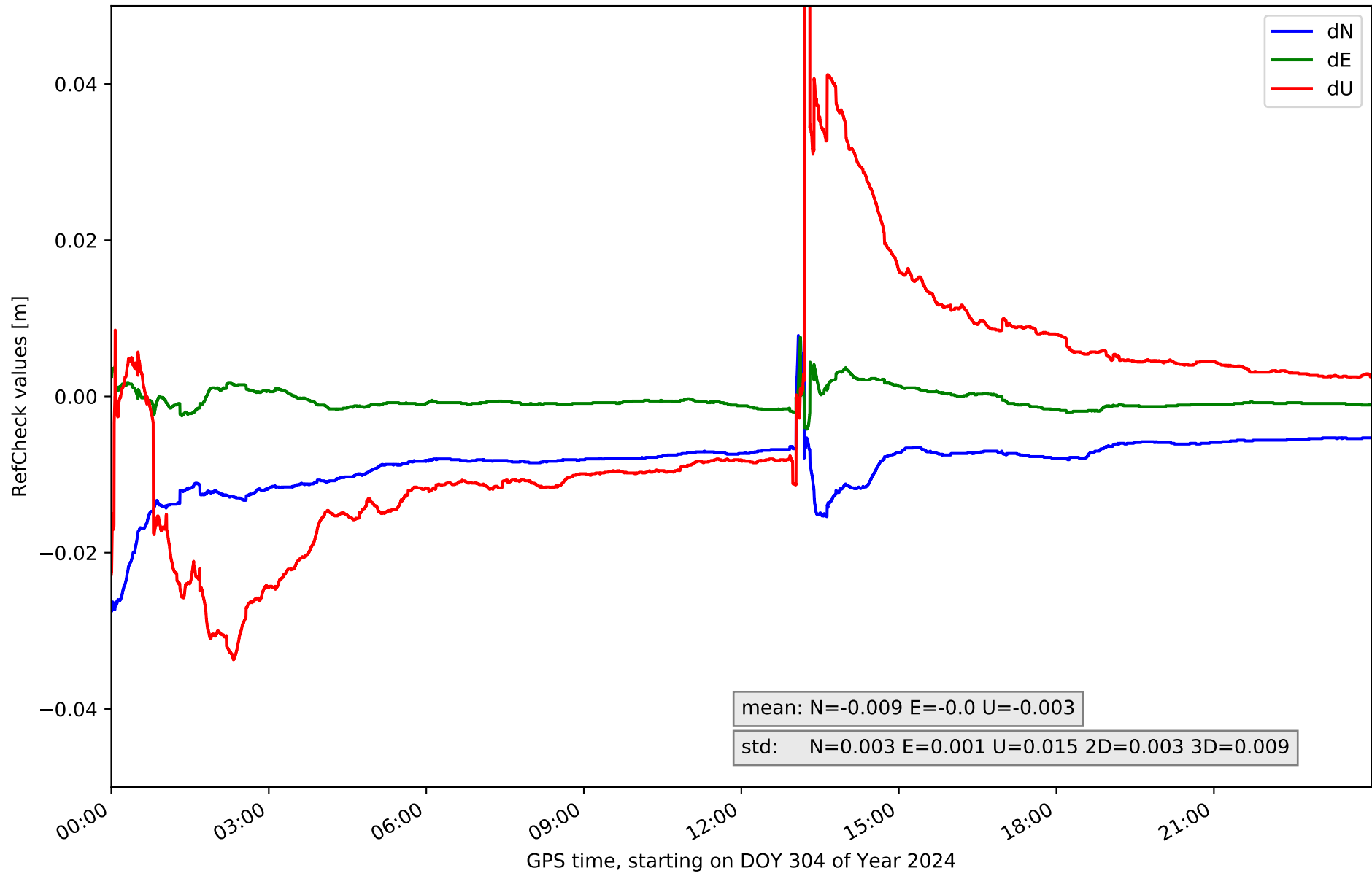
### RefCheck for station CLTR in network NET3



# RefCheck for station COBA in network NET3

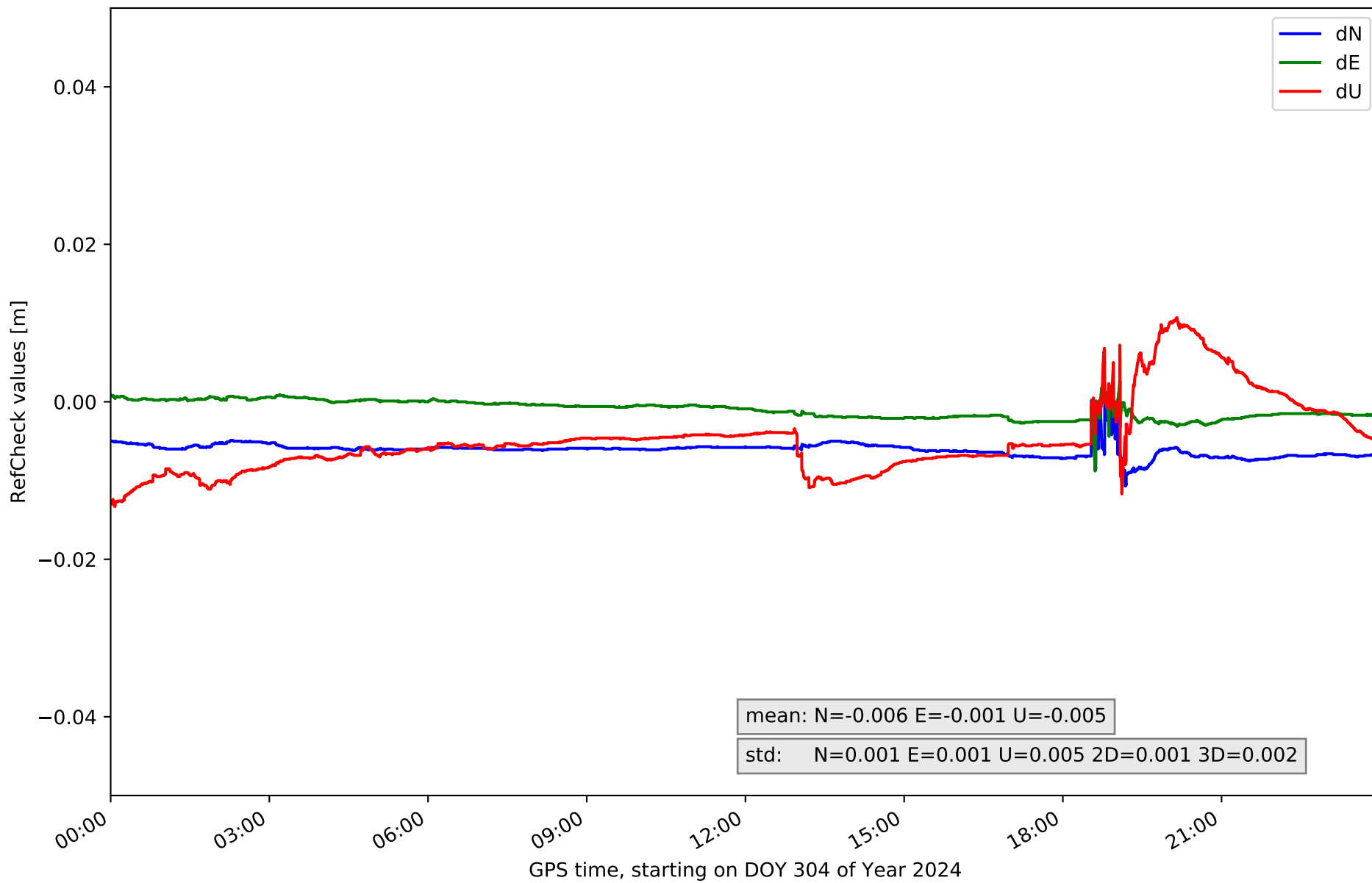


# RefCheck for station CUEN in network NET3

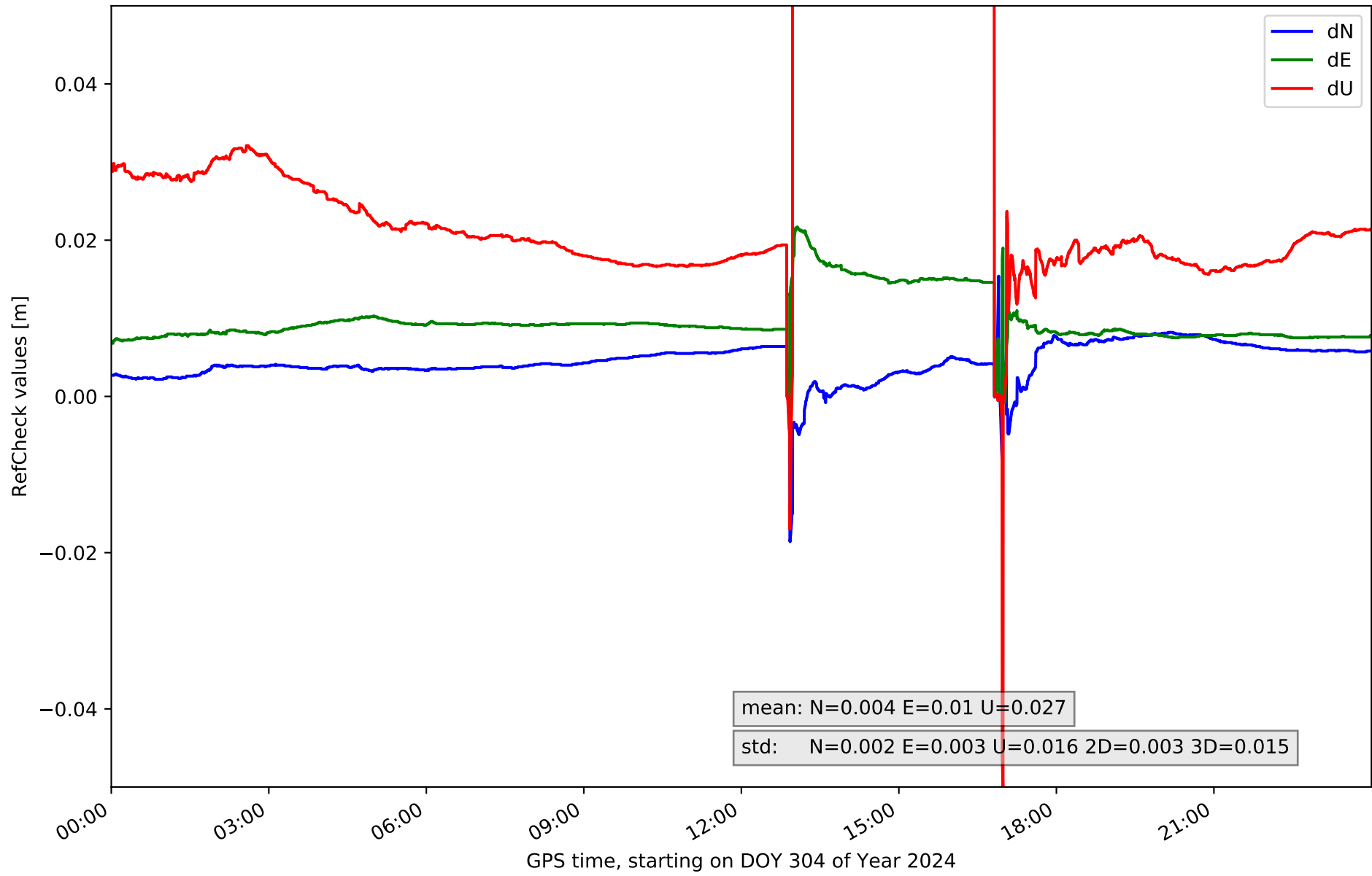




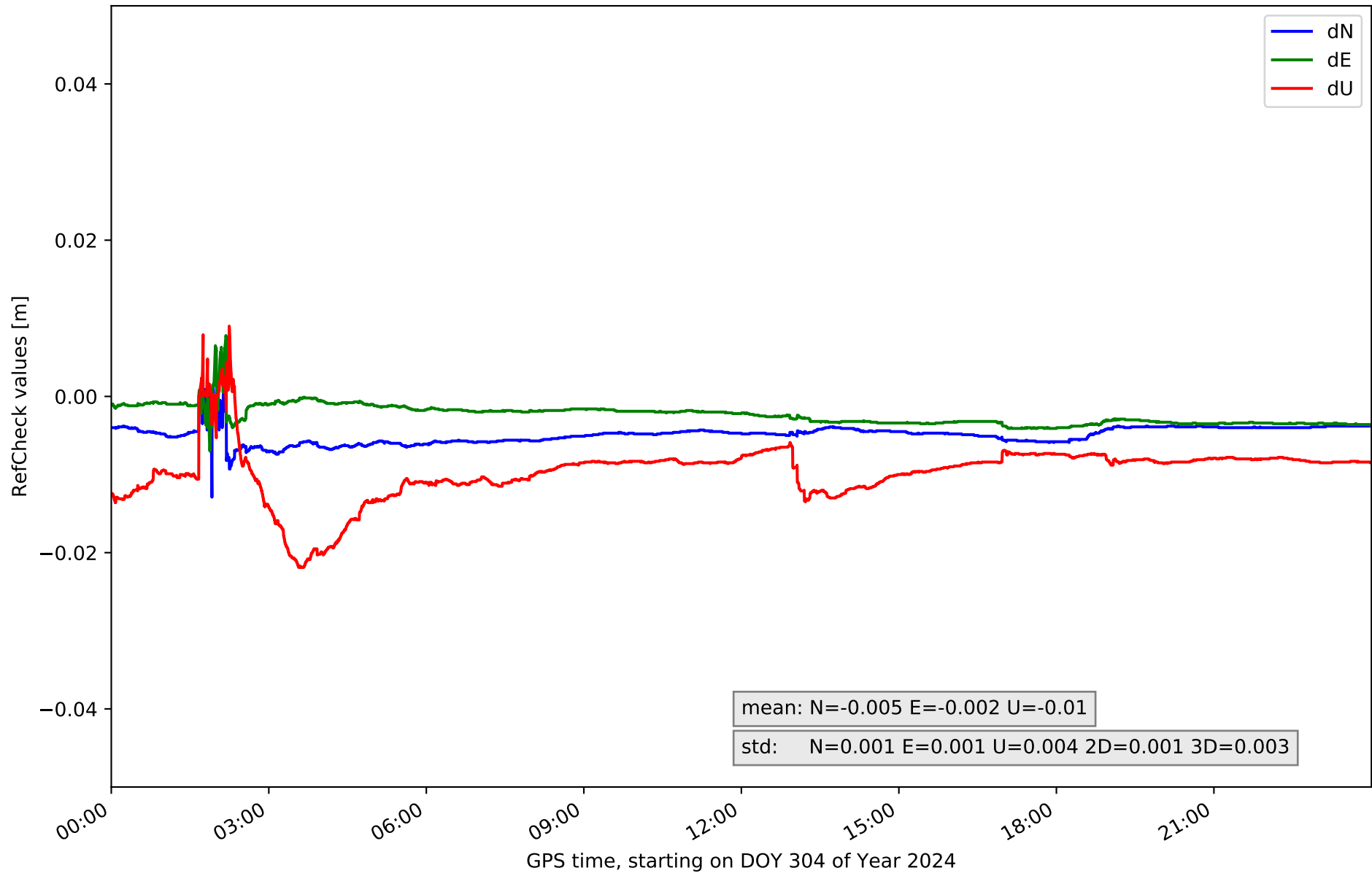
### RefCheck for station MOTA in network NET3



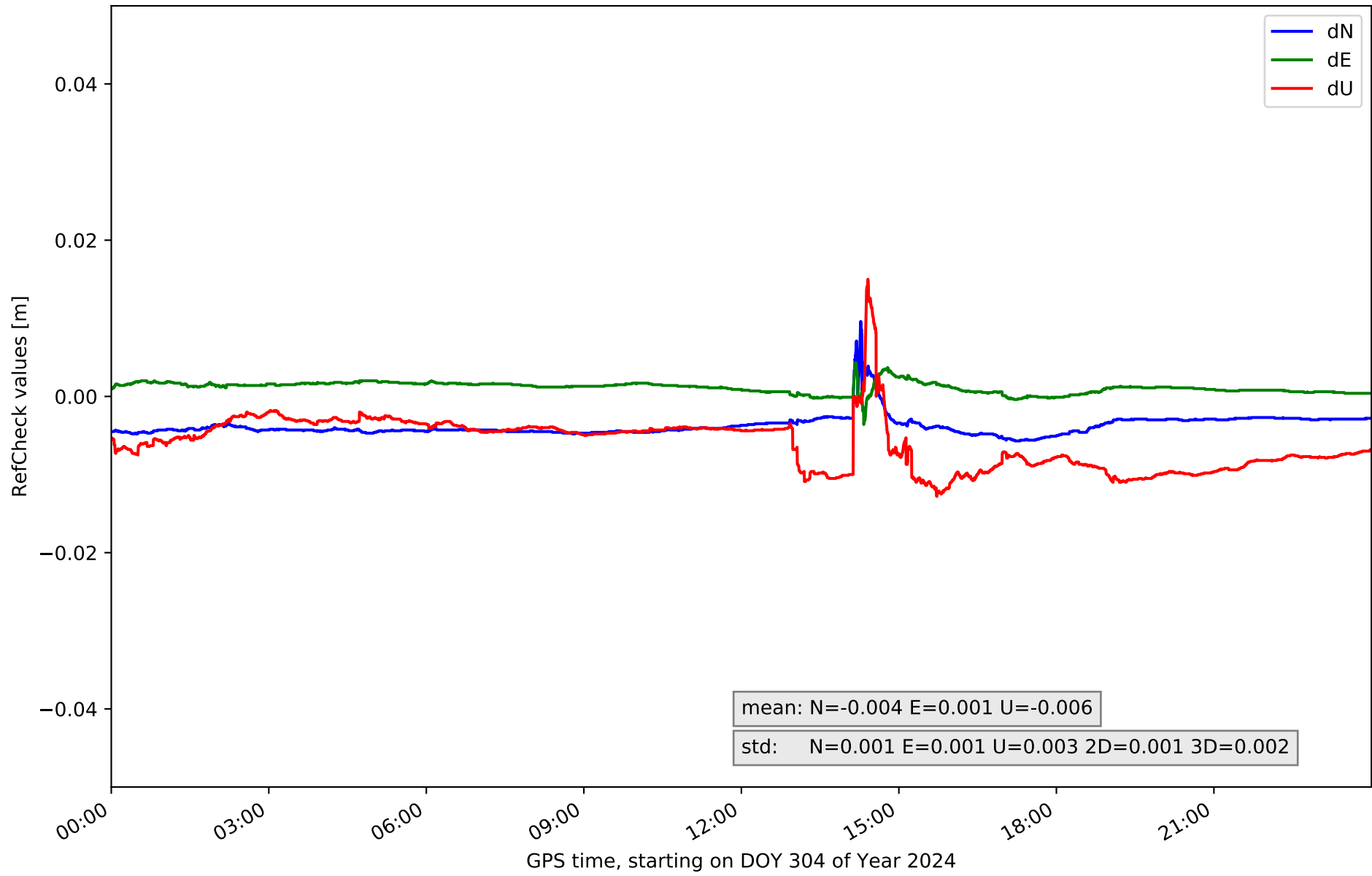
# RefCheck for station MRAT in network NET3



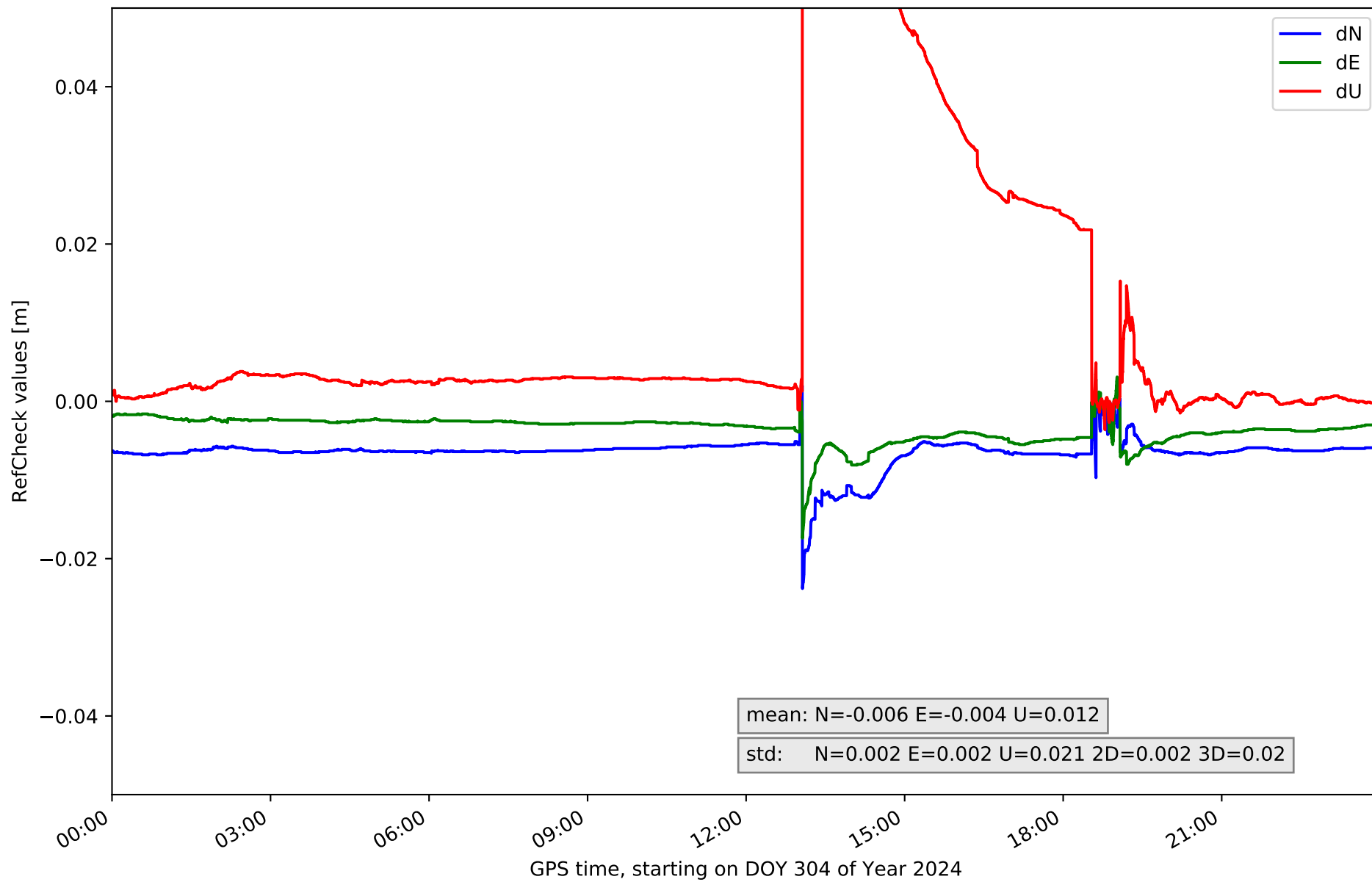
# RefCheck for station SONS in network NET3



# RefCheck for station VIAR in network NET3



### RefCheck for station VILH in network NET3



## RefCheck values for network NET3

Station	Nmin	Nmax	Nstd	Emin	Emax	Estd	Umin	Umax	Ustd	std2D	std3D	#2D > 0.01	% 2D > 0.01	#3D > 0.02	% 3D > 0.02
ALBA	-0.015	0.004	0.003	-0.002	0.014	0.003	-0.026	0.021	0.01	0.002	0.004	5184	6.2	50547	60.1
ALMO	-0.011	0.002	0.002	-0.011	0.004	0.001	-0.008	0.038	0.006	0.001	0.003	378	0.4	644	0.8
CLTR	0.0	0.003	0.001	0.003	0.007	0.001	-0.014	-0.004	0.002	0.001	0.002	0	0.0	0	0.0
COBA	-0.01	0.005	0.001	-0.009	0.006	0.002	-0.021	0.013	0.005	0.001	0.002	1412	1.7	22	0.0
CUEN	-0.028	0.008	0.003	-0.004	0.008	0.001	-0.034	0.071	0.015	0.003	0.009	20581	24.5	17832	21.2
MOTA	-0.011	0.001	0.001	-0.009	0.003	0.001	-0.013	0.011	0.005	0.001	0.002	132	0.2	0	0.0
MRAT	-0.019	0.015	0.002	-0.002	0.022	0.003	-0.05	0.083	0.016	0.003	0.015	54987	65.3	69595	82.7
SONS	-0.013	0.002	0.001	-0.007	0.008	0.001	-0.022	0.009	0.004	0.001	0.003	16	0.0	3286	3.9
VIAR	-0.006	0.01	0.001	-0.004	0.004	0.001	-0.013	0.015	0.003	0.001	0.002	0	0.0	0	0.0
VILH	-0.024	0.002	0.002	-0.017	0.003	0.002	-0.004	0.108	0.021	0.002	0.02	5527	6.6	18987	22.6
<b>Mean</b>	<b>-0.014</b>	<b>0.005</b>	<b>0.002</b>	<b>-0.006</b>	<b>0.008</b>	<b>0.002</b>	<b>-0.02</b>	<b>0.036</b>	<b>0.009</b>	<b>0.002</b>	<b>0.006</b>	<b>8821.7</b>	<b>10.5</b>	<b>16091.3</b>	<b>19.1</b>
<b>Min/Max</b>	<b>-0.028</b>	<b>0.015</b>	<b>0.003</b>	<b>-0.017</b>	<b>0.022</b>	<b>0.003</b>	<b>-0.05</b>	<b>0.108</b>	<b>0.021</b>	<b>0.003</b>	<b>0.02</b>	<b>54987</b>	<b>65.3</b>	<b>69595</b>	<b>82.7</b>

fixing statistic for network NET3

fixing percentage of	all GNSS	G	R	E	C
using threshold 0.3	89.9	91.0	86.7	93.4	88.2
considering satellites with dual-frequency fixed	84.3	85.6	78.5	89.1	82.5
considering all signals separately	84.8	85.6	78.5	89.4	81.9