

## summary for network NT31

timeperiod chosen: from 2024-09-08-00:00:00 until 2024-09-08-23:59:59

average update rate (durations larger than 15 seconds considered as observation gap): 1.0 seconds

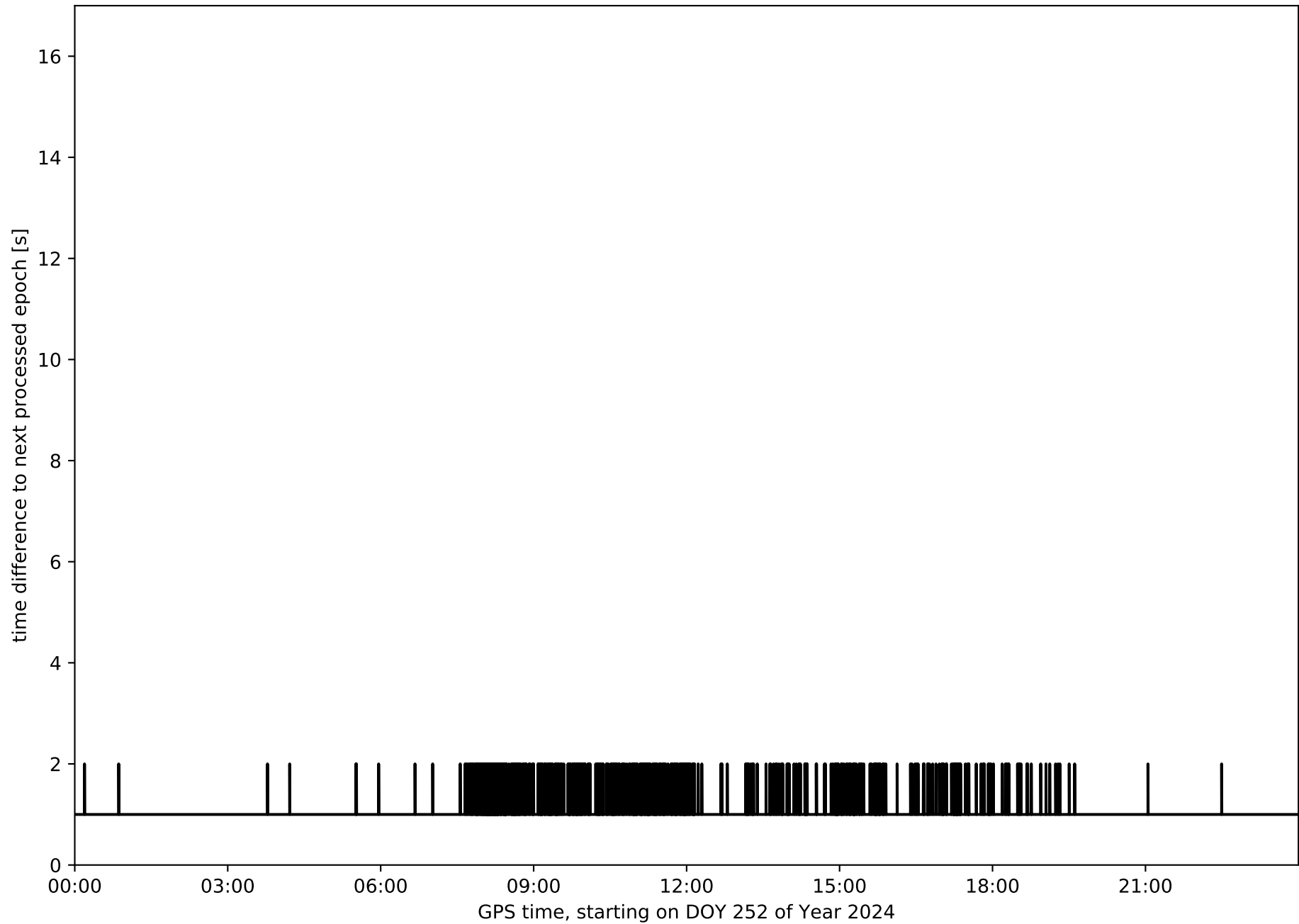
average fixing percentage with threshold set to 0.3: 92.8 percent

stations available: 6 of 7

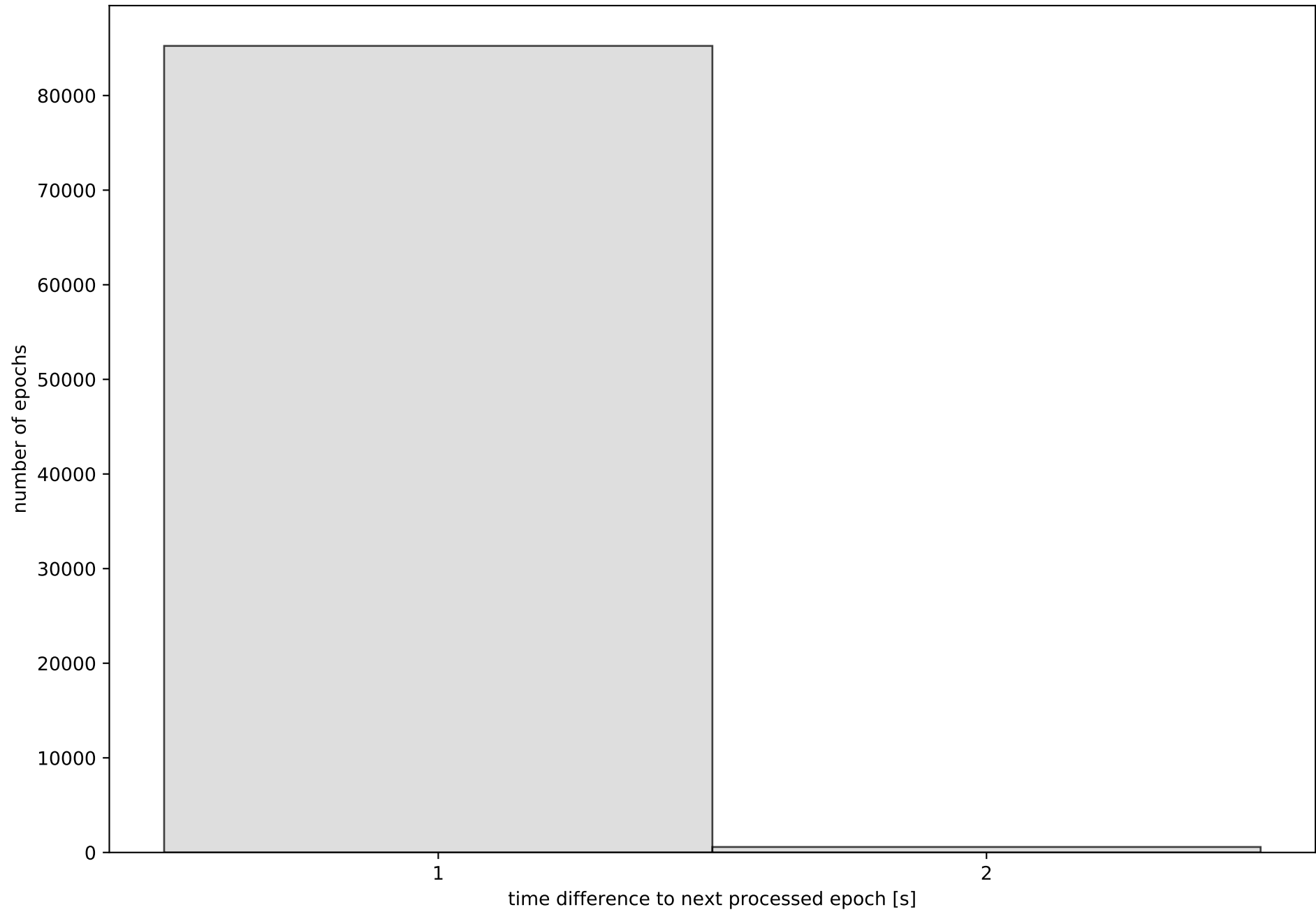
station information:

station FUER:	antenna: LEIAR20	LEIM	receiver: LEICA GR50	height: 76.887
station LALA:	antenna: TRM59900.00	SCIS	receiver: TRIMBLE NETR9	height: 62.306
station LZ01:	antenna: TRM59800.00	SCIS	receiver: TRIMBLE NETR9	height: 52.693
station LZ02:	antenna: LEIAR20	NONE	receiver: LEICA GR25	height: 58.039
station LZ03:	antenna: LEIAR20	NONE	receiver: LEICA GR50	height: 314.762
station ULP2:	antenna: TRM59900.00	SCIS	receiver: TRIMBLE NETR9	height: 375.129

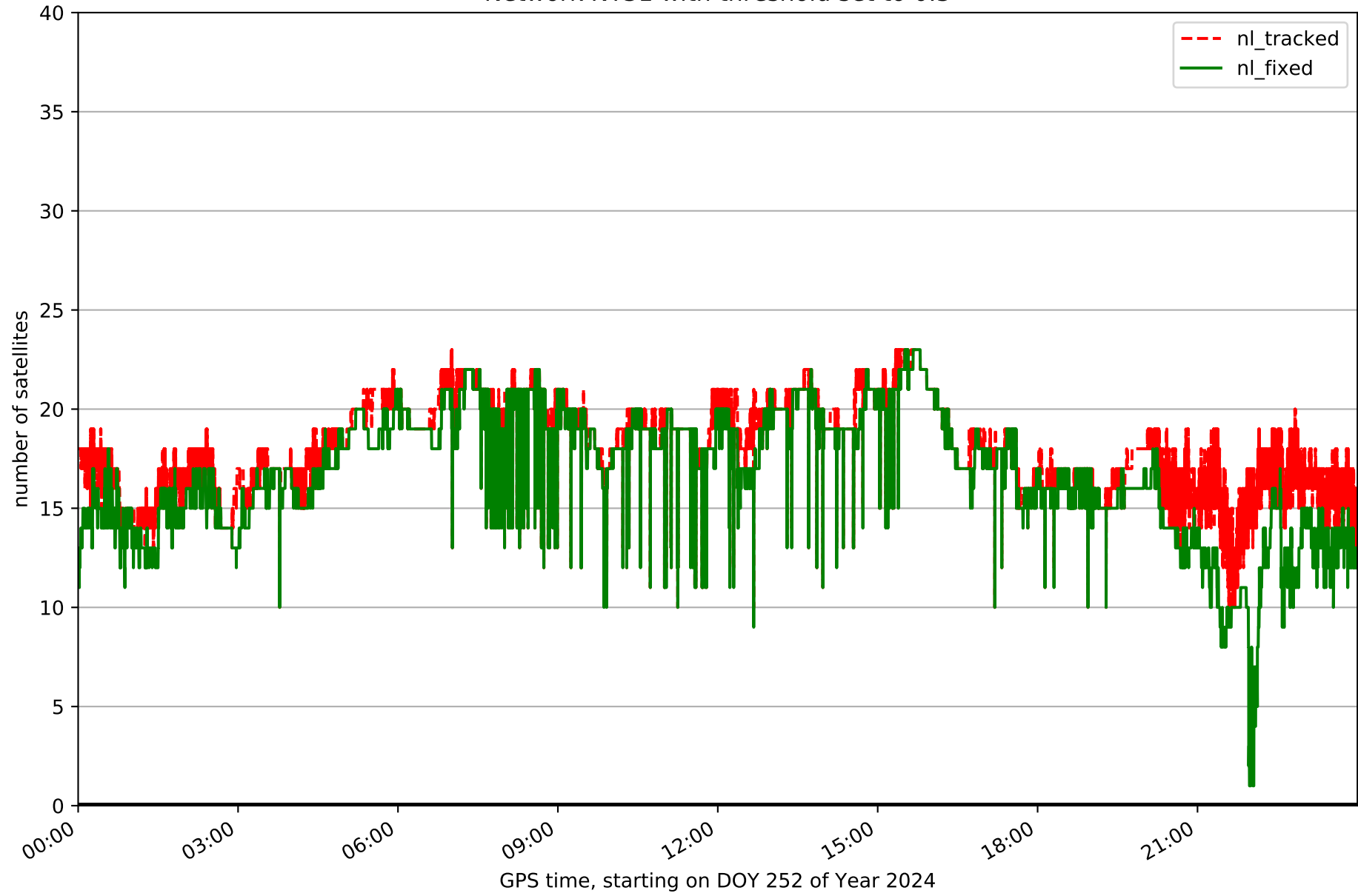
# Processing rate in network NT31



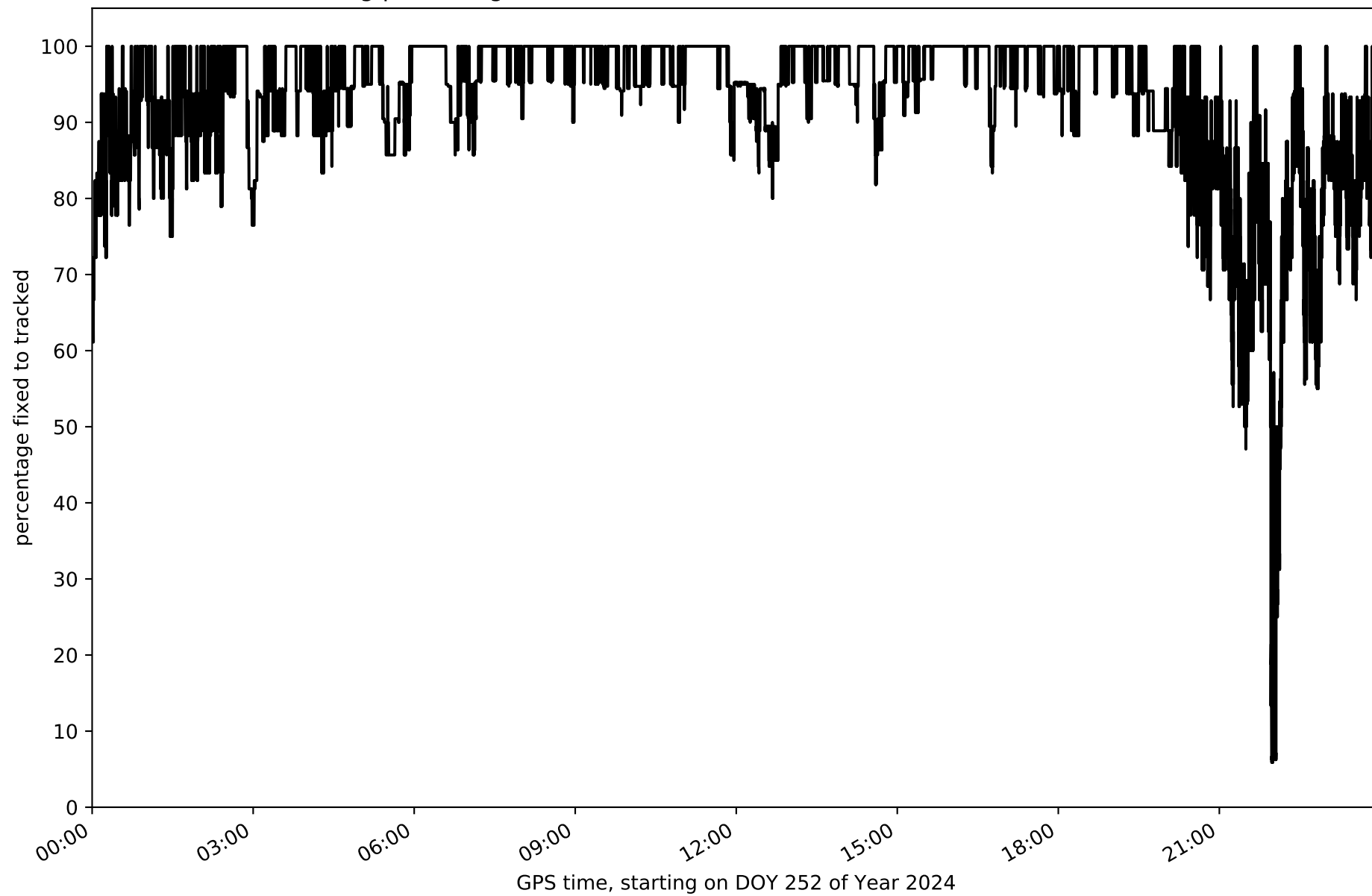
Histogram of the processing rate in network NT31 (durations larger 15 seconds neglected)



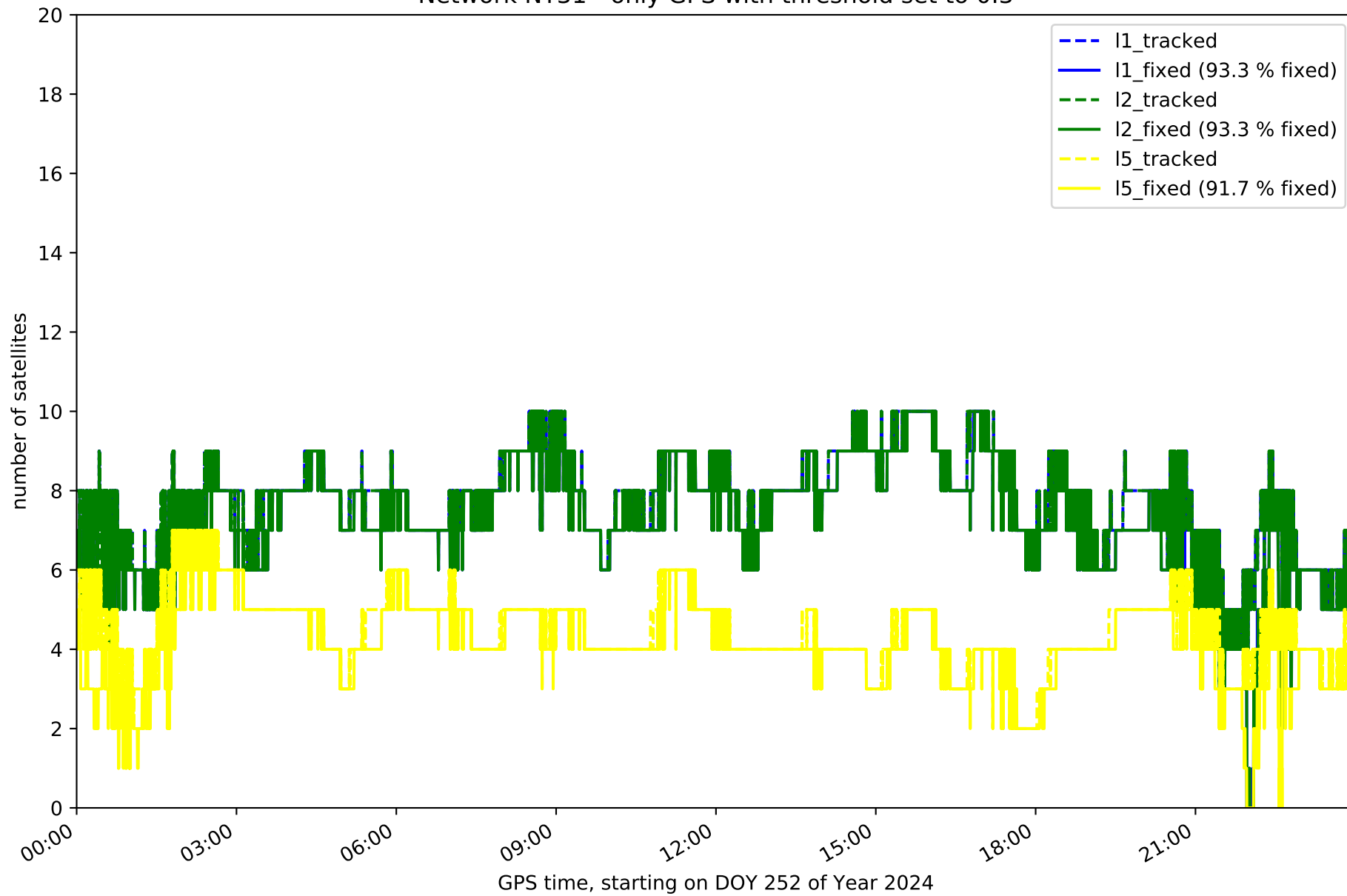
Network NT31 with threshold set to 0.3



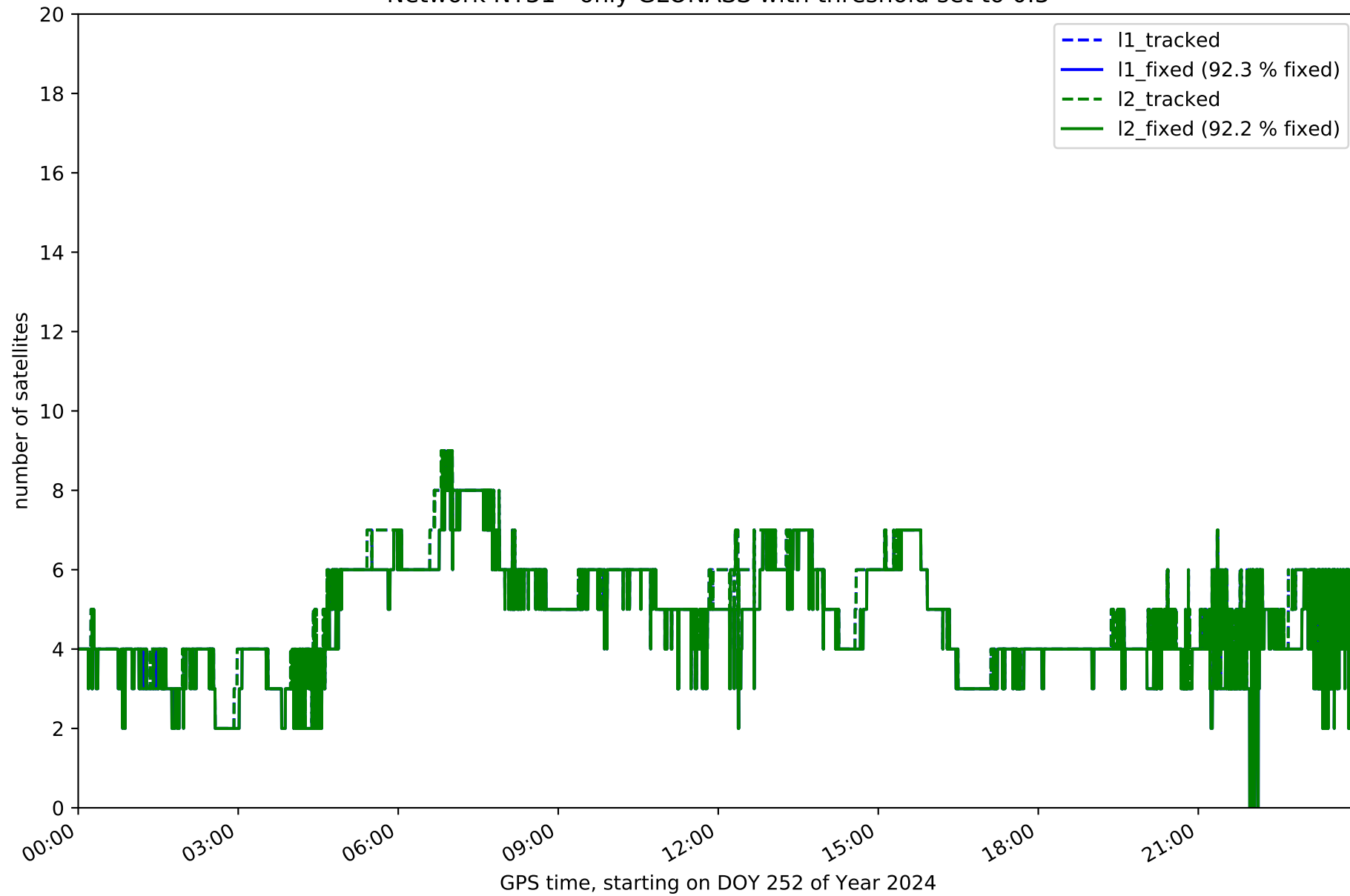
Fixing percentage of satellites in network NT31 with threshold set to 0.3



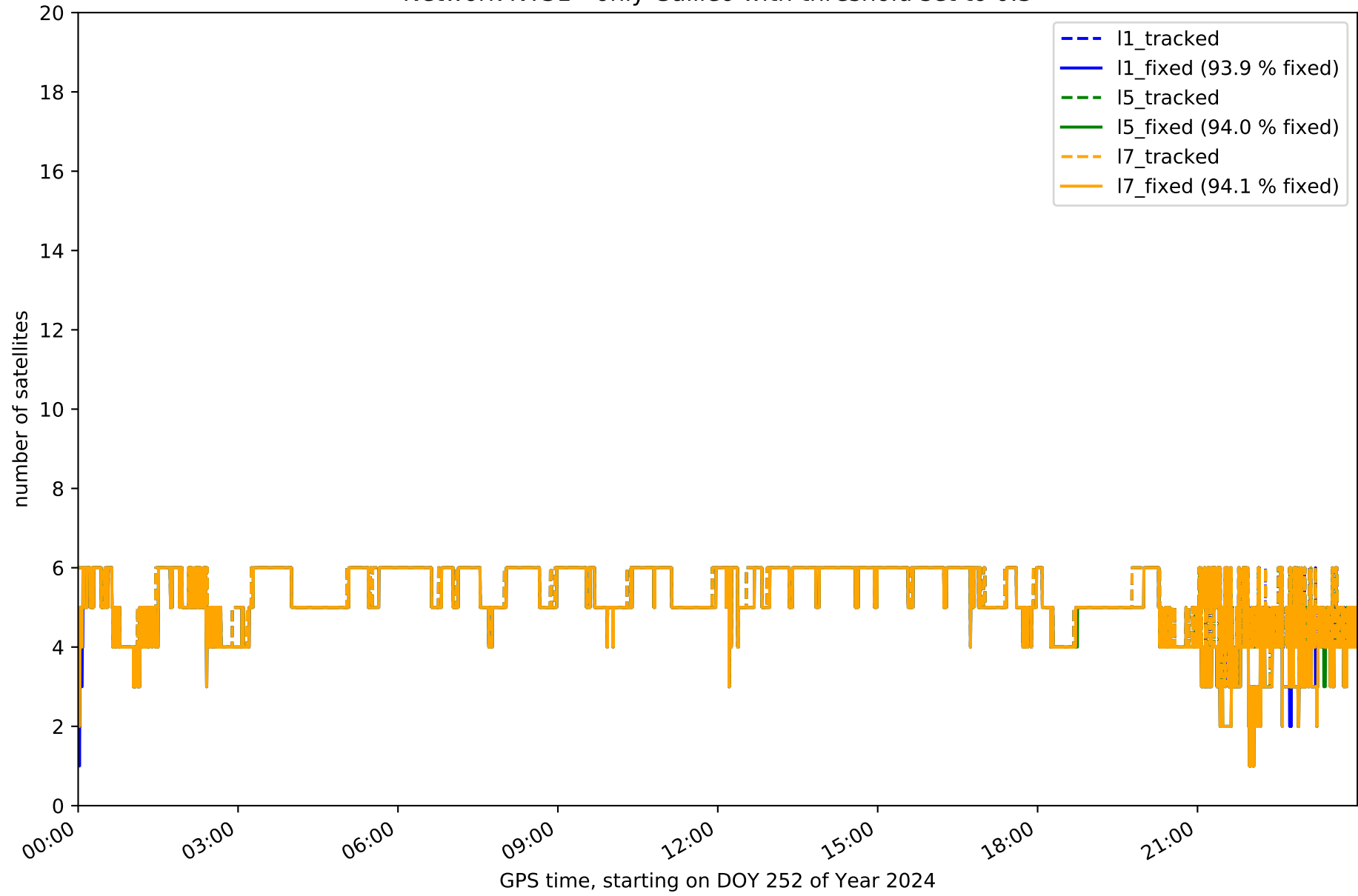
Network NT31 - only GPS with threshold set to 0.3



Network NT31 - only GLONASS with threshold set to 0.3

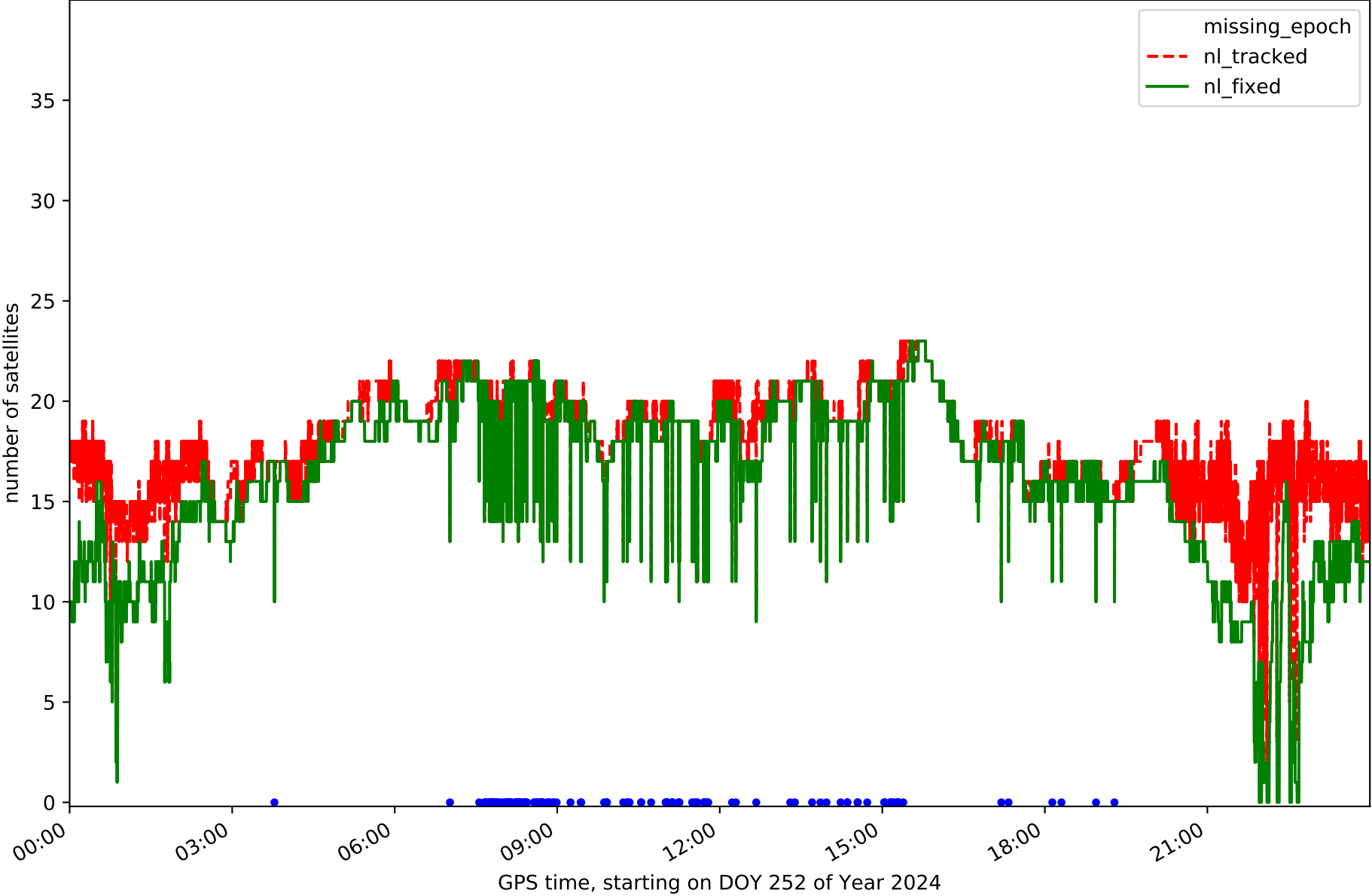


Network NT31 - only Galileo with threshold set to 0.3

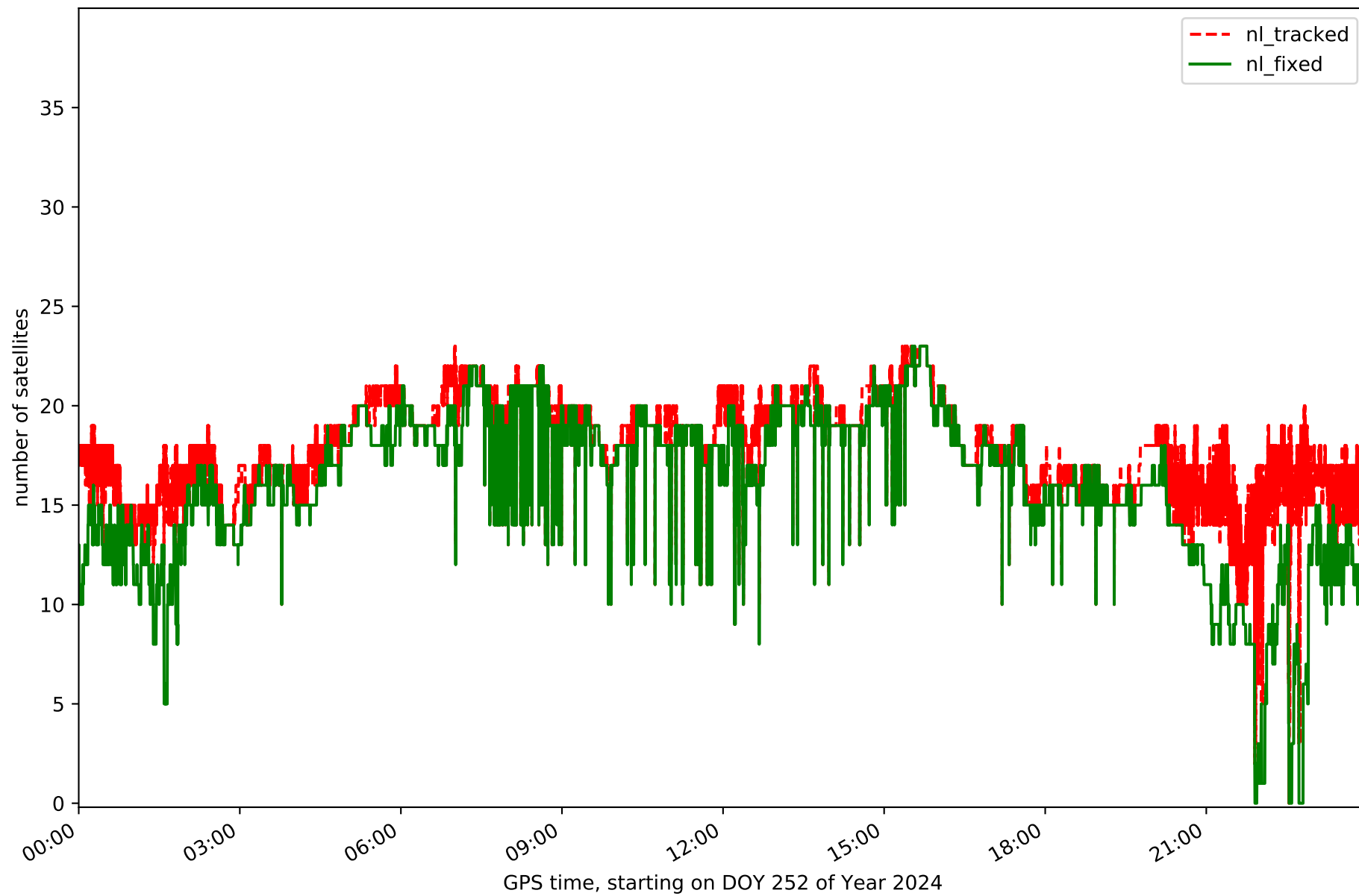




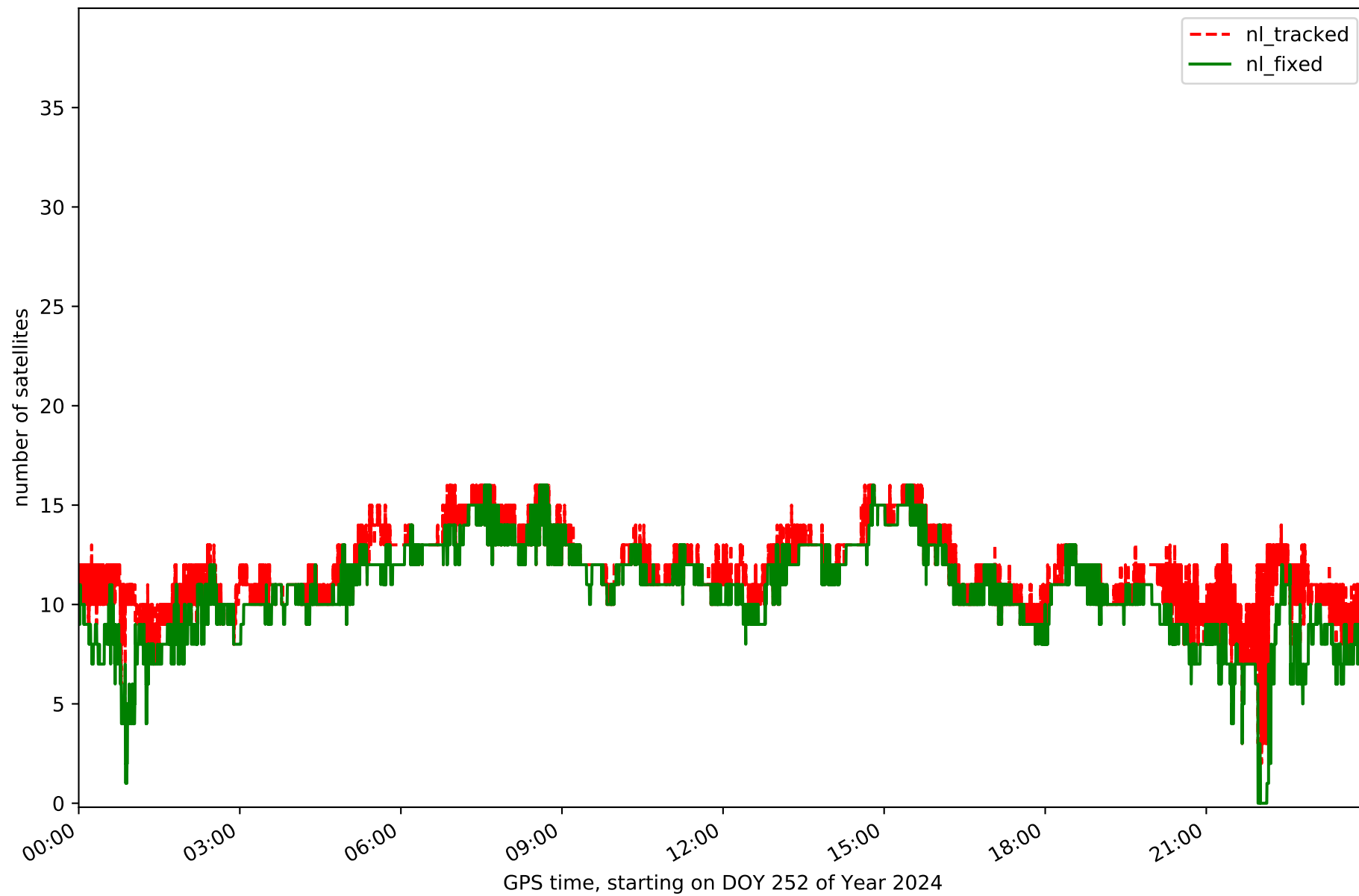
Station FUER in network NT31



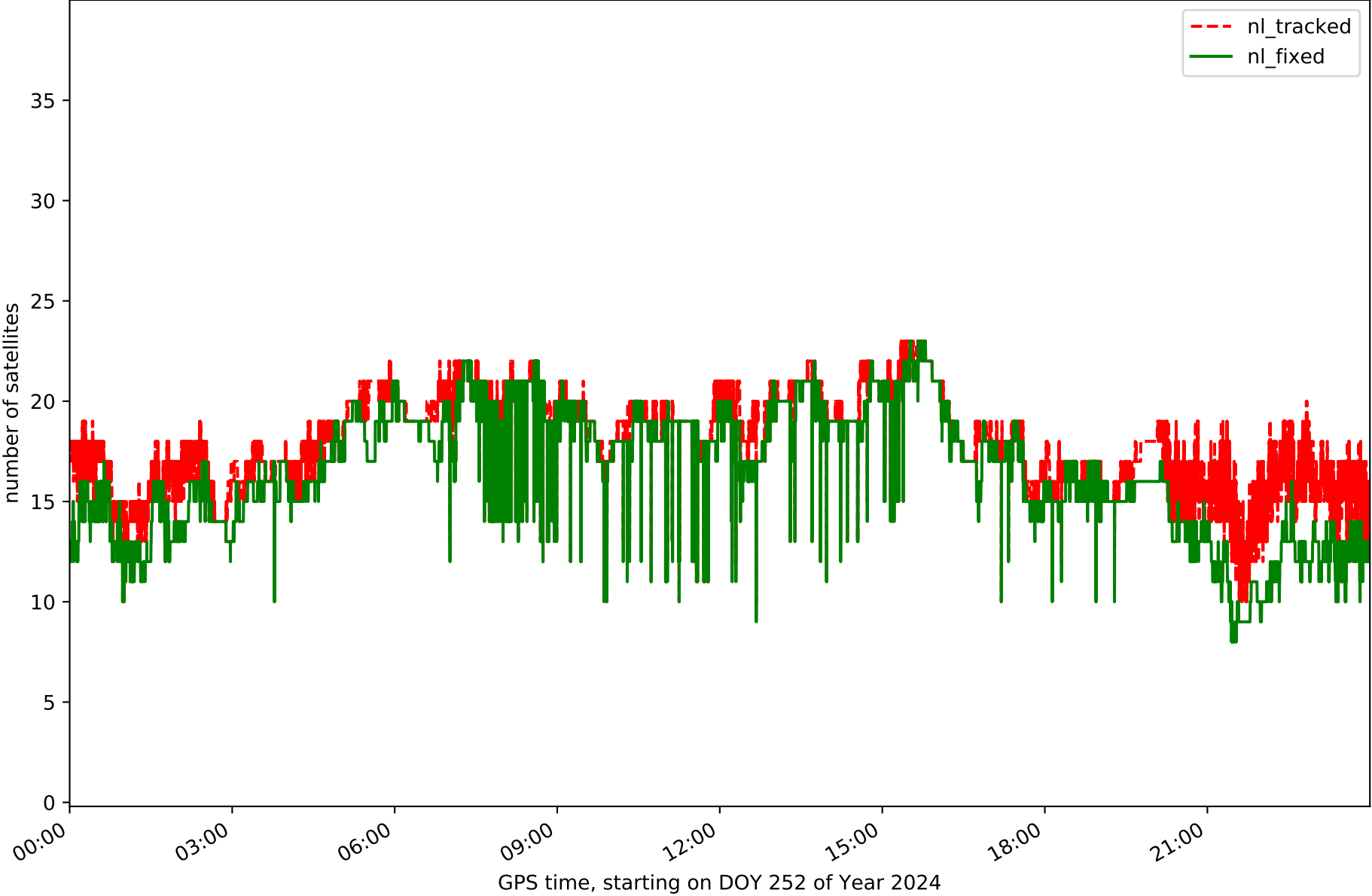
Station LALA in network NT31



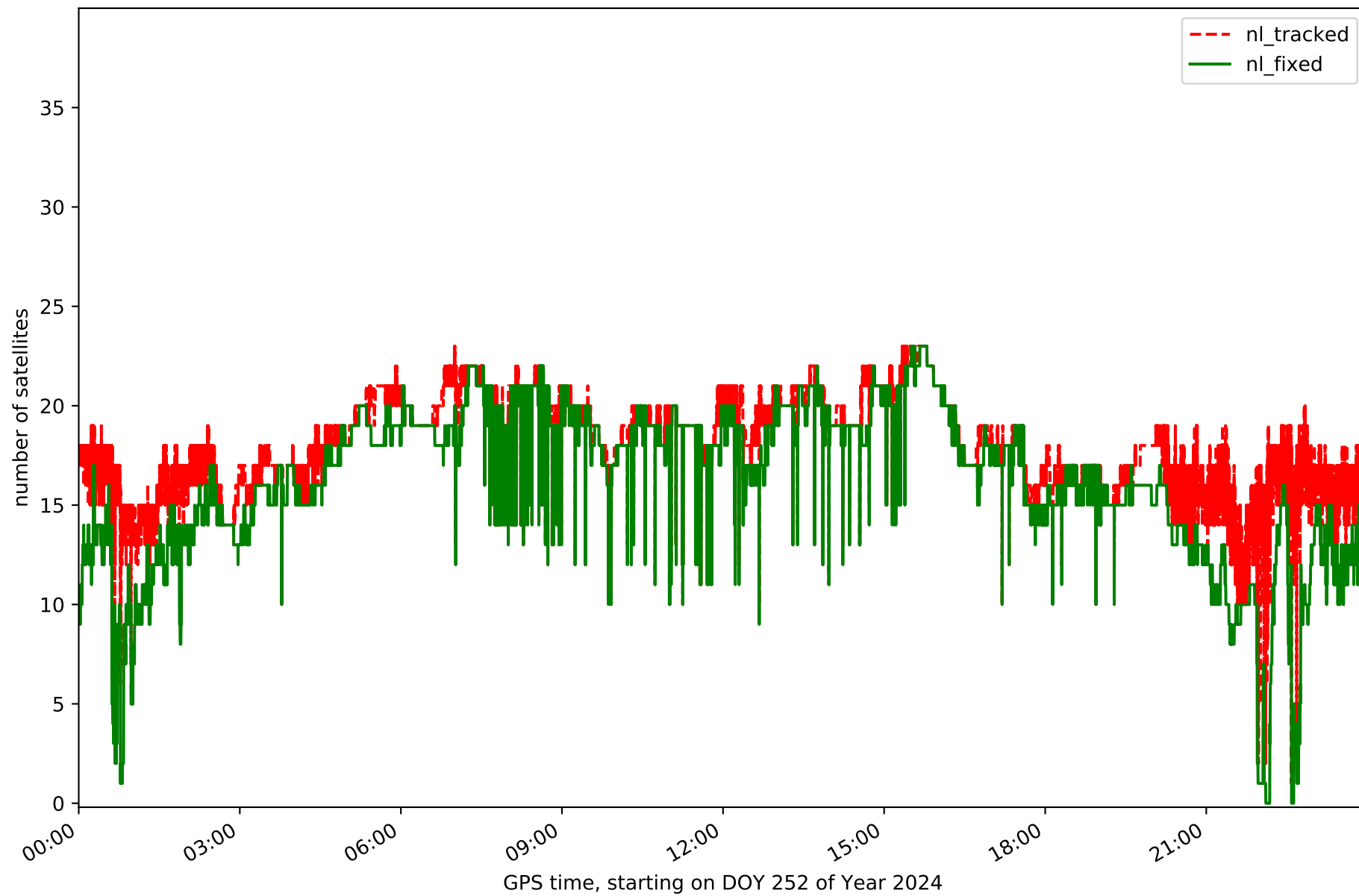
Station LZ01 in network NT31



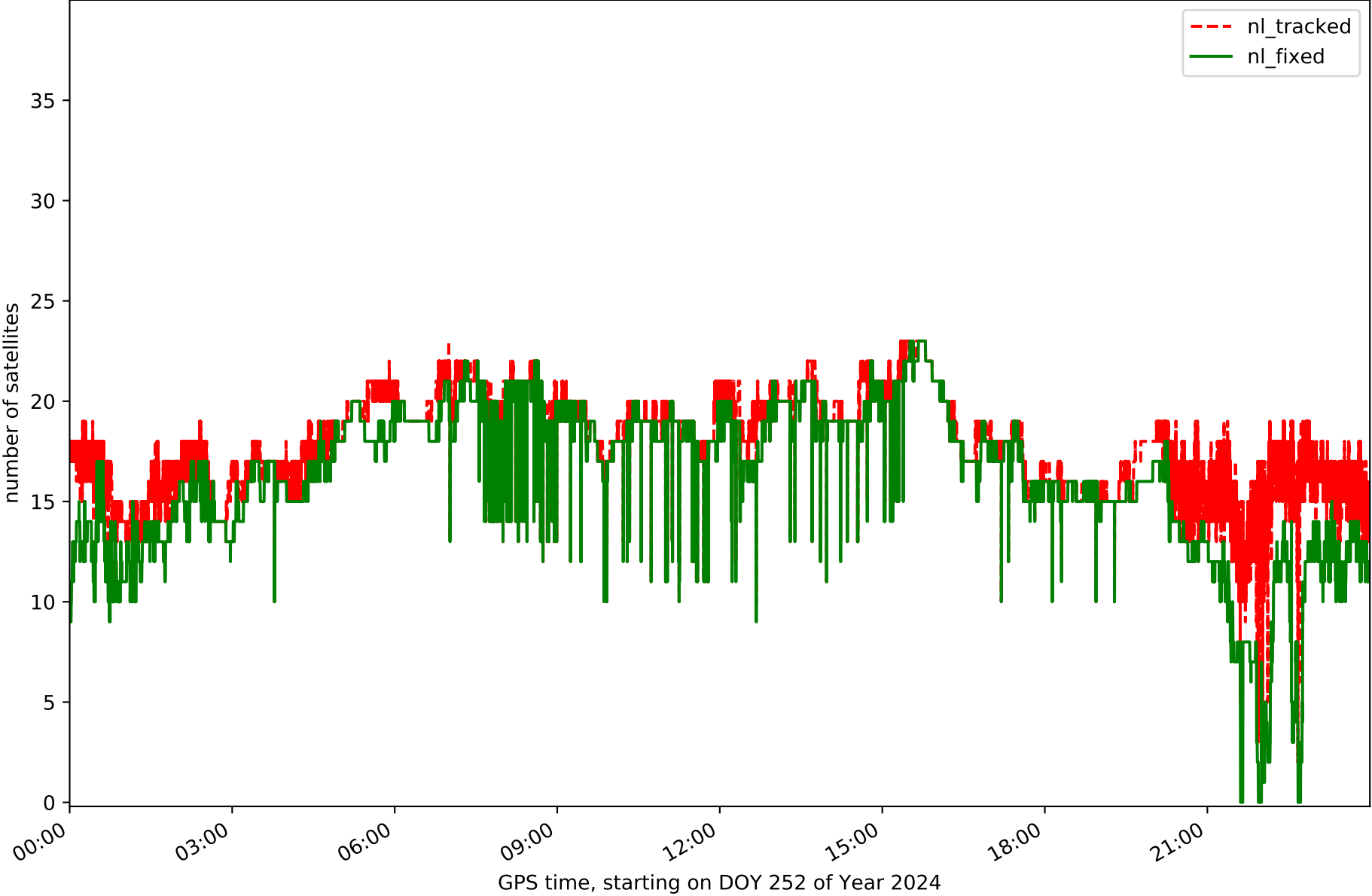
Station LZ02 in network NT31



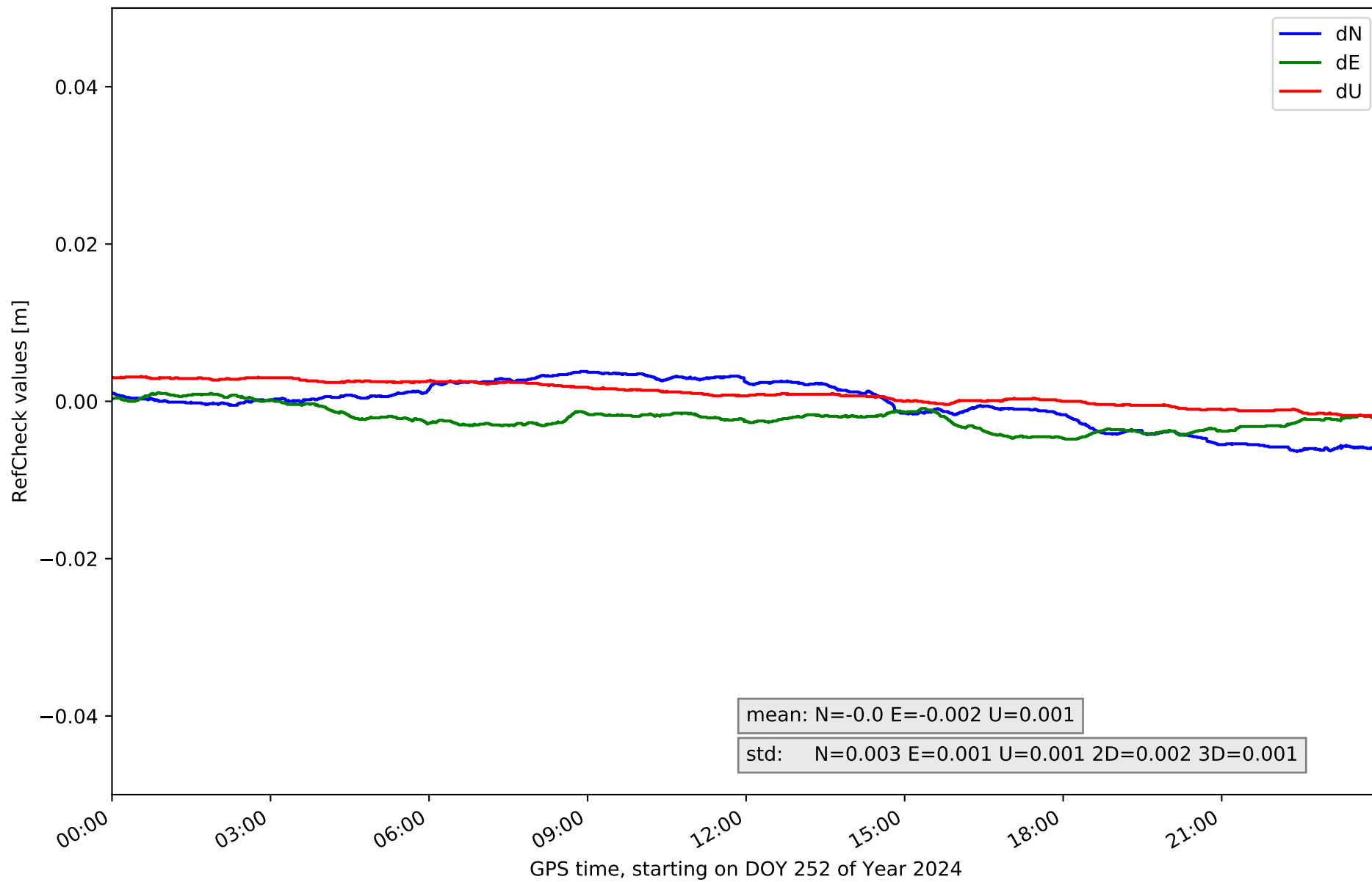
Station LZ03 in network NT31



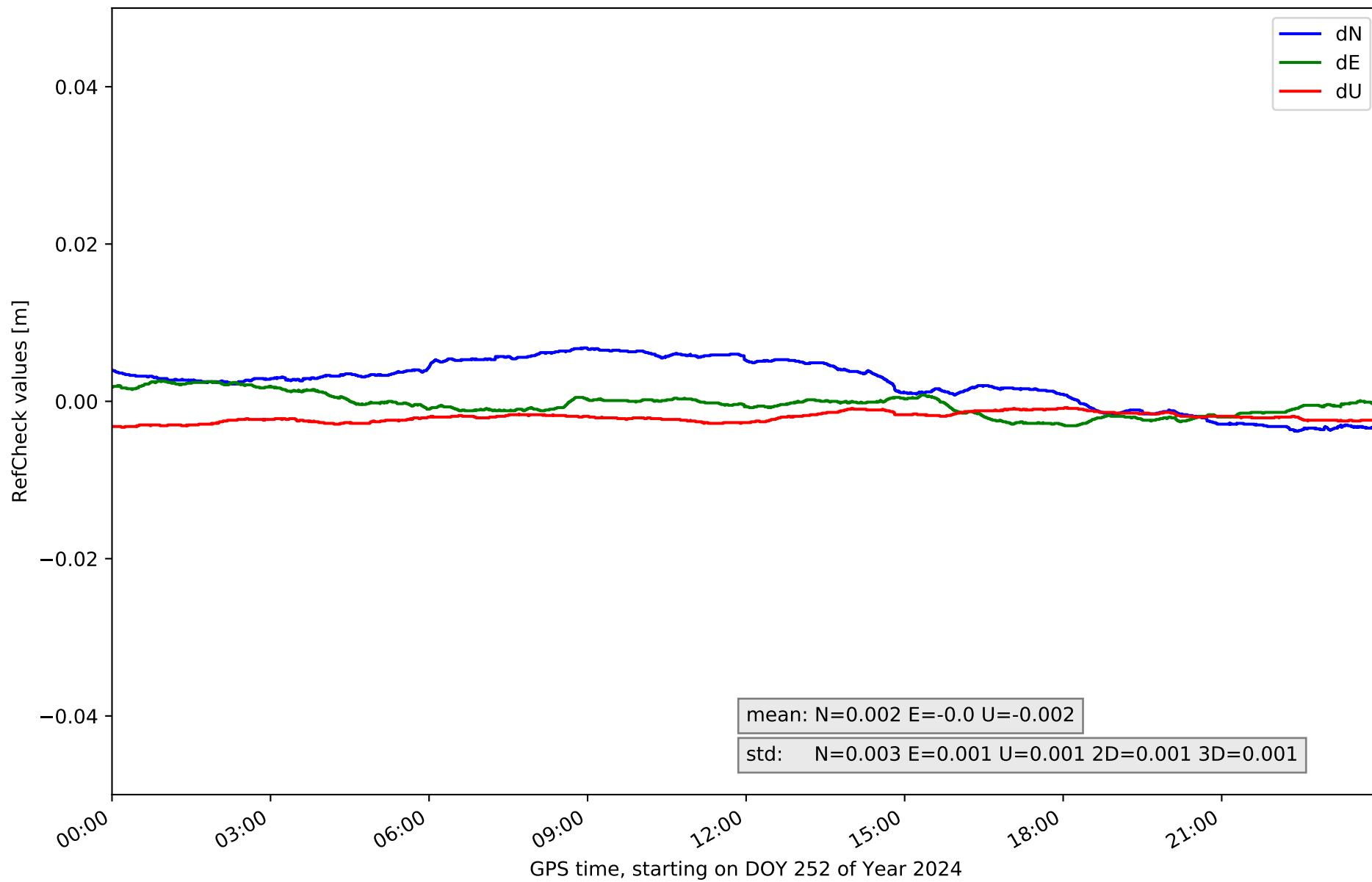
Station ULP2 in network NT31



### RefCheck for station FUER in network NT31

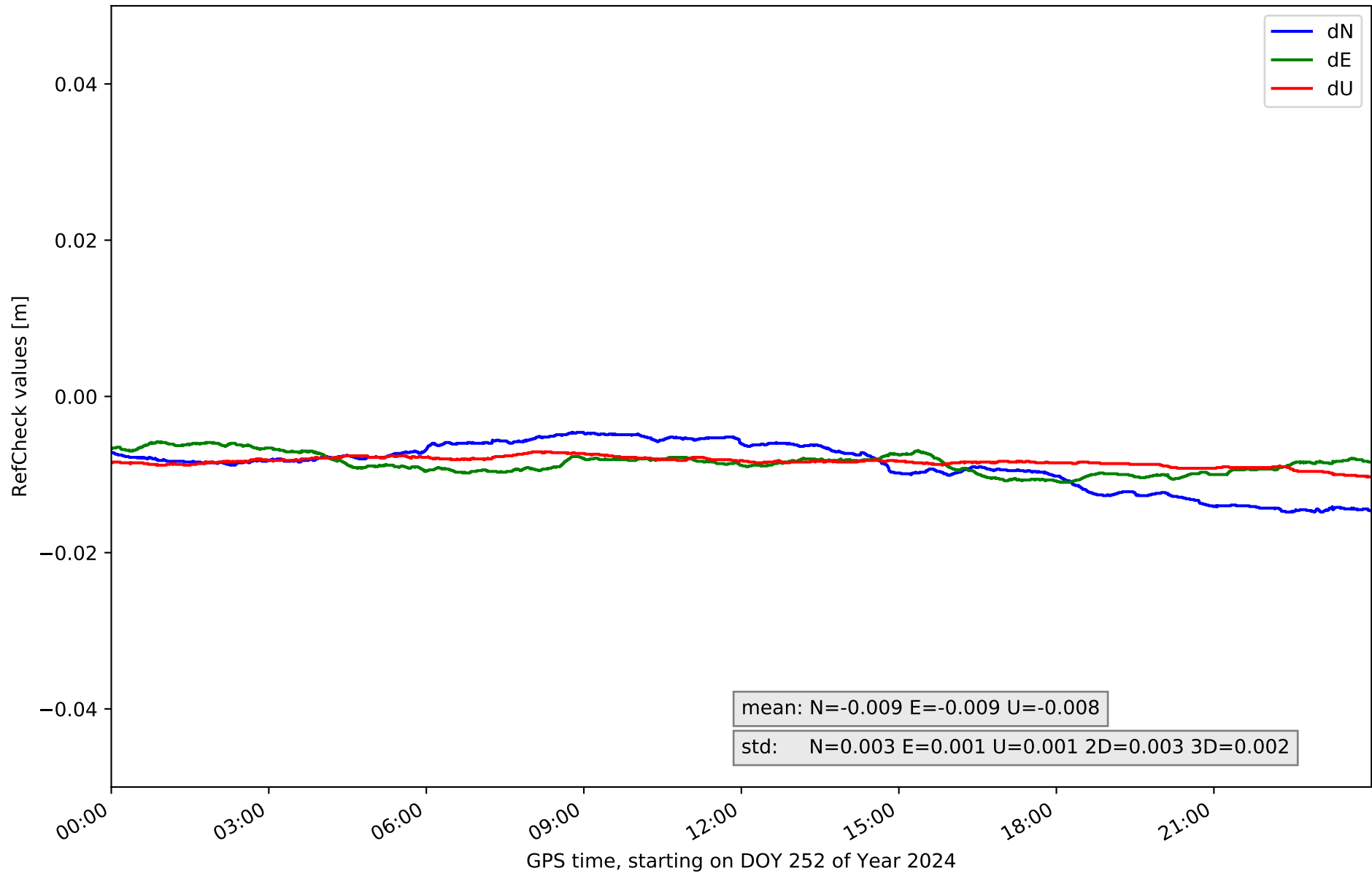


### RefCheck for station LALA in network NT31

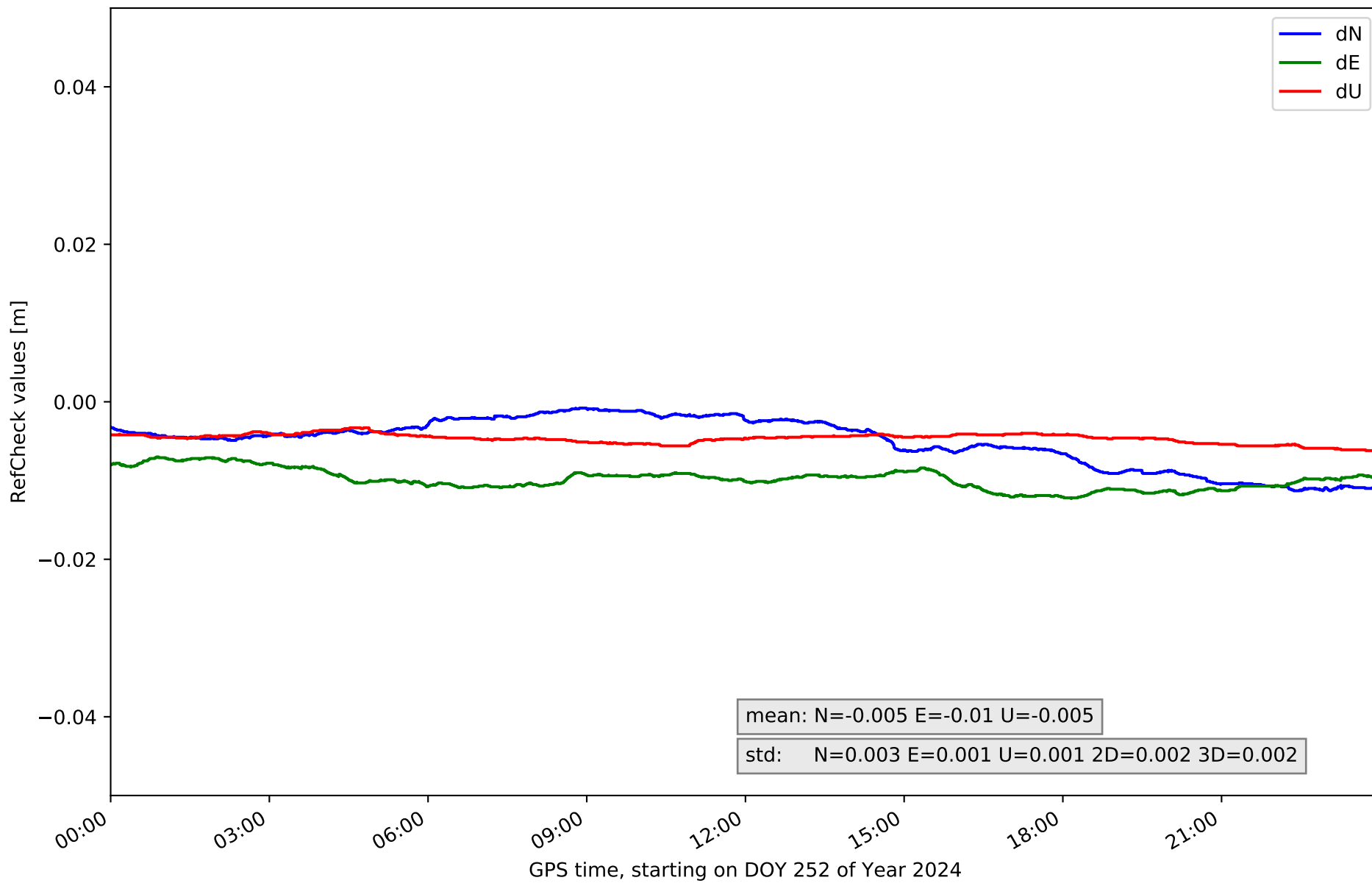




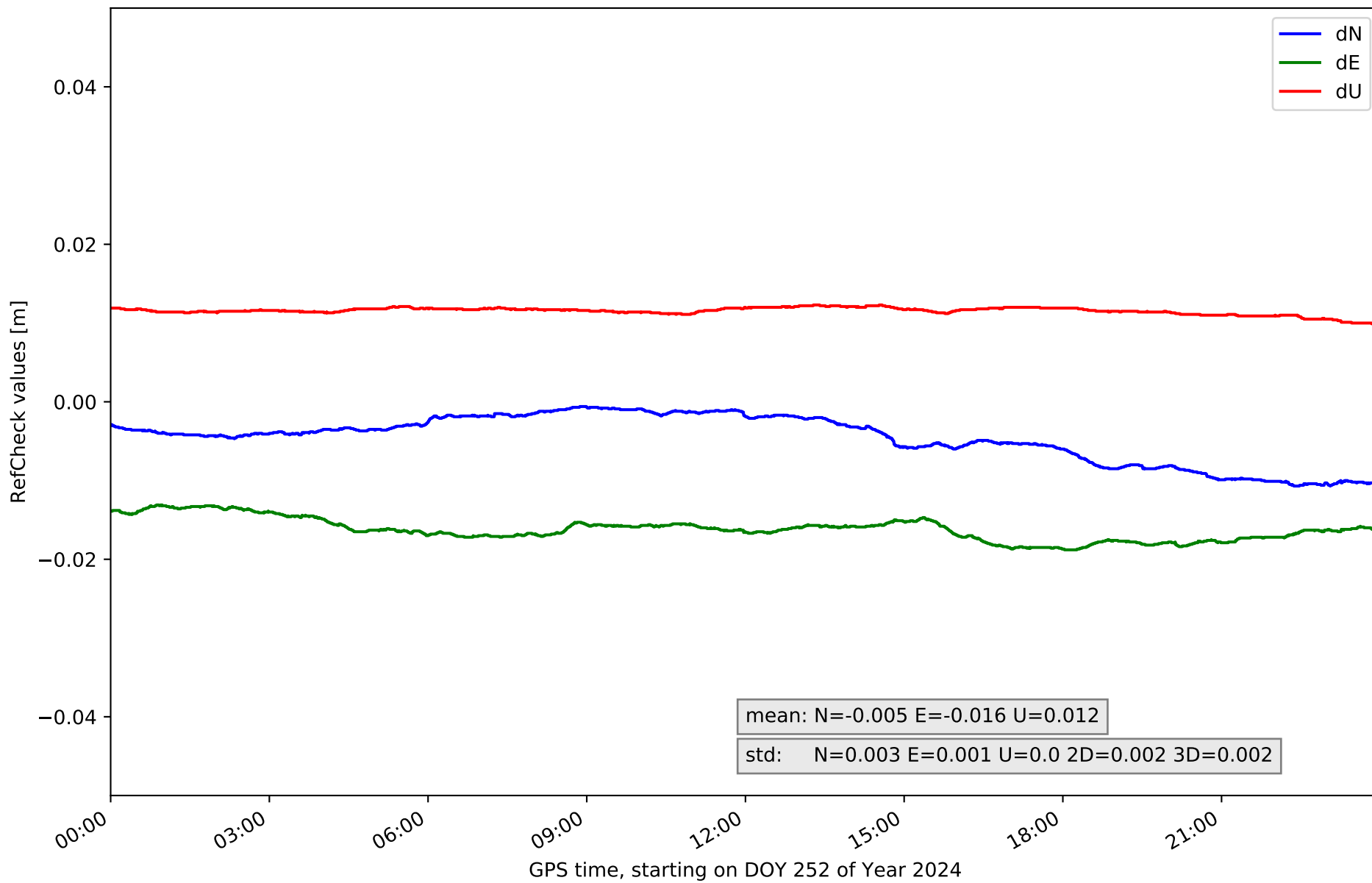
# RefCheck for station LZ01 in network NT31



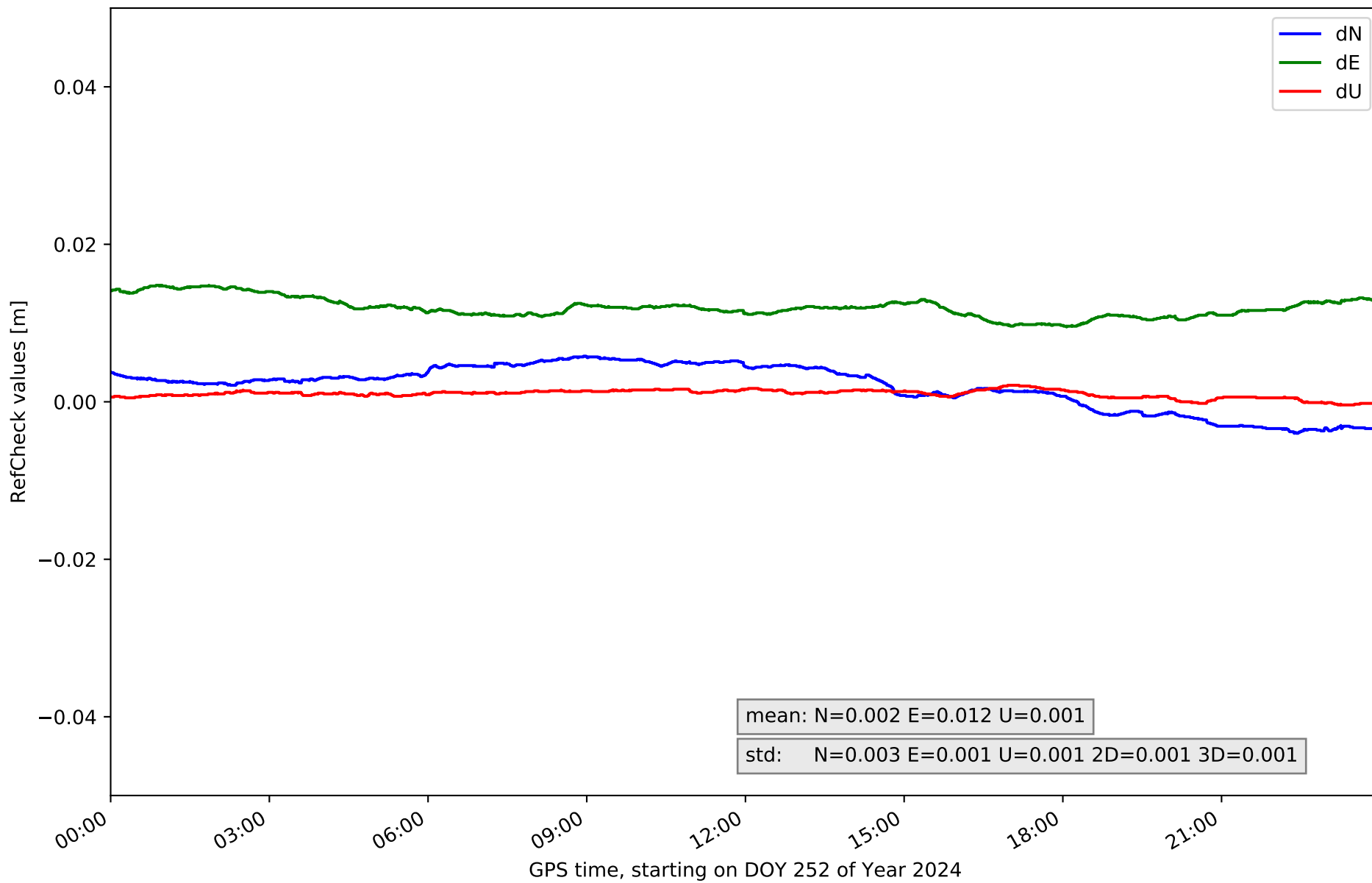
### RefCheck for station LZ02 in network NT31



### RefCheck for station LZ03 in network NT31



### RefCheck for station ULP2 in network NT31



## RefCheck values for network NT31

Station	Nmin	Nmax	Nstd	Emin	Emax	Estd	Umin	Umax	Ustd	std2D	std3D	#2D > 0.01	% 2D > 0.01	#3D > 0.02	% 3D > 0.02
FUER	-0.006	0.004	0.003	-0.005	0.001	0.001	-0.002	0.003	0.001	0.002	0.001	0	0.0	0	0.0
LALA	-0.004	0.007	0.003	-0.003	0.003	0.001	-0.003	-0.001	0.001	0.001	0.001	0	0.0	0	0.0
LZ01	-0.015	-0.005	0.003	-0.011	-0.006	0.001	-0.01	-0.007	0.001	0.003	0.002	74306	86.6	0	0.0
LZ02	-0.011	-0.001	0.003	-0.012	-0.007	0.001	-0.006	-0.003	0.001	0.002	0.002	56729	66.1	0	0.0
LZ03	-0.011	-0.001	0.003	-0.019	-0.013	0.001	0.01	0.012	0.0	0.002	0.002	85825	100.0	56707	66.1
ULP2	-0.004	0.006	0.003	0.009	0.015	0.001	-0.0	0.002	0.001	0.001	0.001	80109	93.3	0	0.0
<b>Mean</b>	<b>-0.008</b>	<b>0.002</b>	<b>0.003</b>	<b>-0.007</b>	<b>-0.001</b>	<b>0.001</b>	<b>-0.002</b>	<b>0.001</b>	<b>0.001</b>	<b>0.002</b>	<b>0.002</b>	<b>49494.8</b>	<b>57.7</b>	<b>9451.2</b>	<b>11.0</b>
<b>Min/Max</b>	<b>-0.015</b>	<b>0.007</b>	<b>0.003</b>	<b>-0.019</b>	<b>0.015</b>	<b>0.001</b>	<b>-0.01</b>	<b>0.012</b>	<b>0.001</b>	<b>0.003</b>	<b>0.002</b>	<b>85825</b>	<b>100.0</b>	<b>56707</b>	<b>66.1</b>

fixing statistic for network NT31

fixing percentage of	all GNSS	G	R	E
using threshold 0.3	92.8	93.3	92.2	93.9
considering satellites with dual-frequency fixed	90.5	90.8	88.9	91.7
considering all signals separately	90.6	90.4	88.9	92.1