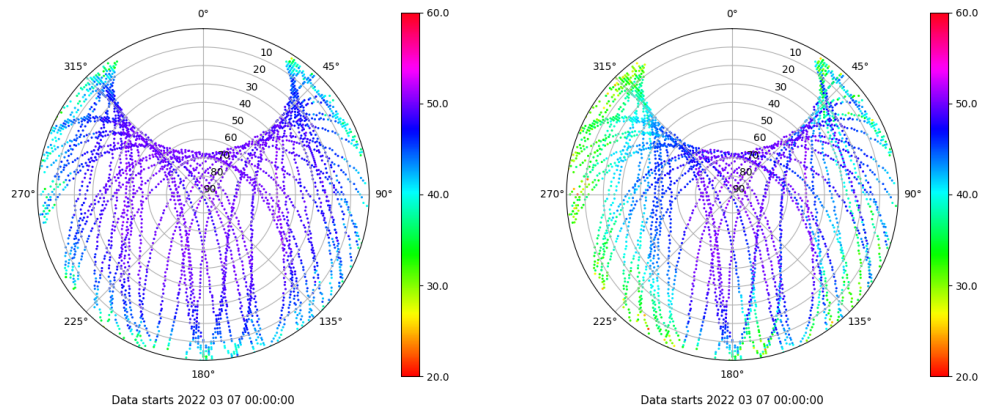


Control de calidad GNSS GPS diario

Estacion: ZFRA
 Fecha: 2022 03 07
 Dia del año: 066

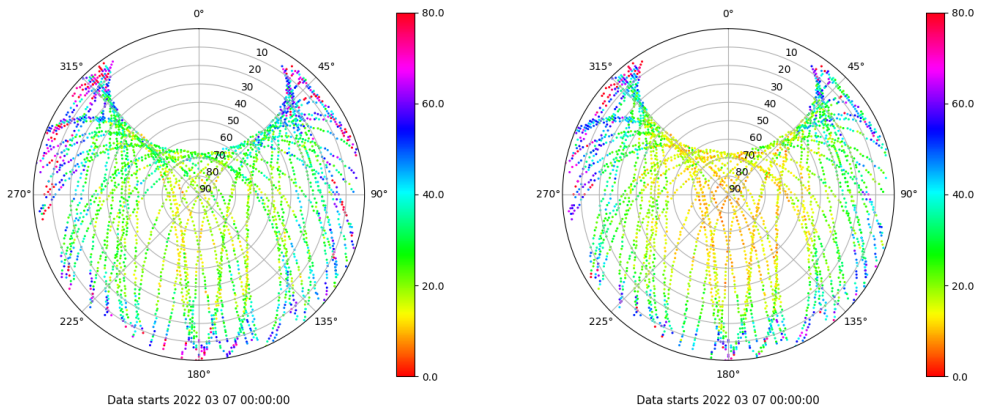
Señal-Ruido GPS L1 y L2

Skyplot for station ZFRA. Signal to Noise S1C Data file ZFRA00ESP_R_2022066.xtr Skyplot for station ZFRA. Signal to Noise S2W Data file ZFRA00ESP_R_2022066.xtr



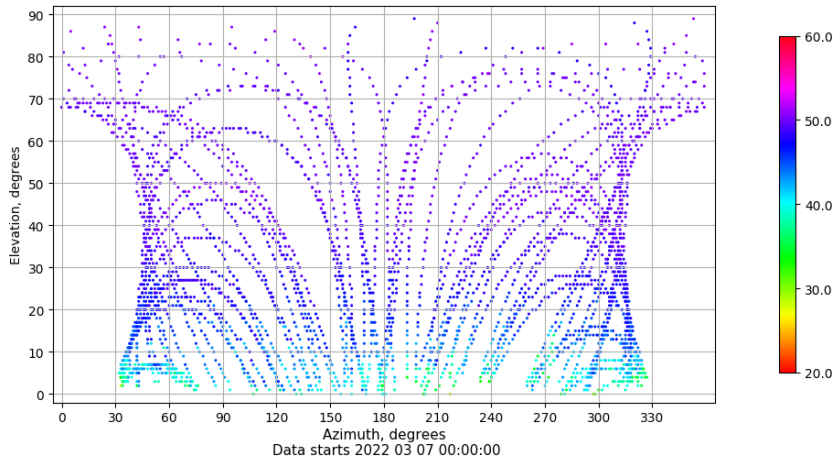
Multipath GPS L1 y L2

Skyplot for station ZFRA. Parameter M1C Data file ZFRA00ESP_R_2022066.xtr Skyplot for station ZFRA. Parameter M2W Data file ZFRA00ESP_R_2022066.xtr



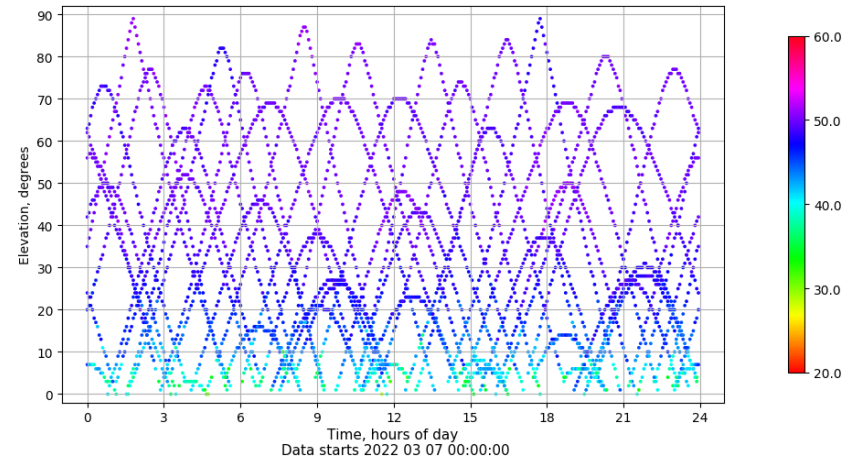
Azimuth-Elevacion

Azimuth-elevation plot for station ZFRA. Signal to Noise S1C Data file ZFRA00ESP_R_2022066.xtr



Tiempo-Elevacion

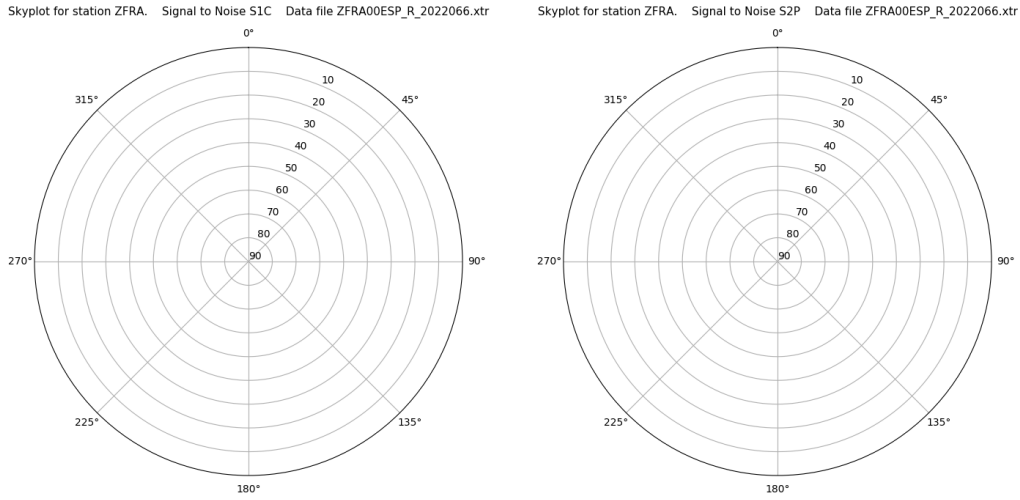
Time-elevation plot for station ZFRA. Signal to Noise S1C Data file ZFRA00ESP_R_2022066.xtr



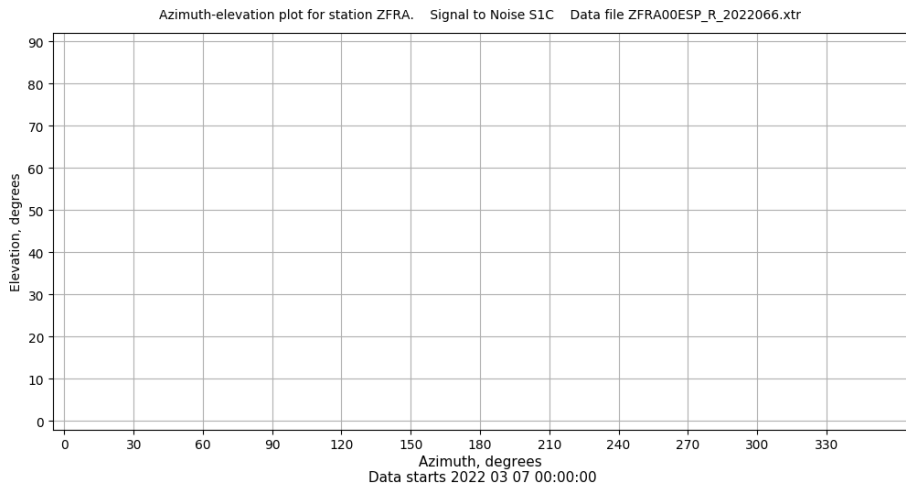
Control de calidad GNSS GLO diario

Estacion: ZFRA
 Fecha: 2022 03 07
 Dia del año: 066

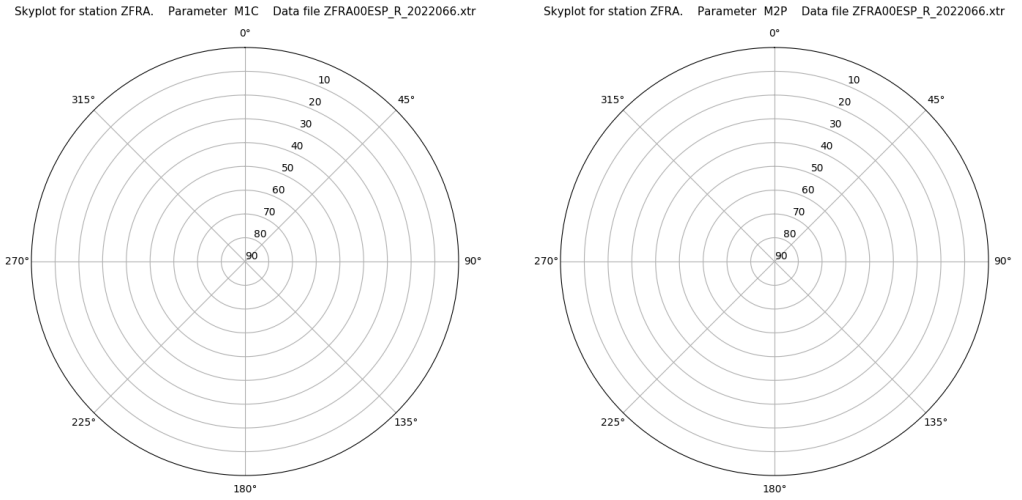
Señal-Ruido GLO L1 y L2



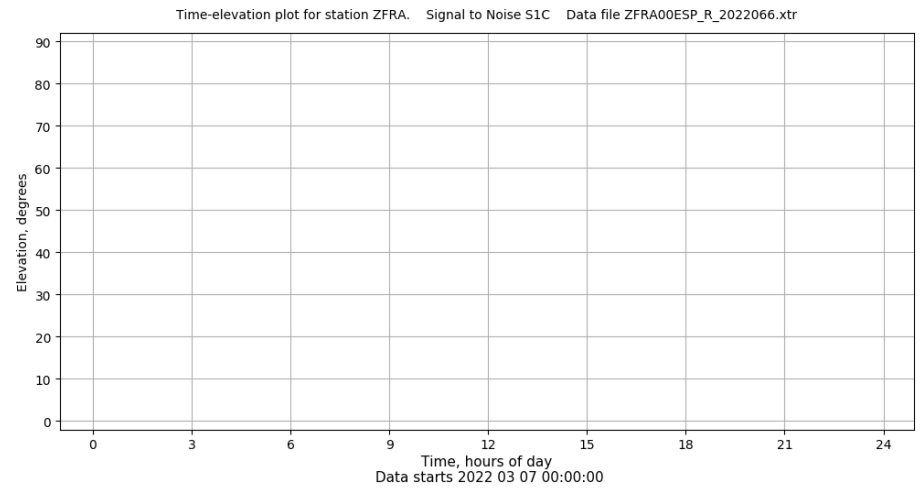
Azimut-Elevacion



Multipath GLO L1 y L2



Tiempo-Elevacion

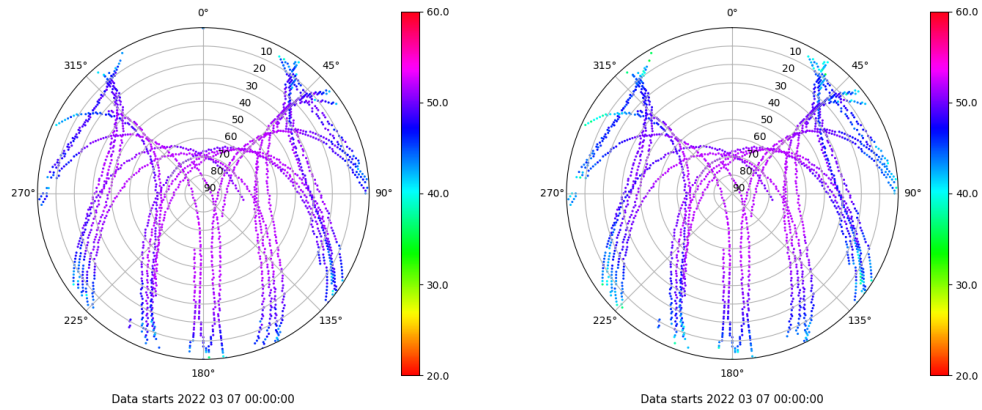


Control de calidad GNSS GAL diario

Estacion: ZFRA
 Fecha: 2022 03 07
 Dia del año: 066

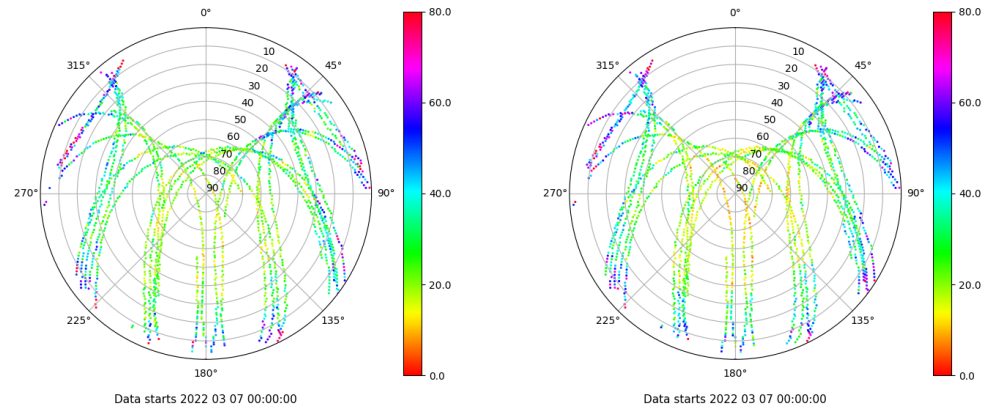
Señal-Ruido GAL E1 y E5

Skyplot for station ZFRA. Signal to Noise S1C Data file ZFRA00ESP_R_2022066.xtr Skyplot for station ZFRA. Signal to Noise S5Q Data file ZFRA00ESP_R_2022066.xtr



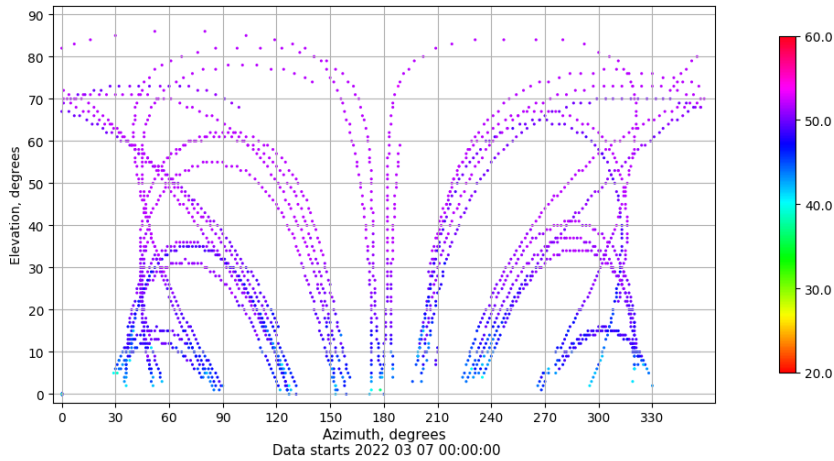
Multipath GAL E1 y E5

Skyplot for station ZFRA. Parameter M1C Data file ZFRA00ESP_R_2022066.xtr Skyplot for station ZFRA. Parameter M5Q Data file ZFRA00ESP_R_2022066.xtr



Azimuth-Elevacion

Azimuth-elevation plot for station ZFRA. Signal to Noise S1C Data file ZFRA00ESP_R_2022066.xtr



Tiempo-Elevacion

Time-elevation plot for station ZFRA. Signal to Noise S1C Data file ZFRA00ESP_R_2022066.xtr

