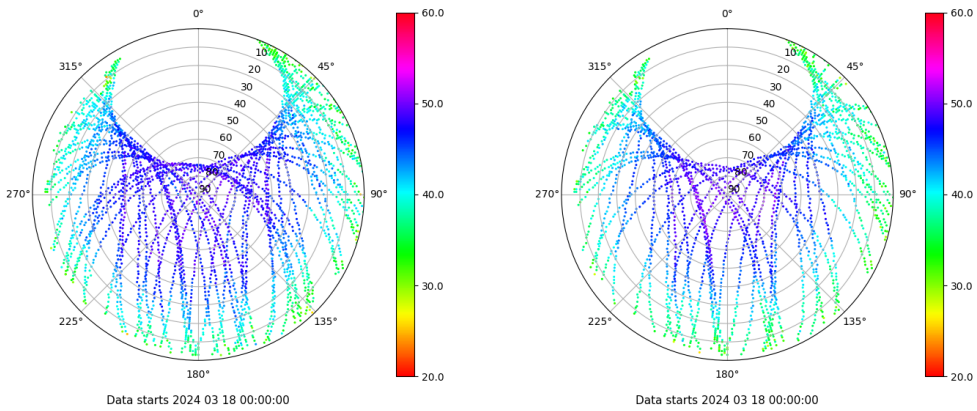


# Control de calidad GNSS GPS diario

Estacion: XIX1  
 Fecha: 2024 03 18  
 Dia del año: 078

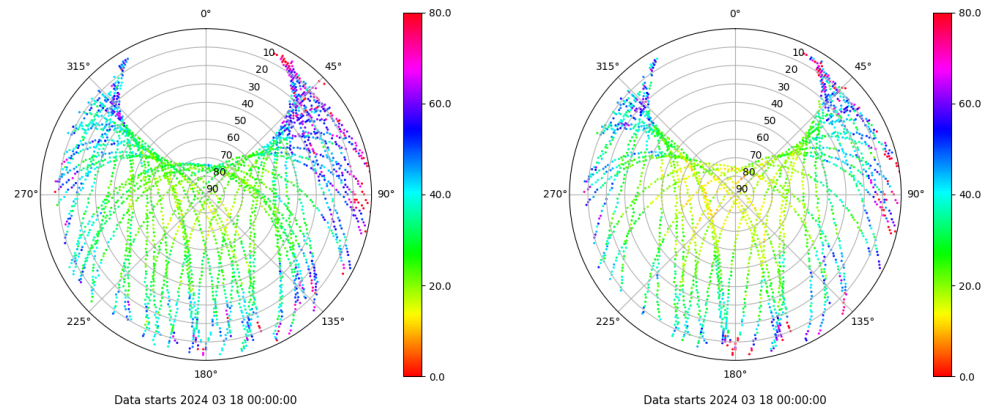
## Señal-Ruido GPS L1 y L2

Skyplot for station XIX1. Signal to Noise S1C Data file XIX100ESP\_R\_2024078.xtr Skyplot for station XIX1. Signal to Noise S2X Data file XIX100ESP\_R\_2024078.xtr



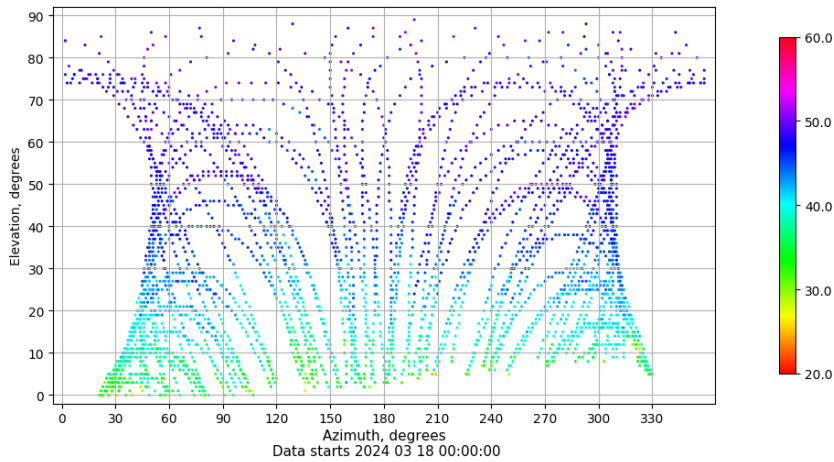
## Multipath GPS L1 y L2

Skyplot for station XIX1. Parameter M1C Data file XIX100ESP\_R\_2024078.xtr Skyplot for station XIX1. Parameter M2X Data file XIX100ESP\_R\_2024078.xtr



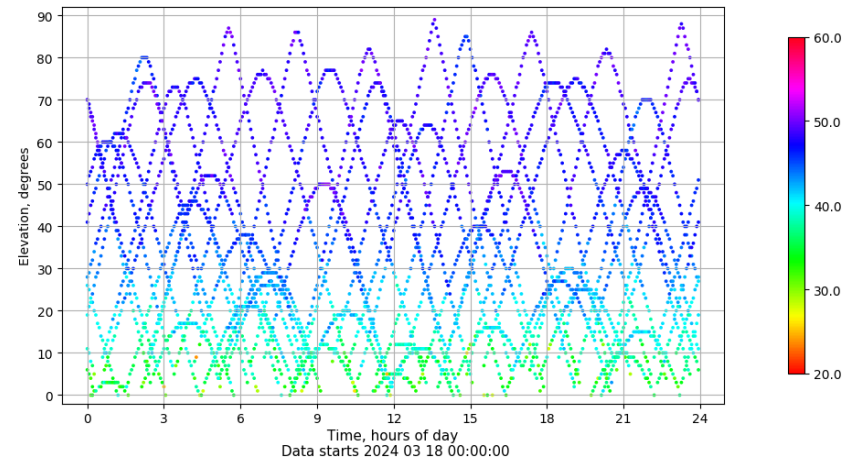
## Azimuth-Elevacion

Azimuth-elevation plot for station XIX1. Signal to Noise S1C Data file XIX100ESP\_R\_2024078.xtr



## Tiempo-Elevacion

Time-elevation plot for station XIX1. Signal to Noise S1C Data file XIX100ESP\_R\_2024078.xtr

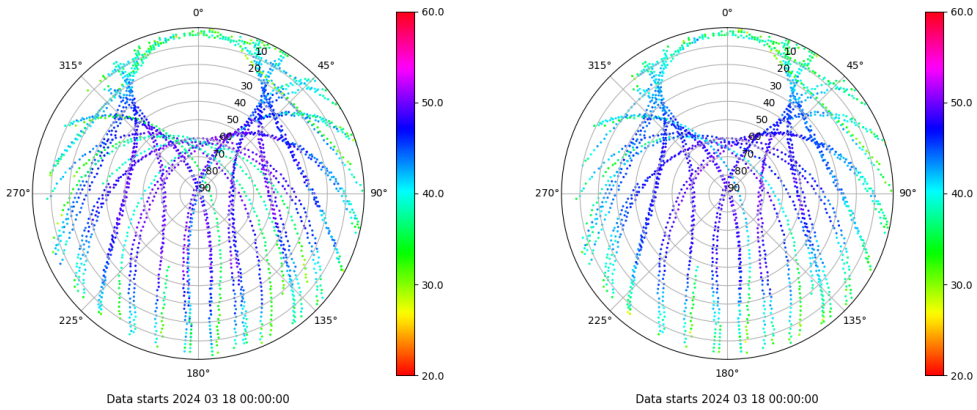


# Control de calidad GNSS GLO diario

Estacion: XIX1  
 Fecha: 2024 03 18  
 Dia del año: 078

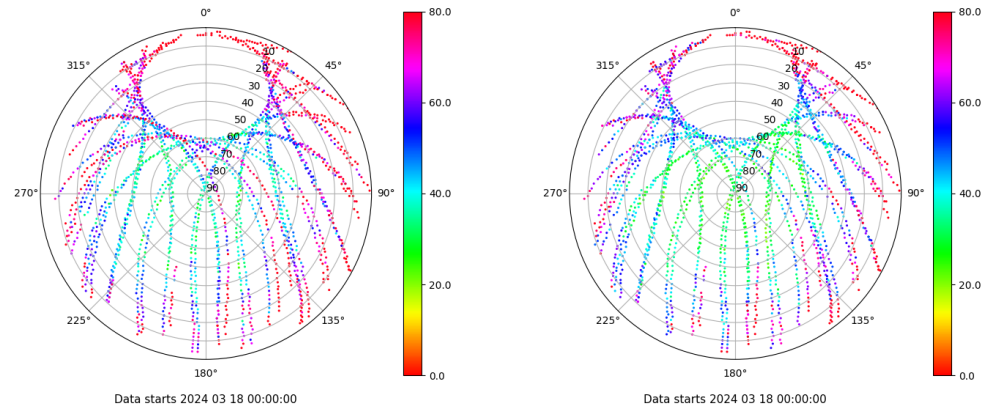
## Señal-Ruido GLO L1 y L2

Skyplot for station XIX1. Signal to Noise S1C Data file XIX100ESP\_R\_2024078.xtr Skyplot for station XIX1. Signal to Noise S2C Data file XIX100ESP\_R\_2024078.xtr



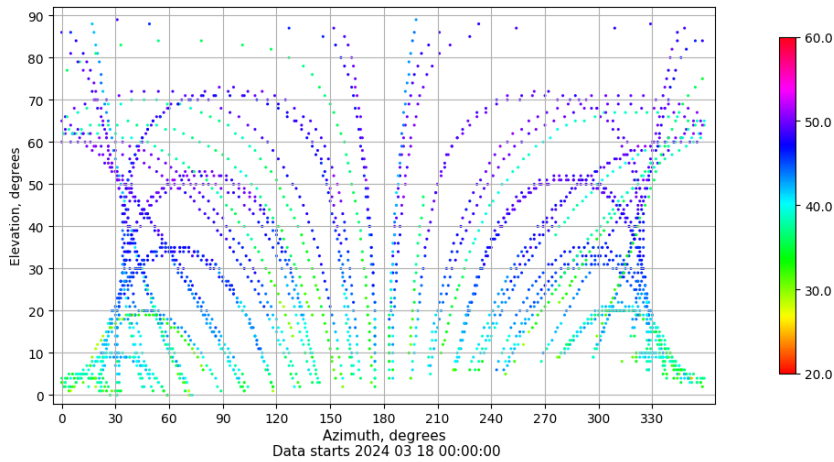
## Multipath GLO L1 y L2

Skyplot for station XIX1. Parameter M1C Data file XIX100ESP\_R\_2024078.xtr Skyplot for station XIX1. Parameter M2C Data file XIX100ESP\_R\_2024078.xtr



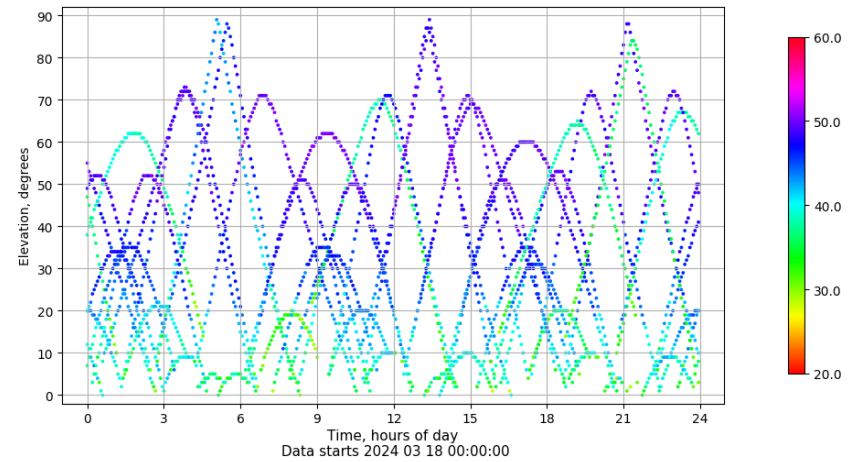
## Azimuth-Elevacion

Azimuth-elevation plot for station XIX1. Signal to Noise S1C Data file XIX100ESP\_R\_2024078.xtr



## Tiempo-Elevacion

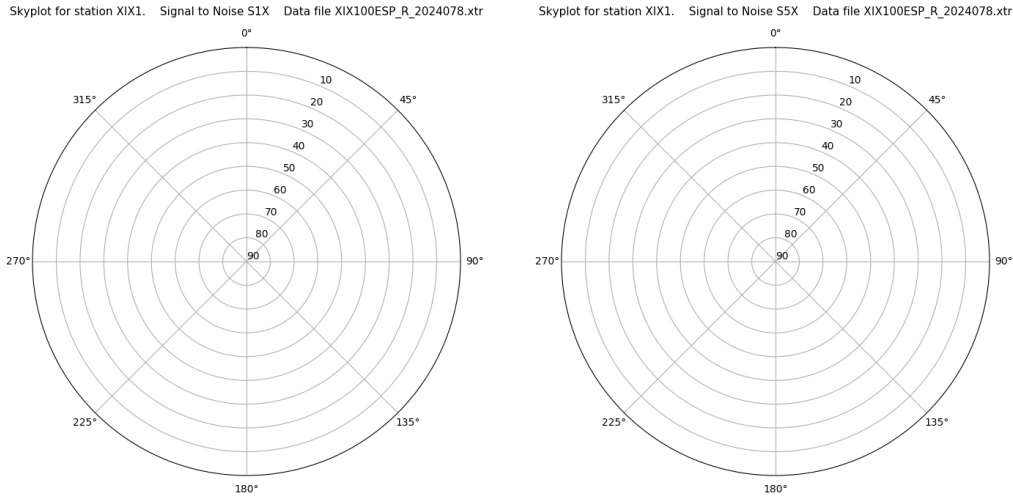
Time-elevation plot for station XIX1. Signal to Noise S1C Data file XIX100ESP\_R\_2024078.xtr



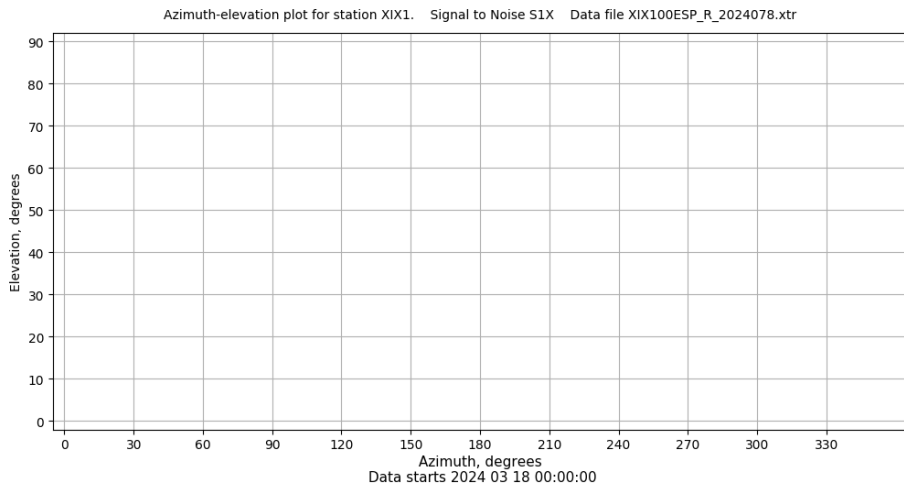
# Control de calidad GNSS GAL diario

Estacion: XIX1  
 Fecha: 2024 03 18  
 Dia del año: 078

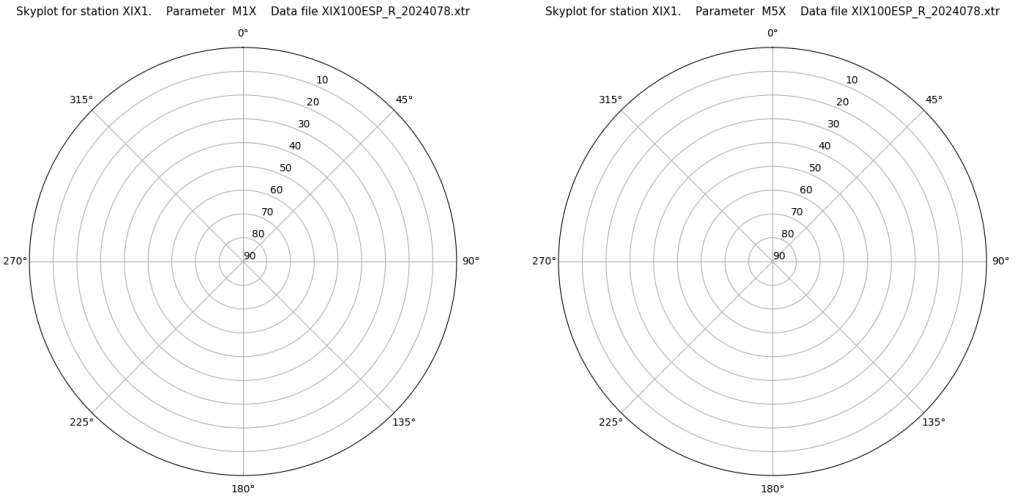
## Señal-Ruido GAL E1 y E5



## Azimut-Elevacion



## Multipath GAL E1 y E5



## Tiempo-Elevacion

