

Control de calidad GNSS GPS diario

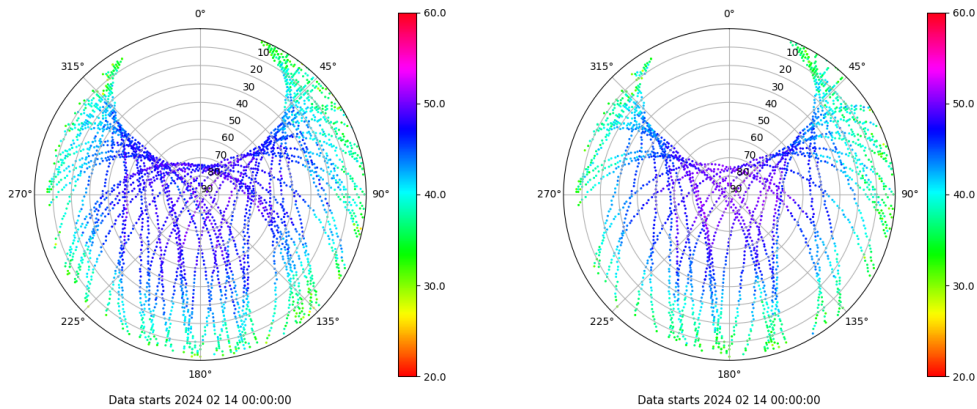
Estacion: XIX1

Fecha: 2024 02 14

Día del año: 045

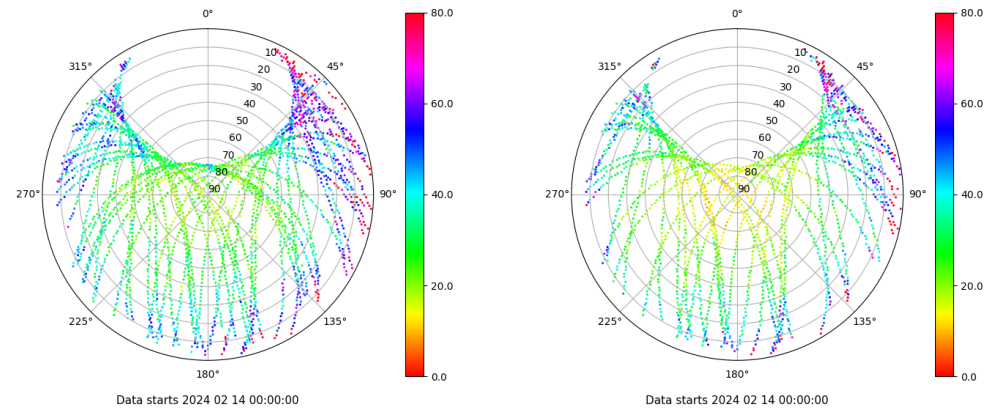
Señal-Ruido GPS L1 y L2

Skyplot for station XIX1. Signal to Noise S1C Data file XIX100ESP_R_2024045.xtr Skyplot for station XIX1. Signal to Noise S2X Data file XIX100ESP_R_2024045.xtr



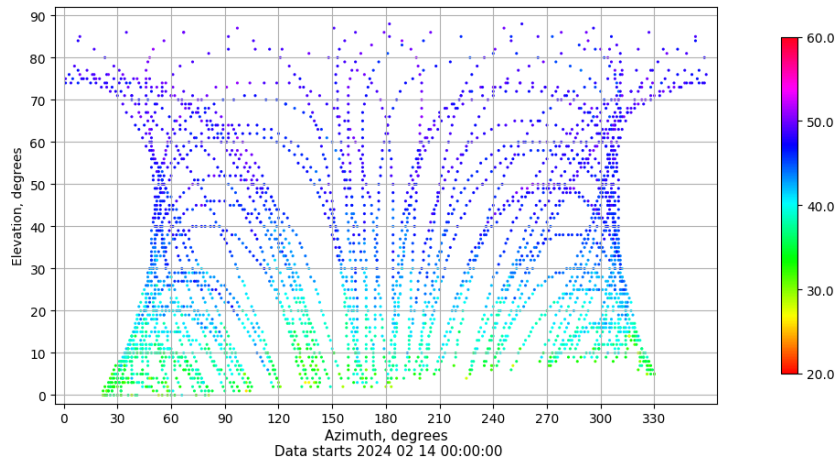
Multipath GPS L1 y L2

Skyplot for station XIX1. Parameter M1C Data file XIX100ESP_R_2024045.xtr Skyplot for station XIX1. Parameter M2X Data file XIX100ESP_R_2024045.xtr



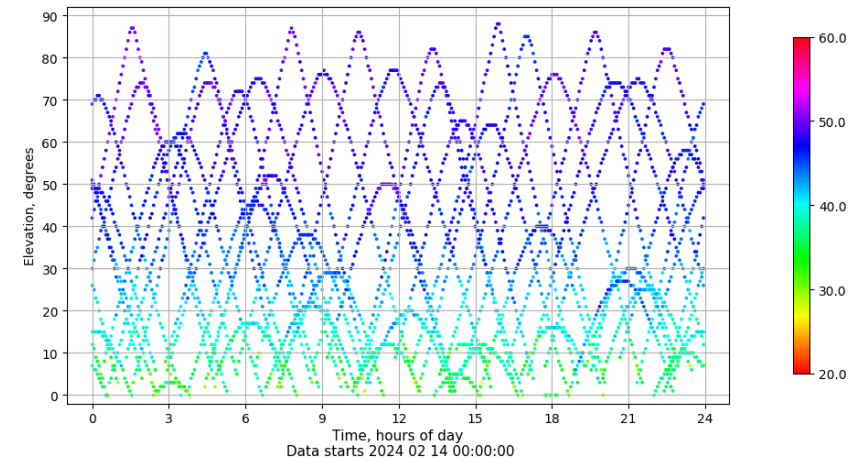
Azimut-Elevacion

Azimuth-elevation plot for station XIX1. Signal to Noise S1C Data file XIX100ESP_R_2024045.xtr



Tiempo-Elevacion

Time-elevation plot for station XIX1. Signal to Noise S1C Data file XIX100ESP_R_2024045.xtr



Control de calidad GNSS GLO diario

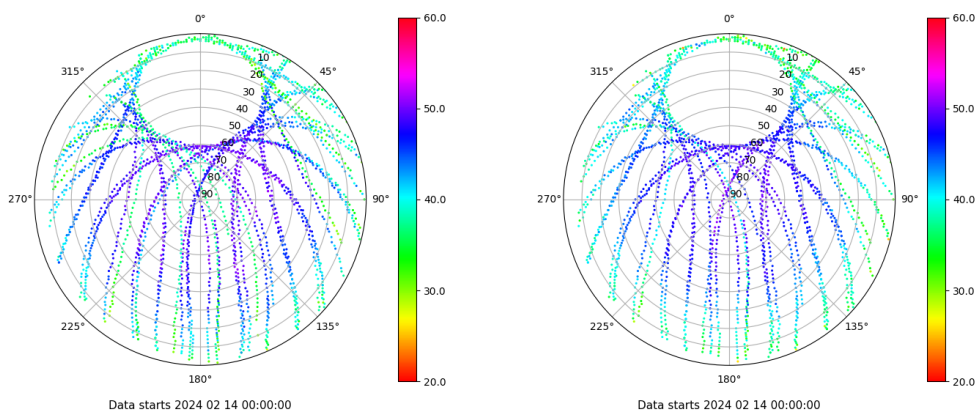
Estacion: XIX1

Fecha: 2024 02 14

Dia del año: 045

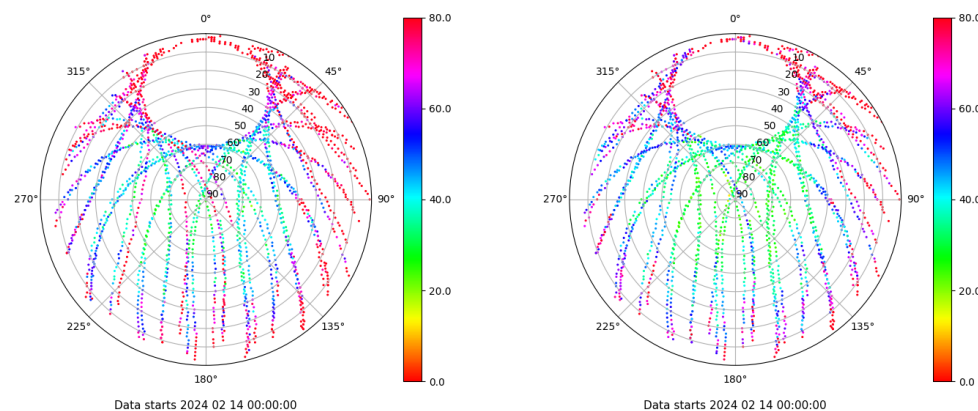
Señal-Ruido GLO L1 y L2

Skyplot for station XIX1. Signal to Noise S1C Data file XIX100ESP_R_2024045.xtr Skyplot for station XIX1. Signal to Noise S2C Data file XIX100ESP_R_2024045.xtr



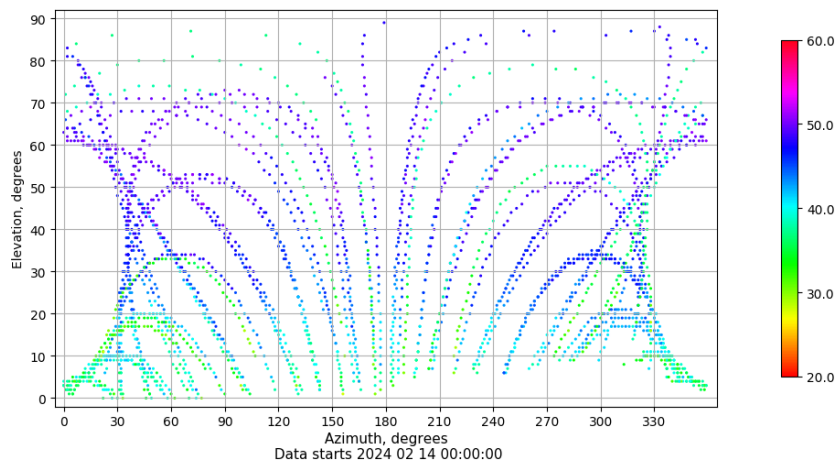
Multipath GLO L1 y L2

Skyplot for station XIX1. Parameter M1C Data file XIX100ESP_R_2024045.xtr Skyplot for station XIX1. Parameter M2C Data file XIX100ESP_R_2024045.xtr



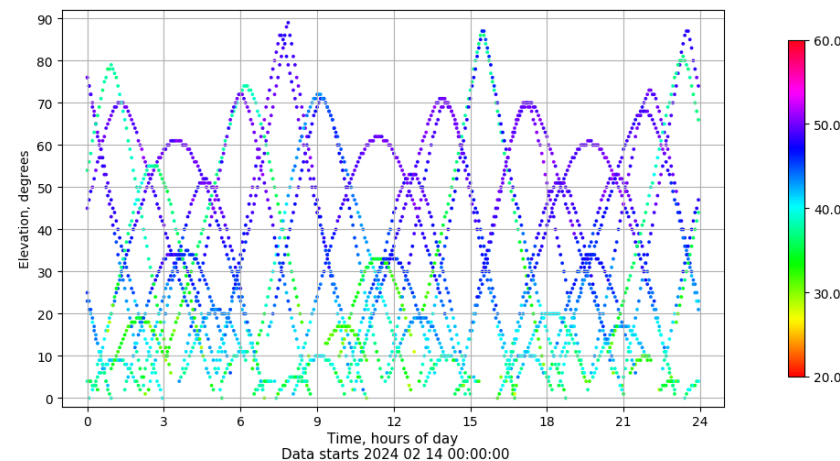
Azimut-Elevacion

Azimuth-elevation plot for station XIX1. Signal to Noise S1C Data file XIX100ESP_R_2024045.xtr



Tiempo-Elevacion

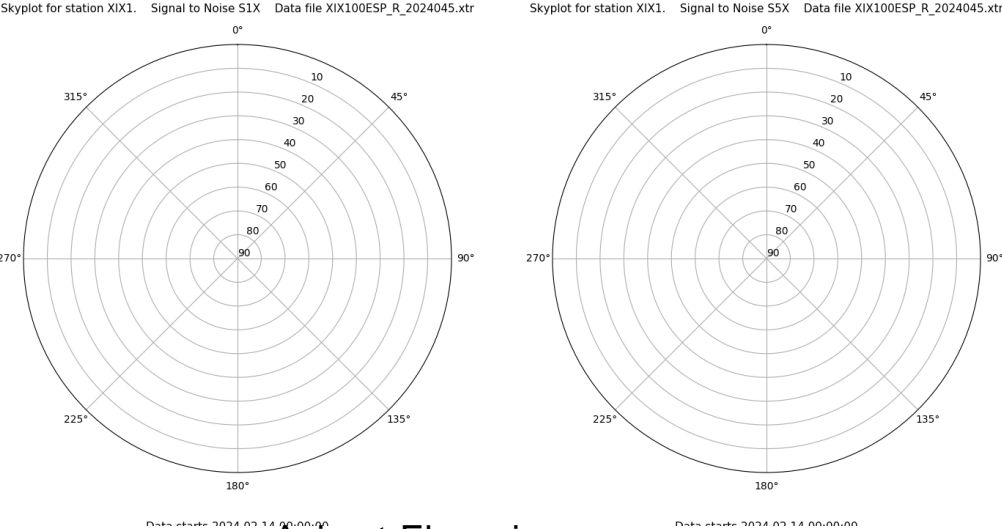
Time-elevation plot for station XIX1. Signal to Noise S1C Data file XIX100ESP_R_2024045.xtr



Control de calidad GNSS GAL diario

Estacion: XIX1
Fecha: 2024 02 14
Dia del año: 045

Señal-Ruido GAL E1 y E5



Azmut-Elevacion

Tiempo-Elevacion